

**Medina Valley ISD Board of Trustees
Regular Meeting**

{{Date }} at 6:30 PM

Medina Valley ISD Central Office Board Room, 8449 FM 471 S, Castroville, TX 78009

Notice is hereby given that on **November 15, 2021** the **Board of Trustees of the Medina Valley Independent School District** will hold a **Regular Board Meeting at 6:30 PM at {{Location: Meeting Location.}}** The subjects to be discussed are listed on the agenda which is attached to and made part of this notice.

Members of the public who desire to address the Board during Public Comments will need to sign up to speak prior to the start of the meeting by providing their name, and the topic they wish to address to the Board on the sign in sheet provided. At Regular Board Meetings the Board of Trustees shall permit public comment on any topic. At all other Board Meetings public comments will be limited to items on the agenda posted with the notice of the meeting. All public comments are limited to 5 minutes.

If it is determined that during the meeting an item on the agenda that can be legally discussed in closed session be removed from the open session and discussed in closed session, the board may elect to discuss such agenda item in closed session in accordance with the Texas Open Meetings Act, Government Code, Chapter 551, Subchapters D and E. Before convening into Closed Meeting the Presiding Officer will announce the time and identify the section or sections of this chapter under which the closed meeting is held. All final votes, actions, or decisions shall be taken in open meeting. The Presiding Officer will announce the date and time for the end of the Closed Meeting before resuming the Open Meeting.

If you have a disability, please advise the school district about special arrangements that may allow you to fully participate in this meeting by calling Medina Valley ISD at 830-931-2243.

For Medina Valley ISD Board of Trustees:

Scott Caloss ED.D., Superintendent of Schools

Medina Valley ISD
Regular Meeting
November 15, 2021

{{Name: Agenda Item Name}}

I. **First Order of Business**

- A Establish a Quorum
- B Pledge of Allegiance to the Flag followed by a moment of silence

II. **Announcements/Communications/Presentations**

A **Student Recognition**

1 **District Holiday Card Artwork Winners**

- a Isabeau Schoenfeld, MVHS and Rose Simonson, MVHS 4
- b Kapri Soto, Ladera Elem. and Pascal Huisman, MVHS 6
- B 3rd Quarter 2021 Demographic Study Report Overview 8
- C Financial Briefing 24
- D Superintendent Briefing 46

III. **Public Comment**

At Regular Board Meetings the Board shall permit public comment on any topic. At all other Board Meetings public comments will be limited to items on the agenda posted with the notice of the meeting. All Public Comments are limited to 5 minutes.

IV. **Discussion and Possible Action Items**

A **Consent Agenda Items**

- 1 Minutes of Regular Board Meeting on October 18, 2021 54
- 2 Donations 57
- B Consider Medina County Appraisal District Resolution to Cast Votes to Elect Directors for the Years 2022 and 2023 59

C Consider Resolution for Disposal of Obsolete and/or Surplus District Property

61

V. **Closed Session**

A Personnel Matters (TX Govt. Code Section 551.074)

B Deliberation Regarding Real Property (TX Govt. Code Section 551.072)

VI. **Continued Discussion and Possible Action Items**

A Consider professional contract recommendations

B Consideration of future meeting dates

VII. **Adjournment**



ARTWORK BY ISABEAU SCHOENFELD



ARTWORK BY ROSE SIMONSON



ARTWORK BY KAPRI SOTO



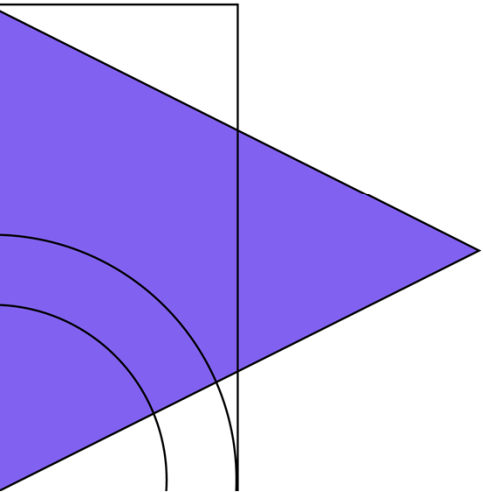
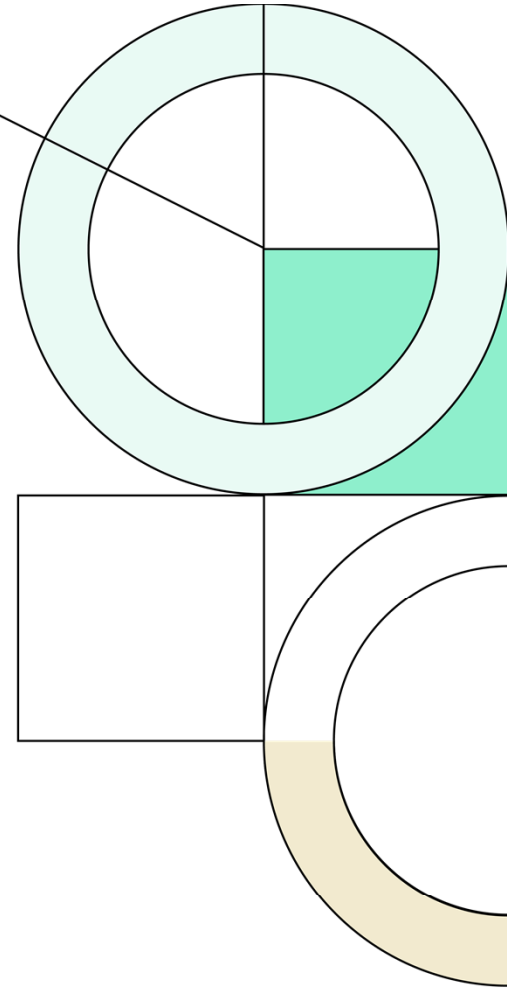
ARTWORK BY PASCAL HUISMAN



Medina Valley Independent School District

3Q21

Demographic Report





Annual Enrollment Change

Year (Oct)	EE	PK	K	1st	2nd	3rd	4th	5th	6th	7th	8th	9th	10th	11th	12th	Total	Total Growth	% Growth
2017/18	32	159	367	357	363	389	397	385	413	380	416	373	400	360	297	5,088		
2018/19	45	209	374	384	367	391	421	415	436	454	408	427	390	388	358	5,467	379	7.4%
2019/20	30	181	431	408	422	411	447	470	483	465	469	436	433	399	367	5,852	385	7.0%
2020/21	26	160	398	474	429	461	460	473	509	489	490	483	449	434	390	6,125	273	4.7%
2021/22	32	186	483	488	526	489	498	520	525	547	539	518	523	459	432	6,765	640	10.4%

Yellow Box = largest grade per year
Green Box = second largest grade per year

	EE	PK	K	1st	2nd	3rd	4th	5th	6th	7th	8th	9th	10th	11th	12th	Elem	MS	HS
3 Year Avg.	0.921	0.971	1.096	1.139	1.087	1.117	1.114	1.102	1.119	1.051	1.063	1.052	1.042	1.016	0.973	1.109	1.078	1.021
2018/19	1.406	1.314	1.019	1.046	1.028	1.077	1.082	1.045	1.132	1.099	1.074	1.026	1.046	0.970	0.994	1.050	1.102	1.009
2019/20	0.667	0.866	1.152	1.091	1.099	1.120	1.143	1.116	1.164	1.067	1.033	1.069	1.014	1.023	0.946	1.120	1.088	1.013
2020/21	0.867	0.884	0.923	1.100	1.051	1.092	1.119	1.058	1.083	1.012	1.054	1.030	1.030	1.002	0.977	1.057	1.050	1.010
2021/22	1.231	1.163	1.214	1.226	1.110	1.140	1.080	1.130	1.110	1.075	1.102	1.057	1.083	1.022	0.995	1.150	1.096	1.039

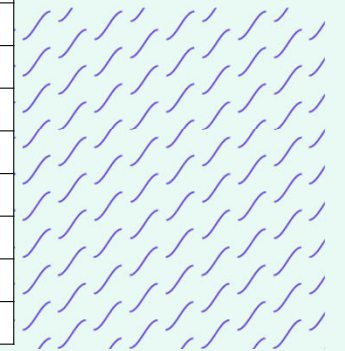
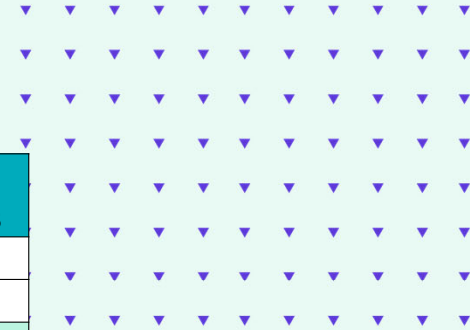
- Medina Valley ISD added than 600 students this year with increased housing activity



San Antonio New Home Ranking Report

ISD Ranked by Annual Closings – 3Q21

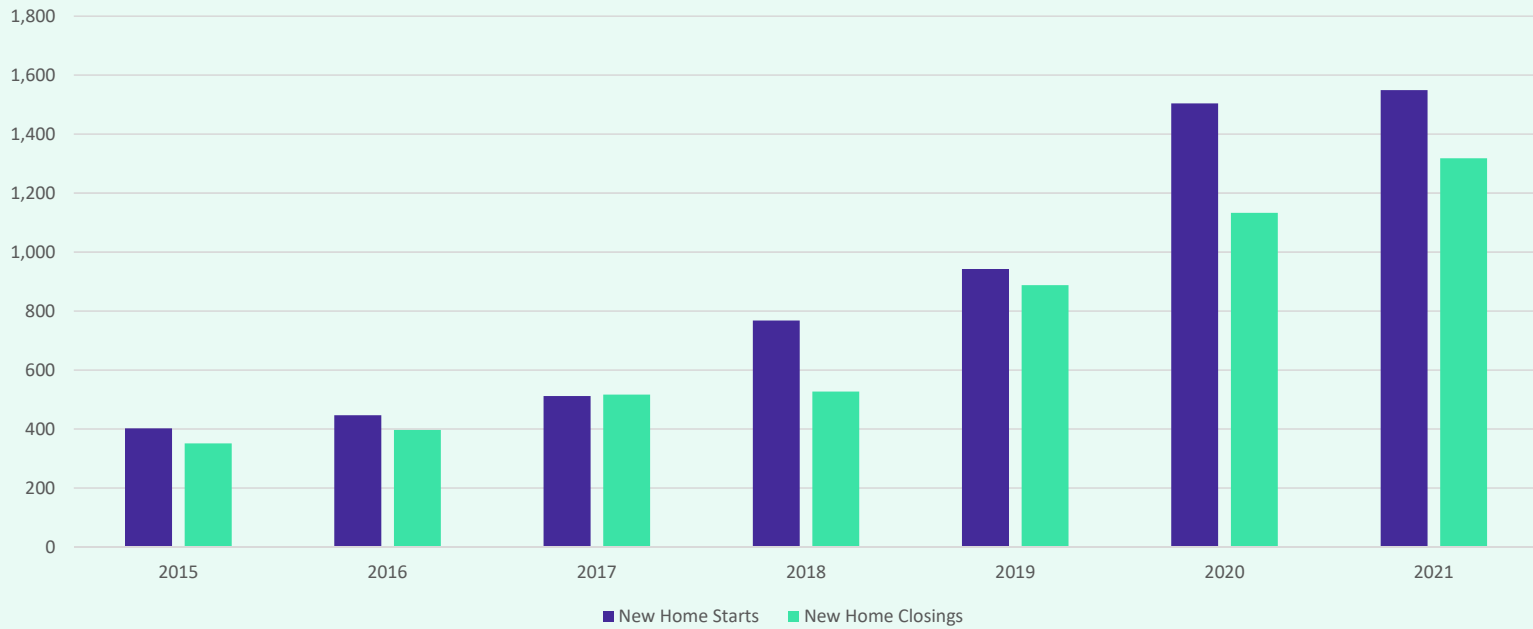
Rank	District Name	Annual Starts	Annual Closings	Inventory	VDL	Futures
1	Northside ISD	4,765	4,037	2,838	4,930	27,958
2	Comal ISD	3,422	2,866	2,095	3,991	27,662
3	Medina Valley ISD	2,084	1,661	1,056	2,551	25,087
4	Judson ISD	1,678	1,643	823	1,687	2,869
5	East Central ISD	2,049	1,565	1,080	2,108	18,636
6	Schertz-Cibolo U City ISD	1,094	931	613	1,625	7,707
7	New Braunfels ISD	1,084	874	627	773	7,387
8	Boerne ISD	924	869	623	1,123	11,526
9	North East ISD	669	607	358	565	6,467
10	Southwest ISD	781	572	447	1,309	9,265
11	Seguin ISD	400	315	189	869	3,949
12	San Antonio ISD	297	207	248	523	1,323
13	Southside ISD	208	170	130	528	9,620
14	South San Antonio ISD	164	164	79	207	843
15	Navarro ISD	140	104	108	676	3,568
16	Alamo Heights ISD	38	48	50	79	46
17	Marion ISD	33	42	15	31	1,228
18	Lytle ISD	45	18	39	140	906
19	Edgewood ISD	0	13	0	32	0
20	Harlandale ISD	48	10	44	93	137



* Based on additional Templeton Demographics housing research
 **Includes Age-Restricted subdivisions



District New Home Starts and Closings by Quarter

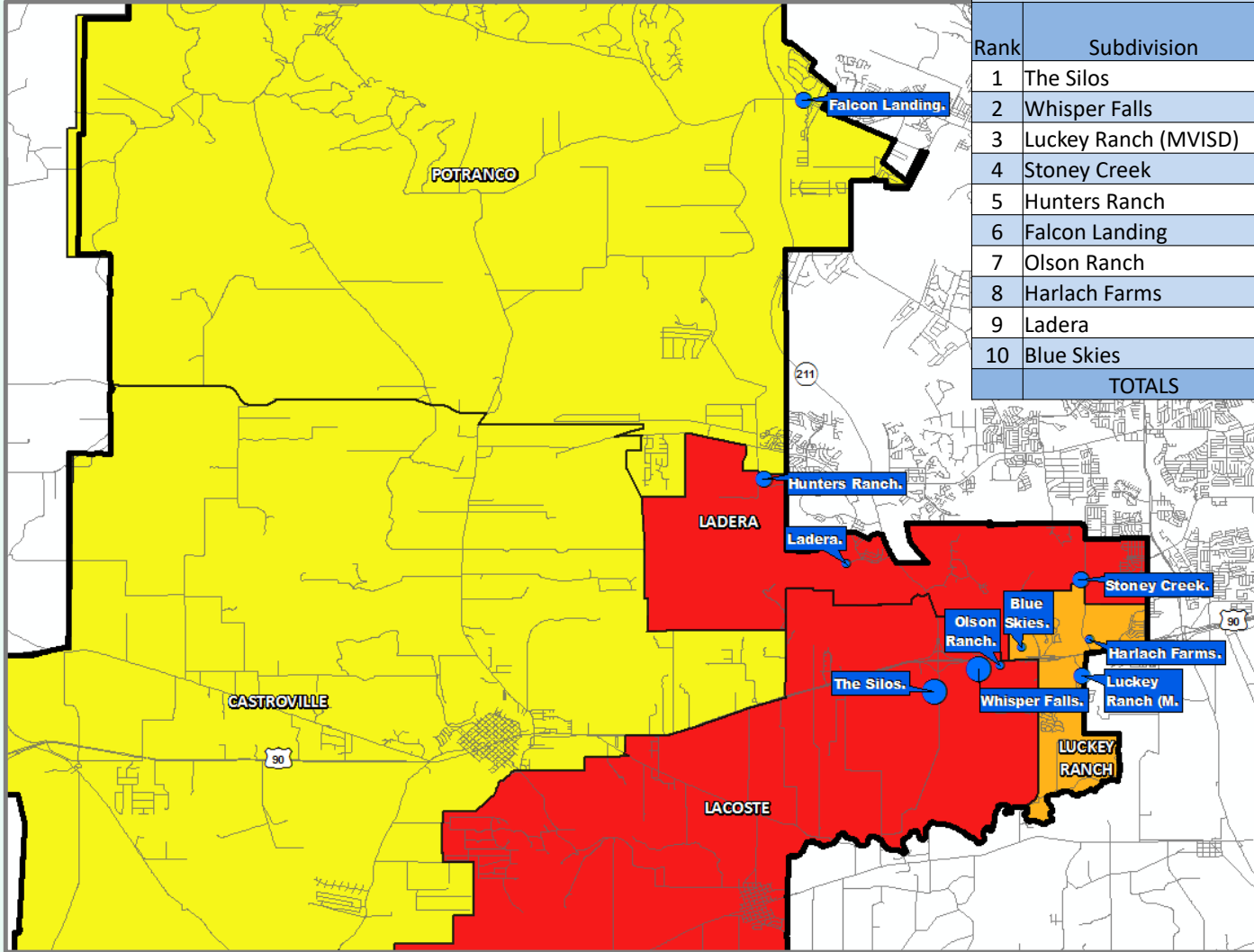


Starts	2015	2016	2017	2018	2019	2020	2021
1Q	70	84	112	124	161	299	526
2Q	109	94	143	163	277	273	528
3Q	105	153	150	199	254	397	495
4Q	118	116	107	282	251	535	
Total	402	447	512	768	943	1,504	1,549

Closings	2015	2016	2017	2018	2019	2020	2021
1Q	76	79	119	109	192	199	401
2Q	81	93	133	146	242	293	485
3Q	86	101	134	132	209	296	432
4Q	108	124	131	140	245	345	
Total	351	397	517	527	888	1,133	1,318



Annual Closing Distribution



Top 10 Subdivisions - 3Q21 (Ranked by Annual Closings)

Rank	Subdivision	Annual Closings	Quarter Closings	VDL	Future
1	The Silos	267	46	323	646
2	Whisper Falls	239	68	387	90
3	Lucky Ranch (MVISD)	190	51	150	10
4	Stoney Creek	152	41	97	0
5	Hunters Ranch	137	45	3	999
6	Falcon Landing	107	28	15	0
7	Olson Ranch	98	9	0	0
8	Harlach Farms	84	26	0	0
9	Ladera	67	25	120	1,958
10	Blue Skies	60	33	146	399
TOTALS		1,401	372	1,241	4,102

Annual Closings by Sub

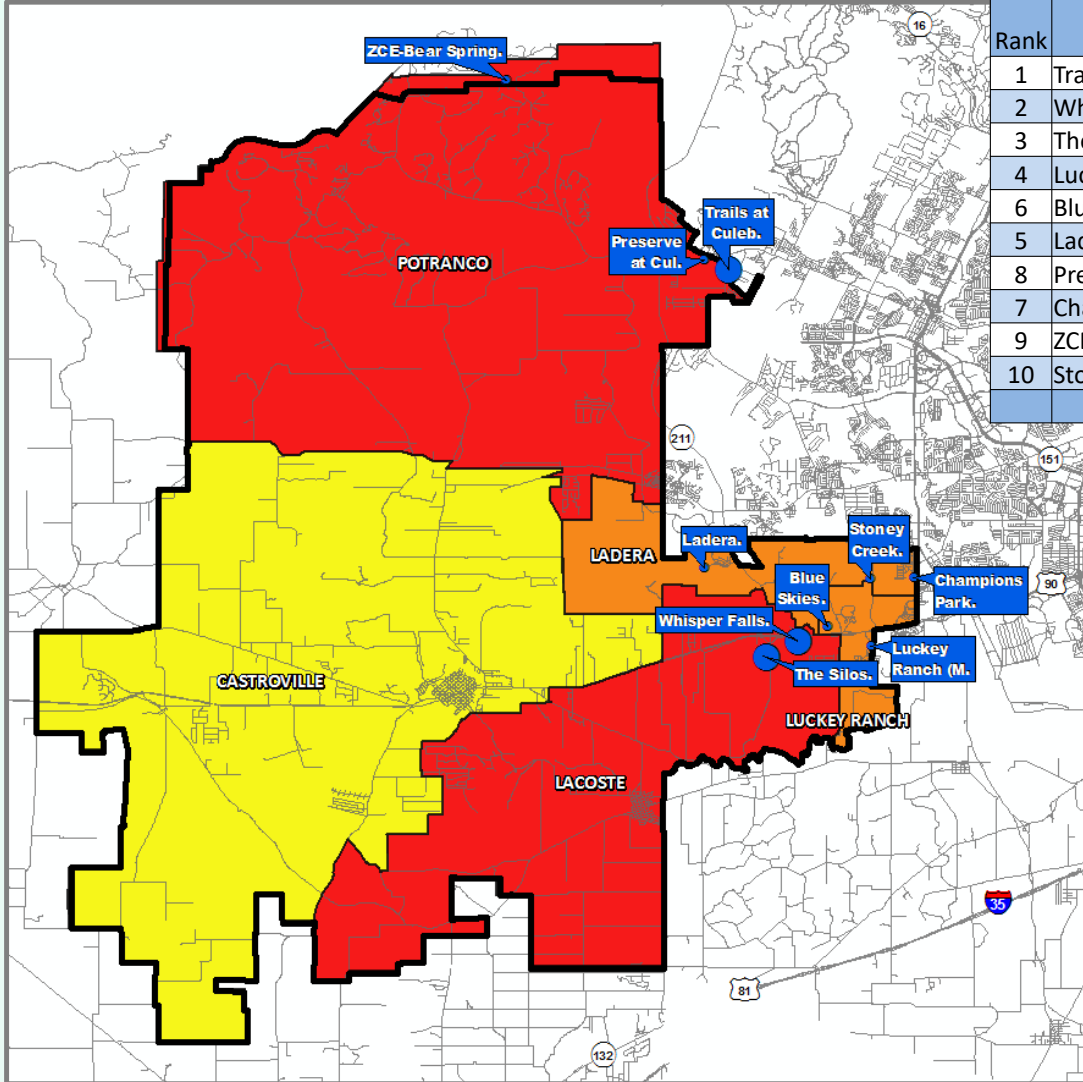
- < 100
- 101 - 200
- > 200

Annual Closings by Elem Zone

- < 200
- 201 - 400
- > 400



VDL Distribution



Top 10 Subdivisions 3Q21 (Ranked by remaining VDL)

Rank	Subdivision	Annual Closings	VDL	Future
1	Trails at Culebra	32	498	332
2	Whisper Falls	239	387	90
3	The Silos	267	323	646
4	Lucky Ranch (MVISD)	190	150	10
6	Blue Skies	60	146	399
5	Ladera	67	120	1,958
8	Preserve at Culebra	0	116	1,386
7	Champions Park	51	115	0
9	ZCE-Bear Springs Ranch	0	107	71
10	Stoney Creek	152	97	0
TOTALS		1,058	2,059	4,892

VDL by Sub

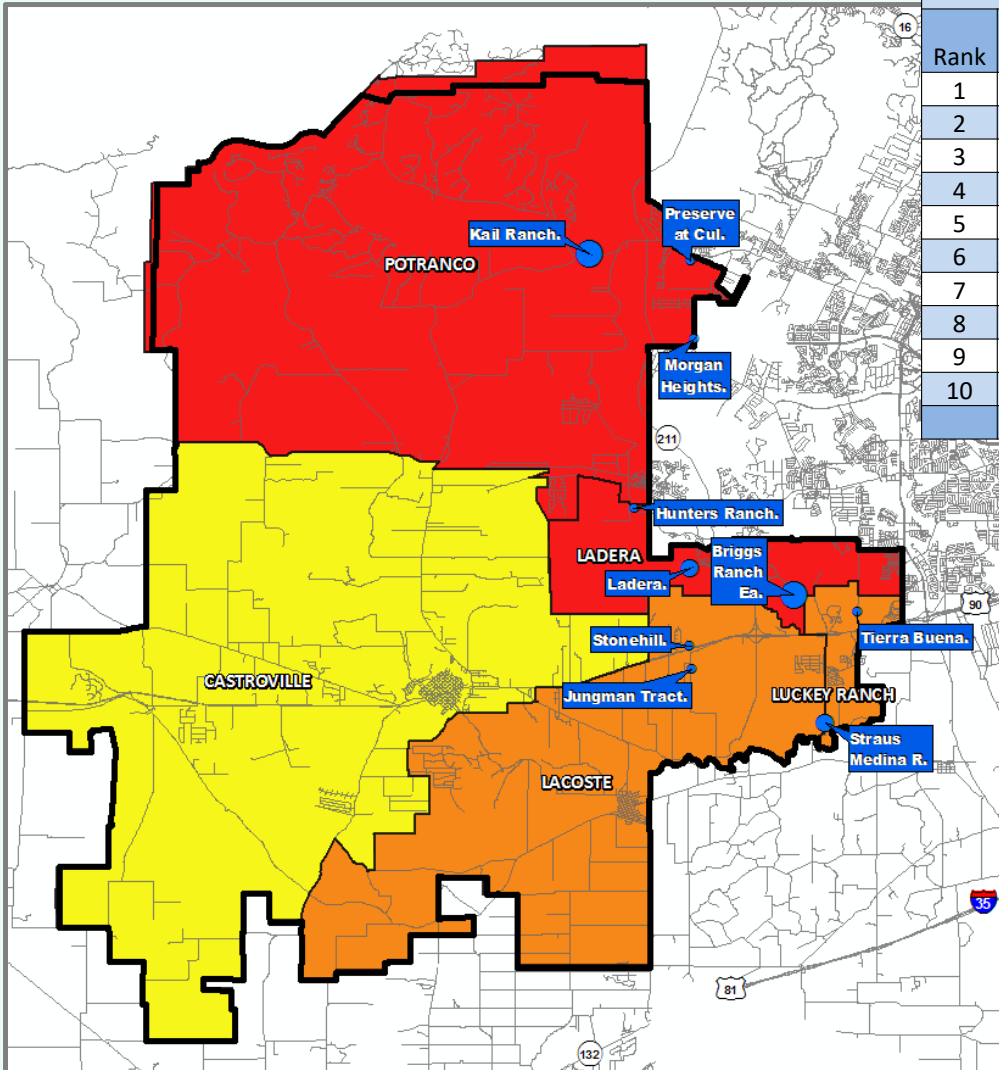
- < 150
- 150 - 300
- > 300

VDL by Elem Zone

- < 250
- 251 - 500
- > 500



Futures Distribution



Top 10 Subdivisions -3Q21 (Ranked by Future Inventory)

Rank	Subdivision	Annual Closings	VDL	Future
1	Briggs Ranch East	0	0	2,490
2	Kail Ranch	0	0	2,175
3	Ladera	67	120	1,958
4	Straus Medina Ranch	0	0	1,628
5	Stonehill	0	0	1,460
6	Jungman Tract	0	0	1,430
7	Preserve at Culebra	0	116	1,386
8	Tierra Buena	0	81	1,171
9	Morgan Heights	0	0	1,019
10	Hunters Ranch	137	3	999
TOTALS		204	320	15,716

Future by Sub

- < 1,500
- 1,501 - 2,000
- > 2,000

Future by Elem Zone




- < 3,000
- 3,001 - 5,000
- > 5,000

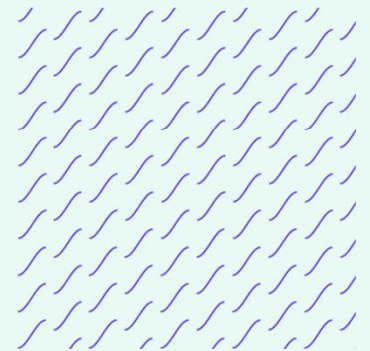


District Housing Overview by Elementary Zone



Elementary	Annual Starts	Quarter Starts	Annual Closings	Quarter Closings	Under Construction	Inventory	Vacant Dev. Lots	Futures
CASTROVILLE	17	5	11	3	12	12	92	1,072
LACOSTE	776	162	604	123	360	367	710	4,542
LADERA	497	110	466	126	230	258	423	8,339
LUCKEY RANCH	434	91	382	116	176	185	466	4,197
POTRANCO	360	127	198	64	213	234	860	6,937
GRAND TOTAL *	2,084	495	1,661	432	991	1,056	2,551	25,087

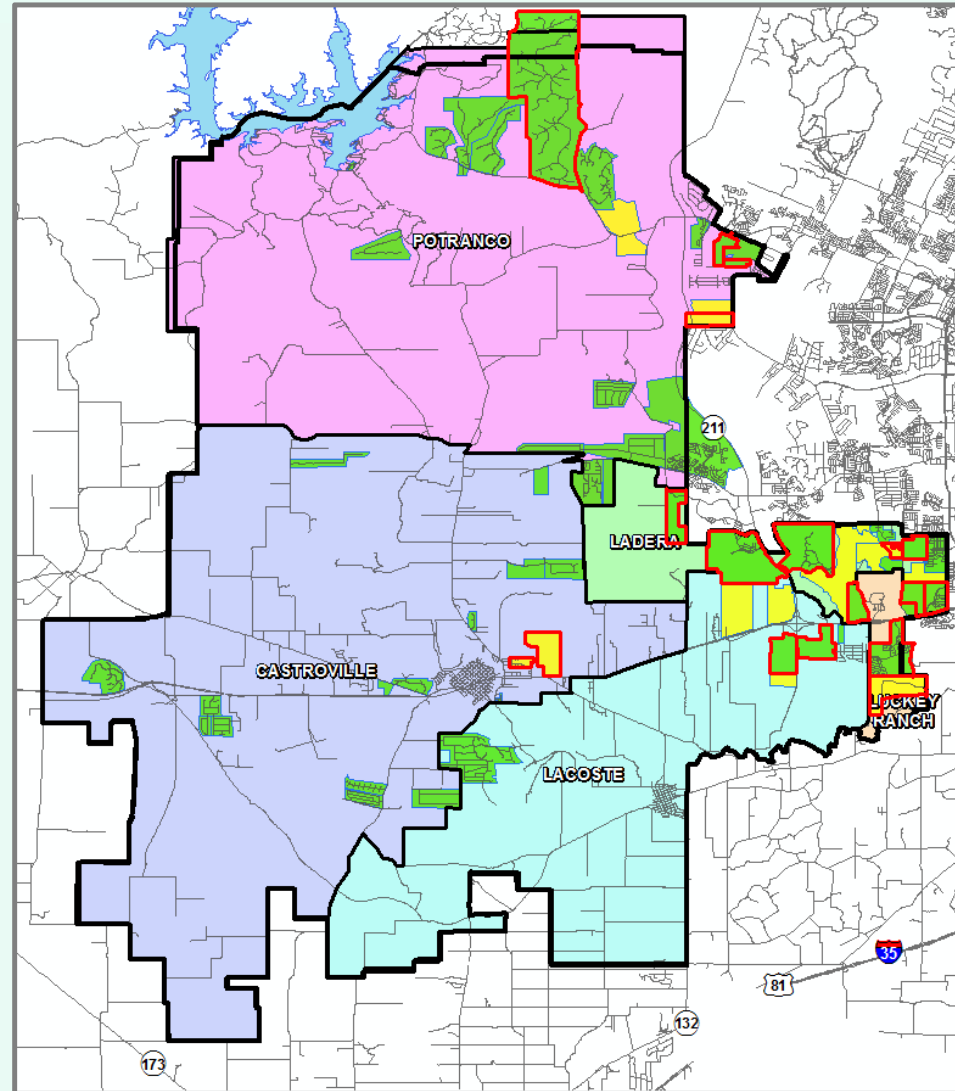
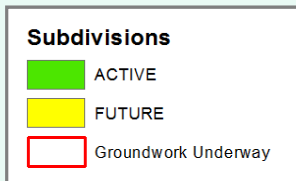
-  Highest activity in the category
-  Second highest activity in the category
-  Third highest activity in the category





District Housing Overview

- The district has 49 actively building subdivisions
- Within MVISD there are 14 future subdivisions
- Of these, groundwork is underway on 2,567 lots within 18 subdivisions





Residential Activity



The Silos

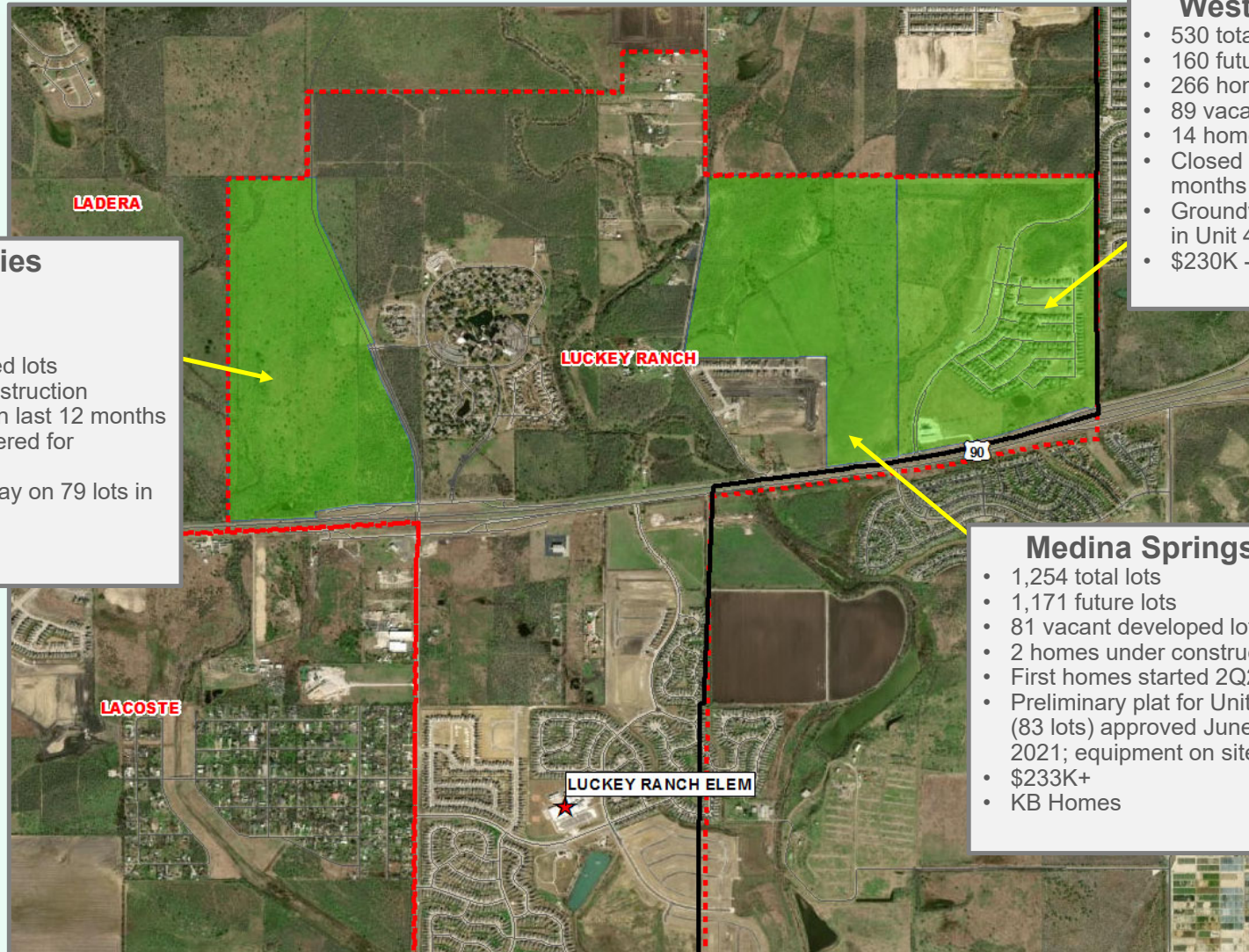
- 1,458 total lots
- 646 future lots
- 308 homes occupied
- 323 vacant developed lots
- 47 homes under construction
- Started 72 homes in 3Q21; started 337 homes in last 12 months
- Groundwork underway for 256 lots in Unit 8 & Unit 9
- Building 250 – 275 homes a year
- \$155K - \$340K
- Lennar

Whisper Falls

- 1,185 total lots
- 90 future lots
- 523 homes occupied
- 387 vacant developed lots
- 181 homes under construction
- Started 90 homes in 3Q21; started 352 homes in last 12 months
- Groundwork underway on 137 lots in Unit 4; Equip on site for Unit 3 (119 lots)
- Building 230 – 250 homes a year
- \$232K+
- DR Horton



Residential Activity



Blue Skies

- 676 total lots
- 399 future lots
- 60 homes occupied
- 146 vacant developed lots
- 69 homes under construction
- Started 131 homes in last 12 months
- Unit 2 (91 lots) delivered for homebuilding 3Q21
- Groundwork underway on 79 lots in Unit 3
- \$230K+

West Pointe Gardens

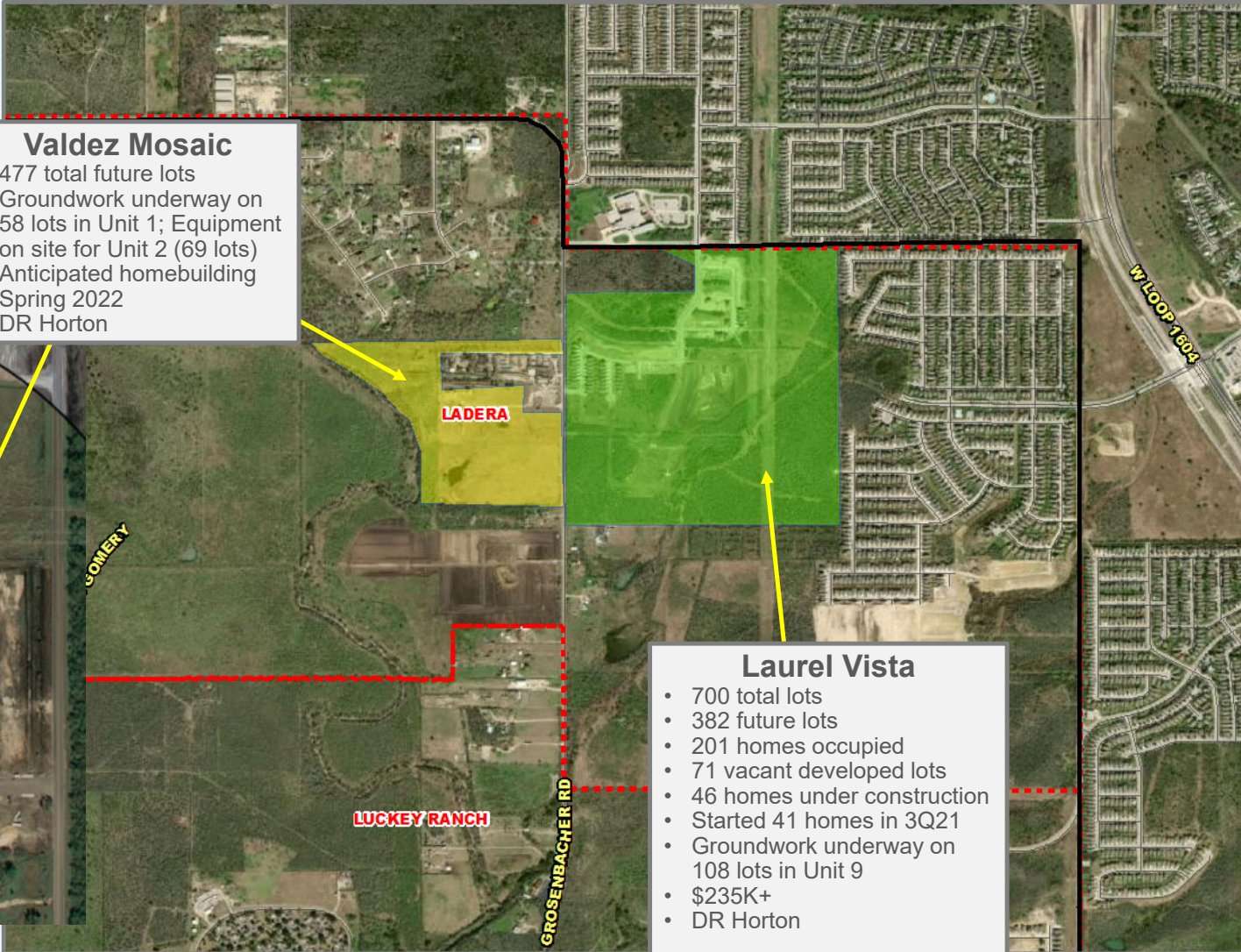
- 530 total lots
- 160 future lots
- 266 homes occupied
- 89 vacant developed lots
- 14 homes under construction
- Closed 48 homes in last 12 months
- Groundwork underway on 106 lots in Unit 4
- \$230K - \$430K

Medina Springs

- 1,254 total lots
- 1,171 future lots
- 81 vacant developed lots
- 2 homes under construction
- First homes started 2Q21
- Preliminary plat for Unit 2 (83 lots) approved June 2021; equipment on site
- \$233K+
- KB Homes



Residential Activity



Valdez Mosaic

- 477 total future lots
- Groundwork underway on 58 lots in Unit 1; Equipment on site for Unit 2 (69 lots)
- Anticipated homebuilding Spring 2022
- DR Horton

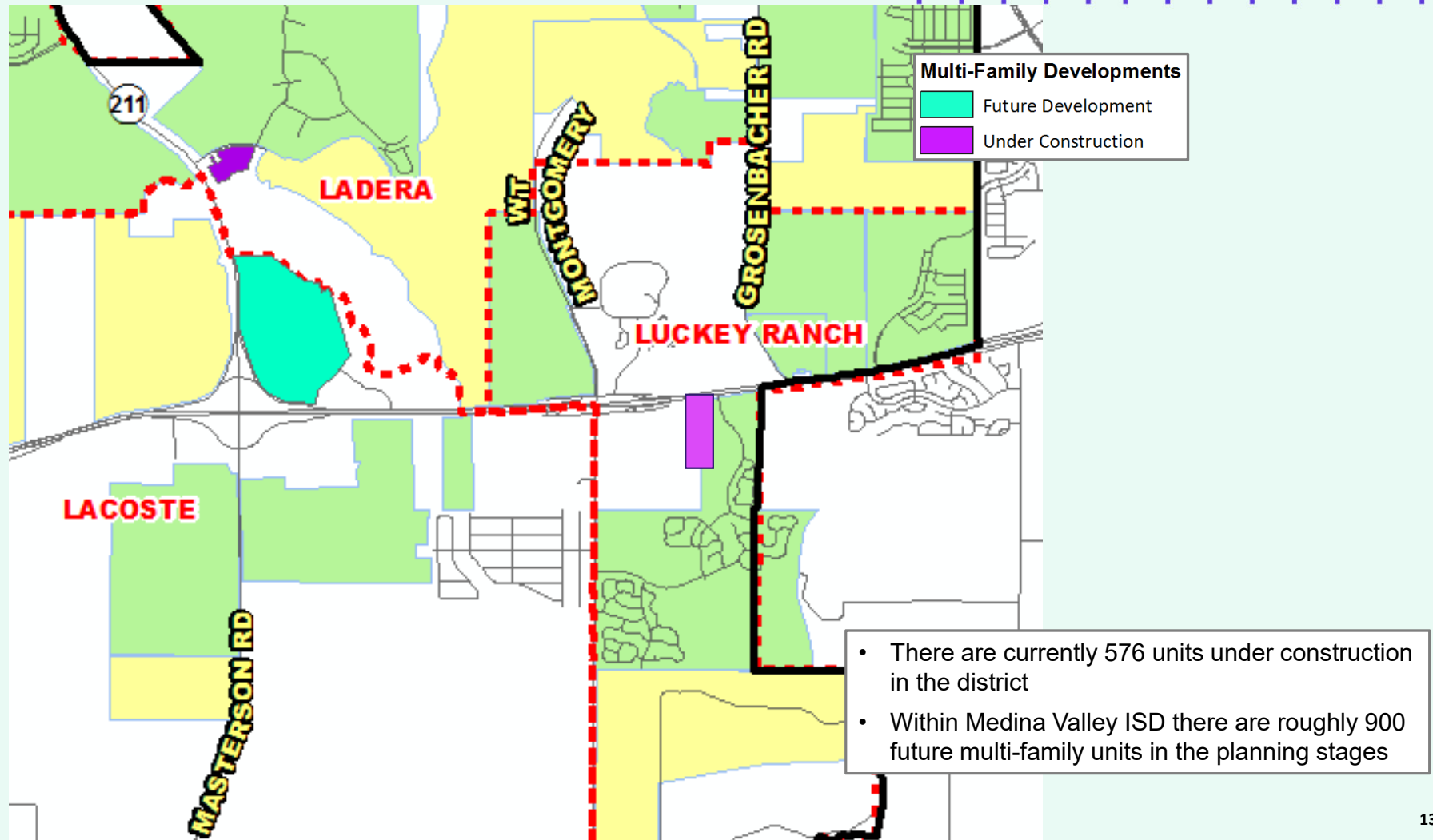
Laurel Vista

- 700 total lots
- 382 future lots
- 201 homes occupied
- 71 vacant developed lots
- 46 homes under construction
- Started 41 homes in 3Q21
- Groundwork underway on 108 lots in Unit 9
- \$235K+
- DR Horton





Multi-Family Housing Overview





Ten Year Forecast by Grade Level

Year (Oct)	EE	PK	K	1st	2nd	3rd	4th	5th	6th	7th	8th	9th	10th	11th	12th	Total	Total Growth	% Growth
2017/18	32	159	367	357	363	389	397	385	413	380	416	373	400	360	297	5,088		
2018/19	45	209	374	384	367	391	421	415	436	454	408	427	390	388	358	5,467	379	7.4%
2019/20	30	181	431	408	422	411	447	470	483	465	469	436	433	399	367	5,852	385	7.0%
2020/21	26	160	398	474	429	461	460	473	509	489	490	483	449	434	390	6,125	273	4.7%
2021/22	32	186	483	488	526	489	498	520	525	547	539	518	523	459	432	6,765	640	10.4%
2022/23	32	219	573	585	568	611	569	581	589	592	617	590	539	539	459	7,663	898	13.3%
2023/24	32	219	668	667	662	643	690	644	658	676	678	652	614	541	539	8,583	920	12.0%
2024/25	32	219	754	779	735	735	713	762	723	738	758	716	678	616	541	9,499	916	10.7%
2025/26	32	219	812	867	849	808	807	784	830	804	812	802	745	681	616	10,468	969	10.2%
2026/27	32	219	887	920	950	928	867	882	838	910	878	859	804	748	654	11,376	908	8.7%
2027/28	32	219	963	995	999	1,024	996	949	927	902	962	928	861	807	718	12,282	906	8.0%
2028/29	32	219	1,042	1,037	1,078	1,069	1,093	1,051	1,020	995	967	1,018	930	864	775	13,190	908	7.4%
2029/30	32	219	1,121	1,115	1,119	1,150	1,139	1,152	1,130	1,081	1,060	1,023	1,020	934	829	14,124	934	7.1%
2030/31	32	219	1,201	1,180	1,191	1,192	1,207	1,195	1,233	1,198	1,152	1,121	1,025	1,024	897	15,067	943	6.7%
2031/32	32	219	1,287	1,264	1,262	1,269	1,251	1,267	1,280	1,307	1,278	1,219	1,124	1,029	983	16,071	1,004	6.7%

Yellow box = largest grade per year
Green box = second largest grade per year



Ten Year Forecast by Campus

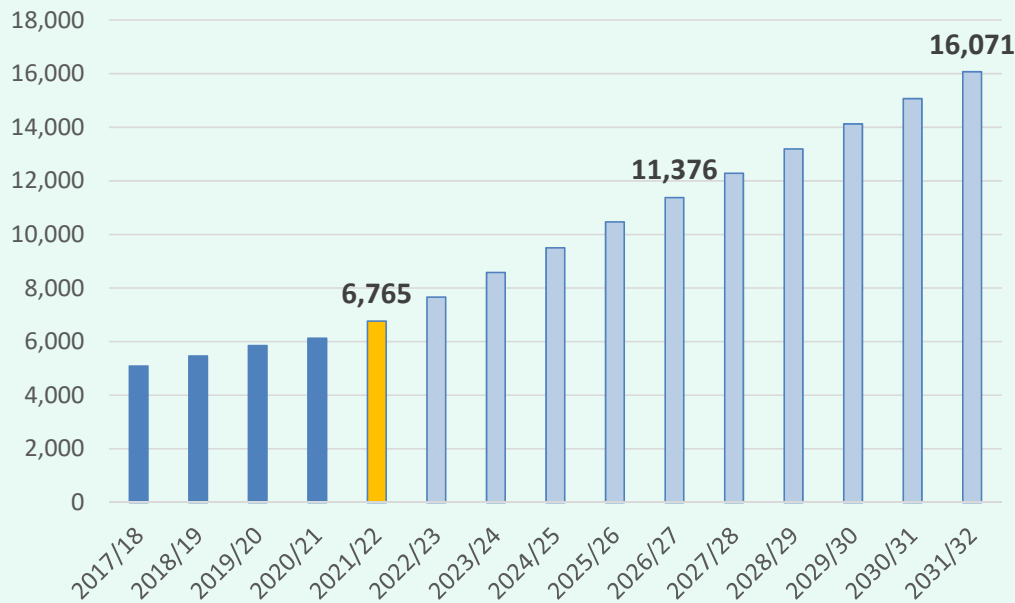
ELEMENTARY CAMPUS	Capacity	Fall	ENROLLMENT PROJECTIONS									
		2021/22	2022/23	2023/24	2024/25	2025/26	2026/27	2027/28	2028/29	2029/30	2030/31	2031/32
CASTROVILLE ELEMENTARY	750	600	638	665	715	733	777	834	875	924	964	1,006
LACOSTE ELEMENTARY	850	620	759	890	1,034	1,146	1,251	1,355	1,446	1,512	1,587	1,676
LADERA ELEMENTARY	850	597	732	875	1,042	1,203	1,361	1,521	1,669	1,813	1,930	2,050
LUCKEY RANCH ELEMENTARY	1,000	685	797	902	954	1,000	1,068	1,119	1,152	1,180	1,198	1,220
POTRANCO ELEMENTARY	1,000	720	812	893	984	1,096	1,228	1,348	1,479	1,618	1,738	1,899
ELEMENTARY TOTALS		3,222	3,738	4,225	4,729	5,178	5,685	6,177	6,621	7,047	7,417	7,851
Elementary Absolute Change		341	516	487	504	449	507	492	444	426	370	434
Elementary Percent Change		11.84%	16.01%	13.03%	11.93%	9.49%	9.79%	8.65%	7.19%	6.43%	5.25%	5.85%
LOMA ALTA MIDDLE SCHOOL	1,100	723	788	915	1,009	1,132	1,224	1,356	1,489	1,712	1,905	2,080
MEDINA VALLEY MIDDLE SCHOOL	1,100	888	1,010	1,097	1,210	1,314	1,402	1,435	1,493	1,559	1,678	1,785
MIDDLE SCHOOL TOTAL		1,611	1,798	2,012	2,219	2,446	2,626	2,791	2,982	3,271	3,583	3,865
Middle School Absolute Change		123	187	214	207	227	180	165	191	289	312	282
Middle School Percent Change		8.27%	11.61%	11.90%	10.29%	10.23%	7.36%	6.28%	6.84%	9.69%	9.54%	7.87%
MEDINA VALLEY HIGH SCHOOL	2,200	1,932	2,127	2,346	2,551	2,844	3,065	3,314	3,587	3,806	4,067	4,355
HIGH SCHOOL TOTAL		1,932	2,127	2,346	2,551	2,844	3,065	3,314	3,587	3,806	4,067	4,355
High School Absolute Change		176	195	219	205	293	221	249	273	219	261	288
High School Percent Change		10.02%	10.09%	10.30%	8.74%	11.49%	7.77%	8.12%	8.24%	6.11%	6.86%	7.08%
DISTRICT TOTALS		6,765	7,663	8,583	9,499	10,468	11,376	12,282	13,190	14,124	15,067	16,071
District Absolute Change		640	898	920	916	969	908	906	908	934	943	1,004
District Percent Change		10.45%	13.27%	12.01%	10.67%	10.20%	8.67%	7.96%	7.39%	7.08%	6.68%	6.66%

Yellow box = exceeds max capacity



Key Takeaways

Enrollment Projections



- Medina Valley ISD returned to a 10% growth rate as the housing market accelerated
- MVISD has started and closed more homes in the first 3 quarters of 2021 than in all of 2020
- The district is expected to close more than 1,900 homes in the next 12 months
- The Silos and Whisper Falls remain the top producing subdivisions driving strong housing growth
- Medina Valley ISD is expected to enroll more than 7,600 students next fall
- 5 year enrollment growth of 4,411 for a fall 2026 enrollment of 11,376
- 10 year enrollment growth of 9,306 for a fall 2031 enrollment of more than 16,0710

**OCTOBER 2021
MEDINA VALLEY INDEPENDENT SCHOOL DISTRICT
GENERAL FUND FINANCIAL STATEMENT**

<u>Estimated Revenues</u>	<u>Original Budget</u>	<u>Current Budget</u>	<u>Current Period Actual</u>	<u>YTD Actual</u>	<u>Estimated Revenue/Encumbrance</u>	<u>Total Estimated Rev/Expense</u>	<u>Balance</u>	<u>Current Year Percent Recognized</u>	<u>Prior Year Percent Recognized</u>
5700 Local Revenues	\$ 26,409,029	\$ 26,409,029	\$ 130,190	\$ 215,597	\$ -	\$ 215,597	\$ (26,193,432)	0.82%	0.79%
5800 State Program Revenues	\$ 34,153,847	\$ 34,153,847	\$ 6,626,972	\$ 11,606,532	\$ -	\$ 11,606,532	\$ (22,547,315)	33.98%	31.09%
5900 Federal Revenues	\$ 1,125,000	\$ 1,125,000	\$ -	\$ -	\$ -	\$ -	\$ (1,125,000)	0.00%	7.71%
Total Revenues	\$ 61,687,876	\$ 61,687,876	\$ 6,757,162	\$ 11,822,129	\$ -	\$ 11,822,129	\$ (49,865,747)	19.16%	18.91%
Proposed Appropriations									
11 Instruction	\$ 35,644,742	\$ 35,644,742	\$ 2,865,143	\$ 5,595,560	\$ 28,006,225	\$ 33,601,785	\$ 2,042,956	15.70%	16.18%
12 Media Services	\$ 618,711	\$ 618,711	\$ 30,353	\$ 72,464	\$ 322,038	\$ 394,502	\$ 224,209	11.71%	19.04%
13 Staff Development	\$ 831,301	\$ 831,301	\$ 49,372	\$ 159,653	\$ 409,232	\$ 568,885	\$ 262,416	19.21%	13.46%
21 Instruct. Leadership	\$ 838,867	\$ 838,867	\$ 60,721	\$ 114,502	\$ 575,147	\$ 689,649	\$ 149,218	13.65%	13.67%
23 School Leadership	\$ 3,214,638	\$ 3,214,638	\$ 247,980	\$ 487,611	\$ 2,537,226	\$ 3,024,838	\$ 189,800	15.17%	17.23%
31 Counseling	\$ 2,452,309	\$ 2,452,309	\$ 174,912	\$ 359,012	\$ 1,812,447	\$ 2,171,459	\$ 280,850	14.64%	16.46%
32 Social Work Services	\$ 658,837	\$ 658,837	\$ 42,650	\$ 85,302	\$ 446,742	\$ 532,044	\$ 126,793	12.95%	16.33%
33 Health Services	\$ 642,758	\$ 642,758	\$ 63,416	\$ 125,021	\$ 655,287	\$ 780,308	\$ (137,550)	19.45%	19.00%
34 Student Transportation	\$ 3,726,221	\$ 3,726,221	\$ 311,323	\$ 655,994	\$ 3,152,821	\$ 3,808,815	\$ (82,594)	17.60%	15.92%
35 Food Service	\$ 45,000	\$ 45,000	\$ -	\$ -	\$ 45,000	\$ 45,000	\$ -	0.00%	32.32%
36 Extracurricular Activities	\$ 2,020,263	\$ 2,020,263	\$ 156,643	\$ 284,384	\$ 1,143,890	\$ 1,428,274	\$ 591,989	14.08%	12.67%
41 General Admin	\$ 1,843,421	\$ 1,843,421	\$ 161,875	\$ 355,059	\$ 1,352,807	\$ 1,707,866	\$ 135,555	19.26%	18.11%
51 Maint. Operations	\$ 6,676,793	\$ 6,676,793	\$ 513,142	\$ 1,377,528	\$ 3,740,313	\$ 5,117,842	\$ 1,558,951	20.63%	17.95%
52 Security/Monitoring	\$ 581,689	\$ 581,689	\$ 25,293	\$ 42,483	\$ 426,841	\$ 469,324	\$ 112,365	7.30%	11.78%
53 Data Processing	\$ 1,452,641	\$ 1,452,641	\$ 192,222	\$ 347,977	\$ 769,265	\$ 1,117,242	\$ 335,399	23.95%	25.41%
61 Community Services	\$ 24,686	\$ 24,686	\$ 645	\$ 1,271	\$ 7,530	\$ 8,801	\$ 15,885	5.15%	18.36%
81 Facilities Construction	\$ -	\$ -	\$ -	\$ -	\$ -	\$ -	\$ -	0.00%	1.60%
95 JJAEP	\$ 5,000	\$ 5,000	\$ -	\$ -	\$ -	\$ -	\$ 5,000	0.00%	0.00%
99 Intergovernmental	\$ 410,000	\$ 410,000	\$ -	\$ 103,413	\$ 284,838	\$ 388,251	\$ 21,749	25.22%	24.01%
Totals	\$ 61,687,876	\$ 61,687,876	\$ 4,895,691	\$ 10,167,237	\$ 45,687,649	\$ 55,854,885	\$ 5,832,991	16.48%	16.65%

Current Year Estimated Surplus/Deficit	\$ -	\$ -
Beginning Fund Balance	\$ 22,755,428	\$ 22,755,428
Est. Ending Fund Balance	\$ 22,755,428	\$ 22,755,428

**OCTOBER 2021
MEDINA VALLEY INDEPENDENT SCHOOL DISTRICT
GENERAL FUND FINANCIAL STATEMENT
(Realized Expenses)**

<u>Estimated Revenues</u>	<u>Current Budget</u>	<u>September</u>	<u>October</u>	<u>November</u>	<u>YTD Actual</u>	<u>Balance</u>
5700 Local Revenues	\$ 26,409,029	\$ 83,862	\$ 130,190	\$ -	\$ 214,052	\$ 26,194,977
5800 State Program Revenues	\$ 34,153,847	\$ 6,741,060	\$ 6,626,972	\$ -	\$ 13,368,032	\$ 20,785,815
5900 Federal Revenues	\$ 1,125,000	\$ -	\$ -	\$ -	\$ -	\$ 1,125,000
Total Revenues	\$ 61,687,876	\$ 6,824,922	\$ 6,757,162	\$ -	\$ 13,582,084	\$ 48,105,792

<u>Proposed Appropriations</u>						
11 Instruction	\$ 35,644,742	\$ 2,660,969	\$ 2,865,143	\$ -	\$ 5,526,112	\$ 30,118,629
12 Media Services	\$ 618,711	\$ 41,547	\$ 30,353	\$ -	\$ 71,900	\$ 546,811
13 Staff Development	\$ 831,301	\$ 109,093	\$ 49,372	\$ -	\$ 158,466	\$ 672,835
21 Instruct. Leadership	\$ 838,867	\$ 52,601	\$ 60,721	\$ -	\$ 113,321	\$ 725,546
23 School Leadership	\$ 3,214,638	\$ 233,605	\$ 247,980	\$ -	\$ 481,585	\$ 2,733,052
31 Counseling	\$ 2,452,309	\$ 179,226	\$ 174,912	\$ -	\$ 354,138	\$ 2,098,171
32 Social Work Services	\$ 658,837	\$ 41,530	\$ 42,650	\$ -	\$ 84,180	\$ 574,657
33 Health Services	\$ 642,758	\$ 60,202	\$ 63,416	\$ -	\$ 123,618	\$ 519,140
34 Student Transportation	\$ 3,726,221	\$ 341,443	\$ 311,323	\$ -	\$ 652,765	\$ 3,073,456
35 Food Service	\$ 45,000	\$ -	\$ -	\$ -	\$ -	\$ 45,000
36 Extracurricular Activities	\$ 2,020,263	\$ 125,786	\$ 156,643	\$ -	\$ 282,429	\$ 1,737,834
41 General Admin	\$ 1,843,421	\$ 189,750	\$ 161,875	\$ -	\$ 351,626	\$ 1,491,795
51 Maint. Operations	\$ 6,676,793	\$ 860,034	\$ 513,142	\$ -	\$ 1,373,176	\$ 5,303,617
52 Security/Monitoring	\$ 581,689	\$ 17,031	\$ 25,293	\$ -	\$ 42,324	\$ 539,365
53 Data Processing	\$ 1,452,641	\$ 154,714	\$ 192,222	\$ -	\$ 346,937	\$ 1,105,704
61 Community Services	\$ 24,686	\$ 617	\$ 645	\$ -	\$ 1,262	\$ 23,424
81 Facilities Construction	\$ -	\$ -	\$ -	\$ -	\$ -	\$ -
95 JJAEP	\$ 5,000	\$ -	\$ -	\$ -	\$ -	\$ 5,000
99 Intergovernmental	\$ 410,000	\$ 103,413	\$ -	\$ -	\$ 103,413	\$ 306,587
Totals	\$ 61,687,876	\$ 5,171,562	\$ 4,895,691	\$ -	\$ 10,067,253	\$ 51,620,623

3 Month Average

**OCTOBER 2021
MEDINA VALLEY INDEPENDENT SCHOOL DISTRICT
GENERAL FUND FINANCIAL STATEMENT**

TAX COLLECTIONS

	Tax Levy/			Current			Uncollected	Current Year	Prior Year	
	Beginning	Cumulative		Month	YTD	YTD				YTD Other
M&O Taxes	Balance	Adjustment	Adjusted Levy	Collections	Collections	Discount	Adjustment	Balance	Collections	Collections
2021 Tax Levy	\$ 26,815,022	\$ 6,961	\$ 26,821,983	\$ 9,184	\$ 9,184	\$ -	\$ -	\$ 26,812,799	0.00%	\$ -
Delinquent Tax Years	\$ 1,157,811	\$ (19,867)	\$ 1,137,943	\$ 73,858	\$ 91,295	\$ (1,578)	\$ -	\$ 1,045,070	8.02%	\$ -
	\$ 27,972,833	\$ (12,906)	\$ 27,959,926	\$ 83,042	\$ 100,479	\$ (1,578)	\$ -	\$ 27,857,869	0.36%	\$ -
I&S Taxes	Balance	Adjustment	Adjusted Levy	Collections	Collections	Discount	Adjustment	Balance	Collections	Collections
2021 Tax Levy	\$ 14,517,649	\$ 3,751	\$ 14,521,400	\$ 4,973	\$ 4,973	\$ -	\$ -	\$ 14,516,427	0.00%	\$ -
Delinquent Tax Years	\$ 473,728	\$ (13,131)	\$ 460,598	\$ 33,482	\$ 40,236	\$ (627)	\$ -	\$ 419,735	8.74%	\$ -
	\$ 14,991,377	\$ (9,380)	\$ 14,981,998	\$ 38,455	\$ 45,209	\$ (627)	\$ -	\$ 14,936,162	0.30%	\$ -
Total Tax Collections	Balance	Adjustment	Adjusted Levy	Collections	Collections	Discount	Adjustment	Balance	Collections	Collections
2021 Tax Levy	\$ 41,332,671	\$ 10,712	\$ 41,343,383	\$ 14,157	\$ 14,157	\$ -	\$ -	\$ 41,329,226	0.00%	\$ -
Delinquent Tax Years	\$ 1,631,539	\$ (32,998)	\$ 1,598,541	\$ 107,340	\$ 131,531	\$ (2,205)	\$ -	\$ 1,464,805	8.23%	\$ -
	\$ 42,964,210	\$ (22,286)	\$ 42,941,924	\$ 121,497	\$ 145,688	\$ (2,205)	\$ -	\$ 42,794,031	0.34%	\$ -

TAX COLLECTIONS SUMMARY

	Current Year				Prior Year			
	Budget	Current Month	YTD	% Collected	Budget	Current Month	YTD	% Collected
M&O Collections								
Current Year Tax	\$ 25,856,274	\$ 9,184	\$ 9,184	0.04%	\$ 20,631,077	\$ -	\$ -	0.00%
Delinquent Tax Years	\$ 200,000	\$ 73,858	\$ 91,295	45.65%	\$ 200,000	\$ 24,172	\$ 89,078	44.54%
Interest	\$ 197,756	\$ 11,470	\$ 22,995	11.63%	\$ 200,000	\$ 11,526	\$ 26,341	13.17%
	\$ 26,254,030	\$ 94,512	\$ 123,474	0.47%	\$ 21,031,077	\$ 35,698	\$ 115,419	0.55%
I&S Collections								
Current Year Tax	\$ 12,982,853	\$ 4,973	\$ 4,973	0.04%	\$ 12,100,706	\$ -	\$ -	0.00%
Delinquent Tax Years	\$ 100,000	\$ 33,482	\$ 40,236	40.24%	\$ 90,000	\$ 10,182	\$ 36,898	41.00%
Interest	\$ 100,000	\$ 4,167	\$ 9,287	9.29%	\$ 100,000	\$ 4,569	\$ 10,188	10.19%
	\$ 13,182,853	\$ 42,622	\$ 54,496	0.41%	\$ 12,290,706	\$ 14,751	\$ 47,086	0.38%
Total Tax Collections								
Current Year Tax	\$ 38,839,127	\$ 14,157	\$ 14,157	0.04%	\$ 32,731,783	\$ -	\$ -	0.00%
Delinquent Tax Years	\$ 300,000	\$ 107,340	\$ 131,531	43.84%	\$ 290,000	\$ 34,354	\$ 125,976	43.44%
Interest	\$ 297,756	\$ 15,637	\$ 32,282	10.84%	\$ 300,000	\$ 16,095	\$ 36,529	12.18%
	\$ 39,436,883	\$ 137,134	\$ 177,970	0.45%	\$ 33,321,783	\$ 50,449	\$ 162,505	0.49%

OCTOBER 2021
MEDINA VALLEY INDEPENDENT SCHOOL DISTRICT
GENERAL FUND FINANCIAL STATEMENT
(Realized Only)

<u>M&O</u> <u>Collections</u>	<u>Adjusted Levy</u>	<u>September</u>	<u>October</u>	<u>November</u>	<u>YTD Actual</u>	<u>Percent</u> <u>Collected</u>
2020-21 Tax Collections	\$ 26,821,983	\$ -	\$ 9,184	\$ -	\$ 9,184	0.00%
Delinquent Tax Years	\$ 1,137,943	\$ 17,437	\$ 73,858	\$ -	\$ 91,295	8.02%
	\$ 27,959,926	\$ 17,437	\$ 83,042	\$ -	\$ 100,479	0.36%

<u>I&S</u> <u>Collections</u>	<u>Adjusted Levy</u>	<u>September</u>	<u>October</u>	<u>November</u>	<u>YTD Actual</u>	<u>Percent</u> <u>Collected</u>
2020-21 Tax Collections	\$ 14,521,400	\$ -	\$ 4,973	\$ -	\$ 4,973	0.00%
Delinquent Tax Years	\$ 460,598	\$ 6,754	\$ 33,482	\$ -	\$ 40,236	8.74%
	\$ 14,981,998	\$ 6,754	\$ 38,455	\$ -	\$ 45,209	0.30%

<u>Total Tax</u> <u>Collections</u>	<u>Adjusted Levy</u>	<u>September</u>	<u>October</u>	<u>November</u>	<u>YTD Actual</u>	<u>Percent</u> <u>Collected</u>
2020-21 Tax Collections	\$ 41,343,383	\$ -	\$ 14,157	\$ -	\$ 14,157	0.00%
Delinquent Tax Years	\$ 1,598,541	\$ 24,191	\$ 107,340	\$ -	\$ 131,531	8.23%
	\$ 42,941,924	\$ 24,191	\$ 121,497	\$ -	\$ 145,688	0.34%

**OCTOBER 2021
MEDINA VALLEY INDEPENDENT SCHOOL DISTRICT
GENERAL FUND FINANCIAL STATEMENT
(Wages and Benefits Realized Expenses)**

<u>Appropriations</u>	<u>Current Budget</u>	<u>September</u>	<u>October</u>	<u>November</u>	<u>YTD Actual</u>	<u>Balance</u>
11 Instruction	\$ 33,535,970	\$ 2,638,256	\$ 2,617,085	\$ -	\$ 5,255,341	\$ 28,280,628
12 Media Services	\$ 571,511	\$ 30,350	\$ 29,368	\$ -	\$ 59,718	\$ 511,793
13 Staff Development	\$ 517,960	\$ 41,889	\$ 33,803	\$ -	\$ 75,693	\$ 442,267
21 Instruct. Leadership	\$ 728,375	\$ 50,358	\$ 50,770	\$ -	\$ 101,128	\$ 627,247
23 School Leadership	\$ 3,026,713	\$ 235,725	\$ 241,049	\$ -	\$ 476,774	\$ 2,549,939
31 Counseling	\$ 2,236,966	\$ 167,920	\$ 166,840	\$ -	\$ 334,760	\$ 1,902,207
32 Social Work Services	\$ 653,955	\$ 42,652	\$ 42,650	\$ -	\$ 85,302	\$ 568,653
33 Health Services	\$ 620,058	\$ 60,754	\$ 63,195	\$ -	\$ 123,949	\$ 496,109
34 Student Transportation	\$ 2,550,721	\$ 217,357	\$ 243,655	\$ -	\$ 461,012	\$ 2,089,709
35 Food Service	\$ 45,000	\$ -	\$ -	\$ -	\$ -	\$ 45,000
36 Extracurricular Activities	\$ 917,872	\$ 67,910	\$ 70,144	\$ -	\$ 138,055	\$ 779,817
41 General Admin	\$ 1,331,745	\$ 119,096	\$ 116,131	\$ -	\$ 235,227	\$ 1,096,518
51 Maint. Operations	\$ 3,993,464	\$ 292,774	\$ 311,820	\$ -	\$ 604,594	\$ 3,388,870
52 Security/Monitoring	\$ 192,529	\$ 10,255	\$ 10,176	\$ -	\$ 20,431	\$ 172,098
53 Data Processing	\$ 1,005,741	\$ 69,636	\$ 63,650	\$ -	\$ 133,286	\$ 872,455
61 Community Services	\$ 20,906	\$ 511	\$ 517	\$ -	\$ 1,028	\$ 19,878
81 Facilities Construction	\$ -	\$ -	\$ -	\$ -	\$ -	\$ -
Totals	\$ 51,949,485	\$ 4,045,443	\$ 4,060,854	\$ -	\$ 8,106,297	\$ 43,843,188

3 Month Average

**OCTOBER 2021
MEDINA VALLEY INDEPENDENT SCHOOL DISTRICT
GENERAL FUND FINANCIAL STATEMENT
(Contracted Services Realized Expenses)**

<u>Appropriations</u>	<u>Current Budget</u>	<u>September</u>	<u>October</u>	<u>November</u>	<u>YTD Actual</u>	<u>Balance</u>
11 Instruction	\$ 587,221	\$ 1,643	\$ 66,180	\$ -	\$ 67,823	\$ 519,398
12 Media Services	\$ -	\$ -	\$ -	\$ -	\$ -	\$ -
13 Staff Development	\$ 156,980	\$ 61,574	\$ 6,726	\$ -	\$ 68,300	\$ 88,680
21 Instruct. Leadership	\$ 25,315	\$ -	\$ 2,272	\$ -	\$ 2,272	\$ 23,043
23 School Leadership	\$ 40,625	\$ -	\$ 25	\$ -	\$ 25	\$ 40,600
31 Counseling	\$ 122,666	\$ 1,520	\$ 60	\$ -	\$ 1,580	\$ 121,086
32 Social Work Services	\$ 240	\$ -	\$ -	\$ -	\$ -	\$ 240
33 Health Services	\$ 4,000	\$ -	\$ -	\$ -	\$ -	\$ 4,000
34 Student Transportation	\$ 72,000	\$ 1,533	\$ 14,366	\$ -	\$ 15,899	\$ 56,101
35 Food Service				\$ -	\$ -	\$ -
36 Extracurricular Activities	\$ 273,503	\$ 5,285	\$ 23,179	\$ -	\$ 28,464	\$ 245,038
41 General Admin	\$ 213,043	\$ 9,659	\$ 6,398	\$ -	\$ 16,057	\$ 196,986
51 Maint. Operations	\$ 1,648,000	\$ 33,968	\$ 153,516	\$ -	\$ 187,484	\$ 1,460,516
52 Security/Monitoring	\$ 340,210	\$ 6,935	\$ 1,118	\$ -	\$ 8,053	\$ 332,158
53 Data Processing	\$ 23,383	\$ -	\$ 6,397	\$ -	\$ 6,397	\$ 16,986
61 Community Services	\$ -	\$ -	\$ -	\$ -	\$ -	\$ -
81 Facilities Construction	\$ -	\$ -	\$ -	\$ -	\$ -	\$ -
95 JJAEP	\$ 5,000	\$ -	\$ -	\$ -	\$ -	\$ 5,000
99 Intergovernmental	\$ 410,000	\$ 103,413	\$ -	\$ -	\$ 103,413	\$ 306,587
Totals	\$ 3,922,186	\$ 225,530	\$ 280,237	\$ -	\$ 505,767	\$ 3,416,419

3 Month Average

OCTOBER 2021
MEDINA VALLEY INDEPENDENT SCHOOL DISTRICT
GENERAL FUND FINANCIAL STATEMENT
(Supplies and Materials Realized Expenses)

<u>Appropriations</u>	<u>Current Budget</u>	<u>September</u>	<u>October</u>	<u>November</u>	<u>YTD Actual</u>	<u>Balance</u>
11 Instruction	\$ 1,450,749	\$ 84,571	\$ 180,359	\$ -	\$ 264,930	\$ 1,185,818
12 Media Services	\$ 45,035	\$ 11,761	\$ 821	\$ -	\$ 12,582	\$ 32,453
13 Staff Development	\$ 62,193	\$ -	\$ 740	\$ -	\$ 740	\$ 61,453
21 Instruct. Leadership	\$ 43,983	\$ 558	\$ 5,608	\$ -	\$ 6,166	\$ 37,817
23 School Leadership	\$ 93,287	\$ 3,877	\$ 3,536	\$ -	\$ 7,412	\$ 85,874
31 Counseling	\$ 68,630	\$ 14,660	\$ 4,452	\$ -	\$ 19,112	\$ 49,518
32 Social Work Services	\$ 4,643	\$ -	\$ -	\$ -	\$ -	\$ 4,643
33 Health Services	\$ 16,750	\$ 364	\$ 221	\$ -	\$ 585	\$ 16,166
34 Student Transportation	\$ 546,500	\$ 36,101	\$ 57,522	\$ -	\$ 93,623	\$ 452,877
35 Food Service				\$ -	\$ -	\$ -
36 Extracurricular Activities	\$ 215,576	\$ 1,958	\$ 37,941	\$ -	\$ 39,900	\$ 175,676
41 General Admin	\$ 126,209	\$ 17,250	\$ 16,378	\$ -	\$ 33,628	\$ 92,581
51 Maint. Operations	\$ 406,000	\$ 33,641	\$ 46,899	\$ -	\$ 80,540	\$ 325,460
52 Security/Monitoring	\$ 46,300	\$ -	\$ 14,000	\$ -	\$ 14,000	\$ 32,300
53 Data Processing	\$ 356,782	\$ 86,107	\$ 122,175	\$ -	\$ 208,282	\$ 148,500
61 Community Services	\$ 1,380	\$ -	\$ -	\$ -	\$ -	\$ 1,380
81 Facilities Construction	\$ -	\$ -	\$ -	\$ -	\$ -	\$ -
95 JJAEP	\$ -	\$ -	\$ -	\$ -	\$ -	\$ -
99 Intergovernmental	\$ -	\$ -	\$ -	\$ -	\$ -	\$ -
Totals	\$ 3,484,016	\$ 290,849	\$ 490,651	\$ -	\$ 781,500	\$ 2,702,516

3 Month Average

**OCTOBER 2021
MEDINA VALLEY INDEPENDENT SCHOOL DISTRICT
GENERAL FUND FINANCIAL STATEMENT
(Travel and Misc. Realized Expenses)**

<u>Appropriations</u>	<u>Current Budget</u>	<u>September</u>	<u>October</u>	<u>November</u>	<u>YTD Actual</u>	<u>Balance</u>
11 Instruction	\$ 58,186	\$ 5,947	\$ 1,519	\$ -	\$ 7,466	\$ 50,721
12 Media Services	\$ 2,165	\$ -	\$ 164	\$ -	\$ 164	\$ 2,001
13 Staff Development	\$ 94,168	\$ 6,817	\$ 8,103	\$ -	\$ 14,920	\$ 79,248
21 Instruct. Leadership	\$ 41,194	\$ 2,865	\$ 2,071	\$ -	\$ 4,936	\$ 36,258
23 School Leadership	\$ 54,013	\$ 30	\$ 3,370	\$ -	\$ 3,400	\$ 50,613
31 Counseling	\$ 24,047	\$ -	\$ 3,561	\$ -	\$ 3,561	\$ 20,486
32 Social Work Services	\$ -	\$ -	\$ -	\$ -	\$ -	\$ -
33 Health Services	\$ 1,950	\$ 488	\$ -	\$ -	\$ 488	\$ 1,463
34 Student Transportation	\$ 7,000	\$ 89,681	\$ (4,220)	\$ -	\$ 85,461	\$ (78,461)
35 Food Service				\$ -	\$ -	\$ -
36 Extracurricular Activities	\$ 372,759	\$ 30,759	\$ 25,378	\$ -	\$ 56,137	\$ 316,622
41 General Admin	\$ 172,424	\$ 47,179	\$ 22,968	\$ -	\$ 70,148	\$ 102,276
51 Maint. Operations	\$ 504,329	\$ 456,483	\$ 907	\$ -	\$ 457,390	\$ 46,939
52 Security/Monitoring	\$ 2,650	\$ -	\$ -	\$ -	\$ -	\$ 2,650
53 Data Processing	\$ 4,860	\$ 11	\$ -	\$ -	\$ 11	\$ 4,849
61 Community Services	\$ 2,400	\$ 114	\$ 128	\$ -	\$ 243	\$ 2,157
81 Facilities Construction	\$ -	\$ -	\$ -	\$ -	\$ -	\$ -
95 JJAEP	\$ -	\$ -	\$ -	\$ -	\$ -	\$ -
99 Intergovernmental	\$ -	\$ -	\$ -	\$ -	\$ -	\$ -
Totals	\$ 1,342,145	\$ 640,374	\$ 63,949	\$ -	\$ 704,323	\$ 637,822

3 Month Average

OCTOBER 2021
MEDINA VALLEY INDEPENDENT SCHOOL DISTRICT
GENERAL FUND FINANCIAL STATEMENT
(Capital Outlay Realized Expenses)

<u>Appropriations</u>	<u>Current Budget</u>	<u>September</u>	<u>October</u>	<u>November</u>	<u>YTD Actual</u>	<u>Balance</u>
11 Instruction	\$ 12,616	\$ -	\$ -	\$ -	\$ -	\$ 12,616
12 Media Services	\$ -	\$ -	\$ -	\$ -	\$ -	\$ -
13 Staff Development	\$ -	\$ -	\$ -	\$ -	\$ -	\$ -
21 Instruct. Leadership	\$ -	\$ -	\$ -	\$ -	\$ -	\$ -
23 School Leadership	\$ -	\$ -	\$ -	\$ -	\$ -	\$ -
31 Counseling	\$ -	\$ -	\$ -	\$ -	\$ -	\$ -
32 Social Work Services	\$ -	\$ -	\$ -	\$ -	\$ -	\$ -
33 Health Services	\$ -	\$ -	\$ -	\$ -	\$ -	\$ -
34 Student Transportation	\$ 550,000	\$ -	\$ -	\$ -	\$ -	\$ 550,000
35 Food Service	\$ -	\$ -	\$ -	\$ -	\$ -	\$ -
36 Extracurricular Activities	\$ 240,554	\$ 21,828	\$ -	\$ -	\$ 21,828	\$ 218,726
41 General Admin	\$ -	\$ -	\$ -	\$ -	\$ -	\$ -
51 Maint. Operations	\$ 125,000	\$ 47,520	\$ -	\$ -	\$ 47,520	\$ 77,480
52 Security/Monitoring	\$ -	\$ -	\$ -	\$ -	\$ -	\$ -
53 Data Processing	\$ 61,875	\$ -	\$ -	\$ -	\$ -	\$ 61,875
61 Community Services	\$ -	\$ -	\$ -	\$ -	\$ -	\$ -
81 Facilities Construction	\$ -	\$ -	\$ -	\$ -	\$ -	\$ -
95 JJAEP	\$ -	\$ -	\$ -	\$ -	\$ -	\$ -
99 Intergovernmental	\$ -	\$ -	\$ -	\$ -	\$ -	\$ -
Totals	\$ 990,045	\$ 69,348	\$ -	\$ -	\$ 69,348	\$ 920,697

**OCTOBER 2021
MEDINA VALLEY INDEPENDENT SCHOOL DISTRICT
GENERAL FUND FINANCIAL STATEMENT**

Object	<u>Current Budget</u>	<u>Current Period Actuals</u>	<u>YTD Actuals</u>	<u>Estimated Encumbrance</u>	<u>Total Estimated Expense</u>	<u>Balance</u>	<u>Current YTD % Recongized</u>	<u>Prior YTD % Recongized</u>
6100 - Wages and Benefits	\$ 51,949,485	\$ 4,060,854	\$ 8,106,298	\$ 42,557,935	\$ 50,664,233	\$ 1,285,252	15.60%	16.81%
6200 - Contracted Services	\$ 3,922,186	\$ 280,237	\$ 505,767	\$ 1,654,470	\$ 2,160,237	\$ 1,761,949	12.90%	8.22%
6300 - Supplies and Materials	\$ 3,484,016	\$ 490,651	\$ 781,500	\$ 759,446	\$ 1,540,946	\$ 1,943,070	22.43%	17.41%
6400 - Travel and Miscellaneous	\$ 1,342,145	\$ 63,949	\$ 704,323	\$ 127,981	\$ 832,304	\$ 509,841	52.48%	45.21%
6600 - Capital Outlay	\$ 990,045	\$ -	\$ 69,348	\$ 587,817	\$ 657,165	\$ 332,880	7.00%	5.71%
TOTAL	\$ 61,687,877	\$ 4,895,691	\$10,167,237	\$ 45,687,649	\$ 55,854,885	\$ 5,832,992	16.48%	16.65%

**OCTOBER 2021
MEDINA VALLEY INDEPENDENT SCHOOL DISTRICT
FOOD SERVICE FUND FINANCIAL STATEMENT**

<u>Estimated Revenues</u>	<u>Original Budget</u>	<u>Current Budget</u>	<u>Current Period Actual</u>	<u>YTD Actual</u>	<u>Balance</u>	<u>Current Year Percent Recognized</u>
5700 Local and Intermediate Revenues	\$ 363,270	\$ 363,270	\$ 19,714	\$ 66,185	\$ 297,085	18.22%
5800 State Program Revenues	\$ -	\$ -	\$ -	\$ -	\$ -	0.00%
5900 Federal Revenues	\$ 4,647,817	\$ 4,647,817	\$ 529,012	\$ 1,084,578	\$ 3,563,239	23.34%
Total Revenues	\$ 5,011,087	\$ 5,011,087	\$ 548,726	\$ 1,150,763	\$ 3,860,324	22.96%

Proposed Appropriations

11 Instruction						
12 Instructional Resources and Media Services						
13 Curriculum and Instructional Staff Development						
21 Instructional Leadership						
23 School Leadership						
31 Guidance, Counseling and Evaluation Services						
32 Social Work Services						
33 Health Services						
34 Student Transportation						
35 Food Service	\$ 4,488,351	\$ 4,488,351	\$ 403,385	\$ 764,580	\$ 3,723,771	17.03%
36 Extracurricular Activities						
41 General Administration						
51 Facilities Maintenance and Operations						
52 Security and Monitoring Services						
53 Data Processing Services						
61 Community Services						
81 Facilities Acquisition and Construction						
95 Payments to JJAEP						
99 Other Intergovernmental						
Totals	\$ 4,488,351	\$ 4,488,351	\$ 403,385	\$ 764,580	\$ 3,723,771	17.03%
Current Year Estimated Surplus/Deficit	\$ 522,736	\$ -				
Beginning Year Fund Balance	\$ 515,688	\$ -				
Projected End of Year Fund Balance	\$ 1,038,424	\$ -				

**OCTOBER 2021
MEDINA VALLEY INDEPENDENT SCHOOL DISTRICT
INTEREST SINKING FUND FINANCIAL STATEMENT**

<u>Estimated Revenues</u>	<u>Original Budget</u>	<u>Current Budget</u>	<u>Current Period Actual</u>	<u>YTD Actual</u>	<u>Balance</u>	<u>Current Year Percent Recognized</u>
5700 Local and Intermediate Revenues	\$13,182,853	\$ 13,182,853	\$ 42,622	\$ 54,739	\$ 13,128,114	0.42%
5800 State Program Revenues	\$ -	\$ -	\$ -	\$ -	\$ -	0.00%
5900 Federal Revenues	\$ -	\$ -	\$ -	\$ -	\$ -	0.00%
Total Revenues	\$13,182,853	\$ 13,182,853	\$ 42,622	\$ 54,739	\$ 13,128,114	0.42%

Proposed Appropriations

11 Instruction						
12 Instructional Resources and Media Services						
13 Curriculum and Instructional Staff Development						
21 Instructional Leadership						
23 School Leadership						
31 Guidance, Counseling and Evaluation Services						
32 Social Work Services						
33 Health Services						
34 Student Transportation						
35 Food Service						
36 Extracurricular Activities						
41 General Administration						
51 Facilities Maintenance and Operations						
52 Security and Monitoring Services						
53 Data Processing Services						
61 Community Services						
71 Debt Service	\$13,182,853	\$ 13,182,853	\$ -	\$ 400	\$ 13,182,453	0.00%
81 Facilities Acquisition and Construction						
95 Payments to JJAEP						
99 Other Intergovernmental						
Totals	\$13,182,853	\$ 13,182,853	\$ -	\$ 400	\$ 13,182,453	0.00%
Current Year Estimated Surplus/Deficit	\$ -	\$ -				
Beginning Year Fund Balance	\$ 3,699,619	\$ 3,699,619				
Projected End of Year Fund Balance	\$ 3,699,619	\$ 3,699,619				

Check Register for October 2021

Distribution Fund	Check Date	Vendor Name	Transaction Amount
8632	10/05/2021	MEDINA VALLEY I.S.D.	\$273,156.00
1992	10/07/2021	212 ATHLETICS	\$300.00
1992	10/07/2021	95 PERCENT GROUP INC	\$1,500.00
1992	10/07/2021	ALERT SERVICES INC	\$2,044.11
1992	10/07/2021	AMAZON CAPITAL SERVICES, INC	\$2,652.66
1992	10/07/2021	AT&T	\$2,694.05
1992	10/07/2021	BLUEBONNET DSD IRVING, INC.	\$1,170.48
1992	10/07/2021	BORDEN DAIRY	\$10,342.10
1992	10/07/2021	CESAR TERRAZAS JR	\$10.00
1992	10/07/2021	EDLIO, LLC	\$2,450.00
1992	10/07/2021	EDUCATION GALAXY, LLC.	\$10,102.00
1992	10/07/2021	FAMILY PARTS COMPANY INC	\$1,908.94
1992	10/07/2021	GULF COAST PAPER CO INC	\$12,891.71
1992	10/07/2021	INSCO DISTRIBUTING INC	\$1,044.36
1992	10/07/2021	PASCO BROKERAGE INC	\$1,092.00
1992	10/07/2021	PIONEER ATHLETICS	\$1,947.00
1992	10/07/2021	ROSALINDA E DE LEON	\$50.57
1992	10/07/2021	SERVICE INDUSTRIAL, INC.	\$329.15
1992	10/07/2021	TAQUERIA SAN JUAN #2	\$249.50
1992	10/07/2021	TEXAS ASSN OF STUDENT COUNCILS	\$170.00
1992	10/07/2021	CASTROVILLE TRUE VALUE	\$273.86
1992	10/07/2021	CESD	\$1,140.00
1992	10/07/2021	FERGUSON ENTERPRISES	\$866.16
1992	10/07/2021	FLAGHOUSE INC	\$126.65
1992	10/07/2021	FRONTLINE TECHNOLOGIES GROUP LLC	\$28,247.00
1992	10/07/2021	JEAN'S RESTAURANT SUPPLY	\$18.48
1992	10/07/2021	MEDINA VALLEY ISD EDUCATION FOUNDAT	\$60.00
1992	10/07/2021	MISTY SCHERER	\$24.15
1992	10/07/2021	MUSIC IS ELEMENTARY	\$3,688.63
1992	10/07/2021	SHI-GOVERNMENT SOLUTIONS, INC.	\$554.60
1992	10/07/2021	TEXAS LIBRARY ASSOCIATION, INC	\$164.00
1992	10/07/2021	TRADITIONS SCREEN PRINTING & EMBROI	\$2,297.00
1992	10/07/2021	AMPLIFY EDUCATION, INC	\$740.25
1992	10/07/2021	BILL MILLERS BAR-B-Q	\$543.80
1992	10/07/2021	BRAINPOP LLC	\$25,141.27
1992	10/07/2021	CAROLINA BIOLOGICAL SUPPLY CO INC	\$120.20
1992	10/07/2021	DEANAN PRODUCTS,INC/GOURMET POPCORN	\$100.00
1992	10/07/2021	EWING IRRIGATION PRODUCTS, INC	\$466.88
1992	10/07/2021	IBOSS, INC	\$28,000.00
1992	10/07/2021	KURZ & CO.	\$2,128.79
1992	10/07/2021	KYRISH TRUCK CENTERS OF SA LLC	\$6,896.77
1992	10/07/2021	RIDDELL/ALL AMERICAN SPORTS CORP	\$846.59
1992	10/07/2021	SAM'S CLUB DIRECT	\$392.13
1992	10/07/2021	SAN ANTONIO WATER SYSTEM	\$8,268.80
1992	10/07/2021	SMORE	\$2,799.00
1992	10/07/2021	TEX ASSOC SECOND SCHOOL PRINC	\$765.00
1992	10/07/2021	THE SHERWIN-WILLIAMS CO	\$465.36

1992	10/07/2021	TRIPLE-S STEEL SUPPLY INC.	\$1,400.76
1992	10/07/2021	ALBERT L RIOJAS JR	\$2,000.00
1992	10/07/2021	BYRON STEELE HIGH SCHOOL	\$90.00
1992	10/07/2021	CDW GOVERNMENT, INC.	\$29,282.85
1992	10/07/2021	FASST SPORTS	\$1,535.00
1992	10/07/2021	GATEWAY PRINTING & OFFICE SUPPLY	\$893.44
1992	10/07/2021	LABATT INSTITUTIONAL SUPPLY CO	\$41,316.20
1992	10/07/2021	MOY TARIN RAMIREZ ENGINEERS, LLC	\$9,038.81
1992	10/07/2021	MVISD-FOOD SERVICE DEPT	\$160.00
1992	10/07/2021	NUMERACY CONSULTANTS LLC	\$295.00
1992	10/07/2021	SAN ANTONIO FOOD BANK	\$600.96
1992	10/07/2021	SCHOOL SPECIALTY, LLC	\$380.10
1992	10/07/2021	SEESAW LEARNING, INC	\$37,620.00
1992	10/07/2021	SUPER DUPER PUBLISHERS	\$62.75
1992	10/07/2021	SYSCO USA I, INC./SYSCO CENTRAL TX	\$985.51
1992	10/07/2021	TEXAS LOCK & DOOR CLOSER, INC.	\$376.00
1992	10/07/2021	TRACTOR SUPPLY CO	\$1,557.26
1992	10/07/2021	ASSESSMENT INTERVENTION MGMT, LLC	\$7,280.00
1992	10/07/2021	CHICK-FIL-A	\$327.76
1992	10/07/2021	DEMCO INC.	\$8,898.51
1992	10/07/2021	HOBBY LOBBY STORES, INC	\$153.46
1992	10/07/2021	JUDSON I.S.D.	\$225.00
1992	10/07/2021	LORI LYNN GILL	\$16.25
1992	10/07/2021	POTH ISD	\$300.00
1992	10/07/2021	QUILL CORPORATION	\$555.13
1992	10/07/2021	ROYCE GROFF OIL CO INC	\$4,430.95
1992	10/07/2021	RUSSELL'S EDUCATIONAL CONSULTING	\$4,057.85
1992	10/07/2021	SMITHPRINT II INC	\$2,529.88
1992	10/07/2021	TASPA-TX ASSOC SCH PERSONNEL ADMIN	\$185.00
1992	10/07/2021	TRANE SAN ANTONIO	\$701.06
1992	10/07/2021	W W GRAINGER INC	\$1,117.65
1992	10/07/2021	ALAMO HEIGHTS I.S.D.	\$60.00
1992	10/07/2021	ALAMO TRUCK ACCESSORIES	\$1,058.00
1992	10/07/2021	ARCHITETURAL WOODWORK INSTITUTE	\$898.00
1992	10/07/2021	CED INC/COLUMBIA ELECTRIC SUPPLY	\$7,650.42
1992	10/07/2021	CELEBRATE EXCELLENCE	\$968.66
1992	10/07/2021	CETC, LLC	\$69.00
1992	10/07/2021	DIANE S ANDERSON	\$25.00
1992	10/07/2021	HAYDAY, INC/CTWP	\$18,776.81
1992	10/07/2021	H-E-B GROCERY COMPANY	\$597.54
1992	10/07/2021	HENRY SCHEIN, INC	\$179.84
1992	10/07/2021	MATERA PAPER COMPANY, INC	\$7,306.14
1992	10/07/2021	MELANIE MAYER	\$750.00
1992	10/07/2021	O'REILLY AUTO PARTS	\$70.53
1992	10/07/2021	POSITIVE PROMOTIONS, INC	\$635.55
1992	10/07/2021	SPROUT SOCIAL, INC.	\$3,288.00
8632	10/07/2021	TEACHER RETIREMENT SYSTEM	\$509,707.64
1992	10/07/2021	TELLUS EQUIPMENT SOLUTIONS, LLC	\$2,980.57
1992	10/07/2021	TEX ASSN OF SCHOOL BOARDS-TASB, INC	\$3,025.00
1992	10/07/2021	WELDERS SUPPLY CO	\$175.65
1992	10/07/2021	AMERICAN ASSOCIATION OF NOTARIES	\$96.90

1992	10/07/2021	AVALON MOTOR COACHES LLC	\$1,280.00
1992	10/07/2021	BEXAR COUNTY SCHL BOARDS COALITION	\$7,500.00
1992	10/07/2021	CITY OF LACOSTE WATER DEPT	\$1,393.64
1992	10/07/2021	FLORESVILLE I.S.D. ATHLETICS	\$350.00
1992	10/07/2021	HARDIE'S FRESH FOODS	\$1,758.23
1992	10/07/2021	HOME DEPOT CREDIT SERVICES	\$1,330.99
1992	10/07/2021	HOUGHTON MIFFLIN HARCOURT	\$463.50
1992	10/07/2021	LA VERNIA I.S.D.	\$300.00
1992	10/07/2021	LONE STAR LEARNING INC	\$380.00
1992	10/07/2021	MEDINA COUNTY TAX OFFICE	\$7.50
1992	10/07/2021	POWERSCHOOL HOLDINGS LLC	\$53,465.79
1992	10/07/2021	ROBERT VASQUEZ QUINTANILLA	\$97.00
1992	10/07/2021	SARA GUINN	\$0.00
1992	10/07/2021	SCARBOROUGH SPECIALTIES, INC.	\$2,256.64
1992	10/07/2021	SCIENTIFIC MINDS, LLC	\$1,200.00
1992	10/07/2021	WALMART	\$2,362.26
1992	10/07/2021	WASTE MANAGEMENT OF TEXAS, INC	\$7,543.70
1992	10/07/2021	1ST CHOICE RESTAURANT EQUIP & SUPPL	\$9,525.00
1992	10/07/2021	ACE MART RESTAURANT SUPPLY CO,INC	\$305.15
1992	10/07/2021	ALTEX ELECTRONICS, LTD	\$259.83
1992	10/07/2021	ANDERSON HS MENS BBALL BOOSTER CLUB	\$250.00
1992	10/07/2021	EDUCATIONAL TECHNOLOGY LEARNING	\$2,500.00
1992	10/07/2021	EMBASSY SUITES SAN MARCOS	\$338.72
1992	10/07/2021	HABY'S ALSATIAN BAKERY	\$130.58
1992	10/07/2021	HIGH SCHOOL MUSIC SERVICE INC	\$2,283.93
1992	10/07/2021	MEDICAL WHOLESALE, INC.	\$2,300.00
1992	10/07/2021	QBS, INC.	\$2,200.00
1992	10/07/2021	RIO MEDINA TRUCK & AUTOMOTIVE, LLC	\$859.08
1992	10/07/2021	RIVERSIDE INSIGHTS	\$80.64
1992	10/07/2021	ROADRUNNER CHARTERS, INC.	\$1,710.00
1992	10/07/2021	STARLINE COSTUMES	\$191.10
1992	10/07/2021	TEXAS TECH UNIVERSITY	\$275.00
1992	10/07/2021	XTRAMATH	\$500.00
7712	10/08/2021	CLAIMS ADMINISTRATIVE SERVICES, INC	\$55,000.00
1992	10/08/2021	HELEN Y. LERMA	\$5,500.00
1992	10/14/2021	AT&T	\$1,550.10
1992	10/14/2021	CHARLES EDMUND RAYMOND KOKEL III	\$69.00
1992	10/14/2021	KYRISH TRUCK CENTERS OF SA LLC	\$9,352.41
1992	10/14/2021	MARIA LIZABETH MADRIGALES	\$7.28
1992	10/14/2021	MVISD-TRANSPORTATION DEPT	\$16.24
1992	10/14/2021	SOUTHERN TIRE MART, LLC	\$900.00
1992	10/14/2021	TASPA-TX ASSOC SCH PERSONNEL ADMIN	\$185.00
1992	10/14/2021	THE SHERWIN-WILLIAMS CO	\$293.60
1992	10/14/2021	VIRGINIA SANCHEZ SALINAS	\$25.00
1992	10/14/2021	W W GRAINGER INC	\$301.98
1992	10/14/2021	ACCO BRANDS CORPORATION	\$1,106.38
1992	10/14/2021	AJ GARZA	\$150.00
1992	10/14/2021	CASTROVILLE UTILITY SYSTEM	\$15,338.33
1992	10/14/2021	DIRECTV	\$82.61
1992	10/14/2021	FASST SPORTS	\$565.50
1992	10/14/2021	FROG PUBLICATIONS	\$334.40

1992	10/14/2021	GATEWAY PRINTING & OFFICE SUPPLY	\$3,524.81
1992	10/14/2021	INSCO DISTRIBUTING INC	\$366.91
1992	10/14/2021	J2 CLOUD SERVICES, LLC	\$673.61
1992	10/14/2021	LODDE TYPEWRITER CO.	\$491.99
1992	10/14/2021	LORELEI SUZANNE ALBRECHT	\$237.74
1992	10/14/2021	SEMANTIC COMPACTION SYSTEMS, INC	\$98.00
1992	10/14/2021	SHELBY L COOK	\$774.70
1992	10/14/2021	TED SOLIS, JR.	\$120.00
1992	10/14/2021	TX ASSOC FOR PUPIL TRANSPORTATION	\$95.00
1992	10/14/2021	TX-STAR SPEECH-LANGUAGE SVCS CORP	\$3,278.75
1992	10/14/2021	AGILE SPORTS TECHNOLOGIES, INC	\$1,800.00
1992	10/14/2021	CTN EDUCATIONAL SERVICES, INC.	\$130.00
1992	10/14/2021	CYNTHIA BROWN	\$121.00
1992	10/14/2021	DEANAN PRODUCTS,INC/GOURMET POPCORN	\$970.00
1992	10/14/2021	EDLIO, LLC	\$4,814.67
1992	10/14/2021	FAMILY PARTS COMPANY INC	\$876.71
1992	10/14/2021	LAKESHORE LEARNING MATERIALS	\$352.47
1992	10/14/2021	OFFICE OF ATTORNEY GENERAL	\$225.00
1992	10/14/2021	SELENA MADRIGAL VIERA	\$15.00
1992	10/14/2021	SOUTHWEST TEXAS JUNIOR COLLEGE	\$49,000.00
1992	10/14/2021	TAQUERIA SAN JUAN #2	\$162.50
1992	10/14/2021	UNIVERSAL CHEERLEADERS ASSOC.	\$819.00
1992	10/14/2021	WALSH GALLEGOS TREVINO KYLE & ROBIN	\$3,779.00
1992	10/14/2021	ALLSTREAM BUSINESS US, LLC	\$924.97
1992	10/14/2021	CASTROVILLE TRUE VALUE	\$181.62
1992	10/14/2021	CDW GOVERNMENT, INC.	\$962.15
1992	10/14/2021	EDUCATION SERVICE CENTER REGION XX	\$4,006.00
1992	10/14/2021	EDUCATIONAL TECHNOLOGY LEARNING	\$2,000.00
1992	10/14/2021	FERGUSON ENTERPRISES	\$406.21
1992	10/14/2021	HONDO ANVIL HERALD	\$44.00
1992	10/14/2021	LOWMAN CONSULTING LLC	\$500.00
1992	10/14/2021	MCGRAW-HILL EDUCATION	\$152,816.70
1992	10/14/2021	MVISD-FOOD SERVICE DEPT	\$11.70
1992	10/14/2021	OFFICE DEPOT INC	\$155.16
1992	10/14/2021	PLEASANTON I S D	\$375.00
1992	10/14/2021	RAPTOR TECHNOLOGIES	\$14,000.00
1992	10/14/2021	SAN ANTONIO TESTING LABORATORY, INC	\$75.00
1992	10/14/2021	TEACHER SYNERGY, LLC	\$261.17
1992	10/14/2021	TRACTOR SUPPLY CO	\$44.98
1992	10/14/2021	VIVROUX SPORTING GOODS	\$1,395.00
1992	10/14/2021	CESAR TERRAZAS JR	\$3,783.00
1992	10/14/2021	CHRISTINE A OROZCO	\$56.90
1992	10/14/2021	DE LA GARZA FENCE CO, INC.	\$1,868.54
1992	10/14/2021	QUILL CORPORATION	\$898.73
1992	10/14/2021	SA THERAPY IN MOTION INC	\$5,256.00
1992	10/14/2021	TASA-TEX ASSOC OF SCHOOL ADMINISTRA	\$816.00
1992	10/14/2021	TEXAS MUSIC FESTIVAL ENTERPRISE INC	\$1,000.00
1992	10/14/2021	THE BROKERAGE STORE, INC	\$3,855.00
1992	10/14/2021	U-HAUL CORPORATE SALES	\$182.72
1992	10/14/2021	WALMART	\$804.99
1992	10/14/2021	WASTE MANAGEMENT OF TEXAS, INC	\$450.25

1992	10/14/2021	AASC-ALAMO ASSOC OF STUDENT COUNCIL	\$390.00
1992	10/14/2021	AMAZON CAPITAL SERVICES, INC	\$4,441.78
1992	10/14/2021	ATX SCIOLY	\$135.00
1992	10/14/2021	BRENT DILLARD	\$135.00
1992	10/14/2021	EDUCATION SERVICE CENTER REGION 12	\$4,950.00
1992	10/14/2021	GABRIEL CARY	\$24.08
1992	10/14/2021	HABY'S ALSATIAN BAKERY	\$296.82
1992	10/14/2021	H-E-B GROCERY COMPANY	\$454.12
1992	10/14/2021	INTRADATA, INC	\$1,180.00
1992	10/14/2021	OTC BRANDS, INC	\$738.26
1992	10/14/2021	RIO MEDINA TRUCK & AUTOMOTIVE, LLC	\$2,126.59
1992	10/14/2021	SAMUEL CASEY SELLERS	\$135.00
1992	10/14/2021	TEXAS ASSOC SCH BUS OFFICIALS	\$325.00
1992	10/14/2021	TMEA/TEXAS MUSIC EDUCATORS ASSN	\$500.00
1992	10/14/2021	APPLE INC.	\$944.00
1992	10/14/2021	BILL MILLERS BAR-B-Q	\$86.00
1992	10/14/2021	HOME DEPOT CREDIT SERVICES	\$1,044.22
1992	10/14/2021	INCARNATE WORD HIGH SCHOOL	\$225.00
1992	10/14/2021	LACKLAND MILITARY CLOTHING STORE	\$1,830.20
1992	10/14/2021	MCKENZIE STRUTHERS	\$168.15
1992	10/14/2021	ROYCE GROFF OIL CO INC	\$17,762.20
1992	10/14/2021	SAM'S CLUB DIRECT	\$3,244.28
1992	10/14/2021	SWANK MOVIE LICENSING USA	\$1,242.00
1992	10/14/2021	TRIPLE-S STEEL SUPPLY INC.	\$840.00
1992	10/14/2021	A TWO Z GRAPHICS	\$1,201.00
1992	10/14/2021	BENITO MIRELES JR.	\$135.00
1992	10/14/2021	BRANDEIS BRONCO BAND BOOSTERS	\$200.00
1992	10/14/2021	CANYON HIGH SCHOOL	\$350.00
1992	10/14/2021	CED INC/COLUMBIA ELECTRIC SUPPLY	\$606.60
1992	10/14/2021	CITY OF CASTROVILLE	\$2,250.00
1992	10/14/2021	HAYDAY, INC/CTWP	\$1,046.56
1992	10/14/2021	HIGH SCHOOL MUSIC SERVICE INC	\$2,173.00
1992	10/14/2021	MATERA PAPER COMPANY, INC	\$2,759.04
1992	10/14/2021	MEDINA COUNTY TAX OFFICE	\$75.00
1992	10/14/2021	O'REILLY HOTEL PARTNERS-DENTON LLC	\$0.00
1992	10/14/2021	QBS, INC.	\$4.00
1992	10/14/2021	ROADRUNNER CERAMICS & POTTERY SUPPL	\$166.60
1992	10/14/2021	ROADRUNNER CHARTERS, INC.	\$3,462.00
1992	10/14/2021	SONIC DRIVE-IN, #3515	\$666.00
1992	10/14/2021	STAPLES CONTRACT & COMM, LLC	\$1,532.49
1992	10/14/2021	TEX ASSN OF SCHOOL BOARDS-TASB, INC	\$4,875.00
1992	10/14/2021	WHATABURGER	\$187.90
8632	10/15/2021	EXPERT PAY	\$1,960.48
8632	10/15/2021	TEACHER RETIREMENT SYSTEM	\$44,178.00
8632	10/15/2021	BROADWAY NATIONAL BANK	\$207,224.51
1992	10/20/2021	BENITO MIRELES JR.	\$120.00
1992	10/20/2021	BILL MILLERS BAR-B-Q	\$320.40
1992	10/20/2021	CAROLINA BIOLOGICAL SUPPLY CO INC	\$77.30
1992	10/20/2021	JACK C. HAYS HIGH SCHOOL	\$195.00
1992	10/20/2021	KURZ & CO.	\$2,543.09
1992	10/20/2021	KYRISH TRUCK CENTERS OF SA LLC	\$20,746.22

1992	10/20/2021	MCCORMICK'S GROUP, LLC	\$3,152.21
1992	10/20/2021	MVISD-TRANSPORTATION DEPT	\$67.28
1992	10/20/2021	ROGER DURAN	\$315.00
1992	10/20/2021	SAM'S CLUB DIRECT	\$576.42
1992	10/20/2021	SAN ANTONIO ISD	\$250.00
1992	10/20/2021	WEX BANK	\$165.91
1992	10/20/2021	CDW GOVERNMENT, INC.	\$634.30
1992	10/20/2021	COMMERCIAL KITCHEN REPAIR INC	\$266.04
1992	10/20/2021	KENNETH MICHAEL ROHRBACH	\$45.45
1992	10/20/2021	LABATT INSTITUTIONAL SUPPLY CO	\$31,909.16
1992	10/20/2021	NORTH TEXAS TOLLWAY AUTHORITY	\$5.56
1992	10/20/2021	SOFIA'S PIZZERIA	\$100.00
1992	10/20/2021	SOLARWINDS WORLDWIDE, LLC	\$2,620.00
1992	10/20/2021	SOUTHWEST TEXAS JUNIOR COLLEGE	\$2,569.40
1992	10/20/2021	SYSCO USA I, INC./SYSCO CENTRAL TX	\$3,753.13
1992	10/20/2021	TRACTOR SUPPLY CO	\$13.98
1992	10/20/2021	TTL, INC	\$1,950.00
1992	10/20/2021	AMAZON CAPITAL SERVICES, INC	\$5,335.28
1992	10/20/2021	AREA VII FFA	\$165.90
1992	10/20/2021	BLUEBONNET DSD IRVING, INC.	\$1,443.84
1992	10/20/2021	BORDEN DAIRY	\$9,292.71
1992	10/20/2021	CARLOS PONCE	\$630.00
1992	10/20/2021	EASTBAY INC.	\$8,692.00
1992	10/20/2021	FAMILY PARTS COMPANY INC	\$998.03
1992	10/20/2021	GMRI, INC	\$364.00
1992	10/20/2021	GULF COAST PAPER CO INC	\$5,246.02
1992	10/20/2021	SERVICE INDUSTRIAL, INC.	\$633.48
1992	10/20/2021	SKILLS USA-TEXAS	\$420.00
1992	10/20/2021	TAQUERIA SAN JUAN #2	\$75.00
1992	10/20/2021	4 IMPRINT, INC	\$2,366.35
1992	10/20/2021	BARNES & NOBLE BOOKSELLERS	\$879.24
1992	10/20/2021	BULL'S EYE BRANDS INC.	\$12,596.65
1992	10/20/2021	CASTROVILLE VETERINARY CLINIC	\$183.44
1992	10/20/2021	FERGUSON ENTERPRISES	\$322.95
1992	10/20/2021	MARIACHI LOS GALLEROS DE SAN ANTONI	\$500.00
1992	10/20/2021	SAMUEL CASEY SELLERS	\$120.00
1992	10/20/2021	TEACHER SYNERGY, LLC	\$139.69
1992	10/20/2021	TYNKER	\$1,100.00
1992	10/20/2021	UIL AREA H - MC	\$450.00
1992	10/20/2021	B & H FOTO & ELECTRONICS CORP.	\$303.90
1992	10/20/2021	HOBBY LOBBY STORES, INC	\$185.56
1992	10/20/2021	HOLIDAY INN EXPRESS N. PADRE ISLAND	\$1,711.30
1992	10/20/2021	QUILL CORPORATION	\$3,454.19
1992	10/20/2021	THE PROPHET CORP	\$95.14
1992	10/20/2021	BWI COMPANIES, INC.	\$535.52
1992	10/20/2021	DECOCK FARM LLC	\$100.00
1992	10/20/2021	H-E-B GROCERY COMPANY	\$12.50
1992	10/20/2021	JANAL WHOLESALE CO.	\$78.00
1992	10/20/2021	MATERA PAPER COMPANY, INC	\$81.35
1992	10/20/2021	QUADIANT, INC	\$388.00
1992	10/20/2021	SCHOLASTIC INC	\$313.17

1992	10/20/2021	TEXAS EDUCATIONAL COLORGUARD ASSN.	\$700.00
1992	10/20/2021	TEXAS FFA ASSOCIATION	\$1,513.00
1992	10/20/2021	HARDIE'S FRESH FOODS	\$2,339.88
1992	10/20/2021	HOME DEPOT CREDIT SERVICES	\$328.81
1992	10/20/2021	INTECH SOUTHWEST SERVICES, LLC	\$2,190.00
1992	10/20/2021	J.W. PEPPER AND SON, INC.	\$442.49
1992	10/20/2021	JAN TSCHIRHART	\$99.20
1992	10/20/2021	LA VERNIA I.S.D.	\$125.00
1992	10/20/2021	NORTHSIDE I.S.D.	\$390.00
1992	10/20/2021	SELENA MADRIGAL VIERA	\$36.00
1992	10/20/2021	TRAIL OF BREADCRUMBS, LLC	\$1,200.00
1992	10/20/2021	U-HAUL CORPORATE SALES	\$147.87
1992	10/20/2021	WALMART	\$975.37
1992	10/20/2021	WHATABURGER	\$698.59
1992	10/20/2021	WOODCRAFT/WOODTOOLS OF TEXAS, LTD	\$1,156.39
1992	10/20/2021	BOOSTERS INC	\$179.92
1992	10/20/2021	COLORTONE PAINT, INC.	\$1,098.92
1992	10/20/2021	HABY'S ALSATIAN BAKERY	\$37.40
1992	10/20/2021	JAMES EDWARD BERMEA	\$675.00
1992	10/20/2021	MEDINA COUNTY TAX OFFICE	\$67.50
1992	10/20/2021	READ NATURALLY INC	\$2,470.00
1992	10/20/2021	REVALDINA DISTRICT FFA	\$238.00
1992	10/20/2021	STARLINE COSTUMES	\$228.50
1992	10/28/2021	A TWO Z GRAPHICS	\$960.00
1992	10/28/2021	BLUEBONNET DSD IRVING, INC.	\$1,536.24
1992	10/28/2021	BSN SPORTS, LLC	\$4,526.27
1992	10/28/2021	BUSH'S CHICKEN	\$1,654.53
1992	10/28/2021	CONTINENTAL PRESS INC	\$1,441.44
1992	10/28/2021	DRAMATIC PUBLISHING COMPANY	\$485.82
1992	10/28/2021	GATEWAY PRINTING & OFFICE SUPPLY	\$29,971.14
1992	10/28/2021	KR ACQUISITIONS, LLC	\$541.02
1992	10/28/2021	LABATT INSTITUTIONAL SUPPLY CO	\$69,235.13
1992	10/28/2021	LAKESHORE LEARNING MATERIALS	\$667.74
1992	10/28/2021	MOBILE DEFENDERS, LLC.	\$1,149.90
2892	10/28/2021	PANORAMA EDUCATION, INC.	\$13,150.00
1992	10/28/2021	QBS LLC	\$124.90
1992	10/28/2021	SCHOLASTIC BOOK FAIRS-10 (BUYBOARD)	\$4,951.35
1992	10/28/2021	SCHOOL SPECIALTY, LLC	\$383.63
1992	10/28/2021	STALKER RADAR	\$1,520.00
1992	10/28/2021	SYSCO USA I, INC./SYSCO CENTRAL TX	\$1,081.57
1992	10/28/2021	TEXAS LOCK & DOOR CLOSER, INC.	\$597.20
1992	10/28/2021	TRACTOR SUPPLY CO	\$29.96
1992	10/28/2021	WRIST-BAND.COM/CUSTOMLANYARD.NET	\$346.50
1992	10/28/2021	BARNES & NOBLE BOOKSELLERS	\$6,670.00
1992	10/28/2021	BILL MILLERS BAR-B-Q	\$360.85
1992	10/28/2021	BOOSTR, LLC	\$4,510.00
1992	10/28/2021	CARRIER ENTERPRISE LLC	\$279.66
1992	10/28/2021	CDW GOVERNMENT, INC.	\$707.86
1992	10/28/2021	CENTERPOINT ENERGY	\$1,145.88
1992	10/28/2021	CHICK-FIL-A MARBACH	\$169.35
1992	10/28/2021	CSTS, LLC	\$3,891.00

1992	10/28/2021	EWING IRRIGATION PRODUCTS, INC	\$93.66
1992	10/28/2021	FERGUSON ENTERPRISES	\$578.80
1992	10/28/2021	KYRISH TRUCK CENTERS OF SA LLC	\$6,594.52
1992	10/28/2021	MARENEM, INC	\$297.00
1992	10/28/2021	MATTHEW JOSEPH SETTLES	\$700.00
1992	10/28/2021	MVISD-FOOD SERVICE DEPT	\$231.10
1992	10/28/2021	OMNI HOUSTON HOTEL/HCD GP OPERATING	\$352.98
1992	10/28/2021	RIDDELL/ALL AMERICAN SPORTS CORP	\$15,242.45
1992	10/28/2021	SAM'S CLUB DIRECT	\$447.54
1992	10/28/2021	SAMUELS GLASS COMPANY, LLC	\$1,333.55
1992	10/28/2021	TEACHER SYNERGY, LLC	\$175.93
1992	10/28/2021	UNIFIRST HOLDINGS, INC.	\$46.50
1992	10/28/2021	4 IMPRINT, INC	\$486.96
1992	10/28/2021	AT&T	\$1,291.67
1992	10/28/2021	BULL'S EYE BRANDS INC.	\$3,049.17
1992	10/28/2021	CASTROVILLE TRUE VALUE	\$221.14
1992	10/28/2021	CESAR TERRAZAS JR	\$10.00
1992	10/28/2021	DOMINO'S PIZZA #8029	\$181.28
1992	10/28/2021	FACTS4ME INC	\$50.00
1992	10/28/2021	KERRY SIMMONS	\$202.50
1992	10/28/2021	PIONEER ATHLETICS	\$3,314.07
1992	10/28/2021	SA THERAPY IN MOTION INC	\$6,643.00
1992	10/28/2021	STEVEN NOLL	\$324.96
1992	10/28/2021	VIRGINIA SANCHEZ SALINAS	\$69.00
1992	10/28/2021	VIVROUX SPORTING GOODS	\$2,097.00
1992	10/28/2021	212 ATHLETICS	\$800.00
1992	10/28/2021	ALERT SERVICES INC	\$527.20
1992	10/28/2021	AMAZON CAPITAL SERVICES, INC	\$7,922.69
1992	10/28/2021	BECKWITH ELECTRONIC ENGINEERING CO	\$413.00
1992	10/28/2021	BLICK ART MATERIALS/DICK BLICK INC	\$562.93
1992	10/28/2021	BORDEN DAIRY	\$13,366.90
1992	10/28/2021	CISCO SYSTEMS, INC	\$212.00
1992	10/28/2021	COMMERCIAL KITCHEN REPAIR INC	\$816.47
1992	10/28/2021	DISCOUNT SCHOOL SUPPLY	\$98.52
1992	10/28/2021	FAMILY PARTS COMPANY INC	\$1,286.68
1992	10/28/2021	GULF COAST PAPER CO INC	\$10,006.73
1992	10/28/2021	MUSIC IS ELEMENTARY	\$21.25
1992	10/28/2021	TAEA-TEXAS ART EDUCATION ASSN	\$110.00
1992	10/28/2021	TEXAS COUNSELING ASSOCIATION	\$180.00
1992	10/28/2021	ALAMO TRUCK ACCESSORIES	\$1,860.00
1992	10/28/2021	CED INC/COLUMBIA ELECTRIC SUPPLY	\$1,215.45
1992	10/28/2021	COMFORT SUITES	\$303.35
1992	10/28/2021	CPS ENERGY	\$107,305.00
1992	10/28/2021	CTSFSDA	\$25.00
1992	10/28/2021	DPC INDUSTRIES, INC.	\$20.00
1992	10/28/2021	EWELL EDUCATIONAL SERVICES, INC	\$585.00
1992	10/28/2021	GENESIS SCREEN PRINTING	\$1,158.00
1992	10/28/2021	HAYDAY, INC/CTWP	\$966.55
1992	10/28/2021	H-E-B GROCERY COMPANY	\$469.41
1992	10/28/2021	KURZ & CO.	\$5,340.75
1992	10/28/2021	LITERACY RESOURCES, LLC	\$129.58

1992	10/28/2021	NORTHERN SPEECH SERVICES INC	\$773.27
1992	10/28/2021	QUADIENT, INC	\$26.00
1992	10/28/2021	TELLUS EQUIPMENT SOLUTIONS, LLC	\$244.34
1992	10/28/2021	THE SHERWIN-WILLIAMS CO	\$363.40
1992	10/28/2021	WALMART	\$1,094.87
1992	10/28/2021	WELDERS SUPPLY CO	\$229.90
1992	10/28/2021	BAKER DISTRIBUTING CO	\$213.94
1992	10/28/2021	GABRIEL LEE SAENZ III	\$1,118.90
1992	10/28/2021	KAPLAN EARLY LEARNING COMPANY	\$186.95
1992	10/28/2021	MEDINA ELECTRIC COOPERATIVE, INC.	\$645.50
1992	10/28/2021	NORTHSIDE I.S.D. - ATHLETIC DEPT.	\$240.00
1992	10/28/2021	NOTARY PUBLIC UNDERWRITERS AGENCY	\$115.50
1992	10/28/2021	QUILL CORPORATION	\$217.68
1992	10/28/2021	ROYCE GROFF OIL CO INC	\$5,790.47
1992	10/28/2021	W W GRAINGER INC	\$422.51
1992	10/28/2021	WHICH WICH/SARADA FOOD	\$1,160.00
1992	10/28/2021	AYA HEALTHCARE, INC	\$2,400.00
1992	10/28/2021	HABY'S ALSATIAN BAKERY	\$434.79
1992	10/28/2021	HIGH SCHOOL MUSIC SERVICE INC	\$127.90
1992	10/28/2021	HILTON TRU ROUND ROCK	\$665.99
1992	10/28/2021	IMELDA GOMEZ	\$49.26
1992	10/28/2021	INDUSTRIAL COMMUNICATIONS	\$1,233.75
1992	10/28/2021	KERRY MCINTIRE	\$20.00
1992	10/28/2021	PEARSALL I.S.D.	\$500.00
1992	10/28/2021	PYE-BAKER FIRE & SAFETY, LLC	\$1,678.00
1992	10/28/2021	REGENT COACH LINE LTD	\$2,646.00
1992	10/28/2021	SELENA MADRIGAL VIERA	\$66.53
1992	10/28/2021	SERVICE INDUSTRIAL, INC.	\$316.74
1992	10/28/2021	TEXAS ASSOC SCH BUS OFFICIALS	\$370.00
1992	10/28/2021	EDUCATION SERVICE CENTER REGION XX	\$8,750.00
1992	10/28/2021	HARDIE'S FRESH FOODS	\$708.32
1992	10/28/2021	HEWLETT PACKARD ENTERPRISE COMPANY	\$1,446.96
1992	10/28/2021	HOME DEPOT CREDIT SERVICES	\$874.96
1992	10/28/2021	INTECH SOUTHWEST SERVICES, LLC	\$3,085.00
1992	10/28/2021	KEMPF'S LAWNMOWER REPAIR	\$33.50
1992	10/28/2021	MATERA PAPER COMPANY, INC	\$10,003.25
1992	10/28/2021	REALLY GOOD STUFF	\$50.94
1992	10/28/2021	STAPLES CONTRACT & COMM, LLC	\$352.57
1992	10/28/2021	U-HAUL CORPORATE SALES	\$120.15
1992	10/28/2021	WASTE MANAGEMENT OF TEXAS, INC	\$450.25
1992	10/28/2021	WESTERN PSYCHOLOGICAL SERVICES	\$371.80
1992	10/28/2021	WHATABURGER	\$162.00
8632	10/29/2021	EXPERT PAY	\$1,960.48
1992	10/29/2021	GARZA BOMBERGER & ASSOCIATES	\$43,945.00
8632	10/29/2021	BROADWAY NATIONAL BANK	\$211,067.16
8632	10/30/2021	NATIONAL PLAN ADMINISTRATORS	\$13,781.42
8632	10/30/2021	NAT'L PLAN ADMN DEPEND CARE	\$419.66
8632	10/30/2021	TEXAS AFT/PEG	\$35.00
8632	10/30/2021	TEXAS CLASSROOM TEACHERS ASSC.	\$168.99
8632	10/30/2021	TX STATE TEACHER'S ASSN-TSTA/NEA	\$137.04
8632	10/30/2021	ATPE	\$4,568.46

8632	10/30/2021	NATIONAL PLAN -HSA	\$3,510.00
8632	10/30/2021	NATIONAL PLAN ADMN ANNUITIES	\$28,002.66
8632	10/30/2021	BAY BRIDGE ADMIN.LLC	\$68,108.90
8632	10/30/2021	MARY K VIEGELAHN,CHAPTER 13 TRUSTEE	\$1,207.00



Superintendent Briefing

November 15, 2021

MVISD October Employee of the Month

NOVEMBER 2021

Medina Valley ISD

*Employee
of the Month*

ERLINDA GARZA
CUSTODIAN, MEDINA VALLEY MS



FFA Homesite Evaluation Team 4th Place at Area 7 Fall CDE Contest State Qualifiers!



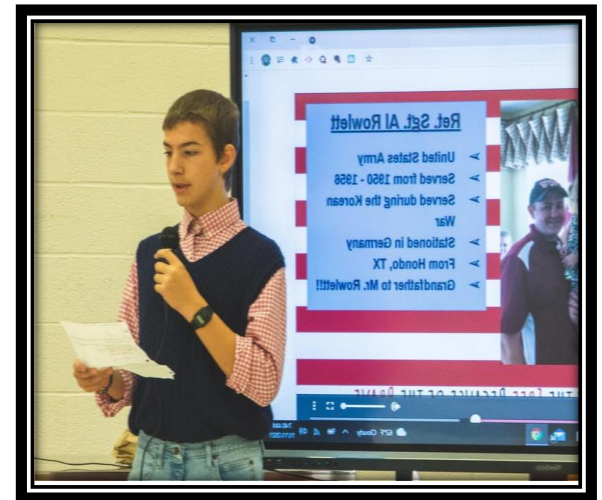
Go Medina County
Best of Medina County
Best Middle School
Medina Valley Middle School



Go Medina County
Best of Medina County
Best High School
Medina Valley High School



Veteran's Day Campus Celebrations



District Enrollment

	<u>6/3/21</u>	<u>11/12/21</u>	<u>Growth</u>
Castroville Elementary	588	600	+ 12
LaCoste Elementary	587	616	+ 29
Potranco Elementary	882	721	- 161
Luckey Ranch Elementary	885	687	- 198
Ladera Elementary	-	603	+ 603
Loma Alta Middle School	871	722	- 149
Medina Valley Middle School	621	893	+ 272
Medina Valley High School	1742	1935	+ 193
Totals	6176	6777	+ 601

End of 20-21 Enrollment: 6,176

Growth over end of 20-21: + 601

9.73% increase over end of 20-21

District COVID Case Count

As of Monday, November 15 (Since first day of school):

Active Cases 16

Recovered 350

<u>Total Cases</u>	<u>Student</u>	<u>Staff</u>
Medina Valley High School	54	8
Medina Valley Middle School	63	10
Loma Alta Middle School	24	3
Castroville Elementary	59	9
LaCoste Elementary	20	6
Potranco Elementary	29	1
Luckey Ranch Elementary	26	5
Ladera Elementary	34	5
Non-Campus Staff & Floaters	-	10

Medina Valley Independent School District
Regular School Board Meeting

Board Minutes

October 18, 2021, 6:30 pm

MVISD Board Room, 8449 FM 471 S., Castroville, TX 78009

A **Regular Meeting** of the Board of Trustees was held Monday, October 18, 2021, beginning at 6:30 PM on/at Medina Valley ISD Central Office Board Room.

I. First Order of Business

A Establish a Quorum

Mario De Leon, Board President, called the Medina Valley ISD Regular Board Meeting to order at 6:30 pm. A quorum of the Board Members were present, Terry Groff, Jennilea Campbell, Shannon Beasley, Paula Davidson, and Mario De Leon.

Veronica Cavazos and Beth Zinsmeyer were absent.

B Pledge of Allegiance to the Flag followed by a moment of silence

Everyone joined in the Pledge of Allegiance to the Flag followed by a moment of silence.

II. Announcements/Communications/Presentations

A Tonie Hutzler presented a Guidance and Counseling Update.

B Juan C. Zamora presented the monthly Financial Briefing.

C Dr. Kenneth Rohrbach presented his monthly Superintendent Briefing.

III. Public Comment

Darren Calvert, Topic: Streaming Board Meetings

IV. Discussion and Possible Action Items

A Consent Agenda Items

Dr. Rohrbach presented the Consent Agenda Items for the Board to consider.

- 1 Minutes of Regular Board Meeting on September 20, 2021, and Board Workshop on October 11, 2021
- 2 Donations: \$5000 FFA Booster donation, 2 - \$1000 AFCEA donations
- 3 Superintendent's Report on Budgeted Purchases of Goods/Services in Excess of \$50,000 - none

Shannon Beasley made a Motion, seconded by Terry Groff, to approve the consent agenda items as presented. All of the Board Members voted for and the Motion passed.

Medina Valley Independent School District
Regular School Board Meeting

Board Minutes

October 18, 2021, 6:30 pm

MVISD Board Room, 8449 FM 471 S., Castroville, TX 78009

B Consider 2021-2022 District Improvement Plan

Dr. McHazlett presented the 2021-2022 District Improvement Plan for the Board to consider.

Jennilea Campbell made a Motion, seconded by Shannon Beasley, to approve the 2021-2022 District Improvement Plan as presented. All of the Board Members voted for and the Motion passed.

C Consider TASB recommended Local Policy Update 117 affecting CH(Local), CV(Local), and DEC(Local)

Dr. Rohrbach presented Local Policy Update 117 for the Board to consider.

Terry Groff made a Motion, seconded by Jennilea Campbell, to approve TASB recommended Local Policy Update 117 affecting DEC(Local) as presented, and not adopt revisions to CH(Local) and CV(Local). All of the Board Members voted for and the Motion passed.

V. Closed Session

Board President Mario De Leon announced that in accordance with the Texas Open Meetings Act, under the exceptions noted in TX Govt. Code Section 551.074 Personnel Matters, and TX Govt. Code 551.072 Deliberation Regarding Real Property, the Board convened into Closed Session at 7:31 pm.

A Personnel Matters (TX Govt. Code Section 551.074)

B Deliberation Regarding Real Property (TX Govt. Code Section 551.072)

Board President Mario De Leon announced that the Board would reconvene into Open Session at 9:09 pm.

VI. Continued Discussion and Possible Action Items

A Consider professional contract recommendations

Jennilea Campbell made a Motion, seconded by Paula Davidson, to approve the contract recommendations by the Superintendent for professional contracts as presented. All of the Board Members voted for and the Motion passed.

Congratulations to the following Medina Valley ISD new hires:

- Stacy Griffith, Ladera Elementary Teacher
- Rebecca Meek, Medina Valley High School Teacher
- David Garcia, Medina Valley Middle School Teacher
- Christie Cochran, Medina Valley High School Teacher
- Amerida Quintanilla, PEIMS

**Medina Valley Independent School District
Regular School Board Meeting**

Board Minutes

October 18, 2021, 6:30 pm

MVISD Board Room, 8449 FM 471 S., Castroville, TX 78009

- B Consider adopting a Resolution formally approving the purchase of a 29.938-acre tract of real property in Medina County, Texas, and authorizing the Superintendent to act on behalf of the Board to close on the transaction, to tender the agreed Purchase Price and all closing and other costs required under the Contract to the title company for the acquisition of said property, and to execute such other and further documents as may be necessary or desirable to effect the District's purchase of the said property.

Jennilea Campbell made a Motion, seconded by Terry Groff, to adopt a Resolution formally approving the purchase of a 29.938-acre tract of real property in Medina County, Texas, and authorizing the Superintendent to act on behalf of the Board to close on the transaction, to tender the agreed Purchase Price and all closing and other costs required under the Contract to the title company for the acquisition of said property, and to execute such other and further documents as may be necessary or desirable to effect the District's purchase of the said property. All of the Board Members voted for and the Motion passed.

- C Consideration of future meeting dates

The next Regular School Board Meeting is scheduled for November 15, 2021 at 6:30 pm.

VII. Adjournment

Terry Groff made a Motion, seconded by Paula Davidson, to adjourn the Regular Board Meeting at 9:14 pm on October 18, 2021. All of the Board Members voted for and Motion passed.

Mario De Leon, Board President

Jennilea Campbell, Board Secretary

Board Approved _____

MEDINA VALLEY INDEPENDENT SCHOOL DISTRICT

"Proud of our past, dedicated to the present, committed to the Future"

Request for Board Acceptance of Donation

(\$501 and above including items valued at \$501 and above)

School/Department: MVHS / Science Club

Donor: Urban Concrete Contractors

Address: 24114 Blanco
San Antonio, TX 78260

Donor Contact Name: _____

Donor Contact Phone: 210-490-0090

Revenue Account for the deposit: 8652 36 00199 000 63990036

 URBAN CONCRETE CONTRACTORS	OPERATING ACCOUNT 24114 BLANCO ROAD SAN ANTONIO, TEXAS 78260 (210) 490-0090	AMARILLO NATIONAL BANK AMARILLO, TEXAS 88-95/1113	CHECK NUMBER 29228
PAY TO THE ORDER OF Medina Valley High School C/O Lindsay Perritano 8365 FM 471 S Castroville, TX 78009		 URBAN CONCRETE CONTRACTORS	DATE 10/15/2021 AMOUNT *****3,000.00
THE SUM OF THREE THOUSAND DOLLARS AND NO CENTS *****			
			 MP

⑈0 29 2 28⑈ ⑆ 1 1 1 300958⑆ ⑈ 2 10 1 29⑈

Medina Valley ISD Board Action Required

Approved or Disapproved Date: _____

MEDINA VALLEY INDEPENDENT SCHOOL DISTRICT

"Proud of our past, dedicated to the present, committed to the Future"

Request for Board Acceptance of Donation

(\$501 and above including items valued at \$501 and above)

School/Department: Medina Valley High School – MVHS Construction

Donor: Vulcan Materials Company

Address: 1200 Urban Center Drive, Birmingham, AL 35242

Donor Contact Name: Tyler Lowe

Donor Contact Phone: 210-524-3542

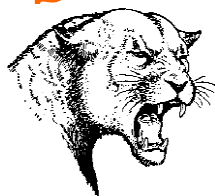
Revenue Account for the deposit:

Description of item/s donated: \$2500 ach

Medina Valley ISD Board Action Required

Approved or Disapproved Date: _____

MEDINA VALLEY INDEPENDENT SCHOOL DISTRICT



"Proud of our past, dedicated to the present, committed to the Future"

MEMORANDUM

To: Medina Valley ISD Board of Trustees
From: Dr. Kenneth Rohrbach, Superintendent
Re: Consider Medina County Appraisal District Resolution to Cast Votes to Elect Directors
for the Years 2022 and 2023
Date: November 5, 2021

Of the 5,000 votes that can be cast in the director election for the Medina County Appraisal District, Medina Valley ISD is entitled to cast 1,373 votes. Your nominee for a director position was Tim Hardt.

Superintendent's Recommendation: Cast 1,373 votes for Tim Hardt for a director position with the Medina County Appraisal District

MEDINA COUNTY APPRAISAL DISTRICT
1410 AVE K
HONDO, TX 78861

OFFICIAL BALLOT

OCTOBER 27, 2021

ISSUED TO **MEDINA VALLEY ISD**

TO ELECT

BOARD OF DIRECTORS FOR MEDINA COUNTY APPRAISAL DISTRICT 2022-2023

DIRECTIONS: PLEASE ENTER THE NUMBER OF VOTES CAST ON THE
BLANK SPACE OPPOSITE THE NAME OF THE CANDIDATE.
YOU MAY CAST ALL OF YOUR VOTES FOR ONE CANDIDATE
OR YOU MAY DIVIDE YOUR VOTES AMONG ANY NUMBER
OF THE CANDIDATES THAT YOU DESIRE. YOU HAVE
1373 TOTAL VOTES THAT YOU MAY CAST.

NAMES OF CANDIDATES:

1. BELL, CLAY _____
2. HARDT, TIM _____
3. JACOBS, JODY _____
4. NAVARRO, MAMIE _____
5. SEGOVIA, CINDY _____

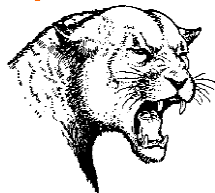

Johnette Dixon, RTA, RPA, CTA, CCA
Chief Appraiser
Medina CAD

RESOLUTION OF VOTES CAST TO ELECT DIRECTORS FOR THE APPRAISAL DISTRICT OF MEDINA COUNTY FOR THE YEARS 2022-2023

Whereas, SB 469 Section 6.03 (g) requires that each taxing unit entitled to vote should cast their vote by resolution and submit to the Chief Appraiser of Medina County by December 15, 2021.

Therefore, the _____ submits the
(Taxing Unit)
above Official Ballot, as issued by the Chief Appraiser, stating our vote for candidates for the election of the Board of Directors for the Medina County Appraisal District.

MEDINA VALLEY INDEPENDENT SCHOOL DISTRICT



"Proud of our past, dedicated to the present, committed to the Future"

MEMORANDUM

To: Medina Valley ISD Board of Trustees
From: Dr. Kenneth Rohrbach, Superintendent
Re: Consider Resolution for Disposal of Obsolete and/or Surplus District Property
Date: November 10, 2021

When necessary, the District disposes of obsolete and/or surplus property via an on-line auction. The District currently has obsolete property that needs to be disposed of. I am asking that the Board authorize the disposal of this property as listed in Exhibit "A".

Recommendation: Approve the resolution for disposal of obsolete and/or surplus district property

Medina Valley Independent School District
Resolution for Disposal of Obsolete and/or Surplus Property

WHEREAS, Medina Valley Independent School District (the "District") has been legally created and operates pursuant to the general laws of the State of Texas applicable to independent school districts; and

WHEREAS, the Board of Trustees has convened on this date at a meeting open to the public as required by law, and wishes to dispose of obsolete and/or surplus property no longer necessary for district operations pursuant to Chapter 11.151 (c), Texas Education Code, as amended from time to time;

NOW THEREFORE, BE IT RESOLVED BY THE BOARD OF TRUSTEES OF THE MEDINA VALLEY INDEPENDENT SCHOOL DISTRICT THAT:

the property described in the property schedule attached to this resolution as Exhibit "A" is no longer necessary for District operations. The Superintendent or his designee is hereby authorized to dispose of said property in an appropriate manner.

PASSED AND APPROVED this 15th day of November 2021.

President, Board of Trustees

ATTEST:

Secretary, Board of Trustees

(SEAL)

MVISD Exhibit "A"
Disposal of Obsolete Property Resolution
11-15-2021

Property no longer necessary for district operations includes but is not limited to the following:

- 1) Various maintenance items including lawn equipment, shop tools, miscellaneous building materials, and a Genie one-man lift.
- 2) Cafeteria equipment
- 3) Vehicles:
 2000 Chevrolet 2500, VIN – 1GCGG25R9Y1261176, mileage 176,434
- 4) Various instructional supplies and/or furniture (desks, chairs, file cabinets)
- 5) Custodial equipment
- 6) Technology equipment
- 7) Athletics equipment
- 8) Any other item(s) as determined by the Superintendent of Schools

All of the items above have been displaced throughout the district and are of negligible salvage value, obsolete, or beyond economical repair.