

Chugach School District Board Meeting

Thursday, April 27, 2023 10:00 AM

Zoom Only

1. **CALL TO ORDER**
2. **ROLL CALL & ESTABLISHMENT OF QUORUM**
3. **APPROVAL OF AGENDA**
4. **PLEDGE OF ALLEGIANCE**
5. **MISSION/VISION STATEMENT, LAND ACKNOWLEDGEMENT**
6. **APPROVAL OF MINUTES**
7. **INTRODUCTION OF GUESTS and/or ANNOUNCEMENTS**
8. **REPORTS & PRESENTATIONS**
9. **PUBLIC COMMENT ON AGENDA ITEMS**
10. **ITEMS OF BUSINESS**
 - a. Site Calendar Approvals
 - b. ELC Building Contractor Approval
11. **NEXT BOARD MEETING (TBD)**
June 1, 2023
12. **ADJORNMENT**

2023-2024 Chugach School Calendar

School Year Calculation	
Days in Session:	<u>170</u>
Legal Holidays:	<u>6</u>
Teacher Work Days:	<u>4</u>
Inservice Days:	<u>10</u>
Total Days:	190

Calendar Key	
Inservice Days	IS
Teacher Work Days	W
School Opens	SO
End of Quarter	E
Legal Holidays	H
Vacation Days	V
School Closes	SC
Saturday School	SS
Parent-Teacher Con	PM
Russian Orthodox	R

1st Quarter Ends:	October 27, 2023	42	days
2nd Quarter Ends:	January 19, 2024	46	days
3rd Quarter Ends:	March 22, 2024	40	days
4th Quarter Ends:	June 7, 2024	42	days

Total: 170 days

July 2023							August 2023							September 2023							October 2023										
S	M	T	W	T	F	S	S	M	T	W	T	F	S	S	M	T	W	T	F	S	S	M	T	W	T	F	S				
						1														1	2										
2	3	4 H	5	6	7	8								3	4 H	5	6	7	8	9		1	2	3	4	5	6	7			
9	10	11	12	13	14	15		6	7	8	9	10	11	12	13	14	15	16				8	9	10	11	12	13	14 IS			
16	17	18	19	20	21	22		13	14	15	16	17	18	19		17	18	19	20	21	22	23		15 IS	16 IS	17 IS	18 IS	19 IS	20 IS	21	
23	24	25	26	27	28	29		20	21 W	22 W	23 SO	24	25	26		24	25	26	27	28	29	30		22	23	24	25	26	27 E	28	
30	31							27	28	29	30	31											29	30	31						
# of Inservice Days <u>0</u>							# of Inservice Days <u>0</u>							# of Inservice Days <u>0</u>							# of Inservice Days <u>7</u>										
# of Student Days <u>0</u>							# of Student Days <u>7</u>							# of Student Days <u>20</u>							# of Student Days <u>17</u>										
# of Teacher Days <u>0</u>							# of Teacher Days <u>2</u>							# of Teacher Days <u>0</u>							# of Teacher Days <u>0</u>										
November 2023							December 2023							January 2024							February 2024										
S	M	T	W	T	F	S	S	M	T	W	T	F	S	S	M	T	W	T	F	S	S	M	T	W	T	F	S				
				1	2	3	4						1	2												1	2	3			
																1 H	2 V	3 V	4 V	5 V	6		4	5	6	7	8	9	10		
5	6	7	8	9	10	11		3	4	5	6	7	8	9		7 R	8 R	9 R	10 W	11	12	13		11	12	13	14	15	16	17	
12	13	14	15	16	17	18		10	11	12	13	14	15	16	17	14	15	16	17	18	19 E	20									
19	20	21	22	23 H	24 H	25		17	18	19	20	21	22	23		21	22	23	24	25	26	27	25	26	27	28	29	30			
26	27	28	29	30				24	25 H	26 V	27 V	28 V	29 V	30	31		28	29	30	31											
# of Inservice Days <u>0</u>							# of Inservice Days <u>0</u>							# of Inservice Days <u>0</u>							# of Inservice Days <u>0</u>										
# of Student Days <u>20</u>							# of Student Days <u>17</u>							# of Student Days <u>15</u>							# of Student Days <u>21</u>										
# of Teacher Days <u>0</u>							# of Teacher Days <u>0</u>							# of Teacher Days <u>1</u>							# of Teacher Days <u>0</u>										
March 2024							April 2024							May 2024							June 2024										
S	M	T	W	T	F	S	S	M	T	W	T	F	S	S	M	T	W	T	F	S	S	M	T	W	T	F	S				
						1	2																				1				
3	4	5	6	7	8	9			1	2	3	4	5	6						1	2	3 R	4		2	3	4	5	6	7 E	8
10	11	12	13	14	15	16		7	8	9	10	11 IS	12 IS	13 IS		5 R	6	7	8	9	10	11		9	10	11	12	13	14	15	
17	18	19	20	21	22	23		14	15	16	17	18	19	20		12	13	14	15	16	17	18		16	17	18	19	20	21	22	
24	25	26	27	28	29	30		21	22	23	24	25	26	27		19	20	21	22	23	24	25		23	24	25	26	27	28	29	
31								28	29	30						26	27 H	28	29	30	31										
# of Inservice Days <u>0</u>							# of Inservice Days <u>3</u>							# of Inservice Days <u>0</u>							# of Inservice Days <u>0</u>										
# of Student Days <u>16</u>							# of Student Days <u>20</u>							# of Student Days <u>17</u>							# of Student Days <u>0</u>										
# of Teacher Days <u>0</u>							# of Teacher Days <u>0</u>							# of Teacher Days <u>1</u>							# of Teacher Days <u>0</u>										

2023-2024 Chugach School Calendar

School Year Calculation	
Days in Session:	170
Legal Holidays:	6
Teacher Work Days:	4
Inservice Days:	10
Total Days:	190

Calendar Key		
Inservice Days	IS	
Teacher Work Days	W	
School Opens	SO	
End of Quarter	E	
Legal Holidays	H	
Vacation Days	V	
School Closes	SC	
Saturday School	SS	
Parent-Teacher Con	PM	
Russian Orthodox	R	

1st Quarter Ends: October 27, 2023 days
 2nd Quarter Ends: January 19, 2024 days
 3rd Quarter Ends: March 22, 2024 days
 4th Quarter Ends: June 7, 2024 days

Total: 0 days

July 2023	August 2023	September 2023	October 2023
S M T W T F S 1 2 3 4 5 6 7 8 9 10 11 12 13 14 15 16 17 18 19 20 21 22 23 24 25 26 27 28 29 30 31	S M T W T F S 1 2 3 4 5 6 7 8 9 10 11 12 13 14 15 16 17 18 19 20 21 22 23 24 25 26 27 W W W SO 31	S M T W T F S 1 2 3 4 5 6 7 8 9 10 11 12 13 14 15 16 17 18 19 20 21 22 23 24 25 26 27 28 29 30	S M T W T F S 1 2 3 4 5 6 7 8 9 10 11 12 13 14 IS 15 16 17 18 19 20 21 IS 22 23 24 25 26 27 28 IS 29 30 31
# of Inservice Days 0 # of Student Days 0 # of Teacher Days 0	# of Inservice Days 0 # of Student Days 6 # of Teacher Days 9	# of Inservice Days 0 # of Student Days 20 # of Teacher Days 20	# of Inservice Days 7 # of Student Days 17 # of Teacher Days 17
November 2023	December 2023	January 2024	February 2024
S M T W T F S 1 2 3 4 5 6 7 8 9 10 11 12 13 14 15 16 17 18 19 20 21 22 23 24 25 26 27 28 29 30	S M T W T F S 1 2 3 4 5 6 7 8 9 10 11 12 13 14 15 16 17 18 19 20 21 22 23 24 25 26 27 28 29 30 31	S M T W T F S 1 2 3 4 5 6 7 8 9 10 11 12 13 14 15 16 17 18 19 20 21 22 23 24 25 26 27 28 29 30 31	S M T W T F S 1 2 3 4 5 6 7 8 9 10 11 12 13 14 15 16 17 18 19 20 21 22 23 24 25 26 27 28 29
# of Inservice Days 0 # of Student Days 20 # of Teacher Days 20	# of Inservice Days 0 # of Student Days 17 # of Teacher Days 17	# of Inservice Days 0 # of Student Days 18 # of Teacher Days 18	# of Inservice Days 0 # of Student Days 21 # of Teacher Days 21
March 2024	April 2024	May 2024	June 2024
S M T W T F S 1 2 3 4 5 6 7 8 9 10 11 12 13 14 15 16 17 18 19 20 21 22 23 24 25 26 27 28 29 30 31	S M T W T F S 1 2 3 4 5 6 7 8 9 10 11 12 13 14 15 16 17 18 19 20 21 22 23 24 25 26 27 28 29 30	S M T W T F S 1 2 3 4 5 6 7 8 9 10 11 12 13 14 15 16 17 18 19 20 21 22 23 24 25 26 27 28 29 30 31	S M T W T F S 1 2 3 4 5 6 7 8 9 10 11 12 13 14 15 16 17 18 19 20 21 22 23 24 25 26 27 28 29 30
# of Inservice Days 0 # of Student Days 16 # of Teacher Days 16	# of Inservice Days 0 # of Student Days 20 # of Teacher Days 20	# of Inservice Days 0 # of Student Days 15 # of Teacher Days 16	# of Inservice Days 0 # of Student Days 0 # of Teacher Days 0

2023-2024 Tatitlek School Calendar

School Year Calculation	
Days in Session:	170
Legal Holidays:	6
Teacher Work Days:	4
Inservice Days:	10
Total Days:	190

Calendar Key		
Inservice Days	IS	
Teacher Work Days	W	
School Opens	SO	
End of Quarter	E	
Legal Holidays	H	
Vacation Days	V	
School Closes	SC	
Saturday School	SS	
Parent-Teacher Con	PM	
Russian Orthodox	R	

1st Quarter Ends:	October 27, 2023	35	days
2nd Quarter Ends:	January 19, 2024	42	days
3rd Quarter Ends:	March 22, 2024	41	days
4th Quarter Ends:	June 7, 2024	52	days

Total: 170 days

July 2023							August 2023							September 2023							October 2023							
S	M	T	W	T	F	S	S	M	T	W	T	F	S	S	M	T	W	T	F	S	S	M	T	W	T	F	S	
						1 V														1 W	2 W							
2	3	4	5	6	7	8			1	2	3	4	5															
V	V	H	V	V	V	V	6	7	8	9	10	11	12	V	H	SO		6	7	8	9	1	2	3	4	5	6	7
9	10	11	12	13	14	15	V	V	V	V	V	V	V	10	11	12	13	14	15	16	17	8	9	10	11	12	13	14
V	V	V	V	V	V	V	13	14	15	16	17	18	19	17	18	19	20	21	22	23	24	15	16	17	18	19	20	21
16	17	18	19	20	21	22	V	V	V	V	V	V	V	20	21	22	23	24	25	26	27	IS	IS	IS	IS	IS	IS	W
V	V	V	V	V	V	V	20	21	22	23	24	25	26	V	V	V	V	V	V	V	28	22	23	24	25	26	27	28
23	24	25	26	27	28	29	V	V	V	V	V	V	V	27	28	29	30	31										
V	V	V	V	V	V	V	27	28	29	30	31																	
30	31						V	V	V	V	V											29	30	31				
V	V																					PM						
# of Inservice Days 0							# of Inservice Days 0							# of Inservice Days 0							# of Inservice Days 7							
# of Student Days 0							# of Student Days 0							# of Student Days 20							# of Student Days 18							
# of Teacher Days 0							# of Teacher Days 0							# of Teacher Days 2							# of Teacher Days 1							
November 2023							December 2023							January 2024							February 2024							
S	M	T	W	T	F	S	S	M	T	W	T	F	S	S	M	T	W	T	F	S	S	M	T	W	T	F	S	
													1 SS															
				1	2	3	3	4	5	6	7	8	9		1	2	3	4	5	6								
5	6	7	8	9	10	11	10	11	12	13	14	15	16	7	8	9	10	11	12	13	4	5	6	7	8	9	10	
12	13	14	15	16	17	18	17	18	19	20	21	22	23	14	15	16	17	18	19	20	11	12	13	14	15	16	17	
19	20	21	22	23	24	25	19	20	21	22	23	24	25	21	22	23	24	25	26	27	18	19	20	21	22	23	24	
26	27	28	29	30			24	25	26	27	28	29	30								25	26	27	28	29			
							V	H	V	V	V	V	V	28	29	30	31											
							31																					
							V																					
# of Inservice Days 0							# of Inservice Days 0							# of Inservice Days 0							# of Inservice Days 0							
# of Student Days 20							# of Student Days 11							# of Student Days 17							# of Student Days 21							
# of Teacher Days 0							# of Teacher Days 0							# of Teacher Days 1							# of Teacher Days 0							
March 2024							April 2024							May 2024							June 2024							
S	M	T	W	T	F	S	S	M	T	W	T	F	S	S	M	T	W	T	F	S	S	M	T	W	T	F	S	
						1 2																						
3	4	5	6	7	8	9		1	2	3	4	5	6															
10	11	12	13	14	15	16	7	8	9	10	11	12	13		5	6	7	8	9	10		2	3	4	5	6	7	
17	18	19	20	21	22	23	14	15	16	17	18	19	20		12	13	14	15	16	17	18	9	10	11	12	13	14	
24	25	26	27	28	29	30	21	22	23	24	25	26	27		19	20	21	22	23	24	16	17	18	19	20	21	22	
31							28	29	30						26	27	28	29	30	31	25	26	27	28	29	30	31	
# of Inservice Days 0							# of Inservice Days 0							# of Inservice Days 0							# of Inservice Days 0							
# of Student Days 16							# of Student Days 20							# of Student Days 26							# of Student Days 1							
# of Teacher Days 0							# of Teacher Days 0							# of Teacher Days 0							# of Teacher Days 0							

2023-2024 FOCUS Calendar

School Year Calculation	
Days in Session:	170
Legal Holidays:	6
Teacher Work Days:	4
Inservice Days:	10
Total Days:	190

Calendar Key		
Inservice Days		IS
Teacher Work Days		W
School Opens		SO
End of Quarter		E
Legal Holidays		H
Vacation Days		V
School Closes		SC
Saturday School		SS
Parent-Teacher Con		PM
Russian Orthodox		R

1st Quarter Ends:	October 27, 2023	44	days
2nd Quarter Ends:	January 19, 2024	43	days
3rd Quarter Ends:	March 22, 2024	40	days
4th Quarter Ends:	June 7, 2024	43	days

Total: 170 days

July 2023							August 2023							September 2023							October 2023									
S	M	T	W	T	F	S	S	M	T	W	T	F	S	S	M	T	W	T	F	S	S	M	T	W	T	F	S			
						1				1	2	3	4	5						1	2									
2	3	4 H	5	6	7	8									3	4 H	5	6	7	8	9	1	2	3	4	5	6	7		
9	10	11	12	13	14	15	6	7	8	9	10	11	12		10	11	12	13	14	15	16	8	9	10	11	12	13	14 IS		
16	17	18	19	20	21	22	13	14	15	16	17 TW	18 TW	19		17	18	19	20	21	22	23	15 IS	16 IS	17 IS	18 IS	19 IS	20 IS	21		
23	24	25	26	27	28	29	20	21 SO	22	23	24	25	26		24	25	26	27	28	29	30	22	23	24	25	26	27 E	28		
30	31						27	28	29	30	31											29	30	31						
# of Inservice Days 0							# of Inservice Days 0							# of Inservice Days 0							# of Inservice Days 7									
# of Student Days 0							# of Student Days 9							# of Student Days 20							# of Student Days 17									
# of Teacher Days 0							# of Teacher Days 2							# of Teacher Days 0							# of Teacher Days 0									
November 2023							December 2023							January 2024							February 2024									
S	M	T	W	T	F	S	S	M	T	W	T	F	S	S	M	T	W	T	F	S	S	M	T	W	T	F	S			
				1	2	3	4						1	2							6					1	2	3		
								3	4	5	6	7	8	9																
5	6	7	8	9	10	11	10	11	12	13	14	15	16		7	8	9	10	11	12	13			4	5	6	7	8	9	10
12	13	14	15	16	17	18	17								14	15	16	17	18	19 E	20			11	12	13	14	15	16	17
19	20	21	22	23 H	24 H	25	18	19	20	21	22				21	22	23	24	25	26	27			18	19	20	21	22	23	24
26	27	28	29	30			24	25 H	26	27	28	29	30		28	29	30	31							25	26	27	28	29	
							31																							
# of Inservice Days 0							# of Inservice Days 0							# of Inservice Days 0							# of Inservice Days 0									
# of Student Days 20							# of Student Days 11							# of Student Days 18							# of Student Days 21									
# of Teacher Days 0							# of Teacher Days 0							# of Teacher Days 0							# of Teacher Days 0									
March 2024							April 2024							May 2024							June 2024									
S	M	T	W	T	F	S	S	M	T	W	T	F	S	S	M	T	W	T	F	S	S	M	T	W	T	F	S			
						1	2														4						1			
3	4	5	6	7	8	9			1	2	3	4	5	6																
10	11	12	13	14	15	16	7	8	9	10	11 IS	12 IS	13 IS		5	6	7	8	9	10	11			2	3	4	5	6	7 E	8
17	18	19	20	21	22	23	14	15	16	17	18	19	20		12	13	14	15	16	17	18			9	10	11	12	13	14	15
24	25	26	27	28	29	30	21	22	23	24	25	26	27		19	20	21	22	23	24 SC	25			16	17	18	19	20	21	22
							28	29	30						26	27 H	28 TW	29 TW	30	31										
31																								30						
# of Inservice Days 0							# of Inservice Days 3							# of Inservice Days 0							# of Inservice Days 0									
# of Student Days 16							# of Student Days 20							# of Student Days 18							# of Student Days 0									
# of Teacher Days 0							# of Teacher Days 0							# of Teacher Days 2							# of Teacher Days 0									

MEMORANDUM # 23-17

TITLE: 23/24 School Year Site Calendar Approvals

REASON: CSD is required by the State to submit Board approved site calendars each school year.

DATE: April 27, 2023

BACKGROUND:

Chugach has had a process of putting together its site calendars by involving EACs and other stakeholders. This year the most noticeable change is the inservice time in October. Traditionally CSD has had four inservices but next year we are reducing the # of inservices to two in order for our staff to attend the Aurora Conference in October.

CHIEF SCHOOL ADMINISTRATOR RECOMMENDATION:

The CSA recommends approving the calendars of Whittier, Chenega, Tatitlek, and Focus.

SUGGESTED MOTION:

A motion to approve memo 23-17, approving the site calendars for the 2023/24 school year.



Proposal



Chugach School District Garage/Multipurpose Center

Submitted to:

Ryan Schmidt
Chugach School District
9312 Vanguard Dr
Anchorage, AK 99507

April 21, 2023
4:00 PM

Chugach School District Garage/Multipurpose Center
Design-Build



COST PROPOSAL

WSI proposes to complete the work as described in the Evaluation Criteria for the stipulated lump sum price of :

One Million Six Hundred Ninety Seven Thousand ⁰⁰/₁₀₀ Dollars

(in words)

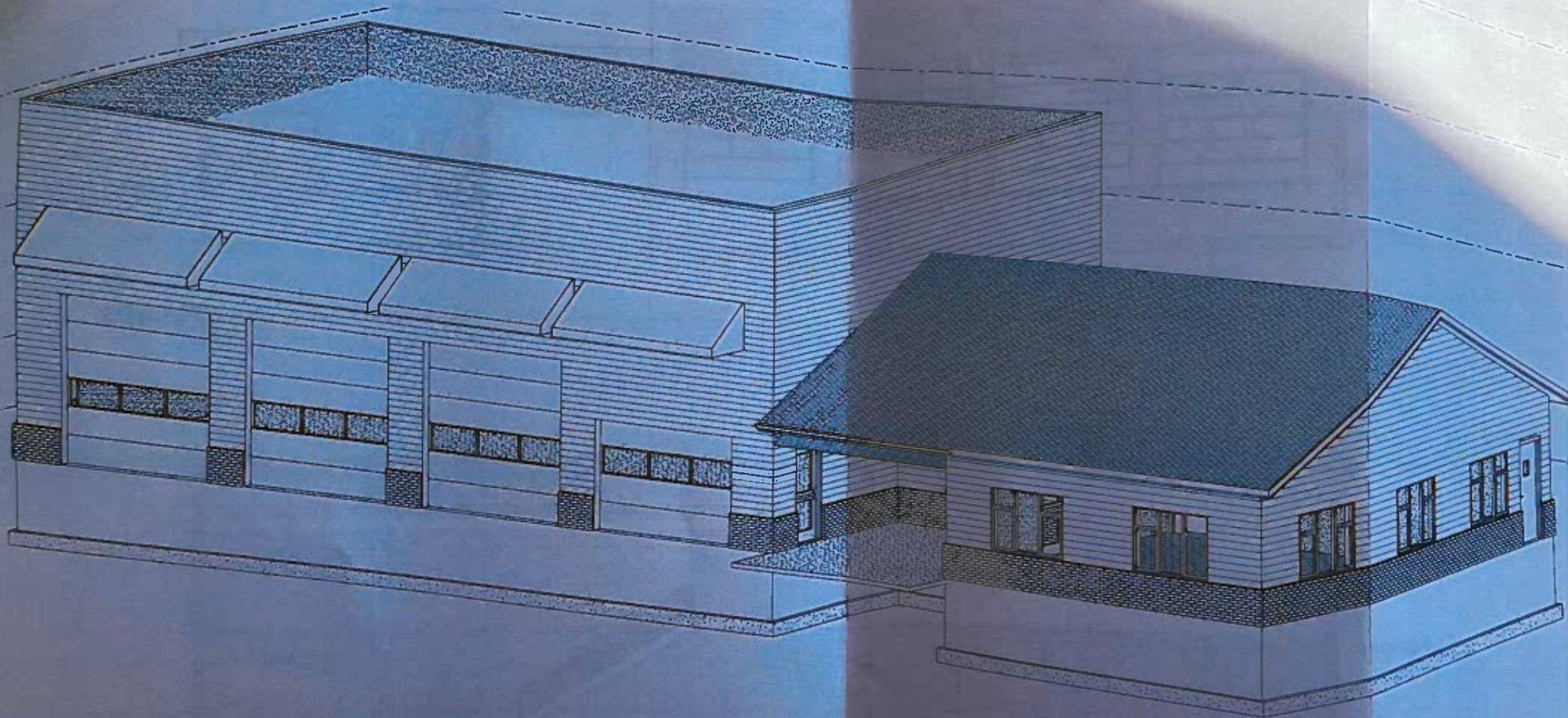
\$ 1,697,000.00

(in numbers)

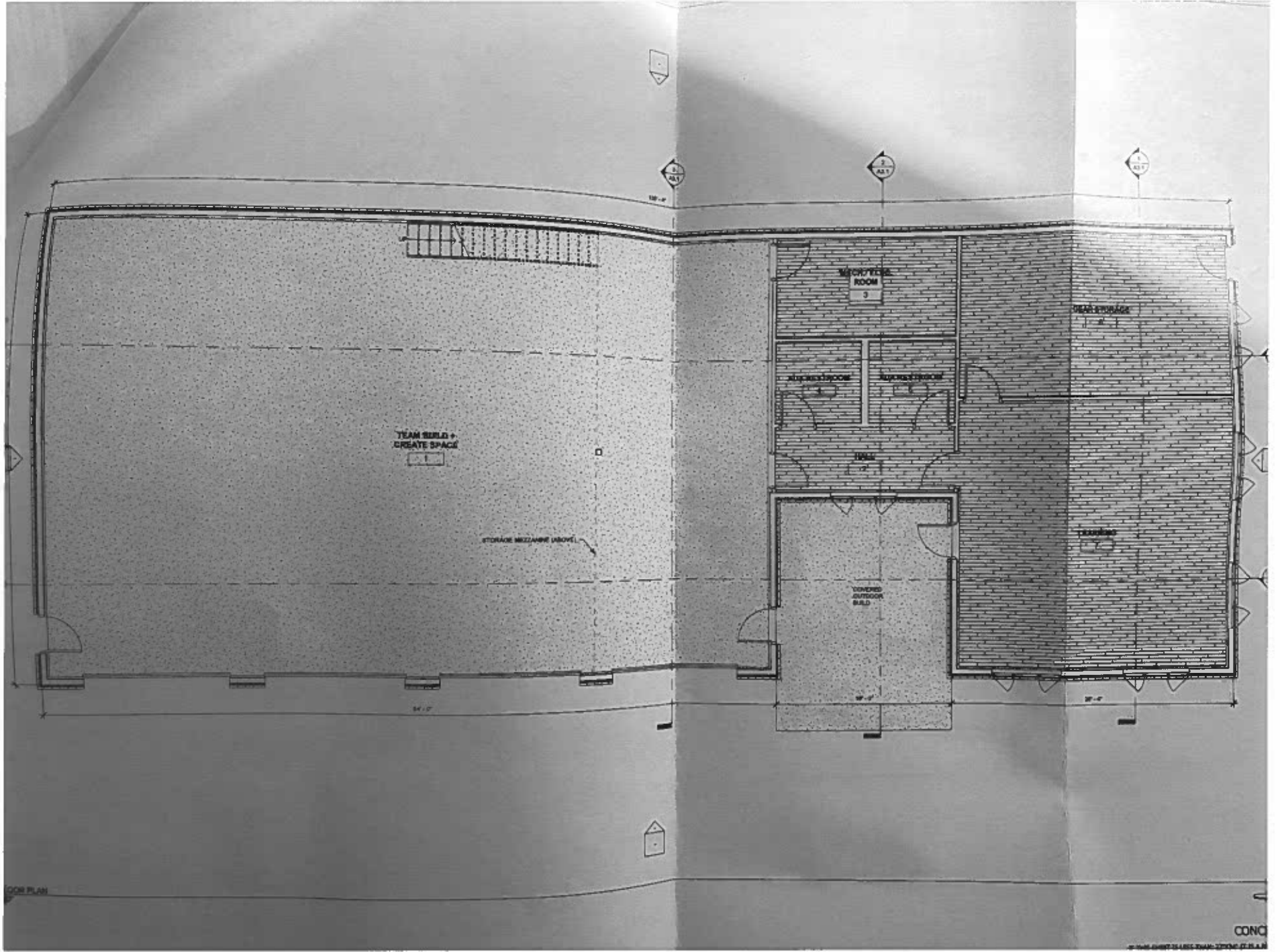
Respectfully submitted to the Chugach School District this 21st day of April, 2023.

Michelle Clapp
Michelle Clapp, Vice President

Wolverine Supply, Inc.
5099 E. Blue Lupine Drive
Wasilla, Alaska 99654
(907) 373-6572 Phone
michelle@wsiak.com



ISOMETRIC ELEVATION



CONC

MEMORANDUM # 23-18

TITLE: Early Childhood Training Center – Contractor Approval

REASON: Chugach plans to spend approximately \$650,000 with this contractor and would like to receive Board approval for the contractor and expenditures.

DATE: April 27, 2023

BACKGROUND:

We have been fortunate to secure \$500,000 through excess grant funds in order to build an early childhood learning center. The bulk of these monies need to be expended by the end of June. With a \$150,000 match, we have \$650,000.

We had over 100 contractors pick up the bid packets and only one, Wolverine Construction, placed a bid. You will see from the bid, almost 1.7 million, that we aren't even close to getting what we originally thought possible.

The idea is to scale the project back with the focus on the "multi-purpose large room", and leave the classroom space and bathrooms as an alternate that can be added on later. Our hope is to get as far as we can with the money that we have available.

CHIEF SCHOOL ADMINISTRATOR RECOMMENDATION:

The CSA recommends approving the contractor and expending the allotted monies for this project.

SUGGESTED MOTION:

A motion to approve memo 23-18, approving Wolverine Construction as our contractor/vendor and the related expenditures to the project.