

Regular Meeting
Monday, March 9, 2026 6:00 PM Mountain

Central Service Building
2102 Wagner Street
Strasburg, CO 80136

Diana Elliott: Present
Gema Gomez: Present
Michael Marrero: Present
Mary O'Malley: Present
Courtney Vance: Present

Present: 5.

I.	Opening of Meeting
I.a.	Roll Call
I.b.	Pledge of Allegiance
I.c.	Adoption of the Minutes
I.d.	Adoption of the Agenda
I.e.	Land Acknowledgment
I.f.	Board of Education Norms
II.	Celebrations
II.a.	Guitar Center Music Foundation Grant
II.b.	National Honors Society
III.	Public Participation/General
III.a.	Keegan - Student
IV.	Old Business
V.	New Business
VI.	Board Reports/Discussion
VI.a.	Board Feedback
VI.b.	Legislative and Colorado Association of School Boards
VI.c.	District Accountability Committee
VI.d.	East Central Board of Cooperative Educational Services
VI.e.	Chamber of Commerce
VII.	Superintendent Report/Discussion
VII.a.	Demographer Study
VII.b.	Building Updates
VII.c.	Fiscal Updates
VII.d.	2026-2027 School Calendar
VIII.	Adoption of Consent Agenda
VIII.a.	Personnel Matters Contract/Letter of Assignments – New Hires/Renewals
VIII.b.	Personnel Matters Contract/Letter of Assignments – Reassignments
•	Cameron Schiller, SES Principal
•	Victoria Dickens, SHS Principal
•	Alaina Franklin, Central Registrar/Accounts Payable
VIII.c.	Personnel Matters Contract/Letter of Assignments – Terminations/Resignations/Non-Renewals

- Teresa Maximiliano, Paraprofessional
- Trevor Lyons, HMS Math Teacher
- Victoria Bomnskie, HMS Math Teacher
- Scott Andrews, SHS Principal

VIII.d. Substitute List

VIII.e. 2026-2027 Calendar

IX. Calendar Review

IX.a. Meeting Times and Dates Review

- **March 30** – Work Session (*Date changed due to Spring Break*)
- **April 13** – Regular Board Meeting
- **April 27** – Work Session

IX.b. Future Agenda Topics

X. Adjournment

THE STRASBURG SCHOOL DISTRICT RESPECTFULLY ACKNOWLEDGES THAT THE LAND ON WHICH WE GATHER AND LEARN IS THE TRADITIONAL AND ANCESTRAL HOMELANDS OF THE NORTHERN ARAPAHO AND CHEYENNE PEOPLE.

WE ARE COMMITTED TO GROWING AND DEEPENING OUR RELATIONSHIP WITH THE VIBRANT INDIGENOUS COMMUNITIES WHO CONTINUE TO THRIVE AND UPHOLD THEIR SACRED RELATION TO THIS LAND. WE EXTEND OUR RESPECT TO THE ELDERS OF THE PAST, THE PRESENT, AND FUTURE.



Strasburg School District 31J

Policy:	File:
Board of Education Norms	BEN
Adopted:	Revision:
	September 2025

Board of Education Team Norms

Accountability to the Board and the Community:

- We communicate with respect, transparency, and openness, especially in challenging situations, while considering the appropriate context for feedback.
- We actively listen and engage with objectivity and without personal bias, ensuring that all voices are heard and respected.
- We support and promote board decisions collectively, address concerns directly with the involved individuals, and maintain mutual respect.

Commitment to the District's Strategic Plan:

- We embrace the school mission and advocate for all students, prioritizing the greater good of the district over personal agendas.
- We approach every issue with the same level of focus and dedication, believing in the potential of all students to achieve academic success.

Effective and Productive Meetings:

- We prioritize and attend all meetings consistently by being prepared, arriving ready to actively engage, contribute, and accomplish the work of the board, while staying focused, using time efficiently, and starting and ending on time.
- We ensure everyone has a voice and promote balanced discussions, ending each meeting with clear action items, timelines, and owners
- We adhere to established norms, speak up when deviations occur, and strive to make our meetings a space for meaningful and respectful dialogue.

Strasburg School District – Demographic and Enrollment Study



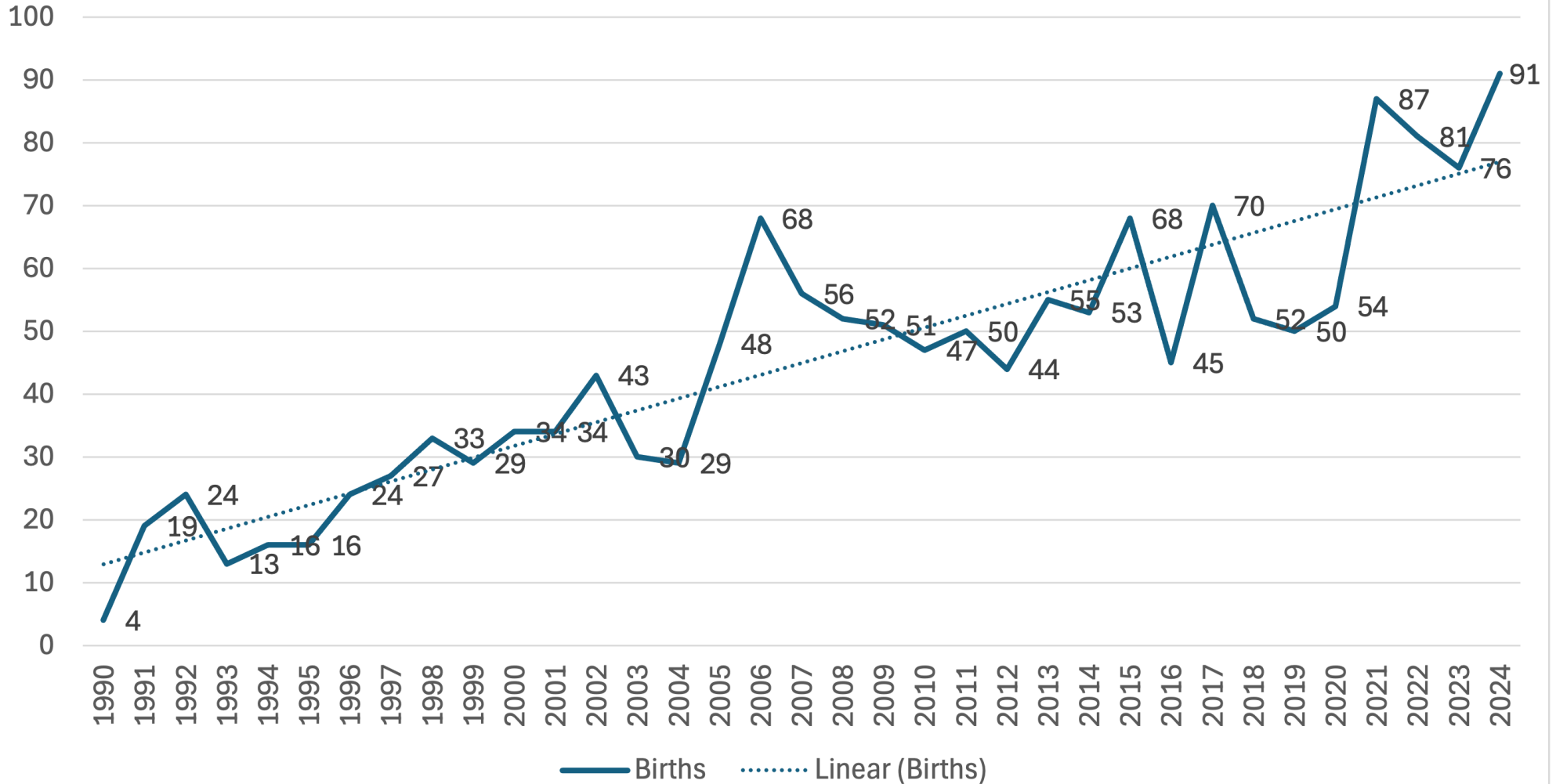
Shannon Bingham – 3/6/26

Findings

- Enrollment has grown slightly during the most recent school years and by 1.5% during the past 7 years.
- Total population has grown by 800 people during the past decade.
- Births have increased during prior decades and are continuing to increase.
- Residential housing growth has been significant with three builders working in Wolf Creek Run West. New housing and rising birth rates should allow enrollment growth in the coming five years.
- Student export to online providers has accelerated in recent years. Students that have gone online have been mostly replaced by growth from new housing.
- The recent departing senior classes have been larger than incoming kindergartens and have produced built in enrollment loss which has somewhat concealed new housing-based growth.
- Enrollment is expected to grow by 30 students according to the medium basis, mostly at the elementary level.

Births

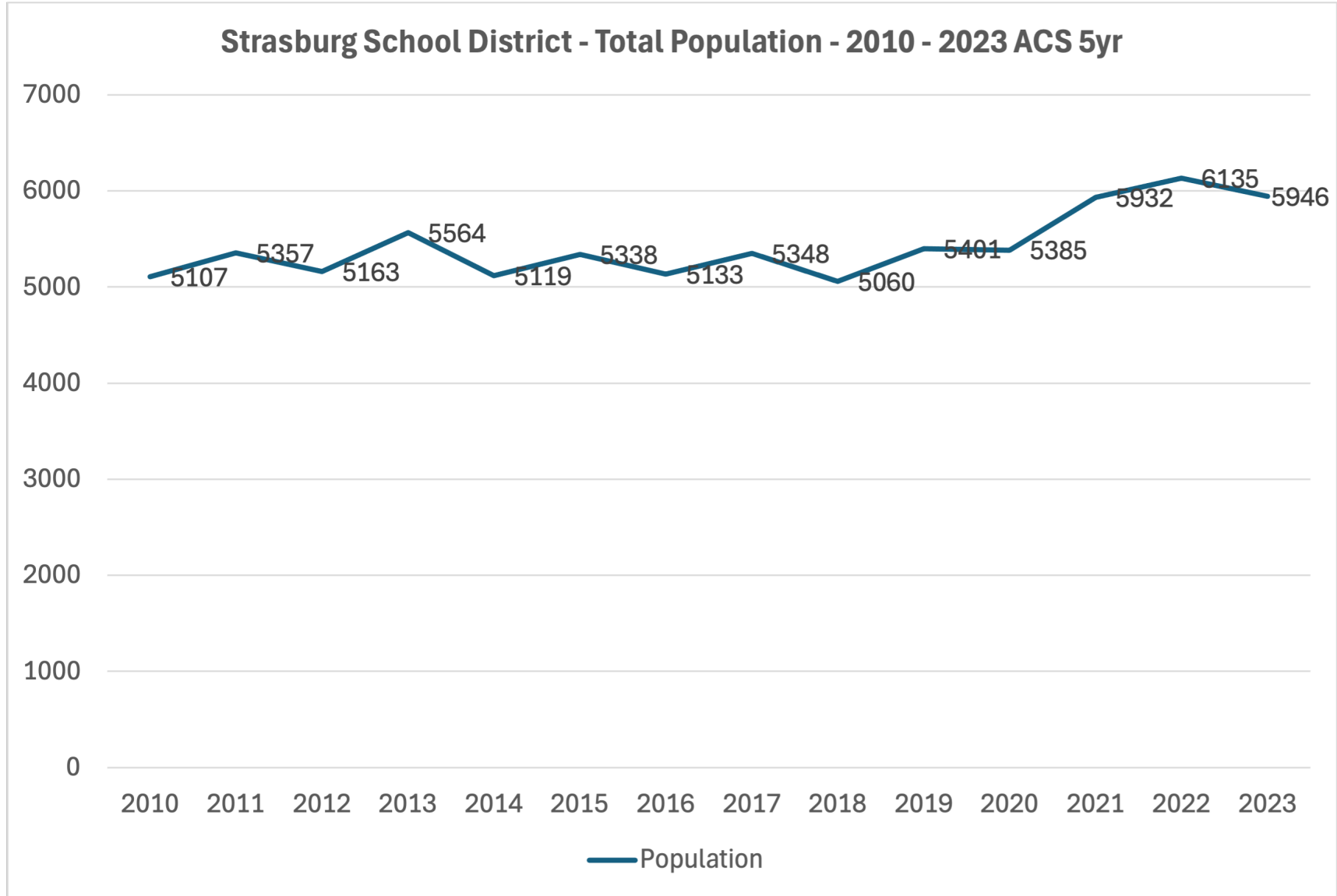
Strasburg School District - 1990 - 2024 - CDPHE



Annual birth counts in the geographic boundary of the district have grown and are expected to continue to do so.



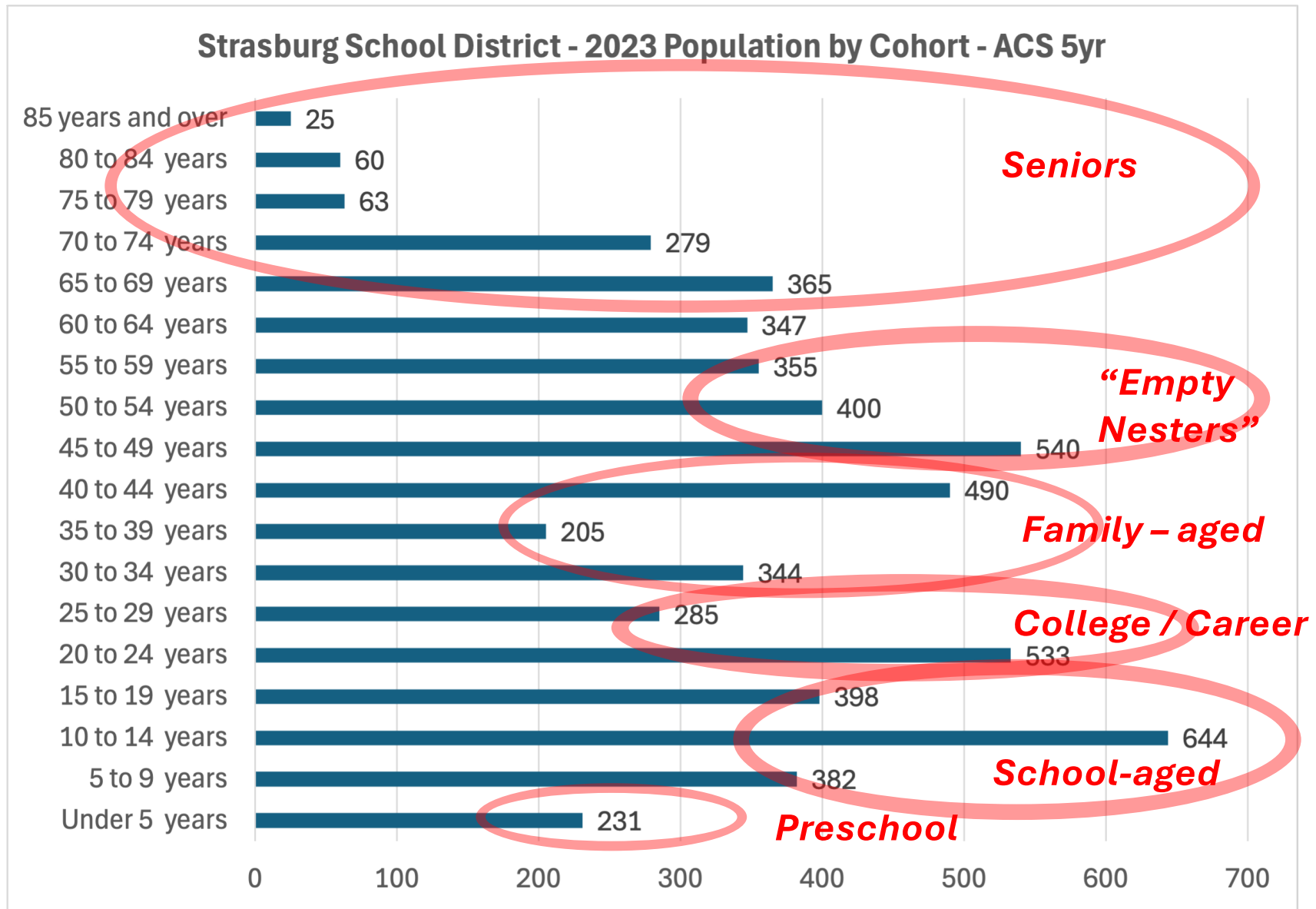
Total Population Growth



Total population in all age groups has grown by approximately 800 during the prior decade.

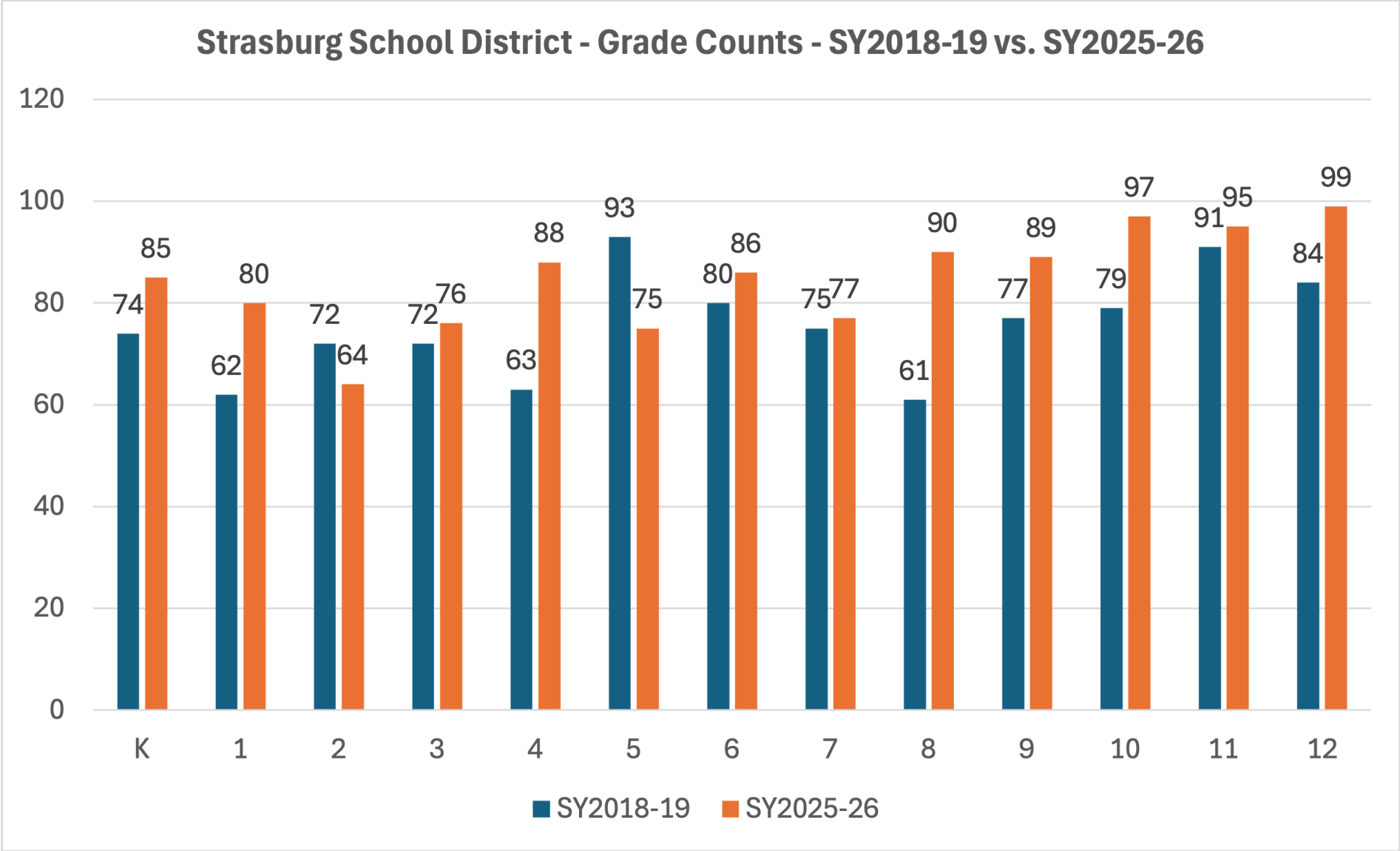


Population in Five-year Cohorts



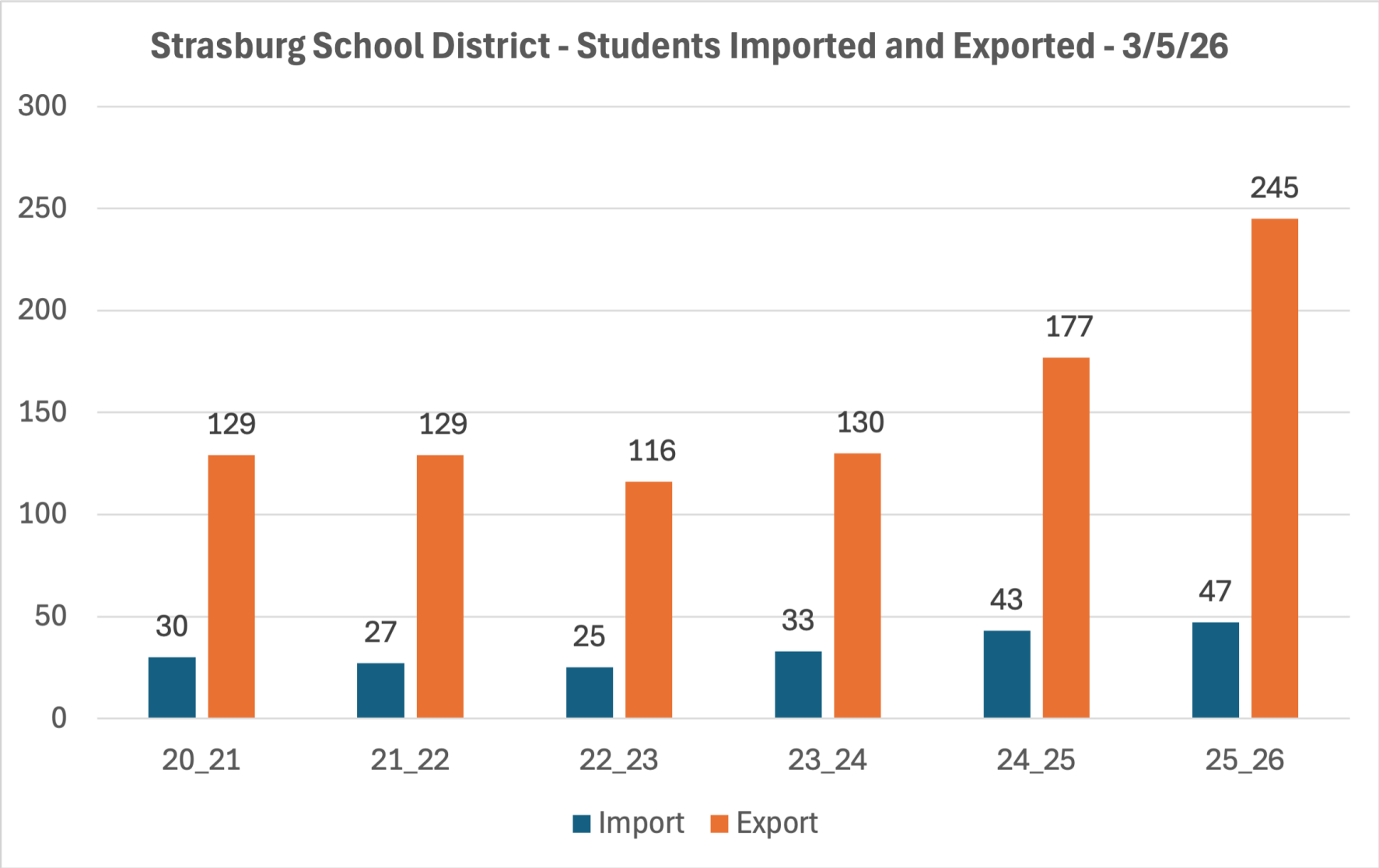
Given the small populations in the district, population counts are volatile. In general, adult population groups are similar to school-aged populations which indicates a family-centered community.

Grade Sizes SY18-19 vs. SY25-26



All grades except one have grown during the past seven years.

Import / Export of Students



The district has lost more students to online programs in recent years which have been mostly replaced by students from new development.



Import / Export of Students - Detail

Organization	Export_20_21	Export_21_22	Export_22_23	Export_23_24	Export_24_25	Export_25_26	Import_20_21	Import_21_22	Import_22_23	Import_23_24	Import_24_25	Import_25_26
Byers 32J	23	39	48	55	67	74	8	8	10	12	9	14
Education reEnvisioned BOCES	23	6	7	11	16	74						
Bennett 29J	21	18	14	12	39	49	12	12	10	13	21	20
Cherry Creek 5	8	10	4	5	8	10					1	
School District 27J	1		7	5	10	9						
Adams-Arapahoe 28J	12	6	3	7	12	8	3	2				1
Denver County 1	2	6	5	3	3	3	2	1				
Agate 300	4	5	6	5	5	3						
District 49	4	2	3	3	1	3						
Adams 12 Five Star Schools		1	1	2	2	2						
Deer Trail 26J				5	2	2	5	4	5	7	5	7
Julesburg Re-1			2	2	1	2						
Charter School Institute	7	4	3	3	3	2						
Westminster Public Schools						1						
Douglas County Re 1	3	2	1	1	1	1						
Cheyenne Mountain 12						1						
Weld County School District RE-3J	3	4	4	2	2	1						
VITAS RE-5	2											
Mapleton 1	10	18										
Academy 20	1	1										
Durango 9-R	5	2	2	3								
Vilas RE-5		2	1	1								
Woodlin R-104		3	3	4	4							
Westminster Public Schools			2	1	1							
Arriba-Flagler C-20									1		1	2
Jefferson County R-1											1	
Spain											3	1
Poland											1	
Switzerland											1	
Germany												1
Italy												1
Total	129	129	116	130	177	245	30	27	25	33	43	47

The district has lost more students to online programs - Byers 32J and Ed reEnvisioned BOCES have increased their draw from the district the most.

Housing Growth

Development	Density	For Sale	Units Remaining
Pulte	SFD	10	100+
Dreamfinders	SFD	13	100+

Annual Expectations	Units	ES	MS	HS	Maximum Students From Development
Wolf Creek Run West	40	12	8	10	30

Three builders are working in Wolf Creek Run West including Pulte, Dreamfinders and LGI. Single family units are priced in the \$400's and are very attractive to young families.



Enrollment History

Historical Enrollment by Grade	Totals by School Type								
Year	(K-5)	(6-8)	(9-12)	(K-12)	ps	Tot w PS	Net Growth	% Change	Avg
2018	436	216	331	983	82	1065			
2019	441	251	321	1013	67	1080	15	1.4%	
2020	418	256	327	1001	71	1072	-8	-0.7%	
2021	456	281	354	1091	80	1171	99	9.2%	
2022	474	255	392	1121	88	1209	38	3.2%	
2023	470	249	380	1099	88	1187	-22	-1.8%	
2024	456	250	386	1092	88	1180	-7	-0.6%	
2025	468	253	380	1101	79	1180	0	0.0%	1.53%

Enrollment during the past three years has been level. The seven-year enrollment trend has been 1.53%.

Larger departing senior classes are replaced by smaller kindergartens thus reducing enrollment. This conceals recent growth from new housing.

Historical Enrollment by Grade													
Year	K	1	2	3	4	5	6	7	8	9	10	11	12
2018	74	62	72	72	63	93	80	75	61	77	79	91	84
2019	76	79	67	73	78	68	97	80	74	66	81	84	90
2020	63	74	77	64	69	71	76	95	85	76	73	77	101
2021	75	67	84	81	71	78	86	85	110	100	89	71	94
2022	77	79	74	85	86	73	86	84	85	114	103	93	82
2023	72	79	76	75	80	88	81	85	83	96	101	89	94
2024	74	66	79	84	72	81	77	89	84	91	100	105	90
2025	85	80	64	76	88	75	86	77	90	89	97	95	99

Enrollment Forecast

Low	(K-5)	(6-8)	(9-12)	(K-12)	ps	Tot w PS	Net Growth	5yr % Avg.		Capacity ES	Capacity MS	Capacity HS	Seats ES	Seats MS	Seats HS
2026	475	241	376	1,092	79	1,171	-9	-0.1%	Low	730	309	449	176	68	73
2027	469	257	363	1,088	79	1,167	-3			730	309	449	182	52	86
2028	476	250	361	1,087	79	1,166	-1			730	309	449	175	59	88
2029	495	244	357	1,097	79	1,176	10			730	309	449	156	65	92
2030	502	238	360	1,099	79	1,178	3			730	309	449	149	71	89
Medium	(K-5)	(6-8)	(9-12)	(K-12)	ps	Tot w PS	Net Growth	5yr % Avg.		Capacity ES	Capacity MS	Capacity HS	Seats ES	Seats MS	Seats HS
2026	478	243	379	1100	79	1179	-2	2.6%	Medium	730	309	449	173	67	70
2027	475	259	371	1105	79	1184	6			730	309	449	177	50	78
2028	484	253	373	1111	79	1190	5			730	309	449	167	56	76
2029	507	247	371	1124	79	1203	13			730	309	449	145	62	78
2030	514	242	375	1131	79	1210	7			730	309	449	137	67	74
High	(K-5)	(6-8)	(9-12)	(K-12)	ps	Tot w PS	Net Change	5yr % Avg.		Capacity ES	Capacity MS	Capacity HS	Seats ES	Seats MS	Seats HS
2026	486	241	377	1104	79	1183	3	5.1%	High	730	309	449	165	68	72
2027	490	258	368	1116	79	1195	12			730	309	449	161	51	81
2028	505	255	370	1130	79	1209	14			730	309	449	146	54	79
2029	531	253	364	1148	79	1227	18			730	309	449	120	56	85
2030	539	254	368	1161	79	1240	13			730	309	449	112	55	81

Level Enrollment

30 Students Growth

60 Students Growth

Overall enrollment will grow by 30 students with most growth in elementary
 Strasburg Elementary includes the K-5 enrollment plus PK shown in the table.
 Hemphill Middle School include the grade 6 – 8 enrollment shown in the table.
 Strasburg High School enrollment includes grade 9-12 enrollment less 28 students
 attending Prairie Creek High School with grade assignments as needed.



Enrollment Forecast by Grade

Low	K	1	2	3	4	5	6	7	8	9	10	11	12
2026	78	86	78	66	77	90	76	88	77	98	88	95	95
2027	80	79	84	80	67	79	91	78	88	85	97	86	95
2028	82	81	77	86	81	69	80	93	78	96	84	95	86
2029	84	83	79	79	87	83	70	82	93	86	95	82	95
2030	86	85	81	81	80	89	84	72	82	101	85	93	82

Low - Level Enrollment

Medium	K	1	2	3	4	5	6	7	8	9	10	11	12
2026	78	86	81	65	77	90	76	89	78	97	91	97	94
2027	80	79	87	82	66	79	91	79	90	85	99	91	96
2028	82	81	80	89	83	69	80	94	80	97	87	99	90
2029	84	83	82	82	90	86	70	83	95	87	99	87	98
2030	86	85	84	84	83	92	87	72	84	102	89	99	86

Medium - 30 Students Growth

High	K	1	2	3	4	5	6	7	8	9	10	11	12
2026	78	88	83	67	79	91	76	88	77	95	95	95	92
2027	80	81	91	86	70	82	92	78	88	82	101	93	92
2028	82	83	84	94	89	73	83	94	78	93	88	99	90
2029	84	85	86	87	97	92	74	85	94	83	99	86	96
2030	85	87	88	89	90	100	93	76	85	99	89	97	83

High - 60 Students Growth

20-year Forecast Using Medium Basis

Year	PS/ES	MS	HS	Total	ES Cap	MS Cap	HS Cap	ES Seats Available	MS Seats Available	HS Seats Available
2030	592	243	375	1210	730	309	449	138	66	74
2031	595	244	377	1216	730	309	449	135	65	72
2032	598	245	379	1222	730	309	449	132	64	70
2033	601	247	381	1228	730	309	449	129	62	68
2034	604	248	383	1234	730	309	449	126	61	66
2035	607	249	384	1241	730	309	449	123	60	65
2036	610	250	386	1247	730	309	449	120	59	63
2037	613	252	388	1253	730	309	449	117	57	61
2038	616	253	390	1259	730	309	449	114	56	59
2039	619	254	392	1266	730	309	449	111	55	57
2040	622	255	394	1272	730	309	449	108	54	55
2041	625	257	396	1278	730	309	449	105	52	53
2042	629	258	398	1285	730	309	449	101	51	51
2043	632	259	400	1291	730	309	449	98	50	49
2044	635	261	402	1298	730	309	449	95	48	47
2045	638	262	404	1304	730	309	449	92	47	45
2046	641	263	406	1311	730	309	449	89	46	43
2047	644	265	408	1317	730	309	449	86	44	41
2048	648	266	410	1324	730	309	449	82	43	39
2049	651	267	412	1330	730	309	449	79	42	37
2050	654	268	414	1337	730	309	449	76	41	35

The current impacts affecting the district suggest adequate capacity for the foreseeable future. Changes in land development activity could change these trends dramatically.



Summary

- Enrollment has grown slightly during the most recent school years and by 1.5% during the past 7 years.
- Total population has grown by 800 people during the past decade.
- Births have increased during prior decades and are continuing to increase.
- Residential housing growth has been significant with three builders working in Wolf Creek Run West. New housing and rising birth rates should allow enrollment growth in the coming five years.
- Student export to online providers has accelerated in recent years. Students that have gone online have been mostly replaced by growth from new housing.
- The recent departing senior classes have been larger than incoming kindergartens and have produced built in enrollment loss which has somewhat concealed new housing-based growth.
- Enrollment is expected to grow by 30 students according to the medium basis, mostly at the elementary level.



CAPACITY ANALYSIS						
GRADE / USE	ROOM #	AVG. ROOM SIZE	CDE SF PER PUPIL	CDE CAPACITY	BUILDING CAPACITY	EDUCATIONAL CAPACITY

CAFETERIA						
DINING	108	3510	0		0	0

CLASSROOM						
1ST GRADE	505	850	32	27	25	25
1ST GRADE	506	850	32	27	25	25
1ST GRADE	507	850	32	27	25	25
1ST GRADE	508	850	32	27	25	25
2ND GRADE	501	850	32	27	25	25
2ND GRADE	502	850	32	27	25	25
2ND GRADE	503	850	32	27	25	25
2ND GRADE	504	850	32	27	25	25
3RD GRADE	402	800	32	25	25	25
3RD GRADE	403	810	32	25	25	25
3RD GRADE	405	840	32	26	25	25
3RD GRADE	406	840	32	26	25	25
4TH GRADE	605	810	30	27	25	25
4TH GRADE	606	810	30	27	25	25
4TH GRADE	608	810	30	27	25	25
5TH GRADE	602	810	30	27	25	25
5TH GRADE	603	810	30	27	25	25
5TH GRADE	604	810	30	27	25	25
FLEX	401	750	32	23	25	25
FLEX	407	800	32	25	25	25
FLEX	601	810	30	27	25	25
FLEX	607	810	30	27	25	25
KINDERGARTEN	204	850	38	22	20	20
KINDERGARTEN	205	850	38	22	20	20
KINDERGARTEN	206	850	38	22	20	20
KINDERGARTEN	207	850	38	22	20	20
KINDERGARTEN	208	850	38	22	20	20
PRE-K	201	850	0		20	20
PRE-K	202	850	0		20	20
PRE-K	203	850	0		20	20
PRE-K	308	850	0		20	20

SPECIAL ED						
INTERVENTION	307	730	37	20	25	0
INTERVENTION	404	730	37	20	25	0
INTERVENTION	409	730	37	20	25	0

SPECIALS						
ART	408	905	35	26	0	0
GYMNASIUM	101	5750	0		0	0
LIBRARY	303	1540	0		0	0
MAKER SPACE	107	615	30	21	0	0
MUSIC	107	1540	35	44	0	0
				841	805	730

Building capacity calculations consider any space of 675 square feet or larger as a potential classroom, per CDE guidance. These rooms are counted in building capacity and may be used as classrooms if needed to accommodate enrollment increases.

Educational capacity calculations reflect how the building is currently being used.

CAPACITY PLAN LEGEND

CAPACITY TAG

Size of space shown in square feet. Number in circle shows capacity.

COLOR LEGEND

- INSTRUCTIONAL SPACES
- SPECIAL EDUCATION / INTERVENTION
- SPECIALS / ELECTIVES
- FLEX CLASSROOMS
- ADMINISTRATION / OTHER USE
- CAFETERIA
- SCIENCE
- MODULAR SPACE



CAPACITY ANALYSIS						
GRADE / USE	ROOM #	AVG. ROOM SIZE	CDE SF PER PUPIL	CDE CAPACITY	BUILDING CAPACITY	SUB-TOTAL EDUCATIONAL CAPACITY (JR. HIGH MODEL)

CAFETERIA						
DINING	112	1878	0		0	0

CLASSROOM						
6TH GRADE	162	850	30	28	25	25
6TH GRADE	163	850	30	28	25	25
6TH GRADE	164	850	30	28	25	25
6TH GRADE	165	850	30	28	25	25
7TH GRADE	145	850	28	30	25	25
7TH GRADE	147	850	28	30	25	25
7TH GRADE	172	850	28	30	25	25
8TH GRADE	171	850	28	30	25	25
8TH GRADE	173	850	28	30	25	25
8TH GRADE	174	850	28	30	25	25

SCIENCE						
BIOLOGY	141	910	40	23	25	25
CHEMISTRY	141	910	40	23	25	25

SPECIAL ED						
INTERVENTION	146	392	37	11	0	4
INTERVENTION	161	850	37	23	25	8

SPECIALS						
ART	144	1074	30	36	25	25
BAND	139	850	35	24	25	25
COMP LAB	134	850	32	27	25	25
GYMNASIUM	131	7395	0		25	25
LIBRARY	121	2046	0		0	0
	20			461	425	412

Building capacity calculations consider any space of 675 square feet or larger as a potential classroom, per CDE guidance. These rooms are counted in building capacity and may be used as classrooms if needed to accommodate enrollment increases.

Sub-total Educational capacity calculations reflect how the building is currently being used.

An optimization factor is applied to the educational capacity of a middle/high school to accurately reflect how the building functions during the academic day. This factor accounts for operational elements such as schedule flexibility, teacher planning periods, and bell schedules. For schools operating on a 6-of-8 period schedule, the optimization factor is 0.75.

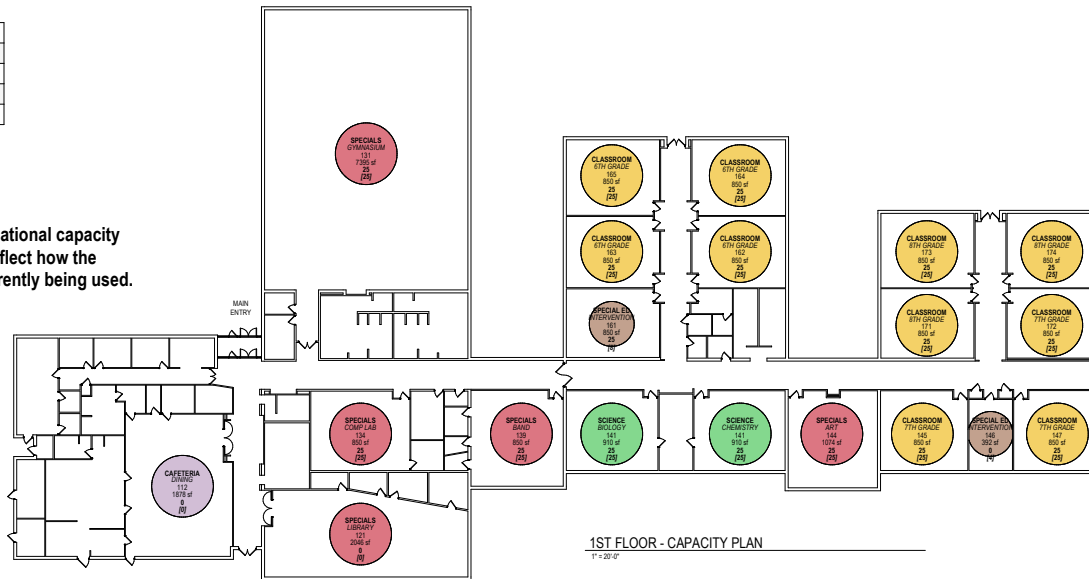
SUB-TOTAL EDUCATIONAL CAPACITY = 412
 TOTAL EDUCATIONAL CAPACITY = 412 x 0.75 = 309

CAPACITY PLAN LEGEND

CAPACITY TAG

COLOR LEGEND

- INSTRUCTIONAL SPACES
- SPECIAL EDUCATION / INTERVENTION
- SPECIALS / ELECTIVES
- FLEX CLASSROOMS
- ADMINISTRATION / OTHER USE
- CAFETERIA
- SCIENCE
- MODULAR SPACE



1ST FLOOR - CAPACITY PLAN

1" = 20'-0"



CAPACITY ANALYSIS						
GRADE / USE	ROOM #	AVG. ROOM SIZE	CDE SF PER PUPIL	CDE CAPACITY	BUILDING CAPACITY	SUB-TOTAL EDUCATIONAL CAPACITY

CAFETERIA						
COMMONS	C-02	1310	0		0	0

CLASSROOM						
INSTRUCTION	105	710	28	25	25	25
INSTRUCTION	107	850	28	30	25	25
INSTRUCTION	108	850	28	30	25	25
INSTRUCTION	108	610	28	22	25	25
INSTRUCTION	111	850	28	30	25	25
INSTRUCTION	112	850	28	30	25	25
INSTRUCTION	114	850	28	30	25	25
INSTRUCTION	115	850	28	30	25	25
INSTRUCTION	306	870	28	31	25	25
INSTRUCTION	308	650	28	23	25	25
INSTRUCTION	309	650	28	23	25	25
INSTRUCTION	310	650	28	23	25	25
INSTRUCTION	312	550	28	20	25	25
INSTRUCTION	313	550	28	20	25	25
INSTRUCTION	315	670	28	24	25	25
INSTRUCTION	317	670	28	24	25	25
INSTRUCTION	318	670	28	24	25	25

SPECIAL ED						
INTERVENTION	115	590	37	16	0	8
INTERVENTION	116	590	37	16	0	8
INTERVENTION	304	680	37	18	25	8

SPECIALS						
ART	307	750	45	17	25	25
COMP LAB	124	980	32	31	25	25
DISTANCE LEARNING	107	810	32	25	25	25
FITNESS	302	2400	0		25	25
GYMNASIUM	201	8350	0		25	25
LIBRARY	106	1540	0		0	0
MUSIC	102	1285	35	37	25	25
SMALL GYMNASIUM	212	5600	0		0	0
	29			601	600	599

Building capacity calculations consider any space of 675 square feet or larger as a potential classroom, per CDE guidance. These rooms are counted in building capacity and may be used as classrooms if needed to accommodate enrollment increases.

Sub-total Educational capacity calculations reflect how the building is currently being used.

An optimization factor is applied to the educational capacity of a middle/high school to accurately reflect how the building functions during the academic day. This factor accounts for operational elements such as schedule flexibility, teacher planning periods, and bell schedules. For schools operating on a 6-of-8 period schedule, the optimization factor is 0.75.

SUB-TOTAL EDUCATIONAL CAPACITY = 599
 TOTAL EDUCATIONAL CAPACITY = 599 x 0.75 = 449

CAPACITY PLAN LEGEND

CAPACITY TAG

TYPE OF SPACE
 ROOM NUMBER
 SQUARE FEET
 CDE SF PER PUPIL
 CDE CAPACITY

COLOR LEGEND

- INSTRUCTIONAL SPACES
- SPECIAL EDUCATION / INTERVENTION
- SPECIALS / ELECTIVES
- FLEX CLASSROOMS
- ADMINISTRATION / OTHER USE
- CAFETERIA
- SCIENCE
- MODULAR SPACE

