

Special Meeting: Board Work Session

Thursday, October 1, 2020 6:30 PM Central

Conference Room, Madison Middle/High
School
700 South Kent St.
Madison, NE 68748-0450

Kate Ebeling: Present, Harlow Hanson: Present, Jim Knapp: Present, Deb Neidig: Present, Jim Reeves: Present, Steve Ruh: Present. Present: 6.

1. Call Meeting to Order
1. Roll Call/Excuse absent Board members
2. Pledge of Allegiance
3. Declare the meeting to be open, legal, and properly advertised
2. Accept the agenda as the official agenda
3. Break for Supper
4. Discussion on options to address bleacher usage in the new gym.
5. Watch video of NASB Regional meeting.
6. Adjournment

Madison Public Schools

Alan Ehlers
Superintendent

Jim Crilly
HS Principal
Reid Ehrisman
MS Principal/EL

Karla Kush
Elementary Principal

700 So Kent St.
P.O. Box 450
Madison, NE 68748
District Phone (402) 454-3336 Fax (402) 454-2238
Elementary Phone (402) 454-2656 Fax (402) 454-3978

Travis Jordan
Director of CAI
Crystal Ernst
Instructional Coach
Landonn Mackey
Athletic Director
Celine Filsinger
Office Manager

The mission of Madison Public Schools is to prepare students to be competent, confident, productive, and responsible citizens.

New Gym bleacher options for discussion 10-1-2020

Option #1 southeast corner – Build a ladder for the video mezzanine estimated cost \$1580.00

Build a platform and rail for the northeast corner with an estimated cost of \$942.00

Total cost \$2,522.00 split 3 ways (Michael, DWB & MPS) = \$840.66 each

Sheridan Bleachers supplies 4 curtains as a cost of \$2275.00 and DWB installs at n/c to the District.

Option #2 Build a non-code permanent stairs on each side with an estimated cost of \$20,000+

Sheridan supplies two curtains for the west side of each bleacher and pays \$1137.00 toward the steps.

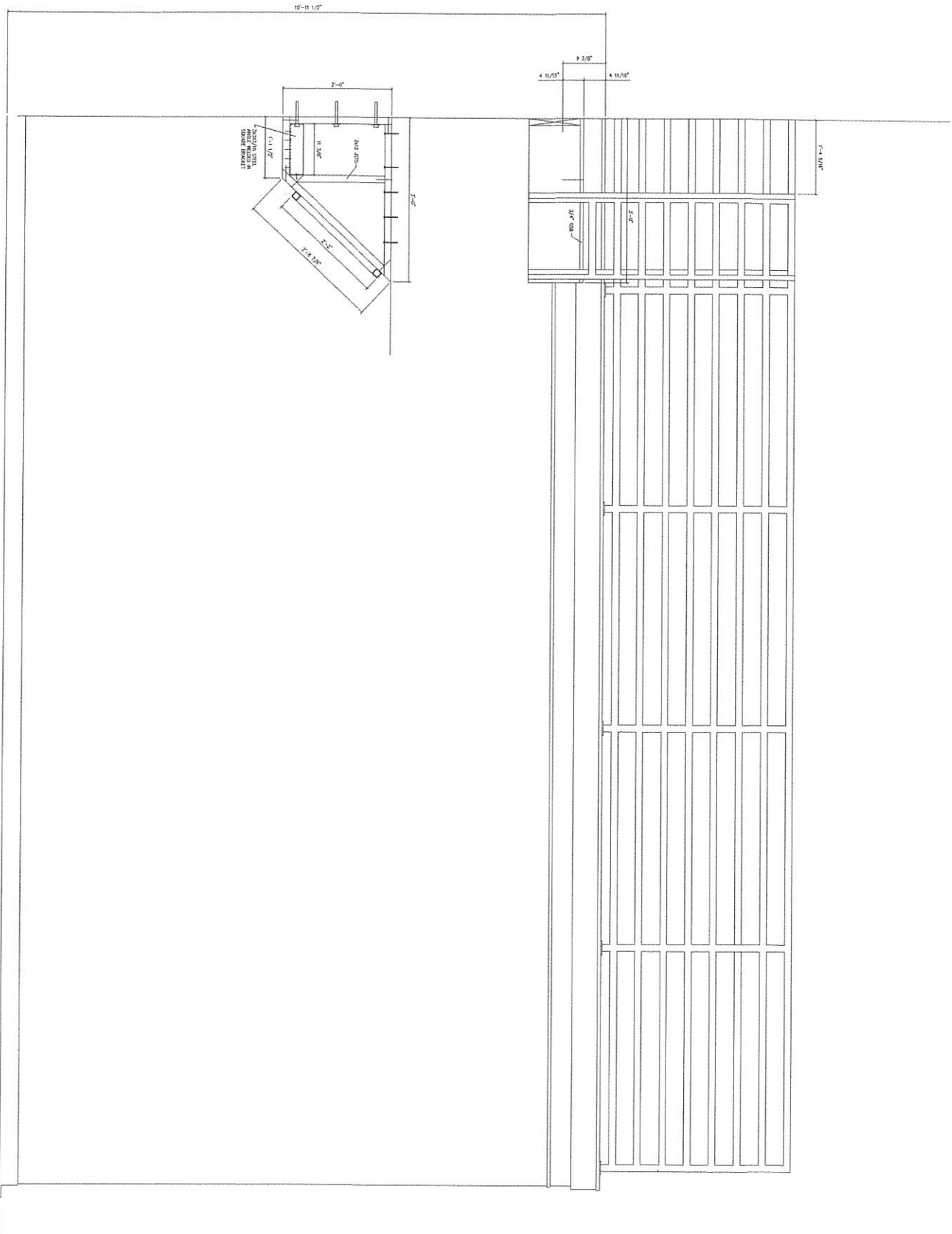
The cost would be too high and the steps would not be legal. If forced to remove at a later time would damage the wood floor would cost more.

Notes:

Reasons to not move the bleachers over:

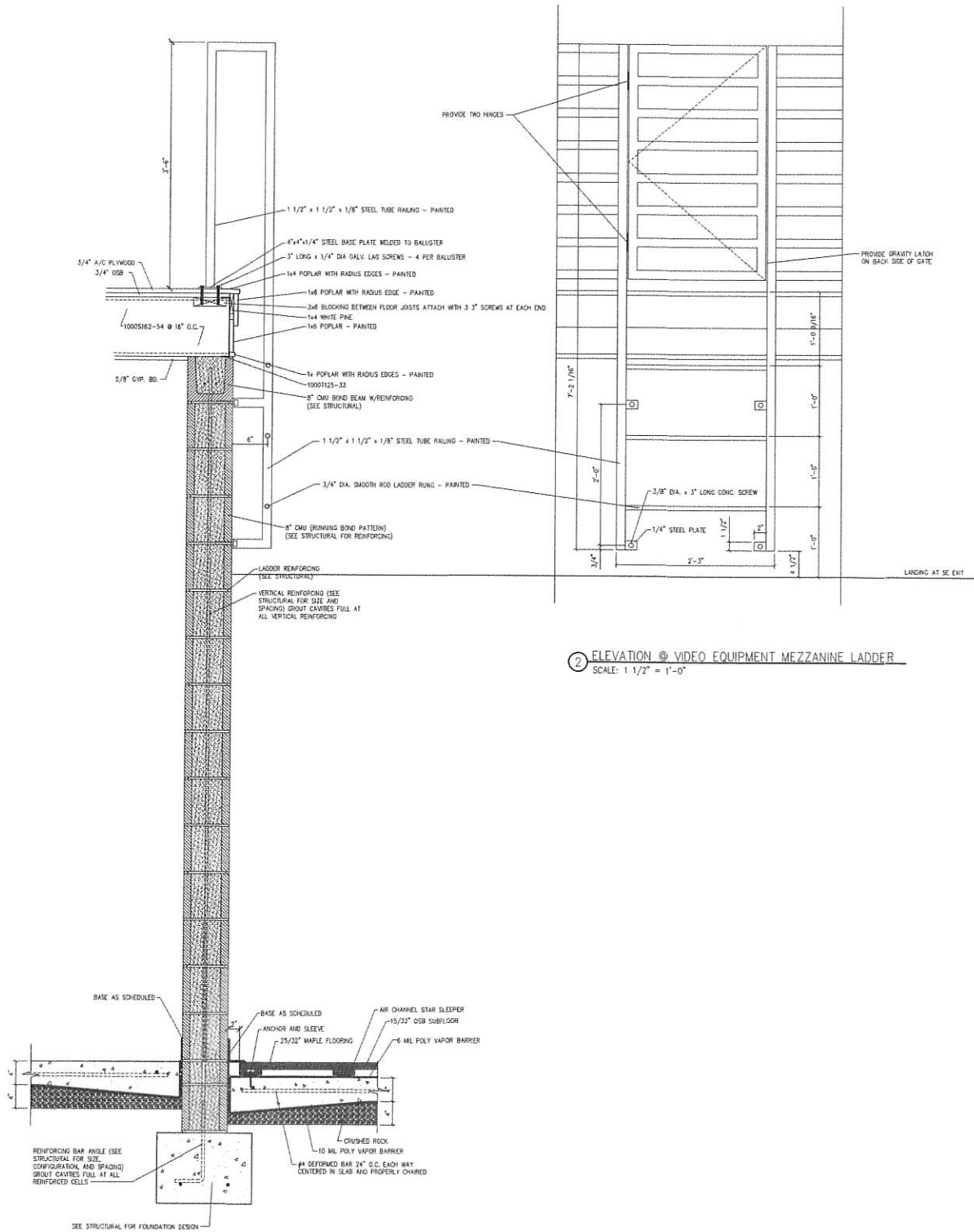
- The aisles were designed to match the location of the gym windows.
- A smaller gap would still remain between the bleachers and the walls.
- Estimated labor cost would be over the \$10,000.
- Good chance it would cause more damage to the floor.

Option #1
\$942.00



Option # 1

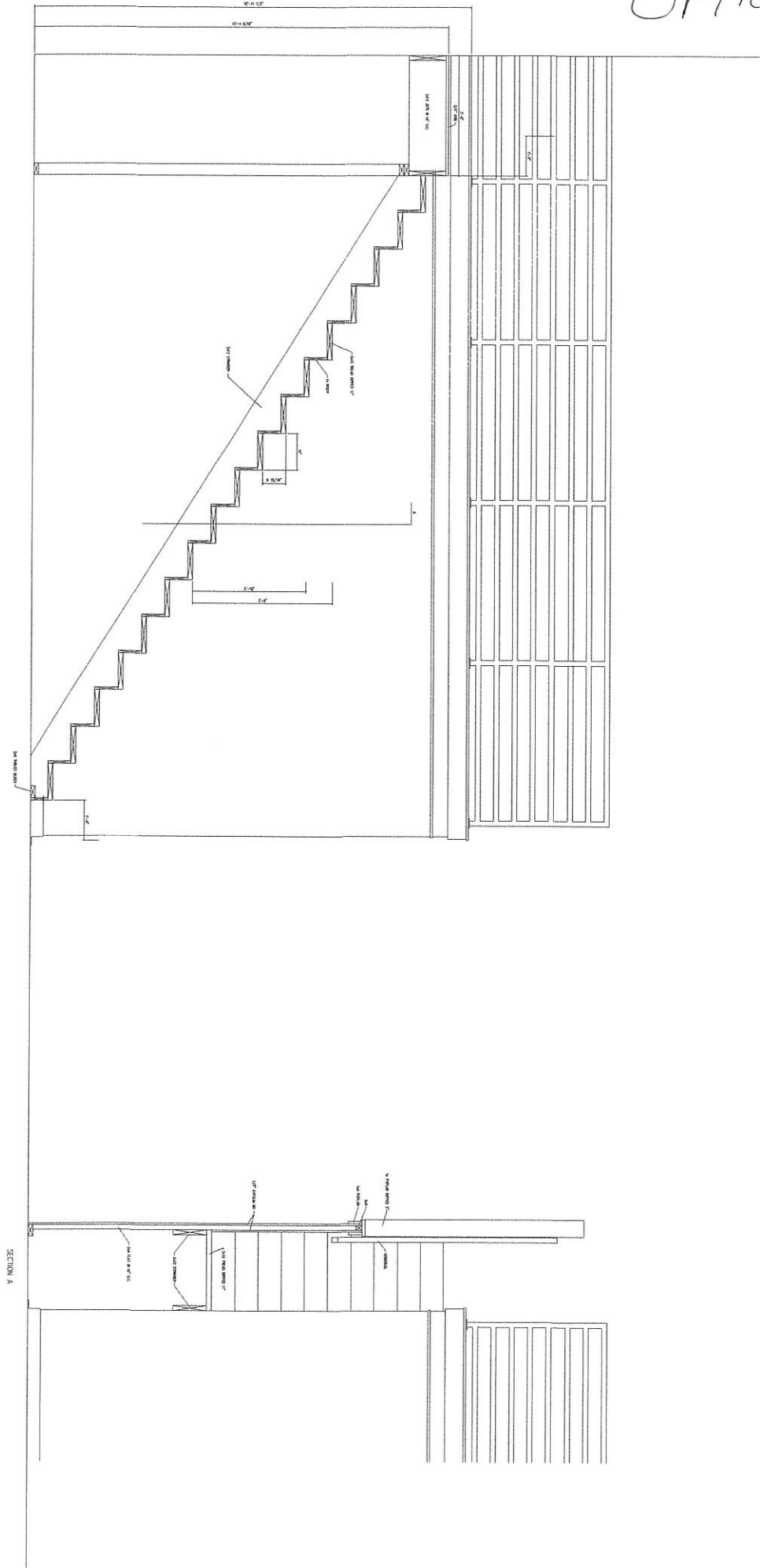
\$ 1,580.00



② ELEVATION @ VIDEO EQUIPMENT MEZZANINE LADDER
SCALE: 1 1/2" = 1'-0"

① SECTION @ VIDEO EQUIPMENT MEZZANINE LADDER
SCALE: 1 1/2" = 1'-0"

Option #2



SECTION A