

Board of Education Regular Meeting

Wednesday, September 9, 2015 6:30 PM

East Butler School  
212 South Madison Street  
Brainard, NE 68626-0036

Jan Bostelman: Present

Stonie Cooper: Present

Mark Janak: Present

Megan Kozisek: Present

Nate Radenslaben: Present

Chris Rezac: Present

Kim TePoel: Present

Marlene Wade: Present

Dan Zysset: Present

1. Call Meeting To Order

2. Roll Call

3. Flag Salute

4. Approve Agenda

Motion to approve the agenda as presented Passed with a motion by Marlene Wade and a

second by Jan Bostelman.

Jan Bostelman: Yea, Stonie Cooper: Yea, Mark Janak: Yea, Megan Kozisek: Yea, Nate Radenslaben: Yea, Chris Rezac: Yea, Kim TePoel: Yea, Marlene Wade: Yea, Dan Zysset: Yea

## 5. Patron's Comments

## 6. Informational Items

### 6.1. 4000s Policy- First Reading

### 6.2. NeSA Scores Review

### 6.3. School Stakeholder Surveys

### 6.4. Kindergarten Milk discussion

## 7. Consent Agenda

Motion to approve the consent agenda as presented Passed with a motion by Jan Bostelman and a second by Chris Rezac.

Jan Bostelman: Yea, Stonie Cooper: Yea, Mark Janak: Yea, Megan Kozisek: Yea, Nate Radenslaben: Yea, Chris Rezac: Yea, Kim TePoel: Yea, Marlene Wade: Yea, Dan Zysset: Yea

### 7.1. Approval of Minutes

### 7.2. Treasurer's Report

## 8. Regular Agenda

### 8.1. 2015-2016 Tax Request

Motion to approve the 2015-2016 Tax Request as presented Passed with a motion by Marlene Wade and a second by Stonie Cooper.

Jan Bostelman: Nay, Chris Rezac: Nay, Kim TePoel: Nay, Stonie Cooper: Yea, Mark Janak: Yea, Megan Kozisek: Yea, Nate Radenslaben: Yea, Marlene Wade: Yea, Dan Zysset: Yea

### 8.2. 2015-2016 Budget

Motion to approve the 2015-2016 Budget as presented Passed with a motion by Stonie Cooper and a second by Dan Zysset.

Jan Bostelman: Yea, Stonie Cooper: Yea, Mark Janak: Yea, Megan Kozisek: Yea, Nate Radenslaben: Yea, Chris Rezac: Yea, Kim TePoel: Yea, Marlene Wade: Yea, Dan Zysset: Yea

### 8.3. Recommendation for Audit Services

Motion to approve recommendation for audit services of Almquist Passed with a motion by Marlene Wade and a second by Jan Bostelman.

Jan Bostelman: Yea, Stonie Cooper: Yea, Mark Janak: Yea, Megan Kozisek: Yea, Nate Radenslaben: Yea, Chris Rezac: Yea, Kim TePoel: Yea, Marlene Wade: Yea, Dan Zysset: Yea

8.4. Recognition of East Butler Education Association as the Exclusive Bargaining Agent  
Motion to recognize the East Butler Education Association as the Exclusive Bargaining Agent Passed with a motion by Stonie Cooper and a second by Marlene Wade.

Jan Bostelman: Yea, Stonie Cooper: Yea, Mark Janak: Yea, Megan Kozisek: Yea, Nate Radenslaben: Yea, Chris Rezac: Yea, Kim TePoel: Yea, Marlene Wade: Yea, Dan Zysset: Yea

8.5. Addition of Shane Hennessy as Assistant Junior High Football Coach

Motion to approve the addition of an Assistant Junior High Football Coach Passed with a motion by Marlene Wade and a second by Stonie Cooper.

Jan Bostelman: Yea, Stonie Cooper: Yea, Mark Janak: Yea, Megan Kozisek: Yea, Nate Radenslaben: Yea, Chris Rezac: Yea, Kim TePoel: Yea, Marlene Wade: Yea, Dan Zysset: Yea

8.6. Approval of Kaitlyn Barker as a paraprofessional.

Motion to approve Kaitlyn Barker as a paraprofessional Passed with a motion by Marlene Wade and a second by Jan Bostelman.

Jan Bostelman: Yea, Stonie Cooper: Yea, Mark Janak: Yea, Megan Kozisek: Yea, Nate Radenslaben: Yea, Chris Rezac: Yea, Kim TePoel: Yea, Marlene Wade: Yea, Dan Zysset: Yea

9. Administrative Comments

10. Items for next Meeting

11. Adjournment

Motion to adjourn at 7:51 PM Passed with a motion by Stonie Cooper and a second by Mark Janak.

Jan Bostelman: Yea, Stonie Cooper: Yea, Mark Janak: Yea, Megan Kozisek: Yea, Nate Radenslaben: Yea, Chris Rezac: Yea, Kim TePoel: Yea, Marlene Wade: Yea, Dan Zysset: Yea



**EAST BUTLER PUBLIC SCHOOLS**  
**DISTRICT REPORT OF SCHOOL PERFORMANCE**  
**NEBRASKA STATE ACCOUNTABILITY (NeSA)**



**GRADE 3**

Performance Level Ranges				READING						MATH					
Exceeds Standards	Meets Standards	Below Standards	State Summary	Average Score	Total Number of Students	% Below Standards	% Meets Standards	% Exceeds Standards	Average Score	Total Number of Students	% Below Standards	% Meets Standards	% Exceeds Standards		
135 and above	085 - 134	084 and below													
			<b>101</b>	<b>21564</b>	<b>33</b>	<b>47</b>	<b>20</b>								
			<b>98</b>	<b>15</b>	<b>33%</b>	<b>47%</b>	<b>20%</b>								
			117	6	17%	50%	33%								
			119	4	0%	75%	25%								
			57	5	80%	20%	0%								
			<b>104</b>	<b>21858</b>	<b>29%</b>	<b>56%</b>	<b>15%</b>		<b>103</b>	<b>21926</b>	<b>33%</b>	<b>50%</b>	<b>17%</b>		
			<b>99</b>	<b>27</b>	<b>36%</b>	<b>51%</b>	<b>14%</b>		<b>107</b>	<b>28</b>	<b>21%</b>	<b>57%</b>	<b>21%</b>		
			97	13	43%	36%	21		114	14	14%	57%	29%		
			97	8	38%	50%	13		100	8	25%	63%	13%		
			104	6	17%	83%	0		102	6	33%	50%	17%		
			<b>109</b>	<b>22432</b>	<b>23%</b>	<b>54%</b>	<b>22%</b>		<b>108</b>	<b>22487</b>	<b>28%</b>	<b>51%</b>	<b>21%</b>		
			<b>95</b>	<b>27</b>	<b>26%</b>	<b>67%</b>	<b>7%</b>		<b>100</b>	<b>27</b>	<b>33%</b>	<b>59%</b>	<b>7%</b>		
			97	19	21%	74%	5%		98	19	32%	63%	5%		
			94	6	33%	50%	17%		106	6	33%	50%	17%		
			85	2	50%	50%	0%		100	2	50%	50%	0%		
			<b>111</b>	<b>22741</b>	<b>23%</b>	<b>57%</b>	<b>21%</b>		<b>110</b>	<b>22793</b>	<b>26%</b>	<b>49%</b>	<b>25%</b>		
			<b>99</b>	<b>20</b>	<b>35%</b>	<b>55%</b>	<b>10%</b>		<b>106</b>	<b>20</b>	<b>20%</b>	<b>55%</b>	<b>25%</b>		
			91	9	56%	44%	0%		98	9	22%	67%	11%		
			109	8	13%	63%	25%		121	8	0%	50%	50%		
			100	3	33%	67%	0%		89	3	67%	33%	0%		
			<b>114</b>		<b>21%</b>	<b>54%</b>	<b>26%</b>		<b>112</b>		<b>24%</b>	<b>49%</b>	<b>27%</b>		
			<b>107</b>	<b>22</b>	<b>18%</b>	<b>77%</b>	<b>5%</b>		<b>109</b>	<b>22</b>	<b>23%</b>	<b>59%</b>	<b>18%</b>		
			106	16	19%	75%	6%		112	16	31%	44%	25%		
			109	6	17%	83%	0%		107	6	0%	100%	0%		
			<b>119</b>	<b>23,015</b>	<b>18%</b>	<b>49%</b>	<b>33%</b>		<b>113</b>	<b>23,132</b>	<b>22%</b>	<b>51%</b>	<b>27%</b>		
			<b>115</b>	<b>18</b>	<b>11%</b>	<b>67%</b>	<b>22%</b>		<b>112</b>	<b>18</b>	<b>17%</b>	<b>67%</b>	<b>17%</b>		
			122	14	7%	64%	29%		110	14	21%	57%	21%		
			<b>88</b>	<b>4</b>	<b>25%</b>	<b>75%</b>	<b>0%</b>		<b>118</b>	<b>4</b>	<b>0%</b>	<b>100%</b>	<b>0%</b>		

SPRING 2015 SPRING 2014 SPRING 2013 SPRING 2012 SPRING 2011 SPRING 2010



**EAST BUTLER PUBLIC SCHOOLS**  
**DISTRICT REPORT OF SCHOOL PERFORMANCE**  
**NEBRASKA STATE ACCOUNTABILITY (NeSA)**



**GRADE 4**

Performance Level Ranges			READING						MATH					
Exceeds Standards	Meets Standards	Below Standards	Average Score	Total Number of Students	% Below Standards	% Meets Standards	% Exceeds Standards	Average Score	Total Number of Students	% Below Standards	% Meets Standards	% Exceeds Standards		
135 and above	085 - 134	084 and below												
<b>State Summary</b>			104	21564	31%	48	21							
<b>District Summary</b>			107	28	22%	57%	22%							
Elem. At Brainard			111	15	20%	53%	27%							
Elem. At Dwight			111	7	29%	43%	29%							
Elem at Prague			91	6	17%	83%	0%							
<b>State Summary</b>			109	21549	29%	56%	15%	103	21603	32%	52%	16%		
<b>District Summary</b>			111	14	14%	57%	29%	115	14	21%	64%	14%		
Elem. At Brainard			101	7	29%	43%	29%	112	7	29%	57%	14%		
Elem. At Dwight			126	4	0%	75%	25%	131	4	0%	75%	25%		
Elem at Prague			114	3	0%	67%	33%	99	3	33%	67%	0%		
<b>State Summary</b>			112	22253	23%	50%	28%	106	22308	28%	52%	20%		
<b>District Summary</b>			105	25	24%	60%	16%	93	25	32%	68%	0%		
Elem. At Brainard			96	13	23%	54%	23%	89	13	23%	77%	0%		
Elem. At Dwight			113	8	38%	50%	13%	102	8	38%	63%	0%		
Elem at Prague			96	4	0%	100%	0%	81	4	50%	50%	0%		
<b>State Summary</b>			115	22233	21%	50%	29%	109	22276	27%	51%	22%		
<b>District Summary</b>			102	24	21%	63%	17%	97	24	21%	75%	4%		
Elem. At Brainard			99	18	17%	78%	6%	92	18	28%	72%	0%		
Elem. At Dwight			101	5	40%	20%	40%	110	5	0%	80%	20%		
Elem at Prague			160	1	0%	0%	100%	125	1	0%	100%	0%		
<b>State Summary</b>			119		22%	41%	37%	113		22%	52%	26%		
<b>District Summary</b>			106	18	33%	44%	22%	101	18	22%	78%	0%		
Elem. At Brainard			98	10	50%	30%	20%	98	10	40%	60%	0%		
Elem. At Dwight			115	8	13%	63%	25%	105	8	0%	100%	0%		
<b>State Summary</b>			121	22,590	19%	43%	38%	112	22,686	23%	54%	24%		
<b>District Summary</b>			104	23	22%	70%	9%	109	23	13%	74%	13%		
Elem. At Brainard			102	17	24%	71%	6%	108	17	12%	71%	18%		
Elem. At Dwight			109	6	17%	67%	17%	112	6	17%	83%	0%		

SPRING 2010      SPRING 2011      SPRING 2012      SPRING 2013      SPRING 2014      SPRING 2015



**EAST BUTLER PUBLIC SCHOOLS**  
**DISTRICT REPORT OF SCHOOL PERFORMANCE**  
**NEBRASKA STATE ACCOUNTABILITY (NeSA)**



**GRADE 5**

Performance Level Ranges		READING						MATH						SCIENCE					
		Average Score	Total Number of Students	% Below Standards	% Meets Standards	% Exceeds Standards	Average Score	Total Number of Students	% Below Standards	% Meets Standards	% Exceeds Standards	Average Score	Total Number of Students	% Below Standards	% Meets Standards	% Exceeds Standards			
Exceeds Standards	135 and above	101	10761	33%	48%	19%													
Meets Standards	085 - 134	102	26	27%	66%	8%													
Below Standards	084 and below	92	6	50%	50%	0%													
		111	12	17%	75%	8%													
		97	8	25%	63%	13%													
<b>State Summary</b>		108	21337	30%	46%	24%	103	21391	34%	48%	18%	101	21991	33%	52%	15%			
<b>District Summary</b>		102	29	31%	59%	10%	107	29	28%	55%	17%	129	13	8%	46%	46%			
Elem. At Brainerd		106	13	31%	56%	13%	111	13	25%	56%	19%	121	7	14%	57%	29%			
Elem. At Dwight		95	8	38%	50%	13%	103	8	38%	50%	13%	152	4	0%	0%	100%			
Elem at Prague		99	5	20%	80%	0%	101	5	20%	60%	20%	113	2	0%	100%	0%			
<b>State Summary</b>		114	21947	24%	42%	34%	108	21995	25%	54%	21%	101	21991	33%	52%	15%			
<b>District Summary</b>		119	13	23%	38%	38%	123	13	15%	46%	38%	129	13	8%	46%	46%			
Elem. At Brainerd		121	7	29%	29%	43%	122	7	29%	29%	43%	121	7	14%	57%	29%			
Elem. At Dwight		120	4	25%	25%	50%	136	4	0%	50%	50%	152	4	0%	0%	100%			
Elem at Prague		109	2	0%	100%	0%	103	2	0%	100%	0%	113	2	0%	100%	0%			
<b>State Summary</b>		118	22020	22%	45%	34%	109	22068	25%	52%	22%	104	22077	32%	46%	22%			
<b>District Summary</b>		109	26	31%	42%	27%	108	26	23%	54%	23%	115	26	15%	58%	27%			
Elem. At Brainerd		113	18	28%	44%	28%	116	18	22%	44%	33%	116	18	22%	44%	33%			
Elem. At Dwight		101	8	38%	38%	25%	90	8	25%	75%	0%	112	8	0%	88%	13%			
<b>State Summary</b>		121		23%	39%	38%	111		24%	51%	25%	106		28%	50%	23%			
<b>District Summary</b>		108	27	26%	52%	22%	97	27	30%	63%	7%	105	27	33%	52%	15%			
Elem. At Brainerd		108	21	24%	62%	14%	97	21	33%	62%	5%	102	21	33%	57%	10%			
Elem. At Dwight		109	6	33%	17%	50%	96	6	17%	67%	17%	117	6	33%	33%	33%			
<b>State Summary</b>		129	22,879	17%	37%	46%	113	22,947	24%	49%	27%	107	22,951	27%	55%	18%			
<b>District Summary</b>		127	20	5%	55%	40%	117	20	5%	75%	20%	117	20	5%	75%	20%			
Elem. At Brainerd		127	12	0%	67%	33%	115	12	8%	75%	17%	108	12	0%	92%	8%			
Elem. At Dwight		128	8	13%	38%	50%	120	8	0%	75%	25%	131	8	13%	50%	38%			

SPRING 2010

SPRING 2011

SPRING 2012

SPRING 2013

SPRING 2014

SPRING 2015



**EAST BUTLER PUBLIC SCHOOLS**  
**DISTRICT REPORT OF SCHOOL PERFORMANCE**  
**NEBRASKA STATE ACCOUNTABILITY (NeSA)**



**GRADE 6**

Performance Level Ranges			READING						MATH					
Exceeds Standards	Meets Standards	Below Standards	Average Score	Total Number of Students	% Below Standards	% Meets Standards	% Exceeds Standards	Average Score	Total Number of Students	% Below Standards	% Meets Standards	% Exceeds Standards		
135 and above	085 - 134	084 and below												
<b>State Summary</b>			101	20495	32%	49%	20%							
<b>District Summary</b>			102	28	29%	54%	18%							
Elem. At Brainard			105	8	38%	38%	25%							
Elem. At Dwight			94	11	18%	73%	9%							
Elem at Prague			109	9	33%	44%	22%							
<b>State Summary</b>			109	20815	26%	48%	26%	100	20866	37%	44%	18%		
<b>District Summary</b>			115	28	21%	57%	21%	105	28	29%	61%	11%		
Elem. At Brainard			95	11	46%	45%	9%	104	11	36%	45%	18%		
Elem. At Dwight			128	13	8%	62%	31%	111	13	23%	69%	8%		
Elem at Prague			126	4	0%	75%	25%	87	4	25%	75%	0%		
<b>State Summary</b>			113	21689	25%	44%	30%	106	21734	32%	45%	23%		
<b>District Summary</b>			119	25	28%	44%	28%	114	25	28%	36%	36%		
Elem. At Brainard			121	15	13%	53%	33%	121	15	13%	47%	40%		
Elem. At Dwight			120	8	50%	25%	25%	110	8	38%	25%	38%		
Elem at Prague			109	2	50%	50%	0%	81	2	100%	0%	0%		
<b>State Summary</b>			115	21687	23%	46%	31%	106	21738	33%	43%	24%		
<b>District Summary</b>			125	16	19%	31%	50%	113	16	19%	56%	25%		
Elem. At Brainard			124	9	22%	33%	44%	121	9	22%	44%	33%		
Elem. At Dwight			127	7	14%	29%	57%	103	7	14%	71%	14%		
<b>State Summary</b>			119		21%	42%	37%	109		28%	47%	25%		
<b>District Summary</b>			108	25	32%	40%	28%	103	25	28%	44%	28%		
Elem. At Brainard			117	18	28%	39%	33%	115	18	11%	50%	39%		
Elem. At Dwight			86	7	43%	43%	14%	72	7	71%	29%	0%		
<b>State Summary</b>			122	22,378	19%	44%	36%	110	22,445	28%	45%	27%		
<b>District Summary</b>			125	24	8%	63%	29%	110	24	17%	63%	21%		
Elem. At Brainard			124	19	5%	74%	21%	113	19	16%	58%	26%		
Elem. At Dwight			126	5	20%	20%	60%	100	5	20%	80%	0%		

SPRING 2010

SPRING 2011

SPRING 2012

SPRING 2013

SPRING 2014

SPRING 2015



**EAST BUTLER PUBLIC SCHOOLS**  
**DISTRICT REPORT OF SCHOOL PERFORMANCE**  
**NEBRASKA STATE ACCOUNTABILITY (NeSA)**



**GRADE 7**

Performance Level Ranges				READING						MATH					
Exceeds Standards	Meets Standards	Below Standards		Average Score	Total Number of Students	% Below Standards	% Meets Standards	% Exceeds Standards	Average Score	Total Number of Students	% Below Standards	% Meets Standards	% Exceeds Standards		
135 and above	085 - 134	084 and below													
<b>State Summary</b>				104	20412	31%	48	21							
<b>District Summary</b>				99	40	32%	55%	13%							
High School at Brainerd				96	31	35%	55%	10%							
High School at Prague				109	9	22%	56%	22%							
<b>State Summary</b>				110	20666	26%	47%	27%	99	20702	39%	45%	16%		
<b>District Summary</b>				110	25	16%	68%	16%	109	25	20%	64%	16%		
State Summary				116	21262	23%	44%	34%	104	21291	32%	46%	22%		
<b>District Summary</b>				113	26	23%	62%	15%	96	26	46%	42%	12%		
State Summary				122	21569	20%	41%	38%	105	21614	30%	47%	23%		
<b>District Summary</b>				112	23	23%	50%	27%	106	26	27%	54%	19%		
State Summary				126		19%	37%	44%	109		28%	46%	26%		
<b>District Summary</b>				138	16	13%	25%	63%	112	16	19%	63%	19%		
State Summary				128	22,217	18%	38%	44%	110	22,287	27%	46%	27%		
<b>District Summary</b>				110	23	26%	39%	35%	101	23	30%	48%	22%		



**EAST BUTLER PUBLIC SCHOOLS**  
**DISTRICT REPORT OF SCHOOL PERFORMANCE**  
**NEBRASKA STATE ACCOUNTABILITY (NeSA)**



**GRADE 8**

Performance Level Ranges	READING					MATH					SCIENCE					
	Average Score	Total Number of Students	% Below Standards	% Meets Standards	% Exceeds Standards	Average Score	Total Number of Students	% Below Standards	% Meets Standards	% Exceeds Standards	Average Score	Total Number of Students	% Below Standards	% Meets Standards	% Exceeds Standards	
Exceeds Standards 135 and above																
Meets Standards 085 - 134																
Below Standards 084 and below																
<b>State Summary</b>	102	20435	30%	48%	22%											
<b>District Summary</b>	101	28	29%	57%	14%											
HS at Brainard	96	20	30%	60%	10%											
HS at Prague	113	8	25%	50%	25%											
<b>State Summary</b>	106	20527	29%	49%	22%	98	20558	40%	44%	16%						
<b>District Summary</b>	103	41	27%	54%	20%	101	41	34%	49%	17%						
<b>State Summary</b>	109	21084	27%	47%	26%	99	21121	38%	44%	18%	100	21118	32%	52%	16%	
<b>District Summary</b>	105	25	24%	56%	20%	96	25	40%	48%	12%	114	25	12%	68%	20%	
<b>State Summary</b>	115	21124	22%	46%	31%	102	21146	34%	47%	19%	102	21154	31%	52%	18%	
<b>District Summary</b>	108	25	24%	56%	20%	89	25	52%	40%	8%	117	25	12%	60%	28%	
<b>State Summary</b>	114		22%	46%	32%	104		34%	46%	20%	105		30%	49%	21%	
<b>District Summary</b>	108	27	22%	67%	11%	100	27	33%	56%	11%	113	27	15%	67%	19%	
<b>State Summary</b>	117	21907	21%	43%	36%	105	21988	32%	46%	22%	106	21994	30%	48%	23%	
<b>District Summary</b>	117	19	26%	47%	26%	108	19	21%	58%	21%	110	19	32%	42%	26%	

2015  
2014  
2013  
2012  
2011  
2010



**EAST BUTLER PUBLIC SCHOOLS**  
**DISTRICT REPORT OF SCHOOL PERFORMANCE**  
**NEBRASKA STATE ACCOUNTABILITY (NeSA)**



**GRADE 11**

Performance Level Ranges	READING					MATH					SCIENCE					
	Average Score	Total Number of Students	% Below Standards	% Meets Standards	% Exceeds Standards	Average Score	Total Number of Students	% Below Standards	% Meets Standards	% Exceeds Standards	Average Score	Total Number of Students	% Below Standards	% Meets Standards	% Exceeds Standards	
Exceeds Standards 135 and above	100	20671	32%	50%	18%											
Meets Standards 085 - 134	99	35	31%	57%	12%											
Below Standards 084 and below	107	24	25%	54%	21%											
HS at Brainard	104	10	20%	70%	10%											
HS at Prague	102	20923	33%	43%	24%	95	20861	46%	32%	21%						
State Summary	108	26	15%	65%	19%	96	26	50%	31%	19%						
District Summary	102	21167	36%	39%	25%	96	21162	44%	34%	21%	99	21146	33%	53%	13%	
State Summary	101	28	25%	57%	18%	87	28	50%	36%	14%	102	28	21%	75%	4%	
District Summary	106	20935	33%	40%	27%	100	20941	42%	32%	26%	103	20945	27%	57%	16%	
State Summary	113	26	23%	42%	35%	96	26	35%	50%	15%	110	26	12%	77%	12%	
District Summary	110		30%	41%	29%	102		39%	36%	25%	103		25%	62%	12%	
State Summary	114	37	19%	59%	22%	115	37	19%	57%	24%	114	37	11%	78%	11%	
District Summary	109	21136	31%	41%	28%	102	21117	39%	36%	25%	104	21117	27%	57%	16%	
State Summary	110	28	29%	50%	21%	103	28	36%	46%	18%	105	28	11%	79%	11%	
District Summary																



**EAST BUTLER PUBLIC SCHOOLS**  
**DISTRICT REPORT OF SCHOOL PERFORMANCE**  
**NEBRASKA STATE ACCOUNTABILITY (NeSA)**  
**GRADUATING CLASSES**



Performance Level Ranges		READING														
		3rd Grade		4th Grade		5th Grade		6th Grade		7th Grade		8th Grade		11th Grade		
Exceeds Standards	135 and above	Average Score	Meets/Exceeds Standards (%)	Average Score	Meets/Exceeds Standards (%)	Average Score	Meets/Exceeds Standards (%)	Average Score	Meets/Exceeds Standards (%)	Average Score	Meets/Exceeds Standards (%)	Average Score	Meets/Exceeds Standards (%)	Average Score	Meets/Exceeds Standards (%)	
Meets Standards	085 - 134															
Below Standards	084 and below															
Graduation Year (This Year)																
Class of 2011														99	69%	
Class of 2012														108	85%	
Class of 2013														101	75%	
Class of 2014												101	71%	113	77%	
Class of 2015														114	81%	
Class of 2016 (Seniors)									102	71%	99	68%	103	73%	110	71%
Class of 2017 (Juniors)									115	79%	113	77%	108	76%		
Class of 2018 (Sophomores)									107	78%	102	69%	112	77%		
Class of 2019 (Freshman)		98	67%	111	86%	119	77%	125	81%	81%	138	88%	117	74%		
Class of 2020 (8th Grade)		99	64%	105	76%	109	69%	108	68%	74%	110	74%				
Class of 2021 (7th Grade)		95	74%	102	79%	108	74%	125	92%							
Class of 2022 (6th Grade)		99	65%	106	66%	127	95%									
Class of 2023 (5th Grade)		107	82%	104	78%											
Class of 2024 (4th Grade)		115	89%													
		Spring of 2010														
		Spring of 2011														
		Spring of 2012														
		Spring of 2013														
		Spring of 2014														
		Spring of 2015														





**EAST BUTLER PUBLIC SCHOOLS**  
**DISTRICT REPORT OF SCHOOL PERFORMANCE**  
**NEBRASKA STATE ACCOUNTABILITY (NeSA)**  
**GRADUATING CLASSES**



Performance Level Ranges		SCIENCE					
		5th Grade		8th Grade		11th Grade	
Exceeds Standards	135 and above	Average Score	Meets/Exceeds Standards (%)	Average Score	Meets/Exceeds Standards (%)	Average Score	Meets/Exceeds Standards (%)
Meets Standards	085 - 134						
Below Standards	084 and below						
Graduation Year (This Year)							
Class of 2013						103	79%
Class of 2014						110	88%
Class of 2015						114	89%
Class of 2016 (Seniors)				114	88%	105	89%
Class of 2017 (Juniors)				117	88%		
Class of 2018 (Sophomores)				113	85%		
Class of 2019 (Freshman)		123	85%	110	68%		
Class of 2020 (8th Grade)		115	85%				
Class of 2021 (7th Grade)		105	67%				
Class of 2022 (6th Grade)		117	95%				
Class of 2023 (5th Grade)							
Class of 2023 (4th Grade)							
Spring of 2012							
Spring of 2013							
Spring of 2014							
Spring of 2015							

Personnel - All Employees

The Board recognizes, endorses and adopts the Standards of Ethical and Professional Performance as established by the Nebraska Department of Education.

Legal Reference: Neb. Rev. Stat. §§ 79-859, 79-866; 92 NAC 27

## Code of Ethics

## Standards of Ethical and Professional Performance

The District Board hereby endorses and communicates to its staff the generally accepted minimal standards of professional practices adopted by the Nebraska State Board of Education.

## I. Preamble

The educator shall believe in the worth and dignity of human beings. Recognizing the supreme importance of the pursuit of truth, the devotion to excellence and the nurture of democratic citizenship, the educator shall regard as essential to these goals the protection of the freedom to learn and to teach and the guarantee of equal educational opportunity for all. The educator shall accept the responsibility to practice the profession to these ethical standards.

The educator shall recognize the magnitude of the responsibility he or she has accepted in choosing a career in education, and engages, individually and collectively with other educators, to judge his or her colleagues, and to be judged by them, in accordance with the provisions of this code of ethics.

The standards listed in this section are held to be generally accepted minimal standards for public school certificate holders in Nebraska with respect to ethical and professional conduct and are, therefore, declared to be the criteria of ethical and professional performance adopted pursuant to the provisions of Section 79- 866 Neb. Rev. Stat. for holders of public school certificates.

## II. Principle I - Commitment as a Professional Educator:

Fundamental to the pursuit of high educational standards is the maintenance of a profession possessed of individuals with high skills, intellect, integrity, wisdom, and compassion. The educator shall exhibit good moral character, maintain high standards of performance and promote equality of opportunity. In fulfillment of the educator's contractual and professional responsibilities, the educator:

A. Shall not interfere with the exercise of political and citizenship rights and responsibilities of students, colleagues, parents, school patrons, or school board members.

B. Shall not discriminate on the basis of race, color, religion, national origin, gender, marital status, disability, or age.

C. Shall not use coercive means, or promise or provide special treatment to students, colleagues, school patrons, or school board members in order to influence professional decisions.

D. Shall not make any fraudulent statement or fail to disclose a material fact for which the educator is responsible.

E. Shall not exploit professional relationships with students, colleagues, parents, school patrons, or school board members for personal gain or private advantage.

F. Shall not sexually harass students, parents or school patrons, employees, or board members.

G. Shall not have had revoked for cause a teaching certificate, administrative certificate, or any certificate enabling a person to engage in any of the activities for which a special services certificate is issued in Nebraska.

H. Shall not engage in conduct involving dishonesty, fraud, deceit, or misrepresentation in the performance of professional duties.

I. Shall report to the Commissioner and the District Superintendent any known violation of Principle I, letter G; Principle III, letter E; or Principle IV, letter B.

J. Shall seek no reprisal against any individual who has reported a violation of this code of ethics.

### III. Principle II - Commitment to the Student:

Mindful that a profession exists for the purpose of serving the best interests of the client, the educator shall practice the profession with genuine interest, concern, and consideration for the student. The educator shall work to stimulate the spirit of inquiry, the acquisition of knowledge and understanding, and the thoughtful formulation of worthy goals.

In fulfillment of the obligation to the student, the educator:

A. Shall permit the student to pursue reasonable independent scholastic effort, and shall permit the student access to varying points of view.

B. Shall not deliberately suppress or distort subject matter for which the educator is responsible.

C. Shall make reasonable effort to protect the student from conditions which interfere with the learning process or are harmful to health or safety.

D. Shall conduct professional educational activities in accordance with sound educational practices that are in the best interest of the student.

E. Shall keep in confidence personally identifiable information that has been obtained in the course of professional service, unless disclosure serves professional purposes, or is required by law.

F. Shall not tutor for remuneration students assigned to his or her classes unless approved by the Millard Board of Education.

G. Shall not discipline students using corporal punishment.

### IV. Principle III - Commitment to the Public:

The magnitude of the responsibility inherent in the education process requires dedication to the principles of our democratic heritage. The educator bears particular responsibility for instilling an understanding of the confidence in the rule of law, a respect for individual freedom, and a responsibility to promote respect by the public for the integrity of the profession.

In fulfillment of the obligation to the public, the educator:

A. Shall not misrepresent an institution with which the educator is affiliated, and shall take added

precautions to distinguish between the educator's personal and institutional views.

B. Shall not use institutional privileges for private gain or to promote political candidates, political

issues, or partisan political activities.

C. Shall neither offer nor accept gifts or favors that will impair professional judgment.

D. Shall support the principle of due process and protect the political, citizenship, and natural rights of all individuals.

E. Shall not commit any act of moral turpitude, nor commit any felony under the laws of the United States or any state or territory, and shall not have a misdemeanor conviction involving abuse, neglect, or sexual misconduct as defined in Sections 003.11 through 003.14 of 92 NAC 21 (an offense under the laws of any jurisdiction, which, if committed in Nebraska, would constitute

one of the following misdemeanors (with the applicable sections for the Revised Statutes of Nebraska in parenthesis):

1. Assault (third degree) (28-310)
2. Child Enticement (28-311)
3. Stalking (28-311.03)
4. Hazing (28-311.06)
5. Unlawful Intrusion (28-311.08)
6. Violating a Harassment Protection Order (28-311.09)
7. False Imprisonment (28-315)
8. Sexual Assault (third degree) (28-320)
9. Domestic Assault (28-323)
10. Child/Vulnerable Adult Contact with Methamphetamine (28-457)
11. Abandonment of Spouse or Child (28-705)
12. Child Abuse (28-707)
13. Contributing to the Delinquency of a Child (28-709)
14. Prostitution (28-801)
15. Keeping a Place of Prostitution (28-804)
16. Debauching a Minor (28-805)
17. Public Indecency (28-806)
18. Sale of Obscene Material to Minor (28-808)
19. Obscene Motion Picture Show, Admitting Minor (28-809)
20. Obscene Literature Distribution (28-813)
21. Sexually Explicit Conduct (28-813.01)
22. Resisting Arrest (28-904 (1)(a)), when the conviction involves use or threat of physical force or violence against a police officer
23. Indecency with an Animal (28-1010)
24. Intimidation by Phone Call (28-1310)
25. Violating a Protection Order (42-924)

Other convictions related to such crimes including:

26. Attempt to Commit a Crime (28-201)
27. Criminal Conspiracy (28-202)
28. Accessory to a Felony (28-204)
29. Aiding, Abetting, Procuring, or Causing Another to Commit an Offense (28-206)

Convictions which have been set aside, nullified, expunged, or pardoned shall not be considered convictions for purposes of this Rule, unless the laws of the jurisdiction of the conviction would allow the conviction to be used as the basis for denial of a certificate to teach, administer, or provide special services in schools.

F. Shall, with reasonable diligence, attend to the duties of his or her professional position.

V. Principle IV - Commitment to the Profession:

In belief that the quality of the services to the education profession directly influences the nation and its citizens, the educator shall exert every effort to raise professional standards, to improve service, to promote a climate in which the exercise of professional judgment is encouraged, and to achieve conditions which attract persons worthy of the trust to careers in education. The educator shall believe that sound professional relationships with colleagues are built upon personal integrity, dignity, and mutual respect.

In fulfillment of the obligation to the profession, the educator:

A. Shall provide upon the request of an aggrieved party, a written statement of specific reasons for recommendations that lead to the denial of increments, significant changes in employment, or termination of employment.

B. Shall not misrepresent his or her professional qualifications, nor those of colleagues.

C. Shall practice the profession only with proper certification, and shall actively oppose the practice of the profession by persons known to be unqualified.

#### VI. Principle V - Commitment to Professional Employment Practices:

The educator shall regard the employment agreement as a pledge to be executed both in spirit and in fact. The educator shall believe that sound personnel relationships with governing boards are built upon personal integrity, dignity, and mutual respect.

In fulfillment of the obligation to professional employment practices, the educator:

A. Shall apply for, accept, offer, or assign a position or responsibility on the basis of professional preparation and legal qualifications.

B. Shall not knowingly withhold information regarding a position from an applicant or employer, or misrepresent an assignment or conditions of employment.

C. Shall give prompt notice to the employer of any change in availability of service.

D. Shall conduct professional business through designated procedures, when available, that have been approved by the employing agency.

E. Shall not assign to unqualified personnel, tasks for which an educator is responsible.

F. Shall permit no commercial or personal exploitation of his or her professional position.

G. Shall use time on duty and leave time for the purpose for which intended.

Legal Reference: Neb. Rev. Stat. §§79-859, 79-866; 92 NAC 27, 92 NAC 21

#### Professional Boundaries Between Employees and Students

All employees are expected to observe and maintain professional boundaries between themselves and students. A violation of professional boundaries will be regarded as a form of misconduct and may result in disciplinary action.

The following non-exclusive list of actions will be regarded as a violation of the professional boundaries that employees are expected to maintain with a student:

- Engaging in sexual activity, a romantic relationship, or dating a student or a former student within two years of the student graduating or otherwise leaving the District.
- Making any sexual advance - verbal, written, or physical - towards a student.
- Showing sexually inappropriate materials or objects to a student.
- Discussing with a student sexual topics that are not related to a specific curriculum.
- Telling sexual jokes to a student.
- Invading a student's physical privacy (e.g., walking in on the student in a restroom).

- Hugging or other physical contact with a student that is initiated by the employee when the student does not seek or want this attention.
- Being overly "touchy" with a specific student.
- Allowing a specific student to get away with misconduct that is not tolerated from other students, except as appropriate for students with an IEP or 504 Plan.
- Discussing with the student the employee's problems that would normally be discussed with adults (e.g., marital problems).
- Giving a student a ride in the employee's personal vehicle without express permission of the student's parent or school administrator unless another adult is in the vehicle.
- Taking a student on an outing without obtaining prior express permission of the student's parent or school administrator.
- Inviting a student to the employee's home without prior express permission of the student's parent and school administrator.
- Going to the student's home when the student's parent or a proper chaperone is not present.
- Giving gifts of a personal nature to a specific student.

Appropriate exceptions are permitted to the foregoing for legitimate health or educational purposes and for reasons of family relationships between employees and their children who are students in the District.

Personnel - All EmployeesProfessional Boundaries Between Employees and Students

All employees are expected to observe and maintain professional boundaries between themselves and students. A violation of professional boundaries will be regarded as a form of misconduct and may result in disciplinary action.

The following non-exclusive list of actions will be regarded as a violation of the professional boundaries that employees are expected to maintain with a student:

- Using e-mail, text messaging, instant messaging or social networking sites to discuss with a student a matter that does not pertain to school-related activities, such as the student's homework, class activity, school sport or club, or other school-sponsored activity. Electronic communications with students are to be sent simultaneously to multiple recipients, not to just one student, except where the communication is clearly school--related and inappropriate for persons other than the individual student to receive (for example, e-mailing a message about a student's grades).
- Engaging in social-networking friendships with a student on MySpace, Facebook, or other social networking site. Material that employees post on social networks that is publicly available to those in the school community must reflect the professional image applicable to the employee's position and not impair the employee's capacity to maintain the respect of students and parents or impair the employee's ability to serve as a role model for children.
- Engaging in sexual activity, a romantic relationship, or dating a student or a former student within one year of the student graduating or otherwise leaving the District.
- Making any sexual advance - verbal, written, or physical - towards a student.
- Showing sexually inappropriate materials or objects to a student.
- Discussing with a student sexual topics that are not related to a specific curriculum.
- Telling sexual jokes to a student.
- Invading a student's physical privacy (e.g., walking in on the student in a restroom).
- Hugging or other physical contact with a student that is initiated by the employee when the student does not seek or want this attention.
- Being overly "touchy" with a specific student.
- Allowing a specific student to get away with misconduct that is not tolerated from other students, except as appropriate for students with an IEP or 504 Plan.

- Discussing with the student the employee's problems that would normally be discussed with adults (e.g., marital problems).
- Giving a student a ride in the employee's personal vehicle without express permission of the student's parent or school administrator unless another adult is in the vehicle.
- Taking a student on an outing without obtaining prior express permission of the student's parent or school administrator.
- Inviting a student to the employee's home without prior express permission of the student's parent and school administrator.
- Going to the student's home when the student's parent or a proper chaperone is not present.
- Giving gifts of a personal nature to a specific student.

Appropriate exceptions are permitted to the foregoing for legitimate health or educational purposes and for reasons of family relationships between employees and their children who are students in the District.

Date of Adoption: [Insert Date]



**EAST BUTLER PUBLIC SCHOOLS**  
**DISTRICT REPORT OF SCHOOL PERFORMANCE**  
**NEBRASKA STATE ACCOUNTABILITY (NeSA)**



**GRADE 3**

Performance Level Ranges				READING						MATH					
Exceeds Standards	Meets Standards	Below Standards	State Summary	Average Score	Total Number of Students	% Below Standards	% Meets Standards	% Exceeds Standards	Average Score	Total Number of Students	% Below Standards	% Meets Standards	% Exceeds Standards		
135 and above	085 - 134	084 and below													
			<b>District Summary</b>	<b>98</b>	<b>15</b>	<b>33%</b>	<b>47%</b>	<b>20%</b>							
			Elem. At Brainard	117	6	17%	50%	33%							
			Elem. At Dwight	119	4	0%	75%	25%							
			Elem at Prague	57	5	80%	20%	0%							
			<b>State Summary</b>	<b>104</b>	<b>21858</b>	<b>29%</b>	<b>56%</b>	<b>15%</b>	<b>103</b>	<b>21926</b>	<b>33%</b>	<b>50%</b>	<b>17%</b>		
			<b>District Summary</b>	<b>99</b>	<b>27</b>	<b>36%</b>	<b>51%</b>	<b>14%</b>	<b>107</b>	<b>28</b>	<b>21%</b>	<b>57%</b>	<b>21%</b>		
			Elem. At Brainard	97	13	43%	36%	21	114	14	14%	57%	29%		
			Elem. At Dwight	97	8	38%	50%	13	100	8	25%	63%	13%		
			Elem at Prague	104	6	17%	83%	0	102	6	33%	50%	17%		
			<b>State Summary</b>	<b>109</b>	<b>22432</b>	<b>23%</b>	<b>54%</b>	<b>22%</b>	<b>108</b>	<b>22487</b>	<b>28%</b>	<b>51%</b>	<b>21%</b>		
			<b>District Summary</b>	<b>95</b>	<b>27</b>	<b>26%</b>	<b>67%</b>	<b>7%</b>	<b>100</b>	<b>27</b>	<b>33%</b>	<b>59%</b>	<b>7%</b>		
			Elem. At Brainard	97	19	21%	74%	5%	98	19	32%	63%	5%		
			Elem. At Dwight	94	6	33%	50%	17%	106	6	33%	50%	17%		
			Elem at Prague	85	2	50%	50%	0%	100	2	50%	50%	0%		
			<b>State Summary</b>	<b>111</b>	<b>22741</b>	<b>23%</b>	<b>57%</b>	<b>21%</b>	<b>110</b>	<b>22793</b>	<b>26%</b>	<b>49%</b>	<b>25%</b>		
			<b>District Summary</b>	<b>99</b>	<b>20</b>	<b>35%</b>	<b>55%</b>	<b>10%</b>	<b>106</b>	<b>20</b>	<b>20%</b>	<b>55%</b>	<b>25%</b>		
			Elem. At Brainard	91	9	56%	44%	0%	98	9	22%	67%	11%		
			Elem. At Dwight	109	8	13%	63%	25%	121	8	0%	50%	50%		
			Elem at Prague	100	3	33%	67%	0%	89	3	67%	33%	0%		
			<b>State Summary</b>	<b>114</b>		<b>21%</b>	<b>54%</b>	<b>26%</b>	<b>112</b>		<b>24%</b>	<b>49%</b>	<b>27%</b>		
			<b>District Summary</b>	<b>107</b>	<b>22</b>	<b>18%</b>	<b>77%</b>	<b>5%</b>	<b>109</b>	<b>22</b>	<b>23%</b>	<b>59%</b>	<b>18%</b>		
			Elem. At Brainard	106	16	19%	75%	6%	112	16	31%	44%	25%		
			Elem. At Dwight	109	6	17%	83%	0%	107	6	0%	100%	0%		
			<b>State Summary</b>	<b>119</b>	<b>23,015</b>	<b>18%</b>	<b>49%</b>	<b>33%</b>	<b>113</b>	<b>23,132</b>	<b>22%</b>	<b>51%</b>	<b>27%</b>		
			<b>District Summary</b>	<b>115</b>	<b>18</b>	<b>11%</b>	<b>67%</b>	<b>22%</b>	<b>112</b>	<b>18</b>	<b>17%</b>	<b>67%</b>	<b>17%</b>		
			Elem. At Brainard	122	14	7%	64%	29%	110	14	21%	57%	21%		
			Elem. At Dwight	88	4	25%	75%	0%	118	4	0%	100%	0%		

SPRING 2015 SPRING 2014 SPRING 2013 SPRING 2012 SPRING 2011 SPRING 2010





**EAST BUTLER PUBLIC SCHOOLS**  
**DISTRICT REPORT OF SCHOOL PERFORMANCE**  
**NEBRASKA STATE ACCOUNTABILITY (NeSA)**



**GRADE 5**

Performance Level Ranges		READING						MATH						SCIENCE					
		Average Score	Total Number of Students	% Below Standards	% Meets Standards	% Exceeds Standards	Average Score	Total Number of Students	% Below Standards	% Meets Standards	% Exceeds Standards	Average Score	Total Number of Students	% Below Standards	% Meets Standards	% Exceeds Standards			
Exceeds Standards	135 and above	101	10761	33%	48%	19%													
Meets Standards	085 - 134	102	26	27%	66%	8%													
Below Standards	084 and below	92	6	50%	50%	0%													
		111	12	17%	75%	8%													
		97	8	25%	63%	13%													
<b>State Summary</b>		108	21337	30%	46%	24%	103	21391	34%	48%	18%	101	21991	33%	52%	15%			
<b>District Summary</b>		102	29	31%	59%	10%	107	29	28%	55%	17%	129	13	8%	46%	46%			
Elem. At Brainerd		106	13	31%	56%	13%	111	13	25%	56%	19%	121	7	14%	57%	29%			
Elem. At Dwight		95	8	38%	50%	13%	103	8	38%	50%	13%	152	4	0%	0%	100%			
Elem at Prague		99	5	20%	80%	0%	101	5	20%	60%	20%	113	2	0%	100%	0%			
<b>State Summary</b>		114	21947	24%	42%	34%	108	21995	25%	54%	21%	101	21991	33%	52%	15%			
<b>District Summary</b>		119	13	23%	38%	38%	123	13	15%	46%	38%	129	13	8%	46%	46%			
Elem. At Brainerd		121	7	29%	29%	43%	122	7	29%	29%	43%	121	7	14%	57%	29%			
Elem. At Dwight		120	4	25%	25%	50%	136	4	0%	50%	50%	152	4	0%	0%	100%			
Elem at Prague		109	2	0%	100%	0%	103	2	0%	100%	0%	113	2	0%	100%	0%			
<b>State Summary</b>		118	22020	22%	45%	34%	109	22068	25%	52%	22%	104	22077	32%	46%	22%			
<b>District Summary</b>		109	26	31%	42%	27%	108	26	23%	54%	23%	115	26	15%	58%	27%			
Elem. At Brainerd		113	18	28%	44%	28%	116	18	22%	44%	33%	116	18	22%	44%	33%			
Elem. At Dwight		101	8	38%	38%	25%	90	8	25%	75%	0%	112	8	0%	88%	13%			
<b>State Summary</b>		121		23%	39%	38%	111		24%	51%	25%	106		28%	50%	23%			
<b>District Summary</b>		108	27	26%	52%	22%	97	27	30%	63%	7%	105	27	33%	52%	15%			
Elem. At Brainerd		108	21	24%	62%	14%	97	21	33%	62%	5%	102	21	33%	57%	10%			
Elem. At Dwight		109	6	33%	17%	50%	96	6	17%	67%	17%	117	6	33%	33%	33%			
<b>State Summary</b>		129	22,879	17%	37%	46%	113	22,947	24%	49%	27%	107	22,951	27%	55%	18%			
<b>District Summary</b>		127	20	5%	55%	40%	117	20	5%	75%	20%	117	20	5%	75%	20%			
Elem. At Brainerd		127	12	0%	67%	33%	115	12	8%	75%	17%	108	12	0%	92%	8%			
Elem. At Dwight		128	8	13%	38%	50%	120	8	0%	75%	25%	131	8	13%	50%	38%			

SPRING 2010

SPRING 2011

SPRING 2012

SPRING 2013

SPRING 2014

SPRING 2015



**EAST BUTLER PUBLIC SCHOOLS  
DISTRICT REPORT OF SCHOOL PERFORMANCE  
NEBRASKA STATE ACCOUNTABILITY (NeSA)**



**GRADE 6**

Performance Level Ranges			READING						MATH					
Exceeds Standards	Meets Standards	Below Standards	Average Score	Total Number of Students	% Below Standards	% Meets Standards	% Exceeds Standards	Average Score	Total Number of Students	% Below Standards	% Meets Standards	% Exceeds Standards		
135 and above	085 - 134	084 and below												
<b>State Summary</b>			101	20495	32%	49%	20%							
<b>District Summary</b>			102	28	29%	54%	18%							
Elem. At Brainard			105	8	38%	38%	25%							
Elem. At Dwight			94	11	18%	73%	9%							
Elem at Prague			109	9	33%	44%	22%							
<b>State Summary</b>			109	20815	26%	48%	26%	100	20866	37%	44%	18%		
<b>District Summary</b>			115	28	21%	57%	21%	105	28	29%	61%	11%		
Elem. At Brainard			95	11	46%	45%	9%	104	11	36%	45%	18%		
Elem. At Dwight			128	13	8%	62%	31%	111	13	23%	69%	8%		
Elem at Prague			126	4	0%	75%	25%	87	4	25%	75%	0%		
<b>State Summary</b>			113	21689	25%	44%	30%	106	21734	32%	45%	23%		
<b>District Summary</b>			119	25	28%	44%	28%	114	25	28%	36%	36%		
Elem. At Brainard			121	15	13%	53%	33%	121	15	13%	47%	40%		
Elem. At Dwight			120	8	50%	25%	25%	110	8	38%	25%	38%		
Elem at Prague			109	2	50%	50%	0%	81	2	100%	0%	0%		
<b>State Summary</b>			115	21687	23%	46%	31%	106	21738	33%	43%	24%		
<b>District Summary</b>			125	16	19%	31%	50%	113	16	19%	56%	25%		
Elem. At Brainard			124	9	22%	33%	44%	121	9	22%	44%	33%		
Elem. At Dwight			127	7	14%	29%	57%	103	7	14%	71%	14%		
<b>State Summary</b>			119		21%	42%	37%	109		28%	47%	25%		
<b>District Summary</b>			108	25	32%	40%	28%	103	25	28%	44%	28%		
Elem. At Brainard			117	18	28%	39%	33%	115	18	11%	50%	39%		
Elem. At Dwight			86	7	43%	43%	14%	72	7	71%	29%	0%		
<b>State Summary</b>			122	22,378	19%	44%	36%	110	22,445	28%	45%	27%		
<b>District Summary</b>			125	24	8%	63%	29%	110	24	17%	63%	21%		
Elem. At Brainard			124	19	5%	74%	21%	113	19	16%	58%	26%		
Elem. At Dwight			126	5	20%	20%	60%	100	5	20%	80%	0%		

SPRING 2010

SPRING 2011

SPRING 2012

SPRING 2013

SPRING 2014

SPRING 2015



**EAST BUTLER PUBLIC SCHOOLS**  
**DISTRICT REPORT OF SCHOOL PERFORMANCE**  
**NEBRASKA STATE ACCOUNTABILITY (NeSA)**



**GRADE 7**

Performance Level Ranges				READING						MATH					
Exceeds Standards	Meets Standards	Below Standards		Average Score	Total Number of Students	% Below Standards	% Meets Standards	% Exceeds Standards	Average Score	Total Number of Students	% Below Standards	% Meets Standards	% Exceeds Standards		
135 and above	085 - 134	084 and below													
<b>State Summary</b>				104	20412	31%	48	21							
<b>District Summary</b>				99	40	32%	55%	13%							
High School at Brainerd				96	31	35%	55%	10%							
High School at Prague				109	9	22%	56%	22%							
<b>State Summary</b>				110	20666	26%	47%	27%	99	20702	39%	45%	16%		
<b>District Summary</b>				110	25	16%	68%	16%	109	25	20%	64%	16%		
State Summary				116	21262	23%	44%	34%	104	21291	32%	46%	22%		
<b>District Summary</b>				113	26	23%	62%	15%	96	26	46%	42%	12%		
State Summary				122	21569	20%	41%	38%	105	21614	30%	47%	23%		
<b>District Summary</b>				112	23	23%	50%	27%	106	26	27%	54%	19%		
State Summary				126		19%	37%	44%	109		28%	46%	26%		
<b>District Summary</b>				138	16	13%	25%	63%	112	16	19%	63%	19%		
State Summary				128	22,217	18%	38%	44%	110	22,287	27%	46%	27%		
<b>District Summary</b>				110	23	26%	39%	35%	101	23	30%	48%	22%		



**EAST BUTLER PUBLIC SCHOOLS**  
**DISTRICT REPORT OF SCHOOL PERFORMANCE**  
**NEBRASKA STATE ACCOUNTABILITY (NeSA)**



**GRADE 8**

Performance Level Ranges	READING					MATH					SCIENCE					
	Average Score	Total Number of Students	% Below Standards	% Meets Standards	% Exceeds Standards	Average Score	Total Number of Students	% Below Standards	% Meets Standards	% Exceeds Standards	Average Score	Total Number of Students	% Below Standards	% Meets Standards	% Exceeds Standards	
Exceeds Standards 135 and above																
Meets Standards 085 - 134																
Below Standards 084 and below																
<b>State Summary</b>	102	20435	30%	48%	22%											
<b>District Summary</b>	101	28	29%	57%	14%											
HS at Brainard	96	20	30%	60%	10%											
HS at Prague	113	8	25%	50%	25%											
<b>State Summary</b>	106	20527	29%	49%	22%	98	20558	40%	44%	16%						
<b>District Summary</b>	103	41	27%	54%	20%	101	41	34%	49%	17%						
<b>State Summary</b>	109	21084	27%	47%	26%	99	21121	38%	44%	18%	100	21118	32%	52%	16%	
<b>District Summary</b>	105	25	24%	56%	20%	96	25	40%	48%	12%	114	25	12%	68%	20%	
<b>State Summary</b>	115	21124	22%	46%	31%	102	21146	34%	47%	19%	102	21154	31%	52%	18%	
<b>District Summary</b>	108	25	24%	56%	20%	89	25	52%	40%	8%	117	25	12%	60%	28%	
<b>State Summary</b>	114		22%	46%	32%	104		34%	46%	20%	105		30%	49%	21%	
<b>District Summary</b>	108	27	22%	67%	11%	100	27	33%	56%	11%	113	27	15%	67%	19%	
<b>State Summary</b>	117	21907	21%	43%	36%	105	21988	32%	46%	22%	106	21994	30%	48%	23%	
<b>District Summary</b>	117	19	26%	47%	26%	108	19	21%	58%	21%	110	19	32%	42%	26%	

2015  
2014  
2013  
2012  
2011  
2010



**EAST BUTLER PUBLIC SCHOOLS**  
**DISTRICT REPORT OF SCHOOL PERFORMANCE**  
**NEBRASKA STATE ACCOUNTABILITY (NeSA)**



**GRADE 11**

Performance Level Ranges	READING					MATH					SCIENCE					
	Average Score	Total Number of Students	% Below Standards	% Meets Standards	% Exceeds Standards	Average Score	Total Number of Students	% Below Standards	% Meets Standards	% Exceeds Standards	Average Score	Total Number of Students	% Below Standards	% Meets Standards	% Exceeds Standards	
Exceeds Standards 135 and above	100	20671	32%	50%	18%											
Meets Standards 085 - 134	99	35	31%	57%	12%											
Below Standards 084 and below	107	24	25%	54%	21%											
State Summary	104	10	20%	70%	10%											
District Summary	102	20923	33%	43%	24%	95	20861	46%	32%	21%						
HS at Brainard	108	26	15%	65%	19%	96	26	50%	31%	19%						
HS at Prague	102	21167	36%	39%	25%	96	21162	44%	34%	21%	99	21146	33%	53%	13%	
State Summary	101	28	25%	57%	18%	87	28	50%	36%	14%	102	28	21%	75%	4%	
District Summary	106	20935	33%	40%	27%	100	20941	42%	32%	26%	103	20945	27%	57%	16%	
State Summary	113	26	23%	42%	35%	96	26	35%	50%	15%	110	26	12%	77%	12%	
District Summary	110		30%	41%	29%	102		39%	36%	25%	103		25%	62%	12%	
State Summary	114	37	19%	59%	22%	115	37	19%	57%	24%	114	37	11%	78%	11%	
District Summary	109	21136	31%	41%	28%	102	21117	39%	36%	25%	104	21117	27%	57%	16%	
State Summary	110	28	29%	50%	21%	103	28	36%	46%	18%	105	28	11%	79%	11%	
District Summary																



**EAST BUTLER PUBLIC SCHOOLS**  
**DISTRICT REPORT OF SCHOOL PERFORMANCE**  
**NEBRASKA STATE ACCOUNTABILITY (NeSA)**  
**GRADUATING CLASSES**



Performance Level Ranges		READING													
		3rd Grade		4th Grade		5th Grade		6th Grade		7th Grade		8th Grade		11th Grade	
Exceeds Standards	135 and above	Average Score	Meets/Exceeds Standards (%)	Average Score	Meets/Exceeds Standards (%)	Average Score	Meets/Exceeds Standards (%)	Average Score	Meets/Exceeds Standards (%)	Average Score	Meets/Exceeds Standards (%)	Average Score	Meets/Exceeds Standards (%)	Average Score	Meets/Exceeds Standards (%)
Meets Standards	085 - 134														
Below Standards	084 and below														
Graduation Year (This Year)															
Class of 2011														99	69%
Class of 2012														108	85%
Class of 2013														101	75%
Class of 2014												101	71%	113	77%
Class of 2015														114	81%
Class of 2016 (Seniors)								102	71%	110	84%	105	76%	110	71%
Class of 2017 (Juniors)								102	74%	113	77%	108	76%		
Class of 2018 (Sophomores)								107	78%	112	77%	108	78%		
Class of 2019 (Freshman)		98	67%	111	86%	119	77%	125	81%	138	88%	117	74%		
Class of 2020 (8th Grade)		99	64%	105	76%	109	69%	108	68%	110	74%				
Class of 2021 (7th Grade)		95	74%	102	79%	108	74%	125	92%						
Class of 2022 (6th Grade)		99	65%	106	66%	127	95%								
Class of 2023 (5th Grade)		107	82%	104	78%										
Class of 2024 (4th Grade)		115	89%												
		Spring of 2010													
		Spring of 2011													
		Spring of 2012													
		Spring of 2013													
		Spring of 2014													
		Spring of 2015													





**EAST BUTLER PUBLIC SCHOOLS**  
**DISTRICT REPORT OF SCHOOL PERFORMANCE**  
**NEBRASKA STATE ACCOUNTABILITY (NeSA)**  
**GRADUATING CLASSES**



Performance Level Ranges		SCIENCE					
		5th Grade		8th Grade		11th Grade	
Exceeds Standards	135 and above	Average Score	Meets/Exceeds Standards (%)	Average Score	Meets/Exceeds Standards (%)	Average Score	Meets/Exceeds Standards (%)
Meets Standards	085 - 134						
Below Standards	084 and below						
Graduation Year (This Year)							
Class of 2013						103	79%
Class of 2014						110	88%
Class of 2015						114	89%
Class of 2016 (Seniors)				114	88%	105	89%
Class of 2017 (Juniors)				117	88%		
Class of 2018 (Sophomores)				113	85%		
Class of 2019 (Freshman)		123	85%	110	68%		
Class of 2020 (8th Grade)		115	85%				
Class of 2021 (7th Grade)		105	67%				
Class of 2022 (6th Grade)		117	95%				
Class of 2023 (5th Grade)							
Class of 2023 (4th Grade)							
Spring of 2012							
Spring of 2013							
Spring of 2014							
Spring of 2015							



	A	B	C	D	E	F	G
1	test & grade	EB % at or above	NE % at or above		# tests	# above	# below
2					20	13	7
3	reading 11	<b>71</b>	69	x			
4	reading 8	74	<b>79</b>	<b>x</b>			
5	reading 7	74	<b>82</b>				
6	reading 6	<b>92</b>	80				
7	reading 5	<b>95</b>	82				
8	reading 4	78	<b>81</b>	<b>x</b>			
9	reading 3	<b>89</b>	82				
10							
11	math 11	<b>64</b>	62	x			
12	math 8	<b>79</b>	68				
13	math 7	70	<b>72</b>	<b>x</b>			
14	math 6	<b>83</b>	72				
15	math 5	<b>95</b>	76	x			
16	math 4	<b>87</b>	77				
17	math 3	<b>83</b>	78				
18							
19	science 11	<b>89</b>	74	x			
20	science 8	68	<b>70</b>	<b>x</b>			
21	science 5	<b>95</b>	73				
22							
23	writing 11	<b>78</b>	76	x			
24	writing 8	69	<b>72</b>	<b>x</b>			
25	writing 4	65	<b>70</b>				
26				10			

Board of Education Regular Meeting  
August 11, 2015 6:30 PM  
East Butler School - Prague

1. Call Meeting To Order at 6:27 P.M.

2. Roll Call - Present Board Members: Jan Bostelman, Stonie Cooper, Mark Janak, Megan Kozisek, Chris Rezac, Kim TePoel, Marlene Wade, and Dan Zysset. Excused Absence: Nate Radenslaben. Also present: Mr. Sam Stecher, Superintendent, Mr. Michael Eldridge, Secondary Principal, and Mr. Shawn Biltoft, Elementary Principal.

3. Flag Salute

4. Approve Agenda

Motion Passed: Motion to approve the agenda as presented passed with a motion by Kim TePoel and a second by Marlene Wade.

Jan Bostelman	Yes
Stonie Cooper	Yes
Mark Janak	Yes
Megan Kozisek	Yes
Nate Radenslaben	Absent
Chris Rezac	Yes
Kim TePoel	Yes
Marlene Wade	Yes
Dan Zysset	Yes

5. Patron's Comments - None

6. Informational Items included: Introduction of Jane Eklund; Committee Reports; Proposed Budget; Suicide Prevention Training; Tiger Stripes-Safe/Respectful/Responsible Discipline Model; Transportation Update; Prague Facilities Update; and First Read Through of 3000s Policy.

7. Consent Agenda

7.a. Approval of Minutes

7.b. Treasurer's Report

Motion Passed: Motion to approve the consent agenda as presented passed with a motion by Stonie Cooper and a second by Chris Rezac.

Jan Bostelman	Yes
Stonie Cooper	Yes
Mark Janak	Yes

Megan Kozisek	Yes
Nate Radenslaben	Absent
Chris Rezac	Yes
Kim TePoel	Yes
Marlene Wade	Yes
Dan Zysset	Yes

## 8. Regular Agenda

8.a. Second Read Through of 2000s Policy- Adopt with revisions

8.b. Second Read Through of Policy Revisions as Advised by Perry, Guthery, Haase, & Gessford, P.C., L.L.O. - Adopt revision as advised.

Motion Passed: Adoption of 2000s Policy with revisions and policy revisions as advised by Perry, Guthery, Haase & Gessford, P.C., L.L.O., passed with a motion by Stonie Cooper and a second by Marlene Wade.

Jan Bostelman	Yes
Stonie Cooper	Yes
Mark Janak	Yes
Megan Kozisek	Yes
Nate Radenslaben	Absent
Chris Rezac	Yes
Kim TePoel	Yes
Marlene Wade	Yes
Dan Zysset	Yes

8.c. Approval of Rebecca Matthews serving in paraprofessional position.

Motion Passed: Approval of Rebecca Matthews serving in paraprofessional position passed with a motion by Marlene Wade and a second by Stonie Cooper.

Jan Bostelman	Yes
Stonie Cooper	Yes
Mark Janak	Yes
Megan Kozisek	Yes
Nate Radenslaben	Absent
Chris Rezac	Yes
Kim TePoel	Yes
Marlene Wade	Yes
Dan Zysset	Yes

9. Administrative Comments plus Labor Relations; John Baylor; Para Resignation; Assistant Volleyball; and Semester Milk

10. Items for September Meeting: Budget Hearing; Tax Hearing; and Negotiations

11. Adjournment

Motion Passed: Motion to adjourn at 7:33 P.M. passed with a motion by Stonie Cooper and a second by Chris Rezac.

Jan Bostelman	Yes
Stonie Cooper	Yes
Mark Janak	Yes
Megan Kozisek	Yes
Nate Radenslaben	Absent
Chris Rezac	Yes
Kim TePoel	Yes
Marlene Wade	Yes
Dan Zysset	Yes

Kim Fuehrer  
Recording Secretary

BILLS SEPTEMBER 9, 2015		
Certified Staff	\$208,431.72	Gross Salary
Classified Staff	\$50,182.72	Gross Salary
First Nebraska Bank	\$19,784.01	FICA (District share)
Nebraska School Retirement	\$25,147.93	Retirement(Dist share)
Blue Cross Blue Shield	\$40,801.02	Insurance
SUB TOTAL OF PAYROLL	\$344,347.40	
Advanced Fire & Safety	\$66.25	Inspect fire exting (B)
Alfred Benesch & Co	\$850.00	Asbestos inspection
Amazon	\$315.22	Spanish/Govt/SPED
Amazon	\$999.67	SPED/Computer supply
Arps	\$380.25	Concrete-Dwt Bike Rack
B J Hardware	\$422.67	Humidifier/op of plant
Blick Art	\$725.12	Art supply
Brainard Meats	\$188.51	Meat for staff/bd picnic
Brown & Saenger	\$2,040.42	Coop order
BSN Sports/US Games	\$234.33	Coop order
Butler County Clinic	\$375.00	Bus physicals (GJ/GK/JM)
Butler Public Power Dist	\$697.58	Dwight electricity
Canon Financial Services	\$849.00	Canon copiers/printers
Canon Solutions America	\$497.67	Supply program
Central Ne Rehab	\$1,325.23	SPED services

Chem Tech	\$59.67	P pest elimination
Columbus Telegram	\$135.17	Notice/para ads
Crescent Electric	\$357.50	Electrical supply
CTF Service Inc	\$20,213.89	Fleet service/repair
Dale's Food Pride	\$121.24	P/S snacks
Darlene Kucera	\$143.59	Mileage/office supply
Data Recognition Corp	\$500.00	Score NeSA SPED
David City Ace Hardware	\$6.50	Op of plant
David City Public School	\$718.04	Our share insurance (SH)
Didier Grocery	\$26.02	FCS grocery
Dunwell Tech Inc	\$159.00	Coop order
E Street Pharmacy	\$10.49	Albuterol medicine
Electronic Sound Inc	\$343.70	Program bell system
Ellen Bongers	\$7.50	Reimburse Bus license
4		
ESU # 2	\$125.00	Workshop (JE)
ESU # 7	\$1,173.41	Production work
Firespring	\$1,680.83	Foundation newsletter
First Ne Bank Ins Group	\$3,245.00	WC audit addl premium
Flinn Scientific	\$963.91	Science supply
Frey Scientific	\$115.61	Science supply
Frogut's Inc	\$299.00	Dissect subscr download
Frontier Coop Co	\$6,940.19	Gas/diesel/propane/water softner salt/elec supply

Gopher		\$300.51	PE supply
Greg Kozisek		\$7.50	Reimburse bus permit
Holiday Inn Express		\$599.70	Rooms Admin Days (ME/SB)
Houghton Mifflin Harcourt		\$3,493.58	Elementary Math
Houghton Mifflin Harcourt		\$2,451.30	Economics Texts/tchr bks
Houghton Mifflin Harcourt		\$921.60	ShipChgs Alg/Geom return
Huskerland Prep Report		\$37.00	Library subscription
Jenn Nantkes		\$1,484.33	SPED vision services
Julie Kahler		\$946.82	Speech Services
Kiddie Cab		\$22.74	SPED transportation
Kim Fuehrer		\$28.93	Breakfast supply
Kuhlman & Kratochvil		\$395.00	Monthly processing
Lakeshore		\$171.35	P/S supply
LuAnn Hofpar		\$13.25	Workshop lunch
Lincoln Journal Star		\$230.10	Library subscriptions
Madison Nat'l Life Ins		\$638.22	Disability insurance
Marco Products		\$111.99	Counselor supply
Matheson Tri Gas Inc		\$493.12	Welding supply
McGraw Hill Education		\$8,553.39	Alg I/II and Geometry
McGraw Hill Education		\$5,604.40	Reading supply
McGraw Hill Education		\$1,322.85	Reading Decoding supply
Megan Kozisek		\$70.10	Picnic supply
Menard's Columbus		\$2,975.58	FCS/Maint/PS shed

Music In Motion	\$276.87	Music supply
Musician's Friend	\$159.55	Music supply
National Art & School	\$412.43	Coop order
Nat'l Everything Wholesale	\$488.35	Coop order
N A S B	\$210.00	Member mtg (SS/MK/NR)
N R C S A	\$700.00	Membership renewal
Nebraska Safety Center	\$150.00	Level I (KS)
Northeast Ne Telephone	\$72.90	Prague phone
Oliva Audio Visual	\$256.95	Computer repair
Omaha Symphony	\$396.00	Symphony performance
Patterson Medical	\$39.00	SPED supply
Paul Kess Inc	\$295.00	Plumbing supply
PerryGutheryHaaseGessford	\$1,260.00	Attorney fees
Rerucha Ag & Auto Supply	\$29.90	Belts-roof top units
Sack Lumber Co	\$106.48	Saw rent/ME desk repair
Sandy Bongers	\$599.08	4 sewing machines (foundation to pay 1/2)
Sandy Bongers	\$77.00	August mileage
Scholastic Inc	\$517.35	Classrom mags (SH/DS/GM)
School Specialty Supply	\$454.70	Ipad cases (foundation to pay 1/2)
School Specialty Supply	\$2,614.48	Teacher orders
Select Plumbing Inc	\$620.00	Ck lawn irrigation/hook up FCS room
Sid Dillon Wahoo	\$59.64	Keys-gold van

Sophie Hermelbracht	\$175.45	PS visits mileage	
Sophie Hermelbracht	\$47.97	PS supply (grandparents)	
Staples Advantage	\$171.20	Ice melt--coop order	
Superior Glass & Home	\$312.98	Repl broken windows(B/P)	
S O C S	\$1,900.00	Annual web hosting	
Supreme School Supply	\$131.94	Teacher/office supply	
Teachers Discovery	\$106.35	Spanish supply	
Tech Masters Htg/Air	\$676.75	Blower motor	
The Rose	\$247.50	Cultural Arts trip	
TPRS Publishing Inc	\$260.00	Spanish supply	
Time Magazine	\$205.16	Classroom magazines	
Titan Machinery	\$350.00	Bobcat skidsteer rental	
United Parcel Service	\$74.13	Ship Flinn product back	
Village of Prague	\$478.00	Electric/water/sewer	
Wage Works	\$65.00	Monthly fee	
Wahoo Newspaper	\$162.17	Mtg notice/para ads/ proceedings July/August	
Walmart Community	\$100.00	SPED supply(Itune card)	
Waste Connections of Ne	\$570.80	B/D garbage	
Windstream Ne Inc	\$2,101.34	2081/2092/2445/internet	
Wright Way Drain/Sewer	\$100.00	Dwight plumbing work	
SUB TOTAL OF BILLS	\$96,217.96		
GRAND TOTAL P/R & BILLS	\$440,565.36		xx



**EAST BUTLER PUBLIC SCHOOLS INVESTMENTS**  
**AS OF SEPTEMBER 1, 2015 For Bd Mtg September 9, 2015**  
**GENERAL FUND**

<u>NUMBER</u>	<u>TERM</u>	<u>MATURITY</u>	<u>AMOUNT</u>	<u>RATE</u>	
1026029	12 month	4/5/16	\$508.38	0.25%	McAuliffePrize (At Prague)
3212	24 month	10/1/16	\$379,650.48	0.55%	
1024535	9 month	2/15/16	\$165,342.45	0.20%	
1024295	12 month FLEX	7/13/16	<u>\$463,373.95</u>	0.25%	
			\$1,008,875.26		
41-513	Checking		<u>\$1,982,494.97</u>	0.25%	
<b>TOTAL</b>			<u>\$2,991,370.23</u>		

**DEPRECIATION RESERVE/VEHICLE REPLACEMENT FUND**

602837			\$93,313.12	0.25%
--------	--	--	-------------	-------

**QUALIFIED CAPITAL IMPROVEMENT PURPOSE UNDERTAKING FUND (QC-PUF)**

1507069			\$425,860.76	0.05%
---------	--	--	--------------	-------

**BUILDING FUND**

1041-718	Checking		\$637,564.53	0.05%
1024870	12 mo FLEX	6/10/16	\$220,908.60	0.25%

**EMPLOYEE BENEFIT FUND**

1505565	Checking		\$3,485.70	0.05%
---------	----------	--	------------	-------

**STUDENT FEE FUND**

1502837	Checking		\$22,729.67	
---------	----------	--	-------------	--

**PLEDGED SECURITIES**

FIRST NEBRASKA BANK	5/30/17	\$500,000.00	Cusip 3136G0JD4
FIRST NEBRASKA BANK	3/8/19	\$150,000.00	Cusip 313378QK0
FIRST NEBRASKA BANK	2/27/17	\$100,000.00	Cusip 3133787M7
FIRST NEBRASKA BANK	5/30/19	\$500,000.00	Cusip 3137EADG1
FIRST NEBRASKA BANK	1/30/2017	\$500,000.00	Cusip 3135G0GY3
FIRST NEBRASKA BANK	12/16/2016	\$150,000.00	Cusip 3133XHZK1
FIRST NEBRASKA BANK	11/30/2019	\$200,000.00	Cusip 912828UB4
FIRST NEBRASKA BANK	12/16/2016	\$100,000.00	Cusip 3133XHZK1
FIRST NATIONAL BANK OMAHA	12/15/2015	\$135,000.00	Cusip 67102CAK5 (Prague)
FIRST NEBRASKA BANK	11/17/2017	\$150,000.00	Cusip 3133XMQ87
FIRST NEBRASKA BANK	5/18/2016	\$200,000.00	Cusip 3133XFJF4
FIRST NEBRASKA BANK	12/16/2016	\$150,000.00	Cusip 3133XHZK1
FIRST NEBRASKA BANK	3/8/19	\$500,000.00	Cusip 3133782M2
FIRST NEBRASKA BANK	9/14/18	\$500,000.00	Cusip 313375K48
FIRST NEBRASKA BANK	9/14/18	\$250,000.00	Cusip 313375K48
FIRST NEBRASKA BANK	9/14/18	\$500,000.00	Cusip 313375K48
FIRST NEBRASKA BANK	11/30/17	\$200,000.00	Cusip 3134G3VB3
FIRST NEBRASKA BANK	4/30/20	\$200,000.00	Cusip 912828VA5
<b>TOTAL PLEDGED</b>		<b>\$4,985,000.00</b>	



REVENUE REPORT THROUGH 9-1-15			
% of year completed this month 100%			
	Amount	Received	
Category	Budgeted	To Date	
1110 Property Taxes	\$4,340,000.00	\$4,356,475.87	
1115 Carline	\$4,000.00	\$2,326.73	
1120 Public Power District-Sales Tax	\$7,000.00	\$7,072.51	
1125 Motor Vehicle Taxes	\$205,000.00	\$227,029.13	
1270 Pre-School Tuition	\$10,000.00	\$10,453.68	
1410 Interest	\$5,000.00	\$5,793.37	
1610 Local License Fees	\$2,500.00	\$1,470.00	
1910 Other Local Receipts	\$500.00	\$3,000.00	
	\$0.00		
2110 County Fines/Licenses	\$22,000.00	\$22,415.45	
2210 ESU Receipts	\$5,000.00	\$33,520.94	
3110 State Aid	\$73,422.00	\$73,422.00	
3120 SPED Programs/School Age	\$250,000.00	\$247,859.00	
3125 SPED Transportation/School Age	\$0.00		
3130 Homestead Exemption	\$0.00	\$48,160.32	
3135 St of Ne High Ability Learner	\$2,000.00	\$3,084.00	
3165 SPED - Below Age Five	\$0.00		
3180 Pro Rate Motor Vehicle	\$10,000.00	\$10,179.67	
3200 State Apportionment	\$52,000.00	\$57,479.35	
3300 In-Lieu-of-School Land Tax	\$0.00		
3500 State Categorical Grants	\$0.00		
3512 Dist. Ed. Incentive	\$0.00	\$2,000.00	
4300 NCLB Title V	\$28,076.00		
4310 Title II-A	\$0.00	\$19,341.00	
4320 Title V Grants	\$0.00		
4400 Special Education (Birth to Age 5)	\$0.00		
4402 Pre-School Transportation	\$0.00		
4404 SPED IDEA	\$28,000.00	\$40,542.00	
4406 IDEA	\$28,000.00	\$3,034.00	
4410 SPED IDEA	\$28,000.00	\$61,836.00	
4411 CEIS	\$0.00		
4412 SPEC EDUC(Non Public)	\$0.00	\$13,969.00	
4450 Medicaid in Schools	\$0.00		
4455 Medicaid Administrative Outreach	\$16,000.00	\$12,655.97	
5400 Sale of Property	\$1,000.00		
5690 Other Non Revenue Receipts	\$5,000.00	\$71,719.46	
TOTAL	\$5,122,498.00	\$5,334,839.45	104.00%



BUDGET CATEGORY SUMMARY					
August, 2015					
% OF YEAR COMPLETED THIS MONTH 100%					
CATEGORY	BUDGETED	AUGUST EXPENDITURES	YEAR TO DATE	BALANCE	
Instruction	\$2,611,635.70	\$224,687.96	\$2,672,925.95	(\$61,290.25)	
SPED (School Age)	\$620,520.00	\$64,652.21	\$585,093.54	\$35,426.46	
Distance Learning	\$0.00	\$0.00	\$2,560.37	(\$2,560.37)	
Guidance Services	\$101,621.00	\$6,168.16	\$84,800.93	\$16,820.07	
Safety/Security	\$0.00	\$0.00	\$317.96	(\$317.96)	
Other Pupil Support	\$152,256.00	\$8,374.13	\$119,028.58	\$33,227.42	
Staff Trng/Curr Develop	\$0.00	\$0.00	\$0.00	\$0.00	
Library	\$95,506.00	\$6,223.24	\$85,255.95	\$10,250.05	
Board of Education	\$50,000.00	\$1,779.67	\$52,844.84	(\$2,844.84)	
Exec Admin Service	\$167,612.50	\$13,331.55	\$157,752.41	\$9,860.09	
Office of Principal	\$240,265.87	\$19,318.82	\$231,937.90	\$8,327.97	
Business Support	\$334,139.50	\$13,901.13	\$307,891.90	\$26,247.60	
Transportation(Not Bus)	\$0.00	\$0.00	\$21,412.38	(\$21,412.38)	
Operation of Plant	\$502,137.50	\$24,423.36	\$344,003.26	\$158,134.24	
Maintenance of Plant	\$10,000.00	\$7,119.60	\$157,166.50	(\$147,166.50)	
Pupil Transportation	\$192,632.50	\$560.16	\$213,019.26	(\$20,386.76)	
SPED Transportation	\$6,500.00	\$312.48	\$9,067.63	(\$2,567.63)	
TITLE I Part A(4200)	\$37,309.50	\$3,172.30	\$38,067.60	(\$758.10)	
High Ability (4301)	\$5,000.00	\$74.52	\$3,815.56	\$1,184.44	
Title V Grant (4320)	\$0.00	\$0.00	\$0.00	\$0.00	
PreSch Transportation 4402	\$2,000.00	\$0.00	\$2,422.56	(\$422.56)	
PreSchool Handicap 4404	\$72,627.50	-\$4,034.20	\$40,592.00	\$32,035.50	
IDEA 4406	\$6,000.00	(\$13,566.97)	\$1,458.00	\$4,542.00	
SPED Idea 4410	\$0.00	-\$24,494.37	\$40,819.00	(\$40,819.00)	
IDEA CEIS 4411	\$0.00	\$0.00	\$0.00	\$0.00	
IDEA NONPUBLIC 4412	\$0.00	\$0.00	\$0.00	\$0.00	
Medicaid Admin Outreach	\$0.00	\$0.00	\$0.00	\$0.00	
Title IV (REAP) 4992	\$0.00	\$0.00	\$0.00	\$0.00	
Summer School	\$0.00	\$0.00	\$0.00	\$0.00	
Transfers	\$185,000.00	\$0.00	\$212,500.00	(\$27,500.00)	
<b>TOTALS</b>	\$5,392,763.57	\$352,003.75	\$5,384,754.08	\$8,009.49	

2015-2016 BUDGET ADOPTED

	TOTAL BEGINNING BALANCE (Column 1)	TOTAL AVAILABLE RESOURCES BEFORE PROPERTY TAXES (Including Beginning Balances) (Column 2)	PERSONAL AND REAL PROPERTY TAXES (Column 3)	TOTAL RESOURCES AVAILABLE (Col 2 + Col 3) (Column 4)	BUDGET OF DISBURSEMENTS & TRANSFERS - SPECIAL EDUCATION (Column 5)	BUDGET OF DISBURSEMENTS & TRANSFERS - NON-SPECIAL EDUCATION (Column 6)	TOTAL BUDGET OF DISBURSEMENTS & TRANSFERS (Col 5 + Col 6) (Column 7)	NECESSARY CASH RESERVE (Column 8)	TOTAL REQUIREMENTS (Col 7 + Col 8) (Column 9)
General	2,400,000.00	3,077,129.41	4,984,705.99	8,061,835.40	664,656.39	5,297,179.01	5,961,835.40	2,100,000.00	8,061,835.40
Depreciation	121,666.91	421,666.91		421,666.91			421,666.91		421,666.91
Employee Benefit	3,496.19	3,496.19		3,496.19			3,496.19		3,496.19
Contingency	-	-		-			-		-
Activities	55,612.54	293,024.84		293,024.84			293,024.84		293,024.84
School Lunch	19,536.62	170,036.62		170,036.62			170,036.62		170,036.62
Bond	150,963.44	150,963.44	40,000.00	190,963.44			178,000.00	12,963.44	190,963.44
Special Building	872,154.07	872,154.07	460,000.00	1,332,154.07			1,332,154.07		1,332,154.07
Qualified Capital Purpose Undertaking	395,033.19	395,033.19	157,592.61	552,625.80			552,625.80		552,625.80
Cooperative	-	-		-			-		-
Student Fee	23,067.67	23,067.67		23,067.67			23,067.67		23,067.67
<b>TOTAL ALL FUNDS</b>	<b>4,041,530.63</b>	<b>5,406,572.34</b>	<b>5,642,298.60</b>	<b>11,048,870.94</b>	<b>664,656.39</b>	<b>5,297,179.01</b>	<b>8,935,907.50</b>	<b>2,112,963.44</b>	<b>11,048,870.94</b>

NOTE: Total Disbursements and Transfers (Column 7) is the sum of Column 5 and Column 6 for the General Fund only. For all other funds, numbers will pull automatically from the Worksheets.

**PERSONAL AND REAL PROPERTY TAX RECAP**

	General Fund	Bond Fund(s) [Total Of All Bond Funds]	Special Building Fund	Qualified Capital Purpose Undertaking Fund
PERSONAL AND REAL PROPERTY TAXES FROM COLUMN 3 (Line A)	4,984,705.99	40,000.00	460,000.00	157,592.61
COUNTY TREASURER'S COMMISSION AT 1% (Line B)	50,350.52	404.04	4,646.46	1,591.84
DELINQUENT TAX ALLOWANCE (If over 5% of Line A, see Instructions) (Line C)	-	-	-	-
TOTAL PERSONAL AND REAL PROPERTY TAXES (Line A + Line B + Line C) (Line D)	5,035,056.51	40,404.04	464,646.46	159,184.45

<b>CERTIFIED STATE AID</b>		<b>MOTOR VEHICLE TAXES</b>	
\$	19,379.81	\$	205,000.00

<b>COUNTY TREASURER'S BALANCE, 9-1-2015</b>	
500,000.00	50,000.00
150,963.44	220,769.48

**2015-2016  
STATE OF NEBRASKA  
SCHOOL DISTRICT BUDGET FORM**

County-District #: 12-0502      Class #: 3  
East Butler  
TO THE COUNTY BOARD AND COUNTY CLERK OF  
Butler County County

This budget is for the Period **SEPTEMBER 1, 2015 through AUGUST 31, 2016**

Upon Filing, The School Certifies the Information Submitted on this Form to be Correct:

AMOUNT OF PERSONAL AND REAL PROPERTY TAX REQUIRED FOR:		Principal and Interest on Bonds	All Other Purposes	TOTAL
General Fund			\$ 5,035,056.51	\$ 5,035,056.51
Bond Fund(s) [If More Than 1 Bond Fund - Total All Together]		\$ 40,404.04		\$ 40,404.04
Special Building Fund			\$ 464,646.46	\$ 464,646.46
Qualified Capital Purpose Undertaking Fund			\$ 159,184.45	\$ 159,184.45
<b>Total All Funds</b>		\$ 40,404.04	\$ 5,658,887.42	\$ 5,699,291.46

Outstanding Bonded Indebtedness as of September 1, 2015  
(Include Bond Fund(s) and Qualified Capital Purpose Undertaking Fund)

\$	2,345,000.00	Principal
\$	468,478.74	Interest
\$	2,813,478.74	<b>Total Outstanding Bonded Indebtedness</b>

County Clerk's Use Only

**Total Certified Valuation (All Counties)**

(Certification of Valuation(s) from County Assessor **MUST** be attached)

852,502,931.00

**Report of Joint Public Agency & Interlocal Agreements**

Was this Subdivision involved in any Interlocal Agreements or Joint Public Agencies for the reporting period of July 1, 2014 through June 30, 2015?  
 YES       NO  
*If YES, Please submit Interlocal Agreement Report by December 31, 2015.*

**Report of Trade Names, Corporate Names & Business Names**

Did the subdivision operate under a separate Trade Name, Corporate Name, or other Business Name during the period of July 1, 2014 through June 30, 2015?  
 YES       NO  
*If YES, Please submit Trade Name Report by December 31, 2015.*

Has your School District held a successful election to override the levy limits provided in Statute 77-3442, which is in effect for 2014-2015 school fiscal year?  
 YES       NO

**Submission Information - Adopted Budget Due by 9-20-2015**

1. Auditor of Public Accounts - PO Box 98917 - Lincoln, NE 68509  
**Submit Adobe PDF Document via Website:**  
<http://www.auditors.nebraska.gov/>

2. County Board (SEC. 13-508), C/O County Clerk

3. Nebraska Dept. of Education

**APA Contact Information**

Auditor of Public Accounts  
**Telephone:** (402) 471-2111      **FAX:** (402) 471-3301  
**Website:** [www.auditors.nebraska.gov](http://www.auditors.nebraska.gov)  
**Questions - E-Mail:** [Deann.Haeffner@nebraska.gov](mailto:Deann.Haeffner@nebraska.gov)

# NOTICE OF BUDGET HEARING AND BUDGET SUMMARY

State of Nebraska  
**Budget Form - NBH-School District**  
 Statement of Publication

East Butler (12-0502) in Butler County, Nebraska

PUBLIC NOTICE is hereby given, in compliance with the provisions of State Statute Sections 13-501 to 13-513, that the governing body will meet on the 9th day of September, 2015 at 6:00 o'clock, P.M., at 212 South Madison Street, Brainard, NE for the purpose of hearing support, opposition, criticism, suggestions or observations of taxpayers relating to the following proposed budget and to consider amendments relative thereto. The budget detail is available at the office of the Clerk/Secretary during regular business hours.

Clerk/Secretary

FUNDS	Actual Disbursements & Transfers	Actual/Estimated Disbursements & Transfers	Budgeted Disbursements & Transfers	Necessary Cash Reserve (4)	Total Available Resources Before Property Taxes (5)	Fee and Delinquent Tax Allowance (6)	Total Personal and Real Property Tax Requirement (7)
	2013-2014 (1)	2014-2015 (2)	2015-2016 (3)				
General	\$ 4,947,846.36	\$ 5,502,117.27	\$ 5,961,835.40	\$ 2,100,000.00	\$ 3,077,129.41	\$ 50,350.52	\$ 5,035,056.51
Depreciation	\$ 114,554.87	\$ 152,085.27	\$ 421,666.91	-	\$ 421,666.91	-	-
Employee Benefit	\$ -	\$ 544.00	\$ 3,496.19	-	\$ 3,496.19	-	-
Contingency	\$ -	\$ -	\$ -	-	\$ -	-	-
Activities	\$ 235,602.35	\$ 201,198.80	\$ 293,024.84	-	\$ 293,024.84	-	-
School Lunch	\$ 144,595.63	\$ 130,427.00	\$ 170,036.62	-	\$ 170,036.62	-	-
Bond	\$ 106,843.75	\$ 85,273.75	\$ 178,000.00	\$ 12,963.44	\$ 150,963.44	\$ 404.04	\$ 40,404.04
Special Building	\$ 620,531.19	\$ 242,483.68	\$ 1,332,154.07	-	\$ 872,154.07	\$ 4,646.46	\$ 464,646.46
Qualified Capital Purpose Undertaking	\$ 167,363.12	\$ 292,533.41	\$ 552,625.80	-	\$ 395,033.19	\$ 1,591.84	\$ 159,184.45
Cooperative	\$ -	\$ -	\$ -	-	\$ -	-	-
Student Fee	\$ -	\$ 485.00	\$ 23,067.67	-	\$ 23,067.67	-	-
<b>TOTALS</b>	<b>\$ 6,337,337.27</b>	<b>\$ 6,607,148.18</b>	<b>\$ 8,935,907.50</b>	<b>\$ 2,112,963.44</b>	<b>\$ 5,406,572.34</b>	<b>\$ 56,992.86</b>	<b>\$ 5,699,291.46</b>

Total Personal and Real Property Tax Requirement For Bonds  
\$ 40,404.04

Total Personal and Real Property Tax Requirement for ALL Other  
\$ 5,658,887.42

# Notice of Special Hearing To Set Final Tax Request

East Butler (12-0502) in Butler County, Nebraska

PUBLIC NOTICE is hereby given, in compliance with the provisions of State Statute Section 77-1601.02, that the governing body will meet on the 9 day of September 2015 at 6:00 o'clock P.M., at 212 South Madison Street, Brainard, NE for the purpose of hearing support, opposition, criticism, suggestions or observations of taxpayers relating to setting the final tax request at a different amount than the prior year tax request.

<b>2014/15 Budget Information</b>			<b>2015/16 Budget Information</b>		
Fund	2014-2015 Property Tax Request	2014 Tax Rate	Property Tax Rate (2014-2015 Request Divided By 2015 Valuation)	2015-2016 Proposed Property Tax Request	Proposed 2015 Tax Rate
General Fund	4,383,838.34	0.570329	0.514231	5,035,056.51	0.590620
Bond Fund(s) K - 12			0.000000		0.000000
Bond Fund(s) K - 8	40,404.04	0.023824	0.023824	20,202.02	0.010939
Bond Fund(s) 9 - 12	40,404.04	0.023737	0.023737	20,202.02	0.010898
Bond Fund			0.000000		0.000000
Special Building Fund	303,030.30	0.039424	0.035546	464,646.46	0.054040
Qualified Capital Purpose Undertaking Fund K - 12	222,222.22	0.028249	0.026067	159,184.45	0.018673
Qualified Capital Purpose Undertaking Fund K - 8			0.000000		0.000000
Qualified Capital Purpose Undertaking Fund 9 - 12			0.000000		0.000000

2015-2016 BUDGET ADOPTED

	TOTAL BEGINNING BALANCE (Column 1)	TOTAL AVAILABLE RESOURCES BEFORE PROPERTY TAXES (Including Beginning Balances) (Column 2)	PERSONAL AND REAL PROPERTY TAXES (Column 3)	TOTAL RESOURCES AVAILABLE (Col 2 + Col 3) (Column 4)	BUDGET OF DISBURSEMENTS & TRANSFERS - SPECIAL EDUCATION (Column 5)	BUDGET OF DISBURSEMENTS & TRANSFERS - NON-SPECIAL EDUCATION (Column 6)	TOTAL BUDGET OF DISBURSEMENTS & TRANSFERS (Col 5 + Col 6) (Column 7)	NECESSARY CASH RESERVE (Column 8)	TOTAL REQUIREMENTS (Col 7 + Col 8) (Column 9)
General	2,400,000.00	3,077,129.41	4,984,705.99	8,061,835.40	664,656.39	5,297,179.01	5,961,835.40	2,100,000.00	8,061,835.40
Depreciation	121,666.91	421,666.91		421,666.91			421,666.91		421,666.91
Employee Benefit	3,496.19	3,496.19		3,496.19			3,496.19		3,496.19
Contingency	-	-		-			-		-
Activities	55,612.54	293,024.84		293,024.84			293,024.84		293,024.84
School Lunch	19,536.62	170,036.62		170,036.62			170,036.62		170,036.62
Bond	150,963.44	150,963.44	40,000.00	190,963.44			178,000.00	12,963.44	190,963.44
Special Building	872,154.07	872,154.07	460,000.00	1,332,154.07			1,332,154.07		1,332,154.07
Qualified Capital Purpose Undertaking	395,033.19	395,033.19	157,592.61	552,625.80			552,625.80		552,625.80
Cooperative	-	-		-			-		-
Student Fee	23,067.67	23,067.67		23,067.67			23,067.67		23,067.67
<b>TOTAL ALL FUNDS</b>	<b>4,041,530.63</b>	<b>5,406,572.34</b>	<b>5,642,298.60</b>	<b>11,048,870.94</b>	<b>664,656.39</b>	<b>5,297,179.01</b>	<b>8,935,907.50</b>	<b>2,112,963.44</b>	<b>11,048,870.94</b>

NOTE: Total Disbursements and Transfers (Column 7) is the sum of Column 5 and Column 6 for the General Fund only. For all other funds, numbers will pull automatically from the Worksheets.

**PERSONAL AND REAL PROPERTY TAX RECAP**

	General Fund	Bond Fund(s) [Total Of All Bond Funds]	Special Building Fund	Qualified Capital Purpose Undertaking Fund
PERSONAL AND REAL PROPERTY TAXES FROM COLUMN 3 (Line A)	4,984,705.99	40,000.00	460,000.00	157,592.61
COUNTY TREASURER'S COMMISSION AT 1% (Line B)	50,350.52	404.04	4,646.46	1,591.84
DELINQUENT TAX ALLOWANCE (If over 5% of Line A, see Instructions) (Line C)	-	-	-	-
TOTAL PERSONAL AND REAL PROPERTY TAXES (Line A + Line B + Line C) (Line D)	5,035,056.51	40,404.04	464,646.46	159,184.45

<b>CERTIFIED STATE AID</b>	<b>19,379.81</b>	<b>\$</b>	<b>205,000.00</b>
----------------------------	------------------	-----------	-------------------

<b>COUNTY TREASURER'S BALANCE, 9-1-2015</b>	<b>500,000.00</b>	<b>150,963.44</b>	<b>220,769.48</b>	<b>50,000.00</b>
---	-------------------	-------------------	-------------------	------------------

**2015-2016  
STATE OF NEBRASKA  
SCHOOL DISTRICT BUDGET FORM**

County-District #: 12-0502      Class #: 3  
East Butler  
TO THE COUNTY BOARD AND COUNTY CLERK OF  
Butler County County

This budget is for the Period **SEPTEMBER 1, 2015 through AUGUST 31, 2016**

Upon Filing, The School Certifies the Information Submitted on this Form to be Correct:

AMOUNT OF PERSONAL AND REAL PROPERTY TAX REQUIRED FOR:		Principal and Interest on Bonds	All Other Purposes	TOTAL
General Fund			\$ 5,035,056.51	\$ 5,035,056.51
Bond Fund(s) [If More Than 1 Bond Fund - Total All Together]		\$ 40,404.04		\$ 40,404.04
Special Building Fund			\$ 464,646.46	\$ 464,646.46
Qualified Capital Purpose Undertaking Fund			\$ 159,184.45	\$ 159,184.45
<b>Total All Funds</b>		\$ 40,404.04	\$ 5,658,887.42	\$ 5,699,291.46

Outstanding Bonded Indebtedness as of September 1, 2015  
(Include Bond Fund(s) and Qualified Capital Purpose Undertaking Fund)

\$	2,345,000.00	Principal
\$	468,478.74	Interest
\$	2,813,478.74	<b>Total Outstanding Bonded Indebtedness</b>

County Clerk's Use Only

**Total Certified Valuation (All Counties)**

(Certification of Valuation(s) from County Assessor **MUST** be attached)

852,502,931.00

**Report of Joint Public Agency & Interlocal Agreements**

Was this Subdivision involved in any Interlocal Agreements or Joint Public Agencies for the reporting period of July 1, 2014 through June 30, 2015?  
 YES       NO  
*If YES, Please submit Interlocal Agreement Report by December 31, 2015.*

**Report of Trade Names, Corporate Names & Business Names**

Did the subdivision operate under a separate Trade Name, Corporate Name, or other Business Name during the period of July 1, 2014 through June 30, 2015?  
 YES       NO  
*If YES, Please submit Trade Name Report by December 31, 2015.*

Has your School District held a successful election to override the levy limits provided in Statute 77-3442, which is in effect for 2014-2015 school fiscal year?  
 YES       NO

**Submission Information - Adopted Budget Due by 9-20-2015**

1. Auditor of Public Accounts - PO Box 98917 - Lincoln, NE 68509  
**Submit Adobe PDF Document via Website:**  
<http://www.auditors.nebraska.gov/>

2. County Board (SEC. 13-508), C/O County Clerk

3. Nebraska Dept. of Education

**APA Contact Information**

Auditor of Public Accounts  
**Telephone:** (402) 471-2111      **FAX:** (402) 471-3301  
**Website:** [www.auditors.nebraska.gov](http://www.auditors.nebraska.gov)  
**Questions - E-Mail:** [Deann.Haeffner@nebraska.gov](mailto:Deann.Haeffner@nebraska.gov)

# NOTICE OF BUDGET HEARING AND BUDGET SUMMARY

State of Nebraska  
**Budget Form - NBH-School District**  
 Statement of Publication

East Butler (12-0502) in Butler County, Nebraska

PUBLIC NOTICE is hereby given, in compliance with the provisions of State Statute Sections 13-501 to 13-513, that the governing body will meet on the 9th day of September, 2015 at 6:00 o'clock, P.M., at 212 South Madison Street, Brainard, NE for the purpose of hearing support, opposition, criticism, suggestions or observations of taxpayers relating to the following proposed budget and to consider amendments relative thereto. The budget detail is available at the office of the Clerk/Secretary during regular business hours.

Clerk/Secretary

FUNDS	Actual Disbursements & Transfers	Actual/Estimated Disbursements & Transfers	Budgeted Disbursements & Transfers	Necessary Cash Reserve (4)	Total Available Resources Before Property Taxes (5)	Fee and Delinquent Tax Allowance (6)	Total Personal and Real Property Tax Requirement (7)
	2013-2014 (1)	2014-2015 (2)	2015-2016 (3)				
General	\$ 4,947,846.36	\$ 5,502,117.27	\$ 5,961,835.40	\$ 2,100,000.00	\$ 3,077,129.41	\$ 50,350.52	\$ 5,035,056.51
Depreciation	\$ 114,554.87	\$ 152,085.27	\$ 421,666.91	-	\$ 421,666.91	-	-
Employee Benefit	\$ -	\$ 544.00	\$ 3,496.19	-	\$ 3,496.19	-	-
Contingency	\$ -	\$ -	\$ -	-	\$ -	-	-
Activities	\$ 235,602.35	\$ 201,198.80	\$ 293,024.84	-	\$ 293,024.84	-	-
School Lunch	\$ 144,595.63	\$ 130,427.00	\$ 170,036.62	-	\$ 170,036.62	-	-
Bond	\$ 106,843.75	\$ 85,273.75	\$ 178,000.00	\$ 12,963.44	\$ 150,963.44	\$ 404.04	\$ 40,404.04
Special Building	\$ 620,531.19	\$ 242,483.68	\$ 1,332,154.07	-	\$ 872,154.07	\$ 4,646.46	\$ 464,646.46
Qualified Capital Purpose Undertaking	\$ 167,363.12	\$ 292,533.41	\$ 552,625.80	-	\$ 395,033.19	\$ 1,591.84	\$ 159,184.45
Cooperative	\$ -	\$ -	\$ -	-	\$ -	-	-
Student Fee	\$ -	\$ 485.00	\$ 23,067.67	-	\$ 23,067.67	-	-
<b>TOTALS</b>	<b>\$ 6,337,337.27</b>	<b>\$ 6,607,148.18</b>	<b>\$ 8,935,907.50</b>	<b>\$ 2,112,963.44</b>	<b>\$ 5,406,572.34</b>	<b>\$ 56,992.86</b>	<b>\$ 5,699,291.46</b>

Total Personal and Real Property Tax Requirement For Bonds  
\$ 40,404.04

Total Personal and Real Property Tax Requirement for ALL Other  
\$ 5,658,887.42

# Notice of Special Hearing To Set Final Tax Request

East Butler (12-0502) in Butler County, Nebraska

PUBLIC NOTICE is hereby given, in compliance with the provisions of State Statute Section 77-1601.02, that the governing body will meet on the 9 day of September 2015 at 6:00 o'clock P.M., at 212 South Madison Street, Brainard, NE for the purpose of hearing support, opposition, criticism, suggestions or observations of taxpayers relating to setting the final tax request at a different amount than the prior year tax request.

		<b>2014/15 Budget Information</b>			<b>2015/16 Budget Information</b>		
Fund	2014-2015 Property Tax Request	2014 Tax Rate	Property Tax Rate (2014-2015 Request Divided By 2015 Valuation)	2015-2016 Proposed Property Tax Request	Proposed 2015 Tax Rate		
General Fund	4,383,838.34	0.570329	0.514231	5,035,056.51	0.590620		
Bond Fund(s) K - 12			0.000000		0.000000		
Bond Fund(s) K - 8	40,404.04	0.023824	0.023824	20,202.02	0.010939		
Bond Fund(s) 9 - 12	40,404.04	0.023737	0.023737	20,202.02	0.010898		
Bond Fund			0.000000		0.000000		
Special Building Fund	303,030.30	0.039424	0.035546	464,646.46	0.054040		
Qualified Capital Purpose Undertaking Fund K - 12	222,222.22	0.028249	0.026067	159,184.45	0.018673		
Qualified Capital Purpose Undertaking Fund K - 8			0.000000		0.000000		
Qualified Capital Purpose Undertaking Fund 9 - 12			0.000000		0.000000		



Sam Stecher <sstecher@ebutler.esu7.org>

---

**quote**

---

**Marcy Luth** <mluth@gicpas.com>  
To: Sam Stecher <sstecher@ebutler.esu7.org>

Wed, Aug 19, 2015 at 7:27 AM

Sam:

Our quote for audit services for the year ending 8/31/15 is \$4,800. This fee includes all out of pocket expenses, including mileage and postage.

Please let me know if you have any questions or if you need any references.

If your board chooses to proceed with our firm, we will contact your bookkeeper right away to get confirmation information and audit planning going. We always like to mail out our school confirmations on 8/31 so we can have all info back before the audit fieldwork. We will also issue an engagement letter if you choose to proceed with our firm.

Thank you,

Marcy

**Marcy J. Luth, CPA**

Almquist, Maltzahn, Galloway & Luth, P.C.

PO Box 1407

1203 W Second St

Grand Island, NE 68802

email: mluth@gicpas.com

Phone: (308) 381-1810

Fax: (308) 381-4824

www.gicpas.com



Sam Stecher <sstecher@ebutler.esu7.org>

---

## Bid for East Butler Public Schools Audit

---

Phillip A. Erb <perb@mmcpas.com>

Fri, Aug 28, 2015 at 6:31 PM

To: "sstecher@ebutler.esu7.org" <sstecher@ebutler.esu7.org>

Cc: Brad Fegley <bfegley@mmcpas.com>, Jenna Grenier <jgrenier@mmcpas.com>

Hello Sam,

In response to your request for fees and references for the audit of East Butler Public Schools, we submit the following information:

Proposed fees for both a one year and three year audit:

- A. 1 year audit fee - \$6,500 for the year ending August 31, 2015
- B. 3 year audit fee - \$5,300, \$5,512, and \$5,732 for the years ending August 31, 2015, 2016, and 2017, respectively

For references, we provide the following school districts:

- A. Kearney Public Schools
- B. McCook Schools
- C. Gothenburg Schools

Thank you for your time and consideration. Please do not hesitate to contact me with any questions.

Thank you,

Phillip A. Erb, CPA, CFE

McDermott + Miller PC



August 12, 2015

Megan Kozisek, President  
Board of Education  
East Butler Public School  
212 S Madison Street  
Brainard, NE 68626

Dear President Kozisek:

The East Butler Education Association requests that the school board of East Butler Public Schools recognize the Association as the exclusive bargaining agent for the district's non-supervisory certified employees for the 2016-2017 contract year. The Association further requests that the bargaining for the terms of the contract begin at your earliest convenience.

Please direct your response to the undersigned.

Sincerely,

A handwritten signature in blue ink that reads "Andrew Wood". The signature is written in a cursive style with a large initial 'A' and 'W'.

Andrew Wood  
East Butler Education Association.

# Elementary Principal Report

## September Board Meeting



### I. Assessments

- A. Northwest Evaluation Association (NWEA)-MAPS testing was completed August 28.
- B. Dynamic Indicators of Basic Early Literacy Skills (DIBELS) testing is in progress for all K-6 students.
- C. DIBELS information is used to flag students that may be having difficulties with Reading. These students may then be placed in an intervention program upon the completion of a placement test.

### II. Paraeducator Position

- A. Lauren Thompson informed administration that she will not be returning for the 2015-2016 school year on August 8.
- B. Two additional applications were received after hiring our last paraeducator position, both candidates were interviewed for the position. A background check was completed before hiring.
- C. Kaitlyn Barker has been hired to fill this position and has been working with a preschool special education student, pending additional board approval. Kaitlyn has received her Associate's Degree from the Early Childhood Education Program at Southeast Community College. She has worked at the SCC Child Development Center and Treehouse Daycare. Kaitlyn had also served a leadership role with the SCC National Association for the Education of Young Children.

### III. Writing/Scoring Retreat

- A. Fourth grade classroom teachers, Valerie Vandenberg and Marilyn Walla, will be participating in a scoring/data retreat in Norfolk on October 19.
- B. The purpose of the retreat is to prepare students for the Spring NeSA-Writing test held in January by analyzing the written work of our students. Teachers are able to develop an understanding of how the test is scored and ways to help students in the classroom.

### IV. Student Leadership Conference

- A. The Student Leadership Conference is held at Doane College in Crete on October 20. There are keynote speakers and break-out sessions designed to build leadership capacity within our students.
- B. The goal is to send a group of Fifth and Sixth grade students to represent East Butler. This is the first year that we have attended this conference.

### V. Semester Milk

- A. There are currently 23 Kindergarten students. 19 students have paid for milk and receive it at this time. The 4 students who do not receive milk qualify for free or reduced lunch. I have contacted these families and parents of 2 of the 4 students would like their student(s) to receive milk if the district would pay the cost. The parent of the 2 other students did not feel their student needed additional milk.
- B. There is one student who qualifies for free or reduced lunch that had already paid for milk. I informed her the school would also be willing to pay for this student's milk.
- C. The school would then cover the cost of milk for 3 Kindergarten students at a total cost of \$216.00

### VI. Additional Notes

- A. Sophie Hermelbracht has been selected to be part of the Results Matters task force for the Nebraska Department of Education. She is one of 30 members from around the state that will meet to find ways to improve early childhood education in Nebraska.
- B. I will be taking part in a panel discussion on September 16 for future middle school teachers at Concordia University.

To: East Butler Public Schools Board of Education  
From: Michael Eldridge, Secondary Principal  
Date: September 9, 2015  
Re: Secondary Principal's Report

**I. Professional Development for Staff**

- a. Our first early out Professional Development session will be on September 23rd.
- b. The focus will be on data analysis based on the recent NeSA results.
- c. We will be reestablishing a new goal, by utilizing our Measure of Academic Progress (MAP) data. Which we just completed the week of August 24th.
- d. We will also be sharing our Annual Progress Report that was submitted to AdvancED in May.

**II. ACT Results**

- a. I have included our most recent Five Year Trends for our Average ACT Scores.
- b. In 2014 we had 17 students take the ACT test, and in 2015 we had 27. Based off of that increase, our average composite score was a 23.0. Which is above the state and national average.
- c. This is something that we should celebrate and be proud of.
- d. We will be starting our next John Baylor prep in October. Right now we have had 23 students say that they will be taking the ACT test this year.

**III. Tiger Time**

- a. So far this year we have had three Tiger Times.
- b. The topics have ranged from the first session being about Responsibility, and what it means to be a responsible student.
- c. The second session was a time for the teaching staff to advise their students on their grades. They had each student pull up their grades and this gave the teacher the opportunity to have a conversation with the student.
- d. The third session was about the content that was discussed by John Baylor on August 21st. The students watched a 15 minute video that covered the same materials that John spoke of on that day.
- e. Our next session will be on September 14th and it will be another advisory time.

**IV. Bill Ganzel**

- a. Bill Ganzel is the author of *Dust Bowl Descent*, in which he utilized photos and description that allows the reader to understand what life was like during the Great Depression.
- b. Mr. Ganzel will be here at East Butler on September 9th, starting at 9:00am. Where he will present to students in grades 3-10. This will give the students the opportunity to see what life was like during one of the worst times in our country's history.
- c. The public is invited to attend. This is in partnership with the Bone Creek Museum of Agrarian Art in David City.

## College Readiness Letter for: EAST BUTLER HIGH SCHOOL

August 26, 2015  
Code: 280310

PRINCIPAL  
EAST BUTLER HIGH SCHOOL  
PO BOX 36  
BRAINARD, NE 68626



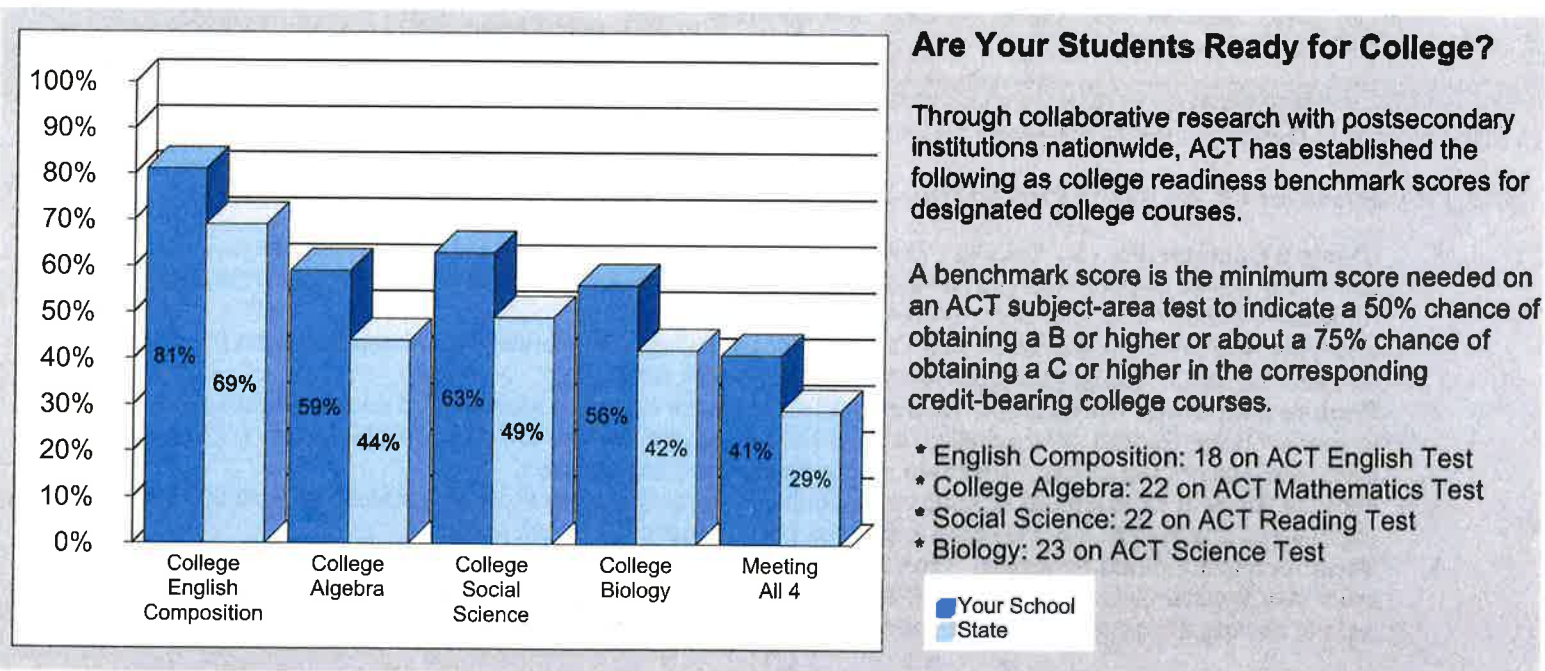
011061110

This report reflects the achievement of your graduates on the ACT over time and an indication of the extent to which they are prepared for college-level work. The ACT consists of curriculum-based tests of educational development in English, mathematics, reading, and science designed to measure the skills needed for success in first-year college coursework. Table 1 shows the five-year trend of your ACT-tested graduates. Beginning with the 2013 Graduating Class, all students whose scores are college reportable, both standard and extended time tests, are included in this report.

**Table 1: Five Year Trends - Average ACT Scores**

Grad Year	Total Tested		English		Mathematics		Reading		Science		Composite	
	School	State	School	State	School	State	School	State	School	State	School	State
2011	21	16,461	21.8	21.8	23.0	21.7	22.3	22.3	23.0	22.0	22.7	22.1
2012	16	16,581	21.5	21.8	21.2	21.7	22.3	22.3	22.1	21.9	21.9	22.0
2013	20	17,745	20.1	21.1	20.6	21.1	20.3	21.8	20.2	21.5	20.4	21.5
2014	17	17,768	22.4	21.3	23.3	21.1	24.1	22.0	23.7	21.7	23.6	21.7
2015	27	18,347	22.6	21.1	22.6	21.0	22.7	21.9	23.1	21.6	23.0	21.5

**Figure 1. Percent of ACT-Tested Students Ready for College-Level Coursework**



### Are Your Students Ready for College?

Through collaborative research with postsecondary institutions nationwide, ACT has established the following as college readiness benchmark scores for designated college courses.

A benchmark score is the minimum score needed on an ACT subject-area test to indicate a 50% chance of obtaining a B or higher or about a 75% chance of obtaining a C or higher in the corresponding credit-bearing college courses.

- \* English Composition: 18 on ACT English Test
- \* College Algebra: 22 on ACT Mathematics Test
- \* Social Science: 22 on ACT Reading Test
- \* Biology: 23 on ACT Science Test

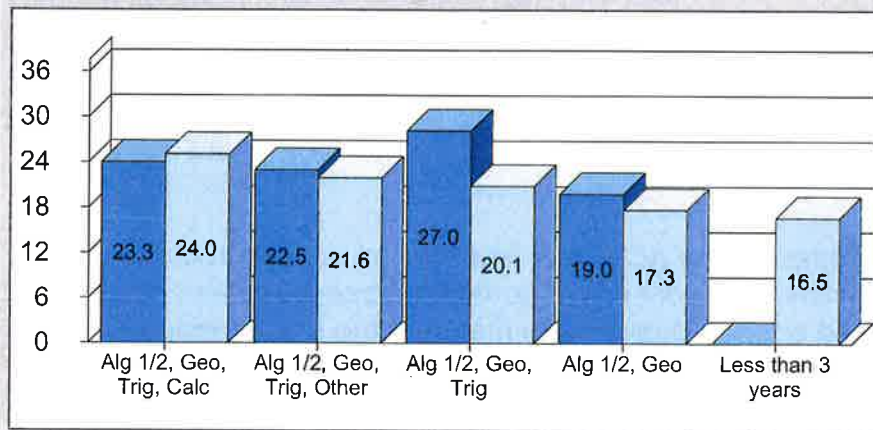
■ Your School  
■ State

A District College Readiness Letter has been sent to the Superintendent of the district.

## College Readiness Letter for: EAST BUTLER HIGH SCHOOL

ACT Research has shown that it is the rigor of coursework - rather than simply the number of core courses - that has the greatest impact on ACT performance and college readiness. Figures 2 and 3 report the value added by increasingly rigorous coursework in mathematics and science respectively.

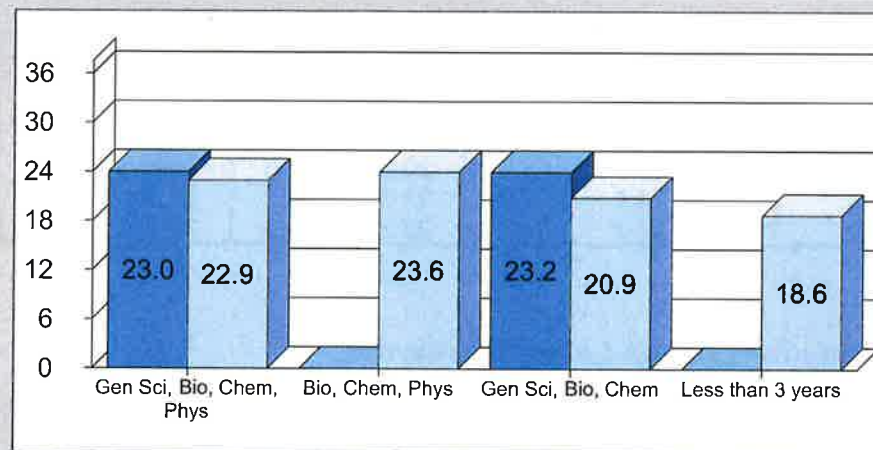
**Figure 2. Average ACT Mathematics Scores by Course Sequence**



### **Value Added by Mathematics Courses**

Students who take Algebra 1, Algebra 2, and Geometry typically achieve higher ACT Mathematics scores than students who take less than three years of mathematics. In addition, students who take more advanced mathematics courses substantially increase their ACT Mathematics score.

**Figure 3. Average ACT Science Scores by Course Sequence**



### **Value Added by Science Courses**

Students taking Biology and Chemistry in combination with Physics typically achieve higher ACT Science scores than students taking less than three years of science courses.

In order to ensure that all students are ready for college, an overview of vital action steps is provided.

### **College Readiness for All: An Action Plan for Schools and Districts**

1. **Create a Common Focus.** Establish collaborative partnerships with local and state postsecondary institutions to come to a shared understanding of what students need to know for college readiness. Use ACT's College Readiness Benchmarks as a common language to define readiness.
2. **Establish High Expectations for All.** Create a school culture that identifies and communicates the need for all students to meet or exceed College Readiness Benchmark Scores.
3. **Require a Rigorous Curriculum.** Review and evaluate the rigor and alignment of courses offered and required in your school in English, mathematics, and science to ensure that the foundational skills leading to readiness for college-level work are taught, reaffirmed, and articulated across courses.
4. **Provide Student Counseling.** Engage all students in early college and career awareness, help them to set high aspirations, and ensure that they plan a rigorous high school coursework program.
5. **Measure and Evaluate Progress.** Monitor and measure every student's progress early and often using college readiness assessments like ACT Aspire and the ACT. Make timely interventions with those students who are not making adequate progress in meeting College Readiness Benchmarks.

To learn more about these recommended action steps and ACT programs that will help improve college readiness for your students, contact ACT Customer Service at 319-337-1309 or [customerservices@act.org](mailto:customerservices@act.org).