

Princeton Public Schools - ISD 477  
Tuesday, August 1, 2017 at 7:00 PM  
Regular School Board Meeting  
District Office Board Room located at City Hall (Please use City Hall Entrance)

**Our Mission**

*Princeton is an innovative leader in instruction, developing in EVERY learner the ability to succeed in an ever-changing world.*

**Our Vision**

*Princeton will equip every student to be career and college ready through personalized instruction, community partnerships and collaboration.*

1. **PROCEDURAL ITEMS**
2. Call to Order and Pledge of Allegiance
3. Roll Call
4. Citizen Comments
5. **REPORTS**
  - a. Board Members Committee Reports
  - b. Student Council Report
  - c. Superintendent Report
6. **APPROVE AGENDA**
7. **DISCUSS and ACT on PREVIOUS BOARD MEETING MINUTES** 3
8. **CONSENT AGENDA**

*The consent agenda consists of non-controversial items that the Board adopts routinely without debate. Any single member may remove an item from consent agenda by requesting removal at the time the consent agenda is moved for adoption. The full text of items approved by consent may be found at the conclusion of the agenda.*

  - a. Personnel 5
  - b. District Cell Phone Reimbursement 8
  - c. Princeton Event Workers 9
  - d. Native American Indian Liaison Agreement 10
  - e. Fundraiser 14
9. **INFORMATION**
  - a. Possible Future Options: Facilities Discussion 17
  - b. Outdoor Classroom 29
10. **ACTION**
11. **ADDITIONS TO AGENDA**

12. **FUTURE MEETINGS**Negotiations-8.02.17-4:30  
Negotiations-8.9.17-4:30  
Policy Meeting- 8.15.17-5:30

13. **ADJOURN -**

July 18, 2017

### Call to Order and Pledge of Allegiance

The regular meeting of the School Board of District #477 was called to order by Chair Deb Ulm on the **18th day of July, at 5:15 p.m.** in the District Center Board Room.

Roll Call: Members Present: Eric Strandberg, Howard Vaillancourt, Deb Ulm and Sue VanHooser

Members Absent: Craig Johnson, Eric Minks and Chad Young

Chad Young arrived at 5:28.

Others present: Superintendent Julia Espe, Director of Business Services Michelle Czech, Director of Human Resources Sarah Marxhausen; and Director of Community Education Gwen Anderson and Director of Student Services Erin Dohrmann

Student Council Representative: Lacey Broding

Citizen Comments: Eric Bjurman spoke on his concerns with student athletics fees.  
Gabby Dahlen spoke to the board on the tennis courts.  
Kelly Dorr spoke to the board on the tennis courts.

### REPORTS

**Board committee meeting(s) and School Events each Board member attended.**

Sue VanHooser	Special Board meeting
Howard Vaillancourt	Special Board meeting, two negotiations sessions
Eric Strandberg	Community Education drama camp musical, Special Board meeting
Deb Ulm	Agenda Planning, Special Board meeting

Student Council Report: The student council president met with other executive board members to plan for upcoming events.

Superintendent Report: No report

### APPROVE AGENDA

Motion made by Howard Vaillancourt, seconded by Eric Strandberg **to approve the agenda as presented.**  
*Motion passed unanimously.*

### DISCUSS and ACT on PREVIOUS BOARD MEETING MINUTES

Motion made by Chad Young seconded by Howard Vaillancourt, **to approve the June 20th Regular Board meeting and Special/Closed meeting minutes as presented.** Motion passed unanimously.

**CONSENT AGENDA**

Motion made by Howard Vaillancourt, seconded by Eric Strandberg **to approve the consent agenda as presented.** *Personnel, Bills, Wire Transfers, Treasurer’s Report, Fundraiser, Field Trips, Gifts, Primary and High School Handbook.* Motion passed unanimously.

**ACTION**

**Long Term Facility Maintenance Plan-** Motion made by Sue VanHooser and seconded by Chad Young to approve the long term facility maintenance plan as presented. Motion passed unanimously.

**Positive Coaching Alliance Study Session started at 5:30-presentation**

**Facilities Study Session- Started at 7:15-presentation**

**Additions to the agenda:** None

**Future Meetings:** Negotiations-Wednesday, July 26th- 3:30-6:30  
Negotiations-Wednesday, August 2-4:30-6:30  
Negotiations-Wednesday, August 9 -4:30-6:30

**ADJOURN-** Meeting was adjourned at 8:30 p.m.

\_\_\_\_\_  
Chair Deb Ulm

\_\_\_\_\_  
Clerk Eric Minks

Recorder-Kari Plafcan

**08.01.2017**

Last Name	First Name	Status	Building	Job Title	Group	Replacing	Effective Date	Wage
Abrahamson	Dave	Resignation	High School	Assistant Varsity Football Coach	Activities	N/A	6.30.17	
Angstman	Mark	Extra Duty	High School	9th Gr. Football Coach	Activities	Dave Abrahamson	8.14.17	\$3,471.00
Bergstrom	Courtney	Extra Duty	Middle School	WEB Coordinator	Advisor/Coach	Kari Vogel	9.5.17	\$1,202.00
Bieringer	Tasha	New Hire	Family Center	Tiger Club-SACC Lead		N/A	7.1.17-8.25.17	15.25/Hr
Duke	Tami	Resignation	Student Services	Guidance Councelor	PEA	N/A	7.26.17	
Durch	Sarah	Resignation	High School	Head Girls Swim/Dive	Activities	N/A		
Flicek	Marqus	Resignation	Middle School	Football Coach	Activities	N/A	7.18.17	
Frederiksen	Christian	Change in assignment	High School	Going to 1.0 Math/Business	PEA	N/A	9.5.17	\$39,233.00
Hanson	Jeff	Resignation	High School	Head Boys Hockey Coach	Activities	N/A	6.27.17	
Hellman	Brian	Resignation	Middle School	Football Coach	Activities	N/A	7.26.17	
Henke	Thomas	Change in assignment	High School/Middle School	Phy Ed Teacher-Going to .4 at High school and .6 at Middle School	Activities	N/A	9.5.17	No change
Jacobs	Erik	Change in assignment	High School	1 seciton overload	PEA	N/A	9.5.17	No change
Lupkes	Jessica	Change in assignment	High School	1 section overload	PEA	N/A	9.5.17	No change
Magnuson	Ashley	New Hire	High School	FACS Teacher	PEA	Ashley Magnuson	9.5.17	\$38,405.00
Mathson	Danielle	New Hire	Middle School	6th Grade Math Teacher	PEA	Casie Monson	9.5.17	\$50,318.00
Moe	Charles	Extra Duty	High School	Vocal Ensemble Director	Advisor/Coach	Mark Potvin	9.5.17	\$3,904.00
Moe	Charles	Extra Duty	High School	Fall Musical Asst. Director	Advisor/Coach	Mark Potvin	9.5.17	\$3,037.00
Moehlmann	Scott	Change in assignment	High School	Going to 1.0 for Photography/business	PEA	N/A	9.5.17	\$37,576.00
Moffat	Sarah	Change in assignment	Student Services	Guidance Counselor	PEA	Tami Duke	9.5.17	No change
Monson	Casie	Resignation	High School	Girls JV Tennis Coach	Activities	N/A	6.27.17	
Monson	Casie	Resignation	Middle School	6th Grade Math Teacher	PEA	N/A	6.27.17	
Ostroot	Tom	Extra Duty	High School	Cross Country Head Coach	Activities	Matthew Zook	8.14.17	\$4,565.00
Roy	Sandra	Retirement	Intermediate School	SpEd Para	Para	N/A	8.30.17	
Schmock	Cal	Extra Duty	High School	9th Gr. Football Coach	Activities	Erik Jacobs	8.14.17	\$3,205.00
Strickland	Karly	Extra Duty	High School	Asst. Volleyball Coach	Activities	Alex Fay	8.14.17	\$3,072.00
Thompson	Erin	Extra Duty	High School	Fall Musical Director	Advisor/Coach	Mark Potvin	9.5.17	\$3,382.00
Triplett	Brett	Change in assignment	High School	SpEd Teacher-Going from ALC/High School to Full time High School	PEA	N/A	9.5.17	No Change
Vaughn	Christina	New Hire	Student Services	Teacher	PEA	Christina Vaughn	9.5.17	\$62,723.00
Wogen	Eric	Extra Duty	Middle School	Middle School Boys Soccer Coach	PEA	Jon Duncan/Sandy Slinde	8.21.17	\$1,870.00

**Advisor/Coach Returning for the 2017-2018 School Year**

Last Name	First Name	Building	Job Title	Group	Effective Date	Wage
Alderick	Kris	High School	SADD Advisor	Advisor/Coach	2017-2018	\$868.00
Angstman	Mark	Middle School	Boys Basketball Coach	Athletics	2017-2018	\$2,086.00
Arens	Pat	High School	Head Girls Soccer Coach	Athletics	8.14.17	\$4,338.00
Aydt	Kelsey	Middle School	Girls Soccer Coach	Athletics	8.21.17	\$1,920.00
Baxter	James	High School	Jazz Band Director	Advisor/Coach	2017-2018	\$3,904.00
Baxter	James	High School	LINK Advisor	Advisor/Coach	2017-2018	\$1,252.00

Beck	Sara	High School	School Store/Concession	Advisor/Coach	2017-2018	\$3,841.00		
Benner	Bobbi	Middle School	WEB Advisor	Advisor/Coach	8.1.17	\$1,177.00		
Bergstrom	Courtney	Middle School	Volleyball Coach	Athletics	9.5.17	\$2,044.00		
Blomberg	Barb	Middle School	Volleyball Coach	Athletics	9.5.17	\$2,169.00		
Blomberg	Barb	Middle School	Girls Basketball Coach	Athletics	2017-2018	\$2,169.00		
Borich	Melissa	Middle School	WEB Advisor	Advisor/Coach	8.1.17	\$1,177.00		
Borich	Brandon	High School	Asst Football Coach	Athletics	8.14.17	\$3,904.00		
Brandell	Mitchel	High School	Asst. Girls Tennis Coach	Athletics	8.14.17	\$3,471.00		
Cairns	Nathan	High School	Asst. Boys Hockey Coach	Athletics	2017-2018	\$3,680.00		
Cinchy	Karen	High School	Head Boys Soccer Coach	Athletics	8.14.17	\$3,923.00		
Cloutier	Brett	High School	Head Boys Basketball Coach	Athletics	2017-2018	\$4,907.00		
Deden	Kristen	High School	Asst. FFA Advisor	Advisor/Coach	2017-2018	\$4,089.00		
Dettmer	Lee	High School	Asst. Football Coach	Athletics	8.14.17	\$4,109.00		
Dorr	Kelly	High School	Head Girls Tennis Coach	Athletics	8.14.17	\$4,338.00		
Ellingson	Keith	Middle School	Football Coach	Athletics	8.21.17	\$1,920.00		
Evans	Linda	High School	Asst. Speech Coach .5	Advisor/Coach	2017-2018	\$1,735.50		
Farmer	Joan	Middle School	Speech	Advisor/Coach	9.5.17	\$1,962.00		
Fay	Ryan	High School	Asst. Football Coach	Athletics	8.14.17	\$3,680.00		
Fillafer	Carol	Middle School	Jazz Band Director	Advisor/Coach	9.5.17	\$1,301.00		
Fillafer	Richard	High School	Fall Musical Asst. Director	Advisor/Coach	9.5.17	\$2,862.00		
Gateway	Jodi	Middle School	WEB Advisor	Advisor/Coach	8.1.17	\$1,202.00		
Gust	Elizabeth	High School	9th gr. Volleyball Coach	Athletics	8.14.16	\$2,630.00		
Halgrimson	Shania	High School	Fall Musical Asst. Director	Advisor/Coach	9.5.17	\$2,746.00		
Hanenburg	Roy	High School	Head Football Coach	Athletics	8.14.17	\$5,206.00		
Hasselberg	Derek	Middle School	Boys Basketball Coach	Athletics	2017-2018	\$2,169.00		
Hasselberg	Derek	Middle School	Girls Basketball Coach	Athletics	2017-2018	\$2,169.00		
Haubenschild	Bonnie	High School	Asst. Speech Coach .5	Advisor/Coach	2017-2018	\$1,735.50		
Hellman	Brian	High School	Head Wrestling Coach	Athletics	2017-2018	\$4,907.00		
Hershey	Logan	High School	Asst. Boys Swim/Dive	Athletics	2017-2018	\$3,205.00		
Holman	Kandy	Middle School	Yearbook Advisor	Advisor/Coach	9.5.17	\$1,536.00		
Howlett	Shawn	High School	Asst. Girls Basketball Coach	Athletics	2017-2018	\$3,531.00		
Jacobs	Erik	High School	Head Girls Basketball Coach	Athletics	2017-2018	\$4,907.00		
Jennings	Susan	Middle School	Knowledge Bowl	Advisor/Coach	9.5.17	\$1,127.00		
Johnson	Erin	High School	Winter Sideline Cheer Head Coach	Advisor/Coach	2017-2018	\$2,044.00		
Johnson	Erin	High School	Head Sideline Cheerleading Coach	Athletics	8.14.17	\$2,044.00		
Jones	Lora-Jean	High School	Fall Musical Choreographer .5	Advisor/Coach	9.5.17	\$1,518.50		
Joseph	Jade	High School	Yearbook Advisor	Advisor/Coach	2017-2018	\$4,172.00		
Joseph	Jade	High School	LINK Advisor	Advisor/Coach	2017-2018	\$1,177.00		
Joseph	Jade	High School	NHS-Co Advisor .5	Advisor/Coach	2017-2018	\$576.00		
Larson	Charissa	High School	Asst. Yearbook Advisor	Advisor/Coach	2017-2018	\$801.00		
Lehmann	Nicole	Middle School	Musical Director	Advisor/Coach	9.5.17	\$1,569.00		
Lerfald	Josh	High School	Asst. Gymnastics Coach	Athletics	2017-2018	3006.00 (prorated on Lane D step 1)		
Levering	Andrea	High School	Student Council Advisor	Advisor/Coach	2017-2018	\$2,862.00		

Lupkes	Jessica	High School	FFA Head Advisor	Advisor/Coach	2017-2018	\$4,338.00		
Majerus	Michelle	Middle School	Newspaper Advisor	Advisor/Coach	9.5.17	\$1,569.00		
Martindale	Jennine	High School	Head Gymnastics Coach	Athletics	2017-2018	\$3,841.00		
Mattick	Thor	High School	Head Speech Coach	Advisor/Coach	2017-2018	\$4,338.00		
McAlpine	Allyson	High School	Asst. Volleyball Coach	Athletics	8.14.17	\$3,139.00		
McElhone	Paul	High School	Head Girls Hockey Coach	Athletics	2017-2018	\$5,206.00		
McGathey	Olivia	High School	Mock Trial .5	Advisor/Coach	2017-2018	\$588.50		
McGathey	Olivia	High School	Asst. Speech Coach .75	Advisor/Coach	2017-2018	\$2,304.00		
Meidl	Mimi	Middle School	Vocal Music/Treb Choir Director	Advisor/Coach	9.5.17	\$1,370.00		
Meidl	Mimi	Middle School	Sensations Director	Advisor/Coach	9.5.17	\$1,301.00		
Meixell	Darrien	High School	Asst. Wrestling Coach	Athletics	2017-2018	\$3,456.00		
Miller	Jane	Middle School	Jazz Band Director	Advisor/Coach	9.5.17	\$1,301.00		
Moore	Julie	High School	Fall Musical Asst. Director	Advisor/Coach	9.5.17	\$2,862.00		
Murkve	Alex	High School	Knowledge Bowl	Advisor/Coach	2017-2018	\$2,086.00		
Naumann	Dillon	High School	9th Grade Boys Basketball Coach	Athletics	2017-2018	\$3,205.00		
Nelson	Zach	Middle School	Wrestling Coach	Athletics	2017-2018	\$1,962.00		
Neubauer	Jordan	High School	Asst. Boys Basketball Coach	Athletics	2017-2018	\$3,680.00		
Olive	Brandon	High School	Asst. Boys Soccer Coach	Athletics	8.14.17	\$3,139.00		
Paddock	David	High School	Robotics	Athletics	2017-2018	\$3,605.00		
Paddock	David	High School	Asst. Football Coach	Athletics	8.14.17	\$3,755.00		
Papesh	Chris	High School	Asst. Girls Hockey Coach	Athletics	2017-2018	\$3,456.00		
Patnode	Doug	Middle School	Football Coach	Athletics	8.21.17	\$2,283.00		
Patnode	Mary	High School	Head Volleyball Coach	Athletics	8.14.17	\$4,338.00		
Paurus	Lindsay	High School	Head Boys Swim/Dive	Athletics	2017-2018	\$4,338.00		
Paurus	Lindsay	High School	Asst. Girls Swim/Dive	Athletics	8.14.17	\$3,404.00		
Powers	Ratana	High School	Asst. Gymnastics Coach	Athletics	2017-2018	\$3,072.00		
Sawatsky	Caleb	Middle School	Girls Soccer Coach	Athletics	8.21.17	\$1,920.00		
Schramel	Robyn	High School	Asst. Girls Soccer Coach	Athletics	8.14.17	\$3,471.00		
Servaty	Louis	High School	Asst. Wrestling Coach	Athletics	2017-2018	\$3,680.00		
Siewert	Ellen	High School	Asst. Speech Coach .25	Advisor/Coach	2017-2018	\$913.00		
Solberg	Alyssa	Middle School	Volleyball Coach	Athletics	9.5.17	\$1,962.00		
Sorenson	Heather	High School	Mock Trial .5	Advisor/Coach	2017-2018	\$613.50		
Sorenson	Heather	High School	LINK Advisor	Advisor/Coach	2017-2018	\$1,252.00		
Sorenson	Heather	High School	NHS-Co Advisor .5	Advisor/Coach	2017-2018	\$576.00		
Steinbrecher	Jon	Middle School	Boys Basketball Coach	Athletics	2017-2018	\$2,169.00		
Ternes	Mike	High School	Asst. Football Coach	Athletics	8.14.17	\$3,904.00		
Thiel	Joe	High School	Video Board Operator/Advisor	Advisor/Coach	2017-2018	\$3,841.00		
Thiel	Joe	High School	Asst. Girls Soccer Coach	Athletics	8.14.17	\$3,471.00		
Thomson	Abby	High School	9th gr. Volleyball (Float) Coach	Athletics	8.14.17	\$2,630.00		
Trujillo	Nicole	Middle School	Speech	Advisor/Coach	9.5.17	\$2,169.00		
Vita	Carla	Middle School	Robotics	Advisor/Coach	9.5.17	\$1,962.00		
Walquist	Scott	Middle School	Football Coach	Athletics	8.21.2017	\$2,169.00		
Wentworth	Taylor	High School	One Act Play	Advisor/Coach	2017-2018	\$2,688.00		

<b>CELLULAR DEVICE REIMBURSEMENT CHOICES-</b>				
<b>(There is no change to the amounts from the past year.)</b>				
CELLULAR DEVICE WITH NO DATA PLAN REQUIRED				
	\$45.00			
CELLULAR DEVICE WITH DATA PLAN REQUIRED				
	\$90.00			
This reimbursement is paired with a district procedure that gives guidance on requesting a cellular device reimbursement. Generally, Administrators, Custodial, and Technology staff are expected to have a level of communication outside the district or between buildings because of their job duties.				

<b>2017-2018 EVENT WORKERS PAY</b>					<b>board meeting</b>
					<b>Approved</b>
<b>LOCAL OFFICIALS</b>		<b>LOCAL EVENT WORKERS</b>			
<b>VOLLEYBALL</b>			TICKET TAKERS/SELLERS	\$26.49	TEACHERS
JV	\$65.00		TICKET TAKERS/SELLERS	\$9.50/HOUR/Min. Wage	HOURLY STAFF
9TH GRADE	\$50.00		VARSITY ANNOUNCER ALL SPORTS	\$26.49	
8TH GRADE	\$50.00		V/JV/9 CLOCK OPERATOR	\$30.00	
7TH GRADE	\$50.00		V/JV SCOREBOOK	\$30.00	
			V/JV VOLLEYBALL LINES	\$30.00	
<b>BASKETBALL</b>			SWIM TABLE WORKERS	\$30.00	
JV	\$65.00		VARSITY FOOTBALL CHAINS	\$30.00	
9TH GRADE	\$50.00		TRACK EVENT WORKERS	\$40.00	
8TH GRADE	\$50.00		CROSS COUNTRY WORKERS	\$40.00	
7TH GRADE	\$50.00		EVENT SUPERVISORS	\$45.00	
			FOOTBALL PATROLLERS	\$45.00	
<b>BASEBALL</b>			MUSIC USHERS	\$45.00	
JV	\$65.00		ACTIVITIES(OTHER) & ATHLETIC TRAINERS	\$25.00	Hourly
9TH GRADE	\$50.00		STARTER-TRACK	\$150.00	
8TH GRADE	\$50.00				
7TH GRADE	\$50.00				
			Event Worker fees are approved yearly. We have a slight change in the Ticket Taker Hourly pay as minimum wage is increasing to \$9.50 per year.		
<b>SOFTBALL</b>					
JV	\$65.00				
9TH GRADE	\$50.00				
8TH GRADE	\$50.00				
7TH GRADE	\$50.00				
Note the section sets varsity level officials rate of pay					

## 2017-2018 AGREEMENT

This Agreement (“Agreement”) is entered into by and between Independent District No. 477, Princeton (“Princeton”) and Independent School District No. 912, Milaca (“Milaca”).

WHEREAS, Princeton employs a full-time Native American Indian Liaison;

WHEREAS, Milaca would like to pay Princeton to assign its Native American Indian Liaison to provide an average of twenty hours of service per week to students and families in Milaca;

NOW, THEREFORE, IN CONSIDERATION OF the forgoing, the promises contained in this Agreement, and other valuable consideration, the sufficiency of which is acknowledged, Princeton and Milaca agree as follows:

1. **Term.** The effective date of this Agreement is August 29, 2017. This Agreement will automatically terminate, without further action from either party, at 5:00 p.m. on June 29, 2018, unless the parties affirmatively act to renew this Agreement or to enter into a successor agreement. Either party may terminate this Agreement before June 29, 2018, by providing written notice to the other party thirty (30) calendar days in advance of the effective date of termination. If early termination occurs, Milaca will be responsible for paying a prorated amount of the payment specified in the third numbered paragraph of this Agreement.
2. **Assignment of Native American Indian Liaison.** For each week that school is in session while this Agreement is in effect, Princeton will assign and direct the Native American Indian Liaison to provide an average of twenty (20) hours of service to Milaca students and their families.
3. **Payment.** Milaca will pay Princeton for one-half of all costs and expenses that Princeton incurs in employing a full-time Native American Indian Liaison during the 2017-2018 school year. Such costs and expenses include, but are not limited to, wages, benefits, workers’ compensation insurance, unemployment compensation insurance, liability insurance, the provision of office space, and the provision of a school computer. On or before January 15, 2018, Princeton will provide written notice to Milaca of the total costs and expenses that Princeton incurred in employing the Native American Indian Liaison from August 29, 2017 through December 31, 2017. Milaca will pay Princeton that amount on or before January 30, 2018. On or before July 15, 2018, Princeton will provide written notice to Milaca of the total costs and expenses that Princeton incurred in employing the Native American Indian Liaison from January 1, 2018 through June 30, 2018. Milaca will pay Princeton that amount on or before July 30, 2018. If Princeton provides notice of the total amount of the costs and expenses after any of the deadlines specified in this paragraph,

Milaca will not be responsible for paying the costs and expenses until fifteen (15) calendar days after it receives notice from Princeton of the amount that is due.

4. **MDE Funding.** While this Agreement is in effect, Milaca will submit their plan to MDE that allows Milaca to pay Princeton Public Schools for the Native American Indian monies.

5. **Unemployment Compensation.** In the event that Princeton terminates the Native American Indian Liaison's employment on or before June 30, 2018 and is obligated to pay unemployment compensation to the Native American Indian Liaison, Milaca will be responsible for reimbursing Princeton for one-half of the unemployment compensation it pays to the Native American Indian Liaison. This provision will survive the termination of this Agreement.

6. **Office Space and Furnishings.** During the term of this Agreement, Princeton will provide office space for the Native American Indian Liaison and appropriate furnishings, including a school computer with internet access. The office space will be available during regular school hours for use by the Native American Indian Liaison.

7. **Relationship of the Parties.** Princeton and Milaca not entering into a partnership or a joint venture, and nothing in this Agreement may be construed to create a partnership or joint venture between Princeton and Milaca. Neither party has any authority or power to take any unilateral action that could legally bind the other party. For purposes of the Minnesota Government Data Practices Act, each party is considered to be an independent contractor relative to the other party.

8. **Employment Status.** The Native American Indian Liaison will be considered to be an employee of Princeton at all times and for all purposes. Princeton maintains full control over its employees, including the Native American Indian Liaison, and is solely responsible for all employment and administrative functions related its employees, including, but not limited to, supervision, evaluation, payroll and deductions, maintenance of all required insurance (e.g. workers' compensation insurance, unemployment insurance, liability insurance), and any disputes or grievances.

9. **Liability Claims.** Each party is solely responsible for the alleged acts and omissions of its own officers, employees, officials, agents, and representatives. To the extent permitted by law, Princeton or its insurer must defend, indemnify, and hold Milaca harmless for any claims that are made against Milaca based on any omissions or actions alleged to have been taken by the Native American Indian Liaison. To the extent permitted by law, Milaca or its insurer must defend, indemnify, and hold Princeton harmless for any claims that are made by

the Native American Indian Liaison or any other person based on any alleged omissions or actions alleged to have been taken by any employee of Milaca.

10. **Notices.** Princeton must provide all official notices under this Agreement to Milaca by electronic mail or by U.S. Mail addressed to Milaca's Superintendent at 500 MN-23, Milaca, MN 56353. Milaca must provide all official notices under this Agreement by electronic mail or U.S. Mail addressed to Princeton's Superintendent at 706 First Street, Princeton, Minnesota 55371. Either party may designate a different addressee or address at any time by giving written notice to the other party. Notice that is delivered by U.S. Mail is effective upon mailing. The parties may also agree, in writing, to permit notices to be delivered by email. If such permission is granted, any notice that is delivered by email is effective upon transmission

11. **Data Practices.** All other government data that are collected, created, received, or maintained as a result of this Agreement must be administered in compliance the Minnesota Government Data Practices Act ("MGDPA"). Nothing in this Agreement may be construed to modify the responsibilities of either party under the MGDPA. To the extent that the Native American Indian Liaison collects, generates, or otherwise maintains educational data or personnel data because of any service provided to any student or family of Princeton, Princeton has the exclusive right and responsibility to maintain and administer such data. To the extent that the Native American Indian Liaison collects, generates, or otherwise maintains educational data or personnel data because of any service provided to any student or family of Milaca, Milaca has the exclusive right and responsibility to maintain and administer such data.

12. **No. Assignment.** Neither party may assign, delegate, or otherwise transfer any rights or obligations under this Agreement to another party.

13. **No Unlawful Discrimination.** The District and Milaca each agree to provide equal employment opportunities to all employees and applicants for employment in accordance with all applicable federal, state, and local laws. No person may be excluded from full employment rights in, participation in, be denied the benefits of, or be otherwise subjected to discrimination in any program, service, or activity based on race, color, creed, religion, national origin, sex (gender), marital status, familial status, disability, public assistance, age, sexual orientation, or local human rights commission activity. In addition, Princeton and Milaca each specifically agree not to discriminate unlawfully against any student in any program, service, activity, or decision based on race, color, creed, religion, national origin, sex (gender), marital status, disability, public assistance, age, or sexual orientation.

14. **Equal Drafting.** In the event that either party asserts that a provision of this Agreement is unlawful, unenforceable, or ambiguous, this Agreement must be construed to have been drafted equally by the parties.

15. **Entire Agreement.** This Agreement represents the full and complete agreement between the parties regarding the Native American Indian Liaison. Neither party has relied on any promise, representation, or inducement that is not stated in this written Agreement. This Agreement supersedes any and all prior agreements between the parties related to the Native American Indian Liaison. To be valid, any amendments or addendums to this Agreement must be in writing and must be signed by duly authorized representatives for each party. An executed copy of this Agreement will have the same legal effect as the original.

IN WITNESS WHEREOF, the parties have caused this Agreement to be duly executed and intend to be bound by it.

**INDEPENDENT SCHOOL DISTRICT NO. 447, PRINCETON**

_____ School Board Chair Independent District 477	_____ Date
---	---------------

_____ School Board Clerk Independent District No. 477	_____ Date
---	---------------

**INDEPENDENT SCHOOL DISTRICT NO. 912, MILACA**

_____ School Board Chair Independent District 912	_____ Date
---	---------------

_____ School Board Clerk Independent District No. 912	_____ Date
---	---------------

RASW: 70170

Date of fundraiser: <i>Year Long / Focus - October</i>		Projected profit: <i>See potential earnings on handout</i>	Amount earned:
Group or organization proposing the fundraiser: <i>Princeton Middle School</i>		Item(s) being sold: <i>Gift cards for local stores and online organizations</i>	
Company/organization supplying items to be sold: <i>Shop with Scrip</i>			
The money raised will be used for: <i>Student Activities: Field trips &amp; Scholarships</i>			
The school board recognizes a desire and a need for fundraising to support district programs or student activities. The school board also recognizes a need for some constraint to prevent fundraising activities from becoming too numerous and overly demanding on employees, students, and the general public.			Place a checkmark beside each box to indicate whether the criteria for fundraising are met.
Pupils may engage in raising funds, under the control of the school, for certain approved activities and for a limited number of charities, subject to the following conditions:			
		Yes	No
1.	Individual student participation is optional. Students will not be pressured to sell products or solicit funds and will not be required to meet a sales quota to participate in an activity or field trip.	X	
2.	The charity involved has been selected by the student body as one in which they wish to participate (if applicable).		
3.	Addressed envelopes are available to people who prefer to donate directly rather than purchase a product.	X	
4.	The raising of funds shall not be done during normal class time. Students will be informed that they are not to fundraise during class time.	X	
5.	Information is going home with the students to the parents explaining the district's fundraising policy.	X	
6.	I have discussed this fundraiser with the administrator and have identified the purpose of the fundraiser.	X	
7.	The students participating in the fundraiser have been informed that they are representing the school, the student organization and the community in a responsible manner. All rules pertaining to student conduct and discipline extend to student fundraising activities.	X	
8.	Door-to-door sales are discouraged, but if approved, students may be allowed to sell door-to-door according to the following standards: <ul style="list-style-type: none"> <li>• K-8: Only allowed if a parent or guardian is with the student</li> <li>• 9-12: Groups of two or more students working together.</li> </ul>	X	
I have reviewed Policy #511 Fundraising and agree to its provisions:			
Date: <i>7/24/17</i>	Teacher/Sponsor Signature: <i>Arona Deavel</i>		
As administrator, I understand that approval of this fundraiser means that all provisions of the above policy have been complied with to my satisfaction. _____ APPROVED _____ NOT APPROVED			
Date: <i>7/24/17</i>	Administrator Signature: <i>David Hill</i>		
Date: <i>7.26.17</i>	Superintendent Signature: <i>Julia Espe</i>		
Date:	School Board Chair Signature:		



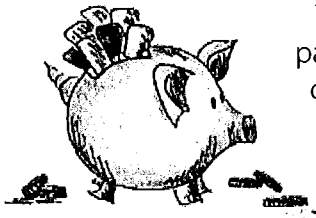
# What is Scrip Fundraising?

## It's fundraising while you shop!®

Stop selling and start earning with scrip fundraising! Your members can purchase gift cards for America's most popular retailers through Great Lakes Scrip Center® (GLSC) and use them for their everyday purchases. Your organization earns money with each gift card purchase.



Scrip gift cards are the same gift cards you can purchase from the retailer. With over 300 of the country's biggest brands, including grocery and department stores, gas stations, restaurants, hotels and home improvement, GLSC has something to appeal to every family in your organization.

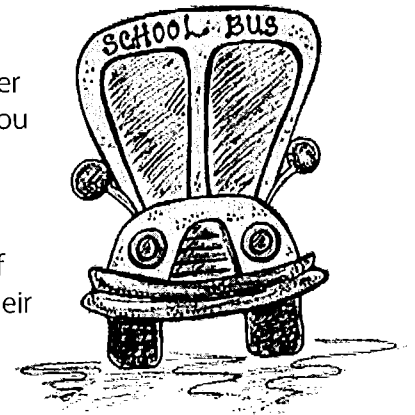


The organization's coordinator orders scrip from GLSC at a discount, and your families pay face value for their gift cards. That difference is an instant rebate for your organization, and your families don't have to purchase anything they don't need.

## Calling all non-profits!

More than seventeen thousand nonprofit organizations all over the country are taking advantage of scrip fundraising, and you can too. Scrip fundraising is perfect for schools, churches, sports teams, bands, and more!

Any nonprofit group can start taking advantage of scrip fundraising just by using scrip gift cards for their everyday purchases.






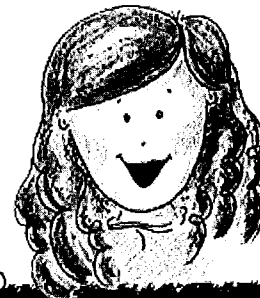
## Rebates add up quickly!

By simply planning ahead on everyday purchases, the average family can earn at least \$11 a week. That modest number adds up quickly. It's easy for a family to earn \$500 - \$1,000 in a year, and many families earn much more! The more families participating, the bigger the earnings for your organization. You'll love how easy it is to reach your fundraising goals with scrip!

Your organization decides how to use your rebates. Maybe it's for a general fund, a special savings fund, or even back to the families themselves to be used for tuition, special trips, or other organization expenses. The choice is yours!

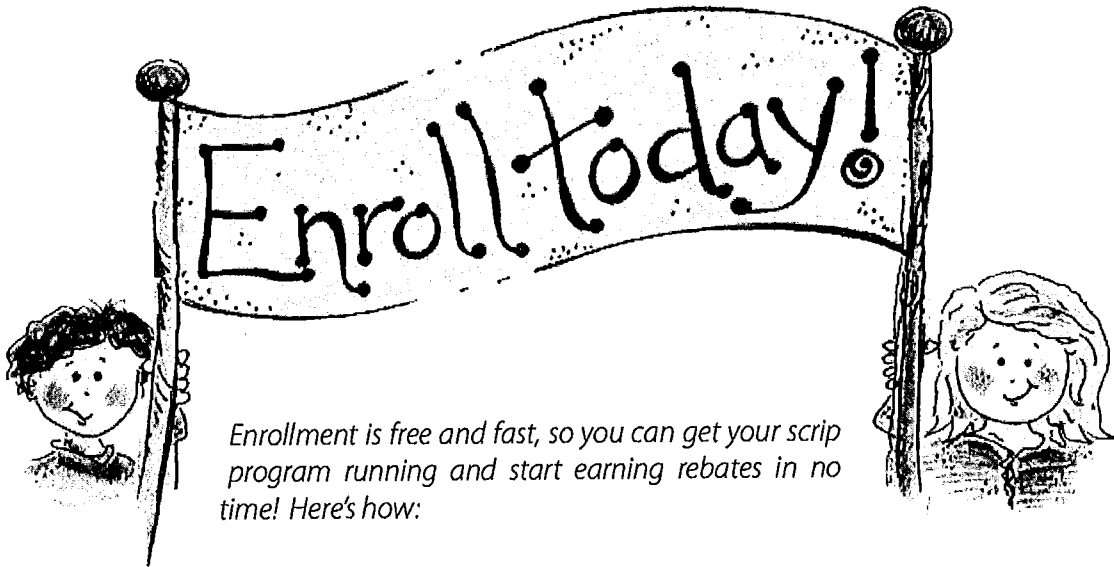
## How much can one family raise per year?

  	Average Rebate	Spending Per Month	Earnings Per Year
Grocery	4 %	\$600	\$288
Gas	3 %	\$345	\$124
Dining Out	8 %	\$100	\$96
Fast Food	8 %	\$120	\$115
Clothing & Accessories	8 %	\$160	\$153
Home Improvement	4 %	\$130	\$62
Online Shopping	10 %	\$85	\$102
Movies/Books/Gadgets	5 %	\$60	\$36
<b>TOTAL</b>		<b>\$1,600</b>	<b>\$976</b>



## Yearly Fundraising Potential

20 Families	\$19,520
50 Families	\$48,800
100 Families	\$97,600



Enrollment is free and fast, so you can get your scrip program running and start earning rebates in no time! Here's how:

1. Visit ShopWithScrip.com and click on the register button at the top. Then click **Start a Scrip Program** and create a ShopWithScrip account.
2. Fill out your program information and choose your method of payment. Click **I agree** and print your enrollment form
3. Provide proof of non-profit status and banking information if choosing ACH payment.
4. Submit required documents to GLSC by mail, fax, or email.
  - Great Lakes Scrip Center  
PO Box 8158  
Kentwood, MI 49518-8158
  - Fax - 1.888.865.9655
  - Email - RFIMail@glscscrip.com

Questions? Call 1-800-727-4715 Opt. #5



**Wold Architects  
and Engineers**

332 Minnesota Street  
Suite W2000  
Saint Paul, MN 55101  
651 227 7773

**ics** | CONSULTING, INC



**Princeton Public Schools**

---

# Long Range Planning: Board Work Session

July 18, 2017

**PLANNERS  
ARCHITECTS  
ENGINEERS**



- Discuss Ideas for Projects
- Diagrams / Concepts
- Issues
- Next Steps?





# Overview of Typical Approach

ics | CONSULTING, INC



## KEY COMPONENTS OF A MASTER PLAN

- » Fact Based
- » Perceptions Validated
- » Agreement on Need
- » Community Involved In Process
- » Criteria Based for Decision Making





# Preliminary List of Needs

ics | CONSULTING, INC

- Field House--2 Additional basketball courts
  - Locker rooms
  - Storage
  - Batting Cages
  - Tennis Nets
  - *Indoor Track--Walking track or indoor track meet track?*
  - Volleyball Standards
  - Concessions
  - Ticket Booth
  - Toilets
- Weight Room and Cardio room, with Yoga/Dance Studio (for cheer)
- Gymnastics Room/Studio (Year-round)--Old pool area? (Potentially ideal for lowered pit, spectator seating, etc.)
- Pool with 8 lanes and a Diving Well--at least 10M; idea of walking track? (Best location - Middle School)
- Wrestling Room
- Turf on John Harvey Field--1M
- *Upgrade /Enlarge shops, demo asbestos*
- Outside storage area near shops
- *Address core area at Intermediate School-Kitchen, Lunchroom & Gym*
- *High School revitalizing common areas, Kitchen, music area*

20



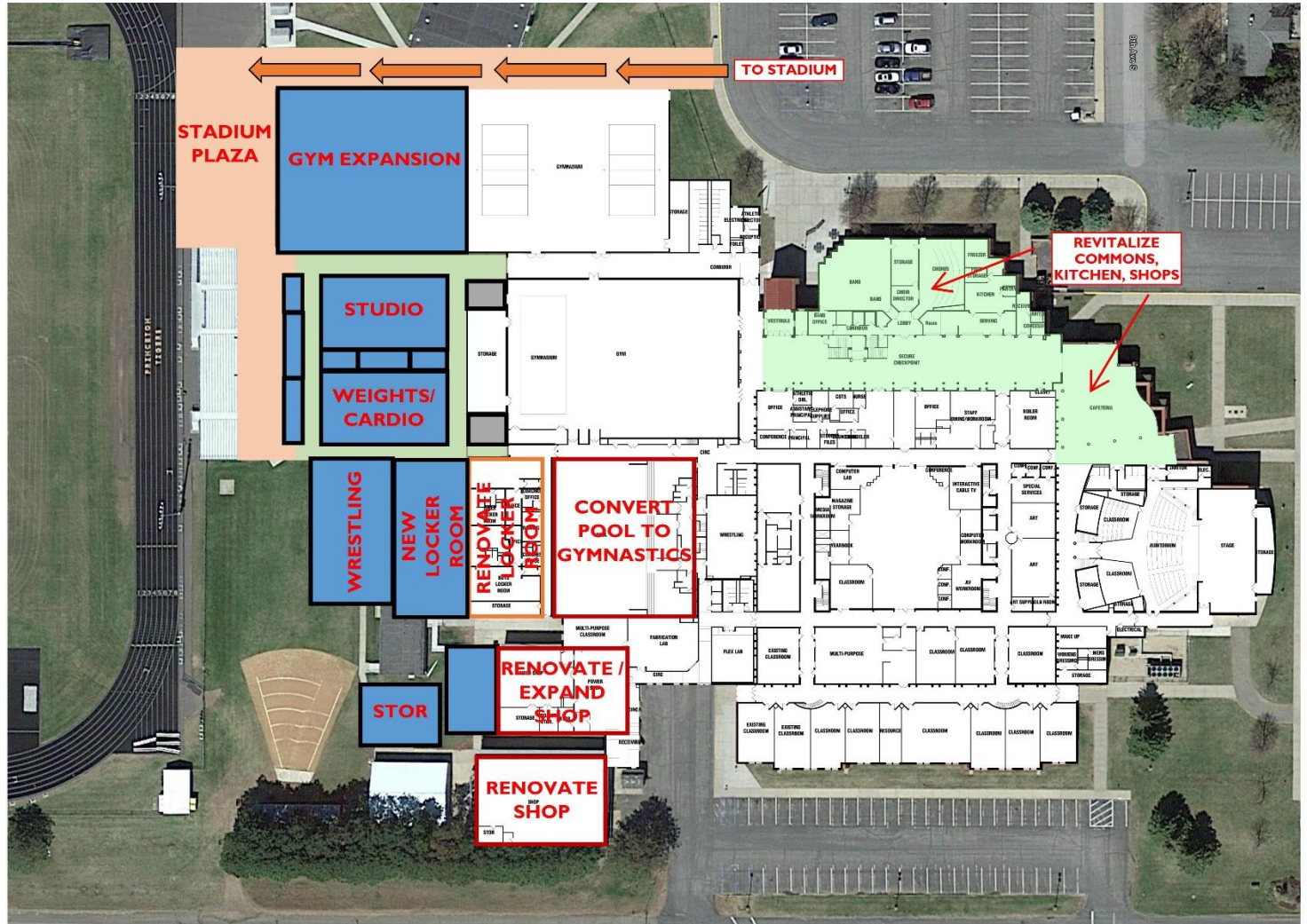


# Expansion / Renovation Opportunities

ics CONSULTING, INC

## Issues:

- Hard surface significantly increased
- Fire Lane
- Need to determine scope of Shops, Common Areas
- Will need to relocate some Field events



## High School



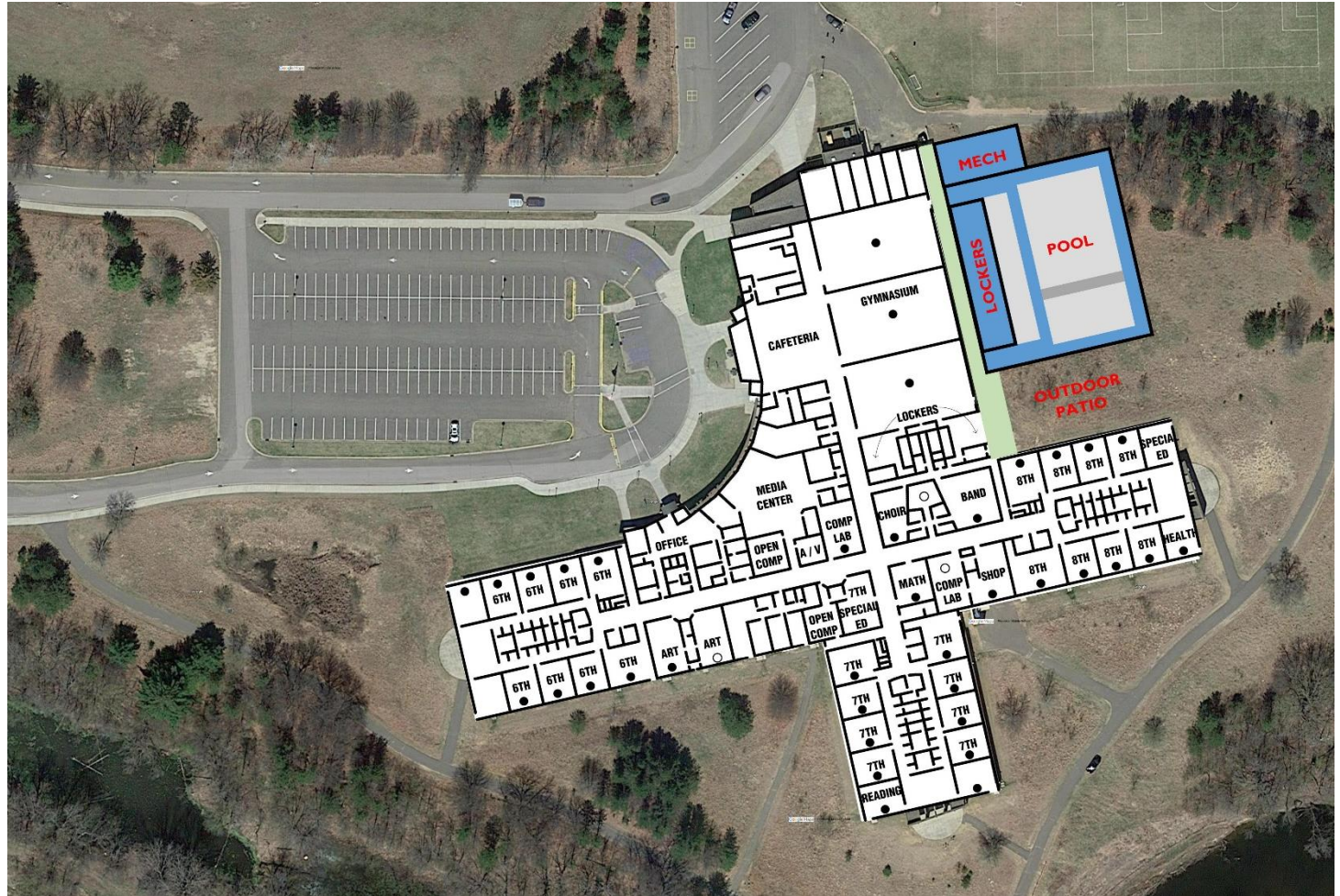
# Expansion / Renovation Opportunities

ics CONSULTING, INC

## Issues:

- Building not designed for easy expansion
- Public route to pool not direct
- Need to maintain space next to classrooms

22



**Middle School**



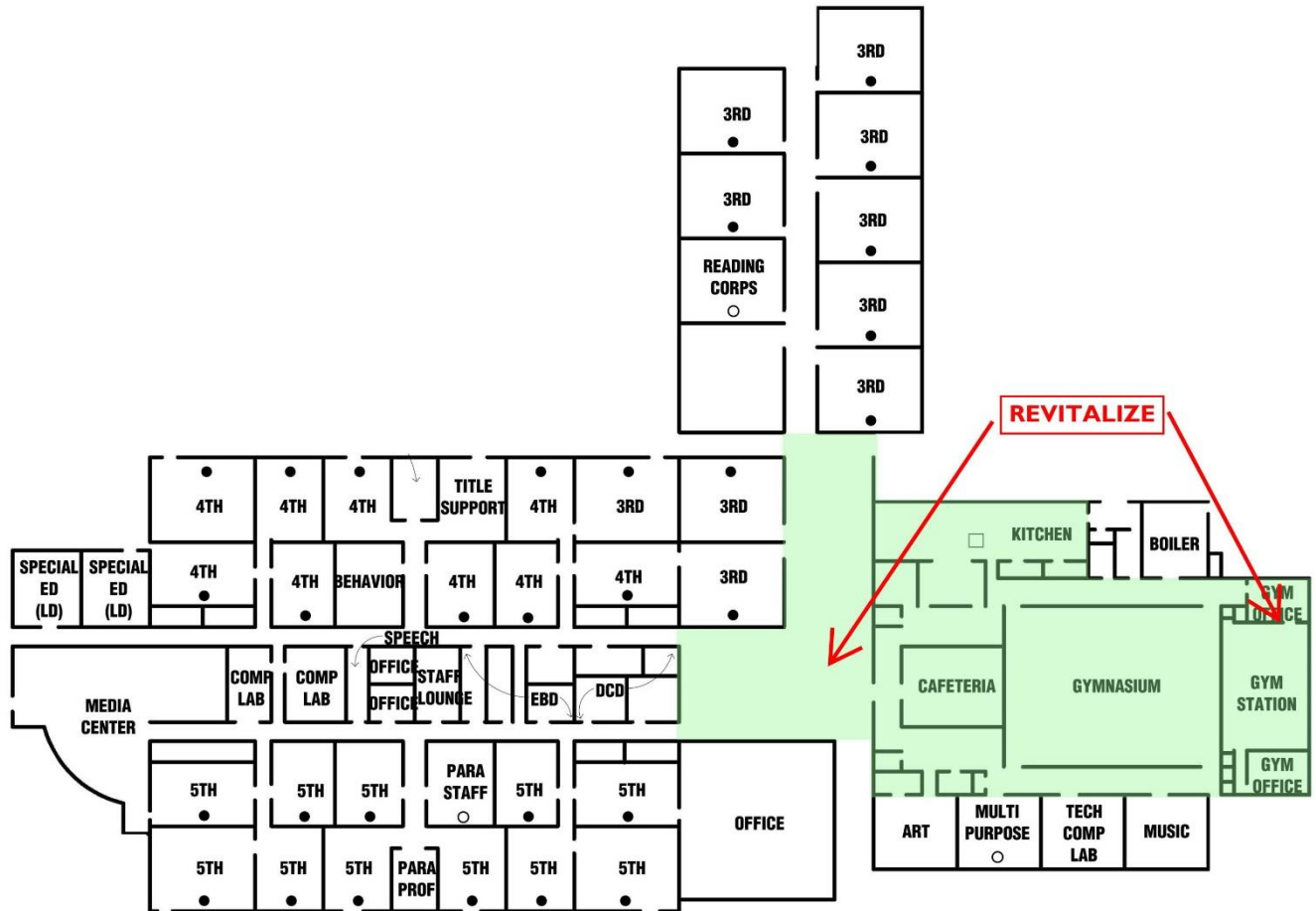
# Expansion / Renovation Opportunities

ics CONSULTING, INC

## Issues:

- Need to determine scope of Common Areas

23



## Intermediate School



# Programs

## HIGH SCHOOL ACTIVITIES ADDITION

AREA	Individual Spaces	Size
Field House Gymnasium Expansion 8' Between Courts	(2 Stations)	13,500 SF
Wrestling		4,800 SF
Studio		4,800 SF
Weights / Cardio		4,800 SF
Gym Storage		1,200 SF
New Team Locker Room		5,000 SF
Toilets		1,400 SF
Concessions		300 SF
<b>TOTAL NET SQUARE FEET</b>		<b>35,800 SF</b>
NET TO GROSS FACTOR (Includes mechanical, electrical, circulation, and maintenance / janitorial spaces)	x	1.40
<b>TOTAL GROSS SQUARE FEET</b>		<b>50,120 SF</b>

**DRAFT**

## HIGH SCHOOL RENOVATIONS

AREA	Size
Pool Conversion to Gymnastics Gym	10,000 SF
Gut Existing Locker Rooms - Convert to One Locker Room	5,000 SF
Commons / Kitchen / Music (Scope TBD)	
Shops (Scope TBD)	
Shops Expansion (Scope TBD)	

## OTHER

- New Storage Building
- Stadium Entry / Walk





# Programs

ics CONSULTING, INC

## MIDDLE SCHOOL POOL ADDITION

AREA	Individual Spaces	Size
Stretch Pool		11,400 SF
Includes Diving Well		
Spectator Seating		2,000 SF
Team Seating		400 SF
Storage		600 SF
Pool Mechanical / Filters		1,200 SF
Locker Rooms	2 @ 1,000	2,000 SF
Team Locker Rooms	2 @ 250	500 SF
Pool Office		250 SF
Concessions		200 SF
<b>TOTAL NET SQUARE FOOTAGE</b>		<b>18,550 SF</b>
NET TO GROSS FACTOR	x	1.40
(Includes mechanical, electrical, toilets, circulation, and maintenance / janitorial spaces)		
<b>TOTAL GROSS SQUARE FOOTAGE</b>		<b>25,970 SF</b>

**DRAFT**





# Project Costs

ics | CONSULTING, INC

**High School Activities Addition / Renovations**      **\$26.4 – 28.4**

**Synthetic Turf @ Stadium**      **\$1.8 - 2.4**

**Pool Addition**      **\$9.4 - 10.4**

**Commons Renovations (HS & IS)**      **TBD**

**DRAFT**





# Potential Partners?

ics | CONSULTING, INC

- **Fairview Northland**
- **City of Princeton**
- **USDP**
- **Health Partners**
- **Others?**





# Next Steps

ics | CONSULTING, INC

- *Additional Items to Study?*
- *Timeline?*
- *Develop Potential “Project” Scenarios for pricing?*
- *Other?*

28



***Making smart decisions!***

# Outdoor Classrooms

PS and IS

# How this began...

Tom Ostroot's vision....

Planning for new Primary School

Design of the school

30



**PRINCETON**  
PRIMARY SCHOOL

# At about the same time. . .

- Becky Pollard's outdoor education quest
- Workshop last summer
- Working with students last year
- Taking advantage of free local outside resources at or near the school



# Outdoor Classroom Model--Prairie Wetlands Learning Center-Fergus Falls

## 4-Day Workshop - Teaching in the Outdoor Classroom

- Explored ways to use outdoor classroom with 5th grade Explorers Biology Camp
- Hands-on practice using weather monitoring equipment, field guides & journals



4th & 5th grade classrooms located in the Prairie Wetlands Learning Center



# Teaching MN Standards Outside



Name: _____		Date: _____	
<b>Describe your Plot</b>			
Location: _____	Temperature: _____	Sunrise _____ a.m.	
	degrees fahrenheit	Sunset _____ p.m.	
perimeter: _____	degrees celsius	Hours of Sunlight _____	
area: _____	Cloud Type: _____	Moon Phase _____	<input type="radio"/>
Soil Temperature		Mean: _____	
_____		Median: _____	
		Range: _____	
Wind Speed		Mean: _____	
_____		Median: _____	
		Range: _____	



Nature Notebook Example

5<sup>th</sup> grade MN standard: 5.3.2 Develop and use formulas to determine the area of triangles, parallelograms, and figures that can be decomposed into triangles.

5.1.3.4.1- Use appropriate tools and techniques in gathering, analyzing and interpreting data.

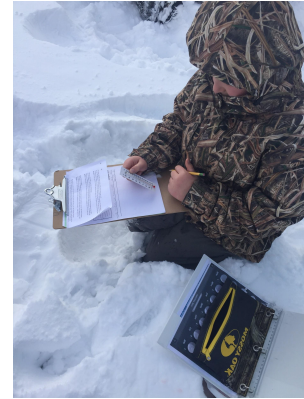
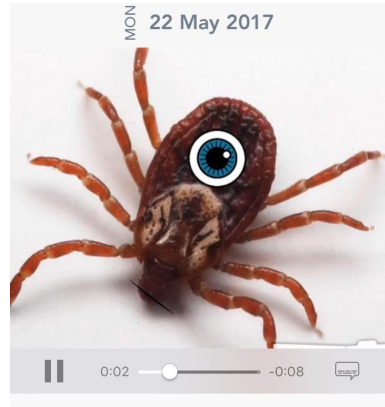
5<sup>th</sup> grade MN standard: 5.4.1 Display and interpret data; determine mean, median and range.

- Record the wind speed, air temperature, and soil temperature and determine the *mean*, *median*, and *range* of your data.

# You can teach just about anything outside...

Even in the Winter

Nature technology projects after viewing insects in our bug boxes.



Writing MN Standard 5.6.2.2  
Write informative text to examine a topic.

# Sherburne Refuge Visits Last Year

Sue Hix

- 2nd grade
- 1st grade



# Why Outdoor Learning?

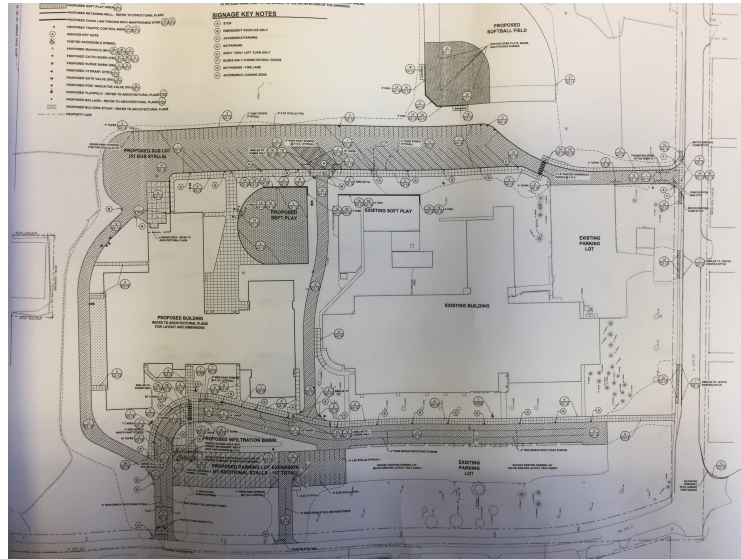
- Helps social development
- Aids physical development and coordination
- Increases motor skills
- Nurtures creativity
- Teaches collaboration
- Develops leadership skills
- Teaches appreciation of nature and outdoor activity
- Can decrease stress & heart rate



“What’s important is that children have an opportunity to bond with the natural world, to learn to love it, before being asked to heal its wounds.” *David Sobel, Beyond Ecophobia*

# Two Outdoor Areas

1. Wooded area to the north of the Primary School
2. Area between the two schools (Primary and Intermediate)



# Areas in the Outdoor Spaces

- Climbing/Balance
  - Log steps
  - Natural log balance beam
- Gathering
  - Log/bench seating for 32 students
- Music and Movement
  - Ground level stage
  - Outdoor marimba
  - Log bench seating
- Dirt Digging
  - In ground dirt digging bed with rock-lined perimeter



# More Areas:

- Building
  - Table and stump stools
- Messy Materials
  - Branches and other natural materials, ready to build!
  - Mud kitchen
- Multipurpose
  - Picnic tables for a variety of activities
- Nature Art
  - Art panel and stump stool seating
- Science Observation
  - Picnic table and storage for close observation tools



# Design Phase

Recruiting community members and families to “outfit” our outdoor spaces with trees that have fallen.

Other needs to be asking from the community:

- Wood chips
- Tree trunk chairs
- Picnic tables
- Art Panel
- Marimba



# Next Year at Sherburne Refuge

- Planning for refuge visits already underway despite staffing changes at refuge
- Teacher workshop in early August for 4th-grade science teachers
- Committed teachers trained to use the outdoors as a classroom will deliver standards-based lessons with the aid of experienced refuge volunteers
- Community help with cost of busing would be welcome



# Questions?

