

Princeton Public Schools - ISD 477
Thursday, February 6, 2014 at 7:00 PM
Regular School Board Meeting
District Office Board Room

OUR VISION
NO BOUNDARIES TO LEARNING

OUR MISSION
TO DEVELOP THE POTENTIAL IN EACH PERSON THROUGH ACADEMIC & EXTRA-CURRICULAR PROGRAMS

PROCEDURAL ITEMS

1. Call to Order and Pledge of Allegiance
2. Roll Call
3. Citizen Comments

REPORTS

1. Board Members Committee Reports
2. Student Council Report
3. Superintendent Report

APPROVE AGENDA

DISCUSS and ACT on PREVIOUS BOARD MEETING MINUTES 3

CONSENT AGENDA

The consent agenda consists of non-controversial items that the Board adopts routinely without debate. Any single member may remove an item from consent agenda by requesting removal at the time the consent agenda is moved for adoption. The full text of items approved by consent may be found at the conclusion of the agenda.

1. Personnel 9
2. Non Resident Agreements 10

Informational Items

1. Middle School Strategic Growth and Change Framework (Principal Dan Voce) 11

ACTION ITEMS

1. High School Program of Studies 12
2. Facilities 15

Motion to approve proceeding with planning, development, approvals, design, and implementation of a District-wide improvements project to be funded thru a voter-approved bond referendum on or near May 20, 2014, to include construction of a new K-2 elementary building; improvements at the existing High School including elimination of the portable classrooms, kitchen &

cafeteria renovations, creation of additional gymnasium space, ADA upgrades, and IT Shop improvements; and security and technology improvements throughout the District.

This motion directs the District administration to work with Wold and ICS to proceed with further development of the project scopes and completion and submission of necessary applications and documentation to the Minnesota Department of Education for formal review and comment related to the project with total project cost not to exceed \$30 Million.

MEETINGS TO BE SET

ADDITIONS TO AGENDA

**ADJOURN - Pursuant to Minnesota Statutes section 13D.05, subdivision 2(b),
I move to close the meeting for negotiation strategies.**

Call to order and Pledge of Allegiance

The regular meeting of the School Board of District #477 was called to order by Chair Deb Ulm on the **28th day of January 2014, at 7:00 p.m.** in the District Office Board Room.

Roll Call: Members Present: Craig Johnson, Eric Minks, Jeremy Miller, Chuck Nagle, Deb Ulm, Howard Vaillancourt, and Chad Young

Members Absent: None

Others present: Superintendent Julia Espe,
Director of Business Services Michelle Czech,
Director of Human Resources Brenda Alexander

Letter of Commendation: Gino Fraboni was given a letter of recommendation by the board. Gino was selected to represent Region 7AA in the Academics, Arts, and Athletics Aware program.

Citizen Comments: Rich Harris spoke to the board regarding the new build project for South Elementary.

Elaine Philippi spoke to the board in regards to the recommendation coming from the Options committee for a new South Elementary building.

Student Council Rep: Absent

REPORTS

Board Reports:

Deb Ulm Attended: The MSBA Leadership Conference, two Agenda Meetings with Supt. Espe, and the Facilities Projects meeting.

Jeremy Miller Attended: The Facilities Projects, and Negotiations/Certified meetings.

Howard Vaillancourt Attended: The Facilities Projects meeting.

Eric Minks Attended: The MSBA Leadership Conference, and the Negotiations/Certified meeting.

Craig Johnson Attended: The MSBA Leadership Conference, and the Negotiations/Certified meeting.

Chad Young Attended: The Facilities Project meeting.

Chuck Nagle

Attended: Praised the HS teacher Mr. Murkve for his ability to teach complex math.

Superintendent Report: Superintendent Espe reported to the board the Middle Schools Deep Portage outing this week has been canceled and rescheduled for March/April due to the severe cold weather. The High School STEM event has also been canceled due to the amount of days missed due to cold weather. Good News: Our Middle School Principal Dan Voce is a finalist for Principal of the Year for the State of Minnesota.

APPROVE AGENDA

Motion made by Chad Young and seconded by Craig Johnson, to approve the agenda as presented. Motion passed unanimously.

DISCUSS and ACT on PREVIOUS BOARD MEETING MINUTES

Motion by Howard Vaillancourt, and seconded by Eric Minks, to approve the January 14, 2013 Regular School Board meeting minutes, and the January 14, 2014 Organizational meeting minutes. Motion passed unanimously.

CONSENT AGENDA

The consent agenda consists of non-controversial items that the Board adopts routinely without debate. Any single member may remove an item from the consent agenda by requesting removal at the time the consent agenda is moved for adoption. The full text of items approved by consent may be found at the conclusion of the agenda.

Motion made by Howard Vaillancourt, and seconded by Chad Young, to approve the consent agenda items: Personnel, Bills, Wire Transfers, Treasurer's Report, Gifts, and Fundraiser, and. Motion passed unanimously.

ACTION ITEMS

Academic make up days

Superintendent Espe presented the board with a school make-up day plan for the days schools were closed due to weather. Proposal: Closed day January 23 be a no make-up day for both staff and students, closed days January 6, 7, 27 and 28 will be made up by staff and students on April 14, 15, 16 and 17th. Any additional closings will be made up by staff only on June 9 and 10 as staff development days. If we encounter two more days it is proposed that the board allow an additional no make-up day. Finally, if there are any additional closing days, then another plan will be brought to the board for further review and approval.

Motion made by Howard Vaillancourt, and seconded by Chad Young, to amend the calendar as proposed. Upon roll call the following voted in favor of: Deb Ulm, Eric Minks, Jeremy Miller, Howard Vaillancourt, Craig Johnson, and Chad Young. The following voted against: Chuck Nagle.

Motion passed 6:1.

Activities make up dates

On behalf of the Activities Director, Superintendent Espe asked the board to approve activity make-up games and meets as necessary on Wednesdays. The Activities Director will organize the activity to be after school and ending by 6:45p.m.

Motion made by Howard Vaillancourt, and seconded by Jeremy Miller, **to approve the Activities make-up games and meets as necessary for the winter season on Wednesdays.** Motion passed unanimously.

Pay Equity Report

Brenda Alexander Director of Human Resources provided the board with information on the pay equity report progress; It has passed the state requirements.

Motion was made by Eric Minks, and seconded by Howard Vaillancourt, **to approve the pay equity implementation report.** Motion passed unanimously.

INFORMATION ITEMS

Organizational Chart - Superintendent Espe provided the board with the revised district organizational chart. It was recommended by the board to change the color of the box for the: Transportation Manager, Special Education Coordinator, and the Secretary to the Special Education Coordinator, as these are not employees paid by the district.

DISCUSSION ITEMS

Options Committee Proposal (Presenters: Vaughn Dierks and Options Committee Members)

Kevin Walz, Shannon Arens, Rachel Gillman and Vaughn Dierks presented to the board the recommendation for the Facility Project. The committee explained the three options that were researched: Option 1, Renovation; Option 2, Replacement; Option 3, Re-invest.

The options were analyzed in terms of:

- Operations, quality, and physical conditions
- Site Evaluation
- Enrollment, Capacity, and Grade Level Configuration
- Programming and functional needs
- Activities and Community
- Technology
- Safety and Security

The Final recommendation to the board:

Build a new K-2 elementary school on the north end of town

- Construction on the current North Elementary site may have benefits including less infrastructure development and the ability to address and redesign parking issues to better serve the site
- Preserving existing District owned land may create a future High School site, but either site acceptable

Address most urgent needs at the High School

- Remove Portables

- Flow & Function of Kitchen / Cafeteria Space
- Additional Gym Space for PE (2 Stations)
- ADA Accessibility to Spaces (Locker Rooms)
- Modernize I.T. / Shops Area
- Provide secure vestibules at all buildings
- Provide improvements to Technology infrastructure
- If there is a re-use scenario for South that is appropriate and will not cost the District, consider keeping. Otherwise, consider demolition and site redevelopment.

The board thanked the Committee members for their work. Board member Chuck Nagle had questions.

Administrators' Evaluations

Superintendent Espe provided the board with a new state law for Principal evaluations. The district would like to use this same evaluation for all district's instructionally-based administrators: Principals, Assistant Principals, Technology Director, Special Education Coordinator, and the Superintendent. Every school district has to have a plan for evaluating their administrators, concerning using 35% weighting of the evaluation for student achievement measures and a written plan to address under-performing administrators.

FUTURE MEETINGS

1. Committee Assignments were given to each of the members for the 2014 committee meetings.
2. Finance Board Committee Dates will be held at 5:30 p.m. on the 1st Tuesday of the month with the exception in the month of February. The date for the meeting will be February 6.
3. Curriculum/World Class Best Work-Force Committee Meeting Dates: January 30, 3:30p.m. District Office Board Room.
4. Policy Committee Meeting Dates will be held on the 3rd Tuesday of each month at 5:30p.m. Location: District Office Board Room.
5. The next regular board meeting will be held on Thursday, February 6, instead of Tuesday, February 4, due to the precinct caucus event held that day. No meetings can be conducted after 6p.m.

ADDITIONS TO AGENDA – None

ADJOURN The meeting was adjourned at 8:58p.m.

Chair Deb Ulm

Recorder: Bridget Sorensen

Clerk Eric Minks

Call to order and Pledge of Allegiance. The regular meeting of the School Board of District #477 was called to order by Chair Deb Ulm on the **28th day of January 2014, at 7:00 p.m.** in the District Office Board Room. Roll Call - Members Present: Craig Johnson, Eric Minks, Jeremy Miller, Chuck Nagle, Deb Ulm, Howard Vaillancourt, and Chad Young. Members Absent: None. Others present: Superintendent Julia Espe, Director of Business Services Michelle Czech, and the Director of Human Resources Brenda Alexander. Student Council Rep: Absent

Letter of Commendation was given to Gino Fraboni by the board. Gino was selected to represent Region 7AA in the Academics, Arts, and Athletics Aware program.

Citizen Comments: Rich Harris spoke to the board regarding the new build project for South Elementary. Elaine Philippi spoke to the board in regards to the recommendation coming from the Options committee for a new South Elementary building.

APPROVE AGENDA Motion made by Chad Young and seconded by Craig Johnson, **to approve the agenda as presented. Motion passed unanimously.**

DISCUSS and ACT on PREVIOUS BOARD MEETING MINUTES Motion by Howard Vaillancourt, and seconded by Eric Minks, **to approve the January 14, 2013 Regular School Board meeting minutes, and the January 14, 2014 Organizational meeting minutes. Motion passed unanimously.**

CONSENT AGENDA Motion made by Howard Vaillancourt, and seconded by Chad Young, **to approve the consent agenda items: Personnel, Bills, Wire Transfers, Treasurer's Report, Gifts, and Fundraiser, and. Motion passed unanimously.**

ACTION ITEMS

Academic make up days

Superintendent Espe presented the board with a school make-up day plan for the days schools were closed due to weather. Proposal: Closed day January 23 be a no make-up day for both staff and students, closed days January 6, 7, 27 and 28 will be made up by staff and students on April 14, 15,16, and 17th. Any additional closings will be made up by staff only on June 9 and 10 as staff development days. If we encounter two more days it is proposed that the board allow an additional no make-up day. Finally, if there are any additional closing days, then another plan will be brought to the board for further review and approval. Motion made by Howard Vaillancourt, and seconded by Chad Young, **to amend the calendar as proposed.** Upon roll call the following voted in favor of: Deb Ulm, Eric Minks, Jeremy Miller, Howard Vaillancourt, Craig Johnson, and Chad Young. The following voted against: Chuck Nagle.

Motion passed 6:1.

Activities make up dates On behalf of the Activities Director, Superintendent Espe asked the board to approve activity make-up games and meets as necessary on Wednesdays. The Activities Director will organize the activity to be after school and ending by 6:45p.m. Motion made by Howard Vaillancourt, and seconded by Jeremy Miller, **to approve the Activities make-up games and meets as necessary for the winter season on Wednesdays.** Motion passed unanimously.

Pay Equity Report Brenda Alexander Director of Human Resources provided the board with information on the pay equity report progress; It has passed the state requirements. Motion was made by Eric Minks, and seconded by Howard Vaillancourt, **to approve the pay equity implementation report.** Motion passed unanimously.

INFORMATION ITEMS

Organizational Chart - Superintendent Espe provided the board with the revised district organizational chart. It was recommended by the board to change the color of the box for the: Transportation Manager, Special Education Coordinator, and the Secretary to the Special Education Coordinator, as these are not employees paid by the district.

DISCUSSION ITEMS Options Committee Proposal (Presenters: Vaughn Dierks and Options Committee Members) Kevin Walz, Shannon Arens, Rachel Gillman and Vaughn Dierks presented to the board the recommendation for the Facility Project.

The committee explained the three options that were researched: Option 1, Renovation; Option 2, Replacement; Option 3, Re-invest.

The options were analyzed in terms of:

- Operations, quality, and physical conditions
- Site Evaluation

- Enrollment, Capacity, and Grade Level Configuration
- Programming and functional needs
- Activities and Community
- Technology
- Safety and Security

The Final recommendation to the board:

Build a new K-2 elementary school on the north end of town

- Construction on the current North Elementary site may have benefits including less infrastructure development and the ability to address and redesign parking issues to better serve the site
- Preserving existing District owned land may create a future High School site, but either site acceptable

Address most urgent needs at the High School

- Remove Portables
- Flow & Function of Kitchen / Cafeteria Space
- Additional Gym Space for PE (2 Stations)
- ADA Accessibility to Spaces (Locker Rooms)
- Modernize I.T. / Shops Area
- Provide secure vestibules at all buildings
- Provide improvements to Technology infrastructure
- If there is a re-use scenario for South that is appropriate and will not cost the District, consider keeping. Otherwise, consider demolition and site redevelopment.

The board thanked the Committee members for their work. Board member Chuck Nagle had questions.

Administrators' Evaluations

Superintendent Espe provided the board with a new state law for Principal evaluations. The district would like to use this same evaluation for all district's instructionally-based administrators: Principals, Assistant Principals, Technology Director, Special Education Coordinator, and the Superintendent. Every school district has to have a plan for evaluating their administrators, concerning using 35% weighting of the evaluation for student achievement measures and a written plan to address under-performing administrators.

FUTURE MEETINGS

1. Committee Assignments were given to each of the members for the 2014 committee meetings.
2. Finance Board Committee Dates will be held at 5:30 p.m. on the 1st Tuesday of the month with the exception in the month of February. The date for the meeting will be February 6.
3. Curriculum/World Class Best Work-Force Committee Meeting Dates: January 30, 3:30p.m. District Office Board Room.
4. Policy Committee Meeting Dates will be held on the 3rd Tuesday of each month at 5:30p.m. Location: District Office Board Room.
5. The next regular board meeting will be held on Thursday, February 6, instead of Tuesday, February 4, due to the precinct caucus event held that day. No meetings can be conducted after 6p.m.

ADDITIONS TO AGENDA – None

ADJOURN The meeting was adjourned at 8:58p.m.

Chair Deb Ulm

Recorder: Bridget Sorensen

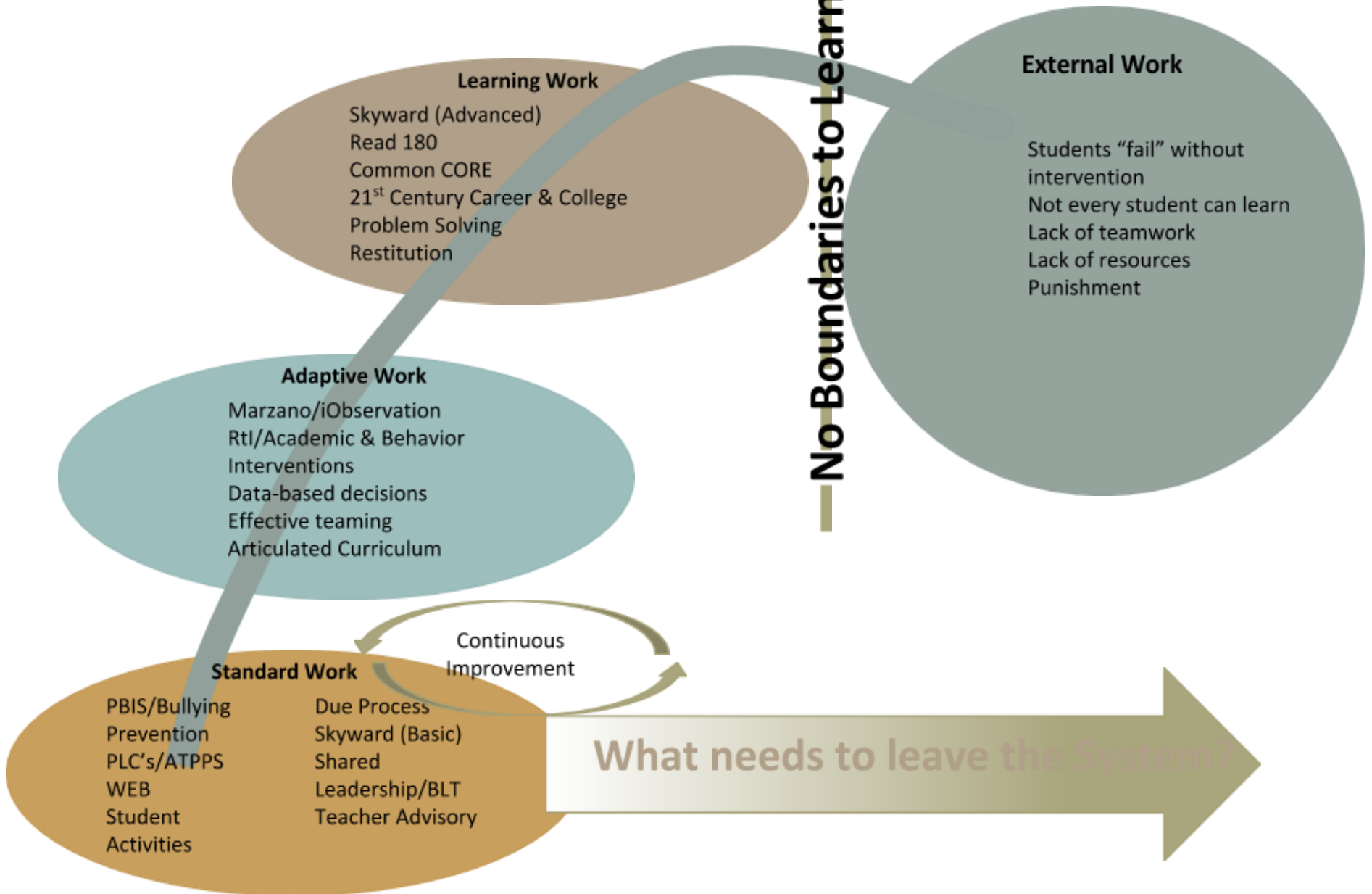
Clerk Eric Minks

	A	B	C	D	E	F	G
1	February 6, 2014						
2	Name	Status	Job Title	Group	Replacing	Effective Date	Wage
3	Dorr, Kelly	New	MS Golf Coach	PEA	New Position	2013-14 school year season	\$1602 (class H, step 8)
4	Johnson, Matthew	New Hire	SPED Paraprofessional - NE	ESA	New Position	1/29/2014	\$12.90/hour (class III, step 1-3)
5	O'Brien, Kari	Status change from LTS to Active		PEA	New Position	2/3/2014 - 6/6/2014 (85 days)	BA, Step 1
6	Olson, Yvette	Retirement	Teacher - NE	PEA	N/A	6/6/2014	N/A
7	Schmieg, Kelly	LOA	Teacher - HS	PEA	N/A	1/21/14 - TBD	N/A
8	Thompson-Slinde, Sandra	Resignation	SPED Paraprofessional - NE	ESA	N/A	2/12/2014	N/A
9							
10							
11							
12							
13							
14							
15							
16							
17							
18							
19							
20							
21							
22							
23							
24							
25							
26							
27							
28							
29							
30							
31							
32							
33							

	A	B	C	D	E	F
1	Open Enrolled Students (Out/In) as of February 6, 2014					
2	OE In/Out	Effective	Resident Dist.	Serving Dist.	Grade	Reason
3	IN	1/8/2014	Milaca	Princeton	12	Moved into a group home outside of Princeton
4	IN	1/8/2014	St Francis	Princeton	K	Temporary custody given to grandparent who lives in the St Francis School District.
5						
6						
7						
8						
9						
10						
11						
12						
13						
14						
15						
16						
17						
18						
19						
20						
21						
22						
23						

Princeton Middle School

11





PRINCETON HIGH SCHOOL

807 South 8th Avenue

Princeton, MN 55371

763.389.4101 Phone 763.389.5816 Fax

Barbara Muckenhirn, Principal 763.389.6010
Emorie Colby, Assistant Principal 763.389.6015
Darin Laabs, Activities Director 763.389.6047

TO: Dr. Julia Espe
FROM: Barb Muckenhirn
DATE: Jan. 29, 2014
RE: New Course Proposals and Program of Studies Changes

A. NEW COURSE PROPOSALS

Proposed Course 1: 2014-2015 School Year – FASHION & FABRICS II

Department: FACS
Grade Levels: 9-12
Course Length: 1 trimester
Articulation/College Credit: none
Prerequisite: Fashion and Fabrics
Standard Alignment: Family & Consumer Science Standards (national)
MN Programs of Study
Need: Prepare students to enter the workforce with required skills needed for apparel industry
Considerations: Scheduling of sewing machine use
\$100 sewing supplies
10 more machines (approx. \$200 each = \$2000 either cap. Or Perkins)
May run concurrently with Fashion & Fabrics

Proposed Course 2: 2015-2016 School Year – ProSTART B

Department: FACS
Grade Levels: 10-12
Course Length: 2 trimesters
Articulation/College Credit: Articulated Through Hennepin Technical College
Students eligible to take MN State-approved Technical Skills Assessment of ProStart Certification and compete in ProStart competitions
Prerequisite: Baking
Meals
Advanced Foods (ProStartA)
Standard Alignment: Family & Consumer Science Standards
Need: ProStart speaks towards the consortium goals of teaching math skills through culinary techniques and management skills. We currently have Advanced Foods, which is ProStartA. Adding ProStartB would enable students to finish ProStart and develop skills to be restaurant and foodservice industry leaders by building practical skills and foundation of culinary arts and management. This course provides the opportunity to take the certification assessment.
Considerations: \$600 food cost
\$8300 textbook cost
Scheduling concerns, but may run concurrently with Pro StartA (Meals 1)

Proposed Course 4: 2014-2015 School Year -- AP CALCULUS (YEAR LONG)

Changes Calculus to a year-long (3 trimesters) course

Department: Mathematics
Grade Levels: 12
Course Length: 3 trimesters
Articulation/College Credit: None – AP status
Prerequisite: Math Analysis
Standard Alignment: AP Guidelines (course already approved through College Board)
Need: To provide higher-level mathematics to senior students and prepare them for success in mathematics at the collegiate level through success on the AP exam.
Considerations: This would change Calculus to a year-long course
The anticipated enrollment is 30 students. We currently have 35 texts.
There may be additional texts needed. However, that can be covered with the textbook contingency budget for such purposes.
AP exam cost: \$4500 (increase of approximately \$3500)

B. COURSE NAME CHANGES

<u>Dept.</u>	<u>Current Name</u>	<u>Proposed Change</u>
Mathematics	Calculus	AP Calculus
FACS	Interpersonal & Career Skills	College & Career Exploration

C. ADDITIONAL INFORMATION

Interpersonal & Career Skills – required FACS course

The content of the required Interpersonal & Career Skills course is currently being revised to meet new Postsecondary Pathway requirements set forth in legislation last spring. A twelve-week curriculum is being implemented in trimesters 2 and 3 to prepare students for the ACT exam. Portions of the existing curriculum are being moved to other courses or eliminated if found to be redundant or outdated. Ms. Schuppenhauer and Ms. Schmeig are leading this work.

Calculus

Mr. Murkve has obtained College Board approval for our Calculus course to be approved and titled AP Calculus. We may be able to make this change mid-year so to be reflected on student’s transcripts. He will be working an overload in trimester 3 in order to provide continuous instruction to students wishing to work toward better preparation for the AP exam in the spring. Currently, Calculus is a two-trimester course that causes a gap between the end of the course and the AP exam.

D. REQUEST FOR APPROVAL TO MOVE FORWARD WITH ADVANCED PLACEMENT (AP) & COLLEGE IN THE SCHOOLS (CIS) PROGRAMMING

As we continually move toward increasing student achievement, increasing rigorous programming offering, and providing additional opportunities for students to access college credit during high school, we request board approval to allow administration to increase AP and CIS offerings as staffing and scheduling allow.

Building Cost Estimates

January 28, 2014

NEW K-2 (At North)

Construction Costs

New K-2 Building	102,000 sf	\$	16,525,000
------------------	------------	----	------------

Site Work

Field Development		\$	400,000
Re-Design Parking / Drop Off		\$	500,000
Road / Access Improvements		\$	600,000
Water / Utility / Infrastructure Improvements		\$	300,000
		\$	1,800,000

Furniture / Fixtures / Equipment

Kitchen / Food Service		\$	400,000
Technology Infrastructure (Hard & Soft)		\$	200,000
Classroom Furniture (Repair / Replace)		\$	500,000
		\$	1,100,000

Demolition of South Elementary

		\$	600,000
Construction Sub-Total		\$	20,025,000

Project Costs

Contingency (5%)		\$	1,000,000
Design / Permits / Testing / etc.		\$	2,450,000
Moving / Phasing		\$	80,000
		\$	3,530,000

New Elementary - Total **\$ 23,555,000**

Other Costs

Security Improvements (4 Buildings)		\$	100,000
Technology Improvements (4 Buildings)		\$	500,000
High School Improvements		\$	4,500,000
Remove Portables			
Kitchen / Cafeteria Renovations			
Gymnasium Addition (2 Station)			
ADA Upgrades			
Industrial Technology Renovations			
Project Costs		\$	900,000

District-wide and High School - Total **\$ 6,000,000**

Project Issuance Costs

\$ 400,000

Total **\$ 29,955,000**

NEW (K-2) ELEMENTARY SCHOOL

AREA		760 Student
Classrooms		
1st-2nd Grade Classrooms	(22 @ 900)	19,800 SF
Conference Rooms	(4 @ 200)	800 SF
Resource Areas	(4 @ 600)	2,400 SF
		23,000 SF
Kindergarten		
Classrooms	(11 @ 1200)	13,200 SF
Toilets	(11 @ 65)	715 SF
Coats	(11 @ 75)	825 SF
		14,740 SF
Applied / Specialists		
Art Lab		1,200 SF
Storage		100 SF
Kiln		60 SF
Science / Multi Purpose Lab		1,200 SF
Storage		120 SF
Music Classroom		1,200 SF
Storage		120 SF
Computer Lab	(2 @ 900)	1,800 SF
Server		60 SF
		5,860 SF
Special Education		
TBD		4,000 SF
Media Center		
Circulation/Distribution/Stacks/Reading Area		3,000 SF
Media Workroom		240 SF
Media Production / Editing		440 SF
Conference Room (Large)		240 SF
Conference Room (Small)		120 SF
Storage		160 SF
Video Control		180 SF
Office		120 SF
		4,500 SF

NEW (K-2) ELEMENTARY SCHOOL

AREA 760 Student

Physical Education

Gymnasium	6,500	SF
Stage	1,200	SF
Office	160	SF
Storage	500	SF
Outdoor Storage	200	SF
	8,560	SF

Administration

General Office / Waiting	400	SF
Principal Office	200	SF
Conference Room	250	SF
Workroom/Copy/Mailroom	500	SF
Storage	250	SF
Parent/Volunteer Room	400	SF
	2,000	SF

Health / Nurse

Cot Room	240	SF
Office / Exam	180	SF
Toilet	60	SF
	480	SF

Staff Space

Faculty Staff Room		480	SF
Toilets	(6 @ 60)	360	SF
		840	SF

Cafeteria

Seating Area	(3 Shifts)	3,200	SF
Table Storage		450	SF
		3,650	SF

NEW (K-2) ELEMENTARY SCHOOL

AREA **760 Student**

Kitchen / Food Services

Serving Lines	450 SF
Prep Area	800 SF
Dry Storage	400 SF
Freezer / Cooler	600 SF
Dishwash Area	300 SF
Office/Lockers/Custodial	350 SF
	2,900 SF

Receiving / Central Plant

Receiving Area	600 SF
Workroom / Office	200 SF
Outdoor Storage	250 SF
Boiler	1,000 SF
	2,050 SF

TOTAL NET SQUARE FOOTAGE **72,580 SF**

NET TO GROSS FACTOR x 1.4

(Includes mechanical, electrical, public
toilets, circulation, and maintenance /
janitorial spaces)

TOTAL GROSS SQUARE FOOTAGE **102,000 SF**

SF PER STUDENT 134



Options Committee Recommendation to School Board

January 28, 2014

- *Community Driven Process*
- Understand and develop an approach to prioritizing addressing the most critical needs
- There are no preconceptions! Everyone needs to remain open-minded
- To be respectful of each other's opinions, time and participation

20

Options / Planning Committee Membership

Options

Ken Hennen
Lee Steinbrecher
Gayle Harshman
Mitzi Mellott
Elaine Maples
Teri Walker
Greg Schmitz
Carol Swanson
Jim Muckenhirn
Elaine Philippi
Rachel Gillman
Jay Swanson
Paul Vollkommer
Rich Harris
Michelle Hagen
Dick Dobson
Lisa Fobbe

Susan Potvin
Charles Zarns
Jack Edmonds
Kevin Walz
Jim Gibbs
Eldon Johnson
Shannon Arens
Art Skarohlid
Andy Schreder
Dean McDevitt
Cheryl Goetz Dobson
Carie Fuhrman
Scott Berry
Brenda Baird
Pam McElhone
Dave DeWars

Finance

Marsha Haubenschild
Wayne Nelson
Art Skarohlid
Jack Edmonds
Dan Erickson

Criteria	Operations, Quality & Physical Conditions	Site Evaluation	Enrollment, Capacity & Configuration	Programming & Functional Needs	Activities & Community	Technology	Safety & Security	
A comprehensive Long-Range Plan must be developed both for now and the future	✓	✓	✓	✓	✓	✓	✓	7
Portable classrooms must be replaced	✓		✓	✓		✓	✓	5
Accommodations to support increased technology usage through personal devices (including charging stations, connection points, Wi-Fi, etc.) need to be provided	✓				✓	✓	✓	4
The community should be able to utilize the facilities to a greater extent				✓	✓	✓	✓	4
Changing enrollment must be considered when developing flexible options for future			✓	✓	✓			3
Any addition, renovation or new construction should adhere to District Quality standards	✓					✓	✓	3
Any type of infrastructure (technology, security, etc.) must be flexible and easily adapted for the future	✓					✓	✓	3
Utilize existing District owned land whenever possible		✓	✓	✓				3
All spaces must be ADA accessible				✓	✓		✓	3
Additional indoor athletic / gym space is needed			✓	✓	✓			3
South Elementary is highest priority focus	✓			✓				2
Separate bus and parent drop off loops should be created		✓					✓	2
All buildings should have appropriate and functional doors and hardware	✓						✓	2
Flexible learning environments that support independent work, personalized learning, special needs and collaboration need to be created				✓		✓		2
Additional performance space is needed				✓	✓			2

- Portable classrooms must be replaced
- Physical Conditions & Program Issues at South must be addressed in some format through Options
- Technology & Security Criteria must be consistent in all Options
- All Options must meet Physical and Operational Quality Standards developed by Committees
- Educational Spaces must meet State Guidelines
- Addressing Needs at South Elementary is the Highest Priority

Givens For Any / All Options:

- Starting with South – Highest Priority / Biggest Issue
- Security Issues to be addressed
- Technology Issues to be addressed
- Same quality level on all options
- Community needs addressed within the K-12 program
(via additions, renovation or new construction)

****Critical for Apples-to-Apples Evaluation***

When Considering South Elementary:

Addressing South =

Needed Repairs (Physical Conditions)

+ Portable Replacement

+ Program / Needs Items

Comparable Solution

Step One: Consider Option Scenarios:

- 1) Reinvest in South Elementary at Existing Site
- 2) Replacement Elementary (Site TBD)
- 3) Additions to North Elementary / Reinvest in South Elementary
- ~~4) New High School / Shift Grades in Existing Buildings~~
- ~~5) New Elementary + New High School + New Community Center~~
- ~~6) New Elementary w/ New Community Center~~
- ~~7) Do Nothing Now – Wait and Evaluate~~

Additional to Prioritize:

- High School Needs
- Reuse vs. Demolition @ South (or other?)
- Other District Needs

Step Two: Evaluation of Options

- ***What are the critical issues?***
- ***What will change prioritization?***
- ***What does the Data / Information show***

→ **Location**

→ **Enrollment Trends**

- *School Finances.com: Demographic Study and Enrollment Projections*
- *The Center for Community Opinion Survey*

Location

- **Studied Available Data**

- *Enrollment History & Projections*
- *Demographic & Birth Rate Data*
- *New Housing Permits*
- *Survey Responses*

- **Discussion**

- *Student Loss is predominantly a High School issue*
- *Population info shows growth in District*
- *Proximity was not the main reason for open enrollment out*
- *Even within Baldwin no clear mandate to build there*

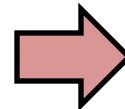
Conclusion:

Location would not be a deciding factor in evaluating Options. Cost and operational efficiency were more of a factor in evaluation process.

Option Scenario 1: Reinvest in South Elementary at Existing Site (K-2)

NEEDS (\$)

- Physical Issues: \$ 9m +/-
- Replace Portables
- Program Issues
 - Enlarge Kindergarten (Addition / Renovation)
 - Enlarge Kitchen and/or Cafeteria
 - Enlarge Media Center
 - Additional Special Education spaces
 - New Gym / Performance space
 - Redefine Drop-Off / Bus / Parking



- Kindergarten 1
- Kindergarten 2
- Kindergarten 3
- Classrooms 1
- Classrooms 2**
- Classrooms 3
- Classrooms 4
- Classrooms 5
- Gymnasium
- Cafeteria (Cap/3)
- Music (General)
- Music (2 / Band)
- Art
- Media Center****
- Computer
- Specialist
- Multi-Purpose
- Stage?
- Special Education

State Guideline	South Elementary	#	*
1200-1500	1,034	2	
1200-1500	908	2	
1200-1500	841	7	
900-950	841	10	***
900-950	860	11	
900-950	NA		
900-950	NA		
900-950	NA		
6000-8000	3,200		
12-13/Stud.	3,188		
1000-1500	841		
1500-2000	NA		
1000-1500	841		
4100-4825	3,888		
1000-1200	860	**	
1000-1200	860		
Varies	860		
	NA		
Varies			

32

PROS

- On land already developed
- Reuse of an existing asset

CONS

- Will decrease green space (practice area?)
- Corridors still “small”
- Limits potential HS expansion / use

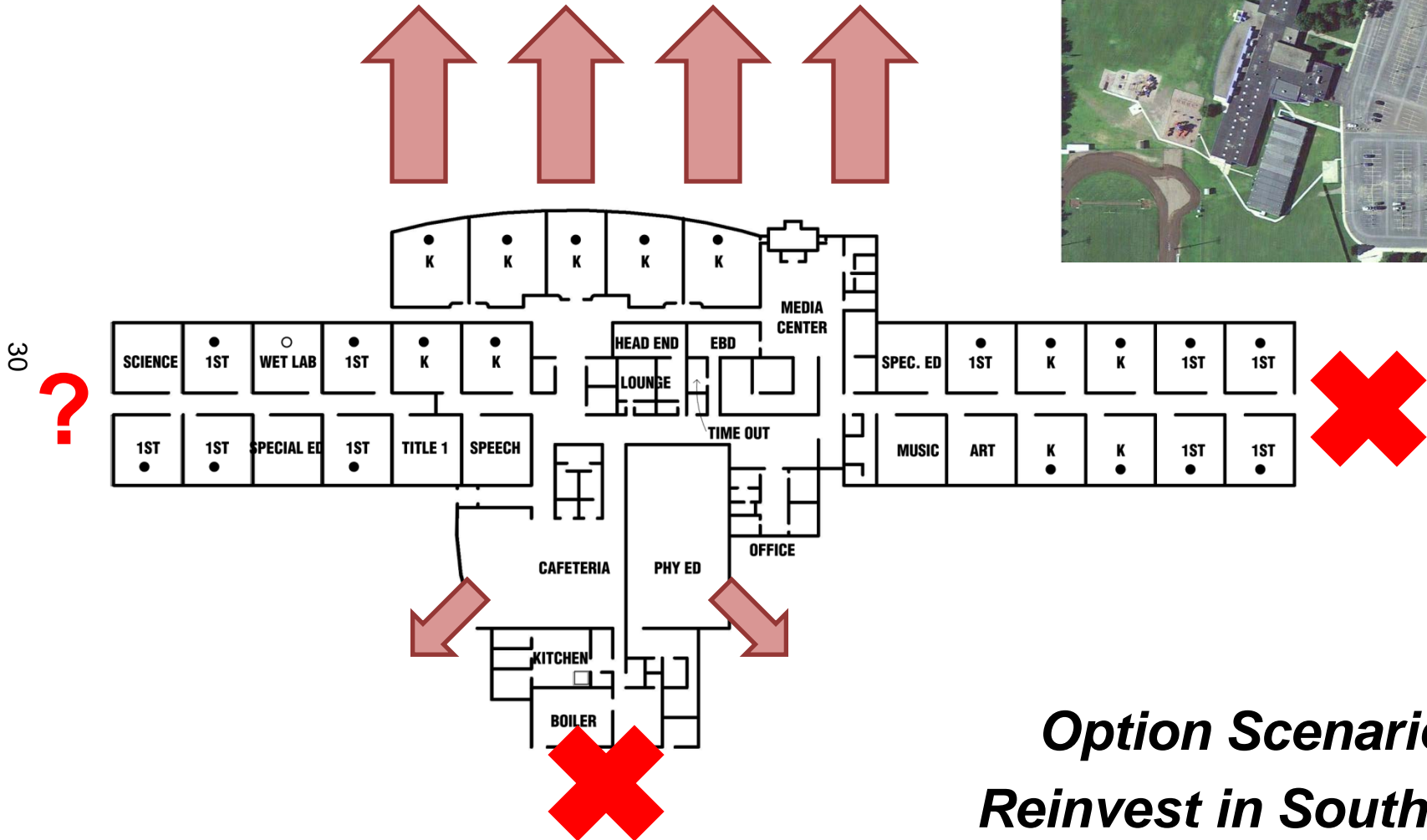
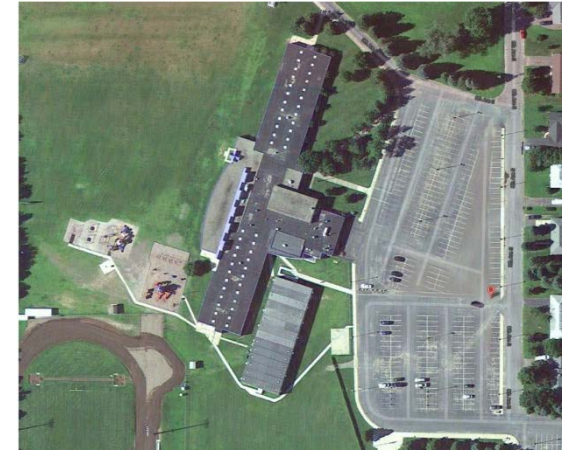
* Represents an average - less than 5% variation between multiple spaces

**Portable Classrooms

***Even though below guidelines, acceptable to re-use

****2,000-2,200 + (8-10% of students x 35) [eg. 500 students = 3,700 +/-]

Options Development



***Option Scenario 1:
Reinvest in South ES***

Option Scenario 1: Reinvest in South Elementary at Existing Site (K-2)

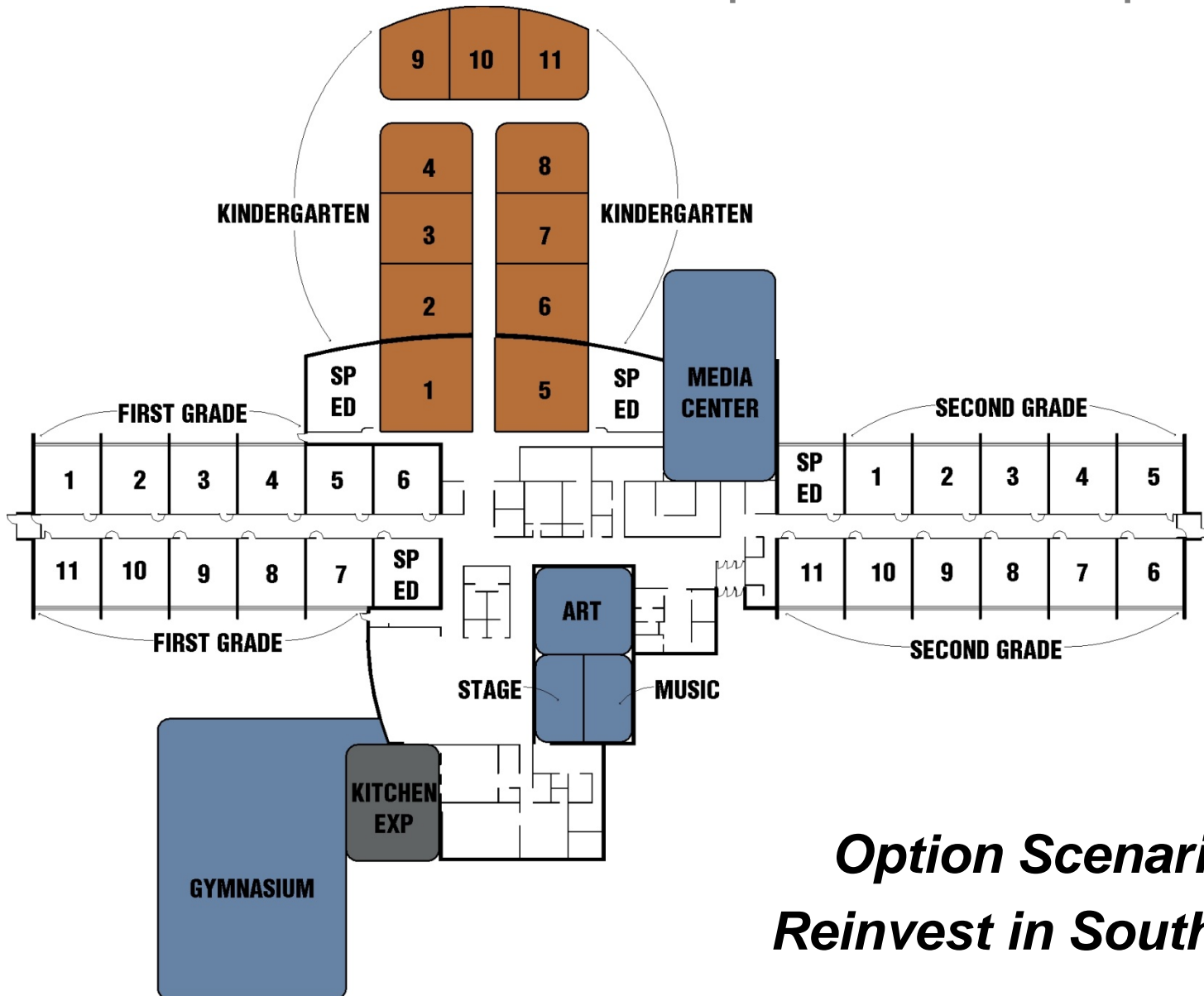
Program Issues (Additions)

○ Kindergarten (Classroom) Addition	12,340 sf
○ Computer Lab	960 sf
○ Multi-Purpose Lab	1,320 sf
○ Special Education	1,200 sf
○ Media Center Expansion	800 sf
○ Gymnasium (incl. support spaces)	7,360 sf
○ Stage	1,800 sf
○ Kitchen Expansion	800 sf
○ Net-to-Gross (mech, elec, circulation, etc.) [30%]	<u>8,420 sf</u>
	35,000 sf

Program Issues (Renovations)

○ Kindergarten (Classroom) Area	1,000 sf
○ Gym Conversion (Art / Music)	3,200 sf
○ Media Center Renovation	1,000 sf
○ Building-wide Impact	<u>2,000 sf</u>
	7,200 sf

Options Development



32

Option Scenario 1: Reinvest in South ES

Option Scenario 2: Replacement Elementary

NEEDS (\$)

A) On District Land

- New ES: 102,000 sf
- Needs Incorporation
- Utility / Infrastructure Expansion
- Land Owned (No \$)
- Field Development

B) At North Site

- New ES: 102,000 sf
- Within Town
- Existing Utility / Infrastructure (Sizing)
- Land Owned (No \$)
- Field Development + (or shared?)

C) New Site

- New ES: Same SF-Size
- Outside of Town
- Utility / Infrastructure Development
- Land Acquisition / Sale?
- Field Development

D) New 3-5 at North Site

- New ES: Similar Size
- Within Town
- Existing Utility / Infrastructure (Sizing?)
- Land Owned (No \$)
- Field Development + (or shared?)
- Kindergarten Addition or Renovation
- Capacity / Core Issues?

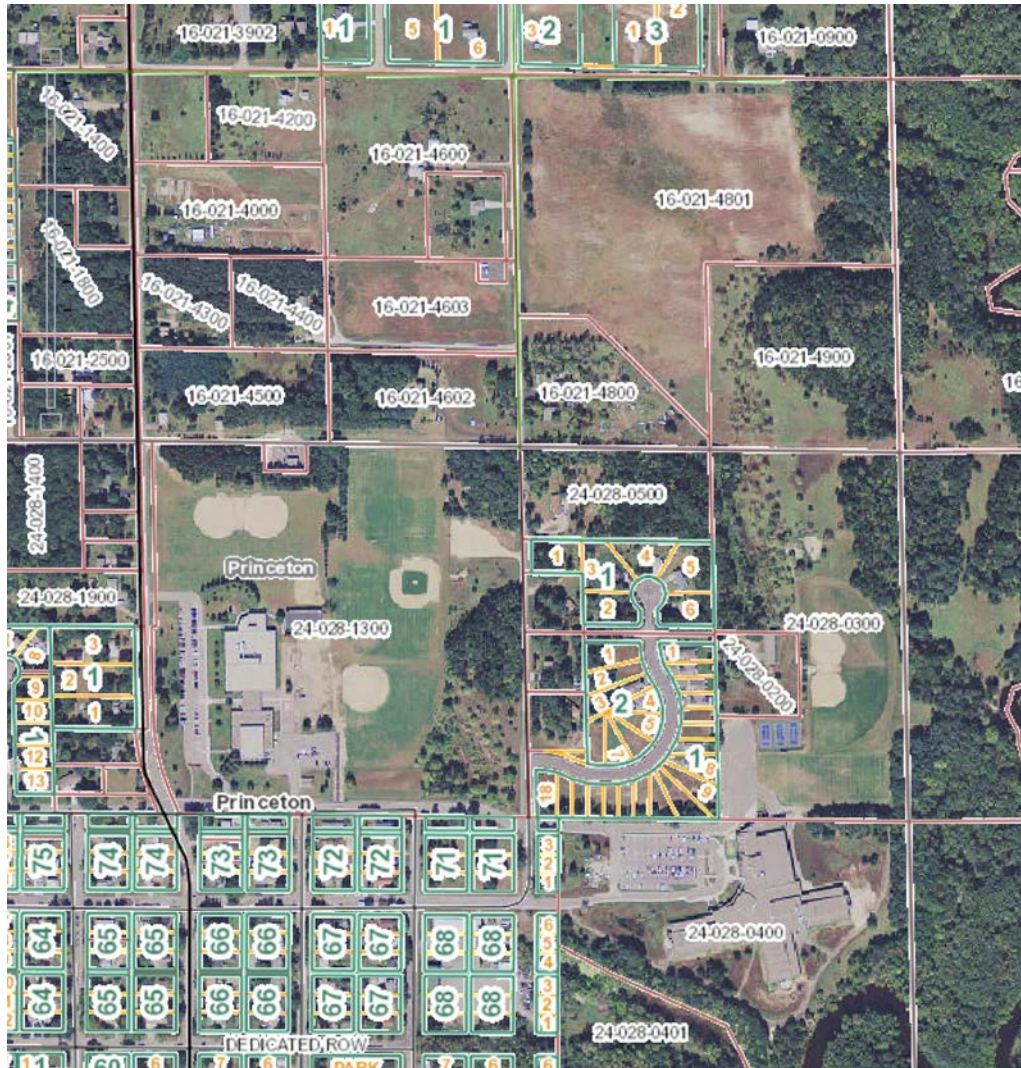
EVALUATION (PROS & CONS)

- Campus vs. Neighborhood
- Grade Structure (K-2 / 3-5, K-5 / K-5)
- Transportation Impact
- Boundary Establishment & Impact
- Address some issues at North?

Option Scenario 2B: Replacement Elementary at North ES Site



Option Scenario 2: Replacement Elementary



35

Option Scenario 3: Addition @ North ES, Reinvest in South ES

NEEDS (\$)

- Physical Issues: \$ 9m +/-
- Replace Portables [at North ES]
- Program Issues @ South
 - Enlarge Kindergarten
(Addition / Renovation)
 - Additional Special Education spaces
 - New Gym / Performance space
 - Redefine Drop-Off / Bus / Parking
- Program Issues @ North
 - Enlarge Kitchen and/or Cafeteria?
 - Enlarge Media Center?
 - Additional Special Education spaces?
 - Enlarge Gym?
 - Art / Music / Computer Capacity?

PROS

- On land already developed
- Reuse of an existing asset
- Better size for South ES “Core”

CONS

- Will decrease green space (not as much as Option 1)
- Limits potential HS expansion / use

? – To Define

- Grade Structure (K-1, 2-5)
- Addition could be at MS? (K-1, 2-4, 5-8?)

Criteria Committees

Operations, Quality & Physical Conditions

COMMITTEE DISCUSSION OVERVIEW:

Based on the focus of this committee, a significant amount of time was spent reviewing conditions at buildings through tours, and then discussing the Facility Analysis work done as well as previous studies to determine what work would need to be done if the existing schools are to remain. General discussion included:

- Recent investments at North Elementary have alleviated previous physical concerns, and the age of the Middle School has not created any relevant issues to be addressed at this time. The priority focus for physical conditions of buildings should be at South Elementary first, followed by the High School.
- It was difficult to justify why you would justify renovation expenses in buildings with other significant functional issues. The group understood that their charge was not to make the buildings work better for education, but to objectively analyze the costs to repair or renovate existing conditions only.
- HVAC systems were discussed at great length. The committee determined that an approach that only focused on low first cost would not serve the District needs for the long term, and an approach that considered efficiency, convenience and cost needed to be utilized.

Criteria Committees

Operations, Quality & Physical Conditions

Repair Costs: By Category

Site	\$	300,000
Exterior	\$	1,875,000
Interior	\$	1,113,000
Accessibility	\$	135,000
Life Safety	\$	10,000
Mechanical	\$	4,925,000
Electrical	\$	599,000
Total	\$	8,957,000

Repair Costs: By Priority

1) 0-2 Years	\$	5,701,000
2) 2-5 Years	\$	3,194,000
3) 6-10 Years	\$	62,000
4) Aesthetic	\$	-
5) Under \$500	\$	-
N) Not Prioritized	\$	-
Total	\$	8,957,000

NOTE: These costs do not include any investment for portable classrooms

Criteria Committees

Operations, Quality & Physical Conditions

FACILITIES CRITERIA:

- Portable classrooms are NOT calculated in any of the repair costs, nor is investing in them supported by the committee. Replacement is assumed.
- A centralized variable air volume [VAV] system with internally located air handling units [AHU] is the baseline system for HVAC infrastructure. This will necessitate new construction for these units within the repair costs.
- Baseline standards for additional systems include:
 - Exterior Envelope: Concrete Masonry Unit (CMU) back-up with brick or Exterior Insulation Finish Systems (EIFS) walls, concrete wall panels for gymnasium(s), built up bitumen roofs.
 - Interiors: Steel stud with Gypsum Board and tile at classrooms, toilet rooms, etc., burnished CMU at corridors, Vinyl Composition Tile (VCT) or carpet at classrooms, stained/sealed concrete floors at corridors & cafeterias

CRITICAL FOR APPLES-TO-APPLES COMPARISON

Discussion

- **Reinvest vs. New Construction**

- *Reinvestment possible, but still had compromises / limitations*
- *New construction allows for current educational delivery models*
- *New construction provides greater flexibility*
 - *High School expansion*
 - *Improved Parking / Drop Off*
 - *Elementary Campus Approach*

- **Cost**

- *Reinvestment construction costs over 80% of what new construction costs*
- *Tax impact needed to be justifiable (smart use of money)*
- *Per Community Finance Committee: Address South Elementary first, then necessary HS and District needs while remaining below \$30 million total.*

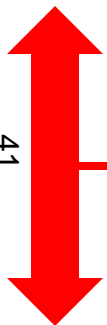
Priority List Beyond “South”

From Educational & Programming Needs Committee:

Reuse of South?

- | | | |
|--------------------------------------|--|---------------|
| 1. | Remove High School Portables | ✓ |
| 2. | High School Program and Functional Issues | |
| | • Flow & Function of Kitchen / Cafeteria Space | NA |
| | • Additional Gym Space for PE (2 Stations) | (Land) |
| | • ADA Accessibility to Spaces (Locker Rooms) | NA |
| 3. | Modernize I.T. / Shops Area | ✓? |
| <hr style="border: 1px solid red;"/> | | |
| 4. | Address District Pool (Repair or Replace) | NA |
| 5. | Right-Size High School Classrooms | NA / ? |

Now



Future

Other Priorities:

- | | | |
|---|--|-----------|
| • | Relocate Early Childhood to Elementary (when possible) | ✓ |
| • | Bus Transfer Site at Middle School | NA |
| • | District Office / Community Ed Building? | ✓ |

- **Build a new K-2 elementary school on the north end of town**
 - *Construction on the current North Elementary site may have benefits including less infrastructure development and the ability to address and redesign parking issues to better serve the site*
 - *Preserving existing District owned land may create a future High School site, but either site acceptable*
- **Address most urgent needs at the High School**
 - *Remove Portables*
 - *Flow & Function of Kitchen / Cafeteria Space*
 - *Additional Gym Space for PE (2 Stations)*
 - *ADA Accessibility to Spaces (Locker Rooms)*
 - *Modernize I.T. / Shops Area*
- **Provide secure vestibules at all buildings**
- **Provide improvements to Technology infrastructure**
- **If there is a re-use scenario for South that is appropriate and will not cost the District, consider keeping. Otherwise, consider demolition and site redevelopment.**



Options Committee Recommendation to School Board

Questions & Answers

Princeton School District No. 477

Estimated Sources and Uses of Funds for Proposed Building Program

May, 2014 Election and Two Issues

February 5, 2014

Description	May, 2014 Election & Two Bond Issues		
	1st Issue	2nd Issue	Total
Number of Years	20	20	
Bond Issue Amount	\$10,000,000	\$19,955,000	\$29,955,000
Sources of Funds			
Par Amount of Bonds	\$10,000,000	\$19,955,000	\$29,955,000
Estimated Investment Earnings *	12,160	24,787	36,947
Total Sources	\$10,012,160	\$19,979,787	\$29,991,947
Uses of Funds			
Allowance for Discount Bidding	\$0	\$0	\$0
Capitalized Interest **	217,500	54,000	271,500
Legal and Fiscal Costs#	54,775	71,055	125,830
Net Available for Project Costs	9,739,885	19,854,732	29,594,617
Total Uses	\$10,012,160	\$19,979,787	\$29,991,947

* Estimated investment earnings are based on an average interest rate of 0.25% and an average life of 6 months for investments.

** Assumes that all of the interest costs due during fiscal year 2015 and \$54,000 of the interest costs due during fiscal year 2016 would be paid from bond proceeds.

Includes fees for financial advisor, bond counsel, rating agency, paying agent and county certificates.

PRELIMINARY INFORMATION - FOR DISCUSSION ONLY

Princeton School District No. 477
Analysis of Possible Structure for Capital and Debt Levies

\$29,955,000 Building Program
May 2014 Election
20 Years; Wrap Around

Principal Amount:	\$10,000,000	\$19,955,000
Dated Date:	8/1/2014	2/1/2015
Avg. Interest Rate:	4.35%	4.50%

February 5, 2014

Levy Pay. Year	Fiscal Year	Tax Capacity Value* (\$000s)	Existing Commitments						Proposed New Debt				Combined Totals				
			Building Bonds	AF Bonds	Est. Debt Excess+	State Debt Aid	Net Levy	Tax Rate	Principal	Interest	Est. Debt Excess+	Initial Debt Levy**	Initial Debt Levy**	Est. Debt Excess	State Debt Aid	Net Levy	Tax Rate
2013	2014	12,366	1,606,144	911,178	(76,132)	-	2,441,190	19.74	-	-	-	-	2,517,322	(76,132)	-	2,441,190	19.74
2014	2015	12,506	1,577,676	909,144	(126,298)	(30,891)	2,329,631	18.63	-	217,500	++	-	2,486,820	(126,298)	(30,891)	2,329,631	18.63
2015	2016	12,506	1,599,086	878,484	(115,614)	(28,878)	2,333,078	18.66	-	1,332,975	+++	1,342,924	3,820,493	(115,614)	(28,878)	3,676,002	29.40
2016	2017	12,506	1,609,796	869,034	(99,103)	(27,577)	2,352,150	18.81	-	1,332,975	-	1,399,624	3,878,453	(99,103)	(103,024)	3,676,326	29.40
2017	2018	12,506	1,723,852	785,454	(99,153)	(26,346)	2,383,807	19.06	-	1,332,975	(55,985)	1,340,840	3,908,930	(155,138)	(101,793)	3,651,998	29.20
2018	2019	12,506	1,733,491	777,684	(100,372)	(26,502)	2,384,301	19.07	-	1,332,975	(53,634)	1,343,308	3,910,799	(154,006)	(101,949)	3,654,844	29.23
2019	2020	12,506	1,734,567	778,878	(100,447)	(26,612)	2,386,386	19.08	-	1,332,975	(53,732)	1,343,205	3,913,069	(154,179)	(102,059)	3,656,830	29.24
2020	2021	12,506	1,743,689	768,168	(100,538)	(26,528)	2,384,791	19.07	-	1,332,975	(53,728)	1,343,209	3,911,481	(154,266)	(101,975)	3,655,239	29.23
2021	2022	12,506	1,753,336	760,917	(100,474)	(26,655)	2,387,124	19.09	-	1,332,975	(53,728)	1,343,209	3,913,877	(154,203)	(102,103)	3,657,572	29.25
2022	2023	12,506	1,754,517	762,746	(100,570)	(26,816)	2,389,877	19.11	-	1,332,975	(53,728)	1,343,209	3,916,887	(154,298)	(102,264)	3,660,325	29.27
2023	2024	12,506	1,747,463	768,075	(100,691)	(26,306)	2,388,541	19.10	-	1,332,975	(53,728)	1,343,209	3,915,161	(154,419)	(101,754)	3,658,989	29.26
2024	2025	12,506	-	-	-	-	-	-	2,190,000	1,332,975	(156,606)	3,534,687	3,699,124	(156,606)	(308,724)	3,233,793	25.86
2025	2026	12,506	-	-	-	-	-	-	2,270,000	1,236,068	(141,387)	3,532,914	3,681,371	(141,387)	(307,267)	3,232,716	25.85
2026	2027	12,506	-	-	-	-	-	-	2,370,000	1,135,620	(141,317)	3,532,519	3,680,901	(141,317)	(307,038)	3,232,546	25.85
2027	2028	12,506	-	-	-	-	-	-	2,475,000	1,030,748	(141,301)	3,532,669	3,681,035	(141,301)	(307,124)	3,232,610	25.85
2028	2029	12,506	-	-	-	-	-	-	2,585,000	921,229	(141,307)	3,533,168	3,681,540	(141,307)	(307,411)	3,232,822	25.85
2029	2030	12,506	-	-	-	-	-	-	2,700,000	806,843	(141,327)	3,533,792	3,682,185	(141,327)	(307,770)	3,233,088	25.85
2030	2031	12,506	-	-	-	-	-	-	2,820,000	687,368	(141,352)	3,534,317	3,682,736	(141,352)	(308,073)	3,233,312	25.86
2031	2032	12,506	-	-	-	-	-	-	2,945,000	562,583	(141,373)	3,534,520	3,682,962	(141,373)	(308,190)	3,233,399	25.86
2032	2033	12,506	-	-	-	-	-	-	3,075,000	432,000	(141,381)	3,533,900	3,682,350	(141,381)	(307,834)	3,233,135	25.85
2033	2034	12,506	-	-	-	-	-	-	3,215,000	293,625	(141,356)	3,535,632	3,684,056	(141,356)	(308,829)	3,233,871	25.86
2034	2035	12,506	-	-	-	-	-	-	3,310,000	148,950	(141,425)	3,483,401	3,631,898	(141,425)	(278,806)	3,211,667	25.68
2035	2036	12,506	-	-	-	-	-	-	-	-	-	-	-	-	-	-	-
2036	2037	12,506	-	-	-	-	-	-	-	-	-	-	-	-	-	-	-
2037	2038	12,506	-	-	-	-	-	-	-	-	-	-	-	-	-	-	-
2038	2039	12,506	-	-	-	-	-	-	-	-	-	-	-	-	-	-	-
2039	2040	12,506	-	-	-	-	-	-	-	-	-	-	-	-	-	-	-
2040	2041	12,506	-	-	-	-	-	-	-	-	-	-	-	-	-	-	-
2041	2042	12,506	-	-	-	-	-	-	-	-	-	-	-	-	-	-	-
2042	2043	12,506	-	-	-	-	-	-	-	-	-	-	-	-	-	-	-
2043	2044	12,506	-	-	-	-	-	-	-	-	-	-	-	-	-	-	-
2044	2045	12,506	-	-	-	-	-	-	-	-	-	-	-	-	-	-	-
Totals			18,583,616	8,969,762	(1,119,391)	(273,110)	26,160,876		29,955,000	20,802,281	(1,948,395)	50,964,255	80,563,448	(3,067,787)	(4,233,756)	73,261,905	

* Tax capacity value for taxes payable in 2013 is actual. Tax capacity value for taxes payable in 2014 is based on the preliminary value from the county. Estimates for future years are based on the percentage changes as shown above.

** Initial debt service levies (prior to subtracting debt equalization aid) are set at 105 percent of the principal and interest payments during the next fiscal year.

+ Debt excess adjustments for taxes payable in 2013 through 2015 are actual amounts. Debt excess for future years is estimated at 4% of the prior year's initial debt service levy.

++ The district would not qualify to make a tax levy for payments due on the new bond issue during fiscal year 2015. Those payments, estimated at \$217,500, would have to be made from funds on hand or bond proceeds.

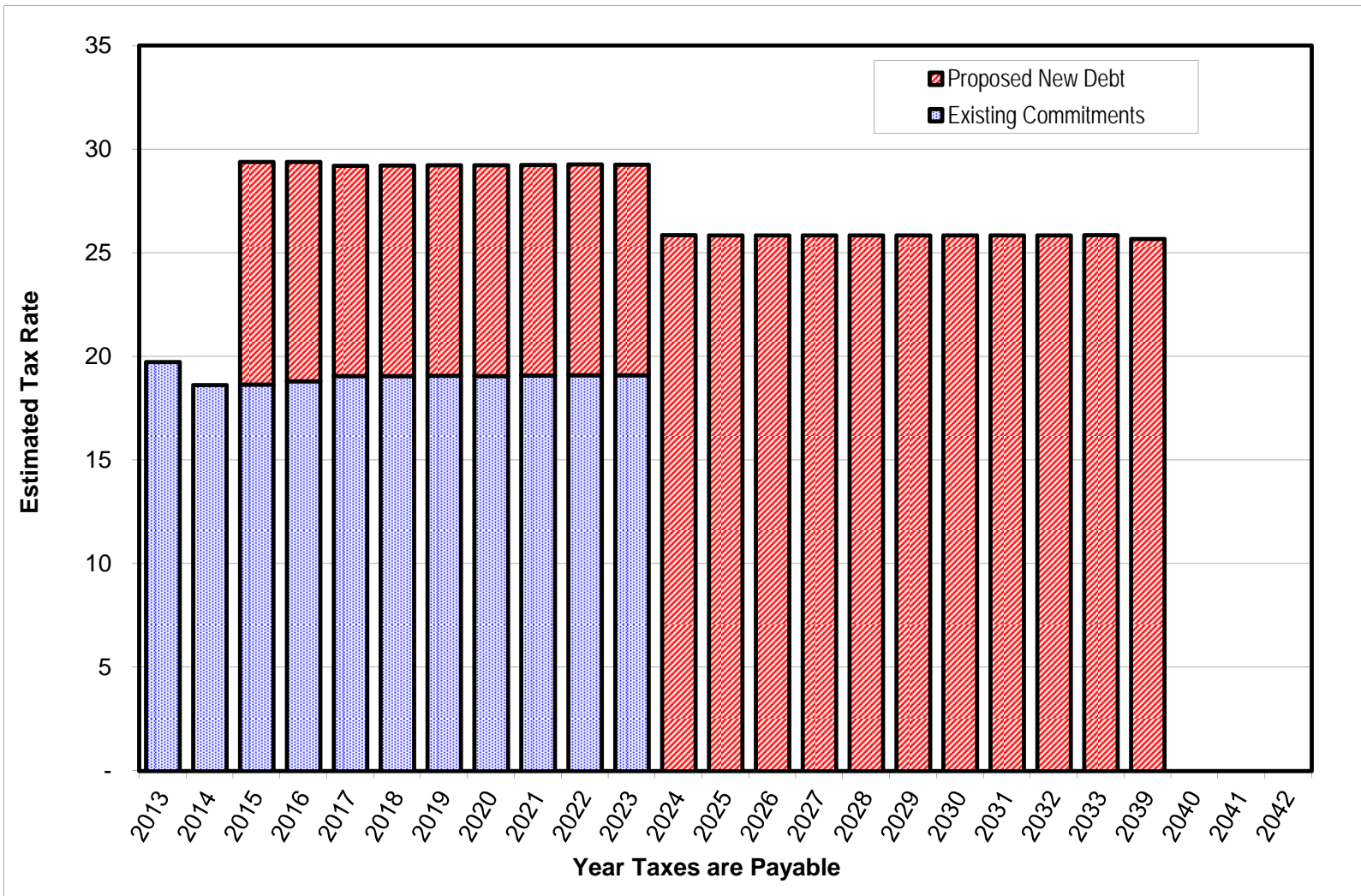
+++ To hold the tax rate payable in 2015 to the amount shown above, a portion of the payments due during fiscal year 2016, estimated at \$54,000, would have to be made from funds on hand or bond proceeds.

PRELIMINARY INFORMATION - FOR DISCUSSION ONLY

Princeton School District No. 477
Estimated Tax Rates for Capital and Debt Service Levies
Existing Commitments and Proposed New Debt

\$29,955,000 Building Program
May 2014 Election
20 Years; Wrap Around

Date Prepared: February 5, 2014



46

Analysis of Tax Impact for Potential Bond Referendum

Bond Issue Amount (Two Issues)	\$29,955,000
Estimated Tax Capacity Rate*	
Payable 2015 without bond issue	18.66%
Payable 2015 with bond issue	<u>29.40%</u>
Increase	10.74%

Type of Property	Estimated Market Value	Estimated Increase in Taxes*
Residential Homestead	\$50,000	\$32
	75,000	48
	100,000	77
	125,000	106
	150,000	136
	175,000	165
	200,000	194
	250,000	253
	300,000	311
	350,000	370
400,000	428	
Commercial/ Industrial	\$500,000	\$993
	750,000	1,530
	1,000,000	2,067
	1,500,000	3,141
	2,000,000	4,215
Apartments	\$400,000	\$537
	800,000	1,074
	1,250,000	1,678
	2,000,000	2,685
Agricultural Homestead **	\$150,000	\$104
	200,000	131
	300,000	184
	400,000	238
	500,000	292
Agricultural Non-Homestead (dollars per acre)	\$1,500	\$1.61
	2,000	2.15
	2,500	2.69
Seasonal Recreational Residential	50,000	\$54
	100,000	107
	150,000	161
	200,000	215
	300,000	322
400,000	430	

* The figures in the table are based on school district taxes for bonded debt only and do not include tax levies for other purposes. Tax increases shown above are gross increases, not including the impact of the state Property Tax Refund ("Circuit Breaker") program. Many owners of homestead property will qualify for a refund, based on their income and total property taxes. This will decrease the net effect of the proposed bond issue for many property owners.

** For agricultural homestead property, a value of \$100,000 was assumed for the house, garage, and one acre.