

Marble Falls ISD
has an unyielding commitment
to love every child and inspire
them to achieve their fullest
potential.



**Marble Falls ISD
Special Meeting**

**Monday, January 14, 2019
6:00 PM**

**AGENDA OF SPECIAL MEETING
MARBLE FALLS INDEPENDENT SCHOOL DISTRICT
BOARD OF TRUSTEES
MONDAY, JANUARY 14, 2019 – 6:00 PM
Marble Falls ISD Central Office Community Room**

Notice is hereby given that on January 14, 2019, the Board of Trustees of the Marble Falls Independent School District will hold a Special meeting at 6:00 PM, at the Marble Falls ISD Central Office Community Room, 1800 Colt Circle, Marble Falls, TX 78654.

The subjects to be discussed or considered, or upon which any formal action may be taken are listed below. Items do not have to be taken in the order shown on this meeting notice.

1. Call to Order
Presenter: Kevin Naumann, President
2. Presentation/Discussion Items and Possible Action
 - A. School Bus Purchase 4
Presenter: Dr. Jeff Gasaway
 - B. Approve Construction Delivery Methods for Bond 2018- Attachment A 35
Presenter: Dr. Jeff Gasaway
 - C. Approval of HVAC and LED Vendor and Authorize Superintendent to Negotiate Contract 38
Presenter: Dr. Jeff Gasaway
 - D. Safety Technology Vendor and Proposed Contract 39
Presenter: Dr. Jeff Gasaway
 - E. Resolution to Participate in Texas CLASS Investment Pool 55
Presenter: Dr. Wes Cunningham
 - F. Contract for Architectural Engineering Services from Huckabee Inc. 61
Presenter: Dr. Chris Allen
 - G. Approval of Most Qualified Provider of Geotechnical Services and Authorize Superintendent to Negotiate Contract 62
Presenter: Dr. Chris Allen
 - H. Update on Bond Sale 66
Presenter: Dr. Chris Allen
 - I. Quitclaim Deed to Release District Ownership of Access Easement 68
Presenter: Dr. Chris Allen
3. Executive Session
 - A. Discussion of Professional Personnel (TX Govt. Code 551.074)
4. Reconvene from Executive Session
5. Discussion and Possible Approval of Action Arising from Executive Session
 - A. Possible Approval of Professional Personnel
6. Adjourn

If, during the course of the meeting, discussion of any item on the agenda should be held in a closed meeting, the board will conduct a closed meeting in accordance with the Texas Open Meetings Act, Government Code, Chapter 551, Subchapters D and E or Texas Government Code section 418.183(f). Before any closed meeting is convened, the

presiding officer will publicly identify the section or sections of the Act authorizing the closed meeting. All final votes, actions, or decisions will be taken in open meeting. [See BEC(LEGAL)]

FOR THE BOARD OF TRUSTEES
MARBLE FALLS INDEPENDENT SCHOOL

Dr. Chris Allen, Superintendent of Schools



**LEARNERS TODAY,
LEADERS TOMORROW,
MUSTANGS FOREVER!**

**Marble Falls ISD
Board of Trustees
Agenda Item Information**

Meeting Date:		
Meeting Type: Regular Meeting Special Meeting/Workshop Hearing	Agenda Placement: Public Hearing Information Items Presentation/Discussion Items Consideration Items Consent Agenda	
Date Submitted:		
Subject:		
Executive Summary:		
Fiscal Impact: Cost: Recurring One-Time No Fiscal Impact	Funding Source: General Fund Grant Funds Bond Funds Other Funds (Specify)	Fiscal Year: Amendment Required? Yes No
Administration's Recommendation:		
Submitted By:		
Board Approval Required: Yes No		



INTEGRATED CE S BUS

Sales Proposal For:
Marble Falls ISD

Presented By:
LONGHORN BUS SALES

Prepared For:
Marble Falls ISD
George Hamilton
2001 Broadway St.
Marble Falls, TX 78654-4803
(830)693 - 4357
Reference ID: 1-54 GAS 3wc

Presented By:
LONGHORN BUS SALES
FRED HOKE
6921 HOMESTEAD ROAD
HOUSTON TX 77028 -
(713)631-9306

Thank you for the opportunity to provide you with the following quotation on a new IC Corporation vehicle. I am sure the following detailed specification will meet your operational requirements, and I look forward to serving your business needs.

Model Profile
2020 INTEGRATED CE S BUS (PB105)

APPLICATION:	School Transportation, Special Needs
MISSION:	Requested GVWR: 29800. Calc. GVWR: 29800 Calc. Start / Grade Ability: 24.57% / 1.75% @ 55 MPH Calc. Geared Speed: 80.9 MPH
DIMENSION:	Wheelbase: 217.00, CA: N/A, Axle to Frame: 126.00
ENGINE, GASOLINE:	{Power Solutions International 8.8 Liter GAS} EPA 2018, 265 HP @ 2600 RPM, 548 lb-ft Torque @ 1800 RPM, 2700 RPM Governed Speed, 265 Peak HP (MAX)
TRANSMISSION, AUTOMATIC:	{Allison 2500 PTS} 5th Generation Controls, Wide Ratio, 6-Speed with Double Overdrive, Less PTO Provision, Less Retarder, with 33,000-lb GVW and GCW Max, School Bus
CLUTCH:	Omit Item (Clutch & Control)
AXLE, FRONT NON-DRIVING:	{Navistar Select} I-Beam Type, 10,000-lb Capacity
AXLE, REAR, SINGLE:	{Navistar Select} Single Reduction, 19,800-lb Capacity, 190 Wheel Ends Gear Ratio: 5.57
TIRE, FRONT:	(2) 255/70R22.5 Load Range H AH37 (HANKOOK), 562 rev/mile, 75 MPH, All-Position
TIRE, REAR:	(4) 255/70R22.5 Load Range H AH37 (HANKOOK), 562 rev/mile, 75 MPH, All-Position
SUSPENSION, REAR, AIR, SINGLE:	{International IROS} 21,000-lb Capacity, 9.25" Ride Height, with Shock Absorbers
PAINT:	Cab schematic 100NB Location 1: 4421, School Bus Yellow (Std) Chassis schematic N/A

Vehicle Specifications
2020 INTEGRATED CE S BUS (PB105)

November 20, 2018

<u>Code</u>	<u>Description</u>
PB10500	Base Chassis, Model INTEGRATED CE S BUS with 217.00 Wheelbase, N/A CA, and 126.00 Axle to Frame.
1570	TOW HOOK, FRONT (2) Frame Mounted
1CAC	FRAME RAILS High Strength Low Alloy Steel (50,000 PSI Yield); 10.125" x 3.062" x 0.312" (257.2mm x 77.8mm x 8.0mm); 480.1" (12195mm) Maximum OAL <u>Includes</u> : CHASSIS PAINT Chassis Painted Prior to Body Mounting : FRAME RAILS All holes Laser Aligned and Machine Punched, Powder Coated Prior to Full Assembly, Assembled in Fixture using "Grade 8" Bolts : FRAME REINFORCEMENT, SPECIAL 3.30" x 1.80" x 0.312" x 31.50" Inverted "L" in Front Shock Absorber Mounting Area
1LLE	BUMPER, FRONT Full Width, Aerodynamic, Heavy Duty, Steel <u>Includes</u> : BUMPER, FRONT THICKNESS 1/4 Inch
1LNT	CROSSING GATE, FRONT Omit Item <u>Includes</u> : CROSSING GATE, FRONT Matches Contour of Bumper
1SAL	CROSSMEMBER, REAR, AF (1)
1WHT	WHEELBASE RANGE 193" (490cm) Through and Including 217" (550cm)
2AUT	AXLE, FRONT NON-DRIVING {Navistar Select} I-Beam Type, 10,000-lb Capacity
3ADB	SUSPENSION, FRONT, SPRING Parabolic Taper Leaf, Shackle Type, 10,000-lb Capacity, with Shock Absorbers <u>Includes</u> : SPRING PINS Bolt and Nut Type : SPRING PINS Rubber Bushings, Maintenance-Free <u>Notes</u> : The following features should be considered when calculating Front GAWR: Front Axles; Front Suspension; Brake System; Brakes, Front Air Cam; Wheels; Tires.
4091	BRAKE SYSTEM, AIR Dual System for Straight Truck Applications <u>Includes</u> : BRAKE LINES Color and Size Coded Nylon : DRAIN VALVE Twist-Type : GAUGE, AIR PRESSURE (2) Air 1 and Air 2 Gauges; Located in Instrument Cluster : PARKING BRAKE CONTROL Yellow Knob, Located on Instrument Panel : PARKING BRAKE VALVE For Truck : QUICK RELEASE VALVE On Rear Axle for Spring Brake Release: 1 for 4x2, 2 for 6x4 : SLACK ADJUSTERS, FRONT Automatic (with Air Cam Brakes) : SLACK ADJUSTERS, REAR Automatic (with Air Cam Brakes) : SPRING BRAKE MODULATOR VALVE R-7 for 4x2, SR-7 with relay valve for 6x4/8x6 <u>Notes</u> : Rear Axle is Limited to 19,000-LB GAWR with Code 04091 BRAKE SYSTEM, AIR and Code 04NDC BRAKES, REAR, AIR CAM Regardless of Axle/Suspension Ordered : Rear Axle is Limited to 20,000-LB GAWR with Code 04092 BRAKE SYSTEM, AIR and Code 04NCW BRAKES, REAR, AIR CAM Regardless of Axle/Suspension Ordered
4722	DRAIN VALVE {Bendix DV-2} Automatic, with Heater, for Air Tank <u>Includes</u> : DRAIN VALVE Mounted in Wet Tank

Vehicle Specifications
2020 INTEGRATED CE S BUS (PB105)

November 20, 2018

<u>Code</u>	<u>Description</u>
4AZJ	AIR BRAKE ABS {Bendix AntiLock Brake System} Full Vehicle Wheel Control System (4-Channel) with Automatic Traction Control
4EBS	AIR DRYER {Bendix AD-9} with Heater
4EXP	BRAKE CHAMBERS, FRONT AXLE {Bendix} 20 SqIn
4EXU	BRAKE CHAMBERS, REAR AXLE {Bendix EverSure} 30/30 Spring Brake
4JCH	BRAKES, FRONT, AIR CAM S-Cam; 15.0" x 5.0"; Includes 20 Sq. In. Long Stroke Brake Chambers
	<u>Notes</u> : Front Axle with 14,000-lb GAWR is Limited to 13,200-lb GAWR when used in Conjunction with 15" BRAKES, FRONT, AIR CAM.
4NDB	BRAKES, REAR, AIR CAM S-Cam; 16.5" x 7.0"; Includes 30/30 Sq.In. Long Stroke Brake Chamber and Spring Actuated Parking Brake
	<u>Notes</u> : The following features should be considered when calculating Front GAWR: Front Axles; Front Suspension; Brake System; Brakes, Front Air Cam; Wheels; Tires.
4SBC	AIR COMPRESSOR {Bendix Tu-Flo 550} 13.2 CFM Capacity
4VCY	AIR TANK LOCATION (1) Mounted Left Side to Provide Clearance for Larger Body Builder Supplied Battery Box
4WEA	PARKING BRAKE INTERLOCK Parking Brake Cannot be Released until Ignition Switch is in the "ON" Position and the Service Brake Pedal is Applied, Use with air brake chassis only.
4WZT	GVWR LIMITATION FOR BUS with Air Brakes, Limited to 33,000-lbs Maximum to meet FMVSS 121 Requirements, for Conventional Bus
5708	STEERING COLUMN Tilting
5CAL	STEERING WHEEL 2-Spoke, 18" Dia., Black
5PSA	STEERING GEAR {Sheppard M100} Power
7DXS	EXHAUST SYSTEM Horizontal Dual Catalytic Converters, Frame Mounted Muffler Right Side, Includes Long Horizontal Tail Pipe, for use with Propane or Gasoline Engines
7WBL	TAIL PIPE Long Horizontal, Exits Left Side Through Bumper
8000	ELECTRICAL SYSTEM 12-Volt, Standard Equipment
	<u>Includes</u> : FUSES, ELECTRICAL SAE Blade-Type : HAZARD SWITCH Push On/Push Off, Located on Top of Steering Column Cover : HEADLIGHT DIMMER SWITCH Integral with Turn Signal Lever : MISCELLANEOUS FEATURES Modular, Loom Protected, Grommets in all Applicable Body Openings, Assembled in Computer Assisted Fixture which Verifies Continuity and Correct Assembly Prior to Installation : PARKING LIGHT Integral with Front Turn Signal and Rear Tail Light : STARTER SWITCH Electric, Key Operated : TURN SIGNAL FLASHER : TURN SIGNAL SWITCH Self-Cancelling with Lane Change Feature : TURN SIGNALS, FRONT Includes Reflectors; Flush Mounted : WINDSHIELD WIPER SWITCH 2-Speed with Wash and Intermittent Feature (5 Pre-Set Delays), Integral with Turn Signal Lever : WIRING, CHASSIS Color Coded and Continuously Numbered
8GXK	ALTERNATOR {Leece-Neville BLP4006HN} Brushless, 12 Volt 325 Amp. Capacity, Pad Mount, with Remote Sense
8MSG	BATTERY SYSTEM {Fleetrite} Maintenance-Free, (3) 12-Volt 1980CCA Total

Vehicle Specifications
2020 INTEGRATED CE S BUS (PB105)

November 20, 2018

<u>Code</u>	<u>Description</u>
8TTK	BATTERY BOX Steel, with Sliding Tray, 25.25" Wide, for Standard Batteries, Mounted Left Side Behind Front Axle Perpendicular to Frame Rail
8TUT	COLLISION MITIGATION SYSTEM Omit
8VBD	HORN, ELECTRIC (2) Trumpet Style, Mounted Above Right Frame Rail
8WPB	HEADLIGHTS Halogen; Composite Aero Design for Two Light System; Includes Daytime Running Lights
8WWJ	INDICATOR, LOW COOLANT LEVEL with Audible Alarm
8WXB	HEADLIGHT WARNING BUZZER Sounds When Head Light Switch is on and Ignition Switch is in "Off" Position
8XAH	CIRCUIT BREAKERS Manual-Reset (Main Panel) SAE Type III with Trip Indicators, Replaces All Fuses
8XHE	STARTING MOTOR {Delco Remy PG260N2} 12 Volt; less Thermal Over-Crank Protection
9WAB	HOOD TILT ASSIST {EASY TILT} Mechanical
9WAY	FRONT END Tilting, Fiberglass, with Three Piece Construction
	<u>Includes</u> : AIR INTAKE SYSTEM Integrated Pre-Cleaning System to Enhance Air Filter Life : GRILLE Removable; Fiberglass Painted Hood Color : SPLASH SHIELD Integral with Front End Assembly
10020	CHASSIS PAINT Full Chassis
10060	PAINT SCHEMATIC, PT-1 Single Color, Design 100
	<u>Includes</u> : PAINT SCHEMATIC ID LETTERS "NB"
10788	PAINT TYPE Urethane, One or Two Colors, Other than Imron or International.
10AAZ	OVER THE AIR PROGRAMMING Omit
10XAJ	PROMOTIONAL PACKAGE LED EXT {Sound Off} LED Lights
10XAK	PROMOTIONAL PACKAGE 7 Year Unlimited Miles/km Warranty, Limited Time Program for Allison 2000 Series Transmission on School and Commercial Buses (Supplied directly through Allison)
11001	CLUTCH Omit Item (Clutch & Control)
12DLP	ENGINE, GASOLINE {Power Solutions International 8.8 Liter GAS} EPA 2018, 265 HP @ 2600 RPM, 548 lb-ft Torque @ 1800 RPM, 2700 RPM Governed Speed, 265 Peak HP (MAX)
12TSV	FAN DRIVE {Borg-Warner SA-75} Viscous Type, Screw On
12UGN	THROTTLE, HAND CONTROL Electronic
	<u>Notes</u> : Cruise Control Switches Mounted on Steering Wheel are Non-Illuminated.
12VBR	AIR CLEANER with Service Protection Element
	<u>Includes</u> : GAUGE, AIR CLEANER RESTRICTION Air Cleaner Mounted
12VGX	FEDERAL EMISSIONS {Power Solutions International 8.8L GAS} EPA, OBD and GHG Certified for Calendar Year 2019
12VVN	CRUISE CONTROL Electronic
	<u>Notes</u> : Cruise Control Switches Mounted on Steering Wheel are Non-Illuminated.
12VWH	GOVERNOR Electronic Road Speed Type; for Electronic Engines and Bus Models; with 55 MPH Default

Vehicle Specifications
2020 INTEGRATED CE S BUS (PB105)

November 20, 2018

<u>Code</u>	<u>Description</u>
12VYT	IDLE MANAGEMENT SYSTEM Ramp Engine Speed with Low Battery When Vehicle is Stationary, for Use with Variable Engine Speed Control and Automatic Transmission
12XBA	RADIATOR Down Flow, 665 SqIn Aluminum Radiator Core with Internal Water to Oil Transmission Cooler
13ARV	TRANSMISSION, AUTOMATIC {Allison 2500 PTS} 5th Generation Controls, Wide Ratio, 6-Speed with Double Overdrive, Less PTO Provision, Less Retarder, with 33,000-lb GVW and GCW Max, School Bus <u>Includes</u> : OIL FILTER, TRANSMISSION Mounted on Transmission : TRANSMISSION OIL PAN Magnet in Oil Pan
13WLN	TRANSMISSION OIL Synthetic; 20 thru 28 Pints
13WYY	SHIFT CONTROL PARAMETERS Allison 1000 or 2000 Series Transmissions, 5th Generation Controls, Performance Programming
14AJU	AXLE, REAR, SINGLE {Navistar Select} Single Reduction, 19,800-lb Capacity, 190 Wheel Ends . Gear Ratio: 5.57
14TBS	SUSPENSION, REAR, AIR, SINGLE {International IROS} 21,000-lb Capacity, 9.25" Ride Height, with Shock Absorbers <u>Notes</u> : The following features should be considered when calculating Rear GAWR: Rear Axles; Rear Suspension; Brake System; Brakes, Rear Air Cam; Brake Shoes, Rear; Special Rating, GAWR; Wheels; Tires.
14WAW	FLAT FLOOR EFFECTS for Air Suspension; with Conventional Bus Models
15SZS	FUEL TANK, GASOLINE Top Draw; Rectangular, Steel; 60 U.S. Gal., 227 L Capacity, Includes Protective Cage, for Low Profile Fuel Filler Assembly and Vent Hosing, Mounted Between Frame Rails and Behind Rear Axle
16010	COWL Flat Back
16HBA	GAUGE CLUSTER English with English Electronic Speedometer <u>Includes</u> : GAUGE CLUSTER (5) Engine Oil Pressure (Electronic), Water Temperature (Electronic), Fuel (Electronic), Tachometer (Electronic), Voltmeter : ODOMETER DISPLAY, Miles, Trip Miles, Engine Hours, Trip Hours, Fault Code Readout : WARNING SYSTEM Low Fuel, Low Oil Pressure, High Engine Coolant Temp, and Low Battery Voltage (Visual and Audible)
16HGH	GAUGE, OIL TEMP, AUTO TRANS for Allison Transmission
16HKT	IP CLUSTER DISPLAY On Board Diagnostics Display of Fault Codes in Gauge Cluster
27DUW	WHEELS, FRONT {Accuride 51408} DISC; 22.5x8.25 Rims, Powder Coat Steel, 2-Hand Hole, 10-Stud, 285.75mm BC, Hub-Piloted, Flanged Nut, with Steel Hubs
28DUW	WHEELS, REAR {Accuride 51408} DUAL DISC; 22.5x8.25 Rims, Powder Coat Steel, 2-Hand Hole, 10-Stud, 285.75mm BC, Hub-Piloted, Flanged Nut, with Steel Hubs
29580	WHEEL SEALS, FRONT {International} Oil-Lubricated Wheel Bearings
47AEU	BODY, BUS Conventional; 78" Headroom, 26'8" Body Length, +9 Section Front and Rear, 54 Passenger, 217/218 WB
47AJA	BODY CERTIFICATION TAG Metal
47AJC	BODY TAG, METAL Capacity to Include the Total Number of Passengers
47AKK	STEP, FRONT ENTRANCE DOOR 25 3/4" Depth; 14ga Steel <u>Includes</u>

Vehicle Specifications
2020 INTEGRATED CE S BUS (PB105)

November 20, 2018

<u>Code</u>	<u>Description</u>
	: STEP, FRONT ENTRANCE DOOR OPENING, 35 Inch Width; Continuous Bottom to Top
47AKZ	DECAL, HANDICAP (4) 6" x 6", 1 Mounted on Electrical Access Door, 1 Mounted on Lift Door Below Window Line, 1 on Left Bumper, 1 on Rear Door Between Top and Bottom Glass
47AMA	FASTENERS, EXTERIOR MOUNTED Stainless Steel Screws; for Fender and Body Exterior Rear View Mirrors, Bumper Mounted Crossing Gate and Body Mounted Stop Arm
47APJ	BODY RATING TAG Metal; for State of Texas, Includes Design Capacity and Seat Capacity
47APR	HEADLINER, BODY Conventional; 25'11"-34'11" Body Length, Perforated Full Length with Sound Insulation Full Length
47APX	FASTENERS, HEADLINER Screws
47ARH	BOWS, ROOF 14 ga., One Piece Construction
	<u>Includes</u> : BOWS, ROOF Positioned Floor Line to Floor Line, Threaded Through Roof Strainers and Drip Rail
47ARP	LIGHT BARS Plastic
47ASG	SKIRT, BODY for Conventional, 14 1/2", 16ga
	<u>Includes</u> : SKIRT, BODY Extra Smooth Steel Supported by Floor Gussets
47AUR	TIE DOWNS, BODY Grade 8 Bolts, Every Body Section
	<u>Includes</u> : TIE DOWNS, BODY with Formed Tab that Fits into Floor Structure to Prevent Turning
47AXR	RUB RAILS, BODY (4) Conventional; Steel, 25'2", 25'11", 26'8", 27'5" Body Length, Includes Snow Rail
	<u>Includes</u> : RUB RAILS Full Length, Primer Coated (Both Sides), Attached to Body without Cuts or Splices
47AYB	BODY, REAR Includes Emergency Door
	<u>Includes</u> : DOOR, REAR EMERGENCY with Concealed Hinges : HEADER BUMPER Padded, Mounted Over Rear Door; Upholstered to Match Passenger Seat Color
47AZC	SIDE SHEET, BODY, EXTERIOR Conventional, 16ga., Smooth, 25'2", 25'11", 26'8", 27'5", Body Length
47AZK	FLOOR, BODY Flat
47BAK	BUMPER, REAR Painted; 12" High, 0.188" Thick
47BAR	SUPPORTS, REAR BUMPER Bolted to Frame
47BBH	LINING, SIDE INTERIOR, LOWER Embossed Steel, Clear Coated
47BEX	SEALER Water-proof Sealer on all Floor Covering Seams
47BKK	LETTERS, SCHOOL BUS FRONT/REAR Decal; "SCHOOL BUS"; with 8" Black Reflective Letters, 3M Fluorescent Diamond Grade, Yellow On Front and Rear Cap
47DAJ	COVER, REAR DOOR INSIDE HANDLE Partial Coverage
47DAK	FASTENERS, REAR DOOR Bolts and Nutserts, Rear Door To Body
47DBP	DOOR, ENTRANCE, FRONT Air, Outward Opening, with Split Pane Glass
47DCW	HANDLE, EXTERIOR, LIFT DOOR Single Door, Yellow
47DDE	HANDLE, ASSIST, ENTRANCE DOOR Outside Entrance

Vehicle Specifications
2020 INTEGRATED CE S BUS (PB105)

November 20, 2018

<u>Code</u>	<u>Description</u>
47DDH	HOLD BACK, REAR DOOR Stationary, No Cables, with Plastic Cover
47DDR	LATCH, LIFT DOOR Single, Three Point Slide Bar
47DDU	LATCH, REAR DOOR One Point Slide Bar, Cam Operated, with One Inch Stroke
47DEK	LOCK, VANDAL, REAR DOOR with Ignition Starter Interlock
47DEV	LOCK, VANDAL, SINGLE LIFT DOOR with Ignition Starter Interlock
47DEY	HANDLE, EXTERIOR, REAR Emergency Door; Yellow
47DNK	SWITCH, LOCATION Steering Wheel; Includes Master Flasher, Flasher On/Off, Red Override, and Door Control
	<u>Includes</u> : SWITCH, STEERING WHEEL, LIGHT Includes Illuminated Switches
47DWP	DOOR, LIFT Single, 43" x 69.79", Mounted Aft of Rear Wheel Pocket, with 78" Headroom
47DXG	FASTENERS, HANDRAIL Plusnuts & Screws
47EBM	HOLD DOWN, BATTERY For (2) Standard Size Batteries
47ECS	COMPARTMENT, TOOL, FWD LEFT Aft of Standard Battery Box, Key Lock, 13"x 15"x 25 1/2"
47EXK	LOCK, VANDAL, ENTRANCE DOOR Integrated Manual Control in Door, with Key
47KDC	MONITOR, POST TRIP INSPECTION {Leave No Student Behind} Accessory Controlled, with Push Button Alarm Disable at Rear of Bus Prompts Driver to Walk to Back of Bus and Push Button in Light Bar to Deactivate System
47LAR	NOISE REDUCTION, ROOF BOW Conventional; Insulation, 25'2", 25'11", 26'8", 27'5" Body Lengths
47LAU	INSULATION, ROOF AND SIDES 1.50", All Models
47MAV	LETTERS, SCHOOL BUS SIDE Decal; "SCHOOL BUS"; in 8" Reflective Black Letters, Each Side
47MBA	UNDERCOAT, BODY Fire Resistant, Water Based, TT-C-730 Spec
	<u>Includes</u> : UNDERCOATING Performed Before and After Mounting on Chassis
47MBC	INSULATION, STEPWELL
47MJR	LETTERS, DOOR, REAR Decals; "EMERGENCY DOOR", 2" Black Letters Inside and Outside
47MNT	ARROW, RR DOOR, INSIDE Decal; Red, .75" Stroke, Indicating Handle Direction
47MRU	LETTERS, E/E WINDOW, LEFT (2) Decal Sets, "EMERGENCY EXIT", Black Inside and Outside
47MTY	WIRING DIAGRAM Schematic, Electrical
	<u>Includes</u> : ACCESS PANEL for Wiring Diagram Schematic Located on Body Exterior; Below Driver Window
47MVA	LETTERS, HEADER Decal; "WATCH YOUR STEP", 1" Black, Above Windshield
47MVC	LETTERS, STEPWELL Decal, "WATCH YOUR STEP", 2.5" Black, Behind Door on Step Riser
47NAB	PAINT COLOR, RUB RAILS 0001 Canyon Black
47NGW	SEAL, RUB RAILS Top Edge, All Rails
47NHL	LETTERS, E/E WINDOW, RIGHT (2) Decal Sets, "EMERGENCY EXIT", Black, Inside and Outside
47NJA	PAINT COLOR, BODY EXTERIOR 4421 School Bus Yellow
47NJM	PAINT FLASHER BACKGRD 0001 Canyon Black

Vehicle Specifications
2020 INTEGRATED CE S BUS (PB105)

November 20, 2018

<u>Code</u>	<u>Description</u>
47NJS	PAINT COLOR, BUMPER Rear; 0001 Canyon Black
47NKD	PAINT COLOR, ROOF 9219 Winter White, Beginning 5" Above Drip
47NKL	PAINT, RUB RAIL Flange to Flange
47NKR	PAINT COLOR, BODY INTERIOR Light Gray
47NMG	OPERATING INSTR, REAR Decal, Inside Rear Emergency Door
47NTE	LOGO, ROOF LINE Decal; Wing and Shield, First Body Section, Above Driver Window and Entrance Door Over Driver Window and Entrance Door
47NTY	PAINT HOOD AND FENDER To Match Body Exterior
47NWH	STRIPING, ROOF HATCH, REAR Decal, Perimeter, 1", Yellow, 3M Fluorescent Diamond Grade
47NWJ	STRIPING, SEATLINE {3M} 2" Yellow, Fluorescent Diamond Grade
47NWR	STRIPING, REAR END {3M} 2" Yellow Fluorescent Diamond Grade
47NWT	STRIPING, ROOF HATCH, FRONT {3M} Decal, Perimeter, 1", Yellow Fluorescent Diamond Grade
47NWU	STRIPING, E/E WINDOW, RIGHT (02) Perimeter, 1" 3M Yellow Fluorescent Diamond Grade
47NXH	STRIPING, E/E WINDOW, LEFT {3M} (02) Perimeter, 1" Yellow Fluorescent Diamond Grade
47NXN	STRIPING, PERIMETER, REAR Emergency Door; 1" Wide, 3M Fluorescent Diamond Grade, Yellow
47PBZ	HANDLE, ASSIST Windshield Side Mounted, Left and Right, Body Color
47PGV	LETTERS, FUEL I.D. Paint; "UNLEADED GASOLINE ONLY", 2" Black, Adjacent to Fuel Filler Door
47SAZ	SUB FLOOR, PLYWOOD Conventional; B-B Marine Grade, Less Sealed Edges, 5/8", 5 Ply, for 25'2", 25'11", 26'8" or 27'5" Body Lengths
47SPC	ALPHA/NUMERIC DECAL GUIDE Quantity 031-40
48ACN	SEAT BELT, DRIVER, COLOR with Blaze Orange Seat Belt Webbing
48ANE	WINDOW, ENTRANCE DOOR, TOP Laminated, Clear
48ANM	WINDOW, ENTRANCE DOOR, BOTTOM Laminated, Clear
48ANT	WINDOW, DRIVER Laminated, Clear
48APL	WINDOW, STOPS 12" Opening, Only with 78" Headroom
48ARD	WINDOW, SASH (9) 27" Sections, 9"x 23" Opening
48ASR	WINDOW, SASH +9 SECTIONS (3) 9" x 32 1/4" Opening
48AUL	WINDOW, PASSENGER, TINT Conventional; 28% Light, Laminated Glass, 78" Headroom, with 25'2", 25'11", 26'8", 27'5" Body Lengths
48BAH	WINDOW, E/E, LEFT (2) Vertical Hinge
48BJA	COLOR, WINDOW FRAME, PASS Passenger Window, Natural Aluminum Finish
48BKP	WINDOW, E/E, RIGHT (2) Vertical Hinge
48GHC	HEATER, DRIVER 90,000 BTU, with Defroster and without Rear Heat Duct
	<u>Includes</u>
	: AIR FILTER
	: HEATER HOSES Premium
	: HOSE CLAMPS, HEATER HOSE Mubea Constant Tension Clamps
48GJN	SEAT, TRACK, RT, 39", 6 LEG {IMMI Seats} (02) High Back, with 3 Point Seat Belts

Vehicle Specifications
2020 INTEGRATED CE S BUS (PB105)

November 20, 2018

<u>Code</u>	<u>Description</u>
48GJZ	SEAT, TRACK, LT, 39", 6 LEG {IMMI Seats} (04) High Back, with 3 Point Seat Belts
48GYV	HEATER, DEFLECTOR Kit, for Driver Heater
48NAT	FITTINGS, AIR SEAT for Driver Seat
48PAM	WINDSHIELD 3 Flat Pieces, 73% Light, with Band
48PAY	AISLE POSITION Center, for balanced seating
48PEW	FLOOR COVERING, COLOR Gray #766
48PHK	UPHOLSTERY, PASS SEATS, TYPE Prevaill, 42 oz.; for (15-16) Seats
48PJR	FLOOR COVERING, TRIM Aluminum
48PJZ	FLOOR COVERING, TYPE {Koroseal} All Body Lengths
48PKC	HOSE CLAMPS, HEATER HOSE Constant Torque for Heater System
48PNW	HEATER, WATER PUMP {2 MPU 12} Self Priming, with Plastic Housing
48PPM	HEATER CUT OFF, VALVE Ball, with Butterfly Handle
48PPP	HEATER CUT OFF, VALVE INSIDE Brass Ball, Inside Forward of Driver Heater
48PPS	ROOF VENT, FRONT Static
48PTT	ARM REST, DRIVER, RIGHT {National}
48PUT	NUTS, BELT MOUNTING Standard Nuts For Seat Belt Mounting
48PVA	UPHOLSTERY, DRIVER SEAT, STYLE Plain, with Cloth Insert
48PVN	UPHOLSTERY, DRIVER SEAT, COLOR Drivers Seat, Gray
48PWD	UPHOLSTERY, PASS SEATS, COLOR Gray, for Seats, Barriers and Head Bumpers
48PWR	UPHOLSTERY, DRIVER SEAT, TYPE Prevail, 42 oz.
48PXP	UPHOLSTERY, BARRIER, TYPE (1-2) Prevaill, 42 oz.
48RAE	BARRIER, CRASH, AFT ENTRY DOOR 39", 1 Leg
48RAL	BARRIER, CRASH, AFT DRIVER 39", 1 Leg
48RDL	FAN, DEFOG LEFT OF DRIVER 6.50" Diameter, Black, Mounted Left of Driver Above Windshield, 2 Speed Switch in Panel
48RGE	HAND RAIL, ENTRANCE DOOR, FWD Stainless Steel; Curved
48RGR	HAND RAIL, ENTRANCE DOOR, AFT Stainless Steel, 4", Above Step
48RLX	CUSHION, SEAT 15" Depth
	<u>Includes</u> : WARRANTY Four Years
48RRA	UPHOLSTERY, SEAT, STITCHING Single
	<u>Includes</u> : WARRANTY Two Years
48RYW	SEAT, DRIVER {National 2000} Air Suspension, High Back with Integral Headrest, Isolated, with 2 Position Front Cushion Adjustment, 6 to 17 Degree Seat Back Adjustment, Mechanical Lumbar Support, Includes Additional Back Padding
	<u>Includes</u> : SEAT BELT, DRIVER Adjustable D-Loop Seat Belt, Single Locking Retractor

Vehicle Specifications
2020 INTEGRATED CE S BUS (PB105)

November 20, 2018

<u>Code</u>	<u>Description</u>
48RZJ	STEP TREADS {Koroseal} Pebble Top with White Nosing, with Non-Metal Backing
48UCP	ROOF HATCH, FRONT {Transpec 1975-028-121-03} with Outside Release, with English Decals
48UCR	ROOF HATCH, REAR {Transpec 1975-028-121-03} with Outside Release, with English Decals
48USV	SEAT BACK, PASSENGER High Back
48UYC	HEATER, REAR WALL, RT SIDE 80,000 BTU, Bergstrom
48WZW	SEAT,CHILD,LT,36",2 LEG {BTI Seating System} (03) High Back, with 3 Point Seat Belts, with Child Restraints
	<u>Notes</u> : BTI Seating System -Integrated Child Restraint. Retrofitable, Contact IC Bus Application Engineering for more information.
48XAG	SEAT,CHILD,RT,36",2 LEG {BTI Seating System} (03) High Back, with 3 Point Seat Belts and Child Restraint
	<u>Notes</u> : BTI Seating System -Integrated Child Restraint. Retrofitable, Contact IC Bus Application Engineering for more information.
48XZW	SEAT,PASS,3PT,LT,39",2 LEG {BTI Seating System} (2) High Back, with 3 Point Seat Belts
48YAK	SEAT,PASS,3PT,RT,39",2 LEG {BTI Seating System} (2) High Back, with 3 Point Seat Belts
49001	BODY PLAN, APPROVED VARIATION Number 001
49AHV	LIGHT, STROBE, STOP SIGN, FRT In Lieu Of Flashing Lights Furnished with Stop Sign, Speciality
49AHY	LIGHT, STROBE, STOP SIGN, REAR In Lieu of the two Flashing Lights Furnished with Stop Sign, Speciality
49AJH	CONNECTION, LIGHTS Cluster, Clearance and Side Marker To Tail Lights
49AMD	SWITCH, DRIVER PANEL, TYPE Rocker
49AMJ	ALARM, BACKING {Ecco #575} 107 db
49AMT	CIRCUIT, PROTECTION Breakers, Manual Reset in Lieu of Fuses
	<u>Includes</u> : ACCESS PANEL for Body and Chassis Fuses/Circuit Breakers Located on Body Exterior; Below Driver Window
49AMY	SWITCH, REAR DOOR BUZZER for Emergency Door
49ANH	SWITCH, MAGNETIC, DISCONNECT Master, Ignition Operated, All Body Circuits
49ANU	SOURCE, POWER 12 VDC, Mounted On Dash
49APA	LIGHT, DRIVER, CEILING Deluxe, with Separate Switch, Mounted in Light Bar
49APV	LIGHT, LIFT DOOR, INTERIOR Above Lift Door, with Door Operated Switch
49APX	LIGHTS, DOME Conventional; Two Full Rows Rectangular Recessed Dome Lights, 25'2", 25'11", 26'8", 27' 5" Body Length
	<u>Includes</u> : WIRING HARNESS Main Body Wiring Harness Accessed by Removing Dome Light
49ATJ	LIGHT, INDIC, LIFT DOOR Amber; Flashing, Located in Driver Area
49AWT	SPEAKERS AND WIRING (4) Flush Mounted in Light Bar
49BCN	FLASHER SYSTEM (8) Warning Lights, 8-Lamp System, Electronic Relay Flasher, Non-Sequential Operation, Red Lights Activate with Door Open
49BCR	LIGHT, EXTERIOR, CHECK Automatically Activates Lights for Pre Trip Inspection

Vehicle Specifications
2020 INTEGRATED CE S BUS (PB105)

November 20, 2018

Code	Description
49BLL	WIRING, VIDEO SYSTEM Power and Ground Connection Only; Connection in Flasher Plate Area with 20 Amp Fuse Protection
49BMA	STOP ARM, FRONT {Specialty 2980} Air, 18" Octagon, Double Sided, 1/2" White Border, Hi Intensity Grade, Strobing LED Lights
49BUS	WIRING, WARNING LIGHTS (8) for 7" Red Warning Lights, Alternately Flashing, 2 Front, 2 Rear, Red Warning Lights to Operate When Lift Door is Open and Master Flasher Switch is "ON"
49BVE	MIRROR, CROSS VIEW, EXTERIOR {Mirror Lite High Definition Busboy} for Left & Right Side; Black
49BWG	STOP ARM, LEFT REAR {Specialty 2981} Air, Hi Intensity, Strobing LED Lights, with Letters on Back
49BXN	SWITCH, RED, OVERRIDE WARNING Wired Hot, with ESC, Mounted Left of Driver
49BYD	RADIO, ENTERTAINMENT {Panasonic} AM/FM-MPLX Stereo, Includes Antenna and Cable, with Public Address System
49BYT	LIGHTS, STOP (2) {Sound Off} and Tail; 7" Round LED, Red
49BYV	LIGHTS, MARKER, FRONT, REAR {Sound Off} Rectangular LED, Armored, (8) Four Amber Front and Four Red Rear
49BYZ	LIGHTS, DIRECTIONAL, REAR (2) {Sound Off} LED, 7" Round Amber LED
49CKR	FUEL FILLER PIPE Low Profile Neck Cap and Vent Hosing, for Use with Right Side Fill for Between the Rail Fuel Tanks, for Below the Floor Fuel Fill
49DAG	LIGHT, INDIC, WARNING LIGHTS LED Type; Red and Amber
49DBR	HOOD, WARNING LAMP (4) Black, 8-Lamp System, One Hood Above Two Lights
49EAW	LIGHTS, MARKER, SIDE {Sound Off} Rectangular LED, Armored Type, Intermediate, Centered; Required for Units 30 Foot or Longer
49EBA	KIT, FIRST AID Plastic; 24 Unit, Spec State
49EGC	MIRROR, INSIDE 6" x 30", Clear Safety Glass, Metal Back, Round Corners
49EJR	MIRROR, REAR VIEW, EXTERIOR {Rosco} Suspended, Black, with Breakaway Bracket, Motorized Head
49ENK	VISOR, INTERIOR, LEFT FRONT 6" x 30", Transparent, For Left Windshield
49EPY	CUTTER, SEAT BELT (2) {TIE TECH Safecut} for Cutting Seat Belts
49EVL	SWITCH, NOISE SUPPRESSION Actuator Legend States, "NOISE SUPP ", for Separate Solenoid, with Red Switch in Panel
49EWM	LIGHT, STROBE ECCO 6550C, Low Profile, Double Flash, 4.9" High
49EZC	CUTTER, SEAT BELT, LOCATION (2) Centered on Inside of Driver Compartment Lid
49GAY	KIT, BODY FLUID Texas
49GBV	WINDSHIELD WIPERS (2) Cowl Mounted <u>Includes</u> : WINDSHIELD WIPERS CONTROL Single Motor, Overlapping Wipe Pattern
49GDG	PADDING COMPART ABOVE DRIVER Window; Safety Equipment, Vandal Equip Compartment with Cutout for dome light
49GDS	COMPARTMENT ABOVE DRIVER Left of the Driver <u>Includes</u> : COMPARTMENT ABOVE DRIVER Compartment Size: 39" x 10" x 10" : HINGES Piano Type

Vehicle Specifications
2020 INTEGRATED CE S BUS (PB105)

November 20, 2018

Code	Description
49GEH	SAFETY TRIANGLES Warning Reflectors, Mounted on Drivers Barrier Level with Top of a Modesty Shield
49GGE	FIRE EXTINGUISHER, DRIVER AREA 5 lb 2A-40BC Minimum with Flexible Hose and Metal Nozzle
49GGW	FIRE BLANKET Deist, in Storage Container, 1st Bow Section From Rear
49GJL	SAFETY EQUIPMENT Evacuation Aid; 18 Sq Ft, Vinyl Sheet with Metal Hooks at each Corner, Used as Slide for Emergency Evacuation
49GLA	REFLECTORS, SIDE, INTERMEDIATE (2) 3" Amber, 1 Each Side, Mounted with Screws, Below The Third Rub Rail From the Top
49GLG	REFLECTORS, SIDE, REAR (2) 3", Red, Mounted with Screws
49GLM	REFLECTORS, SIDE, FRONT (2) 3", Amber; 1 Aft Drivers Window Left, 1 Aft Entrance Door Right, Mounted with Screws
49GLP	REFLECTORS, REAR (2) 3", Red, Mounted with Screws
49GMM	INTERLOCK, LIFT for FMVSS Wheel Chair Interlock Requirements; Key Off, Lift Door Must be Open before Lift can be Activated, w/ Key in "On or Accessory" Position, Park Brake Must be Applied, Transmission in Neutral, Lift Door Must be Open Before Lift Can be Activated, w/ Automatic or Precision Transmissions
49GPH	STORAGE COMPARTMENT, BELTS (3) for Sure Lok Wheelchair Belts, Mounted to Wall
49GVC	MUD FLAPS, REAR WHEELS (2) Rubber; Behind Rear Wheels
49GWW	WINDSHIELD WASHER Kit; 6 Quart Capacity, Bottle
	<u>Includes</u> : WINDSHIELD WASHER ELECTRICAL CONNECTIONS Sealed and Locking Type
49HES	MIRROR, BRACE, EXTERIOR Telescoping for Breakaway Bracket
49HGA	TRACK, FLOOR LENGTHS 151"-200", with Full Shoulder Track
49HHB	TIE DOWN, TRACK (03) Retractable
49HJU	TIE DOWN, TRACK TYPE {Sure-Lok FF612S-4C-7} Retractable
49JBG	TRACK, TYPE (BRAND) {OMNI L Track}
49JBS	LIGHTS, CLUSTER {Sound Off} Oval, 4 Internal LEDs per Light; Amber Front and Red Rear
49JBU	LIGHT, ENTRY DOOR {Sound Off} LED; 4" Oval; Light Mounted in Skirt Behind Entrance Door, Wired To Step Light
49JBV	LIGHT, LICENSE PLATE {Sound Off} LED, with Mounting Gasket
49JBW	LIGHT, STEP {Sound Off} 4" Round LED, White, Wired to Clearance Lights, Operated by Entrance Door
49JCX	INSPECTION PLATE Fuel Sending Unit 11.4" x 8" Steel
49MZS	FUEL FILLER DOOR Non-Locking, Lever Latch, Spring Loaded to Hold in Open Position
49MZV	LATCH, COMPARTMENT Locking, for Overhead Storage Compartment
49NAB	LIFT, WHEELCHAIR {Braun Model NCL1000FIB3451 Gen 2} Power Pack Mounted Forward of Lift
49NGJ	LIGHTS, WARNING (8) {Sound Off} (4) 7" Round Red Strobing LED and (4) 7" Round Amber Strobing LED, 2 Front, 2 Rear Each Color
49PTB	LIGHTS, DIRECTIONAL, SIDE {Sound Off} Rectangular LED Armor Type, Amber, 1 Each Side, Second Bow Section Aft of Entrance Door Between 2nd & 3rd Rub Rail
49UBZ	STATE OF OPERATION Texas
49ZNC	LIGHTS, BACK UP (2) {Sound Off} 4" Round, White, LED, with Flange

Vehicle Specifications
2020 INTEGRATED CE S BUS (PB105)

November 20, 2018

Code	Description
49ZNG	LIGHTS, STOP & TAIL ADDITIONAL (2) {Sound Off} 4" Round LED, Red, with Flange
50UAV	BODY PLAN, SPECIAL NEEDS Conventional; 26' 08" Body Length, +9 Section Front & Rear, 42 Passenger, 218" WB, DX9359A000
7752525809	(2) TIRE, FRONT 255/70R22.5 Load Range H AH37 (HANKOOK), 562 rev/mile, 75 MPH, All-Position
7752525809	(4) TIRE, REAR 255/70R22.5 Load Range H AH37 (HANKOOK), 562 rev/mile, 75 MPH, All-Position

Services Section:

40126	WARRANTY Standard for CE, RE, BE School Bus Models, Effective with Vehicles Built March 1, 2017 or Later, CTS-3304H
40KMA	SERVICES, TOWING {Navistar} Service Call to 24-Month/Unlimited Mileage to the Nearest Navistar Dealer for Navistar Warrantable Failure as Contract Defined; Includes Engine Failure if Supplier Declines Tow Coverage & ESC Supplied thru Navistar; \$550 (USA) Maximum Benefit per Incident
40PKZ	SRV CONTRACT, EXT VEH COVERAGE {Navistar} To 24-Month/50,000 Miles (80,000 km), Covers 100% Parts and Labor; Includes Body; Excludes Extending Warranty for Engine, Transmission, Perforation or Corrosion of Cab/Cowl Structure and Paint
49GVN	WARRANTY 5-Year, Limited MCC 136K BTU AIR CONDITIONING, INCLUDES DASH,FRONT, REAR AND MID EVAP, ANDYS 16 - 3 POINT SEAT INCENTIVE DOT INSPECTION - ANDYS PRE DELIVERY INSPECTION - ANDYS SET GOVERN SPEED @ 65 MPH WEIGHT SLIP - ANDYS ANGLETRAX VULCAN V12 SEVEN CAMERA MOBILE DIGITAL VIDEO RECORDING SYSTEM, INSTALLED CUMMINS INSITE DIAMOND LOGIC BUILDER - KBODY SOFTWARE (ANNUAL RENEWAL) MOTOROLA CM200D, UHF, 16CH, 40WATT MOBILE COMPLETE W/MOUNTING BRACKET, POWER CABLE, PALM MICROPHONE AND TWO YEAR WARRANTY, INSTALLED NEDS - ENGINE SOFTWARE (ANNUAL RENEWAL) ADDITIONAL SPA INVOICE CREDIT

Financial Summary
2020 INTEGRATED CE S BUS (PB105)

November 20, 2018

<u>Description</u>	<u>(US DOLLAR)</u>	<u>Price</u>
Net Sales Price:		\$101,285.00

Please feel free to contact me regarding these specifications should your interests or needs change. I am confident you will be pleased with the quality and service of an IC Corporation vehicle.

*** PRICE PER VEHICLE: \$101,285.00 ***

PRICE DOES NOT INCLUDE BUY BOARD FEE \$800 PER PURCHASE ORDER, PLEASE ADD IF APPLICABLE.

Approved by Seller:

Accepted by Purchaser:

Official Title and Date

Firm or Business Name

Authorized Signature

Authorized Signature and Date

**This proposal is not binding upon the seller without
Seller's Authorized Signature**

Official Title and Date

The TOPS FET calculation is an estimate for reference purposes only. The seller or retailer is responsible for calculating and reporting/paying appropriate FET to the IRS.



INTEGRATED CE S BUS

Sales Proposal For:
Marble Falls ISD

Presented By:
LONGHORN BUS SALES

Prepared For:
Marble Falls ISD
George Hamilton
2001 Broadway St.
Marble Falls, TX 78654-4803
(830)693 - 4357
Reference ID: 5-77 GAS 3pt

Presented By:
LONGHORN BUS SALES
FRED HOKE
6921 HOMESTEAD ROAD
HOUSTON TX 77028 -
(713)631-9306

Thank you for the opportunity to provide you with the following quotation on a new IC Corporation vehicle. I am sure the following detailed specification will meet your operational requirements, and I look forward to serving your business needs.

Model Profile
2020 INTEGRATED CE S BUS (PB105)

APPLICATION:	School Transportation
MISSION:	Requested GVWR: 29800. Calc. GVWR: 29800 Calc. Start / Grade Ability: 24.14% / 1.69% @ 55 MPH Calc. Geared Speed: 82.2 MPH
DIMENSION:	Wheelbase: 276.00, CA: N/A, Axle to Frame: 166.00
ENGINE, GASOLINE:	{Power Solutions International 8.8 Liter GAS} EPA 2018, 265 HP @ 2600 RPM, 548 lb-ft Torque @ 1800 RPM, 2700 RPM Governed Speed, 265 Peak HP (MAX)
TRANSMISSION, AUTOMATIC:	{Allison 2500 PTS} 5th Generation Controls, Wide Ratio, 6-Speed with Double Overdrive, Less PTO Provision, Less Retarder, with 33,000-lb GVW and GCW Max, School Bus
CLUTCH:	Omit Item (Clutch & Control)
AXLE, FRONT NON-DRIVING:	{Navistar Select} I-Beam Type, 10,000-lb Capacity
AXLE, REAR, SINGLE:	{Navistar Select} Single Reduction, 19,800-lb Capacity, 190 Wheel Ends Gear Ratio: 6.17
TIRE, FRONT:	(2) 11R22.5 Load Range H AH37 (HANKOOK), 499 rev/mile, 75 MPH, All-Position
TIRE, REAR:	(4) 11R22.5 Load Range H AH37 (HANKOOK), 499 rev/mile, 75 MPH, All-Position
SUSPENSION, REAR, AIR, SINGLE:	{International IROS} 21,000-lb Capacity, 9.25" Ride Height, with Shock Absorbers
PAINT:	Cab schematic 100NB Location 1: 4421, School Bus Yellow (Std) Chassis schematic N/A

Vehicle Specifications
2020 INTEGRATED CE S BUS (PB105)

November 20, 2018

Code	Description
PB10500	Base Chassis, Model INTEGRATED CE S BUS with 276.00 Wheelbase, N/A CA, and 166.00 Axle to Frame.
1CAC	FRAME RAILS High Strength Low Alloy Steel (50,000 PSI Yield); 10.125" x 3.062" x 0.312" (257.2mm x 77.8mm x 8.0mm); 480.1" (12195mm) Maximum OAL <u>Includes</u> : CHASSIS PAINT Chassis Painted Prior to Body Mounting : FRAME RAILS All holes Laser Aligned and Machine Punched, Powder Coated Prior to Full Assembly, Assembled in Fixture using "Grade 8" Bolts : FRAME REINFORCEMENT, SPECIAL 3.30" x 1.80" x 0.312" x 31.50" Inverted "L" in Front Shock Absorber Mounting Area
1LLE	BUMPER, FRONT Full Width, Aerodynamic, Heavy Duty, Steel <u>Includes</u> : BUMPER, FRONT THICKNESS 1/4 Inch
1LNT	CROSSING GATE, FRONT Omit Item <u>Includes</u> : CROSSING GATE, FRONT Matches Contour of Bumper
1SAL	CROSSMEMBER, REAR, AF (1)
1WJE	WHEELBASE RANGE 276" (700cm) Only
2AUT	AXLE, FRONT NON-DRIVING {Navistar Select} I-Beam Type, 10,000-lb Capacity
3ADB	SUSPENSION, FRONT, SPRING Parabolic Taper Leaf, Shackle Type, 10,000-lb Capacity, with Shock Absorbers <u>Includes</u> : SPRING PINS Bolt and Nut Type : SPRING PINS Rubber Bushings, Maintenance-Free <u>Notes</u> : The following features should be considered when calculating Front GAWR: Front Axles; Front Suspension; Brake System; Brakes, Front Air Cam; Wheels; Tires.
4002	BRAKE, PARKING Omit Item
4091	BRAKE SYSTEM, AIR Dual System for Straight Truck Applications <u>Includes</u> : BRAKE LINES Color and Size Coded Nylon : DRAIN VALVE Twist-Type : GAUGE, AIR PRESSURE (2) Air 1 and Air 2 Gauges; Located in Instrument Cluster : PARKING BRAKE CONTROL Yellow Knob, Located on Instrument Panel : PARKING BRAKE VALVE For Truck : QUICK RELEASE VALVE On Rear Axle for Spring Brake Release: 1 for 4x2, 2 for 6x4 : SLACK ADJUSTERS, FRONT Automatic (with Air Cam Brakes) : SLACK ADJUSTERS, REAR Automatic (with Air Cam Brakes) : SPRING BRAKE MODULATOR VALVE R-7 for 4x2, SR-7 with relay valve for 6x4/8x6 <u>Notes</u> : Rear Axle is Limited to 19,000-LB GAWR with Code 04091 BRAKE SYSTEM, AIR and Code 04NDC BRAKES, REAR, AIR CAM Regardless of Axle/Suspension Ordered : Rear Axle is Limited to 20,000-LB GAWR with Code 04092 BRAKE SYSTEM, AIR and Code 04NCW BRAKES, REAR, AIR CAM Regardless of Axle/Suspension Ordered
4722	DRAIN VALVE {Bendix DV-2} Automatic, with Heater, for Air Tank <u>Includes</u> : DRAIN VALVE Mounted in Wet Tank

Vehicle Specifications
2020 INTEGRATED CE S BUS (PB105)

November 20, 2018

<u>Code</u>	<u>Description</u>
4AZJ	AIR BRAKE ABS {Bendix AntiLock Brake System} Full Vehicle Wheel Control System (4-Channel) with Automatic Traction Control
4EBS	AIR DRYER {Bendix AD-9} with Heater
4EXP	BRAKE CHAMBERS, FRONT AXLE {Bendix} 20 SqIn
4EXU	BRAKE CHAMBERS, REAR AXLE {Bendix EverSure} 30/30 Spring Brake
4JCH	BRAKES, FRONT, AIR CAM S-Cam; 15.0" x 5.0"; Includes 20 Sq. In. Long Stroke Brake Chambers
	<u>Notes</u> : Front Axle with 14,000-lb GAWR is Limited to 13,200-lb GAWR when used in Conjunction with 15" BRAKES, FRONT, AIR CAM.
4NDB	BRAKES, REAR, AIR CAM S-Cam; 16.5" x 7.0"; Includes 30/30 Sq.In. Long Stroke Brake Chamber and Spring Actuated Parking Brake
	<u>Notes</u> : The following features should be considered when calculating Front GAWR: Front Axles; Front Suspension; Brake System; Brakes, Front Air Cam; Wheels; Tires.
4SBC	AIR COMPRESSOR {Bendix Tu-Flo 550} 13.2 CFM Capacity
4VCY	AIR TANK LOCATION (1) Mounted Left Side to Provide Clearance for Larger Body Builder Supplied Battery Box
4WZT	GVWR LIMITATION FOR BUS with Air Brakes, Limited to 33,000-lbs Maximum to meet FMVSS 121 Requirements, for Conventional Bus
5708	STEERING COLUMN Tilting
5CAL	STEERING WHEEL 2-Spoke, 18" Dia., Black
5PSA	STEERING GEAR {Sheppard M100} Power
7DXS	EXHAUST SYSTEM Horizontal Dual Catalytic Converters, Frame Mounted Muffler Right Side, Includes Long Horizontal Tail Pipe, for use with Propane or Gasoline Engines
7WBL	TAIL PIPE Long Horizontal, Exits Left Side Through Bumper
8000	ELECTRICAL SYSTEM 12-Volt, Standard Equipment
	<u>Includes</u> : FUSES, ELECTRICAL SAE Blade-Type : HAZARD SWITCH Push On/Push Off, Located on Top of Steering Column Cover : HEADLIGHT DIMMER SWITCH Integral with Turn Signal Lever : MISCELLANEOUS FEATURES Modular, Loom Protected, Grommets in all Applicable Body Openings, Assembled in Computer Assisted Fixture which Verifies Continuity and Correct Assembly Prior to Installation : PARKING LIGHT Integral with Front Turn Signal and Rear Tail Light : STARTER SWITCH Electric, Key Operated : TURN SIGNAL FLASHER : TURN SIGNAL SWITCH Self-Cancelling with Lane Change Feature : TURN SIGNALS, FRONT Includes Reflectors; Flush Mounted : WINDSHIELD WIPER SWITCH 2-Speed with Wash and Intermittent Feature (5 Pre-Set Delays), Integral with Turn Signal Lever : WIRING, CHASSIS Color Coded and Continuously Numbered
8GXK	ALTERNATOR {Leece-Neville BLP4006HN} Brushless, 12 Volt 325 Amp. Capacity, Pad Mount, with Remote Sense
8MSG	BATTERY SYSTEM {Fleetrite} Maintenance-Free, (3) 12-Volt 1980CCA Total
8TTK	BATTERY BOX Steel, with Sliding Tray, 25.25" Wide, for Standard Batteries, Mounted Left Side Behind Front Axle Perpendicular to Frame Rail

Vehicle Specifications
2020 INTEGRATED CE S BUS (PB105)

November 20, 2018

<u>Code</u>	<u>Description</u>
8TUT	COLLISION MITIGATION SYSTEM Omit
8VBD	HORN, ELECTRIC (2) Trumpet Style, Mounted Above Right Frame Rail
8WPB	HEADLIGHTS Halogen; Composite Aero Design for Two Light System; Includes Daytime Running Lights
8WWJ	INDICATOR, LOW COOLANT LEVEL with Audible Alarm
8WXB	HEADLIGHT WARNING BUZZER Sounds When Head Light Switch is on and Ignition Switch is in "Off" Position
8XAH	CIRCUIT BREAKERS Manual-Reset (Main Panel) SAE Type III with Trip Indicators, Replaces All Fuses
8XHE	STARTING MOTOR {Delco Remy PG260N2} 12 Volt; less Thermal Over-Crank Protection
9WAB	HOOD TILT ASSIST {EASY TILT} Mechanical
9WAY	FRONT END Tilting, Fiberglass, with Three Piece Construction
	<u>Includes</u> : AIR INTAKE SYSTEM Integrated Pre-Cleaning System to Enhance Air Filter Life : GRILLE Removable; Fiberglass Painted Hood Color : SPLASH SHIELD Integral with Front End Assembly
10020	CHASSIS PAINT Full Chassis
10060	PAINT SCHEMATIC, PT-1 Single Color, Design 100
	<u>Includes</u> : PAINT SCHEMATIC ID LETTERS "NB"
10788	PAINT TYPE Urethane, One or Two Colors, Other than Imron or International.
10AAZ	OVER THE AIR PROGRAMMING Omit
10XAJ	PROMOTIONAL PACKAGE LED EXT {Sound Off} LED Lights
10XAK	PROMOTIONAL PACKAGE 7 Year Unlimited Miles/km Warranty, Limited Time Program for Allison 2000 Series Transmission on School and Commercial Buses (Supplied directly through Allison)
11001	CLUTCH Omit Item (Clutch & Control)
12DLP	ENGINE, GASOLINE {Power Solutions International 8.8 Liter GAS} EPA 2018, 265 HP @ 2600 RPM, 548 lb-ft Torque @ 1800 RPM, 2700 RPM Governed Speed, 265 Peak HP (MAX)
12TSV	FAN DRIVE {Borg-Warner SA-75} Viscous Type, Screw On
12UGN	THROTTLE, HAND CONTROL Electronic
	<u>Notes</u> : Cruise Control Switches Mounted on Steering Wheel are Non-Illuminated.
12VBR	AIR CLEANER with Service Protection Element
	<u>Includes</u> : GAUGE, AIR CLEANER RESTRICTION Air Cleaner Mounted
12VGX	FEDERAL EMISSIONS {Power Solutions International 8.8L GAS} EPA, OBD and GHG Certified for Calendar Year 2019
12VVN	CRUISE CONTROL Electronic
	<u>Notes</u> : Cruise Control Switches Mounted on Steering Wheel are Non-Illuminated.
12VWH	GOVERNOR Electronic Road Speed Type; for Electronic Engines and Bus Models; with 55 MPH Default
12VYT	IDLE MANAGEMENT SYSTEM Ramp Engine Speed with Low Battery When Vehicle is Stationary, for Use with Variable Engine Speed Control and Automatic Transmission

Vehicle Specifications
2020 INTEGRATED CE S BUS (PB105)

November 20, 2018

<u>Code</u>	<u>Description</u>
12XBA	RADIATOR Down Flow, 665 SqIn Aluminum Radiator Core with Internal Water to Oil Transmission Cooler
13ARV	TRANSMISSION, AUTOMATIC {Allison 2500 PTS} 5th Generation Controls, Wide Ratio, 6-Speed with Double Overdrive, Less PTO Provision, Less Retarder, with 33,000-lb GVW and GCW Max, School Bus
	<u>Includes</u> : OIL FILTER, TRANSMISSION Mounted on Transmission : TRANSMISSION OIL PAN Magnet in Oil Pan
13WLN	TRANSMISSION OIL Synthetic; 20 thru 28 Pints
13WYY	SHIFT CONTROL PARAMETERS Allison 1000 or 2000 Series Transmissions, 5th Generation Controls, Performance Programming
14AJU	AXLE, REAR, SINGLE {Navistar Select} Single Reduction, 19,800-lb Capacity, 190 Wheel Ends . Gear Ratio: 6.17
14TBS	SUSPENSION, REAR, AIR, SINGLE {International IROS} 21,000-lb Capacity, 9.25" Ride Height, with Shock Absorbers
	<u>Notes</u> : The following features should be considered when calculating Rear GAWR: Rear Axles; Rear Suspension; Brake System; Brakes, Rear Air Cam; Brake Shoes, Rear; Special Rating, GAWR; Wheels; Tires.
15SZT	FUEL TANK, GASOLINE Top Draw; Rectangular, Steel; 100 U.S. Gal., 397 L Capacity, Includes Protective Cage, for Low Profile Fuel Filler Assembly and Vent Hosing, Mounted Between Frame Rails and Behind Rear Axle
16010	COWL Flat Back
16HBA	GAUGE CLUSTER English with English Electronic Speedometer
	<u>Includes</u> : GAUGE CLUSTER (5) Engine Oil Pressure (Electronic), Water Temperature (Electronic), Fuel (Electronic), Tachometer (Electronic), Voltmeter : ODOMETER DISPLAY, Miles, Trip Miles, Engine Hours, Trip Hours, Fault Code Readout : WARNING SYSTEM Low Fuel, Low Oil Pressure, High Engine Coolant Temp, and Low Battery Voltage (Visual and Audible)
16HGH	GAUGE, OIL TEMP, AUTO TRANS for Allison Transmission
16HKT	IP CLUSTER DISPLAY On Board Diagnostics Display of Fault Codes in Gauge Cluster
27DUW	WHEELS, FRONT {Accuride 51408} DISC; 22.5x8.25 Rims, Powder Coat Steel, 2-Hand Hole, 10-Stud, 285.75mm BC, Hub-Piloted, Flanged Nut, with Steel Hubs
28DUW	WHEELS, REAR {Accuride 51408} DUAL DISC; 22.5x8.25 Rims, Powder Coat Steel, 2-Hand Hole, 10-Stud, 285.75mm BC, Hub-Piloted, Flanged Nut, with Steel Hubs
29580	WHEEL SEALS, FRONT {International} Oil-Lubricated Wheel Bearings
47AJA	BODY CERTIFICATION TAG Metal
47AJC	BODY TAG, METAL Capacity to Include the Total Number of Passengers
47AJW	STEP, FRONT ENTRANCE DOOR 27 1/4" Depth; 14ga Steel
	<u>Includes</u> : STEP, FRONT ENTRANCE DOOR OPENING, 35 Inch Width; Continuous Bottom to Top
47AMA	FASTENERS, EXTERIOR MOUNTED Stainless Steel Screws; for Fender and Body Exterior Rear View Mirrors, Bumper Mounted Crossing Gate and Body Mounted Stop Arm
47AMG	BODY, BUS Conventional; 78" Headroom, 34'11" Body Length, +9 Section Rear, 78 Passenger, 276 WB
	<u>Includes</u>

Vehicle Specifications
2020 INTEGRATED CE S BUS (PB105)

November 20, 2018

<u>Code</u>	<u>Description</u>
	: NOTE: Body Mandates Overall Vehicle Length of Greater than 40 Feet
47APJ	BODY RATING TAG Metal; for State of Texas, Includes Design Capacity and Seat Capacity
47APR	HEADLINER, BODY Conventional; 25'11"-34'11" Body Length, Perforated Full Length with Sound Insulation Full Length
47APX	FASTENERS, HEADLINER Screws
47ARH	BOWS, ROOF 14 ga., One Piece Construction
	<u>Includes</u> : BOWS, ROOF Positioned Floor Line to Floor Line, Threaded Through Roof Strainers and Drip Rail
47ARP	LIGHT BARS Plastic
47ASG	SKIRT, BODY for Conventional, 14 1/2", 16ga
	<u>Includes</u> : SKIRT, BODY Extra Smooth Steel Supported by Floor Gussets
47AUR	TIE DOWNS, BODY Grade 8 Bolts, Every Body Section
	<u>Includes</u> : TIE DOWNS, BODY with Formed Tab that Fits into Floor Structure to Prevent Turning
47AXT	RUB RAILS, BODY (4) Conventional; Steel, 31'2", 31'11", 32'8", 33'5", 34'2", 34'11", Body Length, Includes Snow Rail
	<u>Includes</u> : RUB RAILS Full Length, Primer Coated (Both Sides), Attached to Body without Cuts or Splices
47AYB	BODY, REAR Includes Emergency Door
	<u>Includes</u> : DOOR, REAR EMERGENCY with Concealed Hinges : HEADER BUMPER Padded, Mounted Over Rear Door; Upholstered to Match Passenger Seat Color
47AZE	SIDE SHEET, BODY, EXTERIOR Conventional, 16ga., Smooth, 31'2", 31'11", 32'8", 33'5", 34'2", 34'11", Body Length
47AZL	FLOOR, BODY with Wheel Wells
47BAK	BUMPER, REAR Painted; 12" High, 0.188" Thick
47BAR	SUPPORTS, REAR BUMPER Bolted to Frame
47BBH	LINING, SIDE INTERIOR, LOWER Embossed Steel, Clear Coated
47BEX	SEALER Water-proof Sealer on all Floor Covering Seams
47BKK	LETTERS, SCHOOL BUS FRONT/REAR Decal; "SCHOOL BUS"; with 8" Black Reflective Letters, 3M Fluorescent Diamond Grade, Yellow On Front and Rear Cap
47DAJ	COVER, REAR DOOR INSIDE HANDLE Partial Coverage
47DAK	FASTENERS, REAR DOOR Bolts and Nutserts, Rear Door To Body
47DBP	DOOR, ENTRANCE, FRONT Air, Outward Opening, with Split Pane Glass
47DDE	HANDLE, ASSIST, ENTRANCE DOOR Outside Entrance
47DDH	HOLD BACK, REAR DOOR Stationary, No Cables, with Plastic Cover
47DDU	LATCH, REAR DOOR One Point Slide Bar, Cam Operated, with One Inch Stroke
47DEK	LOCK, VANDAL, REAR DOOR with Ignition Starter Interlock

Vehicle Specifications
2020 INTEGRATED CE S BUS (PB105)

November 20, 2018

Code	Description
47DEY	HANDLE, EXTERIOR, REAR Emergency Door; Yellow
47DNK	SWITCH, LOCATION Steering Wheel; Includes Master Flasher, Flasher On/Off, Red Override, and Door Control <u>Includes</u> : SWITCH, STEERING WHEEL, LIGHT Includes Illuminated Switches
47DXG	FASTENERS, HANDRAIL Plusnuts & Screws
47EBM	HOLD DOWN, BATTERY For (2) Standard Size Batteries
47ECS	COMPARTMENT, TOOL, FWD LEFT Aft of Standard Battery Box, Key Lock, 13"x 15"x 25 1/2"
47EXK	LOCK, VANDAL, ENTRANCE DOOR Integrated Manual Control in Door, with Key
47KDC	MONITOR, POST TRIP INSPECTION {Leave No Student Behind} Accessory Controlled, with Push Button Alarm Disable at Rear of Bus Prompts Driver to Walk to Back of Bus and Push Button in Light Bar to Deactivate System
47LAT	NOISE REDUCTION, ROOF BOW Conventional; Insulation, 31'2", 31'11", 32'8", 33'5", 34'2", 34'11", Body Lengths
47LAU	INSULATION, ROOF AND SIDES 1.50", All Models
47MAV	LETTERS, SCHOOL BUS SIDE Decal; "SCHOOL BUS"; in 8" Reflective Black Letters, Each Side
47MBA	UNDERCOAT, BODY Fire Resistant, Water Based, TT-C-730 Spec <u>Includes</u> : UNDERCOATING Performed Before and After Mounting on Chassis
47MBC	INSULATION, STEPWELL
47MJR	LETTERS, DOOR, REAR Decals; "EMERGENCY DOOR", 2" Black Letters Inside and Outside
47MNT	ARROW, RR DOOR, INSIDE Decal; Red, .75" Stroke, Indicating Handle Direction
47MRU	LETTERS, E/E WINDOW, LEFT (2) Decal Sets, "EMERGENCY EXIT", Black Inside and Outside
47MTY	WIRING DIAGRAM Schematic, Electrical <u>Includes</u> : ACCESS PANEL for Wiring Diagram Schematic Located on Body Exterior; Below Driver Window
47MVA	LETTERS, HEADER Decal; "WATCH YOUR STEP", 1" Black, Above Windshield
47MVC	LETTERS, STEPWELL Decal, "WATCH YOUR STEP", 2.5" Black, Behind Door on Step Riser
47NAB	PAINT COLOR, RUB RAILS 0001 Canyon Black
47NGW	SEAL, RUB RAILS Top Edge, All Rails
47NHL	LETTERS, E/E WINDOW, RIGHT (2) Decal Sets, "EMERGENCY EXIT", Black, Inside and Outside
47NJA	PAINT COLOR, BODY EXTERIOR 4421 School Bus Yellow
47NJM	PAINT FLASHER BACKGRD 0001 Canyon Black
47NJS	PAINT COLOR, BUMPER Rear; 0001 Canyon Black
47NKD	PAINT COLOR, ROOF 9219 Winter White, Beginning 5" Above Drip
47NKL	PAINT, RUB RAIL Flange to Flange
47NKR	PAINT COLOR, BODY INTERIOR Light Gray
47NMG	OPERATING INSTR, REAR Decal, Inside Rear Emergency Door

Vehicle Specifications
2020 INTEGRATED CE S BUS (PB105)

November 20, 2018

Code	Description
47NTE	LOGO, ROOF LINE Decal; Wing and Shield, First Body Section, Above Driver Window and Entrance Door Over Driver Window and Entrance Door
47NTY	PAINT HOOD AND FENDER To Match Body Exterior
47NWH	STRIPING, ROOF HATCH, REAR Decal, Perimeter, 1", Yellow, 3M Fluorescent Diamond Grade
47NWJ	STRIPING, SEATLINE {3M} 2" Yellow, Fluorescent Diamond Grade
47NWR	STRIPING, REAR END {3M} 2" Yellow Fluorescent Diamond Grade
47NWT	STRIPING, ROOF HATCH, FRONT {3M} Decal, Perimeter, 1", Yellow Fluorescent Diamond Grade
47NWU	STRIPING, E/E WINDOW, RIGHT (02) Perimeter, 1" 3M Yellow Fluorescent Diamond Grade
47NXH	STRIPING, E/E WINDOW, LEFT {3M} (02) Perimeter, 1" Yellow Fluorescent Diamond Grade
47NXN	STRIPING, PERIMETER, REAR Emergency Door; 1" Wide, 3M Fluorescent Diamond Grade, Yellow
47PBZ	HANDLE, ASSIST Windshield Side Mounted, Left and Right, Body Color
47PGV	LETTERS, FUEL I.D. Paint; "UNLEADED GASOLINE ONLY", 2" Black, Adjacent to Fuel Filler Door
47SBB	SUB FLOOR, PLYWOOD Conventional; B-B Marine Grade, Less Sealed Edges, 5/8", 5 Ply, for 31'2", 31'11", 32'8", 33'5", 34'2", 34'11", Body Length
47SPC	ALPHA/NUMERIC DECAL GUIDE Quantity 031-40
48ACN	SEAT BELT, DRIVER, COLOR with Blaze Orange Seat Belt Webbing
48ANE	WINDOW, ENTRANCE DOOR, TOP Laminated, Clear
48ANM	WINDOW, ENTRANCE DOOR, BOTTOM Laminated, Clear
48ANT	WINDOW, DRIVER Laminated, Clear
48APL	WINDOW, STOPS 12" Opening, Only with 78" Headroom
48ARU	WINDOW, SASH (20) 27" Sections, 9"x 23" Opening
48ASP	WINDOW, SASH +9 SECTIONS (2) 9" x 32 1/4" Opening
48AUN	WINDOW, PASSENGER, TINT Conventional; 28% Light, Laminated Glass, 78" Headroom, with 31'2", 31'11", 32'8", 33'5", 34'2", 34'11" Body Length
48BAH	WINDOW, E/E, LEFT (2) Vertical Hinge
48BJA	COLOR, WINDOW FRAME, PASS Passenger Window, Natural Aluminum Finish
48BKP	WINDOW, E/E, RIGHT (2) Vertical Hinge
48GHC	HEATER, DRIVER 90,000 BTU, with Defroster and without Rear Heat Duct
	<u>Includes</u>
	: AIR FILTER
	: HEATER HOSES Premium
	: HOSE CLAMPS, HEATER HOSE Mubea Constant Tension Clamps
48GYV	HEATER, DEFLECTOR Kit, for Driver Heater
48NAT	FITTINGS, AIR SEAT for Driver Seat
48PAM	WINDSHIELD 3 Flat Pieces, 73% Light, with Band
48PAV	WHEEL POCKET COVER Plastic, ABS
48PAY	AISLE POSITION Center, for balanced seating
48PEW	FLOOR COVERING, COLOR Gray #766

Vehicle Specifications
2020 INTEGRATED CE S BUS (PB105)

November 20, 2018

<u>Code</u>	<u>Description</u>
48PHR	UPHOLSTERY, PASS SEATS, TYPE Prevaill, 42 oz.; for (25-26) Seats
48PJR	FLOOR COVERING, TRIM Aluminum
48PJZ	FLOOR COVERING, TYPE {Koroseal} All Body Lengths
48PKC	HOSE CLAMPS, HEATER HOSE Constant Torque for Heater System
48PMJ	HEATER, PASS, LT REAR 84,500 BTU
	<u>Includes</u> : AIR FILTER
48PNW	HEATER, WATER PUMP {2 MPU 12} Self Priming, with Plastic Housing
48PPC	SWITCH, HTR FAN, REAR, LT with 84,500 BTU Rear Heater Only
48PPM	HEATER CUT OFF, VALVE Ball, with Butterfly Handle
48PPP	HEATER CUT OFF, VALVE INSIDE Brass Ball, Inside Forward of Driver Heater
48PPS	ROOF VENT, FRONT Static
48PTT	ARM REST, DRIVER, RIGHT {National}
48PUT	NUTS, BELT MOUNTING Standard Nuts For Seat Belt Mounting
48PVA	UPHOLSTERY, DRIVER SEAT, STYLE Plain, with Cloth Insert
48PVN	UPHOLSTERY, DRIVER SEAT, COLOR Drivers Seat, Gray
48PWD	UPHOLSTERY, PASS SEATS, COLOR Gray, for Seats, Barriers and Head Bumpers
48PWR	UPHOLSTERY, DRIVER SEAT, TYPE Prevail, 42 oz.
48PXP	UPHOLSTERY, BARRIER, TYPE (1-2) Prevaill, 42 oz.
48RAE	BARRIER, CRASH, AFT ENTRY DOOR 39", 1 Leg
48RAL	BARRIER, CRASH, AFT DRIVER 39", 1 Leg
48RDL	FAN, DEFOG LEFT OF DRIVER 6.50" Diameter, Black, Mounted Left of Driver Above Windshield, 2 Speed Switch in Panel
48RGE	HAND RAIL, ENTRANCE DOOR, FWD Stainless Steel; Curved
48RGR	HAND RAIL, ENTRANCE DOOR, AFT Stainless Steel, 4", Above Step
48RLX	CUSHION, SEAT 15" Depth
	<u>Includes</u> : WARRANTY Four Years
48RRA	UPHOLSTERY, SEAT, STITCHING Single
	<u>Includes</u> : WARRANTY Two Years
48RYW	SEAT, DRIVER {National 2000} Air Suspension, High Back with Integral Headrest, Isolated, with 2 Position Front Cushion Adjustment, 6 to 17 Degree Seat Back Adjustment, Mechanical Lumbar Support, Includes Additional Back Padding
	<u>Includes</u> : SEAT BELT, DRIVER Adjustable D-Loop Seat Belt, Single Locking Retractor
48RZJ	STEP TREADS {Koroseal} Pebble Top with White Nosing, with Non-Metal Backing
48UCP	ROOF HATCH, FRONT {Transpec 1975-028-121-03} with Outside Release, with English Decals

Vehicle Specifications
2020 INTEGRATED CE S BUS (PB105)

November 20, 2018

Code	Description
48UCR	ROOF HATCH, REAR {Transpec 1975-028-121-03} with Outside Release, with English Decals
48USV	SEAT BACK, PASSENGER High Back
48XGC	SEAT,PASS,3PT,LT,26",2 LEG {BTI Seating System} (01) High Back, with 3 Point Seat Belts
48YAH	SEAT,PASS,3PT,LT,39",2 LEG {BTI Seating System} (12) High Back, with 3 Point Seat Belts
48YAX	SEAT,PASS,3PT,RT,39",2 LEG {BTI Seating System} (13) High Back, with 3 Point Seat Belts
49001	BODY PLAN, APPROVED VARIATION Number 001
49AHV	LIGHT, STROBE, STOP SIGN, FRT In Lieu Of Flashing Lights Furnished with Stop Sign, Speciality
49AHY	LIGHT, STROBE, STOP SIGN, REAR In Lieu of the two Flashing Lights Furnished with Stop Sign, Speciality
49AJH	CONNECTION, LIGHTS Cluster, Clearance and Side Marker To Tail Lights
49AMD	SWITCH, DRIVER PANEL, TYPE Rocker
49AMJ	ALARM, BACKING {Ecco #575} 107 db
49AMT	CIRCUIT, PROTECTION Breakers, Manual Reset in Lieu of Fuses
	<u>Includes</u> : ACCESS PANEL for Body and Chassis Fuses/Circuit Breakers Located on Body Exterior; Below Driver Window
49AMY	SWITCH, REAR DOOR BUZZER for Emergency Door
49ANH	SWITCH, MAGNETIC, DISCONNECT Master, Ignition Operated, All Body Circuits
49ANU	SOURCE, POWER 12 VDC, Mounted On Dash
49APA	LIGHT, DRIVER, CEILING Deluxe, with Separate Switch, Mounted in Light Bar
49APZ	LIGHTS, DOME Conventional; Two Full Rows Rectangular Recessed Dome Lights, 31'2", 31'11", 32'8", 33'5", 34'2", 34'11", Body Length
	<u>Includes</u> : WIRING HARNESS Main Body Wiring Harness Accessed by Removing Dome Light
49AWU	SPEAKERS AND WIRING (6) Flush Mounted in Light Bar
49BCN	FLASHER SYSTEM (8) Warning Lights, 8-Lamp System, Electronic Relay Flasher, Non-Sequential Operation, Red Lights Activate with Door Open
49BCR	LIGHT, EXTERIOR, CHECK Automatically Activates Lights for Pre Trip Inspection
49BLL	WIRING, VIDEO SYSTEM Power and Ground Connection Only; Connection in Flasher Plate Area with 20 Amp Fuse Protection
49BMA	STOP ARM, FRONT {Specialty 2980} Air, 18" Octagon, Double Sided, 1/2" White Border, Hi Intensity Grade, Strobing LED Lights
49BVE	MIRROR, CROSS VIEW, EXTERIOR {Mirror Lite High Definition Busboy} for Left & Right Side; Black
49BWG	STOP ARM, LEFT REAR {Specialty 2981} Air, Hi Intensity, Strobing LED Lights, with Letters on Back
49BXN	SWITCH, RED, OVERRIDE WARNING Wired Hot, with ESC, Mounted Left of Driver
49BYC	RADIO, ENTERTAINMENT {Panasonic} AM/FM/CD Stereo, Includes Antenna and Cable, with Public Address System
49BYT	LIGHTS, STOP (2) {Sound Off} and Tail; 7" Round LED, Red
49BYV	LIGHTS, MARKER, FRONT, REAR {Sound Off} Rectangular LED, Armored, (8) Four Amber Front and Four Red Rear

Vehicle Specifications
2020 INTEGRATED CE S BUS (PB105)

November 20, 2018

<u>Code</u>	<u>Description</u>
49BYZ	LIGHTS, DIRECTIONAL, REAR (2) {Sound Off} LED, 7" Round Amber LED
49CKR	FUEL FILLER PIPE Low Profile Neck Cap and Vent Hosing, for Use with Right Side Fill for Between the Rail Fuel Tanks, for Below the Floor Fuel Fill
49DAG	LIGHT, INDIC, WARNING LIGHTS LED Type; Red and Amber
49DBR	HOOD, WARNING LAMP (4) Black, 8-Lamp System, One Hood Above Two Lights
49EAW	LIGHTS, MARKER, SIDE {Sound Off} Rectangular LED, Armored Type, Intermediate, Centered; Required for Units 30 Foot or Longer
49EBA	KIT, FIRST AID Plastic; 24 Unit, Spec State
49EGB	MIRROR, INSIDE 10" x 30", Clear
49EJR	MIRROR, REAR VIEW, EXTERIOR {Rosco} Suspended, Black, with Breakaway Bracket, Motorized Head
49ENK	VISOR, INTERIOR, LEFT FRONT 6" x 30", Transparent, For Left Windshield
49EVL	SWITCH, NOISE SUPPRESSION Actuator Legend States, "NOISE SUPP ", for Separate Solenoid, with Red Switch in Panel
49EWM	LIGHT, STROBE ECCO 6550C, Low Profile, Double Flash, 4.9" High
49GAY	KIT, BODY FLUID Texas
49GBV	WINDSHIELD WIPERS (2) Cowl Mounted <u>Includes</u> : WINDSHIELD WIPERS CONTROL Single Motor, Overlapping Wipe Pattern
49GCC	CUTTER, SEAT BELT, LOCATION Centered on Inside of Driver Compartment Lid
49GDG	PADDING COMPART ABOVE DRIVER Window; Safety Equipment, Vandal Equip Compartment with Cutout for dome light
49GDS	COMPARTMENT ABOVE DRIVER Left of the Driver <u>Includes</u> : COMPARTMENT ABOVE DRIVER Compartment Size: 39" x 10" x 10" : HINGES Piano Type
49GEH	SAFETY TRIANGLES Warning Reflectors, Mounted on Drivers Barrier Level with Top of a Modesty Shield
49GGE	FIRE EXTINGUISHER, DRIVER AREA 5 lb 2A-40BC Minimum with Flexible Hose and Metal Nozzle
49GLA	REFLECTORS, SIDE, INTERMEDIATE (2) 3" Amber, 1 Each Side, Mounted with Screws, Below The Third Rub Rail From the Top
49GLG	REFLECTORS, SIDE, REAR (2) 3", Red, Mounted with Screws
49GLM	REFLECTORS, SIDE, FRONT (2) 3", Amber; 1 Aft Drivers Window Left, 1 Aft Entrance Door Right, Mounted with Screws
49GLP	REFLECTORS, REAR (2) 3", Red, Mounted with Screws
49GUB	CUTTER, SEAT BELT {TIE TECH Safecut} for Cutting Seat Belts
49GVC	MUD FLAPS, REAR WHEELS (2) Rubber; Behind Rear Wheels
49GWW	WINDSHIELD WASHER Kit; 6 Quart Capacity, Bottle <u>Includes</u> : WINDSHIELD WASHER ELECTRICAL CONNECTIONS Sealed and Locking Type
49HES	MIRROR, BRACE, EXTERIOR Telescoping for Breakaway Bracket

Vehicle Specifications
2020 INTEGRATED CE S BUS (PB105)

November 20, 2018

Code	Description
49JBS	LIGHTS, CLUSTER {Sound Off} Oval, 4 Internal LEDs per Light; Amber Front and Red Rear
49JBU	LIGHT, ENTRY DOOR {Sound Off} LED; 4" Oval; Light Mounted in Skirt Behind Entrance Door, Wired To Step Light
49JBV	LIGHT, LICENSE PLATE {Sound Off} LED, with Mounting Gasket
49JBW	LIGHT, STEP {Sound Off} 4" Round LED, White, Wired to Clearance Lights, Operated by Entrance Door
49JCX	INSPECTION PLATE Fuel Sending Unit 11.4" x 8" Steel
49MZS	FUEL FILLER DOOR Non-Locking, Lever Latch, Spring Loaded to Hold in Open Position
49MZV	LATCH, COMPARTMENT Locking, for Overhead Storage Compartment
49NGJ	LIGHTS, WARNING (8) {Sound Off} (4) 7" Round Red Strobing LED and (4) 7" Round Amber Strobing LED, 2 Front, 2 Rear Each Color
49PTB	LIGHTS, DIRECTIONAL, SIDE {Sound Off} Rectangular LED Armor Type, Amber, 1 Each Side, Second Bow Section Aft of Entrance Door Between 2nd & 3rd Rub Rail
49UBZ	STATE OF OPERATION Texas
49ZNC	LIGHTS, BACK UP (2) {Sound Off} 4" Round, White, LED, with Flange
49ZNG	LIGHTS, STOP & TAIL ADDITIONAL (2) {Sound Off} 4" Round LED, Red, with Flange
50UCJ	BODY PLAN, NON-SPECIAL NEEDS Conventional; 34' 11" Body Length, +9 Section Rear, 77 Passenger, 276" WB, DX9386A000
7382135809	(2) TIRE, FRONT 11R22.5 Load Range H AH37 (HANKOOK), 499 rev/mile, 75 MPH, All-Position
7382135809	(4) TIRE, REAR 11R22.5 Load Range H AH37 (HANKOOK), 499 rev/mile, 75 MPH, All-Position

Services Section:

40126	WARRANTY Standard for CE, RE, BE School Bus Models, Effective with Vehicles Built March 1, 2017 or Later, CTS-3304H
40KMA	SERVICES, TOWING {Navistar} Service Call to 24-Month/Unlimited Mileage to the Nearest Navistar Dealer for Navistar Warrantable Failure as Contract Defined; Includes Engine Failure if Supplier Declines Tow Coverage & ESC Supplied thru Navistar; \$550 (USA) Maximum Benefit per Incident
40PKZ	SRV CONTRACT, EXT VEH COVERAGE {Navistar} To 24-Month/50,000 Miles (80,000 km), Covers 100% Parts and Labor; Includes Body; Excludes Extending Warranty for Engine, Transmission, Perforation or Corrosion of Cab/Cowl Structure and Paint
49GVN	WARRANTY 5-Year, Limited MCC 136K BTU AIR CONDITIONING, INCLUDES DASH,FRONT, REAR AND MID EVAP, ANDYS 26 - 3 POINT SEAT INCENTIVE DOT INSPECTION - ANDYS PRE DELIVERY INSPECTION - ANDYS SET GOVERN SPEED @ 65 MPH NEDS - ENGINE SOFTWARE (ANNUAL RENEWAL) DIAMOND LOGIC BUILDER - BODY SOFTWARE (ANNUAL RENEWAL) CUMMINS INSITE

Vehicle Specifications
2020 INTEGRATED CE S BUS (PB105)

November 20, 2018

Code

Description

MOTOROLA CM200D, UHF, 16CH, 40WATT, MOBILE COMPLETE W/ MOUNTING BRACKET, POWER CABLE, PALM MICORPHONE AND TWO YEAR WARRANTY, INSTALLED

ANGLETRAX VULCAN V12 SEVEN CAMERA MOBILE DIGITAL VIDEO RECORDING SYSTEM, INSTALLED

ADDITIONAL SPA INVOICE CREDIT

Financial Summary
2020 INTEGRATED CE S BUS (PB105)

November 20, 2018

<u>Description</u>	<u>(US DOLLAR)</u>	<u>Price</u>
Net Sales Price:		\$502,555.00

Please feel free to contact me regarding these specifications should your interests or needs change. I am confident you will be pleased with the quality and service of an IC Corporation vehicle.

*** PRICE PER VEHICLE: \$100,511.00 ***

*** PRICE FOR FIVE (5) VEHICLES: \$502,555.00 ***

PRICE DOES NOT INCLUDE BUY BOARD FEE \$800 PER PURCHASE ORDER, PLEASE ADD IF APPLICABLE.

Approved by Seller:

Accepted by Purchaser:

Official Title and Date

Firm or Business Name

Authorized Signature

Authorized Signature and Date

This proposal is not binding upon the seller without Seller's Authorized Signature

Official Title and Date

The TOPS FET calculation is an estimate for reference purposes only. The seller or retailer is responsible for calculating and reporting/paying appropriate FET to the IRS.



**LEARNERS TODAY,
LEADERS TOMORROW,
MUSTANGS FOREVER!**

**Marble Falls ISD
Board of Trustees
Agenda Item Information**

Meeting Date:		
Meeting Type: Regular Meeting Special Meeting/Workshop Hearing	Agenda Placement: Public Hearing Information Items Presentation/Discussion Items Consideration Items Consent Agenda	
Date Submitted:		
Subject:		
Executive Summary:		
Fiscal Impact: Cost: Recurring One-Time No Fiscal Impact	Funding Source: General Fund Grant Funds Bond Funds Other Funds (Specify)	Fiscal Year: Amendment Required? Yes No
Administration's Recommendation:		
Submitted By:		
Board Approval Required: Yes No		

Attachment A

Campus	Item	Responsible Party	Construction Method	Assessment items
				By Campus
Counseling	All Campuses	Huckabee	CMAR - One Step	Interior renovation to create the following spaces: - 2 offices and a conference room at MFHS - 2 offices at MFMS - 1 office at each of the Ess <u>Total of 1,800sf of renovation</u>
HLES	Admin Space	Huckabee	CMAR - One Step	Renovate/expand administration
HLES	New Addition	Huckabee	CMAR - One Step	5,000sf of new construction for connecting corridor, academic, and collaboration space that will connect the 600wing to the rest of the building.
HLES	Paint	Huckabee	CMAR - One Step	Paint classroom walls
HLES	VCT	Huckabee	CMAR - One Step	Replace VCT flooring throughout campus
MFES	D Wing	Huckabee	CMAR - One Step	Renovate D Wing - finishes only
MFES	Paint	Huckabee	CMAR - One Step	Paint hallways in 5th Grade Bldg
MFES	Pink Building	Huckabee	CMAR - One Step	Renovate "Pink Building" at MFES for future district use
MFES	VCT	Huckabee	CMAR - One Step	Repair/replace VCT in 5th Grade Bldg
MFHS	Fire Alarm	Huckabee	CMAR - One Step	Replace entire fire alarm system at Main Building
MFHS	Fire Alarm	Huckabee	CMAR - One Step	Replace fire alarm smoke detectors and strobes/horns at Band Hall
MFHS	Fire Alarm	Huckabee	CMAR - One Step	Replace fire alarm smoke detectors and strobes/horns at Field House
MFHS	Fire Alarm	Huckabee	CMAR - One Step	Replace fire alarm smoke detectors and strobes/horns at Max Copeland Gym
MFHS	Fire Alarm	Huckabee	CMAR - One Step	Replace fire alarm smoke detectors and strobes/horns at Weight Room
MFHS	New Addition - Commons	Huckabee	CMAR - One Step	Cafeteria/commons addition
MFHS	New Addition - Front	Huckabee	CMAR - One Step	New addition at front (admin suite/hallways/collab space/fine arts)
MFHS	New Addition - Locker Room	Huckabee	CMAR - One Step	Girls' lockers at Max Copeland Gym
MFHS	VCT	Huckabee	CMAR - One Step	Replace VCT flooring in Main Building
MFMS	Band Hall	Huckabee	CMAR - One Step	Improvements to the existing Band Hall suite including adding additional wall layers and acoustical wall/ceiling treatments to improve the existing sound transmission issues.
MFMS	Cafeteria Improve	Huckabee	CMAR - One Step	Improve/expand cafeteria
MFMS	Rest Room Improvements	Huckabee	CMAR - One Step	Restroom improvements
Transportation	Office	Huckabee	CMAR - One Step	Office and restroom additions at Transportation Building
Colt	Paving	Huckabee	CSP	Reseal/restripe portion of main parking lot
HLES	Paving	Huckabee	CSP	Reseal/restripe main parking lot
HLES	Paving	Huckabee	CSP	Add parking lot at rear of school
MFHS	Paving	Huckabee	CSP	New paving at vendor alley and 300 hall parking
MFHS	Paving	Huckabee	CSP	Seal and restripe all campus roads
MFHS	Paving	Huckabee	CSP	Replace asphalt at main entrance
MFMS	Paving	Huckabee	CSP	Replace 200lf of concrete curbing at front of school
MFMS	Paving	Huckabee	CSP	New sidewalk near Bldg. D
MFMS	Paving	Huckabee	CSP	Reseal drive at front of school
MFMS	Paving	Huckabee	CSP	Reseal parking at 6th grade wing and front visitor
MFMS	Paving	Huckabee	CSP	New parking lot to replace existing at west, kitchen, and portable lots
MFMS	Paving	Huckabee	CSP	New parking lot at stadium north and west
Vehicle	All Campuses	Huckabee	CSP	- MFHS: 130K sf of reseal/restripe of existing parking lots - MFMS: 140K sf of new parking and drives - HLES: 210K sf of new parking and drives - MFES: 63K sf of new parking and drives All new paving is priced as asphalt paving and concrete curbing.

Attachment A

Campus	Item	Responsible Party	Construction Method	Assessment items
Bus and Tech	Bus and Tech	MFISD	Buy Board	Buses and technology
MFHS	Bleachers	MFISD	Buy Board	Replace bleachers in Mustang Gym
MFHS	Furniture	MFISD	Buy Board	New Furniture and Equipment (i.e. student desks)
MFHS	Track	MFISD	Buy Board	Removal of existing running surface down to the existing asphalt. Existing asphalt and subbase to remain. Includes new mid-level (sandwich system) running surface with any lane striping and identification graphics/numbering needed. Assumes existing asphalt and subbase do not need major rework, only minor repairs.
MFHS	Turf	MFISD	Buy Board	Removal of the existing artificial turf "carpet" and pad. Existing subbase to remain. Includes new "carpet" and pad to the same extents as existing, including infill of "D area" at south end, (est. 90,000sf) and same game lines/end zone designs as currently exists. Assumes existing subbase does not need major rework, only minor repair. Assumes existing concrete curb at track edge is in good shape and can be reused for attachment.
Safety	All Campuses	MFISD	Buy Board	Door locations that receive access control at each campus: <u>MFHS</u> - 13 locations <u>MFMS</u> - 10 locations <u>Colt ES</u> - 9 locations <u>Highland Lakes ES</u> - 9 locations <u>Marble Falls ES</u> - 8 locations <u>Spicewood ES</u> - 9 locations <u>Central Office</u> - 6 locations <u>Falls High School</u> - 2 locations <u>Technology Building</u> - 1 location
CO	Fire Alarm	MFISD	CSP	Replace fire alarm smoke detectors and strobes/horns
Colt	Fire Alarm	MFISD	CSP	Replace fire alarm smoke detectors and strobes/horns
Colt	Partitions	MFISD	CSP	Replace toilet partitions at select locations in the Main Building
Falls	Fire Alarm	MFISD	CSP	Replace fire alarm smoke detectors and strobes/horns
HLES	Fire Alarm	MFISD	CSP	Replace fire alarm smoke detectors and strobes/horns at 5th Grade Bldg and Main Bldg.
Maintenance	Fire Alarm	MFISD	CSP	Replace fire alarm smoke detectors, pull stations, and strobes/horns
Maintenance	Fire Alarm	MFISD	CSP	Replace fire alarm panel
MFES	Carpet	MFISD	CSP	Replace carpet in select locations in Main Bldg
MFES	Fire Alarm	MFISD	CSP	Replace fire alarm panel at 5th Grade Bldg
MFES	Fire Alarm	MFISD	CSP	Replace fire alarm smoke detectors and strobes/horns at 5th Grade Bldg
MFES	Partitions	MFISD	CSP	Replace toilet partitions in 5th Grade Bldg
MFES	Roof	MFISD	CSP	Replace roof on Main Bldg and Gym
MFES	Toilets/Sinks	MFISD	CSP	Replace toilets and sinks in 5th Grade Bldg
MFES	Window	MFISD	CSP	Replace window casements at Granite Bldg
MFES	Window	MFISD	CSP	Replace D Hall Windows and Doors
MFHS	Carpet	MFISD	CSP	Replace carpet in Press Box
MFHS	Carpet	MFISD	CSP	Replace carpet in Field House Training Room
MFHS	Partitions	MFISD	CSP	Replace toilet partitions in Main Building
MFHS	Partitions	MFISD	CSP	Replace toilet partitions in Max Copeland Gym
MFHS	Partitions	MFISD	CSP	Replace toilet partitions in restrooms near Weight Room
MFMS	Carpet	MFISD	CSP	Replace carpet in offices and Library
MFMS	Fire Alarm	MFISD	CSP	Replace fire alarm smoke detectors and strobes/horns in Main Building
MFMS	Partitions	MFISD	CSP	Replace toilet partitions throughout the campus
SWES	Asphalt Track	MFISD	CSP	Reseal asphalt track
SWES	Carpet	MFISD	CSP	Replace carpet on walls and replace cabinets
SWES	Fire Alarm	MFISD	CSP	Replace fire alarm smoke detectors and strobes/horns
SWES	Paint	MFISD	CSP	Paint interior walls throughout the campus
Technology	Fire Alarm	MFISD	CSP	Replace fire alarm smoke detectors and strobes/horns
Colt	Drainage	MFISD	Local Vendor	Develop a drainage survey for the school
MFMS	Technology	MFISD	Recommended to not do	Replace generator
MFMS				Replace damaged soccer goals



**LEARNERS TODAY,
LEADERS TOMORROW,
MUSTANGS FOREVER!**

**Marble Falls ISD
Board of Trustees
Agenda Item Information**

Meeting Date:		
Meeting Type: Regular Meeting Special Meeting/Workshop Hearing	Agenda Placement: Public Hearing Information Items Presentation/Discussion Items Consideration Items Consent Agenda	
Date Submitted:		
Subject:		
Executive Summary:		
Fiscal Impact: Cost: Recurring One-Time No Fiscal Impact	Funding Source: General Fund Grant Funds Bond Funds Other Funds (Specify)	Fiscal Year: Amendment Required? Yes No
Administration's Recommendation:		
Submitted By:		
Board Approval Required: Yes No		



**LEARNERS TODAY,
LEADERS TOMORROW,
MUSTANGS FOREVER!**

**Marble Falls ISD
Board of Trustees
Agenda Item Information**

Meeting Date:		
Meeting Type: Regular Meeting Special Meeting/Workshop Hearing	Agenda Placement: Public Hearing Information Items Presentation/Discussion Items Consideration Items Consent Agenda	
Date Submitted:		
Subject:		
Executive Summary:		
Fiscal Impact: Cost: Recurring One-Time No Fiscal Impact	Funding Source: General Fund Grant Funds Bond Funds Other Funds (Specify)	Fiscal Year: Amendment Required? Yes No
Administration's Recommendation:		
Submitted By:		
Board Approval Required: Yes No		



Quote#:70525-REV2

658 Alliance Pkwy, Hewitt, TX 76643

Ph: 254.741.2724 Fax: 254.741.2779

Brandy Olson, Account Manager

Brandon Troyer, Cable & Security Estimator



To: Marble Falls ISD

Date: December 12, 2018

Attn: Nathan Fink

RE: REVISED - Access Control - District Wide - Wired Solution

Qty	Part #	Description	Price Each	Extended
Headend Equipment				
1	SL100-SOFT	Access It!@ Universal Standard - SL100 Soft	\$ 4,828.41	\$ 4,828.41
1	S-CLIENT	Access It! Universal.NET Standard Client License - Single Pack	\$ 568.19	\$ 568.19
2	S-DVR-[MFG]	Access It!@ Universal Standard DVR/NVR Interface License - Single Pack	\$ 568.19	\$ 1,136.38
1	S-DATAEXCHG	Access It! Universal.NET Standard - Data Exchange License Optional system site license enabling the use of data exchange packages to manually or automatically add, modify, or delete cardholder/card records via external data sources. Supported data sources: Microsoft Access, Microsoft Active Directory, Microsoft Excel, Microsoft SQL Server, ODBC, and Text File	\$ 3,409.10	\$ 3,409.10
1	S-NOTIFY	Optional system site license for e-mail and alpha-numeric paging of alarm and event notifications	\$ 568.19	\$ 568.19
1	S-WEB	Optional system site license enabling the use of WEB Clients	\$ 284.10	\$ 284.10
1	TFE-CONFIG	Software Setup and Configuration	\$ 5,546.24	\$ 5,546.24
1	TFE-TRAINING	Training on System	\$ 960.00	\$ 960.00
Total				\$ 17,300.61

Spicewood Elementary School (8 Doors)				
2,400	AC-A12-68	Composite Access Control Cable CMP	\$ 0.57	\$ 1,368.00
2	LP-1502	LP-1502 - Intelligent Two Portal Four Reader Combination Controller	\$ 805.69	\$ 1,611.38
3	MR-52-S3	MR-52 - Series 3 Two Portal Four Reader SIO	\$ 482.96	\$ 1,448.88
13	1078C-N	GE Security Recessed Door Contact	\$ 6.54	\$ 85.02
8	DS-160	Bosch PIR Motion REX	\$ 63.64	\$ 509.12
8	920NT	iCLASS SE R40 wall switch reader, SIO, SEOS, and legacy enabled	\$ 150.00	\$ 1,200.00
100	2050	iCLASS contactless key tag fob with 2K bits, 2 application areas (Minimum order 100)	\$ 3.99	\$ 399.00
2	FPO150/250-2D8E4M1	LSP Dual Voltage Power Supply and Enclosure	\$ 642.05	\$ 1,284.10
4	BAT-70	Rechargeable battery, 7.0 Ah ,12 Volt	\$ 22.73	\$ 90.92
1	TFE-SUB	HB Blake Sub-Contractor	\$ 6,099.78	\$ 6,099.78
1	TFE-MISC	Miscellaneous Cables, Connectors and Installation Hardware	\$ 724.20	\$ 724.20
1	TFE-CABLE	Labor & Installation	\$ 7,518.23	\$ 7,518.23
Total				\$ 22,338.62

Marble Falls Elementary School (10 Doors)				
3,000	AC-A12-68	Composite Access Control Cable CMP	\$ 0.57	\$ 1,710.00
3	LP-1502	LP-1502 - Intelligent Two Portal Four Reader Combination Controller	\$ 805.69	\$ 2,417.07
3	MR-52-S3	MR-52 - Series 3 Two Portal Four Reader SIO	\$ 482.96	\$ 1,448.88
17	1078C-N	GE Security Recessed Door Contact	\$ 6.54	\$ 111.18
10	DS-160	Bosch PIR Motion REX	\$ 63.64	\$ 636.40
10	920NT	iCLASS SE R40 wall switch reader, SIO, SEOS, and legacy enabled	\$ 150.00	\$ 1,500.00
100	2050	iCLASS contactless key tag fob with 2K bits, 2 application areas (Minimum order 100)	\$ 3.99	\$ 399.00
3	FPO150/250-2D8E4M1	LSP Dual Voltage Power Supply and Enclosure	\$ 642.05	\$ 1,926.15
6	BAT-70	Rechargeable battery, 7.0 Ah ,12 Volt	\$ 22.73	\$ 136.38
1	TFE-SUB	HB Blake Sub-Contractor	\$ 16,414.78	\$ 16,414.78
1	TFE-MISC	Miscellaneous Cables, Connectors and Installation Hardware	\$ 905.24	\$ 905.24
1	TFE-CABLE	Labor & Installation	\$ 9,288.79	\$ 9,288.79
Total				\$ 36,893.87

Marble Falls Career High (2 Doors)				
---	--	--	--	--

400	AC-A12-68	Composite Access Control Cable CMP	\$	0.57	\$	228.00
1	LP-1502	LP-1502 - Intelligent Two Portal Four Reader Combination Controller	\$	805.69	\$	805.69
4	1078C-N	GE Security Recessed Door Contact	\$	6.54	\$	26.16
2	DS-160	Bosch PIR Motion REX	\$	63.64	\$	127.28
2	920NT	iCLASS SE R40 wall switch reader, SIO, SEOS, and legacy enabled	\$	150.00	\$	300.00
100	2050	iCLASS contactless key tag fob with 2K bits, 2 application areas (Minimum order 100)	\$	3.99	\$	399.00
1	FPO150/250-2D8E4M1	LSP Dual Voltage Power Supply and Enclosure	\$	642.05	\$	642.05
2	BAT-70	Rechargeable battery, 7.0 Ah ,12 Volt	\$	22.73	\$	45.46
1	TFE-SUB	HB Blake Sub-Contractor	\$	7,539.78	\$	7,539.78
1	TFE-MISC	Miscellaneous Cables, Connectors and Installation Hardware	\$	181.05	\$	181.05
1	TFE-CABLE	Labor & Installation	\$	2,706.15	\$	2,706.15
Total						\$ 13,000.62

Colt Elementary School (13 Doors)

3,900	AC-A12-68	Composite Access Control Cable CMP	\$	0.57	\$	2,223.00
5	LP-1502	LP-1502 - Intelligent Two Portal Four Reader Combination Controller	\$	805.69	\$	4,028.45
3	MR-52-S3	MR-52 - Series 3 Two Portal Four Reader SIO	\$	482.96	\$	1,448.88
22	1078C-N	GE Security Recessed Door Contact	\$	6.54	\$	143.88
13	DS-160	Bosch PIR Motion REX	\$	63.64	\$	827.32
13	920NT	iCLASS SE R40 wall switch reader, SIO, SEOS, and legacy enabled	\$	150.00	\$	1,950.00
100	2050	iCLASS contactless key tag fob with 2K bits, 2 application areas (Minimum order 100)	\$	3.99	\$	399.00
5	FPO150/250-2D8E4M1	LSP Dual Voltage Power Supply and Enclosure	\$	642.05	\$	3,210.25
10	BAT-70	Rechargeable battery, 7.0 Ah ,12 Volt	\$	22.73	\$	227.30
1	TFE-SUB	HB Blake Sub-Contractor	\$	10,568.19	\$	10,568.19
1	TFE-MISC	Miscellaneous Cables, Connectors and Installation Hardware	\$	1,176.82	\$	1,176.82
1	TFE-CABLE	Labor & Installation	\$	12,147.28	\$	12,147.28
Total						\$ 38,350.37

Highland Lakes Elementary (10 Doors)

3,000	AC-A12-68	Composite Access Control Cable CMP	\$	0.57	\$	1,710.00
3	LP-1502	LP-1502 - Intelligent Two Portal Four Reader Combination Controller	\$	805.69	\$	2,417.07
3	MR-52-S3	MR-52 - Series 3 Two Portal Four Reader SIO	\$	482.96	\$	1,448.88
17	1078C-N	GE Security Recessed Door Contact	\$	6.54	\$	111.18
10	DS-160	Bosch PIR Motion REX	\$	63.64	\$	636.40
10	920NT	iCLASS SE R40 wall switch reader, SIO, SEOS, and legacy enabled	\$	150.00	\$	1,500.00
100	2050	iCLASS contactless key tag fob with 2K bits, 2 application areas (Minimum order 100)	\$	3.99	\$	399.00
3	FPO150/250-2D8E4M1	LSP Dual Voltage Power Supply and Enclosure	\$	642.05	\$	1,926.15
6	BAT-70	Rechargeable battery, 7.0 Ah ,12 Volt	\$	22.73	\$	136.38
1	TFE-SUB	HB Blake Sub-Contractor	\$	12,721.60	\$	12,721.60
1	TFE-MISC	Miscellaneous Cables, Connectors and Installation Hardware	\$	905.24	\$	905.24
1	TFE-CABLE	Labor & Installation	\$	9,288.79	\$	9,288.79
Total						\$ 33,200.69

Marble Falls Middle School (14 Doors)

4,200	AC-A12-68	Composite Access Control Cable CMP	\$	0.57	\$	2,394.00
6	LP-1502	LP-1502 - Intelligent Two Portal Four Reader Combination Controller	\$	805.69	\$	4,834.14
3	MR-52-S3	MR-52 - Series 3 Two Portal Four Reader SIO	\$	482.96	\$	1,448.88
28	1078C-N	GE Security Recessed Door Contact	\$	6.54	\$	183.12
16	DS-160	Bosch PIR Motion REX	\$	63.64	\$	1,018.24
14	920NT	iCLASS SE R40 wall switch reader, SIO, SEOS, and legacy enabled	\$	150.00	\$	2,100.00
100	2050	iCLASS contactless key tag fob with 2K bits, 2 application areas (Minimum order 100)	\$	3.99	\$	399.00
6	FPO150/250-2D8E4M1	LSP Dual Voltage Power Supply and Enclosure	\$	642.05	\$	3,852.30
12	BAT-70	Rechargeable battery, 7.0 Ah ,12 Volt	\$	22.73	\$	272.76
1	TFE-SUB	HB Blake Sub-Contractor	\$	14,607.96	\$	14,607.96
1	TFE-MISC	Miscellaneous Cables, Connectors and Installation Hardware	\$	1,267.34	\$	1,267.34
1	TFE-CABLE	Labor & Installation	\$	12,382.61	\$	12,382.61
Total						\$ 44,760.35

Marble Falls High School (17 Doors)

5,100	AC-A12-68	Composite Access Control Cable CMP	\$	0.57	\$	2,907.00
7	LP-1502	LP-1502 - Intelligent Two Portal Four Reader Combination Controller	\$	805.69	\$	5,639.83
2	MR-52-S3	MR-52 - Series 3 Two Portal Four Reader SIO	\$	482.96	\$	965.92
32	1078C-N	GE Security Recessed Door Contact	\$	6.54	\$	209.28
18	DS-160	Bosch PIR Motion REX	\$	63.64	\$	1,145.52
17	920NT	iCLASS SE R40 wall switch reader, SIO, SEOS, and legacy enabled	\$	150.00	\$	2,550.00
100	2050	iCLASS contactless key tag fob with 2K bits, 2 application areas (Minimum order 100)	\$	3.99	\$	399.00
7	FPO150/250-2D8E4M1	LSP Dual Voltage Power Supply and Enclosure	\$	642.05	\$	4,494.35
14	BAT-70	Rechargeable battery, 7.0 Ah ,12 Volt	\$	22.73	\$	318.22
1	TFE-SUB	HB Blake Sub-Contractor	\$	21,312.50	\$	21,312.50
1	TFE-MISC	Miscellaneous Cables, Connectors and Installation Hardware	\$	1,538.91	\$	1,538.91
1	TFE-CABLE	Labor & Installation	\$	14,750.61	\$	14,750.61

Total \$ 56,231.14

Technology (1 Door)

200	AC-A12-68	Composite Access Control Cable CMP	\$	0.57	\$	114.00
1	LP-1502	LP-1502 - Intelligent Two Portal Four Reader Combination Controller	\$	805.69	\$	805.69
1	1078C-N	GE Security Recessed Door Contact	\$	6.54	\$	6.54
1	DS-160	Bosch PIR Motion REX	\$	63.64	\$	63.64
1	920NT	iCLASS SE R40 wall switch reader, SIO, SEOS, and legacy enabled	\$	150.00	\$	150.00
1	FPO150/250-2D8E4M1	LSP Dual Voltage Power Supply and Enclosure	\$	642.05	\$	642.05
2	BAT-70	Rechargeable battery, 7.0 Ah ,12 Volt	\$	22.73	\$	318.22
1	TFE-SUB	HB Blake Sub-Contractor	\$	2,045.46	\$	2,045.46
1	TFE-MISC	Miscellaneous Cables, Connectors and Installation Hardware	\$	90.52	\$	90.52
1	TFE-CABLE	Labor & Installation	\$	2,227.86	\$	2,227.86

Total \$ 6,463.98

Curriculum / Administration (7 Doors)

2,100	AC-A12-68	Composite Access Control Cable CMP	\$	0.57	\$	1,197.00
3	LP-1502	LP-1502 - Intelligent Two Portal Four Reader Combination Controller	\$	805.69	\$	2,417.07
1	MR-52-S3	MR-52 - Series 3 Two Portal Four Reader SIO	\$	482.96	\$	482.96
13	1078C-N	GE Security Recessed Door Contact	\$	6.54	\$	85.02
7	DS-160	Bosch PIR Motion REX	\$	63.64	\$	445.48
7	920NT	iCLASS SE R40 wall switch reader, SIO, SEOS, and legacy enabled	\$	150.00	\$	1,050.00
3	FPO150/250-2D8E4M1	LSP Dual Voltage Power Supply and Enclosure	\$	642.05	\$	1,926.15
6	BAT-70	Rechargeable battery, 7.0 Ah ,12 Volt	\$	22.73	\$	136.38
1	TFE-SUB	HB Blake Sub-Contractor	\$	7,528.41	\$	7,528.41
1	TFE-MISC	Miscellaneous Cables, Connectors and Installation Hardware	\$	633.67	\$	633.67
1	TFE-CABLE	Labor & Installation	\$	7,048.91	\$	7,048.91

Total \$ 22,951.05




Grand Total \$ 291,491.31

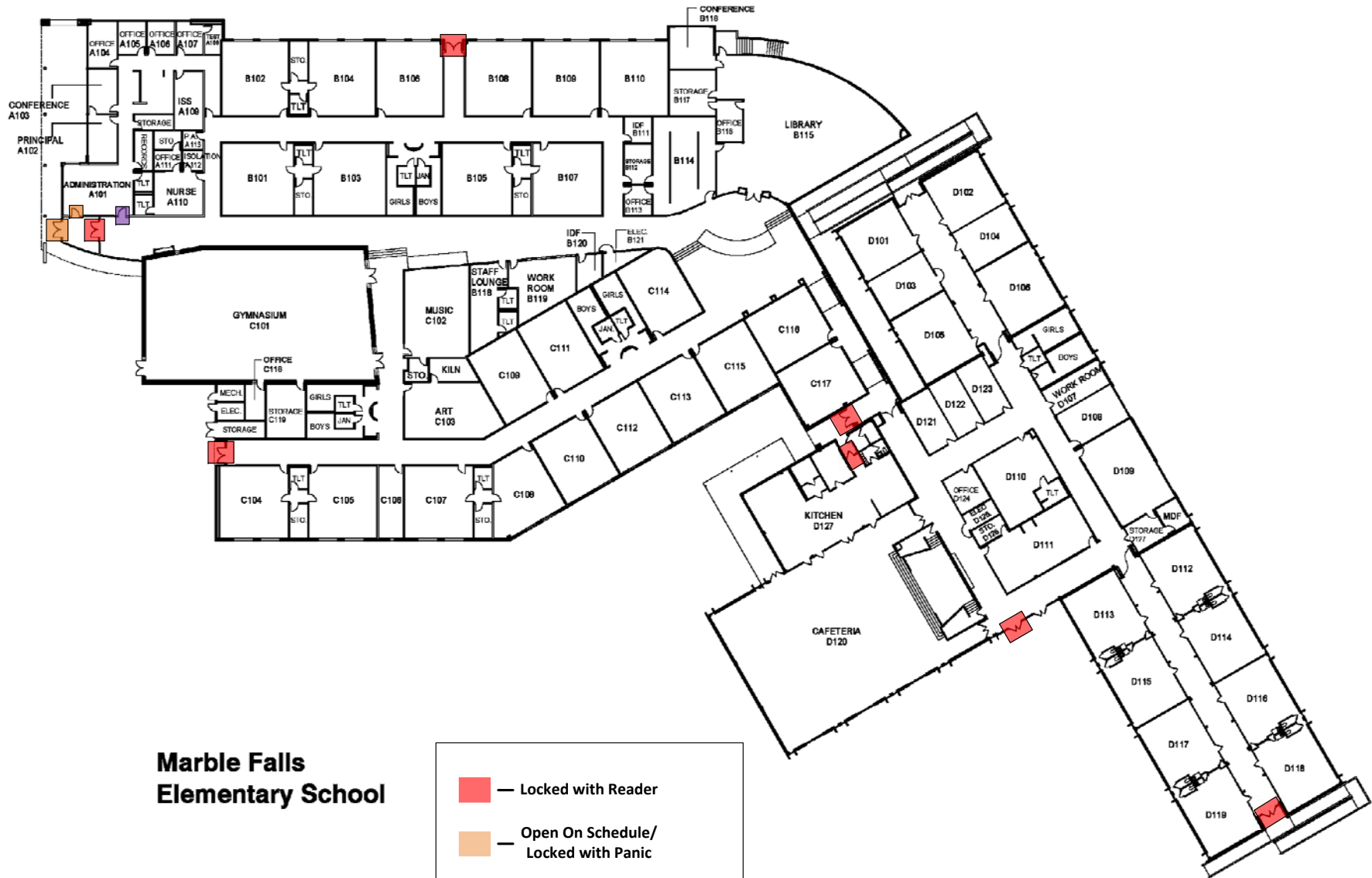
Terms and Conditions

- * Pricing is based on an eight (8) hour workday, Monday through Friday, 8:00 AM to 5:00 PM.
- * If required, customer will provide all installation personnel with access badges, keys, and/or escorts in order to perform the work in a timely manner.
- * Customer will have a designated Project Manager to answer any/all questions that might arise during the project installation.
- * Any customer requested work and/or materials beyond the original scope of work described in this proposal are subject to additional charges. An authorized signature is required before any additional work will be performed. Due to time constraints, any changes in the scope of work may require additional time to complete the project.
- * Customer is responsible for any applicable sales and/or use tax.

Spicewood Elementary




	— Locked with Reader
	— Open On Schedule/ Locked with Panic
	— Locked with buzzer to open



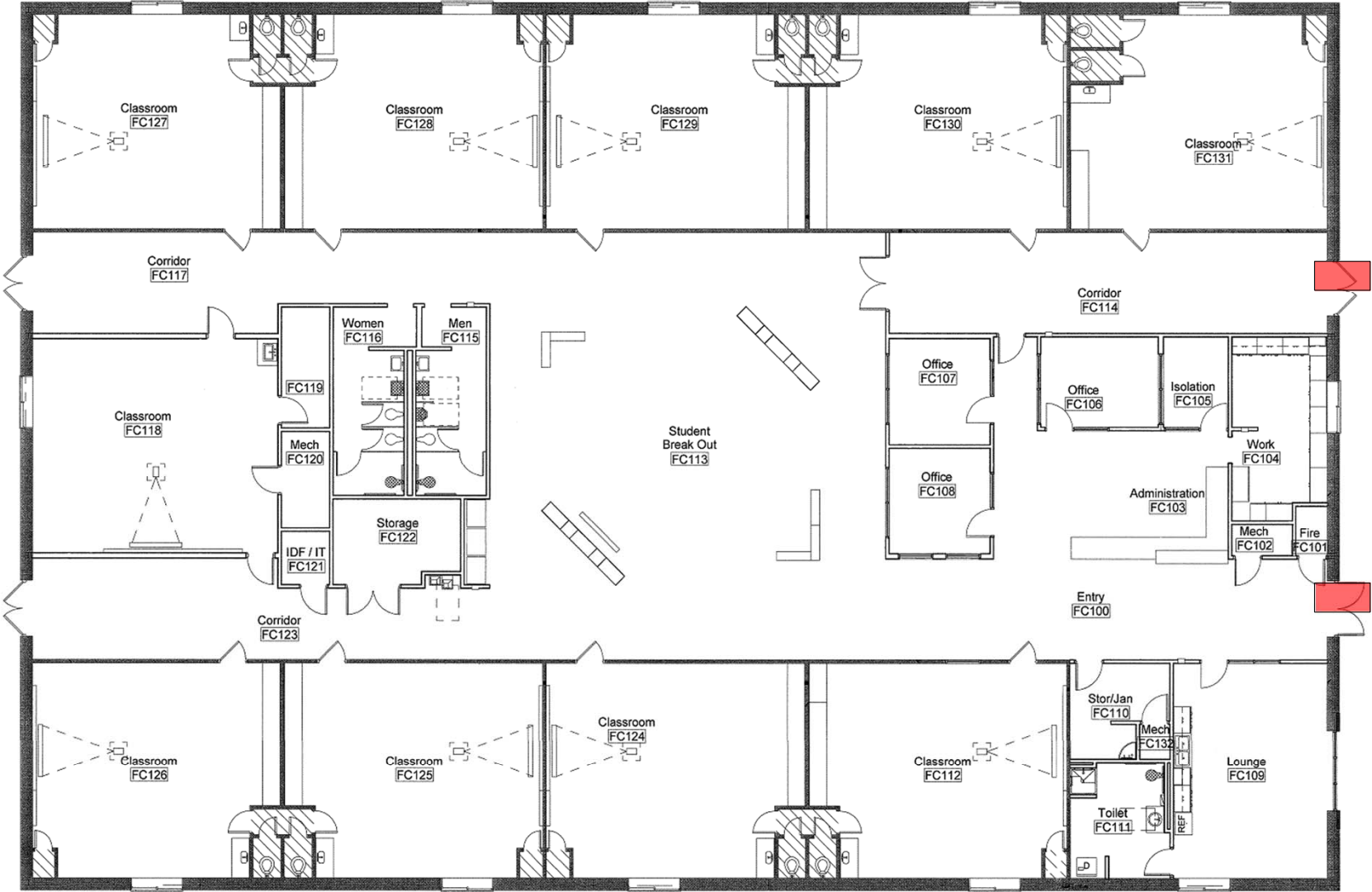
Marble Falls Elementary School

- — Locked with Reader
- — Open On Schedule/
Locked with Panic
- — Locked with buzzer
to open

Falls Career HS

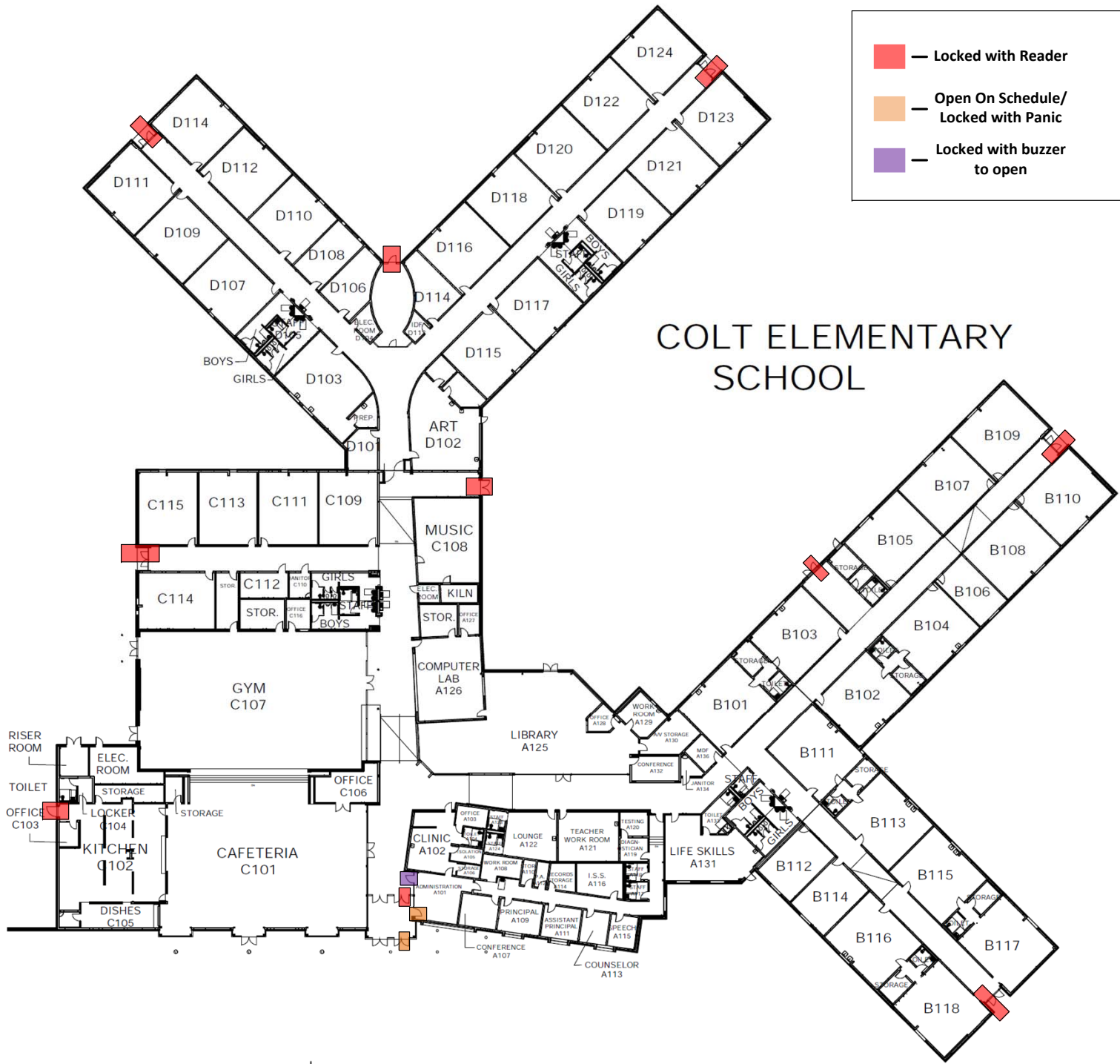
 — Locked with Reader

45






■ — Locked with Reader
■ — Open On Schedule/
 Locked with Panic
■ — Locked with buzzer
 to open

COLT ELEMENTARY SCHOOL



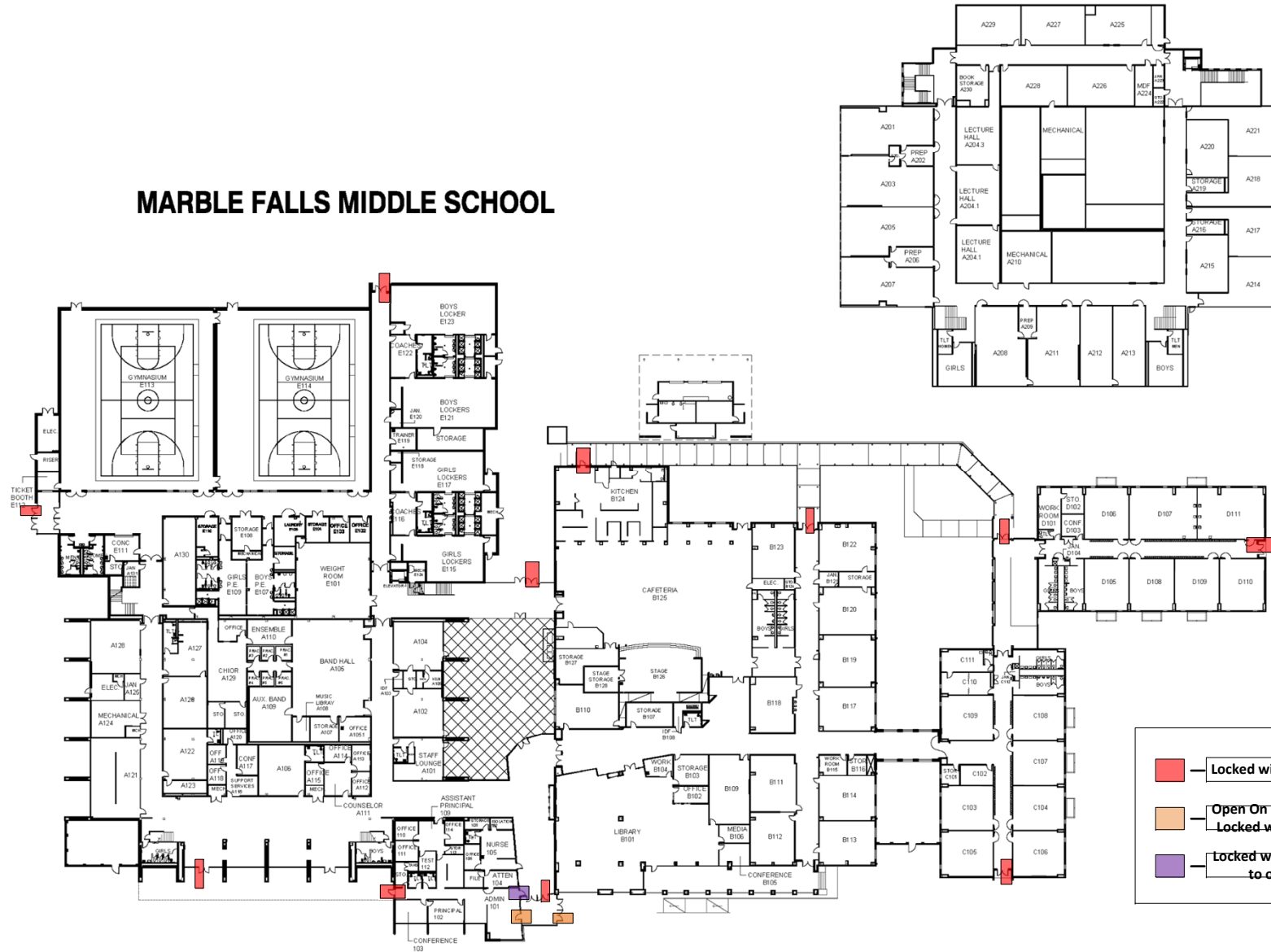
HIGHLAND LAKES ELEMENTARY






	Locked with Reader
	Open On Schedule/ Locked with Panic
	Locked with buzzer to open



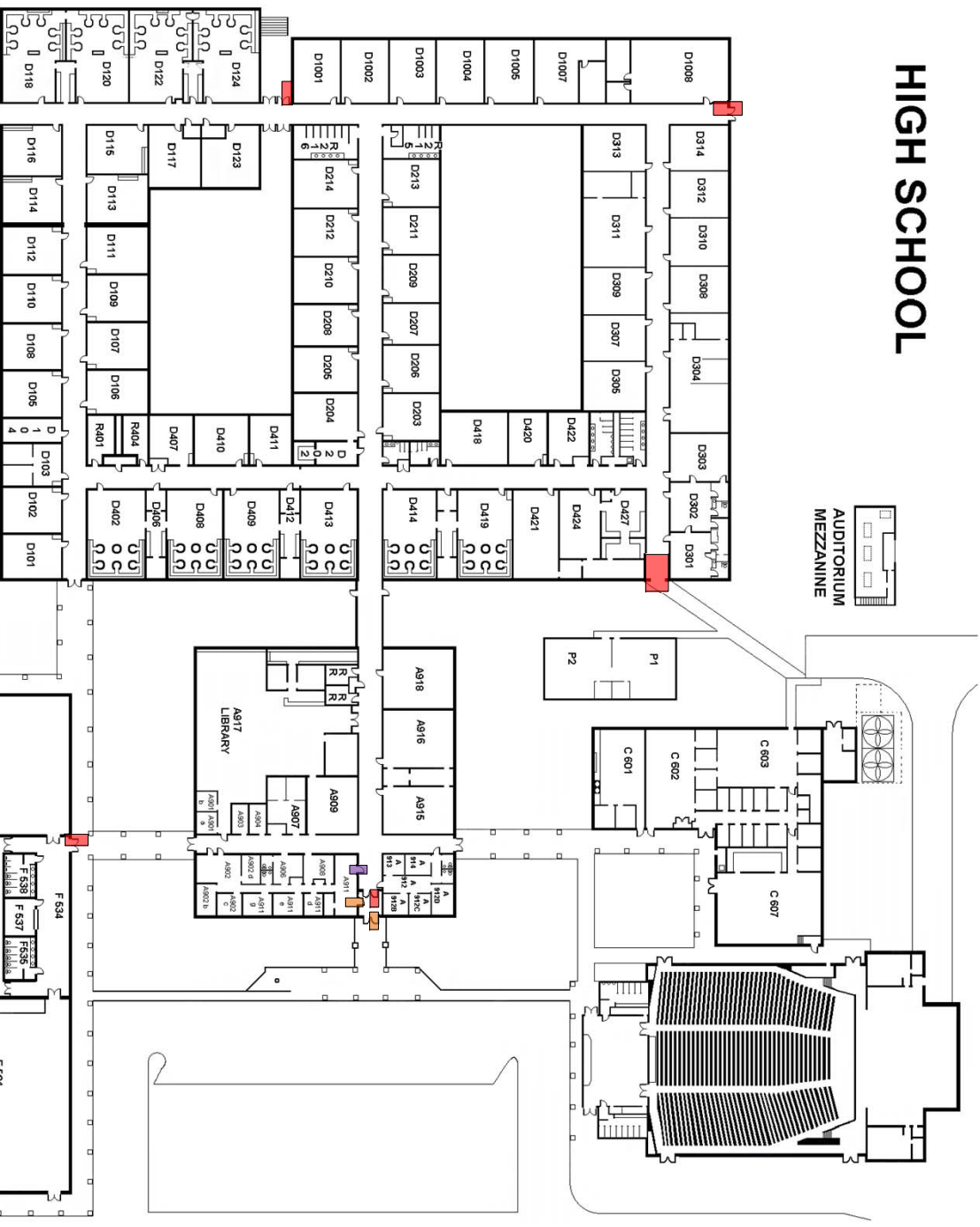
MARBLE FALLS MIDDLE SCHOOL






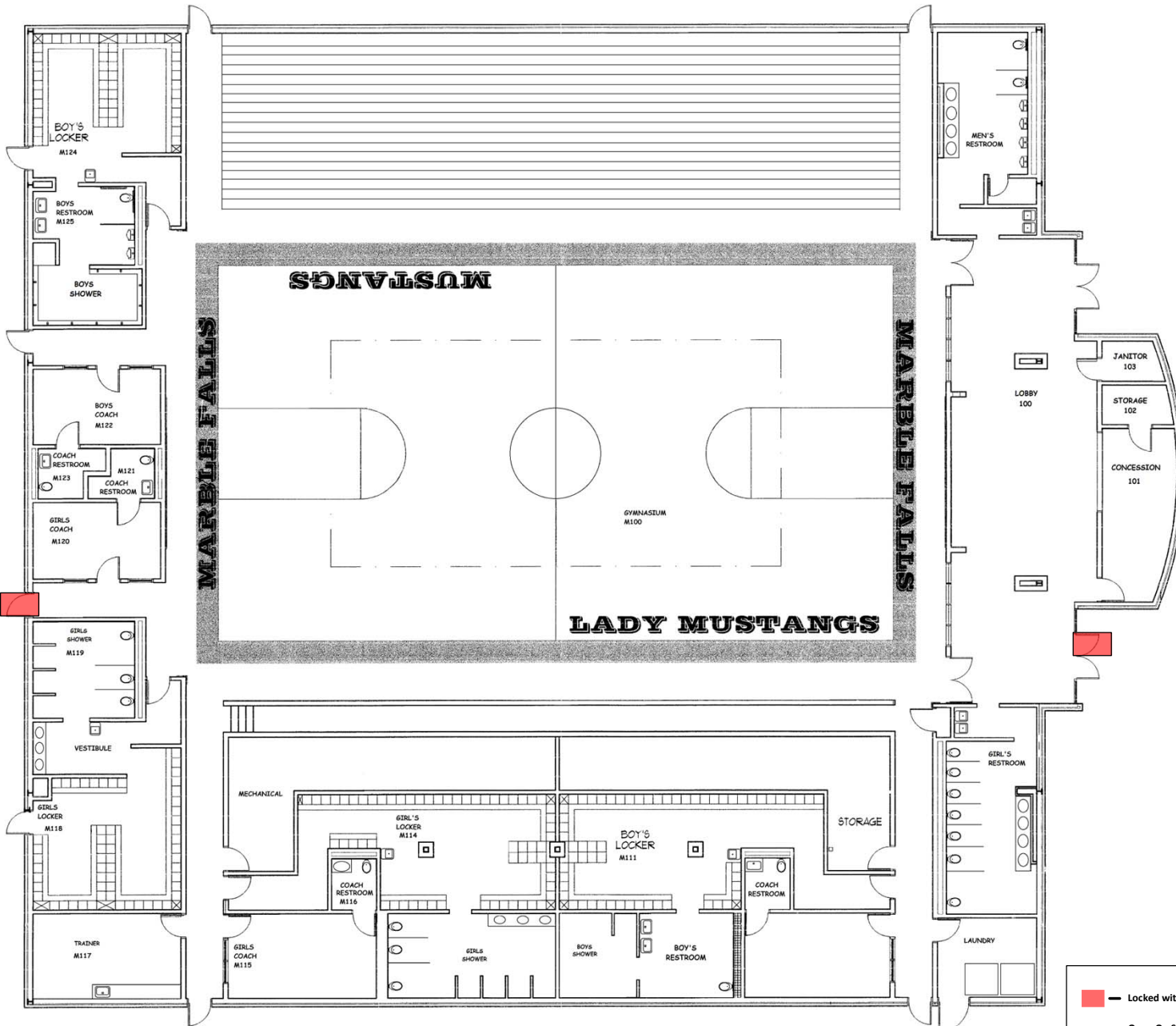
	Locked with Reader
	Open On Schedule/ Locked with Panic
	Locked with buzzer to open

HIGH SCHOOL

AUDITORIUM
MEZZANINE



	Locked with Reader
	Open On Schedule/ Locked with Panic
	Locked with buzzer to open

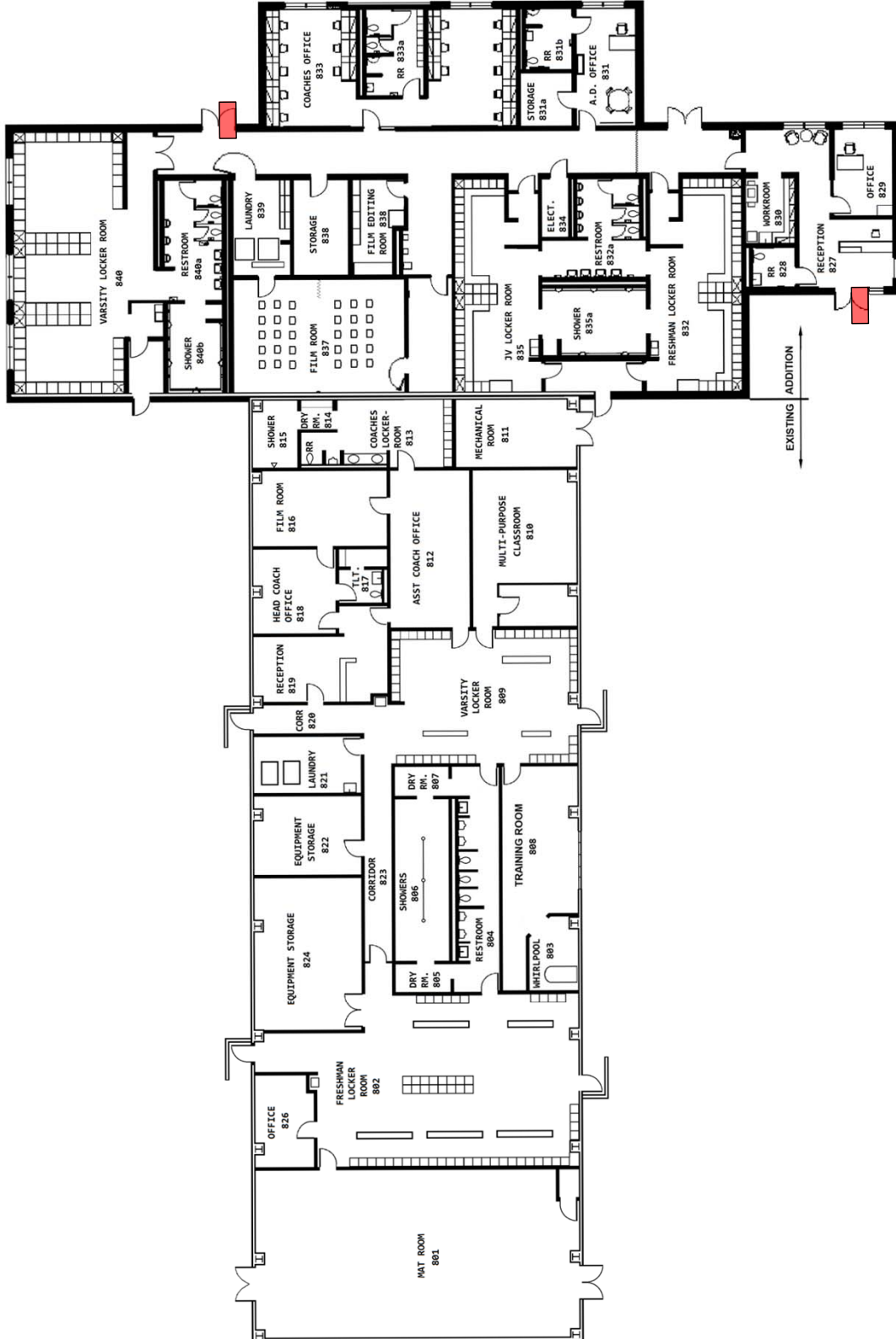
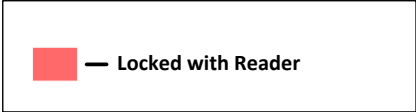


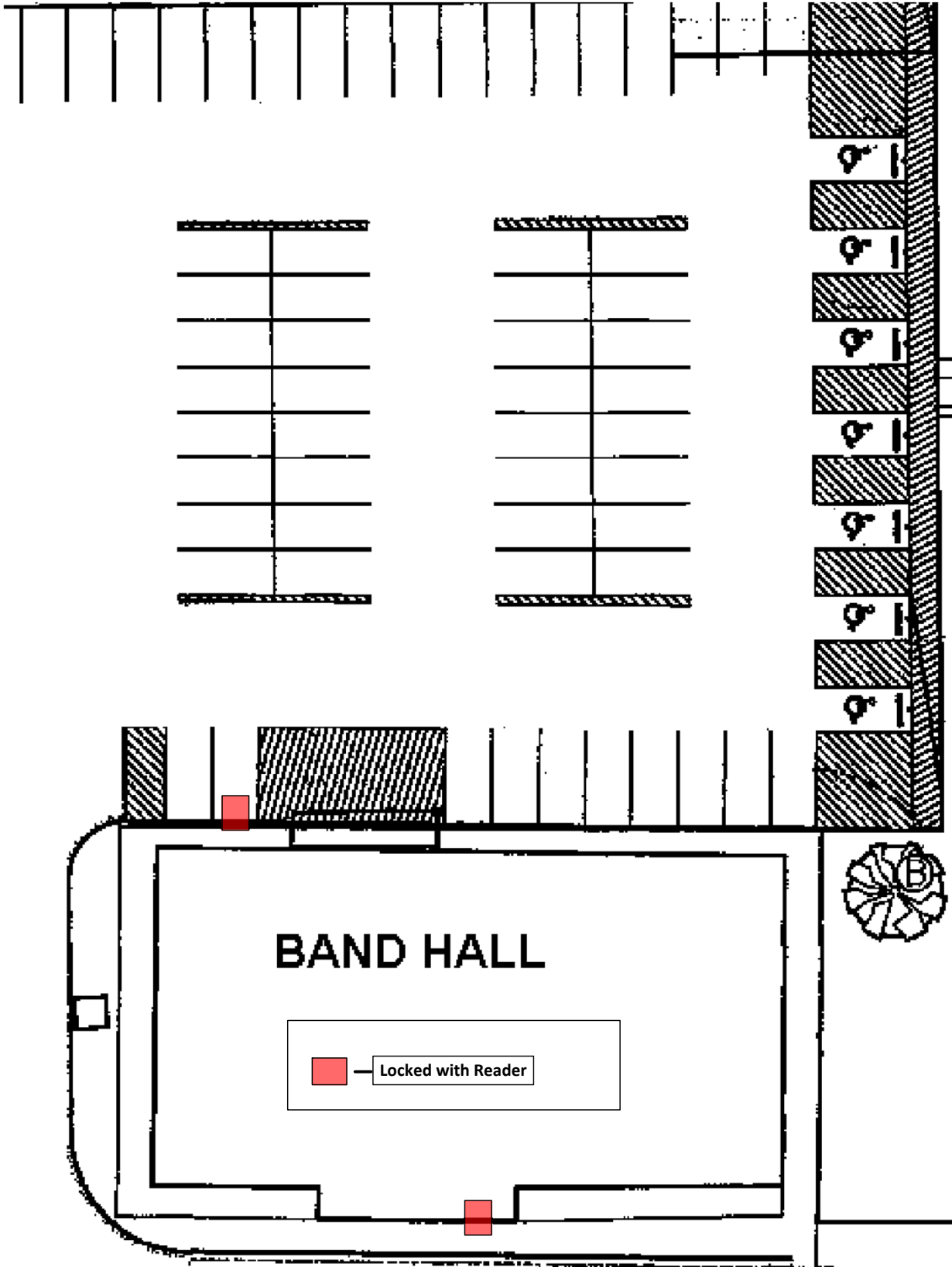
MAX COPELAND GYM

- Locked with Reader
- Open On Schedule/
Locked with Panic
- Locked with buzzer
to open



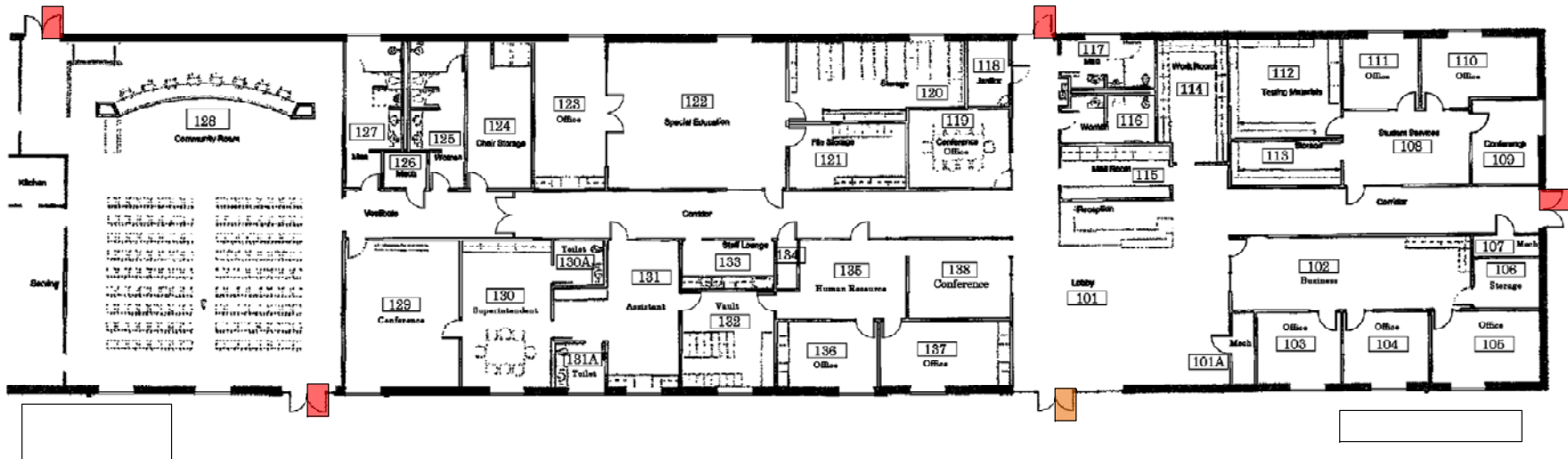
MFHS FIELD HOUSE

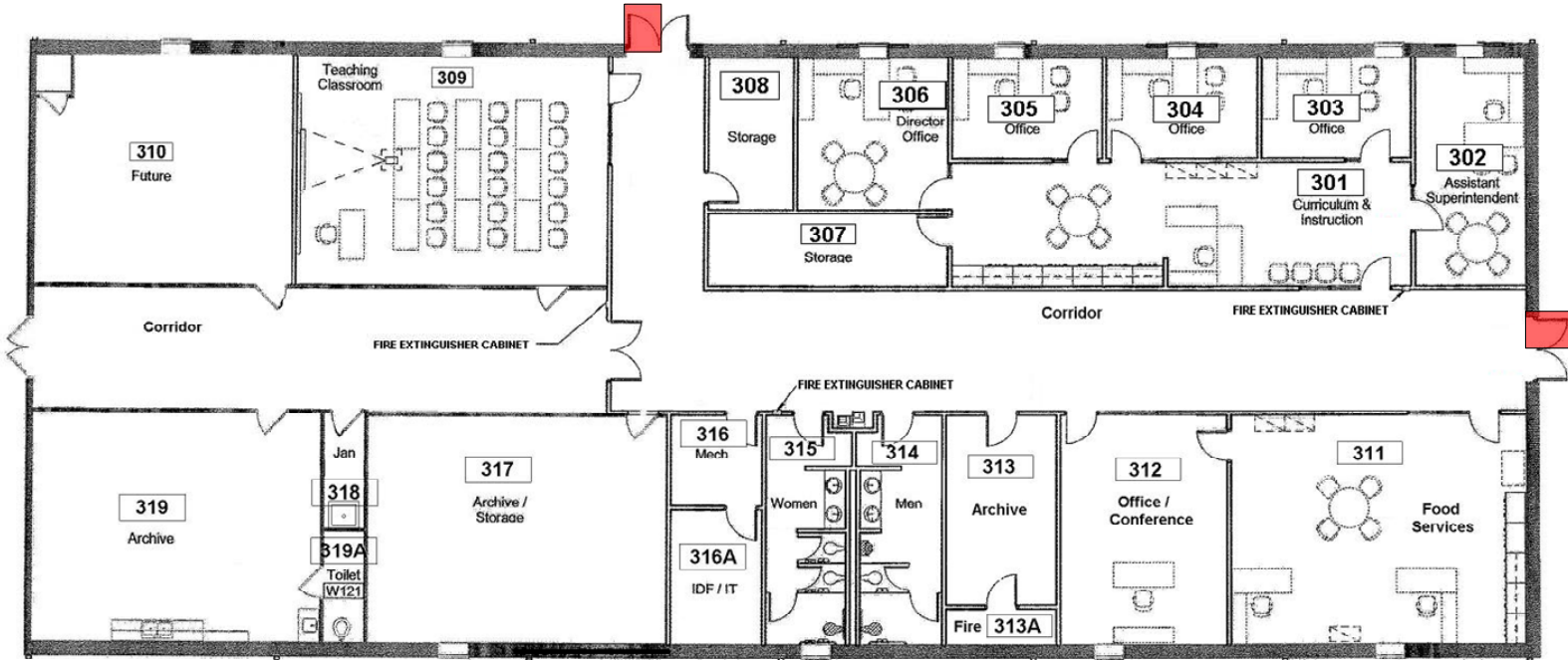




Central Office

- Locked with Reader
- Open On Schedule/
Locked with Panic





300 BUILDING

West Building Floor Plan

 — Locked with Reader



**LEARNERS TODAY,
LEADERS TOMORROW,
MUSTANGS FOREVER!**

**Marble Falls ISD
Board of Trustees
Agenda Item Information**

Meeting Date:		
Meeting Type: Regular Meeting Special Meeting/Workshop Hearing	Agenda Placement: Public Hearing Information Items Presentation/Discussion Items Consideration Items Consent Agenda	
Date Submitted:		
Subject:		
Executive Summary:		
Fiscal Impact: Cost: Recurring One-Time No Fiscal Impact	Funding Source: General Fund Grant Funds Bond Funds Other Funds (Specify)	Fiscal Year: Amendment Required? Yes No
Administration's Recommendation:		
Submitted By:		
Board Approval Required: Yes No		

TEXAS CLASS

Texas Cooperative Liquid Assets
Securities System

INVESTMENT OBJECTIVES

- Safety
- Liquidity
- Yield

BASIC INFORMATION

- Local government investment pool
- All investments in accordance with Public Funds Investment Act
- Participants include: counties (17%), municipalities (23%), school districts (42%), special districts (13%), other (5%)
- Weighted Average Maturity ranging from 50 – 80 days
- NAV \$1.00

PORTFOLIO BREAKDOWN

- Texas CLASS -Portfolio includes: repurchase agreements (1%), government obligations and money market funds (1%), commercial paper (98%)
- Texas CLASS Government – Portfolio includes: repurchase agreements (30%), US Government agency securities (15%), US Treasury securities (41%), money market funds (14%)

RATE COMPARISONS

As of 1/7/19	Daily %	7 Day Yield %
Lone Star	2.6062	2.6000
Texas CLASS	2.6051	2.5845
TexSTAR	2.3538	2.4500
Texas Term	2.5400	2.4300



Marble Falls ISD has an unyielding commitment to love every child and inspire them to achieve their fullest potential.

Marble Falls ISD Board of Trustees Agenda Item Information

Meeting Date:		
Meeting Type: Regular Meeting Special Meeting/Workshop Hearing	Agenda Placement: Public Hearing Information Items Presentation/Discussion Items Consideration Items Consent Agenda	
Date Submitted:		
Subject:		
Executive Summary:		
Fiscal Impact: Cost: Recurring One-Time No Fiscal Impact	Funding Source: General Fund Grant Funds Bond Funds Other Funds (Specify)	Fiscal Year: Amendment Required? Yes No
Administration's Recommendation:		
Submitted By:		
Board Approval Required: Yes No		



Marble Falls ISD has an unyielding commitment to love every child and inspire them to achieve their fullest potential.

Marble Falls ISD Board of Trustees Agenda Item Information

Meeting Date:		
Meeting Type: Regular Meeting Special Meeting/Workshop Hearing Date Submitted:	Agenda Placement: Public Hearing Information Items Presentation/Discussion Items Consideration Items Consent Agenda	
Subject:		
Executive Summary:		
Fiscal Impact: Cost: Recurring One-Time No Fiscal Impact	Funding Source: General Fund Grant Funds Bond Funds Other Funds (Specify)	Fiscal Year: Amendment Required? Yes No
Administration's Recommendation:		
Submitted By:		
Board Approval Required: Yes No		



GEO TECHNICAL ENGINEER

PURPOSE

Geotechnical engineering uses principles of soil mechanics and rock mechanics to investigate subsurface conditions and materials; determine the relevant physical/mechanical and chemical properties of these materials; evaluate stability of natural slopes and man-made soil deposits; assess risks posed by site conditions; design earthworks and structure foundations; and monitors site conditions, earthwork and foundation construction.

PROCESS - ASSISTED BY HUCKABEE:

- Posted an RFQ for geotechnical engineering services – (prequalified and local engineers were specifically invited to respond)
- The eight firms who responded to the RFQ were asked to respond to a standard set of questions (developed with Huckabee)
- Answers and other qualifications were recorded on an evaluation matrix and evaluated by the District.
- The most qualified service provider will be selected for recommendation.



Marble Falls ISD has an unyielding commitment to love every child and inspire them to achieve their fullest potential.

Marble Falls ISD Board of Trustees Agenda Item Information

Meeting Date:		
Meeting Type: Regular Meeting Special Meeting/Workshop Hearing Date Submitted:	Agenda Placement: Public Hearing Information Items Presentation/Discussion Items Consideration Items Consent Agenda	
Subject:		
Executive Summary:		
Fiscal Impact: Cost: Recurring One-Time No Fiscal Impact	Funding Source: General Fund Grant Funds Bond Funds Other Funds (Specify)	Fiscal Year: Amendment Required? Yes No
Administration's Recommendation:		
Submitted By:		
Board Approval Required: Yes No		

Overview of the Timing

- November 6, 2018 – Bond Election
- November 15, 2018 – Staff Conference Call: Pre-Sale Discussion with the Staff
- **November 15, 2018 – Board Meeting: Canvass Election Results** November 29, 2018 – Submit Application for Permanent School Fund Guarantee
- **November 29, 2018 – Board Meeting: Review the Plan of Finance and Schedule of Events** December 15, 2018 – 30 Day Contest Period Ends
- **December 17, 2018 – Board Meeting: Adopt Resolution Allowing for Reimbursement** December 20, 2018 – Conference Calls – Rating Agency Interview and Tax Compliance
- December 21, 2018 – Receive Permanent School Fund Guarantee
- January 7, 2019 – Receive Ratings on the Bonds
- January 22, 2019 – Bond Sale (lock in interest rate)
- **January 22, 2019 – Board Meeting: Review the Bond Sale Results and Adopt the Order Authorizing**
- **the Issuance of the Bonds** February 19, 2019 – Bond Closing and Transfer of Funds



Marble Falls ISD has an unyielding commitment to love every child and inspire them to achieve their fullest potential.

Marble Falls ISD Board of Trustees Agenda Item Information

Meeting Date:		
Meeting Type: Regular Meeting Special Meeting/Workshop Hearing	Agenda Placement: Public Hearing Information Items Presentation/Discussion Items Consideration Items Consent Agenda	
Date Submitted:		
Subject:		
Executive Summary:		
Fiscal Impact: Cost: Recurring One-Time No Fiscal Impact	Funding Source: General Fund Grant Funds Bond Funds Other Funds (Specify)	Fiscal Year: Amendment Required? Yes No
Administration's Recommendation:		
Submitted By:		
Board Approval Required: Yes No		

NOTICE OF CONFIDENTIALITY RIGHTS: IF YOU ARE A NATURAL PERSON, YOU MAY REMOVE OR STRIKE ANY OR ALL OF THE FOLLOWING INFORMATION FROM ANY INSTRUMENT THAT TRANSFERS AN INTEREST IN REAL PROPERTY BEFORE IT IS FILED FOR RECORD IN THE PUBLIC RECORDS: YOUR SOCIAL SECURITY NUMBER OR YOUR DRIVER'S LICENSE NUMBER.

QUITCLAIM – RELEASE OF EASEMENT

QUITCLAIM DEED

STATE OF TEXAS

§
§
§

KNOW ALL MEN BY THESE PRESENTS:

COUNTY OF BURNET

For valuable consideration, receipt of which is acknowledged, **THE BOARD OF TRUSTEES OF THE MARBLE FALLS INDEPENDENT SCHOOL DISTRICT**, of Burnet County, Texas, does release, and forever quitclaim any interest it may have in that certain real property located in Burnet County, Texas described as a .90 acre tract of land out of the J.H. Johnson Survey No. 16, Abstract No. 477, in Burnet County, Texas. Said .98 acre tract being more particularly located and described by metes and bounds in **Exhibit A** attached hereto and incorporated herein by reference.

This Quitclaim Deed is given specifically to release the easement granted by TINA RECHELE WALL BOONE, LINDA MICHELE WALL, & SHIRLEY WALL LOOKINGBILL WHITE in an instrument dated April 23, 2002, recorded in Volume 1058, at page 806 of the Deed of Records of Burnet County, Texas.

Executed on this ____ of January 2019.

GRANTOR:

**THE BOARD OF TRUSTEES OF THE
MARBLE FALLS INDEPENDENT SCHOOL DISTRICT**

By: _____
Kevin Naumann, President of Marble
Falls Independent School District Board
of Trustees

ACKNOWLEDGEMENT

STATE OF TEXAS
COUNTY OF BURNET

§
§

BEFORE ME, the undersigned authority, on this day personally appeared Kevin Naumann, known to me to be the person whose name is subscribed to the foregoing instrument, and acknowledged to me that he is the President of the Board of Trustees for Marble Falls Independent School District, a political subdivision of the State of Texas, that he has been duly authorized to by the political subdivision to execute this document, and that it is executed on behalf of the political subdivision for the purposes and consideration herein expressed.

Given under my hand and seal of office this _____ day of January 2019.

Notary Public, State of Texas

MARBLE FALLS SURVEYING & MAPPING
 110 AVENUE H, SUITE 212
 MARBLE FALLS, TEXAS 78654
 TEL 8306938815
 FAX 830 6938915

METES AND BOUNDS EXHIBIT

STATE OF TEXAS;
 COUNTY OF BURNET;

FIELD NOTES FOR A 0.98 ACRE TRACT OF LAND OUT OF THE J. H. JOHNSON SURVEY NO. 16, ABSTRACT NO. 477, IN BURNET COUNTY, TEXAS, AND BEING OUT OF THAT CERTAIN TRACT VIII AND THAT CERTAIN 200 ACRE HOMESTEAD TRACT SET ASIDE TO SHIRLEY WHITE IN A PARTITION DEED, RECORDED IN VOLUME 586, PAGE 475 OF THE BURNET COUNTY REAL PROPERTY RECORDS. SAID 0.98 ACRE TRACT BEING MORE PARTICULARLY DESCRIBED AS FOLLOWS:

BEGINNING AT A 1/2" IRON ROD SET, WITH PLASTIC CAP STAMPED RPLS 4452, IN THE EAST RIGHT-OF-WAY LINE OF TEXAS SPUR NO. 191, CONVEYED TO THE STATE OF TEXAS IN VOLUME 100, PAGE 557 OF THE BURNET COUNTY DEED RECORDS, BEING THE SOUTHWEST CORNER OF THAT CERTAIN 10.01 ACRE TRACT OF LAND CONVEYED TO STEPHEN D. BAXTER, BY DEED RECORDED IN VOLUME 797, PAGE 707 OF THE BURNET COUNTY OFFICIAL PUBLIC RECORDS AND OF THAT CERTAIN TRACT VII DESCRIBED IN SAID VOLUME 586, PAGE 475, FOR THE NORTHWEST CORNER HEREOF AND OF SAID TRACT VIA, FROM WHICH A 1/2" IRON ROD FOUND AT THE POINT OF TANGENCY AT THE END OF A 1392.50 FOOT RADIUS CURVE TO THE RIGHT BEARS A CHORD BEARING AND DISTANCE OF N23°20'24"E, 341.47 FEET (CALLED N23°11'54"E, 341.07);

THENCE, S88°42'19"E, WITH THE NORTH LINE HEREOF AND OF SAID TRACT VIII, BEING THE SOUTH LINE OF SAID TRACT VII AND OF SAID 10.01 ACRE TRACT, AT A DISTANCE OF 652.23 FEET (CALLED 651.36 FEET) PASS A 1/2" IRON ROD FOUND AT THE SOUTHEAST CORNER OF SAID TRACT VII AND OF SAID 10.01 ACRE TRACT, BEING AN ANGLE CORNER IN THE WEST LINE OF SAID 200 ACRE HOMESTEAD TRACT, FROM WHICH A 1/2" IRON ROD FOUND AT THE NORTHEAST CORNER OF THAT CERTAIN 6.00 ACRE TRACT CONVEYED TO MATTHEW D. MATULA, BY DEED RECORDED IN VOLUME 798, PAGE 537 OF THE BURNET COUNTY OFFICIAL PUBLIC RECORDS BEARS N21°32'59"E (BASIS OF BEARINGS), A DISTANCE OF 1270.07 FEET (CALLED 1270.09 FEET), CONTINUING A TOTAL DISTANCE OF 712.23 FEET TO A 1/2" IRON ROD SET, WITH PLASTIC CAP STAMPED RPLS 4452, FOR THE NORTHEAST CORNER HEREOF;

THENCE S21°32'59"W, WITH THE EAST LINE HEREOF, A DISTANCE OF 64.16 FEET TO A 1/2" IRON ROD SET, WITH PLASTIC CAP STAMPED RPLS 4452, FOR THE SOUTHEAST CORNER HEREOF;

THENCE N88°44'00"W (CALLED N88°43'W), WITH THE SOUTH LINE HEREOF, AT A DISTANCE OF 37.77 FEET PASS A 1/2" IRON ROD FOUND AT THE NORTHEAST CORNER OF A REMAINDER OF THAT CERTAIN 34.83 ACRE TRACT DESCRIBED AS TRACT 5 IN A DEED TO THE C. R. ASHMORE FAMILY PARTNERSHIP, LTD., RECORDED IN VOLUME 912, PAGE 108 OF THE BURNET COUNTY OFFICIAL PUBLIC RECORDS, BEING AN INSIDE "ELL" CORNER OF SAID TRACT VIII, CONTINUING A TOTAL DISTANCE OF 731.19 FEET TO A COMPUTED POINT IN THE EAST RIGHT-OF-WAY LINE OF SAID TEXAS SPUR NO. 191, BEING THE NORTHWEST CORNER OF SAID 34.83 ACRE REMAINDER TRACT, AND BEING AN OUTSIDE "ELL" CORNER OF SAID TRACT VIII, FOR THE SOUTHWEST CORNER HEREOF, FROM WHICH A 1/2" IRON ROD FOUND BEARS N88°44'00"W, A DISTANCE OF 0.56 FEET AND FROM WHICH A 1/2" IRON ROD FOUND AT THE POINT OF CURVATURE OF SAID CURVE TO THE RIGHT BEARS A CHORD BEARING AND DISTANCE OF S07°33'46" W, 299.34 FEET;

THENCE, WITH THE WEST LINE HEREOF AND OF SAID TRACT VIII, BEING THE EAST RIGHT-OF-WAY LINE OF SAID TEXAS SPUR NO. 191, ALONG SAID 1392.50 RADIUS CURVE TO THE RIGHT HAVING A DELTA ANGLE OF 02°33'51", AN ARC DISTANCE OF 62.32 FEET AND CHORD BEARING AND DISTANCE OF N15°00'15" E, 62.32 FEET TO THE PLACE OF BEGINNING AND CONTAINING 0.98 ACRE OF LAND.