

# WAYZATA PUBLIC SCHOOLS

Independent School District 284  
Wayzata, Minnesota

## **BOARD OF EDUCATION**

Regular Meeting - November 14, 2016 - 5:30 PM  
Wayzata City Hall, 600 Rice Street, Wayzata

### **AGENDA**

<b>1. CALL TO ORDER/ROLL CALL</b>	<b>3</b>
<b>2. APPROVAL OF AGENDA AND CONSENT AGENDA ITEMS</b>	<b>4</b>
Consent Agenda items are considered to be routine in nature and will be enacted by one motion. There will be no separate discussion of these items unless a Board member or citizen so requests, in which event the item will be removed as a Consent Agenda item and addressed. Consent Agenda items are as follows:	
A. Approval of Minutes	5
B. Finance and Business Recommendations	
1. Monthly Reports	12
C. Human Resource Recommendations	
1. Monthly Recommendations	30
D. Approve Overhang Electric Easement for Northern States Power Company Luce Line Improvement Project	33
E. Affirm 403(b) Plan Document and Adoption Agreement Effective November 1, 2016	34
<b>3. RECOGNITIONS</b>	
A. Retiree Recognition	41
B. Employee of the Month - Donna Roehl, Kimberly Lane	42
C. Perfect ACT William Drew Jeffrey Hu Christine Luo Dhruv Methi	43
D. Boy's Cross-Country	44
<b>4. REPORTS FROM ORGANIZATIONS</b>	
A. Wayzata High School Student Council Representative	
<b>5. STUDENT CURRICULUM PRESENTATION</b>	
<b>6. SUPERINTENDENT'S REPORTS AND RECOMMENDATIONS</b>	
A. Superintendent	
B. Teaching and Learning	
C. Finance and Business Services	
1. Monthly Reports	45
2. Resolution Providing for Open Enrollment Non-Resident Agreement for 2017-2018	55
3. Site Lease Agreement With Option Between Wayzata School District and City of Wayzata	57
4. Transportation Hazardous Areas	82
D. Human Resource Services	
<b>7. OTHER BOARD ACTION</b>	
<b>8. BOARD REPORTS</b>	<b>85</b>
<b>9. AUDIENCE OPPORTUNITY TO ADDRESS SCHOOL BOARD</b>	<b>86</b>
This section of the agenda provides an opportunity for those who have called and placed their names on the list and for members of the audience to address the School Board.	
<b>10. ADJOURN</b>	<b>87</b>

# WAYZATA PUBLIC SCHOOLS

Independent School District 284  
Wayzata, Minnesota

## MISSION

### **Our Core Purpose:**

The mission of Wayzata Public Schools is to ensure a world-class education that prepares each and every student to thrive today and excel tomorrow in an ever-changing global society.

## VISION

### **What We Intend to Create and Experience:**

The vision of Wayzata Public Schools is to be a model of excellence where all students discover their unique talents, develop a love and tenacity for learning and demonstrate confidence and capacity for success through:

### **Exceptional Student Learning, Experiences and Relationships:**

- High achievement by each and every student—no exceptions, no excuses;
- Content-rich, rigorous and personalized education;
- Meaningful relationships with teachers, staff, mentors and peers in a welcoming, nurturing and safe environment where all are valued for who they are and the contributions they make.

### **Community Trust, Confidence and Partnership:**

- Comprehensive learning opportunities meeting diverse learner needs and community aspirations;
- Committed to being the first choice for students and families;
- Maintaining the highest levels of satisfaction and pride by staff, parents and community.

### **Operational Excellence:**

- Attraction, development and retention of exemplary, creative and engaged employees;
- Accountability by all staff for individual and collective performance;
- Effective and efficient use of time and human, financial and physical resources;
- Culture of continuous improvement and responsive innovation;
- High performing district governance, management and partnerships.

**WAYZATA PUBLIC SCHOOLS**  
Independent School District 284  
Wayzata, Minnesota

**BOARD OF EDUCATION**  
Regular Meeting – November 14, 2016

**AGENDA SECTION:** 1. Call to Order

**ITEM:** Call to Order/Roll Call Attendance

**COMMENTS BY:** Chris McCullough, Board Chair

School Board Chair, Chris McCullough, will call the meeting to order. Clerk Cheryl Polzin will call the roll.

	<u>Present</u>	<u>Absent</u>
Linda A. Cohen	_____	_____
Andrea Cuene	_____	_____
Sarah Johansen	_____	_____
Erik Brown	_____	_____
Chris McCullough	_____	_____
Bonita Lucky	_____	_____
Cheryl Polzin	_____	_____
Dr. Chace B. Anderson, Ex Officio	_____	_____

**WAYZATA PUBLIC SCHOOLS**  
Independent School District 284  
Wayzata, Minnesota

**BOARD OF EDUCATION**  
Regular Meeting – November 14, 2016

**AGENDA SECTION:** 2. Approval of Agenda and Consent Agenda Items

**ITEM:** \_\_\_\_\_

**COMMENTS BY:** Chris McCullough, Board Chair

Consent Agenda items are considered to be routine in nature and will be enacted by one motion. There will be no separate discussion of these items unless a Board member or citizen so requests, in which event, the item will be removed as a Consent Agenda item and addressed. Consent Agenda items are as follows:

- A. Approval of Minutes**
- B. Finance and Business Recommendations**
- C. Human Resource Recommendations**
- D. Approve Overhang Electric Easement for Northern States Power Company Luce Line Improvement Project**
- E. Affirm 403(b) Plan Document and Adoption Agreement Effective November 1, 2016**

**RECOMMENDED ACTION:** Approve the agenda as presented and the Consent Agenda items.

Motion by: \_\_\_\_\_ ROLL CALL Passed \_\_\_\_\_

Second by: \_\_\_\_\_ Failed \_\_\_\_\_

Abstentions: \_\_\_\_\_

# Minutes of Regular Meeting

## The Board of Education Wayzata Public Schools

---

A Regular Meeting of the Board of Education of Wayzata Public Schools was held Monday, September 12, 2016, beginning at 7:00 PM in the Wayzata City Hall, 600 Rice Street, Wayzata.

### 1. CALL TO ORDER/ROLL CALL

*The meeting was called to order by Board Chair Chris McCullough, and the roll call taken by Board Clerk Cheryl Polzin. The following School Board members were present: Andrea Cuene, Erik Brown, Sarah Johansen, Bonita Lucky, Cheryl Polzin, Chris McCullough, Linda Cohen, and ex-officio member Superintendent Chace B. Anderson.*

### 2. APPROVAL OF AGENDA AND CONSENT AGENDA ITEMS

*Andrea Cuene motioned to approve the agenda and the consent agenda items. Sarah Johansen seconded the motion and it carried unanimously via a roll call vote.*

A. Approval of Minutes

B. Finance and Business Recommendations

1. Monthly Reports

<i>General Checking Account for August 2016</i>	<i>\$12,410,101</i>
<i>Wire Transfer for July 2016</i>	<i>\$7,283,060</i>

C. Human Resource Recommendations

1. Monthly Recommendations

D. P-Card Approvals

E. Teachers' Retirement Association Part-time Teacher Program (TRA)

*Approved participation in the Teachers' Retirement Association Part-Time Teach Program for licensed staff who have taught a minimum of 3 full years.*

### 3. REPORTS FROM ORGANIZATIONS

A. Wayzata High School Student Council Representative

*Jessica Schlundt, Vice-President of the WHS Student Council, gave an overview on high school events.*

### 4. RECOGNITIONS

*Superintendent Chace B. Anderson recognized the retirees for their years of service, and honored WHS for their Strength of America Award (Ryan Johnson was unable to attend the meeting). The superintendent also recognized the June, August, and September employee of the month winners for their outstanding service to the district.*

A. Retiree Recognition

B. WHS Strength of America Award, Ryan Johnson

C. June Employee of the Month - Matt Rohweder, East Middle School

D. August Employee of the Month - Julie Ruchti, Culinary Express

E. September Employee of the Month - Jane Johnson, Plymouth Creek

**5. STUDENT CURRICULUM PRESENTATION**

**6. SUPERINTENDENT'S REPORTS AND RECOMMENDATIONS**

A. Superintendent

1. Report on the Start of the 2016-2017 School Year

*Superintendent Chace B. Anderson presented his annual start of the year presentation, highlighting the success the district had on the start of a new school year which included new school start times and operation of a new elementary school.*

B. Teaching and Learning

C. Finance and Business Services

*Jim Westrum, Executive Director of Business and Finance, presented the following items for Board review:*

1. Monthly Financial Reports

*No Board action was required.*

2. Approval of the Purchase Agreement for Purchase of Land

*Jim Westrum presented the district's plan to approve the purchase agreement between ISD 284 and Jeannie Marie Sigler for the purchase of land located at 18930 State Highway No. 55 in Plymouth, MN. Linda Cohen motioned to approve the purchase agreement and Erik Brown seconded the motion. The motion carried with a unanimous vote.*

3. Resolution Authorizing the Superintendent and/or Executive Director of Finance and Business Services to Execute Closing Documents for the Purchase of Land

*Jim Westrum presented the resolution to authorize the Executive Director of Finance and Business Services (namely, Jim Westrum) to execute closing documents related to item 6.C.2. Sarah Johansen motioned to approve the resolution and to waive the formal reading of the resolution. Linda Cohen seconded the motion, and the resolution carried with a unanimous vote by roll call.*

4. Administrative Attendance Area

*Jim Westrum presented the administrative recommendation to adjust attendance boundaries for Meadow Ridge and Oakwood Elementary schools, to minimize crowding and maintain class sizes consistent with district staffing guidelines. Andrea Cuene motioned to approve the adjustment, and Bonita Lucky seconded the motion. The motion carried unanimously.*

D. Human Resource Services

**7. OTHER BOARD ACTION**

**8. BOARD REPORTS**

A. Superintendent Evaluation Committee Report

*Erik Brown, Bonita Lucky, and Chris McCullough served on the Superintendent Review Committee. The committee gave an overview of their review process*

*which culminated with a formal review with Superintendent Anderson on July 27<sup>th</sup>. The committee thanked the superintendent for his outstanding work efforts and dedicated service to the community.*

**B. LAC FORUM**

*Andrea Cuene reminded the Board and audience that the Legislative Candidate Forum would be held on September 29, 2016 at 6:30 pm.*

**9. AUDIENCE OPPORTUNITY TO ADDRESS SCHOOL BOARD**

*No citizens wished to address the board.*

**10. ADJOURN**

*Sarah Johansen moved to adjourn the meeting; Linda Cohen seconded the motion. The motion carried unanimously and the meeting was adjourned at 8:28 pm.*

# Minutes of Special Meeting

## The Board of Education Wayzata Public Schools

---

A Special Meeting of the Board of Education of Wayzata Public Schools was held Monday, September 26, 2016, beginning at 4:00 PM in the District Administration Building.

### 1. ROLL CALL

*The meeting was called to order by Board Chair Chris McCullough and the roll call taken by Board Clerk Cheryl Polzin. The following School Board members were present: Andrea Cuene, Erik Brown, Chris McCullough, Sarah Johansen, Bonita Lucky, Cheryl Polzin, Linda Cohen, and Chace B. Anderson, Superintendent of Schools and ex officio member of the School Board.*

### 2. FINANCE AND BUSINESS

#### A. Preliminary Levy Limitation and Certification -2016 Payable 2017

*Jim Westrum, Executive Director of Finance and Business Services, presented the preliminary levy and certification for 2016 (payable 2017). These amounts are required to be certified before September 30, 2016; however, the Minnesota Department of Education is still in the process of making software alterations. Finalized numbers will be presented to the School Board in the December Regular meeting. The recommendation is for the Board to approve the levy at "maximum" allowed by state statute; preliminary numbers suggest the total levy is \$60.75 million. Andrea Cuene motioned to approve the preliminary levy, and Linda Cohen seconded the motion. The motion carried unanimously.*

### 3. ADJOURN

*Sarah Johansen moved to adjourn the meeting; Erik Brown seconded the motion. The meeting adjourned at 4:17 pm.*

# Minutes of Regular Meeting

## The Board of Education Wayzata Public Schools

---

A Regular Meeting of the Board of Education of Wayzata Public Schools was held Monday, October 10, 2016, beginning at 7:00 PM in the Wayzata City Hall, 600 Rice Street, Wayzata.

### 1. CALL TO ORDER/ROLL CALL

*The meeting was called to order by Board Chair Chris McCullough, and the roll call taken by Board Clerk Cheryl Polzin. The following School Board members were present: Andrea Cuene, Erik Brown, Sarah Johansen, Bonita Lucky, Cheryl Polzin, Chris McCullough, Linda Cohen, and ex-officio member Superintendent Chace B. Anderson.*

### 2. APPROVAL OF AGENDA AND CONSENT AGENDA ITEMS

*Andrea Cuene motioned to approve the agenda and the consent agenda items. Linda Cohen seconded the motion and it carried unanimously via a roll call vote.*

A. Approval of Minutes

B. Finance and Business Recommendations

#### 1. Monthly Reports

<i>General Checking Account for September 2016</i>	<i>\$10,113,528</i>
<i>Wire Transfer for August 2016</i>	<i>\$4,268,643</i>

C. Human Resource Recommendations

#### 1. Monthly Recommendations

D. Memorandum of Agreement Between Wayzata Public Schools and Intermediate District 287

E. P-Card Approval

F. Certify Approval for MSHSL 2016-2017 Membership

### 3. REPORTS FROM ORGANIZATIONS

A. Wayzata High School Student Council Representative

*Jessica Schlundt, Vice-President of the WHS Student Council, gave an overview on high school events.*

### 4. RECOGNITIONS

*Superintendent Chace B. Anderson recognized the employee of the month, and congratulated Sam Fredrickson, principal of Birchview Elementary School, for earning recognition as a Blue Ribbon School. The awards ceremony will be held in Washington DC.*

A. Employee of the Month - Amy Kondziolka; Wayzata West Middle

B. Birchview Blue Ribbon Schools

### 5. STUDENT CURRICULUM PRESENTATION

## **6. SUPERINTENDENT'S REPORTS AND RECOMMENDATIONS**

### **A. Superintendent**

#### **B. Teaching and Learning**

#### **C. Finance and Business Services**

*Jim Westrum, Executive Director of Business and Finance, presented the monthly financial reports. No board action is required.*

#### **1. Monthly Financial Reports**

#### **D. Human Resource Services**

## **7. OTHER BOARD ACTION**

## **8. BOARD REPORTS**

*Board Chair Chris McCullough reminded the audience that the dedication for Meadow Ridge Elementary School will be held on October 16<sup>th</sup>.*

## **9. AUDIENCE OPPORTUNITY TO ADDRESS SCHOOL BOARD**

*Several citizens and parents wished to address the board. The citizen speakers were: Kristin Nordstrom, Swaraj Mukherjee, Navnit Narayan, Venkatesh Vasudevan, and Jamie Richardson; all who reside in Corcoran, MN. The citizens requested a reconsideration of Meadow Ridge school boundaries, for reasons including: purchase of homes with the intent to attend Meadow Ridge; lack of communication from the District notifying the parents the boundaries would be redrawn; proximity of the homes to the school; concerns about longer bus times and parent commutes; and keeping the neighborhood children together as some students are already grandfathered into the school. The School Board and administration will review the citizen concerns and take them into consideration.*

## **10. ADJOURN**

*Sarah Johansen moved to adjourn the meeting, and the motion carried unanimously. The meeting was adjourned at 7:40 pm.*

# Minutes of Special Meeting

## The Board of Education Wayzata Public Schools

---

A Special Meeting of the Board of Education of Wayzata Public Schools was held Monday, October 24, 2016, beginning at 4:00 PM in the District Administration Building.

### 1. **ROLL CALL**

*The meeting was called to order by Board Chair Chris McCullough and the roll call taken by Board Clerk Cheryl Polzin. The following School Board members were present: Andrea Cuene, Erik Brown, Chris McCullough, Sarah Johansen, Cheryl Polzin, Linda Cohen, and Chace B. Anderson, Superintendent of Schools and ex officio member of the School Board. Absent from the meeting was Board Director Bonita Lucky.*

### 2. **Human Resource Services**

#### A. Human Resource Personnel Recommendations

*Annie Doughty, Executive Director of Human Resource services, presented the Human Resource Personnel Recommendations. These recommendations are typically presented in the Regular Meetings but to provide more timely action near the start of the school year, the administration is recommending approval of the changes in advance of the November meeting. Andrea Cuene motioned to approve the recommendations, and Sarah Johansen seconded the motion. It carried unanimously.*

### 3. **ADJOURN**

*Cheryl Polzin moved to adjourn the meeting; Linda Cohen seconded the motion. The meeting adjourned at 4:03 pm.*

**WAYZATA PUBLIC SCHOOLS**  
Independent School District 284  
Wayzata, Minnesota

**BOARD OF EDUCATION**  
Regular Meeting – November 14, 2016

**AGENDA SECTION: APPROVAL OF AGENDA AND CONSENT AGENDA ITEMS**

**ITEM: Finance & Business Recommendations**

**COMMENTS BY: Jim Westrum, Executive Director of Finance and Business**

**Finance and Business Recommendations**

These routine items are presented for Board of Education review and approval through a single consent motion.

**Monthly Bills**

The attached lists itemize claims for which the Board of Education is requested to authorize payment.

General Checking Account for October 2016	\$5,120,572
Wire Transfer for September 2016	\$9,331,360

**RECOMMENDED ACTION:** Authorize payment as recommended.

**Acknowledgement Of Contributions**

Minn. Stat. 465.03 - GIFTS TO MUNICIPALITIES.

“Any city, county, school district or town may accept a grant or devise of real or personal property and maintain such property for the benefit of its citizens in accordance with the terms prescribed by the donor. Nothing herein shall authorize such acceptance or use for religious or sectarian purposes. Every such acceptance shall be by resolution of the governing body adopted by a two-thirds majority of its members, expressing such terms in full.”

**Monthly Donations**

The Board of Education is requested to accept the attached lists donations received in October 2016.

Cash Donations	\$6,423.09
In-Kind Donations	≈\$1,600.00

**Monthly Donations**

Cash Donations:

AMOUNT	DONATED BY	PURPOSE
1,804.05	Plymouth Creek PTO	PC - RAZ Kids Subscription
1,641.75	Oakwood PTA	OW - Student Folders & Planners
1,466.18	Wells Fargo Matching Gifts Program - DoTopia	WHS - Student Activity Support
720.00	Oakwood PTA	OW - Joe Odhiambo Assembly
403.87	Wells Fargo Matching Gifts Program - DoTopia	WHS - Student Activity Support
154.00	Wells Fargo Matching Gifts Program - DoTopia	GL - Student Activity Use
107.70	Oakwood PTA	OW - Books for 4th Grade Classroom
67.34	Christopher Hupp	CMS - Student Scholarships & Supplies
58.20	Gleason Lake PTO	GL - Laminating Costs

In-Kind Donations:

1,350.00	Lakeland, Inc.	BV - Trojan Pride Passports
150.00	Chili's Grill & Bar	Chips for Safety Drill
100.00	AchieveMpls	Conference Fee waived/donated for Superintendent

**RECOMMENDED ACTION:** That the School Board approves the following checking account and wire transfer payments and accepts with appreciation the following gifts, which are in compliance with current District policy and guidelines:

Motion by: \_\_\_\_\_ Yes \_\_\_\_\_ Passed \_\_\_\_\_

Second by: \_\_\_\_\_ No \_\_\_\_\_ Failed \_\_\_\_\_

Abstentions: \_\_\_\_\_

WAYZATA PUBLIC SCHOOLS				
MONTHLY CHECK DISBURSEMENT SUMMARY				
OCTOBER 2016				
CHECK	VENDOR	DESCRIPTION	DATE	AMOUNT
404304	HUFCOR INC	NEW ELEM 10-A OPERABLE WALL SYSTEMS TO 9/25/16	10/20/2016	216,128.80
404313	MUSKA ELECTRIC CO	INV 7336 HS ADD 26-A ELECTRICAL TO 9/30/16	10/20/2016	215,344.52
404493	UPPER LAKE FOODS	GROCERIES	10/25/2016	187,981.38
404210	INTEREUM	WHS ADD SOFT SEATING	10/18/2016	187,974.23
703152	HILLYARD INC MINNEAPOLIS	WHS ADD CUSTODIAL EQUIPMENT & SUPPLIES	10/3/2016	182,799.10
404281	W L HALL CO	ADM-2016 WALL AND DOOR REPLACEMENT PROJ	10/18/2016	173,558.35
404326	THELEN HEATING AND ROOFING INC	HS ADD 23-A HVAC TO 9/30/16	10/20/2016	161,528.50
404328	VEIT & COMPANY INC	VAR BASEBALL RECONST EARTHWORK & SITE UTILITIES	10/20/2016	157,428.61
404408	INTERMEDIATE DIST 287	NOV 16 PROVIDED SERVICES	10/25/2016	151,523.00
404323	SPECIALTY SYSTEMS INC	HS ADD - 07-A METAL PANELS & ROOF TO 9/30/16	10/20/2016	121,305.50
404508	XCEL ENERGY	MONTHLY ENERGY	10/25/2016	120,240.98
404322	RTL CONSTRUCTION INC	HS ADD-07-E FIREPROOFING 09-A DRYWALL PACKAGE #1	10/20/2016	112,440.25
404517	TRUST POINT/FBO WAYZATA SCHOOLS	Payroll accrual	10/31/2016	108,020.00
404317	PETERSON COMPANIES INC	INV#32559 HS ADD - 32-E IRRIGATION & LANDSCAPE	10/20/2016	101,815.83
404309	MIDWEST ASPHALT CORP	HS ADD 32-A ASPHALT PAVING & 32-C TENNIS COURTS	10/20/2016	100,228.95
404158	WOLD ARCHITECTS AND ENGINEERS	SH 2015/2016 UPGRADES #142074	10/11/2016	93,016.21
703153	MACKIN EDUCATIONAL RESOURCES	MR MEDIA COLLECTION	10/3/2016	83,915.97
404315	NORTH COUNTRY CONCRETE INC	HS ADD - 32-B SITE CONCRETE TO 9/17/16	10/20/2016	82,263.75
404316	OLYMPIC COMPANIES INC	HS ADD 07-D EIFS	10/20/2016	75,610.12
404407	INNOVATIVE OFFICE SOLUTIONS	WHS STUDENT CHAIRS/STOOLS ,CAFETERIA, ELS	10/25/2016	64,225.79
403929	FIRST STUDENT, INC	TRANSPORT-SUMMER 7/24-8/19	10/4/2016	63,484.40
404286	WOLD ARCHITECTS AND ENGINEERS	WHS ATHLETIC LIGHTING - BASEBALL/SOFTBALL	10/18/2016	61,133.67
703261	HILLYARD INC MINNEAPOLIS	CUL EXP-OW-SUPPLIES	10/28/2016	60,454.05
404518	WAYZATA EDUCATION ASSN	Payroll accrual	10/31/2016	60,414.79
404279	W GOHMAN CONSTRUCTION CO	WMS-2016 EXTERIOR WALL REHAB, SITE IMPROVEMENTS	10/18/2016	59,158.40
404068	EAGLE BLUFF ENVIROMENTAL LEARN CTR	WMS-6TH GR TRIP 9/16	10/11/2016	53,554.00
404409	INTERMEDIATE DIST 287	ALC BILLING 15-16 PERIOD 4	10/25/2016	47,268.99
404089	INTEREUM	MR MEDIA FURNITURE	10/11/2016	47,224.37
404305	KELLINGTON CONSTRUCTION INC	CMS UPGRADES WS 06-A: CARPENTRY TO 9/30/16	10/20/2016	44,840.95
404302	FLOORS BY BECKERS INC	SSH UPGRADES WORK SCOPE 09-D TO 9/30/16	10/20/2016	42,866.85
404414	K12 TRANSPORTATION MANAGEMENT SVCS	TRANSPORTATION	10/25/2016	37,000.00
404256	RUPP, ANDERSON, SQUIRED & WALDSPURGER PA	PROF SERV 6/16 & 7/16	10/18/2016	34,544.41
403992	MINNETONKA HIGH SCHOOL	ATH-ADAPTED SPORTS	10/4/2016	33,211.00
403920	EBACKPACK INC	One year renewal subscription for eBackpack	10/4/2016	32,680.00
404290	ACOUSTICS ASSOCIATES	SH 09-C ACOUSTICAL CEILINGS TO 9/12/16	10/20/2016	31,022.25
404295	CAULKERS CO INC	HS ADD - 07-C SEALANTS TO 9/30/16	10/20/2016	30,970.00
404308	LAKETOWN ELECTRIC CORPORATION	WS 26-A ELECTRICAL TO 9/16	10/20/2016	30,875.00
404325	SWANSON & YOUNGDALE, INC.	HS ADD 09-G WALL COVERING & PAINTING TO 8/31/16	10/20/2016	30,435.15
404298	COOL AIR MECHANICAL INC	CMS UPGRADES-WS 20-A: COMBINED MECHANICAL	10/20/2016	30,286.95
404320	R J MECHANICAL INC	HS ADD 22-A PLUMBING TO 9/30/16	10/20/2016	30,262.59
404178	BLACKBOARD INC	Moodlerooms renewal	10/18/2016	29,360.00
404134	RAV TECHNOLOGIES, INC	SH-PROJECT	10/11/2016	28,257.02
404297	CD TILE & STONE INC	HS ADD 09-B TILE THRU 9/30/16	10/20/2016	27,455.20
703226	STAPLES BUSINESS ADVANTAGE	ERASERS, CLASSROOM TABLES, SUPPLIES	10/14/2016	26,743.96
404327	VEIT & COMPANY INC	HS ADD 31-A SITE CLEARING & EARTHWORK THRU 9/30/16	10/20/2016	25,802.41
404311	MN ROADWAYS COMPANY	NEW ELEM 32-A ASPHALT PAVING	10/20/2016	24,847.83
404169	ANCOM COMMUNICATIONS	MR IN-BUILDING BDA SOLUTION	10/18/2016	24,238.50
404300	EBERT CONSTRUCTION	INV#21624183 HS ADD - 06-A CARPENTRY TO 9/30/16	10/20/2016	23,759.88
404083	HALDEMAN-HOMME, INC	HS-GYM FLOOR	10/11/2016	23,100.00
404196	FRONTLINE TECHNOLOGIES INC	APPLITRACK RECRUITING 10/27/16-10/26/17	10/18/2016	22,905.08
404293	BRETH-ZENZEN FIRE PROTECTION LLC	HS ADD 21-A FIRE SUPPRESSION TO 9/30/16	10/20/2016	22,224.33
404467	REPUBLIC SERVICES #894	SERVICE-AUG \$9,149.93 & SEPT-\$12,074.74	10/25/2016	21,224.67
404336	AGROPUR INC DIVISION OF NATREL USA	DAIRY PRODUCTS	10/25/2016	20,184.22
403960	ISCORP	SERVICE BUREAU SUBSCRIPTION FEE 16-17	10/4/2016	20,000.04
404373	DONLAR CONSTRUCTION	OW-MECH UPGRADES 9/22/16	10/25/2016	20,000.00
404372	DIVERSIFIED SNACK DISTRIBUTION INC	GROCERIES	10/25/2016	19,024.18
703281	TRIO SUPPLY CO	SERVING SUPPLIES	10/28/2016	18,850.16

403962	K12 TRANSPORTATION MGMT SVCS INC	TRANSPORTATION	10/4/2016	18,500.00
404331	WENZEL-PLYMOUTH PLUMBING LLC	NEW ELEM 22-A PLUMBING TO 9/22/16	10/20/2016	18,410.44
404180	BMO HARRIS BANK NA	PLOW TRUCK BILLING ID#90136384202	10/18/2016	18,296.00
404301	ENVISION GLASS INC	HS ADD 08-D - CURTAIN WALL, WINDOW & GLAZING	10/20/2016	17,376.20
404520	LIFE INSURANCE CO OF NORTH AMERICA	Ins. Tracking Billing	10/31/2016	17,232.49
404280	W L HALL CO	ADM-2016 WALL AND DOOR REPLACEMENT PROJ	10/18/2016	17,195.00
404061	CDW	CISCO UPGRADE	10/11/2016	16,937.50
404348	BERGIN FRUIT AND NUT COMPANY	GROCERIES	10/25/2016	16,568.74
404214	LIFE INSURANCE CO OF NORTH AMERICA	Payroll accrual	10/18/2016	16,564.05
404047	XCEL ENERGY	HS-ELEC METER #17612015 8/16-9/15	10/4/2016	16,275.30
404291	AIR SYSTEMS ENGINEERING INC	SH TEST & BALANCE 23-B TO 9/12/16	10/20/2016	16,245.00
404456	CITY OF PLYMOUTH - FINANCE DEPT	HS-WATER	10/25/2016	15,701.27
404330	WELLS CONCRETE	HS ADD 03-B STURCTURAL PRECASE CONCRETE TO 9/30/16	10/20/2016	15,519.08
404506	WOLD ARCHITECTS AND ENGINEERS	MR-ADDITION TO 9/30/16	10/25/2016	15,270.08
703155	PRO-TEC DESIGN	HS-FIELD CAMERAS	10/3/2016	14,827.00
703173	TRIO SUPPLY CO	SERVING SUPPLIES	10/3/2016	14,629.18
404066	DAVE'S SPORT SHOP	ATH-B HOCKEY MASK, EQUIPMENT	10/11/2016	14,364.99
404516	SCHOOL SERVICE EMPLOYEES	Payroll accrual	10/31/2016	14,351.10
404163	SCHOOL SERVICE EMPLOYEES	Payroll accrual	10/14/2016	14,178.24
404431	MALLOY MONTAGUE KARNOWSKI & CO PA	2016 Audit Services THRU 9/30/16	10/25/2016	14,000.00
404288	ZOLTAR INVESTMENT GROUP LLC	16th ave rent 11/16	10/18/2016	13,644.63
703280	STAPLES BUSINESS ADVANTAGE	KLHB-SUPPLIES	10/28/2016	12,312.01
404135	R J MECHANICAL INC	WMS-REPLACE PIPING & METER	10/11/2016	12,270.46
703180	INSPEC, INC.	WMS-EXT WALL REHAB	10/14/2016	12,078.47
404181	BOOTH LAW GROUP LLC	PROF SERV 6/16	10/18/2016	11,786.50
404220	LOFFLER COMPANIES INC	DAB FINANCE COPIER BLANKET	10/18/2016	11,356.19
404459	PROMOWEAR	CSF-UNIFORMS	10/25/2016	11,218.05
404488	UNISOURCE	WHITE COPY PAPER TO RESTOCK WAREHOUSE	10/25/2016	11,016.00
404321	RTL CONSTRUCTION INC	NEW ELEM 09-A FRAMING AND DRYWALL THRU 9/30/16	10/20/2016	10,068.82
404470	ROGUE FITNESS	WHS WEIGHT ROOM EQUIPMENT	10/25/2016	10,065.43
404310	MINNETONKA PLUMBING INC	SH 23-A MECHANICAL TO 9/30/16	10/20/2016	9,903.99
404072	EGAN COMPANY	SH-SPEAKERS	10/11/2016	9,870.00
404082	H & B SPECIALIZED PRODUCTS	SH-GYM DIVIDER CURTAIN	10/11/2016	9,865.00
404022	SCHELDE NORTH AMERICA, LLC	WHS ADD BADMINTON EQUIPMENT	10/4/2016	9,864.00
703174	ALLEGRA PRINT & IMAGING	BUSINESS CARDS, FORMS, MAILINGS	10/14/2016	9,432.78
404369	CUSTOM WATER WORKS	ALA CARTE SNACKS	10/25/2016	9,255.00
703228	TEAM SPORTING GOODS, INC	WHS ADD GYMNASSTICS BLEACHERS	10/14/2016	9,097.11
404306	KENDELL DOORS & HARDWARE INC	HS ADD 08-A DOORS, FRAMES, HARDWARE-MATERIAL	10/20/2016	8,768.02
404396	HANUS ENTERPRISES,LLP	bus garage rent 11/16	10/25/2016	8,543.09
404371	DENNY'S 5TH AVENUE BAKERY	GROCERIES	10/25/2016	8,320.41
703143	ANCHOR PAPER COMPANY	COLORED PAPER FOR INVENTORY	10/3/2016	8,230.22
703178	GENERAL SPORTS CORPORATION	G TENNIS APPAREL-ATH	10/14/2016	8,160.00
703251	COMMERCIAL KITCHEN SERVICES	CMS-REPLACE OVEN HIDGES	10/28/2016	7,941.73
404167	AIR SYSTEMS ENGINEERING INC	MR-Testing and Balancing air/water distrib systems	10/18/2016	7,940.00
404119	NORTHFIELD LINES, INC.	WMS-TRANSPORT-EAGLE BLUFF 9/26-9/30	10/11/2016	7,707.00
404238	NORTHSTAR LACROSSE	ATH-LAX APPAREL	10/18/2016	7,573.80
404137	SCHMITTY & SONS / GRAY LINE MPLS	ATH-TRANSPORT G SOCCER 9/3	10/11/2016	7,300.01
703184	RELATE COUNSELING CTR	MH ECSE 9/16	10/14/2016	7,151.25
404091	KARGES-FAULCONBRIDGE, INC	CMS-COMMISSIONING FOR 2016 UPGRADES PROJECT	10/11/2016	6,925.00
404360	CENTURY LINK BUSINESS SERVICES	SEPT INTERNET	10/25/2016	6,500.00
404217	LOFFLER COMPANIES, INC.	WPS CANON IR3235i COPIER BLANKET	10/18/2016	6,413.22
404519	LIFE INSURANCE CO OF NORTH AMERICA	Ins. Tracking Billing	10/31/2016	6,397.04
404055	ALL STRINGS ATTACHED	WMS-3 BASS & I VIOLA	10/11/2016	6,200.00
404399	HI-TECH REFRIGERATION	CSF-REPLACE FREEZER CONDENSER MOTOR	10/25/2016	6,195.26
404226	MEDICAL SOLUTIONS INC	GL CHANGING TABLE, CMS CHANGING TABLE	10/18/2016	6,128.26
404185	D'AMICO CATERING	HS-CANCELL FEE (PROM) 5/21/16	10/18/2016	6,000.00
404486	TRUCK UTILITIES INC	CSF-TR#18 REPAIR LIFT GATE	10/25/2016	6,000.00
404314	NAC (NORTHERN AIR CORP)	INV 8737-15 NEW ELEM 26-A ELECTRICAL TO 9/30/16	10/20/2016	5,899.50
703185	RETROFIT COMPANIES INC	MDE#02059 CSF-HAZ WASTE FEE	10/14/2016	5,834.00
703229	TRUSTED EMPLOYEES	HR & WMS-BACKGRD CHECKS	10/14/2016	5,512.10
404287	XEROX FINANCIAL SERVICES	WPS PRODUCTION COPIER BLANKET	10/18/2016	5,453.96
404312	MULTIPLE CONCEPTS INTERIORS	CMS UPGRADES WS 09-D: FLOORING TO 9/30/16	10/20/2016	5,182.15
404363	COLLEGE TOWN PIZZA INC #1966	PIZZA	10/25/2016	4,956.00

404150	THREE RIVERS PARK DISTRICT	CMS-8TH GR FIELD TRIP 9/21/16	10/11/2016	4,929.75
404215	LIFETIME FITNESS, INC.	Lifetime fitness lockerroom rental 11/16	10/18/2016	4,919.30
404303	GEORGE COOK CONSTRUCTION CO	INV 1302 SH 06-A DEMO & CARPENTRY TO 9/30/16	10/20/2016	4,860.20
404359	CENTURY LINK BUSINESS SERVICES	INTERNET ACCT#87842760	10/25/2016	4,829.03
703172	STAPLES BUSINESS ADVANTAGE	WMS-SUPPLIES	10/3/2016	4,821.44
404016	RAV TECHNOLOGIES, INC	WMS-SSMARTBRD PLACEMENT	10/4/2016	4,769.03
404299	CRAWFORD DOOR SALES OF TWIN CITIES	WORK SCOPE 08-B SPECIALTY DOOR TO 9/30/16	10/20/2016	4,750.00
404507	WRIGHT-HENNEPIN COOP ELECTRIC ASSN	MR-ELECTRIC 9/1-10/1	10/25/2016	4,640.29
404052	AIR SYSTEMS ENGINEERING INC	CMS-TESTING/BALANCING 2016 UPGRADES PROJECT	10/11/2016	4,600.00
404221	LOW VOLTAGE CONTRACTORS	MDE#02074 CMS-REPAIR FIRE ALARM	10/18/2016	4,582.39
403931	GENERAL SHEET METAL	CMS-RTU-25	10/4/2016	4,480.00
403878	A & L CONSTRUCTION INC	CMS-RENOVATIONS 5/31/16 FINAL	10/4/2016	4,442.00
404511	CORPORATE HEALTH SYSTEMS INC	Payroll accrual	10/31/2016	4,305.20
404247	POSTMASTER	REPLENISH BULK MAIL ACCOUNT	10/18/2016	4,250.15
703234	MOTG (MN OFFICE TECHNOLOGY GRP)	BV-STAPLES	10/20/2016	4,229.49
404439	MILLER 32ND AVE, LLC	RENT 11/16	10/25/2016	4,224.01
404049	ZOHO CORPORATION	SERVICE	10/4/2016	4,201.00
404253	RAV TECHNOLOGIES, INC	KL-ROOM 7 WORK	10/18/2016	4,195.21
404125	PORTA PHONE	FB HEAD PHONES-ATH	10/11/2016	4,188.50
404193	FERGUSON ENTERPRISES, INC #1657	WHS ADD FACS LAB APPLIANCES	10/18/2016	4,168.36
403899	CAPTURE VIDEO	COMM-BACK TO SCHOOL & DVD WORK	10/4/2016	4,000.00
404352	BRUEGGER'S ENTERPRISES INC	BAGELS	10/25/2016	3,967.59
403896	BRAUN INTEREC CORP	WNES-INSPECTION AND MATERIALS TESTING	10/4/2016	3,949.00
404168	ALPHA VIDEO & AUDIO, INC	Alpha Video for Mounting TV's at MR and HS	10/18/2016	3,916.00
404010	CITY OF PLYMOUTH - FINANCE DEPT	FUEL USAGE-AUG 16	10/4/2016	3,877.69
703231	ECM PUBLISHERS, INC	FALL EDITION COMMUNICATOR	10/20/2016	3,715.07
404282	WAYZATA ORCHESTRA BOOSTERS	REIMBURSE KRISPY KREME-ORCH PORTION	10/18/2016	3,712.80
404186	DBW CONSULTING	CONTRACTED SERVICES 10/1-10/15	10/18/2016	3,675.00
404218	LOFFLER COMPANIES, INC.	HS-Oce/VDPMAIN	10/18/2016	3,538.28
703182	MOTG (MN OFFICE TECHNOLOGY GRP)	PRINTER MONTHLY MAINT 8/18/16-9/17/16	10/14/2016	3,537.52
404434	MARKET DISTRIBUTING	GROCERIES	10/25/2016	3,460.45
404153	UNIVERSAL ATHLETIC SERVICE INC	ATH-T & CC APPAREL	10/11/2016	3,387.42
404457	PLYMOUTH ICE CTR	B H CAP'N PRACTICE 9/19-9/29	10/25/2016	3,255.00
404364	COLLEGE TOWN PIZZA INC #1937	PIZZA	10/25/2016	3,225.00
404050	1ST CHOICE PEDIATRIC HOME CARE	MA Contract 8/28-9/10 SGO	10/11/2016	3,204.00
404476	SIGN PRODUCERS, THE	CUL EXP-SIGNS & BRDS	10/25/2016	3,146.00
404041	US ENERGY SERVICES, INC	ENERGY-AUG 16	10/4/2016	3,127.24
404376	ELSMORE AQUATICS	ATH-SWIM APPAREL	10/25/2016	3,052.97
403914	DIGITAL INSURANCE INC	HR-COBRA & FLEX 9/16	10/4/2016	3,043.21
404078	GATEWAY MUSIC FESTIVALS & TOURS INC	HS-FIN ASST-3 STUDENTS	10/11/2016	3,040.00
404164	10K CUSTOM LETTERING	CED-TROJAN POWER T-SHIRTS	10/18/2016	2,948.00
404128	PRODOCON INC	MDE#02057 HS-COPPER FILTERS	10/11/2016	2,868.05
404179	BLICK ART MATERIALS	SH-Art Supplies	10/18/2016	2,853.86
403898	BRILLIANT MINDFULNESS LLC	CMS-STAFF TRAINING 8/30,9/27,12/13 & 11/9	10/4/2016	2,850.00
703233	JOSTENS, INC	HS-DIPLOMA COVERS	10/20/2016	2,811.51
403879	A-1 OUTDOOR POWER, INC	DIST-SUPPLIES	10/4/2016	2,809.37
404151	TRIARCO ARTS & CRAFTS, INC.	KL-ART SUPPLIES	10/11/2016	2,796.69
404329	WEIDNER PLUMBING & HEATING CO	INV 245984 NEW ELEM 23-A HVAC TO 9/25/16	10/20/2016	2,784.45
404246	PFEFFERLE KANE LLP	PROF SERV 9/16	10/18/2016	2,750.00
404065	CREATIVE CATERING LLC BY MOLLY	HS-STAFF MTG BREAKFAST 6/10/16	10/11/2016	2,730.00
404374	DVM PIZZA, INC	PIZZA	10/25/2016	2,677.50
403964	KARGES-FAULCONBRIDGE, INC	WMS-COMMISSIONING-CHILLER THRU 8/31/16	10/4/2016	2,560.00
703183	PRO-TEC DESIGN	WMS-DOOR#9 ADDITION	10/14/2016	2,555.72
404367	COUNTRYSIDE CATERING	G SOCCER BANQUET 10/12/16	10/25/2016	2,542.40
404075	FIRE CONTROL INC	MDE#02072 CMS-FIRE EXT INSP	10/11/2016	2,537.00
403891	AUTOMATED LOGIC CORP	CMS-REPAIR	10/4/2016	2,427.75
404241	OLSEN FIRE PROTECTION, INC	MDE#02075 HS-REPAIR FIRE SPRINKLER	10/18/2016	2,408.00
703148	FOLLETT SCHOOL SOLUTIONS INC	READERS NOTEBOOKS	10/3/2016	2,362.50
703175	ANCHOR PAPER COMPANY	BACK ORDERED COLORED PAPER	10/14/2016	2,345.25
404448	PARALLEL TECHNOLOGIES INC	GL-4 DATA JACKS	10/25/2016	2,337.96
404343	AUTOMATED LOGIC CORP	EMS-CONTROL MODULE	10/25/2016	2,335.00
404273	TIERNEY BROTHERS, INC.	Frontrow ToGo mic system for SSH	10/18/2016	2,319.28
404333	1ST CHOICE PEDIATRIC HOME CARE	MA Contract 9/26-10/7 SGO	10/25/2016	2,304.00

404234	MY LAUNDRY SQUAD	LAUNDRY SERV 6/14-8/29	10/18/2016	2,280.00
404466	RENAISSANCE LEARNING INC	REAL TIME SUBSCRIPTION RENEWAL ANNUAL FEE	10/25/2016	2,270.89
403956	INNOVATIVE OFFICE SOLUTIONS	MR SMITH SYSTEM STOOLS & CHAIRS	10/4/2016	2,266.32
404356	CENTURY LINK	MONTHLY SERV-10/16	10/25/2016	2,252.24
404152	ULTIMATE SAFETY CONCEPTS	IAQ MONITOR	10/11/2016	2,225.88
703262	JOHNSON CONTROLS	CMS-SERVICE-CHILLER	10/28/2016	2,221.83
703245	STAPLES BUSINESS ADVANTAGE	GW-SUPPLIES	10/20/2016	2,205.92
703235	MP NEXLEVEL LLC	LOCATES-9/16	10/20/2016	2,203.69
404446	ON SITE SANITATION	ATH-SANIT UNITS-WEST FIELDS 10/8-11/4	10/25/2016	2,131.00
404144	SPIRITWEAR USA	FB COACH APPAREL	10/11/2016	2,125.35
404464	RAV TECHNOLOGIES, INC	MR-INSTALL LEARNING LAB	10/25/2016	2,116.31
404342	APPLE INC	iMac for tech	10/25/2016	2,029.00
404377	ENGINEERING DESIGN INITIATIVE LTD	Blanket PO for fiber consulting 9/1-9/30	10/25/2016	2,025.00
404485	TROPICANA CHILLED DSD	BEVERAGES-CUST#124737	10/25/2016	2,021.04
404187	DISCOUNT SCHOOL SUPPLY	DISCOUNT FURNITURE ORDER	10/18/2016	2,000.37
404077	GARVEY COMMUNICATIONS	COMM-PROF SERV 9/16	10/11/2016	2,000.00
404122	OSP INC/OUT SOURCE PROJECTS	WORK TO COMPLETE PERKINS GRANT	10/11/2016	1,900.00
404351	BROWN'S ICE CREAM CO	GROCERIES	10/25/2016	1,889.79
404121	ON SITE SANITATION	ATH-SANIT UNITS 9/10-10/7	10/11/2016	1,851.00
404269	TERRELL DANIELS INC	COMM-PROF SERV 9/13-10/11	10/18/2016	1,841.00
404233	MUSKA ELECTRIC CO	HS-TV STUDIO CABLING	10/18/2016	1,823.26
403887	APEX ADVENTURE ALLIANCE, LLC	HS-LEASE LEVY-CLIMBING CLASS	10/4/2016	1,820.00
403880	A.C.CARLSON APPLIANCES	MR-APPLIANCES	10/4/2016	1,800.00
403895	BRANDED CUSTOM SPORTSWEAR INC	HOODIES-HS	10/4/2016	1,778.54
404195	FIRST STUDENT, INC	CMS-TRANSPORT	10/18/2016	1,751.52
404498	WAYZATA, CITY OF	WMS-WATER/SEWER	10/25/2016	1,732.11
403983	MIDWEST EDUCATIONAL CONSULTANTS	GL-ENVOY TRAINING 8/29/16	10/4/2016	1,730.00
404494	US FOODS CULINARY E & S	SMALL WARES CUST#H0011568	10/25/2016	1,707.31
404155	WHITCOMB, GAIL	CED-ARCHERY CLASS	10/11/2016	1,690.00
161700324	LAHR, MELISSA	REIMBURSE	10/5/2016	1,598.69
404292	AXEL H OHMAN INC	CMS RENOVATIONS WS 03-A CONCRETE TO 9/30/16	10/20/2016	1,579.62
404332	KREMER & DAVIS INC	NEW ELEM 07-A WATERPROOFING & WEATHER BARRIER	10/20/2016	1,528.55
403938	HANG SAFE HOOKS	COAT HOOK PROJECT	10/4/2016	1,526.65
404453	CITY OF PLYMOUTH - FINANCE DEPT	ATH-FB SECURITY 9/23/16	10/25/2016	1,521.88
404296	CD TILE & STONE INC	CMS UPGRADES WS 09-B: TILE TO 9/30/16	10/20/2016	1,513.04
703263	MEI - MINNESOTA ELEVATOR INC	WMS-REPAIR ELEVATOR	10/28/2016	1,505.00
404095	LAKE CONFERENCE	CMS,EMS & WMS-WEB FEE	10/11/2016	1,497.00
404149	THE BAKKEN	GL-4TH GR FIELD TRIP 11/9/16	10/11/2016	1,470.00
404216	LINDGREN DESIGN, IRENE	COMM-PROF SER 8/8,9/19,9/22 & 10/3	10/18/2016	1,462.50
404033	THE WORKS	MR-FIELD TRIP 10/28/16	10/4/2016	1,452.00
404267	SPIRITWEAR USA	CLUB YES T-SHIRTS	10/18/2016	1,431.95
404502	WAYZATA INC	ATH-FB YEARBOOK	10/25/2016	1,400.00
404451	PHASOR ELECTRIC CO	CMS GYM-2 PROJECTORS & SCREENS	10/25/2016	1,394.35
404349	BLB CONSULTING LLC	SCHOOL DUDE MGMT & PM SET-UP	10/25/2016	1,360.00
404423	KIERNAN, NICOLE	CED-PROF SERV CPR 10/8	10/25/2016	1,350.00
404430	LOFFLER COMPANIES, INC.	WHS SPEC ED COPIER BLANKET	10/25/2016	1,345.84
404250	PUBLIC STORAGE	STORAGE 11/16	10/18/2016	1,345.00
703268	SCHOLASTIC INC	WMS-SCI SUBSCRIPTION acct#55391110	10/28/2016	1,321.73
703248	COMMAND CENTER INC	CSF-VARIOUS CUST SUBS	10/28/2016	1,317.86
404092	KEANE SENSE OF RHYTHM	DANCE CAMP	10/11/2016	1,300.00
404064	CONTEMPORARY IMAGES	DANCE TEAM SUPPLIES	10/11/2016	1,297.97
404496	W L HALL CO	GL-MISC REPAIRS	10/25/2016	1,295.00
161700416	CAMPBELL, CLAIRE	REIMBURSE	10/20/2016	1,284.65
404289	ACOUSTICS ASSOCIATES	CMS UPGRADES WS 09-C: ACOUSTICAL TO 9/15/16	10/20/2016	1,273.00
403935	GRAINGER INC., W. W.	PC-EXHAUST FAN	10/4/2016	1,255.18
403943	HENNN CNTY TREASURER- GOVERNMENT CENTER	2ND HALF 2016 TAXES 17905 CO RD NO 47	10/4/2016	1,252.45
703267	SCHMITT MUSIC CO	WMS-BAND SUPPLIES	10/28/2016	1,249.18
404009	PLAISTED COMPANIES INC	BV-GARDEN DIRT	10/4/2016	1,245.50
403974	LEARNING A-Z	BV-LICENSE SUBSCRIPTION 16-17	10/4/2016	1,234.35
403997	OFFICE OF ENTERPRISE TECHNOLOGY	VOICE SERV THRU 8/31/16	10/4/2016	1,231.81
404192	EMSL ANALYTICAL, INC	BERTHIAUME PROP DEMO INSPECTION 10/3	10/18/2016	1,225.10
403942	HENNEPIN CTY TREASURER	2ND HALF PROPERTY TAXES DUE 10/17/16	10/4/2016	1,220.76
404130	PROFESSIONAL INTERPRETING	Interpreter	10/11/2016	1,206.80

404117	MN SCHOOL-AGE CHILD CARE ALLIANCE	CED-HB-TRAINING 8/22 & 8/25	10/11/2016	1,200.00
404062	COMPREHENSIVE REPAIR	HS-REPAIR TABLE SAW	10/11/2016	1,175.00
703146	ECM PUBLISHERS, INC	HS-TROJAN TRIBUNE 9/19/16	10/3/2016	1,158.87
404138	SCHOOLKIDZ USA	SH-SCHOOL SUPPLY KITS	10/11/2016	1,154.19
403984	MINT ROOFING INC	PC-REPAIR ROOF	10/4/2016	1,143.56
403973	LEARNING A-Z	RAZ Kids for K-2	10/4/2016	1,139.40
404097	LIFE INSURANCE CO OF NORTH AMERICA	ADMIN-CARVE OUT-LIFE FLX 963464 000-002	10/11/2016	1,110.48
404224	MCCARTNEY, SHARON	PF-SPANISH CLASS 9/16	10/18/2016	1,085.00
404005	PEPPER & SON INC., J. W.	MS-ORCH MUSIC	10/4/2016	1,065.98
404401	HILL CO, ROBERT B.	ARENA-SALT	10/25/2016	1,039.95
161700456	PASHINA, KEN	REIMBURSE	10/20/2016	1,034.05
404056	APPLE JACK ORCHARDS	GW-59 TOURS	10/11/2016	1,029.00
404207	INGRAM LIBRARY SERVICES	CMS-MEDIA CTR BKS	10/18/2016	1,027.21
404441	MINT ROOFING INC	CMS-REPAIR ROOF	10/25/2016	1,013.82
403936	H & B SPECIALIZED PRODUCTS	PC-REPAIR BB MOTOR	10/4/2016	1,013.52
404341	APPLE INC	Parts for Macbooks iPad charging cables	10/25/2016	1,011.95
404111	MN DEPT OF HUMAN SERVICES	SP ED-IEP ADMIN FEE SFY 2016	10/11/2016	1,005.00
703247	ALLEGRA PRINT & IMAGING	CUL EXP-MEL & BROG POSTERS	10/28/2016	1,003.63
403913	DAY, DONALD	Indian Education Consultant Contract Pay	10/4/2016	1,000.00
403958	INSTRUCTURE INC	Canvas Additional Ticketing System	10/4/2016	1,000.00
404110	MN DECA	FALL CONF-HS 11/16	10/11/2016	997.50
161700340	VANHORN, ROBYN	REIMBURSE	10/5/2016	985.00
404319	RIGHT-WAY CAULKING INC	NEW ELEM 07-D SEALANTS TO 9/10/16	10/20/2016	982.78
161700407	WESTRUM, JAMES	REIMBURSE	10/12/2016	980.40
404252	RAV TECHNOLOGIES, INC	HS-DE-INSTALL & RE-INSTALL RM C206 & C208 (BOND)	10/18/2016	970.00
403900	CARCIOFINI COMPANY INC	GL-EXTERIOR WORK	10/4/2016	950.00
404175	ASBO INTERNATIONAL	AD-REGISTER CONF 2/17	10/18/2016	950.00
703230	ALLEGRA PRINT & IMAGING	EMS-BUS CARDS AVD	10/20/2016	947.23
404383	FLOORS BY BECKERS INC	EMS-REPAIR FLOOR	10/25/2016	930.00
703186	SCHMITT MUSIC CO	EMS-INST REPAIR	10/14/2016	924.71
404465	REINDERS	DIST ATH FIELD-PESTICIDE FEE	10/25/2016	923.99
404172	APPLE JACK ORCHARDS	MR-KNGN FIELD TRIP 9/28	10/18/2016	923.50
404389	GOPHER STATE ONE-CALL	LOCATES 9/16	10/25/2016	916.65
404270	THE WORKS	BV-3RD GR FIELD TRIP 10/31	10/18/2016	912.00
404475	SHAMROCK GROUP	HS,CMS & WMS-SLUSHY SUPPLIES CUST#03293	10/25/2016	895.40
404271	THREE RIVERS PARK DISTRICT	SH-4TH GR FIELD TRIP 9/19 & 9/20	10/18/2016	894.00
404345	BAYFIELD FRUIT CO	OW-APPLES	10/25/2016	856.90
403985	MN ASSN OF SECONDARY SCH PRINCIPALS	EMS-MASSP,NASSP & DIV DUES 16-17 MR	10/4/2016	853.00
404108	MN ASSN OF SECONDARY SCHOOL PRINCIPALS	EMS-MASSP,NASSP & DIV DUES 16-17	10/11/2016	853.00
404021	SAM'S CLUB	LAKER'S BREAKFAST NOOK SUPPLIES 9/16	10/4/2016	851.29
404258	SCHOLASTIC CLASSROOM MAGAZINES	EMS-MAGAZINE SUBSCRIPTIONS	10/18/2016	840.84
403949	HOLDAHL CO	MR-GYM STORAGE	10/4/2016	827.00
403959	INTEGRATE LLC	Public Utilities Inspection	10/4/2016	824.22
404030	STAGES THEATRE CO	PC-4TH GR FIELD TRIP 10/19/16	10/4/2016	822.00
161700333	SHERWOOD, JAIME	REIMBURSE	10/5/2016	821.79
404101	LOW VOLTAGE CONTRACTORS	MDE#02074 HS-REPAIR FIRE ALARM	10/11/2016	810.00
404000	PARALLEL TECHNOLOGIES INC	HS-RENOV PROJECT-BOND	10/4/2016	797.60
404324	STATE TOURNAMENT BANQUET	ATH-B SOCCER BANQUET 10/23	10/20/2016	784.00
404029	SPIRITWEAR USA	SR POWDER PUFF JERSEYS	10/4/2016	768.00
404188	DOUGHTY, JEFFREY	PURPLE T-SHIRTS-HS	10/18/2016	765.00
403917	DOYLE SECURITY PRODUCTS	CSF-LOCK SUPPLIES	10/4/2016	754.11
404395	HAMEL BUILDING CTR	DIST-SUPPLIES	10/25/2016	754.01
404013	PROMOWEAR	T-SHIRTS-CONF-GRANT	10/4/2016	750.00
404509	YOUTH FRONTIERS, INC	OW-KINDNESS RETREAT DEPOSIT 1/6/17	10/25/2016	750.00
403955	INGRAM LIBRARY SERVICES	CMS-MEDIA CTR BKS	10/4/2016	749.55
404495	US ENERGY SERVICES, INC	MGMT FEE 10/16	10/25/2016	743.00
404513	MESSERLI & KRAMER, PA	GARNISH PAYROLL 9/30/16-10/31/16	10/31/2016	739.84
404318	RAM CONSTRUCTION SVCS OF MN LLC	NEW ELEM 07-E TRAFFIC TOPPING TO 9/16	10/20/2016	739.50
403921	EDINA HISTORICAL SOCIETY	GL-2ND GR FIELD TRIP 12/14/16	10/4/2016	720.00
404124	PLYMOUTH ROTARY	CED-DUES & MEALS THRU 12/16	10/11/2016	714.00
404203	HERC-U-LIFT, INC	MDE#02049 REPAIR AERIAL LIFT	10/18/2016	700.94
404201	HAMEL BUILDING CTR	CMS-LUMBER FOR ETD	10/18/2016	691.92
404393	HACH COMPANY	WHS ADD SCIENCE SUPPLIES - WASH BOTTLES	10/25/2016	689.65

404048	XCEL ENERGY	ENERGY-HS 8/16-9/15	10/4/2016	685.38
403932	GENERAL SHEET METAL	SH-REPAIR MEDIA CTR A/C	10/4/2016	679.20
404001	PARALLEL TECHNOLOGIES INC	GW-MOVE LOUNGE CABLES	10/4/2016	671.78
404198	GRAINGER INC., W. W.	HS-CIRCUIT BREAKER SUPPLIES	10/18/2016	671.73
404123	PIONEER DRAMA SERVICE, INC	PLAY SUPPLIES-WMS	10/11/2016	670.50
403976	LOFFLER COMPANIES, INC.	WHS COPY CENTER IONS SOFTWARE MAINT 10/16	10/4/2016	670.00
404067	DKI OF HENNEPIN COUNTY INC	CED-KL-PLAYHOUSE CAMP	10/11/2016	670.00
703144	BOILER SERVICES, INC	EMS-REPAIR WATER HEATER	10/3/2016	667.33
404391	GRAINGER INC., W. W.	CUL EXP-MR-FAN	10/25/2016	667.23
403996	NORTH SHORE GYM SALES	ATH-SWIVEL ANCHOR	10/4/2016	665.00
161700401	STODOLA, JOSEPH	REIMBURSE	10/12/2016	655.23
703176	BOILER SERVICES, INC	MDE#02060 BOILER RPZ INSPECTIONS	10/14/2016	650.00
404039	TUMBLEWEED PRESS INC	KL-EBOOKS	10/4/2016	639.20
404114	MN HISTORICAL SOCIETY	KL-4TH GR FIELD TRIP 9/28/16	10/11/2016	636.00
161700499	WOBSCHELL, ALISON	REIMBURSE	10/26/2016	623.81
161700317	HALL, FRANZ	REIMBURSE	10/5/2016	605.70
403916	DKI OF HENNEPIN COUNTY INC	CED-MR-PLAYHOUSE CAMP	10/4/2016	603.00
404240	NTSA	REGISTER-403B SUMMIT	10/18/2016	600.00
161700484	KUBALAK, PATRICIA	REIMBURSE	10/26/2016	595.88
403933	GOODIN CO	PC-SUPPLIES	10/4/2016	583.07
404035	TIME FOR KIDS	GW-TIME FOR KIDS 3RD GRADE SUBSCRIPTION	10/4/2016	579.80
404197	GIBBS FARM	PC-5TH GR FIELD TRIP 9/30/16	10/18/2016	576.00
404499	WAYZATA HIGH SCHOOL SENIOR CLASS PARTY	SEPT VOLUNTEER HRS	10/25/2016	575.00
404103	MARS CO, W. P. & R.S.	MDE#02048 PPE-EAR PLUGS	10/11/2016	574.75
703265	RETROFIT COMPANIES INC	MDE#02059 HS-HAZ WASTE FEE	10/28/2016	573.69
404154	VILLAGE CHEVROLET CO	CED-REPAIR BRAKES-MAILIBU	10/11/2016	563.55
403986	MINNESOTA EQUIPMENT	CSF-REPAIR PRO-GATOR CLUTCH	10/4/2016	563.42
403928	FASTSIGNS	PARKING LOT SIGNS	10/4/2016	558.09
404174	APPLE JACK ORCHARDS	KL-KDGN FIELD TRIP 10/13	10/18/2016	553.00
404074	EXCEL IMAGES	3RD GR T-SHIRTS-SH	10/11/2016	548.55
404249	PRIME MECHANICAL INSULATION INC	CMS-INSULATE PIPE	10/18/2016	545.00
404228	MN SAFETY COUNCIL	MR-AED CABINETS	10/18/2016	540.00
404346	BDS LAUNDRY SYSTEMS	HS-REPAIR DRYER	10/25/2016	534.77
404115	MN HISTORICAL SOCIETY	BV-FIELD TRIP 9/30/16	10/11/2016	534.00
404096	LANGUAGE LINE SERVICES	PHONE INTERPRETATION	10/11/2016	530.46
404132	RACE PACE SWIM GEAR	G SWIM GEAR	10/11/2016	525.00
404227	MN SAFETY COUNCIL	MDE#02065 DUES	10/18/2016	525.00
404080	GIBBS FARM	OW-1ST GR FIELD TRIP 9/27/16	10/11/2016	522.00
404090	JIMMY'S JOHNNYS INC	CMS-BIFFS 8/29-9/25	10/11/2016	520.00
404136	SHELDE NORTH AMERICA, LLC	ATH-BADMINTON NET	10/11/2016	517.00
404259	SCHOLASTIC CLASSROOM MAGAZINES	GW-5TH GR STORYWORKS SUBSCRIPTION	10/18/2016	514.80
404199	GREAT LAKES COCA-COLA DISTRIBUTION LLC	CONCESSION INVENTORY-HS	10/18/2016	505.76
403965	KIERNAN, NICOLE	CED-PROF SERV-CPR 9/19/16	10/4/2016	500.00
403987	MNAEYC MN ASSN ED OF YOUNG CHILDREN	GWHB-REGISTER MAAP SF-R	10/4/2016	500.00
403881	ACCO BRANDS CORPORATION	CMS-SERV CONTRACT-LAMINATOR 9/7/16-9/6/17	10/4/2016	499.20
404473	SCHOOL NUTRITION ASSOCIATION	REGISTER-CONF 1/17	10/25/2016	495.00
404145	STAFF DEVELOPMENT FOR EDUCATORS	SH-REGISTER CONF 11/16	10/11/2016	490.00
161700361	DUENAS, DOMINIC	REIMBURSE	10/12/2016	480.60
404433	MARCO INC	TECH-CABLING BY PARAGON	10/25/2016	475.49
403919	EASTER, MARK	CMS-PIANO TUNING	10/4/2016	475.00
404337	ALLINA HEALTH	OCC HEALTH HIST & PHYSICAL	10/25/2016	475.00
404497	WALBRAN, SHARON	CED-PROF SERV 10/4,10/6,10/13 & 10/14	10/25/2016	472.50
404012	PROFESSIONAL BEVERAGE SYSTEMS, INC II	CMS-REPAIR ICE MAKER	10/4/2016	471.65
404283	WESTWOOD HILLS NATURE CTR	PF-FIELD TRIP 10/7 HOUSEHOLD#6984	10/18/2016	470.00
403894	BLICK ART MATERIALS	EMS ART SUPPLIES	10/4/2016	468.94
404244	PEPPER & SON INC., J. W.	WMS-BAND MUSIC	10/18/2016	463.99
403975	LIGHTNING PRINTING INC	COMM-WELCOME BROCHURE	10/4/2016	458.80
403954	HUMPHREY, CAROLE	CED-PROF SERV 10/7 & 10/10	10/4/2016	450.00
403993	NAHAN, SHELLY	CED-PROF SERV 8/30/16	10/4/2016	450.00
161700423	GENGLER, SCOTT	REIMBURSE	10/20/2016	446.73
404487	TSBL DISTRIBUTING/TAYLOR SALES	HS-SERVICE VALVE CUST#300030	10/25/2016	445.73
404403	HORIZON EQUIPMENT	PC-CLEANING SUPPLIES	10/25/2016	445.00
404386	GILLUND ENTERPRISES	CSF-RE-STOCK SHOP	10/25/2016	433.20

404417	KARLSBURGER FOODS, INC	GROCERIES	10/25/2016	423.36
404182	CINTAS FIRST AID & SAFETY	CSF-FIRST AID KITS (GRD VEHICLES)	10/18/2016	419.50
404471	ROOT-O-MATIC	WMS-SERV-M LOCKER RM DRAINS	10/25/2016	415.00
404098	LIGHTNING PRINTING INC	COMM-SCHOOL BROCHURE	10/11/2016	413.05
404370	DEHN'S PUMPKINS LLC	TROJAN TOTS FIELD TRIP 10/6	10/25/2016	413.00
404410	IRON MOUNTAIN	DIST-DOC STORAGE 10/16	10/25/2016	408.97
703177	ECM PUBLISHERS, INC	HS-CONFUCIUS BROCHURE (GRANT) 9/27/16	10/14/2016	407.88
161700367	HALSTENSGARD, DANIEL	REIMBURSE	10/12/2016	405.57
404223	MARS CO, W. P. & R.S.	MDE#02048 PPE-EYE MUFFS	10/18/2016	402.88
404106	MERZER M.A., L.P., SHEILA	CONSULT 9/12/16	10/11/2016	402.50
404037	TIME FOR KIDS	OW-GR 5-6 SUBSCRIPTIONS	10/4/2016	401.40
161700418	CHASE, MICHELLE	REIMBURSE	10/20/2016	400.00
403995	NEW WAY HYPNOSIS CLINIC, INC	CED-PROF SERV 9/26/16	10/4/2016	396.00
404462	RAMETTE, JAMES	CED-PROF SERV 10/13	10/25/2016	390.00
404428	LARSON CO, J. H.	EMS-BALLAST	10/25/2016	389.34
161700406	WELK, JENNIFER	REIMBURSE	10/12/2016	389.20
161700408	WINDSOR, CYNTHIA	REIMBURSE	10/12/2016	387.80
404444	NAPA AUTO PARTS OF CORCORAN	CSF-LOWER SHOP SUPPLIES	10/25/2016	382.52
404018	REINDERS	ATH FIELD SEED	10/4/2016	380.60
404173	APPLE JACK ORCHARDS	KL-KDGN FIELD TRIP 10/10	10/18/2016	378.00
404143	SKILLZY'S LLC	G SOCCER SUPPLIES-ATH	10/11/2016	375.45
161700322	HUYNH, MAI	REIMBURSE	10/5/2016	373.78
404251	PUBLIC STORAGE 08316	STORAGE 11/16	10/18/2016	369.00
161700425	HALL, FRANZ	REIMBURSE	10/20/2016	368.97
404474	SCIENCE EXPLORERS	CED-GW-ELEC ENGINEERING 10/5-10/19	10/25/2016	364.50
161700500	WOOLEVER MARTINEZ, KATE	REIMBURSE	10/26/2016	363.73
161700383	MEESTER, ELIZABETH	REIMBURSE	10/12/2016	362.18
161700447	MATTIOLI, VALERIE	REIMBURSE	10/20/2016	354.90
161700464	SCHWENDEMAN, KAREN	REIMBURSE	10/20/2016	353.00
404480	SPECIAL SCHOOL DISTRICT #1	EC SCREENING MPSI TEST KIT AND FORMS	10/25/2016	350.75
403922	EDR (ENVIRONMENTAL DATA RESOURCES)	18930 ST HGWY 55 PROPERTY-PHASE I	10/4/2016	350.00
404276	UNIVERSITY OF OREGON	GL-SWIS SUBSCRIPTION 9/1/16-8/31/17	10/18/2016	350.00
403906	CITI-CARGO & STORAGE	CMS-DOME STORAGE	10/4/2016	348.00
403988	MN LANDSCAPE ARBORETUM	SH-1ST GR FIELD TRIP 10/5/16	10/4/2016	346.50
404104	MATH MASTERS OF MN	PC-REGISTER (4 TEAMS) 4/22/17	10/11/2016	340.00
404036	TIME FOR KIDS	OW-GR 3-4 SUBSCRIPTION	10/4/2016	334.50
161700479	FILDES, LORI	REIMBURSE	10/26/2016	328.00
404183	COLLEGE BOARD	HS-MEMBERSHIP 16-17	10/18/2016	325.00
404500	WAYZATA ROTARY	HS-DUES & MEALS 7/16-9/16	10/25/2016	325.00
404501	WAYZATA ROTARY	AD-DUES & MEALS 10/16-12/16	10/25/2016	325.00
404418	KARLSBURGER FOODS, INC	GROCERIES	10/25/2016	321.15
161700467	TOOLEY FROLANDER, ANDREA	REIMBURSE	10/20/2016	319.70
403883	ACTION FLEET INC	REPAIR SKID-LOADER	10/4/2016	319.00
404378	ESPRESSO SERVICES INC	HS-SERVICE	10/25/2016	317.64
161700495	VOLLENDORF, AMY	REIMBURSE	10/26/2016	315.74
404405	IKI INC.	CED-PROF SERV	10/25/2016	308.00
703145	COMMAND CENTER INC	CSF-VARIOUS CUST SUBS	10/3/2016	307.24
403991	MNSHAPE(MN SOC HLTH AND PHY ED)	PC-REGISTER CONF 11/16	10/4/2016	300.00
404060	BRIGGS & MORGAN	PROF SERV 8/16	10/11/2016	300.00
404107	METRO ECSU-REGION 11 IDS #920	REGISTER-MDE FINDING LEARNERS 12/14/16	10/11/2016	300.00
404112	MN URBAN DEBATE LEAGUE AUGSBURG	HS-REGISTER DEBATE 11/16 (12 TEAMS)	10/11/2016	300.00
404139	SCIENCE MUSEUM OF MN	SHHB-FIELD TRIP 11/10/16	10/11/2016	300.00
404429	LOFFLER COMPANIES, INC.	HS-PICK-UP & LEASE RETURN	10/25/2016	300.00
404243	PEPPER & SON INC., J. W.	KL-VOCAL MUSIC	10/18/2016	295.90
404347	BENNETT MATERIAL HANDLING	CMS-PALLET JACK	10/25/2016	295.00
403903	CENTERPOINT ENERGY	MR-GAS 7/31-8/31	10/4/2016	294.24
161700349	ANDERSON, BRAD	REIMBURSE	10/12/2016	289.00
161700379	LANKFORD, LYNDA	REIMBURSE	10/12/2016	285.98
404002	PASHINA, BRANDON	OFFICIAL	10/4/2016	285.00
703246	ADI	CSF-STOCK BATTERIES	10/28/2016	283.28
404161	PHEAA	Payroll accrual	10/14/2016	280.86
404514	PHEAA	Payroll accrual	10/31/2016	280.86
404212	KID CARPET.COM	GW-RUG KINDERGARTEN - RINGQUIST	10/18/2016	279.99

404116	MN LANDSCAPE ARBORETUM	KLHB-FIELD TRIP 4/19/17	10/11/2016	275.00
161700357	BRAUN, CATHY	REIMBURSE	10/12/2016	271.30
403902	CARR, CHRIS	OFFICIAL	10/4/2016	264.00
404165	ACCO BRANDS CORPORATION	PC-LAMINATING FILM	10/18/2016	257.50
404443	MTI DISTRIBUTING INC	CSF-TRACTOR PARTS	10/25/2016	256.74
161700364	FREDRICKSON, SAM	REIMBURSE	10/12/2016	256.20
403981	MATH MASTERS OF MN	GW-REGISTER (3 TEAMS) 4/22/17	10/4/2016	255.00
404294	CAPITAL CITY GLASS INC	CMS UPGRADES - WS 08-A: GLAZING TO 9/30/16	10/20/2016	250.80
404160	IRS CENTER - UNITED STATES TREASURY	Payroll accrual	10/14/2016	250.00
404166	ACCUCUT LLC	SUPPLIES	10/18/2016	250.00
404482	THOUR, JULIE	OFFICIAL 9/14,9/21,9/29,10/5 & 10/12	10/25/2016	250.00
404512	IRS CENTER - UNITED STATES TREASURY	Payroll accrual	10/31/2016	250.00
404402	HOLDAHL CO	CMS-COUNTER PROJECT	10/25/2016	241.74
161700353	BEVAR, ROBERT	REIMBURSE	10/12/2016	240.20
403889	ASL INTERPRETING SERVICES	PF-INTERPRETER JOB#256509 9/12/16	10/4/2016	240.00
403937	HACHEM, DRISS	OFFICIAL	10/4/2016	240.00
404034	TIERNEY BROTHERS, INC.	INK CARTRIDGE-HS	10/4/2016	237.00
403989	MN LANDSCAPE ARBORETUM	SH-1ST GR FIELD TRIP 10/27	10/4/2016	236.50
404205	HIRSCH, JAMES	ATH-SOCCER SCHEDULING	10/18/2016	234.00
703147	ECOLAB PEST ELIMINATION DIV	WMS-PEST CONTROL	10/3/2016	233.63
404023	SCHOLASTIC CLASSROOM MAGAZINES	CMS-MAGAZINES LC ACCT#55447024	10/4/2016	233.48
404350	BLUE TARP FINANCIAL INC	CSF-SHOP TOOLS	10/25/2016	233.24
404415	K4 APPLICATION INC DBA DUNN BROS COFFEE	HS-COFFEE	10/25/2016	231.00
403927	EROSION PRODUCTS LLC	GL-HILLSIDE SUPPLIES	10/4/2016	230.00
404379	ESPRESSO SERVICES INC	HS-SERVICE	10/25/2016	227.50
404264	SCHROEDER, HARVEY	PROF SERV 10/8-8/10	10/18/2016	225.00
404489	UNIVERSITY OF WI-RIVERFALLS	HS-REGISTER SCI OLYMPIAD (3 TEAMS) 1/21/17	10/25/2016	225.00
404477	SITE ONE LANDSCAPE SUPPLY LLC	HS-REPAIR SUPPLIES	10/25/2016	224.36
161700394	ROGERS, JUDY	REIMBURSE	10/12/2016	222.64
161700314	GENGLER, SCOTT	REIMBURSE	10/5/2016	221.55
404438	MERTENS, LINDA	REIMBURSE-G S & D PICTURES	10/25/2016	219.47
404460	PUBLIC STORAGE	STORAGE 11/16	10/25/2016	219.33
404231	MOTION PICTURE LICENSING CORP	GL-MPLC UMBRELLA LICENSE 12/7/16-12/7/17	10/18/2016	219.30
404461	R & R SPECIALTIES, INC.	ARENA-ZAMBONI PARTS	10/25/2016	216.59
161700374	HOWE, MICHELLE	REIMBURSE	10/12/2016	215.19
161700481	GIBSON, JANE	REIMBURSE	10/26/2016	210.60
403923	EGAN COMPANY	CMS-REPAIR BELL	10/4/2016	210.00
404432	MAMAC SYSTEMS INC	EMS-POOL TRANSDUCER	10/25/2016	209.19
404481	SZARKE, JOY	CONT SERV-ESY 8/16	10/25/2016	208.46
161700453	PADJEN, AMANDA	REIMBURSE	10/20/2016	208.28
161700396	SCHUMACHER, MICHAEL	REIMBURSE	10/12/2016	207.95
404368	CTB, INC	GW-BREAKRM WORK SURFACE	10/25/2016	204.00
161700472	ACKERMAN, BRIAN	REIMBURSE	10/26/2016	200.72
404040	TWIN CITIES CHINESE DANCE CTR	PROF SERV-CEREMONY 9/27	10/4/2016	200.00
404073	ELLIOTT, JANE	HS-SKYPE PRESENTATION 4/11/16	10/11/2016	200.00
404086	HONG DE LION DANCE ASSOCIATION	PROF SERV 9/27/16	10/11/2016	200.00
404093	KIERNAN, NICOLE	CED-PROF SERV CPR 9/24/16	10/11/2016	200.00
404127	PRIOR LAKE ROBOTICS	REGIONAL ROBOTICS	10/11/2016	200.00
404054	ALLINA HEALTH	DRIVER PHYSICAL-8/25 CB & 8/25	10/11/2016	197.00
404411	JACKSON, SHERI	REIMBURSE-ATH-G S & D SUPPLIES	10/25/2016	196.20
404057	ART PARTNERS GROUP LLC	G SWIM-GRAPHIC ARTWORK	10/11/2016	195.25
404204	HIGH NORTH INC	OFFICIAL	10/18/2016	195.00
403910	CPD CENTRAL POWER DISTRIBUTORS	CSF-MOWER PARTS	10/4/2016	193.07
161700330	PETERSON, LAURI	REIMBURSE	10/5/2016	192.53
403951	HOUSE OF NOTE	MS ORCH-INST REPAIR	10/4/2016	190.00
404053	ALLINA HEALTH SYSTEM	PRE-EMPLOY SCREENING 9/27/16	10/11/2016	190.00
404189	EASTER, MARK	EMS-PIANO TUNING	10/18/2016	190.00
404025	SHERMAN, JULIE	CED-MAKE UP BOOT CAMP 9/27/16	10/4/2016	188.50
161700354	BLANK, SAMUEL	REIMBURSE	10/12/2016	188.26
404069	EASTBAY TEAM SALES	ATH-B S APPAREL	10/11/2016	187.80
404184	CREATING ART INC	CED-PAINT FLOWERS	10/18/2016	187.00
403886	ANDERSON, TODD	OFFICIAL	10/4/2016	186.00
403966	KOEHLER, BRIAN	OFFICIAL	10/4/2016	186.00

404020	SAGRASSE, ABDELAZIZ	OFFICIAL	10/4/2016	186.00
404427	LARSON CO, GUSTAVE A.	CMS-RELIEF VALVE	10/25/2016	185.45
403971	LARSON CO, J. H.	WMS-BULBS	10/4/2016	185.32
161700399	SOLHEID, CAROL	REIMBURSE	10/12/2016	183.98
161700380	LEHMAN, DENNIS	REIMBURSE	10/12/2016	182.70
161700410	WORTH, ANDREW	REIMBURSE	10/12/2016	181.70
403908	COMMERCIAL ASPHALT CO	DIST-POTHOLE REPAIR	10/4/2016	180.29
404365	COMMERCIAL ASPHALT CO	PARKING LOT REPAIRS	10/25/2016	180.29
161700496	WEINER, MARCI	REIMBURSE	10/26/2016	180.00
404038	TOLL GAS & WELDING SUPPLY	CSF-SHOP SUPPLIES	10/4/2016	178.42
161700360	DEITERING, KATIE	REIMBURSE	10/12/2016	177.84
404109	MN BPA REGION 1 (BUS PROF OF AMER)	REGISTER-FALL CONF 11/16 (4)	10/11/2016	175.00
161700477	FANDRICH, KARA	REIMBURSE	10/26/2016	174.00
404387	GOKEY, HILLARY	REIMBURSE-FUNERAL FLOWERS	10/25/2016	172.17
161700323	JACOBSON, RACHEL	REIMBURSE	10/5/2016	170.64
404442	MN SWIM COACHES ASSN	ATH-G S & D AWARDS	10/25/2016	170.00
161700443	LAGERQUIST, SARAH	REIMBURSE	10/20/2016	169.92
161700351	ANDERSON, MARY	REIMBURSE	10/12/2016	169.80
404404	HORIZON COMMERCIAL POOL SUPPLY	WMS-INSTALL STRAINER	10/25/2016	167.95
404406	INGLES, PEGGY	CED-PROF SERV	10/25/2016	165.00
404261	SCHOLASTIC CLASSROOM MAGAZINES	SUBSCRIPTION WHS	10/18/2016	164.84
404510	ZHOU, SHAOHUA	REIMBURSE-PROG PRINTING-ATH	10/25/2016	161.44
404458	PREMIUM WATERS, INC	CSF-WATER 9/16	10/25/2016	160.16
161700345	YEAGER, JILL	REIMBURSE	10/5/2016	159.90
161700331	PHILLIPS, WADE	REIMBURSE	10/5/2016	159.46
161700344	WOBSCHELL, ALISON	REIMBURSE	10/5/2016	158.54
403882	ACME TOOLS - PLYMOUTH	HS-SCI TABLES	10/4/2016	158.22
403912	DAVIS, ANDREW	OFFICIAL	10/4/2016	158.00
161700492	ROSSTEDT, JANET	REIMBURSE	10/26/2016	157.45
403888	ARNOLD, RANDALL	OFFICIAL	10/4/2016	155.00
404007	PERRY, MARK	OFFICIAL	10/4/2016	155.00
404209	INTERMEDIATE DIST 287	ADSIS MEETINGS-CATERING 9/28 & 9/30	10/18/2016	154.78
403897	BREW, GREG	REIMBURSE-SNOWMOBILE TUNE-UP	10/4/2016	151.33
404229	MN SWIM COACHES ASSN	ATH-G S & D 10/16	10/18/2016	150.00
161700308	ENGBRETSON, DEBRA	REIMBURSE	10/5/2016	150.00
161700365	FRICKE, JESSICA	REIMBURSE	10/12/2016	150.00
161700377	KNUTSEN, TERAH	REIMBURSE	10/12/2016	150.00
161700461	RINGATE, NICOLE	REIMBURSE	10/20/2016	150.00
404146	SUHRWARDY, AMBEREEN	REFUND-CANCEL CLASS	10/11/2016	149.00
404260	SCHOLASTIC CLASSROOM MAGAZINES	SUBSCRIPTION-UPFRONT 16-17 WHS	10/18/2016	148.34
404126	PREMIUM WATERS, INC	AD-9/16	10/11/2016	146.92
161700384	MERZ, IRENE	REIMBURSE	10/12/2016	146.61
161700393	RIDLEY, SARA	REIMBURSE	10/12/2016	145.26
404027	SNOW, ROBERT	OFFICIAL	10/4/2016	144.00
404334	A CHANCE TO GROW, INC.	gw-AWE BOOKS	10/25/2016	144.00
404388	GOODIN CO	WMS-SUPPLIES	10/25/2016	143.92
161700321	HOWE, MICHELLE	REIMBURSE	10/5/2016	143.82
161700449	MENZEL, MICHELE	REIMBURSE	10/20/2016	140.74
161700480	FORTIN, LINDA	REIMBURSE	10/26/2016	140.00
161700312	FRECHTMAN, ALAN	REIMBURSE	10/5/2016	139.37
703236	SCHOLASTIC INC	KLHB-ANNUAL SUBSCRIPTION ACCT#55446001	10/20/2016	138.60
404483	TIMM, RONALD	CED-PROF SERV 9/27	10/25/2016	137.50
161700310	EXSTED, SAMANTHA	REIMBURSE	10/5/2016	136.14
404113	MN FUTURE PROBLEM SOLVING PROGRAM	DIST REGISTER	10/11/2016	135.00
161700405	WEINER, MARCI	REIMBURSE	10/12/2016	135.00
403904	CENTURY LINK	MR-MONTHLY SERV 9/10-10/9	10/4/2016	134.13
403885	ANCOM COMMUNICATIONS	RADIO BATTERIES	10/4/2016	133.25
403909	CONLEY, BEN	OFFICIAL	10/4/2016	132.00
161700362	DVORAK, MARGARET	REIMBURSE	10/12/2016	131.54
161700392	REDDRICK, SHERRI	REIMBURSE	10/12/2016	130.58
403945	HILL CO, ROBERT B.	MR-SALT	10/4/2016	128.70
404358	CENTURY LINK	MR-MONTHLY SERV 10/10-11/9	10/25/2016	128.59
404079	GE, JING	REIMBURSE-CONFUSIUS CEREMONY SUPPLIES	10/11/2016	128.05

161700326	MUJIR, FAROZ	REIMBURSE	10/5/2016	126.97
161700460	RIES, CAROLE	REIMBURSE	10/20/2016	126.68
703232	GENERAL SPORTS CORPORATION	SUPER FAN TEE-ATH	10/20/2016	126.00
404202	HENNEPIN THEATRE TRUST	MILLIE-HS	10/18/2016	125.00
161700421	GALE, CHRISTA	REIMBURSE	10/20/2016	124.90
404081	GIRARD'S BUSINESS MACHINES INC	CED-SHREDDER OIL	10/11/2016	124.00
161700378	LAHTI, JILL	REIMBURSE	10/12/2016	123.00
403968	KRATOSIGA, BILL	OFFICIAL	10/4/2016	120.00
403998	ORUC, DZEVELO	OFFICIAL	10/4/2016	120.00
404043	VOZNYUK, ALEKSANDR	OFFICIAL	10/4/2016	120.00
404071	EDUCATIONAL DESIGN, LLC-THE 2 SISTERS	SH-CC PENSIEVE BASIC MEMBERSHIP (5)	10/11/2016	120.00
404200	HADLEY, SAMARAH	OFFICIAL	10/18/2016	120.00
404245	PETERSON, AMY	OFFICIAL	10/18/2016	120.00
404257	SAGRASSE, ABDELAZIZ	OFFICIAL	10/18/2016	120.00
404278	VOZNYUK, ALEKSANDR	OFFICIAL	10/18/2016	120.00
161700327	O'NEILL, MELISSA	REIMBURSE	10/5/2016	119.87
161700468	WEHRMANN, KARI	REIMBURSE	10/20/2016	119.62
161700490	RANDALL, LIZABETH	REIMBURSE	10/26/2016	119.50
161700414	BOBEK, DANIEL	REIMBURSE	10/20/2016	118.03
404076	FLAGSHIP RECREATION	MDE#05056 GL-REPAIR PLAYGRD EQUIPMENT	10/11/2016	117.00
161700422	GALLAGHER, KELLY	REIMBURSE	10/20/2016	115.88
404024	SCHOLASTIC CLASSROOM MAGAZINES	MRBS-SUBSCRIPTIOIN JO ACCT#01153417	10/4/2016	115.50
161700474	BLAKE, KAISA	REIMBURSE	10/26/2016	115.40
161700438	JOHNSON, PAMELA	REIMBURSE	10/20/2016	114.95
161700417	CAMPBELL-KLETT, LAUREN	REIMBURSE	10/20/2016	114.95
161700316	HAGEN, ANDREW	REIMBURSE	10/5/2016	114.59
404032	TEACHER'S DISCOVERY	EMS-SPANISH SUPPLIES	10/4/2016	112.20
404211	JAMES, JODI	REIMBURSE-FOOD-G SOCCER	10/18/2016	111.89
161700444	LAROCHE, COURTNEY	REIMBURSE	10/20/2016	110.11
404028	SOCIAL THINKING	SH-The Incredible Flexible You 5 Storybooks	10/4/2016	110.01
404400	HIGH NORTH INC	OFFICIAL	10/25/2016	110.00
403907	CLASSROOM PRODUCTS LLC	CMS - DESK CARRELS	10/4/2016	109.45
404131	PUMP & METER SERVICE, INC	MDE#05058 CMS-UST REPAIR	10/11/2016	108.66
161700441	KOSKELA, SARA	REIMBURSE	10/20/2016	108.56
404177	BERRY COFFEE CO	MR-RENT-ION COUNTERTOP H/C	10/18/2016	108.00
403926	ELLIOTT, IZAAK	OFFICIAL	10/4/2016	106.00
161700387	NELSON, JERROD	REIMBURSE	10/12/2016	105.00
404505	WESTSIDE WHOLESALE TIRE, INC	HS-TIRE DISPOSAL	10/25/2016	103.00
161700320	HIEBERT, JULIE	REIMBURSE	10/5/2016	102.44
161700433	HULDEEN, DANIEL	REIMBURSE	10/20/2016	101.91
404070	EBSO SUBSCRIPTION SERVICES	PC-MEDIA CTR BOOKS	10/11/2016	101.90
161700483	JOHNSON, MARI	REIMBURSE	10/26/2016	101.79
404382	FASTSIGNS	MISC SCHOOL SIGNS	10/25/2016	101.53
161700413	ARTH, MARY	REIMBURSE	10/20/2016	101.37
404357	CENTURY LINK	ELM CREEK 9/28-10/27	10/25/2016	100.56
403952	HUANG, NINGSHENG	PROF SERV-KUNGFU PRESENTATION	10/4/2016	100.00
404239	NOVAK, JANICE	CED-PROF SERV 10/5	10/18/2016	100.00
161700358	BROFFORD, ROBERT	REIMBURSE	10/12/2016	100.00
161700359	CRAIG-CASMER, MEGAN	REIMBURSE	10/12/2016	100.00
161700430	HINNENKAMP, ADAM	REIMBURSE	10/20/2016	100.00
161700439	KIMLINGER, DEBRA	REIMBURSE	10/20/2016	99.60
161700470	YEAGER, JILL	REIMBURSE	10/20/2016	99.19
161700454	PALUTA, CHRISTINE	REIMBURSE	10/20/2016	98.99
404262	SCHOLASTIC CLASSROOM MAGAZINES	SUBSCRIPTION CMS	10/18/2016	98.89
404413	JOHNSTONE SUPPLY	WMS-KITCHEN AIR SENSOR	10/25/2016	98.36
404087	IDENTITY PRINTING INC	POSTERS (PIP GRANT)	10/11/2016	98.00
404263	SCHOOLMATE	KL-2ND GR PLANNERS	10/18/2016	96.25
404479	SNOW, ROBERT	OFFICIAL	10/25/2016	96.00
161700432	HOWE, MICHELLE	REIMBURSE	10/20/2016	95.88
404058	BLOBAUM, JOHN	WMS-PIANO TUNING	10/11/2016	95.00
161700404	WATKINS, CARY	REIMBURSE	10/12/2016	94.95
161700385	MILLER, JANET	REIMBURSE	10/12/2016	94.18
161700363	FOREMAN, LEAH	REIMBURSE	10/12/2016	93.93

161700486	LELAND, TONI	REIMBURSE	10/26/2016	93.53
161700459	RICE, MICHAEL	REIMBURSE	10/20/2016	93.34
404105	MATH MASTERS OF MN	BV-REGISTER (1TEAM) 4/22/17	10/11/2016	93.00
161700436	JAKUCKI, ALLISON	REIMBURSE	10/20/2016	92.67
161700339	THURSTON, ANDREA	REIMBURSE	10/5/2016	90.81
161700370	HARREN, KIMBERLY	REIMBURSE	10/12/2016	90.56
161700489	POOL, MICHELLE	REIMBURSE	10/26/2016	90.37
403918	EAST METRO INTEGRATION DIST 6067	GL-ADMIN TRAINING 7/27/16 MM	10/4/2016	90.00
404026	SHRED-N-GO	SHRED-N-GO BLANKET PO 16-17 7/6 & 7/20	10/4/2016	90.00
403890	ASSN FOR SUPERVISION & CURR. DEV	EMS-MEMBERSHIP 16-17 MR (A53-AYH3-AHNA)	10/4/2016	89.00
404381	EULL'S MANUFACTURING CO INC	GL-DOWN SPOUTS	10/25/2016	88.50
161700376	JOHNSON, JERI	REIMBURSE	10/12/2016	87.97
404008	PITSCO, INC	CMS-REPAIR ETD EQUIPMENT	10/4/2016	87.00
161700390	RANDALL, LIZABETH	REIMBURSE	10/12/2016	86.77
161700437	JOHNSON, JERI	REIMBURSE	10/20/2016	86.13
403905	CERVENA, ANDREA	OFFICIAL	10/4/2016	86.00
403911	DAVIS, ALICIA	OFFICIAL	10/4/2016	86.00
403915	DINGMANN, KURT	OFFICIAL	10/4/2016	86.00
403939	HARRIS, FRED	OFFICIAL	10/4/2016	86.00
403941	HELGERSON, JEFFREY	OFFICIAL	10/4/2016	86.00
403950	HOULE, THOMAS	OFFICIAL	10/4/2016	86.00
403969	KRAUSE, JEFFREY	OFFICIAL	10/4/2016	86.00
403994	NELSON, JEFFREY	OFFICIAL	10/4/2016	86.00
404004	PELLETIER, DAN	OFFICIAL	10/4/2016	86.00
404006	PERKINS, JASON	OFFICIAL	10/4/2016	86.00
404338	ANDERSEN, ALAN	OFFICIAL	10/25/2016	86.00
404375	EKEGREN, JEANNE	OFFICIAL	10/25/2016	86.00
404412	JENSEN, ERIC	OFFICIAL	10/25/2016	86.00
404419	KARNAS, JIM	OFFICIAL	10/25/2016	86.00
404420	KARNAS, MATT	OFFICIAL	10/25/2016	86.00
404421	KARNAS, MIKE	OFFICIAL	10/25/2016	86.00
404424	KOCKELMAN, DEAN	OFFICIAL	10/25/2016	86.00
404435	MARSHALL, GREG	OFFICIAL	10/25/2016	86.00
404472	SCHNEIDER, MICHELLE	OFFICIAL	10/25/2016	86.00
403979	MATH MASTERS OF MN	KL-REGISTER (1 TEAM) 4/22/17	10/4/2016	85.00
403980	MATH MASTERS OF MN	REGISTER-GL (1 TEAM) 4/22/17	10/4/2016	85.00
404272	THREE RIVERS PARK DISTRICT	SH-4TH GR FIELD TRIP 9/18/16	10/18/2016	85.00
404366	COMMITTEE FOR CHILDREN	OW-ANTI BULLYING POSTERS	10/25/2016	85.00
161700409	WINTERHALTER, JANET	REIMBURSE	10/12/2016	84.15
404232	MOY, MICHELE	REIMBURSE-CONFUCIUS CEREMONY 9/27/16	10/18/2016	83.52
161700352	BECK, JONI	REIMBURSE	10/12/2016	82.21
161700305	BRYANT, ANDREW	REIMBURSE	10/5/2016	82.16
404362	CLEAR, DAVID	OFFICIAL	10/25/2016	82.00
404437	MCINTOSH, ALAN	OFFICIAL	10/25/2016	82.00
161700337	SWARTCHICK, KRISTINE	REIMBURSE	10/5/2016	81.55
161700478	FEHRENBACH, ANN	REIMBURSE	10/26/2016	81.54
404236	NATIONAL CURRENT EVENTS LEAGUE	EMS-REGISTER GR 8	10/18/2016	80.00
404274	TWIN CITY WATER CLINIC	MDE#02057 DRINKING WATER TESTING	10/18/2016	80.00
161700458	REINKE, MICHELLE	REIMBURSE	10/20/2016	79.53
161700434	HUMES, FILESTEA	REIMBURSE	10/20/2016	79.00
161700335	SPAULDING, KALLIE	REIMBURSE	10/5/2016	78.84
161700451	MONSON, DALE	REIMBURSE	10/20/2016	77.49
161700350	ANDERSEN-LAWRANCE, CAROL	REIMBURSE	10/12/2016	77.00
161700332	RODGERS, JUDITH	REIMBURSE	10/5/2016	75.59
404191	EDINA HIGH SCHOOL	ATH-JV G S & D 10/27 & 10/29	10/18/2016	75.00
404063	CONSOLIDATED PLASTICS CO	WC ANTI FATIGUE MAT	10/11/2016	71.65
404254	READING RECOVERY COUNCIL OF NO AMERICA	BV-MEMBERSHIP 8/29/16	10/18/2016	70.00
404170	ANCOM COMMUNICATIONS	EMS-RADIO BATTERY & HOLSTER	10/18/2016	69.95
404422	KD & COMPANY RECYCLING INC	GL-PREMIUM MIX	10/25/2016	69.95
161700435	IVERSON, SUE	REIMBURSE	10/20/2016	69.94
403893	BERRY COFFEE CO	MR-WATER	10/4/2016	69.73
404017	REALLY GOOD STUFF	CMS-READING INTERVENTION	10/4/2016	68.92
404394	HADLEY, SAMARAH	OFFICIAL	10/25/2016	68.00

404468	ROBINSON, TOBIAH	OFFICIAL	10/25/2016	68.00
161700346	ZEMLIN, LYNN	REIMBURSE	10/5/2016	67.61
404335	A-1 OUTDOOR POWER, INC	MOVING SUPPLIES	10/25/2016	66.97
161700318	HERRSCHER, JESSI	REIMBURSE	10/5/2016	66.87
404361	CLASSROOM PRODUCTS LLC	CMS - DESK CARRELS	10/25/2016	66.65
161700329	PERALEZ, DAVID	REIMBURSE	10/5/2016	66.29
403884	AGBOSSOA, EZEKIEL	OFFICIAL	10/4/2016	66.00
403892	BANDY, ERIC	OFFICIAL	10/4/2016	66.00
403901	CARLSON, ANDRE	OFFICIAL	10/4/2016	66.00
403925	ELLEFSON, MARK	OFFICIAL	10/4/2016	66.00
403940	HASSE, TYLER	OFFICIAL	10/4/2016	66.00
403944	HIESTAND, DEBORAH	OFFICIAL	10/4/2016	66.00
403946	HOBERG, CLINT	OFFICIAL	10/4/2016	66.00
403963	KALLAS, MICHAEL	OFFICIAL	10/4/2016	66.00
403967	KOVACH, JAMES	OFFICIAL	10/4/2016	66.00
403977	LOVAS, MICHAEL	OFFICIAL	10/4/2016	66.00
404014	RAMIC, ALMIN	OFFICIAL	10/4/2016	66.00
404031	SULLIVAN, CHRIS	OFFICIAL	10/4/2016	66.00
404045	WITTE, OWEN	OFFICIAL	10/4/2016	66.00
404046	WOOD, BRIAN	OFFICIAL	10/4/2016	66.00
404051	AGATE, SR, DERRICK	OFFICIAL	10/11/2016	66.00
404094	KOVACH, JAMES	OFFICIAL	10/11/2016	66.00
404100	LOVAS, MICHAEL	OFFICIAL	10/11/2016	66.00
404118	NORGAARD, DAN	OFFICIAL	10/11/2016	66.00
404213	LANDY, SCOTT	OFFICIAL	10/18/2016	66.00
404222	LYNDSLEY, KEVIN	OFFICIAL	10/18/2016	66.00
404255	RIDLEY, PETER	OFFICIAL	10/18/2016	66.00
404284	WINGERT, JACOB	OFFICIAL	10/18/2016	66.00
404353	CARDONA, IVAN	OFFICIAL	10/25/2016	66.00
404354	CARLSON, ANDRE	OFFICIAL	10/25/2016	66.00
404416	KALLAS, MICHAEL	OFFICIAL	10/25/2016	66.00
404425	KOVACH, JAMES	OFFICIAL	10/25/2016	66.00
404426	LANDY, SCOTT	OFFICIAL	10/25/2016	66.00
404447	PALAN, ADAM	OFFICIAL	10/25/2016	66.00
161700338	THEISEN, JOHN	REIMBURSE	10/5/2016	65.18
404142	SIGNS NOW	WMS-ROOM SIGNS	10/11/2016	65.00
404340	APPLE AUTOMATIC FOOD SERVICE	OW -BLANKET PO MONTHLY RENTAL WATER COOLER	10/25/2016	64.90
403999	PALAI, LAUREN	REIMBURSE-HC PARADE FLOAT SUPPLIES	10/4/2016	64.05
161700494	SCHUMACHER, MICHAEL	REIMBURSE	10/26/2016	63.50
161700386	NAUMANN, ANNE	REIMBURSE	10/12/2016	63.40
161700440	KOSIN, SUSAN	REIMBURSE	10/20/2016	61.00
161700342	WILLIAMS, JESSICA	REIMBURSE	10/5/2016	60.93
404440	MINNESOTA LETTERPRESS	HS-SIGNATURE STAMPS BOYD & LAHR	10/25/2016	60.00
161700336	STUTZMAN, BELINDA	REIMBURSE	10/5/2016	59.78
161700381	LENTZ, CHRISTINE	REIMBURSE	10/12/2016	59.47
161700347	ZHANG, SHEEN	REIMBURSE	10/5/2016	59.14
161700450	MOE, KATHRYN	REIMBURSE	10/20/2016	58.97
161700493	SCHNETTLER, BRYAN	REIMBURSE	10/26/2016	58.50
403930	FREY SCIENTIFIC	WHS ADD SCIENCE EQUIPMENT/SUPPLIES	10/4/2016	58.48
161700482	HARRIDAY, SOLVEIG	REIMBURSE	10/26/2016	58.21
161700412	ANDERSON, MARY	REIMBURSE	10/20/2016	58.05
161700445	LENTZ, CHRISTINE	REIMBURSE	10/20/2016	58.00
403947	HOCHSTEIN, RANDY	OFFICIAL	10/4/2016	57.00
403948	HOFSTEDT, RONALD	OFFICIAL	10/4/2016	57.00
403970	KUBES, JON	OFFICIAL	10/4/2016	57.00
404133	RAUSCH, GERALD	OFFICIAL	10/11/2016	57.00
404171	ANDREWS, JAMES	OFFICIAL	10/18/2016	57.00
404225	MCINTOSH, ALAN	OFFICIAL	10/18/2016	57.00
404230	MOORE, ANDREW	OFFICIAL	10/18/2016	57.00
404242	PASHINA, BRANDON	OFFICIAL	10/18/2016	57.00
404339	ANDREWS, JAMES	OFFICIAL	10/25/2016	57.00
404344	BARKLOW, MARTIN	OFFICIAL	10/25/2016	57.00
404385	GDS LLC (GARY'S DIESEL SERVICE)	DOT BKS FOR TRUCKS	10/25/2016	57.00

404449	PASHINA, BRANDON	OFFICIAL	10/25/2016	57.00
404450	PERRY, MARK	OFFICIAL	10/25/2016	57.00
161700382	MASHADI, ERAM	REIMBURSE	10/12/2016	57.00
404042	VILLAGE CHEVROLET CO	CED-REPAIR MAILBU	10/4/2016	56.94
404099	LOKOWICH, MARY	OFFICIAL	10/11/2016	55.00
404237	NEMEC, JO	OFFICIAL	10/18/2016	55.00
404384	FULL COMPASS SYSTEMS, LTD	CMS - READING INTERVENTION HEADPHONES	10/25/2016	54.95
403978	MAHAJAN, VIDEH	REFUND BALANCE CULINARY EXPRESS ACCT	10/4/2016	53.95
161700355	BOBEK, STACY	REIMBURSE	10/12/2016	53.78
161700419	EFTA, PATRICIA	REIMBURSE	10/20/2016	53.73
161700389	PRONDZINSKI, JEFF	REIMBURSE	10/12/2016	53.50
161700442	LADEN, AMANDA	REIMBURSE	10/20/2016	53.15
404206	HOLDAHL CO	MR-DBL TRACK BRACKETS	10/18/2016	53.05
404484	TOLL GAS & WELDING SUPPLY	CSF-CYLINDERS	10/25/2016	53.04
703154	MINVALCO	GW-WATER HEATER SUPPLIES	10/3/2016	51.53
404380	ETA HAND2MIND	VERSA TILES BLOOM	10/25/2016	50.83
161700341	WILLISON, CALEB	REIMBURSE	10/5/2016	50.65
403957	INPRO CORP	HS-SUPPLIES	10/4/2016	50.44
403953	HUANG, YANLING	PROF SERV-CHINESE PAINTING 9/22	10/4/2016	50.00
403990	MN SCHOOL BOARDS ASSN	SCHOOL ATTY NEWSLETTER 16-17	10/4/2016	50.00
404059	BRACKEN, SARAH	REFUND BALANCE CULINARY EXPRESS ACCT	10/11/2016	50.00
161700391	RAWSKI, ANNETTE	REIMBURSE	10/12/2016	50.00
403982	MCINTOSH, ALAN	OFFICIAL	10/4/2016	49.00
404015	RAUSCH, GERALD	OFFICIAL	10/4/2016	49.00
404436	MCGUIRE, NIKOLAS	OFFICIAL	10/25/2016	49.00
404463	RAUSCH, GERALD	OFFICIAL	10/25/2016	49.00
161700471	ZIMMERMANN, ANDREA	REIMBURSE	10/20/2016	48.60
161700315	GULSVIG, ERIK	REIMBURSE	10/5/2016	47.84
161700402	THOMPSON, JANET	REIMBURSE	10/12/2016	47.31
161700372	HODENA, MELISSA	REIMBURSE	10/12/2016	46.71
161700325	MATTIOLI, VALERIE	REIMBURSE	10/5/2016	46.40
703156	SCHOOL SPECIALTY	ECSE Supplies	10/3/2016	46.38
161700368	HANRAHAN, MARGARET	REIMBURSE	10/12/2016	45.00
161700452	NARVESON, CAROLYN	REIMBURSE	10/20/2016	45.00
161700428	HARING, KAREN	REIMBURSE	10/20/2016	44.01
404148	TAYLOR, JULIE	REFUND BALANCE CULINARY EXPRESS ACCT	10/11/2016	44.00
161700491	RIES, CAROLE	REIMBURSE	10/26/2016	43.19
161700431	HOGAN, NICOLE	REIMBURSE	10/20/2016	42.98
161700313	GEINERT, LISA	REIMBURSE	10/5/2016	42.73
161700388	POOL, MICHELLE	REIMBURSE	10/12/2016	40.15
404102	MAKEMUSIC INC	CMS-ORCH SUPPLIES	10/11/2016	40.00
161700397	SEELAND, ELIZABETH	REIMBURSE	10/12/2016	39.96
161700455	PARSONS, JEAN	REIMBURSE	10/20/2016	38.23
161700375	HUOT, KATHLEEN	REIMBURSE	10/12/2016	37.91
161700469	WHEELER, SALLY	REIMBURSE	10/20/2016	37.90
161700463	SAMPSON, JAMES	REIMBURSE	10/20/2016	37.80
404147	TAMS-WITMARK MUSIC LIBRARY INC	PLAY SUPPLIES-WMS ACCT#20815	10/11/2016	37.50
161700476	EVANS, MELANIE	REIMBURSE	10/26/2016	37.26
404003	PAULY, SUE	REIMBURSE-DRAMA CLUB SUPPLIES	10/4/2016	36.94
404504	WENDELL'S	CSF-SELF INKING STAMP	10/25/2016	36.80
161700328	O'NEILL, STEVEN	REIMBURSE	10/5/2016	35.72
404235	NATIONAL ALLIANCE	AD-DUES 16-17	10/18/2016	35.00
404355	CENTERPOINT ENERGY	12955-16TH AVE-GAS 8/22-9/21	10/25/2016	34.53
161700487	MASHADI, ERAM	REIMBURSE	10/26/2016	34.29
161700319	HERZOG, JORDAN	REIMBURSE	10/5/2016	33.93
404275	UNIVERSAL ATHLETIC SERVICE INC	CED-TENNIS NET STRAPS	10/18/2016	32.59
161700369	HANSEN, ELIZABETH	REIMBURSE	10/12/2016	32.46
703264	MINVALCO	WMS-POOL REPAIR SUPPLIES	10/28/2016	31.50
161700457	PERALEZ, DAVID	REIMBURSE	10/20/2016	31.33
404268	TEACHER'S DISCOVERY	EMS GR 7 SCIENCE SUPPLIES	10/18/2016	30.88
161700311	FOLTZ-RINGSTROM, SHARON	REIMBURSE	10/5/2016	30.56
161700462	RUCHTI, JULIE	REIMBURSE	10/20/2016	30.40
403972	LAWRENCE, JANET	REFUND BALANCE CULINARY EXPRESS ACCT	10/4/2016	30.35

404277	VERIZON WIRELESS	Verizon monthly Data Plan - Welcome Center	10/18/2016	30.08
404141	SHRED-N-GO	BLANKET PO 16-17 9/14 & 9/28	10/11/2016	30.00
161700448	MCCARTHY, LORI	REIMBURSE	10/20/2016	30.00
404159	WORLD WAR II	CMS-SUBSCRIPTION 2 yrs (12 ISSUES)	10/11/2016	29.95
161700415	BUCHER, KATHLEEN	REIMBURSE	10/20/2016	29.36
161700343	WILVERS, LAUREN	REIMBURSE	10/5/2016	29.28
161700473	BERGMANN, TROY	REIMBURSE	10/26/2016	28.87
161700334	SNEDE, ALEXANDRA	REIMBURSE	10/5/2016	28.42
161700411	ANDERSON, JULI	REIMBURSE	10/20/2016	27.84
404248	PREMIUM WATERS, INC	PC-WATER COOLER RENTAL 10/16	10/18/2016	27.00
161700497	WHITLOCK, REBECCA	REIMBURSE	10/26/2016	26.42
404084	HAYDEN, IVY	REIMBURSE-FOOD (ARTS)	10/11/2016	25.99
404503	WEBER, TIM	REIMBURSE-ATH-ROSES	10/25/2016	25.73
161700398	SKERBITZ, WILLIAM	REIMBURSE	10/12/2016	24.94
404176	BARNES & NOBLE	GW-BOOK	10/18/2016	24.00
161700395	RUCHTI, JULIE	REIMBURSE	10/12/2016	23.27
161700427	HAMILTON, WAYNE	REIMBURSE	10/20/2016	22.82
161700400	SONSTEGARD, LAURIE	REIMBURSE	10/12/2016	22.46
161700488	NELSON, REBECCA	REIMBURSE	10/26/2016	22.14
161700371	HERRSCHER, ERIC	REIMBURSE	10/12/2016	21.98
404044	WESTSIDE WHOLESALE TIRE, INC	REPAIR TURF TIRE	10/4/2016	21.76
161700485	KUKLOK, KATHRYN	REIMBURSE	10/26/2016	21.38
404208	INTERMEDIATE DIST 287	LEADERSHIP COUNCIL-COFFEE & WATER 9/14/16	10/18/2016	21.00
703187	SCHOOL SPECIALTY	REPLACEMENT BANDS FOR GREENWOOD	10/14/2016	20.76
403924	ELECTRONIC CENTER	HS-TV STUDIO CONNECTORS-BOND PROJECT	10/4/2016	20.64
161700465	SHANNON-ANDERSON, KARI	REIMBURSE	10/20/2016	20.30
404452	PIONEER VALLEY BOOKS	SH-Book Room Books	10/25/2016	20.25
161700420	FEIA, KARI	REIMBURSE	10/20/2016	20.09
404011	PLYMOUTH STORY TIME PLAYERS	GL-2ND GR PERFORMANCE 10/19	10/4/2016	20.00
404120	NORTHEY, MICHELE	ATH-REIMBURSE-eDIVE LICENSE	10/11/2016	20.00
161700366	GILBERTSON, MORIAH	REIMBURSE	10/12/2016	19.99
161700498	WILLIAMS, JAMES	REIMBURSE	10/26/2016	18.98
404392	GUARDIAN COUNSEL, LLC	CED-PROF SERV 10/13	10/25/2016	18.00
161700446	MASHADI, ERAM	REIMBURSE	10/20/2016	18.00
404085	HILOWLE, KHADIJO	CMS-REFUND-FOUND LIBRARY BOOK	10/11/2016	16.99
161700309	EUGENE, SAMARA	REIMBURSE	10/5/2016	16.99
703179	GOPHER SPORT	HS-JUMP ROPES	10/14/2016	16.15
161700373	HOOVER, JUDITH	REIMBURSE	10/12/2016	16.06
404266	SPATAFORE, DAVID	REFUND BALANCE CULINARY EXPRESS ACCT	10/18/2016	15.55
161700424	GOSSEN, CAROLINE	REIMBURSE	10/20/2016	15.10
404265	SHRED-N-GO	MR-SHREDDING 9/21	10/18/2016	15.00
161700307	EAMES, CAITLIN	REIMBURSE	10/5/2016	14.51
161700429	HEIDELBERGER, KELLIE	REIMBURSE	10/20/2016	14.32
161700306	DENNIS, MIRIAM	REIMBURSE	10/5/2016	14.14
404190	EASYKEYS.COM INC	CES HON FILE KEYS	10/18/2016	14.00
161700356	BOWDISH, LISA	REIMBURSE	10/12/2016	13.85
161700348	ABRAHAMSON, JODI	REIMBURSE	10/12/2016	12.64
404478	SKYWARD USERS CONFERENCE OF MN	SKYWARD CONF	10/25/2016	12.00
161700426	HALLSON, JILL	REIMBURSE	10/20/2016	9.86
161700403	WARNE, ALYSSA	REIMBURSE	10/12/2016	8.68
161700466	SHERWOOD, JAIME	REIMBURSE	10/20/2016	8.42
403961	JOHNSTONE SUPPLY	OW-SUPPLIES	10/4/2016	8.32
161700475	BRANSON, SUSAN	REIMBURSE	10/26/2016	8.05
404140	SEVENTEEN MAGAZINE	CMS-MEDIA CTR SUBSCRIPTION (1 YR)	10/11/2016	8.00
404088	INGRAM LIBRARY SERVICES	CMS-MEDIA CTR BKS	10/11/2016	7.58
404019	REMPE, JOANNE	CMS-REFUND FOR FOUND LIBRARY BOOK	10/4/2016	7.00
404469	RODENBURG LAW FIRM	GARNISH 7/15-10/14	10/25/2016	2.68
404307	KREMER & DAVIS INC	VOID	10/20/2016	0.00
401254	BREW, GREG	VOID	10/4/2016	(151.33)
403176	SZARKE, JOY	VOID	10/25/2016	(208.46)
403546	ENVIRONMENTAL HEALTH CONSULTANTS	VOID	10/4/2016	(350.00)
403811	MEISEL HARDWARE SPECIALITIES	VOID	10/4/2016	(616.50)
				<b>5,120,572.23</b>
		Page 14 of 15		



**WAYZATA PUBLIC SCHOOLS  
WIRE TRANSFER, EFT AND ACH ACTIVITY  
September 2016**

<u>FROM</u>	<u>TO</u>	<u>DATE</u>	<u>AMOUNT</u>
Wells Fargo-Checking	Wells Fargo-Payroll	Multiple	\$4,521,185
Wells Fargo-Checking	IRS		
	- Federal P/R Taxes	9/1/2016	\$211,440
	- Federal P/R Taxes	9/16/2016	\$896,686
Wells Fargo-Checking	MN Department of Revenue		
	- State P/R Taxes etc. (MN)	9/1/2016	\$34,543
	- State P/R Taxes etc. (MN)	9/16/2016	\$150,680
Wells Fargo-Checking	Delta Dental		
	- Dental Claims	Multiple	\$96,011
Wells Fargo-Checking	Preferred One		
	- Health Claims	Multiple	\$784,663
Wells Fargo-Checking	Wells Fargo Commercial Card		
	- Purchase Card Program	9/6/2016	\$210,674
Wells Fargo-Checking	Corporate Health Systems		
	- Flex Benefits	Multiple	\$112,474
Wells Fargo-Checking	Preferred One		
	- Broker/Reinsurance Fees	9/9/2016	\$79,729
Wells Fargo-Checking	Payroll Vendors (TRA, EBC, MSRS, etc.)		
	- Electronic Payments	Multiple	\$883,784
Wells Fargo-Checking	District Employees		
	- Expense Reimbursement	Multiple	\$25,026
Wells Fargo-Checking	Commerce Bank/Control Pay		
	- Electronic A/P	Multiple	\$479,347
Wells Fargo-Checking	MN Department of Revenue		
	- Sales & Use Tax Payment	9/21/2016	\$11,869
Wells Fargo-Checking	U.S. BankTrust N.A.	9/28/2016	\$833,249
<b>TOTAL ACTIVITY</b>			<b><u><u>\$9,331,360</u></u></b>

**WAYZATA PUBLIC SCHOOLS**  
Independent School District 284  
Wayzata, Minnesota

**BOARD OF EDUCATION**

Regular Meeting – November 14, 2016

**AGENDA SECTION:** 2. APPROVAL OF AGENDA AND CONSENT AGENDA ITEMS

**ITEM:** C. Human Resource Recommendations

**COMMENTS BY:** Ms. Annie Doughty

Attached is the recommendation regarding personnel actions, including: employment, separations and leaves of absence.

**RECOMMENDED ACTION:** Approve the Human Resource Actions as recommended.

Motion by: \_\_\_\_\_ Yes \_\_\_\_\_ Passed \_\_\_\_\_

Second by: \_\_\_\_\_ No \_\_\_\_\_ Failed \_\_\_\_\_

Abstentions \_\_\_\_\_

## HUMAN RESOURCES RECOMMENDATIONS

Consent Agenda - October 10, 2016

### EMPLOYMENT

Name	Position	Location	Reason	Start Date
Jill Idelkope	Paraprofessional - 6 Hours	Birchview	New Position	11/3/2016
Solveig Lawrence	Teacher - 3rd Grade LTR	Birchview	Leave of Absence	11/7/2017
Meredith Campbell	Paraprofessional - 6 Hours	Central Middle	New Position	11/1/2016
Lori Kurman	Paraprofessional - 3 Hours	Early Learning School	Transfer	10/31/2016
Dania Sidani	Paraprofessional - 6 Hours	Greenwood	Transfer	11/14/2016
Greg Choukalas	Custodian - 8 Hours	High School	Resignation	11/7/2016
Deborah Olson	Paraprofessional - 6 Hours	High School	Contract Ended	10/31/2016
Jordan Halverson	Teacher - Physical Education/Health	High School	Resignation	10/31/2016
Brenna Ziebell	Home Base - Assistant 3.5 Hours	Kimberly Lane	New Position	10/25/2016
Steffani Weekly	Teacher - Special Education LTR	Kimberly Lane	Leave of Absence	10/17/2016
Sunita Singh	Home Base - Instructor 2.5 Hours	Sunset Hill	New Position	10/24/2016

### CONTRACT MODIFICATION

Name	Position	Location	Modification	Date
James Randall	Teacher - Physical Education	Sunset Hill	From .7 to .8 FTE	8/29/2016

### LEAVE OF ABSENCE

Name	Position	Location	Leave Date
Sara Gammack	Teacher - 5th Grade	Birchview	Leave without pay 12/20-12/21/16
Aimee Largent	Teacher - Counselor	Central Middle	Approximately 4/10/17 - End of 16-17
Anne Overcott	Teacher - English/Language Arts	Central Middle	Approximately 11/28/16 - 2/10/17
Kristi Johnson	Teacher - Mathematics	Central Middle	Approximately 4/13/17 - End of 16-17
Megan Ringquist	Teacher - Kindergarten	Greenwood	Approximately 3/24/17 - End of 16-17
Dan Halstensgard	Teacher - Mathematics	High School	Approximately 2/2-2/15/17
Adam Woods	Teacher - Social Studies	High School	Leave without pay 1/10-1/13/17
Brian Etling	Teacher - Peer Coach	Kimberly Lane	2/2-2/3/17
Cassandra vanKoeverder	Teacher - Special Education	Oakwood	Approximately 4/28/17 - End of 16-17
Seth Brown	Teacher - Mathematics	West Middle	5/1-5/22/17

### RESIGNATION

## HUMAN RESOURCES RECOMMENDATIONS

Consent Agenda - October 10, 2016

<b>Name</b>	<b>Position</b>	<b>Location</b>	<b>Resign Date</b>
Terry Newman	Culinary Express	Birchview	11/15/2016
Kim Harren	Unaffiliated - Culinary Express Asst Supv	Central Services	11/11/2016
Becky Schellinger	Paraprofessional	Kimberly Lane	12/2/2016
Rachel Coatta	Paraprofessional	Meadow Ridge	11/4/2016
<b>RETIREMENT</b>			
<b>Name</b>	<b>Position</b>	<b>Location</b>	<b>Retirement Date</b>
Vicki O'Brien	Culinary Express	Kimberly Lane	12/21/2016

**WAYZATA PUBLIC SCHOOLS**

Independent School District 284  
Wayzata, Minnesota

**BOARD OF EDUCATION**

Regular Meeting – November 14, 2016

**AGENDA SECTION: APPROVAL OF AGENDA AND CONSENT AGENDA**

**COMMENTS BY: Jim Westrum, Executive Director of Business & Finance**

**Approve Overhang Electric Easement for Northern States Power Company Luce Line Improvement Project**

Northern States Power Company will begin its planned transmission line improvements along the Luce Line trail beginning in early 2017. Through this process, property owners adjacent to the planned transmission line improvements were contacted and received offers to compensate them for the required easements that would allow NSP to proceed with these planned improvements. Appraisals were performed and the amount of compensation is deemed reasonable for the permanent easement to allow the utility to provide the public purpose of improving poles, wires, and cables.

The administration and district staff have reviewed the request and the District's legal counsel has reviewed the agreement for reasonableness. The District will receive \$4,200 in proceeds from granting this 0.07 acre easement along the Luce Line Trail. NSP will use this easement for the purpose of maintenance and tree trimming and other minimal maintenance deemed necessary by NSP.

**RECOMMENDED ACTION:** Approve the Overhang Easement Agreement.

Motion by: \_\_\_\_\_ Yes \_\_\_\_\_ Passed \_\_\_\_\_

Second by: \_\_\_\_\_ No \_\_\_\_\_ Failed \_\_\_\_\_

Abstentions: \_\_\_\_\_

**WAYZATA PUBLIC SCHOOLS**

Independent School District 284  
Wayzata, Minnesota

**BOARD OF EDUCATION**

**Regular Meeting – November 14, 2016**

**AGENDA SECTION:** Consent Agenda

**COMMENTS BY:** Jim Westrum, Executive Director of Business & Finance

**ISD #284 403(b) Adoption Agreement**

You may recall that the IRS finalized the first significant change in 403(b) plan regulations in 42 years in 2008 and that the District approved its 403(b) Plan documents in November 2009. These new regulations transformed what was previously a participant plan into an employer plan; much like the private-sector 401(k) plans. The most significant change in the regulations was making the employer, (District 284), responsible for creating a written plan document. It continues to remain critical that the District remain in compliance with IRS and State of Minnesota regulations to ensure that Wayzata’s employees and retirees continue to receive the tax advantages associated with certain accrued severance, sick leave, and vacation payments deposited into a 403(b) plan.

The District administration worked closely with its benefits attorney and legal counsel to ensure that District 284’s 403(b) plans remain in compliance with certain requirements as stated in IRS regulations and Minnesota state statutes 356.24. Subd. 1, paragraph 11.

The School Board passed a motion at its October 12, 2015 regular school board meeting authorizing James Westrum, Executive Director of Finance and Business, to take the steps reasonably necessary to establish the program described above, including but not limited to signing contract(s) on behalf of the District to accomplish the District’s objectives and to be in compliance with IRS and State Laws and Regulations.

Attached you will find the District’s 403(b) Plan Document and Adoption Agreement Effective November 1, 2016 as executed by James Westrum on October 31, 2016. In accordance with school board policy, the 403(b) Plan Document and Adoption Agreement Effective November 1, 2016 is submitted for school board approval.

The District will continue to use five 403(b) providers and execute necessary contracts and adoption agreements as a part of the Plan documents, herein incorporated by reference.

**RECOMMENDED ACTION:** Affirm and approve the Wayzata ISD 284 Special 403(b) Plan Document and Adoption Agreement Effective November 1, 2106 as executed by James Westrum, Executive Director of Finance and Business, on October 31, 2016 and authorize James Westrum, Executive Director of Finance and Business, to take the steps reasonably necessary to establish the program described above, including but not limited to signing contract(s) on behalf of the District to accomplish the District’s objectives and be in compliance with IRS and State Laws and Regulations.

Motion by: \_\_\_\_\_ Yes \_\_\_\_\_ Passed \_\_\_\_\_

Second by: \_\_\_\_\_ No \_\_\_\_\_ Failed \_\_\_\_\_

Abstentions: \_\_\_\_\_

ADOPTION AGREEMENT

Employer hereby adopts the 403(b) Plan Document for Public Education Organizations plan document (the "Plan") as modified by this Adoption Agreement and agrees that the following provisions shall be incorporated as part of the Plan document.

EMPLOYER INFORMATION

Name of Employer: Independent School District # 284

Federal Tax ID: 41-6001464

Employer's Address:  
210 County Rd. 101 N  
PO Box 660  
Wayzata, MN 55391

Telephone Number: 763-745-5070

Fax: 763-745-5091

Contact Person: Jill Schwint

Type of Organization:

- K-12 Public School
- Community College
- Public College/University

Note: If Employer is not a public education organization, this document may not be used.

PLAN INFORMATION

1. Name of Plan: Independent School District # 284 403(b) Plan

2. Effective Date: This Adoption Agreement:

- establishes a Plan effective as of \_\_\_\_\_ (the "Effective Date") and is the first 403(b) plan document established by the Employer.
- amends and restates a previously established 403(b) Plan document of the Employer. The effective date of this amended Plan is November 1<sup>st</sup>, 2016 (the "Effective Date").

Default Construction Rule: If no box is checked, that feature is NOT included in the Plan.

3. Eligibility: Under the Plan document, ALL common law employees except student workers and student teachers are immediately eligible to make contributions under the Plan, unless an exception is indicated below. Eligibility for Employer Contributions is based on applicable employment agreements or collective bargaining agreements to which an employee is subject, or as determined by the Employer from year to year.

The following employees are excluded from participating in the Plan (NOT RECOMMENDED):

- Employees who normally work fewer than \_\_\_ hours per week (must be 20 or less and generally equivalent to 1,000 hours or less in a working year except as otherwise provided under applicable 403(b) regulations
- Employees who are eligible to participate in another plan sponsored by the Employer that permits salary reduction contributions described under Section 403(b)(12)(A) of the Code.

Note: Excluding any employees will greatly increase the risk of violating the "universal availability" requirements of Section 403(b)(A)(ii) of the Code which may result in complete Plan failure.

**4. Contributions:**

Employee Contributions (in addition to pre-tax Elective Deferrals):

- Roth 403(b) Contributions are NOT permitted under the Plan
- Roth 403(b) Contributions to the Plan are permitted beginning on December 31, 2012. If Roth 403(b) Contributions are permitted to the Plan, direct rollovers from other Roth 403(b) or 401(k) plans are , are not  accepted into the Plan

Employer Contributions, if any:

- No Employer Contributions will be made.
- Employer Contributions will be made in accordance with applicable employment agreements and collective bargaining agreements, or as may be determined from year to year by the Employer.

**5. 15 Years of Service Catch Up Contributions:** The Plan will  or will not  permit employees with 15 years of service with the Employer that satisfy the conditions for the Special Section 403(b) Catch-up Limitation for Employees With 15 Years of Service (Section 3.2 of the Plan) to increase their Elective Deferrals limitation.

**6. Investment Options:** Any Annuity Contracts and/or Custodial Accounts that meet the requirements of Section 403(b) of the Code offered by the organizations listed on Appendix 1 are authorized as Vendors under the Plan.

**7. Exchanges Within the Plan:** The Plan will  or will not  permit Participants to make Exchanges. If permitted, Exchanges may occur:

- Only between those Vendors listed on Appendix 1 (*permitted only between Vendors authorized to maintain current payroll slots*).
- Between Vendors listed on Appendix 1 and from vendors that are not listed on Appendix 1 to Vendors listed on Appendix 1. Exchanges to Vendors not listed on Appendix 1 are not permitted. (*permitted between authorized Vendors AND from unauthorized vendors to authorized Vendors*)
- Between Vendors listed on Appendix 1 and any other organization offering annuity contracts and/or custodial accounts that satisfy the requirements of Section 403(b) of the Code and execute the information sharing agreement provided by Employer for purposes of satisfying applicable compliance requirements. Administrator will maintain a list of organizations (Appendix 2) that have executed information sharing agreements and will make this list available to Vendors. (*permitted between authorized Vendors and between any other listed vendor that executes an information sharing agreement*).

**8. Transfers Into the Plan :** The Plan will  or will not  accept Transfers from another employer's 403(b) plan.

**9. Transfers From the Plan :** The Plan will  or will not  permit Transfers from the Plan to another employer's 403(b) plan, if requested by a former Participant.

**10. Beneficiary Rights :** A beneficiary of a deceased Participant's account  may  may not designate his own beneficiary.

**11. Financial Hardship Distributions:** Hardship Distributions are  or are not  available under the Plan.

12. **Loans:** Loans are  or are not  available under the Plan subject to availability and any additional conditions that may apply under a Participant's 403(b) Individual Agreement(s).

**Note: The Plan prohibits loans to any Participant who has previously defaulted on a loan from any retirement or deferred compensation plan sponsored by the Employer.**

13. **Plan Administration:** The Plan shall be administered:

- By the Employer (Default under the Plan)
- By a designated Administrator. The Employer has named Educators Benefit Consultants LLC. to act in this capacity.
- Jointly by Employer and Vendors. Unless otherwise agreed to in writing by the parties, Employer and each Funding Vehicle shall jointly act as Administrator of the Plan. Employer shall be responsible for matters relating to the Plan document, eligibility (including providing notice of the Plan to Employees), enrollment opportunities, contributions, proper tax reporting on contributions, and payroll related issues. The Funding Vehicles are responsible for matters relating to investing Contributions as directed by Participants, beneficiary designations, distributions, exchanges, transfers, rollovers, loans, withdrawals and post-employment compliance matters, such as tax reporting, notice requirements and withholding on distributions.

The following section may be used to insert provisions for which there were no acceptable alternatives provided. It may be used to modify any portion of the Plan or Adoption Agreement.

**NOTE: Any modifications should be carefully reviewed by Employer's legal counsel to ensure that changes do not adversely affect the Plan's qualification under Section 403(b) of the Code.**

Other provisions of the Plan (Attach additional pages as necessary):

---



---



---




---

EMPLOYER ACKNOWLEDGEMENTS AND SIGNATURES

Employer acknowledges that it is an eligible public education organization under Section 170(b)(1)(A)(ii) of the Code and is authorized to offer a program qualified under Section 403(b) of the Internal Revenue Code.

EMPLOYER

Print Name of Employer: INDEPENDENT SCHOOL DISTRICT #284

By: 

Print Name of Signer: James R. Westrum

Title: Executive Director

Dated: 10/31/16



---

# Appendix 1 - Approved Vendors

Wayzata ISD #284

---

**Only to be completed if Employer has elected to permit exchanges and transfers with vendors who are currently authorized to maintain an active 403(b) payroll slot with the Employer.  
(Question 7)**

**Important: If the ISA box has been checked that vendor may accept transfers/exchanges from the District's Participants. If the ISA box has not been checked that vendor shall not receive transfers/exchanges from Participants.**

<b>Name of Organization</b>	<b>Telephone #</b>	<b>ISA</b>
American Century Investors	800-345-3533	<input checked="" type="checkbox"/>
Fidelity	800-343-0860	<input checked="" type="checkbox"/>
Met Life a/k/a Metropolitan Mutual Life	800-560-5001	<input checked="" type="checkbox"/>
VOYA	844-869-2343	<input checked="" type="checkbox"/>
Waddell & Reed	888-923-3355	<input checked="" type="checkbox"/>

---

**As agreement's are signed by the vendors and submitted to EBC this Appendix will be updated.**

Monday, October 31, 2016

Page 1 of 1



**WAYZATA PUBLIC SCHOOLS**  
Independent School District 284  
Wayzata, Minnesota

**BOARD OF EDUCATION**  
Regular Meeting – November 14, 2016

**AGENDA SECTION:** 3. HUMAN RESOURCE RECOMMENDATIONS

**ITEM:** A. Wayzata Public Schools 2016-2017 Retirees

**COMMENTS BY:** Superintendent Chace B. Anderson

Tonight we would like to recognize the following employees who announced their retirement in 2016. We would like to thank them for their years of service to Wayzata Public Schools and wish them well in their future endeavors.

<u>Name</u>	<u>Position</u>	<u>Years of Service</u>
Vicki O'Brien	Kimberly Lane, Culinary Express	23 Years

**WAYZATA PUBLIC SCHOOLS**

Independent School District 284  
Wayzata, Minnesota

**BOARD OF EDUCATION**

Regular Meeting – November 14, 2016

**AGENDA SECTION: November Employee of the Month – Donna Roehl**  
**COMMENTS BY: Chace B. Anderson**

Kimberly Lane Elementary is proud to recognize Donna Roehl, our school secretary, as the November Employee of the Month. Donna has worked for 14 years in the District and at Kimberly Lane Elementary since 2009. Her dedication to excellence is seen in her professionalism, work ethic, creativity, attention to detail and positive attitude. Each day she works tirelessly to help both students and staff be the best they can be, and help families with their questions. She is a very important person on our staff, significantly contributing to the success of our school:

- During the last year, Donna transitioned 450 students to Meadow Ridge plus welcomed in 150 students from Greenwood, 90 from Plymouth Creek, 90 from Oakwood and 60 students new to Wayzata Public Schools. She gave tours to families, answered countless questions, attended play dates and did it all with a smile. She went above and beyond to make this transition as positive as possible for everyone.
- Also, over this last year she has launched multiple new systems for our building: True Time for time cards, Raptor for security and ePay for online payments for families. She is the “go to” person for training staff, substitutes, families and visitors on these systems.
- She supports the PTA with their communications and events. This year in particular she took a leadership role with its largest fundraiser, the Coyote Dash. With so many new families coming from a variety of buildings, her role as the “411 of Kimberly Lane” has been well used and we are fortunate to have her be the welcoming face of Kimberly Lane.
- She supports the teaching staff in many ways: communicating about upcoming events, ordering supplies, mentoring new staff, and thinking three moves ahead on almost everything to keep the operation of our school as smooth as possible.
- Donna’s attention to detail and creativity when ordering has saved the school thousands of dollars over the years. If there is a promo code out there for free shipping or 30% off, Donna works her magic.
- Finally, Donna’s positivity and kindness make Kimberly Lane a great place to work, and a welcoming place for students and their families. She has a big heart.

Congratulations, Ms. Roehl, on receiving this well-deserved honor.

**WAYZATA PUBLIC SCHOOLS**  
Independent School District 284  
Wayzata, Minnesota

**BOARD OF EDUCATION**  
Regular Meeting – November 14, 2016

**AGENDA SECTION: Perfect ACT**  
**COMMENTS BY: Chace B Anderson**

**Four WHS Students Earn Perfect Scores on ACT Exam**

Congratulations to Wayzata High School (WHS) seniors William Drew, Jeffrey Hu, Christine Luo and Dhruv Methi for earning a perfect score on their ACT college entrance exams. The maximum score on the ACT is a 36. Of the nearly 2.1 million students from the class of 2016 who took the ACT, only 2,235 earned a 36, or less than one-tenth of one percent of all test takers.

**William Drew** said he took one ACT test in middle school, but the classes he took at WHS are what helped the most. Outside of school, he participates in the Math, Science Bowl, Speech and Table Tennis teams. He is also active in the National Honor Society, volunteers at Maple Grove Hospital and coaches Junior High Math League. He hasn't decided on a college next year, but plans to study chemistry and neuroscience.

**Jeffrey Hu** said he took multiple practice ACT tests and that a good night's sleep and a good breakfast the day of the test helped greatly. Outside of school, he participates in debate, plays piano and volunteers at the Science Museum of Minnesota. He hasn't decided on a college for next year, but knows that he wants to major in economics followed by law school.

**Christine Luo** said she prepared by taking an ACT prep course, practice tests, and that her Advanced Placement courses at WHS also helped. Outside of school, she participates in Future Problem Solvers (FPS), Chinese Club and Business Professionals of America (BPA). She is interested in studying biology and possibly going on to medical school.

**Dhruv Methi** said he took several practice tests to prepare for the test, each time gaining a better understanding of areas for improvement. Outside of school, he participates in policy debate, coaching Junior High Math League and First Lego League at East Middle School, DECA and National Honor Society. His top choice for college is Stanford University to pursue a degree in computer science.

**WAYZATA PUBLIC SCHOOLS**

Independent School District 284  
Wayzata, Minnesota

**BOARD OF EDUCATION**

Regular Meeting – November 14, 2016

**AGENDA SECTION: WHS Boy's Cross Country**  
**COMMENTS BY: Chace B Anderson**

Wayzata High School's Boys' Cross Country took first place at the 2016 Minnesota State High School League Class AA Cross Country Meet November 5, 2016 at St. Olaf College in Northfield, MN.

Khalid Hussein, 11, took second place at the meet finishing the 5-kilometer course in 15 minutes 41 seconds.

Cross Country Team Members include Andrew Brandt, 10; Blake Buysse, 11; Jeremy Gilbertson, 12; Khalid Hussein, 11; Liban Jama, 12; Grant Matthews, 11; Gemechu Meskele, 12; Grant Price, 10 and Mitchell Tolander, 11.

The Wayzata Boys' Cross Country team is coached by Mark Popp and assistant coaches Andrew Hansen, Brandon Heebink and Kyle Rasmussen

Full results are on the MSHSL website at [www.mshsl.org](http://www.mshsl.org).

**WAYZATA PUBLIC SCHOOLS**  
Independent School District 284  
Wayzata, Minnesota

**BOARD OF EDUCATION**  
Regular Meeting – November 14, 2016

**AGENDA SECTION: SUPERINTENDENT'S REPORTS AND RECOMMENDATIONS**

**ITEM: Finance and Business Services**

**COMMENTS BY: Jim Westrum, Exec. Director of Finance and Business Services**

**Monthly Financial Reports**

Enclosed for School Board review and information are the following financial reports as of September 2016:

- Student Activity Fund Report
- Investment Summary
- Analysis of Financial Reports
- Statement of Revenues
- Statement of Expenditures

No School Board action is required.



## ANALYSIS OF FINANCIAL REPORTS For the month ended September 30, 2016

### **Statement of Revenues:**

This report reflects revenue received by the month end noted above. Overall revenues are consistent with prior years with the exception of the following items:

- Alternative Facilities, Construction and Tech fund in the current year reflects revenue received from a Bond Surety which is related to the completion of a construction project. Fiscal 2016 had a deficit revenue amount due to recognizing a loss on an investment sold in July 2015. This loss was netted against earnings in prior fiscal years and over the life of the investment had positive net earnings.
- Interest earnings are reflected in the Building Construction Fund. The investments have been held since the May 2014 proceeds were received.

### **Statement of Expenses:**

This report reflects actual expenditures paid and does not include outstanding encumbrance balances. Overall expenditures are in line with prior years with the exception of the following:

- General Fund expenditures are in line with prior years with the exception of Supplies & Materials expenditures. Supplies and Materials were significantly higher this year due to the many classroom related items needed to open the new elementary school and the new addition at the High School.
- Debt Service and OPEB Debt Service Funds reflect interest payments on debt that are due the first of August. The payment in August is for interest only and principal and interest payments are due the first of February each year. As of June 30, 2016, the OPEB Debt Service Fund was eliminated due to all outstanding debt being repaid.
- A construction budget is not reflected for the Building Construction Fund due to projects spanning over multiple fiscal years. For Fiscal 2016 only, the District adopted a budget for salary and related benefit expenditures. Construction began in Fiscal 2015 with a majority of the construction completed by the start of the 16-17 school year.

**WAYZATA PUBLIC SCHOOLS  
INVESTMENT SUMMARY  
As of September 30, 2016**

**GENERAL FUND**

<u>Investment Held At</u>	<u>Type of Investment</u>	<u>Purchase Date</u>	<u>Maturity Date</u>	<u>Investment Cost</u>	<u>Maturity Amount</u>	<u>Interest Earned</u>	<u>Yield</u>
PMA/MN Trust	Money Market	N/A	NOW	N/A	\$13,760,685	N/A	0.43%
MSDLAF+	Money Market	N/A	NOW	N/A	\$1,789,186	N/A	0.47%
MSDMAX	Money Market	N/A	NOW	N/A	\$4,043,981	N/A	0.58%
Morgan Stanley	Money Market	N/A	NOW	N/A	\$3,515,592	N/A	0.31%
<b>Total General Fund</b>					<b>\$23,109,444</b>		

Note: Term Series investment held with PMA/MN Trust consists of investments in certificates of deposit, obligations of the U.S. Government, it's agencies and instrumentalities, municipal obligations or any other instruments permitted under Minnesota law.

**FUND 06 (ALT FACILITIES BONDS)**

<u>Investment Held At</u>	<u>Type of Investment</u>	<u>Purchase Date</u>	<u>Maturity Date</u>	<u>Investment Cost</u>	<u>Maturity Amount</u>	<u>Interest Earned</u>	<u>Yield</u>
MSDLAF+	Money Market	N/A	NOW	N/A	\$1,195	N/A	0.47%
<b>Total Alt. Facilities Bonds Fund</b>				<b>\$0</b>	<b>\$1,195</b>	<b>\$0</b>	

**FUND 82 (2014 BUILDING BONDS)**

<u>Investment Held At</u>	<u>Type of Investment</u>	<u>Purchase Date</u>	<u>Maturity Date</u>	<u>Investment Cost</u>	<u>Maturity Amount</u>	<u>Interest Earned</u>	<u>Yield</u>
MSDLAF+	Money Market	N/A	NOW	N/A	\$13,159,347	N/A	0.47%
<b>Total Building Bonds Fund</b>				<b>\$0</b>	<b>\$13,159,347</b>	<b>\$0</b>	

**Wayzata Public Schools**  
**Student Activity Fund Summary**  
**September 2016**

<b>PROGRAM/LOCATION : MISCELLANEOUS</b>											
<i>Fund</i>	<i>Type</i>	<i>Org</i>	<i>Prg</i>	<i>Crs</i>	<i>Fin</i>	<i>Obj/Src</i>	<i>Account Name</i>	<b>Balance as Of</b>	<b>FY'2016/17</b>	<b>FY'2016/17</b>	<b>Balance as Of</b>
								<i>06/30/16</i>	<i>Revenue</i>	<i>Expend</i>	<i>09/30/16</i>
21	E/R	018	000	000	000	899/XXX	AD BUILDING	2,014.59	-	53.62	1,960.97
<b>TOTAL MISCELLANEOUS</b>								<b>2,014.59</b>	<b>-</b>	<b>53.62</b>	<b>1,960.97</b>
<b>PROGRAM/LOCATION : WAZATA HIGH SCHOOL</b>											
<i>Fund</i>	<i>Type</i>	<i>Org</i>	<i>Prg</i>	<i>Crs</i>	<i>Fin</i>	<i>Obj/Src</i>	<i>Account Name</i>	<b>Balance as Of</b>	<b>FY'2016/17</b>	<b>FY'2016/17</b>	<b>Balance as Of</b>
								<i>06/30/16</i>	<i>Revenue</i>	<i>Expend</i>	<i>09/30/16</i>
21	E/R	251	280	001	000	899/099	WAYZATA PLAYERS	29,837.50	2,288.94	6,663.00	25,463.44
21	E/R	251	280	003	000	899/099	YEARBOOK (WAYAKO)	-	36,892.39	2,726.65	34,165.74
21	E/R	251	280	005	000	899/099	CERAMICS	4,514.44	-	768.20	3,746.24
21	E/R	251	280	007	000	899/099	CHEERLEADERS	162.00	7,407.00	7,300.78	268.22
21	E/R	251	280	008	000	899/099	CHOIR	2,852.51	4,155.00	2,468.04	4,539.47
21	E/R	251	280	009	000	899/099	DANCE TEAM	24,060.87	8,708.00	7,112.00	25,656.87
21	E/R	251	280	016	000	899/099	ACTIVITY SUPPORT	101,448.33	6,481.77	2,814.72	105,115.38
21	E/R	251	280	017	000	899/099	DECA	5,664.00	3,265.00	233.05	8,695.95
21	E/R	251	280	019	000	899/099	FRENCH	501.23	195.00	-	696.23
21	E/R	251	280	020	000	899/099	GERMAN	11,780.00	-	-	11,780.00
21	E/R	251	280	021	000	899/099	LETTERMAN	38,954.34	38,102.87	(7,210.05)	84,267.26
21	E/R	251	280	022	000	899/099	FINE ARTS	5,008.66	-	337.92	4,670.74
21	E/R	251	280	024	000	899/099	BAND	18,050.59	8,787.57	8,477.69	18,360.47
21	E/R	251	280	026	000	899/099	NATIONAL HONOR	4,075.76	-	743.94	3,331.82
21	E/R	251	280	027	000	899/099	STUDENT SERVICES	2,184.14	-	69.00	2,115.14
21	E/R	251	280	028	000	899/099	ORCHESTRA	8,263.89	3,990.73	630.00	11,624.62
21	E/R	251	280	030	000	899/099	STUDENT COUNCIL	14,386.52	14,452.13	6,204.24	22,634.41
21	E/R	251	280	031	000	899/099	SPANISH	2,111.33	750.00	-	2,861.33
21	E/R	251	280	038	000	899/099	SCHOLARSHIPS	-	-	-	-
21	E/R	251	280	039	000	899/099	THEATRE ARTS	1,110.34	208.15	32.18	1,286.31
21	E/R	251	280	040	000	899/099	BUSINESS PROFESS(BPA)	7,153.94	2,039.00	1,508.51	7,684.43
21	E/R	251	280	042	000	899/099	SKILLS USA	-	-	-	-
21	E/R	251	280	043	000	899/099	ART CLUB	-	-	-	-
21	E/R	251	280	044	000	899/099	LINK	11,596.52	(40.81)	2,877.98	8,677.73
21	E/R	251	280	047	000	899/099	SUPER MILEAGE TEAM	481.79	-	-	481.79
21	E/R	251	280	048	000	899/099	Y.E.S.	3,649.01	2,660.76	116.78	6,192.99
21	E/R	251	280	049	000	899/099	CREATIVE WRITING	2,131.24	-	-	2,131.24
21	E/R	251	280	050	000	899/099	TROJAN LOCK ROOM (DECA - S	21,461.34	2,860.89	7,623.82	16,698.41
21	E/R	251	280	051	000	899/099	V21 - ACTIVITY SUPPORT	619.81	1,650.00	-	2,269.81
21	E/R	251	280	052	000	899/099	ROBOTICS TEAM	113.27	-	-	113.27
21	E/R	251	280	053	000	899/099	SHOW STOPPERS	9,487.41	5,743.00	11,340.52	3,889.89
21	E/R	251	280	055	000	899/099	CHINESE CLUB	1,256.56	60.00	-	1,316.56
21	E/R	251	280	056	000	899/099	LAKER'S BKST NOOK	15,048.37	448.90	1,202.89	14,294.38
21	E/R	251	280	057	000	899/099	WHS INTERNATIONAL FESTIVAL	1,390.87	-	-	1,390.87
21	E/R	251	280	058	000	899/099	FRESHMAN RETREAT	2,095.15	2,393.33	3,841.85	646.63
21	E/R	251	280	059	000	899/099	TRAP & SKEET	5,932.90	520.00	-	6,452.90
21	E/R	251	280	060	000	899/099	JR STATESMAN	741.05	-	-	741.05
21	E/R	251	280	061	000	899/099	QUIZ BOWL	-	475.00	100.00	375.00
<b>TOTAL WAZATA HIGH SCHOOL</b>								<b>358,125.68</b>	<b>154,494.62</b>	<b>67,983.71</b>	<b>444,636.59</b>

**Wayzata Public Schools**  
**Student Activity Fund Summary**  
**September 2016**

**PROGRAM/LOCATION : WAZATA HIGH SCHOOL ATHLETICS**

<i>Fund</i>	<i>Type</i>	<i>Org</i>	<i>Prg</i>	<i>Crs</i>	<i>Fin</i>	<i>Obj/Src</i>	<i>Account Name</i>	<b>Balance as Of 06/30/16</b>	<b>FY'2016/17 Revenue</b>	<b>FY'2016/17 Expend</b>	<b>Balance as Of 09/30/16</b>
21	E/R	251	280	070	000	899/099	BASEBALL	1,063.00	9,592.00	1,554.68	9,100.32
21	E/R	251	280	071	000	899/099	BASKETBALL - BOYS	1,587.82	220.00	250.00	1,557.82
21	E/R	251	280	072	000	899/099	BASKETBALL - GIRLS	6,952.90	3,280.00	-	10,232.90
21	E/R	251	280	073	000	899/099	CROSS COUNTRY - BOYS	4,679.48	1,085.00	1,371.00	4,393.48
21	E/R	251	280	074	000	899/099	CROSS COUNTRY - GIRLS	1,209.32	-	261.35	947.97
21	E/R	251	280	075	000	899/099	FOOTBALL	59,317.95	2,247.00	20,650.02	40,914.93
21	E/R	251	280	076	000	899/099	GYMNASTICS	3,945.58	490.00	-	4,435.58
21	E/R	251	280	077	000	899/099	GOLF - BOYS	-	3,423.00	2,354.67	1,068.33
21	E/R	251	280	078	000	899/099	GOLF - GIRLS	607.21	1,221.00	781.49	1,046.72
21	E/R	251	280	079	000	899/099	HOCKEY - BOYS	-	10,381.88	8,388.81	1,993.07
21	E/R	251	280	080	000	899/099	HOCKEY - GIRLS	16,710.40	5,141.25	-	21,851.65
21	E/R	251	280	081	000	899/099	SKIING - ALPINE	4,952.30	1,369.00	-	6,321.30
21	E/R	251	280	082	000	899/099	SKIING - NORDIC	11,976.01	595.00	400.98	12,170.03
21	E/R	251	280	083	000	899/099	SOFTBALL	-	4,955.00	1,629.49	3,325.51
21	E/R	251	280	084	000	899/099	SWIMMING/DIVING - BOYS	4,933.71	542.00	-	5,475.71
21	E/R	251	280	085	000	899/099	SWIMMING/DIVING - GIRLS	10,325.70	2,565.00	2,668.07	10,222.63
21	E/R	251	280	086	000	899/099	SOCCER - BOYS	6,976.85	1,479.00	3,976.25	4,479.60
21	E/R	251	280	087	000	899/099	SOCCER - GIRLS	13,211.88	51.00	3,579.32	9,683.56
21	E/R	251	280	088	000	899/099	SYNCHRONIZED SWIMMING	6,982.34	6,669.00	4,814.50	8,836.84
21	E/R	251	280	089	000	899/099	TENNIS - BOYS	21,194.14	2,412.00	3,380.80	20,225.34
21	E/R	251	280	090	000	899/099	TENNIS - GIRLS	2,338.15	9,606.75	2,604.51	9,340.39
21	E/R	251	280	091	000	899/099	TRACK/FIELD - BOYS	253.11	2,131.00	215.90	2,168.21
21	E/R	251	280	092	000	899/099	TRACK/FIELD - GIRLS	723.15	4,043.00	-	4,766.15
21	E/R	251	280	093	000	899/099	VOLLEYBALL	10,795.36	1,008.00	4,918.52	6,884.84
21	E/R	251	280	094	000	899/099	WRESTLING	-	25.00	1,389.24	(1,364.24)
21	E/R	251	280	095	000	899/099	ADAPTIVE ATHLETICS	3,900.12	-	-	3,900.12
21	E/R	251	280	096	000	899/099	BOYS LACROSSE	4,339.77	7,617.00	1,871.89	10,084.88
21	E/R	251	280	097	000	899/099	GIRLS LACROSSE	2,622.60	1,773.00	255.63	4,139.97
<b>TOTAL HIGH SCHOOL ATHLETICS</b>								<b>201,598.85</b>	<b>83,921.88</b>	<b>67,317.12</b>	<b>218,203.61</b>

**PROGRAM/LOCATION : CENTRAL MIDDLE SCHOOL**

<i>Fund</i>	<i>Type</i>	<i>Org</i>	<i>Prg</i>	<i>Crs</i>	<i>Fin</i>	<i>Obj/Src</i>	<i>Account Name</i>	<b>Balance as Of 06/30/16</b>	<b>FY'2016/17 Revenue</b>	<b>FY'2016/17 Expend</b>	<b>Balance as Of 09/30/16</b>
21	E/R	253	280	152	000	899/099	MUSICAL	9,942.65	-	685.83	9,256.82
21	E/R	253	280	156	000	899/099	STUDENT COUNCIL	1,508.47	-	-	1,508.47
21	E/R	253	280	157	000	899/099	BAND	257.78	240.00	-	497.78
21	E/R	253	280	161	000	899/099	YEARBOOKS	4,523.37	-	3,047.00	1,476.37
21	E/R	253	280	165	000	899/099	STUDENT SERVICES	7,155.27	4,832.03	-	11,987.30
<b>TOTAL CENTRAL MIDDLE SCHOOL</b>								<b>23,387.54</b>	<b>5,072.03</b>	<b>3,732.83</b>	<b>24,726.74</b>

**Wayzata Public Schools**  
**Student Activity Fund Summary**  
**September 2016**

**PROGRAM/LOCATION : WEST MIDDLE SCHOOL**

<i>Fund</i>	<i>Type</i>	<i>Org</i>	<i>Prg</i>	<i>Crs</i>	<i>Fin</i>	<i>Obj/Src</i>	<i>Account Name</i>	<b>Balance as Of 06/30/16</b>	<b>FY'2016/17 Revenue</b>	<b>FY'2016/17 Expend</b>	<b>Balance as Of 09/30/16</b>
21	E/R	351	280	202	000	899/099	CHOIR	30.89	-	-	30.89
21	E/R	351	280	203	000	899/099	STUDENT SERVICES	2,473.94	2,227.41	518.23	4,183.12
21	E/R	351	280	209	000	899/099	STUDENT COUNCIL	-	-	131.77	(131.77)
21	E/R	351	280	212	000	899/099	YEARBOOK	5,905.25	877.00	-	6,782.25
21	E/R	351	280	213	000	899/099	THEATER	4,083.84	8,179.00	2,299.98	9,962.86
21	E/R	351	280	215	000	899/099	DAY ONE	-	-	230.00	(230.00)
<b>TOTAL WEST MIDDLE SCHOOL</b>								<b>12,493.92</b>	<b>11,283.41</b>	<b>3,179.98</b>	<b>20,597.35</b>

**PROGRAM/LOCATION : EAST MIDDLE SCHOOL**

<i>Fund</i>	<i>Type</i>	<i>Org</i>	<i>Prg</i>	<i>Crs</i>	<i>Fin</i>	<i>Obj/Src</i>	<i>Account Name</i>	<b>Balance as Of 06/30/16</b>	<b>FY'2016/17 Revenue</b>	<b>FY'2016/17 Expend</b>	<b>Balance as Of 09/30/16</b>
21	E/R	352	280	100	000	899/099	STUDENT SERVICES	15,272.07	5,454.66	3,828.17	16,898.56
21	E/R	352	280	104	000	899/099	BAND	519.85	-	-	519.85
21	E/R	352	280	105	000	899/099	STUDENT COUNCIL	15,906.34	-	1,460.62	14,445.72
21	E/R	352	280	107	000	899/099	VARIETY FUND	14,513.71	-	349.00	14,164.71
<b>TOTAL EAST MIDDLE SCHOOL</b>								<b>46,211.97</b>	<b>5,454.66</b>	<b>5,637.79</b>	<b>46,028.84</b>

**PROGRAM/LOCATION : MEADOW RIDGE**

<i>Fund</i>	<i>Type</i>	<i>Org</i>	<i>Prg</i>	<i>Crs</i>	<i>Fin</i>	<i>Obj/Src</i>	<i>Account Name</i>	<b>Balance as Of 06/30/16</b>	<b>FY'2016/17 Revenue</b>	<b>FY'2016/17 Expend</b>	<b>Balance as Of 09/30/16</b>
21	E/R	403	280	474	000	899/099	STUDENT SERVICES	-	-	-	-
<b>TOTAL MEADOW RIDGE</b>								<b>-</b>	<b>-</b>	<b>-</b>	<b>-</b>

**PROGRAM/LOCATION : BIRCHVIEW**

<i>Fund</i>	<i>Type</i>	<i>Org</i>	<i>Prg</i>	<i>Crs</i>	<i>Fin</i>	<i>Obj/Src</i>	<i>Account Name</i>	<b>Balance as Of 06/30/16</b>	<b>FY'2016/17 Revenue</b>	<b>FY'2016/17 Expend</b>	<b>Balance as Of 09/30/16</b>
21	E/R	404	280	251	000	899/099	STUDENT SERV - K	-	-	-	-
21	E/R	404	280	253	000	899/099	STUDENT SERV - GR 1	-	-	-	-
21	E/R	404	280	254	000	899/099	STUDENT SERV - GR 2	-	-	-	-
21	E/R	404	280	255	000	899/099	STUDENT SERV - GR 3	-	-	-	-
21	E/R	404	280	256	000	899/099	STUDENT SERV - GR 4	-	-	-	-
21	E/R	404	280	257	000	899/099	STUDENT SERV - GR 5	-	-	-	-
21	E/R	404	280	259	000	899/099	STUDENT COUNCIL	731.92	-	-	731.92
21	E/R	404	280	260	000	899/099	STUDENT SERV - GENERAL	3,282.34	969.00	1,567.11	2,684.23
21	E/R	404	280	261	000	899/099	MEDIA	251.26	1,175.98	245.12	1,182.12
<b>TOTAL BIRCHVIEW</b>								<b>4,265.52</b>	<b>2,144.98</b>	<b>1,812.23</b>	<b>4,598.27</b>

**Wayzata Public Schools**  
**Student Activity Fund Summary**  
**September 2016**

<b>PROGRAM/LOCATION : GREENWOOD</b>								<b>Balance as Of</b>	<b>FY'2016/17</b>	<b>FY'2016/17</b>	<b>Balance as Of</b>
<i>Fund</i>	<i>Type</i>	<i>Org</i>	<i>Prg</i>	<i>Crs</i>	<i>Fin</i>	<i>Obj/Src</i>	<i>Account Name</i>	<i>06/30/16</i>	<i>Revenue</i>	<i>Expend</i>	<i>09/30/16</i>
21	E/R	406	280	307	000	899/099	KINDERGARTEN	411.77	965.00	-	1,376.77
21	E/R	406	280	311	000	899/099	MEDIA	47.11	-	-	47.11
21	E/R	406	280	312	000	899/099	STUDENT SERVICES	1,090.52	3,613.68	1,518.75	3,185.45
<b>TOTAL GREENWOOD</b>								<b>1,549.40</b>	<b>4,578.68</b>	<b>1,518.75</b>	<b>4,609.33</b>
<b>PROGRAM/LOCATION : OAKWOOD</b>								<b>Balance as Of</b>	<b>FY'2016/17</b>	<b>FY'2016/17</b>	<b>Balance as Of</b>
<i>Fund</i>	<i>Type</i>	<i>Org</i>	<i>Prg</i>	<i>Crs</i>	<i>Fin</i>	<i>Obj/Src</i>	<i>Account Name</i>	<i>06/30/16</i>	<i>Revenue</i>	<i>Expend</i>	<i>09/30/16</i>
21	E/R	407	280	469	000	899/099	STUDENT COUNCIL	1,754.95	-	-	1,754.95
21	E/R	407	280	474	000	899/099	STUDENT SERV - GENERAL	7,271.21	-	-	7,271.21
21	E/R	407	280	476	000	899/099	CHESS CLUB	328.24	-	-	328.24
<b>TOTAL OAKWOOD</b>								<b>9,354.40</b>	<b>-</b>	<b>-</b>	<b>9,354.40</b>
<b>PROGRAM/LOCATION : SUNSET HILL</b>								<b>Balance as Of</b>	<b>FY'2016/17</b>	<b>FY'2016/17</b>	<b>Balance as Of</b>
<i>Fund</i>	<i>Type</i>	<i>Org</i>	<i>Prg</i>	<i>Crs</i>	<i>Fin</i>	<i>Obj/Src</i>	<i>Account Name</i>	<i>06/30/16</i>	<i>Revenue</i>	<i>Expend</i>	<i>09/30/16</i>
21	E/R	408	280	572	000	899/099	STUDENT SERVICES	12,573.95	589.61	2,483.72	10,679.84
21	E/R	408	280	573	000	899/099	ALL DISTRICT CHOIR	-	-	239.21	(239.21)
21	E/R	408	280	574	000	899/099	PENCIL MACHINE/STORE	1,817.03	-	-	1,817.03
<b>TOTAL SUNSET HILL</b>								<b>14,390.98</b>	<b>589.61</b>	<b>2,722.93</b>	<b>12,257.66</b>
<b>PROGRAM/LOCATION : PLYMOUTH CREEK</b>								<b>Balance as Of</b>	<b>FY'2016/17</b>	<b>FY'2016/17</b>	<b>Balance as Of</b>
<i>Fund</i>	<i>Type</i>	<i>Org</i>	<i>Prg</i>	<i>Crs</i>	<i>Fin</i>	<i>Obj/Src</i>	<i>Account Name</i>	<i>06/30/16</i>	<i>Revenue</i>	<i>Expend</i>	<i>09/30/16</i>
21	E/R	410	280	533	000	899/099	STUDENT SERVICES	5,370.72	339.15	6,369.55	(659.68)
<b>TOTAL PLYMOUTH CREEK</b>								<b>5,370.72</b>	<b>339.15</b>	<b>6,369.55</b>	<b>(659.68)</b>
<b>PROGRAM/LOCATION : GLEASON LAKE</b>								<b>Balance as Of</b>	<b>FY'2016/17</b>	<b>FY'2016/17</b>	<b>Balance as Of</b>
<i>Fund</i>	<i>Type</i>	<i>Org</i>	<i>Prg</i>	<i>Crs</i>	<i>Fin</i>	<i>Obj/Src</i>	<i>Account Name</i>	<i>06/30/16</i>	<i>Revenue</i>	<i>Expend</i>	<i>09/30/16</i>
21	E/R	411	280	352	000	899/099	STUDENT SERVICES	27,741.20	154.00	458.46	27,436.74
<b>TOTAL GLEASON LAKE</b>								<b>27,741.20</b>	<b>154.00</b>	<b>458.46</b>	<b>27,436.74</b>

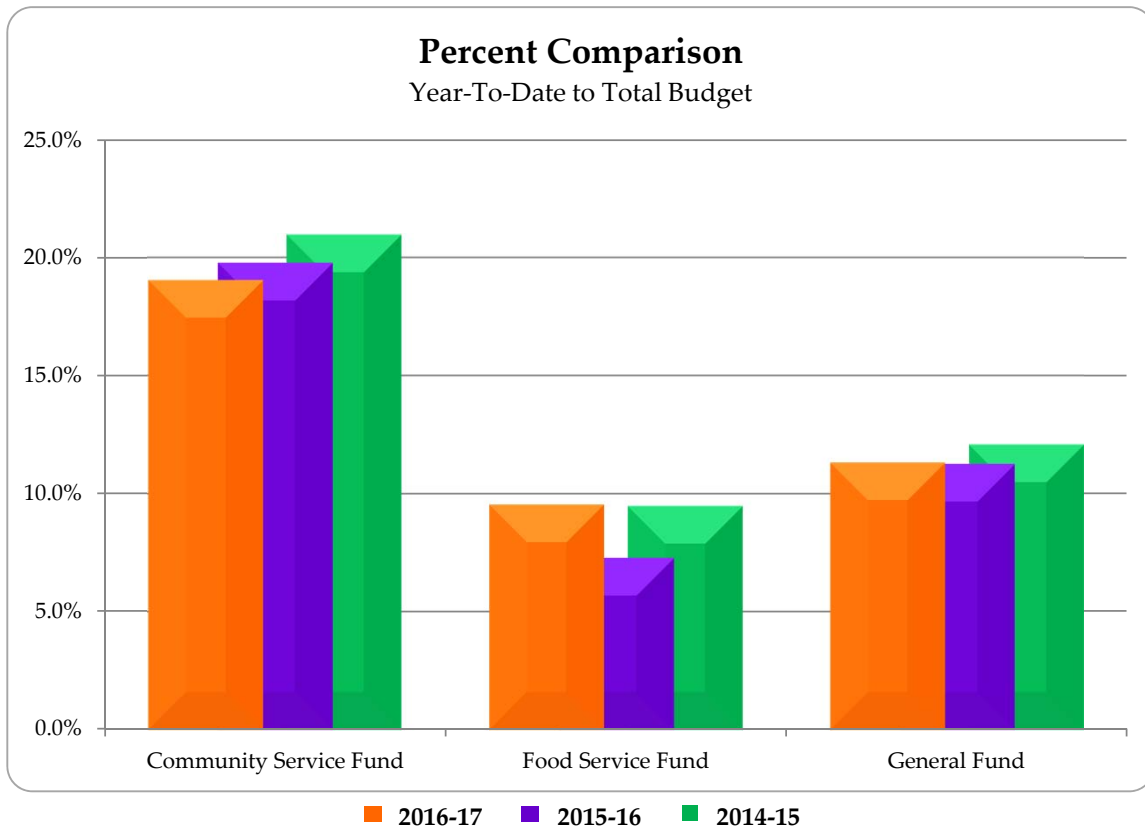
Wayzata Public Schools											
Student Activity Fund Summary											
September 2016											
PROGRAM/LOCATION : KIMBERLY LANE											
<i>Fund</i>	<i>Type</i>	<i>Org</i>	<i>Prg</i>	<i>Crs</i>	<i>Fin</i>	<i>Obj/Src</i>	<i>Account Name</i>	Balance as Of <i>06/30/16</i>	FY'2016/17 Revenue	FY'2016/17 Expend	Balance as Of <i>09/30/16</i>
21	E/R	412	280	401	000	899/099	STUDENT COUNCIL	672.68	-	-	672.68
21	E/R	412	280	403	000	899/099	KINDERGARTEN ACTIVITY	3,279.80	-	-	3,279.80
21	E/R	412	280	404	000	899/099	CARLSON	-	-	-	-
21	E/R	412	280	405	000	899/099	SPRAQUE	-	-	-	-
21	E/R	412	280	430	000	899/099	MEDIA	225.41	134.49	-	359.90
21	E/R	412	280	431	000	899/099	STUDENT SERVICES	51,883.10	6,532.52	-	58,415.62
<b>TOTAL KIMBERLY LANE</b>								<b>56,060.99</b>	<b>6,667.01</b>	<b>-</b>	<b>62,728.00</b>
<b>GRAND TOTAL</b>								<b>762,565.76</b>	<b>274,700.03</b>	<b>160,786.97</b>	<b>876,478.82</b>



## STATEMENT OF EXPENDITURES

For the month ended September 30, 2016

Fund	Year- To-Date	Budget	YTD as % of Budget		
			2016-17	2015-16	2014-15
<b>General Fund</b>					
Salaries	\$ 8,696,415	\$ 80,757,016	10.8%	11.1%	11.5%
Benefits	2,617,456	24,616,636	10.6%	10.3%	11.0%
Purchased Services	1,920,780	19,736,660	9.7%	9.0%	11.5%
Supplies & Materials	1,236,892	2,936,520	42.1%	31.5%	27.0%
Capital Expenditures	1,187,095	2,391,322	49.6%	49.0%	57.6%
Other Expenses	133,673	8,992,214	1.5%	1.6%	1.7%
<b>Total General Fund</b>	<b>\$ 15,792,311</b>	<b>\$ 139,430,368</b>	<b>11.3%</b>	<b>11.3%</b>	<b>12.1%</b>
Food Service Fund	\$ 586,929	\$ 6,138,495	9.6%	7.3%	9.5%
Community Service Fund	1,721,271	9,025,778	19.1%	19.8%	21.0%
Alt Fac, Const and Tech Fund	8,791,549	18,106,953	48.6%	24.3%	44.3%
Debt Service Fund	2,859,429	14,616,076	19.6%	22.9%	6.6%
Building Construction Fund	11,278,042	-	-	-	-
<b>Total All Funds</b>	<b>\$ 41,029,530</b>	<b>\$ 187,317,670</b>	<b>21.9%</b>	<b>19.4%</b>	<b>16.9%</b>

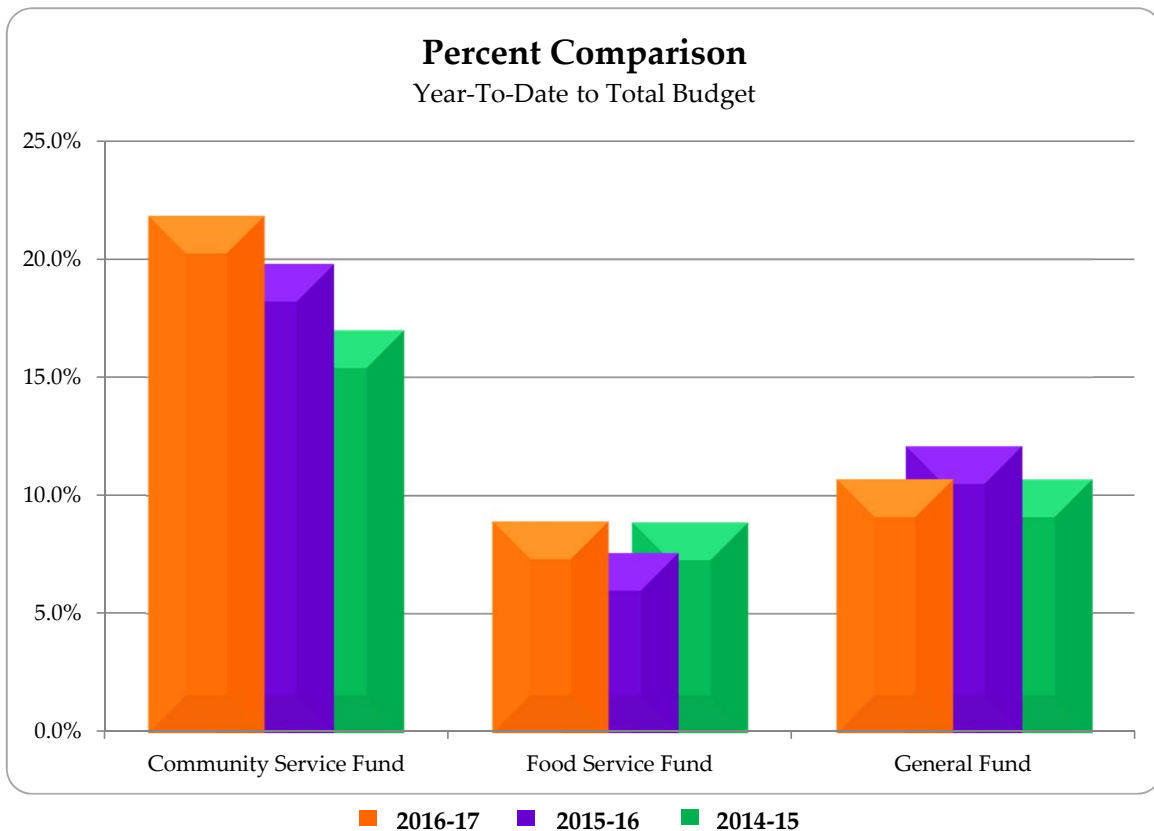




## STATEMENT OF REVENUES

For the month ended September 30, 2016

Fund	Year- To-Date	Budget	YTD as % of Budget		
			2016-17	2015-16	2014-15
General Fund	\$ 14,913,102	\$ 135,866,109	11.0%	12.4%	11.0%
Capital Expenditures Fund	-	519,018	0.0%	0.0%	0.0%
Federal Programs Fund	1,720	2,875,546	0.1%	0.0%	0.0%
Total	<u>\$ 14,914,822</u>	<u>\$ 139,260,673</u>	<u>10.7%</u>	<u>12.1%</u>	<u>10.7%</u>
Food Service Fund	\$ 528,378	\$ 5,905,900	8.9%	7.6%	8.9%
Community Service Fund	1,920,364	8,793,136	21.8%	19.8%	17.0%
Alt Fac, Const and Tech Fund	449,347	8,757,030	5.1%	-0.6%	0.5%
Debt Service Fund	107	14,650,626	0.0%	0.0%	0.0%
Building Construction Fund	37,964	-	-	-	-
Total All Funds	<u><u>\$ 17,850,982</u></u>	<u><u>\$ 177,367,365</u></u>	<u><u>10.1%</u></u>	<u><u>10.6%</u></u>	<u><u>9.8%</u></u>



**WAYZATA PUBLIC SCHOOLS**

Independent School District 284  
Wayzata, Minnesota

**BOARD OF EDUCATION**

Regular Board Meeting – November 14, 2016

**AGENDA SECTION: 6. SUPERINTENDENT’S REPORTS AND RECOMMENDATIONS**

**ITEM: Finance and Business Services**

**COMMENTS BY: Jim Westrum, Executive Director of Business and Finance**

**Resolution Providing for Open Enrollment Non-Resident Agreement for 2017-2018**

According to Minnesota Statute 124D.03, Subdivision 2, A Board may, by resolution, limit the enrollment for nonresident pupils in its schools or program according to this section to a number not less than the lessor of:

- 1) One percent of the total enrollment at each grade level in the district; or
- 2) The number of district’s residents at that grade level enrolled in a non-resident district according to this section.

**Open Enrollment Guidelines for 2017-2018:**

- Close open enrollment at grades 1-12
- In accordance with state law, offer and accept enrollment to kindergarten students with a currently enrolled sibling. The 2017-2018 kindergarten students will be placed at an elementary school that has anticipated capacity.
- In accordance with state law, offer and accept enrollment to kindergarten students with a currently employed staff person. The 2017-2018 kindergarten students will be placed at an elementary school that has anticipated capacity.
- If the required minimum number of open enrolled kindergarten students is not met with siblings and/or children of employees, then a lottery will be executed to reach the minimum number of satisfy the 1% of open enrolled students per grade requirement

**RECOMMENDED ACTION:** Approve the recommendation to close open enrollment for 2017-2018 in grades 1-12 and limit open enrollment in kindergarten to siblings and children of employees.

Motion by: \_\_\_\_\_ ROLL CALL Passed \_\_\_\_\_

Second by: \_\_\_\_\_ VOTE Failed \_\_\_\_\_

## **RESOLUTION PROVIDING FOR OPEN-ENROLLMENT NON-RESIDENT AGREEMENT FOR 2014-2015**

**WHEREAS**, in accordance to Minnesota Statute 124D.03, Subdivision 2, A Board may, by resolution, limit the enrollment for nonresident pupils in its schools or program according to this section to a number not less than the lessor of:

- One percent of the total enrollment at each grade level in the district;
- The number of district residents at that grade level enrolled in a non-resident district according to this section;

**RECITAL**, the administration recommends the following open enrollment guidelines for school year 2017-2018:

- Close open enrollment at grades 1-12
- Accept and offer enrollment to kindergarten students with a currently enrolled sibling. The 2017-2018 kindergarten students will be placed at an elementary school that has anticipated capacity.
- Accept and offer enrollment to kindergarten students with a parent who is currently employed by the district. The 2017-2018 kindergarten students will be placed at an elementary school that has anticipated capacity.

**NOW, THEREFORE, BE IT RESOLVED** by the School Board of Independent School District No. 284, City of Wayzata, State of Minnesota, as follows:

1. Approve the recommendation to close open enrollment for 2017-2018 in grades 1-12 and limit open enrollment in kindergarten to siblings and children of employees.

WITNESS MY HAND officially as such recording officer this 14th day of November, 2016.

\_\_\_\_\_  
School District Clerk

**WAYZATA PUBLIC SCHOOLS**

Independent School District 284  
Wayzata, Minnesota

**BOARD OF EDUCATION**

**Regular Meeting – November 14, 2016**

**AGENDA SECTION: APPROVAL OF AGENDA AND CONSENT AGENDA**

**COMMENTS BY: Jim Westrum, Executive Director of Business & Finance**

**Site Lease Agreement With Option Between Wayzata School District and City of Wayzata**

The City of Wayzata will lease a 100 foot by 100 foot area for the public purpose of providing “911” and other telecommunication services within the city of Wayzata. The portion of the property is located near the north east corner of the campus of Wayzata West Middle School. The lease also provides an access easement to the Antenna Lease Area and all improvements and maintenance of this area will be at the sole of expense of the city of Wayzata. (See Exhibit E of the attached lease agreement )

Highlights of the lease include:

- Rent: \$2,000 per month, adjusted on an annual basis by CPI, with a minimum of 3% and a maximum of 6%.
- Lease Term: 25 years
- Renewal Terms: 2 additional ten year terms
- Cancel Terms: 30 days prior to renewal
- The City of Wayzata is anticipated to approve the use and structures and it is anticipated that the site work would begin in 2017.

**RECOMMENDED ACTION:** Approve the attached City of Wayzata Lease Agreement and authorize the clerk to sign the document.

Motion by: \_\_\_\_\_ Yes \_\_\_\_\_ Passed \_\_\_\_\_

Second by: \_\_\_\_\_ No \_\_\_\_\_ Failed \_\_\_\_\_

Abstentions: \_\_\_\_\_

## SITE LEASE WITH OPTION

THIS SITE LEASE WITH OPTION (“**Lease**”) dated the \_\_\_\_ day of \_\_\_\_\_, 2016 is made by and between Independent School District #284, a Minnesota K-12 public school district (“**Landlord**”) and The City of Wayzata, a Municipal Corporation under the laws of Minnesota (“**Tenant**”).

### 1. Option to Lease.

(a) In consideration of the payment of One Thousand and No/100 Dollars (\$1,000.00) (the “**Option Fee**”) by Tenant to Landlord, Landlord hereby grants to Tenant an option to lease a portion of the real property legally described on attached Exhibit A (the “**Landlord Property**”), said portion of the Landlord Property being leased being legally described on attached Exhibit B (the “**Antenna Lease Area**”), as well as an access easement over that portion of the Landlord Property legally described on attached Exhibit C (“**Access Easement Area**”), to provide access to the Antenna Lease Area via a public right of way, as well as a utility easement over that portion of the Landlord Property legally described on attached Exhibit D (“**Utility Easement Area**”), all upon the terms and conditions set forth herein (the “**Option**”). The Antenna Lease Area, Access Easement Area and Utility Easement Area are all depicted on the pictorial attached hereto as Exhibit E. The Option shall be for an initial term of twelve (12) months, commencing on the Effective Date (as defined below) (the “**Option Period**”). The Option Period may be extended by Tenant for an additional twelve (12) months upon written notice to Landlord and payment of One Thousand and No/100 Dollars (\$1,000.00) (“**Additional Option Fee**”) at any time prior to the end of the Option Period.

(b) During the Option Period, and any extension thereof, and during the Initial Term and any Renewal Term (as those terms are defined below) of this Lease, Landlord agrees to cooperate with Tenant in obtaining, at Tenant’s expense, all licenses and permits or authorizations required for Tenant’s use of the Premises (as defined below) from all applicable government and/or regulatory entities (including, without limitation, zoning and land use authorities, and the Federal Communications Commission (“**FCC**”) (“**Government Approvals**”), including all land use and zoning permit applications, and Landlord agrees to cooperate with and to allow Tenant, at no cost to Landlord, to obtain a title report, zoning approvals and variances, land-use permits provided Landlord shall not be required to incur any liability or expense in so doing. Landlord expressly grants to Tenant a right of access to the Landlord Property to perform any surveys, soil tests, and other engineering procedures or environmental investigations (“**Tests**”) on the Landlord Property deemed necessary or appropriate by Tenant to evaluate the suitability of the Landlord Property for the uses contemplated under this Lease. During the Option Period and any extension thereof, and during the Initial Term or any Renewal Term of this Lease, Landlord agrees that it will not interfere with Tenant’s efforts to secure other licenses and permits or authorizations that relate to other property. During the

Option Period and any extension thereof, Tenant may exercise the Option by so notifying Landlord in writing, at Landlord's address in accordance with Section 12 hereof. Tenant agrees to indemnify, defend and hold harmless Landlord from any claim caused by Tenant's entry onto the Landlord Property.

(c) If Tenant exercises the Option, then Landlord hereby leases to Tenant the Antenna Lease Area, Access Easement Area, and the Utility Easement Area for the purposes allowed herein, (collectively referred to hereinafter as the "**Premises**"). The Antenna Lease Area located at 149 Barry Avenue North, Wayzata, Minnesota, comprises approximately 10,000 square feet plus access area.

2. Term. The initial term of this Lease shall be twenty-five (25) years plus the initial partial month, if any, commencing on the date of exercise of the Option (the "**Commencement Date**"), and terminating at midnight on the last day of the month containing the twenty-fifth anniversary of the Commencement Date (the "**Initial Term**").

3. Renewal. Tenant shall have the right to extend this Lease for two (2) additional and successive ten (10) year terms (each a "**Renewal Term**") on the same terms and conditions as set forth herein. This Lease shall automatically renew for each successive Renewal Term unless Tenant notifies Landlord, in writing, of Tenant's intention not to renew this Lease, at least thirty (30) days prior to the expiration of the Initial Term or any Renewal Term. If Tenant shall remain in possession of the Premises at the expiration of this Lease or any Renewal Term without a written agreement, such tenancy shall be deemed a month-to-month tenancy under the same terms and conditions of this Lease, except that such tenancy shall be deemed a month-to-month tenancy under the terms and conditions of this Lease, except that such month-to-month tenancy may be terminated at will by either party upon thirty (30) days' written notice to the other party.

4. Rent.

(a) From and after the Commencement Date, Tenant shall pay Landlord or designee, as rent for the Premises, Twenty-four Thousand and No/100 Dollars (\$24,000.00) one half of which will be paid each on January 1 and June 1 ("**Rent**"). The first payment of Rent shall be due within twenty (20) days following the Commencement Date and shall be prorated based on the days remaining in the month containing the Commencement Date, and thereafter Rent will be payable monthly in advance by the fifth (5<sup>th</sup>) day of each month to the Payee and address specified in Section 12 below. If this Lease is terminated for any reason (other than a default by Tenant) at a time other than on the last day of a month, Rent shall be prorated as of the date of termination and all prepaid Rent shall be immediately refunded to Tenant. Landlord, its successors, assigns, and/or designee, if any, will submit to Tenant any documents required by Tenant in connection with the payment of Rent, including, without limitation, an IRS Form W-9.

**(b)** During the Initial Term and any Renewal Terms, monthly Rent shall be adjusted, effective on the first anniversary of the Commencement Date, and on each such subsequent anniversary thereof, to an amount equal to one hundred three percent (103%) of the monthly Rent in effect immediately prior to the adjustment date, or, an amount equal to the increase in the Consumer Price Index (“CPI”), whichever is greater up to a maximum annual adjustment of six percent (6%). At least sixty (60) days prior to the adjustment date, Landlord shall notify Tenant as to the Rent increase calculation. Landlord’s failure to so notify Tenant shall result in the Rent increasing to an amount equal to one hundred three percent (103%) of the monthly Rent in effect immediately prior to the adjustment date. The (“CPI”) shall mean the Consumer Price Index for All Urban Consumers, All Cities, All Items (1984=100) as published by the United States Department of Statistics, or if such Index be discontinued, its successor Index, or, if none, a comparable Index as the parties shall agree upon. To determine the annual rental increase to be paid by Tenant under the “CPI” adjuster, the annualized rental for the previous year shall be multiplied by a percentage figure, computed from a fraction, the numerator of which shall be the CPI for the third (3<sup>rd</sup>) quarter of the preceding year and the denominator of which shall be the CPI for the corresponding quarter of one year earlier. Such fraction shall be converted to a percentage equivalent. The resulting percentage figure shall be multiplied by the previous years rent (annualized for the first year).

**5. Permitted Use.** The Premises may be used by Tenant for the transmission and reception of telecommunication signals and for the construction, installation, operation, maintenance, repair, removal or replacement of related facilities, including, without limitation, tower and/or Antenna Facilities (defined below), antennas, microwave dishes, equipment shelters and/or cabinets, and related activities.

**6. Interference.** Landlord shall not use, nor shall Landlord permit its lessees, licensees, employees, invitees or agents to use, any portion of the Antenna Lease Area or the Access Easement Area in any way which interferes with the operations of Tenant, it being agreed that customary school operations on the remainder of Landlord Property as of the Commencement Date do not interfere with Tenant’s use of the Premises. Such interference shall be deemed a material breach by the interfering party, who shall, upon written notice from the other, be responsible for terminating said interference. In the event any such interference does not cease promptly, the parties acknowledge that continuing interference may cause irreparable injury and, therefore, the injured party shall have the right, in addition to any other rights that it may have at law or in equity, to bring a court action to enjoin such interference or to terminate this Lease immediately upon written notice.

**7. Improvements; Utilities; Access.**

**(a)** Tenant shall have the right, at its expense, to erect and maintain on the Premises improvements, personal property and facilities necessary to operate its communications system and communication systems of third party entities, including, without limitation, radio and telecommunication transmitting

and receiving antennas, microwave dishes, tower and base, equipment shelters and/or cabinets and related cables and utility lines and a location based system, as such location based system may be required by any county, state or federal agency/department, including, without limitation, additional antenna(s), coaxial cable, base units and other associated equipment (collectively, the “**Antenna Facilities**”). Tenant shall have the right to alter, replace, expand, enhance and upgrade the Antenna Facilities at any time during the term of this Lease. Tenant shall cause all construction to occur lien-free and in compliance with all applicable laws and ordinances. Tenant shall repair, at its sole cost, any damage to Landlord Property caused by Tenant during the construction phase of initial installation. Such repair shall be done to Landlord’s satisfaction. Landlord acknowledges that it shall neither interfere with any aspects of construction nor attempt to direct construction personnel as to the location of or method of installation of the Antenna Facilities and the Easements (as defined below). The Antenna Facilities shall remain the exclusive property of Tenant and shall not be considered fixtures. Tenant shall have the right to remove the Antenna Facilities at any time during and upon the expiration or termination of this Lease.

(b) Tenant, at its expense, shall use any and all appropriate means of restricting access to the Antenna Facilities, including, without limitation, the construction of a fence.

(c) Tenant shall, at Tenant’s expense, keep and maintain the Antenna Facilities now or hereafter located on the Antenna Lease Area in commercially reasonable condition and repair during the term of this Lease, normal wear and tear and casualty excepted. All such Antenna Facilities and the Premises shall be in compliance with all applicable ordinances, statutes, laws and regulations at all times during the term of the Lease. Upon termination or expiration of this Lease, the Premises shall be returned to Landlord in good, usable condition, normal wear and tear and casualty excepted.

(d) Tenant shall have the right to install utilities, at Tenant’s expense, and to improve the present utilities on the Antenna Lease Area (including, but not limited to, the installation of emergency power generators or alternative power sources) as well as on the Utility Easement Area. Landlord agrees to use reasonable efforts in assisting Tenant to acquire approvals for utility service and power sources. Tenant shall, wherever practicable, install separate meters for utilities used on the Antenna Lease Area by Tenant. In the event separate meters are not installed or utility service is not timely available, Tenant may connect temporarily to Landlord’s electrical service and shall pay the periodic charges for all utilities attributable to Tenant’s use, at the rate charged by the servicing utility. Landlord shall diligently request that the provider of utilities correct any variation, interruption or failure of utility service. If the provider declines to make such correction, either Landlord or Tenant shall make such correction depending on whether it is Landlord’s system or Tenant’s system which has the problem.

(e) As partial consideration for Rent paid under this Lease, Landlord hereby grants Tenant easements on, under and across the Landlord Property for ingress, egress, utilities and access (including access for the purposes described in Section 1) to the Premises adequate to install and maintain utilities, including, but not limited to, the installation of power and telecommunications service cable, and to service the Premises and the Antenna Facilities at all times during the Initial Term of this Lease and any Renewal Term in accordance with the terms of this Lease. The Easements are set forth on attached Exhibits B, C and D (collectively, the “**Easements**”). The parties shall cooperate with each other in recording the Easements in the appropriate land records office.

(f) Tenant shall have 24-hours-a-day, 7-days-a-week access to the Premises at all times during the Initial Term of this Lease and any Renewal Term, at no charge to Tenant.

(g) Tenant shall maintain and repair all existing access roadways in the easement area in a manner sufficient to allow vehicular and pedestrian access at all times, at its sole expense, except for any damage to such roadways caused by Landlord.

(h) Upon termination of the Lease, Landlord may require Tenant to remove all improvements to the Premises and restore the Premises to the condition it existed as of the Commencement Date. Landlord shall deliver written notice requesting such removal at least ninety (90) days prior to the Lease termination date. If Landlord does not give such notice to Tenant and Tenant does not remove such improvements within ninety (90) days after the Lease termination date, at the option of Landlord and upon thirty (30) days written notice to Tenant, such improvements shall be owned by Landlord with no compensation to Tenant and without further liability for either party.

**8. Termination.** Except as otherwise provided herein, this Lease may be terminated, without any penalty or further liability as follows:

(a) Upon ninety (90) days’ written notice by Landlord if Tenant fails to cure a default for payment of amounts due under this Lease within such ninety (90) day period.

(b) Immediately upon written notice by Tenant if Tenant notifies Landlord of any unacceptable results of any Tests prior to Tenant’s installation of the Antenna Facilities on the Premises, or if Tenant does not obtain, maintain, or otherwise forfeits or cancels any license (including, without limitation, an FCC license), permit or any Governmental Approval necessary to the installation and/or operation of the Antenna Facilities or Tenant’s business.

(c) Upon ninety (90) days’ written notice by Tenant if Tenant determines that the Antenna Lease Area or the Antenna Facilities are

inappropriate or unnecessary for Tenant's ( or Tenant's lessee's ) operations for economic or technological reasons.

**(d)** Immediately upon written notice by Tenant if the Premises or the Antenna Facilities are destroyed or damaged so as in Tenant's reasonable judgment to substantially and adversely affect the effective use of the Antenna Facilities. In such event, all rights and obligations of the parties shall cease as of the date of the damage or destruction except clean up obligations of Tenant as to the Premises, and obligations related to events which occurred prior to the date of damage or destruction, and Tenant shall be entitled to the reimbursement of any Rent prepaid by Tenant. If Tenant elects to continue this Lease, then all Rent shall abate until the Premises and/or the Antenna Facilities are restored to the condition existing immediately prior to such damage or destruction.

**(e)** At the time title to the Antenna Lease Area transfers to a condemning authority pursuant to a taking of all or a portion of the Landlord Property sufficient in Tenant's determination to render the Premises unsuitable for Tenant's use. Landlord and Tenant shall each be entitled to pursue their own separate awards with respect to such taking. Sale of all or part of the Premises to a purchaser with the power of eminent domain in the face of the exercise of the power shall be treated as a taking by condemnation.

**(f)** By Landlord, after the expiration of the second Renewal Term.

**9. Default and Right to Cure.** Notwithstanding anything contained herein to the contrary and without waiving any other rights granted to it at law or in equity, each party shall have the right, but not the obligation, to terminate this Lease on written notice pursuant to Section 12 hereof, to take effect immediately, if the other party fails to perform any covenant or commits a material breach of this Lease and fails to diligently pursue a cure thereof to its completion after thirty (30) days' written notice specifying such failure of performance or default.

**10. Taxes.** The parties recognize that Landlord is a school district and the Landlord Property is currently tax exempt. Landlord shall pay when due all real property taxes for the Landlord Property, including the Premises. In the event that Landlord fails to pay any such real property taxes or other fees and assessments, Tenant shall have the right, but not the obligation, to pay such owed amounts and deduct them from Rent amounts due under this Lease. Notwithstanding the foregoing, Tenant shall pay any personal property tax, real property tax or any other tax or fee which is directly attributable to the presence or installation of Tenant's Antenna Facilities, only for taxes levied in those calendar years while this Lease remains in effect. If Landlord receives notice of any personal property or real property tax assessment against Landlord, which may affect Tenant and is directly attributable to Tenant's installation, Landlord shall provide timely notice of the assessment to Tenant sufficient to allow Tenant to consent to or challenge such assessment, whether in a Court, administrative proceeding, or other venue, on behalf of Landlord and/or Tenant. Further, Landlord shall provide to Tenant any and all documentation associated with the assessment and shall execute

any and all documents reasonably necessary to effectuate the intent of this Section 10. In the event real property taxes are assessed against Landlord or Tenant for the Premises or the Landlord Property, Tenant shall have the right, but not the obligation, to terminate this Lease without further liability after thirty (30) days' written notice to Landlord, provided Tenant pays any real property taxes assessed as provided herein.

Tenant shall have the right, but not the obligation, to satisfy any and all liens recorded on the Landlord Property upon at least ten (10) business days' prior notice to Landlord. In exchange for its satisfaction of any outstanding liens on the Landlord Property which are not otherwise to be paid or reimbursed by Tenant, Rent shall fully abate until Tenant is reimbursed for the entire amount paid by Tenant in satisfaction of the liens.

**11. Insurance and Subrogation and Indemnification.**

**(a)** Tenant will maintain Commercial General Liability insurance in amounts of One Million and no/100 Dollars (\$1,000,000.00) per occurrence and Two Million and no/100 Dollars (\$2,000,000.00) aggregate. Tenant may satisfy this requirement by obtaining the appropriate endorsement to any master policy of liability insurance Tenant may maintain.

**(b)** Landlord and Tenant hereby mutually release each other (and their successors or assigns) from liability and waive all right of recovery against the other to the extent any loss or damage is covered by their respective first party property insurance policies for all perils insured thereunder. In the event of such insured loss, neither party's insurance company shall have a subrogated claim against the other.

**(c)** Subject to the property insurance waivers set forth in subsection 11(b), Landlord and Tenant each agree to indemnify and hold harmless the other party from and against any and all claims, damages, costs and expenses, including reasonable attorney fees, to the extent caused by or arising out of the negligent acts or omissions or willful misconduct in the operations or activities on the Landlord Property and Access Easement Area by the indemnifying party or the employees, agents, contractors, licensees, tenants and/or subtenants of the indemnifying party (other than Tenant as a tenant of Landlord), or a breach of any obligation of the indemnifying party under this Lease. The indemnifying party's obligations under this section are contingent upon its receiving prompt written notice of any event giving rise to an obligation to indemnify the other party and the indemnified party's granting it the right to control the defense and settlement of the same. Notwithstanding this subparagraph 11(c), Tenant shall indemnify, defend and hold Landlord harmless from any legal liability Landlord incurs for personal injury due to Tenant's violation of maximum permissible exposure limits, established by the American National Standards Institute and adopted by the FCC, to the extent such injury is caused by the Antenna Facilities. Notwithstanding anything to the contrary above, the indemnification provided by the Tenant in this Section 11 are subject to tort limits of liability for Minnesota municipalities.

**12. Notices.** All notices, requests, demands and other communications shall be in writing and are effective three (3) days after deposit in the U.S. mail, certified and postage paid, or upon receipt if personally delivered or sent by next-business-day delivery via a nationally recognized overnight courier to the addresses set forth below. Landlord or Tenant may from time to time designate any other address for this purpose by providing written notice to the other party.

**If to Tenant, to:**

City of Wayzata  
600 Rice Street  
Wayzata, MN 55391  
Attn: Director of Public Services

**If to Landlord, to:**

Independent School District #284  
210 County Road 101 N.  
PO Box 660  
Wayzata, MN 55391  
Attn: Director of Finance and Business

**And with a copy to:**

Best & Flanagan LLP  
60 South Sixth Street, Suite 2700  
Minneapolis, MN 55402  
Attn: City Attorney for Wayzata

**Pay and Send Rent payments to the following Payee:**

Independent School District #284  
210 County Road 101 N.  
PO Box 660  
Wayzata, MN 55391

**13. Quiet Enjoyment, Title and Authority.** As of the Effective Date and at all times during the Initial Term and any Renewal Terms of this Lease, Landlord covenants and warrants to Tenant that (i) Landlord has full right, power and authority to execute and perform this Lease; (ii) Landlord has fee title to the Landlord Property and (iii) Tenant's quiet enjoyment of the Premises or any part thereof shall not be disturbed as long as Tenant is not in default beyond any applicable grace or cure period.

**14. Environmental Laws.** Landlord represents that it has no knowledge of any substance, chemical or waste (collectively, "**Hazardous Substance**") on the Landlord Property that is identified as hazardous, toxic or dangerous in any applicable federal, state or local law or regulation, Landlord and Tenant shall not introduce or use any Hazardous Substance on the Landlord Property in violation of any applicable law. Landlord shall be responsible for, and shall promptly conduct any investigation and remediation as required by any applicable environmental laws, all spills or other releases of any Hazardous Substance not caused by Tenant, that have occurred or which may occur on the Landlord Property. Subject to statutory limitations on liability, each party agrees to defend, indemnify and hold harmless the other from and against any and all administrative and judicial actions and rulings, claims, causes of action, demands and liability (collectively, "**Claims**") including, but not limited to, damages, cost expenses, assessments, penalties, fines, losses, judgments and reasonable attorney fees that the indemnitee may suffer or incur due to the existence of any Hazardous Substances on the Landlord Property or the migration of any Hazardous Substance to other properties or the release of any Hazardous Substance into the environment (collectively, "**Actions**"), that relate to or arise from the indemnitor's activities on the Landlord Property. The indemnifications in this section specifically include, without limitation, costs incurred in connection with any investigation of site conditions or any

cleanup, remedial, removal or restoration work required by any governmental authority. This Section 14 shall survive the termination or expiration of this Lease.

**15. Assignment and Subleasing.** Tenant may not assign or otherwise transfer this lease without the prior written consent of Landlord not to be unreasonably withheld. No assignment shall be effective until and unless the assignee executes an Assignment and Assumption Agreement reasonably acceptable to Landlord and delivers such an Assignment and Assumption Agreement to Landlord prior to the effective date of any such assignment. Upon any assignment by Tenant hereunder, Tenant shall be relieved of all liabilities and obligations hereunder and Landlord shall look solely to the assignee for performance under this Lease and all obligations hereunder.

Tenant may not sublease all or a part of the Premises to another party without the Landlord's prior consent, it being agreed that it is Tenant's intent to lease portions of the Antenna Facilities to third party telecommunication companies, which Landlord hereby approves.

Landlord shall have the right to assign or otherwise transfer this Lease and the Easements granted herein, upon written notice to Tenant except for the following: any assignment or transfer of this Lease which is separate and distinct from a transfer of Landlord's entire right, title and interest in the Landlord Property shall require the prior written consent of Tenant which may be withheld in Tenant's sole discretion. Upon Tenant's receipt of (i) an executed deed or assignment and (ii) an IRS Form W-9 from assignee, and subject to Tenant's consent, if required, Landlord shall be relieved of all liabilities and obligations hereunder and Tenant shall look solely to the assignee for performance under this Lease and all obligations hereunder.

Additionally, notwithstanding anything to the contrary above, Landlord or Tenant may, upon notice to the other, grant a security interest in this Lease (and as regards Tenant, in the Antenna Facilities), and may collaterally assign this Lease (and as regards Tenant, in the Antenna Facilities) to any mortgagees or holders of security interests, including their successors or assigns (collectively "**Secured Parties**"). In such event, Landlord or Tenant, as the case may be, shall execute such consent to leasehold financing as may reasonably be required by Secured Parties.

**16. Successors and Assigns.** This Lease and the Easements granted herein shall run with the land, and shall be binding upon and inure to the benefit of the parties, their respective successors, personal representatives and assigns.

**17. Waiver of Landlord's Lien.** Landlord hereby waives any and all lien rights it may have, statutory or otherwise, concerning the Antenna Facilities or any portion thereof, which shall be deemed personal property for the purposes of this Lease, whether or not the same is deemed real or personal property under applicable laws, and Landlord gives Tenant and Secured Parties the right to remove all or any portion of the same from time to time, whether before or after a default under this Lease, in Tenant's and/or Secured Party's sole discretion and without Landlord's consent.

**18. Access/Utilities.** The Landlord hereby grants to Tenant an access easement over the Access Easement Area as well as a utility easement over the Utility Easement Area. The Tenant shall, at its sole cost, be required to improve and maintain that area of the Access Easement Area located outside of that portion of the Access Easement Area which is improved with parking and drive areas serving the adjoining school. Improvements to the Access Easement Area shall be approved by the Landlord, said approval not to be unreasonably withheld. Landlord agrees to allow Tenant to provide a hard service (either black-top, concrete or gravel) over that portion of the Access Easement Area necessary for vehicular access to the Antenna Lease Area. If Tenant installs any utilities in the Utility Easement Area, Tenant shall be responsible for returning the area to at least as good a condition as it was in prior to such utility work. Landlord and Tenant agree that they shall use best efforts not use the Access Easement Area in such a way that would result in the other party not continuing to enjoy continuous access through the Access Easement Area.

**19. Miscellaneous.**

**(a)** The prevailing party in any litigation arising hereunder shall be entitled to reimbursement from the other party of its reasonable attorneys' fees and court costs, including appeals, if any.

**(b)** This Lease constitutes the entire agreement and understanding of the parties, and supersedes all offers, negotiations and other agreements with respect to the subject matter and property covered by this Lease. Any amendments to this Lease must be in writing and executed by both parties.

**(c)** Landlord agrees to cooperate with Tenant in executing any documents necessary to protect Tenant's rights in or use of the Premises. A Memorandum of Lease in substantially the form attached hereto as Exhibit C may be recorded in place of this Lease by Tenant.

**(d)** In the event the Landlord Property is encumbered by a mortgage or deed of trust, Landlord agrees, upon request of Tenant, to obtain and furnish to Tenant a non-disturbance and attornment agreement for each such mortgage or deed of trust, in a form reasonably acceptable to Tenant.

**(e)** Tenant may obtain title insurance on its interest in the Premises. Landlord agrees to execute such documents as the title company may require in connection therewith.

**(f)** This Lease shall be construed in accordance with the laws of the state in which the Landlord Property is located, without regard to the conflicts of law principles of such state.

**(g)** If any term of this Lease is found to be void or invalid, the remaining terms of this Lease shall continue in full force and effect. Any questions of particular interpretation shall not be interpreted against the drafter, but rather in accordance with the fair meaning thereof. No provision of this Lease will be deemed waived by either party unless expressly waived in writing by the waiving

party. No waiver shall be implied by delay or any other act or omission of either party. No waiver by either party of any provision of this Lease shall be deemed a waiver of such provision with respect to any subsequent matter relating to such provision.

**(h)** The persons who have executed this Lease represent and warrant that they are duly authorized to execute this Lease in their individual or representative capacities as indicated.

**(i)** This Lease may be executed in any number of counterparts, each of which shall be deemed an original, but all of which together shall constitute a single instrument.

**(j)** All Exhibits referred to herein and any Addenda are incorporated herein for all purposes. The parties understand and acknowledge that Exhibits may be attached to this Lease and the Memorandum of Lease, in preliminary form. Accordingly, the parties agree that upon the preparation of final, more complete Exhibits may be replaced by Tenant with such final, more complete exhibit(s).

**(k)** If either party is represented by any broker or any other leasing agent, such party is responsible for all commission fees or other payment to such agent, and agrees to indemnify and hold the other party harmless from all claims by such broker or anyone claiming through such broker.

**20. Future Development.** Tenant understands and acknowledges that Landlord may redesign, redevelop or utilize the Landlord Property for alternative public use at some future date, and that the design and manner of such uses shall be in the sole discretion of Landlord. In the event Landlord undertakes such use, redesign or redevelopment, then Landlord and Tenant agree to cooperate with one another as necessary to facilitate both parties' use of the Landlord Property. Landlord will use its best efforts to accommodate and/or relocate Tenant's equipment at a comparable location, at Landlord's sole cost and expense. Tenant may install a temporary antenna facility and power source on the Landlord Property during any such period of relocation. Notwithstanding the foregoing, Landlord shall not have the right to relocate the Antenna Facilities until after the expiration of the second Renewal Term and only upon at least one hundred eighty (180) days prior written notice to Tenant.

[NEXT PAGE IS THE SIGNATURE PAGE]

The effective date of this Lease is the date of execution by the last party to sign (the **“Effective Date”**).

**LANDLORD:** Independent School District #284

By: \_\_\_\_\_

Printed Name: \_\_\_\_\_

Title: \_\_\_\_\_

Date: \_\_\_\_\_

**LANDLORD:** Independent School District #284

By: \_\_\_\_\_

Printed Name: \_\_\_\_\_

Title: \_\_\_\_\_

Date: \_\_\_\_\_

**TENANT:** City of Wayzata

By: \_\_\_\_\_

Printed Name: \_\_\_\_\_

Title: \_\_\_\_\_

Date: \_\_\_\_\_

**TENANT:** City of Wayzata

By: \_\_\_\_\_

Printed Name: \_\_\_\_\_

Title: \_\_\_\_\_

Date: \_\_\_\_\_

000043/316015/2412185\_4

## EXHIBIT A

### LANDLORD PROPERTY

The Landlord Property is legally described as follows:

Wayzata West Middle School  
149 Barry Avenue North  
Wayzata, MN 55391

P.I.D. #06.117.22.22.0008

#### Existing Legal Description

That part of Lot 1, Auditor's Subdivision No. 184, Hennepin County, Minn., lying East of a line described as beginning at the Northwest corner of Section 6, Township 117, Range 22, thence on an assumed bearing of South along the West line of said Section 6 a distance of 90 feet, thence South 32 degrees 56 minutes East, a distance of 936 feet, thence South 12 degrees West to the South line of said Lot 1 and there ending. EXCEPT roads, ALSO EXCEPT that part of said Lot 1 described as beginning at a point on the East line of said Lot 1 a distance of 320 feet South from the Southwesterly Railroad right of way line, thence West 150 feet, thence South 85 feet, thence East 150 feet to the East line of Lot, thence North to the point of beginning, Hennepin County, Minnesota.

**EXHIBIT B**

**ANTENNA LEASE AREA**

A 100 foot by 100 foot lease area for Antenna purposes over, under and across that part of the above described property described as follows;

Commencing at the northwest corner of Section 6, Township 117 North, Range 22 West, thence South 00 degrees 42 minutes 17 seconds West (assumed bearing) along the west line of said Section 6 a distance of 1083.29 feet; thence South 69 degrees 20 minutes 15 seconds East a distance of 979.24 feet; thence North 00 degrees 17 minutes 38 seconds East a distance of 42.67 feet to the northerly right of way line of Wayzata Boulevard; thence North 00 degrees 17 minutes 38 seconds East a distance of 263.44 feet; thence North 23 degrees 12 minutes 36 seconds West a distance of 88.77 feet; thence North 10 degrees 48 minutes 21 seconds East a distance of 243.77 feet; thence North 03 degrees 08 minutes 01 second East a distance of 266.74 feet; thence North 37 degrees 02 minutes 38 seconds East a distance of 92.97 feet to the point of beginning of the lease area to be described; thence North 00 degrees 00 minutes 00 seconds East a distance of 100.00 feet; thence North 90 degrees 00 minutes 00 seconds East a distance of 100.00 feet; thence South 00 degrees 00 minutes 00 seconds East a distance of 100.00 feet; thence North 90 degrees 00 minutes 00 seconds West a distance of 100.00 feet to the point of beginning.

Antenna Lease Area encompasses 10000 SF of above described property.

## EXHIBIT C

### ACCESS EASEMENT DESCRIPTION

A 20.00 foot wide Permanent Easement for access purposes over, under and across that part of the above described property. The centerline of said 20.00 foot wide easement is described as follows;

Commencing at the northwest corner of Section 6, Township 117 North, Range 22 West, thence South 00 degrees 42 minutes 17 seconds West (assumed bearing) along the west line of said Section 6 a distance of 1083.29 feet; thence South 69 degrees 20 minutes 15 seconds East a distance of 979.24 feet; thence North 00 degrees 17 minutes 38 seconds East a distance of 42.67 feet to the northerly right of way line of Wayzata Boulevard and the beginning of the 20.00 foot wide access easement centerline to be described; thence North 00 degrees 17 minutes 38 seconds East a distance of 263.44 feet; thence North 23 degrees 12 minutes 36 seconds West a distance of 88.77 feet; thence North 10 degrees 48 minutes 21 seconds East a distance of 243.77 feet; thence North 03 degrees 08 minutes 01 second East a distance of 266.74 feet; thence North 37 degrees 02 minutes 38 seconds East a distance of 92.97 feet to a point on the southerly line of the above described lease area, and said centerline there terminating. The sidelines of said easement shall be prolonged or shortened to terminate at the northerly right of way of line Wayzata Boulevard East and the southerly and westerly line of the above described lease area.

Permanent Access Easement acquisition encompasses 19218 SF of above described property.

## EXHIBIT D

### UTILITY EASEMENT DESCRIPTION

A 15.00 foot wide Permanent Easement for utility purposes over, under and across that part of the above described property. The centerline of said 15.00 foot wide easement is described as follows;

Commencing at the northwest corner of Section 6, Township 117 North, Range 22 West, thence South 00 degrees 42 minutes 17 seconds West (assumed bearing) along the west line of said Section 6 a distance of 1083.29 feet; thence South 69 degrees 20 minutes 15 seconds East a distance of 883.61 feet; thence North 00 degrees 17 minutes 38 seconds East a distance of 42.67 feet to the northerly right of way line of Wayzata Boulevard and the beginning of the 15.00 foot wide utility easement centerline to be described; thence North 00 degrees 17 minutes 38 seconds East a distance of 306.75 feet; thence North 09 degrees 51 minutes 27 seconds East a distance of 42.23 feet; thence North 14 degrees 04 minutes 50 seconds East a distance of 162.73 feet; thence North 21 degrees 48 minutes 52 seconds East a distance of 111.26 feet; thence North 03 degrees 08 minutes 01 seconds East a distance of 213.30 feet; thence North 37 degrees 02 minutes 38 seconds East a distance of 117.42 feet to a point on the westerly line of the above described lease area, and said centerline there terminating. The sidelines of said easement shall be prolonged or shortened to terminate at the northerly right of way line of Wayzata Boulevard East and the westerly line of the above described lease area.

Permanent Access Easement acquisition encompasses 9537 SF of above described property.



**EXHIBIT F**

**MEMORANDUM OF LEASE**

Assessor's Parcel Number: \_\_\_\_\_  
Between Independent School District #284 ("**Landlord**") and City of Wayzata ("**Tenant**")

A Site Lease with Option (the "**Lease**") by and between Independent School District #284, a Minnesota K-12 public school district ("**Landlord**") and City of Wayzata, a Minnesota Municipal Corporation ("**Tenant**") was made regarding a portion of the following property:

See Attached Exhibit "A" incorporated herein for all purposes

The Option is for a term of twelve (12) months after the Effective Date (as defined under the Lease) of the Lease, with up to one additional twelve (12) month renewal ("**Option Period**").

The Lease is for a term of twenty-five (25) years and will commence on the date as set forth in the Lease (the "**Commencement Date**"). Tenant shall have the right to extend this Lease for two (2) additional and successive ten (10) year terms.

IN WITNESS WHEREOF, the parties hereto have respectively executed this memorandum effective as of the date of the last party to sign.

**LANDLORD:** Independent School District #284

By: \_\_\_\_\_  
Printed Name: \_\_\_\_\_  
Title: \_\_\_\_\_  
Date: \_\_\_\_\_

**LANDLORD:** Independent School District #284

By: \_\_\_\_\_  
Printed Name: \_\_\_\_\_  
Title: \_\_\_\_\_  
Date: \_\_\_\_\_

**TENANT:** City of Wayzata

By: \_\_\_\_\_  
Printed Name: \_\_\_\_\_

Title: \_\_\_\_\_  
Date: \_\_\_\_\_

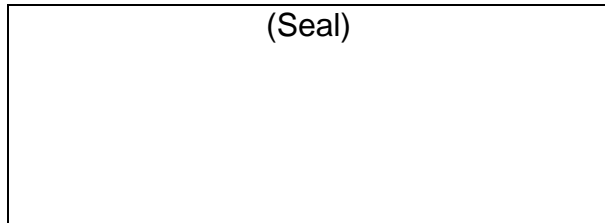
**TENANT:** City of Wayzata

By: \_\_\_\_\_  
Printed Name: \_\_\_\_\_  
Title: \_\_\_\_\_  
Date: \_\_\_\_\_

STATE OF MINNESOTA        }  
  } ss.  
COUNTY OF HENNEPIN

The foregoing instrument was acknowledged before me this \_\_\_\_ day of \_\_\_\_\_,  
20\_\_\_\_, by \_\_\_\_\_, the  
\_\_\_\_\_ of Independent School District #284, a  
\_\_\_\_\_, on behalf of said Independent School District #284.

(Seal)



\_\_\_\_\_  
Notary Public

STATE OF MINNESOTA }  
COUNTY OF HENNEPIN } ss.

The foregoing instrument was acknowledged before me this \_\_\_\_ day of \_\_\_\_\_, 20\_\_\_\_, by \_\_\_\_\_, the \_\_\_\_\_ of Independent School District #284, a \_\_\_\_\_, on behalf of said Independent School District #284.

(Seal)

\_\_\_\_\_  
Notary Public

STATE OF MINNESOTA }  
COUNTY OF HENNEPIN } ss.

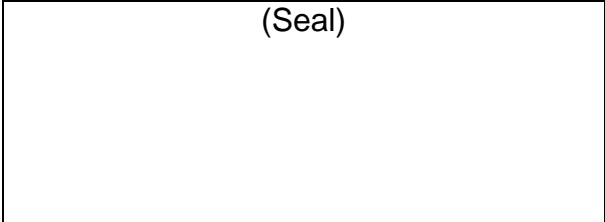
The foregoing instrument was acknowledged before me this \_\_\_\_ day of \_\_\_\_\_, 20\_\_\_\_ by \_\_\_\_\_, the \_\_\_\_\_ of the City of Wayzata, a \_\_\_\_\_, on behalf of said \_\_\_\_\_.

(Seal)

\_\_\_\_\_  
Notary Public

STATE OF MINNESOTA }  
COUNTY OF HENNEPIN } ss.

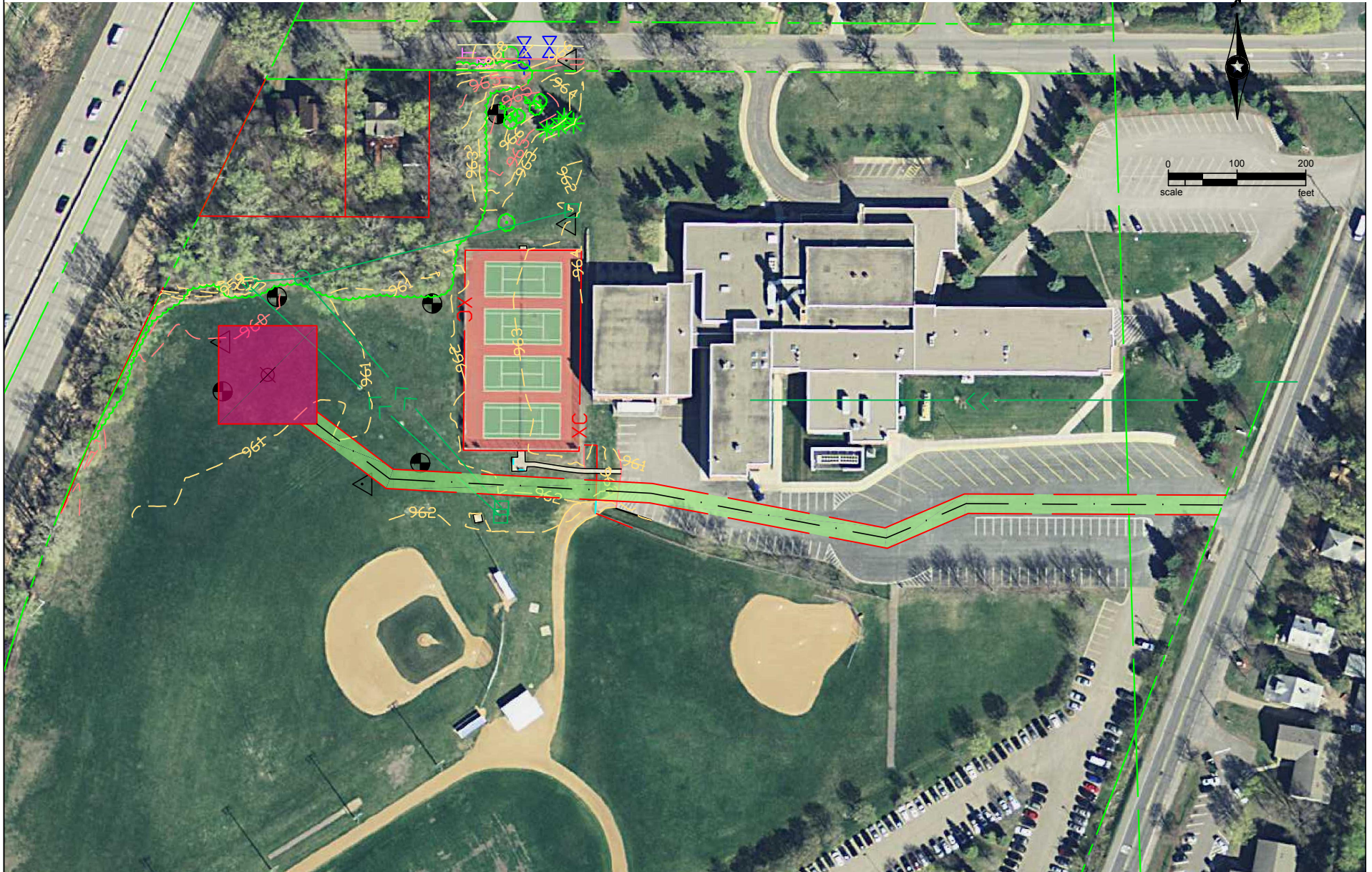
The foregoing instrument was acknowledged before me this \_\_\_\_ day of \_\_\_\_\_,  
20\_\_\_\_, by \_\_\_\_\_, the  
\_\_\_\_\_ of the City of Wayzata, a \_\_\_\_\_,  
on behalf of said \_\_\_\_\_.



\_\_\_\_\_  
Notary Public

**EXHIBIT A  
TO MEMORANDUM OF LEASE  
LEGAL DESCRIPTION**

# Wayzata Middle School Proposed Cell Tower Site Plan Exhibit



S:\UZ\W\Wayzata\134285\9-survey\92-CAD\15-dwg\Wayzata\_Topodwg\_3/9/2016\_3:15 PM\_glundquist

DRAWN BY: SK  
 CHECKED BY: GL  
 SURVEYED BY: GT

**Wayzata West Middle School Property  
 Auditors Subdivision No. 84  
 Wayzata, MN**



PHONE: 651 491 2000  
 3535 VADNAIS CENTER DRIVE  
 VADNAIS HEIGHTS, MN 55110-5196  
[www.sehinc.com](http://www.sehinc.com)

NO.	BY	DATE	REVISIONS

**Wayzata West Middle School Property  
 149 Barry Avenue North  
 Wayzata, MN 55391  
 Telecommunications Tower**

FILE NO  
134285

DATE  
03/01/16

REV. NO.  
1

**WAYZATA PUBLIC SCHOOLS**  
Independent School District 284  
Wayzata, Minnesota

**BOARD OF EDUCATION**  
Regular Meeting – November 14, 2016

**AGENDA SECTION: SUPERINTENDENT’S REPORTS AND RECOMMENDATIONS**

**ITEM: Finance and Business Services**

**COMMENTS BY: Jim Westrum, Exec. Director of Finance and Business Services**

**Transportation Hazardous Areas**

The enclosed report details areas the District has identified as hazard areas for the purpose of classifying students living within the respective area in the excess transportation category.

**RECOMMENDED ACTION:** That the School Board approves the following Transportation Hazardous Areas for transportation excess category report.

Motion by: \_\_\_\_\_ Yes \_\_\_\_\_ Passed \_\_\_\_\_

Second by: \_\_\_\_\_ No \_\_\_\_\_ Failed \_\_\_\_\_

Abstentions: \_\_\_\_\_

## Hazardous Roads

The school board has recognized certain streets and highways as "hazard" roadways. Therefore, even though an Elementary School student may live less than one mile from school, if that student would be required to cross a roadway designated by the school board as a hazard, that student will be transported to and from school. This also applies to Secondary School students who live less than one and two miles from their schools. Below is a list of Hazard Roads listed for each school attendance area.

### Birchview

Vicksburg Lane N  
Gleason Lake RD N  
Niagara LN N

Gleason Lake Elementary  
County Road 101 N

Greenwood Elementary  
County Road 101 N  
Medina Rd

Kimberly Lane Elementary  
Old Rockford Road  
Peony LN N  
Schmidt Lake Rd

Meadow Ridge Elem  
County Road 47  
Lawndale Ln N

Oakwood Elementary  
County Road 101 N  
County Road 6 N

Plymouth Creek Elementary  
Old Rockford Rd  
Vicksburg Ln N

Sunset Hill Elementary  
Xenium Ln N

Central Middle School  
State Highway 12  
Vicksburg Ln N (north of Soo line Trail)  
Gleason Lake Rd N

County Road 6 N

East Middle School

Interstate 394  
State Hwy 55  
Xenium Ln N

West Middle School

State Highway 12  
Central Ave N  
Ferndale Ave N  
Lake St N

Wayzata High School

Lawndale LN/Peoney (except for designated crosswalk at Schmidt Lake Rd and 51<sup>st</sup> Ave N)  
Schmidt Lake Road  
State Highway 55  
County Rd 47  
Troy Lane N  
Old Rockford RD

**WAYZATA PUBLIC SCHOOLS**  
Independent School District 284  
Wayzata, Minnesota

**BOARD OF EDUCATION**  
Regular Meeting – November 14, 2016

**AGENDA SECTION:** 8. Board Reports

**ITEM:** \_\_\_\_\_

**COMMENTS BY:** Chris McCullough, Board Chair

This section of the agenda provides an opportunity for Board members to update school board members on school board-related work or to make announcements of interest to the public.

**WAYZATA PUBLIC SCHOOLS**  
Independent School District 284  
Wayzata, Minnesota

**BOARD OF EDUCATION**  
Regular Meeting – November 14, 2016

**AGENDA SECTION:** 9. Audience Opportunity to Address the Board

**ITEM:** \_\_\_\_\_

**COMMENTS BY:** Chris McCullough, Board Chair

This section of the agenda provides an opportunity for members of the audience to address the School Board. Speakers will be allotted approximately two-three minutes.

**WAYZATA PUBLIC SCHOOLS**  
Independent School District 284  
Wayzata, Minnesota

**BOARD OF EDUCATION**  
Regular Meeting – November 14, 2016

**AGENDA SECTION:** 10. Adjourn

**ITEM:** \_\_\_\_\_

**COMMENTS BY:** Chris McCullough, Board Chair

This agenda item brings closure to the school board meeting.

**RECOMMENDED ACTION:** Call the meeting to a close.

Motion by: \_\_\_\_\_ Yes \_\_\_\_\_ Passed \_\_\_\_\_

Second by: \_\_\_\_\_ No \_\_\_\_\_ Failed \_\_\_\_\_

Abstentions: \_\_\_\_\_

Time: \_\_\_\_\_