

WAYZATA PUBLIC SCHOOLS

Independent School District 284

Wayzata, Minnesota

BOARD OF EDUCATION

Work Session Meeting - September 22, 2014 - 4:00 PM

District Administration Building, 201 County Road 101 N, Plymouth, MN 55447

AGENDA

1. CALL TO ORDER/ROLL CALL
2. TEACHING AND LEARNING 3
 - A. Fullbright Presentation *C. Polski 20 minutes*
3. ADMINISTRATIVE 4
 - A. Elementary School Schematic Design Presentation *L. Schoen & V. Bengston 45 minutes* 5
4. HUMAN RESOURCES
5. BOARD REPORTS 24
 - A. WMEP Update *J. Hesby 5 minutes*
 - B. District 287 Update *C. Peterson 5 minutes*
 - C. WPSEF Update *S. Johansen 5 minutes*
 - D. CfKI Update *A. Cuene 5 minutes*
6. FINANCIAL
7. SCHOOL BOARD 25
 - A. Tentative Board Agenda for October 13, 2014 - *5 minutes* 26
8. ADJOURN

WAYZATA PUBLIC SCHOOLS

Independent School District 284
Wayzata, Minnesota

MISSION

Our Core Purpose:

The mission of Wayzata Public Schools is to ensure a world-class education that prepares each and every student to thrive today and excel tomorrow in an ever-changing global society.

VISION

What We Intend to Create and Experience:

The vision of Wayzata Public Schools is to be a model of excellence where all students discover their unique talents, develop a love and tenacity for learning and demonstrate confidence and capacity for success through:

Exceptional Student Learning, Experiences and Relationships:

- High achievement by each and every student—no exceptions, no excuses;
- Content-rich, rigorous and personalized education;
- Meaningful relationships with teachers, staff, mentors and peers in a welcoming, nurturing and safe environment.

Community Trust, Confidence and Partnership:

- Comprehensive learning opportunities meeting diverse learner needs and community aspirations;
- Committed to being the first choice for students and families;
- Maintaining the highest levels of satisfaction and pride by staff, parents and community.

Operational Excellence:

- Attraction, development and retention of exemplary, creative and valued employees;
- Effective and efficient use of time and human, financial and physical resources;
- Culture of continuous improvement and responsive innovation;
- High performing district governance, management and partnerships.



**9.22.14 Work Session
District Administration Building**

TEACHING AND LEARNING

Fullbright Presentation



**9.22.14 Work Session
District Administration Building**

ADMINISTRATIVE

Elementary School Schematic Design Presentation



architects
engineers
www.woldae.com

305 Saint Peter Street
Saint Paul, MN 55102

tel 651 227 7773
fax 651 223 5646
mail@woldae.com



Schematic Design Submittal

Wayzata New Elementary School



Independent School District #284
September 22, 2014

Minnesota
Illinois
Michigan
Colorado
Iowa

Comm No: 142032



TABLE OF CONTENTS

	<u>Page</u>
Introduction	2
Core Planning Group's Commitments	3
Core Planning Group's Design Criteria	4-5
Building Program Summary	6-8
Building Floor Plan Overviews	
Main Level	9
Lower Level	10
Enlarged Plan: Classroom /Resource Area	11
Interior Axonometric	12
Site Relationships Diagram	13
Elevations	14-15
Renderings	16-17
Project Schedule	18



INTRODUCTION


Wold Architects and Engineers is pleased to submit to the Board of Education of Independent School District #284, the Schematic Design Submittal for the New Elementary School project.

We wish to thank the School District's Administration, Staff, and Core Planning Group for their exhaustive efforts in providing the Design Team with the information necessary to advance to this state of development in a timely fashion.

Upon review by the Board of this project, the Design Team will commence with the Design Development Phase. Thank you for your consideration of this Schematic Design presentation.



R. Scott McQueen, AIA, LEED-AP
Partner
WOLD ARCHITECTS AND ENGINEERS



Lynae Schoen, IIDA, LEED-AP
Partner
WOLD ARCHITECTS AND ENGINEERS

Core Planning Group Members

- Chace Anderson, Superintendent
- Steve Brantner, Parent
- Ramona Braun, Teacher
- Andrea Cohen, Teacher
- Sam Eaton, Music Teacher
- Mary Hurwitz, Physical Education Teacher
- Jeri Johnson, Special Services Representative
- Jill Johnson, Executive Director of Teaching and Learning
- Karen Keffeler, Elementary School Administrator
- Kristy Maas, Student Services Representative
- Irene Merz, Health Services Representative
- Jami Oppold, Parent
- Trina Snow, Teacher
- Rebecca Whitlock, Media Specialist
- Darcy Zarns, Parent
- Lynn Zemlin, Community Education Representative
- David Zukor, Technology Services Representative

Staff Consultation/ Resources

- Mary Anderson, Culinary Express
- Jon Deutsch, Director of Facilities and Transportation
- Joe Matson, Director of Construction
- Shelly Nelson, Director of Curriculum and Instruction
- Kristin Tollison, Director of Administrative Services

Resources

- Scott McQueen, Wold Architects and Engineers
- Lynae Schoen, Wold Architects and Engineers
- Valerie Peterson, Wold Architects and Engineers
- Kaitlin Schalow, Wold Architects and Engineers
- Gary Benson, Kraus Anderson



CORE PLANNING GROUP'S COMMITMENTS

- Student and staff **safety** is a priority.
- The building's atmosphere should be **welcoming, friendly, and fun** for all.
- The building should meet the needs of a diverse population (**accessibility**, ethnicity, and **age**).
- Design should be **age and size appropriate** for everyone.
- Daily learning activities should be immediately observable that identify the building as a learning environment.
- There should be designed elements that allow for recognition of student accomplishment and **culture**.
- The design shall include **flexible, individual and collaborative** learning environments.
- The building and its grounds shall be **easy to navigate** for all users.
- The building will be a "**good neighbor**" to the community in respect to its visual appearance and experience.
- The school should serve the broader community, allowing for **multi-purpose** uses.
- The building should be a source of **community pride** and a reflection of good fiscal investment.
- The design should be **forward thinking and innovative**, incorporating advances in **technology** to support learning.



CORE PLANNING GROUP'S DESIGN CRITERIA

- Administration should be located near the Main Entry.
- The Media Center as the **"hub"** of student activity.
- Separate Bus Drop-off and Parent Drop-off areas.
- Bus Drop Off to be located next to the Cafeteria for ease of queuing.
- Specialists to be **clustered together** (Gym, Music, Art, Media, Technology, Spanish).
- Media Center, Cafeteria and Gym to be **easily accessed** for after-hours community use.
- Faculty Dining to be located near the Workroom and Administration.
- Nurse and social worker to be located next to Administration to support each other.
- Classrooms to be clustered around a shared group learning space.
- Limit access to Classrooms for after hours use.
- Visual connections between Classrooms and Shared Group Learning for collaboration.
- Ability to have a **"flexible"** Classroom within clusters for changes in enrollment.
- Special Education to be distributed throughout the building.
- Conference rooms to be located off the shared group learning space.
- Include dedicated areas for the **display of student work** as a source of school pride.
- Incorporate natural daylight and views to the outdoors in as many spaces as possible.
- Outdoor learning area with seating for school and community use.
- Designated areas for storage.



CORE PLANNING GROUP'S DESIGN CRITERIA

- Gym and Cafeteria to have easy, safe access to outdoor playground and play areas.
- Playgrounds located a safe distance away from roads and parking.
- Access routes for students with mobility challenges to be equitable to the main circulation routes.



SPACE SUMMARY

	<u>Kimberly Lane Elementary</u>		<u>Nov 2014 Review and Comment</u>		<u>September 9,2014 Schematic Design</u>		<u>Design Development</u>	<u>Construction Documents</u>
ADMINISTRATION								
General Office/Waiting		920 S.F.		– S.F.		680 S.F.		
Principal Office		190 S.F.		– S.F.		120 S.F.		
Conference		330 S.F.		350 S.F.		350 S.F.		
Workroom/Copy Room/Mail/Volunteer Room		180 S.F.		– S.F.		180 S.F.		
Storage		150 S.F.		– S.F.		150 S.F.		
Counselor/Social Worker		Incl.		– S.F.		120 S.F.		
Dean/Shared Office		–		– S.F.		120 S.F.		
Head Secretary Office		–		– S.F.		120 S.F.		
		<u>1,770 S.F.</u>		<u>1,830 S.F.</u>		<u>1,830 S.F.</u>		
HEALTH/NURSE								
Cot Room		195 S.F.		385 S.F.		385 S.F.		
Office/Exam		95 S.F.		Incl. S.F.		Incl. S.F.		
Toilet		50 S.F.		65 S.F.		65 S.F.		
		<u>340 S.F.</u>		<u>450 S.F.</u>		<u>450 S.F.</u>		
CLASSROOMS								
Classrooms	24 @ 900	21,600 S.F.	25 @ 900	22,500 S.F.	25 @ 900	22,500 S.F.		
Collaboration/Conference Rooms		n/a	5 @ 150	750 S.F.	5 @ 150	750 S.F.		
Resource Areas	2 @ 300	600 S.F.	5 @ 300	1,500 S.F.	5 @ 300	1,500 S.F.		
		<u>22,200 S.F.</u>		<u>24,750 S.F.</u>		<u>24,750 S.F.</u>		
KINDERGARTEN								
Classrooms (incl. Coats)	4 @ 1,100	4,400 S.F.	4 @ 1,200	4,800 S.F.	5 @ 1,100	5,500 S.F.		
Toilets	4 @ 40	160 S.F.	4 @ 65	260 S.F.	5 @ 65	325 S.F.		
Resource Area		300 S.F.	1 @ 300	300 S.F.	1 @ 300	300 S.F.		
Storage		450 S.F.		Incl. S.F.		Incl. S.F.		
Collaboration/Conference Rooms		n/a	1 @ 150	150 S.F.		150 S.F.		
		<u>5,310 S.F.</u>		<u>5,510 S.F.</u>		<u>6,275 S.F.</u>		
BRIGHT START								
Classroom		900 S.F.		1,000 S.F.		900 S.F.		
Parenting		450 S.F.		n/a		n/a		
Storage		450 S.F.		100 S.F.		100 S.F.		
Toilets		n/a		65 S.F.		65 S.F.		
		<u>1,800 S.F.</u>		<u>1,165 S.F.</u>		<u>1,065 S.F.</u>		
APPLIED LABS								
Art Lab		1,100 S.F.		1,200 S.F.		1,200 S.F.		
Art Lab Storage		90 S.F.		100 S.F.		100 S.F.		
Kiln		75 S.F.		100 S.F.		100 S.F.		
Computer Lab		1,000 S.F.	2 @ 1,000	2,000 S.F.		2,000 S.F.		
Activity Room		1,000 S.F.		n/a		n/a		
Server		150 S.F.		150 S.F.		150 S.F.		
		<u>3,415 S.F.</u>		<u>3,550 S.F.</u>		<u>3,550 S.F.</u>		



SPACE SUMMARY (CONT.)

	Kimberly Lane Elementary	Nov 2014 Review and Comment	September 9,2014 Schematic Design	Design Development	Construction Documents
SPECIAL EDUCATION & SERVICES					
Special Ed. Classroom	-	-	950 S.F.		
Specially Designed Classroom (S.D.C.)	-	-	340 S.F.		
Specially Designed Classroom (S.D.C.)	-	-	685 S.F.		
Toilet/Shower	-	-	115 S.F.		
Spec. Ed. Office	-	-	350 S.F.		
Quiet Room	-	-	70 S.F.		
Motor Room	-	-	290 S.F.		
	1,360 S.F.	2,800 S.F.	2,800 S.F.		
MUSIC					
Instr. Music/Choir/Offices/Storage/Suite	2,400 S.F.	n/a	n/a		
General Music Classroom	n/a	1,200 S.F.	1,200 S.F.		
	2,400 S.F.	1,200 S.F.	1,200 S.F.		
MEDIA CENTER					
Circulation/Distribution/Stacks/Storage			2,475 S.F.		
Independent Study Area/Reading					
Area/Flexible Computer Space					
Media Workroom with AV Storage	S.F.	- S.F.	240 S.F.		
Large Group Room	S.F.	- S.F.	785 S.F.		
Conference Room (Small)	S.F.	- S.F.	2 @ 100 2 @ 200 S.F.		
Storage/Professional and Curriculum Library	S.F.	- S.F.	-		
Video Production	S.F.	- S.F.	Incl.		
	5,300 S.F.	3,700 S.F.	3,700 S.F.		
PHYSICAL EDUCATION					
Gymnasium	6,000 S.F.	- S.F.	6,000 S.F.		
Office	150 S.F.	- S.F.	150 S.F.		
Storage	750 S.F.	- S.F.	750 S.F.		
Locker Rooms/Toilets	220 S.F.	- S.F.	n/a		
	7,120 S.F.	7,500 S.F.	6,900 S.F.		
STAFF SPACE					
Faculty Dining	850 S.F.	800 S.F.	800 S.F.		
Toilets	2 @ 40 80 S.F.	5 @ 65 325 S.F.	4 @ 65 260 S.F.		
Print/Copy Satellite Room	n/a	n/a	1 @ 65 65		
	930 S.F.	1,125 S.F.	1,125 S.F.		



SPACE SUMMARY (CONT.)

	<u>Kimberly Lane Elementary</u>	<u>Nov 2014 Review and Comment</u>	<u>September 9,2014 Schematic Design</u>	<u>Design Development</u>	<u>Construction Documents</u>
CAFETERIA					
Cafeteria	3,250 S.F.	3,200 S.F.	3,040 S.F.		
Table Storage	160 S.F.	n/a	160 S.F.		
	<u>3,410 S.F.</u>	<u>3,200 S.F.</u>	<u>3,200 S.F.</u>		
KITCHEN/FOOD SERVICES					
Kitchen	400 S.F.	- S.F.			
Dry Food Storage	160 S.F.	- S.F.			
Prep Area	Incl. S.F.	- S.F.			
Serving Lines	300 S.F.	- S.F.			
Dish Wash Area	300 S.F.	- S.F.			
Office/Lockers/Toilet/Mop Area	150 S.F.	- S.F.			
Refrigerator and Freezer	260 S.F.	- S.F.			
	<u>1,570 S.F.</u>	<u>1,640 S.F.</u>	<u>1,640 S.F.</u>		
RECEIVING/CENTRAL SUPPLY/STORAGE					
Receiving	1,000 S.F.	- S.F.	1,320 S.F.		
Workroom/Office	Incl.	- S.F.	150 S.F.		
Outdoor Storage	n/a	- S.F.	100 S.F.		
	<u>1,000 S.F.</u>	<u>1,570 S.F.</u>	<u>1,570 S.F.</u>		
SUPPORT					
Toilet Rooms/Custodial	2,300 S.F.	Incl.	Incl.		
TOTAL NET SQUARE FOOTAGE	60,225 S.F.	59,990 S.F.	60,055 S.F.		
NET/GROSS FACTOR	x 1.37	x 1.38	x 1.39		
TOTAL GROSS SQUARE FOOTAGE	82,700 S.F.	83,000 S.F.	83,700 S.F.		



BUBBLE/ SCHEMATIC DIAGRAM

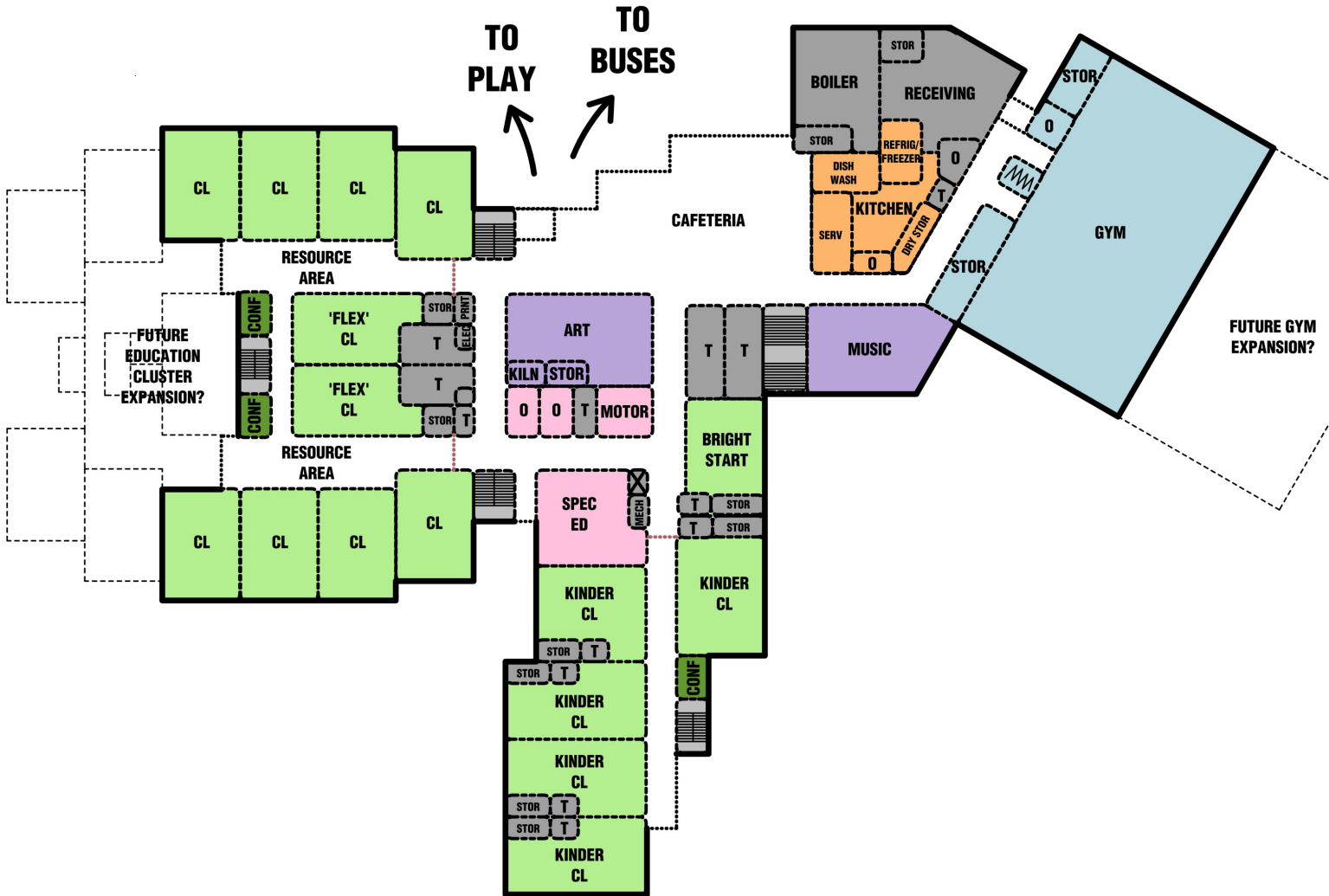
MAIN LEVEL





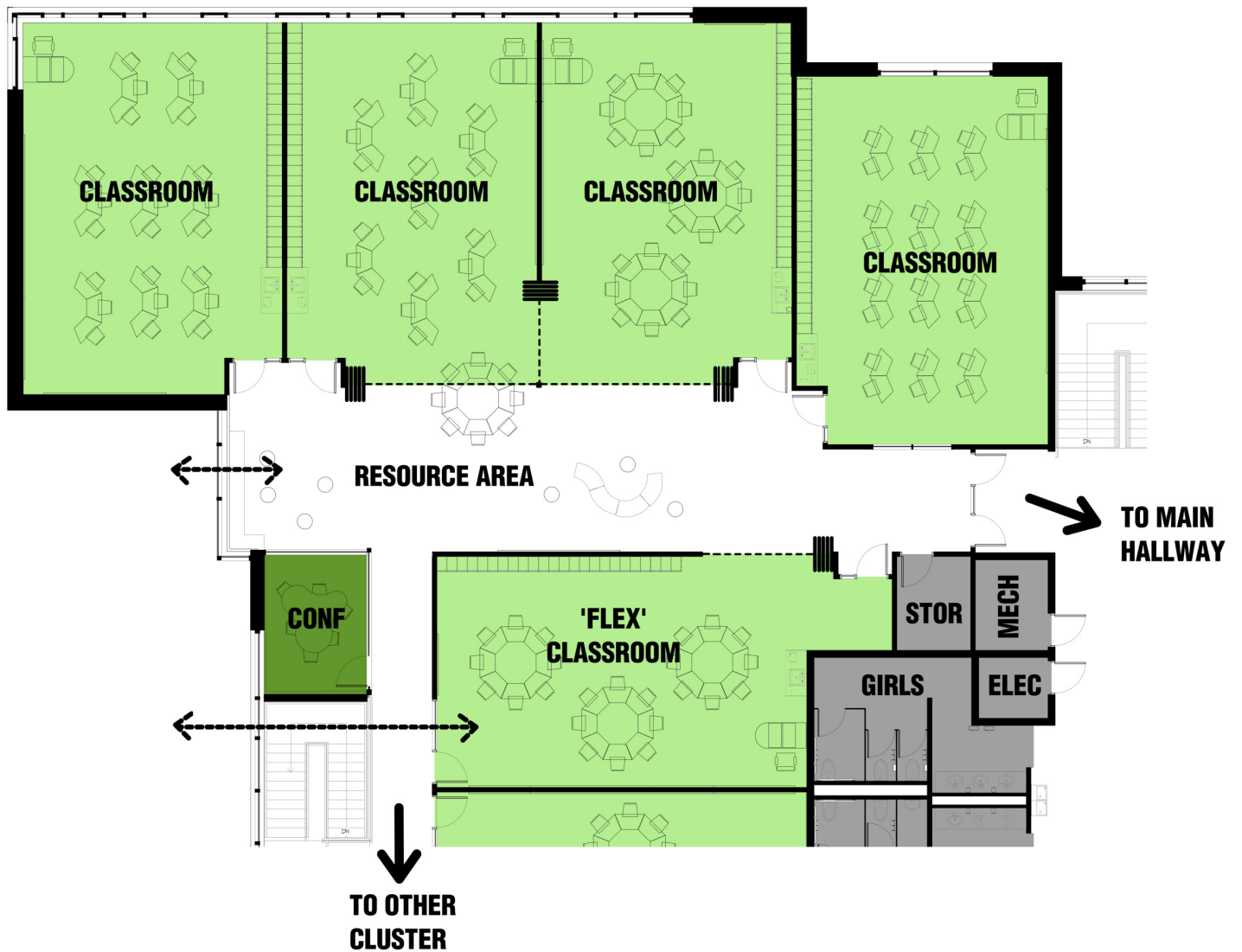
BUBBLE/ SCHEMATIC DIAGRAM

LOWER LEVEL



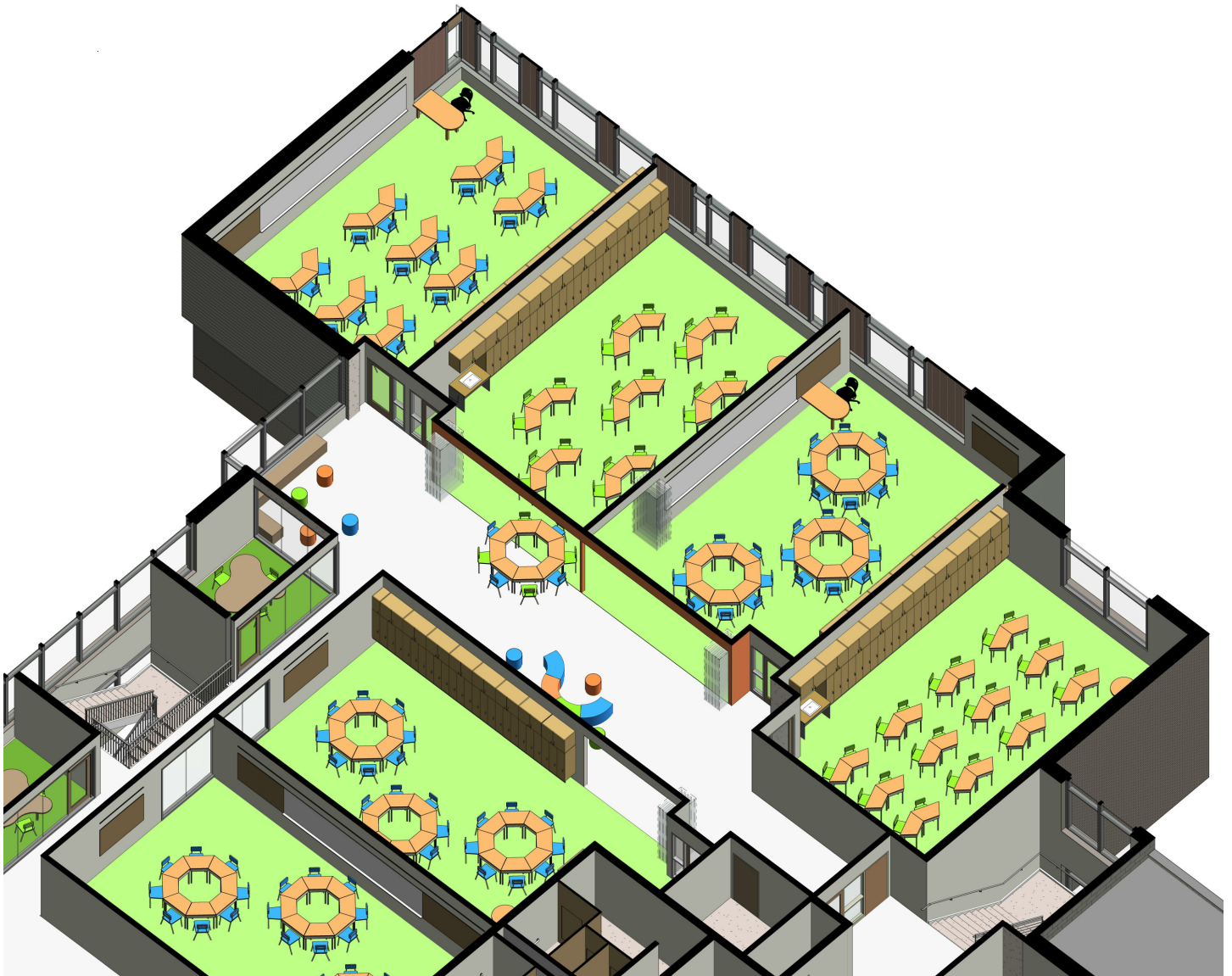
ENLARGED PLAN

CLASSROOM CLUSTER AND RESOURCE AREA

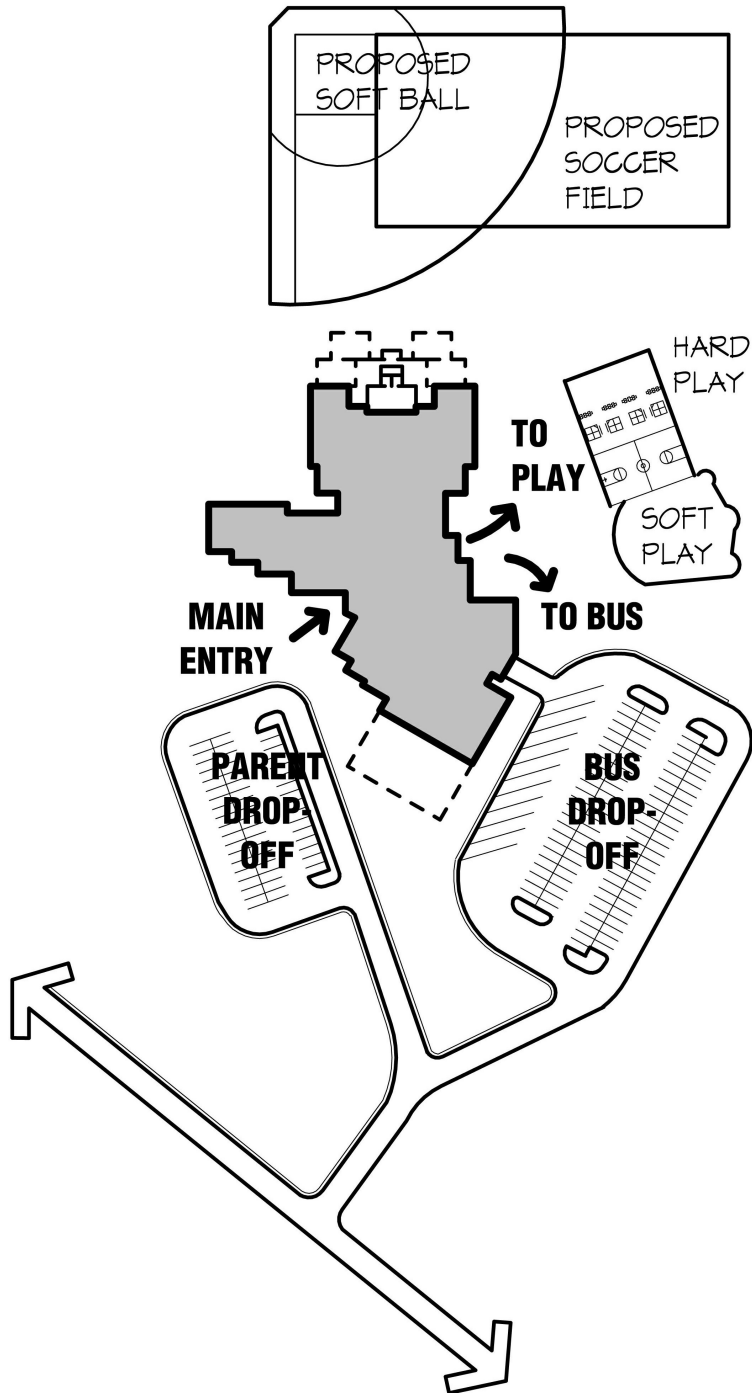


INTERIOR AXONOMETRIC

CLASSROOM CLUSTER AND RESOURCE AREA



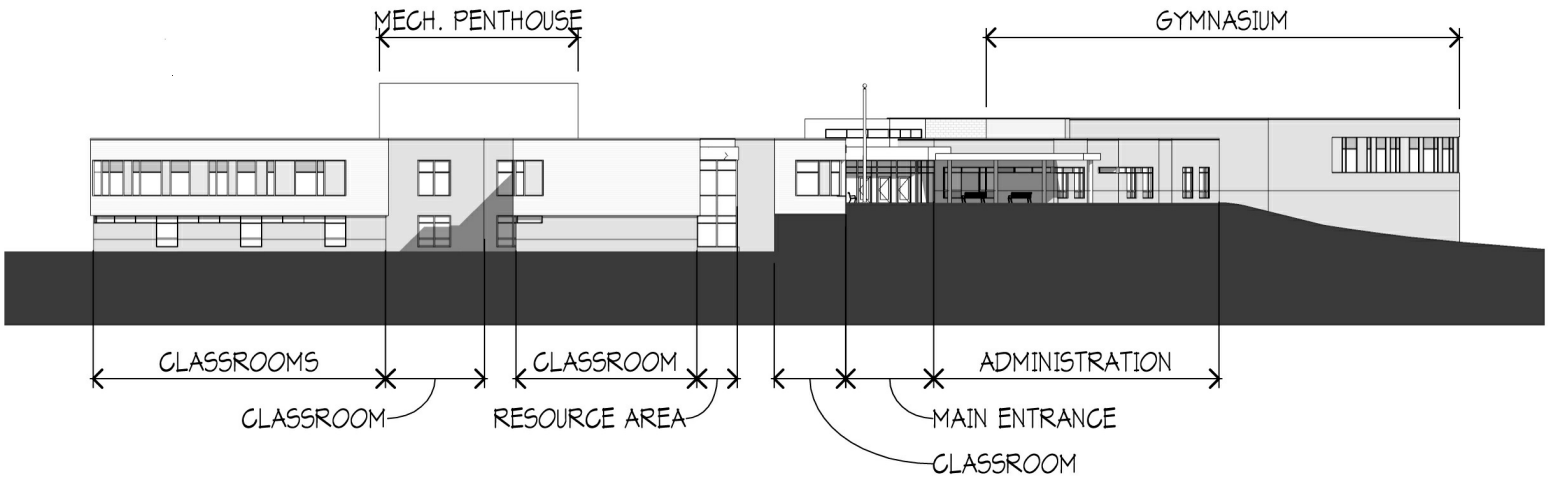
SITE RELATIONSHIPS DIAGRAM



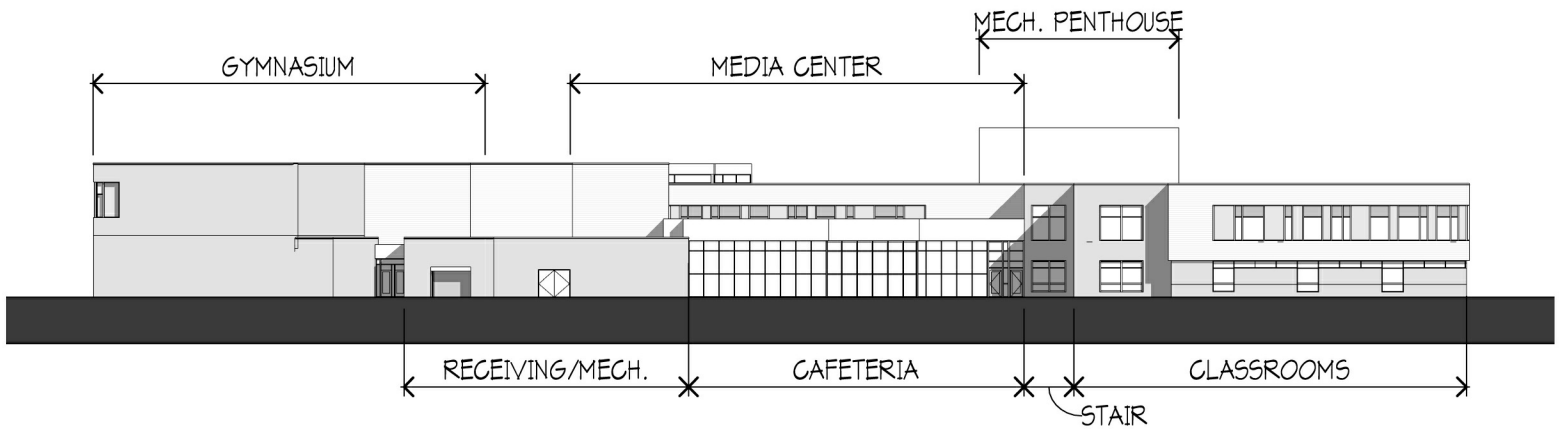


ELEVATIONS - NORTH AND SOUTH

SOUTH ELEVATION

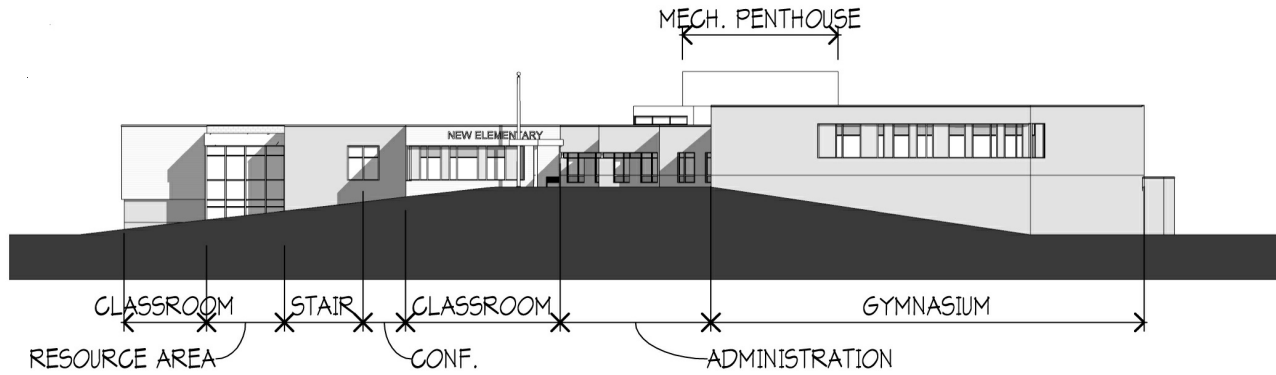


NORTH ELEVATION

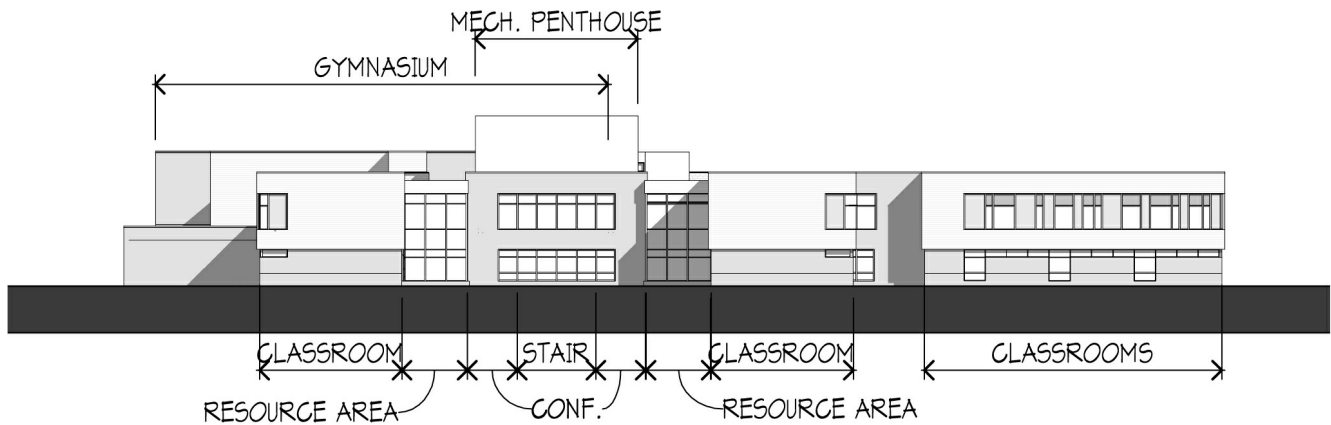


ELEVATIONS - EAST AND WEST

EAST ELEVATION



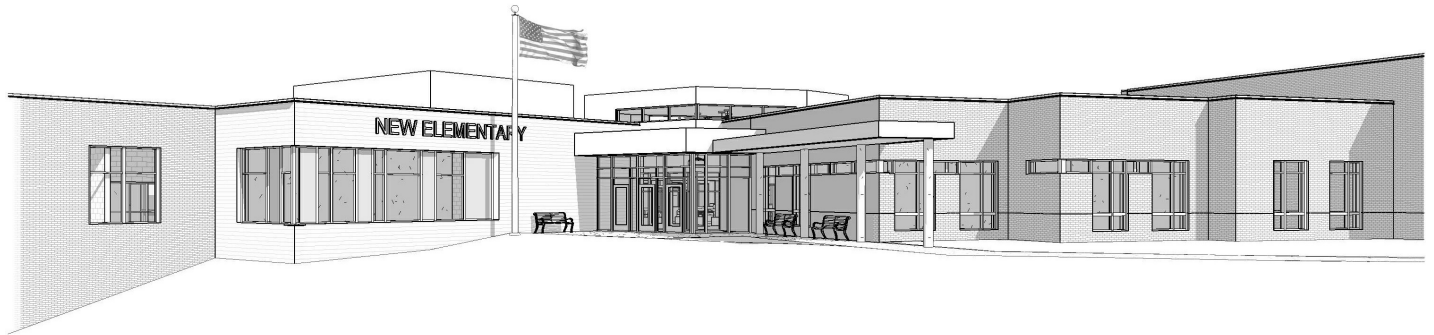
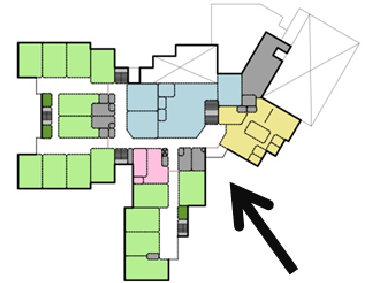
WEST ELEVATION





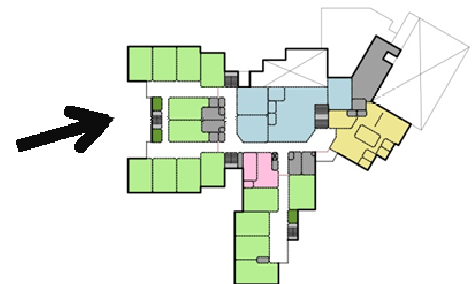
EXTERIOR BUILDING RENDERING

SOUTH VIEW - MAIN ENTRANCE



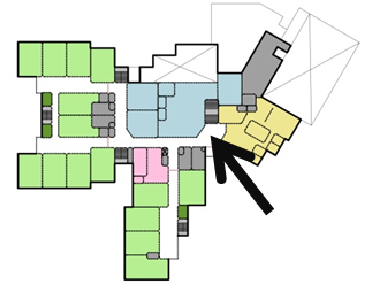
EXTERIOR BUILDING RENDERING

WEST VIEW - CLASSROOM CLUSTER



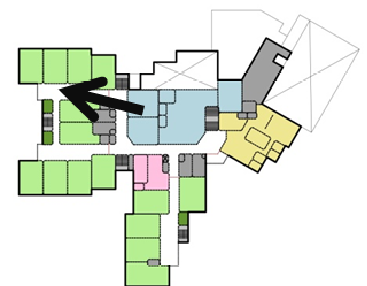
INTERIOR RENDERING

MAIN LEVEL - MAIN ENTRANCE AND MEDIA CENTER



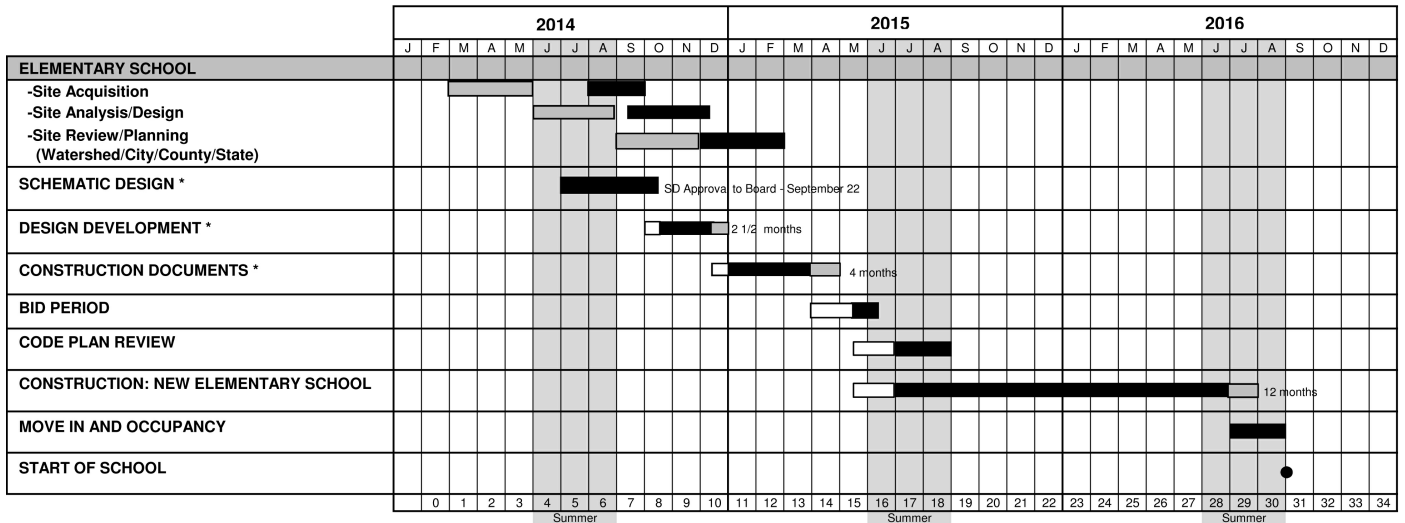
INTERIOR RENDERING

CLASSROOM CLUSTER AND RESOURCE AREA





PROJECT SCHEDULE



*Design Phase Descriptions:

Schematic Design - Phase in which information is gathered, design options are developed and reviewed, and the existing buildings and sites are analyzed.

Design Development - Phase in which user input is gathered, materials are determined, and a design is finalized.

Construction Documents - Phase in which the design is incorporated into a set of bidding documents.



BOARD REPORTS

WMEP UPDATE

DISTRICT 287 UPDATE

WPSEF UPDATE

CfKI UPDATE



**9.22.14 Work Session
District Administration Building**

SCHOOL BOARD

TENTATIVE BOARD AGENDA 10.13.14

WAYZATA PUBLIC SCHOOLS

Independent School District 284
Wayzata, Minnesota

BOARD OF EDUCATION

Regular Meeting - October 13, 2014 - 7:00 PM
Wayzata City Hall
600 Rice Street, Wayzata

AGENDA

1. **CALL TO ORDER/ROLL CALL**
2. **APPROVAL OF AGENDA AND CONSENT AGENDA ITEMS**

Consent Agenda items are considered to be routine in nature and will be enacted by one motion. There will be no separate discussion of these items unless a Board member or citizen so requests, in which event the item will be removed as a Consent Agenda item and addressed. Consent Agenda items are as follows:

 - A. Approval of Minutes
 - B. Finance and Business Recommendations
 1. Monthly Reports
 - C. Human Resource Recommendations
 1. Monthly Recommendations
 2. Assurance of Compliance with State and Federal Laws Prohibiting Discrimination
3. **STUDENT CURRICULUM PRESENTATION**
4. **RECOGNITIONS**
 - A. Retiree Recognition
 - B. October Employee of the Month
5. **REPORTS FROM ORGANIZATIONS**
 - A. Wayzata High School Student Council Representative
6. **SUPERINTENDENT'S REPORTS AND RECOMMENDATIONS**
 - A. Superintendent
 - B. Teaching and Learning
 - C. Finance and Business Services
 1. Monthly Financial Reports
 2. Resolution: School Recycling Assistance Program
 3. Resolution: School Recycling Assistance Program
 - D. Human Resource Services
7. **OTHER BOARD ACTION**
8. **BOARD REPORTS**
9. **AUDIENCE OPPORTUNITY TO ADDRESS SCHOOL BOARD**

This section of the agenda provides an opportunity for those who have called and placed their names on the list and for members of the audience to address the School Board.
10. **ADJOURN**