

Tentative Agenda for the WAVERLY CITY COUNCIL MEETING to be held on June 23, 2026 at 6:00 PM. This meeting will be held at the Waverly City Office Building, 14130 Lancashire, Waverly, NE 68462. A current Agenda shall be readily available for public inspection at the office of the City Clerk during normal business hours.

1. **Call to Order**
 - 1.a) Roll Call
 - 1.b) Pledge of Allegiance
 - 1.c) Acknowledgement of the "Open Meetings Act" poster that is posted by the south entrance.
 - 1.d) Adoption of Agenda
 - 1.e) Approval of the Consent Agenda Items*

All items listed with an asterisk (*) are considered to be routine by the City Council and will be approved by one motion. There will be no separate discussion of these items unless a Council Member or a Citizen so requests, in which event the item will be removed from the Consent Agenda status and considered in its normal sequence on the Agenda.
 - 1.f) Proclamations and Presentations
 - 1.f.i) Mayor's presentation of 15-year employment award to Andrew Toy, Water System Lead and a 5-year employment award to Megan Frye, City Clerk.
2. **Modification to Redevelopment Plan to TIF Area B (Downtown Area-Wide TIF)**
 - 2.a) Public Hearing: Modification to a Redevelopment Plan for an area of the City designated as Blighted and Substandard and in need of Redevelopment pursuant to the Nebraska Community Development Law, known as TIF Area B (Downtown Area-Wide TIF).
 - 2.b) Consideration of Resolution 26-13 of the Mayor and City Council of the City of Waverly, Nebraska, approving a Modification to the Redevelopment Plan for TIF Area B (Downtown Area-Wide TIF) and Approving Related Actions.
3. **Sheriff's Report**
4. **Public Comments**
5. **Approval of Minutes**
 - 5.a) *Minutes of the June 9, 2026 City Council Meeting
6. **Consideration of Claims and Financial Reports**
 - 6.a) Claims for Payment
 - 6.b) Keno & Sales Tax Reports
7. **Introduction of Resolutions**
 - 7.a) *Consideration of Resolution 26-14 to Establish and Charge Reasonable Building Permit Fees
 - 7.b) *Consideration of Resolution 26-15 adopting and revising the employee handbook
8. **Introduction of Ordinances**
9. **Introduction of Business and Communications**
 - 9.a) Consideration of Right of Way request from Kinetic for a fiber internet buildout in the City of Waverly.
10. **Committee Reports**
 - 10.a) Human Services (Park & Recreation): Council Member Nielson

- 10.b) Public Works (Utilities & Street): Council Member Jespersen
- 10.c) Public Health (Fire & Safety): Council Member Delahoyde
- 10.d) Fiscal & Economic Development: Council Member Ruhter-Engelhardt
- 10.e) City Administrator Fisher

11. Adjournment

The Governing Body reserves the right to go into Executive Session at any time for the reasons outlined in State Statute 84-1410.

The following rules are established for audience members and participants at a Council meeting:

- (1) Any person wishing to address the Council shall first state their name and address.
- (2) Public comments may be for agenda or non-agenda items.
- (3) Remarks shall be limited to five (5) minutes.

RESOLUTION NO. 26-13

A RESOLUTION OF THE MAYOR AND CITY COUNCIL OF THE CITY OF WAVERLY, NEBRASKA, APPROVING A MODIFICATION TO THE REDEVELOPMENT PLAN FOR TIF AREA B (DOWNTOWN AREA-WIDE TIF) AND APPROVING RELATED ACTIONS.

WITNESSETH:

WHEREAS, the City of Waverly, Nebraska, a municipal corporation and city of the second class, has determined it to be desirable to undertake and carry out redevelopment projects in areas of the City which are substandard and blighted and in need of redevelopment; and

WHEREAS, the Nebraska Community Development Law, Chapter 18, Article 21, Nebraska Reissue Revised Statutes of 2012, as amended (the “Act”), prescribes the requirements and procedures for the planning and implementation of redevelopment projects; and

WHEREAS, the City has previously adopted a Redevelopment Plan for a specific blighted and substandard area of the City known as TIF Area B (Downtown Area-Wide TIF); and

WHEREAS, the area covered by TIF Area B is described as set forth on **Schedule 1** attached hereto; and

WHEREAS, the existing Redevelopment Plan for TIF Area B (Downtown Area-Wide TIF) is referred to hereinafter as the “Downtown Redevelopment Plan”; and

WHEREAS, the Community Redevelopment Authority of the City of Waverly, Nebraska (the “CRA”) desires to modify the Downtown Redevelopment Plan to include additional potential redevelopment projects as listed on **Schedule 2** attached hereto which are intended to ameliorate blight and substandard conditions in TIF Area B; and

WHEREAS, the proposed inclusion of additional potential redevelopment projects to the Downtown Redevelopment Plan is referred to hereinafter as the “Modification”; and

WHEREAS, the CRA has determined that the Modification does not qualify as a minor modification of the Downtown Redevelopment Plan; and

WHEREAS, the CRA forwarded the Modification to the Planning Commission of the City of Waverly, Nebraska, and the Planning Commission conducted a public hearing with regard to the Modification, reviewed the Modification, determined that it conforms to the general development plan of the City, and recommended approval of the Modification; and

WHEREAS, on June 15, 2026, the CRA adopted **Resolution No. 26-02**, a copy of which is attached hereto as **Schedule 3**, approving the Modification and recommending approval of the Modification to the City Council; and

WHEREAS, the City published notices of a public hearing and mailed notices as required pursuant to Section 18-2115 of the Act and has, on the date of this Resolution conducted a public hearing on the proposal to adopt the Modification;

NOW THEREFORE, BE IT RESOLVED BY THE MAYOR AND CITY COUNCIL OF THE CITY OF WAVERLY, NEBRASKA, AS FOLLOWS:

1. The Modification, as approved by the CRA, is hereby determined to be feasible and in conformity with the general plan for the development of the City as a whole and the Modification is in conformity with the legislative declarations and determinations set forth in the Act; and it is hereby found and determined, based on the analysis conducted by the CRA, that (a) the additional projects in the Modification would not be economically feasible without the use of tax-increment financing, (b) the additional projects in the Modification would not occur in TIF Area B without the use of tax-increment financing, and (c) the costs and benefits of the additional projects in the Modification, including costs and benefits to other affected political subdivisions, the economy of the community, and the demand for public and private services have been analyzed by the City and have been found to be in the long-term best interest of the community impacted by the projects in the Modification.

2. Approval of the Downtown Redevelopment Plan, as modified by the Modification, is hereby ratified and affirmed and the CRA is hereby directed to implement the Downtown Redevelopment Plan in accordance with the Act.

3. The City acknowledges that TIF Area B is already subject to a notice to divide taxes on file with Lancaster County and that incremental tax revenues collected by the CRA with regard to TIF Area B during the balance of such division period will be used for the payment of notes, bonds, or other indebtedness issued by the CRA to fund the projects described in the Modification. The CRA is hereby authorized to take all actions contemplated and required by the Downtown Redevelopment Plan, as modified by the Modification, to complete the projects described therein, including, without limitation, the issuance of indebtedness payable from the incremental tax revenues created within TIF Area B.

4. The City hereby finds and determines that the proposed land uses and building requirements in the Downtown Redevelopment Plan, as modified by the Modification, are designed with the general purposes of accomplishing, in accordance with the general plan for development of the City, a coordinated, adjusted and harmonious development of the City and its environs which will, in accordance with present and future needs, promote health, safety, morals, order, convenience, prosperity; and the general welfare, as well as efficiency and economy in the process of development; including, among other things, adequate provision for traffic, vehicular parking, the promotion of safety from fire, panic, and other dangers, adequate provision for light and air, the promotion of a healthful and convenient distribution of population, the provision of adequate transportation, water, sewerage, and other public utilities, the promotion of sound design and arrangement, the wise and efficient expenditure of public funds, and the prevention of the recurrence of unsanitary or unsafe dwelling accommodations, or conditions of blight.

5. The Mayor and the appropriate officers of the CRA are hereby authorized and directed to execute and deliver such documents, certificates, or instruments and take such actions as they deem reasonable or necessary to carry out the intent of this resolution.

Passed and approved this ____ day of June, 2026.

CITY OF WAVERLY, NEBRASKA

ATTEST:

By: _____
Mayor

City Clerk

SCHEDULE 1

Legal Description of TIF Area B

The Redevelopment Area begins at the intersection of the north line of Irregular Lot 19, with the west line of 148th Street, thence south along said west line to its intersection with the north line of Lot 2, Kubert's Subdivision, thence west along said north line to its intersection with the east line of Lot 1, Kubert's Subdivision, thence south along said east line to its intersection with the north line of Irregular Lot 133 in the southeast quarter of Section 16, T11N, R8E of the Sixth Principal Meridian, also known as Rose Hill Cemetery, thence west along said north line to its intersection with the west line of Lot 1, Kubert's Subdivision, thence north along said west line to its intersection with the south line of Lot 92, thence west along said line and continuing west along the south line of Lots 110, 104, 114, 113, 49, 37 and 107 to its intersection with the east line of 144th Street, thence south along said east line to its intersection with the south line of Ivanhoe Street, thence west along said south line to its intersection with the east line of 142nd Street, thence south along said east line to its intersection with the south line of Heywood Street, thence west along said south line to its intersection with the south line of Highway 6, thence southwest along said south line to its intersection with the east line of Canongate Road, thence north along said east line to its intersection with the west Corporate Limit Line of the City of Waverly, Lancaster County, Nebraska, thence following along said Corporate Limit Line east and south to its intersection with the north line of the Highway 6 right-of-way, thence northeast along said north line to its intersection with an extension of the west line of 140th Street, thence north along said extended west line to its intersection with the north line of Lancashire Street, thence east along said north line to its intersection with the west line of the vacated alley located in the Waverly Village Subdivision, thence north along said west line to its intersection with the north line of Lot 19 of the Waverly Village Subdivision, thence west along said north line to its intersection with the extended west line of Irregular Lot 162 of the Waverly Village Subdivision, thence north along said extended west line, continuing as the west line of Lot 163, to its intersection with the south line of Irregular Lot 158, in the southwest quarter of Section 16, T11N, R8E (also known as the Corporate Limit Line of the City of Waverly, Lancaster County, Nebraska) thence west along said south line to its intersection with the west line of Lot 158, thence north along said west line, continuing along an extension of said west line to its intersection with the north line of Irregular Lot 216, thence east along said north line to its intersection with the west line of 141st Street, thence north along said west line to its intersection with the south line of Waverly Road, thence east along said south line, across 141st Street, to its intersection with the east line of 141st Street, thence south along said east line to its intersection with the north line of Mansfield Street, thence east along said north line to its intersection with the west line of Lot 194, thence north along said west line to its intersection with the north line of Lot 194, thence east along said north line, continuing east along the north line of Lots 170, 32, 31, 207 and 19, to its intersection with the west line of 148th Street, also known as the point of beginning.

SCHEDULE 2

Additional Potential Projects Added to Redevelopment Plan for TIF Area B

1. Workforce/Affordable Housing.
2. Land Acquisition including demolition, site preparation, water, sewer, streets, storm water, sidewalks, public trails.
3. Real Estate Acquisition including rehabilitation of existing structures.
4. Improvements to city-owned buildings in TIF Area B, including city office, city shop buildings, and fire station.
5. Intersection Improvements at Hwy 6 & N. 141st Street including traffic signals, warning lights, pedestrian safety improvements.
6. Intersection Improvements at Hwy 6 & N. 148th Street including turn lanes, traffic signals, other safety improvements, storm water drainage improvements.
7. Installation of Rectangular Rapid Flashing Beacons to improve pedestrian safety within TIF Area B

SCHEDULE 3

Copy of CRA Resolution No. 26-02 attached hereto.

COMMUNITY REDEVELOPMENT AUTHORITY
OF THE CITY OF WAVERLY, NEBRASKA
RESOLUTION NO. 26-02

A RESOLUTION OF THE COMMUNITY REDEVELOPMENT AUTHORITY OF THE CITY OF WAVERLY, NEBRASKA, APPROVING A MODIFICATION TO THE REDEVELOPMENT PLAN OF THE CITY FOR TIF AREA B (DOWNTOWN AREA-WIDE TIF) AND RECOMMENDING APPROVAL BY THE CITY COUNCIL.

WITNESSETH:

WHEREAS, the Community Redevelopment Authority of the City of Waverly, Nebraska (the "Authority"), in furtherance of the purposes and pursuant to the provisions of Section 18-2101 to 18-2154, Reissue of Revised Statutes of Nebraska (the "Act"), has previously adopted a Redevelopment Plan for a specific blighted and substandard area of the City known as TIF Area B (Downtown Area-Wide TIF);

WHEREAS, the area covered by TIF Area B is described as set forth on **Exhibit A** attached hereto; and

WHEREAS, the existing Redevelopment Plan for TIF Area B (Downtown Area-Wide TIF) is referred to hereinafter as the "Downtown Redevelopment Plan"; and

WHEREAS, the Mayor and City Council of the City of Waverly, Nebraska, have previously approved the Downtown Redevelopment Plan; and

WHEREAS, the Authority desires to modify the Downtown Redevelopment Plan to include additional potential redevelopment projects as listed on **Exhibit B** attached hereto which are intended to ameliorate blight and substandard conditions in TIF Area B; and

WHEREAS, the proposed inclusion of additional potential redevelopment projects to the Downtown Redevelopment Plan is referred to hereinafter as the "Modification"; and

WHEREAS, the Authority has determined that the Modification does not qualify as a minor modification of the Downtown Redevelopment Plan; and

WHEREAS, the Authority has forwarded the Modification to the Planning Commission of the City of Waverly, Nebraska, and the Planning Commission conducted a public hearing with regard to the Modification, has reviewed the Modification, has determined that it conforms to the general development plan of the City, and has recommended approval of the Modification; and

WHEREAS, the Authority has made certain findings and has determined that it is in the best interests of the Authority and the City to adopt the Modification and to complete the projects described in the Modification as a Redevelopment Project;

NOW, THEREFORE, be it resolved by the Authority as follows:

1. The Authority has determined that the proposed land uses and building requirements in the Modification are designed with the general purposes of accomplishing, and in conformance with the general redevelopment plan of the City, a coordinated, adjusted, and harmonious development of the City and its environs which will, in accordance with present and future needs, promote health, safety, morals, order, convenience, prosperity and the general welfare, as well as efficiency in economy in the process of development; including, among other things, adequate provision for traffic, vehicular parking, the promotion of safety from fire, panic, and other dangers, adequate provisions for light and air, the promotion of the healthful and convenient distribution of population, the provision of adequate transportation, water, sewerage, and other public utilities, schools, parks, recreational and community facilities, and other public requirements, the promotion of sound design and arrangement, the wise and efficient expenditure of public funds, and the prevention of the recurrence of unsanitary or unsafe dwelling accommodations, or conditions of blight.

2. The Authority has conducted a cost-benefit analysis for the Modification in accordance with the Act and has found and hereby finds that the projects described in the Modification would not be economically feasible without the use of tax increment financing, the projects in the Modification would not occur in TIF Area B without the use of tax increment financing and the costs and benefits of the projects in the Modification, including costs and benefits to other affected political subdivisions, the economy of the community, and the demand for public and private services have been analyzed and have been found to be in the long term best interests of the community impacted by the projects in the Modification. A copy of the Cost-Benefit Analysis for the Modification is attached hereto as **Exhibit C** and is incorporated herein by reference.

3. The Authority hereby gives the City notice of its intent to pledge incremental taxes collected with regard to real property in TIF Area B (pursuant to the Notice to Divide Taxes that is currently in place) for the payment of notes, bonds, or other indebtedness issued by the Authority to fund the projects included in the Modification.

4. The Authority hereby recommends to the City approval of the Modification, following publication of notice of and a public hearing with respect to the proposed Modification pursuant to the Act.

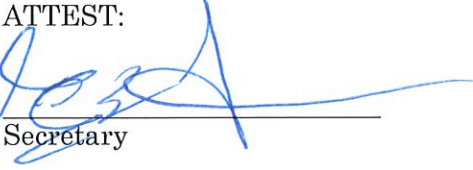
5. The Authority hereby recommends that the City authorize the continued division of taxes on the property included in TIF Area B pursuant to the Notice to Divide Taxes currently in place with regard to TIF Area B.

6. The appropriate officers of the Authority are hereby authorized and directed to take such actions and to execute and deliver such documents as are reasonably necessary to carry out the intent of this Resolution.

IN WITNESS WHEREOF, the undersigned members of the Community Redevelopment Authority of the City of Waverly, Nebraska, hereby pass and adopt this Resolution this 1 day of June, 2026.

COMMUNITY REDEVELOPMENT
AUTHORITY OF THE CITY OF
WAVERLY, NEBRASKA


ATTEST:


Secretary


Member


Member


Member


Member

Member

EXHIBIT A
Legal Description of TIF Area B

The Redevelopment Area begins at the intersection of the north line of Irregular Lot 19, with the west line of 148th Street, thence south along said west line to its intersection with the north line of Lot 2, Kubert's Subdivision, thence west along said north line to its intersection with the east line of Lot 1, Kubert's Subdivision, thence south along said east line to its intersection with the north line of Irregular Lot 133 in the southeast quarter of Section 16, T11N, R8E of the Sixth Principal Meridian, also known as Rose Hill Cemetery, thence west along said north line to its intersection with the west line of Lot 1, Kubert's Subdivision, thence north along said west line to its intersection with the south line of Lot 92, thence west along said line and continuing west along the south line of Lots 110, 104, 114, 113, 49, 37 and 107 to its intersection with the east line of 144th Street, thence south along said east line to its intersection with the south line of Ivanhoe Street, thence west along said south line to its intersection with the east line of 142nd Street, thence south along said east line to its intersection with the south line of Heywood Street, thence west along said south line to its intersection with the south line of Highway 6, thence southwest along said south line to its intersection with the east line of Canongate Road, thence north along said east line to its intersection with the west Corporate Limit Line of the City of Waverly, Lancaster County, Nebraska, thence following along said Corporate Limit Line east and south to its intersection with the north line of the Highway 6 right-of-way, thence northeast along said north line to its intersection with an extension of the west line of 140th Street, thence north along said extended west line to its intersection with the north line of Lancashire Street, thence east along said north line to its intersection with the west line of the vacated alley located in the Waverly Village Subdivision, thence north along said west line to its intersection with the north line of Lot 19 of the Waverly Village Subdivision, thence west along said north line to its intersection with the extended west line of Irregular Lot 162 of the Waverly Village Subdivision, thence north along said extended west line, continuing as the west line of Lot 163, to its intersection with the south line of Irregular Lot 158, in the southwest quarter of Section 16, T11N, R8E (also known as the Corporate Limit Line of the City of Waverly, Lancaster County, Nebraska) thence west along said south line to its intersection with the west line of Lot 158, thence north along said west line, continuing along an extension of said west line to its intersection with the north line of Irregular Lot 216, thence east along said north line to its intersection with the west line of 141st Street, thence north along said west line to its intersection with the south line of Waverly Road, thence east along said south line, across 141st Street, to its intersection with the east line of 141st Street, thence south along said east line to its intersection with the north line of Mansfield Street, thence east along said north line to its intersection with the west line of Lot 194, thence north along said west line to its intersection with the north line of Lot 194, thence east along said north line, continuing east along the north line of Lots 170, 32, 31, 207 and 19, to its intersection with the west line of 148th Street, also known as the point of beginning.

EXHIBIT B
Additional Potential Projects Added to
Redevelopment Plan for TIF Area B

1. Workforce/Affordable Housing.
2. Land Acquisition including demolition, site preparation, water, sewer, streets, storm water, sidewalks, public trails.
3. Real Estate Acquisition including rehabilitation of existing structures.
4. Improvements to city-owned buildings in TIF Area B, including city office, city shop buildings, and fire station.
5. Intersection Improvements at Hwy 6 & N. 141st Street including traffic signals, warning lights, pedestrian safety improvements.
6. Intersection Improvements at Hwy 6 & N. 148th Street including turn lanes, traffic signals, other safety improvements, storm water drainage improvements.
7. Installation of Rectangular Rapid Flashing Beacons to improve pedestrian safety within TIF Area B

EXHIBIT C

COMMUNITY REDEVELOPMENT AUTHORITY CITY OF WAVERLY, NEBRASKA TIF AREA B – MODIFICATION TO REDEVELOPMENT PLAN

COST-BENEFIT ANALYSIS (Pursuant to Neb. Rev. Stat. § 18-2113)

The City has previously approved a redevelopment plan for TIF Area B (Downtown Area Wide TIF) which includes various projects to be funded by the issuance of TIF indebtedness. The various projects comprise a single “Redevelopment Project” as defined under applicable law. Ad valorem taxes have been collected as part of the approved Redevelopment Plan since 2013 and various projects have been completed. It is now proposed to add certain additional projects to the list of potential projects approved for TIF Area B as a modification to the approved Redevelopment Plan (the “Modification”). The cost-benefit analysis for the proposed Modification, which will continue to utilize funds authorized by Neb. Rev. Stat. § 18-2147, is summarized as follows:

1. Tax shifts resulting from the approval of the use of funds pursuant to Section 18-2147:

The proposed Modification will not result in any additional tax shift beyond what is already occurring pursuant to the existing Redevelopment Plan. Since 2013, incremental tax revenues of \$2,002,221 have been allocated for use under the Redevelopment Plan.

2. Public infrastructure and community public service needs impacts and local tax impacts arising from the approval of the redevelopment project:

a. Public infrastructure improvements and impacts:

The additional projects included by the Modification are intended to improve public infrastructure in TIF Area B and provide community and recreational resources and amenities. Because the projects will be improving existing infrastructure, it is not anticipated that the projects in the Modification will have any material adverse impact on existing public infrastructure. The projects in the Modification will materially benefit other property in and around the City.

b. Local tax impacts (in addition to impacts of tax shifts described above):

The additional projects in the Modification are not intended to have any material impact on local taxing jurisdictions. The infrastructure improvements may contribute to the overall growth of the City which could create an increase in property taxes and increased sales tax revenue. The City could realize revenue from sales taxes paid by the employees and workers that will work in the City in connection with completion of the projects in the Modification.

3. Impacts on employers and employees of firms locating or expanding within the boundaries of the area of the redevelopment project:

The additional projects in the Modification are intended to provide infrastructure and amenities to support existing businesses in TIF Area B and to encourage future development. Over the long term, the additional projects in the Modification may contribute to job growth in the City.

4. Impacts on other employers and employees within the City and the immediate area that is located outside of the boundaries of the area of the redevelopment project:

The additional projects in the Modification should have a material positive impact on private sector businesses in and around the area outside the boundaries of TIF Area B. The additional projects in the Modification are not anticipated to impose a burden or have a negative impact on other local area employers.

5. Impacts on the student population of the school district:

The additional projects in the Modification are not expected to have a significant impact on student populations of the Waverly school district. One of the additional projects is support of workforce/affordable housing which may allow some additional families with school-age children to reside in the City, but such impacts should be consistent with the general growth of the City.

6. Other impacts determined by the authority to be relevant to the consideration of costs and benefits arising from the redevelopment project:

The additional projects in the Modification will help address some immediate infrastructure needs in TIF Area B.

7. Cost Benefit Analysis Conclusion:

Based upon the findings presented in this cost benefit analysis, the benefits outweigh the costs of the proposed Modification.

MINUTES OF A WAVERLY CITY COUNCIL MEETING HELD ON JUNE 9, 2026

CALL TO ORDER

Mayor Abbey Pascoe called the Meeting to order at 6:00 p.m. and led those in attendance in reciting the Pledge of Allegiance. Pascoe acknowledged the Open Meetings Act Poster located on the south wall of the Council Chambers. Mayor Pascoe and Council Members Dave Nielson and Brook Ruhter-Engelhardt were in attendance. Council Members David Jespersen and Aaron Delahoyde were absent. Other City Officials present were City Administrator Stephanie Fisher, City Attorney Mark Fahleson, and City Clerk Megan Frye. Also in attendance was Fire Chief Robin Hoffman. Notice of the Meeting and Agenda were given to the Mayor and all Members of the City Council prior to the Meeting. Notice of the Meeting was posted at Russ’s Market Express, the US Post Office, the City Office and the City website (citywaverly.com).

ADOPTION OF AGENDA

Council Member Nielson moved to adopt the Agenda as presented. Council Member Ruhter-Engelhardt seconded the motion.

The following Council Members voted “YEA”: Nielson and Ruhter-Engelhardt. The following Council Members voted “NAY”: None. With only two Council Members present, Mayor Pascoe voted “YEA” to establish a quorum. Motion Carried. 3-0.

APPROVAL OF THE CONSENT AGENDA ITEMS

Minutes of the May 26, 2026 City Council Meeting

Consideration of granting a noise variance request for the annual BBQ Contest at the Waverly Community Foundation to be held on August 1, 2026.

Council Member Ruhter-Engelhardt moved to approve the Consent Agenda. Council Member Nielson seconded the motion.

The following Council Members voted “YEA”: Nielson and Ruhter-Engelhardt. The following Council Members voted “NAY”: None. With only two Council Members present, Mayor Pascoe voted “YEA” to establish a quorum. Motion Carried. 3-0.

PROCLAMATIONS AND PRESENTATIONS

None.

PUBLIC HEARINGS

None.

SHERIFF'S REPORT

No report.

PUBLIC COMMENTS

None.

APPROVAL OF MINUTES

Minutes of the May 26, 2026 City Council Meeting

Consent Agenda.

CONSIDERATION OF CLAIMS AND FINANCIAL REPORTS

Claims for Payment

| Claims for Payment: May 27 th - June 9 th , 2026 | | |
|--|-------------|--------|
| Group A | | |
| Vendor | Description | Amount |

| | | |
|-------------------------------|---|---------------|
| Austin Barela | Utility Deposit Refund | \$ 100.00 |
| Patti & Lowell Bomgaars | Utility Deposit Refund | \$ 100.00 |
| Chase Bryant | Utility Deposit Refund | \$ 100.00 |
| Joe Cockerill | Utility Deposit Refund | \$ 100.00 |
| Alisha Connelly | Utility Deposit Refund | \$ 100.00 |
| Kristi & Russell Dostal | Utility Deposit Refund | \$ 100.00 |
| Allison & Dylan Lindburg | Utility Deposit Refund | \$ 100.00 |
| Toni & Troy Lurz | Utility Deposit Refund | \$ 100.00 |
| Joel Magee | Utility Deposit Refund | \$ 100.00 |
| Richard Meyer | Utility Deposit Refund | \$ 100.00 |
| Sara Nettifee | Utility Deposit Refund | \$ 100.00 |
| Katlynn & Allen Osborn | Utility Deposit Refund | \$ 100.00 |
| Matt Reidy | Utility Deposit Refund | \$ 100.00 |
| Valentine Santarlas | Utility Deposit Refund | \$ 100.00 |
| Tanner Wansing | Utility Deposit Refund | \$ 100.00 |
| ADP Payroll | Payroll | \$ 93,939.55 |
| Allo Communications | Phone/Internet Services | \$ 1,039.43 |
| Anna Unruh | Lifeguard Training & CPR | \$ 3,090.00 |
| Aqua-Chem, Inc. | Pool chemicals | \$ 886.25 |
| Awards Unlimited, Inc. | Anniversary plaques | \$ 81.00 |
| BOK Financial | GO Various Purpose Bonds 2020 | \$ 166,671.25 |
| BOK Financial | GO Sewer Refunding Bond 2021 | \$ 230,158.75 |
| BOK Financial | Hwy Allocation Fund Bond 2020 | \$ 1,102.50 |
| BOK Financial | GO Water Bonds Series 2025 | \$ 23,307.50 |
| BOK Financial | GO Water Refunding Bond 2021 | \$ 7,395.00 |
| BOK Financial | Combined Utility Ref Bond 2020 | \$ 219,083.75 |
| BOK Financial | Combined Utility Ref Bond 2021 | \$ 8,002.50 |
| BOK Financial | Municipal Improve Bond 2025 | \$ 27,973.75 |
| BOK Financial | GO Aquatic Center Bond 2021 | \$ 16,121.25 |
| BOK Financial | Public Safety Tax Bond 2026 | \$ 21,547.30 |
| Bowman Consulting Group | Canongate Road Roadway Design | \$ 585.00 |
| Braxton Halsey | Umpire payout | \$ 605.00 |
| Carquest Auto Parts | Mass air flow sensor | \$ 190.99 |
| Caselle LLC | Hosted Software & Services | \$ 29,464.50 |
| Colonial Life | Insurance | \$ 43.92 |
| Danko Emergency Equipment Co. | Riley spreader | \$ 660.00 |
| DataVizion, LLC | Microsoft 365 Business, Support | \$ 2,010.36 |
| Design Wear | Heavyweight insulated jackets | \$ 6,254.00 |
| Dun-Rite Homes, Inc. | Refund-Permit 250116 | \$ 800.00 |
| ESRI | ArcGIS Term License | \$ 3,500.00 |
| Eugene Unick | Umpire payout | \$ 620.00 |
| Faughn Electric | Lawson parking lot lights | \$ 290.00 |
| Holly Boyd | Swimsuit reimbursement | \$ 32.12 |
| Horizon Bank | Monthly ACH Fees | \$ 10.00 |
| Hunter Claycomb | Umpire payout | \$ 150.00 |
| Inyo Pool Products | Commercial pool cleaner | \$ 6,073.95 |
| JEO Consulting Group, Inc. | Comp. Safety Action Plan, 134 th & Hwy 6 Drainage Improvements | \$ 7,749.95 |
| John Deere Financial | Supplies | \$ 7.78 |

| | | |
|----------------------------------|--|------------------------|
| John Hancock USA | Retirement | \$ 3,978.81 |
| Justin Gregory | Umpire payout | \$ 165.00 |
| Keith Ernst | Umpire payout | \$ 100.00 |
| Kriha Fluid Power-Lincoln | Supplies | \$ 103.91 |
| Lancaster Co. Sheriff Office | June 2026 | \$ 38,759.00 |
| Leading Edge | Utility Bills | \$ 871.95 |
| Lincoln Electric System | Electricity | \$ 4,347.05 |
| MacQueen Equipment | SCBA flow testing | \$ 1,605.00 |
| Mammoth Station | Fuel, batteries | \$ 1,184.14 |
| Menards-Lincoln North | Concrete mix | \$ 20.95 |
| Midwest Laboratories, Inc. | Lab fees | \$ 1,451.08 |
| Midwest Turf & Irrigation | Mower repair | \$ 374.43 |
| Morgan Gregory | Umpire payout | \$ 115.00 |
| Nebraska Dept Revenue Waste | Utility Sales Tax | \$ 15,252.94 |
| Nebr. Dept. of Environ. & Energy | Grade 3 Water Operator Course | \$ 200.00 |
| Nebraska Generator Service | Well 10 & 11 generator repair, replace control board | \$ 7,523.11 |
| Nebraska Landscape Solutions | Chalk marker | \$ 660.79 |
| NE Public Health Environ. Lab | Lab Fees | \$ 314.00 |
| One Call Concepts, Inc. | One-Call Service | \$ 79.77 |
| One Source-Background Check Co | Background checks | \$ 171.00 |
| Paramount Supply Co. | Supplies | \$ 71.05 |
| Pepsi-Cola of Lincoln | Aquatic Center concessions | \$ 853.10 |
| Pinnacle Bank | Pool & shop supplies, pool maintenance, conference | \$ 7,037.12 |
| PRC Enterprises | TIF G Snap Fitness - June 2026 | \$ 5,500.00 |
| Production Creek Specialty Adv | Aquatic center staff clothing | \$ 883.00 |
| Recreonics | Racing lane rope | \$ 1,716.80 |
| Reid Nagel | Umpire payout | \$ 245.00 |
| Rembolt Ludtke LLP | Legal Fees | \$ 3,000.00 |
| Scott Claycomb | Umpire payout | \$ 195.00 |
| Small Engine Specialists | Repairs | \$ 116.06 |
| S.E. Rural Fire Protection Dist. | EMS Calls | \$ 3,750.00 |
| The Voice News | Advertising & Printing | \$ 389.07 |
| Tractor Supply | TIF H - TSC Distrib. | \$ 153,302.44 |
| Tractor Supply | TIF I - TSC Retail | \$ 29,975.52 |
| U.S. Postmaster | Box Rent Fee | \$ 280.00 |
| U.S. Bank Equipment Finance | Ricoh Copier | \$ 143.95 |
| Uribe Refuse Services | Restroom Rental | \$ 96.00 |
| Vacek Enterprises | TIF J Amberly Dental-June 2026 | \$ 8,710.11 |
| Visual Edge IT | Copies | \$ 197.44 |
| Woodstock Holdings LLC | TIF K Empire Fence - June 2026 | \$ 21,722.45 |
| RecDesk | Monthly deposit charge | \$ 25.00 |
| RecDesk | Monthly deposit charge | \$ 25.00 |
| RecDesk | Swimming lesson refund - Meagan Reiman | \$ 65.00 |
| RecDesk | Swimming lesson refund - Kacey Mendyk | \$ 65.00 |
| | Claims Group A Total | \$ 1,196,589.39 |

Council Member Ruhter-Engelhardt moved to approve claims in the amount of \$1,196,589.39. Council Member Nielson seconded the motion.

Council Member Nielson noted the TIF payments and semi-annual bond payments.

The following Council Members voted “YEA”: Nielson and Ruhter-Engelhardt. The following Council Members voted “NAY”: None. With only two Council Members present, Mayor Pascoe voted “YEA” to establish a quorum. Motion Carried. 3-0.

TREASURER'S REPORT AND BUDGET & EXPENSE REPORT

Council Member Nielson moved to approve Treasurer's Report and Budget & Expense Report. Council Member Ruhter-Engelhardt seconded the motion.

The following Council Members voted “YEA”: Nielson and Ruhter-Engelhardt. The following Council Members voted “NAY”: None. With only two Council Members present, Mayor Pascoe voted “YEA” to establish a quorum. Motion Carried. 3-0.

INTRODUCTION OF RESOLUTIONS

None.

INTRODUCTION OF ORDINANCES

None.

INTRODUCTION OF BUSINESS AND COMMUNICATIONS

Consideration of granting a noise variance request for the annual BBQ Contest at the Waverly Community Foundation to be held on August 1, 2026.

Consent Agenda.

Consideration of contract with Midwest Excavating Services, LLC for the N 134th St & Hwy 6 Drainage Improvements Project in an amount not to exceed \$104,215.41.

Council Member Nielson moved to approve a contract with Midwest Excavating Services, LLC for the N 134th St & Hwy 6 Drainage Improvements Project in an amount not to exceed \$104,215.41. Council Member Ruhter-Engelhardt seconded the motion.

The following Council Members voted “YEA”: Nielson and Ruhter-Engelhardt. The following Council Members voted “NAY”: None. With only two Council Members present, Mayor Pascoe voted “YEA” to establish a quorum. Motion Carried. 3-0.

Consideration of Change Order No. 1 with Midwest Excavating Services, LLC for the N 134th St & Hwy 6 Drainage Improvements Project.

Council Member Nielson moved to approve Change Order No. 1 with Midwest Excavating Services, LLC for the N 134th St & Hwy 6 Drainage Improvements Project. Council Member Ruhter-Engelhardt seconded the motion.

City Administrator Fisher advised the changes include price decrease due to City paying insurance policy and date of completion pushed to September 1st, prior to fiscal year end.

The following Council Members voted “YEA”: Nielson and Ruhter-Engelhardt. The following Council Members voted “NAY”: None. With only two Council Members present, Mayor Pascoe voted “YEA” to establish a quorum. Motion Carried. 3-0.

Council Member Nielson left the meeting at 6:05 p.m.

COMMITTEE REPORTS

Human Services (Park & Recreation): Council Member Nielson

City Administrator Fisher reported 8u tournament at Lawson Park this week. One of the parks mowers had an engine blow and a new motor will be installed by the end of this week locally. Chairs were purchased with a donation from Horizon Bank and installed at the Aquatic Center. Swim team started and

a swim meet has been scheduled here, similar to last year. Seasonal staff is in full swing trimming trees in the park and tackling projects. The Park & Rec Committee discussed budget year projects for next year.

Public Works (Utilities & Street): Council Member Jespersen

City Administrator Fisher reported public works has been monitoring water levels; the static levels are decreasing. The water tables are not changing significantly after the rain; it will take a long time to affect the water table. We ask that people abide by conservation methods in place, we can see there is some misuse on non-watering days. When it rains, you don't need to water even though it might be your day. We ask residents to focus on conservation.

Public Health (Fire & Safety): Council Member Delahoyde

Fire Chief Hoffman reported last week had fewer calls with 6 calls for service. In the next couple weeks, the members will receive their personal vehicle reimbursement and officer stipends. The three new members got training and gear; one of the new members has been on a couple calls.

Fiscal and Economic Development: Council Member Ruhter-Engelhardt

Council Member Ruhter-Engelhardt reported the WEDC had a meeting yesterday where they approved a contract with Amanda Staab with SENDD until the end of the year and elected officers. The next meeting is July 13 and the next CRA meeting is June 15.

City Administrator Fisher

City Administrator Fisher reported Benefit Management met with staff to go over the new healthcare policy with staff members, which will take effect July 1. Department heads are all working on budget projects for next year and finishing up projects for this budget year.

ADJOURNMENT

Mayor Pascoe moved to adjourn the meeting at 6:10 p.m. Council Member Ruhter-Engelhardt seconded the motion.

The following voted "YEA": Mayor Pascoe and Council Member Ruhter-Engelhardt. The following Council Members voted "NAY": None. Motion Carried. 2-0.

Abbey L. Pascoe
Mayor

Megan K. Frye
City Clerk/Human Resources Assistant

Claims for Payment: June 10th - 23rd, 2026

| Group A | | | |
|--------------------------------|---|----------------------|------------------|
| Vendor | Description | Amount | Date Paid |
| Aaron Hummel | WFR-Personal Vehicle Reimbursement | \$ 760.00 | |
| Aaron McClellan | WFR-Personal Vehicle Reimbursement | \$ 2,320.00 | |
| ADP Fees | Quarterly taxes ADP did not file | \$ 158.66 | 6/18/2026 |
| ADP Fees | Payroll Fees | \$ 500.15 | 6/19/2026 |
| ADP Payroll | Payroll | \$ 84,038.22 | 6/26/2026 |
| Aqua-Chem, Inc. | Pool chemicals, basket strainer cover | \$ 1,674.07 | |
| Black Hills Energy | Natural gas | \$ 169.52 | |
| Braxton Halsey | Umpire payout | \$ 640.00 | |
| Caleb Bishop | WFR Stipends/Vehicle Reimbursement | \$ 1,530.00 | |
| Carquest Auto Parts | Filters, brake rotor, calipers, v-belt w/ return | \$ 575.43 | |
| Cubby's, Inc. | Fuel | \$ 2,696.00 | |
| Derick Peters | Umpire payout | \$ 245.00 | |
| Emerson Glassburner | Umpire payout | \$ 165.00 | |
| Empire Repair | Waverly 61 oil/filter change | \$ 119.38 | |
| Eugene Unick | Umpire payout | \$ 720.00 | |
| Faughn Electric | Pool receptacle repair | \$ 202.00 | |
| Frontier | Cornerstone Plus | \$ 60.00 | |
| Greg Gerlach | WFR Stipends/Vehicle Reimbursement | \$ 2,380.00 | |
| Hawkins, Inc. | Supplies | \$ 1,734.08 | |
| Hippo Equipment | Mower engine, mower tire | \$ 4,327.40 | |
| Holiday Inn Express-GI | Room Charges - Fire School | \$ 934.00 | |
| Hometown Leasing | FD Copier | \$ 71.48 | |
| International Code Council Inc | Inspection/code books | \$ 2,285.58 | |
| Jacob Brosseau | WFR-Personal Vehicle Reimbursement | \$ 800.00 | |
| Jared Rains | WFR-Personal Vehicle Reimbursement | \$ 640.00 | |
| JEO Consulting Group, Inc. | New Fire Station, New Well Siting, New Well #12, Safety Action Plan, Zoning Map | \$ 50,549.00 | |
| JLC Construction | City office roof & gutters | \$ 37,210.00 | |
| John Adams | WFR-Personal Vehicle Reimbursement | \$ 2,200.00 | |
| John Catsinas | WFR-Personal Vehicle Reimbursement | \$ 420.00 | |
| John Hancock USA | Retirement | \$ 4,105.17 | 6/26/2026 |
| Joseph Hummel | WFR Stipends/Vehicle Reimbursement | \$ 2,010.00 | |
| Julian Linke | WFR-Personal Vehicle Reimbursement | \$ 580.00 | |
| Keith Ernst | Umpire payout | \$ 295.00 | |
| Larry Fichtner | WFR-Personal Vehicle Reimbursement | \$ 60.00 | |
| Life-Assist, Inc. | Medical Supplies | \$ 707.85 | |
| Lincoln Electric System | Electricity | \$ 17,350.84 | |
| Matheson Tri-Gas, Inc. | Oxygen bottle rental | \$ 124.39 | |
| Mellen & Associates | (4) wasting valve replacements | \$ 13,713.22 | |
| Menards-Lincoln North | Water hose & utility winch, showerhead, wrench, concrete mix, fescue, stop sign parts | \$ 389.99 | |
| Michael McClellan | WFR-Personal Vehicle Reimbursement | \$ 2,290.00 | |
| Nadezhda Koval | Cleaning Service | \$ 452.41 | |
| Nathanael Brosseau | WFR-Personal Vehicle Reimbursement | \$ 160.00 | |
| NE Dept Of Transportation | Snow Removal Agreement | \$ 7,750.60 | |
| Nebraska Fire Chiefs Assoc. | Fire Chief Membership | \$ 25.00 | |
| NE Public Health Environ.Lab | Lab Fees | \$ 63.00 | |
| NSVFA | Membership Dues | \$ 870.00 | |
| Odey's Inc. | Linestripe paint, end-spike pitching rubbers | \$ 1,298.85 | |
| Olsson Inc. | Anderson North Park 10th Add. | \$ 5,343.50 | |
| One Billing Solutions | May 2026 Billing-EMS | \$ 1,970.59 | |
| Pavers Inc. | Amberly Road panel repairs | \$ 12,922.50 | |
| Pepsi-Cola of Lincoln | Aquatic Center concessions | \$ 157.85 | 7/10/2026 |
| Pepsi-Cola of Lincoln | Aquatic Center concessions | \$ 486.75 | 7/10/2026 |
| Pepsi-Cola of Lincoln | Aquatic Center concessions | \$ 43.75 | 7/10/2026 |
| Pepsi-Cola of Lincoln | Aquatic Center concessions | \$ 122.85 | 7/10/2026 |
| Point C | Health Reimbursement Account | \$ 209.25 | |
| Quik Dump Refuse | Garbage Service | \$ 803.91 | |
| Reid Nagel | Umpire payout | \$ 490.00 | |
| Rembolt Ludtke LLP | TIF plan amendment | \$ 2,436.00 | |
| Robin L. Hoffman | WFR Stipends/Vehicle Reimbursement & tire inflation chucks reimbursement | \$ 6,796.66 | |
| S & L Trenching LLC | Water line repair | \$ 3,300.00 | |
| Shaffer Communications | Handheld radio repair | \$ 142.50 | |
| Small Engine Specialists | Chain saw repair | \$ 76.85 | |
| Star City Heating & Cooling | Aquatic center A/C repair | \$ 277.00 | |
| Take Off Tire LLC | Tire repair Waverly 10 | \$ 122.00 | |
| U.S. Postmaster | Stamps/Postage | \$ 626.50 | |
| Union Bank & Trust Co. | HSA Accounts | \$ 3,000.00 | 7/1/2026 |
| USA Blue Book | UV bulb replacements | \$ 1,142.17 | |
| Verizon Wireless | Phone Service | \$ 488.64 | |
| Whitehead Oil Co. | Fuel | \$ 52.50 | |
| William Gerdes | WFR-Personal Vehicle Reimbursement | \$ 1,700.00 | |
| Storage Ninjas - Waverly | Storage for Engine 34 - F.D. debit card purchase | \$ 148.00 | |
| RecDesk | Daily admission pool refund | \$ 8.50 | |
| Claims Group A Total | | \$ 295,239.56 | |

Abbey Pascoe, Mayor

Cheris Cadwell, City Treasurer/Deputy Clerk

Sales Tax Collections: sales tax earned two months prior-- shown as month paid to City

| | 2011 | 2012 | 2013 | 2014 | 2015 | 2016 | 2017 | 2018 | 2019 | 2020 | 2021 | 2022 | 2023 | 2024 | 2025 | 2026 | | |
|--------------------|--------------|--------------|--------------|--------------|--------------|--------------|--------------|--------------|--------------|--------------|----------------|----------------|----------------|----------------|----------------|--------------|--------------|--------------|
| January | | \$32,992.14 | \$29,189.49 | \$29,531.36 | \$32,688.55 | \$32,284.36 | \$33,172.54 | \$46,014.14 | \$41,917.94 | \$46,648.43 | \$90,625.85 | \$103,786.45 | \$105,194.37 | \$104,708.89 | \$125,496.52 | \$126,221.23 | | |
| February | | \$29,537.64 | \$30,246.77 | \$64,480.25 | \$36,940.26 | \$41,698.05 | \$41,692.99 | \$60,599.43 | \$46,095.47 | \$54,122.85 | \$109,289.36 | \$116,586.73 | \$131,852.76 | \$114,253.11 | \$133,595.25 | \$121,368.26 | | |
| March | | \$26,920.56 | \$26,887.71 | \$30,457.12 | \$35,161.97 | \$35,290.80 | \$40,821.47 | \$40,219.57 | \$42,933.14 | \$42,610.56 | \$75,928.93 | \$99,352.41 | \$95,771.88 | \$82,176.63 | \$123,786.47 | \$109,943.19 | | |
| April | | \$28,796.53 | \$28,137.26 | \$29,420.11 | \$29,176.72 | \$30,227.87 | \$34,683.45 | \$41,461.95 | \$34,740.53 | \$47,940.60 | \$77,700.69 | \$111,903.31 | \$97,168.62 | \$111,029.70 | \$101,190.07 | \$104,345.70 | | |
| May | \$8.24 | \$35,288.09 | \$34,362.26 | \$34,621.55 | \$31,802.05 | \$39,108.51 | \$43,465.17 | \$52,003.47 | \$47,233.51 | \$44,064.34 | \$93,473.57 | \$97,854.57 | \$101,491.84 | \$105,729.62 | \$109,905.53 | \$112,148.66 | | |
| June | \$21,243.02 | \$32,198.24 | \$28,426.22 | \$38,672.07 | \$31,794.65 | \$33,427.73 | \$40,781.58 | \$45,768.13 | \$41,378.54 | \$52,572.46 | \$99,944.43 | \$95,376.36 | \$111,660.31 | \$96,112.09 | \$112,449.89 | \$104,372.49 | | |
| July | \$25,244.63 | \$30,457.75 | \$31,952.30 | \$39,768.61 | \$43,691.63 | \$5,327.24 | \$45,632.90 | \$50,294.37 | \$52,805.83 | \$45,600.18 | \$98,328.54 | \$100,142.61 | \$106,592.60 | \$107,047.20 | \$109,031.89 | | | |
| August | \$29,839.16 | \$36,192.83 | \$33,585.11 | \$32,131.22 | \$31,226.35 | \$44,897.74 | \$48,886.02 | \$51,641.21 | \$50,411.52 | \$59,379.70 | \$107,707.62 | \$121,477.70 | \$130,326.31 | \$99,092.02 | \$124,102.79 | | | |
| September | \$30,988.54 | \$37,130.93 | \$34,002.03 | \$41,645.33 | \$49,711.78 | \$36,561.46 | \$41,391.36 | \$42,353.80 | \$50,953.89 | \$67,428.76 | \$99,848.37 | \$104,395.19 | \$103,737.29 | \$91,604.71 | \$124,882.31 | | | |
| October | \$29,229.16 | \$36,993.71 | \$38,297.05 | \$35,077.10 | \$36,328.32 | \$39,165.85 | \$45,678.64 | \$52,076.81 | \$57,694.98 | \$55,385.72 | \$99,986.54 | \$119,671.73 | \$114,754.32 | \$95,256.32 | \$117,354.64 | | | |
| November | \$29,346.34 | \$32,505.44 | \$41,745.15 | \$37,159.48 | \$36,419.27 | \$47,264.28 | \$50,944.62 | \$42,158.82 | \$58,477.36 | \$56,647.46 | \$118,010.17 | \$109,006.57 | \$102,350.94 | \$104,667.52 | \$133,623.58 | | | |
| December | \$27,622.05 | \$29,632.44 | \$17,238.71 | \$32,581.21 | \$22,368.15 | \$35,162.51 | \$48,520.21 | \$45,481.83 | \$45,307.48 | \$90,445.57 | \$87,009.84 | \$14,777.74 | \$102,439.75 | \$83,758.65 | \$29,331.27 | | | |
| Total Year | \$193,521.14 | \$388,646.30 | \$374,070.06 | \$445,545.41 | \$417,309.70 | \$420,416.40 | \$515,670.95 | \$570,073.53 | \$569,950.19 | \$662,846.63 | \$1,157,853.91 | \$1,194,331.37 | \$1,303,340.99 | \$1,195,436.46 | \$1,344,750.21 | \$678,399.53 | City | Aquatic Ctr |
| | | | | | | | | | | | | | | | | | \$452,266.58 | \$226,132.95 |
| Monthly Ave | \$24,190.14 | \$32,387.19 | \$31,172.51 | \$37,128.78 | \$34,775.81 | \$35,034.70 | \$42,972.58 | \$47,506.13 | \$47,495.85 | \$55,237.22 | \$96,487.83 | \$99,527.61 | \$108,611.75 | \$99,619.71 | \$112,062.52 | \$113,066.59 | | |

| Tax Year | Tax Month | Sales and Use Tax*** | Consumers Use Tax | Current Month's Refunds | Administration Fee | Paid to City | Motor Vehicle Sales Tax |
|----------|-----------|----------------------|-------------------|-------------------------|--------------------|--------------|-------------------------|
| 2011 | MARCH | 8.5 | 0 | 0 | -0.26 | 8.24 | 0 |
| 2011 | APRIL | 15,415.21 | 6,484.81 | 0 | -657 | 21,243.02 | 1,823.27 |
| 2011 | MAY | 21,667.75 | 4,357.64 | 0 | -780.76 | 25,244.63 | 5,788.37 |
| 2011 | JUNE | 23,301.52 | 7,460.50 | 0 | -922.86 | 29,839.16 | 4,130.36 |
| 2011 | JULY | 27,421.51 | 4,525.44 | 0 | -958.41 | 30,988.54 | 7,386.23 |
| 2011 | AUGUST | 24,815.25 | 5,317.90 | 0 | -903.99 | 29,229.16 | 6,051.95 |
| 2011 | SEPTEMBER | 25,308.28 | 4,945.68 | 0 | -907.62 | 29,346.34 | 7,157.20 |
| 2011 | OCTOBER | 22,134.06 | 6,342.28 | 0 | -854.29 | 27,622.05 | 4,587.09 |
| 2011 | NOVEMBER | 27,617.00 | 6,421.31 | -25.79 | -1,020.38 | 32,992.14 | 4,160.86 |
| 2011 | DECEMBER | 23,244.46 | 7,206.72 | 0 | -913.54 | 29,537.64 | 4,359.71 |
| 2012 | JANUARY | 23,359.89 | 4,393.26 | 0 | -832.59 | 26,920.56 | 6,780.83 |
| 2012 | FEBRUARY | 25,526.98 | 4,160.16 | 0 | -890.61 | 28,796.53 | 8,674.90 |
| 2012 | MARCH | 28,559.75 | 7,902.92 | -83.2 | -1,091.38 | 35,288.09 | 8,671.84 |
| 2012 | APRIL | 23,623.05 | 9,574.34 | -3.33 | -995.82 | 32,198.24 | 6,178.25 |
| 2012 | MAY | 24,541.36 | 6,858.38 | 0 | -941.99 | 30,457.75 | 5,172.52 |
| 2012 | JUNE | 27,549.48 | 10,143.28 | -380.56 | -1,119.37 | 36,192.83 | 9,538.15 |
| 2012 | JULY | 27,301.79 | 10,978.30 | -0.78 | -1,148.38 | 37,130.93 | 5,693.49 |
| 2012 | AUGUST | 30,506.45 | 7,633.26 | -1.86 | -1,144.14 | 36,993.71 | 9,079.62 |
| 2012 | SEPTEMBER | 24,745.01 | 8,767.26 | -1.51 | -1,005.32 | 32,505.44 | 4,169.41 |
| 2012 | OCTOBER | 24,429.85 | 6,119.06 | 0 | -916.47 | 29,632.44 | 6,285.49 |
| 2012 | NOVEMBER | 26,792.27 | 3,318.20 | -18.21 | -902.77 | 29,189.49 | 6,440.89 |
| 2012 | DECEMBER | 27,459.37 | 3,722.87 | 0 | -935.47 | 30,246.77 | 7,076.74 |
| 2013 | JANUARY | 24,879.70 | 2,889.59 | -50 | -831.58 | 26,887.71 | 5,370.87 |
| 2013 | FEBRUARY | 26,724.12 | 2,283.36 | 0 | -870.22 | 28,137.26 | 3,988.43 |
| 2013 | MARCH | 33,193.18 | 2,231.83 | 0 | -1,062.75 | 34,362.26 | 5,453.53 |
| 2013 | APRIL | 27,197.57 | 2,107.81 | 0 | -879.16 | 28,426.22 | 5,843.58 |
| 2013 | MAY | 30,628.60 | 2,317.08 | -5.16 | -988.22 | 31,952.30 | 6,412.37 |
| 2013 | JUNE | 29,122.78 | 7,593.00 | -2,091.96 | -1,038.71 | 33,585.11 | 9,349.84 |
| 2013 | JULY | 32,833.59 | 2,223.69 | -3.64 | -1,051.61 | 34,002.03 | 7,990.33 |
| 2013 | AUGUST | 36,291.13 | 3,233.44 | -43.08 | -1,184.44 | 38,297.05 | 15,073.10 |
| 2013 | SEPTEMBER | 34,347.27 | 8,688.97 | 0 | -1,291.09 | 41,745.15 | 11,463.13 |
| 2013 | OCTOBER | 30,797.91 | 3,943.10 | -16,969.14 | -533.16 | 17,238.71 | 4,370.31 |
| 2013 | NOVEMBER | 29,408.36 | 1,036.34 | 0 | -913.34 | 29,531.36 | 8,019.80 |
| 2013 | DECEMBER | 61,359.57 | 5,114.91 | 0 | -1,994.23 | 64,480.25 | 9,177.12 |
| 2014 | JANUARY | 30,017.85 | 1,385.43 | -4.19 | -941.97 | 30,457.12 | 4,790.19 |
| 2014 | FEBRUARY | 31,594.51 | 2,426.46 | -3,690.96 | -909.9 | 29,420.11 | 7,156.77 |
| 2014 | MARCH | 32,421.02 | 3,271.30 | 0 | -1,070.77 | 34,621.55 | 6,011.56 |

| | | | | | | | |
|------|-----------|-----------|-----------|------------|-----------|-----------|-----------|
| 2014 | APRIL | 33,181.11 | 6,687.00 | 0 | -1,196.04 | 38,672.07 | 8,966.34 |
| 2014 | MAY | 36,039.59 | 4,958.98 | 0 | -1,229.96 | 39,768.61 | 6,281.78 |
| 2014 | JUNE | 30,408.84 | 3,528.21 | -812.08 | -993.75 | 32,131.22 | 6,908.98 |
| 2014 | JULY | 38,778.88 | 4,319.77 | -165.32 | -1,288.00 | 41,645.33 | 10,423.14 |
| 2014 | AUGUST | 37,204.63 | -1,042.67 | 0 | -1,084.86 | 35,077.10 | 12,752.23 |
| 2014 | SEPTEMBER | 35,673.34 | 2,635.40 | 0 | -1,149.26 | 37,159.48 | 6,890.30 |
| 2014 | OCTOBER | 32,755.32 | 1,097.64 | -264.08 | -1,007.67 | 32,581.21 | 6,242.33 |
| 2014 | NOVEMBER | 29,758.71 | 4,197.54 | -256.71 | -1,010.99 | 32,688.55 | 7,173.36 |
| 2014 | DECEMBER | 36,212.81 | 2,697.68 | -827.75 | -1,142.48 | 36,940.26 | 9,673.81 |
| 2015 | JANUARY | 31,430.17 | 4,819.28 | 0 | -1,087.48 | 35,161.97 | 7,641.40 |
| 2015 | FEBRUARY | 28,073.66 | 2,005.43 | 0 | -902.37 | 29,176.72 | 7,068.34 |
| 2015 | MARCH | 30,523.36 | 3,514.71 | -1,252.45 | -983.57 | 31,802.05 | 7,207.36 |
| 2015 | APRIL | 30,654.89 | 2,529.75 | -406.65 | -983.34 | 31,794.65 | 7,116.77 |
| 2015 | MAY | 39,248.01 | 5,794.91 | 0 | -1,351.29 | 43,691.63 | 9,533.30 |
| 2015 | JUNE | 31,312.06 | 4,469.40 | -3,589.35 | -965.76 | 31,226.35 | 6,797.96 |
| 2015 | JULY | 37,820.92 | 13,511.27 | -82.93 | -1,537.48 | 49,711.78 | 10,182.40 |
| 2015 | AUGUST | 32,702.13 | 4,749.75 | 0 | -1,123.56 | 36,328.32 | 8,532.32 |
| 2015 | SEPTEMBER | 34,772.93 | 2,776.84 | -4.13 | -1,126.37 | 36,419.27 | 7,182.17 |
| 2015 | OCTOBER | 32,438.30 | 3,694.75 | -13,073.10 | -691.8 | 22,368.15 | 8,275.22 |
| 2015 | NOVEMBER | 26,484.79 | 6,798.06 | 0 | -998.49 | 32,284.36 | 5,183.27 |
| 2015 | DECEMBER | 35,027.68 | 8,361.67 | -401.67 | -1,289.63 | 41,698.05 | 5,382.21 |
| 2016 | JANUARY | 34,494.33 | 1,887.94 | 0 | -1,091.47 | 35,290.80 | 7,568.79 |
| 2016 | FEBRUARY | 30,867.40 | 1,608.14 | -1,312.79 | -934.88 | 30,227.87 | 5,103.29 |
| 2016 | MARCH | 34,681.29 | 5,691.40 | -54.64 | -1,209.54 | 39,108.51 | 8,511.11 |
| 2016 | APRIL | 32,367.40 | 2,094.18 | 0 | -1,033.85 | 33,427.73 | 6,657.25 |
| 2016 | MAY | 32,517.30 | 7,487.50 | -34,512.80 | -164.76 | 5,327.24 | 6,533.37 |
| 2016 | JUNE | 38,735.52 | 7,550.81 | 0 | -1,388.59 | 44,897.74 | 9,915.06 |
| 2016 | JULY | 34,322.24 | 3,484.90 | -114.91 | -1,130.77 | 36,561.46 | 7,592.47 |
| 2016 | AUGUST | 36,751.30 | 3,824.29 | -198.42 | -1,211.32 | 39,165.85 | 7,313.30 |
| 2016 | SEPTEMBER | 42,023.77 | 6,704.04 | -1.75 | -1,461.78 | 47,264.28 | 8,791.01 |
| 2016 | OCTOBER | 34,633.96 | 1,616.05 | 0 | -1,087.50 | 35,162.51 | 6,679.20 |
| 2016 | NOVEMBER | 32,423.73 | 1,774.77 | 0 | -1,025.96 | 33,172.54 | 6,436.16 |
| 2016 | DECEMBER | 37,251.12 | 6,031.09 | -299.75 | -1,289.47 | 41,692.99 | 4,876.80 |
| 2017 | JANUARY | 33,469.65 | 8,614.34 | 0 | -1,262.52 | 40,821.47 | 6,863.48 |
| 2017 | FEBRUARY | 33,713.45 | 2,042.68 | 0 | -1,072.68 | 34,683.45 | 6,736.48 |
| 2017 | MARCH | 42,760.85 | 3,282.76 | -1,234.16 | -1,344.28 | 43,465.17 | 9,149.62 |
| 2017 | APRIL | 41,358.64 | 1,773.97 | -1,089.74 | -1,261.29 | 40,781.58 | 7,983.03 |
| 2017 | MAY | 43,807.66 | 3,357.01 | -120.44 | -1,411.33 | 45,632.90 | 11,624.63 |
| 2017 | JUNE | 43,258.55 | 7,245.94 | -106.53 | -1,511.94 | 48,886.02 | 9,277.24 |

| | | | | | | | |
|------|-----------|-----------|-----------|-----------|-----------|-----------|-----------|
| 2017 | JULY | 40,577.27 | 3,157.72 | -1,063.48 | -1,280.15 | 41,391.36 | 6,598.62 |
| 2017 | AUGUST | 41,702.65 | 5,463.01 | -74.28 | -1,412.74 | 45,678.64 | 10,427.95 |
| 2017 | SEPTEMBER | 50,678.98 | 2,160.87 | -319.62 | -1,575.61 | 50,944.62 | 13,695.11 |
| 2017 | OCTOBER | 41,192.29 | 8,828.54 | 0 | -1,500.62 | 48,520.21 | 7,569.74 |
| 2017 | NOVEMBER | 43,767.24 | 5,067.77 | -1,397.75 | -1,423.12 | 46,014.14 | 7,294.89 |
| 2017 | DECEMBER | 53,503.31 | 8,970.33 | 0 | -1,874.21 | 60,599.43 | 8,982.34 |
| 2018 | JANUARY | 40,067.17 | 1,396.30 | 0 | -1,243.90 | 40,219.57 | 8,010.64 |
| 2018 | FEBRUARY | 38,328.66 | 4,632.29 | -216.67 | -1,282.33 | 41,461.95 | 4,361.85 |
| 2018 | MARCH | 44,653.78 | 8,958.04 | 0 | -1,608.35 | 52,003.47 | 7,890.18 |
| 2018 | APRIL | 43,637.34 | 3,546.30 | 0 | -1,415.51 | 45,768.13 | 7,859.35 |
| 2018 | MAY | 49,767.39 | 3,104.94 | -1,022.46 | -1,555.50 | 50,294.37 | 9,463.96 |
| 2018 | JUNE | 43,510.52 | 10,623.77 | -895.93 | -1,597.15 | 51,641.21 | 6,832.18 |
| 2018 | JULY | 42,122.29 | 1,937.52 | -396.1 | -1,309.91 | 42,353.80 | 5,827.99 |
| 2018 | AUGUST | 50,970.75 | 2,716.68 | 0 | -1,610.62 | 52,076.81 | 13,293.29 |
| 2018 | SEPTEMBER | 39,643.73 | 3,818.97 | 0 | -1,303.88 | 42,158.82 | 6,262.15 |
| 2018 | OCTOBER | 43,991.20 | 2,897.28 | 0 | -1,406.65 | 45,481.83 | 7,533.17 |
| 2018 | NOVEMBER | 44,139.20 | 4,058.28 | -4,983.11 | -1,296.43 | 41,917.94 | 7,449.37 |
| 2018 | DECEMBER | 43,301.31 | 4,219.79 | 0 | -1,425.63 | 46,095.47 | 8,658.42 |
| 2019 | JANUARY | 41,778.46 | 2,831.79 | -349.28 | -1,327.83 | 42,933.14 | 8,634.39 |
| 2019 | FEBRUARY | 37,753.03 | 2,595.61 | -4,533.66 | -1,074.45 | 34,740.53 | 4,058.98 |
| 2019 | MARCH | 45,207.29 | 3,487.95 | -0.9 | -1,460.83 | 47,233.51 | 8,965.99 |
| 2019 | APRIL | 41,931.04 | 1,671.25 | -944 | -1,279.75 | 41,378.54 | 7,105.21 |
| 2019 | MAY | 50,371.66 | 4,608.31 | -540.97 | -1,633.17 | 52,805.83 | 15,575.91 |
| 2019 | JUNE | 47,239.73 | 4,730.91 | 0 | -1,559.12 | 50,411.52 | 6,902.70 |
| 2019 | JULY | 52,092.06 | 3,821.66 | -3,383.94 | -1,575.89 | 50,953.89 | 9,424.54 |
| 2019 | AUGUST | 47,578.92 | 11,900.44 | 0 | -1,784.38 | 57,694.98 | 7,477.22 |
| 2019 | SEPTEMBER | 53,124.03 | 7,130.98 | 0 | -1,807.65 | 58,447.36 | 11,382.61 |
| 2019 | OCTOBER | 43,090.84 | 4,687.33 | -1,069.43 | -1,401.26 | 45,307.48 | 8,105.56 |
| 2019 | NOVEMBER | 44,966.28 | 3,124.88 | 0 | -1,442.73 | 46,648.43 | 8,702.34 |
| 2019 | DECEMBER | 51,145.06 | 4,651.69 | 0 | -1,673.90 | 54,122.85 | 7,878.82 |
| 2020 | JANUARY | 42,943.97 | 1,004.86 | -20.42 | -1,317.85 | 42,610.56 | 8,420.51 |
| 2020 | FEBRUARY | 43,897.77 | 5,525.53 | 0 | -1,482.70 | 47,940.60 | 6,559.23 |
| 2020 | MARCH | 42,056.98 | 3,509.49 | -139.32 | -1,362.81 | 44,064.34 | 7,372.41 |
| 2020 | APRIL | 41,704.64 | 12,631.43 | -137.66 | -1,625.95 | 52,572.46 | 2,409.46 |
| 2020 | MAY | 43,803.00 | 3,207.49 | 0 | -1,410.31 | 45,600.18 | 4,510.43 |
| 2020 | JUNE | 55,131.98 | 6,084.21 | 0 | -1,836.49 | 59,379.70 | 12,180.94 |
| 2020 | JULY | 66,198.05 | 3,798.16 | -482.02 | -2,085.43 | 67,428.76 | 18,066.18 |
| 2020 | AUGUST | 54,937.26 | 2,161.42 | 0 | -1,712.96 | 55,385.72 | 11,556.38 |
| 2020 | SEPTEMBER | 56,125.69 | 2,273.75 | 0 | -1,751.98 | 56,647.46 | 9,608.01 |

| | | | | | | | |
|------|-----------|------------|-----------|------------|-----------|------------|-----------|
| 2020 | OCTOBER | 89,776.04 | 3,466.82 | 0 | -2,797.29 | 90,445.57 | 18,153.45 |
| 2020 | NOVEMBER | 86,949.10 | 6,479.61 | 0 | -2,802.86 | 90,625.85 | 21,547.71 |
| 2020 | DECEMBER | 108,576.77 | 4,092.67 | 0 | -3,380.08 | 109,289.36 | 23,446.26 |
| 2021 | JANUARY | 74,598.19 | 4,558.11 | -879.05 | -2,348.32 | 75,928.93 | 13,386.75 |
| 2021 | FEBRUARY | 72,896.15 | 7,312.07 | -104.42 | -2,403.11 | 77,700.69 | 12,505.52 |
| 2021 | MARCH | 93,083.13 | 3,284.28 | -2.9 | -2,890.94 | 93,473.57 | 14,828.07 |
| 2021 | APRIL | 98,712.24 | 5,293.21 | -969.96 | -3,091.06 | 99,944.43 | 23,661.01 |
| 2021 | MAY | 97,187.83 | 4,222.15 | -40.35 | -3,041.09 | 98,328.54 | 25,823.99 |
| 2021 | JUNE | 108,982.91 | 2,055.87 | 0 | -3,331.16 | 107,707.62 | 29,613.97 |
| 2021 | JULY | 95,408.95 | 7,528.82 | -1.31 | -3,088.09 | 99,848.37 | 18,159.99 |
| 2021 | AUGUST | 99,081.53 | 3,997.38 | 0 | -3,092.37 | 99,986.54 | 19,045.36 |
| 2021 | SEPTEMBER | 95,169.14 | 26,490.83 | 0 | -3,649.80 | 118,010.17 | 14,982.49 |
| 2021 | OCTOBER | 84,890.49 | 4,810.38 | 0 | -2,691.03 | 87,009.84 | 9,257.17 |
| 2021 | NOVEMBER | 99,432.30 | 7,571.35 | -7.31 | -3,209.89 | 103,786.45 | 13,258.56 |
| 2021 | DECEMBER | 117,320.03 | 2,872.48 | 0 | -3,605.78 | 116,586.73 | 20,511.17 |
| 2022 | JANUARY | 94,993.99 | 7,431.17 | 0 | -3,072.75 | 99,352.41 | 16,055.01 |
| 2022 | FEBRUARY | 100,863.32 | 14,500.92 | 0 | -3,460.93 | 111,903.31 | 31,073.57 |
| 2022 | MARCH | 95,600.01 | 5,280.99 | 0 | -3,026.43 | 97,854.57 | 16,791.29 |
| 2022 | APRIL | 98,630.99 | 5,313.40 | -5,618.25 | -2,949.78 | 95,376.36 | 18,250.98 |
| 2022 | MAY | 96,913.50 | 6,326.30 | 0 | -3,097.19 | 100,142.61 | 22,080.80 |
| 2022 | JUNE | 119,936.26 | 5,303.56 | -5.08 | -3,757.04 | 121,477.70 | 35,999.23 |
| 2022 | JULY | 110,599.83 | 6,739.12 | -9,715.04 | -3,228.72 | 104,395.19 | 25,964.36 |
| 2022 | AUGUST | 115,315.14 | 8,057.78 | 0 | -3,701.19 | 119,671.73 | 24,717.82 |
| 2022 | SEPTEMBER | 107,091.76 | 5,286.15 | 0 | -3,371.34 | 109,006.57 | 20,853.84 |
| 2022 | OCTOBER | 97,831.00 | 6,146.73 | -88,742.95 | -457.04 | 14,777.74 | 17,684.55 |
| 2022 | NOVEMBER | 103,147.49 | 5,303.92 | -3.61 | -3,253.43 | 105,194.37 | 14,413.06 |
| 2022 | DECEMBER | 126,213.66 | 9,717.02 | 0.00 | -4,077.92 | 131,852.76 | 19,582.54 |
| 2023 | JANUARY | 99,931.16 | 4,540.54 | -5,737.80 | -2,926.02 | 95,771.88 | 16,309.36 |
| 2023 | FEBRUARY | 92,450.77 | 7,723.06 | 0.00 | -3,005.21 | 97,168.62 | 17,766.17 |
| 2023 | MARCH | 104,088.00 | 5,851.20 | -5,308.44 | -3,138.92 | 101,491.84 | 19,821.37 |
| 2023 | APRIL | 107,671.13 | 7,442.59 | 0.00 | 3,453.41 | 111,660.31 | 22,676.53 |
| 2023 | MAY | 99,774.64 | 10,985.95 | -871.31 | -3,296.68 | 106,592.60 | 15,819.03 |
| 2023 | JUNE | 116,964.50 | 17,405.68 | -13.16 | -4,030.71 | 130,326.31 | 34,107.82 |
| 2023 | JULY | 90,489.34 | 16,652.84 | -196.52 | -3,208.37 | 103,737.29 | 20,060.61 |
| 2023 | AUGUST | 106,653.66 | 11,652.42 | -2.66 | -3,549.10 | 114,754.32 | 20,898.64 |
| 2023 | SEPTEMBER | 94,484.67 | 11,064.11 | -32.35 | -3,165.49 | 102,350.94 | 17,374.97 |
| 2023 | OCTOBER | 89,704.24 | 15,907.81 | -4.06 | -3,168.24 | 102,439.75 | 19,912.75 |
| 2024 | NOVEMBER | 97,589.16 | 14,908.49 | -4,550.34 | -3,238.42 | 104,708.89 | 21,411.40 |
| 2024 | DECEMBER | 95,134.75 | 22,651.96 | 0.00 | -3,533.60 | 114,253.11 | 12,711.15 |

| | | | | | | | |
|------|---------------|------------|-----------|----------------------|-----------|------------------------|-----------|
| 2024 | JANUARY | 76,394.12 | 9,310.60 | -986.54 | -2,541.55 | 82,176.63 | 12,082.66 |
| 2024 | FEBRUARY | 103,146.31 | 11,657.40 | -340.10 | -3,433.91 | 111,029.70 | 31,303.95 |
| 2024 | MARCH | 101,023.80 | 7,990.16 | -14.35 | -3,269.99 | 105,729.62 | 18,011.46 |
| 2024 | APRIL | 89,290.02 | 9,800.04 | -5.43 | -2,972.54 | 96,112.09 | 16,984.55 |
| 2024 | MAY | 101,290.86 | 9,067.08 | 0.00 | -3,310.74 | 107,047.20 | 25,940.79 |
| 2024 | JUNE | 95,653.49 | 6,662.89 | -159.66 | -3,064.70 | 99,092.02 | 25,619.52 |
| 2024 | JULY | 87,998.16 | 6,439.69 | 0.00 | -2,833.14 | 91,604.71 | 14,076.87 |
| 2024 | AUGUST | 90,958.63 | 7,243.76 | 0.00 | -2,946.07 | 95,256.32 | 15,569.72 |
| 2024 | SEPTEMBER | 105,512.30 | 13,132.88 | -10,740.52 | -3,237.14 | 104,667.52 | 21,204.49 |
| 2024 | OCTOBER | 84,153.55 | 8,735.27 | -6,539.70 | -2,590.47 | 83,758.65 | 16,601.42 |
| 2024 | NOVEMBER | 120,780.83 | 8,597.03 | 0.00 | 3,881.34 | 125,496.52 | 22,739.09 |
| 2024 | DECEMBER | 131,604.25 | 6,273.10 | -150.29 | -4,131.81 | 133,595.25 | 10,951.52 |
| 2025 | JANUARY | 118,540.78 | 9,103.41 | -29.27 | -3,828.45 | 123,786.47 | 28,771.09 |
| 2025 | FEBRUARY | 91,096.33 | 13,343.99 | -120.66 | -3,129.59 | 101,190.07 | 17,224.28 |
| 2025 | MARCH | 107,113.04 | 6,276.11 | -84.48 | -3,399.14 | 109,905.53 | 25,630.17 |
| 2025 | APRIL | 111,272.09 | 4,690.72 | -35.09 | -3,477.83 | 112,449.89 | 22,174.66 |
| 2025 | MAY | 108,480.84 | 6,417.81 | -2,494.64 | -3,372.12 | 109,031.89 | 21,232.57 |
| 2025 | JUNE | 119,302.16 | 8,638.86 | 0.00 | -3,838.23 | 124,102.79 | 21,591.29 |
| 2025 | JULY | 117,119.04 | 13,505.71 | -1,880.10 | -3,862.34 | 124,882.31 | 30,178.66 |
| 2025 | AUGUST | 108,870.25 | 18,229.43 | -6,115.52 | -3,629.52 | 117,354.64 | 26,196.34 |
| 2025 | SEPTEMBER | 118,365.45 | 19,427.58 | -36.76 | -4,132.69 | 133,623.58 | 31,172.46 |
| 2025 | OCTOBER | 89,413.05 | 11,154.22 | -70,328.85 | -907.15 | 29,331.27 | 15,477.33 |
| 2025 | NOVEMBER | 125,474.24 | 5,095.16 | -444.42 | -3,903.75 | 126,221.23 | 35,912.04 |
| 2025 | DECEMBER | 114,638.44 | 10,483.48 | 0.00 | -3,753.66 | 121,368.26 | 14,189.73 |
| 2026 | JANUARY | 106,217.16 | 7,321.28 | -194.94 | -3,400.31 | 109,943.19 | 33,025.66 |
| 2026 | FEBRUARY | 102,403.64 | 6,573.10 | -1,403.85 | -3,227.19 | 104,345.70 | 32,594.85 |
| 2026 | MARCH | 110,202.84 | 6,741.79 | -1,327.45 | -3,468.52 | 112,148.66 | 19,977.71 |
| 2026 | APRIL | 93,815.69 | 14,077.15 | -292.33 | -3,228.02 | 104,372.49 | 18,665.46 |
| 2026 | MAY | | | | | | |
| 2026 | JUNE | | | | | | |
| | TOTALS | | | -\$332,058.34 | | \$11,432,132.78 | |

*** The Sales and Use Tax Column includes Motor Vehicle Sales Tax. The amount of Motor Vehicle Sales Tax is separately stated in the last column of this spreadsheet.

RESOLUTION 26-14

RESOLUTION TO ESTABLISH AND CHARGE REASONABLE BUILDING PERMIT FEES

WHEREAS, the establishment of reasonable building permit fees for building permits is authorized by the Waverly Municipal Code per § 150.22 FEES, and

WHEREAS, the following proposed fees attached hereto at Attachment “A” and incorporated herein by this reference have been determined to be reasonable:

CITY OF WAVERLY BUILDING PERMIT FEE SCHEDULE

NOW, THEREFORE, BE IT RESOLVED BY THE MAYOR AND CITY COUNCIL OF THE CITY OF WAVERLY, NEBRASKA that the Building Permit Fees included in this resolution are hereby adopted as policy and provide for an effective date of November 1, 2021.

PASSED AND APPROVED THIS 23RD DAY OF JUNE, 2026

Abbey L. Pascoe
Mayor

ATTEST:

Megan K Frye
City Clerk/Human Resources Assistant

(SEAL)

APPLICATION FOR MECHANICAL / GAS PIPING PERMIT

City of Waverly

Building Department
P.O. Box 427
14130 Lancashire St.
Waverly, NE 68462



REVISED BY RESOLUTION 9-28-2021
EFFECTIVE DATE 11-1-2021

Phone 402.786.2312
Fax 402.786.2490

www.citywaverly.com

| Type of Permit | # | # Fee | \$ Total | Permit # | |
|--|---|---------|----------|---|--|
| Furnace: Brand _____ Electric__ Gas__ | | \$25.00 | | Site Address: Contractor Name & Address: Phone # Email | |
| Cooling: Brand _____ A/C__ Heat Pump__ | | \$20.00 | | | |
| Roof Top Heating / Cooling: Brand _____ | | \$25.00 | | | |
| Air Handling Unit: Brand _____ | | \$15.00 | | | |
| Residential Kitchen Exhaust Hood & Duct CFM | | \$10.00 | | | |
| Bathrooms / Restrooms Exhaust & Duct CFM | | \$10.00 | | | |
| Clothes Dryer Vent | | \$10.00 | | | |
| Vent / Chimney Liner for Fuel Burning Appliance | | \$10.00 | | | |
| Alteration of Existing Duct Work | | \$15.00 | | | |
| Decorative Gas Fireplace / Log Insert | | \$35.00 | | | |
| Wood / Pellet Stove / Insert | | \$25.00 | | | |
| Boiler (Including Vent) | | \$15.00 | | | |
| Hydrolic Piping System | | \$15.00 | | | Property Owner Name & Address: Phone # Email |
| Gas Heater in Wall | | \$15.00 | | | |
| Suspended Heaters - Infrared Heaters | | \$15.00 | | | |
| | | | | | |
| | | | | | |
| | | | | | |
| | | | | | |
| | | | | | |
| | | | | | |
| | | | | | |
| PLEASE CALL TO SET UP INSPECTION | | | | <p>I certify that I have read this application and state that the information provided is correct. I agree to comply with all state laws and the 2018 International Building Code and/or International Residential Code, and hereby authorize the City's representative to enter upon the above-mentioned property for inspection purposes.</p> | |
| Gas Piping – Each Gas Appliance – New or Replacement – Requires a Gas Piping Permit | | | | | X |
| New Construction (1-5 outlets) | | \$25.00 | | | Applicant Signature |
| Each Additional Outlet | | \$5.00 | | | Date |
| Gas Piping Replacement Appliance | | \$5.00 | \$10.00 | | Permit Expiration |
| Gas Piping: Replacement__ Alteration__ | | \$15.00 | | | <p>This permit shall become null and void if the work authorized by this permit is not commenced within 180 days from date of issuance. This permit will expire after a period of 2 years from date of issuance.</p> |
| Reinspection fee | | \$50.00 | | | |
| Penalty Fee (Double Permit Fee) | | | | | |
| Total Fee | | | | | Permit Issued |
| | | | | | By: |

RESOLUTION 26-15

RESOLUTION ADOPTING AND REVISING THE EMPLOYEE HANDBOOK

WHEREAS, the establishment of rules and regulations for the hiring and continued employment of City personnel is of benefit to the City, and

WHEREAS, it is advantageous for City personnel to know their rights and terms of employment.

NOW, THEREFORE, BE IT RESOLVED BY THE MAYOR AND CITY COUNCIL OF THE CITY OF WAVERLY, NEBRASKA that the Employee Handbook as revised on November 27, 2018, incorporates revisions to the following sections, attached hereto as Attachment "A":

PAY PLAN

The additions and changes in the above stated section is hereby adopted as policy.

PASSED AND APPROVED THIS 23RD DAY OF JUNE, 2026

Abbey L. Pascoe
Mayor

ATTEST:

Megan K. Frye
City Clerk/Human Resources Assistant

(Seal)

RESOLUTION 26-15 ATTACHMENT “A”

City of Waverly Pay Plan

| Permanent Full Time/Part Time | Type | Range |
|---|-------------|--------------------|
| City Administrator | Salary | \$45.68 to \$70.00 |
| City Clerk/Human Resources Assistant | Salary | \$24.82 to \$45.00 |
| City Treasurer/Deputy City Clerk | Salary | \$28.38 to \$45.00 |
| Utility Billing Clerk/Accounts Payable | Hourly | \$18.70 to \$35.00 |
| Office Assistant | Hourly | \$18.00 to \$30.00 |
| Fire Department Administrative Assistant | Hourly | \$18.00 to \$30.00 |
| | | |
| Building Inspector/Zoning Administrator | Salary | \$31.03 to \$45.00 |
| Municipal Code Inspector | Hourly | \$18.00 to \$30.00 |
| | | |
| Parks and Recreation Director | Salary | \$30.00 to \$45.00 |
| Parks and Recreation Maintenance Lead** | Hourly | \$21.00 to \$35.00 |
| Aquatics Manager/Parks and Recreation Marketing Assistant | Hourly | \$21.00 to \$35.00 |
| | | |
| Public Works Director | Salary | \$38.00 to \$60.00 |
| Public Works Worker** | Hourly | \$22.00 to \$35.00 |
| Street Department Lead** | Hourly | \$24.00 to \$40.00 |
| Water System Lead** | Hourly | \$24.00 to \$40.00 |
| Wastewater System Lead** | Hourly | \$24.00 to \$40.00 |
| **\$21 per hour increase for each certificate earned | | |

| Seasonal and Temporary Full Time/Part Time | Type | Range |
|---|-------------|--------------------|
| Aquatics Assistant Manager | Hourly | \$15.00 to \$20.00 |
| Aquatics Lifeguards | Hourly | \$15.00 to \$18.00 |
| Aquatics Concessions Manager | Hourly | \$15.00 to \$20.00 |
| Aquatics Concessions & Admissions Staff | Hourly | \$15.00 to \$18.00 |
| | | |
| General Labor | Hourly | \$15.00 to \$18.00 |
| General Office | Hourly | \$15.00 to \$18.00 |

Kinetic
4005 N Rodney Parham Rd.
Little Rock, AR, 72212

Date: April 30, 2026
Entity: City of Waverly
Permit Request Number: 56088, 55313, 55594, 56049, 56060 JobTrac Number: 715062338

To Whom it May Concern, Kinetic is proposing:
the installation of approximately 65,190 feet of underground fiber optic cable via bore methods along
multiple streets within the City of Waverly.

This submission consolidates the scope of work previously outlined in five separate permit applications, referenced as permit numbers 56088, 55313, 55594, 56049, and 56060. The full project scope remains consistent with those prior submissions.

Please refer to the attached plans for detailed information regarding the proposed routes and specific installation locations.

If there are no objections to the above listed proposal, please sign below and return this cover letter to Natalia.Ewing@windstream.com / Natalia.Ewing@uniti.com

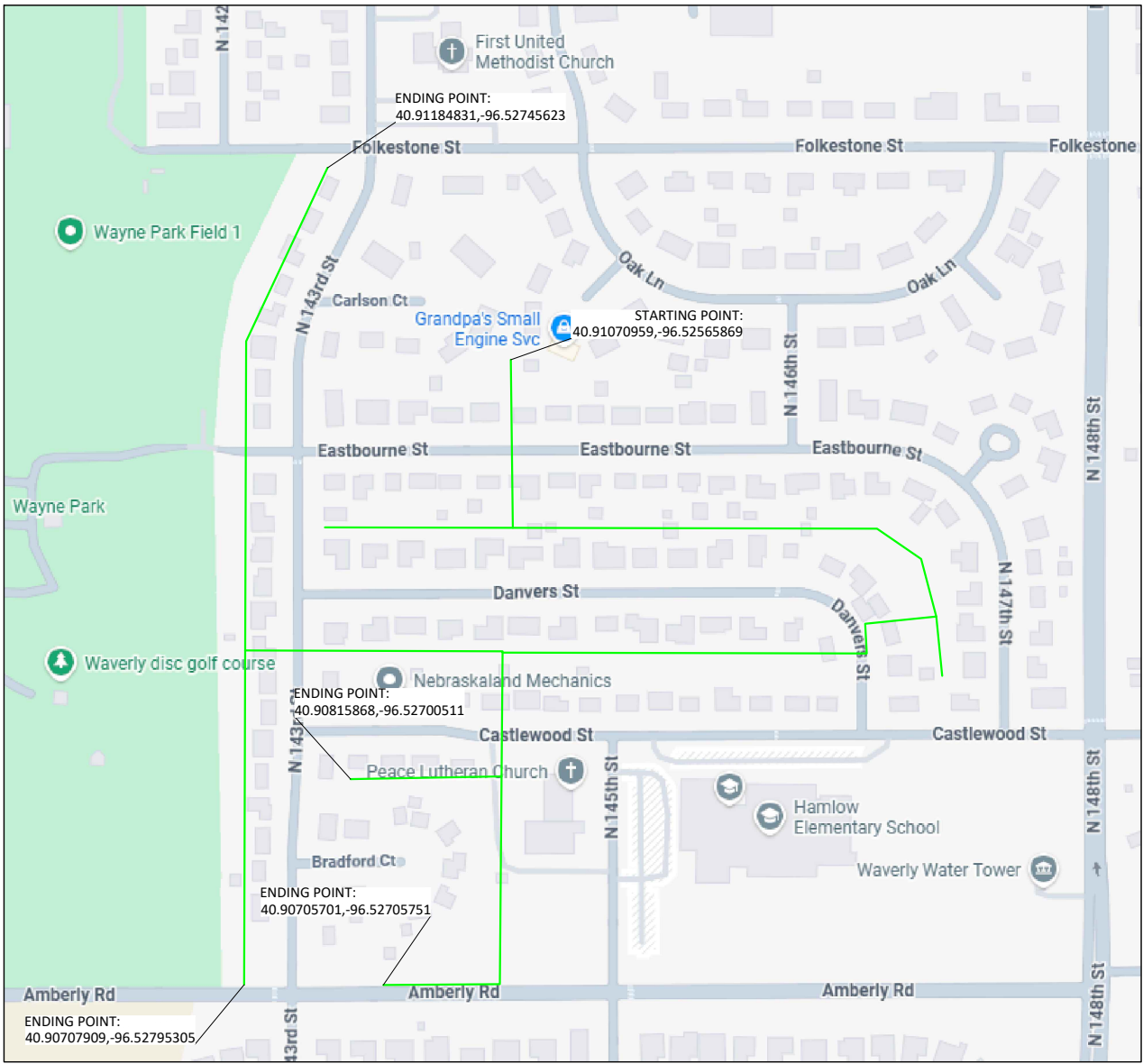
| Printed Name and Title | Signature | Date |
|------------------------|-----------|------|
|------------------------|-----------|------|

Your cooperation and assistance regarding this project is greatly appreciated. If you have any questions or require additional information, please contact me at the above listed email address.

Thank you,

Natalia Ewing
Natalia Ewing
Analyst – I, Engineering Support, Permitting Team

Windstream VICINTY MAP EASTBOURNE ST



LEGEND

- PROPOSED CONDUIT
- - - PROPOSED BURIED FIBER
- R/W
- BOC
- CL
- SW
- EXISTING WS
- PEDESTAL
- PROP. WS PEDESTAL
- BORE PIT



DATE CREATED: 4/10/26
 DATE REVISED:
 DRAWN BY: RAMTeCH



SCALE: NTS

COMPANY:
Windstream

SYSTEM:
WAVERLY, NE

PROJECT NUMBER:
715062336

DESCRIPTION:
FTTP GPON PERMIT

MAP:

LOCATION MAP

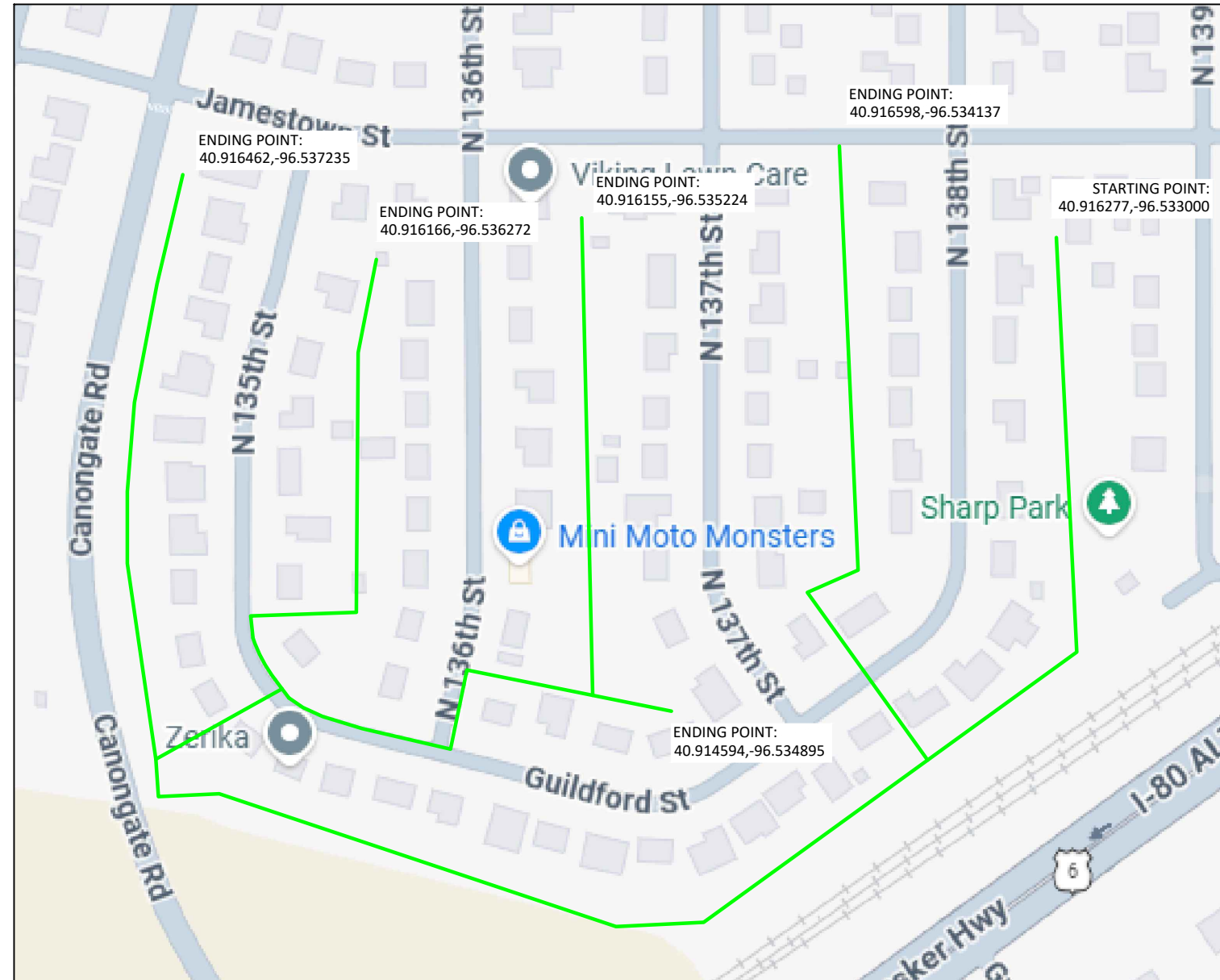
RAMTeCH

WINDSTREAM PROPOSES FIBER OPTIC CABLE PLACEMENT:

| BURIED | 12 FOC | 24 FOC | 48 FOC | 144 FOC |
|------------------|--------|--------|--------|---------|
| RESI PLOW | 345' | 402' | 0' | 0' |
| DIRECTIONAL BORE | 0' | 370' | 2474' | 1622' |
| RESI BORE | 478' | 1430' | 0' | 0' |
| AERIAL | 0' FOC | 0' FOC | 0' FOC | 0' FOC |
| LASH TO EXISTING | 0' | 0' | 0' | 0' |
| NEW ATTACHMENT | 0' | 0' | 0' | 0' |

TOTAL PROPOSED FIBER CABLE=7121'

Windstream LOCATION MAP GUILDFORD ST



WINDSTREAM PROPOSES FIBER OPTIC CABLE PLACEMENT:

| BURIED | 12 FOC | 24 FOC | 48 FOC | 144 FOC |
|------------------|--------|--------|--------|---------|
| DIRECT BURIED | 0' | 0' | 0' | 0' |
| DIRECTIONAL BORE | 0' | 332' | 20' | 0' |
| RESI PLOW | 2526' | 1892' | 0' | 0' |
| RESI BORE | 696' | 411' | 0' | 0' |
| AERIAL | 12 FOC | 24 FOC | 48 FOC | 144 FOC |
| LASH TO EXISTING | 0' | 0' | 0' | 0' |
| NEW ATTACHMENT | 0' | 0' | 0' | 0' |

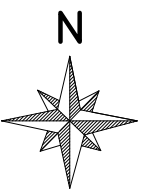
TOTAL PROPOSED CABLE=5877'



DATE CREATED: 5/13/26

DATE REVISED:

DRAWN BY: RAMTeCH



SCALE: NTS

COMPANY:
Windstream

SYSTEM:
WAVERLY, NE

PROJECT NUMBER:
715062337

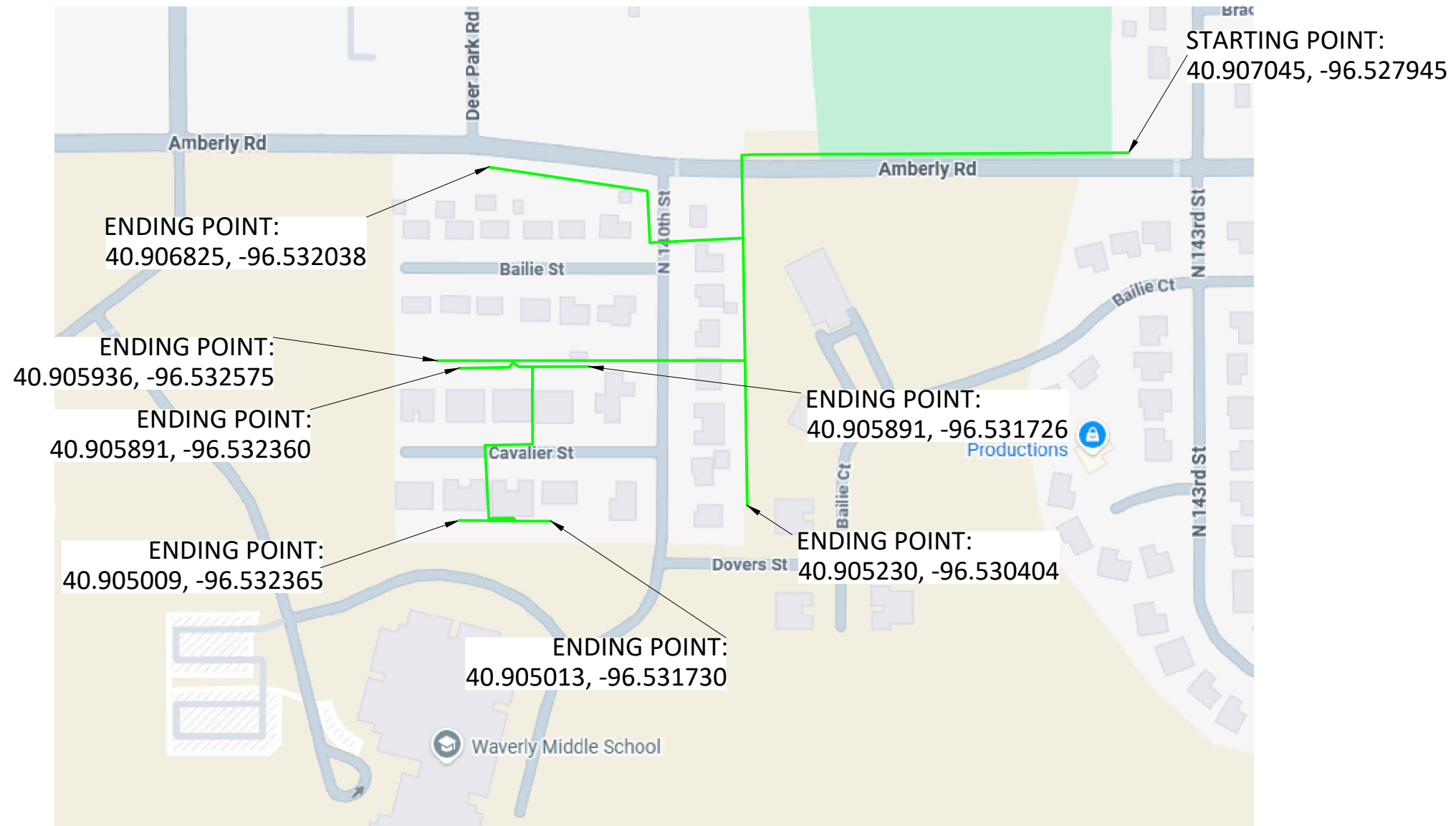
DESCRIPTION:
FTTP GPON PERMIT

MAP:

LOCATION MAP

RAMTeCH

Windstream LOCATION MAP AMBERLY RD



LEGEND

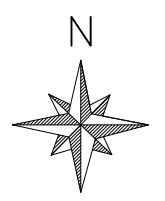
- PROPOSED CONDUIT
- - - PROPOSED BURIED FIBER
- AERIAL PROPOSED FIBER WITH NEW STRAND
- AERIAL PROPOSED FIBER WITH EXISTING STRAND
- AERIAL PROPOSED FIBER WITH EXISTING STRAND
- SW SIDEWALK
- R/W ROW
- EOP EOP
- CL CENTER LINE
- BOC BOC
- ⊠ EXT WS PED
- ⊠ NEW WS PED
- NEW FDM



DATE CREATED: 4/22/26

DATE REVISED:

DRAWN BY: RAMTeCH



SCALE: NTS

COMPANY:
Windstream

SYSTEM:
WAVERLY, NE

PROJECT NUMBER:
715062338

DESCRIPTION:
FTTP GPON PERMIT

MAP:
LOCATION MAP

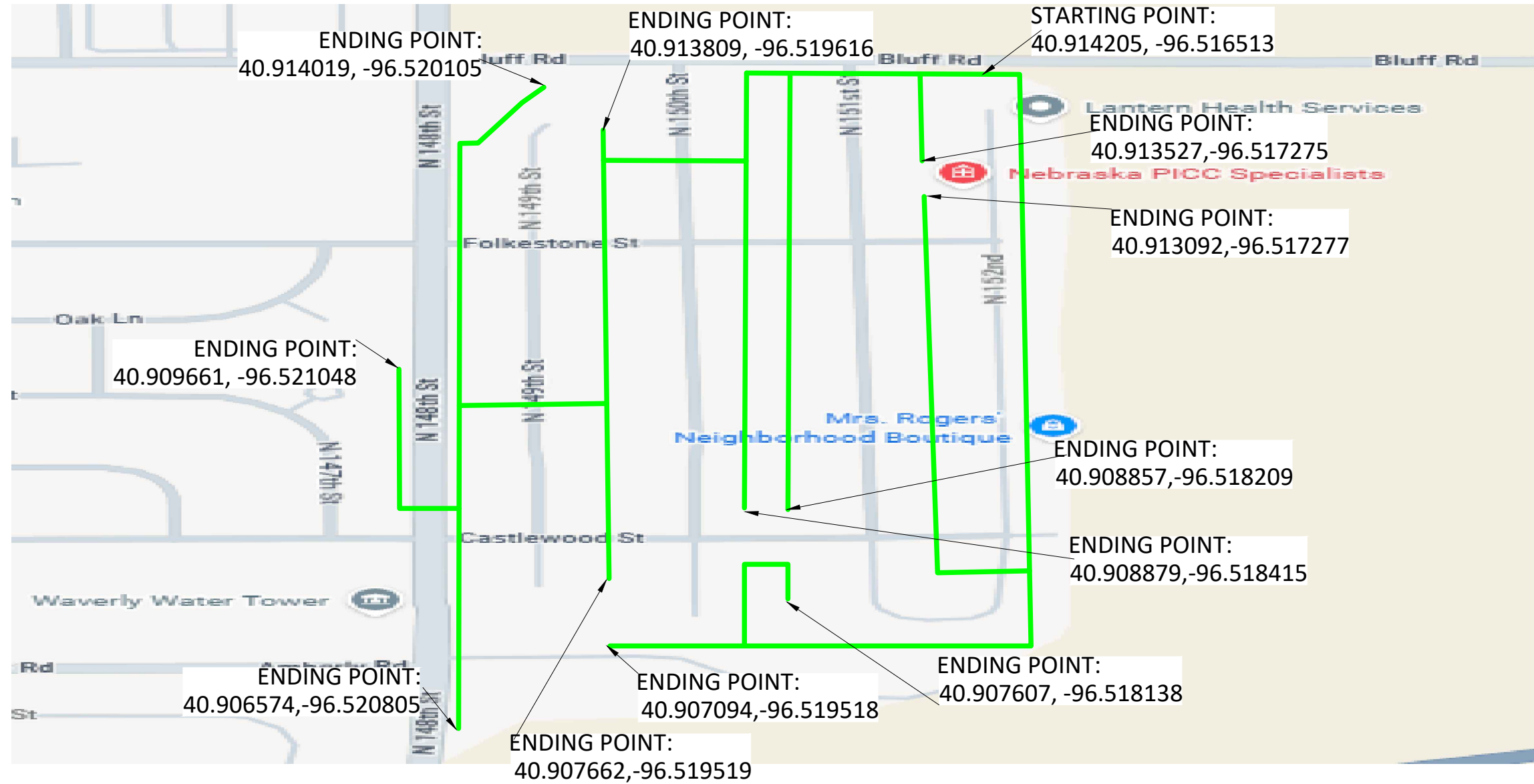
RAMTeCH

WINDSTREAM PROPOSES FIBER OPTIC CABLE PLACEMENT:

| BURIED | 12 FOC | 24 FOC | 48 FOC | 144 FOC |
|------------------|--------|--------|--------|---------|
| DIRECT BURIED | 0' | 0' | 743' | 0' |
| MICRODUCT 12.7MM | 1563' | 622' | 0' | 0' |
| DIRECTIONAL BORE | 109' | 50' | 90' | 0' |
| RESI BORE | 41' | 0' | 0' | 0' |
| AERIAL | 12 FOC | 24 FOC | 48 FOC | 144 FOC |
| LASH TO EXISTING | 0' | 0' | 0' | 0' |
| NEW ATTACHMENT | 0' | 0' | 0' | 0' |

TOTAL PROPOSED CABLE=3,218

Windstream LOCATION MAP BLUFF RD



WINDSTREAM PROPOSES FIBER OPTIC CABLE PLACEMENT:

| BURIED | 12 FOC | 24 FOC | 48 FOC | 144 FOC |
|------------------|--------|--------|--------|---------|
| DIRECT BURIED | 0' | 0' | 0' | 0' |
| PULL THROUGH | 406' | 0' | 0' | 0' |
| DIRECTIONAL BORE | 134' | 402' | 4541' | 1003' |
| RESI BORE | 2610' | 8733' | 0' | 0' |
| AERIAL | 12 FOC | 24 FOC | 48 FOC | 144 FOC |
| LASH TO EXISTING | 0' | 0' | 0' | 0' |
| NEW ATTACHMENT | 0' | 0' | 0' | 0' |

TOTAL PROPOSED CABLE=17,829'

LEGEND

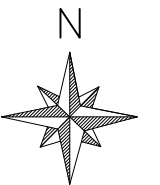
- PROPOSED CONDUIT
- PROPOSED BURIED FIBER
- AERIAL PROPOSED FIBER WITH NEW STRAND
- AERIAL PROPOSED FIBER WITH EXISTING STRAND
- SW SIDEWALK
- R/W ROW
- EOP EOP
- BOC BOC
- CL CENTER LINE
- UE UTILITY LINE
- POLE
- POWER POLE
- ⊙ JOINT POLE
- FDH FDH
- X NEW WS PED
- BORE PIT



DATE CREATED: 4/23/26

DATE REVISED:

DRAWN BY: RAMTeCH



SCALE: NTS

COMPANY:
Windstream

SYSTEM:
WAVERLY, NE

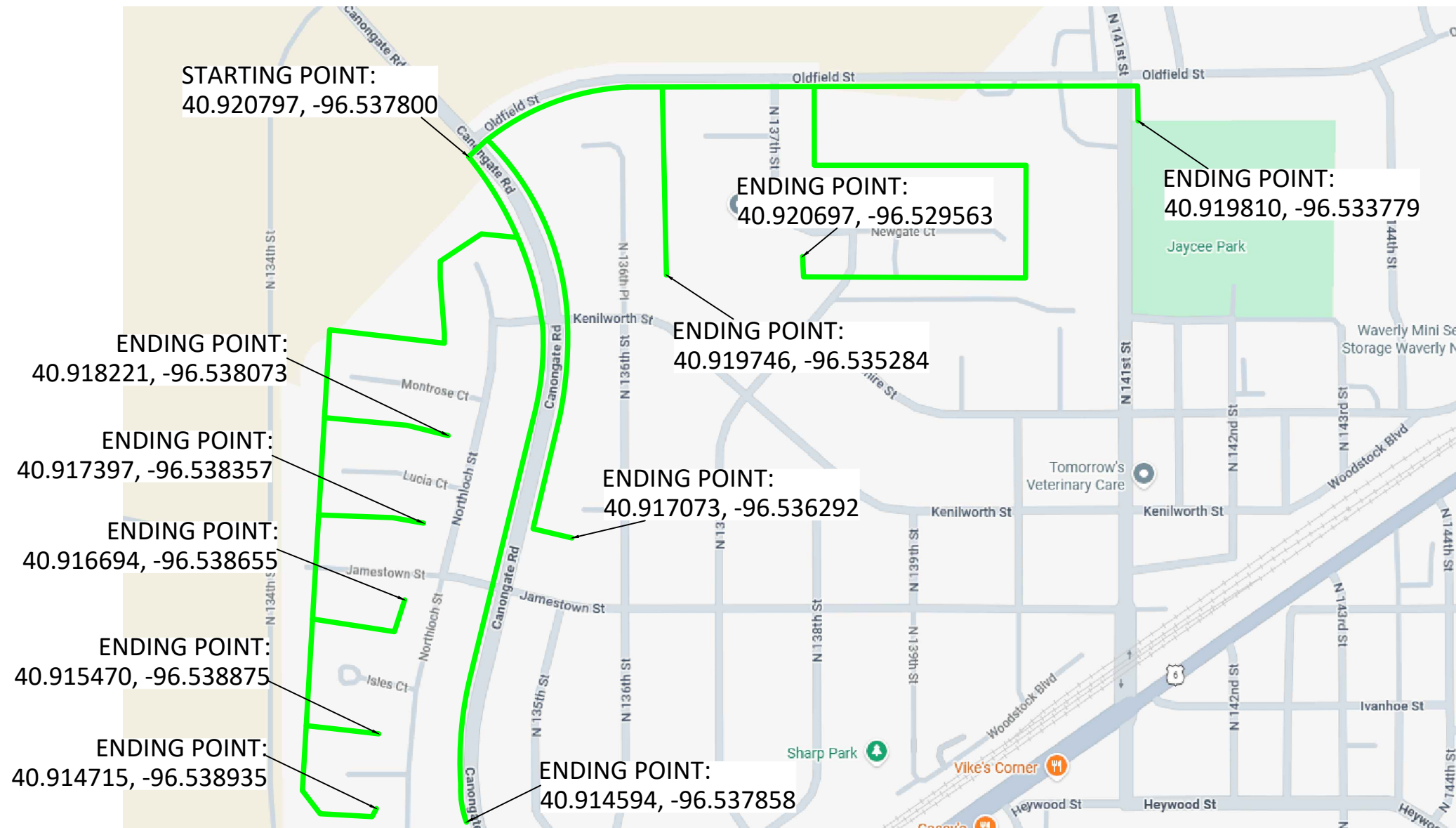
PROJECT NUMBER:
715062339

DESCRIPTION:
FTTP GPON PERMIT

MAP:
LOCATION MAP

RAMTeCH

Windstream LOCATION MAP CANONGATE RD



WINDSTREAM PROPOSES FIBER OPTIC CABLE PLACEMENT:

| BURIED | 12 FOC | 24 FOC | 48 FOC | 144 FOC |
|--------------------|--------|--------|--------|---------|
| DIRECT BURIED | 0' | 0' | 0' | 0' |
| MICRODUCT | 1787' | 9440' | 0' | 0' |
| DIRECTIONAL BORE | 0' | 280' | 215' | 0' |
| DRY BORE | 0' | 0' | 94' | 0' |
| RESI BORE | 0' | 110' | 0' | 0' |
| PLOW/TRENCH/BURIED | 0' | 0' | 2425' | 192' |
| AERIAL | 12 FOC | 24 FOC | 48 FOC | 144 FOC |
| LASH TO EXISTING | 0' | 0' | 0' | 0' |
| NEW ATTACHMENT | 0' | 0' | 0' | 0' |

TOTAL PROPOSED CABLE= 14,543'

LEGEND

- PROPOSED CONDUIT
- - - PROPOSED BURIED FIBER
- UE U/E LINE
- R/W ROW
- EOP EOP
- BOC BOC
- CL CENTER LINE
- ☒ NEW WS PED
- ☒ BORE PIT
- ☒ HANDHOLE



DATE CREATED: 4/30/26

DATE REVISED:

DRAWN BY: RAMTeCH



SCALE: NTS

COMPANY:

Windstream

SYSTEM:

WAVERLY, NE

PROJECT NUMBER:

715062335

DESCRIPTION:

FTTP GPON PERMIT

MAP:

LOCATION MAP

RAMTeCH