

Grove Public Schools
REGULAR BOARD MEETING
Tuesday, May 12, 2026 7:00 PM
Grove Administration Building
310 S. Broadway
Grove, Oklahoma 74344

The Grove Board of Education may discuss, vote to approve, disapprove, vote to table, or decide not to vote on any item on this agenda and except for items I and II, may take up any item in any order.

- I. Call to Order
- II. Roll Call
- III. Pledge of Allegiance to the Flag of the United States and Salute to the Oklahoma State Flag
- IV. Audience with Individuals or Groups
- V. Financial and Budget Reports
- VI. Report of Superintendent
- VII. Regular Business
 1. Consent Agenda
 - A. Minutes of April 14, regular board meeting and April 20, April 23, and May 1, 2026, special board meetings
 - B. Approval of bills and claims
 - C. Approval of the financial report of the activity funds
 - D. Treasurer's report as the status of funds and investments
 - E. Approval of Fundraisers
 - F. Accept donations as per attachment A
 - G. Declare surplus, as no longer needed by district, items as listed per attachment B and to authorize the superintendent to dispose of these items in a manner he deems in the best interest of the school district.
 - H. Renew the Independent Contractor Agreement and Services Agreement with NEO Orthopedics and Rehabilitation, LLC.
 - I. Renew the Sylogist financial software service agreement.
 - J. Renew the Sylogist student information and lunch room software service agreement.
 - K. Renew the OSSBA Membership dues for the 2026-2027 school year.
 - L. Renew the OSSBA Assemble board meetings for the 2026-2027 school year.
 - M. Renew the OSSBA Employment Service Agreement.
 - N. Renew CCOSA District Level Services Agreement.
 - O. Renew the Apptegy, Thrillshare Media Subscription.
 - P. Renew the Edgenuity program with Imagine Learning
 2. Discuss and vote to approve or not approve selecting a board member representative for the Tax Increment Financing (TIF) District per request from David Poindexter.
 3. Discuss and vote to establish negotiations team for the 2026-2027 school year.

4. Discuss and vote to approve or not approve the Technology Student Association to attend the National TSA Conference in Washington, DC, in June 2026.
 5. Discuss and vote to approve or not approve a contract with Barlow Education Management Services, LLC, to plan, prepare and submit an Innovative Approaches to Literacy Grant.
- VIII. Discussion, consideration, and vote to determine the necessity of an executive session and vote to go into executive session, pursuant to Okla. Stat., Title 25, Section 307(b.)1 for discussion of employing personnel in items XI - XXVIII.
 - IX. Vote to acknowledge return to open session.
 - X. Statement by board president of executive session minutes.
 - XI. Vote to employ or not employ an IT Computer Technician.
 - XII. Vote to employ or not employ a Tier 1 paraprofessional, pending certification.
 - XIII. Vote to employ or not employ a Tier 1 Paraprofessional, pending certification.
 - XIV. Vote to employ or not employ a Tier 1 Paraprofessional, pending certification.
 - XV. Vote to employ or not employ a full-time Tier 1 Paraprofessional at the Alternative Ed site.
 - XVI. Vote to employ or not employ a Tier 2 Paraprofessional, pending certification.
 - XVII. Vote to employ or not employ a Lower Elementary Principal's Secretary.
 - XVIII. Vote to employ or not employ a Middle School Library Clerk.
 - XIX. Vote to employ or not employ a 7 hour Cafeteria Clerk.
 - XX. Vote to approve or not approve transferring a Head Cook to an 8 hr. Cook at the Upper Elementary.
 - XXI. Vote to approve or not approve transferring a Cook to Head Cook at the Upper Elementary.
 - XXII. Vote to approve or not approve transferring a Cook to Head Cook at the Middle School.
 - XXIII. Vote to employ or not employ a part-time Interventionist Teacher at the Middle School, on a temporary contract, for the 2026-2027 school year.
 - XXIV. Vote to employ or not employ an Elementary Teacher, on a temporary contract, pending certification, for the 2026-2027 school year.
 - XXV. Vote to employ or not employ a Special Education Teacher, on a temporary contract, for the 2026-2027 school year.
 - XXVI. Vote to employ or not employ a High School Counselor, pending certification, for the 2026-2027 school year.
 - XXVII. Vote to employ or not employ a High School Assistant Principal for the 2026-2027 school year.
 - XXVIII. Vote to employ or not employ a HS Head Boys Basketball Coach, on a temporary contract, for the 2026-2027 school year.
 - XXIX. New Business
 - XXX. Vote to Adjourn

Location: Glass case in front of Administration Building at 310 S. Broadway, Grove, OK. Agenda can be viewed on the school's internet website at www.ridgerunners.net

Date & Time: _____

By: _____

Title: _____

ECC PRINCIPAL'S REPORT

May 7, 2026

UPCOMING EVENTS

- Water Day
- PK to the Park
- PK Promotion
- Kindergarten Promotion

ECC NEWS

CURRENT EVENTS

- PK Field Trips
- Kindergarten Pictures
- Rancho Visit
- NA Dancers
- ABC Parade
- Teacher Appreciation Week
- McDonald's for Sight Words
- Field Day



EXTRA

EXTRA

EXTRA

We would like to give a huge shout out to our incredible parents and community partners. A special thanks goes to the Perryman family, Marissa Winkleman, and Alex Mafei for sponsoring meals for our staff!

Life at the Lower May 2026

The Southwest Dairy Farmers Mobile Dairy Classroom made a stop at the Lower. Second grade students learned how milk makes it from the farms to the stores.



Ms. Gain's first grade classroom won the First Grade Spring Reading Challenge! To date her classroom alone has read over 1.2 million words and counting. Thank you to Dairy Queen for treating the readers to ice cream cones. Reading is great, but add ice cream and it is even better!!



We are saying goodbye to three of our second grade teachers this year due to retirement. Mrs. Mandrell, Mrs. Green, and Mr. Beall have been a staple at the Lower and have become well loved. They will be deeply missed. In honor of their retirement, the retirees donated a tree to our campus. The classes celebrated with a planting day. The students all wrote down their future dreams and planted them with the tree.



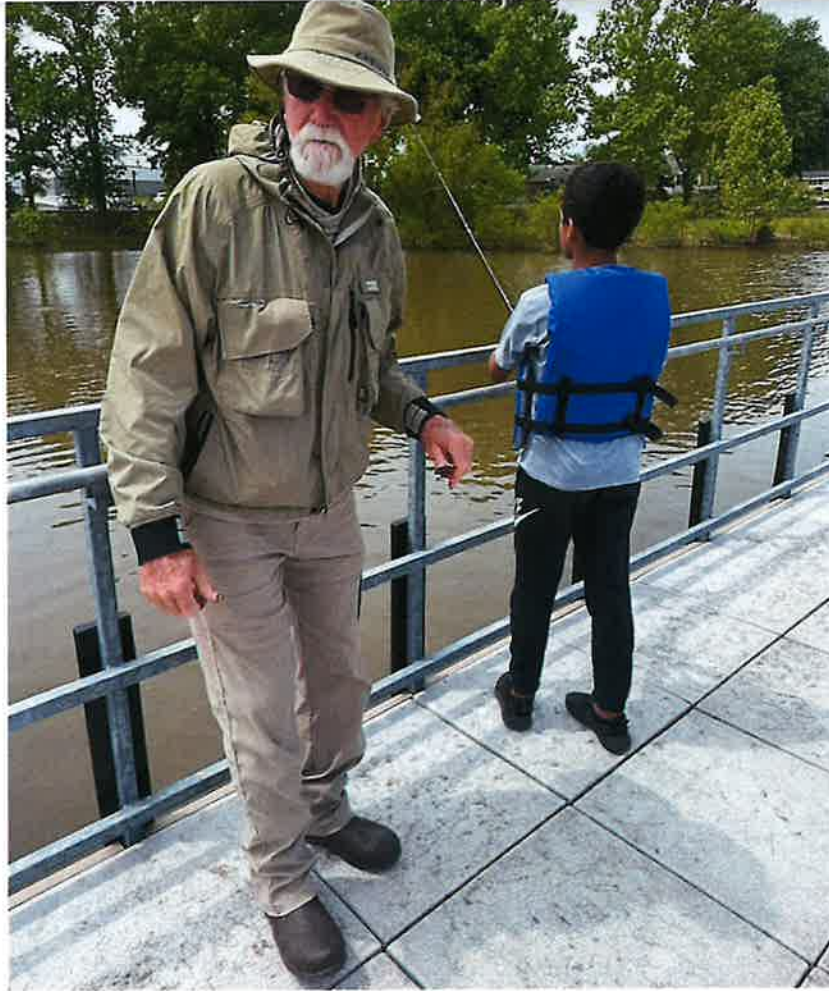
I cannot think of a better way to wrap up all the years of dedication, time, and love they have given to our school.

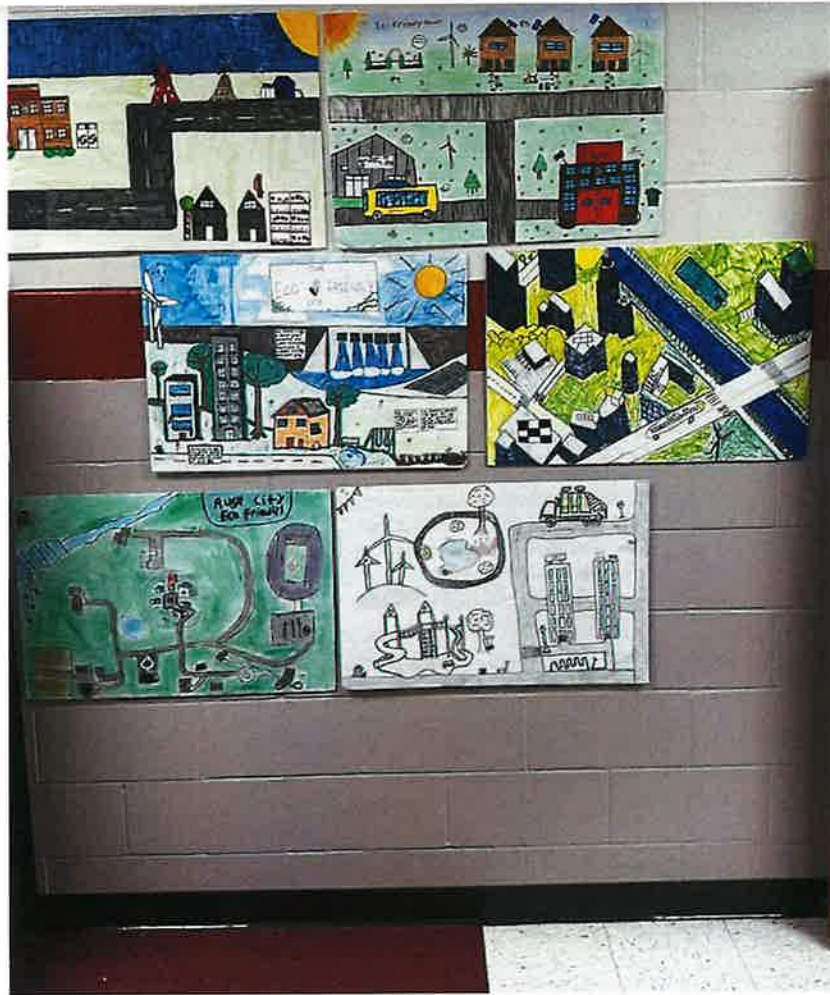
GUE Board Report

May

Here Fishy Fishy!

Our 6th Grade Lifetime Fitness class has had a great time fishing at Wolf Creek. We love teaching our kids how to have fun unplugged in different ways! Thank you to Grove Rotary, Grove YMCA and Mark Lovelace for your part in making sure our students have these opportunities.









Congrats Mrs. Hines' Class







Charla Matthews

Charla is using Smore to create beautiful newsletters

Created with  **smore**

Communicate quickly and effectively with interactive newsletters.

Smore empowers educators to connect with their community, streamline school communications, and increase engagement.

[Create a newsletter](#)

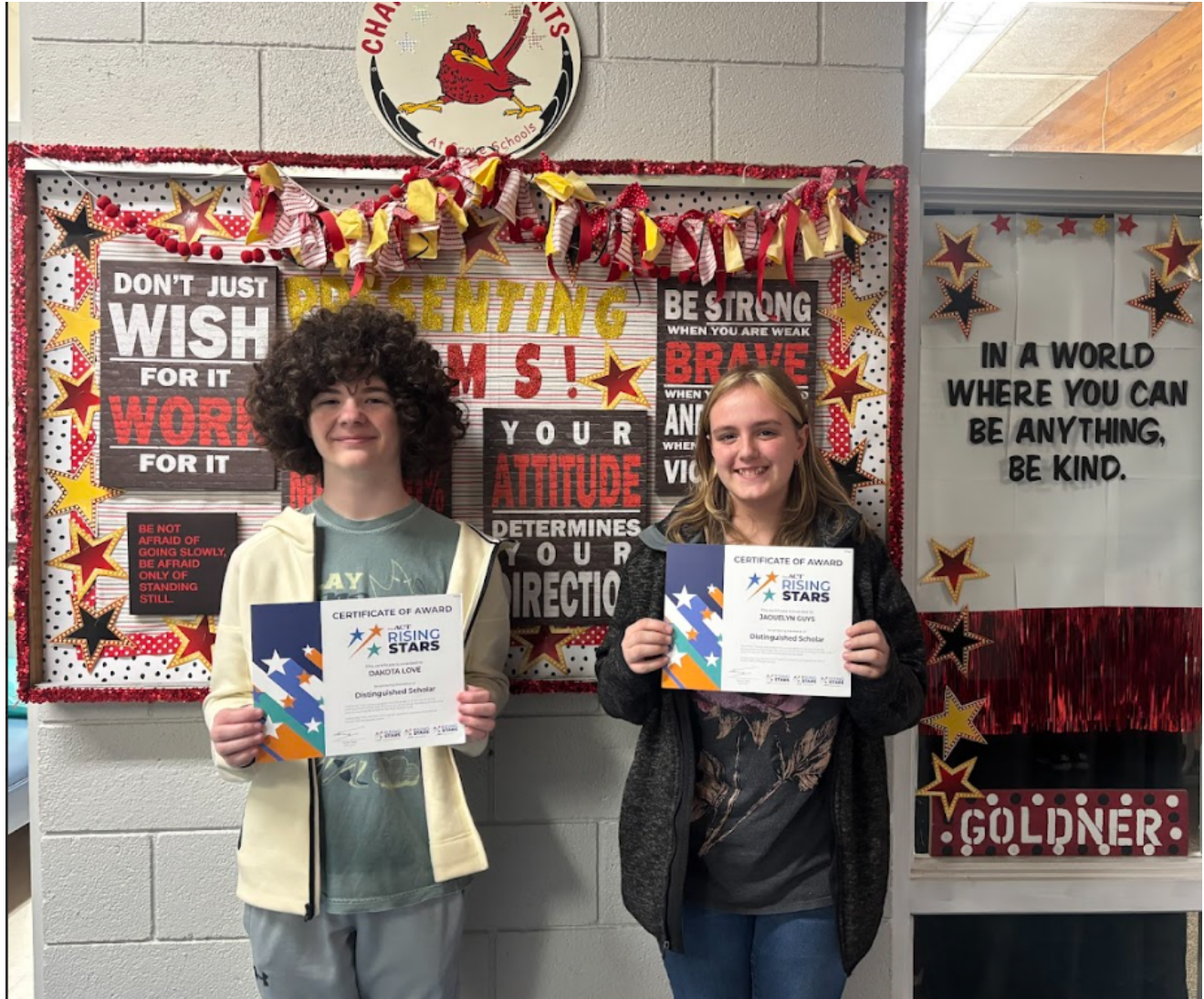
The Ridgy Report

Grove Middle School

May 2026

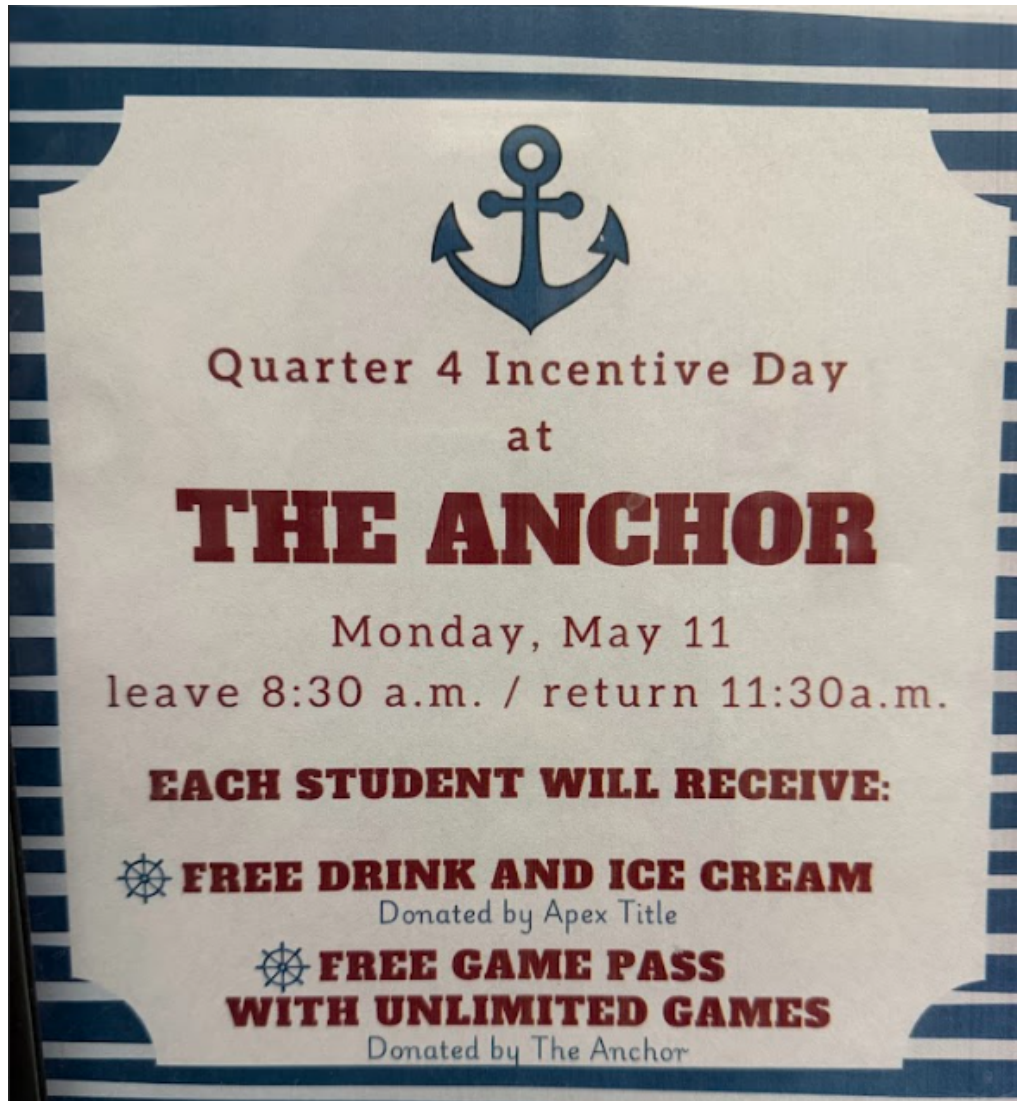
Pre ACT Distinguished Scholars- Top 3%

Dakota Love and Jacquelyn Guys earn a very distinguished recognition for scoring in the top 3% of students in the nation who took the Pre ACT this year. We are so very proud of them!



4th Quarter Incentive Day

STUCO has organized our very last incentive day of the year to celebrate student success at GMS. To qualify this semester, students had to have 3 or fewer absences for the quarter, no failing grades, and no discipline referrals. We are looking forward to a fun filled day ahead! Thank you to our friends at The Anchor, for making this possible!



2026-27 Student Council Announced

Congratulations 7th Grade Student Council



"You Crushed It This Year!"



Congratulations 8th Grade Student Council



"You Crushed It This Year!"



A Fine-Feathered Murder Performance Success

Mr. Gilmore and his drama students present a smashing performance on stage night!



Teacher Appreciation Week

A special thank you to all the parents and community members that contributed to a great appreciation week for teachers!

Thanks for keeping us



A-FLOAT



Thank you to the Byers family for providing a cool cup filled with a sweet treat from the Morrison and Northcutt families to celebrate Day 1 of Teacher Appreciation Week!



Thank you to the Beasley, Brodrick, Collier, Crowder, Ferguson, Grant, Huynh, Jackson, Lingard, and Ward families for providing a taco lunch with all the fixings on Day 2 of Teacher Appreciation Week!

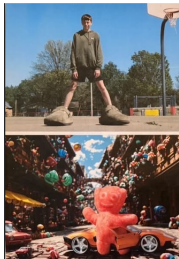
Mr. Palasano's Class Invest in Their Knowledge

Mr. Palasano's brother, Robin, served as a guest speaker to provide a lesson on investing in the New York Stock Exchange. Thank you for sharing your time and knowledge with our students, Robin!



Creative Photography by Mrs. Thomas' Yearbook Class

Thank you to GEFPE for funding the cameras used in our yearbook and journalism classes during the 2024-25 grant year cycle! Students were able to explore forced perspective photography, an optical illusion technique that plays with perception to make objects appear larger, smaller, closer, or farther away than they really are. Incredible results!



Mrs. Deason's Retirement Celebrated



We All Play a Role to Stop Bullying

REPORT, REPORT, REPORT!

**BULLYING
MEAN
RUDE
SAFETY**

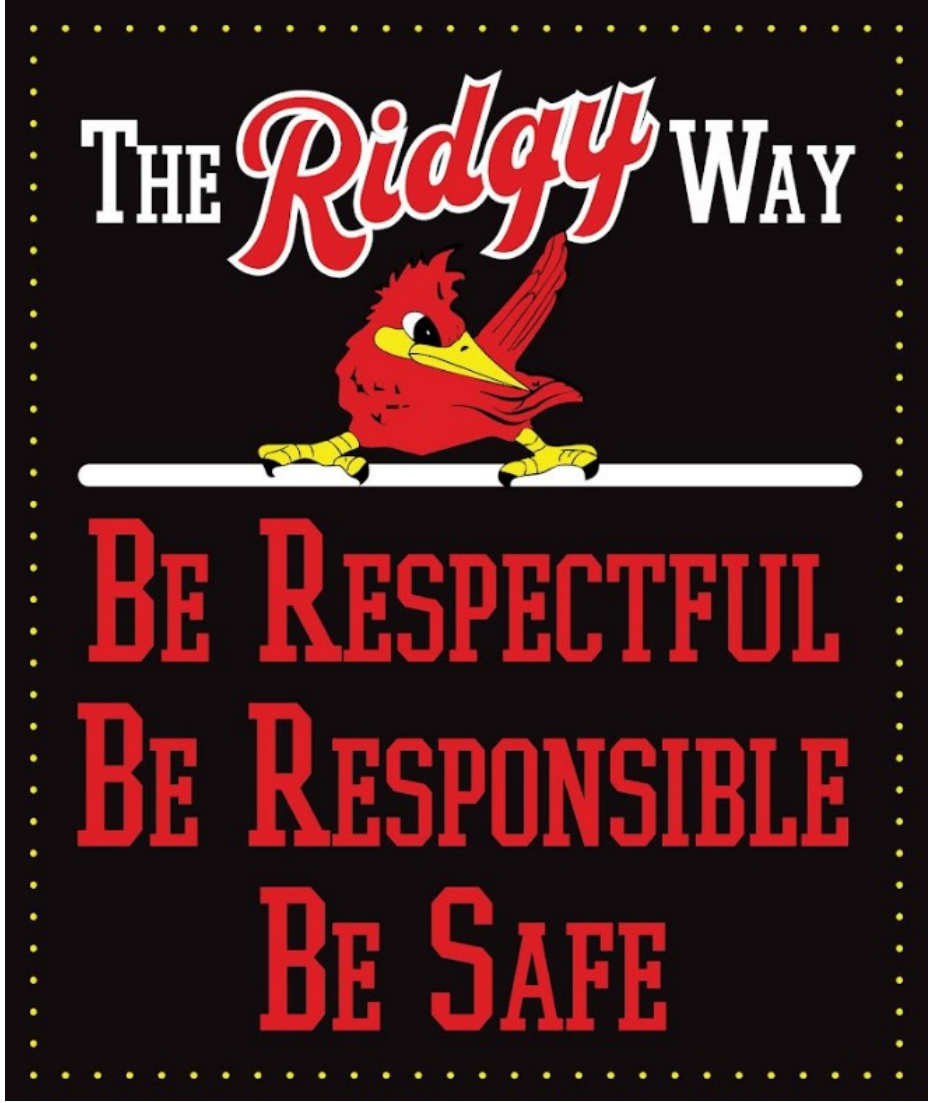
**DON'T STAND BY:
STAND UP FOR OTHERS!
STAND TOGETHER**

Ways to Report!!!!!!!!!!!!!!!!!!!!

- ★ **EMAIL A TRUSTED
MIDDLE SCHOOL
ADULT**
- ★ **INFORM A TEACHER**
- ★ **COME TO THE
OFFICE**
- ★ **PUT A NOTE IN
THE MAILBOX**

**BE KIND: EVERYONE YOU
MEET IS FIGHTING A
HARD BATTLE**

The Ridgy Way!



Student behavior at GMS is centered around The Ridgy Way; students will be responsible, be respectful, and be safe.

Teachers hand out Ridgy Tickets when they witness examples of students exemplifying good character.

Important Dates on the Horizon

- May 4th-8th and 11th-12th in Science classes- SHAPE
- May 11- 4th Quarter Incentive Day, 9-11:35 @ The Anchor
- May 11- Awards Assembly, 8th Grade-5th hour, 7th Grade- 6th hour
- May 14- Semester Tests Odd hours plus (7th hour Study)
- May 15- Semester Tests Even hours plus (7th hour Test)
- May 15-Last Day of Classes
- May 18- Employee Work Day

Access 2026-2027 School Calendar



GPS-2026-2027-Calendar-Board-Approved-02-10-2026.pdf

Download
265.2 KB

2026-2027 GROVE PUBLIC SCHOOLS SCHOOL CALENDAR

Approved by the
Grove School Board of Education

○ Begin/End 9 Weeks	■ School NOT in Session
◻ Professional Day/No School	◻ Parent Teacher Conference/ NO School
◻ Employee Work Day/ No School	◻ Parent Teacher Conference/ 4-7:00 P.M.
★ Graduation	◻ Snow Days (Conditional)

Teachers Report/Professional Days August 10-11
No School/ Employee Work Day August 12
First Day of School August 13

No School/Labor Day Sept 7
No School/Professional Day Sept 8

End 1st Quarter Oct 12
Parent Teacher Conference (P.M.) Oct 13
No School/Parent Teacher Conference(A.M.) Oct 14
No School/Fall Break Oct 15 - 16
No School/ Professional Day Oct 19

No School/Thanksgiving Break Nov 23-27

End 2nd Quarter Dec 18
Winter Break Dec 21 - Jan 1
No School/Professional Day Jan 4
Classes Resume/Begin 3rd Quarter Jan 5
No School/MLK Day/Snow Day(conditional) Jan 18

No School/President's Day/Snow Day Feb 15

End of 3rd Quarter March 10
Parent Teacher Conferences (P.M.) March 11
No School/Parent Teacher Conferences (A.M.) March 12
No School/Spring Break March 15-19
No School/ Professional Day March 22
No School/Good Friday March 26

Last Day of Classes May 19
No school/ Employee Work Day May 20
High School Graduation May 21

Snow Days (Conditional) April 30
May 7, & 14

INSTRUCTIONAL DAYS

1ST QTR: 41 DAYS
2ND QTR: 41 DAYS
3RD QTR: 45 DAYS
4TH QTR: 40 DAYS

167 TOTAL DAYS TAUGHT
+ 6 PROFESSIONAL DAYS
+ 2 EMPLOYEE WORK DAYS

www.ridgerunners.net

August '26							January '27						
S	M	T	W	T	F	S	S	M	T	W	T	F	S
				5	6	7	8					1	2
2	3	4							5	6	7	8	9
9	10	11	12	13	14	15	10	11	12	13	14	15	16
16	17	18	19	20	21	22	17	18	19	20	21	22	23
23	24	25	26	27	28	29	24	25	26	27	28	29	30
30	31						31						

September '26							February '27						
S	M	T	W	T	F	S	S	M	T	W	T	F	S
		1	2	3	4	5							
6	7	8	9	10	11	12	7	8	9	10	11	12	13
13	14	15	16	17	18	19	14	15	16	17	18	19	20
20	21	22	23	24	25	26	21	22	23	24	25	26	27
27	28	29	30				28						

October '26							March '27						
S	M	T	W	T	F	S	S	M	T	W	T	F	S
				1	2	3					1	2	3
4	5	6	7	8	9	10	7	8	9	10	11	12	13
11	12	13	14	15	16	17	14	15	16	17	18	19	20
18	19	20	21	22	23	24	21	22	23	24	25	26	27
25	26	27	28	29	30	31	28	29	30	31			

November '26							April '27						
S	M	T	W	T	F	S	S	M	T	W	T	F	S
1	2	3	4	5	6	7					1	2	3
8	9	10	11	12	13	14	4	5	6	7	8	9	10
15	16	17	18	19	20	21	11	12	13	14	15	16	17
22	23	24	25	26	27	28	18	19	20	21	22	23	24
29	30						25	26	27	28	29	30	

December '26							May '27						
S	M	T	W	T	F	S	S	M	T	W	T	F	S
		1	2	3	4	5							1
6	7	8	9	10	11	12	2	3	4	5	6	7	8
13	14	15	16	17	18	19	9	10	11	12	13	14	15
20	21	22	23	24	25	26	16	17	18	19	20	21	22
27	28	29	30	31			23	24	25	26	27	28	29
							30	31					



Grove Middle School

Email: mcollins@ridgerunners.net

Website: <https://www.ridgerunners.net/page/grove-middle-school>

Location: 517 West 10th Street, Grove, OK, USA

Phone: [918-786-2209](tel:918-786-2209)



Smore

Use Smore to create beautiful newsletters

$n_1 = 1$

双正态总体

$X \sim N(\mu_1)$

$H_1: \mu_1 - \mu_2$

$H_0: \mu_1 - \mu_2 = m$

σ_1^2, σ_2^2 已知

$$\left| \frac{(\bar{X} - \bar{Y}) - m}{\sqrt{\frac{\sigma_1^2}{n_1} + \frac{\sigma_2^2}{n_2}}} \right| \geq z_{\frac{\alpha}{2}}$$

$\sigma_1^2 = \sigma_2^2$ 未知

$$\left| \frac{(\bar{X} - \bar{Y}) - m}{S_w \sqrt{\frac{1}{n_1} + \frac{1}{n_2}}} \right| \geq t_{\frac{\alpha}{2}}(n_1 + n_2 - 2)$$

σ_1^2 / σ_2^2 未知

$H_0: \sigma_1^2 / \sigma_2^2 = 1$

$$\frac{S_1^2 / S_2^2}{1} < 1$$

High School May Board Report 2026

- We have had seventy-four students accepted to OU, OSU, Alabama, KU, UCO, Pitt State, Depaw University, University of Illinois, College of Wooster, OCU, Westminster, ECU, LSU, Hartwick College in NY, NEO, MSSU, Southeastern OK, OBU, Duquesne in Pittsburgh, PA, U of Hawaii, USAO, Kansas State, Colorado School of Mines, U of Nebraska, U of Omaha, Haverford, PA (full ride), Palm Beach Atlantic University, Evangel, Tulsa Community College, College of the Ozarks, Cameron, Ole Miss, John Brown University, Full Sail University in Florida, Arizona State, Eastern Oregon, University of Colorado, SW Baptist, Southern Nazarene, Panhandle State, Baylor, Missouri State, Bethany, Crowder and Harding!! Three students are joining the National Guard and one student is joining the Navy. We have had sixteen students accepted into the 13th year program at NE Tech.
- The COW week reveal amount was \$227,441 and will be used to construct a multi-purpose outdoor facility at the HS. The amount may go even higher with additional grants possibly coming in.
- Sophomore Jedd Patitz has scored a perfect score of 36 on the ACT!!!
- Teacher appreciation week was May 4th-8th. Shout out to all of the parents/guardians who made the week special for our faculty/staff.
- We had six students chosen to participate in the OHP Cadet Lawman Academy this Summer.
- GearUp paid for a charter bus to take 21 students to tour OSU including a free lunch and 7 students who went to tour Northeastern State.
- Our Jazz band placed 3rd out of 22 bands in the state at state competition.
- Graduation practice will be Wednesday, May 13th at 9am in the stadium. The senior slideshow will be the same day at 1pm in the PAC. Baccalaureate will be Sunday, May 17th at 6pm at the Church on the Hill. Thank you to Thomas Hawkins and all the other youth

pastors who put this together for us. Graduation will be on Friday, May 22nd at 7pm in the stadium. If the weather is unsafe, we will move the ceremony to Saturday, May 23rd at 7pm. If the weather is unsafe again, we will move the ceremony to Sunday, May 24th at 7pm. If the weather is unsafe for a third consecutive day, we will move the ceremony inside to the PAC at the same time.

- Summer school will be from May 19th to June 23rd for any student failing a class. All classes will be online through Edgenuity.

**Grove Public Schools
REGULAR BOARD MEETING**

Tuesday, April 14, 2026 7:00 PM
Grove Administration Building
310 S. Broadway
Grove, Oklahoma 74344

The Grove Board of Education of Independent School District I002 met in a Regular session on Tuesday, April 14, 2026 at 7:00 PM in Grove Administration Building, 310 S. Broadway Grove, Oklahoma 74344, pursuant to written notice given to the county clerk of Delaware County Oklahoma on the 11th day of November, 2025 as required by Title 25, O.A. #301-#314. Public notice of meeting was posted in the glass case in front of the administration office and on the web site www.ridgerunners.net.

Attendance Taken at 7:00 PM.

Lacy Berryman: Present
Karen Dyer: Present
Dr Joe Ferguson: Present
Darrin Hill: Present
Sheila Stogsdill: Present
Present: 5.

I. Call to Order

II. Roll Call

III. Pledge of Allegiance to the Flag of the United States and Salute to the Oklahoma State Flag
Gary Bishop led the meeting with a prayer.

IV. Recognition to Darrin Hill, re-elected to board seat #1 with no opposition.
Mr. Dodson presented Darrin Hill with a certificate from the County Election Board in recognition of his re-election to board seat #1.

V. Vote to reorganize the Grove Board of Education offices.

Offices to remain the same: Sheila Stogsdill as Clerk, Darrin Hill as Vice-President, and Karen Dyer as President. This motion, made by Sheila Stogsdill and seconded by Darrin Hill, Passed.

Lacy Berryman: Yea
Karen Dyer: Yea
Dr Joe Ferguson: Yea
Darrin Hill: Yea
Sheila Stogsdill: Yea

Yea: 5, Nay: 0

VI. Audience with Individuals or Groups

Pam Jarrett spoke about the bills that will impact our students in Grove. Mr. Dodson stated we already comply with the PE requirements, so it won't affect our scheduling. The other bill involves increasing days on the calendar and teacher pay raises.

VII. Financial and Budget Reports

Grand Savings Bank \$1,001,376.23, Grand Savings ICS \$5,435,472.73, Bank of Grand Lake \$9,630,365.03, Local Bank CD \$500,000, totaling \$16,567,213.99. Outstanding warrants \$55,572.91. Activity account at Bancfirst \$791,650.17.

VIII. Report of Superintendent

Josh Iliff gave a report on the Mid-School gym repairs. A new company has been hired to fix the alarm system at the PAC.

Principals reported on the end of the year activities. Charla Matthews has been selected as a finalist for the NAESP Principal of the year. Richard Bassett reported on spring sports. Karen Dyer reported that the board conducted the first round of interviews and will do the second round next week.

Mr. Dodson introduced Chris Brown as the new school resource officer for the next school year. GEFPE raised around \$200,000 at the Gala. Lobster Fest is on May 30, 2026.

Support resignations: Christyna Durham - Tier 1 Paraprofessional, Mickie Shepherd - Tier 2 Paraprofessional, Joanna Baker - LE Library Clerk, Lindsey Duncan - Day Custodian, Jameson Poteet - Child Nutrition Warehouse Worker, Kathryn Younger - Tier 2 Paraprofessional.

Certified resignations: Tonya Goldner - MS Counselor, District and Building Test Coordinator, Gifted/Talented Coordinator; Shannon Johnson - MS Nurse; Kathryn Casey - UE Teacher; Lei Yang - HS Special Ed Teacher.

Extra Duty resignation: Todd Kerr, HS TSA Advisor.

Mr. Dodson reminded the board that the personal financial disclosure statements deadline is May 15th.

IX. Regular Business

1. Consent Agenda

Approve consent agenda as presented. This motion, made by Darrin Hill and seconded by Sheila Stogsdill, Passed.

Lacy Berryman: Yea

Karen Dyer: Yea

Dr Joe Ferguson: Yea

Darrin Hill: Yea

Sheila Stogsdill: Yea

Yea: 5, Nay: 0

A. Minutes of the March 10th regular meeting, March 26th and April 9th, 2026 special board meetings

B. Approval of bills and claims

General fund encumbrance 1010-1111, \$217,774.12, change order \$124.00, warrants 4578-5086; Building fund encumbrance 240-262, \$103,293.30, warrants 249-276; Building bond fund encumbrance 4, \$151,800.00, warrants 8-9.

- C. Approval of the financial report of the activity funds
- D. Treasurer's report as the status of funds and investments
- E. Approval of Fundraisers
- F. Approval of Personnel Transfers
- G. Accept donations as per attachment A
- H. Declare surplus, as no longer needed by district, items as listed per attachment B and to authorize the superintendent to dispose of these items in a manner he deems in the best interest of the school district.
- I. Renewal of existing Lease and Service agreement with Lakeland Office Systems for District copiers
- J. Renewal of agreements with AAVCOR for student and bus driver drug and alcohol testing services.

2. Board to consider and take action on a resolution determining the maturities of, and setting a date, time and place for the sale of the \$2,795,000 General Obligation Building Bonds of the School District.

Approve a resolution determining the maturities of, and setting a date, time and place for the sale on May 12, 2026, at 11:30 a.m., at the Administration Building, of the \$2,795,000 General Obligation Building Bonds of the School District. A special board meeting will be May 12, 2026 at 6:30 p.m. to award the lowest bidder. This motion, made by Darrin Hill and seconded by Sheila Stogsdill, Passed.

Lacy Berryman: Yea
Karen Dyer: Yea
Dr Joe Ferguson: Yea
Darrin Hill: Yea
Sheila Stogsdill: Yea

Yea: 5, Nay: 0

3. Discuss and vote to approve or not approve an application for temporary appropriations.

Approve an application for temporary appropriations. This motion, made by Sheila Stogsdill and seconded by Darrin Hill, Passed.

Lacy Berryman: Yea
Karen Dyer: Yea
Dr Joe Ferguson: Yea
Darrin Hill: Yea
Sheila Stogsdill: Yea

Yea: 5, Nay: 0

4. Discuss and vote to approve or not approve the Interventionist job description.

Approve the Interventionist job description. This motion, made by Darrin Hill and seconded by Sheila Stogsdill, Passed.

Lacy Berryman: Yea
Karen Dyer: Yea
Dr Joe Ferguson: Yea
Darrin Hill: Yea
Sheila Stogsdill: Yea

Yea: 5, Nay: 0

5. Discuss and vote to approve or not approve closing activity account #915 Class of 2025 and transfer the remaining balance of \$355.81 to account #910 Class of 2029.

Approve closing activity account #915 Class of 2025 and transfer the remaining balance of \$355.81 to account #910 Class of 2029. This motion, made by Darrin Hill and seconded by Sheila Stogsdill, Passed.

Lacy Berryman: Yea
Karen Dyer: Yea
Dr Joe Ferguson: Yea
Darrin Hill: Yea
Sheila Stogsdill: Yea

Yea: 5, Nay: 0

X. Discussion, consideration, and vote to determine the necessity of an executive session and vote to go into executive session, pursuant to Okla. Stat., Title 25, Section 307(b.)1 for discussion of employing personnel in items XIII - XXV.

Enter into executive session at 7:42 p.m. This motion, made by Darrin Hill and seconded by Sheila Stogsdill, Passed.

Lacy Berryman: Yea
Karen Dyer: Yea
Dr Joe Ferguson: Yea
Darrin Hill: Yea
Sheila Stogsdill: Yea

Yea: 5, Nay: 0

XI. Vote to acknowledge return to open session.

Return to open session at 8:26 p.m. This motion, made by Darrin Hill and seconded by Sheila Stogsdill, Passed.

Lacy Berryman: Yea
Karen Dyer: Yea
Dr Joe Ferguson: Yea
Darrin Hill: Yea
Sheila Stogsdill: Yea

Yea: 5, Nay: 0

XII. Statement by board president of executive session minutes.

Only items 13-25 were discussed in executive session.

XIII. Vote to employ or not employ an Elementary Teacher, on a temporary contract, for the 2026-2027 school year.

Employ Tiffany Mosley as an Elementary Teacher, on a temporary contract, for the 2026-2027 school year. This motion, made by Sheila Stogsdill and seconded by Darrin Hill, Passed.

Lacy Berryman: Yea
Karen Dyer: Yea
Dr Joe Ferguson: Yea
Darrin Hill: Yea
Sheila Stogsdill: Yea

Yea: 5, Nay: 0

XIV. Vote to employ or not employ an Elementary Teacher, on a temporary contract, for the 2026-2027 school year.

Employ Rebekah Facio as an Elementary Teacher, on a temporary contract, for the 2026-2027 school year. This motion, made by Sheila Stogsdill and seconded by Darrin Hill, Passed.

Lacy Berryman: Yea
Karen Dyer: Yea
Dr Joe Ferguson: Yea
Darrin Hill: Yea
Sheila Stogsdill: Yea

Yea: 5, Nay: 0

XV. Vote to employ or not employ an Elementary Teacher, pending certification, on a temporary contract, for the 2026-2027 school year.

Employ Jessica Spielman as an Elementary Teacher, pending certification, on a temporary contract, for the 2026-2027 school year. This motion, made by Sheila Stogsdill and seconded by Darrin Hill, Passed.

Lacy Berryman: Yea
Karen Dyer: Yea
Dr Joe Ferguson: Yea
Darrin Hill: Yea
Sheila Stogsdill: Yea

Yea: 5, Nay: 0

XVI. Vote to employ or not employ a Tier 1 Paraprofessional, pending certification, for the 2026-2027 school year.

Employ Megan Rainbolt as a Tier 1 Paraprofessional, pending certification, for the 2026-2027 school year. This motion, made by Darrin Hill and seconded by Sheila Stogsdill, Passed.

Lacy Berryman: Yea
Karen Dyer: Yea
Dr Joe Ferguson: Yea

Darrin Hill: Yea
Sheila Stogsdill: Yea
Yea: 5, Nay: 0

XVII. Vote to employ or not employ a Tier 1 Paraprofessional, pending certification, for the 2026-2027 school year.

Employ Briley Tesreau as a Tier 1 Paraprofessional, pending certification, for the 2026-2027 school year. This motion, made by Darrin Hill and seconded by Sheila Stogsdill, Passed.

Lacy Berryman: Yea
Karen Dyer: Yea
Dr Joe Ferguson: Yea
Darrin Hill: Yea
Sheila Stogsdill: Yea
Yea: 5, Nay: 0

XVIII. Vote to approve or not approve transferring a Cafeteria Cook from a 7 hr. to a 6 hr. Cook.

Approve transferring Vivian Greene from a 7 hr. to a 6 hr. Cafeteria Cook. This motion, made by Darrin Hill and seconded by Sheila Stogsdill, Passed.

Lacy Berryman: Yea
Karen Dyer: Yea
Dr Joe Ferguson: Yea
Darrin Hill: Yea
Sheila Stogsdill: Yea
Yea: 5, Nay: 0

XIX. Vote to employ or not employ a Middle School Science Teacher, pending certification, on a temporary contract, for the 2026-2027 school year.

Employ Kali Hammock as Middle School Science Teacher, pending certification, on a temporary contract, for the 2026-2027 school year. This motion, made by Darrin Hill and seconded by Sheila Stogsdill, Passed.

Lacy Berryman: Yea
Karen Dyer: Yea
Dr Joe Ferguson: Yea
Darrin Hill: Yea
Sheila Stogsdill: Yea
Yea: 5, Nay: 0

XX. Vote to employ or not employ a School Nurse, pending certification, on a temporary contract for the 2026-2027 school year

Employ Sydney Cantwell as a School Nurse, pending certification, on a temporary contract for the 2026-2027 school year. This motion, made by Darrin Hill and seconded by Sheila Stogsdill, Passed.

Lacy Berryman: Yea
Karen Dyer: Yea
Dr Joe Ferguson: Yea
Darrin Hill: Yea
Sheila Stogsdill: Yea

Yea: 5, Nay: 0

XXI. Vote to employ or not employ a School Nurse, pending certification, on a temporary contract for the 2026-2027 school year.

Employ Casey LeadingFox as a School Nurse, pending certification, on a temporary contract for the 2026-2027 school year. This motion, made by Sheila Stogsdill and seconded by Darrin Hill, Passed.

Lacy Berryman: Yea
Karen Dyer: Yea
Dr Joe Ferguson: Yea
Darrin Hill: Yea
Sheila Stogsdill: Yea

Yea: 5, Nay: 0

XXII. Discuss and vote to approve or not approve directing the superintendent of schools to notify in writing, the following 10-month support personnel that the board of education does presently intend to enter into a written contract of employment with each employee, on or after July 1, 2026, for the employment during the 2026-2027 school year as listed on attachment E.

Approve directing the superintendent of schools to notify in writing, the following 10-month support personnel that the board of education does presently intend to enter into a written contract of employment with each employee, on or after July 1, 2026, for the employment during the 2026-2027 school year as listed on attachment E. This motion, made by Sheila Stogsdill and seconded by Darrin Hill, Passed.

Lacy Berryman: Yea
Karen Dyer: Yea
Dr Joe Ferguson: Yea
Darrin Hill: Yea
Sheila Stogsdill: Yea

Yea: 5, Nay: 0

XXIII. Discuss and vote to approve or not approve directing the superintendent of schools to notify in writing, the following 12-month support personnel that the board of education does presently intend to enter into a written contract of employment with each employee, on or after July 1, 2026, for the employment during the 2026-2027 school year as listed on attachment F.

Approve directing the superintendent of schools to notify in writing, the following 12-month support personnel that the board of education does presently intend to enter into a written contract of employment with each employee, on or after July 1, 2026, for the employment during the 2026-2027 school year as listed on attachment F. This motion, made by Darrin Hill and seconded by Sheila Stogsdill, Passed.

Lacy Berryman: Yea
Karen Dyer: Yea
Dr Joe Ferguson: Yea
Darrin Hill: Yea
Sheila Stogsdill: Yea

Yea: 5, Nay: 0

XXIV. Discuss and vote to approve or not approve directing the superintendent of schools to notify in writing, the following support managers/directors that the board of education does presently intend to enter into a written contract of employment with each employee, on or after July 1, 2026, for the employment during the 2026-2027 school year as listed on attachment G. **Approve directing the superintendent of schools to notify in writing, the following support managers/directors that the board of education does presently intend to enter into a written contract of employment with each employee, on or after July 1, 2026, for the employment during the 2026-2027 school year as listed on attachment G. This motion, made by Sheila Stogsdill and seconded by Darrin Hill, Passed.**

Lacy Berryman: Yea
Karen Dyer: Yea
Dr Joe Ferguson: Yea
Darrin Hill: Yea
Sheila Stogsdill: Yea

Yea: 5, Nay: 0

XXV. Vote to approve or not approve the extra-duty list for the 2026-2027 school year. **Approve the extra-duty list for the 2026-2027 school year with the exception of the high school head boys basketball coach, 9th grade head boys basketball coach, 8th grade boys assistant basketball coach, and 7th grade boys assistant basketball coach. This motion, made by Darrin Hill and seconded by Sheila Stogsdill, Passed.**

Lacy Berryman: Yea
Karen Dyer: Yea
Dr Joe Ferguson: Yea
Darrin Hill: Yea
Sheila Stogsdill: Yea

Yea: 5, Nay: 0

XXVI. New Business

XXVII. Vote to Adjourn

Adjourn at 8:36 p.m. This motion, made by Darrin Hill and seconded by Sheila Stogsdill, Passed.

Lacy Berryman: Yea
Karen Dyer: Yea
Dr Joe Ferguson: Yea
Darrin Hill: Yea

Sheila Stogsdill: Yea
Yea: 5, Nay: 0

President

Clerk

Member

DRAFT

Grove Public Schools
SPECIAL BOARD MEETING

Monday, April 20, 2026 8:00 AM
Northeast Tech Business and Industry Office/Conference Room #1
8705 US Highway 59 N.
Grove, OK 74344

The Grove Board of Education of Independent School District I002 met in a Special session on Monday, April 20, 2026 at 8:00 AM in Northeast Tech Business and Industry Office/Conference Room #1, 8705 US Highway 59 N., Grove, OK 74344, pursuant to written notice given to the county clerk of Delaware County Oklahoma on the 15th day of April, 2026 as required by Title 25, O.A. #301-#314. Public notice of meeting was posted in the glass case in front of the administration office, on the front door of the Northeast Tech Business Office, and on the web site www.ridgerunners.net.

Attendance Taken at 8:05 AM.

Lacy Berryman: Present
Karen Dyer: Present
Dr Joe Ferguson: Present
Darrin Hill: Present
Sheila Stogsdill: Present
Present: 5.

I. Call to Order

II. Roll Call

III. Consideration and vote to enter executive session to interview applicants for the position of Superintendent of Schools, pursuant to Okla. Stat. Title 25 Sect. 307 (B) (1).

Entered into executive session at 8:07 a.m. This motion, made by Darrin Hill and seconded by Sheila Stogsdill, Passed.

Lacy Berryman: Yea
Karen Dyer: Yea
Dr Joe Ferguson: Yea
Darrin Hill: Yea
Sheila Stogsdill: Yea

Yea: 5, Nay: 0

IV. Acknowledge and vote to return from executive session.

Returned to open session at 10:06 a.m. This motion, made by Sheila Stogsdill and seconded by Darrin Hill, Passed.

Lacy Berryman: Yea
Karen Dyer: Yea
Dr Joe Ferguson: Yea
Darrin Hill: Yea

Sheila Stogsdill: Yea

Yea: 5, Nay: 0

V. Executive session compliance announcement.

Karen Dyer stated the Superintendent interview was the only item discussed during executive session.

VI. Vote to Adjourn

Adjourned at 10:07 a.m. This motion, made by Sheila Stogsdill and seconded by Darrin Hill, Passed.

Lacy Berryman: Yea

Karen Dyer: Yea

Dr Joe Ferguson: Yea

Darrin Hill: Yea

Sheila Stogsdill: Yea

Yea: 5, Nay: 0

President

Clerk

Member

DRAFT

Grove Public Schools
Special BOARD MEETING

Thursday, April 23, 2026 10:00 AM
Northeast Tech Business and Industry Office/Conference Room #1
8705 US Highway 59 N.
Grove, OK 74344

The Grove Board of Education of Independent School District I002 met in a Special session on Thursday, April 23, 2026 at 10:10 AM in Northeast Tech Business and Industry Office/Conference Room #1, 8705 US Highway 59 N., Grove, OK 74344, pursuant to written notice given to the county clerk of Delaware County Oklahoma on the 20th day of April, 2026 as required by Title 25, O.A. #301-#314. Public notice of meeting was posted in the glass case in front of the administration office, front door of the Northeast Tech Office, and on the web site www.ridgerunners.net.

Attendance Taken at 10:10 AM.

Lacy Berryman: Present
Karen Dyer: Present
Dr Joe Ferguson: Present
Darrin Hill: Present
Sheila Stogsdill: Present
Present: 5.

I. Call to Order

II. Roll Call

III. Consideration and vote to enter executive session to interview applicants for the position of Superintendent of Schools, pursuant to Okla. Stat. Title 25 Sect. 307 (B) (1).

Enter into executive session at 10:11 a.m. This motion, made by Darrin Hill and seconded by Lacy Berryman, Passed.

Lacy Berryman: Yea
Karen Dyer: Yea
Dr Joe Ferguson: Yea
Darrin Hill: Yea
Sheila Stogsdill: Yea

Yea: 5, Nay: 0

IV. Acknowledge and vote to return from executive session.

Returned to open session at 3:50 p.m. This motion, made by Sheila Stogsdill and seconded by Darrin Hill, Passed.

Lacy Berryman: Yea
Karen Dyer: Yea
Dr Joe Ferguson: Yea
Darrin Hill: Yea

Sheila Stogsdill: Yea

Yea: 5, Nay: 0

V. Executive session compliance announcement.

Karen Dyer stated the superintendents' interviews were the only item discussed during executive session.

VI. Vote to Adjourn

Adjourn at 3:51 p.m. This motion, made by Sheila Stogsdill and seconded by Darrin Hill, Passed.

Lacy Berryman: Yea

Karen Dyer: Yea

Dr Joe Ferguson: Yea

Darrin Hill: Yea

Sheila Stogsdill: Yea

Yea: 5, Nay: 0

President

Clerk

Member

DRAFT

**Grove Public Schools
SPECIAL BOARD MEETING**

Friday, May 1, 2026 1:00 PM
Grove Administration Building
310 S. Broadway
Grove, Oklahoma 74344

The Grove Board of Education of Independent School District I002 met in a Special session on Friday, May 1, 2026 at 1:00 PM in Grove Administration Building, 310 S. Broadway Grove, Oklahoma 74344, pursuant to written notice given to the county clerk of Delaware County Oklahoma on the 29th day of April, 2026 as required by Title 25, O.A. #301-#314. Public notice of meeting was posted in the glass case in front of the administration office and on the web site www.ridgerunners.net.

Attendance Taken at 1:00 PM.

Lacy Berryman: Absent
Karen Dyer: Present
Dr Joe Ferguson: Present
Darrin Hill: Present
Sheila Stogsdill: Present
Present: 4, Absent: 1.

I. Call to Order

II. Roll Call

III. Consideration and vote to enter executive session to discuss entering a contract with an individual to serve as Superintendent of Schools, pursuant to Okla. Stat. Title 25 Sect. 307 (B) (1).

Entered into executive session at 1:01 p.m. This motion, made by Darrin Hill and seconded by Sheila Stogsdill, Passed.

Lacy Berryman: Absent
Karen Dyer: Yea
Dr Joe Ferguson: Yea
Darrin Hill: Yea
Sheila Stogsdill: Yea

Yea: 4, Nay: 0, Absent: 1

IV. Acknowledge and vote to return from executive session.

Returned to open session at 1:13 pm. This motion, made by Darrin Hill and seconded by Sheila Stogsdill, Passed.

Lacy Berryman: Absent
Karen Dyer: Yea
Dr Joe Ferguson: Yea
Darrin Hill: Yea

Sheila Stogsdill: Yea

Yea: 4, Nay: 0, Absent: 1

V. Executive session compliance announcement.

The board discussed the hiring of the new Superintendent.

VI. Discuss and vote to employ or not employ a Superintendent of Schools.

Employ Doug Brown as Superintendent of Schools. This motion, made by Darrin Hill and seconded by Sheila Stogsdill, Passed.

Lacy Berryman: Absent

Karen Dyer: Yea

Dr Joe Ferguson: Yea

Darrin Hill: Yea

Sheila Stogsdill: Yea

Yea: 4, Nay: 0, Absent: 1

VII. Vote to Adjourn

Adjourned at 1:16 pm. This motion, made by Darrin Hill and seconded by Sheila Stogsdill, Passed.

Lacy Berryman: Absent

Karen Dyer: Yea

Dr Joe Ferguson: Yea

Darrin Hill: Yea

Sheila Stogsdill: Yea

Yea: 4, Nay: 0, Absent: 1

President

Clerk

Member

Purchase Order

GROVE PUBLIC SCHOOLS
ADMIN BUSINESS OFFICE
PO BOX 450789
GROVE OK 74345

PO No	2026-60-1693
PO Date	5/4/2026

Bill To →

Ship To:	GROVE PUBLIC SCHOOLS RECEIVING/MAINTENANCE 700 W. 7TH STREET GROVE OK 74344
----------	--------------------------------------------------------------------------------------

Vendor No:	58995
To:	GRAND BOUNCE 3659 HWY 59 N. GROVE OK 74344

Amount	\$400.00		
Date Requested	5/1/2026	Date Approved	5/4/2026
Requested By	SHANNON SERGEANT		
Encumbered By	<i>Diana Jeffries</i>		

Description	Vendor Item No	Qty	Unit Price	Amount
GMS STUCO RENTAL FOR 8TH GRADE DAY 5/11/26		1.000	\$400.00	\$400.00

Purchase Order

GROVE PUBLIC SCHOOLS
ADMIN BUSINESS OFFICE
PO BOX 450789
GROVE OK 74345

PO No	2026-60-1602
PO Date	4/15/2026

Bill To →

Ship To:	GROVE PUBLIC SCHOOLS RECEIVING/MAINTENANCE 700 W. 7TH STREET GROVE OK 74344
----------	--------------------------------------------------------------------------------------

Vendor No:	58995
To:	GRAND BOUNCE 3659 HWY 59 N. GROVE OK 74344

Amount	
\$1,120.00	
Date Requested	Date Approved
4/15/2026	4/15/2026
Requested By	
BRITTANY HARDING	
Encumbered By	
<i>Diana Jeffers</i>	

Description	Vendor Item No	Qty	Unit Price	Amount
3rd grade field trip to the Jumpstation May 12th		160.000	\$7.00	\$1,120.00

Purchase Order

GROVE PUBLIC SCHOOLS
ADMIN BUSINESSS OFFICE
PO BOX 450789
GROVE OK 74345

Bill To →

PO No	2026-60-1601
PO Date	4/15/2026

Ship To:	GROVE PUBLIC SCHOOLS RECEIVING/MAINTENANCE 700 W. 7TH STREET GROVE OK 74344
----------	--------------------------------------------------------------------------------------

Vendor No:	58995
To:	GRAND BOUNCE 3659 HWY 59 N. GROVE OK 74344

Amount	\$1,125.00		
Date Requested	4/14/2026	Date Approved	4/15/2026
Requested By	BRITTANY HARDING		
Encumbered By	<i>Diana Jettis</i>		

Description	Vendor Item No	Qty	Unit Price	Amount
Bounce House for 1st grade fun day on May 7th		1.000	\$1,125.00	\$1,125.00

GROVE PUBLIC SCHOOL BOARD REPORT
05/12/2026

(2025-2026)

General Fund 11

Encumbrance Register	1112-1177	\$245,176.93
Change Order Total		\$ 0
Warrants Issued	5087-5610	

Building Fund 21

Encumbrance Register	263-285	\$111,639.82
Change Order Total		\$ 663.00
Warrants Issued	277-305	

BUILDING BOND FUND 31

Encumbrance Register		
Change Order Total		
Warrants Issued	10	

Encumbrance Register

Options: Year: 2025-2026, Date Range: 7/1/2025 - 6/30/2026, PO Range: 1112 - 1177, Fund(s): 11 GENERAL FUND

Fund	PO No	Date	Vendor No	Vendor	Description	Amount
11	1112	04/14/2026	33	QUILL, INC.	ADMIN OFFICE SUPPLIES	400.00
11	1113	04/14/2026	77514	AMAZON CAPITAL SERVICES	LIBRARY BOOKS HS	85.78
11	1114	04/14/2026	77514	AMAZON CAPITAL SERVICES	Title VI Direct Instruction Supplies	337.56
11	1115	04/14/2026	701339	TREVIPAY-WALMART	JOM Banquet	149.46
11	1116	04/14/2026	701339	TREVIPAY-WALMART	JOM Banquet	111.22
11	1117	04/15/2026	114	SCHOOL SPECIALTY LLC	KITCHEN SUPPLIES FOR CRAWFORD	335.93
11	1118	04/15/2026	1529	HARPS	FOOD LABS	189.11
11	1119	04/16/2026	77514	AMAZON CAPITAL SERVICES	Swing for ECC, and other items for WINGS	1,906.47
11	1120	04/16/2026	68	UNIVERSITY OF OKLAHOMA	Surveys	1,500.00
11	1121	04/16/2026	11402	BEACHNER GRAIN, INC.	Chicken feed & straw	600.70
11	1122	04/17/2026	4000	DELL MARKETING LP	CHROMEBOOK/LAPTOP ORDER	132,488.70
11	1123	04/17/2026	3639	LOWE'S	OUTDOOR STORAGE BUILDING WINGS PROGRAM	2,500.00
11	1124	04/17/2026	77514	AMAZON CAPITAL SERVICES	Items for WINGS	450.84
11	1125	04/20/2026	55123	ARVEST BANK CARD SERVICES	Matuska Taxidermy Products	439.20
11	1126	04/20/2026	55123	ARVEST BANK CARD SERVICES	2 DC CONVERTERS EBAY	1,388.52
11	1127	04/20/2026	49120	BAUER BUILT INC	Tires	5,000.00
11	1128	04/21/2026	65757	NCS PEARSON INC	SCORING/RECORDS/FORMS SEE QUOTE	195.00
11	1129	04/23/2026	55123	ARVEST BANK CARD SERVICES	Car Dolly if needed	500.00
11	1130	04/23/2026	76655	BRUCKNER'S TRUCK & EQUIPMENT	Repairs	3,500.00
11	1131	04/23/2026	66662	JENNY CLARK	GEAR UP MEALS STUDENT PREP 6/14-6/17/2026	150.00
11	1132	04/23/2026	73152	AMANDA PETTY	MEALS K-12 STEM CONF GEAR UP 6-12-26	45.00
11	1133	04/23/2026	38190	RYAN MCABEE	MEALS K-12 STEM CONF GEAR UP 6-12-26	45.00
11	1134	04/23/2026	10699	ALISHA SMITH	MEALS K-12 STEM CONF GEAR UP 6-12-26	45.00
11	1135	04/23/2026	6078	LESIA PRAYTOR	MEALS K-12 STEM CONF GEAR UP 6-12-26	45.00
11	1136	04/23/2026	6197	LESLIE COHEA	MEALS K-12 STEM CONF GEAR UP 6-12-26	45.00
11	1137	04/23/2026	32522	JOAN JOHNSON	MEALS K-12 STEM CONF GEAR UP 6-12-26	45.00
11	1138	04/23/2026	69	LAURA MCCRARY	MEALS K-12 STEM CONF GEAR UP 6-12-26	45.00
11	1139	04/23/2026	40073	CORBIN CHANDLER	GEAR UP MEALS AP TRAINING NSU 6-21-6-25-26	180.00
11	1140	04/23/2026	40066	RACHEL BLACKRICE	GEAR UP MEALS AP TRAINING NSU 6-21-6-25-26	180.00
11	1141	04/23/2026	73	MELISSA GRONINGER	GEAR UP MEALS AP TRAINING NSU 6-14-6-18-2026	180.00
11	1142	04/23/2026	4702	JEANNE SMITH	GEAR UP MEALS AP TRAINING 6-21-6-25-2026	180.00

Encumbrance Register

Options: Year: 2025-2026, Date Range: 7/1/2025 - 6/30/2026, PO Range: 1112 - 1177, Fund(s): 11 GENERAL FUND

Fund	PO No	Date	Vendor No	Vendor	Description	Amount
11	1143	04/23/2026	2744	MELISSA SADLER	GEAR UP MEALS AP TRAINING NSU 6-21-6-25-26	180.00
11	1144	04/23/2026	34245	RACHEL WATTERS	GEAR UP MEALS AP TRAINING NSU 6-21-6-25-26	180.00
11	1145	04/24/2026	77514	AMAZON CAPITAL SERVICES	CALCULATORS MATH	985.99
11	1146	04/24/2026	190	O'REILLY AUTO PARTS	Robinair A/C Machine	4,149.00
11	1147	04/27/2026	77514	AMAZON CAPITAL SERVICES	CALCULATORS MATH	972.00
11	1148	04/27/2026	701339	TREVIPAY-WALMART	JOM Snacks	121.08
11	1149	04/27/2026	55123	ARVEST BANK CARD SERVICES	BAMBU LAB PRINTER AND FILLAMENT	1,184.83
11	1150	04/27/2026	77514	AMAZON CAPITAL SERVICES	GATE CLASSROOM SUPPLIES	1,321.57
11	1151	04/27/2026	77514	AMAZON CAPITAL SERVICES	Title VI Supplies	319.75
11	1152	04/29/2026	3639	LOWE'S	Plants for Class Project	1,000.00
11	1153	04/29/2026	76655	BRUCKNER'S TRUCK & EQUIPMENT	BUS REPAIRS A2	1,803.58
11	1154	04/30/2026	1529	HARPS	FOOD LABS	102.40
11	1155	04/30/2026	55123	ARVEST BANK CARD SERVICES	JOM Supplies	150.00
11	1156	04/30/2026	10067	TRENCH BROTHERS GRAPHICS	JOM Promotional Items	499.28
11	1157	04/30/2026	77514	AMAZON CAPITAL SERVICES	Title VI Direct Instruction Supplies	300.00
11	1158	04/30/2026	77514	AMAZON CAPITAL SERVICES	JOM COMMUNITY EVENT	650.00
11	1159	04/30/2026	77514	AMAZON CAPITAL SERVICES	BUS REPAIR SUPPLIES	1,243.99
11	1160	04/30/2026	77514	AMAZON CAPITAL SERVICES	JOM Supplies	190.00
11	1161	04/30/2026	77514	AMAZON CAPITAL SERVICES	CLASSROOM SUPPLIES	1,325.19
11	1162	04/30/2026	77514	AMAZON CAPITAL SERVICES	CLASSROOM SUPPLIES	2,171.80
11	1163	04/30/2026	77514	AMAZON CAPITAL SERVICES	JOM SUPPLIES	44.00
11	1164	04/30/2026	65757	NCS PEARSON INC	TESTING FORMS/KITS SS	1,376.74
11	1165	05/04/2026	6175	BEN E KEITH CO	CN FOOD/CN NON-FOOD	20,000.00
11	1166	05/04/2026	10377	HILAND DAIRY KANSAS CITY	CN FOOD	20,000.00
11	1167	05/04/2026	190	O'REILLY AUTO PARTS	Parts	5,000.00
11	1168	05/04/2026	1040	PITSCO	Classroom Supplies	962.71
11	1169	05/04/2026	4000	DELL MARKETING LP	COMPUTERS & ADAPTERS	1,989.63
11	1170	05/05/2026	75	CITY OF GROVE POLICE DEPARTMENT	SRO ACADEMY FOR CHRIS BROWN	220.00
11	1171	05/05/2026	33924	PURPLE WAVE AUCTION	20-30 Passenger bus for Sporting Events	8,800.00
11	1172	05/07/2026	701339	TREVIPAY-WALMART	962XL INK CARTRIDGE FOR OFFICE	91.98
11	1173	05/07/2026	2178	SCHOOL SPECIALTY LLC	ELM'ER'S RUBBER CEMENT, 3V BATTERIES, AA BATTERIES	182.92
11	1174	05/07/2026	172	BARLOW EDUCATION MANAGEMENT	GRANT WRITING SERVICES	4,000.00
11	1175	05/08/2026	11422	SHANON PAXSON	Student Transportation	45.00
11	1176	05/08/2026	69955	NEO ORTHOPEDICS & REHAB.	OT-PT	10,000.00
11	1177	05/08/2026	76	SAFETY-KLEEN SYSTEMS, INC	Oil Removal	350.00

Encumbrance Register

Options: Year: 2025-2026, Date Range: 7/1/2025 - 6/30/2026, PO Range: 1112 - 1177, Fund(s): 11 GENERAL FUND

Fund	PO No	Date	Vendor No	Vendor	Description	Amount
					Non-Payroll Total:	\$245,176.93
					Payroll Total:	\$0.00
					Balance Forward:	\$0.00
					Report Total:	\$245,176.93

Payment Register

Options: Year: 2025-2026, Fund Account: 11 GENERAL FUND, Date Range: 7/1/2025 - 6/30/2026, Payment Range: 5087 - 5610, Print Payroll Payments: True, Print Details: False

Payment No	Date	Vendor No	Vendor	Type	Date Voided	Void Amount	Amount
5087	04/21/2026	77514	AMAZON CAPITAL SERVICES				\$1,979.58
5088	04/21/2026	55123	ARVEST BANK CARD SERVICES				\$624.45
5089	04/21/2026	11350	LAKELAND FINANCIAL SERVICES				\$3,371.80
5090	04/21/2026	701329	MCKENZIE SPORTS PRODUCTS				\$294.53
5091	04/21/2026	4546	OKLAHOMA HEALTHCARE AUTH				\$8,822.24
5092	04/21/2026	2038	OKLAHOMA TSA				\$180.00
5093	04/21/2026	188	PINNACLE CAR SERVICES INC				\$2,249.00
5094	04/21/2026	701339	TREVIPAY-WALMART				\$84.84
5095	04/28/2026	6536	ATTAINMENT COMPANY, INC.				\$1,652.70
5096	04/28/2026	38069	BOLT -NE RURAL SERVICES				\$5,723.92
5097	04/28/2026	65757	NCS PEARSON INC				\$322.00
5098	04/28/2026	362	OMTECH				\$2,299.99
5099	04/28/2026	39958	OSSBA EMPLOYMENT SERVICES				\$600.00
5100	04/28/2026	176	ROSENSTEIN, FIST & RINGOLD				\$301.50
5101	04/28/2026	1212	SREB				\$4,400.00
5102	05/01/2026	89092	MARTIN B ABRAM	PN			\$1,939.40
5103	05/01/2026	99824	ISAAC JACOB ANARIBA REYES	PN			\$1,829.21
5104	05/01/2026	90199	ISRAEL ANTONIO ANARIBA-REYE	PN			\$1,863.79
5105	05/01/2026	81350	ROSA DAWANI	PN			\$1,847.86
5106	05/01/2026	88798	SARA E. EDGE	PN			\$1,794.55
5107	05/01/2026	90362	DAWNALEE GADBERRY	PN			\$2,020.71
5108	05/01/2026	99804	LAWRENCE EDWIN SHUNCY GRO	PN			\$1,712.86
5109	05/01/2026	83568	BRANDON HANDLE	PN			\$1,928.30
5110	05/01/2026	99771	JUSTIN TODD HOWE	PN			\$1,943.10
5111	05/01/2026	90575	JEREMIAH DAVID ILIFF	PN			\$1,555.19
5112	05/01/2026	90080	JOSHUA ALAN ILIFF	PN			\$4,183.15
5113	05/01/2026	90046	DOUGLAS MARTIN INNOCENTI	PN			\$1,326.20
5114	05/01/2026	83006	KAREN S. INNOCENTI	PN			\$2,573.51
5115	05/01/2026	90262	LUZ MATILDE JUAREZ	PN			\$1,770.22
5116	05/01/2026	88833	ROGER W. JUMPER	PN			\$1,974.78
5117	05/01/2026	90567	CYNTHIA RENEE KELLEY	PN			\$1,820.24
5118	05/01/2026	81299	MARK L. LOVELACE	PN			\$2,426.73
5119	05/01/2026	89079	ATANACIO MENDOZA	PN			\$2,208.58
5120	05/01/2026	82332	JANA L. NELSON	PN			\$2,134.75
5121	05/01/2026	99808	CRAIG LEON ROBERTS	PN			\$2,047.75
5122	05/01/2026	90160	GARY WAYNE SMITH	PN			\$1,873.52
5123	05/01/2026	90114	BELINDA A VARNIS	PN			\$1,888.89
5124	05/01/2026	98983	RHONDA JEAN ANDERSON	PN			\$1,746.57
5125	05/01/2026	88981	LORI A. ATKINSON	PN			\$3,151.68
5126	05/01/2026	81322	GAYLE J. CANNON	PN			\$4,252.92
5127	05/01/2026	80067	PATRICK N. DODSON	PN			\$13,314.86
5128	05/01/2026	90234	RYAN MARGARET GOZA	PN			\$3,135.88
5129	05/01/2026	90571	DIANA RAE JEFFRIES	PN			\$2,796.37
5130	05/01/2026	89095	TERESA L ROCKERS	PN			\$2,524.01
5131	05/01/2026	98984	KATRINA LYNN FRANSEN	PN			\$4,127.24
5132	05/01/2026	90563	ADAM MATHEW HUSONG	PN			\$4,100.49
5133	05/01/2026	90551	TERRY L LAREY	PN			\$3,716.83
5134	05/01/2026	88899	GARY MICHAEL MAYFIELD	PN			\$5,181.79
5135	05/01/2026	90137	ROLAND JAY SCHAAPVELD	PN			\$2,417.35

Payment Register

Options: Year: 2025-2026, Fund Account: 11 GENERAL FUND, Date Range: 7/1/2025 - 6/30/2026, Payment Range: 5087 - 5610, Print Payroll Payments: True, Print Details: False

Payment No	Date	Vendor No	Vendor	Type	Date Voided	Void Amount	Amount
5136	05/01/2026	50034	TEACHER RETIREMENT SYSTEM	R			\$11,716.56
5137	05/01/2026	50017	AMERICAN FIDELITY ASSURANCE	R			\$800.00
5138	05/01/2026	50001	AMERICAN FIDELITY ADM. SER.LL	R			\$2,983.34
5139	05/01/2026	82347	ASSOC OF PROFESSIONAL OK ED	R			\$112.00
5140	05/01/2026	50022	CCOSA DUES	R			\$43.00
5141	05/01/2026	51234	EGID	R	05/01/2026	\$19,524.12	\$0.00
5142	05/01/2026	1515	GRAND SAVINGS BANK	R			\$28,071.15
5143	05/01/2026	50035	OKLAHOMA TAX COMMISSION	R			\$509.78
5144	05/01/2026	88817	KANSAS PAYMENT CENTER	R			\$474.00
5145	05/01/2026	50028	METLIFE	R			\$100.00
5146	05/01/2026	35571	MUTUAL OF OMAHA	R	05/01/2026	\$111.51	\$0.00
5147	05/01/2026	51251	OEA/NEA	R			\$22.54
5148	05/01/2026	50025	OKLAHOMA TAX COMMISSION	R			\$3,903.00
5149	05/01/2026	50030	TEACHER RETIREMENT SYSTEM	R			\$7,984.64
5150	05/01/2026	50012	VISION SERVICE PLAN (CT)	R	05/01/2026	\$405.09	\$0.00
5151	05/08/2026	83037	ROBERT W. AMEY	PD			\$0.00
5152	05/08/2026	83033	ROSIE AMEY	PD			\$0.00
5153	05/08/2026	98982	WILLIAM FRANCIS ATKINSON	PD			\$0.00
5154	05/08/2026	99805	LILIANA BETZABE CLARK	PD			\$0.00
5155	05/08/2026	88892	KIM K. CRAMER	PN			\$1,292.95
5156	05/08/2026	90439	SHEILA RAE CUMMINGS	PD			\$0.00
5157	05/08/2026	83579	LAURA DICKINSON	PD			\$0.00
5158	05/08/2026	90269	JEANNIE IRENE FREEMAN	PD			\$0.00
5159	05/08/2026	90432	VICKIE JEANENE FULLER	PN			\$1,240.92
5160	05/08/2026	99740	LORI LEA GALLARDO	PD			\$0.00
5161	05/08/2026	90360	VIVIAN JEAN GREENE	PD			\$0.00
5162	05/08/2026	90331	ANITA KAY HAYES	PD			\$0.00
5163	05/08/2026	88856	ALISHA S. HENSLEY	PN			\$2,158.56
5164	05/08/2026	89109	CHRISTINE A HOVER	PD			\$0.00
5165	05/08/2026	89114	BERLINDA DIONNE KLEEMAN	PD			\$0.00
5166	05/08/2026	66356	ELINOR L. LAGRONE	PD			\$0.00
5167	05/08/2026	90451	JENNIFER LEE LANDIN	PD			\$0.00
5168	05/08/2026	99457	ARIEL ARROW RENEE MILLER	PD			\$0.00
5169	05/08/2026	89020	SHANNAN M. MILLER	PD			\$0.00
5170	05/08/2026	90583	JULIA ANN MOORE	PD			\$0.00
5171	05/08/2026	90348	KIMBERLY DAWN NIXON	PD			\$0.00
5172	05/08/2026	99807	MARCY LEANN PRATHER	PD			\$0.00
5173	05/08/2026	89068	LORIE M RAMEY	PD			\$0.00
5174	05/08/2026	99790	SAMANTHA LYNN ROOF	PD			\$0.00
5175	05/08/2026	88757	BRIANNA D. SHOBE	PD			\$0.00
5176	05/08/2026	90047	MEGAN MICHELE SPICER	PD			\$0.00
5177	05/08/2026	90592	BRANDY STEPHENS	PN			\$805.75
5178	05/08/2026	82502	JACKIE A. THOMPSON	PD			\$0.00
5179	05/08/2026	80221	MARY A. VANDERPOOL	PD			\$0.00
5180	05/08/2026	82663	NANCY K. VANDERPOOL	PN			\$1,560.01
5181	05/08/2026	99792	SHELLIE ANN ASHLEY	PD			\$0.00
5182	05/08/2026	88849	LORRAINE K. BEALL	PD			\$0.00
5183	05/08/2026	82084	JENNIFER L. BLYTHE	PD			\$0.00
5184	05/08/2026	98990	CASEY LANAE BRICE	PD			\$0.00

Payment Register

Options: Year: 2025-2026, Fund Account: 11 GENERAL FUND, Date Range: 7/1/2025 - 6/30/2026, Payment Range: 5087 - 5610, Print Payroll Payments: True, Print Details: False

Payment No	Date	Vendor No	Vendor	Type	Date Voided	Void Amount	Amount
5185	05/08/2026	88991	JENNIFER LEAH BRODRICK	PD			\$0.00
5186	05/08/2026	99712	STORM AUSTIN BURKE	PD			\$0.00
5187	05/08/2026	90248	MEGAN ELIZABETH BURROUGHS	PD			\$0.00
5188	05/08/2026	82694	SAMUEL J. CARPER	PD			\$0.00
5189	05/08/2026	81571	KATHRYN S. CARPER	PD			\$0.00
5190	05/08/2026	90375	KATHRYN NICHOLE CASEY	PD			\$0.00
5191	05/08/2026	88730	TERESA N. CASTON	PD			\$0.00
5192	05/08/2026	99711	SUNNI JUNE COOMBS	PD			\$0.00
5193	05/08/2026	83317	CAREY MELAINE CROWDER	PD			\$0.00
5194	05/08/2026	90378	WHITNEY RACHEL CURRY	PD			\$0.00
5195	05/08/2026	82483	RACHEL SUZANNE DAVENPORT	PD			\$0.00
5196	05/08/2026	83015	DEANA F. GLASGOW	PD			\$0.00
5197	05/08/2026	82211	KERI R GREGG	PN			\$3,361.65
5198	05/08/2026	83315	KIM R HACKER	PN			\$2,892.00
5199	05/08/2026	80788	KIMBERLEA A HAMPTON	PN			\$3,923.12
5200	05/08/2026	80087	LORI J. HINES	PD			\$0.00
5201	05/08/2026	90315	KYLIE RENEE HORNBACK	PD			\$0.00
5202	05/08/2026	80089	ANGELA K. HOWERTON	PD			\$0.00
5203	05/08/2026	90317	DARCI LINN IMMELL	PD			\$0.00
5204	05/08/2026	90181	NINA L JOHNSTON	PD			\$0.00
5205	05/08/2026	80097	REBECCA G. KIDWELL	PD			\$0.00
5206	05/08/2026	90229	TRACY ALINE MADDUX	PD			\$0.00
5207	05/08/2026	99810	DALENE SUE MARTIN	PD			\$0.00
5208	05/08/2026	83342	CHARLA MATTHEWS	PD			\$0.00
5209	05/08/2026	99789	KATRINA LEE MURPHY	PD			\$0.00
5210	05/08/2026	66395	DIANNA CRISSY NELSON	PD			\$0.00
5211	05/08/2026	90180	SHEILA RENAE NOBLETT	PD			\$0.00
5212	05/08/2026	99778	MEAGAN LEIGH OAKLEY	PD			\$0.00
5213	05/08/2026	89077	DANA KENDALL ORCUTT	PD			\$0.00
5214	05/08/2026	99736	MARY ELLEN POLLETT	PD			\$0.00
5215	05/08/2026	81441	SUNNI J. PORTER	PD			\$0.00
5216	05/08/2026	90410	BRITTANY ASHLIE REECE	PN			\$3,011.82
5217	05/08/2026	90321	TRAVIS D RHATIGAN	PD			\$0.00
5218	05/08/2026	90556	JENNIFER KENNEDY RICHARD	PD			\$0.00
5219	05/08/2026	99781	MISTY MARIE ROBERTSON	PD			\$0.00
5220	05/08/2026	90382	KELLIE JEANNE ROSE	PD			\$0.00
5221	05/08/2026	80522	SHERI L. ROSS	PD			\$0.00
5222	05/08/2026	99000	CORTNEY LORRAINE RUSSELL	PD			\$0.00
5223	05/08/2026	99709	ASHLEY RENEE SHARP	PD			\$0.00
5224	05/08/2026	99788	MICHELLE DEANN SILVERHORN	PD			\$0.00
5225	05/08/2026	90027	HALEY V SKILES	PD			\$0.00
5226	05/08/2026	99811	ALICIA VENITA SMITH	PD			\$0.00
5227	05/08/2026	83064	SHERRY L SPICER	PD			\$0.00
5228	05/08/2026	90029	JACLYN M TAYLOR	PD			\$0.00
5229	05/08/2026	83021	JAYLA L. TEEL	PD			\$0.00
5230	05/08/2026	90340	LAUREN ELIZABETH THOMPSON	PD			\$0.00
5231	05/08/2026	88711	MIRANDA N. WARD	PD			\$0.00
5232	05/08/2026	99731	HEATHER N WATTS CHASTAIN	PD			\$0.00
5233	05/08/2026	83209	KELLI PAIGE YARBOROUGH	PD			\$0.00

Payment Register

Options: Year: 2025-2026, Fund Account: 11 GENERAL FUND, Date Range: 7/1/2025 - 6/30/2026, Payment Range: 5087 - 5610, Print Payroll Payments: True, Print Details: False

Payment No	Date	Vendor No	Vendor	Type	Date Voided	Void Amount	Amount
5234	05/08/2026	82456	RANDI R. ANDREWS	PD			\$0.00
5235	05/08/2026	90591	HALEY MAXINE BACON	PD			\$0.00
5236	05/08/2026	90548	DELL LYNNE BAKER	PD			\$0.00
5237	05/08/2026	80566	DAWN LEA BREWER	PN			\$1,747.97
5238	05/08/2026	99016	DEBORAH LEA CARTON	PD			\$0.00
5239	05/08/2026	90411	ELIZABETH MARIE CASH	PD			\$0.00
5240	05/08/2026	90107	KIMBERLY J CASH	PD			\$0.00
5241	05/08/2026	90381	ALLISON ARYN COLE	PD			\$0.00
5242	05/08/2026	99017	KIMBERLY ARLENE COLLIER	PD			\$0.00
5243	05/08/2026	83154	ERIN N. DEATON	PD			\$0.00
5244	05/08/2026	80249	LISA R. DODSON	PN			\$1,799.39
5245	05/08/2026	82601	JANA D. GIBSON	PD			\$0.00
5246	05/08/2026	90201	ANNA P HAMPTON	PD			\$0.00
5247	05/08/2026	90264	MICHELLE RENAE HEATLEY	PD			\$0.00
5248	05/08/2026	99006	MELBA ALICE HENSON	PD			\$0.00
5249	05/08/2026	81335	ANITA L. HIGHLEY	PD			\$0.00
5250	05/08/2026	90384	STEPHANIE NACOLE HIGNITE	PD			\$0.00
5251	05/08/2026	83196	KATIE L. HUTSON	PN			\$3,519.70
5252	05/08/2026	88822	KATRINA M. JACKSON	PD			\$0.00
5253	05/08/2026	90586	GABRIELLE ROSE KARLESKINT	PD			\$0.00
5254	05/08/2026	88693	KALI K LYNN KARRIMAN	PD			\$0.00
5255	05/08/2026	90327	LETICIA ISABEL CUEVAS GONZAL	PD			\$0.00
5256	05/08/2026	89016	CHELSEY E. LEWANDOWSKI	PD			\$0.00
5257	05/08/2026	90337	LANI MICHAELE LITTLEJOHN	PD			\$0.00
5258	05/08/2026	89074	ASHLEE NICOLE LOVEDAY	PD			\$0.00
5259	05/08/2026	99785	LACEY M MOSS	PD			\$0.00
5260	05/08/2026	90171	ROSEMARIE V PATITZ	PN			\$1,657.55
5261	05/08/2026	99727	ALI F PETERS	PD			\$0.00
5262	05/08/2026	90310	KAREN RACHELLE PHELPS	PD			\$0.00
5263	05/08/2026	90032	SHELBY F ARRASMITH	PD			\$0.00
5264	05/08/2026	80383	MOLLY M. SANDERS	PD			\$0.00
5265	05/08/2026	82157	MICHELLE L. SIXKILLER	PD			\$0.00
5266	05/08/2026	99716	JENNIFER R SNOW	PD			\$0.00
5267	05/08/2026	99454	JESSICA LAUREN STENZEL	PN			\$3,388.07
5268	05/08/2026	99738	FELICIA DAWN WAKEFIELD	PD			\$0.00
5269	05/08/2026	83577	SCARLETT D WICHITA	PD			\$0.00
5270	05/08/2026	90312	SARA NICOLE WILSON	PD			\$0.00
5271	05/08/2026	90131	CINDY K WINTERS	PD			\$0.00
5272	05/08/2026	90028	KELSEY D ALEXANDER	PD			\$0.00
5273	05/08/2026	90344	MAKAYLA E ANGLIN	PD			\$0.00
5274	05/08/2026	90585	GABRIELLE H BARNES	PD			\$0.00
5275	05/08/2026	90581	HANNA JO BEAL	PD			\$0.00
5276	05/08/2026	88857	NATHAN F BEALL III	PD			\$0.00
5277	05/08/2026	99801	KADYNCE NICOLE BEAN	PD			\$0.00
5278	05/08/2026	90562	SAVANNAH LYN BRODRICK	PD			\$0.00
5279	05/08/2026	88752	DANIEL A. CARTER	PD			\$0.00
5280	05/08/2026	99708	HEATHER SUE CARY	PD			\$0.00
5281	05/08/2026	83279	LYDIA NICOLE COCHRAN	PD			\$0.00
5282	05/08/2026	81501	SANDRA L. COUGHRAN	PD			\$0.00

Payment Register

Options: Year: 2025-2026, Fund Account: 11 GENERAL FUND, Date Range: 7/1/2025 - 6/30/2026, Payment Range: 5087 - 5610, Print Payroll Payments: True, Print Details: False

Payment No	Date	Vendor No	Vendor	Type	Date Voided	Void Amount	Amount
5283	05/08/2026	90332	KAMI S DAVIS	PD			\$0.00
5284	05/08/2026	83351	SAMANTHA J DAVIS	PD			\$0.00
5285	05/08/2026	90424	SHAIREE DAWN EADS	PD			\$0.00
5286	05/08/2026	88937	DANA M. FARNELLI	PD			\$0.00
5287	05/08/2026	88872	AMANDA GAIN	PD			\$0.00
5288	05/08/2026	80294	TRACY L. GOINS	PD			\$0.00
5289	05/08/2026	80078	JULIE R. GREEN	PD			\$0.00
5290	05/08/2026	90371	BRITTANY RENEE HARDING	PD			\$0.00
5291	05/08/2026	83320	SARAH A. HEIRD	PD			\$0.00
5292	05/08/2026	88747	JESSICA HELMER	PD			\$0.00
5293	05/08/2026	80232	CAROL LEE HUNSPERGER	PD			\$0.00
5294	05/08/2026	90372	HALEE ANN HUTCHISON	PD			\$0.00
5295	05/08/2026	90288	STEVIE JO JENKINS	PD			\$0.00
5296	05/08/2026	99800	NATISHA LYNETTE JOHNSON	PD			\$0.00
5297	05/08/2026	80604	BRANDY MARIE DARLENE KELLY	PD			\$0.00
5298	05/08/2026	99460	SAMANTHA MAE VICTORIA KIMS	PD			\$0.00
5299	05/08/2026	90368	JESSICA ROSE KOSTER	PD			\$0.00
5300	05/08/2026	90587	CLAUDIA LEON VALLES	PD			\$0.00
5301	05/08/2026	90392	HAYLEY NICOLE LOVELADY	PD			\$0.00
5302	05/08/2026	80482	LORI A. LOVELADY	PD			\$0.00
5303	05/08/2026	99706	KATTIE NELLIE MALONE	PD			\$0.00
5304	05/08/2026	88710	SUSAN D. MANDRELL	PD			\$0.00
5305	05/08/2026	90110	DEBBIE B MARKS	PD			\$0.00
5306	05/08/2026	90112	TRACY L MARSHALL	PD			\$0.00
5307	05/08/2026	89072	LEE MARTIN	PD			\$0.00
5308	05/08/2026	82210	TERESA R. ROYSTER MATTHEWS	PD			\$0.00
5309	05/08/2026	88725	CHRISTEN M. MCCOIN	PD			\$0.00
5310	05/08/2026	99732	JORDAN RANDALL MILES	PD			\$0.00
5311	05/08/2026	99707	KJERSTI LAUREL MORRIS	PD			\$0.00
5312	05/08/2026	90235	REBECCA LYNN PAGE	PN			\$1,425.71
5313	05/08/2026	89046	DONALD R PATITZ	PN			\$1,665.00
5314	05/08/2026	90120	SHANEY K PERRY	PD			\$0.00
5315	05/08/2026	88901	PAMELA L PURKIS	PD			\$0.00
5316	05/08/2026	88844	DONNA LYNN RILEY	PD			\$0.00
5317	05/08/2026	99787	JAMIE ROSE RODRIGUEZ	PD			\$0.00
5318	05/08/2026	90546	REANNA MARIE SCHAAPVELD	PD			\$0.00
5319	05/08/2026	90421	SARAH KATHLEEN SIMPSON	PD			\$0.00
5320	05/08/2026	83056	SHANNON D SISCO	PD			\$0.00
5321	05/08/2026	90187	DOROTHY L SMITH	PD			\$0.00
5322	05/08/2026	90265	KAITLYN SMITH	PD			\$0.00
5323	05/08/2026	82542	CASSI N. STINNETT	PD			\$0.00
5324	05/08/2026	82611	TANYA M. TACKKETT	PD			\$0.00
5325	05/08/2026	88813	HALEY DAWN VANCUREN	PD			\$0.00
5326	05/08/2026	99815	TWANA SUE WIENS	PD			\$0.00
5327	05/08/2026	99812	KATELYN D WILLIAMS	PD			\$0.00
5328	05/08/2026	98989	BROOKE ASHLY WILSON	PD			\$0.00
5329	05/08/2026	83563	KELSEY RENEE WISDOM	PD			\$0.00
5330	05/08/2026	66293	CINDY D. HARJU	PD			\$0.00
5331	05/08/2026	80979	CHARLOTTE A. BERGMAN	PD			\$0.00

Payment Register

Options: Year: 2025-2026, Fund Account: 11 GENERAL FUND, Date Range: 7/1/2025 - 6/30/2026, Payment Range: 5087 - 5610, Print Payroll Payments: True, Print Details: False

Payment No	Date	Vendor No	Vendor	Type	Date Voided	Void Amount	Amount
5332	05/08/2026	81479	REBECCA M. MEASE	PD			\$0.00
5333	05/08/2026	82682	CINDY J. WEAVER	PD			\$0.00
5334	05/08/2026	99747	AMBER BERENTZ	PD			\$0.00
5335	05/08/2026	99753	JOHN DAVID BERENTZ	PD			\$0.00
5336	05/08/2026	90136	JAMES W BESEAU	PD			\$0.00
5337	05/08/2026	90580	CARTER STEPHEN BOSWELL	PN			\$485.75
5338	05/08/2026	88936	PAMELA JAYE COMPTON	PD			\$0.00
5339	05/08/2026	99798	KIMBRA LEA GARDENHIRE	PD			\$0.00
5340	05/08/2026	83371	BRADLEY T HELTON	PD			\$0.00
5341	05/08/2026	99813	MORGAN ALEXANDRA HENSLEY	PN			\$653.87
5342	05/08/2026	88718	TED G. KEITH	PD			\$0.00
5343	05/08/2026	99745	MARILYN S MATTHEWS	PD			\$0.00
5344	05/08/2026	90064	MICHELLA R MORGAN	PN			\$1,881.46
5345	05/08/2026	90404	CONSTANCE L NORRIS	PD			\$0.00
5346	05/08/2026	88720	EDDIE R. RISMAN JR	PD			\$0.00
5347	05/08/2026	90250	TOSHA D SHERMAN	PD			\$0.00
5348	05/08/2026	89015	CHARLES S. SHULTZ	PD			\$0.00
5349	05/08/2026	80033	JOE CURTIS WILHELM	PD			\$0.00
5350	05/08/2026	90423	DEANNA LEE WRIDE	PD			\$0.00
5351	05/08/2026	90363	JACK L WRIDE	PD			\$0.00
5352	05/08/2026	99795	STORMY RENEE BERGMANN	PN			\$205.24
5353	05/08/2026	99822	CHERYL MARIE BROCK	PN			\$147.76
5354	05/08/2026	90566	JONATHAN ALVIN BURNAMAN	PD			\$0.00
5355	05/08/2026	90193	JONATHAN G BURNAMAN	PN			\$164.16
5356	05/08/2026	90414	BARBARA ARLAND CALLISON	PN			\$77.05
5357	05/08/2026	99802	SCOTT ALAN CARLSON	PN			\$147.76
5358	05/08/2026	99809	KRISS LEHMANN CHILDRESS	PN			\$184.70
5359	05/08/2026	80062	KATHY A. DAIGLE	PD			\$0.00
5360	05/08/2026	90547	JAZLYNN ANN EHRIE	PD			\$0.00
5361	05/08/2026	90425	LINDA FOLSOM	PD			\$0.00
5362	05/08/2026	99817	KAREN MARIE FORRESTER	PD			\$0.00
5363	05/08/2026	80075	DONITA F. GOFORTH	PD			\$0.00
5364	05/08/2026	89005	LEIGH ANN GOODMAN	PN			\$147.76
5365	05/08/2026	99779	JACOB LEVI GUINN	PN			\$262.50
5366	05/08/2026	80080	MARTHA S HAMILTON	PN			\$1,235.13
5367	05/08/2026	90275	THOMAS HAWKINS	PD			\$0.00
5368	05/08/2026	90257	JANET LYNN HILDERBRAND	PD			\$0.00
5369	05/08/2026	90342	CARYN DEANN HOFFMAN	PD			\$0.00
5370	05/08/2026	99749	FRED HOLMES	PD			\$0.00
5371	05/08/2026	90240	ROBERT S HOMER	PN			\$903.50
5372	05/08/2026	99752	NOAH CHARLES HOUSMAN	PN			\$262.50
5373	05/08/2026	99823	GRANT LEE JONES	PN			\$554.10
5374	05/08/2026	82050	DIANA L. KING	PD			\$0.00
5375	05/08/2026	99825	JAIDYN ANN KLEEMAN	PN			\$1,268.25
5376	05/08/2026	90309	LAWANA ELIZABETH LEACH	PD			\$0.00
5377	05/08/2026	90448	DAYLA STRAT MARNEY	PN			\$73.88
5378	05/08/2026	99756	KIMBERLY GAYE MARTIN	PD			\$0.00
5379	05/08/2026	99827	MICHELE DIANE MARTIN	PN			\$461.75
5380	05/08/2026	99765	JAMIE SUE MATHIA	PD			\$0.00

Payment Register

Options: Year: 2025-2026, Fund Account: 11 GENERAL FUND, Date Range: 7/1/2025 - 6/30/2026, Payment Range: 5087 - 5610, Print Payroll Payments: True, Print Details: False

Payment No	Date	Vendor No	Vendor	Type	Date Voided	Void Amount	Amount
5381	05/08/2026	90105	MARILYN B MCCLELLAND	PD			\$0.00
5382	05/08/2026	90100	REBEKAH S MORPHIS	PD			\$0.00
5383	05/08/2026	99830	TIFFANY CRYSTAL MOSLEY	PN			\$554.10
5384	05/08/2026	90396	MISTI GAYLE ONEAL	PD			\$0.00
5385	05/08/2026	89057	DENISE ANN PAYTON	PD			\$0.00
5386	05/08/2026	90308	MADISON ELIZABETH PITTS	PD			\$0.00
5387	05/08/2026	99721	KENNETH R PORTER	PN			\$73.88
5388	05/08/2026	66302	TODD ROBERTSON	PN			\$1,034.32
5389	05/08/2026	90590	ARMANDO RODRIGUEZ	PD			\$0.00
5390	05/08/2026	90398	JESSICA LEEANNE SPIELMANN	PD			\$0.00
5391	05/08/2026	90545	CYNTHIA JANE STAFFORD	PD			\$0.00
5392	05/08/2026	90318	BRILEY GRACE TESREAU	PD			\$0.00
5393	05/08/2026	99720	AMANDA E VENN	PD			\$0.00
5394	05/08/2026	90214	LYNETTE P WILBANKS	PD			\$0.00
5395	05/08/2026	90251	JOSHUA WILHELM	PN			\$102.62
5396	05/08/2026	80167	PATRICIA R. WILHELM	PN			\$369.40
5397	05/08/2026	99008	ANITA POUSSON WILLIAMS	PD			\$0.00
5398	05/08/2026	99826	ABBIGAIL LOU WOODS	PN			\$73.88
5399	05/08/2026	99820	JAMES FRED ZUROWESTE	PN			\$295.52
5400	05/08/2026	80037	LINDA R. AMOS	PD			\$0.00
5401	05/08/2026	83276	MATT T. BARNHART	PD			\$0.00
5402	05/08/2026	90102	ANDREA R BENGE	PD			\$0.00
5403	05/08/2026	99806	ASHLEY CHRISTINE BENNETT	PD			\$0.00
5404	05/08/2026	98977	BRYAN DAVID BURROUGHS	PD			\$0.00
5405	05/08/2026	82202	PAMELA ANN CHANEY	PD			\$0.00
5406	05/08/2026	82549	AMY SARAH CHRISTENSEN	PD			\$0.00
5407	05/08/2026	81407	MINDY J. COLLINS	PD			\$0.00
5408	05/08/2026	90042	PAUL D COWEN	PD			\$0.00
5409	05/08/2026	80228	CHARLOTTE R. CROUCH	PD			\$0.00
5410	05/08/2026	80935	DONNA L. DEASON	PD			\$0.00
5411	05/08/2026	98995	BRITTONI CHRISTINE DOZIER	PD			\$0.00
5412	05/08/2026	90379	JAMES HEATH FLEMING	PD			\$0.00
5413	05/08/2026	90445	DAKOTA DAWN FLOYD	PD			\$0.00
5414	05/08/2026	81473	GAYLA S FLYNN	PD			\$0.00
5415	05/08/2026	99710	HEATHER NICOLE GARRETT	PD			\$0.00
5416	05/08/2026	80815	JASON E. GEER	PD			\$0.00
5417	05/08/2026	99757	ALEXIS NOELLE GIBE	PD			\$0.00
5418	05/08/2026	90252	JEFFERY PAUL GILMORE	PD			\$0.00
5419	05/08/2026	80502	TONYA L. GOLDNER	PD			\$0.00
5420	05/08/2026	82069	CHER M GUINN	PD			\$0.00
5421	05/08/2026	89058	KRISTI ANN HAMPTON	PD			\$0.00
5422	05/08/2026	99741	TIFFANY MICHELLE HICKS	PD			\$0.00
5423	05/08/2026	82074	MELINDA L. JARVIS	PD			\$0.00
5424	05/08/2026	83066	RYAN B JARVIS	PD			\$0.00
5425	05/08/2026	81354	SHANNON LEIGH JOHNSON	PD			\$0.00
5426	05/08/2026	99783	SAWYER ELLIS JONES	PD			\$0.00
5427	05/08/2026	99784	WARREN DALE KIRK	PD			\$0.00
5428	05/08/2026	99713	JESSICA ERIN LAVERTY	PD			\$0.00
5429	05/08/2026	98973	KIMBERLY BLAKE LEE	PD			\$0.00

Payment Register

Options: Year: 2025-2026, Fund Account: 11 GENERAL FUND, Date Range: 7/1/2025 - 6/30/2026, Payment Range: 5087 - 5610, Print Payroll Payments: True, Print Details: False

Payment No	Date	Vendor No	Vendor	Type	Date Voided	Void Amount	Amount
5430	05/08/2026	90281	SARAH B LOGUE	PN			\$3,220.74
5431	05/08/2026	99803	DARIUS ALLEN MCNACK	PN			\$1,959.12
5432	05/08/2026	90208	GAYLA R MEIER	PD			\$0.00
5433	05/08/2026	90005	ALAN D PALESANO	PD			\$0.00
5434	05/08/2026	80125	LISA A. PARTON	PD			\$0.00
5435	05/08/2026	83156	SHANNON D SERGEANT	PD			\$0.00
5436	05/08/2026	80473	JUSTIN M. TEEL	PD			\$0.00
5437	05/08/2026	90582	ADAM DANIEL TERRY	PD			\$0.00
5438	05/08/2026	83007	LISA F. THOMAS	PD			\$0.00
5439	05/08/2026	82409	MIRANDA A. WOODS	PD			\$0.00
5440	05/08/2026	99751	KATHRYN LOU YOUNGER	PD			\$0.00
5441	05/08/2026	98975	SHEILA ANNE CORONADO	PD			\$0.00
5442	05/08/2026	89063	JANA L DONER COLLIER	PD			\$0.00
5443	05/08/2026	90258	CHRISTYNA CAROL DURHAM	PD			\$0.00
5444	05/08/2026	80633	ELSIE A. LOPEZ-HOFFSTATTER	PD			\$0.00
5445	05/08/2026	98988	SUSAN MICHELLE KNAPP	PD			\$0.00
5446	05/08/2026	90427	PAMELA SUE LEPTICH	PD			\$0.00
5447	05/08/2026	90370	KEELEE LYNN MARTIN	PD			\$0.00
5448	05/08/2026	82696	JOSHUA M. MARTIN	PD			\$0.00
5449	05/08/2026	81476	GYNNA E. THOMPSON	PD			\$0.00
5450	05/08/2026	80157	EDWARD J. TRUMBULL	PD			\$0.00
5451	05/08/2026	90294	MICHAEL VINCENT BANDY	PN			\$2,532.61
5452	05/08/2026	82334	RICHARD A. BASSETT JR	PN			\$5,702.01
5453	05/08/2026	99786	CONNER E BLACKRICE	PD			\$0.00
5454	05/08/2026	99455	RACHEL ELISE BLACKRICE	PD			\$0.00
5455	05/08/2026	90390	MIKEL SILAS GLEN BOHANNAN	PD			\$0.00
5456	05/08/2026	88785	RYAN WALKER BOTTS	PN			\$486.91
5457	05/08/2026	80042	WALKER SEAN BOTTS	PD			\$0.00
5458	05/08/2026	80664	SHELLY R. CARMICHAEL CRAWFO	PD			\$0.00
5459	05/08/2026	83313	JILLIAN L. CASH	PN			\$1,302.91
5460	05/08/2026	99799	CORBIN BRYCE CHANDLER	PD			\$0.00
5461	05/08/2026	90325	JENNIFFER COLLEEN CLARK	PD			\$0.00
5462	05/08/2026	82181	LESLIE D. COHEA	PD			\$0.00
5463	05/08/2026	82070	JEREMY S. COLLINS	PD			\$0.00
5464	05/08/2026	82098	DUSTIN W. CROWDER	PD			\$0.00
5465	05/08/2026	90564	ZACHARY MARTIN DELMONT	PD			\$0.00
5466	05/08/2026	83005	ANGELA DUFF	PD			\$0.00
5467	05/08/2026	82426	KRISTEN C. FARRIS	PD			\$0.00
5468	05/08/2026	90431	SARA BETH FIFE	PD			\$0.00
5469	05/08/2026	83091	MATTHEW FRACEK	PD			\$0.00
5470	05/08/2026	99724	MELISSA LYNETTE GRONINGER	PD			\$0.00
5471	05/08/2026	80305	TERRI R. GUTHRIDGE	PD			\$0.00
5472	05/08/2026	88996	JEFFREY R. HAYNES	PD			\$0.00
5473	05/08/2026	90002	LUCINDA JUNE HILL	PD			\$0.00
5474	05/08/2026	99763	TAWNIA CLARENE HOLLAND	PD			\$0.00
5475	05/08/2026	82045	MICHAEL B. HUGGINS	PD			\$0.00
5476	05/08/2026	82474	ERIC M. HUNSPERGER	PD			\$0.00
5477	05/08/2026	90106	COURTNEY M HUSSONG	PD			\$0.00
5478	05/08/2026	80892	JANICE R. JEFFRIES	PN			\$1,536.95

Payment Register

Options: Year: 2025-2026, Fund Account: 11 GENERAL FUND, Date Range: 7/1/2025 - 6/30/2026, Payment Range: 5087 - 5610, Print Payroll Payments: True, Print Details: False

Payment No	Date	Vendor No	Vendor	Type	Date Voided	Void Amount	Amount
5479	05/08/2026	82121	ROBERT D JEFFRIES JR	PN			\$819.62
5480	05/08/2026	83191	JOAN E JOHNSON	PD			\$0.00
5481	05/08/2026	90033	ANDRE J JONES	PD			\$0.00
5482	05/08/2026	90584	RYAN PATRICK CLARK KEENOM	PD			\$0.00
5483	05/08/2026	80096	TODD R. KERR	PD			\$0.00
5484	05/08/2026	80095	DONNETTA K. KERR	PD			\$0.00
5485	05/08/2026	83321	ROBERT T. KREUTZ	PD			\$0.00
5486	05/08/2026	89060	ELIZABETH L LEHMANN	PD			\$0.00
5487	05/08/2026	99796	DANIELLE CHRISTINE LYONS	PD			\$0.00
5488	05/08/2026	99768	RYAN ADAM MCABEE	PN			\$2,449.68
5489	05/08/2026	90313	LAURA LYNN CULPEPPER MCCRA	PD			\$0.00
5490	05/08/2026	82489	GLORIA D. MIMS	PN			\$1,571.53
5491	05/08/2026	99714	DUSTY CHEYENNE MITCHELL	PD			\$0.00
5492	05/08/2026	99780	DEBORAH LUANN ODELL	PD			\$0.00
5493	05/08/2026	98981	AMANDA D PETTY	PD			\$0.00
5494	05/08/2026	90385	LORRAINE MAY PITTS	PD			\$0.00
5495	05/08/2026	81569	AMANDA ERRIN POLLAN	PD			\$0.00
5496	05/08/2026	88969	LESIA K. PRAYTOR	PD			\$0.00
5497	05/08/2026	88748	KELSEY R. RHINE	PN			\$379.67
5498	05/08/2026	80133	DAVID L. ROBERTS	PN			\$2,509.09
5499	05/08/2026	89097	MICHELLE D VANHOUTEN-ROBE	PD			\$0.00
5500	05/08/2026	80139	MELISSA K. SADLER	PN			\$4,040.36
5501	05/08/2026	80235	MICHAEL D. SADLER	PN			\$4,219.57
5502	05/08/2026	99829	MASON LEON SANFORD DAVIS	PN			\$435.00
5503	05/08/2026	88919	TRACIE LEE SCONYERS	PD			\$0.00
5504	05/08/2026	98972	MELISSA ANN SKAGGS	PD			\$0.00
5505	05/08/2026	90306	CAMERON LEE SMITH	PD			\$0.00
5506	05/08/2026	88842	ALISHA J. SMITH	PD			\$0.00
5507	05/08/2026	81342	JEANNE A SMITH	PD			\$0.00
5508	05/08/2026	90326	BENJAMIN RILEY STEFFENSON	PD			\$0.00
5509	05/08/2026	90282	CARMEN LAURELL THARP	PD			\$0.00
5510	05/08/2026	90146	TERESA D TOWLE	PD			\$0.00
5511	05/08/2026	83323	ZACHARY R. TRIMBLE	PD			\$0.00
5512	05/08/2026	80949	JOHN HENRY WARD II	PD			\$0.00
5513	05/08/2026	99793	SABRINA DAWN WATSON	PD			\$0.00
5514	05/08/2026	89093	RACHEL G WATTERS	PD			\$0.00
5515	05/08/2026	88702	JOSEPH C. WILHELM III	PD			\$0.00
5516	05/08/2026	90302	LEI YANG	PD			\$0.00
5517	05/08/2026	80169	RUBY VERA YIRSA	PN			\$1,544.48
5518	05/08/2026	50034	TEACHER RETIREMENT SYSTEM	R			\$130,784.50
5519	05/08/2026	70004	AMERICAN FIDELITY HEALTH SRV	R			\$4,590.00
5520	05/08/2026	51238	AMERICAN FIDELITY ASSURANCE	R			\$575.00
5521	05/08/2026	50017	AMERICAN FIDELITY ASSURANCE	R			\$6,600.00
5522	05/08/2026	51000	AMERICAN FIDELITY ASSURANCE	R			\$446.66
5523	05/08/2026	50001	AMERICAN FIDELITY ADM. SER.LL	R			\$43,345.09
5524	05/08/2026	82347	ASSOC OF PROFESSIONAL OK ED	R			\$558.25
5525	05/08/2026	50044	CREDIT BUREAU SERVICES	R			\$354.36
5526	05/08/2026	50022	CCOSA DUES	R			\$552.50
5527	05/08/2026	51234	EGID	R			\$212,724.14

Payment Register

Options: Year: 2025-2026, Fund Account: 11 GENERAL FUND, Date Range: 7/1/2025 - 6/30/2026, Payment Range: 5087 - 5610, Print Payroll Payments: True, Print Details: False

Payment No	Date	Vendor No	Vendor	Type	Date Voided	Void Amount	Amount
5528	05/08/2026	1515	GRAND SAVINGS BANK	R			\$242,756.46
5529	05/08/2026	83390	GRAND SAVINGS	R			\$826,329.59
5530	05/08/2026	82136	EMPLOYEE DEPOSIT ACCOUNT	R			\$651.00
5531	05/08/2026	50028	METLIFE	R			\$25.00
5532	05/08/2026	35571	MUTUAL OF OMAHA	R			\$1,084.43
5533	05/08/2026	50016	NEW YORK LIFE INSUR & ANNUIT	R			\$300.00
5534	05/08/2026	51251	OEA/NEA	R			\$184.07
5535	05/08/2026	50011	OEA/NEA	R			\$852.22
5536	05/08/2026	50025	OKLAHOMA TAX COMMISSION	R			\$33,036.00
5537	05/08/2026	70001	PROGRESSIVE CAR FINANCE LLC	R			\$20.00
5538	05/08/2026	50030	TEACHER RETIREMENT SYSTEM	R			\$72,004.51
5539	05/08/2026	50012	VISION SERVICE PLAN (CT)	R			\$3,691.94
5540	05/08/2026	50042	WORKS & LENTZ, INC. ATTORNEY	R			\$459.91
5541	05/01/2026	51234	EGID	R			\$19,577.90
5542	05/01/2026	35571	MUTUAL OF OMAHA	R			\$114.96
5543	05/01/2026	50012	VISION SERVICE PLAN (CT)	R			\$414.52
5544	05/12/2026	11889	5 STAR FOOD EQUIPMENT				\$1,602.62
5545	05/12/2026	77514	AMAZON CAPITAL SERVICES				\$8,048.14
5546	05/12/2026	33981	ARBOR SCIENTIFIC				\$104.18
5547	05/12/2026	55123	ARVEST BANK CARD SERVICES				\$7,733.75
5548	05/12/2026	238	AYDEN CROWDER				\$40.00
5549	05/12/2026	49120	BAUER BUILT INC				\$8,473.00
5550	05/12/2026	11402	BEACHNER GRAIN, INC.				\$600.70
5551	05/12/2026	6175	BEN E KEITH CO				\$23,564.87
5552	05/12/2026	557	BLAINE RAY WORKSHOPS				\$14.00
5553	05/12/2026	50082	BLICK ART MATERIALS				\$1,153.26
5554	05/12/2026	33585	BOLT FIBER				\$860.80
5555	05/12/2026	76655	BRUCKNER'S TRUCK & EQUIPME				\$4,227.04
5556	05/12/2026	977	CAROLINA BIOLOGICAL SUPPLY C				\$436.68
5557	05/12/2026	230	CARTER BOSWELL				\$40.00
5558	05/12/2026	409	CCOSA				\$6,498.00
5559	05/12/2026	66277	CINDY HARJU				\$80.63
5560	05/12/2026	77099	CINTAS				\$1,121.24
5561	05/12/2026	3054	CITY OF GROVE				\$6,100.00
5562	05/12/2026	75	CITY OF GROVE POLICE DEPART				\$220.00
5563	05/12/2026	45	OKLAHOMA STATE UNIVERSITY				\$280.00
5564	05/12/2026	262	DANIKA KEITH				\$40.00
5565	05/12/2026	13433	DYLAN HILTON				\$40.00
5566	05/12/2026	10229	E3 DIAGNOSTICS, INC				\$275.00
5567	05/12/2026	13480	ELIANA CROWDER				\$50.00
5568	05/12/2026	356	EMILY EASTEP				\$500.00
5569	05/12/2026	591	EDUCATIONAL PRODUCTS, INC				\$2,161.80
5570	05/12/2026	214	GOLD STAR FOODS, INC				\$4,427.28
5571	05/12/2026	10169	GROVE SUN				\$100.34
5572	05/12/2026	13489	GWENETH WARD				\$50.00
5573	05/12/2026	1529	HARPS				\$3,716.79
5574	05/12/2026	357	HELPING HANDS THERAPY CO, LL				\$1,605.10
5575	05/12/2026	10377	HILAND DAIRY KANSAS CITY				\$20,839.46
5576	05/12/2026	36911	INTERQUEST DETECTION CANINE				\$270.00

Payment Register

Options: Year: 2025-2026, Fund Account: 11 GENERAL FUND, Date Range: 7/1/2025 - 6/30/2026, Payment Range: 5087 - 5610, Print Payroll Payments: True, Print Details: False

Payment No	Date	Vendor No	Vendor	Type	Date Voided	Void Amount	Amount
5577	05/12/2026	4408	JANICE JEFFRIES				\$42.50
5578	05/12/2026	26	KATNER MILLS				\$269.90
5579	05/12/2026	80095	DONNETTA K. KERR				\$105.00
5580	05/12/2026	330	KYNLEE SMITH				\$50.00
5581	05/12/2026	220	LAKELAND PETROLEUM PRODUC				\$3,112.91
5582	05/12/2026	3639	LOWE'S				\$490.37
5583	05/12/2026	347	LYBBE ENGLERT				\$50.00
5584	05/12/2026	13470	MIDWEST BUS PARTS INC				\$1,171.10
5585	05/12/2026	114	SCHOOL SPECIALTY LLC				\$335.93
5586	05/12/2026	65757	NCS PEARSON INC				\$195.00
5587	05/12/2026	69955	NEO ORTHOPEDICS & REHAB.				\$10,377.26
5588	05/12/2026	1933	OKLAHOMA COUNCIL FOR INDIA				\$85.00
5589	05/12/2026	182	OTA PIKEPASS				\$789.39
5590	05/12/2026	190	O'REILLY AUTO PARTS				\$8,321.49
5591	05/12/2026	1253	PAT DODSON				\$30.00
5592	05/12/2026	33534	PEDIATRIC ASSESSMENT & COUN				\$3,633.00
5593	05/12/2026	2198	PERMA-BOUND BOOKS				\$37.90
5594	05/12/2026	55151	PUBLIC CONSULTING GROUP LLC				\$1,748.92
5595	05/12/2026	33	QUILL, INC.				\$430.51
5596	05/12/2026	237	RHETT GUINN				\$40.00
5597	05/12/2026	10017	RITE TEMP REFRIGERATION LLC				\$525.00
5598	05/12/2026	524	ROSS TRANSPORTATION, INC.				\$1,312.98
5599	05/12/2026	291	RYDER RAZEY				\$40.00
5600	05/12/2026	187	SALISBURY ONLINE				\$378.51
5601	05/12/2026	11422	SHANON PAXSON				\$228.00
5602	05/12/2026	399	SPRINGFIELD GROCER COMPANY				\$11,323.11
5603	05/12/2026	3643	SYSCO OKLAHOMA				\$6,879.32
5604	05/12/2026	34172	TEACHERS PAY TEACHERS				\$402.88
5605	05/12/2026	709	TODD KERR				\$105.00
5606	05/12/2026	68	UNIVERSITY OF OKLAHOMA				\$1,500.00
5607	05/12/2026	60309	VINITA DAILY JOURNAL				\$350.00
5608	05/12/2026	701339	TREVIPAY-WALMART				\$579.41
5609	05/12/2026	67718	WAYSIDE PUBLISHING				\$320.85
5610	05/12/2026	4169	ZANER-BLOSER				\$1,260.82
Non-Payroll Total:							\$194,703.29
Payroll Total:							\$1,835,663.56
Balance Forward:							\$18,101,933.68
Total:							\$20,132,300.53

GROVE PUBLIC SCHOOLS

Encumbrance Register

Options: Year: 2025-2026, Date Range: 7/1/2025 - 6/30/2026, PO Range: 263 - 285, Fund(s): 21 BUILDING FUND

Fund	PO No	Date	Vendor No	Vendor	Description	Amount
21	263	04/14/2026	352	FIRETROL PROTECTION SYSTEMS, INC	Repairs	5,000.00
21	264	04/14/2026	77514	AMAZON CAPITAL SERVICES	cabinets	300.00
21	265	04/16/2026	33	QUILL, INC.	Diana desk	1,043.66
21	266	04/16/2026	56	MUSKOGEE SAND COMPANY, INC	sand	1,400.00
21	267	04/16/2026	77514	AMAZON CAPITAL SERVICES	Supplies	200.00
21	268	04/16/2026	67725	SHERWIN WILLIAMS	Paint	2,000.00
21	269	04/20/2026	13399	BRADY INDUSTRIES OF KANSAS LLC	JANITORIAL SUPPLIES	10,000.00
21	270	04/20/2026	77514	AMAZON CAPITAL SERVICES	OFFICE FURNITURE	349.96
21	271	04/23/2026	78999	HARNESS ROOFING	REPAIR GYM AREA ROOF HS	5,185.00
21	272	04/24/2026	352	FIRETROL PROTECTION SYSTEMS, INC	HS-PAC Module	1,155.00
21	273	04/27/2026	74	BLAKE BUSBY	BASEBALL FIELD REPAIRS	6,550.00
21	274	04/27/2026	70120	MEDLEY MATERIAL HANDLING CO.	REPAIRS TO EQUIPMENT	4,000.00
21	275	04/28/2026	40125	STATELINE PLUMBING	PLUMBING REPAIRS ALL SITES	5,000.00
21	276	04/28/2026	77514	AMAZON CAPITAL SERVICES	Chair	180.00
21	277	04/28/2026	74	BLAKE BUSBY	DRAIN REPAIR ADMIN BUILDING	8,740.00
21	278	04/28/2026	78999	HARNESS ROOFING	ROOF REPAIR MS	2,500.00
21	279	04/28/2026	78999	HARNESS ROOFING	ROOF REPAIR UPPER ELEMENTARY GYM	2,473.20
21	280	04/30/2026	352	FIRETROL PROTECTION SYSTEMS, INC	Repair UE	1,188.00
21	281	04/30/2026	352	FIRETROL PROTECTION SYSTEMS, INC	Repairs	1,775.00
21	282	04/30/2026	222	GROVE MUNICIPAL SERVICES AUTHORITY	UTILITIES WATER/SEWER/TRASH	11,000.00
21	283	04/30/2026	223	PUBLIC SERVICE COMPANY OF OKLAHOMA	ELECTRICTY	35,000.00
21	284	04/30/2026	186	ADVANCE TREE SERVICE LLC	TREE REMOVAL	4,500.00
21	285	05/05/2026	77099	CINTAS	Mop heads and rags	2,100.00
Non-Payroll Total:						\$111,639.82
Payroll Total:						\$0.00
Balance Forward:						\$0.00
Report Total:						\$111,639.82

Change Order Listing

Options: Fund(s): 21 BUILDING FUND, Year: 2025-2026, ReferenceDate: PO Date, Date Range: 5/1/2026 - 5/31/2026,
Minimum Amount Change: \$100.00, Include Negative Changes: False

PO No	Date	Vendor No	Vendor	Description	Amount
25	07/01/2025	223	PUBLIC SERVICE COMPANY OF OKLAHOMA	ELECTRICITY	663.00
Non-Payroll Total:					\$663.00
Payroll Total:					\$0.00
Report Total:					\$663.00

Payment Register

Options: Year: 2025-2026, Fund Account: 21 BUILDING FUND, Date Range: 7/1/2025 - 6/30/2026, Payment Range: 277 - 305, Print Payroll Payments: True, Print Details: False

Payment No	Date	Vendor No	Vendor	Type	Date Voided	Void Amount	Amount
277	05/12/2026	77514	AMAZON CAPITAL SERVICES				\$737.85
278	05/12/2026	223	PUBLIC SERVICE COMPANY OF O				\$23,920.24
279	05/12/2026	326	MAPLEWOOD LANDSCAPE PROJE				\$4,600.00
280	05/12/2026	11402	BEACHNER GRAIN, INC.				\$195.00
281	05/12/2026	74	BLAKE BUSBY				\$6,550.00
282	05/12/2026	13399	BRADY INDUSTRIES OF KANSAS L				\$9,149.35
283	05/12/2026	52188	CARDS OKLAHOMA LLC				\$5,530.91
284	05/12/2026	77099	CINTAS				\$1,981.19
285	05/12/2026	351	DELAWARE COUNTY SOLID WAS				\$184.80
286	05/12/2026	352	FIRETROL PROTECTION SYSTEMS,				\$3,675.00
287	05/12/2026	36971	GLOBAL EQUIPMENT COMPANY,				\$114.49
288	05/12/2026	222	GROVE MUNICIPAL SERVICES AU				\$6,552.11
289	05/12/2026	67889	RANDALL ESTES				\$1,250.00
290	05/12/2026	547	GRAND TRUE VALUE RENTAL				\$674.31
291	05/12/2026	6	GROVE ELECTRIC & LIGHTING SU				\$570.47
292	05/12/2026	334	GROVE LOCK & KEY, LLC				\$221.50
293	05/12/2026	78999	HARNESS ROOFING				\$54,675.06
294	05/12/2026	3639	LOWE'S				\$948.78
295	05/12/2026	70120	MEDLEY MATERIAL HANDLING C				\$1,091.80
296	05/12/2026	43	MODOC DOORS, LLC				\$171.17
297	05/12/2026	33	QUILL, INC.				\$1,043.66
298	05/12/2026	3230	RED CEDAR RECYCLING				\$280.00
299	05/12/2026	10017	RITE TEMP REFRIGERATION LLC				\$1,000.00
300	05/12/2026	67725	SHERWIN WILLIAMS				\$564.23
301	05/12/2026	3427	SISCO TRUE VALUE HARDWARE				\$745.00
302	05/12/2026	42556	SPRINGDALE TRACTOR				\$273.27
303	05/12/2026	40125	STATELINE PLUMBING				\$3,762.00
304	05/12/2026	68926	STATEWIDE COMMERCIAL CLEA				\$31,666.67
305	05/12/2026	7	WINSUPPLY GROVE OK CO.				\$1,233.71
Non-Payroll Total:							\$163,362.57
Payroll Total:							\$0.00
Balance Forward:							\$1,497,437.31
Total:							\$1,660,799.88

Payment Register

Options: Year: 2025-2026, Fund Account: 31 BUILDING BOND 2024, Date Range: 7/1/2025 - 6/30/2026, Payment Range: 10 - 10, Print Payroll Payments: True, Print Details: False

Payment No	Date	Vendor No	Vendor	Type	Date Voided	Void Amount	Amount
10	05/12/2026	66779	GH2 ARCHITECTS				\$51,746.67
Non-Payroll Total:							\$51,746.67
Payroll Total:							\$0.00
Balance Forward:							\$2,718,703.83
Total:							\$2,770,450.50

GROVE PUBLIC SCHOOLS

Budget Analysis

Options: Year: 2025-2026, Date Range: 7/1/2025 - 6/30/2026, Print Detail: False

Classification	Appropriation	Encumbered	Paid	Encumbered Balance	Unencumbered Balance	% Enc Budget
2025-2026						
Fund - 11 11 GENERAL FUND						
000 NON-CATEGORICAL EXP	20,242,665.00	17,617,213.96	13,561,617.64	4,055,596.32	2,625,451.04	87.03%
090 MEDICAID EXPENDITURES	10,000.00	25,000.00	13,408.00	11,592.00	-15,000.00	250.00%
104 FOOTBALL BOOSTER STIPEND	21,851.23	32,200.04	25,849.59	6,350.45	-10,348.81	147.36%
109 TECHNOLOGY DIRECTOR	363,097.36	361,762.32	208,786.12	152,976.20	1,335.04	99.63%
115 RCORP-MONEY-CHEROKEE COUNTY HEALTH	17,818.00	2,789.86	2,789.86	0.00	15,028.14	15.66%
120 FOOD FOR SCHOOL PROGRAM GRANT LOCAL VENDOR	25,000.00	25,000.00	25,000.00	0.00	0.00	100.00%
122 NURSE SUPPLIES	11,500.00	8,455.23	7,659.39	795.84	3,044.77	73.52%
134 ATHLETIC GATEWORKERS	29,736.30	31,597.90	31,597.90	0.00	-1,861.60	106.26%
145 BAND	10,000.00	9,720.60	9,720.60	0.00	279.40	97.21%
160 ATHLETIC DEPARTMENT	55,000.00	53,948.28	53,948.28	0.00	1,051.72	98.09%
166 EARLY CHILDHOOD CENTER	24,742.75	24,742.75	24,212.75	530.00	0.00	100.00%
167 LOWER ELEMENTARY	26,000.00	25,790.90	21,400.12	4,390.78	209.10	99.20%
168 UPPER ELEMENTARY	26,562.00	26,117.75	24,697.75	1,420.00	444.25	98.33%
169 MIDDLE SCHOOL	23,554.00	22,660.88	22,220.88	440.00	893.12	96.21%
170 HIGH SCHOOL	42,910.00	42,298.12	40,928.13	1,369.99	611.88	98.57%
172 HS DETENTION REG. AND SATURDAY	804.43	804.43	804.43	0.00	0.00	100.00%
175 CHEROKEE NATION DONATION	2,294.37	1,617.66	1,617.66	0.00	676.71	70.51%
178 CHEROKEE NATION TAG MONEY	137,535.80	135,254.81	101,259.21	33,995.60	2,280.99	98.34%
2024-2025						
190 Drama-High School PAC	10,000.00	9,114.88	9,114.88	0.00	885.12	91.15%
191 GIFTED AND TALENTED	54,977.00	54,956.48	41,169.29	13,787.19	20.52	99.96%
197 ALTERNATIVE EDUCATION-LOCAL FUNDS	155,256.85	150,592.10	107,305.39	43,286.71	4,664.75	97.00%
198 TRANSPORTATION	1,075,000.00	1,005,633.06	810,410.30	195,222.76	69,366.94	93.55%
312 NAT'L BD. CERT. BONUS	15,000.00	15,000.00	15,000.00	0.00	0.00	100.00%
331 ED. FLEX. BENEFIT-CERT.	17,009.24	16,660.69	12,478.09	4,182.60	348.55	97.95%
332 ED. FLEX. BENEFIT-SUPPORT	99,966.63	97,121.28	75,117.24	22,004.04	2,845.35	97.15%
333 TEXTBOOKS	163,407.06	12,200.00	12,200.00	0.00	151,207.06	7.47%
334 EDUCATION FLEX. BENEFIT ALLOW-CERT.	1,459,248.00	1,452,178.00	1,090,194.00	361,984.00	7,070.00	99.52%
335 EDUCATION FLEX. BENEFIT ALLOW. SUPPORT	919,807.00	904,960.00	698,516.00	206,444.00	14,847.00	98.39%
337 STATE ARTS COUNCIL GRANT	1,000.00	1,000.00	1,000.00	0.00	0.00	100.00%
343 RURAL LITERACY ACCELERATION INITIATIVE	11,000.00	9,873.33	9,873.33	0.00	1,126.67	89.76%
367 STRONG READERS	94,796.00	36,940.48	36,807.48	133.00	57,855.52	38.97%
376 SCHOOL RESOURCE OFFICER PROGRAM	95,422.25	95,422.25	95,422.25	0.00	0.00	100.00%
377 MATERNITY LEAVE	6,840.76	6,840.76	6,840.76	0.00	0.00	100.00%
385 CHILD NUTR PROGRAM	20,000.00	18,888.94	16,821.31	2,067.63	1,111.06	94.44%
388 ALTERNATIVE ED GRANT	45,672.82	45,672.82	45,672.82	0.00	0.00	100.00%

Budget Analysis

Options: Year: 2025-2026, Date Range: 7/1/2025 - 6/30/2026, Print Detail: False

Classification	Appropriation	Encumbered	Paid	Encumbered Balance	Unencumbered Balance	% Enc Budget
2025-2026						
Fund - 11 11 GENERAL FUND						
411 COMPR HS PROG	189,189.50	189,181.83	150,133.92	39,047.91	7.67	100.00%
412 Vocational Programs Assistance	54,413.15	51,147.54	45,878.87	5,268.67	3,265.61	94.00%
421 CARL PERKINS SECONDARY	30,773.00	30,749.48	30,749.48	0.00	23.52	99.92%
456 JOB TRAINING-OJT	5,981.25	3,490.88	3,490.88	0.00	2,490.37	58.36%
511 TITLE I, Part A, Basic Program	710,175.06	700,262.39	536,048.43	164,213.96	9,912.67	98.60%
541 TITLE II, PART A SUPPORTING EFFECTIVE INSTRUCTION	41,856.58	7,296.03	5,630.15	1,665.88	34,560.55	17.43%
552 TITLE IV Part A-Student Support & Academic Enrich	49,040.41	43,793.33	34,487.04	9,306.29	5,247.08	89.30%
561 TITLE VI PART A, INDIAN EDUCATION EASIE	203,179.00	201,328.92	149,672.37	51,656.55	1,850.08	99.09%
563 JOHNSON O'MALLEY PROGRAM	57,540.00	57,540.06	51,938.47	5,601.59	-0.06	100.00%
587 TITLE V, PART B, RURAL AND LOW INCOME SCHOOL	89,613.31	75,792.59	62,844.59	12,948.00	13,820.72	84.58%
613 SPECIAL EDUCATION STAFF DEVELOPMENT-OSDE	5,300.00	2,734.86	2,734.86	0.00	2,565.14	51.60%
615 SPECIAL ED PROF. DEVELOPMENT-DISTRICT	2,109.95	1,399.60	1,399.60	0.00	710.35	66.33%
618 TRANSITION DEV. PROGRAM SP.ED	10,121.81	9,642.88	5,634.43	4,008.45	478.93	95.27%
621 FLOW THROUGH, P.L.IDEA, PART B	559,710.50	552,529.36	424,086.03	128,443.33	7,181.14	98.72%
641 PRESCHOOL, AGES 3-5, PL. 108-4	12,452.48	5,347.18	5,347.18	0.00	7,105.30	42.94%
697 MEDICAID FEDERAL MATCH	28,387.47	28,387.47	28,387.47	0.00	0.00	100.00%
698 MEDICAID RESOURCES	42,947.85	43,625.49	35,525.34	8,100.15	-677.64	101.58%
757 LOCAL FOOD FOR SCHOOLS PROGRAM	25,000.00	0.00	0.00	0.00	25,000.00	0.00%
763 LUNCHES-CN FED. FUNDS	1,200,000.00	983,363.02	761,416.86	221,946.16	216,636.98	81.95%
764 BREAKFASTS-CN FED. FUNDS	570,271.74	536,412.94	418,732.17	117,680.77	33,858.80	94.06%
771 GEAR UP GRANT 2025-2032	150,436.00	96,445.22	82,160.72	14,284.50	53,990.78	64.11%
786 CONSOLIDATED ADM. FUNDS	43,978.00	43,978.00	34,540.22	9,437.78	0.00	100.00%
Total Fund - 11 11 GENERAL FUND	\$29,397,951.91	\$26,044,479.63	\$20,132,300.53	\$5,912,179.10	\$3,353,472.28	88.59 %
Total 2025-2026	\$29,397,951.91	\$26,044,479.63	\$20,132,300.53	\$5,912,179.10	\$3,353,472.28	88.59 %
Report Total	\$29,397,951.91	\$26,044,479.63	\$20,132,300.53	\$5,912,179.10	\$3,353,472.28	88.59 %

Date Range: 7/1/2025 - 6/30/2026

Classification Bolding: N/A

Print Detail: No

Dimension	Group Order	Total	Bold	Filter
Fiscal Year	1	Yes	No	2026
Fund	2	Yes	No	11
Project	3	Yes	No	
Function	N/A	N/A	N/A	
Object	N/A	N/A	N/A	
Program	N/A	N/A	N/A	
Subject	N/A	N/A	N/A	
JobClass	N/A	N/A	N/A	
Unit	N/A	N/A	N/A	

GROVE PUBLIC SCHOOLS

Budget Analysis

Options: Year: 2025-2026, Date Range: 7/1/2025 - 6/30/2026, Print Detail: False

Classification	Appropriation	Encumbered	Paid	Encumbered Balance	Unencumbered Balance	% Enc Budget
2025-2026						
Fund - 21 21 BUILDING FUND						
000 NON-CATEGORICAL EXP	3,015,910.32	2,117,637.85	1,660,799.88	456,837.97	898,272.47	70.22%
Total Fund - 21 21 BUILDING FUND	\$3,015,910.32	\$2,117,637.85	\$1,660,799.88	\$456,837.97	\$898,272.47	70.22 %
Total 2025-2026	\$3,015,910.32	\$2,117,637.85	\$1,660,799.88	\$456,837.97	\$898,272.47	70.22 %
Report Total	\$3,015,910.32	\$2,117,637.85	\$1,660,799.88	\$456,837.97	\$898,272.47	70.22 %

**Budget Analysis
Report Request**

Date Range: 7/1/2025 - 6/30/2026

Classification Bolding: N/A

Print Detail: No

Dimension	Group Order	Total	Bold	Filter
Fiscal Year	1	Yes	No	2026
Fund	2	Yes	No	21
Project	3	Yes	No	
Function	N/A	N/A	N/A	
Object	N/A	N/A	N/A	
Program	N/A	N/A	N/A	
Subject	N/A	N/A	N/A	
JobClass	N/A	N/A	N/A	
Unit	N/A	N/A	N/A	

GROVE PUBLIC SCHOOLS

Budget Analysis

Options: Year: 2025-2026, Date Range: 7/1/2025 - 6/30/2026, Print Detail: False

Classification	Appropriation	Encumbered	Paid	Encumbered Balance	Unencumbered Balance	% Enc Budget
2025-2026						
Fund - 31 31 BUILDING BOND 2024						
000 NON-CATEGORICAL EXP	4,847,802.56	2,870,503.83	2,770,450.50	100,053.33	1,977,298.73	59.21%
Total Fund - 31 31 BUILDING BOND 2024	\$4,847,802.56	\$2,870,503.83	\$2,770,450.50	\$100,053.33	\$1,977,298.73	59.21 %
Total 2025-2026	\$4,847,802.56	\$2,870,503.83	\$2,770,450.50	\$100,053.33	\$1,977,298.73	59.21 %
Report Total	\$4,847,802.56	\$2,870,503.83	\$2,770,450.50	\$100,053.33	\$1,977,298.73	59.21 %

Report Request

Date Range: 7/1/2025 - 6/30/2026

Classification Bolding: N/A

Print Detail: No

Dimension	Group Order	Total	Bold	Filter
Fiscal Year	1	Yes	No	2026
Fund	2	Yes	No	31
Project	3	Yes	No	
Function	N/A	N/A	N/A	
Object	N/A	N/A	N/A	
Program	N/A	N/A	N/A	
Subject	N/A	N/A	N/A	
JobClass	N/A	N/A	N/A	
Unit	N/A	N/A	N/A	

GROVE PUBLIC SCHOOLS

Cash Balances

Options: Fiscal Years: 2026, Funds: 60, Account Nos: 0103,0107, As Of Date: 4/30/2026, Account Types: All

Cash By Account and Fund

AC 0103	ACTIVITY BANCFIRST					
2026	60	60 SCHOOL ACTIVITY FUNDS				(\$4,712.16)
				Total AC	0103	(\$4,712.16)
AC 0107	SWEEP ACCT BANCFIRST ACTIVITY FUND		<i>3.27% Interest</i>			
2026	60	60 SCHOOL ACTIVITY FUNDS				\$796,099.69
				Total AC	0107	\$796,099.69
						<u>\$791,387.53</u>

Cash By Fund

2026	60	60 SCHOOL ACTIVITY FUNDS				\$791,387.53
						<u>\$791,387.53</u>

GROVE PUBLIC SCHOOLS

Revenue/Expenditure Summary

Options: Fund: 60, Date Range: 4/1/2026 - 4/30/2026

	Begin Balance	Receipts	Adjusting Entries	Payments	Cash End Balance	Unpaid POs	End Balance
801 FOOTBALL	\$6,062.58	\$0.00	\$0.00	\$1,975.00	\$4,087.58	\$0.00	\$4,087.58
802 BOYS BASKETBALL	\$5,290.25	\$0.00	\$0.00	\$0.00	\$5,290.25	\$0.00	\$5,290.25
803 GIRLS BASKETBALL	\$2,658.22	\$2,120.00	\$0.00	\$2,727.43	\$2,050.79	\$0.00	\$2,050.79
805 BASEBALL	\$1,873.88	\$0.00	\$0.00	\$0.00	\$1,873.88	\$0.00	\$1,873.88
806 SOFTBALL	\$4,800.42	\$0.00	\$0.00	\$0.00	\$4,800.42	\$0.00	\$4,800.42
807 WRESTLING	\$6,619.07	\$6,848.00	\$0.00	\$742.52	\$12,724.55	\$6,990.70	\$5,733.85
808 BOYS TENNIS	\$2,045.74	\$0.00	\$0.00	\$142.50	\$1,903.24	\$0.00	\$1,903.24
809 GIRLS TENNIS	\$200.00	\$0.00	\$0.00	\$142.50	\$57.50	\$0.00	\$57.50
811 BOYS TRACK	\$57.89	\$0.00	\$0.00	\$0.00	\$57.89	\$0.00	\$57.89
812 GIRLS TRACK	\$142.49	\$0.00	\$0.00	\$0.00	\$142.49	\$0.00	\$142.49
813 BOYS GOLF	\$3,579.30	\$0.00	\$0.00	\$1,916.70	\$1,662.60	\$0.00	\$1,662.60
814 CROSS COUNTRY	\$10.69	\$0.00	\$0.00	\$0.00	\$10.69	\$0.00	\$10.69
815 VARSITY CHEERLEADERS	\$18,264.16	\$0.00	\$0.00	\$3,000.00	\$15,264.16	\$5,500.00	\$9,764.16
819 ATHLETICS	\$47,174.19	\$14,695.00	\$0.00	\$19,792.93	\$42,076.26	\$22,222.98	\$19,853.28
820 GIRLS SOCCER	\$4,742.40	\$0.00	\$0.00	\$328.50	\$4,413.90	\$0.00	\$4,413.90
821 BOYS SOCCER	\$5,398.42	\$0.00	\$0.00	\$0.00	\$5,398.42	\$0.00	\$5,398.42
822 FRESHMAN CHEERLEADERS	\$2.53	\$0.00	\$0.00	\$0.00	\$2.53	\$0.00	\$2.53
823 MIDDLE SCHOOL CHEERLEADERS	\$233.15	\$0.00	\$0.00	\$0.00	\$233.15	\$0.00	\$233.15
826 GIRLS GOLF	\$2,739.42	\$0.00	\$0.00	\$0.00	\$2,739.42	\$0.00	\$2,739.42
888 ATHLETIC CONCESSION STAND	\$8,659.94	\$0.00	\$0.00	\$1,224.97	\$7,434.97	\$4,138.00	\$3,296.97
889 UE PHYSICAL ED	\$689.05	\$0.00	\$0.00	\$257.53	\$431.52	\$0.00	\$431.52
890 GROVE RIDGERUNNER ATHLETIC HALL OF FAME	\$2,298.14	\$0.00	\$0.00	\$0.00	\$2,298.14	\$0.00	\$2,298.14
901 ALUMNI	\$3,722.79	\$0.00	\$0.00	\$0.00	\$3,722.79	\$0.00	\$3,722.79
902 HS ANNUAL	\$7,842.50	\$0.00	\$0.00	\$0.00	\$7,842.50	\$0.00	\$7,842.50
903 MS ANNUAL	\$1,868.70	\$1,156.90	\$0.00	\$274.33	\$2,751.27	\$0.00	\$2,751.27
904 ECC/LE ANNUAL	\$4,224.12	\$0.00	\$0.00	\$0.00	\$4,224.12	\$0.00	\$4,224.12
905 BAND	\$50,935.32	\$646.00	\$0.00	\$5,852.34	\$45,728.98	\$2,258.48	\$43,470.50
906 MS JOURNALISM	\$682.59	\$1,124.35	\$0.00	\$1,014.19	\$792.75	\$0.00	\$792.75
907 KEN HINES MEMORIAL SCHOLARSHIP	\$1,083.98	\$0.00	\$0.00	\$0.00	\$1,083.98	\$0.00	\$1,083.98
908 ARVEST FOUNDATION SCHOLARSHIP	\$764.65	\$0.00	\$0.00	\$0.00	\$764.65	\$0.00	\$764.65
909 CLASS OF 2026	\$6,169.62	\$0.00	\$0.00	\$0.00	\$6,169.62	\$0.00	\$6,169.62
910 CLASS OF 2029	\$101.00	\$0.00	\$355.81	\$0.00	\$456.81	\$0.00	\$456.81
911 PAC PRODUCTIONS/DRAMA	\$15,018.24	\$3,507.20	\$0.00	\$5,292.14	\$13,233.30	\$2,681.00	\$10,552.30
912 CLASS OF 2028	\$4,215.48	\$0.00	\$0.00	\$0.00	\$4,215.48	\$0.00	\$4,215.48
915 CLASS OF 2025	\$355.81	\$0.00	(\$355.81)	\$0.00	\$0.00	\$0.00	\$0.00
916 CHOIR	\$7,345.58	\$150.00	\$0.00	\$610.00	\$6,885.58	\$0.00	\$6,885.58
917 GIFTED/ACADEMIC TEAM	\$249.26	\$0.00	\$0.00	\$0.00	\$249.26	\$0.00	\$249.26
918 CLASS OF 2027	\$6,191.47	\$5,010.00	\$0.00	\$1,498.72	\$9,702.75	\$612.50	\$9,090.25
919 UPPER ELEMENTARY	\$17,750.03	\$1,550.10	\$0.00	\$3,613.37	\$15,686.76	\$1,835.60	\$13,851.16
921 HS AP PROGRAM	\$11,556.42	\$0.00	\$0.00	\$0.00	\$11,556.42	\$6,200.00	\$5,356.42
922 COW WEEK	\$107,366.59	\$16,601.34	\$0.00	\$0.00	\$123,967.93	\$0.00	\$123,967.93
924 FFA	\$78,907.92	\$2,854.50	\$0.00	\$4,130.90	\$77,631.52	\$15,369.00	\$62,262.52
925 FCCLA	\$3,268.70	\$0.00	\$0.00	\$423.09	\$2,845.61	\$550.00	\$2,295.61
926 SPANISH CLUB	\$160.70	\$0.00	\$0.00	\$0.00	\$160.70	\$0.00	\$160.70
930 HS NATIONAL HONOR SOCIETY	\$2,022.74	\$0.00	\$0.00	\$248.49	\$1,774.25	\$0.00	\$1,774.25
931 GRADUATE CLASSES	\$1,676.04	\$0.00	\$0.00	\$0.00	\$1,676.04	\$0.00	\$1,676.04
933 HIGH SCH GEFPE	\$808.39	\$0.00	\$0.00	\$0.00	\$808.39	\$0.00	\$808.39
934 HIGH SCHOOL LIBRARY	\$12,437.38	\$30.00	\$0.00	\$447.10	\$12,020.28	\$0.00	\$12,020.28
935 INTEREST	\$83,457.38	\$1,986.52	\$0.00	\$1,213.74	\$84,230.16	\$5,407.00	\$78,823.16
936 CHASE MORRIS MEMORIAL SCHOLARS	\$35.66	\$0.00	\$0.00	\$0.00	\$35.66	\$0.00	\$35.66
939 MEMORIAL SCHOLARSHIP	\$208.59	\$0.00	\$0.00	\$0.00	\$208.59	\$0.00	\$208.59
940 TECHNOLOGY STUDENT USAGE FEE	\$11,890.51	\$1,335.00	\$0.00	\$275.45	\$12,950.06	\$1,230.00	\$11,720.06
941 MIDDLE SCHOOL	\$6,152.00	\$0.40	\$0.00	\$167.98	\$5,984.42	\$296.43	\$5,687.99
942 MIDDLE SCHOOL LIBRARY	\$7,431.11	\$603.50	\$0.00	\$199.99	\$7,834.62	\$0.00	\$7,834.62
944 MS STEM	\$10,366.71	\$11,417.00	\$0.00	\$5,130.06	\$16,653.65	\$8,107.00	\$8,546.65
945 MS STUDENT COUNCIL	\$5,121.72	\$147.00	\$0.00	\$949.40	\$4,319.32	\$420.04	\$3,899.28
947 NATIONAL JR HONOR SOCIETY-MS	\$2,392.26	\$0.00	\$0.00	\$0.00	\$2,392.26	\$0.00	\$2,392.26

GROVE PUBLIC SCHOOLS Revenue/Expenditure Summary

Options: Fund: 60, Date Range: 4/1/2026 - 4/30/2026

	Begin Balance	Receipts	Adjusting Entries	Payments	Cash End Balance	Unpaid POs	End Balance
948 INTERACT CLUB	\$1,485.10	\$0.00	\$0.00	\$479.00	\$1,006.10	\$0.00	\$1,006.10
949 MS ACADEMICS	\$68.64	\$0.00	\$0.00	\$0.00	\$68.64	\$0.00	\$68.64
954 MS SCIENCE FAIR	\$5,858.29	\$260.25	\$0.00	\$1,763.70	\$4,354.84	\$1,300.00	\$3,054.84
956 INDEPENDENT SCI RESEARCH	\$200.37	\$0.00	\$0.00	\$0.00	\$200.37	\$0.00	\$200.37
957 SPECIAL SERVICES	\$11,452.20	\$0.00	\$0.00	\$0.00	\$11,452.20	\$0.00	\$11,452.20
958 HS STUDENT COUNCIL	\$2,090.59	\$0.00	\$0.00	\$0.00	\$2,090.59	\$0.00	\$2,090.59
959 LIFE SKILLS	\$89.00	\$51.00	\$0.00	\$0.00	\$140.00	\$0.00	\$140.00
960 GROVE GREENHOUSE	\$1,917.11	\$1,440.00	\$0.00	\$1,191.47	\$2,165.64	\$0.00	\$2,165.64
961 MS MASQUERS	\$1,207.29	\$245.00	\$0.00	\$897.59	\$554.70	\$85.00	\$469.70
962 MS THERAPY DOG	\$100.00	\$0.00	\$0.00	\$0.00	\$100.00	\$0.00	\$100.00
963 LE ELEMENTARY LIBRARY	\$28,367.33	\$500.00	\$0.00	\$4,957.67	\$23,909.66	\$300.00	\$23,609.66
964 UE ELEMENTARY LIBRARY	\$24,906.29	\$42.00	\$0.00	\$2,248.82	\$22,699.47	\$0.00	\$22,699.47
965 COUNSELOR'S SCHOLARSHIP FUND	\$0.00	\$1,000.00	\$0.00	\$0.00	\$1,000.00	\$0.00	\$1,000.00
966 GPS ACTIVITY	\$20,759.37	\$148.96	\$0.00	\$366.49	\$20,541.84	\$690.96	\$19,850.88
967 CHARACTER COUNTS/COMM CRISIS	\$1,977.94	\$0.00	\$0.00	\$0.00	\$1,977.94	\$0.00	\$1,977.94
968 MS GEFFE	\$1,406.18	\$0.00	\$0.00	\$0.00	\$1,406.18	\$0.00	\$1,406.18
970 CAFETERIA REVENUE	\$2,149.67	\$2,604.70	\$0.00	\$2,149.67	\$2,604.70	\$0.00	\$2,604.70
972 PLTW TSA HIGH SCHOOL	\$8,135.80	\$415.47	\$0.00	\$3,152.42	\$5,398.85	\$420.50	\$4,978.35
974 JOE ETHRIDGE MEMORIAL FUND	\$44.12	\$0.00	\$0.00	\$0.00	\$44.12	\$0.00	\$44.12
975 UE BOOK REPLACEMENT	\$178.69	\$0.00	\$0.00	\$0.00	\$178.69	\$0.00	\$178.69
976 MS/HS BOOK REPLACEMENT	\$1,395.53	\$0.00	\$0.00	\$0.00	\$1,395.53	\$0.00	\$1,395.53
977 LE BOOK REPLACEMENT	\$133.13	\$0.00	\$0.00	\$0.00	\$133.13	\$0.00	\$133.13
979 LOWER ELEMENTARY	\$35,116.99	\$6,055.32	\$0.00	\$2,323.71	\$38,848.60	\$5,809.50	\$33,039.10
981 UE GEFFE	\$160.51	\$0.00	\$0.00	\$0.00	\$160.51	\$0.00	\$160.51
982 EC GEFFE	\$56.26	\$0.00	\$0.00	\$0.00	\$56.26	\$0.00	\$56.26
983 HS STUDENT CENTER	\$9,725.70	\$1,367.60	\$0.00	\$1,910.09	\$9,183.21	\$3,957.46	\$5,225.75
984 HS STUDENT PARKING	\$1,739.89	\$0.00	\$0.00	\$0.00	\$1,739.89	\$0.00	\$1,739.89
985 HIGH SCHOOL INDIAN HERITAGE CLUB	\$1,433.14	\$0.00	\$0.00	\$270.19	\$1,162.95	\$0.00	\$1,162.95
986 UPPER ELEMENTARY ANNUAL	\$5,749.86	\$115.00	\$0.00	\$0.00	\$5,864.86	\$0.00	\$5,864.86
987 EC CENTER	\$7,014.38	\$2,737.25	\$0.00	\$2,189.79	\$7,561.84	\$903.00	\$6,658.84
988 EC LIBRARY	\$5,644.27	\$0.00	\$0.00	\$0.00	\$5,644.27	\$0.00	\$5,644.27
989 HS THERAPY DOG PROGRAM	\$249.80	\$0.00	\$0.00	\$0.00	\$249.80	\$0.00	\$249.80
992 THE PI SHOP	\$2,973.11	\$0.00	\$0.00	\$354.00	\$2,619.11	\$0.00	\$2,619.11
993 ROBOTICS TEAM	\$7,305.95	\$0.00	\$0.00	\$1,007.52	\$6,298.43	\$0.00	\$6,298.43
994 HS MATH CLUB	\$669.20	\$0.00	\$0.00	\$174.00	\$495.20	\$0.00	\$495.20
995 ADVANCED PLACEMENT SCIENCE	\$26.27	\$0.00	\$0.00	\$0.00	\$26.27	\$0.00	\$26.27
996 HOPE SQUAD	\$1,373.12	\$0.00	\$0.00	\$0.00	\$1,373.12	\$492.17	\$880.95
998 GROVE CLOTHES CLOSET	\$1,165.19	\$0.00	\$0.00	\$0.00	\$1,165.19	\$0.00	\$1,165.19
Total	\$791,650.17	\$88,765.36	\$0.00	\$89,028.00	\$791,387.53	\$97,777.32	\$693,610.21

GROVE PUBLIC SCHOOLS

Cash Balances

Options: Fiscal Years: 2024-2026, Funds: 11-41, Account Nos: 0104-0106, 0101, As Of Date: 4/30/2026, Account Types: All

Cash By Account and Fund

AC 0104	GRAND SAVINGS BANK		<i>1.50% Interest</i>	
2024	11	11 GENERAL FUND		\$665.51
2024	21	21 BUILDING FUND		\$0.00
2024	33	33 BUILDING BONDS 2022-PAC		\$0.00
2024	41	41 SINKING FUND		\$0.00
2025	11	11 GENERAL FUND		\$40,708.53
2025	21	21 BUILDING FUND		\$32,532.26
2025	31	31 BUILDING BOND 2024		\$0.00
2025	33	33 BUILDING BONDS 2022-PAC		\$0.00
2025	41	41 SINKING FUND		\$0.00
2026	11	11 GENERAL FUND		(\$3,923,014.95)
2026	21	21 BUILDING FUND		\$1,639,521.84
2026	31	31 BUILDING BOND 2024		\$850,658.22
2026	41	41 SINKING FUND		\$2,360,195.51
			Total AC 0104	\$1,001,266.92
AC 0105	GRAND SAVINGS ICS INVESTMENT ACCT		<i>2.30% Interest</i>	
2024	11	11 GENERAL FUND		\$0.00
2024	21	21 BUILDING FUND		\$0.00
2024	33	33 BUILDING BONDS 2022-PAC		\$0.00
2024	41	41 SINKING FUND		\$0.00
2025	11	11 GENERAL FUND		\$0.00
2025	21	21 BUILDING FUND		\$0.00
2025	31	31 BUILDING BOND 2024		\$0.00
2025	33	33 BUILDING BONDS 2022-PAC		\$0.00
2025	41	41 SINKING FUND		\$0.00
2026	11	11 GENERAL FUND		\$3,974,438.63
2026	21	21 BUILDING FUND		\$0.00
2026	31	31 BUILDING BOND 2024		\$1,278,440.51
			Total AC 0105	\$5,252,879.14
AC 0106	BANK OF GRAND LAKE INVESTMENT		<i>2.78% Interest</i>	
2024	11	11 GENERAL FUND		\$0.00
2024	21	21 BUILDING FUND		\$0.00
2024	41	41 SINKING FUND		\$0.00
2025	11	11 GENERAL FUND		\$0.00
2026	11	11 GENERAL FUND		\$9,652,132.29
			Total AC 0106	\$9,652,132.29
AI 0101	LOCAL BANK CD		<i>4.00% Interest</i>	
2025	11	11 GENERAL FUND		\$0.00
2026	11	11 GENERAL FUND		\$500,000.00
			Total AI 0101	\$500,000.00
				\$16,406,278.35

Cash By Fund

2024	11	11 GENERAL FUND	\$665.51
2024	21	21 BUILDING FUND	\$0.00
2024	33	33 BUILDING BONDS 2022-PAC	\$0.00
2024	41	41 SINKING FUND	\$0.00
2025	11	11 GENERAL FUND	\$40,708.53
2025	21	21 BUILDING FUND	\$32,532.26
2025	31	31 BUILDING BOND 2024	\$0.00

GROVE PUBLIC SCHOOLS

Cash Balances

Options: Fiscal Years: 2024-2026, Funds: 11-41, Account Nos: 0104-0106, 0101, As Of Date: 4/30/2026, Account Types: All

2025	33	33 BUILDING BONDS 2022-PAC	\$0.00
2025	41	41 SINKING FUND	\$0.00
2026	11	11 GENERAL FUND	\$10,203,555.97
2026	21	21 BUILDING FUND	\$1,639,521.84
2026	31	31 BUILDING BOND 2024	\$2,129,098.73
2026	41	41 SINKING FUND	\$2,360,195.51
			<hr/>
			\$16,406,278.35
			<hr/>

GROVE PUBLIC SCHOOLS

Balance Sheet

Options: Fiscal Years: 2024-2026, Funds: 11-41, As Of Date: 4/30/2026

Assets

Cash

11	2024	11 GENERAL FUND		\$665.51
11	2025	11 GENERAL FUND		\$40,708.53
11	2026	11 GENERAL FUND		\$9,703,555.97
			Fund 11 Total	<u>\$9,744,930.01</u>
21	2024	21 BUILDING FUND		\$0.00
21	2025	21 BUILDING FUND		\$32,532.26
21	2026	21 BUILDING FUND		\$1,639,521.84
			Fund 21 Total	<u>\$1,672,054.10</u>
31	2025	31 BUILDING BOND 2024		\$0.00
31	2026	31 BUILDING BOND 2024		\$2,129,098.73
			Fund 31 Total	<u>\$2,129,098.73</u>
33	2024	33 BUILDING BONDS 2022-PAC		\$0.00
33	2025	33 BUILDING BONDS 2022-PAC		\$0.00
			Fund 33 Total	<u>\$0.00</u>
41	2024	41 SINKING FUND		\$0.00
41	2025	41 SINKING FUND		\$0.00
41	2026	41 SINKING FUND		\$2,360,195.51
			Fund 41 Total	<u>\$2,360,195.51</u>
			Cash Total	<u>\$15,906,278.35</u>

Investments

11	2025	11 GENERAL FUND		\$0.00
11	2026	11 GENERAL FUND		\$500,000.00
			Fund 11 Total	<u>\$500,000.00</u>
			Investments Total	<u>\$500,000.00</u>

Revenue Receivable

11	2024	11 GENERAL FUND		\$0.00
11	2025	11 GENERAL FUND		\$0.00
11	2026	11 GENERAL FUND		\$1,084,635.93
			Fund 11 Total	<u>\$1,084,635.93</u>
21	2024	21 BUILDING FUND		\$0.00
21	2025	21 BUILDING FUND		\$0.00
21	2026	21 BUILDING FUND		(\$65,104.67)
			Fund 21 Total	<u>(\$65,104.67)</u>
31	2025	31 BUILDING BOND 2024		\$0.00
31	2026	31 BUILDING BOND 2024		\$0.00
			Fund 31 Total	<u>\$0.00</u>
33	2024	33 BUILDING BONDS 2022-PAC		\$0.00
33	2025	33 BUILDING BONDS 2022-PAC		\$0.00
			Fund 33 Total	<u>\$0.00</u>
41	2024	41 SINKING FUND		\$0.00
41	2025	41 SINKING FUND		\$0.00
41	2026	41 SINKING FUND		\$44,662.83
			Fund 41 Total	<u>\$44,662.83</u>
			Revenue Receivable Total	<u>\$1,064,194.09</u>
			Assets Total	<u><u>\$17,470,472.44</u></u>

Liabilities, Reserves and Fund Balance

Outstanding Warrants

11	2024	11 GENERAL FUND		\$665.51
----	------	-----------------	--	----------

GROVE PUBLIC SCHOOLS

Balance Sheet

Options: Fiscal Years: 2024-2026, Funds: 11-41, As Of Date: 4/30/2026

11	2025	11 GENERAL FUND		\$415.00
11	2026	11 GENERAL FUND		\$25,080.22
			Fund 11 Total	<u>\$26,160.73</u>
21	2024	21 BUILDING FUND		\$0.00
21	2025	21 BUILDING FUND		\$0.00
21	2026	21 BUILDING FUND		\$55,944.16
			Fund 21 Total	<u>\$55,944.16</u>
31	2025	31 BUILDING BOND 2024		\$0.00
31	2026	31 BUILDING BOND 2024		\$0.00
			Fund 31 Total	<u>\$0.00</u>
33	2024	33 BUILDING BONDS 2022-PAC		\$0.00
			Fund 33 Total	<u>\$0.00</u>
			Outstanding Warrants Total	<u>\$82,104.89</u>
Fund Balance				
11	2024	11 GENERAL FUND		\$0.00
11	2025	11 GENERAL FUND		\$40,293.53
11	2026	11 GENERAL FUND		\$11,263,111.68
			Fund 11 Total	<u>\$11,303,405.21</u>
21	2024	21 BUILDING FUND		\$0.00
21	2025	21 BUILDING FUND		\$32,532.26
21	2026	21 BUILDING FUND		\$1,518,473.01
			Fund 21 Total	<u>\$1,551,005.27</u>
31	2025	31 BUILDING BOND 2024		\$0.00
31	2026	31 BUILDING BOND 2024		\$2,129,098.73
			Fund 31 Total	<u>\$2,129,098.73</u>
33	2024	33 BUILDING BONDS 2022-PAC		\$0.00
			Fund 33 Total	<u>\$0.00</u>
41	2024	41 SINKING FUND		\$0.00
41	2025	41 SINKING FUND		\$0.00
41	2026	41 SINKING FUND		\$2,404,858.34
			Fund 41 Total	<u>\$2,404,858.34</u>
			Fund Balance Total	<u>\$17,388,367.55</u>
			Liabilities, Reserves and Fund Balance Total	<u><u>\$17,470,472.44</u></u>

GROVE PUBLIC SCHOOLS

Revenue Analysis

Options: Type of Revenue: Estimated, As Of Date: 4/30/2026

	Estimated Revenue	Revenue Collected	Revenue Receivable	Unappropriated Receipts	% Rev Collected	Current Month
Fund - 11 11 GENERAL FUND						
Series - 1000						
Source - 1110 AD VAL TX LV (CUR YR	\$11,913,889.95	\$11,840,690.08	\$73,199.87	\$0.00	99.39%	\$875,154.29
Source - 1121 1ST PRIOR YR AD VAL	\$0.00	\$0.00	\$0.00	\$0.00	N/A	\$0.00
Source - 1122 ALL OTH PR YR AD VAL	\$0.00	\$440,286.58	\$0.00	\$440,286.58	N/A	\$13,910.61
Source - 1130 REV IN LIEU OF TAXES	\$0.00	\$1,178.20	\$0.00	\$1,178.20	N/A	\$775.13
Source - 1310 INTEREST EARNINGS	\$0.00	\$256,993.57	\$0.00	\$256,993.57	N/A	\$33,477.51
Source - 1350 INT ON TAXES	\$0.00	\$23,528.85	\$0.00	\$23,528.85	N/A	\$565.34
Source - 1410 RNTL OF SCH FAC	\$0.00	\$3,500.00	\$0.00	\$3,500.00	N/A	\$0.00
Source - 1420 RNTL OTH SCH FAC	\$0.00	\$50.00	\$0.00	\$50.00	N/A	\$50.00
Source - 1440 SLS EQUIP, SVC, MTL	\$0.00	\$12,985.20	\$0.00	\$12,985.20	N/A	\$0.00
Source - 1460 COMMISSIONS	\$0.00	\$1,221.91	\$0.00	\$1,221.91	N/A	\$159.86
Source - 1570 CUST SVCS & UTIL	\$0.00	\$3,775.00	\$0.00	\$3,775.00	N/A	\$2,400.00
Source - 1590 MISC REIMBURSEMENTS	\$0.00	\$794.34	\$0.00	\$794.34	N/A	\$0.00
Source - 1610 CONTRB & DNTS-PR SCS	\$0.00	\$183,000.59	\$0.00	\$183,000.59	N/A	\$2,231.48
Source - 1680 REFUND PRIOR YR EXP	\$0.00	\$541.38	\$0.00	\$541.38	N/A	\$0.00
Source - 1720 A LA CARTE OR CATERING REVENUE	\$20,000.00	\$3,063.07	\$16,936.93	\$0.00	15.32%	\$378.67
Source - 1730 ADULT LUNCHES/BF	\$0.00	\$18,388.35	\$0.00	\$18,388.35	N/A	\$1,771.00
Source - 1790 OTHER DIST REVENUR CN	\$0.00	\$25,000.00	\$0.00	\$25,000.00	N/A	\$0.00
Source - 1792 GIFTS AND DONATIONS	\$0.00	\$3.00	\$0.00	\$3.00	N/A	\$0.00
Source - 1795 Promotional Rebate	\$0.00	\$558.61	\$0.00	\$558.61	N/A	\$0.00
Series - 1000 Total	\$11,933,889.95	\$12,815,558.73	\$90,136.80	\$971,805.58	107.39%	\$930,873.89
Series - 2000						
Source - 2100 COUNTY 4 MILL AD VAL	\$899,224.68	\$929,478.94	\$0.00	\$30,254.26	103.36%	\$75,513.42
Source - 2200 COUNTY APPORTN (MTG)	\$137,425.87	\$140,380.41	\$0.00	\$2,954.54	102.15%	\$17,599.15
Series - 2000 Total	\$1,036,650.55	\$1,069,859.35	\$0.00	\$33,208.80	103.20%	\$93,112.57
Series - 3000						
Source - 3120 MOTOR VEH COLLECTION	\$1,025,546.38	\$840,964.48	\$184,581.90	\$0.00	82.00%	\$92,466.19
Source - 3130 R.E.A. TAX	\$348,089.15	\$313,807.85	\$34,281.30	\$0.00	90.15%	\$35,246.38
Source - 3140 ST SCH LAND EARNINGS	\$443,800.48	\$378,202.28	\$65,598.20	\$0.00	85.22%	\$41,791.44
Source - 3150 VEHICLE TAX STAMP	\$980.26	\$945.64	\$34.62	\$0.00	96.47%	\$146.06
Source - 3160 FARM IMPLEMENT TAX	\$0.00	\$52.85	\$0.00	\$52.85	N/A	\$0.00
Source - 3210 FNDTN & SAL INC AID	\$3,390,155.69	\$2,304,204.59	\$1,085,951.10	\$0.00	67.97%	\$256,022.74
Source - 3250 FRINGE BENEFIT ALLOWANCE	\$2,506,261.92	\$2,022,930.34	\$483,331.58	\$0.00	80.72%	\$224,770.04
Source - 3310 ALT ED & AT RISK	\$0.00	\$34,254.62	\$0.00	\$34,254.62	N/A	\$0.00
Source - 3412 NAT'L BOARD CERT BONUS	\$0.00	\$15,000.00	\$0.00	\$15,000.00	N/A	\$0.00
Source - 3415 STRONG READERS	\$0.00	\$52,443.93	\$0.00	\$52,443.93	N/A	\$0.00
Source - 3420 STATE TEXTBOOK	\$156,354.91	\$126,893.86	\$29,461.05	\$0.00	81.16%	\$14,099.32
Source - 3436 SCHOOL RESOURCE OFFICER PROGRAM	\$91,829.62	\$93,041.47	\$0.00	\$1,211.85	101.32%	\$0.00
Source - 3437 MATERNITY LEAVE	\$0.00	\$6,840.76	\$0.00	\$6,840.76	N/A	\$0.00
Source - 3610 ADD HOMESTEAD REIMB	\$0.00	\$37,601.47	\$0.00	\$37,601.47	N/A	\$0.00
Source - 3620 STATE LAND REIMBURSE	\$0.00	\$814.21	\$0.00	\$814.21	N/A	\$0.00
Source - 3652 RURAL LITERACY ACC INITIATIVE	\$0.00	\$7,494.82	\$0.00	\$7,494.82	N/A	\$7,494.82
Source - 3690 MISC SOURCES STATE REVENUE	\$0.00	\$1,000.00	\$0.00	\$1,000.00	N/A	\$500.00
Source - 3720 STATE MATCHING	\$11,477.74	\$5,235.60	\$6,242.14	\$0.00	45.62%	\$0.00
Source - 3811 COMPR HS VO SAL REIM	\$20,420.00	\$12,190.00	\$8,230.00	\$0.00	59.70%	\$0.00
Source - 3812 VO INCENT ASSIST GTS	\$54,250.00	\$40,686.00	\$13,564.00	\$0.00	75.00%	\$0.00
Series - 3000 Total	\$8,049,166.15	\$6,294,604.77	\$1,911,275.89	\$156,714.51	78.20%	\$672,536.99
Series - 4000						

GROVE PUBLIC SCHOOLS

Revenue Analysis

Options: Type of Revenue: Estimated, As Of Date: 4/30/2026

	Estimated Revenue	Revenue Collected	Revenue Receivable	Unappropriated Receipts	% Rev Collected	Current Month
Source - 4140 TITLE VI-PART A INDIAN ED	\$203,179.00	\$132,759.47	\$70,419.53	\$0.00	65.34%	\$35,206.05
Source - 4210 TITLE I BASIC PROGRAM	\$650,000.00	\$426,930.71	\$223,069.29	\$0.00	65.68%	\$58,163.89
Source - 4271 TITLE II PT A SUPPORT EFFECT INSTR	\$0.00	\$90,589.25	\$0.00	\$90,589.25	N/A	\$555.26
Source - 4310 IDEA-B FL THR/SPECIAL ED	\$551,769.98	\$388,769.31	\$163,000.67	\$0.00	70.46%	\$41,782.79
Source - 4340 PRESCHOOL 3-5 102-119	\$12,051.57	\$4,206.79	\$7,844.78	\$0.00	34.91%	\$0.00
Source - 4442 TITLE IV PART A STUDENT SUPPORT	\$0.00	\$30,728.89	\$0.00	\$30,728.89	N/A	\$3,433.40
Source - 4470 TITLE V PART B RUR/LOW INCOM	\$0.00	\$70,730.94	\$0.00	\$70,730.94	N/A	\$5,137.78
Source - 4550 JOHNSON-O'MALLEY PROGRAM	\$30,000.00	\$52,788.68	\$0.00	\$22,788.68	175.96%	\$0.00
Source - 4580 MEDICAID REIMBURSEMENT	\$0.00	\$71,335.32	\$0.00	\$71,335.32	N/A	\$7,422.51
Source - 4617 REHAB SERVICES	\$0.00	\$2,570.13	\$0.00	\$2,570.13	N/A	\$355.25
Source - 4689 OTH MISC FED REV	\$145,000.94	\$145,000.94	\$0.00	\$0.00	100.00%	\$0.00
Source - 4707 LOCAL FOODS FOR SCHOOL PROGRAM	\$0.00	\$0.00	\$0.00	\$0.00	N/A	\$0.00
Source - 4710 FEDERAL LUNCH REIMBURSEMENT	\$710,000.00	\$594,401.63	\$115,598.37	\$0.00	83.72%	\$67,869.67
Source - 4720 FEDERAL BREAKFAST REIMBURSEMEN	\$276,752.93	\$261,476.98	\$15,275.95	\$0.00	94.48%	\$28,179.50
Source - 4821 CARL PERKINS	\$0.00	\$30,749.48	\$0.00	\$30,749.48	N/A	\$0.00
Series - 4000 Total	\$2,578,754.42	\$2,303,038.52	\$595,208.59	\$319,492.69	89.31%	\$248,106.10
Series - 5000						
Source - 5160 ACTIVITY FUND REIMBURSEMENT	\$0.00	\$29,736.30	\$0.00	\$29,736.30	N/A	\$0.00
Source - 5600 CORRECTING ENTRY	\$0.00	\$1,027.47	\$0.00	\$1,027.47	N/A	\$0.00
Series - 5000 Total	\$0.00	\$30,763.77	\$0.00	\$30,763.77	N/A	\$0.00
Series - 6000						
Source - 6110 CASH FORWARD	\$5,799,490.84	\$5,799,490.84	\$0.00	\$0.00	100.00%	\$0.00
Series - 6000 Total	\$5,799,490.84	\$5,799,490.84	\$0.00	\$0.00	100.00%	\$0.00
Fund - 11 11 GENERAL FUND Total	\$29,397,951.91	\$28,313,315.98	\$2,596,621.28	\$1,511,985.35	96.31%	\$1,944,629.55

GROVE PUBLIC SCHOOLS

Revenue Analysis

Options: Type of Revenue: Estimated, As Of Date: 4/30/2026

	Estimated Revenue	Revenue Collected	Revenue Receivable	Unappropriated Receipts	% Rev Collected	Current Month
Fund - 21 21 BUILDING FUND						
Series - 1000						
Source - 1110 AD VAL TX LV (CUR YR	\$1,701,984.28	\$1,691,527.13	\$10,457.15	\$0.00	99.39%	\$125,022.03
Source - 1122 ALL OTH PR YR AD VAL	\$0.00	\$62,897.99	\$0.00	\$62,897.99	N/A	\$1,987.22
Source - 1130 REV IN LIEU OF TAXES	\$0.00	\$168.31	\$0.00	\$168.31	N/A	\$110.73
Source - 1410 RNTL OF SCH FAC	\$0.00	\$2,000.00	\$0.00	\$2,000.00	N/A	\$0.00
Source - 1440 SLS EQUIP, SVC, MTL	\$0.00	\$5,000.00	\$0.00	\$5,000.00	N/A	\$5,000.00
Series - 1000 Total	\$1,701,984.28	\$1,761,593.43	\$10,457.15	\$70,066.30	103.50%	\$132,119.98
Series - 3000						
Source - 3160 FARM IMPLEMENT TAX	\$0.00	\$7.55	\$0.00	\$7.55	N/A	\$0.00
Source - 3610 ADD HOMESTEAD REIMB	\$0.00	\$5,371.65	\$0.00	\$5,371.65	N/A	\$0.00
Source - 3620 STATE LAND REIMBURSE	\$0.00	\$116.32	\$0.00	\$116.32	N/A	\$0.00
Series - 3000 Total	\$0.00	\$5,495.52	\$0.00	\$5,495.52	N/A	\$0.00
Series - 6000						
Source - 6110 CASH FORWARD	\$1,313,926.04	\$1,313,926.04	\$0.00	\$0.00	100.00%	\$0.00
Series - 6000 Total	\$1,313,926.04	\$1,313,926.04	\$0.00	\$0.00	100.00%	\$0.00
Fund - 21 21 BUILDING FUND Total	\$3,015,910.32	\$3,081,014.99	\$10,457.15	\$75,561.82	102.16%	\$132,119.98

GROVE PUBLIC SCHOOLS

Revenue Analysis

Options: Type of Revenue: Estimated, As Of Date: 4/30/2026

	Estimated Revenue	Revenue Collected	Revenue Receivable	Unappropriated Receipts	% Rev Collected	Current Month
Fund - 31 31 BUILDING BOND 2024						
Series - 6000						
Source - 6110 CASH FORWARD	\$4,847,802.56	\$4,847,802.56	\$0.00	\$0.00	100.00%	\$0.00
Series - 6000 Total	\$4,847,802.56	\$4,847,802.56	\$0.00	\$0.00	100.00%	\$0.00
Fund - 31 31 BUILDING BOND 2024	\$4,847,802.56	\$4,847,802.56	\$0.00	\$0.00	100.00%	\$0.00
Total						

GROVE PUBLIC SCHOOLS

Revenue Analysis

Options: Type of Revenue: Estimated, As Of Date: 4/30/2026

	Estimated Revenue	Revenue Collected	Revenue Receivable	Unappropriated Receipts	% Rev Collected	Current Month
Fund - 41 41 SINKING FUND						
Series - 1000						
Source - 1100 Taxes Lev/Asd for LE	\$0.00	\$0.00	\$0.00	\$0.00	N/A	\$0.00
Source - 1110 AD VAL TX LV (CUR YR	\$2,541,572.41	\$2,410,426.19	\$131,146.22	\$0.00	94.84%	\$178,156.41
Source - 1122 ALL OTH PR YR AD VAL	\$0.00	\$79,477.92	\$0.00	\$79,477.92	N/A	\$2,629.78
Source - 1130 REV IN LIEU OF TAXES	\$0.00	\$239.84	\$0.00	\$239.84	N/A	\$157.79
Series - 1000 Total	\$2,541,572.41	\$2,490,143.95	\$131,146.22	\$79,717.76	97.98%	\$180,943.98
Series - 3000						
Source - 3160 FARM IMPLEMENT TAX	\$0.00	\$9.27	\$0.00	\$9.27	N/A	\$0.00
Source - 3610 ADD HOMESTEAD REIMB	\$0.00	\$6,590.60	\$0.00	\$6,590.60	N/A	\$0.00
Source - 3620 STATE LAND REIMBURSE	\$0.00	\$165.76	\$0.00	\$165.76	N/A	\$0.00
Series - 3000 Total	\$0.00	\$6,765.63	\$0.00	\$6,765.63	N/A	\$0.00
Series - 6000						
Source - 6110 CASH FORWARD	\$127,098.43	\$127,098.43	\$0.00	\$0.00	100.00%	\$0.00
Series - 6000 Total	\$127,098.43	\$127,098.43	\$0.00	\$0.00	100.00%	\$0.00
Fund - 41 41 SINKING FUND Total	\$2,668,670.84	\$2,624,008.01	\$131,146.22	\$86,483.39	98.33%	\$180,943.98

GROVE PUBLIC SCHOOLS

Revenue Analysis

Options: Type of Revenue: Estimated, As Of Date: 4/30/2026

	Estimated Revenue	Revenue Collected	Revenue Receivable	Unappropriated Receipts	% Rev Collected	Current Month
Fund - 60 60 SCHOOL ACTIVITY FUNDS						
Series - 1000						
Source - 1310 INTEREST EARNINGS	\$0.00	\$19,817.56	\$0.00	\$19,817.56	N/A	\$1,986.52
Source - 1810 ADMISSIONS	\$0.00	\$89,802.15	\$0.00	\$89,802.15	N/A	\$9,140.00
Source - 1813 Season Tickets	\$0.00	\$33,380.00	\$0.00	\$33,380.00	N/A	\$0.00
Source - 1820 ADVTSNG & PROG SALES	\$0.00	\$16,300.00	\$0.00	\$16,300.00	N/A	\$0.00
Source - 1830 CONCESSIONS	\$0.00	\$53,688.02	\$0.00	\$53,688.02	N/A	\$415.47
Source - 1890 OTH ATHLETIC REV	\$0.00	\$63,980.63	\$0.00	\$63,980.63	N/A	\$5,325.00
Source - 1912 Dances	\$0.00	\$1,740.00	\$0.00	\$1,740.00	N/A	\$0.00
Source - 1914 Promenades	\$0.00	\$6,460.00	\$0.00	\$6,460.00	N/A	\$3,720.00
Source - 1915 Sch or Class Plays	\$0.00	\$5,671.20	\$0.00	\$5,671.20	N/A	\$3,501.20
Source - 1920 CONCESSIONS SALES	\$0.00	\$1,353.10	\$0.00	\$1,353.10	N/A	\$981.10
Source - 1972 Donations	\$0.00	\$167,261.83	\$0.00	\$167,261.83	N/A	\$23,275.00
Source - 1990 OTH SCH ACT FND RCP	\$0.00	\$384,887.27	\$0.00	\$384,887.27	N/A	\$37,616.37
Series - 1000 Total	\$0.00	\$844,341.76	\$0.00	\$844,341.76	N/A	\$85,960.66
Series - 5000						
Source - 5120 Cash or Change	\$0.00	\$3,770.00	\$0.00	\$3,770.00	N/A	\$200.00
Source - 5150 Child Nutrition Prog	\$0.00	\$24,059.12	\$0.00	\$24,059.12	N/A	\$2,604.70
Source - 5600 CORRECTING ENTRY	\$0.00	\$60.00	\$0.00	\$60.00	N/A	\$0.00
Series - 5000 Total	\$0.00	\$27,889.12	\$0.00	\$27,889.12	N/A	\$2,804.70
Fund - 60 60 SCHOOL ACTIVITY FUNDS Total	\$0.00	\$872,230.88	\$0.00	\$872,230.88	N/A	\$88,765.36

Revenue Analysis

Options: Type of Revenue: Estimated, As Of Date: 4/30/2026

	Estimated Revenue	Revenue Collected	Revenue Receivable	Unappropriated Receipts	% Rev Collected	Current Month
Report Total	\$39,930,335.63	\$39,738,372.42	\$2,738,224.65	\$2,546,261.44	99.52%	\$2,346,458.87

Approval Number	Group or Organization	Sponsor	Purpose or Use of Funds	Firm or Merchandise Sold	Activity Requested	Start Date	End Date
1	Class of 2027	Leslie Cohea & Laura M	PROM	Snacks	Sell Snacks in between classes.	8/14/2025	12/19/2025
2	Class of 2027	Cohea & Laura M	PROM and Senior Tshirts	2026 Prom Tickets	Sell tickets for PROM. (We obviously do not have a date selected yet but put the end of April for End date.)	10/6/2026	4/30/2026
3	Grove Upper Library	Miranda Ward	Library Funds	Books and Items-Scholastic	Book Fair	10/6/2025	10/15/2025
4	Grove Upper Library	Miranda Ward	Library Funds	Books and Items-Scholastic	Spring Book Fair	3/1/2026	3/12/2026
5	Grove Choirs	Melinda Jones	We will be using this money	Valentine Sing-a-Grms	Valentine Sing-a-Grms	1/5/2026	2/13/2026
6	Middle School Library	Melinda Jarvis	Funds will be used to purchase	water, popcorn, fruit rollups	products are sold out of library	11/1/2025	5/22/2026
7	FCCLA	Shelly Crawford	Tshirts, Competitions, Food	Baked Goods	Bake Sale	9/18/2025	9/19/2025
8	FCCLA	Shelly Crawford	Tshirts, Competitions, Food	Baked Goods	Bake Sale	10/23/2025	10/24/2025
9	FCCLA	Shelly Crawford	Tshirts, Competitions, Food	Baked Goods	Bake Sale	11/13/2025	11/14/2025
10	FCCLA	Shelly Crawford	Tshirts, Competitions, Food	Baked Goods	Bake Sale	2/12/2026	2/13/2026
11	FCCLA	Shelly Crawford	Tshirts, Competitions, Food	baked goods	Bake Sale	3/5/2026	3/6/2026
12	Athletics	Richard Bassett	Athletics	Ridgy Cart	Sell Cards	8/14/2025	10/11/2025
13	Soccer	Walker Bots	Soccer	Soccer Camp Instruction	Soccer Camp	7/29/2025	7/31/2025
14	GHS Library	Kerr/FILE	library supplies	Coffee and other items at the coffee shop	N/A	8/1/2025	5/30/2026
15	hs library	kerr/ife	library supplies	prom dress sale or rental	n/a	8/1/2025	5/30/2026
16	hs stuco	Kerr/Guthridge	School activities and materials	Hoco t-shirts	n/a	8/1/2025	9/30/2025
17	Yearbook	Kylie Hornback	Yearbook	Yearbooks	Sell Yearbooks	8/1/2025	5/20/2026
18	MS Annual / Yearbook	Lisa Thomas	Yearbook class supplies	MS Yearbook	Sell Yearbooks	8/11/2025	5/25/2026
19	MS Journalism	Lisa Thomas	Classroom materials	Concessions	Sell Concessions	8/14/2025	5/19/2026
20	GLE	Dotie Smith	Student Activity Account	Variety of trinkets/toys/food	Ridgy Store	8/14/2025	5/29/2026
21	GLE	Carol Hunsperger	Library	Books/Posters/Trinkets	Fall Book Fair	10/8/2025	10/15/2025
22	GLE	Carol Hunsperger	Library	Scholastic Books	Spring Book Fair	3/6/2026	3/12/2026
23	GLE	Jess Helmer	Student Activity Fund	Candle Sale	Candle Sale	10/2/2025	10/20/2025
24	GLE	Jess Helmer	Activity Account	Popcorn	Popcorn Sale	2/26/2026	3/23/2026
25	GLE	Jess Helmer	Yearbooks	Yearbooks	Yearbook Sales	8/14/2025	5/22/2026
26	GLE	Dotie Smith	Activity Fund	Freeze Pops/Popcorn	Selling Pops/Popcorn	8/14/2025	5/19/2026
27	GLE	Dotie Smith	Activity Fund	Pictures	Pictures	8/15/2025	5/15/2026
28	GLE	Carol Hunsperger	Ridgy Store/Books	Book Baskets	Book Baskets Raffle	8/15/2025	5/15/2026
29	GLE	Tracy Goins	Activity Fund	Math Baskets	Math Baskets Auction	8/15/2025	5/15/2026
30	MS STEM	Andrea Benge	MS STEM travel expenses	Bake Sale, Concessions, Drinks, etc	Bake Sale, Concessions, Drinks, etc	6/13/2025	6/14/2025
31	Athletics	Richard Bassett	Athletics equipment	stadium seats	Football games	8/1/2025	12/1/2025
32	Athletics	Richard Bassett	Athletics	Corporate Sponsors	Corporate Sponsors	8/1/2025	5/1/2026
33	Football	Ryan Keenon	Coaches Summer Pay	Ridgy Maker	Ridgy Maker	6/9/2025	6/9/2025
34	Grove Cheerleaders	Kelsey Rhine	camp uniforms, warmups	football program	selling ads for the program	7/1/2025	12/31/2025
35	Grove Bands	Joseph Wilhelm	Band Activity	Fan Pledge	Pledge Drive	9/8/2025	9/22/2025
36	Grove Bands	Joseph Wilhelm	Band Activity	World's Finest Chocolate	Selling Chocolate	9/24/2025	10/8/2025
37	Grove Bands	Joseph Wilhelm	Band Activity	Football, Basketball, and Wrestling Concessions	Football, Basketball, and Wrestling Concessions	9/1/2025	3/1/2026
38	Class of 2028	Alisha Smith	Prom	Shirts and Sweatshirts	Apparel Fundraiser	8/8/2025	11/14/2025
39	Class of 2028	Alisha Smith	Prom	Drinks	Sell drinks, mainly water during the school day.	8/14/2025	5/15/2026
40	GMS Drama	Jeffery Gilmore	Classroom supplies and pl	Popcorn	selling popcorn	8/11/2025	5/19/2026
41	GMS Drama	Jeffery Gilmore	Classroom supplies and pl	Cookies	Selling cookies	8/11/2025	6/30/2026
42	GMS Drama	Jeffery Gilmore	Classroom supplies and pl	Donations	Solicitation of Donations	8/11/2025	6/30/2026
43	GMS Drama	Jeffery Gilmore	Classroom supplies and pl	Tickets	Selling tickets to student productions	8/11/2025	5/31/2026
44	GMS Drama	Jeffery Gilmore	Classroom supplies and pl	T-Shirts	Selling of Show shirts to families and friends of GMS Drama participants.	8/11/2025	5/31/2026
45	Lisa Dodson	ECC Library	funds for our library	books	Book Fair	10/2/2025	10/17/2025
46	Lisa Dodson	ECC Library/Sci	funds for library	books	Book Fair	3/3/2026	3/20/2026
47	Science Department	Donna Deason	Science supplies and Scie	Springfield Grocer (Healthy Snacks)	To sell snacks during hall passing	8/25/2025	5/8/2026
48	Grove Choirs	Allie Cole	We are raising the money	Armed Baked Goods (Pies, Cookies, Bread, etc.)	Catrol Fundraiser	7/1/2025	10/14/2025
49	Early Childhood Cent	Allie Cole	Activity	Ridgy store items (small prizes/toys)	Ridgy Store	8/22/2025	5/22/2026
50	Early Childhood Cent	Allie Cole	Activity fund	na	School Store	8/15/2025	5/22/2026
51	Upper Elementary	Charla Matthews	student activities, rewards	house/spirit tshirts	sales	8/13/2025	8/29/2025
52	upper elementary	Charla Matthews	student activities, recogniti	Ridgy Store Snacks	Ridgy store sales	8/14/2025	5/22/2026
53	Upper Elementary	Spirit Gear	student recognition, suppli	shirts, hoodies, blanket, etc.	Spirit Store Sales	8/18/2025	10/15/2025
54	Middle School Math	Dozier	Supplies, Instructional Mat	Country Meats	Selling meat sticks.	8/14/2025	5/10/2026
55	NHS	Allie Cole	unifs, pens, certifica	Books for the Middle School	Pay to wear a hat	8/23/2025	5/10/2026
56	MS STEM	Andrea Benge	Activities, Trips, Supplies,	Suckers, snacks, drinks, school supplies, stickers	Selling suckers, snacks, drinks, school supplies, stickers, buttons, pins	8/14/2025	5/18/2026
57	Athletics	Richard Bassett	Athletics equipment	All-Sports Passes	All-Sports Passes	8/13/2025	5/10/2026
58	Grove High School/St	Bobby Kreutz	High School supplies, gifts	Smart snacks and water	School Store	8/18/2025	5/15/2026
59	ECC	ALLIE COLE	ACTIVITY FUND	NA	BACK TO SCHOOL BASH	8/14/2025	9/30/2025
60	Class of 2028	Amanda Petty	Prom 2028	Water	Homecoming assembly	9/26/2025	9/26/2025
61	Grove High School	Missy Skaggs	supplies as needed	firm/parking permits	n/a	8/14/2025	5/1/2026
62	HS Yearbook	Richard Bassett	Lower cost of yearbooks	Yearbooks, Senior Ads & DVD's	Sell 2026 Yearbooks, Senior Memory Ads & DVD's	9/22/2025	5/15/2026
63	Hall of Fame	Richard Bassett	HOF Banquet	Meal tickets.	HOF banquet	9/15/2025	11/4/2025
64	GMS Student Council	Jessica Lavery	To off set cost of 'Incentiv	food and drink	Concession Stand during Incentive Day	10/24/2025	10/24/2025
65	Upper Elementary	Charla Matthews	student activity account	Double Good Popcorn	Double Good Popcorn	9/10/2025	10/10/2025
66	NHS	Lesia Praytor	Angle Tree Kids & Summe	Shirts	Selling Pink Out Shirts	9/10/2025	10/13/2025
67	GMS Student Council	Jessica Lavery	Incentive Day Rewards the	Individual Bags of Freshly Popped Popcorn	Popcorn Friday	9/12/2025	5/15/2026
68	HS TSA	Todd Kerr	Travel expenses	Garage sale	garage sale	9/27/2025	9/27/2025
69	ECC Library	Kerr	Books for the library	Book Fair	Book Fair	9/27/2025	9/27/2025
70	High School Drama	Jeffrey Haynes	Reimbursement for the pu	T-Shirts	Purchase of T-Shirts for One-Act Team	9/15/2025	9/26/2025
71	FCCLA	Shelly Crawford	For Tshirts	group Tshirts	Students will pay 15 dollars for their tshirts. This is not an official fundraiser as we are not raising funds. Stud	10/8/2025	10/24/2025
72	Alternative Education	Ed Trumbull	Greenhouse Activity Acco	Plants/Ornamental Flowers	Spring Plant Sale	3/23/2026	5/8/2026
73	Lower Elementary	Dotie Smith	Field trips throughout the y	Tickets to field trips	Field Trips	9/22/2025	5/15/2026
74	Counseling Departme	Dani Lyons	PSAT's and AP testing	tests	testing	9/8/2025	12/31/2025
75	Grove Choirs	Andrea Jones	Uniform Fees	Uniforms, T-Shirts, Shoes, etc.	Collecting money for choir uniforms	10/7/2025	5/15/2026
76	Grove Choirs	Andrea Jones	To pay for contest fees	Contests throughout the year.	Collecting money for contest fees throughout the year.	9/22/2025	5/15/2026
77	FFA	Mike Mayfield	FFA activities, Convention	Blue and Gold Sausage, T&D Meats, D's Meats	Meat Sales	10/20/2025	5/1/2026
78	MS STEM	Andrea Benge	Classroom supplies, dues,	Membership Dues & Registration for TSA Events &	Receiving Payment for Registration and Dues for events and conferences	10/1/2025	6/19/2026
79	ECC	Allie Cole	School field trip	n/a	n/a	9/22/2025	5/22/2026
80	Science Department	Donna Deason	There will be minimal profit	Display Boards	To sell display boards for science fair	10/6/2025	1/9/2026
81	HS TSA	Todd Kerr	TSA Travel expenses	shirts, key chains, buttons	sale of made items	10/11/2025	5/15/2026
82	WINGS Academy and	Keelee Martin	The sale of the chicken eg	Chicken Eggs	Chicken Egg Sales	10/20/2025	5/23/2026
83	StuCo	Kerr	COW Week	COW Week merch	n/a	10/15/2025	5/15/2026
84	Stu/Guthridge	Kerr	COW Week	Winter Dance	n/a	11/1/2025	5/15/2026
85	GUE 5th Grade	Crissey Nelson	taking the 5th grade class	Movie tickets-Grove Cinema	attending movie	12/1/2025	12/19/2025
86	ECC ACTIVITY FUND	ALLIE COLE	ACTIVITY FUND	N/A	N/A	12/1/2025	12/31/2025
87	MS STEM	Andrea Benge	Travel, Food, Registration,	T-Shirts (TSA & Grove Ridgy Design)	Selling Shirts	10/22/2025	11/5/2025
88	ECC	ALLIE COLE	Activity Fund	None	SILLY STRING THE TEACHER	10/21/2025	10/31/2025
89	Allie Cole	Allie Cole	Activity	N/A	Fill Santa's Beard, Spread Christmas Cheer	12/1/2025	12/19/2025
90	COW Week	Kerr	COW Week	Movie on Football Field	football feed	10/22/2025	5/14/2026
91	Class of 2028	Alisha Smith	Prom/ Class of 2028 Activ	Entry Fee- Team Fee	Entry Fee of 2028- each student collect at least \$28	12/1/2025	4/30/2026
92	Math Club	Alisha Smith	Math Honor Society Membr	Membership to Mu Alpha Theta, National Math Hor	Collect Dues for students to be members of Mu Alpha Theta	10/21/2025	3/31/2026
93	Grove FFA	Mike Mayfield	Livestock Show Entry Fee	Show Entry Fees and Nominations	Oklahoma Youth Expo, Tulsa State Fair, American Royal	11/14/2025	5/22/2026
94	High School Drama	Jeffrey Haynes	Fundraising for play/music	None	Fan Pledge	11/11/2025	12/12/2025
95	High School Drama	Jeffrey Haynes	T-Shirts for Seussical	T-Shirts	Sale of T-Shirts for Seussical	11/11/2025	2/28/2026
96	High School Drama	Jeffrey Haynes	Concessions for musical	Candy and water	Concession Sales	2/22/2026	3/13/2026
97	High School Drama	Jeffrey Haynes	Drama activity account	Tickets	Selling tickets to musical	1/1/2026	3/13/2026
98	High School Drama	Jeffrey Haynes	Ads for program	lad space	Sale of ads for program	1/1/2026	3/13/2026
99	Boys Soccer	Bryan Burroughs	Dues	Team Gear	N/A	11/13/2025	5/22/2026
100	8th grade	Kim Hampton	Movies for 8th grade	movie	movie	12/5/2025	12/19/2025
101	COW Week/Student	Guthridge/Kerr	COW Week fundraiser	Tshirts/Sweatshirts/COW Week Merch	Selling T-Shirts	11/12/2025	5/13/2026
102	GMS Student Council	Jessica Lavery	fund incentive day trips	concession stand items and glow items	sell glow items and concession items during incentive day	1/5/2026	1/30/2026
103	Mid-School Annual (v	Lisa Thomas	Class supplies, yearbook t	Old yearbooks	To sell past stock of yearbooks	12/1/2025	5/15/2026
104	Grove Choirs	Andrea Jones	The money will be used for	Grove Choir Uniforms	Grove Choir Uniform Rental: renting uniforms to students	11/1/2025	5/15/2026
105	MS STEM	Andrea Benge	Travel expenses, classroo	3D Prints and Laser Printed Items	Sale of 3D printed and laser made items	11/7/2025	5/22/2026
106	HS TSA	Todd Kerr	Competitive travel	competitive dance	MS dance	3/23/2026	4/3/2026
107	HS TSA	todd kerr	travel expenses	entry fee	video game tournament	12/10/2025	5/15/2026
108	ECC	Allie Cole	Pay for our field trip to the	Movie tickets	Field trip to the Grove Cinema	12/15/2025	12/15/2025
112	GMS Student Council	Jessica Lavery	Support Student Council fo	Dance Tickets / Concession	Semi-Formal Dance	2/2/2026	2/21/2026
110	ECC	Allie Cole	Tickets, popcorn, drink, an	Movie ticket package	Field Trip to Grove Cinema	12/10/2025	12/19/2025
111	Class of 2029	Amanda Petty	Prom	t shirts - TBD	Sell Basketball t-shirts until the 19th of December	12/10/2025	12/19/2025
112	Class of 2028	Alisha Smith	Prom/ Class of 2028 Activ	Entry Fee- Team Fee	Volleyball Tournament	1/14/2026	5/15/2026
113	Class of 2028	Alisha Smith	Prom/ Class of 2028 Activ	Concessions later than	Concessions Sales at Volleyball Tournament	1/21/2026	5/15/2026
114	Grove Bands	Joseph Wilhelm	Band Activity	Oklahoma Fundraiser and Apparel	Brochure sales	1/19/2026	2/2/2026
115	GMS Student Council	Jessica Lavery	Incentive Day Rewards the	Concession Stand Items	Incentive Day Concession Stand	1/16/2026	1/16/2026
116	GMS Student Council	Jessica Lavery	Support Student Council fo	Concession Stand	Concession Stand	2/21/2026	2/21/2026
117	Cow week	Kerr/Guthridge	Activity center	Daddy Daughter Dance	Daddy Daughter Dance	1/14/2026	5/2/2026
118	Grove FCCLA	Shelly Crawford	Tshirts, travel, food, comp	BBQ Dinner	BBQ Dinner	3/12/2026	3/12/2026
119	ECC	ECC	ECC Activity Fund	Bingo tickets, pizza, and drinks	BINGO Night	2/10/2026	2/27/2026
120	ECC	Allie Cole	Activity fund	Easter eggs	Easter Egg Fundraiser	3/23/2026	4/3/2026
121	ECC	Allie Cole	Activity fund	Prom tickets, pictures, face tattoos	Tiny Prom	4/3/2026	5/1/2026
122	COW Week	Kerr/Guthridge	activity complex	school and community coin drive	n/a	2/10/2026	5/4/2026
123	COW Week	Kerr/Guthridge	activity complex	museum tours at the high school for elem students	high school cow decorations	3/9/2026	5/1/2026
124	Drama	Jeff Haynes	musical expenses	tshirts	tshirt sales	2/11/2026	3/10/2026
125	HS drama	Jeff Haynes	musical expenses	ticket sales	ticket sales	2/11/2026	3/8/2026
126	Golf	Justin Teel	using money to help pay fo	n/a	apparel and equipment	2/2/2026	5/15/2026
127	Math Club	Alisha Smith	Pay student dues for math	3D Printed goods	Math Club Pi Day Celebration	3/12/2026	3/27/2026
128	MS STEM	Andrea Benge	Travel dues, classroom s	Chili Dinner, Silent Auction & Demonstration Night	Chili Dinner, Silent Auction & Demonstration Night	4/2/2026	4/9/2026
129	MS STEM	Andrea Benge	Competition dues, classro	Slots on a Fundraising Grid	Donation Grid/Fundraising Board (Individuals sponsor slots on a grid for a student)	3/12/2026	4/9/2026

130	COW Week	Kerr/Guthridge	COW Week	n/a	n/a	3/11/2026	3/13/2026
131	COW WEEK	Kerr/Guthridge	activity complex	garage sale, golf tournaments, moving through gro	n/a	4/14/2026	5/15/2026
132	COW WEEK	KERR/GUTHRIE	ACTIVITY COMPLEX	2K IN A DAY	N/A	4/14/2026	5/15/2026
133	COW WEEK	KERR/GUTHRIE	ACTIVITY COMPLEX	GARAGE SALE	GARAGE SALE	3/24/2026	5/15/2026
134	COW WEEK	KERR/GUTHRIE	ACTIVITY COMPLEX	GOLF TOURNAMENT PI	GOLF TOURNAMENT	3/24/2026	5/15/2026
135	COW WEEK	KERR/GUTHRIE	ACTIVITY COMPLEX	GOLF TOURN COVES	GOLF TOURN	3/24/2026	5/15/2026
136	COW WEEK	KERR/GUTHRIE	ACTIVITY COMPLEX	MOOVING THROUGH GROVE	MOOVING THROUGH GROVE	3/24/2026	5/15/2026
137	Grove Athletics	Richard Bassett	Athletics	Discount Cards	Athletics	4/15/2026	4/14/2026
138	Football	Ryan Keenom	Coaches Summer Pay	Youth Camp	Youth Football Camp	5/11/2026	5/12/2026
139	Football	Ryan Keenom	Coaches Summer Pay	Ridgy Maker	Ridgy Maker	6/8/2026	7/30/2026
140	Girls basketball	Richard Bassett	Coaches Summer Pay	Youth Basketball camp	Youth Basketball camp	5/19/2026	5/21/2026
141	Grove Softball	Jeremy Collins	Summer pay	n/a	Youth SB Camp	5/19/2026	5/21/2026
142	Grove Softball	Jeremy Collins	Summer pay and Umpire f	n/a	Grove Softball Team Camp	5/26/2026	5/29/2026
143	MS STEM	Andrea Benga	Competition Funding	Sponsorships for Nationals	Seeking Donations for National TSA Sponsorships	5/13/2026	5/27/2026
144	HS TSA	Todd Kerr	National TSA Competition	Sponsorships for Nationals	Selling Sponsorships for National TSA Competition	5/13/2026	5/27/2026

Attachment A - May 12, 2026
Grove Public School Donations

	Received From	Activity Acct. Deposit
\$350.00	WGM Top Level	#819 Athletics
\$6,848.00	Tony Mathis	#807 Wrestling
\$250.00	Bank of Grand Lake	#944 MS Stem
\$300.00	Simmons Prepared Foods	#944 MS Stem
\$100.00	BancFirst	#944 MS Stem
\$1,000.00	Southern Star	#944 MS Stem
		General Fund Donation
\$2,591.48	Grove Football Boosters Inc.	General Fund - Keenom
\$11,439.48	Total	

ATTACHMENT B
Surplus Items May 12, 2026

HS Items:

# of Items	Equipment Description	Purchase Date	Condition
2	Class sets of CLASS VR VR Googles & Charging Case	February 2020	Old Technology Requires Annual Subscription
2	VR Goggles	February 2020	Old Technology
1	Large laptop cart	2017	Good
22	Dell Latitude E5570 Laptops	September 2016	Old Technology Cannot upgrade to Windows 11
10	Android Tablets	2016	Old Technology will not charge