

CENTRAL COMMUNITY COLLEGE BOARD OF GOVERNORS MEETING
Thursday, November 20, 2025, 12:00 PM, Central Community College Administration
Board Room

Work Session begins at 11 a.m.

A G E N D A

Central Community College reserves the right to make changes to the agenda up to 48 hours prior to the scheduled meeting. A current copy of the agenda may be obtained in the College President's Office, 3134 W. Highway 34, Grand Island, Nebraska.

1. Agenda
Information Item
2. Phelps Project and Sculpture Update/Holdrege Center Naming Rights
Action Item
3. Edgerton Trades on the Move
Action Item
4. Nebraska Community College Insurance Trust
Action Item
5. Break before 1 p.m. Meeting
Action Item

Board Work Session Agenda
November 20, 2025, Grand Island

Lunch will be provided.

Noon – Phelps Project and Sculpture Update/Holdrege Center Naming Rights – Skalberg
12:20 p.m. – Edgerton Trades on the Move – Gotschall and Mary Molliconi
12:40 p.m. – Nebraska Community College Insurance Trust – King
12:55 p.m. – Break before 1 p.m. meeting

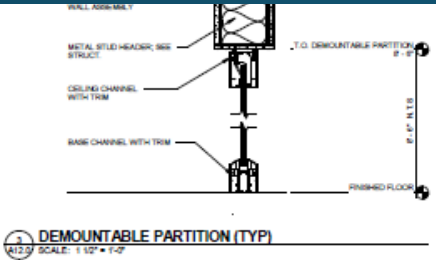
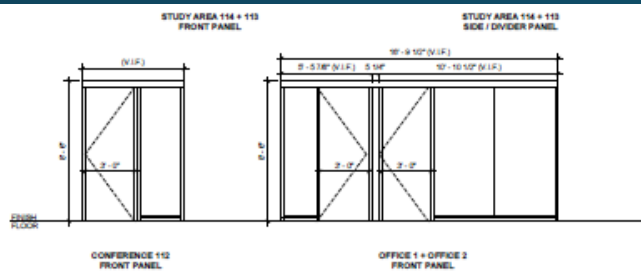


Partnership in Capital Projects

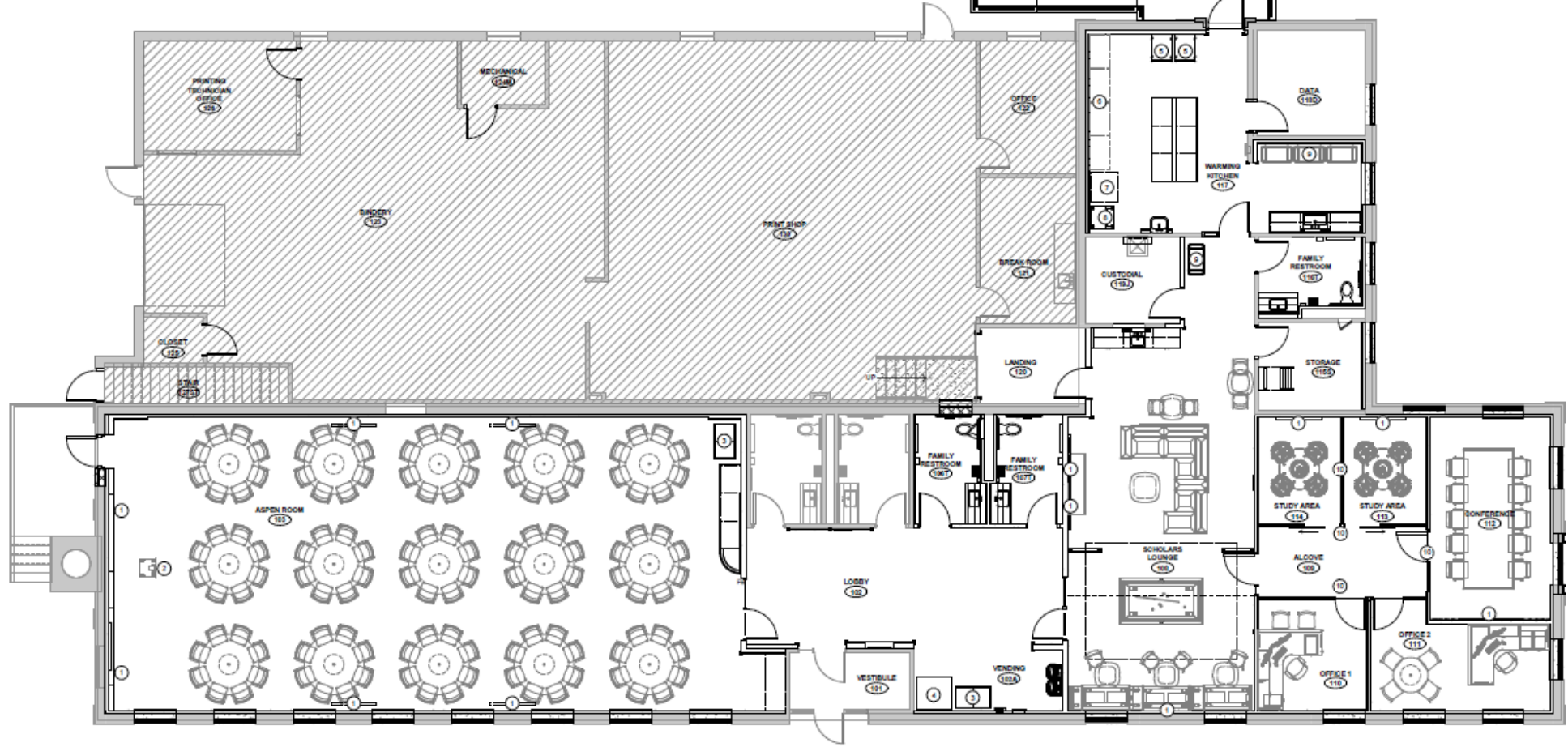
2025 Update



Phelps Building Hastings Campus



3. WASTE AND RECYCLE RECEPTACLES (OWNER PROVIDED)
4. VENDING MACHINES (OWNER PROVIDED)
5. TALL WARMING CABINETS (OWNER PROVIDED)
6. TALL SHELVING RACKS (OWNER PROVIDED)
7. REFRIGERATOR (OWNER PROVIDED)
8. ICE MACHINE (OWNER PROVIDED)
9. SERVICE CARTS (OWNER PROVIDED)
10. DEMOUNTABLE PARTITIONS (CONTRACTOR PROVIDED AND INSTALLED)



Central Community College - Hastings
 PHELPS BUILDING PHASE 2 REMODEL
 550 South Technical Blvd
 Hastings, NE 68901

Revision / Issue	Date
1 - PR 001	9/26/2025

Furniture, Fixtures & Equipment Floor Plans

Project Number: 2549
 Date: August 1, 2025

Copyright © 2025
 WELKING Architecture | Design | Planning LLC.

Sheet Number

A12.0

FURNITURE, FIXTURE AND EQUIPMENT FLOOR PLAN

SCALE: 3/8" = 1'-0"

Public Art at the
Phelps Building



Sculptor Matthew Placzek



Sculptor Matthew Placzek

Public Art at the Phelps Building



CENTRAL COMMUNITY COLLEGE
FOUNDATION



Phelps Project
Total Philanthropic Commitment =
\$1,070,000



Bringing Central to the Center of Holdrege

Holdrege Naming Rights Fundraising





1 FLOOR PLAN - GROUND FLOOR

Copyright © 2025
www.WilkinsADP.com



Date: April 14, 2025
Project Number: 2421

Central Community College HOLDREGE CENTER RELOCATION



Holdrege Naming Rights Fundraising

- Community Classroom 106 & Foyer 101 -**Phelps Memorial Health Center**
- CNA Nursing Lab 121 – **TBD, *this space still available***
- Classroom 123 – **Dale & Betty Murdoch**
- Computer Lab 118 - **Roy W. & Mary L. Pearson**
- Live Video Room 114 – **Embecta**
- Live Video Room 115 – **In Memory of Gregory Heiden, *Given by Linda Heiden & Family***
- Office 111 – **Becton Dickinson**
- Office 113 – **Phelps County Development Corporation**

Total Philanthropic Commitment = \$678,000

We are proud to maximize student and
community success *with you!*

Thank you





TRADES ON THE MOVE PARTNERSHIP

CENTRAL COMMUNITY COLLEGE

EDGERTON EXPLORIT CENTER

SIX REGIONS, ONE NEBRASKA





Why the Skilled Trades Matter

- Skilled trades are critical to infrastructure, construction, and manufacturing.
- Growing demand: The U.S. Bureau of Labor Statistics projects 235,000 job openings annually in construction and extraction occupations through 2033.
- Issue: Fewer young people (ages 18–25) are entering trades, leading to labor shortages.

HEESE EVENT CENT



UNDERSTANDING THE YOUTH TRADE SHORTAGE

- The ratio of retiring Baby Boomers to younger workers entering the trades is roughly **5:2** — for every five retirees, only two new entrants are joining. [skillwork.com](https://www.skillwork.com)
- Nearly **70%** of tradespeople say that labor shortages are a problem in their industry. [Research MS Root](#)
- In the skilled trades workforce, about **40% are over age 45**, and less than 9% of workers are aged 19–24 in trade roles. [PeopleReady](#)
- It is projected that in manufacturing and other skilled-trades sectors up to **2.1 million jobs may go unfilled by 2030** due to the lack of skilled labor. [Census.gov+1](#)
- Shortage = higher project costs, delays, and reduced community capacity



WHY ARE YOUTH AVOIDING TRADES

- 4-year college is often seen as the only "successful" path
- Lack of exposure to real trade careers
- Limited access to hands-on learning at young ages
- Misperception: "Trades don't pay or require skills" (**not true**)
- Financial barriers like upfront training or tools

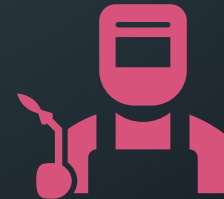
IMPACT OF THE SHORTAGE



Economic: Delayed projects, higher costs. (Construction delay cost \$1.6 trillion annually globally).



Social: Housing shortages worsen due to lack of builders.



Industry: Overworked current workers, reduced innovation.

THE SOLUTION – BRIDGING THE GAP

The 6 Regions/1 Nebraska, Central Workforce Action Team developed a way to create a pipeline in the trades by taking trades education on the road



The group is focused on increasing interest in trades with the youth in Central Nebraska. Dr. Josie Schafer shared important data about gaps and opportunities in the trades in the Central area when the committee met in July 2024.



The project aims to engage Nebraska kids in grades K – 12 with a focus on 3rd – 8th by providing them with programming, local connections, and educating their families about trade opportunities.



The action team approached the Edgerton Explorit Center in Aurora, known for hands-on science education, to put together a 3-year program and budget for Trades on the Move Program based on their Edgerton On The Move model.



EDGERTON TRADES ON THE MOVE OVERVIEW

- Partnership formed by **6 Regions One Nebraska + CCC + Edgerton**
- Developed 3-year program budget: **\$890,503**
- CCC committed **\$300,000** toward launch
- With CCC's partnership, Edgerton has started incorporating Trades Science **into existing programming**
- Full mobile buildout will advance **as additional funding is secured**



WHY EDGERTON?

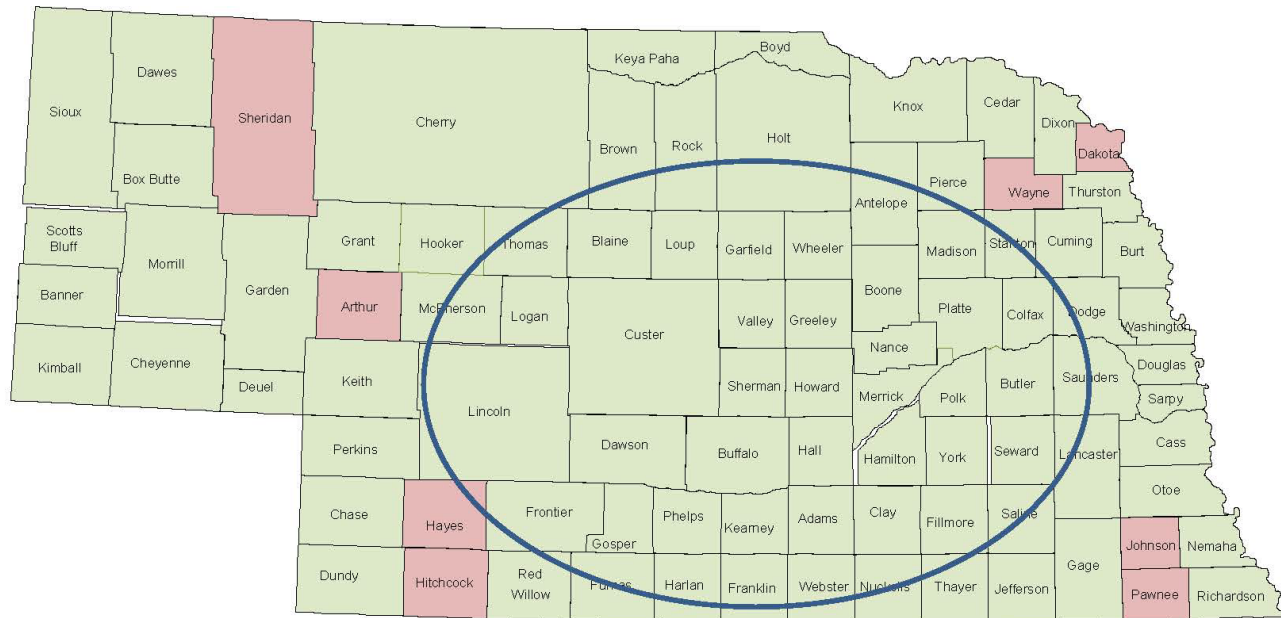
- 30 years of hands-on STEM education leadership in Nebraska
- Proven statewide reach through **Edgerton On The Move**
- Programming impacts **150,000–200,000** people each year
- Known for turning learning into high-energy discovery
- Trusted educational partner by schools, businesses, and communities

EDGERTON EXPLORIT CENTER GEOGRAPHIC AREAS SERVED & EXTENSIVE REACH

Nebraska

Edgerton Explorit Center Programming by county

- Counties Edgerton provided programming in the past 3 years
- Counties Edgerton has not provided programming in the past 3 years
- Counties Edgerton provides multiple programming to each year



- In the past 3 years, we have provided programming in 85 of Nebraska's 93 counties which are highlighted in green.
- We have conducted multiple programs over several years in the 50 counties surrounding Aurora which located in the circled area.
- Edgerton serves between 150,000 and 200,000 students, teachers and families each year.



CENTRAL COMMUNITY COLLEGE'S COMMITMENT:

- Central Community College has committed \$100,000 to the Edgerton Explorit Center over 3 years to add Trade Science into their programming
- CCC will also provide access to experts, marketing and recruitment support, and career statistics while building pathways to dual credit and post-secondary opportunities
- Support with grant writing and reporting
- Summer camp opportunities in trades areas

OTHER COMMITMENTS

- RMV Construction has committed to a 3-year loan for a Trades Science pickup.
- \$2,000 grant from the Hamilton County Visitors Committee towards the \$3,800 need to wrap the pickup
- Wortman Enterprises has donated \$25,000 in 3 yearly payments for a total of \$75,000 toward the project.
- Multiple visits and donor meetings held or planned.



PHASE 1: EDGERTON TRADES SCIENCE LAUNCH

Current integration includes:

- Trades-based exhibits, demonstrations, and lab experiences at the Edgerton Center
- Trades content added to **Edgerton On The Move Program** demonstrations, hands-on labs and exploration zone
- Projected reach: **50,000+** students, teachers, and families in Phase 1



METRICS FOR SUCCESS

- # of kids exposed to the trades
- # of schools reached
- # of local contractors included in the training and/or education
- # of parents/families given information on the trades
- Surveys of school staff, teachers and parents to monitor success

HOW YOU CAN HELP:



Exhibit & program sponsorships



In-kind contributions (TOOLS, materials, equipment)



Industry expertise and hands-on mentorship in live programs



Program support for long-term sustainability



QUESTIONS

WAGNER
308-345-3500 | www.DriveWagner.com

Edgerton / CCC Trades Science Program: *Sponsorship Opportunities*

Join Us in Building Nebraska's Future!

The Edgerton / CCC Trades Science Program gives students across Nebraska the opportunity to roll up their sleeves, pick up real tools, and discover the science behind the trades. Through hands-on labs and demonstrations, students explore construction, welding, electrical, plumbing, and mechanical systems—while also strengthening their understanding of science, technology, engineering, and mathematics (STEM).

By sponsoring a Trades Science Program, you make it possible for Edgerton educators to travel to schools and communities, providing all materials, instruction, and guidance needed for an unforgettable learning experience. Your support helps spark curiosity, connect students to high-demand careers, and ensure that every child—no matter where they live—can see themselves as a builder, creator, and innovator.

Become a Trades Science Sponsor Today!

Together, we can inspire the next generation of Nebraska's skilled workforce and empower students to turn curiosity into careers.

Sponsorship Levels

Field Trip Scholarship Sponsor – \$9 per student + transportation

Covers: *Make an immediate impact by covering travel and field trip program costs for one school to participate in a full day of Trades Science & STEM experiences at the Edgerton Explorit Center. Your sponsorship helps make hands-on learning possible for all students! Your sponsorship includes recognition and a photo thank-you from the students you support.*

Includes:

- Your sponsorship covers the cost for each student to attend a field trip to the Edgerton Explorit Center—multiplied by the number of students in the group—along with travel expenses for the school.
- Each field trip experience includes two live Trades or STEM demonstrations, or a combination of one demonstration and one hands-on lab.
- Invitation to participate in the field trip alongside the sponsored school.

Recognition:

- Invitation to participate in the field trip alongside a local school.
- Featured recognition on Edgerton's social media, website, newsletters, and event marketing—celebrating your commitment to inspiring Nebraska's next generation.
- Opportunity to collaborate on curriculum or special exhibits related to your industry.



To become a sponsor, contact **Mary Molliconi**, mary@edgerton.org or 402-694-4032

TradeWorks Classroom Sponsor – \$400

Covers: *Sponsors provide funding for a program where teachers can choose between a live Trades Science demonstration or a hands-on Trades lab experience. Demonstrations can accommodate any number of students, while hands-on labs are limited to 25 participants to ensure every student receives the best possible learning experience.*

Recognition:

- Invitation to participate in hands-on day at the sponsored school.
 - Featured recognition on Edgerton’s social media, website, newsletters, and event marketing—celebrating your commitment to inspiring Nebraska’s next generation.
 - Opportunity to collaborate on curriculum or special exhibits related to your industry.
 - Company name included in student thank-you letters or class videos.
-

Invent, Build Workshop Sponsor – \$1,000

Covers: *A half-day Trades Science program with four lab stations or mini workshops. Hands-on labs and some workshops are limited to 25 participants to ensure the best learning experience for every student.*

Recognition:

- Invitation to participate in hands-on day at sponsored school.
 - Featured recognition on Edgerton’s social media, website, newsletters, and event marketing—celebrating your commitment to inspiring Nebraska’s next generation.
 - Opportunity to collaborate on curriculum or special exhibits related to your industry.
 - Company name included in student thank-you letters or class videos.
-

Science & Sparks Day Sponsor – \$1,950

Covers: *A full day of Trades Science and Edgerton On The Move programs at a school of your choice.*

Includes:

6 labs or demonstrations
Traveling Explorit Zone brings the excitement of interactive science and trades exploration directly to schools, inspiring curiosity and discovery through engaging, hands-on exhibits.

Recognition:

- Invitation to participate in hands-on day at a local school
- Featured recognition on Edgerton’s social media, website, newsletters, and event marketing—celebrating your commitment to inspiring Nebraska’s next generation.
- Opportunity to collaborate on curriculum or special exhibits related to your industry.
- Company name included in student thank-you letters or class videos.

Family Trades Night Sponsor – \$1,000

Covers: *An evening program for families to explore Edgerton On The Move and trades-themed exhibits and activities together.*

Includes:

- Live Demonstration of your choice from Edgerton On The Move and Trades Science offerings
- Traveling Explorit Zone brings the excitement of interactive science and trades exploration directly to schools, inspiring curiosity and discovery through engaging, hands-on exhibits.
- Creates an opportunity for families to discover trades careers together, sharing an unforgettable hands-on learning experience.

Recognition:

- Invitation to participate in hands-on day at a local school
 - Featured recognition on Edgerton's social media, website, newsletters, and event marketing—celebrating your commitment to inspiring Nebraska's next generation.
 - Opportunity to collaborate on curriculum or special exhibits related to your industry.
 - Company name included in student thank-you letters or class videos.
-

Build the Future: Science & Trades Explosion Day Sponsor – \$3,050

Covers: *A two-day school or community event featuring the full Edgerton On The Move and Trades Science experience, bringing hands-on learning, live demonstrations, and interactive exhibits to students and families.*

This high-impact program includes multiple STEM and Trades Science labs, live demonstrations, and the Traveling Explorit Zone, where participants explore construction, engineering, and innovation through real-world science connections. Educators, students, and community members come together to celebrate learning that builds both curiosity and career awareness.

Includes:

- 10 Demonstrations and/or labs of your choice.
- Traveling Explorit Zone brings the excitement of interactive science and trades exploration directly to schools, inspiring curiosity and discovery through engaging, hands-on exhibits.
- Family engagement night, which creates an opportunity for families to discover trades careers together, sharing an unforgettable hands-on learning experience.

Recognition:

- Invitation to participate in hands-on day at a local school
- Featured recognition on Edgerton's social media, website, newsletters, and event marketing—celebrating your commitment to inspiring Nebraska's next generation.
- Opportunity to collaborate on curriculum or special exhibits related to your industry.
- Company name included in student thank-you letters or class videos.

Equipment & Exhibit Sponsor – \$2,500–\$10,000

Covers: *The creation of Trades Science exhibits, simulators, and educational stations that bring hands-on learning to life for students of all ages. These sponsorships are highly collaborative - offering businesses, community partners, and individuals the chance to work directly with the Edgerton Explorit Center and Central Community College teams to design meaningful, industry-inspired learning experiences.*

Each sponsored exhibit helps connect students to real-world skills in construction, electrical systems, welding, mechanics, and engineering - while also reinforcing science, technology, and innovation. Sponsors may choose to fund new exhibit builds, adopt existing exhibits in need of upgrades, or contribute to portable versions that can travel as part of the Trades On The Move mobile experience.

Exhibit Examples:

- \$2,500: Wood for the Trades Science open frame exhibit area
- \$5,000: CNC Router
- \$10,000: Welding simulator

Recognition:

- Co-branded signage on Explorit Zone and traveling exhibits you have sponsored
- Permanent plaque on sponsored exhibit
- Featured recognition on Edgerton’s social media, website, newsletters, and event marketing—celebrating your commitment to inspiring Nebraska’s next generation.
- Option to name exhibit
- **Exclusive \$5,000+ Sponsor Benefit:** Complimentary admission for all company employees to the Edgerton Explorit Center—sharing in the same excitement for science and discovery that your generosity brings to Nebraska’s students.

Workforce Legacy Partner - \$25,000+

Covers: *Multi-year support for Trades Science expansion, staffing, and workforce programming.*

Recognition:

Naming rights for an “Edgerton TradeWorks Lab”.

Featured recognition on Edgerton’s social media, website, newsletters, and event marketing—celebrating your commitment to inspiring Nebraska’s next generation.

Exclusive benefit: All of your company’s employees receive free admission to the Edgerton Explorit Center, so they can experience the same spirit of curiosity and discovery your support makes possible for students across Nebraska.

Exclusive invitation to school visits and Edgerton events.

Please note: Program fees do not include travel costs. Round-trip mileage and travel expenses will be added based on location.

All Sponsors receive a tax-deductible receipt for charitable support.

To become a sponsor, contact *Mary Molliconi, mary@edgerton.org or 402-694-4032*

Exhibition Price List

Construction and Carpentry

Build-A-Wall Challenge: Assemble wall framing with magnetic/Velcro studs, add insulation & siding panels.
\$600-\$1,200

Roof Truss Builder: Snap-together truss kits; test load distribution and strength.
\$800-\$1,500

Mini Masonry Station: Stack foam bricks with reusable "mortar" to learn bricklaying patterns.
\$500-\$1,000

Measure Twice Race: Measure/mark/cut foam rods accurately with tape measures and jigs.
\$300-\$700

Level It Up!: Use bubble/laser levels to set adjustable shelves perfectly level.
\$400-\$900

Earthquake Table: Build towers and test stability/engineering designs on a shake table.
\$800-\$1,500

Tool Match Game: Match real/replica tools to the correct trade task.
\$200-\$600

Blueprint Builder: Follow or design blueprints with LEGO/wood blocks; build to spec.
\$300-\$800

Electrical & Energy

Light It Right! Circuit Wall: Snap-circuit or wiring board stations to power lights, fans, buzzers.
\$500-\$1,200

Power Path Wiring Board: Route colored cords to create circuits between outlets/switches/lights.
\$700-\$1,500

Energy Transfer Station: Cranks, pulleys, gears demonstrate mechanical electrical energy.
\$600-\$1,300

Solar Power Lab: Angle small solar panels to power fans/lights; measure output.
\$500-\$1,200

Hand-Crank Generator Booth: Crank/pedal to power bulbs of different wattages; compare effort vs. output.
\$700-\$1,400

Electrical Wiring Kit: Teaches essential principles and techniques of electrical wiring.
\$1,099

Electrical Wiring Wall Unit: Works in conjunction with Electrical Wiring Kit.
\$505

Magnet Mover: Build/test electromagnets to lift washers and small metal pieces.
\$400-\$1,000



Plumbing, Water & HVAC

Pipe Puzzle Wall: Connect clear PVC pipes to route water/balls through valves and elbows.
\$700–\$1,500

Build-A-Drain Maze: Assemble pipe segments at correct slope to drain to a catch basin.
\$500–\$1,200

Water Heater Model: Transparent tank shows convection/heat rise and system flow.
\$500–\$1,200

Leak Detective: Find and seal “leaky” joints with gaskets and plumber’s tape.
\$300–\$800

Air Duct Challenge: Build duct runs; use fans to move balloons; measure airflow.
\$600–\$1,300

Welding, Metals & Fabrication

Weld Defects Classroom Kit: Identify and correct common weld defects.
\$1,539

Weld Bead Simulator: Trace welding beads with hot glue/wax to learn precision.
\$200–\$600

Pulley Lift Race: Compare effort between single and compound pulleys.
\$400–\$1,000

Magnetic Metal Puzzle: Simulate welding by joining metal plates with magnets.
\$300–\$800

Gears in Motion Table: Interlock gears to lift weights; explore ratios & torque.
\$400–\$1,000

GuideWeld VR Welding Simulator (Realityworks): Safe VR welding training with scoring/feedback.
\$9,899

Mechanics & Motion

Simple Engine Model: Cutaway/clear small engine model to demonstrate pistons/valves/timing.
\$800–\$1,500

Brake System Simulator: Transparent hydraulic brake model to see force transfer.
\$1,200–\$2,000

Hydraulics Demonstration Board: Cylinders/levers to lift or push objects; learn fluid power.
\$700–\$1,500

Gear Ratio Challenge: Change gear pairs to see torque vs. speed tradeoffs.
\$400–\$900

Transmission Trainer Display: Cutaway transmission; shift to see internal motion.
\$1,000–\$2,500

Build-A-Machine Station: Kits with motors, belts, and gears to design simple machines.
\$600–\$1,200



To become a sponsor, contact *Mary Molliconi*, mary@edgerton.org or 402-694-4032

Mechanics & Engines

Briggs & Stratton Educational Model Engine: Real small engine for repeated disassembly/reassembly.
\$250-\$350

Nasco Small Engine Classroom Kit: Teams remove cylinder head/valves/piston; rebuild with guides.
\$300-\$400

Realityworks Engine Dissection & Rebuild Lab: Guided take-apart and rebuild of small gas engine.
\$400-\$500

SainSmart/TECHING 4-Cylinder Metal Engine Kit: Assemble functioning metal model engine.
\$399

TOYAN FS-S100AC 4-Stroke RC Engine Kit: Build small working mechanical engine with transparent casing.
\$200

OWI V8 Combustion Engine Kit: Snap-together clear V8 model powered by batteries.
\$55-\$60

Trailer Circuits STEM Kit: Real-world trailer wiring simulation.
\$2,199

RC Tractor Pull Challenge (5-pack): Explore force, motion, friction, and gravity using remote-controlled tractors.
\$3,399

Smithsonian Motor Works 4-Cylinder: Plastic engine with moving pistons, lights, and sounds.
\$35-\$50

Simulator

Ergonomics & Lift Training Simulator (Realityworks): Interactive system for safe lifting and posture.
\$3,000-\$4,000

Electrical Troubleshooting Simulator (Realityworks): Diagnose electrical faults digitally.
\$2,500-\$3,000

Simbott VR Spray Painting Simulator: VR spray-gun training for technique and coverage.
\$2,500

SimSpray Go Portable VR Painter: Tabletop VR spray paint trainer.
\$5,000

Simbott Multi-Trades Simulator: Combines multiple trade simulations in one system.
\$10,000-\$18,000

Structure & Construction (Supplies)

Lumber framing (2*4s, 2*6s): Framing for walls/roof and hands-on lessons.
\$2,000-\$2,500

Metal roofing sheets: Durable roofing for 12*24 structure.
\$800-\$1,000

Exterior siding panels (Velcro mount): Interactive siding wall installation.
\$1,000-\$1,500

Flooring/tiling area supplies: Snap-in flooring/tiling for install/remove exhibit.
\$500-\$1,000

Electrical conduit & wall framing: Setup for routing and safety demonstrations.
\$400-\$700

Plumbing line wall setup: Display pipes and valves for exercises.
\$400-\$800



To become a sponsor, contact *Mary Molliconi*, mary@edgerton.org or 402-694-4032

Structure & Construction (Supplies)*CONTINUED

Paint & finish supplies:

Low-VOC paint and finishes for exhibit updates.

\$200–\$400

Digital Fabrication

3D Printer (Prusa i3 MK4 or Creality K1 Max): Classroom 3D printer for student prototyping.
\$1,000–\$1,500

3D printer enclosure / venting system: Safety and odor control for printing area.
\$250–\$400

CNC Router (X-Carve Pro 4*2 or Shapeoko 5 Pro): Educational CNC for wood/acrylic.
\$3,000–\$5,000

Resin Printer (Anycubic Photon Mono X2 or Elegoo Saturn 4K): High-detail resin prints for projects.
\$600–\$1,000

3D modeling software (Tinkercad / Fusion 360 Edu): Design tools for student models.
Free

CNC bits and tool sets: Variety of cutting heads and collets.
\$250–\$400

Filament supplies (PLA, ABS, PETG, etc.): 10–15 spools for student projects.
\$300–\$500

Glow Forge 3D Laser Printer: Laser cutting and engraving for fabrication projects.
\$6,500

Computer & control software: Dedicated CAM/control station.
\$1,000

Resin & alcohol wash station: Cleaning & curing setup for resin prints.
\$300–\$400

Basic tools (scrapers, pliers, nozzles, gloves): Maintenance and prep toolkit.
\$150–\$250

Dust collection system: Safe cleanup for fabrication area.
\$400–\$600

Safety shields & PPE: Glasses, ear protection, gloves.
\$150–\$300

Rotating small exhibits in Trades Areas

Development of small, rotating interactive exhibits across Trades Science zones to keep experiences fresh and engaging. \$200 (unlimited number).

RMV Construction is proud to support the 6 Regions, One Nebraska driven partnership with Edgerton Explorit Center and CCC Trades Science Program with Trades on the Move—an incredible effort giving students across Nebraska real, hands-on exposure to the skilled trades. By connecting education with experience, this program will spark curiosity, build confidence, and inspire future builders and innovators. We encourage others to join us in supporting this important investment in Nebraska's next generation.

— RMV Construction, LLC



To become a sponsor, contact *Mary Molliconi*, mary@edgerton.org or 402-694-4032

NEBRASKA COMMUNITY COLLEGE INSURANCE TRUST

Central • Metropolitan • Mid-Plains • Northeast • Southeast • Western

8040 Eiger Drive • P.O. Box 85210, Lincoln, NE 68501-5210 • Phone: 402-742-9220 • FAX: 402-742-9230

October 17, 2025

Board of Governors:

On July 1, 2025, the Nebraska Community College Insurance Trust began its 31st year of operations. The Trust operates as a governmental risk management pool and was created in 1995 by and for the Community Colleges of Nebraska under the provisions of the Nebraska Intergovernmental Risk Management Act for member Colleges to self-insure on a group basis coverage for property, liability, errors and omissions, and workers' compensation claims. Only Nebraska Community Colleges are eligible to participate in the Trust, and all six Community College Areas in Nebraska are members and owners of the Trust.

The officers of the Trust are as follows:

President: Mike Steele, Mid-Plains
Vice President: Scott Gray, Northeast
Secretary: Vacant - TBD
Treasurer: Amy Jorgens, Southeast

Other Board members:

Joel King, Central
Lynne Koski, Western
Kathryn (KT) Nelson, Metro

As it has since 2012, the Trust continues to contract with the Nebraska Risk Management Association, Inc. (NRMA) to administer the program. NRMA's primary business is pool administration in Nebraska. They provide the Trust with a full range of pool administrative services including but not limited to day-to-day pool management, financial/budget/investments, required filings/ communications with the Nebraska Department of Insurance, billing/invoicing, setting of annual contribution levels, scheduling and notice of Board and committee meetings and general member communications. NRMA has also administered all of the Trust's claims service needs since 2007. Other services being provided on a regular basis involve contract review, coverage interpretations, and coordination of broker services. All broker services continue to be provided by Arthur J. Gallagher Risk Management Services, Inc., as has been the case since the Trust's inception.

NRMA also provides the Trust with safety and loss prevention services including, but not limited to, providing experience and expertise to assist College safety committees and offering presentations and workshops to colleges for the purpose of creating a safer working environment as well as promoting safety for employees, students and the public. NRMA staff have met with each Trust member's safety personnel to familiarize them with the safety and loss prevention services that are available to them, and training has been provided to various members. When a major security event occurs at any of the Trust member sites, a contact is made to ensure emergency protocols are followed. NRMA staff is available to respond to the questions and concerns of your college's safety and security personnel too.

Effective July 1, 2012, the Trust established a committee structure for governance, operation and oversight of the Trust's business. The Trust has 4 committees with 3 Trust Board members serving on each committee. These committees and their current membership are as follows:

Finance and Audit Committee

- h Amy Jorgens, Southeast, Chairperson
- h Joel King, Central, Vice-Chair
- h Vacant - TBD

Claims Committee

- h Joel King, Central, Chairperson
- h Amy Jorgens, Southeast, Vice-Chair
- h Mike Steele, Mid-Plains

Loss Prevention and Safety Committee

- h Lynne Koski, Western Nebraska, Chairperson
- h Mike Steele, Mid-Plains, Vice-Chair
- h Scott Gray, Northeast

Policy Coverage and Review Committee

- h Lynne Koski, Western Nebraska, Chairperson
- h Scott Gray, Northeast, Vice-Chair
- h Vacant - TBD

The committee structure provides additional opportunities for involvement by all members of the Board in the governance, operation and oversight of the Trust's business.

Throughout the history of the Trust, whenever the Trust has been involved in a bidding situation with commercial carriers, the Trust's coverage has been broader and at a lower cost than competing bids of commercial carriers. As evidence of the breadth of coverage provided by the Trust, effective with the July 1, 2013, policy period, we added Cyber Liability coverage to the extensive list of coverages provided to our members. Effective July 1, 2016, the Trust changed from an individual contract-year accounting basis to a consolidated accounting basis similar to what other pools in Nebraska have previously done. The pool no longer must maintain separate accounts for each open contract year and this added flexibility helps to maintain cash flow, pay claims, and issue dividends. Accounting, reporting and investing procedures are streamlined in the process.

The July 1, 2025, renewal was once again difficult. The property market is very challenging in terms of cost and coverage, and multiple Trust members have experienced significant weather-related property losses in recent years which adds to the challenge. To assure the accuracy of property values, the Trust continues to have newly added, constructed or altered property inspected and appraised by its chosen appraisal firm, HCA Asset Management LLC. HCA also adjusts the values of property not specifically inspected and appraised utilizing industry accepted trend factors. When including the reported auto physical damages values, that process resulted in an increase of 6.6 percent in overall property values. A \$25,000 maintenance deductible per member applies for each property loss. In addition, a maximum deductible of 2 percent of the affected structure's insured value is associated with wind/hail losses.

The Travelers coverage includes what is referred to as a margin clause which makes insuring to replacement cost value a priority.

Travelers also imposes a \$1,500,000 Annual Aggregate Excess Policy Retention (Annual Aggregate Deductible) in any one policy year. No loss will be paid under this excess property coverage until this annual aggregate is eroded. This same provision was first presented in the 7/1/2022-2023 Travelers coverage.

The Trust continues to provide members with a \$6,900,000 limit of liability over its \$100,000 self-insured retention for a total of \$7,000,000 each occurrence limit of liability. A \$15,000 maintenance deductible is applied to all general liability claims.

In addition, one must also include the dividends paid and future potential dividend payments to member Colleges. Even with the return of dividends, the Trust remains in a strong financial position to consider future dividends.

As of September 30, 2025, some significant facts regarding the Trust are as follows:

1. The Trust has earned \$3,764,187 in investment income which has been used for the benefit of the Trust members.
2. The Trust has been able to close the 1996 - 2003, 2005, 2006, 2008-2020 insurance years as all claims arising during those years have been resolved. For the 7/1/2024-2025 coverage period, the Trust has incurred a total of 140 property, liability, and workers' compensation claims with a total incurred (paid plus reserves) of \$2,502,140.98 for that one-year period. Those amounts compares to a total of 181 claims and a total incurred of \$1,161,136.56 in losses for the one year 7/1/2023-2024 period. Both coverage periods have open claims and are valued as of 6/30/2025. These numbers can and will change as claims develop further.
3. The Trust has returned \$6,943,329 in dividends to its members as follows:
 - a. \$120,000 in July 2003
 - b. \$160,000 in July 2005
 - c. \$500,000 in July 2008
 - d. \$500,000 in July 2009
 - e. \$500,000 in July 2010
 - f. \$700,000 in July 2011
 - g. \$263,329 in July 2013
 - h. \$300,000 in July 2014
 - i. \$300,000 in July 2015
 - j. \$300,000 in July 2016
 - k. \$300,000 in July 2017
 - l. \$300,000 in July 2018
 - m. \$300,000 in July 2019
 - n. \$600,000 in July 2020
 - o. \$300,000 in July 2021
 - p. \$900,000 in July 2022
 - q. \$300,000 in July 2023
 - r. \$300,000 in July 2025

4. The Trust had a net gain for the year ending June 30, 2025, of \$1,291,814. Much of this year's gain is attributed to solid investment income because of higher rates.
5. Consequently, the member fund equity/surplus for the Trust increased from \$11,348,205 as of June 30, 2024, to \$12,640,019.10 as of June 30, 2025.
6. On February 29, 2024, the Trust received notice dated February 14, 2024, from the Nebraska Department of Insurance of the Adopted Financial Examination Report for the Trust, an examination involving the four years ending June 30, 2022. No changes were made to the financial statements as a result of the examination. Fund balances as stated by the Trust as of June 30, 2022, were accepted for this examination. The Trust received similar positive reports from the Department of Insurance for the periods ending June 30, 2018; June 30, 2014; June 30, 2010; June 30, 2006; and June 30, 2002. This is in addition to the annual financial audit the Trust retains the auditing firm of Thomas, Kunc & Black, L.L.P., to complete each year.
7. Beginning with the June 30, 2004, insurance year, the Trust phased in a contribution allocation method that includes actual claim experience as well as exposures. Thus, those Colleges with below average claim experience pay less and Colleges with above average claim experience pay more.
8. The primary package layer of property insurance is experience rated, meaning the allocation of property premium per member was based on the individual members' loss experience. Excess property insurance cost beyond the package policy was not experienced rated. The Board decided effective 7/1/2023 to utilize experience rating for allocating the excess property premium per member based on the member's most recent five-year loss data.

The Trust has been successful, provides coverage and services tailored to the needs of Community Colleges in Nebraska, and has saved the Colleges money. Thank you for your continuing support.



Michael D. Steele

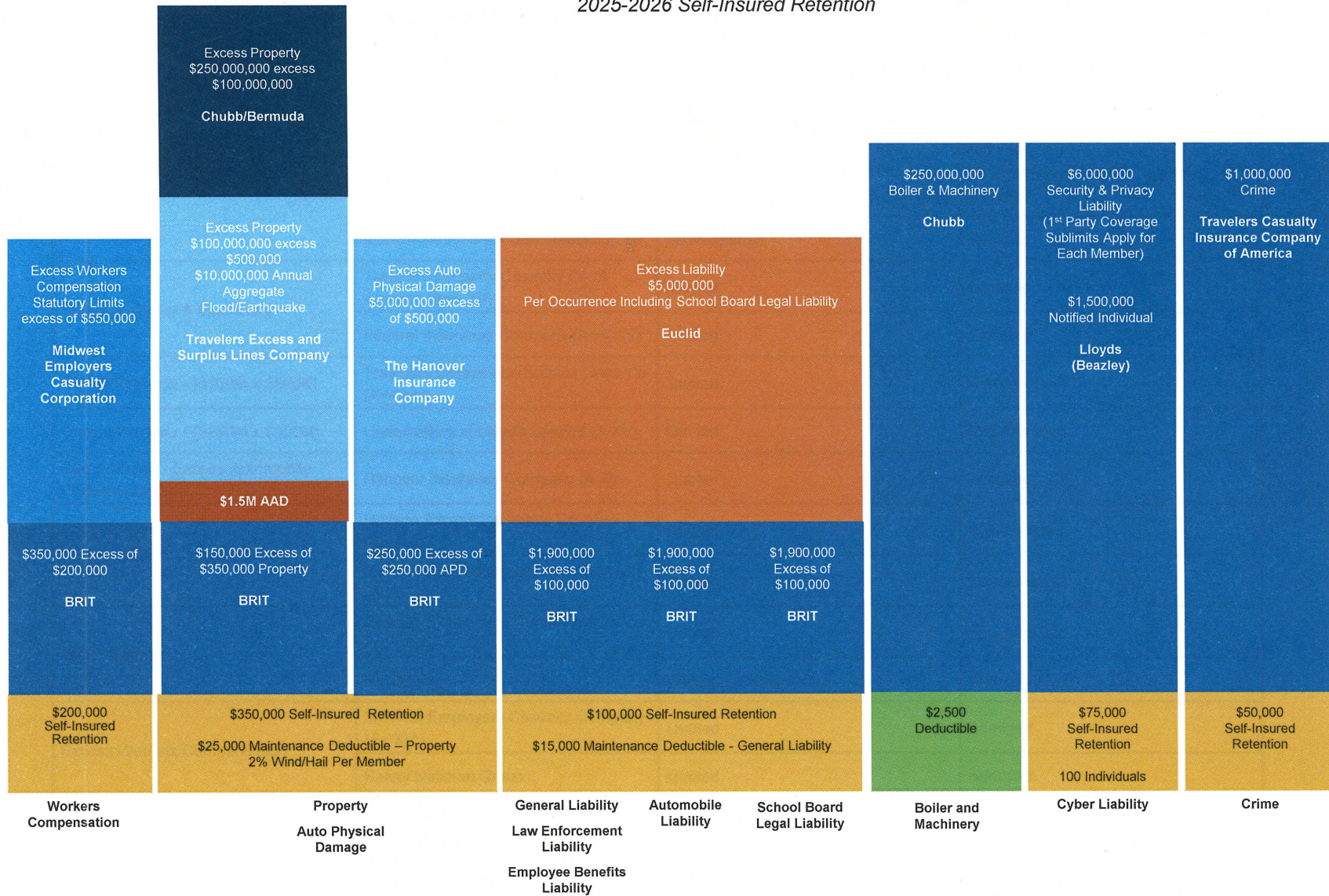
President

Nebraska Community College Insurance Trust

Program Structure - Proposed

Nebraska Community College Insurance Trust

2025-2026 Self-Insured Retention



- \$25,000 Maintenance Deductible applies per Member for Property and \$15,000 for General Liability. NOTE: For Wind/Hail losses, a Wind/Hail deductible replaces the **SELF INSURED RETENTION** and is \$250,000 or 2% of affected TIV, whichever is greater.
- The SIR is a per occurrence retention. Only one retention applies in the event of a multiple coverage part loss.
- \$400,000 annual aggregate applies to Flood and Earthquake in the primary \$500,000 Property Limit.
- All liability coverages have a \$5,000,000 Excess Liability Limit.

Nebraska Community College Insurance Trust

