

**GRADY INDEPENDENT SCHOOL DISTRICT
3500 FM 829
LENORAH, TEXAS 79749**

GRADY BOARD OF TRUSTEES

NOTICE: REGULAR MEETING

TIME: 6:30 PM

DATE: MONDAY, JANUARY 12, 2026

**PLACE: GRADY BOARD ROOM
3011 STATE HWY 176
LENORAH, TEXAS 79749**

MEMBERS – Bryan Creech; Randy Lewis; Austin Luna; David Matthews; Vance McMorries; Kyle McMorries; Ben Nabors; Danny Peugh; Orin Romine; Drew Snellgrove

AGENDA:

- I. President calls meeting to order**
- II. Invocation**
- III. Public Forum: Audience with individuals/committees making a request**
- IV. Consent Items:**
 - A. Approval of Minutes of the Previous Board Meeting(s)**
- V. Action Items:**
 - A. Consideration and Possible Action on by GT Presentations – Mrs. Franklin**
 - B. Consideration and Possible Action: Presentation from Eichelbaum Wardell Hansen Powell & Muñoz, P.C. Law Firm**
 - C. Consideration and Possible Action on Playground Equipment and Related Projects. 3**
 - D. Consideration and Possible Action on Presentation by Parkhill Engineering- Water Projects**
 - E. Consideration and Possible Action on Shiver Megert Updates on Bond Projects and Updates**
 - F. Discussion on Personnel:**
 - 1. Athletic Director**
 - 2. Business Manager**
 - 3. Counselor**

**Leandro Gonzales, Jr.
Superintendent**

If, during the course of the meeting, discussion of any item on the agenda should be held in a closed meeting, the Board will conduct a closed meeting in accordance with the Texas Open Meetings Act, Government Code, Chapter 551, Subchapters D and E. Before any closed meeting is convened, the presiding officer will publicly identify the section or sections of the Act authorizing the closed meeting. All final votes, actions, or decisions will be taken in open meeting.

- G. Consideration and Possible Action on SB 11 Bible Reading and Studying Time**
- H. Consideration and Possible Action on Utility Vehicles.**
- I. Consideration and Possible Action on Naming the Lone Finalist for the Superintendent's Position.**
- J. Consideration and Possible Action on Region 17 - West Texas Food Service Coop Interlocal Agreement.**
- K. Consideration and Possible Action on TAPR Hearing and Report.**
- L. Consideration and Possible Action on Board's Requests and Related Matters.**
- M. Consideration and Possible Action on Budget Amendments.**
- N. Approval for payment of monthly bills.**
- VI. Information Items:**
 - A. Superintendent's Report**
 - 1. Next Board Meetings: February 9th or 16th?**
- VII. Adjourn**

Leandro Gonzales, Jr.
Superintendent

If, during the course of the meeting, discussion of any item on the agenda should be held in a closed meeting, the Board will conduct a closed meeting in accordance with the Texas Open Meetings Act, Government Code, Chapter 551, Subchapters D and E. Before any closed meeting is convened, the presiding officer will publicly identify the section or sections of the Act authorizing the closed meeting. All final votes, actions, or decisions will be taken in open meeting.

Project Proposal

Prepared for
Grady ISD

January 2026



Prepared by



1410 W. Texas Avenue
Midland, Texas 79701
432-687-6388
playgroundsetc.com

Scope of Work

Playgrounds Etc understands that new construction and dealing with contractors can be stressful and burdensome. Our mission at Playgrounds Etc is to ensure that we make designing, receiving, and installing your new play scape the enjoyable experience that it should be. It has been a pleasure designing and bidding this project for your children. Keeping in mind the many options to consider when designing a new playground, we were able to design a playground that we are certain will best suit the needs of the children, and also meet the pricing objectives of your organization.

Site Preparation (1 Day)

Site preparation can be the most important stage of the process when completing a project of this scale. We will be contacting Dig Tess, which is an organization that will mark any public utilities leading up to, or conflicting with, the designated play area. One aspect of installation that is always considered is the slope of the area. Slope is important to ensure that proper drainage is obtained, thus reducing the amount of water that comes into contact with the play area. Proper drainage will reduce displacement of surfacing materials. We also want to make sure that we do not create any drainage issues for the surrounding facilities. While we are happy to provide machinery for minor excavations in order to complete this process any major excavation will need to be discussed and contracted for beforehand.

Delivery (7-9 Weeks)

The equipment will be shipped via an eighteen wheel truck and trailer to your location. Receiving a shipment of this size can become a burden if the right amount of man power and machinery are not available. Playgrounds Etc will be happy to supply needed man power and/or machinery needed to receive the shipment of equipment and surfacing materials if need be.

Installation (4-6 Weeks)

The next step will be to have all specified equipment installed. The installation will be a full installation, supervised by Certified Playground Safety Inspectors. Our installers will ensure that all equipment is installed in the proper locations, maintaining proper safety zones. The upright posts for the composite units will be concreted in the ground at a depth of 30 inches, in order to ensure stability. Once all the equipment has been installed we will then begin the process of installing the safety surfacing.

Clean Up (1 Day)

Playgrounds Etc will be responsible for cleaning up any trash that is left behind from shipping crates or plastic wrapping. Although we are happy to ensure that the playground and surrounding area is free of trash and other debris, we do ask that dumpsters be provided.



Grady ISD

STRUCTURE SP072020-002-2 • QUOTE QU00319269

Design is for illustration purposes only and colors may vary.

Color Key

- | | |
|------------------------|---------------------------|
| Post: Black | Panel: Black |
| Post Cap: Butterscotch | San. Panel: Black / White |
| Metal: Butterscotch | Deck: Brown |
| Plastic: Champagne | Fabric: Silver |



Grady ISD

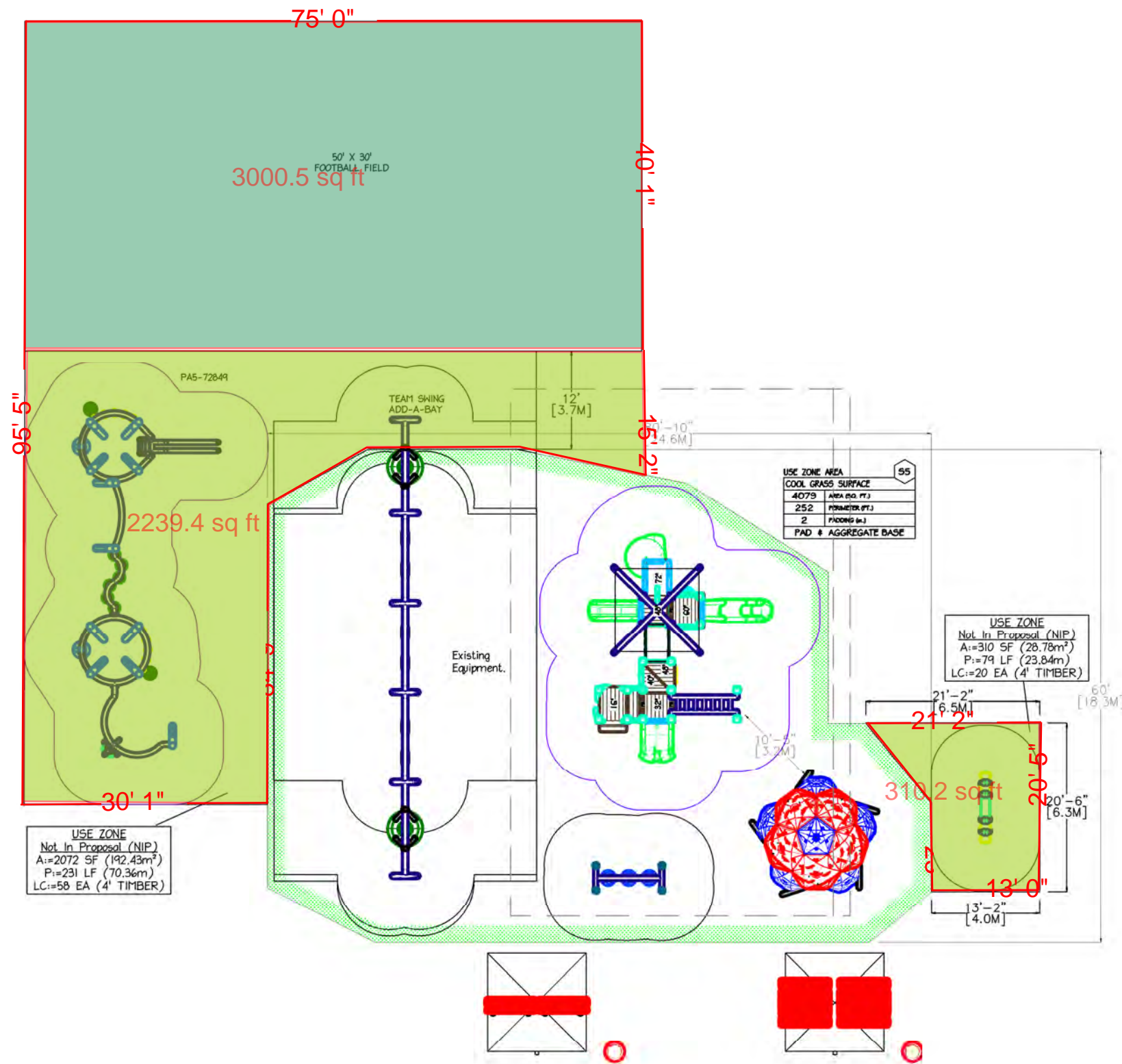
STRUCTURE SP072020-002-2 • QUOTE QU00319269

Design is for illustration purposes only and colors may vary.

Color Key

Post: Black
Post Cap: Butterscotch
Metal: Butterscotch
Plastic: Champagne

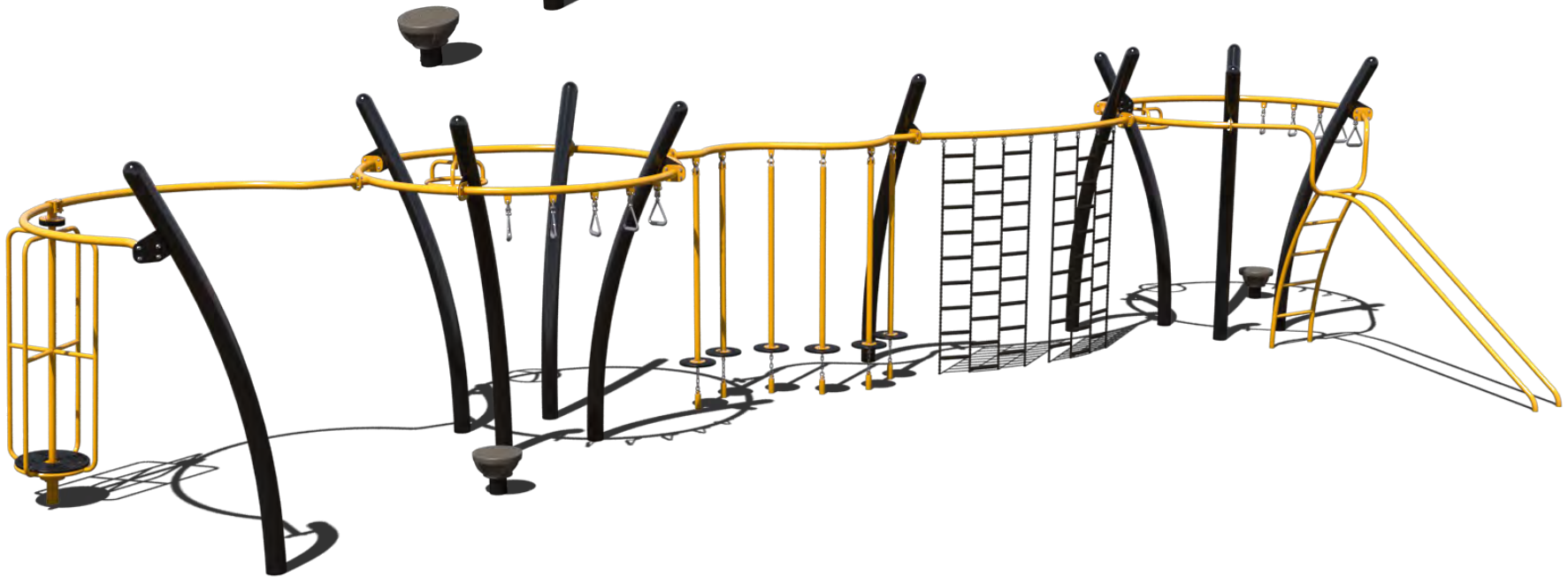
Panel: Black
San. Panel: Black / White
Deck: Brown
Fabric: Silver



Playgrounds
BY SUPERIOR RECREATIONAL PRODUCTS

PLAYGROUND SUPERVISION IS REQUIRED.
THIS DESIGN IS THE PROPERTY OF SUPERIOR RECREATIONAL PRODUCTS AND MAY NOT BE REPRODUCED OR USED IN ANY MANNER WITHOUT THE EXPRESSED WRITTEN CONSENT OF SUPERIOR RECREATIONAL PRODUCTS.





Grady ISD

STRUCTURE PA5-72849 • QUOTE QUO0318084

Design is for illustration purposes only and colors may vary.

Color Key	Post: Black	Panel: Black
	Post Cap: Butterscotch	San. Panel: Black / White
	Metal: Butterscotch	Deck: Brown
	Plastic: Champagne	Fabric: N/A

REFERENCE NUMBER
PA5-72849

5" STEEL STRUCTURE DESIGN

EQUIPMENT SIZE 42'X18'	USE ZONE 54'X30'
AGE GROUP 5-12	SURFACE AREA 1088 SQ. FT.

USER CAPACITY 20-25	4' TIMBER COUNT 41
------------------------	-----------------------

FALL HEIGHT 7'	9
-------------------	---

ADA ACCESSIBILITY

ELEVATED
PLAY ACTIVITIES
NA

	GROUND LEVEL ACCESSIBLE PLAY ACTIVITIES	GROUND LEVEL ACCESSIBLE ACTIVITY TYPES
REQUIRED	NA	NA
PROVIDED	NA	NA

THIS STRUCTURE MEETS OR EXCEEDS CPSC #325 AND ASTM F1487 UNLESS OTHERWISE NOTED.

DATE 5/13/2024 DRAWN/SAVED BY BL / WILLOW.BRANSCUM

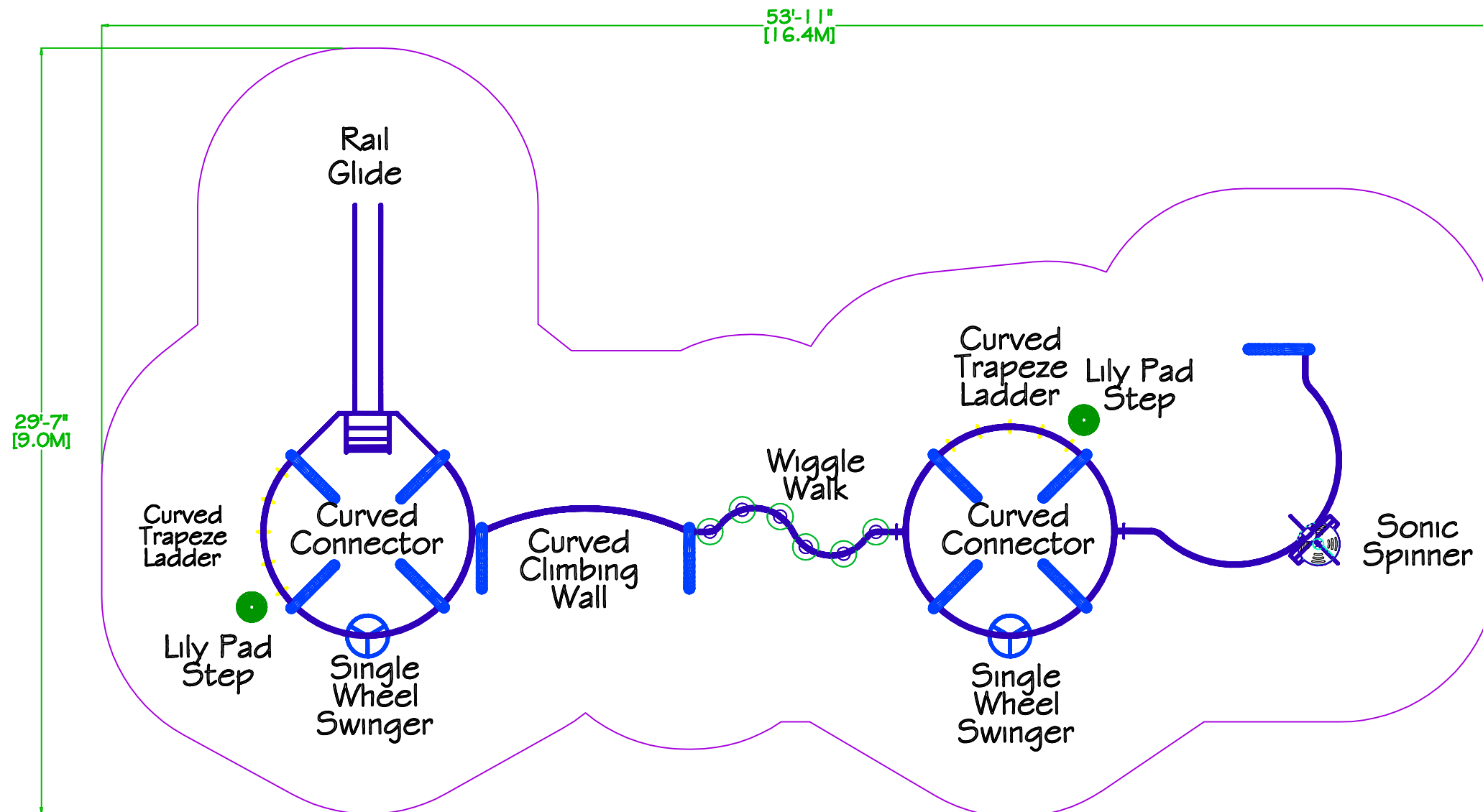
SCALE 3/16" = 1'-0" SHEET 1 OF 3

PAGE PLAN_VIEW

WE RECOMMEND THIS PLAN BE PRINTED ON 11" x 17" PAPER

PLAYGROUND SUPERVISION IS REQUIRED.

THIS DESIGN IS THE PROPERTY OF SUPERIOR RECREATIONAL PRODUCTS AND MAY NOT BE REPRODUCED OR USED IN ANY MANNER WITHOUT THE EXPRESSED WRITTEN CONSENT OF SUPERIOR RECREATIONAL PRODUCTS.



MODEL: TFR0684XX

4 Seat See-Saw

Promote social play with our 4-Seat See-Saw that ages 2-12 years can enjoy!

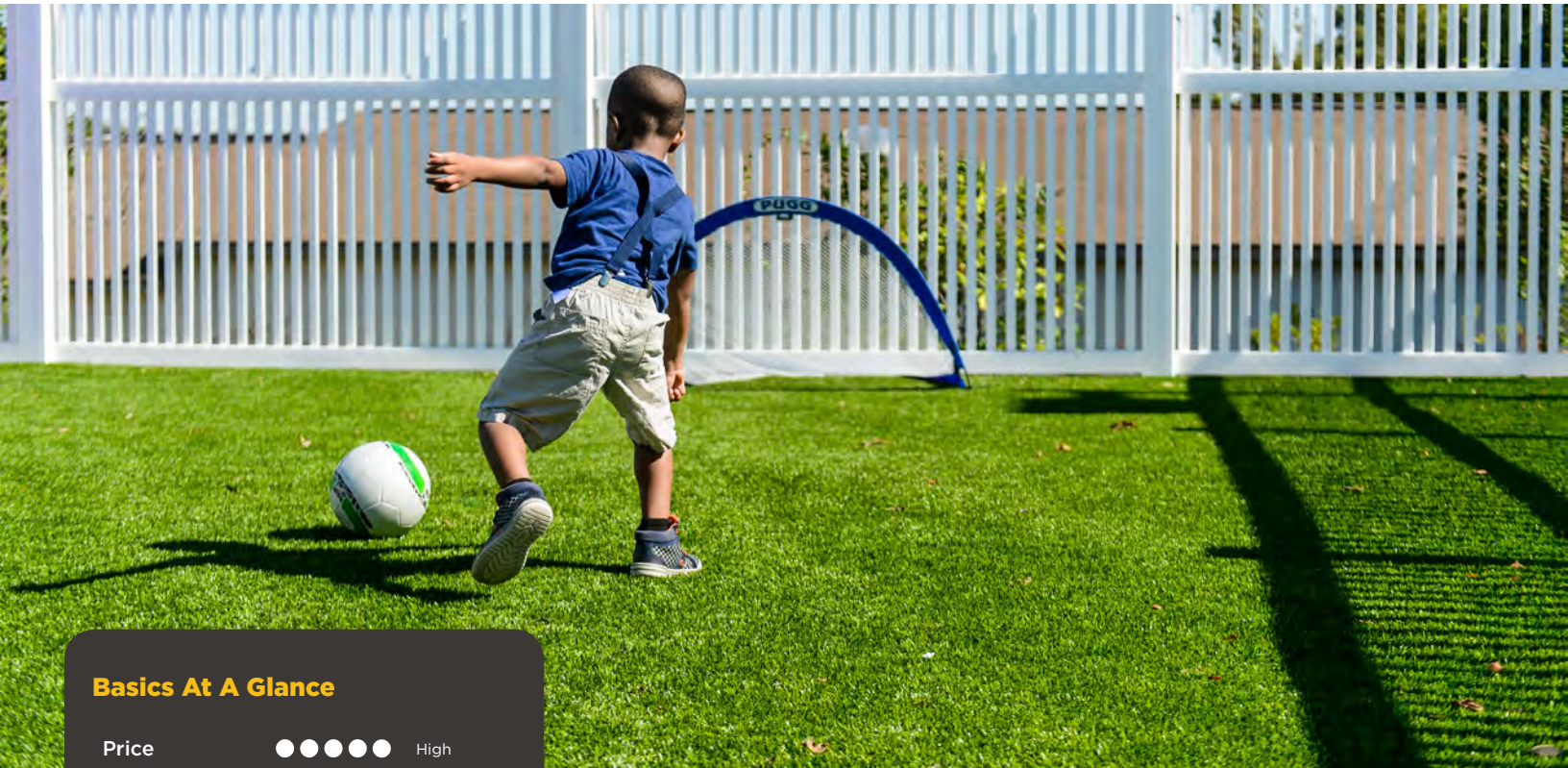






Synthetic Turf

The natural look of grass with appropriate impact attenuation and low maintenance



Basics At A Glance

Price	●●●●●	High
Maintenance	●●●●●	Low/Mid
Access	●●●●●	Mid/High
Color Options	●●●●●	None
Warranty	●●●●●	5 Years

Utilizes a two layer system — the top layer a combination of turf fiber and polypropylene and the bottom (cushion) a combination of rubber buffings and urethane or porous closed-cell composite material

Installed to meet necessary fall height requirements

Meets all applicable ASTM standards

Description

Turf is an engineered grass product designed to bring the look of real grass to your environment. Unlike real grass, however, it offers height appropriate impact attenuation and provides the appearance of a beautiful lawn that never needs mowing!

Our turf is available in two weights — a 50 oz. that requires infill and an 80 oz. that does not. Your turf will be laid over a cushion pad to provide drainage and fall attenuation properties up to 12'. After the turf layer is installed, the infill is worked into the blades to discourage flattening. Although infill is not required for the 80 oz. option, it is recommended to aid against blade compaction. Properly installed, it offers adequate drainage, great impact attenuation, long wear, and ADA accessibility in playground applications.

Benefits

- Lower maintenance
- Appealing, natural look and feel
- UV resistant
- Cooler surface temperature than many unitary surface types

Tips

- Great option for nature inspired play areas
- Use in any area where a low maintenance grass look is desirable
- Ask your local representative about additional grass blade types that may be available in your area
- Raking is recommended to distribute infill and discourage blade compaction



Workmanship Warranty

This warranty covers workmanship related to the installation of the products purchased from and installed by Playgrounds Etc for a period of 1 year from the date of installation.

A Note from The Owner

This warranty essentially states that we will stand behind our installation or perform a service call related to improper installation for up to 1 year at no cost to our customer. In actuality, our warranty is better than that. If anything that we install ever fails, regardless of when, and the failure is not due to carelessness, accidental damage, or normal wear and tear, Playgrounds Etc will honor an implied warranty and take care of the matter at no cost to the customer (yes, we really mean that). In other words, if something fails that shouldn't fail, we will take care of it for you. We have always treated our customers like family and we hope that our warranty expresses our feelings towards our customers.

Warranty Exclusions:

The stated warranty is valid only on projects in which Playgrounds Etc is responsible for the complete installation of said project and/or equipment. Playgrounds Etc is not responsible for cosmetic defects such as scratches, dents, marring, fading, damage due to vandalism, misuse, accident, wear and tear from normal use, exposure to extreme weather, immersion in salt or chlorine water, unauthorized repair or modification, abnormal use, lack of maintenance, or other causes not within Playground's Etc control.

Limitation of Remedies:

Playgrounds Etc is not liable for consequential or incidental damages, including but not limited to: labor cost or lost profits resulting from use of, or inability to use, the products, *or* from the products being incorporated in, or becoming a component of, any other product. If, after a reasonable number of repeated efforts, Playgrounds Etc is unable to repair or replace a defective or non-conforming product, Playgrounds Etc shall have the option to accept return of the product, or part thereof, if such does not substantially impair its value, and return the purchase price as the buyer's entire and exclusive remedy.

Playground General Product Specifications

At Superior Recreational Products, we use only quality playground materials — whether purchasing a steel or recycled structure. Our playgrounds are proudly made in the USA so you can trust our playgrounds are built to last and will provide fun for years to come.



Steel Posts and Tubing

We use galvanized steel for all steel posts and tubing for maximum strength and durability. Both the interior and exterior of all of our galvanized steel parts have been through the Triple Flo-Coat® process to ensure greater corrosion resistance. All galvanized steel posts and tubing are 95%-98% recyclable. Our posts are available in two different size options to meet your design and budget needs.

Playground Series

3.5" Commercial Playground Series

- 3.5" O.D. vertical posts
- 36" deck grid and 46.5" deck grid
- 24" diameter plastic and 30" diameter plastic

5" Commercial Playground Series

- 5" O.D. vertical posts
- 48" deck grid
- 30" diameter plastic

Posts & Tubing

Vertical Posts

- 13 gauge galvanized steel (3.5" Series)
- 11 gauge galvanized steel (5" Series)
- 11 gauge galvanized steel (shade verticals)
- 50,000 PSI yield strength (ASTM E-8)
- 55,000 PSI tensile strength (ASTM E-8)
- Interior and exterior Triple Flo-Coated corrosion protection (ASTM B-117)
- Contains a minimum of 30% recycled steel and is between 95%-98% recyclable
- Manufactured per ASTM A500

Tubing

- Contains a minimum of 30% recycled steel and is between 95%-98% recyclable
- Interior and exterior Triple Flo-Coated corrosion protection (ASTM B-117)
- Manufactured per ASTM A500
- 50,000 PSI yield strength (ASTM E-8)
- 55,000 PSI tensile strength (ASTM E-8)

Overall Diameter	Tubing Shape	Material
1.25"	Round	14 gauge galvanized steel
1.66"	Round	13 gauge galvanized steel
1.90"	Round	11 gauge galvanized steel
2.375"	Round	3 gauge galvanized steel/9 gauge steel (bi-pod/tri-pod top bar/fitness frame)
3.5"	Round	13 gauge galvanized steel (3.5" Series)
4"	Square	11 gauge galvanized steel
5"	Round	11 gauge galvanized steel (5" Series)



Recycled Plastic Posts

Our 100% recycled (excluding additives and colorants) HDPE posts are made from both pre-consumer and post-consumer plastic, like milk jugs and detergent bottles! Every pound of our recycled plastic lumber equates to 8 recycled milk containers. Neat, right? We ensure our recycled posts are reinforced for even greater strength by adding additional fiberglass elements to each post. Our posts are vandal resistant and protected from rotting, splitting, cracking or splinters for a minimum of 50 years. Additionally the posts have minimal fading and are resistant to termites, marine borers, salt spray, oil and fungus.

- 6"x6" dimensions for vertical posts
- Made of HDPE
- Molded in one piece
- UV additives to prevent deterioration from UV light
- Made of 100% recycled material (post-industrial and post-consumer) excluding additives and colorants
- Will not rot, split, crack or splinter for a minimum of 50 years
- Resistant to termites, marine borers, salt spray, oil, and fungus



Textured High Density Polyethylene (HDPE) Panels

All solid plastic panels are manufactured from high-density polyethylene. All solid plastic panels shall meet or exceed the following specifications: Density (ASTM D- 1505); Brittleness Temperature (ASTM D-746); Tensile Values (ASTM D-638); Flexural Modulus (ASTM D-790).

- | | |
|--|--|
| <ul style="list-style-type: none"> • 0.75" high density polyethylene sheeting (HDPE) • Tested in accordance with ASTM D1928 Procedure C • Density per ASTM D1505 • Melt Index per ASTM D1238 • Tensile Strength and Ultimate Elongation per ASTM D638 Type 4 • Brittleness temperature per ASTM D746 | <ul style="list-style-type: none"> • Flexural modulus per ASTM D790 • Coefficient of linear thermal expansion per ASTM E831 • Textured, matte finish • UV stabilized • UL 94 HB fire rating • Stain and graffiti resistant and will not delaminate, splinter, or crack |
|--|--|



Rotationally-Molded Plastics

Our rotationally-molded plastics, such as those used for slides and tubes, are made of ¼" thick low density polyethylene (LDPE). Not only are our rotationally-molded plastics UV stabilized for reduced fading, they also contain anti-static inhibitors.

General Properties

- Material: Low-Density Polyethylene (LDPE)
- Wall Thickness: 0.250" (¼")
- Tensile Strength: 2,550 PSI (ASTM D638)
- Classifications: ASTM D-1248, Type 2, Class A and Federal Specification LP-390C, Type 1, Class M, Grade 2, Category 3
- Features: UV Stabilizers and Anti-Static Inhibitors

Meet or Exceed the Following Specifications:

- Density (ASTM D1505)
- Flexural Modulus (ASTM D790)
- Deflection Temperature Under Load (ASTM D648)
- Brittleness Temperature (ASTM D746)
- Tensile Properties (ASTM D638)
- Low Temperature Impact Test (ARM-STD)



Powder Coat

Our powder coating is electrostatically applied from a custom formula of TGIC polyester powder. All components will be free of sharp edges and excess weld spatter and will be cleaned in a six stage bath system with an iron phosphate wash, as a rust inhibitor, and a sealer to prevent flash rusting before coating. This coating has a super tough finish with maximum exterior durability and has superior adhesion characteristics.

General Properties

- Mil Thickness: 3.0-5.0
- Oven Cured: 375°- 425° Fahrenheit
- Oven-Bake Stability: 100% at 400° Fahrenheit
- Fadometer Test: 300 Hours with No Loss of Gloss

Meet or Exceed the Following Specifications:

- Film Hardness (ASTM D3363)
- Impact Test (ASTM D2794-69)
- Bend Test (ASTM D522-68)
- Adhesion (ASTM D3359, ASTM D2197)
- Stain Resistance (ASTM D1308)
- Water Resistance/Humidity (D2247-87)
- Salt Spray (ASTM B117)



Stainless Steel Hardware

All nuts, bolts, and washers, with a few exceptions, are stainless steel in varying lengths. Our hardware is vandal resistant; thus, we supply a special tool with each shipment for installation.

General Properties

- Material: ⅜" Diameter 18-8 Stainless Steel
- Vandal Resistant: Yes
- Locking Patch: Yes, Factory Applied



Steel Deck Platforms, Ramps, Bridges, and Steps

Our steel decks are formed from 12-gauge hot-rolled pickled and oiled steel body — the thickest in the industry — and coated with UV stabilized PVC (plastisol) coating for a softer play surface. Our decks are perforated for great drainage, are lead-free and have formed sides that are welded with reinforcements for an even stronger deck.

General Properties

- 12 gauge HRPO per ASTM A1011
- Formed sides with welded reinforcements (stairs have welded stringers)
- 0.625"x1" diameter slots after coating
- Plastisol coating with thickness of .080" to .120"
- 1.5" slots for vertical adjustability
- Deck coating meets CFR 1207.5 for slip resistance
- Tensile Strength: 2,800 psi
- Elongation: 290 %
- Tear Strength: 420 lbs/in
- Lead free per 16 CFR Part 1303



Post Caps

From easy in-field installation to a unique two-color look, our aluminum alloy post caps offer many great benefits. Our super-tough post cap design allows for less water access, making our posts more durable in the field. Once installed the post caps can't be removed, stopping unwanted vandalism.

- Aluminum alloy (ZL101) aluminum series of tertiary alloys
- Tested using GB/T 1173-1995 (equivalent to ANSI 365.0 specified in ASTM B26/B26M)
- Less than 40ppm of lead per IEC 62321:2008 Ed. 1 and US EPA 3050B: 1996
- Powder coat finish



Other Materials

C-Line Fittings

- Aluminum alloy (ZL101, GB/T 1173-1995) aluminum series of tertiary alloys
- Less than 40ppm of lead per IEC 62321:2008 Ed. 1 and US EPA 3050B: 1996
- Mounts to vertical post with gasket and four 0.25"x1" self-tapping screws with patch
- Powder coat finish
- Direct bolt systems have 360° of rotational adjustability

Sealing Gaskets

- Neoprene rubber
- 60 +/- 5 durometer hardness

Color Options

Metal Colors

Gloss



Matte or Metallic



Plastic Colors



Activity Panel & Panel Colors

Solid Core



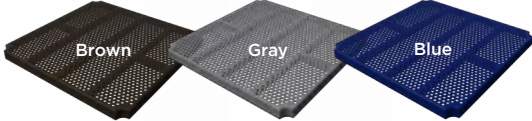
Sandwich Core



Shade Colors | More Available!



Steel Deck Colors

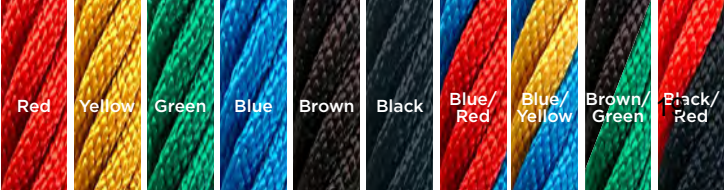


Recycled Deck & Post Colors



*May affect delivery lead time.

Ascend Rope Colors




Belt Seat Colors



Color Schemes



Nature Trail

- Brown
 - Beige
 - Spring Green
 - Orange
 - Beige
-  Shade Color Recommendation



Deep Ocean

- Bronze
- Champagne
- White
- Sky Blue
- Blue
- Silver



Earth

- Spring Green
- Blue
- Beige
- Brown
- Rivergum



Santorini

- Blue
- Champagne
- Vanilla
- Beige
- Beige



Terra

- Burgundy
- Beige
- Spring Green
- Beige



Electric

- Chartreuse
- Champagne
- Blue
- White
- Silver



Forest

- Burgundy
- Beige
- Green
- Beige



Van Gogh

- Bronze
- Metallic
- Champagne
- Periwinkle
- Steel Gray



Modern Marsh

- Champagne
- Green
- Spring Green
- Bronze
- Rivergum



Monarch

- Champagne
- Black
- Orange
- Yellow
- Yellow

Color Schemes



NEW! **Robin Egg**

- Azure
- Brown
- Beige
- Cream



Circus

- Red
- Yellow
- Sky Blue
- Yellow



NEW! **Del Rio**

- Orange
- Azure
- Vanilla
- Beige
- Beige



NEW! **Parrot**

- Yellow
- Sky Blue
- Spring Green
- Red
- Rivergum



NEW! **Synthwave**

- Champagne
- Chartreuse
- Royal Purple
- Ocean
- Royal Purple



Spring Bloom

- Sky Blue
- White
- Spring Green
- Orange
- Rivergum



NEW! **Aqua Vista**

- Orange
- Butterscotch
- Azure
- White
- Metallic
- Steel Gray



Spring Storm

- Champagne
- Spring Green
- Sky Blue
- Black
- Lime



Pistachio

- Vanilla
- Chartreuse
- Burgundy
- Beige
- Lime

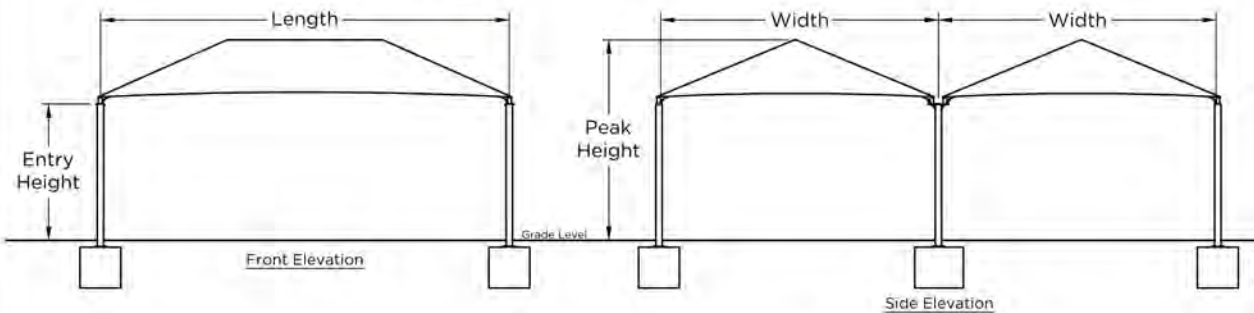
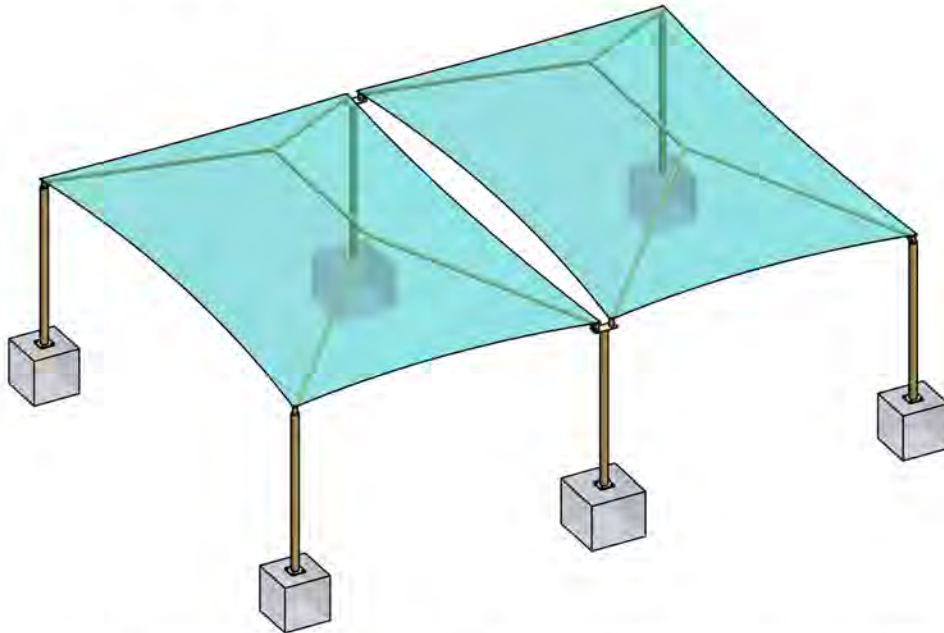


Oasis

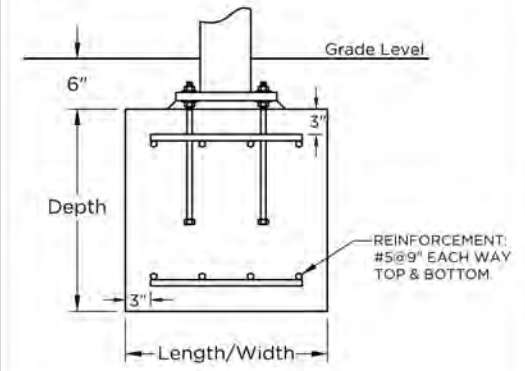
- White
- Blue
- Spring Green
- Orange
- True Blue

Multi-Dome Hip Shade

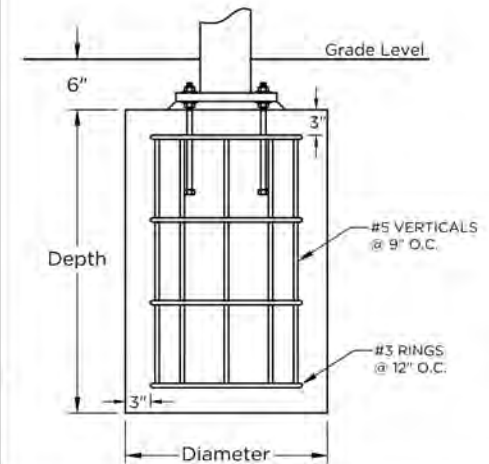
Length	60'	Width	40.5'	Entry Height	14'
Peak Height	22.18'	Elbow	Standard	Column Mount	Base Plate
Column Size	12"x12"x3/8"	Rafter Size	8"x6"x3/16"	Ridge Size	8"x6"x3/16"
Column Length	14.5'	Rafter Length	28.79'	Ridge Length	22.47'
Dome Qty.	2	Column Qty.	6		



Square Footing		
Column	Length & Width	Depth
Single Cap	7.46	3
Double Cap	8.206	3



Auger Footing		
Diameter	Single Cap Depth	Double Cap Depth
1'-6"		
2'-0"	Out of range	Out of range
2'-6"	Out of range	Out of range
3'-0"	18.89	22.88



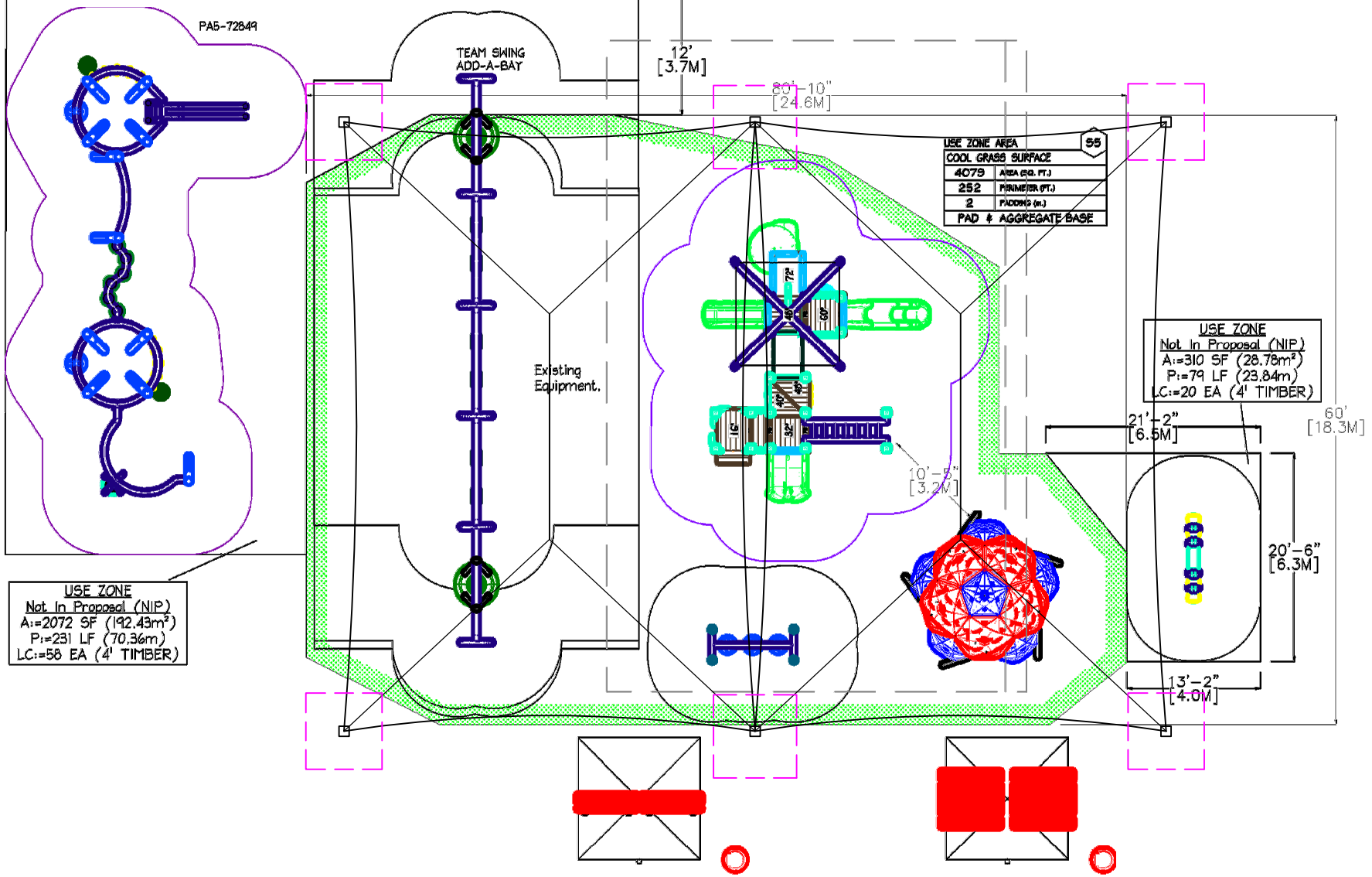
SuperiorShade

QUOTE
117912
QUO0318084

SHADE SIZE
60 X 40.5

SHADE STYLE
Multi-Dome Hip Shade

These drawings are for reference only and should not be used as construction details. They show the general character and rough dimensions of the structural features. Exact spans, fasteners, materials, and foundations can be determined by a licensed professional engineer upon request. Estimated footing size above is based on 1,500 PSF soil bearing pressure.



23

Shade Warranty

Superior Recreational Products (SRP) warrants that its product will be free from defects in materials and workmanship as well as maintain structural integrity for the periods listed below from the date of invoice and once SRP has been paid in full. This warranty is in effect only if the product has been assembled and installed strictly in accordance with the setup instructions provided by SRP, good construction practices, general maintenance and care is provided as per instructions in the customer packet, and has been subjected only to normal use and exposure. Product should be maintained per the instructions given at time of delivery.

- | | | | |
|-----------|---|----------|---|
| LW | Lifetime* Warranty on stainless steel hardware | 5 | 5-Year Limited Warranty on powder coat |
| 20 | 20-Year Limited Warranty on framework | 1 | 1-Year Limited Warranty on cables |
| 10 | 10-Year Limited Warranty on fabric | 1 | 1-Year Limited Warranty on materials not above |

The Limited Warranty excludes abnormal conditions, contingent liability, cosmetic defects such as scratches, dents, marring, stripping, peeling, or fading; damage due to incorrect installation, vandalism, misuse, accident wear and tear from normal use; exposure to extreme weather, immersion in salt or chlorine water, damage due to sand, salt spray, or other abrasive and corrosive material; unauthorized repair or modification, abnormal use, or lack of maintenance. The warranty does not cover damages due to “acts of God” such as hail, flooding, lightning, tornadoes, sand storms, shifts of terrain, earthquakes, mudslides, and wind-storms.

SRP does not warrant product for defects caused by erection, harsh site conditions, lack of maintenance, and/or other conditions beyond SRP’s control. SRP will not be held responsible for any materials that were not properly stored prior to installation. SRP reserves the right to void the limited warranty if it not installed per the installation instructions and/or unauthorized modifications.

In the unlikely event of failure, SRP reserves the right to alter the design, color, or contributing factors to rectify the condition and help prevent any future reoccurrence(s). SRP has the option to repair or replace any defect in materials.

The warranty is void if any changes, modifications, additions, or attachments are made to the product without the written consent of the manufacturer.

No signs, objects, ornaments, fans, lights, fixtures, or decorations may be hung from the structure unless specifically designed and engineered by the manufacturer or has manufacturers written approval.

SRP excludes any implied warranty of merchantability, fitness, or purpose, and there are no warranties which extend beyond the description of the face hereof. Under no circumstances will SRP be responsible for any indirect, special, consequential, incidental, or liquidated damages due to breach of warranty and such damages are specifically excluded from the warranty.

The owner shall notify SRP with original Sales Order Number issued from SRP to arrange for an inspection within 30 days after discovery of any defect under this warranty and before any alteration or repair is made or attempted. This Limited Warranty shall be null and void if the owner makes any alterations in design.

This warranty is the only express warranty given by the company. No person has authority to change or add to these obligations and liabilities. The company reserves the right to determine whether the fault is caused by faulty workmanship, material, or the part that is defective.

SRP will repair or replace at its discretion any defective part/s on an Ex-Works basis only. It is the responsibility of the customer to return the whole unit or the defective part/s at their own cost back to SRP for inspection along with proof of the date of purchase. SRP will not be liable for any costs incurred by the customer as a result of replacing the defective part/s, including but not limited to the costs of site visits and the labor costs involved with the removal and reinstallation of the whole unit or the defective part/s. Furthermore SRP will not be liable for any claimed compensation while the unit is not working or not present at the site whatsoever. This guarantee does not entitle the customer to a complete new product due to a defective component.

Limited Warranty: Structural Steel

SRP offers a 20-year Limited Warranty on structural steel frames for shade canopies against failure due to rust-through corrosion under normal environmental conditions. Should the fabric or parts need to be replaced under the warranty, SRP will manufacture and ship new replacement parts at no charge for the first ten years, thereafter pro-rated at 10% per annum over the last ten years.

Workmanship is warranted for a period of five years. This steel warranty shall be void if damage to the steel is caused by the installer or from physical damage, damage by salt spray or sprinkler systems, contact with chemicals, chlorine, pollution, misuse, vandalism, or any act of God.

Limited Warranty: Powder Coat

Superior Recreational Products offers a 5-year Limited Warranty for powder coating to the original purchaser. This Limited Warranty is for factory applied finish only. Damage occurring from shipping, erection, vandalism, accidents, or field modification is not covered in this limited warranty and will require field touch-up immediately and periodically thereafter. The owner must report any defect in powder coat at the time the installation is completed. Not covered by this Limited Warranty are acute angles, welds, and end plates.

The Limited Warranty for powder coating provides the following after a 5-year exposure period when applied according to the recommendations listed on the product's technical data sheet and appropriate surface preparation has been utilized.

- The coatings shall retain their original color with a ΔE of <7.5 units for high chroma colors (yellows, reds, oranges, etc.) and a ΔE of <5.0 units for low chroma colors, when tested in accordance with ASTM D 2244.
- The coating shall retain a minimum of 50% of its original gloss level after washing, when tested in accordance with ASTM D 523.
- The coating shall exhibit chalking no worse than numerical rating of 6, when evaluated in accordance with ASTM D 659-80.

Limited Warranty: Shade Fabric

Traditional shade fabric made with PTFE fiber that is high strength and low shrinkage and VALMEX[®] MEHATOP F 1 waterproof fabric carry a 10-year limited warranty. This warranties that the sewing thread used on the traditional shade fabric will be free from defects in material and workmanship and will not be damaged by exposure to sunlight, weather, and water. All other warranties are disclaimed.

SRP fabrics carry a 10-Year Limited Manufacturer's Warranty from the date of delivery against failure from significant fading**, deterioration, breakdown, outdoor heat, cold, or discoloration. Should the fabric need to be replaced under the warranty, SRP will manufacture and ship new fabric at no charge for the first six years, thereafter pro-rated at 18% per annum over the last four years.

**The colors red and yellow are warranted against significant fading for only two years.

If the corners of the fabric are equipped with both holes in the fabric corner PLUS reinforcing straps, BOTH the strap and fabric hole must be placed over each corner hook or the fabric warranty is void.

Fabric curtains, valences, or flat vertical panels are not covered under the warranty.

Fabric is not warranted where it is installed on a structure that is not engineered and built by SRP or its agents.

This warranty shall be void if damage to or failure to the shade is caused by contact with chemicals, chlorine, bleaching agents, hydrocarbons or hydrocarbon containing solvents, misuse, vandalism, or any act of God, including but not limited to wind in excess of the wind limitations set forth below.

All fabric tops are warranted for sustained winds up to 76 mph (Hurricane Force 1) and for gusts of up to 3 seconds duration up to 90 mph. Removal of the shade fabric is required if damaging winds are called for. Damage due to snow and/or ice accumulation is not covered by this warranty. Canopies should be removed during the "off season."

These structures have been designed to eliminate any friction between the rafters and the fabric. The warranty will, therefore, be voided if any modification (temporary or permanent) is made to the rafter, cross pieces, or ridge beams, or if the fastening apparatus or canopy are not secured accordingly.

Structures are warranted for winds up to 90 or 105 mph only if shade canopies have been removed as per requirement set forth above in the fabric paragraph. Removal and re-installation must be performed by a qualified person or authorized dealer.

**For the purpose of this warranty, lifetime encompasses no specific term of years, but rather that seller warrants to its original customer for as long as the original customer owns the product and uses the product for its intended purpose that the product and all parts will be free from defects in materials and manufacturing workmanship. This warranty does not cover damage caused by vandalism, misuse or abuse, altered or modified parts, or cosmetic damage such as scratches, dents, or fading or weathering and normal wear and tear. This warranty is valid only if the structures are installed in conformity with instructions provided by Superior Recreational Products using approved Superior Recreational Products parts. Superior Recreational Products will deliver the repaired or replacement part or parts to the site free of charge, but will not be responsible for labor or the labor costs of replacement. Warranty claims must be filed within the applicable warranty period and accompanied by a sales order or invoice number.*

Color Options

Frame

Gloss



Matte, Textured, or Metallic



Fabric

Traditional Fabric

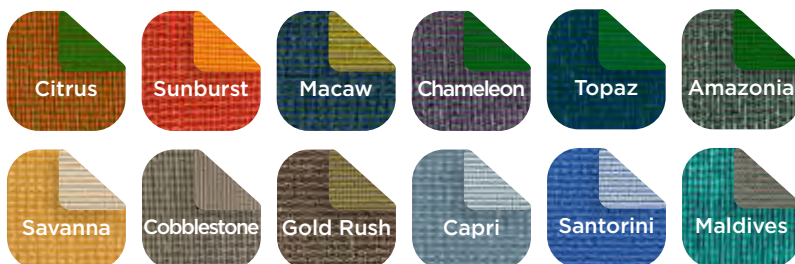
This option includes colors that are California Fire Marshal certified and pass the NFPA 701 or ASTM E84 tests. Select color options are flame retardant (FR).



26

Dual Color Fabric

This option is available for an upcharge exclusively for our Hypar Umbrella, Triangle Sail, and Hyperbolic Sail.



Waterproof Fabric

This option is available exclusively for our Arched Cantilever, Flower, and Single Post and Cantilever Waterproof Umbrellas.





TurfHub

SYNTHETIC GRASS SUPPLIER

PACIFIC BLEND PRO

SKU: PACIFIC-BLEND-PRO

Diversity is the benchmark feature of all 3D Wave shaped yarn blades. This turf is both remarkably comfortable to the touch and stoically retains its shape after footfall. It's soft yet durable, making it the best of both worlds. This extra stability and deluxe texture is accredited to its very diverse shape. In addition to the aforementioned benefits, the structure of the 3D Wave shape deflects hot UV sunlight, keeping the color more true and the surface temperature cooler.

Pile Height: 1 7/8"

Face Weight: 76 oz

Total Weight: 103 oz

Yarn Color: Field/Olive

Thatch Color: Brown/Green

Yarn Material: Monofilament Polyethylene (PE)

Thatch Material: Texturize PE

Primary Backing Material: 7oz K29 Dual Layered Non-expansive

Secondary Coating Material: 20oz Polyurethane

Turf Bind: >10 lbs.

Machine Gauge: 3/8"

Infill Ratio: 2-3 lbs

Roll Width: 15' feet

Drain Rate: >28 inch per hour

Warranty: 15 year

Recommended Use: Moderate to High Traffic



FEATURES

- CoolFlo Technology -Yarn shape increases airflow and lowers surface temperature
- Durable yarn shape creates stronger fiber strength
- UV stabilized yarns to resist fading from the sun
- Non-flammable, anti-acid yarn resistant to chemical attack



View this product in detail online at www.turfhub.com/product/pacific-blend-pro/

NEXT DAY SHIPPING!²⁷ ALWAYS IN-STOCK!
1.800.383.8229 • WWW.TURFHUB.COM



WARRANTY: TurfHub warrants that for fifteen (15) years from the date of synthetic turf installation, the turf, when installed and maintained as recommended by the turf manufacturer. If any area or portion of the turf substantially changes, as distinguished from a change in texture, or if the pile heights decrease 50% or more within fifteen years after its initial installation, TurfHub will have such areas or portions replaced, excluding installation costs. Slight color changes will occur over the lifetime of this turf and is not considered an issue or basis for a claim. All labor costs involved with the removal of the affected turf and reinstallation of the replacement will be the sole responsibility of the purchaser. Subject to the following limitations: General provisions of this limited warrant apply only to the wear of the turf regard to ultraviolet degradation, and do not apply to damage incurred during installation, improper underlay, pile crushing, willful or negligent abuses, or damage by machinery or equipment nor does it apply when the turf is not installed by a professional installer. The expressed limited warranty excludes all implied warranties, and said manufacturer shall in no event be liable for a breach of warranty in any amount exceeding the invoice price of the turf.

PRORATION IS AS FOLLOWS: Years 1-8 (100%), Years 9-12 (50%), Years 13-15 (25%)

LIMITATION OF COVERAGE: *The warranty does not warrant:*

1. Damage from accidents, force majeure, abuse and neglect from other than normal ordinary use of the product.
2. Vandalism, floods or other acts of God.
3. Use of chemicals and improper cleaning methods.
4. Failure to properly maintain, protect or repair the turf.
5. Damage that occurs during the shipping / transportation process. All shipping claims must be filed against the truck line in question.
6. Damage cause by reflection (melting) or other flammable materials. Damage caused to material by invasive vegetation, including but not limited to, nut grass, nut sage, roots and similar growths. All synthetic turf is subject to normal wear and tear. Normal wear and tear is not a manufacturing defect and is not covered by this warranty

LIMITATION OF LIABILITY: Purchaser must properly inspect all products upon delivery. Anything herein to the contrary notwithstanding, to the extent that any defects, shortages, or non conformities in the products are discoverable by inspection upon delivery of the products, all obligations of TurfHub to purchaser with respect to such defects, shortages, and non conformities shall be deemed satisfied, and all products shall be deemed to be free of such defects, shortages, or non-conformities in writing within 30 days after the date of delivery.

ASSIGNMENT: Purchaser may not transfer, convey, or otherwise assign all or any of its rights under this warranty without prior written consent of TurfHub. Any such transfer or assignment without prior written consent shall be null and void and of no force or effect.

Claims must be signed and submitted in writing and delivered to 1725 East Germann Rd. Suite 19, Chandler, AZ 85286.

WARRANTY CERTIFICATE ISSUED TO: _____
PRODUCT: _____
DYELOT: _____
ROLL#: _____
DATE: _____

TURFHUB AUTHORIZATION: _____

Signature



Customer Reference List

Name and Position	Organization Name	Contact Number
Laurie Williams, Parks Director	City of Midland	432-685-7370
George Fierro, CEO	Midland YMCA	432-682-2551
Junior Fitts, Supervisor	Midland ISD	432-689-1514
Jill Roberts, Principal	Trinity Church of Lubbock	806-777-2690
Lindsey Hayes, Director	Wolfforth United Methodist	806-535-8846
Diane Gourard, CDC Director	Odessa Day Nursery	432-332-6754
Brandi Winans, CDC Director	St. Luke's Day Nursery	432-694-2574
Danny Lee	Monterey Church of Christ	806-445-3680
Steve McLaren, Superintendent	Klondike ISD	806-462-7334
Debbie Cramer, Child Care Director	Crestview Baptist Church	432-681-8200
Charlie Bradley, County Judge	Schleicher County	325-853-2766
Julie Moore, CDC Director	Austin Street Church of Christ	325-646-0855
Nancy Brown, Day Care Director	First Baptist Church, Henrietta	940-538-5217
Jerry Webster, City Manager	City of Tahoka	806-561-4211
Tony Gomez, Facility Director	Glasscock County ISD	432-466-1837
Mary Wood, Day Care Director	Grace Lutheran Church Day Care	432-694-3063
Steve Evans, Maintenance Director	Coleman ISD	432-625-3575
Jill Rainey, City Secretary	City of Gorman	254-734-2317
Maxy Kirk, Rehabilitation Director	Hendrick Hospital, Abilene	325-670-6058
Shawn Crane, CR Kids Director	CrossRoads Fellowship, Odessa	432-368-2500



OUR STAFF

Josh Bartlett

President and CPSI*

Office – 432-687-6388

Cell – 432-301-3175

Amber Graham

Design Consultant and CPSI* (West Texas and Texas Panhandle Regions)

Office – 432-687-6388

Cell – 4806-746-7515

David Kitch

Design Consultant and CPSI* (Central Texas and South Texas Regions)

Office – 432-687-6388

Cell – 512-560-0142

Kristin Brasher

Design Consultant and CPSI* – (North Texas Region)

Office – 432-687-6388

Cell – 817-701-6846

Jordan Moore

Project Superintendent – CPSI*

Office – 432-687-6388

Cell – 432-296-3937

Jerod Finch

Project Coordinator and CPSI* (West Texas and Panhandle Regions)

Office – 432-687-6388

Cell – 432-254-9795

Nathan Brewer

Project Coordinator and CPSI* (East TX, Central TX and South, TX Regions)

Office – 432-687-6388

Cell – 361-542-8588

Office / Accounting – 432-687-6388

*CPSI Certified Playground Safety Inspector



PURCHASING INFORMATION

PRODUCT CHANGES:

Changes in equipment, surfacing, and other items can be made up to the time contract is signed. Colors, equipment selection and arrangement, quantity of products, size and scope of project may all be changed. We welcome changes and we will be happy to redesign and re-price the project for you. Generally it make take anywhere from a couple of days to two weeks to make these changes for your review.

CONTRACTS:

Once your selection is completed, a contract will be sent to you. This contract specifies the exact equipment and services purchased, including specifications, quantities and expectations as to final appearance. Details as to delivery, the client's participation and the services rendered will be included. Funding details will also be included with the contract. In the event of a supervised installation then additional details regarding equipment required, labor and time schedule will be included.

DELIVERY:

Generally, delivery of playground equipment manufactured by Playland International, as well as any shades or shade structures is approximately six weeks. Delivery of site amenities, surfacing and components is generally two to three weeks.

INSTALLATION:

Full Installation:

Construction crews are scheduled generally to start within two weeks of delivery. Except for substantially large projects, most projects will be completed in a week or less. Our contactors are certified installers and will work with you to make sure your expectations are met as long as safety standards are not compromised

FUNDING:

Company policy provides one-half of the project total price is due upon contract signing. The remaining balance is due within seven days after completion of project or delivery in the event of a supervised installation or if client chooses to install units themselves.

WARRANTY:

A copy of the warranty on equipment, turf or other products is included with this packet. Playgrounds Etc. will assist client in any way necessary when warranty issues arise.

REFERENCES:

References will be supplied upon your request.



Playgrounds Etc.

1410 W Texas Ave.
Midland, TX 79701
432-687-6388

Bid

Date	Bid #
1/8/2026	33886

Name / Address
Grady ISD 3011 TX-176 Lenorah TX 79749

Notes to Client

Rep	Project Location	Project		
Amber Graham	School	Playground 2025		
Item	Description	Qty	Rate	Total
PA5-72849	Active Series Playground	1	\$35,479.00	\$35,479.00
TFR0684XX	4-Seat See-Saw	1	\$6,590.00	\$6,590.00
PLD0019XX	3.5" Add-A-Bay Inclusive Team Swing	1	\$4,172.00	\$4,172.00
TRT-10	Triple Toss	1	\$1,227.00	\$1,227.00
60019301XX	Tether Ball	1	\$537.00	\$537.00
SRP SHADE	Multi-Dome Hip Shade, 81' x 60' x 14'	1	\$82,905.71	\$82,905.71
Attack Select	Attack Bolt Down Basketball System with 36x60 acrylic backboard	2	\$2,784.29	\$5,568.58
Court Striping	Basketball Court Striping	1	\$3,250.00	\$3,250.00
AT-CS	2625 square feet of Artificial Turf with padding installed over 4 inch compacted stone base.	1	\$57,937.50	\$57,937.50
AT-NP-CS	3000 sq ft Artificial Field Turf installed over 4 inch compacted stone base includes end zones and logos. Padding not included.	1	\$66,428.57	\$66,428.57
Demo	Demo and remove existing curbs approximately 110 linear feet	1	\$785.71	\$785.71
SubTotal				
Sales Tax (0.0%)				
Total				

Thank you for the opportunity to quote your upcoming project. If you have any questions about this proposal or if you need to make any revisions, please contact your Design Consultant at 866-451-2814. We look forward to helping you complete your next project. This bid is good for 30 days.



Playgrounds Etc.

1410 W Texas Ave.
Midland, TX 79701
432-687-6388

Bid

Date	Bid #
1/8/2026	33886

Name / Address
Grady ISD 3011 TX-176 Lenorah TX 79749

Notes to Client

Rep	Project Location	Project		
Amber Graham	School	Playground 2025		
Item	Description	Qty	Rate	Total
Concrete	Concrete curbing around perimeter, approximately 311 linear feet, 6" tall and 8" wide	1	\$12,440.00	\$12,440.00
Freight	Freight	1		\$15,598.35
Installation	Installation of items listed on this proposal	1		\$68,880.35
Engineered Drawings	Engineered Drawings	1		\$1,400.00
BuyBoard Discount	BuyBoard Discount, Vendor #781-25			-\$20,105.00

SubTotal	\$343,094.77
Sales Tax (0.0%)	\$0.00
Total	\$343,094.77

Approval Signature: _____ Date: _____

Thank you for the opportunity to quote your upcoming project. If you have any questions about this proposal or if you need to make any revisions, please contact your Design Consultant at 866-451-2814. We look forward to helping you complete your next project. This bid is good for 30 days.