

Committee of the Whole Board Meeting

Duluth Public Schools, ISD 709

Agenda

Thursday, February 4, 2021

VIA VIDEO CONFERENCE

Google Meet

Duluth, MN 55802

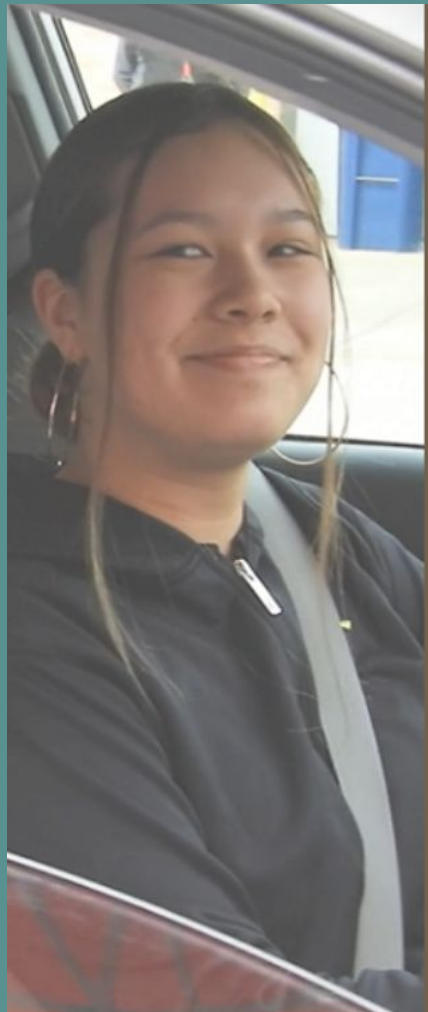
5:30 PM

1. **CALL TO ORDER**2. **ROLL CALL**3. **AGENDA ITEMS**A. Return to Learn - Secondary In Person Update24. **ADJOURN**

Return to Learn Update

February 4, 2021





ISD 709

Guiding Principles

FOR RE-OPENING SCHOOLS

- 1 Ensure the safety and wellness of students and staff
- 2 Deliver high-quality instruction to students, regardless of delivery model
- 3 Equity: Ensuring all means all
- 4 Optimize use of resources (space & materials)
- 5 Community and stakeholder engagement in plan development

Equity Criteria:

Access

Participation

Representation

Outcomes

ISD709.org/Equity



Review of Current Planning

Currently in full in-person in elementary grades PK-2. We are preparing for:

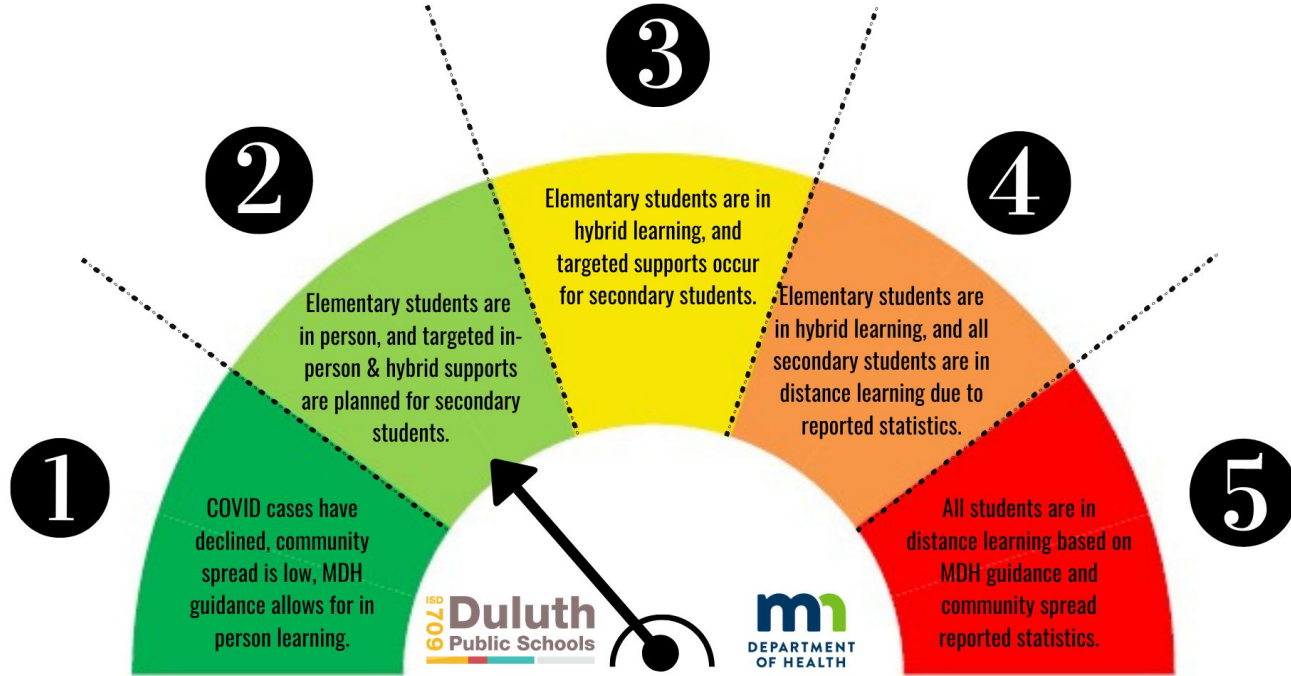
- In-person classes for grades 3-5 on February 8
- Additional in-person learning at the secondary level, as discussed within tonight's presentation



Local Duluth Bi-Weekly COVID Rates

- 9/12 - 16.14
- 9/19 - 22.47
- 9/26 - 33.37
- 10/03 - 35.20
- 10/10 - 32.70
- 10/17 - 34.20
- 10/24 - 39.80
- 10/31 - 54.30
- 11/07 - 105.00
- 11/14 - 153.90
- 11/21 - 169.70
- 11/28 - 154.10
- 12/05 - 127.40
- 12/12 - 100.20
- 12/19 - 72.60
- 12/26 - 60.70
- 01/02 - 58.75
- 01/09 - 56.90
- 01/16 - 43.40
- **01/23 - 37.86**
- **30.57 - SLC**

| Policy Option | Range (14-day case rate per 10,000 people) |
|---|---|
| In-person learning for all students | 0 to less than 10 |
| Elementary in-person, Middle/high school hybrid | 10 to less than 20 |
| Both hybrid | 20 to less than 30 |
| Elementary hybrid, Middle/high school distance | 30 to less than 50 |
| Both distance | 50 or more |





Where have we been?

March 15- 3rd Floor HOCHS Planning for Emergency Distance Learning

July 30- Safe Learning Plan published by Gov Walz, MDE, MDH

- Requiring 3 plans w/specific criteria- Full Distance, Hybrid, Full In-person

Aug 30- COVID Contract Day MOU

- Qtr 1- Full DL (access & Canvas LMS)
- Qtr 2- Full DL (engagement & In-person support)
- Qtr 3- Full DL (synchronous schedule, increase interaction, build upon relationships)

Dec - Upon release of Governor's guidance on returning to in-person instruction, contacted MN Department of Health to schedule mandatory consultation session on secondary learning models.

Jan 4- Supt Magas met w/Dept Health: Continue to follow SLP and county COVID data. District must be in a hybrid model before a full in-person model can be considered.

Jan 27- Supt Magas met w/Dept Health: COVID data is trending down. Plan for Hybrid, 50% capacity, reduce transitions for students, ensure safety protocols are followed. We were again told that full in-person for secondary would not yet be permitted and that hybrid model implementation was a prerequisite.



Communication Timeline: Presentation, Q/A, Feedback

- Wed., Jan 27-
 - General Update for ISD 709 Staff, Families
- Fri., Jan 29-
 - Secondary Principals, Supt, Asst Supt, Cabinet met w DFT Exec Brd
 - General Update for ISD 709 Staff, Families
- Mon., Feb 1-
 - Secondary Principals, Supt, Asst Supt, Cabinet met w DFT Exec Brd
 - Secondary Principals met w Building Stewards
- Tues., Feb 2-
 - Secondary Principals will meet w Dept Chairs/Leadership Teams/CIT members (structures may be unique to each site)
- Wed., Feb 3-
 - Secondary QLT
- Thurs., Feb 4-
 - All 4 Secondary Buildings Staff Meetings
 - Union Leaders Meeting
 - District Advisory Committee Meeting
 - School Board Committee of Whole Meeting

Previous DRAFT Hybrid Plan Aligned to MOU

This has been the DRAFT concept since August. It meets the language of the MOU.

25% of our students come into the building, one day per week for 6 periods

We have learned a lot since this was created.

This plan would nearly eliminate distance learning only students' access to teachers to only one day per week.

For these reasons, we are presenting a different model for hybrid.

Hybrid Class Schedule DRAFT: Based on MOU Language

High School Day

| | | | |
|------------------|--------------------|------------------|--------------------|
| Zero Hour | 9:00–9:45 | | |
| Period 1 | 9:50–10:35 | | |
| Period 2 | 10:40–11:25 | | |
| Period 3 | 11:30–12:15 | | |
| Period 4A | 12:20–1:05 | Lunch A | 12:20–12:50 |
| Lunch B | 1:10–1:40 | Period 4B | 12:55–1:40 |
| Period 5 | 1:45–2:30 | | |
| Period 6 | 2:35–3:20 | | |

Middle School Day

| | | | |
|------------------------------|------------------------------|------------------------------|--|
| Period 1 | 9:45–10:30 | | |
| Period 2 | 10:35–11:20 | | |
| Lunch A 11:25–11:55 | Period 3B 11:25–12:10 | Period 3C 11:25–12:10 | |
| Period 3A 12:00–12:45 | Lunch B 12:15–12:45 | Period 4C 12:15–1:00 | |
| Period 3B 12:50–1:35 | Period 4B 12:50–1:35 | Lunch C 1:05–1:35 | |
| Period 5 | 1:40–2:25 | | |
| Period 6 | 2:30–3:15 | | |



Rationale for Proposed Model Change

We are proposing the following model change for a variety of reasons, including:

- State and local health officials have given us permission to serve students with hybrid instruction
- Implementation of a hybrid model is a prerequisite for full in-person instruction at the secondary level
- We are seeking a model that serves the need of ALL learners, whether distance or hybrid

DRAFT Middle School Hybrid/Synchronous, Aligns to MOU ¹¹

| Hybrid Group A- Day 1 | Hybrid Group A- Day 2 | Hybrid Group B- Day 1 | Hybrid Group B- Day 2 | Friday- as opposed to Wednesdays |
|--|--|--|--|---|
| PLC/Team/Staff /SST or Open 7:45-8:45 | PLC/Team/Staff /SST or Open 7:45-8:45 | PLC/Team/Staff /SST or Open 7:45-8:45 | PLC/Team/Staff /SST or Open 7:45-8:45 | PLC/Team/Staff /SST or Open 7:45-8:45 |
| Hybrid Grp A Period 1 8:45-9:30 | Hybrid Grp A Period 4 8:45-9:30 | Hybrid Grp B Period 1 8:45-9:30 | Hybrid Grp B Period 4 8:45-9:30 | 9-10 Professional Learning |
| Hybrid Grp A Period 2 9:35-10:20 | Hybrid Grp A Period 5 9:35-10:20 | Hybrid Grp B Period 2 9:35-10:20 | Hybrid Grp B Period 5 9:35-10:20 | 10-11 Content Building |
| Hybrid Grp A Period 3 10:25-11:10 | Hybrid Grp A Period 6 10:25-11:10 | Hybrid Grp B Period 3 10:25-11:10 | Hybrid Grp B Period 6 10:25-11:10 | Google Meets/ Communication Time 11-12 |
| 11:15-12:00 Professional Time | 11:15-12:00 Professional Time | 11:15-12:00 Professional Time | 11:15-12:00 Professional Time | |
| 12:05-12:35 Lunch | 12:05-12:35 Lunch | 12:05-12:35 Lunch | 12:05-12:35 Lunch | |
| Pd 4 Synchronous (Whole Class) 12:40-1:10 | Pd 1 Synchronous (Whole Class) 12:40-1:10 | Pd 4 Synchronous (Whole Class) 12:40-1:10 | Pd 1 Synchronous (Whole Class) 12:40-1:10 | 12-12:30 Lunch |
| Pd 5 Synchronous (Whole Class) 1:15-1:45 | Pd 2 Synchronous (Whole Class) 1:15-1:45 | Pd 5 Synchronous (Whole Class) 1:15-1:45 | Pd 2 Synchronous (Whole Class) 1:15-1:45 | 12:30-1:00 Professional Time |
| Pd 6 Synchronous (Whole Class) 1:50-2:20 | Pd 3 Synchronous (Whole Class) 1:50-2:20 | Pd 6 Synchronous (Whole Class) 1:50-2:20 | Pd 3 Synchronous (Whole Class) 1:50-2:20 | 1-2 Content Building, Due Process |
| Google Meets/ Communication Time 2:30-3:00 | Google Meets/ Communication Time 2:30-3:00 | Google Meets/ Communication Time 2:30-3:00 | Google Meets/ Communication Time 2:30-3:00 | 2-3 District Team Content Building |
| 3:00-3:45 Prep | 3:00-3:45 Prep | 3:00-3:45 Prep | 3:00-3:45 Prep | 3-3:45 Prep Time (Student attendance updated) |

Current DRAFT High School Hybrid/Synchronous

Same as Middle School with 15 minutes between synchronous sessions

12

| Synchronous with HYBRID: Sample Secondary Schedule HIGH SCHOOL | | | | |
|--|---|---|---|---|
| Monday: A | Tuesday: A | Wednesday: B | Thursday: B | Friday |
| PLC/Team/Staff/SST or Open 7:45-8:45 | PLC/Team/Staff/SST or Open 7:45-8:45 | PLC/Team/Staff/SST or Open 7:45-8:45 | PLC/Team/Staff/SST or Open 7:45-8:45 | PLC/Team/Staff/SST or Open 7:45-8:45 |
| Zero Hour 8:10-8:55 | Zero Hr Synchronous Class 8:00-8:30 | Zero Hour 8:10-8:55 | Zero Hr Synchronous Class 8:00-8:30 | Meetings 7:45-8:55 |
| Pd 1 9:00-9:45 | Pd 4 9:00-9:45 | Pd 1 9:00-9:45 | Pd 4 9:00-9:45 | 9-10 Professional Learning |
| Pd 2 9:50-10:35 | Pd 5 9:50-10:35 | Pd 2 9:50-10:35 | Pd 5 9:50-10:35 | 10-11 Content Building |
| Pd 3 10:40-11:25 | Pd 6 10:40-11:25 | Pd 3 10:40-11:25 | Pd 6 10:40-11:25 | |
| 11:30-12:20 Professional Time | 11:30-12:20 Professional Time | 11:30-12:20 Professional Time | 11:30-12:20 Professional Time | Google Meets/ Communication Time 11-12 |
| 12:25-12:55 Lunch | 12:25-12:55 Lunch | 12:25-12:55 Lunch | 12:25-12:55 Lunch | 12-12:30 Lunch |
| Pd 4 Synchronous Class 1:00-1:30 | Pd 1 Synchronous Class 1:00-1:30 | Pd 4 Synchronous Class 1:00-1:30 | Pd 1 Synchronous Class 1:00-1:30 | 12:30-1:00 Professional Time |
| Google Meets/ Communication Time 1:30-1:45 | Google Meets/ Communication Time 1:30-1:45 | Google Meets/ Communication Time 1:30-1:45 | Google Meets/ Communication Time 1:30-1:45 | 1-2 Content Building, Due Process |
| Pd 5 Synchronous Class 1:45-2:15 | Pd 2 Synchronous Class 1:45-2:15 | Pd 5 Synchronous Class 1:45-2:15 | Pd 2 Synchronous Class 1:45-2:15 | |
| Google Meets/ Communication Time 2:15-2:30 | Google Meets/ Communication Time 2:15-2:30 | Google Meets/ Communication Time 2:15-2:30 | Google Meets/ Communication Time 2:15-2:30 | 2-3 District Team Content Building |
| Pd 6 Synchronous Class 2:30-3:00 | Pd 3 Synchronous Class 2:30-3:00 | Pd 6 Synchronous Class 2:30-3:00 | Pd 3 Synchronous Class 2:30-3:00 | |
| 3:00-3:45 Prep | 3:00-3:45 Prep | 3:00-3:45 Prep | 3:00-3:45 Prep | 3-3:45 Prep Time (Student attendance updated) |

Sample Student Schedule DRAFT Middle School Hybrid/Synchronous

| Hybrid Group A Student Schedule | | | | |
|--|--|--|--|--|
| Monday Hybrid Group A- Day 1 | Tuesday: Hybrid Group A- Day 2 | Wednesday | Thursday | Friday |
| CANVAS Module Published by 9:00AM | | | | Google Meets/ Communication Time CANVAS Module Due by 11:59PM w/week of grace |
| Hybrid Grp A Period 1 8:45-9:30 | Hybrid Grp A Period 4 8:45-9:30 | | | |
| Hybrid Grp A Period 2 9:35-10:20 | Hybrid Grp A Period 5 9:35-10:20 | | | |
| Hybrid Grp A Period 3 10:25-11:10 | Hybrid Grp A Period 6 10:25-11:10 | | | |
| Pd 4 Synchronous (Whole Class) 12:40-1:10 | Pd 1 Synchronous (Whole Class) 12:40-1:10 | Pd 4 Synchronous (Whole Class) 12:40-1:10 | Pd 1 Synchronous (Whole Class) 12:40-1:10 | |
| Pd 5 Synchronous (Whole Class) 1:15-1:45 | Pd 2 Synchronous (Whole Class) 1:15-1:45 | Pd 5 Synchronous (Whole Class) 1:15-1:45 | Pd 2 Synchronous (Whole Class) 1:15-1:45 | |
| Pd 6 Synchronous (Whole Class) 1:50-2:20 | Pd 3 Synchronous (Whole Class) 1:50-2:20 | Pd 6 Synchronous (Whole Class) 1:50-2:20 | Pd 3 Synchronous (Whole Class) 1:50-2:20 | |
| Google Meets/ Communication Time | Google Meets/ Communication Time | Google Meets/ Communication Time | Google Meets/ Communication Time | |

Sample Student Schedules DRAFT High School Hybrid/Synchronous

| A Group: Attends In-Person Monday and Tuesday | | | | |
|---|---|---|---|--------|
| Monday: A | Tuesday: A | Wednesday: B | Thursday: B | Friday |
| <i>Zero Hr In-Person 8:10-8:55</i> | 0 Hr Synchronous Class 8:00-8:30 | | 0 Hr Synchronous Class 8:00-8:30 | |
| <i>Pd 1 In-Person 9:00-9:45</i> | <i>Pd 4 In-Person 9:00-9:45</i> | | | |
| <i>Pd 2 In-Person 9:50-10:35</i> | <i>Pd 5 In-Person 9:50-10:35</i> | | | |
| <i>Pd 3 In-Person 9:40-11:25</i> | <i>Pd 6 In-Person 9:40-11:25</i> | | | |
| Pd 4 Synchronous Class 1:00-1:30 | Pd 1 Synchronous Class 1:00-1:30 | Pd 4 Synchronous Class 1:00-1:30 | Pd 1 Synchronous Class 1:00-1:30 | |
| Pd 5 Synchronous Class 1:45-2:15 | Pd 2 Synchronous Class 1:45-2:15 | Pd 5 Synchronous Class 1:45-2:15 | Pd 2 Synchronous Class 1:45-2:15 | |
| Pd 6 Synchronous Class 2:30-3:00 | Pd 3 Synchronous Class 2:30-3:00 | Pd 6 Synchronous Class 2:30-3:00 | Pd 3 Synchronous Class 2:30-3:00 | |
| Google Meets/ Communication Time for Individual Support if Needed (Times Vary) | | | | |

| Full Distance Group: No In-Person Attendance Selected | | | | |
|---|---|---|---|--------|
| Monday: A | Tuesday: A | Wednesday: B | Thursday: B | Friday |
| | 0 Hr Synchronous Class 8:00-8:30 | | 0 Hr Synchronous Class 8:00-8:30 | |
| Pd 4 Synchronous Class 1:00-1:30 | Pd 1 Synchronous Class 1:00-1:30 | Pd 4 Synchronous Class 1:00-1:30 | Pd 1 Synchronous Class 1:00-1:30 | |
| Pd 5 Synchronous Class 1:45-2:15 | Pd 2 Synchronous Class 1:45-2:15 | Pd 5 Synchronous Class 1:45-2:15 | Pd 2 Synchronous Class 1:45-2:15 | |
| Pd 6 Synchronous Class 2:30-3:00 | Pd 3 Synchronous Class 2:30-3:00 | Pd 6 Synchronous Class 2:30-3:00 | Pd 3 Synchronous Class 2:30-3:00 | |
| Google Meets/ Communication Time for Individual Support if Needed (Times Vary) | | | | |



There are still details to work through. Your feedback is important!

All students are distance learning students.

- They will continue to access content through Canvas modules that are published on Mondays.
- Hybrid time and synchronous time will support students academically and social/emotionally while providing for increased interaction between students and staff.

We will survey our families to determine who will take advantage of the hybrid model and who will continue to work through our distance learning/synchronous model.



There are still details to work through. Your feedback is important!

The state requires Duluth Public Schools to be in a hybrid model before implementing a full in-person model.

The following are our planned implementation dates and are subject to change based on Dept of Health guidance.

Planning includes a rolling start process (required by MDH and MDE) in which students are gradually brought back in the building.

- **3 transition days the week of March 1**
 - **Tues, Wed, Thurs**
 - **Module Mon., Due Fri. w/Open Meet time for support- No synchronous schedule this week**
- **Start hybrid with 6th, 9th, 12th graders the week of March 8**
 - **The ability to orient our newest students to their school is essential.**
- **Phase in 7th, 8th, 10th, 11th grade the week of March 15**



Additional Next Steps

In addition to the previously listed steps, we are also focusing on:

- Continue to enhance our operational plans to support students during and after the pandemic
- Continue to monitor state and local guidance
- Continue to monitor our COVID rates and emerging information
- Continue to take input from stakeholders and utilize it for collaborative decision making

Themes from secondary staff feedback

- Health and Safety Questions and Concerns
 - General information and frequently asked questions will come out early next week
 - Continued communication about access to vaccines for school staff
- Concerns around managing multiple modes of interaction (Canvas, Synchronous, Hybrid In-Person)
 - Sessions with Curriculum regarding what a day for a teacher could look like in this model