

## **Business Committee-Regular School Board Meeting**

Duluth Public Schools, ISD 709

Agenda

Tuesday, January 22, 2013

District Services Center

709 Portia Johnson Dr.

Duluth, MN 55811

6:30 PM

1. **Financial Report**
  - A. Financial Report 4
  - B. Approval of Payment of Claims  
This item is attached as an "extra" on board book.
  - C. Budget Revisions 29
  - D. Wire Transfers 31
  - E. Investment Transactions 32
  - F. WADM Projections 33
  - G. Fund Raisers 34
  - H. Investments in School Children 35
2. **Bids, R.F.P.s and Quotes Reports**
  - A. Bids
    - 1) PLACEHOLDER - for Bids Related to the LRFP
    - 2) R.F.P.s
  - B. Quotes
    - 1) Voyageur Bus Company - Special Student Transportation - Quote 4114 36  
Attached is a contract with Voyageur Bus Company for special student transportation for the 2012-13 School Year, not to exceed \$50,000.00.  
  
Recommendation: It is recommended that the Duluth School Board approve the contract with Voyageur Bus Company, not to exceed \$50,000.00.
    - 2) PLACEHOLDER - for Quotes Related to the LRFP
3. **Policies and Regulations**
  - A. Policies
    - 1) Policy 8030 - School Board Member Compensation 40  
Based on board discussion there will be no changes at this time.
  - B. Regulations
4. **Contracts, Change Orders, and Leases**
  - A. Contracts
  - B. Change Orders
    - 1) **Eastern Middle School (Ordean East Middle School)** **41**
      - a. Eastern MS LRFP – Steel Erection – Structural and Miscellaneous Metals  
Change Order #12, Bid #1165, WS #6 – Northern Industrial Erectors,

Inc

Change Order decrease to delete the steel framed platform and stairs at Area B, 4th floor attic access **Deduct: \$1,433.00**

Recommendation: It is recommended the School Board approve the change order as listed above at Eastern Middle School reflecting a total decrease of \$1,433.00.

2) **Myers-Wilkins Elementary School** **43**

a. Myers-Wilkins ES LRFP – Earthwork/Asphalt Paving

Change Order #7 Bid #1215, BP #1 (Contract #3100/3210) – Veit and Company, Inc

Change Order increase to install the curb on 11th Street **Add:**

**\$5,788.00**

Recommendation: It is recommended the School Board approve the change order as listed above at Myers-Wilkins Elementary School reflecting a total increase of \$5,788.00.

3) **Congdon Park Elementary School** **45**

a. Congdon Park ES LRFP – Asbestos/Lead Abatement

Change Order #1 Quote #4121 – Grivette Environmental Management

Change Order increase for additional abatement work and to remove additional pipe insulation **Add: \$8,532.00**

Recommendation: It is recommended the School Board approve the change order as listed above at Congdon Park Elementary School reflecting a total increase of \$8,532.00.

4) PLACEHOLDER - for Change Orders Related to the LRFP

C. Leases

5. **Resolutions**

A. Resolution B-1-13-3071 - Authorized Student Activity Bank Account **47**  
Signer

Recommendation: It is recommended that the Duluth School Board approve Resolution Resolution B-1-13-3071 - Authorized Student Activity Bank Account Signer

B. Resolution B-1-13-3072 - Legislative Platform 2013 **48**

Recommendation: It is recommended that the Duluth School Board approve Resolution B-1-13-3072 - Legislative Platform 2013

C. PLACEHOLDER – Resolution authorizing the purchase of properties relating to the Long-range Facilities Plan and relocation expenses that apply to these properties

D. PLACEHOLDER – Resolution authorizing the sale of properties relating to the Long-range Facilities Plan and relocation expenses that apply to these properties

E. PLACEHOLDER – Resolutions for Schematic Designs and Working Drawings related to the LRFP

6. **Informational - These items are provided for informational purposes only an no action is required.**

A. <u>Expenditure Contracts</u>	<u>50</u>
Superintendent Gronseth or the Director of Business and Finance has signed the following contracts during the month of December 2012	
B. <u>Revenue Contracts - None</u>	
C. <u>Other Contracts</u>	<u>65</u>
Superintendent Gronseth or the Director of Business and Finance has signed the following no cost contracts during the month of December 2012	
D. <u>Facilities Management &amp; Capital Project Status Report</u>	<u>69</u>
Kerry Leider will be present to answer questions regarding the attached report.	
E. <u>Johnson Controls, Inc. Long-Range Facilities Plan Status Report</u>	<u>80</u>
Kerry Leider will be present to answer questions regarding the attached report.	
F. <u>Change Orders Pertaining to the Long-range Facilities Plan</u>	<u>81</u>
Kerry Leider will be present to answer questions regarding the attached report.	
G. <u>Contracts Pertaining to the Long-range Facilities Plan - None</u>	
H. <u>Quarterly Report of Grants and Donations - October - December 2012</u>	<u>85</u>
<b>7. <u>Future Items</u></b>	
A. Review of Memorial Parks Master Plan	

**Duluth Public Schools - ISD 709**  
**Cash Flow Report**  
**Month Ending 11/30/12**

		Fund										
		Total	1	2	3	4	5	6	7	8 & 9	20	71 & 79
Cash and investments	10/31/2012	\$ 73,429,955	\$ 35,925,032	\$ 647,858	\$ (2,907,691)	\$ 538,236	\$ (7,465,289)	\$ 34,521,084	\$ 9,351,772	\$ 1,673,702	\$ 22,909	\$ 1,122,343
Receivables (increase)/decrease -		4,950,085	5,308,087	(28,866)	(88,760)	(20,157)	(219,956)	-	-	-	(264)	-
Payables increase/(decrease) -		25,373	(54,136)	19,115	31,842	56,676	6,421	(32,795)	(1,750)	-	-	-
Revenues increase/(decrease) -		1,535,450	855,604	519,663	-	(16,856)	922	63,854	45,095	-	67,167	-
Expenditures (increase)/decrease -		(10,804,956)	(6,615,126)	(354,269)	(436,736)	(419,281)	(77,523)	(2,856,991)	-	-	(45,029)	-
<hr/>		<hr/>										
Cash and investments	11/30/2012	\$ 69,135,906	\$ 35,419,461	\$ 803,502	\$ (3,401,345)	\$ 138,617	\$ (7,755,426)	\$ 31,695,152	\$ 9,395,118	\$ 1,673,702	\$ 44,782	\$ 1,122,343

**STATEMENT OF REVENUES AND EXPENDITURES**  
 (IN THOUSANDS)

	CURRENT MONTH				YEAR - TO - DATE				ANNUAL BUDGET	
	FY2013	FY2012	\$ Variance	% Variance	FY2013	FY2012	\$ Variance	% Variance	Adopted	Revised
<u>Revenues</u>										
Levy	\$0	\$0	\$0	N/A	\$0	\$0	\$0	N/A	\$22,400	\$22,407
Interest	(27)	-	(27)	N/A	(764)	-	(764)	N/A	225	225
Tuition, Fees, Admissions	496	354	142	40.1	1,984	899	1,085	120.7	3,379	3,406
Other Local Revenues	(99)	418	(517)	(123.8)	749	2,474	(1,725)	(69.7)	2,040	2,548
State Sources	593	89	504	566.0	43,955	37,885	6,070	16.0	80,557	80,621
Federal Aids from MDE	251	(1,735)	1,986	114.5	805	1,962	(1,157)	(59.0)	7,920	9,407
Federal Direct Aids	-	(351)	351	100.0	571	743	(172)	(23.1)	3,154	3,154
Local Sales	255	227	28	12.3	433	423	10	2.4	6,321	6,326
Sale of Bonds or Loans	0	0	0	N/A	0	0	0	N/A	0	0
<b>Total Revenues</b>	<b>1,468</b>	<b>(998)</b>	<b>2,466</b>	<b>247.1</b>	<b>47,733</b>	<b>44,386</b>	<b>3,347</b>	<b>7.5</b>	<b>125,994</b>	<b>128,094</b>
<u>Expenditures</u>										
Salaries	4,780	4,978	198	4.0	16,499	17,159	660	3.8	54,966	56,594
Benefits	1,995	2,188	193	8.8	7,456	8,124	668	8.2	26,995	27,375
Purchased Services	574	871	297	34.1	3,387	3,550	163	4.6	12,098	12,543
Supplies & Materials	374	390	16	4.1	1,163	1,241	78	6.3	4,770	4,729
Chargebacks	0	1	1	95.2	0	0	(0)	N/A	315	276
Capital Expenditures	3,017	5,269	2,252	42.7	10,355	18,594	8,239	44.3	40,505	40,943
Debt Service	0	4	4	100.0	5,153	5,525	372	6.7	20,995	20,995
Other	21	19	(2)	(10.5)	374	371	(3)	(0.9)	1,061	1,573
<b>Total Expenditures</b>	<b>10,760</b>	<b>13,720</b>	<b>2,960</b>	<b>21.6</b>	<b>44,388</b>	<b>54,564</b>	<b>10,176</b>	<b>18.7</b>	<b>161,704</b>	<b>165,029</b>
Transfers In (Out)	0	0	0	N/A	0	0	0	N/A	0	0
<b>Operating Excess (Deficit)</b>	<b>(9,292)</b>	<b>(\$14,718)</b>	<b>5,426</b>	<b>36.9</b>	<b>3,345</b>	<b>(\$10,178)</b>	<b>13,523</b>	<b>132.9</b>	<b>(\$35,710)</b>	<b>(\$36,936)</b>

DULUTH PUBLIC SCHOOLS - ISD 709  
November 12  
General Fund **TOTAL**

**STATEMENT OF REVENUES AND EXPENDITURES**  
(IN THOUSANDS)

**PAGE 3**

	CURRENT MONTH				YEAR-TO-DATE				ANNUAL BUDGET	
	FY2013	FY2012	\$ Variance	% Variance	FY2013	FY2012	\$ Variance	% Variance	Adopted	Revised
<u>Revenues</u>										
Levy	\$0	\$0	\$0	N/A	\$0	\$0	\$0	N/A	\$7,846	\$7,846
Interest	(27)	0	(27)	N/A	(25)	0	(25)	N/A	50	50
Tuition, Fees, Admissions	360	274	86	31.5	1,442	492	950	193.0	1,365	1,371
Other Local Revenues	83	196	(113)	(57.4)	574	592	(18)	(3.0)	511	687
State Sources	427	(57)	484	848.5	39,055	33,426	5,629	16.8	69,647	69,724
Federal Aids from MDE	12	(1,881)	1,893	100.6	(8)	978	(986)	(100.8)	5,884	7,076
Federal Direct Aids	0	(3)	3	100.0	0	(3)	3	100.0	135	135
Local Sales	0	0	0	N/A	0	14	(14)	(100.0)	0	0
Sale of Bonds or Loans	0	0	0	N/A	0	0	0	N/A	0	0
<b>Total Revenues</b>	<b>856</b>	<b>(1,471)</b>	<b>2,327</b>	<b>158.2</b>	<b>41,038</b>	<b>35,499</b>	<b>5,539</b>	<b>15.6</b>	<b>85,438</b>	<b>86,889</b>
<u>Expenditures</u>										
Salaries	4,247	4,297	50	1.2	14,272	14,608	336	2.3	48,445	49,727
Benefits	1,760	1,720	(40)	(2.4)	6,542	6,908	366	5.3	23,090	23,462
Purchased Services	318	600	282	47.0	1,969	1,953	(16)	(0.8)	6,331	6,574
Supplies & Materials	92	114	22	19.6	447	536	89	16.6	1,632	1,614
Chargebacks	0	(1)	(1)	(100.0)	(1)	(3)	(2)	(51.9)	(1)	(55)
Capital Expenditures	192	68	(124)	(182.4)	250	237	(13)	(5.6)	365	662
Debt Service	0	0	0	N/A	(88)	97	185	190.5	125	125
Other	6	16	10	64.2	335	337	2	0.5	879	1,267
<b>Total Expenditures</b>	<b>6,615</b>	<b>6,814</b>	<b>199</b>	<b>2.9</b>	<b>23,727</b>	<b>24,673</b>	<b>946</b>	<b>3.8</b>	<b>80,866</b>	<b>83,375</b>
Transfers In (Out)	0	0	0	N/A	0	0	0	N/A	(3,589)	(3,589)
<b>Operating Excess (Deficit)</b>	<b>(\$5,760)</b>	<b>(\$8,285)</b>	<b>2,525</b>	<b>30.5</b>	<b>\$17,311</b>	<b>\$10,826</b>	<b>\$6,485</b>	<b>59.9</b>	<b>\$983</b>	<b>(\$76)</b>

**STATEMENT OF REVENUES AND EXPENDITURES**  
 (IN THOUSANDS)

	CURRENT MONTH				YEAR-TO-DATE				ANNUAL BUDGET	
	FY2013	FY2012	\$ Variance	% Variance	FY2013	FY2012	\$ Variance	% Variance	Adopted	Revised
<u>Revenues</u>										
Levy	\$0	\$0	\$0	N/A	\$0	\$0	\$0	N/A	\$7,232	\$7,232
Interest	(27)	0	(27)	N/A	(25)	0	(25)	N/A	50	50
Tuition, Fees, Admissions	327	233	94	40.4	1,364	405	959	236.8	887	887
Other Local Revenues	72	22	50	227.4	240	110	130	118.1	171	179
State Sources	(0)	67	(67)	(100.0)	38,160	32,586	5,574	17.1	64,569	64,569
Federal Aids from MDE	0	(427)	427	100.0	0	14	(14)	(100.0)	0	0
Federal Direct Aids	0	0	0	N/A	0	0	0	N/A	0	0
Local Sales	0	0	0	N/A	0	14	(14)	(100.0)	0	0
Sale of Bonds or Loans	0	0	0	N/A	0	0	0	N/A	0	0
<b>Total Revenues</b>	<b>373</b>	<b>(105)</b>	<b>478</b>	<b>454.9</b>	<b>39,740</b>	<b>33,129</b>	<b>6,611</b>	<b>20.0</b>	<b>72,909</b>	<b>72,917</b>
<u>Expenditures</u>										
Salaries	3,608	3,704	96	2.6	12,080	12,503	423	3.4	41,473	41,645
Benefits	1,485	1,452	(33)	(2.2)	5,599	5,974	375	6.3	19,885	19,869
Purchased Services	236	547	311	56.9	1,765	1,710	(55)	(3.2)	5,532	5,719
Supplies & Materials	72	87	15	17.7	374	400	26	6.4	1,133	1,156
Chargebacks	0	(1)	(1)	(100.0)	(2)	(3)	(1)	(40.2)	(259)	(314)
Capital Expenditures	186	49	(137)	(279.3)	214	103	(111)	(107.6)	214	348
Debt Service	0	0	0	N/A	(88)	97	185	190.5	125	125
Other	2	(6)	(8)	(132.8)	303	241	(62)	(25.6)	234	340
<b>Total Expenditures</b>	<b>5,587</b>	<b>5,832</b>	<b>245</b>	<b>4.2</b>	<b>20,246</b>	<b>21,025</b>	<b>779</b>	<b>3.7</b>	<b>68,337</b>	<b>68,887</b>
Transfers In (Out)	0	0	0	N/A	0	0	0	N/A	(3,589)	(3,589)
<b>Operating Excess (Deficit)</b>	<b>(\$5,215)</b>	<b>(\$5,937)</b>	<b>722</b>	<b>12.2</b>	<b>\$19,494</b>	<b>\$12,104</b>	<b>\$7,390</b>	<b>61.1</b>	<b>\$983</b>	<b>\$440</b>

**STATEMENT OF REVENUES AND EXPENDITURES**  
 (IN THOUSANDS)

	CURRENT MONTH				YEAR-TO-DATE				ANNUAL BUDGET	
	FY2013	FY2012	\$ Variance	% Variance	FY2013	FY2012	\$ Variance	% Variance	Adopted	Revised
<u>Revenues</u>										
Levy	\$0	\$0	\$0	N/A	\$0	\$0	\$0	N/A	\$614	\$614
Interest	0	0	0	N/A	0	0	0	N/A	0	0
Tuition, Fees, Admissions	33	41	(8)	(19.4)	77	87	(10)	(11.1)	478	484
Other Local Revenues	11	174	(163)	(93.4)	334	482	(148)	(30.6)	340	509
State Sources	427	(124)	551	444.1	895	840	55	6.6	5,077	5,154
Federal Aids from MDE	12	(1,454)	1,466	100.8	(8)	964	(972)	(100.9)	5,884	7,076
Federal Direct Aids	0	(3)	3	100.0	0	(3)	3	100.0	135	135
Local Sales	0	0	0	N/A	0	0	0	N/A	0	0
Sale of Bonds or Loans	0	0	0	N/A	0	0	0	N/A	0	0
<b>Total Revenues</b>	<b>483</b>	<b>(1,366)</b>	<b>1,849</b>	<b>135.4</b>	<b>1,299</b>	<b>2,370</b>	<b>(1,071)</b>	<b>(45.2)</b>	<b>12,529</b>	<b>13,973</b>
<u>Expenditures</u>										
Salaries	640	593	(47)	(7.9)	2,192	2,105	(87)	(4.2)	6,972	8,082
Benefits	276	268	(8)	(2.9)	944	934	(10)	(1.0)	3,205	3,593
Purchased Services	82	53	(29)	(55.0)	204	243	39	16.2	799	855
Supplies & Materials	20	27	7	25.7	73	136	63	46.7	499	458
Chargebacks	0	0	0	N/A	0	0	(0)	N/A	258	259
Capital Expenditures	6	19	13	67.5	36	134	98	72.9	150	314
Debt Service	0	0	0	N/A	0	0	0	N/A	0	0
Other	4	22	18	83.0	32	96	64	66.2	645	927
<b>Total Expenditures</b>	<b>1,028</b>	<b>982</b>	<b>(46)</b>	<b>(4.7)</b>	<b>3,482</b>	<b>3,648</b>	<b>166</b>	<b>4.6</b>	<b>12,529</b>	<b>14,488</b>
Transfers In (Out)	0	0	0	N/A	0	0	0	N/A	0	0
<b>Operating Excess (Deficit)</b>	<b>(\$545)</b>	<b>(2,348)</b>	<b>1,803</b>	<b>76.8</b>	<b>(\$2,183)</b>	<b>(\$1,278)</b>	<b>(\$905)</b>	<b>(70.8)</b>	<b>\$0</b>	<b>(\$516)</b>

**STATEMENT OF REVENUES AND EXPENDITURES**  
 (IN THOUSANDS)

	CURRENT MONTH				YEAR - TO - DATE				ANNUAL BUDGET	
	FY2013	FY2012	\$ Variance	% Variance	FY2013	FY2012	\$ Variance	% Variance	Adopted	Revised
<u>Revenues</u>										
Levy	\$0	\$0	\$0	N/A	\$0	\$0	\$0	N/A	\$0	\$0
Interest	0	0	0	N/A	0	0	0	N/A	0	0
Tuition, Fees, Admissions	0	0	0	N/A	0	0	0	N/A	0	0
Other Local Revenues	1	0	1	N/A	3	12	(9)	(78.7)	17	17
State Sources	22	19	3	16.0	37	33	4	12.1	165	165
Federal Aids from MDE	242	220	22	9.9	523	507	16	3.2	2,021	2,021
Federal Direct Aids	0	0	0	N/A	0	0	0	N/A	0	0
Local Sales	255	120	135	112.4	275	278	(3)	(1.0)	1,130	1,130
Sale of Bonds or Loans	0	0	0	N/A	0	0	0	N/A	0	0
<b>Total Revenues</b>	<b>520</b>	<b>359</b>	<b>161</b>	<b>44.8</b>	<b>838</b>	<b>830</b>	<b>8</b>	<b>1.0</b>	<b>3,332</b>	<b>3,332</b>
<u>Expenditures</u>										
Salaries	91	81	(10)	(12.0)	294	267	(27)	(10.0)	968	968
Benefits	34	34	0	1.3	109	111	2	2.1	403	403
Purchased Services	3	4	1	22.7	23	16	(7)	(45.0)	105	95
Supplies & Materials	214	204	(10)	(4.7)	470	442	(28)	(6.3)	1,705	1,712
Chargebacks	0	1	1	100.0	1	1	0	38.9	131	131
Capital Expenditures	0	0	0	N/A	41	0	(41)	N/A	7	46
Debt Service	0	0	0	N/A	0	0	0	N/A	0	0
Other	13	(1)	(14)	(1,434.5)	15	0	(15)	N/A	14	16
<b>Total Expenditures</b>	<b>354</b>	<b>323</b>	<b>(31)</b>	<b>(9.7)</b>	<b>953</b>	<b>837</b>	<b>(116)</b>	<b>(13.8)</b>	<b>3,332</b>	<b>3,371</b>
Transfers In (Out)	0	0	0	N/A	0	0	0	N/A	0	0
<b>Operating Excess (Deficit)</b>	<b>\$165</b>	<b>\$36</b>	<b>\$129</b>	<b>359.4</b>	<b>(\$115)</b>	<b>(\$7)</b>	<b>(\$108)</b>	<b>(1,537.7)</b>	<b>(\$0)</b>	<b>(\$39)</b>

**STATEMENT OF REVENUES AND EXPENDITURES**  
 (IN THOUSANDS)

	CURRENT MONTH				YEAR-TO-DATE				ANNUAL BUDGET	
	FY2013	FY2012	\$ Variance	% Variance	FY2013	FY2012	\$ Variance	% Variance	Adopted	Revised
<u>Revenues</u>										
Levy	\$0	\$0	\$0	N/A	\$0	\$0	\$0	N/A	\$0	\$0
Interest	0	0	0	N/A	0	0	0	N/A	0	0
Tuition, Fees, Admissions	0	0	0	N/A	0	0	0	N/A	0	0
Other Local Revenues	0	0	0	N/A	24	(8)	32	404.5	20	20
State Sources	0	2	(2)	(100.0)	1,939	1,635	304	18.6	5,125	5,125
Federal Aids from MDE	0	0	0	N/A	0	0	0	N/A	0	0
Federal Direct Aids	0	0	0	N/A	0	0	0	N/A	0	0
Local Sales	0	0	0	N/A	0	0	0	N/A	0	0
Sale of Bonds or Loans	0	0	0	N/A	0	0	0	N/A	0	0
<b>Total Revenues</b>	<b>0</b>	<b>2</b>	<b>(2)</b>	<b>(100.0)</b>	<b>1,963</b>	<b>1,627</b>	<b>336</b>	<b>20.7</b>	<b>5,145</b>	<b>5,145</b>
<u>Expenditures</u>										
Salaries	102	103	1	1.0	350	358	8	2.1	1,185	1,185
Benefits	70	68	(2)	(2.7)	213	215	2	1.0	696	696
Purchased Services	227	209	(18)	(8.8)	964	965	1	0.1	3,709	3,713
Supplies & Materials	38	28	(10)	(34.6)	99	88	(11)	(12.0)	317	317
Chargebacks	0	0	0	N/A	0	0	(0)	N/A	1	1
Capital Expenditures	0	0	0	N/A	6	0	(6)	N/A	220	216
Debt Service	0	0	0	N/A	0	0	0	N/A	0	0
Other	0	0	0	N/A	0	0	0	N/A	0	0
<b>Total Expenditures</b>	<b>437</b>	<b>408</b>	<b>(29)</b>	<b>(7.0)</b>	<b>1,631</b>	<b>1,626</b>	<b>(5)</b>	<b>(0.3)</b>	<b>6,128</b>	<b>6,128</b>
Transfers In (Out)	0	0	0	N/A	0	0	0	N/A	0	0
<b>Operating Excess (Deficit)</b>	<b>(\$437)</b>	<b>(\$406)</b>	<b>(\$31)</b>	<b>(7.6)</b>	<b>\$332</b>	<b>\$1</b>	<b>\$331</b>	<b>33,095.0</b>	<b>(\$983)</b>	<b>(\$983)</b>

**STATEMENT OF REVENUES AND EXPENDITURES**  
 (IN THOUSANDS)

	CURRENT MONTH				YEAR-TO-DATE				ANNUAL BUDGET	
	FY2013	FY2012	\$ Variance	% Variance	FY2013	FY2012	\$ Variance	% Variance	Adopted	Revised
<u>Revenues</u>										
Levy	\$0	\$0	\$0	N/A	\$0	\$0	\$0	N/A	\$905	\$912
Interest	0	0	0	N/A	0	0	0	N/A	0	0
Tuition, Fees, Admissions	136	80	56	69.5	543	407	136	33.4	1,032	1,053
Other Local Revenues	(185)	221	(406)	(183.6)	93	469	(376)	(80.2)	21	253
State Sources	35	(19)	54	284.7	989	881	108	12.3	2,017	2,004
Federal Aids from MDE	(3)	(91)	88	96.8	290	460	(170)	(37.1)	15	310
Federal Direct Aids	0	(348)	348	100.0	0	164	(164)	(100.0)	1,876	1,876
Local Sales	0	0	0	N/A	0	0	0	N/A	0	0
Sale of Bonds or Loans	0	0	0	N/A	0	0	0	N/A	0	0
<b>Total Revenues</b>	<b>(17)</b>	<b>(157)</b>	<b>140</b>	<b>89.3</b>	<b>1,915</b>	<b>2,381</b>	<b>(466)</b>	<b>(19.6)</b>	<b>5,865</b>	<b>6,408</b>
<u>Expenditures</u>										
Salaries	282	430	148	34.4	1,265	1,586	321	20.2	3,481	3,827
Benefits	107	138	31	22.3	459	540	81	15.1	1,467	1,474
Purchased Services	24	46	22	48.7	107	154	47	30.7	320	453
Supplies & Materials	5	41	36	88.9	105	131	26	19.5	253	271
Chargebacks	0	1	1	95.2	1	2	1	58.4	184	200
Capital Expenditures	0	0	0	N/A	0	0	0	N/A	8	12
Debt Service	0	0	0	N/A	0	0	0	N/A	0	0
Other	2	1	(1)	(92.4)	22	9	(13)	(146.8)	123	155
<b>Total Expenditures</b>	<b>419</b>	<b>657</b>	<b>238</b>	<b>36.2</b>	<b>1,959</b>	<b>2,422</b>	<b>463</b>	<b>19.1</b>	<b>5,837</b>	<b>6,393</b>
Transfers In (Out)	0	0	0	N/A	0	0	0	N/A		
<b>Operating Excess (Deficit)</b>	<b>(\$436)</b>	<b>(\$814)</b>	<b>\$378</b>	<b>46.4</b>	<b>(\$44)</b>	<b>(\$41)</b>	<b>(\$3)</b>	<b>(8.5)</b>	<b>\$28</b>	<b>\$15</b>

**STATEMENT OF REVENUES AND EXPENDITURES**  
 (IN THOUSANDS)

	CURRENT MONTH				YEAR-TO-DATE				ANNUAL BUDGET	
	FY2013	FY2012	\$ Variance	% Variance	FY2013	FY2012	\$ Variance	% Variance	Adopted	Revised
<u>Revenues</u>										
Levy	\$0	\$0	\$0	N/A	\$0	\$0	\$0	N/A	\$1,463	\$1,463
Interest	0	0	0	N/A	0	0	0	N/A	0	0
Tuition, Fees, Admissions	0	0	0	N/A	0	0	0	N/A	0	0
Other Local Revenues	1	1	(0)	(7.8)	55	163	(108)	(66.3)	151	251
State Sources	0	0	0	N/A	364	337	27	8.0	648	648
Federal Aids from MDE	0	17	(17)	(100.0)	0	17	(17)	(100.0)	0	0
Federal Direct Aids	0	0	0	N/A	0	0	0	N/A	0	0
Local Sales	0	107	(107)	(100.0)	158	107	51	47.5	4,774	4,779
Sale of Bonds or Loans	0	0	0	N/A	0	0	0	N/A	0	0
<b>Total Revenues</b>	<b>1</b>	<b>125</b>	<b>(124)</b>	<b>(99.3)</b>	<b>577</b>	<b>624</b>	<b>(47)</b>	<b>(7.6)</b>	<b>7,037</b>	<b>7,142</b>
<u>Expenditures</u>										
Salaries	52	59	7	11.6	301	304	3	1.0	805	805
Benefits	22	25	3	10.3	129	134	5	3.6	317	317
Purchased Services	0	10	10	99.2	284	430	146	33.9	345	421
Supplies & Materials	3	2	(1)	(44.6)	15	13	(2)	(17.8)	300	252
Chargebacks	0	0	0	N/A	0	0	0	N/A	0	0
Capital Expenditures	0	217	217	100.0	1,022	1,128	106	9.4	3,280	3,408
Debt Service	0	0	0	N/A	0	0	0	N/A	0	0
Other	0	0	0	N/A	0	0	0	N/A	0	67
<b>Total Expenditures</b>	<b>78</b>	<b>313</b>	<b>235</b>	<b>75.2</b>	<b>1,751</b>	<b>2,009</b>	<b>258</b>	<b>12.8</b>	<b>5,047</b>	<b>5,268</b>
Transfers In (Out)	0	0	0	N/A	0	0	0	N/A	(1,311)	(1,311)
<b>Operating Excess (Deficit)</b>	<b>(\$77)</b>	<b>(\$188)</b>	<b>\$111</b>	<b>59.3</b>	<b>(\$1,174)</b>	<b>(\$1,385)</b>	<b>\$211</b>	<b>15.2</b>	<b>\$680</b>	<b>\$563</b>

**STATEMENT OF REVENUES AND EXPENDITURES**  
 (IN THOUSANDS)

	CURRENT MONTH				YEAR - TO - DATE				ANNUAL BUDGET	
	FY2013	FY2012	\$ Variance	% Variance	FY2013	FY2012	\$ Variance	% Variance	Adopted	Revised
<u>Revenues</u>										
Levy	\$0	\$0	\$0	N/A	\$0	\$0	\$0	N/A	\$409	\$409
Interest	0	0	0	N/A	(727)	0	(727)	N/A	158	158
Tuition, Fees, Admissions	0	0	0	N/A	0	0	0	N/A	0	0
Other Local Revenues	0	0	0	N/A	0	1,250	(1,250)	(100.0)	0	0
State Sources	64	0	64	N/A	168	151	17	11.3	168	168
Federal Aids from MDE	0	0	0	N/A	0	0	0	N/A	0	0
Federal Direct Aids	0	0	0	N/A	0	0	0	N/A	0	0
Local Sales	0	0	0	N/A	0	24	(24)	(100.0)	0	0
Sale of Bonds or Loans	0	0	0	N/A	0	0	0	N/A	0	0
<b>Total Revenues</b>	<b>64</b>	<b>0</b>	<b>64</b>	<b>N/A</b>	<b>(559)</b>	<b>1,425</b>	<b>(1,984)</b>	<b>(139.2)</b>	<b>735</b>	<b>735</b>
<u>Expenditures</u>										
Salaries	6	8	2	31.0	16	36	20	54.6	83	83
Benefits	1	3	2	59.4	4	16	12	76.0	37	37
Purchased Services	2	2	0	6.5	40	32	(8)	(24.2)	146	146
Supplies & Materials	24	1	(23)	(2,257.0)	27	31	4	13.2	55	55
Chargebacks	0	0	0	N/A	0	0	(0)	N/A	0	0
Capital Expenditures	2,825	4,984	2,159	43.3	9,037	17,229	8,192	47.6	36,625	36,600
Debt Service	0	0	0	N/A	0	0	0	N/A	0	0
Other	0	3	3	100.0	2	25	24	94.0	6	30
<b>Total Expenditures</b>	<b>2,857</b>	<b>5,001</b>	<b>2,144</b>	<b>42.9</b>	<b>9,125</b>	<b>17,369</b>	<b>8,244</b>	<b>47.5</b>	<b>36,952</b>	<b>36,952</b>
Transfers In (Out)	0	0	0	N/A	0	0	0	N/A	0	0
<b>Operating Excess (Deficit)</b>	<b>(\$2,793)</b>	<b>(\$5,001)</b>	<b>\$2,208</b>	<b>44.1</b>	<b>(\$9,684)</b>	<b>(\$15,944)</b>	<b>\$6,260</b>	<b>39.3</b>	<b>(\$36,217)</b>	<b>(\$36,217)</b>

**STATEMENT OF REVENUES AND EXPENDITURES**  
 (IN THOUSANDS)

	CURRENT MONTH				YEAR-TO-DATE				ANNUAL BUDGET	
	FY2013	FY2012	\$ Variance	% Variance	FY2013	FY2012	\$ Variance	% Variance	Adopted	Revised
<u>Revenues</u>										
Levy	\$0	\$0	\$0	N/A	\$0	\$0	\$0	N/A	\$11,777	\$11,777
Interest	0	0	0	N/A	0	0	0	N/A	0	0
Tuition, Fees, Admissions	0	0	0	N/A	0	0	0	N/A	0	0
Other Local Revenues	0	0	0	N/A	0	(5)	5	100.0	0	0
State Sources	45	144	(99)	(68.7)	1,402	1,422	(20)	(1.4)	2,787	2,787
Federal Aids from MDE	0	0	0	N/A	0	0	0	N/A	0	0
Federal Direct Aids	0	0	0	N/A	571	582	(11)	(1.8)	1,143	1,143
Local Sales	0	0	0	N/A	0	0	0	N/A	0	0
Sale of Bonds or Loans	0	0	0	N/A	0	0	0	N/A	0	0
<b>Total Revenues</b>	<b>45</b>	<b>144</b>	<b>(99)</b>	<b>(68.7)</b>	<b>1,974</b>	<b>1,999</b>	<b>(25)</b>	<b>(1.3)</b>	<b>15,707</b>	<b>15,707</b>
<u>Expenditures</u>										
Salaries	0	0	0	N/A	0	0	0	N/A	0	0
Benefits	0	0	0	N/A	0	0	0	N/A	0	0
Purchased Services	0	0	0	N/A	0	0	0	N/A	0	0
Supplies & Materials	0	0	0	N/A	0	0	0	N/A	0	0
Chargebacks	0	0	0	N/A	0	0	0	N/A	0	0
Capital Expenditures	0	0	0	N/A	0	0	0	N/A	0	0
Debt Service	0	4	4	100.0	5,241	5,428	187	3.4	20,870	20,870
Other	0	0	0	N/A	0	0	0	N/A	0	0
<b>Total Expenditures</b>	<b>0</b>	<b>4</b>	<b>4</b>	<b>100.0</b>	<b>5,241</b>	<b>5,428</b>	<b>187</b>	<b>3.4</b>	<b>20,870</b>	<b>20,870</b>
Transfers In (Out)	0	0	0	N/A	0	0	0	N/A	4,900	4,900
<b>Operating Excess (Deficit)</b>	<b>\$45</b>	<b>\$140</b>	<b>(\$95)</b>	<b>(67.8)</b>	<b>(\$3,267)</b>	<b>(\$3,429)</b>	<b>\$162</b>	<b>4.7</b>	<b>(\$263)</b>	<b>(\$263)</b>

**STATEMENT OF REVENUES AND EXPENDITURES**  
 (IN THOUSANDS)

	CURRENT MONTH				YEAR-TO-DATE				ANNUAL BUDGET	
	FY2013	FY2012	\$ Variance	% Variance	FY2013	FY2012	\$ Variance	% Variance	Adopted	Revised
<u>Revenues</u>										
Levy	\$0	\$0	\$0	N/A	\$0	\$0	\$0	N/A	\$0	\$0
Interest	0	0	0	N/A	(13)	0	(13)	N/A	13	13
Tuition, Fees, Admissions	0	0	0	N/A	0	0	0	N/A	0	0
Other Local Revenues	0	0	0	N/A	0	1	(1)	(100.0)	300	300
State Sources	0	0	0	N/A	0	0	0	N/A	0	0
Federal Aids from MDE	0	0	0	N/A	0	0	0	N/A	0	0
Federal Direct Aids	0	0	0	N/A	0	0	0	N/A	0	0
Local Sales	0	0	0	N/A	0	0	0	N/A	0	0
Sale of Bonds or Loans	0	0	0	N/A	0	0	0	N/A	0	0
<b>Total Revenues</b>	<b>0</b>	<b>0</b>	<b>0</b>	<b>N/A</b>	<b>(13)</b>	<b>1</b>	<b>(14)</b>	<b>(1,372.8)</b>	<b>313</b>	<b>313</b>
<u>Expenditures</u>										
Salaries	0	0	0	N/A	0	0	0	N/A	0	0
Benefits	0	200	200	100.0	0	200	200	100.0	250	250
Purchased Services	0	0	0	N/A	0	0	0	N/A	0	0
Supplies & Materials	0	0	0	N/A	0	0	(0)	N/A	0	0
Chargebacks	0	0	0	N/A	0	0	0	N/A	0	0
Capital Expenditures	0	0	0	N/A	0	0	0	N/A	0	0
Debt Service	0	0	0	N/A	0	0	0	N/A	0	0
Other	0	0	0	N/A	0	0	0	N/A	0	0
<b>Total Expenditures</b>	<b>0</b>	<b>200</b>	<b>200</b>	<b>100.0</b>	<b>0</b>	<b>200</b>	<b>200</b>	<b>100.0</b>	<b>250</b>	<b>250</b>
Transfers In (Out)	0	0	0	N/A	0	0	0	N/A	0	0
<b>Operating Excess (Deficit)</b>	<b>\$0</b>	<b>(\$200)</b>	<b>\$200</b>	<b>100.0</b>	<b>(\$13)</b>	<b>(\$199)</b>	<b>\$186</b>	<b>93.6</b>	<b>\$62</b>	<b>\$63</b>

**STATEMENT OF REVENUES AND EXPENDITURES**  
 (IN THOUSANDS)

	CURRENT MONTH				YEAR-TO-DATE				ANNUAL BUDGET	
	FY2013	FY2012	\$ Variance	% Variance	FY2013	FY2012	\$ Variance	% Variance	Adopted	Revised
<u>Revenues</u>										
Levy	\$0	\$0	\$0	N/A	\$0	\$0	\$0	N/A	\$0	\$0
Interest	0	0	0	N/A	0	0	0	N/A	0	0
Tuition, Fees, Admissions	0	0	0	N/A	0	0	0	N/A	0	0
Other Local Revenues	67	0	67	N/A	361	0	361	N/A	790	790
State Sources	0	0	0	N/A	0	0	0	N/A	0	0
Federal Aids from MDE	0	0	0	N/A	0	0	0	N/A	0	0
Federal Direct Aids	0	0	0	N/A	0	0	0	N/A	0	0
Local Sales	0	0	0	N/A	0	0	0	N/A	0	0
Sale of Bonds or Loans	0	0	0	N/A	0	0	0	N/A	0	0
<b>Total Revenues</b>	<b>67</b>	<b>0</b>	<b>67</b>	<b>N/A</b>	<b>361</b>	<b>0</b>	<b>361</b>	<b>N/A</b>	<b>790</b>	<b>790</b>
<u>Expenditures</u>										
Salaries	0	0	0	N/A	0	0	0	N/A	0	0
Benefits	41	0	(41)	N/A	202	0	(202)	N/A	735	735
Purchased Services	4	0	(4)	N/A	22	0	(22)	N/A	55	55
Supplies & Materials	0	0	0	N/A	0	0	0	N/A	0	0
Chargebacks	0	0	0	N/A	0	0	0	N/A	0	0
Capital Expenditures	0	0	0	N/A	0	0	0	N/A	0	0
Debt Service	0	0	0	N/A	0	0	0	N/A	0	0
Other	0	0	0	N/A	0	0	0	N/A	0	0
<b>Total Expenditures</b>	<b>45</b>	<b>0</b>	<b>(45)</b>	<b>N/A</b>	<b>225</b>	<b>0</b>	<b>(225)</b>	<b>N/A</b>	<b>790</b>	<b>790</b>
Transfers In (Out)	0	0	0	N/A	0	0	0	N/A	0	0
<b>Operating Excess (Deficit)</b>	<b>\$22</b>	<b>\$0</b>	<b>\$22</b>	<b>N/A</b>	<b>\$136</b>	<b>\$0</b>	<b>\$136</b>	<b>N/A</b>	<b>\$0</b>	<b>\$0</b>

DULUTH PUBLIC SCHOOLS - ISD 709  
November 12  
Student Activities

**STATEMENT OF REVENUES AND EXPENDITURES**  
(IN THOUSANDS)

**PAGE 14**

	CURRENT MONTH				YEAR-TO-DATE				ANNUAL BUDGET	
	FY2013	FY2012	\$ Variance	% Variance	FY2013	FY2012	\$ Variance	% Variance	Adopted	Revised
<u>Revenues</u>										
Levy	\$0	\$0	\$0	N/A	\$0	\$0	\$0	N/A	\$0	\$0
Interest	0	0	0	N/A	0	0	0	N/A	4	4
Tuition, Fees, Admissions	0	0	0	N/A	0	0	0	N/A	981	981
Other Local Revenues	0	0	0	N/A	0	0	0	N/A	230	230
State Sources	0	0	0	N/A	0	0	0	N/A	0	0
Federal Aids from MDE	0	0	0	N/A	0	0	0	N/A	0	0
Federal Direct Aids	0	0	0	N/A	0	0	0	N/A	0	0
Local Sales	0	0	0	N/A	0	0	0	N/A	417	417
Sale of Bonds or Loans	0	0	0	N/A	0	0	0	N/A	0	0
<b>Total Revenues</b>	<b>0</b>	<b>0</b>	<b>0</b>	<b>N/A</b>	<b>0</b>	<b>0</b>	<b>0</b>	<b>N/A</b>	<b>1,632</b>	<b>1,632</b>
<u>Expenditures</u>										
Salaries	0	0	0	N/A	0	0	0	N/A	0	0
Benefits	0	0	0	N/A	0	0	0	N/A	0	0
Purchased Services	0	0	0	N/A	0	0	0	N/A	1,086	1,086
Supplies & Materials	0	0	0	N/A	0	0	0	N/A	507	507
Chargebacks	0	0	0	N/A	0	0	0	N/A	0	0
Capital Expenditures	0	0	0	N/A	0	0	0	N/A	0	0
Debt Service	0	0	0	N/A	0	0	0	N/A	0	0
Other	0	0	0	N/A	0	0	0	N/A	39	39
<b>Total Expenditures</b>	<b>0</b>	<b>0</b>	<b>0</b>	<b>N/A</b>	<b>0</b>	<b>0</b>	<b>0</b>	<b>N/A</b>	<b>1,632</b>	<b>1,632</b>
Transfers In (Out)	0	0	0	N/A	0	0	0	N/A	0	0
<b>Operating Excess (Deficit)</b>	<b>\$0</b>	<b>\$0</b>	<b>\$0</b>	<b>N/A</b>	<b>\$0</b>	<b>\$0</b>	<b>\$0</b>	<b>N/A</b>	<b>(\$0)</b>	<b>(\$0)</b>

November 12

# BALANCE SHEET

ALL FUNDS

ASSETS	11/30/12	06/30/12	11/30/11	FUND BALANCES	11/30/12	06/30/12	11/30/11
Cash / Investments	\$69,136	\$71,942	\$86,391	Reserved for:			
Taxes & Credits Receivable	4,352	16,155	6,438	Severance	\$0	\$0	\$0
Accounts / Interest Receivable	443	1,733	3,249	Nonspendable Inventory	222	222	212
Due from Other Funds	228	228	75	Nonspendable Prepaids	81	82	72
Due from Other MN Districts	925	995	0	Staff Development	236	236	302
Due From MDE	27,317	27,568	22,747	Reemployment comp	0	0	0
Due From Federal thru MDE	35	1,743	35	Basic skills	305	305	329
Due From Federal - Direct	0	499	0	Learning development	0	0	0
Due from Other Governments	0	94	0	Desegregation	211	211	293
Inventory	1,552	1,573	215	Gifted and Talented	0	0	23
Prepaids	44	82	83	Pupil Transportation Safety	0	0	0
				ECFE	191	191	160
<b>Total Assets</b>	<b>\$104,030</b>	<b>\$122,611</b>	<b>\$119,232</b>	Community Education	281	281	159
				Community Services	27	27	0
<b>LIABILITIES</b>				Operating Capital	0	0	0
Tax and Aid Anticipation Payable	\$ 23,000	\$ 22,610	\$ 8,450	Facilities	27,888	27,888	60,433
Accrued Interest Payable	0	0	0	Alternative facilities	13,561	13,561	20,554
Salaries Payable	(120)	13,157	760	Restricted Programs	0	0	0
Accounts Payable	123	8,662	296	Bond Refunding	0	0	0
Due to Other Funds	228	228	75	Endowment	1,901	1,914	1,675
Due to Other MN Districts	8	83	24	Encumbrances	0	0	0
Due to Other Governments	0	0	297	Severance-Insurance Prem	0	0	4,081
Claims Payable	182	179	166	Area Learning Center	0	0	0
Deferred Revenue	2,612	3,176	12	Designated for:			
Taxes Levied for Subsequent Yr.	19,985	19,985	19,710	Textbooks	273	273	0
Property tax shift	(865)	(865)	0	Carryovers	328	328	680
				Operating Capital	95	0	0
<b>Total Liabilities</b>	<b>\$45,154</b>	<b>\$67,216</b>	<b>\$29,790</b>	Referendum	0	0	0
				Undesignated	13,275	9,877	469
				<b>Total Fund Balance</b>	<b>\$58,876</b>	<b>\$55,395</b>	<b>\$89,442</b>
				<b>Liabilities &amp; Fund Balance</b>	<b>\$104,030</b>	<b>\$122,611</b>	<b>\$119,232</b>

November 12  
General Fund

BALANCE SHEET

ASSETS	11/30/12	06/30/12	11/30/11
Cash / Investments	\$35,419	\$18,034	\$17,042
Taxes & Credits Receivable	(4,233)	7,571	(3,074)
Accounts / Interest Receivable	(167)	27	412
Due from Other Funds	0	0	75
Due from Other MN Districts	901	970	0
Due From MDE	23,611	23,661	21,393
Due From Federal thru MDE	0	1,663	0
Due From Federal - Direct	0	85	0
Due from Other Governments	0	26	0
Inventory	156	131	177
Prepays	44	78	83
<b>Total Assets</b>	<b>\$55,730</b>	<b>\$52,245</b>	<b>\$36,108</b>

LIABILITIES	11/30/12	06/30/12	11/30/11
Tax and Aid Anticipation Payable	\$23,000	\$22,610	\$8,450
Accrued Interest Payable	0	0	0
Salaries & Benefits Payable	(584)	12,500	195
Accounts Payable	118	916	254
Due to Other Funds	171	171	0
Due to Other MN Districts	8	83	24
Due to Other Governments	0	0	297
Claims Payable	182	178	149
Deferred Revenue	598	862	9
Taxes Levied for Subsequent Yr.	5,461	5,461	5,315
Property tax shift	(850)	(850)	0
<b>Total Liabilities</b>	<b>\$28,105</b>	<b>\$41,931</b>	<b>\$14,693</b>

FUND BALANCES	11/30/12	06/30/12	11/30/11
Reserved for:			
Severance	\$0	\$0	\$0
Nonspendable Inventory	131	131	129
Nonspendable Prepays	78	78	72
Staff Development	236	236	302
Reemployment comp	0	0	0
Basic skills	305	305	329
Learning development	0	0	0
Desegregation	211	211	293
Gifted and Talented	0	0	23
Pupil Transportation Safety	0	0	0
ECFE	0	0	0
Community Education	0	0	0
Community Services	0	0	0
Operating Capital	0	0	0
Facilities	0	0	0
Alternative facilities	0	0	0
Restricted Programs	0	0	0
Escrow Account	0	0	0
Severance-Insurance Prem	0	0	4,081
Encumbrances	0	0	0
Area Learning Center	0	0	0
Designated for:			
Textbooks	0	0	0
Carryovers	307	307	375
Operating Capital	0	0	0
Referendum	0	0	0
Undesignated	26,358	9,047	15,811
<b>Total Fund Balance</b>	<b>\$27,625</b>	<b>\$10,314</b>	<b>\$21,415</b>
<b>Liabilities &amp; Fund Balance</b>	<b>\$55,730</b>	<b>\$52,245</b>	<b>\$36,108</b>

Duluth Public Schools - ISD #709  
 November 12  
 Food Service Fund

## BALANCE SHEET

ASSETS	11/30/12	06/30/12	11/30/11
Cash / Investments	\$804	\$933	\$709
Taxes & Credits Receivable	0	0	0
Accounts / Interest Receivable	44	2	0
Due from Other Funds	0	0	0
Due from Other MN Districts	0	0	0
Due From MDE	0	0	0
Due From Federal thru MDE	35	35	35
Due From Federal - Direct	0	0	0
Due from Other Governments	0	0	0
Inventory	56	89	46
Prepays	0	1	0
<b>Total Assets</b>	<b>\$937</b>	<b>\$1,060</b>	<b>\$790</b>

LIABILITIES	11/30/12	06/30/12	11/30/11
Tax and Aid Anticipation Payable	\$0	\$0	\$0
Accrued Interest Payable	0	0	0
Salaries Payable	59	17	69
Accounts Payable	0	50	19
Due to Other Funds	0	0	0
Due to Other MN Districts	0	0	0
Due to Other Governments	0	0	0
Claims Payable	0	0	1
Deferred Revenue	0	0	0
Taxes Levied for Subsequent Yr.	0	0	0
Property tax shift	0	0	0
<b>Total Liabilities</b>	<b>\$59</b>	<b>\$67</b>	<b>\$89</b>

FUND BALANCES	11/30/12	06/30/12	11/30/11
Reserved for:			
Severance	\$0	\$0	\$0
Nonspendable Inventory	89	89	83
Nonspendable Prepays	1	1	0
Staff Development	0	0	0
Reemployment comp	0	0	0
Basic skills	0	0	0
Learning development	0	0	0
Desegregation	0	0	0
Gifted and Talented	0	0	0
Pupil Transportation Safety	0	0	0
ECFE	0	0	0
Community Education	0	0	0
Community Services	0	0	0
Operating Capital	0	0	0
Facilities	0	0	0
Alternative facilities	0	0	0
Restricted Programs	0	0	0
Escrow Account	0	0	0
Endowment	0	0	0
Encumbrances	0	0	0
Designated for:			
Textbooks	0	0	0
Operating Capital	0	0	0
Undesignated	788	902	618
<b>Total Fund Balance</b>	<b>\$878</b>	<b>\$993</b>	<b>\$701</b>
<b>Liabilities &amp; Fund Balance</b>	<b>\$937</b>	<b>\$1,060</b>	<b>\$790</b>

November 12

## BALANCE SHEET

Transportation Fund

ASSETS	11/30/12	06/30/12	11/30/11	FUND BALANCES	11/30/12	06/30/12	11/30/11
Cash / Investments	(\$3,401)	(\$3,483)	(\$1,078)	Reserved for:			
Taxes & Credits Receivable	0	0	0	Severance	\$0	\$0	\$0
Accounts / Interest Receivable	145	3	8	Nonspendable Inventory	2	2	0
Due from Other Funds	0	0	0	Nonspendable Prepaids	0	0	0
Due from Other MN Districts	24	24	0	Staff Development	0	0	0
Due From MDE	2,166	2,166	74	Reemployment comp	0	0	0
Due From Federal thru MDE	0	0	0	Basic skills	0	0	0
Due From Federal - Direct	0	0	0	Learning development	0	0	0
Due from Other Governments	0	0	0	Desegregation	0	0	0
Inventory	(8)	2	(6)	Gifted and Talented	0	0	0
Prepaids	0	0	0	Pupil Transportation Safety	0	0	0
				ECFE	0	0	0
Total Assets	<u>(\$1,073)</u>	<u>(\$1,288)</u>	<u>(\$1,002)</u>	Community Education	0	0	0
				Community Services	0	0	0
				Operating Capital	0	0	0
				Facilities	0	0	0
				Alternative facilities	0	0	0
				Restricted Programs	0	0	0
				Escrow Account	0	0	0
				Endowment	0	0	0
				Encumbrances	0	0	0
				Designated for:			
				Textbooks	0	0	0
				Operating Capital	0	0	0
				Undesignated	(1,209)	(1,541)	(1,150)
				Total Fund Balance	<u>(\$1,207)</u>	<u>(\$1,539)</u>	<u>(\$1,150)</u>
				Liabilities & Fund Balance	<u>(\$1,073)</u>	<u>(\$1,288)</u>	<u>(\$1,002)</u>

**LIABILITIES**

Tax and Aid Anticipation Payable	\$0	\$0	\$0
Accrued Interest Payable	0	0	0
Salaries Payable	134	22	143
Accounts Payable	0	229	0
Due to Other Funds	0	0	0
Due to Other MN Districts	0	0	0
Due to Other Governments	0	0	0
Claims Payable	0	0	5
Deferred Revenue	0	0	0
Taxes Levied for Subsequent Yr.	0	0	0
Property tax shift	0	0	0
Total Liabilities	<u>\$134</u>	<u>\$252</u>	<u>\$148</u>

November 12

## BALANCE SHEET

Community Service Fund

ASSETS	11/30/12	06/30/12	11/30/11	FUND BALANCES	11/30/12	06/30/12	11/30/11
Cash / Investments	\$139	\$212	\$224	Reserved for:			
Taxes & Credits Receivable	629	629	642	Severance	\$0	\$0	\$0
Accounts / Interest Receivable	47	9	0	Nonspendable Inventory	0	0	0
Due from Other Funds	0	0	0	Nonspendable Prepays	2	2	0
Due from Other MN Districts	0	0	0	Staff development	0	0	0
Due From MDE	514	705	425	Reemployment comp	0	0	0
Due From Federal thru MDE	0	46	0	Basic skills	0	0	0
Due From Federal - Direct	0	414	0	Learning development	0	0	0
Due from Other Governments	0	5	0	Desegregation	0	0	0
Inventory	(3)	0	(2)	Gifted and Talented	0	0	0
Prepays	0	2	0	Pupil Transportation Safety	0	0	0
				ECFE	191	191	160
<b>Total Assets</b>	<b>\$1,327</b>	<b>\$2,022</b>	<b>\$1,289</b>	Community Education	281	281	159
				Community Services	27	27	0
<b>LIABILITIES</b>				Operating Capital	0	0	0
Tax and Aid Anticipation Payable	\$0	\$0	\$0	Facilities	0	0	0
Accrued Interest Payable	0	0	0	Alternative facilities	0	0	0
Salaries Payable	198	563	255	Restricted Programs	0	0	0
Accounts Payable	0	75	9	Escrow Account	0	0	0
Due to Other Funds	57	57	75	Endowment	0	0	0
Due to Other MN Districts	0	0	0	Encumbrances	0	0	0
Due to Other Governments	0	0	0	Designated for:			
Claims Payable	0	0	8	Textbooks	0	0	0
Deferred Revenue	60	271	0	Operating Capital	0	0	0
Taxes Levied for Subsequent Yr.	569	569	665	Undesignated	(44)	0	(42)
Property tax shift	(14)	(14)	0				
<b>Total Liabilities</b>	<b>\$871</b>	<b>\$1,521</b>	<b>\$1,012</b>	<b>Total Fund Balance</b>	<b>\$457</b>	<b>\$501</b>	<b>\$277</b>
				<b>Liabilities &amp; Fund Balance</b>	<b>\$1,327</b>	<b>\$2,022</b>	<b>\$1,289</b>

November 12

## BALANCE SHEET

Capital Expenditures

ASSETS	11/30/12	06/30/12	11/30/11	FUND BALANCES	11/30/12	06/30/12	11/30/11
Cash / Investments	(\$7,755)	(\$6,355)	(\$5,094)	Reserved for:			
Taxes & Credits Receivable	0	0	0	Severance	\$0	\$0	\$0
Accounts / Interest Receivable	360	60	18	Nonspendable Inventory	0	0	0
Due from Other Funds	0	0	0	Nonspendable Prepays	0	0	0
Due from Other MN Districts	0	0	0	Staff Development	0	0	0
Due From MDE	0	11	0	Reemployment comp	0	0	0
Due From Federal thru MDE	0	0	0	Basic skills	0	0	0
Due From Federal - Direct	0	0	0	Learning development	0	0	0
Due from Other Governments	0	63	0	Desegregation	0	0	0
Inventory	1,351	1,351	0	Gifted and Talented	0	0	0
Prepays	0	0	0	Pupil Transportation Safety	0	0	0
				ECFE	0	0	0
Total Assets	<u>(\$6,044)</u>	<u>(\$4,870)</u>	<u>(\$5,076)</u>	Community Education	0	0	0
				Community Services	0	0	0
LIABILITIES				Operating Capital	0	0	0
Tax and Aid Anticipation Payable	\$0	\$0	\$0	Facilities	0	0	0
Accrued Interest Payable	0	0	0	Alternative facilities	0	0	0
Salaries Payable	70	43	87	Restricted Programs	0	0	0
Accounts Payable	0	27	7	Escrow Account	0	0	0
Due to Other Funds	0	0	0	Endowment	0	0	0
Due to Other MN Districts	0	0	0	Encumbrances	0	0	0
Due to Other Governments	0	0	0	Designated for:			
Claims Payable	0	0	3	Textbooks	273	273	0
Deferred Revenue	1,351	1,351	1	School Carryover	21	21	305
Taxes Levied for Subsequent Yr.	0	0	0	Operating Capital	95	0	0
Property tax shift	0	0	0	Undesignated	(7,855)	(6,586)	(5,479)
Total Liabilities	<u>\$1,422</u>	<u>\$1,421</u>	<u>\$98</u>	Total Fund Balance	<u>(\$7,465)</u>	<u>(\$6,291)</u>	<u>(\$5,174)</u>
				Liabilities & Fund Balance	<u>(\$6,044)</u>	<u>(\$4,870)</u>	<u>(\$5,076)</u>

November 12

## BALANCE SHEET

Building Construction Fund

ASSETS	11/30/12	06/30/12	11/30/11	FUND BALANCES	11/30/12	06/30/12	11/30/11
Cash / Investments	\$31,695	\$47,075	\$62,216	Reserved for:			
Taxes & Credits Receivable	0	0	0	Severance	\$0	\$0	\$0
Accounts / Interest Receivable	12	1,617	2,795	Nonspendable Inventory	0	0	0
Due from Other Funds	0	0	0	Nonspendable Prepays	0	0	0
Due from Other MN Districts	0	0	0	Staff Development	0	0	0
Due From MDE	60	60	50	Reemployment comp	0	0	0
Due From Federal thru MDE	0	0	0	Basic skills	0	0	0
Due From Federal - Direct	0	0	0	Learning development	0	0	0
Due from Other Governments	0	0	0	Desegregation	0	0	0
Inventory	0	0	0	Gifted and Talented	0	0	0
Prepays	0	0	0	Pupil Transportation Safety	0	0	0
				ECFE	0	0	0
<b>Total Assets</b>	<b><u>\$31,767</u></b>	<b><u>\$48,752</u></b>	<b><u>\$65,061</u></b>	Community Education	0	0	0
				Community Services	0	0	0
<b>LIABILITIES</b>				Operating Capital	0	0	0
Tax and Aid Anticipation Payable	\$0	\$0	\$0	Facilities	27,888	27,888	60,433
Accrued Interest Payable	0	0	0	Alternative facilities	13,561	13,561	20,554
Salaries Payable	2	11	11	Restricted Programs	0	0	0
Accounts Payable	0	7,292	7	Escrow Account	0	0	0
Due to Other Funds	0	0	0	Endowment	0	0	0
Due to Other MN Districts	0	0	0	Encumbrances	0	0	0
Due to Other Governments	0	0	0				
Claims Payable	0	0	0	Textbooks	0	0	0
Deferred Revenue	0	0	0	Operating Capital	0	0	0
Taxes Levied for Subsequent Yr.	0	0	0	Undesignated	(9,684)	0	(15,944)
Property tax shift	0	0	0				
<b>Total Liabilities</b>	<b><u>\$2</u></b>	<b><u>\$7,303</u></b>	<b><u>\$18</u></b>	<b>Total Fund Balance</b>	<b><u>\$31,765</u></b>	<b><u>\$41,449</u></b>	<b><u>\$65,043</u></b>
				<b>Liabilities &amp; Fund Balance</b>	<b><u>\$31,767</u></b>	<b><u>\$48,752</u></b>	<b><u>\$65,061</u></b>

November 12

## BALANCE SHEET

Debt Service Fund

ASSETS	11/30/12	06/30/12	11/30/11	FUND BALANCES	11/30/12	06/30/12	11/30/11
Cash / Investments	\$9,395	\$12,661	\$9,561	Reserved for:			
Taxes & Credits Receivable	7,955	7,955	8,870	Severance	\$0	\$0	\$0
Accounts / Interest Receivable	0	1	0	Nonspendable Inventory	0	0	0
Due from Other Funds	0	0	0	Nonspendable Prepays	0	0	0
Due from Other MN Districts	0	0	0	Staff Development	0	0	0
Due From MDE	965	965	805	Reemployment comp	0	0	0
Due From Federal thru MDE	0	0	0	Basic skills	0	0	0
Due From Federal - Direct	0	0	0	Learning development	0	0	0
Due from Other Governments	0	0	0	Desegregation	0	0	0
Inventory	0	0	0	Gifted and Talented	0	0	0
Prepays	0	0	0	Pupil Transportation Safety	0	0	0
				ECFE	0	0	0
<b>Total Assets</b>	<b><u>\$18,315</u></b>	<b><u>\$21,583</u></b>	<b><u>\$19,236</u></b>	Community Education	0	0	0
				Community Services	0	0	0
<b>LIABILITIES</b>				Operating Capital	0	0	0
Tax and Aid Anticipation Payable	\$0	\$0	\$0	Facilities	0	0	0
Accrued Interest Payable	0	0	0	Alternative facilities	0	0	0
Salaries Payable	0	0	0	Restricted Programs	0	0	0
Accounts Payable	0	0	0	Escrow Account	0	0	0
Due to Other Funds	0	0	0	Bond Refundings	0	0	0
Due to Other MN Districts	0	0	0	Encumbrances	0	0	0
Due to Other Governments	0	0	0	Designated for:			
Claims Payable	0	0	0	Textbooks	0	0	0
Deferred Revenue	602	602	0	Operating Capital	0	0	0
Taxes Levied for Subsequent Yr.	13,955	13,955	13,730	Undesignated	3,758	7,026	5,506
Property tax shift	0	0	0				
				<b>Total Fund Balance</b>	<b><u>\$3,758</u></b>	<b><u>\$7,026</u></b>	<b><u>\$5,506</u></b>
<b>Total Liabilities</b>	<b><u>\$14,557</u></b>	<b><u>\$14,557</u></b>	<b><u>\$13,730</u></b>				
				<b>Liabilities &amp; Fund Balance</b>	<b><u>\$18,315</u></b>	<b><u>\$21,583</u></b>	<b><u>\$19,236</u></b>

November 12

# BALANCE SHEET

Trust & Agency Funds

ASSETS	11/30/12	06/30/12	11/30/11	FUND BALANCES	11/30/12	06/30/12	11/30/11
Cash / Investments	\$1,674	\$1,673	\$1,661	Reserved for:			
Taxes & Credits Receivable	0	0	0	Severance	\$0	\$0	\$0
Accounts / Interest Receivable	0	13	16	Nonspendable Inventory	0	0	0
Due from Other Funds	228	228	0	Nonspendable Prepaids	0	0	0
Due from Other MN Districts	0	0	0	Staff Development	0	0	0
Due From MDE	0	0	0	Reemployment comp	0	0	0
Due From Federal thru MDE	0	0	0	Basic skills	0	0	0
Due From Federal - Direct	0	0	0	Learning development	0	0	0
Due from Other Governments	0	0	0	Desegregation	0	0	0
Inventory	0	0	0	Gifted and Talented	0	0	0
Prepaids	0	0	0	Pupil Transportation Safety	0	0	0
				ECFE	0	0	0
Total Assets	<u>\$1,901</u>	<u>\$1,914</u>	<u>\$1,677</u>	Community Education	0	0	0
				Community Services	0	0	0
LIABILITIES				Operating Capital	0	0	0
Tax and Aid Anticipation Payable	\$0	\$0	\$0	Facilities	0	0	0
Accrued Interest Payable	0	0	0	Alternative facilities	0	0	0
Salaries Payable	0	0	0	Restricted Programs	0	0	0
Accounts Payable	0	0	0	Escrow Account	0	0	0
Due to Other Funds	0	0	0	Endowment	1,901	1,914	1,675
Due to Other MN Districts	0	0	0	Encumbrances	0	0	0
Due to Other Governments	0	0	0	Designated for:			
Claims Payable	0	0	0	Textbooks	0	0	0
Deferred Revenue	0	0	2	Operating Capital	0	0	0
Taxes Levied for Subsequent Yr.	0	0	0	Undesignated	0	0	0
Property tax shift	0	0	0				
Total Liabilities	<u>\$0</u>	<u>\$0</u>	<u>\$2</u>	Total Fund Balance	<u>\$1,901</u>	<u>\$1,914</u>	<u>\$1,675</u>
				Liabilities & Fund Balance	<u>\$1,901</u>	<u>\$1,914</u>	<u>\$1,677</u>

November 12

## BALANCE SHEET

Dental Internal Service Fund

ASSETS	11/30/12	06/30/12	11/30/11	FUND BALANCES	11/30/12	06/30/12	11/30/11
Cash / Investments	\$45	\$69	\$0	Reserved for:			
Taxes & Credits Receivable	0	0	0	Severance	\$0	\$0	\$0
Accounts / Interest Receivable	1	1	0	Nonspendable Inventory	0	0	0
Due from Other Funds	0	0	0	Nonspendable Prepays	0	0	0
Due from Other MN Districts	0	0	0	Staff Development	0	0	0
Due From MDE	0	0	0	Reemployment comp	0	0	0
Due From Federal thru MDE	0	0	0	Reemployment comp	0	0	0
Due From Federal - Direct	0	0	0	Learning development	0	0	0
Due from Other Governments	0	0	0	Desegregation	0	0	0
Inventory	0	0	0	Gifted and Talented	0	0	0
Prepays	0	0	0	Pupil Transportation Safety	0	0	0
				ECFE	0	0	0
<b>Total Assets</b>	<b>\$46</b>	<b>\$70</b>	<b>\$0</b>	Community Education	0	0	0
				Community Services	0	0	0
<b>LIABILITIES</b>				Operating Capital	0	0	0
Tax and Aid Anticipation Payable	\$0	\$0	\$0	Facilities	0	0	0
Accrued Interest Payable	0	0	0	Alternative facilities	0	0	0
Salaries Payable	0	0	0	Restricted Programs	0	0	0
Accounts Payable	4	74	0	Escrow Account	0	0	0
Due to Other Funds	0	0	0	Endowment	0	0	0
Due to Other MN Districts	0	0	0	Encumbrances	0	0	0
Due to Other Governments	0	0	0	Designated for:			
Claims Payable	0	0	0	Textbooks	0	0	0
Deferred Revenue	0	90	0	Operating Capital	0	0	0
Taxes Levied for Subsequent Yr.	0	0	0	Undesignated	42	(94)	0
Property tax shift	0	0	0				
<b>Total Liabilities</b>	<b>\$4</b>	<b>\$164</b>	<b>\$0</b>	<b>Total Fund Balance</b>	<b>\$42</b>	<b>(\$94)</b>	<b>\$0</b>
				<b>Liabilities &amp; Fund Balance</b>	<b>\$46</b>	<b>\$70</b>	<b>\$0</b>

November 12

## BALANCE SHEET

Student Activities

ASSETS	11/30/12	06/30/12	11/30/11	FUND BALANCES	11/30/12	06/30/12	11/30/11
Cash / Investments	\$1,122	\$1,122	\$1,150	Reserved for:			
Taxes & Credits Receivable	0	0	0	Severance	\$0	\$0	\$0
Accounts / Interest Receivable	0	0	0	Nonspendable Inventory	0	0	0
Due from Other Funds	0	0	0	Nonspendable Prepays	0	0	0
Due from Other MN Districts	0	0	0	Staff Development	0	0	0
Due From MDE	0	0	0	Reemployment comp	0	0	0
Due From Federal thru MDE	0	0	0	Basic skills	0	0	0
Due From Federal - Direct	0	0	0	Learning development	0	0	0
Due from Other Governments	0	0	0	Desegregation	0	0	0
Inventory	0	0	0	Gifted and Talented	0	0	0
Prepays	0	0	0	Pupil Transportation Safety	0	0	0
				ECFE	0	0	0
<b>Total Assets</b>	<b>\$1,122</b>	<b>\$1,122</b>	<b>\$1,150</b>	Community Education	0	0	0
				Community Services	0	0	0
<b>LIABILITIES</b>				Operating Capital	0	0	0
Tax and Aid Anticipation Payable	\$0	\$0	\$0	Facilities	0	0	0
Accrued Interest Payable	0	0	0	Alternative facilities	0	0	0
Salaries Payable	0	0	0	Restricted Programs	0	0	0
Accounts Payable	0	0	0	Escrow Account	0	0	0
Due to Other Funds	0	0	0	Endowment	0	0	0
Due to Other MN Districts	0	0	0	Encumbrances	0	0	0
Due to Other Governments	0	0	0	Designated for:			
Claims Payable	0	0	0	Textbooks	0	0	0
Deferred Revenue	0	0	0	Operating Capital	0	0	0
Taxes Levied for Subsequent Yr.	0	0	0	Undesignated	1,122	1,122	1,150
Property tax shift	0	0	0				
<b>Total Liabilities</b>	<b>\$0</b>	<b>\$0</b>	<b>\$0</b>	<b>Total Fund Balance</b>	<b>\$1,122</b>	<b>\$1,122</b>	<b>\$1,150</b>
				<b>Liabilities &amp; Fund Balance</b>	<b>\$1,122</b>	<b>\$1,122</b>	<b>\$1,150</b>





**ISD #709 - Duluth Public Schools  
ACH & Wire Transfer Summary  
Period Ending 11/30/2012**

<u>CHECK DATE</u>	<u>VENDOR ID</u>	<u>DESCRIPTION</u>	<u>MSDLFA</u>
11/09/2012	V106466	CITISTREET FOR MSRS	23,285.31
11/09/2012	V79764	DULUTH FEDERATION OF TEA	23,231.16
11/09/2012	V107231	DULUTH TEACHERS CREDIT	11,637.60
11/09/2012	V79711	DULUTH TEACHERS RETIRE	223,042.06
11/09/2012	V106637	EBC - FLEX EFT	14,089.68
11/09/2012	V106635	EBC - HRA EFT	118,776.83
11/09/2012	V106636	EBC - TSA EFT	86,986.16
11/09/2012	V79771	EDUCATION MN CLERICAL	1,253.99
11/09/2012	V102915	FEDERAL 941 PR TAXES	535,928.98
11/09/2012	V05173	MN CHILD SUPPORT EFT	1,299.30
11/09/2012	V102916	MN STATE PR TAXES	97,227.55
11/09/2012	V79708	PUBLIC EMPLOYEES RETIREMENT	86,606.97
11/09/2012	V79704	U S BANK - PY DIRECT DEPOSIT	1,523,748.78
11/23/2012	V106466	CITISTREET FOR MSRS	32,326.98
11/23/2012	V79764	DULUTH FEDERATION OF TEA	23,266.95
11/23/2012	V107231	DULUTH TEACHERS CREDIT	11,587.60
11/23/2012	V79711	DULUTH TEACHERS RETIRE	219,857.28
11/23/2012	V106637	EBC - FLEX EFT	14,089.58
11/23/2012	V106635	EBC - HRA EFT	117,280.20
11/23/2012	V106636	EBC - TSA EFT	88,226.77
11/23/2012	V79771	EDUCATION MN CLERICAL	1,253.99
11/23/2012	V102915	FEDERAL 941 PR TAXES	524,060.50
11/23/2012	V05173	MN CHILD SUPPORT EFT	1,299.30
11/23/2012	V102916	MN STATE PR TAXES	94,677.73
11/23/2012	V79708	PUBLIC EMPLOYEES RETIREMENT	86,841.29
11/23/2012	V79704	U S BANK - PY DIRECT DEPOSIT	1,525,401.47
11/30/2012	V06645	MEDICA HEALTH PLAN (EFT)	177,770.71
11/30/2012	V106638	PEIP - HLTH EFT	1,110,405.35
11/30/2012	V80030	DELTA DENTAL PLAN OF MN(EFT)	45,029.20
11/30/2012	V104923	HARRIS BANK	23,064.37
11/30/2012	V105358	RELIASTAR LIFE ING SERVICE CTR	23,703.16
			6,867,256.80

**ISD 709 – Duluth Public Schools  
Investment Activity for FY 2013  
As of November 30, 2012**

**Beginning Investment Balance (October 31, 2012):** **\$ 8,776,248.96**

**Add Purchases:**

<u>Date</u>	<u>Issuer</u>	<u>Broker</u>	<u>Matures</u>	<u>Yield (YTM)</u>	
11/07	FHLMC	MBS	05/15/29	4.21%	\$ 129,565.40
11/13	FFCB	MBS	05/16/22	2.42%	2,302,936.80
11/13	FHLB	MBS	09/13/24	2.66%	1,013,750.00
11/13	FNMA	MBS	03/22/32	3.67%	151,650.00
11/21	Hancock Bank (MS)	MBS	05/21/13	0.40%	248,000.00
11/23	Bank Baroda (NY)	MBS	05/23/13	0.40%	227,000.00

**Total Purchases** **\$ 4,072,902.20**

**Deduct Maturities/Calls/Sales:**

<u>Date</u>	<u>Issuer</u>	<u>Broker</u>	<u>Matures</u>	<u>Yield (YTM)</u>	
11/07	FNMA	MBS	11/07/31	3.91%	738,577.50
11/14	Goldman Sachs Bank (UT)	MBS	11/14/12	4.85%	97,000.00
11/14	SW Bank of St. Louis (MO)	MBS	11/14/12	4.85%	97,000.00
11/28	Capital One Bank (VA)	MBS	11/28/12	4.75%	97,000.00

**Total Maturities** **\$ 1,029,577.50**

**Other items:**

Add:	Money Market Funds Interest	\$ 91.62
	Market Value Adjustment	0.00
	Other Interest	0.00
Deduct:	Transaction Fees/Other	0.00
	Beginning Value Adjustment	0.00

**Total Other** **\$ 91.62**

**Ending Investment Balance (November 30, 2012)** **\$ 11,819,665.28**

Note: Ending Investment Balance as of November 30, 2011 was \$ 2,220,532.09

WADM Projection Report - FY 2013

January 2013

Grade Levels	January Enrollment	Progression to ADM	Projected ADM	PUW	Projected WADM	EOY 11-12
KG	624	1.006608058	628.12	0.612	384.41	382.98
HK	77	1.012990172	78.00	1.000	78.00	78.01
Gr 1-3	1996.5	0.992919781	1982.36	1.115	2210.34	2216.07
Gr 4-6	1851	0.981044442	1815.91	1.060	1924.87	1899.75
Gr 7-8	1125.17	0.972900861	1094.68	1.300	1423.08	1468.92
Gr 9-12	2999.82	0.960020673	2879.89	1.300	3743.86	3806.21
<b>Sub-Total</b>	8673.49				9764.55	9851.94

Other WADM	January Enrollment	Progression to ADM	Projected ADM	PUW	Projected WADM	EOY 11-12
<b>Early Childhood</b>	196	0.394033128	77.23	1.250	96.54	118.50
	Final Count	Jan 1 Count	Final ADM			
09-10	466	243	97.32			
10-11	474	254	100.12			
11-12	432	265	102.68			
12-13*		196	96.54			

Resident Tuition**	Total WADM
<b>Resident Tuition Details</b>	
09-10	55.36
10-11	46.14
11-12	48.97
12-13*	50.16

ALC	Total WADM
<b>ALC Details**</b>	
09-10	205.88
10-11	256.05
11-12	285.78
12-13*	249.24

<b>Projected Total WADM</b>	9861.09	9970.44
<b>Budgeted WADM</b>	9866.00	
<b>Net</b>	-4.91	

\* Projected

\*\*Included in Grade Level Projections

Fund Raisers

<u>School</u>	<u>Organization</u>	<u>Function</u>
Denfeld	Music Department	Wreath Sales
Denfeld	Science Chicago Trip	Clothing Sale
Denfeld	Boys Basketball	Pizza, Pies, Coffee, etc.
Piedmont	Safety Patrol	Sucker Sales
East	Spanish Club	Candy Cane Sales

***DONATIONS/INVESTMENT IN SCHOOL CHILDREN***

<b>SCHOOL</b>	<b>FIRST NAME</b>	<b>LAST NAME/ORG</b>	<b>RESTRICTION</b>	<b>AMOUNT</b>
Lester Park		Lester Park Foundation	None	450.00
Lester Park		Grandma's Inc.	None	901.37
Ordean East Middle School	Laura & Charles	Plewa	Destination Imagination	25.00
Ordean East Middle School	Seung & Young	Lee	Destination Imagination	20.00
Ordean East Middle School	Rachael	Nyenhuis	Destination Imagination	20.00
Ordean East Middle School	Margaret & Steven	Sutherland	Destination Imagination	50.00
District Wide	Kimberly	Keelor	Art Department	In Kind
Laura MacArthur	Tony & Shelley	Sheff	Rifton Adapted Trike	In Kind
			<b>TOTAL</b>	<b>1,466.37</b>

**INDEPENDENT SCHOOL DISTRICT NO. 709**

**MEMORANDUM OF AGREEMENT, made this 18th day of**

**December 2012, between Independent School District No. 709, a public corporation, in the State of Minnesota, party of the first part, hereinafter called "ISD 709", and Voyageur Bus Company, 3941 E Calvary Road, Duluth, MN. 55803, party of the second part, hereinafter called "Contractor",**

12

**WITNESSETH, that the said Contractor, in consideration of the covenants and agreements herein mutually entered into and under the conditions and penalties provided in the specifications hereto annexed, which specifications form an integral part of this contract and also under the penalty expressed in a bond hereto annexed, does for itself and for its successors, assigns, executors and administrators covenant, promise and agree to and with ISD 709 that Contractor shall and will at its own proper cost and expense and according to the best of its art and ability, do and perform all the work and furnish all materials (except only where otherwise especially provided herein to the contrary) which may be required in**

**building and completing the work required: Provide special student transportation services as per Quote 4124 dated August 3, 2012 for the school year 2012 - 2013.**

**Not to exceed \$50,000.00**

*Handwritten signature and date: 12/20/12*

Together with all other words connected therewith or necessary thereto, in accordance with the specifications herein contained and in accordance with the plans and directions made and to be made from time to time as the work proceeds, said directions to form a part of this contract.

**AUDIT:**

All books, records, documents, and accounting procedures and practices of the vendor, that are relevant to the contract, are subject to examination by the state auditor. (1998 Minn. Laws chp. 386, art. 1, & 6.)

**CONSIDERATION:**

ISD 709, in consideration of the due and faithful performance of the covenants and agreements referred to herein and in the specifications promises and agrees that the contract price submitted to ISD 709 in Contractor's bid shall be paid to said Contractor, in full for all claims and demands, and in the manner herein provided and subject to all specified and legal conditions, forfeitures and deductions.

**CONTRACT DOCUMENTS:**

It is understood and agreed that this contract consists of the following:

1. Printed Memoranda of Agreement
2. Numbered Addenda
3. Advertisement for Bids, Contractor's Bid and Resolution Awarding Contract

- 4. Plans and Specifications on File at ISD 709
- 5. Certificate of Insurance
- 6. Current Department of Labor Wage Rate Table

IN WITNESS WHEREOF, Independent School District No. 709 has caused these presents to be signed by the chair of the Board of education, and attested by the Clerk of the Board of Education, and said Contractor shall hereunto set his/her hand the day and year first above written.

INDEPENDENT SCHOOL DISTRICT NO. 709

By: \_\_\_\_\_

Chair, Board of Education

By: \_\_\_\_\_ District No. 709 has

Clerk of the Board or Designee of education,

CONTRACTOR

By: Michael J. Kozan

Its: President

Date: 12/19/12

**QUOTE - 4124**  
**SPECIAL STUDENT TRANSPORTATION SERVICES**  
**RECAP**

Cloquet Transit  
Cloquet MN

No Response

Voyageur Bus Company  
Duluth MN

\$478 per one way trip (type III school bus)  
\$589 per one way trip (type A,B, or C school bus)  
Not to exceed \$50,000 total for 2012-2013 School Year

### 8030 - School Board Member Compensation

School Board members shall be compensated for School Board work. Compensation shall be a stipend of \$630.00 per month, to a maximum of \$7,560.00 (excluding negotiations) during one (1) calendar year. The Chairperson, however, shall receive an additional \$52.50 per month for discharging the duties of his/her office. The maximum compensation for the chairperson shall not exceed \$8,190.00 (excluding negotiations) during one (1) calendar year. This policy shall be effective January 1, 2008, and reviewed annually in January.

Board compensation is the stipend for all Board related activities, including committee assignments.

Board members shall not accept additional compensation from any source for Board related activities.

Adopted: 2-10-81 ISD 709

Revised: 7-10-84

3-8-88

3-10-92

1-9-95

6-20-95

3-18-97

2-28-06

6-20-06

2-28-07

2-26-08



## FACILITIES MANAGEMENT

Independent School District No. 709

*Located at 730 East Central Entrance*

*Mailing Address: 215 North 1st Avenue East*

*Duluth, Minnesota 55802*

Construction Management (218) 336-8907

Maintenance (218) 336-8906

Operations (218) 336-8905

Fax (218) 336-8909

# Memorandum

**To:** Bill Hanson  
School Board Members

**From:** Kerry M. Leider

**Date:** January 8, 2013

**Re:** Bid #1165 – Eastern Middle School Project – WS #6 – Steel Erection - Structural and Miscellaneous Metals – Northern Industrial Erectors, Inc. – Change Order #12

Bid #1165, WS #6 – Steel Erection - Structural and Miscellaneous Metals at Eastern Middle School was approved at the Special School Board Meeting on October 6, 2009 with a base bid of \$74,695.00.

Change Order #12 to this bid is a credit to delete the steel framed platform and stairs at Area B, 4<sup>th</sup> floor attic access resulting in a decrease of \$1,433.00.

**Recommendation:**

It is recommended the School Board approve the change order as listed above pertaining to Bid #1165, WS #6 – Steel Erection - Structural and Miscellaneous Metals at Eastern Middle School deducting \$1,433.00 from the previously awarded base bid and change orders for a new contract total of \$105,609.00.

Attachment



# AIA Document G701/CMa™ - 1992

**RECEIVED**  
JAN 08 2013  
I.S.D. #709  
FACILITIES MGMT

## Change Order - Construction Manager-Adviser Edition

**PROJECT (Name and address):**  
Eastern Middle School - Bid #1165  
2900 East 4<sup>th</sup> Street  
Duluth, MN 55812

**CHANGE ORDER NUMBER:** 012  
**INITIATION DATE:** November 15, 2012

**OWNER:**   
**CONSTRUCTION MANAGER:**   
**ARCHITECT:**   
**CONTRACTOR:**   
**FIELD:**   
**OTHER:**

**TO CONTRACTOR (Name and address):**  
Northern Industrial Erectors, Inc.  
2500 Glenwood Drive  
PO Box 308  
Grand Rapids, MN 55744

**PROJECT NUMBERS:** 080331 / 90281-2  
**CONTRACT DATE:** October 7, 2009  
**CONTRACT FOR:** Work Scope 06

**THE CONTRACT IS CHANGED AS FOLLOWS:**

Item No. 001 - PCO #610 - Eliminate access stairs per LHB PR #154.  
Total Amount Item No. 001: (\$1,433.00)

Total Amount This Change Order: (\$1,433.00)

The original Contract Sum was	\$	74,695.00
Net change by previously authorized Change Orders	\$	32,347.00
The Contract Sum prior to this Change Order was	\$	107,042.00
The Contract Sum will be decreased by this Change Order in the amount of	\$	1,433.00
The new Contract Sum including this Change Order will be	\$	105,609.00

The Contract Time will be unchanged by Zero (0) days.  
The date of Substantial Completion as of the date of this Change Order therefore is June 1, 2012.

**NOTE:** This summary does not reflect changes in the Contract Sum, Contract Time or Guaranteed Maximum Price which have been authorized by Construction Change Directive.

**NOT VALID UNTIL SIGNED BY THE OWNER, CONSTRUCTION MANAGER, ARCHITECT AND CONTRACTOR.**

Kraus-Anderson Construction Company  
**CONSTRUCTION MANAGER (Firm name)**  
8625 Rendova Street NE, PO Box 158, Circle Pines, MN 55014

LHB Engineers & Architects  
**ARCHITECT (Firm name)**  
21 West Superior Street Suite 500, Duluth, MN 55802

**ADDRESS**  
  
**BY (Signature)**  
Patrick Mulcahey  
**(Typed name)** DATE: 12-5-12

**ADDRESS**  
  
**BY (Signature)**  
Kevin Holm  
**(Typed name)** DATE: 12-17-12

Northern Industrial Erectors, Inc.  
**CONTRACTOR (Firm name)**  
2500 Glenwood Drive, PO Box 308, Grand Rapids, MN 55744

Duluth Public Schools - ISD #709  
**OWNER (Firm name)**  
215 North 1st Avenue East, Duluth, MN 55802

**ADDRESS**  
  
**BY (Signature)**  
Tom Kaspea  
**(Typed name)** DATE: 11/19/12

**ADDRESS**  
  
**BY (Signature)**  
TOM KASPEA  
**(Typed name)** DATE:



## FACILITIES MANAGEMENT

Independent School District No. 709

*Located at 730 East Central Entrance*

*Mailing Address: 215 North 1st Avenue East  
Duluth, Minnesota 55802*

Construction Management (218) 336-8907

Maintenance (218) 336-8906

Operations (218) 336-8905

Fax (218) 336-8909

# Memorandum

**To: Bill Hanson**  
School Board Members

**From: Kerry M. Leider**

**Date: January 8, 2013**

**Re: Bid #1215, BP #1 – Myers-Wilkins Elementary School – Contract #3100/3210 – Earthwork/Asphalt Paving – Veit and Company, Inc. - Change Order #7**

Bid #1215, BP #1, Contract #3100/3210 – Earthwork/Asphalt Paving at Myers-Wilkins Elementary School was approved at the Special School Board Meeting on June 28, 2012 with a base bid of \$834,155.00.

Change Order #7 to this bid is to install a curb on 11<sup>th</sup> Street resulting in an increase of \$5,788.00.

**Recommendation:**

It is recommended the School Board approve the change order as listed above pertaining to Contract #3100/3210 – Earthwork/Asphalt Paving at Myers-Wilkins Elementary School adding \$5,788.00 to the previously awarded base bid and change orders for a new contract total of \$1,206,458.00.

Attachment

# CHANGE ORDER

DEC 20 2012

CONSTRUCTION MANAGER-ADVISER EDITION DEC 31 2012  
AIA DOCUMENT G701/CMa

<input checked="" type="checkbox"/>	PCO #	54
<input checked="" type="checkbox"/>	CONSTRUCTION MANAGER	
<input checked="" type="checkbox"/>	ARCHITECT	44
<input checked="" type="checkbox"/>	CONTRACTOR	
<input checked="" type="checkbox"/>	FIELD	
<input type="checkbox"/>	OTHER	

(Instructions on reverse side)

PROJECT: MYERS-WILKINS ELEMENTARY SCHOOL  
(Name and address) 1027 N 8TH STREET (BID 1215)  
DULUTH, MINNESOTA 55804

CHANGE ORDER NO.: 3100/3210.007

INITIATION DATE: 12/11/2012

TO CONTRACTOR: VEIT AND COMPANY, INC  
(Name and address) 14000 VEIT PLACE  
ROGERS, MINNESOTA 55374

PROJECT NOS.: 0807.02

CONTRACT FOR: Contract #3100  
Earthwork & #3210

CONTRACT DATE: Asphalt Paving  
6/11/2012

The Contract is changed as follows:  
Provide labor and material as necessary to complete the work for  
Request Field Change Order #031-as noted on the attached  
page as RFCO #031.

RECEIVED  
JAN 08 2013

I.S.D. #709  
FACILITIES MGMT

### Not valid until signed by the Owner, Construction Manager, Architect and Contractor.

The original (Contract Sum) ( <del>Guaranteed Maximum Price</del> ) was .....	\$	834,155.00
Net change by previously authorized Change Orders .....	\$	366,515.00
The (Contract Sum) ( <del>Guaranteed Maximum Price</del> ) prior to this Change Order was .....	\$	1,200,670.00
The (Contract Sum) ( <del>Guaranteed Maximum Price</del> ) will be (increased) ( <del>decreased</del> ) ( <del>unchanged</del> ) by this Change Order .....	\$	5,788.00
The new (Contract Sum) ( <del>Guaranteed Maximum Price</del> ) including this Change Order will be ....	\$	1,206,458.00
The Contract Time will be (increased) ( <del>decreased</del> ) (unchanged) by .....		ZERO ( -0- ) days
The date of Substantial Completion as of the date of this Change Order therefore is .....		unchanged.

NOTE: This summary does not reflect changes in the Contract Sum, Contract Time or Guaranteed Maximum Price which have been authorized by Construction Change Directive.

PROGRAM MANAGER: JOHNSON CONTROLS, INC.

ARCHITECT: DSGW ARCHITECTS

ADDRESS 211 North 1st Avenue East, Rm. 100, Duluth, MN 55802

ADDRESS 2 West First Street, Duluth, MN 55801

BY: [Signature] DATE: 1/2/13  
CONSTRUCTION MANAGER: BOSSARDT CORPORATION

BY: [Signature] DATE: 12-27-12

ADDRESS 5270 West 84th Street Ste. 550, Mpls, MN 55437

BY: [Signature] DATE: 12/20/12

CONTRACTOR: VEIT AND COMPANY, INC

OWNER: INDEPENDENT SCHOOL DISTRICT #709

ADDRESS 14000 Veit Place, Rogers, MN 55374

ADDRESS 215 North 1st Avenue East, Duluth, MN 55802

BY: [Signature] DATE: 12-19-12

BY: \_\_\_\_\_ DATE: \_\_\_\_\_



CAUTION: You should use an original AIA document which has this caution printed in red. An original assures that changes will not be obscured as may occur when documents are reproduced.





## FACILITIES MANAGEMENT

Independent School District No. 709

*Located at 730 East Central Entrance*

*Mailing Address: 215 North 1st Avenue East*

*Duluth, Minnesota 55802*

Construction Management (218) 336-8907

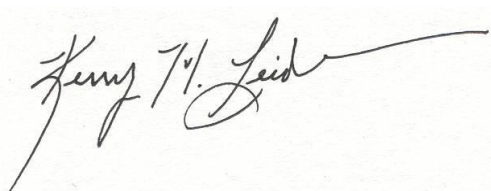
Maintenance (218) 336-8906

Operations (218) 336-8905

Fax (218) 336-8909

# Memorandum

**To:** Bill Hanson  
School Board Members

**From:** Kerry M. Leider 

**Date:** January 14, 2013

**Re:** Quote #4121 – Asbestos/Lead Abatement at Congdon Park School – Grivette Environmental Management – Change Order #1

Quote #4121 – Asbestos/Lead Abatement at Congdon Park School was approved at the Regular School Board Meeting on July 17, 2012 with a base bid of \$27,585.00.

Change Order #1 to this bid is to remove additional pipe insulation discovered after the wall demolition and for additional abatement work resulting in an increase of \$8,532.00.

**Recommendation:**

It is recommended the School Board approve the change order as listed above pertaining to Quote #4121 – Asbestos/Lead Abatement at Congdon Park School adding \$8,532.00 to the previously awarded base bid for a new contract total of \$36,117.00.

Attachment

# AIA<sup>®</sup> Document G701/CMa<sup>™</sup> – 1992

## Change Order - Construction Manager-Adviser Edition

**PROJECT (Name and address):**  
 Congdon Park Elementary School -  
 Asbestos Abatement  
 3116 East Superior Street  
 Duluth, MN 55803

**CHANGE ORDER NUMBER:** 001  
**INITIATION DATE:** December 12<sup>th</sup>,  
 2012

**OWNER:**   
**CONSTRUCTION MANAGER:**   
**ARCHITECT:**   
**CONTRACTOR:**   
**FIELD:**   
**OTHER:**

**TO CONTRACTOR (Name and address):**  
 Grivette Environmental Management  
 416 Fayal Road, Suite C  
 Eveleth, MN 55734

**PROJECT NUMBERS:** /  
**CONTRACT DATE:** March 30<sup>th</sup>, 2012  
**CONTRACT FOR:** Asbestos Abatement

**THE CONTRACT IS CHANGED AS FOLLOWS:**

Item No. 001 - Remove additional pipe insulation that was discovered after wall demolition.  
 Total Amount Item No. 001: \$852.00

Item No. 002 - Additional asbestos abatement work at Congdon.  
 Total Amount Item No. 002: \$7,680.00

Total Amount This Change Order: \$8,532.00

The original Contract Sum was	\$	27,585.00
Net change by previously authorized Change Orders	\$	0.00
The Contract Sum prior to this Change Order was	\$	27,585.00
The Contract Sum will be increased by this Change Order in the amount of	\$	8,532.00
The new Contract Sum including this Change Order will be	\$	36,117.00

The Contract Time will be unchanged by Zero (0) days.

The date of Substantial Completion as of the date of this Change Order therefore is August 1<sup>st</sup>, 2013.

**NOTE:** This summary does not reflect changes in the Contract Sum, Contract Time or Guaranteed Maximum Price which have been authorized by Construction Change Directive.

**NOT VALID UNTIL SIGNED BY THE OWNER, CONSTRUCTION MANAGER, ARCHITECT AND CONTRACTOR.**

Johnson Controls, Inc.  
**CONSTRUCTION MANAGER (Firm name)**  
 215 North 1<sup>st</sup> Avenue East, Room 100  
 Duluth, MN 55802  
**ADDRESS**

N/A  
**ARCHITECT (Firm name)**  
  
**ADDRESS**

\_\_\_\_\_  
**BY (Signature)**  
 Kevin Strong  
 (Typed name) **DATE:**

\_\_\_\_\_  
**BY (Signature)**  
 (Typed name) **DATE:**

Grivette Environmental Management  
**CONTRACTOR (Firm name)**  
 416 Fayal Road, Suite C., Eveleth, MN 55734  
**ADDRESS**

Duluth Public Schools - ISD #709  
**OWNER (Firm name)**  
 215 North 1st Avenue East, Duluth, MN 55802  
**ADDRESS**

\_\_\_\_\_  
**BY (Signature)**  
 (Typed name) **DATE:**

\_\_\_\_\_  
**BY (Signature)**  
 Ann Wasson  
 (Typed name) **DATE:**

**RESOLUTION**

Authorized Student Activity Bank Account Signer

RESOLVED, by the School Board of Independent School District No. 709, St.

Louis County, Minnesota, that it hereby authorizes the following:

<u>District Building</u>	<u>Banking Institution</u>	<u>Account Number</u>	<u>Addition of Authorized Signer</u>	<u>Removal of Authorized Signer</u>
Ordean East Middle Sch	DTCU	XXXX1	Rachel Jackson	Vance Hopkins

**RESOLUTION**2013 Legislative Platform

RESOLVED, by the School Board of Independent School District No. 709, St. Louis County, Minnesota, that the attached 2011 Duluth School District Legislative Platform be adopted.

Brochure Info  
2013 Legislative Platform

### **Integration Revenue**

The State of Minnesota should continue funding of both inter-district and intra-district integration revenue. Any redistribution of integration aid should be tied to a specific consensus on the proper use of integration funding. Existing school district integration plans for Minneapolis, St. Paul and Duluth that have evolved over time with significant community involvement should be approved and funded at current levels. The MDE should cooperate with these and other districts to further develop programs that provide choice, close the learning gap, and promote integrated learning experiences for all students.

### **Referendum Equalization Restoration**

Adequate equalization aid should be restored to previous levels to provide needed property tax relief to local property taxpayers, give low property valuation districts a chance to pass referenda to make up for inadequate state aid, and provide additional revenue to charter schools. Calls for using local property tax referendum revenue to go to unelected charter school boards are not appropriate.

### **E-12 Education Reform**

The Duluth School District recognizes the importance of a simplified, comprehensive school finance formula to provide the justification for significant revenue increases. Without significant revenue increases, however, any redistribution of revenue to districts through changes in the school formula should be adjusted by a transition revenue component.

### **Permanent Structural Change**

With the State of Minnesota facing a \$4 billion shortfall in the FY 2014-15 biennium, (counting the restoration of school shifts, built-in inflation and one-time tobacco bond funding); it is clear that short-term solutions such as property tax and state aid shifts have not solved the state's budget problems. Permanent structural change in Minnesota's tax system must be combined with school finance reform efforts already being considered. Tax reform should include replacing school district reliance on property tax increases with other state taxes, greater equalization of the operating referendum, and restoring debt service equalization.

### **Prevent Further Cuts To E-12**

Over the past several years, school districts have contributed almost \$2.8 billion to help resolve the state budget shortfall. Any further adjustments by the 2013 Legislature should not come at the expense of Minnesota's school children. Legislation should clearly state that the shifts and aid reductions will continue to be restored as it becomes available in future legislative sessions and that it should begin this session in conjunction with new revenue for E-12 programs. Even a freeze in E-12 funding for the next school year would mean drastic cuts in programs for the Duluth School District. Declining enrollment, and other inflationary costs would mean a shortfall of approximately \$3.5 million next year alone. Budget reductions for the past several years mean there are no more cuts that can be made "away from the classroom".

### **Cuts in Federal Funding**

Should Congress fail to act this session, an 8.2% reduction in federal funding could occur for such programs as Special Education and Title 1, the 2013 Minnesota Legislature should be prepared to compensate the loss of federal funding.

### **Early Childhood Funding**

Increased funding for early childhood programs is an important component of any plan to close the learning gap. Voluntary, All-Day Kindergarten for school districts is an important first step.



## Incognito, Inc.

Michael S. Fosberg  
6110 N. Francisco Ave.  
Chicago, IL 60659-2502  
773.856.3399  
[www.incognitotheplay.com](http://www.incognitotheplay.com)

### Letter of Agreement

AGREEMENT made this **19th of December 2012**, by and between INCOGNITO, INC. / MICHAEL FOSBERG, 6110 N. Francisco Ave. Chicago, Il 60659 (herein after referred to as "ACTOR") and **Duluth East High School, 301 North 40<sup>th</sup> Ave. East, Duluth MN**, (herein after referred to as "PURCHASER"). It is mutually agreed by and between the parties as follows:

1. PURCHASER agrees to engage ACTOR to for **two performances** of his one-man play, "Incognito", at Auditorium/Theatre Space TBD (PURCHASER will provide venue details) to be performed on **January 23, 2013, at TBD AM/ PM** followed by a 10-30 minute post-show discussion with audience.

2. It is agreed that as full compensation for the services mentioned herein, PURCHASER will pay ACTOR in United States currency, certified check, money order, or accepted bank draft the sum of **\$2300 (Two Thousand Three Hundred Dollars)** for ~~one~~<sup>both</sup> performance<sup>s</sup>. A 50% deposit is due upon signing of this contract with the balance due the day of performance. (Please make checks payable to: Incognito, Inc. Federal EIN # 36-4449428) and (ii) PURCHASER also agrees to compensate ACTOR for **all travel and accommodation expenses** incurred for travel to and from school up to a maximum of **\$300 (Three Hundred Dollars)**.

3. PURCHASER agrees to provide ACTOR an appropriate space in which to perform Incognito, (preferably a theater but not mandatory - with a stage space of no less than 12'x16'), including basic stage lights and sound system, eight (8) armless chairs and

a small table or desk (to be used as set pieces), a lavalier ("hands-free", or lapel) wireless microphone, and an off-stage dressing area. PURCHASER further agrees to provide a person to operate the stage lights and run a maximum of four (4) sound cues for the presentation. This will require a "dry-tech" of approx. 30 minutes, prior to the presentation. ACTOR will provide a sound disc (with a maximum of four sound cues).

***Please NOTE: The topics and material covered within the program demand a certain type of controlled environment. If the show is presented in a very open and public space (such as a cafeteria or lobby), people socializing or freely passing through the area with no interest in watching the show disrupt the presentation and effectiveness of the message. The show is best experienced in a more intimate setting with decent acoustics. Therefore, INCOGNITO will NOT be performed in the following venues: chapels and gymnasiums (because of sound issues), cafeterias or recreational rooms when food is being served, or recreational rooms/atriums that get a lot of through traffic at the time when the show would be presented. [SPECIAL ARRANGEMENTS MAY BE CONSIDERED IF DISCUSSED AT LEAST 30 DAYS PRIOR TO PROGRAM].***

4. PURCHASER shall provide ACTOR no less than 30 minutes set up time in the space, not including the time provided for the dry tech described in paragraph 3 above. In the event that more than one show is to be performed, PURCHASER shall provide ACTOR a minimum of 30- minutes following the post-show discussion before the subsequent show is performed.

5. PURCHASER should be aware of the theatrical nature of this presentation. The ACTOR assumes that audiences will respect the nature of a theatrical performance, and understand the difference between enthusiastic participation and disrespectful disruption. Nonetheless, some audience members can become unruly. ACTOR expects the cooperation of student leaders, faculty members, and staff at keeping the theatrical nature of the show in tact without distraction. PURCHASER shall eject particularly disruptive audience members. In worst-case scenarios, ACTOR reserves the right to stop the show if he feels threatened or if an audience has effectively altered the show through disruptive behavior.

6. This agreement is made in reliance upon PURCHASER'S good reputation for the prompt discharge of all contract obligations. In the event PURCHASER refuses or neglects to provide any of the items required to be provided by PURCHASER hereunder and/or fails to make any of the payments required to be made by PURCHASER hereunder, ACTOR shall have the right to refuse to perform services provided herein. Notwithstanding the exercise of such right by ACTOR, any amount theretofore paid to ACTOR by PURCHASER shall be retained by ACTOR, and the balance of the contract terms provided for herein shall immediately become payable to ACTOR.

7. This Agreement shall be executed by PURCHASER and a copy returned to and received by ACTOR together with the deposit described in paragraph 2 above, no later than **14 days from the date of this agreement**. In the event that PURCHASER does not so return to ACTOR the executed Agreement together with the above referenced deposit, then the provisions of paragraph 6 above shall apply and ACTOR shall have the right to refuse to perform services provided herein.

IN WITNESS HEREOF, the parties have duly executed this Agreement as of the day and year first above written.

For: **INCOGNITO, INC.**  
"ACTOR"

For: **Duluth East High School**  
"PURCHASER"



Michael Fosberg  
Signature

President  
Title



Signature

CFO  
Title

Bill HANSON  
Print Name

## AGREEMENT

**THIS AGREEMENT** made and entered into this 19<sup>th</sup> day of December, 2012, by and between Independent School District #709, a public corporation, hereinafter called District, and Dr. Paula Pedersen, independent contractor, hereinafter called Contractor.

**THE PURPOSE OF THE AGREEMENT** is to set out the terms and conditions whereby Contractor will provide programs or services for the District at the times and locations set forth in this Agreement.

The terms and conditions of this Agreement are as follows:

1. This Agreement shall be deemed to be effective as of January 2<sup>nd</sup>, 2013, and shall remain in effect until June 20<sup>th</sup>, 2013, unless terminated earlier as provided for herein, or unless and until all obligations set forth in this Agreement have been satisfactorily fulfilled, whichever occurs first.

2. Contractors shall provide the following services:

- Meet with district personnel to understand scope of services they will be providing
- Co-facilitate focus group(s) for district participants of the Leadership Project
- Co-facilitate Intercultural Leadership retreat experience
- Provide consultation on Intercultural Curriculum Integration for district faculty

3. **Reimbursement.** In consideration of the performance of Contractor of its obligations pursuant to this Agreement, District hereby agrees to reimburse Contractor for its services and expenses in performing said obligations up to 6,500.00. Contractor is required by Minnesota Statutes, Section 270.66, subd. 3, to provide their Taxpayer Identification Number (TIN)/and or SSN on any invoice to be used in the enforcement of Federal and State tax laws. The TIN will be available to Federal and State tax authorities and State personnel involved in the payment of State obligations. This Agreement will not be approved unless TIN and/or SSN is provided.

4. **Requests for Reimbursement.** Contractors will be paid in the following manner: Contractor will submit an invoice to the not to exceed 5,000 for co-facilitating the Intercultural Leadership retreat, 500.00 for co-facilitating focus groups and 1000.00 for providing consultation on intercultural curriculum integration. Once the Invoice is approved, payment will be made in full-agreed amount. Payment will be made by the district within 30 days of submission of a proper invoice by Contractor.

5. **Propriety of Expenses.** The fact that the District has reimbursed Contractor for any expense claimed by Contractor shall not preclude District from questioning the propriety of any such item. District reserves the right to offset any overpayment or disallowance of any item or items at any time under this Agreement by reducing future payments to Contractor. This clause shall not be construed to bar any other legal remedies District may have to recover funds expended by Contractor for disallowed costs.

6. **Ownership of Materials.** The District reserves the rights to reproduce the programming in any fashion, or appropriate the contents of the programming, or any portion thereof, to its own use for any and all programs, forms and other materials that Contractor has provided, prepared, or utilized in performance of the terms of this Agreement.

7. **Independent Contractor.** Both the District and Contractor agree that they will act as an independent contractor in the performance of its duties under this Agreement. Nothing contained in this Agreement shall be construed as in any manner creating a relationship of joint venture between the parties, which shall remain independent contractors with respect to all actions performed pursuant to this Agreement.

Accordingly, Contractor shall be responsible for payment of all taxes, including Federal, State and local taxes arising out of Contractor's activities in accordance with this Agreement, including by way of

**8. Indemnity and defense of the District.** Contractor hereby agrees to Denfeld, indemnify and hold the District harmless from all claims relating to its work pursuant to this Agreement.

In the event that Contractor breaches its obligation to defend, indemnify and hold the District harmless, then in addition to its other damages, the District shall be entitled to recover its attorney's fees and costs and disbursements incurred in enforcing this agreement.

**9. Notices.** All notices to be given by Contractor to District shall be deemed to have been given by depositing the same in writing in the United States Mail care of \_\_\_\_\_ ISD 709, Duluth Public Schools, 215 N. 1<sup>st</sup> Avenue East, Duluth MN 55802. All notices to be given by District to Contractor shall be deemed to have been given by depositing the same in writing in the United States Mail \_\_\_\_\_.

**10. Assignment.** Contractors shall not in any way assign or transfer any of its rights, interests or obligations under this Agreement in any way whatsoever without the prior written approval of the District.

**11. Governing Laws.** This Agreement, together with all its paragraphs, terms and provisions is made in the State of Minnesota and shall be construed and interpreted in accordance with the laws of the State of Minnesota.

**12. Entire Agreement.** This Agreement contains the entire understanding of the parties hereto with respect to the subject matter hereof and shall not be changed or otherwise altered except by written agreement of the parties.

**13. Cancellation.** Either party shall have the right to terminate this Agreement, without cause, upon (30) days written notice to the other party as provided for in this Agreement.

**14. Data Practices.** Contractor further understands and agrees that it shall be bound by the Minnesota Government Data Practices Act (Minnesota Statutes 13.03-13.04) with respect to "data on individuals"; as defined in 13.02, subd. 5 of that Statute) which it collects, receives, stores, uses, creates or disseminates pursuant to this Agreement.

**AS EVIDENCE OF THEIR ASSENT TO THE TERMS AND CONDITIONS OF THIS AGREEMENT,** set forth above, the parties hereto have caused this Agreement to be executed by their duly authorized officers as of the day and year first above written.

INDEPENDENT SCHOOL DISTRICT NO 709

CONTRACTOR

\_\_\_\_\_  
Name

\_\_\_\_\_  
Name

date

\_\_\_\_\_  
Title

\_\_\_\_\_  
Title

Program Director  
*W. C. Hansen*  
Director of Business Service

*12/14/12*  
date

\_\_\_\_\_  
Taxpayer Identification Number



at the commencement of the residency, ordinary wear and tear excepted. Nail holes are not considered normal wear and tear. If the security deposit is insufficient for the purposes stated above, then RESIDENT shall be liable for the excess.

#### 10. MANAGER

57

The property is managed by Sentinel Management Company, LLC whose business address is 5215 Edina Industrial Boulevard, Suite 100, Edina, Minnesota 55439. Sentinel Management Company, LLC is the agent of the LANDLORD and is empowered to accept service of process and to receive and give receipt for notices and demands.

#### 11. USE

RESIDENT agrees to use the Apartment only as a residence for the purposes designated as Occupants and to use the Garage Space only for an automobile owned or leased by an Occupant. RESIDENT further agrees to the following conditions:

- (a) RESIDENT shall not sublet the Premises or assign the lease without the WRITTEN permission of LANDLORD.
- (b) Neither RESIDENT nor any OCCUPANT shall conduct a business of any kind on the Premises.
- (c) Neither RESIDENT nor any OCCUPANT shall use the Premises, common areas, or area surrounding the Building nor allow any dependent/s or guest/s to manufacture, sell, give away, barter, deliver, exchange, distribute or possess with the intent to manufacture, sell, give away, barter, exchange, or distribute any illegal drugs.
- (d) Neither RESIDENT nor any OCCUPANT shall unreasonably disturb the quiet and peaceful possession of the Premises by other residents.
- (e) RESIDENT and OCCUPANTS shall keep the Garage Space in a clean (broom swept) and sanitary condition, and shall not use the Garage Space so as to interfere with any adjoining garage space or common area. Garage doors (where applicable) shall be kept closed. The Garage Space shall not be used for storage of personal property of any kind.
- (f) Neither RESIDENT nor any OCCUPANT shall affix any lock or other permanent hardware on the Premises or use or store any large appliance within the Premises without the written permission of LANDLORD.
- (g) Neither RESIDENT nor any OCCUPANT shall permit anything to be thrown out of the windows; nothing shall be hung on the outside of the windows or placed on the outside window sills of any window in the Building; the halls, stairways, patios, balconies, garages and other common areas shall not be used for the storage of furniture or other articles.
- (h) Neither RESIDENT nor any OCCUPANT shall install any aereals, antennas or other electrical connections within the Apartment or on the Building exterior.
- (i) RESIDENT and OCCUPANTS shall keep the Storage Locker in a clean and sanitary condition. RESIDENT shall provide a removable lock for the Storage Locker and keep such Storage Locker locked at all times when not in use.
- (j) Neither RESIDENT nor any OCCUPANT shall paint or affix wallpaper or contact paper without the written permission of LANDLORD.
- (k) Neither RESIDENT nor any OCCUPANT shall interfere with the management of the property.
- (l) RESIDENT and OCCUPANTS shall surrender the Premises to LANDLORD when tenancy is terminated as provided in Section 7 above.

#### 12. SATELLITE DISHES AND ANTENNAE

The installation of satellite dishes or antennae in spaces exclusively within the control of RESIDENT is subject to special FCC requirements and reasonable rules and regulations of LANDLORD. If RESIDENT wants to install satellite dishes or antennae in spaces exclusively within RESIDENT'S control, he/she must come to the management office to obtain the rules regarding the installation of satellite dishes or antennae. RESIDENT will be required to sign a separate Indemnity and Hold Harmless Agreement that makes RESIDENT responsible for the installation, removal, and any damage caused by a dish or antenna.

#### 13. ASBESTOS

RESIDENT acknowledges that it has been expressly disclosed to RESIDENT by LANDLORD that the Building and Premises contain asbestos-containing materials, including ceiling material, vinyl asbestos floor tile, and certain pipe and mechanical equipment insulation. The acknowledgement by RESIDENT of the presence of asbestos does not in any manner impose any liability or responsibility on RESIDENT for removal, treatment, or abatement of such material, provided, however, that RESIDENT shall not intentionally disturb or damage asbestos-containing material without prior notice to LANDLORD, so that proper safety procedures may be implemented.

In the event LANDLORD elects to remove or abate asbestos-containing material from the Premises and this activity interferes with RESIDENT'S use or occupancy of the Apartment, LANDLORD shall relocate RESIDENT to a comparable apartment for the duration of the project, without any cost to RESIDENT.

#### 14. PERSONAL PROPERTY OF LANDLORD

The Apartment is furnished in part with personal property (refrigerator, range, disposal, dishwasher, etc.), which belongs to LANDLORD. RESIDENT agrees to maintain and preserve this personal property and to return it to LANDLORD at the conclusion of this lease in the same condition in which it was received, with the exception of ordinary wear and tear.

#### 15. RENTAL APPLICATION

The Rental Application executed by RESIDENT is hereby made a part of the lease. Any misrepresentation of material fact contained in the application shall constitute a material breach of the lease and entitle LANDLORD to pursue its remedies under Section 17.

#### 16. EXPENSES AND COSTS OF ENFORCEMENT

RESIDENT agrees to pay to LANDLORD all expenses and costs, including reasonable attorney fees, incurred by LANDLORD in enforcing the terms of the lease. This includes court costs and attorney's fees even if rent is paid after legal action is started.

#### 17. BREACH OF LEASE AND LANDLORD'S REMEDIES

If RESIDENT breaches the lease, LANDLORD shall have the right to immediately terminate the lease, have the RESIDENT evicted and sue the RESIDENT for damages, OR affirm the lease and sue the RESIDENT for damages. Damages shall include, but not be limited to, all costs incurred by LANDLORD in attempting to re-rent the Premises, including painting and shampooing. In addition, if LANDLORD brings any legal action or collection proceeding against RESIDENT, RESIDENT shall pay LANDLORD'S actual attorney's fees, court costs, filing fees and service fees, including collection agency fees, even if rent is paid after legal action is started. RESIDENT agrees that all of the above costs, fees and charges may be deducted from the security deposit and interest earned thereon. If LANDLORD commences an Unlawful Detainer action as a result of RESIDENT'S breach of the lease and RESIDENT cures such breach

and remains in possession of the Premises, any further breach of the lease by RESIDENT shall give LANDLORD, in addition to any other remedies provided in this lease or by law, the right to repossess the Premises regardless of RESIDENT'S cure or attempted cure of such further breach.

58

By way of illustration, and not of limitation, the following activities of RESIDENT shall constitute breaches of lease:

- (a) If RESIDENT fails to pay the full amount of rent or any other sums when due.
- (b) If RESIDENT fails to inform LANDLORD of all persons residing at the Premises and fails to receive LANDLORD'S written approval for the same.
- (c) If RESIDENT or any OCCUPANT keeps a pet or allows a pet in the Premises or on the common grounds, other than approved domestic cats (no more than two), small caged birds or tropical fish which are permitted.
- (d) If RESIDENT or any OCCUPANT fails to maintain the Premises in a clean and sanitary condition.
- (e) If the conduct of RESIDENT, any OCCUPANT, or any guest of either RESIDENT or OCCUPANT is so objectionable or improper as to unreasonably interfere with the use and quiet enjoyment of the Building by other residents.
- (f) If RESIDENT fails to reimburse LANDLORD for repairs made necessary to the property of LANDLORD by the negligence, neglect, misuse or abuse of RESIDENT, any OCCUPANT or any guest of either RESIDENT or OCCUPANT.
- (g) If RESIDENT, any OCCUPANT or any guest of either RESIDENT or OCCUPANT causes serious damage to the Premises or common areas.
- (h) If RESIDENT, any OCCUPANT or any guest of either RESIDENT or OCCUPANT unlawfully possesses any illegal object or substance, including drugs/narcotics, at the property.
- (i) If RESIDENT, any OCCUPANT or any guest of either RESIDENT or OCCUPANT engages in or permits unlawful activity on the Premises, common areas or anywhere else on the property.
- (j) If RESIDENT has provided any false information in connection with RESIDENT'S application to rent the Premises.

Acceptance of rent does not waive LANDLORD'S right to evict RESIDENT for any past or existing violation of any term of the lease.

#### 18. LANDLORD'S DUTIES

- (a) LANDLORD will maintain the Premises and all common areas fit for the use intended by the parties.
- (b) LANDLORD will maintain the Premises in reasonable repair during the term of the lease, except when the disrepair has been caused by the willful, malicious, negligent or irresponsible conduct of RESIDENT, any OCCUPANT or any guest of RESIDENT or an OCCUPANT.
- (c) LANDLORD will maintain the Premises in compliance with the applicable health and safety laws of the state and of the local units of government where the Premises are located during the term of the lease, except when violation of the health and safety laws has been caused by the willful, malicious, negligent or irresponsible conduct of RESIDENT, any OCCUPANT or any guest of RESIDENT or an OCCUPANT.

#### 19. INTERRUPTION OF SERVICE BEYOND CONTROL OF LANDLORD

RESIDENT shall notify LANDLORD immediately in case of malfunction of equipment owned by LANDLORD or utilities and LANDLORD shall make repairs with reasonable promptness. Rent shall not abate during any such period if such malfunction is due to any cause beyond the control of LANDLORD. LANDLORD may charge RESIDENT the reasonable cost of making any repairs caused by neglect, misuse, abuse or negligence of RESIDENT, any OCCUPANT or any guest of RESIDENT or an OCCUPANT.

#### 20. REPAIRS AND DAMAGE TO PREMISES

RESIDENT agrees to request all repairs to the Premises or common areas in writing to LANDLORD, except that in an emergency, telephone calls will be sufficient notice. LANDLORD shall make repairs with reasonable promptness. Rent shall not abate during the period of repairs. LANDLORD may charge RESIDENT the reasonable cost of making any repairs caused by the neglect, misuse, abuse or negligence of RESIDENT, any OCCUPANT or any guest of RESIDENT or an OCCUPANT.

If the Premises are damaged by fire or other casualty so they are unfit for occupancy, and if LANDLORD decides not to repair the Premises, LANDLORD may terminate this lease by giving written notice to RESIDENT. Upon such termination of this lease, rent paid by RESIDENT shall be prorated to the date of damage and the balance refunded to RESIDENT. If LANDLORD does decide to repair the Premises, rent shall abate during the period of repairs.

#### 21. TELEPHONE SERVICE

RESIDENT agrees to pay any charges incurred in switching over to another provider and to notify LANDLORD of their intention to do so. RESIDENT also agrees to restore telephone service connections/wiring back to their original state and pay any fees incurred in doing so upon vacating the premises.

#### 22. LIABILITY OF LANDLORD AND RESIDENT INSURANCE

LANDLORD (including its partners, officers, employees, agents and representatives) shall not be liable to RESIDENT, or those claiming by, through or under RESIDENT, for any injury, death or property damage occurring in, on or about the Premises, however caused. LANDLORD shall, however, be liable for its or its agents' negligence unless the damage or other injury arising out of such negligence is covered by a standard renter's or automobile insurance policy, WHICH LANDLORD STRONGLY RECOMMENDS THAT RESIDENT PURCHASE FOR RESIDENT'S PROTECTION AGAINST SUCH INJURY, DEATH OR PROPERTY DAMAGE. RESIDENT shall, however, obtain an insurance policy to cover any damage to the Apartment resulting from RESIDENT'S use of a waterbed. RESIDENT shall deliver to LANDLORD a Certificate of Insurance providing evidence of such insurance policy prior to moving a waterbed into the Apartment.

If any of LANDLORD'S employees are requested by RESIDENT to render any services not contemplated in this lease, such as moving automobiles, handling of furniture, cleaning, delivering packages, etc., such employees shall be deemed agents of RESIDENT while performing these services regardless of whether payment is arranged for such services; and RESIDENT agrees to hold LANDLORD harmless from all liability for damages which may occur in connection with rendering such services.

#### 23. LANDLORD'S RIGHT OF ENTRY

In addition to the right to enter the Premises to make repairs, upon 24 hours notice LANDLORD shall have the right, by itself or through its agents or employees, to enter the Premises for any reasonable business purpose. A "reasonable business purpose" shall include, but not be limited to, "showing" the Premises to prospective residents during the last 60 days of the lease term. In the event of an emergency, LANDLORD or its agents or employees may enter the Premises without any prior notice.

#### 24. RULES AND REGULATIONS

RESIDENT shall promptly comply with and use the Premises, the common areas and the area surrounding the Building, including parking facilities, in accordance with such rules and regulations as may from time to time be made by LANDLORD for the general safety, comfort and convenience of LANDLORD and other residents in the building. RESIDENT shall also cause its guests to abide by such rules and regulations. LANDLORD shall not be responsible to RESIDENT for enforcement of such rules and regulations against other residents.

**25. WAIVER**

Failure by LANDLORD to insist upon the strict performance of the terms of this lease shall not constitute or be construed as a waiver or relinquishment of LANDLORD'S right to thereafter enforce such terms.

**26. GIVING AND RECEIVING NOTICE**

Whenever this lease requires one of the parties to give a written notice to the other party, this notice MUST BE RECEIVED by the other party or his agent on or before the date specified. RESIDENT agrees that such written notice must be signed by all parties listed as RESIDENT(s) in Section One (1) of the Lease. RESIDENT agrees that notices and demands delivered by LANDLORD to the Apartment constitute proper notice and are effective as soon as delivered.

**27. GUESTS**

RESIDENT'S guest(s) shall abide by the same covenants of the lease as RESIDENT. RESIDENT agrees to accompany guest(s) when facilities at the property are to be used.

**28. PARKING AREA**

Neither RESIDENT nor RESIDENT'S guest(s) shall leave inoperative vehicle(s) in the parking area. For the purpose of snow removal, sweeping, blacktopping, etc., RESIDENT agrees upon 24 hours notice to cooperate by moving any vehicle requested by LANDLORD. LANDLORD may tow at RESIDENT'S expense any vehicle remaining in the parking area in violation of this lease.

**29. ENTIRE AGREEMENT**

This lease contains the entire agreement of the parties. No changes shall be made to this lease except by means of writing, signed by both parties and dated.

**30. SIGNATURES OF PARTIES**

IN WITNESS WHEREOF, we have signed this lease jointly and severally.

RESIDENTS:

DATE SIGNED:

\_\_\_\_\_  
\_\_\_\_\_  
*W. Chanson*  
\_\_\_\_\_

\_\_\_\_\_  
\_\_\_\_\_  
*12/13/12*  
\_\_\_\_\_

LANDLORD:

**KELLOGG SQUARE APARTMENTS, LLC**

By: SENTINEL MANAGEMENT COMPANY, LLC  
Its Managing Agent

DATE SIGNED:

\_\_\_\_\_  
By: Resident Manager

# KELLOGG SQUARE

AT HOME BY THE RIVER

## PARKING ADDENDUM TO LEASE OF RESIDENTIAL PROPERTY

This Addendum to the Lease of Residential Property dated **January 1, 2013** between **KELLOGG SQUARE APARTMENTS, LLC** known as **LANDLORD** and **I.D.S. #709 (Ron Soberg)** as **RESIDENT/s** shall be incorporated in and made a part of the aforesaid Lease.

In the event **RESIDENT/s** owns and drives a car, **LANDLORD** shall furnish unreserved parking for the **RESIDENT/s** car only. Parking spaces shall be available on first-come, first served basis.

**RESIDENT/s** understand and agree that they must evidence of ownership of the vehicle by the way of Certificate Title, Title Registration, or Certificate of Liability Insurance which bears **RESIDENT/s** name as owner plus such other proof as **LANDLORD** may require at its sole discretion.

**RESIDENTS/s** further agree that if **RESIDENT/s** should cease driving or owning their car for any reason whatsoever, **LANDLORD** shall subsequently revoke all **RESIDENT/s** right to said parking.

All other terms, conditions, and covenants of the Lease are hereby reaffirmed and shall remain the same.

IN WITNESS WHEREOF, we have signed this Lease Addendum jointly and severally.

Resident: \_\_\_\_\_

Date: \_\_\_\_\_

Resident: \_\_\_\_\_

Date: \_\_\_\_\_

Resident: WCHanson

Date: 12/13/12

Apt. # **811**

Site Manager: \_\_\_\_\_

Date: \_\_\_\_\_



ONE ELEVEN EAST KELLOGG BLVD.SAINT PAUL, MINNESOTA 55101

TEL (651) 227 9224 FAX (651) 227 9226



Specializing In  
Natural Education

### CONFIRMATION OF PROGRAM FORM

TO: Susan Selna

PHONE# 218-336-8865

This letter is considered confirmation of Critters and Company Inc.'s presentation on

~~Thurs~~ Mon Jan 15, 2013 from 8:45 AM to 10:45 AM

for Homecroft Eden To be performed at

4784 Howard Green Rd Duluth, MN  
55803

*Stued*  
*8:45 AM*  
*9:45 AM*

Homecroft Eden agrees to pay Critters and Company Inc.

220 minus a discount\* of 15%

for the 2 performance(s) of Friends & Chores

Additional expenses: Mileage 392 @ .30 = 116 Per Diem 1 @ 110 = 110

Total payment of (220 + 130) = 350 should be

made out to Critters and Company Inc. and handed to the presenter prior to the performance.

Homecroft Eden agrees to assume all responsibilities for accidents or

damages inadvertently caused by use of animals or birds on premises. This contract not obligate Critters and Company Inc., nor any of it's volunteers or staff, for any damages that occur prior to, during, or after the performance.

Please sign and return to Critters & Company. Upon receipt of this signed agreement the dates agreed upon will be considered confirmed. Please ~~confirm~~ confirm this is one copy for your files.

Acknowledged by: W. C. Hanson

\*Late payment forfeits discount

## AGREEMENT

**THIS AGREEMENT**, made and entered into this 3rd day of October, 2012, by and between Independent School District #709, a public corporation, hereinafter called District, and Chris Bell (Impact Sports Training), an independent contractor, hereinafter called Contractor.

**THE PURPOSE OF THE AGREEMENT** is to set out the terms and conditions whereby Contractor will provide programs or services for the District at the times and locations set forth in this Agreement.

The terms and conditions of this Agreement are as follows: Conduct training sessions with Denfeld student-athletes for one on selected Monday and Wednesdays.

1. **Dates of Service.** This Agreement shall be deemed to be effective as of October 3, 2012, and shall remain in effect until November 21, 2012, unless terminated earlier as provided for herein, or unless and until all obligations set forth in this Agreement have been satisfactorily fulfilled, whichever occurs first.

2. **Performance.** Dates of training 10/3, 8, 10, 15, 17, 22, 24, 29, 31, 11/5, 7, 12, 14, 19, 21

3. **Background Check .** (Applies to contractors working independent with students)

Contractor must provide an executed criminal history consent form and a money order or check payable to the District in an amount equal to the actual cost of conducting a criminal history background check on all of its employees assigned to the program. Contractor is precluded from performance of contract until the results of the criminal background check(s) are on file.

4. **Reimbursement.** In consideration of the performance of Contractor of its obligations pursuant to this Agreement, District hereby agrees to reimburse Contractor for its services and expenses in performing said obligations up to a sum not to exceed \$2,812.50. Contractor is required by Minnesota Statutes, Section 270.66, subd. 3, to provide their Taxpayer Identification Number (TIN) used in the enforcement of Federal and State tax laws. The TIN will be available to Federal and State tax authorities and State personnel involved in the payment of State obligations. This Agreement will not be approved unless TIN is provided.

5. **Requests for Reimbursement.** The terms of payment under this Agreement are as follows:

- a. Payment shall be made by the District within 30 days of submission of a proper invoice by the Contractor;
- b. Any other terms of payment in the performance of services are incorporated by reference in this Agreement.

6. **Propriety of Expenses.** The fact that the District has reimbursed Contractor for any expense claimed by Contractor shall not preclude District from questioning the propriety of any such item. District reserves the right to offset any overpayment or disallowance of any item or items at any time under this Agreement by reducing future payments to Contractor. This clause shall not be construed to bar any other legal remedies District may have to recover funds expended by Contractor for disallowed costs.

7. **Ownership of Materials.** The District reserves the rights to reproduce the programming in any fashion, or appropriate the contents of the programming, or any portion thereof, to its own use for any and all programs, forms and other materials that Contractor has provided, prepared, or utilized in performance of the terms of this Agreement.

8. **Independent Contractor.** Both the District and Contractor agree that they will act as an independent contractor in the performance of its duties under this Agreement. Nothing contained in this Agreement shall be construed as in any manner creating a relationship of joint venture between the parties, which shall remain independent contractors with respect to all actions performed pursuant to this Agreement.

Accordingly, Contractor shall be responsible for payment of all taxes, including Federal, State, and local taxes, arising out of Contractor's activities in accordance with this Agreement, including by way of illustration, but not limited to, Federal and State income tax, Social Security tax, Unemployment Insurance taxes, workers compensations, and any other taxes or business license fees as required.

9. **Indemnity and defense of the District.** Contractor hereby agrees to defend, indemnify and hold the District harmless from all claims relating to its work pursuant to this Agreement.

In the event that Contractor breaches its obligation to defend, indemnify and hold the District harmless, then in addition to its other damages the District shall be entitled to recover its attorney's fees and costs and disbursements incurred in enforcing this Agreement.

10. **Notices.** All notices to be given by Contractor to District shall be deemed to have been given by depositing the same in writing in the United States Mail care of \_\_\_\_\_, ISD 709, Duluth Public Schools, 215 North 1<sup>st</sup> Avenue East, Duluth, MN 55802. All notices to be given by District to Contractor shall be deemed to have been given by depositing the same in writing in the United States Mail 6382 Beaver River Road, Duluth, MN 55803.

11. **Assignment.** Contractor shall not in any way assign or transfer any of its rights, interests or obligations under this Agreement in any way whatsoever without the prior written approval of the District.

12. **Modification or Amendment.** No amendment, change or modification of this Agreement shall be valid unless in writing signed by the parties' hereto.

13. **Governing Laws.** This Agreement, together with all its paragraphs, terms and provisions is made in the State of Minnesota and shall be construed and interpreted in accordance with the laws of the State of Minnesota.

14. **Entire Agreement.** This Agreement contains the entire understanding of the parties hereto with respect to the subject matter hereof and shall not be changed or otherwise altered except by written agreement of the parties.

15. **Cancellation.** Either party shall have the right to terminate this Agreement, without cause, upon (30) days written notice to the other party as provided for in this Agreement.

16. **Data Practices.** Contractor further understands and agrees that it shall be bound by the Minnesota Government Data Practices Act (Minnesota Statutes 13.03-13.04) with respect to "data on individuals"; as defined in 13.02, subd. 5 of that Statute) which it collects, receives, stores, uses, creates or disseminates pursuant to this Agreement.

17. **Insurance.** (If applicable) Contractor shall not commence work under the contract until they have obtained all the insurance described below and Duluth Public Schools has approved such insurance. Contractor shall maintain such insurance in force and effect throughout the term of the contract.

Contractor is required to maintain and furnish satisfactory evidence of the following insurance policies:

**Workers' Compensation Insurance:** Contractor must provide Worker's Compensation insurance for all its employees and, in case any work is subcontracted, Contractor will require the subcontractor to provide Workers' Compensation insurance in accordance with the statutory requirements of the State of Minnesota including Coverage B, Employer's Liability.

**Commercial General Liability:** Contractor is required to maintain insurance protecting it from claims for damages for bodily injury, including sickness or disease, death, and for care and loss of services as well as claims for property damage, including loss of use which may arise from operations under the Contract whether the operations are by the contractor or subcontractor or by anyone directly or indirectly employed under the contract.

**AS EVIDENCE OF THEIR ASSENT TO THE TERMS AND CONDITIONS OF THIS AGREEMENT,** set forth above, the parties hereto have caused this Agreement to be executed by their duly authorized officers as of the day and year first above written.

INDEPENDENT SCHOOL DISTRICT NO. 709

CONTRACTOR

\_\_\_\_\_  
Chair

\_\_\_\_\_  
Title

\_\_\_\_\_  
Clerk

\_\_\_\_\_  
Title

  
\_\_\_\_\_  
Program Director

393-17-6231  
Taxpayer Identification Number

  
\_\_\_\_\_  
Director of Business Service



## MEMORANDUM OF UNDERSTANDING

December 2012

### Between the Carlton County Public Health and Human Services and TXT4Life Partners

This MEMORANDUM OF UNDERSTANDING is hereby made and entered into by and between Carlton County Public Health and Human Services and **Duluth Public Schools**, in an effort to facilitate planning for development and expansion of the TXT4Life Project, funded by a federal Garrett Lee Smith grant beginning in August of 2011. **TXT4LIFE** builds on existing multi-agency collaborations to strengthen suicide prevention efforts which serve 22,000 school-aged youth who live in rural and reservation areas of Northeastern Minnesota. ***TXT4LIFE will begin in Carlton County, expand to Cook, Lake, St. Louis, Aitkin, Itasca, Koochiching Counties and Fond du Lac, Grand Portage, Red Lake, and Bois Forte/Nett Lake tribal reservations, and then continue across Minnesota.*** As estimated, 1400 individual advocates and service providers who deal with youth in crises are targeted to benefit from the training and collaboration made possible through this grant and its associated MOU partners. An estimated 1500 youth are targeted to benefit from direct services (prevention/intervention) made possible through this initiative.

The primary mission of TXT4LIFE is to reduce the incidence of suicidal ideation and suicide attempts for NE MN youth 1) Increasing access and utilization among youth of the Minnesota suicide prevention crisis response system by updating infrastructure to include text-messaging to encourage help-seeking behavior, 2) Improving local suicide prevention planning/services and increase protective factors and reduce risk factors among youth through implementation of culturally appropriate, evidence based youth suicide prevention and early intervention strategies, 3) Increasing gatekeeper awareness and understanding of youth suicide, willingness to intervene, and skills for appropriate intervention and referral. TXT4LIFE strategies include:

- Expansion of local public awareness efforts utilizing social media marketing (i.e. texting)
- Strengthen collaborative infrastructure within the NE Minnesota region
- Development of partnerships in NE Minnesota to expand suicide prevention efforts
- Combine efforts of the student originated "Life is for Everyone" (LIFE), Department of Public Health, the Minnesota Department of Human Services, and Suicide Awareness Voices of Education (SAVE), and Carlton County Suicide Prevention Taskforce
- Ensure sustainability of youth suicide prevention programs.
- Provide leadership and informational training for consumer and community stakeholders
- Continue to provide training for key gatekeepers in recognizing and responding to suicide risk.

**Governance Structure** for this initiative is provided by Carlton County Public Health and Human Services (CCPHHS), Human Services Inc./Crisis Connection (HSI) and Carlton County Children and Family Services Collaborative (CCCFSC). The CCPHHS takes the lead in implementing TXT4LIFE strategies. The CCCFSC will take the lead on grant management and the fiscal accountability for the project. HSI takes the lead on providing access and utilization of the Minnesota suicide prevention crisis response system/national hotline to include text-messaging. There is a TXT4LIFE advisory committee with representatives from additional organizations for implementation of this project. Overall, direction for this initiative will be provided through Dave Lee, Director of Carlton County Public Health and Human Services. Donna LeKander, Carlton County Collaborative Director, who is supervised by Dave Lee, will provide overall grant management and fiscal accountability. Meghann Condit and Sierra Beckman, project co-coordinators, are the primary facilitators of public awareness, training for this project, and convening meetings relative to TXT4LIFE implementation. The contributions and commitment of this partnership is to support the attended goals of this project as highlighted above and the contributions outlined below.

**1. Partner Information:**

## Organization Type

School    \_\_\_ Government Agency    \_\_\_ Mental Health Provider    \_\_\_ Reservation  
 \_\_\_ Nonprofit    \_\_\_ Business    \_\_\_ Other: \_\_\_\_\_

## Service Area

\_\_\_ Aitkin    \_\_\_ Carlton    \_\_\_ Cook    \_\_\_ Lake    \_\_\_ Itasca     St. Louis  
 \_\_\_ Koochiching    \_\_\_ State    \_\_\_ National    \_\_\_ Other: \_\_\_\_\_

**2. Identity of Partner Organization:**

Partner Institute/School Name: Duluth Public Schools

Primary Contact: RON LAKE

Title: CLIMATE COORDINATOR

Address: 215 N 1ST AVE EAST

DULUTH, MN 55802

Email: RONALD.LAKE@DULUTH.K12.MN.US

Telephone: 218-336-8700 (2014)

**3. Partner Contributions and Commitments Description:**

Relative to the implementation of TXT4LIFE, **Duluth Public Schools** agrees to:

- 1) Support public awareness, education, and outreach campaigns targeted to middle and high school students
- 2) Allow display of signage, posters, and marketing materials advocating use of TXT4LIFE
- 3) Encourage staff, student, and community participation in QPR and ASIST trainings and project participation
- 4) Allow for school staff to participate in all applicable data collection pertinent to Garrett Lee Smith Cross Site Evaluation processes for the TXT4LIFE Project as needed
- 5) Work together to achieve stated project goals and to sustain the project

Relative to the implementation of TXT4LIFE, **Carlton County Public Health and Human Services** agrees to:

- 1) Convene all planning and implementation meetings for this initiative
- 2) Offer train the trainer to 28 people; assist in offering trainings and recruiting participants for QPR
- 3) Offer train the trainer to four people; assist in offering trainings and recruiting participants for ASIST
- 4) Support region-wide public awareness and outreach campaigns targeted to its secondary student population of 7 - 12 grade students
- 5) Develop marketing materials advocating use of TXT4LIFE
- 6) Encourage community awareness and capacity in suicide prevention through providing resources and information
- 7) Facilitate and participate in all applicable data collection pertinent to Garrett Lee Smith Cross Site Evaluation processes for the TXT4LIFE Project

We, the undersigned have read and agree with this MOU. Further, we have reviewed the TXT 4 Life project and approve it.

Authorized partner signature: \_\_\_\_\_

Print Name: Dave Lee

Title: Director

Agency/Organization: Carlton County Public Health & Human Services

Date: \_\_\_\_\_

Authorized partner signature: 

Print Name: Bill HANSON

Title: CFO

Agency/Organization: Duluth Public Schools

Date: 12/17/12

# FACILITIES MANAGEMENT & CAPITAL PROJECT STATUS REPORT

## December 2012

69

### **Facilities Management – General**

In the past month, the maintenance crews have completed 282 work orders, and are currently working on 487 open work orders.

Maintenance crews are back on scheduled maintenance and focusing on Denfeld at this time.

Storeroom / Utility functions are being evaluated.

Safety railing / fall protection project is completed at Denfeld.

Modifications to create a GED testing booth in ALC are being worked on with Beth T.

### **Capital Construction:**

Currently, LRFP site work is ongoing at Congdon Park, Myers-Wilkins, WMS, and OEMS.

OEMS girl's pool locker room floor drain issues are being investigated.

Door closer issues at multiple sites are being reviewed.

Various training sessions at our new sites on a variety of systems is occurring regularly.

Commissioning of HVAC equipment is still ongoing at both LPMS and OEMS.

Testing / Balancing / and Commissioning of our new HVAC systems at our new sites is occurring, ongoing, and almost completed, and contractors are very close to completing the repairs as identified.

JCI, District, and CM's continue to meet at Facilities on a weekly basis to review all ongoing issues, as well as weekly at all site construction meetings.

### **Operations**

Building staff prepared sites and set up for holiday programs that took place at each site. Operations staff used the break to accomplish HVAC maintenance and special cleaning of hallways, bathrooms and areas that required attention to keep the buildings appearance up, especially during this time of year when salt and sand is tracked throughout the school.

The excess items at Central are being organized for the February auction.

### **Health and Safety**

- Emergency Response Crisis Management (ERCM) activities included:
  - Meeting with Denfeld's response team prior to Friday's alleged/potential shooting incident and assisting in staffing and review of the ERCM plan.
  - Reviewing security at several locations and assisting in improvement ideas for securing facilities.

- Workers' Compensation activities included:
  - Reviewing worker's compensation claims and matching them to the OSHA log for monthly reviews.
  - There were 27 FROI's (First Report of Injury/Incident). Two were recordable incidents, of which one is a lost time incident (shoulder strain and slip/fall).
- Received the noise monitoring results and report for Ordean East's industrial arts room. Although no one tested over the OSHA limits, the instructor's test results were close to 85dB; therefore, the sound panels that have already been purchased will be installed.
- The IAQ results for the suspected mold in Lakewood Elementary were received. The samples did not reveal any raised levels of airborne mold spores inside room 122 (the room in question from a parent), however, there are future plans to replace the carpeting at Lakewood Elementary.

### **Risk Management**

There have been no significant claims or changes in status relating to insurance policies for general liability, property, auto, and school leader's legal liability.

Attachment – FY 13 Facilities Maintenance Schedule

# FACILITIES MAINTENANCE SCHEDULE

12/13/12-1

Building	Dates	Days	Split	SEPTEMBER 2012							OCTOBER 2012							NOVEMBER 2012							DECEMBER 2012									
				S	M	T	W	Th	F	S	S	M	T	W	Th	F	S	S	M	T	W	Th	F	S	S	M	T	W	Th	F	S			
Denfeld HS	1/2-1/22 & 5/10-5/31	30	15/15																															
East HS	1/23-2/11 & 6/3-6/20	28	14/14																															
Lincoln Park MS	2/12-3/1 & 6/21-7/3	18	9/9																															
Ordean East MS	3/4-3/15 & 7/5-7/17	19	10/9							1		1	2	3	4	5	6							1	2	3							1	
Congdon Park	under construction																																	
Homecroft	3/18-3/19 & 7/18-7/22	5	2/3	2	Holiday	3	4	5	★ 6	7	8	7	8	9	10	11	12	13	4	5	6	7	8	9	10	2	3	4	5	6	7	8		
Laura MacArthur	3/20-3/25 & 7/23-7/26	8	4/4																															
Lester Park	3/26-3/29 & 7/29-7/31	7	4/3	9	10	11	12	13	14	15	14	15	16	17	18	19	20	21	10	11	12	13	14	15	16	17	9	10	11	12	13	14	15	
Lowell	4/1-4/5 & 8/1-8/6	9	5/4																															
Meyers-Wilkens	under construction																																	
Piedmont	4/15-4/18 & 8/7-8/12	8	4/4																															
Lakewood	4/19-4/22 & 8/13-8/14	4	2/2	23	24	25	26	27	28	29	28	29	30	31											25	26	27	28	29	30				
Stowe	4/23-4/26 & 8/15-8/19	7	4/3																															
Transportation	4/29 & 8/20	2	1/1	30																					30	31								
HOCHS	4/30-5/9 & 8/21-8/30	16	8/8																															
Total Building Days 161				JANUARY 2013							FEBRUARY 2013							MARCH 2013							APRIL 2013									
				S	M	T	W	Th	F	S	S	M	T	W	Th	F	S	S	M	T	W	Th	F	S	S	M	T	W	Th	F	S			
Open A	2/19-2/22	4				Holiday	Denfeld	Denfeld	Denfeld	5						East	1	2							Lincoln	1	2		Lowell	Lowell	Lowell	Lowell	Lowell	6
Open B	4/8-4/12	5					1	2	3	4																		Lowell	Lowell	Lowell	Lowell	Lowell	6	
Total Open Days 9				6	7	8	9	10	11	12	3	4	5	6	7	8	9	3	4	5	6	7	8	9	7	8	9	10	11	12	13			
TOTAL WORK DAYS 170				13	14	15	16	17	18	19	10	11	12	13	14	15	16	10	11	12	13	14	15	16	14	15	16	17	18	19	20			
				20	21	22	23	24	25	26	17	Holiday	Open A	Open A	Open A	Open A	23	17	18	19	20	21	22	23	21	22	23	24	25	26	27			
				27	28	29	30	31			24	25	26	27	28			24	25	26	27	28	29	30	28	29	30							
Indicate first and last day of school ★				MAY 2013							JUNE 2013							JULY 2013							AUGUST 2013									
				S	M	T	W	Th	F	S	S	M	T	W	Th	F	S	S	M	T	W	Th	F	S	S	M	T	W	Th	F	S			
No school for students							HOCHS	HOCHS	HOCHS	4							1		Lincoln	Lincoln	Lincoln	Holiday	Ordean	5	6					Lowell	Lowell	3		
Holiday				5	6	7	8	9	10	11	2	East	East	East	East	★ 6	7	7	8	9	10	11	12	13	4	Lowell	Lowell	Piedmont	Piedmont	Piedmont	10			
Early Release				12	13	14	15	16	17	18	9	East	East	East	East	Lincoln	14	14	15	16	17	18	19	20	11	Piedmont	Lakewood	Lakewood	Stowe	Stowe	17			
				19	20	21	22	23	24	25	16	17	18	19	20	21	22	21	22	23	24	25	26	27	18	19	20	21	22	23	24			
				26	Holiday	27	28	29	30	31	23	24	25	26	27	28	29	28	29	30	31				25	HOCHS	HOCHS	HOCHS	HOCHS	HOCHS	31			
											30																							

# FY13

GL Transactions by Object Code within Org. Key

GL Ledger Code: GL

Fiscal Year: 2013

72

FQA: 06-870-215-386-JOB

ALT FACILITIES/DENFELD

Object: 152000 BUILDING ACQUISITION/CONSTRUCT

Post Date	Reference	PO #	Check #	PEID	Person/Entity Name	Description	Job_Num	SS	Debit	Credit	Net
11/12/2012	7057	217124	00625686	V70893	HOLM DONALD CONSTRUCTION	BUILDING ACQUISITION/CONSTRUCT	829777	OH	4,348.55	0.00	4,348.55
11/28/2012	DFLD APP 2		00625977	V00596	TRANE USA INC	DENFELD APPLICATION 2	831527	OH	16,205.05	0.00	16,205.05
11/28/2012	PGM MGMT		00625955	V87763	JOHNSON CONTROLS INC	PRGM MGMT FEE APP 52	831527	OH	1,100.00	0.00	1,100.00
<b>Object 152000 Total:</b>									21,653.60	0.00	21,653.60
<b>FQA 06-870-215-386-JOB Total:</b>									21,653.60	0.00	21,653.60

FQA: 06-870-220-386-JOB

ALT FACILITIES/EAST

Object: 152000 BUILDING ACQUISITION/CONSTRUCT

Post Date	Reference	PO #	Check #	PEID	Person/Entity Name	Description	Job_Num	SS	Debit	Credit	Net
11/28/2012	PGM MGMT		00625955	V87763	JOHNSON CONTROLS INC	PRGM MGMT FEE APP 52	831527	OH	4,100.00	0.00	4,100.00
11/28/2012	EMS PROF		00625955	V87763	JOHNSON CONTROLS INC	EMS PROF FEE APP 43	831527	OH	44,122.29	0.00	44,122.29
11/28/2012	EAST 10/12		00625958	V105888	KRAUS-ANDERSON	OCT 12 REIMBURSABLES	831527	OH	2,285.10	0.00	2,285.10
11/28/2012	EAST APP 6		00625973	V63580	ST GERMAINS GLASS CO	EAST APPLICATION 6	831527	OH	5,923.00	0.00	5,923.00
11/28/2012	EAST APP 2		00625975	V107259	T D TEST AND BALANCE INC	EAST APPLICATION 2	831527	OH	19,475.00	0.00	19,475.00
11/28/2012	EAST APP 12		00625962	V00202	NORTHERN DOOR AND HRDWRE	EAST APPLICATION 12	831527	OH	3,197.70	0.00	3,197.70
11/28/2012	EAST APP 10		00625961	V107097	MULTIPLE CONCEPTS INTERIORS	EAST APPLICATION 10	831527	OH	19,315.40	0.00	19,315.40
<b>Object 152000 Total:</b>									98,418.49	0.00	98,418.49
<b>FQA 06-870-220-386-JOB Total:</b>									98,418.49	0.00	98,418.49

FQA: 06-870-320-386-JOB

ALT FACILITIES/ORDEAN

Object: 152000 BUILDING ACQUISITION/CONSTRUCT

Post Date	Reference	PO #	Check #	PEID	Person/Entity Name	Description	Job_Num	SS	Debit	Credit	Net
11/28/2012	ORD BP4		00625960	V00917	LIPE BROS CONST INC	ORDEAN BP4 FINAL APPLICATION	831527	OH	57,737.33	0.00	57,737.33
11/28/2012	ORD APP 40		00625941	V105879	BELKNAP ELECTRIC	ORDEAN APPLICATION 40	831527	OH	2,708.00	0.00	2,708.00
11/28/2012	ORD APP 2		00625977	V00596	TRANE USA INC	ORDEAN APPLICATION 2	831527	OH	20,828.85	0.00	20,828.85
11/28/2012	PGM MGMT		00625955	V87763	JOHNSON CONTROLS INC	PRGM MGMT FEE APP 52	831527	OH	2,000.00	0.00	2,000.00
11/28/2012	ORD APP 17		00625982	V70771	VIKING AUTOMATIC SPRINKLER CO	ORDEAN APPLICATION 17	831527	OH	23,130.30	0.00	23,130.30
11/28/2012	ORD 1224		00625960	V00917	LIPE BROS CONST INC	ORDEAN 1224 FINAL APPLICATION	831527	OH	2,410.00	0.00	2,410.00
<b>Object 152000 Total:</b>									108,814.48	0.00	108,814.48
<b>FQA 06-870-320-386-JOB Total:</b>									108,814.48	0.00	108,814.48

GL Transactions by Object Code within Org. Key

GL Ledger Code: GL

Fiscal Year: 2013

FQA: 06-870-435-386-JOB

ALT FACILITIES/CONGDON PARK

73

**Object: 152000 BUILDING ACQUISITION/CONSTRUCT**

Post Date	Reference	PO #	Check #	PEID	Person/Entity Name	Description	Job_Num	SS	Debit	Credit	Net
11/12/2012	356581	217136	00625651	V106044	BRAUN INTERTEC CORP	BUILDING ACQUISITION/CONSTRUCT	829777	OH	531.00	0.00	531.00
11/19/2012	10/26/12 MAIN		00625824	V44024	MN POWER AND LIGHT CO	BUILDING ACQUISITION/CONSTRUCT	830836	OH	213.41	0.00	213.41
11/28/2012	CGDN KA		00625955	V87763	JOHNSON CONTROLS INC	CONGDON KRAUS 10/12	831527	OH	15,678.51	0.00	15,678.51
11/28/2012	CGDN APP 3		00625951	V107973	HECIMOVICH MECH CONT	CONGDON APPLICATION 3	831527	OH	84,681.70	0.00	84,681.70
11/28/2012	CGDN APP 3		00625950	V02687	HARBOR CITY MASONRY	CONGDON APPLICATION 3	831527	OH	10,670.68	0.00	10,670.68
11/28/2012	PGM MGMT		00625955	V87763	JOHNSON CONTROLS INC	PRGM MGMT FEE APP 52	831527	OH	4,997.56	0.00	4,997.56
11/28/2012	CGDN APP 2		00625962	V00202	NORTHERN DOOR AND HRDWRE	CONGDON APPLICATION 2	831527	OH	1,998.33	0.00	1,998.33
11/28/2012	PGM MGMT		00625955	V87763	JOHNSON CONTROLS INC	PRGM MGMT FEE APP 52	831527	OH	1,269.79	0.00	1,269.79
11/28/2012	CGDN APP 2		00625941	V105879	BELKNAP ELECTRIC	CONGDON APPLICATION 2	831527	OH	18,699.99	0.00	18,699.99
11/28/2012	CGDN APP 1		00625966	V89594	O BRIEN A G PLUMBING	CONGDON APPLICATION 1	831527	OH	14,561.88	0.00	14,561.88
11/28/2012	CGDN APP 1		00625946	V108048	CUSTOM DRYWALL INC	CONGDON APPLICATION 1	831527	OH	14,523.60	0.00	14,523.60
11/28/2012	CGDN 10/12		00625958	V105888	KRAUS-ANDERSON	OCT 12 REIMBURSABLES	831527	OH	5,334.09	0.00	5,334.09
11/28/2012	CGDN PROF		00625955	V87763	JOHNSON CONTROLS INC	CONGDON PROF FEE APP 22	831527	OH	14,662.42	0.00	14,662.42
<b>Object 152000 Total:</b>									187,822.96	0.00	187,822.96
<b>FQA 06-870-435-386-JOB Total:</b>									187,822.96	0.00	187,822.96

**FQA: 06-870-470-386-JOB ALT FACILITIES/GRANT**

**Object: 152000 BUILDING ACQUISITION/CONSTRUCT**

Post Date	Reference	PO #	Check #	PEID	Person/Entity Name	Description	Job_Num	SS	Debit	Credit	Net
11/19/2012	10/26/12 MAIN		00625824	V44024	MN POWER AND LIGHT CO	BUILDING ACQUISITION/CONSTRUCT	830836	OH	163.12	0.00	163.12
11/28/2012	GRNT PROF		00625955	V87763	JOHNSON CONTROLS INC	GRANT PROF FEE 20	831527	OH	22,139.27	0.00	22,139.27
11/28/2012	492		00625956	V106763	KELLEHER CONSTRUCTION	MYERS-WILKINS APP 3	831527	OH	12,730.77	0.00	12,730.77
11/28/2012	120230-4		00625981	V102745	VEIT AND COMPANY INC	MYERS-WILKINS APP 4	831527	OH	200,349.00	0.00	200,349.00
11/28/2012	120230-4		00625981	V102745	VEIT AND COMPANY INC	MYERS-WILKINS APP 4	831527	OH	1,358.24	0.00	1,358.24
11/28/2012	MWE BOSS		00625955	V87763	JOHNSON CONTROLS INC	MYERS-WILKINS BOSS 10/12	831527	OH	8,314.80	0.00	8,314.80
11/28/2012	MWE APP 4		00625972	V105887	SHANNON'S INC	MYERS-WILKINS APP 4	831527	OH	5,027.05	0.00	5,027.05
11/28/2012	MWE APP 4		00625941	V105879	BELKNAP ELECTRIC	MYERS-WILKINS APP 4	831527	OH	10,375.57	0.00	10,375.57
11/28/2012	MWE APP 2		00625976	V106468	THELEN HEATING & ROOFING INC	MYERS-WILKINS APP 2	831527	OH	75,691.62	0.00	75,691.62
11/28/2012	PGM MGMT		00625955	V87763	JOHNSON CONTROLS INC	PRGM MGMT FEE APP 52	831527	OH	2,140.82	0.00	2,140.82
11/28/2012	MWE APP 2		00625940	V105889	BEDROCK-FLINT INC	MYERS-WILKINS APP 2	831527	OH	43,301.76	0.00	43,301.76
11/28/2012	0066540-IN		00625978	V92769	TWIN PORTS TESTING	JOB 11M5853	831527	OH	1,078.93	0.00	1,078.93
11/28/2012	MWE APP 1		00625954	V106832	HUFCOR MINNESOTA LLC	MYERS-WILKINS APP 1	831527	OH	270.75	0.00	270.75
11/28/2012	MWE APP 1		00625948	V106953	GRAZZINI BROTHERS AND	MYERS-WILKINS APP 1	831527	OH	2,327.50	0.00	2,327.50

GL Transactions by Object Code within Org. Key

GL Ledger Code: GL  
Fiscal Year: 2013

74

11/28/2012	MWE APP 1	00625945	V108047	CROSSROAD CONSTRUCTION INCMYERS-WILKINS APP 1	831527	OH	9,792.28	0.00	9,792.28	
11/28/2012	MWE 10/12	00625943	V107094	BOSSARDT CORPORATION OCT 12 REIMBURSABLES	831527	OH	2,211.28	0.00	2,211.28	
<b>Object 152000</b>							<b>Total:</b>	397,272.76	0.00	397,272.76
<b>FQA 06-870-470-386-JOB</b>							<b>Total:</b>	397,272.76	0.00	397,272.76

**FQA: 06-871-220-000-000 GEN FUND SAVINGS-EAST**

**Object: 152000 BUILDING ACQUISITION/CONSTRUCT**

<u>Post Date</u>	<u>Reference</u>	<u>PO #</u>	<u>Check #</u>	<u>PEID</u>	<u>Person/Entity Name</u>	<u>Description</u>	<u>Job_Num</u>	<u>SS</u>	<u>Debit</u>	<u>Credit</u>	<u>Net</u>
11/12/2012	61017	217126	00625744	V106468	THELEN HEATING & ROOFING INC	BUILDING ACQUISITION/CONSTRUCT	829777	OH	2,138.00	0.00	2,138.00
11/12/2012	78416		00625641	V100769	AMERICAN ENGINEERING &	BUILDING ACQUISITION/CONSTRUCT	829777	OH	780.00	0.00	780.00
11/12/2012	143117	217139	00625689	V108007	HUNT ELECTRIC CORP	BUILDING ACQUISITION/CONSTRUCT	829777	OH	4,384.55	0.00	4,384.55
11/26/2012	0110605-IN	217964	00625907	V34960	JOHNSON CARPET ONE	BUILDING ACQUISITION/CONSTRUCT	831333	OH	4,199.00	0.00	4,199.00
11/28/2012	141008-1		00625949	V28830	HALDEMAN HOMME INC	EAST RETENTION	831527	OH	38,187.20	0.00	38,187.20
11/28/2012	EAST APP 19		00625964	V106518	NORTHLAND CONCRETE AND	EAST APPLICATION 19	831527	OH	13,666.70	0.00	13,666.70
11/28/2012	142255		00625949	V28830	HALDEMAN HOMME INC	EAST DIFFUSERS	831527	OH	6,520.00	0.00	6,520.00
<b>Object 152000</b>							<b>Total:</b>	69,875.45	0.00	69,875.45	
<b>FQA 06-871-220-000-000</b>							<b>Total:</b>	69,875.45	0.00	69,875.45	

**FQA: 06-871-320-000-000 GEN FUND SAVINGS-ORDEAN**

**Object: 152000 BUILDING ACQUISITION/CONSTRUCT**

<u>Post Date</u>	<u>Reference</u>	<u>PO #</u>	<u>Check #</u>	<u>PEID</u>	<u>Person/Entity Name</u>	<u>Description</u>	<u>Job_Num</u>	<u>SS</u>	<u>Debit</u>	<u>Credit</u>	<u>Net</u>
11/12/2012	M121106	217137	00625649	V61181	BENSON ELECTRIC CO INC	BUILDING ACQUISITION/CONSTRUCT	829777	OH	560.00	0.00	560.00
11/12/2012	78416	217131	00625641	V100769	AMERICAN ENGINEERING &	BUILDING ACQUISITION/CONSTRUCT	829777	OH	360.00	0.00	360.00
11/12/2012	2076164-IN	217129	00625738	V61525	SELL HARDWARE INC	BUILDING ACQUISITION/CONSTRUCT	829777	OH	438.40	0.00	438.40
11/28/2012	ORD 10/12		00625943	V107094	BOSSARDT CORPORATION	OCT 12 REIMBURSABLES	831527	OH	84.43	0.00	84.43
<b>Object 152000</b>							<b>Total:</b>	1,442.83	0.00	1,442.83	
<b>FQA 06-871-320-000-000</b>							<b>Total:</b>	1,442.83	0.00	1,442.83	

**FQA: 06-873-350-000-000 LRFPLINCOLN PK MIDDLE SCHOOL**

**Object: 152000 BUILDING ACQUISITION/CONSTRUCT**

<u>Post Date</u>	<u>Reference</u>	<u>PO #</u>	<u>Check #</u>	<u>PEID</u>	<u>Person/Entity Name</u>	<u>Description</u>	<u>Job_Num</u>	<u>SS</u>	<u>Debit</u>	<u>Credit</u>	<u>Net</u>
11/12/2012	143131	217138	00625689	V108007	HUNT ELECTRIC CORP	BUILDING ACQUISITION/CONSTRUCT	829777	OH	1,535.81	0.00	1,535.81
11/12/2012	78416		00625641	V100769	AMERICAN ENGINEERING &	BUILDING ACQUISITION/CONSTRUCT	829777	OH	850.00	0.00	850.00
11/12/2012	2075918-IN	127127	00625738	V61525	SELL HARDWARE INC	BUILDING ACQUISITION/CONSTRUCT	829777	OH	1,237.52	0.00	1,237.52
11/28/2012	WMS APP 4		00625957	V107052	KENDELL DOORS & HARDWARE	WEST MIDDLE APP 4	831527	OH	3,794.30	0.00	3,794.30

GL Transactions by Object Code within Org. Key

GL Ledger Code: GL  
Fiscal Year: 2013

75

11/28/2012	WMS APP 4	00625967	V107261	OLYMPUS LOCKERS & STORAGE	WEST MIDDLE APP 4	831527	OH	20,363.25	0.00	20,363.25	
11/28/2012	WEST PROF	00625955	V87763	JOHNSON CONTROLS INC	WEST PROF FEE APP 39	831527	OH	19,957.00	0.00	19,957.00	
11/28/2012	PGM MGMT	00625955	V87763	JOHNSON CONTROLS INC	PRGM MGMT FEE APP 52	831527	OH	7,000.00	0.00	7,000.00	
11/28/2012	WMS APP 6	00625953	V92302	HOVLAND MASONRY INC	WEST MIDDLE APP 6	831527	OH	5,633.50	0.00	5,633.50	
11/28/2012	WMS APP 7	00625971	V61525	SELL HARDWARE INC	WEST MIDDLE APP 7	831527	OH	2,498.50	0.00	2,498.50	
11/28/2012	WMS APP 16	00625963	V107008	NORTHERN INDUSTRIAL	WEST MIDDLE APP 16	831527	OH	20,742.30	0.00	20,742.30	
11/28/2012	WMS 10/12	00625958	V105888	KRAUS-ANDERSON	OCT 12 REIMBURSABLES	831527	OH	70,853.82	0.00	70,853.82	
11/28/2012	WMS APP 17	00625969	V107302	RICE LAKE CONSTRUCTION	WEST MIDDLE APP 17	831527	OH	41,770.55	0.00	41,770.55	
<b>Object 152000</b>								<b>Total:</b>	196,236.55	0.00	196,236.55

**Object: 153000 OTHER EQUIPMENT PURCHASED**

<u>Post Date</u>	<u>Reference</u>	<u>PO #</u>	<u>Check #</u>	<u>PEID</u>	<u>Person/Entity Name</u>	<u>Description</u>	<u>Job_Num</u>	<u>SS</u>	<u>Debit</u>	<u>Credit</u>	<u>Net</u>
11/12/2012	1192	309525	00625699	V107999	JT ARCHITECTURAL SALES LLC	MARK FOR KERRY LEIDER/FACILITI	829777	OH	2,560.00	0.00	2,560.00
<b>Object 153000</b>								<b>Total:</b>	2,560.00	0.00	2,560.00
<b>FQA 06-873-350-000-000</b>								<b>Total:</b>	198,796.55	0.00	198,796.55

**FQA: 06-876-200-000-000 COP 2012A**

**Object: 118501 OVERTIME,SHIFT DIFFERENTIAL**

<u>Post Date</u>	<u>Reference</u>	<u>PO #</u>	<u>Check #</u>	<u>PEID</u>	<u>Person/Entity Name</u>	<u>Description</u>	<u>Job_Num</u>	<u>SS</u>	<u>Debit</u>	<u>Credit</u>	<u>Net</u>
11/23/2012	02240DP	EARN REG		7066		BERNDT, BETTY GRS.	830924	3	326.11	0.00	326.11
<b>Object 118501</b>								<b>Total:</b>	326.11	0.00	326.11

**Object: 121000 FICA/MEDICARE**

<u>Post Date</u>	<u>Reference</u>	<u>PO #</u>	<u>Check #</u>	<u>PEID</u>	<u>Person/Entity Name</u>	<u>Description</u>	<u>Job_Num</u>	<u>SS</u>	<u>Debit</u>	<u>Credit</u>	<u>Net</u>
11/23/2012	02240DP	CONT REG		N/A..N/A		COP 2012A	830924	2	21.42	0.00	21.42
<b>Object 121000</b>								<b>Total:</b>	21.42	0.00	21.42

**Object: 121400 PERA**

<u>Post Date</u>	<u>Reference</u>	<u>PO #</u>	<u>Check #</u>	<u>PEID</u>	<u>Person/Entity Name</u>	<u>Description</u>	<u>Job_Num</u>	<u>SS</u>	<u>Debit</u>	<u>Credit</u>	<u>Net</u>
11/23/2012	02240DP	CONT REG		N/A..N/A		COP 2012A	830924	2	23.64	0.00	23.64
<b>Object 121400</b>								<b>Total:</b>	23.64	0.00	23.64

**Object: 127000 WORKERS COMPENSATION**

<u>Post Date</u>	<u>Reference</u>	<u>PO #</u>	<u>Check #</u>	<u>PEID</u>	<u>Person/Entity Name</u>	<u>Description</u>	<u>Job_Num</u>	<u>SS</u>	<u>Debit</u>	<u>Credit</u>	<u>Net</u>
11/23/2012	02240DP	CONT REG		N/A..N/A		COP 2012A	830924	2	1.30	0.00	1.30
<b>Object 127000</b>								<b>Total:</b>	1.30	0.00	1.30

GL Transactions by Object Code within Org. Key

GL Ledger Code: GL  
 Fiscal Year: 2013  
 Object: 128000

UNEMPLOYMENT COMPENSATION

76

Post Date	Reference	PO #	Check #	PEID	Person/Entity Name	Description	Job_Num	SS	Debit	Credit	Net
11/23/2012	02240DP	CONT REG		N/A..N/A		COP 2012A	830924	2	2.28	0.00	2.28
							<b>Object 128000</b>	<b>Total:</b>	2.28	0.00	2.28
							<b>FQA 06-876-200-000-000</b>	<b>Total:</b>	374.75	0.00	374.75

**FQA: 06-876-215-000-000 COP 2012A-DENFELD**

**Object: 152000 BUILDING ACQUISITION/CONSTRUCT**

Post Date	Reference	PO #	Check #	PEID	Person/Entity Name	Description	Job_Num	SS	Debit	Credit	Net
11/28/2012	ORD/DFLD		00625965	V62693	NORTHLAND CONSTRUCTORS INC	ORDEAN/DENFELD APPLICATION 5	831527	OH	3,875.00	0.00	3,875.00
							<b>Object 152000</b>	<b>Total:</b>	3,875.00	0.00	3,875.00
							<b>FQA 06-876-215-000-000</b>	<b>Total:</b>	3,875.00	0.00	3,875.00

**FQA: 06-876-320-000-000 COP 2012A-ORDEAN EAST MIDDLE**

**Object: 152000 BUILDING ACQUISITION/CONSTRUCT**

Post Date	Reference	PO #	Check #	PEID	Person/Entity Name	Description	Job_Num	SS	Debit	Credit	Net
11/26/2012	23187	217966	00625909	V106692	LAKEHEAD TRUCKING INC	BUILDING ACQUISITION/CONSTRUCT	831333	OH	1,440.00	0.00	1,440.00
11/28/2012	ORD APP 9		00625980	V107499	UPPER MIDWEST ATHLETIC	ORDEAN APPLICATION 9	831527	OH	16,625.00	0.00	16,625.00
11/28/2012	ORD/DFLD		00625965	V62693	NORTHLAND CONSTRUCTORS INC	ORDEAN/DENFELD APPLICATION 5	831527	OH	14,430.00	0.00	14,430.00
							<b>Object 152000</b>	<b>Total:</b>	32,495.00	0.00	32,495.00
							<b>FQA 06-876-320-000-000</b>	<b>Total:</b>	32,495.00	0.00	32,495.00

**FQA: 06-876-435-000-000 COP 2012A-CONGDON PARK**

**Object: 152000 BUILDING ACQUISITION/CONSTRUCT**

Post Date	Reference	PO #	Check #	PEID	Person/Entity Name	Description	Job_Num	SS	Debit	Credit	Net
11/19/2012	10/26/12 MAIN		00625824	V44024	MN POWER AND LIGHT CO	BUILDING ACQUISITION/CONSTRUCT	830836	OH	180.20	0.00	180.20
11/28/2012	CGDN APP 1		00625946	V108048	CUSTOM DRYWALL INC	CONGDON APPLICATION 1	831527	OH	9,984.97	0.00	9,984.97
11/28/2012	CGDN APP 1		00625968	V106725	RED CEDAR STEEL ERECTORS INC	CONGDON APPLICATION 1	831527	OH	18,479.87	0.00	18,479.87
11/28/2012	CGDN APP 2		00625941	V105879	BELKNAP ELECTRIC	CONGDON APPLICATION 2	831527	OH	13,503.87	0.00	13,503.87
11/28/2012	CGDN APP 2		00625962	V00202	NORTHERN DOOR AND HRDWRE	CONGDON APPLICATION 2	831527	OH	5,374.93	0.00	5,374.93
11/28/2012	CGDN APP 3		00625950	V02687	HARBOR CITY MASONRY	CONGDON APPLICATION 3	831527	OH	32,690.18	0.00	32,690.18
11/28/2012	CGDN APP 3		00625951	V107973	HECIMOVICH MECH CONT	CONGDON APPLICATION 3	831527	OH	5,689.00	0.00	5,689.00
11/28/2012	CGDN APP 3		00625960	V00917	LIPE BROS CONST INC	CONGDON APPLICATION 3	831527	OH	6,360.76	0.00	6,360.76
11/28/2012	CGDN APP 4		00625956	V106763	KELLEHER CONSTRUCTION	CONGDON APPLICATION 4	831527	OH	16,394.91	0.00	16,394.91

**GL Transactions by Object Code within Org. Key**

GL Ledger Code: GL  
Fiscal Year: 2013

77

11/28/2012	CGDN APP 1	00625966	V89594	O BRIEN A G PLUMBING	CONGDON APPLICATION 1	831527	OH	311.44	0.00	311.44	
11/28/2012	CGDN KA	00625955	V87763	JOHNSON CONTROLS INC	CONGDON KRAUS 10/12	831527	OH	13,238.41	0.00	13,238.41	
11/28/2012	CGDN PROF	00625955	V87763	JOHNSON CONTROLS INC	CONGDON PROF FEE APP 22	831527	OH	12,380.46	0.00	12,380.46	
11/28/2012	PGM MGMT	00625955	V87763	JOHNSON CONTROLS INC	PRGM MGMT FEE APP 52	831527	OH	1,072.16	0.00	1,072.16	
11/28/2012	PGM MGMT	00625955	V87763	JOHNSON CONTROLS INC	PRGM MGMT FEE APP 52	831527	OH	2,687.27	0.00	2,687.27	
11/28/2012	CGDN 10/12	00625958	V105888	KRAUS-ANDERSON	OCT 12 REIMBURSABLES	831527	OH	4,503.93	0.00	4,503.93	
11/28/2012	CGDN APP 1	00625942	V108046	BEN'S STRUCTURAL	CONGDON APPLICATION 1	831527	OH	88,133.11	0.00	88,133.11	
<b>Object 152000</b>								<b>Total:</b>	230,985.47	0.00	230,985.47
<b>FQA 06-876-435-000-000</b>								<b>Total:</b>	230,985.47	0.00	230,985.47

**FQA: 06-876-470-000-000                      COP 2012A-MEYERS WILKINS**

**Object: 152000                      BUILDING ACQUISITION/CONSTRUCT**

<u>Post Date</u>	<u>Reference</u>	<u>PO #</u>	<u>Check #</u>	<u>PEID</u>	<u>Person/Entity Name</u>	<u>Description</u>	<u>Job_Num</u>	<u>SS</u>	<u>Debit</u>	<u>Credit</u>	<u>Net</u>
11/12/2012	78416		00625641	V100769	AMERICAN ENGINEERING &	BUILDING ACQUISITION/CONSTRUCT	829777	OH	850.00	0.00	850.00
11/19/2012	10/26/12 MAIN		00625824	V44024	MN POWER AND LIGHT CO	BUILDING ACQUISITION/CONSTRUCT	830836	OH	371.45	0.00	371.45
11/28/2012	MWE APP 1		00625945	V108047	CROSSROAD CONSTRUCTION INCMYERS-WILKINS APP 1		831527	OH	11,246.37	0.00	11,246.37
11/28/2012	MWE 10/12		00625943	V107094	BOSSARDT CORPORATION	OCT 12 REIMBURSABLES	831527	OH	5,035.63	0.00	5,035.63
11/28/2012	GRNT PROF		00625955	V87763	JOHNSON CONTROLS INC	GRANT PROF FEE 20	831527	OH	24,968.77	0.00	24,968.77
11/28/2012	A242789		00625944	V49855	CENTURYLINK	ACCOUNT MN E381992	831527	OH	4,758.51	0.00	4,758.51
11/28/2012	6402		00625979	V03601	ULLAND BROTHERS INC	MYERS-WILKINS APP 2	831527	OH	94,331.62	0.00	94,331.62
11/28/2012	492		00625956	V106763	KELLEHER CONSTRUCTION	MYERS-WILKINS APP 3	831527	OH	125,225.49	0.00	125,225.49
11/28/2012	12230-1A		00625970	V106831	RTL CONSTRUCTION	MYERS-WILKINS APP 1	831527	OH	93,836.25	0.00	93,836.25
11/28/2012	120230-4		00625981	V102745	VEIT AND COMPANY INC	MYERS-WILKINS APP 4	831527	OH	41,065.12	0.00	41,065.12
11/28/2012	120229-2		00625981	V102745	VEIT AND COMPANY INC	MYERS-WILKINS APP 2	831527	OH	57,864.66	0.00	57,864.66
11/28/2012	MWE APP 2		00625959	V106640	KREMER & DAVIS INC	MYERS-WILKINS APP 2	831527	OH	24,640.19	0.00	24,640.19
11/28/2012	MWE APP 2		00625947	V108012	D & M IRON WORKS INC	MYERS-WILKINS APP 2	831527	OH	92,389.40	0.00	92,389.40
11/28/2012	0066540-IN		00625978	V92769	TWIN PORTS TESTING	JOB 11M5853	831527	OH	2,456.98	0.00	2,456.98
11/28/2012	MWE APP 2		00625976	V106468	THELEN HEATING & ROOFING INC	MYERS-WILKINS APP 2	831527	OH	16,352.80	0.00	16,352.80
11/28/2012	MWE APP 2		00625940	V105889	BEDROCK-FLINT INC	MYERS-WILKINS APP 2	831527	OH	116,389.44	0.00	116,389.44
11/28/2012	MWE APP 1		00625974	V106597	STEINBRECHER PAINTING INC	MYERS-WILKINS APP 1	831527	OH	1,900.06	0.00	1,900.06
11/28/2012	MWE APP 4		00625941	V105879	BELKNAP ELECTRIC	MYERS-WILKINS APP 4	831527	OH	45,388.37	0.00	45,388.37
11/28/2012	MWE APP 4		00625972	V105887	SHANNON'S INC	MYERS-WILKINS APP 4	831527	OH	28,446.82	0.00	28,446.82
11/28/2012	MWE BOSS		00625955	V87763	JOHNSON CONTROLS INC	MYERS-WILKINS BOSS 10/12	831527	OH	18,934.85	0.00	18,934.85
11/28/2012	PGM MGMT		00625955	V87763	JOHNSON CONTROLS INC	PRGM MGMT FEE APP 52	831527	OH	2,414.91	0.00	2,414.91
<b>Object 152000</b>								<b>Total:</b>	808,867.69	0.00	808,867.69
<b>FQA 06-876-470-000-000</b>								<b>Total:</b>	808,867.69	0.00	808,867.69

GL Transactions by Object Code within Org. Key

GL Ledger Code: GL

Fiscal Year: 2013

78

FQA: 06-876-525-000-000

COP 2012A-LAURA MACARTHUR

Object: 152000 BUILDING ACQUISITION/CONSTRUCT

Post Date	Reference	PO #	Check #	PEID	Person/Entity Name	Description	Job_Num	SS	Debit	Credit	Net	
11/12/2012	09M0516-20	217121	00625669	V105891	EPC ENGINEERING & TESTING	BUILDING ACQUISITION/CONSTRUCT	829777	OH	1,090.00	0.00	1,090.00	
11/12/2012	78416		00625641	V100769	AMERICAN ENGINEERING &	BUILDING ACQUISITION/CONSTRUCT	829777	OH	850.00	0.00	850.00	
11/28/2012	LMAC APP 2		00625977	V00596	TRANE USA INC	MACARTHUR APPLICATION 2	831527	OH	5,760.55	0.00	5,760.55	
11/28/2012	LMAC APP 7		00625952	V107852	HIBBING EXCAVATING INC	MACARTHUR APPLICATION 7	831527	OH	50,989.21	0.00	50,989.21	
<b>Object 152000</b>									<b>Total:</b>	58,689.76	0.00	58,689.76
<b>FQA 06-876-525-000-000</b>									<b>Total:</b>	58,689.76	0.00	58,689.76

FQA: 06-877-435-000-000

GEN FUND SAVINGS-CONGDON PK

Object: 152000 BUILDING ACQUISITION/CONSTRUCT

Post Date	Reference	PO #	Check #	PEID	Person/Entity Name	Description	Job_Num	SS	Debit	Credit	Net	
11/15/2012	888101	217544	00625835	V100715	PER MAR SECURITY SERVICES	BUILDING ACQUISITION/CONSTRUCT	830511	OH	2,075.00	0.00	2,075.00	
11/19/2012	10/26/12 MAIN		00625824	V44024	MN POWER AND LIGHT CO	BUILDING ACQUISITION/CONSTRUCT	830836	OH	194.63	0.00	194.63	
11/28/2012	CGDN APP 1		00625942	V108046	BEN'S STRUCTURAL	CONGDON APPLICATION 1	831527	OH	51,516.89	0.00	51,516.89	
11/28/2012	CGDN 10/12		00625958	V105888	KRAUS-ANDERSON	OCT 12 REIMBURSABLES	831527	OH	4,864.69	0.00	4,864.69	
11/28/2012	CGDN APP 1		00625946	V108048	CUSTOM DRYWALL INC	CONGDON APPLICATION 1	831527	OH	8,741.43	0.00	8,741.43	
11/28/2012	PGM MGMT		00625955	V87763	JOHNSON CONTROLS INC	PRGM MGMT FEE APP 52	831527	OH	2,615.17	0.00	2,615.17	
11/28/2012	CGDN APP 1		00625966	V89594	O BRIEN A G PLUMBING	CONGDON APPLICATION 1	831527	OH	3,554.78	0.00	3,554.78	
11/28/2012	CGDN APP 1		00625968	V106725	RED CEDAR STEEL ERECTORS INC	CONGDON APPLICATION 1	831527	OH	5,270.13	0.00	5,270.13	
11/28/2012	CGDN APP 2		00625941	V105879	BELKNAP ELECTRIC	CONGDON APPLICATION 2	831527	OH	118,846.14	0.00	118,846.14	
11/28/2012	CGDN APP 2		00625962	V00202	NORTHERN DOOR AND HRDWRE	CONGDON APPLICATION 2	831527	OH	475.64	0.00	475.64	
11/28/2012	CGDN APP 3		00625950	V02687	HARBOR CITY MASONRY	CONGDON APPLICATION 3	831527	OH	23,123.14	0.00	23,123.14	
11/28/2012	CGDN APP 3		00625951	V107973	HECIMOVICH MECH CONT	CONGDON APPLICATION 3	831527	OH	68,985.15	0.00	68,985.15	
11/28/2012	CGDN APP 3		00625960	V00917	LIPE BROS CONST INC	CONGDON APPLICATION 3	831527	OH	20,021.50	0.00	20,021.50	
11/28/2012	CGDN APP 4		00625956	V106763	KELLEHER CONSTRUCTION	CONGDON APPLICATION 4	831527	OH	7,026.39	0.00	7,026.39	
11/28/2012	CGDN KA		00625955	V87763	JOHNSON CONTROLS INC	CONGDON KRAUS 10/12	831527	OH	14,298.80	0.00	14,298.80	
11/28/2012	CGDN PROF		00625955	V87763	JOHNSON CONTROLS INC	CONGDON PROF FEE APP 22	831527	OH	13,372.12	0.00	13,372.12	
11/28/2012	PGM MGMT		00625955	V87763	JOHNSON CONTROLS INC	PRGM MGMT FEE APP 52	831527	OH	1,158.05	0.00	1,158.05	
<b>Object 152000</b>									<b>Total:</b>	346,139.65	0.00	346,139.65
<b>FQA 06-877-435-000-000</b>									<b>Total:</b>	346,139.65	0.00	346,139.65

FQA: 06-877-470-000-000

GEN FD SAVINGS-MEYERS WILKINS

GL Transactions by Object Code within Org. Key

GL Ledger Code: GL  
 Fiscal Year: 2013  
 Object: 152000

**BUILDING ACQUISITION/CONSTRUCT**

79

Post Date	Reference	PO #	Check #	PEID	Person/Entity Name	Description	Job_Num	SS	Debit	Credit	Net	
11/19/2012	10/26/12 MAIN		00625824	V44024	MN POWER AND LIGHT CO	BUILDING ACQUISITION/CONSTRUCT	830836	OH	134.26	0.00	134.26	
11/28/2012	120229-2		00625981	V102745	VEIT AND COMPANY INC	MYERS-WILKINS APP 2	831527	OH	20,088.54	0.00	20,088.54	
11/28/2012	120230-4		00625981	V102745	VEIT AND COMPANY INC	MYERS-WILKINS APP 4	831527	OH	23,832.09	0.00	23,832.09	
11/28/2012	12230-1A		00625970	V106831	RTL CONSTRUCTION	MYERS-WILKINS APP 1	831527	OH	24,913.75	0.00	24,913.75	
11/28/2012	143481		00625949	V28830	HALDEMAN HOMME INC	MYERS-WILKINS APP 1	831527	OH	1,116.25	0.00	1,116.25	
11/28/2012	492		00625956	V106763	KELLEHER CONSTRUCTION	MYERS-WILKINS APP 3	831527	OH	1,788.74	0.00	1,788.74	
11/28/2012	GRNT PROF		00625955	V87763	JOHNSON CONTROLS INC	GRANT PROF FEE 20	831527	OH	12,432.96	0.00	12,432.96	
11/28/2012	0066540-IN		00625978	V92769	TWIN PORTS TESTING	JOB 11M5853	831527	OH	888.09	0.00	888.09	
11/28/2012	MWE 10/12		00625943	V107094	BOSSARDT CORPORATION	OCT 12 REIMBURSABLES	831527	OH	1,820.16	0.00	1,820.16	
11/28/2012	PGM MGMT		00625955	V87763	JOHNSON CONTROLS INC	PRGM MGMT FEE APP 52	831527	OH	1,202.27	0.00	1,202.27	
11/28/2012	MWE APP 1		00625945	V108047	CROSSROAD CONSTRUCTION INC	MYERS-WILKINS APP 1	831527	OH	22,366.85	0.00	22,366.85	
11/28/2012	MWE APP 1		00625974	V106597	STEINBRECHER PAINTING INC	MYERS-WILKINS APP 1	831527	OH	417.94	0.00	417.94	
11/28/2012	MWE APP 2		00625940	V105889	BEDROCK-FLINT INC	MYERS-WILKINS APP 2	831527	OH	22,708.80	0.00	22,708.80	
11/28/2012	MWE APP 2		00625959	V106640	KREMER & DAVIS INC	MYERS-WILKINS APP 2	831527	OH	13,549.81	0.00	13,549.81	
11/28/2012	MWE APP 2		00625976	V106468	THELEN HEATING & ROOFING INC	MYERS-WILKINS APP 2	831527	OH	12,113.58	0.00	12,113.58	
11/28/2012	MWE APP 4		00625941	V105879	BELKNAP ELECTRIC	MYERS-WILKINS APP 4	831527	OH	71,232.06	0.00	71,232.06	
11/28/2012	MWE APP 4		00625972	V105887	SHANNON'S INC	MYERS-WILKINS APP 4	831527	OH	9,200.62	0.00	9,200.62	
11/28/2012	MWE BOSS		00625955	V87763	JOHNSON CONTROLS INC	MYERS-WILKINS BOSS 10/12	831527	OH	6,844.10	0.00	6,844.10	
<b>Object 152000</b>									<b>Total:</b>	246,650.87	0.00	246,650.87
<b>FQA 06-877-470-000-000</b>									<b>Total:</b>	246,650.87	0.00	246,650.87
<b>Grand Total:</b>									<u>2,812,175.31</u>	<u>0.00</u>	<u>2,812,175.31</u>	

**Long-Range Facilities Plan Status Report**  
**Provided by Johnson Controls, Inc.**  
**January 14, 2013**

**Project Design and Construction**

- Myers-Wilkins Elementary – The Gym addition slabs will be poured by February. Load bearing masonry work for the Classroom addition structure has been slowed by cold temperatures, and hopefully will be completed by February 1<sup>st</sup> to allow roof bar joists and deck to proceed. Mechanical / electrical / drywall work continues inside the existing building. Interior painting has started inside the existing building. Project projected to complete August 2013.
  
- Congdon Elementary – All roofing has been substantially completed. The slab in the new Gym has been poured, which will allow Gym mechanical / electrical rough-in work to continue. Upper level drywall taping and painting continue. Exterior masonry work has started. Mechanical / electrical rough-in is continuing inside the existing building. Project projected to complete August 2013.



## FACILITIES MANAGEMENT

Independent School District No. 709

Located at 730 E. Central Entrance

Mailing Address: 215 North 1st Avenue East  
Duluth, Minnesota 55802

Construction Management (218) 336-8907

Maintenance (218) 336-8906

Operations (218) 336-8905

Fax (218) 336-8909

# Memorandum

**To:** School Board Members

**From:** Kerry M. Leider

**Date:** January 2, 2013

**Re:** Long-range Facilities Plan Change Order Approval Information

Pursuant to School Board Resolution #B-8-08-2565, the following Change Orders pertaining to the Long-range Facilities Plan were signed by Bill Hanson during the month of December:

### **Eastern (Ordean East) Middle School**

#### **Eastern MS LRFP – Acoustical Ceilings**

Change Order #18, Bid 1165, WS #18 – W.A. Schaefer & Son Contracting, Inc

Change Order increase for ceiling modifications in the science prep room 3411 and for revisions to the orchestra room ceiling

**Add: \$2,441.00**

#### **Eastern MS LRFP – Acoustical Ceilings**

Change Order #19, Bid 1165, WS #18 – W.A. Schaefer & Son Contracting, Inc

Change Order increase to provide new ACT in corridor 2101

**Add: \$2,102.00**

#### **Eastern MS LRFP – Electrical**

Change Order #35, Bid 1165, WS #30 – Benson Electric Company

Change Order increase to relocate the outlets in the front office 2150, provide additional relays and wiring for FSDs, add connections to the fire/smoke dampers, and for smoke detector/fire alarm modifications

**Add: \$26,783.00**

#### **Eastern MS LRFP – Electrical**

Change Order #36, Bid 1165, WS #30 – Benson Electric Company

Change Order increase to revise the door security system to change switches to double pole/double throw position switches and add a card reader to door VQ1.1, add speakers, and add a contactor for the kitchen hood Ansul system

**Add: \$37,259.00**

**Eastern MS LRFP – Electrical**

Change Order #37, Bid 1165, WS #30 – Benson Electric Company

Change Order increase to install 14 exterior LED wall pack fixtures; put horns in boxes; move switches interfering with whiteboards; connect the press box, cord reels, scoreboards, dimming system and sound system; install a self-illuminating wireless exit at the courtyard; relocate head end equipment for the access control system, and provide duct detectors for additional ducting and relays for the security door changes

**Add: \$14,645.00**

**Eastern MS LRFP – Electrical**

Change Order #38, Bid 1165, WS #30 – Benson Electric Company

Change Order increase to provide and install 12 additional clocks

**Add: \$2,159.00**

All Change Orders for Eastern (Ordean East) Middle School as listed above reflect a total increase of \$85,389.00.

**Congdon Park Elementary School**

**Congdon Park ES LRFP – Concrete**

Change Order #2, Bid 1222 (WS #3) – Kelleher Construction, Inc

Change Order increase for additional waterproofing and drainage board at below grade CMU

**Add: \$1,421.00**

**Congdon Park ES LRFP – Selective Building Demolition**

Change Order #5 Bid 1223 (WS #9) – Lipe Brothers Construction, Inc

Change Order decrease to credit for plywood installation, add bridge framing members at two locations, and provide concrete slab demolition in rooms 120 and 122

**Deduct: \$1,673.00**

**Congdon Park ES LRFP – HM Doors, Frames and Hardware - Supply**

Change Order #3 Bid 1223 (WS #13) – Northern Door and Hardware, Inc

Change Order decrease to credit for revisions in the attic space to delete door 401, delete the door 402 frame and make the door fit the existing metal channel iron frame

**Deduct: \$600.00**

**Congdon Park ES LRFP – Fire Protection**

Change Order #2, Bid 1223 (WS #28) – A.G. O'Brien Plumbing and Heating Company

Change Order increase for revisions to the fire sprinkler system related to the chiller slab and storage room 114C infill

**Add: \$199.00**

**Congdon Park ES LRFP – Mechanical**

Change Order #4 Bid 1223 (WS #29) – Bob Hecimovich Mechanical Contracting, Inc  
Change Order increase to relocate the vent and install it outside the wall and for State plumbing review requirements

**Add: \$28,044.00**

**Congdon Park ES LRFP – Electrical**

Change Order #3 Bid 1223 (WS #30) – Belknap Electric, Inc  
Change Order increase for electrical work related to the attic demolition and for construction of the conduit enclosure to move the electrical room to avoid wet conditions

**Add: \$1,673.00**

All Change Orders for Congdon Park Elementary School as listed above reflect a total increase of \$29,064.00.

**Myers-Wilkins (Grant) Elementary School**

**Myers-Wilkins ES LRFP – Demolition**

Change Order #4 Bid 1215, BP #1, (Contract #0241) – Kellington Construction, Inc  
Change Order increase to provide additional ceiling demolition at the cafeteria and kitchen, demo and install steel support at stair B, and for additional demo at the restrooms on the 2<sup>nd</sup> and 3<sup>rd</sup> floor

**Add: \$5,000.00**

**Myers-Wilkins ES LRFP – Demolition**

Change Order #5 Bid 1215, BP #1, (Contract #0241) – Kellington Construction, Inc  
Change Order increase to provide a temporary door at the basement to secure the jobsite, demo the mortar bed at the restrooms to prep for new tile, and chip down terrazzo at the new door openings

**Add: \$4,816.00**

**Myers-Wilkins ES LRFP – Cast-in-Place Concrete**

Change Order #1 Bid 1215, BP #1, (Contract #0330) – Kelleher Construction, Inc  
Change Order increase to provide concrete door threshold infill

**Add: \$662.00**

**Myers-Wilkins ES LRFP – Cast-in-Place Concrete**

Change Order #2 Bid 1215, BP #1, (Contract #0330) – Kelleher Construction, Inc  
Change Order increase to provide concrete fill to adjust grade at the elevator

**Add: \$2,448.00**

**Myers-Wilkins ES LRFP – Precast Concrete Plank**

Change Order #1 Bid 1215, BP #1, (Contract #0340) – Molin Concrete Products Company  
Change Order increase for plank changes at stair F

**Add: \$625.00**

**Myers-Wilkins ES LRFP – Doors/Frames/Hardware - Supply**

Change Order #3 Bid 1215, BP #1, (Contract #0810) – Sell Hardware, Inc  
Change Order increase to add a 45 minute label to door 313B and add a closer to door 164

**Add: \$615.00**

**Myers-Wilkins ES LRFP – Aluminum Entrances/Storefronts/Windows/Glazing**

Change Order #1 Bid 1215, BP #1, (Contract #0840) – Superior Glass, Inc  
Change Order increase to provide glazing for revised door frames

**Add: \$288.00**

**Myers-Wilkins ES LRFP – Drywall-Rebid**

Change Order #1 Bid 1215-1, BP #1, (Contract #0920) – RTL Construction, Inc  
Change Order increase for additional drywall work in room 214 and the balcony

**Add: \$1,079.00**

**Myers-Wilkins ES LRFP – Drywall-Rebid**

Change Order #2 Bid 1215-1, BP #1, (Contract #0920) – RTL Construction, Inc  
Change Order increase to add drywall behind the 2<sup>nd</sup> floor display case, drywall infill at girls 214 and 309 and boys 212 and 307, revise the door size at opening 205B and 300, add a plumbing wall chase in the kitchen, and omit the soffit in the southwest corner of hall 242

**Add: \$2,084.00**

**Myers-Wilkins ES LRFP – Plumbing and Heat Piping**

Change Order #5, Bid 1215, BP #1, (Contract #2100) – Shannon's, Inc  
Change Order increase to provide additional floor drains, move heating lines in the plumbing chase for closet carriers and rain leader, and redo the waste and vent on the janitor's sink

**Add: \$9,636.00**

All Change Orders for Myers-Wilkins Elementary School as listed above reflect a total decrease of \$27,253.00.

**West (Lincoln Park) Middle School****West MS LRFP – Mechanical**

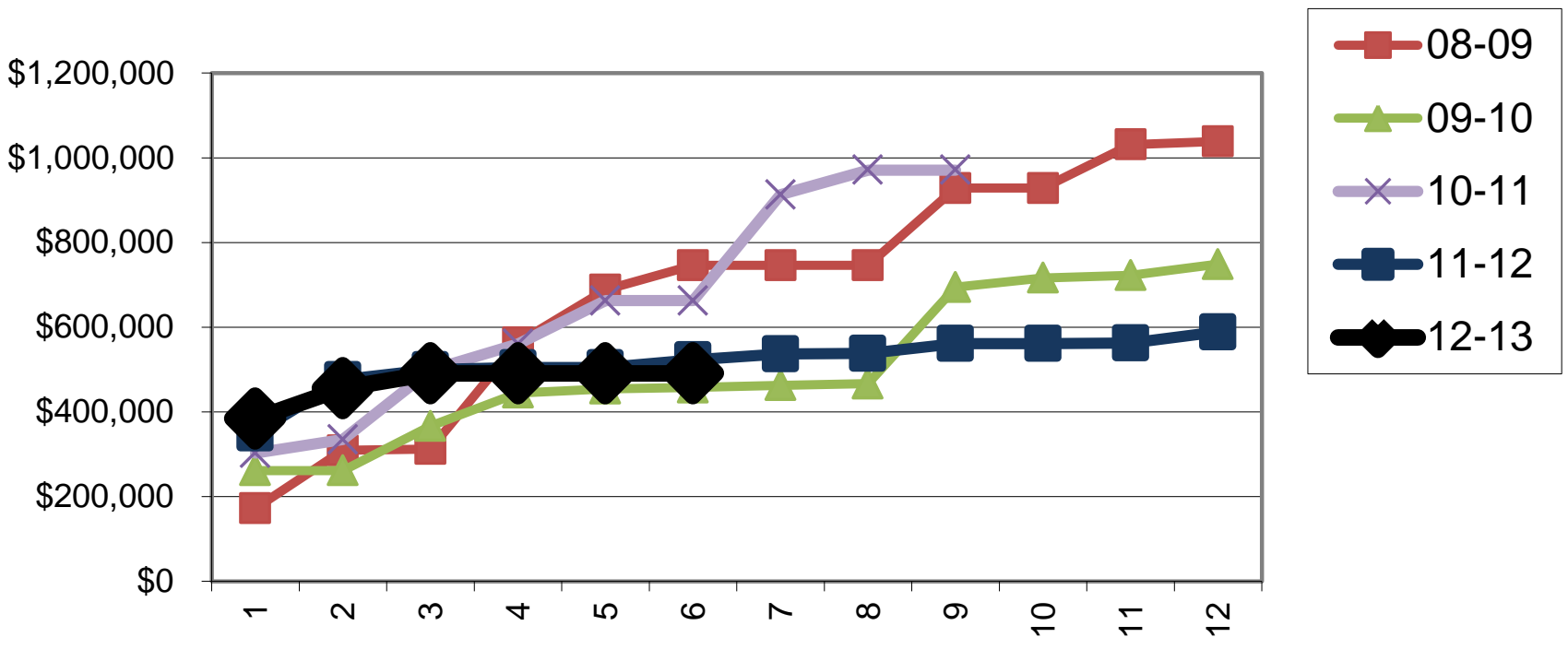
Change Order #11 Bid 1184, BP #2 (WS #36) – Gorham Oien Mechanical, Inc.  
Change Order increase for revisions to the natural gas piping serving the emergency generator

**Add: \$3,911.00**

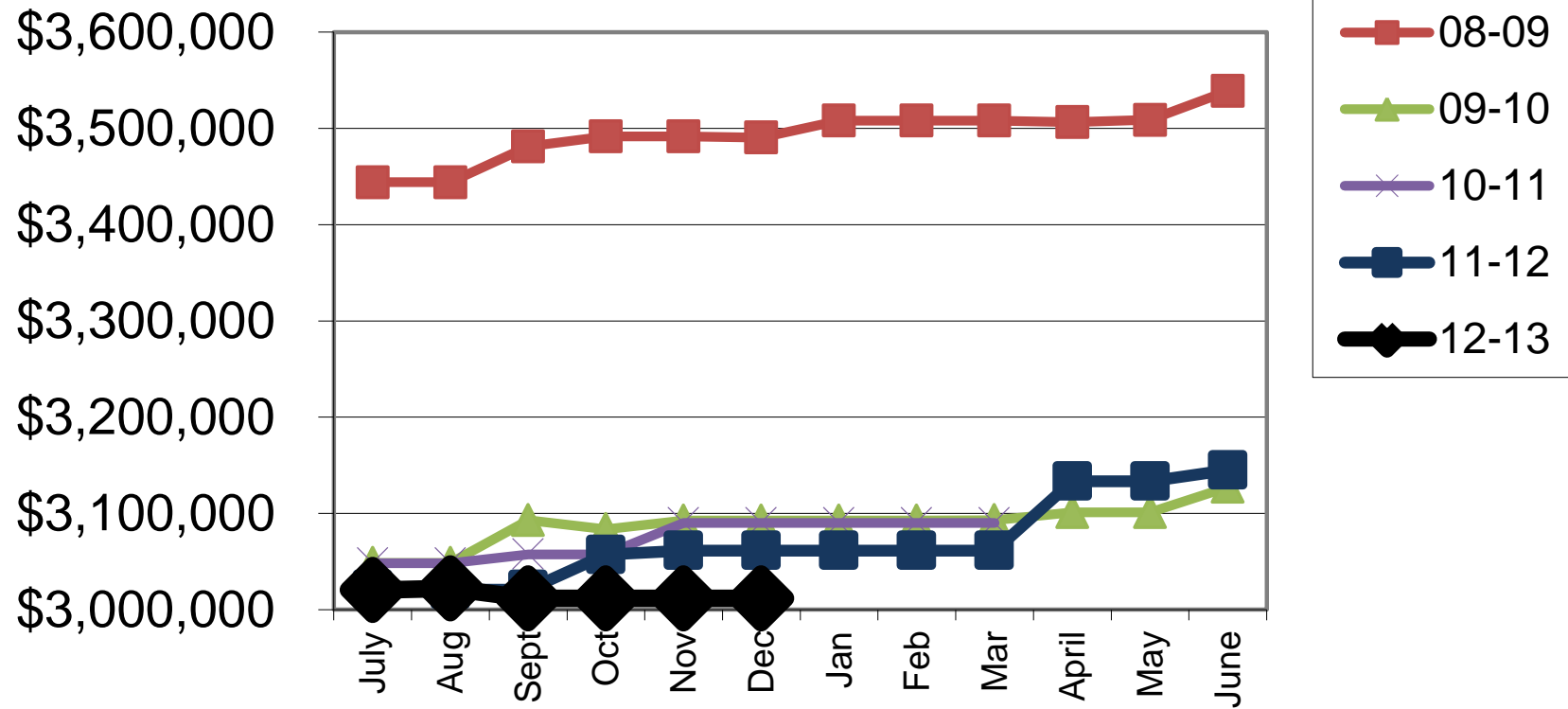
All Change Orders for West (Lincoln Park) Middle School as listed above reflect a total increase of \$3,911.00.

All project Change Orders listed on this report are available for review by School Board members upon request. If you wish to have copies of this information, please contact the Facilities Management Office.

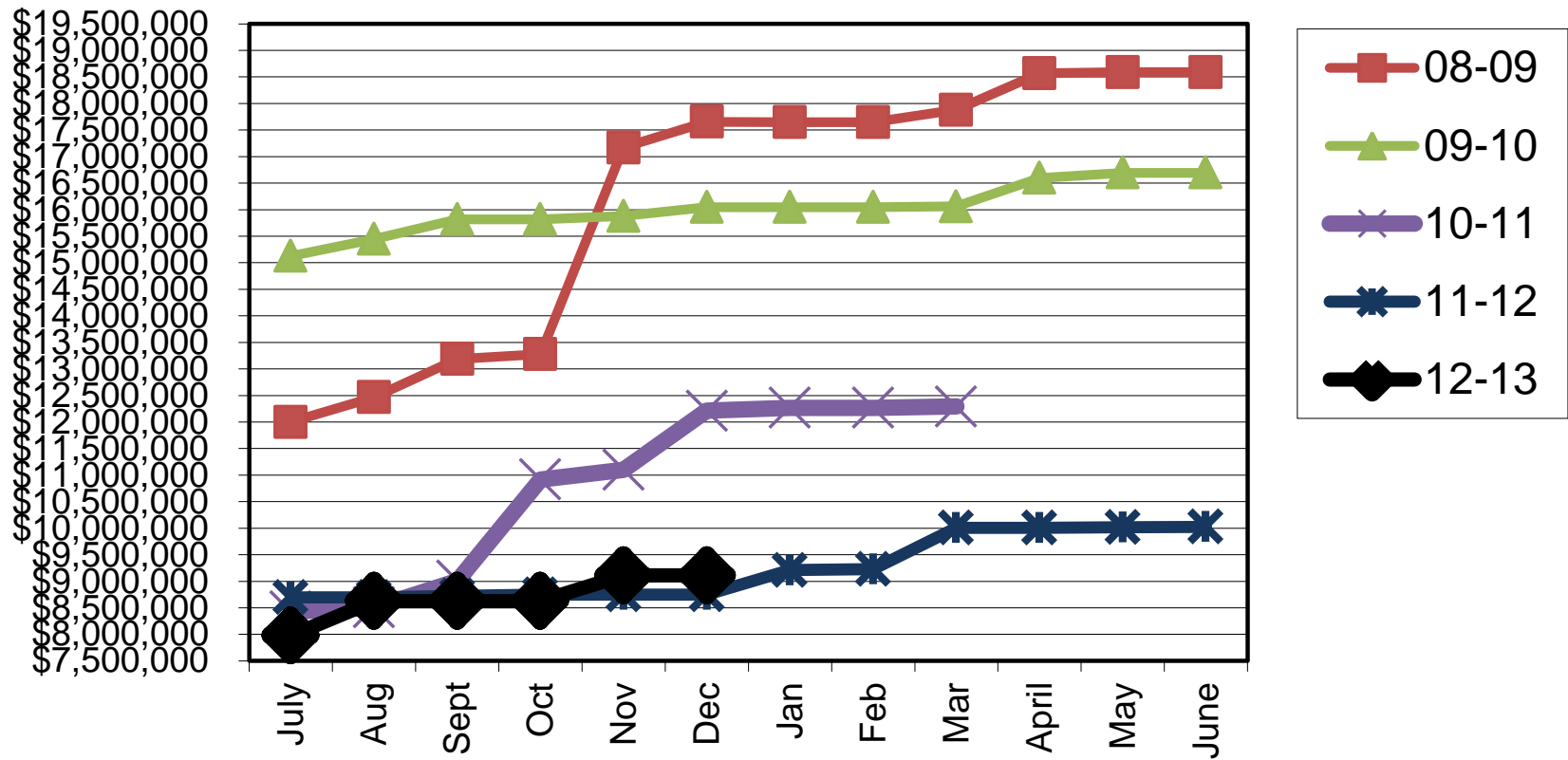
# Local Grants



## State Grants



# Federal Grants



# Donations

