



WALLED LAKE CONSOLIDATED SCHOOL DISTRICT
Walled Lake, Michigan

AGENDA
Regular Meeting of the Board of Education
April 3, 2025

Notice

Persons with disabilities needing accommodations for effective participation in the meeting should contact the Superintendent's office at 248-956-2011 to request mobility, visual, hearing, or other assistance.

The public may view this meeting streamed live at <https://wlcsd.org/board-of-education/livestream/>

Place: Educational Services Center
850 Ladd Road
Walled Lake, MI 48390

7:00 PM

1. **CALL TO ORDER**

2. **PLEDGE OF ALLEGIANCE**

3. **GOLDEN APPLE AWARDS**

Steve Steiner and Rob Stevenson

4. **BETTY CAMPION-SUPPORT PERSON OF THE YEAR AWARD**

Dorothy Tremblay

5. **FOUNDATION FOR EXCELLENCE MINI-GRANT UPDATE**

6. **WLCS D PUPIL ENROLLMENT PROJECTION STUDY PRESENTATION**

7. **LAKES AREA YOUTH ASSISTANCE ANNUAL REPORT**

4

Lakes Area Youth Assistance (LAYA) is a prevention program within the Oakland County Circuit Court. Youth Assistance has been in Walled Lake since 1960. Their mission statement is to strengthen youth and families and to prevent and reduce incidents of juvenile delinquency, neglect, and abuse through volunteer involvement. Ms. Nancy van Leuwen, LAYA Vice-Chairperson, and Mrs. Stacy Pasini, LAYA Caseworker, will present an update on their programs and services.

8. **MIDDLE SCHOOL PROGRAM OF STUDY PRESENTATION**

9. **PUBLIC COMMENTARY**

10. **ADMINISTRATIVE COMMENTARY**

11. **BOARD COMMENTARY**

12. **CONSENT AGENDA**

a. Approval of Minutes

1) Proposed March 6, 2025, Regular Meeting

b. Personnel Recommendations

1) New Hires

13

2) Resignations

14

c. Financial Reports - February 2025

15

Disbursements in the amount of \$18,575,132

Balance Sheet and Statement of Revenues and Expenditures - Unaudited, and Investment Schedule

d. Head Start Director's Report

20

13. **PURCHASES (Over \$50,000)**

a. Everyday Mathematics, \$369,249.50 - General Fund

21

Currently our K-5th grade classrooms use the Board-approved 2020 Everyday

Mathematics curriculum resources. Our three-year renewal for the consumable materials expires this year and requires us to renew, The costs outlined include consumable resources for students over the next three years and online access to the curriculum resources for teachers and students. The cost of the elementary curriculum materials totals \$369,249.50, and includes all teacher and student materials, online access, and shipping. The cost works out to roughly \$22/student over the course of three years and would be paid through the General Fund.

b. Phonics Reading Materials, \$162,361.63 - 35j Literacy Grant 25

The proposed book purchases will support our structured phonics literacy instruction, as outlined in the MDE 35j Literacy Grant. These books will be utilized by classroom teachers to provide texts for both large and small group instructional purposes. The selected resources are designed to support phonics and decoding instruction, align with grade-level content standards, and enhance overall reading instruction. Teachers have requested additional copies of these resources to ensure direct access within classrooms. The materials will be used with all students but most specifically with students who have reading plans as outlined by the State in the third grade reading legislation. The purchases totaling \$162,361.63 will be made with grant dollars from the 35j Literacy Grant through the General Fund.

14. **BID AWARDS**

a. Playground Soft Surface Material, Three-Year Contract, \$150,750.00 - General Fund 31

Administration obtained bids for a three-year contract, with the option to extend for two additional years, for the purchase and installation of playground soft surface material (engineered wood fiber) throughout the District. The recommendation is to award the bid to the low bidder, Superior Groundcover, Inc., with a total bid ranging from \$33.00 per CY to \$34.00 per CY over three years with an approximate total cost of \$150,750.00 for the duration of the three-year contract. This purchase will be funded from the General Fund beginning with Summer 2025 services.

15. **EQUIPMENT USAGE REQUEST - Memorial Day Parade and Viewfest**

The Walled Lake Schools Transportation Department has participated in the City of Walled Lake's annual Memorial Day Parade for many years and it will be the second year the department has participated in Viewfest. A Walled Lake/Dean Transportation bus driver will drive the bus in the parade procession, which provides a good public relations opportunity during this highly anticipated community event. This year's Memorial Day parade is on Monday, May 26, 2025. Viewfest is at the Detroit Zoo on Sunday, July 13, 2025. Viewfest is a Mental Health Walk and Celebration where Walled Lake/Dean Transportation converts a bus into a Zen Den. Walled Lake/Dean Transportation will also have a designated table to engage with potential employees and generate interest in job opportunities. Administration supports participation by the Walled Lake Transportation Department in both the Memorial Day Parade and Viewfest by allowing them to use one bus for each event. Walled Lake/Dean Transportation employees will donate their time to drive the buses, attend the events, and clean them afterward.

16. **WAIVER REQUEST** 32

The White Lake Wolves are a non-profit community-based youth football and cheer program that has a strong relationship with Walled Lake Northern High School's football and cheer program. With the elimination of middle school football and cheer programs in Walled Lake Schools, the White Lake Wolves play an important role in providing a valuable outlet for young athletes to learn teamwork, perseverance, and leadership while smoothing the transition for athletes as they progress into high school sports. As a new organization, the White Lake Wolves request that all fees relating to the use of school facilities for games and practices be waived for the 2025-26 school year.

17. **PROCLAMATION: VOLUNTEER RECOGNITION WEEK** 34

While we honor individual volunteers, as well as outstanding staff members through our Golden Apple Award program, we do feel it is appropriate to honor the legions of volunteers we have working throughout the schools each day of the school year. The

week of April 21 through April 25, 2025, has been designated as Walled Lake Schools Volunteer Recognition Week.

18. **BOARD POLICY ADOPTION**

35

The updated Board Policies were provided for the Board's review at the Regular Board meeting on March 6, 2025. The updated policies are in alignment with the current law, and the Administration recommends the adoption of these updated Board policies.

19. **ADJOURNMENT**

Notice of Nondiscrimination

In compliance with Title VII of the Civil Rights Act of 1964, Title IX of the Education Amendments of 1972, Section 504 of the Rehabilitation Act of 1973, the Age Discrimination Act of 1975, and the Americans with Disability Act of 1990, it is the policy of the Walled Lake Consolidated School District that no person shall, on the basis of race, color, religion, national origin or ancestry, sex, age, disability, height, weight, political belief, military service or marital status be excluded from participation in, be denied the benefits of, or be subjected to discrimination during any program or activity or in employment. For information contact the District Compliance Officer, at 248-956-2023.



Lakes Area Youth Assistance

Annual Report for the Year 2024

850 Ladd Rd., Bldg. D, Walled Lake, MI 48390 ~ 248-956-5070 ~

Statement of Sponsorship and Support

The mission of Lakes Area Youth Assistance (LAYA) is to strengthen the relationship between youth and their families and reduce child abuse, neglect and juvenile delinquency through volunteer involvement.

The core sponsors and supporters who make Lakes Area Youth Assistance possible are the Charter Township of Commerce, City of Walled Lake, Walled Lake Consolidated School District, City of Wixom, Village of Wolverine Lake and Oakland County Circuit Court-Family Division. Principal funding is through the Oakland County Board of Commissioners, business owners, individuals and a dedicated Board of Directors.

The Walled Lake Consolidated School District provides LAYA with an office located in the Educational Services Center. We are very grateful for the generous support of our community sponsors!

LAYA receives casework referrals from school personnel, police/sheriff departments, parents, Department of Human Services and other entities. Our caseworkers provide confidential short-term family-centered counseling services. Through early intervention, more serious problems can be averted. Typical reasons for referrals include intervention, retail fraud, home and school problems, violations of local ordinances, assault and alcohol or drug involvement.

We provide numerous prevention programs that continue to prove successful each year such as: Summer Camp, Skill Building Activities, Family Education Programs, Mentors PLUS, Shop with a Hero and Holiday Adopt-a-Child.

The annual fundraiser for LAYA is our "Taste of the Lakes" event. It is held at Edgewood Country Club in Commerce Township. Many thanks to the board members and staff who give of their time and efforts to bring this event together. We look forward to seeing you all at the event this year, scheduled for **Tuesday, October 7, 2025.**

If you are interested in being a part of Lakes Area Youth Assistance I encourage you to call 248-956-5070 for more information. We meet at 12:00 noon on the second Wednesday of each month at the LAYA office.

Stephanie Kaplan

Lakes Area Youth Assistance, 2024 Chairperson

2024 Board of Directors-Officers

Stephanie Kaplan, Chairperson
Nancy van Leuwen, Vice Chairperson
Joan Sare, Secretary
Peggy Hawke, Treasurer

2024 Board Members

Ellen Demray, Jodi Gallo, Clarence Mills, Mike Hayes and Jim and Kelly Holubeck-Gotts. **Ad Hoc Members:** Kathy Lyall, Christopher Titus, Shayna Levin, Cindy Scarpace and Hon. David Law. **Police Liaisons**-Deputy Giffin, Deputy Krafft, Deputy Peterson.

Office Staff- Stacy Pasini, Caseworker

Administrative Assistant - Barb Sprunk

Oakland County Commissioners:

District #10: Kristen Nelson (D), nelsonkd@oakgov.com

District #11: Marcia Gershenson (D), gershensonm@oakgov.com

District #12: Christine Long (R), longc@oakgov.com

District #14: Ajay Raman (D), ramana@oakgov.com

District #15: Gwen Markham (D), markhamg@oakgov.com

District #16: William Miller (D), millerw@oakgov.com

Judges of Circuit Court Family Division

*Lakes Area Youth Assistance is sponsored by
the Circuit Court—Family Division.*

*Hon. Lisa Langton
Presiding Family Division Judge*

Hon. Kameshia D. Gant
Hon. Maureen Kinsella
Hon. Lisa Gorcyca
Hon. Julie McDonald
Hon. Lorie N. Savin
Hon. Amanda J. Shelton



The Probate Court for the County of Oakland does not discriminate on the basis of disability in admission or access to its programs, activities or services as required by Title II of the American Disabilities Act of 1990. The court is an equal opportunity employer.

Court Administration:

Rich Lynch, Circuit Court Administrator
Oakland County Circuit Court

Pamela J. Monville, Deputy Court Administrator
Oakland County Circuit Court

Liz Csizmadia, Chief, Oakland County Youth Assistance,
Oakland County Circuit Court

Sponsorship and Support:

Charter Township of Commerce

City of Walled Lake

Walled Lake Consolidated School District & School Board

City of Wixom

Village of Wolverine Lake

Oakland County Circuit Court

Our 24th Annual

“Taste of the Lakes”

Fundraiser will be held
on **Tuesday, October 7, 2025**

Edgewood Country Club

5:00 – 8:00 PM

Without the financial support of the community we could not offer the programs summarized in this brochure.

Please come out and support this wonderful cause.



Lakes Area

Strengthening Families
Through Community Involvement

Shop with a Hero

On December 5th, 2024, LAYA was able to pair 20 area youth from the Walled Lake School District with members of the Fraternal Order of Police (FOP), Lodge 128, to provide a holiday shopping spree, all sponsored by the FOP, Lodge 128 and the Wixom Meijer. After a free pizza meal, the youths were matched with an officer and were able to shop for clothing, supplies and a few special items for themselves or family members.



On December 10th, 2024, LAYA was able to pair 34 area youth from the Walled Lake School District with local heroes for a holiday shopping experience. At this event, the heroes consisted of Oakland County Sheriff's Officers, Commerce Township Firefighters and EMTs. After a free pizza meal provided by LAYA, the youths were matched with a Hero and were able to shop for clothing, supplies and a few special items, all paid for by contributions from the Commerce Meijer.

At both events, the Meijer Stores sent each family home with groceries for a great holiday meal.

These events were great opportunities for some Walled Lake School children to have a positive learning experience with members of our area law enforcement and local heroes. It also allowed these youths to see through the Meijer Corporation, how two of our local Meijer stores continue to very generously support our community.

Jodi Gallo
Shop with a Cop/Hero, Coordinator



Mentors PLUS

The Lakes Area Youth Assistance Mentors PLUS program is designed to match pre-screened adult mentors with at-risk caseload children in the Walled Lake School system. The "matching" process is designed to help the youth develop both socially and emotionally. A supportive mentor is to be a friend and a positive role model. The mentor's commitment is for one year.

If you know of someone who would be interested in becoming a mentor or volunteering for the Mentors Plus committee, please contact the LAYA office for further information.

We had one (1) "match" in 2024.

Clarence Mills
Mentors PLUS, Coordinator



Skill Building

Lakes Area Youth Assistance strives to provide scholarships to youth for activities that enable them to develop a special interest or talent which they may not otherwise be able to participate in. These skill building activities are aimed at expanding the youth's horizons, increasing skills and building self-confidence. We are pleased that in 2024 we were able to assist 25 youth in the Walled Lake Consolidated Schools in working toward reaching their full potential and experiencing a positive learning opportunity that may not have been possible without assistance. Youngsters were able to participate in football, soccer, swimming, TGA Jr. Golf, track & field, volleyball, and basketball. Our Board will continue to work together with the community in 2025 to keep our youth engaged in activities that develop skills and self-confidence so they may experience a brighter future.

Jodi Gallo
Skill Building, Coordinator



Holiday Adopt-A-Child

The Holiday Adopt-a-Child event was very successful this year. A total of 66 children were adopted and we are proud to say that this was the 24th year LAYA has been able to help families during the holidays. The youth adopted were both LAYA caseload and non-caseload families. Thank you to all of the Walled Lake Consolidated School District principals, secretaries, teachers, counselors and social workers who worked with LAYA to identify and refer families in need.

Our generous donors included **Huron Valley-Sinai Hospital, Spencer Roofing, Wixom DPW, Wixom Senior Center, Walled Lake United Methodist Church, Crossroads Presbyterian Church, and several individual community members.**

We would like to extend our sincere appreciation to everyone who contributed. Your willingness to give made for a blessed and joyful holiday for some of our area children.

We look forward to helping many more children in 2025!

Ellen Demray
Holiday Adopt-a-Child, Coordinator



5th Grade Camp / Summer Camp

Our objective in sending kids to camp throughout the school year and during the summer months is to introduce or reinforce positive relationships and experiences. New friendships and skill building experiences will always be with them. Accomplishing goals (talking to a new person or completing a skills course) are some of the many positive learning tools.

In 2024, we were proud to send seven children to Basketball, Karate, Gymnastics, and Baseball summer day camps offered through Walled Lake Schools Community Education, American All Stars and Lakes Area Baseball and we were able to provide a scholarship for one child to attend 5th Grade Camp.

We gratefully wish to acknowledge donations received from the 2024 Taste of the Lakes event. Without your help, these kids would not have had the opportunity to have a positive summer camp experience. Thanks to all involved.

Joan Sare
Summer Camp Coordinator



Taste of the Lakes



2024 was a great year for our 23rd Annual “Taste of the Lakes”. With your support we were able to net more than \$28,000! Thanks to all of our sponsors, restaurants, volunteers and supporters who made this year’s event a huge success. Please take a look at each program report to see how your support helped the children and families in this great community.

The Taste was held once again at Edgewood Country Club and 19 of our finest local restaurants provided specialty items from their menu for our patrons to sample and enjoy. When visiting these great establishments, please mention you had seen them at the “Taste”.

Our raffle and silent auction offered an array of unique treasures donated by many local business owners and our school’s PTA/PTSA’s. A big “Thank You” goes out to the staff and management of Edgewood Country Club for hosting the event and helping make the night a huge success.

A special thank you, as well, to those who generously supported our efforts with financial donations.

Lakes Area Youth Assistance is very proud and grateful for the outpouring of the community wide efforts that made “Taste of the Lakes 2024” so successful. Our appreciation goes out to everyone whose generosity helps make the prevention programs and services of Lakes Area Youth Assistance possible for at-risk WLCS students and families.

Ellen Demray
Taste of the Lakes Coordinator



Lakes Area

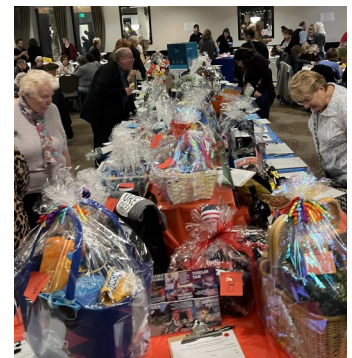
Strengthening Families
Through Community Involvement

Make a difference in your community

Become a LAYA Volunteer

Call (248) 956-5070

- ✦ Join LAYA’s Board of Directors
- ✦ Join a LAYA prevention program committee



Youth Programs sponsored by LAYA for 2024

Family Support

Lakes Area Youth Assistance offers programs to youth and families in the WLCSD to help build skills in: communication, problem solving, resiliency, self awareness and prevention of bullying and drug/substance abuse. Programs can be requested by schools, law enforcement, or families. Funds for these programs come from our annual fundraising “Taste of the Lakes” event, as well as from our community support partners.

Youth Programs offered this year, for Junior Kindergarten through Middle School included:

- ◆ **Art Therapy:** Small groups of at risk students explore the use of art for emotional expression, self awareness, coping skills and enhanced social skills. These classes are facilitated by a certified Art Therapist. Topics explored may include: absentee parents, family substance abuse, bullying, grief and/or loss. This year our program offered these services to approximately 40 elementary and middle school students.
- ◆ **Stress to Success Yoga:** A certified yoga instructor teaches basics of yoga to small groups of students from preschool to middle school. These tools help build self regulation, mindfulness, resiliency, and self esteem. This program runs 6-8 weeks and has been offered throughout this school year to approximately 200 students.

Our Family Support budget further offered programs on Vaping to 6th, 7th & 8th grade students at two of our middle schools. Additionally, a program on Diversity and another on Bullying were offered at two of our elementary schools.

LAYA volunteers bought, packed and distributed 450 backpacks for a “ Free Backpack Giveaway” at the beginning of the 2024-2025 school year.

Peggy Hawke
Family Support Coordinator

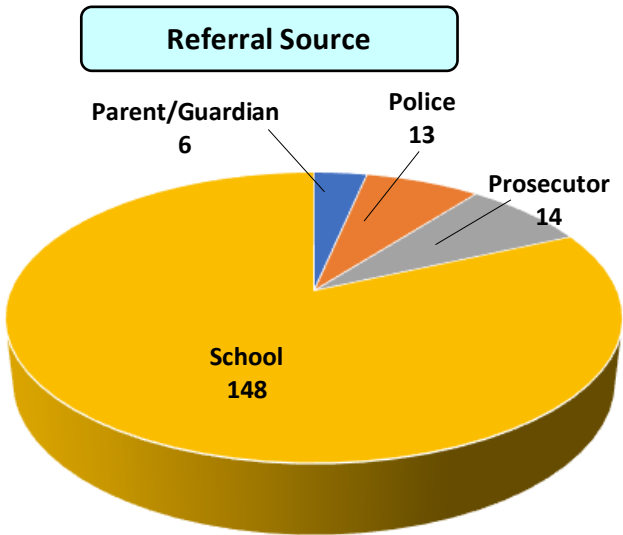


Caseworker's Report

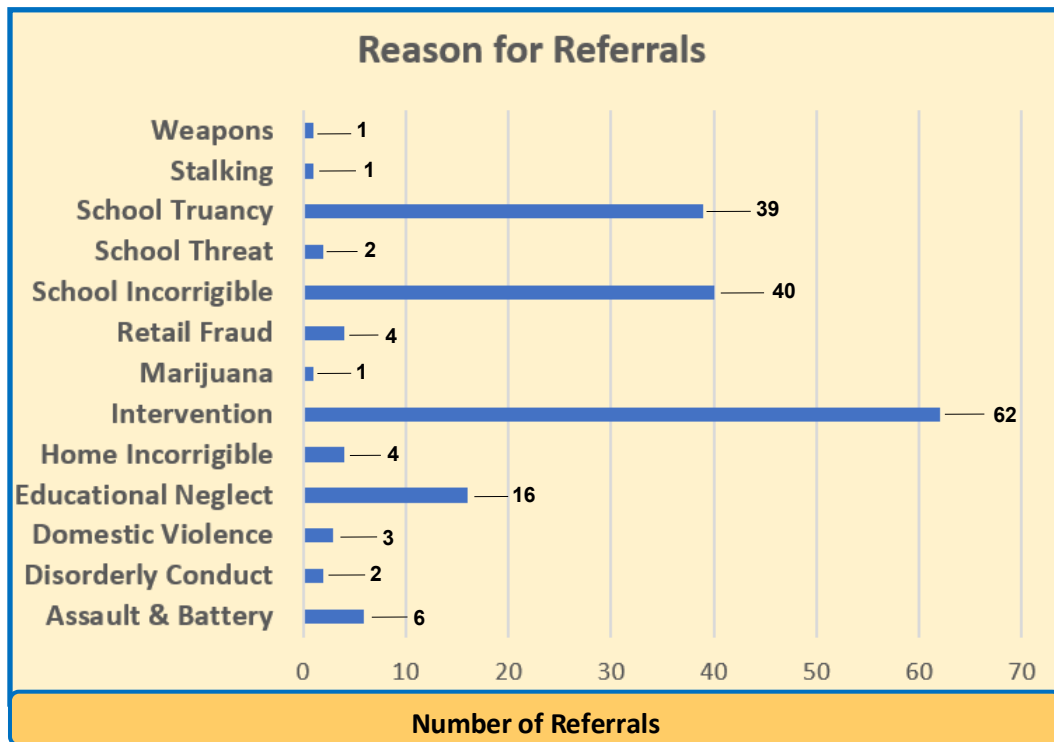
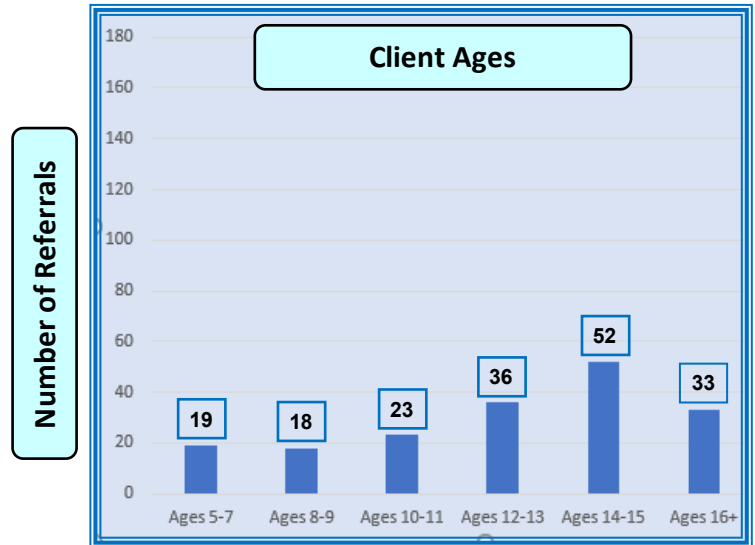
In 2024, Lakes Area Youth Assistance had a total of 181 new cases.

(Charts depict age, reason, and source breakdowns for referrals)

The LAYA staff and volunteer board continue to forge strong links with schools, law enforcement, and other community entities to increase awareness of our programs and services. We also welcome collaborations with local businesses, human service agencies, civic groups, churches and others in our community determined to decrease and prevent child abuse, neglect and juvenile delinquency through prevention programs.



School = 82% Parent = 3% Police = 7% Prosecutor = 8%



2024 Caseworker Staff

9
Stacy Pasini



Lakes Area Youth Assistance

Thank You

to our community and to all the generous contributors

2024 "Taste of the Lakes"

Because of your commitment, our mission to strengthen youth and families through volunteer involvement will continue to grow to meet our community's needs.

Gold Sponsors

** Giffels Webster ** Spencer Roofing**

Silver Sponsors

Hislop & Lepak Family Dentistry ** Integrated & Preventative Health Care ** KER Engineering
Nedrow Refractories Co. ** Walled Lake Education Association ** Walled Lake Schools Federal Credit Union

Bronze Sponsors

** Adkinson, Need, Allen & Rentrop, PLLC ** Commerce Ridge, Inc. Energy Saver Homes **
Granby Mold **Lynch & Sons Funeral Home **Matrix Group Shelving & Rack Systems, Inc. **

Restaurants

**Biggby Coffee **CJ's Brewery **Casey's of Walled Lake **Crmbl Cookies **Dickey's Barbeque Pit **Edgewood Country Club
**Edible Arrangements **Great Harvest Bread Company **Gus's Carry-out **Jet's Pizza **Kickstand Brewing Co.
Library Sports Pub & Grill **Lulu's **Olive Garden **Pita Way **Sheldon's Street Pizza **Tim Horton's of Walled Lake **Wing Snob

Generous Contributors

Acorn Farm, Alpine Tavern & Eatery, American All-Stars, American Plastic Toys, Amy Serniak, Ann Arbor Hands on Museum, Annie's Party Store, Applebees Neighborhood Frill & Bar, Aroma Cigar Lounge, Bella Photography, Bennethums Northern Inn Restaurant, Benstein Grill, Blazing Bagels, Blue Cactus Cantina, Blush Salon, Body Language Fitness & Yoga Center, Bogie Lake Greenhouse, Bonaventure Skating Center, Brentwood Golf Club & Banquet Center, Brentwood Grille, California Pizza Kitchen, Camp Bow Wow, Canine to Five, Castell Workspace in Balance, Charlies' Still on Main, Cheesecake Factory, Chris & Christine Titus, Cindy Scarpace, Clarence Mills, Clifford Smart M.S. PTSA, Coaches Corner/ Fox Creek Golf Course, Commerce Elementary PTA, Commerce Fire Dept., Commerce Village Dentist, Commerce Village Veterinarian Hospital, Copper Mug Bar & Grill, Culver's of Commerce, Cutco Kitchen Store, Dairy Queen, Walled Lake; Dairy Queen, Wixom; Dairy Twist Café, Detroit Lions, Detroit Tigers, Diamond Jim Brady's, Double Tree by Hilton Hotel, Dough by Rumi's Passion Bakery, Dublin Elem. PTA, Ellen Demray, El Mariachi, El Nibble Nook, Exhale Tobacco & Vape Shop, 5th Tavern Restaurant, Fancy Nails, Farmer John's Greenhouse, Fork n' Pint Restaurant, Freshway Market, Futuristic Car Wash, Game & Company, Geisler MS PTSA, Glengary Elem. PTA, Gloria Lints, Goldfish Swim School of West Bloomfield, Great Lakes Ace Hardware, Great Lakes Segway/ Pedego of Walled Lake, Haang's Bistro, Hagopian World of Rugs, Hickory Woods Elem. PTA, Highland Hills Golf Club, Highland House, High Tail Grooming Salon, Holy Land, Inc. dba Sinbad Fruit Market, Home Interior Warehouse, Homedics, Honey Baked Ham Co., Howell Nature Center, Indian River Golf Club, Insight Commercial, Inspired Acting, Ironwood Golf Club, JC Penney Hair Salon, Jacobson's Dental Group, Jax Kar Wash, Joan Sare, Jodi Gallo, Kai Photography, Kathy Lyall, Keith Elem. PTA, Kendra Scott, L. George's Coney Island, LaFontaine CDJR of Walled Lake, Lakes Bar & Grille, Lakes Foot & Ankle Assoc., Lakeview Market, Lena's Kitchen, Long Family Orchard, Farm & Cider Mill, Loon Lake Elem. PTA, MH Guest Elem. PTA, Magoos Pet Outlet, Main Street Grill, Market Place Meats & Deli, Mary Moore, Matt Weber, Meadowbrook Elem. PTA, Meadowbrook Hall & Theater, Mel's Grill, Michael Beardslee, Michelle Walkup, Murray's Auto Supply, Music Time of Milford, LLC; Nancy van Leuwen, New Hudson Inn, Nothing Bundt Cake, NYPD Pizza, Oakland County Parks & Recreation, Oakland County Sheriff's Office -Commerce Substation, Oakley Park Elem. PTA, Olympia Taekwondo, Ore Creek Ciders, Parkers Hilltop Brewery, Peggy Hawke, Penny Lake Market, Pine Knob Golf Course, Pleasant Lake Elem. PTA, Pontiac Golf Club, Prime 7 Bar & Restaurant, PureFit Pilates & Yoga, Ripples on the Lake, Salon Agape, Inc., Sarah Banks M.S. PTSA, Sean's Salon & Barbershop, Shag Salon-Broadway Salon Studio, Shear Serenity Salon, Sheila Rose, Siegel's Deli, Skull Island, Sky Zone, Skull Island, Smoke Street BBQ, Sparkies Kitchen & Bar, Starbucks, Stars & Stripes Athletics, Stephanie Kaplan, Susan Sayed, M.D., Swag Kids Gym, TeaserPilates, The Clothing Cove, The Maples Golf Club, Thunder Bay Golf Resort, Top Lube Center, Tree Runner of West Bloomfield, Turtle Creek Farm, Twin's Brunch Family Dining, Uptown Grille, Urban Air Adventure Park, USPBL/Jimmy John's Field, Village Florist, Village Grill, Waldenwoods, WL Central HS PTSA, WL Community Ed., Walled Lake Elem. PTA, WLS Prime Time Care, WL Western HS PTSA, Walnut Creek M.S. PTSA, Watkins Florist, Watsons of Novi-Home Leisure, Wheatfield Valley Golf Club, White Lake Dental, White Lake Inn, Whole Hearted Winery, Wholesale Flooring, Wilson Marine, Windmill Market, Wixom Elem. PTA, Wonderland Lanes, Wynn Berry.

SAVE THE DATE: 24th Annual Taste of the Lakes
October 7, 2025 Edgewood Country Club, 5-8 p.m.

Lakes Area Youth Assistance

Sponsored by:

- ◆ **Walled Lake Consolidated School District**
- ◆ **City of Walled Lake**
- ◆ **City of Wixom**
- ◆ **Township of Commerce**
- ◆ **Village of Wolverine Lake**
- ◆ **Oakland County Circuit Court-Family Division**

*Principal funding is provided by the
Oakland County Board of Commissioners.*

**Lakes Area Youth Assistance appreciates
the sponsorship and support of:**

Hon. Kameshia D. Gant
Hon. Lisa Gorcyca
Hon. Maureen Kinsella
Hon. Lisa Langton
Hon. Julie McDonald
Hon. Lorie N. Savin
Hon. Amanda Shelton

Rich Lynch, Circuit Court Administrator
Pamela Monville, Deputy Court Administrator
Liz Csizmadia, Chief of Youth Assistance

Programs Offered by LAYA

- ◆ Short-term Counseling/Casework Services
- ◆ Family Education Programs
- ◆ Youth Education
- ◆ Skillbuilding Scholarships
- ◆ Summer Camp Scholarships
- ◆ Holiday Adopt-a-Child
- ◆ Shop with a Hero
- ◆ Mentors PLUS



For more information about our programs,
or to volunteer, please contact us at:

LAYA@wlcsd.org
(248) 956-5070

Lakes Area Youth Assistance
850 Ladd Rd., Building D
Walled Lake, MI 48390

Lakes Area Youth Assistance



11

**850 Ladd Rd., Building D
Walled Lake, MI 48390**

LAYA@wlcsd.org
Phone: (248) 956-5070

***Servicing the
Walled Lake Consolidated
School District***

Mission Statement

To strengthen youth and families, and to reduce the incidence of delinquency, abuse, and neglect through community involvement.

Program Structure

Youth Assistance programs are community based, and developed by volunteers who live and/or work in the communities in which they serve. The Circuit Court provides the casework staff to provide direct casework services and to work with the volunteers on programming and services. Lakes Area Youth Assistance works under the sponsorship and financial support of the Walled Lake School District, City of Walled Lake, Village of Wolverine Lake, Commerce Township, City of Wixom and the Oakland County Probate Court/Circuit Court Family Division. Additional funding is obtained through grants, donations, and local "Taste of the Lakes" fundraising efforts.

Casework Services

Lakes Area Youth Assistance provides confidential, short-term, family centered counseling and referral services for young people, 18 years of age or younger, and their families, who reside within the Walled Lake Consolidated School District. Referrals are accepted from schools, police, parents, and other agencies or adults with concerns about a child. Typical reasons for a referral include prevention, retail fraud, school and home problems, alcohol and other drug abuse, and violations of local ordinances. The Family Division's Intake Unit diverts cases when, in their judgement, Youth Assistance services are most appropriate. These services are offered on a confidential, voluntary, and cost-free basis.

Family & Youth Education

Lakes Area Youth Assistance offers many programs throughout the school year to address parent and youth education. The aim of some of the programs are to improve communication between parents and their children, understanding child development, and enhance parenting skills, building resiliency, problem solving, motivation and mindfulness in students.



Skill Building

Lakes Area Youth Assistance provides scholarships to youth who would benefit from a positive learning experience, designed to enhance their self-esteem and a specific skill such as dance, football, basketball, cheer, or art lessons. The scholarships are aimed at expanding the youth's horizons and offers enjoyable recreational activities throughout the year. Often, these are conducted in conjunction with other groups or institutions in the communities, including local schools and Municipal Parks & Recreation Departments.

Summer Camp



Summer Camp Scholarships are provided to young people who are in need of a day or overnight camp experience. Some camps are within the community, while others require transportation. They include a variety of sports, music, and art camps as well as specialty camps such as those designed to improve math, science and computer skills.



Holiday Adopt-a-Child

During the Holiday Season, Lakes Area Youth Assistance partners with local businesses and community members to provide holiday gifts to local youth in need. The youth adopted are both LAYA caseload and non-caseload families. Walled Lake Consolidated School's counselors, teachers and principals work with LAYA to identify and refer families in need.



12

**Make a difference in your
community**

Become a LAYA Volunteer

Email LAYA@wlcso.org

Call (248) 956-5070

- ◆ Join LAYA's Board of Directors
- ◆ Join a LAYA program committee

Consent Agenda – April 3, 2025
Personnel Recommendations

New Hires

Danielle Behan

1.0 Social Worker
Meadowbrook Elementary School
Effective 3/17/2025

Stacie Burkel

1.0 Grade 4
Commerce Elementary School
Effective 3/12/2025

Consent Agenda – April 3, 2025
Personnel Recommendations

Resignations

Max Albulov

1.0 Social Worker
Northern High School
Effective 2/26/2025

Elaine Aldrich

1.0 CI
Keith Elementary School
Effective 3/4/2025

Lisa Genoa

1.0 Resource Room
Wixom Elementary School
Effective 3/21/2025

Zoey Lutz

1.0 Grade 5
Wixom Elementary School
Effective 3/14/2025



**WALLED LAKE CONSOLIDATED SCHOOL DISTRICT
GENERAL FUND BALANCE SHEET - Unaudited
FEBRUARY 28, 2025**

ASSETS

Cash and Investments	\$ 50,485,800
Accounts Receivable	84,833
Interfund Receivables	427,415
Prepaid Costs	258,551
	<hr/>
TOTAL ASSETS	\$ 51,256,599
	<hr/> <hr/>

LIABILITIES

Accounts Payable	\$ 1,049,523
Accrued Payroll Liabilities	2,532,617
Deferred Revenue and Other Liabilities	7,334,007
Interfund Payables	4,289,265
	<hr/>
TOTAL LIABILITIES	15,205,412

FUND BALANCE

Prior Year Ending Fund Balance	31,265,585
Current revenues over/(under) expenditures	4,785,602
	<hr/>
TOTAL FUND BALANCE	36,051,187
	<hr/>
TOTAL LIABILITIES & FUND BALANCE	\$ 51,256,599
	<hr/> <hr/>



WALLED LAKE CONSOLIDATED SCHOOL DISTRICT
GENERAL FUND STATEMENT OF REVENUE AND EXPENDITURES - Unaudited
JULY 1, 2024 to FEBRUARY 28, 2025

	PRIOR YEAR ACTUAL JUNE 30, 2024	AMENDED BUDGET 02/06/2025	YEAR-TO-DATE ACTUAL	% of Budget
REVENUE				
LOCAL SOURCES				
Property Taxes	\$ 33,526,262	\$ 37,928,174	\$ 36,412,620	96%
Tuition and Fees	86,299	86,058	65,929	77%
Interest Earnings	1,272,296	1,169,546	1,006,016	86%
Other Local Revenue	3,173,505	2,789,772	1,801,849	65%
Total Local Sources	38,058,362	41,973,550	39,286,414	94%
STATE SOURCES	127,636,168	123,508,166	59,155,003	48%
FEDERAL SOURCES	10,516,449	6,476,465	2,607,635	40%
INTERDISTRICT SOURCES	15,588,499	16,373,572	7,886,026	48%
TOTAL REVENUE	\$ 191,799,478	\$ 188,331,753	\$ 108,935,078	58%
EXPENDITURES				
INSTRUCTION				
Basic Programs				
Elementary Programs	\$ 40,960,998	\$ 41,034,435	\$ 20,361,136	50%
Middle School Programs	16,703,884	17,819,477	8,941,069	50%
High School Programs	22,375,584	22,529,724	10,852,678	48%
Other Basic Programs	1,395,451	1,448,113	1,038,595	72%
Total Basic Programs	81,435,917	82,831,749	41,193,478	50%
Added Needs				
Special Education	25,488,399	28,805,171	14,985,344	52%
Compensatory Education	5,680,383	7,204,095	3,641,746	51%
Vocational Programs	1,128,850	1,078,796	487,697	45%
Total Added Needs	32,297,632	37,088,062	19,114,787	52%
Adult and Continuing Education	83,960	210,711	51,232	24%
TOTAL INSTRUCTION	113,817,509	120,130,522	60,359,497	50%
SUPPORTING SERVICES				
Pupil Support	18,496,162	20,183,918	9,919,188	49%
Instructional Support	8,022,348	9,278,543	4,860,751	52%
General Administration	873,969	993,029	546,630	55%
School Administration	9,881,217	10,298,606	6,348,044	62%
Business Services	2,557,632	2,659,039	1,690,624	64%
Operations & Maintenance	13,985,226	16,174,187	10,145,636	63%
Transportation	6,758,943	6,957,182	3,774,749	54%
Central Support Services	4,503,942	5,923,041	4,102,392	69%
Athletics	2,406,372	2,443,765	1,503,845	62%
TOTAL SUPPORTING SERVICES	67,485,811	74,911,310	42,891,859	57%
COMMUNITY SERVICES/OTHER				
Community Services	286,093	328,675	172,280	52%
Non-voted Debt Service and Leases	1,093,351	1,082,093	725,840	67%
Transfer to Other Funds	2,678	100	-	0%
TOTAL COMMUNITY SERVICES/OTHER	1,382,122	1,410,868	898,120	64%
TOTAL EXPENDITURES	\$ 182,685,442	\$ 196,452,700	\$ 104,149,476	53%
NET CHANGE IN FUND BALANCE	9,114,036	(8,120,947)	4,785,602	
BEGINNING FUND BALANCE	22,151,549	31,265,585		
ENDING FUND BALANCE	\$ 31,265,585	\$ 23,144,638		



WALLED LAKE CONSOLIDATED SCHOOL DISTRICT NOTES TO STATEMENT OF REVENUE & EXPENDITURES JULY 1, 2024 to FEBRUARY 28, 2025

REVENUE

- Property taxes are largely collected in the summer. As a result, most of the budget has been realized.
- Tuition and fees primarily relate to summer activities, which explains the high percentage of budget that has been realized to-date.
- Interest earnings are budgeted conservatively and will continue to be monitored and amended with future budget amendments, if necessary.
- State Sources consist primarily of State aid payments, which are paid from October 2024 through August 2025. We have received five of eleven payments, or 45% as of the end of the month. In addition to State Aid, we have several State grants included in this category of revenue.
- Federal programs are reimbursed after expenditures have been incurred and there is often a delay in timing before the revenue is received.
- Interdistrict sources represent revenues received through Oakland Schools. These sources include PA 18 special education funding (received quarterly), Medicaid (received at the end of the year), and grant funds (received four times per year). The balance is where we expect it to be.

EXPENDITURES

- Teachers have received 12 of 24 pays related to the 2024/2025 contract; therefore, we would expect instructional areas to be at approximately 50% of budget. All other employees have received 16 of 24 pays, or about 67%.
- Other basic programs consist primarily of summer programming and certain preschool programs, which are funded with grant funds. Since the summer programs operate seasonally rather than throughout the year, the percentage of budget expended appears higher at this point in the year compared to programs that run year-round.
- Transportation is trending behind budget due to the timing of invoicing. As of the end of the current reporting period, the District has paid Dean Transportation for services through January.
- Central Support Services is trending over budget due to the accounting treatment of the new computer server lease. Under Governmental Accounting Standards Board ("GASB") Statement No. 87, the District has recorded the leased equipment as an expense and an offsetting revenue for the lease proceeds. Since this budgeted transaction was fully recognized, 100% of the expense has been incurred, despite only 67% of the fiscal year having elapsed.
- Community Services expenditures are primarily driven by grant programs. A significant portion of these expenditures are recorded manually via reclassification of wages and fringes based on completed time logs. Due to the manual nature of this process, the reclassification of expenditures lags behind the related services.



**WALLED LAKE CONSOLIDATED SCHOOL DISTRICT
DISBURSEMENTS
MONTH ENDING FEBRUARY 28, 2025**

FUND	PAYROLL	ACCOUNTS PAYABLE	TOTAL
General Fund	\$ 11,649,578	\$ 2,568,450	\$ 14,218,028
Athletics	23,462	218,275	241,737
Student Activity Funds	-	80,564	80,564
Food Service Funds	266,280	254,435	520,715
Federal Funds	441,916	11,941	453,857
Capital Project Funds	-	2,816,560	2,816,560
Special Revenue Funds	230,438	12,733	243,171
Debt Service Funds	-	500	500
	<u>\$ 12,611,674</u>	<u>\$ 5,963,458</u>	<u>\$ 18,575,132</u>



**WALLED LAKE CONSOLIDATED SCHOOL DISTRICT
INVESTMENT HOLDINGS AS OF FEBRUARY 28, 2025**

	WEIGHTED AVERAGE MATURITY	MARKET VALUE
GENERAL FUND		
MILAF Cash Management Money Market Fund	n/a	\$ 1,157,855
MILAF Cash Management MAX Class Money Market	n/a	14,861,416
Michigan CLASS Money Market Fund	n/a	6,167,576
GENERAL FUND TOTAL		22,186,847
DEBT FUNDS		
MILAF Cash Management MAX Class Money Market	n/a	24,739,196
Premium Commercial Money Market	n/a	10,566,822
DEBT FUNDS TOTAL		35,306,018
CAPITAL PROJECTS		
MILAF Cash Management Money Market Fund	n/a	4,108,539
MILAF Cash Management MAX Class Money Market	n/a	13,829,415
MILAF Term Investment pool	4.63 months	17,485,000
Commercial Paper	6.53 months	7,080,327
U.S. Treasury Bonds/Notes	7.98 months	59,339,204
Premium Commercial Money Market	n/a	7,408,588
CAPITAL PROJECT FUNDS TOTAL		109,251,073
TOTAL INVESTMENTS		\$ 166,743,938

Head Start Director's Report

March 10, 2025

Enrollment:

- We currently have 48 students, (16 males, 32 females) enrolled.
- 3 year-olds: 20, 4 year-olds: 23, 5 year-olds: 5

- Actual enrollment by ethnicity and race:
 - Ethnicity: Hispanic or Latino Origin: 6
 - Non-Hispanic/Non-Latino Origin: 42
 - Race:
 - American Indian or Alaskan Native: 0
 - Asian: 2
 - Black or African American: 13
 - White: 26
 - Bi-Racial or Multi-Racial: 6

- Languages Spoken:
 - English: 42 Arabic: 4 Ukrainian: 1
 - Spanish: 3 French: 1 ASL: 1
 - Armenian: 1 Chaldean: 7 Urdu: 1

- We have no children on the waitlist.
- Total of 1 child considered over income.
- Average Daily Attendance is 84%. *We have had a family that had to leave the country for a family emergency and many illnesses in the program.

Education:

- Visits from the local librarian, SEL push in lessons by our MTSS team, Black History Month activities, science experiments

Disabilities:

- There are currently 5 enrolled children who received services in the month of February

Staffing Training:

- Staff participated in the following trainings: MI Child Care Centers Administrative Business Series, High Scope I, CPI, Book Study

Staffing: We have no new staff this month

Parent Training: Cooking Matters, Head Start 101, ERSEA training

Volunteers: We have had 53 volunteers this month with a total of 144.17 volunteer hours

Respectfully Submitted,
Sarah Davey



Because learning changes everything.®

QUOTE PREPARED FOR:

Walled Lake Cons Schools
850 LADD RD BLDG D
WALLED LAKE, MI 48390
ACCOUNT NUMBER: 276834

SUBSCRIPTION/DIGITAL CONTACT:

Ellen McDonald
ellenmcdonald@wlcsd.org
(248) 956-2029

CONTACT:

Ellen McDonald
ellenmcdonald@wlcsd.org
(248) 956-2029

SALES REP INFORMATION:

Kevin Clark
kevin.clark@mheducation.com
(313) 655-6319

Section Summary	Value of All Materials	Free Materials	Product Subtotal
EM 4 2020 3yr quote	\$579,682.80	(\$219,933.30)	\$359,749.50
Additional Materials Needed	\$12,897.84	(\$12,897.84)	\$0.00
PRODUCT TOTAL*	\$592,580.64	(\$232,831.14)	\$359,749.50
ESTIMATED S&H**			\$9,500.00
ESTIMATED TAX**			\$0.00
GRAND TOTAL*			\$369,249.50

* Price firm for 120 days from quote date. Price quote must be attached to school purchase order to receive the quoted price and free materials.

**Shipping and handling charges shown are only estimates. Actual shipping and handling charges will be applied at time of order. Taxes shown are only estimates. If applicable, actual tax charges will be applied at time of order.

Comments:

PLEASE INCLUDE THIS PROPOSAL WITH YOUR PURCHASE ORDER

SEND ORDER TO:

McGraw Hill LLC | PO Box 182605 | Columbus, OH 43218-2605
Email: orders_mhe@mheducation.com | Phone: 1-800-338-3987 | Fax: 1-800-953-8691

QUOTE DATE: 12/19/2024

ACCOUNT NAME: Walled Lake Cons Schools

EXPIRATION DATE: 04/18/2025

QUOTE NUMBER: KCLARK-12192024014612-001

ACCOUNT #: 276834

PAGE #: 1



Because learning changes everything.®

Product Description	ISBN	Qty	Unit Price	Free Materials	Line Subtotal
EM 4 2020 3yr quote					
EVERYDAY MATH NATIONAL STUDENT CENTER 3 YEAR SUBSCRIPTION GRADE K	978-0-07-695388-2	550	\$37.65	\$20,707.50	*Free Materials
EVERYDAY MATH NATIONAL STUDENT CENTER 3 YEAR SUBSCRIPTION GRADE K	978-0-07-695388-2	350	\$37.65	\$0.00	\$13,177.50
EVERYDAY MATH ESSENTIAL STUDENT MATERIALS SET 3 YEAR SUBSCRIPTION BUNDLE GRADE 1	978-0-07-701138-3	900	\$96.27	\$0.00	\$86,643.00
EVERYDAY MATH ESSENTIAL STUDENT MATERIALS SET 3 YEAR SUBSCRIPTION BUNDLE GRADE 2	978-0-07-701139-0	900	\$96.27	\$86,643.00	*Free Materials
EVERYDAY MATH ESSENTIAL STUDENT MATERIALS SET 3 YEAR SUBSCRIPTION BUNDLE GRADE 3	978-0-07-701143-7	900	\$96.27	\$0.00	\$86,643.00
EVERYDAY MATH ESSENTIAL STUDENT MATERIALS SET 3 YEAR SUBSCRIPTION BUNDLE GRADE 4	978-0-07-701036-2	900	\$96.27	\$0.00	\$86,643.00
EVERYDAY MATH ESSENTIAL STUDENT MATERIALS SET 3 YEAR SUBSCRIPTION BUNDLE GRADE 5	978-0-07-701040-9	900	\$96.27	\$0.00	\$86,643.00
TE & License					
EVERYDAY MATH NATIONAL TEACHER CENTER 3 YEAR SUBSCRIPTION GRADE K	978-0-07-700876-5	60	\$249.18	\$14,950.80	*Free Materials
EVERYDAY MATH NATIONAL TEACHER CENTER 3 YEAR SUBSCRIPTION GRADE 1	978-0-07-700881-9	60	\$325.44	\$19,526.40	*Free Materials
EVERYDAY MATH NATIONAL TEACHER CENTER 3 YEAR SUBSCRIPTION GRADE 2	978-0-07-700924-3	60	\$325.44	\$19,526.40	*Free Materials
EVERYDAY MATH NATIONAL TEACHER CENTER 3 YEAR SUBSCRIPTION GRADE 3	978-0-07-700928-1	60	\$325.44	\$19,526.40	*Free Materials
EVERYDAY MATH NATIONAL TEACHER CENTER 3 YEAR SUBSCRIPTION GRADE 4	978-0-07-700933-5	60	\$325.44	\$19,526.40	*Free Materials
EVERYDAY MATH NATIONAL TEACHER CENTER 3 YEAR SUBSCRIPTION GRADE 5	978-0-07-700938-0	60	\$325.44	\$19,526.40	*Free Materials
EM 4 2020 3yr quote Subtotal:				\$219,933.30	\$359,749.50

PLEASE INCLUDE THIS PROPOSAL WITH YOUR PURCHASE ORDER

SEND ORDER TO:

McGraw Hill LLC | PO Box 182605 | Columbus, OH 43218-2605
 Email: orders_mhe@mheducation.com | Phone: 1-800-338-3987 | Fax: 1-800-953-8691

QUOTE DATE: 12/19/2024

ACCOUNT NAME: Walled Lake Cons Schools

EXPIRATION DATE: 04/18/2025

QUOTE NUMBER: KCLARK-12192024014612-001

ACCOUNT #: 276834

PAGE #: 2



Because learning changes everything.®

Product Description	ISBN	Qty	Unit Price	Free Materials	Line Subtotal
Additional Materials Needed					
EVERYDAY MATH CLASSROOM MANIPULATIVES KIT GRADE K	978-0-02-140973-0	2	\$801.51	\$1,603.02	*Free Materials
EVERYDAY MATH CLASSROOM MANIPULATIVES KIT GRADE 1	978-0-02-140987-7	2	\$1,020.03	\$2,040.06	*Free Materials
EVERYDAY MATH CLASSROOM MANIPULATIVES KIT GRADE 2	978-0-02-140990-7	2	\$1,020.03	\$2,040.06	*Free Materials
EVERYDAY MATH CLASSROOM MANIPULATIVES KIT GRADE 3	978-0-02-137945-3	2	\$1,020.03	\$2,040.06	*Free Materials
EVERYDAY MATH CLASSROOM MANIPULATIVES KIT GRADE 4	978-0-02-137948-4	2	\$874.26	\$1,748.52	*Free Materials
EVERYDAY MATH CLASSROOM MANIPULATIVES KIT GRADE 5	978-0-02-137949-1	2	\$874.26	\$1,748.52	*Free Materials
EVERYDAY MATH FRACTION CIRCLES	978-0-02-144838-8	50	\$3.69	\$184.50	*Free Materials
EVERYDAY MATH GAMES EVERYTHING MATH DECK 5-PACK	978-0-07-657382-0	10	\$48.51	\$485.10	*Free Materials
EVERYDAY MATH - PATTERN BLOCK TEMPLATE GRADE 1-3	978-0-07-604538-9	50	\$9.99	\$499.50	*Free Materials
EVERYDAY MATH - GEOMETRY TEMPLATE GRADE 4-6	978-0-07-604585-3	50	\$10.17	\$508.50	*Free Materials
Additional Materials Needed Subtotal:				\$12,897.84	\$0.00

PLEASE INCLUDE THIS PROPOSAL WITH YOUR PURCHASE ORDER

SEND ORDER TO:

McGraw Hill LLC | PO Box 182605 | Columbus, OH 43218-2605
 Email: orders_mhe@mheducation.com | Phone: 1-800-338-3987 | Fax: 1-800-953-8691

QUOTE DATE: 12/19/2024

ACCOUNT NAME: Walled Lake Cons Schools

EXPIRATION DATE: 04/18/2025

QUOTE NUMBER: KCLARK-12192024014612-001

ACCOUNT #: 276834

PAGE #: 3



Because learning changes everything.®

QUOTE PREPARED FOR:

Walled Lake Cons Schools
850 LADD RD BLDG D
WALLED LAKE, MI 48390
ACCOUNT NUMBER: 276834

CONTACT:

Ellen McDonald
ellenmcdonald@wlcsd.org
(248) 956-2029

VALUE OF ALL MATERIALS	\$592,580.64
FREE MATERIALS	(\$232,831.14)
PRODUCT TOTAL*	\$359,749.50
ESTIMATED SHIPPING & HANDLING**	\$9,500.00
ESTIMATED TAX**	\$0.00
GRAND TOTAL	\$369,249.50

SUBSCRIPTION/DIGITAL CONTACT:

Ellen McDonald
ellenmcdonald@wlcsd.org
(248) 956-2029

Comments:

* Price firm for 120 days from quote date. Price quote must be attached to school purchase order to receive the quoted price and free materials.

**Shipping and handling charges shown are only estimates. Actual shipping and handling charges will be applied at time of order. Taxes shown are only estimates. If applicable, actual tax charges will be applied at time of order.

Terms of Service:

By placing an order for digital products (the 'Subscribed Materials'), the entity that this price quote has been prepared for ('Subscriber') agrees to be bound by the Terms of Service and any specific provisions required by Subscriber's state law, each located in the applicable links below. Subject to Subscriber's payment of the fees set out above, McGraw Hill LLC hereby grants to Subscriber a non-exclusive, non-transferable license to allow only the number of Authorized Users that corresponds to the quantity of Subscribed Materials set forth above to access and use the Subscribed Materials under the terms described in the Terms of Service and any specific provisions required by Subscriber's state law, each located in the applicable links below. The subscription term for the Subscribed Materials shall be as set forth in the Product Description above. If no subscription term is specified, the initial term shall be one (1) year from the date of this price quote (the 'Initial Subscription Term'), and thereafter the Subscriber shall renew for additional one (1) year terms (each a 'Subscription Renewal Term'), provided MHE has chosen to renew the subscription and has sent an invoice for such Subscription Renewal Term to Subscriber.

[Terms Of Service](#)

[Provisions required by Subscriber State law](#)

ATTENTION: In our effort to protect our customer's data, we will no longer store credit card data in any manner within in our system. Therefore, as of April 30, 2016 we will no longer accept credit card orders via email, fax, or mail/package delivery. Credit card orders may be placed over the phone by calling the number listed above or via our websites by visiting www.mheducation.com (or www.mhecoast2coast.com).

School Purchase Order Number: _____

Name of School Official (Please Print)

Signature of School Official

PLEASE INCLUDE THIS PROPOSAL WITH YOUR PURCHASE ORDER

SEND ORDER TO:

McGraw Hill LLC | PO Box 182605 | Columbus, OH 43218-2605
Email: orders_mhe@mheducation.com | Phone: 1-800-338-3987 | Fax: 1-800-953-8691

QUOTE DATE: 12/19/2024

ACCOUNT NAME: Walled Lake Cons Schools

EXPIRATION DATE: 04/18/2025

QUOTE NUMBER: KCLARK-12192024014612-001

ACCOUNT #: 276834

PAGE #: 4



DEDICATED TO TEACHERS

Proposal
Prepared For
Walled Lake Cons School Dist

850 Ladd Rd Bldg D
Walled Lake MI 48390

Attention:
Jennifer LaMay
jenniferlamay@wlcsd.org

For the Purchase of:

Shelves

Prepared By
Diane Tripi
diane.tripi@heinemann.com

Please submit this proposal with your purchase order.

Purchase orders or duly executed service agreements for **Professional Services** purchased, must be submitted at least 30 days before the service event date.

For greater detail, the complete Terms of Purchase may be reviewed here:

<https://www.heinemann.com/terms-of-purchase>

Send **Check Payments** to:
Heinemann
14046 Collections Center Drive
Chicago, IL 60693
Greenwood Publishing Group, LLC. Dba Heinemann

Attention:
Jennifer LaMay
jenniferlamay@wlcsd.org
Confidential and Proprietary

Send **Orders** to
orders@heinemann.com
FAX: 603-547-9917
Heinemann
P.O. Box 528
Portsmouth, NH 03801

Proposal for
Walled Lake Cons School Dist

ISBN	Title	Price	Quantity	Value of All Materials
<u>Jump Rope Readers</u>				
Materials and Services				
E16081	9780325160818 Jump Rope Readers Classroom Set A, Fiction Box 1	\$557.00	14	\$7,798.00
E16082	9780325160825 Jump Rope Readers Classroom Set A, Fiction Box 2	\$557.00	10	\$5,570.00
E16083	9780325160832 Jump Rope Readers Classroom Set B, Fiction Box 1	\$647.00	1	\$647.00
E16084	9780325160849 Jump Rope Readers Classroom Set B, Fiction Box 2	\$647.00	5	\$3,235.00
E17832	9780325178325 Jump Rope Readers Classroom Set B, Nonfiction Box 1	\$432.00	1	\$432.00
E17835	9780325178356 Jump Rope Readers Classroom Set B, Nonfiction Box 2	\$432.00	1	\$432.00
Total for Materials and Services				

Total for Jump Rope Readers **\$18,114.00**

<u>Grade 3</u>				
Materials and Services				
E09107	9780325091075 Biography Shelf, Grade 3	\$488.00	1	\$488.00
E09115	9780325091150 Biography Shelf, Grade 3, Below Benchmark	\$204.00	5	\$1,020.00
E09110	9780325091105 Mystery Shelf, Grade 3	\$483.00	1	\$483.00
E09118	9780325091181 Mystery Shelf, Grade 3, Below Benchmark	\$333.00	5	\$1,665.00
Total for Materials and Services				

Total for Grade 3 **\$3,656.00**

<u>Grade 4</u>				
Materials and Services				
E09126	9780325091266 Historical Fiction Shelf, Grade 4	\$327.00	12	\$3,924.00
E09135	9780325091358 Historical Fiction Shelf, Grade 4, Below Benchmark	\$150.00	6	\$900.00
E09029	9780325090290 Extreme Weather and Natural Disasters Shelf, Grade 4	\$558.00	12	\$6,696.00
E09030	9780325090306 Extreme Weather and Natural Disasters Shelf, Grade 4, Below Benchmark	\$183.00	12	\$2,196.00
Total for Materials and Services				

Total for Grade 4 **\$13,716.00**

Send **Check Payments** to:
 Heinemann
 14046 Collections Center Drive
 Chicago, IL 60693
 Greenwood Publishing Group, LLC. Dba
 Heinemann

Attention:
 Jennifer LaMay
 jenniferlamay@wlcscd.org
 26
HMH Confidential and Proprietary

Send **Orders** to
orders@heinemann.com
 FAX: 603-547-9917
 Heinemann
 P.O. Box 528
 Portsmouth, NH 03801

Proposal for Walled Lake Cons School Dist

ISBN

Title

Price

Quantity

Value of All
Materials

<i>Total Savings:</i>	\$0.00
<i>Subtotal Purchase Amount:</i>	\$35,486.00
<i>Shipping & Handling:</i>	\$3,477.63
<i>Sales Tax:</i>	\$0.00
<hr/>	
<i>Total Cost of Proposal (PO Amount):</i>	\$38,963.63

Send **Check Payments** to:
 Heinemann
 14046 Collections Center Drive
 Chicago, IL 60693
 Greenwood Publishing Group, LLC. Dba
 Heinemann

Attention:
 Jennifer LaMay
 jenniferlamay@wlsd.org

HMH Confidential and Proprietary

Send **Orders** to
orders@heinemann.com
 FAX: 603-547-9917
 Heinemann
 P.O. Box 528
 Portsmouth, NH 03801

Proposal for
Walled Lake Cons School Dist

Total Cost of Proposal (PO Amount): \$38,963.63

Thank you for considering Heinemann as your partner. We are committed to providing an excellent experience and delivering ongoing, high-quality service to our customers. To meet these goals, we want to ensure you are aware of the below additional terms of purchase. These terms help us process your order quickly, efficiently, and accurately, ensuring successful delivery and implementation of our solutions.

- Please return this cost proposal with your signed purchase order that matches product, prices and shipping charges.
- Provide the exact address for *delivery* of print materials. The shipping address may be your district warehouse or individual school sites, but it is essential that this is accurate.
- Please supply the name of each important district point of contact for all aspects of the solution including their direct contact information (email/phone):
 - o Point of Contact for Print materials
 - o Point of Contact for Digital materials
 - o Point of Contact for Scheduling Professional Development
- Please confirm that we have the correct 'Ship to' and 'Sold to' information on the cost proposal.

Ship to:
 Walled Lake Cons Schl Dist
 850 Ladd Rd Bldg D
 Walled Lake, MI 48390-3019

Sold to:
 Walled Lake Cons Schl Dist
 850 Ladd Rd Bldg D
 Walled Lake, MI 48390-3019

- Please provide funding start and end dates.
- Please note that all products and services will be billed upon the processing of your purchase order.
- Our payment terms are 30 days from the invoice date.
- Print subscription material quantities may be adjusted across grades for like products, to accommodate enrollment fluctuations, quantities cannot be adjusted between different programs or copyrights.
- Our shipping terms are FOB shipping point.
- Any proposed shipping or tax amount provided on this proposal, is based on the Ship To account location quoted within.
- If the location of your delivery changes, please include the proper sales tax and shipping charges for that location in the applicable Purchase Order
- Should any of the Terms of Purchase linked or stated herein conflict with any preprinted terms on your purchase order, the Heinemann Terms shall apply.

Thank you in advance for supplying us with the necessary information at time of purchase.

For greater detail, the complete Terms of Purchase may be reviewed here: <https://www.heinemann.com/terms-of-purchase>



Send **Check Payments** to:
 Heinemann
 14046 Collections Center Drive
 Chicago, IL 60693
 Greenwood Publishing Group, LLC. Db
 Heinemann

Attention:
 Jennifer LaMay
 jenniferlamay@wlcsl.org

Confidential and Proprietary

Send **Orders** to
orders@heinemann.com
 FAX: 603-547-9917
 Heinemann
 P.O. Box 528
 Portsmouth, NH 03801



Pioneer Valley Books
 199 Pine Street
 Florence, MA 01060
 Phone: 888-482-3906
 Tax ID: 04-3414244

Quote

#Q212401

Bill To
 Accounts Payable
 Walled Lake Consolidated School District
 850 LADD RD BLDG D
 WALLED LAKE MI 48390-3019
 248-956-2091

Ship To
 Jen LaMay
 Walled Lake Consolidated School District
 850 Ladd Road
 Building D
 Walled Lake MI 48390
 248-956-2091

02/04/2025

Expires	Sales Rep	Shipping Method
03/06/2025	Jennine Brown	Standard Shipping

Qty	SKU/ISBN	Item Name	Reg. Price	Disc.	Price	Amount
1	LFP-Third-CP	Literacy Footprints Third Grade Kit for the Classroom	\$2,295.00		\$2,295.00	\$2,295.00
		Discount		10%		-\$229.50
1	LFP-Second-CP	Literacy Footprints Second Grade Kit for the Classroom	\$2,895.00		\$2,895.00	\$2,895.00
		Discount		10%		-\$289.50
3	LFP-First-CP	Literacy Footprints First Grade Kit for the Classroom	\$4,200.00		\$4,200.00	\$12,600.00
		Discount		10%		-\$1,260.00
4	LFP-Kinder-CP	Literacy Footprints Kindergarten Kit for the Classroom	\$3,195.00		\$3,195.00	\$12,780.00
		Discount		10%		-\$1,278.00
1	LFP-BC-I-CP	Literacy Footprints Book Closet, Level I (Set One)	\$395.00		\$395.00	\$395.00
1	LFP-BC-H-CP	Literacy Footprints Book Closet, Level H (Set One)	\$395.00		\$395.00	\$395.00
1	LFP-BC-G-CP	Literacy Footprints Book Closet, Level G (Set One)	\$395.00		\$395.00	\$395.00
1	LFP-BC-F-CP	Literacy Footprints Book Closet, Level F (Set One)	\$395.00		\$395.00	\$395.00
1	LFP-BC-E-CP	Literacy Footprints Book Closet, Level E (Set One)	\$395.00		\$395.00	\$395.00
1	LFP-BC-D-CP	Literacy Footprints Book Closet, Level D (Set One)	\$395.00		\$395.00	\$395.00
1	LFP-BC-C-CP	Literacy Footprints Book Closet, Level C (Set One)	\$395.00		\$395.00	\$395.00
1	LFP-BC-B-CP	Literacy Footprints Book Closet, Level B (Set One)	\$395.00		\$395.00	\$395.00
1	LFP-BC-A-CP	Literacy Footprints Book Closet, Level A (Set One)	\$395.00		\$395.00	\$395.00



Q212401



Pioneer Valley Books
 199 Pine Street
 Florence, MA 01060
 Phone: 888-482-3906
 Tax ID: 04-3414244

Quote

#Q212401

Qty	SKU/ISBN	Item Name	Reg. Price	Disc.	Price	Amount
2	TAN-First-LP	In Tandem Lesson Plans for First Grade	\$185.00		\$185.00	\$370.00
3	TAN-Second-CP2	In Tandem: Reading-Writing-Phonics Second Grade (handbook included)	\$4,750.00		\$4,750.00	\$14,250.00
6	TAN-First-CP2	In Tandem: Reading-Writing-Phonics First Grade (handbook included)	\$4,750.00		\$4,750.00	\$28,500.00
3	TAN-Kinder-CP2	In Tandem: Reading-Writing-Phonics Kindergarten (handbook included)	\$3,450.00		\$3,450.00	\$10,350.00
5	PL-RSG2-CP	Phonics Launch: Ready, Set, Go - Kit 2	\$800.00		\$800.00	\$4,000.00
3	PL-OOW1-CP	Phonics Launch: On Our Way - Kit 1	\$800.00		\$800.00	\$2,400.00
1	PL-RSG1-CP	Phonics Launch: Ready, Set, Go - Kit 1	\$800.00		\$800.00	\$800.00
5	PL-OOW2-CP	Phonics Launch: On Our Way - Kit 2	\$800.00		\$800.00	\$4,000.00
10	PL-LO2-CP	Phonics Launch: Lifting Off - Kit 2	\$620.00		\$620.00	\$6,200.00
6	PL-LO1-CP	Phonics Launch: Lifting Off - Kit 1	\$620.00		\$620.00	\$3,720.00
11	PL-MO2-CP	Phonics Launch: Moving On - Kit 2	\$620.00		\$620.00	\$6,820.00
6	PL-MO1-CP	Phonics Launch: Moving On - Kit 1	\$620.00		\$620.00	\$3,720.00
5	PL-BU2-CP	Phonics Launch: Building Up - Kit 2	\$800.00		\$800.00	\$4,000.00
4	PL-BU1-CP	Phonics Launch: Building Up - Kit 1	\$800.00		\$800.00	\$3,200.00
4	LFP-DR-TEACHER	Digital Reader, Teacher Access	\$38.00		\$38.00	\$152.00
		Discount - DR Free		100%		-\$152.00
100	LFP-DR-STUDENT	Digital Reader, Student Access	\$12.00		\$12.00	\$1,200.00
		Discount - DR Free		100%		-\$1,200.00

Promotions Applied to this Order
 DISCOUNT

Subtotal	\$123,398.00
Tax	\$0.00
Free Shipping & Handling	\$0.00
Total	\$123,398.00

Quote Comments

Quote prepared for Jennifer LaMay. This quote is valid through 03/06/2025. Please reference quote number when submitting PO to ensure that discounts are applied correctly. Please note that starting April 1, 2021 we will be collecting tax for all states where it is applicable. If you are a tax exempt entity or organization, please submit your tax exemption certificate with your FEIN/TIN number or TID number. Exemptions may take up to 48 business hours to process.

This quote includes complimentary Digital Reader subscriptions to enhance your Literacy Footprints kit purchase. Once activated, these licenses are valid for the 2025-2026 academic year. A special 10% discount has also been applied to your kit purchase.



Q212401

**WALLED LAKE CONSOLIDATED SCHOOL DISTRICT
PLAYGROUND SOFT SURFACE MATERIAL (ENGINEERED WOOD FIBER)
BID TABULATION - RFP 25-0314**

RECOMMENDATION: Administration obtained bids for a three-year contract, with the option to extend for two additional years, for the purchase and installation of playground soft surface material (engineered wood fiber) throughout the District. The recommendation is to award the bid to the low bidder, **Superior Groundcover, Inc.**, with a total bid ranging from \$33.00 per CY to \$34.00 per CY over three years. This purchase will be funded from the General Fund beginning with Summer 2025 services.

		Superior Groundcover, Inc.		Big Lakes Lawncare		Premier Group Associates		Progressive Irrigation	
Estimated Annual Quantity		Unit Price per Cubic Yard (CY)	Total Annual Cost	Unit Price per Cubic Yard (CY)	Total Annual Cost	Unit Price per Cubic Yard (CY)	Total Annual Cost	Unit Price per Cubic Yard (CY)	Total Annual Cost
<u>EWF, Delivered & Installed</u>									
Year 1	1,500 CY	\$33.00	\$49,500.00	\$35.00	\$52,500.00	\$48.75	\$73,125.00	\$75.00	\$112,500.00
Year 2	1,500 CY	\$33.50	\$50,250.00	\$35.00	\$52,500.00	\$49.50	\$74,250.00	\$82.50	\$123,750.00
Year 3	1,500 CY	\$34.00	\$51,000.00	\$35.00	\$52,500.00	\$51.00	\$76,500.00	\$90.75	\$136,125.00
Total Contract	4,500 CY		\$150,750.00		\$157,500.00		\$223,875.00		\$372,375.00
<u>Additional Services & Fees</u>									
	Unit								
Additional EWF	Per CY		\$33.00		\$35.00		\$52.50		\$75.00
Site Preparation (if needed)	Per Hour		\$75.00		\$55.00		\$75.00		\$175.00
Removal of Existing Material (if needed)	Per CY		\$90.00		\$25.00		\$45.00		\$55.00
Other Fees			n/a			Modifications	\$500.00		



WHITE LAKE WOLVES

May 7th, 2025

**To: Board of Education
Walled Lake School District**

Dear Members of the Board of Education,

I am writing on behalf of The White Lake Wolves, a nonprofit youth football and cheerleading organization that serves children in our community. Our mission is to provide a safe and supportive environment where young people can learn the values of teamwork, discipline, and leadership through sports. As we continue to grow and positively impact the lives of local youth, we are reaching out to request your support.

As a new organization, we face significant financial challenges. These challenges stem from fees for school facility use, which, though understandable, are substantial for our nonprofit, which is funded solely through registration fees, donations, and volunteer efforts. According to the Walled Lake Schools "Use of School Facilities Fee/Rental Rates" document, and as detailed in our attached budget, each game day will cost approximately \$1,945. We will have up to four home game days, bringing our total expense for game days to \$7,780. Additionally, we plan to practice no more than four days per week for two hours each day from August through October, totaling approximately \$2,400 for practice space, based on the fee schedule.

We understand that other nonprofit teams in the Walled Lake boundaries have typically been approved for a 50% discount on these fees. Applying this discount would reduce our costs to \$3,890 for game days and \$1,200 for practice space. While we greatly appreciate this discount, we are respectfully requesting that the district consider waiving the remaining \$5,090 in fees. This support would significantly reduce our financial burdens and allow us to make a greater impact on the youth of Walled Lake, Commerce and White Lake.

For instance, in our first year of operation, we hope to purchase Riddell Speed Flex Helmets for our Varsity level (7th and 8th grade) players. These helmets, which provide added protection against head injuries, cost a total of \$7,700. Waiving our game and practice fees this year would bring us much closer to achieving this goal and ensuring the safety of our athletes.



WHITE LAKE WOLVES

By waiving these fees, the district would support:

1. **Increased Accessibility:** With the fee reduction, we can lower registration costs, making it easier for children from lower-income families to participate, fostering a more inclusive and diverse environment for all youth in our community.
2. **Stronger Community Engagement:** As a nonprofit, we are committed to reinvesting funds into our programs, equipment, and resources, which directly benefit the children and families we serve.
3. **Alignment with the District's Mission:** By supporting youth sports programs, the district would further its mission of developing well-rounded students who thrive academically and socially. This partnership also supports the district's commitment to fostering positive, healthy activities for young people.

Since Walled Lake Schools eliminated middle school football and cheerleading programs years ago, there is now a gap in athletic opportunities for our youth. The White Lake Wolves play an even more important role in filling this gap and providing a valuable outlet for young athletes to learn teamwork, perseverance, and leadership. Our strong relationship with Walled Lake Northern's football and cheer programs also creates positive connections between youth and high school athletes, smoothing the transition for our athletes as they progress into high school sports.

We understand the district has many competing priorities and do not make this request lightly. However, we believe that waiving these fees would have a lasting, positive impact on the children in our community, providing them with valuable opportunities for growth and development both on and off the field.

Thank you for your time and consideration of our request. We are happy to meet with you to discuss this further and explore how we can work together to ensure every child has the opportunity to participate in this enriching extracurricular activity

Best Regards,

Nicole Warden
Vice President

Phone
248-895-5348

Email
vicepresident@whitelakewolves.com

**WALLED LAKE SCHOOLS
VOLUNTEER RECOGNITION WEEK
APRIL 21 – 25, 2025**

WHEREAS, The week of April 21 – April 25, 2025, has been designated Walled Lake Schools Volunteer Recognition Week to recognize the excellent contributions of all volunteers throughout the District; and

WHEREAS, The volunteers of Walled Lake Schools are an outstanding group of volunteers, each and every one of them essential to maintaining maintaining the quality education we offer our students; and

WHEREAS, Although the Board of Education has honored volunteers on an individual basis during the year, the other devoted and dedicated volunteers in the District have received little formal recognition for their distinguished service; and

WHEREAS, Our volunteers are highly valued members of the Walled Lake Schools' family;

NOW, THEREFORE,
We, the members of the Walled Lake Schools Board of Education, and Administration, hereby proclaim April 21 – April 25, 2025, Walled Lake Schools Volunteer Recognition Week, and thank and congratulate all our School District volunteers for their excellent contributions to the education of the students of the Walled Lake Consolidated School District.

Walled Lake Consolidated School District District Board Policy Adoption

March 6, 2025, Regular Board Meeting Review

April 3, 2025, Regular Board Meeting Proposed Adoption

Board Policy 3009 – Limited English Proficiency

~~The Board is committed to providing equal educational opportunities for all students in the School District. This includes students who have an English language deficiency. The Superintendent will develop and implement programs of instruction that:~~

- ~~• Appropriately identify students who have an English language deficiency;~~
- ~~• Provide appropriate instruction to limited English proficient students to assist them in gaining English language proficiency; and,~~
- ~~• Annually assess the English proficiency of students and monitor their progress in order to determine the degree to which they may participate in a regular classroom environment.~~

The Board is committed to providing equal educational opportunities for all students in the School District. This includes students who are developing English language proficiency. The Superintendent will develop and implement programs of instruction that:

- Accurately identify potential English Learner students in a timely manner;
- Provide appropriate language assistance services to help students become proficient in English and allow them to participate equally in the standard instructional program;
- Ensure that English Learner students are taught by highly qualified and trained staff using appropriate materials and research-based instructional methods;
- Avoid unnecessary segregation of English Learner students; and,
- Appropriately identify and evaluate English Learner students with disabilities and provide both language assistance and disability-related services to which they are entitled.

Board Policy 8002 – Americans with Disabilities Act (ADA) / Section 504 of the Rehabilitation Act of 1973 (Section 504)

In accordance with [Section 504 of the Rehabilitation Act of 1973](#) (Section 504) and [Title II of the Americans with Disabilities Act](#) (ADA), the School District will ensure that no otherwise qualified individual with a disability shall, solely by reason of his/her disability, be excluded from participation in, be denied the benefits of, or be subjected to discrimination. The School District does not discriminate in admission or access to, participation in, or treatment of students with disabilities in its programs and activities. Similarly, the School District does not discriminate against any job applicant or employee with a disability in any term or condition of employment or in the recruitment process.

The District has developed guidelines for providing a free appropriate public education (FAPE) to students under Section 504 and the ADA, which may be accessed by clicking on the following link: https://wlcsc.org/downloads/district-special_services/504_plan_manual_and_forms-february_2018.pdf.

The Superintendent appoints: the Assistant Superintendent for Human Resources to serve as the School District's Compliance Officer for employment issues arising under Section 504 and the ADA; and, the Director of Special Services to serve as the School District's Compliance Officer for FAPE

Walled Lake Consolidated School District District Board Policy Adoption

March 6, 2025, Regular Board Meeting Review

April 3, 2025, Regular Board Meeting Proposed Adoption

and other accessibility issues arising under Section 504 and the ADA. The Superintendent will develop a complaint procedure for the processing and early disposition of alleged violations of the policy.

Service Animals are allowed on School District property to the extent required or permitted by law. For any requests to have non-service animals on school grounds, the Superintendent shall develop administrative regulations for the review and approval of such requests. Emotional support animals are not considered Service Animals for purposes of this policy. This policy applies to employees, students, volunteers, and visitors.

The District permits the use of Therapy Animals in a manner consistent with the administrative regulations developed by the Superintendent, including the District's **Therapy Dog Program Manual**.