

Board of Education Regular Meeting

October 8, 2012 6:00 PM

District Board Office, Central Services  
Building  
765 Main St  
Springfield, NE 68059

## **Agenda**

- I. Site Committee Meeting
- II. Finance Committee Meeting
- III. Call to Order and Roll Call
- IV. Notice of Open Meetings Act - Posted
- V. Consent Agenda
  - V.A. Minutes of the Previous Month's Meetings
  - V.B. Treasurer's Report
  - V.C. Statement of Activity Fund Accounts
  - V.D. Recommendation for Bill Payment
  - V.E. Open and Option Enrollment Applications
- VI. Items From Patrons on Agenda Items
- VII. New Business
  - VII.A. iPad- Elementary School Demonstration
  - VII.B. NASB Convention Delegate
- VIII. Reports
  - VIII.A. Site Committee Report
  - VIII.B. Learning Community Report
  - VIII.C. Nebraska Accountability System
  - VIII.D. Food Service Report
  - VIII.E. Other Items
- IX. Items from Patrons on Items Not on Agenda
- X. Advance Planning
- XI. Adjourn

Board of Education Regular Meeting  
September 10, 2012

The Site Committee started at 6:00 p.m. Kyle Fisher, Nick Stolzer, and Brian Wichman were present. Summer projects, current maintenance issues, and a possible timeline and process for a bond were discussed. The committee meeting adjourned at 6:28 p.m.

The Finance Committee started at 6:30 p.m. Kyle Fisher, Brenda Sherman, Nick Stolzer, and Brian Wichman were present. Finance reports were reviewed by the committee. Discussion of the bills took place. The committee meeting adjourned at 6:55 p.m.

A meeting of the Board of Education of Springfield Platteview Community Schools in the County of Sarpy, in the State of Nebraska, was convened in open and public session at 7:00 p.m., Monday, September 10, 2012, at the District Board Office, Central Services Building. Present: Kyle Fisher, Jennifer Kreifels, Brenda Sherman, Nick Stolzer, and Brian Wichman. Absent: Chris Dill.

Notice of the meeting and committee meetings were given in advance thereof by posting in at least five public places as shown by the certificate of posting notice attached to these minutes. Notice of this meeting was simultaneously given to all members of the Board of Education, and a copy of their acknowledgment of receipt of notice and the agenda was communicated in the advance notice and in the notice to the Board of Education of this meeting. All proceedings hereafter shown were taken while the convened meeting was open to the attendance of the public.

Statute 84-1407 to 84-1414 require that the Open Meetings Act be posted in the meeting room. President Stolzer informed the board and the public that the Act is located on the west wall of the board room.

Action to approve the Consent Agenda as presented passed with a motion by Sherman and a second by Wichman. Vote: Ayes – Fisher, Kreifels, Sherman, Stolzer, Wichman. Nays – None.

There were no items from patrons on agenda items.

Superintendent Richards discussed the possibility of refinancing bonds and presented proposals from Ameritas and D.A. Davidson.

At 7:10 p.m. President Stolzer opened the Public Hearing on the 2012-2013 Tax Levies (General Fund and Bond Fund). The administration presented a review of the property tax request for each taxing fund in the budget. The public was given the opportunity to comment on the tax levies. No input was presented. The hearing ended at 7:20 p.m.

Since the public hearing on the fund budgets was held, the board resolved to approve the budgets. Action to resolve that the 2012-2013 Tax Request for the General Fund should be, and hereby is set at \$1,095,649.38 with a tax levy of \$.099999; and the Tax Request for the Bond Fund should be, and hereby is set at \$445,454.54 with a levy of \$.029057 passed with a motion by Fisher and a second by Sherman. Vote: Ayes – Fisher, Kreifels, Sherman, Stolzer, Wichman. Nays – None.

Action to resolve that the budget recommendations of the administration are adopted as presented in the State's 2012-2013 School District Budget Forms and in the Notice of Budget Hearing Summary for the 2012-2013 fiscal school year totaling \$13,500,000.90 for the General Fund Disbursements and Transfers passed with a motion by Fisher and a second by Sherman. Vote: Ayes – Fisher, Kreifels, Sherman, Stolzer, Wichman. Nays – None.

Chris Dill joined the meeting at 7:25 p.m.

Holli Kirwan reviewed 2012 NeSA and ACT test scores.

Mr. Richards reviewed the benefits of joining the NASB Medicaid Consortium. Action to approve becoming a member of the NASB Medicaid Consortium and authorizing Brett Richards, Superintendent to sign the NASB Medicaid Consortium Membership Agreement passed with a motion by Wichman and a second by Sherman. Vote: Ayes – Fisher, Kreifels, Sherman, Stolzer, Wichman. Abstain – Dill. Nays – None.

Mr. Richards gave a Learning Community and Legislative update. Brian Wichman reported on the site committee meeting. Richards reported on student successes and gave an update on student enrollment numbers. The upcoming NASB State Convention in LaVista was also discussed.

There were no items from patrons on items not on the agenda.

Board members reviewed their upcoming schedule of meetings, trainings, and conventions. Significant school calendar items were also discussed.

Action to adjourn the meeting at 8:30 p.m. passed with a motion by Kreifels and a second by Sherman. Vote: Ayes – Dill, Fisher, Kreifels, Sherman, Stolzer, Wichman. Nays – None.

Thoma Bumgardner, Recording Secretary

Accepted: \_\_\_\_\_

\_\_\_\_\_  
Kyle Fisher, Secretary  
Board of Education

Board of Education Work Session  
September 24, 2012

A meeting of the Board of Education of Springfield Platteview Community Schools in the County of Sarpy, in the State of Nebraska, was convened in open and public session at 7:00 p.m., Monday, September 24, 2012, at the District Board Office, Central Services Building. Present: Chris Dill, Kyle Fisher, Jennifer Kreifels, Brenda Sherman, Nick Stolzer, and Brian Wichman. Absent: None.

Notice of the meeting and committee meetings were given in advance thereof by posting in at least five public places as shown by the certificate of posting notice attached to these minutes. Notice of this meeting was simultaneously given to all members of the Board of Education, and a copy of their acknowledgment of receipt of notice and the agenda was communicated in the advance notice and in the notice to the Board of Education of this meeting. All proceedings hereafter shown were taken while the convened meeting was open to the attendance of the public.

Statute 84-1407 to 84-1414 require that the Open Meetings Act be posted in the meeting room. President Stolzer informed the board and the public that the Act is located on the west wall of the board room.

There was no public comment.

Wes Reed, Springfield Elementary Principal; and Melissa Hasty, Westmont Elementary Principal gave their 2011-2012 reports and 2012-2013 initiatives. Anita Belsky, Special Services Director, reported on Special Services.

D. A. Davidson and Lukas Partners were in attendance and discussed with the Board Bond Planning and what processes could be used if the Board would choose to go to Bond in the near future. The Board would like the superintendent to gather more information from the public and staff through meetings and survey on whether a bond could be supported or not with the projects that have been outlined by the Board. Also, to get other ideas on projects that the public and staff feel would be appropriate.

Kevin Schuster presented possible billboard sites to the Board for public relations considerations. The billboard on Hwy. 370 and 38th was the one selected to go ahead with in November. The district will continue to wait for a West Omaha billboard to open up that looks favorable to the district.

The Board took action to Advance Fund current bonds and would see at least \$200,000 in savings before proceeding with the refinance.

Action to approve a resolution calling for the early redemption of three million one hundred sixty thousand dollars (\$3,160,000) in aggregate principal amount of general obligation refunding bonds, series 2009, issued by Sarpy County School District 0046 (Springfield Platteview Community Schools) in the State of Nebraska passed with a motion by Kyle Fisher and a second by Brenda Sherman. Vote: Yeas - Dill, Fisher, Kreifels, Sherman, Stolzer, Wichman. Nays - None.

Action to approve a resolution authorizing the issuance by Sarpy County School District 0046 (Springfield Platteview Community Schools) in the State of Nebraska of its general obligation refunding bonds, series 2012, in the

aggregate principal amount not to exceed three million eight hundred fifty thousand dollars (\$3,850,000); prescribing the form and details of such bonds; authorizing the President of the Board of Education or the Superintendent of Schools to determine the final aggregate principal amount, maturities, rates, terms and other details of such bonds; imposing a tax to pay the principal of and interest on such bonds; designating the bonds as qualified tax-exempt obligations; and authorizing certain actions and documents and prescribing other matters relating thereto passed with a motion by Brenda Sherman and a second by Kyle Fisher. Vote: Yeas - Dill, Fisher, Kreifels, Sherman, Stolzer, Wichman. Nays - None.

Action to approve a resolution approving and adopting post-issuance compliance procedures to establish policies and procedures regarding the issuance of tax-exempt bonds by Sarpy County School District 0046 (Springfield Platteview Community Schools) in the State of Nebraska passed with a motion by Nick Stolzer and a second by Jennifer Kreifels. Vote: Yeas - Dill, Fisher, Kreifels, Sherman, Stolzer, Wichman. Nays - None.

Board members reviewed their upcoming schedule of meetings, trainings, and conventions. Significant school calendar items were also discussed.

Action to go into executive session at 8:55 p.m. for the purpose negotiations with another district and for the protection of the public interest passed with a motion by Brenda Sherman and a second by Kyle Fisher. Vote: Yeas - Dill, Fisher, Kreifels, Sherman, Stolzer, Wichman. Nays - None.

Action to move out of executive session at 9:15 p.m. passed with a motion by Jennifer Kreifels and a second by Brian Wichman. Vote: Yeas - Dill, Fisher, Kreifels, Sherman, Stolzer, Wichman. Nays - None.

Action to adjourn at 9:15 p.m. passed with a motion by Brenda Sherman and a second by Brian Wichman. Vote: Yeas - Dill, Fisher, Kreifels, Sherman, Stolzer, Wichman. Nays - None.

Thoma Bumgardner, Recording Secretary

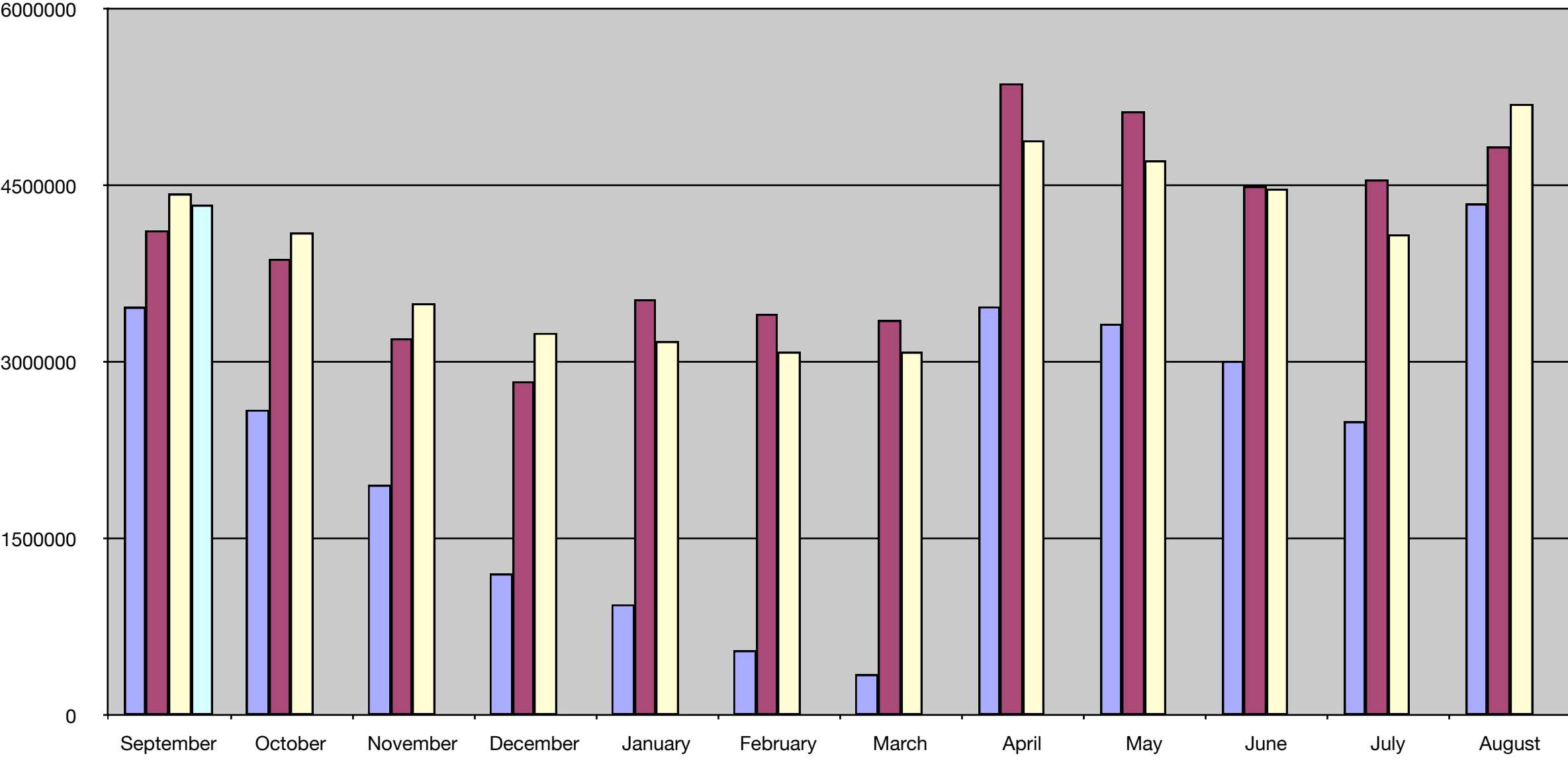
Accepted: \_\_\_\_\_

\_\_\_\_\_  
Kyle Fisher, Secretary  
Board of Education

*South Sarpy School District #46*  
**Comparison of Cash Balance by Fund**  
**September 30, 2012**

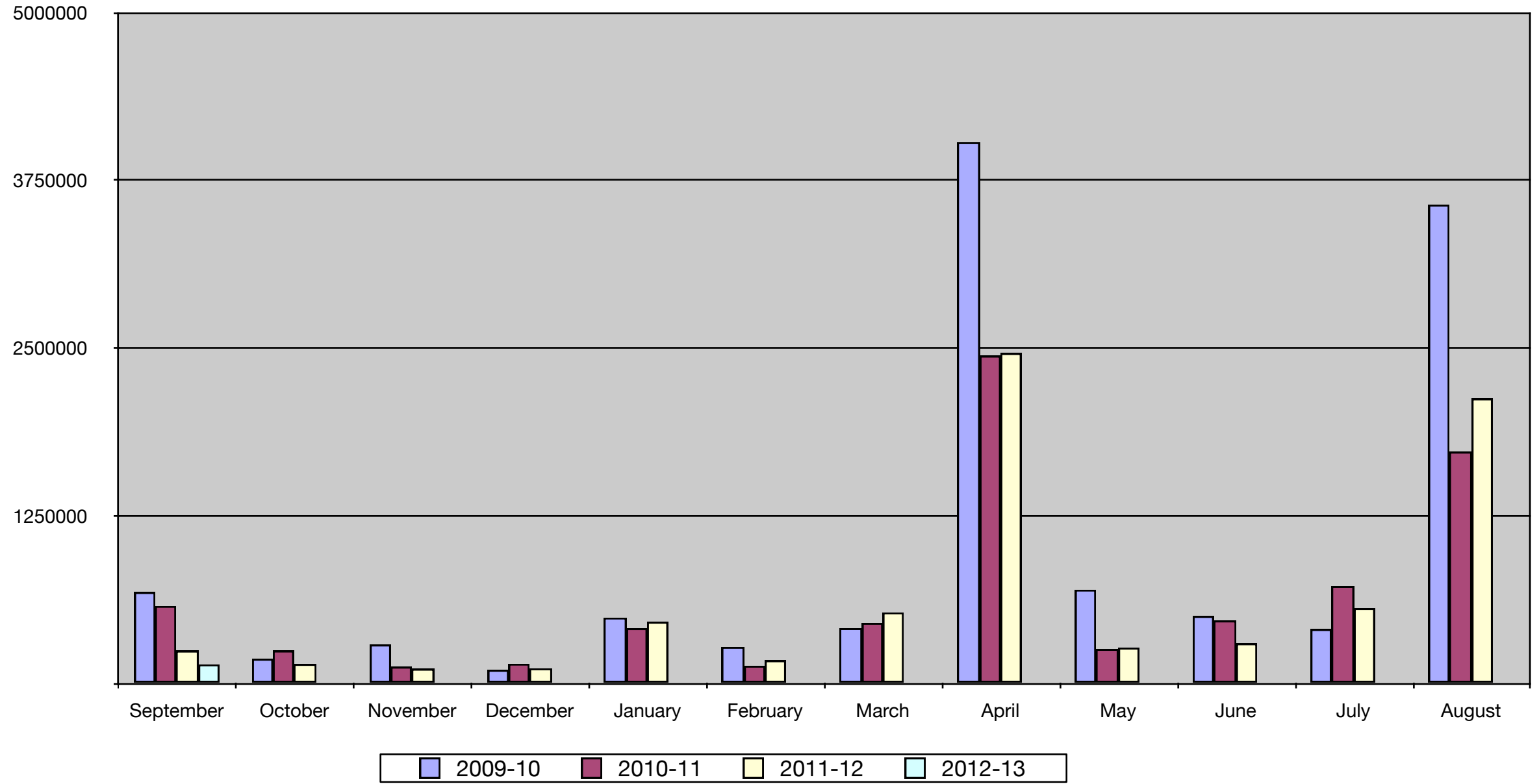
		<u>2010</u>	<u>2011</u>	<u>2012</u>
<b>Jun</b>	General Fund	\$ 3,012,180.55	\$ 4,496,558.67	\$ 4,474,952.06
	Emp. Benefit Fund	\$ 60,615.00	\$ 725,890.33	\$ 503,018.00
	Building Fund	\$ 1,174,130.10	\$ 1,428,352.13	\$ 1,420,941.49
	School Lunch	\$ 100,210.67	\$ 81,916.36	\$ 109,501.34
	Bond Fund	\$ 334,489.80	\$ 320,586.04	\$ 307,996.56
	Depreciation Fund	\$ 111,641.37	\$ 150,105.73	\$ 210,451.18
	June Total	\$ 4,793,267.95	\$ 7,203,409.26	\$ 7,026,860.63
<b>July</b>	General Fund	\$ 2,498,710.51	\$ 4,552,631.98	\$ 4,086,579.84
	Emp. Benefit Fund	\$ 105,640.23	\$ 726,005.68	\$ 496,842.60
	Building Fund	\$ 1,127,831.85	\$ 1,409,747.81	\$ 1,361,511.90
	School Lunch	\$ 96,061.80	\$ 75,876.37	\$ 104,759.25
	Bond Fund	\$ 340,137.23	\$ 325,823.80	\$ 313,223.80
	Depreciation Fund	\$ 111,678.07	\$ 150,135.55	\$ 210,474.24
	July Total	\$ 4,280,059.69	\$ 7,240,221.19	\$ 6,573,391.63
<b>Aug</b>	General Fund	\$ 4,348,397.57	\$ 4,833,068.31	\$ 5,195,318.65
	Emp. Benefit Fund	\$ 466,607.11	\$ 722,846.39	\$ 709,896.74
	Building Fund	\$ 1,223,682.99	\$ 1,572,344.69	\$ 1,198,410.01
	School Lunch	\$ 116,630.51	\$ 102,932.61	\$ 134,422.71
	Bond Fund	\$ 501,590.71	\$ 482,885.56	\$ 464,056.95
	Depreciation Fund	\$ 149,717.23	\$ 210,169.24	\$ 210,496.58
	Aug Total	\$ 6,806,626.12	\$ 7,924,246.80	\$ 7,912,601.64
<b>Sept</b>	General Fund	\$ 4,120,936.82	\$ 4,432,866.89	\$ 4,338,547.54
	Emp. Benefit Fund	\$ 432,821.70	\$ 639,876.30	\$ 509,943.64
	Building Fund	\$ 1,225,124.10	\$ 1,553,887.83	\$ 1,198,414.51
	School Lunch	\$ 104,438.86	\$ 127,739.95	\$ 120,376.89
	Bond Fund	\$ 526,070.81	\$ 503,167.36	\$ 486,936.11
	Depreciation Fund	\$ 149,764.81	\$ 210,206.52	\$ 210,516.77
	Sept Total	\$ 6,559,157.10	\$ 7,467,744.85	\$ 6,864,735.46

General Fund Balance 2012-13

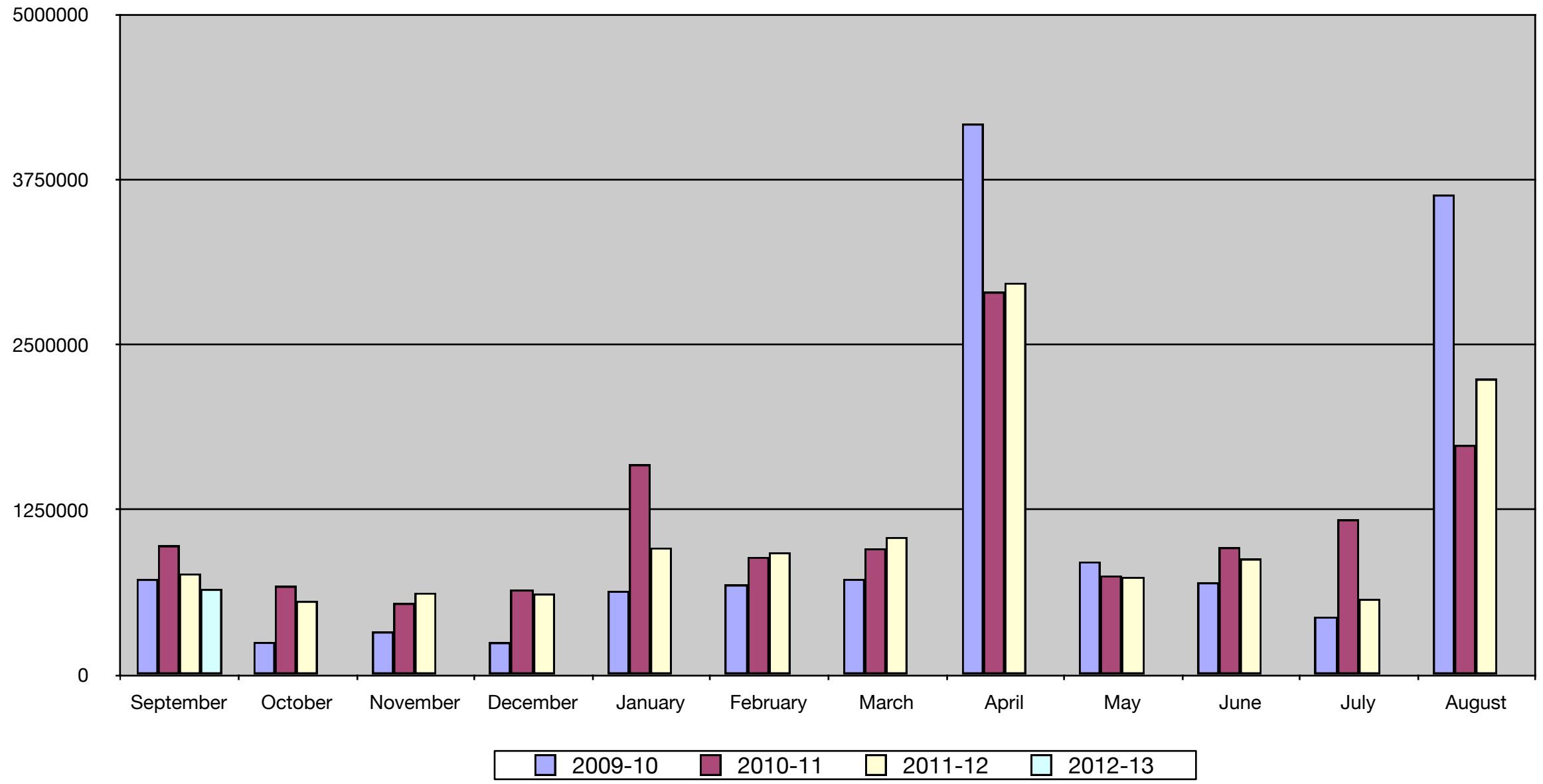


2009-10 2010-11 2011-12 2012-13

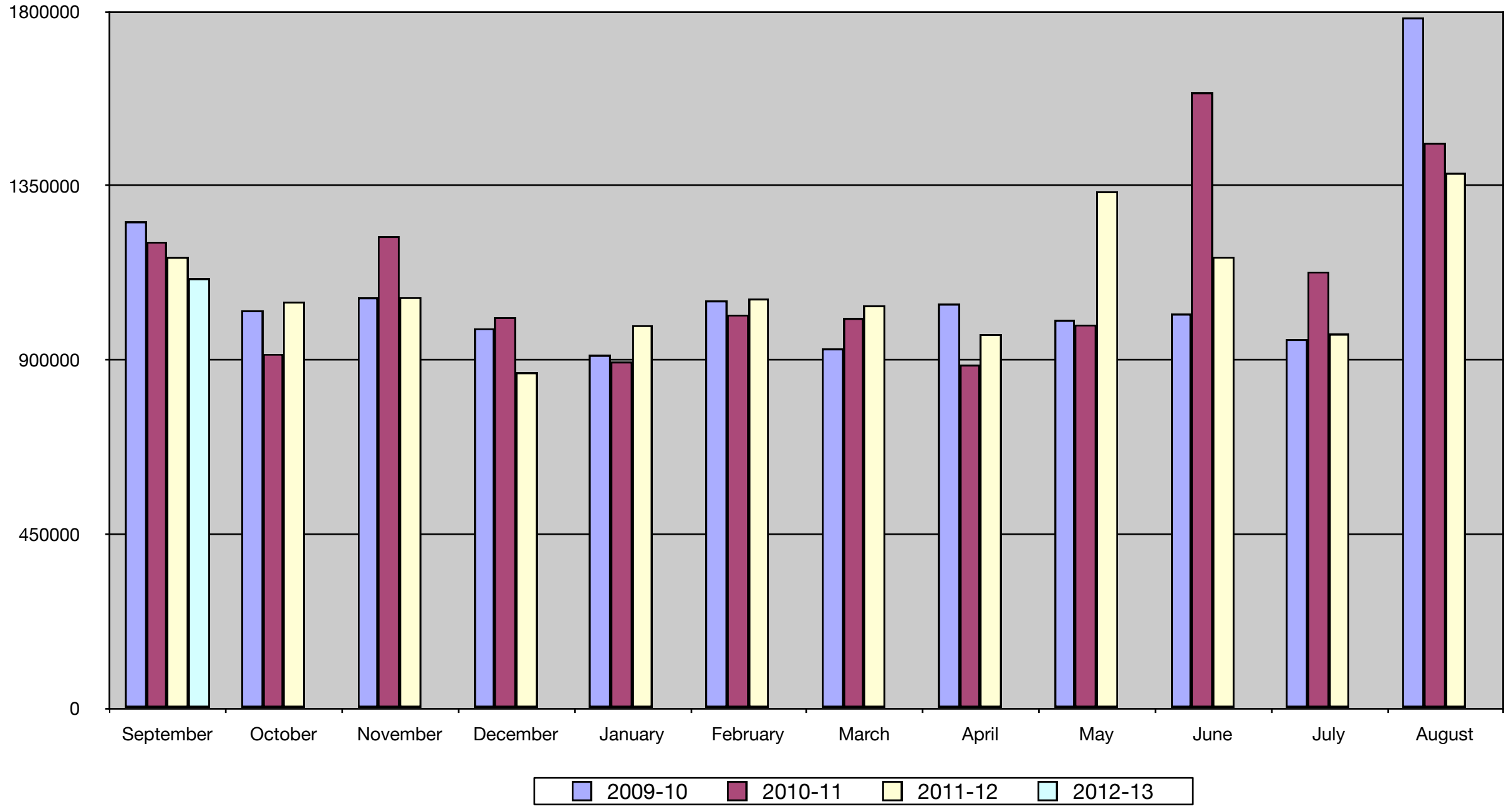
General Fund Tax Draws 2012-13



General Fund Receipts 2012-13



General Fund Expenses 2012-13





Sept 2012 Student Fee - Sep 2012

9/1/2012 through 9/30/2012

10/1/2012

Date	Account	Num	Description	Memo	Category	Clr	Amount
<b>BALANCE 8/31/2012</b>							<b>7.00</b>
9/18/2012	STUDENT FE... DEP		DRIVERS ED...		DRIVER EDU...	R	6,102.00
<b>9/1/2012 - 9/30/2012</b>							<b>6,102.00</b>
<b>BALANCE 9/30/2012</b>							<b>6,109.00</b>
<b>TOTAL INFLOWS</b>							<b>6,102.00</b>
<b>TOTAL OUTFLOWS</b>							<b>0.00</b>
<b>NET TOTAL</b>							<b>6,102.00</b>

Sept 2012 Administrative Revolving - Sep 2012

9/1/2012 through 9/30/2012

10/1/2012

Page 1

Date	Account	Num	Description	Memo	Category	Clr	Amount
<b>BALANCE 8/31/2012</b>							<b>4,537.65</b>
9/5/2012	Administrative	5158	**VOID**NATS	1-21-1100-630	REGISTR FEE	R	0.00
9/5/2012	Administrative	5159	NATS	1-21-1100-630	REGISTR FEE	R	-212.00
9/5/2012	Administrative	5160	POSTMASTE...	1-01-2510-341	POSTAGE	R	-50.20
9/7/2012	Administrative	5161	BOBCAT OF ...	1-01-2620-319	REPAIRS	R	-588.97
9/7/2012	Administrative	5162	LHS INSTRU...	1-22-1100-630	MARCHING B...	R	-165.00
9/7/2012	Administrative	5163	NE STATE B...	1-22-1100-630	MARCHING B...	R	-175.00
9/7/2012	Administrative	5164	NMEA	1-22-1100-630	ALL-STATE F...	R	-563.00
9/17/2012	Administrative	5165	POSTMASTE...	1-01-2510-341	POSTAGE	R	-5.75
9/19/2012	Administrative	5166	POSTMASTE...	1-01-2510-341	POSTAGE	R	-21.00
9/19/2012	Administrative	5167	POSTMASTE...	1-01-2510-341	POSTAGE	R	-5.75
9/21/2012	Administrative	5168	NSCTA	1-22-1100-670	MEMBERSHIP		-100.00
9/21/2012	Administrative	5169	RAMADA INN...	1-22-1100-670	ROOMS		-87.79
9/21/2012	Administrative	5170	DOANE COLL...	1-22-1100-410	REGISTR FEE		-30.00
9/24/2012	Administrative	5171	PERU STATE...	1-22-1100-630	SHOW CHOI...	R	-110.00
9/25/2012	Administrative	5172	POSTMASTE...	1-01-2510-341	POSTAGE	R	-127.55
9/26/2012	Administrative	5173	REGION II PR...	1-11-1100-630	REGISTR FEE		-90.00
<b>9/1/2012 - 9/30/2012</b>							<b>-2,332.01</b>
<b>BALANCE 9/30/2012</b>							<b>2,205.64</b>

<b>TOTAL INFLOWS</b>	<b>0.00</b>
<b>TOTAL OUTFLOWS</b>	<b>-2,332.01</b>
<b>NET TOTAL</b>	<b>-2,332.01</b>

**Nebraska Public Agency Investment Trust**

**PO Box 82529  
Lincoln, NE 68501  
(800) 640-8817  
(402) 323-1615**

**Account Activity for September 01, 2012 to September 30, 2012**

**Participant Name:**

SOUTH SARPY SCHOOL DISTRICT #46  
14801 S 108TH ST  
SPRINGFIELD NE 68059-4925

**Account Number: 126649-001**

**Beginning Balance: \$68,508.88**

<b>Date</b>	<b>Description</b>	<b>Authorization</b>	<b>Amount</b>	<b>Balance</b>
9/30/2012	Auto-Post September Interest, Purchase		\$1.80	\$68,510.68

**Ending Balance: \$68,510.68**

NPAT

September 30, 2012

**Nebraska Public Agency Investment Trust**  
**Daily Balance and Interest Report for: September 2012**

Name: SOUTH SARPY SCHOOL DISTRICT #46

Account Number: 126649-001

Date	Daily Yield (Annualized)	Balance	Daily Accrual
9/01/2012	0.00032	\$68,508.88	\$0.06
9/02/2012	0.00032	\$68,508.88	\$0.06
9/03/2012	0.00032	\$68,508.88	\$0.06
9/04/2012	0.00030	\$68,508.88	\$0.06
9/05/2012	0.00030	\$68,508.88	\$0.06
9/06/2012	0.00030	\$68,508.88	\$0.06
9/07/2012	0.00030	\$68,508.88	\$0.06
9/08/2012	0.00030	\$68,508.88	\$0.06
9/09/2012	0.00030	\$68,508.88	\$0.06
9/10/2012	0.00030	\$68,508.88	\$0.06
9/11/2012	0.00030	\$68,508.88	\$0.06
9/12/2012	0.00030	\$68,508.88	\$0.06
9/13/2012	0.00030	\$68,508.88	\$0.06
9/14/2012	0.00030	\$68,508.88	\$0.06
9/15/2012	0.00030	\$68,508.88	\$0.06
9/16/2012	0.00030	\$68,508.88	\$0.06
9/17/2012	0.00030	\$68,508.88	\$0.06
9/18/2012	0.00030	\$68,508.88	\$0.06
9/19/2012	0.00030	\$68,508.88	\$0.06
9/20/2012	0.00030	\$68,508.88	\$0.06
9/21/2012	0.00030	\$68,508.88	\$0.06
9/22/2012	0.00030	\$68,508.88	\$0.06
9/23/2012	0.00030	\$68,508.88	\$0.06
9/24/2012	0.00030	\$68,508.88	\$0.06
9/25/2012	0.00030	\$68,508.88	\$0.06
9/26/2012	0.00030	\$68,508.88	\$0.06
9/27/2012	0.00030	\$68,508.88	\$0.06
9/28/2012	0.00030	\$68,508.88	\$0.06
9/29/2012	0.00030	\$68,508.88	\$0.06
9/30/2012	0.00030	\$68,508.88	\$0.06
<b>Average Weighted Rate</b>		<b>Average Balance</b>	<b>Total Interest</b>
0.03205 %		\$68,508.88	\$1.80

<b>SOUTH SARPY SCHOOL DISTRICT 46</b>			
<b>Treasurer's Report</b>			
<b>For the month ended September 30, 2012</b>			
<u>General Fund Now Account</u>			
Bank Balance: Beginning of Reporting Period			\$ 406,284.83
Deposits:			
Springfield State Bank - Interest	\$ 22.00		
Transfer from Employee Benefit	\$ 200,000.00		
Transfers from Investment Account	\$ 1,110,016.16		
Transfer from Bond Fund	\$ 0.00		
Transfers from Lunch Fund Investment	\$ 48,301.34		
Transfers from Building Fund Investment	\$ 110.59		
			\$ 1,358,450.09
Disbursements			\$ 1,764,734.92
Bank Balance: End of Reporting Period			\$ 183,102.16
Outstanding Checks: End of Reporting Period			\$ 167,116.72
<b>NOW Account Balance: End of Reporting Period</b>			<b>\$ 15,985.44</b>
<u>General Fund Investment Account</u>			
Available Balance: Beginning of Reporting Period			\$ 4,783,422.07
Deposits:			
Springfield State Bank - Interest	\$ 436.16		
Sarpy County Treasurer - Local Taxes	\$ 69,732.99		
Learning Community Common Taxes	\$ 70,162.10		
Sarpy County- MVT	\$ 96,300.33		
Liquor License	\$ 0.00		
State Aid	\$ 406,538.10		
Rentals	\$ 965.00		
Perkins- ESU #3	\$ 0.00		
Pre-School Tuition	\$ 975.00		
Refunds and Reimbursements	\$ 199.30		
iPad Fees	\$ 195.00		
First Management Inc. - LaPlatte	\$ 3,707.01		
			\$ 649,210.99
			\$ 5,432,633.06
Disbursements			
Transfers to General Fund NOW	\$ 1,110,016.16		
Administrative Revolving	\$ 0.00		
Returned checks/ fees	\$ 0.00		
Bank Service Charges	\$ 54.80		
			\$ 1,110,070.96
<b>Investment Account Balance: End of Reporting Period</b>			<b>\$ 4,322,562.10</b>
<u>General Fund Administrative Revolving Account</u>			
Available Balance: Beginning of Reporting Period			\$ 5,611.75
Deposits:			
Transfers From General Fund Investment Acc't	\$ 0.00		
Transfers From Lunch Fund Investment Acc't	\$ 0.00		
			\$ 0.00
			\$ 5,611.75
Disbursements			
			\$ 2,219.92
<b>Admin. Revolving Account Balance: End of Reporting Period</b>			<b>\$ 3,391.83</b>
General Fund Administrative Revolving Account			\$ 3,391.83
General Fund NOW Account			\$ 15,985.44
General Fund Investment Account			\$ 4,322,562.10
<b>TOTAL GENERAL FUND BALANCE</b>			<b>\$ 4,341,939.37</b>
<u>Employee Benefit Fund</u>			
Available Balance: Beginning of Reporting Period			\$ 709,896.74
Deposits:			
Springfield State Bank - Interest	\$ 46.90		
Transfers From General Fund Investment Acc't	\$ 0.00		
PayFlex startup money	\$ 0.00		
Bank Balance: End of Reporting Period			\$ 709,943.64
Certificate of Deposit			
Available Balance: End of Reporting Period			\$ 709,943.64
Disbursements			\$ 200,000.00
<b>TOTAL EMPLOYEE BENEFIT BALANCE</b>			<b>\$ 509,943.64</b>
<u>Special Building Fund Investment Account</u>			
Available Balance: Beginning of Reporting Period			\$ 1,198,410.01
Deposits:			
Springfield State Bank - Interest	\$ 114.91		
Sarpy County Treasurer - Local Taxes	\$ 0.18		
			\$ 115.09
			\$ 1,198,525.10
Disbursements			
			\$ 110.59
Available Balance: End of Reporting Period			\$ 1,198,414.51
<b>TOTAL SPECIAL BUILDING FUND BALANCE</b>			<b>\$ 1,198,414.51</b>
<u>School Lunch Investment Account</u>			
Available Balance: Beginning of Reporting Period			\$ 134,422.71
Deposits:			
Springfield State Bank - Interest	\$ 12.39		
Hot Lunches	\$ 24,220.41		
State/Federal Aid	\$ 8,128.52		
Miscellaneous	\$ 1,894.20		
			\$ 34,255.52
			\$ 168,678.23
Disbursements			
Coin Short	\$ 0.00		
Transfers to NOW	\$ 48,301.34		
			\$ 48,301.34
Available Balance: End of Reporting Period			\$ 120,376.89
<b>TOTAL SCHOOL LUNCH FUND BALANCE</b>			<b>\$ 120,376.89</b>
<u>Bond Fund Investment Account</u>			
Available Balance: Beginning of Reporting Period			\$ 464,056.95
Deposits:			
Springfield State Bank - Interest	\$ 45.98		
Sarpy County Treasurer - Local Taxes	\$ 22,833.18		
			\$ 22,879.16
			\$ 486,936.11
Disbursements			
Transfer to NOW			\$ 0.00
Available Balance: End of Reporting Period			\$ 486,936.11
<b>TOTAL BOND FUND BALANCE</b>			<b>\$ 486,936.11</b>
<u>Depreciation Fund Account</u>			
Available Balance: Beginning of Reporting Period			\$ 210,496.58
Deposits:			
Springfield State Bank - Interest	\$ 20.19		
Transfers from General Fund	\$ 0.00		
			\$ 20.19
			\$ 210,516.77
Disbursements			
Transfer to NOW			\$ 0.00
Available Balance: End of Reporting Period			\$ 210,516.77
<b>TOTAL DEPRECIATION FUND BALANCE</b>			<b>\$ 210,516.77</b>

SPRINGFIELD STATE BANK  
 600 MAIN ST  
 SPRINGFIELD, NE 68059  
 Tel: (402)253-2222

SPRINGFIELD PLATTEVIEW COMM  
 PLATTEVIEW ACTIVITY FUND  
 14801 S 108TH STREET  
 SPRINGFIELD NE 68059

Statement Date: **09/28/2012** Enclosures: **( 118)**

Account No.: **104812** Page: **1**

**NOW CHECKING ACCOUNT SUMMARY**

Type: REG Status: Active

Category	Number	Amount
Balance Forward From 08/31/12		129,209.83
Deposits	17	39,292.48+
Debits	101	38,997.86
Automatic Deposits	1	750.00+
Interest Added This Statement		12.84+
Ending Balance On 09/28/12		130,267.29
Annual Percentage Yield Earned	0.13%	
Interest Paid This Year	115.41	
Interest Paid Last Year	121.23	
Average Balance (Collected)	133,917.83+	

**STATEMENT PERIOD ACTIVITY**

Date	Check/Description	Amount	Check/Description	Amount	Balance
09/04/12	DEPOSIT	3,491.76+	DEPOSIT	4,648.00+	137,349.59
09/04/12	40677	75.00			137,274.59
09/05/12	DEPOSIT	781.50+		500.00	137,556.09
09/05/12	40682	7.97	40656	33.16	137,514.96
09/05/12	31413	74.91	40678	121.91	137,318.14
09/06/12		450.00	40644	150.00	136,718.14
09/06/12	40683	7,448.00			129,270.14
09/07/12	DEPOSIT	632.00+	DEPOSIT	1,328.00+	131,230.14
09/07/12	40672	100.00	40679	1,586.00	129,544.14
09/10/12	EDUCATIONQUEST CASH C&D			750.00+	130,294.14
09/10/12	40723	36.00	40685	79.00	130,179.14
09/10/12	40684	200.00	40670	500.00	129,479.14
09/11/12	DEPOSIT	1,344.50+	DEPOSIT	6,915.30+	137,738.94
09/11/12	40652	21.40	40687	22.40	137,695.14
09/11/12	40719	45.00	40706	50.00	137,600.14
09/11/12	40686	70.00	40703	95.00	137,435.14
09/11/12	40707	140.00	40728	237.50	137,057.64
09/11/12	40689	241.19	40688	344.70	136,471.75
09/12/12	DEPOSIT	644.27+	DEPOSIT	2,310.65+	139,426.67
09/12/12		700.00	40722	30.00	138,696.67
09/12/12	40710	70.00	40720	95.00	138,531.67
09/12/12	40675	457.50	40690	1,009.55	137,064.62
09/12/12	40725	1,205.77	40693	2,605.50	133,253.35
09/13/12	40709	50.00	40681	50.00	133,153.35
09/13/12	40726	59.76	40711	70.00	133,023.59

Continued

01/178/1

# Bank Statement Reconciliation

Description

Adjustment Date

Adjustment Amount

Platteview High School

09/01/2012 through 09/30/2012

Checking

## Bank Statement Reconciliation Summary

1. Statement Balance	\$ 130,267.29
2. - Outstanding checks	\$ 5,224.37
3. + Outstanding Deposits	\$ 0.00
4. + Outstanding Adjustments	\$ 0.00
5. Total	<hr/> \$ 125,042.92
6. + Investments	\$ 0.00
7. Book Balance	<hr/> \$ 125,042.92

# Current Cash Balance

Sorted by Site ID, Group ID, Activity ID.  
From 09/01/2012 to 09/30/2012.

Site ID	Site Name	Beginning Cash	Receipts	Disbursements	Adjustments	Cash Balance
Group ID	Group Name					
Activity ID	Activity Name					
<b>SpringPI Platteview High School</b>						
<b>A</b>	<b>Athletics</b>					
100	Athletics	26,438.44	15,958.50	4,855.88	0.00	37,541.06
105	Boys Basketball Contest	0.00	0.00	0.00	0.00	0.00
106	Boys Basketball Equip/Supplies	0.00	0.00	0.00	0.00	0.00
110	Boys Golf Contest	0.00	0.00	0.00	0.00	0.00
111	Boys Golf Equip/Supplies	0.00	0.00	0.00	0.00	0.00
115	Boys Soccer Contest	0.00	0.00	0.00	0.00	0.00
116	Boys Soccer Equip/Supplies	0.00	0.00	0.00	0.00	0.00
120	Cross Country Contest	-80.00	0.00	1,013.00	0.00	-1,093.00
121	Cross Country Equip/Supplies	0.00	0.00	51.96	0.00	-51.96
125	Football Contest	-75.00	0.00	2,215.00	0.00	-2,290.00
126	Football Equip/Supplies	-1,701.99	0.00	3,024.00	0.00	-4,725.99
130	Girls Basketball Contest	0.00	0.00	0.00	0.00	0.00
131	Girls Basketball Equip/Supplies	0.00	0.00	0.00	0.00	0.00
135	Girls Golf Contest	-122.50	0.00	220.00	0.00	-342.50
136	Girls Golf Equip/Supplies	0.00	0.00	0.00	0.00	0.00
140	Girls Soccer Contest	0.00	0.00	0.00	0.00	0.00
141	Girls Soccer Equip/Supplies	0.00	0.00	0.00	0.00	0.00
145	Track Contest	0.00	0.00	0.00	0.00	0.00
146	Track Equip/Supplies	0.00	0.00	0.00	0.00	0.00
150	Volleyball Contest	-236.61	780.00	3,064.90	0.00	-2,521.51
151	Volleyball Equip/Supplies	0.00	0.00	0.00	0.00	0.00
155	Wrestling Contest	0.00	0.00	0.00	0.00	0.00
156	Wrestling Equip/Supplies	0.00	0.00	0.00	0.00	0.00
	<b>A Totals:</b>	<b>24,222.34</b>	<b>16,738.50</b>	<b>14,444.74</b>	<b>0.00</b>	<b>26,516.10</b>
<b>B</b>	<b>Clubs &amp; Organizations</b>					
200	Boys Basketball Club	1,299.52	92.00	79.00	-45.00	1,267.52
205	Boys Golf Club	53.24	0.00	0.00	0.00	53.24
210	Boys Soccer Club	1,727.87	0.00	0.00	0.00	1,727.87
220	Cheer	6,292.29	1,389.00	641.14	64.20	7,104.35
240	Dance Team	4,209.05	0.00	1,818.35	0.00	2,390.70
250	FBLA	966.87	0.00	325.00	0.00	641.87
260	Football Club	9,193.47	2,265.65	1,737.01	45.00	9,767.11
270	Girls Basketball Club	2,812.24	0.00	9.00	0.00	2,803.24
280	Girls Golf Club	5.73	0.00	0.00	0.00	5.73
290	Girls Letter Club	2,678.20	0.00	27.96	0.00	2,650.24
300	Girls Soccer Club	2,136.25	0.00	0.00	0.00	2,136.25
330	National Honor Society	209.92	0.00	0.00	0.00	209.92
340	P Club	1,446.47	150.00	0.00	0.00	1,596.47
350	Skills USA	149.50	0.00	0.00	0.00	149.50
360	Spanish Club	252.60	0.00	0.00	0.00	252.60
370	Spirit Club	683.00	0.00	0.00	0.00	683.00
380	Student Council	1,013.44	0.00	0.00	0.00	1,013.44
390	Thespian	0.00	0.00	0.00	0.00	0.00

# Current Cash Balance

Sorted by Site ID, Group ID, Activity ID.  
From 09/01/2012 to 09/30/2012.

Site ID Group ID	Site Name Group Name	Activity ID	Activity Name	Beginning Cash	Receipts	Disbursements	Adjustments	Cash Balance
400			Track Club	1,940.90	0.00	0.00	0.00	1,940.90
410			Volleyball Club	14,994.77	0.00	7,464.00	0.00	7,530.77
420			Wrestling Club	719.96	0.00	36.00	0.00	683.96
	B		Totals:	52,785.29	3,896.65	12,137.46	64.20	44,608.68
C	Classes							
500			Art	2,641.71	468.00	139.00	0.00	2,970.71
505			Band	5,288.20	321.16	1,749.94	0.00	3,859.42
510			Choir	2,851.29	0.00	0.00	0.00	2,851.29
515			Class of 2016	0.00	0.00	0.00	0.00	0.00
520			Class of 2013	1,052.96	0.00	0.00	0.00	1,052.96
530			Class of 2014	1,616.55	0.00	0.00	0.00	1,616.55
540			Class of 2015	450.15	2,270.00	800.83	0.00	1,919.32
550			Construction Tech	52.82	0.00	0.00	0.00	52.82
560			Drama	1,338.89	276.15	720.00	0.00	895.04
570			Family Consumer Science	767.32	0.00	0.00	0.00	767.32
580			Industry Tech	1,589.68	405.00	0.00	0.00	1,994.68
590			Yearbook	5,463.27	2,733.00	200.00	0.00	7,996.27
	C		Totals:	23,112.84	6,473.31	3,609.77	0.00	25,976.38
D	Dual Credits							
600			Math	250.00	0.00	0.00	0.00	250.00
	D		Totals:	250.00	0.00	0.00	0.00	250.00
E	Activities							
650			Mock Trial	116.57	0.00	70.00	0.00	46.57
660			Musical	0.00	0.00	0.00	0.00	0.00
670			Speech	0.00	0.00	0.00	0.00	0.00
	E		Totals:	116.57	0.00	70.00	0.00	46.57
M	Miscellaneous							
700			Alumni	2,836.59	0.00	0.00	0.00	2,836.59
705			Capital Improvement	10,000.00	0.00	0.00	0.00	10,000.00
710			Concessions	6,134.84	10,531.88	8,469.54	-64.20	8,132.98
720			Faculty Courtesy Fund	409.98	0.00	0.00	0.00	409.98
730			Fine Arts	1,523.95	0.00	0.00	0.00	1,523.95
740			Guidance	379.80	0.00	0.00	0.00	379.80
750			Library	709.50	0.00	0.00	0.00	709.50
760			Principal	903.38	914.98	408.74	0.00	1,409.62
770			Textbook Fines	806.57	0.00	0.00	0.00	806.57
780			College Access Grant	0.00	1,500.00	102.00	0.00	1,398.00
	M		Totals:	23,704.61	12,946.86	8,980.28	-64.20	27,606.99

# Current Cash Balance

Sorted by Site ID, Group ID, Activity ID.  
From 09/01/2012 to 09/30/2012.

Site ID Group ID	Site Name Group Name	Activity ID	Activity Name	Beginning Cash	Receipts	Disbursements	Adjustments	Cash Balance
N	Non-Active Accounts							
	90001		AV - Graduation	0.00	0.00	0.00	0.00	0.00
	90002		Class of 2010	0.00	0.00	0.00	0.00	0.00
	90003		Class of 2011	0.00	0.00	0.00	0.00	0.00
	90004		Class of 2012	0.00	0.00	0.00	0.00	0.00
	90005		General Fund	0.00	0.00	0.00	0.00	0.00
	90006		German	0.00	0.00	0.00	0.00	0.00
	90007		Government	38.20	0.00	0.00	0.00	38.20
	90008		Lit Mag	0.00	0.00	0.00	0.00	0.00
	N Totals:			38.20	0.00	0.00	0.00	38.20
	SpringPI Totals:			124,229.85	40,055.32	39,242.25	0.00	125,042.92
	Report Totals:			124,229.85	40,055.32	39,242.25	0.00	125,042.92

*Angela Simpson*



Statement of Activity Fund  
Springfield Elementary  
For the Period of Sep. 1, 2012 to Sept. 30, 2012

Activity	Balance Last Report	Receipts	Expenditures	Transactions In-Out	Balance On Hand
Library	\$ 1,406.88	\$ -	\$ -	\$ -	\$ 1,406.88
Pop	\$ 564.99	\$ -	\$ 121.32	\$ -	\$ 443.67
General	\$ 1,897.80	\$ 520.28	\$ 517.48	\$ -	\$ 1,900.60
Student Council	\$ 898.77	\$ -	\$ 140.51	\$ -	\$ 758.26
<b>Total</b>	<b>\$ 4,768.44</b>	<b>\$ 520.28</b>	<b>\$ 779.31</b>	<b>\$ -</b>	<b>\$ 4,509.41</b>

Previous Bank Balance \$ 4,768.44  
 Deposits made this month \$ 520.28  
 Checks Paid this Month \$ 731.91  
 New Bank Balance \$ 4,556.81  
 Minus Outstanding Cks. \$ 47.40  
 Plus Outstanding Deposits \$ -  
 Final Account Balance \$ 4,509.41

*Wes Reed*

Wes Reed, Principal  
October 3, 2012

**STATEMENT OF ACTIVITY FUND**

**WESTMONT ELEMENTARY**

**FOR THE PERIOD:**      **Sep-12**

<b>Activity</b>	<b>Balance Last Report</b>	<b>Receipts</b>	<b>Expenditures</b>	<b>Balance On Hand</b>
<b>Library Fund</b>	\$2,318.08	\$55.00	\$0.00	\$2,373.08
<b>General Fund</b>	\$2,499.74	\$633.04	\$152.33	\$2,980.45
<b>Pop</b>	\$1,109.69	\$89.80	\$79.87	\$1,119.62
<b>Student Council</b>	\$892.00	\$140.00	\$28.38	\$1,003.62
<b>Totals</b>	<b>\$6,819.51</b>	<b>\$917.84</b>	<b>\$260.58</b>	<b>\$7,476.77</b>

**Previous Bank Balance**      \$6,819.51

**Deposits Made This Month**      \$917.84

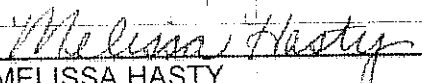
**Checks Paid This Month**      \$260.58

**New Bank Balance**      \$7,476.77

**Minus Outstanding Checks**      \$0.00

**Plus Outstanding Deposits**      \$0.00

**Final Account Balance**      \$7,476.77

  
**MELISSA HASTY**  
 Principal

SPRINGFIELD STATE BANK  
 600 MAIN ST  
 SPRINGFIELD, NE 68059  
 Tel: (402)253-2222

SPRINGFIELD PLATTEVIEW COMM  
 PLATTEVIEW EARLY EDUCATION CEN  
 ACTIVITY FUND  
 14801 S 108TH STREET  
 SPRINGFIELD NE 68059

Statement Date: 09/28/2012 Enclosures: (0)

Account No.: 3491217 Page: 1

**REGULAR CHECKING ACCOUNT SUMMARY**

Type: REG Status: Active

Category	Number	Amount
Balance Forward From 08/31/12		1,033.00
Debits		0.00
Ending Balance On 09/28/12		1,033.00
Average Balance (Collected)	1,033.00+	

**AVERAGE AND MINIMUM BALANCES**

Average Ledger Balance :	1,033.00	Minimum Ledger Balance :	1,033.00
Average Collected Balance :	1,033.00	Minimum Collected Balance :	1,033.00
Average Available Balance :	1,033.00	Minimum Available Balance :	1,033.00

**OVERDRAFT FEE SUMMARY**

	This Statement	Year To Date
Total Returned Item Fees	0.00	0.00
Total Overdraft Fees	0.00	0.00

**This Statement Cycle Reflects 28 Days**

NEW FRIDAY LOBBY SERVICE HOURS EFFECTIVE MAY 4, 2012:  
 LOBBY MON-THURS 9AM-4PM FRI 9AM-5PM  
 DRIVE-IN MON-THURS 7:30AM-6PM FRI 7:30AM-7PM SAT 9AM-12PM

<b>Bills for Payment by Fund</b>			
<b>Payee</b>	<b>Account Code</b>	<b>Reason</b>	<b>Amount</b>
US Treasury	1-01-1100-284	2012 FICA VSP Payment	\$ 33,274.97
Special Pay Trust	1-01-1100-284	2012 VSP PAYMENT TO MIDAMERICA SPECIAL F	\$ 272,994.21
Apple Financial Services	1-01-1100-318	IPAD LEASE AGREEMENT	\$ 147,618.75
Prime Communications, Inc.	1-01-1100-318	REPAIR @ PHS	\$ 192.50
State of NE-Office of CIO	1-01-1100-318	ONLINE FEE	\$ 222.15
Pearson Education Inc.	1-01-1100-420	SPEECH TEXTBOOKS	\$ 1,735.93
CDWG	1-01-1100-560	PROJECTOR	\$ 775.99
Kids On The Move Inc	1-01-1210-318	SPED SERVICE	\$ 1,357.00
AMAZON	1-01-1210-410	Supplies	\$ 24.95
AMAZON	1-01-1210-410	Supplies	\$ 25.99
AMAZON	1-01-1210-410	Supplies	\$ 11.74
Diversified Health Care Inc.	1-01-2130-318	RN SUB	\$ 1,016.75
Feldhacker, Heather	1-01-2130-410	MILEAGE REIMBR.	\$ 47.85
HyVee Food & Drug Store	1-01-2130-410	SUPPLIES	\$ 24.43
School Health	1-01-2130-410	Credit Memo	\$ (1.65)
School Health	1-01-2130-410	SUPPLIES	\$ 27.23
School Health	1-01-2130-410	Supplies	\$ 659.63
Feldhacker, Heather	1-01-2130-670	MILEAGE REIMBR.	\$ 8.88
AMAZON	1-01-2210-410	SUPPLIES	\$ 68.22
HyVee Food & Drug Store	1-01-2210-410	SUPPLIES	\$ 46.45
Advanced Learning Centers, Inc.	1-01-2210-630	Registration:Holli Kirwan	\$ 679.00
Educational Service #3	1-01-2210-630	WORKSHOP-MCCRACKEN	\$ 75.00
Learning Forward	1-01-2210-630	2 YEAR MEMBERSHIP-HOLLI KIRWAN	\$ 158.00
National Council for the Social Studies	1-01-2210-630	MEMBERSHIP-HOLLIE KIRWAN	\$ 66.00
McCracken, Michelle	1-01-2210-670	MILEAGE REIMBR.	\$ 132.20
NE Assoc Of School Boards	1-01-2310-630	EMeetings Fee	\$ 1,000.00
NE Assoc Of School Boards	1-01-2310-630	MEMBERSHIP MEETING	\$ 165.00
NE Assoc Of School Boards	1-01-2320-630	MEMBERSHIP MEETING	\$ 55.00
Richards, Brett	1-01-2320-670	MILEAGE REIMBR.	\$ 325.23
Springfield Piateview Community Schools	1-01-2320-690	TEACHER INSERVICE 9/24/12	\$ 71.70
Lukas Partners, Inc.	1-01-2330-318	PR SERVICES	\$ 606.30
Omaha World Herald	1-01-2330-350	LEGAL/EMPLOYMENT	\$ 572.36
Frankel, Zacharia	1-01-2510-318	AUDIT	\$ 1,005.25
Midwest Office Automations	1-01-2510-318	COPIER LEASE	\$ 2,584.00
Blair Telephone Co	1-01-2510-342	HOMEWORK HOTLINE	\$ 19.19
CenturyLink	1-01-2510-342	PHONES	\$ 421.91
CenturyLink	1-01-2510-342	PHONES SERVICE	\$ 213.64
MCI	1-01-2510-342	LONG DISTANCE	\$ 110.63
Verizon Wireless	1-01-2510-342	CELL PHONES	\$ 158.74
Windstream	1-01-2510-342	PHONES SERVICE	\$ 1,171.70
Claritus	1-01-2510-410	SUPPLIES	\$ 149.45
Culligan Us Filter	1-01-2510-410	SUPPLIES	\$ 28.00
Quill Corp	1-01-2510-410	SUPPLIES	\$ 315.60

Retoner Inc (The)	1-01-2510-410	TONER	\$	121.90
Retoner Inc (The)	1-01-2510-410	TONER(COLOR)	\$	351.90
American Express	1-01-2520-336	CREDIT CARD PAYMENT	\$	981.58
Great Plains Pest Services In	1-01-2620-318	PEST CONTROL	\$	150.00
Protex Central Inc	1-01-2620-318	FIRE ALARM @ LP	\$	140.00
Rosser Lawn Care, Inc.	1-01-2620-318	MOWING & TREE CLEAN UP @ LP	\$	850.00
Rosser Lawn Care, Inc.	1-01-2620-318	MOWING @ PHS	\$	930.00
Rosser Lawn Care, Inc.	1-01-2620-318	MOWING @ SP	\$	126.00
Rosser Lawn Care, Inc.	1-01-2620-318	MOWING @ WM	\$	168.00
AC Roofing	1-01-2620-319	ROOF @ SP	\$	1,750.00
ESI Communications Inc	1-01-2620-319	PHONE REPAIR @ SP	\$	100.00
Goodwin Tucker Group	1-01-2620-319	STEAM KETTLE @ SP	\$	269.00
Greater Omaha Refrigeration	1-01-2620-319	COOLER @ SP	\$	197.88
Hobart Services	1-01-2620-319	REPAIR DISHWASHER @ PC	\$	246.05
Hotsy Equipment Co./A NE. Corp.	1-01-2620-319	REPAIR PRESSURE WASHER	\$	169.00
Millard Sprinkler	1-01-2620-319	REPAIR SYSTEM @ PHS	\$	281.25
NE Public Health Enviromental Laborator	1-01-2620-319	WATER TEST	\$	137.00
Regan, Dan J	1-01-2620-319	HAND DRYERS @ PHS	\$	930.00
Regan, Dan J	1-01-2620-319	REPAIR @ SP	\$	535.00
Steve Haffke Plumbing Inc.	1-01-2620-319	REAIR @ PHS KITCHEN	\$	975.00
Steve Haffke Plumbing Inc.	1-01-2620-319	REPAIR @ PHS	\$	323.00
Dennis Supply Company	1-01-2620-410	SUPPLIES	\$	154.00
Grainger	1-01-2620-410	SUPPLIES	\$	474.14
Home Depot/GECE	1-01-2620-410	SUPPLIES	\$	362.62
Mark's Plumbing Parts	1-01-2620-410	SUPPLIES	\$	663.97
Nebraska Air Filter Inc	1-01-2620-410	SUPPLIES	\$	340.44
P.C.C., Inc.	1-01-2620-410	SUPPLIES	\$	126.50
Papillion Hardware	1-01-2620-410	SUPPLIES	\$	31.01
Pioneer Manufacturing Company	1-01-2620-410	SUPPLIES	\$	1,119.95
Quill Corp	1-01-2620-410	SUPPLIES	\$	49.37
Sherwin-Williams Co. (The)	1-01-2620-410	SUPPLIES	\$	50.80
SimplexGrinnell Lp	1-01-2620-410	CLOCKS	\$	900.00
Metropolitan Utilities Dist	1-02-2610-321	LEVEL PAYMENT	\$	200.00
Omaha Public Power District	1-02-2610-322	LEVEL PAYMENT	\$	352.00
First Student	1-02-2750-318	FACILITY RENT	\$	(1,000.00)
First Student	1-02-2750-318	FUEL ESCALATOR	\$	478.00
First Student	1-02-2750-318	REGULAR TRANSPORTATION	\$	12,888.47
First Student	1-02-2750-318	ROUTE EXTENTION	\$	715.14
First Student	1-02-2760-318	FACILITY RENT	\$	(700.00)
First Student	1-02-2760-318	SPED SUMMER ROUTE	\$	2,956.38
First Student	1-02-2760-318	SPED TRANSPORTATION	\$	7,713.65
Allied Bus Sales, Inc. #25391	1-02-2760-530	CAR SEATS	\$	1,965.89
First Student	1-02-2790-318	LC HOURS	\$	920.64
Metropolitan Utilities Dist	1-03-2610-321	LEVEL PAYMENT	\$	160.00
Omaha Public Power District	1-03-2610-322	LEVEL PAYMENT	\$	335.10
Midwest Office Automations	1-10-1100-410	STAPLES	\$	65.00
Pioneer Publishing Co	1-10-1100-410	SUPPLIES	\$	148.80

Quill Corp	1-10-1100-410	SUPPLIES	\$ 117.65
Kids On The Move Inc	1-10-1290-318	SPED SERVICE	\$ 457.25
HyVee Food & Drug Store	1-10-1290-410	SUPPLIES	\$ 150.36
Springfield Platteview Community School	1-10-1290-410	PRE-SCHOOL SNACKS	\$ 989.40
Teacher's Discount	1-10-1290-410	1/2" X 10' Magnetic Tape Page 151	\$ 5.32
Teacher's Discount	1-10-1290-410	18" X 75' Contact Paper Page 151	\$ 19.76
Teacher's Discount	1-10-1290-410	8-ST Multi-Cultural Careers Puzzle Set Page 87	\$ 65.46
Teacher's Discount	1-10-1290-410	Magnetic Tape Page 151	\$ 5.32
Teacher's Discount	1-10-1290-410	Magnetic Wand Page 132	\$ 20.40
Teacher's Discount	1-10-1290-410	Magnetic Wands Page 132	\$ 13.60
Teacher's Discount	1-10-1290-410	Melissa & Doug Multi-Cultural Career Puzzles Page	\$ 65.46
Teacher's Discount	1-10-1290-410	No Spill Bubble Tumblers Page 50	\$ 77.26
Teacher's Discount	1-10-1290-410	Con Tact Paper 75 Feet Page 151	\$ 19.76
Teacher's Discount	1-10-1290-410	DAP Blue Stik Reusable Adhesive Putty Page 151	\$ 12.48
Teacher's Discount	1-10-1290-410	Glitter Pom Poms Page 37	\$ 3.06
Teacher's Discount	1-10-1290-410	Glitter Pom Poms Page 37	\$ 3.06
Teacher's Discount	1-10-1290-410	Happy Birthday Ribbons Page 141	\$ 3.46
Teacher's Discount	1-10-1290-410	Jumbo Wiggle Eyes Page 36	\$ 54.24
Lee, Sandy	1-10-1290-670	REIMBR. SUPPLIES	\$ 30.22
Educational Service #3	1-10-1310-630	HAL LEADERSHIP CONFERENCE	\$ 405.00
Culligan Us Filter	1-11-1100-318	SUPPLIES	\$ 96.00
AccuPrint Laser Services Inc	1-11-1100-410	TONER	\$ 379.90
Arnauskas, Kathy	1-11-1100-410	REIMBR. SUPPLIES	\$ 83.36
Brown & Saenger	1-11-1100-410	SUPPLIES	\$ 38.50
Classroom Direct	1-11-1100-410	'It's Your Birthday, Cool!' Recognition Awards	\$ 4.94
Classroom Direct	1-11-1100-410	1" Cursive Colored Chart Tablet	\$ 9.74
Classroom Direct	1-11-1100-410	100 pk, Clear Sheet Protectors	\$ 6.47
Classroom Direct	1-11-1100-410	Wiggle Eyes - 12 mm eyes	\$ 1.57
Classroom Direct	1-11-1100-410	With Fun Smells Added - Blue/Blueberry scent stamp	\$ 3.47
Classroom Direct	1-11-1100-410	With Fun Smells Added - Purple/Grape scent stamp	\$ 3.47
Classroom Direct	1-11-1100-410	With Fun Smells Added - Red/Apple scent stamp pa	\$ 3.47
Classroom Direct	1-11-1100-410	Yellow 2-Pocket Folders w/fasteners	\$ 17.94
Classroom Direct	1-11-1100-410	Special Occasion Crowns - Happy Birthday Crowns	\$ 9.87
Classroom Direct	1-11-1100-410	Tempera Poster Marker Sets - 12 set	\$ 18.77
Classroom Direct	1-11-1100-410	Test Prep Word Problems Challenge Cards Gr. 4-6	\$ 5.34
Classroom Direct	1-11-1100-410	Test Prep Word Problems Challenge Cards Gr.1-3	\$ 2.67
Classroom Direct	1-11-1100-410	Welcome Back to School Paper	\$ 3.57
Classroom Direct	1-11-1100-410	White Play Sand - 25 lbs.	\$ 11.77
Classroom Direct	1-11-1100-410	Red Washable Stamp Pads	\$ 6.34
Classroom Direct	1-11-1100-410	School Days Fun Sparkle Stickers	\$ 6.67
Classroom Direct	1-11-1100-410	Scotch Book Tape, 2"	\$ 53.70
Classroom Direct	1-11-1100-410	Scotch Book Tape, 4"	\$ 21.34
Classroom Direct	1-11-1100-410	Sentence Strips Rainbow	\$ 6.51
Classroom Direct	1-11-1100-410	Silver Glitter (4 oz. bottle)	\$ 2.17
Classroom Direct	1-11-1100-410	Light Blue 2-Pocket Folders w/fasteners	\$ 17.94
Classroom Direct	1-11-1100-410	Light Green 2-Pocket Folders w/fasteners	\$ 17.94
Classroom Direct	1-11-1100-410	Original Judy Clock	\$ 21.17

Classroom Direct	1-11-1100-410	Pom-Poms Classroom Pack (300 count)	\$	3.77
Classroom Direct	1-11-1100-410	Rainbow Stars Paper	\$	6.77
Classroom Direct	1-11-1100-410	Red 2 Pocket Folders	\$	12.54
Classroom Direct	1-11-1100-410	File 'n Save System - Bulletin Board System (27 3/4"	\$	7.47
Classroom Direct	1-11-1100-410	File 'n Save System - Trimmer System (39 1/2" x 5"	\$	5.27
Classroom Direct	1-11-1100-410	First Grade Pencils	\$	7.48
Classroom Direct	1-11-1100-410	Gold Glitter (4 oz. bottle)	\$	2.17
Classroom Direct	1-11-1100-410	Hayes Printer Compatible Certificates and Awards -	\$	4.27
Classroom Direct	1-11-1100-410	Jumbo Craft Sticks - Assorted Colors (500 count)	\$	6.27
Classroom Direct	1-11-1100-410	Clothespins - Spring Clothespins, 3 3/8", 50 pack	\$	2.67
Classroom Direct	1-11-1100-410	Colorful Favorites Stinky Stickers	\$	6.97
Classroom Direct	1-11-1100-410	Copernicus Reading-Writing Mobile Center with Tub	\$	300.97
Classroom Direct	1-11-1100-410	Everyday Pack of Name Tags - (192 total tags)	\$	10.97
Classroom Direct	1-11-1100-410	Expo Low Odor Dry Erase Markers - Chisel Tip - Ass	\$	11.87
Classroom Direct	1-11-1100-410	Expo Original Dry Erase Markers - Chisel tip - Assor	\$	13.97
Classroom Direct	1-11-1100-410	12 pk Low Order Expo Dry Erase Markers	\$	11.87
Classroom Direct	1-11-1100-410	5'4"x7'8"Joy Carpet Classroom Rug	\$	351.74
Classroom Direct	1-11-1100-410	Aleene's Tacky Glue (8 fl. oz. bottle)	\$	2.97
Classroom Direct	1-11-1100-410	Birthday Pencils	\$	7.48
Classroom Direct	1-11-1100-410	Blue Glitter (4 oz. bottle)	\$	2.17
Classroom Direct	1-11-1100-410	Blue Washable Stamp Pads	\$	6.34
EAI Education Magazine	1-11-1100-410	10-sided dice (set of 5)	\$	2.58
EAI Education Magazine	1-11-1100-410	12-sided dice (set of 5)	\$	2.58
EAI Education Magazine	1-11-1100-410	Deluxe Place Value Pocket Chart	\$	69.90
EAI Education Magazine	1-11-1100-410	More Domino Math	\$	8.29
EAI Education Magazine	1-11-1100-410	Shipping	\$	7.50
Namify	1-11-1100-410	SUPPLIES	\$	21.11
Pepper Of Minneapolis	1-11-1100-410	SUPPLIES	\$	7.89
Presidents Challenge (The)	1-11-1100-410	National Award Certificate	\$	19.25
Presidents Challenge (The)	1-11-1100-410	National Physical Fitness Award Emblem	\$	82.50
Presidents Challenge (The)	1-11-1100-410	Presidential Physical Fitness Award Emblem & Cert	\$	24.50
Presidents Challenge (The)	1-11-1100-410	Shipping	\$	11.36
TEACHER DIRECT	1-11-1100-410	180 Days of Math	\$	18.88
TEACHER DIRECT	1-11-1100-410	50 Super Fun Math Activities	\$	10.88
TEACHER DIRECT	1-11-1100-410	Birthday Blitz Pencils	\$	3.96
TEACHER DIRECT	1-11-1100-410	Bulletin Board System Box	\$	7.48
TEACHER DIRECT	1-11-1100-410	Photographic Measurement	\$	9.88
TEACHER DIRECT	1-11-1100-410	Reusable Dry Erase Pockets	\$	15.88
Classroom Direct	1-11-1100-530	Sandusky Welded Steel Bookcase (Blue)	\$	146.67
School Specialty	1-11-1100-530	Sandusky Lee Steel Mobile Bookcases (Blue)	\$	658.16
AMAZON	1-11-1100-560	SUPPLIES	\$	305.30
NE Music Educators Association	1-11-1100-630	MEMBERSHIP & CONVENTION -MARLA JANAK	\$	194.00
AccuPrint Laser Services Inc	1-11-1220-410	TONER	\$	62.95
AMAZON	1-11-1220-410	Supplies	\$	16.55
AMAZON	1-11-1220-410	Supplies	\$	5.70
AMAZON	1-11-1220-410	Supplies	\$	19.28
Learning A-Z	1-11-1220-410	READING A-Z	\$	74.95

Mayer-Johnson LLC	1-11-1220-410	Boardmaker Plus -	\$ 1,030.00
Highsmith Inc	1-11-2220-410	14 in ex-fit jacket cover (300 feet)	\$ 82.88
Highsmith Inc	1-11-2220-410	1st Reading Level book label sticker	\$ 3.23
Highsmith Inc	1-11-2220-410	2nd Reading Level Spine label	\$ 3.17
Highsmith Inc	1-11-2220-410	3rd Reading Level spine labels	\$ 3.19
Highsmith Inc	1-11-2220-410	4th Reading Level spine labels	\$ 3.19
Highsmith Inc	1-11-2220-410	Multicultural spine labels	\$ 3.19
Highsmith Inc	1-11-2220-410	Red Stereo Headphones	\$ 89.20
Highsmith Inc	1-11-2220-410	Reddi-Cover 10 inch	\$ 25.96
Highsmith Inc	1-11-2220-410	Reddi-Cover 12 inch	\$ 78.64
Highsmith Inc	1-11-2220-410	Reddi-Cover 9 inch	\$ 43.14
Highsmith Inc	1-11-2220-410	Shipping	\$ 7.51
Highsmith Inc	1-11-2220-410	ABC spine lables	\$ 3.19
Highsmith Inc	1-11-2220-410	Audio Cable Adaptor	\$ 16.60
Highsmith Inc	1-11-2220-410	book to film spine label	\$ 3.19
Highsmith Inc	1-11-2220-410	Holiday Label Assortment	\$ 6.19
Highsmith Inc	1-11-2220-410	Horror and suspense spine labels	\$ 3.19
Highsmith Inc	1-11-2220-410	Library motivational pencils	\$ 32.09
Quill Corp	1-11-2220-410	SUPPLIES	\$ 8.49
EBSCO Industries, Inc.	1-11-2220-440	SUBSCRIPTION RENEWAL	\$ 508.86
Highsmith Inc	1-11-2220-530	CCD Scanner with USB cable	\$ 130.90
Highsmith Inc	1-11-2220-530	library shelf marker	\$ 34.70
Highsmith Inc	1-11-2220-530	Shipping	\$ 3.44
Educational Service #3	1-11-2230-318	A/V REPAIR	\$ 70.56
Metropolitan Utilities Dist	1-11-2610-321	LEVEL PAYMENT	\$ 390.00
Omaha Public Power District	1-11-2610-322	LEVEL PAYMENT	\$ 3,216.35
City Of Springfield	1-11-2610-323	WATER & SEWER @ SP	\$ 180.30
Egan Supply Company	1-11-2610-410	SUPPLIES	\$ 101.46
Hillyard/Sioux Falls	1-11-2610-410	SUPPLIES	\$ 237.41
AccuPrint Laser Services Inc	1-12-1100-410	TONER	\$ 856.80
Lakeshore Learning Materials	1-12-1100-410	SUPPLIES	\$ 59.85
Resources For Educators	1-12-1100-410	SUBSCRIPTION RENEWAL	\$ 388.00
School Datebooks	1-12-1100-410	Shipping	\$ 25.87
School Datebooks	1-12-1100-410	STUDENT ASSIGNMENT BOOKS- ALREADY ORD	\$ 258.70
School Specialty	1-12-1100-410	WASHABLE STAMP PAD ORANGE	\$ 3.40
School Specialty	1-12-1100-410	WASHABLE STAMP PAD TURQUOISE	\$ 3.40
School Specialty	1-12-1100-410	WASHABLE STAMP PADS HOT PINK	\$ 3.40
School Specialty	1-12-1100-410	X-ACTO PENCIL SHARPENER	\$ 28.12
School Specialty	1-12-1100-410	YOU ARE RESPONSIBLE FOR YOU	\$ 5.96
School Specialty	1-12-1100-410	POP FOR WORD FAMILIES	\$ 8.52
School Specialty	1-12-1100-410	POST IT DURABLE INDEX TABS	\$ 11.00
School Specialty	1-12-1100-410	POST IT FLAGS	\$ 8.94
School Specialty	1-12-1100-410	RAINBOW STRIPES NAME TAGS	\$ 4.47
School Specialty	1-12-1100-410	TRANSPARENT INCHWORMS RULERS	\$ 26.62
School Specialty	1-12-1100-410	ULTRACK 320 CUMULATIVE SPLIT TIMING STOP	\$ 34.12
School Specialty	1-12-1100-410	DOTTED DICE	\$ 6.82
School Specialty	1-12-1100-410	EARTH MOON & STARS MINI BULLETIN BOARD	\$ 6.27

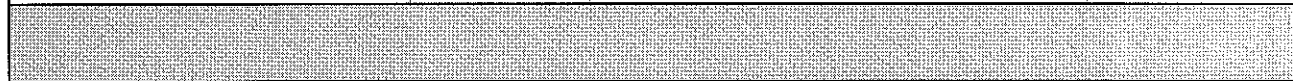
School Specialty	1-12-1100-410	FOLDING GEOMETRIC SHAPES	\$	34.12
School Specialty	1-12-1100-410	INSTANT MATH CENTERS	\$	15.23
School Specialty	1-12-1100-410	PERIODIC TABLE OF ELEMENTS	\$	6.82
School Specialty	1-12-1100-410	POP FOR BLENDS	\$	8.52
School Specialty	1-12-1100-410	15 SLOT CLASSROOM MAILBOX	\$	25.59
School Specialty	1-12-1100-410	2-WAY WORD BUILDER GAME	\$	27.30
School Specialty	1-12-1100-410	48" X 72" HORSE SHOE TABLE	\$	223.48
School Specialty	1-12-1100-410	5/8 LOWERCASE LETTERS	\$	10.23
School Specialty	1-12-1100-410	ABC CAN SORT	\$	40.95
School Specialty	1-12-1100-410	COLOR-CODED JUDY CLOCK	\$	21.32
AccuPrint Laser Services Inc	1-12-1220-410	TONE	\$	182.85
Highsmith Inc	1-12-2220-410	Blue Headphones	\$	345.45
Highsmith Inc	1-12-2220-410	book to film label	\$	3.27
Highsmith Inc	1-12-2220-410	CCD Scanner with USB Cable	\$	133.98
Highsmith Inc	1-12-2220-410	Holiday labels	\$	6.34
Highsmith Inc	1-12-2220-410	Horror and Suspense label	\$	3.27
Highsmith Inc	1-12-2220-410	library reading motivencils	\$	35.49
Highsmith Inc	1-12-2220-410	1st Reading Level sticker	\$	3.27
Highsmith Inc	1-12-2220-410	2md Reading level label	\$	3.27
Highsmith Inc	1-12-2220-410	3rd reading level label	\$	3.27
Highsmith Inc	1-12-2220-410	4th level reading label	\$	3.27
Highsmith Inc	1-12-2220-410	abc label	\$	3.27
Highsmith Inc	1-12-2220-410	Audio Cable Adaptor	\$	17.00
Highsmith Inc	1-12-2220-410	multicultural label	\$	3.27
Highsmith Inc	1-12-2220-410	Reddi-Cover 10 inch	\$	26.57
Highsmith Inc	1-12-2220-410	Reddi-Cover 12 inch	\$	80.48
Highsmith Inc	1-12-2220-410	Reddi-Cover 9"	\$	44.13
Highsmith Inc	1-12-2220-410	Shipping	\$	7.96
Quill Corp	1-12-2220-410	SUPPLIES	\$	8.49
EBSCO Industries, Inc.	1-12-2220-440	SUBSCRIPTION RENEWAL	\$	499.93
AMAZON	1-12-2220-450	SUPPLIES	\$	104.88
ASCD	1-12-2410-630	MEMBERSHIP-M.HASTY	\$	189.00
Omaha Public Power District	1-12-2610-322	LEVEL PAYMENT	\$	3,842.26
S I D #23	1-12-2610-323	WATER @ SEWER @ WM	\$	50.56
Egan Supply Company	1-12-2610-410	SUPPLIES	\$	101.46
Hillyard/Sioux Falls	1-12-2610-410	SUPPLIES	\$	237.42
Midwest Office Automations	1-20-1100-410	STAPLES	\$	65.00
Quill Corp	1-20-1100-410	SUPPLIES	\$	94.75
Career Solutions, Inc.	1-20-1230-362	SPED SERVICE	\$	3,325.00
Heartland Foundation	1-20-1230-362	SPED SERVICE	\$	4,805.00
Science Kit & Boreal Lab	1-21-1100-410	Diffraction Grating Glasses (set of 6)	\$	21.00
Science Kit & Boreal Lab	1-21-1100-410	Shipping	\$	14.35
Science Kit & Boreal Lab	1-21-1100-410	Standing Wave Demonstration	\$	23.50
Mathcounts Foundation	1-21-1100-630	12/13 REGISTRATION	\$	190.00
Omaha World Herald	1-21-2220-440	10 M-F NIE NEWSPAPERS	\$	61.25
Papillion Times	1-21-2220-440	SUBSCRIPTION	\$	46.00
Educational Service #3	1-21-2230-318	AV REPAIR	\$	155.76

Culligan Us Filter	1-21-2410-690	SUPPLIES	\$ 94.13
Papillion Times	1-21-2410-690	SUBSCRIPTION	\$ 46.00
Egan Supply Company	1-21-2610-410	SUPPLIES	\$ 101.46
Hillyard/Sioux Falls	1-21-2610-410	SUPPLIES	\$ 237.42
Patera, Erin	1-22-1100-318	ALUMNI NEWSLETTER	\$ 250.00
Schmitt Music Center	1-22-1100-318	CREDIT MEMO	\$ (141.34)
Schmitt Music Center	1-22-1100-318	Repairs	\$ 282.00
Flinn Scientific	1-22-1100-410	SUPPLIES	\$ 728.80
Glaser Ceramics	1-22-1100-410	SUPPLIES	\$ 220.49
Office Depot Inc	1-22-1100-410	SUPPLIES	\$ 199.90
Quill Corp	1-22-1100-410	SUPPLIES	\$ 461.37
Rockbrook Camera	1-22-1100-410	Zoom Lens	\$ 489.97
Sherwin-Williams Co. (The)	1-22-1100-410	SUPPLIES	\$ 89.00
Crystal Springs Books	1-22-1100-420	METAPHORS AND ANALOGIES: POWER TOOLS	\$ 23.00
Crystal Springs Books	1-22-1100-420	Shipping	\$ 9.95
Crystal Springs Books	1-22-1100-420	WELL SPOKEN: TEACHING SPEAKING TO ALL S	\$ 16.00
Crystal Springs Books	1-22-1100-420	WRITE LIKE THIS, TEACHING REAL-WORLD WR	\$ 23.00
Educational Theatre Association	1-22-1100-420	Monologues in Dialect for Young Actors	\$ 13.50
Educational Theatre Association	1-22-1100-420	Play Director's Survival Kit	\$ 27.00
Educational Theatre Association	1-22-1100-420	S/H	\$ 15.50
Educational Theatre Association	1-22-1100-420	Scenses from Shakespeare: Fifteen Cuttings for the	\$ 13.50
Educational Theatre Association	1-22-1100-420	Self Supporting Scenery for Children's Theatre and C	\$ 16.25
Educational Theatre Association	1-22-1100-420	Small Stage Sets on Tour	\$ 15.25
Educational Theatre Association	1-22-1100-420	Theater Games for The Classroom	\$ 22.50
Pioneer Drama Service	1-22-1100-420	ELEGANTLY FRUGAL COSTUMES, THE POOR M	\$ 17.95
Pioneer Drama Service	1-22-1100-420	ONE-ACT PLAYS FOR ACTING STUDENTS	\$ 19.95
Pioneer Drama Service	1-22-1100-420	Shipping	\$ 3.22
Nat Council Teachers English	1-22-1100-630	MEMBERSHIP-JODIE MORGENSON	\$ 75.00
National Association of Student Council	1-22-1100-630	MEMBERSHIP-ANGELA SIMPSON	\$ 95.00
National Honor Society or National Junior	1-22-1100-630	MEMBERSHIP-ANGELA SIMPSON	\$ 85.00
Case, Jacki	1-22-1100-670	MILEAGE REIMBR.	\$ 66.05
Janda, Michelle	1-22-1100-670	REIMBR. MILEAGE/MEALS NSCTA CONVENTION	\$ 112.21
Home Depot/GECF	1-22-1100-690	SUPPLIES	\$ 94.91
Morgenson, Jodie	1-22-1100-690	REIMBR. SUPPLIES	\$ 187.18
Pioneer Drama Service	1-22-1100-690	Shipping	\$ 12.78
Pioneer Drama Service	1-22-1100-690	THEATRICAL MAKE-UP KIT--FAIR: LIGHT MEDIUM	\$ 55.00
Pioneer Drama Service	1-22-1100-690	THEATRICAL MAKEUP KIT--FAIR MEDIUM DEEP	\$ 55.00
Pioneer Drama Service	1-22-1100-690	THEATRICAL MAKEUP KIT--OLIVE MEDIUM DEE	\$ 55.00
AMAZON	1-22-1220-410	CREDIT MEMO	\$ (10.54)
AMAZON	1-22-1220-410	SUPPLIES	\$ 44.60
Target	1-22-1220-410	SUPPLIES	\$ 75.00
Demco Inc	1-22-2220-410	SUPPLIES	\$ 241.96
Omaha World Herald	1-22-2220-440	10 M-F NIE NEWSPAPERS	\$ 61.25
Quill Corp	1-22-2230-450	SUPPLIES	\$ 249.91
Papillion Times	1-22-2410-318	SUBSCRIPTION	\$ 46.00
Quill Corp	1-22-2410-410	CREDIT MEMO	\$ (129.99)
Quill Corp	1-22-2410-410	SUPPLEIS	\$ 68.82

Quill Corp	1-22-2410-410	SUPPLIES	\$ 147.83
Stadium Sports	1-22-2410-410	SUPPLIES	\$ 51.25
American Express	1-22-2410-630	CREDIT CARD PAYMENT	\$ 99.00
Janda, Michelle	1-22-2410-630	REIMBR. MILEAGE/MEALS NSCTA CONVENTION	\$ 121.03
Simpson, Angela	1-22-2410-690	REIMBR. SUPPLIES	\$ 30.00
Metropolitan Utilities Dist	1-22-2610-321	LEVEL PAYMENT	\$ 1,720.00
Omaha Public Power District	1-22-2610-322	LEVEL PAYMENT	\$ 13,929.29
Egan Supply Company	1-22-2610-410	SUPPLIES	\$ 237.77
Hillyard/Sioux Falls	1-22-2610-410	SUPPLIES	\$ 537.44
			\$ 562,312.98



Payee	Account Code	Reason	Amount
Hamilton, Rheland	2-23-6000-291	UNIFORM ALLOWANCE & REIMBR.SUPPLIES	\$ 125.00
Kenagy, Terri	2-23-6000-291	UNIFORM ALLOWANCE	\$ 49.99
Robin Thayer	2-23-6000-291	UNIFORM ALLOWANCE	\$ 118.89
Roll, Jill	2-23-6000-291	UNIFORM ALLOWANCE	\$ 125.00
Stephanie West-Tex	2-23-6000-291	UNIFORM REIMBR.	\$ 125.00
Aryzta LLC	2-23-6000-410	FOOD	\$ 286.52
Hamilton, Rheland	2-23-6000-410	UNIFORM ALLOWANCE & REIMBR.SUPPLIES	\$ 3.06
Kern, Kathy	2-23-6000-410	REIMBR. SUPPLIES	\$ 42.88
Quill Corp	2-23-6000-410	CREDIT MEMO	\$ (19.99)
Quill Corp	2-23-6000-410	SUPPLIES	\$ 44.23
Roberts Dairy Company	2-23-6000-410	FOOD	\$ 2,824.77
Rotella's Italian Bakery, Inc.	2-23-6000-410	FOOD	\$ 635.63
Sam's Club	2-23-6000-410	FOOD/SUPPLIES	\$ 22.05
Sysco Lincoln	2-23-6000-410	FOOD/SUPPLIES	\$ 642.75
Thompson Company (The)	2-23-6000-410	FOOD	\$ 74.92
Food Distribution Program	2-23-6000-470	CREDIT ON ACCOUNT	\$ (119.56)
Food Distribution Program	2-23-6000-470	FOOD	\$ 1,680.77
Sam's Club	2-23-6000-470	FOOD/SUPPLIES	\$ 1,013.51
Sysco Lincoln	2-23-6000-470	FOOD/SUPPLIES	\$ 14,781.36
Thompson Company (The)	2-23-6000-470	FOOD	\$ 2,469.85
Bob Cox	2-23-6000-690	LUNCH ACCOUNT REFUND	\$ 18.05
Paul Heidrick	2-23-6000-690	LUNCH FUND REFUND	\$ 275.00
			\$ 25,219.68



Payee	Account Code	Reason	Amount

Budget Blinds	3-06-2515-000	BLINDS @ PHS	\$ 1,700.00
			\$ 1,700.00
<b>Payee</b>	<b>Account Code</b>	<b>Reason</b>	<b>Amount</b>
Lusero, Patty	5-06-0005-284	VSP 2012 Payment	\$ 13,465.50
Meyer, Larry	5-06-0005-284	VSP 2012 Payment	\$ 12,319.50
			\$ 25,785.00
			\$ 615,017.66

# **Nebraska Performance Accountability System [NePAS] Sample Charts**

## **Sample Charts**

**The charts included on the following pages are samples only and do not include any actual school, district, or state results.**

## ANYSCHOOL PUBLIC SCHOOLS

### Nebraska Performance Accountability System (NePAS)

Writing		
	Grade 8	Grade 11
Exceeds the Standards	55-70	53-70
Meets the Standards	40-54	40-52
Below the Standards	0-39	0-39

Reading, Math, Science	
Exceeds the Standards	135-200
Meets the Standards	85-134
Below the Standards	0-84

**The following charts are samples only and do not include any actual school, district, or state results.**

## Section 1 includes rankings.

### Section 1.1

#### Elementary Grade-Level Configuration (Grades 3-5)

Indicator Type	Indicator	District Results	State Results	Rank	# of Ranked Districts
Status	Average NeSA Reading	102.33	110.9	72	240
	Average NeSA Math	88.30	101.6	229	230
	Average NeSA Science	111.23	120.13	13	221
	Grade 4 Writing Scale Scores not available for 2012				
Improvement from 2011 (Different Students)	Average NeSA Reading	8.44	5.23	19	231
	Average NeSA Math	7.34	3.32	21	200
Growth since 2011 (Same Students)	Average NeSA Reading	15.61	9.3	19	212
	Average NeSA Math	19.77	5.43	59	239
Participation	NeSA Reading	MET			
	NeSA Math	MET			
	NeSA Science	MET			
	NeSA Writing				

### Middle Grade-Level Configuration (Grades 6-8)

Indicator Type	Indicator	District Results	State Results	Rank	# of Ranked Districts
Status	Average NeSA Reading	121.23	111.77	89	240
	Average NeSA Math	95.31	100.23	200	236
	Average NeSA Science	103.21	87.22	153	215
	Average NeSA Writing	68.11	55.33	200	217
Improvement from 2011 (Different Students)	Average NeSA Reading	9.95	2.66	35	240
	Average NeSA Math	2.00	3.22	102	239
Growth since 2011 (Same Students)	Average NeSA Reading	12.66	3.32	135	220
	Average NeSA Math	2.01	3.01	99	220
Participation	NeSA Reading	NOT MET			
	NeSA Math	MET			
	NeSA Science	MET			
	NeSA Writing	MET			

### Secondary Grade-Level Configuration (Grades 9-12)

**Grades 9-12 Membership: 637**

Indicator Type	Indicator	District Results	State Results	Rank	# of Ranked Districts
Status	Average NeSA Reading	75.75	99.32	299	214
	Average NeSA Math	86.33	102.77	210	215
	Average NeSA Science	102.33	75.66	23	214
	Average NeSA Writing	40.13	49.77	172	220
Improvement from 2011 (Different Students)	Average NeSA Reading	5.61	2.13	107	200
	Average NeSA Math	8.88	1.05	102	210
Graduation Rate	4-Year	98.16 %	89.23	100	132
Participation	NeSA Reading	MET			
	NeSA Math	MET			
	NeSA Science	MET			
	NeSA Writing	MET			

**Section 1.2**  
**School District (Grades 3-12)**

Indicator Type	Indicator	District Results	State Results	Rank	# of Ranked Districts
Status	Average NeSA Reading	103.99	98.7	123	235
	Average NeSA Math	88.98	100.22	231	235
	Average NeSA Science	96.33	109.21	200	220
	Average NeSA Writing	21.44	33.33	219	241
Improvement from 2011 (Different Students)	Average NeSA Reading	17.33	9.14	101	239
	Average NeSA Math	7.00	4.32	102	210
Growth since 2011 (Same Students)	Average NeSA Reading	14.33	5.22	78	199
	Average NeSA Math	5.51	5.32	121	188
Graduation Rate	4-Year	99.66 %	89.77 %	110	129
Participation	NeSA Reading	NOT MET			
	NeSA Math	MET			
	NeSA Science	MET			
	NeSA Writing	MET			

## Section 2 does not include rankings.

### ANY ELEMENTARY SCHOOL

#### Section 2.1

#### School Building Accountability By Grade

Choose Grade:

#### Grade 05

Indicator Type	Indicator	Building Results	State Results
Status	Average NeSA Reading	122.31	113.01
	Average NeSA Math	122.66	99.67
	Average NeSA Science	111.22	112.33
	Writing not assessed		
Improvement from 2011 (Different Students)	Average NeSA Reading	-1.12	8.67
	Average NeSA Math	3.25	4.33
Growth since 2011 (Same Students)	Average NeSA Reading	-0.23	4.81
	Average NeSA Math	1.92	4.91
Participation	NeSA Reading	99.38%	99.77%
	NeSA Math	100.00 %	95.76 %
	NeSA Science	95.01 %	98.32 %
	NeSA Writing		

Section 2 continued on next page

**Section 2.2  
District By Grade**

Choose Grade:

**Grade 05**

Indicator Type	Indicator	District Results	State Results
Status	Average NeSA Reading	101.01	122.33
	Average NeSA Math	126.62	100.21
	Average NeSA Science	89.32	95.66
	Writing not assessed		
Improvement from 2011 (Different Students)	Average NeSA Reading	18.05	3.21
	Average NeSA Math	19.43	4.32
Growth since 2011 (Same Students)	Average NeSA Reading	22.78	3.31
	Average NeSA Math	6.00	3.46
Participation	NeSA Reading	90.20 %	97.53 %
	NeSA Math	91.63 %	95.12 %
	NeSA Science	97.65 %	93.22 %
	NeSA Writing		

**Springfield Platteview Community Schools  
Board of Education  
Future Planning  
October 8, 2012**

1. 10/22/12- Board Work Session 7 PM
2. 11/12/12- Regular Board Meeting 7 PM, 6 PM- Site, 6:30 PM- Finance
3. 11/14-16- NASB Annual Conference, Embassy Suites, LaVista
4. 11/19/12- Community Advisory Committee 7 PM
5. 11/21/12- Early Dismissal – 1/2 Teacher Contract Day
6. 11/22-23- No School - Thanksgiving
7. 11/26/12- Board Work Session 7 PM
8. 12/10/12- Regular Board Meeting 7 PM, 6 PM- Policy, 6:30 PM- Finance
9. 12/21/12- Holiday Tea 2 PM
10. 12/22-1/6- Holiday Break
11. NSBA Annual Conference in San Diego, April 13-15