

Board of Education Regular Meeting

August 13, 2012 6:00 PM

District Board Office, Central Services
Building
765 Main St
Springfield, NE 68059

Agenda

- I. Finance Committee Meeting
- II. Call to Order and Roll Call
- III. Notice of Open Meetings Act - Posted
- IV. Consent Agenda
 - IV.A. Minutes of the Previous Month's Meetings
 - IV.B. Treasurer's Report
 - IV.C. Statement of Activity Fund Accounts
 - IV.D. Recommendation for Bill Payment
 - IV.E. 2nd Reading of Policies
 - IV.F. Open and Option Enrollment Applications
- V. Items From Patrons on Agenda Items
- VI. Old Business
 - VI.A. 2012-13 District Certified Handbooks
 - VI.B. 2012-13 District Classified Handbooks
 - VI.C. Policy 5416- Student Fees- Rules and Regulations (2nd Reading)
- VII. New Business
 - VII.A. ESU #3 Core Service Funds Purposes
 - VII.B. ESU #3 Property Tax Levy Fund Purposes
 - VII.C. Public Relations Contract with Lukas Partners
 - VII.D. 2012-13, 2013-14 District Certified Negotiated Agreement and Contract Increases
- VIII. Reports
 - VIII.A. 2011-12 Budget Discussion
 - VIII.B. 2012-13 Budget Discussion
- IX. Items from Patrons on Items Not on Agenda
- X. Advance Planning
- XI. Executive Session
 - XI.A. Negotiations with Another School District(s)
 - XI.B. Leave Executive Session
- XII. Adjourn

Board of Education Work Session
July 23, 2012

A meeting of the Board of Education of Springfield Platteview Community Schools in the County of Sarpy, in the State of Nebraska, was convened in open and public session at 7:00 p.m., Monday, July 23, 2012, at the District Board Office, Central Services Building. Present: Chris Dill, Kyle Fisher, Jennifer Kreifels, Brenda Sherman, Nick Stolzer. Absent: Brian Wichman.

Notices of the meeting and committee meetings were given in advance thereof by posting in at least five public places as shown by the certificate of posting notice attached to these minutes. Notice of this meeting was simultaneously given to all members of the Board of Education, and a copy of their acknowledgment of receipt of notice and the agenda was communicated in the advance notice and in the notice to the Board of Education of this meeting. All proceedings hereafter shown were taken while the convened meeting was open to the attendance of the public.

Statute 84-1407 to 84-1414 require that the Open Meetings Act be posted in the meeting room. President Stolzer informed the board and the public that the Act is located on the west wall of the board room.

Shawn Pollock addressed the board on grade point average and class rank issues.

Miss Simpson reported on Platteview High School progress during the 2011-12 school year and outlined plans for 2012-13.

Mr. Johnson reported on Platteview Central Junior High School progress during the 2011-12 school year and outlined plans for 2012-13.

Mrs. Kirwan reported on district progress during the 2011-12 school year and outlined plans for 2012-13.

Superintendent Richards discussed communication and procedures with board members. He also reported on strategic planning, public relations, and continuing our relationship with Lukas Partners.

There were no action items.

Board members reviewed their upcoming schedule of meetings, trainings, and conventions. Significant school calendar items were also discussed.

Action to enter into executive session at 9:10 p.m. for the purpose of negotiations with another district and teacher negotiations for the protection of the public interest and for the prevention of needless injury to the reputation of an individual passed with a motion by Kreifels and a second by Sherman. Vote: Yeas - Dill, Fisher, Kreifels, Sherman, Stolzer. Nays - None

Action to return from executive session at 10:05 p.m. passed with a motion by Fisher and a second by Sherman. Vote: Yeas - Dill, Fisher, Kreifels, Sherman, Stolzer. Nays - None

Action to adjourn the meeting at 10:06 p.m. passed with a motion by Stolzer and a second by Fisher. Vote: Yeas - Dill, Fisher, Kreifels, Sherman, Stolzer. Nays - None

Thoma Bumgardner, Recording Secretary

Accepted: _____

Kyle Fisher, Secretary
Board of Education

Board of Education Regular Meeting

July 09, 2012

The Policy Committee started at 6:00 p.m. Chris Dill, Jenny Kreifels, and Brian Wiechman were present. The committee reviewed drafts of policies to be presented in August.

The Finance Committee started at 6:30 p.m. Chris Dill, Kyle Fisher, Jenny Kreifels, Brenda Sherman, Nick Stolzer, and Brian Wichman were present. Finance reports were reviewed by the committee. Discussion of the bills took place. The committee meeting adjourned at 6:55 p.m.

A meeting of the Board of Education of Springfield Platteview Community Schools in the County of Sarpy, in the State of Nebraska, was convened in open and public session at 7:00 p.m., Monday, July 9, 2012, at the District Board Office, Central Services Building. Present: Chris Dill, Kyle Fisher, Jennifer Kreifels, Brenda Sherman, Nick Stolzer, and Brian Wichman. Absent: None.

Notice of the meeting and committee meetings were given in advance thereof by posting in at least five public places as shown by the certificate of posting notice attached to these minutes. Notice of this meeting was simultaneously given to all members of the Board of Education, and a copy of their acknowledgment of receipt of notice and the agenda was communicated in the advance notice and in the notice to the Board of Education of this meeting. All proceedings hereafter shown were taken while the convened meeting was open to the attendance of the public.

Statute 84-1407 to 84-1414 require that the Open Meetings Act be posted in the meeting room. President Stolzer informed the board and the public that the Act is located on the west wall of the board room.

Action to approve the Consent Agenda as presented passed with a motion by Sherman and a second by Fisher. Vote: Yeas - Dill, Fisher, Kreifels, Sherman, Stolzer, Wichman. Nays - None.

There were no items from patrons on agenda items.

Kevin Schuster of Lucas Partners presented the final two logo designs to the board. Members discussed the two designs.

At 7:15 p.m. President Stolzer opened the Public Hearing on the Student Fees Policy. The administration presented a review of the amount of money collected from students pursuant to, and the use of waivers provided in, the student fee collections of the District for the 2012-2013 school year. The public was given the opportunity to present information and opinions on the proposed Student Fee Policy. No input was presented. The hearing ended at 7:18 p.m.

Mr. Richards confirmed with board members that proposed Policy 5416 - Student Fees was adequately discussed at the 7:15 p.m. hearing. A second reading on August 13, 2012 will be held to approve the changes to the appendix.

At 7:20 p.m. President Stolzer opened the Public Hearing on Parental Involvement Policy. Our current policy is 6400. The public was given the opportunity to present information and opinions on the Parental Involvement Policy. No input was presented. The hearing ended at 7:22 p.m.

The Policy Committee presented policies that have been reviewed for First Reading. Action to approve these policies will take place during the second reading at a future meeting.

Every year, with the recommendation of the administration, the Board of Education approves the building handbooks. Action to approve the 2012-13 PHS student/parent handbook as presented passed with a motion by Sherman and a

second by Fisher. Vote: Yeas - Dill, Fisher, Kreifels, Sherman, Stolzer, Wichman. Nays - None.

Action to approve the 2012-13 PHS Teacher Handbook as presented passed with a motion by Sherman and a second by Wichman. Vote: Yeas - Dill, Fisher, Kreifels, Sherman, Stolzer, Wichman. Nays - None.

Action to approve the 2012-13 Platteview Central Junior High Student/ Parent Handbook as presented passed with a motion by Sherman and a second by Fisher. Vote: Yeas - Dill, Fisher, Kreifels, Sherman, Stolzer, Wichman. Nays - None.

Action to Approve the Platteview Central 2012-13 Teacher Handbook as presented passed with a motion by Wichman and a second by Fisher. Vote: Yeas - Dill, Fisher, Kreifels, Sherman, Stolzer, Wichman. Nays - None.

Action to approve the 2012-13 Westmont and Springfield Elementary schools' student/parent handbook as presented. passed with a motion by Kreifels and a second by Fisher. Vote: Yeas - Dill, Fisher, Kreifels, Sherman, Stolzer, Wichman. Nays - None.

Action to approve Springfield Elementary Teacher Handbook for 2012-13 passed with a motion by Sherman and a second by Fisher. Vote: Yeas - Dill, Fisher, Kreifels, Sherman, Stolzer, Wichman. Nays - None.

Action to Approve the Westmont Teacher Handbook for 2-12-13 as presented passed with a motion by Wichman and a second by Sherman. Vote: Yeas - Dill, Fisher, Kreifels, Sherman, Stolzer, Wichman. Nays - None.

Mr. Richards suggested changes to the registered nurse position to make the position more attractive for long term employment. Action to approve the position of a registered nurse, with a 207 day at-will employment agreement and a benefit package letter "C" passed with a motion by Sherman and a second by Fisher. Vote: Yeas -Fisher, Kreifels, Sherman, Stolzer. Nays - Dill and Wichman.

There were no items from patrons on items not on the agenda.

Board members reviewed their upcoming schedule of meetings, trainings, and conventions. Significant school calendar items were also discussed.

Action to go into executive session at 8:25 p.m. for the purpose of protecting the public interest regarding strategy sessions with respect to teacher contract negotiations passed with a motion by Sherman and a second by Fisher. Vote: Yeas - Dill, Fisher, Kreifels, Sherman, Stolzer, Wichman. Nays - None.

Action to adjourn the meeting at 8:45 p.m. passed with a motion by Sherman and a second by Kreifels. Vote: Yeas - Dill, Fisher, Kreifels, Sherman, Stolzer, Wichman. Nays - None.

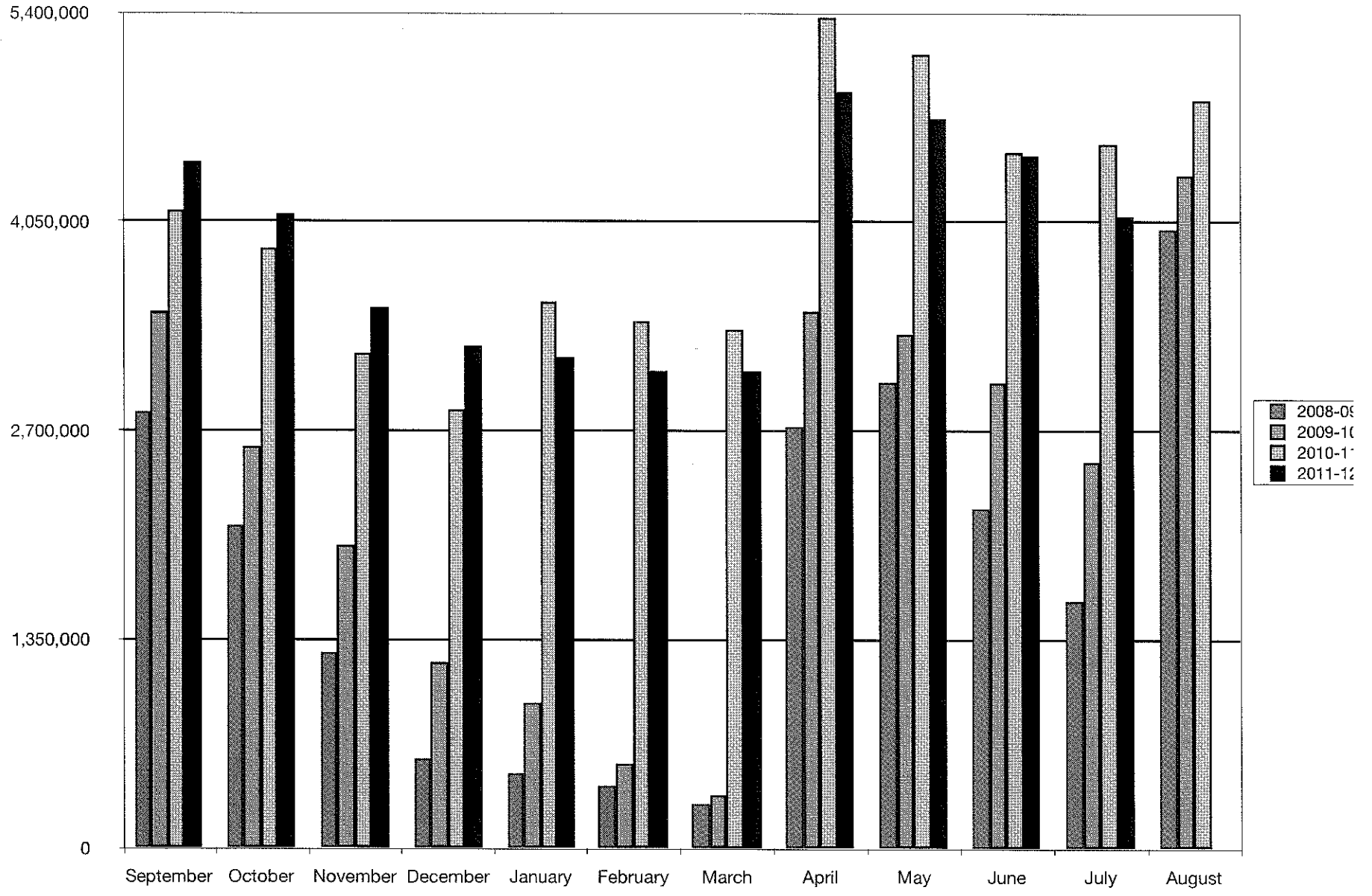
Thoma Bumgardner, Recording Secretary

Accepted: _____

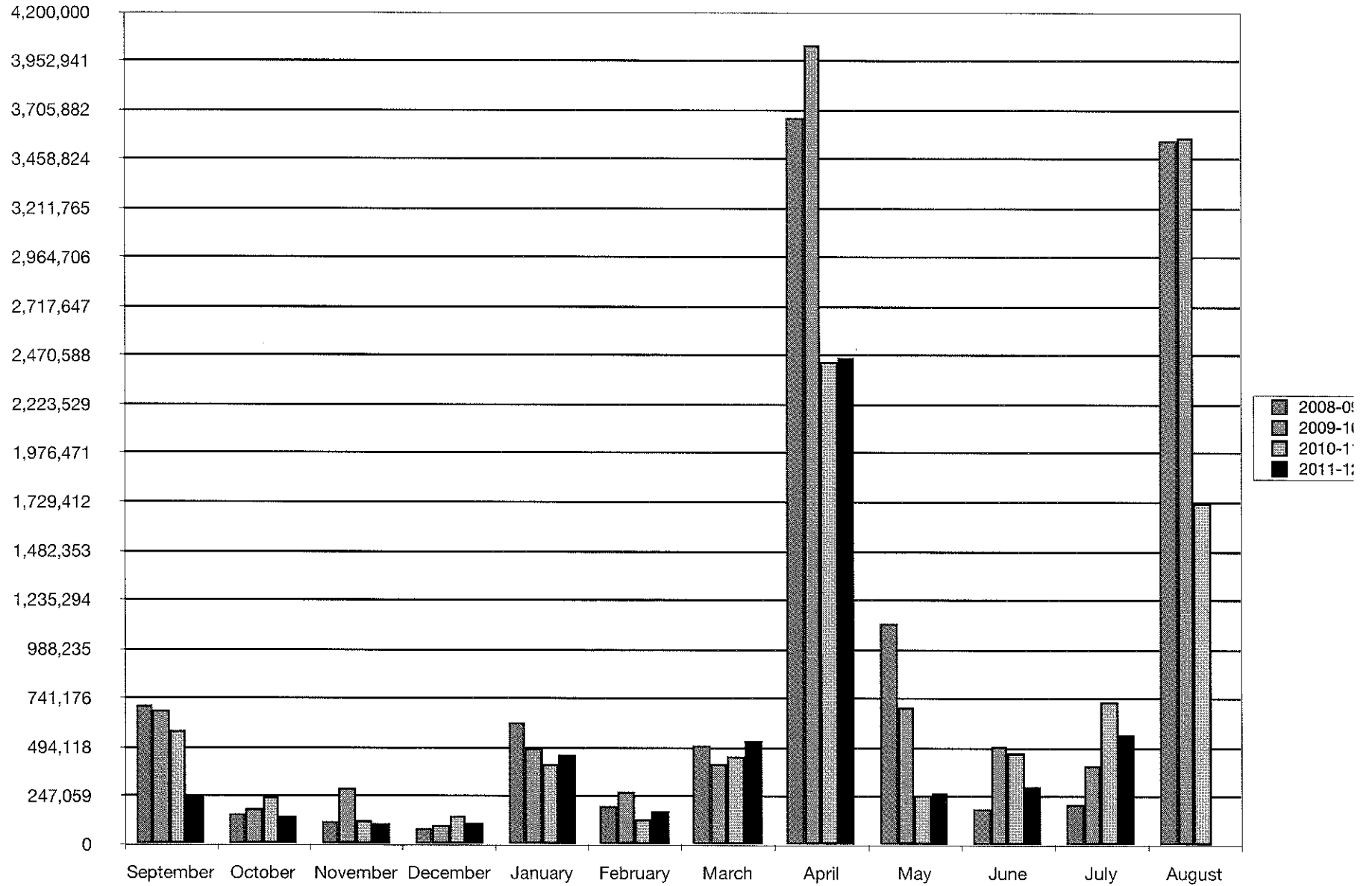
Kyle Fisher, Secretary
Board of Education

			2010	2011	2012
	Apr	General Fund	\$ 3,475,649.34	\$ 5,370,556.89	\$ 4,886,114.31
		Emp. Benefit Fund	\$ 60,580.01	\$ 455,713.30	\$ 502,915.06
		Building Fund	\$ 1,176,312.85	\$ 1,383,748.21	\$ 1,485,961.46
		School Lunch	\$ 119,830.46	\$ 97,264.09	\$ 130,182.01
		Bond Fund	\$ 363,927.99	\$ 353,749.82	\$ 345,556.43
		Depreciation Fund	\$ 111,560.82	\$ 150,042.00	\$ 210,407.94
		April Total	\$ 5,307,861.47	\$ 7,811,074.31	\$ 7,561,137.21
	May	General Fund	\$ 3,327,628.98	\$ 5,132,100.07	\$ 4,715,150.89
		Emp. Benefit Fund	\$ 60,596.28	\$ 455,793.21	\$ 502,968.45
		Building Fund	\$ 1,201,327.38	\$ 1,429,599.40	\$ 1,447,336.63
		School Lunch	\$ 112,280.84	\$ 93,425.01	\$ 123,235.45
		Bond Fund	\$ 328,519.58	\$ 316,422.81	\$ 302,480.43
		Depreciation Fund	\$ 111,599.33	\$ 150,074.89	\$ 210,430.28
		May Total	\$ 5,141,952.39	\$ 7,577,415.39	\$ 7,301,602.13
	Jun	General Fund	\$ 3,012,180.55	\$ 4,496,558.67	\$ 4,474,952.06
		Emp. Benefit Fund	\$ 60,615.00	\$ 725,890.33	\$ 503,018.00
		Building Fund	\$ 1,174,130.10	\$ 1,428,352.13	\$ 1,420,941.49
		School Lunch	\$ 100,210.67	\$ 81,916.36	\$ 109,501.34
		Bond Fund	\$ 334,489.80	\$ 320,586.04	\$ 307,996.56
		Depreciation Fund	\$ 111,641.37	\$ 150,105.73	\$ 210,451.18
		June Total	\$ 4,793,267.95	\$ 7,203,409.26	\$ 7,026,860.63
	July	General Fund	\$ 2,498,710.51	\$ 4,552,631.98	\$ 4,086,579.84
		Emp. Benefit Fund	\$ 105,640.23	\$ 726,005.68	\$ 496,842.60
		Building Fund	\$ 1,127,831.85	\$ 1,409,747.81	\$ 1,361,511.90
		School Lunch	\$ 96,061.80	\$ 75,876.37	\$ 104,759.25
		Bond Fund	\$ 340,137.23	\$ 325,823.80	\$ 313,223.80
		Depreciation Fund	\$ 111,678.07	\$ 150,135.55	\$ 210,474.24
		July Total	\$ 4,280,059.69	\$ 7,240,221.19	\$ 6,573,391.63

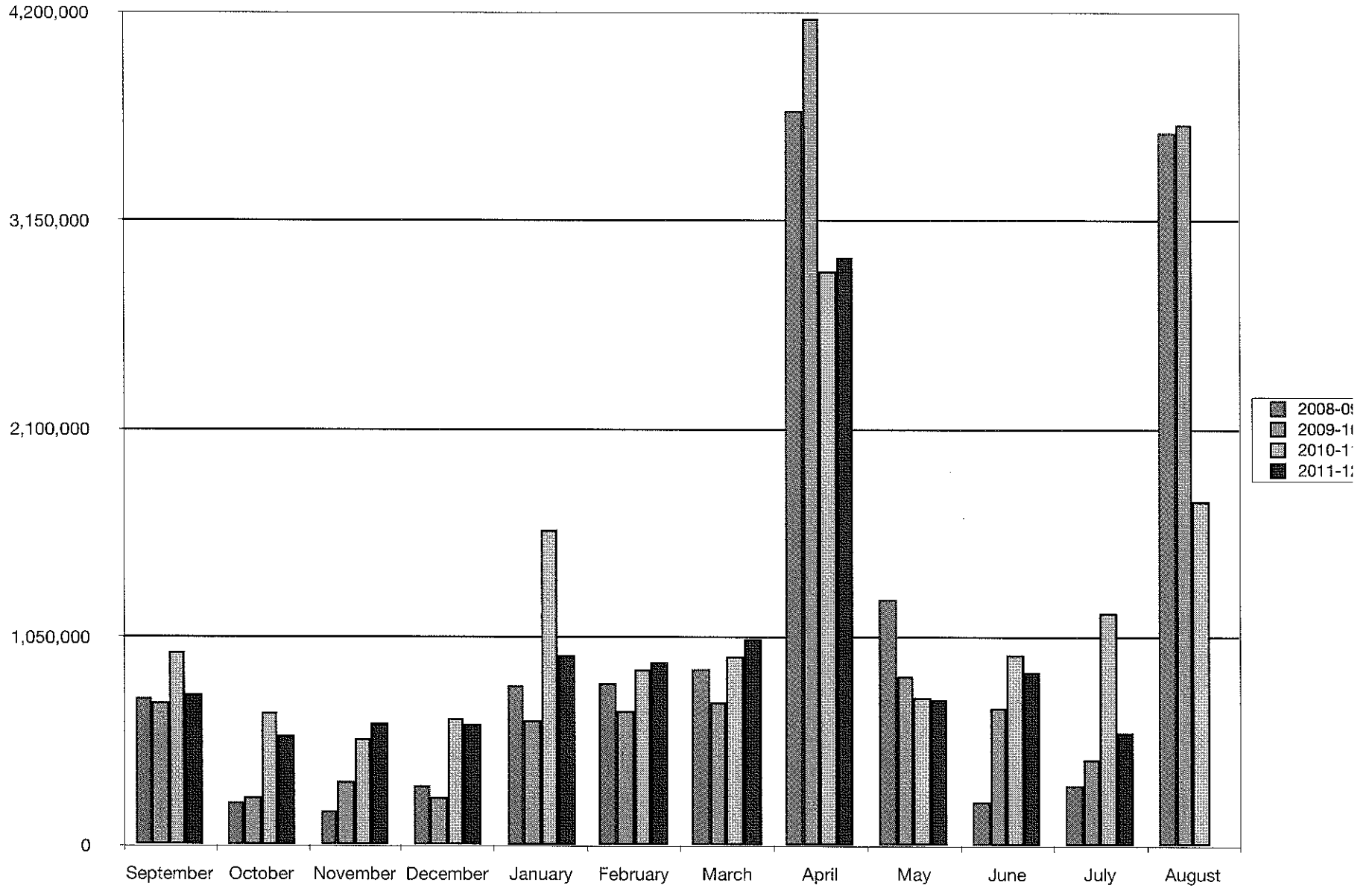
General Fund Balance 2008-2012



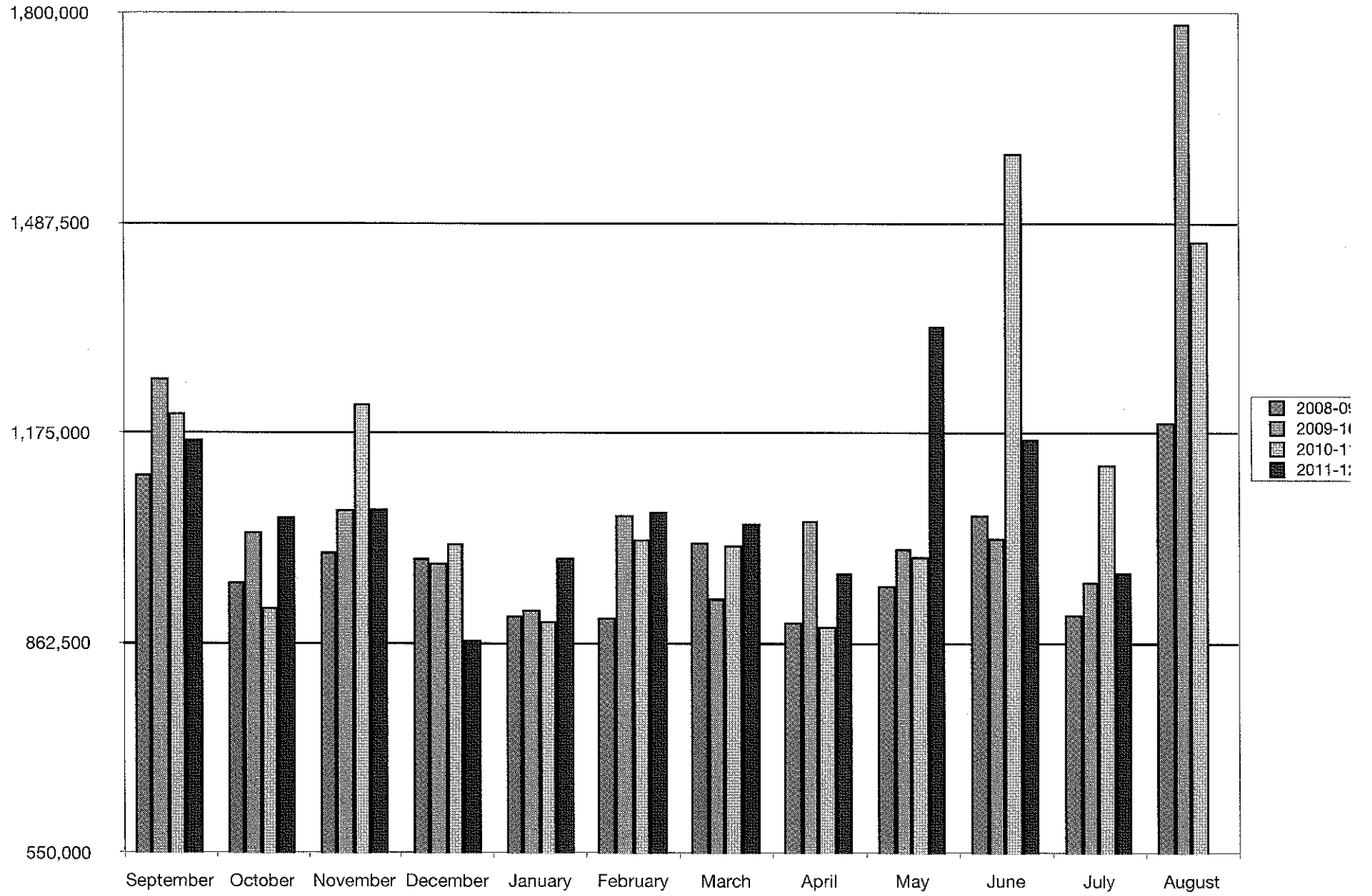
Tax Draw 2008-2012



Total Receipts 2008-2012



Expenses 2008-2012



SPRINGFIELD STATE BANK
600 MAIN ST
SPRINGFIELD, NE 68059
Tel: (402)253-2222

SPRINGFIELD PLATTEVIEW COMM
 STUDENT FEE ACCOUNT
 14801 S 108TH ST
 SPRINGFIELD NE 68059

Statement Date: 07/31/2012 Enclosures: (0)

Account No.: 4151129 Page: 1

REGULAR CHECKING ACCOUNT SUMMARY

Category	Number	Type :	REG	Status :	Active	Amount
Balance Forward From 06/29/12						7.58
Debits						0.00
Ending Balance On 07/31/12						7.58
Average Balance (Collected)						7.58+

AVERAGE AND MINIMUM BALANCES

Average Ledger Balance :	7.58	Minimum Ledger Balance :	7.58
Average Collected Balance :	7.58	Minimum Collected Balance :	7.58
Average Available Balance :	7.58	Minimum Available Balance :	7.58

OVERDRAFT FEE SUMMARY

	This Statement	Year To Date
Total Returned Item Fees	0.00	0.00
Total Overdraft Fees	0.00	0.00

This Statement Cycle Reflects 32 Days

NEW FRIDAY LOBBY SERVICE HOURS EFFECTIVE MAY 4, 2012:
 LOBBY MON-THURS 9AM-4PM FRI 9AM-5PM
 DRIVE-IN MON-THURS 7:30AM-6PM FRI 7:30AM-7PM SAT 9AM-12PM

July 2012 Admin. Revolving:2

6/29/2012 through 7/31/2012

8/7/2012

Page 1

Date	Account	Num	Description	Memo	Category	Clr	Amount
BALANCE 6/28/2012							2,471.44
6/29/2012	Administrative	5137	CHUCK CHE...	1-01-2320-670REIMBR MIL...		R	-332.22
7/2/2012	Administrative	5138	SGT. PEFFERS	1-01-2320-690MEALS		R	-117.00
7/11/2012	Administrative	5139	Dan Craney P...	3-06-2515-000REPAIRS		R	-520.50
7/11/2012	Administrative	TXFR	TRANSFER F...			R	2,066.20
7/18/2012	Administrative	5140	POSTMASTE...	1-01-2510-341POSTAGE		R	-50.30
7/26/2012	Administrative	5141	POSTMASTE...	1-01-2510-341POSTAGE		R	-101.50
7/26/2012	Administrative	5142	KATHY FOUS...	1-21-2120-410REPAIRS			-375.00
6/29/2012 - 7/31/2012							569.68
BALANCE 7/31/2012							3,041.12
TOTAL INFLOWS							2,066.20
TOTAL OUTFLOWS							-1,496.52
NET TOTAL							569.68

Nebraska Public Agency Investment Trust

**PO Box 82529
Lincoln, NE 68501
(800) 640-8817
(402) 323-1615**

Account Activity for July 01, 2012 to July 31, 2012

Participant Name:

SOUTH SARPY SCHOOL DISTRICT #46
14801 S 108TH ST
SPRINGFIELD NE 68059-4925

Account Number: 126649-001

Beginning Balance: \$68,505.45

Date	Description	Authorization	Amount	Balance
7/31/2012	Auto-Post July Interest, Purchase		\$1.73	\$68,507.18

Ending Balance: \$68,507.18



Nebraska Public Agency Investment Trust

**Nebraska Public Agency Investment Trust
Daily Balance and Interest Report for: July 2012**

Name: SOUTH SARPY SCHOOL DISTRICT #46

Account Number: 126649-001

Date	Daily Yield (Annualized)	Balance	Daily Accrual
7/01/2012	0.00027	\$68,505.45	\$0.05
7/02/2012	0.00030	\$68,505.45	\$0.06
7/03/2012	0.00030	\$68,505.45	\$0.06
7/04/2012	0.00030	\$68,505.45	\$0.06
7/05/2012	0.00030	\$68,505.45	\$0.06
7/06/2012	0.00030	\$68,505.45	\$0.06
7/07/2012	0.00030	\$68,505.45	\$0.06
7/08/2012	0.00030	\$68,505.45	\$0.06
7/09/2012	0.00030	\$68,505.45	\$0.06
7/10/2012	0.00030	\$68,505.45	\$0.06
7/11/2012	0.00030	\$68,505.45	\$0.06
7/12/2012	0.00030	\$68,505.45	\$0.06
7/13/2012	0.00030	\$68,505.45	\$0.06
7/14/2012	0.00030	\$68,505.45	\$0.06
7/15/2012	0.00030	\$68,505.45	\$0.06
7/16/2012	0.00030	\$68,505.45	\$0.06
7/17/2012	0.00030	\$68,505.45	\$0.06
7/18/2012	0.00020	\$68,505.45	\$0.04
7/19/2012	0.00020	\$68,505.45	\$0.04
7/20/2012	0.00020	\$68,505.45	\$0.04
7/21/2012	0.00020	\$68,505.45	\$0.04
7/22/2012	0.00020	\$68,505.45	\$0.04
7/23/2012	0.00020	\$68,505.45	\$0.04
7/24/2012	0.00030	\$68,505.45	\$0.06
7/25/2012	0.00030	\$68,505.45	\$0.06
7/26/2012	0.00030	\$68,505.45	\$0.06
7/27/2012	0.00030	\$68,505.45	\$0.06
7/28/2012	0.00030	\$68,505.45	\$0.06
7/29/2012	0.00030	\$68,505.45	\$0.06
7/30/2012	0.00030	\$68,505.45	\$0.06
7/31/2012	0.00030	\$68,505.45	\$0.06

Average Weighted Rate	Average Balance	Total Interest
0.02982 %	\$68,505.45	\$1.73

SOUTH SARPY SCHOOL DISTRICT 46			
Treasurer's Report			
For the month ended July 31, 2012			
General Fund Now Account			
Bank Balance: Beginning of Reporting Period			\$ 155,757.69
Deposits:			
Springfield State Bank - Interest	\$ 19.78		
Transfer From Employee Benefit	\$ 6,230.50		
Transfers from Investment Account	\$ 964,620.44		
Transfer from Bond Fund	\$ 524.00		
Transfers from Lunch Fund Investment	\$ 4,753.87		
Transfers from Building Fund Investment	\$ 59,583.50		
			\$ 1,035,732.09
			\$ 1,191,489.78
Disbursements			\$ 1,035,669.80
Bank Balance: End of Reporting Period			\$ 155,819.98
Outstanding Checks: End of Reporting Period			
NOW Account Balance: End of Reporting Period			\$ 155,819.98
General Fund Investment Account			
Available Balance: Beginning of Reporting Period			\$ 4,319,194.37
Deposits:			
Springfield State Bank - Interest	\$ 453.10		
Sarpy County Treasurer - Local Taxes	\$ 112,817.76		
Learning Community Common Taxes	\$ 446,888.89		
Liquor License	\$ 0.00		
State Aid	\$ 0.00		
Rentals	\$ 2,868.90		
Perkins- ESU #3	\$ 4,660.30		
Summer School	\$ 260.00		
Pre-School Tuition	\$ 0.00		
Refunds and Reimbursements	\$ 2,286.05		
First Management Inc. - LaPlatte	\$ 3,782.01		
			\$ 574,017.01
			\$ 4,893,211.38
Disbursements			
Transfers to General Fund NOW	\$ 964,620.44		
Transfers to Lunch Fund	\$ 0.00		
Administrative Revolving	\$ 2,066.20		
Bank Service Charges	\$ 59.40		
			\$ 966,746.04
Investment Account Balance: End of Reporting Period			\$ 3,926,465.34
General Fund Administrative Revolving Account			
Available Balance: Beginning of Reporting Period			\$ 4,159.62
Deposits:			
Transfers From General Fund Investment Acc't	\$ 2,066.20		
Transfers From Lunch Fund Investment Acc't	\$ 0.00		
			\$ 2,066.20
			\$ 6,225.82
Disbursements			\$ 1,931.30
Admin. Revolving Account Balance: End of Reporting Period			\$ 4,294.52
General Fund Administrative Revolving Account			\$ 4,294.52
General Fund NOW Account			\$ 155,819.98
General Fund Investment Account			\$ 3,926,465.34
TOTAL GENERAL FUND BALANCE			\$ 4,086,579.84
Employee Benefit Fund			
Available Balance: Beginning of Reporting Period			\$ 503,018.40
Deposits:			
Springfield State Bank - Interest			\$ 54.70
Bank Balance: End of Reporting Period			\$ 503,073.10
Certificate of Deposit			
Available Balance: End of Reporting Period			\$ 503,073.10
Disbursements			\$ 6,230.50
TOTAL EMPLOYEE BENEFIT BALANCE			\$ 496,842.60
Special Building Fund Investment Account			
Available Balance: Beginning of Reporting Period			\$ 1,420,941.49
Deposits:			
Springfield State Bank - Interest	\$ 151.43		
Sarpy County Treasurer - Local Taxes	\$ 2.48		
			\$ 153.91
			\$ 1,421,095.40
Disbursements			
Transfer to NOW			\$ 59,583.50
Available Balance: End of Reporting Period			\$ 1,361,511.90
TOTAL SPECIAL BUILDING FUND BALANCE			\$ 1,361,511.90
School Lunch Investment Account			
Available Balance: Beginning of Reporting Period			\$ 109,501.34
Deposits:			
Springfield State Bank - Interest	\$ 11.78		
Hot Lunches	\$ 0.00		
State/Federal Aid	\$ 0.00		
Miscellaneous	\$ 0.00		
			\$ 11.78
			\$ 109,513.12
Disbursements			
Coin Short	\$ 0.00		
Transfers to NOW	\$ 4,753.87		
			\$ 4,753.87
Available Balance: End of Reporting Period			\$ 104,759.25
TOTAL SCHOOL LUNCH FUND BALANCE			\$ 104,759.25
Bond Fund Investment Account			
Available Balance: Beginning of Reporting Period			\$ 307,996.56
Deposits:			
Springfield State Bank - Interest	\$ 34.15		
Sarpy County Treasurer - Local Taxes	\$ 5,717.09		
			\$ 5,751.24
			\$ 313,747.80
Disbursements			
Transfer to NOW			\$ 524.00
Available Balance: End of Reporting Period			\$ 313,223.80
TOTAL BOND FUND BALANCE			\$ 313,223.80
Depreciation Fund Account			
Available Balance: Beginning of Reporting Period			\$ 210,451.18
Deposits:			
Springfield State Bank - Interest	\$ 23.06		
Transfers from General Fund	\$ 0.00		
			\$ 23.06
			\$ 210,474.24
Disbursements			
Transfer to NOW			\$ 0.00
Available Balance: End of Reporting Period			\$ 210,474.24
TOTAL DEPRECIATION FUND BALANCE			\$ 210,474.24

SPRINGFIELD STATE BANK
 600 MAIN ST
 SPRINGFIELD, NE 68059
 Tel: (402)253-2222

SPRINGFIELD PLATTEVIEW COMM
 PLATTEVIEW ACTIVITY FUND
 14801 S 108TH STREET
 SPRINGFIELD NE 68059

Statement Date: 07/31/2012 Enclosures: (36) Account No.: 104812 Page: 1

NOW CHECKING ACCOUNT SUMMARY

Type: REG Status: Active

Category	Number	Amount
Balance Forward From 06/29/12		133,564.69
Deposits	8	6,664.30+
Debits	28	11,796.78
Automatic Withdrawals	1	40.00
Interest Added This Statement		13.94+
Ending Balance On 07/31/12		128,406.15
Annual Percentage Yield Earned	0.13%	
Interest Paid This Year	90.05	
Interest Paid Last Year	121.23	
Average Balance (Collected)	127,205.78+	

STATEMENT PERIOD ACTIVITY

Date	Check/Description	Amount	Check/Description	Amount	Balance
07/02/12	40602	60.00	40603	80.00	133,424.69
07/02/12	40607	146.00	40611	400.00	132,878.69
07/02/12	40612	418.42	40609	593.13	131,867.14
07/02/12	40591	1,980.00			129,887.14
07/03/12	40614	72.90	40511	140.00	129,674.24
07/03/12	40610	141.34	40615	370.61	129,162.29
07/03/12	40604	1,600.00			127,562.29
07/05/12	40608	185.45			127,376.84
07/09/12	DEPOSIT	325.00+	DEPOSIT	1,575.00+	129,276.84
07/09/12	KELLY TOLLIVER CLOSED ACCOUNT 0000001995			40.00	129,236.84
07/09/12	40606	420.00			128,816.84
07/10/12	40572	110.00	40616	300.00	128,406.84
07/11/12	DEPOSIT	562.00+	40613	148.00	128,820.84
07/12/12	40618	250.00			128,570.84
07/13/12	40564	22.57	40623	30.00	128,518.27
07/13/12	40620	128.43	40621	175.00	128,214.84
07/13/12	40617	300.00			127,914.84
07/16/12	40597	1,943.93			125,970.91
07/23/12	40624	90.00			125,880.91
07/25/12	40622	175.00			125,705.91
07/30/12	DEPOSIT	65.00+	DEPOSIT	1,031.00+	126,801.91
07/30/12	DEPOSIT	2,340.00+	40625	1,402.00	127,739.91
07/31/12	DEPOSIT	40.00+	DEPOSIT	726.30+	128,506.21
07/31/12	40557	114.00			128,392.21
07/31/12	INTEREST PAID			13.94+	128,406.15

Continued

01/172/1

Current Cash Balance

Sorted by Site, Group, Activity.
From 07/01/2012 to 07/31/2012.

Site ID	Site Name	Beginning Cash	Receipts	Disbursements	Adjustments	Cash Balance
Group ID	Group Name					
Activity ID	Activity Name					
SouthSa Platteview High School						
A	Athletics					
100	Athletics	51,300.15	325.00	2,035.00	-38,704.50	10,885.65
105	Boys Basketball Contest	-6,585.00	0.00	0.00	6,585.00	0.00
106	Boys Basketball Equip/Supplies	-3,520.00	0.00	0.00	3,520.00	0.00
110	Boys Golf Contest	-1,126.35	0.00	0.00	1,126.35	0.00
111	Boys Golf Equip/Supplies	-586.70	0.00	0.00	586.70	0.00
115	Boys Soccer Contest	-1,100.00	0.00	0.00	1,100.00	0.00
116	Boys Soccer Equip/Supplies	-57.88	0.00	0.00	57.88	0.00
120	Cross Country Contest	-475.96	0.00	0.00	475.96	0.00
121	Cross Country Equip/Supplies	0.00	0.00	0.00	0.00	0.00
125	Football Contest	-194.00	0.00	0.00	194.00	0.00
126	Football Equip/Supplies	-4,347.98	0.00	0.00	4,347.98	0.00
130	Girls Basketball Contest	-6,556.00	0.00	0.00	6,556.00	0.00
131	Girls Basketball Equip/Supplies	-2,966.13	0.00	0.00	2,966.13	0.00
135	Girls Golf Contest	-565.00	0.00	0.00	565.00	0.00
136	Girls Golf Equip/Supplies	-175.00	0.00	0.00	175.00	0.00
140	Girls Soccer Contest	-2,236.73	0.00	0.00	2,236.73	0.00
141	Girls Soccer Equip/Supplies	-47.88	0.00	0.00	47.88	0.00
145	Track Contest	-2,989.26	0.00	0.00	2,989.26	0.00
146	Track Equip/Supplies	-638.79	0.00	0.00	638.79	0.00
150	Volleyball Contest	-193.81	0.00	0.00	193.81	0.00
151	Volleyball Equip/Supplies	0.00	0.00	0.00	0.00	0.00
155	Wrestling Contest	-3,539.90	0.00	0.00	3,539.90	0.00
156	Wrestling Equip/Supplies	-802.13	0.00	0.00	802.13	0.00
	A Totals:	12,595.65	325.00	2,035.00	0.00	10,885.65
B	Clubs & Organizations					
200	Boys Basketball Club	1,161.52	0.00	0.00	0.00	1,161.52
205	Boys Golf Club	53.24	0.00	0.00	0.00	53.24
210	Boys Soccer Club	1,727.87	0.00	0.00	0.00	1,727.87
220	Cheer	16,416.74	0.00	0.00	0.00	16,416.74
230	Concessions	18,984.52	0.00	0.00	0.00	18,984.52
240	Dance Team	3,874.48	2,340.00	2,005.43	0.00	4,209.05
250	FBLA	3,186.03	100.00	0.00	0.00	3,286.03
260	Football Club	4,166.42	595.00	1,989.40	0.00	2,772.02
265	German	0.00	0.00	0.00	0.00	0.00
270	Girls Basketball Club	837.24	1,575.00	850.00	0.00	1,562.24
280	Girls Golf Club	90.00	0.00	0.00	0.00	90.00
290	Girls Letter Club	3,278.20	0.00	0.00	0.00	3,278.20
300	Girls Soccer Club	2,203.00	1,035.00	1,101.75	0.00	2,136.25
310	Lit Mag	116.57	0.00	0.00	0.00	116.57
320	Mock Trial	0.00	0.00	0.00	0.00	0.00
330	National Honor Society	209.92	0.00	0.00	0.00	209.92
340	P Club	1,946.47	0.00	0.00	0.00	1,946.47
350	Skills USA	119.50	30.00	0.00	0.00	149.50

Current Cash Balance

Sorted by Site, Group, Activity.
From 07/01/2012 to 07/31/2012.

Site ID Group ID	Site Name Group Name	Activity ID	Activity Name	Beginning Cash	Receipts	Disbursements	Adjustments	Cash Balance
360	Spanish Club			252.60	0.00	0.00	0.00	252.60
365	Speech Club			0.00	0.00	0.00	0.00	0.00
370	Spirit Club			592.00	70.00	0.00	0.00	662.00
380	Student Council			1,013.44	0.00	0.00	0.00	1,013.44
390	Thespian			0.00	0.00	0.00	0.00	0.00
400	Track Club			1,982.84	0.00	41.94	0.00	1,940.90
410	Volleyball Club			1,999.73	0.00	548.26	0.00	1,451.47
420	Wrestling Club			792.77	0.00	0.00	0.00	792.77
B Totals:				65,005.10	5,745.00	6,536.78	0.00	64,213.32
C	Classes							
500	Art			2,641.71	0.00	0.00	0.00	2,641.71
505	Band			5,430.42	587.00	0.00	0.00	6,017.42
510	Choir			2,834.29	0.00	0.00	0.00	2,834.29
513	Class of 2010			0.00	0.00	0.00	0.00	0.00
514	Class of 2011			0.00	0.00	0.00	0.00	0.00
515	Class of 2012			2,335.21	0.00	1,093.05	0.00	1,242.16
520	Class of 2013			1,052.96	0.00	0.00	0.00	1,052.96
530	Class of 2014			1,616.55	0.00	0.00	0.00	1,616.55
540	Class of 2015			500.15	0.00	0.00	0.00	500.15
550	Construction Tech			52.82	0.00	0.00	0.00	52.82
560	Drama			1,338.89	0.00	0.00	0.00	1,338.89
570	Family Consumer Science			1,054.04	0.00	142.72	0.00	911.32
580	Government			200.02	0.00	0.00	0.00	200.02
590	Industry Tech			909.68	0.00	0.00	0.00	909.68
600	Yearbook			4,743.27	0.00	0.00	0.00	4,743.27
C Totals:				24,710.01	587.00	1,235.77	0.00	24,061.24
M	Miscellaneous							
700	AV - Graduation			0.00	0.00	0.00	0.00	0.00
705	Alumni			1,594.43	0.00	0.00	0.00	1,594.43
710	Capital Improvement			15,000.00	0.00	0.00	0.00	15,000.00
720	Faculty Courtesy Fund			409.98	0.00	0.00	0.00	409.98
730	Fine Arts			1,523.95	0.00	0.00	0.00	1,523.95
735	General Fund			0.00	0.00	0.00	0.00	0.00
740	Guidance			379.80	0.00	0.00	0.00	379.80
750	Library			707.20	2.30	0.00	0.00	709.50
760	Principal			1,292.40	13.94	0.00	0.00	1,306.34
770	Textbook Fines			954.82	5.00	0.00	0.00	959.82
M Totals:				21,862.58	21.24	0.00	0.00	21,883.82
SouthSar Totals:				124,173.34	6,678.24	9,807.55	0.00	121,044.03
Report Totals:				124,173.34	6,678.24	9,807.55	0.00	121,044.03

Bank Statement Reconciliation

Description

Adjustment Date

Adjustment Amount

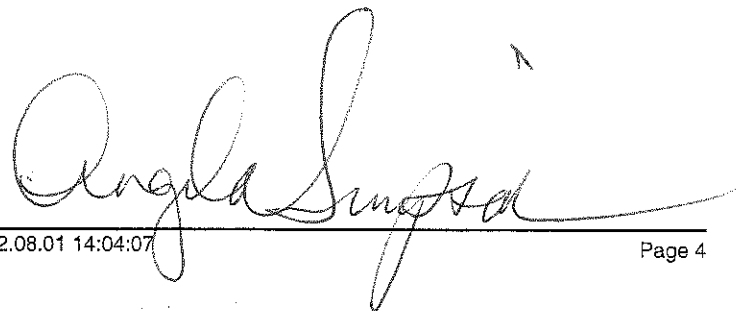
Platteview High School

06/30/2012 through 07/31/2012

Checking

Bank Statement Reconciliation Summary

1. Statement Balance	\$ 128,406.15
2. - Outstanding checks	\$ 7,362.12
3. + Outstanding Deposits	\$ 0.00
4. + Outstanding Adjustments	\$ 0.00
5. Total	\$ 121,044.03
6. + Investments	\$ 0.00
7. Book Balance	\$ 121,044.03



Payee	Account Code	Reason	Amount
Apple Financial Services	1-01-1100-318	IPAD PURCHASE	\$ 95,470.77
Edline LLC	1-01-1100-318	SCHOOLFUSION	\$ 6,300.00
Career Solutions Publishing	1-01-1100-420	Reality Workplace Ethics	\$ 295.00
Career Solutions Publishing	1-01-1100-420	S/H	\$ 14.75
Cengage Learning	1-01-1100-420	TEXTBOOKS	\$ 13,867.70
Cengage Learning	1-01-1100-420	TEXTBOOKS	\$ 1,970.10
Pearson Education Inc.	1-01-1100-420	Instructor Resource CD/DVD with TestGen	\$ 100.97
Pearson Education Inc.	1-01-1100-420	Instructor's Resource Manula	\$ 19.97
Pearson Education Inc.	1-01-1100-420	PER ATTACHED PROPOSAL	\$ 2,548.15
Pearson Education Inc.	1-01-1100-420	PER ATTACHED QUOTE	\$ 4,205.85
Pearson Education Inc.	1-01-1100-420	Printed Test Bank	\$ 19.97
Pearson Education Inc.	1-01-1100-420	Shipping	\$ 82.88
Pearson Education Inc.	1-01-1100-420	AP* ExamVier CD-ROM	\$ 50.97
Pearson Education Inc.	1-01-1100-420	Chemistry: The Central Science 12e AP Student Edition (HS Binding)	\$ 784.85
Pearson Education Inc.	1-01-1100-420	Solutions to Black Exercises	\$ 19.97
School Education Group	1-01-1100-420	TEXTBOOKS	\$ 2,705.66
Softchoice	1-01-1100-460	WEB LICENSE-BUS.,PHOTO.,JOURN.	\$ 10,707.54
Prime Communications, Inc.	1-01-1100-690	FRONT DOOR @ PHS-ADA COMP.	\$ 894.60
Kids On The Move Inc	1-01-1210-318	SPED SERVICE	\$ 1,116.50
Educational Service Unit #3 (SPED)	1-01-1240-318	SPED SERVICE	\$ 2,330.00
NE Council of School Administrators	1-01-1240-630	ADMIN. DAYS	\$ 30.00
Educational Service Unit #3 (ADMIN)	1-01-2130-120	INTERLOCAL SUB	\$ 115.00
Educational Service Unit #3 (ADMIN)	1-01-2130-210	INTERLOCAL SUB	\$ 8.80
Educational Service Unit #3 (ADMIN)	1-01-2130-290	INTERLOCAL SUB	\$ 0.57
Kohl's Pharmacy	1-01-2130-410	SUPPLIES	\$ 90.00
Tiffanie Wright	1-01-2130-670	REIMBR. MILEAGE/CONFERENCE	\$ 216.11
Educational Service #3	1-01-2210-410	SUPPLIES	\$ 5.60
HyVee Food & Drug Store	1-01-2210-410	SUPPLIES	\$ 117.38
Platteview Booster Club	1-01-2210-410	SUPPLIES	\$ 55.00
Father Flanagan's Boys Home (Training)	1-01-2210-630	Registration: Manon Strayer	\$ 375.00
Father Flanagan's Boys Home (Training)	1-01-2210-630	Well Managed Classroom, July 10 & 11 Registration: Brad Schlieman	\$ 375.00
Father Flanagan's Boys Home (Training)	1-01-2210-630	Well Managed Classroom, July 10 & 11 Registration: Christina King	\$ 375.00
Father Flanagan's Boys Home (Training)	1-01-2210-630	Well Managed Classroom, June 4 & 5 Registration: Laura Hilkemann	\$ 375.00
Father Flanagan's Boys Home (Training)	1-01-2210-630	Well Mangaged Classroom, July 10 & 11: Registration Janna Giles	\$ 375.00
Natl Council Teachers Of Math	1-01-2210-630	MEMBERSHIP-KIRWAN	\$ 149.00
NE Council of School Administrators	1-01-2210-630	ADMIN. DAYS	\$ 180.00
Phi Delta Kappa (IN)	1-01-2210-630	MEMBERSHIP-KIRWAN	\$ 95.00
Blum, Glenda	1-01-2210-670	REIMBR. MILEAGE	\$ 56.28
NE Assoc Of School Boards	1-01-2310-630	NEGOTIATION WORKSHOP	\$ 80.00
NE Assoc Of School Boards	1-01-2310-630	NEGOTIATIONS WORKSHOP	\$ 80.00
Patry, Fisher & Dudley, PC	1-01-2320-318	PHS ACTIVITY FUND	\$ 2,500.00
Omaha World Herald	1-01-2320-350	EMPLOYMENT AD	\$ 2,428.49
Richards, Brett	1-01-2320-410	REIMBR. MILEAGE/SUPPLIES	\$ 13.88
NE Assoc Of School Boards	1-01-2320-630	NEGOTIATIONS WORKSHOP	\$ 80.00
NE Council of School Administrators	1-01-2320-630	ADMIN. DAYS	\$ 150.00
Sarpy Co Chamber Of Comm	1-01-2320-630	MEMBERSHIP	\$ 225.00
Bumgardner, Thoma	1-01-2320-670	REIMBR. MILEAGE/MILEAGE	\$ 245.38
Richards, Brett	1-01-2320-670	REIMBR. MILEAGE	\$ 426.24
Richards, Brett	1-01-2320-670	REIMBR. MILEAGE/SUPPLIES	\$ 79.92
Bumgardner, Thoma	1-01-2320-690	REIMBR. MILEAGE/MILEAGE	\$ 21.92
Lukas Partners, Inc.	1-01-2330-318	LOG CREATION	\$ 1,750.00
Lukas Partners, Inc.	1-01-2330-318	LOGO CREATION	\$ 1,755.40
Midwest Office Automations	1-01-2510-318	COPIER LEASE	\$ 2,584.00
Stamp Fulfillment Services	1-01-2510-341	FOREVER STAMP @ PC	\$ 1,025.80
Stamp Fulfillment Services	1-01-2510-341	FOREVER STAMPS	\$ 261.95
CenturyLink	1-01-2510-342	PHONE @ SP	\$ 179.11
MCI	1-01-2510-342	LONG DISTNACE	\$ 84.03
Verizon Wireless	1-01-2510-342	CELL PHONE	\$ 167.35
Windstream	1-01-2510-342	PHONES @ PHS,PC,WM.CO	\$ 1,127.03
Culligan Us Filter	1-01-2510-410	SUPPLIES	\$ 28.00
Educational Service #3	1-01-2510-410	SUPPLIES	\$ 28.19

Payee	Account Code	Reason	Amount
Quill Corp	1-01-2510-410	SUPPLIES	\$ 19.98
Retoner Inc (The)	1-01-2510-410	TONER	\$ 60.95
Molzer, Lori	1-01-2510-670	REIMBR. MILEAGE	\$ 59.93
American Express	1-01-2510-690	CREDIT CARD PAYMENT	\$ 55.00
American Express	1-01-2520-336	CREDIT CARD PAYMENT	\$ 659.30
Buskirk, Richard	1-01-2520-336	OIL CHANGE 2007 VAN	\$ 48.50
Buskirk, Richard	1-01-2520-336	OIL CHANGE 2008 VAN	\$ 48.50
Ahern Fire Protection	1-01-2620-318	ANNUAL INSPECTION	\$ 300.00
Great Plains Pest Services In	1-01-2620-318	PEST ORDER	\$ 150.00
Rosser Lawn Care, Inc.	1-01-2620-318	MOWING @ PHS	\$ 581.25
Rosser Lawn Care, Inc.	1-01-2620-318	MOWING @ SP	\$ 189.00
Rosser Lawn Care, Inc.	1-01-2620-318	MOWING @ WM	\$ 252.00
Siemens Industry, Inc.	1-01-2620-318	HVAC @ SP	\$ 2,740.00
SimplexGrinnell Lp	1-01-2620-318	CLKS @ WM	\$ 241.00
SimplexGrinnell Lp	1-01-2620-318	MASTER CLOCK @ PHS	\$ 509.00
SimplexGrinnell Lp	1-01-2620-318	MASTER CLOCK @ SP	\$ 235.00
Sterrett Bros Sanitation	1-01-2620-318	SANITATION PICK UP	\$ 672.00
Electrical Engineering & Equipment Co	1-01-2620-319	SUPPLIES	\$ 322.50
Gerhad L. Steinhauer	1-01-2620-319	REPAIR 2007 VAN	\$ 154.00
Grainger	1-01-2620-319	SUPPLIES	\$ 2,379.96
Greater Omaha Refrigeration	1-01-2620-319	REPAIR ICE MACHINE @ PHS	\$ 686.69
Greenfield Auto Body	1-01-2620-319	REPAIR 2008 SILVERADO	\$ 1,139.24
Hayes Mechanical, LLC	1-01-2620-319	REPAIR PHS AIR	\$ 2,697.54
Home Depot/GEFCF	1-01-2620-319	SUPPLIES	\$ 401.48
JFS, Inc.	1-01-2620-319	LIFT RENTAL	\$ 581.78
Johnstone Supply Of Omaha	1-01-2620-319	SUPPLIES	\$ 409.82
Krasa, Dan	1-01-2620-319	REPAIR WELL PUMP	\$ 5,389.85
Mark's Plumbing Parts	1-01-2620-319	SUPPLIES	\$ 1,045.08
McKnight, Mary	1-01-2620-319	REIMBR. SUPPLIES	\$ 10.67
Millard Sprinkler	1-01-2620-319	REPAIR SPRINKLER @ PHS	\$ 280.60
Papillion Hardware	1-01-2620-319	SUPPLIES	\$ 109.77
Pioneer Manufacturing Company	1-01-2620-319	SUPPLIES	\$ 756.00
Rainbow Glass And Supply	1-01-2620-319	WINDOW @ SP EAST SIDE	\$ 364.40
Randy Evans	1-01-2620-319	REPAIR DOOR @ SP	\$ 888.00
SimplexGrinnell Lp	1-01-2620-319	MASTER CLOCK @ PC	\$ 85.00
Kids On The Move Inc	1-01-4410-318	SPED SERVICE	\$ 275.50
Arnauskas, Kathy	1-01-6000-410	SUPPLIES	\$ 124.88
Omaha Public Power District	1-02-2610-322	LEVEL PAYMENT	\$ 352.00
Nebraska.Gov	1-02-2760-318	SUBSCRIPTION FEE	\$ 50.00
Omaha Public Power District	1-03-2610-322	LEVEL PAYMENT	\$ 335.10
Educational Service Unit #3 (ADMIN)	1-10-1100-120	INTERLOCAL SUB	\$ 2,415.00
Educational Service Unit #3 (ADMIN)	1-10-1100-210	INTERLOCAL SUB	\$ 184.76
Educational Service Unit #3 (ADMIN)	1-10-1100-290	INTERLOCAL SUB	\$ 11.99
Sarpy County Treasurer's Offi	1-10-1100-313	SRO	\$ 5,361.95
Quill Corp	1-10-1100-410	SUPPLIES	\$ 32.29
Educational Service Unit #3 (ADMIN)	1-10-1290-120	INTERLOCAL SUB	\$ 172.50
Educational Service Unit #3 (ADMIN)	1-10-1290-210	INTERLOCAL SUB	\$ 13.20
Educational Service Unit #3 (ADMIN)	1-10-1290-290	INTERLOCAL SUB	\$ 0.85
Kids On The Move Inc	1-10-1290-318	SPED SERVICE	\$ 174.00
School Datebooks	1-11-1100-410	SUPPLIES	\$ 372.13
AMAZON	1-11-1100-420	SUPPLIES	\$ 153.00
AccuPrint Laser Services Inc	1-11-1100-560	TONER	\$ 62.95
Apple, Inc.	1-11-1100-560	POWER ADAPT	\$ 237.00
Center Trophy Company	1-11-1100-690	SUPPLIES	\$ 39.60
Educational Service Unit #3 (ADMIN)	1-11-1220-120	INTERLOCAL SUB	\$ 230.00
Educational Service Unit #3 (ADMIN)	1-11-1220-210	INTERLOCAL SUB	\$ 17.60
Educational Service Unit #3 (ADMIN)	1-11-1220-290	INTERLOCAL SUB	\$ 1.14
Gumdrop Books	1-11-2220-430	Library books	\$ 332.19
Reed, Wes	1-11-2410-690	REIMBR. SUPPLIES	\$ 62.74
Omaha Public Power District	1-11-2610-322	LEVEL PAYMENT	\$ 3,216.35
City Of Springfield	1-11-2610-323	WATER & SEWER @ SP	\$ 97.80
Egan Supply Company	1-11-2610-410	SUPPLIES	\$ 47.37

Payee	Account Code	Reason	Amount
Gumdrop Books	1-12-2220-430	Library Books	\$ 332.19
NE Council of School Administrators	1-12-2410-630	ADMIN. DAYS	\$ 175.00
Hasty, Melissa	1-12-2410-670	REIMBR. MILEAGE	\$ 335.78
Omaha Public Power District	1-12-2610-322	LEVEL PAYMENT	\$ 3,849.26
S I D #23	1-12-2610-323	WATER & SEWER @ WM	\$ 50.56
Egan Supply Company	1-12-2610-410	SUPPLIES	\$ 47.37
Educational Service Unit #3 (ADMIN)	1-20-1100-120	INTERLOCAL SUB	\$ 3,910.00
Educational Service Unit #3 (ADMIN)	1-20-1100-210	INTERLOCAL SUB	\$ 299.14
Educational Service Unit #3 (ADMIN)	1-20-1100-220	INTERLOCAL SUB	\$ 10.31
Educational Service Unit #3 (ADMIN)	1-20-1100-290	INTERLOCAL SUB	\$ 19.18
Sarpy County Treasurer's Offi	1-20-1100-313	SRO	\$ 5,361.95
Midwest Office Automations	1-20-1100-410	SUPPLIES	\$ 65.00
Vobejda, Mikaela	1-20-1150-410	SUPPLIES	\$ 82.36
Career Solutions, Inc.	1-20-1230-362	SPED SERVICE	\$ 4,042.50
Blair Telephone Co	1-21-1100-318	HOMEWORK HOTLINE	\$ 19.19
Awards Unlimited	1-21-1100-410	SUPPLIES	\$ 960.75
Culligan Us Filter	1-21-1100-690	SUPPLIES	\$ 8.44
Namifiers	1-21-1100-690	NAME BADGES	\$ 147.94
Johnson, Darin	1-21-2410-410	REIMBR. MILEAGE/SUPPLIES	\$ 67.67
NE Council of School Administrators	1-21-2410-630	ADMIN. DAYS	\$ 150.00
Johnson, Darin	1-21-2410-670	REIMBR. MILEAGE/SUPPLIES	\$ 253.08
Egan Supply Company	1-21-2610-410	SUPPLIES	\$ 47.37
ESI Communications Inc	1-22-1100-318	REPAIR @ PHS	\$ 100.00
MakeMusic, Inc	1-22-1100-318	SUBSCRIPTION	\$ 320.00
Schmitt Music Center	1-22-1100-410	REPAIR	\$ 406.00
Schmitt Music Center	1-22-1100-410	SUPPLIES	\$ 141.34
Virco Inc	1-22-1100-530	DESK/CHAIRS @ PHS	\$ 1,763.48
Educational Service Unit #3 (ADMIN)	1-22-1220-120	INTERLOCAL SUB	\$ 1,725.00
Educational Service Unit #3 (ADMIN)	1-22-1220-210	INTERLOCAL SUB	\$ 131.96
Educational Service Unit #3 (ADMIN)	1-22-1220-290	INTERLOCAL SUB	\$ 8.82
AMAZON	1-22-2410-410	SUPPLIES	\$ 114.25
NE Council of School Administrators	1-22-2410-630	ADMIN. DAYS	\$ 300.00
Omaha Public Power District	1-22-2610-322	LEVEL PAYMENT	\$ 13,922.29
Egan Supply Company	1-22-2610-410	SUPPLIES	\$ 94.74
			\$ 239,982.23

Payee	Account Code	Reason	Amount
Kern, Kathy	2-23-6000-410	REIMBR. SUPPLIES	\$ 28.78
			\$ 28.78

Payee	Account Code	Reason	Amount
Construction Containers & Excavating, Inc.	3-06-2515-000	CONTAINER @ PHS	\$ 349.40
Construction Containers & Excavating, Inc.	3-06-2515-000	CONTAINERS @ PHS	\$ 349.40
Craney, Dan Painting	3-06-2515-000	KITCHEN @	\$ 505.00
Craney, Dan Painting	3-06-2515-000	NURSE DOOR @ SP	\$ 115.00
Electronic Sound Inc	3-06-2515-000	GYM SOUND@ SP	\$ 7,590.00
Hayes Mechanical, LLC	3-06-2515-000	HVAC @ SP	\$ 64,060.00
Independent Roofing Co. Inc.	3-06-2515-000	ROOFING @ PHS	\$ 8,642.98
Kirwan Construction, Inc.	3-06-2515-000	RESTROOMS @ SP	\$ 9,470.00
Moore Brothers Construction, Inc.	3-06-2515-000	MULCH @ SP & WM, SHOWER @ PHS	\$ 1,280.00
Moore Brothers Construction, Inc.	3-06-2515-000	PUBLIC SIDE WALK @ SP	\$ 5,688.00
Rainbow Glass And Supply	3-06-2515-000	SP- KINDG. ROOMS	\$ 839.00

Payee	Account Code	Reason	Amount
Rainbow Glass And Supply	3-06-2515-000	SP-RESTROOM	\$ 357.00
Sherwin-Williams Co. (The)	3-06-2515-000	SUPPLIES	\$ 1,863.52
Simpson Supply	3-06-2515-000	SUPPLIES	\$ 502.67
Virco Inc	3-06-2515-000	DESK/CHAIRS @ PHS	\$ 3,415.00
ZIMCO	3-06-2515-000	SUPPLIES	\$ 498.00
			\$ 105,524.97
			\$ 345,535.98

Program	General Description of Fee or Material	\$ Amount of Fee (Anticipated or Maximum) or Specific Material Required
Elementary Schools		
Physical Education classes	Appropriate clothing (non-specialized attire)	Soft Soled/Tennis shoes and socks, running shorts, T-shirt
4th Grade (Music Class)	Recorder	\$10
Elementary Students	Yearbook	The book is optional (Appx. \$20)
Art classes and special projects or events	Appropriate clothing (non-specialized attire)	Old shirt for painting; other clothing which may get paint on it or otherwise be damaged
Music-Optional band courses	Musical instruments	Musical instruments and accessories (reeds, valve oil, drum sticks, lyres, flip folders, slide grease, reed guards, cleaning swabs, mouthpiece brushes, piece brushes, pad savers, ligatures, and a "gig bag", etc.) Limited instruments available for use by any student. Instrument Rental Fee is \$35 for Tier 1 and \$60 for Tier 2 per year for use of school owned instrument.
Music-Optional Honor Choir	Coordinating group attire	Special shirts (Appx. \$8)
Classroom supplies	General supplies, such as writing instruments (pens, pencils, crayons, markers), notebooks, etc.	None-necessary classroom supplies will be made available by the school. Students will be responsible for the replacement cost of damaged or lost supplies. Students are encouraged but not required to bring items from class supply lists.
Field Trips	Transportation and admission costs of field trips.	None-costs of school sponsored, class-related field trips will be paid for by the school. Parents may be encouraged but not required to pay for field trip costs of up to \$10.00 per student for each field trip to defray costs. (With administrative approval, the requested donation may be up to \$100.00 for over night field trips. Currently, 6th grade Outdoor Education is \$50.). Meals on field trips will be at the expense of the student. School lunches will be provided as needed for free-reduced lunch eligible students.
Picture Packets	Optional - Pictures are still taken for use in school yearbook.	Students purchase packets as desired and pay directly to photo company.
Summer school courses	Classes offered during the summer, or at night, if any	None for Guided Reading/Library use. \$35 to \$200 per class for electives; None - Free-reduced lunch students
Copies	Use of school copiers (except for one copy of the student file, which will be provided without charge).	Ten cents (.10) per page when charges apply.
School Meals		Lunch--\$2.30; Milk - \$0.55; Prices are maximums based on one meal per day, and will vary depending on the number of meals or items purchased by the student, and may be adjusted during the year.
Program		
General Description of Fee or Material		
\$ Amount of Fee (Anticipated or Maximum) or Specific Material Required		
Secondary Program		
Physical Education classes	Appropriate clothing (non-specialized attire)	Soft Soled/Tennis shoes and socks, running shorts, T-shirt
Art Fees	Fee for materials	Advanced Art, Commercial Design, Painting - \$20 Semester; Drawing - \$8 Semester; Independent Art - \$10 Semester; Three Dimensional Art - \$25
Art and shop classes and special projects, science classes	Appropriate clothing (non-specialized attire) Goggles-1 pair provided per year. If lost or damaged, students are required to purchase a new pair.	Old shirt for painting; other clothing which may get paint on it or otherwise be damaged, protective clothing for shop classes; approved protective goggles for science classes.
Music-Optional band courses	Musical instruments	Musical instruments and accessories (reeds, valve oil, etc.) Limited instruments available for use by any student. Instrument Rental Fee is \$35 for Tier 1 and \$60 for Tier 2 per year for use of school owned instrument.
Classroom Supplies	General supplies, such as writing instruments (pens, pencils, crayons, markers), notebooks, etc.	Necessary classroom supplies will be made available by the school. Students will be responsible for the replacement cost of damaged or lost supplies. Students are encouraged but not required to bring items from class supply lists which may be handed out by the office or individual teachers.
Classroom Projects, i.e., Industrial Technology, Family and Consumer Science	Project Cost (Which may be a fee charged)	Student pays cost that is beyond the standard project provided by the school.
Advanced math or science classes	Specialized calculators	Some calculators will be available at school. If lost or damaged, a replacement fee will be assessed at a rate paid by the school. Students are encouraged but not required to purchase such equipment for their personal use.
Copies	Use of school copiers (except for one copy of the student file, which will be provided without charge).	Ten cents (.10) per page when charges apply.
School Meals		Lunch--\$2.55; Milk - \$0.55; Prices are maximums based on one meal per day, and will vary depending on the number of meals or items purchased by the student, and may be adjusted during the year.
Post-secondary education classes	Tuition and fees for college courses taken for credit.	Postsecondary education costs are a maximum of \$400 per class.
End of year lost or damaged books	Damage fee or replacement cost	Fees and fines up to \$6.00 for damaged books. Lost books or ruined books are charged replacement cost, generally at a maximum of \$70.
Yearbooks - Optional	School Book	Yearbooks are published and made available for purchase every year. Cost is generally about \$70.
College entrance tests and preparation	Prep programs & tests	Costs of college entrance tests or prep courses, such as ACT preparation tutoring, PSAT test, and ACT test, are optional and to be paid directly to the private companies involved.
Summer school courses	Classes offered during the summer, or at night, if any	Drivers education class: \$330; other classes \$50 to \$200 per class; none for free-reduced lunch students
Locker usage	Use of school padlock	\$5.00 fee if damaged or not returned at the end of the year.
Industrial Technology	Fees for general materials	Manufacturing Technology - \$120 Year; Production Systems - \$65; Technology Systems - \$15
Family and Consumer Science	Fees for general materials	Nutrition and Foods, Advanced Nutrition and Foods - \$10; Culinary Arts - \$15
Business Classes	Workbooks	\$25
Music Theory	Fees for general materials	\$25
Photography	Fees for general materials	No more than \$50 per year.
Marching Band and Musical Groups	Equipment and attire.	Students will be responsible for supplying their own musical instruments and accessories and for their own uniforms. Instrument Rental Fee is \$35 for Tier 1 and \$60 for Tier 2 per year for use of school owned instruments. Uniforms for the marching band will be supplied by the school. For High School Band students, a \$25 uniform cleaning fee is required. For High School Vocal students, a \$15 choir robe cleaning fee is required.
iPad Use	Fee for self-insurance program for iPads.	\$35 per year; max \$100 per family per year.
Extracurricular and other programs		
General Description of Fee or Material		
\$ Amount of Fee (Anticipated or Maximum) or Specific Material Required		
Athletic Programs		
Admission	Spectator fees for admission to events	\$5.00 per event maximum. Students may purchase an Activity Pass for \$40.00 per year. Family passes \$190.00 per year. For District and Conference events hosted by the School, cost to be set by NSAA but not to exceed \$20.00 per event.
Athletic Physicals	NSAA required athletic physicals	Cost varies; payable directly to student's physician or clinic.
Equipment and Attire	Students are responsible for required equipment and attire appropriate to the sport or activity which are not provided by the school, and are responsible for any optional clothing, equipment, or other items associated with the sport or activity. Uniform items are checked out to students. If lost or damaged, students will be assessed fees in the amount of replacement cost.	Required items include athletic undergarments (supporter, bra, socks, and undershirts), practice attire, including shorts, shirts, socks and shoes suitable for the activity, and dress attire suitable for team travel. Optional items for which students are responsible include: personal athletic bags, hair ties, sweat bands, non-required gloves, swim goggles, towels, forearm pads and personal medical devices (braces, orthopedic inserts, etc.) Additional required items for particular sports or activities include: Basketball -- No additional, Football -- Mouthpiece, Golf -- Golf bag and clubs, Speech -- Dress attire; copies of research; Track -- No additional, Volleyball -- Volleyball knee pads, Wrestling -- No additional, Cheerleading and Flag Team Squads -- Shoes, approved uniforms (top & skirt; jacket), poms and other accessories
Travel meals	Meals	Students are responsible for their own meals while traveling.
Locker use	Padlock for locker	\$5.00 fee if damaged or not returned at the end of the year.
Camps and Clinics	Registration and other costs of camps or clinics	Students are responsible for the cost of all clinics, camps, and conditioning programs. Any personal items purchased at camps or clinics, such as t-shirts, shall be at the student's expense.
Athletic Clubs	Letterman's club and other clubs supporting the athletic program	Annual dues not to exceed \$50.00 per club.
Music Optional Show Choir	Coordinating group attire	Students will pay for outfits selected by the group. Cost will be based on selection at a maximum of \$200.
Clubs/Organizations		
SkillsUSA	State & national dues, meals and activities	Annual dues not to exceed \$30.00 per club.
FBLA	State & national dues, meals and activities	Annual dues not to exceed \$20.00 per club.
National Honor Society	State & national dues, meals and activities	Currently no dues required. Annual dues not to exceed \$20.00 per club.
Student Council	State & national dues, meals and activities	Currently no dues required. Annual dues not to exceed \$20.00 per club.
Destination Imagination	State & national dues, meals and activities	Annual dues not to exceed \$30.00 per club.
Social & Recognition Activities		
School plays, musicals and social activities	Admission to events	\$3.00 per play or activity
School dances	Admission to prom, home-coming, etc.	Up to \$40.00 per event
Class dues		Each of the six secondary classes may assess its members an amount not to exceed \$60.00 annually for rental and decoration of dance facilities, punch and snacks at social activities, memorials and recognition plaques, flowers, and cards, and similar class activities. The payment of such an assessment shall be strictly voluntary, but students who do not pay may be denied admission to extracurricular activities supported by the class dues.
Picture Packets	Optional - Pictures are still taken for use in school yearbook.	Students purchase packets as desired and pay directly to photo company.
Senior recognition assessment	Optional graduation activities	Participation in part activities attendant to graduation (such as being part of the composite picture, special yearbook pages, etc.) is not required in order for students to receive their high school diploma. Students who choose to participate will be required to pay the cost of the items involved in the graduation ceremony and attendant class activities. This may include the rental of graduation robes (\$35), caps, tassels, class flowers, one mother's flower, class gift, yearbook picture page, and class composite picture. A single Senior Class Recognition Assessment, not to exceed \$50, will be assessed to those Seniors who elect to participate in such activities. Expenses for above mentioned items will be paid out of the "Class Activity" account until funds are depleted. After this fund is empty, students will be responsible for all optional graduation activity costs.
Trips	Transportation, lodging, meals, admission to events, etc.	For the extracurricular and options trip - students will be assessed a fee no more than \$20 and will be responsible for meals. Students are responsible for costs of school sponsored trips where the trip is an extracurricular activity. The maximum costs of such trips will be \$2,000 per student. If the trip is not school sponsored, the costs of the trip are not subject to this policy and no fee waivers will apply. A trip is not school sponsored: it is not supervised or administered by the school, attendance on the trip does not count toward graduation credit or grade advancement, and participation on the trip is voluntary for students.

**Springfield Platteview Community Schools
Board of Education
Future Planning
July 9, 2012**

1. 8/14/12 Open Houses at Springfield and Westmont
2. 8/15/12 Travis Allen- Technology Parent Presentation 6:30 PM; iPad deployment for high school and junior high students
3. 8/16/12 First Day of School
4. 8/27/12 Board Work Session 7 PM; 2012-13 Budget Hearing 7:15 PM
5. 9/10/12 Site Committee (6 PM); Finance Committee (6:30 PM); Regular Board Meeting 7 PM
6. 9/24/12 Board Work Session 7 PM