

# Notice of Regular Meeting

## The Board of Trustees Celina Independent School District

---

A Regular Meeting of the Board of Trustees of Celina Independent School District will be held Monday, April 16, 2012, beginning at 6:15 PM in the Celina ISD Administration Office, 205 S Colorado Dr, Celina, TX 75009.

The subjects to be discussed or considered or upon which any formal action may be taken are listed below. Items do not have to be taken in the same order as shown on this meeting notice. Unless removed from the consent agenda, items identified within the consent agenda will be acted on at one time.

1. CALL TO ORDER DINNER/DISCUSSION (6:15 p.m. - Room 4)
  - 1.A. Discuss Agenda Items
    - 1.A.1. Budget Committee
    - 1.A.2. Appreciation Dinner
    - 1.A.3. Early Resignations
2. CALL TO ORDER & ESTABLISH QUORUM (Board Room)
  - 2.A. Pledge of Allegiance
  - 2.B. Invocation
3. OPEN FORUM
  - 3.A. Comments from Visitors Who Wish to Address Board Members on Agenda or Non-Agenda Topics
4. CONSENT/CONFIRMATION AGENDA ITEMS
  - 4.A. Minutes of the March 26, 2012 Board Meeting
  - 4.B. Monthly Cash Distributions/Cash Balance/Investment Report
  - 4.C. Budget Amendments
5. INFORMATION/CONFIRMATION AGENDA ITEMS
  - 5.A. GPA/Class Rank Policy
  - 5.B. Dual Credit Courses at the High School
  - 5.C. Spring Superintendent Awards
  - 5.D. Schedule Meeting with the City of Celina on Celina Forum, Phase 2
6. ACTION/BRIEFING ITEMS
  - 6.A. Consideration and Possible Action to Name Donny O'Dell as the Sole Finalist for the Position of Superintendent for the Celina Independent School District.
  - 6.B. Discussion and Action to Co-Op DAEP with Anna ISD
  - 6.C. Approve the Concussion Management Team as Presented
  - 6.D. Instructional Materials Allotment
  - 6.E. TEKS Certification
  - 6.F. Approve Change in First Grade Report Card
  - 6.G. Approval of the Music Production I & II
  - 6.H. Consider Granting Easement to Marilee Water District to Move Water Line at Hwy 289 and County Road 105
7. **CLOSED MEETING - Pursuant to Texas Government Code, Chapter 551, including, but not limited to Section 551.074 - Personnel, to deliberate regarding the appointment, employment, evaluation, reassignment, duties, discipline, or dismissal of a public officer or employee, or to hear a complaint or charge against an officer or employee, specifically to include deliberation**

**regarding an interim and/or full-time Superintendent, process for the search, and Board responsibilities related to the search. Pursuant to Texas Government Code Section 551-071, to consult with the District's attorney regarding pending or contemplated litigation or on a matter in which the duty of the attorney to the District under the Texas Disciplinary Rules of Professional Conduct of the State Board of Texas clearly conflicts with Chapter 551 of the Texas Government Code, regarding legal advice concerning an Interim Superintendent and selection of new full-time Superintendent and related issues.**

- 7.A. Personnel
  - 7.A.1. District Administrative Benefits
- 7.B. Superintendent Search
- 8. RECONVENE - Open meeting to vote on matters considered in closed session in accordance with the Texas Open Meetings Act, Texas Government Code, Chapter 551, to take action necessary regarding personnel.
  - 8.A. Personnel
  - 8.B. Superintendent Search
- 9. ADJOURNMENT

---

If, during the course of the meeting, discussion of any items on the agenda should be held in a closed meeting, the board will conduct a closed meeting in accordance with the Texas Open Meetings Act, Government Code, Chapter 551, Subchapters D and E or Texas Government Code section 418.183(f). Before any closed meeting is convened, the preside officer will publicly identify the section or sections of the Act authorizing the closed meeting. All final votes, actions, or decisions will be taken in open meeting. [See BEC(LEGAL)]

April 12, 2012 at 3:00 PM

---

For the Board of Trustees

**REGULAR BOARD MEETING**

**MARCH 26, 2012**

The Celina independent School District’s Board of Trustees met in regular session on Monday, March 26, 2012 at the Celina Independent School District Administration Offices at 205 S Colorado in Room 4 and the Board Room.

**DINNER/DISCUSSION**

The dinner discussion was called to order at 6:15 p.m. Members present included Choc Christopher, Jeff Gravley, Chuck Hansen, Lance Haynes, Kelly Juergens, Tim Looper and Pam Peters. Staff members and guests present included Donny O’Dell, Lizzy Kloiber, Colette Pledger, Lana Brooks and Penny Rathbun of the Celina Board.

Dinner Discussion:

- A. Agenda Item Topics

At 6:59 p.m. Board President Choc Christopher called the regular meeting of the Celina Independent School District’s Board of Trustees to order in the Board Room of the CISD Administration Offices. Jeff Gravley led the pledge and Chuck Hansen gave the invocation.

**MEMBERS PRESENT:** Choc Christopher, Jeff Gravley, Chuck Hansen, Lance Haynes, Tim Looper, Kelly Juergens, and Pam Peters.

**MEMBERS ABSENT:** None

**SCHOOL OFFICIALS & VISITORS PRESENT:** Donny O’Dell, Lizzy Kloiber, Colette Pledger, Starla Martin, Starly Wells, Janice Calvert, Rick Masters, Lana Brooks and Penny Rathbun of the Celina Board.

**OPEN FORUM:** One addressed the Board regarding agenda items.

**CONSENT/CONFIRMATION ON AGENDA ITEMS:**

Tim Looper moved and Kelly Juergens seconded the motion to approve the following consent agenda items as presented:

- Minutes of the June 27, 2011 meeting
- Monthly Cash Distributions/Cash Balance/Investment Report
- Budget Amendments

Motion Carried 7-0.

**ACTION/BRIEFING ITEMS:**

Pam Peters moved and Jeff Gravley seconded the motion to authorize the posting of the notice to fill the vacant position of the Superintendent of Schools. Motion Carried 7-0.

Pam Peters moved and Chuck Hansen seconded the motion to approve the policy regarding 8<sup>th</sup> grade students taking both the STAAR Math and EOC Algebra 1 State Assessment. Motion Carried 7-0.

Kelly Juergens moved and Pam Peters seconded the motion to approve Medina ISD waiving the requirements to count the EOC exams as 15% of the student's final grade for the 2011-2012 school year. Motion Carried 7-0.

Tim Looper moved and Jeff Gravley seconded the motion to accept and approve the 2012-2013 school calendar as presented. Motion Carried 7-0.

Chuck Hansen moved and Pam Peters seconded the motion to approve Update 93 as submitted. Motion Carried 7-0.

Tim Looper moved and Jeff Gravley seconded the motion to approve the resolution of Grayson Central Appraisal District's request to purchase real estate and make improvements if necessary. Motion Carried 7-0.

Kelly Juergens moved and Pam Peters seconded the motion to approve the resolution concerning High Stakes, Standardized Testing of Texas Public School Students. Motion Carried 7-0.

*At 7:01p.m. Choc Christopher recessed the open session and convened the Board in closed session pursuant to Texas Government Code Section 551-074, Personnel, to deliberate regarding appointment, employment, evaluation, reassignment, duties, discipline or dismissal of a public officer or employee, or to hear a complaint or charge against a public officer or employee, specifically to include deliberation regarding an interim and full-time superintendent, process for the search, and Board responsibilities related to the search.*

*Pursuant to Texas Government Code Section 551-071, to consult with the District's attorney regarding pending or contemplated litigation or on a matter in which the duty of the attorney to the District under the Texas Disciplinary Rules of Professional Conduct of the State Bar of Texas clearly conflicts with Chapter 551 of the Texas Government Code, regarding legal advice concerning an interim Superintendent and selection of new full-time Superintendent and related issues.*

*At 7:25 p.m. Choc Christopher recessed the closed session and reconvened the Board in open session.*

**ACTION TAKEN ON ITEMS DISCUSSED IN CLOSED SESSION:**

Chuck Hansen moved and Kelly Juergens moved to approve the Elementary teacher contracts. Motion Carried 7-0.

Kelly Juergens moved and Jeff Gravley seconded the motion to approve the Intermediate teacher contracts. Motion Carried 6-0 with Chuck Hansen abstaining.

Pam Peters moved and Kelly Juergens moved to approve the Middle School teacher contracts. Motion Carried 7-0.

Jeff Gravley moved and Tim Looper seconded the motion to approve High School teacher contracts. Motion Carried 6-0 with Choc Christopher abstaining.

**ADJOURNMENT:**

Chuck Hansen moved and Tim Looper seconded the motion to adjourn the meeting. The motion carried 7-0.

The meeting adjourned at 8:26 p.m.

---

Choc Christopher, President

---

Kelly Juergens, Secretary

**DRAFT**

	Estimated Revenue (Budget)	Revenue Realized Current	Revenue Realized To Date	Revenue Balance	Percent Realized
5000 - RECEIPTS					
5700 - REVENUE-LOCAL & INTERMED					
5740 - LOCAL REVENUE	13,794.25	-400.00	-13,321.71	472.54	96.57%
5750 - ENTERPRISING ACTIVITIES	93,000.00	-5,473.00	-114,886.87	-21,886.87	123.53%
<b>Total REVENUE-LOCAL &amp; INTERMED</b>	<b>106,794.25</b>	<b>-5,873.00</b>	<b>-128,208.58</b>	<b>-21,414.33</b>	<b>120.05%</b>
5800 - STATE PROGRAM REVENUES					
5830 - STATE REVENUES FROM STATE AGEN	353.69	.00	-353.69	.00	100.00%
<b>Total STATE PROGRAM REVENUES</b>	<b>353.69</b>	<b>.00</b>	<b>-353.69</b>	<b>.00</b>	<b>100.00%</b>
<b>Total Revenue Local-State-Federal</b>	<b>107,147.94</b>	<b>-5,873.00</b>	<b>-128,562.27</b>	<b>-21,414.33</b>	<b>119.99%</b>

	<u>Budget</u>	<u>Encumbrance YTD</u>	<u>Expenditure YTD</u>	<u>Current Expenditure</u>	<u>Balance</u>	<u>Percent Expended</u>
6000 - EXPENDITURES						
36 - EXTRACURRICULAR ACTIVITIES						
6100 - PAYROLL COSTS	-6,813.78	.00	6,813.78	.00	.00	100.00%
6200 - CONTRACTED SERVICES	-41,441.88	15,585.25	23,433.44	1,688.22	-2,423.19	56.55%
6300 - SUPPLIES & MATERIALS	-84,920.38	26,608.53	40,637.91	12,636.22	-17,673.94	47.85%
6400 - OTHER OPERATING EXPENSES	-67,850.00	.00	57,670.75	8,438.29	-10,179.25	85.00%
6600 - CPTL OUTLY LAND BLDG & EQUIP	-8,556.87	.00	6,195.60	.00	-2,361.27	72.40%
<b>Total Function36 EXTRACURRICULAR</b>	<b>-209,582.91</b>	<b>42,193.78</b>	<b>134,751.48</b>	<b>22,762.73</b>	<b>-32,637.65</b>	<b>64.30%</b>
52 - SECURITY & MONITORING						
6200 - CONTRACTED SERVICES	-13,760.03	.00	11,729.04	514.08	-2,030.99	85.24%
<b>Total Function52 SECURITY &amp; MONITORING</b>	<b>-13,760.03</b>	<b>.00</b>	<b>11,729.04</b>	<b>514.08</b>	<b>-2,030.99</b>	<b>85.24%</b>
<b>Total Expenditures</b>	<b>-223,342.94</b>	<b>42,193.78</b>	<b>146,480.52</b>	<b>23,276.81</b>	<b>-34,668.64</b>	<b>65.59%</b>

Comparison of Revenue to Budget

Celina ISD

As of March

Fund 191 / 2 M & O FUND BALANCE - HUBBARD

	Estimated Revenue (Budget)	Revenue Realized Current	Revenue Realized To Date	Revenue Balance	Percent Realized
5000 - RECEIPTS					
5700 - REVENUE-LOCAL & INTERMED					
5740 - LOCAL REVENUE	100,017.00	-106.41	-100,664.76	-647.76	100.65%
<b>Total REVENUE-LOCAL &amp; INTERMED</b>	<b>100,017.00</b>	<b>-106.41</b>	<b>-100,664.76</b>	<b>-647.76</b>	<b>100.65%</b>
<b>Total Revenue Local-State-Federal</b>	<b>100,017.00</b>	<b>-106.41</b>	<b>-100,664.76</b>	<b>-647.76</b>	<b>100.65%</b>

	<u>Budget</u>	<u>Encumbrance YTD</u>	<u>Expenditure YTD</u>	<u>Current Expenditure</u>	<u>Balance</u>	<u>Percent Expended</u>
8000 - TRANSFERS OUT						
00 - MISCELLANEOUS						
8900 - FLOW THROUGH	-102,500.00	.00	102,500.00	.00	.00	100.00%
<b>Total Function00 MISCELLANEOUS</b>	<b>-102,500.00</b>	<b>.00</b>	<b>102,500.00</b>	<b>.00</b>	<b>.00</b>	<b>100.00%</b>
<b>Total Expenditures</b>	<b>-102,500.00</b>	<b>.00</b>	<b>102,500.00</b>	<b>.00</b>	<b>.00</b>	<b>100.00%</b>

	Estimated Revenue (Budget)	Revenue Realized Current	Revenue Realized To Date	Revenue Balance	Percent Realized
5000 - RECEIPTS					
5700 - REVENUE-LOCAL & INTERMED					
5710 - LOCAL REAL-PROPERTY TAXES	7,110,274.00	-185,556.18	-7,070,255.17	40,018.83	99.44%
5730 - TUITION & FEES	15,000.00	-580.00	-10,250.00	4,750.00	68.33%
5740 - LOCAL REVENUE	129,810.44	-18,472.68	-185,447.09	-55,636.65	142.86%
<b>Total REVENUE-LOCAL &amp; INTERMED</b>	<b>7,255,084.44</b>	<b>-204,608.86</b>	<b>-7,265,952.26</b>	<b>-10,867.82</b>	<b>100.15%</b>
5800 - STATE PROGRAM REVENUES					
5810 - PER CAPITA-FOUNDATION REV	6,346,738.00	-97,010.00	-3,977,219.00	2,369,519.00	62.67%
5830 - STATE REVENUES FROM STATE AGEN	647,345.05	-47,320.54	-438,601.52	208,743.53	67.75%
<b>Total STATE PROGRAM REVENUES</b>	<b>6,994,083.05</b>	<b>-144,330.54</b>	<b>-4,415,820.52</b>	<b>2,578,262.53</b>	<b>63.14%</b>
5900 - FEDERAL PROGRAM REVENUES					
5930 - VOC ED NON FOUNDATION	.00	-32,447.25	-32,447.25	-32,447.25	.00%
5940 - OBJECT GROUP DESCRIPTION	25,000.00	.00	-19,356.48	5,643.52	77.43%
<b>Total FEDERAL PROGRAM REVENUES</b>	<b>25,000.00</b>	<b>-32,447.25</b>	<b>-51,803.73</b>	<b>-26,803.73</b>	<b>207.21%</b>
7000 - OBJECT GROUP DESCRIPTION					
7900 - FLOW THROUGH					
7910 - FLOW THROUGH IN	102,500.00	.00	-102,500.00	.00	100.00%
<b>Total FLOW THROUGH</b>	<b>102,500.00</b>	<b>.00</b>	<b>-102,500.00</b>	<b>.00</b>	<b>100.00%</b>
<b>Total Revenue Local-State-Federal</b>	<b>14,376,667.49</b>	<b>-381,386.65</b>	<b>-11,836,076.51</b>	<b>2,540,590.98</b>	<b>82.33%</b>

## Fund 199 / 2 GENERAL OPERATING

As of March

	<u>Budget</u>	<u>Encumbrance YTD</u>	<u>Expenditure YTD</u>	<u>Current Expenditure</u>	<u>Balance</u>	<u>Percent Expended</u>
6000 - EXPENDITURES						
11 - INSTRUCTION						
6100 - PAYROLL COSTS	-7,593,337.22	.00	5,741,078.62	658,510.99	-1,852,258.60	75.61%
6200 - CONTRACTED SERVICES	-100,299.00	5,795.05	71,918.98	10,067.94	-22,584.97	71.70%
6300 - SUPPLIES & MATERIALS	-204,348.00	25,501.98	148,453.98	16,302.40	-30,392.04	72.65%
6400 - OTHER OPERATING EXPENSES	-27,192.00	2,677.99	18,218.07	3,602.27	-6,295.94	67.00%
6600 - CPTL OUTLY LAND BLDG & EQUIP	-9,055.00	5,540.01	1,371.77	140.99	-2,143.22	15.15%
<b>Total Function11 INSTRUCTION</b>	<b>-7,934,231.22</b>	<b>39,515.03</b>	<b>5,981,041.42</b>	<b>688,624.59</b>	<b>-1,913,674.77</b>	<b>75.38%</b>
12 - INSTR. RESOURCES & MEDIA SERV.						
6100 - PAYROLL COSTS	-148,572.31	.00	111,196.40	12,648.60	-37,375.91	74.84%
6200 - CONTRACTED SERVICES	-6,560.00	.00	2,427.46	10.00	-4,132.54	37.00%
6300 - SUPPLIES & MATERIALS	-6,835.00	1,829.63	3,750.21	500.62	-1,255.16	54.87%
6400 - OTHER OPERATING EXPENSES	-8,279.00	186.74	7,453.55	119.90	-638.71	90.03%
6600 - CPTL OUTLY LAND BLDG & EQUIP	-17,436.00	9,299.27	6,099.48	916.75	-2,037.25	34.98%
<b>Total Function12 INSTR. RESOURCES &amp; MEDIA</b>	<b>-187,682.31</b>	<b>11,315.64</b>	<b>130,927.10</b>	<b>14,195.87</b>	<b>-45,439.57</b>	<b>69.76%</b>
13 - CURRICULUM & STAFF DEVELOPMENT						
6100 - PAYROLL COSTS	-199,919.88	.00	127,972.00	14,007.31	-71,947.88	64.01%
6300 - SUPPLIES & MATERIALS	-11,900.00	633.13	10,488.46	2,094.88	-778.41	88.14%
6400 - OTHER OPERATING EXPENSES	-4,300.00	.00	3,594.18	420.00	-705.82	83.59%
<b>Total Function13 CURRICULUM &amp; STAFF</b>	<b>-216,119.88</b>	<b>633.13</b>	<b>142,054.64</b>	<b>16,522.19</b>	<b>-73,432.11</b>	<b>65.73%</b>
21 - INSTRUCTIONAL LEADERSHIP						
6100 - PAYROLL COSTS	-27,147.90	.00	20,338.44	2,255.98	-6,809.46	74.92%
<b>Total Function21 INSTRUCTIONAL</b>	<b>-27,147.90</b>	<b>.00</b>	<b>20,338.44</b>	<b>2,255.98</b>	<b>-6,809.46</b>	<b>74.92%</b>
23 - SCHOOL ADMINISTRATION						
6100 - PAYROLL COSTS	-916,546.37	.00	734,402.40	77,607.08	-182,143.97	80.13%
6200 - CONTRACTED SERVICES	-1,213.00	.00	442.00	.00	-771.00	36.44%
6300 - SUPPLIES & MATERIALS	-5,725.00	783.96	2,941.54	509.66	-1,999.50	51.38%
6400 - OTHER OPERATING EXPENSES	-7,064.00	924.63	3,981.26	698.58	-2,158.11	56.36%
6600 - CPTL OUTLY LAND BLDG & EQUIP	-1,873.00	400.00	1,193.32	1,044.32	-279.68	63.71%
<b>Total Function23 SCHOOL ADMINISTRATION</b>	<b>-932,421.37</b>	<b>2,108.59</b>	<b>742,960.52</b>	<b>79,859.64</b>	<b>-187,352.26</b>	<b>79.68%</b>
31 - GUIDANCE AND COUNSELING SVS						
6100 - PAYROLL COSTS	-258,129.43	.00	196,052.55	21,875.13	-62,076.88	75.95%
6200 - CONTRACTED SERVICES	-6,933.00	14.96	5,448.74	20.65	-1,469.30	78.59%
6300 - SUPPLIES & MATERIALS	-9,693.00	1,984.12	3,007.60	.00	-4,701.28	31.03%
6400 - OTHER OPERATING EXPENSES	-3,046.00	.00	1,526.83	63.48	-1,519.17	50.13%
6600 - CPTL OUTLY LAND BLDG & EQUIP	-390.00	.00	.00	.00	-390.00	-.00%
<b>Total Function31 GUIDANCE AND</b>	<b>-278,191.43</b>	<b>1,999.08</b>	<b>206,035.72</b>	<b>21,959.26</b>	<b>-70,156.63</b>	<b>74.06%</b>
33 - HEALTH SERVICES						
6100 - PAYROLL COSTS	-148,219.15	.00	112,791.85	13,171.98	-35,427.30	76.10%
6200 - CONTRACTED SERVICES	-342.00	.00	55.00	.00	-287.00	16.08%
6300 - SUPPLIES & MATERIALS	-3,278.00	687.34	2,327.26	.00	-263.40	71.00%
6400 - OTHER OPERATING EXPENSES	-2,470.00	150.00	1,186.96	100.00	-1,133.04	48.06%
6600 - CPTL OUTLY LAND BLDG & EQUIP	-1,046.00	.00	.00	.00	-1,046.00	-.00%
<b>Total Function33 HEALTH SERVICES</b>	<b>-155,355.15</b>	<b>837.34</b>	<b>116,361.07</b>	<b>13,271.98</b>	<b>-38,156.74</b>	<b>74.90%</b>
34 - PUPIL TRANSPORTATION-REGULAR						
6100 - PAYROLL COSTS	-448,857.46	.00	379,217.89	46,050.50	-69,639.57	84.49%
6200 - CONTRACTED SERVICES	-5,928.08	.00	5,947.26	500.00	19.18	100.32%
6300 - SUPPLIES & MATERIALS	-138,302.00	12,211.01	105,141.59	10,075.52	-20,949.40	76.02%
6400 - OTHER OPERATING EXPENSES	-16,948.00	.00	16,404.95	.00	-543.05	96.80%

## Fund 199 / 2 GENERAL OPERATING

As of March

	<u>Budget</u>	<u>Encumbrance YTD</u>	<u>Expenditure YTD</u>	<u>Current Expenditure</u>	<u>Balance</u>	<u>Percent Expended</u>
6000 - EXPENDITURES						
34 - PUPIL TRANSPORTATION-REGULAR						
<b>Total Function34 PUPIL TRANSPORTATION-</b>	<b>-610,035.54</b>	<b>12,211.01</b>	<b>506,711.69</b>	<b>56,626.02</b>	<b>-91,112.84</b>	<b>83.06%</b>
36 - EXTRACURRICULAR ACTIVITIES						
6100 - PAYROLL COSTS	-586,188.37	.00	463,813.96	49,154.81	-122,374.41	79.12%
6200 - CONTRACTED SERVICES	-37,000.00	.00	33,825.27	.00	-3,174.73	91.42%
6300 - SUPPLIES & MATERIALS	-17,004.00	2,109.20	7,549.95	2,491.44	-7,344.85	44.40%
6400 - OTHER OPERATING EXPENSES	-29,267.00	7,819.33	20,933.83	2,469.27	-513.84	71.53%
6600 - CPTL OUTLY LAND BLDG & EQUIP	-3,000.00	3,154.00	-165.00	.00	-11.00	5.50%
<b>Total Function36 EXTRACURRICULAR</b>	<b>-672,459.37</b>	<b>13,082.53</b>	<b>525,958.01</b>	<b>54,115.52</b>	<b>-133,418.83</b>	<b>78.21%</b>
41 - GENERAL ADMINISTRATION						
6100 - PAYROLL COSTS	-490,109.43	.00	245,548.03	18,898.26	-244,561.40	50.10%
6200 - CONTRACTED SERVICES	-80,083.00	.00	68,940.93	8,750.61	-11,142.07	86.09%
6300 - SUPPLIES & MATERIALS	-15,125.00	489.98	7,377.27	489.85	-7,257.75	48.78%
6400 - OTHER OPERATING EXPENSES	-55,132.00	.00	13,731.02	2,854.66	-41,400.98	24.91%
6600 - CPTL OUTLY LAND BLDG & EQUIP	-2,140.00	.00	989.00	.00	-1,151.00	46.21%
<b>Total Function41 GENERAL ADMINISTRATION</b>	<b>-642,589.43</b>	<b>489.98</b>	<b>336,586.25</b>	<b>30,993.38</b>	<b>-305,513.20</b>	<b>52.38%</b>
51 - PLANT MAINTENANCE & OPERATION						
6100 - PAYROLL COSTS	-859,417.02	.00	678,790.20	72,669.33	-180,626.82	78.98%
6200 - CONTRACTED SERVICES	-824,754.00	915.00	746,580.30	70,013.01	-77,258.70	90.52%
6300 - SUPPLIES & MATERIALS	-137,723.68	142.89	152,282.45	16,429.40	14,701.66	110.57%
6400 - OTHER OPERATING EXPENSES	-84,059.00	.00	74,703.75	.00	-9,355.25	88.87%
6600 - CPTL OUTLY LAND BLDG & EQUIP	-4,375.09	.00	.00	.00	-4,375.09	-.00%
<b>Total Function51 PLANT MAINTENANCE &amp;</b>	<b>-1,910,328.79</b>	<b>1,057.89</b>	<b>1,652,356.70</b>	<b>159,111.74</b>	<b>-256,914.20</b>	<b>86.50%</b>
52 - SECURITY & MONITORING						
6100 - PAYROLL COSTS	-4,000.00	.00	2,852.29	356.51	-1,147.71	71.31%
6200 - CONTRACTED SERVICES	-10,023.00	.00	2,894.80	63.00	-7,128.20	28.88%
<b>Total Function52 SECURITY &amp; MONITORING</b>	<b>-14,023.00</b>	<b>.00</b>	<b>5,747.09</b>	<b>419.51</b>	<b>-8,275.91</b>	<b>40.98%</b>
53 - DATA PROCESSING SERVICES						
6100 - PAYROLL COSTS	-212,286.51	.00	150,117.28	16,690.40	-62,169.23	70.71%
6200 - CONTRACTED SERVICES	-110,829.00	4,250.00	75,718.07	25,373.94	-30,860.93	68.32%
6300 - SUPPLIES & MATERIALS	-1,543.00	39.00	1,369.68	305.76	-134.32	88.77%
6400 - OTHER OPERATING EXPENSES	-13,135.00	1,587.92	4,879.57	.00	-6,667.51	37.15%
6600 - CPTL OUTLY LAND BLDG & EQUIP	-3,790.00	.00	3,790.00	.00	.00	100.00%
<b>Total Function53 DATA PROCESSING</b>	<b>-341,583.51</b>	<b>5,876.92</b>	<b>235,874.60</b>	<b>42,370.10</b>	<b>-99,831.99</b>	<b>69.05%</b>
71 - DEBT SERVICE						
6500 - DEBT SERVICE	-264,730.00	.00	175,109.16	.00	-89,620.84	66.15%
<b>Total Function71 DEBT SERVICE</b>	<b>-264,730.00</b>	<b>.00</b>	<b>175,109.16</b>	<b>.00</b>	<b>-89,620.84</b>	<b>66.15%</b>
81 - FACILITIES ADQ. & CONSTRUCTION						
6600 - CPTL OUTLY LAND BLDG & EQUIP	-17,590.59	.00	18,872.55	5,189.21	1,281.96	107.29%
<b>Total Function81 FACILITIES ADQ. &amp;</b>	<b>-17,590.59</b>	<b>.00</b>	<b>18,872.55</b>	<b>5,189.21</b>	<b>1,281.96</b>	<b>107.29%</b>
93 - PAYMENT TO FISCAL AGENT						
6400 - OTHER OPERATING EXPENSES	-337,500.00	.00	165,115.00	.00	-172,385.00	48.92%
<b>Total Function93 PAYMENT TO FISCAL AGENT</b>	<b>-337,500.00</b>	<b>.00</b>	<b>165,115.00</b>	<b>.00</b>	<b>-172,385.00</b>	<b>48.92%</b>
99 - OTHER GOVERNMENTAL CHARGES						
6200 - CONTRACTED SERVICES	-66,000.00	.00	50,035.01	650.47	-15,964.99	75.81%
<b>Total Function99 OTHER GOVERNMENTAL</b>	<b>-66,000.00</b>	<b>.00</b>	<b>50,035.01</b>	<b>650.47</b>	<b>-15,964.99</b>	<b>75.81%</b>
<b>Total Expenditures</b>	<b>-14,607,989.49</b>	<b>89,127.14</b>	<b>11,012,084.97</b>	<b>1,186,165.46</b>	<b>-3,506,777.38</b>	<b>75.38%</b>

	Estimated Revenue (Budget)	Revenue Realized Current	Revenue Realized To Date	Revenue Balance	Percent Realized
5000 - RECEIPTS					
5700 - REVENUE-LOCAL & INTERMED					
5750 - ENTERPRISING ACTIVITIES	423,000.00	-43,299.52	-349,334.98	73,665.02	82.59%
<b>Total REVENUE-LOCAL &amp; INTERMED</b>	<b>423,000.00</b>	<b>-43,299.52</b>	<b>-349,334.98</b>	<b>73,665.02</b>	<b>82.59%</b>
5800 - STATE PROGRAM REVENUES					
5820 - STATE REVENUE DISTRIB. BY TEA	4,000.00	.00	.00	4,000.00	.00%
5830 - STATE REVENUES FROM STATE AGEN	15,778.00	-1,265.12	-11,424.77	4,353.23	72.41%
<b>Total STATE PROGRAM REVENUES</b>	<b>19,778.00</b>	<b>-1,265.12</b>	<b>-11,424.77</b>	<b>8,353.23</b>	<b>57.77%</b>
5900 - FEDERAL PROGRAM REVENUES					
5920 - FEDERAL REVENUE	386,285.00	-44,773.55	-242,593.69	143,691.31	62.80%
<b>Total FEDERAL PROGRAM REVENUES</b>	<b>386,285.00</b>	<b>-44,773.55</b>	<b>-242,593.69</b>	<b>143,691.31</b>	<b>62.80%</b>
<b>Total Revenue Local-State-Federal</b>	<b>829,063.00</b>	<b>-89,338.19</b>	<b>-603,353.44</b>	<b>225,709.56</b>	<b>72.78%</b>

	<u>Budget</u>	<u>Encumbrance YTD</u>	<u>Expenditure YTD</u>	<u>Current Expenditure</u>	<u>Balance</u>	<u>Percent Expended</u>
6000 - EXPENDITURES						
35 - FOOD SERVICES						
6100 - PAYROLL COSTS	-343,993.00	.00	249,460.92	29,296.00	-94,532.08	72.52%
6200 - CONTRACTED SERVICES	-76,285.00	.00	54,824.81	8,152.41	-21,460.19	71.87%
6300 - SUPPLIES & MATERIALS	-346,285.00	.00	229,034.18	39,497.91	-117,250.82	66.14%
6400 - OTHER OPERATING EXPENSES	-12,500.00	140.00	4,225.14	70.00	-8,134.86	33.80%
6600 - CPTL OUTLY LAND BLDG & EQUIP	-50,000.00	.00	22,519.75	.00	-27,480.25	45.04%
<b>Total Function35 FOOD SERVICES</b>	<b>-829,063.00</b>	<b>140.00</b>	<b>560,064.80</b>	<b>77,016.32</b>	<b>-268,858.20</b>	<b>67.55%</b>
<b>Total Expenditures</b>	<b>-829,063.00</b>	<b>140.00</b>	<b>560,064.80</b>	<b>77,016.32</b>	<b>-268,858.20</b>	<b>67.55%</b>

	Estimated Revenue (Budget)	Revenue Realized Current	Revenue Realized To Date	Revenue Balance	Percent Realized
5000 - RECEIPTS					
5700 - REVENUE-LOCAL & INTERMED					
5710 - LOCAL REAL-PROPERTY TAXES	3,030,000.00	-81,293.77	-3,098,551.26	-68,551.26	102.26%
5740 - LOCAL REVENUE	15,000.00	-2,456.51	-12,778.62	2,221.38	85.19%
<b>Total REVENUE-LOCAL &amp; INTERMED</b>	<b>3,045,000.00</b>	<b>-83,750.28</b>	<b>-3,111,329.88</b>	<b>-66,329.88</b>	<b>102.18%</b>
5800 - STATE PROGRAM REVENUES					
5820 - STATE REVENUE DISTRIB. BY TEA	75,000.00	.00	-133,953.00	-58,953.00	178.60%
<b>Total STATE PROGRAM REVENUES</b>	<b>75,000.00</b>	<b>.00</b>	<b>-133,953.00</b>	<b>-58,953.00</b>	<b>178.60%</b>
<b>Total Revenue Local-State-Federal</b>	<b>3,120,000.00</b>	<b>-83,750.28</b>	<b>-3,245,282.88</b>	<b>-125,282.88</b>	<b>104.02%</b>

	<u>Budget</u>	<u>Encumbrance YTD</u>	<u>Expenditure YTD</u>	<u>Current Expenditure</u>	<u>Balance</u>	<u>Percent Expended</u>
6000 - EXPENDITURES						
71 - DEBT SERVICE						
6500 - DEBT SERVICE	-3,322,179.00	.00	3,321,105.80	1,000.00	-1,073.20	99.97%
<b>Total Function71 DEBT SERVICE</b>	<b>-3,322,179.00</b>	<b>.00</b>	<b>3,321,105.80</b>	<b>1,000.00</b>	<b>-1,073.20</b>	<b>99.97%</b>
8000 - TRANSFERS OUT						
00 - MISCELLANEOUS						
8900 - FLOW THROUGH	.00	.00	.00	.00	.00	.00%
<b>Total Function00 MISCELLANEOUS</b>	<b>.00</b>	<b>.00</b>	<b>.00</b>	<b>.00</b>	<b>.00</b>	<b>.00%</b>
<b>Total Expenditures</b>	<b>-3,322,179.00</b>	<b>.00</b>	<b>3,321,105.80</b>	<b>1,000.00</b>	<b>-1,073.20</b>	<b>99.97%</b>

Board Report  
Recap Comparison of Revenue to Budget  
Celina ISD  
As of March

	<u>EstimatedRevenue (Budget)</u>	<u>Revenue Realized Current</u>	<u>Revenue Realized To Date</u>	<u>Revenue Balance</u>	<u>Percent Realized</u>
181 / 2 ATHLETIC	107,147.94	-5,873.00	-128,562.27	-21,414.33	119.99%
191 / 2 M & O FUND BALANCE - HUBBARD	100,017.00	-106.41	-100,664.76	-647.76	100.65%
199 / 2 GENERAL OPERATING	14,376,667.49	-381,386.65	-11,836,076.51	2,540,590.98	82.33%
240 / 2 NAT'L SCHOOL BREAKFAST & LUNCH	829,063.00	-89,338.19	-603,353.44	225,709.56	72.78%
599 / 2 DEBT SERVICE FUNDS	3,120,000.00	-83,750.28	-3,245,282.88	-125,282.88	104.02%
<b>Grand Total Revenues</b>	<b>18,430,395.43</b>	<b>-560,454.53</b>	<b>-15,811,439.86</b>	<b>2,618,955.57</b>	<b>85.79%</b>
<b>7000</b>	<b>102,500.00</b>	<b>.00</b>	<b>-102,500.00</b>	<b>.00</b>	<b>100.00%</b>

**Board Report**  
**Recap Comparison of Expenditures and Encumbrances to Budget**  
**Celina ISD**  
**As of March**

	<u>Budget</u>	<u>Encumbrance YTD</u>	<u>Expenditure YTD</u>	<u>Current Expenditure</u>	<u>Balance</u>	<u>Percent Expended</u>
181 / 2 ATHLETIC	-223,342.94	42,193.78	146,480.52	23,276.81	-34,668.64	65.59%
191 / 2 M & O FUND BALANCE - HUBBARD	-102,500.00	.00	102,500.00	.00	.00	100.00%
199 / 2 GENERAL OPERATING	-14,607,989.49	89,127.14	11,012,084.97	1,186,165.46	-3,506,777.38	75.38%
240 / 2 NAT'L SCHOOL BREAKFAST & LUNCH	-829,063.00	140.00	560,064.80	77,016.32	-268,858.20	67.55%
599 / 2 DEBT SERVICE FUNDS	-3,322,179.00	.00	3,321,105.80	1,000.00	-1,073.20	99.97%
<b>Grand Total Expenditures</b>	<b>-18,982,574.43</b>	<b>131,460.92</b>	<b>15,039,736.09</b>	<b>1,287,458.59</b>	<b>-3,811,377.42</b>	<b>79.23%</b>
<b>8000</b>	<b>-102,500.00</b>	<b>.00</b>	<b>102,500.00</b>	<b>.00</b>	<b>.00</b>	<b>100.00%</b>

End of Report

Celina Independent School District  
Operating Cash Flow Statement  
2011-2012

	December, 2011 Actual	January, 2012 Actual	February, 2012 Actual
<i>Beginning Cash Balance</i>	\$ 2,712,205.52	2,737,698.62	909,110.44
<b>RECEIPTS</b>			
Tax Collections	\$ 1,785,522.67	3,230,971.68	1,292,669.52
Interest	\$ 2,718.29	2,469.21	1,593.28
Other Local Revenue	\$ 22,555.76	88,046.74	5,895.76
State Revenue - Available School	\$ 60,727.00	16,224.00	16,224.00
State Revenue -Foundation	\$ 0.00	0.00	0.00
State Revenue - Prior Year	\$ 0.00	0.00	0.00
State Revenue - Misc	\$ 0.00	2,747.00	0.00
Federal Program Revenue	\$ 420,849.29	55,161.87	164,998.88
Breakfast/Lunch Revenue - Local/Fed	\$ 60,383.92	73,382.88	94,614.23
Transfers From Texpool/Hubbard	\$ 0.00	0.00	0.00
<b>Total Revenue</b>	<b>\$ 2,352,756.93</b>	<b>3,469,003.38</b>	<b>1,575,995.67</b>
<b>DISBURSEMENTS</b>			
Payroll Net Checks	\$ -779,387.10	-714,502.31	-767,551.21
Payroll Deductions	\$ -36,240.54	-37,796.98	-35,364.67
TRS Deposit **	\$ -210,183.12	-195,952.78	-196,866.04
IRS Deposit	\$ -114,468.83	-98,479.69	-102,796.03
<b>Total Payroll</b>	<b>\$ -1,140,279.59</b>	<b>-1,046,731.76</b>	<b>-1,102,577.95</b>
Transfers to Texpool	\$ -1,000,000.00	-3,800,000.00	0.00
Account Payable Expenditures	\$ -186,984.24	-450,859.80	-352,185.81
<b>Total Expenditures</b>	<b>\$ -2,327,263.83</b>	<b>-5,297,591.56</b>	<b>-1,454,763.76</b>
Net Change in Cash	\$ 25,493.10	-1,828,588.18	121,231.91
<b>Ending Cash Balance</b>	<b>\$ 2,737,698.62</b>	<b>909,110.44</b>	<b>1,030,342.35</b>
Beginning Cash Balance at Texpool	\$ 3,103,774.96	4,104,003.28	7,904,456.85
Deposits - Transfers In	\$ 1,000,000.00	3,800,000.00	0.00
Interest Earned	\$ 228.32	453.57	566.83
Transfers out	\$ 0.00	0.00	0.00
<b>Ending Cash Balance at Texpool</b>	<b>\$ 4,104,003.28</b>	<b>7,904,456.85</b>	<b>7,905,023.68</b>
<b>TOTAL CASH AVAILABLE</b>	<b>\$ 6,841,701.90</b>	<b>8,813,567.29</b>	<b>8,935,366.03</b>

\*\*TRS Deposit will hit books in August

Celina Independent School District  
Interest & Sinking Cash Flow Statement  
2011-2012

	January, 2012 Actual	February, 2012 Actual	March, 2012 Actual
<i>Beginning Cash Balance</i>	\$ 1,566,224.77	1,455,645.47	2,242,898.49
<b>RECEIPTS</b>			
Tax Collections	\$ 1,415,313.31	566,462.97	81,293.77
Interest	\$ 1,788.89	1,341.95	2,440.64
Transfer from Texpool	\$	1,500,000.00	0.00
State Revenue - IFA	\$ 122,907.00	0.00	0.00
<b>Total Revenue</b>	<b>\$ 1,540,009.20</b>	<b>2,067,804.92</b>	<b>83,734.41</b>
<b>DISBURSEMENTS</b>			
Bond Payments	\$ -588.50	-1,280,551.90	-1,000.00
Transfers to Texpool	\$ -1,650,000.00	0.00	0.00
<b>Total Expenditures</b>	<b>\$ -1,650,588.50</b>	<b>-1,280,551.90</b>	<b>-1,000.00</b>
Net Change in Cash	-110,579.30	787,253.02	82,734.41
<b>Ending Cash Balance</b>	<b>\$ 1,455,645.47</b>	<b>2,242,898.49</b>	<b>2,325,632.90</b>
Beginning Cash Balance at Texpool	\$ 12,695.21	1,662,756.53	162,852.18
Deposits - Transfers In/Int Sale of Bond	\$ 1,650,000.00	0.00	0.00
Interest Earned	\$ 61.32	95.65	15.87
Transfers out	\$ 0.00	-1,500,000.00	0.00
<b>Ending Cash Balance at Texpool</b>	<b>\$ 1,662,756.53</b>	<b>162,852.18</b>	<b>162,868.05</b>
<b>TOTAL CASH AVAILABLE</b>	<b>\$ 3,118,402.00</b>	<b>2,405,750.67</b>	<b>2,488,500.95</b>

Celina Independent School District  
Hubbard Cash Flow Statement  
2011-2012

	January, 2012 Actual	February, 2012 Actual	March, 2012 Actual
<i>Beginning Cash Balance</i>	\$ 110.37	100,134.46	100,233.91
<b>RECEIPTS</b>			
Interest	\$ 24.09	99.45	106.41
Payments from Hubbard TR	\$ 100,000.00	0.00	0.00
<b>Total Revenue</b>	<b>\$ 100,024.09</b>	<b>99.45</b>	<b>106.41</b>
<b>DISBURSEMENTS</b>			
Transfers to Operating	0.00	0.00	0.00
Transfers to Texpool	0.00	0.00	0.00
<b>Total Expenditures</b>	<b>\$ 0.00</b>	<b>0.00</b>	<b>0.00</b>
Net Change in Cash	100,024.09	99.45	106.41
<b>Ending Cash Balance</b>	<b>\$ 100,134.46</b>	<b>100,233.91</b>	<b>100,340.32</b>

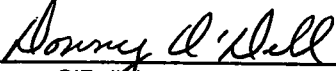
Celina Independent School District  
Construction Cash Flow Statement  
2011-2012

	January Actual	February Actual	March Actual
<i>Beginning Cash Balance</i>	\$ 173,325.33	151,457.49	150,367.89
<b>RECEIPTS</b>			
Interest	\$ 169.41	149.70	159.00
Additional Revenue Trans from Operating	0.00	0.00	0.00
Transfers from Logic	\$ 0.00	0.00	0.00
Transfers from Texpool	0.00	0.00	0.00
<b>Total Revenue</b>	<b>\$ 169.41</b>	<b>149.70</b>	<b>159.00</b>
<b>DISBURSEMENTS</b>			
Transfers to Texpool/Logic	\$ 0.00	0.00	0.00
Construction Payables	\$ -22,037.25	-1,239.30	-5,170.21
<b>Total Expenditures</b>	<b>\$ -22,037.25</b>	<b>-1,239.30</b>	<b>-5,170.21</b>
Net Change in Cash	\$ -21,867.84	-1,089.60	-5,011.21
 <b>Ending Cash Balance**</b>	 <b>\$ 151,457.49</b>	 <b>150,367.89</b>	 <b>145,356.68</b>
Beginning Cash Balance at Texpool	\$ 102.23	102.23	102.23
Deposits - Transfers In	\$ 0.00	0.00	0.00
Interest Earned	\$ 0.00	0.00	0.00
Transfers out	\$ 0.00	0.00	0.00
<b>Ending Cash Balance at Texpool</b>	<b>\$ 102.23</b>	<b>102.23</b>	<b>102.23</b>
 Logic Beginning Balance	 \$ 122.79	 122.82	 122.85
Deposits - Transfers In	0.00	0.00	0.00
Interest Earned	\$ 0.03	0.03	0.03
Transfer to checking	\$ 0.00	0.00	0.00
<b>Ending Balance at Logic</b>	<b>\$ 122.82</b>	<b>122.85</b>	<b>122.88</b>
 <b>TOTAL CASH AVAILABLE</b>	 <b>\$ 151,682.54</b>	 <b>150,592.97</b>	 <b>145,581.79</b>

Celina Independent School District  
Investment Statement  
2011-2012

	January, 2012 Actual	February, 2012 Actual	March, 2012 Actual
<b>Construction Account</b>			
Beginning Cash Balance at Texpool	\$ 102.23	102.23	102.23
Deposits - Transfers In	\$ 0.00	0.00	0.00
Interest Earned	\$ 0.00	0.00	0.00
Transfers out	\$ 0.00	0.00	0.00
<b>Ending Cash Balance at Texpool</b>	<b>\$ 102.23</b>	<b>102.23</b>	<b>102.23</b>
Beginning Cash Balance at Logic	\$ 122.79	122.82	122.85
Deposits - Transfers In	\$ 0.00	0.00	0.00
Interest Earned	\$ 0.03	0.03	0.03
Transfers out	\$ 0.00	0.00	0.00
<b>Ending Cash Balance at Logic</b>	<b>\$ 122.82</b>	<b>122.85</b>	<b>122.88</b>
Beginning Cash Balance at Ind Bank	\$ 173,325.33	151,457.49	150,367.89
Deposits - Transfers In	\$ 0.00	0.00	0.00
Interest Earned	\$ 169.41	149.70	159.00
Transfers out	\$ -22,037.25	-1,239.30	-5,170.21
<b>Ending Cash Balance at Ind Bank</b>	<b>\$ 151,457.49</b>	<b>150,367.89</b>	<b>145,356.68</b>
<b>Operating</b>			
<b>General Operating</b>			
Beginning Cash Balance at Texpool	\$ 4,104,003.28	7,904,456.85	7,905,023.68
Deposits - Transfers In	\$ 3,800,000.00	0.00	0.00
Interest Earned	\$ 453.57	566.83	744.17
Transfers out	\$ 0.00	0.00	-1,000,000.00
<b>Ending Cash Balance at Texpool</b>	<b>\$ 7,904,456.85</b>	<b>7,905,023.68</b>	<b>6,905,767.85</b>
Beginning MMA - Independent Bank-Hubbard	\$ 110.37	100,134.46	100,233.91
Deposits - Transfers In	\$ 100,000.00	0.00	0.00
Interest Earned	\$ 24.09	99.45	106.41
Transfers out	\$ 0.00	0.00	0.00
<b>Ending MMA - Independent Bank</b>	<b>\$ 100,134.46</b>	<b>100,233.91</b>	<b>100,340.32</b>
Beginning Cash Balance at Ind Bank	\$ 2,737,698.62	909,110.44	1,030,342.35
Deposits	\$ 3,466,534.17	1,574,402.39	1,663,552.04
Interest Earned	\$ 2,469.21	1,593.28	1,326.67
Expenditures	\$ -5,297,591.56	-1,454,763.76	-1,334,551.43
<b>Ending Cash Balance at Ind Bank</b>	<b>\$ 909,110.44</b>	<b>1,030,342.35</b>	<b>1,360,669.63</b>
<b>Interest and Sinking</b>			
Beginning Cash Balance at Texpool	\$ 12,695.21	1,662,756.53	162,852.18
Deposits - Transfers In	\$ 1,650,000.00	0.00	0.00
Interest Earned	\$ 61.32	95.65	15.87
Transfers out	\$ 0.00	-1,500,000.00	0.00
<b>Ending Cash Balance at Texpool</b>	<b>\$ 1,662,756.53</b>	<b>162,852.18</b>	<b>162,868.05</b>
Beginning Cash Balance at Ind Bank	\$ 1,566,224.77	1,455,645.47	2,242,898.49
Deposits	\$ 1,538,220.31	2,066,462.97	81,293.77
Interest Earned	\$ 1,788.89	1,341.95	2,440.64
Expenditures/Transfers Out	\$ -1,650,588.50	-1,280,551.90	-1,000.00
<b>Ending Cash Balance at Ind Bank</b>	<b>\$ 1,455,645.47</b>	<b>2,242,898.49</b>	<b>2,325,632.90</b>

This report is presented in accordance with the Texas Government Code Title 10 Section 2256.023. The below signed hereby certify that, to the best of their knowledge on the date this report was created, Celina ISD is in compliance with the provisions of Government Code 2256 and with the policies and strategies of Celina ISD.

  
 Donny O'Dell, Investment Officer

  
 Sarabeth McCarter, Investment Designee

**RATE INFORMATION**

**DEPOSITORY CONTRACT WITH INDEPENDENT BANK LOCKED IN 1.25% FIXED RATE FOR TWO YEARS**

March, 2012

**LOGIC INVESTMENT POOL**

**Monthly Averages**

INTEREST RATE: 0.2942%  
 ALLOCATION FACTOR: 0.00000806  
 AVERAGE MONTHLY POOL BALANCE: 3,308,884,180.72  
 WEIGHTED AVERAGE MATURITY: 48  
 BOOK VALUE 3,263,401,089.13  
 MARKET VALUE 3,263,825,072.25  
 MARKET VALUE PER SHARE: 1.000129  
 NUMBER OF PARTICIPANTS 426

**LOGIC PORTFOLIO ASSET SUMMARY AS OF DECEMBER 31, 2011**

	BOOK VALUE	MARKET VALUE
Uninvested Balance	10,342.23	10,342.23
Accrual of Interet Income	309,164.94	309,164.94
Interest and Management Fees Payable	(1,106,915.92)	(1,106,915.92)
Payable for Investment Purchased	0.00	0.00
Receivable for Investment Sold	0.00	0.00
Repurchase Agreements	590,435,000.00	590,435,000.00
Commercial Paper	2,486,152,307.91	2,486,537,993.50
Government Securities	187,601,189.97	187,639,487.50
Total	3,263,401,089.13	3,263,825,072.25

**TEXPOOL INVESTMENT POOL - March, 2012**

**Monthly Averages**

INTEREST RATE: 0.1150%  
 ALLOCATION FACTOR: 0.000003151  
 AVERAGE MONTHLY POOL BALANCE: 17,579,640,300.21  
 WEIGHTED AVERAGE MATURITY: 44  
 BOOK VALUE 17,100,536,508.68  
 MARKET VALUE 17,101,618,281.97  
 MARKET VALUE PER SHARE: 1.00007  
 NUMBER OF PARTICIPANTS 2261

**TEXPOOL PORTFOLIO ASSET SUMMARY AS OF MARCH 31, 2012**

	BOOK VALUE	MARKET VALUE
Uninvested Balance	(850.11)	(850.11)
Accrual of Interet Income	6,733,651.43	6,733,651.43
Interest and Management Fees Payable	(1,717,115.19)	(1,717,115.19)
Payable for Investment Purchased	0.00	0.00
Receivable for Investment Sold	0.00	0.00
Repurchase Agreements	9,687,245,000.00	9,687,241,900.00
Mutual Fund Investments	0.00	0.00
Government Securities	7,006,851,257.35	7,007,975,895.84
US Treasury Bills	0.00	0.00
US Treasury Notes	401,424,565.20	401,384,800.00
Total	17,100,536,508.68	17,101,618,281.97

## **2011-2012 Superintendent Award Recipients**

### **Elementary**

Briley Combs – Kindergarten  
Evan Estep – 1<sup>st</sup> Grade  
Emma Sunski – 2<sup>nd</sup> Grade

### **Intermediate**

Kinley Bishop – 5<sup>th</sup> Grade  
Frankie Berentsen – 5<sup>th</sup> Grade

### **Middle School**

Tanner Woodrum – 6<sup>th</sup> Grade  
Miles Teague – 7<sup>th</sup> Grade  
Harrison Hubbartt – 8<sup>th</sup> Grade

### **High School**

Braylin Brown – 10<sup>th</sup> Grade  
Dominique Stansberry – 10<sup>th</sup> Grade

Nathan Elliott – 9<sup>th</sup> Grade  
Hannah Meritt – 9<sup>th</sup> Grade

**Celina ISD Athletic Department  
Guidelines for Concussion Management**

Approved by Concussion Management Team

Team Physician \_\_\_\_\_ Date \_\_\_\_\_

Athletic Trainer \_\_\_\_\_ Date \_\_\_\_\_

# **Celina ISD Athletic Department**

## **Guidelines for Concussion Management**

### **Introduction**

The Centers for Disease Control (CDC) estimates that there are approximately 300,000 cases of mild traumatic brain injury (MTBI) or concussions annually in the United States as the result of participation in sports. The Sports Concussion Institute estimates that 10 percent of athletes in contact sports suffer a concussion during a season. A 2006 report estimated that there were 92,000 cases of concussions in American high school sports annually, and that these rates seem to be increasing. Also of concern is the risk of repeated concussions and second impact syndrome to our young athletes. These two problems can have long lasting, and even terminal effects, on the individual. In order to have a standard method of managing concussions to CISD athletes and to conform to SB835, the following guidelines are intended to serve as a written protocol for concussion management.

### **Definitions**

**Concussion or Mild Traumatic Brain Injury (MTBI)** - A concussion or MTBI is the common result of a blow to the head or body, which causes the brain to move rapidly within the skull. This injury causes brain function to change which results in an altered mental state (either temporary or prolonged). Physiologic and/or anatomic disruptions of connections between some nerve cells in the brain occur. Concussions can have serious and long-term health effects, even from a mild bump on the head. Symptoms include, but are not limited to, brief loss of consciousness, headache, amnesia, nausea, dizziness, confusion, blurred vision, ringing in the ears, loss of balance, moodiness, poor concentration or mentally slow, lethargy, photosensitivity, sensitivity to noise, and a change in sleeping patterns. These symptoms may be temporary or long lasting.

**Second Impact Syndrome** - Second impact syndrome (SIS) refers to catastrophic events, which may occur when a second concussion occurs while the athlete is still symptomatic and healing from a previous concussion. The second injury may occur within days or weeks following the first injury. Loss of consciousness is not required. The second impact is more likely to cause brain swelling with other widespread damage to the brain. This can be fatal. Most often SIS occurs when an athlete returns to activity without being symptom free from the previous concussion.

**Concussion Management Team** - As a result of HB2038 - "Natasha's Law", the Concussion Management Team will oversee all concussion or MTBI cases. The team consists of the Licensed Athletic Trainer employed by CISD and the Volunteer Team Doctor.

## Prevention Strategies

1. All headgear must be NOCSAE certified.
2. Make sure the headgear fits the individual.
3. For all sports that require headgear, a coach or appropriate designate should check headgear before use to make sure air bladders work and are appropriately filled. Padding should be checked to make sure they are in proper working condition.
4. Make sure helmets are secured properly at all times.
5. Mouth guards should fit and be used at all times.
6. Neuro-psychology testing on students that participate in contact sports prior to season (high school only).

## Evaluation for Concussion/MTBI

1. At time of injury administer one of these assessment tests:
  - a. Sports Concussion Assessment Tool 2 (SCAT 2) – Appendix A
  - b. Graded Symptom Checklist (GSC) – Appendix B
  - c. On-field Cognitive Testing – Appendix C
2. Observe athlete 15 to 20 minutes and re-evaluate.
3. **Athlete does not return to a game or practice if he/she has any form of amnesia or loss of consciousness.**
4. Doctor Referral – Appendix D
5. Home Instructions – Appendix E
6. Return to Play Guidelines for Parents – Appendix F
7. ImPact retest 48 hours after injury (high school only).
8. **Note - If in doubt, athlete is referred to doctor and does not return to play.**

## Concussion Management

1. School modifications
  - a. Notify school nurse and all classroom teachers of the student that he/she has MTBI
  - b. Notify teachers of post concussion symptoms
  - c. Student may need special accommodations such as limited computer work, reading activities, testing, assistance to class, etc. until symptoms subside
2. Student must be symptom free for one week before begin return to play protocol

## Return to Play Guidelines

1. Activity progressions
  - a. No activity for one week
  - b. Athlete must be symptom free

- c. Light aerobic exercise with no resistance training
  - d. Sport specific activity
  - e. Non-contact training drills with resistance training
  - f. Full contact training drills (must have physician clearance)
  - g. **Note – Athlete progression continues as long as athlete is asymptomatic at current level. If the athlete experiences any post concussion symptoms, you wait 24 hours and start the progressions again at the beginning.**
2. Component scores of ImPact test normal (High School Only)
  3. Physician clearance
  4. Athletic Trainer clearance

## References

1. McCrory, Paul, et al. Summary & Agreement Statement of the 2<sup>nd</sup> International Conference on Concussion in Sport, Prague 2004; Clinical Journal of Sports Medicine, March 2005
2. Guskiewicz, Kevin M, et al. National Athletic Trainers Association Position Statement: Management of Sport-Related Concussion; Journal of Athletic Training, Sept. 2004
3. [www.ImPacttest.com](http://www.ImPacttest.com)
4. [www.healthsystem.virginia.edu/internet/neurogram](http://www.healthsystem.virginia.edu/internet/neurogram)
5. [www.cdc.org](http://www.cdc.org)
6. [www.brainline.org](http://www.brainline.org)
7. [www.momsteam.com./healthsafety/concussion](http://www.momsteam.com./healthsafety/concussion)
8. Presbyterian Sports Network, Sports Concussion Management Protocol

**Appendix A**  
**SCAT 2**

**Appendix B**  
**Graded Symptom Checklist**

## **Appendix C**

### **On-field Cognitive Testing**

#### **Orientation**

**Ask the athlete the following questions.**

What stadium is this? What month is it?

What city is this? What day is it?

Who is the opposing team?

#### **Anterograde amnesia**

**Ask the athlete to repeat the following words.**

Girl, dog, green

#### **Retrograde amnesia**

**Ask the athlete the following questions.**

What happened in the prior quarter/period?

What do you remember just prior to the hit?

What was the score of the game prior to the hit?

Do you remember the hit?

#### **Concentration**

**Ask the athlete to do the following.**

Repeat the days of the week backward (starting with today).

Repeat these numbers backward:

63 (36 is correct) 419 (914 is correct)

#### **Word list memory**

**Ask the athlete to repeat the three words from earlier.**

**(Girl, dog, green)**

**Any failure should be considered abnormal.**

**Consult a physician following a suspected concussion.**

## **Appendix D Doctor Referral**

### **Day of Injury Referral**

1. Loss of consciousness on the field
2. Amnesia
3. Increase in blood pressure
4. Cranial nerve deficits
5. Vomiting
6. Motor deficits subsequent to initial on-field exam
7. Sensory deficits subsequent to initial on-field exam
8. Balance deficits subsequent to initial on-field exam
9. Cranial nerve deficits subsequent to initial on-field exam
10. Post-concussion symptoms that worsen
11. Additional post-concussion symptoms as compared with those on the field
12. Athlete is symptomatic at the end of the game
13. Deterioration of neurologic function\*
14. Decreasing level of consciousness\*
15. Decrease or irregularity in respiration\*
16. Decrease or irregularity in pulse\*
17. Unequal, dilated or unreactive pupils\*
18. Any signs or symptoms of associated injuries, spine or skull fracture or bleeding\*
19. Mental status changes: lethargy, difficulty maintaining arousal, confusion, or agitation\*
20. Seizure activity\*

**Note: \* indicates that the athlete needs to be transported immediately to the nearest emergency department.**

### **Delayed Referral (after the day of the injury)**

1. Any of the findings in the day of injury referral category
2. Post-concussion symptoms worsen or do not improve over time
3. Increase in the number of post-concussion symptoms reported
4. Post-concussion symptoms begin to interfere with the athlete's daily activities (ie. sleep, cognition, depression, aggression, etc.)

**Appendix E**  
**Home Instructions**

\_\_\_\_\_ has sustained a concussion during \_\_\_\_\_ today.  
To make sure he/she recovers please follow the following important recommendations:

1. Please review the items outlined on the **Physician Referral Checklist**. If any of these problems develop, please call 911 or your family physician.
2. Things that are OK to do:
  - a. Take acetaminophen (Tylenol)
  - b. Use ice packs on head or neck as needed for comfort
  - c. Eat a light diet
  - d. Go to sleep (rest is very important)
  - e. No strenuous activity or sports
  - f. Return to school
3. Things that should not be allowed:
  - a. Eat spicy foods
  - b. Watch TV
  - c. Listen to ipod or talk on telephone
  - d. Read
  - e. Use a computer
  - f. Bright lights
  - g. Loud noise
  - h. Drink alcohol
4. Things there is no need to do:
  - a. Check eyes with a flashlight
  - b. Wake up every hour
  - c. Test reflexes
5. Have student report to athletic training room at 8 AM tomorrow morning for a follow-up exam

Further recommendations:

Instructions provided to: \_\_\_\_\_

Signature: \_\_\_\_\_

Instructions provided by: \_\_\_\_\_

Signature: \_\_\_\_\_

Date: \_\_\_\_\_ Time: \_\_\_\_\_

Contact Number: \_\_\_\_\_

## **Appendix F**

### **Return to Play Guidelines for Parents**

Celina ISD has developed a protocol for managing concussions. This policy includes a multidiscipline approach involving neuropsychological testing, athletic trainer clearance, physician referral and clearance, and successful completion of activity progressions related to their sport. The following is an outline of this procedure. Your son/daughter must pass all of these tests in order to return to sport activity after having a concussion.

1. All athletes who sustain head injuries are require to be evaluated by their primary care physician. They must have a normal physical and neurological exam prior to being permitted to progress to activity. This includes athletes who were initially referred to and emergency department.
2. The student will be monitored daily at school by the athletic trainer and school nurse. His/her teachers will be notified of their injury and what to expect. Accommodations may need to be given according to physician recommendations and observations.
3. The student must be asymptomatic at rest and exertion.
4. Once cleared to begin activity, the student will start a progressive step-by-step procedure outlined in the Prague statement. These progressions are:
  - a. No activity for one week after injury & athlete is symptom free
  - b. Physician clearance to begin activity
  - c. Light aerobic exercise with no resistance training
  - d. Sport specific activity
  - e. Non-contact training drills with resistance training
  - f. Full contact training drills
  - g. **Note - Athlete progression continues as long as athlete is asymptomatic at current activity level. If the athlete experiences any post concussion symptoms, he/she will wait 24 hours and start the progressions again at the beginning.**
5. Once the student has completed steps 1 through 5, he/she may return to their sport activity with no restrictions.

AN ACT

relating to prevention, treatment, and oversight of concussions affecting public school students participating in interscholastic athletics.

BE IT ENACTED BY THE LEGISLATURE OF THE STATE OF TEXAS:

SECTION 1. This Act may be cited as Natasha's Law in honor of Natasha Helmick for her courage in advocating for the enactment of this Act and in honor of all other student athletes at the middle and high school levels.

SECTION 2. Chapter 38, Education Code, is amended by adding Subchapter D to read as follows:

SUBCHAPTER D. PREVENTION, TREATMENT, AND OVERSIGHT OF CONCUSSIONS AFFECTING STUDENT ATHLETES

Sec. 38.151. DEFINITIONS. In this subchapter:

(1) "Advanced practice nurse" has the meaning assigned by Section 301.152, Occupations Code.

(2) "Athletic trainer" has the meaning assigned by Section 451.001, Occupations Code.

(3) "Coach" includes an assistant coach.

(4) "Concussion" means a complex pathophysiological process affecting the brain caused by a traumatic physical force or impact to the head or body, which may:

(A) include temporary or prolonged altered brain

1 altered sleep patterns; and

2 (B) involve loss of consciousness.

3 (5) "Licensed health care professional" means an  
4 advanced practice nurse, athletic trainer, neuropsychologist, or  
5 physician assistant, as those terms are defined by this section.

6 (6) "Neuropsychologist" means a person who:

7 (A) holds a license to engage in the practice of  
8 psychology issued under Section 501.252, Occupations Code; and

9 (B) specializes in the practice of  
10 neuropsychology.

11 (7) "Open-enrollment charter school" includes a  
12 school granted a charter under Subchapter E, Chapter 12.

13 (8) "Physician" means a person who holds a license to  
14 practice medicine in this state.

15 (9) "Physician assistant" means a person who holds a  
16 license issued under Chapter 204, Occupations Code.

17 Sec. 38.152. APPLICABILITY. This subchapter applies to an  
18 interscholastic athletic activity, including practice and  
19 competition, sponsored or sanctioned by:

20 (1) a school district, including a home-rule school  
21 district, or a public school, including any school for which a  
22 charter has been granted under Chapter 12; or

23 (2) the University Interscholastic League.

24 Sec. 38.153. OVERSIGHT OF CONCUSSIONS BY SCHOOL DISTRICTS  
25 AND CHARTER SCHOOLS; RETURN-TO-PLAY PROTOCOL DEVELOPMENT BY  
26 CONCUSSION OVERSIGHT TEAM. (a) The governing body of each school

1 who participate in an interscholastic athletic activity shall  
2 appoint or approve a concussion oversight team.

3 (b) Each concussion oversight team shall establish a  
4 return-to-play protocol, based on peer-reviewed scientific  
5 evidence, for a student's return to interscholastic athletics  
6 practice or competition following the force or impact believed to  
7 have caused a concussion.

8 Sec. 38.154. CONCUSSION OVERSIGHT TEAM: MEMBERSHIP. (a)  
9 Each concussion oversight team must include at least one physician  
10 and, to the greatest extent practicable, considering factors  
11 including the population of the metropolitan statistical area in  
12 which the school district or open-enrollment charter school is  
13 located, district or charter school student enrollment, and the  
14 availability of and access to licensed health care professionals in  
15 the district or charter school area, must also include one or more  
16 of the following:

- 17 (1) an athletic trainer;  
18 (2) an advanced practice nurse;  
19 (3) a neuropsychologist; or  
20 (4) a physician assistant.

21 (b) If a school district or open-enrollment charter school  
22 employs an athletic trainer, the athletic trainer must be a member  
23 of the district or charter school concussion oversight team.

24 (c) Each member of the concussion oversight team must have  
25 had training in the evaluation, treatment, and oversight of  
26 concussions at the time of appointment or approval as a member of

1       Sec. 38.155. REQUIRED ANNUAL FORM ACKNOWLEDGING CONCUSSION  
2 INFORMATION. A student may not participate in an interscholastic  
3 athletic activity for a school year until both the student and the  
4 student's parent or guardian or another person with legal authority  
5 to make medical decisions for the student have signed a form for  
6 that school year that acknowledges receiving and reading written  
7 information that explains concussion prevention, symptoms,  
8 treatment, and oversight and that includes guidelines for safely  
9 resuming participation in an athletic activity following a  
10 concussion. The form must be approved by the University  
11 Interscholastic League.

12       Sec. 38.156. REMOVAL FROM PLAY IN PRACTICE OR COMPETITION  
13 FOLLOWING CONCUSSION. A student shall be removed from an  
14 interscholastic athletics practice or competition immediately if  
15 one of the following persons believes the student might have  
16 sustained a concussion during the practice or competition:

- 17               (1) a coach;  
18               (2) a physician;  
19               (3) a licensed health care professional; or  
20               (4) the student's parent or guardian or another person  
21 with legal authority to make medical decisions for the student.

22       Sec. 38.157. RETURN TO PLAY IN PRACTICE OR COMPETITION. (a)  
23 A student removed from an interscholastic athletics practice or  
24 competition under Section 38.156 may not be permitted to practice  
25 or compete again following the force or impact believed to have  
26 caused the concussion until:

1 medical protocols based on peer-reviewed scientific evidence, by a  
2 treating physician chosen by the student or the student's parent or  
3 guardian or another person with legal authority to make medical  
4 decisions for the student;

5 (2) the student has successfully completed each  
6 requirement of the return-to-play protocol established under  
7 Section 38.153 necessary for the student to return to play;

8 (3) the treating physician has provided a written  
9 statement indicating that, in the physician's professional  
10 judgment, it is safe for the student to return to play; and

11 (4) the student and the student's parent or guardian or  
12 another person with legal authority to make medical decisions for  
13 the student:

14 (A) have acknowledged that the student has  
15 completed the requirements of the return-to-play protocol  
16 necessary for the student to return to play;

17 (B) have provided the treating physician's  
18 written statement under Subdivision (3) to the person responsible  
19 for compliance with the return-to-play protocol under Subsection  
20 (c) and the person who has supervisory responsibilities under  
21 Subsection (c); and

22 (C) have signed a consent form indicating that  
23 the person signing:

24 (i) has been informed concerning and  
25 consents to the student participating in returning to play in  
26 accordance with the return-to-play protocol;

1 the student returning to play and will comply with any ongoing  
2 requirements in the return-to-play protocol;

3 (iii) consents to the disclosure to  
4 appropriate persons, consistent with the Health Insurance  
5 Portability and Accountability Act of 1996 (Pub. L. No. 104-191),  
6 of the treating physician's written statement under Subdivision (3)  
7 and, if any, the return-to-play recommendations of the treating  
8 physician; and

9 (iv) understands the immunity provisions  
10 under Section 38.159.

11 (b) A coach of an interscholastic athletics team may not  
12 authorize a student's return to play.

13 (c) The school district superintendent or the  
14 superintendent's designee or, in the case of a home-rule school  
15 district or open-enrollment charter school, the person who serves  
16 the function of superintendent or that person's designee shall  
17 supervise an athletic trainer or other person responsible for  
18 compliance with the return-to-play protocol. The person who has  
19 supervisory responsibilities under this subsection may not be a  
20 coach of an interscholastic athletics team.

21 Sec. 38.158. TRAINING COURSES. (a) The University  
22 Interscholastic League shall approve for coaches of  
23 interscholastic athletic activities training courses that provide  
24 for not less than two hours of training in the subject matter of  
25 concussions, including evaluation, prevention, symptoms, risks,  
26 and long-term effects. The league shall maintain an updated list of

1 the training.

2 (b) The Department of State Health Services Advisory Board  
3 of Athletic Trainers shall approve for athletic trainers training  
4 courses in the subject matter of concussions and shall maintain an  
5 updated list of individuals and organizations authorized by the  
6 board to provide the training.

7 (c) The following persons must take a training course in  
8 accordance with Subsection (e) from an authorized training provider  
9 at least once every two years:

10 (1) a coach of an interscholastic athletic activity;

11 (2) a licensed health care professional who serves as  
12 a member of a concussion oversight team and is an employee,  
13 representative, or agent of a school district or open-enrollment  
14 charter school; and

15 (3) a licensed health care professional who serves on  
16 a volunteer basis as a member of a concussion oversight team for a  
17 school district or open-enrollment charter school.

18 (d) A physician who serves as a member of a concussion  
19 oversight team shall, to the greatest extent practicable,  
20 periodically take an appropriate continuing medical education  
21 course in the subject matter of concussions.

22 (e) For purposes of Subsection (c):

23 (1) a coach must take a course described by Subsection  
24 (a);

25 (2) an athletic trainer must take:

26 (A) a course described by Subsection (b); or

1 concussions that has been approved for continuing education credit  
2 by the appropriate licensing authority for the profession; and

3 (3) a licensed health care professional, other than an  
4 athletic trainer, must take:

5 (A) a course described by Subsection (a) or (b);  
6 or

7 (B) a course concerning the subject matter of  
8 concussions that has been approved for continuing education credit  
9 by the appropriate licensing authority for the profession.

10 (f) Each person described by Subsection (c) must submit  
11 proof of timely completion of an approved course in compliance with  
12 Subsection (e) to the school district superintendent or the  
13 superintendent's designee or, in the case of a home-rule school  
14 district or open-enrollment charter school, a person who serves the  
15 function of a superintendent or that person's designee.

16 (g) A licensed health care professional who is not in  
17 compliance with the training requirements under this section may  
18 not serve on a concussion oversight team in any capacity.

19 Sec. 38.159. IMMUNITY. This subchapter does not:

20 (1) waive any immunity from liability of a school  
21 district or open-enrollment charter school or of district or  
22 charter school officers or employees;

23 (2) create any liability for a cause of action against  
24 a school district or open-enrollment charter school or against  
25 district or charter school officers or employees;

26 (3) waive any immunity from liability under Section

1           (4) create any cause of action or liability for a  
2 member of a concussion oversight team arising from the injury or  
3 death of a student participating in an interscholastic athletics  
4 practice or competition, based on service or participation on the  
5 concussion oversight team.

6           Sec. 38.160. RULES. The commissioner may adopt rules as  
7 necessary to administer this subchapter.

8           SECTION 3. Subchapter D, Chapter 38, Education Code, as  
9 added by this Act, applies beginning with the 2011-2012 school  
10 year.

11           SECTION 4. Notwithstanding Section 38.158(f), Education  
12 Code, as added by this Act, a person required under Section  
13 38.158(c), Education Code, as added by this Act, to take a training  
14 course in the subject of concussions must initially complete the  
15 training course not later than September 1, 2012.

16           SECTION 5. This Act takes effect immediately if it receives  
17 a vote of two-thirds of all the members elected to each house, as  
18 provided by Section 39, Article III, Texas Constitution. If this  
19 Act does not receive the vote necessary for immediate effect, this  
20 Act takes effect September 1, 2011.

---

President of the Senate

---

Speaker of the House

I certify that H.B. No. 2038 was passed by the House on May 5, 2011, by the following vote: Yeas 127, Nays 7, 2 present, not voting.

---

Chief Clerk of the House

I certify that H.B. No. 2038 was passed by the Senate on May 24, 2011, by the following vote: Yeas 31, Nays 0.

---

Secretary of the Senate

APPROVED: \_\_\_\_\_

Date

---

Governor

The Celina Independent School District Board of Trustees recognizes that under HB2038 – “Natasha’s Law” a Concussion Management Team must be appointed. The Celina Independent School District Board of Trustees understands the importance of a return-to-play protocol, that the Concussion Management Team will establish and maintain based on peer-reviewed scientific evidence.

Under the law, the Celina Independent School District Board of Trustees appoints the Athletic Trainer employed by the School District and the Volunteer Team Physician as the Concussion Management Team for the Celina Independent School District.

Passed and Approved this \_\_\_\_\_ day of \_\_\_\_\_, 2012

\_\_\_\_\_  
Choc Christopher, Board President

---

**Subject:** Marilee SUD Celina ISD Waterline Easement  
**Date:** Wednesday, April 11, 2012 9:08 AM  
**From:** Matthew Whitman <matthew@texaslandprofessionals.com>  
**To:** Donny O'Dell <donyodell@celinaisd.com>

Donny,

Thank you for returning my call yesterday. Texas Land Professionals works with the Marilee Special Utility District helping to obtain the easements necessary to maintain their water distribution lines in Celina. TxDot is in the process of widening SH 289, and Marilee SUD needs to relocate some of their distribution lines to resolve conflicts with the new right of way.

TxDot has slightly increased their right of way (a "corner clip") at the intersection of SH289 and CR 105, and the water district needs to reconfigure its lines at that intersection to conform with the new property lines. The new waterlines will be installed approximately ten feet (10') off the property line per the attached exhibit. It is Marilee's intent to repair or replace fences, driveways, and objects damaged by the installation to equal or better condition that existing prior to the lines being relocated.

I have attached a standard waterline easement for review and signature. Please have the easement signed where indicated, have notarized, and return by either fax or e-mail. The originals should be sent to:

Texas Land Professionals, Inc.  
410 W. Grand Parkway South, Suite 390  
Katy, TX 77494

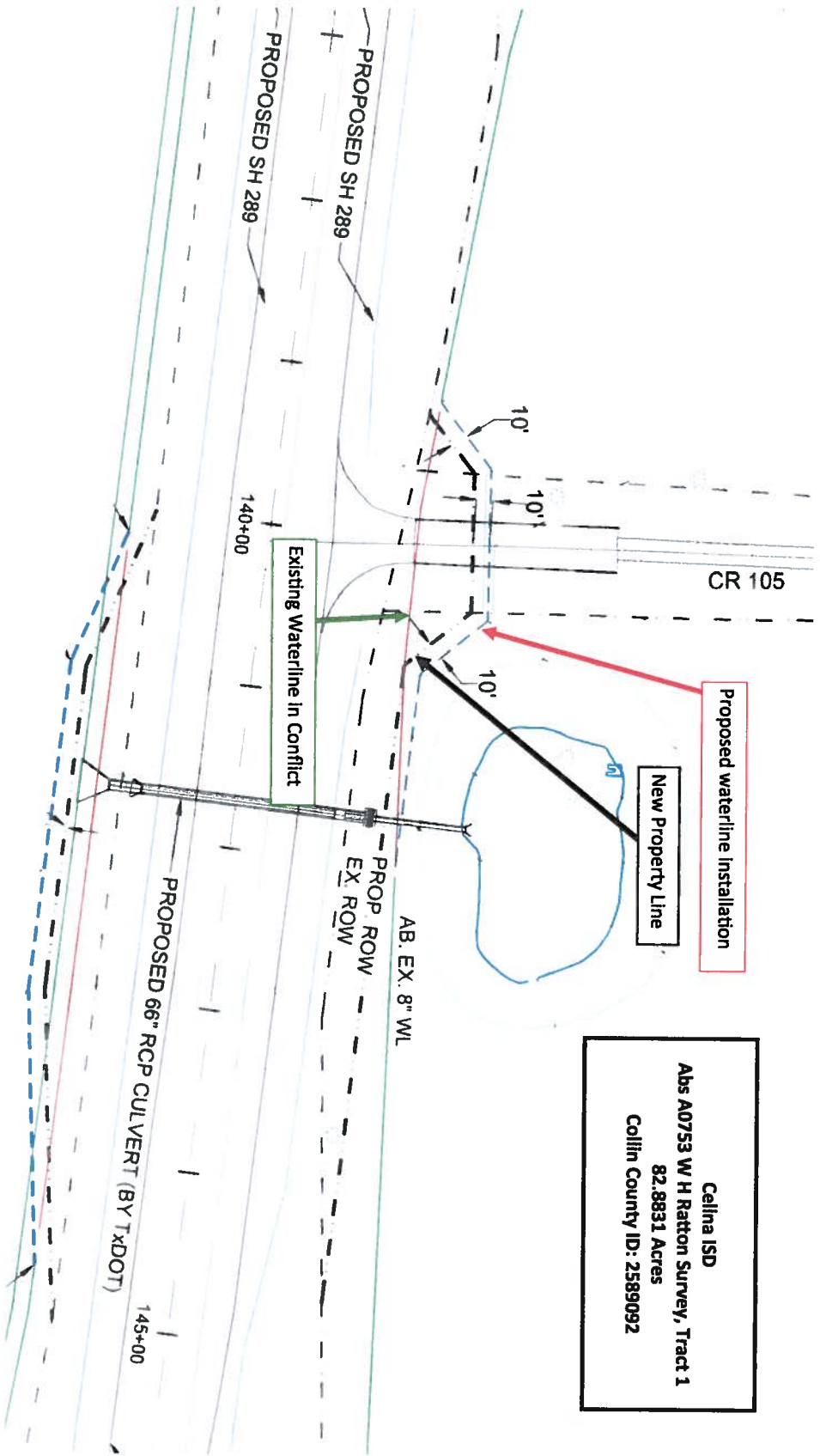
Thank you for getting this on the agenda for next week. Please do not hesitate to contact me with any questions.

Regards,

**Matthew Whitman**  
*Broker / Right of Way*

Office: 972-318-9688  
Fax: 832-413-5455

**Marilee Special Utility District**  
Proposed Waterline Installation - Right of Way Relocation  
Celina ISD - Parcel 2



Celina ISD  
Abs A0753 W H Ratton Survey, Tract 1  
82.8831 Acres  
Collin County ID: 2589092

AFTER RECORDING, RETURN TO:  
Texas Land Professionals, Inc.  
410 W. Grand Parkway South, Suite 390  
Katy, TX 77494

---

**WATERLINE EASEMENT AND RIGHT-OF-WAY**  
(Including Temporary Easement for Construction)

STATE OF TEXAS                    §  
   §     **KNOW ALL MEN BY THESE PRESENTS:**  
   §  
COUNTY OF COLLIN               §

That **CELINA INDEPENDENT SCHOOL DISTRICT**, (hereinafter in individually collectively referred to as “Grantor”), for and in consideration of Ten Dollars (\$10.00) and other good and valuable consideration paid to Grantor by the **MARILEE SPECIAL UTILITY DISTRICT** (“Grantee”), the receipt and sufficiency of which is hereby acknowledged, does hereby grant and convey unto the Grantee, its successors and assigns, an easement and right-of-way within which the Grantee has the right to install, construct, operate, inspect, protect, repair, rebuild, replace, alter, upgrade, remove, parallel and maintain public waterlines and necessary valves and fittings (the “Facilities”) in, upon, over and across that certain **82.8831** acres of land owned by Grantor located in Collin County, Texas, being more particularly described in an instrument recorded under **Document No. 20070404000455450** of the real property records of Collin County, Texas (the “Property”), together with reasonable rights of ingress and egress over Grantor’s adjacent lands for the purpose for which the above mentioned rights are granted. The easement conveyed herein shall be limited to a strip of land twenty feet (20’) in width, that is adjacent and parallel to a public road, to wit **State Highway 289 / Preston Road** (the “Easement Property”).

Grantor also grants and conveys a temporary construction easement to Grantee, its successors and assigns, to accommodate construction equipment, materials, and excavated earth during the initial construction and installation of the Facilities within the Easement Property. The temporary construction easement shall be limited to an additional fifteen-foot wide strip of land on each side of an abutting the Easement Property; being also a part of Grantor’s Property. The temporary construction easement will expire immediately upon Grantee’s acceptance of the completed Facilities.

Grantee shall clean up and remove all trash caused by the installation of pipelines, valves, fittings and facilities hereunder, and shall repair or replace existing fences and repair other damages caused by said installation. Grantee shall also restore the surface of the land to a smooth contour following said installation.

Grantee, its successors and assigns, shall have such other rights and benefits as necessary or convenient for the full use and enjoyment of the easement rights granted

herein including, without limitation: (I) to the extent necessary the reasonable right of ingress and egress over and across lands owned by Grantor which are contiguous to the easement; (ii) the right from time-to-time to remove any pavement, vegetation and other obstructions that may injure the Facilities or that may interfere with the installation, construction, operation, inspection, protection, repair, replacement, relocation, alteration, upgrade, removal, addition or maintenance of same; and (iii) the right to abandon-in-place the Facilities installed within the Easement property.

In the event the easement hereby granted abuts on a public road and the county or state hereafter widens or relocates the public road so as to require the relocation of the Facilities as installed, Grantor further grants to Grantee an additional easement over and across the Property for the purpose of laterally relocating said Facilities as may be necessary to clear the road improvements, which easement hereby granted shall be limited to a strip of land twenty feet in width, the center line thereof being the pipeline as relocated.

Grantor, as owner of the Property, reserves the right to continue to use and enjoy the Easement Property for all purposes that do not interfere with or interrupt the use of or enjoyment of the easement by Grantee for the easement purposes stated herein including pasturage and agricultural uses, and to construct and maintain private driveways and roads, fences, landscaping, sidewalks, and drainage. No building, structure or reservoir upon, over, or across the Easement Property will be constructed without the Grantee's prior written consent.

The provisions of this grant shall constitute a covenant running with the land for the benefit of the Grantee, its successors and assigns. Grantee's rights hereunder may be assigned in whole or in part, to one or more retail water utilities assignees. Grantors covenant that they are the owners of the above described lands.

TO HAVE AND TO HOLD the easement and the rights appurtenant thereto unto the Grantee, its successors and assigns, until the Facilities are declared permanently abandoned by Grantee, in which event said easement and the rights appurtenant thereto shall cease and terminate, and revert to Grantor and Grantor's heirs, successors and assigns.

Grantor binds Grantor and Grantor's heirs, executors, administrators, successors and assigns to warrant and forever defend, all and singular, the property rights and interests herein granted to Grantee, its successors and assigns, against every person whomsoever claiming or to claim the same or any part thereof.

When context requires, singular nouns and pronouns include the plural.

(Signature page to follow)

SIGNED AND EXECUTED this \_\_\_\_\_ day of \_\_\_\_\_, 2012.

**CELINA INDEPENDENT SCHOOL DISTRICT**

By: \_\_\_\_\_

Name: \_\_\_\_\_

Title: \_\_\_\_\_

THE STATE OF TEXAS

COUNTY OF COLLIN

This instrument was acknowledged before me on this \_\_\_\_\_ day of \_\_\_\_\_, 2012, by \_\_\_\_\_, \_\_\_\_\_ of the CELINA INDEPENDENT SCHOOL DISTRICT, on its behalf

\_\_\_\_\_  
Notary Public in and for the State of Texas