

Notice of Special Called Meeting
The Board of Trustees
Fort Bend Independent School District

Tuesday, February 18, 2025

This is Notice that the Fort Bend Independent School District Board of Trustees will hold a Special Called Meeting on Tuesday, February 18, 2025, beginning at 6:00 PM in the Board Room of the Fort Bend ISD Administration Building, 16431 Lexington Blvd., Sugar Land, TX 77479. It is the Board of Trustees' intent that a quorum of the Board of Trustees will be physically present at this location although one or more trustees may participate by videoconference. The agenda packet for the meeting is available at <https://meetings.boardbook.org/Public/Organization/649>.

Members of the public may view the live stream of the meeting at the following address:
<https://www.fortbendisd.com/BoardMeetingLivestream>.

1. Call to order

2. Public Comment

3. Information

A. Proposed Boundary Scenario(s) for Ferndell Henry Elementary

2

4. Adjournment

If, during the meeting, discussion of any item on the agenda should be held in a closed meeting, the Board will conduct a closed meeting in accordance with the Texas Open Meetings Act, Government Code, Chapter 551, Subchapters D and E or Texas Government Code section 418.183(f). Before any closed meeting is convened, the presiding officer will publicly identify the section or sections of the Act authorizing the closed meeting. All final votes, actions, or decisions will be taken in an open meeting. [See BEC (LEGAL)]

The following Fort Bend ISD Goals may be referenced in agenda items included in this document:

- Goal 1: Fort Bend ISD will provide rigorous and relevant curriculum and deliver instruction that is responsive to the needs of all students.
- Goal 2: Fort Bend ISD will provide a positive culture and climate that provides a safe and supportive environment for learning and working.
- Goal 3: Fort Bend ISD will recruit, develop, and retain high quality teachers and staff.
- Goal 4: Fort Bend ISD will engage students, parents, staff, and the community through ongoing communication, opportunities for collaboration and innovation, and partnerships that support the learning community.
- Goal 5: Fort Bend ISD will utilize financial, material, and human capital resources to maximize district outcomes and student achievement.

For: Fort Bend ISD Board of Trustees
Date: February 18, 2025
Action: Special Board Workshop: Proposed
Boundary Scenario(s) for Ferndell
Henry Elementary School
References: FC(Local)
Department: Deputy Superintendent Chief of
Staff

Summary

Zonda Education, the district's external boundary planner, will present proposed boundary scenario(s) related to establishing an attendance boundary for Ferndell Henry Elementary School (scheduled to open August 2025).

As part of the boundary planning process, this recommendation was presented to the School Boundary Advisory Committee (SBAC) on February 5, 2025, for input and feedback. The SBAC Chairperson will also address the Board to summarize the SBAC process, involvement, and input.

Public feedback opportunities will include an in-person event on February 26, 2025, with a virtual community feedback opportunity scheduled to take place from February 26 to March 5, 2025.

Final boundary recommendations will be presented to the Board for action on April 7, 2025.

Recommended by:

Dr. Marc Smith
Superintendent of Schools

Submitted by:

Beth Martinez
Deputy Superintendent Chief of Staff

FBISD

Special Called Board Meeting: School Boundaries



February 18, 2025



Lead
THE PAC

Presentation Overview

01

Administration Update

- Boundary recommendation process
- Timeline overview & checkpoint
- Scope of Work

02

School Boundary Advisory Committee Chair

- Update on SBAC progress and involvement

03

Zonda Presentation of Proposed Ferndell Henry ES Boundary

- Background of southeast portion of the District
- Walk-through of recommendation(s)
- Items for consideration

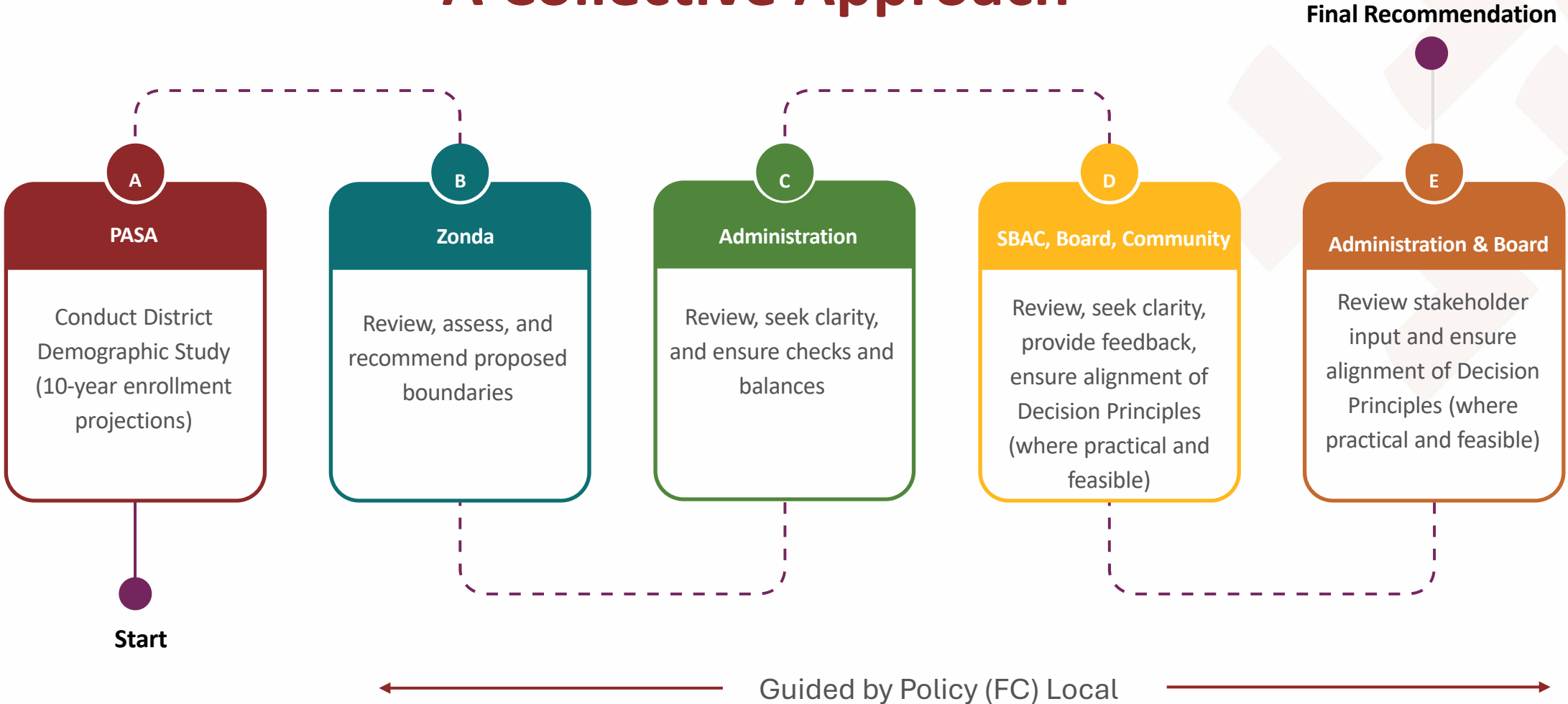
04

Questions and Answers

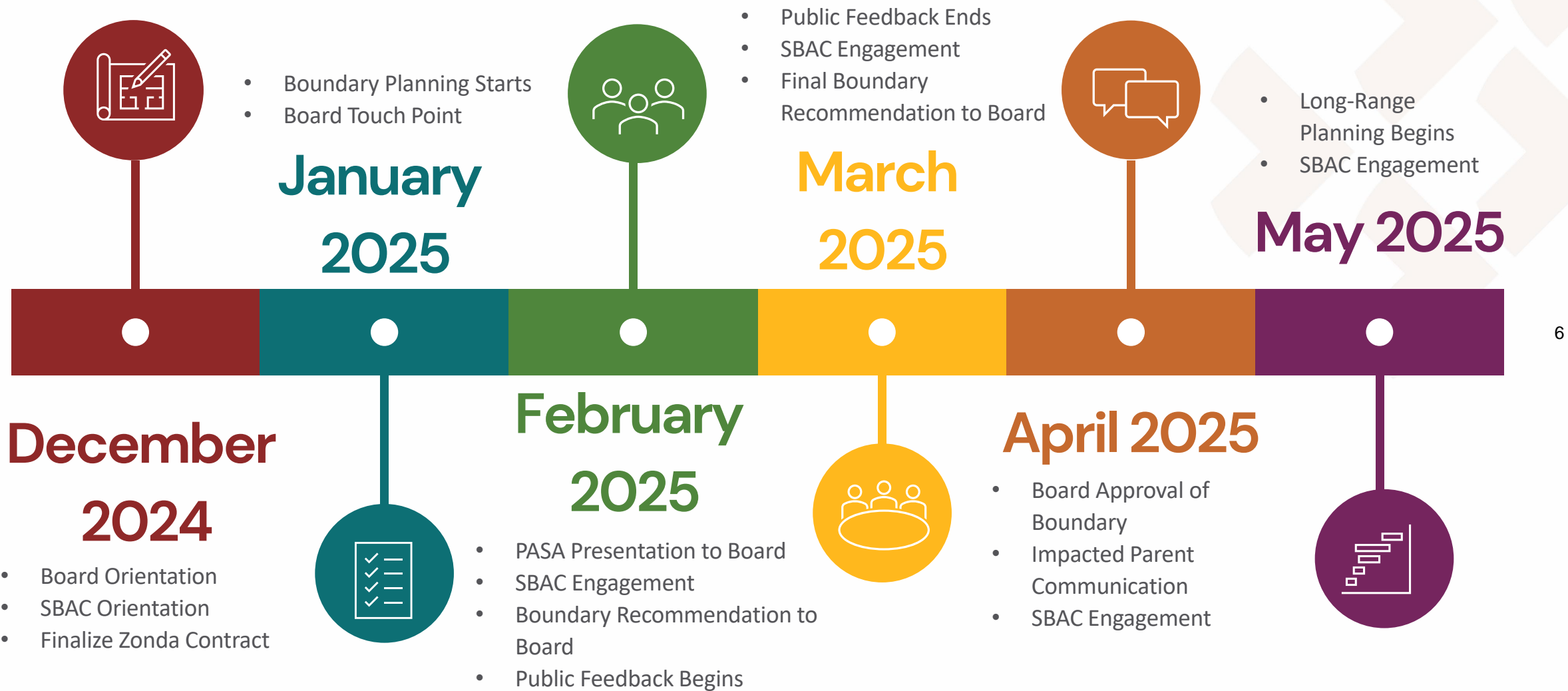
4



Boundary Recommendation Process: A Collective Approach



Boundary Process Timeline



6



2024-2025 Scope of Work

Primary goals:

- Relieve overutilization at Heritage Rose Elementary School
- Establish new attendance community for Ferndell Henry Elementary School (Scheduled opening: August 2025)

Current situation:

- Heritage Rose ES
 - 12 portables
 - Capacity is 1,138 students
- Ferndell Henry ES
 - Capacity is 720 students

7



Decision Principles

Abbreviated

Safely House Students and Staff;
Align Student Transitions within
Feeder

Support Neighborhood School Concept

Assign Entire Neighborhoods to Same
School

Utilize Natural Boundaries

Use of Safe and Reasonable Walking
Distances

Efficient Use of Existing Facilities

Unique Needs of Students

Align Boundaries that Withstand Time

Lessen Financial Impact

- Community Integrity
- Growth Projections
- Program Accommodations/Student Needs
- Frequency of Changes
- Cost Effectiveness



SBAC Chair: Susan Waldron

SBAC Engagement and Process

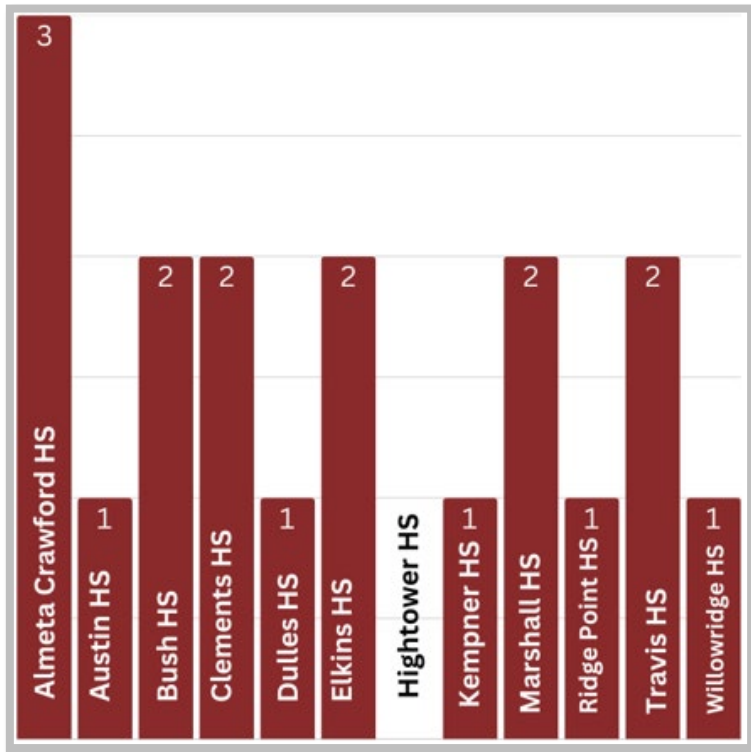
- Orientation Work Session (12/11/2024)
- Special Called Meeting (2/3/2025)
- SBAC Work Session (2/5/2025)
- Future Engagement
 - Field Trip (3/5/2025)
 - Work Session (3/19/2025)
- SBAC Process Overview

10



SBAC 2/5 Work Session Recap & Outcomes

- Reviewed two proposed boundary scenarios.
- Reviewed both scenarios for alignment with the decision principles.
- Recommended that **one scenario** be brought forward to the Board and community for consideration.



*Representation at 2/5/2025 SBAC Meeting

Percent* of SBAC members indicate the scenario aligns to the boundary Decision Principles

11

Boundary Decision Principle	Scenario 1	Scenario 2
Safely house students and staff; align to designated feeder	28%	72%
Supports neighborhood concept	50%	83%
Assign entire neighborhoods together	67%	72%
Utilize natural boundaries	67%	89%
Use of safe and reasonable walking distances	17%	72%
Efficient use of existing facilities	56%	78%
Unique needs of students	44%	72%
Less likely to require future change	17%	33%
Lessen future financial impact	28%	72%
Does the scenario meet as many decision principles as feasible and practical?	33%	100%

*18 Respondents

Survey conducted on 2/5/2025



Zonda: Bob Templeton

Fort Bend Independent School District Forecast (PASA) | Elementary | 2024 Elementary

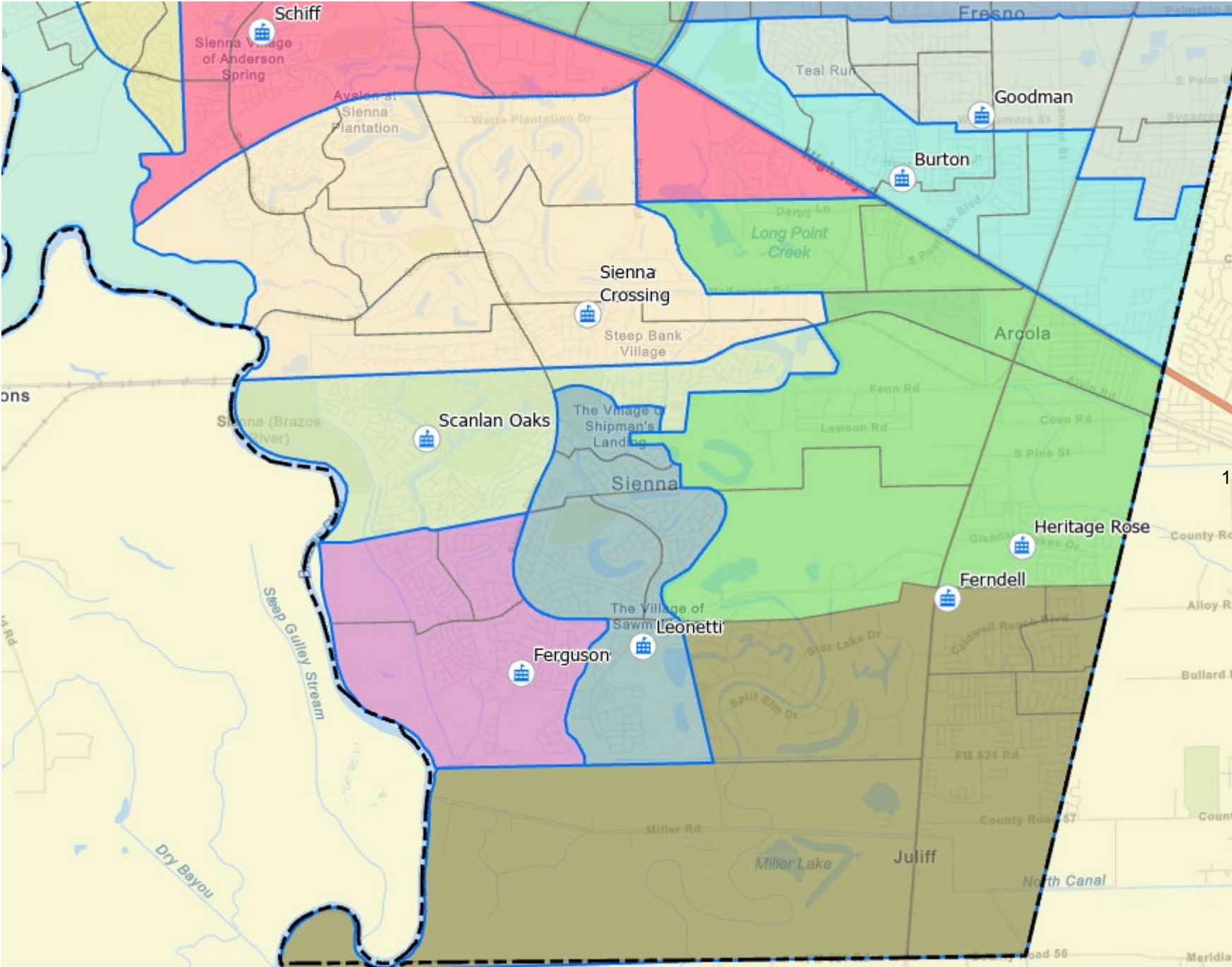
SCHOOL	Capacity	2024/25	2025/26	2026/27	2027/28	2028/29	2029/30	2030/31	2031/32	2032/33	2033/34	2034/35
Ferguson	988	680	773	887	934	945	953	957	967	977	978	975
Heritage Rose	1,138	1,444	1,633	1,793	2,092	2,397	2,671	2,945	3,164	3,346	3,535	3,717
Leonetti	965	866	928	980	988	961	950	953	962	977	977	969
Scanlan Oaks	950	607	580	570	566	546	559	548	539	534	525	514
Schiff	1,007	801	786	739	723	705	720	731	755	785	800	812
Sienna Crossing	999	1,058	1,055	1,035	1,022	1,034	1,024	1,036	1,053	1,074	1,083	1,090
Total	6,047	5,456	5,755	6,004	6,325	6,588	6,877	7,170	7,440	7,693	7,898	8,077

13

Percent Utilization

SCHOOL	Capacity	2024/25	2025/26	2026/27	2027/28	2028/29	2029/30	2030/31	2031/32	2032/33	2033/34	2034/35
Ferguson	988	69%	78%	90%	95%	96%	96%	97%	98%	99%	99%	99%
Heritage Rose	1,138	127%	143%	158%	184%	211%	235%	259%	278%	294%	311%	327%
Leonetti	965	90%	96%	102%	102%	100%	98%	99%	100%	101%	101%	100%
Scanlan Oaks	950	64%	61%	60%	60%	57%	59%	58%	57%	56%	55%	54%
Schiff	1,007	80%	78%	73%	72%	70%	71%	73%	75%	78%	79%	81%
Sienna Crossing	999	106%	106%	104%	102%	104%	103%	104%	105%	108%	108%	109%

Heritage Rose Plan 1



Fort Bend Independent School District Forecast (PASA) | Elementary | Heritage_Rose_Plan_1

SCHOOL	Capacity	2025/26	2026/27	2027/28	2028/29	2029/30	2030/31	2031/32	2032/33	2033/34	2034/35
Ferguson	988	773	887	934	945	953	957	967	977	978	975
Ferndell Henry	720	709	733	791	866	954	1,050	1,141	1,249	1,358	1,455
Heritage Rose	1,138	924	1,060	1,301	1,531	1,717	1,895	2,023	2,097	2,177	2,262
Leonetti	965	928	980	988	961	950	953	962	977	977	969
Scanlan Oaks	950	580	570	566	546	559	548	539	534	525	514
Schiff	1,007	786	739	723	705	720	731	755	785	800	812
Sienna Crossing	999	1,055	1,035	1,022	1,034	1,024	1,036	1,053	1,074	1,083	1,090
Totals	6,767	5,755	6,004	6,325	6,588	6,877	7,170	7,440	7,693	7,898	8,077

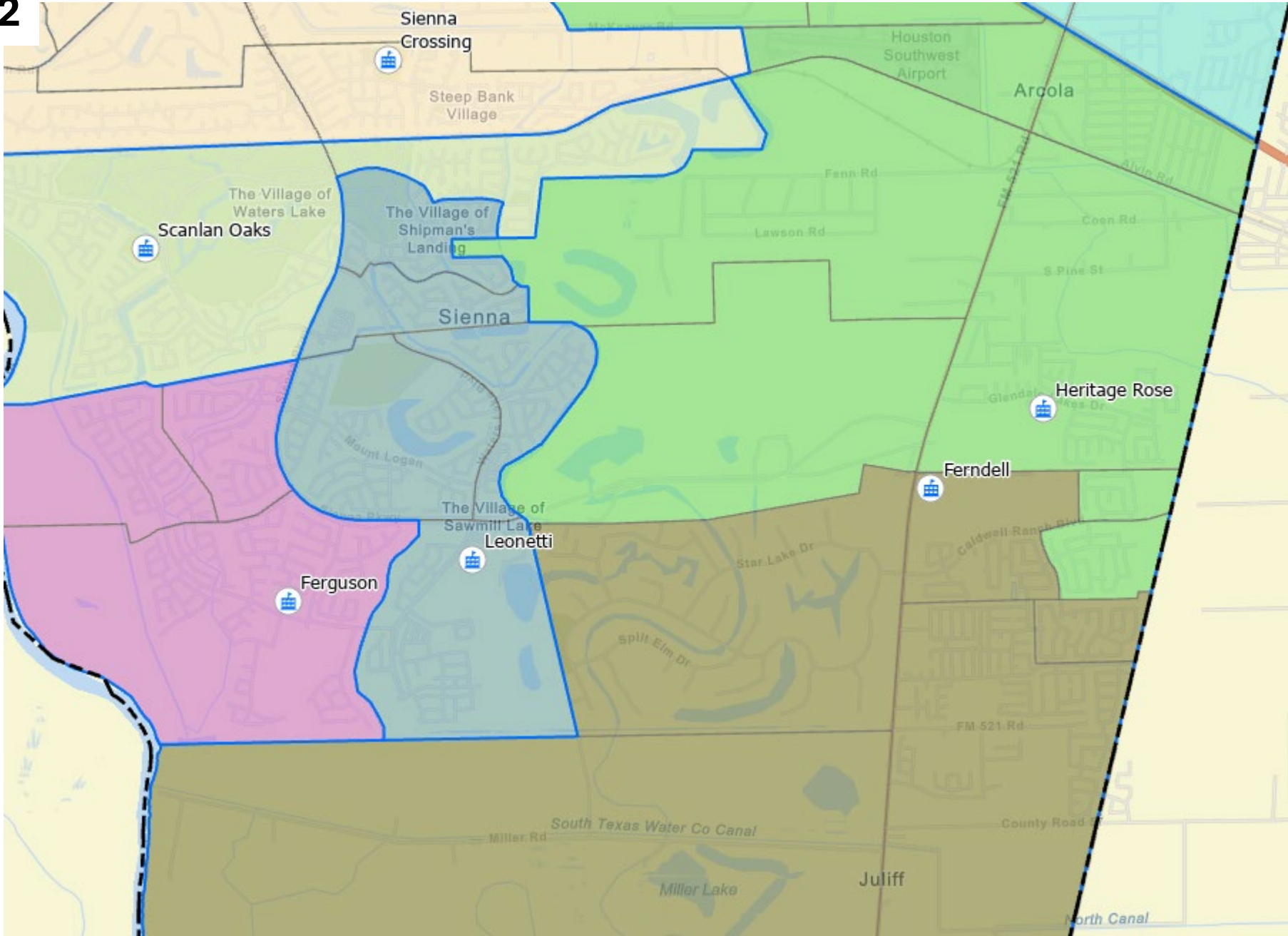
15

Percentage Utilization (without portables)

SCHOOL	Capacity	2025/26	2026/27	2027/28	2028/29	2029/30	2030/31	2031/32	2032/33	2033/34	2034/35
Ferguson	988	78%	90%	95%	96%	96%	97%	98%	99%	99%	99%
Ferndell Henry	720	98%	102%	110%	120%	133%	146%	158%	173%	189%	202%
Heritage Rose	1,138	81%	93%	114%	135%	151%	167%	178%	184%	191%	199%
Leonetti	965	96%	102%	102%	100%	98%	99%	100%	101%	101%	100%
Scanlan Oaks	950	61%	60%	60%	57%	59%	58%	57%	56%	55%	54%
Schiff	1,007	78%	73%	72%	70%	71%	73%	75%	78%	79%	81%
Sienna Crossing	999	106%	104%	102%	104%	103%	104%	105%	108%	108%	109%

■ Yellow < 80% Capacity
■ Green 80% - 100% Capacity
■ Red > 100% Over Capacity

Heritage Rose Plan 2



Fort Bend Independent School District Forecast (PASA) | Elementary | Heritage_Rose_Plan_2

SCHOOL	Capacity	2025/26	2026/27	2027/28	2028/29	2029/30	2030/31	2031/32	2032/33	2033/34	2034/35
Ferguson	988	773	887	934	945	953	957	967	977	978	975
Ferndell Henry	720	595	614	664	739	826	926	1,018	1,127	1,237	1,335
Heritage Rose	1,138	1,038	1,179	1,428	1,658	1,845	2,019	2,146	2,219	2,298	2,382
Leonetti	965	928	980	988	961	950	953	962	977	977	969
Scanlan Oaks	950	580	570	566	546	559	548	539	534	525	514
Schiff	1,007	786	739	723	705	720	731	755	785	800	812
Sienna Crossing	999	1,055	1,035	1,022	1,034	1,024	1,036	1,053	1,074	1,083	1,090
Totals	6,767	5,755	6,004	6,325	6,588	6,877	7,170	7,440	7,693	7,898	8,077

Percentage Utilization (without portables)

SCHOOL	Capacity	2025/26	2026/27	2027/28	2028/29	2029/30	2030/31	2031/32	2032/33	2033/34	2034/35
Ferguson	988	78%	90%	95%	96%	96%	97%	98%	99%	99%	99%
Ferndell Henry	720	83%	85%	92%	103%	115%	129%	141%	157%	172%	185%
Heritage Rose	1,138	91%	104%	125%	146%	162%	177%	189%	195%	202%	209%
Leonetti	965	96%	102%	102%	100%	98%	99%	100%	101%	101%	100%
Scanlan Oaks	950	61%	60%	60%	57%	59%	58%	57%	56%	55%	54%
Schiff	1,007	78%	73%	72%	70%	71%	73%	75%	78%	79%	81%
Sienna Crossing	999	106%	104%	102%	104%	103%	104%	105%	108%	108%	109%

17
■ Yellow < 80% Capacity
■ Green 80% - 100% Capacity
■ Red > 100% Over Capacity

Considerations & Impact

- Campus utilization numbers and percentages are based upon the 2024 PASA Demographic Study.
- Special program participants are projected based on the current placement of these programs in 2024-2025.
- Transportation costs will be minimal as bus riders to Heritage Rose ES will be considered bus riders to Ferndell Henry ES.

Recap and Next Steps

- Move forward with Scenario 2 for public input and feedback
 - 2/26/25-3/5/25
- Review public feedback and engage SBAC
 - 3/5/25
 - 3/19/25
- Present final recommendation to the Board
 - 3/27/25
- Board takes action
 - 4/7/25

18

