



Saline County Board of Commissioners

Meeting Agenda

AGENDA

SALINE COUNTY BOARD OF COMMISSIONERS

SALINE COUNTY COURTHOUSE

Wilber, NE

9:30 AM

DATE: July 19, 2022

This agenda is kept on a daily basis and may change from day to day as requests come in to the County Clerk's office. Requests to be on the agenda must be in the County Clerk's office 24 hours prior to the start of the meeting as stated above. This agenda is considered current on the day of the meeting and cannot be changed or altered except for an emergency.

The Board reserves the right to go into executive session if such session is clearly necessary for the protection of the public interest or for the prevention of needless injury to the reputation of an individual.

ROLL CALL

APPROVAL OF AGENDA

APPROVAL OF MINUTES OF THE PREVIOUS MEETING

CITIZENS FORUM

CORRESPONDENCE

REPORT OF OFFICIALS

BUSINESS FOR ACTION

10:00 Scott Bartels, SCAT-Annual update and request for funds.

10:30 Russ Kalkwarf- Report on Distress Warrants

10:45 Assessor office discussion - county emails / office door locking system / office lighting

Listing of Investments and Pledged Securities for period ending June 30, 2022 for informational purposes of the Board

Discuss/Approve increasing the Saline County Attorney Petty Cash Fund from \$2,500.00 to \$3,000.00 - Resolution #2022-36

Approve new Pledged Security CUSIP #79517KDR3 at First State Bank Nebraska Par Value \$195,000.00 for County Treasurer, Resolution #2022-29

Pledged Security CUSIP #728092HK6 at Citizens State Bank Friend for \$15,000.00 for County Treasurer Resolution #2022-30

New Pledged Securities at Pinnacle Bank

Polk SD #032 CUSIP #731307DR2 \$260,000.00

Neligh NE GO Ref Bnds CUSIP #640272LB4 \$135,000.00

Adams SC #18 CUSIP #006078ET2 \$125,000.00

Holt County SD #29 CUSIP #436536BU9 \$185,000.00

Aurora NE HWY Allocation Pledge 2020 CUSIP #051879HX5 \$125,000.00

Semi-Annual Statement for period ending June 30, 2022

Discuss/Approve the June 2022 County Clerk fees, \$18,852.75

Discuss/Approve the request from Saline County Aging Services to salvage the Stand Up Fridge purchased in 2011.

Discuss/Approve the Sheriff Fees for June 2022 - \$2,892.17

RESOLUTIONS TO TRANSFER FUNDS

Approve Resolution #2022-37, transferring \$1,100.00 from the Inheritance Fund to the Juvenile Services Aid Program, to be reimbursed when funds become available.

HIGHWAY SUPERINTENDENT - ROAD AND BRIDGE MATTERS

Discuss and Approve/Disapprove preliminary plans for 3 projects:

(1) Project # C76(821)/C007603005P in Section 14-T6N-R4E

(2) Project # C76(822)/C007614815 in Sections 28/33-T5N-R2E

(3) Structure # C007614620 in Sections 23/26-T5N-R3E.

Discuss and Approve/Deny Request to Occupy Right of Way for Windstream Nebraska, LLC-
WO#71501230000000; PR-7593.

Discuss and Approve/Disapprove Interlocal agreement between The State of Nebraska and Saline County.

11:30 COUNTY GENERAL ASSISTANCE AND CLOSED SESSION MATTERS

CLAIMS APPROVAL

ADJOURNMENT

SALINE COUNTY BOARD OF COMMISSIONERS

The regular meeting of the Saline County Board of Commissioners was called to order at 9:35 a.m. on Tuesday, July 5, 2022, by Chairperson Russ Karpisek. Present were Karpisek, Janet J. Henning, Marvin A. Kohout and Phil Hardenburger Commissioners, and County Clerk Anita K. Bartels. County Attorney Tad Eickman was present between court commitments. Commissioner Stephanie A. Krivohlavek was absent.

Notice of said meeting was posted in the County Clerk's Office and published in all three county newspapers on June 29, 2022, in compliance with State Statutes.

Karpisek advised those present of the open meetings act posted at the back of the room and that all proceedings are electronically recorded.

Henning moved to approve the agenda, seconded by Hardenburger. Voting aye were Hardenburger, Henning, Karpisek and Kohout, nays none, motion carried.

Kohout moved to approve the minutes of the June 21, 2022 meeting, seconded by Hardenburger. Voting aye were Henning, Karpisek, Kohout and Hardenburger, nays none, motion carried.

Under Correspondence Bartels reported receiving from SENDD the agenda for a July 6, 2022 Executive Committee Special Meeting; from the League of Nebraska Municipalities a notice regarding Opioid Litigation and Settlement Notice; from the Bailiff of the First Judicial District Court the budget request and explanation; a call from Glen Peiper giving notification the Veteran Memorial Kiosk was repaired at a cost of approximately \$800.00 and from the City of Crete the July 5th agendas for the City Council and the Public Works, Finance and Public Safety Committees.

Under Report of Officials, Hardenburger reported attending a Blue Valley Community Action meeting, missed the Tall Grass C02 pipeline meeting and he has an Ag Society meeting tomorrow night;

Kohout reported attending a Planning & Zoning meeting and noted the upcoming Property Valuation Protest hearings.

Karpisek reported following up on the status of the nameplate capacity tax issue.

Bryce Horak, Ag Society President gave an update of the projects completed at the fairgrounds as well as proposed future improvements.

No discussion was held on the Railroad Transportation Safety District (RTSD) in Crete.

Planning & Zoning Administrator Lyle Weber and Linda Clarke presented a minor subdivision for 3.339 acres at S1/2 of NW ¼ 17-6-3E. The ownership of the land is not changing, Clarke is requesting to remove the homestead from the farm ground. Henning moved to approve, seconded by Kohout. Voting aye were Karpisek, Kohout, Hardenburger and Henning, nays none, motion carried.

County Treasurer Debbie Spanyers presented per §77-9918 a delinquent tax list for approval. Henning moved to approve, seconded by Kohout. Voting aye were Kohout, Hardenburger, Henning and Karpisek, nays none, motion carried.

Henning moved to approve the June 2022 Clerk of the District Court fees in the amount of \$10,264.92. Henning moved to approve, seconded by Hardenburger. Voting aye were Hardenburger, Henning, Karpisek and Kohout, nays none, motion carried.

Kohout moved to approve the Lutz & Company Agreement for consulting/compliance procedures regarding COVID and ARPA funds reporting for FY 2022-2023, seconded by Hardenburger. Voting aye were Henning, Karpisek, Kohout and Hardenburger, nays none, motion carried.

Henning moved to approve the subaward with the City of Lincoln dba Aging Partners and Saline County, seconded by Hardenburger. Voting aye were Karpisek, Kohout, Hardenburger and Henning, nays none, motion carried.

Henning moved to approve the Nebraska Auditor of Public Accounts understanding of services, seconded by Kohout. Voting aye were Kohout, Hardenburger, and Henning, abstaining with conflict Karpisek, nays none, motion carried.

Hardenburger moved to approve the Schultz & Associates PC representation letter for the fiscal year 2021-2022 audit, seconded by Henning. Voting aye were Hardenburger, Henning, Karpisek and Kohout, nays none, motion carried.

Kohout moved to accept Estimate 1170 from Holly's Home Improvement to build the wall dividing the second-floor conference room, in the amount of \$7,237.50, seconded by Henning. Voting aye were Henning, Karpisek, Kohout and Hardenburger, nays none, motion carried.

Henning moved to approve Resolution #2022-28 transferring \$2,300.00 from the Inheritance Fund to the Juvenile Services Aid Program, to be reimbursed when funds

become available, seconded by Kohout. Voting aye were Karpisek, Kohout, Hardenburger and Henning, nays none, motion carried.

Highway Superintendent Bruce Filipi presented for a approval an agreement with Norris Public Power for the relocation of power facilities, Project No. CN 13402-Crete Northwest. Henning moved to approve, seconded by Kohout. Voting aye were Kohout, Hardenburger, Henning and Karpisek, nays none, motion carried.

Filipi gave his recommendations for the gravel and crushed rock bids opened during the June 21, 2022 meeting. Filipi rejected the Gana Trucking & Excavating bid because a pit price was not included in their bidding documents. He also rejected the bid of Hard Rock Quarries LLC because it was received late.

Filipi recommended accepting the gravel bids from Rock On Inc., Southwest Gravel Products LLC, Johnson Sand & Gravel and Beatrice Sand & Gravel.

Henning moved to approve accepting the gravel bids from Rock On Inc., Southwest Gravel Products LLC, Johnson Sand & Gravel and Beatrice Sand & Gravel, seconded by Hardenburger. Voting aye were Hardenburger, Henning, Karpisek and Kohout, nays none, motion carried.

Filipi recommended accepting the crushed rock bids from Rock On Inc., Beatrice Sand & Gravel and Gana Trucking & Excavating.

Henning moved to approve accepting the crushed rock bids from Rock On Inc., Beatrice Sand & Gravel and Gana Trucking & Excavating, seconded by Kohout. Voting aye were Henning, Karpisek, Kohout and Hardenburger, nays none, motion carried.

Filipi updated the board on various road projects, including there is one motor grader and one excavator down, waiting on parts to repair.

Henning moved to approve the claims as presented, seconded by Hardenburger. Voting aye were Karpisek, Kohout, Hardenburger and Henning, nays none, motion carried.

GENERAL FUND

| | | |
|------------------------------------|-----------------|------------|
| General Fund Payroll | Salaries | 134,200.86 |
| Barnas | Supplies | 132.38 |
| Black Hills | Utilities | 1,601.60 |
| City of Wilber Ambulance Service | Contract | 338.37 |
| CAMC | Contract | 907.34 |
| Crowne Plaza | Training | 249.90 |
| Dollar General | Supplies | 47.50 |
| Dee Drake | Mileage | 199.27 |
| Eakes | Office Supplies | 426.93 |
| First Concord | Insurance | 5,548.85 |
| Friend Community Healthcare System | Contract | 515.00 |
| Alexis Gerritse | Mileage | 102.96 |
| Greatamerica Financial | Contract | 385.18 |
| Philip Hardenburger | Mileage | 38.61 |
| Kathy Homolka | Reimburse | 221.21 |
| Matthew Kosmicki | Attorney Fees | 2,748.37 |
| Lincoln Radiology | Contract | 432.00 |
| Ingrid Lindal | Mileage | 126.37 |
| Mallory Safety | Supplies | 113.00 |
| John Meidlinger | Contract | 400.00 |
| Mid-Continental Restoration | Contract | 11,073.96 |
| Nebraska Health & Human Svcs | Contract | 979.83 |
| Nebraska Public Health Envr Lab | Contract | 210.00 |
| Nebraska Weed Control Association | Training | 120.00 |
| NIFCO | Supplies | 282.02 |
| NPPD | Utilities | 219.00 |
| Quill | Office Supplies | 0.59 |
| Region V Systems | Contract | 2,568.00 |
| Sack Lumber | Supplies | 32.47 |
| Saline County Attorney | Reimburse | 29.54 |
| Seward County Independent | Print & Publish | 427.00 |
| Shared Service Systems | Supplies | 135.44 |

| | | |
|---------------------------|---------------|-----------|
| Soarin Group | Contract | 1,497.00 |
| Debbie Spanyers | Reimburse | 7.48 |
| State of NE | Equipment | 12,000.00 |
| Eric Stehlik | Mileage | 185.45 |
| Anita Stougard | Mileage | 47.97 |
| Summit | Supplies | 9,155.25 |
| Us Bank Equipment Finance | Contract | 772.45 |
| Becky Vales | Mileage | 38.61 |
| Verizon | Communication | 2,076.92 |
| Visa | Equipment | 1,105.94 |
| Walker | Supplies | 33.08 |
| Walker | Supplies | 73.21 |
| Windstream | Communication | 5,625.71 |

ROAD FUND

| | | |
|------------------------|-----------------|-----------|
| Road Fund Payroll | Salaries | 24,670.89 |
| Beatrice Concrete | Gravel | 55,023.65 |
| Black Hills | Utilities | 282.16 |
| Crete Glass | Equipment Rpr | 271.00 |
| Eakes | Office Supplies | 95.34 |
| Johnson Sand & Gravel | Gravel | 30,427.65 |
| Midwest Steel Works | Supplies | 510.00 |
| Orschelns | Supplies | 4.99 |
| Rock On | Gravel | 960.07 |
| Shaffer Communications | Supplies | 355.00 |
| State of NE | Equipment | 16,800.00 |
| Village of Dewitt | Utilities | 62.78 |
| Village of Western | Utilities | 83.00 |

BAILIFF FUND

| | | |
|----------------------|----------|----------|
| Bailiff Fund Payroll | Salaries | 1,222.87 |
|----------------------|----------|----------|

VISITOR'S PROMOTION FUND

| | | |
|---------------|-----------|----------|
| Saline Center | Reimburse | 1,000.00 |
|---------------|-----------|----------|

VISITOR'S IMPROVEMENT FUND

| | | |
|---------------|-----------|----------|
| Saline Center | Reimburse | 1,000.00 |
|---------------|-----------|----------|

AGING SERVICES FUND

| | | |
|------------------------|---------|--------|
| Samantha Cosaert | Program | 285.00 |
| Tia Kreshel | Program | 360.00 |
| Delaney Mazza | Program | 180.00 |
| Miller Mailing Service | Postage | 181.94 |
| Darlene Pribyl | Program | 285.00 |

JUVENILE SERVICES GRANT FUND

| | | |
|----------------|---------------|----------|
| Anita Stougard | Program | 2,111.91 |
| Verizon | Communication | 32.83 |

AMERICAN RESUCE PLAN FUND

| | | |
|----------------|------------|-----------|
| MMC Mechanical | Bldg Maint | 14,493.20 |
|----------------|------------|-----------|

911 EMERGENCY MANAGEMENT FUND

| | | |
|---------------|----------|----------|
| Linda Kotas | Rent | 1,500.00 |
| Nemaha County | Contract | 53.27 |

911 WIRELESS SERVICE FUND

| | | |
|---------------|----------|--------|
| Nemaha County | Contract | 301.85 |
|---------------|----------|--------|

COMMISSARY FUND

| | | |
|--------------------|----------|----------|
| Barnas | Supplies | 1,647.13 |
| Bob Barker Company | Supplies | 14.81 |
| Summit | Supplies | 6,728.45 |

ALL FUNDS

| | | |
|------------------|-----------|-----------|
| First State Bank | Fed Tax | 16,640.23 |
| NE Dept of Rev | State Tax | 7,950.16 |
| First State Bank | Soc Sec | 33,091.20 |

| | | |
|------------------------------|------------|-----------|
| Ameritas Life | Retire | 26,313.40 |
| Delta Dental | Dental Ins | 2,225.19 |
| Madison Nat'l Life | Life Ins | 50.48 |
| AFLAC | Ins | 1,150.51 |
| VSP | Eye Ins | 465.38 |
| MassMutal | Def Comp | 2,428.00 |
| First Concord | Café | 1,941.75 |
| Colonial Supp Ins | Ins | 164.87 |
| Madison Nat'l Life | Dis Ins | 164.97 |
| Teamsters | Dues | 299.00 |
| New York Life | Ins | 95.64 |
| Globe Life | Ins | 267.32 |
| AZ Child Support | Garnish | 86.06 |
| Lancaster County Court | Garnish | 200.83 |
| Nebraska Child Support | Garnish | 300.00 |
| Credit Management Services | Garnish | 283.93 |
| Professional Choice Recovery | Garnish | 213.01 |

At 10:44 a.m. Kohout moved to enter closed session to discuss a litigation matter, seconded by Hardenburger. Voting aye were Kohout, Henning, Hardenburger and Karpisek, nays none, motion carried.

At 11:18 a.m. Kohout moved to exit closed session, seconded by Henning. Voting aye were Henning, Hardenburger, Kohout and Karpisek, nays none, motion carried.

Karpisek announced during closed session a litigation matter was discussed with no action taken.

There being no further business to come before the Board, the meeting was adjourned at 11:20 a.m. The next regular meeting will be on July 19, 2022 at 9:30 a.m. in the Saline County Commissioners' Room, Court House, Wilber, NE.

ATTEST:

Anita K. Bartels, County Clerk

Janet J. Henning

Marvin A. Kohout

Stephanie A. Krivohlavek

Phil Hardenburger, Vice-Chairperson

Russ Karpisek, Chairperson

I, Anita K. Bartels, County Clerk in and for Saline County, do hereby certify that the minutes of the previous meeting held on June 21, 2022 were approved as presented.

Anita K. Bartels, County Clerk

Janet J. Henning

Marvin A. Kohout

Stephanie A. Krivohlavek

Phil Hardenburger, Vice-Chairperson

Russ Karpisek, Chairperson

RESOLUTION # 2022-36

WHEREAS, Sheriff's Departments require payment in advance for service fees outside of Saline County; and,

WHEREAS, other miscellaneous documents required by the Saline County Attorney's Office require payment in advance and/or accepting and paying restitution from criminal defendants (trust account);

BE IT HEREBY RESOLVED that pursuant to Nebraska Revised Statutes, a Petty Cash checking account was established at Farmers and Merchants Bank to be held by the Saline County Attorney to pay fees for service by out-of-county Sheriff's Departments and other miscellaneous fees requiring advanced payment or where the Saline County Attorney's Office is required to handle funds from sources other than the county as a "trust account." Said account was called "Saline County Attorney Petty Cash Fund." The total in said account shall be increased from \$2,500.00 to \$3,000.00, effective August 1, 2022. Trust monies which are accepted from criminal defendants for payment of restitution shall also be handled through this account.

Motion made by Commissioner _____, seconded by Commissioner _____, to adopt the foregoing Resolution.

All members present voting as follows:

Yea: _____

Nay: _____

Motion carried

Chairman

SUBSCRIBED AND SWORN TO before me this 19 day of July 2022.

County Clerk

Resolution 2022-29
Approving of Securities

Of
First State Bank Nebraska
of
Wilber, NE

It was moved by _____ that the following resolution be adopted.

RESOLVED that application for designation as County Depository by **First State Bank Nebraska of Wilber, NE**, and that the deposit of the following securities aggregating in the amount the sum of:

\$195,000.00 CUSIP: 79517KDR3

as a pledge to secure deposits of the public moneys of this county in said Bank be and the same hereby is approved as to said securities and the deposit thereof with said trustee, on condition that said trustee issue its trust receipt therefore, as provided for by Section 77-2328 R.S.Neb. 1943.

RESOLVED, further, that said trust receipt when issued by said trustee shall be deposited by said Bank with the County Clerk of this County in lieu of the deposit of said securities with said County Clerk as a pledge to secure the deposit of said moneys in said Bank.

RESOLVED, further that such trust receipt shall contain the following provisions which shall constitute the terms and conditions of the escrow.

I

When the interest coupons attached to said bonds become due, the proceeds of collection shall be applied to the credit of said bank.

II

The above securities shall be delivered to said bank only: (1) upon the joint order of the County Clerk and County Commissioners of said county with resolution approving substitution of other securities, or (2) upon receipt of certificate of said County Treasurer that all deposits secured thereby have been repaid.

III

On presentation by the bank to the trustee of a certificate from the County Treasurer under seal, stating the amount of the deposits in said bank, together with a certified copy of a resolution of the County Board approving such withdrawal, the trustee may deliver to said bank designated securities in excess of 110 percent of the deposits based on the then market value of securities deposited.

IV

The above securities shall be delivered to the County Clerk of said county upon written demand, (without further responsibility on the part of the trustee) supported by certified copy of resolution of the County Commissioners of said county and

(1) a certificate from the office of the Department of Banking, under seal certifying that possession of said bank has been taken by said Department, or

(2) proof that a receiver of said bank has been applied for, with an affidavit signed by the County Clerk and attested by the County Treasurer under seal, or

(3) an affidavit of the Treasurer of said county that said bank has been unable to pay any check drawn by her on said bank.

Said county shall have the right to dispose of said securities and reimburse the county to the extent and for the amount of the deposit with interest in said bank.

V

The trustee may at any time act in reliance upon the signature of any public officer, attested by his official seal, without liability to either the county or said bank.

VI

Said securities shall be held by the trustee without cost to the county and said bank shall pay all costs, expenses and charges for the safekeeping, transportation and handling of said securities. The county shall not be responsible for any loss of said securities or coupons thereon.

VII

The trustee will give to said securities the same care it gives to its own property, but beyond that it will not and does not assume any responsibility.

VIII

RESOLVED, further, that a copy of this resolution duly certified by the County Clerk of this County be transmitted to said trustee, and shall constitute the escrow agreement.

The motion was seconded by _____ and on roll call, the vote was as follows:

| AYES | NAYS |
|-------|-------|
| _____ | _____ |
| _____ | _____ |
| _____ | _____ |
| _____ | _____ |
| _____ | _____ |

The chairman declared the resolution adopted.

This is to certify that the foregoing is a true and correct copy of the resolution duly adopted by the County Board of Saline County, Nebraska, at a regular meeting of said Board held at Wilber, Nebraska, on the 19th day of July, 2022, at which a quorum was present as shown by the minutes of said meeting and that said resolution is now in full force and effect.

In Witness Whereof, I have hereunto subscribed my name and affixed my official seal this 19th day of July, 2022.

County Clerk of Saline County, Nebraska

OFFICIAL SEAL

Resolution 2022-30
Approving of Securities

Of
Citizens State Bank

It was moved by _____ that the following resolution be adopted.

RESOLVED that application for designation as County Depository by Citizens State Bank and that the deposit of the following securities aggregating in the amount the sum of:

\$15,000.00 CUSIP: #728092HK6

as a pledge to secure deposits of the public moneys of this county in said Bank be and the same hereby is approved as to said securities and the deposit thereof with said trustee, on condition that said trustee issue its trust receipt therefore, as provided for by Section 77-2328 R.S. Neb. 1943.

RESOLVED, further, that said trust receipt when issued by said trustee shall be deposited by said Bank with the County Clerk of this County in lieu of the deposit of said securities with said County Clerk as a pledge to secure the deposit of said moneys in said Bank.

RESOLVED, further that such trust receipt shall contain the following provisions which shall constitute the terms and conditions of the escrow.

I

When the interest coupons attached to said bonds become due, the proceeds of collection shall be applied to the credit of said bank.

II

The above securities shall be delivered to said bank only: (1) upon the joint order of the County Clerk and County Commissioners or Board of Supervisors of said county with resolution approving substitution of other securities, or (2) upon receipt of certificate of said County Treasurer that all deposits secured thereby have been repaid.

III

On presentation by the bank to the trustee of a certificate from the County Treasurer under seal, stating the amount of the deposits in said bank, together with a certified copy of a resolution of the County Board approving such withdrawal, the trustee may deliver to said bank designated securities in excess of 110 percent of the deposits based on the then market value of securities deposited.

IV

The above securities shall be delivered to the County Clerk of said county upon written demand, (without further responsibility on the part of the trustee) supported by certified copy of resolution of the County Commissioners or Board of Supervisors of said county and

(1) a certificate from the office of the Department of Banking, under seal certifying that possession of said bank has been taken by said Department, or

(2) proof that a receiver of said bank has been applied for, with an affidavit signed by the County Clerk and attested by the County Treasurer under seal, or

(3) an affidavit of the Treasurer of said county that said bank has been unable to pay any check drawn by him on said bank.

Said county shall have the right to dispose of said securities and reimburse the county to the extent and for the amount of the deposit with interest in said bank.

The trustee may at any time act in reliance upon the signature of any public officer, attested by his official seal, without liability to either the county or said bank.

VI

Said securities shall be held by the trustee without cost to the county and said bank shall pay all costs, expenses and charges for the safekeeping, transportation and handling of said securities. The county shall not be responsible for any loss of said securities or coupons thereon.

VII

The trustee will give to said securities the same care it gives to its own property, but beyond that it will not and does not assume any responsibility.

VIII

RESOLVED, further, that a copy of this resolution duly certified by the County Clerk of this County be transmitted to said trustee, and shall constitute the escrow agreement.

The motion was seconded by _____ and on roll call, the vote was as follows:

| AYES | NAYS |
|-------|-------|
| _____ | _____ |
| _____ | _____ |
| _____ | _____ |
| _____ | _____ |
| _____ | _____ |

The chairman declared the resolution adopted.

This is to certify that the foregoing is a true and correct copy of the resolution duly adopted by the County Board of Saline County, Nebraska, at a regular meeting of said Board held at Wilber, Nebraska, on the 19th day of July 2022, at which a quorum was present as shown by the minutes of said meeting and that said resolution is now in full force and effect.

In Witness Whereof, I have hereunto subscribed my name and affixed my official seal this 19th day of July 2022.

County Clerk of Saline County, Nebraska

OFFICIAL SEAL

Resolution 2022-31
Approving of Securities

Of
Pinnacle Bank
of
Aurora, Nebraska

It was moved by _____ that the following resolution be adopted.

RESOLVED that application for designation as County Depository by **Pinnacle Bank of Aurora, NE** and that the deposit of the following securities aggregating in the amount the sum of:

\$260,000.00 CUSIP #731307DR2

as a pledge to secure deposits of the public moneys of this county in said Bank be and the same hereby is approved as to said securities and the deposit thereof with said trustee, on condition that said trustee issue its trust receipt therefore, as provided for by Section 77-2328 R.S.Neb. 1943.

RESOLVED, further, that said trust receipt when issued by said trustee shall be deposited by said Bank with the County Clerk of this County in lieu of the deposit of said securities with said County Clerk as a pledge to secure the deposit of said moneys in said Bank.

RESOLVED, further that such trust receipt shall contain the following provisions which shall constitute the terms and conditions of the escrow.

I

When the interest coupons attached to said bonds become due, the proceeds of collection shall be applied to the credit of said bank.

II

The above securities shall be delivered to said bank only: (1) upon the joint order of the County Clerk and County Commissioners or Board of Supervisors of said county with resolution approving substitution of other securities, or (2) upon receipt of certificate of said County Treasurer that all deposits secured thereby have been repaid.

III

On presentation by the bank to the trustee of a certificate from the County Treasurer under seal, stating the amount of the deposits in said bank, together with a certified copy of a resolution of the County Board approving such withdrawal, the trustee may deliver to said bank designated securities in excess of 110 percent of the deposits based on the then market value of securities deposited.

IV

The above securities shall be delivered to the County Clerk of said county upon written demand, (without further responsibility on the part of the trustee) supported by certified copy of resolution of the County Commissioners or Board of Supervisors of said county and

(1) a certificate from the office of the Department of Banking, under seal certifying that possession of said bank has been taken by said Department, or

(2) proof that a receiver of said bank has been applied for, with an affidavit signed by the County Clerk and attested by the County Treasurer under seal, or

(3) an affidavit of the Treasurer of said county that said bank has been unable to pay any check drawn by him on said bank.

Said county shall have the right to dispose of said securities and reimburse the county to the extent and for the amount of the deposit with interest in said bank.

V

The trustee may at any time act in reliance upon the signature of any public officer, attested by his official seal, without liability to either the county or said bank.

VI

Said securities shall be held by the trustee without cost to the county and said bank shall pay all costs, expenses and charges for the safekeeping, transportation and handling of said securities. The county shall not be responsible for any loss of said securities or coupons thereon.

VII

The trustee will give to said securities the same care it gives to its own property, but beyond that it will not and does not assume any responsibility.

VIII

RESOLVED, further, that a copy of this resolution duly certified by the County Clerk of this County be transmitted to said trustee, and shall constitute the escrow agreement.

The motion was seconded by _____ and on roll call, the vote was as follows:

| AYES | NAYS |
|-------|-------|
| _____ | _____ |
| _____ | _____ |
| _____ | _____ |
| _____ | _____ |
| _____ | _____ |

The chairman declared the resolution adopted.

This is to certify that the foregoing is a true and correct copy of the resolution duly adopted by the County Board of Saline County, Nebraska, at a regular meeting of said Board held at Wilber, Nebraska, on the 19TH day of July, 2022, at which a quorum was present as shown by the minutes of said meeting and that said resolution is now in full force and effect.

In Witness Whereof, I have hereunto subscribed my name and affixed my official seal this 19TH day of July, 2022.

County Clerk of Saline County, Nebraska

OFFICIAL SEAL

Resolution 2022-32
Approving of Securities

Of
Pinnacle Bank
of
Aurora, Nebraska

It was moved by _____ that the following resolution be adopted.

RESOLVED that application for designation as County Depository by **Pinnacle Bank of Aurora, NE** and that the deposit of the following securities aggregating in the amount the sum of:

\$135,000.00 CUSIP #640272LB4

as a pledge to secure deposits of the public moneys of this county in said Bank be and the same hereby is approved as to said securities and the deposit thereof with said trustee, on condition that said trustee issue its trust receipt therefore, as provided for by Section 77-2328 R.S.Neb. 1943.

RESOLVED, further, that said trust receipt when issued by said trustee shall be deposited by said Bank with the County Clerk of this County in lieu of the deposit of said securities with said County Clerk as a pledge to secure the deposit of said moneys in said Bank.

RESOLVED, further that such trust receipt shall contain the following provisions which shall constitute the terms and conditions of the escrow.

I

When the interest coupons attached to said bonds become due, the proceeds of collection shall be applied to the credit of said bank.

II

The above securities shall be delivered to said bank only: (1) upon the joint order of the County Clerk and County Commissioners or Board of Supervisors of said county with resolution approving substitution of other securities, or (2) upon receipt of certificate of said County Treasurer that all deposits secured thereby have been repaid.

III

On presentation by the bank to the trustee of a certificate from the County Treasurer under seal, stating the amount of the deposits in said bank, together with a certified copy of a resolution of the County Board approving such withdrawal, the trustee may deliver to said bank designated securities in excess of 110 percent of the deposits based on the then market value of securities deposited.

IV

The above securities shall be delivered to the County Clerk of said county upon written demand, (without further responsibility on the part of the trustee) supported by certified copy of resolution of the County Commissioners or Board of Supervisors of said county and

(1) a certificate from the office of the Department of Banking, under seal certifying that possession of said bank has been taken by said Department, or

(2) proof that a receiver of said bank has been applied for, with an affidavit signed by the County Clerk and attested by the County Treasurer under seal, or

(3) an affidavit of the Treasurer of said county that said bank has been unable to pay any check drawn by him on said bank.

Said county shall have the right to dispose of said securities and reimburse the county to the extent and for the amount of the deposit with interest in said bank.

V

The trustee may at any time act in reliance upon the signature of any public officer, attested by his official seal, without liability to either the county or said bank.

VI

Said securities shall be held by the trustee without cost to the county and said bank shall pay all costs, expenses and charges for the safekeeping, transportation and handling of said securities. The county shall not be responsible for any loss of said securities or coupons thereon.

VII

The trustee will give to said securities the same care it gives to its own property, but beyond that it will not and does not assume any responsibility.

VIII

RESOLVED, further, that a copy of this resolution duly certified by the County Clerk of this County be transmitted to said trustee, and shall constitute the escrow agreement.

The motion was seconded by _____ and on roll call, the vote was as follows:

| AYES | NAYS |
|-------|-------|
| _____ | _____ |
| _____ | _____ |
| _____ | _____ |
| _____ | _____ |
| _____ | _____ |

The chairman declared the resolution adopted.

This is to certify that the foregoing is a true and correct copy of the resolution duly adopted by the County Board of Saline County, Nebraska, at a regular meeting of said Board held at Wilber, Nebraska, on the 19TH day of July, 2022, at which a quorum was present as shown by the minutes of said meeting and that said resolution is now in full force and effect.

In Witness Whereof, I have hereunto subscribed my name and affixed my official seal this 19TH day of July, 2022.

County Clerk of Saline County, Nebraska

OFFICIAL SEAL

Resolution 2022-33
Approving of Securities

Of
Pinnacle Bank
of
Aurora, Nebraska

It was moved by _____ that the following resolution be adopted.

RESOLVED that application for designation as County Depository by **Pinnacle Bank of Aurora, NE** and that the deposit of the following securities aggregating in the amount the sum of:

\$125,000.00 CUSIP #006078ET2

as a pledge to secure deposits of the public moneys of this county in said Bank be and the same hereby is approved as to said securities and the deposit thereof with said trustee, on condition that said trustee issue its trust receipt therefore, as provided for by Section 77-2328 R.S.Neb. 1943.

RESOLVED, further, that said trust receipt when issued by said trustee shall be deposited by said Bank with the County Clerk of this County in lieu of the deposit of said securities with said County Clerk as a pledge to secure the deposit of said moneys in said Bank.

RESOLVED, further that such trust receipt shall contain the following provisions which shall constitute the terms and conditions of the escrow.

I

When the interest coupons attached to said bonds become due, the proceeds of collection shall be applied to the credit of said bank.

II

The above securities shall be delivered to said bank only: (1) upon the joint order of the County Clerk and County Commissioners or Board of Supervisors of said county with resolution approving substitution of other securities, or (2) upon receipt of certificate of said County Treasurer that all deposits secured thereby have been repaid.

III

On presentation by the bank to the trustee of a certificate from the County Treasurer under seal, stating the amount of the deposits in said bank, together with a certified copy of a resolution of the County Board approving such withdrawal, the trustee may deliver to said bank designated securities in excess of 110 percent of the deposits based on the then market value of securities deposited.

IV

The above securities shall be delivered to the County Clerk of said county upon written demand, (without further responsibility on the part of the trustee) supported by certified copy of resolution of the County Commissioners or Board of Supervisors of said county and

(1) a certificate from the office of the Department of Banking, under seal certifying that possession of said bank has been taken by said Department, or

(2) proof that a receiver of said bank has been applied for, with an affidavit signed by the County Clerk and attested by the County Treasurer under seal, or

(3) an affidavit of the Treasurer of said county that said bank has been unable to pay any check drawn by him on said bank.

Said county shall have the right to dispose of said securities and reimburse the county to the extent and for the amount of the deposit with interest in said bank.

V

The trustee may at any time act in reliance upon the signature of any public officer, attested by his official seal, without liability to either the county or said bank.

VI

Said securities shall be held by the trustee without cost to the county and said bank shall pay all costs, expenses and charges for the safekeeping, transportation and handling of said securities. The county shall not be responsible for any loss of said securities or coupons thereon.

VII

The trustee will give to said securities the same care it gives to its own property, but beyond that it will not and does not assume any responsibility.

VIII

RESOLVED, further, that a copy of this resolution duly certified by the County Clerk of this County be transmitted to said trustee, and shall constitute the escrow agreement.

The motion was seconded by _____ and on roll call, the vote was as follows:

| AYES | NAYS |
|-------|-------|
| _____ | _____ |
| _____ | _____ |
| _____ | _____ |
| _____ | _____ |
| _____ | _____ |

The chairman declared the resolution adopted.

This is to certify that the foregoing is a true and correct copy of the resolution duly adopted by the County Board of Saline County, Nebraska, at a regular meeting of said Board held at Wilber, Nebraska, on the 19TH day of July, 2022, at which a quorum was present as shown by the minutes of said meeting and that said resolution is now in full force and effect.

In Witness Whereof, I have hereunto subscribed my name and affixed my official seal this 19TH day of July, 2022.

County Clerk of Saline County, Nebraska

OFFICIAL SEAL

Resolution 2022-34
Approving of Securities

Of
Pinnacle Bank
of
Aurora, Nebraska

It was moved by _____ that the following resolution be adopted.

RESOLVED that application for designation as County Depository by **Pinnacle Bank of Aurora, NE** and that the deposit of the following securities aggregating in the amount the sum of:

\$185,000.00 CUSIP #436536BU9

as a pledge to secure deposits of the public moneys of this county in said Bank be and the same hereby is approved as to said securities and the deposit thereof with said trustee, on condition that said trustee issue its trust receipt therefore, as provided for by Section 77-2328 R.S.Neb. 1943.

RESOLVED, further, that said trust receipt when issued by said trustee shall be deposited by said Bank with the County Clerk of this County in lieu of the deposit of said securities with said County Clerk as a pledge to secure the deposit of said moneys in said Bank.

RESOLVED, further that such trust receipt shall contain the following provisions which shall constitute the terms and conditions of the escrow.

I

When the interest coupons attached to said bonds become due, the proceeds of collection shall be applied to the credit of said bank.

II

The above securities shall be delivered to said bank only: (1) upon the joint order of the County Clerk and County Commissioners or Board of Supervisors of said county with resolution approving substitution of other securities, or (2) upon receipt of certificate of said County Treasurer that all deposits secured thereby have been repaid.

III

On presentation by the bank to the trustee of a certificate from the County Treasurer under seal, stating the amount of the deposits in said bank, together with a certified copy of a resolution of the County Board approving such withdrawal, the trustee may deliver to said bank designated securities in excess of 110 percent of the deposits based on the then market value of securities deposited.

IV

The above securities shall be delivered to the County Clerk of said county upon written demand, (without further responsibility on the part of the trustee) supported by certified copy of resolution of the County Commissioners or Board of Supervisors of said county and

(1) a certificate from the office of the Department of Banking, under seal certifying that possession of said bank has been taken by said Department, or

(2) proof that a receiver of said bank has been applied for, with an affidavit signed by the County Clerk and attested by the County Treasurer under seal, or

(3) an affidavit of the Treasurer of said county that said bank has been unable to pay any check drawn by him on said bank.

Said county shall have the right to dispose of said securities and reimburse the county to the extent and for the amount of the deposit with interest in said bank.

V

The trustee may at any time act in reliance upon the signature of any public officer, attested by his official seal, without liability to either the county or said bank.

VI

Said securities shall be held by the trustee without cost to the county and said bank shall pay all costs, expenses and charges for the safekeeping, transportation and handling of said securities. The county shall not be responsible for any loss of said securities or coupons thereon.

VII

The trustee will give to said securities the same care it gives to its own property, but beyond that it will not and does not assume any responsibility.

VIII

RESOLVED, further, that a copy of this resolution duly certified by the County Clerk of this County be transmitted to said trustee, and shall constitute the escrow agreement.

The motion was seconded by _____ and on roll call, the vote was as follows:

| AYES | NAYS |
|-------|-------|
| _____ | _____ |
| _____ | _____ |
| _____ | _____ |
| _____ | _____ |
| _____ | _____ |

The chairman declared the resolution adopted.

This is to certify that the foregoing is a true and correct copy of the resolution duly adopted by the County Board of Saline County, Nebraska, at a regular meeting of said Board held at Wilber, Nebraska, on the 19TH day of July, 2022, at which a quorum was present as shown by the minutes of said meeting and that said resolution is now in full force and effect.

In Witness Whereof, I have hereunto subscribed my name and affixed my official seal this 19TH day of July, 2022.

County Clerk of Saline County, Nebraska

OFFICIAL SEAL

Resolution 2022-35
Approving of Securities

Of
Pinnacle Bank
of
Aurora, Nebraska

It was moved by _____ that the following resolution be adopted.

RESOLVED that application for designation as County Depository by **Pinnacle Bank of Aurora, NE** and that the deposit of the following securities aggregating in the amount the sum of:

\$125,000.00 CUSIP #051879HX5

as a pledge to secure deposits of the public moneys of this county in said Bank be and the same hereby is approved as to said securities and the deposit thereof with said trustee, on condition that said trustee issue its trust receipt therefore, as provided for by Section 77-2328 R.S.Neb. 1943.

RESOLVED, further, that said trust receipt when issued by said trustee shall be deposited by said Bank with the County Clerk of this County in lieu of the deposit of said securities with said County Clerk as a pledge to secure the deposit of said moneys in said Bank.

RESOLVED, further that such trust receipt shall contain the following provisions which shall constitute the terms and conditions of the escrow.

I

When the interest coupons attached to said bonds become due, the proceeds of collection shall be applied to the credit of said bank.

II

The above securities shall be delivered to said bank only: (1) upon the joint order of the County Clerk and County Commissioners or Board of Supervisors of said county with resolution approving substitution of other securities, or (2) upon receipt of certificate of said County Treasurer that all deposits secured thereby have been repaid.

III

On presentation by the bank to the trustee of a certificate from the County Treasurer under seal, stating the amount of the deposits in said bank, together with a certified copy of a resolution of the County Board approving such withdrawal, the trustee may deliver to said bank designated securities in excess of 110 percent of the deposits based on the then market value of securities deposited.

IV

The above securities shall be delivered to the County Clerk of said county upon written demand, (without further responsibility on the part of the trustee) supported by certified copy of resolution of the County Commissioners or Board of Supervisors of said county and

(1) a certificate from the office of the Department of Banking, under seal certifying that possession of said bank has been taken by said Department, or

(2) proof that a receiver of said bank has been applied for, with an affidavit signed by the County Clerk and attested by the County Treasurer under seal, or

(3) an affidavit of the Treasurer of said county that said bank has been unable to pay any check drawn by him on said bank.

Said county shall have the right to dispose of said securities and reimburse the county to the extent and for the amount of the deposit with interest in said bank.

V

The trustee may at any time act in reliance upon the signature of any public officer, attested by his official seal, without liability to either the county or said bank.

VI

Said securities shall be held by the trustee without cost to the county and said bank shall pay all costs, expenses and charges for the safekeeping, transportation and handling of said securities. The county shall not be responsible for any loss of said securities or coupons thereon.

VII

The trustee will give to said securities the same care it gives to its own property, but beyond that it will not and does not assume any responsibility.

VIII

RESOLVED, further, that a copy of this resolution duly certified by the County Clerk of this County be transmitted to said trustee, and shall constitute the escrow agreement.

The motion was seconded by _____ and on roll call, the vote was as follows:

| AYES | NAYS |
|-------|-------|
| _____ | _____ |
| _____ | _____ |
| _____ | _____ |
| _____ | _____ |
| _____ | _____ |

The chairman declared the resolution adopted.

This is to certify that the foregoing is a true and correct copy of the resolution duly adopted by the County Board of Saline County, Nebraska, at a regular meeting of said Board held at Wilber, Nebraska, on the 19TH day of July, 2022, at which a quorum was present as shown by the minutes of said meeting and that said resolution is now in full force and effect.

In Witness Whereof, I have hereunto subscribed my name and affixed my official seal this 19TH day of July, 2022.

County Clerk of Saline County, Nebraska

OFFICIAL SEAL

Saline County Clerk

REPORT OF FEES

June 2022

| | | |
|--|----|-----------|
| Photocopies & Handling Fees | \$ | 61.00 |
| Fax Fees & Emailing Fees | \$ | 76.50 |
| Phone & Written Searches | \$ | - |
| Certified Copies | \$ | 81.00 |
| Plat Books/Farm & Home Directory & Hdlg | \$ | 27.00 |
| Maps | \$ | - |
| Tax Liens (Federal & State) | \$ | - |
| Marriage Licenses | \$ | 200.00 |
| Election, voter registration lists, etc. | \$ | - |
| Real Estate | \$ | 6,180.00 |
| Documentary Stamp Tax | \$ | 12,134.25 |
| Game & Parks Fees | \$ | 93.00 |

| | | |
|--------------|-----------|------------------|
| TOTAL | \$ | 18,852.75 |
|--------------|-----------|------------------|

Approved

This 19th day of July, 2022

County Board

P.O. Box 812 • 109 W 3rd Street



Wilber NE 68465 • 402.821.3330

July 8, 2022

Dear Saline County Commissioners,

I would like request the Stand Up Fridge purchases in 2011 be salvaged.

Thank you, Lori

State of Nebraska } ss
 Saline County
 Filed in the County Clerks
 office Saline County, Nebraska

JUL 13 2022

at _____ o'clock and _____ minute

 County Clerk

**Saline Civil Account
 Transactions by Account**

JUL 13 2022

8:02 AM
 07/06/22
 Accrual Basis

As of June 30, 2022

| Type | Date | Num | Name | Memo | Split | Amount | Balance |
|--------------------------------------|------------|--------|-----------------------------------|----------------------|-------------|-----------|----------|
| 200 · Due to County Treasurer | | | | | | | 5,800.87 |
| 201 · Writ Fees | | | | | | | 1,359.00 |
| Check | 06/01/2022 | 9792 | Saline County Treasurer | May 2022 - sheri... | 100 · Ca... | -1,359.00 | 0.00 |
| Invoice | 06/01/2022 | 230-33 | Messerli & Kramer PA | Writ Fees-Noel ... | 120 · A/R | 18.00 | 18.00 |
| Invoice | 06/01/2022 | 230-32 | Collection Agency, LLC | Writ Fees-Rita L... | 120 · A/R | 27.00 | 45.00 |
| Invoice | 06/01/2022 | 230-31 | James A Cada | Writ Fees-Micha... | 120 · A/R | 27.00 | 72.00 |
| Invoice | 06/01/2022 | 230-19 | Credit Management | Writ Fees-Dany... | 120 · A/R | 18.00 | 90.00 |
| Invoice | 06/01/2022 | 230-35 | Credit Management | Writ Fees-Cody ... | 120 · A/R | 18.00 | 108.00 |
| Invoice | 06/01/2022 | 230-36 | Credit Management | Writ Fees-Lawre... | 120 · A/R | 6.00 | 114.00 |
| Invoice | 06/01/2022 | 230-37 | Credit Management | Writ Fees-Paige... | 120 · A/R | 18.00 | 132.00 |
| Invoice | 06/01/2022 | 230-80 | Credit Bureau Services, Inc | Writ Fees-Steve... | 120 · A/R | 18.00 | 150.00 |
| Invoice | 06/01/2022 | 230-34 | Kalkwarf & Smith Law Offices, LLC | Writ Fees-Payto... | 120 · A/R | 18.00 | 168.00 |
| Invoice | 06/01/2022 | 230-12 | Tad D Eickman | Writ Fees-Ann P... | 120 · A/R | 6.00 | 174.00 |
| Invoice | 06/01/2022 | 230-98 | Advanced Asset Alliance | Writ Fees-Adam... | 120 · A/R | 18.00 | 192.00 |
| Invoice | 06/01/2022 | 230-79 | Collection Agency, LLC | Writ Fees-Natha... | 120 · A/R | 18.00 | 210.00 |
| Invoice | 06/02/2022 | 230-41 | Svehla Law Offices | Writ Fees-Aubre... | 120 · A/R | 6.00 | 216.00 |
| Invoice | 06/02/2022 | 230-39 | Collection Agency, LLC | Writ Fees-Diego... | 120 · A/R | 18.00 | 234.00 |
| Invoice | 06/02/2022 | 230-38 | James A Cada | Writ Fees-Matia... | 120 · A/R | 27.00 | 261.00 |
| Invoice | 06/02/2022 | 230-40 | State | Writ Fees-Jorge ... | 120 · A/R | 18.00 | 279.00 |
| Invoice | 06/03/2022 | 230-50 | Messerli & Kramer PA | Writ Fees-Brayt... | 120 · A/R | 18.00 | 297.00 |
| Invoice | 06/03/2022 | 230-47 | Gurstel Law Firm, PC | Writ Fees-Faith ... | 120 · A/R | 18.00 | 315.00 |
| Invoice | 06/03/2022 | 230-48 | Gurstel Law Firm, PC | Writ Fees-Lemu... | 120 · A/R | 6.00 | 321.00 |
| Invoice | 06/03/2022 | 230-52 | Solhelm Law Firm LLC | Writ Fees-Gilber... | 120 · A/R | 33.00 | 354.00 |
| Invoice | 06/06/2022 | 230-49 | Messerli & Kramer PA | Writ Fees-Elvira ... | 120 · A/R | 18.00 | 372.00 |
| Invoice | 06/06/2022 | 230-46 | Credit Management | Writ Fees-Paige... | 120 · A/R | 18.00 | 390.00 |
| Invoice | 06/06/2022 | 230-43 | AR Solutions Inc | Writ Fees-Nicole... | 120 · A/R | 18.00 | 408.00 |
| Invoice | 06/06/2022 | 230-44 | AR Solutions Inc | Writ Fees-Juan ... | 120 · A/R | 27.00 | 435.00 |
| Invoice | 06/06/2022 | 230-45 | AR Solutions Inc | Writ Fees-Kasa... | 120 · A/R | 6.00 | 441.00 |
| Invoice | 06/06/2022 | 230-42 | State | Writ Fees-Maria ... | 120 · A/R | 6.00 | 447.00 |
| Invoice | 06/07/2022 | 230-51 | State | Writ Fees-Nichol... | 120 · A/R | 18.00 | 465.00 |
| Invoice | 06/08/2022 | 230-53 | Collection Agency, LLC | Writ Fees-Rean... | 120 · A/R | 18.00 | 483.00 |
| Invoice | 06/08/2022 | 230-54 | Collection Agency, LLC | Writ Fees-Erica ... | 120 · A/R | 18.00 | 501.00 |
| Invoice | 06/08/2022 | 230-55 | James A Cada | Writ Fees-Brad ... | 120 · A/R | 18.00 | 519.00 |
| Invoice | 06/08/2022 | 230-56 | James A Cada | Writ Fees-Lester... | 120 · A/R | 24.00 | 543.00 |
| Invoice | 06/09/2022 | 230-57 | James A Cada | Writ Fees-Erin ... | 120 · A/R | 18.00 | 561.00 |
| Invoice | 06/09/2022 | 230-59 | James A Cada | Writ Fees-Shari ... | 120 · A/R | 27.00 | 588.00 |
| Invoice | 06/09/2022 | 230-60 | Gurstel Law Firm, PC | Writ Fees-Wilbe... | 120 · A/R | 6.00 | 594.00 |
| Invoice | 06/09/2022 | 230-58 | State | Writ Fees-Paulin... | 120 · A/R | 18.00 | 612.00 |
| Invoice | 06/14/2022 | 230-66 | Collection Agency, LLC | Writ Fees-Ramo... | 120 · A/R | 18.00 | 630.00 |
| Invoice | 06/14/2022 | 230-65 | James A Cada | Writ Fees-Jacly... | 120 · A/R | 6.00 | 636.00 |
| Invoice | 06/14/2022 | 230-63 | Credit Management | Writ Fees-Gabri... | 120 · A/R | 18.00 | 654.00 |
| Invoice | 06/14/2022 | 230-67 | James A Cada | Writ Fees-John ... | 120 · A/R | 27.00 | 681.00 |
| Invoice | 06/14/2022 | 230-64 | Rausch Sturm LLP | Writ Fees-Thom... | 120 · A/R | 6.00 | 687.00 |
| Invoice | 06/14/2022 | 230-74 | Messerli & Kramer PA | Writ Fees-Javier... | 120 · A/R | 18.00 | 705.00 |

8:02 AM

07/06/22

Accrual Basis

**Saline Civil Account
Transactions by Account**

As of June 30, 2022

| Type | Date | Num | Name | Memo | Split | Amount | Balance |
|-----------------------|------------|---------|-------------------------------------|----------------------|-----------|--------|----------|
| Invoice | 06/15/2022 | 230-61 | James A Cada | Writ Fees-Brad ... | 120 · A/R | 18.00 | 723.00 |
| Invoice | 06/15/2022 | 230-81 | Credit Bureau Services, Inc | Writ Fees-Julian... | 120 · A/R | 18.00 | 741.00 |
| Invoice | 06/15/2022 | 230-97 | James A Cada | Writ Fees-Shan... | 120 · A/R | 18.00 | 759.00 |
| Invoice | 06/16/2022 | 230-69 | Credit Management | Writ Fees-Olivia ... | 120 · A/R | 6.00 | 765.00 |
| Invoice | 06/16/2022 | 230-70 | Credit Management | Writ Fees-Victor... | 120 · A/R | 18.00 | 783.00 |
| Invoice | 06/16/2022 | 230-68 | State | Writ Fees-Edwin... | 120 · A/R | 6.00 | 789.00 |
| Invoice | 06/16/2022 | 230-71 | State | Writ Fees-Dariu... | 120 · A/R | 18.00 | 807.00 |
| Invoice | 06/20/2022 | 230-76 | AR Solutions Inc | Writ Fees-Micha... | 120 · A/R | 18.00 | 825.00 |
| Invoice | 06/21/2022 | 230-78 | Credit Bureau Services, Inc | Writ Fees-Raul ... | 120 · A/R | 6.00 | 831.00 |
| Invoice | 06/21/2022 | 230-77 | James A Cada | Writ Fees-Share... | 120 · A/R | 18.00 | 849.00 |
| Invoice | 06/22/2022 | 230-95 | Collection Agency, LLC | Writ Fees-Jason... | 120 · A/R | 27.00 | 876.00 |
| Invoice | 06/22/2022 | 230-86 | Collection Agency, LLC | Writ Fees-Natha... | 120 · A/R | 18.00 | 894.00 |
| invoice | 06/22/2022 | 230-87 | Collection Agency, LLC | Writ Fees-Tricia ... | 120 · A/R | 18.00 | 912.00 |
| Invoice | 06/22/2022 | 230-88 | Collection Agency, LLC | Writ Fees-Jorge ... | 120 · A/R | 6.00 | 918.00 |
| Invoice | 06/22/2022 | 230-89 | Collection Agency, LLC | Writ Fees-Katrin... | 120 · A/R | 18.00 | 936.00 |
| Invoice | 06/22/2022 | 230-90 | Collection Agency, LLC | Writ Fees-Christ... | 120 · A/R | 18.00 | 954.00 |
| Invoice | 06/22/2022 | 230-92 | Collection Agency, LLC | Writ Fees-Christ... | 120 · A/R | 18.00 | 972.00 |
| Invoice | 06/22/2022 | 230-93 | Credit Management | Writ Fees-Donal... | 120 · A/R | 18.00 | 990.00 |
| Invoice | 06/22/2022 | 230-94 | Credit Management | Writ Fees-Turza ... | 120 · A/R | 6.00 | 996.00 |
| Invoice | 06/22/2022 | 231-07 | Messerli & Kramer PA | Writ Fees-Troy ... | 120 · A/R | 18.00 | 1,014.00 |
| Invoice | 06/22/2022 | 230-75 | Messerli & Kramer PA | Writ Fees-Hugo ... | 120 · A/R | 18.00 | 1,032.00 |
| Invoice | 06/22/2022 | 230-82 | State | Writ Fees-Joshu... | 120 · A/R | 18.00 | 1,050.00 |
| Invoice | 06/22/2022 | 230-83 | State | Writ Fees-Seba... | 120 · A/R | 24.00 | 1,074.00 |
| Invoice | 06/22/2022 | 230-84 | State | Writ Fees-Yanlli ... | 120 · A/R | 18.00 | 1,092.00 |
| Invoice | 06/23/2022 | 230-99 | Collection Agency, LLC | Writ Fees-Jose ... | 120 · A/R | 18.00 | 1,110.00 |
| Invoice | 06/23/2022 | 231-01 | Kalkwarf & Smith Law Offices, LLC | Writ Fees-Mirna ... | 120 · A/R | 18.00 | 1,128.00 |
| Invoice | 06/23/2022 | 230-100 | Credit Management | Writ Fees-Kirk B... | 120 · A/R | 18.00 | 1,146.00 |
| Invoice | 06/23/2022 | 231-02 | Credit Management | Writ Fees-Mark ... | 120 · A/R | 18.00 | 1,164.00 |
| Invoice | 06/24/2022 | 231-03 | Collection Agency, LLC | Writ Fees-Kirk B... | 120 · A/R | 27.00 | 1,191.00 |
| Invoice | 06/24/2022 | 231-05 | Collection Agency, LLC | Writ Fees-Rober... | 120 · A/R | 12.00 | 1,203.00 |
| Invoice | 06/24/2022 | 231-04 | Credit Management | Writ Fees-Florin... | 120 · A/R | 18.00 | 1,221.00 |
| Invoice | 06/27/2022 | 231-11 | Credit Management | Writ Fees-Shan... | 120 · A/R | 18.00 | 1,239.00 |
| Invoice | 06/27/2022 | 231-10 | David Chipman or Mindy Rush-Chipman | Writ Fees-Russ... | 120 · A/R | 27.00 | 1,266.00 |
| Invoice | 06/27/2022 | 231-06 | Rausch Sturm LLP | Writ Fees-Jose ... | 120 · A/R | 18.00 | 1,284.00 |
| Invoice | 06/27/2022 | 231-09 | AR Solutions Inc | Writ Fees-Heidi ... | 120 · A/R | 18.00 | 1,302.00 |
| Invoice | 06/27/2022 | 231-08 | Messerli & Kramer PA | Writ Fees-Kathe... | 120 · A/R | 18.00 | 1,320.00 |
| Invoice | 06/28/2022 | 231-12 | James A Cada | Writ Fees-Terri ... | 120 · A/R | 18.00 | 1,338.00 |
| Total 201 · Writ Fees | | | | | | -21.00 | 1,338.00 |

8:02 AM
 07/06/22
 Accrual Basis

Saline Civil Account
 Transactions by Account
 As of June 30, 2022

| Type | Date | Num | Name | Memo | Split | Amount | Balance |
|---------------|------------|--------|-----------------------------------|---------------------|-------------|-----------|----------|
| | | | | | | | 1,142.87 |
| 202 · Mileage | | | | | | | |
| Check | 06/01/2022 | 9792 | Saline County Treasurer | May 2022 - sheri... | 100 · Ca... | -1,142.87 | 0.00 |
| Invoice | 06/01/2022 | 230-33 | Messerli & Kramer PA | Mileage-Noel Re... | 120 · A/R | 14.52 | 14.52 |
| Invoice | 06/01/2022 | 230-32 | Collection Agency, LLC | Mileage-Rita Llo... | 120 · A/R | 40.54 | 55.06 |
| Invoice | 06/01/2022 | 230-31 | James A Cada | Mileage-Michael... | 120 · A/R | 16.94 | 72.00 |
| Invoice | 06/01/2022 | 230-19 | Credit Management | Mileage-Danya ... | 120 · A/R | 15.13 | 87.13 |
| Invoice | 06/01/2022 | 230-35 | Credit Management | Mileage-Cody G... | 120 · A/R | 7.87 | 95.00 |
| Invoice | 06/01/2022 | 230-36 | Credit Management | Mileage-Lawren... | 120 · A/R | 13.92 | 108.92 |
| Invoice | 06/01/2022 | 230-37 | Credit Management | Mileage-Paige V... | 120 · A/R | 12.10 | 121.02 |
| Invoice | 06/01/2022 | 230-80 | Credit Bureau Services, Inc | Mileage-Steven ... | 120 · A/R | 10.89 | 131.91 |
| Invoice | 06/01/2022 | 230-34 | Kalkwarf & Smith Law Offices, LLC | Mileage-Payton ... | 120 · A/R | 13.92 | 145.83 |
| Invoice | 06/01/2022 | 230-12 | Tad D Eickman | Mileage-Ann Phi... | 120 · A/R | 52.03 | 197.86 |
| Invoice | 06/01/2022 | 230-98 | Advanced Asset Alliance | Mileage-Adam N... | 120 · A/R | 13.92 | 211.78 |
| Invoice | 06/01/2022 | 230-79 | Collection Agency, LLC | Mileage-Nathan ... | 120 · A/R | 1.21 | 212.99 |
| Invoice | 06/02/2022 | 230-41 | Svehla Law Offices | Mileage-Aubree ... | 120 · A/R | 35.09 | 248.08 |
| Invoice | 06/02/2022 | 230-39 | Collection Agency, LLC | Mileage-Diego A... | 120 · A/R | 13.92 | 262.00 |
| Invoice | 06/02/2022 | 230-38 | James A Cada | Mileage-Matias ... | 120 · A/R | 14.52 | 276.52 |
| Invoice | 06/02/2022 | 230-40 | State | Mileage-Jorge C... | 120 · A/R | 13.92 | 290.44 |
| Invoice | 06/03/2022 | 230-50 | Messerli & Kramer PA | Mileage-Brayton... | 120 · A/R | 0.61 | 291.05 |
| Invoice | 06/03/2022 | 230-47 | Gurstel Law Firm, PC | Mileage-Faith Sl... | 120 · A/R | 13.92 | 304.97 |
| Invoice | 06/03/2022 | 230-48 | Gurstel Law Firm, PC | Mileage-Lemuel ... | 120 · A/R | 37.51 | 342.48 |
| Invoice | 06/03/2022 | 230-52 | Solheim Law Firm LLC | Mileage-Gilberto... | 120 · A/R | 17.56 | 360.04 |
| Invoice | 06/06/2022 | 230-49 | Messerli & Kramer PA | Mileage-Eivira M... | 120 · A/R | 13.92 | 373.96 |
| Invoice | 06/06/2022 | 230-46 | Credit Management | Mileage-Paige R... | 120 · A/R | 7.87 | 381.83 |
| Invoice | 06/06/2022 | 230-43 | AR Solutions Inc | Mileage-Nicole ... | 120 · A/R | 31.46 | 413.29 |
| Invoice | 06/06/2022 | 230-44 | AR Solutions Inc | Mileage-Juan/D... | 120 · A/R | 14.52 | 427.81 |
| Invoice | 06/06/2022 | 230-45 | AR Solutions Inc | Mileage-Kasand... | 120 · A/R | 13.31 | 441.12 |
| Invoice | 06/06/2022 | 230-42 | State | Mileage-Maria L... | 120 · A/R | 19.97 | 461.09 |
| Invoice | 06/07/2022 | 230-51 | State | Mileage-Nichola... | 120 · A/R | 13.92 | 475.01 |
| Invoice | 06/08/2022 | 230-53 | Collection Agency, LLC | Mileage-Reanna... | 120 · A/R | 19.97 | 494.98 |
| Invoice | 06/08/2022 | 230-54 | Collection Agency, LLC | Mileage-Erica Cr... | 120 · A/R | 13.92 | 508.90 |
| Invoice | 06/08/2022 | 230-55 | James A Cada | Mileage-Brad Ka... | 120 · A/R | 13.92 | 522.82 |
| Invoice | 06/08/2022 | 230-56 | James A Cada | Mileage-Lester ... | 120 · A/R | 13.92 | 536.74 |
| Invoice | 06/09/2022 | 230-57 | James A Cada | Mileage-Erin We... | 120 · A/R | 13.92 | 550.66 |
| Invoice | 06/09/2022 | 230-59 | James A Cada | Mileage-Shari N... | 120 · A/R | 21.18 | 571.84 |
| Invoice | 06/09/2022 | 230-60 | Gurstel Law Firm, PC | Mileage-Wilber ... | 120 · A/R | 13.92 | 585.76 |
| Invoice | 06/09/2022 | 230-58 | State | Mileage-Paulina ... | 120 · A/R | 13.92 | 599.68 |
| Invoice | 06/14/2022 | 230-66 | Collection Agency, LLC | Mileage-Ramon ... | 120 · A/R | 15.73 | 615.41 |
| Invoice | 06/14/2022 | 230-65 | James A Cada | Mileage-Jaclyn ... | 120 · A/R | 13.92 | 629.33 |
| Invoice | 06/14/2022 | 230-63 | Credit Management | Mileage-Gabriell... | 120 · A/R | 16.34 | 645.67 |
| Invoice | 06/14/2022 | 230-67 | James A Cada | Mileage-John Pr... | 120 · A/R | 9.08 | 654.75 |
| Invoice | 06/14/2022 | 230-64 | Rausch Sturm LLP | Mileage-Thomas... | 120 · A/R | 0.00 | 654.75 |
| Invoice | 06/14/2022 | 230-74 | Messerli & Kramer PA | Mileage-Javier A... | 120 · A/R | 15.13 | 669.88 |
| Invoice | 06/15/2022 | 230-61 | James A Cada | Mileage-Brad Ka... | 120 · A/R | 13.92 | 683.80 |

8:02 AM

07/06/22

Accrual Basis

Saline Civil Account Transactions by Account

As of June 30, 2022

| Type | Date | Num | Name | Memo | Split | Amount | Balance |
|----------------------------------|------------|-----------|-------------------------------------|----------------------|-------------|---------|----------|
| Invoice | 06/15/2022 | 230-81 | Credit Bureau Services, Inc | Mileage-Julian D... | 120 · A/R | 13.92 | 697.72 |
| Invoice | 06/15/2022 | 230-97 | James A Cada | Mileage-Shane ... | 120 · A/R | 30.86 | 728.58 |
| Invoice | 06/16/2022 | 230-69 | Credit Management | Mileage-Olivia A... | 120 · A/R | 13.92 | 742.50 |
| Invoice | 06/16/2022 | 230-70 | Credit Management | Mileage-Victor P... | 120 · A/R | 13.92 | 756.42 |
| Invoice | 06/16/2022 | 230-68 | State | Mileage-Edwin B... | 120 · A/R | 13.92 | 770.34 |
| Invoice | 06/16/2022 | 230-71 | State | Mileage-Darius ... | 120 · A/R | 0.61 | 770.95 |
| Invoice | 06/20/2022 | 230-76 | AR Solutions Inc | Mileage-Michael... | 120 · A/R | 14.52 | 785.47 |
| Invoice | 06/21/2022 | 230-78 | Credit Bureau Services, Inc | Mileage-Raul Lo... | 120 · A/R | 0.00 | 785.47 |
| Invoice | 06/21/2022 | 230-77 | James A Cada | Mileage-Sharey... | 120 · A/R | 13.92 | 799.39 |
| Invoice | 06/22/2022 | 230-95 | Collection Agency, LLC | Mileage-Jason ... | 120 · A/R | 1.21 | 800.60 |
| Invoice | 06/22/2022 | 230-86 | Collection Agency, LLC | Mileage-Nathan ... | 120 · A/R | 1.82 | 802.42 |
| Invoice | 06/22/2022 | 230-87 | Collection Agency, LLC | Mileage-Tricia P... | 120 · A/R | 0.61 | 803.03 |
| invoice | 06/22/2022 | 230-88 | Collection Agency, LLC | Mileage-Jorge L... | 120 · A/R | 7.87 | 810.90 |
| Invoice | 06/22/2022 | 230-89 | Collection Agency, LLC | Mileage-Katrina ... | 120 · A/R | 0.61 | 811.51 |
| Invoice | 06/22/2022 | 230-90 | Collection Agency, LLC | Mileage-Christin... | 120 · A/R | 13.92 | 825.43 |
| Invoice | 06/22/2022 | 230-92 | Collection Agency, LLC | Mileage-Christo... | 120 · A/R | 0.61 | 826.04 |
| Invoice | 06/22/2022 | 230-93 | Credit Management | Mileage-Donald ... | 120 · A/R | 24.81 | 850.85 |
| Invoice | 06/22/2022 | 230-94 | Credit Management | Mileage-Turza M... | 120 · A/R | 0.61 | 851.46 |
| Invoice | 06/22/2022 | 231-07 | Messerli & Kramer PA | Mileage-Troy Mil... | 120 · A/R | 0.61 | 852.07 |
| Invoice | 06/22/2022 | 230-75 | Messerli & Kramer PA | Mileage-Hugo Fl... | 120 · A/R | 0.61 | 852.68 |
| Invoice | 06/22/2022 | 230-82 | State | Mileage-Joshua ... | 120 · A/R | 32.67 | 885.35 |
| Invoice | 06/22/2022 | 230-83 | State | Mileage-Sebasti... | 120 · A/R | 16.34 | 901.69 |
| Invoice | 06/22/2022 | 230-84 | State | Mileage-Yanili M... | 120 · A/R | 13.92 | 915.61 |
| Invoice | 06/23/2022 | 230-99 | Collection Agency, LLC | Mileage-Jose Ta... | 120 · A/R | 14.52 | 930.13 |
| Invoice | 06/23/2022 | 231-01 | Kalkwarf & Smith Law Offices, LLC | Mileage-Mirna M... | 120 · A/R | 13.92 | 944.05 |
| Invoice | 06/23/2022 | 230-100 | Credit Management | Mileage-Kirk Bra... | 120 · A/R | 0.61 | 944.66 |
| Invoice | 06/23/2022 | 231-02 | Credit Management | Mileage-Mark LI... | 120 · A/R | 7.87 | 952.53 |
| Invoice | 06/24/2022 | 231-03 | Collection Agency, LLC | Mileage-Kirk Bra... | 120 · A/R | 0.61 | 953.14 |
| Invoice | 06/24/2022 | 231-05 | Collection Agency, LLC | Mileage-Robert ... | 120 · A/R | 14.52 | 967.66 |
| Invoice | 06/24/2022 | 231-04 | Credit Management | Mileage-Florinda... | 120 · A/R | 13.92 | 981.58 |
| Invoice | 06/27/2022 | 231-11 | Credit Management | Mileage-Shane ... | 120 · A/R | 32.67 | 1,014.25 |
| Invoice | 06/27/2022 | 231-10 | David Chipman or Mindy Rush-Chipman | Mileage-Russel ... | 120 · A/R | 0.61 | 1,014.86 |
| Invoice | 06/27/2022 | 231-06 | Rausch Sturm LLP | Mileage-Jose Nu... | 120 · A/R | 23.60 | 1,038.46 |
| Invoice | 06/27/2022 | 231-09 | AR Solutions Inc | Mileage-Heidi Cl... | 120 · A/R | 7.87 | 1,046.33 |
| Invoice | 06/27/2022 | 231-08 | Messerli & Kramer PA | Mileage-Katheri... | 120 · A/R | 13.92 | 1,060.25 |
| Invoice | 06/28/2022 | 231-12 | James A Cada | Mileage-Terri Do... | 120 · A/R | 13.92 | 1,074.17 |
| Total 202 · Mileage | | | | | | -68.70 | 1,074.17 |
| 203 · Vehicle Inspections | | | | | | | 610.00 |
| General ... | 06/01/2022 | 207 | | | -SPLIT- | -610.00 | 0.00 |
| Sales Re... | 06/30/2022 | June 2024 | Saline County Treasurer | Title Inspections... | 160 · On... | 430.00 | 430.00 |
| Total 203 · Vehicle Inspections | | | | | | -180.00 | 430.00 |

8:02 AM
 07/06/22
 Accrual Basis

**Saline Civil Account
 Transactions by Account
 As of June 30, 2022**

| Type | Date | Num | Name | Memo | Split | Amount | Balance |
|-------------------------------------|------------|-----------|-------------------------|---------------------|-------------|------------------|-----------------|
| 204 · Gun Permits | | | | | | | 65.00 |
| General ... | 06/01/2022 | 207 | | | 203 · Ve... | -65.00 | 0.00 |
| Sales Re... | 06/30/2022 | June 2024 | Saline County Treasurer | Gun Permits 73... | 160 · On... | 50.00 | 50.00 |
| Total 204 · Gun Permits | | | | | | -15.00 | 50.00 |
| 208 · Miscellaneous | | | | | | | 2,624.00 |
| Check | 06/01/2022 | 9792 | Saline County Treasurer | May 2022 - sheri... | 100 · Ca... | -2,624.00 | 0.00 |
| Total 208 · Miscellaneous | | | | | | -2,624.00 | 0.00 |
| Total 200 · Due to County Treasurer | | | | | | -2,908.70 | 2,892.17 |
| TOTAL | | | | | | -2,908.70 | 2,892.17 |

\$1,338.00 - Writ Fees
 1,074.17 - Mileage
 430.00 - Vehicle Inspections
 50.00 - Gun Permits
\$2,892.17

APPROVED

This 19 Day of July 2022

COUNTY BOARD

Chairman

RESOLUTION #2022-37

BE IT HEREBY RESOLVED, by the Board of Commissioners of Saline County, NE,
that the sum of \$1,100.00 be transferred from the Inheritance Fund #2700 to the Juvenile
Services Aid Program Fund #2516, to be reimbursed when funds are available.

Motion made by Commissioner _____, seconded by Commissioner
_____, to adopt the foregoing Resolution. All members present
voting as follows:

Yeas: _____

Nays: _____

Abstentions: _____

Absent: _____

Chairman

SUBSCRIBED AND SWORN TO before me this 19th day of July, 2022

SEAL

Saline County Clerk

SALINE COUNTY
REQUEST TO OCCUPY COUNTY RIGHT-OF-WAY

Windstream Nebraska, LLC, hereinafter referred to as "owner" requests to construct telecommunications facilities occupying the Right-of-Way of the Saline County Public Highway System. Windstream to place fiber along and across various county roads in Saline County, NE - **WO# 71501230000000;PR-7593.**

Owner proposes to place and maintain the aforesaid construction on Saline County Public Right-of-Way at owner's risk and expense and hereby absolves Saline County, its officials and employees from any liability arising from the placing and maintaining of said construction.

The owner will cooperate fully with the officials of Saline County and will keep them fully and immediately informed of all construction or maintenance work required on Saline County Public Right-of-Way. The surface of the road will be restored to the same condition as it was prior to the work and such restoration will be accomplished to the reasonable satisfaction of the Saline County Officials.

Person to be contacted, prior to construction by a Telephone Company or a Utility Company, is the County Highway Superintendent or the Highway Coordinator, Courthouse – 2nd floor, telephone #821-2737. Each location to be inspected by Saline County when permit is submitted and upon project completion, at which latter time any work or supply of gravel reasonable required to restore the surface of the road or work to restore the County Right-of-Way to the same condition as it was prior to the work will be determined and the work performed and gravel supplied by the owner.

Draw a sketch indicating approximate location to or from some easily recognized landmark, or a sketch may be attached.

Date July 14, 2022

Melvin Fecher

Melvin Fecher – Analyst I – Permitting Team
1170-B1F02-1211A, 4001 N Rodney Parham Rd
Little Rock, AR 72212

At the option of the County Board of Commissioners, the owner shall furnish a Surety Bond for an amount specified by the County Board of Commissioners. The form of the Surety Bond shall be acceptable to the Saline County Board.

Surety Bond Required: YES _____ NO _____ Amount _____

COMMENTS: (County only) I recommend that this permit be granted subject to _____ agreeing to return the damaged area to its original condition.

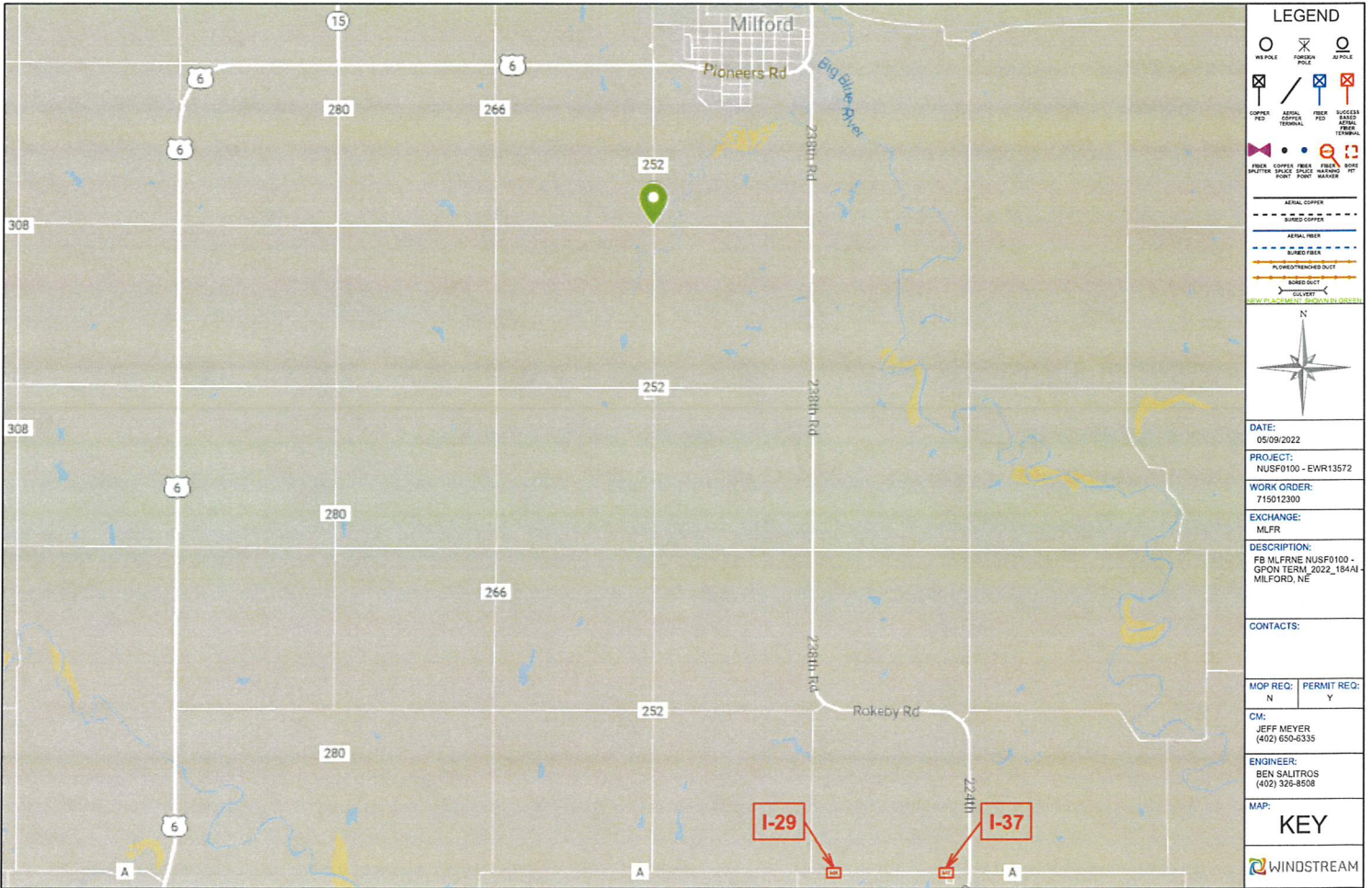
Date _____

Highway Superintendent or Coordinator

We hereby grant _____ permission to occupy the County Right-of-Way at the location and according to the procedure and conditions described in this document.

Date _____

(Signature - Chairman of County Board)



LEGEND

- W POLE
- FIBER POLE
- AL POLE
- COOPER RED
- AERIAL COOPER TERMINAL
- FIBER RED
- BUSSES BASED AERIAL FIBER TERMINAL
- FIBER SPLITTER
- COOPER SPACE PORT
- FIBER SPACE PORT
- FIBER MARKING POINT
- ROSE MARKER
- ROSE TYP
- AERIAL COOPER
- BURIED COOPER
- AERIAL FIBER
- BURIED FIBER
- PLANNED/TRENCHED DUCT
- BURIED DUCT
- GULLERY
- NEW PLANNED/PROPOSED DUCTS

DATE: 05/09/2022

PROJECT: NUSF0100 - EWR13572

WORK ORDER: 715012300

EXCHANGE: MLFR

DESCRIPTION: FB MLFRNE NUSF0100 - GPON TERM_2022_184A - MILFORD, NE

CONTACTS:

MCP REQ: N PERMIT REQ: Y

CM: JEFF MEYER (402) 650-6335

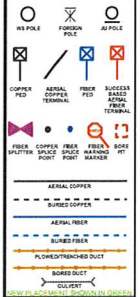
ENGINEER: BEN SALITROS (402) 326-8608

MAP: **KEY**

WINDSTREAM

COMMON UNIT EXPLANATION:
 FBM60(X)(X)PF - X (X") DUCT BORED (IN FT)
 FBFOV(X)(X)T - X (X") DUCT TRENCHED (IN FT)
 FBFOXX - XX FIBER DIRECT PLOWED (IN FT)
 FBFOXXI - XX FIBER PULLED IN DUCT (IN FT)
 FBFOXXT - XX FIBER TRENCHED
 BFOE(XX) - XX" DEPTH ADDER
 FBHF(XXxXXxXX)T - TRAFFIC RATED HAND HOLE (DIMENSIONS IN INCHES)
 FBD4MP - 8" FIBER PEDESTAL
 FBD5OT-SP(2) - 10" FIBER PEDESTAL
 FBD5MP - 10" FIBER PEDESTAL
 FBM2 - GROUNDING/BONDING
 FHO1 - SPLICING
 FBM53F - FIBER MARKER

LEGEND



DATE: 05/09/2022
 PROJECT: NUSF0100 - EWR13572
 WORK ORDER: 715012300
 EXCHANGE: MLFR
 DESCRIPTION: FB MLFRNE NUSF0100 - GPON TERM 2022_184A1 - MILFORD, NE

CONTACTS:

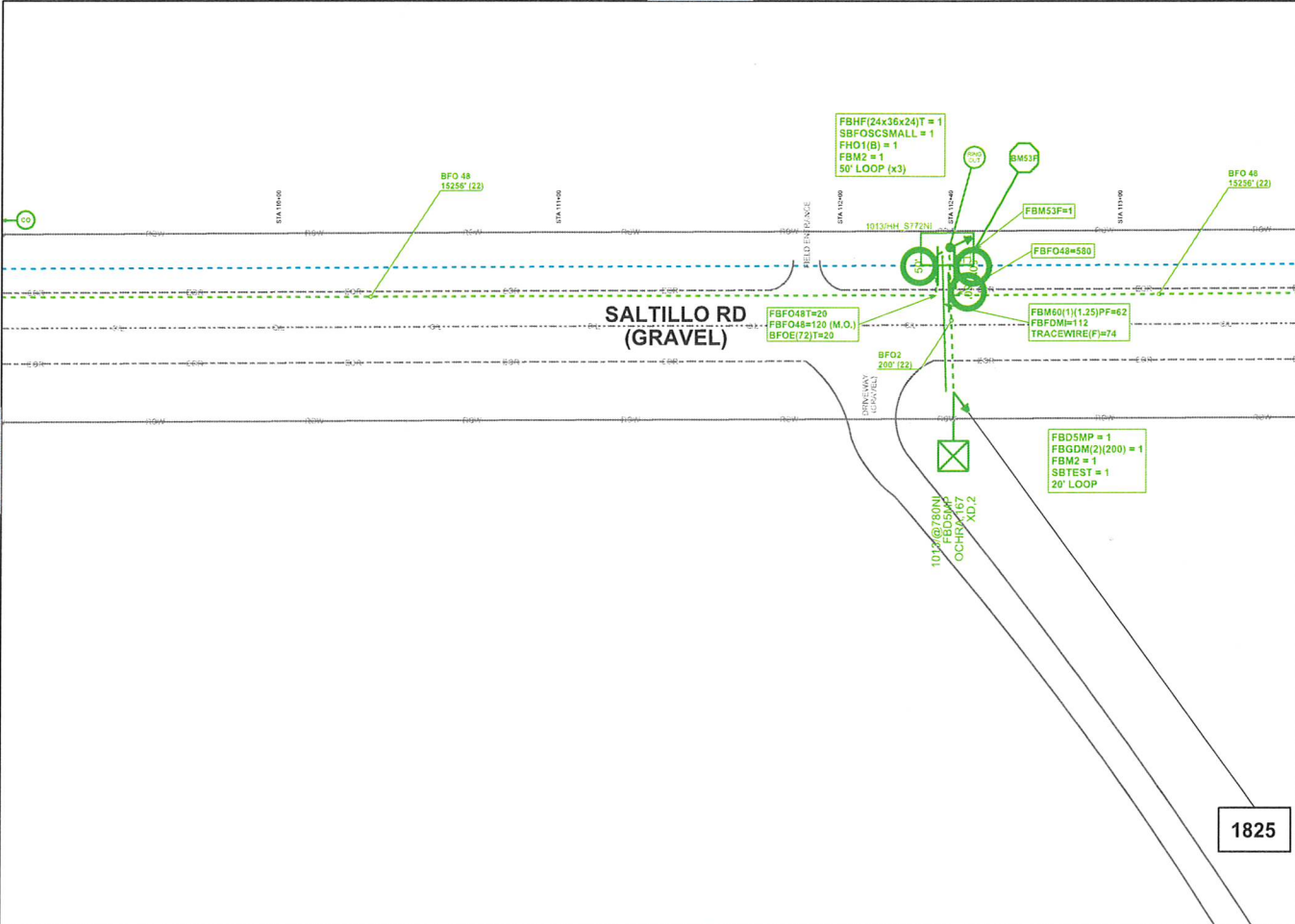
MOP REQ: N PERMIT REQ: Y

CM: JEFF MEYER (402) 650-6335

ENGINEER: BEN SALLITROS (402) 328-8508

MAP: UNIT SUMMARY





LEGEND

- HX POLE
- ⊗ HORIZON POLE
- AI POLE
- ⊗ COOPER FIBER
- ⊗ AERIAL COOPER FIBER
- ⊗ FIBER FIBER
- ⊗ BUCKLE BASED AERIAL FIBER TERMINAL
- ⊗ FIBER SPLITTER
- ⊗ COOPER FIBER PORT
- ⊗ FIBER MARKING POINT
- ⊗ FIBER MARKER
- ⊗ ROSE TIE

--- AERIAL COOPER
 --- BURIED COOPER
 --- AERIAL FIBER
 --- BURIED FIBER
 --- FLOWED/TRENCHED DUCT
 --- BARE DUCT

DATE: 05/09/2022
 PROJECT: NUSF0100 - EWR13572
 WORK ORDER: 715012300
 EXCHANGE: MLFR
 DESCRIPTION: FB MLFRNE NUSF0100 - GPON TERM_2022_184A1 - MILFORD, NE
 CONTACTS:
 MOP REQ: N PERMIT REQ: Y
 CM: JEFF MEYER (402) 650-6335
 ENGINEER: BEN SALITROS (402) 328-8508
 MAP: I-29

1825

WINDSTREAM

**INTERLOCAL AGREEMENT
BETWEEN THE STATE OF NEBRASKA, THROUGH THE NEBRASKA DEPARTMENT OF
ADMINISTRATIVE SERVICES,
AND
SALINE COUNTY, NEBRASKA**

Pursuant to the Interlocal Cooperation Act, Neb. Rev. Stat. §§ 13-801 to 13-827, this Interlocal Agreement (“Agreement”) is entered into this ____ day of _____, 2022, by and between THE STATE OF NEBRASKA (“State”) and SALINE COUNTY, NEBRASKA (“County”) for the purpose of disposing of the County’s excess and surplus property.

I. PURPOSE, SCOPE, & DISPOSAL

Upon request of the County, the State agrees to dispose of the County’s surplus property as mutually agreed to between the State and County for each item disposed of. In the absence of an agreement for the specific disposal of each specific item of County surplus property, the State, at the State’s sole discretion, may dispose of the County’s surplus property in accordance with Neb. Rev. Stat. § 81-161.04. The County agrees to compensate the State for such disposal in accordance with this Agreement. The State may refuse to dispose of the County’s surplus property for any reason or no reason. The State is not liable or responsible for any damage (including, but not limited to cosmetic damage), destruction, or loss to any of County’s surplus property. The County is responsible for and guarantees compliance with any and all laws that pertain to the disposal of the County’s surplus property. For the purposes of this Agreement, the County’s surplus property is any item of personal property that is declared surplus or excess in accordance with applicable law.

II. TERM

This Agreement shall be in effect for a period of one (1) year with the option to renew for an additional one (1) year by written agreement of both parties.

III. COMPENSATION

The State shall remit any proceeds from the disposal of the County’s surplus property, less administrative expenses charged by the State. The administrative expenses charged by the State shall be equivalent to the charges in effect at the time the disposal is made and applicable to other State agencies. Unless otherwise agreed to in writing between the State and County, the County is responsible for any and all transportation, shipping, and any other costs associated with disposing of the surplus property.

IV. RELATIONSHIP

It is understood and agreed that nothing in this Agreement shall be interpreted or construed as creating or establishing the relationship of employer and employee between the State of Nebraska and any employee or agent of Saline County, Nebraska. The Agreement does not create a joint venture or business partnership under Nebraska law.

V. TERMINATION

Either party may terminate this Agreement without cause with thirty (30) days advance written notice. The State may terminate this Agreement AT ANY TIME WITH WRITTEN NOTICE if the County has defaulted in whole or in part or refuses or fails to comply with the provisions of this Agreement. In the event of a termination for any reason, the County agrees to pay for the County’s surplus property already disposed of or in the process of being disposed of by the State.

VI. LOCAL FUNDS

Any local funds expended will be from current revenues available to the paying party.

VII. AUTHORIZATION

Each party acknowledges that this Agreement has been authorized by the governing body of each party to the Contract.

VIII. NOTICE

Any notice provided under the terms of this Agreement by either party to the other shall be in writing and may be affected by certified mail, return receipt requested. Notice to shall be sufficient if made or addressed as follows:

**Department of Administrative Services
Attention: Amara Block
1526 K Street
Suite 140
Lincoln, NE 68509**

**Saline County, Nebraska
Saline County Clerk
204 South High
PO Box 865
Wilber, NE 68465**

Each party may change the address at which notice may be sent to that party by giving notice of such change to the other party by certified mail, return receipt requested.

IX. GOVERNING LAW

This Agreement shall be governed by and construed in accordance with the laws of the State of Nebraska.

X. ENTIRE AGREEMENT

This Agreement represents the entire and exclusive agreement between the parties thereto and replaces in their entirety any previous agreements, written or oral.

XI. AMENDMENT

This Agreement may be amended only by the mutual agreement of the parties, in writing to be attached to and incorporated in this Agreement.

XII. ASSIGNMENT

Neither this Agreement nor any duties or obligations under it shall be assignable by either party without the prior written acknowledgment and authorization.

XIII. SEVERABILITY

All parties agree that should any of the provisions contained in this Agreement shall for any reason be held to be invalid, illegal, or unenforceable in any respect, such invalidity, illegality, or unenforceability shall not affect any other provisions, and the Agreement shall continue in full force and effect.

XIV. BENEFIT FOR SIGNATORY PARTIES ONLY

Neither this Agreement, nor any term or provision hereof, nor any inclusion by reference, shall be construed as being for the benefit of any party not in signatory hereto.

The parties have executed this instrument hereto as follows:

THE NEBRASKA DEPARTMENT OF
ADMINISTRATIVE SERVICES,
ON BEHALF OF THE STATE OF NEBRASKA

SALINE COUNTY BOARD OF
COMMISSIONERS

Authorized Signature
Amara Block
Printed Name
Material Administrator
Title

Authorized Signature
Russ Karpisek
Printed Name

Authorized Signature
Phil Hardenburger
Printed Name

Authorized Signature
Stephanie Krivohlavek
Printed Name

Authorized Signature
Marvin Kohout
Printed Name

Authorized Signature
Janet Henning
Printed Name

Date: _____, 2022

SALINE
BOARD PREAPPROVAL REPORT
GENERAL
FROM 07/29/2022 TO 07/29/2022

| Account # | Description | Account Amt | Vendor | Invoice Description | Claim # |
|-----------|-----------------------------------|-------------|---------------------------|----------------------------|----------|
| 602-00 | CLERK | | | | |
| 00-3-0101 | OFFICE SUPPLIES | 98.61 | EAKES OFFICE PLUS | INV 8484046-0 INV 8505104- | 22070292 |
| 00-3-0101 | OFFICE SUPPLIES | 389.15 | PRIORITY PRINTING | INV 123385 | 22070319 |
| 00-3-0101 | OFFICE SUPPLIES | 25.49 | VISA | ACCT 8013 | 22070342 |
| | | ***** | | | |
| | 602-00 CLERK | 513.25 | | | |
| | | ***** | | | |
| 603-00 | TREASURER | | | | |
| 00-3-0101 | OFFICE SUPPLIES | 36.58 | QUILL CORPORATION | INV 25956551 INV 25961354 | 22070320 |
| | | ***** | | | |
| | 603-00 TREASURER | 36.58 | | | |
| | | ***** | | | |
| 605-00 | ASSESSOR | | | | |
| 00-2-1700 | TRAVEL EXPENSES | 19.58 | VISA | ACCT 3268 | 22070341 |
| 00-2-2000 | PRINTING & PUBLISHING | 1,791.41 | ARBOR INK | INV 31937 INV 31938 | 22070284 |
| 00-2-3900 | CONTRACTOR FOR REAPPRAISAL | 5,782.00 | STANARD APPRAISAL SERVICE | INV 2980 INV 2990 | 22070332 |
| 00-3-0101 | OFFICE SUPPLIES | 523.30 | EAKES OFFICE PLUS | INV 8484046-0 INV 8505104- | 22070292 |
| | | ***** | | | |
| | 605-00 ASSESSOR | 8,116.29 | | | |
| | | ***** | | | |
| 607-00 | ELECTION | | | | |
| 00-3-0101 | OFFICE SUPPLIES | 40.00 | SECRETARY OF STATE ELECTI | POSTCARDS | 22070328 |
| 00-5-0500 | OFFICE EQUIPMENT | 336.21 | VISA | ACCT 8013 | 22070342 |
| | | ***** | | | |
| | 607-00 ELECTION | 376.21 | | | |
| | | ***** | | | |
| 608-00 | PLANNING-ZONING COMMISSION | | | | |
| 00-2-0100 | POSTAL SERVICE | 65.58 | VISA | ACCT 4030 | 22070350 |
| 00-2-2000 | PRINTING AND PUBLISHING | 9.21 | SEWARD COUNTY INDEPENDENT | INV 149247 INV 149268 | 22070329 |
| 00-5-0500 | OFFICE EQUIPMENT | .99 | VISA | ACCT 4030 | 22070350 |
| | | ***** | | | |
| | 608-00 PLANNING-ZONING COMMISSION | 75.78 | | | |
| | | ***** | | | |
| 610-00 | VOICE/DATA SERVICES | | | | |
| 00-4-0200 | IT SUPPORT-SOARIN | 2,972.20 | SOARIN GROUP LLC | INV INV-9228 | 22070331 |
| 00-4-0201 | DATA PROCESSING-MIPS | 2,198.97 | MIPS INC | INV 22070945 INV 22070944 | 22070314 |
| 00-4-0201 | DATA PROCESSING-MIPS | 251.10 | STATE OF NE-DEPT OF ADMIN | INV 1326577 | 22070333 |
| 00-4-0201 | DATA PROCESSING-MIPS | 52.00 | VISA | ACCT 8661 | 22070344 |
| 00-4-0203 | INTERNET SERVICES | 1,802.05 | UNITE PRIVATE NETWORKS | INV SI22020958 | 22070338 |
| 00-4-0204 | LANDLINE SERVICES | 2,293.51 | UNITE PRIVATE NETWORKS | INV SI22020958 | 22070338 |

SALINE
BOARD PREAPPROVAL REPORT
GENERAL
FROM 07/29/2022 TO 07/29/2022

| Account # 1099 | Description | Account Amt | Vendor | Invoice Description | Claim # |
|----------------|---|-------------|-------------------------------------|-----------------------------|----------|
| ***** | | | | | |
| | 610-00 VOICE/DATA SERVICES | 9,569.83 | | | |
| ***** | | | | | |
| 621-00 | CLERK OF DIST. COURT | | | | |
| 00-2-1700 | TRAVEL EXPENSES | 192.00 | VISA | ACCT 8604 | 22070343 |
| 00-3-0101 | OFFICE SUPPLIES | 34.37 | EAKES OFFICE PLUS | INV 8484046-0 INV 8505104- | 22070292 |
| ***** | | | | | |
| | 621-00 CLERK OF DIST. COURT | 226.37 | | | |
| ***** | | | | | |
| 622-00 | COUNTY COURT SYSTEM-JUDGE | | | | |
| 00-2-0100 | POSTAL SERVICES | 710.70 | VISA | ACCT 6942 | 22070345 |
| 00-4-0200 | EQUIPMENT RENTAL - OFFICE | 140.00 | CAPITAL BUSINESS SYSTEMS | INV 31955873 | 22070286 |
| 00-4-0200 | EQUIPMENT RENTAL - OFFICE | 150.00 | MICROFILM IMAGING SYSTEMS | INV 89539 | 22070312 |
| ***** | | | | | |
| | 622-00 COUNTY COURT SYSTEM-JUDGE | 1,000.70 | | | |
| ***** | | | | | |
| 631-00 | CLERK OF DIST. COURT CHILD SUPPORT | | | | |
| 00-2-1100 | DATA PROCESSING COSTS | 118.00 | MIPS INC | INV 22070945 INV 22070944 | 22070314 |
| ***** | | | | | |
| | 631-00 CLERK OF DIST. COURT CHILD SUPPORT | 118.00 | | | |
| ***** | | | | | |
| 641-00 | BUILDING & GROUNDS (COURT HOUSE) | | | | |
| 00-1-0303 | MAINTENANCE SALARY | 96.00 | DELANEY MAZZA | JUNE CLEANING | 22070311 |
| 00-2-0501 | LIGHT | 4,452.13 | CITY OF WILBER | ACCT 2680700 ACCT 7200000 A | 22070287 |
| 00-2-0502 | WATER | 195.35 | CITY OF WILBER | ACCT 2680700 ACCT 7200000 A | 22070287 |
| 00-2-0503 | HEATING/FUELS | 127.00 | BLACK HILLS ENERGY | 9947 0482 76 | 22070285 |
| 00-2-0505 | GARBAGE | 283.41 | CITY OF WILBER | ACCT 2680700 ACCT 7200000 A | 22070287 |
| 00-2-4100 | LAWN CARE | 4.99 | FOOD MESTO | ACCT 1014 | 22070297 |
| 00-2-9900 | MISCELLANEOUS | 107.88 | EAKES OFFICE PLUS | INV 8484046-0 INV 8505104- | 22070292 |
| 00-2-9900 | MISCELLANEOUS | 33.08 | WALKER UNIFORM RENTAL | INV 1212934 | 22070351 |
| 00-3-0103 | JANITORIAL SUPPLIES | 91.41 | EAKES OFFICE PLUS | INV 8484046-0 INV 8505104- | 22070292 |
| 00-3-0103 | JANITORIAL SUPPLIES | 49.66 | SACK LUMBER COMPANY | INV 2205084274 INV 22060876 | 22070322 |
| 00-3-0119 | BUILDING SUPPLIES | 41.91 | CRETE ACE HARDWARE #82123 | ACCT 212374 | 22070288 |
| 00-3-0119 | BUILDING SUPPLIES | 191.88 | EAKES OFFICE PLUS | INV 8484046-0 INV 8505104- | 22070292 |
| 00-3-0119 | BUILDING SUPPLIES | 181.92 | THE HOME DEPOT PRO | INV 693616666 INV 69361664 | 22070300 |
| 00-5-0230 | BUILDING IMPROVEMENTS | 1,560.00 | ELECTRONIC CONTRACTING CO | INV 29446 | 22070294 |
| ***** | | | | | |
| | 641-00 BUILDING & GROUNDS (COURT HOUSE) | 7,416.62 | | | |
| ***** | | | | | |
| 645-00 | EXTENSION OFFICE | | | | |
| 00-2-0100 | POSTAL SERVICE | 41.00 | UNL COOPERATIVE EXTENSION REIMBURSE | | 22070339 |

SALINE
BOARD PREAPPROVAL REPORT
GENERAL
FROM 07/29/2022 TO 07/29/2022

| Account # | Description | Account Amt | Vendor | Invoice Description | Claim # |
|-------------------------------|------------------------------|-------------|---------------------------|-----------------------------|----------|
| 00-2-1200 | OFFICE EQUIPMENT REPAIR | 167.00 | UNL COOPERATIVE EXTENSION | REIMBURSE | 22070339 |
| 00-2-1700 | TRAVEL EXPENSES | 170.88 | UNL COOPERATIVE EXTENSION | REIMBURSE | 22070339 |
| 00-2-1704 | MILEAGE ALLOWANCE | 30.00 | MELANIE KUNC | MILEAGE | 22070305 |
| 00-2-1704 | MILEAGE ALLOWANCE | 86.25 | INGRID LINDAL | MILEAGE | 22070309 |
| 00-2-1704 | MILEAGE ALLOWANCE | 303.62 | NATHAN MUELLER | MILEAGE | 22070315 |
| 00-2-1704 | MILEAGE ALLOWANCE | 47.97 | ANITA STOUGARD | MILEAGE | 22070334 |
| 00-2-1704 | MILEAGE ALLOWANCE | 25.74 | BECKY VALES | MILEAGE | 22070340 |
| 00-3-0101 | OFFICE SUPPLIES | 376.40 | UNL COOPERATIVE EXTENSION | REIMBURSE | 22070339 |
| | | ***** | | | |
| 645-00 EXTENSION OFFICE | | 1,248.86 | ***** | | |
| | | ***** | | | |
| 651-00 SHERIFF | | | | | |
| 00-1-1100 | UNIFORM ALLOWANCE | 11.59 | TYSON OSBORN | INV 260060 | 22070318 |
| 00-1-1100 | UNIFORM ALLOWANCE | 152.97 | RAY ALLEN MANUFACTURING C | INV RINV257972 | 22070321 |
| 00-2-0100 | POSTAL SERVICES | 100.14 | VISA | ACCT 9495 | 22070349 |
| 00-2-1700 | TRAVEL EXPENSES | 35.93 | VISA | ACCT 6084 | 22070348 |
| 00-2-9900 | MISCELLANEOUS | 146.32 | 41 AUTO PARTS | ACCT 33 | 22070355 |
| 00-3-0209 | FUEL | 7,275.54 | SAPP BROS INC - LINCOLN | ACCT 715651 | 22070327 |
| 00-3-0209 | FUEL | 111.96 | VISA | ACCT 3940 | 22070347 |
| 00-3-0212 | EQUIPMENT REPAIRS-COMMERCIAL | 104.95 | SID DILLON | INV 8FCB899282 | 22070330 |
| 00-3-0212 | EQUIPMENT REPAIRS-COMMERCIAL | 358.91 | 41 AUTO PARTS | ACCT 33 | 22070355 |
| | | ***** | | | |
| 651-00 SHERIFF | | 8,298.31 | ***** | | |
| | | ***** | | | |
| 652-00 ATTORNEY | | | | | |
| 00-2-0100 | POSTAL SERVICES | 166.00 | SALINE COUNTY ATTORNEY PE | REIMBURSE INCREASE FUND | 22070323 |
| 00-2-7000 | MICROFILMING/PHOTOSTAT | 45.99 | EAKES OFFICE PLUS | INV 8484046-0 INV 8505104- | 22070292 |
| 00-3-0101 | OFFICE SUPPLIES | 25.00 | EAKES OFFICE PLUS | INV 8484046-0 INV 8505104- | 22070292 |
| | | ***** | | | |
| 652-00 ATTORNEY | | 236.99 | ***** | | |
| | | ***** | | | |
| 662-00 ATTORNEY-CHILD SUPPORT | | | | | |
| 00-2-0100 | POSTAL SERVICE | 300.00 | SALINE COUNTY ATTORNEY PE | REIMBURSE INCREASE FUND | 22070323 |
| 00-2-1801 | DUES, SUB, REG, & TRAINING | 90.00 | NCSEA | R. ZOUBEK REG | 22070316 |
| 00-2-1801 | DUES, SUB, REG, & TRAINING | 155.57 | THOMSON REUTERS | INV 846593198 | 22070337 |
| 00-3-0101 | OFFICE SUPPLIES | 145.00 | EAKES OFFICE PLUS | INV 8484046-0 INV 8505104- | 22070292 |
| | | ***** | | | |
| 662-00 ATTORNEY-CHILD SUPPORT | | 690.57 | ***** | | |
| | | ***** | | | |
| 671-00 JAIL | | | | | |
| 00-2-0101 | ELECTRICITY | 3,337.84 | CITY OF WILBER | ACCT 2680700 ACCT 7200000 A | 22070287 |
| 00-2-0102 | WATER | 1,105.42 | CITY OF WILBER | ACCT 2680700 ACCT 7200000 A | 22070287 |

SALINE
BOARD PREAPPROVAL REPORT
GENERAL
FROM 07/29/2022 TO 07/29/2022

| Account # | Description | Account Amt | Vendor | Invoice Description | Claim # |
|------------|---|-------------|---------------------------|-----------------------------|----------|
| 00-2-0505 | GARBAGE | 153.00 | CITY OF WILBER | ACCT 2680700 ACCT 7200000 A | 22070287 |
| 00-2-0609 | MAINTENANCE CONTRACTS/REPAIRS | 160.00 | ANYTIME PLUMBING & HEATIN | INV 23433VI INV 23421VI | 22070283 |
| 00-2-1701 | MEALS REIMBURSEMENT-STAFF | 21.46 | VISA | ACCT 6084 | 22070348 |
| 00-2-1801 | DUES, SUB, REG, & TRAINING | 109.22 | LANGUAGE LINE SERVICES IN | INV 10571887 | 22070307 |
| 00-2-1801 | DUES, SUB, REG, & TRAINING | 14.99 | VISA | ACCT 9495 | 22070349 |
| 00-2-1900 | BOARD OF PRISONERS-MEALS | 9,299.01 | SUMMIT FOOD SERVICE LLC | INV2000147678 INV200014712 | 22070335 |
| 00-2-2200 | FREIGHT | 79.25 | VISA | ACCT 9495 | 22070349 |
| 00-2-3000 | MEDICAL SERVICES | 315.00 | FRIEND COMMUNITY HEALTHCA | 7/1/22 | 22070298 |
| 00-2-9900 | MISCELLANEOUS | 783.99 | O'REILLY AUTO PARTS | C# 3174908 | 22070317 |
| 00-2-9900 | MISCELLANEOUS | 90.17 | 41 AUTO PARTS | ACCT 33 | 22070355 |
| 00-3-0100 | SUPPLIES & MATERIALS-LINENS ET | 162.00 | CULLIGAN OF CRETE | INV 58660 | 22070291 |
| 00-3-0100 | SUPPLIES & MATERIALS-LINENS ET | 21.54 | EAKES OFFICE PLUS | INV 8484046-0 INV 8505104- | 22070292 |
| 00-3-0100 | SUPPLIES & MATERIALS-LINENS ET | 299.93 | ECOLAB | INV 6270150004 INV 62701807 | 22070293 |
| 00-3-0101 | OFFICE SUPPLIES | 174.76 | EAKES OFFICE PLUS | INV 8484046-0 INV 8505104- | 22070292 |
| 00-3-0103 | JANITORIAL SUPPLIES | 34.72 | EAKES OFFICE PLUS | INV 8484046-0 INV 8505104- | 22070292 |
| 00-3-0103 | JANITORIAL SUPPLIES | 198.88 | ECOLAB | INV 6270150004 INV 62701807 | 22070293 |
| 00-3-0103 | JANITORIAL SUPPLIES | 135.92 | THE HOME DEPOT PRO | INV 693616666 INV 69361664 | 22070300 |
| 00-3-0103 | JANITORIAL SUPPLIES | 58.08 | WALKER UNIFORM RENTAL | INV 1212933 | 22070352 |
| 00-3-0105 | MEDICAL SUPPLIES | 39.98 | VISA | ACCT 9495 | 22070349 |
| 00-3-0119 | BUILDING SUPPLIES | 102.50 | ANYTIME PLUMBING & HEATIN | INV 23433VI INV 23421VI | 22070283 |
| 00-3-0134 | LAUNDRY SUPPLIES | 599.13 | ECOLAB | INV 6270150004 INV 62701807 | 22070293 |
| 00-3-0209 | FUEL | 1,818.87 | SAPP BROS INC - LINCOLN | ACCT 715651 | 22070327 |
| 00-3-0209 | FUEL | 58.50 | VISA | ACCT 6084 | 22070348 |
| | | ***** | | | |
| | 671-00 JAIL | 19,174.16 | | | |
| | | ***** | | | |
| 690-00 911 | EMERGENCY SERVICES | | | | |
| 00-1-1100 | UNIFORM ALLOWANCE | 139.94 | MALLORY SAFETY AND SUPPLY | INV 5387824 | 22070310 |
| 00-2-9900 | MISCELLANEOUS | 33.00 | VISA | ACCT 9495 | 22070349 |
| | | ***** | | | |
| | 690-00 911 EMERGENCY SERVICES | 172.94 | | | |
| | | ***** | | | |
| 693-00 | EMERGENCY MANAGEMENT (CIVIL DEF) | | | | |
| 00-1-0301 | ADMINISTRATIVE SALARY | 3,400.00 | JEFFERSON COUNTY EMERGENC | JUNE 2022 | 22070301 |
| 00-1-0305 | CLERICAL SALARY | 580.00 | JEFFERSON COUNTY EMERGENC | JUNE 2022 | 22070301 |
| 00-2-0500 | TOWER ELECTRICITY | 69.92 | CITY OF WILBER | ACCT 2680700 ACCT 7200000 A | 22070287 |
| 00-3-0209 | FUEL | 147.56 | VISA | ACCT 6723 | 22070346 |
| | | ***** | | | |
| | 693-00 EMERGENCY MANAGEMENT (CIVIL DEF) | 4,197.48 | | | |
| | | ***** | | | |
| 701-00 | HIGHWAY SUPERINTENDENT | | | | |
| 00-2-1700 | TRAVEL EXPENSES | 356.00 | HARMONY INN & SUITES | INV 1839765 | 22070299 |
| | | ***** | | | |
| | 701-00 HIGHWAY SUPERINTENDENT | 356.00 | | | |
| | | ***** | | | |

APS7040
7/13/22
16:21:24

SALINE
BOARD PREAPPROVAL REPORT
GENERAL
FROM 07/29/2022 TO 07/29/2022

| Account # | Description | Account Amt | Vendor | Invoice Description | Claim # |
|-----------|-------------------------------------|-------------|---------------------------|-----------------------------|----------|
| ***** | | | | | |
| 733-00 | WEED CONTROL | | | | |
| 00-2-1630 | SPRAYING EQUIPMENT REPAIR | 25.89 | VISA | ACCT 4030 | 22070350 |
| 00-5-0600 | SPRAYING EQUIPMENT | 35.99 | VISA | ACCT 4030 | 22070350 |
| ***** | | | | | |
| | 733-00 WEED CONTROL | 61.88 | | | |
| ***** | | | | | |
| 803-00 | VETERANS SERVICE | | | | |
| 00-2-6040 | VETERANS MEMORIAL MAINT & REPA | 766.00 | WINDY PRAIRIE SYSTEMS INC | 6/15/22 | 22070353 |
| ***** | | | | | |
| | 803-00 VETERANS SERVICE | 766.00 | | | |
| ***** | | | | | |
| 970-00 | MISCELLANEOUS & MISC. COURTS | | | | |
| 00-1-0800 | INSURANCE (DEDUCTIBLES) | 10,293.99 | FIRST CONCORD BENEFITS GR | 6/1-5/22 6/6-12/22 6/29-7/4 | 22070296 |
| 00-2-2000 | PRINTING AND PUBLISHING (P & P | 483.24 | SEWARD COUNTY INDEPENDENT | INV 149247 INV 149268 | 22070329 |
| 00-2-2411 | DISTRICT COURT ATTORNEY FEES | 266.00 | KALKWARF & SMITH LAW OFFI | CR 19-71 | 22070302 |
| 00-2-2412 | COUNTY COURT ATTORNEY | 697.50 | REBECCA ANDERSON | JV 21 70 JV 20 28 JV 22 20 | 22070282 |
| 00-2-2412 | COUNTY COURT ATTORNEY | 875.59 | MATTHEW K KOSMICKI | CR 21 315 | 22070304 |
| 00-2-2414 | JUVENILE ATTORNEY | 2,056.75 | REBECCA ANDERSON | JV 21 70 JV 20 28 JV 22 20 | 22070282 |
| 00-2-2414 | JUVENILE ATTORNEY | 540.00 | KALKWARF & SMITH LAW OFFI | JV 22 7 | 22070303 |
| 00-2-2601 | DISTRICT COURT COSTS | 30.38 | EAKES OFFICE PLUS | INV 8484046-0 INV 8505104- | 22070292 |
| 00-2-2601 | 7 DISTRICT COURT COSTS | 136.90 | LATIMER REPORTING | INV 38471 | 22070308 |
| 00-2-2601 | DISTRICT COURT COSTS | 78.77 | SALINE COUNTY ATTORNEY PE | REIMBURSE INCREASE FUND | 22070323 |
| 00-2-2601 | DISTRICT COURT COSTS | 589.00 | SALINE COUNTY DISTRICT CO | CLAIM 1724 CLAIM 1722 CLAIM | 22070325 |
| 00-2-2601 | DISTRICT COURT COSTS | 107.64 | THOMAS & THOMAS COURT REP | INV 417870 | 22070336 |
| 00-2-2602 | COUNTY COURT COSTS | 106.00 | CRETE AREA MEDICAL CENTER | 602139800 | 22070289 |
| 00-2-2602 | COUNTY COURT COSTS | 430.00 | SALINE COUNTY COURT | CLAIM 457 | 22070324 |
| 00-2-2602 | COUNTY COURT COSTS | 283.19 | SALINE COUNTY SHERIFF | REIMBURSE | 22070326 |
| 00-2-2602 | COUNTY COURT COSTS | 35.00 | COLIN GAMAN | WITNESS FEES | 22070354 |
| 00-2-2700 | MENTAL HEALTH BOARD COSTS | 131.25 | MIDWEST COURT REPORTING I | MH 22-1 | 22070313 |
| 00-2-4406 | ANIMAL CONTROL | 122.50 | CRETE VETERINARY CLINIC P | INV 53479 | 22070290 |
| 00-2-7000 | MICROFILMING/PHOTOSTAT | 108.12 | MIPS INC | INV 22070945 INV 22070944 | 22070314 |
| 00-2-9900 | MISCELLANEOUS | 889.28 | ALL STAR GLASS OF LINCOLN | WO WAS5018147 WO WAS501836 | 22070281 |
| 00-2-9900 | MISCELLANEOUS | 254.15 | EAKES OFFICE PLUS | INV 8484046-0 INV 8505104- | 22070292 |
| 00-2-9900 | MISCELLANEOUS | 465.00 | KUNCL FUNERAL HOME INC. | 6/21/22 | 22070306 |
| 00-2-9900 | MISCELLANEOUS | 500.00 | SALINE COUNTY ATTORNEY PE | REIMBURSE INCREASE FUND | 22070323 |
| 00-3-0150 | MISC. VEHICLE SUPPLIES (CAR EX | 509.24 | FARMERS COOPERATIVE | ACCT 649785 ACCT 1715 | 22070295 |
| ***** | | | | | |
| | 970-00 MISCELLANEOUS & MISC. COURTS | 19,989.49 | | | |
| ***** | | | | | |
| ***** | | | | | |
| | 0100 GENERAL FUND | 82,642.31 | | | |
| ***** | | | | | |

SALINE
BOARD PREAPPROVAL REPORT
GENERAL
FROM 07/29/2022 TO 07/29/2022

| Account # | Description | Account Amt | Vendor | Invoice Description | Claim # |
|-----------|--------------------------------|-------------|---------------------------|-----------------------------|----------|
| 705-00 | BRIDGE/ROAD MAINTENANCE | | | | |
| 00-2-0501 | LIGHT | 168.59 | CITY OF CRETE DEPT OF PUB | ACCT 11976 | 22070358 |
| 00-2-0501 | LIGHT | 690.30 | CITY OF FRIEND | ACCT 523 ACCT 1986 | 22070359 |
| 00-2-0501 | LIGHT | 17.48 | CITY OF WILBER | ACCT 4570000 | 22070360 |
| 00-2-0501 | LIGHT | 215.63 | NORRIS PUBLIC POWER | ACCT 124625900 | 22070374 |
| 00-2-0501 | LIGHT | 18.75 | VILLAGE OF DORCHESTER | ACCT 10 | 22070382 |
| 00-2-0502 | WATER | 17.77 | CITY OF CRETE DEPT OF PUB | ACCT 11976 | 22070358 |
| 00-2-0502 | WATER | 88.70 | CITY OF FRIEND | ACCT 523 ACCT 1986 | 22070359 |
| 00-2-0502 | WATER | 14.15 | CITY OF WILBER | ACCT 4570000 | 22070360 |
| 00-2-0502 | WATER | 37.00 | VILLAGE OF DORCHESTER | ACCT 10 | 22070382 |
| 00-2-0502 | WATER | 30.44 | VILLAGE OF SWANTON | ACCT 207 | 22070383 |
| 00-2-0502 | WATER | 44.80 | VILLAGE OF TOBIAS | JUNE 2022 | 22070384 |
| 00-2-0504 | SEWER | 43.86 | CITY OF CRETE DEPT OF PUB | ACCT 11976 | 22070358 |
| 00-2-0504 | SEWER | 12.99 | CITY OF WILBER | ACCT 4570000 | 22070360 |
| 00-2-0504 | SEWER | 21.15 | VILLAGE OF DORCHESTER | ACCT 10 | 22070382 |
| 00-2-0504 | SEWER | 18.00 | VILLAGE OF SWANTON | ACCT 207 | 22070383 |
| 00-2-0504 | SEWER | 12.00 | VILLAGE OF TOBIAS | JUNE 2022 | 22070384 |
| 00-2-0505 | GARBAGE | 19.82 | CITY OF WILBER | ACCT 4570000 | 22070360 |
| 00-2-0505 | GARBAGE | 14.70 | VILLAGE OF DORCHESTER | ACCT 10 | 22070382 |
| 00-2-0505 | GARBAGE | 16.01 | VILLAGE OF SWANTON | ACCT 207 | 22070383 |
| 00-2-0505 | GARBAGE | 219.24 | WASTE CONNECTIONS OF NEBR | ACCT 3010645 ACCT 4855 ACCT | 22070386 |
| 00-2-1400 | ROAD EQUIPMENT REPAIR PARTS | 725.32 | CRETE AUTO SUPPLY INC | ACCT 4575 | 22070362 |
| 00-2-1400 | ROAD EQUIPMENT REPAIR PARTS | 32.57 | FARMERS UNION COOP CO | ACCT SALINE | 22070366 |
| 00-2-1400 | ROAD EQUIPMENT REPAIR PARTS | 107.65 | FILTERCARE OF NEBRASKA LL | INV 126967 | 22070367 |
| 00-2-1400 | ROAD EQUIPMENT REPAIR PARTS | 64.69 | KLEINE REPAIR | E# 02615 | 22070370 |
| 00-2-1400 | ROAD EQUIPMENT REPAIR PARTS | 526.59 | NMC EXCHANGE LLC | ACCT 576500 | 22070373 |
| 00-2-1400 | ROAD EQUIPMENT REPAIR PARTS | 175.26 | POWERPLAN | ACCT 87002 | 22070376 |
| 00-2-1400 | ROAD EQUIPMENT REPAIR PARTS | 151.30 | RDO TRUCK CENTER CO | ACCT L80351 | 22070377 |
| 00-2-1700 | TRAVEL EXPENSES | 39.30 | VISA | ACCTG 1590 | 22070385 |
| 00-2-1800 | OPERATING EXPENSES | 41.00 | VISA | ACCTG 1590 | 22070385 |
| 00-3-0106 | SHOP SUPPLIES | 25.27 | CRETE AUTO SUPPLY INC | ACCT 4575 | 22070362 |
| 00-3-0106 | SHOP SUPPLIES | 6.84 | FARMERS UNION COOP CO | ACCT SALINE | 22070366 |
| 00-3-0106 | SHOP SUPPLIES | 84.95 | LINDE GAS & EQUIPMENT | INV 11385782 | 22070371 |
| 00-3-0106 | SHOP SUPPLIES | 1,050.00 | MIDWEST UNLIMITED | T# 20627-01 | 22070372 |
| 00-3-0106 | SHOP SUPPLIES | 39.20 | YOUNG'S WELDING & REPAIR | INV 36484 INV 36482 INV 39. | 22070388 |
| 00-3-0106 | SHOP SUPPLIES | 2.46 | 41 AUTO PARTS | ACCT 43 | 22070389 |
| 00-3-0107 | PLUMBING SUPPLIES | 175.00 | DRAKE REFRIG/HEATING/COOL | INV 003422 | 22070364 |
| 00-3-0109 | SHOP TOOLS | 126.98 | CRETE ACE HARDWARE #82127 | ACCT 212737 | 22070361 |
| 00-3-0110 | SMALL TOOLS, ETC. | 27.98 | CRETE ACE HARDWARE #82127 | ACCT 212737 | 22070361 |
| 00-3-0110 | SMALL TOOLS, ETC. | 9.95 | FARMERS UNION COOP CO | ACCT SALINE | 22070366 |
| 00-3-0202 | GRAVEL AND BORROW | 28,553.71 | BEATRICE CONCRETE CO INC | INV P1 174725 INV P1 17472 | 22070357 |
| 00-3-0202 | GRAVEL AND BORROW | 18,034.72 | JOHNSON SAND & GRAVEL CO | INV 10957A | 22070369 |
| 00-3-0202 | GRAVEL AND BORROW | 1,173.53 | ROCK ON INC | INV 1752 | 22070378 |
| 00-3-0203 | GRADER BLADES | 29,903.72 | NMC EXCHANGE LLC | ACCT 576500 | 22070373 |
| 00-3-0207 | STEEL PRODUCTS | 495.98 | YOUNG'S WELDING & REPAIR | INV 36484 INV 36482 INV 39. | 22070388 |
| 00-3-0209 | MACHINERY & EQUIPMENT FUEL | 52,064.56 | FARMERS COOPERATIVE | ACCT 649700 | 22070365 |
| 00-3-0209 | MACHINERY & EQUIPMENT FUEL | 2,245.00 | FARMERS UNION COOP CO | ACCT SALINE | 22070366 |
| 00-3-0209 | MACHINERY & EQUIPMENT FUEL | 5,662.69 | SAPP BROS INC - LINCOLN | ACCT 717088 | 22070379 |
| 00-3-0209 | MACHINERY & EQUIPMENT FUEL | 3.25 | WESTERN OIL COMPANY | INV 965188 | 22070387 |
| 00-3-0210 | MACHINERY & EQUIPMENT GREASE-O | 1,822.28 | FARMERS COOPERATIVE | ACCT 649700 | 22070365 |

APS7040
7/13/22
16:21:24

SALINE
BOARD PREAPPROVAL REPORT
ROAD & BRIDGE
FROM 07/29/2022 TO 07/29/2022

| Account # | Description | Account Amt | Vendor | Invoice Description | Claim # |
|--------------------------------|--------------------------------|-------------|---------------------------|-----------------------------|----------|
| 00-3-0210 | MACHINERY & EQUIPMENT GREASE-O | 84.91 | FARMERS UNION COOP CO | ACCT SALINE | 22070366 |
| 00-3-0210 | MACHINERY & EQUIPMENT GREASE-O | 419.40 | NMC EXCHANGE LLC | ACCT 576500 | 22070373 |
| 00-3-0210 | MACHINERY & EQUIPMENT GREASE-O | 396.32 | 41 AUTO PARTS | ACCT 43 | 22070389 |
| 00-3-0211 | MACHINERY & EQUIPMENT TIRES-RE | 31.00 | FARMERS COOPERATIVE | ACCT 649700 | 22070365 |
| 00-3-0211 | MACHINERY & EQUIPMENT TIRES-RE | 1,511.00 | FARMERS UNION COOP CO | ACCT SALINE | 22070366 |
| 00-3-0211 | MACHINERY & EQUIPMENT TIRES-RE | 336.89 | POMP'S TIRE SERVICE INC | INV 1430063772 | 22070375 |
| 00-3-0400 | MISCELLANEOUS | 31.98 | CRETE ACE HARDWARE #82127 | ACCT 212737 | 22070361 |
| 00-5-0318 | SAFETY EQUIPMENT | 271.90 | CRETE LUMBER & FARM SUPPL | ACCT 20041 | 22070363 |
| 00-5-0318 | SAFETY EQUIPMENT | 440.94 | THE FORT INC | INV 8634 | 22070368 |
| 00-5-1207 | STRUCTURES, PIPES, BX, CULVERT | 15,961.67 | ACE IRRIGATION & MFG CO I | INV 003330 INV 003413 INV 0 | 22070356 |
| 00-5-1302 | ENGINEERING FEES | 4,110.62 | SPEECE-LEWIS ENGINEERS | INV 11813 | 22070381 |
| 00-5-1307 | ADVERTISEMENT FOR BIDS | 35.31 | SEWARD COUNTY INDEPENDENT | INV 149257 | 22070380 |
| 705-00 BRIDGE/ROAD MAINTENANCE | | 168,725.07 | ***** | | |
| 0300 ROAD & BRIDGE FUND | | 168,725.07 | ***** | | |
| 604-00 REGISTER OF DEEDS | MISCELLANEOUS | 199.00 | VISA | ACCT 8013 | 22070390 |
| 604-00 REGISTER OF DEEDS | | 199.00 | ***** | | |
| 1150 REGISTER OF DEEDS FUND | | 199.00 | ***** | | |
| 612-00 EMPLOYEE WELLNESS | AWARDS/INCENTIVES | 417.04 | VISA | ACCT 4987 | 22070391 |
| 612-00 EMPLOYEE WELLNESS | | 417.04 | ***** | | |
| 1502 EMPLOYEE WELLNESS FUND | | 417.04 | ***** | | |
| 837-00 AGING SERVICES | PROGRAM EXPENSE | 285.00 | SAMANTHA COSAERT | 6/30-7/12/22 | 22070393 |
| 00-1-1400 | PROGRAM EXPENSE | 54.70 | FOOD MESTO | ACCT 1053 | 22070396 |
| 00-1-1400 | PROGRAM EXPENSE | 240.00 | TIA L KRESHEL | 6/30-7/1/22 | 22070397 |

SALINE
BOARD PREAPPROVAL REPORT
AGING SERVICES
FROM 07/29/2022 TO 07/29/2022

| Account # | Description | Account Amt | Vendor | Invoice Description | Claim # |
|---|------------------------------|-------------|---------------------------|----------------------------|----------|
| 00-1-1400 | PROGRAM EXPENSE | 426.00 | DELANEY MAZZA | 6/16-29/22 | 22070398 |
| 00-1-1400 | PROGRAM EXPENSE | 74.89 | O'KEEFE ELEVATOR COMPANY | ACCT 8975 | 22070401 |
| 00-1-1400 | PROGRAM EXPENSE | 60.00 | MICHELE VANA | JUNE 2022 | 22070404 |
| 00-1-1400 | PROGRAM EXPENSE | 76.80 | VISA | ACCT 5190 | 22070405 |
| 00-1-1400 | PROGRAM EXPENSE | 25.50 | VISA | ACCT 3108 | 22070406 |
| 00-2-0100 | POSTAL SERVICE | 8.80 | O'KEEFE ELEVATOR COMPANY | ACCT 8975 | 22070401 |
| 00-2-0100 | POSTAL SERVICE | 58.00 | VISA | ACCT 5190 | 22070405 |
| 00-2-1200 | HISPANIC OUTREACH | 610.00 | JESSICA ACOSTA | 6/16-7/12/22 | 22070392 |
| 00-2-1200 | HISPANIC OUTREACH | 1,122.17 | O'KEEFE ELEVATOR COMPANY | ACCT 8975 | 22070401 |
| 00-2-1200 | HISPANIC OUTREACH | 749.00 | VISA | ACCT 3108 | 22070406 |
| 00-2-1704 | MILEAGE ALLOWANCE | 60.84 | LORI MOLDENHAUER | MILEAGE | 22070399 |
| 00-2-1704 | MILEAGE ALLOWANCE | 110.69 | DONNA ZLAB-KOVAR | MILEAGE | 22070408 |
| 00-2-1801 | DUES, SUBS, REG., & TRAINING | 75.00 | NEBRASKA CZECHS OF WILBER | INV 7/13/22 | 22070400 |
| 00-2-9900 | MISCELLANEOUS | 59.20 | SEWARD COUNTY INDEPENDENT | INV 149472 | 22070403 |
| 00-3-0101 | OFFICE SUPPLIES | 207.19 | EAKES OFFICE PLUS | INV 8503967-0 INV 8505102- | 22070394 |
| 00-3-0209 | FUEL | 43.06 | FARMERS COOPERATIVE | ACCT 5654 | 22070395 |
| 00-3-0400 | USDA RAW FOODS | 478.14 | PURFOODS, LLC DBA MOM'S M | INV MM062022 | 22070402 |
| 00-3-0400 | USDA RAW FOODS | 1,142.46 | WILBER CARE CENTER | JUNE 2022 | 22070407 |
| 837-00 AGING SERVICES | | 5,967.44 | ***** | | |
| 2250 AGING SERVICES FUND | | 5,967.44 | ***** | | |
| 672-00 DRUG COURT | OFFICE SUPPLIES | 40.01 | VERIZON WIRELESS | INV 9909587782 | 22070409 |
| 672-00 DRUG COURT | | 40.01 | ***** | | |
| 2390 DRUG COURT FUND | | 40.01 | ***** | | |
| 666-00 JUVENILE SERVICES AID PROGRAM GRANT | SALARIES | 1,065.00 | ANITA STOUGARD | 6/30-7/12/22 | 22070410 |
| 666-00 JUVENILE SERVICES AID PROGRAM GRANT | | 1,065.00 | ***** | | |
| 2516 JUVENILE SERVICES AID PROGRAM GRANT FUND | | 1,065.00 | ***** | | |

APS7040
7/13/22
16:21:24

SALINE
BOARD PREAPPROVAL REPORT
JUVENILE SERVICES AID PROGRAM GRA
FROM 07/29/2022 TO 07/29/2022

| Account # | Description | Account Amt | Vendor | Invoice Description | Claim # |
|-----------|--------------------------------------|-------------|-------------------------|----------------------------|----------|
| 911-00 | COVID AMERICAN RESCUE PLAN | | | | |
| 00-2-9900 | COVID AMERICAN RESCUE PLAN | 44,802.56 | FIRST WIRELESS INC | INV 119296 | 22070411 |
| | | ***** | | | |
| | 911-00 COVID AMERICAN RESCUE PLAN | 44,802.56 | | | |
| | | ***** | | | |
| | | ***** | | | |
| | 2580 COVID AMERICAN RESUCE PLAN FUND | 44,802.56 | | | |
| | | ***** | | | |
| 665-00 | LAW ENFORCEMENT COMMISSARY | | | | |
| 00-2-0100 | POSTAL SERVICES | 174.00 | VISA | ACCT 9495 | 22070415 |
| 00-2-1900 | FOOD | 4,433.93 | SUMMIT FOOD SERVICE LLC | INV2000147255 INV200014725 | 22070414 |
| 00-2-9900 | MISCELLANEOUS | 6,750.00 | BOB BARKER COMPANY INC | INV INV1783187 | 22070412 |
| 00-2-9900 | MISCELLANEOUS | 543.05 | EAKES OFFICE PLUS | INV 8516557-0 INV 8513181- | 22070413 |
| 00-2-9900 | MISCELLANEOUS | 1,502.32 | SUMMIT FOOD SERVICE LLC | INV2000147255 INV200014725 | 22070414 |
| 00-2-9900 | MISCELLANEOUS | 82.25 | VISA | ACCT 9495 | 22070415 |
| | | ***** | | | |
| | 665-00 LAW ENFORCEMENT COMMISSARY | 13,485.55 | | | |
| | | ***** | | | |
| | | ***** | | | |
| | 2965 LAW ENFORCEMENT COMMISSARY FUND | 13,485.55 | | | |
| | | ***** | | | |
| | | ***** | | | |
| | | ***** | | | |
| | GRAND | 317,343.98 | | | |
| | | ***** | | | |