



BOARD OF TRUSTEES AGENDA

Regular
Regular Meeting
Tuesday, February 11, 2025
6:00 PM
Ambler Board Room
1801 N. Cottonwood
Iola, KS 66749

Current Board Members:

Gena Clouch; Vicki Curry; Rebecca Nilges; Corey Schinstock; Jenny Spillman; Jessica Thompson

1. **Call to order and establish quorum.**
2. **Approval of Agenda**
3. **New Business**
Jarrod, Gilmore, and Phillips
Audit Presentation
4. **Patron's Concerns**
"Persons who wish to address the Board of Trustees regarding items on the agenda may do so as that agenda item is called. Persons who wish to address the Board of Trustees regarding items not on the agenda and that are under the jurisdiction of the Board of Trustees may do so at this time when called upon by the Chair. Comments on personnel matters and matters pending in court are not permitted. Speakers are limited to three minutes. Any presentation is for information purposes only. No action will be taken."
5. **Executive session**
5.a. Executive session for the purpose of discussing personnel matters for non-elected personnel.
At 6:15 PM returned to open session, no action taken.
6. **Consent Agenda** **3**
Financial reports Feb 2025 3
7. **Reports and/or Board Discussion** **19**
Feb 2025 President Board Report 19
VP Academic Affairs Board Report - February 2025 26
SA Board Report 2-11-25 33
8. **Board Reports** **35**
KACC - Jessica Thompson
Iola Industries - Corey Schinstock
ACC Endowment - Vicki Curry

CTE and Maintenance Buildings—Corey Schinstock/Becky Nilges	
Board Finance Committee - Gena Clouch/Vicki Curry	
Other Board members	
Facilities and Maintenance--Front View	35
Facilities and Maintenance--Angle View	36
23-087 ACC - Facilities Maintenance Shop and Warehouse_Floor Plan 02-11-25	37
10_2_CTE Rendering	38
4_2_CTE Rendering	39
5_2_CTE Rendering	40
7_2_CTE Rendering	41
23-088 ACC - CTE_Floor Plan 02-11-25	42
9. Old Business (Action, Report, or Discussion)	
10. New Business (Action, Report, or Discussion)	
10.a. David Lee, New Wave Broadband request	
10.b. Water tower logo	
10.c. 2025-2026 Tuition, Fees, Room and Board	43
Cynthia Jacobson	
Tuition and Fees 25-26	43
11. Executive Session	
11.a. Executive session for the purpose of discussing personnel matters for non-elected personnel	
11.a.1. Open Session	
12. Upcoming Meetings	
Regular meeting: Tuesday, March 11, 2025 at 6:00 PM	
Annual negotiations training February 17, 2025 at 4:00 PM via Zoom	
13. Pending Agenda Items	
14. Adjournment	

Allen County Community College
SUMMARY OF FUNDS
JAN 24/25

Funds	This Month		This Year			Last Year		
	Actual	Actual	Encumbrance	Budget	%	Unexpended	Budget	YTD
11 General/Unrestricted	830,288.33	6,388,142.57	112,645.12	15,178,815.00	42.1	8,678,027.31	14,975,226.00	6,544,671.5
12 PTE Fund	63,986.84	653,631.07	2,285.72	1,833,653.00	35.6	1,177,736.21	1,875,282.00	623,977.4
16 Auxiliary Enter/Unrest	135,418.93	954,824.64	324,283.68	3,551,925.00	26.9	2,272,816.68	2,811,712.00	924,405.3
21 College Work Study/Res	315.00	7,477.25	0.00	0.00	*****	-7,477.25	0.00	5,984.5
22 Suppl Educ Opp Grnt/Re	0.00	38,889.19	0.00	0.00	*****	-38,889.19	0.00	15,628.2
24 Pell Grant/Restricted	0.00	829,748.04	0.00	0.00	*****	-829,748.04	0.00	655,053.9
27 State Grants/Restrict	995.17	22,507.25	0.00	45,364.00	49.6	22,856.75	79,127.00	33,769.4
40 Loan Funds/Restricted	0.00	422,603.00	0.00	0.00	*****	-422,603.00	0.00	377,788.0
61 Capital Outlay/Restrict	4,670.00	443,100.00	0.00	1,500,000.00	29.5	1,056,900.00	2,000,000.00	0.0
70 Agency/Restricted	-9,201.00	476,705.00	0.00	0.00	*****	-476,705.00	0.00	612,236.2

\$Source: /opt/carsi/modules/accounting/reports/RCS/fundsum,v \$

\$Header

For: JAN 2425 11

Run: 12:34:26 Thu Feb 6 2025

Allen County Community College
Treasurer's Report
January 31, 2025

Fund Description	Balance	Revenue	Expenditures	Balance	- A/R	+ A/P	Prior Year	Balance
	12-31-2024			01-31-2025	01-31-2025	01-31-2025	Adjustments	01-31-2025
11 General	\$18,315,096.97	\$4,819,351.37	\$830,367.08	\$22,304,081.26	\$2,276,768.17	\$213,104.45	\$7,587.65	\$20,248,005.19
12 Postsecondary Technical Educa	\$1,826,296.04	\$234,109.50	\$63,986.84	\$1,996,418.70	\$0.00	\$0.00	\$3,682.08	\$2,000,100.78
14 Adult Supplementary Education	\$6,500.85	\$0.00	\$0.00	\$6,500.85	\$0.00	\$0.00	\$0.00	\$6,500.85
16 Auxiliary Enterprises	\$3,850,461.78	\$992,803.27	\$135,418.93	\$4,707,846.12	\$0.00	\$1,700.00	(\$45.00)	\$4,709,501.12
20 EDPMS	(\$29,686.36)	\$0.00	\$0.00	(\$29,686.36)	(\$9,686.20)	(\$236.25)	(\$899.84)	(\$21,136.25)
21 College Work Study	\$0.00	\$315.00	\$315.00	\$0.00	\$0.00	\$0.00	\$0.00	\$0.00
22 SEOG	\$0.00	\$0.00	\$0.00	\$0.00	\$0.00	\$0.00	\$0.00	\$0.00
23 ABE Grant	(\$0.42)	\$0.00	\$0.00	(\$0.42)	\$0.00	\$0.00	\$0.00	(\$0.42)
24 PELL	\$0.00	\$0.00	\$0.00	\$0.00	\$0.00	\$0.00	\$0.00	\$0.00
27 State Grants	\$467,432.80	\$0.00	\$995.17	\$466,437.63	\$0.00	\$0.00	(\$10,949.89)	\$455,487.74
28 Federal Grants	\$0.00	\$0.00	\$0.00	\$0.00	\$0.00	\$0.00	\$0.00	\$0.00
40 Loan Funds/Restricted	\$0.00	\$0.00	\$0.00	\$0.00	\$0.00	\$0.00	\$0.00	\$0.00
61 Capital Outlay	\$2,993,329.56	\$288,651.41	\$4,670.00	\$3,277,310.97	\$0.00	\$0.00	\$0.00	\$3,277,310.97
70 Agency	\$2,267,718.07	\$0.00	(\$9,201.00)	\$2,276,919.07	\$0.00	\$222,880.51	\$625.00	\$2,500,424.58
Holding for Distribution	\$0.00	\$0.00	\$0.00	\$0.00	\$0.00	\$0.00	\$0.00	\$0.00
Total	\$29,697,149.29	\$6,335,230.55	\$1,026,552.02	\$35,005,827.82	\$2,267,081.97	\$437,448.71	\$0.00	\$33,176,194.56

Summary of Cash Transactions

	Balance	Receipts	Disbursements	Balance
	12-31-2024			01-31-2025
Landmark Nat'l Bank #385 (Gen. Fun	9,031,022.55	4,431,916.46	988,576.46	12,474,362.55
Landmark Nat'l Bank #377 (Fed Fund	0.15	9,686.20	9,686.20	0.15
Community Nat'l Bank (Checking)	130,211.93	21,910.36	0.00	152,122.29
Petty Cash-Main Campus	300.00	9.00	14.58	294.42
Landmark Nat'l CD's	8,000,000.00	0.00	0.00	8,000,000.00
Community Nat'l Bank CD's	6,454,880.34	0.00	0.00	6,454,880.34
Emprise Bank CD's	6,080,234.32	13,800.49	0.00	6,094,034.81
Athletic Cash	300.00	0.00	0.00	300.00
Bookstore Cash-Iola Campus	200.00	0.00	0.00	200.00
Cashier's Drawer #1	0.00	4,111,914.19	4,111,914.19	0.00
Cashier's Drawer #2	0.00	0.00	0.00	0.00
Cashier's Drawer #3	0.00	0.00	0.00	0.00
Cashier's Drawer #4	0.00	0.00	0.00	0.00
Holding for Distribution	0.00	0.00	0.00	0.00
Total	29,697,149.29	8,589,236.70	5,110,191.43	33,176,194.56

Pledged Securities

	01-31-2025
Investments - KMIP	\$0.00
Emprise Bank	\$6,259,890.24
Community National Bank & Trust	\$6,357,793.00
Landmark National Bank	<u>\$22,976,273.69</u>
	<u>\$35,593,956.93</u>

I hereby certify that the above fund reconciliation is correct to the best of my knowledge.

President

Board Chair

Allen County Community College
 Direct Payment Bills Presented for Ratification
 From 01/01/2025 thru 01/31/2025

<u>Date Paid</u>	<u>Vendor Name</u>	<u>Fund</u>	<u>Center</u>	<u>Account</u>	<u>Amount</u>
1/3/25	KPERS	11	No Center	Retirement/KPERS Life Payable	2,690.32
1/3/25	KPERS	11	No Center	Retirement/KPERS Life Payable	140.56
1/03/25	Internal Revenue Service	11	No Center	FIT/FICA Taxes Payable	10,057.88
1/2/25	Kansas Dept of Revenue	11	No Center	Kansas State Tax	2,111.64
1/14/25	KPERS	11	No Center	Retirement/KPERS Life Payable	325.80
1/15/25	KPERS	11	No Center	Retirement/KPERS Life Payable	7,432.03
1/15/25	Internal Revenue Service	11	No Center	FIT/FICA Taxes Payable	28,706.29
1/15/25	Kansas Dept of Revenue	11	No Center	Kansas State Tax	6,055.72
1/17/25	Bay Bridge Administrators	11	No Center	DISR,LIFR,ACCR,XDEP,XMED,Vision	3,601.94
1/17/25	Bay Bridge Administrators	11	No Center	403B-AFA/Security Benefit plus match	11,560.00
1/13/25	Kansas Dept of Revenue	11	No Center	Kansas Sales Tax	313.31
1/17/25	KPERS	11	No Center	Retirement/KPERS Life Payable	2,719.31
1/17/25	UMB	11	No Center	Health Savings Account	1,307.38
1/24/25	Kansas Dept of Revenue	11	No Center	Consumers Use Tax	153.22
1/31/25	Kansas Payment Center	11	No Center	Child Support Payment	600.00
1/17/25	KPERS	11	No Center	Retirement/KPERS Life Payable	164.98
1/17/25	Kansas Dept of Revenue	11	No Center	Kansas State Tax	2,153.05
1/17/25	KPERS	11	No Center	Retirement/KPERS Life Payable	740.62
1/17/25	Internal Revenue Service	11	No Center	FIT/FICA Taxes Payable	10,260.42
1/31/25	Internal Revenue Service	11	No Center	FIT/FICA Taxes Payable	80,249.18
1/31/25	Kansas Dept of Revenue	11	No Center	Kansas State Tax	16,595.24
1/31/25	KPERS	11	No Center	Retirement/KPERS Life Payable	15,727.91
1/31/25	KPERS	11	No Center	Retirement/KPERS Life Payable	2,070.19
1/31/25	KPERS	11	No Center	Retirement/KPERS Life Payable	2,834.62
1/31/25	KPERS	11	No Center	Retirement/KPERS Life Payable	157.48
					\$208,729.09

Signed and approved this _____ day of _____, 2025

ATTEST: _____
 Chairman, Board of Trustees

 Clerk, Board of Trustees

Allen County Community College
Bills Presented for Ratification
From: 02/04/2025 To 02/06/2025

Check No	Vendor Name	Fund	Center	Line	Invoice Amt
224890	Cardmember Service	11	Admissions	Office Supplies	30.36
224891	Almeida, Luiz Gustavo_De	11	No Center	Accts Recv/Students	516.00
224892	American Assoc of Comm Colleges	11	President	Professional Memberships	3,917.00
224893	B&B Theatres	16	Student Housing/Program	Student Activities	467.55
224894	Ball, Connor Douglas	11	No Center	Accts Recv/Students	130.00
224895	CASE	11	Alumni/Development Offic	Institutional Dues	1,785.00
224904	Cardmember Service	11	Communication	Conferences & Workshops	70.00
224904	Cardmember Service	11	Communication	Institutional Dues	70.00
224904	Cardmember Service	11	Communication	Professional Memberships	75.00
224904	Cardmember Service	11	Communication	Instructional Supplies	155.00
224904	Cardmember Service	11	Mathematics	Business Travel	438.96
224904	Cardmember Service	11	Mathematics	Conferences & Workshops	150.00
224904	Cardmember Service	11	Mathematics	Institutional Dues	800.00
224904	Cardmember Service	11	Fitness Center	Athletic Supplies	19.56
224904	Cardmember Service	11	Online Learning	Instructional Supplies	144.00
224904	Cardmember Service	11	VP for Academic Affairs	Conferences & Workshops	760.00
224904	Cardmember Service	11	Dean-Dist & Gen Ed Iola	Conferences & Workshops	760.00
224904	Cardmember Service	11	Professional Development	Conferences & Workshops	-685.00
224904	Cardmember Service	11	Professional Development	Conferences & Workshops	2,280.00
224904	Cardmember Service	11	VP for Student Affairs	Miscellaneous Supplies	146.88
224904	Cardmember Service	11	Director of Athletics	Athletic Supplies	4,457.56
224904	Cardmember Service	11	Men's Basketball	Athletic Team Travel	149.85
224904	Cardmember Service	11	Men's Basketball	Athletic Team Travel	101.43
224904	Cardmember Service	11	Men's Basketball	Athletic Team Travel	18.43
224904	Cardmember Service	11	Men's Basketball	Athletic Team Travel	17.12
224904	Cardmember Service	11	Men's Basketball	Athletic Team Travel	110.87
224904	Cardmember Service	11	Women's Basketball	Athletic Team Travel	155.81
224904	Cardmember Service	11	Women's Basketball	Athletic Team Travel	121.00
224904	Cardmember Service	11	Women's Basketball	Athletic Team Travel	101.44
224904	Cardmember Service	11	Track	Business Travel	24.85
224904	Cardmember Service	11	Track	Athletic Team Travel	79.00
224904	Cardmember Service	11	Track	Athletic Team Travel	182.66
224904	Cardmember Service	11	Track	Athletic Team Travel	324.61
224904	Cardmember Service	11	Track	Athletic Team Travel	105.48
224904	Cardmember Service	11	Track	Athletic Team Travel	33.77
224904	Cardmember Service	11	Track	Athletic Team Travel	88.08
224904	Cardmember Service	11	Track	Athletic Team Travel	21.42
224904	Cardmember Service	11	Track	Athletic Team Travel	132.10
224904	Cardmember Service	11	Track	Athletic Team Travel	30.43
224904	Cardmember Service	11	Track	Athletic Team Travel	158.80
224904	Cardmember Service	11	Track	Entry Fees	480.25
224904	Cardmember Service	11	Track	Entry Fees	1,057.35
224904	Cardmember Service	11	Track	Entry Fees	1,201.12
224904	Cardmember Service	11	Softball	Athletic Supplies	956.54

PAGE TOTALS

22,140.28

Check No	Vendor Name	Fund	Center	Line	Invoice Amt
224904	Cardmember Service	11	Volleyball	Business Travel	13.87
224904	Cardmember Service	11	Volleyball	Business Travel	16.21
224904	Cardmember Service	11	Volleyball	Business Travel	9.00
224904	Cardmember Service	11	Volleyball	Business Travel	27.85
224904	Cardmember Service	11	Volleyball	Business Travel	18.11
224904	Cardmember Service	11	Volleyball	Business Travel	42.00
224904	Cardmember Service	11	Volleyball	Business Travel	23.05
224904	Cardmember Service	11	Volleyball	Business Travel	52.00
224904	Cardmember Service	11	Volleyball	Athletic Team Travel	17.17
224904	Cardmember Service	11	Volleyball	Athletic Team Travel	37.52
224904	Cardmember Service	11	Livestock Judging	Business Travel	136.16
224904	Cardmember Service	11	Cheerleader/Dance	Athletic Supplies	108.72
224904	Cardmember Service	11	Cheerleader/Dance	Athletic Supplies	735.05
224904	Cardmember Service	11	Men's Soccer	Business Travel	15.10
224904	Cardmember Service	11	Women's Soccer	Athletic Team Travel	116.80
224904	Cardmember Service	11	Women's Soccer	Athletic Team Travel	2.98
224904	Cardmember Service	11	Women's Soccer	Athletic Team Travel	6.55
224904	Cardmember Service	11	Athletic Trainer	Athletic Supplies	119.90
224904	Cardmember Service	11	Music	Postage	359.69
224904	Cardmember Service	11	Music	Instructional Supplies	8.99
224904	Cardmember Service	11	Music	Instructional Supplies	149.67
224904	Cardmember Service	11	Music	Instructional Supplies	104.93
224904	Cardmember Service	11	Theater	Athletic Team Travel	270.42
224904	Cardmember Service	11	Theater	Athletic Team Travel	3,283.06
224904	Cardmember Service	11	Theater	Athletic Team Travel	178.36
224904	Cardmember Service	11	Theater	Athletic Team Travel	266.20
224904	Cardmember Service	11	Theater	Athletic Team Travel	270.77
224904	Cardmember Service	11	Theater	Athletic Team Travel	315.31
224904	Cardmember Service	11	Theater	Athletic Team Travel	345.56
224904	Cardmember Service	11	Theater	Athletic Team Travel	14.92
224904	Cardmember Service	11	Theater	Athletic Team Travel	170.45
224904	Cardmember Service	11	Theater	Athletic Team Travel	323.30
224904	Cardmember Service	11	Theater	Athletic Team Travel	301.31
224904	Cardmember Service	11	Theater	Athletic Team Travel	320.04
224904	Cardmember Service	11	Theater	Postage	30.00
224904	Cardmember Service	11	College Quiz Bowl	Athletic Team Travel	32.00
224904	Cardmember Service	11	College Quiz Bowl	Athletic Team Travel	88.23
224904	Cardmember Service	11	President	Conferences & Workshops	860.00
224904	Cardmember Service	11	President	Office Supplies	43.99
224904	Cardmember Service	11	Information Tech (IT)	Repairs & Maintenance	36.16
224904	Cardmember Service	11	Information Tech (IT)	Repairs & Maintenance	57.78
224904	Cardmember Service	11	Information Tech (IT)	Repairs & Maintenance	59.48
224904	Cardmember Service	11	Maintenance of Buildings	Maintenance Supplies	-150.96
224904	Cardmember Service	11	Maintenance of Buildings	Maintenance Supplies	75.50

PAGE TOTALS

9,313.20

Check No	Vendor Name	Fund	Center	Line	Invoice Amt
224904	Cardmember Service	11	Maintenance of Buildings	Maintenance Supplies	21.12
224904	Cardmember Service	11	Maintenance of Buildings	Maintenance Supplies	592.98
224904	Cardmember Service	11	Maintenance of Buildings	Janitorial Supplies	109.68
224904	Cardmember Service	11	Maintenance of Buildings	Janitorial Supplies	26.42
224904	Cardmember Service	11	Maintenance of Buildings	Janitorial Supplies	152.14
224904	Cardmember Service	11	Maintenance of Grounds	Maintenance Supplies	66.32
224904	Cardmember Service	12	Computer Science	Instructional Supplies	29.99
224904	Cardmember Service	12	Computer Science	Instructional Supplies	1,785.00
224904	Cardmember Service	12	Business & Industry	Business Travel	18.71
224904	Cardmember Service	12	Business & Industry	Business Travel	15.35
224904	Cardmember Service	12	Allied Health	Business Travel	20.67
224904	Cardmember Service	12	Allied Health	Postage	48.85
224904	Cardmember Service	12	Allied Health	Postage	10.10
224904	Cardmember Service	12	Early Childhood Educ	Instructional Supplies	250.00
224904	Cardmember Service	12	Machining & Manufacturi	Business Travel	130.21
224904	Cardmember Service	16	Bookstore	C of GS/Ebook/AccessCode	3,813.20
224904	Cardmember Service	16	Bookstore	C of GS/Supplies	541.16
224904	Cardmember Service	16	Bookstore	C of GS/Soft Goods	284.70
224904	Cardmember Service	70	No Center	Early Childhood Educ	266.28
224905	Carolina Biological Supply Co	11	Biology	Instruc. Supp.-Biology	267.62
224905	Carolina Biological Supply Co	11	Biology	Instruc. Supp.-Biology	382.51
224906	Cengage Learning Inc	16	Bookstore	C of GS/Ebook/AccessCode	17,100.00
224907	City of Branson	11	Softball	Entry Fees	500.00
224908	City of Iola	16	Ballard House	Natural Gas/	114.61
224908	City of Iola	16	Ballard House	Electricity/	64.16
224908	City of Iola	16	Ballard House	Water/	68.99
224908	City of Iola	16	Ballard House	Sewer/	26.67
224909	City of Iola	11	General Inst Expenses	Natural Gas/	7,927.19
224909	City of Iola	11	General Inst Expenses	Electricity/	9,145.06
224909	City of Iola	11	General Inst Expenses	Water/	2,310.64
224909	City of Iola	11	General Inst Expenses	Sewer/	1,113.15
224909	City of Iola	11	Gen Inst Exp Tech Bldg	Natural Gas/	912.91
224909	City of Iola	11	Gen Inst Exp Tech Bldg	Electricity/	1,706.80
224909	City of Iola	11	Gen Inst Exp Tech Bldg	Water/	85.94
224909	City of Iola	11	Gen Inst Exp Tech Bldg	Sewer/	35.17
224909	City of Iola	16	Parkford Apartments	Electricity/	1,233.54
224909	City of Iola	16	Herynk Hall	Natural Gas/	196.07
224909	City of Iola	16	Herynk Hall	Electricity/	149.43
224909	City of Iola	16	Herynk Hall	Water/	198.98
224909	City of Iola	16	Herynk Hall	Sewer/	91.84
224909	City of Iola	16	Horton Hall	Natural Gas/	237.36
224909	City of Iola	16	Horton Hall	Electricity/	926.80
224909	City of Iola	16	Horton Hall	Water/	1,125.89
224909	City of Iola	16	Horton Hall	Sewer/	556.57

PAGE TOTALS

54,660.78

Check No	Vendor Name	Fund	Center	Line	Invoice Amt
224909	City of Iola	16	Winter Hall	Electricity/	2,142.40
224909	City of Iola	16	Winter Hall	Water/	577.66
224909	City of Iola	16	Winter Hall	Sewer/	281.70
224909	City of Iola	16	Red Devil Duplexes	Natural Gas/	795.78
224909	City of Iola	16	Red Devil Duplexes	Electricity/	548.63
224909	City of Iola	16	Red Devil Duplexes	Water/	453.32
224909	City of Iola	16	Red Devil Duplexes	Sewer/	219.36
224909	City of Iola	16	Masterson Hall	Natural Gas/	90.17
224909	City of Iola	16	Masterson Hall	Electricity/	1,426.00
224909	City of Iola	16	Masterson Hall	Water/	232.89
224909	City of Iola	16	Masterson Hall	Sewer/	108.84
224910	Cunningham, McKayla Dale	11	No Center	Accts Recv/Students	456.00
224911	Design Mechanical Inc	11	Maintenance of Buildings	Mtc & Service Agreements	4,875.00
224912	Emerson, Terry Eugene	11	No Center	Accts Recv/Students	902.00
224913	Fast Lube Iola	11	Maintenance of Equipment	Repairs & Maintenance	61.90
224913	Fast Lube Iola	11	Maintenance of Equipment	Repairs & Maintenance	51.33
224913	Fast Lube Iola	11	Maintenance of Equipment	Repairs & Maintenance	53.20
224913	Fast Lube Iola	11	Maintenance of Equipment	Repairs & Maintenance	47.95
224914	First Class Color/Fax Cards	11	President	Office Supplies	47.20
224915	Four State Maintenance Supply	11	Maintenance of Buildings	Janitorial Supplies	89.00
224915	Four State Maintenance Supply	11	Maintenance of Buildings	Janitorial Supplies	111.91
224916	Fuelman	11	Director of Athletics	Gasoline	739.95
224916	Fuelman	11	General Inst Expenses	Gasoline	291.70
224917	Homeville Vending	70	No Center	Concessions 70	34.95
224917	Homeville Vending	70	No Center	Concessions 70	526.85
224917	Homeville Vending	70	No Center	Concessions 70	83.95
224918	INA Alert Inc	16	Major Projects	Major Equipment	92,000.00
224919	Ingram Library Services	16	Bookstore	Mtc & Service Agreements	51.50
224919	Ingram Library Services	70	No Center	Library 70	13.63
224919	Ingram Library Services	70	No Center	Library 70	39.00
224919	Ingram Library Services	70	No Center	Library 70	192.94
224920	Iola Auto Parts LLC	11	Maintenance of Buildings	Maintenance Supplies	183.75
224920	Iola Auto Parts LLC	11	Maintenance of Equipment	Maintenance Supplies	16.91
224920	Iola Auto Parts LLC	16	Horton Hall	Maintenance Supplies	7.00
224921	John Deere Financial	11	Fitness Center	Athletic Supplies	149.97
224922	Kansas One-Call System Inc	11	Maintenance of Buildings	Mtc & Service Agreements	6.65
224923	Kraft Inc., Henry	11	Maintenance of Buildings	Janitorial Supplies	191.60
224924	Locke Supply Co	11	Maintenance of Grounds	Maintenance Supplies	74.24
224924	Locke Supply Co	11	Maintenance of Grounds	Maintenance Supplies	74.14
224925	MPS	16	Bookstore	C of GS/Ebook/AccessCode	6,152.32
224926	MV Sport-MV Corp Inc	16	Bookstore	C of GS/Soft Goods	1,104.00
224927	Maier, Lucas Owen	11	No Center	Accts Recv/Students	195.00
224928	McAnulty, Serena J	12	Allied Health	Instructional Supplies	6.22
224929	McCarty's Office Machines Inc	11	Information Tech (IT)	Data Processing Supplies	2,243.55

PAGE TOTALS

117,951.86

Check No	Vendor Name	Fund	Center	Line	Invoice Amt
224930	McNutt, Jamie LeAnn	11	No Center	Accts Recv/Students	793.00
224931	Miller's Gas Body Shop	11	Maintenance of Equipment	Repairs & Maintenance	887.00
224932	Nelson Quarries Inc	11	Maintenance of Grounds	Maintenance Supplies	326.16
224933	New Klein Lumber Co., The	11	Maintenance of Buildings	Maintenance Supplies	5.56
224933	New Klein Lumber Co., The	11	Maintenance of Buildings	Maintenance Supplies	17.98
224933	New Klein Lumber Co., The	11	Maintenance of Grounds	Maintenance Supplies	253.32
224933	New Klein Lumber Co., The	16	Horton Hall	Maintenance Supplies	34.99
224933	New Klein Lumber Co., The	16	Winter Hall	Maintenance Supplies	17.99
224933	New Klein Lumber Co., The	16	Masterson Hall	Maintenance Supplies	20.98
224934	OTA PlatePay	11	Director of Athletics	Business Travel	44.00
224935	PTSolutions	12	Business & Industry	Instructional Supplies	1,924.72
224936	Pinder, Tyler Kyre	11	Men's Basketball	Business Travel	30.00
224937	Pur-D-Zone	11	Maintenance of Buildings	Janitorial Supplies	382.62
224938	Ray's Metal Depot Inc	11	Maintenance of Buildings	Maintenance Supplies	30.95
224939	Resource Door & Hardware	11	Maintenance of Buildings	Maintenance Supplies	900.00
224940	SAGE Publications Inc	16	Bookstore	C of GS/Ebook/AccessCode	159.00
224941	Schultz, Tera K	11	Art	Instructional Supplies	5.56
224942	Shultz, Tymber Ann	11	No Center	Accts Recv/Students	150.00
224943	Sigg Tire & Repair Inc	11	Maintenance of Equipment	Repairs & Maintenance	455.23
224944	Simpson, Corrina Marie	11	No Center	Accts Recv/Students	1,849.00
224945	Sports Locker	11	Softball	Athletic Apparel	2,101.37
224945	Sports Locker	70	No Center	Softball 70	1,937.50
224946	Stogsdill, Tricia J	11	Theater	Athletic Team Travel	342.56
224947	W W Norton & Company Inc	16	Bookstore	C of GS/Ebook/AccessCode	860.00
224947	W W Norton & Company Inc	16	Bookstore	C of GS/Ebook/AccessCode	860.00
224948	Waxie Sanitary Supply	11	Campus Services	Duplicating Supplies	2,198.80
PAGE TOTALS					16,588.29
AP GRAND TOTAL					220,654.41

Signed and approved this ____ day of _____, 2025

ATTEST:

Chairman, Board of Trustees

Clerk, Board of Trustees

Check No	Vendor Name	Fund	Center	Line	Invoice Amt
224842	Ace Refrigeration	16	Parkford Apartments	Maintenance Supplies	85.10
224843	Acosta-Cruz, Angela	11	No Center	Accts Recv/Students	132.00
224844	Aikins, Maria	11	Volleyball	Business Travel	30.00
224845	Allen, Karl D	11	Director of Athletics	Athletic Team Travel	44.28
224846	American Fidelity	11	No Center	Accident Ins/AFA	59.90
224846	American Fidelity	11	No Center	Life Insurance/Am Fideli	127.00
224846	American Fidelity	11	No Center	Critical Illness/Amer Fi	35.98
224846	American Fidelity	11	No Center	Disability/Amer Fidelity	131.70
224846	American Fidelity	11	No Center	Cancer/American Fidelity	83.00
224847	Barnhart, Allison Ranae	11	Registrar's Office	Office Supplies	30.99
224848	Blue Cross Blue Shield of Kansas	11	No Center	Hospitalization Payable	84,405.34
224849	Boyd, LaQuonia S	11	No Center	Accts Recv/Students	456.00
224850	CPI Financial	11	Campus Services	Mtc & Service Agreements	1,028.16
224851	CPI Technologies	11	General Inst Expenses	Office Supplies	52.68
224853	Cardmember Service	11	Mathematics	Institutional Dues	800.00
224853	Cardmember Service	11	Admissions	Office Supplies	30.36
224853	Cardmember Service	11	President	Office Supplies	43.99
224853	Cardmember Service	11	Information Tech (IT)	Repairs & Maintenance	59.48
224853	Cardmember Service	11	Information Tech (IT)	Repairs & Maintenance	36.16
224853	Cardmember Service	11	Information Tech (IT)	Repairs & Maintenance	57.78
224853	Cardmember Service	11	Maintenance of Buildings	Maintenance Supplies	75.50
224853	Cardmember Service	11	Maintenance of Buildings	Maintenance Supplies	-150.96
224853	Cardmember Service	11	Maintenance of Buildings	Maintenance Supplies	592.98
224853	Cardmember Service	11	Maintenance of Buildings	Maintenance Supplies	21.12
224853	Cardmember Service	11	Maintenance of Buildings	Janitorial Supplies	109.68
224853	Cardmember Service	11	Maintenance of Buildings	Janitorial Supplies	152.14
224853	Cardmember Service	11	Maintenance of Buildings	Janitorial Supplies	26.42
224853	Cardmember Service	11	Maintenance of Grounds	Maintenance Supplies	66.32
224853	Cardmember Service	16	Bookstore	C of GS/Ebook/AccessCode	3,813.20
224853	Cardmember Service	16	Bookstore	C of GS/Supplies	541.16
224853	Cardmember Service	16	Bookstore	C of GS/Soft Goods	284.70
224853	Cardmember Service	70	No Center	Early Childhood Educ	266.28
224854	Cengage Learning Inc	16	Bookstore	C of GS/Ebook/AccessCode	3,356.25
224854	Cengage Learning Inc	16	Bookstore	C of GS/Ebook/AccessCode	-1,680.00
224854	Cengage Learning Inc	16	Bookstore	C of GS/Ebook/AccessCode	5,265.00
224854	Cengage Learning Inc	16	Bookstore	C of GS/Ebook/AccessCode	2,467.50
224855	Cintas	11	General Inst Expenses	Mtc & Service Agreements	861.00
224856	Cipriano, Eric Daniel	11	No Center	Accts Recv/Students	972.00
224857	Dale's Sheet Metal Inc	11	Maintenance of Buildings	Maintenance Supplies	11.60
224857	Dale's Sheet Metal Inc	11	Maintenance of Buildings	Maintenance Supplies	11.25
224857	Dale's Sheet Metal Inc	11	Maintenance of Buildings	Maintenance Supplies	-11.60
224857	Dale's Sheet Metal Inc	11	Maintenance of Buildings	Maintenance Supplies	25.18
224858	Fast Lube Iola	11	Maintenance of Equipment	Repairs & Maintenance	47.95
224858	Fast Lube Iola	11	Maintenance of Equipment	Repairs & Maintenance	63.28

PAGE TOTALS

104,917.85

Check No	Vendor Name	Fund	Center	Line	Invoice Amt
224859	FedEx	16	Bookstore	Postage	36.84
224859	FedEx	16	Bookstore	Postage	123.46
224860	Great Western Dining	11	No Center	Fringe Benefit	582.16
224860	Great Western Dining	11	No Center	Fringe Benefit	252.78
224860	Great Western Dining	16	Food Service	Cost of Food Service Con	18,497.64
224860	Great Western Dining	16	Food Service	Cost of Food Service Con	21,580.58
224860	Great Western Dining	16	Food Service	Cost of Food Service Con	1,870.66
224861	Haviland, Bobbie L	11	Registrar's Office	Business Travel	368.60
224862	Inceptia	11	Financial Aid Office	Mtc & Service Agreements	89.50
224863	Ingram Library Services	70	No Center	Library 70	163.43
224864	Iola Auto Parts LLC	11	Maintenance of Grounds	Maintenance Supplies	11.36
224865	J W Pepper & Son Inc	11	Music	Instructional Supplies	25.96
224866	John Deere Financial	11	Fitness Center	Repairs & Maintenance	28.72
224866	John Deere Financial	11	Maintenance of Buildings	Maintenance Supplies	1.00
224866	John Deere Financial	11	Maintenance of Equipment	Maintenance Supplies	1.55
224866	John Deere Financial	11	Maintenance of Grounds	Maintenance Supplies	-4.63
224866	John Deere Financial	11	Maintenance of Grounds	Maintenance Supplies	57.59
224866	John Deere Financial	11	Maintenance of Grounds	Small Tools	1,188.96
224866	John Deere Financial	11	Maintenance of Grounds	Small Tools	299.97
224867	KWIKOM	16	Ballard House	Mtc & Service Agreements	75.00
224868	Kryterion Inc	12	Allied Health	Testing Fees	180.00
224869	McDermeit, Madelynn Marie	11	No Center	Accts Recv/Students	325.00
224870	McGraw-Hill LLC	16	Bookstore	C of GS/Ebook/AccessCode	2,418.75
224871	Medco Supply Company	11	Athletic Trainer	Athletic Supplies	691.89
224871	Medco Supply Company	11	Athletic Trainer	Athletic Supplies	337.56
224871	Medco Supply Company	11	Athletic Trainer	Athletic Supplies	9.40
224872	Moots, Lauren Elisabeth	11	Concurrent Dual Credit	Business Travel	89.78
224873	NTTA	11	Director of Athletics	Business Travel	24.18
224874	Nee, Patrick	11	Men's Basketball	Athletic Team Travel	126.62
224875	Nelnet Campus Commerce	11	Business Office	Mtc & Service Agreements	400.00
224875	Nelnet Campus Commerce	11	General Inst Expenses	Service Charges	116.95
224876	New Wave Broadband	11	Director of Athletics	Mtc & Service Agreements	80.00
224877	Normans Printing	11	Alumni/Development Offic	Office Supplies	269.00
224878	Pearson Education Inc	16	Bookstore	C of GS/Ebook/AccessCode	3,699.60
224879	Phillips 66 Co/SYNCB	11	Director of Athletics	Gasoline	761.27
224879	Phillips 66 Co/SYNCB	11	General Inst Expenses	Gasoline	255.96
224879	Phillips 66 Co/SYNCB	11	Maintenance of Grounds	Gasoline	203.37
224880	Pur-0-Zone	11	Maintenance of Buildings	Janitorial Supplies	387.08
224880	Pur-0-Zone	11	Maintenance of Buildings	Major Equipment	11,998.66
224880	Pur-0-Zone	11	Maintenance of Buildings	Major Equipment	2,627.00
224880	Pur-0-Zone	11	Maintenance of Buildings	Major Equipment	3,420.00
224881	Ravin Printing	11	Cheerleader/Dance	Office Supplies	19.00
224882	Regehr, Shellie R	11	Human Resources	Meetings & Hospitality	2.18
224882	Regehr, Shellie R	11	General Inst Expenses	Postage	31.35

PAGE TOTALS

73,725.73

Check No	Vendor Name	Fund	Center	Line	Invoice Amt
224883	Sandifer Engineering & Controls	11	Maintenance of Buildings	Mtc & Service Agreements	420.00
224884	Shaffer, Virginia D	70	No Center	Food Pantry 70	29.91
224885	Shimizu, Marcos R	11	Director of Athletics	Athletic Team Travel	16.76
224886	Topeka Blue Print Co Inc	12	Early Childhood Educ	Instructional Supplies	354.90
224887	Van Diest Supply Company	11	Maintenance of Grounds	Maintenance Supplies	1,141.70
224888	Wake, Shauna Renee	11	No Center	Accts Recv/Students	456.00
224889	West Virginia Parkways	11	Director of Athletics	Business Travel	18.50
				PAGE TOTALS	2,437.77
				AP GRAND TOTAL	181,081.35

Signed and approved this ____ day of _____, 2025

ATTEST:

Chairman, Board of Trustees

Clerk, Board of Trustees

Allen County Community College
Bills Presented for Ratification
From: 01/16/2025 To 01/23/2025

Check No	Vendor Name	Fund	Center	Line	Invoice Amt
224815	ACCC Petty Cash	11	Income Cntrl/VP-Finance	Cash Over	2.05
224816	Blackshine LLC	16	Parkford Apartments	Building/Room Rentals	1,965.00
224817	Blackshine LLC	16	Parkford Apartments	Building/Room Rentals	1,965.00
224818	Blackshine LLC	16	Parkford Apartments	Building/Room Rentals	1,310.00
224819	CE Water Management Inc	11	Maintenance of Buildings	Mtc & Service Agreements	242.95
224824	Cardmember Service	11	Fitness Center	Office Supplies	330.52
224824	Cardmember Service	11	Fitness Center	Major Equipment	3,999.00
224824	Cardmember Service	11	Online Learning	Office Supplies	71.54
224824	Cardmember Service	11	Men's Basketball	Business Travel	386.37
224824	Cardmember Service	11	Women's Basketball	Athletic Team Travel	159.85
224824	Cardmember Service	11	Women's Basketball	Athletic Team Travel	119.60
224824	Cardmember Service	11	Women's Basketball	Athletic Team Travel	98.00
224824	Cardmember Service	11	Track	Business Travel	43.71
224824	Cardmember Service	11	Track	Athletic Team Travel	85.04
224824	Cardmember Service	11	Track	Athletic Team Travel	120.55
224824	Cardmember Service	11	Track	Athletic Team Travel	20.39
224824	Cardmember Service	11	Track	Athletic Team Travel	29.99
224824	Cardmember Service	11	Track	Athletic Team Travel	18.66
224824	Cardmember Service	11	Track	Athletic Team Travel	197.90
224824	Cardmember Service	11	Track	Athletic Team Travel	28.89
224824	Cardmember Service	11	Track	Athletic Team Travel	71.78
224824	Cardmember Service	11	Track	Entry Fees	401.37
224824	Cardmember Service	11	Track	Subscriptions	65.25
224824	Cardmember Service	11	Track	Athletic Supplies	34.98
224824	Cardmember Service	11	Cheerleader/Dance	Professional Memberships	118.00
224824	Cardmember Service	11	Men's Soccer	Business Travel	42.00
224824	Cardmember Service	11	Athletic Trainer	Athletic Supplies	36.58
224824	Cardmember Service	11	Athletic Trainer	Athletic Supplies	87.98
224824	Cardmember Service	11	Athletic Trainer	Athletic Supplies	39.99
224824	Cardmember Service	11	Music	Postage	36.25
224824	Cardmember Service	11	Theater	Postage	30.00
224824	Cardmember Service	11	Information Tech (IT)	Telephone/	42.00
224824	Cardmember Service	11	Information Tech (IT)	Mtc & Service Agreements	279.99
224824	Cardmember Service	11	Information Tech (IT)	Repairs & Maintenance	410.50
224824	Cardmember Service	11	Information Tech (IT)	Subscriptions	89.95
224824	Cardmember Service	11	Information Tech (IT)	Data Processing Supplies	209.78
224824	Cardmember Service	11	General Inst Expenses	Office Supplies	99.92
224824	Cardmember Service	11	General Inst Expenses	Other Expense	72.53
224824	Cardmember Service	11	General Inst Expenses	Miscellaneous Supplies	70.02
224824	Cardmember Service	11	Maintenance of Buildings	Business Travel	59.00
224824	Cardmember Service	11	Maintenance of Buildings	Janitorial Supplies	104.40
224824	Cardmember Service	12	Agriculture	Athletic Team Travel	163.37
224824	Cardmember Service	12	Agriculture	Athletic Team Travel	2,386.20
224824	Cardmember Service	12	Agriculture	Athletic Team Travel	165.75

PAGE TOTALS

16,312.60

Thu Jan 23 2025
11:49

Allen County Community College
Bills Presented for Ratification
From: 01/16/2025 To 01/23/2025

Page 2
billrat

Check No	Vendor Name	Fund	Center	Line	Invoice Amt
224824	Cardmember Service	12	Emergency Medical Servic	Instructional Supplies	219.96
224824	Cardmember Service	12	Machining & Manufacturi	Instructional Supplies	202.89
224824	Cardmember Service	16	Bookstore	C of GS/Ebook/AccessCode	388.00
224824	Cardmember Service	16	Bookstore	C of GS/Ebook/AccessCode	996.75
224824	Cardmember Service	16	Bookstore	C of GS/Ebook/AccessCode	250.31
224824	Cardmember Service	16	Bookstore	C of GS/Soft Goods	95.40
224825	Cox Business	16	Student Union	Mtc & Service Agreements	240.35
224826	Cox Business	16	Parkford Apartments	Mtc & Service Agreements	147.65
224826	Cox Business	16	Herynk Hall	Mtc & Service Agreements	117.00
224826	Cox Business	16	Red Devil Duplexes	Mtc & Service Agreements	193.60
224827	FedEx	16	Bookstore	Postage	33.98
224828	First Class Color/Fax Cards	11	Cheerleader/Dance	Office Supplies	47.20
224829	Great Western Dining	11	Professional Development	Meetings & Hospitality	1,340.50
224829	Great Western Dining	16	Food Service	Cost of Food Service Con	9,961.01
224830	KASFAA	11	Financial Aid Office	Institutional Dues	150.00
224831	MV Sport-MV Corp Inc	16	Bookstore	C of GS/Soft Goods	420.00
224832	Papen, Jim D	11	Women's Basketball	Athletic Supplies	81.51
224833	Peak Uptime	11	Information Tech (IT)	Mtc & Service Agreements	7,595.74
224833	Peak Uptime	11	Information Tech (IT)	Major Equipment	1,527.53
224834	Ross, DeMarco Braxton	11	No Center	Accts Recv/Students	150.00
224835	Shelbys' Sassy Designs	70	No Center	Softball 70	3,318.50
224836	Sports Locker	11	Cheerleader/Dance	Athletic Apparel	170.00
224836	Sports Locker	11	Men's Soccer	Athletic Apparel	525.30
224836	Sports Locker	11	Women's Soccer	Athletic Apparel	525.30
224837	Stogsdill, Tricia J	11	Theater	Business Travel	135.52
224837	Stogsdill, Tricia J	11	Theater	Conferences & Workshops	140.00
224838	Texas Life Insurance Company	11	No Center	Texas Life Insurance	210.80
224839	Toland, Elizabeth Ann	12	Early Childhood Educ	Business Travel	254.78
224840	Tri-Valley	11	General Inst Expenses	Mtc & Service Agreements	87.60
224841	UPS	16	Bookstore	Postage	136.96
224841	UPS	16	Bookstore	Postage	259.14
PAGE TOTALS					29,923.28
AP GRAND TOTAL					46,235.88

Thu Jan 23 2025
11:49

Allen County Community College
Bills Presented for Ratification
From: 01/16/2025 To 01/23/2025

Page 3
billrat

Check No	Vendor Name	Fund	Center	Line	Invoice Amt
----------	-------------	------	--------	------	-------------

Signed and approved this ____ day of _____, 2025

ATTEST:

Chairman, Board of Trustees

Clerk, Board of Trustees

Check No	Vendor Name	Fund	Center	Line	Invoice Amt
224784	Ace Refrigeration	11	Maintenance of Buildings	Mtc & Service Agreements	823.50
224785	Active Internet	11	Marketing	Mtc & Service Agreements	20,010.00
224786	Architect One	61	Miscellaneous Oth Fnd Ex	Buildings	1,050.00
224786	Architect One	61	Miscellaneous Oth Fnd Ex	Buildings	3,620.00
224787	Arnold Group, The	11	President	Misc Contractual Service	4,230.00
224788	BMI	11	Music	Licenses	466.14
224789	Blanc, Gefte A	11	Men's Soccer	Business Travel	35.60
224790	Cintas	11	Maintenance of Buildings	Mtc & Service Agreements	127.81
224790	Cintas	11	Maintenance of Buildings	Mtc & Service Agreements	112.88
224791	Crane, Leslie Susan	11	Women's Basketball	Athletic Team Travel	713.27
224792	Crossroad Tours	11	Director of Athletics	Athletic Team Travel	1,380.00
224792	Crossroad Tours	11	Director of Athletics	Athletic Team Travel	1,480.00
224793	Dale's Sheet Metal Inc	11	Maintenance of Buildings	Maintenance Supplies	291.38
224793	Dale's Sheet Metal Inc	11	Maintenance of Buildings	Maintenance Supplies	91.56
224794	Dell Financial Serv LLC	11	Information Tech (IT)	Major Equipment	1,500.18
224795	Fast Lube Iola	11	Maintenance of Equipment	Repairs & Maintenance	47.95
224795	Fast Lube Iola	11	Maintenance of Equipment	Repairs & Maintenance	50.20
224795	Fast Lube Iola	11	Maintenance of Equipment	Repairs & Maintenance	69.15
224796	Fastenal Company	11	Maintenance of Buildings	Maintenance Supplies	45.91
224796	Fastenal Company	11	Maintenance of Buildings	Janitorial Supplies	70.01
224797	Grainger	11	Maintenance of Buildings	Maintenance Supplies	1,058.28
224798	Great Western Dining	11	No Center	Fringe Benefit	543.86
224798	Great Western Dining	11	Director of Athletics	Athletic Team Travel	1,597.05
224798	Great Western Dining	16	Food Service	Cost of Food Service Con	22,444.52
224799	Heartland Tractor	11	Maintenance of Equipment	Repairs & Maintenance	1,755.18
224800	INA Alert Inc	11	Maintenance of Buildings	Major Equipment	6,220.72
224801	Iola Auto Parts LLC	11	Maintenance of Buildings	Maintenance Supplies	34.95
224801	Iola Auto Parts LLC	11	Maintenance of Grounds	Maintenance Supplies	6.95
224802	Jenzabar Lockbox	11	Information Tech (IT)	Major Equipment	8,740.00
224802	Jenzabar Lockbox	11	Information Tech (IT)	Major Equipment	120.00
224802	Jenzabar Lockbox	11	Information Tech (IT)	Major Equipment	460.00
224803	Kansas One-Call System Inc	11	Maintenance of Buildings	Mtc & Service Agreements	1.20
224804	Locke Supply Co	11	Maintenance of Buildings	Maintenance Supplies	6.38
224804	Locke Supply Co	11	Maintenance of Buildings	Maintenance Supplies	271.08
224805	MPS	16	Bookstore	C of GS/Ebook/AccessCode	13,950.00
224806	Nelnet Campus Commerce	11	Business Office	Mtc & Service Agreements	400.00
224806	Nelnet Campus Commerce	11	General Inst Expenses	Service Charges	16.80
224807	New Klein Lumber Co., The	16	Horton Hall	Maintenance Supplies	240.99
224807	New Klein Lumber Co., The	16	Red Devil Duplexes	Maintenance Supplies	15.18
224808	Pur-O-Zone	11	Maintenance of Buildings	Janitorial Supplies	241.87
224809	Sports Locker	11	Women's Basketball	Athletic Apparel	6,630.30
224809	Sports Locker	11	Men's Soccer	Athletic Supplies	165.00
224810	Stout Electric & Mechanical Inc	11	Maintenance of Buildings	Maintenance Supplies	537.10
224810	Stout Electric & Mechanical Inc	11	Maintenance of Buildings	Maintenance Supplies	80.00

PAGE TOTALS

101,752.95

Check No	Vendor Name	Fund	Center	Line	Invoice Amt
224811	Taylor, Rhett	11	Livestock Judging	Business Travel	335.46
224812	Thompson Brothers Supply Inc	11	Maintenance of Buildings	Mtc & Service Agreements	45.00
224813	UPS	16	Bookstore	Postage	591.22
224813	UPS	16	Bookstore	Postage	305.85
224813	UPS	16	Bookstore	Postage	761.86
224814	USPS-POC	11	Campus Services	Postage	4,000.00
				PAGE TOTALS	6,039.39
				AP GRAND TOTAL	107,792.34

Signed and approved this ____ day of _____, 2025

ATTEST:

Chairman, Board of Trustees

Clerk, Board of Trustees

Iola Campus, Online Learning, and CEP (Concurrent Enrollment Partnerships)

Report to the Board of Trustees

Lyvier L Leffler PhD LMHC: President
February 2025

President's Report

- I have been having 1:1 meetings with all direct reports and division meetings with various groups across campus. The meetings are very informative. I will have a few more weeks until I have met with all groups.
- I enjoyed the various meet and greets on campus. It has provided me with a valuable opportunity to meet with various community leaders across the county and community.
 - January 23: Students and Staff
 - January 30: Community Reception
 - February 1: Reception with BOT – invitation only
- Implementing a four-day work week for Summer 2025, beginning Monday, May 19th, with the last Friday off being August 1, 2025. Allen CC will continue to be open to the public Monday through Thursday, 8:00 AM—4:00 PM. Campus leadership will ensure facilities are maintained during closed hours.
- The Arnold Group was on campus on the 27th to meet with campus leadership and review the Compensation Study. They will meet with Karen and me next week to continue the discussion and provide recommendations.
- On January 31st, the Kansas Association of Community Colleges recommended two changes to all community colleges in Kansas.
 - Remove all DEI terminology from all webpages, handbooks, and social media platforms.
 - Remove pronouns from college employees' signatures. Campus email was sent on 2/5/2025 to all Allen CC employees with a recommended signature to be used, for consistency, by all employees effective Monday, February 10th, by 4:00 PM.
- The Inclement Weather administration procedure was created and approved by the President's Council. The Allen Executive Team shared it via campus-wide email.

Institutional Effectiveness and Research

Jacob Reichard, Director of Institutional Effectiveness and Research

Report to the Board of Trustees, February 11, 2025

- The Financial Value Transparency and Gainful Employment (FVT/GE) report for Allen was completed by the deadline. The report was extended to mid-February, but we had completed it by the January deadline.
- I worked with the business office to complete our Chart of Accounts setup for Jenzabar One. After having several meetings with our consultants, we cleared up the last few areas that needed updates. We were able to narrow down the number of accounts that we needed to add into the new system by ignoring any account components not used within the last seven years approximately. We also made some changes to certain areas to facilitate better reporting internally and externally for audits. The CoA was submitted last week and has been pushed into our new system. We are now working on cleaning up any lingering errors tied to this and will move forward with training.
- The Winter Collection for IPEDS was due last week. I worked with Doug to pull the data needed for the reports and submitted it into the system. For any errors on specific reports, I worked with Kim from Financial Aid and Bobbie from the Registrar's office to clear any errors.
- I continued to work with Kara on the Program Review and we are sending the information to the departments as they are completed.

Allen Community College

Human Resources Board Report

Date: 2/7/2025

New Hires:

Dr. Lyvier Leffler, President, start date 1/20/25

Stormie Bush, Assistant Softball Coach, temporary role

Resignations/Terms:

None

Position Changes / Transfers:

None

HR Projects:

- Transition of HR hard copy employee files to Soft Docs.
- HIB Sponsorships of F1 OPT Employees – researched pricing and working on policy and procedure.
- Creation of Volunteer Coach Process – working on policy and procedure to consider volunteers as volunteer coaches.
- Initial review of comp book from The Arnold Group, finishing up status changes, terms, and new employee pay evaluations for changes from 10/1/2025. Will communicate when final compensation book and report is complete.
- The Arnold Group is working on updating job descriptions to include pay grades and job codes for employee position classification.
- Starting to evaluate Personnel / Human Resources policies and update for policy and procedure manual.
- Evaluation of current Learning Management System to comply with employee education and training requirements of KBOR, HLC, etc.

Board Report for Allen Advancement – February 2025

Endowment

February 1st through February 4th, Josiah attended the CASE Region VI Conference in Omaha, Nebraska. CASE is the Council for the Advancement and Support of Education and incorporates Advancement, Administration, Communications and Marketing. Josiah attended with Emporia State due to his volunteer role as the President-elect on their Alumni Association Board of Directors. Allen will be rejoining the organization as an institutional member to gain more knowledge and learn promising practices.

The Allen County Community College Endowment Board met on January 31st for their quarterly meeting. At the meeting, it was announced that there was a tax error with the funds from the Bernard Blevins Trust, and the Endowment will be receiving an additional \$159,000 to be split between the two funds set up by Bernie Blevins' Trust. The Endowment Board will be working on developing and finalizing the restrictions and processes for both funds.

The Endowment participates in a program with Community National Bank & Trust where the Bank donates to the Endowment

The Endowment's 2024-2025 Scholarship Luncheon is slated for Friday, April 25th. Physical invitations will go out later this month.

Alumni Relations

The Winter 2025 Allen Spark went out in January. The Allen Spark is a quarterly Advancement newsletter to provide alumni and donors information on what is happening at the College. In the most recent issue, readers can update their contact information by utilizing the QR code on the last page.

The Advancement Office has been working with Athletics and the Athletics Hall of Fame committee for planning of the inaugural Hall of Fame weekend and ceremony. A total of 11 individuals and one team will be inducted as the first class. The ceremony will take place between the Women's and Men's Basketball games on February 22nd. Several alumni are planning to return to see their coaches or friends be inducted.

Advancement

Allen's inaugural *Founder's Day* will be celebrated on Thursday, April 3rd. The Advancement Office has sent out invitations to the USD 257 Board of Education and the Allen Community College Endowment Board for a special luncheon where we will honor the founding of our institution, and recognize the inaugural *Devils' Advocate* recipient. April 3rd is officially being recognized as Founder's Day, as this was the date where the voters in Lola's school district first approved the creation of Lola Junior College in 1923. Mr. A.M. Thoroman, the superintendent, approached the School Board about the idea before the Board approved the idea being added to the April ballot. As time goes on, this event will grow to welcome back alumni and supporters to the institution and celebrate our long history.

Board members, please make sure to RSVP to endowment@allencc.edu.

The *Devils' Advocate* award will be coming from the Advancement Office in recognition of the dedication and support the individual has shown the College. While the recipient has been invited and plans to attend, they do not know they will be receiving the award.

The Advancement Office is also going to be the new home for the *Scarlet & Black Club*. We have streamlined the fliers to reduce possible confusion between what club members get and what we offer everyone. The *Scarlet & Black Club* is for Kansans 60 years of age or older. To register, they'll need to provide a copy of their driver's license or state ID showing residence in Kansas, and fill out the form on an annual basis to keep information up-to-date. Perks include: Free tuition, S&B Club members still have to pay fees, and free admission to regular season Athletic events and Fine Arts performances. We will be rolling the update out later this semester. Club members will also receive an annual membership card to show at Athletics and Fine Arts events.

Lastly, over Winter Break, Vince DeGrado put together the new podcast room based on materials we still had from the previous podcast room in B-20. The new room is located above the Athletic Training Room. Advancement will be starting a video podcast, "*Voices of Allen*", to tell the stories of current students, alumni, faculty, staff, and community members. This will be used to better connect donors and supporters to Allen.

Physical Plant Operations Report - as of February 4, 2025

As of today, Plant Operations project list:

- Budget Items – In progress for 2025-26
- Construction Projects
- HVAC Repairs
- Grounds Maintenance
- Vehicle Fleet

Budget Items –

Gathering budget items with Maintenance Staff and will begin to prepare budget for 2025-2026 in March.

Construction Projects –

Construction on the main entrance roads and building pad for the maintenance facility is underway. We had a small preconstruction meeting with Simpson Construction on January 24th to discuss safety concerns and property usage. The rough-in dirt work should be completed for phase 1 of the project by the end of February. Utilities will be able to be installed soon as well. Concrete work is planned to begin in the first part of March. Project is moving along decent with a few minor interruptions.

HVAC Repairs –

No new information on the 2-pipe chiller/boiler system from the engineering firms that we have met with previously. Will continue to work on this project and bring information forward as we gather it.

Grounds Maintenance –

Grounds maintenance is still working on spring projects in the shop.

Vehicle Fleet –

We have had minor repairs to one of our 24 passenger buses and a minivan. Met with Dr Leffler on some options to begin updating some of the fleet vehicles that need replaced.

Athletic Board Report

The inaugural Allen Athletics Hall of Fame will be on Feb. 22nd in between the women's and men's basketball games. We are inducting 5 athletes, 6 coaches, and 1 team this first year. We will have a social at Rookies on the square on Friday night starting at 7. There will be a reception at Rookies on State following the men's game. Everyone is welcome to attend these. There will also be a court naming for coach Neil Crane on Feb. 22nd at halftime of the men's game. Rookies athletes of the month for January were Dirk Johnson men's basketball and Mafalda Chambel women's basketball. Have met with all of the coaching staff to see what needs, wants, and dreams are for their programs for facilities. Working on developing a Master Facilities plan for Athletics from this and prioritizing what is needed first. Had conference and region meetings last week and will be attending the NJCAA national convention in April. Serving on NJCAA division 2 soccer committee and NJCAA division 2 basketball committee.

Basketball:

Women: Currently 15-2 overall, 4-2 in conference, and ranked 12th in the nation. Next home game is Wednesday Feb. 12th against Neosho at 6pm.

Men: Currently 8-12 overall and 3-4 in conference. Next home game is Wednesday Feb. 12th at 8 pm against Neosho

Indoor Track: Have had several athletes qualify for nationals in their first couple meets. Next meet is at Pitt State on Feb. 14th.

Softball:

Haven't played any games yet, first games will be in Branson at the JUCO JAM on Feb. 14th and 15th. First home games will be Wed. Feb. 26th at 1 and 3 against North Central Missouri.

Baseball:

Currently 2-2 on season, play at home on Feb. 22nd at 12 and 2 against Ellsworth Community College.

Cheer/Dance

Performing during home basketball games. Have recruited more athletes for this semester and will be competing this spring.

Soccer and Volleyball

Recruiting and off season training.

Iola Campus, Online Learning, and CEP (Concurrent Enrollment Partnerships)

Report to the Board of Trustees

Kara Wheeler: Vice President for Academic Affairs
February 2025

Academic Affairs

- Being a member of the transition team for Dr. Leffler, I scheduled out times for her to meet with all employees/employee groups in her first month on campus. So far they have been going well and employees have appreciated the time.
- I finished my Executive Leadership Institute training through the League of Innovation.
- Softdocs training on forms has been completed by three departments: H.R., Admissions/Advising, and Registrar. We are now building out form flows to go paperless for some of our processes. Academics is just involved because there is a lot of overlap between these departments.
- The Arnold Group was on campus the 27th to review where we are at with the Compensation Study. They met with leadership to review different areas to make sure their scales were in alignment with what we were thinking. Now that Karen is here, she is taking point on this project.
- Academic Program Review is continuing. Data sheets are almost complete for all programs, and faculty have been trained on the template for the self-study they will have to submit.
- I created an Inclement Weather procedure that President's Council approved and will be sent out campus wide.
- A schedule was sent out campus-wide for upcoming deadlines for catalog creation and training. It is:
 - February 3rd: Deadline for February Curriculum Committee Items
 - February 14: Follow up meeting with athletics and advising on class schedule/expectations
 - March 2nd: Deadline for March Curriculum Committee Items
 - March 6th: Last Curriculum Committee meeting
 - March 10th: Faculty/Division Proposed Summer/Fall Schedule due to Deans/VPAA
 - March 28th: Follow-up meeting with athletics and advising on class schedule
 - April 2nd: Catalog Training for all faculty, advisors, and staff that are interested
 - April 14th: Summer/Fall Schedule goes live for enrollment

KBOR:

- Discussions have continued on the “First 15” for concurrent/dual-credit students. Nothing new since last month.
- The projects we are currently working on:
 - Math must finish the developmental co-req for Contemporary Math and Elementary Stats this spring to be ready for fall enrollment.
 - English faculty have submitted to Curriculum Committee their developmental co-req for English Comp I to be ready for fall enrollment.
 - KBOR has us checking all CTE aligned programs across the state to make sure we are following the approved alignments on KBOR’s website. This will be due this spring.

Tutoring (Bruce Symes):

- Nothing to Report

Library (Virginia Shaffer):

- Nothing to Report

High Schools (Lauren Moots):

- Enrollment is complete. Contacted the high schools to notify them of last day to drop for 100% refund.
- Contracts are being sent out to instructors/USD’s for spring classes.

Allen Community College

Iola Campus and Online Learning

Melanie Wallace, Dean for Distance and General Education

Report to the Board of Trustees, February 11th, 2025

Faculty and Classes:

- Tricia Stogsdill, John Leahy and a group of 8 students traveled to Des Moines, Iowa to the Kennedy Center American College Theatre Festival Region V. Tricia's report with all the awards that they received can be found at the end of my report. They did an amazing job!
- Classes are underway and the halls are buzzing with students and faculty ready to embark on a great spring 2025 semester!
- I will begin full-time faculty and adjunct faculty evaluations in the coming weeks.
- Several faculty, Mason Ingle (Online Learning Coordinator) and I met with our Cengage support team to discuss how they can continue to support us and help with our continued transition into ebooks. Cengage has great resources for our faculty and students and they strive to make the use of ebooks in our classes as easy as possible.
- Our first adjunct faculty meeting of the spring semester will be held virtually on Wednesday February 26th at 6pm.

Online Learning:

- Course design projects for start dates of summer 2025 and fall 2025 have started. Jerald Johnson (Instructional Designer) has scheduled kick-off meetings with each of our designers to help they get underway with their design projects.
- We will continue to transition our courses that do not currently have an ebook option available over to ebooks through new course designs. We are encouraging our course designers to explore the use of Cengage books as we have a contract with Cengage.
- Online learning is also updating several of our procedures with respect to onboarding new instructors and training instructors for course design.

Upcoming Events:

- 1st 8-week classes end March 14th
- Spring Break – March 17th – 21st
- 2nd 8-week classes begin March 24th

Kansas Thespians

Allen Theatre & Film had a very successful recruiting trip to Kansas Thespians Festival January 9-11. We hosted two Improv Workshops with a total of over 100 students attending! We also auditioned/interviewed 40 potential recruits, and spoke to countless others!

KCACTF

Last week January 19-25 we attended the Kennedy Center American College Theatre Festival Region V, where we watch productions, take workshops, and compete against colleges and universities (including the graduate level) from seven states!

Last year we did incredible at the Festival, taking home nine Certificates of Merit, so this year we set a stretch goal of 12-15, and we blew that out of the water, winning a total of 16 Certificates of Merit for our productions! Here are the following Certificates:

- NEW instructor John Leahy won for Lights and Sound Design for *The Woman in Black* (his very first production as faculty at Allen!)
- Part-time Costume Shop Manager Ashley Shaughnessy won for achievement in Lobby Display for *The Woman in Black* (she always goes above and beyond in her job duties!)
- Theatre Instructor Tricia Stogsdill won for Scenic/Properties Design for *The Woman in Black*
- Tricia Stogsdill also won for Direction for *The Woman in Black*
- Student Brynn Walker won for Costume/Hair and Makeup Design for *The Woman in Black*
- Student Gabe Wight won for Original Composition for *The Woman in Black*
- Student Molly Riebel won for Assistant Stage Management for *The Woman in Black*
- Brynn Walker won for Sound Board Operator for *Harvey*
- Tricia Stogsdill won for Lighting Design for *The Ocean Inside*
- Tricia and The Production Team won for Film Production for *The Ocean Inside*
- Brynn Walker won for Costume/Hair and Makeup Design for *The Ocean Inside*
- Our long-time collaborator and local filmmaker Daniel Carroll won for Film Editing for *The Ocean Inside*

Recent Graduates were also recognized

- Maddie Hodgden won for Direction for the student film *The Ocean Inside*
- Maddie and the Ensemble won for Devising for *The Ocean Inside*
- Tiago Cortes won for Scenic Design for *The Ocean Inside*
- Maddie Hodgden, Nautianna Goforth, and Tricia Stogsdill won for Sound Design for *The Ocean Inside*

At the Festival, we won some additional awards/accolades:

Jenny Bussanmas broke into the semi-finals for the Irene Ryan Acting Competition with their partner Brigham Folk. They were one of only 63 selected out of approximately 270 entries!

Brynn Walker WON the Regional Award against students from seven states in Makeup Design for *The Woman in Black* at the Design, Technology, and Management Expo!!! Students from community college to graduate level compete, and industry professionals adjudicate and choose a Regional Winner. This is the highest honor in this category!

Students also have once in a lifetime experiences at the Festival, for example, International Student Divine Mensah from Ghana was able to take a Traditional Ghanaian Dance Workshop, and when he spoke to the presenter afterwards, they realized that Divine's mom had been his teacher in grade school! This is just one of the many special moments at the Festival!

Allen Community College

CTE & Industry

Lisa Wicoff, Dean for CTE & Industry

Report to the Board of Trustees, February 11, 2025

New Programs, Recruitment and Staffing:

- CTE faculty and staff attended the K-ACTE conference in Manhattan last week and were able to meet with several area high school counselors and instructors about possible partnerships and offering more CTE in EXCEL courses in their high school. Faculty and Staff attended professional development sessions, also.
- Work continues with CDL partnership.

CTE Programs and Faculty Information:

Information Technology/Cybersecurity Program

Two new testimonial videos were posted on the Information Technology and Cybersecurity program pages. In the videos, the students discuss their positive experiences at Allen and the training received in the program courses.

Student Testimonial Videos:

Information Technology student video: <https://www.allencc.edu/academics/information-technology-as>

Carter Tappan is an Allen Information Technology student. He is completing the Computer & Network Support Technician certificate. He is a high school student using the Excel in CTE initiative to cover the cost of his classes. With his training from Allen, he is now employed part-time at Best Buy using his skills in computer repair.

Cybersecurity Student video: <https://www.allencc.edu/academics/cybersecurity>

Tanner McNutt is an Allen Cybersecurity student. In the fall 2024 semester, he completed an associate of science degree and certificate in Cybersecurity. He is employed at Stormont Vail Hospital providing computer/network technical support and is transferring to FHSU to complete a bachelor's degree in Cybersecurity.

ECE/EDU

- At the end of the fall semester, Allen had 11 students earn the Foundations in ECE Certificate.

- We have a new cohort of students at Community Action(CA) in Topeka targeting families of children participating in the Head Start and Early Head Start program. These adults will take two classes in the spring, summer, and fall semesters focusing on parenting skills and soft skills for the workforce.

Upcoming Events:

February-Advisory Board Meetings for CTE Program Areas
April 3 -Aggie Days at Allen Community College

Student Affairs Report to the Board of Trustees

Cynthia Jacobson, Vice President for Student Affairs



February 11, 2025

Enrollment Management

As of Monday, February 3rd, our spring enrollment was 1937 students with 14383 credits. This is an increase of 23% in headcount and 11% in credit hours as compared to the spring 2024 term. Once we have the census data, we will assess where enrollment changes occurred. In general, we saw a larger increase in secondary students than post-secondary students but there were increases in each of the areas we track: high school concurrent, high school online, on campus, and online.

Registrar

Bobbie Haviland and Nikki Peters have been working to implement Softdocs, our new document management system. This system will eventually be linked with our new J1 system. They are starting the process by building forms we use in the registration process.

As a reminder to board members, Commencement will be on May 10, 2025 at 10:30 am. Board members should arrive by 9:45 am. Please mark this on your calendars. Also let us know if you need any changes to your regalia.

Financial Aid

As was shared previously, the Department of Education has continued making changes to the FAFSA. The FAFSA was not available to students until December, but we have not had the issues we experienced last year with the FAFSA. For 2025-2026 we will be processing federal, state, and institutional aid using the new Jenzabar financial aid module (JFA). Once we have determined tuition, fees, room, and board we will be able to start awarding aid.

Student Life

Gavin Brown, our new Director of Student Life, started working in his new position at the beginning of the month. He is busy with training, developing some new student activities, and working with our student senate. We are having a 1st Thursday event (instead of 3rd Thursday) on February 6th for students to meet Gavin.

Homecoming was celebrated at Allen on February 1st. Unfortunately, the women's basketball game was cancelled, but the men's team beat Labette by almost 20 points. Amo Mofokeng, our student senate president, was selected as the Homecoming King. Amo is a soccer player from Johannesburg, South Africa and is also a member of Theta Kappa. Mafalda Chambel was crowned the Homecoming Queen. Mafalda is a member of our women's basketball team from Torres Vedras, Portugal, and is studying pre-

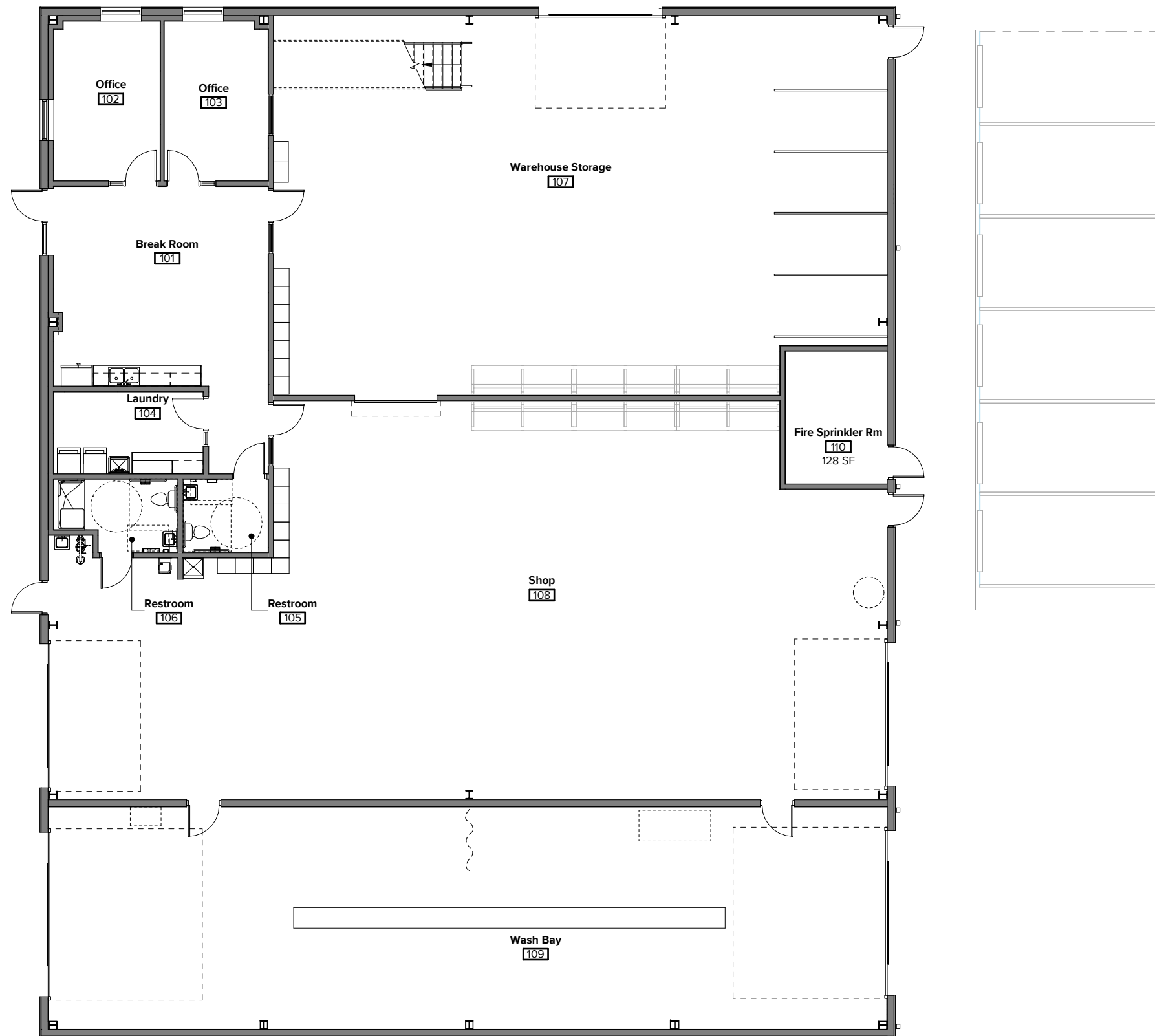
veterinary science. Both of these students excel in and out of the classroom and are wonderful role models for their peer. The weekend concluded with a Homecoming Dance sponsored by the International Student Organization. We brought out the disco ball that hung in the student center before we remodeled. There was a good turnout and the students had a great time.

The Soccer Watching Club is hosting a Super Bowl Watch Party in the student center. They are working with Great Western Dining to provide game day food for dinner on Sunday evening. Coed Volleyball is our next IM sport with games beginning this week.

During the construction of the new road to the new CTE and maintenance buildings, a fiber optic cable was broken. This resulted in loss of internet access in Winter and Masterson Halls. IT and facilities staff are working to restore internet access.







ALLEN COUNTY COLLEGE FACILITIES + MAINTENANCE BUILDING approx 8,860 SF

Not To Scale

February 11, 2025













ALLEN COUNTY COLLEGE CTE BUILDING

Not To Scale

approx 29,500 SF (with mezzanines)

February 11, 2025



Allen Community College
2025-2026

Tuition, Fees, Room and Board Rates

2024-2025

Change

2025-2026

Tuition per credit hour

In-District	\$75.00
Out-District	\$85.00
Out-of-State	\$95.00
International	\$105.00
High School Concurrent	\$50.00
High School Dual Credit	\$50.00
High School Excel in CTE	\$0.00

\$0.00
\$0.00
\$5.00
\$10.00
\$0.00
\$0.00
\$0.00

\$75.00
\$85.00
\$100.00
\$115.00
\$50.00
\$50.00
\$0.00

Fees per credit hour

Student Fee	\$25.00
HS Concurrent Students Fee	\$0.00
HS Dual Credit Students Fee	\$0.00
HS Excel in CTE Students Fee	\$0.00
Technology Fee	\$27.00
HS Concurrent Technology Fee	\$0.00
HS Dual Credit Technology Fee	\$0.00
HS Excel in CTE Students Fee	\$0.00
Instructional Materials Fee	\$15.00
HS Concurrent Instructional Materials Fee	\$0.00
HS Dual Credit Instructional Materials Fee	\$15.00
HS Excel in CTE Instructional Materials Fee	\$0.00

\$0.00
\$0.00
\$0.00
\$0.00
\$0.00
\$0.00
\$0.00
\$0.00
\$0.00
\$0.00
\$0.00
\$0.00

\$25.00
\$0.00
\$0.00
\$0.00
\$27.00
\$0.00
\$0.00
\$0.00
\$15.00
\$0.00
\$15.00
\$0.00

Housing and Meal Cost* per year

Horton Hall	\$5,745.00
Winter Hall	\$5,745.00
Ballard House	\$5,745.00
Masterson Hall	\$6,695.00
Red Devil Duplex	\$6,695.00
Herynk Hall	\$6,695.00
Parkford Apartment	\$6,695.00
19 Meal Plan (no housing)	\$2,592.00

\$255.00
\$255.00
\$255.00
\$305.00
\$305.00
\$305.00
\$305.00
\$98.00

\$6,000.00
\$6,000.00
\$6,000.00
\$7,000.00
\$7,000.00
\$7,000.00
\$7,000.00
\$2,690.00

*All housing costs include a 19 Meal Plan

