



Board Work Session of the Board of Directors
BANKS SCHOOL DISTRICT 13
Banks, OR
Tuesday, November 12, 2024

Note: The District will endeavor to provide the following services if requested 48 hours prior to the meeting: qualified bilingual interpreters or qualified sign language interpreters. These services are provided at no cost to recipient. To obtain services, call 503-324-8591 at least 48 hours prior to this meeting.

1. Preliminaries

1.1. Call to Order

Welcome everyone. The November 12th, 2024 Banks School District Board of Directors Work Session is called to order at 4:00 PM.

1.2. Roll Call

We will move to a Roll call of Board Members. If you could please state "present" after I call your name:

Corissa Mazurkiewicz

Will Moore

Leslee Sipp

Dan Streblov

Ron Frame

1.3. Approval of Agenda

2. Discussion Items

2.1. Salmonberry Trail Foundation

The Salmonberry Trail Foundation has many different kinds of partners that range from low to high engagement. As they apply for grants and seek significant funding, it would be meaningful to have the school district formally recognized as a supporter. For this, they'd like to request permission to use the district's logo and name on the website, included in grant application materials, etc., as a key partner helping bring the project to life. They also want to ensure this is the start of a solid working relationship that grows over time, and the hope is that this is the beginning of that collaboration.

For reference, attached is the current list of all types of partners and supporters.

2.2. Bond Update

The Board will receive preliminary drafts of master plans and should give feed back and ask questions as needed. No action is expected in the November Board meeting but looking ahead, preliminary Board action will be expected in December.

3. Adjourn

SalmonberryTrail

OUR HEARTFELT THANKS GO TO ALL OUR PARTNER ORGANIZATIONS FOR THEIR STEADFAST SUPPORT, WHICH CONTINUOUSLY FUELS OUR MOMENTUM.

AARP Oregon
America Walks
Bike Portland
Bird Alliance of Oregon
Blue Heron French Cheese Company
Chris King Precision Components
City of Banks
City of Garibaldi
City of Manzanita
City of Nehalem
City of Rockaway Beach
City of Tillamook
City of Wheeler
Columbia Pacific Economic Development District
Confederated Tribes of the Grand Ronde
Copy Pilot
Cycle Oregon
Economic Development Council of Tillamook
Forge Graphic Works
Former, Oregon State Senator Betsy Johnson
Former, Oregon Governor Kate Brown
Landscape Architects of Oregon
Level
LL Stub Stewart State Park
Love, Oregon
Manning Bible Church
Mumble Street
MJ Murdock Trust
MODA Health Services
Metro Regional Government
Neah-Kah-Nie School Board
Neah-Kah-Nie Smokehouse
Neah-Kah-Nie Superintendent

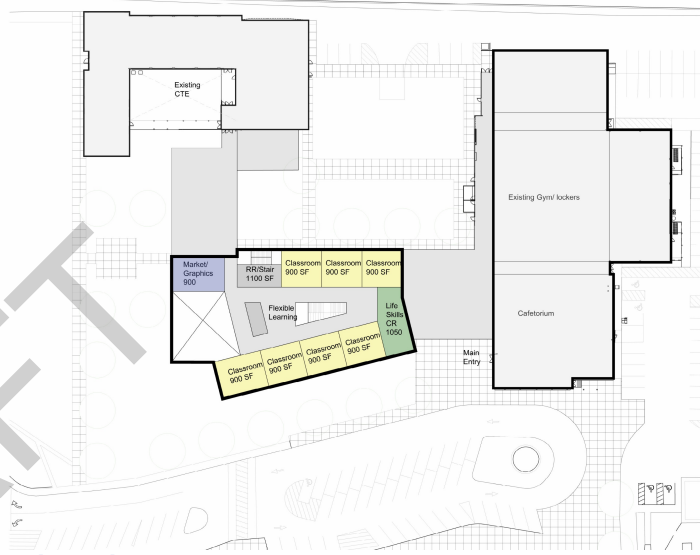
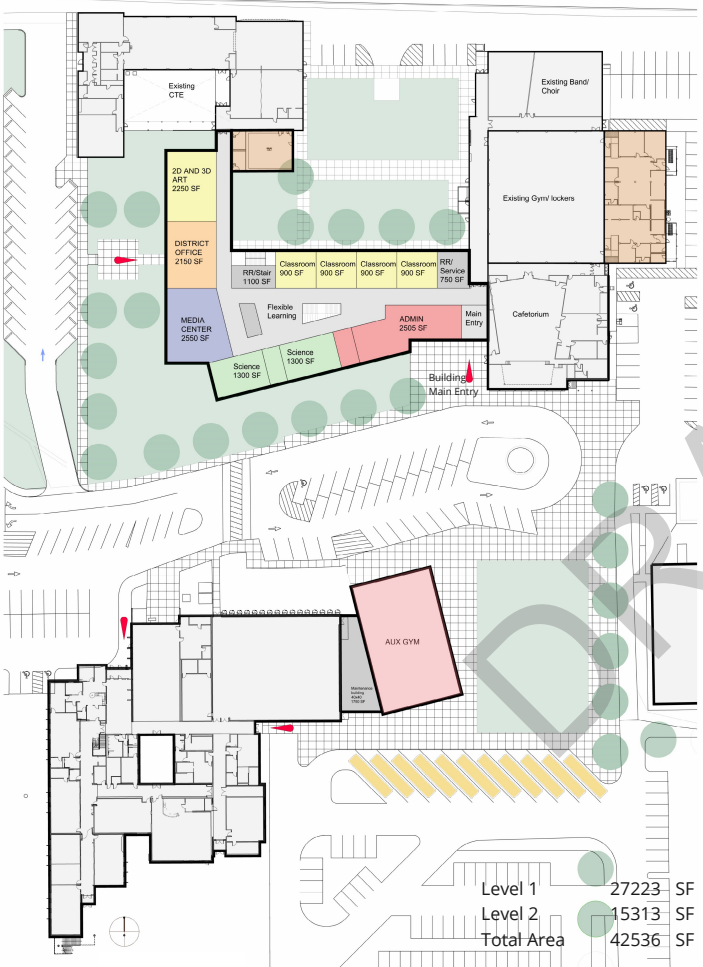
Nehalem Community Trust
Neil Kelly Company
Northwest Senior and Disability Center
Northwest Steelheaders
National Coast Trail Association
Old Wheeler Hotel
Oregon Coast Scenic Railroad
Oregon Coast Trail
Oregon Coast Trail Foundation
Oregon Coast Visitor Association
Oregon Department of Energy
Oregon Department of Environmental Quality
Oregon Department of Forestry
Oregon Department of Fish and Wildlife
Oregon Department of Transportation
Oregon Equestrian Trails
Oregon Outdoor Association
Oregon Recreation Trails Advisory Council
Oregon Regional Solutions
Oregon Trails Coalition
Oregon State Representative Cyrus Javadi
Oregon State Representative Ken Helm
Oregon State Senator Suzanne Weber
Oregon State Senator Michael Dembrow
Oxalis Group
Parametrix
Peace Fox and Ernie Fox Fund, OCF
Pelican Brewery
Pelican & Piper
Port of Garibaldi Corporation
Port of Tillamook Bay Corporation
Public Coast Farms
Rails to Trails Conservancy

REI
Rices Horses
Rice & Shine
River Studio Gallery
Rockaway Roastery
State Forest Trusts of Oregon
The Intertwine
The Roost
The Salmonberry Restaurant
The Salmonberry Trail Foundation
Tillamook Air Museum
Tillamook Chamber of Commerce
Tillamook County
Tillamook County Pioneer Museum
Tillamook Estuary Partnerships
Friends of Kilches Trail and Point Reserve
Tillamook Creamery
Trailkeepers of Oregon
Travel Oregon
Twin Rocks Camp
Visit Tillamook Coast
US Congresswoman Suzanne Bonamici
US Senator Jeff Merkley
US Senator Ron Wyden
Walker Macy
Washington County
Washington County Visitor Association / Visit Tualatin Valley
We Might Be Human
Western Rivers Conservancy
Wheeler Beauty Shop
Wheeler Masonic
Wheeler On The Bay Lodge
Wheeler Station Antique



**BECOME A
SALMONBERRY TRAIL
PARTNER**

salmonberrytrail.org/partners



2nd Level PHASE I

Opportunities

- Efficient use of plan, programs are consolidated on more compact footprint
- Construction phasing is simplified, contributing to cost and scheduling improvements.
- Minimized disruption
- Compact structure provides a more efficient MEP system and less ductwork
- More future parking to the west - double loaded.
- Compact building footprint reduces exterior envelope.
- Prominent new School - Clearly representative of the school district's commitment to getting the most out of the community's investment.

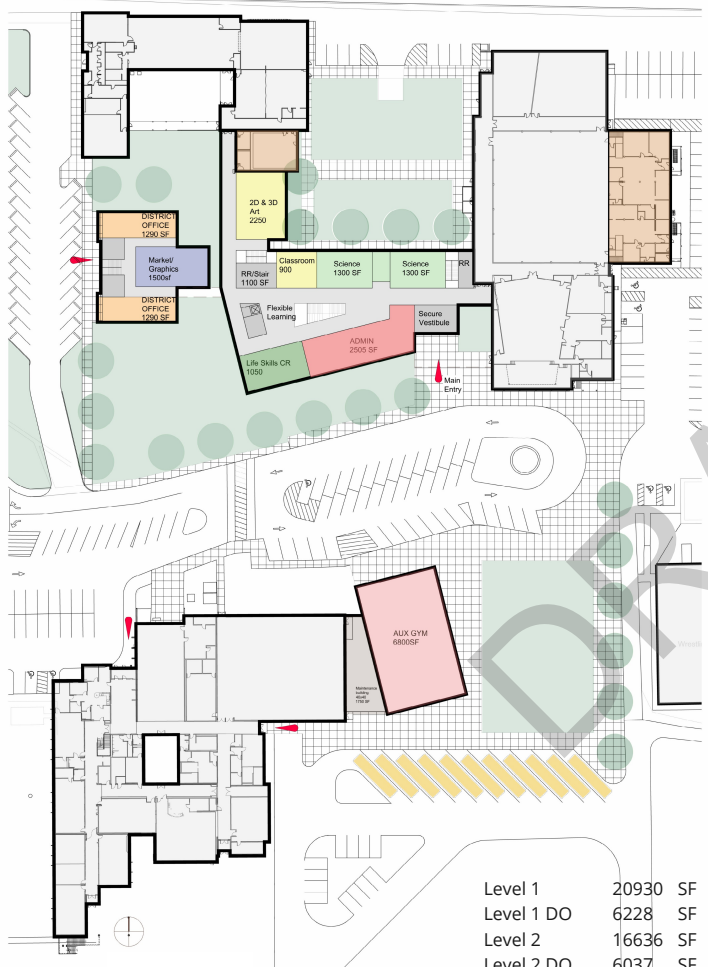
Challenges & Risks

-
-
-
-
-

1st Level PHASE I

Concept 1
Omit Existing District Office:

Total Area	42536	SF
Program	42478	SF
Over Area	58	SF

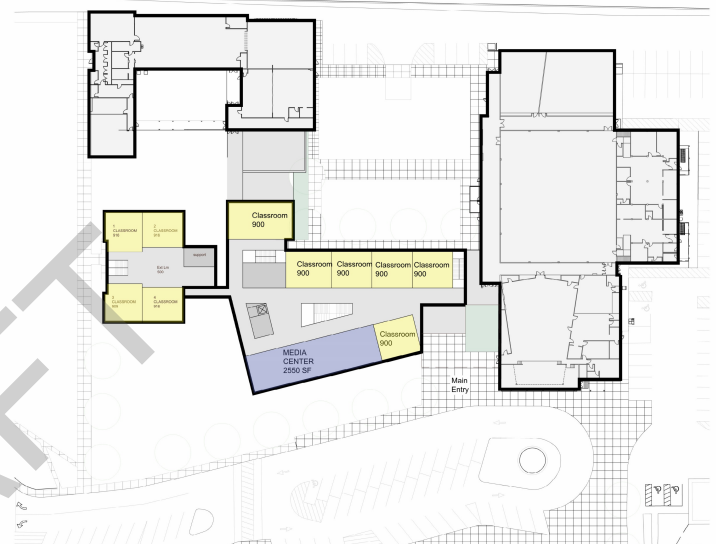


1st Level PHASE I

Concept 2

Keep Existing District Office: 4 CR and District Office program located in Existing District Office Building

Level 1	20930	SF
Level 1 DO	6228	SF
Level 2	16636	SF
Level 2 DO	6037	SF
Total Area	49831	SF
Total Area	49831	SF
Program	42478	SF
Over Area	7353	SF



2nd Level PHASE I

Opportunities

- District Office building remains with PHASE I program - 4 classrooms, marketing/ graphics and District office at the ground floor
- Maintain historic exterior architectural language - Brick facade

Challenges & Risks

- Will take considerable funds to bring existing District Office building up to code and to upgrade to exterior walls and roof to make it usable.
- Given current estimated structural upgrades exterior windows are minimal, possible impact on exterior windows at exterior walls
- Need to add elevator or walk at 2nd floor to existing District Office building
- Potential finish floor elevations not aligning from existing District Office building to new School - possible complicated ramping to achieve ADA accessibility
- Existing District Office building occupies additional site area along the west where additional parking could be challenging
- Separate mechanical, plumbing or electrical systems may potentially be needed for the existing District Office building.
- Classrooms inside existing District Office will feel removed/separated from the rest of the school.

ROM - 7m-9m