



Agenda
Osseo Area Schools
School Board

Regular Business Meeting
Zanewood Community Center
7100 Zane Ave. N.
Brooklyn Park, MN 55429
Thursday, April 9, 2026
6:30 PM

Our mission is to inspire and prepare each and every scholar with the confidence, courage and competence to achieve their dreams; contribute to community; and engage in a lifetime of learning.

This regular meeting of the School Board of Osseo Area Schools is being conducted in the Board Room of the Educational Service Center, and is open to the public. The meeting can be monitored electronically by streaming online at district279.org/about-us/school-board (Watch Livestream). An archived recording will also be available on the district website.

Agenda Items

1. Welcome and Purpose
Mayor Hollies Winston and Board Chair Tanya Prince
2. Tobacco and Vaping 2
Jackie Siewert, Hennepin County Public Health and Elyse Levine-Less, Tobacco-Free Alliance
3. City of Brooklyn Park Updates
Brooklyn Park City Council and City Administration
4. Osseo Area Schools Updates 29
Dr. Kim Hiel, Superintendent; School Board Members; District Administration
5. Tour of Facility
6. Adjournment

To accommodate individuals with disabilities, this material will be made available in alternative formats upon request. Individuals with disabilities are invited to request reasonable accommodations to participate in or attend a district activity, call your local school or the school district at least seventy-two (72) hours in advance (two-week notice preferred). Members of the public can view and download School Board meeting notices and regular meeting agendas and materials from the district website www.district279.org, under "About Us > School Board."



Commercial Tobacco in Brooklyn Park

Understanding Harms and Policy Solutions

Hennepin County | Brooklyn Park City Council Work Session | April 9, 2026

Jackie Siewert, Hennepin County Public Health
Elyse Levine Less, Tobacco-Free Alliance



Agenda

- The problem of commercial tobacco
- Commercial tobacco harms and health disparities
- Data and best practice point-of-sale policy

Our Brooklyn Park Partners

- African Immigrant Community Services
- Association for Nonsmokers – Minnesota
- Brooklyn Bridge Alliance for Youth
- Northpoint Health and Wellness
- Sierre Leone Community in Minnesota
- Sub-Saharan African Youth and Family Services in Minnesota

These organizations have long been actively engaged in commercial tobacco prevention in Brooklyn Park, playing key roles in community education and policy efforts, including the city's 2020 ordinance update.

The Problem of Commercial Tobacco

- Commercial tobacco is still the #1 cause of preventable death in the U.S.
- The tobacco industry spends nearly one million dollars per hour marketing their products
- Flavored products are a key driver of youth tobacco use.
- Flavored products contribute to tobacco-related health disparities in targeted communities.
- Tobacco use drives up costs for communities and the health system.
- Everyone pays the price of tobacco-related harm.

Menthol Tobacco = Harder to Quit

- Menthol increases nicotine absorption, leading to greater dependence.
- More than 43 percent of U.S. adults who smoke use menthol cigarettes. Youth, people of color, and people with low incomes use menthol products the most.
- Among high school smokers, those who smoke menthols are more likely to smoke within one hour of waking and more likely to report cravings compared to high school smokers of non-menthols.



Sources: <http://tobacco.stanford.edu/>
<http://tobacco.stanford.edu/>
www.trinketsandtrash.org

Wackowski & Delnevo, 2007. Menthol cigarettes and indicators of tobacco dependence among adolescents. *Addictive Behaviors*, 32(9), 1964-1969; Sarah D Mills, et al., The Impact of Menthol Cigarette Bans: A Systematic Review and Meta-Analysis, 20 *Nicotine & Tobacco Res.* 1 (2024).

BEAUTIFUL LIE
UGLY TRUTH
ABOUT MENTHOL TOBACCO

Tobacco Industry Targeting: Flavored products



81% of MN Middle and High School students who use tobacco use flavored products

Source: MN Youth Tobacco Survey, 2023

Tobacco Industry Targeting: Current flavors- endless



Vape brands popular among youth: Inhaled nicotine content in one vape device compared to nicotine per pack of cigarettes



EB:
3500+ puffs
(10.5ml X 50 mg)=
**Nicotine in 17.5 packs of
cigarettes**
\$15.99 for device



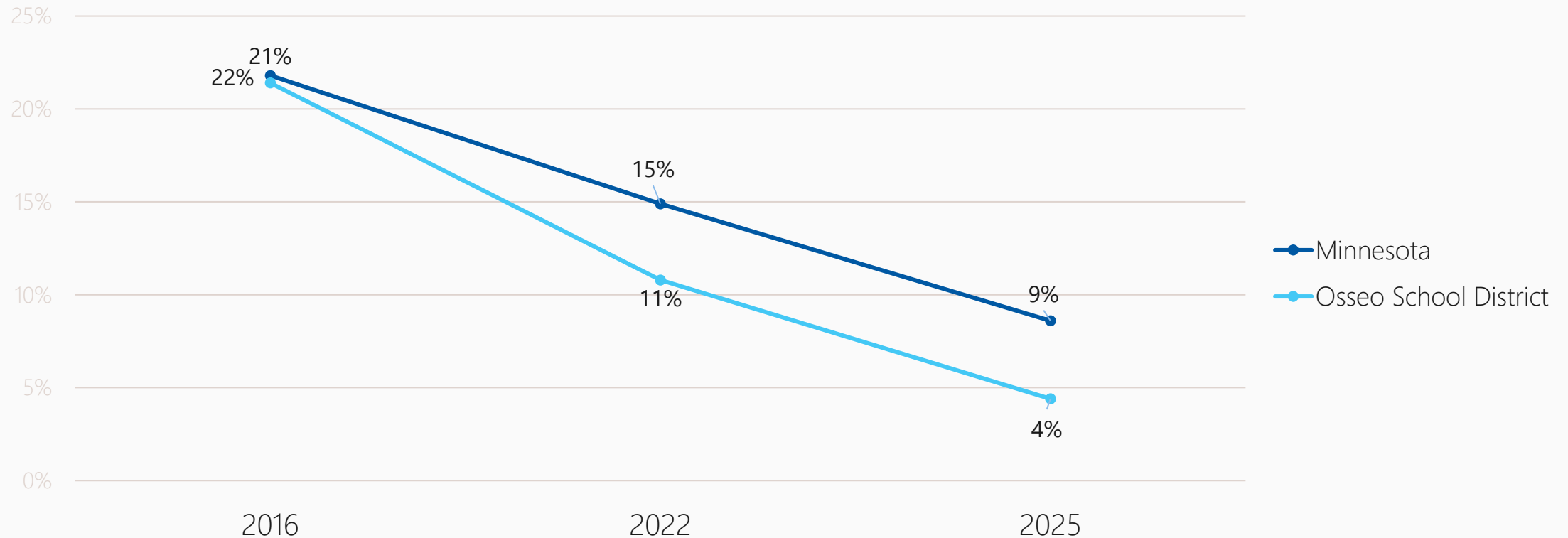
Geek Bar:
15,000 puffs in regular mode or 7500
puffs in pulse mode=
Nicotine in 26 packs of cigarettes
\$19.99 for device



Loon Pluto:
2500 puffs (6ml x 50mg)=
**Nicotine in 10 packs of
cigarettes**
\$4 for device

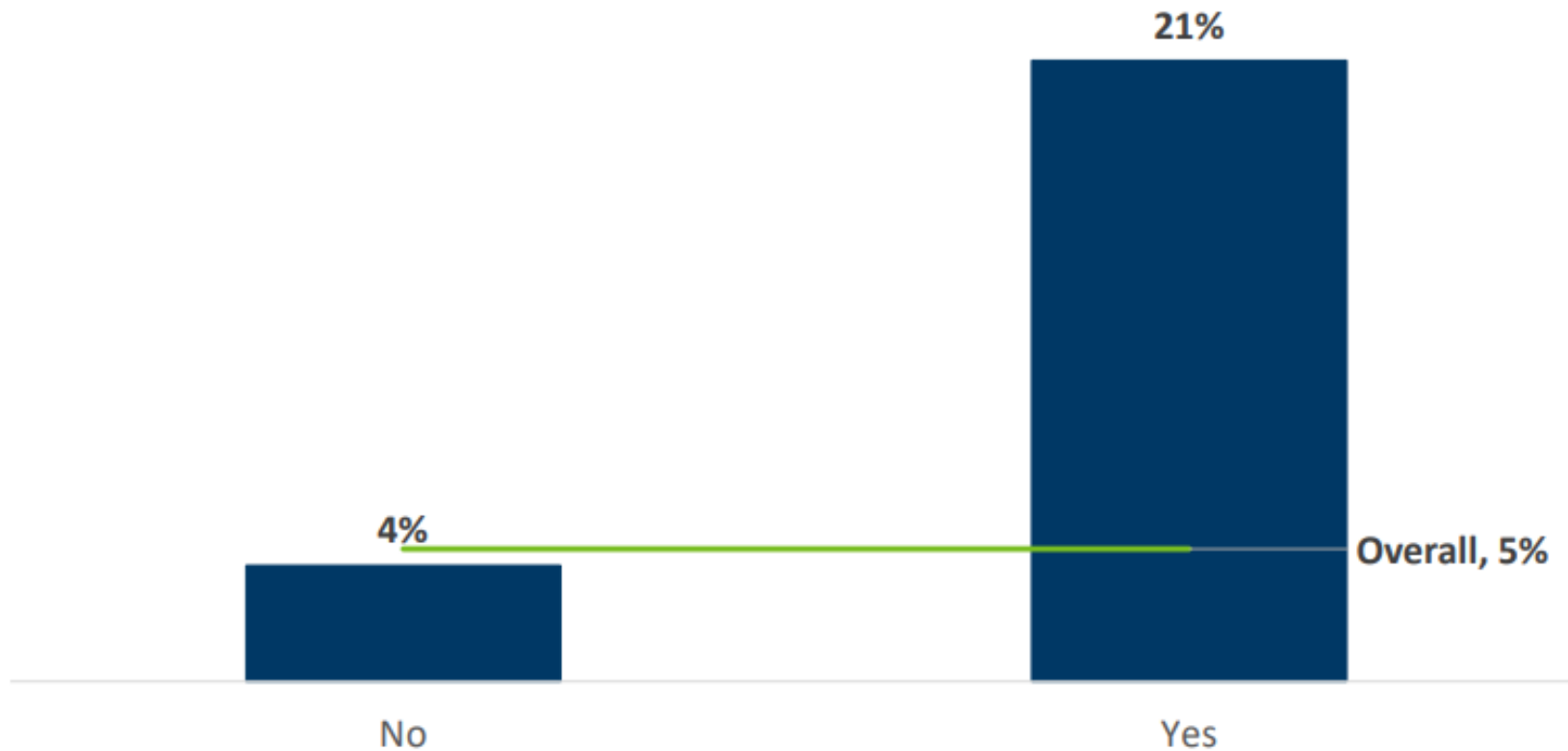
Use of any tobacco products during the last 30 days

Minnesota Student Survey, 2016-2025, 11th Grade,



Vaping Prevalence among students by Severe Economic Hardship

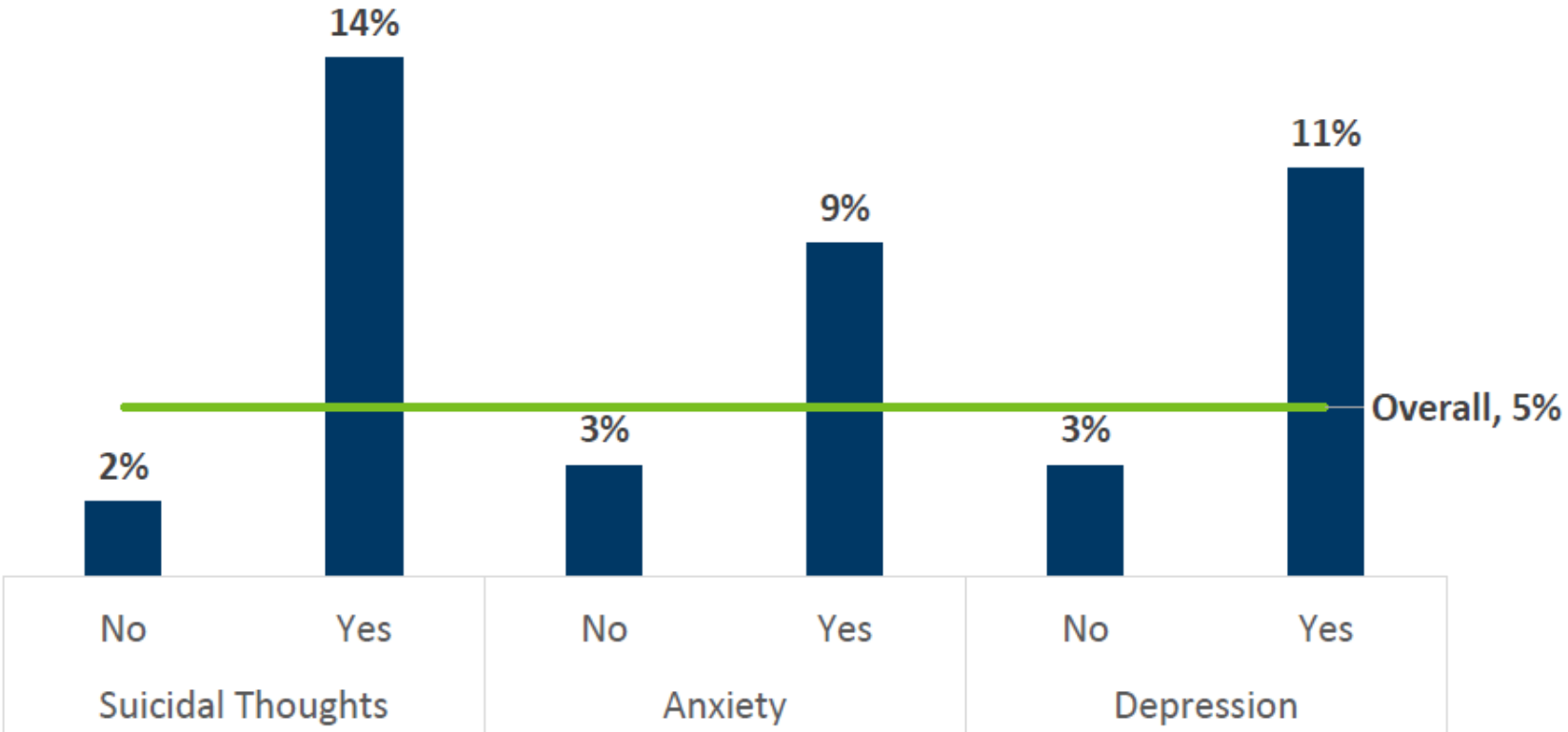
Vaping Prevalence by Severe Economic Hardship



- Vaping prevalence is higher among students who have experience homelessness or food insecurity.

Vaping Prevalence among students by Mental Health

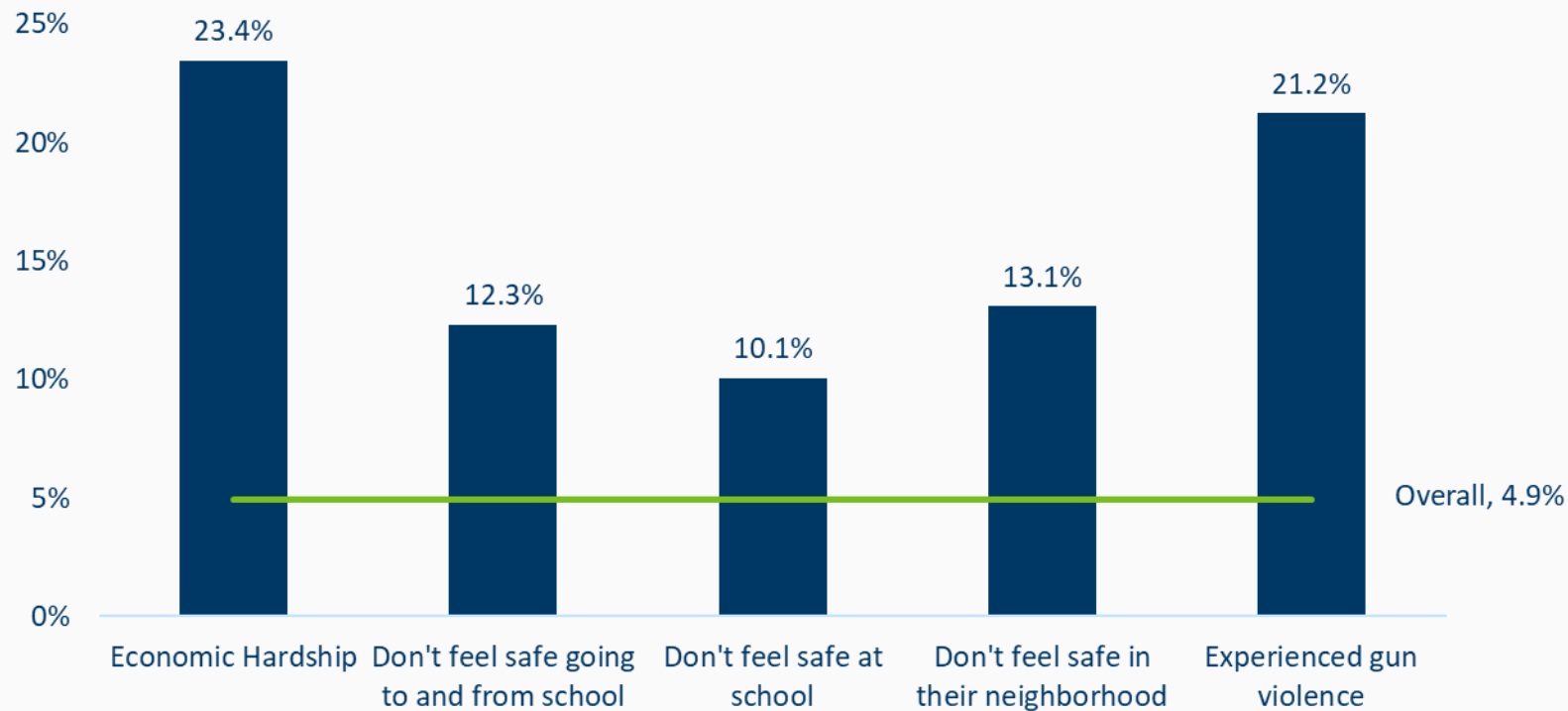
Vaping Prevalence by Mental Health



- Vaping prevalence is higher among students who report suicidal thoughts, anxiety (GAD-2) and depression (PHQ-2).

Commercial tobacco use among students by Economic Hardship, Safety, and Gun Violence

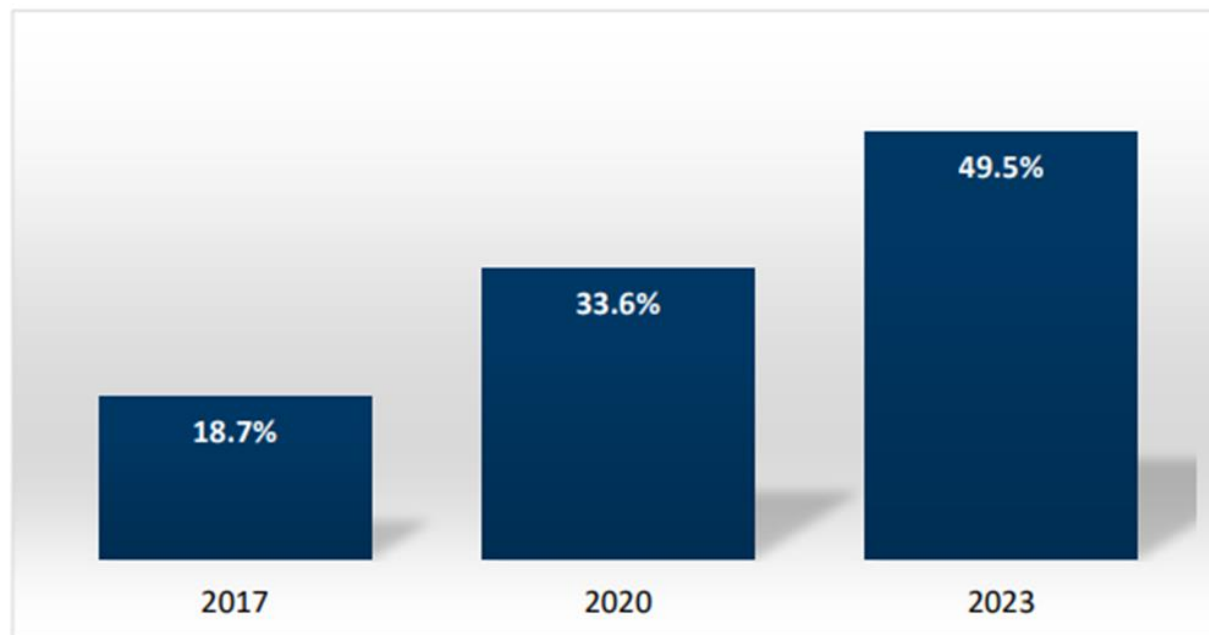
Current Tobacco Use



- Commercial tobacco use is higher among students who have experienced economic hardship or gun violence.

Minnesota Youth Tobacco Survey, 2023

Figure 4. Percent of students who currently use e-cigarettes who reported frequent use, by year, 2017-2023

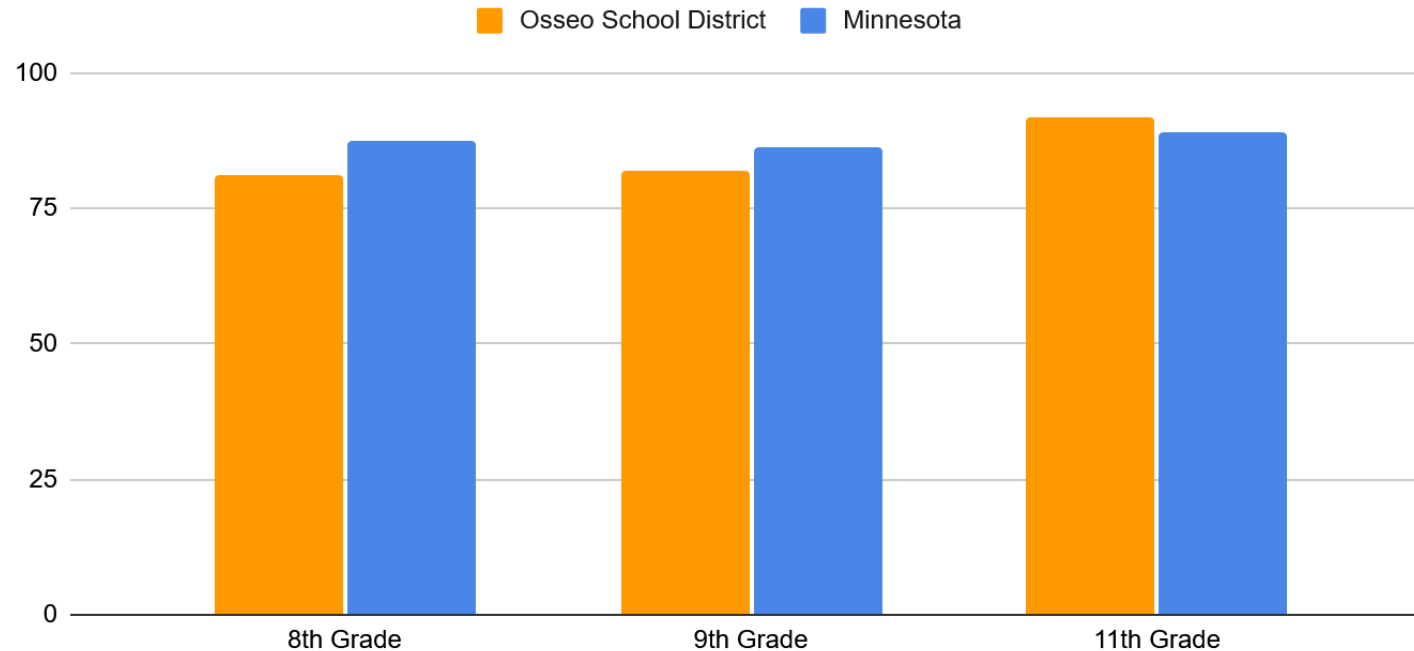


Source: Minnesota Youth Tobacco Survey, 2023. Denominator: students who reported having vaped in the past 30 days.

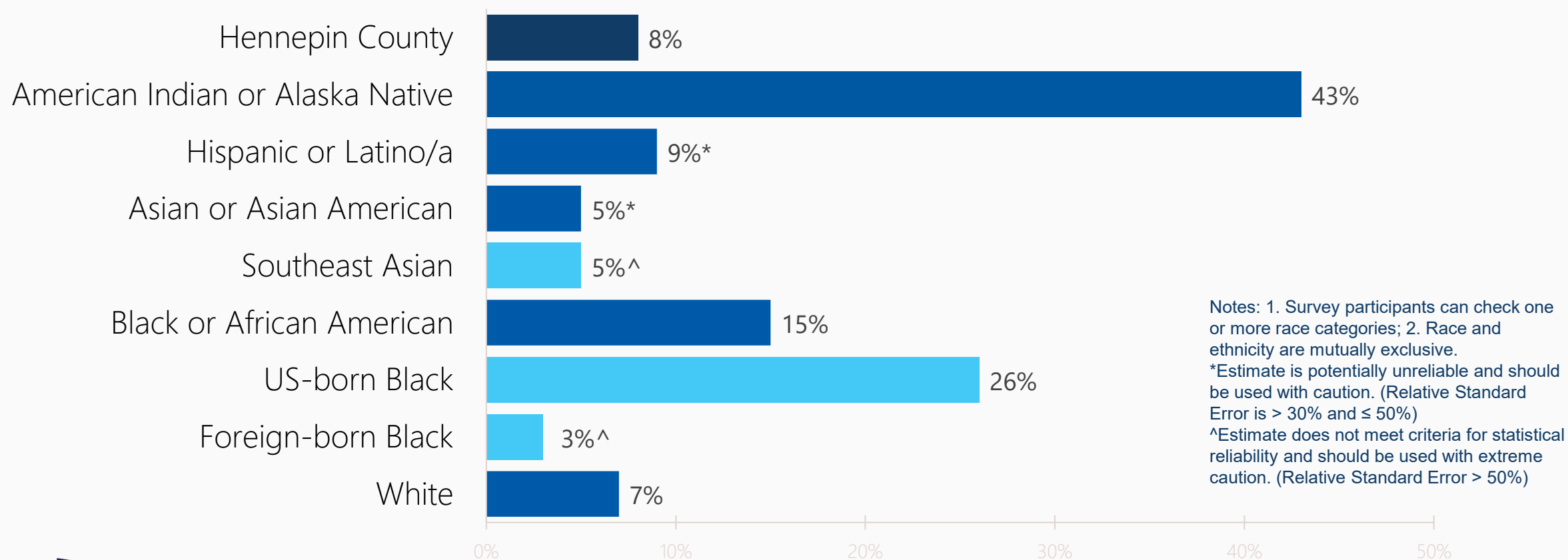
Osseo School District Flavored E-Cigarette Use Compared to State

Minnesota Student Survey, 2025

IF VAPED IN THE PAST 30 DAYS: Student used a flavored e-cigarette



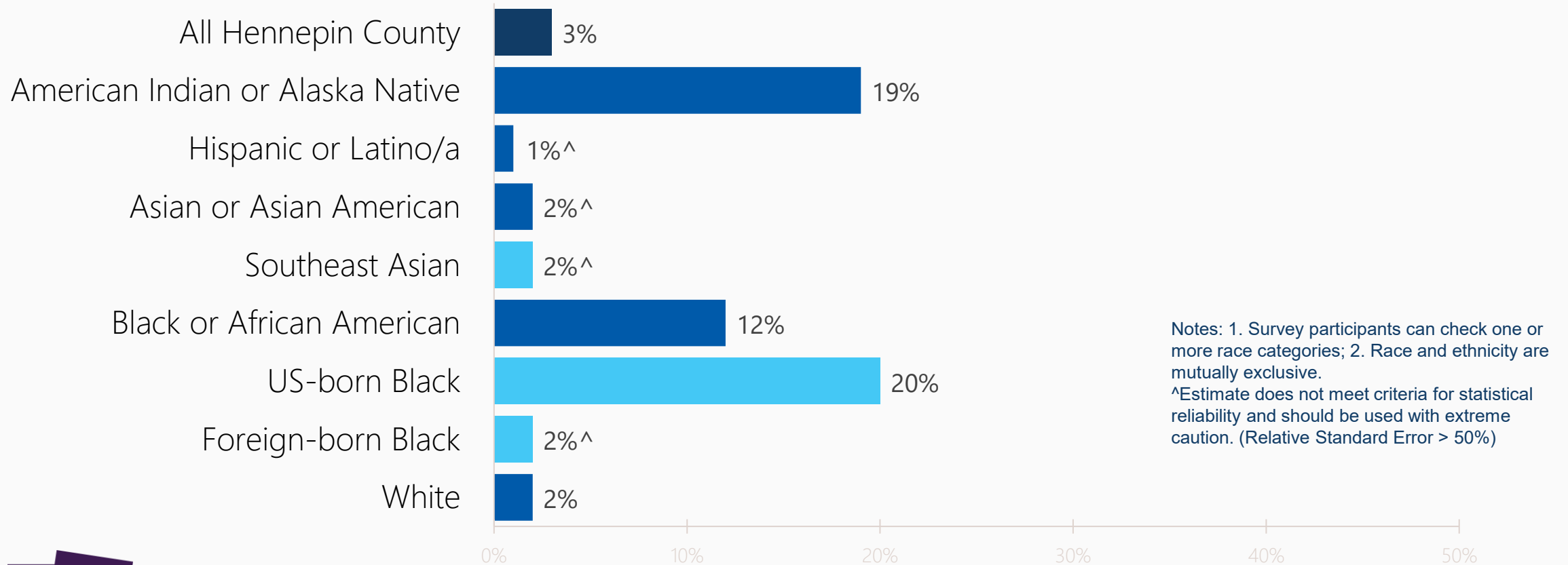
Hennepin County adult current smoking by race/ethnicity



Hennepin County Public Health, SHAPE 2022 Dashboard, Survey of the Health of All the Population and the Environment, Minneapolis, Minnesota, www.hennepin.us/your-government/research-data/shape-surveys, Accessed on 12/18/2025



Hennepin County adult menthol cigarette use by race/ethnicity



Hennepin County Public Health, SHAPE 2022 Dashboard, Survey of the Health of All the Population and the Environment, Minneapolis, Minnesota, www.hennepin.us/your-government/research-data/shape-surveys, Accessed on 12/18/2025



Key Data Points Summary

- Commercial tobacco use among youth is down but the level of addiction for youth who vape is increasing.
- Commercial tobacco use is higher among students who have experienced economic hardship, gun violence, and mental health challenges.
- Most students in the U.S., Minnesota, and the Osseo School District who vape use flavored e-cigarettes.
- Among Hennepin County adults, two racial groups smoke and use menthol at significantly higher rates: American Indian or Alaska Natives and Black or African Americans.

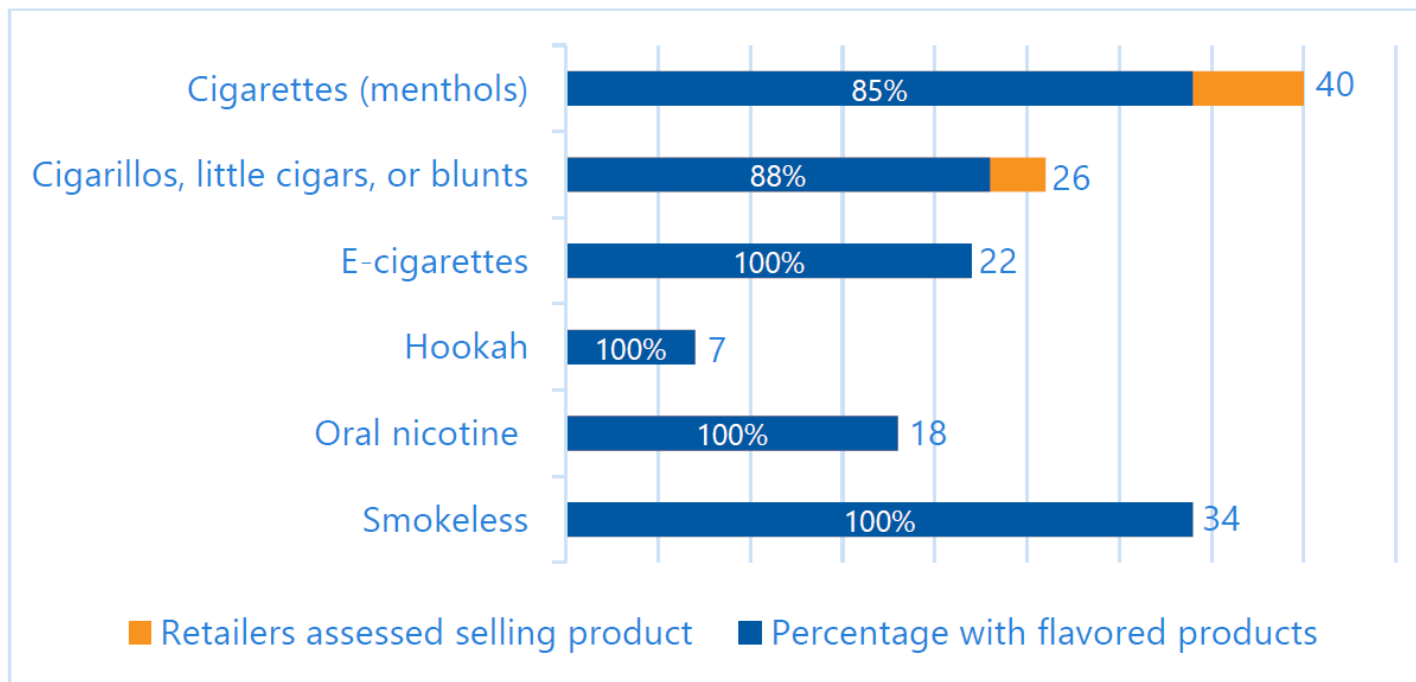
Brooklyn Park Commercial Tobacco Retailer Assessment, 2024

- March 2024 – June 2024
- Conducted by Hennepin County Public Health and Sierra Leone Community in Minnesota
- Assessed 335 retailers in Hennepin County (44 in Brooklyn Park)
- Goal: to learn about commercial tobacco retail characteristics:
 - Types of retailers
 - Flavors and menthol
 - Price and promotions
 - Youth appeal

Percent of retailers with flavored products

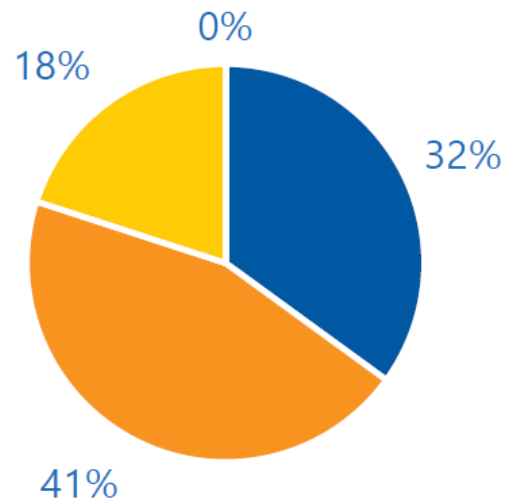
Brooklyn Park

Hennepin County



Percent of retailers selling different e-cigarette flavors

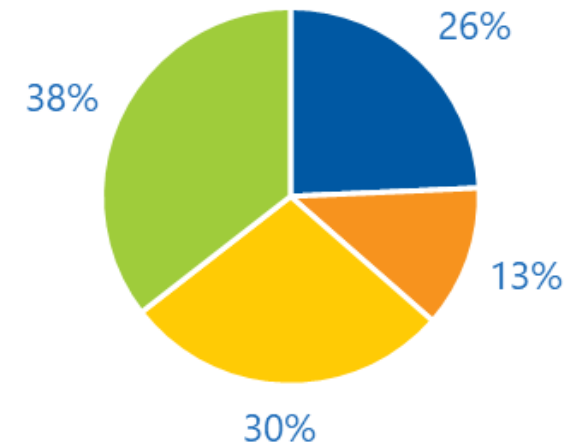
Brooklyn Park



Number of Different Flavors

- 1 to 5
- 6 to 10
- 11 to 20
- More than 20

Hennepin County





GEEK BAR PULSE

FROZEN WATERMELON	FROZEN CHERRY APPLE	FROZEN WHITE GRAPE	FROZEN STRAWBERRY	FROZEN BLACKBERRY FAB	FROZEN PINA COLADA
-------------------	---------------------	--------------------	-------------------	-----------------------	--------------------

E-LIQUID & BATTERY SCREEN

GEEK BAR PULSE

SOOR APPLE BLOW POP	JUICY PEACH ICE	BLUEBERRY WATERMELON	TROPICAL RAINBOW BLAST	OMG B - POP	MEXICO MANGO
---------------------	-----------------	----------------------	------------------------	-------------	--------------

GEEK BAR PULSE

BLUE MINT	WHITE GUMMY ICE	FCUKING FAB	CRAZY MELON	WHITE GUMMY ICE	MIRMI MINT
-----------	-----------------	-------------	-------------	-----------------	------------

GEEK BAR PULSE

ORANGE CREAMSICLE	BERRY BLISS
-------------------	-------------

GEEK BAR PULSE

BLOW POP	BLUE MINT
----------	-----------

*Geekbar All Rights Reserved

GEEK BAR PULSE

PINK LEMONADE	CRAZY MELON	SOOR APPLE
---------------	-------------	------------

Brooklyn Park gas station

Policy Options to Address Flavored Tobacco

★ End the sale of all flavored products without exemption

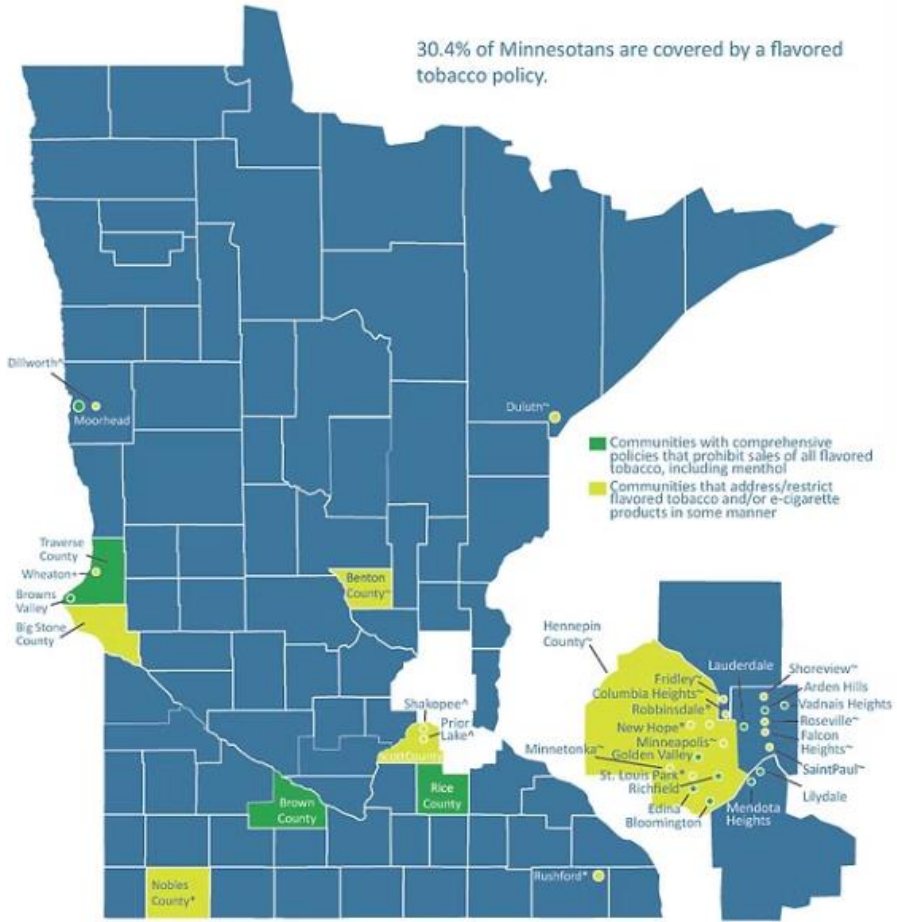
- High impact
 - Comprehensive
 - Easiest to enforce
- Restrict where flavored products can be sold

Flavors play a key role in commercial tobacco use. Because flavors are particularly appealing to young people, eliminating flavors in commercial tobacco products is expected to lead to reduction in commercial tobacco use and commercial tobacco-related health disparities.

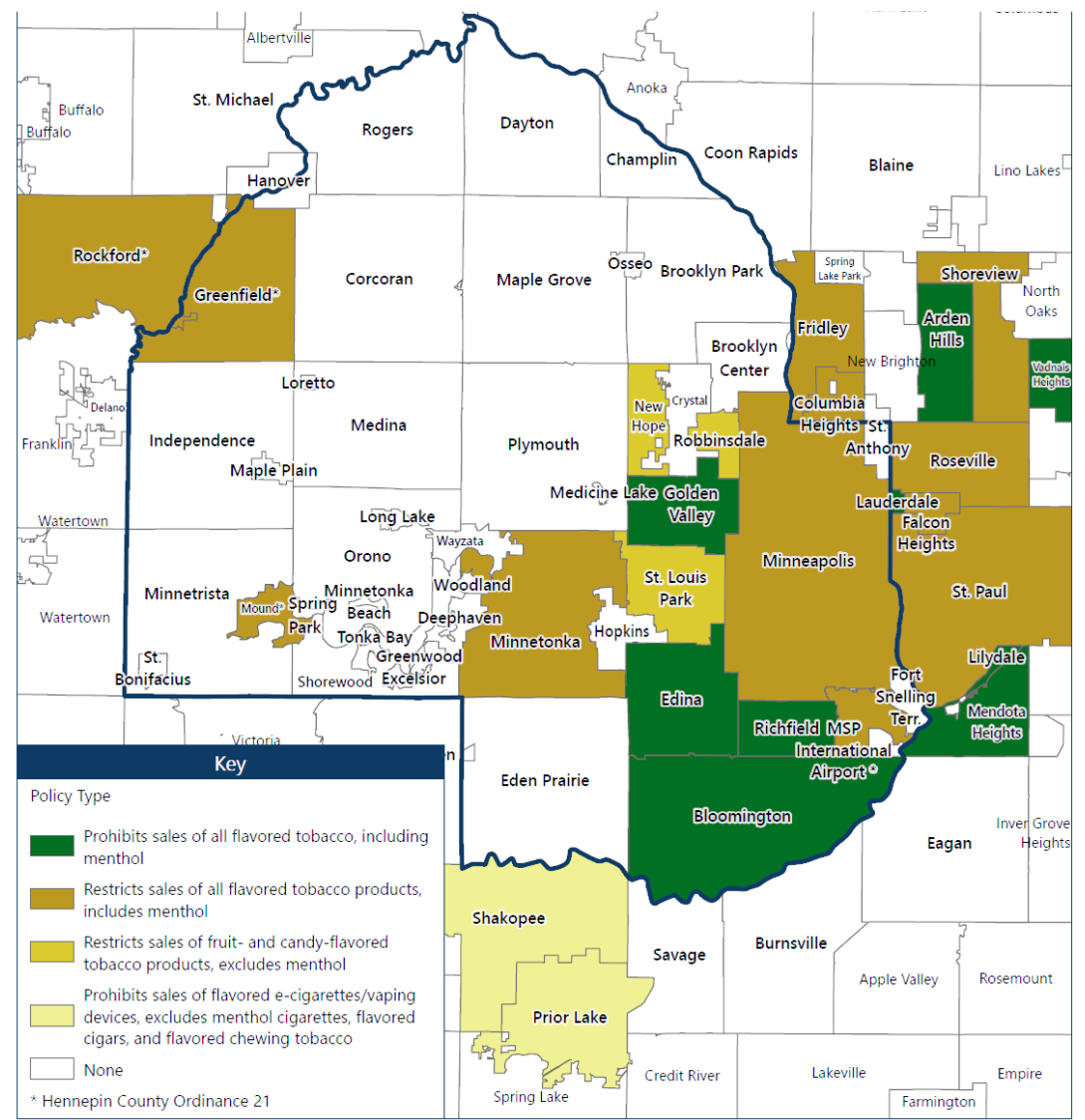
U.S. Department of Health and Human Services. Eliminating Tobacco-Related Disease and Death: Addressing Disparities—A Report of the Surgeon General. 2024.

Minnesota communities addressing the sale of flavored commercial tobacco products

30.4% of Minnesotans are covered by a flavored tobacco policy.



*Restricts sales of fruit- and candy-flavored tobacco products, excludes menthol
 **Restricts sales of all flavored tobacco products, includes menthol
 +Prohibits sales of all menthol cigarettes, flavored cigars, and flavored chewing tobacco, excludes flavored e-cigarettes/vaping devices
 *Prohibits sales of flavored e-cigarettes/vaping devices, excludes menthol cigarettes, flavored cigars, and flavored chewing tobacco



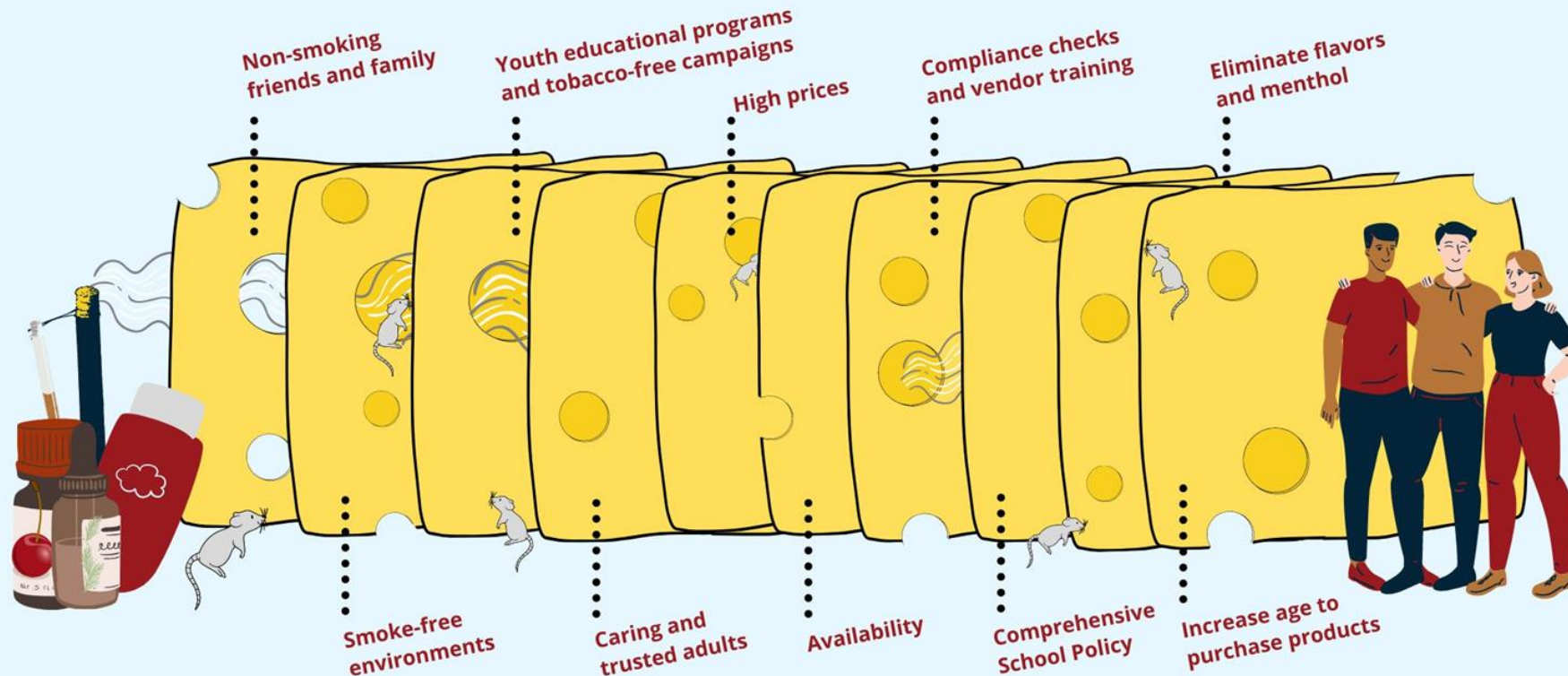
Point-of-Sale Policy Options

- Flavors
 - ★ End the sale of all flavored tobacco products
 - Restrict where flavored products are sold
- Pricing
 - Set minimum price and
 - Minimum pack size
 - Prohibit the redemption of coupons and price promotions for tobacco products
- Licensing and zoning
 - License cap
 - Minimum distance (e.g. from youth-oriented facilities and treatment centers)
 - Minimum spacing between retailers
- Strengthen penalty structure

The combined impact of these policies strengthens and amplifies tobacco control protections.

SWISS CHEESE MODEL OF COMMERCIAL TOBACCO PREVENTION

Effective commercial tobacco prevention happens when interventions are layered together to create a healthy tobacco-free community.



Interventions



Targeted tobacco industry marketing, social media misinformation, and tobacco lobbyists weakening regulations

Source: Adapted from James T. Reason



2395 University Avenue W, Ste 310, St. Paul, MN 55114
651-646-3005 www.ansrmn.org
(February 2021)



Jackie Siewert

Jacquelyn.Siewert@hennepin.us, 612-543-0402

Elyse Levine Less, JD, MPH

elyse@mntobaccofreealliance.org





One Community for All

April 9, 2026

THE CONCEPT OF HOLDING SPACE

It means that we are willing to walk along side another person in whatever journey they're on without judging them, making them feel inadequate, trying to fix them, or trying to impact the outcome. When we hold space for other people, we open our hearts, offer unconditional support. and let go of judgement and control.

from Heather Plett, Wakeup World Blog

CONSISTENCY

- Our responsibilities
- Our behavior
- Understanding of biases
- Understanding expectations

CONNECTION

- Our relationships
- Our roles
- Our impact on others
- Build trust

COHERENCE

- The why
- Our decisions
- Our data
- Weight on the system



Osseo Area Schools serves families across eight cities with strong schools, diverse programs and a clear plan for the future.

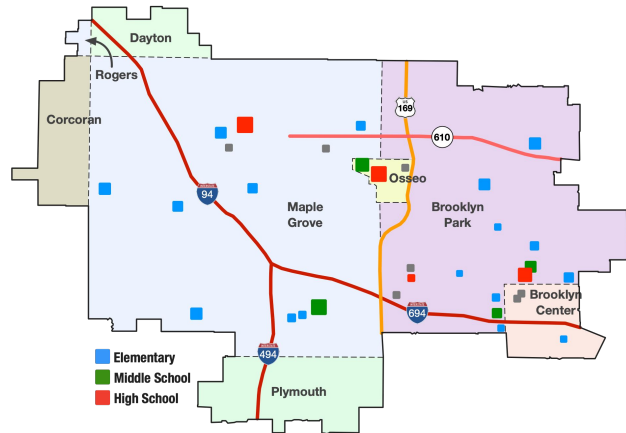
Schools shape communities.

Strong schools strengthen neighborhoods.

Where Osseo Area Schools serves

Osseo Area Schools serves:

- Brooklyn Center
- Brooklyn Park
- Corcoran
- Dayton
- Maple Grove
- Osseo
- Plymouth
- Rogers



Families across the northwest metro choose Osseo Area Schools for quality, opportunity and stability.



Did you know?

There are more than

7,200 students

who live in Brooklyn Park and have chosen Osseo Area Schools for their education.



Find your path

Students in Osseo Area Schools learn in environments built for growth, creativity and real-world success.

From early childhood to graduation, every student has access to:

- Strong academics
- Caring support
- Multiple learning pathways

The goal is simple:

Prepare students for life.

90%

are proud and would **recommend** district schools to friends

Parents/caregivers: 95%

Park Center Senior: An IB World School

- 200+ Courses
- International Baccalaureate (IB) emphasizes critical thinking and global awareness
- Advancement Via Individual Determination (AVID) creates college-going culture
- Career/technical education opportunities
 - Automotive
 - Business, finance and marketing
 - Business management
 - Construction management
 - Design/pre-construction
 - Education
 - Engineering
 - Health science



Career/tech ed opportunities



Before- and after-school activities

Co-Curricular Fall Sports

Adapted Soccer Cheerleading
 Cross Country Boys
 Cross Country Girls
 Football
 Soccer Boys
 Soccer Girls
 Swim & Dive Girls
 Tennis Girls
 Volleyball Girls

Co-Curricular Winter Sports

Adapted Floor Hockey
 Alpine Ski
 Basketball Boys
 Basketball Girls
 Cheerleading
 Gymnastics Girls
 Hockey Boys
 Hockey Girls
 Nordic Ski Boys
 Nordic Ski Girls
 Swim and Dive Boys Wrestling

Co-Curricular Spring Sports

Adapted Softball
 Baseball
 Golf Boys
 Golf Girls
 Lacrosse Boys
 Lacrosse Girls
 Softball Girls
 Tennis Boys
 Track and Field Boys
 Track and Field Girls
 Volleyball Boys
 Co-Curricular Activities
 Class Advisory
 Fall Play
 Jazz Band Club
 Link Crew
 Marching Band
 Model UN
 Musical
 National Honor Society
 Orchestra
 PCTV
 Pep Band
 Robotics
 Speech
 Student Advisory Committee
 Weight Room
 Yearbook

Clubs

Alpha Women's Club
 Asian Club
 Black Student Union
 Book Club
 Culinary Club
 Drum Club
 Education Rising
 Fashion Club
 Gaming Group
 Garden Club
 Hip Hop Music Club
 Hmong Group
 Latino Circle
 MAWA
 Muslim Student Association
 PRISM
 Psychology Club
 Real Talk Club
 WE Act Club
 We Are One Club
 Writers Club
 Outside Agencies
 College Possible
 Upward Bound

Recent accomplishments/highlights



PCSH's Lillian Chan placed in the top 20 statewide in the BestPrep 2026 Student Spotlight Competition.



PCSH students got to know elementary age students through their recent AVID service project.



Eight students received recognition in the state's Scholastic Art Awards. This is Sophie Sevitts' piece, *Work Break in Wyoming*

Recent accomplishments/highlights



PCSH wrestlers advanced to the MSHSL state wrestling tournament

- Jacob Hansen advanced to the semifinals round in the 189-pound weight class, ultimately earning sixth place
- Jachai King competed in the preliminary round of 215-pound weight class



PCSH's new sideline cheer program is gaining lots of student interest and seeing success. In a recent competition, they earned first place prizes in the showcase dance performance and the cheer battle section.



PCSH's robotics teams wrapped up their season with a strong showing at the FIRST Tech Challenge State Tournament

- One team earned second place in the REACH Award
- Student Chris Onipede was one of two students statewide to receive a coding scholarship

Brooklyn Middle STEAM School

- Students gain real-world, hands-on experience through project-based learning
- AVID program creates college-going culture
- Career/technical education opportunities
 - PLTW* Gateway Engineering Program
 - Food and Consumer Sciences
- Peer mentors
- Co-curricular activities include student newspaper, music, drama, math club and more



*PLTW is an innovative project-based learning program that incorporates science, technology, engineering, and math. It empowers students to develop and apply in-demand, transportable skills by exploring real-world challenges in an exciting and engaging way.

North View Middle School

- Literacy-rich environment through daily reading classes; reading, writing within core classes
- AVID program creates college-going culture
- Career/technical education opportunities
 - PLTW* Gateway Engineering Program
 - Food and Consumer Sciences
- Co-curricular activities include music, drama, math club and more
- Districtwide Indian Ed program on site



*PLTW is an innovative project-based learning program that incorporates science, technology, engineering, and math. It empowers students to develop and apply in-demand, transportable skills by exploring real-world challenges in an exciting and engaging way.

Elementary schools in Brooklyn Park

Birch Grove School for the Arts - through intentional arts integration, students receive expanded instruction in visual art, music, drama and movement while meeting Minnesota academic standards.

Edinbrook Elementary School - AVID program, which is a college-readiness program that places special emphasis on growing writing, critical thinking, teamwork, organization and reading skills.

Fair Oaks Elementary School - combines strong academic instruction with a schoolwide focus on health, wellness and whole-child development.

Garden City Elementary School - combines strong academic instruction with a close-knit school community where students are known, supported and encouraged to grow.

Elementary schools in Brooklyn Park

Palmer Lake Elementary School - combines strong community roots with personalized learning and high expectations for every student.

Park Brook Elementary School - combines strong academic growth with a unique Focus on Fitness model that supports both student learning and overall well-being.

Woodland Elementary School - provides a modern learning environment where strong academic instruction, meaningful student leadership opportunities and a welcoming school culture come together to support every child.

Zanewood Community: A STEAM School - through hands-on learning in science, technology, engineering, arts and math, students develop creativity, critical thinking and problem-solving skills in a supportive, close-knit school community.



Support that helps students excel

Students are supported by:

- Counselors and mental health therapists
- Social workers and nurses
- Equity and multilingual services
- Award-winning educators

Students succeed when they feel supported, and families stay connected to their schools and communities.

Investing in the future

Voters approved the *Building a Better Future* plan to modernize schools across the district.

Improvements include:

- Safer school entrances
- Updated classrooms and technology
- STEAM learning spaces
- Modern libraries
- Flexible learning environments
- New schools in growing areas

Construction is already underway.



Palmer Lake library media center



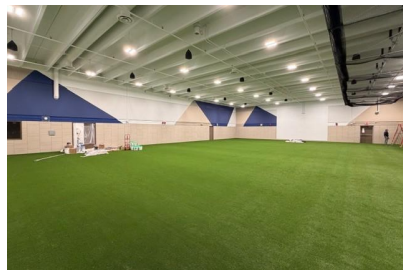
BMS commons outside learning kitchen



Fair Oaks maker space



Woodland outdoor learning



NVMS multipurpose space with turf



NVMS flexible learning area



Community learning center (Crest View)



Community learning center (Crest View)



PCSH library

Construction Timeline

Starting Spring/Summer
2026

Elementary Schools

- Birch Grove
- Crest View
- Fair Oaks
- Fernbrook
- Garden City
- Weaver Lake
- Zanewood

Middle Schools

- Maple Grove
- Osseo

High Schools

- Park Center

Starting Spring/Summer
2027

Elementary Schools

- Cedar Island
- Elm Creek
- Palmer Lake
- Park Brook
- Rice Lake

Education Centers

- Osseo

Why this matters to communities

Modern schools:

- Attract families
- Support neighborhood growth
- Increase long-term stability
- Reflect community pride

Strong school districts are a key driver of strong housing markets.



Attendance boundaries

New elementary and middle school attendance boundaries take effect in 2026–27.

Changes were made to balance enrollment as the district grows.

Families can:

- Enter their address online
- View interactive boundary maps
- See future school assignments clearly

Transparency helps families plan with confidence.

Learn more at osseoschools.org/boundaries

Beyond the K-12 school day

- More than **2,000 Brooklyn Park youth** have participated in enrichment classes.
- Kidstop school-age care currently serves over **1,200 children** who call Brooklyn Park home.
- Early childhood programs have supported more than **500 Brooklyn Park families** this year.
- Almost **400 Brooklyn Park adults** have participated in enrichment classes this year.

Partners

- Boston Scientific
- Brooklyn Bridge Alliance for Youth
- COMPAS
- City of Brooklyn Park
- Cornerstone
- Family Law
- Geek Squad
- Imagination Theatre
- MacPhail School of Music
- MPR Class Notes
- Northwest Suburban Integrated School District
- League of Women Voters
- Perpich Center for Arts Education
- Philips
- Saint David's Mental Health
- Three Rivers Park District
- University of Minnesota
- Vocal Essence



The big picture

Osseo Area Schools delivers:

- Strong academics
- Diverse learning options
- Modern facilities
- Long-term planning
- Deep community investment

This is a district built for families and for the future.



Contact information

- Superintendent Dr. Kim Hiel
 - Email: hielk@district279.org
 - Phone: 763-391-7222
- Osseo School Board
 - Email: osseoschoolboard@district279.org

Thank you

Osseo Area Schools

Dream. Explore. Discover.