

Agenda Independent School District 279 School Board	Regular Business Meeting Educational Service Center - Forum Room 11200 93rd Ave N Maple Grove, MN 55369 Tuesday, September 10, 2024 6:00 PM
---	--

Our mission is to inspire and prepare each and every scholar with the confidence, courage and competence to achieve their dreams; contribute to community; and engage in a lifetime of learning.

This regular meeting of the Osseo School Board is being conducted in the Board Room of the Educational Service Center, and is open to the public. The meeting can be monitored electronically by streaming online at district279.org/info-center/school-board (Watch Livestream). An archived recording will also be available on the district website.

Agenda Items

1. 6:00 p.m. Welcome and purpose
Tanya Prince, Board Vice Chair
2. 6:00-6:05 p.m. Check in
Dr. Kim Hiel, Superintendent
3. 6:05-6:45 p.m. Attendance boundary changes: overview, timeline and process 2
John Morstad, Executive Director of Finance and Operations and Kay Villella, Executive Director of Community Relations
4. 6:45-7:30 p.m. Repurpose site: communications and engagement plan 21
Steve Flisk, Asst. Superintendent of Elementary; Bryan Bass, Asst. Superintendent of Equity & Achievement; Brian Siverson-Hall, Exec. Dir. of Community Engagement
5. 7:30-7:35 p.m. Board meeting calendar review 40
Dr. Kim Hiel, Superintendent
6. 7:45 p.m. Adjournment
Tanya Prince, Board Vice Chair

To accommodate individuals with disabilities, this material will be made available in alternative formats upon request. Individuals with disabilities are invited to request reasonable accommodations to participate in or attend a district activity, call your local school or the school district at least seventy-two (72) hours in advance (two-week notice preferred). Members of the public can view and download School Board meeting notices and regular meeting agendas and materials from the district website www.district279.org, under "Info Center > School Board."

OSSEO AREA SCHOOLS

ISD  279

Update on attendance boundary change process

Sept. 10, 2024

Audiences

- ▶ School board
- ▶ Staff at elementary and middle schools
- ▶ Families at elementary and middle schools

Communication goals

- ▶ Provide clear, comprehensive communication that is timely and easily accessible.
- ▶ Ease anxiety with communication that reflects the district's care and concern for staff, students and parents/caregivers.
- ▶ Create opportunities for audiences to share their thoughts and ask questions.
- ▶ Minimize misinformation by immediately correcting and clarifying any.
- ▶ Maintain students enrolled in the district.
- ▶ Ensure widespread community understanding.

Timeline

- ▶ Late September: Update shared along with an opportunity to digitally provide feedback on the parameters. Website w/ FAQ launched.
- ▶ October-November: Core Team to develop scenarios based on parameters.
- ▶ December: Staff engagement (mainly school leadership) on scenarios.
- ▶ January 2025: Community engagement on scenarios.
 - Thought Exchanges
 - Informational meetings
- ▶ February 2025: Core Team makes scenario adjustments based on feedback.

Timeline

- ▶ March 2025: Community engagement on amended scenarios.
 - Thought Exchanges
 - Informational meetings
- ▶ April 2025: Additional school-level meetings may be considered.
- ▶ April/May 2025: Final attendance boundaries announced.
- ▶ May 2025-August 2026: Schools prepare to welcome new students.
- ▶ January 2026-August 2026: New attendance boundaries repeatedly shared.

Timeline

- ▶ September 2026: New attendance boundaries go into effect. Goals are that:
 - All students go to their appropriate school on day one, and
 - Feel welcome when they do.

The Core Team

- ▶ Team's purpose is to lead the Attendance Boundary Change process.
- ▶ Team members include:
 - John Morstad and Kay Villella leading
 - Community Relations reps (2)
 - Enrollment rep (1)
 - Educational Equity rep (1)
 - Facility/operations rep (2)
 - Family and Community Engagement rep (1)
 - Information Systems rep (1)
 - Principals (2 Elem, 2 Middle)
 - Student Services rep (1)
 - Transportation reps (2)
 - Union reps (2)

The Core Team's research

- ▶ Reviewed policies and procedures
 - 725 Policy: Establishing School Attendance Boundaries
 - 558 Procedure: Enrollment Options Program
 - 707 Policy Appendix A: Bus Transportation Scheduling, Bus Stop Assignment, Eligibility Distances, After and Before School Transportation
- ▶ Reviewed additional pertinent information
 - *Building a Better Future*
 - Enrollment trends, capacity, target class sizes and development
 - Open enrollment and in-district transfer
 - Transportation

Staying informed

- ▶ A webpage will be dedicated to the attendance boundary change process. It will include an extensive FAQ section.
- ▶ Regular updates will be shared via email and text (Mass Notification and newsletters).
- ▶ Community informational meetings will be held after winter break (in person and virtually)
- ▶ Hotlines open now
 - BetterFuture@district279.org
 - 763-391-8990

Questions and/or comments

POLICY 725 – ESTABLISHING SCHOOL ATTENDANCE AREAS

I. District-wide Boundary Changes

- A. The Superintendent will annually review building program capacities and projected enrollments and will make recommendations regarding modification of school attendance boundaries.
- B. The School Board will determine the process and timeline for changing attendance boundaries. The School Board will provide opportunities for residents to be informed about and respond to School Board recommended options and modifications to these options.
- C. Boundary adjustments require School Board approval.

II. Administrative Boundary Adjustments

- A. When overcrowding exists in a small number of buildings and when that overcrowding can be solved by adjusting boundaries, re-assignment of new housing developments, and/or re-assignment of a small number of census areas, the Superintendent will recommend administrative boundary adjustments and the rationale for the adjustments.
- B. Boundary adjustments require School Board approval.

III. Magnet Schools are not subject to provisions in this policy and procedure that conflict with Magnet objectives.

Policy Revised: 8/17/10
Policy Suspended: 1/8/08
Policy Revised: 12/7/04
Policy Adopted: 10/6/98

POLICY 558 – ENROLLMENT OPTIONS PROGRAM

I. PURPOSE

The school district values school choice and participates in the enrollment options established in this policy.

II. GENERAL STATEMENT OF POLICY

In order to provide school choice, all students are eligible to attend a school other than their assigned school, provided they are not dependent on district transportation; capacity is available at the school of choice; the times are followed; and application materials are accurate and complete.

III. ENROLLMENT OPTIONS

- A. Resident and Non-Resident Students may enroll in school district schools under the Enrollment Options Program, through School Board approval to enroll in a nonresident district, a graduation incentives program or as an online learning student.
- B. Students will be enrolled following successful completion of the application process outlined in the procedures accompanying this policy.
- C. Students will remain enrolled as long as they continue to meet the criteria for continued enrollment set out in the procedures accompanying this policy.
- D. A student who has been enrolled in the school district who is identified as homeless and whose parent or legal guardian moves to another district, or who is placed in foster care in another school district may continue to enroll in Independent School District No. 279 schools.

Revised: 4/19/16

Revised: 12/20/05

Adopted: 9/2/03

Legal References:

Minn. Stat. § 124D.03 Enrollment Options Program

Minn. Stat. § 124D.08 School Boards Approval to Enroll in Nonresident District

Minn. Stat. § 124D.68 High School Graduation Incentives Program

Minn. Stat. § 260A Truancy Programs

Minn. Stat. § 260C.007 Subd. 19 Habitual Truant

O P: Atty Gen 180g, Dec. 27, 1928 Definition of Residence for School Attendance

Cross References:

725 Establishing School Attendance Boundaries

PROCEDURE 558 – ENROLLMENT OPTIONS PROGRAM

I. General Procedure

- A. This procedure applies to any student who wishes to enroll at a school in Independent School District No. 279 other than the school to which his or her residence is assigned. The procedure applies to In-District Transfer (Resident) Students and Open-Enrolled (Non-Resident) Students. Both are admitted on the basis of available space at each grade in each building.
- B. Once a student becomes an In-District Transfer or Open-Enrolled Student the student will remain in this status, subject to the policies and procedures that apply to Resident Students and the conditions specified below.
- C. If any student changes residence, the parent/legal guardian must complete an updated enrollment options form. Failure to provide an updated enrollment options form may result in termination of the student's Open Enrollment status.

II. Definitions

A. Habitual Truant

1. A child under the age of 17 years who is absent:
 - a) From elementary school attendance without lawful excuse for seven school days per school year, or
 - b) From middle or high school attendance for one or more class periods on seven school days per school year.
2. A child aged 17 years old who is absent from attendance at school without lawful excuse for one or more class periods on seven school days per school year and who has not lawfully withdrawn from school will also be considered truant.

B. Magnet School

1. Magnet schools offer specialized curricular themes and are available as an enrollment option for all school district residents and those students who reside within the boundaries of the Northwest Suburban Integration School District (NWSISD). The following are Magnet Schools or programs operated by the school district.
 - a) Birch Grove Elementary School for the Arts
 - b) Weaver Lake Elementary: A Science, Math & Technology School
 - c) Zanewood Community School: A Science, Technology, Engineering, Arts and Math School
 - d) Brooklyn Middle School: A Science, Technology, Engineering, Arts and Math School
 - e) Osseo Senior High School Health Science Magnet Program
 - f) Park Center Senior High: An International Baccalaureate World School

C. Non-Resident

1. A student whose primary source of nurturing, personal care, supervision, emotional and financial support is at an address outside of school district boundaries, even though the student may lodge within the school district.

D. Open Enrollment

1. Open Enrollment - Parent/legal guardian lives outside of District 279 and would like their student to attend a school within District 279 boundaries.

E. Resident

1. A student who receives their primary nurturing, personal care, supervision, emotional and financial support in a residence within the legal boundaries of the school district,
 - a) From age five through completion of high school, but not beyond the twenty-first birthday if not disabled; or
 - b) From birth through completion of high school, or until July 1 after the twenty-first birthday if disabled.

- F. In-District Transfer
 - 1. Parent/legal guardian lives inside District 279 boundaries and would like their student to attend a school other than their assigned attendance area school.
- III. In-District Transfer (Resident) and Open Enrollment (Non-Resident) Application Process
- A. Application Timelines
 - 1. Parents/legal guardians may apply for the current school year or the following school year only.
 - a) Priority Application period is October 15 through January 15 each school year.
 - b) If there are more applications than available seats, a lottery will be held following the January 15 deadline to determine which students will receive seats.
 - c) Applications will be accepted after the deadline and reviewed periodically. Open-Enrolled Non-Resident Students applying for the current school year may be enrolled immediately if space is available.
 - d) Students are approved for enrollment based on the capacity of the school they select. If space is not available in the preferred school, they may be offered another choice within the district.
 - e) Note: A timely application or a sibling attending the school of choice does not guarantee acceptance into the school of choice. Acceptance is based primarily on availability of space.
 - B. In-District Transfers only
 - 1. During the school year, In-District transfer requests will be processed at the start of Trimesters only.
 - 2. When a student has been accepted for an In-District Transfer or Open Enrollment, the student will remain enrolled in the school district (at the school assigned) unless the school district terminates enrollment in accordance with its policies and procedures or under one of the conditions listed in Section VI. In-District Transfer students may transfer back to their attendance area school.
 - 3. The application deadline is established each year and is published in the Enrollment Services section of the district website at www.district279.org.
 - a) January 15: Applications are due (priority deadline).
 - b) End of January: Families sent notification of acceptance or denial by U.S mail.
 - c) Mid-February: Deadline for families to accept and to complete the enrollment process.
 - C. Acquiring an Application
 - 1. The parent/legal guardian must complete a separate application for each student applying for in-district transfer or open enrollment.
 - 2. Applications are available at:
 - a) The Osseo Area Schools Enrollment Center (7051 Brooklyn Blvd., Brooklyn Center, MN, 55429)
 - b) The school district website: www.district279.org
 - c) Magnet school applications are available online at www.nws.k12.mn.us (Northwest Suburban Integration School District website)
 - D. Submitting an Application
 - 1. Each applicant may select first, second and third choice schools for admission.

2. If there is no space available at the first choice school but there is space available at a second choice school, the application for the second choice school will be accepted and the Enrollment Center will not place the student on a waiting list for the first choice school. If there is no space available at a first or second choice school but there is space available at a third choice school, the Enrollment Center will place the student at the third choice school and the Enrollment Center will not place the student on a waiting list for the first or second choice school.
 3. If there is no space at any of the choices selected by the applicant, the Enrollment Center will place the student on the waiting list for the first choice school ranked by preference and then by date of receipt of the application. Any second choice applications are placed on a waiting list behind applicants who made that school their first choice and any third choice applications are placed behind the first and second choice applications on the waiting list for that school.
- E. Application Approval
1. Applications will be approved only if there is space available at the requested school and/or grade level. If space is not available at the school of choice, the student will be offered enrollment at another school within the district. After the application deadline, the Enrollment Center will send a written notification to the parent/legal guardian at their address on record with information about whether the application has been accepted or denied. The Enrollment Center will mail the written notice approximately three weeks after the annual application deadline (January 15). If the application was denied, the student will be placed on a waiting list for the remainder of that school year.
 2. If the application is approved, the parent/legal guardian must complete the enrollment process by the date contained in the notification.
 - a) The student will be assigned to a geographic attendance area (sometimes referred to as a continuing census area).
 - b) If the student changes residences and wishes to remain Open Enrolled, the student must submit information about the new address to the Enrollment Center.
 3. If the application is not approved, the Enrollment Center will place the student's name on the waiting list. The student's application will be considered as space becomes available. A student will remain on a waiting list only for the remainder of the school year for which they applied. A new application will be required each school year.
- F. Additional Documentation
1. Additional required documents include acceptable proof of address and photo identification. If the student is enrolling in prekindergarten or kindergarten the parent/legal guardian must provide proper age verification.
 2. Specific items that satisfy these requirements are listed on the enrollment checklist found in the Enrollment Services section of the district website: www.district279.org
 3. The parent/legal guardian can bring or submit the completed enrollment forms and the additional documents required to the Enrollment Center.
- G. Approval Guidelines
1. If there are more applications than space available, applications will be approved in the following priority order for any spaces available. Random selection (or lottery) is used within each priority if the number of applications in each category exceeds the number of spaces available:

- a) Sibling — If the applicant’s sibling already attends the requested school
 - b) Child Care (for elementary students only) — If the student’s childcare is in the attendance area of the requested school
 - c) Employee — If the student’s parent/legal guardian is employed by the school district
 - 2. If a student is not selected for admission after an application deadline, the student will be placed on a waiting list ranked by priority as listed above and then by the date the application was received.
 - H. Matriculation from Elementary to Secondary Schools / Promotion to next level (5th to 6th and 8th to 9th).
 - 1. In buildings where promotion to the next level is into a single school, In-District Transfer and Open-Enrolled students will be promoted to the next level building with their class.
 - 2. In buildings where promotion to the next level is split between two or more schools, In-District Transfer and Open Enrolled students will be promoted to the next level school that corresponds to the continuing census area where the point of entry into the current school attendance area is located. The school district will determine the most direct route from the student’s home into the attendance area.
 - 3. If the student wants to attend a school not assigned to either the student’s residence or the continuing census area, the student must apply for an In-District Transfer or Open Enrollment to that school.
 - I. Online Learning
 - 1. Enrollment for online classes is subject to the same procedures used for enrollment in other classes.
- IV. Boundary Changes for School Attendance Areas: In the event school attendance boundaries are changed in accordance with Policy 725:
- A. Open Enrolled and in-district transfer students will be assigned to the school that serves the continuing census area to which each student is assigned at the time of Open Enrollment or reassigned if the parent or guardian changes residences during the time the student is Open Enrolled.
 - B. The school district will not authorize new transfer applications into schools affected by boundary changes for the first year the new boundary is in effect.
- V. Transportation
- A. When students are approved to attend a school outside of their regular attendance area, transportation is the responsibility of the parent/legal guardian. Transportation may be provided from an existing bus stop on the border of the school (in-district transfer) or border of the school district (open enrollment) under the following conditions:
 - 1. The student registers with the school district Transportation Department for bus service each school year and is approved to use an existing stop.
 - 2. Space is available on existing bus routes.
 - 3. Parents/legal guardians accept ultimate responsibility for ensuring that their student can get safely to and from the assigned bus stop.
 - B. A parent/legal guardian of a student in a family living at or below the federal poverty level may seek reimbursement for the cost of transportation to school district schools. A parent/legal guardian who wishes to claim reimbursement must contact the Enrollment Center for instructions and assistance to claim reimbursement.
 - C. Magnet School Transportation

1. The school district will provide transportation within the school district to any elementary student attending a magnet school who lives more than 0.8 miles from the school and to any secondary student attending a magnet school who lives more than 1 mile from the school. Consistent with School District Policy 707.

VI. Termination of In-District Transfer or Open Enrollment

- A. The school district will terminate the enrollment of an In-District Transfer or Open Enrolled student at the end of a school year if the student is a habitual truant, the student has been provided appropriate services to prevent truancy or educational neglect, and the student has been referred to juvenile court.
- B. The school district will terminate the enrollment of a Non-Resident student over the age of 17 if the student is absent without lawful excuse for one or more periods on 15 school days and has not otherwise withdrawn from school.
- C. The school district will terminate the enrollment of a Non-Resident student in accordance with its policies and procedures, including those that govern student discipline, or for failure to provide accurate information concerning the current residence of the student.

Revised 8/26/22
Revised 9/28/21
Revised: 6/24/21
Revised: 4/19/16
Revised: 12/9/14
Revised: 9/10/13
Revised: 12/20/
Adopted: 9/2/03

Legal References:

Minn. Stat. § 124D.03 Enrollment Options Program
Minn. Stat. § 124D.08 School Boards Approval to Enroll in Nonresident District
Minn. Stat. § 124D.68 High School Graduation Incentives Program
Minn. Stat. § 260A Truancy Programs
Minn. Stat. § 260C.007 Subd. 19 Habitual Truant
O P: Atty Gen 180g, Dec. 27, 1928 Definition of Residence for School Attendance

Cross References:

725 Establishing School Attendance Boundaries

POLICY 707 – NON-INSTRUCTIONAL OPERATIONS: TRANSPORTATION OF STUDENTS

Appendix A	Bus Transportation Scheduling; Bus Stop Assignment; Eligibility Distances; After and Before School Transportation
Appendix B	School Bus Safety Training
Appendix C	Student Conduct on School Buses and at Bus Stops, Parent or Guardian Responsibility for School Bus Safety
Appendix D	Reporting School Bus Accidents and Incidents; Use of Type III Vehicles; Operating Rules and Procedures; Emergency Procedures; Equipment Maintenance and Inspection
Appendix E	Cameras on School Buses

General Purpose

The school district will provide transportation for eligible students to and from school in accordance with this policy, including Appendices A-E.

- I. The school district will set bus ridership eligibility distances that meet or fall within requirements of the State of Minnesota.
 - A. The school district will provide transportation for students within eligibility distances in appropriate circumstances as determined by the transportation safety director or his or her designee.
 - B. At a minimum, the school district will provide transportation for the following eligible students
 1. All Pre-K 5 elementary students who live 0.8 miles or more from school.
 2. All middle school and high school students who live two (2) miles or more from school.
- II. The Director of Facilities and Transportation Operations will serve as the school transportation safety director. The Director of Facilities and Transportation Operations or his or her designee will oversee implementation of this policy including Appendices A-E.
- III. The school district may deny transportation to a student who fails to demonstrate bus safety protocols. Exceptions may be made when a student's failure to demonstrate safety protocols is a manifestation of the student's disability.
- IV. The school district may provide transportation for academic field trips in direct support of the instructional program, transportation for the support of extracurricular and co-curricular program (e.g. athletics, music and drama) and "late bus" transportation for those students who stay for school-related activities past the normal dismissal time. These additional services may be provided if financial resources are available. If the school district does not arrange for extracurricular and co-curricular transportation, students who wish to participate are responsible for arranging for or providing their own transportation.
- V. Students with disabilities will be provided transportation appropriate to their individual needs in accordance with federal and state law and regulation. Transportation of students with disabilities will be coordinated through the Student Services Department.
- VI. Buses serving students with disabilities may stop while using the 4-way hazard lights at house stops where it takes an extended period of time to load/unload the student. At these sites, the

bus is to pull onto the shoulder of the road and the student will not be allowed to cross the roadway. Under normal conditions, the buses will use the 8-light system and stop arm.

- VII. The Director of Facilities and Transportation Operations as the designee of the Superintendent shall establish procedures to address student bus safety training, student conduct on buses and at bus stops, parent or guardian responsibilities for bus safety, school bus incident and accident reporting, bus monitor qualifications, use of Type III vehicles, operating rules, emergency procedures and equipment maintenance and inspection.
- VIII. Staff members should not provide transportation to students except in an emergency situation in accordance with authorization by the principal or Director of Facilities and Transportation Operations. If emergency transportation must be provided, two staff members must accompany the student.

Policy Revised: 7/31/18
Policy Revised: 3/17/15
Policy Revised: 5/20/14
Policy Revised: 6/7/11
Policy Revised: 10/15/02
Policy Revised: 10/16/01
Policy 707 Adopted: 1/5/99 (formerly Policy 3810)
Policy Revised: 2/17/98
Policy Revised: 4/21/87
Policy Revised: 11/15/83
Policy Adopted: 8/15/78

Cross Reference

Policy 442 – Travel
Policy 506 – Student Discipline
Policy 515 – Protection and Privacy of Student Records
Policy 550 – Suspension
Policy 551 – Exclusion and Expulsion
Policy 608 – Instructional Services – Special Education
Policy 921 – Non-Use of Tobacco on School Premises
Policy 922 – Non-Use of Chemicals on School Premises

Legal Reference

M.S. 123B.88 Independent School Districts; Transportation
M.S. 123B.90 School Bus Safety Training
M.S. 123B.91 School District Bus Safety Responsibilities
M.S. 169.443 Safety of School Children; Bus Driver’s Duties
M.S. 169.446 Safety of School Children; Training and Education Rules
M.S. 169.451 Inspecting School and Head Start Buses; Rules; Misdemeanor
M.S. 169.454 Type III Vehicle Standards
M.S. 169.458 Reportable Offense on School Bus
M.S. 169A.31 Alcohol-Related School Bus or Head Start Bus Driving

OSSEO AREA SCHOOLS

ISD  279

Repurposing portion of the *Building a Better Future* plan

September 10, 2024

Outcomes

Board members will:

- ▶ Review the process that led to the repurpose section of the BBF plan.
- ▶ Update on community based spaces at the repurposed site and how they will be used.

Repurpose portion of the plan

- ▶ Plan shared that an elementary school would be repurposed to serve pre-kindergarten grades, enrichment and community-based programming needs.
- ▶ After much research and consideration, Crest View Elementary School has been chosen to be repurposed.
 - Crest View's students and staff will be moving schools fall 2025; the start of the 2025-26 school year.
 - Crest View will continue to have elementary programming next school year; the 2024-25 school year. This will end June 2025.

Transferring school options

- ▶ Students currently attending Crest View or coming in as a kindergartener fall 2024, will have the opportunity to choose a nearby elementary school to continue their learning for fall 2025 and remaining elementary years
 - Edinbrook Elementary School
 - Fair Oaks Elementary School
 - Zanewood Community: A STEAM School
- ▶ Transportation will be provided for all three options

The why: *Building a Better Future* includes a repurpose

- ▶ ECMAC (Enrollment and Capacity Management) has consistently shared variations that exist with enrollment, capacity and building use.
- ▶ ECMAC and six other groups provided suggestions for the *Building a Better Future* plan that included several facility improvements and the repurposing of a school or schools.
- ▶ Oversight Task Force reviewed all work and made final recommendations to the board using the following criteria:
 - Equitable impact
 - Fiscal responsibility
 - Districtwide alignment/standards
 - Capacity
 - Long-term impact
 - Program improvement
 - Communication, engagement
 - Flexible/adaptable spaces

The why: Crest View being the site to be repurposed

- ▶ Central location to neighborhood schools
- ▶ Opportunity to expand to offer more community services
- ▶ Lower student enrollment that is reaching unsustainable levels

Programming plans for site: Needs and commitments

- ▶ Pre-kindergarten grades (125 seats)
 - Heritage learning model focused on cultural immersion centering Indigenous, Hmong, East/West African and Spanish (MAP grant)
- ▶ Enrichment programming (all ages)
- ▶ Community-based programming
- ▶ Community-access clinic in collaboration with Park Nicollet.
- ▶ American Indian Cultural Center alongside Dakota & Ojibwe language revitalization program (MDE grant)

Programming plans for site: Additional opportunities possible

- ▶ Feedback in May and June has helped the programming team with narrowing the final recommendations to provide to the designers and architects as additional opportunities possible.
- ▶ This was done via an anonymous ThoughtExchange.

Feedback opportunity shared via

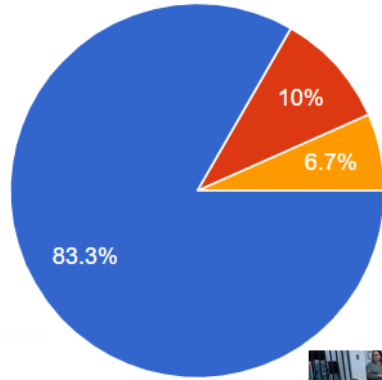
- ▶ District communications including e-news, web and social
- ▶ Brooklyn Park and Brooklyn Center school communications including e-news, web, social and Mass Notification text
- ▶ Graphic displays near entrances at Brooklyn Park and Brooklyn Center schools
- ▶ Flyer at Brooklyn Park and Brooklyn Center schools
 - Displayed on bulletin boards
 - Available for pick up in main offices
 - Passed out at in-person events like PTO meetings, end of year gatherings
- ▶ Community Ed communications including e-news, web and social
- ▶ FACE and multilingual communications (Facebook, RISE email)
- ▶ Cities of Brooklyn Park and Brooklyn Center communications
- ▶ Media partners including CCX, Sun Post and Press & News

Feedback themes

- ▶ After-school programs
- ▶ Family counseling services
- ▶ Special needs support
- ▶ Adult English classes
- ▶ Early childhood education
- ▶ STEAM education
- ▶ Tutoring services
- ▶ Community gathering spaces
- ▶ Mental health support
- ▶ Outdoor educational spaces
- ▶ Cultural immersion programs
- ▶ Indoor recreational facilities
- ▶ Job placement services
- ▶ Parent education programs

AIPAC Feedback

- Significant interest in proposed cultural immersion programming.



- Very interested
- Somewhat interested
- Neutral
- Somewhat uninterested
- Not interested



Indian Education



American Indian Cultural Center

Most requested by AIPAC and students

Language Revitalization Programming

Cultural Displays

Traditional Arts Workshops

Storytelling & Oral History

Miigwanikwe AIE Curated Library

Traditional Foods and Cooking

Indigenous Sports and Games

Intergenerational Culture Camps

Medicine Garden/Traditional Ecological Knowledge

IEFA Legislation and PD Opportunities

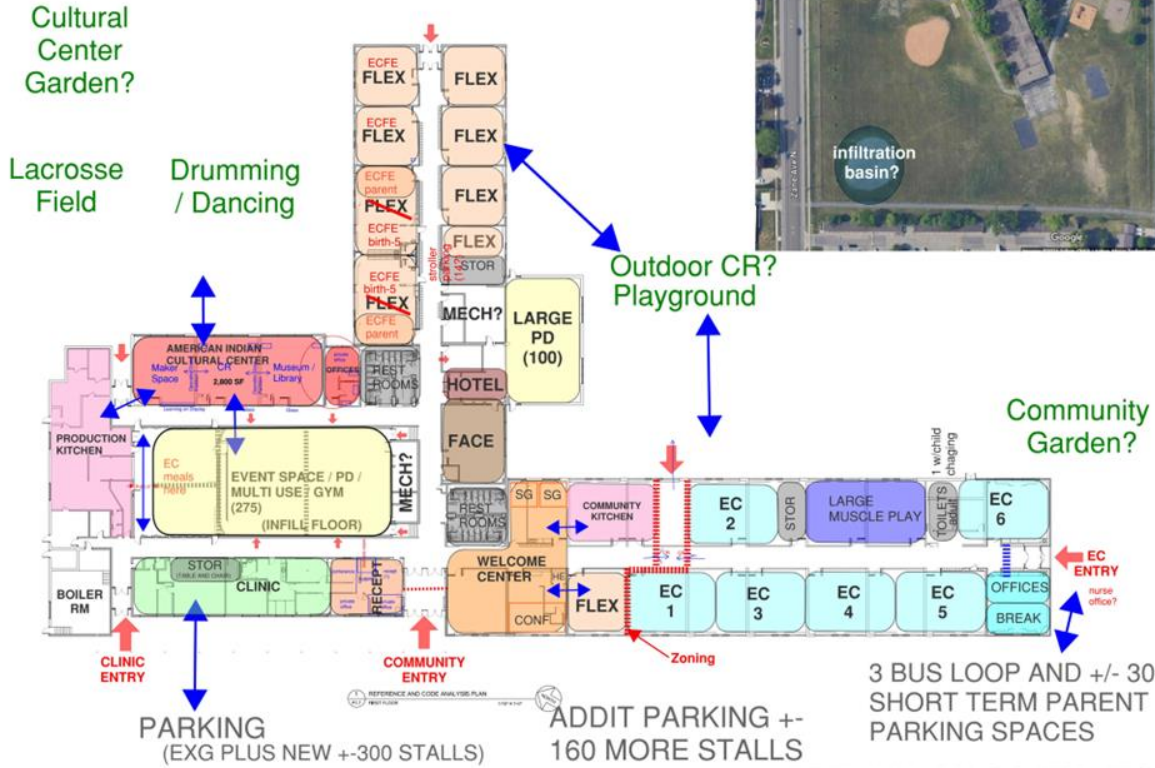


School Based Health Center (SBHC)

- ▶ Ongoing exploration of best practices for developing a sustainable school-based health center (SBHC) has led to the conclusion that the repurposed site is not the most suitable location.
- ▶ Best practices for establishing a sustainable school-based health center (SBHC) have shown that such clinics should be located in schools with a large student population to ensure that medical care is easily accessible during the school day, thus reducing out of seat time for students.

Health Related Services

- Early Childhood Screening
Appointments
- Free Pediatric Dental Care Clinics
- Vaccine Clinics/Health on the Go
- Early Childhood Mental Health Supports
- Pediatric Vision Care Clinics



Multi-use Spaces

- Defining Multi-Use
- Current Multi-Use examples and process
- Range of spaces on current thinking

Timeline

- ▶ Reminders **now until June 2025**.
- ▶ Event(s) to celebrate Crest View **May 2024 and onward**.
- ▶ Opportunity to preview transferring school(s) via meetings at the sites in **late September 2024**.
- ▶ Construction at Crest View to start **summer 2025**.
- ▶ Crest View staff and students begin their new journeys at transferring schools in **September 2025**.
- ▶ Newly repurposed site to tentatively open **September 2026**.

Next steps

- ▶ Provide ongoing community input opportunities for multi-use spaces.
- ▶ Detailed information will continue to be shared via
 - district279.org/BetterFuture (improvements to site)
 - district279.org/Repurposing (transition plans for Crest View families and staff)

Thank you.

Osseo Area Schools

Proposed Board of Education July-December 2024 Agenda/Calendar

	July	August	September	October	November	December
District Policy		<ul style="list-style-type: none"> ● Policy Committee Mtg (8/20/24) 		<ul style="list-style-type: none"> ● Policy Committee Mtg (10/8/24) 		<ul style="list-style-type: none"> ● Policy Committee Mtg (12/10/24)
Op Oversight	<p>Regular Meeting (7/23/24)</p> <ul style="list-style-type: none"> ● Consent agenda (teacher contracts) ● Gifts to the district ● Electric bus contract <p>(brief meeting to act on required business)</p>	<p>Work Session (8/20/24)</p> <ul style="list-style-type: none"> ● 2024-25 Strategic Priorities and Operational Plan 279Online Update ● Board calendar review <p>Regular Mtg (8/27/24)</p> <ul style="list-style-type: none"> ● Superintendent’s Report ● Non-public contracts for Student Services ● BBF Update Presentation ● Summer Programming Report Presentation ● Contract approvals ● Negotiation Strat Mtg (closed) 	<p>Work Session (9/10/24)</p> <ul style="list-style-type: none"> ● Attendance boundary changes: overview, timeline and process ● Repurpose site: communications and engagement plan ● Board calendar review <p>Hold for Extra Work Session 9/17/24</p> <p>Regular Mtg (9/24/24)</p> <ul style="list-style-type: none"> ● Introduction of Student Board Representatives ● Superintendent’s Report ● Preliminary Levy (action item with presentation) ● Preliminary FY 2024 Financial Report (presentation) ● General Liability Insurance Renewal ● Negotiation Strat Mtg (closed) 	<p>Work Session (10/8/24)</p> <ul style="list-style-type: none"> ● ELA Curriculum and Structured Literacy Review <p>Regular Mtg (10/22/24)</p> <ul style="list-style-type: none"> ● Student Board Representatives Report ● Superintendent’s Report ● Students Connecting Through International Service ● Contract ratifications ● Lobbyist contract approval ● Negotiation Strategies Meeting (closed session) 	<p>Special Mtg – Election Canvassing (11/12/24) followed by</p> <p>Work Session</p> <ul style="list-style-type: none"> ● World’s Best Workforce Results ● LRF Budget Parameters ● LTFM Update <p>Regular Mtg (11/29/24)</p> <ul style="list-style-type: none"> ● Student Board Representatives Report ● Superintendent’s Report ● FY24 Financial Audit Results presentation ● World’s Best Workforce Results ● Combined polling place resolution ● Negotiation Strategies Meeting (closed session) 	<p>Work Session (12/10/24)</p> <ul style="list-style-type: none"> ● Legislative Platform ● Enrollment Update <p>Regular Mtg (12/17/24)</p> <ul style="list-style-type: none"> ● Student Board Representatives Report ● Superintendent’s Report ● Legislative Platform ● Final Levy/Truth in Taxation ● Contract ratifications ● Negotiation Strategies Meeting (closed session)
Board Gov./ Self Gov.		<p>Work Session</p> <ul style="list-style-type: none"> ● Standing item: Board calendar review 	<p>Work Session</p> <ul style="list-style-type: none"> ● Standing item: Board calendar review (15 min) ● Board PD Session or Extra Work session (9/17/24) 	<p>Work Session</p> <ul style="list-style-type: none"> ● Standing item: Board calendar review (15 min) 	<p>Work Session</p> <ul style="list-style-type: none"> ● Standing item: Board calendar review (15 min) 	<p>Work Session</p> <ul style="list-style-type: none"> ● Standing item: Board calendar review (15 min)
Sup Relations			Establish individual board member meetings process (frequency TBD)	Develop superintendent evaluation/goal setting process		
Public Engage-ment						