

Board of Education Tom Buffett President, 2025-2026	Okemos Public Schools board@okemosk12.net http://okemosk12.net	4406 Okemos Road Okemos, Michigan 48864 Phone: 517-706-5010
---	--	---

This agenda is for general informational purposes only. Based on board policy, the board of education may revise this agenda and may take up other issues at the meeting.

6:15 PM

**MEETING AGENDA
Monday, February 24, 2025**

Community Conference Rm

CALL TO ORDER

Tom Buffett, Jason Burns, Katie Cavanaugh, Shulawn Doxie, Andrew Phelps, Leeni Shrestha and Jillian Winn

WELCOME AND MEETING FORMAT (2 Min)

Welcome to this regular meeting of the Okemos Board of Education held in public for the purpose of conducting the business of the school board.

There are two opportunities for public comment: Citizens who wish to address agenda or non-agenda items will have an opportunity at the beginning of the meeting, as well as near the end of the meeting. In-person individuals who wish to address the board must complete a blue form, located with the agendas near the room entrance, and present it to the board’s secretary prior to the start of the agenda item. Virtual participants must submit their name and address in a message through the chat box located in Zoom’s meeting controls prior to the start of the agenda item.

At the appropriate point in the agenda, the board president will call upon individuals who have submitted a blue card or chat message and that individual’s microphone will be un-muted for their comments.

ADJOURN TO EXECUTIVE SESSION – Contract Negotiations & Personnel Matter

Pursuant to Section 8(c) and 8(a) of the Open Meetings Act, the board of education may adjourn to Executive Session for the purpose of contract negotiations and a personnel matter.

That the board adjourn to Executive Session pursuant to Section 8(c) of the Open Meetings Act for the purpose of discussing contract negotiations (Roll Call).

RECONVENE

Tom Buffett, Jason Burns, Katie Cavanaugh, Shulawn Doxie, Andrew Phelps, Leeni Shrestha and Jillian Winn

DISCUSSION MOVED FORWARD: 2025-2026 Budget Development

Finance Director Elizabeth Lentz will provide information regarding the development of the 2025-2026 budget, including preliminary assumptions.

DISCUSSION MOVED FORWARD: Community Education Update

Superintendent Hood will provide an update regarding Community Education's Childcare programming.

CITIZENS ADDRESS AGENDA AND NON-AGENDA ITEMS

At this time in the meeting, citizens have an opportunity to address the board regarding items of interest that that may or may not be part of the evening’s agenda. Citizens are required to limit comments to three minutes, except when this requirement is waived by the board president during the meeting. A designated timekeeper will communicate to the individual who is addressing the board at three minutes. The board highly values public comment and input; however, the board meeting format is designed to facilitate the evening’s agenda and, therefore, restricts board members from engaging in conversation with speakers or immediately responding to questions. Questions and concerns may be addressed by the board later in the agenda and may be assigned for follow-up by the board or superintendent at a later date.

HIGH SCHOOL STUDENT REPORTS/REQUESTS (5 Min)

The high school student representative will highlight events and issues of interest and take questions from the board.

SUPERINTENDENT REPORTS/REQUESTS (10 Min)

The superintendent will highlight events and issues of interest and take questions from the board.

BOARD REPORTS/REQUESTS (10 Min)

The board will acknowledge receipt of correspondence.

Individual board members may highlight other events and issues of interest and request follow-up on other matters of concern.

ACTION ITEMS

Within Action Items, there is a Consent Agenda to expedite the business of the board which groups a number of items together to be dealt with by one action of the board. However, items in the consent agenda may be extracted by individual board member request for further discussion or clarification.

CONSENT AGENDA (5 Min)

In an effort to expedite the business of the board of education, but in no way meant to diminish the importance of each item, a Consent Agenda has been developed.

That the board approve items 1 through 4 for immediate implementation and appropriate action.

Item 1: Approval of the Minutes of the Regular Meeting of February 10, 2025; Item 2: Approval of the Minutes of the Executive Session Meeting of February 10, 2025; Item 3: Approval of the Minutes of the Special Meeting of February 18, 2025; and Item 4: Approval of the Minutes of the Executive Session Meeting of February 18, 2025.

OTHER ACTION ITEMS

The Other Action Items require additional discussion prior to board action.

MASB Election

Board members have received information on candidates seeking election to the board of directors of the Michigan Association of School Boards (MASB). The election ballot must be completed and returned by March 5, 2025.

Okemos may vote on candidates from Region 7, which this year is for one, three-year term. Members will discuss their selection to vote for.

That the board select _____ as the Region 7 candidate of its choice to complete the election ballot for members of the 2025 board of directors of the Michigan Association of School Boards.

2022 Bond Purchases

Representatives from Veridas, TowerPinkster and Christman provided an update regarding the 2022 bond, including bid package #8 award recommendations.

That the Board award contracts not to exceed \$3,104,136 for the trade contractors listed below and to assign those contracts to The Christman Company pursuant to the construction manager-as-constructor project delivery method: LD Clark Company; Proline Concrete Construction; Davenport Masonry, Inc.; Custom Steel Fabricators, LLC; C&I Building Maintenance, Inc.; Aaron Glass Company, Inc.; Moore Trospen Construction, Inc.; Grand River Interiors & Plaster, LLC; Integrity Interiors, Inc.; H&H Painting Company Inc.; Brigade Fire Protection; Applegate Inc. Meyer Electric, Inc.; and The Boelter Companies, Inc.

Board Policy - Final Reading

The board approved first reading of these policies during its meeting of January 13, 2025. These policies were then posted to the district's website for public review/comment for 30 days or more per board policy.

3102 Smoking, Tobacco Products, Drugs, and Alcohol
3106 Booster Clubs, PTOs, and Other Support Groups
3119 Experimental or Pilot Programs
3207 School Activities Fund
3211 Post-Issuance Tax Compliance
3301 Purchasing and Procurement
3306 Construction Bidding
3307 Construction Administration
3408 Firearms and Weapons
3410 Opioid Antagonist
4101 Non-Discrimination
4105 Disability Workplace Accommodations for Employees and Applicants
4105A Pregnancy Workplace Accommodations for Employees and Applicants
4105B Religious Workplace Accommodations for Employees and Applicants
4106 Family and Medical Leave Act (FMLA)
4107 Military Leave
4109 Break Time For Nursing Mothers
4201 Employee Ethics and Standards
4202 Children’s Protective Services (CPS) and Adult Protective Services (APS) Reporting and Student Safety and Welfare
4206 Employment Contracts
4207 Third Party Contracting of Non-Instructional Support Services
4215 District Technology and Acceptable Use
4228 No Expectation of Privacy
4229 Acceptable Use of Generative Artificial Intelligence
4401 Definition
4507 Termination
4603 Performance Evaluation
5103 Search and Seizure
5105 Collaboration with Outside Entities
5202 Unlawful Discrimination, Harassment, and Retaliation Against Students
5203 Hazing
5204 Student Appearance and Dress Code
5206 Student Discipline
5206A- Student Discipline Due Process
5206B Student Discipline - Students with Disabilities
5206D Student Discipline - Enrollment Following Misconduct at Another Public or Nonpublic School
5208 Student Acceptable Use and Internet Safety
5208.01 Acceptable Use of Generative Artificial Intelligence
5212 Registered Sex Offenders - Students
5301 Compulsory Attendance, Absenteeism, and Truancy
5303 Student Enrollment and Withdrawal
5304 Nonpublic School Students Part-Time Attendance
5416 Homebound and Hospitalized Instruction
5506 Field Trips
5510 Student-Initiated, Non-Curricular Clubs
5601 Special Education
5701 Abuse and Neglect
5711 Toilet Training
5713 Immunizations and Communicable Diseases
5804 Work Permits

That the board waive the reading and adopt final reading of board policies 3102 Smoking, Tobacco Products, Drugs, and Alcohol 3106 Booster Clubs, PTOs, and Other Support Groups 3119 Experimental or Pilot Programs 3207 School Activities Fund 3211 Post-Issuance Tax Compliance

3301 Purchasing and Procurement 3306 Construction Bidding 3307 Construction Administration
3408 Firearms and Weapons 3410 Opioid Antagonist 4101 Non-Discrimination 4105 Disability
Workplace Accommodations for Employees and Applicants 4105A Pregnancy Workplace
Accommodations for Employees and Applicants 4105B Religious Workplace Accommodations for
Employees and Applicants 4106 Family and Medical Leave Act (FMLA) 4107 Military Leave 4109
Break Time For Nursing Mothers 4201 Employee Ethics and Standards 4202 Children's Protective
Services (CPS) and Adult Protective Services (APS) Reporting and Student Safety and Welfare
4206 Employment Contracts 4207 Third Party Contracting 4215 District Technology and
Acceptable Use Policy 4228 No Expectation of Privacy 4229 Acceptable Use of Generative
Artificial Intelligence 4401 Definition 4507 Termination 4603 Performance Evaluation 5103 Search
and Seizure 5105 Collaboration with Outside Entities 5202 Unlawful Discrimination, Harassment,
and Retaliation Against Students 5203 Hazing 5204 Student Appearance and Dress Code 5206
Student Discipline 5206A- Student Discipline Due Process 5206B Student Discipline - Students
with Disabilities 5206D Student Discipline - Enrollment Following Misconduct at Another Public or
Nonpublic School 5208 Student Acceptable Use and Internet Safety 5208.01 Acceptable Use of
Generative Artificial Intelligence 5212 Registered Sex Offenders - Students 5301 Compulsory
Attendance, Absenteeism, and Truancy 5303 Student Enrollment and Withdrawal 5304 Nonpublic
School Students Part-Time Attendance 5416 Homebound and Hospitalized Instruction 5506 Field
Trips 5510 Student-Initiated, Non-Curricular Clubs 5601 Special Education 5701 Abuse and
Neglect 5711 Toilet Training 5713 Immunizations and Communicable Diseases 5804 Work Permits.

DISCUSSION ITEMS

Discussion items are intended to provide an opportunity for review of material and interaction concerning the individual items. Action is not taken during the board meeting. Discussion items may be acted upon by the Board of Education at a later date. The board president may move a discussion item forward in the meeting agenda to facilitate timely discussion and/or community input on that discussion item.

COMMENTS FROM THE PUBLIC

At this time in the meeting, citizens have an opportunity to address the board regarding any item(s) of interest. Individual comments at this time will be limited to three minutes but may be extended at the discretion of the board president. A designated timekeeper will communicate to the individual who is addressing the board at three minutes. The board highly values public comment; however, our meeting format does not allow the board to engage in conversation with speakers. Questions or concerns may be assigned for follow-up by the board or the administration at a later date.

OTHER MATTERS (5 Min)

ADJOURN

2025-26 Preliminary Budget Assumptions Budget Development Timelines

Board Meeting • 02/24/2025



Executive Budget Proposal

- **Foundation:** +\$392; 4.1% Increase from \$9,608 to \$10,000
 - Okemos impact \$1,817,700
- **Transportation** - Continues funding
- **School Safety/Mental Health** - Continues funding
- **Child Nutrition:** Continues funding for free breakfast & lunch
- **Early Learning Opportunities:** Additional funding for GSRP 4 year old programs, pilot program called Strong Beginnings for 3 year olds

Executive Budget Proposal - Retirement

Section	2024-25	2025-26 Proposal	Okemos Budget Impact, est
147a(4) MPSERS Rate Cap Reduction	1-time, \$'s to offset retirement costs	Eliminated; rate cap reduced from 20.96% to 15.21%	(\$1,882,774)
147g MPSERS Healthcare Reimbursement	Intent is to reimburse eligible employees 3% "Premium Subsidy Healthcare Benefit"	3% subsidy switches to employer paid, approx. ½ to be reimbursed in 25-26 only	\$287,000 (executive proposal)
			(\$1,595,774)

Retirement Impact - Okemos

	2024-25	2025-26	Change in % Points
Pension Normal Cost	9.15%	10.87%	+1.72
Pension UAAL	20.96%	15.21%	(5.75)
Pension Total Rate	30.11%	26.08%	(4.03)
Health Normal Cost	1.25%	3.83%	2.58
Employer Capped Rate	31.36%	29.91%	(1.45)

Budget Impact = +\$498,180

Executive Budget Proposal Summary

Section	Budget Impact, of New State Aid	
	Passes as is	Passes at 50%
Foundation, +\$392 executive	\$1,817,700	\$908,850
147a(4) MPSERS Rate Cap Reduction, 24-25 1x revenue	(1,882,774)	(1,882,774)
147g MPSERS Employer Healthcare Reimbursement	287,000	143,500
Revenue Summary	+\$221,926	(\$830,424)
Retirement Expenditure, decrease	+498,180	+498,180
	+\$702,106 +\$150/pupil	(\$332,244) (\$70)/pupil

2024-25 Preliminary Budget Revisions #2 & Carryforward Impact on 2025-26 Budget

	Budget Impact
2024-25 Net Change in Fund Balance, Budget Revision #1	(\$1,639,177)
ISD Revenue, SE & Medicaid	267,500
	(1,371,677)
2024-24 Non-Structural, 1x revisions	
Reductions in Grants	(621,327)
Environmental remediation	939,973
Curriculum/New textbooks	(205,000)
ISD SE Funding, addl due to 23-24 final & medicaid	(435,500)
SE State Aid, prior year final reconciliation	(286,620)
Equipment Needs	170,500
Kindergarten Classroom Aides	40,000
All Other 1-time	(49,851)
Net Impact of Changes	(\$447,825)
Carry forward effect on General Fund Budget (6/30/26)	(\$1,819,502)

2025-26 Expenditure Increases/Revenue Decreases

<u>Decreases to General Fund</u>	<u>Optimistic</u>	<u>Most Likely</u>	<u>Worst Case</u>
Health insurance (MESSA 1/2 yr +16%)*	290,844	290,844	290,844
MPSERS Cost Offset, Reduced UAAL by 5.75pts	1,882,774	1,882,774	1,882,774
ISD Special Education Funding, change in formula	470,000	470,000	470,000
20f Hold Harmless Guarantee	239,545	239,545	239,545
24-25 Wage/Position adjustments to full year	11,951	11,951	11,951
	\$2,895,114	\$2,895,114	\$2,895,114

Compensation Reference

Steps = \$927,110

1% wages = \$467,935

2025-26 Revenue Increases/Expenditure Decreases

<u>Increases to General Fund</u>	<u>Optimistic</u>	<u>Most Likely</u>	<u>Worst Case</u>
Increase in Foundation Allowance (\$392,\$196,\$100)	1,817,700	908,850	463,700
MPSERS rate decrease (-1.45 pts to 29.91%)	498,180	498,180	498,180
MPSERS 3% Health Subsidy Reimb, 1-time	287,000	143,500	0
Increased Spec Ed Categorical State Aid	366,525	366,525	366,525
	\$2,969,405	\$1,917,055	\$1,328,405

2025-26 Projected Impact on General Fund Budget

	<u>Optimistic</u>	<u>Most Likely</u>	<u>Worst Case</u>
Expenditure Increases/Revenue Decreases	(\$2,895,114)	(\$2,895,114)	(\$2,895,114)
Revenue Increases/Expenditures Decreases	2,969,405	1,917,055	1,328,405
Net Impact on General Fund Balance	\$74,291	(\$978,059)	(\$1,566,709)
Carryforward effect on GF Budget (6/30/26)	(1,819,502)	(1,819,502)	(1,819,502)
Total Impact on General Fund Balance	(\$1,745,211)	(\$2,797,561)	(\$3,386,211)
<i>Fund Balance as a % of Expenditures</i>	11.2%	9.7%	8.8%

Budget Development Tentative Timeline

2024-25 Fiscal Year	
Monitor Revenue and Expense Activity	Feb– May
2 nd Budget Revision	May/June

Slide under development

2025-26 Fiscal Year	
Budget Review & Discussion Leadership	Jan/Feb
Budget Development & Updated Assumptions	Feb– May (Board)
Budget Work Session	TBD
Proposed Budget	June 9
Budget Adoption	June 23

**Okemos Public Schools
2024-25 1-Time Budget Items
Effect on Carry Forward Fund Balance
2025-26 Proposed Budget**

	<u>Most Likely</u>
2024-25 Net Change in Fund Balance, Budget Revision #1	(1,639,177)
Preliminary 2nd Budget Revisions, May/June	
Ingham ISD SE Revenue, on-going	193,000
Ingham ISD Medicaid Revenue, 1x	74,500
	<u>267,500</u>
	(1,371,677)
2024-25 Non-Structural, 1x revisions, do not repeat (removed from 25-26 preliminary assumptions)	
Grant Funding Sources Expired	
ESSER Grant	(268,079)
Health Resource Advocate Grant (nurses)	(69,300)
Safety/Security & Mental Health, 31aa	(283,948)
	<u>(621,327)</u>
Non-Grant Related	
Environmental remediation	939,973
Curriculum/New textbooks	(205,000)
ISD SE Funding, addl due to 23-24 final & 24-25 medicaid	(435,500)
SE State Aid, prior year final reconciliation	(286,620)
Equipment Needs	170,500
Kindergarten Classroom Aides	40,000
All Other 1x	(49,851)
	<u>173,502</u>
Total Non-Structural, 1x revisions	<u>(447,825)</u>
Carry forward effect on General Fund Budget (6/30/26)	<u><u>(1,819,502)</u></u>

Okemos Public Schools
Preliminary Budget Assumptions
2025-26

Increased Expenditures/Decreased Revenue	Optimistic	Most Likely	Worst Case
Health insurance (MESSA 1/2 yr +16%)*	290,844	290,844	290,844
MPSERS Cost Offset, Reduced UAAL by 5.75pts	1,882,774	1,882,774	1,882,774
ISD Special Education Funding, change in funding formula	470,000	470,000	470,000
20f Hold Harmless Guarantee	239,545	239,545	239,545
24-25 Wage/Position adjustments to full year	11,951	11,951	11,951
	\$2,895,114	\$2,895,114	\$2,895,114
Increased Revenue/Decreased Expenditures	Optimistic	Most Likely	Worst Case
Increase in per-pupil Foundation Allowance (\$392,\$196,\$100)	1,817,700	908,850	463,700
MPSERS rate decrease (-1.45 pts to 29.91%, eff. 10/1/25)	498,180	498,180	498,180
MPSERS 3% Health Subsidy Reimb, 1-time	287,000	143,500	0
Increased Special Ed Categorical (CY est + 24-25 timing delay)	366,525	366,525	366,525
	\$2,969,405	\$1,917,055	\$1,328,405
Projected Impact on General Fund Balance	\$74,291	(\$978,059)	(\$1,566,709)
Carry forward effect on General Fund Budget (6/30/26)	(1,819,502)	(1,819,502)	(1,819,502)
Total Impact on General Fund Balance	(\$1,745,211)	(\$2,797,561)	(\$3,386,211)

* - *subject to negotiations*

Additional Information

Compensation reference - Steps ~ \$927,110

Compensation reference - 1% of wages ~ \$467,935

Fund Balance - as percentage of expenditures

Audited 6/30/21	\$ 8,093,308	14.9%
Audited 6/30/22	\$ 8,677,164	14.6%
Audited 6/30/23	\$ 9,922,868	14.6%
Audited 6/30/24	\$ 10,928,320	15.6%
2024-25 Original Budget	\$ 9,187,199	12.9%
2024-25 Revised Budget	\$ 9,289,144	12.9%
Pro Forma 6/30/26		
<i>optimistic</i>	\$ 7,811,433	11.2%
<i>most likely</i>	\$ 6,759,083	9.7%
<i>worst case</i>	\$ 6,170,433	8.8%

Community Education Childcare Programming

February 24, 2025



Goals for Tonight

- Acknowledge community concerns and impacts on families
- Provide transparency, data, and historical overview
- Understanding of childcare programming and how it fits into the district
- Overview of local child care programs and rates
- Financial snapshot from sustainable programming and current
- Why we are here, what we will do
- Sustainable options and considerations

Community Ed Programming

- A valued **service** provided to our community, *not something we are mandated to provide: childcare, recreational sports, facility rentals, special programs*
- **Separate from K-12** programming and funding
- Program sustainability is goal; ideally contributes to general fund, minimally does not cost general fund
- Infant and toddler programming has always been subsidized by other programs (e.g. before-/after-care)

STRATEGIC PLAN

What is our vision for the future?

Where do we want to focus our efforts and resources?

Community Ed Programming

Early Childhood

Childcare

Preschool

Recreation & Enrichment

Facilities rentals

Rec sports

Enrichment activities

What is our vision for the future of early childhood programming in OPS, and what decisions can we make now that will get us there?

**Overview of
Community Education
Childcare and Preschool
Programming**

What We Currently Offer

INFANTS

TODDLER 1's

TODDLER 2's

Year-round, full-day programming

3 YEAR OLDS

Year-round
preschool
program

4 YEAR OLDS

GSRP
classrooms
(4) (School
year only)

PPK (3-5 year olds)

Before- and aftercare
program (PreK-8)

½ day Montessori
Enrichment

Childcare/Preschool Programming

Benefits

Early intervention for our youngest students sets them up for success in K-12 (academically, behaviorally, socially)

Provides a valued service to our community and staff, additional childcare option for community

Challenges

Great Start to Quality program rating

Staffing - Retention (wages) and attendance

Sustainability - Impact on K-12 general fund

Management/administrative bandwidth

Childcare Offerings by Local School Districts

School District	Infants	1's	2's	Preschool (3's/4's)	Before/After Care
Okemos	X	X	X	X	X
East Lansing					Provided by City of East Lansing
Haslett				MSU CDL	X
Holt	X	X	X	X	X
Mason				X	X
Waverly				X	X
Williamston				X	X

Rate Comparison

Organization	Infants (per week)	1's (per week)	2's (per week)	Preschool (3's/4's) (per week)
Okemos	\$335	\$320	\$320	\$190
Local districts	\$297.50	\$290	\$290	\$193
Okemos	\$335	\$320	\$320	\$190
Private centers	\$397	\$397	\$397	\$344.50

Before Care (per day)	After Care (per day)
\$11	\$15
\$8.91	\$12.04
\$11	\$15
\$13.20	\$13.20

How We Got Here...

School-aged
B/A care
enrollment
decline

Staffing costs
increased

Classroom
capacity
maximums
not met

Tuition rate
increases not
sustaining
programs

Grants used
to sustain
programming
ended

Change in
structure and
management
of programs

Waitlists not
efficiently
utilized

Great Start to
Quality Rating
decline

External factors
Internal factors

...and Changes We'll Make

Increased oversight by leadership

Utilize waitlists more effectively

Enroll to classroom to capacity

Increase advertisement of programs and openings

Monitor tuition to meet financial needs

Increase transparency and parent engagement

ENROLLMENT: 2018 (sustainable) and current (not sustainable)

Past & Present

	Infants			Toddler 1's			Toddler 2's		
	Enrollment	State Ratio	OPS Capacity	Enrollment	State Ratio	OPS Capacity	Enrollment	State Ratio	OPS Capacity
2018-19	7	1 to 4	9	11	1 to 4	12	11	1 to 4	12
Present	6	1 to 4	12	10	1 to 4	12	11	1 to 4	12

	2018-19	Present	Change
	Average weekly total (all sites)	Average weekly total (all sites)	Average weekly total (all sites)
Before Care	176	148	28 ↓
After Care	272	245	27 ↓

Past & Present

Three and Four Year Old Programs		
	2018-19	Present
Tuition only	One 3's classroom (full day) One 3's classroom (½ day) One PPK classroom (½ day) One 3's and 4's Enrichment classroom (½ day)	One 3's classroom (full day) One PPK classroom (½ day) One 3's and 4's Enrichment classroom (½ day)
Grant-funded only		Three 4-day GSRP classrooms 4 yr olds (full day) One 5-day GSRP classroom 4 yr olds (full day)
Blended (tuition & grant-funded)	Three classrooms (½ day)	

Financial Overview

Okemos Multi-Year Budget Summary*

		2024-25	2025-26	2026-27
Fund Balance Net Impact (rev's/exp's), from prior year		376,095	(1,639,177)	(2,658,317)
	One-Time Budget Impact in prior year, reversed in current year	(285,822)	248,002	(183,250)
Net Impact after reversal of prior year 1x adjustments		90,273	(1,391,175)	(2,841,567)
Current Year Variables				
	Grant Funding Sources Expired	(1,725,372)	(621,327)	(378,690)
	New Budget Variables	(4,078)	(645,815)	(700,000)
	Net Changes, current year variables	(1,729,450)	(1,267,142)	(1,078,690)
Fund Balance Net Impact (rev's/exp's)		(1,639,177)	(2,658,317)	(3,920,257)

**from 2/3/25 board work session*

Community Education Budget Impact

	Net Revenue/(Expense)	
	2018-19	2024-25
Infants	(37,553)	(96,737)
Toddler 1's	(20,221)	(64,019)
Toddler 2's	(4,048)	(87,407)
Young Preschool, 3's	13,695	930
Older Preschool, 4's	64,730	(20,212) *
Montessori Enrichment	(20,234)	(81,956)
Before/After Care Programs	652,540	323,188
All Other, includes program administration, summer, break days, montessori classroom	(269,662)	(356,951)
Total Childcare	379,247	(383,164)
Enrichment, Youth Sports, etc	(20,810)	24,850
Facility Rentals	28,544	(64,152)
GSRP, grant	0	0
	386,981	(422,466)

*Older 4's converted from tuition based to GSRP grant funded mid-way through 2024-25

Note: Expenditure total only includes direct, program costs.

Indirect costs are not accounted for separately within the community education/ childcare budgets.

Indirect cost examples include:

- Accounting & payroll
- Human resources
- Custodial/maintenance
- Administrative oversight

Past & Present

TUITION (per week)		
	2018-19	Present
Infants	\$250	\$335
Toddler 1's	\$239	\$320
Toddler 2's	\$239	\$320
3-year-old full-day classroom	\$162	\$190
PPK	\$125	\$135.88
Enrichment	\$107.25	\$117.50

	2018-19	Present
Before Care	\$41.50	\$35-\$55
After Care	\$58	\$70-\$75

Options for Sustainability

Options for Moving Forward

1

Maintain Most Programming, Share Tuition Increases

Assumptions: 75% capacity in Edgewood tuition-based programs, maintain school-aged Before and Aftercare enrollment

2

Maintain Most Programming, Target Tuition Increases

Assumptions: 75% capacity in Edgewood tuition-based programs, maintain school-aged Before and Aftercare enrollment

3

Expand Preschool Offerings, Discontinue Infant & Toddler Programs

4

Delay Decision Until Strategic Plan is Revised

Approximate cost (with no tuition changes) is \$20,000+ per month.

Option 1: Maintain Most Programming, Share Tuition Increases

July 1 Tuition increases (~20%) for:

- Infants
- Toddlers
- Three-year-old care
- Before-/aftercare (all ages)

Restructure OPM enrichment to GSRP blend (3/4 yr old), with cap at 20, OPM preschoolers provided no before or aftercare

Maintain capacity in all classrooms.

Assumptions: 75% capacity in Edgewood tuition-based programs, maintain school-aged Before and Aftercare enrollment

Option 2: Maintain Most Programming, Target Increases

Higher tuition increases (+40%) for:

- Infants
- Toddlers

Lower tuition increases for:

- Three-year-old care, +30%
- Before-/aftercare (all ages), +10%

July 1 effective date

Restructure OPM enrichment to GSRP blend (3/4 yr old), with cap at 20, OPM preschoolers provided no before or aftercare

Maintain capacity in all classrooms.

Assumptions: 75% capacity in Edgewood tuition based programs, maintain school-aged Before and Aftercare enrollment

Impacts of Options 1 & 2

Benefits

Preserves our infant and toddler programs and benefits of those programs

Retain current staffing

Enroll more students in infant and toddler classrooms

Challenges

Must meet assumed enrollment thresholds

Increased tuition for families

Reliance on other programs to offset infant and toddler care

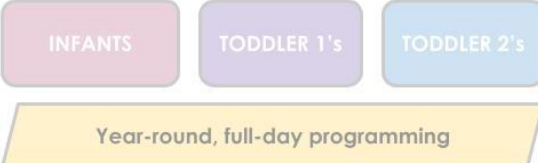
Changes expansion opportunities

District resources stretched thin (e.g. management/staffing)

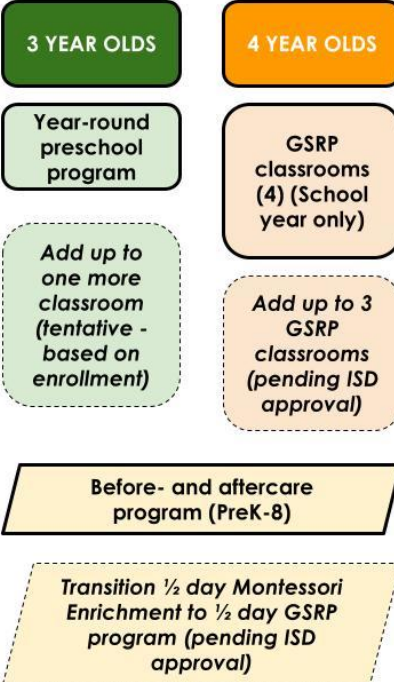
1&2

Option 3 - Expand Preschool, Discontinue Infant & Toddler Programs - August 15

Discontinue Infant, Toddler 1, and Toddler 2 programming



Expand preschool offerings



Rate increases to occur per routine, annual schedule.

Impacts of Option 3

Benefits

Reduces strain on district K-12 budget more immediately

Focus on school-aged preschool (skills, behaviors, socialization)

Challenges

Removes valued infant/toddler option for our families, staff

Potential loss of staff

Potential GSRP oversaturation of market

Potential loss of students for K-12 program

Families need more lead time

Option 4 - Delay Decision

Delay decision until strategic plan is revised (June)

Approximate cost (with no tuition changes) is \$20,000 per month

This is not recommended as it does not address sustainability and does not provide clear direction for families or staff

Weekly Tuition Rate Summary by Option

		Option 1: Shared Tuition Increase		Option 2: Targeted Tuition Increase		Option 3: 3 & Above Programming	
	2024-25	Rate Change	2025-26	Rate Change	2025-26	Rate Change	2025-26
Infants	\$335	20%	\$402	40%	\$469		
Toddler 1's	\$320	20%	\$384	40%	\$448		
Toddler 2's	\$320	20%	\$384	40%	\$448		
Young Preschool, 3's	\$190	20%	\$228	30%	\$247	25%	\$238
Older Preschool, 4's - 100% grant funded							
Montessori Enrichment	\$118	20%	\$142	30%	\$153	25%	\$148
Before Care Programs	\$35-\$55	20%	\$42-\$66	10%	\$39-\$61	5%	\$37-\$58
After Care Programs	\$70-\$75	20%	\$84-\$90	10%	\$77-\$83	5%	\$74-\$79
All Other	various	20%		10%		5%	
<i>Note: Actual rates may vary slightly due to rounding</i>							

Other Considerations

Open Classrooms at Edgewood; Additional GSRP

Current Program:

- One infant classroom
- One toddler classroom (1 year olds)
- One toddler classroom (2 year olds)
- One 3-year-old classroom
- Three 4-day GSRP classrooms
- One 5-day GSRP classroom
- One ECSE classroom

Future Program Additions:

- Add one to two more 3-year-old classrooms
- Add two to three more 5-day GSRP classrooms

Can be implement
regardless of option to
different degrees

Impacts number of
potential GSRP rooms

Administrative oversight

Potential Rental of Rooms at Edgewood

- District may consider rental of open rooms to other community programs as a revenue enhancement
- One inquiry this week with potential renter

What is our vision for the future of early childhood programming in OPS, and what decisions can we make now that will get us there?

Options for Moving Forward

1

Maintain Most Programming, Share Tuition Increases

Assumptions: 75% capacity in Edgewood tuition-based programs, maintain school-aged Before and Aftercare enrollment

2

Maintain Most Programming, Target Tuition Increases

Assumptions: 75% capacity in Edgewood tuition-based programs, maintain school-aged Before and Aftercare enrollment

3

Expand Preschool Offerings, Discontinue Infant & Toddler Programs

No Sooner than August 15th to honor community feedback.

4

Delay Decision Until Strategic Plan is Revised

Approximate cost (with no tuition changes) is \$20,000+ per month.

Plan for Sustainability - Options 1,2

- ❑ Perform quarterly audits: enrollment, revenue/expenses, staffing levels, etc.
 - ❑ June 2025, Sept. 2025, Jan. 2026, April 2026 (tentative)
- ❑ Tuition Study (Spring annually for Summer implementation)
- ❑ Report out to Board of Education and Community Ed families (Board and local meetings)
 - ❑ Forecast effectiveness of strategies
 - ❑ Share audit findings
 - ❑ Forecast additional steps and timelines
 - ❑ Suggest 6-month lead if program is to close

1,2

Options for Moving Forward

1

Maintain Most Programming, Share Tuition Increases

Assumption: capacity in tuition-based maintain sc Before and enrollment

Implement Option 1 or 2 with updates to BOE and Community on sustainability and next steps

75% Edgewood programs, school-aged aftercare

2

Maintain Most Programming, Target Tuition Increases

3

Expand Preschool Offerings, Discontinue Infant & Toddler Programs

While recommended by administration, recognize community impact and need for additional time and rationale for families.

4

Delay Decision Until Strategic Plan Review

Approximate cost (with changes) is \$20,000+ per month.

Questions

OPM Preschool B/A

Current Program

- Four ½-day PPK classrooms
- One ½-day enrichment classroom (currently held at Edgewood)
- Aftercare for enrichment (currently held at Edgewood, not sustainable with low numbers)

Future Program Additions

- Offer one ⅓-day GSRP in the afternoon while maintaining current PPK programming
- Discontinue B&A for preschool students at OPM

	2018-19	2023 & Present	Change
Before Care	9	4	5 ↓
After Care	15	5	10 ↓

Community Education				
2024-25 Financial Comparison to 2018-19				
			2018-19	2024-25
Childcare				
	Revenue		2,139,812	1,823,488
	Expenditures		(1,760,565)	(2,206,652)
	Net Revenue/(Expense)		379,247	(383,164)
Enrichment, Youth Sports, etc				
	Revenue		498,877	491,161
	Expenditures		(519,687)	(466,311)
	Net Revenue/(Expense)		(20,810)	24,850
Facility Rentals				
	Revenue		133,597	77,000
	Expenditures		(105,053)	(141,152)
	Net Revenue/(Expense)		28,544	(64,152)
GSRP, grant				
	Revenue		93,786	688,523
	Expenditures		(93,786)	(688,523)
	Net Revenue/(Expense)		0	0
Total Community Education				
	Revenue		2,866,072	3,080,172
	Expenditures		(2,479,091)	(3,502,638)
	Net Revenue/(Expense)		386,981	(422,466)

Childcare Only			
2024-25 Financial Comparison to 2018-19			
		2018-19	2024-25
Infants			
Revenue		85,823	97,900
Expenditures		(123,376)	(194,637)
Net Revenue/(Expense)		(37,553)	(96,737)
Toddler 1's			
Revenue		114,972	162,000
Expenditures		(135,193)	(226,019)
Net Revenue/(Expense)		(20,221)	(64,019)
Toddler 2's			
Revenue		129,740	144,500
Expenditures		(133,788)	(231,907)
Net Revenue/(Expense)		(4,048)	(87,407)
Young Preschool, 3's			
Revenue		153,104	183,500
Expenditures		(139,409)	(182,570)
Net Revenue/(Expense)		13,695	930
Older Preschool, 4's			
Revenue		286,695	52,000
Expenditures		(221,965)	(72,212)
Net Revenue/(Expense)		64,730	(20,212)
<div style="display: flex; justify-content: space-between;"> Note: Older 4's converted from tuition based to GSRP grant funded mid-way through 2024-25, moving forward the tuition based program will not exist. </div>			
Montessori Enrichment			
Revenue		73,084	68,000
Expenditures		(93,318)	(149,956)
Net Revenue/(Expense)		(20,234)	(81,956)
Before/After Care Programs			
Revenue		946,607	813,100
Expenditures		(294,067)	(489,912)
Net Revenue/(Expense)		652,540	323,188
All Other, includes program administration, summer, break days, montessori classroom			
Revenue		349,787	302,488
Expenditures		(619,449)	(659,439)
Net Revenue/(Expense)		(269,662)	(356,951)
Total Childcare			
Revenue		2,139,812	1,823,488
Expenditures		(1,760,565)	(2,206,652)
Net Revenue/(Expense)		379,247	(383,164)

Childcare					
Financial Analysis					
Option 1: Shared Tuition Increase					
			2025-26	Rate Change	2025-26
Infants					
	Revenue	+3 infants	110,680	20%	132,816
	Expenditures		(194,637)		(194,637)
	Net Revenue/(Expense)		(83,957)		(61,821)
Toddler 1's					
	Revenue		162,000	20%	194,400
	Expenditures		(226,019)		(226,019)
	Net Revenue/(Expense)		(64,019)		(31,619)
Toddler 2's					
	Revenue		144,500	20%	173,400
	Expenditures		(231,907)		(231,907)
	Net Revenue/(Expense)		(87,407)		(58,507)
Young Preschool, 3's					
	Revenue		183,500	20%	220,200
	Expenditures		(182,570)		(182,570)
	Net Revenue/(Expense)		930		37,630
Older Preschool, 4's - 100% grant funded					
	Revenue		0		0
	Expenditures		0		0
	Net Revenue/(Expense)		0		0
Montessori Enrichment					
	Revenue		68,000	20%	81,600
	Expenditures		(149,956)		(149,956)
	Net Revenue/(Expense)		(81,956)		(68,356)
Before/After Care Programs					
	Revenue		813,100	20%	975,720
	Expenditures		(489,912)		(489,912)
	Net Revenue/(Expense)		323,188		485,808
All Other, includes program administration, summer, break days, montessori classroom					
	Revenue		302,488	20%	362,986
	Expenditures		(659,439)		(659,439)
	Net Revenue/(Expense)		(356,951)		(296,453)
Total Childcare					
	Revenue		1,784,268		2,141,122
	Expenditures		(2,134,440)		(2,134,440)
	Net Revenue/(Expense)		(350,172)		6,682

Childcare					
Financial Analysis					
Option 2: Targeted Tuition Increases					
			2025-26	Rate Change	2025-26
Infants					
Revenue	+3 infants		110,680	40%	154,952
Expenditures			(194,637)		(194,637)
Net Revenue/(Expense)			(83,957)		(39,685)
Toddler 1's					
Revenue			162,000	40%	226,800
Expenditures			(226,019)		(226,019)
Net Revenue/(Expense)			(64,019)		781
Toddler 2's					
Revenue			144,500	40%	202,300
Expenditures			(231,907)		(231,907)
Net Revenue/(Expense)			(87,407)		(29,607)
Young Preschool, 3's					
Revenue			183,500	30%	238,550
Expenditures			(182,570)		(182,570)
Net Revenue/(Expense)			930		55,980
Older Preschool, 4's - 100% grant funded					
Revenue			0		0
Expenditures			0		0
Net Revenue/(Expense)			0		0
Montessori Enrichment					
Revenue			68,000	30%	88,400
Expenditures			(149,956)		(149,956)
Net Revenue/(Expense)			(81,956)		(61,556)
Before/After Care Programs					
Revenue			813,100	10%	894,410
Expenditures			(489,912)		(489,912)
Net Revenue/(Expense)			323,188		404,498
All Other, includes program administration, summer, break days, montessori classroom					
Revenue			302,488	10%	332,737
Expenditures			(659,439)		(659,439)
Net Revenue/(Expense)			(356,951)		(326,702)
Total Childcare					
Revenue			1,784,268		2,138,149
Expenditures			(2,134,440)		(2,134,440)
Net Revenue/(Expense)			(350,172)		3,709

Childcare				
Financial Analysis				
Option 3: 3 & Above Programming Only				
		2025-26	Rate Change	2025-26
Infants				
Revenue		0		0
Expenditures		0		0
Net Revenue/(Expense)		0		0
Toddler 1's				
Revenue		0		0
Expenditures		0		0
Net Revenue/(Expense)		0		0
Toddler 2's				
Revenue		0		0
Expenditures		0		0
Net Revenue/(Expense)		0		0
Young Preschool, 3's				
Revenue		183,500	25%	229,375
Expenditures		(182,570)		(182,570)
Net Revenue/(Expense)		930		46,805
Older Preschool, 4's - 100% grant funded				
Revenue		0		0
Expenditures		0		0
Net Revenue/(Expense)		0		0
Montessori Enrichment				
Revenue		68,000	25%	85,000
Expenditures		(149,956)		(149,956)
Net Revenue/(Expense)		(81,956)		(64,956)
Before/After Care Programs				
Revenue		813,100	5%	853,755
Expenditures		(489,912)		(489,912)
Net Revenue/(Expense)		323,188		363,843
All Other, includes program administration, summer, break days, montessori classroom				
Revenue		302,488	5%	317,612
Expenditures		(659,439)		(659,439)
Net Revenue/(Expense)		(356,951)		(341,827)
Total Childcare				
Revenue		1,367,088		1,485,742
Expenditures		(1,481,877)		(1,481,877)
Net Revenue/(Expense)		(114,789)		3,865



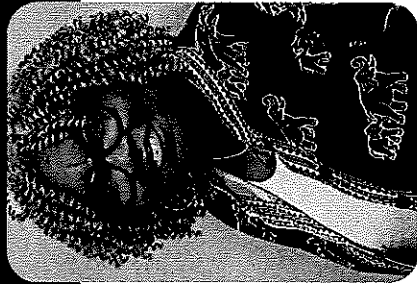
MASB
MICHIGAN ASSOCIATION
OF SCHOOL BOARDS



BOARD *of*
DIRECTORS
ELECTIONS

2025

Region 6 (One-Year Term)



Elizabeth O'Dell

St. Joseph County ISD, St. Joseph County

Time served
on this board:

27 years

Offices held:

President, Vice
President, Secretary
and Treasurer

MASB Certification:

Certified Boardmember Award
Award of Merit
Award of Distinction
Master Boardmember
Master Diamond

Election Statement:

The MASB is our collective voice on education at the state level, and it allows board members to be informed about educational issues. I think the Director for the Region's role is to ensure that our voice is heard as the MASB discusses issues and concerns. The Past President, Kathleen Moore, was able to model how to accomplish that task positively. I cannot fill her shoes; I am unsure if anyone can.

I have been an active St. Joseph County ISD member for 27 years. I have taken advantage of opportunities to learn about best practices for serving and supporting the education process in our communities. I have held various positions, from member to president.

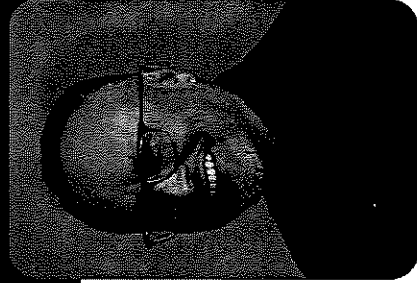
I have worked with the parent-teacher association, band, and athletic booster clubs. I have served on the special education advisory committee. I have enjoyed serving as a delegate to MASB membership meetings in my county. Through this process, I have learned what various boards are concerned about as they present resolutions and amendments to the Board of Directors, which has deepened my understanding of how our collective needs are connected.

I have and will continue to advocate for a strong public education. My children and I are products of public education. I obtained my bachelor's degree from Ball State University and my graduate degree from Western Michigan University.

I am not new to service, advocacy, listening, and striving to assist others to make positive change. I am a retired CEO of St. Joseph County Community Mental Health and use my time currently as a volunteer in my church, for American Red Cross Disaster Relief, as a substitute teacher, as well as working with a variety of social action services through my sorority, Delta Sigma Theta Sorority, Incorporated.

I am seeking this position to advocate for the needs of our small and large communities. I am a champion for public education, and with your vote, I can take my commitment to this service to the next level.

Region 7 (Three-Year Term)



Guillermo Z Lopez (INCUMBENT)

Lansing School District, Ingham County

Time served
on this board:

24 years

Offices held:

President, and
Treasurer

MASB Certification:

Certified Boardmember Award
Award of Merit
Award of Distinction
Master Boardmember

Election Statement:

As we welcome the new year, we are also aware that changes in education funding from the federal government are very possible. As your director from Region 7, I will work closely with our MASB staff and pay close attention to how these changes may affect our educational system here in Michigan. I will also continue to support the work MASB has done in the area of equity in education in all its forms. Additionally, I will continue supporting districts that need training but are not in a position to cover the costs. I very much appreciate MASB staff who are continually looking at ways that we can expand these funding efforts. Finally, I hope you have enjoyed the newsletter coming directly from Region 7.

Region 7 (Three-Year Term)



Cory McLaughlin

Jefferson Schools, Monroe County

Time served
on this board:

11 years

Offices held:
President and
Secretary

MASB Certification:

Certified Boardmember (CBA 101)

Region 7 (Three-Year Term)

Jack Temsey

Eaton RESA, Eaton County

Time served on
another board:

8 years

Pottersville
Public Schools

Offices held:
Secretary and
Treasurer

Time served
on this board:

8 years

Offices held:
President, Vice
President, Secretary
and Treasurer

MASB Certification:

Certified Boardmember Award

Award of Merit

Award of Distinction

Master Boardmember

Master Diamond

Master Platinum

Election Statement:

Since joining the Jefferson School Board in 2014, I have been dedicated to ensuring that every decision we make is in the best interest of our students. I am passionate about creating opportunities for all learners and believe that every child deserves access to a high-quality education that meets their unique needs and aspirations.

Career and Technical Education (CTE) programs are a priority for me because they provide students with real-world skills and open doors to meaningful careers. I also strongly advocate for advanced classes to challenge and inspire high-achieving students, ensuring they are prepared for post-secondary education and beyond. Equally important is my commitment to special education, as I believe every child, regardless of ability, deserves the resources and support to thrive.

My experience on the Jefferson School Board has taught me the importance of collaboration, fiscal responsibility and community engagement. I bring a student-centered approach to decision-making and strive to build partnerships that benefit our schools. Serving on the MASB Board of Directors would allow me to expand this work, sharing best practices and advocating for policies that empower all districts to succeed.

I am running for this position because I am deeply committed to advancing education in Michigan and ensuring that every child has access to the tools and opportunities they need to achieve their full potential.

Election Statement:

As a Board of Education Trustee, I feel we are the voice for our children. We need to utilize this voice to ensure we can offer our children the education they deserve, regardless of the struggles that we face behind the scenes.

We need to direct this voice to those who create legislation that we feel will adversely affect public education, as well as remember to offer praise to those who show us favor and offer to help. I believe the voice of our boards and communities can make a difference. I have strived to become the best board member I can be. One of the ways that I have tried to accomplish this is by becoming certified through the MASB's CBA program. I have gained a wealth of knowledge by attending classes, conferences and other various events as well as networking with board members from around the state.

Public education is as diverse as our country. There are no single fix-all solutions that work for every school district. I feel that bringing the voice of small communities and small districts to the forefront is important. I would like to continue advocating to provide

adequate and equitable funding for ALL districts. Adequate funding is sufficient funding to provide basic schooling. Equitable funding is based on fairness.

I previously served the Pottersville Public Schools Board of Education for eight years. During this time, I served on the Policy, Community Relations and Technology Committees, as well as Secretary and Treasurer. I have been an Eaton RESA Trustee for eight years, serving on the Building and Grounds and Finance and Audit Committees as well as Secretary, Vice President and Treasurer. I am currently serving again as President.

Additionally, I have served MASB as a member of the Curriculum and Instruction Committee and Government Relations Committee plus served as its Vice Chairman, also on the Resolutions and Bylaws committee, and as its Vice Chairman. I am currently serving again on the Government Relations Committee as its Vice Chairman.

I would be honored to serve on the MASB Board of Directors to represent you, our Region, and our students. I want to bring your voices to the table to further benefit the future of public education.

OKEMOS PUBLIC SCHOOLS

2022 Bond Program Update

February 10, 2025

TowerPinkster
Architecture · Engineering · Interiors

CHRISTMAN
BUILDING SINCE 1894

 **VERIDUS**
GROUP



Agenda

- Introductions
- BOE Roles and Responsibilities
- BP8 Scope
- BP8 Project Timeline
- BP8 Bid Results Summary
- BOE Bond Update Schedule





Veridus Group

- Allison Duncan - Project Executive

Tower Pinkster

- Andrew Howard - Project Manager (Online)

The Christman Company

- Nate Hubert - Senior Project Manager
- Shane Lounsberry - Project Manager





BOARD OF EDUCATION

INFORMATIONAL UPDATES

- Bond Draw Schedule
- Design Milestone Updates
- Bid Results
- Construction Updates
- Communication Plans

BOARD ACTIONS

- District Guiding Principles
- 2022 Bond Program
- Permit & Inspection Services
- Bond Sales, 4 Series
- Approve Bids > \$29,000

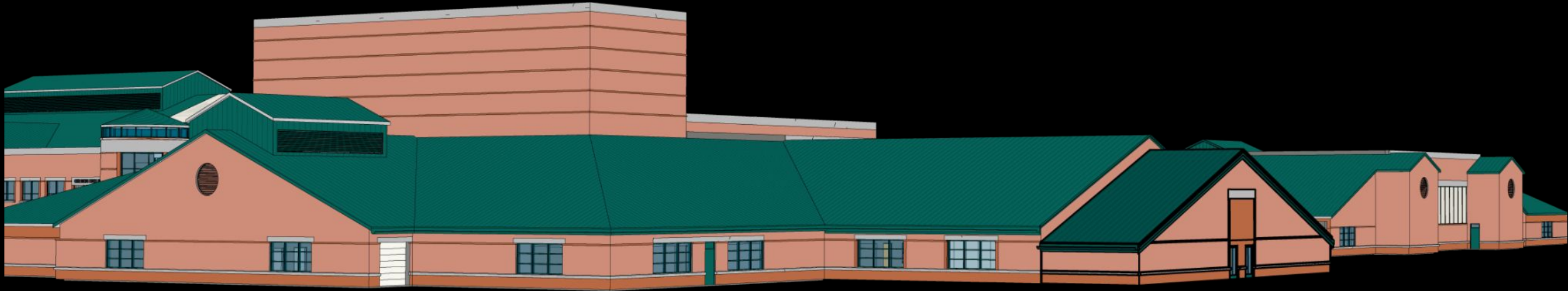


Bid Package 8: High School Pressing Needs

- Music Expansion (Unfulfilled from 2019 Bond)
- Lighting Upgrades
- Bathroom Renovation (Public Gym & Auditorium Bathroom)
- Kitchen & Servery Improvements (Summer 2026)
- Greenhouse Exterior Improvements

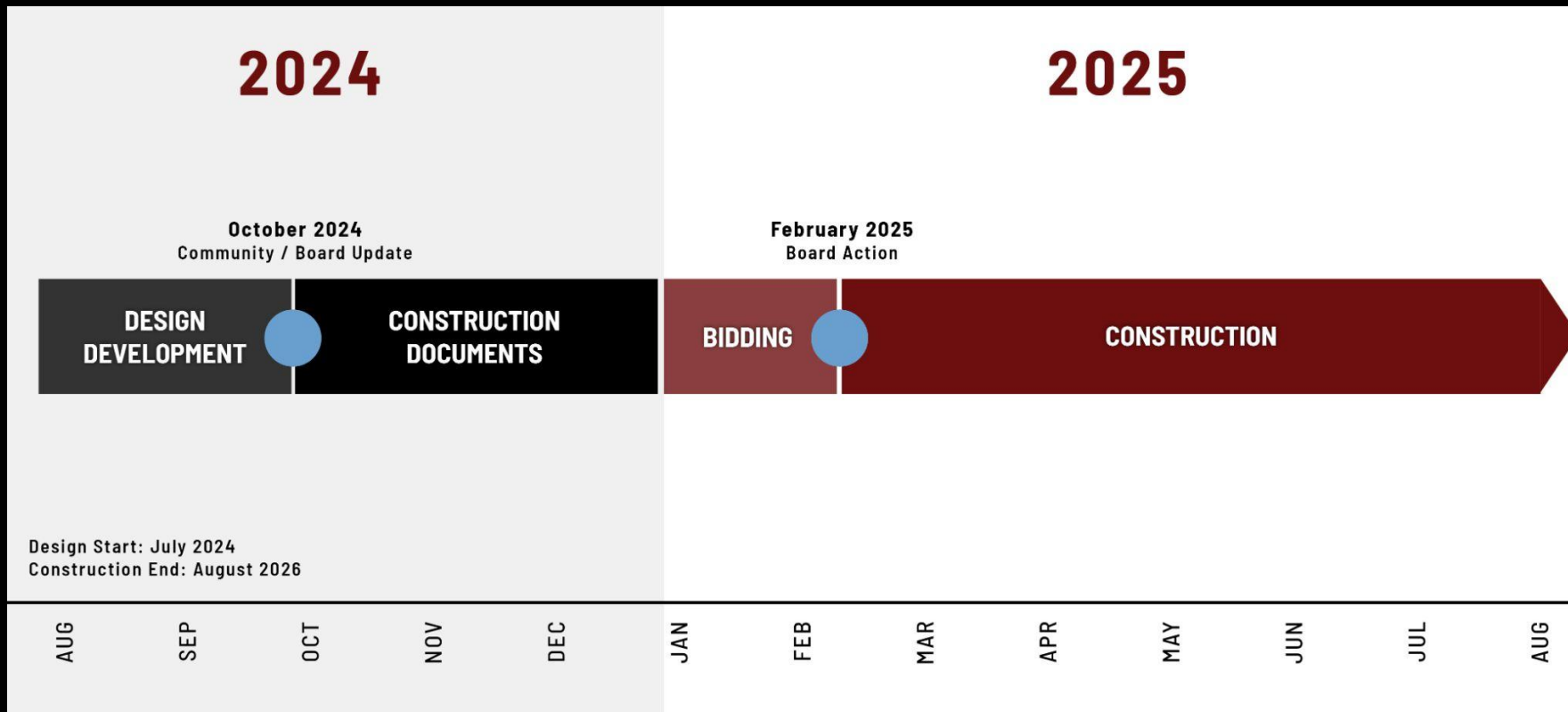


HIGH SCHOOL MUSIC EXPANSION





Bid Package 8: High School Pressing Needs





Bid Package 8 Summary

- Trade Contractor Estimated Budget: \$4,609,329.00
- Trade Contractor Recommended Award Total: \$3,104,136.00
- Trade Contractor Scope: HS band remodel & addition. Food service equipment upgrades. Greenhouse brick/block repair. Various door replacements.

Bid Day Coverage

- 51 bids received over 14 categories averaging 3.6 bids/category

Results

- Recommended Bids for Contract Award by Category

Request for Approval of Contract Awards



2025 BOE Projected Bond Update Schedule

Month	Date	Bid Package	BOE Agenda
February	2/24/25	BP8 OHS Music	Approve Bids - BOARD ACTION
March	3/10/25	BP7 New Cornell	Design Update - New Cornell Elementary
April	4/14/25	BP3 New CMS	BOE Walkthrough and Construction Update
June	TBD	2022 BOND	Bond Overview
August	8/6/25	BP8 OHS Music	Construction Update
August	8/6/25	BP7 New Cornell	Design Update - New Cornell Elementary



OKEMOS PUBLIC SCHOOLS
BOND CONSTRUCTION
AT A GLANCE

NEW CHIPPEWA MIDDLE SCHOOL
Construction begins: **Summer 2024**
Construction complete: **Summer 2026**

TEMPORARY CORNELL ELEMENTARY
Students/Staff relocate to existing Chippewa Middle School:
Summer 2026

NEW CORNELL ELEMENTARY
Demolish existing Cornell: **Summer 2026**
Construction complete: **Summer 2028**
Cornell students start in new school: **August 2028**

NEW KINAWA MIDDLE SCHOOL
Demolish existing Chippewa: **Summer 2028**
Construction Complete: **Summer 2030**
Kinawa students start in new school: **August 2030**

UNDER CONSTRUCTION

STAY UP TO DATE WITH CONSTRUCTION PROJECTS AT OKEMOSBOND.NET

BOND MILESTONE DATES

2022 BOND PROGRAM UPDATES

okemosbond.net



QUESTIONS

QUESTIONS

Project: 2022 Bond Program, Bid Package 8
 Job No.: 221126-800
 Client: Okemos Public Schools
 Date: Monday, February 10, 2025

Chippewa Middle School

I. Budget and Scope Overview

- a. Trade Contractor Initial Estimate: \$4,609,329
- b. Facilities Included:
 - i. Okemos High School
- c. Bid Results:
 - i. Work Categories: 14
 - ii. Bids Received: 51
 - iii. Average Bids Per Category: 3.6

2. Contract Award Recommendations

Work Category	Bidder	Address	Proposal Amount
02 - Earthwork and Site Utilities	LD Clark Company	7707 Rickle St, Lansing, MI 48917	\$ 126,850.00
05 - Concrete	Proline Concrete Construction	4185 Proline Ct Ste A, Dorr, MI 49323	\$ 104,790.00
11 - Masonry	Davenport Masonry, Inc.	1445 N. Edgar Rd, Holt, MI 48842	\$ 579,000.00
12 - Structural Steel	Custom Steel Fabricators, LLC	5550 Clay, Wyoming, MI 49548	\$ 78,400.00
14 - Roofing	C&I Building Maintenance, Inc.	1895 15 Mile Rd NE, Sparta, MI 49345	\$ 121,080.00
18 - Glass/Glazing/ Aluminum	Aaron Glass Company, Inc.	2421 N. Larch St, Lansing, MI 48906	\$ 339,975.00
20 - General Trades/Carpentry	Moore Trosper Construction, Inc.	2442 Keller Rd, Holt, MI 48842	\$ 383,300.00
21 - Metal Walls & Ceiling	Grand River Interiors & Plaster, LLC	6850 Aurelius Rd, Lansing, MI 48911	\$ 83,200.00
22 - Flooring & Hard Tile	Integrity Interiors, Inc.	622 E Cesar E Chavez Ave, Lansing, MI 48906	\$ 146,630.00
24 - Painting & Wall Coverings	H&H Painting Company Inc.	1735 Westnedge Ave, Kalamazoo, MI 49007	\$ 46,250.00
26 - Fire Protection	Brigade Fire Protection	5701 Safety Dr, Belmont, MI 49306	\$ 31,270.00
27 - Mechanical & Plumbing	Applegate Inc.	485 E. South St., Jackson, MI 49203	\$ 521,000.00
28- Electrical	Meyer Electric, Inc.	108 Chipman St, Owosso, MI 48867	\$ 312,000.00
29 - Food Service Equipment	The Boelter Companies, Inc.	N22 W23684 Ridgeview Pkwy W, Waukesha, WI 53188	\$ 230,391.00
		Total	\$ 3,104,136.00

3. Overall Bid Results

Work Category	Bidder	Address	Proposal Amount
02 - Earthwork and Site Utilities	LD Clark Company	7707 Rickle St, Lansing, MI 48917	\$ 126,850.00
02 -	Iron Horse Excavation LLC	5501 East Clinton Trail, Eaton Rapids, MI 48827	\$ 134,000.00
02 -	Woodhull Construction Co, Inc.	9609 E. Price Rd, Laingsburg, MI 48848	\$ 179,000.00
02 -	E.T. Mackenzie Company	4248 W. Saginaw Hwy, Grand Ledge, MI 48837	\$ 179,073.00
05 - Concrete	Proline Concrete Construction	4185 Proline Ct Ste A, Dorr, MI 49323	\$ 104,790.00
05 -	LD Clark Company	7707 Rickle St, Lansing, MI 48917	\$ 122,282.00
05 -	Fessler & Bowman, Inc.	9335 Enterprise Way, Holly, MI 48442	\$ 166,178.00
11 - Masonry	Davenport Masonry, Inc.	1445 N. Edgar Rd, Holt, MI 48842	\$ 579,000.00
11 -	Schiffer Mason Contractors, Inc.	2190 Delhi NE, Holt, MI 48842	\$ 656,800.00
12 - Structural Steel	Custom Steel Fabricators, LLC	5550 Clay, Wyoming, MI 49548	\$ 78,400.00
12 -	Duke and Duke Services, Inc	25566 Pennsylvania Ave, Taylor, MI 48180	\$ 85,520.00
12 -	Eagle Enterprise of Michigan, Inc.	13425 W. Grand River, Eagle, MI 48822	\$ 94,900.00
12 -	Redinger Steel Erectors, Inc.	10525 Bennett Dr, Morrice, MI 48857	\$ 105,500.00
12 -	Suburban Fabrication, LLC	5383 Perry Dr, Waterford, MI 48329	\$ 137,100.00
14 - Roofing	C&I Building Maintenance, Inc.	1895 15 Mile Rd NE, Sparta, MI 49345	\$ 121,080.00
14 -	Christen Detroit	20420 Stephens St, Saint Clare Shores, MI 48080	\$ 140,000.00
14 -	Eagle Enterprise of Michigan, Inc.	13425 W. Grand River, Eagle, MI 48822	\$ 173,500.00
14 -	CEI Michigan, LLC	7750 E. M-36, Whitmore Lake, MI 48189	\$ 182,100.00
18 - Glass/Glazing/Aluminum	Aaron Glass Company, Inc.	2421 N. Larch St, Lansing, MI 48906	\$ 339,975.00
18 -	Lansing Glass Company	330 Baker St, Lansing, MI 48910	\$ 385,929.00
18 -	Curtis Glass Company, Inc.	1900 East Maple, Troy, MI 48083	Did not read (incomplete bid)
20 - General Trades/Carpentry	Moore Trosper Construction, Inc.	2442 Keller Rd, Holt, MI 48842	\$ 383,300.00
20 -	Christman Constructors Inc.	324 E South St, Lansing, MI	\$ 457,700.00
20 -	LJ Trumble Builders, LLC	6850 Aurelius Rd, Lansing, MI 48911	\$ 498,750.00
20 -	E&L Construction Group, Inc.	3040 Airpark Drive South, Flint, MI 48507	\$ 572,000.00
20 -	Dobie Construction	15733 S. Hinman Rd, Eagle, MI 48822	\$ 618,000.00

21 - Metal Walls & Ceiling	Grand River Interiors & Plaster, LLC	6850 Aurelius Rd, Lansing, MI 48911	\$ 83,200.00
21 -	William C. Reichenbach Co.	2869 Jolly Rd, Okemos, MI 48864	\$ 130,000.00
21 -	Integrity Interiors, Inc.	622 E Cesar E Chavez Ave, Lansing, MI 48906	\$ 140,000.00
21 -	Christman Constructors Inc	324 E South St, Lansing, MI	\$ 147,700.00
22 - Flooring & Hard Tile	Integrity Interiors, Inc.	622 E Cesar E Chavez Ave, Lansing, MI 48906	\$ 146,630.00
22 -	Lansing Tile & Mosaic, Inc.	2210 Apollo Dr., Lansing, MI 48906	\$ 160,000.00
22 -	William C. Reichenbach Co.	2869 Jolly Rd, Okemos, MI 48864	\$ 196,425.00
22 -	MK Builders LLC	426 Business Centre Dr, Lansing, MI 48911	\$ 220,000.00
24 - Painting & Wall Coverings	H&H Painting Company Inc.	1735 Westnedge Ave, Kalamazoo, MI 49007	\$ 46,250.00
24 -	Vork Brothers Painting, LLC	188 N. Jefferson St., Zeeland, MI 49464	\$ 51,210.00
24 -	Ritter Painting Contractors, LLC	11910 S. Francis Rd., DeWitt, MI 48820	\$ 59,450.00
24 -	Detroit Spectrum Painters, Inc.	27560 College Park, Warren, MI 48088	\$ 70,000.00
24 -	R&L Painting, LLC	10220 W Herbison Rd, Eagle, MI 48822	\$ 71,585.00
26 - Fire Protection	Brigade Fire Protection	5701 Safety Dr, Belmont, MI 49306	\$ 31,270.00
26 -	Total Fire Protection, Inc.	5385 Patterson Ave, Grand Rapids, MI 49512	Did not read (incomplete Bid)
26 -	Wolverine Fire Protection Co.	8067 N. Dort Hwy, Mt. Morris, MI 48458	\$ 45,985.00
26 -	Hunter-Prell Company	149 Richmond Ave, Battle Creek, MI 49014	\$ 50,400.00
27 - Mechanical & Plumbing	Applegate Inc.	485 E. South St., Jackson, MI 49203	\$ 521,000.00
27 -	Professional Thermal Systems, Inc.	1256 Fendt Dr, Howell, MI 48843	\$ 845,000.00
27 -	Miller-Boldt, Inc.	21481 Carlo Dr, Clinton Twp, MI 48038	\$ 940,000.00
28 - Electrical	Meyer Electric, Inc.	108 Chipman St, Owosso, MI 48867	\$ 312,000.00
29 - Food Service Equipment	The Boelter Companies, Inc.	N22 W23684 Ridgeview Pkwy W, Waukesha, WI 53188	\$ 230,391.00
29 -	Great Lake West, LLC	48962 24th St, Mattawan, MI 49071	\$ 253,411.00
29 -	Stafford-Smith inc.	3414 S Burdick St, Kalamzoo, MI 49001	\$ 263,022.00

Series 3000: Operations, Finance, and Property

3100 General Operations

3102 Smoking, Tobacco Products, Drugs, and Alcohol

A. Definitions

1. "Electronic nicotine delivery system" includes the components, parts, and accessories of an electronic nicotine delivery system, such as e-liquids, cartridges, atomizers, cartomizers (atomizer plus replaceable fluid-filled cartridge), clearomizers, tank systems, flavors, and vials that contain e-liquids.
2. "Illegal drugs" means "controlled substances" under federal or Michigan law, anabolic steroids, human growth hormones or other performance-enhancing drugs, substances purported to be illegal, abusive, or performance-enhancing (i.e., synthetic "look-alike") drugs, or other drugs prohibited by law.
3. "Tobacco product" means any product made or derived from tobacco that is intended for human consumption, including any component, part, or accessory of a tobacco product (except for raw materials other than tobacco used in manufacturing a component, part, or accessory of a tobacco product).
4. "Use of tobacco product" means any of the following:
 - a. the carrying by a person of a lighted cigar, cigarette, pipe, other lighted smoking device, or electronic nicotine delivery system;
 - b. the inhaling or chewing of a tobacco product;
 - c. the placing of a tobacco product within a person's mouth; or
 - d. the smoking or use of electronic vapor or other substitute forms of cigarettes, clove cigarettes, other lighted smoking devices, or other electronic nicotine delivery systems for consuming or inhaling tobacco or any other substance.

B. Smoking and Tobacco Products

1. The District prohibits the sale, possession, distribution, dispensation, or use of tobacco products, electronic cigarettes, vaporizers, and all electronic nicotine delivery systems on property owned or operated by the District and at any District-related event. The Superintendent or designee will consider exceptions to this prohibition.

C. Drugs

1. The District prohibits the sale, possession, distribution, dispensation, or use of illegal drugs on property owned or operated by the District and at any District-related event.

2. The District prohibits the sale, possession, distribution, dispensation, or use of any products containing cannabidiol (commonly referred to as CBD) on property owned or operated by the District and at any District-related event. [The Superintendent or designee will consider exceptions to this prohibition.]
3. District personnel should review Policy 4210 for the District's drug- and alcohol-free workplace policy. Students should review Policy 5206 for the student discipline policy.

D. Alcohol

1. The District generally prohibits the sale, possession, distribution, dispensation, and use of alcohol on property owned or operated by the District and at any District-sponsored event, except as otherwise provided in this Policy.
2. With the written permission of the Superintendent or designee, the District may permit the lawful sale, possession, distribution, dispensation, and use of alcohol on school property if:
 - a. the District building is used for adult education or college extension courses;
 - b. the use or possession of alcohol is part of a generally recognized religious service or ceremony;
3. Any person or entity with the Superintendent's or designee's permission in subsection D.2 must comply with and enforce all applicable laws and regulations and obtain any legally-required permits. See also Policy 3304.
4. District personnel should review Policy 4210 for the District's drug- and alcohol-free workplace policy.

Legal authority: 20 USC 6081 et seq.; 21 USC 812, 21 USC 860; 21 CFR 1100.3; MCL 333.7201 et seq., 333.7410, 333.12601 et seq.; MCL 436.1904; MCL 722.642; MCL 750.473; Mich Admin Code R 338.3101 et seq.

Date adopted: July 1, 2024

Date revised: February 24, 2025

Series 3000: Operations, Finance, and Property

3100 General Operations

3106 *Booster Clubs, PTOs, and Other Support Groups*

The Board recognizes the important role of parent/guardian groups, booster clubs, parent/guardian-teacher organizations ("PTOs," "Family Councils"), and other organizations that support District programs and activities ("support groups"). This Policy clarifies the relationship between the District and support groups.

A. General Rules

1. A support group must comply with applicable laws, Policies, administrative guidelines, and internal procedures.
2. A support group is required to submit to the District Form 3106-F annually, whether a new or existing support group.
3. A support group will indicate on the District Form 3106-F whether it has completed the criteria to be designated as an external support group, as defined below. The Superintendent or designee, in their sole discretion, may designate a support group as an internal or external support group based on information provided and as defined below.

B. Internal Support Groups

1. An internal support group is a group of individuals, including parents/guardians, community members, and advisors, which is approved to operate within the District (e.g., internally conducted class or club fundraisers). An internal support group's activities require prior written approval of the Superintendent or designee.
2. Funds raised by an internal support group are public funds that must be deposited with the District, and any related expenditure must be approved by the Superintendent or designee.
3. The Board may revoke the approval of an internal support group at any time.

C. External Support Groups

1. An external support group is a group, separate from the District, that supports the District's programs and activities (e.g., booster clubs, both athletic and non-athletic, and PTOs). Unless the District agrees in writing, an external support group's activities are not District sponsored.
2. Funds raised by an external support group are not public funds and may not be held by, or deposited with, the District. An external support group must maintain a separate bank account and adopt written accounting procedures.

3. The District strongly encourages external support groups to seek the advice of legal counsel and form a separate legal entity.
4. The Superintendent or designee may request informational documents for verification purposes, including its accounting procedures, bylaws, insurance, and state or federal filings. The District's request and review of documentation is not an endorsement of its accuracy or legal sufficiency.
5. An external support group is prohibited from using the District's tax identification or employer identification number.
6. An external support group is not an agent of the District and may not represent that it is an agent of, or legally related to, the District.
7. An external support group may not represent or suggest that the District sponsors, endorses, or approves a fundraiser, annual participation fee, or solicitation without the District's written consent.

D. Violations

If a support group violates this Policy, the District may:

1. prohibit the group from using District facilities, soliciting funds on District property and at District-sponsored events, or using the District's name and logo; or
2. take any other action deemed appropriate by the Board.

Legal authority: MCL 380.11a, 380.601a; MCL 400.293

Date adopted: July 1, 2024

Date revised: February 24, 2025

Series 3000: Operations, Finance, and Property

3100 General Operations

3119 *Experimental or Pilot Programs*

The Board encourages innovation and creativity in its educational programming and general operations through the use of experimental or pilot programs (“Programs”). An experimental or pilot program is a trial program conducted to evaluate feasibility that may be converted to a regular program at the conclusion of the trial period.

Employees may submit a proposal for a Program to the Superintendent or designee for consideration. The Superintendent may also prepare a Program proposal.

A Program proposal must include the Program name, duration, purpose, and goals. Proposals must also include:

- A. A list of proposed materials and equipment to be used in the Program;
- B. Anticipated Program costs, including staffing costs;
- C. A proposed framework for implementing the Program and evaluating the Program’s success, including evaluation intervals and criteria; and
- D. Other relevant information, if requested by the Superintendent or designee.

The Superintendent or designee will review the Program proposal with an advisory council made up of teacher and administrative representatives and may seek clarification from the employee(s) that submitted the proposal, if prepared by employees other than the Superintendent. The Superintendent or designee may also amend the proposed Program in the Superintendent’s or designee’s sole discretion.

If the Superintendent or designee believes that the proposed Program (either as originally drafted or as amended) is in the best interests of the District, the Superintendent or designee will present the proposed Program to the Board for its consideration. The Program may be approved by the Board in its sole discretion.

The Board recognizes that experimental and pilot programs are a prohibited subject of bargaining under the Michigan Public Employment Relations Act. The Superintendent is encouraged to consult with legal counsel about legal implications of a Program before submitting it for Board approval.

At the conclusion of the Program, the Board may consider conversion of the Program to a regular program.

Legal Authority: MCL 380.11a; MCL 423.215(3)(h)

Date adopted: July 1, 2024

Date revised: February 24, 2025

Series 3000: Operations, Finance, and Property

3200 Finance and Borrowing

3207 School Activities Fund

A. Fiduciary Funds

A fiduciary fund is a fund held by the District, in its discretion, in a trustee or agency capacity, for a purpose within the scope of the District's legal authority. A fiduciary fund cannot be used by the District to support its operations. All District fiduciary funds must comply with generally accepted accounting principles and be held in accordance with the standards adopted by MDE in the Michigan Public School Accounting Manual (Bulletin 1022). A fiduciary fund may be a Custodial Fund or a Private-Purpose Trust Fund. For purposes of this Policy, capitalized terms not defined in this Policy are defined in Bulletin 1022.

1. Activity Funds

The District may not use an activity fund as defined by GASB Statement No. 84 and adopted by Bulletin 1022.

2. Custodial Funds

A Custodial Fund may be used only to hold assets and issue payments for a non-District Custodial Fund beneficiary. A Custodial Fund may be maintained if the account:

- a. does not contain the District's sole source revenue, such as state and federal aid, tax collections, and non-exchange transactions;
- b. does not designate the District as a beneficiary; and
- c. is not subject to District control, including administrative or financial control.

3. Private-Purpose Trust Funds

A Private-Purpose Trust Fund (Private Trust) may be maintained as a fiduciary fund if:

- a. a written, lawful trust agreement exists and is submitted to the District;
- b. the trust assets are for a private purpose;
- c. the District is not a beneficiary, directly or indirectly; and
- d. the District does not have control, including administrative or financial control, or the ability to make decisions about trust assets.

Trust funds failing to meet the above requirements must be treated as a public purpose trust fund, subject to Policy 3201.

B. Scholarship Funds

1. Private Trust Scholarships

An individual, estate, support group, club, company, or other donor that desires to establish a trust fund to benefit persons through scholarships must meet the criteria for a Private Trust described above.

2. Compact Scholarships

Public funds may not be used to administer scholarships, except that the District may establish and administer a scholarship fund for its students or graduates to attend a postsecondary educational institution if the fund arises from a compact between the State of Michigan and a federally-recognized Indian tribe under the Indian Gaming Regulatory Act.

Legal authority: MCL 380.11a(3), 380.11a(14); MDE *Michigan Public School Accounting Manual (Bulletin 1022)*; GASB Statement No. 84, *Fiduciary Activities*

Date adopted: July 1, 2024

Date revised: February 24, 2025

Series 3000: Operations, Finance, and Property

3200 Finance and Borrowing

3211 *Post-Issuance Tax Compliance*

A. Policy

Federal tax law requires that issuers of outstanding tax-exempt or tax credit debt obligations (“Obligations”) comply with certain post-issuance requirements in the Internal Revenue Code (IRC) and Treasury Regulations. Obligations include, but are not limited to, tax-exempt bonds, refunding bonds, tax credit bonds, installment and lease purchase agreements, lines of credit, state aid notes, and tax anticipation notes.

B. Policy Implementation

To preserve the tax-exempt or tax credit status of the Obligations and to comply with federal tax law after Obligations have been issued, the Board authorizes the Superintendent or designee to establish administrative guidelines in connection with Obligations to comply with federal tax law.

C. Designation of Debt Compliance Officer

The District's chief business official will be the debt compliance officer responsible for implementing this Policy (“Debt Compliance Officer”). In the absence of a chief business official, the Superintendent or designee will serve as the Debt Compliance Officer until a replacement Debt Compliance Officer is assigned. The Superintendent will ensure that a person serves in this position at all times. If the District contracts with a third party for business services, including another school district, the Superintendent or designee remains responsible for the oversight of the third-party Debt Compliance Officer.

D. Responsibilities of Debt Compliance Officer

The Debt Compliance Officer will be responsible for administration and oversight of post-issuance tax compliance requirements and other provisions of this Policy related to the District's Obligations, including implementation and compliance with remedial action procedures outlined below. The Debt Compliance Officer's responsibilities will include:

1. Overseeing and managing compliance with federal rules and regulations applicable to post-issuance tax compliance for all outstanding Obligations from the date of issuance through the date of maturity of such Obligations, including any refunding Obligations related to the original issuance of debt;
2. Consulting with bond counsel, financial advisors, and other professionals about non-compliance, if any, and required remedial actions as necessary;

3. Maintaining written records of expenditures and investments of Obligations in accordance with subsection G;
4. Supervising and ensuring timely filings of reports and forms required by state and federal agencies related to Obligations;
5. Providing written documentation and other requested disclosures, including to the District's bond counsel, financial advisors, and other professionals, upon request;
6. Monitoring arbitrage, yield restriction, and rebate requirements under IRC Section 148. This duty includes monitoring compliance with 6-month, 18-month, or 2-year spending exceptions, as applicable; and
7. Monitoring all record retention requirements and oversee compliance with record retention requirements set forth in this Policy.

E. Internal Written Procedures and Protocols

1. The Debt Compliance Officer will develop written internal controls and procedures related to post-issuance tax compliance that address at least the following:
 - a. Identifying and reporting non-compliance, including protocols for contacting bond counsel and financial advisors;
 - b. Monitoring compliance with arbitrage, yield restriction, and rebate requirements under IRC Section 148; and
 - c. Monitoring and tracking the use of bond-financed or refinanced assets, including identifying non-compliance and taking appropriate remedial action in accordance with Treasury Regulation 1.141-12.
2. Internal procedures and controls will provide for detailed written guidelines to be used for the purpose of identifying potential non-compliance. If non-compliance is confirmed, the Debt Compliance Officer will take immediate action to report and resolve non-compliance in accordance with the District's internal procedures and federal law and regulations.

F. Periodic Compliance Review

1. Annual Review. The Debt Compliance Officer will conduct an annual review of District records related to outstanding Obligations to ensure that such records, including tax documentation, are adequately maintained.
2. Periodic Review. The Debt Compliance Officer will review and update District records, including tax documentation, related to an Obligation upon the occurrence of any of the following events:
 - a. The retirement, defeasance, or refunding of an Obligation; and

- b. Upon the sale, re-purposing, change in use, or refinancing of property purchased with outstanding Obligations that remain outstanding.

G. Record Retention

The District will maintain detailed written records of all expenditures and investments of Obligations for the life of the Obligation, which will be maintained until final maturity. With respect to bond issues, the District will maintain records of all expenditures and investments for the life of the bonds, including any subsequent refunding bonds, plus 3 years.

H. Training and Education

The District will provide, at its cost, training for the Debt Compliance Officer. The Debt Compliance Officer will complete training at least annually. Annual training may be provided to additional personnel who assist the Debt Compliance Officer.

Legal Authority: IRC 148; Treasury Regulation 1.141-12

Date adopted: July 1, 2024

Date revised: February 24, 2025

Series 3000: Operations, Finance, and Property

2 3300 Facilities, Real, and Personal Property

3301 Purchasing and Procurement

This Policy applies to all purchases of materials, supplies, and equipment. Purchases acquired through lease financing are governed by this Policy, but true leases (i.e., rental agreements) are not.

A. Responsibility for Purchasing

The District's administration, under the Superintendent's supervision, may purchase items for the District, subject to Policy 2202 subsection C and any other parameters established by the Board.

B. When Competitive Bidding is Required

1. The District must competitively bid the purchase of an item or group of items costing an amount equal to or greater than the then-current state bid threshold published annually by MDE.
2. The District does not need to competitively bid a purchase in an emergency if competitive bidding is not required by law. Superintendent or designee shall review funding source to ensure compliance and must notify the Board of the expenditure and rationale.
3. The District will not artificially segregate purchases into smaller orders to avoid the bid threshold.

C. Bidding Procedure

1. The District may competitively bid a purchase using 1 or more of the following methods:
 - a. Requesting written price quotations from at least 3 known and practical vendors of an item;
 - b. Distributing a request for proposals to at least 3 known and practical vendors of an item;
 - c. Posting a request for proposals on the District's website or any other website that regularly informs vendors of bid opportunities;
 - d. Selecting a contract awarded to a winning bidder under a bid process operated by a reputable bid cooperative if the District determines, after reasonable due diligence, that the bid procedure used by the bid cooperative was fair and open, resulted in a bid award to the lowest responsible bidder, and the contract price is comparable to current market rates for the purchased item; or

- e. Any other process, in the Superintendent's or designee's discretion, that is likely to result in at least 3 known vendors providing bids for the item sought, regardless of whether at least 3 bids are actually received.
2. Each bidder responding to a request for proposals must certify that it is not an Iran-linked business as defined by MCL 129.312.
 3. Awarding Bids
 - a. If competitive bidding is required by law, any contract must be awarded by the Board to the lowest responsible bidder.
 - b. In determining bidder responsibility, the District may take 1 or more of the following into account:
 - The District's experience with the bidder;
 - Others' experience with the bidder;
 - The bidder's history of satisfactory performance or questionable litigation, protests, or disputes;
 - The bidder's capitalization and solvency;
 - The length of time the bidder has been engaged in its business;
 - The recommendation of the District's professional consultants; and
 - Any other factor consistently and lawfully applied.
 - c. In any bid procedure, the District reserves the right to reject any or all bids or waive any informalities or irregularities in the bid process.
 4. Michigan-Based Business Preference
 - a. The District may give up to a 10% preference to a bidder that is a Michigan-based business as defined by MCL 18.1268.
 - b. The Michigan-based business preference will not apply if federal funds are used for the purchase.
- D. Purchases Using State Aid Act Funds
1. The District will not use state aid to purchase foreign goods or services if American goods or services are available, competitively priced, and of comparable quality.

2. The District will give a preference to goods or services manufactured or provided by Michigan businesses if competitively priced and of comparable quality.
3. The District will give a preference to goods or services manufactured or provided by Michigan businesses owned and operated by veterans if competitively priced and of comparable quality.

E. Purchases Using Federal Funds

Purchases made with federal funds and subject to the federal Uniform Grant Guidance are also governed by Policy 3301A.

Legal authority: 2 CFR 200.1 et seq.; MCL 129.311 et seq.; MCL 380.1274; MCL 388.1764c

Date adopted: July 1, 2024

Date revised: February 24, 2025

Series 3000: Operations, Finance, and Property

3300 Facilities, Real, and Personal Property

3306 Construction Bidding

The Board will comply with applicable laws and this Policy for the construction of a new school building or an addition to or repair or renovation of an existing school building (a "Construction Project").

A. When Competitive Bidding is Required

1. The District must competitively bid all labor and material for a Construction Project if the project cost exceeds the then-current state bid threshold published annually by MDE (the "Bid Threshold").
2. The District does not need to competitively bid a:
 - Construction Project costing less than the Bid Threshold;
 - contract for repair in emergency situations;
 - repair normally performed by District employees; or
 - professional consultant contract.

B. Bidding Procedure

1. If competitive bidding is required, the District must follow the bidding procedure prescribed by Revised School Code Section 1267 and award contracts to the lowest responsible bidder.
2. To determine whether a bidder is a responsible bidder, the District may consider the factors enumerated in Policy 3301 subsection C.3.b.
3. If competitive bidding is not required, the District may use any lawful means to procure contracts.
4. Each bidder must certify that it is not an Iran-linked business as defined by MCL 129.312.
5. If federal or state prevailing wage requirements apply, project specifications must include the schedule of minimum rates to be paid to each relevant class of construction mechanic or laborer. If state prevailing wage requirements apply, the schedule of minimum rates must also be printed on bid forms.

C. Alternates

1. Bid specifications may require bidders to submit bids with mandatory alternates or allow bidders to submit voluntary alternates; provided, however, that no voluntary alternate may change the nature of the work.

2. The Board, in its discretion, may award bids based on allowable alternates.

D. Michigan Business Preference

For any Construction Project, the District may apply a preference to a Michigan-based business as described in Policy 3301 subsection C.4.

E. Construction Bidding Using State Aid Act Funds

The purchase of property and services made with state aid must comply with the requirements described in Policy 3301 subsection D.

F. Construction Bidding Using Federal Funds

The purchase of property and services made with federal funds subject to the Uniform Grant Guidance are also governed by Policy 3301A.

Legal authority: 40 USC 3141, et seq.; 2 CFR 200.1, et seq.; MCL 129.311 et seq.; MCL 380.1267; MCL 388.1764c; MCL 408.1101, et seq.

Date adopted: July 1, 2024

Date revised: February 24, 2025

Series 3000: Operations, Finance, and Property

3300 Facilities, Real, and Personal Property

3307 Construction Administration

This Policy sets forth procedures and requirements for District building and site improvements. Bidding requirements for construction appear in Policy 3306.

A. Plan Review

1. Before commencing construction, the District, or an authorized agent on the District's behalf, will submit project plans and specifications to the Michigan Bureau of Construction Codes Plan Review Division.
2. Alternatively, the District may submit the plans and specifications to the applicable local building department if the Board and the municipality's governing body have properly certified that full-time code officials, inspectors, and plan reviewers registered under the Skilled Trades Regulation Act will conduct plan reviews and inspections. In that situation, the District must also submit the plans and specifications to the Bureau of Fire Safety.
3. If required by Revised School Code Section 1263, before building a new high school or expanding a high school by at least 20% of its existing square footage, the District, or an authorized agent on the District's behalf, will submit the site plan to the local zoning authority for administrative review.
4. Before the District commences new construction or major renovation of a school building or athletic facility, the Superintendent or designee will consult with the law enforcement agency that will be the first responder for that building or facility about safety issues.

B. Professional Consultants

1. If the total cost of a school building construction project will be \$15,000 or more:
 - a. a Michigan-licensed architect or professional engineer must prepare the plans and specifications; and
 - b. a qualified person or firm must supervise construction as provided in MCL 388.851.
2. The District may hire a construction manager for any project. If the construction manager also performs construction, either directly or by assuming responsibility for the work of other contractors (e.g., construction manager as constructor):
 - a. the construction manager may not supervise such construction under MCL 388.851; and

b. the District must still bid the project as required by law.

C. Payment and Performance Bonds

1. For all contracts described in MCL 129.201 that exceed \$50,000, the principal contractor must procure performance and payment bonds in accordance with law.
2. Unless the Superintendent or designee determines otherwise, the District requires payment and performance bonds to be 100% of the contract sum.
3. The responsibility for procuring payment and performance bonds rests solely with the contractor. The District has no duty to ensure that a contractor has procured a payment or performance bond.

D. Prevailing Wage

1. Bid materials, project specifications, and contract documents must comply with applicable federal and state law prevailing wage requirements.
2. The responsibility for paying prevailing wage rates rests solely with the contractor. The District has no duty to ensure that a contractor has paid prevailing wage rates.

Legal authority: 40 USC 3141, et seq.; MCL 129.201 et seq.; MCL 339.6001 et seq.;
MCL 380.1263, 380.1264; MCL 388.851 et seq.; MCL 408.1101, et seq.

Date adopted: July 1, 2024

Date revised: February 24, 2025

Series 3000: Operations, Finance, and Property

3400 School Safety and Security

3408 Firearms and Weapons

The District is a weapon-free school zone. Except as otherwise permitted by Policy or required by applicable law, a person may not possess a weapon on District property. See also Policy 5206. Each person on District property must also comply with the federal Gun Free Schools Zone Act.

A. As used in this Policy:

1. A "firearm" means any weapon that will, is designed to, or may readily be converted to expel a projectile by the action of an explosive.
2. "Pistol" means that term as defined by MCL 28.421.
3. "District property" means:
 - a. a building, playing field, or property used for school purposes to impart instruction to students or used for functions and events sponsored by a school, except a building used primarily for adult education or college extension courses; and
 - b. a vehicle used by the District to transport students to or from a place described in subsection A.4.a above.
4. A "weapon" means a firearm, pneumatic gun, dagger, dirk, stiletto, knife with a blade over 3 inches in length, pocket knife opened by a mechanical device, iron bar, or brass knuckles, or any other object used, intended, or represented to inflict serious bodily injury or property damage.

B. Permitted Uses

The following persons may possess a weapon on District property:

1. A peace officer as defined by law;
2. A student's parent or guardian licensed to carry a concealed pistol may carry a concealed pistol (but no other weapons) while in a vehicle if the parent or guardian is dropping the student off at, or picking the student up from, the student's school;
3. A person with permission from the Superintendent or designee to possess a firearm (but no other weapons) within any lawful parameters established by the Board; including:
4. An employee or contracted person if the possession of that weapon is to provide security services for the District.

C. Violations

1. Students and District personnel with knowledge that a person is in violation of this Policy should immediately report the violation to the building principal or designee.
2. Violation of this Policy will result in discipline of students, employees, and contractors, up to and including expulsion or termination, removal from District property, and referral to law enforcement.

Legal authority: 18 USC 921; 18 USC 922(q); MCL 28.425f, 28.425o; MCL 750.237a

Date adopted: July 1, 2024

Date revised: February 24, 2025

Series 3000: Operations, Finance, and Property

3400 School Safety and Security

3410 Opioid Antagonist

The District will provide adequate control, supervision, and training to maintain and administer opioid antagonists at school consistent with state law.

A. Emergency Preparedness

1. The Superintendent or designee will obtain opioid antagonists, as authorized by law.
2. An opioid antagonist maintained by a school may only be administered to a person who is believed to be having an opioid-related overdose on school grounds by:
 - a. a licensed registered professional nurse employed or contracted by the District; or,
 - b. a District employee appropriately trained in accordance with state law.

B. Notice and Reporting

The building principal or designee will:

1. contact 911 if individual is believed to be having an opioid-related overdose;
2. promptly notify the parent/guardian of a student to whom an opioid antagonist has been administered and document all actual and attempted notices. The District will encourage the parent/guardian to seek treatment for the student from a substance use disorder services program; and
3. document all instances of opioid antagonist administration at school.

Legal authority: MCL 15.671 et seq.

Date adopted: July 1, 2024

Date revised: February 24, 2025

Series 4000: District Employment

4100 Employee Rights and Responsibilities

4101 Non-Discrimination

A. Equal Employment Opportunity

The District is committed to equal employment opportunity and compliance with federal, state, and local laws that prohibit workplace Unlawful Discrimination, including unlawful harassment and Retaliation, based on any protected class or activity. This Policy applies to all aspects of employment, including recruiting, advertising, hiring, training, job placement, evaluation, classification, promotion, transfer, work assignment, compensation, benefits, discipline, demotion, termination, reduction in force, recall, and any other term or condition of employment.

This Policy prohibits discrimination against employees or applicants for employment based on the following protected classes: race, color, national origin, ethnicity, religion, sex (including pregnancy or related conditions, gender identity, or sexual orientation), height, weight, marital status, age, disability, genetic information, veteran status, military service, or any other legally protected class. This Policy also prohibits Retaliation based on a protected activity.

The District prohibits unlawful employment discrimination as required by applicable civil rights statutes, including:

- Title VI of the Civil Rights Act of 1964, which prohibits discrimination based on race, color, religion, or national origin;
- Title VII of the Civil Rights Act of 1964, which prohibits discrimination based on race, color, religion, sex (including gender identity, and sexual orientation), or national origin;
- Title IX of the Education Amendments of 1972, which prohibits discrimination based on sex (including gender identity and sexual orientation);
- Age Discrimination in Employment Act of 1967 (ADEA), which prohibits discrimination based on age as to persons who are at least 40 years old;
- Equal Pay Act of 1963, which prohibits sex discrimination in payment of wages for persons performing substantially equal work in the same establishment;
- Section 504 of the Rehabilitation Act of 1973 (Section 504), which prohibits discrimination based on disability;

- Americans with Disabilities Act of 1990 (ADA), which prohibits discrimination against qualified persons with disabilities in employment, public service, public accommodations, and telecommunications;
- Pregnancy Discrimination Act of 1978, which prohibits discrimination based on pregnancy, childbirth, or related medical conditions;
- Pregnant Workers Fairness Act (PWFA), which requires covered employers to provide reasonable accommodations to a worker's known limitations related to pregnancy, childbirth, or related medical conditions, unless the accommodation will cause an undue hardship.
- Genetic Information Non-Discrimination Act of 2008 (GINA), which prohibits discrimination based on genetic information as to health insurance and employment;
- Michigan Elliott-Larsen Civil Rights Act of 1976 (ELCRA), which prohibits discrimination based on race, color, national origin, age, sex, pregnancy, sexual orientation, gender identity or expression, religion, height, weight, or marital status;
- Michigan Persons with Disabilities Civil Rights Act of 1976 (MPDCRA), which prohibits discrimination against qualified persons based on disability that is unrelated to that person's ability to perform the duties of a particular position or genetic information; and
- Michigan Equal Pay Act, which prohibits discriminatory wage practices based on sex.

The District also complies with and prohibits employment action that violates the following statutes:

- Family and Medical Leave Act of 1993 (FMLA), which requires covered employers to provide up to 12 work weeks of unpaid, job-protected leave to eligible employees for certain family, military, and medical reasons, and up to 26 work weeks to care for a covered service member with a serious injury or illness;
- Michigan Paid Medical Leave Act of 2018 (PMLA), which provides eligible employees paid medical leave for certain reasons;

- Uniformed Services Employment and Reemployment Rights Act of 1994 (USERRA), which provides job protection and reemployment rights to individuals who voluntarily or involuntarily leave employment to undertake military service, including military reservists and National Guard members called to duty;
- Public Employment Relations Act of 1947 (PERA), which prohibits a public employer from discriminating against an employee based on membership or non-membership in a labor organization;
- Fair Labor Standards Act of 1938 (FLSA), which establishes minimum wage, overtime pay, record keeping, and youth employment standards affecting employees; and
- Michigan Whistleblower Protection Act of 1980, which protects employees who report a violation or suspected violation of state, local, or federal law and employees who participate in hearings, investigations, or court actions.

B. Reporting Requirements

Any employee who believes they have been subjected to behavior that violates this Policy is encouraged to file a complaint promptly with a supervisor. A complaint implicating an individual's civil rights will be investigated pursuant to the procedures outlined in Policy 4104 and 3115-3115H.

Employees with questions about compliance with this Policy and applicable laws should contact the Superintendent or the Employment Compliance Officer(s) identified in Policy 3115B.

Board members, administrators, and supervisors must promptly report incidents of Unlawful Discrimination and Retaliation that he/she observes or about which he/she receives information.

Board members, administrators, or supervisors who receive a complaint alleging a violation of this Policy must promptly report the complaint, in writing, to the Employment Compliance Officer(s) identified in Policy 3115B.

A failure to comply with reporting requirements may result in discipline, including discharge.

C. Employment Discrimination Compliance Training

The District will train administrators, supervisors, and the Employment Compliance Officer(s) on how to address and investigate discrimination and retaliation complaints.

The District may also provide discrimination and retaliation training to Board members and employees.

Training may be provided by an outside entity or person approved by the District.

Legal authority: 20 USC 1681 et seq.; 29 USC 206 et seq., 701 et seq., 2601 et seq.; 38 USC 4301 et seq.; 42 USC 2000d et seq., 2000e et seq., 2000ff et seq., 12101 et seq.; H.R. 2617-1626, 117th Cong. § 103(1) (signed into law December 29, 2022); MCL 37.1101 et seq., 37.2101 et seq.; MCL 423.201 et seq.; MCL 750.556; 34 CFR 106.1 et seq.

Date adopted: July 1, 2024

Date revised: February 24, 2025

Series 4000: District Employment

4100 Employee Rights and Responsibilities

4105 Disability Workplace Accommodations for Employees and Applicants

The District complies with the ADA (Americans with Disabilities Act), Section 504, the MPDCRA (Michigan Persons with Disabilities Civil Rights Act), and other federal, state, and local laws that prohibit discrimination in employment against qualified persons with disabilities. The District does not unlawfully discriminate against otherwise qualified employees or applicants for employment with a physical or mental impairment that substantially limits one or more major life activities, those regarded as having a disability, or those with a record of a disability.

An applicant or employee with a disability, like all other applicants and employees, must meet the District's requirements for the job, including education, training, employment experience, skills, or licenses/certifications. An applicant or employee with a disability must be able to perform the job's essential functions with or without reasonable accommodation(s). After an applicant has been given a conditional job offer, the District may ask disability-related questions about the applicant's ability to perform the essential functions of the position with or without reasonable accommodation.

An employee who requires a reasonable accommodation to perform essential job functions must promptly inform the employee's supervisor or the Superintendent or designee. An applicant who requires a reasonable accommodation to perform essential job functions must promptly inform the Superintendent or designee after receiving a conditional offer of employment. A reasonable accommodation is defined as a change in the work environment or in the methods of performing work to enable an otherwise qualified applicant or employee to perform the essential job functions of a position and to enjoy equal employment opportunities.

Upon receipt of an accommodation request, the District will begin the interactive process with the employee or applicant to consider reasonable accommodation options consistent with the ADA, Section 504, and the MPDCRA using the interactive process form.

Reasonable accommodation requests that do not pose a direct threat to health or safety or cause undue hardship, as defined by law, will be considered for qualified applicants or employees with a physical or mental impairment that substantially limits one or more major life activities.

After considering the relevant medical information, essential job functions, and the applicant's or employee's requested accommodations, the District will, as appropriate, implement reasonable accommodations that do not pose a direct threat to health or safety or cause an undue hardship. The District is not obligated to adopt the applicant's or employee's specific accommodation request.

The District may engage or re-engage in the interactive process, as necessary.

The District may require a medical statement supporting the requested accommodation. The District may also require an employee to undergo an independent medical examination, limited to the accommodation request, at the District's expense. Medical information will be kept confidential.

Reasonable accommodation of a disability with a limited duration may be provided.

An applicant or employee who believes they have been discriminated against under this Policy must promptly file a complaint using the Employment Complaint Procedure in Policy 4104.

A qualified applicant or employee with a disability who needs a reasonable accommodation to attend or participate in a public Board meeting may request an accommodation under Policy 2501.

Legal authority: 29 USC 701 et seq.; 42 USC 12101 et seq.; 29 CFR 1630; 34 CFR 104; MCL 37.1101 et seq., 37.2101 et seq.

Date adopted: February 24, 2025

Date revised:

Series 4000: District Employment

4100 Employee Rights and Responsibilities

4105A Pregnancy Workplace Accommodations for Employees and Applicants

The District complies with state and federal law prohibiting pregnancy discrimination. The District will provide reasonable accommodations to known limitations related to pregnancy, childbirth, or related medical conditions of a qualified employee absent an undue hardship. The District treats pregnancy or related conditions as any other temporary medical condition for all job-related purposes. For purposes of this policy, the term "employee" includes an applicant for employment where relevant.

For an employee who requires a reasonable accommodation due to a known limitation related to pregnancy, childbirth, or related medical conditions, the employee or the employee's representative must make a proper District official (as identified in Pregnant Workers Fairness Act ("PWFA") regulations) aware of the limitation.

Upon receipt of an accommodation request, the District will begin the interactive process with the employee to consider whether the employee is qualified under the PWFA and, if so, reasonable accommodation options consistent with the PWFA that do not cause undue hardship using the interactive process form.

Determining whether an employee is qualified may be a two-step inquiry. First, the District will determine whether the employee can perform the essential job functions of the employee's position with or without a reasonable accommodation. If so, the employee is qualified. If not, then the District will consider the employee to be qualified if: (1) any inability to perform an essential job function(s) is for a temporary period, (2) the essential function(s) could be performed in the near future, and (3) the inability to perform the essential function(s) can be reasonably accommodated without an undue hardship.

Reasonable accommodation requests will not be granted if they cause an undue hardship, as defined by law. The District may require medical documentation supporting the requested accommodation where allowed by law because the information is necessary for assessing the accommodation request. Medical information will be kept confidential.

After considering any relevant medical information, essential job functions, and the employee's requested accommodations, the District will, as appropriate, implement reasonable accommodations for a qualified employee that do not cause an undue hardship. The District is not obligated to adopt the employee's specific accommodation request. The District may engage or re-engage in the interactive process, as necessary.

A reasonable accommodation may include a voluntary leave of absence. If an employee has insufficient leave or insufficient accrued employment time to qualify for leave, or if the District does not maintain a leave policy applicable to the employee, the District will treat any pregnancy or related conditions as a justification for a voluntary leave of absence without pay for a reasonable period of time, at the conclusion of which the

employee will be reinstated to the status held when the leave began or to a comparable position without decrease in rate of compensation or loss of promotional opportunities, or any other right or privilege of employment.

An employee who believes they have been discriminated against under this Policy must promptly file a complaint using the Employment Complaint Procedure in Policy 4104. For additional information about preventing and addressing pregnancy discrimination, see Policy 3115G.

Legal authority: 42 USC 2000gg et seq.; 29 CFR 1636.1 et seq.; 34 CFR 106.57

Date adopted: February 24, 2025

Date revised:

Series 4000: District Employment

4100 Employee Rights and Responsibilities

4105B Religious Workplace Accommodations for Employees and Applicants

The District complies with Title VII and state and local laws that prohibit discrimination in employment against employees or applicants for employment based on religion. The District will reasonably accommodate sincerely held religious beliefs, practices, and observances of employees and applicants for employment absent an undue hardship.

An employee or applicant for employment who requests a reasonable accommodation based on religion must promptly inform the Superintendent or designee. Upon receipt of an accommodation request, the District will meet with the employee or applicant to consider reasonable accommodation options consistent with Title VII. Reasonable accommodation requests that do not pose an undue hardship will be considered.

After considering the requested accommodation and other relevant information, the District will, as appropriate, implement reasonable accommodations that do not pose an undue hardship (as defined by law). The District is not obligated to adopt the applicant's or employee's specific accommodation request.

The District may engage or re-engage in accommodation discussions, as necessary.

An applicant or employee who believes they have been discriminated against under this Policy must promptly file a complaint using the Employment Complaint Procedure in Policy 4104.

Legal authority: 42 USC 2000e, et seq.; *Groff v DeJoy*, 143 S Ct 646 (2023)

Date adopted: October 14, 2024

Date revised: February 24, 2025

Series 4000: District Employment

4100 Employee Rights and Responsibilities

4106 Family and Medical Leave Act (FMLA)

This Policy will be interpreted and applied consistent with the FMLA, as amended, and its regulations. This Policy should not be interpreted to conflict with an applicable collective bargaining agreement where the collective bargaining agreement provides rights or obligations beyond those conferred by FMLA and that are not prohibited by FMLA.

A. Qualifying for FMLA Leave

1. Employee Eligibility

- a. To be eligible for FMLA leave, an employee must:
 - i. have worked at least 1,250 hours during the 12-month period immediately preceding the commencement of the leave (full-time instructional employees are presumed to meet the 1,250 hour requirement);
 - ii. have completed 12 months (cumulative) of work for the District before the commencement of the leave. This includes non-consecutive intervals of employment with the District occurring up to 7 years before the commencement of the FMLA leave; and
 - iii. make the request at a time when the District has 50 or more employees at, or within 75 miles of, the worksite.
- b. The applicable 12-month period to determine an employee's entitlement to FMLA leave (i.e., the FMLA leave year) is the period from July 1 to June 30.
- c. An eligible employee taking FMLA leave to care for a covered service member or veteran with a serious injury or illness is allowed to take up to 26 work weeks of leave in a single 12-month period measured forward from the date the employee first takes leave.

2. Qualifying Events

- a. An eligible employee may take FMLA leave, up to a total of 12 work weeks, during any 12-month period for any one or more of the following:
 - i. the birth or care of the employee's newborn child;
 - ii. the employee's care for a newly adopted child or child placed in the employee's home for foster care;

- iii. to care for a spouse, child (who is younger than age 18, or over 18 but incapable of self-care), a Parent (but not parent-in-law), or an individual for whom the employee stands *in loco parentis* who has a serious health condition;
 - iv. the employee's own serious health condition; or
 - v. a qualifying military exigency about an employee, the employee's spouse, child (regardless of age), or Parent.
- b. An eligible employee may take up to 26 work weeks of leave during a single 12-month period to care for a covered service member who is receiving medical treatment, recuperation, or therapy, or is in outpatient status, or is on the temporary disability retired list for a serious injury or illness. The employee must be the spouse, child, Parent (regardless of their child's age), or next of kin of the covered service member. This subsection applies to veterans of the Armed Services who suffered an injury or illness, or aggravated an injury or illness, in the line of duty on active duty if the veteran was a member of the Armed Forces at any time during the 5 years before receiving treatment.

3. Limitations on FMLA Leave

- a. The entitlement to leave for the birth of a child or placement of a child with an employee for the purposes of adoption or foster care expires at the end of the 12-month period beginning on the date of the birth or placement, and these circumstances do not qualify for intermittent or reduced schedule leave unless the Superintendent or designee approves an intermittent or reduced schedule leave in writing.
- b. Concerning spouses who are both employed by the District, and both eligible for FMLA leave, they may be limited to a combined total of 12 work weeks of FMLA leave for the birth or placement, or related care, of a child for adoption or foster care with the employees or the care of a Parent with a serious health condition. This limitation does not apply to the care of a spouse or child with a serious health condition or to an employee's own serious health condition.
- c. Concerning the entitlement to 26 work weeks of leave to care for a covered service member with a serious illness or injury, the 26 work week allotment may include other reasons for FMLA leave authorized by the Act. But in that allotment, an employee is not entitled to more than 12 work weeks of leave for reasons unrelated to the care for a covered service member with a serious illness or injury.
- d. Concerning spouses who are both employed by the District, and both eligible for FMLA leave to care for a covered service member, they are limited to a combined total of 26 work weeks of leave for all leaves authorized by the Act during the 12-month period commencing with FMLA

leave to care for a covered service member. The spouses are subject to the 12 work week limitation for leave related to the birth or placement, or related care, of a child for adoption or foster care with the employees or the care of a Parent with a serious health condition.

B. FMLA Notice

1. An employee must give the District notice of FMLA leave as follows:
 - a. When the need for FMLA leave is foreseeable (e.g., for the birth of a child, placement for adoption or foster care, or planned medical treatment), 30 calendar days' notice is required. If the employee fails to give 30 calendar days' notice with no reasonable excuse, the District reserves the right to deny or to delay the employee's FMLA leave. If the FMLA leave is for planned medical treatment, the employee must make reasonable efforts to schedule treatment so as not to unduly disrupt the District's operations.
 - b. When the need for FMLA leave is unexpected, the employee must provide notice to the District as soon as practicable.
2. For both foreseeable and unexpected leave, employees must comply with District Policies, work rules, collective bargaining agreement provisions, and customary absence reporting procedures. Failure to comply with these requirements may be grounds to delay or deny the employee's FMLA leave request and may result in discipline.
3. Absent extenuating circumstances, within 5 work days after an employee requests FMLA leave or the District has reasonable information that an employee may qualify for FMLA leave, the District will provide to the employee a copy of this Policy and the U.S. Department of Labor's (DOL) "Notice of Eligibility and Rights & Responsibilities" DOL Form WH-381 (as updated).
4. Once the District receives sufficient notice, including any requested medical certification (see below), that an employee's leave qualifies as FMLA leave, the District will, absent extenuating circumstances, within 5 work days, notify the employee in writing whether the leave is designated as FMLA leave using DOL Form WH-382 (as updated).

C. Certification

1. If an employee requests FMLA leave due to the employee's serious health condition or to care for a Parent, child, or spouse with a serious health condition, the employee must provide medical certification from a health care provider of the serious health condition involved and, if applicable, verification that the employee is needed to care for the family member and the expected duration of the leave. Employees requesting leave for a qualifying exigency or leave to care for a covered service member with a serious injury or illness must provide the appropriate certification. The District will provide the

employee with the appropriate DOL form applicable to the employee's requested leave.

2. Employees must return the requested certification within 15 calendar days after the request. The District may delay or deny FMLA leave if submission of the certification is not timely.
3. Failure or refusal to provide requested medical certification within 15 calendar days may result in denial of the leave being designated as FMLA leave.
4. If an employee provides an incomplete or insufficient certification, the District will advise the employee, in writing, of the deficiencies and what additional information is needed. An employee must return the requested additional information within 7 calendar days. The District, but not the employee's direct supervisor, may contact an employee's health care provider for clarification or authentication of a certification. The District may not contact the employee's health care provider if a complete and sufficient certification, signed by the health care provider, is submitted.
5. If the District has reason to doubt the medical certification an employee submits, the District may require, at its expense, that the employee obtain a second opinion from a health care provider of the District's choice. If the second opinion differs, the District may require, at its expense, that a third opinion be obtained from a health care provider who is mutually selected by the employee and the District. The third medical certification will be final and binding on both parties. If the employee refuses to be examined by the third health care provider, the employee will be bound by the second opinion. The District may not request a second opinion for leave to care for a covered service member or veteran with a serious injury or illness.

The District may request recertification consistent with FMLA regulations. Recertification will be at the employee's expense.

The District may request recertification in less than 30 calendar days if: an employee requests an extension of FMLA leave; circumstances stated in the prior certification have changed significantly; or the District receives information that casts doubt upon the employee's stated reason for the absence or the certification's validity.

D. Concurrent Leave and Substitution of Paid Leave

FMLA leave provided to employees is unpaid, unless the employee has applicable paid leave. Applicable paid leave (e.g., sick, personal, business, vacation, paid time off, leave under Michigan Paid Medical Leave Act (MPMLA), or workers' compensation) will run concurrently with FMLA leave at the election of either the District or the employee. The ability to use paid leave concurrently with FMLA leave is subject to compliance with the procedures and conditions normally associated with the paid leave. A medical leave of absence covered by workers' compensation runs concurrently with FMLA leave and consistent with

an applicable individual employment contract or collective bargaining agreement. FMLA leave beyond an employee's applicable accrued paid leave is unpaid.

E. Intermittent and Reduced Schedule Leave

1. Eligible employees may take FMLA leave intermittently or on a reduced schedule when leave is taken to care for a family member with a serious health condition, for an employee's own serious health condition, because of a qualifying exigency, or to care for a covered service member or veteran, an eligible employee may take leave intermittently or on a reduced schedule when medically necessary.
2. Intermittent or reduced schedule leave will not result in a reduction in the employee's total amount of leave beyond the amount of leave actually taken. Intermittent and reduced schedule FMLA leave will be accounted for in the shortest increment used to account for leave generally within the employee's classification.

Employees must follow the District's absence reporting procedures when using intermittent leave.

3. When an instructional employee seeks to take intermittent or reduced schedule leave to care for a family member with a serious health condition, to care for a covered service member or veteran, or for the employee's own serious health condition which is foreseeable based on planned medical treatment, and the employee would be on leave for more than 20% of the total number of work days over the leave period, the District may either require the employee to take leave on a full-time basis for the duration of the requested intermittent or reduced schedule leave or temporarily transfer the employee to an alternate position with equivalent pay and benefits.
4. If an eligible employee requests intermittent or reduced schedule leave for a foreseeable medical treatment, including during a period of recovery from a serious health condition, the District may require the employee to transfer temporarily to an available alternate position for which the employee is qualified and which better accommodates recurring periods of leave than the employee's regular position. The alternate position must have equivalent pay and benefits as the employee's regular position.

F. Group Health Plan Benefits

1. Eligible employees are generally entitled to the continuation of District-provided group health plan benefits while on FMLA leave. Group health plan benefits include medical, dental, and optical insurance coverages in which the employee is enrolled at the time that FMLA leave is taken.
2. The District will continue paying its portion, if any, of the employee's group health plan costs and insurance premiums or representative premiums while the employee is on FMLA leave and in accordance with any applicable

collective bargaining or individual employment contract. Any share or portion of the group health plan costs, insurance premiums, or representative premiums paid by the employee before FMLA leave must continue to be paid by the employee during FMLA leave. See DOL Form WH-381. An employee's failure to pay his/her portion of group health plan costs, insurance premiums, or representative premiums during FMLA leave may result in loss of coverage if the employee's contribution is more than 30 calendar days late. The District will provide the employee with written notice at least 15 calendar days before canceling the employee's coverage because of a failure to make employee contributions.

3. As addressed in subsection I below, an employee who fails to voluntarily return to work after FMLA leave may be required to repay the District for his/her group health plan benefit costs.

G. Return to Work

1. At the expiration date of an employee's FMLA leave, the employee will be returned to that employee's former position or an equivalent position with the same pay, benefits, and working conditions. An employee taking FMLA leave has no greater right to reinstatement than if the employee had been continuously employed during the FMLA leave period.
2. If an employee was unable to renew a license or certification because of FMLA leave and is no longer qualified for the employee's former position, the District will provide the employee reasonable time, on unpaid status, to fulfill the necessary return to work conditions.
3. Instructional Employees
 - a. "Instructional" employees are those whose principal function is to teach and instruct students in a class, small group, or individual setting.
 - b. If an instructional employee begins FMLA leave more than 5 weeks before the end of a term or semester, the District may require the employee to take FMLA leave until the end of the term or semester if the FMLA leave is to last at least 3 weeks and the employee would return to work during the 3-week period before the end of the term or semester.
 - c. If an instructional employee begins FMLA leave during the 5-week period before the end of a term or semester because of the birth or placement for adoption or foster care of a child, to care for a spouse, child, or Parent with a serious health condition, or to care for a covered service member or veteran, the District may require that FMLA leave be taken until the end of the term or semester if the instructional employee would return to work during the 2-week period immediately before the end of the term or semester and the leave is to last more than 2 weeks.

- d. If an instructional employee begins FMLA leave during the 3-week period before the end of a term or semester because of the birth or placement for adoption or foster care of a child, to care for a spouse, child, or Parent with a serious health condition, or to care for a covered service member or veteran, the District may require the employee to take FMLA leave until the end of the term or semester, if the leave will last more than five (5) work days.
- e. Any additional FMLA leave required of an instructional employee by the District will not count against the employee's allotment of FMLA leave.

4. Fitness for Duty

The District may require that an employee returning from FMLA leave submit a fitness-for-duty certification from a health care provider which addresses the employee's ability to return to work and perform the essential functions of the employee's position. The District must provide the employee with notice of the requirement to provide a fitness-for-duty certification and the essential functions of the employee's position when the District provides the employee the designation of FMLA leave notice (DOL Form WH-382, as updated). If the employee fails to submit the fitness-for-duty certification in a timely manner, return from FMLA leave may be delayed by the District. The employee may be terminated if he/she fails to submit the fitness-for-duty certification.

5. Unless a collective bargaining agreement provides otherwise, an employee on unpaid FMLA leave is not entitled to accrue seniority, employment benefits (other than medical insurance), or any benefit conditioned on length of service or work performed.

H. Denial of Key Employee Restoration

1. The District reserves the right to deny restoration to the same or equivalent position to any eligible employee who is a key employee, meaning any employee who is paid a salary and is in the highest paid 10% of employees. The District may deny restoration if necessary to prevent substantial and grievous economic injury to the District's operations. If the District intends to deny restoration to a key employee, it will:
 - a. use DOL Form WH-381, as updated, to notify the employee of his/her status as a key employee in response to the employee's request for FMLA leave and provide the employee with an explanation of the consequences for the employee if the District determines that substantial and grievous injury will result to its operations if the employee is reinstated after FMLA leave;
 - b. notify the employee, in person or by certified mail, as soon as the District decides it will deny restoration and the reasons for the denial;

- c. offer the employee a reasonable opportunity to return to work from FMLA leave after giving this notice;
- d. make a final determination as to whether reinstatement will be denied at the end of the leave period if the employee then requests restoration; and
- e. the District must maintain its group health plan cost, contributions, premium, or representative premium contributions for the employee's group health plan benefits for the entire term of the employee's FMLA leave, even after giving the employee notice that restoration will be denied.

I. Failure to Return to Work

1. An employee's unexcused failure to return to work upon expiration of FMLA leave will subject the employee to discharge unless the District grants an extension of leave as required by law or under a collective bargaining agreement, employee handbook, or individual employment contract. An employee who requests an extension of leave due to the continuation, recurrence, or onset of the employee's serious health condition, or the serious health condition of the employee's spouse, child, Parent, or covered service member or veteran, must submit to the employee's supervisor a written request for an extension. This written request must be made as soon as possible before the expiration of the employee's FMLA leave. Medical certification or recertification will be required to support any request for leave extension.
2. If an employee is unable to perform the essential functions of the position or an equivalent position at the end of FMLA leave, the District will comply with ADA requirements, as applicable.
3. If an employee fails to return to work after his/her FMLA leave expires, the employee must reimburse the District for any group health plan costs, contributions, premiums, and representative premiums that the District paid for continuation of the employee's group health benefits coverage during FMLA leave, unless the employee does not return due to: (a) the continuation, recurrence, or onset of the serious health condition which entitled the employee to FMLA leave and the employee provides the District with sufficient certification from the proper health care provider of the continuation, recurrence, or onset of the serious health condition; or (b) other circumstances beyond the employee's control. This provision does not apply to any group health plan cost, insurance premium, or representative premium contributions made by the District for periods during which the employee used paid leave concurrently with FMLA leave.

J. Recordkeeping

1. The District will maintain the following records related to FMLA requests and use:

- a. basic payroll information;
 - b. dates (or hours) during which eligible employees take FMLA leave;
 - c. copies of all notices, requests, and other documents related to FMLA leave;
 - d. copies of documents evidencing group health plan cost contributions, insurance premium, and representative premium payments made by the District on behalf of an eligible employee on FMLA leave; and
 - e. documents related to disputes about eligibility or designation of FMLA leave.
2. Medical certifications and other medical documentation related to FMLA leave will be maintained in a separate, confidential file from an employee's personnel file. See Policy 4224.

K. Notice to Employees

The District will post the appropriate notice of rights poster in a location easily seen by employees and include a general notice of employee FMLA rights in applicable employee handbooks or by providing employees notice at their time of hire.

Legal authority: 29 USC 2601 et seq.; 29 CFR 825.100 et seq.

Date adopted: February 24, 2025

Date revised:

Series 4000: District Employment

4100 Employee Rights and Responsibilities

4107 Military Leave

The District complies with the Uniformed Services Employment and Reemployment Rights Act (USERRA), Michigan's Military Leaves Reemployment Protection Act (MLRPA), and Michigan's Public Employees Entering Armed Forces Act (MPEEAFA). The term "military service" as used in this Policy includes the "uniformed services" as defined in the USERRA, "service" as defined in the MLRPA, and "military duty" as defined in the MPEEAFA.

Military service also includes service and training in the Army, Navy, Marine Corps, Air Force, Coast Guard, applicable reserve forces, Army National Guard, Air National Guard, Commissioned Corps of the Public Health Service, and other categories of persons designated by the U.S. President in times of war.

In qualifying circumstances, eligible full- and part-time employees may take leave related to military service and are entitled to reemployment and other rights during and at the conclusion of military leave. Military leave is unpaid, but employees may use accrued applicable paid leave for all or a portion of their military leave in accordance with a collective bargaining agreement or individual employment contract.

A. Employee Notice and Eligibility

1. Advance notice of military service is required, unless that service prevents advance notice or notice is otherwise unreasonable or impossible.
2. Employees are eligible for military leave when called to provide military service, whether voluntary or involuntary.
3. Military leave may be taken for the purpose of active duty, active duty training, inactive duty training, full-time National Guard duty, examinations to determine fitness for duty, funeral honors duty, duty related to the National Disaster Medical System, or any other activity authorized by law.

B. Reemployment Rights

1. Employees returning from military leave are entitled to prompt reemployment pursuant to conditions in the law.
2. Employees may be disqualified from reemployment when: (a) discharged dishonorably or for bad conduct; (b) separation from military service is considered "other than honorable" by the applicable military branch; (c) dismissal occurs via court martial or by order of the U.S. President; or (d) the employee is dropped from the military service rolls because of an unauthorized absence from military service or imprisonment.

3. The District may deny reemployment after military leave if the District's circumstances have changed to make reemployment impossible or unreasonable.

C. Reemployment Positions

An employee's reemployment position upon returning from military leave depends on the length of the employee's military service, advancement if the employee had remained continuously employed, the employee's qualifications, and other factors described in the law.

D. Pay and Rights Upon Reemployment

1. Upon reemployment, an employee receives seniority and other rights and benefits determined by seniority that the employee had attained on the date that military leave began, plus the additional seniority and rights and benefits that the employee would have attained if the employee had remained continuously employed. An employee is entitled to any other rights and benefits not determined by seniority as are generally provided by the District to other employees having similar seniority, status, and pay when taking a non-military leave.
2. Upon reemployment, an employee's eligibility calculation for leave under the FMLA will assume that the employee worked for the District during the period of military leave.
3. Upon reemployment, an employee may not be discharged except for a reason constituting just cause for a period of up to 1 year after reemployment from military leave depending on the length and type of military service.

E. Benefits

1. If an employee commencing military leave has coverage under a District-provided group health benefit plan, the employee may (at the employee's expense) elect to continue coverage for the employee, the employee's spouse, and/or the employee's dependents, subject to conditions in the law.
2. If an employee's health insurance coverage is terminated consistent with the law, upon reemployment, the employee (and the employee's spouse and dependents) is immediately eligible for reinstatement of health insurance coverage.

F. Notice and Complaints

1. Notice of employee rights under the USERRA will be posted in an appropriate location.
2. The District will not retaliate or take adverse action against an employee based on the employee's exercise of rights under the law.

3. An employee must immediately contact the Employment Compliance Officer(s) if the employee believes the District has violated the law or this Policy. The District will investigate the complaint pursuant to Policy 4104.

Legal authority: 38 USC 4301 et seq.; MCL 32.271 et seq.; MCL 35.351 et seq.

Date adopted: July 1, 2024

Date revised: February 24, 2025

Series 4000: District Employment

4100 Employee Rights and Responsibilities

4109 *Break Time for Nursing Mothers*

Each time an employee needs to express breast milk during the 1-year period after the child's birth, the District will provide reasonable break time for this purpose in a place, other than a bathroom, that is shielded from view and free from intrusion by co-workers and the public or additional time may be granted for appropriate cause as determined by the Superintendent or designee. For non-exempt employees, break time for expressing breast milk may be unpaid unless the employee is not completely relieved from duty during the entirety of the break, or the employee uses paid break time to which the employee is otherwise entitled under an applicable collective bargaining agreement, individual employment contract, or employee handbook. A longer accommodation may be available under the Pregnant Workers Fairness Act.

Legal authority: 29 USC 218d; 34 CFR 106.57

Date adopted: July 1, 2024

Date revised: February 24, 2025

Series 4000: District Employment

4200 Employee Conduct and Ethics

4201 *Employee Ethics and Standards*

Employees must act professionally and model high standards of behavior at all times. Employees shall perform their respective duties and responsibilities in a professional manner, using appropriate judgment. Employees must maintain a standard of behavior that reflects positively on their status as District representatives in the community and is consistent with the Michigan Code of Educational Ethics, which is incorporated herein by reference. See:

https://www.michigan.gov/documents/mde/Code_of_Ethics_653130_7.pdf

If an employee is uncertain as to a potential course of conduct, the employee should seek advice from a supervisor before proceeding.

A. Employee Ethical Conduct

Employees must exercise objectively sound and professional judgment when engaging with students, Parents, colleagues, administrators, Board members, and community members. This standard extends to employee conduct on and off school property. Ethical behavior generally includes, but is not limited to:

1. supporting the physical and emotional welfare and safety of students, Parents, colleagues, administrators, Board members, and community members;
2. complying with federal and state law;
3. competently and appropriately performing duties and responsibilities for which the employee is trained or assigned;
4. assigning tasks to District personnel who are qualified and hired to perform the assigned task;
5. refraining from unlawful discrimination, including unlawful harassment, and retaliation as defined by Policy;
6. immediately reporting suspected child abuse or neglect;
7. immediately reporting reasonable cause to believe or suspect abuse, neglect, or exploitation of a vulnerable adult;
8. maintaining confidential information, including student, medical, personnel, financial, and security information, as protected by statute;
9. appropriately using District funds, resources, and technology;

10. maintaining consistent and reliable work attendance, unless excused by the employee's supervisor or the Superintendent or designee, as applicable;
11. engaging in activities or behaviors that enhance the operational and instructional environment;
12. professionally communicating with students, Parents, colleagues, Board members, and community members, including through electronic means;
13. Completing time and effort reporting under 4201-AG.
14. abiding by professional, ethical, and licensing standards established by relevant governmental agencies, professional licensing boards, and professional associations, including the Michigan State Board of Education; and
15. self-reporting a criminal charge and plea or conviction, as required by law.

B. Conflict of Interest

Employees shall perform their duties and responsibilities free from a prohibited conflict of interest, unless authorized by the Board or designee. Prohibited conflicts of interest include, but are not limited to:

1. soliciting or accepting anything of value (such as a gift, loan, contribution, or reward), other than compensation received from the District in exchange for services provided to the District, that would influence the employee's judgment when performing the employee's duties;
2. using public funds to purchase alcoholic beverages, jewelry, gifts, fees for golf, or any item the purchase of which is illegal, except as consistent with and permitted by Policy 3205 and Revised School Code Section 1814;
3. using or authorizing the use of the employee's public employment or any confidential information received through public employment to obtain personal, professional, political, or financial gain other than compensation received from the District in exchange for services provided to the District for the employee or a member of the employee's immediate family, or a business with which the employee is associated;
4. using or authorizing the use of District personnel, resources, property, or funds under the employee's care and control other than in accordance with prescribed constitutional, statutory, and regulatory procedures, or using those items for personal, professional, political, or financial gain;
5. providing private services, lessons, tutoring, or coaching for students assigned to the employee for additional remuneration, except as permitted by Policy 4214;

6. engaging in any activity of a sexual or romantic nature with another employee(s) or contractor(s) that the employee supervises, unless the individuals are engaged to be married, married, or cohabitating;
7. engaging in any activity of a sexual or romantic nature on school property or at school-sponsored events;
8. directly or indirectly supervising, making, or contributing to an employment decision pertaining to a relative or significant other, or relative of a relative or significant other (as defined by Policy 4213); and
9. engaging in any other activity that promotes an employee's financial and pecuniary interests over those of the District.

C. Student Fraternization

Employees must establish and maintain professional boundaries with students, including while using personal or District technology. Employees are prohibited from direct or indirect interactions with students that do not reasonably relate to an educational purpose. Employees will behave at all times in a manner supportive of the best interests of students and the District.

Conduct identified below constitutes unprofessional conduct, subjecting the employee to discipline, including discharge, absent express Board or designee authorization. The following list illustrates prohibited behavior involving students but does not describe every kind of prohibited behavior:

1. communicating about alcohol use, drug use, or sexual activity when the discussion is not appropriately related to a specific aspect of the curriculum or the employee's duties;
2. providing drugs, alcohol, tobacco, e-cigarettes, or other items students cannot possess under the District's Student Code of Conduct;
3. commenting about matters involving sex, using double entendre, or making sexually suggestive remarks with no appropriate educational purpose;
4. displaying sexually inappropriate images, materials, or objects;
5. offering or soliciting sexual advice, whether written, verbal, or physical;
6. engaging in any activity of a sexual or romantic nature, including following graduation where the relationship arises out of an employee-student relationship;
7. inappropriate kissing;

8. inappropriately intruding on a student's personal space, such as by touching unnecessarily, moving too close, or staring at a portion of the student's body;
9. communicating directly or indirectly (e.g., by phone, email, text messaging, or social media) on a matter that does not pertain to school unless the employee obtained prior parental consent. Electronic communications with students generally are to be sent simultaneously to multiple recipients and not just to one student except when the communication is clearly school related and inappropriate for persons other than the individual student to receive (e.g., grades);
10. permitting a specific student to engage in conduct that is not permitted or tolerated from other students;
11. inappropriately discussing with a student the student's personal issues or problems that should normally be discussed with a Parent or counselor unless the employee is the student's family member;
12. inappropriately giving a student a personal gift;
13. allowing a student to live in the employee's residence without prior Parent consent unless the student is the employee's family member, a foreign exchange student placed with the employee, or if the employee serves as the student's foster parent or legal guardian;
14. giving a student a ride in the employee's vehicle without appropriate authorization;
15. taking a student on an activity outside of school without first obtaining the express permission of the student's Parent and a District administrator;
16. inviting a student to the employee's home or residence without first obtaining the express permission of the student's Parent;
17. going to a student's home when the student's Parent or an adult chaperone is not present unless the employee is the student's family member; or
18. engaging in any other conduct which undermines the special position of trust and authority between a District employee and a student.

D. Abuse and Neglect

1. Children: An employee who suspects child abuse or neglect must: (a) immediately contact Children's Protective Services (CPS), (b) file an appropriate report with that agency as required by the Child Protection Law and Policy 4202, and (c) notify the Superintendent or designee and the building principal or supervisor that the report has been filed.

An employees should consult with their immediate supervisor about their duty to cooperate with CPS investigations or to disclose student records to CPS.

2. Vulnerable Adults: An employee who has reasonable cause to believe or suspect abuse, neglect, or exploitation of a vulnerable adult must: (a) immediately report the matter to Adult Protective Services (APS) consistent with Michigan's Social Welfare Act and Policy 4202, and (b) notify the Superintendent or designee and the building principal or supervisor that the report has been filed.

A reporter's identity will remain confidential unless disclosure is authorized by the reporter's consent or by court order.

An employee should consult with their immediate supervisor about their duty to cooperate with APS investigations or to disclose student records to APS.

Legal authority: MCL 380.11a, 380.601a, 380.634, 380.1308a, 380.1814; MCL 722.621 et seq.; MCL 400.11a.

Date adopted: February 24, 2025

Date revised:

Series 4000: District Employment

4200 Employee Conduct and Ethics

4202 *Children's Protective Services (CPS) and Adult Protective Services (APS) Reporting and Student Safety and Welfare*

During the performance of their duties, employees must exercise due care for the safety and welfare of the District's students.

A. Required Reports to CPS, APS, District administration, and Michigan State Police

1. A reporter must: (a) promptly notify the Superintendent or designee and the building principal of the report; and (b) submit an electronic or written report to CPS or APS within the statutory timeframe of 24 hours. Failure to make an immediate report or follow-up with an electronic or written report may result in discipline, including discharge, as well as criminal or civil penalties. CPS and APS may be contacted at 855-444-3911 or www.michigan.gov/mdhhs.

Administrators, teachers, counselors, social workers, psychologists, nurses, physical therapists, physical therapist assistants, occupational therapists, athletic trainers, and others identified as mandatory reporters pursuant to Michigan's Child Protection Law must *immediately* report all instances of suspected child abuse or neglect to CPS. Other employees are also expected to make reports to CPS of suspected child abuse or neglect.

School employees who suspect or have reasonable cause to believe that a vulnerable adult was or is being subjected to abuse, neglect, or exploitation must *immediately* report the matter to APS. A vulnerable adult means a person 18 years of age or older who is unable to protect themselves from abuse, neglect, or exploitation because of a mental or physical impairment or because of advanced age.

2. Employees must promptly report to the building principal or the Superintendent or designee any instances of injury (accidental or intentional), violence, threats of violence, self-harm, hazards, or any other situation that endangers student safety and welfare or raises reasonable concerns as to the safety of students.
3. Employees must promptly report to the building principal or the Superintendent or designee incidents of student bullying and crimes or attempted crimes involving physical violence, gang-related activity, illegal possession of a controlled substance or controlled substance analogue, or other intoxicant, trespassing, and property crimes, including theft and vandalism.

Within 24 hours of an alleged incident, an administrator must make an appropriate report to the Michigan State Police as required by law.

B. Student Safety and Welfare

1. Employees will maintain control and supervision of students to ensure student safety and will take appropriate action if the employee observes an unsafe or dangerous situation.
2. Employees will treat students with respect and maintain appropriate professional boundaries with students both in and out of school. Employees must avoid conduct with students that potentially creates the appearance of an unprofessional, unethical, or inappropriate relationship. Romantic relationships between employees and students are prohibited regardless of the student's age, including following graduation where the relationship arises out of an employee-student relationship.
3. An employee will not assess, diagnose, prescribe, or provide therapy or counseling services to a student unless: (a) the employee is appropriately certified or licensed under Michigan law; and (b) the services are within the employee's job duties. An employee will direct students in need of these services to the appropriate District employee or community resource.
4. Employees will comply with and respect confidentiality of student records and privacy rights, including not posting student information or images online without prior authorization from the employee's supervisor.
5. Employees will not interfere with or adversely impact a parent's/guardian's right to determine and direct their student's care, wellbeing, teaching, and education.
6. Pursuant to the state's 2013 Task Force on the Prevention of Sexual Abuse of Children, the Board authorizes the Superintendent or designee to consider and implement all of the following:
 - age-appropriate, evidence-based curriculum and instruction for students in grades pre-K to 5 concerning child sexual abuse awareness and prevention;
 - training for District personnel on child sexual abuse, including but not limited to, training on supportive, appropriate response to disclosure of abuse;
 - providing educational information to parents/guardians on the warning signs of a child being sexually abused and information on needed assistance, referral, or resources;
 - available counseling and resources for students affected by sexual abuse;
 - emotional and educational support for students affected by sexual abuse; and

- a review of the system to educate and support personnel who are legally required to report child abuse or neglect.

Legal authority: MCL 380.10, 380.1308, 380.1308a, 380.1310a, 380.1505; MCL 400.11 et seq.; MCL 722.621 et seq.

Dated adopted: July 1, 2024

Date revised: February 24, 2025

Series 4000: District Employment

4200 Employee Conduct and Ethics

4206 Employment Contracts

Professional Staff, Administrators/Supervisors, and the Superintendent, as defined in Policies 4401, 4501, and 4601, will be employed pursuant to an individual employment contract and any applicable collective bargaining agreement. Non-Exempt Staff, as defined in Policy 4301, will be employed at-will unless an applicable collective bargaining agreement or individual employment contract specifies another standard of employment security.

Employment contracts will comply with applicable laws and regulations. The Board President, Superintendent or designee, as applicable, should consult with Board legal counsel about contract terms and requirements to ensure compliance with state and federal law.

A. Authority

The Board President is authorized to execute the Superintendent's contract on behalf of the Board upon Board approval of the contract. Teacher contracts must be approved by the Board and signed on behalf of the District by a majority of the Board, the Board President and Secretary, or the Superintendent or designee. The Superintendent is authorized to execute employment contracts for Non-Exempt Staff and temporary and substitute employees on the Board's behalf or upon Board approval, where necessary.

B. General Requirements

Individual employment contracts required or permitted under this Policy may contain at least the following, as applicable to the category of employment:

1. employee name;
2. term of employment;
3. annual salary or hourly rate;
4. merit pay and annual evaluation for teachers and required administrator;
5. job title;
6. number of work days and general hours of work;
7. certification and licensing requirements;
8. benefits (health insurance, leave time, etc.);
9. reduction in force and recall;

10. discipline, discharge, and transfer during the contract term;
11. a provision prohibiting an Administrator from engaging in conduct involving moral turpitude and a provision allowing the Board to void the contract if the Administrator violates the moral turpitude provision;
12. date and employee signature;
13. date and signature of authorized District representative; and
1. an appeal process concerning the evaluation process and rating received as required by Revised School Code Sections 1249 (K-12 certified teachers of record) and 1249b (instructional administrators and the Superintendent); and
14. other terms as necessary to serve the District's interests or that are legally required.

C. Specific Requirements

Professional Staff, Administrator, and Superintendent contracts must comply with the following, as applicable:

1. Superintendent

The contract term will not exceed 5 years, as required by Revised School Code Section 1229.

2. Administrators

For Administrators subject to Revised School Code Section 1229, the contract term will not exceed 3 years and the contract will automatically terminate if the Administrator does not hold the required certification. The Administrator will not have tenure in the administrative position.

The Superintendent or designee will ensure that Administrator contracts are consistent with any applicable collective bargaining agreement. The term "Administrator" includes instructional Supervisors and Directors.

3. Non-Instructional Supervisors or Directors or exempt staff

Unless otherwise required by law, Non-Instructional Supervisors or Directors or exempt staff are not required to hold an Administrator certificate and will be employed at will.

4. Professional Staff

The Superintendent or designee will ensure that all Professional Staff contracts are consistent with any applicable collective bargaining agreement. Individual teacher contracts will comply with Revised School Code Section 1231. If a teacher seeks appointment to an extracurricular position, the

District may enter into a separate written contract for the extracurricular position.

D. Collective Bargaining Agreements

The Board, with the Superintendent or designee, will determine who will represent the Board in labor negotiations. The designated negotiator(s) may sign tentative agreements during bargaining; however, the final agreement is subject to ratification by the Board. Collective bargaining agreements may be reviewed by legal counsel before bargaining begins.

Legal authority: MCL 380.11a(3), 380.601a(1), 380.623(1)(b), 380.634, 380.1229, 380.1231, 380.1246, 380.1249, 380.1249b

Date adopted: July 1, 2024

Date revised: February 24, 2025

Series 4000: District Employment

4200 Employee Conduct and Ethics

4207 Third-Party Contracting of Non-Instructional Support Services

This Policy must be implemented consistent with Policy 1101. Unless prohibited because of a collective bargaining agreement and to the maximum extent permitted by law, the Board or designee may contract with third parties as determined by the Board.

Any selected third-party contractor must fully comply with Policies 2202 and 4205(C).

Legal authority: MCL 380.11a(3)

Date adopted: July 1, 2024

Date revised: February 24, 2025

Series 4000: District Employment

4200 Employee Conduct and Ethics

4215 District Technology and Acceptable Use

The Board provides students, employees, volunteers, and other authorized users access to the District's technology resources, including its computers and network resources, for educational and other District purposes, in a manner that encourages responsible use. Any use of technology resources that violates federal and state law is prohibited.

Employees have no expectation of privacy when using the District's technology resources. Information and records on the District's network may be subject to disclosure under the Freedom of Information Act, and the District may monitor or access employees' electronic files, as deemed necessary.

Employees must not use District technology resources to record students, Parents, or District personnel or to record a non-public meeting, unless performed for a legitimate educational purpose. The recording must be authorized by a supervisor or Policy. Unauthorized recording or dissemination of a recording may be subject to discipline, including discharge.

Employees must not use a password other than their own to access District technology resources unless authorized by a supervisor. Employees must protect their password(s) from being used by others. An employee will be responsible for any misuse if the employee failed to adequately secure their password(s).

District technology resources are provided for District-related services. Employees must minimize personal use of District technology resources and are prohibited from using those resources when doing so interferes with the employee's job responsibilities or District operations.

Requests for District records must be promptly directed to the FOIA Coordinator under Policy 3501. Only authorized employees may disclose District records to third parties unless otherwise permitted by law.

Employees must not permit students to engage in non-instructional computer games, movies, videos, and activities during the work or school day, unless authorized by a supervisor.

Employees must not download unauthorized software or applications.

Employees must immediately notify the District's technology department of any unauthorized access to, misuse of, or interference with the District's technology resources.

Employees must abide by Policy 3116 pertaining to District Technology and Acceptable Use, including complying with the Children's Internet Protection Act and executing an Acceptable Use Agreement.

Legal authority: 47 USC 254; MCL 397.606

Date adopted: February 24, 2025

Date revised:

Series 4000: District Employment

4200 Employee Conduct and Ethics

4228 No Expectation of Privacy

Employees have no expectation of privacy in connection with their use of District property and equipment. The District reserves the right to search District property, equipment, and technology issued or provided for the employee's use during the employee's District employment, including but not limited to the employee's office, desk, files, computer, or locker. Inspections may be conducted at any time at the District's discretion. A search of an employee's personal effects will comply with federal and state constitutional protections, laws, and regulations.

Legal Authority: U.S. Const, amend. IV

Date adopted: February 24, 2025

Date revised:

Series 4000: District Employment

4200 Employee Conduct and Ethics

4229 *Acceptable Use of Generative Artificial Intelligence*

Employees may use Generative Artificial Intelligence (“Generative AI”) in the school setting in compliance with this Policy and applicable law.

A. Definitions

1. “Generative AI” means the class of AI models that emulate the structure and characteristics of input data in order to generate derived synthetic content. This may include images, videos, audio, text, and other digital content.
2. “AI System” means any data system, software, hardware, application, tool, or utility that operates in whole or in part using AI.

B. Acceptable Use

Employee use of Generative AI must be appropriate for the educational environment and in compliance with all applicable laws, including, but not limited to, the Family Educational Rights and Privacy Act, the Individuals with Disabilities Education Act, and the Children’s Internet Protection Act. Employees must also comply with applicable Board Policies when using Generative AI, including, but not limited to, policies on District technology and acceptable use, copyright protection, student records, unlawful harassment, discrimination, and employee ethics.

Employees must thoroughly review AI-generated material to ensure accuracy, relevance, and appropriateness. Employees may not rely solely on Generative AI to deliver instructional or work-related material. Employee use of Generative AI in the classroom must align with the Board-approved curriculum.

C. Training

Employees may receive training on the legal and ethical use of Generative AI and its integration into the curriculum.

D. Violations

Violations of this policy may result in disciplinary action, up to and including discharge.

Legal Authority: 20 USC 1232g; 20 USC 1400 et seq.; 34 CFR 99; 47 CFR 54.520; 88 Fed Reg 75191 (October 30, 2023)

Date adopted: October 14, 2024

Date revised: February 24, 2025

Series 4000: District Employment

4400 Professional Staff

4401 Definition

A. General

Professional Staff primarily perform work that requires advanced knowledge or work that is intellectual in nature, consistent with the FLSA's (Fair Labor Standards Act) definition of "professional." The Professional Staff member's area of expertise is related to learning or comes from prolonged course of study, including teachers and Non-Teaching Professionals, but excluding Administrators/Supervisors (as defined under Policy 4501) and the Superintendent (as defined under Policy 4601).

B. Teachers

Teachers are professional persons who provide or direct instruction to students and must be appropriately qualified and certified for the assigned teaching position, consistent with federal and state law and District Policies. Each teacher shall maintain required qualifications and certification as a condition of that teacher's continued employment.

A classroom teacher employed by the District must: (1) have a valid Michigan teaching certificate or authorization to teach under Revised School Code Section 1233b; and (2) be assigned by the District to deliver direct instruction to students as a teacher of record.

A teacher must promptly notify the Superintendent or designee, in writing, if the teacher's certification or authorization expires, is revoked, or nullified. Failure to provide this written notice, whether willfully or negligently, may result in discipline, including discharge.

C. Non-Teaching Professionals

Non-Teaching Professionals are "other Professional Staff" who are not teachers and who meet the professional exemption under the FLSA, such as counselors (i.e., those counselors who are not certified teachers), social workers, teacher consultants, behavior specialists, speech pathologists (i.e. who are not certified teachers), physical or occupational therapists, nurses, and psychologists. A Non-Teaching Professional is not required by law to hold a teaching certificate or authorization for the assigned duties. Each Non-Teaching Professional must be qualified and certified as required by the Board or federal and state law. Each Non-Teaching Professional must maintain those qualifications and certifications as a condition of that person's continued employment.

A Non-Teaching Professional must promptly notify the Superintendent or designee, in writing, if the person's certification, license, or endorsement expires,

is revoked, or nullified. Failure to provide this written notice, whether willfully or negligently, may result in discipline, including discharge.

Legal authority: 29 USC 201 et seq.; MCL 38.81 et seq.; MCL 380.1231, 380.1233, 380.1233b, 380.1236, 380.1237

Date adopted: July 1, 2024

Dated revised: February 24, 2025

Series 4000: District Employment

4500 Administrators/Supervisors

4507 Termination

For purposes of this Policy, "termination" refers to a proposed action to discharge or permanently discontinue the employment of an Administrator, Supervisor, or Director during the term of an individual employment contract. Non-renewal at contract expiration is not a termination under this Policy and is addressed in Policy 4508.

Unless otherwise provided by an applicable collective bargaining agreement or individual employment contract, an Administrator, Supervisor, or Director may be terminated for any lawful reason. Off-duty conduct may result in termination if it adversely impacts the District and is not a legally protected activity.

The Superintendent or designee will provide written charges in support of the recommendation for discharge and notice of the Board hearing date, time, and location, to the Administrator, Supervisor, or Director in advance of a Board meeting on the charges. The employee may request a hearing in closed session, but the Board's decision on the termination recommendation must be made in open session. If the employee requests a hearing, the employee has the right to bring legal counsel or another representative of the employee's choice (at the employee's expense) to hear and contest the evidence supporting the termination recommendation and to submit evidence in support of the employee's retention.

The Board resolution or written correspondence identifying the reason(s) for the Board's decision on termination will be placed in the employee's personnel file.

If the employee holds tenure rights as a classroom teacher and the District seeks to terminate those tenure rights, the District will comply with the Teachers' Tenure Act.

Legal authority: MCL 38.71 et seq.; MCL 380.1229(2), 380.1229(3)

Date adopted: July 1, 2024

Date revised: February 24, 2025

Series 4000: District Employment

4600 The Superintendent

4603 Performance Evaluation

Performance evaluations for the Superintendent are an essential element of providing quality educational services and measuring job performance and effectiveness. This Policy does not diminish the Board's authority or ability to either terminate the Superintendent's employment during the term of the Superintendent's employment contract or to non-renew the Superintendent's contract at its expiration.

The Board will ensure that the Superintendent is evaluated based on a performance evaluation system described in Revised School Code Sections 1249 and 1249b and the individual employment contract. The evaluation may include, where appropriate or required by law, the following components:

- A. an annual evaluation process that meets statutory standards and is based on objective criteria;
- B. an annual evaluation by the Board, unless the Superintendent qualifies for a biennial evaluation, provided that this does not limit the Board's right to conduct more frequent evaluations where deemed appropriate by the Board;
- C. an improvement plan if the Superintendent is evaluated as developing or needing support, or otherwise at the Board's discretion;
- D. student growth and assessment data or student learning objectives, as defined by Revised School Code Section 1249;
- E. an evaluation and feedback provided in writing with an overall effectiveness rating of effective, developing, or needing support;
- F. dismissal of a Superintendent rated ineffective or needing support on 3 consecutive evaluations;
- G. a midyear progress report for each year that the Superintendent is evaluated that includes specific performance goals for the remainder of the year and any recommended training identified by the Board;
- H. a tool approved by the MDE, a modified MDE tool, or a local evaluation tool adopted in compliance with Revised School Code Sections 1249 and 1249b;
- I. opportunity for a Superintendent rated needing support to request a review consistent with the procedure for other administrators under Revised School Code 1249b;
- J. website posting of required information pertaining to the evaluation tool;
- K. providing appropriate training for Board members; and

- L. other components that the Board deems relevant, important, or in the District's best interests.

The Superintendent's individual employment contract will include an appeal process concerning the evaluation process and rating received.

The Board, in its discretion, may provide periodic scheduled feedback about the Superintendent's performance.

Legal authority: MCL 380.11a, 380.601a, 380.1249, 380.1249b

Date adopted: February 24, 2025

Date revised:

Series 5000: Students, Curriculum, and Academic Matters

5100 Student Rights

5103 Search and Seizure

School officials may search a student and the student's belongings if they have reasonable suspicion that the search will reveal contraband or evidence of a violation of law, Board Policy, or rule. In rare cases, school officials may conduct a search without reasonable suspicion if there is an imminent threat of physical harm or death.

A reasonable suspicion search must be justified at its inception and reasonable in its scope. A search is justified at its inception when school officials have reasonable grounds to suspect that the search will uncover contraband or evidence of a violation of law, Policy, or rule. A search is reasonable in scope when the measures used are reasonably related to the search objectives and are not excessively intrusive in light of the student's age and sex and the nature of the infraction.

School officials are not required to have reasonable suspicion to search lockers or other District property. See Policy 5102.

The District may use detection dogs to search for contraband on District property consistent with Policy 3107.

A breath alcohol test is a search and may be administered upon reasonable suspicion that a student has consumed or is under the influence of alcohol. For voluntary, noncurricular school activities (e.g., school dances), suspicionless breath alcohol tests may be administered for student health and safety purposes if students and their parents/guardians have been provided advance written notice.

Strip searches are prohibited.

The building principal or designee will turn over to law enforcement illegal items and dangerous weapons, as defined in Policy 5206, and may store in a secure place any other contraband or evidence seized from a search until a disciplinary hearing.

This Policy does not apply to any outside entity that may require drug or breath alcohol testing as a condition of participation. See Policy 5105.

Legal authority: MCL 380.1306, 380.1313(2)

Date adopted: July 1, 2024

Date revised: February 24, 2025

Series 5000: Students, Curriculum, and Academic Matters

5100 Student Rights

5105 Collaboration with Outside Entities

Nothing in these Board Policies, including, without limitation, protocols for student searches and seizures, student discipline, interrogation of students, and seclusion and restraint, may be interpreted to interfere with any rule, regulation, or policy imposed by an outside entity with which the District cooperates or collaborates, except as otherwise prohibited by law.

Date adopted: July 1, 2024

Date revised: February 24, 2025

Series 5000: Students, Curriculum, and Academic Matters

5200 Student Conduct and Discipline

5202 Unlawful Discrimination, Harassment, and Retaliation Against Students

The District prohibits unlawful discrimination. For purposes of this Policy, “unlawful discrimination” includes unlawful harassment and retaliation, unless specifically stated otherwise. The District will investigate all allegations of unlawful discrimination and will take appropriate action, including discipline, against any person who, following an investigation, is determined to have engaged in unlawful discrimination.

This Policy applies to student-to-student conduct and staff-to-student conduct. See Policy 4102 for District personnel harassment.

Complaints alleging Title IX sexual harassment (staff-to-staff, staff-to-student, student-to-student, or student-to-staff) are governed by Policy 3118.

This Policy applies to all conduct occurring on school property, including in a classroom, elsewhere on school premises, on a school bus or other school related vehicle, at a school-sponsored activity or event whether or not it is held on school premises, or conduct with a direct nexus to school.

The District will comply with all applicable state and federal laws related to unlawful discrimination.

A. Student Handbooks

The Superintendent or designee will include in student handbooks a statement explaining the District’s policy against unlawful discrimination, including unlawful harassment and retaliation. This statement must include an explanation of types of unlawful discrimination, examples of harassment, reporting requirements, and consequences as described in this Policy.

B. Types of Unlawful Harassment

“Unlawful harassment” is verbal, written, or physical conduct that denigrates or shows hostility or aversion toward a student because of the student’s race, color, religion, sex (including pregnancy, gender identity, or sexual orientation), national origin, disability, or any other legally protected class that has the purpose or effect of:

1. creating an intimidating, hostile, or offensive environment; or
2. unreasonably interfering with the student’s ability to benefit from the District’s educational programs or activities.

Race, color, and national origin harassment is prohibited by Title VI of the Civil Rights Act of 1964 and the Michigan Elliott-Larsen Civil Rights Act. Race, color, and national origin harassment is unwelcome conduct based on a student’s

actual or perceived race, color, or national origin. Race, color, and national origin harassment can take many forms, including slurs, taunts, stereotypes, or name-calling, as well as racially motivated physical threats, attacks, or other hateful conduct. Under this Policy, harassment based on ethnicity, ancestry, or perceived ancestral, ethnic, or religious characteristics, will be considered race, color, and national origin harassment.

Disability harassment is prohibited by the Americans with Disabilities Act, Section 504 of the Rehabilitation Act of 1973, and the Michigan Persons with Disabilities Civil Rights Act. Disability harassment is unwelcome conduct based on a student's actual or perceived disability. Disability harassment can take many forms, including slurs, taunts, stereotypes, or name-calling, as well as disability motivated physical threats, attacks, or other hateful conduct.

Sex-based harassment is prohibited by Title IX of the Education Amendments of 1972 and the Michigan Elliott-Larsen Civil Rights Act. For the definition of sexual harassment under Title IX, see Policy 3118. Sex-based harassment prohibited by this Policy includes harassment based on gender identity or sexual orientation. This Policy also prohibits harassment of a sexual nature that does not rise to the level of Title IX sexual harassment, as defined in Policy 3118.

C. Reporting Requirements

District personnel must immediately report incidents of alleged unlawful discrimination, including incidents that District personnel witness or about which they receive reports or information, regardless of whether the incidents are verbal, visual, or physical, and whether the incidents also constitute harassment, bullying, or hazing.

District personnel who witness an act of unlawful discrimination must intervene immediately, unless circumstances would make intervention dangerous. A person who is unable to intervene should promptly attempt to find another person who is able to intervene, contact a building administrator, or contact law enforcement, as the situation requires.

Any student who witnesses an act of unlawful discrimination is encouraged to report it to District personnel. No student will be retaliated against based on any report of suspected unlawful discrimination. A student may also anonymously report an incident of unlawful discrimination. The District will investigate anonymous reports pursuant to its investigation procedures described below. Minor students do not need parent/guardian permission to file complaints or participate in the formal complaint resolution process described below.

D. How to Report Unlawful Discrimination

If you or someone you know has been the victim of unlawful sex-based discrimination, you may file a report with any District employee or with the Title IX Coordinator:

John Hood, Superintendent
4406 N Okemos Rd, Okemos MI 48864
517-706-5006
john.hood@okemosk12.net

Formal Complaints of Title IX Sexual Harassment must be filed with the Title IX Coordinator. For information on the District's Title IX Sexual Harassment Grievance Process, see Policy 3118.

If you or someone you know has been the victim of disability-based discrimination, you may file a complaint with:

Heather Pricco, Special Education Director
4406 N Okemos Road, Okemos MI 48864
517-706-4828
heather.pricco@okemosk12.net

If you or someone you know has been the victim of any other type of unlawful discrimination, including unlawful conduct based on race, color, or national origin, you may file a complaint with:

John Hood, Superintendent
4406 N Okemos Rd, Okemos MI 48864
517-706-5007
john.hood@okemosk12.net

A report of unlawful discrimination may be made verbally or in writing.

The coordinators identified above will document all unlawful discrimination reports, as well as any incidents they personally observe. The District will retain this documentation in accordance with applicable record retention requirements.

E. Complaint Process

Any person who has been the victim of unlawful discrimination or any person who has witnessed an incident of unlawful discrimination may make a complaint at any time. District personnel who receive a complaint of unlawful discrimination must immediately document the reported incident and notify the appropriate coordinator identified above by the end of the next school day.

F. Investigation Timelines

The District will initiate an investigation within 5 school days after receiving a complaint of unlawful discrimination. In most cases, an investigation will be completed within 20 school days.

The District will attempt to comply with all law enforcement requests for cooperation. In some circumstances, compliance with law enforcement requests

may require the District to briefly suspend its investigation. The District will promptly resume its investigation as soon as it is notified by the law enforcement agency that the law enforcement agency has completed its evidence gathering process. This delay should not exceed 10 school days. If the District's investigation is suspended, interim steps will be taken to provide for the safety of the alleged victim or victims and the school community and to avoid potential retaliation. Those steps may include suspending the alleged perpetrator from work or school until the investigation is complete. If the law enforcement agency does not notify the District within 10 school days that the investigation may resume, the District will notify the law enforcement agency that the District intends to promptly resume its investigation.

Within 5 school days after completing the investigation, the District will separately notify, in writing, the alleged victim and the alleged perpetrator of the investigation's outcome. Any disciplinary action against the alleged perpetrator will be implemented in accordance with the due process standards contained within Policy 5206.

An alleged victim of unlawful discrimination may present new evidence at any time.

An alleged perpetrator's status as a student with a disability will not affect the District's obligation to protect the alleged victim during and after an investigation.

G. Investigation Procedures

The District will use the following procedures when initiating and conducting investigations of unlawful discrimination:

1. Any written or verbal report of unlawful discrimination or harassment, including anonymous written or verbal reports, will be promptly addressed and investigated.
2. The District will assure the alleged victim that:
 - a. the complaint will be fully investigated;
 - b. the alleged victim's identity will be kept confidential during the investigation, to the extent possible;
 - c. the alleged victim will not be retaliated against by the District; and
 - d. the District will enforce its non-retaliation policy.
3. The District will take preventative measures to ensure that others, including the alleged perpetrator, do not retaliate against the alleged victim during or after the investigation.
4. The District will notify the alleged victim that the victim will not be required to confront the alleged perpetrator during the investigation, that steps will be

taken to immediately ensure that the alleged conduct does not continue, and that retaliation is prohibited.

5. The District will interview any witnesses identified by the alleged victim and the alleged perpetrator. All witnesses will be assured that their identities will be kept confidential during the investigation, to the extent both possible and practical, and that retaliation is prohibited.
6. The District will implement individualized interim measures during the investigation to ensure that any unlawful conduct does not continue. Interim measures may include, but are not limited to, temporary schedule changes, no-contact directives, short-term suspensions, changes to class schedules or lockers, and student escorts.
7. The District will take action to end unlawful discrimination, including monitoring that the conduct does not reoccur and modifying responses if the unlawful discrimination does reoccur.
8. If the alleged victim is a minor student, the District will notify the student's parent/guardian of the complaint. The parent/guardian will be informed of the investigation's status, as appropriate.
9. Unless otherwise required by law, if an alleged victim has been discriminated against or harassed based on sexual orientation, gender identity, or non-compliance with gender stereotypes, the District will first consult with the student to determine an appropriate method of notifying the student's parent/guardian of the complaint.
10. All documentation, including witness statements, must be kept with the complaint and reports.
11. The District will use the preponderance of the evidence standard as the appropriate standard to substantiate allegations of unlawful discrimination.
12. If the District determines that a school official's impartiality has been compromised during the investigation process, that school official will be removed from the investigation and have no further involvement.
13. If an alleged victim requests complete confidentiality or asks that the complaint not be pursued, the District will take all reasonable steps to investigate and respond to the complaint consistent with the alleged victim's request. If an alleged victim insists that the victim's name or other identifying information not be disclosed to the alleged perpetrator, the appropriate coordinator or designee will notify the alleged victim that the District's ability to investigate and respond to the complaint may be limited.

H. Remedies

The District will take appropriate and effective measures to promptly remedy effects of unlawful discrimination. Appropriate remedies will be based on the circumstances and may include, but are not limited to:

1. providing an escort to ensure that the victim can safely attend classes and school activities;
2. providing the victim with school-based counseling services;
3. providing the victim with academic support services, such as tutoring;
4. rearranging course schedules, to the extent practicable, to minimize contact between the victim and perpetrator;
5. moving the victim's or the perpetrator's locker;
6. issuing a "no contact" directive to the perpetrator; or
7. imposing discipline, up to and including suspension or expulsion, consistent with Policy 5206 and the student code of conduct, or
8. removing district provided transportation.

Whenever possible, the District will strive to ensure that the victim's academic and other school-related schedules remain intact.

These remedies may also be available to any other student who is or was affected by unlawful discrimination.

The applicable coordinator should also consider whether broader remedies are required, which may include, but are not limited to:

1. assemblies reminding students and staff of their obligations under this Policy and applicable handbooks;
2. additional staff training;
3. a climate survey; or
4. letters to students, staff, and parents/guardians reminding them of their obligations under this Policy and applicable handbooks.

If the alleged victim is a student with a disability, the Superintendent or designee will convene an IEP or Section 504 Team meeting to determine if additional or different programs, services, accommodations, or supports are required to ensure that the alleged victim continues to receive a free appropriate public education.

B. Investigation Report

After the investigation concludes, the appropriate coordinator or designee will create an investigation report. The report must include the following information:

1. the alleged victim's name, a description, or identifying information;
2. the alleged victim's relevant protected class(es);
3. the name, a description, or identifying information about the person making the report, if not the alleged victim;
4. the protected class(es) of the person making the report, if not the alleged victim;
5. the nature of the allegation, a description of the alleged incident(s), and the date and time (if known) of the alleged incident(s);
6. the name(s) and protected classes of all persons alleged to have committed the unlawful discrimination, if known, or a description/identifying information available if the name is not known;
7. the name(s) or description/identifying information and protected classes of all known witnesses to the alleged incident;
8. any written statement of the person making the report, the alleged victim (if different than the reporter), the alleged perpetrator(s), and any known witnesses;
9. the applicable standard of evidence, conclusion, and recommendations; and
10. the response by District personnel, including the date any incident was reported to law enforcement.

C. Filing a False Report

Any person who knowingly or maliciously files a false report of unlawful discrimination will be subject to discipline, up to and including expulsion.

D. Retaliation

Retaliation against a person who reports unlawful discrimination is prohibited. Any person who retaliates against a person who reports suspected unlawful discrimination will be disciplined in accordance with Policy 5206. This prohibition against retaliation also applies to retaliation against people who participate in or cooperate with an investigation related to a complaint.

E. Office for Civil Rights

Any person who believes that he or she was the victim of unlawful discrimination may file a complaint with the Office for Civil Rights (OCR) at any time:

U.S. Department of Education

Office for Civil Rights
1350 Euclid Avenue, Suite 325
Cleveland, Ohio 44115
Phone: (216) 522-4970
E-mail: OCR.Cleveland@ed.gov

This complaint may be filed before, during, or after filing a complaint with the District. A person may forego filing a complaint with the District and instead file a complaint directly with OCR. The District recommends that a person who has been subjected to unlawful discrimination also file a complaint with the District to ensure that the District is able to take steps to prevent any further harassment and to discipline the alleged perpetrator, if necessary. OCR does not serve as an appellate body for District decisions. An investigation by OCR will occur separately from any District investigation.

F. Appeal Process

An alleged victim or alleged perpetrator may appeal the written investigation findings and conclusions to the Superintendent within 5 business days of receipt. Upon receipt of an appeal, the Superintendent or designee will review the investigation report, may contact additional witnesses, may consider all additional evidence, and may re-interview any witnesses. The Superintendent will then notify the parties in writing of the decision. The Superintendent or designee is not required to give deference to the investigation report and may consider any new, previously unavailable evidence in evaluating the appeal.

G. Training

The District will provide to District personnel training on responding to and investigating unlawful discrimination. This training is mandatory for all District personnel responsible for implementing and enforcing anti-discrimination and anti-harassment laws and related policies and procedures. The Superintendent or designee will ensure that District personnel are notified of mandatory training sessions.

Legal authority: 20 USC 1400 et seq., 1681 et seq.; 29 USC 206 et seq., 621 et seq., 701 et seq., 794, 2601 et seq., 6101 et seq.; 38 USC 4301 et seq.; 42 USC 1983, 2000d et seq., 2000e et seq., 2000ff et seq., 6101 et seq., 12101 et seq.; 29 CFR 1604.1 et seq., 1635; 34 CFR 106.8, 106.9; MCL 37.1101 et seq., 37.2101 et seq.

Date adopted: July 1, 2024

Date revised: February 24, 2025

Series 5000: Students, Curriculum, and Academic Matters

5200 Student Conduct and Discipline

5203 Hazing

Hazing is an intentional or reckless act directed against a student that endangers the student's physical or mental health or safety that is done for the purpose of pledging, being initiated into, affiliating with, participating in, holding office in, or maintaining membership in any organization, activity, team, or social group. This Policy applies regardless of a student's consent, permission, or assumption of risk. Any student who engages in hazing may be subject to discipline.

Hazing includes, but is not limited to:

- physical brutality or punishment (e.g., whipping, beating, striking, branding, or placing a harmful substance on a student's body);
- physical activity that subjects a student to an unreasonable risk of harm or that adversely affects a student's physical or mental health or safety (e.g., sleep deprivation, exposure to the elements, confinement in a small space, or undressing or exposing a student);
- consumption of food, liquid, alcohol, drugs, or other substance that subjects a student to an unreasonable risk of harm or that adversely affects a student's physical or mental health or safety;
- an activity that induces, causes, or requires a student to commit a crime or an act of hazing;
- intentional humiliation or embarrassment of a student;
- detention or seclusion of a student; and
- other activities that subject a student to an unreasonable risk of harm or that adversely affect a student's physical or mental health or safety.

Legal authority: MCL 750.411t

Date adopted: July 1, 2024

Date revised: February 24, 2025

Series 5000: Students, Curriculum, and Academic Matters

5200 Student Conduct and Discipline

5204 Student Appearance and Dress Code

Student dress, hair style, make up, cleanliness, or personal appearance that is a threat to the safety, health, or welfare of students or others; violates any statute or Policy 5101; or substantially disrupts the educational environment or that school officials reasonably forecast will substantially disrupt the educational environment, is grounds for remedial or disciplinary action. The Superintendent or designee will develop and publish specific dress code regulations in student handbooks consistent with the law and this Policy.

Dress Code Philosophy

The dress code for students attending Okemos Public Schools supports equitable educational access and is intentionally written in a manner that does not reinforce stereotypes or increase marginalization or oppression of any group based on race, sex, gender identity, gender expression, sexual orientation, ethnicity, religion, cultural observance, household income or body type/size.

Students should be able to dress comfortably for school and engage in the educational environment without fear of discipline or body shaming

School staff should support a positive school environment that focuses on the development of the whole child without the additional and often uncomfortable burden of dress code enforcement.

The primary responsibility for a student's attire resides with the student and their parent(s) or guardian(s). All students and staff should understand that they are responsible for managing their own personal "distractions" without regulating individual students' clothing/self-expression.

Certain body parts must be covered for all students at all times. Clothes must be worn in a way such that genitals, buttocks, breasts, and nipples are fully covered with opaque fabric. However, cleavage should not have coverage requirements. Students **MUST** wear a Shirt (with fabric in the front, back, and on the sides under the arms), and Pants/Jeans or the equivalent (for example, a skirt, sweatpants, leggings, a dress or shorts), and shoes.

Dress Code Implementation

School staff will have conversation with the student who is not adhering to the dress code to discuss the standards. The conversation with the student will be restorative in nature. School administration may direct students to change clothing or contact home for a change of clothes.

These dress codes shall apply to regular school days and summer school days, as well as any school-related events and activities, such as graduation ceremonies, dances and prom.

Legal authority: MCL 37.2101 et.seq.

Date adopted: July 1, 2024

Date revised: February 24, 2025

Series 5000: Students, Curriculum, and Academic Matters

5200 Student Conduct and Discipline

5206 Student Discipline

A. Student Discipline - Generally

The Board is committed to providing students and staff with a safe learning environment free from substantial disruption. Consistent with this commitment, the District may discipline students who engage in misconduct, up to and including suspension or expulsion from school.

The District will take steps to effectively discipline students in a manner that minimizes out-of-school suspensions and expulsions. The District will comply with applicable laws related to student discipline, including the consideration of specific factors and possible use of restorative practices.

B. Applicability

This Policy applies to student conduct that occurs:

1. on District property;
2. at a school-sponsored or school-related event;
3. on a school bus or vehicle;
4. while traveling to or from school, including at a bus stop; and
5. at any other time or place if the conduct has a nexus to the school, substantially disrupts the school environment, or as permitted by law.

C. Student Code of Conduct

The Superintendent or designee will develop, regularly update, and annually publish a student code of conduct in all student handbooks. The student code of conduct must:

1. identify offenses that may result in discipline;
2. identify possible disciplinary consequences for each offense, which may, if appropriate, include suspension or expulsion;
3. be consistent with applicable state and federal laws and Board Policies; and
4. include a copy of Policy 5206E entitled "Suspension from Class, Subject, or Activity by Teacher."

D. Definitions

For purposes of this Policy:

1. "suspend" or "suspension" means a disciplinary removal from school for less than 60 school days;
2. "expel" or "expulsion" means a disciplinary removal from school for 60 or more school days;
3. "restorative practices" means practices that emphasize repairing the harm to the victim and the school community caused by a student's misconduct; and
4. "Mandatory 7 Factors" means the following:
 - a. the student's age;
 - b. the student's disciplinary history;
 - c. whether the student has a disability;
 - d. the seriousness of the behavior;
 - e. whether the behavior posed a safety risk;
 - f. whether restorative practices are a better option; and
 - g. whether lesser interventions would address the behavior.

E. Restorative Practices

Before suspending or expelling a student (except a student who possesses a firearm in a weapon-free school zone), teachers, administrators, and the Board must first determine whether restorative practices would better address the student's misconduct, recognizing the Board's objective of minimizing out-of-school suspensions and expulsions. Likewise, teachers, administrators, and the Board must consider whether restorative practices should be used in addition to the suspension or expulsion. Restorative practices, which may include a victim-offender conference, should be the first consideration to remediate offenses such as interpersonal conflicts, bullying, verbal and physical conflicts, theft, damage to property, class disruption, harassment, and cyberbullying.

All victim-offender conferences must be conducted consistent with state and federal law and Policies. No student who claims to be the victim of unlawful harassment may be compelled to meet with the alleged perpetrator of the harassment as part of a restorative practice.

F. Discretionary Suspension or Expulsion

Under Michigan law, a suspension of 10 or fewer school days is presumed to be reasonable. A suspension of more than 10 school days or an expulsion is, in most circumstances, presumed not to be justified. Before imposing a suspension or an expulsion, administrators or the Board must consider the Mandatory 7 Factors.

1. Building Administrators - 10 or fewer days

The Board delegates to all building administrators the authority to suspend a student for up to 10 school days consistent with the student code of conduct.

A building administrator may also suspend a student for up to 10 school days pending further investigation and possible further disciplinary consequences, including a longer-term suspension or expulsion.

Before exercising this authority, the building administrator must consider the Mandatory 7 Factors.

Additionally, before suspending a student for any length of time, the building administrator must provide the student due process as described in Policy 5206A. If the student is a student with a disability, the student's discipline is also subject to Policy 5206B.

2. Superintendent - Less than 60 school days

The Board delegates to the Superintendent the authority to suspend a student for less than 60 school days consistent with the student code of conduct. Before exercising this authority, the Superintendent must consider the Mandatory 7 Factors.

Any time the Superintendent finds that a suspension of more than 10 school days is warranted, the Superintendent must base the rationale on the Mandatory 7 Factors and explain the rationale in writing.

Additionally, before suspending a student for any length of time, the Superintendent must provide the student due process as described in Policy 5206A. If the student is a student with a disability, the student's discipline is also subject to Policy 5206B.

3. Board - Suspension or Expulsion

The Board may suspend or expel a student for an offense consistent with the student code of conduct.

Before exercising this authority, the Board must consider the Mandatory 7 Factors.

Any time the Board finds that a suspension of more than 10 school days or expulsion is warranted, the Board must base the rationale on the Mandatory 7 Factors and explain the rationale in writing.

Before exercising this authority, the Board must provide the student due process as described in Policy 5206A. If the student is a student with a disability, the student's discipline is also subject to Policy 5206B.

G. Criminal Sexual Conduct – Discretionary Suspension or Expulsion

If a student commits criminal sexual conduct, as defined in Revised School Code Section 1311, against another student enrolled in the District and expulsion is not mandatory under Policy 5206 H.3, the District may suspend or expel the student even if the student has not been criminally charged, subject to consideration of the Mandatory 7 Factors.

Before exercising this authority, the District must provide the student due process as described in Policy 5206A. If the student is a student with a disability, the student's discipline is also subject to Policy 5206B.

H. Mandatory Suspension or Expulsion

Building principals and other administrators must refer all incidents that may result in a mandatory suspension or expulsion to the Superintendent or designee for transmission to the Board. As explained below, the Board recognizes that in some circumstances it may choose not to suspend or expel a student. Nothing in this section may be construed as limiting the Board's discretion to suspend or expel a student for any offense that the student code of conduct identifies as possibly resulting in suspension or expulsion.

1. Possession of a Dangerous Weapon

a. Possession of a Firearm

If a student possesses a firearm in a weapon-free school zone, the Board will permanently expel the student unless the student demonstrates, in a clear and convincing manner, at least one of the following:

- the student was not possessing the firearm to use as a weapon or to deliver, either directly or indirectly, to another person to use as a weapon;
- the student did not knowingly possess the firearm;
- the student did not know or have reason to know that the firearm constituted a "dangerous weapon"; or
- the student possessed the firearm at the suggestion, request, or direction of, or with the express permission of, school or police authorities.

If a student demonstrates one of the above circumstances in a clear and convincing manner and the student has not been previously suspended or expelled from school, the Board will not expel the student unless the Board finds that, based on the circumstances, expulsion is warranted.

b. Possession of a Dangerous Weapon (Other than a Firearm)

If a student possesses a dangerous weapon (other than a firearm) in a weapon-free school zone, the Board will consider whether to permanently

expel the student or to impose a less severe penalty after first considering the Mandatory 7 Factors.

The Board is not required to expel a student for possession of a dangerous weapon (other than a firearm) if the student demonstrates, in a clear and convincing manner, at least one of the following:

- the student was not possessing the instrument or object to use as a weapon or to deliver, either directly or indirectly, to another person to use as a weapon;
- the student did not knowingly possess the weapon;
- the student did not know or have reason to know that the instrument or object constituted a "dangerous weapon"; or
- the student possessed the weapon at the suggestion, request, or direction of, or with the express permission of, school or police authorities.

If a student demonstrates one of the above circumstances in a clear and convincing manner and the student has not been previously suspended or expelled from school, the Board will not expel the student unless the Board finds that, based on the circumstances, expulsion is warranted.

c. Applicable Definitions for Dangerous Weapon Offense

"Weapon-free school zone" means school property and a vehicle used by a school to transport students to or from school property.

"School property" means a building, playing field, or property used for school purposes to impart instruction to children or used for functions and events sponsored by a school, except a building used primarily for adult education or college extension courses.

"Dangerous weapon" means a firearm, dagger, dirk, stiletto, knife with a blade over 3 inches in length, pocket knife opened by a mechanical device, iron bar, or brass knuckles.

"Firearm" means (i) any weapon (including a starter gun) which will or is designed to or may readily be converted to expel a projectile by the action of an explosive; (ii) the frame or receiver of any such weapon; (iii) any firearm muffler or firearm silencer; or (iv) any destructive device. "Firearm" does not include an antique firearm, as defined by 18 USC § 921.

"Destructive device" means (i) any explosive, incendiary, or poison gas (including a bomb, grenade, rocket having a propellant charge of more than four ounces, missile having an explosive or incendiary charge of more than one-quarter ounce, mine, or similar device); (ii) any type of weapon (other than a shotgun or a shotgun shell that the Attorney General

finds is generally recognized as particularly suitable for sporting purposes) by whatever name known which will, or which may be readily converted to, expel a projectile by the action of an explosive or other propellant, and which has any barrel with a bore of more than one-half inch in diameter; and (iii) any combination of parts either designed or intended for use in converting any device into a destructive device and from which a destructive device may be readily assembled.

d. Additional Procedures for Dangerous Weapon Expulsion

The Superintendent or designee must ensure that if a student is expelled for possession of a dangerous weapon, the student's permanent record reflects the expulsion. The Superintendent or designee must refer a student who is expelled for possession of a dangerous weapon to the county department of social services or the county community mental health agency and notify the student's parent/guardian (or the student, if the student is at least age 18 or is an emancipated minor) of the referral within 3 calendar days of the expulsion. The Superintendent or designee must also make a referral to local law enforcement and contact the student's parent/guardian immediately any time a student is found to have brought a dangerous weapon to school or possessed a dangerous weapon at school, at a school related activity, or in a school vehicle. If a District official confiscates a dangerous weapon, the District official will give the dangerous weapon to law enforcement and will not release the dangerous weapon to any other person, including the legal owner.

Unless reinstated pursuant to Revised School Code Section 1311(6), a student expelled by another district or public school academy for possession of a dangerous weapon may not enroll in the District.

2. Arson

If a student commits arson as defined in Revised School Code Section 1311, in a school building or on school grounds, the Board will consider whether to permanently expel the student or to impose a less severe penalty after first considering the Mandatory 7 Factors.

The Superintendent or designee must ensure that if a student is expelled for committing arson, the student's permanent record reflects the expulsion. The Superintendent or designee must refer a student who is expelled for committing arson to the county department of social services or the county community mental health agency and notify the student's parent/guardian (or the student, if the student is at least age 18 or is an emancipated minor) of the referral within 3 calendar days of the expulsion.

Unless reinstated pursuant to Revised School Code Section 1311(6), a student expelled by another district or public school academy for committing arson may not enroll in the District.

3. Criminal Sexual Conduct

If a student commits criminal sexual conduct as defined in Revised School Code Section 1311, in a school building or on school grounds, or pleads to, is convicted of, or is adjudicated for criminal sexual conduct against another student enrolled in the District, the Board will consider whether to permanently expel the student or to impose a less severe penalty after first considering the Mandatory 7 Factors.

The Superintendent or designee must ensure that if a student is expelled for committing criminal sexual conduct, the student's permanent record reflects the expulsion. The Superintendent or designee must refer a student who is expelled for committing criminal sexual conduct to the county department of social services or the county community mental health agency and notify the student's parent/guardian (or the student, if the student is at least age 18 or is an emancipated minor) of the referral within 3 calendar days of the expulsion.

Unless reinstated pursuant to Revised School Code Section 1311(6), a student expelled by another district or public school academy for committing criminal sexual conduct may not enroll in the District.

4. Physical Assault

a. Physical Assault Against Employee, Volunteer, or Contractor

If a student in grade 6 or above commits a physical assault at school against an employee, volunteer, or contractor and the victim reports the physical assault to the Board or to a school administrator or, if the victim is unable to report the assault, another person makes the report on the victim's behalf, the Board will consider whether to permanently expel the student or to impose a less severe penalty after first considering the Mandatory 7 Factors.

The Superintendent or designee must ensure that if a student is expelled for physically assaulting an employee, volunteer, or contractor, the student's permanent record reflects the expulsion. The Superintendent or designee must refer a student who is expelled for physically assaulting an employee, volunteer, or contractor to the county department of social services or the county community mental health agency and notify the student's parent/guardian (or the student, if the student is at least age 18 or is an emancipated minor) of the referral within 3 calendar days of the expulsion.

Unless reinstated pursuant to Revised School Code Section 1311a(5), a student expelled by another district or public school academy for physically assaulting an employee, volunteer, or contractor may not enroll in the District.

b. Physical Assault Against Another Student

If a student in grade 6 or above commits a physical assault at school against another student and the physical assault is reported to the Board or to an administrator, the District will consider whether to suspend or expel the student or to impose a less severe penalty after first considering the Mandatory 7 Factors.

A resident student in grade 6 or above who is currently expelled by another district or public school academy for committing a physical assault against another student may request to enroll in the District. The Superintendent or designee will consider the request along with any information the Superintendent or designee determines relevant. The Superintendent or designee may either grant or deny the request. The Superintendent's decision is final.

c. Applicable Definitions for Physical Assault Against Student

- i. "Physical assault" means intentionally causing or attempting to cause physical harm to another through force or violence.
- ii. "At school" means in a classroom, elsewhere on school premises, on a school bus or other school-related vehicle, or at a school-sponsored activity or event whether or not it is held on school premises.

5. Bomb Threat or Similar Threat

If a student in grade 6 or above makes a bomb threat or similar threat directed at a school building, other District property, or at a school-related event, the District will consider whether to suspend or expel the student or to impose a less severe penalty after first considering the Mandatory 7 Factors.

A resident student in grade 6 or above who is currently expelled by another district or public school academy for making a bomb threat or similar threat may request to enroll in the District. The Superintendent or designee will consider the request along with any information the Superintendent or designee determines relevant. The Superintendent or designee may either grant or deny the request. The Superintendent's decision is final.

I. Statewide School Safety Information Policy (SSSIP) & Law Enforcement Reporting

The Superintendent or designee must notify law enforcement when required by the SSSIP and make all other reports and provide all other notifications required by the SSSIP or any state or federal law. Nothing in this Policy limits the ability of a school administrator to contact law enforcement at any other time.

J. Educational Programming During Suspension or Expulsion

Except as otherwise required by law or as provided in this Policy, a student who has been suspended or expelled may not be on school property, attend classes

or other school functions, or participate in extracurricular activities during the student's suspension or expulsion without written permission from the Superintendent or designee. District personnel may assist students who have been suspended or expelled to explore alternative means, as allowed by law, to earn credit and to complete coursework during the period of the student's suspension or expulsion.

Legal authority: 18 USC 921; 20 USC 1401 et seq., 7151; 29 USC 705, 794-794b; MCL 380.1308-1310, 380.1310a, 380.1310c, 380.1310d, 380.1311, 380.1311a, 380.1312, 380.1313

Date adopted: July 1, 2024

Date revised: February 24, 2025

Series 5000: Students, Curriculum, and Academic Matters

5200 Student Conduct and Discipline

5206A Student Discipline - Due Process

The District will provide students due process to the extent required by state and federal law before a student is suspended or expelled. All District administrators must respect student due process rights.

If a District administrator determines that an emergency exists that requires the immediate removal of a student from school, the administrator may contact the student's Parent or local law enforcement or take other measures to have the student safely removed from school. The administrator must, as soon as practicable thereafter, follow the procedures outlined in this Policy.

A. Building Administrator – 10 or Fewer School Days

Before suspending a student for 10 or fewer school days, an administrator must: (1) provide the student verbal notice of the offense the student is suspected to have committed, and (2) provide the student an informal opportunity to explain what happened. Except in emergency circumstances, an administrator will not suspend the student unless, after providing the student notice and an opportunity to explain, the administrator is reasonably certain that the student committed a violation of the student code of conduct and that suspension is the appropriate consequence.

B. Superintendent or Designee – 59 or Fewer School Days

Before suspending a student for more than 10 school days but less than 60 school days, the Superintendent or designee must provide the Parent or student with: (1) written notice of the offense the student is suspected to have committed; (2) an explanation of the evidence relied upon by the District in arriving at the conclusion that disciplinary action may be warranted; and (3) an opportunity for a hearing at which the student may present evidence and witnesses to show that the student did not commit the alleged offense or that suspension is not an appropriate consequence. The Superintendent or designee will provide the Parent or student at least 3 calendar days' notice before the hearing. The Parent and student may be represented, at their cost, by an attorney or another adult advocate at the hearing. The Superintendent or designee will not suspend the student unless, following the hearing, he or she is convinced by a preponderance of the evidence that the student committed a violation of the student code of conduct and that suspension is the appropriate consequence. A Parent or student may appeal the Superintendent's or designee's decision to the Board. The appeal must be submitted to the Board within 3 calendar days of the decision. The Board will hear the appeal at its next regularly scheduled meeting. The Board's decision is final. The student's suspension will run while the appeal is pending.

C. Board Suspension or Expulsion

Before the Board suspends or expels a student, the Superintendent or designee must provide the Parent or student with: (1) written notice of the offense the student is suspected to have committed; (2) an explanation of the evidence relied upon by the District in arriving at the conclusion that disciplinary action may be warranted; and (3) an opportunity for a Board hearing at which the student may present evidence and witnesses to show that the student did not commit the suspected offense or that suspension or expulsion is not an appropriate consequence. The Superintendent or designee will provide the Parent or student at least 3 calendar days' notice before the hearing. The Parent and student may be represented, at their cost, by an attorney or another adult advocate at the hearing. The Board will not suspend or expel the student unless, following the hearing, a majority of the Board finds by a preponderance of the evidence that the student committed misconduct that should result in suspension or expulsion under either the student code of conduct or this Policy and that suspension or expulsion is the appropriate consequence. The Board's decision is final.

Legal authority: *Goss v Lopez*, 419 US 565 (1975)

Date adopted: February 24, 2025

Date revised:

Series 5000: Students, Curriculum, and Academic Matters

5200 Student Conduct and Discipline

5206B Student Discipline - Students with Disabilities

The District will follow all applicable state and federal laws related to disciplining students with disabilities. Students with disabilities are entitled to all due process protections afforded to other students pursuant to Policy 5206A. For students with disabilities, the additional procedures and protections in this Policy also apply.

A. Change of Placement

On the date on which the District decides to: (1) expel a student with a disability; (2) suspend a student with a disability for more than 10 consecutive school days; (3) suspend a student with a disability for more than 10 cumulative school days in the same school year if a pattern of removals exists; or (4) place a student with a disability in an interim alternative educational setting (explained below), the District will notify the student's parent/guardian of that decision, will provide the parent/guardian a copy of applicable procedural safeguards, and will conduct a manifestation determination review (MDR) within 10 school days.

B. Manifestation Determination Review (MDR)

The MDR team, which includes the parent/guardian and relevant members of the student's Individualized Education Plan (IEP) or Section 504 Team, will determine whether the student's conduct was a manifestation of the student's disability.

1. Conduct Was a Manifestation

If the conduct was a manifestation of the student's disability, the District must immediately return the student to the placement from which the student was removed unless the parent/guardian and the District agree to change the placement or the student is placed in an interim alternative educational setting for up to 45 school days (see section C).

For a student with an IEP, if the conduct was a manifestation of the student's disability, the District must either: (1) conduct a functional behavioral assessment (unless one was previously conducted) and implement a behavior intervention plan for the student; or (2) if a behavior intervention plan was already developed, review and modify the behavior intervention plan to address the conduct at issue.

2. Conduct Was Not a Manifestation

If the conduct was not a manifestation of the student's disability, the District may proceed with the suspension or expulsion by adhering to the due process requirements in Policy 5206A.

If the student has an IEP, the District must, as appropriate, conduct a functional behavioral assessment and develop a behavior intervention plan or other behavioral modifications for the student to prevent the behavior from recurring.

C. Interim Alternative Educational Setting ("IAES")

The District may remove a student with a disability who engages in any of the following conduct to an IAES for not more than 45 school days, even if the conduct is a manifestation of the student's disability:

1. carrying a weapon to or possessing a weapon at school, on school premises, or to or at a school function;
2. knowingly possessing or using illegal drugs, or selling or soliciting the sale of a controlled substance, while at school, on school premises, or at a school function; or
3. inflicting serious bodily injury upon another person while at school, on school premises, or at a school function.

For purposes of this section only, a "weapon" means a device, instrument, material, or substance, animate or inanimate, that is used for, or is readily capable of, causing death or serious bodily injury. A "weapon" does not include a pocket knife with a blade of less than 2½ inches in length.

No student with a disability may be removed to an IAES without first receiving the due process rights afforded under Policy 5206A.

If the student has an IEP, the District must, as appropriate, conduct a functional behavioral assessment and develop a behavior intervention plan or other behavioral modifications for the student to prevent the behavior from continuing.

D. Dangerous Students

The District may remove a dangerous student from school as permitted by law. District administrators must follow all state and federal laws governing the removal of dangerous students with disabilities.

E. Services During Disciplinary Removal or IAES

A student who is eligible for services under the Individuals with Disabilities Education Act (IDEA) who is expelled or suspended for more than 10 school days during a school year or placed in a 45-school day IAES is entitled to receive programs and services, although in a setting other than the regular school setting, that are sufficient to enable the student to participate in the general education curriculum and to progress toward meeting the goals contained in the student's IEP.

F. Students Not Yet IDEA Eligible

A student who is not currently identified as a student with a disability under the IDEA is entitled to the rights and procedures provided to students with disabilities if the District had knowledge that the student was a student with a disability before the misconduct occurred. The District is deemed to have knowledge that a student was a student with a disability only if: (1) the student's parent/guardian expressed concern in writing to a school administrator that the student needed special education or related services; (2) the student's parent/guardian requested a special education evaluation; or (3) the student's teacher or other District personnel expressed specific concerns about a pattern of behavior demonstrated by the student to the District's special education director or to other supervisory personnel. The District will not be deemed to have knowledge that the student was a student with a disability if: (1) the student's parent/guardian refused to allow the District to evaluate the student; (2) the student's parent/guardian refused special education for the student; or (3) the student was previously evaluated and determined to not be a student with a disability.

This Policy does not provide a comprehensive description of the disciplinary rights and procedures due to students with disabilities. District administrators must ensure that the rights of students with disabilities are protected and all procedures applicable to students with disabilities are followed as required by the IDEA, Section 504 of the Rehabilitation Act, state law, and Board Policy.

Legal authority: 20 USC 1401 et seq., 7151; 29 USC 705, 794-794b; MCL 380.1308-.1310, 380.1310a, 380.1310c, 380.1310d, 380.1311, 380.1311a, 380.1312, 380.1313

Date adopted: July 1, 2024

Date revised: February 24, 2025

Series 5000: Students, Curriculum, and Academic Matters

5200 Student Conduct and Discipline

5206D Student Discipline - Enrollment Following Misconduct at Another Public or Nonpublic School

To the extent permitted by law, the District may deny enrollment to a student who engaged in misconduct in another public or nonpublic school and who seeks to enroll in the District either: (1) before the previous school imposes disciplinary consequences for the misconduct; or (2) while the student is suspended or expelled from the previous public or nonpublic school. The Superintendent or designee must refer the student to the Board if, under the student code of conduct, the student's misconduct in the previous public or nonpublic school would result in a long-term suspension or expulsion from that institution and, in the Superintendent's or designee's opinion, the student's enrollment in the District would jeopardize the safety or welfare of the District or substantially disrupt District operations. The Board will hold a pre-enrollment hearing following the Superintendent's or designee's referral to consider whether the student may enroll and, if so, any conditions on enrollment. The Board will consider any information submitted by the parent/guardian or student and the Superintendent in either support of or opposition to the student's enrollment.

This Policy does not apply to students seeking to enroll who have been expelled for any of the following offenses:

- A. possession of a firearm or other dangerous weapon;
- B. arson;
- C. criminal sexual conduct pursuant to Policy 5206 H.3;
- D. physical assault on an employee, contractor, or volunteer if student is in grade 6 or above;
- E. physical assault of another student if student is in grade 6 or above; and
- F. a bomb threat or similar threat if student is in grade 6 or above.

Legal authority: MCL 380.11a, 380.1308-1310, 380.1310a, 380.1310c, 380.1310d, 380.1311, 380.1311a, 380.1312, 380.1313

Date adopted: July 1, 2024

Date revised: February 24, 2025

Series 5000: Students, Curriculum, and Academic Matters

5200 Student Conduct and Discipline

5208 Student Acceptable Use and Internet Safety Policy

Student use of District technology is a privilege, not a right, and is governed by Policy 3116 and the applicable acceptable use agreement. As part of its Internet Safety Policy the District must implement the rules and procedures identified in Policy 3116. A student's failure to comply with Policy 3116 and the applicable acceptable use agreement may result in discipline or loss of technology privileges.

Students have no expectation of privacy in or right to continued use of District technology resources.

Date adopted: July 1, 2024

Date revised: February 24, 2025

Series 5000: Students, Curriculum, and Academic Matters

5200 Student Conduct and Discipline

5208.01 Acceptable Use of Generative Artificial Intelligence

Students may use Generative Artificial Intelligence ("Generative AI") in the school setting in compliance with this Policy and applicable law.

A. Definitions

1. "Generative AI" means the class of AI models that emulate the structure and characteristics of input data in order to generate derived synthetic content. This may include images, videos, audio, text, and other digital content.
2. "AI System" means any data system, software, hardware, application, tool, or utility that operates in whole or in part using AI.

B. Acceptable Use

Students may use District-approved Generative AI Systems to complete coursework when expressly authorized by their teacher. Any AI-generated material must be thoroughly reviewed to ensure appropriateness and accuracy. Students should not share personally identifiable information on an AI System.

Student use of Generative AI must comply with Board Policy, including, but not limited to, technology and acceptable use, unlawful discrimination and harassment, anti-bullying, and the student code of conduct.

C. Violation

Students who violate this Policy are subject to corrective or disciplinary action, consistent with Policy and the student code of conduct. This may include loss of technology privileges.

Legal Authority: 88 Fed Reg 75191 (October 30, 2023)

Date adopted: February 24, 2025

Date revised:

Series 5000: Students, Curriculum, and Academic Matters

5200 Student Conduct and Discipline

5212 Registered Sex Offenders - Students

Inclusion on the state's sex offender registry alone is not a sufficient basis to exclude a student from school. The District reserves the right, consistent with Policy 5411 and applicable law, to determine the educational placement of a student who is listed on the state's sex offender registry.

For a student who is listed on the state's sex offender registry, the building principal may establish a safety plan, which may include excluding the student from extracurricular activities.

Date adopted: July 1, 2024

Date revised: February 24, 2025

Series 5000: Students, Curriculum, and Academic Matters

5300 Student Enrollment, Attendance, and Records

5301 *Compulsory Attendance, Absenteeism, and Truancy*

A. Required Attendance

Every person residing in the District who has legal or actual charge or control of a child who is of mandatory attendance age must ensure that the child regularly attends a public or private school or is receiving a home-school education unless the child has satisfied District graduation requirements or is otherwise exempt from Michigan's compulsory attendance requirements.

B. Mandatory Attendance Age

A child who is or will turn 6 years old before December 1 of the current school year and who has not turned 18 years old is of mandatory attendance age.

C. Exceptions

A parent/guardian of a child who is at least 16 years old may provide the District with written notice that the child has permission to stop attending school. Upon receipt of the written notice, the child will be exempt from this Policy.

D. Excused Absences

The following absences will be considered excused if they are confirmed by communication to the school from the student's parent/guardian:

- the student's physical or mental illness (verification from a physician, physician assistant, or nurse practitioner is required after 4 consecutive days of absence for illness);
- severe weather;
- medical appointments for the student;
- death or serious illness of the student's family member;
- attendance at a funeral, wedding, or graduation;
- appearance at court or for other legal matters;
- observance of religious holidays of the student's own faith;
- college planning visits; and
- personal or family business/vacations.

E. Excessive Absenteeism and Truancy

When a student has 10 unexcused absences in any school year, the building principal or designee will provide written notice to the student's parent/guardian encouraging the student's regular daily attendance and explaining the truancy process.

If the Superintendent or designee determines that a student is repeatedly absent from school without valid excuse, is failing, or has behavior problems, and attempts to confer with the student's parent/guardian have not been successful, the Superintendent or designee may request the attendance officer who has jurisdiction in the District to send notice to the parent/guardian requiring the parent/guardian to meet with District personnel to discuss the matter.

When a student has 15 or more unexcused absences in a school year the building principal or designee will notify the attendance officer who has jurisdiction in the District. Once notified, the attendance officer will investigate each case of nonattendance and will take all other steps permitted and required by law.

The building principal or designee may impose additional consequences for excessive absenteeism, consistent with the student handbook or published grading procedures.

Legal authority: MCL 380.1561 et seq.

Date adopted: July 1, 2024

Date revised: February 24, 2025

Series 5000: Students, Curriculum, and Academic Matters

5300 Student Enrollment, Attendance, and Records

5303 Student Enrollment and Withdrawal

A. Student Enrollment

The District will enroll a student who is:

- a legal resident of the District or otherwise entitled by Michigan law to enroll in the District;
- under court jurisdiction and is placed in foster care if the Department of Health and Human Services or a child placing agency determines that the child should be enrolled in the District, regardless of residency;
- eligible to enroll as a schools-of-choice student under these Policies and Michigan law;
- the resident of another district with the consent of the resident district if, in the Superintendent's discretion, the student should be enrolled;
- the resident of another district as permitted and authorized by law if, in the Superintendent's discretion, the student should be enrolled;
- homeless, if the student has a right to enroll in the District pursuant to applicable law and Policy 5307;
- the child of a custodial parent/guardian assigned to active duty military service if the child's noncustodial parent/guardian or person serving *in loco parentis* for the child resides in the District and the child's custodial parent/guardian has provided a legally valid power of attorney;
- approved as an international exchange student pursuant to Policy 5306;
- a legal resident of a district that has contracted with the District for the student's educational services; or
- legally entitled to attend the District on a part-time basis.

The District may independently verify a student's residency status or eligibility for enrollment. The Superintendent or designee may pursue all available legal options, including referral to law enforcement, against any person who provides false or misleading enrollment information.

A person enrolling a student must provide the following within 30 calendar days after enrollment:

- a copy of the student's birth certificate; or
- other reliable proof of the student's identity and age and an affidavit explaining the inability to produce a copy of the student's birth certificate.

If the required documentation is not timely provided, the District will, after providing 30 calendar days' notice to the person enrolling the student, refer the matter to local law enforcement. The District will immediately report to law enforcement any affidavit that appears inaccurate or suspicious.

As a condition of enrollment, a person enrolling a student must provide documentation of the student's required immunizations or a valid immunization waiver pursuant to Policy 5713. Failure to submit the required documentation will result in the student's exclusion from school.

Within 14 calendar days after a transfer student enrolls, the building principal or designee must send a written request to the student's previous school requesting a copy of the student's school record.

A student who is or will be 20 years old on September 1 of the school year, or who has earned a high school diploma or GED, may not enroll in or continue to attend school in the District, except for a student with a disability, a student enrolling in an approved adult education or dropout recovery program, or when otherwise required by law.

Except for a student with a disability or a student enrolling in an approved early childhood program, a student who will not be 5 years old on December 1 of the school year may not enroll in or attend school in the District without the Superintendent's express written permission.

A student's placement, including building assignment and grade level, will be determined pursuant to Policy 5411.

B. Student Withdrawal

The District will disenroll a student upon receipt of either written notice from a parent/guardian of intent to withdraw or a records request from another school. If at the time of receipt of a notice of disenrollment there are pending disciplinary proceedings against the student involving potential suspension or expulsion, the District may elect to complete those proceedings.

Legal authority: MCL 380.1135, 380.1147, 380.1148, 380.1148a

Date adopted: July 1, 2024

Date revised: February 24, 2025

Series 5000: Students, Curriculum, and Academic Matters

5300 Student Enrollment, Attendance, and Records

5304 Nonpublic School Students; Part-Time Attendance

A resident student who attends a nonpublic school or who is home-schooled and who otherwise meets the enrollment requirements in Policy 5303, has the right to enroll in nonessential elective courses (including co-curricular activities associated with those courses) that the District provides to public school students in the same grade level or age group.

The District may provide instruction in nonessential elective courses to students at a nonpublic school site, consistent with state law and subject to constitutional constraints, so long as comparable instruction is provided to public school students in the same grade level or age group. The District may also permit nonresident, home-schooled and nonpublic school students to enroll in nonessential elective courses that the District provides to students in the same grade level or age group consistent with state law and subject to constitutional constraints.

A nonpublic, part-time student, regardless of residency and instructional location, is subject to the same course requirements and prerequisites that apply to all other District students.

A nonpublic, part-time student is subject to all District rules and applicable student codes of conduct.

The District is not required to provide transportation to a nonpublic, part-time student.

Nonpublic, part-time students may not participate in District-provided athletics or extracurricular activities.

The Superintendent or designee must ensure that all courses and related optional experiences offered or provided to nonpublic, part-time students satisfy the requirements of state and federal law and applicable provisions of the Michigan Pupil Accounting Manual.

Legal authority: MCL 388.1766b

Date adopted: July 1, 2024

Date revised: February 24, 2025

Series 5000: Students, Curriculum, and Academic Matters

5400 Curriculum, Instruction, and Parent/Guardian Involvement

5416 Homebound and Hospitalized Instruction

The District will provide an enrolled student with instruction in the student's home, hospital, or licensed treatment facility if both of the following requirements are met:

- A. the student's parent/guardian submits a homebound/hospitalized instruction form which includes verification by a legally authorized healthcare provider of a medical condition that requires the student to be hospitalized or confined to the home during regular school hours for a period longer than 5 consecutive school days. A student who is able to attend school for part of the day is not eligible for homebound instruction; and
- B. the student is physically able to participate in instruction while hospitalized or confined to the home.

Homebound instruction is not intended to replicate the classroom experience. For most students, the District will provide a minimum of 2 45-minute sessions per week with a certificated teacher. For students with disabilities under the Individuals with Disabilities Education Act (IDEA), the District will provide a minimum of 2 nonconsecutive hours per week with a certificated teacher. Homebound instruction may be supplemented with a variety of in-person and distance learning services, as determined appropriate by the Superintendent or relevant educational team.

For students with disabilities under IDEA, the District will consider whether the student's homebound instruction constitutes a change in placement and whether an IEP Team meeting should be convened.

The District will provide homebound and hospitalized instruction consistent with state law and MDE guidance.

Legal authority: MCL 388.1709; Mich Admin Code R 340.2(11), 340.2(12), 340.1746; *Providing Homebound and Hospitalized Educational Services for Michigan Public School Pupils*, as amended; Michigan Pupil Accounting Manual

Date Adopted: July 1, 2024

Date Revised: February 24, 2025

Series 5000: Students, Curriculum, and Academic Matters

5500 School Sponsored and Extracurricular Activities

5506 Field Trips

Field trips should generally be conducted during the school day. Field trips requiring District vehicles shall not interfere with the regularly scheduled transportation of students to and from school.

A. General Conditions

All field trips must be pre-approved by the building principal or designee. International and out-of-state trips require pre-approval from the Board. Overnight trips shall be planned for non-school days whenever possible with the exception of 7th grade camp. (Field trips that occur over the span of many days shall be scheduled for school breaks such as weekends, spring break, or summer vacation.) The Superintendent or building principal(s) will develop procedures for pre-approval of trips and communicate those procedures to instructional staff.

Field trips that occur on a religious holiday shall allow for religious observances.

B. Parent/guardian Permission

Each student must submit a completed permission form or blanket field trip form signed by the student's parent/guardian before being allowed to attend a field trip.

C. Supervision

Teachers must ensure that students are adequately supervised and chaperoned by a responsible adult during field trips. All adult chaperones must be at least age 21. A chaperone is prohibited from activity that in excess would impair their judgment at any time during the field trip. A chaperone must adhere to all District and building volunteer requirements, including Policy 3105. The District may deny or terminate a chaperone assignment for any reason that is not unlawful.

The District will not prohibit an eligible student from participating in a field trip solely because the student's parent/guardian does not chaperone.

D. Cost and Financial Assistance

The Board recognizes the value in immersive field trips for Okemos students that enhances the education experience, however, cost to students, families, staff, and the District shall be carefully considered when planning any field trip. When planning international or out-of-state overnight field trips, multiple bids shall be obtained from tour operators. These bids shall include a detailed breakdown of the costs and include all fees assessed by the company such as late fees or processing fees. Field trips shall include a mechanism to ensure opportunities

exist for students to participate regardless of financial means in alignment with Policy 5501: Fundraising.

Student Conduct

A student's failure to comply with Board Policy, the student code of conduct, and any other applicable rules or behavioral expectations while on a field trip may result in disciplinary action and removal or exclusion from the trip without refund.

Date adopted: July 1, 2024

Date revised: February 24, 2025

Series 5000: Students, Curriculum, and Academic Matters

5500 School Sponsored and Extracurricular Activities

5510 Student-Initiated, Non-Curricular Clubs

Students may voluntarily form clubs that are not directly related to the curriculum to promote activities unrelated to the regular classroom environment. Membership in a student-initiated, non-curricular club must be open to all interested and eligible District students, and the club may not refuse membership to a student based on any protected classification under state or federal law.

Students seeking to create a student-initiated, non-curricular club must first obtain approval from the building principal. If the building principal denies approval, the students seeking to create the club may submit a written appeal to the Superintendent or designee within 5 school days after the denial. The Superintendent or designee must make a decision on the appeal within 15 school days after receiving the appeal. If the Superintendent denies the club approval, the students may submit a written appeal to the Board within 5 school days after the denial. The Board will be deemed to have received the appeal at its next regularly scheduled meeting and will consider and make its final decision on the appeal at its next regularly scheduled meeting following the meeting when it receives the appeal (i.e., the Board's final decision will be made by the second regularly scheduled meeting after the appeal is filed). The Board's decision is final.

Student-initiated, non-curricular clubs may not conduct activities on school property without prior permission from the building principal. Student initiated, non-curricular clubs are permitted to meet on school property only before or after the school day, or during lunch periods; they are not permitted to meet during instructional time. Meetings may not materially and substantially interfere with the orderly conduct of the school's educational activities or violate any Policy or state or federal law.

The District may assign a staff member to be present in a supervisory, but not participatory, capacity at meetings or activities of student-initiated, non-curricular clubs. Persons not affiliated with the District may not direct, conduct, control, or regularly attend meetings or activities of student-initiated, non-curricular clubs.

No public funds may be expended on behalf of the student-initiated, non-curricular clubs covered by this Policy except for the incidental cost of meeting space.

The District will comply with all applicable laws related to student-initiated, non-curricular clubs, including but not limited to the provisions of the Equal Access Act, and will not discriminate against or deny access to clubs or other groups protected by the Act.

Legal authority: 20 USC 4071; MCL 380.1299

Date adopted: July 1, 2024

Date revised: February 24, 2025

Series 5000: Students, Curriculum, and Academic Matters

5600 Student Support Services

5601 *Special Education*

Eligible students with disabilities under the Individuals with Disabilities Education Act (IDEA) are entitled to a free appropriate public education through an individualized education program. The District will follow state and federal law and applicable rules and regulations in identifying, locating, evaluating, and educating students with disabilities.

IDEA-eligible students are protected from discrimination under Section 504 of the Rehabilitation Act, as outlined in Policy 5603.

Legal authority: 20 USC 1400 et seq.; 34 CFR Part 300; MCL 380.1701 et seq.; MARSE R 340.1701 et seq.

Date adopted: July 1, 2024

Date revised: February 24, 2025

Series 5000: Students, Curriculum, and Academic Matters

5700 Student Health and Safety

5701 Child Abuse and Neglect

Mandated reporters must immediately report all instances of suspected child abuse or neglect pursuant to Michigan's Child Protection Law and Policy 4202. All other employees, volunteers, and contractors who are not mandated reporters are also expected to immediately report all instances of suspected child abuse or neglect.

The District will cooperate with Children's Protective Services (CPS) during an investigation of suspected child abuse or neglect. Cooperation may include allowing CPS access to a student without parent/guardian consent if CPS determines access is necessary to complete the investigation or prevent abuse or neglect. The District will not impose conditions on the investigator or investigation beyond what is permitted by law.

Before a CPS investigator is given access to a student, the building principal or designee will verify the investigator's credentials.

The building principal or designee may be present for the student's interview, at the discretion of CPS. If CPS seeks to remove a student from school, the building principal or designee will: (1) provide CPS with the student's parent/guardian phone number and address; and (2) request that the CPS official sign a statement certifying that the student is being removed because of safety-related concerns. If the CPS official refuses to or is unable to sign the requested certification, the building principal or designee will document the removal, including the name(s) of the CPS official(s) removing the student, the stated reason(s) given for the removal, the identity of the person(s) witnessing the removal, and the date and time of the removal.

The District may share student records with CPS only as permitted by Policy 5309 and the Family Educational Rights and Privacy Act.

If the District makes a report to CPS, the District will maintain a copy of the written report with the reporter's identity redacted. The reporter's identity will remain confidential unless disclosure is authorized by the reporter's consent or by court order.

"Mandated reporter" means a physician, dentist, physician's assistant, registered dental hygienist, medical examiner, nurse, person licensed to provide emergency medical care, audiologist, psychologist, marriage and family therapist, licensed professional counselor, social worker, licensed master's social worker, licensed bachelor's social worker, registered social service technician, social service technician, a person employed in a professional capacity in any office of the friend of the court, school administrator, school counselor or teacher, law enforcement officer, member of the clergy, or regulated child care provider who has reasonable cause to suspect child abuse or child neglect.

Legal authority: 20 USC 1232g; MCL 722.621 et seq.

Date adopted: July 1, 2024

Date revised: February 24, 2025

Series 5000: Students, Curriculum, and Academic Matters

5700 Student Health and Safety

5711 Toilet Training

Students are expected to be fully toilet trained before the first day of school, unless otherwise specifically addressed in the student's IEP or Section 504 Plan, or when toilet training is part of the instructional program.

The student's Parent/Guardian is responsible for ensuring that the student is toilet trained. The Parent/Guardian is also responsible for providing clean clothes for a student who may have toileting accidents.

No student will be punished or humiliated for soiling or wetting clothing or not using the toilet.

For a student with repeated toileting accidents, the building principal or designee should consider whether to refer the student for a Section 504 or IDEA evaluation.

Staff will not assist a student with toileting unless directed to do so by the student's IEP or Section 504 Plan, or when toilet training is part of the instructional program.

Date adopted: October 23, 2023

Date revised: February 24, 2025

Series 5000: Students, Curriculum, and Academic Matters

5700 Student Health and Safety

5713 Immunizations and Communicable Diseases

A. Enrollment, Immunization Certification, and Exemptions

1. Subject to the exemptions stated below, for a student entering the District for the first time or entering 7th grade, a parent/guardian must provide the building principal or designee with a certificate indicating that the student has received at least 1 dose of an immunizing agent against each disease specified by the Michigan Department of Health and Human Services (MDHHS) or other responsible agency.

The student's parent/guardian must provide the certificate at the time of registration, or no later than the first day of school.

A parent/guardian of a student who has not received all doses of any required immunizing agent must provide the District an updated immunization certificate demonstrating that the immunizations have been completed as required by the MDHHS. The updated certificate must be provided within 4 months of the student entering the District for the first time or upon entering 7th grade.

2. A student is exempt from the above requirements if:
 - a. a physician certifies that a specific immunization is or may be inappropriate or detrimental to the student's health; or
 - b. a student's parent/guardian, or a person acting *in loco parentis*, certifies to the building principal or designee that the child cannot be immunized as required because of religious convictions or other objection to immunization. Only waiver forms authorized, executed, and certified as required by applicable law and administrative rules will be accepted.
3. The District will not permit a student to attend school unless the parent/guardian provides evidence of immunizations or exemptions consistent with this Policy and state law.

B. Emergency Exclusion Due to Outbreak

The District, in conjunction with local health department officials, may exclude students who:

- are suspected of having a communicable disease until a physician or local health official determines the student is no longer a risk; or

- lack documentation of immunity or are otherwise considered susceptible to the disease until the local health department officials determine the risk of spreading the disease has passed.

C. District Reporting Requirements

The District will report student immunization information as required by and consistent with state and federal law.

D. Homeless Children and Youth

Nothing in this Policy diminishes the rights of homeless children and youth under Policy 5307.

Legal authority: MCL 333.9206, 333.9208, 333.9215; MCL 380.1177; MCL 388.1767;
Mich Admin Code R 325.176

Date adopted: July 1, 2024

Date revised: February 24, 2025

Series 5000: Students, Curriculum, and Academic Matters

5800 Miscellaneous

5804 *Work Permits*

The building principal or designee will issue student work permits in accordance with state law.

Date adopted: July 1, 2024

Date revised: February 24, 2025