

Madison Board of Education, Madison District #1

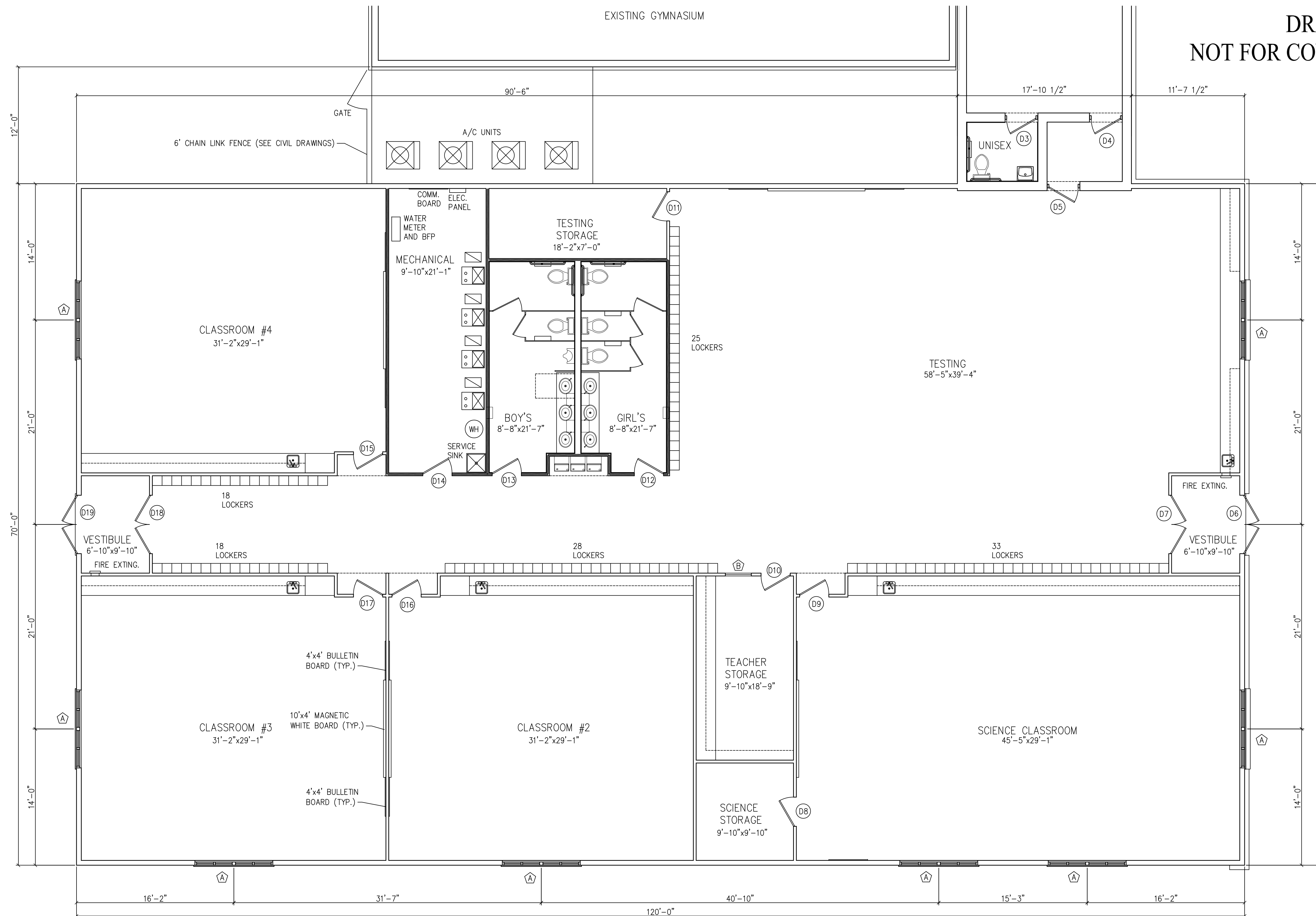
Special Meeting: Community Informational meeting
Monday, March 7, 2022 7:00 PM
Conference Room, Madison Middle/High School
700 South Kent St.
Madison, NE 68748-0450

The sequence of items on the agenda is provided as a courtesy. The board reserves the right to consider items in any sequence deemed appropriate. Therefore, visitors are encouraged to attend the meeting from the beginning.

1. Call Meeting to Order
 - 1.1. Roll Call/Excuse absent Board members
 - 1.2. Pledge of Allegiance
 - 1.3. Declare the meeting to be open, legal, and properly advertised
 - 1.4. Reading of the Mission Statement
2. Accept the agenda as the official agenda
3. Opening comments from Board President Harlow Hanson.
4. Presentation of Materials and ideas
5. Public Forum - Questions and answer period with members of the Board of Education.
6. Adjournment

The board reserves the right to enter executive session if it deems it necessary to prevent needless injury to a staff member's reputation or for the protection of the public interest.

DRAFT
NOT FOR CONSTRUCTION



PROPOSED USE:
MIXED USE
CLASSROOMS - TYPE E OCCUPANCY
STORAGE - TYPE S1 OCCUPANCY

TYPE OF CONSTRUCTION:
TYPE VB

AUTOMATIC SPRINKLER SYSTEM:
PROVIDED

TOTAL AREA 10,331 SQ. FT.

OCCUPANT LOADS:
CLASSROOMS - 5857 NET SQ. FT. / 20 SQ. FT. PER PERSON = 292.85 PEOPLE PER IBC & NFPA
TESTING, TEACHER, & SCIENCE STORAGE, MECHANICAL, & JANITOR - 764 GROSS SQ. FT. / 300 SQ. FT. PER PERSON = 2.55 PEOPLE PER IBC
IBC TOTAL OCCUPANT LOAD = 296
NFPA TOTAL OCCUPANT LOAD = 293

REQUIRED PLUMBING FIXTURES
148 MEN & 148 WOMEN
148/50 = 3 WC MEN
148/50 = 3 LAVATORIES MEN
148/50 = 3 WC WOMEN
148/50 = 3 LAVATORIES WOMEN
296/100 = 3 DRINKING FOUNTAINS
1 SERVICE SINK

FLOOR PLAN
SCALE: 3/16" = 1'-0"
122 SINGLE TIER LOCKERS

LEGEND
WALL WITH SOUND BATTS

L. MICHAEL D. FAKLER, AM THE
COORDINATING PROFESSIONAL ON
THE MADISON PUBLIC SCHOOLS ELEMENTARY
CLASSROOM ADDITION PROJECT

FAKLER ARCHITECTS, L.L.C.
1001 N. 6th St., BEATRICE, NE 68310
PH 402-228-3020 FAX 402-228-3018
E-MAIL michael@faklerarchitects.com

CLASSROOM BUILDING FLOOR PLAN
Madison P.S. Elementary Classroom Addition
405 East 8th St., Madison, Nebraska 68748

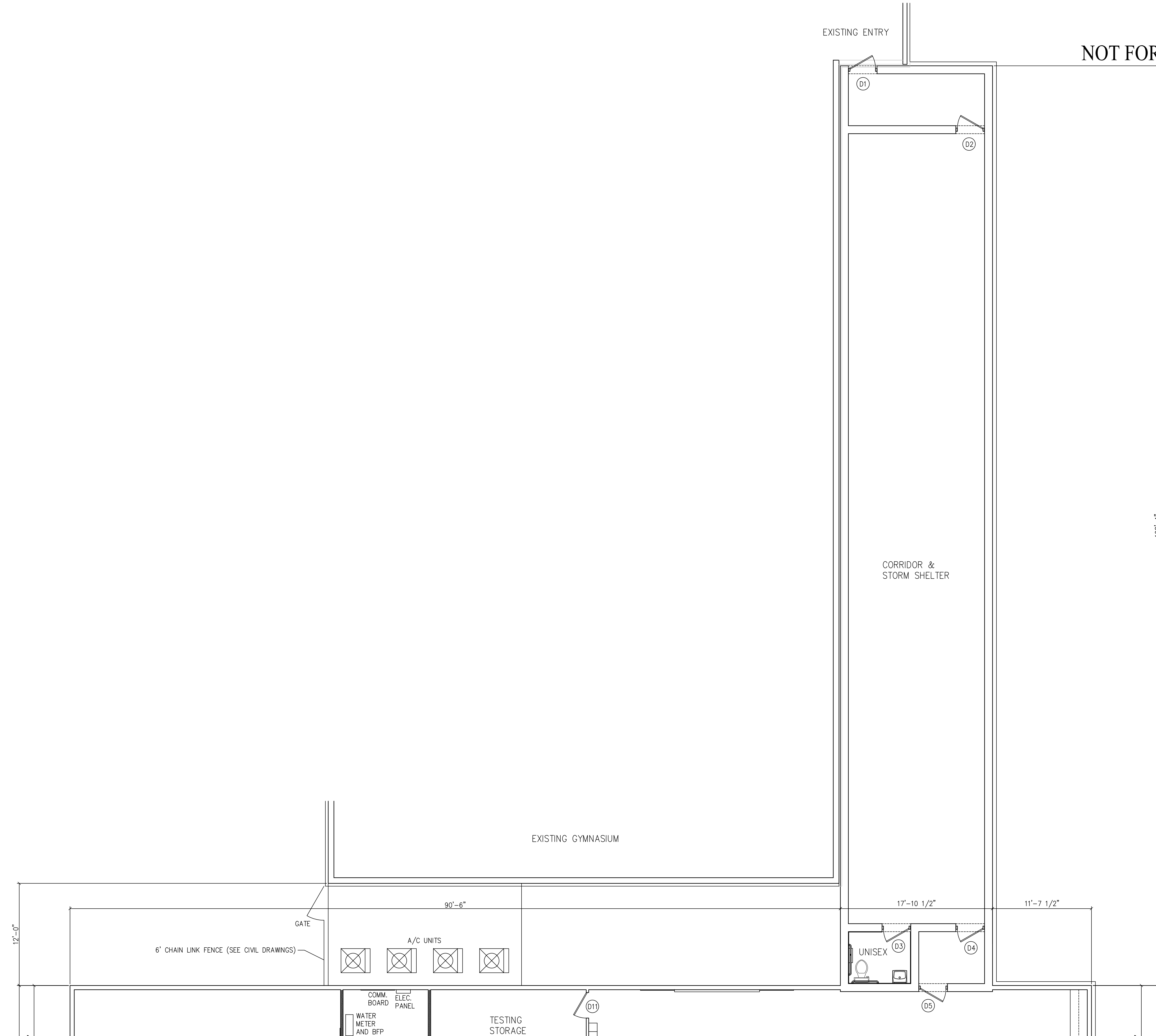
REVISIONS
PRELIMINARY ISSUE
9/16/2021
BID ISSUE
PERMIT ISSUE
CONST. ISSUE

A-1.0

PROJECT #1415

EXISTING ENTRY

DRAFT
NOT FOR CONSTRUCTION



L. MICHAEL D. FAKLER, AM THE
COORDINATING PROFESSIONAL ON
THE MADISON PUBLIC SCHOOLS ELEMENTARY
CLASSROOM ADDITION PROJECT

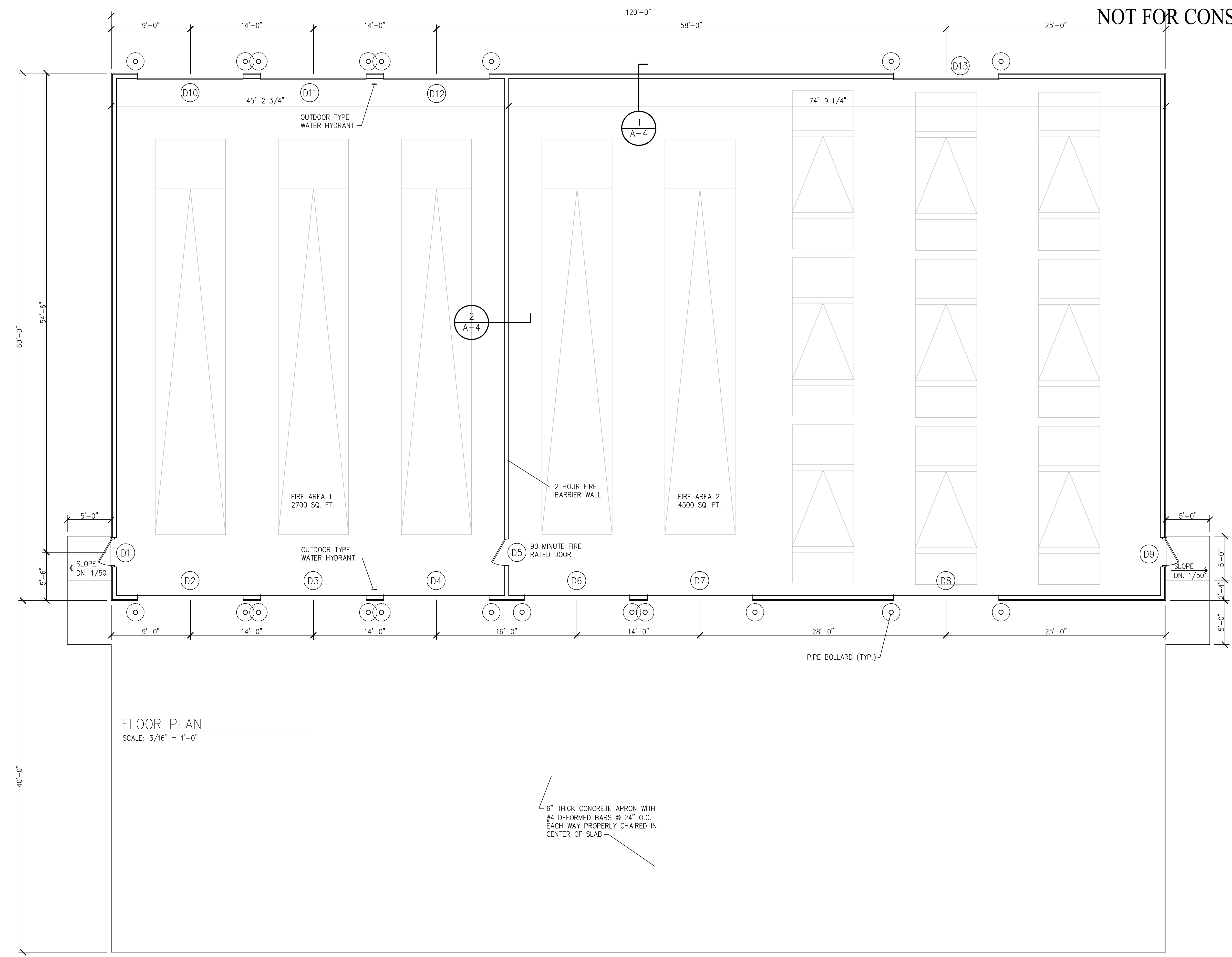
FAKLER ARCHITECTS, L.L.C.
1001 N. 6th St., BEATRICE, NE 68310
PH 402-228-3020 FAX 402-228-3018
E-MAIL michael@faklerarchitects.com

CONNECTING CORRIDOR & STORM SHELTER FLOOR PLAN
Madison P.S. Elementary Classroom Addition
405 East 8th St., Madison, Nebraska 68748

REVISIONS
PRELIMINARY ISSUE 9/16/2021
BID ISSUE
PERMIT ISSUE
CONST. ISSUE

A-1.1
PROJECT #1415

DRAFT
NOT FOR CONSTRUCTION



FLOOR PLAN
SCALE: 3/16" = 1'-0"

6" THICK CONCRETE APRON WITH
#4 DEFORMED BARS @ 24" O.C.
EACH WAY PROPERLY CHAIRED IN
CENTER OF SLAB

I, MICHAEL D. FAKLER, AM THE
COORDINATING PROFESSIONAL ON
THE MADISON PUBLIC SCHOOLS BUS BARN
PROJECT

THIS DOCUMENT IS ISSUED UNDER
THE AUTHORITY OF MICHAEL D. FAKLER
NEBRASKA ARCHITECT REGISTRATION # A-3413
ON MARCH 1, 2022. NOT FOR
REGULATORY APPROVAL, PERMITTING,
OR CONSTRUCTION.

FAKLER ARCHITECTS, L.L.C.

1001 N. 6th ST., BEATRICE, NE 68310
PH 402-228-3020 FAX 402-228-3018
E-MAIL michael@faklerarchitects.com

Madison P.S. Bus Barn
700 South Kent St., Madison, Nebraska

FLOOR PLAN

REVISIONS
PRELIMINARY ISSUE 3/1/2022
BID ISSUE
PERMIT ISSUE
CONST. ISSUE

A-2
PROJECT #1432



Alan Ehlers @ Madison Public Schools



[Home](#)

[Secure Page for Madison Public Schools](#)

[Download](#)

[Attachments](#)

March 7, 2022 at 7:00 PM - Special Meeting: Community Informational meeting

Agenda

1. Call Meeting to Order

1.1. Roll Call/Excuse absent Board members

1.2. Pledge of Allegiance

1.3. Declare the meeting to be open, legal, and properly advertised

1.4. Reading of the Mission Statement

2. Accept the agenda as the official agenda

3. Opening comments from Board President Harlow Hanson.

4. Presentation of Materials and ideas

5. Public Forum - Questions and answer period with members of the Board of Education.

6. Adjournment

[<< Back to the Public Page for Madison Public Schools](#)

Sparq Data Solutions | 1311 Stockwell Street | Lincoln, NE 68502 | (402) 817-0120 | (800) 422-4572

Copyright © 2015-2022. Sparq Data Solutions Inc. - All Rights Reserved.

[Privacy Policy](#)

[Terms and Conditions of Use](#)



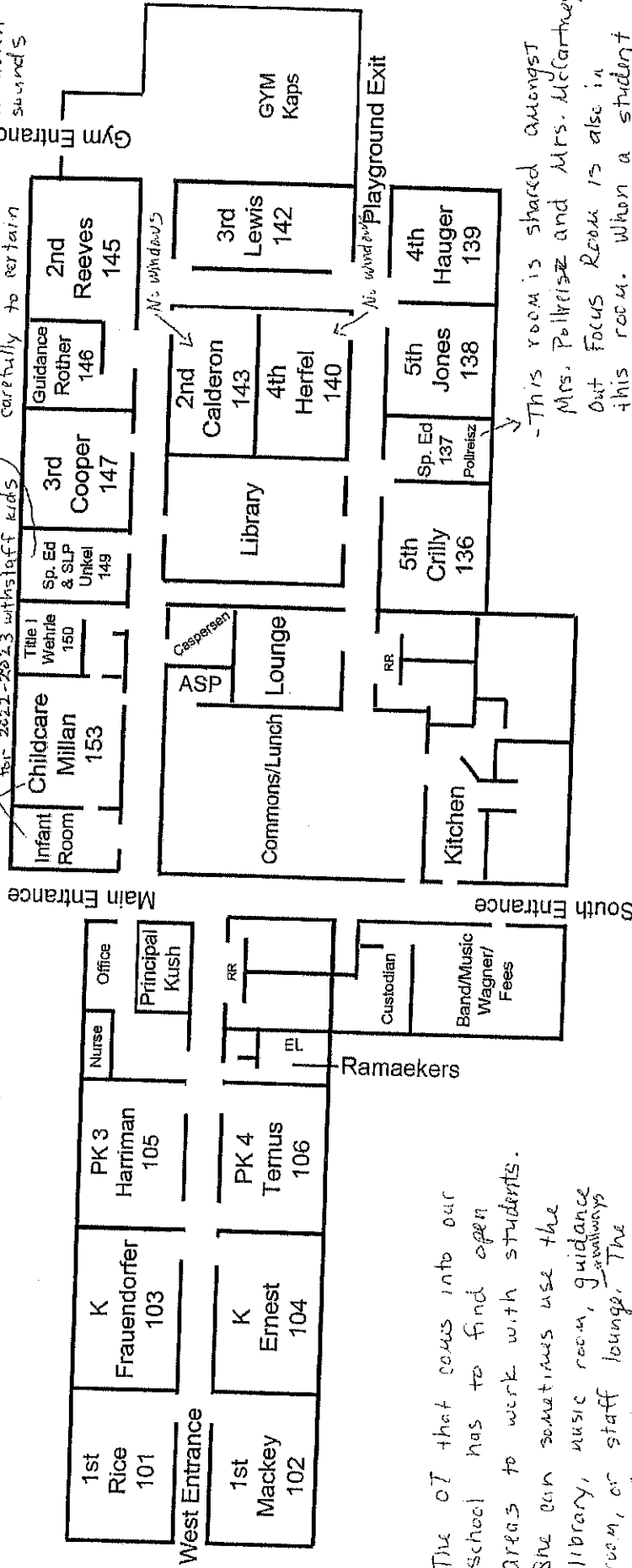
- When it is cold outside and the gym is being used by different athletic teams, the after school program has a hard time finding areas to use.

- We have a counselor from midtown health in once a week. She uses the guidance room and therefore, Mrs. Rother relocates.

We continue to have people from the community asking if their children can attend - we are full and will be again for 2022-2023 with staff kids

Madison Elementary

This special room is shared with the SLPs from the ESUG. They serve all students in our district starting at a birth. We continue to have many referrals for speech. Sharing this room is difficult due to over hearing other's lessons. Students in speech often need carefully to listen sounds



- The OT that comes into our school has to find open areas to work with students. She can sometimes use the library, music room, guidance room, or staff lounge. The lack of consistency is difficult.

- The library is used for multiple purposes. It makes it hard for classes to find extra time to visit when it gets used by multiple people and intervention groups.

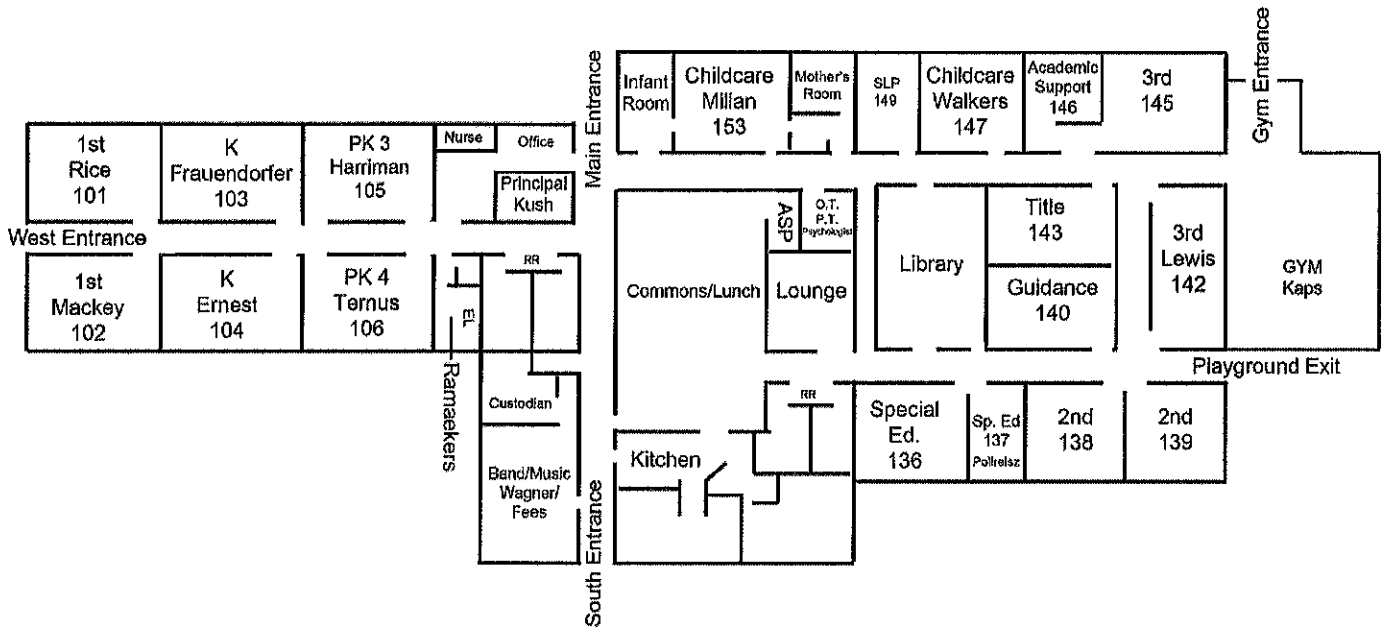
- The school psychologist does not have a set space for testing or evaluating students. She is similar with the OT in using the library, music room, guidance room, staff lounge and hallways.

- This room is shared amongst Mrs. Polkrisz and Mrs. McCartney. Out Focus Room is also in this room. When a student is having a difficult in the focus room the other students miss out on learning.

- Mr. Crilly's room can also hear when a student is in the focus room.

- Mrs. McCartney does not have a set space for students. She uses the library and other classrooms when they are open.

Madison Elementary (Future)



Proposed Elementary building

Legend

Untitled Path

Untitled Placemark

E 8th St

E 8th St

E 8th St

E 8th St

E 8th St

Untitled Placemark



Proposed Bus Barn

Legend

Proposed Bus barn

Untitled Path

St

Park St

E 9th St

Quincy St

Google Earth

St

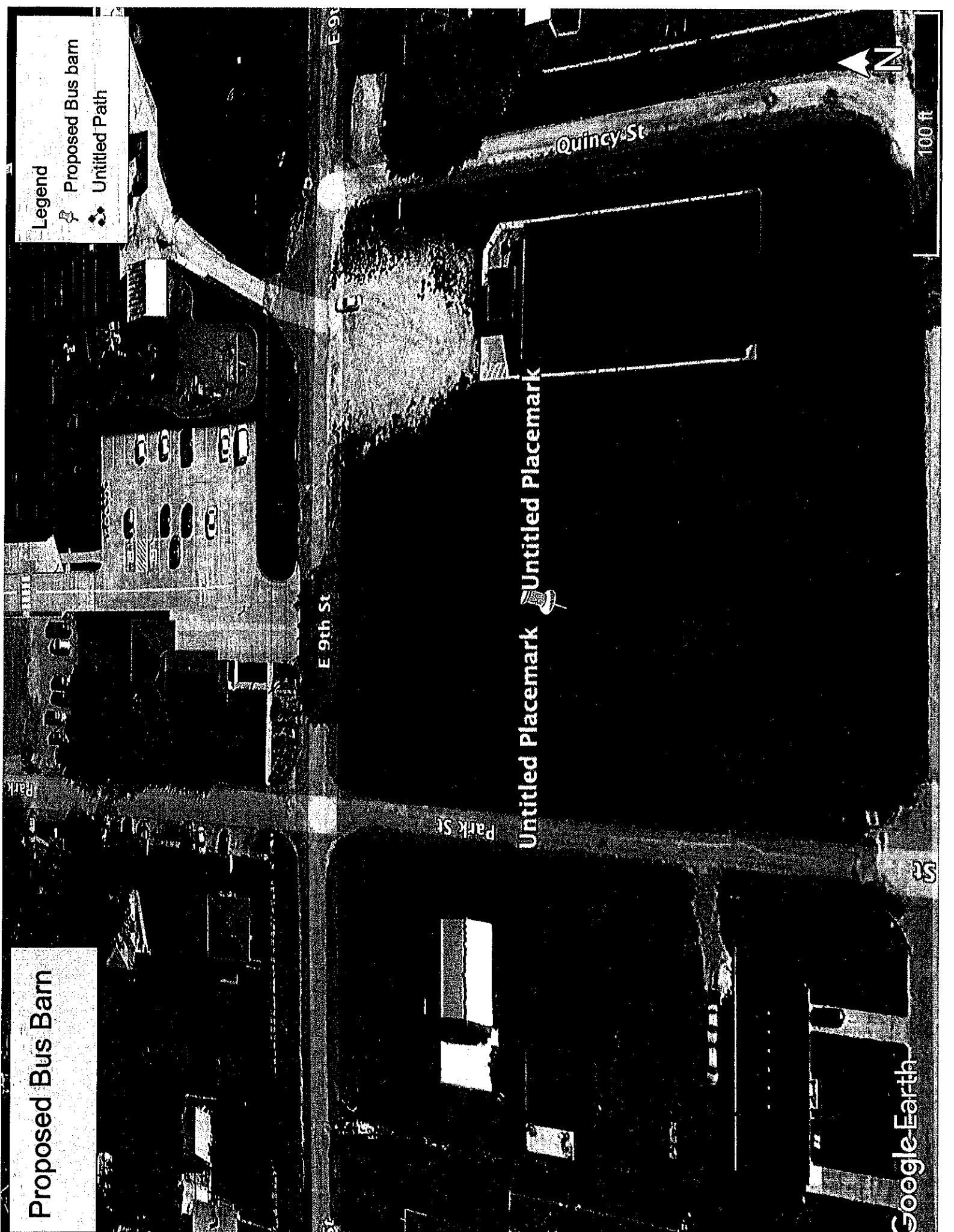
100 ft



Untitled Placemark



Untitled Placemark



STRATEGIC PLAN GOALS
FACILITIES IMPROVEMENT
ACTION PLAN GOALS
MAY 2021

Madison Public Schools



March 7, 2022

Madison, Nebraska

TIME FRAME REVIEW

- Strategic planning sessions were led by representatives from the Nebraska Rural Community Schools Association on May 14 & 15 of 2021.
- Formal Board of Education approval of three action plans to guide the district. (Facilities Improvement, Enhancing Students Learning Instruction, Enhancing Students Learning Involvement)
- Action plans shared with district staff in May of 2021.
- Information shared with the public “Kent Street News” via the Star Mail and on MPS social media.
- Following meetings with the Building and Grounds Committee, in July of 2021 a contract was signed with architect Michael Fakler to develop a concept plan.

TIME FRAME #2

- On July 22, 2021, proposed floor plans were shared with the Board of Education.
- During the August staff in-service days, upper elementary teachers met with the superintendent and elementary principal to gather feedback on two proposed plans.
- During the months of September thru November, the Board of Education had conversations on how to meet the space issue at the elementary building.
- At the November Board of Education meeting a discussion was brought up on adding a bus barn during the same time frame as the elementary project to help save on construction costs.

TIME FRAME #3

- During November and December, the board started to explore ways to finance projects and the advantages and disadvantages of a long-term bond vs. a 7-year lease.
- Elementary principal Karla Kush provided a current map of the elementary showing that extra space is needed to meet the needs of our students. A proposed map of the elementary was shared with the Board of Education to show designs of how a new building could be built.
- During the January Board of Education meeting, the Board established a March 7, 2022 date to hold a community informational meeting.

TIME FRAME #4

- A Request for Proposals (RFP) to receive bids from architectural firms was due to the district by February 11, 2022. Five completed proposals were received.
- During the February 15th Board of Education meeting, a motion was approved on a vote of 5-0 to work with architect Michael Fakler to develop future drawings in plans.
- Mr. Ehlers was asked to contact D.A. Davidson to request updated costs for a 3.5 - 3.75 million dollar lease.

COMMUNITY INFORMATIONAL MEETING

- Comments from the Board President
- Presentation of materials and ideas from the Superintendent
- Questions and answer period with members of the Board of Education

NEXT STEPS

- Take steps to establish funding for proposed projects.
- Board would consider formal motion to approve the funding.
- Detailed drawings of the proposed projects would be developed and reviewed.
- June 9th Board of Education meeting final drawings may be approved.
- June 10th go out for bids.

NEXT STEPS #2

- Request bids back for the first week in July.
- Approve contract with the general contractors at the July Board meeting.
- Construction to begin in August.

ESTIMATED COSTS

- Elementary 4/5 grade building and corridor
- 8400 square ft. building with approximately 1944 square ft. connecting corridor (Storm Shelter)
- Rough budget of \$2,600,000 - \$3,000,000
- Pole building for a bus barn/vehicle storage
- 60 square ft. x 120 square ft. = 7200 Square ft.
- Rough budget \$400,000 - \$600,000

SCHOOL DISTRICT BUDGET FUNDS

- **General Fund:** Used to finance all facets of services rendered by the school district. The tax levy for this fund is restricted to \$1.05 along with an allowable growth rate. **Current levy is \$0.77**
- **Depreciation Fund:** Established by a school district in order to facilitate the eventual purchase of costly capital outlay by reserving money from the General Fund.
- **Bond Fund:** Used to record tax receipts, investment interest, payment of principal & interest. Levy from passed bond issue are used to finance. **Current levy is \$0.025 and will be fully paid off in 2028**

SCHOOL DISTRICT BUDGET FUNDS #2

- **QCPUF Fund:** Established for the removal of environmental hazards, the reduction of elimination of accessibility barriers in school buildings, repayment of qualified zone academy bonds, qualified school construction bonds, build America bonds. Vote of the Board. **Current levy is \$0.005 restricted to no more than \$0.030 Fully paid off in 2030**
- **Special Building Fund:** Established when a school board decides to acquire or improve sites and/or to erect, alter or improve buildings. The tax levy for this fund is restricted to \$0.14 with local board approval or \$0.175 following a vote of the people not to exceed ten years. **Current Special Building Fund Levy is \$0.139**

YEARLY GENERAL FUND COSTS

- Estimated General Fund increases for 2022-23:
- Certified staff (teachers & administrators) 56 staff
- Salaries - \$92,434
- Benefits - \$20,000
- Classified Staff (paras, custodians, office staff) 37 staff
- Salaries - \$102,944
- Benefits - \$39,464
- Estimated Totals: Salaries \$195,378 Benefits \$49,464

CURRENT CAPITAL PROJECTS

- Elementary Building Bond - Total outstanding \$1,613,755, Paid off in 2028, Bond tax rate 2.5 cents
- QCPUF Fund - Limited tax bonds \$663,022.55, Paid off in 2030, OSCB tax rate 0.5 cents
- 2018 Phase IV project – MS/HS gym & commons \$2,183,840.41, Paid off in 2025, Lease tax 9.5 cents
- SBF - Ongoing repair costs tax levy 2-3 cents yearly

LEVY HISTORY

1 CENT = \$80,000
LEVY LIMIT \$1.05

Years	<u>18-19</u>	<u>19-20</u>	<u>20-21</u>	<u>21-22</u>	<u>22-23</u>
GF	68.9	70.9	74.4	77.3	80.0
BF	0.025	0.030	0.031	0.025	0.025
QP	0.012	0.011	0.011	0.005	0.005
SBF	0.120	0.120	0.131	0.139	0.139
TL	84.7	87.2	92.1	94.5	96.45

LEASE FUND OPTION

Lease:

<u>Amount</u>	<u>Term</u>	<u>Estimated Funds</u>	<u>Est Levy</u>
\$3,500,000	7 yrs	\$3,420,000	9.35 cents

<u>Amount</u>	<u>Term</u>	<u>Estimated Funds</u>	<u>Est Levy</u>
\$3,750,000	7 yrs	\$3,670,000	9.50 cents

TAX LEVY REPORT/DEBT SERVICE

<u>Year</u>	<u>Elem Payment</u>	<u>Gym Payment</u>	<u>SBF Levy</u>
2023	\$52,500	\$728,253	\$0.0957
2024	\$215,674	\$727,949	\$0.1250
2025	\$215,674	\$727,637	\$0.1250
2026	\$762,375	Paid Off	\$0.0950
2027	\$762,375		\$0.0950
2028	\$762,374		\$0.0950
2029	\$762,374		\$0.0950
2030	\$759,674		\$0.0947

ADVANTAGES OF LEASING

- A lease provides funds all at one time so construction costs can flow properly, and work does not stop.
- The rate to lease funds most likely would be around 3.00% would be short term debit of 7 years.
- Construction costs are known at the start of the project.
- Could be approved by a vote of the Board of Education which would save money compared to a Bond Issue. The Board has used this approach three times already in the past for improvements in the district.

COMMUNITY INVESTMENT OUTCOMES 1.0

- **NEW COMMONS AND GYM INVESTMENT:**
- Hosting District Wrestling – Over 2,000 visitors during two days representing 14 communities
- Hosting Sub-district Basketball Tournaments – During three days brought over 3,000 visitors into Madison from five communities.
- Hosting District Basketball Tournament - Hosting 800 visitors from three communities.

ACADEMIC OUTCOMES

- Location for state required testing for students.
- Allows middle school classroom activities to be held outside the regular classroom walls.
- Has brought another area to host the local blood drives and health fairs with handicap accessible entrance.
- Allows space for staff professional development.
- Meeting area for student groups.

FUTURE COMMUNITY INVESTMENT OUTCOMES

- **ELEMENTARY BUILDING INVESTMENT:**
- Provides classroom space to support a higher level of learning for our youngest children.
- Provides a commons space to allow for student testing and learning activities.
- Will allow space for specialized staff to better support our students.
- Opportunity to expand our childcare programs to support the teaching staff in our school district.

COMMUNITY INVESTMENT OUTCOMES

- **Bus Barn:**
- Provides the opportunity to keep the school buses and newer vehicles out of the elements which should help extend the depreciation schedule for buses and vans.
- Helps keep staff and students safe when vehicles are not covered with snow and ice.
- Allows buses to start and run so school can be held during extremely cold weather.
- Protects vehicles from vandalism. Save costs in long-term.