



**Board of Education
Big Lake School District #727
Regular Meeting**

Mission Statement

Our mission is to challenge, educate, & inspire all students
to reach their highest level of achievement in
academics, athletics, & the arts.

**Wednesday, January 28, 2026
6:00 PM
Middle School Student Center
601 Minnesota Ave
Big Lake, MN 55309**

I. Call to Order	
Chair, Tonya Reasoner	
II. Roll Call	
Chair, Tonya Reasoner	
III. Approve Agenda	
Chair, Tonya Reasoner	
IV. Pledge of Allegiance	
Chair, Tonya Reasoner	
V. Open Forum	3
Chair, Tonya Reasoner	
VI. Consent Agenda	
Chair, Tonya Reasoner	
A. Previous Minutes	4
Minutes from the December 17, 2025 Truth in Taxation Hearing, the December 17, 2025 Regular Board Meeting, the January 7, 2026 Organizational Meeting, and the January 7, 2026 Work Session	
B. Claims and Accounts	12
Claims and Accounts for the month of January	
C. Credit Card Report	27
D. Personnel	30
E. Audit Report	31
VII. Donations	42
Chair, Tonya Reasoner	
VIII. Financial Report	43
Director of Business Services, Angie Manuel	
December report will be presented.	
IX. Resolution for Program Reduction	62
Superintendent Truebenbach	
X. Approve Non-Core Program Class Size Range	63
Director of Business Services, Angie Manuel	
XI. Approve Amended LTFM Plan	64
Director of Business Services, Angie Manuel and Director of Buildings and Grounds, TJ Zerwas	
XII. Liberty Elementary School Short Term Radon Test Results	66
Director of Buildings and Grounds, TJ Zerwas	
XIII. School Board Committee/Representative Updates	
A. Finance Committee	
Board Treasurer, Amber Sixberry	
B. Policy Committee	
Board Clerk, Ashley Schabilion	1
C. Buildings and Grounds Committee	
Board Chair, Tonya Reasoner	

D. School Board Representatives

XIV. Student Representative Report

Student Representative, Alexis Gosewisch

XV. Superintendent Report

Superintendent, Tim Truebenbach

A. Cabinet Department Update

XVI. Announce Closed Session for Negotiation Strategy

Chair, Tonya Reasoner

XVII. Adjournment

Chair, Tonya Reasoner

Strategic Plan Focus Areas

Student Support

Staff Support

Family & Community Engagement



OPEN FORUM

An open forum is scheduled during the beginning of each regular School Board meeting to allow district residents the opportunity to address the Board.

If you would like to address the Board, please fill out a slip with your name and address, and provide to the Chair prior to the meeting start time.

The guidelines for open forum are as follows:

3

1. Speakers must state their name
2. Each speaker will be provided three minutes
3. No action can be taken unless the matter addressed is formally on the agenda
4. Speaker will not make negative comments regarding any employee of the District
5. The Board Chair can end the Open Forum at any time
6. Please note that data privacy laws do not allow for any matters concerning individual employees or students to be discussed

INDEPENDENT SCHOOL DISTRICT 727
BIG LAKE, MINNESOTA
SHERBURNE COUNTY

Minutes of the Truth in Taxation Hearing
December 17, 2025
6:00 PM

- I. CALL TO ORDER
The Truth in Taxation Hearing of the Board of Education of Independent School District No. 727, Big Lake Schools was called to order on December 17, 2025 at 6:00 PM in the Middle School Student Center by Chair Reasoner.

- II. ROLL CALL
The following Board members were present: Ms. Tonya Reasoner, Ms. Amber Sixberry, Ms. Ashley Schabilion, Mr. Derek Nelson, Ms. Chelsey Hancock and Ms. Lenette Brown.

- III. TRUTH IN TAXATION HEARING
Director of Business Services, Angie Manuel, presented the Truth in Taxation Hearing for taxes payable in 2026 and asked if there were any questions or comments from the public.

- IV. ADJOURNMENT
Chair Reasoner adjourned the hearing at 6:33 PM.

Clerk, Lenette Brown
Approved January 28, 2026

BIG LAKE SCHOOLS
INDEPENDENT SCHOOL DISTRICT 727
BIG LAKE, MINNESOTA

Minutes of the Regular Meeting
December 17, 2025
6:30 PM

I. CALL TO ORDER

The regular meeting of the Board of Education of Independent School District No. 727, Big Lake Schools, was called to order on December 17, 2025 at 6:44 PM in the Middle School Student Center by Chair Reasoner.

II. ROLL CALL

The following Board members were present: Ms. Chelsey Hancock, Ms. Amber Sixberry, Ms. Tonya Reasoner, Ms. Lenette Brown, Ms. Ashley Schabilion, Mr. Derek Nelson, and Student Representative Alexis Gosewisch.

III. APPROVE AGENDA

A motion was made by Nelson seconded by Sixberry to approve the agenda.

The motion carried 6-0.

IV. PLEDGE OF ALLEGIANCE

Chair Reasoner and the Board led the Pledge of Allegiance.

V. OPEN FORUM

No participants

VI. CONSENT AGENDA

A motion was made by Hancock seconded by Sixberry to approve the following:

- A. PREVIOUS MINUTES from the November 19, 2025 regular meeting
- B. CLAIMS AND ACCOUNTS for the month of December in the amount of \$1,471,064.78 checks 107966-108080
- C. CREDIT CARD REPORT
- D. PERSONNEL

December 2025 Personnel				
Employee (Last, First Name)	Position	Building	Effective Date	Action Type
Carbert, Olivia	Paraeducator	Liberty	11/25/2025	Resignation
Thomas, Mary Kay	LTS Dean of Students	Middle School	12/15/2025	New Hire
Bringus, Rose	Paraeducator	Independence	12/1/2025	New Hire
Shepherd, Adam	Paraeducator	Liberty	12/1/2025	Transfer
Wilhelm, Luke	Teacher	High School	01/05/2026	Transfer
Flom, Brittany	Custodian	High School	12/10/2025	New Hire
Dooley, Katie	LTS Office Assistant	Liberty	12/15/2025	New Hire
Lee, Mackenzie	LTS Teacher	Liberty	4/11/2025	New Hire

E. FUNDRAISERS: Big Lake Girls Flag Football, raise money through the Raise 365 app with proceeds to be used for expenses. 12/18/25-1/15/26

F. AMENDED SRO CONTRACT

G. EXTENDED FIELD TRIP REQUESTS

- i. GIRLS BASKETBALL
- ii. WRESTLING
- iii. ROBOTICS

The motion carried 6-0.

VII. DONATIONS

A motion was made by Brown seconded by Reasoner to approve the following donations:

Donor	Item	Designated Purpose (if any)
Big Lake Releve Club Inc	\$1,995.84	Hotel for dance invitational
Big Lake Swim & Dive Booster Club	\$3,090.60	Assistant coach salary
Big Lake Quarterback Club	\$5,663.00	Coaches stipend
Big Lake Spud Fest	\$5,000.00	Integrated Mental Performance Partnership
Big Lake Spud Fest	\$5,000.00	2026 Prom
Harvest Church	\$100.00	Musical
Riverside Church	Walmart gift cards valued at \$6,000.00	Families in need
Big Lake Spud Fest	\$11,000.00	\$5,000 Musical and \$6,000 Early Childhood Coalition
Mathison Motors	Winter clothing valued at \$620.00	Students in need at Independence
Big Lake Fast Break Club	\$3,000.00	Coach stipend
Central Minnesota Manufacturers Association	\$1,120.00	\$1,000 Youth Apprentice event and \$120 for cookies at event
Big Lake Gymnastics Boosters	\$5,067.00	New mats for gymnastics gym

The motion carried 6-0.

VIII. FINANCIAL REPORT

Director of Business Services, Angie Manuel, presented the financial report for November. A motion was made by Nelson seconded by Hancock to approve the financial report as presented.

The motion carried 6-0.

IX. APPROVE PAY 2026 PROPERTY TAX LEVY CERTIFICATION

Director of Business Services, Angie Manuel, presented the Pay 2026 Property Tax Levy Certification. A motion was made by Nelson seconded by Schabilion to approve the 2026 Levy Certification at \$13,887,802.55.

The motion carried 6-0.

X. 2026 BUILDING ENVELOPE IMPROVEMENT BID APPROVAL

Director of Buildings and Grounds, TJ Zerwas, presented the bids. A motion was made by Schabilion seconded by Brown to approve the bid from Granite City Roofing for \$1,952,000.00.

The motion carried 6-0.

XI. ANNOUNCE AND APPROVE JOINT POWERS MEETING

A motion was made by Reasoner seconded by Sixberry to set the Joint Powers Meeting for Thursday, January 15, 2026 at 6:00 PM in the City Council Chambers.

The motion carried 6-0.

- XII. SCHOOL BOARD COMMITTEE/REPRESENTATIVE UPDATES
 - a. Finance—no meeting
 - b. Policy—no meeting
 - c. Buildings and Grounds—no meeting
 - d. School Board Representatives—Schabilion gave an update on SAFF

XIII. SCHOOL BOARD STUDENT REPRESENTATIVE REPORT
Student School Board Representative, Alexis Gosewisch, gave her monthly report to the board.

- XIV. SUPERINTENDENT REPORT
Superintendent Truebenbach gave his monthly report to the board.
 - a. Cabinet Department Update—none

XV. ANNOUNCE AND APPROVE CLOSED SESSION FOR NEGOTIATION STRATEGY AFTER ADJOURNMENT OF THE REGULAR MEETING
Chair Reasoner read the statement to enter a closed session for negotiation strategy following the adjournment of the regular meeting. A motion was made by Nelson seconded by Brown to enter a closed session after the regular meeting is adjourned.
The motion carried 6-0.

XVI. ADJOURNMENT
Chair Reasoner adjourned the meeting at 7:20 PM.

Clerk, Lenette Brown
Approved January 28, 2026

BIG LAKE SCHOOLS
INDEPENDENT SCHOOL DISTRICT 727
BIG LAKE, MINNESOTA

Minutes of the Organizational Meeting
January 7, 2026
6:30 PM

- I. CALL TO ORDER
The Organizational Meeting of the Board of Education of Independent School District No. 727, Big Lake Public Schools was called to order on January 7, 2026, at 6:30 PM, in the Middle School Student Center by Chair Reasoner.
- II. ROLL CALL
The following Board members were present: Ms. Chelsey Hancock, Ms. Tonya Reasoner, Ms. Amber Sixberry, Ms. Ashley Schabilion, Mr. Derek Nelson, and Ms. Lenette Brown.
- III. APPROVE AGENDA
A motion was made by Sixberry seconded by Nelson to approve the agenda. The motion carried 6-0.
- IV. PLEDGE OF ALLEGIANCE
Chair Reasoner and the board led the Pledge of Allegiance.
- V. ORGANIZATION FOR 2026
 - A. Chair
A motion was made by Schabilion seconded by Sixberry to nominate Reasoner for Chair. No other nominations. The motion carried 6-0.
 - B. Clerk
A motion was made by Brown seconded by Sixberry to nominate Schabilion for Clerk. No other nominations. The motion carried 6-0.
 - C. Treasurer
A motion was made by Reasoner seconded by Brown to nominate Sixberry for Treasurer. No other nominations. The motion carried 6-0.
- VI. BOARD MEETING SCHEDULE
Reviewed the meeting schedule for 2026 regular meetings and work sessions. A motion was made by Reasoner seconded by Schabilion to approve the meeting dates with a new start time of 6:00 PM and moving the May 27, 2026 meeting to May 20, 2026. The motion passed 6-0.
- VII. DESIGNATION OF OFFICIAL NEWSPAPER
A motion was made by Schabilion seconded by Nelson to designate the Patriot as the official newspaper. The motion carried 6-0.
- VIII. DESIGNATION OF DEPOSITORY FOR SCHOOL FUNDS
A motion was made by Sixberry seconded by Brown to designate Old National Bank and any other as determined as depository of school funds. The motion carried 5-0, with Nelson abstaining.

IX. COMPENSATION FOR SCHOOL BOARD MEMBERS

A motion was made by Brown seconded by Sixberry for Board members compensation to remain at \$75.00 for regular/special meetings and committees and \$110.00 for meetings exceeding four hours. Yearly stipend for Board Chair will remain at \$700.00 and \$500.00 for Treasurer.

The motion carried 6-0.

X. APPROVE USE OF FACSIMILE SIGNATURE STAMP FOR BOARD MEMBERS SIGNING CHECKS

A motion was made by Schabilion seconded by Hancock to approve the 2026 facsimile signature stamps for Chair, Treasurer, and Clerk.

The motion carried 6-0.

XI. ELECTRONIC FUNDS TRANSFER

A motion was made by Sixberry seconded by Brown to approve the Director of Business Services, Accountant, Human Resources Coordinator, Payroll Specialist, and Superintendent to make electronic fund transfers on behalf of Big Lake Schools.

The motion carried 6-0.

XII. COMMITTEE AND REPRESENTATIVE ASSIGNMENTS

Reviewed and updated board committee and representative assignments for 2026. A motion was made by Reasoner seconded by Hancock to approve the Board committee and Board representative assignments.

The motion carried 6-0.

XIII. LEGAL COUNSEL

A motion was made by Reasoner seconded by Nelson to approve the legal counsel of Ratwik, Roszak & Maloney on an as needed basis by the Superintendent or Board's discretion.

The motion carried 6-0.

XIV. SET MILEAGE REIMBURSEMENT RATE

A motion was made by Sixberry seconded by Brown to approve the IRS mileage reimbursement rate of 72.5 cents per mile for 2026.

The motion carried 6-0.

XV. MEMBERSHIPS IN ORGANIZATIONS

A motion was made by Reasoner seconded by Schabilion to approve the following memberships for 2026:

- A. Minnesota School Boards Association
- B. Schools Advocating for Fair Funding
- C. Resource Training and Solutions
- D. Central Minnesota Education Research and Development Council
- E. Minnesota State High School League

The motion carried 6-0.

XVI. REVIEWED POLICIES 206 PUBLIC PARTICIPATION IN SCHOOL BOARD MEETINGS AND 209 CODE OF ETHICS

The board reviewed both policies.

XVII. PERSONNEL

A motion was made by Sixberry seconded by Brown to accept High School Principal Bob Dockendorf's retirement.

The motion carried 6-0.

A motion was made by Reasoner seconded by Nelson to approve the MOU as presented.

The motion carried 6-0.

XVIII. ADJOURNMENT

Chari Reasoner adjourned the meeting at 6:58 PM

Clerk, Ashley Schabilion
Approved January 28, 2026

BIG LAKE SCHOOLS
INDEPENDENT SCHOOL DISTRICT 727
BIG LAKE, MINNESOTA

Minutes of the Work Session
January 7, 2026
6:30 PM

- I. CALL TO ORDER
The Work Session of the Board of Education of Independent School District No. 727, Big Lake Schools was called to order on January 7, 2026 at 6:59 PM, in the Middle School Student Center, by Chair Reasoner.

- II. ROLL CALL
The following Board members were present: Ms. Chelsey Hancock, Ms. Amber Sixberry, Ms. Tonya Reasoner, Ms. Lenette Brown, Ms. Ashley Schabilion, and Mr. Derek Nelson.

- III. JOINT POWERS MEETING PRESENTATION DISCUSSION
Superintendent Truebenbach discussed using the same format as last year with updated information for the presentation at the Joint Powers Meeting.

- IV. CALENDAR DISCUSSION
Superintendent Truebenbach updated the board that he will continue working on the 2026-2027 school calendar with a start date before Labor Day.

- V. BUDGET UPDATE
Discussed potential cuts, timeline, and class sizes due to adjustments that need to be made to the budget.

- VI. ADJOURNMENT
Chair Reasoner adjourned the meeting at 8:12 PM.

Clerk, Ashley Schabilion
Approved January 28, 2026

Big Lake Public Schools, ISD #727

Payment Reg by Check-No Voids

Check Number: 108081-2147483647 Payment Date: 7/1/2025-1/31/2026

Bank	Check No	Ty	Grp	Code	Vendor	Date	Amount	Voucher #	Account Code	Description	
001	108081	CH	1	13218	CENTRAL MN MENTAL HEALTH CENTE	12/22/2025	\$1,433.75	167148	E 01 005 211 000 799 305	BRIDGES SEPTEMBER 2025	
001	108081	CH	1	13218	CENTRAL MN MENTAL HEALTH CENTE	12/22/2025	\$1,295.00	167149	E 01 005 211 000 799 305	BRIDGES AUGUST 2025	
Check Total:							\$2,728.75				
001	108082	CH	1	14323	NORTH STAR PIZZA SLICE, LLC.	12/22/2025	\$39.99	167150	E 11 300 298 000 000 490	Food	
Check Total:							\$39.99				
001	108083	CH	1	04234	MN CHILD SUPPORT PYMT CENTER	12/19/2025	\$318.71	167161	B 01 215 081	Child Support	
001	108083	CH	1	04234	MN CHILD SUPPORT PYMT CENTER	12/19/2025	\$103.92	167161	B 12 215 081	Child Support	
Check Total:							\$422.63				
001	108084	CH	1	14034	NORTH DAKOTA CHILD SUPPORT DIVI	12/19/2025	\$621.95	167164	B 12 215 081	Child Support	
Check Total:							\$621.95				
001	108085	CH	1	01973	SCHOOL SERVICE EMP LOCAL 284	12/19/2025	\$1,010.87	167167	B 01 215 040	U Due Nc	
001	108085	CH	1	01973	SCHOOL SERVICE EMP LOCAL 284	12/19/2025	\$135.98	167167	B 04 215 040	U Dues Nc	
001	108085	CH	1	01973	SCHOOL SERVICE EMP LOCAL 284	12/19/2025	\$2,047.32	167167	B 12 215 040	U Due Nc	
Check Total:							\$3,194.17				
001	108086	CH	1	12504	MN PEIP	12/19/2025	\$239,504.95	167175	B 01 215 030	JANUARY 2025 HEALTH	
001	108086	CH	1	12504	MN PEIP	12/19/2025	\$22,311.14	167175	B 04 215 030	JANUARY 2025 HEALTH	
001	108086	CH	1	12504	MN PEIP	12/19/2025	\$4,705.74	167175	B 05 215 030	JANUARY 2025 HEALTH	
001	108086	CH	1	12504	MN PEIP	12/19/2025	\$2,821.90	167175	B 11 215 030	JANUARY 2025 HEALTH	
001	108086	CH	1	12504	MN PEIP	12/19/2025	\$148,367.55	167175	B 12 215 030	JANUARY 2025 HEALTH	
001	108086	CH	1	12504	MN PEIP	12/19/2025	(\$73.88)	167175	B 01 215 051	JANUARY 2025 HEALTH	
001	108086	CH	1	12504	MN PEIP	12/19/2025	\$1,964.04	167175	B 04 215 051	JANUARY 2025 HEALTH	
001	108086	CH	1	12504	MN PEIP	12/19/2025	\$581.56	167175	B 05 215 051	JANUARY 2025 HEALTH	
001	108086	CH	1	12504	MN PEIP	12/19/2025	\$527.60	167175	B 11 215 051	JANUARY 2025 HEALTH	
001	108086	CH	1	12504	MN PEIP	12/19/2025	\$13,860.42	167175	B 11 215 051	JANUARY 2025 HEALTH	
Check Total:							\$434,571.02				
001	108087	CH	1	12159	ARVIG	01/02/2026	\$137.18	167201	E 01 005 630 000 000 305	INTERNET 12/06/2025-01/05/2026	
Check Total:							\$137.18				
001	108088	CH	1	12563	BATTERIES PLUS	01/02/2026	\$397.92	167202	E 01 201 810 000 000 401	MS B&G SUPPLIES	
Check Total:							\$397.92				
001	108089	CH	1	02735	BOND TRUST SERVICES CORPORATIC	01/02/2026	\$475.00	167206	E 07 005 910 000 000 790	\$4,000,000.00 GENERAL OBLIGATION S	
Check Total:							\$475.00				
001	108090	CH	1	10336	BOULDER POINTE EQUESTRIAN AND	01/02/2026	\$148.00	167203	E 04 500 585 000 332 305	CE HORSE CAMPS OCTOBER 2025	
Check Total:							\$148.00				

Big Lake Public Schools, ISD #727

Payment Reg by Check-No Voids

Check Number: 108081-2147483647 Payment Date: 7/1/2025-1/31/2026

Bank	Check No	Ty	Grp	Code	Vendor	Date	Amount	Voucher #	Account Code	Description	
001	108091	CH	1	01035	CENTRAL MINNESOTA ERDC	01/02/2026	\$4,592.75	167204	E 01 005 110 000 000 316	3RD QUARTER SMART	
001	108091	CH	1	01035	CENTRAL MINNESOTA ERDC	01/02/2026	\$1,559.25	167204	E 01 005 110 000 000 316	3RD QUARTER CITRIX	
001	108091	CH	1	01035	CENTRAL MINNESOTA ERDC	01/02/2026	\$450.00	167204	E 01 005 110 000 000 316	3RD QUARTER UFARS/ACCOUNTING	
001	108091	CH	1	01035	CENTRAL MINNESOTA ERDC	01/02/2026	\$902.55	167204	E 01 005 110 000 000 405	3RD QUARTER TIMETRACKER	
Check Total:							\$7,504.55				
001	108092	CH	1	14276	CLASSY CAKES	01/02/2026	\$352.00	167205	E 11 300 298 000 000 490	HS CONCESSIONS	
Check Total:							\$352.00				
001	108093	CH	1	12517	GERTEN GREENHOUSES-446133	01/02/2026	(\$480.20)	167208	E 01 005 810 000 000 363	MASTER MELT	
001	108093	CH	1	12517	GERTEN GREENHOUSES-446133	01/02/2026	\$3,841.60	167207	E 01 005 810 000 000 363	MASTER MELT	
Check Total:							\$3,361.40				
001	108094	CH	1	04641	IEA	01/02/2026	\$652.04	167210	E 05 005 865 000 352 305	26-28 ENVIRONMENTAL, HEALTH & SAF	
001	108094	CH	1	04641	IEA	01/02/2026	\$9,300.00	167209	E 05 005 865 000 349 305	INDY LEAD-IN-WATER SAMPLE TESTING	
Check Total:							\$9,952.04				
001	108095	CH	1	13490	KOESEL, TRACY	01/02/2026	\$100.00	167211	E 04 500 560 182 321 357	12/15/2025 SIGN LANGUAGE HS FLAG F 13	
Check Total:							\$100.00				
001	108096	CH	1	10151	LAKE COUNTRY SCALE WORKS, INC.	01/02/2026	\$595.00	167212	E 11 300 294 115 000 305	TEST (4) WRESTLING SCALES	
Check Total:							\$595.00				
001	108097	CH	1	13672	MILIUS, MARGARET M	01/02/2026	\$288.00	167218	E 04 500 565 090 321 305	ORNAMENTS DECEMBER 2025	
Check Total:							\$288.00				
001	108098	CH	1	01121	MINNESOTA ASSOCIATION OF SECON	01/02/2026	\$405.00	167215	E 01 300 605 000 000 366	2006 MASSP WINTER CONFERENCE PA	
Check Total:							\$405.00				
001	108099	CH	1	14324	MINNESOTA DEPARTMENT OF COMME	01/02/2026	\$48.45	167216	R 01 300 211 000 000 099	HS MANUAL ONLINE REPORTING	
001	108099	CH	1	14324	MINNESOTA DEPARTMENT OF COMME	01/02/2026	\$50.00	167216	R 04 500 560 000 321 050	CE MANUAL ONLINE REPORTING	
001	108099	CH	1	14324	MINNESOTA DEPARTMENT OF COMME	01/02/2026	\$574.17	167216	R 02 300 000 000 707 601	HS MEALS	
001	108099	CH	1	14324	MINNESOTA DEPARTMENT OF COMME	01/02/2026	\$92.85	167216	R 02 100 000 000 707 601	INDY MEALS	
001	108099	CH	1	14324	MINNESOTA DEPARTMENT OF COMME	01/02/2026	\$31.25	167216	R 02 201 000 000 707 601	MS MEALS	
Check Total:							\$796.72				
001	108100	CH	1	10455	NORTH SHORE GYM SALES LLC	01/02/2026	\$1,357.00	167213	E 04 500 560 122 321 530	CLM1203 7'x12', 12 cm non-fold V2 mat	
001	108100	CH	1	10455	NORTH SHORE GYM SALES LLC	01/02/2026	\$1,415.00	167213	E 04 500 560 122 321 530	CLM1204 8'x12'x 12cm, non-fold V2 mat	
001	108100	CH	1	10455	NORTH SHORE GYM SALES LLC	01/02/2026	\$1,849.00	167213	E 04 500 560 122 321 530	CLM1207 8'x15'6x 12cm, non-fold V2 map	
001	108100	CH	1	10455	NORTH SHORE GYM SALES LLC	01/02/2026	\$446.00	167213	E 04 500 560 122 321 530	Shipping and Handling	
Check Total:							\$5,067.00				

Big Lake Public Schools, ISD #727

Payment Reg by Check-No Voids

Check Number: 108081-2147483647 Payment Date: 7/1/2025-1/31/2026

Bank	Check No	Ty	Grp	Code	Vendor	Date	Amount	Voucher #	Account Code	Description	
001	108101	CH	1	13016	NORTHLAND REFRIGERATION INCORP	01/02/2026	\$615.00	167214	E 02 100 770 000 701 350	INDY FREEZER REPAIRS	
Check Total:							\$615.00				
001	108102	CH	1	07890	PTMA	01/02/2026	\$630.74	167217	E 45 005 935 000 000 305	ASSETS NOVEMBER 2025	
Check Total:							\$630.74				
001	108103	CH	1	13463	SALMON, ABIGAIL	01/02/2026	\$200.00	167219	E 01 300 259 000 000 305	WINTER 2025 CHOIR CONCERT AND RE	
Check Total:							\$200.00				
001	108104	CH	1	08981	SHRED RIGHT	01/02/2026	\$42.53	167220	E 01 005 810 000 000 333	SHREDDING 12/04/2025	
001	108104	CH	1	08981	SHRED RIGHT	01/02/2026	\$21.26	167221	E 01 110 203 000 000 305	LIBERTY SHREDDING 12/11/2025	
001	108104	CH	1	08981	SHRED RIGHT	01/02/2026	\$21.27	167221	E 04 500 505 000 321 305	CE SHREDDING 12/11/2025	
Check Total:							\$85.06				
001	108105	CH	1	05903	TEACHING STRATEGIES, INC.	01/02/2026	\$21,601.70	167222	E 01 110 203 602 000 460	The Creative Curriculum for Preschool	
001	108105	CH	1	05903	TEACHING STRATEGIES, INC.	01/02/2026	\$3,985.00	167222	E 04 500 596 000 344 305	Introduction to the Creative Curriculum for	
001	108105	CH	1	05903	TEACHING STRATEGIES, INC.	01/02/2026	\$1,730.00	167222	E 04 500 596 000 344 305	Coach Membership	
Check Total:							\$27,316.70				
001	108106	CH	1	12068	THE WATSON COMPANY, INC.	01/02/2026	\$226.86	167226	E 11 300 298 000 000 490	HS CONCESSIONS	
Check Total:							\$226.86				
001	108107	CH	1	04148	VIKING COCA-COLA BOTTLING CO	01/02/2026	\$1,541.50	167224	E 11 300 298 000 000 490	HS CONCESSIONS	
001	108107	CH	1	04148	VIKING COCA-COLA BOTTLING CO	01/02/2026	\$1,369.50	167223	E 11 300 298 000 000 490	HS CONCESSIONS	
001	108107	CH	1	04148	VIKING COCA-COLA BOTTLING CO	01/02/2026	(\$1,369.50)	167223	E 11 300 298 000 000 490	HS CONCESSIONS	
001	108107	CH	1	04148	VIKING COCA-COLA BOTTLING CO	01/02/2026	\$1,369.50	167223	E 01 300 790 000 699 401	HS CONCESSIONS	
Check Total:							\$2,911.00				
001	108108	CH	1	06532	VISION STAFFING	01/02/2026	\$429.98	167225	E 01 005 810 356 000 305	GROUNDS WEEK OF 12/14/2025	
Check Total:							\$429.98				
001	108109	CH	1	13048	WELLNESS FOR LIVING LLC	01/02/2026	\$210.00	167227	E 04 500 585 000 332 305	CULINARY CRAFTS	
Check Total:							\$210.00				
001	108110	CH	1	01240	WRIGHT TECHNICAL CENTER	01/02/2026	\$2,006.46	167228	E 01 300 740 000 374 377	STUDENT SUPPORT PERSONNEL AID P	
Check Total:							\$2,006.46				
001	108111	CH	1	13130	LINDSEY OSTERMAN	01/02/2026	\$2,832.00	167229	E 01 300 790 000 699 303	PCN MEDIA CONSULTANT NOVEMBER	
Check Total:							\$2,832.00				
001	108112	CH	1	03642	SHERBURNE COUNTY AUDITOR/TREA	01/02/2026	\$2,070.63	167230	E 01 005 110 000 000 305	TNT NOTICES	
Check Total:							\$2,070.63				

Big Lake Public Schools, ISD #727

Payment Reg by Check-No Voids

Check Number: 108081-2147483647 Payment Date: 7/1/2025-1/31/2026

Bank	Check No	Ty	Grp	Code	Vendor	Date	Amount	Voucher #	Account Code	Description	
001	108113	CH	1	14291	HEARS TO U	01/02/2026	\$190.00	167231	E 05 005 865 000 347 401	HEARING PROTECTION LEFT & RIGHT I	
							Check Total:	\$190.00			
001	108114	CH	1	06507	ACUNA, SANDRA	01/09/2026	\$120.00	167259	E 01 200 219 000 339 305	11/11, 11/17, 12/04 INTERPRETER	
							Check Total:	\$120.00			
001	108115	CH	1	13465	ANDERSON, JULIE	01/09/2026	\$5,410.00	167281	E 04 500 565 090 321 305	CE SUPPLIES	
							Check Total:	\$5,410.00			
001	108116	CH	1	08417	AVIBEN	01/09/2026	\$437.89	167260	E 01 005 105 000 000 305	403B ADMIN & COMPLIANCE MONTHLY	
							Check Total:	\$437.89			
001	108117	CH	1	01503	BECKER COMMUNITY EDUCATION	01/09/2026	\$117.00	167283	E 04 500 565 090 321 305	11/11/25 BEGINNING CROCHET	
							Check Total:	\$117.00			
001	108118	CH	1	13241	BENEFIT RESOURCE LLC	01/09/2026	\$200.00	167261	E 01 005 105 000 000 305	COBRA	
							Check Total:	\$200.00			
001	108119	CH	1	13348	BUSINESS ESSENTIALS	01/09/2026	\$2,879.20	167268	E 01 300 211 000 000 401	BOI900 WHITE COPY PAPER	
001	108119	CH	1	13348	BUSINESS ESSENTIALS	01/09/2026	\$2,879.20	167268	E 01 201 208 000 000 401	BOI900 WHITE COPY PAPER	
001	108119	CH	1	13348	BUSINESS ESSENTIALS	01/09/2026	\$2,879.20	167268	E 01 100 203 000 000 401	BOI900 WHITE COPY PAPER	
001	108119	CH	1	13348	BUSINESS ESSENTIALS	01/09/2026	\$2,879.20	167268	E 01 110 203 000 000 401	BOI900 WHITE COPY PAPER	
							Check Total:	\$11,516.80			
001	108120	CH	1	01475	CONNEXUS ENERGY	01/09/2026	\$28.60	167290	E 01 005 810 860 000 331	SOFTBALL CONCESSIONS ELECTRICAL	
001	108120	CH	1	01475	CONNEXUS ENERGY	01/09/2026	\$6,006.85	167290	E 01 100 810 000 000 331	INDY ELECTRICAL 11/12/2025-12/11/2025	
001	108120	CH	1	01475	CONNEXUS ENERGY	01/09/2026	\$8,215.74	167290	E 01 110 810 000 000 331	LIBERTY ELECTRICAL 11/12/2025-12/11/2025	
001	108120	CH	1	01475	CONNEXUS ENERGY	01/09/2026	\$53.44	167290	E 01 005 810 860 000 331	BASEBALL FIELD LIGHTS ELECTRICAL	
001	108120	CH	1	01475	CONNEXUS ENERGY	01/09/2026	\$74.39	167290	E 01 005 810 860 000 331	SOFTBALL FIELD ELECTRICAL 11/12/2025	
							Check Total:	\$14,379.02			
001	108121	CH	1	12226	DARRYL WALETZKO	01/09/2026	\$19,387.50	167269	E 01 005 810 000 000 363	SNOW REMOVAL DECEMBER 2025	
							Check Total:	\$19,387.50			
001	108122	CH	1	13449	FRSecure LLC	01/09/2026	\$3,462.50	167284	E 01 005 630 000 000 305	PO 34703 SOLCIAL E-MAIL PHISHING	
001	108122	CH	1	13449	FRSecure LLC	01/09/2026	\$3,325.00	167285	E 01 005 630 000 000 305	PO 34703 PEN TEST EXTERNAL	
							Check Total:	\$6,787.50			
001	108123	CH	1	14015	GET OUTDOORS MN INC	01/09/2026	\$420.00	167282	E 04 500 585 000 332 305	WOODLAND EXPLORERS	
							Check Total:	\$420.00			
001	108124	CH	1	13166	LRS OF MINNESOTA	01/09/2026	\$1,206.60	167291	E 01 300 810 000 000 333	HS WASTE SERVICES JANUARY 2026	
001	108124	CH	1	13166	LRS OF MINNESOTA	01/09/2026	\$1,029.44	167291	E 01 201 810 000 000 333	MS WASTE SERVICES JANUARY 2026	
001	108124	CH	1	13166	LRS OF MINNESOTA	01/09/2026	\$1,029.44	167291	E 01 100 810 000 000 333	INDY WASTE SERVICES JANUARY 2026	

Big Lake Public Schools, ISD #727

Payment Reg by Check-No Voids

Check Number: 108081-2147483647 Payment Date: 7/1/2025-1/31/2026

Bank	Check No	Ty	Grp	Code	Vendor	Date	Amount	Voucher #	Account Code	Description	
001	108124	CH	1	13166	LRS OF MINNESOTA	01/09/2026	\$1,193.08	167291	E 01 110 810 000 000 333	LIBERTY WASTE SERVICES JANUARY 2	
001	108124	CH	1	13166	LRS OF MINNESOTA	01/09/2026	\$181.13	167291	E 01 005 810 000 000 333	GROUNDS WASTE SERVICES JANUARY	
Check Total:							\$4,639.69				
001	108125	CH	1	01487	MCDOWALL COMFORT COMPANY	01/09/2026	\$3,300.00	167270	E 01 300 810 000 000 350	COLUMN BASE COVERS - PER ESTIMA	
Check Total:							\$3,300.00				
001	108126	CH	1	13463	SALMON, ABIGAIL	01/09/2026	\$200.00	167276	E 01 201 259 000 000 430	12/11/2025 MS CHOIR CONCERT & REHI	
Check Total:							\$200.00				
001	108127	CH	1	14325	SATPAC SPEECH	01/09/2026	\$100.00	167286	E 12 110 401 000 740 406	SATPAC Speech	
Check Total:							\$100.00				
001	108128	CH	1	01187	SCHMITT DIRECTOR CENTER	01/09/2026	(\$68.00)	167274	E 01 201 258 000 000 430	CREDIT MS MUSIC SUPPLIES	
001	108128	CH	1	01187	SCHMITT DIRECTOR CENTER	01/09/2026	\$49.44	167273	E 01 201 258 000 000 430	MS MUSIC SUPPLIES	
001	108128	CH	1	01187	SCHMITT DIRECTOR CENTER	01/09/2026	\$44.00	167275	E 01 201 258 000 000 430	MS SUPPLIES	
Check Total:							\$25.44				
001	108129	CH	1	10333	SHERBURNE NORTHERN WRIGHT SPI	01/09/2026	\$25,000.00	167277	E 01 005 740 000 374 377	25/26 BIG LAKE COOP STUDENT SUPPC	
001	108129	CH	1	10333	SHERBURNE NORTHERN WRIGHT SPI	01/09/2026	\$6,974.18	167277	E 01 005 740 000 374 347	25/26 BIG LAKE COOP STUDENT SUPPC	
Check Total:							\$31,974.18				
001	108130	CH	1	10777	ST. CROIX RECREATION FUN PLAYGR	01/09/2026	\$483.18	167271	E 01 110 810 000 000 350	LIBERTY ROCKER REPAIRS	
Check Total:							\$483.18				
001	108131	CH	1	13796	TECH ACADEMY	01/09/2026	\$30.00	167263	E 04 500 585 000 332 305	12/22/2025 POKEMON GAME CODING	
Check Total:							\$30.00				
001	108132	CH	1	05314	TECH CHECK	01/09/2026	\$14,718.75	167288	E 01 005 630 000 000 405	Ostra Core with Sentinel Once	
001	108132	CH	1	05314	TECH CHECK	01/09/2026	\$2,250.00	167288	E 01 005 630 000 000 405	Ostra Collector & Sensor	
Check Total:							\$16,968.75				
001	108133	CH	1	14030	THE BOELTER COMPANIES, INC.	01/09/2026	\$372.16	167262	E 02 110 770 000 701 401	CART, UTILITY/BUSSING	
001	108133	CH	1	14030	THE BOELTER COMPANIES, INC.	01/09/2026	\$0.00	167262	E 02 110 770 000 701 401	QUOTED DATED 11/13/2025, JOB REFEF	
001	108133	CH	1	14030	THE BOELTER COMPANIES, INC.	01/09/2026	\$109.00	167262	E 02 110 770 000 701 401	FREIGHT	
001	108133	CH	1	14030	THE BOELTER COMPANIES, INC.	01/09/2026	\$2,784.00	167272	E 02 201 770 000 701 401	COMPARTMENT TRAY	
001	108133	CH	1	14030	THE BOELTER COMPANIES, INC.	01/09/2026	\$0.00	167272	E 02 201 770 000 701 401	QUOTE DATED 11/13/2025 JOB REFERE	
001	108133	CH	1	14030	THE BOELTER COMPANIES, INC.	01/09/2026	\$259.00	167272	E 02 201 770 000 701 401	FREIGHT	
Check Total:							\$3,524.16				
001	108134	CH	1	12762	T-MOBILE	01/09/2026	\$140.00	167287	E 01 005 630 000 000 320	HOT SPOTS 11/21/25-12/20/25	
Check Total:							\$140.00				
001	108135	CH	1	01240	WRIGHT TECHNICAL CENTER	01/09/2026	\$19,254.56	167289	E 01 998 211 000 303 390	WRIGHT ACADEMY HIGH SCHOOL NOV	

Big Lake Public Schools, ISD #727

Payment Reg by Check-No Voids

Check Number: 108081-2147483647 Payment Date: 7/1/2025-1/31/2026

Bank	Check No	Ty	Grp	Code	Vendor	Date	Amount	Voucher #	Account Code	Description	
001	108135	CH	1	01240	WRIGHT TECHNICAL CENTER	01/09/2026	\$807.84	167289	E 01 998 211 000 303 390	WRIGHT ACADEMY MIDDLE SCHOOL N	
Check Total:							\$20,062.40				
001	108136	CH	1	08694	COMMERCIAL KITCHEN SERVICES	01/09/2026	\$5,223.15	167378	E 02 110 770 000 701 350	LIBERTY 3 HORSE 3 PHASE GARBAGE	
Check Total:							\$5,223.15				
001	108137	CH	1	08379	APPLE INC.	01/09/2026	\$165,240.00	167381	E 05 005 630 000 795 466	iPad Wi-Fi 128GB - Silver (Packaged in a	
001	108137	CH	1	08379	APPLE INC.	01/09/2026	\$18,174.00	167379	E 05 005 630 000 795 466	Brenthaven 360 for iPad (A16) – Special 10	
001	108137	CH	1	08379	APPLE INC.	01/09/2026	\$3,240.00	167380	E 05 005 630 000 795 466	iPad Wi-Fi 128GB - Silver (Packaged in a	
Check Total:							\$186,654.00				
001	108138	CH	1	14327	FOLEY FALCONS ARCHERY	01/09/2026	\$350.00	167382	E 04 500 560 000 321 305	BULLSEY TOURNAMENT 01/24-01/25	
Check Total:							\$350.00				
001	108139	CH	1	04234	MN CHILD SUPPORT PYMT CENTER	01/09/2026	\$293.50	167242	B 01 215 081	Child Support	
001	108139	CH	1	04234	MN CHILD SUPPORT PYMT CENTER	01/09/2026	\$129.13	167242	B 12 215 081	Child Support	
Check Total:							\$422.63				
001	108140	CH	1	04223	MN NCPERS LIFE INSURANCE	01/09/2026	\$80.00	167247	B 01 215 033	NCPR Life	
Check Total:							\$80.00				
001	108141	CH	1	14034	NORTH DAKOTA CHILD SUPPORT DIVI	01/09/2026	\$816.36	167245	B 12 215 081	Child Support	
Check Total:							\$816.36				
001	108142	CH	1	01973	SCHOOL SERVICE EMP LOCAL 284	01/09/2026	\$1,048.37	167249	B 01 215 040	U Due Nc	
001	108142	CH	1	01973	SCHOOL SERVICE EMP LOCAL 284	01/09/2026	\$135.98	167249	B 04 215 040	U Dues Nc	
001	108142	CH	1	01973	SCHOOL SERVICE EMP LOCAL 284	01/09/2026	\$2,047.32	167249	B 12 215 040	U Due Nc	
Check Total:							\$3,231.67				
001	108143	CH	1	03804	ALL STAR TROPHY	01/16/2026	\$126.00	167394	E 11 300 296 121 000 401	BLACK=SWIRL/STAR COLUMN 5/4/3" 50	
Check Total:							\$126.00				
001	108144	CH	1	08379	APPLE INC.	01/16/2026	\$1,767.00	167396	E 05 005 630 000 795 466	Mac mini: Apple M4 chipPart Number: Z1C	
001	108144	CH	1	08379	APPLE INC.	01/16/2026	\$589.00	167397	E 05 005 630 000 795 466	Mac mini: Apple M4 chipPart Number: Z1C	
Check Total:							\$2,356.00				
001	108145	CH	1	13182	BIG LAKE GYMNASTICS BOOSTER CLI	01/16/2026	\$401.10	167400	E 11 300 295 122 000 490	HORNET CLASSIC REIMBURSEMENT 01	
Check Total:							\$401.10				
001	108146	CH	1	01026	BLICK ART MATERIALS LLC	01/16/2026	\$20.01	167398	E 01 300 212 000 000 430	40163-1008 ESSDEE SOFT RUBBER ROI	
001	108146	CH	1	01026	BLICK ART MATERIALS LLC	01/16/2026	\$56.12	167398	E 01 300 212 000 000 430	40326-1069 SPEEDBALL ULTIMATE FABF	
001	108146	CH	1	01026	BLICK ART MATERIALS LLC	01/16/2026	\$11.99	167398	E 01 300 212 000 000 430	21893-1005 PILOT PRECISE V5 RETRAC	
001	108146	CH	1	01026	BLICK ART MATERIALS LLC	01/16/2026	\$21.96	167398	E 01 300 212 000 000 430	56894-1003 OFFICEMATE RUBBER BANI	
001	108146	CH	1	01026	BLICK ART MATERIALS LLC	01/16/2026	\$45.90	167398	E 01 300 212 000 000 430	21315-2015 SHARPIE ULTRA FINE POIN	

Big Lake Public Schools, ISD #727

Payment Reg by Check-No Voids

Check Number: 108081-2147483647 Payment Date: 7/1/2025-1/31/2026

Pay/Void										
Bank	Check No	Ty	Grp	Code	Vendor	Date	Amount	Voucher #	Account Code	Description
001	108146	CH	1	01026	BLICK ART MATERIALS LLC	01/16/2026	\$61.56	167398	E 01 300 212 000 000 430	21316-2026 SHARPIE FINE POINT PERM
001	108146	CH	1	01026	BLICK ART MATERIALS LLC	01/16/2026	\$15.65	167398	E 01 300 212 000 000 430	11308-1493 BLICK ART TISSUE 20X30 W
001	108146	CH	1	01026	BLICK ART MATERIALS LLC	01/16/2026	\$14.52	167398	E 01 300 212 000 000 430	20508-7241 PRISMACOLOR PREMIER C
001	108146	CH	1	01026	BLICK ART MATERIALS LLC	01/16/2026	\$29.04	167398	E 01 300 212 000 000 430	20508-1001 PRISMACOLOR PREMIER C
001	108146	CH	1	01026	BLICK ART MATERIALS LLC	01/16/2026	\$14.52	167398	E 01 300 212 000 000 430	20508-7171 PRISMACOLOR PREMIER C
001	108146	CH	1	01026	BLICK ART MATERIALS LLC	01/16/2026	\$14.52	167398	E 01 300 212 000 000 430	20508-4261 PRISMACOLOR PREMIER C
001	108146	CH	1	01026	BLICK ART MATERIALS LLC	01/16/2026	\$14.52	167398	E 01 300 212 000 000 430	20508-4501 PRISMACOLOR PREMIER C
001	108146	CH	1	01026	BLICK ART MATERIALS LLC	01/16/2026	\$14.52	167398	E 01 300 212 000 000 430	20508-3161 PRISMACOLOR PREMIER C
001	108146	CH	1	01026	BLICK ART MATERIALS LLC	01/16/2026	\$14.52	167398	E 01 300 212 000 000 430	20508-8121 PRISMACOLOR PREMIER C
001	108146	CH	1	01026	BLICK ART MATERIALS LLC	01/16/2026	\$14.52	167398	E 01 300 212 000 000 430	20508-8031 PRISMACOLOR PREMIER C
001	108146	CH	1	01026	BLICK ART MATERIALS LLC	01/16/2026	\$29.04	167398	E 01 300 212 000 000 430	20508-2001 PRISMACOLOR PREMIER C
001	108146	CH	1	01026	BLICK ART MATERIALS LLC	01/16/2026	\$14.52	167398	E 01 300 212 000 000 430	20508-5281 PRISMACOLOR PREMIER C
001	108146	CH	1	01026	BLICK ART MATERIALS LLC	01/16/2026	\$18.60	167398	E 01 300 212 000 000 430	34255-1911 3M GENERAL PURPOSE SAI
001	108146	CH	1	01026	BLICK ART MATERIALS LLC	01/16/2026	\$142.76	167398	E 01 300 212 000 000 430	33401-1014 BLICK SCULPTURE WIRE 12
001	108146	CH	1	01026	BLICK ART MATERIALS LLC	01/16/2026	\$22.45	167398	E 01 300 212 000 000 430	22100-1025 SHARPIE OIL BASED PAINT
001	108146	CH	1	01026	BLICK ART MATERIALS LLC	01/16/2026	\$26.76	167398	E 01 300 212 000 000 430	19994-1129 POSCA PAINT MARKERS SE
001	108146	CH	1	01026	BLICK ART MATERIALS LLC	01/16/2026	\$24.00	167398	E 01 300 212 000 000 430	22220-2051 BLICK STUDIO DRAWING PE
001	108146	CH	1	01026	BLICK ART MATERIALS LLC	01/16/2026	\$15.12	167398	E 01 300 212 000 000 430	22220-2100 BLICK STUDIO DRAWING PE
001	108146	CH	1	01026	BLICK ART MATERIALS LLC	01/16/2026	\$72.50	167398	E 01 300 212 000 000 430	07227-1014 BLICK STANDARD STRETCH
001	108146	CH	1	01026	BLICK ART MATERIALS LLC	01/16/2026	\$65.00	167398	E 01 300 212 000 000 430	07227-1013 BLICK STANDARD STRETCH
001	108146	CH	1	01026	BLICK ART MATERIALS LLC	01/16/2026	\$114.40	167398	E 01 300 212 000 000 430	00717-2044 LIQUITEX BASICS MARS BL
001	108146	CH	1	01026	BLICK ART MATERIALS LLC	01/16/2026	\$264.00	167398	E 01 300 212 000 000 430	00717-1014 LIQUITEX BASICS - TITANIUM
001	108146	CH	1	01026	BLICK ART MATERIALS LLC	01/16/2026	\$49.00	167398	E 01 300 212 000 000 430	07227-1010 BLICK STANDARD STRETCH
001	108146	CH	1	01026	BLICK ART MATERIALS LLC	01/16/2026	\$0.00	167398	E 01 300 212 000 000 430	FREE SHIPPING OVER \$79
Check Total:								\$1,222.02		
001	108147	CH	1	09518	BREAKDOWN SPORTS USA	01/16/2026	\$350.00	167401	E 11 300 294 112 000 369	DECEMBER 26 & 27TH GRANITE CITY
Check Total:								\$350.00		
001	108148	CH	1	01644	BUFFALO SCHOOLS ISD #877	01/16/2026	\$70.00	167399	E 11 300 292 129 000 369	TECH HS KNOWLEDGE BOWL MEET IN'
Check Total:								\$70.00		
001	108149	CH	1	13218	CENTRAL MN MENTAL HEALTH CENTE	01/16/2026	\$185.00	167429	E 01 005 211 000 799 305	DEC 2025 BRIDGES
Check Total:								\$185.00		
001	108150	CH	1	14240	DAIKIN APPLIED AMERICAS INC	01/16/2026	\$921.25	167428	E 01 300 810 000 000 305	QUARTERLY INSPECTION 01/01/2026-03
Check Total:								\$921.25		

Big Lake Public Schools, ISD #727

Payment Reg by Check-No Voids

Check Number: 108081-2147483647 Payment Date: 7/1/2025-1/31/2026

Bank	Check No	Ty	Grp	Code	Vendor	Date	Amount	Voucher #	Account Code	Description	
001	108151	CH	1	13688	DASH SPORTS LLC	01/16/2026	\$605.00	167402	E 04 500 560 000 321 305	SOCCER TYKES #272F13	
							Check Total:	\$605.00			
001	108152	CH	1	04005	FOLEY HIGH SCHOOL	01/16/2026	\$340.00	167403	E 11 300 296 121 000 369	DANCE TEAM INVITATIONAL 01/09/2026	
							Check Total:	\$340.00			
001	108153	CH	1	03351	GOPHER SPORT	01/16/2026	\$17.90	167404	E 04 500 560 000 321 305	1" Vinyl Floor Tape Orange	
001	108153	CH	1	03351	GOPHER SPORT	01/16/2026	\$17.90	167404	E 04 500 560 000 321 305	1" Vinyl Floor Tape White	
001	108153	CH	1	03351	GOPHER SPORT	01/16/2026	\$14.90	167404	E 04 500 560 000 321 305	Shipping	
							Check Total:	\$50.70			
001	108154	CH	1	14332	HOLT, AMANDA	01/16/2026	\$39.15	167408	E 04 500 560 122 321 366	CE HORNET CLASSIC GYMNASTICS ME	
001	108154	CH	1	14332	HOLT, AMANDA	01/16/2026	\$201.50	167409	E 04 500 560 122 321 366	CE HORNET CLASSIC GYMNASTICS ME	
001	108154	CH	1	14332	HOLT, AMANDA	01/16/2026	(\$201.50)	167409	E 04 500 560 122 321 366	CE HORNET CLASSIC GYMNASTICS ME	
001	108154	CH	1	14332	HOLT, AMANDA	01/16/2026	\$201.50	167409	E 04 500 560 122 321 305	CE HORNET CLASSIC GYMNASTICS ME	
							Check Total:	\$240.65			
001	108155	CH	1	04623	KIEFER AQUATICS	01/16/2026	\$2,430.00	167406	E 05 300 292 000 302 530	Finis Adjustable FINA Complaint Backstrok	
001	108155	CH	1	04623	KIEFER AQUATICS	01/16/2026	\$55.00	167406	E 05 300 292 000 302 530	Shipping	
							Check Total:	\$2,485.00			
001	108156	CH	1	13838	MCLEAN, TIFFANY	01/16/2026	\$42.05	167411	E 04 500 560 122 321 366	CE HORNET CLASSIC GYMNASTICS ME	
001	108156	CH	1	13838	MCLEAN, TIFFANY	01/16/2026	\$221.00	167410	E 04 500 560 122 321 366	CE HORNET CLASSIC GYMNASTICS ME	
001	108156	CH	1	13838	MCLEAN, TIFFANY	01/16/2026	(\$221.00)	167410	E 04 500 560 122 321 366	CE HORNET CLASSIC GYMNASTICS ME	
001	108156	CH	1	13838	MCLEAN, TIFFANY	01/16/2026	\$221.00	167410	E 04 500 560 122 321 305	CE HORNET CLASSIC GYMNASTICS ME	
							Check Total:	\$263.05			
001	108157	CH	1	01121	MINNESOTA ASSOCIATION OF SECON	01/16/2026	\$100.00	167412	E 01 300 050 000 000 366	MASSP JIMMY CASA CENTRAL DIVISIOI	
							Check Total:	\$100.00			
001	108159	CH	1	12605	MRI SOFTWARE LLC	01/16/2026	\$201.50	167407	E 01 005 105 170 000 305	BACKGROUND SCREENING DECEMBEF	
							Check Total:	\$201.50			
001	108160	CH	1	14107	ROSALES, SILVIA	01/16/2026	\$201.50	167416	E 04 500 560 122 321 366	CE HORNET CLASSIC GYMNASTICS ME	
001	108160	CH	1	14107	ROSALES, SILVIA	01/16/2026	(\$201.50)	167416	E 04 500 560 122 321 366	CE HORNET CLASSIC GYMNASTICS ME	
001	108160	CH	1	14107	ROSALES, SILVIA	01/16/2026	\$201.50	167416	E 04 500 560 122 321 305	CE HORNET CLASSIC GYMNASTICS ME	
001	108160	CH	1	14107	ROSALES, SILVIA	01/16/2026	\$69.60	167417	E 04 500 560 122 321 366	CE HORNET CLASSIC GYMNASTICS ME	
							Check Total:	\$271.10			
001	108161	CH	1	04523	SARTELL HIGH SCHOOL	01/16/2026	\$70.00	167418	E 11 300 292 129 000 369	SARTELL KNOWLEDGE BOWL MEET IN'	
							Check Total:	\$70.00			

Big Lake Public Schools, ISD #727

Payment Reg by Check-No Voids

Check Number: 108081-2147483647 Payment Date: 7/1/2025-1/31/2026

Bank	Check No	Ty	Grp	Code	Vendor	Date	Amount	Voucher #	Account Code	Description	
001	108162	CH	1	09941	STERLING TROPHY	01/16/2026	\$530.00	167419	E 04 500 560 122 321 401	CE GYMNASTICS MEET MEDALLIONS &	
							Check Total:	\$530.00			
001	108163	CH	1	12845	SYSCO-MINNESOTA INC	01/16/2026	\$163.70	167420	E 02 110 770 000 701 401	LIBERTY KITCHEN SUPPLIES	
							Check Total:	\$163.70			
001	108164	CH	1	13539	TECH HIGH SCHOOL	01/16/2026	\$70.00	167421	E 11 300 292 129 000 369	TECH HS KNOWLEDGE BOWL 01/17/202	
							Check Total:	\$70.00			
001	108165	CH	1	12068	THE WATSON COMPANY, INC.	01/16/2026	\$694.42	167425	E 11 300 298 000 000 490	HS CONCESSIONS	
							Check Total:	\$694.42			
001	108166	CH	1	14331	TILL360 LLC	01/16/2026	\$7,700.00	167413	E 01 300 790 000 699 401	SPEAKERS 01/22 & 01/23	
001	108166	CH	1	14331	TILL360 LLC	01/16/2026	(\$7,700.00)	167413	E 01 300 790 000 699 401	SPEAKERS 01/22 & 01/23	
001	108166	CH	1	14331	TILL360 LLC	01/16/2026	\$100.00	167413	E 01 300 790 000 699 366		
001	108166	CH	1	14331	TILL360 LLC	01/16/2026	\$3,750.00	167413	E 01 300 790 000 699 303		
001	108166	CH	1	14331	TILL360 LLC	01/16/2026	\$100.00	167413	E 01 300 790 000 699 366		
001	108166	CH	1	14331	TILL360 LLC	01/16/2026	\$3,750.00	167413	E 01 300 790 000 699 303		
							Check Total:	\$7,700.00			
001	108167	CH	1	04148	VIKING COCA-COLA BOTTLING CO	01/16/2026	\$1,928.00	167422	E 11 300 298 000 000 490	HS CONCESSIONS	
							Check Total:	\$1,928.00			
001	108168	CH	1	06532	VISION STAFFING	01/16/2026	\$163.80	167423	E 01 005 810 356 000 305	GROUNDS WEEK OF 01/04/2026	
							Check Total:	\$163.80			
001	108169	CH	1	10633	WOLD ARCHITECTS AND ENGINEERS	01/16/2026	\$5,179.99	167426	E 05 300 866 000 366 305	PROJECT ID #PG26.366.305 HS POOL H	
							Check Total:	\$5,179.99			
001	108170	CH	1	01165	XCEL ENERGY-NSP	01/16/2026	\$7,572.13	167427	E 01 110 810 000 000 330	LIBERTY GAS 12/08/2025-01/08/2026	
							Check Total:	\$7,572.13			
001	108171	CH	1	14043	ZAHAYRA DIAZ VILLASENOR	01/16/2026	\$20.00	167424	E 01 110 219 000 339 358	INTERPRETER 12/2 AT INDY AND 12/18 /	
001	108171	CH	1	14043	ZAHAYRA DIAZ VILLASENOR	01/16/2026	\$160.00	167424	E 01 100 219 000 339 358	INTERPRETER 12/2 AT INDY AND 12/18 /	
							Check Total:	\$180.00			
001	108172	CH	1	13836	MORTENSEN, MALLORY	01/16/2026	\$201.50	167414	E 04 500 560 122 321 366	CE HORNET CLASSIC GYMNASTICS ME	
001	108172	CH	1	13836	MORTENSEN, MALLORY	01/16/2026	(\$201.50)	167414	E 04 500 560 122 321 366	CE HORNET CLASSIC GYMNASTICS ME	
001	108172	CH	1	13836	MORTENSEN, MALLORY	01/16/2026	\$201.50	167414	E 04 500 560 122 321 305	CE HORNET CLASSIC GYMNASTICS ME	
001	108172	CH	1	13836	MORTENSEN, MALLORY	01/16/2026	\$39.15	167433	E 04 500 560 122 321 366	CE HORNET CLASSIC GYMNASTICS ME	
							Check Total:	\$240.65			
001	108173	CH	1	12159	ARVIG	01/23/2026	\$139.24	167479	E 01 005 630 000 000 305	INTERNET SERVICES 01/06/26-02/05/26	
							Check Total:	\$139.24			

Big Lake Public Schools, ISD #727

Payment Reg by Check-No Voids

Check Number: 108081-2147483647 Payment Date: 7/1/2025-1/31/2026

Pay/Void										
Bank	Check No	Ty	Grp	Code	Vendor	Date	Amount	Voucher #	Account Code	Description
001	108175	CH	1	13182	BIG LAKE GYMNASTICS BOOSTER CLI	01/23/2026	\$365.87	167481	E 04 500 560 122 321 490	CE HORNET CLASSIC GYMNASTICS ME
001	108175	CH	1	13182	BIG LAKE GYMNASTICS BOOSTER CLI	01/23/2026	(\$365.87)	167481	E 04 500 560 122 321 490	CE HORNET CLASSIC GYMNASTICS ME
001	108175	CH	1	13182	BIG LAKE GYMNASTICS BOOSTER CLI	01/23/2026	\$365.87	167481	E 11 300 295 122 000 490	Hornet Classic food reimb
001	108175	CH	1	13182	BIG LAKE GYMNASTICS BOOSTER CLI	01/23/2026	(\$365.87)	167481	E 11 300 295 122 000 490	Hornet Classic food reimb
001	108175	CH	1	13182	BIG LAKE GYMNASTICS BOOSTER CLI	01/23/2026	\$365.87	167481	E 04 500 560 122 321 490	Hornet Classic Judges rm food
Check Total:								\$365.87		
001	108176	CH	1	03184	CENTERPOINT ENERGY	01/23/2026	\$455.40	167483	E 01 201 810 000 000 330	#5769708-8 MS FIRM GAS DECEMBER 2
001	108176	CH	1	03184	CENTERPOINT ENERGY	01/23/2026	\$5,908.31	167483	E 01 201 810 000 000 330	#5775439-2 MS INT GAS DECEMBER 20
001	108176	CH	1	03184	CENTERPOINT ENERGY	01/23/2026	\$7,222.73	167483	E 01 100 810 000 000 330	#5775443-4 INDY INT GAS DECEMBER 2
001	108176	CH	1	03184	CENTERPOINT ENERGY	01/23/2026	\$168.59	167483	E 01 300 810 000 000 330	#5793404-4 HS FIRM GAS DECEMBER 2
001	108176	CH	1	03184	CENTERPOINT ENERGY	01/23/2026	\$12,220.43	167483	E 01 300 810 000 000 330	#5793464-8 HS INT GAS DECEMBER 20
001	108176	CH	1	03184	CENTERPOINT ENERGY	01/23/2026	\$189.19	167483	E 01 100 810 000 000 330	#5803273-1 INDY FIRM #2 GAS DECEMB
001	108176	CH	1	03184	CENTERPOINT ENERGY	01/23/2026	\$561.11	167483	E 01 100 810 000 000 330	#5808588-7 INDY FIRM #1 GAS DECEMB
Check Total:								\$26,725.76		
001	108177	CH	1	01033	CM2 SUPPLY	01/23/2026	\$413.68	167482	E 01 300 361 000 830 433	Cust# 05630 HS SHOP SUPPLIES ²¹
Check Total:								\$413.68		
001	108178	CH	1	01138	DEPART OF EMPLOYMENT & ECONOM	01/23/2026	\$429.00	167493	E 01 005 505 000 000 281	UNEMPLOYMENT BENEFITS QUARTER
001	108178	CH	1	01138	DEPART OF EMPLOYMENT & ECONOM	01/23/2026	\$1,208.00	167493	E 01 110 400 000 000 281	UNEMPLOYMENT BENEFITS QUARTER
001	108178	CH	1	01138	DEPART OF EMPLOYMENT & ECONOM	01/23/2026	\$692.99	167493	E 01 100 790 000 000 280	UNEMPLOYMENT BENEFITS QUARTER
001	108178	CH	1	01138	DEPART OF EMPLOYMENT & ECONOM	01/23/2026	\$662.81	167493	E 01 100 203 000 000 280	UNEMPLOYMENT BENEFITS QUARTER
001	108178	CH	1	01138	DEPART OF EMPLOYMENT & ECONOM	01/23/2026	\$78.30	167493	E 01 300 211 000 000 280	UNEMPLOYMENT BENEFITS QUARTER
001	108178	CH	1	01138	DEPART OF EMPLOYMENT & ECONOM	01/23/2026	(\$370.12)	167493	E 01 300 292 000 000 280	UNEMPLOYMENT BENEFITS QUARTER
Check Total:								\$2,700.98		
001	108179	CH	1	14318	GAME ONE	01/23/2026	\$1,360.00	167484	E 04 500 560 000 321 436	PR178 1/4 Zip Archery Tournament Jersey:
001	108179	CH	1	14318	GAME ONE	01/23/2026	\$84.86	167484	E 04 500 560 000 321 436	Shipping and Handling
001	108179	CH	1	14318	GAME ONE	01/23/2026	\$47.90	167485	E 04 500 560 000 321 436	CE YOUTH ARCHERY TOURNAMENT JE
Check Total:								\$1,492.76		
001	108180	CH	1	12516	GILBERT MECHANICAL CONTRACTOR	01/23/2026	\$390.00	167486	E 05 100 865 000 363 305	ANNUAL FIRE SPRINKLER SYSTEM INS
Check Total:								\$390.00		
001	108181	CH	1	06161	HAZELDEN PUBLISHING	01/23/2026	\$395.00	167487	E 01 300 211 290 000 401	SAFE DATES THIRD EDITION BY VANGII
001	108181	CH	1	06161	HAZELDEN PUBLISHING	01/23/2026	\$14.70	167487	E 01 300 211 290 000 401	shipping
Check Total:								\$409.70		

Big Lake Public Schools, ISD #727

Payment Reg by Check-No Voids

Check Number: 108081-2147483647 Payment Date: 7/1/2025-1/31/2026

Bank	Check No	Ty	Grp	Code	Vendor	Date	Amount	Voucher #	Account Code	Description	
001	108182	CH	1	14333	MILACA WOLVES ARCHERY	01/23/2026	\$422.00	167488	E 04 500 560 000 321 305	CE YOUTH ARCHERY TOURNAMENT 02	
Check Total:							\$422.00				
001	108183	CH	1	13016	NORTHLAND REFRIGERATION INCORP	01/23/2026	\$1,373.35	167492	E 02 100 770 000 701 350	INDY B&G REPAIRS	
Check Total:							\$1,373.35				
001	108184	CH	1	04241	OTC BRANDS, INC	01/23/2026	\$24.99	167494	E 01 200 205 011 417 401	white puzzles #13610940	
001	108184	CH	1	04241	OTC BRANDS, INC	01/23/2026	\$31.16	167494	E 01 200 205 011 417 401	Vinyl pen bracelets	
001	108184	CH	1	04241	OTC BRANDS, INC	01/23/2026	\$9.95	167494	E 01 200 205 011 417 401	Shipping	
Check Total:							\$66.10				
001	108185	CH	1	01840	RATWIK, ROSZAK & MALONEY, P.A.	01/23/2026	\$19,117.98	167495	E 01 005 110 305 000 305	ADMINISTRATOR INVESTIGATION	
Check Total:							\$19,117.98				
001	108186	CH	1	12845	SYSCO-MINNESOTA INC	01/23/2026	\$98.22	167496	E 02 100 770 000 701 401	INDY KITCHEN SUPPLIES	
Check Total:							\$98.22				
001	108187	CH	1	12839	THE METRO GROUP, INC.	01/23/2026	\$2,091.00	167489	E 01 005 810 359 000 401	INDEPENDENCE GLYCOL ADDITIVIES)1	
001	108187	CH	1	12839	THE METRO GROUP, INC.	01/23/2026	\$3,011.04	167490	E 01 005 810 359 000 401	HIGH SCHOOL GLYCOL ADDITIVES (20 (
001	108187	CH	1	12839	THE METRO GROUP, INC.	01/23/2026	\$9,909.00	167491	E 01 005 810 359 000 401	LIBERTY GLYCOL ADDITIVES (90 GALLC	
001	108187	CH	1	12839	THE METRO GROUP, INC.	01/23/2026	\$792.72	167491	E 01 005 810 359 000 401	ENERGY SURCHARGE	
Check Total:							\$15,803.76				
001	108188	CH	1	13762	TROBEC'S BUS SERVICE	01/23/2026	\$1,200.00	167497	E 11 300 295 127 733 360	54-56 Passenger Motor Coach Bus - Fergu	
001	108188	CH	1	13762	TROBEC'S BUS SERVICE	01/23/2026	\$870.00	167497	E 11 300 296 127 733 360	54-56 Passenger Motor Coach Bus - Fergu	
Check Total:							\$2,070.00				
001	108189	CH	1	12651	WESTERN PSYCHOLOGICAL SERVICE	01/23/2026	\$176.00	167499	E 12 110 401 000 740 433	W-685A - CASL-2 Comprehensive Form	
001	108189	CH	1	12651	WESTERN PSYCHOLOGICAL SERVICE	01/23/2026	\$17.60	167499	E 12 110 401 000 740 433	Shipping & Handling	
Check Total:							\$193.60				
001	108190	CH	1	01240	WRIGHT TECHNICAL CENTER	01/23/2026	\$18,395.10	167498	E 01 998 211 000 303 390	WRIGHT ACADEMY HIGH SCHOOL	
001	108190	CH	1	01240	WRIGHT TECHNICAL CENTER	01/23/2026	\$807.84	167498	E 01 998 208 000 303 390	WRIGHT ACADEMY MIDDLE SCHOOL	
Check Total:							\$19,202.94				
001	108191	CH	1	13130	LINDSEY OSTERMAN	01/23/2026	\$1,416.00	167500	E 01 300 790 000 699 303	PCN MEDIA CONSULTANT-JANUARY 20	
Check Total:							\$1,416.00				
001	108192	CH	1	06778	LEARNING OPPORTUNITIES, INC.	01/23/2026	\$1,690.57	167501	E 01 100 620 000 000 470	MEDIA SUPPLIES	
Check Total:							\$1,690.57				
001	108193	CH	1	04499	POWDER RIDGE SKI AREA	01/23/2026	\$13,628.00	167502	E 04 500 560 000 321 305	SKI CLUB	
Check Total:							\$13,628.00				

Big Lake Public Schools, ISD #727

Payment Reg by Check-No Voids

Check Number: 108081-2147483647 Payment Date: 7/1/2025-1/31/2026

Bank	Check No	Ty	Grp	Code	Vendor	Date	Amount	Voucher #	Account Code	Description	
001	108194	CH	1	164	COMPASS GROUP	01/23/2026	\$24.60	167503	E 02 005 770 000 701 305	REVISED ADULT MEAL COUNTS OCTOE	
Check Total:								\$24.60			
001	108195	CH	1	12563	BATTERIES PLUS BULBS	01/23/2026	\$397.92	167505	E 01 005 810 000 000 401	B&G 12V 80H LEAD BATTERY	
Check Total:								\$397.92			
001	108196	CH	1	14334	ELK RIVER PARKS & RECREATION	01/23/2026	\$520.00	167506	E 01 005 203 214 000 369	3RD GRADE FIELD TRIPS 05/07, 05/12, C	
Check Total:								\$520.00			
001	108197	CH	1	1016	O'REILLY AUTOMOTIVE, INC.	01/23/2026	\$21.99	167507	E 01 005 810 000 000 401	B&G SUPPLIES	
Check Total:								\$21.99			
001	108198	CH	1	13212	THREE SONS HARDWARE LLC	01/23/2026	\$16.44	167508	E 01 300 810 000 000 401	B&G SUPPLIES	
001	108198	CH	1	13212	THREE SONS HARDWARE LLC	01/23/2026	\$10.11	167508	E 01 201 810 000 000 401	B&G SUPPLIES	
001	108198	CH	1	13212	THREE SONS HARDWARE LLC	01/23/2026	\$6.69	167508	E 01 110 810 000 000 401	B&G SUPPLIES	
Check Total:								\$33.24			
001	108199	CH	1	08379	APPLE INC.	01/23/2026	\$499.00	167509	E 05 005 630 000 795 466	Mac mini: Apple M4 chip with 10-core CPU	
Check Total:								\$499.00			
001	108200	CH	1	04234	MN CHILD SUPPORT PYMT CENTER	01/20/2026	\$293.50	167444	B 01 215 081	Child Support	
001	108200	CH	1	04234	MN CHILD SUPPORT PYMT CENTER	01/20/2026	\$129.13	167444	B 12 215 081	Child Support	
Check Total:								\$422.63			
001	108201	CH	1	04223	MN NCPERS LIFE INSURANCE	01/20/2026	\$80.00	167449	B 01 215 033	NCPR Life	
Check Total:								\$80.00			
001	108202	CH	1	12504	MN PEIP	01/20/2026	\$242,316.47	167512	B 01 215 030	FEBRUARY 2026 HEALTH	
001	108202	CH	1	12504	MN PEIP	01/20/2026	\$26,288.46	167512	B 04 215 030	FEBRUARY 2026 HEALTH	
001	108202	CH	1	12504	MN PEIP	01/20/2026	\$4,576.62	167512	B 05 215 030	FEBRUARY 2026 HEALTH	
001	108202	CH	1	12504	MN PEIP	01/20/2026	\$2,865.04	167512	B 11 215 030	FEBRUARY 2026 HEALTH	
001	108202	CH	1	12504	MN PEIP	01/20/2026	\$149,011.74	167512	B 12 215 030	FEBRUARY 2026 HEALTH	
001	108202	CH	1	12504	MN PEIP	01/20/2026	(\$256.31)	167512	B 01 215 051	FEBRUARY 2026 HEALTH	
001	108202	CH	1	12504	MN PEIP	01/20/2026	\$498.20	167512	B 04 215 051	FEBRUARY 2026 HEALTH	
001	108202	CH	1	12504	MN PEIP	01/20/2026	\$431.68	167512	B 05 215 051	FEBRUARY 2026 HEALTH	
001	108202	CH	1	12504	MN PEIP	01/20/2026	\$644.90	167512	B 11 215 051	FEBRUARY 2026 HEALTH	
001	108202	CH	1	12504	MN PEIP	01/20/2026	\$12,371.98	167512	B 11 215 051	FEBRUARY 2026 HEALTH	
Check Total:								\$438,748.78			
001	108203	CH	1	14034	NORTH DAKOTA CHILD SUPPORT DIVI	01/20/2026	\$452.26	167447	B 12 215 081	Child Support	
Check Total:								\$452.26			
001	108204	CH	1	01973	SCHOOL SERVICE EMP LOCAL 284	01/20/2026	\$1,048.37	167451	B 01 215 040	U Due Nc	

Big Lake Public Schools, ISD #727

Payment Reg by Check-No Voids

Check Number: 108081-2147483647 Payment Date: 7/1/2025-1/31/2026

Bank	Check No	Ty	Grp	Code	Vendor	Date	Amount	Voucher #	Account Code	Description	
001	108204	CH	1	01973	SCHOOL SERVICE EMP LOCAL 284	01/20/2026	\$135.98	167451	B 04 215 040	U Dues Nc	
001	108204	CH	1	01973	SCHOOL SERVICE EMP LOCAL 284	01/20/2026	\$1,983.24	167451	B 12 215 040	U Due Nc	
Check Total:							\$3,167.59				
001	108205	CH	1	14336	ENGLAR, RACHEL	01/23/2026	\$132.98	167516	E 04 799 590 000 351 433	FY 26 HOMESCHOOL	
Check Total:							\$132.98				
001	108206	CH	1	14337	BEMIDJI HIGH SCHOOL	01/23/2026	\$150.00	167480	E 11 300 294 115 000 369	GIRLS WRESTLING TOURNAMENT 01/11	
Check Total:							\$150.00				
Bank 001 Total:							\$1,434,936.63				
Report Total:							\$1,434,936.63				

Big Lake Public Schools, ISD #727

Payment Reg by Check-No Voids

Check Number: 108207-2147483647 Payment Date: 7/1/2025-1/31/2026

Bank	Check No	Ty	Grp	Code	Vendor	Date	Amount	Voucher #	Account Code	Description	
001	108207	CH	1	14276	CLASSY CAKES	01/30/2026	\$352.00	167526	E 11 300 298 000 000 490	COOKIE DOUGH CONCESSIONS	
Check Total:							\$352.00				
001	108208	CH	1	01033	CM2 SUPPLY	01/30/2026	\$243.84	167524	E 01 300 361 000 830 433	Cust# 05630 HS SHOP SUPPLIES	
Check Total:							\$243.84				
001	108209	CH	1	14338	DEMPSEY, JENNA	01/30/2026	\$135.00	167525	E 04 500 585 000 332 305	POKEMON TRADING CARD GAME 101	
Check Total:							\$135.00				
001	108210	CH	1	03351	GOPHER SPORT	01/30/2026	\$59.90	167527	E 04 500 570 000 321 401	Rainbow SmashBall Balls Item #72-042	
001	108210	CH	1	03351	GOPHER SPORT	01/30/2026	\$15.44	167527	E 04 500 570 000 321 401	SHIPPING	
Check Total:							\$75.34				
001	108211	CH	1	04641	IEA	01/30/2026	\$4,312.50	167529	E 05 110 865 000 349 305	PROFESSIONAL SERVICES 12/01/2025-1	
001	108211	CH	1	04641	IEA	01/30/2026	\$772.04	167530	E 05 005 865 000 352 305	PROFESSIONAL SERVICES 12/01/2025-1	
Check Total:							\$5,084.54				
001	108212	CH	1	01644	IND. SCHOOL DISTRICT 877	01/30/2026	\$8,360.00	167528	E 01 300 211 000 000 390	SEPT-DEC 2025	
Check Total:							\$8,360.00				
001	108213	CH	1	08228	KIDCREATE STUDIO-NORTH METRO	01/30/2026	\$350.00	167531	E 04 500 585 000 332 305	SNOWFLAKE SNOW GLOVE WORKSHO	
Check Total:							\$350.00				
001	108214	CH	1	14340	KING, TEANNA	01/30/2026	\$74.25	167533	E 04 500 580 341 325 401	DECORATIONS/SUPPLIES FOR ECFE SV	
Check Total:							\$74.25				
001	108215	CH	1	14321	KNB CONTRACTING LLC	01/30/2026	\$220,339.64	167532	E 05 300 866 000 366 520	HS POOL HVAC IMPROVEMENTS PG26.:	
Check Total:							\$220,339.64				
001	108216	CH	1	08583	MN TRUE TEAM TRACK	01/30/2026	\$85.00	167536	E 11 300 296 184 000 369	SECTION 5AA TRUE TEAM REGISTRATIK	
001	108216	CH	1	08583	MN TRUE TEAM TRACK	01/30/2026	\$85.00	167536	E 11 300 294 114 000 369	SECTION 5AA TRUE TEAM REGISTRATIK	
Check Total:							\$170.00				
001	108217	CH	1	01146	MONTICELLO PRINTING	01/30/2026	\$470.23	167537	E 01 100 203 290 000 401	NOTE PADS- STEM	
Check Total:							\$470.23				
001	108218	CH	1	10327	NAC MECHANICAL AND ELECTRICAL S	01/30/2026	\$7,540.00	167535	E 06 100 870 000 000 520	PO 34566 INDY AHU 9E & 10E OUTDOOF	
Check Total:							\$7,540.00				
001	108219	CH	1	13016	NORTHLAND REFRIGERATION INCORF	01/30/2026	\$564.20	167534	E 01 100 810 000 000 350	INDY B&G REPAIRS	
Check Total:							\$564.20				
001	108220	CH	1	13252	NORWOOD, CHARLES	01/30/2026	\$36.00	167539	E 04 500 505 000 321 305	MILEAGE	
001	108220	CH	1	13252	NORWOOD, CHARLES	01/30/2026	\$100.00	167538	E 04 500 505 000 321 305	ONE ACT LIGHTING FOCUS	
Check Total:							\$136.00				

Big Lake Public Schools, ISD #727

Payment Reg by Check-No Voids

Check Number: 108207-2147483647 Payment Date: 7/1/2025-1/31/2026

Bank	Check No	Ty	Grp	Code	Vendor	Date	Amount	Voucher #	Account Code	Description	
001	108221	CH	1	07890	PTMA	01/30/2026	\$609.17	167540	E 45 005 935 000 000 305	BILLABLE ASSETS 12/01/2025-12/31/2025	
Check Total:							\$609.17				
001	108222	CH	1	14335	R.D. OFFUTT COMPANY	01/30/2026	\$1,033.35	167541	E 01 300 255 000 000 401	GLASS REPLACEMENT	
Check Total:							\$1,033.35				
001	108223	CH	1	01840	RATWIK, ROSZAK & MALONEY, P.A.	01/30/2026	\$660.00	167546	E 01 005 110 305 000 305	NOVEMBER 2025 LEGAL	
001	108223	CH	1	01840	RATWIK, ROSZAK & MALONEY, P.A.	01/30/2026	\$1,815.00	167547	E 01 005 110 305 000 305	DECEMBER 2025 LEGAL	
001	108223	CH	1	01840	RATWIK, ROSZAK & MALONEY, P.A.	01/30/2026	\$3,089.06	167548	E 01 005 110 305 000 305	DECEMBER 2025 LEGAL	
Check Total:							\$5,564.06				
001	108224	CH	1	10333	SHERBURNE NORTHERN WRIGHT SPE	01/30/2026	\$11,435.78	167551	E 01 005 105 000 000 391	FY 26 GRANT WRITER (JULY TO DEC)	
001	108224	CH	1	10333	SHERBURNE NORTHERN WRIGHT SPE	01/30/2026	\$24,193.64	167549	E 01 005 850 000 389 570	LEASE WFC JAN-MAR WORK FORCE CE	
001	108224	CH	1	10333	SHERBURNE NORTHERN WRIGHT SPE	01/30/2026	\$22,581.75	167550	E 12 005 404 000 740 396	25-26 PURCHASED SERVICES (50%)	
001	108224	CH	1	10333	SHERBURNE NORTHERN WRIGHT SPE	01/30/2026	\$10,366.62	167550	E 12 005 404 000 740 397	25-26 PURCHASED SERVICES (50%)	
001	108224	CH	1	10333	SHERBURNE NORTHERN WRIGHT SPE	01/30/2026	\$28,497.38	167550	E 12 005 404 000 740 396	25-26 PURCHASED SERVICES (50%)	
001	108224	CH	1	10333	SHERBURNE NORTHERN WRIGHT SPE	01/30/2026	\$9,031.64	167550	E 12 005 404 000 740 397	25-26 PURCHASED SERVICES (50%)	
001	108224	CH	1	10333	SHERBURNE NORTHERN WRIGHT SPE	01/30/2026	\$15,164.34	167550	E 12 005 405 000 740 396	25-26 PURCHASED SERVICES (50%)	
001	108224	CH	1	10333	SHERBURNE NORTHERN WRIGHT SPE	01/30/2026	\$4,641.60	167550	E 12 005 405 000 740 397	25-26 PURCHASED SERVICES (50%)	
Check Total:							\$125,912.75				
001	108225	CH	1	12068	THE WATSON COMPANY, INC.	01/30/2026	\$1,358.86	167543	E 11 300 298 000 000 490	HS CONCESSIONS	
001	108225	CH	1	12068	THE WATSON COMPANY, INC.	01/30/2026	\$354.08	167544	E 11 300 298 000 000 490	HS CONCESSIONS	
Check Total:							\$1,712.94				
001	108226	CH	1	04148	VIKING COCA-COLA BOTTLING CO	01/30/2026	\$1,001.45	167542	E 11 300 298 000 000 490	HS CONCESSIONS	
Check Total:							\$1,001.45				
001	108227	CH	1	10633	WOLD ARCHITECTS AND ENGINEERS	01/30/2026	\$499.34	167545	E 06 201 870 000 000 305	BOND ID #22F201.01B MS INTERIOR REI	
Check Total:							\$499.34				
Bank 001 Total:							\$380,228.10				
Report Total:							\$380,228.10				

Big Lake Public Schools, ISD #727

Payment Reg by Check-No Voids

Check Number: 0-2147483647 Payment Date: 01/01/26-1/31/2026

										Pay/Void
Bank	Check No	Ty	Grp	Code	Vendor	Date	Amount	Voucher #	Account Code	Description
001		CC	1	01034	RESOURCE TRAINING & SOLUTIONS	01/08/2026	\$685.00	167295	E 11 300 292 129 000 369	Membership HS Knowledge Bowl Team 25
001		CC	1	01038	CITY OF BIG LAKE	01/08/2026	\$1,402.20	167362	E 01 110 810 000 000 332	Liberty Water/Sewer 10/07/2025-11/07/202
001		CC	1	01038	CITY OF BIG LAKE	01/08/2026	\$1,245.34	167364	E 01 201 810 000 000 332	MS Water/Sewer 10/07/2025-11/07/2025
001		CC	1	01038	CITY OF BIG LAKE	01/08/2026	\$1,220.67	167368	E 01 100 810 000 000 332	Indy Water/Sewer 10/07/2025-11/07/2025
001		CC	1	01038	CITY OF BIG LAKE	01/08/2026	\$2,655.06	167357	E 01 300 810 000 000 332	HS Water/Sewer 10/07/2025-11/07/2025
001		CC	1	01038	CITY OF BIG LAKE	01/08/2026	\$50.40	167363	E 01 005 810 000 000 332	Bathrooms Water/Sewer 10/07/2025-11/07/
001		CC	1	01038	CITY OF BIG LAKE	01/08/2026	\$111.01	167355	E 01 005 810 000 000 332	Admissions Water/Sewer 10/07/2025-11/0/
001		CC	1	01048	DEMCO INC	01/08/2026	\$455.86	167304	E 01 100 620 000 000 401	PO 35009 Indy Supplies
001		CC	1	01065	HILLYARD FLOOR CARE	01/08/2026	\$113.66	167310	E 01 110 810 000 000 401	PO 34996 Liberty Cleaning Supplies
001		CC	1	01065	HILLYARD FLOOR CARE	01/08/2026	\$88.20	167311	E 01 110 810 000 000 401	PO 34996 Liberty Cleaning Supplies
001		CC	1	01065	HILLYARD FLOOR CARE	01/08/2026	\$4,708.43	167371	E 01 100 810 000 000 401	PO 34975 Indy Cleaning Supplies
001		CC	1	01065	HILLYARD FLOOR CARE	01/08/2026	\$113.66	167330	E 01 100 810 000 000 401	PO 34975 Indy Cleaning Supplies
001		CC	1	01065	HILLYARD FLOOR CARE	01/08/2026	\$3,647.83	167333	E 01 110 810 000 000 401	PO 34996 Liberty Cleaning Supplies
001		CC	1	01065	HILLYARD FLOOR CARE	01/08/2026	\$42.05	167312	E 01 110 810 000 000 401	PO 34996 Liberty Cleaning Supplies
001		CC	1	01065	HILLYARD FLOOR CARE	01/08/2026	\$552.58	167334	E 02 300 770 000 701 401	PO 34997 HS Kitchen Cleaning S ² plies
001		CC	1	01065	HILLYARD FLOOR CARE	01/08/2026	\$451.55	167372	E 01 100 810 000 000 401	PO 34975 Indy Cleaning Supplies
001		CC	1	01107	JOSTENS	01/08/2026	\$2,519.45	167325	E 01 300 211 222 000 401	Diploma Covers
001		CC	1	01908	MINNESOTA HISTORICAL SOCIETY	01/08/2026	\$430.00	167369	E 01 005 208 214 000 369	Field trip
001		CC	1	02499	J.W. PEPPER OF MINNEAPOLIS	01/08/2026	\$253.80	167338	E 01 300 259 000 000 430	PO 34828 HS Athletic Supplies
001		CC	1	02499	J.W. PEPPER OF MINNEAPOLIS	01/08/2026	\$32.50	167338	E 01 300 259 000 000 430	PO 34828 HS Athletic Supplies
001		CC	1	02499	J.W. PEPPER OF MINNEAPOLIS	01/08/2026	\$74.99	167338	E 01 300 259 000 000 430	PO 34828 HS Athletic Supplies
001		CC	1	02499	J.W. PEPPER OF MINNEAPOLIS	01/08/2026	\$34.50	167338	E 01 300 259 000 000 430	PO 34828 HS Athletic Supplies
001		CC	1	02632	SHIFFLER EQUIPMENT SALES INC	01/08/2026	\$176.03	167319	E 01 100 810 000 000 401	Indy 3-Piece Nylon Latch (17 on backorder
001		CC	1	03566	FOLLETT CONTENT SOLUTIONS, LLC	01/08/2026	\$293.00	167302	E 01 100 620 000 000 470	PO 34835 Indy Books
001		CC	1	03849	DISCOUNT SCHOOL SUPPLY	01/08/2026	\$110.63	167297	E 04 500 580 000 325 430	PO 34977 CE Coloractions
001		CC	1	04483	MCEA EXECUTIVE OFFICE	01/08/2026	\$1,375.00	167370	E 04 500 505 000 321 366	2026 Membership
001		CC	1	04641	IEA	01/08/2026	\$2,425.00	167354	E 05 005 865 000 352 305	Third Year Re-Inspection (Oct 2025)
001		CC	1	05264	BSN SPORTS	01/08/2026	\$2,580.00	167336	E 11 300 294 112 000 434	PO 34819 BOYS BASKETBALL SHORTS
001		CC	1	05351	HOME DEPOT	01/08/2026	\$167.15	167305	E 01 100 810 000 000 401	Indy B &G Supplies
001		CC	1	05351	HOME DEPOT	01/08/2026	\$213.54	167344	E 01 201 810 000 000 401	MS B&G Supplies
001		CC	1	06130	COBORN'S INC.	01/08/2026	\$6.49	167294	E 01 300 790 000 699 401	PCN Supplies
001		CC	1	06130	COBORN'S INC.	01/08/2026	\$33.75	167348	E 01 100 203 000 320 490	Indy Leadership Meeting
001		CC	1	06130	COBORN'S INC.	01/08/2026	\$60.94	167350	E 01 300 211 000 320 490	HS Leadership Meeting
001		CC	1	06130	COBORN'S INC.	01/08/2026	\$29.95	167298	E 01 100 203 000 320 490	Indy Leadership Meeting

Big Lake Public Schools, ISD #727

Payment Reg by Check-No Voids

Check Number: 0-2147483647 Payment Date: 01/01/26-1/31/2026

Pay/Void									
Bank	Check No	Ty	Grp Code	Vendor	Date	Amount	Voucher #	Account Code	Description
001		CC	1 06130	COBORN'S INC.	01/08/2026	\$111.23	167301	E 01 005 790 000 320 490	AIPAC Parent Meeting
001		CC	1 06130	COBORN'S INC.	01/08/2026	\$15.47	167299	E 01 005 790 000 320 401	AIPAC Parents Meeting
001		CC	1 06130	COBORN'S INC.	01/08/2026	\$58.42	167296	E 01 300 211 000 320 490	HS Leadership Meeting
001		CC	1 06130	COBORN'S INC.	01/08/2026	\$31.95	167337	E 01 110 203 000 320 490	Liberty Leadership Meeting Food
001		CC	1 06130	COBORN'S INC.	01/08/2026	\$32.43	167321	E 01 300 790 000 699 490	PCN- Food
001		CC	1 06130	COBORN'S INC.	01/08/2026	\$24.51	167339	E 01 110 201 000 000 401	Kindergarten - gingerbread
001		CC	1 06130	COBORN'S INC.	01/08/2026	\$41.45	167327	E 01 201 208 000 320 490	MS Leadership Meeting
001		CC	1 06130	COBORN'S INC.	01/08/2026	\$47.94	167303	E 01 300 211 000 320 490	High School Leadership Meeting
001		CC	1 06130	COBORN'S INC.	01/08/2026	\$67.12	167360	E 01 201 208 290 000 401	Donuts Celebration No Tardy
001		CC	1 06130	COBORN'S INC.	01/08/2026	\$70.77	167346	E 01 300 211 000 320 490	HS Leadership Meeting
001		CC	1 06700	B & H FOTO & ELECTRONICS CORP	01/08/2026	\$497.49	167322	E 01 005 630 000 000 465	DO Laptop
001		CC	1 08066	TARGET	01/08/2026	\$48.00	167292	E 01 110 203 312 000 401	Storage bins
001		CC	1 08066	TARGET	01/08/2026	\$11.98	167332	E 01 110 201 000 000 401	Kindergarten -gingerbread
001		CC	1 08347	WALMART	01/08/2026	\$16.99	167340	E 01 110 201 000 000 401	Kindergarten - gingerbread
001		CC	1 08347	WALMART	01/08/2026	\$50.71	167306	E 04 500 585 000 362 490	CE YDYS
001		CC	1 08465	INNOVATIVE OFFICE SOLUTIONS	01/08/2026	\$179.55	167309	E 01 100 203 000 000 401	PO 35013 Indy Supplies
001		CC	1 09044	MENARDS - ELK RIVER	01/08/2026	\$208.62	167328	E 11 300 288 136 000 401	B&G Supplies
001		CC	1 09044	MENARDS - ELK RIVER	01/08/2026	\$46.99	167328	E 01 005 810 000 000 401	B&G Supplies
001		CC	1 09164	LEGO EDUCATION NORTH AMERICA	01/08/2026	\$144.97	167374	E 01 110 203 312 000 430	STEAM - coding
001		CC	1 10338	ADAM'S PEST CONTROL, INC.	01/08/2026	\$58.30	167359	E 01 100 810 000 000 305	Indy Prevention Plus
001		CC	1 10338	ADAM'S PEST CONTROL, INC.	01/08/2026	\$53.00	167361	E 01 300 810 000 000 305	HS Prevention Plus
001		CC	1 10338	ADAM'S PEST CONTROL, INC.	01/08/2026	\$58.30	167365	E 01 201 810 000 000 305	MS Prevention Plus
001		CC	1 10338	ADAM'S PEST CONTROL, INC.	01/08/2026	\$58.30	167367	E 01 110 810 000 000 305	Liberty Prevention Plus
001		CC	1 10512	CASEY'S	01/08/2026	\$22.53	167320	E 01 005 105 000 000 490	Negotiations
001		CC	1 10586	AUSCO DESIGN &MARKETING	01/08/2026	\$50.00	167353	E 04 500 560 112 321 401	CE Basketball
001		CC	1 10619	4IMPRINT	01/08/2026	\$1,208.01	167293	E 01 005 107 000 000 401	PO 35053 District Comm and CE Supplies
001		CC	1 10619	4IMPRINT	01/08/2026	\$466.65	167293	E 04 500 505 000 321 401	PO 35053 District Comm and CE Supplies
001		CC	1 12031	LANGUAGELINE Solutions	01/08/2026	\$35.55	167335	E 01 100 219 000 339 358	Indy Interpreter 12/08/2025 (Maksym)
001		CC	1 12031	LANGUAGELINE Solutions	01/08/2026	\$63.20	167343	E 01 110 219 000 339 358	Liberty Interpreter 12/04/2025 (Somali)
001		CC	1 12129	SIPTRUNK, INC	01/08/2026	\$73.50	167373	E 01 005 630 000 000 320	Backup Phones
001		CC	1 12412	HILTON	01/08/2026	\$325.84	167316	E 04 500 560 122 321 366	CE Gymnastics
001		CC	1 12412	HILTON	01/08/2026	\$325.84	167317	E 04 500 560 122 321 366	CE Gymnastics
001		CC	1 12511	PANERA BREAD	01/08/2026	\$61.47	167318	E 01 300 790 000 699 490	Coffee and Connect
001		CC	1 12812	WEVIDEO, INC.	01/08/2026	\$89.00	167366	E 01 100 203 000 000 406	automatic renewal J. Deavel

Big Lake Public Schools, ISD #727

Payment Reg by Check-No Voids

Check Number: 0-2147483647 Payment Date: 01/01/26-1/31/2026

Bank	Check No	Ty	Grp	Code	Vendor	Date	Amount	Voucher #	Account Code	Description
001		CC	1	12851	NEW YORK TIMES	01/08/2026	\$4.00	167342	E 01 300 220 000 000 430	English Dept.
001		CC	1	12916	VOYAGER SOPRIS	01/08/2026	\$783.50	167329	E 12 300 407 000 372 406	PO 34972 TransMath
001		CC	1	13072	CINTAS CORPORATION NO 2	01/08/2026	\$132.96	167331	E 01 300 810 350 000 305	November Uniform Services (\$4.01 Discou
001		CC	1	13072	CINTAS CORPORATION NO 2	01/08/2026	\$131.52	167331	E 01 100 810 350 000 305	November Uniform Services (\$4.01 Discou
001		CC	1	13072	CINTAS CORPORATION NO 2	01/08/2026	\$131.52	167331	E 01 201 810 350 000 305	November Uniform Services (\$4.01 Discou
001		CC	1	13072	CINTAS CORPORATION NO 2	01/08/2026	\$131.52	167331	E 01 110 810 350 000 305	November Uniform Services (\$4.01 Discou
001		CC	1	13072	CINTAS CORPORATION NO 2	01/08/2026	(\$4.01)	167331	E 01 201 810 350 000 305	November Uniform Services (\$4.01 Discou
001		CC	1	13158	PINTV	01/08/2026	\$200.00	167356	E 11 300 294 115 000 305	Rent-32" PinTV Sports Package 1
001		CC	1	13185	PATRIOT NEWS MN	01/08/2026	\$82.50	167358	E 01 005 010 000 000 305	Nov 22 Legal Special Meeting and Work S
001		CC	1	13185	PATRIOT NEWS MN	01/08/2026	\$105.00	167358	E 01 005 010 000 000 305	Nov 22 Legal Special Meeting and Work S
001		CC	1	13185	PATRIOT NEWS MN	01/08/2026	\$165.00	167341	E 05 005 865 000 383 305	Nov 22/29 Legal Notice for Bids
001		CC	1	13185	PATRIOT NEWS MN	01/08/2026	\$240.00	167347	E 01 005 010 000 000 305	Nov 29, Legal (week 1)
001		CC	1	13185	PATRIOT NEWS MN	01/08/2026	\$375.00	167351	E 01 005 110 000 000 305	Nov 22, Legal Week 1
001		CC	1	13382	HOBBY LOBBY	01/08/2026	\$86.07	167345	E 01 300 298 918 000 401	Java HIVE
001		CC	1	13620	PS I LOVE YOU	01/08/2026	\$315.00	167323	E 04 500 580 341 325 401	EC PAC shirts 29
001		CC	1	13801	SCHUTT SPORTS, LLC	01/08/2026	\$6,185.00	167313	E 11 300 294 113 000 530	PO 34967 Varsity Helmets
001		CC	1	13801	SCHUTT SPORTS, LLC	01/08/2026	\$5,205.46	167314	E 11 201 294 113 000 530	PO 34968 Varsity Helmets/PO 34966
001		CC	1	13801	SCHUTT SPORTS, LLC	01/08/2026	\$346.14	167314	E 11 300 294 113 000 530	PO 34968 Varsity Helmets/PO 34966
001		CC	1	13801	SCHUTT SPORTS, LLC	01/08/2026	\$965.22	167314	E 11 300 294 113 000 530	PO 34968 Varsity Helmets/PO 34966
001		CC	1	13802	MOVE AND LEARN MN	01/08/2026	\$788.90	167300	E 04 500 585 000 332 305	CE classes
001		CC	1	13927	MINNESOTA INDIAN EDUCATION ASSC	01/08/2026	\$550.00	167349	E 01 005 790 000 320 366	MIEA 2025 Annual Conference
001		CC	1	14006	MN SCHOOL JOBS	01/08/2026	\$440.00	167307	E 01 005 105 000 000 366	MNSchool Job fair
001		CC	1	14202	BATTERYPLEX	01/08/2026	\$1,435.59	167315	E 01 201 810 000 000 401	Battery Nicad 6V
001		CC	1	14261	BUSWHERE LLC	01/08/2026	\$2,150.00	167352	E 01 005 760 000 720 405	School Bus Tracking December 2025
001		CC	1	14322	KIRCHNER, SHAWN	01/08/2026	\$20.00	167308	E 01 300 259 000 000 430	PO 35032 - Hawkins
001		CC	1	14330	FINALSITE.COM	01/08/2026	\$99.00	167324	E 01 005 107 000 000 366	District Comm- conference (MP)
001		CC	1	14330	FINALSITE.COM	01/08/2026	\$99.00	167326	E 01 005 107 000 000 366	District Comm- conference- SH

Check Total: \$54,180.19

Bank 001 Total:

Report Total:

January 2026 Personnel

Employee (Last, First Name)	Position	Building	Effective Date	Action Type
Ramon, Wilson	Paraeducator	High School	01/19/2026	New Hire
Arko, Jamie	Teacher	Independence	12/31/2025	Transfer
Kvalheim, Emma	LTS Teacher	Liberty	02/02/2026	New Hire
McClure, Kayla	Paraeducator	Independence	01/26/2026	Transfer
Foster, Alexis	Paraeducator	Independence	02/02/2026	Transfer
Woltman, Nicole	LTS Teacher	Independence	02/26/2026	Rehire

**Independent School District No. 727
Big Lake, Minnesota**

Report on Compliance and Uniform Guidance

June 30, 2025

**Independent School District No. 727
Table of Contents**

Schedule of Expenditures of Federal Awards	1
Notes to the Schedule of Expenditures of Federal Awards	2
Report on Compliance for Each Major Federal Program and Report on Internal Control Over Compliance in Accordance with the Uniform Guidance	3
Schedule of Findings and Questioned Costs in Accordance with Uniform Guidance	6

Independent School District No. 727
Schedule of Expenditures of Federal Awards
Year Ended June 30, 2025

Federal Funding Source	Federal Assistance Listing Number	Pass Through Entity	Grant Name	Expenditures
U.S. Department of Agriculture	10.553	Minnesota Department of Education	School Breakfast	\$ 156,966
U.S. Department of Agriculture	10.555	Minnesota Department of Education	Type A Lunch	710,883
U.S. Department of Agriculture	10.555	Minnesota Department of Education	Commodities (Noncash)	165,144
U.S. Department of Agriculture	10.559	Minnesota Department of Education	Summer Food Service	73,154
			Total Child Nutrition Cluster	<u>1,106,147</u>
U.S. Department of Agriculture	10.560	Minnesota Department of Education	State Administrative Expenses for Child Nutrition	6,704
U.S. Department of Education	84.010	Minnesota Department of Education	Title I, Part A	171,911
U.S. Department of Education	84.367	Minnesota Department of Education	Title II, Part A - Teacher and Principal Training and Recruiting	36,684
U.S. Department of Education	84.365	Minnesota Department of Education	Title III, Part A - English Language Acquisition, Language Enhancement and Academic Achievement	16,047
U.S. Department of Health and Human Services	93.959	Minnesota Department of Health and Human Services	Block Grants for Prevention and Treatment of Substance Abuse	212,246
U.S. Department of Education	84.027	Independent School District No. 882	Special Education	104,996
U.S. Department of Education	84.425U	Minnesota Department of Education	COVID-19 Learning Recovery - Lost Instructional Time	22,670
U.S. Department of Housing and Urban Development	14.259	Minnesota Department of Education	Community Compass Technical Assistance	3,800
U.S. Department of Justice	16.710	Independent School District No. 882	Public Safety Partnership and Community Policing Grants	33,645
			Total Federal Expenditures	<u>\$ 1,714,850</u>

See notes to schedule of expenditures of federal awards.

Independent School District No. 727
Notes to the Schedule of Expenditures of Federal Awards
June 30, 2025

NOTE 1 - BASIS OF PRESENTATION

The accompanying Schedule of Expenditures of Federal Awards (the "Schedule") includes the federal award activity of the District under programs of the federal government for the year ended June 30, 2025. The information in this Schedule is presented in accordance with the requirements of *Title 2 U.S. Code of Federal Regulations Part 200, Uniform Administrative Requirements, Cost Principles, and Audit Requirements for Federal Awards* (Uniform Guidance). Because the Schedule presents only a selected portion of the operations of the District, it is not intended to and does not present the financial position, changes of net assets, or cash flows of the District.

NOTE 2 - SUMMARY OF SIGNIFICANT ACCOUNTING POLICIES

Expenditures reported on the Schedule are reported on the modified accrual basis of accounting. Such expenditures are recognized following the cost principles contained in the Uniform Guidance, wherein certain types of expenditures are not allowable or are limited as to reimbursement.

NOTE 3 - PASS-THROUGH GRANT NUMBERS

All pass-through entities listed above use the same Assistance Listing numbers as the federal grantors to identify these grants and have not assigned any additional identifying numbers.

NOTE 4 - INVENTORY

Inventories of commodities donated by the U.S. Department of Agriculture are recorded at market value in the Food Service Fund as inventory. Revenue and expenditures are recorded when commodities are used.

NOTE 5 - INDIRECT COST RATE

The District did not elect to use the 10 percent de minimis indirect cost rate, as allowed under the Uniform Guidance.



**Report on Compliance for Each Major Federal Program
and Report on Internal Control over Compliance in Accordance with
the Uniform Guidance**

Independent Auditor's Report

To the School Board
Independent School District No. 727
Big Lake, Minnesota

Report on Compliance for Each Major Federal Program

Opinion on Each Major Federal Program

We have audited the District's compliance with the types of compliance requirements identified as subject to audit in the *U.S. Office of Management and Budget (OMB) Compliance Supplement* that could have a direct and material effect on each of the District's major federal programs for the year ended June 30, 2025. The District's major federal programs are identified in the summary of auditor's results section of the accompanying Schedule of Findings and Questioned Costs.

In our opinion, the District complied in all material respects, with the compliance requirements referred to above that could have a direct and material effect on its major federal programs for the year ended June 30, 2025.

Basis for Opinion on Each Major Federal Program

We conducted our audit of compliance in accordance with auditing standards generally accepted in the United States of America (GAAS); the standards applicable to financial audits contained in *Government Auditing Standards* issued by the Comptroller General of the United States (*Government Auditing Standards*); and the audit requirements of *Title 2 U.S. Code of Federal Regulations Part 200, Uniform Administrative Requirements, Cost Principles, and Audit Requirements for Federal Awards* (Uniform Guidance). Our responsibilities under those standards and the Uniform Guidance are further described in the Auditor's Responsibilities for the Audit of Compliance section of our report.

We are required to be independent of the District and to meet our other ethical responsibilities, in accordance with relevant ethical requirements relating to our audit. We believe that the audit evidence we have obtained is sufficient and appropriate to provide a basis for our opinion on compliance for each major federal program. Our audit does not provide a legal determination of the District's compliance with the compliance requirements referred to above.

Responsibilities of Management for Compliance

Management is responsible for compliance with the requirements referred to above and for the design, implementation, and maintenance of effective internal control over compliance with the requirements of laws, statutes, regulations, rules, and provisions of contracts or grant agreements applicable to the District's federal programs.

Auditor's Responsibilities for the Audit of Compliance

Our objectives are to obtain reasonable assurance about whether material noncompliance with the compliance requirements referred to above occurred, whether due to fraud or error, and express an opinion on the District's compliance based on our audit. Reasonable assurance is a high level of assurance but is not absolute assurance and therefore is not a guarantee that an audit conducted in accordance with GAAS, *Government Auditing Standards*, and the Uniform Guidance will always detect material noncompliance when it exists. The risk of not detecting material noncompliance resulting from fraud is higher than for that resulting from error, as fraud may involve collusion, forgery, intentional omissions, misrepresentations, or the override of internal control.

Noncompliance with the compliance requirements referred to above is considered material, if there is a substantial likelihood that, individually or in the aggregate, it would influence the judgment made by a reasonable user of the report on compliance about the District's compliance with the requirements of each major federal program as a whole.

In performing an audit in accordance with GAAS, *Government Auditing Standards*, and the Uniform Guidance, we:

- Exercise professional judgment and maintain professional skepticism throughout the audit.
- Identify and assess the risks of material noncompliance, whether due to fraud or error, and design and perform audit procedures responsive to those risks. Such procedures include examining, on a test basis, evidence regarding the District's compliance with the compliance requirements referred to above and performing such other procedures as we considered necessary in the circumstances.
- Obtain an understanding of the District's internal control over compliance relevant to the audit in order to design audit procedures that are appropriate in the circumstances and to test and report on internal control over compliance in accordance with the Uniform Guidance, but not for the purpose of expressing an opinion on the effectiveness of the District's internal control over compliance. Accordingly, no such opinion is expressed.

We are required to communicate with those charged with governance regarding, among other matters, the planned scope and timing of the audit and any significant deficiencies and material weaknesses in internal control over compliance that we identified during the audit.

Report on Internal Control over Compliance

A deficiency in internal control over compliance exists when the design or operation of a control over compliance does not allow management or employees, in the normal course of performing their assigned functions, to prevent, or detect and correct, noncompliance with a type of compliance requirement of a federal program on a timely basis. A material weakness in internal control over compliance is a deficiency, or combination of deficiencies, in internal control over compliance, such that there is a reasonable possibility that material noncompliance with a type of compliance requirement of a federal program will not be prevented, or detected and corrected, on a timely basis. A significant deficiency in internal control over compliance is a deficiency, or a combination of deficiencies, in internal control over compliance with a type of compliance requirement of a federal program that is less severe than a material weakness in internal control over compliance, yet important enough to merit attention by those charged with governance.

Report on Internal Control over Compliance (Continued)

Our consideration of internal control over compliance was for the limited purpose described in Auditor's Responsibilities for the Audit of Compliance section and was not designed to identify all deficiencies in internal control over compliance that might be material weaknesses or significant deficiencies in internal control over compliance. Given these limitations, during our audit we did not identify any deficiencies in internal control over compliance that we consider to be material weaknesses, as defined above. However, material weaknesses or significant deficiencies in internal control over compliance may exist that were not identified.

Our audit was not designed for the purpose of expressing an opinion on the effectiveness of internal control over compliance. Accordingly, no such opinion is expressed.

The purpose of this report on internal control over compliance is solely to describe the scope of our testing of internal control over compliance and the results of that testing based on the requirements of the Uniform Guidance. Accordingly, this report is not suitable for any other purpose.

Report on schedules of Expenditures of Federal Awards Required by the Uniform Guidance

We have also audited the financial statements of the governmental activities, each major fund, and the aggregate remaining fund information of the District, as of and for the year ended June 30, 2025, and the related notes to financial statements, which collectively comprise the District's basic financial statements. We issued our report thereon dated November 4, 2025, which contained unmodified opinions on those financial statements. We conducted our audit to opine on the District's basic financial statements as a whole. We have not performed any procedures to the audited financial statements subsequent to November 4, 2025, the date of the auditor's report on the financial statements. The accompanying schedule of expenditures of federal awards presents additional analysis required by the Uniform Guidance and is not a required part of the basic financial statements. The schedule is management's responsibility and was derived from and relates directly to the underlying accounting and other records management used to prepare the basic financial statements. We subjected this schedule to the auditing procedures we applied to the basic financial statements. We also applied certain additional procedures, including comparing and reconciling this schedule directly to the underlying accounting and other records used to prepare the basic financial statements or to the basic financial statements themselves, and other additional procedures in accordance with auditing standards generally accepted in the United States of America. In our opinion, this schedule is fairly stated, in all material respects, in relation to the basic financial statements taken as a whole.

Bergank DV, Ltd.

St. Cloud, Minnesota
December 9, 2025

**Independent School District No. 727
Schedule of Findings and Questioned Costs
in Accordance with the Uniform Guidance**

SECTION I - SUMMARY OF AUDITOR'S RESULTS

Financial Statements

Type of auditor's report issued: We issued an unmodified opinion on the fair presentation of the financial statements of the governmental activities, each major fund, and the aggregate remaining fund information in accordance with accounting principles generally accepted in the United States of America (GAAP).

Internal control over financial reporting:

- Material weakness(es) identified? No
- Significant deficiency(ies) identified? Yes, Audit Finding 2025-001

Noncompliance material to financial statements noted? No

Federal Awards

Type of auditor's report issued on compliance for major programs: Unmodified

- Internal control over major programs:
- Material weakness(es) identified? No
 - Significant deficiency(ies) identified? None reported

Any audit findings disclosed that are required to be reported in accordance with 2 CFR 200.516? No

Identification of Major Programs

Assistance Listing No: 10.553, 10.555, 10.559
Name of Federal Program or Cluster: Child Nutrition Cluster

Dollar threshold used to distinguish between type A and type B programs: \$750,000

Auditee qualified as low risk auditee? Yes

**Independent School District No. 727
Schedule of Findings and Questioned Costs
in Accordance with Uniform Guidance**

SECTION II - FINANCIAL STATEMENT FINDINGS

Audit Finding 2025-001

Criteria:

Internal control that supports the District's ability to initiate, record, process, and report financial data consistent with the assertions of management in the financial statements requires adequate segregation of accounting duties.

Condition:

During the year ended June 30, 2025, the District had a lack of segregation of accounting duties in the cash disbursements, receipts, and payroll processes due to a limited number of office employees. Although this meets the definition of a "significant deficiency," it may not be practical to correct since the costs of obtaining desirable segregation of accounting duties may exceed benefits that could be derived.

Cash Disbursements

- The Accounts Payable Specialist matches POs to invoices, enters invoices into SMART Finance, and runs/prints/mails checks. The District Accountant then reviews the check stubs and invoices. In the Specialist's absences, the District Accountant performs invoice entry and check processing, and the Director of Business Services performs the review.

Cash Receipts

- The Administrative Assistant at each building can receipt cash, prepare deposit slips, and reconcile the deposit.
- The Community Education Director and Administrative Assistant can collect money, prepare the deposit, and also can perform the reconciliation to the deposit.

Payroll

- The Payroll Specialist reviews and inputs timesheets, calculates payroll, generates payroll and may adjust pay rates in the system. The District Accountant spot-checks a sample of employees pay period to verify payroll accuracy.

Context:

This finding impacts the internal control for all significant accounting functions.

Cause:

There are a limited number of office employees.

Effect or Potential Effect:

The lack of adequate segregation of accounting duties could adversely affect the District's ability to initiate, record, process, and report financial data consistent with the assertions of management in the financial statements.

Recommendation:

Continue to review the accounting system, including changes that may occur. Implement segregation whenever practical.

**Independent School District No. 727
Schedule of Findings and Questioned Costs
in Accordance with Uniform Guidance**

SECTION II - FINANCIAL STATEMENT FINDINGS (CONTINUED)

Audit Finding 2025-001 (Continued)

Views of the Responsible Officials and Planned Corrective Actions:

CORRECTIVE ACTION PLAN (CAP):

1. Explanation of Disagreement with Audit Finding
There is no disagreement with the audit finding.

2. Actions Planned in Response to Finding

The District has implemented mitigating controls to overcome the lack of segregation of accounting duties. Examples are provided on the following page for specific areas in which the District was cited.

A. Cash Disbursement Process

The Director of Business Services or Accountant reviews invoices with check stubs and purchase orders for unusual transactions or alterations. The Director of Business Services or Accountant also reviews for supervisor approval and proper documentation. The check stubs are initialed by the Director of Business Services or Accountant indicating such review has taken place.

On a monthly basis, detailed budget reports are sent to building and program administrators for review. In addition, the Director of Business Services currently reviews detailed budgeted line items on at least a quarterly basis for significant variances.

B. Cash Receipt Process

The District operates on a decentralized cash receipts process in which each building reconciles and prepares the deposits for the bank. Copies of the deposit slips are forwarded to the District Accountant, who ensures all deposits are properly credited to the District bank account during the bank reconciliation process. The Director of Business Services and building and administrator budget managers monitor receipts and revenue for significant fluctuations or unusual variations.

3. Actions Planned in Response to Finding

C. Payroll Process

The District Accountant posts the payroll to the general ledger and on a quarterly basis, reviews salary and benefit line item budgets with expected results based on the staffing budget. The District Accountant also reconciles all payroll liability accounts on a monthly basis and variations or fluctuations are communicated to the Payroll Specialist or Human Resources Coordinator.

**Independent School District No. 727
Schedule of Findings and Questioned Costs
in Accordance with Uniform Guidance**

SECTION II - FINANCIAL STATEMENT FINDINGS (CONTINUED)

Audit Finding 2025-001 (Continued)

Views of the Responsible Officials and Planned Corrective Actions: (Continued)

CORRECTIVE ACTION PLAN (CAP): (CONTINUED)

4. Official Responsible for Ensuring CAP
Angie Manuel, Director of Business Services, is the official responsible for ensuring corrective action of the deficiency.
5. Planned Completion Date for CAP
The planned completion date is ongoing.
6. Plan to Monitor Completion of CAP
The School Board will be monitoring the corrective action plan.

SECTION III - FEDERAL AWARDS FINDINGS AND QUESTIONED COSTS

There were no federal award findings or questioned costs.

SECTION IV - PRIOR YEAR FINDINGS AND QUESTIONED COSTS

There were no prior year findings or questioned costs.

The following resolution was moved by _____ and seconded by _____:

RESOLUTION ACCEPTING DONATIONS

WHEREAS, Minnesota Statutes 123B.02, Subd. 6 provides: “The board may receive, for the benefit of the district, bequests, donations, or gifts for any proper purpose and apply the same to the purpose designated. In that behalf, the board may act as trustee of any trust created for the benefit of the district, or for the benefit of pupils thereof, including trusts created to provide pupils of the district with advanced education after completion of high school, in the advancement of education.”; and

WHEREAS, Minnesota Statutes 465.03 provides: “Any city, county, school district or town may accept a grant or devise of real or personal property and maintain such property for the benefit of its citizens in accordance with the terms prescribed by the donor. Nothing herein shall authorize such acceptance or use for religious or sectarian purposes. Every such acceptance shall be by resolution of the governing body adopted by a two-thirds majority of its members, expressing such terms in full.”; and

WHEREAS, every such acceptance shall be by resolution of the governing body adopted by a two-thirds majority of its members, expressing such terms in full;

THEREFORE, BE IT RESOLVED, that the School Board of Big Lake Schools, ISD 727, gratefully accepts the following donations as identified below:

Donor	Item	Designated Purpose (if any)
Big Lake Spud Fest	\$43,000.00	Field trip expenses
Big Lake Girls Basketball Booster Club	\$1,200.00	Charter bus to Fergus Falls
Big Lake Boys Fast Break Club	\$565.00	Charter bus to Perham
Mary of the Visitation	Gift cards, clothing, shoes, and gloves	Students in need at Independence and Liberty
Big Lake Spud Fest	\$3,000.00	NWTA Scholarships
Lupulin Brewing Company	\$75.00	Help struggling students and families

The vote on adoption of the Resolution was as follows:

Aye:

Nay:

Absent:

Whereupon, said Resolution was declared duly adopted on January 28, 2026.

CASH REPORT FOR SCHOOL BOARD

BIG LAKE PUBLIC SCHOOLS

Independent School District # 727

for month: Dec 2025

101 - CASH ACCOUNTS					
	Beg Balance	Receipts	Checks	Adjustments	End Balance
General Fund	\$ (102,148)	\$ 5,793,771	\$ (5,156,396)		\$ 535,227
Food Service	(\$410,640)	76,835	(193,873)		(\$527,678)
Community Service	\$28,060	286,086	(313,916)		\$230
Building Fund	\$0	168,879	(168,879)		\$0
Debt Service	\$891,051	-	-		\$891,051
Project fund- HVAC (Fund 15)	\$0				\$0
OPEB Trust Fund	(\$55,231)				(\$55,231)
TOTAL PER BOOKS	351,092	6,325,571.00	(\$5,833,064)	\$0	843,599
				General Checking Account	\$843,599
				TOTAL PER BANK	\$843,599

102 - PETTY CASH ACCOUNT					
	Beg Balance	Receipts	Checks	Adjustments	End Balance
General Fund	\$1,633	797	(\$114)	-	\$2,316
				Petty Cash Checking Account	\$2,316
				TOTAL PER BANK	\$2,316

104 - INVESTMENT ACCOUNTS					
	Beg Balance	Deposits	Withdrawals	Adjustments	End Balance
General Fund	(\$191,379)	\$ 4,378,877	\$ (4,900,000)		(\$712,502)
General Fd Operating Investments	\$19,668,693	16,798	(497,126)		\$19,188,365
Food Service	\$927,283	200,693	-		\$1,127,976
Community Service	\$1,707,676	119,377	-		\$1,827,053
Debt Service	\$4,848,534	124,625	-		\$4,973,159
Facility Maintenance Invest. 2021A (Fd 15)	\$0				\$0
Facilities Investments 2022A (Fd 06)	\$1,095,175	2,382	(168,879)		\$928,678
OPEB Trust Fund	\$0	52,172	-		\$52,172
OPEB Trust Equities	\$1,513,764	408	(52,172)		\$1,462,000
TOTAL PER BOOKS	\$29,569,746	\$4,895,332	(\$5,618,177)	\$0	\$28,846,901
				MN Trust	\$7,267,858
				Operating Investments	\$19,188,365
				Building Fund Investments	\$928,678
				OPEB Trust	\$1,462,000
				TOTAL PER BANK	\$28,846,901

CASH AND INVESTMENT BALANCE SUMMARY BY FUND					
	Beg Balance	Deposits	Withdrawals	Adjustments	End Balance
General Fund	\$ 19,376,799	\$ 10,190,243	\$ (10,553,636)	\$ -	\$ 19,013,406
Food Service	\$516,643	277,528	(193,873)	-	\$600,298
Community Service	\$1,735,736	405,463	(313,916)	-	\$1,827,283
Debt Service	5,739,585	124,625	-	-	5,864,210
Project Fund HVAC- Fund 15	\$0	\$0	\$0	\$0	\$0
Bond Account Investments (fund 06)	\$1,095,175	\$171,261	(\$337,758)	\$0	\$928,678
OPEB Trust Fund	(\$55,231)	52,172	-	-	(\$3,059)
OPEB Trust Equities	\$1,513,764	408	(52,172)	-	\$1,462,000
TOTAL PER BOOKS	29,922,471	\$11,221,700	(\$11,451,355)	\$0	29,692,816
				Cash	\$843,599
				Petty Cash	\$2,316
		43		Investments	\$28,846,901
				TOTAL PER BANK	\$29,692,816

BIG LAKE PUBLIC SCHOOLS ISD #727
Investment Transactions 25-26
 December 31, 2025

	Yield	Purchased	Maturity Date	Balance 07/01/25	Purchased	Premium/ Interest Paid	Interest Rec'd	Realized Gain/Loss	Matured	Mark to Market Unrealized Loss	Balance 12/31/25	
PMA (Operating Investments):												
Financial Federal Bank CD	4.650%	2/29/2024	1/27/2026	229,450.00							229,450.00	
CIBC Bank USA CD	4.565%	2/29/2024	1/27/2026	229,800.00							229,800.00	
Valley Natl bank Wayne CD	4.905%	3/5/2024	9/5/2025	243,144.54				102.81	243,000.00	(247.35)	(0.00)	
Morgan Stanley bank CD	4.905%	3/6/2024	9/8/2025	243,291.19				(47.73)	243,000.00	(243.46)	(0.00)	
Bank of America	4.855%	3/7/2024	9/8/2025	243,268.37				(44.47)	243,000.00	(223.90)	(0.00)	
Eaglebank CD	4.704%	3/8/2024	12/8/2025	248,585.88				(69.76)	248,000.00	(516.12)	(0.00)	
Affinity Bank CD	4.510%	3/8/2024	12/8/2025	249,372.13				(56.25)	249,000.00	(315.88)	0.00	
Western Alliance bank	4.955%	3/12/2024	9/12/2025	243,195.59				65.80	243,000.00	(261.39)	(0.00)	
Community National CD	5.074%	6/10/2024	7/5/2025	236,400.00					236,400.00		0.00	
Farmers & Merchants Union Bank CD	5.036%	6/10/2024	7/25/2025	236,500.00					236,500.00		0.00	
ServisFirst bank	5.004%	6/10/2024	3/19/2026	229,500.00							229,500.00	
Solera National bank CD	5.039%	6/11/2024	7/25/2025	236,400.00					236,400.00		0.00	
Nexbank CD	4.143%	1/29/2025	1/29/2026	240,000.00							240,000.00	
OMB bank CD	4.150%	1/29/2025	1/29/2026	239,900.00							239,900.00	
Royal Business Bank CD	4.004%	3/19/2025	3/19/2026	240,200.00							240,200.00	
T Bank National Asso. CD	4.106%	3/19/2025	3/19/2026	239,900.00							239,900.00	
Live Oak Banking Co CD	4.011%	3/28/2025	1/28/2026	248,910.96							249,053.44	
DMB Community Bank, WI	3.760%	8/20/2025	10/14/2026		\$239,500.00					142.48	239,500.00	
Solera National Bank, CO	4.135%	8/21/2025	10/14/2026		\$238,400.00						238,400.00	
First Bank of Ohio, OH	3.793%	8/20/2025	1/26/2027		\$236,800.00						236,800.00	
Mission National Bank, CA	3.843%	8/20/2025	1/26/2027		\$236,700.00						236,700.00	
GSBank, NV	3.982%	8/20/2025	1/26/2027		\$236,200.00						236,200.00	
Premier Bank, IA	3.793%	8/20/2025	1/26/2027		\$236,800.00						236,800.00	
Freedom Northwest Credit Union, ID	3.884%	8/20/2025	1/26/2027		\$236,500.00						236,500.00	
American Commercial Bank & Trust,	3.843%	8/20/2025	4/19/2027		\$234,700.00						234,700.00	
FirstBank Puerto Rico, PR	3.860%	8/20/2025	4/19/2027		\$234,600.00						234,600.00	
Treasury # 67127	4.257%	11/15/2024	7/31/2025	1,023,539.40				3,460.60	1,027,000.00		(0.00)	
Treasury # 67104	4.190%	11/15/2024	10/15/2025	745,839.73				(0.22)	746,000.00		0.00	
Treasury # 67105	4.170%	11/15/2024	2/15/2026	251,977.50						160.49	251,359.53	
Treasury # 67128	4.110%	11/15/2024	11/15/2026	489,775.98						3,362.93	489,427.33	
MN Trust Term Series- 20260107AA09	4.820%	5/17/2024	1/7/2026	1,500,000.00							1,500,000.00	
MN Trust Term Series- 20260518AA09	4.700%	5/17/2024	5/18/2026	500,000.00							500,000.00	
MN Trust Term Series- 20260727AB 09	3.950%	8/21/2024	7/27/2026	500,000.00							500,000.00	
MN Trust Term Series- 2026126AA09437	4.247%	11/15/2024	1/28/2026	1,200,000.00							1,200,000.00	
MN Trust Term Series- 20260618AA09541	4.160%	12/24/2024	6/26/2026	1,500,000.00							1,500,000.00	
MN Trust Term Series- 20250813AA09145	3.962%	3/21/2025	1/20/2026	250,000.00							250,000.00	
MN Trust Term Series- 20260118AA0915	4.090%	8/21/2025	1/23/2026		1,000,000.00						1,000,000.00	
MN Trust Term Series- 20270125AA09521	4.110%	8/26/2025	1/25/2027		1,300,000.00						1,300,000.00	
MN Trust Limited Term Duration	3.550%	10/30/2025	1/25/2027		2,000,000.00						2,000,000.00	
MN Trust Investment Shares Portfolio	0.920%	6/1/2017		4,557,621.76				97,951.90			4,655,573.66	
				11,860,749.05	27,837,737.84		221,458.51		32,652,087.50		7,267,657.90	
Subtotal - General Fund				28,467,322.08	34,267,937.84	0.00	221,458.51	101,362.68	36,603,387.50	1,529.75	26,456,223.36	
				Ok with SMART Funds 01,02,04,05,07,11,12 104-002/003 and 104-014								Ok with SMART Fund 104-002/003 and 104-
Fund 6												
PMA (2022A Bond Investments):												
Mn Trust Limited Term Duration	1.950%	1/31/2025		3,203,884.42			25,915.02		2,302,521.07		927,278.37	
MN Trust Investment Shares Portfolio	0.920%	1/31/2022		1,375.68	153,460.38		23.85		153,460.38		\$ 1,399.53	
Subtotal - Building Fund 6				3,205,260.10	153,460.38	-	25,938.87	-	2,455,981.45	-	928,677.90	
				B06-104-022								B06-104-022
Fund 15												
PMA (2021A Facility Maintenance Bonds Investments):												
MN Trust Investment Shares Portfolio	0.920%			44,715.12			390.67		45,105.79		(0.00)	
				44,715.12	-	-	390.67	-	45,105.79	-	(0.00)	
				B07, 15 104-020								B07, 15 104-020
				B07, 15 104-021								B07, 15 104-021
PMA (OPEB Equity Investments):												
Cash & equivalent				14,694.04			451.59			8,174.93	23,320.56	
Bond				800,828.33						7,928.61	808,756.94	
Mortgage Bad Sec. - Vanguard				183,460.06						6,460.66	189,920.72	
Equity Investments				436,666.47					52,171.61	55,507.18	440,002.04	
Subtotal - OPEB Fund 45 Asset				1,435,648.90	-	-	451.59	-	52,171.61	78,071.38	1,462,000.26	
				B45-104-016								B45-104-016
Total OPEB Fund 45				1,435,648.90	-	-	451.59	-	52,171.61	78,071.38	1,462,000.26	
TOTAL				33,152,946.20	34,421,398.22	-	248,239.64	101,362.68	39,156,646.35	79,601.13	28,846,901.52	
Percentage of Portfolio - CD's	13.963%											
Percentage of Portfolio - Bonds	2.804%											
Percentage of Portfolio - MBS	0.658%											
Percentage of Portfolio - Liq Asset	0.081%											
Percentage of Portfolio - Equities	1.525%											
Percentage of Portfolio - US Treasury	2.617%											
Percentage of Portfolio - MN Trust Term Serie	33.799%											
Percentage of Portfolio - MN Trust Limited Ter	19.353%											
Percentage of Portfolio - MN Trust Money Ma	25.199%											
	100.00%											

WIRE TRANSFER SUMMARY
Big Lake Public Schools
Independent School District #727
December 31, 2025

DATE	FROM	TO	AMOUNT	PURPOSE
12/1/2025	Old National-Checking	Heartland Pmt System	\$ 517.07	Myschoolbucks Credit Card Fees
12/1/2025	Old National-Checking	Health Equity	\$ 2,027.90	H.S.A Contributions
12/3/2025	Old National-Checking	EYEMED	\$ 1,759.07	Insurance Coverage
12/3/2025	Old National-Checking	Amazon	\$ 4,492.55	Invoice Payments
12/4/2025	Public Surplus	Old National-Checking	\$ 4,530.00	Sale of Surplus Inventory/Equipment
12/4/2025	MN Trust-PMA	Old National-Checking	\$ 1,900,000.00	Payroll and Payroll AP
12/5/2025	Old National-Checking	Trustmark	\$ 1,225.92	Insurance Coverage
12/5/2025	Old National-Checking	Card Services	\$ 1,933.55	Coborns
12/5/2025	Old National-Checking	Health Equity	\$ 6,861.60	Health Equity Flex
12/5/2025	Old National-Checking	Health Equity	\$ 34,493.70	H.S.A Contributions
12/8/2025	Old National-Checking	Neopost	\$ 250.00	DO Postage
12/8/2025	Old National-Checking	Health Equity	\$ 369.80	Health Equity Fee
12/8/2025	Old National-Checking	Delta Dental	\$ 29,745.20	Dental Insurance
12/8/2025	Old National-Checking	EBC	\$ 73,284.64	403b & 457 contributions
12/9/2025	Old National-Checking	United Way	\$ 56.00	United Way EE elections
12/9/2025	Old National-Checking	SSI MN TRANCHE 2 LLC	\$ 2,542.44	Solar Contract
12/9/2025	Old National-Checking	Amazon	\$ 2,879.99	Invoice Payments
12/9/2025	Old National-Checking	Bankcard Service	\$ 4,772.76	ELEYO Credit Card Fees
12/9/2025	Old National-Checking	BLEM	\$ 9,285.26	Teacher Unions Dues
12/9/2025	Old National-Checking	USS MINNESOTA ONE MT	\$ 24,954.92	Solar Contract
12/10/2025	Old National-Checking	Transfirst/TSYS	\$ 1,286.34	Affinity Credit Card fees
12/10/2025	Old National-Checking	ELEYOmonthlysoft	\$ 1,425.00	ELEYO User Fees
12/12/2025	Old National-Checking	Health Equity	\$ 488.96	Health Equity Flex
12/15/2025	Old National-Checking	FleetCor	\$ 79.86	Kwik Trip Billing
12/17/2025	Old National-Checking	Amazon	\$ 1,138.22	Invoice Payments
12/18/2025	Greater Twin City	Old National-Checking	\$ 1,605.00	Pathway I
12/18/2025	Old National-Checking	Compass Group	\$ 190,136.26	Chartwells
12/18/2025	MN Trust-PMA	Old National-Checking	\$ 3,000,000.00	Payroll and Payroll AP
12/19/2025	Old National-Checking	United Way	\$ 56.00	United Way EE elections
12/19/2025	Old National-Checking	Old National Bank	\$ 625.16	Old National Service Charge
12/19/2025	Old National-Checking	Health Equity	\$ 8,562.43	Health Equity Flex
12/19/2025	Old National-Checking	BLEM	\$ 9,285.26	Teacher Unions Dues
12/19/2025	Old National-Checking	Health Equity	\$ 34,103.67	H.S.A Contributions
12/19/2025	MN Trust-PMA BONDS	Old National-Checking	\$ 168,879.33	Bond Draw 2022A
12/19/2025	Old National-Checking	Vision Transportation	\$ 324,296.46	Transportation billing
12/22/2025	Old National-Checking	Neopost	\$ 200.00	DO Postage
12/22/2025	Old National-Checking	Verizon	\$ 1,016.88	Verizon billing
12/22/2025	Old National-Checking	Windstream	\$ 1,560.20	Windstream billing
12/22/2025	Old National-Checking	Health Equity	\$ 18,030.00	Health Equity Flex
12/22/2025	Old National-Checking	EBC	\$ 72,995.68	403b & 457 contributions
12/23/2025	Old National-Checking	NewYork Life	\$ 15,741.21	Life & LTD Insurance & suppl. Life
12/29/2025	Old National-Checking	Health Equity	\$ 958.12	Health Equity Flex
12/30/2025	Old National-Checking	Deluxe Business	\$ 176.02	Check stock
12/30/2025	Benefit Resource BRI	Old National-Checking	\$ 11,584.10	Cobra Payment

Treasurer's Report
 Month of December, 2025/26 School Year
 Amber Sixberry, Treasurer

Big Lake School District #727
 Respectfully Submitted at the 01/28/2026 Board Meeting
(Italicized, underlined phrase in parenthesis denotes the source of the data and notes)

COMPLIANCE ISSUES

- | | | |
|----|---|---------------|
| 1) | Preliminary UFARS data loaded to MDE by September 15th, 2025 | In compliance |
| 2) | Revenue and Expenditure Budget published by earlier of one week after school board accepts final audit or November 30, 2025 | In compliance |
| 3) | Final UFARS data to MDE by November 30, 2025 | In compliance |
| 4) | The 2024/2025 audit (electronic copy) received at MDE by December 31st, 2025 | In compliance |
| 5) | Board members having received training in financial matters per statute | In compliance |

FISCAL HEALTH - INCOME STATEMENT PARAMETERS

- 1) Revenue/Expenditure Monitor - *Exp/Rev Summary - FD Report*

	REVENUE			<i>(Calculated)</i>		EXPENDITURES		
	Budget	Actual \$ YTD	Actual % YTD			Budget	Actual \$ YTD	Actual % YTD
General Fund (01,05,11 &12)	\$ 49,472,360	\$ 8,153,987	16%	\$ 54,142,509	\$ 14,715,206	27%		
Food Service (02)	\$ 2,610,011	\$ 652,313	25%	\$ 2,718,026	\$ 978,227	36%		
Community Service (04)	\$ 3,519,517	\$ 1,267,962	36%	\$ 3,604,302	\$ 1,351,157	37%		
Building Construction (06)	\$ 25,000	\$ 23,948	96%	\$ 2,350,862	\$ 1,823,356	78%		
Debt Service (07)	\$ 4,865,286	\$ 509,919	10%	\$ 4,482,775	\$ 675,212	15%		
OPEB Irrevocable Trust Fund (45)	\$ 100,000	\$ 78,115	78%	\$ 138,688	\$ 2,461	2%		

- 2) ADM Monitor - *Principals' monthly reporting*

	Original	Adjusted
Budgeted Seated ADM	3115	3042
Tuition ADM	65	72
Budgeted ADM	3180	3114

NOTES

No budget revisions

School Board Financial Report

January 28th, 2026

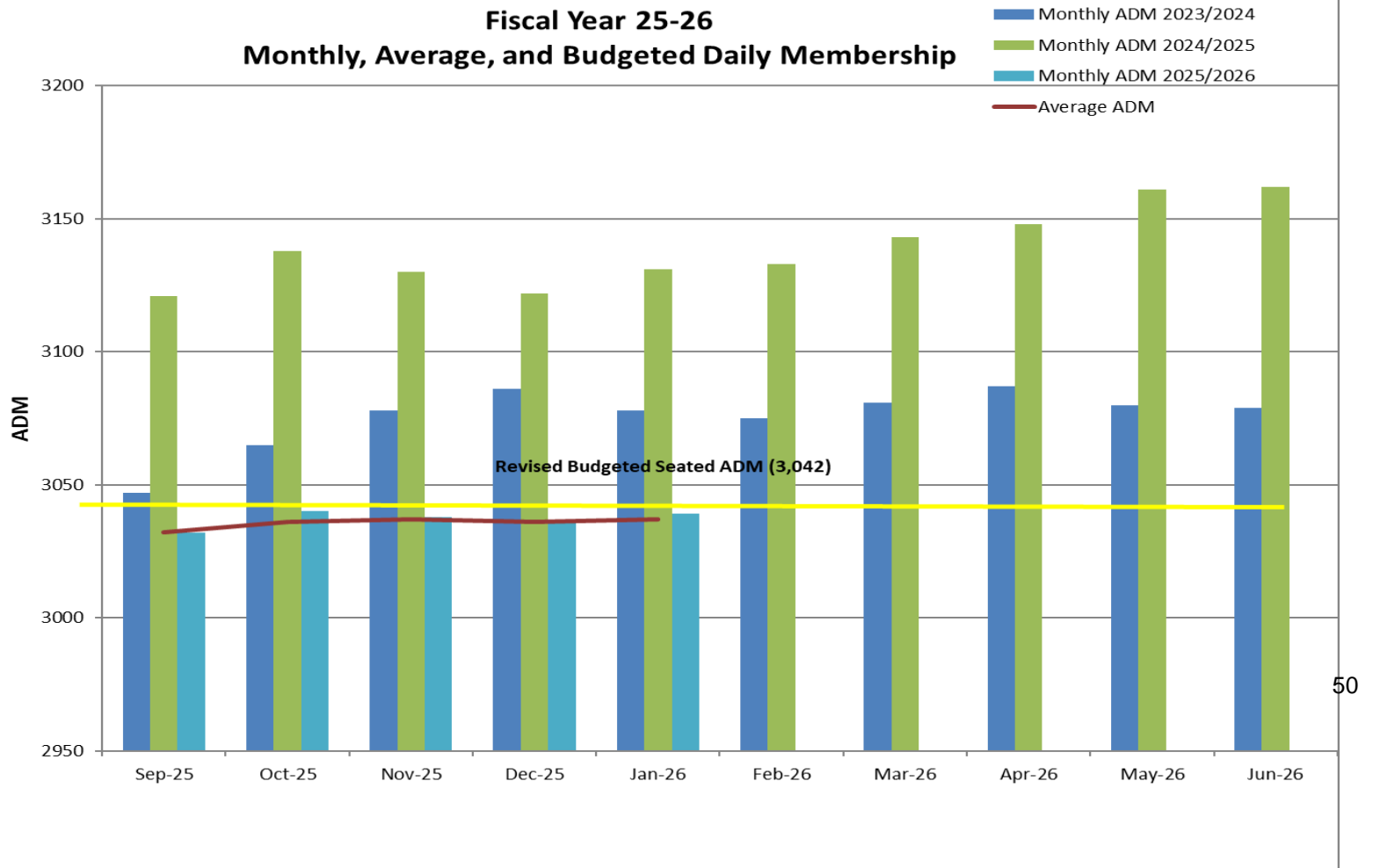
Presented by Angie Manuel, Director of Business Services

25-26 Enrollment Update

- ❖ January 5th Seated ADM: 3,039
 - +3 ADM from December 1st
 - ✓ Average ADM Sept-Jan: 3,037
 - ✓ Revised Budgeted ADM: 3,042
 - ✓ Enrollment Shortfall: -5
 - ✓ Enrollment shift in MS & HS to 6-12 Big Lake Online

ADM=Average Daily Membership

Fiscal Year 25-26 Monthly, Average, and Budgeted Daily Membership



ISD #727 Revised 2025-2026 Budget

January 2026

	Audited Fund Balance June 30,2025	Revenue Budget 25-26	Expenditure Budget 25-26	Projected Net Change Incr(Decr) in Fund Balance	Transfers	Budgeted Fund Balance June 30,2026
General:						
Restricted -						
Long Term Facilities Maintenance	\$ 44,669	\$ 1,568,038	\$ 2,308,801	\$ (740,763)	\$ 700,000	\$ 3,906
Operating Capital	\$ 693,043	\$ 760,625	\$ 1,229,122	\$ (468,497)	\$ -	\$ 224,546
Capital Projects Levy	\$ 433,489	\$ 930,816	\$ 1,357,403	\$ (426,587)	\$ -	\$ 6,902
Staff Development	\$ 263,436	\$ 507,533	\$ 512,172	\$ (4,639)	\$ -	\$ 258,797
Basic Skills	\$ 677,815	\$ 1,716,647	\$ 1,843,535	\$ (126,888)	\$ -	\$ 550,927
Q Comp	\$ 120,329	\$ 806,267	\$ 844,315	\$ (38,048)	\$ -	\$ 82,281
School Library Aid	\$ 40,911	\$ 34,849	\$ 41,547	\$ (6,698)	\$ -	\$ 34,213
Literacy Incentive Aid	\$ -	\$ 146,588	\$ 157,416	\$ (10,828)	\$ 10,828	\$ -
Literacy Aid (READ Act)	\$ 126,091	\$ -	\$ -	\$ -	\$ (15,460)	\$ 110,631
Teacher Compensation READ Act Training	\$ 33,130	\$ -	\$ 37,762	\$ (37,762)	\$ 4,632	\$ -
American Indian Education Aid	\$ -	\$ 63,500	\$ 63,479	\$ 21	\$ -	\$ 21
Third Party/Medical Assistance	\$ 502,225	\$ 110,000	\$ 194,647	\$ (84,647)	\$ -	\$ 417,578
Area Learning Center (ALC)	\$ 133,062	\$ 377,772	\$ 413,591	\$ (35,819)	\$ -	\$ 97,243
Scholarships	\$ 45,089	\$ 20,000	\$ 20,000	\$ -	\$ -	\$ 45,089
Student Activities	\$ 27,134	\$ 7,650	\$ 10,087	\$ (2,437)	\$ -	\$ 24,697
Committed for Severance	\$ 917,410	\$ -	\$ 19,775	\$ (19,775)	\$ -	\$ 897,635
Assigned for Athletics and Activities	\$ 222,581	\$ 1,337,806	\$ 1,481,300	\$ (143,494)	\$ -	\$ 79,087
Assigned for Building Level Activities	\$ 171,698	\$ 32,400	\$ 73,077	\$ (40,677)	\$ -	\$ 131,021
Other Assigned Fund Balances	\$ 3,478,035	\$ 11,999	\$ 383,593	\$ (371,594)	\$ (700,000)	\$ 2,406,441
Nonspendable for Prepaid Items	\$ 57,354	\$ -	\$ -	\$ -	\$ -	\$ 57,354
Unassigned Fund Balance	\$ 9,783,306	\$ 41,039,870	\$ 43,150,887	\$ (2,111,017)	\$ -	\$ 7,672,289
Subtotal	\$ 17,770,807	\$ 49,472,360	\$ 54,142,509	\$ (4,670,149)	\$ -	\$ 13,100,658
Food Service:						
Restricted	\$ 844,616	\$ 2,610,011	\$ 2,718,026	\$ (108,015)	\$ -	\$ 736,601
Nonspendable for Inventory	\$ 34,186	\$ -	\$ -	\$ -	\$ -	\$ 34,186
Subtotal	\$ 878,802	\$ 2,610,011	\$ 2,718,026	\$ (108,015)	\$ -	\$ 770,787
Community Service:						
Nonspendable for Prepaid Items	\$ 11,600	\$ -	\$ -	\$ -	\$ -	\$ 11,600
Restricted -						
Community Education	\$ 1,322,076	\$ 2,694,062	\$ 2,754,941	\$ (60,879)	\$ -	\$ 1,261,197
ECFE	\$ 170,755	\$ 309,594	\$ 281,968	\$ 27,626	\$ -	\$ 198,381
School Readiness	\$ (25,584)	\$ 494,248	\$ 551,094	\$ (56,846)	\$ -	\$ (82,430)
Preschool Screening	\$ 11,752	\$ 21,613	\$ 16,299	\$ 5,314	\$ -	\$ 17,066
Subtotal	\$ 1,490,599	\$ 3,519,517	\$ 3,604,302	\$ (84,785)	\$ -	\$ 1,405,814
Building Construction Fund						
Restricted -						
Long-Term Facilities Maintenance	\$ 27,655	\$ -	\$ 27,655	\$ (27,655)	\$ -	\$ -
Referendum Projects	\$ 2,866,929	\$ 25,000	\$ 2,323,207	\$ (2,298,207)	\$ -	\$ 568,722
	\$ 2,894,584	\$ 25,000	\$ 2,350,862	\$ (2,325,862)	\$ -	\$ 568,722
Debt Service - Restricted	\$ 2,024,280	\$ 4,865,286	\$ 4,482,775	\$ 382,511	\$ -	\$ 2,406,791
OPEB Irrevocable Trust Fund	\$ 1,382,879	\$ 100,000	\$ 138,688	\$ (38,688)	\$ -	\$ 1,344,191
Total	\$ 26,441,951	\$ 60,592,174	\$ 67,437,162	\$ (6,844,988)	\$ -	\$ 19,596,963

25-26 Budget Update

No budget revisions for January

Fund Balance Types

Restricted

Amounts restricted for specific purposes, typically as a result of laws or regulations of other governments, such as the state of Minnesota, or imposed by law through enabling legislation.

Examples

Long Term Facilities Maintenance

Operating Capital

Capital Projects Levy

Staff Development

Basic Skills

Fund Balance Types

Committed

Amounts that can only be used for specific purposes pursuant to constraints imposed by the School Board (highest level of decision making authority).

Examples

Committed for Severance

Set aside for future contractual severance liabilities

Looked upon favorably by bond rating agencies

Fund Balance Types

Assigned

School Board delegates to the Director of Business Services, after consultation with the Finance Committee, the authority to assign fund balances for specific purposes.

Examples

Athletics and Activities (Fund 11)
Building Level Activities (Student Activities)
Curriculum Materials
Insurance Deductible
Replacement of Vans and Activities Bus

Fund Balance Types

Nonspendable

Amounts that cannot be spent because they are either not in spendable form or they are legally or contractually required to be maintained intact and include inventory and prepaid items.

Examples

Prepaid Insurance

Fund Balance Types

Unassigned

Represents fund balance that has not been assigned to other funds and that has not been restricted, committed, or assigned to a specific purpose in the General Fund. This fund balance is available for general operating costs.

Unassigned Fund Balance Goal (Policy 714)

- 9-12% of general fund operating expenditures
- Does not include committed, restricted, or assigned fund balance expenditures
- 25-26 budget: 17.8% after \$2.1 million in deficit spending

Why Does the District Need a Fund Balance?

- Federal Funding Uncertainty
- Unfunded State Mandates
 - Paid Family Medical Leave
- Future State Budget Deficits and Budget Cuts
 - Payment shifts – current 90/10; has been 60/40
 - Tax shift –prevalent in recession years

Why Does the District Need a Fund Balance?

- Prevent Cash Flow Borrowing
 - Cash flow borrowing costs diverts resources from the classroom.
 - Prevalent in the recession years when the payment schedule was 60/40.

Other Financial Updates

District Office Staffing Update

School Board Action

Approve financial report

CONSIDERATION OF PROGRAM REDUCTION RESOLUTION

WHEREAS, the financial condition of the school district dictates that the Board of Education may have to consider the reduction of expenditures, and

WHEREAS, such reductions in expenditures may include discontinuance of positions and discontinuance or curtailment of programs, and

WHEREAS, a determination must be made as to which employment contracts may be terminated and not renewed and which individuals may be placed on unrequested leave of absence without pay or fringe benefits in effecting discontinuance of positions,

THEREFORE, BE IT RESOLVED, by the Big Lake Independent School District No. 727 Board of Education as follows:

That the Board of Education hereby directs the superintendent of schools and administration to consider the discontinuance of programs or positions to effectuate economics in the school district and reduce expenditures and make recommendations to the Board of Education for the discontinuance of programs, curtailment of programs, discontinuance of positions, or curtailment of positions.

Date

School District Clerk

Board Approved Guidelines for Class Size Ranges

Elementary Classrooms

Kindergarten	18-22
Grade 1-2	20-24
Grades 3-5	23-27

Middle School Classrooms

Core Programs:

Science	26-30
Social Studies	26-30
Language Arts	26-30
Math	26-30

Non-Core Programs Variable

High School Classrooms

Core Programs:

Science	26-30
Social Studies	26-30
Language Arts	26-30
Math	26-30

Non-Core Programs Variable

EXTRACT OF SCHOOL BOARD MEETING MINUTES
INDEPENDENT SCHOOL DISTRICT NO. 727
BIG LAKE PUBLIC SCHOOLS
STATE OF MINNESOTA

Pursuant to due call and notice thereof, a School Board meeting of Independent School District No. 727, Big Lake, Minnesota, was held on January 28th, 2026, at 6:00 pm, for the purpose, in part, of approving the District’s amended FY 27 Long-Term Facility Maintenance Ten-Year Plan as established in Minnesota Statutes 2024, section 123B.595

School Board Member _____ introduced the following resolution and moved its adoption.

RESOLUTION ADOPTING INDEPENDENT SCHOOL DISTRICT NO. 727
AMENDED FY 27 LONG-TERM FACILITIES MAINTENANCE TEN-YEAR PLAN


BE IT RESOLVED that School Board of Independent School District No. 727, State of Minnesota, approves the attached amended FY 27 Long-Term Facilities Maintenance Plan.

The motion for the adoption of the foregoing resolution was duly seconded by School Board Member _____ and upon vote being taken thereon, the following voted in favor of the motion:

And the following voted against:

WHEREUPON the resolution was declared duly passed and adopted on the 28th day of January 2026.

SCHOOL BOARD CLERK SIGNATURE

 Division of School Finance 400 NE Stinson Blvd Minneapolis, MN 55413		Long-Term Facility Maintenance Ten-Year Expenditure Application (LTFM) - Fund 01 and Fund 06 Projects Only										ED - 02478-11
Instructions: Enter estimated, allowable LTFM expenditures (Fund 01 and/or Fund 06 only) under Minnesota Statutes 2024, section 123B.595, subd. 10. Enter by Uniform Financial and Accounting Reporting Standards (UFARS) finance code and by fiscal year in the cells provided.												
District Info.		(REQUIRED) Enter information		District Info.		(REQUIRED) Enter information						
District Name:	Big Lake	Date:	7/23/2025									
District Number:	727	Email:	a.manuel@biglakeschools.org									
District Contact Name:	Angie Manuel											
Contact Phone #	763-262-5185											
Expenditure Categories		Fiscal Year (FY) Ending June 30										
Health and Safety - this section excludes project costs in Category 2 of \$100,000 or more for which additional revenue is requested for Finance Codes 358, 363 and 366.		2025 (base year)	2026	2027	2028	2029	2030	2031	2032	2033	2034	2035
Finance Code	Category (1)											
347	Physical Hazards	\$40,532	\$37,815	\$35,935	\$36,080	\$37,400	\$32,545	\$30,165	\$32,960	\$31,700	\$32,500	\$31,750
349	Other Hazardous Materials	\$13,408	\$15,200	\$14,250	\$15,250	\$6,000	\$9,100	\$16,200	\$15,300	\$16,000	\$16,000	\$9,000
352	Environmental Health and Safety Management	\$83,583	\$81,500	\$83,300	\$85,950	\$92,213	\$93,143	\$97,093	\$104,019	\$104,824	\$96,000	\$102,992
358	Asbestos Removal and Encapsulation	\$2,540	\$1,175	\$2,350	\$2,350	\$1,200	\$2,400	\$2,400	\$1,200	\$2,400	\$3,000	\$1,200
363	Fire Safety	\$72,217	\$38,150	\$38,600	\$49,250	\$37,050	\$39,850	\$49,650	\$37,800	\$39,350	\$39,000	\$32,200
366	Indoor Air Quality	\$0	\$0	\$0	\$0	\$0	\$0	\$0	\$0	\$0	\$0	\$0
Total Health and Safety Capital Projects - Category (1)		\$212,280	\$173,840	\$174,435	\$188,880	\$173,863	\$177,038	\$195,508	\$191,279	\$194,274	\$186,500	\$177,142
Health and Safety - Projects Costing \$100,000 or more per Project/Site/Year - Additional Revenue												
Finance Code	Category (2)											
358	Asbestos Removal and Encapsulation	\$0	\$0	\$0	\$0	\$0	\$0	\$0	\$0	\$0	\$0	\$0
363	Fire Safety	\$0	\$0	\$0	\$0	\$0	\$0	\$0	\$0	\$0	\$0	\$0
366	Indoor Air Quality	\$0	\$2,378,677	\$0	\$0	\$0	\$0	\$0	\$0	\$0	\$0	\$0
Total Health and Safety Capital Projects \$100,000 or More - Category (2)		\$0	\$2,378,677	\$0	\$0	\$0	\$0	\$0	\$0	\$0	\$0	\$0
Remodeling for Approved Voluntary Pre-K under Minnesota Statutes, section 124D.151												
Finance Code	Category 3 (a)											
355	Remodeling for prekindergarten (Pre-K) instruction approved by the commissioner.	\$0	\$0	\$0	\$0	\$0	\$0	\$0	\$0	\$0	\$0	\$0
Total Remodeling for Approved Voluntary Pre-K Projects - Category 3(a)		\$0	\$0	\$0	\$0	\$0	\$0	\$0	\$0	\$0	\$0	\$0
Remodeling for Gender-Neutral Single-User Restrooms												
Finance/Course Codes	Category 3 (b) LTFM REVENUE EFFECTIVE FY 2025											
Finance Code 384 and Course Code 684 MUST USE BOTH	Remodeling for gender-neutral single user restroom per site.	\$0	\$0	\$0	\$0	\$0	\$0	\$0	\$0	\$0	\$0	\$0
Total Remodeling for Gender-Neutral Single User Projects - Category 3(b)		\$0	\$0	\$0	\$0	\$0	\$0	\$0	\$0	\$0	\$0	\$0
Accessibility												
Finance Code	Category (4)											
367	Accessibility	\$0	\$0	\$0	\$0	\$0	\$0	\$0	\$0	\$0	\$0	\$0
Total Accessibility Projects - Category (4)		\$0	\$0	\$0	\$0	\$0	\$0	\$0	\$0	\$0	\$0	\$0
Deferred Capital Expenditures and Maintenance Projects												
Finance Code	Category (5)											
368	Building Envelope	\$53,965	\$4,500	\$0	\$0	\$0	\$0	\$0	\$0	\$0	\$0	\$0
369	Building Hardware and Equipment	\$0	\$0	\$0	\$0	\$0	\$0	\$0	\$0	\$0	\$0	\$0
370	Electrical	\$11,713	\$0	\$0	\$0	\$0	\$0	\$0	\$0	\$0	\$0	\$0
379	Interior Surfaces	\$44,552	\$9,612	\$0	\$0	\$40,000	\$0	\$58,500	\$72,000	\$25,000	\$20,000	\$25,000
380	Mechanical Systems	\$133,831	\$0	\$0	\$0	\$0	\$0	\$0	\$0	\$0	\$0	\$0
381	Plumbing	\$0	\$0	\$0	\$0	\$0	\$0	\$0	\$0	\$0	\$0	\$0
382	Professional Services and Salary	\$33,132	\$21,855	\$22,510	\$23,185	\$23,881	\$24,597	\$25,335	\$26,095	\$26,878	\$27,865	\$30,000
383	Roof Systems (normally below \$100,000 unless the school chooses not to receive additional revenue for \$100K or more roofing project/site/year - pending 2025 Legislation)	\$0	\$0	\$0	\$0	\$0	\$0	\$0	\$0	\$0	\$0	\$0
384	Site Projects	\$68,130	\$30,000	\$36,000	\$25,000	\$0	\$25,000	\$0	\$0	\$0	\$0	\$0
Total Deferred Capital Expenditures and Maintenance Projects - Category (5)		\$345,323	\$65,967	\$58,510	\$48,185	\$63,881	\$49,597	\$83,835	\$98,095	\$51,878	\$47,865	\$55,000
Deferred Capital Expenditures for Roofing Projects - Additional Revenue for \$100,000 or more project/site/year												
Finance Code	Category (6)											
383	Roofing Systems -pending 2025 Legislation and if passed effective FY 2027	\$0	\$0	\$2,410,000	\$0	\$0	\$0	\$0	\$0	\$0	\$0	\$0
Total Deferred Capital Expense and Maintenance - Category (6)		\$0	\$0	\$2,410,000	\$0	\$0	\$0	\$0	\$0	\$0	\$0	\$0
Total Annual 10-Year Plan Expenditures		\$557,603	\$2,618,484	\$2,642,945	\$237,065	\$237,744	\$226,635	\$279,343	\$289,374	\$246,152	\$234,365	\$232,142
Fund Balance Section												
Fund 01		FY 25 and 26 Revenue Projection Model Revenue				FY 27 Revenue Projection Model Ten-Year Spreadsheet						
Beginning Fund Balance 01-467-XX		\$162,556	\$79,762	-\$980,534	-\$971,996	-\$968,775	\$197,740	\$295,296	\$340,433	\$376,353	\$453,867	\$542,335
LTFM Fiscal Year Revenue - Levy		\$271,349	\$1,590,674	\$2,651,483	\$240,286	\$325,582	\$324,191	\$324,480	\$325,294	\$323,666	\$322,833	\$321,894
LTFM Fiscal Year Revenue - AID if Applicable		\$0	\$0	\$0	\$0	\$0	\$0	\$0	\$0	\$0	\$0	\$0
LTFM Fiscal Year Revenue Other		\$0	\$0	\$0	\$0	\$1,078,677	\$0	\$0	\$0	\$0	\$0	\$0
LTFM Transfer IN from Fund 06 if applicable (see transfer guidance tab)		\$0	\$0	\$0	\$0	\$0	\$0	\$0	\$0	\$0	\$0	\$0
LEVY Page 10, Line 421	LTFM Deduction for applicable Cooperative/Intermediate Member District Levy	\$16,496	\$39,304	\$0	\$0	\$0	\$0	\$0	\$0	\$0	\$0	\$0
LTFM Transfer OUT from Fund 01 if applicable (see transfer guidance tab)		\$0	\$0	\$0	\$0	\$0	\$0	\$0	\$0	\$0	\$0	\$0
LTFM Transfer OUT if applicable - Special Legislation		\$0	\$0	\$0	\$0	\$0	\$0	\$0	\$0	\$0	\$0	\$0
LTFM Estimated Fiscal Year Expenditures		\$337,647	\$2,611,666	\$2,642,945	\$237,065	\$237,744	\$226,635	\$279,343	\$289,374	\$246,152	\$234,365	\$232,142
Ending Fiscal Year Fund Balance 01-467-XX		\$79,762	-\$980,534	-\$971,996	-\$968,775	\$197,740	\$295,296	\$340,433	\$376,353	\$453,867	\$542,335	\$632,087
Fund 06												
Beginning Fund Balance 06-467-XX		\$226,774	\$6,818	\$0	\$0	\$0	\$0	\$0	\$0	\$0	\$0	\$0
LTFM Fiscal Year Bonded Revenue		\$0	\$0	\$0	\$0	\$0	\$0	\$0	\$0	\$0	\$0	\$0
LTFM Fiscal Year Revenue Other		\$0	\$0	\$0	\$0	\$0	\$0	\$0	\$0	\$0	\$0	\$0
LTFM Transfer IN from Fund 01 if applicable (see transfer guidance tab)		\$0	\$0	\$0	\$0	\$0	\$0	\$0	\$0	\$0	\$0	\$0
LTFM Transfer OUT from Fund 06 if applicable (see transfer guidance tab)		\$0	\$0	\$0	\$0	\$0	\$0	\$0	\$0	\$0	\$0	\$0
Other Transfers		\$0	\$0	\$0	\$0	\$0	\$0	\$0	\$0	\$0	\$0	\$0
LTFM Estimated Fiscal Year Expenditures		\$219,956	\$6,818	\$0	\$0	\$0	\$0	\$0	\$0	\$0	\$0	\$0
Ending Fiscal Year Fund Balance 06-467-XX		\$6,818	\$0	\$0	\$0	\$0	\$0	\$0	\$0	\$0	\$0	\$0

January 15, 2026



TJ Zerwas
 Manager of Buildings and Grounds
 Big Lake Schools
 701 Minnesota Ave
 Big Lake, MN 55309

**RE: Liberty Elementary School
 Short-Term Radon Testing Results
 IEA Project #202511159**

Dear Mr. Zerwas:

The Institute for Environmental Assessment, Inc. (IEA) placed 111 Air Chek Pro Chek short-term radon test kits in 94 locations at Liberty Elementary School for the purpose of evaluating radon levels.

The number of kits placed includes those used for quality control purposes. See Appendix A for Quality Control information.

The radon test kits were placed by the following Minnesota Department of Health (MDH) licensed Radon Measurement Professionals:

Measurement Professional	License Number	Signature
Rebecca Escamilla	RMEA-00597	<i>Rebecca Escamilla</i>
Allison Sloan	RMEA-00562	<i>ASloan</i>

INTRODUCTION

Radon is a colorless, odorless, tasteless, radioactive gas that occurs naturally in soil, rocks, and underground water supplies and in the ambient air. According to the U.S. Environmental Protection Agency (EPA) and other scientific organizations, naturally occurring radon gas has been associated with an increased risk of developing lung cancer. The chances of developing lung cancer from radon exposure are dependent on several factors, including individual susceptibility and, perhaps more importantly, the dose and duration of exposure. Radon testing in schools is highly recommended by the Minnesota Department of Health (MDH) and EPA.

BROOKLYN PARK
 9201 West Broadway, Ste. #600
 Brooklyn Park, MN 55445
 763-315-7900 / FAX 763-315-7920
 800-233-9513

MANKATO
 610 North Riverfront Drive
 Mankato, MN 56001
 507-345-8818
 800-233-9513

ROCHESTER
 210 Woodlake Drive SE
 Rochester, MN 55904
 507-281-6664
 800-233-9513

BRAINERD
 601 NW 5th Street, Ste. #4
 Brainerd, MN 56401
 218-302-3787
 800-233-9513

MARSHALL
 1510 Stadium Drive, Ste. #2
 Marshall, MN 56258
 800-233-9513

VIRGINIA
 5525 Emerald Avenue
 Mountain Iron, MN 55768
 218-302-3787
 800-233-9513

METHODOLOGY

IEA placed Air Chek Pro Chek short-term radon test kits in frequently occupied areas in the buildings listed above at Big Lake Schools for the purpose of sampling for radon in accordance with the MDH’s *Guidance for Radon Testing in Minnesota Schools* (2024) or successor and ANSI/AARST MA-MFLB ‘*Protocol for Conducting Measurements of Radon and Radon Decay Products in Multifamily, Schools and Commercial and Multi-Use Buildings*’ (ANSI/AARST MA-MFLB 2023) or successor ANSI/AARST standards using the extended testing protocol.

A total of 111 radon test kits were placed from December 16-19, 2025 for a total short-term sampling period of 3 days. The radon test kits were analyzed by AirChek, Inc., MDH license #RL-00003, located at 1936 Butler Bridge Road, Mills River, NC 28759. The Analysis Methodologies are provided in Appendix A.

Air intakes and ventilation systems were operating in normal condition at the time of placement and retrieval. IEA was informed that the HVAC was on a normal operating schedule during the testing period.

IEA followed ANSI/AARST MA-MFLB 2023 or successor ANSI/AARST standards for quality assurance measurements by including duplicate kits, control kits (blanks), and spiked kits.

Client communications and commitments were delivered to the client and are located in Appendix C:

- Client Commitments, Advisories and Authorizations
- Facilitating Staff Commitments

Occupant notices were sent to the client for distribution on December 2, 2025. The client distributed the notifications to staff members at Liberty Elementary School on December 11, 2025.

EVALUATION CRITERIA

The MDH and the EPA have established a recommended action level for intended to be occupied areas of 4.0 picocuries per liter (pCi/L) for an annual average. Testing was conducted during school days when the building is significantly occupied. The HVAC system was set on a normal occupied operating schedule. Testing was conducted during the heating season when the average outdoor temperature is less than 65°F, as recommended by the MDH, when the ventilation system was operating normally, and windows and doors were closed. Consequently, sampling under these “closed” conditions is when the radon risk is most likely to occur.

MDH recommends follow-up testing for sampling results that are above the action level. Please refer to the following table for MDH guidelines:

RESULTS (pCi/L)	RECOMMENDED ACTION
LESS THAN 4	Re-test after changes to foundation or HVAC and every 5 years
GREATER THAN OR EQUAL TO 4	Conduct CRM short-term testing during winter months
LESS THAN 4 (DURING OCCUPANCY) AFTER CRM TESTING	Repeat CRM testing if not conducted during winter or if conducted during abnormal ventilation. Otherwise consider re-testing after changes to foundation or HVAC and every 5 years
GREATER THAN OR EQUAL TO 4 (DURING OCCUPANCY) AFTER CRM TESTING	Reduce radon in rooms to less than 4 through radon mitigation. Conduct CRM testing to verify radon reduction.

CRM: Continuous Radon Monitor

RESULTS & DISCUSSION

The laboratory reports and maps of each building with sampling locations are provided in Appendix B. The following includes summary results for each building.

Liberty Elementary School

17901 205th Ave NW
 Big Lake, MN 55309

A total of 111 test kits were placed in 94 locations at Liberty Elementary School. No test kits were missing or damaged upon retrieval.

The results indicated that radon levels for the locations tested in Liberty Elementary School were below the action level of 4 pCi/L. See Table 1 below for a summary of the results:

TABLE 1: LIBERTY ELEMENTARY SCHOOL – RANGE OF RESULTS				
	0.0 – 1.9 pCi/L	2.0 – 2.9 pCi/L	3.0 – 3.9 pCi/L	≥ 4 pCi/L
Number of Locations	94	0	0	0
¹ All results were below action level of 4 pCi/L.				

pCi/L: picocuries per liter

CONCLUSIONS AND RECOMMENDATIONS

The radon levels in the sampled locations were below the EPA action level of 4 pCi/L.

The EPA has established recommended guidelines for permissible radon concentrations in schools. The following are general recommendations for frequently occupied areas of schools:

- The building should be retested at least every 5 years and in conjunction with any sale of the building. The building should be retested at least every 2 years if a mitigation system is present.
- Ground contact rooms that were not tested because they were not occupied, should be tested if they become occupied in the future.

In addition, retesting should be conducted when any of the following circumstances occur:

- A new addition is constructed, or a significant renovation occurs
- Heating or cooling systems are significantly altered, resulting in changes to air pressures or distribution.
- Ventilation is significantly altered by extensive weatherization, changes to mechanical systems, or comparable procedures.
- Significant openings to soil occur due to:
 - Ground water or slab surface water control systems (e.g., sumps, perimeter drain tile, shower/tub retrofits, etc.)
 - Natural settlement causing major cracks to develop
 - Earthquakes, construction blasting, or formation of sink holes nearby
 - A mitigation system is altered, modified, or repaired
- Rooms should be retested during the winter heating season (i.e., under “closed” conditions) which is typically “worst case” conditions.

Per Minnesota Statutes, section 123B.571, school districts are required to report radon test results at a school board meeting and report results to the MDH. IEA is able to assist with presenting results to the school board, and the MDH reporting. The MDH ‘School Radon Testing Form’ is located in Appendix E.

For more information regarding radon, see the EPA’s A Citizen’s Guide to Radon at <http://www.epa.gov/radon>. MDH can be contacted at health.indoorair@state.mn.us or 651-201-4601.

GENERAL COMMENTS

The analysis and opinions expressed in this report are based upon data obtained from radon sampling district-wide and are representative of the locations and time period sampled. This report does not reflect variations in conditions that may occur across the site, property, or facility. Actual conditions may vary and may not become evident without further assessment. The chain of custody for test devices is available upon request. It is the client’s responsibility to identify and comply with local statutes regarding obligations that may exist for disclosing test results to occupants and affected third parties.

The report is prepared for the exclusive use of our client for specific application to the project discussed and has been prepared in accordance with generally accepted environmental, health and safety practices. Other than as provided in the preceding sentence and in our Proposal #13238 dated August 20, 2025, regarding radon sampling services at the district locations, including the General Conditions attached thereto, no warranties are extended or made.

Should you require additional radon testing or have any questions regarding radon or any other environmental, health, or safety-related concerns, please do not hesitate to contact our office.

Sincerely,

IEA, Inc.



Nate Murphy
IAQ Project Manager

Reviewed by:



Emma Squires-Sperling
Laboratory Director

NM/wb 011526

Enc.

Appendix A

Analysis Methodology and Quality Control Measurements

Analysis Methodology

IEA placed Air Chek, Inc. Pro Chek activated charcoal radon test kits designed specifically for the detection of gamma emissions caused by the decay of Radon-222 and its daughter products. The kit is made of a padded envelope which contains activated charcoal. Upon pick-up, the kit is sealed with vinyl tape after 72 to 96 hours of indoor exposure. Individual kits are uniquely identified with a number and corresponding bar code.

Upon receipt at the analytical laboratory, the kits are logged in using the unique numbers assigned to each kit. The kits are placed on a gamma detector to count the gamma emissions from the decay of radon adsorbed by the charcoal. A calibration factor determined in part by the exposure time and decay time is used to calculate the radon concentration. A correction factor is also applied for weight gain from any moisture absorbed by the charcoal during the sampling period.

Any unusual conditions are noted on the processing form and shown on the exposure report.

MDH and ANSI/AARST MA-MFLB 2023 Quality Control Measurements

IEA followed ANSI/AARST MA-MFLB 2023 or successor ANSI/AARST standards and MDH recommendations for quality assurance measurements to ensure the accuracy of test results. Quality assurance measurements include side-by-side test kits (duplicates) and unexposed control test kits (blanks).

Duplicates are pairs of test kits placed 4-8 inches apart for the same test period. Duplicates are stored, placed, retrieved, and shipped to the laboratory for analysis in the same manner as the other test kits so that the laboratory cannot distinguish them. Since duplicates are placed side-by-side, the measured values for radon should be the same. In an environment with a radon concentration between 2 and 4 pCi/L, the average of all duplicates' relative percent difference (RPD) should not exceed 25%. In an environment with a radon concentration greater than or equal to 4 pCi/L, the average of all duplicates' relative percent difference (RPD) should not exceed 14%. If they do, an investigation to identify the cause may be warranted and could include repeating the measurements. Duplicate averages are listed in Table 1 below.

Table 1: Duplicate Device Measurements and Averages					
Location	Test 1 (pCi/L)	Test 2 (pCi/L)	Average (pCi/L)	Difference	RPD (%)
25	0.8	1.2	1.0	0.4	40
27	1.2	1.1	1.2	0.1	9
100	<0.3	0.6	<0.5	0.3	67
110	0.5	<0.3	<0.4	0.2	50
123	1.2	1	1.1	0.2	18
143	0.6	<0.3	<0.5	0.3	67
150	0.7	<0.3	<0.5	0.4	80
160	0.7	0.7	0.7	0.0	0
295	<0.3	0.5	<0.4	0.2	50
D128	<0.3	<0.3	<0.3	0.0	0
Main Office	0.7	0.5	0.6	0.2	33

Duplicates averaging < 2.0 pCi/L reach the warning limit when there is a difference between the two results of more than 1pCi/L, but there is no control limit.

Blanks can be used to determine whether the manufacturing, shipping, storage, or processing of the detector has "contaminated" your measurements. Blanks are opened and immediately re-sealed to keep room air from infiltrating the test kit. Blanks are labeled and shipped in the same manner as the exposed test kits so that the laboratory cannot distinguish them. Since blanks are not exposed to radon, their measurement value should be below the lower limit of detection; lower limit of detection for Airchek is < 0.3pCi/L. Field blanks are listed in the laboratory report as FB<Room/Location Name>. Office blanks are listed in the laboratory report as OStorage Room A, OStorage Room B, etc. Lab-Transit Blanks are listed in Table 2 below.

Table 2: Blanks							
Start Date	End Date	Start Time	End Time	Device ID	Type of Blank	Description	Radon Concentration (pCi/L)
12/16/2025	12/19/2025	11:00 AM	11:00 AM	12190077	Field	FB028-1	<0.3
12/16/2025	12/19/2025	11:00 AM	11:00 AM	12188362	Field	FB028-2	<0.3
12/16/2025	12/19/2025	11:00 AM	11:00 AM	12189852	Field	FB028-3	<0.3
12/16/2025	12/19/2025	1:00 PM	12:00 PM	11805191	Office	OStorage Room A	<0.3
12/16/2025	12/19/2025	1:00 PM	12:00 PM	11805167	Office	OStorage Room B	<0.3
12/16/2025	12/19/2025	1:00 PM	12:00 PM	12189817	Office	OStorage Room C	<0.3
12/13/2025	12/15/2025	1:13 PM	1:13 PM	12306323	Lab-Transit	LTBP-90	< 0.3
12/13/2025	12/15/2025	1:13 PM	1:13 PM	12306324	Lab-Transit	LTBP-91	< 0.3
12/13/2025	12/15/2025	1:13 PM	1:13 PM	12306326	Lab-Transit	LTBP-93	< 0.3
12/13/2025	12/15/2025	1:13 PM	1:13 PM	12306327	Lab-Transit	LTBP-94	< 0.3
12/13/2025	12/15/2025	1:13 PM	1:13 PM	12306328	Lab-Transit	LTBP-95	< 0.3
12/13/2025	12/15/2025	1:13 PM	1:13 PM	12306329	Lab-Transit	LTBP-96	< 0.3
12/13/2025	12/15/2025	1:13 PM	1:13 PM	12306330	Lab-Transit	LTBP-97	< 0.3

Spikes are test kits that have been exposed in a chamber to a known concentration of radon. Using spiked measurements can help evaluate the accuracy of a laboratory analysis and/or how accurately test kits supplied by a laboratory measure radon. Spiked test kits are labeled and shipped in the same manner as the exposed test kits so that the laboratory cannot distinguish them. Spiked results completed for our laboratory are included in the following pages. Spiked test kits are listed in Table 3 below.

Table 3: Spiked Detectors							
Start Date	End Date	Start Time	End Time	Device ID	Measured Value (pCi/L)	Reference Value (pCi/L)	Relative Percent Error (RPE)
12/5/2025	12/8/2025	9:12:00 AM	9:12:00 AM	12188216	24.3	25.5	-4.7
12/5/2025	12/8/2025	9:12:00 AM	9:12:00 AM	12188217	25.7	25.5	0.8
12/5/2025	12/8/2025	9:12:00 AM	9:12:00 AM	12188218	23.2	25.5	-9.0
12/5/2025	12/8/2025	9:12:00 AM	9:12:00 AM	12188219	22.5	25.5	-11.8
12/5/2025	12/8/2025	9:12:00 AM	9:12:00 AM	12188221	24.2	25.5	-5.1
12/5/2025	12/8/2025	9:12:00 AM	9:12:00 AM	12188222	24.5	25.5	-3.9

Any spike result outside the RPE range of $\pm 30\%$ has exceeded the control limit.

Appendix B

Laboratory Reports and Maps

Radon test result report for:**LIBERTY ELEMENTARY SCHOOL**

Kit #	Room Id	Started	Ended	pCi/L	Analyzed
11805188	026	2025-12-16 @ 9:00 am	2025-12-19 @ 9:00 am	0.6 ± 0.4	2025-12-23
11805200	028	2025-12-16 @ 9:00 am	2025-12-19 @ 9:00 am	1.3 ± 0.4	2025-12-23
12189861	CAFETERIA N	2025-12-16 @ 9:00 am	2025-12-19 @ 9:00 am	0.5 ± 0.3	2025-12-23
11805192	CAFETERIA NE	2025-12-16 @ 9:00 am	2025-12-19 @ 9:00 am	0.5 ± 0.3	2025-12-23
12189826	CAFETERIA W	2025-12-16 @ 9:00 am	2025-12-19 @ 9:00 am	< 0.3	2025-12-23
11805189	DISH ROOM	2025-12-16 @ 9:00 am	2025-12-19 @ 9:00 am	< 0.3	2025-12-23
11805186	DRY STORAGE	2025-12-16 @ 9:00 am	2025-12-19 @ 9:00 am	0.8 ± 0.4	2025-12-23
12190056	DUP-025-1	2025-12-16 @ 9:00 am	2025-12-19 @ 9:00 am	0.8 ± 0.3	2025-12-23
12189890	DUP-025-2	2025-12-16 @ 9:00 am	2025-12-19 @ 9:00 am	1.2 ± 0.4	2025-12-23
12189882	DUP-027-1	2025-12-16 @ 9:00 am	2025-12-19 @ 9:00 am	1.2 ± 0.3	2025-12-23
11805199	DUP-027-2	2025-12-16 @ 9:00 am	2025-12-19 @ 9:00 am	1.1 ± 0.3	2025-12-23
12189825	KITCHEN	2025-12-16 @ 9:00 am	2025-12-19 @ 9:00 am	< 0.3	2025-12-23
11805187	STAGE	2025-12-16 @ 9:00 am	2025-12-19 @ 9:00 am	< 0.3	2025-12-23

Air Chek 1936 Butler Bridge Rd, Mills River, NC 28759-3892 Phone: (828) 684-0893 Fax: (828) 684-8498

Radon test result report for:

BIG LAKE SCHOOLS**LIBERTY ELEMENTARY SCHOOL**

Kit #	Room Id	Started	Ended	pCi/L	Analyzed
12189840	015	2025-12-16 @ 9:00 am	2025-12-19 @ 9:00 am	0.8 ± 0.3	2025-12-23
12189839	016	2025-12-16 @ 9:00 am	2025-12-19 @ 9:00 am	0.7 ± 0.3	2025-12-23
11805159	017	2025-12-16 @ 9:00 am	2025-12-19 @ 9:00 am	0.8 ± 0.3	2025-12-23
12189827	018	2025-12-16 @ 9:00 am	2025-12-19 @ 9:00 am	0.9 ± 0.4	2025-12-23
12189888	019	2025-12-16 @ 9:00 am	2025-12-19 @ 9:00 am	< 0.3	2025-12-23
12189829	020	2025-12-16 @ 9:00 am	2025-12-19 @ 9:00 am	< 0.3	2025-12-23
12189855	021	2025-12-16 @ 9:00 am	2025-12-19 @ 9:00 am	0.6 ± 0.3	2025-12-23
12189854	022	2025-12-16 @ 9:00 am	2025-12-19 @ 9:00 am	< 0.3	2025-12-23
12189820	023	2025-12-16 @ 9:00 am	2025-12-19 @ 9:00 am	0.7 ± 0.3	2025-12-23
12189898	103	2025-12-16 @ 9:00 am	2025-12-19 @ 9:00 am	0.8 ± 0.3	2025-12-23
12189822	104	2025-12-16 @ 9:00 am	2025-12-19 @ 9:00 am	< 0.3	2025-12-23
12189821	105	2025-12-16 @ 10:00 am	2025-12-19 @ 9:00 am	< 0.3	2025-12-23
12189833	106	2025-12-16 @ 10:00 am	2025-12-19 @ 9:00 am	0.5 ± 0.3	2025-12-23
12189876	111	2025-12-16 @ 10:00 am	2025-12-19 @ 9:00 am	< 0.3	2025-12-23
12189885	112	2025-12-16 @ 10:00 am	2025-12-19 @ 10:00 am	< 0.3	2025-12-23
12189830	113	2025-12-16 @ 10:00 am	2025-12-19 @ 10:00 am	< 0.3	2025-12-23
12189879	114	2025-12-16 @ 10:00 am	2025-12-19 @ 10:00 am	0.8 ± 0.4	2025-12-23
12189867	115	2025-12-16 @ 10:00 am	2025-12-19 @ 10:00 am	< 0.3	2025-12-23
12189835	116	2025-12-16 @ 10:00 am	2025-12-19 @ 10:00 am	0.5 ± 0.3	2025-12-23
12189862	120	2025-12-16 @ 10:00 am	2025-12-19 @ 10:00 am	< 0.3	2025-12-23
12189838	121	2025-12-16 @ 10:00 am	2025-12-19 @ 10:00 am	0.5 ± 0.3	2025-12-23
12189857	122	2025-12-16 @ 10:00 am	2025-12-19 @ 10:00 am	1.1 ± 0.4	2025-12-23
12189891	130	2025-12-16 @ 9:00 am	2025-12-19 @ 9:00 am	0.6 ± 0.3	2025-12-23
12189894	131	2025-12-16 @ 10:00 am	2025-12-19 @ 9:00 am	< 0.3	2025-12-23
12190081	132	2025-12-16 @ 10:00 am	2025-12-19 @ 9:00 am	0.6 ± 0.3	2025-12-23
12190070	133	2025-12-16 @ 10:00 am	2025-12-19 @ 9:00 am	< 0.3	2025-12-23
11805193	134	2025-12-16 @ 10:00 am	2025-12-19 @ 10:00 am	0.7 ± 0.4	2025-12-23
12189875	135	2025-12-16 @ 10:00 am	2025-12-19 @ 10:00 am	1.1 ± 0.3	2025-12-23
12186598	136	2025-12-16 @ 10:00 am	2025-12-19 @ 10:00 am	1.0 ± 0.3	2025-12-23
12189870	137	2025-12-16 @ 10:00 am	2025-12-19 @ 10:00 am	1.1 ± 0.3	2025-12-23
12189868	138	2025-12-16 @ 10:00 am	2025-12-19 @ 10:00 am	0.7 ± 0.4	2025-12-23
12186589	139	2025-12-16 @ 10:00 am	2025-12-19 @ 10:00 am	0.9 ± 0.4	2025-12-23
12189893	140	2025-12-16 @ 10:00 am	2025-12-19 @ 10:00 am	< 0.3	2025-12-23
12189877	140 SENSORY ROOM	2025-12-16 @ 10:00 am	2025-12-19 @ 10:00 am	< 0.3	2025-12-23
12189858	141	2025-12-16 @ 10:00 am	2025-12-19 @ 10:00 am	< 0.3	2025-12-23
12189846	142	2025-12-16 @ 10:00 am	2025-12-19 @ 10:00 am	< 0.3	2025-12-23
12189864	144	2025-12-16 @ 10:00 am	2025-12-19 @ 10:00 am	0.6 ± 0.4	2025-12-23

Radon test result report for:

BIG LAKE SCHOOLS**LIBERTY ELEMENTARY SCHOOL**

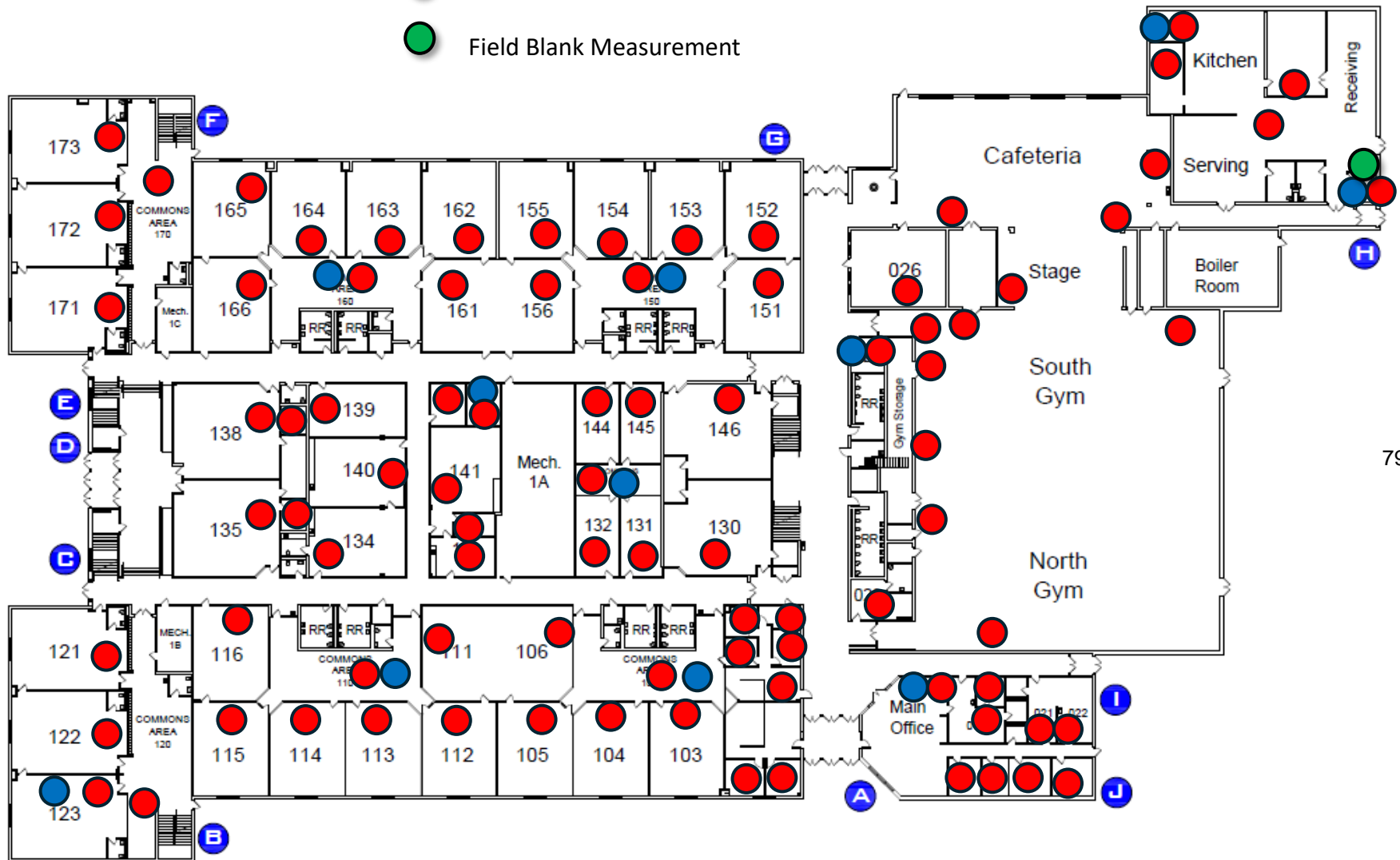
Kit #	Room Id	Started	Ended	pCi/L	Analyzed
12189863	146	2025-12-16 @ 10:00 am	2025-12-19 @ 10:00 am	< 0.3	2025-12-23
12186596	151	2025-12-16 @ 10:00 am	2025-12-19 @ 10:00 am	0.7 ± 0.3	2025-12-23
12189849	152	2025-12-16 @ 10:00 am	2025-12-19 @ 10:00 am	0.6 ± 0.3	2025-12-23
12189866	153	2025-12-16 @ 10:00 am	2025-12-19 @ 10:00 am	< 0.3	2025-12-23
12189850	154	2025-12-16 @ 10:00 am	2025-12-19 @ 10:00 am	< 0.3	2025-12-23
12189848	155	2025-12-16 @ 10:00 am	2025-12-19 @ 10:00 am	< 0.3	2025-12-23
12190055	156	2025-12-16 @ 10:00 am	2025-12-19 @ 10:00 am	0.7 ± 0.4	2025-12-23
12189892	161	2025-12-16 @ 10:00 am	2025-12-19 @ 10:00 am	< 0.3	2025-12-23
12189897	162	2025-12-16 @ 10:00 am	2025-12-19 @ 10:00 am	< 0.3	2025-12-23
12189843	163	2025-12-16 @ 10:00 am	2025-12-19 @ 10:00 am	< 0.3	2025-12-23
12189889	164	2025-12-16 @ 10:00 am	2025-12-19 @ 10:00 am	0.7 ± 0.3	2025-12-23
12189900	165	2025-12-16 @ 10:00 am	2025-12-19 @ 10:00 am	0.7 ± 0.3	2025-12-23
12189899	166	2025-12-16 @ 10:00 am	2025-12-19 @ 10:00 am	0.8 ± 0.3	2025-12-23
12189878	170	2025-12-16 @ 10:00 am	2025-12-19 @ 10:00 am	0.7 ± 0.3	2025-12-23
12186590	171	2025-12-16 @ 10:00 am	2025-12-19 @ 10:00 am	0.7 ± 0.3	2025-12-23
12186597	172	2025-12-16 @ 10:00 am	2025-12-19 @ 10:00 am	0.8 ± 0.3	2025-12-23
12189844	173	2025-12-16 @ 10:00 am	2025-12-19 @ 10:00 am	0.6 ± 0.3	2025-12-23
12189836	200	2025-12-16 @ 11:00 am	2025-12-19 @ 10:00 am	< 0.3	2025-12-23
12190045	210	2025-12-16 @ 11:00 am	2025-12-19 @ 10:00 am	< 0.3	2025-12-23
12190058	250	2025-12-16 @ 11:00 am	2025-12-19 @ 10:00 am	< 0.3	2025-12-23
12189860	270	2025-12-16 @ 11:00 am	2025-12-19 @ 10:00 am	< 0.3	2025-12-23
12189831	COMMUNITY EDUCATION BREAK ROOM	2025-12-16 @ 9:00 am	2025-12-19 @ 9:00 am	< 0.3	2025-12-23
12189823	COMMUNITY EDUCATION MAIN OFFICE	2025-12-16 @ 9:00 am	2025-12-19 @ 9:00 am	0.5 ± 0.4	2025-12-23
12189847	D122	2025-12-16 @ 10:00 am	2025-12-19 @ 10:00 am	0.7 ± 0.3	2025-12-23
12189896	D145	2025-12-16 @ 10:00 am	2025-12-19 @ 10:00 am	< 0.3	2025-12-23
12189895	DUP-100-1	2025-12-16 @ 9:00 am	2025-12-19 @ 9:00 am	< 0.3	2025-12-23
12189884	DUP-100-2	2025-12-16 @ 9:00 am	2025-12-19 @ 9:00 am	0.6 ± 0.3	2025-12-23
12189828	DUP-110-1	2025-12-16 @ 10:00 am	2025-12-19 @ 10:00 am	0.5 ± 0.3	2025-12-23
12189887	DUP-110-2	2025-12-16 @ 10:00 am	2025-12-19 @ 10:00 am	< 0.3	2025-12-23
12189818	DUP-123-1	2025-12-16 @ 10:00 am	2025-12-19 @ 10:00 am	1.2 ± 0.4	2025-12-23
12189834	DUP-123-2	2025-12-16 @ 10:00 am	2025-12-19 @ 10:00 am	1.0 ± 0.3	2025-12-23
12189845	DUP-143-1	2025-12-16 @ 10:00 am	2025-12-19 @ 10:00 am	0.6 ± 0.3	2025-12-23
12186594	DUP-143-2	2025-12-16 @ 10:00 am	2025-12-19 @ 10:00 am	< 0.3	2025-12-23
12189856	DUP-150-1	2025-12-16 @ 10:00 am	2025-12-19 @ 10:00 am	0.7 ± 0.3	2025-12-23
12186600	DUP-150-2	2025-12-16 @ 10:00 am	2025-12-19 @ 10:00 am	< 0.3	2025-12-23
12189842	DUP-160-1	2025-12-16 @ 10:00 am	2025-12-19 @ 10:00 am	0.7 ± 0.3	2025-12-23
12189865	DUP-160-2	2025-12-16 @ 10:00 am	2025-12-19 @ 10:00 am	0.7 ± 0.3	2025-12-23

Radon test result report for:

BIG LAKE SCHOOLS**LIBERTY ELEMENTARY SCHOOL**

Kit #	Room Id	Started	Ended	pCi/L	Analyzed
12190072	DUP-295-1	2025-12-16 @ 11:00 am	2025-12-19 @ 10:00 am	< 0.3	2025-12-23
12190063	DUP-295-2	2025-12-16 @ 11:00 am	2025-12-19 @ 10:00 am	0.5 ± 0.3	2025-12-23
12186599	DUP-D128-1	2025-12-16 @ 10:00 am	2025-12-19 @ 10:00 am	< 0.3	2025-12-23
12190098	DUP-D128-2	2025-12-16 @ 10:00 am	2025-12-19 @ 10:00 am	< 0.3	2025-12-23
12189880	DUP-MAIN OFFICE-1	2025-12-16 @ 9:00 am	2025-12-19 @ 9:00 am	0.7 ± 0.4	2025-12-23
12189841	DUP-MAIN OFFICE-2	2025-12-16 @ 9:00 am	2025-12-19 @ 9:00 am	0.5 ± 0.3	2025-12-23
12190077	FB0281	2025-12-16 @ 11:00 am	2025-12-19 @ 11:00 am	< 0.3	2025-12-23
12188362	FB0282	2025-12-16 @ 11:00 am	2025-12-19 @ 11:00 am	< 0.3	2025-12-23
12189852	FB0283	2025-12-16 @ 11:00 am	2025-12-19 @ 11:00 am	< 0.3	2025-12-23
12190082	H.DEHMER OFFICE	2025-12-16 @ 9:00 am	2025-12-19 @ 9:00 am	< 0.3	2025-12-23
12189869	M.PROKOSCH OFFICE	2025-12-16 @ 9:00 am	2025-12-19 @ 9:00 am	< 0.3	2025-12-23
11805191	OSTORAGE ROOM A	2025-12-16 @ 1:00 pm	2025-12-19 @ 12:00 pm	< 0.3	2025-12-23
11805167	OSTORAGE ROOM B	2025-12-16 @ 1:00 pm	2025-12-19 @ 12:00 pm	< 0.3	2025-12-23
12189817	OSTORAGE ROOM C	2025-12-16 @ 1:00 pm	2025-12-19 @ 12:00 pm	< 0.3	2025-12-23
12190064	S.GORT OFFICE	2025-12-16 @ 9:00 am	2025-12-19 @ 9:00 am	< 0.3	2025-12-23
12189832	S.HILLMAN OFFICE	2025-12-16 @ 9:00 am	2025-12-19 @ 9:00 am	0.5 ± 0.3	2025-12-23
12189883	SOUTH/NORTH GYM 1	2025-12-16 @ 9:00 am	2025-12-19 @ 9:00 am	0.5 ± 0.3	2025-12-23
12189853	SOUTH/NORTH GYM 2	2025-12-16 @ 9:00 am	2025-12-19 @ 9:00 am	< 0.3	2025-12-23
12189886	SOUTH/NORTH GYM 3	2025-12-16 @ 9:00 am	2025-12-19 @ 10:00 am	< 0.3	2025-12-23
12189837	SOUTH/NORTH GYM 4	2025-12-16 @ 9:00 am	2025-12-19 @ 9:00 am	< 0.3	2025-12-23
12189871	SOUTH/NORTH GYM 5	2025-12-16 @ 9:00 am	2025-12-19 @ 9:00 am	< 0.3	2025-12-23
12189872	SOUTH/NORTH GYM 6	2025-12-16 @ 9:00 am	2025-12-19 @ 9:00 am	0.5 ± 0.3	2025-12-23
12189819	SOUTH/NORTH GYM 7	2025-12-16 @ 9:00 am	2025-12-19 @ 9:00 am	< 0.3	2025-12-23
11805194	T.FOWLER OFFICE	2025-12-16 @ 9:00 am	2025-12-19 @ 9:00 am	0.6 ± 0.3	2025-12-23

- Short-Term Radon Measurement
- Duplicate Measurement
- Field Blank Measurement



- Short-Term Radon Measurement
- Duplicate Measurement
- Field Blank Measurement



80



UHL - Map of Air Handlers. 2006, AUC

AHU-2
↓ S. Kdgt

AHU-3

AHU-4

AHU-4

AHU-23

AHU



AHU-6
Music

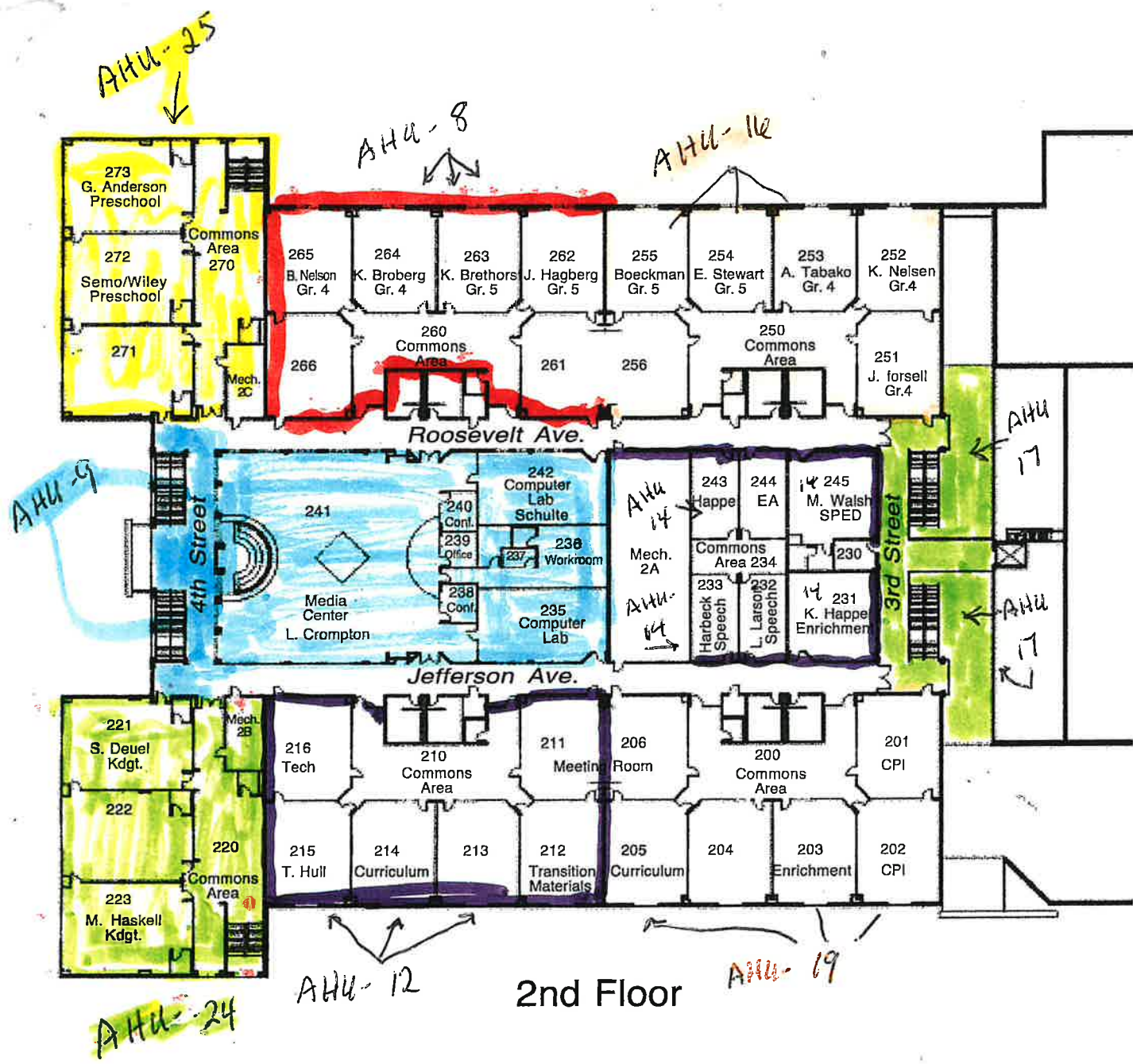
RTU I
Roof Top Unit 84

Liberty Elementary School

1st Floor AHU-10 AHU-11

AHU-1
N. Kdgt
AHU-7
N. Kdgt

AHU-21
AHU-25 - Kids Club's Office
AHU-18 - Phys Ed Office
AHU-10 ART, Rooms 30, 46



- 2nd Floor**
- 230 R. Ringold
 - 237 Copy Room
 - 239 L. Crompton

- 1st Floor**
- 15 Conference room
 - 16 Office
 - 17 J. LeCaptain
 - 18 D. Hauge
 - 19 Nurse
 - 20 N. Dziura
 - 23 J. Haskell
 - 23 A. Noble
 - 23 C. Wittenberg
 - 25 Kids Club Office
 - 27 Kitchen Office
 - 28 Custodian Office

Appendix C

Signed Non-Interference Agreement

and

Client Commitments, Advisories, and Authorizations

NOTICE OF INSPECTION FOR ALL FACILITATING STAFF

A radon test is scheduled for:

Building: Liberty Elementary School

Test Start Date: 12-16-2025

Test End Date: 12-19-2025

Please help to maintain the required test conditions throughout the building

1. All windows and exterior doors must be kept closed (aside from momentary entry or exit) for 12 hours before and during the test.
2. Heating and cooling systems must be set to normal occupied operating temperatures.
3. Test devices are not to be disturbed.

84

Further guidance on required building conditions are located on the next page.

Test devices are not dangerous in any way. The type of devices used for this testing will include:

Short-term test kits. It is important that these devices are fully open and not covered. They will be analyzed by a laboratory.

Continuous radon monitors. These are electronic devices that record hourly radon readings.

Long-term test kits. It is important that these devices are not covered. They will be analyzed by a laboratory.

Declaration of Observed Compliance

Failure to reasonably maintain test conditions can lead to unnecessary expense, disruptions and unreliable data.

Disturbing test devices can also cause unreliable or invalid test results.

- Please report in a timely manner if required test conditions are not maintained.
- Please sign and return this form once the test is complete.

To the best of my knowledge, the required conditions were maintained during the test.

Yes

Name: *Adam Dockendorf*

Signature: *Adam Dockendorf*

Licensed Measurement Professional:

Rebecca Escamilla, RMEA-00597

More Detailed Guidance for Staff

Required Closed-Building Conditions	
Windows	Keep Closed, Seal broken windows closed
External doors (except for normal entry or exit)	Keep Closed
Heating & Cooling Systems	Set to normal operating conditions
Bathroom fans	Operate normally
Fireplaces (including gas)	Do not operate
Auxiliary or temporary systems that bring air into the building	Do not operate (unless an integral part of HVAC or supplies make-up air for combustion appliances)
Exhaust systems (ex. from shops, laundries, kitchens)	Avoid excessive operation
Interior doors, Stairwells, Fire Doors	Operate Normally
Garage doors	Operate normally
Ceiling Fans, Portable Fans	Do not blow directly on the test device
Window AC Units	Operate in recirculation mode only
Window Fans	Do not operate. Seal shut or remove.
Humidifiers, Dehumidifiers, Portable Air Cleaners	Operate Normally
Central Vacuum Cleaner Systems	Operate Normally
Passive crawl space vents	Operate normally
Crawlspace exhaust systems for humidity control	Operate normally
Passive Vents for Combustion Make-Up Air	Leave Open
Combustion Appliance Vents	Operate Normally
Passive Solar Systems	Operate Normally
Attic Vent Fans	Operate Normally
Evaporative Cooling Systems	Do not operate

Client Commitments, Advisories, and Authorizations

I have been informed of test plan options that comply with ANSI/AARST MA-MFLB 2023.

Time-Sensitive Testing	Extended Testing
Tests at each location are tested using two short-term test devices or a continuous radon monitor.	Tests at each location are conducted using a single short-term test device.
--	All locations that meet or exceed the action level (4.0 pCi/L) are retested.
Decisions to mitigate are based on the results of the average of the two short-term test devices or the average from a continuous radon monitor.	Decisions to mitigate are based on the results of the average of the two rounds of testing.

Testing should take place during normal occupied operating conditions for the building, and when operating conditions for the building are most likely to emphasize a clear characterization of a radon hazard. For most locations in the U.S., including Minnesota, this is during the heating season (November through March).

To the extent reasonably possible, I commit to helping ensure that building conditions required to achieve reliable radon tests are met, as portrayed herein, by accepting the following responsibilities:

- BUILDING PREPARATION:** I accept responsibility that, no later than 12 hours prior to testing, each building scheduled for testing will be reviewed for compliance with closed-building requirements.
- COMPLIANCE VERIFICATION:** I accept responsibility for taking actions that could include adjustments to HVAC units and repairs, such as for broken windows, where completion is required no later than 12 hours prior to testing. Maps and information regarding HVAC systems will be provided upon IEA request. Verification will be provided as signed/initialed below or initialed on a log sheet, to be provided.
- PRIOR NOTIFICATIONS:** Notices will be distributed to staff and occupants at least 24 hours prior to testing and posted in publicly accessible areas such as in corridors, elevators and offices in a timely manner, no later than required by local law for gaining access to a dwelling or not later than the day before testing. Notices will include:
 - Scheduled dates and times for test device placement and retrieval
 - Essential closed-building requirements portrayed in Table 4-A of the ANSI/AARST standard and that these conditions are required no later than 12 hours prior to the test and throughout the test period
 - Information on how to obtain federal or state radon health guidance, and
 - Local contact information for inquiries, such as the authorized building supervisor.
- ACCESS:** Access will be provided to each location being tested within a building, with intent to access all locations within a building on the same day for both the event of placing test devices, and a second event for retrieving test devices.
- QUALITY CONTROL:** Quality control measurements will be done at 10% duplicates (extended testing option), 5% blanks, and 3% spikes (3% of each lot of charcoal adsorption devices, max of 6 spikes per month).

A valid measurement shall be taken in 100% ground contact rooms that are occupied or intended to be occupied, and those located above unoccupied rooms in ground contact, as well as 10% of rooms on each upper floor in each building. Failure to reasonably maintain *closed-building conditions* or when test locations are not readily accessible can lead to unnecessary expense, disruptions, and unreliable data. Disturbing test devices can also cause unreliable and invalid test results.

Client Commitments, Advisories, and Authorizations

Please mark or provide, in writing, a list of who is authorized to receive test data and at which junctures data should be provided. Person(s) authorized to receive report data and incremental reports:

- Proposal Contact and Superintendent
- District Administrators
- Building Administrators (Principals or Building Supervisors)
- Other: _____

Client: Big Lake Schools

Building: Liberty Elem.

Name: Terrence Zerwas

Title: Director of B+G

Signature: 

Date: 10/27/25

Appendix D

Average Building Operating Conditions Comparison

Climate Zone 6 (includes Southern MN)



		Annual Averages			During the Test
		24 Hour	Daytime	Daytime 9-Month	Prevailing During the Test
Operating Condition	Outdoor Temperature and Weather Conditions	45 °F	50 °F	N/A	Average: 23.25 °F Minimum: - 6.0 °F Maximum: 45 °F
	Heating Conditions	75%	66%	88%	100%
	Cooling Conditions	-	16%	11%	0%
	Mixed Conditions	25%	16%	-	0%
Normal Operating Condition		<ul style="list-style-type: none"> • Heating conditions • No variance in outdoor air ventilation 			<ul style="list-style-type: none"> • Heating conditions • No variance in outdoor air ventilation • Snow or ice present outdoors
Condition less likely to inhibit characterization of a radon hazard		<ul style="list-style-type: none"> • Heating and air distribution systems active 			<ul style="list-style-type: none"> • Heating and air distribution systems active

Appendix E

MDH Reporting Form

School Radon Testing Reporting Form

According to Minnesota Statute 123B.571, subd. 3, a school district that has tested its school buildings for the presence of radon shall report the results of the tests to the Department of Health. Please use this form to submit information about the most recent round or cycle of testing for each building.

Instructions

1. Complete one form for each building tested. A building is defined as an occupied facility with a unique address. This includes administrative buildings. Please report the MDE School Number.
2. Include this form, reports, and a building map.
3. Submit this form when all work is completed for a round of testing. This includes reporting to the school board, follow-up testing, and mitigation if applicable.
4. Email information to health.indoorair@state.mn.us

Contact Information

(Person submitting this report)

Name: _____

Mailing Address: _____

Phone: _____ Email: _____

Person(s) Deploying or Retrieving Test Devices

List all individuals the placed or picked-up test devices during initial, follow-up, and post-mitigation testing. Additional names can be added in the notes at the end of the form.

Name: _____ Organization/Company: _____

Name: _____ Organization/Company: _____

Name: _____ Organization/Company: _____

School Board Reporting

Were all results reported at a school board meeting? Yes No

Initial Radon Testing

School Building Name: _____ MDE School No.¹: _____

School District Name & District Number: _____

Building Address: _____

Test Kit Manufacturer & Device Name: _____

Date of Kit Retrieval (MM/DD/YYYY): _____ Length of Test (days): _____

Does the test period include weekends? Yes No

Does the test period include school breaks or holidays? Yes No

Was HVAC operating under occupied conditions? Yes No

Were test devices deployed in all occupied or intended to be occupied rooms in contact with the ground, and, if applicable, 10% of upper floor rooms?² Yes No

Were sufficient valid measurements obtained that allow for no further testing?³ Yes No

How many rooms were tested? _____

How many rooms had results ≥ 4 pCi/L? _____

¹ The MDE school number is a 9-digit number in the format XXXX-XX-XXX. The first 4 digits are the organization number, followed by a 2-digit organization type, followed by a 3-digit site/school number. If you are unsure of the school ID number, please search [MDE-ORG \(https://public.education.mn.gov/MdeOrgView/search/tagged/MDEORG DISTRICT SCHOOL\)](https://public.education.mn.gov/MdeOrgView/search/tagged/MDEORG_DISTRICT_SCHOOL) by district/charter name and click District View to see a list of the associated schools/find the school number. Example: Anoka High School is 0011-01-0001.

² This includes rooms, offices, classrooms, and other general use areas. Ground contact means: 1) rooms that have floors or walls in contact with the ground; and 2) rooms that are closest to the ground over untested ground-contact locations such as a crawl space, utility tunnel, parking garage, and other non-habitable space that is in contact with the ground. Intended to be occupied rooms are locations where there are plans to occupy rooms even though they are unoccupied at the time of testing. In addition, if the building has upper floors, at least 10% of those upper rooms need to be tested.

³ Section 6.2 of the ANSI/AARST standard allows for a specific small number of invalid measurements (e.g. missing or damaged test kits). Review this section of the standard and evaluate how many rooms needed testing and how many had valid results. If there were too many invalid results, this mean additional testing was required in these locations and answer this question as 'no'

Follow-up Testing, Mitigation, & Post-Mitigation Testing

If one or more rooms tested ≥ 4.0 pCi/L, please answer the questions below:

How many rooms had follow-up testing? _____

Number of rooms with follow-up results: ≥ 4 pCi/L: _____ < 4 pCi/L: _____

Of the rooms with follow-up results ≥ 4 pCi/L, how many rooms were:

Mitigated by diluting or pressurizing the soil or indoor air (not active soil depressurization): _____

Mitigated by installing active soil depressurization system(s)? _____

Reduced by adjusting the HVAC system? _____

Individuals Who Installed Mitigation:

Name: _____ Organization/Company: _____

Name: _____ Organization/Company: _____

What was the cost of the installation and/or HVAC service work to mitigation radon? _____

What is the known or anticipated annual operating cost of mitigation (estimate)? _____

After radon mitigation, how many rooms were re-tested?⁴ _____

Post-mitigation results (# of rooms):

≥ 4 pCi/L: _____ < 4 pCi/L: _____

Notes

Minnesota Department of Health | Environmental Health | Indoor Air Unit
health.indoorair@state.mn.us, www.health.state.mn.us

February 12, 2025

To obtain this information in a different format, call: 651-201-4601.

⁴ The building must be tested to very reduction and ensure mitigation has not increased radon in rooms that used to be low.