

Operations Committee Meeting
Thursday, October 3, 2024 8:30 AM
Lower Platte North NRD Office
P.O. Box 126
Wahoo, NE 68066

1. UNFINISHED BUSINESS
We have nothing to consider for unfinished business.
2. WILD NE AND OTHER PROGRAMS
Nothing to report.
3. OPERATION & MAINTENANCE & OTHER ITEMS
O & M staff continue mowing project areas in the District. Staff replaced the fascia board on the small shelter at Czechland, cleaned sediment from a plugged culvert at Homestead, cleared fallen trees on Clear Creek Levee, mowed firebreaks on the Wanhoo property. We assisted with Fremont Middle School Outdoor Ed day and Land Judging.
 - 3.A. Rehabilitation of Cottonwood 21-A, NRCS & HDR
A letter was sent to the John Schultz Family (Kathy Johnson) on the District's decision to choose Alternative 3 - High Hazard East Auxiliary Spillway for rehabilitating Cottonwood 21-A. This alternative will predominantly go on their property. We also asked for permission to do the cultural resource study after harvest. Mrs. Johnson has granted that permission.
HDR is anticipating a 90% meeting in October.
 - 3.B. Wanhoo Basin Investigation for Damage
Houston Engineering used sonar technology to determine the topography of the basin below the baffle wall. Mike Sotak gave his investigative report on the basin. They found, overall, the previous repairs after the 2019 flood event held up well, and it looks as though the damage is significantly less. Items that will be addressed for repair are A) the joints in the conduits are missing material, B) the Basin needs cohesive soil, mating, rip-rap, C) Relief well repair and conversions for dewatering, D) Other items after dewatering. E) Potential mitigation include larger rip-rap, and improved mating.
Sotak voluntarily offered his services when staff arranges a time to converse with FEMA/NEMA on this project.
FEMA will be on site Wednesday, October 16th to observe the Wanhoo damaged areas.
 - 3.C. Rawhide Ditch 8, Brand Request
Kirk Brand was present to explain why he would like a 24" CMP replaced with a 36" CMP for faster drainage to his field that empties into Rawhide Ditch 8. Heimann asked three contractors for labor quotes and received two; Grefe Excavating, \$2,950 and Thompson Construction, \$3,000.
A 30" x 60' CMP with a 1' band costs \$3,887.00. A 36" x 60' CMP with a 1' band is \$4,664.50. This doesn't include a flap gate for each and a 2' band would increase the

price.

The estimated cost is \$7,864. Mr. Brand would pay 50% of the cost.

3.D. No-Till Grass Drill, Schuyler Co-op

Schuyler Co-op has ordered a new grass drill to rent out on their own.

What do we want to do with our 16-year-old grass drill? a) Sell it as is, giving first choice to our current cooperators b) repair it and use it as a stand-by at one of our other two cooperators, c) repair it and find another Seed Dealer cooperator, d) other options?

We will take the drill to Benes Service and get a quote for repairs before a decision is made.

3.E. Wanahoo Dam Inspection Item

The Dept. of Natural Resources Dam Safety did it's annual inspection of the Wanahoo Dam this summer. We have not received the formal report to date. We do know that some of the joints in the tunnels/conduits need to be sealed. This process was done in 2019. All the joints in the floor and 2' up the walls were sealed with oakum rope joint sealant. For the most part, it is doing well but, more of the old chalk material is loose or missing (see pictures). This item will be included in the overall repairs to the basin through FEMA.

3.F. Carl Sousek Water Line Request

As previously mentioned, Carl Sousek of Prague has two poor/failing wells on his farmstead. They found water just under a half mile SE of his farmstead below the Cottonwood 6--B dam, on the other side of the creek channel. He has a choice to bore a water line under a deep creek bed or run the water line at the toe of the dam over the dam's outlet pipe. NDNR Dam Safety does not want the water line over or under the outlet pipe even though the line would be encased and valves on each end. The District deals with water, dams and wells. Would we consider assisting Mr. Sousek in some way for the boring of the water line under the creek bed? See attached aerial photo.

Mr. Sousek inquired about a NRCS EQIP program called Small Scale and Urban Ag for running his water line. He found out that there isn't any guarantee that funding would be available through the EQIP program and that it would put him a year behind. He obtained a boring estimate of \$15,000.

Nebraska Dam Safety will be inspecting some of the Cottonwood Dams on October 17th, and we'll meet with Mr. Sousek and Tim Gokie on site.

3.G. FEMA/NEMA 428 Flood Damage & Equipment

Our additional equipment request was recently approved by FEMA for 90% reimbursement, including: backup generator, storage building, dump trailer, pickup, and boom lift.

Procurement:

With legal council guidance, we are able to procure the generator and storage building through the procurement process that we did for our new building because both were originally included in the RFP and subsequently removed through value engineering deductions. The dump trailer is being procured through a GSA contract and the pickup through a State of Nebraska Contract. Seventeen boom lift providers were found online within a 50 mile radius of Wahoo. Seven of the 17 indicated that

they were able to provide a bids when contacted and were emailed specifics. Four companies provided bids. Staff reccomend the bid from Titan Machinery out of Fremont.

The backup generator and storage building are being run by Exec. Committee.

14' Dump Trailer = \$26,407.36

Ford F-150 XL half-ton = \$42,416

Boom Lift = \$58,000

4. ROCK AND JETTY

We have not received any applications or requests for payments.

5. LAKE WANAHOO

5.A. Lake Wanahoo Permit Sales

For the month of August, the District received \$5,117.50 in annual park permit revenue. The year by year break down is listed below.

Month	Monthly Total	YTD
August 2024	\$5,117.50	\$68,619.00
August 2023	\$2,630.00	\$69,180.00
August 2022	\$2,902.50	\$71,447.50
August 2021	\$2,700.00	\$82,037.50
August 2020	\$5,035.00	\$92,622.50
August 2019	\$4,302.50	\$75,027.50

5.B. Lake Wanahoo Camping Revenue

For the month of August, the District received \$13,190.62 in camping revenue. The year by year comparison is below.

August 2024	\$13,190.62	\$89,247.57
August 2023	\$14,707.66	\$97,877.06
August 2022	\$15,626.91	\$94,044.74
August 2021	\$11,405.61	\$93,918.37
August 2020	\$18,197.95	\$105,843.35
August 2019	\$14,509.18	\$83,346.32

5.C. Education Building Rentals

The Clint Johannes Education Building at Lake Wanahoo was rented 14 times in September. Revenue for the month was \$1,000.

6. INFORMATION AND EDUCATION

6.A. Information

6.A.1. Radio & eAds

The KTIC radio ads and Wahoo newspaper e-ads during September featured all three recreation areas. The radio ads for October feature the water reports

reminder for producers (not too early for the December deadline!) and the Wahoo e-ads feature the availability of grass drill rentals. The ads are attached.

6.A.2. Analytics

The LPNNRD Facebook and X pages, along with the website are some of the fastest ways to get information out to the public. Facebook and X posts range from 12 -18 posts per month. If you are on Facebook or X, please like, follow, share, or retweet the Lower Platte North NRD posts!

Total reach/impressions show how many people saw the post/tweet. Engagements include likes, comments, shares/retweets and link clicks.

August had a total of 19 posts.

Followers for August	Total	Increase/Decrease
Facebook	1,648	.79%
X	447	-.88%

Posts included:

- Lake Wanahoo no hunting
- Public Notice: director vacancy
- Hiring Assistant Water Manager
- Lake Wanahoo/Set Your Sites
- Pick up your trash article
- Shell Creek Watershed Improvement Group 25 year celebration article
- Board Meeting/levy hearing reminders
- Hazard Mitigation Plan public survey
- NRD Recreation Exploration

WEBSITTE	Users	Traffic Channel Changes	Top Pages	Devices
September	1,732	Organic -15.14% Direct 7.29% Referral -11.24 Social 321.43%	Lake Wanahoo Home Czechland Outdoor Recreation Downloads	Mobile 58.1% Desktop 39.9% Tablet 2.0%
August	1,686	Organic -25.31% Direct -40.23% Referral -35.48% Social -55.17%	Lake Wanahoo Home Czechland Outdoor Recreation Downloads	Mobile 63% Desktop 35.6% Tablet 1.4%
July	2,396	Organic -13.66% Direct 17.39% Referral -4.71% Social -50.85%	Lake Wanahoo Home Czechland Outdoor Recreation Downloads	Mobile 57% Desktop 41.5% Tablet 1.5%

Traffic channels: organic traffic means they use a search engine then choose an option that includes lpnnrd.org, direct traffic means they type in lpnnrd.org

directly (or have it bookmarked), and referral traffic is any other traffic not from a search engine or social (such as a link from another site). As of mid-September changes for traffic channels and devices will show increase or decrease for the month.

Referral clicks from: NARD's website 26, Wahoo newspaper website (LPNNRD digital ad) 0.

Clicks from Facebook: 45.

Clicks from Twitter: 4.

6.B. Education

6.B.1. Land Judging Contestant Fees

In the past, the Lower Platte North NRD has paid for the contestant fees for the Land Judging Contests. This year, the contest was held on Wednesday, October 2, with 286 total contestants. Contest fees are \$3 per contestant.

6.B.2. The new addition

Denver Mim was born on June 29th. She's got a ton of hair! Shares a birthday with her great grandpa and was named after her great grandma. She's a happy baby and a great sleeper!

6.B.3. Upcoming events

- October 4th: Ag literacy festival at the fairgrounds, Ashland-Greenwood middle school pm.
- October 8th: St. Wenceslaus Pre-K visit.
- October 9th: Survival Club
- October 10th: Coffee Lakeside: Bird Eggs.
- October 14th: Wahoo 3rd grade field trip AM
- October 24th: Aquinas Catholic Middle School Day; all about bees.

TBD more classroom visits and acquiring the snake.

7. RURAL WATER SYSTEMS

7.A. Rural Water Operations

The new Neptune meter reader has arrived and we will begin the transition from our PWG WaterWorks to the new system.

The initial lead service line inventory for both RWDs are nearly complete and will be submitted to EPA by the 10/16 due date.

Digger's Hotline (811) locates have been steady with both districts with a larger fiber optic install along the Bruno line that required substantial locates.

7.B. Colon System

Routine monthly sampling completed, meters read and bills mailed 9/30.

7.C. Bruno System

The RWD will be moving forward with the new residential hookup along our Bruno line; the residence is north of highway 12B spur and technically outside of the RWD so it's their responsibility to cover the cost of boring line under highway. A contractor has been procured and as soon as we receive the tap-fee we will proceed. The Bruno RWD completed its biannual sanitary survey on 9/19; no violations were

recorded, one air vent had to be repaired.

Routine monthly sampling completed, meters read and bills mailed 9/30.


7.D. Other


Rawhide Ditch 8


Kirk Brand request to upgrade CMP.


Legend


 Ditch

 Ditch 8

 Ditch 8

 24" CMP

 Ditch 7 Southside of Road

 24" CMP



3000 ft

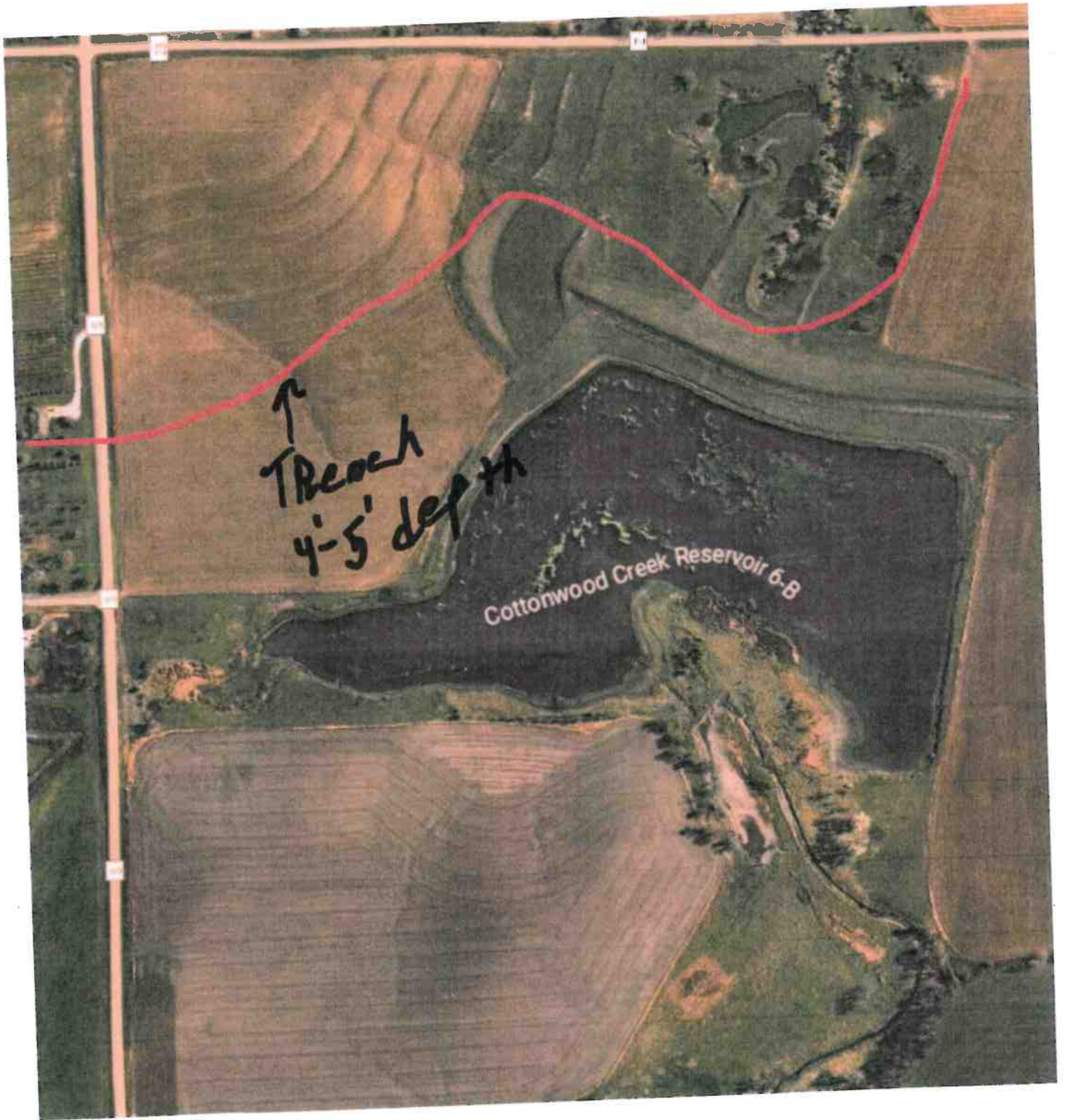






2 in line
H₂O

Carl Sousek
443-7934



Looking to plant native grasses, grains or legumes?

Great Plains no-till drills are available through local cooperatives. Cooperators can assist in setting the drill for mixtures. Visit lpnnrd.org or call 402-443-4675 for more information.



LOWER PLATTE NORTH
Natural Resources District



Looking to plant native grasses, grains or legumes?

Great Plains no-till drills are available through Schuyler Co-op, Rosendahl Feed & Seed, and Rezac Seed. Cooperators can assist in setting the drill for mixtures.

Visit lpnrd.org or call 402-443-4675 for more information.



LOWER PLATTE NORTH
Natural Resources District







Surface Water
Water that is visible and mostly comes from the surface of the earth's water.

Water Pollution
Water that is polluted by the surface of the earth's water.

Water Quality
The amount of pollution in water.

Water Treatment
The process of making water safe for drinking.

Water Conservation
The practice of using water wisely.

Water Recycling
The process of reusing water.

Water Pollution Prevention
The practice of preventing pollution from entering water bodies.

TEAM 8A













Thursday

OCTOBER 10

9:00 a.m. - 10:00 a.m.



BIRD EGGS

Bird eggs come in all sorts of shapes, sizes, patterns, and colors. Every species has a unique design that sets them apart from each other. So how do such intricate designs end up on such fragile surfaces? Join Sydney Abbott, education coordinator as she dives into the science behind bird eggs and how you can create more nesting opportunities for birds in your yards.

Join us every month for a “Coffee, Lakeside” educational event at the Clint Johannes Education Building at Lake Wanahoo, located at 1655 County Road 16, Wahoo. Each month will focus on a new topic, with hot coffee and fresh donuts available to all who attend.

Are you curious about a specific topic and want to learn more?
Email your topic suggestions to sabbott@lpnrd.org



LOWER PLATTE NORTH
Natural Resources District