

Regular Meeting
Tuesday, February 14, 2023 6:00 PM

MS/HS Library
109 Charles W St
Petersburg, AK 99833

Agenda

1. **CALL TO ORDER**
2. **DETERMINE QUORUM**
3. **PLEDGE OF ALLEGIANCE**
4. **APPROVAL OF AGENDA**
5. **STUDENT PRESENTATION - Ryder Sturgeon**
6. **STUDENT REPRESENTATIVE REPORT**
7. **CORRESPONDENCE**
8. **COMMENTS FROM AUDIENCE UNRELATED TO AGENDA ITEMS**
9. **COMMENTS FROM AUDIENCE RELATED TO AGENDA ITEMS**
10. **COMMENTS FROM BOARD MEMBERS**
11. **CONSENT AGENDA**
 - 11.1. January, 2023, Monthly accounting report, bills, payroll, and electronic fund transfers, ASB trial balance and P-Card statements in the amount of \$943,237.68
 - 11.2. January 17, 2023, regular board meeting minutes
 - 11.3. Personnel Action Report - February 2023
12. **ADMINISTRATIVE REPORTS**
 - 12.1. Superintendent's report
Presenter: Superintendent Kludt-Painter
 - 12.2. Elementary Principal's Report
Presenter: Principal Heather Conn
 - 12.3. MS/HS Principal's Report
Presenter: Principal Ambler Moss
 - 12.4. Director of Activities Report
13. **SCHOOL BOARD COMMITTEE REPORTS**
14. **SPECIAL RECOGNITION**
15. **OLD BUSINESS**
16. **NEW BUSINESS**
 - 16.1. Action: Bill Neumann grant acceptance and expenditure
 - 16.2. Action: Policy Update 6146.1 Graduation Requirements
 - 16.3. Action: BP & AR 5121 Grades / Evaluation of Student Achievement
 - 16.4. Action: 2023-24 School Year Calendar
 - 16.5. Discussion: Continuation of attendance discussion
 - 16.6. Discussion: Stedman Elementary School Targeted Assistance designation
17. **ADDITIONAL COMMENTS FROM BOARD MEMBERS**
18. **UPCOMING DATES AND MEETING ANNOUNCEMENTS**
19. **FUTURE AGENDA ITEMS**
20. **OTHER NEW BUSINESS**
21. **ADJOURNMENT**

Petersburg School District

Revenue Report

Summary Only From Date: 1/1/2023 To Date: 1/31/2023

Fiscal Year: 2022-2023

Account Number / Description	Budget	Range To Date	YTD	Uncollected Balance	% Remaining
Fund: 100 GENERAL FUND					
100.000.000.000.011 CITY DIRECT APPROPRIATIONS	\$2,000,000.00	\$166,666.67	\$1,166,666.69	\$833,333.31	41.67%
100.000.000.000.031 INTEREST	\$700.00	\$47.93	\$464.26	\$235.74	33.68%
100.000.000.000.040 OTHER LOCAL REVENUES	\$60,000.00	\$3,488.33	\$44,080.94	\$15,919.06	26.53%
100.000.000.000.043 STUDENT ACTIVITY REVENUE.	\$0.00	\$3,868.75	\$3,935.05	(\$3,935.05)	0.00%
100.000.000.000.044 STUDENT FEES	\$52,000.00	\$801.00	\$29,883.10	\$22,116.90	42.53%
100.000.000.000.047 E-RATE REVENUE	\$93,134.00	\$7,761.20	\$46,567.20	\$46,566.80	50.00%
100.000.000.000.050 REVENUE FROM STATE SOURCES	\$0.00	\$264,084.00	\$264,084.00	(\$264,084.00)	0.00%
100.000.000.000.051 FOUNDATION PROGRAM	\$5,884,048.00	\$474,235.00	\$3,319,645.00	\$2,564,403.00	43.58%
100.000.000.000.056 TRS ON-BEHALF PAYMENTS	\$434,998.00	\$0.00	\$0.00	\$434,998.00	100.00%
100.000.000.000.057 PERS ON-BEHALF PAYMENTS	\$39,200.00	\$0.00	\$0.00	\$39,200.00	100.00%
100.000.000.000.090 OTHER STATE REVENUES	\$19,586.00	\$0.00	\$0.00	\$19,586.00	100.00%
Fund 100 Total:	\$8,583,666.00	\$920,952.88	\$4,875,326.24	\$3,708,339.76	43.20%
Grand Total:	\$8,583,666.00	\$920,952.88	\$4,875,326.24	\$3,708,339.76	43.20%

End of Report

January
 2023
 Monthly bills
 \$943,239.68

Petersburg School District

Expenditure Budget Balance Report

Summary Only

From Date: 1/1/2023

To Date: 1/31/2023

Fiscal Year: 2022-2023

Budget Balance

Account Number / Description	Budget	Range To Date	YTD	Balance	Encumbrance	% Remaining Bud
Fund: 100 GENERAL FUND						
100.100.100.000.315 CERTIFICATED TEACHER	\$737,260.00	\$61,552.20	\$306,728.90	\$430,531.10	\$426,881.85	\$3,649.25 0.49%
100.100.100.000.329 SUBSTITUTES/TEMPORARIES	\$28,500.00	\$2,975.00	\$9,375.00	\$19,125.00	\$0.00	\$19,125.00 67.11%
100.100.100.000.363 WORKERS COMPENSATION	\$3,812.00	\$324.52	\$1,589.83	\$2,222.17	\$0.00	\$2,222.17 58.29%
100.100.100.000.364 INSURANCE-HEALTH/LIFE	\$188,531.00	\$15,543.48	\$77,717.41	\$110,813.59	\$1,458.34	\$109,355.25 58.00%
100.100.100.000.365 RETIREMENT CONTRIBUTION-TRS	\$178,189.00	\$7,755.12	\$35,121.20	\$143,067.80	\$0.00	\$143,067.80 80.29%
100.100.100.000.367 MEDICARE TAX	\$10,000.00	\$884.31	\$4,326.21	\$5,673.79	\$0.00	\$5,673.79 56.74%
100.100.100.000.368 SOCIAL SECURITY TAX	\$1,017.00	\$0.00	\$106.95	\$910.05	\$0.00	\$910.05 89.48%
100.100.100.000.426 STUDENT TRANSPORTATION	\$3,000.00	\$0.00	\$0.00	\$3,000.00	\$0.00	\$3,000.00 100.00%
100.100.100.000.450 FRESHMAN LAPTOP COMPUTERS	\$48,000.00	\$0.00	\$2,614.40	\$45,385.60	\$0.00	\$45,385.60 94.55%
100.100.100.000.451 GENERAL HS TEACHING SUPPLIES	\$10,325.00	\$232.80	\$2,418.61	\$7,906.39	\$0.00	\$7,906.39 76.58%
100.100.100.000.474 HS CURRICULUM ADOPTION	\$10,000.00	\$0.00	\$0.00	\$10,000.00	\$0.00	\$10,000.00 100.00%
100.100.100.000.476 HS COPIER SUPPLIES	\$7,000.00	\$3,575.00	\$7,006.50	(\$6.50)	\$0.00	(\$6.50) -0.09%
100.100.100.000.491 HS DUES AND FEES	\$10,000.00	\$0.00	\$2,029.80	\$7,970.20	\$20.00	\$7,950.20 79.50%
100.100.100.001.451 HS ENGLISH SUPPLIES	\$1,500.00	\$0.00	\$639.15	\$860.85	\$0.00	\$860.85 57.39%
100.100.100.002.451 HS MATH SUPPLIES	\$1,000.00	\$0.00	\$928.77	\$71.23	\$0.00	\$71.23 7.12%
100.100.100.003.451 HS SCIENCE SUPPLIES	\$3,100.00	\$801.01	\$1,758.96	\$1,341.04	\$748.99	\$592.05 19.10%
100.100.100.004.451 HS SOCIAL STUDIES SUPPLIES	\$675.00	\$0.00	\$675.00	\$0.00	\$512.00	(\$512.00) -75.85%
100.100.100.007.451	\$500.00	\$0.00	\$588.14	(\$88.14)	\$0.00	(\$88.14)

Petersburg School District

Expenditure Budget Balance Report

Summary Only

From Date: 1/1/2023

To Date: 1/31/2023

Fiscal Year: 2022-2023

Budget Balance

Account Number / Description	Budget	Range To Date	YTD	Balance	Encumbrance	% Remaining Bud
HS PE SUPPLIES						-17.63%
100.100.100.008.451	\$500.00	\$0.00	\$42.00	\$458.00	\$0.00	\$458.00
HS MUSIC SUPPLIES						91.60%
100.100.100.009.451	\$1,000.00	\$903.00	\$999.33	\$0.67	\$0.00	\$0.67
HS ART/JEWELRY/PHOTO SUPPLIES						0.07%
100.100.100.021.451	\$500.00	\$0.00	\$65.00	\$435.00	\$0.00	\$435.00
HS SPANISH SUPPLIES						87.00%
100.100.160.000.315	\$87,487.00	\$7,290.58	\$36,452.90	\$51,034.10	\$51,034.10	\$0.00
CERTIFICATED TEACHER						0.00%
100.100.160.000.329	\$1,500.00	\$0.00	\$700.00	\$800.00	\$0.00	\$800.00
SUBSTITUTES/TEMPORARIES						53.33%
100.100.160.000.363	\$583.00	\$36.55	\$186.25	\$396.75	\$0.00	\$396.75
WORKERS COMPENSATION						68.05%
100.100.160.000.364	\$27,059.00	\$2,254.88	\$11,274.40	\$15,784.60	\$0.00	\$15,784.60
INSURANCE-HEALTH/LIFE						58.33%
100.100.160.000.365	\$21,538.00	\$915.70	\$4,578.50	\$16,959.50	\$0.00	\$16,959.50
RETIREMENT CONTRIBUTION-TRS						78.74%
100.100.160.000.367	\$1,275.00	\$97.54	\$497.86	\$777.14	\$0.00	\$777.14
MEDICARE TAX						60.95%
100.100.160.000.368	\$31.00	\$0.00	\$0.00	\$31.00	\$0.00	\$31.00
SOCIAL SECURITY TAX						100.00%
100.100.160.006.451	\$500.00	\$0.00	\$0.00	\$500.00	\$0.00	\$500.00
AQUACULTURE SUPPLIES						100.00%
100.100.160.300.451	\$1,300.00	\$0.00	\$0.00	\$1,300.00	\$0.00	\$1,300.00
CULINARY SUPPLIES						100.00%
100.100.160.309.451	\$1,300.00	\$0.00	\$0.00	\$1,300.00	\$800.00	\$500.00
FOOD SCIENCE/CULINARY						38.46%
100.100.160.310.451	\$2,500.00	\$0.00	\$355.96	\$2,144.04	\$0.00	\$2,144.04
SHOP SUPPLIES						85.76%
100.100.200.000.315	\$70,524.00	\$5,785.33	\$29,419.70	\$41,104.30	\$40,497.35	\$606.95
CERTIFICATED TEACHER						0.86%
100.100.200.000.323	\$116,200.00	\$10,660.39	\$55,207.79	\$60,992.21	\$48,575.50	\$12,416.71
AIDES						10.69%
100.100.200.000.329	\$8,000.00	\$0.00	\$2,343.75	\$5,656.25	\$0.00	\$5,656.25
SUBSTITUTES/TEMPORARIES						70.70%
100.100.200.000.363	\$950.00	\$85.16	\$451.68	\$498.32	\$0.00	\$498.32

Petersburg School District

Expenditure Budget Balance Report

 Summary Only

From Date: 1/1/2023

To Date: 1/31/2023

Fiscal Year: 2022-2023

Budget Balance

Account Number / Description	Budget	Range To Date	YTD	Balance	Encumbrance	% Remaining Bud
WORKERS COMPENSATION						52.45%
100.100.200.000.364	\$45,000.00	\$4,848.06	\$24,251.61	\$20,748.39	\$2,791.69	\$17,956.70
INSURANCE-HEALTH/LIFE						39.90%
100.100.200.000.365	\$17,093.00	\$726.64	\$3,695.12	\$13,397.88	\$0.00	\$13,397.88
RETIREMENT CONTRIBUTION-TRS						78.38%
100.100.200.000.366	\$29,467.00	\$2,225.97	\$11,418.34	\$18,048.66	\$0.00	\$18,048.66
RETIREMENT CONTRIBUTION-PERS						61.25%
100.100.200.000.367	\$3,105.00	\$230.70	\$1,224.53	\$1,880.47	\$0.00	\$1,880.47
MEDICARE TAX						60.56%
100.100.200.000.368	\$834.00	\$33.63	\$255.33	\$578.67	\$0.00	\$578.67
SOCIAL SECURITY TAX						69.38%
100.100.200.000.451	\$700.00	\$111.85	\$600.92	\$99.08	\$86.44	\$12.64
HS SPED SUPPLIES						1.81%
100.100.300.000.315	\$61,251.00	\$4,972.00	\$24,860.00	\$36,391.00	\$34,804.00	\$1,587.00
CERTIFICATED TEACHER						2.59%
100.100.300.000.323	\$33,500.00	\$3,118.23	\$16,862.47	\$16,637.53	\$15,028.21	\$1,609.32
AIDES						4.80%
100.100.300.000.329	\$1,000.00	\$0.00	\$1,750.00	(\$750.00)	\$0.00	(\$750.00)
SUBSTITUTES/TEMPORARIES						-75.00%
100.100.300.000.363	\$694.00	\$40.55	\$217.90	\$476.10	\$0.00	\$476.10
WORKERS COMPENSATION						68.60%
100.100.300.000.364	\$45,127.00	\$3,943.39	\$19,716.95	\$25,410.05	\$0.00	\$25,410.05
INSURANCE-HEALTH/LIFE						56.31%
100.100.300.000.365	\$15,142.00	\$624.48	\$3,122.40	\$12,019.60	\$0.00	\$12,019.60
RETIREMENT CONTRIBUTION-TRS						79.38%
100.100.300.000.366	\$7,933.00	\$686.01	\$4,219.15	\$3,713.85	\$0.00	\$3,713.85
RETIREMENT CONTRIBUTION-PERS						46.82%
100.100.300.000.367	\$1,518.00	\$103.01	\$558.87	\$959.13	\$0.00	\$959.13
MEDICARE TAX						63.18%
100.100.300.000.368	\$62.00	\$0.00	\$0.00	\$62.00	\$0.00	\$62.00
SOCIAL SECURITY TAX						100.00%
100.100.300.000.451	\$5,000.00	\$0.00	\$809.49	\$4,190.51	\$0.00	\$4,190.51
SECONDARY COUNSELOR SUPPLIES						83.81%
100.100.300.000.479	\$4,400.00	\$0.00	\$0.00	\$4,400.00	\$0.00	\$4,400.00
SECONDARY COUNSELOR OTHER						100.00%
100.100.350.000.315	\$76,698.00	\$6,349.83	\$31,749.15	\$44,948.85	\$44,448.85	\$500.00

Petersburg School District

Expenditure Budget Balance Report

Summary Only

From Date: 1/1/2023

To Date: 1/31/2023

Fiscal Year: 2022-2023

Budget Balance

Account Number / Description	Budget	Range To Date	YTD	Balance	Encumbrance	% Remaining Bud
CERTIFICATED TEACHER						0.65%
100.100.350.000.329	\$750.00	\$612.50	\$787.50	(\$37.50)	\$0.00	(\$37.50)
SUBSTITUTES/TEMPORARIES						-5.00%
100.100.350.000.363	\$513.00	\$34.90	\$168.11	\$344.89	\$0.00	\$344.89
WORKERS COMPENSATION						67.23%
100.100.350.000.364	\$8,844.00	\$589.69	\$2,769.07	\$6,074.93	\$0.00	\$6,074.93
INSURANCE-HEALTH/LIFE						68.69%
100.100.350.000.365	\$18,759.00	\$797.54	\$3,987.70	\$14,771.30	\$0.00	\$14,771.30
RETIREMENT CONTRIBUTION-TRS						78.74%
100.100.350.000.367	\$1,122.00	\$98.81	\$479.86	\$642.14	\$0.00	\$642.14
MEDICARE TAX						57.23%
100.100.350.000.368	\$47.00	\$0.00	\$0.00	\$47.00	\$0.00	\$47.00
SOCIAL SECURITY TAX						100.00%
100.100.350.000.451	\$409.00	\$0.00	\$408.50	\$0.50	\$0.00	\$0.50
TEACHING SUPPLIES						0.12%
100.100.350.000.472	\$2,291.00	\$704.74	\$704.74	\$1,586.26	\$16.21	\$1,570.05
SECONDARY LIBRARY BOOKS						68.53%
100.100.350.000.473	\$800.00	\$379.00	\$379.00	\$421.00	\$0.00	\$421.00
SECONDARY PERIODICALS						52.63%
100.100.350.000.479	\$1,500.00	\$0.00	\$1,307.73	\$192.27	\$0.00	\$192.27
SECONDARY SUPPLIES AND MATERIALS						12.82%
100.100.400.000.479	\$2,500.00	\$0.00	\$612.32	\$1,887.68	\$0.00	\$1,887.68
SECONDARY PRINCIPAL SUPPLIES AND MATERIALS						75.51%
100.100.400.000.491	\$600.00	\$0.00	\$614.00	(\$14.00)	\$0.00	(\$14.00)
PRINCIPAL DUES AND FEES						-2.33%
100.100.450.000.324	\$65,478.00	\$6,458.78	\$35,575.34	\$29,902.66	\$29,195.49	\$707.17
SUPPORT STAFF						1.08%
100.100.450.000.329	\$600.00	\$0.00	\$0.00	\$600.00	\$0.00	\$600.00
SUBSTITUTES/TEMPORARIES						100.00%
100.100.450.000.363	\$410.00	\$33.88	\$187.17	\$222.83	\$0.00	\$222.83
WORKERS COMPENSATION						54.35%
100.100.450.000.364	\$11,844.00	\$1,282.83	\$6,714.15	\$5,129.85	\$1,200.00	\$3,929.85
INSURANCE-HEALTH/LIFE						33.18%
100.100.450.000.366	\$15,062.00	\$1,420.94	\$7,997.01	\$7,064.99	\$0.00	\$7,064.99
RETIREMENT CONTRIBUTION-PERS						46.91%
100.100.450.000.367	\$898.00	\$94.62	\$524.88	\$373.12	\$0.00	\$373.12

Petersburg School District

Expenditure Budget Balance Report

Summary Only

From Date: 1/1/2023

To Date: 1/31/2023

Fiscal Year: 2022-2023

Budget Balance

Account Number / Description	Budget	Range To Date	YTD	Balance	Encumbrance	% Remaining Bud
MEDICARE TAX						41.55%
100.100.450.000.368	\$74.00	\$0.00	\$0.00	\$74.00	\$0.00	\$74.00
SOCIAL SECURITY TAX						100.00%
100.100.450.000.433	\$1,500.00	\$170.04	\$1,025.46	\$474.54	\$0.00	\$474.54
SECONDARY COMMUNICATIONS						31.64%
100.100.450.000.434	\$400.00	\$0.00	\$22.55	\$377.45	\$177.45	\$200.00
SECONDARY POSTAGE						50.00%
100.100.450.000.454	\$600.00	\$0.00	\$153.28	\$446.72	\$50.00	\$396.72
SECONDARY OFFICE SUPPLIES						66.12%
100.100.700.000.316	\$2,782.00	\$357.14	\$1,071.42	\$1,710.58	\$4,764.58	(\$3,054.00)
CERTIFICATED EXTRA DUTY PAY						-109.78%
100.100.700.000.322	\$1,038.00	\$187.50	\$750.00	\$288.00	\$750.00	(\$462.00)
NON-CERT SPECIALIST/EXTRA DUTY						-44.51%
100.100.700.000.329	\$2,000.00	\$0.00	\$0.00	\$2,000.00	\$0.00	\$2,000.00
SUBSTITUTES/TEMPORARIES						100.00%
100.100.700.000.363	\$139.00	\$2.73	\$9.12	\$129.88	\$0.00	\$129.88
WORKERS COMPENSATION						93.44%
100.100.700.000.364	\$0.00	\$0.00	\$23.44	(\$23.44)	\$0.00	(\$23.44)
INSURANCE-HEALTH/LIFE						0.00%
100.100.700.000.365	\$685.00	\$44.86	\$134.78	\$550.22	\$0.00	\$550.22
RETIREMENT CONTRIBUTION-TRS						80.32%
100.100.700.000.366	\$2,442.00	\$41.24	\$164.98	\$2,277.02	\$0.00	\$2,277.02
RETIREMENT CONTRIBUTION-PERS						93.24%
100.100.700.000.367	\$222.00	\$7.31	\$24.42	\$197.58	\$0.00	\$197.58
MEDICARE TAX						89.00%
100.100.700.000.368	\$504.00	\$0.00	\$0.00	\$504.00	\$0.00	\$504.00
SOCIAL SECURITY TAX						100.00%
100.100.700.000.421	\$6,700.00	\$223.60	\$2,969.62	\$3,730.38	\$0.00	\$3,730.38
STAFF TRANSPORTATION						55.68%
100.100.700.000.426	\$22,877.00	\$0.00	\$0.00	\$22,877.00	\$0.00	\$22,877.00
STUDENT TRANSPORTATION						100.00%
100.100.700.000.433	\$3,000.00	\$97.05	\$582.30	\$2,417.70	\$0.00	\$2,417.70
COMMUNICATIONS						80.59%
100.100.700.000.479	\$6,731.00	\$4,691.08	\$8,158.06	(\$1,427.06)	\$0.00	(\$1,427.06)
OTHER SUPPLIES AND MATERIALS						-21.20%
100.100.700.000.491	\$7,000.00	\$0.00	\$2,740.00	\$4,260.00	\$0.00	\$4,260.00

Petersburg School District

Expenditure Budget Balance Report

Summary Only

From Date: 1/1/2023

To Date: 1/31/2023

Fiscal Year: 2022-2023

Budget Balance

Account Number / Description	Budget	Range To Date	YTD	Balance	Encumbrance	% Remaining Bud
DUES AND FEES						60.86%
100.100.700.110.316	\$3,545.00	\$0.00	\$5,546.80	(\$2,001.80)	\$0.00	(\$2,001.80)
CERTIFICATED EXTRA DUTY PAY						-56.47%
100.100.700.110.329	\$500.00	\$0.00	\$1,613.55	(\$1,113.55)	\$0.00	(\$1,113.55)
SUBSTITUTES/TEMPORARIES						-222.71%
100.100.700.110.363	\$24.00	\$0.00	\$35.90	(\$11.90)	\$0.00	(\$11.90)
WORKERS COMPENSATION						-49.58%
100.100.700.110.365	\$445.00	\$0.00	\$696.72	(\$251.72)	\$0.00	(\$251.72)
RETIREMENT CONTRIBUTION-TRS						-56.57%
100.100.700.110.366	\$0.00	\$0.00	\$19.48	(\$19.48)	\$0.00	(\$19.48)
RETIREMENT CONTRIBUTION-PERS						0.00%
100.100.700.110.367	\$52.00	\$0.00	\$100.64	(\$48.64)	\$0.00	(\$48.64)
MEDICARE TAX						-93.54%
100.100.700.110.368	\$0.00	\$0.00	\$18.60	(\$18.60)	\$0.00	(\$18.60)
SOCIAL SECURITY TAX						0.00%
100.100.700.110.426	\$17,010.00	\$0.00	\$17,010.94	(\$0.94)	\$0.00	(\$0.94)
XCOUNTRY TRANSPORTATION						-0.01%
100.100.700.110.479	\$1,265.00	\$0.00	\$1,265.92	(\$0.92)	\$0.00	(\$0.92)
XCOUNTRY SUPPLIES AND MATERIALS						-0.07%
100.100.700.120.322	\$7,298.00	\$0.00	\$7,298.00	\$0.00	\$0.00	\$0.00
NON-CERT SPECIALIST/EXTRA DUTY						0.00%
100.100.700.120.363	\$48.00	\$0.00	\$36.56	\$11.44	\$0.00	\$11.44
WORKERS COMPENSATION						23.83%
100.100.700.120.366	\$0.00	\$0.00	\$563.77	(\$563.77)	\$0.00	(\$563.77)
RETIREMENT CONTRIBUTION-PERS						0.00%
100.100.700.120.367	\$106.00	\$0.00	\$105.84	\$0.16	\$0.00	\$0.16
MEDICARE TAX						0.15%
100.100.700.120.368	\$366.00	\$0.00	\$323.20	\$42.80	\$0.00	\$42.80
SOCIAL SECURITY TAX						11.69%
100.100.700.120.426	\$7,200.00	\$0.00	\$7,013.69	\$186.31	\$0.00	\$186.31
SWIM TRANSPORTATION						2.59%
100.100.700.120.479	\$1,414.00	\$0.00	\$663.98	\$750.02	\$0.00	\$750.02
SWIM SUPPLIES AND MATERIALS						53.04%
100.100.700.130.316	\$6,045.00	\$1,511.25	\$3,022.50	\$3,022.50	\$3,022.50	\$0.00
CERTIFICATED EXTRA DUTY PAY						0.00%
100.100.700.130.322	\$2,419.00	\$604.75	\$1,209.50	\$1,209.50	\$1,209.50	\$0.00

Petersburg School District

Expenditure Budget Balance Report

Summary Only

From Date: 1/1/2023

To Date: 1/31/2023

Fiscal Year: 2022-2023

Budget Balance

Account Number / Description	Budget	Range To Date	YTD	Balance	Encumbrance	% Remaining Bud
NON-CERT SPECIALIST/EXTRA DUTY						0.00%
100.100.700.130.329	\$1,000.00	\$940.00	\$1,645.00	(\$645.00)	\$0.00	(\$645.00)
SUBSTITUTES/TEMPORARIES						-64.50%
100.100.700.130.363	\$63.00	\$15.32	\$29.46	\$33.54	\$0.00	\$33.54
WORKERS COMPENSATION						53.24%
100.100.700.130.365	\$759.00	\$221.84	\$437.39	\$321.61	\$0.00	\$321.61
RETIREMENT CONTRIBUTION-TRS						42.37%
100.100.700.130.366	\$0.00	\$0.00	\$17.60	(\$17.60)	\$0.00	(\$17.60)
RETIREMENT CONTRIBUTION-PERS						0.00%
100.100.700.130.367	\$137.00	\$43.59	\$83.82	\$53.18	\$0.00	\$53.18
MEDICARE TAX						38.82%
100.100.700.130.368	\$150.00	\$79.96	\$143.49	\$6.51	\$0.00	\$6.51
SOCIAL SECURITY TAX						4.34%
100.100.700.130.426	\$20,000.00	\$779.50	\$879.50	\$19,120.50	\$3,950.00	\$15,170.50
GIRLS BB TRANSPORTATION						75.85%
100.100.700.130.479	\$0.00	\$879.02	\$1,284.11	(\$1,284.11)	\$390.68	(\$1,674.79)
GIRLS BB SUPPLIES AND MATERIALS						0.00%
100.100.700.140.316	\$4,795.00	\$0.00	\$4,000.00	\$795.00	\$0.00	\$795.00
CERTIFICATED EXTRA DUTY PAY						16.58%
100.100.700.140.322	\$1,901.00	\$0.00	\$2,713.00	(\$812.00)	\$0.00	(\$812.00)
NON-CERT SPECIALIST/EXTRA DUTY						-42.71%
100.100.700.140.329	\$360.00	\$0.00	\$0.00	\$360.00	\$0.00	\$360.00
SUBSTITUTES/TEMPORARIES						100.00%
100.100.700.140.363	\$44.00	\$0.00	\$33.64	\$10.36	\$0.00	\$10.36
WORKERS COMPENSATION						23.55%
100.100.700.140.365	\$602.00	\$0.00	\$502.41	\$99.59	\$0.00	\$99.59
RETIREMENT CONTRIBUTION-TRS						16.54%
100.100.700.140.367	\$93.00	\$0.00	\$93.79	(\$0.79)	\$0.00	(\$0.79)
MEDICARE TAX						-0.85%
100.100.700.140.426	\$19,113.00	\$0.00	\$18,732.84	\$380.16	\$0.00	\$380.16
VB TRANSPORTATION						1.99%
100.100.700.140.479	\$0.00	\$0.00	\$419.07	(\$419.07)	\$0.00	(\$419.07)
VB SUPPLIES AND MATERIALS						0.00%
100.100.700.150.316	\$834.00	\$0.00	\$0.00	\$834.00	\$834.00	\$0.00
CERTIFICATED EXTRA DUTY PAY						0.00%
100.100.700.150.363	\$5.00	\$0.00	\$0.00	\$5.00	\$0.00	\$5.00

Petersburg School District

Expenditure Budget Balance Report

Summary Only

From Date: 1/1/2023

To Date: 1/31/2023

Fiscal Year: 2022-2023

Budget Balance

Account Number / Description	Budget	Range To Date	YTD	Balance	Encumbrance	% Remaining Bud
WORKERS COMPENSATION						100.00%
100.100.700.150.367	\$12.00	\$0.00	\$0.00	\$12.00	\$0.00	\$12.00
MEDICARE TAX						100.00%
100.100.700.160.322	\$6,113.00	\$1,511.25	\$3,022.50	\$3,090.50	\$2,607.92	\$482.58
NON-CERT SPECIALIST/EXTRA DUTY						7.89%
100.100.700.160.363	\$44.00	\$7.58	\$15.16	\$28.84	\$0.00	\$28.84
WORKERS COMPENSATION						65.55%
100.100.700.160.367	\$116.00	\$21.91	\$43.82	\$72.18	\$0.00	\$72.18
MEDICARE TAX						62.22%
100.100.700.160.368	\$0.00	\$93.70	\$187.40	(\$187.40)	\$0.00	(\$187.40)
SOCIAL SECURITY TAX						0.00%
100.100.700.160.426	\$6,000.00	\$0.00	\$0.00	\$6,000.00	\$0.00	\$6,000.00
CHEERLEADING TRANSPORTATION						100.00%
100.100.700.170.322	\$6,500.00	\$0.00	\$0.00	\$6,500.00	\$0.00	\$6,500.00
NON-CERT SPECIALIST/EXTRA DUTY						100.00%
100.100.700.170.363	\$44.00	\$0.00	\$0.00	\$44.00	\$0.00	\$44.00
WORKERS COMPENSATION						100.00%
100.100.700.170.365	\$843.00	\$0.00	\$0.00	\$843.00	\$0.00	\$843.00
RETIREMENT CONTRIBUTION-TRS						100.00%
100.100.700.170.367	\$97.00	\$0.00	\$0.00	\$97.00	\$0.00	\$97.00
MEDICARE TAX						100.00%
100.100.700.170.426	\$15,000.00	\$0.00	\$0.00	\$15,000.00	\$0.00	\$15,000.00
TRACK TRANSPORTATION						100.00%
100.100.700.180.316	\$834.00	\$0.00	\$0.00	\$834.00	\$278.00	\$556.00
CERTIFICATED EXTRA DUTY PAY						66.67%
100.100.700.180.363	\$5.00	\$0.00	\$0.00	\$5.00	\$0.00	\$5.00
WORKERS COMPENSATION						100.00%
100.100.700.180.365	\$105.00	\$0.00	\$0.00	\$105.00	\$0.00	\$105.00
RETIREMENT CONTRIBUTION-TRS						100.00%
100.100.700.180.367	\$12.00	\$0.00	\$0.00	\$12.00	\$0.00	\$12.00
MEDICARE TAX						100.00%
100.100.700.190.316	\$0.00	\$469.13	\$1,876.52	(\$1,876.52)	\$1,876.48	(\$3,753.00)
CERTIFICATED EXTRA DUTY PAY						0.00%
100.100.700.190.363	\$0.00	\$2.35	\$9.40	(\$9.40)	\$0.00	(\$9.40)
WORKERS COMPENSATION						0.00%
100.100.700.190.365	\$0.00	\$58.93	\$235.72	(\$235.72)	\$0.00	(\$235.72)

Petersburg School District

Expenditure Budget Balance Report

 Summary Only

From Date: 1/1/2023

To Date: 1/31/2023

Fiscal Year: 2022-2023

Budget Balance

Account Number / Description	Budget	Range To Date	YTD	Balance	Encumbrance	% Remaining Bud
RETIREMENT CONTRIBUTION-TRS						0.00%
100.100.700.190.367	\$0.00	\$6.36	\$25.44	(\$25.44)	\$0.00	(\$25.44)
MEDICARE TAX						0.00%
100.100.700.190.421	\$1,800.00	\$0.00	\$1,788.66	\$11.34	\$0.00	\$11.34
MUSIC STAFF TRANSPORTATION						0.63%
100.100.700.190.426	\$3,300.00	\$0.00	\$3,291.24	\$8.76	\$0.00	\$8.76
MUSIC TRANSPORTATION						0.27%
100.100.700.195.316	\$1,529.00	\$0.00	\$0.00	\$1,529.00	\$0.00	\$1,529.00
CERTIFICATED EXTRA DUTY PAY						100.00%
100.100.700.200.316	\$1,529.00	\$382.25	\$382.25	\$1,146.75	\$1,146.75	\$0.00
CERTIFICATED EXTRA DUTY PAY						0.00%
100.100.700.200.322	\$0.00	\$0.00	\$0.00	\$0.00	\$764.50	(\$764.50)
NON-CERT SPECIALIST/EXTRA DUTY						0.00%
100.100.700.200.363	\$0.00	\$1.92	\$1.92	(\$1.92)	\$0.00	(\$1.92)
WORKERS COMPENSATION						0.00%
100.100.700.200.365	\$0.00	\$50.35	\$50.35	(\$50.35)	\$0.00	(\$50.35)
RETIREMENT CONTRIBUTION-TRS						0.00%
100.100.700.200.367	\$0.00	\$5.54	\$5.54	(\$5.54)	\$0.00	(\$5.54)
MEDICARE TAX						0.00%
100.100.700.205.316	\$2,294.00	\$0.00	\$0.00	\$2,294.00	\$2,294.00	\$0.00
CERTIFICATED EXTRA DUTY PAY						0.00%
100.100.700.210.322	\$6,130.00	\$0.00	\$6,714.00	(\$584.00)	\$0.00	(\$584.00)
NON-CERT SPECIALIST/EXTRA DUTY						-9.53%
100.100.700.210.329	\$0.00	\$0.00	\$1,080.00	(\$1,080.00)	\$0.00	(\$1,080.00)
SUBSTITUTES/TEMPORARIES						0.00%
100.100.700.210.363	\$41.00	\$0.00	\$39.09	\$1.91	\$0.00	\$1.91
WORKERS COMPENSATION						4.66%
100.100.700.210.367	\$89.00	\$0.00	\$113.01	(\$24.01)	\$0.00	(\$24.01)
MEDICARE TAX						-26.98%
100.100.700.210.368	\$380.00	\$0.00	\$483.23	(\$103.23)	\$0.00	(\$103.23)
SOCIAL SECURITY TAX						-27.17%
100.100.700.210.426	\$21,000.00	\$1,161.40	\$23,122.65	(\$2,122.65)	\$367.94	(\$2,490.59)
WRESTLING TRANSPORTATION						-11.86%
100.100.700.210.479	\$0.00	\$0.00	\$607.63	(\$607.63)	\$0.00	(\$607.63)
WRESTLING SUPPLIES AND MATERIALS						0.00%
100.100.700.210.491	\$0.00	\$0.00	\$150.00	(\$150.00)	\$0.00	(\$150.00)

Petersburg School District

Expenditure Budget Balance Report

Summary Only

From Date: 1/1/2023

To Date: 1/31/2023

Fiscal Year: 2022-2023

Budget Balance

Account Number / Description	Budget	Range To Date	YTD	Balance	Encumbrance	% Remaining Bud
WRESTLING DUES AND FEES						0.00%
100.100.700.220.316	\$8,464.00	\$2,116.00	\$4,232.00	\$4,232.00	\$4,232.00	\$0.00
CERTIFICATED EXTRA DUTY PAY						0.00%
100.100.700.220.329	\$4,500.00	\$1,220.00	\$1,925.00	\$2,575.00	\$0.00	\$2,575.00
SUBSTITUTES/TEMPORARIES						57.22%
100.100.700.220.363	\$64.00	\$16.72	\$30.86	\$33.14	\$0.00	\$33.14
WORKERS COMPENSATION						51.78%
100.100.700.220.365	\$1,063.00	\$331.05	\$622.55	\$440.45	\$0.00	\$440.45
RETIREMENT CONTRIBUTION-TRS						41.43%
100.100.700.220.366	\$0.00	\$4.40	\$13.20	(\$13.20)	\$0.00	(\$13.20)
RETIREMENT CONTRIBUTION-PERS						0.00%
100.100.700.220.367	\$132.00	\$45.54	\$83.96	\$48.04	\$0.00	\$48.04
MEDICARE TAX						36.39%
100.100.700.220.368	\$0.00	\$42.16	\$70.68	(\$70.68)	\$0.00	(\$70.68)
SOCIAL SECURITY TAX						0.00%
100.100.700.220.426	\$20,000.00	\$880.47	\$980.47	\$19,019.53	\$3,950.00	\$15,069.53
BOYS BB TRANSPORTATION						75.35%
100.100.700.220.479	\$0.00	\$774.58	\$1,312.77	(\$1,312.77)	\$495.12	(\$1,807.89)
BOYS BB SUPPLIES AND MATERIALS						0.00%
100.100.700.230.316	\$834.00	\$0.00	\$0.00	\$834.00	\$417.00	\$417.00
CERTIFICATED EXTRA DUTY PAY						50.00%
100.100.700.240.316	\$7,298.00	\$0.00	\$0.00	\$7,298.00	\$7,298.00	\$0.00
CERTIFICATED EXTRA DUTY PAY						0.00%
100.100.700.240.322	\$2,085.00	\$0.00	\$0.00	\$2,085.00	\$0.00	\$2,085.00
NON-CERT SPECIALIST/EXTRA DUTY						100.00%
100.100.700.240.329	\$1,000.00	\$0.00	\$0.00	\$1,000.00	\$0.00	\$1,000.00
SUBSTITUTES/TEMPORARIES						100.00%
100.100.700.240.363	\$64.00	\$0.00	\$0.00	\$64.00	\$0.00	\$64.00
WORKERS COMPENSATION						100.00%
100.100.700.240.365	\$655.00	\$0.00	\$0.00	\$655.00	\$0.00	\$655.00
RETIREMENT CONTRIBUTION-TRS						100.00%
100.100.700.240.367	\$76.00	\$0.00	\$0.00	\$76.00	\$0.00	\$76.00
MEDICARE TAX						100.00%
100.100.700.240.426	\$15,000.00	\$0.00	\$0.00	\$15,000.00	\$0.00	\$15,000.00
BASEBALL TRANSPORTATION						100.00%
100.100.700.240.479	\$0.00	\$0.00	\$0.00	\$0.00	\$699.40	(\$699.40)

Petersburg School District

Expenditure Budget Balance Report

Summary Only

From Date: 1/1/2023

To Date: 1/31/2023

Fiscal Year: 2022-2023

Budget Balance

Account Number / Description	Budget	Range To Date	YTD	Balance	Encumbrance	% Remaining Bud
BASEBALL SUPPLIES AND MATERIALS						0.00%
100.200.100.000.314	\$29,000.00	\$2,379.70	\$14,278.20	\$14,721.80	\$14,528.20	\$193.60
CERT DIRECTOR/COORD/MANAGER						0.67%
100.200.100.000.315	\$368,742.00	\$30,530.44	\$152,454.98	\$216,287.02	\$213,272.85	\$3,014.17
CERTIFICATED TEACHER						0.82%
100.200.100.000.329	\$8,000.00	\$875.00	\$4,687.50	\$3,312.50	\$0.00	\$3,312.50
SUBSTITUTES/TEMPORARIES						41.41%
100.200.100.000.363	\$2,661.00	\$171.02	\$867.64	\$1,793.36	\$0.00	\$1,793.36
WORKERS COMPENSATION						67.39%
100.200.100.000.364	\$133,687.00	\$10,663.55	\$53,756.87	\$79,930.13	\$1,333.35	\$78,596.78
INSURANCE-HEALTH/LIFE						58.79%
100.200.100.000.365	\$97,925.00	\$4,139.42	\$20,968.07	\$76,956.93	\$0.00	\$76,956.93
RETIREMENT CONTRIBUTION-TRS						78.59%
100.200.100.000.367	\$5,825.00	\$459.52	\$2,326.49	\$3,498.51	\$0.00	\$3,498.51
MEDICARE TAX						60.06%
100.200.100.000.368	\$498.00	\$0.00	\$4.65	\$493.35	\$0.00	\$493.35
SOCIAL SECURITY TAX						99.07%
100.200.100.000.451	\$11,500.00	\$303.83	\$4,357.56	\$7,142.44	\$0.00	\$7,142.44
MS GENERAL TEACHING SUPPLIES						62.11%
100.200.100.000.474	\$8,000.00	\$0.00	\$0.00	\$8,000.00	\$0.00	\$8,000.00
MS CURRICULUM ADOPTION						100.00%
100.200.100.000.476	\$8,000.00	\$3,199.21	\$5,047.55	\$2,952.45	\$1,570.00	\$1,382.45
MS COPIER SUPPLIES						17.28%
100.200.100.001.451	\$500.00	\$0.00	\$493.16	\$6.84	\$0.00	\$6.84
MS ENGLISH SUPPLIES						1.37%
100.200.100.002.451	\$1,000.00	\$0.00	\$967.02	\$32.98	\$12.99	\$19.99
MS MATH SUPPLIES						2.00%
100.200.100.003.451	\$500.00	\$0.00	\$0.00	\$500.00	\$303.93	\$196.07
MS SCIENCE SUPPLIES						39.21%
100.200.100.004.451	\$500.00	\$0.00	\$269.98	\$230.02	\$0.00	\$230.02
MS SOCIAL STUDIES SUPPLIES						46.00%
100.200.100.008.451	\$500.00	\$0.00	\$0.00	\$500.00	\$0.00	\$500.00
MS MUSIC SUPPLIES						100.00%
100.200.100.009.451	\$500.00	\$196.92	\$196.92	\$303.08	\$0.00	\$303.08
MS ART/JEWELRY/PHOTO SUPPLIES						60.62%
100.200.100.016.451	\$500.00	\$0.00	\$0.00	\$500.00	\$0.00	\$500.00

Petersburg School District

Expenditure Budget Balance Report

Summary Only

From Date: 1/1/2023

To Date: 1/31/2023

Fiscal Year: 2022-2023

Budget Balance

Account Number / Description	Budget	Range To Date	YTD	Balance	Encumbrance	% Remaining Bud
6TH TEACHING SUPPLIES						100.00%
100.200.100.019.451	\$500.00	\$0.00	\$0.00	\$500.00	\$0.00	\$500.00
MS ROBOTICS						100.00%
100.200.200.000.315	\$57,119.00	\$4,656.42	\$23,775.15	\$33,343.85	\$32,594.90	\$748.95
CERTIFICATED TEACHER						1.31%
100.200.200.000.323	\$85,000.00	\$8,360.22	\$36,116.21	\$48,883.79	\$40,535.98	\$8,347.81
AIDES						9.82%
100.200.200.000.329	\$7,000.00	\$175.00	\$3,225.00	\$3,775.00	\$0.00	\$3,775.00
SUBSTITUTES/TEMPORARIES						53.93%
100.200.200.000.363	\$738.00	\$66.12	\$316.38	\$421.62	\$0.00	\$421.62
WORKERS COMPENSATION						57.13%
100.200.200.000.364	\$48,004.00	\$4,200.75	\$21,000.11	\$27,003.89	\$0.00	\$27,003.89
INSURANCE-HEALTH/LIFE						56.25%
100.200.200.000.365	\$14,024.00	\$593.89	\$3,189.44	\$10,834.56	\$0.00	\$10,834.56
RETIREMENT CONTRIBUTION-TRS						77.26%
100.200.200.000.366	\$21,000.00	\$1,371.43	\$6,889.05	\$14,110.95	\$0.00	\$14,110.95
RETIREMENT CONTRIBUTION-PERS						67.20%
100.200.200.000.367	\$2,133.00	\$176.05	\$839.29	\$1,293.71	\$0.00	\$1,293.71
MEDICARE TAX						60.65%
100.200.200.000.368	\$724.00	\$131.83	\$451.43	\$272.57	\$0.00	\$272.57
SOCIAL SECURITY TAX						37.65%
100.200.200.000.451	\$700.00	\$319.00	\$459.30	\$240.70	\$0.00	\$240.70
MS SPED SUPPLIES						34.39%
100.200.450.000.324	\$33,000.00	\$3,263.81	\$18,069.84	\$14,930.16	\$14,098.56	\$831.60
SUPPORT STAFF						2.52%
100.200.450.000.329	\$600.00	\$0.00	\$30.00	\$570.00	\$0.00	\$570.00
SUBSTITUTES/TEMPORARIES						95.00%
100.200.450.000.363	\$253.00	\$16.31	\$90.08	\$162.92	\$0.00	\$162.92
WORKERS COMPENSATION						64.40%
100.200.450.000.364	\$27,059.00	\$2,710.30	\$13,543.84	\$13,515.16	\$0.00	\$13,515.16
INSURANCE-HEALTH/LIFE						49.95%
100.200.450.000.366	\$9,172.00	\$718.04	\$3,975.37	\$5,196.63	\$0.00	\$5,196.63
RETIREMENT CONTRIBUTION-PERS						56.66%
100.200.450.000.367	\$554.00	\$37.50	\$216.31	\$337.69	\$0.00	\$337.69
MEDICARE TAX						60.95%
100.200.450.000.368	\$74.00	\$0.00	\$1.86	\$72.14	\$0.00	\$72.14

Petersburg School District

Expenditure Budget Balance Report

 Summary Only

From Date: 1/1/2023

To Date: 1/31/2023

Fiscal Year: 2022-2023

Budget Balance

Account Number / Description	Budget	Range To Date	YTD	Balance	Encumbrance	% Remaining Bud
SOCIAL SECURITY TAX						97.49%
100.200.450.000.433	\$1,000.00	\$132.67	\$798.36	\$201.64	\$0.00	\$201.64
COMMUNICATIONS						20.16%
100.200.450.000.434	\$300.00	\$0.00	\$0.00	\$300.00	\$100.00	\$200.00
MS POSTAGE						66.67%
100.200.450.000.454	\$400.00	\$0.00	\$0.00	\$400.00	\$45.86	\$354.14
MS OFFICE SUPPLIES						88.54%
100.200.700.000.316	\$5,934.00	\$0.00	\$1,620.00	\$4,314.00	\$3,058.00	\$1,256.00
CERTIFICATED EXTRA DUTY PAY						21.17%
100.200.700.000.322	\$6,156.00	\$445.50	\$4,090.50	\$2,065.50	\$1,835.50	\$230.00
NON-CERT SPECIALIST/EXTRA DUTY						3.74%
100.200.700.000.329	\$1,000.00	\$0.00	\$1,431.00	(\$431.00)	\$0.00	(\$431.00)
SUBSTITUTES/TEMPORARIES						-43.10%
100.200.700.000.363	\$77.00	\$2.23	\$35.81	\$41.19	\$0.00	\$41.19
WORKERS COMPENSATION						53.49%
100.200.700.000.364	\$0.00	\$0.00	\$237.34	(\$237.34)	\$0.00	(\$237.34)
INSURANCE-HEALTH/LIFE						0.00%
100.200.700.000.365	\$1,542.00	\$0.00	\$230.56	\$1,311.44	\$0.00	\$1,311.44
RETIREMENT CONTRIBUTION-TRS						85.05%
100.200.700.000.366	\$0.00	\$0.00	\$20.91	(\$20.91)	\$0.00	(\$20.91)
RETIREMENT CONTRIBUTION-PERS						0.00%
100.200.700.000.367	\$151.00	\$6.46	\$101.21	\$49.79	\$0.00	\$49.79
MEDICARE TAX						32.97%
100.200.700.000.368	\$600.00	\$27.62	\$323.13	\$276.87	\$0.00	\$276.87
SOCIAL SECURITY TAX						46.15%
100.200.700.000.426	\$20,000.00	\$132.00	\$8,463.00	\$11,537.00	\$0.00	\$11,537.00
MS ACTIVITIES STUDENT TRANSPORTATION						57.69%
100.200.700.000.479	\$590.00	\$0.00	\$1,298.01	(\$708.01)	\$0.00	(\$708.01)
MS ACTIVITIES SUPPLIES AND MATERIALS						-120.00%
100.200.700.000.490	\$0.00	\$0.00	\$600.00	(\$600.00)	\$0.00	(\$600.00)
MS ACTIVITIES OTHER EXPENSES						0.00%
100.300.100.000.315	\$959,785.00	\$94,969.83	\$453,747.50	\$506,037.50	\$497,449.14	\$8,588.36
CERTIFICATED TEACHER						0.89%
100.300.100.000.323	\$26,000.00	\$2,660.65	\$13,383.02	\$12,616.98	\$10,736.45	\$1,880.53
AIDES						7.23%
100.300.100.000.329	\$31,000.00	\$1,175.00	\$18,391.00	\$12,609.00	\$0.00	\$12,609.00

Petersburg School District

Expenditure Budget Balance Report

Summary Only

From Date: 1/1/2023

To Date: 1/31/2023

Fiscal Year: 2022-2023

Budget Balance

Account Number / Description	Budget	Range To Date	YTD	Balance	Encumbrance	% Remaining Bud
SUBSTITUTES/TEMPORARIES						40.67%
100.300.100.000.363	\$6,257.00	\$496.97	\$2,442.22	\$3,814.78	\$0.00	\$3,814.78
WORKERS COMPENSATION						60.97%
100.300.100.000.364	\$246,747.00	\$26,740.08	\$128,288.69	\$118,458.31	\$1,333.34	\$117,124.97
INSURANCE-HEALTH/LIFE						47.47%
100.300.100.000.365	\$236,300.00	\$11,962.89	\$57,218.44	\$179,081.56	\$0.00	\$179,081.56
RETIREMENT CONTRIBUTION-TRS						75.79%
100.300.100.000.366	\$6,445.00	\$585.34	\$2,944.27	\$3,500.73	\$0.00	\$3,500.73
RETIREMENT CONTRIBUTION-PERS						54.32%
100.300.100.000.367	\$13,812.00	\$1,342.24	\$6,607.69	\$7,204.31	\$0.00	\$7,204.31
MEDICARE TAX						52.16%
100.300.100.000.368	\$3,123.00	\$18.60	\$819.39	\$2,303.61	\$0.00	\$2,303.61
SOCIAL SECURITY TAX						73.76%
100.300.100.000.451	\$26,500.00	\$0.00	\$9,333.37	\$17,166.63	\$1,367.43	\$15,799.20
TEACHING SUPPLIES						59.62%
100.300.100.000.474	\$10,000.00	\$0.00	\$0.00	\$10,000.00	\$0.00	\$10,000.00
CURRICULUM ADOPTION						100.00%
100.300.100.000.476	\$12,000.00	\$3,664.97	\$3,664.97	\$8,335.03	\$7,150.00	\$1,185.03
COPIER SUPPLIES						9.88%
100.300.100.008.451	\$6,300.00	\$0.00	\$6,296.17	\$3.83	\$0.00	\$3.83
MUSIC TEACHING SUPPLIES						0.06%
100.300.100.010.451	\$300.00	\$0.00	\$0.00	\$300.00	\$0.00	\$300.00
B MARTIN SUPPLIES						100.00%
100.300.100.011.451	\$300.00	\$0.00	\$0.00	\$300.00	\$0.00	\$300.00
M BROCK SUPPLIES						100.00%
100.300.100.012.451	\$300.00	\$0.00	\$0.00	\$300.00	\$0.00	\$300.00
K CURTISS SUPPLIES						100.00%
100.300.100.014.451	\$300.00	\$0.00	\$0.00	\$300.00	\$0.00	\$300.00
G KOWALSKI SUPPLIES						100.00%
100.300.100.015.451	\$300.00	\$0.00	\$0.00	\$300.00	\$0.00	\$300.00
ETHAN BRYNER TEACHING SUPPLIES						100.00%
100.300.100.018.451	\$300.00	\$0.00	\$0.00	\$300.00	\$0.00	\$300.00
ERIN HOFACRE TEACHING SUPPLIES						100.00%
100.300.100.029.451	\$300.00	\$0.00	\$0.00	\$300.00	\$150.07	\$149.93
H MULLEN SUPPLIES						49.98%
100.300.100.030.451	\$300.00	\$0.00	\$0.00	\$300.00	\$0.00	\$300.00

Petersburg School District

Expenditure Budget Balance Report

 Summary Only

From Date: 1/1/2023

To Date: 1/31/2023

Fiscal Year: 2022-2023

Budget Balance

Account Number / Description	Budget	Range To Date	YTD	Balance	Encumbrance	% Remaining Bud
E WILLIS SUPPLIES						100.00%
100.300.100.031.451	\$300.00	\$0.00	\$0.00	\$300.00	\$0.00	\$300.00
S VANDERVEST SUPPLIES						100.00%
100.300.100.032.451	\$300.00	\$0.00	\$0.00	\$300.00	\$0.00	\$300.00
M MIDKIFF SUPPLIES						100.00%
100.300.100.033.451	\$550.00	\$0.00	\$488.76	\$61.24	\$0.00	\$61.24
S PAWUK SUPPLIES						11.13%
100.300.100.034.451	\$550.00	\$0.00	\$237.50	\$312.50	\$0.00	\$312.50
V MILLER SUPPLIES						56.82%
100.300.100.035.451	\$600.00	\$0.00	\$201.31	\$398.69	\$0.00	\$398.69
ES SWIM/PE SUPPLIES						66.45%
100.300.200.000.315	\$209,606.00	\$21,087.44	\$107,080.70	\$102,525.30	\$100,576.80	\$1,948.50
CERTIFICATED TEACHER						0.93%
100.300.200.000.323	\$305,000.00	\$29,485.51	\$138,559.56	\$166,440.44	\$134,772.14	\$31,668.30
AIDES						10.38%
100.300.200.000.329	\$45,000.00	\$1,155.00	\$6,915.00	\$38,085.00	\$0.00	\$38,085.00
SUBSTITUTES/TEMPORARIES						84.63%
100.300.200.000.363	\$3,147.00	\$267.60	\$1,294.96	\$1,852.04	\$0.00	\$1,852.04
WORKERS COMPENSATION						58.85%
100.300.200.000.364	\$138,000.00	\$14,325.33	\$70,610.02	\$67,389.98	\$5,111.12	\$62,278.86
INSURANCE-HEALTH/LIFE						45.13%
100.300.200.000.365	\$51,127.00	\$2,648.58	\$12,871.94	\$38,255.06	\$0.00	\$38,255.06
RETIREMENT CONTRIBUTION-TRS						74.82%
100.300.200.000.366	\$75,595.00	\$5,627.77	\$18,229.73	\$57,365.27	\$0.00	\$57,365.27
RETIREMENT CONTRIBUTION-PERS						75.89%
100.300.200.000.367	\$8,000.00	\$721.07	\$3,502.92	\$4,497.08	\$0.00	\$4,497.08
MEDICARE TAX						56.21%
100.300.200.000.368	\$3,430.00	\$371.03	\$2,423.91	\$1,006.09	\$0.00	\$1,006.09
SOCIAL SECURITY TAX						29.33%
100.300.200.000.451	\$1,400.00	\$0.00	\$825.94	\$574.06	\$0.00	\$574.06
ES SPED SUPPLIES						41.00%
100.300.300.000.315	\$81,213.00	\$6,726.08	\$33,630.40	\$47,582.60	\$47,082.60	\$500.00
CERTIFICATED TEACHER						0.62%
100.300.300.000.329	\$4,500.00	\$0.00	\$87.50	\$4,412.50	\$0.00	\$4,412.50
SUBSTITUTES/TEMPORARIES						98.06%
100.300.300.000.363	\$564.00	\$34.97	\$175.29	\$388.71	\$0.00	\$388.71

Petersburg School District

Expenditure Budget Balance Report

Summary Only

From Date: 1/1/2023

To Date: 1/31/2023

Fiscal Year: 2022-2023

Budget Balance

Account Number / Description	Budget	Range To Date	YTD	Balance	Encumbrance	% Remaining Bud
STAFF TRANSPORTATION						0.05%
100.300.400.000.479	\$1,609.00	\$82.65	\$663.81	\$945.19	\$0.00	\$945.19
ES PRINCIPAL SUPPLIES AND MATERIALS						58.74%
100.300.400.000.491	\$600.00	\$0.00	\$600.00	\$0.00	\$0.00	\$0.00
DUES AND FEES						0.00%
100.300.450.000.324	\$37,500.00	\$3,746.93	\$20,034.65	\$17,465.35	\$16,568.88	\$896.47
SUPPORT STAFF						2.39%
100.300.450.000.329	\$600.00	\$0.00	\$0.00	\$600.00	\$0.00	\$600.00
SUBSTITUTES/TEMPORARIES						100.00%
100.300.450.000.363	\$246.00	\$18.78	\$99.95	\$146.05	\$0.00	\$146.05
WORKERS COMPENSATION						59.37%
100.300.450.000.364	\$27,059.00	\$3,006.51	\$15,032.55	\$12,026.45	\$0.00	\$12,026.45
INSURANCE-HEALTH/LIFE						44.45%
100.300.450.000.366	\$8,924.00	\$824.32	\$4,455.07	\$4,468.93	\$0.00	\$4,468.93
RETIREMENT CONTRIBUTION-PERS						50.08%
100.300.450.000.367	\$539.00	\$43.43	\$239.32	\$299.68	\$0.00	\$299.68
MEDICARE TAX						55.60%
100.300.450.000.368	\$74.00	\$0.00	\$0.00	\$74.00	\$0.00	\$74.00
SOCIAL SECURITY TAX						100.00%
100.300.450.000.433	\$2,000.00	\$170.04	\$1,025.46	\$974.54	\$0.00	\$974.54
COMMUNICATIONS						48.73%
100.300.450.000.434	\$500.00	\$9.90	\$45.80	\$454.20	\$54.20	\$400.00
POSTAGE						80.00%
100.300.450.000.454	\$800.00	\$0.00	\$0.00	\$800.00	\$151.81	\$648.19
OFFICE SUPPLIES						81.02%
100.500.100.000.362	\$6,000.00	\$0.00	\$0.00	\$6,000.00	\$0.00	\$6,000.00
UNEMPLOYMENT INSURANCE						100.00%
100.500.100.000.363	\$0.00	\$0.00	\$63.08	(\$63.08)	\$0.00	(\$63.08)
WORKERS COMPENSATION						0.00%
100.500.100.000.367	\$0.00	\$0.00	\$88.92	(\$88.92)	\$0.00	(\$88.92)
MEDICARE TAX						0.00%
100.500.100.000.369	\$38,000.00	\$1,197.70	\$15,551.68	\$22,448.32	\$683.70	\$21,764.62
OTHER EMPLOYEE BENEFITS						57.28%
100.500.100.000.418	\$5,000.00	\$0.00	\$0.00	\$5,000.00	\$0.00	\$5,000.00
DISTRICT WIDE PROFESSIONAL DEVELOPMENT						100.00%
100.500.100.000.421	\$5,000.00	\$0.00	\$0.00	\$5,000.00	\$0.00	\$5,000.00

Petersburg School District

Expenditure Budget Balance Report

Summary Only

From Date: 1/1/2023

To Date: 1/31/2023

Fiscal Year: 2022-2023

Budget Balance

Account Number / Description	Budget	Range To Date	YTD	Balance	Encumbrance	% Remaining Bud
STAFF TRANSPORTATION						100.00%
100.500.100.000.474	\$20,000.00	\$0.00	\$5,070.15	\$14,929.85	\$6,177.60	\$8,752.25
CURRICULUM ADOPTION						43.76%
100.500.200.000.315	\$47,250.00	\$3,894.45	\$22,873.65	\$24,376.35	\$22,775.01	\$1,601.34
CERTIFICATED TEACHER						3.39%
100.500.200.000.363	\$339.00	\$19.52	\$114.67	\$224.33	\$0.00	\$224.33
WORKERS COMPENSATION						66.17%
100.500.200.000.364	\$15,220.00	\$1,268.37	\$7,610.22	\$7,609.78	\$0.00	\$7,609.78
INSURANCE-HEALTH/LIFE						50.00%
100.500.200.000.365	\$22,281.00	\$485.99	\$2,664.91	\$19,616.09	\$0.00	\$19,616.09
RETIREMENT CONTRIBUTION-TRS						88.04%
100.500.200.000.367	\$685.00	\$54.40	\$319.40	\$365.60	\$0.00	\$365.60
MEDICARE TAX						53.37%
100.500.200.000.418	\$25,000.00	\$0.00	\$2,223.00	\$22,777.00	\$24,283.92	(\$1,506.92)
OTHER PROFESSIONAL SERVICES						-6.03%
100.500.200.000.421	\$3,000.00	\$252.00	\$1,643.11	\$1,356.89	\$338.00	\$1,018.89
STAFF TRANSPORTATION						33.96%
100.500.200.000.440	\$2,500.00	\$1,354.50	\$1,953.50	\$546.50	\$0.00	\$546.50
PURCHASED SERVICES						21.86%
100.500.200.000.451	\$3,700.00	\$0.00	\$870.98	\$2,829.02	\$377.77	\$2,451.25
DISTRICT WIDE SPED SUPPLIES						66.25%
100.500.300.000.365	\$19,911.00	\$0.00	\$0.00	\$19,911.00	\$0.00	\$19,911.00
RETIREMENT CONTRIBUTION-TRS						100.00%
100.500.300.000.366	\$6,227.00	\$0.00	\$0.00	\$6,227.00	\$0.00	\$6,227.00
RETIREMENT CONTRIBUTION-PERS						100.00%
100.500.350.000.318	\$92,433.00	\$7,661.08	\$45,966.48	\$46,466.52	\$45,966.52	\$500.00
CERTIFICATED SPECIALISTS						0.54%
100.500.350.000.324	\$46,000.00	\$3,842.08	\$26,663.74	\$19,336.26	\$18,861.12	\$475.14
SUPPORT STAFF						1.03%
100.500.350.000.329	\$1,500.00	\$0.00	\$305.88	\$1,194.12	\$0.00	\$1,194.12
SUBSTITUTES/TEMPORARIES						79.61%
100.500.350.000.363	\$1,157.00	\$57.66	\$365.60	\$791.40	\$0.00	\$791.40
WORKERS COMPENSATION						68.40%
100.500.350.000.364	\$27,059.00	\$2,254.88	\$15,784.16	\$11,274.84	\$0.00	\$11,274.84
INSURANCE-HEALTH/LIFE						41.67%
100.500.350.000.365	\$22,460.00	\$955.95	\$5,735.70	\$16,724.30	\$0.00	\$16,724.30

Petersburg School District

Expenditure Budget Balance Report

Summary Only

From Date: 1/1/2023

To Date: 1/31/2023

Fiscal Year: 2022-2023

Budget Balance

Account Number / Description	Budget	Range To Date	YTD	Balance	Encumbrance	% Remaining Bud
RETIREMENT CONTRIBUTION-TRS						74.46%
100.500.350.000.366	\$11,403.00	\$845.26	\$5,866.03	\$5,536.97	\$0.00	\$5,536.97
RETIREMENT CONTRIBUTION-PERS						48.56%
100.500.350.000.367	\$2,033.00	\$158.63	\$1,000.38	\$1,032.62	\$0.00	\$1,032.62
MEDICARE TAX						50.79%
100.500.350.000.368	\$93.00	\$0.00	\$18.96	\$74.04	\$0.00	\$74.04
SOCIAL SECURITY TAX						79.61%
100.500.350.000.417	\$39,890.00	\$0.00	\$29,917.50	\$9,972.50	\$9,972.50	\$0.00
TECHNOLOGY SUPPORT						0.00%
100.500.350.000.433	\$148,000.00	\$10,261.30	\$61,567.80	\$86,432.20	\$0.00	\$86,432.20
COMMUNICATIONS						58.40%
100.500.350.000.440	\$66,000.00	\$9,486.93	\$28,941.73	\$37,058.27	\$14,088.27	\$22,970.00
PURCHASED SERVICES						34.80%
100.500.350.000.446	\$21,000.00	\$0.00	\$9,393.85	\$11,606.15	\$2,221.15	\$9,385.00
PROPERTY INSURANCE						44.69%
100.500.350.000.450	\$16,000.00	\$802.70	\$8,890.44	\$7,109.56	\$2,180.46	\$4,929.10
SUPPLIES, MATERIALS & MEDIA						30.81%
100.500.350.000.475	\$109,500.00	\$10,978.43	\$43,577.32	\$65,922.68	\$10,670.12	\$55,252.56
TECHNOLOGY SUPPLIES						50.46%
100.500.400.000.313	\$186,400.00	\$16,434.97	\$104,766.78	\$81,633.22	\$81,681.83	(\$48.61)
PRINCIPAL						-0.03%
100.500.400.000.363	\$1,235.00	\$82.39	\$525.23	\$709.77	\$0.00	\$709.77
WORKERS COMPENSATION						57.47%
100.500.400.000.364	\$50,282.00	\$4,240.18	\$25,710.66	\$24,571.34	\$0.00	\$24,571.34
INSURANCE-HEALTH/LIFE						48.87%
100.500.400.000.365	\$45,596.00	\$2,051.66	\$13,077.07	\$32,518.93	\$0.00	\$32,518.93
RETIREMENT CONTRIBUTION-TRS						71.32%
100.500.400.000.367	\$2,703.00	\$238.31	\$1,519.14	\$1,183.86	\$0.00	\$1,183.86
MEDICARE TAX						43.80%
100.500.600.000.321	\$80,100.00	\$6,725.00	\$46,775.00	\$33,325.00	\$33,625.00	(\$300.00)
NON-CERT DIRECTOR/COORD/MANAGR						-0.37%
100.500.600.000.324	\$40,600.00	\$3,880.29	\$8,418.21	\$32,181.79	\$18,861.12	\$13,320.67
SUPPORT STAFF						32.81%
100.500.600.000.325	\$210,500.00	\$17,473.68	\$117,533.12	\$92,966.88	\$83,300.18	\$9,666.70
MAINTENANCE/CUSTODIAL						4.59%
100.500.600.000.329	\$13,000.00	\$0.00	\$11,907.47	\$1,092.53	\$128.21	\$964.32

Petersburg School District

Expenditure Budget Balance Report

Summary Only

From Date: 1/1/2023

To Date: 1/31/2023

Fiscal Year: 2022-2023

Budget Balance

Account Number / Description	Budget	Range To Date	YTD	Balance	Encumbrance	% Remaining Bud
SUBSTITUTES/TEMPORARIES						7.42%
100.500.600.000.363	\$12,558.00	\$648.67	\$4,165.88	\$8,392.12	\$0.00	\$8,392.12
WORKERS COMPENSATION						66.83%
100.500.600.000.364	\$74,641.00	\$5,730.10	\$34,564.02	\$40,076.98	\$0.00	\$40,076.98
INSURANCE-HEALTH/LIFE						53.69%
100.500.600.000.366	\$83,605.00	\$5,407.23	\$38,399.64	\$45,205.36	\$0.00	\$45,205.36
RETIREMENT CONTRIBUTION-PERS						54.07%
100.500.600.000.367	\$4,990.00	\$379.97	\$2,520.93	\$2,469.07	\$0.00	\$2,469.07
MEDICARE TAX						49.48%
100.500.600.000.368	\$500.00	\$199.41	\$589.34	(\$89.34)	\$0.00	(\$89.34)
SOCIAL SECURITY TAX						-17.87%
100.500.600.000.418	\$20,000.00	\$661.00	\$1,962.01	\$18,037.99	\$661.00	\$17,376.99
OTHER PROFESSIONAL SERVICES						86.88%
100.500.600.000.421	\$3,000.00	\$0.00	\$1,050.92	\$1,949.08	\$0.00	\$1,949.08
STAFF TRANSPORTATION						64.97%
100.500.600.000.431	\$30,000.00	\$2,434.54	\$13,977.22	\$16,022.78	\$0.00	\$16,022.78
WATER AND SEWER						53.41%
100.500.600.000.432	\$40,000.00	\$3,882.23	\$17,661.26	\$22,338.74	\$0.00	\$22,338.74
GARBAGE						55.85%
100.500.600.000.433	\$1,000.00	\$57.00	\$344.04	\$655.96	\$0.00	\$655.96
COMMUNICATIONS						65.60%
100.500.600.000.436	\$284,500.00	\$31,587.42	\$139,921.80	\$144,578.20	\$0.00	\$144,578.20
ENERGY - ELECTRICITY						50.82%
100.500.600.000.438	\$330,000.00	\$62,636.00	\$197,978.76	\$132,021.24	\$0.00	\$132,021.24
ENERGY - HEATING OIL						40.01%
100.500.600.000.440	\$30,000.00	\$5,055.51	\$8,920.51	\$21,079.49	\$11,054.00	\$10,025.49
PURCHASED SERVICES						33.42%
100.500.600.000.446	\$91,063.00	\$0.00	\$91,062.78	\$0.22	\$0.00	\$0.22
PROPERTY INSURANCE						0.00%
100.500.600.000.452	\$70,000.00	\$3,300.17	\$31,558.35	\$38,441.65	\$1,000.00	\$37,441.65
MAINTENANCE/CONSTR SUPPLIES						53.49%
100.500.600.000.453	\$20,000.00	\$0.00	\$4,226.32	\$15,773.68	\$800.00	\$14,973.68
JANITORIAL SUPPLIES						74.87%
100.500.600.000.458	\$7,000.00	\$253.60	\$2,061.40	\$4,938.60	\$0.00	\$4,938.60
VEHICLE GAS AND OIL						70.55%
100.500.600.000.479	\$1,000.00	\$0.00	\$0.00	\$1,000.00	\$0.00	\$1,000.00

Petersburg School District

Expenditure Budget Balance Report

Summary Only

From Date: 1/1/2023

To Date: 1/31/2023

Fiscal Year: 2022-2023

Budget Balance

Account Number / Description	Budget	Range To Date	YTD	Balance	Encumbrance	% Remaining Bud
MAINTENANCE OTHER SUPPLIES AND MATERIALS						100.00%
100.500.600.000.491	\$3,937.00	\$0.00	\$0.00	\$3,937.00	\$0.00	\$3,937.00
DUES AND FEES						100.00%
100.500.700.000.314	\$46,628.00	\$3,949.50	\$23,697.00	\$22,931.00	\$23,697.00	(\$766.00)
CERT DIRECTOR/COORD/MANAGER						-1.64%
100.500.700.000.363	\$304.00	\$19.80	\$118.80	\$185.20	\$0.00	\$185.20
WORKERS COMPENSATION						60.92%
100.500.700.000.364	\$14,000.00	\$1,127.44	\$6,764.64	\$7,235.36	\$0.00	\$7,235.36
INSURANCE-HEALTH/LIFE						51.68%
100.500.700.000.365	\$16,690.00	\$492.92	\$2,957.52	\$13,732.48	\$0.00	\$13,732.48
RETIREMENT CONTRIBUTION-TRS						82.28%
100.500.700.000.367	\$690.00	\$53.18	\$320.85	\$369.15	\$0.00	\$369.15
MEDICARE TAX						53.50%
100.600.510.000.311	\$141,620.00	\$11,801.67	\$82,611.69	\$59,008.31	\$64,330.41	(\$5,322.10)
SUPERINTENDENT						-3.76%
100.600.510.000.324	\$60,000.00	\$5,000.00	\$35,000.00	\$25,000.00	\$25,000.00	\$0.00
SUPPORT STAFF						0.00%
100.600.510.000.363	\$1,335.00	\$85.48	\$598.37	\$736.63	\$0.00	\$736.63
WORKERS COMPENSATION						55.18%
100.600.510.000.364	\$36,828.00	\$3,068.60	\$21,480.20	\$15,347.80	\$1,250.00	\$14,097.80
INSURANCE-HEALTH/LIFE						38.28%
100.600.510.000.365	\$34,468.00	\$1,465.33	\$10,257.31	\$24,210.69	\$0.00	\$24,210.69
RETIREMENT CONTRIBUTION-TRS						70.24%
100.600.510.000.366	\$14,874.00	\$1,100.00	\$7,700.00	\$7,174.00	\$0.00	\$7,174.00
RETIREMENT CONTRIBUTION-PERS						48.23%
100.600.510.000.367	\$2,918.00	\$247.25	\$1,730.76	\$1,187.24	\$0.00	\$1,187.24
MEDICARE TAX						40.69%
100.600.510.000.414	\$20,000.00	\$0.00	\$871.00	\$19,129.00	\$0.00	\$19,129.00
LEGAL SERVICES						95.65%
100.600.510.000.421	\$10,000.00	\$451.50	\$6,236.91	\$3,763.09	\$1,194.00	\$2,569.09
STAFF TRANSPORTATION						25.69%
100.600.510.000.433	\$1,200.00	\$118.57	\$714.63	\$485.37	\$0.00	\$485.37
COMMUNICATIONS						40.45%
100.600.510.000.434	\$500.00	\$0.00	\$42.10	\$457.90	\$57.90	\$400.00
POSTAGE						80.00%
100.600.510.000.454	\$500.00	\$0.00	\$614.33	(\$114.33)	\$0.00	(\$114.33)

Petersburg School District

Expenditure Budget Balance Report

Summary Only

From Date: 1/1/2023

To Date: 1/31/2023

Fiscal Year: 2022-2023

Budget Balance

Account Number / Description	Budget	Range To Date	YTD	Balance	Encumbrance	% Remaining Bud
OFFICE SUPPLIES						-22.87%
100.600.510.000.476	\$5,000.00	\$3,592.71	\$3,681.26	\$1,318.74	\$0.00	\$1,318.74
COPIER SUPPLIES						26.37%
100.600.510.000.479	\$4,500.00	\$0.00	\$195.00	\$4,305.00	\$0.00	\$4,305.00
SUPERINTENDENT OTHER SUPPLIES AND MATERIALS						95.67%
100.600.510.000.491	\$18,500.00	\$13,580.19	\$14,200.19	\$4,299.81	\$0.00	\$4,299.81
DUES AND FEES						23.24%
100.600.511.000.418	\$13,000.00	\$0.00	\$0.00	\$13,000.00	\$12,500.00	\$500.00
BOARD - OTHER PROFESSIONAL SERVICES						3.85%
100.600.511.000.421	\$7,000.00	\$0.00	\$3,031.00	\$3,969.00	\$0.00	\$3,969.00
BOARD- STAFF TRANSPORTATION						56.70%
100.600.511.000.479	\$6,300.00	\$3,060.00	\$6,403.03	(\$103.03)	\$0.00	(\$103.03)
BOE OTHER SUPPLIES AND MATERIALS						-1.64%
100.600.550.000.321	\$109,270.00	\$9,105.83	\$63,740.82	\$45,529.18	\$45,529.18	\$0.00
NON-CERT DIRECTOR/COORD/MANAGR						0.00%
100.600.550.000.363	\$724.00	\$45.65	\$319.55	\$404.45	\$0.00	\$404.45
WORKERS COMPENSATION						55.86%
100.600.550.000.364	\$28,073.00	\$2,339.44	\$16,376.08	\$11,696.92	\$0.00	\$11,696.92
INSURANCE-HEALTH/LIFE						41.67%
100.600.550.000.366	\$27,088.00	\$2,003.28	\$14,022.96	\$13,065.04	\$0.00	\$13,065.04
RETIREMENT CONTRIBUTION-PERS						48.23%
100.600.550.000.367	\$1,584.00	\$125.09	\$875.91	\$708.09	\$0.00	\$708.09
MEDICARE TAX						44.70%
100.600.550.000.412	\$55,000.00	\$22,990.00	\$57,990.00	(\$2,990.00)	\$0.00	(\$2,990.00)
AUDITING & ACCOUNTING SERVICES						-5.44%
100.600.550.000.418	\$12,000.00	\$0.00	\$11,603.76	\$396.24	\$0.00	\$396.24
OTHER PROFESSIONAL SERVICES						3.30%
100.600.550.000.421	\$3,400.00	\$0.00	\$2,345.47	\$1,054.53	\$0.00	\$1,054.53
STAFF TRANSPORTATION						31.02%
100.600.550.000.447	\$74,528.00	\$0.00	\$74,527.97	\$0.03	\$0.00	\$0.03
LIABILITY INSURANCE						0.00%
100.600.550.000.454	\$1,772.00	\$0.00	\$417.67	\$1,354.33	\$0.00	\$1,354.33
OFFICE SUPPLIES						76.43%
100.600.550.000.491	\$9,000.00	\$25.00	\$1,678.17	\$7,321.83	\$0.00	\$7,321.83
DUES AND FEES						81.35%
100.600.550.000.495	(\$30,000.00)	(\$7,439.69)	(\$11,102.80)	(\$18,897.20)	\$0.00	(\$18,897.20)

Petersburg School District

Expenditure Budget Balance Report

Summary Only

From Date: 1/1/2023

To Date: 1/31/2023

Fiscal Year: 2022-2023

Budget Balance

Account Number / Description

Budget

Range To Date

YTD

Balance

Encumbrance

% Remaining Bud

INDIRECT COST RECOVERY

Fund 100 Total:

\$9,442,124.00

\$814,472.73

\$4,294,210.95

\$5,147,913.05

\$2,503,026.88

62.99%

\$2,644,886.17

28.01%

Grand Total:

\$9,442,124.00

\$814,472.73

\$4,294,210.95

\$5,147,913.05

\$2,503,026.88

\$2,644,886.17

28.01%

End of Report

Petersburg School District

Reprint Check Listing

Fiscal Year: 2022-2023

Criteria:

Bank Account: OPERATING ACCOUNT XX3970

From Date: 01/01/2023

To Date: 01/31/2023

From Check:

To Check:

From Voucher:

To Voucher:

Check Number	Date	Payee	Amount	Voucher	Status	Type	Cleared?	Clear Date	Void Date
47118	01/31/2023	TRAUTMAN, VICTOR	\$172.46	7	Printed	Payroll	<input checked="" type="checkbox"/>	01/31/2023	
47119	01/31/2023	VANDERVEST, SHANNON L	\$5,002.81	7	Printed	Payroll	<input type="checkbox"/>		
47120	01/31/2023	PENNINGTON, AUGUST	\$500.87	7	Printed	Payroll	<input type="checkbox"/>		
47121	01/31/2023	BIRCHELL, CURTIS W	\$240.11	7	Printed	Payroll	<input type="checkbox"/>		
47122	01/31/2023	CAMPBELL, RODNEY	\$217.02	7	Printed	Payroll	<input type="checkbox"/>		
47123	01/31/2023	CORL, MICHAEL J	\$411.42	7	Printed	Payroll	<input type="checkbox"/>		
47124	01/31/2023	WEGENER, CAROL L	\$689.85	7	Printed	Payroll	<input type="checkbox"/>		
71695	01/03/2023	ALASKA CAR RENTAL	\$510.00	1105	Printed	Expense	<input checked="" type="checkbox"/>	01/31/2023	
71696	01/03/2023	DAVE OWENS-01802	\$92.00	1105	Printed	Expense	<input checked="" type="checkbox"/>	01/31/2023	
71697	01/03/2023	ENERSPECT MEDICAL SOLUTIONS, LLC	\$10,691.08	1105	Printed	Expense	<input checked="" type="checkbox"/>	01/31/2023	
71698	01/03/2023	ERICA KLUDT-PAINTER-00832	\$92.00	1105	Printed	Expense	<input checked="" type="checkbox"/>	01/31/2023	
71699	01/03/2023	FRONTLINE TECHNOLOGIES GROUP LLC	\$1,863.48	1105	Printed	Expense	<input checked="" type="checkbox"/>	01/31/2023	
71700	01/03/2023	GCI COMMUNICATION CORP-00953	\$2,067.80	1105	Printed	Expense	<input checked="" type="checkbox"/>	01/31/2023	
71701	01/03/2023	KELLEY CONNECT CO	\$13,825.00	1105	Printed	Expense	<input checked="" type="checkbox"/>	01/31/2023	
71702	01/03/2023	RING CENTRAL INC	\$2,696.93	1105	Printed	Expense	<input checked="" type="checkbox"/>	01/31/2023	
71703	01/03/2023	STEPHANIE PFUNDT	\$20.00	1105	Printed	Expense	<input type="checkbox"/>		
71704	01/03/2023	TYSON FOODS, INC	\$546.80	1105	Printed	Expense	<input checked="" type="checkbox"/>	01/31/2023	
71705	01/03/2023	US FOODS, INC.	\$6,230.50	1105	Printed	Expense	<input checked="" type="checkbox"/>	01/31/2023	
71706	01/03/2023	XEROX CORPORATION-02716	\$89.97	1105	Printed	Expense	<input checked="" type="checkbox"/>	01/31/2023	
71707	01/06/2023	AASB	\$5,700.00	1107	Printed	Expense	<input checked="" type="checkbox"/>	01/31/2023	
71708	01/06/2023	APPTEGY INC	\$6,790.00	1107	Printed	Expense	<input checked="" type="checkbox"/>	01/31/2023	
71709	01/06/2023	BUSINESS CARD-00283	\$651.40	1107	Printed	Expense	<input checked="" type="checkbox"/>	01/31/2023	

Petersburg School District

Reprint Check Listing

Fiscal Year: 2022-2023

Criteria:

Bank Account: OPERATING ACCOUNT XX3970

From Date: 01/01/2023

To Date: 01/31/2023

From Check:

To Check:

From Voucher:

To Voucher:

Check Number	Date	Payee	Amount	Voucher	Status	Type	Cleared?	Clear Date	Void Date
71710	01/06/2023	DIV. OF RETIREMENT & BENEFITS-00721	\$125.70	1107	Printed	Expense	<input checked="" type="checkbox"/>	01/31/2023	
71711	01/06/2023	DRAKE BROCK-00740	\$132.00	1107	Printed	Expense	<input type="checkbox"/>		
71712	01/06/2023	HAMMER & WIKAN-01038	\$82.65	1107	Printed	Expense	<input checked="" type="checkbox"/>	01/31/2023	
71713	01/06/2023	KEVIN HAGAN	\$5,055.51	1107	Printed	Expense	<input checked="" type="checkbox"/>	01/31/2023	
71714	01/06/2023	MIKALAI POTRZUSKI	\$132.00	1107	Printed	Expense	<input type="checkbox"/>		
71715	01/06/2023	PETERSBURG LUTHERAN CHURCH	\$130.00	1107	Printed	Expense	<input checked="" type="checkbox"/>	01/31/2023	
71716	01/06/2023	RACHEL KANDOLL	\$132.00	1107	Printed	Expense	<input type="checkbox"/>		
71717	01/06/2023	RICK BROCK-02059	\$132.00	1107	Printed	Expense	<input type="checkbox"/>		
71718	01/18/2023	AT&T MOBILITY-00004	\$846.73	1109	Printed	Expense	<input checked="" type="checkbox"/>	01/31/2023	
71719	01/18/2023	DIMOND CENTER HOTEL-00711	\$318.00	1109	Printed	Expense	<input checked="" type="checkbox"/>	01/31/2023	
71720	01/18/2023	ERICA KLUUDT-PAINTER-00832	\$59.50	1109	Printed	Expense	<input checked="" type="checkbox"/>	01/31/2023	
71721	01/18/2023	READ NATURALLY INC	\$319.00	1109	Printed	Expense	<input checked="" type="checkbox"/>	01/31/2023	
71722	01/18/2023	UNUM LIFE INSURANCE COMPANY OF-02556	\$528.98	1109	Printed	Expense	<input checked="" type="checkbox"/>	01/31/2023	
71723	01/18/2023	US FOODS, INC.	\$8,765.24	1109	Printed	Expense	<input checked="" type="checkbox"/>	01/31/2023	
71724	01/18/2023	USI NORTHWEST	\$1,000.00	1109	Printed	Expense	<input type="checkbox"/>		
71725	01/20/2023	AASB	\$6,576.71	1110	Printed	Expense	<input type="checkbox"/>		
71726	01/20/2023	ALASKA TEACHER PLACEMENT	\$2,500.00	1110	Printed	Expense	<input checked="" type="checkbox"/>	01/31/2023	
71727	01/20/2023	AMBLER MOSS	\$132.00	1110	Printed	Expense	<input checked="" type="checkbox"/>	01/31/2023	
71728	01/20/2023	BEAU WARD	\$132.00	1110	Printed	Expense	<input checked="" type="checkbox"/>	01/31/2023	
71729	01/20/2023	BECKY MARTIN	\$172.00	1110	Printed	Expense	<input checked="" type="checkbox"/>	01/31/2023	
71730	01/20/2023	CYNTHIA FRY-00628	\$252.00	1110	Printed	Expense	<input type="checkbox"/>		
71731	01/20/2023	ERICA KLUUDT-PAINTER-00832	\$172.00	1110	Printed	Expense	<input checked="" type="checkbox"/>	01/31/2023	
71732	01/20/2023	ERIN HOFACRE	\$172.00	1110	Printed	Expense	<input type="checkbox"/>		

Petersburg School District

Reprint Check Listing

Fiscal Year: 2022-2023

Criteria:

Bank Account: OPERATING ACCOUNT XX3970

From Date: 01/01/2023

To Date: 01/31/2023

From Check:

To Check:

From Voucher:

To Voucher:

Check Number	Date	Payee	Amount	Voucher	Status	Type	Cleared?	Clear Date	Void Date
71733	01/20/2023	HEATHER CONN-01075	\$172.00	1110	Printed	Expense	<input checked="" type="checkbox"/>	01/31/2023	
71734	01/20/2023	HEIDI CABRAL	\$132.00	1110	Printed	Expense	<input type="checkbox"/>		
71735	01/20/2023	JOSTENS, INC.-01280	\$232.80	1110	Printed	Expense	<input checked="" type="checkbox"/>	01/31/2023	
71736	01/20/2023	KERRI CURTISS-01331	\$172.00	1110	Printed	Expense	<input checked="" type="checkbox"/>	01/31/2023	
71737	01/20/2023	LEE ANN JENKINS	\$132.00	1110	Printed	Expense	<input checked="" type="checkbox"/>	01/31/2023	
71738	01/20/2023	MARIAH COLTON	\$132.00	1110	Printed	Expense	<input type="checkbox"/>		
71739	01/20/2023	MARY MIDKIFF	\$172.00	1110	Printed	Expense	<input type="checkbox"/>		
71740	01/20/2023	MICHELLE BROCK-01594	\$132.00	1110	Printed	Expense	<input type="checkbox"/>		
71741	01/20/2023	PROVIDENT LIFE AND ACCIDENT I-01978	\$161.25	1110	Printed	Expense	<input checked="" type="checkbox"/>	01/31/2023	
71742	01/20/2023	PUBLIC EDUCATION HEALTH TRUST-01982	\$135,824.10	1110	Printed	Expense	<input checked="" type="checkbox"/>	01/31/2023	
71743	01/20/2023	RACHEL ETCHER-00843	\$132.00	1110	Printed	Expense	<input checked="" type="checkbox"/>	01/31/2023	
71744	01/20/2023	SCHOOL SPECIALTY	\$1,099.92	1110	Printed	Expense	<input checked="" type="checkbox"/>	01/31/2023	
71745	01/20/2023	THE MASTER TEACHER, INC	\$370.00	1110	Printed	Expense	<input checked="" type="checkbox"/>	01/31/2023	
71746	01/20/2023	XEROX CORPORATION-02716	\$17.71	1110	Printed	Expense	<input checked="" type="checkbox"/>	01/31/2023	
71747	01/25/2023	AFLAC-00068	\$456.71	1114	Printed	Expense	<input type="checkbox"/>		
71748	01/25/2023	ALASKA MARINE LINES-00120	\$71.37	1114	Printed	Expense	<input checked="" type="checkbox"/>	01/31/2023	
71749	01/25/2023	ASIAN FOOD SOLUTIONS, INC-00250	\$2,912.04	1114	Printed	Expense	<input type="checkbox"/>		
71750	01/25/2023	CARGILL INCORPORATED-00452	\$1,311.00	1114	Printed	Expense	<input type="checkbox"/>		
71751	01/25/2023	DAS HAGEDORN HAUS B&B-00651	\$363.64	1114	Printed	Expense	<input type="checkbox"/>		
71752	01/25/2023	DIRTY DOG FABRICATION, LLC	\$108.00	1114	Printed	Expense	<input checked="" type="checkbox"/>	01/31/2023	
71753	01/25/2023	HAMMER & WIKAN-01038	\$10.79	1114	Printed	Expense	<input checked="" type="checkbox"/>	01/31/2023	
71754	01/25/2023	MICRO COMPUTER SYSTEMS, INC	\$9,024.00	1114	Printed	Expense	<input checked="" type="checkbox"/>	01/31/2023	

Petersburg School District

Reprint Check Listing

Fiscal Year: 2022-2023

Criteria:

Bank Account: OPERATING ACCOUNT XX3970

From Date: 01/01/2023

To Date: 01/31/2023

From Check:

To Check:

From Voucher:

To Voucher:

Check Number	Date	Payee	Amount	Voucher	Status	Type	Cleared?	Clear Date	Void Date
71755	01/25/2023	SCHWAN'S FOOD SERVICE, INC	\$1,254.92	1114	Printed	Expense	<input type="checkbox"/>		
71756	01/25/2023	STIKINE SERVICES-02326	\$23,522.00	1114	Printed	Expense	<input type="checkbox"/>		
71757	01/25/2023	TRIDENT SEAFOODS, CORP-02520	\$633.00	1114	Printed	Expense	<input type="checkbox"/>		
71758	01/25/2023	US FOODS, INC.	\$8,287.94	1114	Printed	Expense	<input checked="" type="checkbox"/>	01/31/2023	
71759	01/25/2023	WORLD BOOK, INC-02700	\$758.00	1114	Printed	Expense	<input type="checkbox"/>		
71760	01/25/2023	XEROX CORPORATION-02716	\$99.21	1114	Printed	Expense	<input type="checkbox"/>		
71761	01/30/2023	APEA-00222	\$1,912.23	1118	Printed	Payroll Ded	<input type="checkbox"/>		
71762	01/30/2023	ATP-00262	\$3,464.24	1118	Printed	Payroll Ded	<input type="checkbox"/>		
71763	01/30/2023	GREAT-WEST LIFE & ANNUITY	\$11,550.00	1118	Printed	Payroll Ded	<input type="checkbox"/>		
71764	01/30/2023	MINNESOTA CHILD SUPPORT PAYMENT CENTER	\$458.00	1118	Printed	Payroll Ded	<input type="checkbox"/>		
71765	01/30/2023	STATE OF ALASKA-02310	\$105,082.07	1117	Printed	Payroll Ded	<input type="checkbox"/>		
71766	01/31/2023	BUSINESS CARD-00283	\$4,352.27	1119	Printed	Expense	<input type="checkbox"/>		
71767	01/31/2023	CLIA LABORATORY PROGRAM	\$180.00	1119	Printed	Expense	<input type="checkbox"/>		
71768	01/31/2023	DIRTY DOG FABRICATION, LLC	\$167.00	1119	Printed	Expense	<input type="checkbox"/>		
71769	01/31/2023	HAMMER & WIKAN-01038	\$13.99	1119	Printed	Expense	<input type="checkbox"/>		
71770	01/31/2023	MICHAEL CORL	\$132.00	1119	Printed	Expense	<input type="checkbox"/>		
71771	01/31/2023	TK ELEVATOR CORPORATION	\$661.00	1119	Printed	Expense	<input type="checkbox"/>		
71772	01/31/2023	US FOODS, INC.	\$5,118.68	1119	Printed	Expense	<input type="checkbox"/>		

Total Amount: \$407,755.40

End of Report

Petersburg School District

Non-Check Batch Listing

Fiscal Year: 2022-2023

Criteria:

Bank Account: OPERATING ACCOUNT XX3970

From Date: 01/01/2023

To Date: 01/31/2023

From Voucher:

To Voucher:

Account: XX3970

Date	Description	Amount	Account	Posted	AP	AP
01/06/2023	FIRST BANK-00894	\$5.00	1108	Posted to G/L	AP	<input type="checkbox"/>
01/11/2023	REVTRAK INC.-02052	\$42.39	1111	Posted to G/L	AP	<input type="checkbox"/>
01/27/2023	P-CARD PROGRAM-01850	\$4.00	1112	Posted to G/L	AP	<input type="checkbox"/>
01/27/2023	PETERSBURG BOROUGH-01881	\$2,434.54	1112	Posted to G/L	AP	<input type="checkbox"/>
01/27/2023	PETERSBURG BOROUGH-01881	\$3,882.23	1112	Posted to G/L	AP	<input type="checkbox"/>
01/27/2023	PETERSBURG BOROUGH-01881	\$31,587.42	1112	Posted to G/L	AP	<input type="checkbox"/>
01/27/2023	PETERSBURG BOROUGH-01881	\$253.60	1112	Posted to G/L	AP	<input type="checkbox"/>
01/27/2023	PETRO MARINE SERVICES-01909	\$62,636.00	1112	Posted to G/L	AP	<input type="checkbox"/>
01/27/2023	UNITED STATES POSTAL SERVICE-02544	\$9.90	1112	Posted to G/L	AP	<input type="checkbox"/>
01/27/2023	COUNCIL FOR EXCEPTIONAL CHILDREN	\$1,354.50	1112	Posted to G/L	AP	<input type="checkbox"/>
01/27/2023	P-CARD PROGRAM-01850	\$22,990.00	1112	Posted to G/L	AP	<input type="checkbox"/>
01/27/2023	P-CARD PROGRAM-01850	\$969.90	1112	Posted to G/L	AP	<input type="checkbox"/>
01/27/2023	MARRIOTT ANCHORGE DOWNTOWN-01519	-\$166.88	1112	Posted to G/L	AP	<input type="checkbox"/>
01/27/2023	ALASKA POWER & TELEPHONE-00125	\$108.47	1112	Posted to G/L	AP	<input type="checkbox"/>
01/27/2023	ALASKA POWER & TELEPHONE-00125	\$57.00	1112	Posted to G/L	AP	<input type="checkbox"/>

Petersburg School District

Non-Check Batch Listing

Fiscal Year: 2022-2023

Criteria:

Bank Account: OPERATING ACCOUNT XX3970

From Date: 01/01/2023 To Date: 01/31/2023
 From Voucher: To Voucher:

Date	Description	Amount	Voucher #	Posting	AP
01/27/2023	ALASKA POWER & TELEPHONE-00125	\$57.00	1112	Posted to G/L	<input type="checkbox"/>
01/27/2023	ALASKA POWER & TELEPHONE-00125	\$108.47	1112	Posted to G/L	<input type="checkbox"/>
01/27/2023	AMAZON.COM-00164	\$30.39	1112	Posted to G/L	<input type="checkbox"/>
01/27/2023	AMAZON.COM-00164	\$97.86	1112	Posted to G/L	<input type="checkbox"/>
01/27/2023	AMAZON.COM-00164	\$764.37	1112	Posted to G/L	<input type="checkbox"/>
01/27/2023	AMAZON.COM-00164	\$790.22	1112	Posted to G/L	<input type="checkbox"/>
01/27/2023	AMAZON.COM-00164	\$303.83	1112	Posted to G/L	<input type="checkbox"/>
01/27/2023	AMAZON.COM-00164	\$704.74	1112	Posted to G/L	<input type="checkbox"/>
01/27/2023	P-CARD PROGRAM-01850	\$496.08	1113	Posted to G/L	<input type="checkbox"/>
01/27/2023	P-CARD PROGRAM-01850	\$7.62	1113	Posted to G/L	<input type="checkbox"/>
01/27/2023	P-CARD PROGRAM-01850	\$116.75	1113	Posted to G/L	<input type="checkbox"/>
01/27/2023	P-CARD PROGRAM-01850	\$317.97	1113	Posted to G/L	<input type="checkbox"/>
01/27/2023	P-CARD PROGRAM-01850	\$199.00	1113	Posted to G/L	<input type="checkbox"/>
01/27/2023	P-CARD PROGRAM-01850	\$480.00	1113	Posted to G/L	<input type="checkbox"/>
01/27/2023	P-CARD PROGRAM-01850	\$20.00	1113	Posted to G/L	<input type="checkbox"/>
01/27/2023	P-CARD PROGRAM-01850	\$157.89	1113	Posted to G/L	<input type="checkbox"/>
01/27/2023	P-CARD PROGRAM-01850	\$147.49	1113	Posted to G/L	<input type="checkbox"/>

Petersburg School District

Non-Check Batch Listing

Fiscal Year: 2022-2023

Criteria:

Bank Account: OPERATING ACCOUNT XX3970

From Date: 01/01/2023 To Date: 01/31/2023
 From Voucher: To Voucher:

Date	Description	Amount	Voucher	Posted to	Account	Check
01/27/2023	P-CARD PROGRAM-01850	\$332.60	1113	Posted to G/L	AP	<input type="checkbox"/>
01/27/2023	P-CARD PROGRAM-01850	\$96.01	1113	Posted to G/L	AP	<input type="checkbox"/>
01/27/2023	P-CARD PROGRAM-01850	\$25.49	1113	Posted to G/L	AP	<input type="checkbox"/>
01/27/2023	P-CARD PROGRAM-01850	\$26.50	1113	Posted to G/L	AP	<input type="checkbox"/>
01/27/2023	P-CARD PROGRAM-01850	\$812.93	1113	Posted to G/L	AP	<input type="checkbox"/>
01/27/2023	P-CARD PROGRAM-01850	\$1,203.18	1113	Posted to G/L	AP	<input type="checkbox"/>
01/27/2023	P-CARD PROGRAM-01850	\$100.00	1113	Posted to G/L	AP	<input type="checkbox"/>
01/27/2023	P-CARD PROGRAM-01850	\$1,817.75	1113	Posted to G/L	AP	<input type="checkbox"/>
01/27/2023	P-CARD PROGRAM-01850	\$1,800.00	1113	Posted to G/L	AP	<input type="checkbox"/>
01/27/2023	P-CARD PROGRAM-01850	\$232.72	1113	Posted to G/L	AP	<input type="checkbox"/>
01/27/2023	P-CARD PROGRAM-01850	\$237.60	1113	Posted to G/L	AP	<input type="checkbox"/>
01/27/2023	P-CARD PROGRAM-01850	\$20.00	1113	Posted to G/L	AP	<input type="checkbox"/>
01/27/2023	P-CARD PROGRAM-01850	\$107.40	1113	Posted to G/L	AP	<input type="checkbox"/>
01/27/2023	P-CARD PROGRAM-01850	\$848.70	1113	Posted to G/L	AP	<input type="checkbox"/>
01/27/2023	ACSA-00049	\$300.00	1113	Posted to G/L	AP	<input type="checkbox"/>
01/27/2023	P-CARD PROGRAM-01850	\$63.27	1113	Posted to G/L	AP	<input type="checkbox"/>
01/27/2023	P-CARD PROGRAM-01850	\$36.50	1113	Posted to G/L	AP	<input type="checkbox"/>
01/30/2023	EFTPS-00804	\$32,463.11	1115	Posted to G/L	PR	<input type="checkbox"/>

Petersburg School District

Non-Check Batch Listing

Fiscal Year: 2022-2023

Criteria:

Bank Account: OPERATING ACCOUNT XX3970

From Date: 01/01/2023 To Date: 01/31/2023
 From Voucher: To Voucher:

Date	Account	Amount	Voucher	Description	Posted
01/30/2023	EFTPS-00804	\$1,110.09	1115	Posted to G/L PR	<input type="checkbox"/>
01/30/2023	EFTPS-00804	\$6,485.79	1115	Posted to G/L PR	<input type="checkbox"/>
01/30/2023	EFTPS-00804	\$1,110.09	1115	Posted to G/L PR	<input type="checkbox"/>
01/30/2023	EFTPS-00804	\$6,485.79	1115	Posted to G/L PR	<input type="checkbox"/>
01/31/2023	FIRST BANK-00894	\$340,751.03	1116	Posted to G/L PR	<input type="checkbox"/>
01/31/2023	FIRST BANK-00894	\$3,860.00	1116	Posted to G/L PR	<input type="checkbox"/>
01/27/2023	PAPA BEAR'S PIZZA-01819	\$93.00	1122	Posted to G/L AP	<input type="checkbox"/>
01/27/2023	BSN SPORTS, INC.-00417	\$1,147.21	1122	Posted to G/L AP	<input type="checkbox"/>
01/27/2023	P-CARD PROGRAM-01850	\$92.97	1122	Posted to G/L AP	<input type="checkbox"/>
01/27/2023	TIDES INN-02478	\$165.00	1122	Posted to G/L AP	<input type="checkbox"/>
01/27/2023	P-CARD PROGRAM-01850	\$211.35	1122	Posted to G/L AP	<input type="checkbox"/>
01/27/2023	P-CARD PROGRAM-01850	\$298.50	1122	Posted to G/L AP	<input type="checkbox"/>
01/27/2023	P-CARD PROGRAM-01850	\$87.00	1122	Posted to G/L AP	<input type="checkbox"/>
01/27/2023	P-CARD PROGRAM-01850	\$516.35	1122	Posted to G/L AP	<input type="checkbox"/>
01/27/2023	P-CARD PROGRAM-01850	\$269.70	1122	Posted to G/L AP	<input type="checkbox"/>
01/27/2023	P-CARD PROGRAM-01850	\$149.90	1122	Posted to G/L AP	<input type="checkbox"/>
01/27/2023	P-CARD PROGRAM-01850	\$81.07	1122	Posted to G/L AP	<input type="checkbox"/>
01/27/2023	P-CARD PROGRAM-01850	\$298.50	1122	Posted to G/L AP	<input type="checkbox"/>

Petersburg School District

Non-Check Batch Listing

Fiscal Year: 2022-2023

Criteria:

Bank Account: OPERATING ACCOUNT XX3970

From Date: 01/01/2023 **To Date:** 01/31/2023

From Voucher: **To Voucher:**

01/27/2023	P-CARD PROGRAM-01850	\$87.00	1122	Posted to G/L AP	<input type="checkbox"/>
01/27/2023	P-CARD PROGRAM-01850	\$293.53	1122	Posted to G/L AP	<input type="checkbox"/>
01/27/2023	P-CARD PROGRAM-01850	\$269.70	1122	Posted to G/L AP	<input type="checkbox"/>
01/27/2023	P-CARD PROGRAM-01850	\$127.20	1122	Posted to G/L AP	<input type="checkbox"/>

Total for Fund:	72	Total Amount:	<u>\$535,482.28</u>
		Total Amount:	\$535,482.28

End of Report



A part of BMO Financial Group

INVOICE

January 20, 2023

Petersburg School Dist
201 Charles W St Box 289
Petersburg, AK 99833

ATTN:

Invoice Number: 0703724-2301
Invoice Amount: \$ 143,168.99



This invoice amount represents the total balances of all Corporate Card accounts for the billing period ending January 20, 2023.

Your payment is due **February 16, 2023**.

Payment will be automatically withdrawn from your bank account if your organization has pre-arranged payment. If not, please remit payment by electronic means or by mailing a cheque for the Invoice amount to the appropriate address below. Payments must be sent with a detailed breakdown of how the payment needs to be applied, including the 16-digit card numbers or billing account and the total amount to be paid.

BMO Harris Accounts Payment By Mail	Diners Club Accounts Payment By Mail
BMO Harris P.O. Box 5732 Carol Stream, IL 60197-5732 Payment By Overnight Delivery	Diners Club P.O. Box 5732 Carol Stream, IL 60197-5732 Payment By Overnight Delivery
FIS BMO Harris Bank Attn: Lockbox# 5732 270 Remington Blvd, Suite B Bolingbrook, IL 60440	FIS BMO Harris Bank Attn: Lockbox# 5732 270 Remington Blvd, Suite B Bolingbrook, IL 60440

If you have any questions regarding this invoice or supporting documents, please contact Corporate Client Services:

BMO Harris Accounts	Diners Club Accounts
By Phone: 1-855-825-9234	By Phone: 1-800-2-DINERS (1-800-234-6377)
By e-mail: corporate.clientservices@bmo.com (mailto:corporate.clientservices@bmo.com)	By e-mail: dinersclub.service@bmo.com (mailto:dinersclub.service@bmo.com)

Thank you for your continued business.



Please attach a copy of this invoice or the information below this line with your cheque payment.

Petersburg School Dist
201 Charles W St Box 289
Petersburg, AK 99833

Invoice Number: 0703724-2301
Amount Paid: \$ 143,168.99
Payment Due Date: February 16, 2023

RUN DATE: 01/23/2023



Statement

Account Name:	KLUDT-PAINTER, ERICA	Card Number:	xxxx-xxxx-xxxx-5361
Company Name:	PETERSBURG SCHOOL DIST	Account Limit:	\$ 5,000.00
Employee ID:	152		
Statement Date (MM/DD/YYYY):	01/20/2023	Currency:	U.S. DOLLAR

Statement Summary:

Report any items which do not agree with your records within 30 days of the statement date.

Payments:	\$ 0.00
Adjustments:	\$ 0.00
Net Purchases:	\$ 300.00
Cash Advance:	\$ 0.00
Fees:	\$ 0.00
Other Charges:	\$ 0.00
New Account Balance:	\$ 300.00

For your records only. No payment required.

Transaction Summary:

Trans Date	Posting Date Trans ID	Description	Pre-Tax Amount Auth #	Total Tax	Trans Amount
12/20	12/21 453158704	EVENT ASDN/ACSA TYSONS CORNER VA	\$ 283.02 093516	\$ 16.98 (e)	\$ 300.00

TOTAL CREDITS	xxxx-xxxx-xxxx-5361	\$ 0.00
TOTAL DEBITS	xxxx-xxxx-xxxx-5361	\$ 300.00



Statement

Account Name:	BULLER, AARON S	Card Number:	xxxx-xxxx-xxxx-3497
Company Name:	PETERSBURG SCHOOL DIST	Account Limit:	\$ 45,000.00
Employee ID:	1025		
Statement Date (MM/DD/YYYY):	01/20/2023	Currency:	U.S. DOLLAR

Statement Summary:

Report any items which do not agree with your records within 30 days of the statement date.

Payments:	\$ 0.00
Adjustments:	\$ 0.00
Net Purchases:	\$ 5,117.92
Cash Advance:	\$ 0.00
Fees:	\$ 0.00
Other Charges:	\$ 0.00
New Account Balance:	\$ 5,117.92

For your records only. No payment required.

Transaction Summary:

Trans Date	Posting Date Trans ID	Description	Pre-Tax Amount Auth #	Total Tax	Trans Amount
12/20	12/21 453158705	HAMMER & WIKAN #5828 PETERSBURG AK	\$ 69.90 099214	\$ 0.00 (e)	\$ 69.90
12/20	12/21 453158781	DMV WEB VEHICLE RENEWA 9072695551 AK	\$ 10.00 045423	\$ 0.00 (e)	\$ 10.00
12/21	12/22 453308558	HAMMER & WIKAN #5828 PETERSBURG AK	\$ 255.40 012151	\$ 0.00 (e)	\$ 255.40
12/21	12/22 453308480	HAMMER & WIKAN #5828 PETERSBURG AK	\$ 85.20 084624	\$ 0.00 (e)	\$ 85.20
12/21	12/22 453308556	HAMMER & WIKAN #5828 PETERSBURG AK	\$ 285.95 023241	\$ 0.00 (e)	\$ 285.95
12/21	12/22 453308557	HAMMER & WIKAN #5828 PETERSBURG AK	\$ 70.98 074710	\$ 0.00 (e)	\$ 70.98
12/21	12/22 453308559	GRAINGER 877-2022594 IL	\$ 848.70 072449	\$ 0.00	\$ 848.70
12/22	12/23 453385485	HAMMER & WIKAN #5828 PETERSBURG AK	\$ 10.99 011640	\$ 0.00 (e)	\$ 10.99
12/29	12/30 453902451	GRAINGER 877-2022594 IL	\$ 332.60 022500	\$ 0.00	\$ 332.60
12/29	01/02 453964574	ALASKA FLOORCOVERING PETERSBURG AK	\$ 237.60 060661	\$ 0.00 (e)	\$ 237.60
12/29	01/02 453964573	ALASKA A 0279552173100 8006545669 WA	\$ 232.72 038712	\$ 0.00	\$ 232.72
		Passenger Name Enerspect Medical So Ticket Number 0279552173100			
01/06	01/09 454599639	HIGH TIDE PARTS PETERSBURG AK	\$ 317.97 040606	\$ 0.00 (e)	\$ 317.97

01/06	01/09 454599638	HAMMER & WIKAN #5828 PETERSBURG AK	\$ 57.94 005551	\$ 0.00 (e)	
01/09	01/11 455003180	ARCHITECTURAL SUPPLY C 9075611919 AK	\$ 107.40 055765	\$ 0.00	\$ 107.40
01/10	01/11 455003104	HAMMER & WIKAN #5828 PETERSBURG AK	\$ 100.94 074502	\$ 0.00 (e)	\$ 100.94
01/11	01/12 455175006	HAMMER & WIKAN #5828 PETERSBURG AK	\$ 169.94 021416	\$ 0.00 (e)	\$ 169.94
01/18	01/19 456164102	HAMMER & WIKAN #5828 PETERSBURG AK	\$ 43.95 003737	\$ 0.00 (e)	\$ 43.95
01/19	01/20 456353460	GRAINGER 877-2022594 IL	\$ 1,817.75 064195	\$ 0.00	\$ 1,817.75
01/19	01/20 456353461	DMV WEB VEHICLE RENEWA 9072695551 AK	\$ 10.00 051533	\$ 0.00 (e)	\$ 10.00
01/19	01/20 456353459	HAMMER & WIKAN #5828 PETERSBURG AK	\$ 51.99 045776	\$ 0.00 (e)	\$ 51.99

TOTAL CREDITS xxxx-xxxx-xxxx-3497 **\$ 0.00**
TOTAL DEBITS xxxx-xxxx-xxxx-3497 **\$ 5,117.92**



Statement

Account Name:	CABRAL, JAIME	Card Number:	xxxx-xxxx-xxxx-4710
Company Name:	PETERSBURG SCHOOL DIST	Account Limit:	\$ 15,000.00
Employee ID:	7999995418021878		
Statement Date (MM/DD/YYYY):	01/20/2023	Currency:	U.S. DOLLAR

Statement Summary:

Report any items which do not agree with your records within 30 days of the statement date.

Payments:	\$ 0.00
Adjustments:	\$ 0.00
Net Purchases:	\$ 4,187.98
Cash Advance:	\$ 0.00
Fees:	\$ 0.00
Other Charges:	\$ 0.00
New Account Balance:	\$ 4,187.98

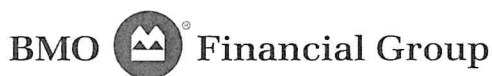
For your records only. No payment required.

Transaction Summary:

Trans Date	Posting Date Trans ID	Description	Pre-Tax Amount Auth #	Total Tax	Trans Amount
12/21	12/22 453308560	KENDALL AUTO - BUDGET JUNEAU AK	\$ 149.90 037896	\$ 0.00	\$ 149.90
12/21	12/22 453308636	KENDALL AUTO - BUDGET JUNEAU AK	\$ 81.07 002146	\$ 0.00	\$ 81.07
01/04	01/05 454352907	HAMMER & WIKAN, INC. PETERSBURG AK	\$ 516.35 015714	\$ 0.00 (e)	\$ 516.35
01/05	01/09 454599795	STUDEBAKER'S PIZZA PETERSBURG AK	\$ 211.35 036461	\$ 0.00 (e)	\$ 211.35
01/06	01/09 454599719	HAMMER & WIKAN, INC. PETERSBURG AK	\$ 92.97 009083	\$ 0.00 (e)	\$ 92.97
01/07	01/09 454599796	TIDES INN PETERSBURG AK	\$ 165.00 096135	\$ 0.00	\$ 165.00
01/07	01/12 455175165	PETERSBURG ELKS 1615 PETERSBURG AK	\$ 127.20 062738	\$ 0.00 (e)	\$ 127.20
01/11	01/12 455175087	BSN SPORTS LLC 8002277404 TX	\$ 424.98 010358	\$ 0.00	\$ 424.98
01/11	01/12 455175008	BSN SPORTS LLC 8002277404 TX	\$ 188.80 003128	\$ 0.00	\$ 188.80
01/11	01/12 455175086	BSN SPORTS LLC 8002277404 TX	\$ 329.51 006848	\$ 0.00	\$ 329.51
01/11	01/12 455175088	ALASKA SEAPLANES 9077893334 AK	\$ 174.00 053043	\$ 0.00 (e)	\$ 174.00
01/11	01/12 455175009	BSN SPORTS LLC 8002277404 TX	\$ 70.00 094278	\$ 0.00	\$ 70.00
01/11	01/12 455175085	BSN SPORTS LLC 8002277404 TX	\$ 133.92 093549	\$ 0.00	\$ 133.92

01/11	01/12 455175089	ALASKA SEAPLANES 9077893334 AK	\$ 597.00 044082	\$ 0.00 (e)	\$ 597.00
01/11	01/13 455357768	PAPA BEARS PIZZA PETERSBURG AK	\$ 93.00 018485	\$ 0.00 (e)	\$ 93.00
01/13	01/16 455733917	BSN SPORTS LLC 8002277404 TX	\$ 269.70 069373	\$ 0.00	\$ 269.70
01/13	01/16 455733918	BSN SPORTS LLC 8002277404 TX	\$ 269.70 085222	\$ 0.00	\$ 269.70
01/15	01/16 455733916	HAMMER & WIKAN, INC. PETERSBURG AK	\$ 293.53 057945	\$ 0.00 (e)	\$ 293.53

TOTAL CREDITS	xxxx-xxxx-xxxx-4710	\$ 0.00
TOTAL DEBITS	xxxx-xxxx-xxxx-4710	\$ 4,187.98



Statement

Account Name:	LOHR, ASHLEY	Card Number:	xxxx-xxxx-xxxx-3401
Company Name:	PETERSBURG SCHOOL DIST	Account Limit:	\$ 1,000.00
Employee ID:	AL		
Statement Date (MM/DD/YYYY):	01/20/2023	Currency:	U.S. DOLLAR

Statement Summary:

Report any items which do not agree with your records within 30 days of the statement date.

Payments:	\$ 0.00
Adjustments:	\$ 0.00
Net Purchases:	\$ 99.77
Cash Advance:	\$ 0.00
Fees:	\$ 0.00
Other Charges:	\$ 0.00
New Account Balance:	\$ 99.77

For your records only. No payment required.

Transaction Summary:

Trans Date	Posting Date Trans ID	Description	Pre-Tax Amount Auth #	Total Tax	Trans Amount
01/10	01/11 455003102	HAMMER & WIKAN, INC. PETERSBURG AK	\$ 63.27 047604	\$ 0.00 (e)	\$ 63.27
01/17	01/18 456076049	TRADING UNION PETERSBURG AK	\$ 36.50 092632	\$ 0.00 (e)	\$ 36.50

TOTAL CREDITS	xxxx-xxxx-xxxx-3401	\$ 0.00
TOTAL DEBITS	xxxx-xxxx-xxxx-3401	\$ 99.77



Statement

Account Name:	KLUDT-PAINTER, JON	Card Number:	xxxx-xxxx-xxxx-8382
Company Name:	PETERSBURG SCHOOL DIST	Account Limit:	\$ 15,000.00
Employee ID:	7999995418021852		
Statement Date (MM/DD/YYYY):	01/20/2023	Currency:	U.S. DOLLAR

Statement Summary:

Report any items which do not agree with your records within 30 days of the statement date.

Payments:	\$ 0.00
Adjustments:	\$ 0.00
Net Purchases:	\$ 4,485.76
Cash Advance:	\$ 0.00
Fees:	\$ 0.00
Other Charges:	\$ 0.00
New Account Balance:	\$ 4,485.76

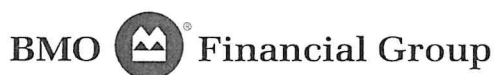
For your records only. No payment required.

Transaction Summary:

Trans Date	Posting Date Trans ID	Description	Pre-Tax Amount Auth #	Total Tax	Trans Amount
12/20	12/21 453158703	DOCUSIGN 8003799973 WA	\$ 480.00 054271	\$ 0.00 (e)	\$ 480.00
12/26	12/27 453662085	SQ ALASKA MACSTORE GOSQ.COM AK	\$ 20.00 015874	\$ 0.00	\$ 20.00
12/27	12/27 453662086	APPLE.COM/US 800-676-2775 CA	\$ 144.69 012154	\$ 13.20 (e)	\$ 157.89
01/07	01/09 454599636	WWW.MAKERBOT.COM 347-457-5757 NY	\$ 147.49 052400	\$ 0.00 (e)	\$ 147.49
01/07	01/09 454599637	SMK SURVEYMONKEY.COM 971-2311154 CA	\$ 468.00 067389	\$ 28.08	\$ 496.08
01/09	01/09 454599635	MSFT E0600LP8ZC MSBILL.INFO WA	\$ 7.19 061981	\$ 0.43	\$ 7.62
01/09	01/10 454864269	FS GETHOPSCOTCH 877-3278914 CA	\$ 92.81 010055	\$ 7.19 (e)	\$ 100.00
01/09	01/12 455176189	CONNECTIONS 4029357733 TN	\$ 116.75 036742	\$ 0.00	\$ 116.75
01/10	01/11 455003103	AMZN MKTP US WL5W654H3 AMZN.COM/BILL WA	\$ 110.44 000255	\$ 0.00	\$ 110.44
01/11	01/12 455175005	AMZN MKTP US 5M09E3MF3 AMZN.COM/BILL WA	\$ 183.85 080928	\$ 0.00	\$ 183.85
01/12	01/13 455357766	SPARK FUN ELECTRONICS 3032840979 CO	\$ 91.28 093216	\$ 4.73 (e)	\$ 96.01
01/13	01/16 455733914	AK SOC. FO EDUCATION ANCHORAGE AK	\$ 600.00 076451	\$ 0.00 (e)	\$ 600.00
01/13	01/16 455733837	TOBII DYNAVOX SYSTEMS 412-381-4883 PA	\$ 199.00 028257	\$ 0.00 (e)	\$ 199.00

01/13	01/16 455733915	AK SOC. FO EDUCATION ANCHORAGE AK	\$ 600.00 076845	\$ 0.00 (e)	\$ 600.00
01/13	01/16 455733838	MCAFEE WWW.MCAFEE.COM 866-622-3911 TX	\$ 25.49 046809	\$ 0.00 (e)	\$ 25.49
01/13	01/16 455733839	AK SOC. FO EDUCATION ANCHORAGE AK	\$ 600.00 031254	\$ 0.00 (e)	\$ 600.00
01/17	01/18 456076050	USPS.COM CLICKNSHIP 800-782-6724 DC	\$ 26.50 039914	\$ 0.00	\$ 26.50
01/17	01/18 456076125	AMAZON.COM MX2HM4M33 AMZN.COM/BILL WA	\$ 38.14 055685	\$ 0.00	\$ 38.14
01/19	01/19 456164101	AMAZON.COM UR75K32V3 AMZN.COM/BILL WA	\$ 295.98 081380	\$ 30.33	\$ 326.31
01/19	01/20 456353382	AMZN MKTP US 4X9MW3J93 AMZN.COM/BILL WA	\$ 16.98 094038	\$ 0.00	\$ 16.98
01/19	01/20 456353458	AMZN MKTP US R71N36TR3 AMZN.COM/BILL WA	\$ 29.49 062212	\$ 0.00	\$ 29.49
01/19	01/20 456353381	AMZN MKTP US PL2K11U53 AMZN.COM/BILL WA	\$ 107.72 021257	\$ 0.00	\$ 107.72

TOTAL CREDITS xxxx-xxxx-xxxx-8382 **\$ 0.00**
TOTAL DEBITS xxxx-xxxx-xxxx-8382 **\$ 4,485.76**



Statement

Account Name:	MORRISON, KAREN	Card Number:	xxxx-xxxx-xxxx-5856
Company Name:	PETERSBURG SCHOOL DIST	Account Limit:	\$ 200,000.00
Employee ID:	7999995418021894		
Statement Date (MM/DD/YYYY):	01/20/2023	Currency:	U.S. DOLLAR

Statement Summary:

Report any items which do not agree with your records within 30 days of the statement date.

Payments:	\$ 0.00
Adjustments:	\$ 0.00
Net Purchases:	\$ 128,977.56
Cash Advance:	\$ 0.00
Fees:	\$ 0.00
Other Charges:	\$ 0.00
New Account Balance:	\$ 128,977.56

For your records only. No payment required.

Transaction Summary:

Trans Date	Posting Date Trans ID	Description	Pre-Tax Amount Auth #	Total Tax	Trans Amount
12/22	12/23 453385486	MARRIOTT ANCHORAGE 849-426-4330 AK	\$ -166.88 073229	\$ 0.00	\$ -166.88
12/26	12/27 453662087	BDO USA LLP 6165758730 MI	\$ 22,990.00 004156	\$ 0.00	\$ 22,990.00
12/28	12/29 453817781	AMZN MKTP US VP0Z14RO3 AMZN.COM/BILL WA	\$ 15.95 082096	\$ 0.00	\$ 15.95
12/28	12/29 453817782	INTUIT QBOOKS ONLINE CL.INTUIT.COM CA	\$ 888.80 009468	\$ 81.10 (e)	\$ 969.90
12/29	12/30 453902452	AMAZON.COM 2B2FZ6NF3 A AMZN.COM/BILL WA	\$ 97.86 008862	\$ 0.00	\$ 97.86
12/30	01/02 453964650	AMZN MKTP US XO48H8O13 AMZN.COM/BILL WA	\$ 287.88 012462	\$ 0.00	\$ 287.88
01/04	01/05 454352831	AMZN MKTP US MG0F41K33 AMZN.COM/BILL WA	\$ 790.22 076528	\$ 0.00	\$ 790.22
01/04	01/06 454426984	COUNCIL FOR EXCEPTIONA 7032649416 VA	\$ 308.49 031081	\$ 18.51	\$ 327.00
01/04	01/06 454426837	COUNCIL FOR EXCEPTIONA 7032649416 VA	\$ 268.87 002065	\$ 16.13	\$ 285.00
01/04	01/06 454426836	COUNCIL FOR EXCEPTIONA 7032649416 VA	\$ 700.47 051149	\$ 42.03	\$ 742.50
01/06	01/09 454599716	ALASKA TELEPHONE COMPA 3603851733 WA	\$ 108.47 046135	\$ 0.00	\$ 108.47
01/06	01/09 454599718	ALASKA TELEPHONE COMPA 3603851733 WA	\$ 57.00 057208	\$ 0.00	\$ 57.00
01/06	01/09 454599717	ALASKA TELEPHONE COMPA 3603851733 WA	\$ 108.47 033729	\$ 0.00	\$ 108.47

01/06	01/09 454599715	ALASKA TELEPHONE COMPA 3603851733 WA	\$ 57.00 009728	\$ 0.00	\$ 57.00
01/10	01/11 455003183	AMZN MKTP US PG0ET2NR3 AMZN.COM/BILL WA	\$ 15.32 047158	\$ 0.00	\$ 15.32
01/10	01/11 455003260	AMZN MKTP US UY8J59U73 AMZN.COM/BILL WA	\$ 126.25 013116	\$ 0.00	\$ 126.25
01/10	01/11 455003263	AMZN MKTP US 7C46G4MV3 AMZN.COM/BILL WA	\$ 16.37 010969	\$ 0.00	\$ 16.37
01/10	01/11 455003339	AMZN MKTP US 5150N51A3 AMZN.COM/BILL WA	\$ 21.20 018803	\$ 0.00	\$ 21.20
01/10	01/11 455003340	AMZN MKTP US RW4V94H13 AMZN.COM/BILL WA	\$ 8.23 039969	\$ 0.00	\$ 8.23
01/10	01/11 455003182	NYTIMES NYTIMES DISC 800-698-4637 NY	\$ 4.00 053968	\$ 0.00 (e)	\$ 4.00
01/10	01/11 455003261	AMZN MKTP US EU2GF4LW3 AMZN.COM/BILL WA	\$ 5.89 025234	\$ 0.00	\$ 5.89
01/10	01/11 455003181	USPS.COM CLICKNSHIP 800-782-6724 DC	\$ 9.90 013300	\$ 0.00	\$ 9.90
01/10	01/11 455003184	AMZN MKTP US CB7W10TX3 AMZN.COM/BILL WA	\$ 8.32 021789	\$ 0.00	\$ 8.32
01/10	01/11 455003262	AMZN MKTP US OP82H2533 AMZN.COM/BILL WA	\$ 6.63 022862	\$ 0.00	\$ 6.63
01/10	01/11 455003341	AMZN MKTP US HT9GE5U93 AMZN.COM/BILL WA	\$ 8.23 040986	\$ 0.00	\$ 8.23
01/10	01/11 455003264	AMZN MKTP US BU6VI2UI3 AMZN.COM/BILL WA	\$ 12.88 032970	\$ 0.00	\$ 12.88
01/11	01/11 455003418	AMZN MKTP US D33HL0CH3 AMZN.COM/BILL WA	\$ 5.59 084382	\$ 0.00	\$ 5.59
01/11	01/11 455003343	AMZN MKTP US XQ8966RW3 AMZN.COM/BILL WA	\$ 5.99 085176	\$ 0.00	\$ 5.99
01/11	01/11 455003342	AMZN MKTP US 6A2HU5CG3 AMZN.COM/BILL WA	\$ 18.97 016978	\$ 0.00	\$ 18.97
01/11	01/12 455175007	AMZN MKTP US M48TJ9WB3 AMZN.COM/BILL WA	\$ 8.89 005641	\$ 0.00	\$ 8.89
01/12	01/13 455357767	AMZN MKTP US YC5A827R3 AMZN.COM/BILL WA	\$ 10.98 070779	\$ 0.00	\$ 10.98
01/17	01/17 455925590	AMZN MKTP US 4V62K1EH3 AMZN.COM/BILL WA	\$ 65.55 091488	\$ 0.00	\$ 65.55
01/17	01/17 455925589	AMZN MKTP US PI6VF8UR3 AMZN.COM/BILL WA	\$ 15.61 059535	\$ 0.00	\$ 15.61
01/17	01/18 456076128	AMZN MKTP US QV0LB24W3 AMZN.COM/BILL WA	\$ 34.44 016748	\$ 0.00	\$ 34.44
01/17	01/18 456076127	AMZN MKTP US 1E0QQ82V3 AMZN.COM/BILL WA	\$ 29.29 014383	\$ 0.00	\$ 29.29
01/17	01/18 456076126	PETRO MARINE SERVICES 9077724251 AK	\$ 62,636.00 060208	\$ 0.00	\$ 62,636.00
01/18	01/18 456076204	AMZN MKTP US JS3087JQ3 AMZN.COM/BILL WA	\$ 452.99 046059	\$ 0.00	\$ 452.99
01/18	01/18 456076129	AMZN MKTP US KB9CJ9HH3 AMZN.COM/BILL WA	\$ 38.30 022071	\$ 0.00	\$ 38.30

01/18	01/19 456164103	PSN PETERSBURG UTILITY 866-917-7368 AK	\$ 38,157.79 001732	\$ 0.00 (e)	
01/19	01/19 456164104	AMZN MKTP US MO17W7JC3 AMZN.COM/BILL WA	\$ 32.94 012354	\$ 0.00	\$ 32.94
01/19	01/19 456164176	AMZN MKTP US AC4NH5MK3 AMZN.COM/BILL WA	\$ 30.39 078011	\$ 0.00	\$ 30.39
01/19	01/19 456164175	AMZN MKTP US VO8ML3HC3 AMZN.COM/BILL WA	\$ 520.25 088032	\$ 0.00	\$ 520.25

TOTAL CREDITS xxxx-xxxx-xxxx-5856 **\$ -166.88**
TOTAL DEBITS xxxx-xxxx-xxxx-5856 **\$ 129,144.44**

Petersburg School District

Trial Balance

As of January 31, 2023

	DEBIT	CREDIT
1-0110 First Bank Checking	160,969.16	
1-0140 First Bank Gaming	1,779.51	
1-0160 ASB CD	0.00	
2-0020 Activity School Fee-5.00		0.00
2-0035 Activity Director		1,975.42
2-0040 Activity Pass Sales-Students		753.02
2-0045 Activities-Viking Store		356.73
2-0050 Shop Sales		31,104.87
2-0080 Art		359.00
2-0085 Artfest		4,128.35
2-0090 Assoc Student Body Government		6,883.98
2-0097 Baseball		1,962.12
2-0098 Baseball Field		251.00
2-0195 Class of 2014		0.00
2-0200 Class of 2015		97.99
2-0205 Class of 2016		0.00
2-0217 Class of 2017		0.00
2-0218 Class of 2018		0.00
2-0219 Class of 2019		0.00
2-0220 Class of 2020		0.00
2-0221 Class of 2021		1,583.18
2-0222 Class of 2022		952.90
2-0223 Class of 2023		911.41
2-0224 Class of 2024		2,039.90
2-0225 Class of 2025		2,383.43
2-0250 Close-Up		3,488.88
2-0260 Concessions		2,142.97
2-0280 Cross Country	371.11	
2-0290 School wide play		936.88
2-0293 DDF		375.80
2-0294 Dig Pink		432.80
2-0295 Ed Camp		0.00
2-0297 Elementary Earth Club		58.00
2-0315 Elementary PIA		395.00
2-0320 Elementary School Store		1,744.42
2-0325 Elementary Stikine River		11,956.73
2-0330 Elementary Memory Book		2,542.36
2-0337 Track Improvement Project		1,958.28
2-0344 School Garden		5,626.67
2-0350 Gym Sign Advertisements		1,133.80
2-0370 Honor Society		82.17
2-0380 Honors English		100.90
2-0400 Integrated		36.68
2-0402 Interact Club (Rotary)		0.00

	DEBIT	CREDIT
2-0405 Jazz Band-High School		3,646.11
2-0410 Jewelry		643.05
2-0417 LeConte Survey		842.62
2-0420 ES Student Council		272.31
2-0430 Little Norway Tournament		0.25
2-0440 Mark Fosse Award		193.60
2-0450 Marquee		197.49
2-0460 Mathematics		603.40
2-0490 MS Baking Club		761.91
2-0500 MS Band		107.55
2-0510 MS Cheerleaders		389.59
2-0520 MS Robotics		1,954.26
2-0527 MS Student Council		1,355.65
2-0530 MS Tournament/Activities		722.08
2-0540 MS Yearbook and Pro		7,438.85
2-0550 Music-High School		2,699.58
2-0560 Natural Helpers		1,227.91
2-0580 Culinary Arts		451.41
2-0595 PHS Library		1,840.27
2-0597 Scholarships		0.00
2-0600 Principal - High School		848.72
2-0601 Principal - Middle School		125.07
2-0605 PIA Undisbursed Funds		4,699.83
2-0610 PTSA Scholarship		200.00
2-0612 EF Puerto Rico		50.13
2-0615 Raffle		1,140.53
2-0625 Region V Tournaments		1,904.60
2-0630 Rory Smith Scholarship		25.00
2-0634 MS Run Club		50.00
2-0640 Pixellot Advertisements		2,670.59
2-0647 Softball		440.52
2-0648 SPED Memorial Account		9,692.50
2-0649 PSD Shred Safe		1,661.53
2-0650 Stereo Repair/Replacement		906.59
2-0655 Student Testing Fees		449.00
2-0670 Swim/Dive Team		324.35
2-0690 Track		1,792.01
2-0699 Tsunami Bowl		1,951.27
2-0700 Unallocated Interest		319.00
2-0710 Varsity Cheer/Stunt		2,985.68
2-0730 Viking Basketball		11,649.06
2-0738 Viking Productions		38.13
2-0740 Volleyball		1,229.61
2-0745 Student Support Fund		2,379.23
2-0750 Work Experience		1,022.00
2-0760 Wrestling	5,241.71	
2-0780 Yearbook		5,703.01
Opening Balance Equity		0.00
TOTAL	\$168,361.49	\$168,361.49

Personnel Action Report for 2022-2023

2-14-2022

EMPLOYMENT OF CERTIFIED PERSONNEL

Lisa Schramek
1 yr Temp PHS Art Teacher 23-24 SY

RESIGNATION/RETIREMENT CERTIFIED PERSONNEL

Gregg Kowalski
Retirement 20+ years of teaching

Samantha Marifern
Resigning June 30, 2023

Shannon Vandervest
Resigning June 30, 2023

EMPLOYMENT OF CLASSIFIED PERSONNEL

None

RESIGNATION/RETIREMENT CLASSIFIED PERSONNEL

None

EXTRA DUTY CONTRACTS

Becky Turland
PHS Asst Cheer Coach

Ethan Bryner
PHS Baseball Asst Coach

Jim Engell
PHS Baseball Head Coach

Jaime Cabral
MS Volleyball

2022-2023 School Year

Teachers	43.00
Classified	37.00
Principals	2.00
District Administration/Exempt (Superintendent, Finance, Maintenance, Food Service, Board Admin, Special education director,)	6.00

Total Employees	89.00
------------------------	--------------

1-23-2023

To Whom it May Concern,

I want to start by thanking you for this wonderful opportunity working with the Petersburg School District. When I started this job I told myself that I would re-evaluate my teaching position after five years of service.

After reviewing the pros and cons of teaching, I have made the decision to stop teaching after this school year. I have thought long and hard about this decision and the driving force behind it is my dad's age and my health.

For these reasons I am unable to sign my contract for next year.

I hope to help out by filling in as a substitute teacher though.

Thank you,

Shannon Vandewest

FROM THE DESK OF

Gregg Kowalski

February 1, 2023

Petersburg Borough Schools,

It is with mixed emotions that I am submitting this letter of retirement to the district and teaching as a profession. There has never been a moment during my 25 year career that I did not enjoy the enthusiasm of youthfulness, challenges, adventures and creative endeavors brought on by this honorable calling. I thank the administration, my current and past colleagues and hundreds of students over the years for a truly blessed career.

Sincerely yours,

A handwritten signature in cursive script that reads "Gregg Kowalski".

Gregg Kowalski

Dear Erica and Heather,

Please accept this letter as formal notification that I will not be signing my contract for next school year.

Thank you so much for the opportunity to work in this position for the past two and a half years. I've greatly enjoyed and appreciated the opportunities I've had and I've learned so much, all of which I will take with me to my next chapter.

I'll do everything possible to wrap up my duties and can help the new teacher get started in this roll. Please let me know if there is anything else I can do during this transition.

I hope to leave with the door open and the possibility to return to the Petersburg School District as a teacher in the future. I wish you all the best, and look forward to keeping in touch.

Sincerely,
Samantha Marifern

Superintendent School Board Report
Feb. 14, 2023

The legislative session is underway, with several important bills to watch. I provided testimony this week in support of SB52, which proposes increasing the BSA by \$1,000. There is also legislation related to inflation proofing the BSA and addressing the retirement issue.

The feedback link on the school district website for staff, students, parents, and community members to provide feedback on teacher and administrator performance is available December to April. As always, we encourage people to meet with teachers and administrators in person to discuss concerns **before** submitting online feedback.

Student attendance continues to be a significant issue with regard to academic performance, engagement in school, and peer/social interactions. This was a primary focus at the recent RTI/MTSS Conference in Anchorage. We were able to send a team of 13 teachers and administrators to this important conference.

READS Act regulations are available for public comment as of Feb. 3, 2023 through April. Ms. Conn and I scheduled three different READS Act sessions to discuss proposed regulations with parents and community members.

PSD continues its work with the RTI/MTSS (Response to Intervention/Multi-Tiered System of Support) "Refresh" program and the ELA (English Language Arts) Curriculum Adoption grant for K-5. Both of these opportunities provide funding for training and materials, as well as coaching. We are also piloting the newly adopted literacy screening tool called Amplify (Dibels) adopted by DEED for the 2023-2024 school year.

The district will be starting a three-year school improvement process for Stedman Elementary through DEED after receiving a Targeted Assistance designation for low academic performance in the Alaska Native/American Indian subgroup. This process will dovetail well with the current RTI/MTSS and ELA initiatives taking place to provide targeted interventions for all students.

A districtwide lockdown/evacuation drill was completed in January.

District strategic planning has been moved to March 21-23.

I will be attending the Legislative Fly-In with Karen Morrison Feb. 25-28 in Juneau. The Superintendent's Association, in cooperation with Business Officials, are combining efforts to provide accurate information to the legislature regarding BSA (base student allocation) needs in districts around the state.

We have a meeting scheduled with Borough Manager, Steve Giesbrecht and Finance Director, Jody Tow on Feb. 15 to discuss budget needs and local funding requests. There will be a work session with the school board on Feb. 22 to discuss the 23-24 school budget and instructional needs.

Elementary Report

Tuesday, February 14th @6:00pm

1. Shout Outs!
2. What has happened?
 - 1st Reads Act Discussion
 - 2nd Reads Act Discussion
 - 3rd Reads Act Discussion
 - Classroom Spelling Bee's Week of Jan. 23rd
 - MTSS/RTI Conference Jan 27-30
 - Launch of Read-A-Thon Month of February
 - Literacy Night Dr. Seuss Kick-off February 1st, 6:00-7:00pm
 - Bring your Parents to PE Day February 8th
3. Current Enrollment: 222
 - Pre-K 12
 - K 37
 - 1st 28
 - 2nd 42
 - 3rd 35
 - 4th 29
 - 5th 39
4. SPED Numbers
 - IEP's: 46
 - Referrals: 6
5. Project 23-24 Enrollment
 - Pre-K=6, K =36, 1=38, 2=28, 3=42, 4=35, 5=30 Total=215
6. Attendance
 - Tardies and Attendance continue to be an issue
 - January Total School: 466 absences / 19 school days = Average 26 absences a day
January By Grade: PreK=9, K=77, 1=65, 2=105, 3=72, 4=58, and 5=80
 - December Total School: 492.5 absences / 12 school days = Average 41 absences a day
December By Grade: PreK=61, K=83.5, 1=61.5, 2=85, 3=52.5, 4=59.5, and 5=89.5
 - November Total School: 509 absences / 19 school days = Average 26.8 absences a day
November By Grade: PreK=15, K=107, 1=97, 2=104, 3=94, 4=81, and 5=118
 - October Total School: 408 absences / 20 school days = Average 20.4 absences a day
October By Grade: PreK=4, K=17, 1=19, 2=23, 3=20, 4=21, and 5=17
 - September Total School: 265.5 absences / 22 school days = Average 12 absences a day
September absence By Grade: PreK=4, K=35.5, 1=49, 2=44.5, 3=36.5, 4=30.5, and 5=65.5
7. After School Programs Offered
 - Going Well
 - 4 Square canceled until icy conditions let up.
 - After-School Recess is canceled until March.
8. Focus

- Attendance (trip slips, attendance in handbook, homework)
 - i. Seek Policy on length of absence and unenrolled length of time
 - ii. OR
 - iii. Seek Policy on district attendance for something? Letter, phone call?
 - Standard-Based Grading (revising report cards, grade 4 standards)
 - AK Reads Act (RTI model)
 - ELA Curriculum
 - Report Card (leadership team, webinars)
9. What is to come?
- Literacy Night Dr. Seuss Celebration March 1st 5:30-7:00pm
 - Book Fair (3/1) 5:00-7:00, (3/2) 4:00-8:00, and (3/3) 1:00-6:00
 - District Spelling Bee Feb. 24th 9:00
 - Conferences March 2nd & 3rd
 - Spring Break Mar. 10th-19th
 - Public Library "Stream of Dreams" Grant Program May 22, 23rd, 24th
- ~~~~~END~~~~~

From: Ambler Moss
Date: 2/14//2023
Re: February Board Report

COGNIA accreditation– *As reported last month, we have finished up the COGNIA process. We will be “visited” (virtually) at the end of this month. Below is a condensed version of the executive summary that we presented to them. If board members know this much, you will know what you need to know in terms of this visit:*

Petersburg High School

History

Petersburg High School opened in the 1920s as the sole high school in the Petersburg School District in Petersburg, Alaska. Petersburg is the only community on Mitkof Island, and the school currently serves 122 students.

Throughout the past two decades, high school enrollment has steadily declined at a low rate. Over the decline, funding and staff have been gradually reduced, while a distinct effort has been made to maintain a diversity of programs including AP courses, CTE courses, and student activities.

Demographics

The school staff includes 7 classified employees, 15 certificated teachers, a counselor, a part time school nurse, a principal and a dean of students/school activities director. Demographically, the student population is 122: 79 Caucasians (65%), 6 African-American (5%), 4 Hispanic (3%), 10 Asian (8%), 3 American Indian (2.5%), 19 Alaska Native (15.5%), 1 Native Hawaiian or Pacific Islander (.01%). Based on State of Alaska definitions 51.26% qualify as Economically Disadvantaged. The special education population is 14%: Specific Learning Disability 41%, Other Health Impairment 18%, Autism (intensive status) 24%, Emotional Disturbance 11% and Cognitive Impairment (Intensive Status) 6%.

Governing Authority

The Petersburg School District is governed by a five-member board with the support of the superintendent. Every board member is elected through the borough election process and board member elections are staggered so that one board member is up for reelection every 3 years. They do not interfere with district or school operations and have made it part of their policy that their management is strictly through the superintendent.

Petersburg High School is led by the administrative staff, which includes the principal, an athletic director, and a counselor. The principal is responsible for staff evaluations, student supervision, and the monitoring of the professional development program. The athletic director manages the coaching staff and events pertaining to the athletic program. The counselor is primarily focused on student support and post high school planning.

Philosophy of Education

Petersburg High School benefits from the small size of our school and high staff retention and engagement. Students are known individually and education decisions are made to support small groups of students. Class sizes are small, yet the school has focused on maintaining a large variety of options for the wide range of student abilities and interests. All teachers have multiple preps to provide required courses, optional courses in the core areas, and elective courses. Diversity of opportunity and supporting the wide range of student interests and abilities is a key focus of the school and creates students who are well prepared for post high school career, training, or college.

Curriculum

The school uses the Alaska State Standards, as adopted by the Alaska Board of Education. The core curriculum has been adopted by the Petersburg School Board and includes the implementation of the standards for all curricular areas.

Classroom Instruction

All classes at PHS are site-based. With seven periods the school is on a modified block where all classes meet Mondays for fifty minutes each, and then Tuesday through Friday five classes meet, two of which are on a longer, hour and twenty minute block. Each classroom teacher is provided with a Smart board and each student has a laptop computer assigned to them.

One of the priorities for the community involved a commitment to small class sizes. In addition, Tier 2 support according to the **Multi-Tiered System of Supports (MTSS)** model is embedded for most students and both Tier 2 and 3 support are available after regular school hours.

Personnel Management

All staff members are evaluated using a Danielson-based model that has been approved by the board and the respective staff associations. Administrative evaluations are conducted by the principal, and the principal's evaluation is conducted by the superintendent. The teacher evaluation process is goal-based and includes one or two

formal classroom observations and at least one informal classroom observation. The evaluation system tabulates the points assigned as a result of the observations as an indicator of employee performance.

Learner Performance

Ninth grade students are required to participate in the Alaska System for Academic Readiness (AK STAR) test and Measures of Academic Progress (MAP) test which assess math and reading. The AK STAR test is new, so there is no longitudinal data. MAP testing data shows positive trends for growth in both Math and Reading growth over the past 4 years, consistently above the National norms. The Spring AK STAR data displayed 41% of the students at Petersburg High School are achieving Proficient or Advanced ratings in mathematics, which is considerably higher than the state average of 23%, and 45% are achieving Proficient or Advanced ratings in reading, which is considerably higher than the state average of 30%.

Reflecting the school's post secondary focus, students shift to college preparatory tests and AP exams. Pre-ACT tests are given to all sophomores and ACT tests are given to all juniors.

Five AP classes are offered and 38% of seniors and 34% of juniors have taken at least one AP course. The pass rate for AP exams for all courses in 2022 was 76%.

Petersburg High School Continuous Improvement Plan

The school has chosen to focus on the following areas:

1. Improve attendance
2. Focus on student engagement
3. Effectively utilize technology to increase instructional efficiency and student engagement.
4. Improve learning outcomes for high risk students.



PETERSBURG

SCHOOL DISTRICT

Petersburg School District

PO Box 289

Petersburg, AK 99833

Ph/Fax: (877) 526-7656

February 7, 2023

To Petersburg Community Foundation,

On behalf of the Petersburg School District, I would like to take this opportunity to thank the Petersburg Community Foundation for coordinating the generous donation of Mr. Bill Neumann. We are writing this letter to formally request the \$75,000 gifted to the PHS Shop Program to purchase the following items:

5 Miller 215's (Mig machines only)

5 Miller 215's (multiprocess tig contractor kits)

5 Miller 220's (AC/DC)

(30) Weld Wire E70S-6 .030 11lb rolls

3 band saws (1 for metal shop and 2 for wood shop)

These items will cost approximately \$55,000, with the remaining funds being used to pay for the electrical work required for the new welders, as well as the gas plumbing work that must be completed. We will be using a local vendor, Dirty Dog Fabrication, for the equipment. They have offered to help with installation and set up, which will be helpful for this large project.

We are very appreciative of this generous gift from Mr. Neumann and for the continued support of the Petersburg Community Foundation. Please don't hesitate to reach out to me with any questions.

Respectfully,

Erica Kludt-Painter, Superintendent



Mara Lutomski <exec@pcsd.us>

Neumann Grant to Petersburg School District

Jessie Lavoie <jlavoie@alaskacf.org>
To: "supt@pcsd.us" <supt@pcsd.us>
Cc: "exec@pcsd.us" <exec@pcsd.us>

Thu, Feb 9, 2023 at 10:50 AM

Superintendent Kludt-Painter,

I wanted to reach out and introduce myself, I'm Jessie Lavoie, the Director of Programs & Grants here at the Alaska Community Foundation. We were made aware of recent request for funds gifted to you from the William K. Neumann Fund for Shop Class in Petersburg.

We're getting ready to process this request but wanted to let you know that the original gift as indicated in the grant agreement was just shy of \$75,000. So what you'll see come through via check in the snail mail is \$74,951.68. This draws down the fund completely and there is no more funding left at this time.

Like I mentioned, we're getting this processed shortly. If you have any questions or concerns, please feel free to reach out to me.

Thanks again,

Jessie Lavoie
Director of Programs & Grants

Direct: (907) 249-6616
Front Desk: (907) 334-6700
Toll-free: (855) 336-6701
3201 C Street, Suite 110
Anchorage, AK 99503



The Alaska Community Foundation

www.alaskacf.org | [@AKCommunity](#) | [Facebook](#)

Please **Pick.Click.Give.** when you apply for your PFD!



BP 6146.1 HIGH SCHOOL GRADUATION REQUIREMENTS

Note: Transfer students who have earned 13 unit credits in another district may, at the district's discretion, be excused from the district's subject area units-of-credit requirements. [4 AAC 06.075](#).

Note: ~~The following sample policy reflects the minimum graduation requirements specified in [4 AAC 06.075](#) and should be revised to reflect district philosophy and needs.~~ Effective July 1, 2014, the requirement that no secondary student be issued a diploma unless he or she has passed the High School Graduation Qualifying Exam was repealed. ~~That requirement was replaced with the requirement that a secondary student take a college and career readiness assessment or receive a waiver in order to receive a diploma.~~ At the request of a student, the district shall retroactively issue a high school diploma to a student who did not receive one because of failure to pass all or a portion of the HSGQE and instead received a certificate of achievement. [AS 14.03.075](#). The district is to mail a notice of this option to each such student who qualifies for a diploma to the student's last known address.

The Superintendent or designee shall prepare for School Board approval a plan consisting of district graduation requirements. Students shall receive diplomas of graduation from high school only after meeting the following district graduation ~~requirements, requirements, as well as taking a college and career readiness assessment or receiving a waiver from the School Board.~~

<u>Subject</u>	<u>Units of Credit</u>	
Language Arts	4	(1 credit each year for 4 years.)
Social Studies	3 *	(1 credit each for US History and World History, ½ credit for Alaska History and ½ credit for American Government)
Mathematics	3	(in grades 9, 10, 11 recommended)
Science	2 3*	(1 credit each year 9, 10 including Physical Science and Biology recommended) <u>(1 credit each year 9, 10 Biology and Intro to Chemistry recommended: with one additional science elective)</u>
Health	½	
Physical Education	1	(1/2 credit allowed for participation in district approved extra curricular <u>extra curricular</u> sport or approved dance program beginning in grade 10. Participation in two such activities will be required to earn ½ credit.)
Electives	10-½ <u>9 1/2</u>	Freshman Success is a required 9th grade elective; not required for non freshman transfer students
TOTAL CREDITS	24	

***Note:** The three units of credit in social studies must include one-half unit of credit in Alaska history or demonstration that the student meets the Alaska history performance standards. This requirement will not apply to a student who (1) transfers into your school after the student's second year of high school; or (2) has already successfully completed a high school state history course in another state. [4 AAC 06.075](#).

**Note: the graduation requirement for 3 science credits will begin with the Class of 2027, all other graduating classes will be grandfathered into the 2 science credit requirement.*

(cf. 5127 - Graduation Ceremonies and Activities)

(cf. 6164.2 - Guidance and Counseling Services)

(cf. 6146.3 - Competency Testing)

(cf. 6184 - Virtual/Online Courses)

Legal References:

ALASKA STATUTES

[14.03.075](#) College and career readiness assessment; retroactive issuance of diploma

ALASKA ADMINISTRATIVE CODE

[4 AAC 06.075](#) High school graduation requirements

~~[4 AAC 06.721](#) College and career readiness assessment waivers~~

[4 AAC 06.755-790](#) State wide assessment program for students with disabilities

PSD approved 12-12-06

PSD approved 06-17-08

AASB revised 3/2015

PSD approved 10-13-15

ADOPTED: June 21, 2005

REVISED: December 12, 2006; June 17, 2008; October 13, 2015

Petersburg City School District

This is the description for the Intro to Chemistry class that can be shared to students, parents and community members:

The Introduction to Chemistry class will open students' eyes to how things work at a chemical level in the world around them. Every day students interact with the world of chemical reactions from the phones they carry, to the food they eat, to the ocean we live around and derive sustenance from. Introduction to Chemistry will employ place-based learning and historical connections for students to grasp how our understanding of chemistry developed and helped us build the modern world we live in today. Students will learn through hands-on experimentation, modeling, and inquiry-based projects how the elements of their own worlds and our local community rely on knowledge and application of chemistry ideas.

SCIENCE CLASSES 4 YEAR PLAN

MS sci classes

	6th	7th	8th
22-23	Life	Earth	Phy Sci
23-24	Life	Earth	Phy Sci
24-25	Life	Earth	Phy Sci
25-26	Life	Earth	Phy Sci

HS 4 year plan for sci classes

*Students should complete a 4-year plan as a 8th Grader/freshman

Alice-

22-23	23-24	24-25	25-26
Bio-10	Bio- 9/10	Bio- 9	Bio- 9
Bio-10	Bio- 9/10	Bio- 9	Bio- 9
Aqua/Adv Aqua	Bio- 9/10	Aqua/Adv Aqua	Aqua/Adv Aqua
Mar Sci	Aqua/Adv. Aqua	Mar Sci	Mar Sci
AP Bio	Mar Sci	AP Bio	Anat
Anat/RASOR	Anat/RASOR/AP Bio	Anat/RASOR	RASOR

Ioana

22-23	23-24	24-25	25-26
Phy. Sci- 9	Physics	Intro Chem- 10	Intro Chem-10
Phy. Sci- 9	Physics	Intro Chem- 10	Intro Chem-10
Chem- 11/12	Food Sci	Chem 2- 11/12	Physics
Chem- 11/12	Culinary 1	Chem 2- 11/12	Physics
Food Sci	Culinary 2	Food Sci	Food Sci
Culinary	Chem 2/MS Culinary	Culinary	Culinary

	6th	7th	8th	9th	10th	11th
19-20	phys	life	earth			
20-21	life	earth	earth			
21-22	life	earth	life	phys		
22-23	life	earth	phys	phys	bio	
23-24	life	earth	phys	bio	bio	
24-25				bio	Chem 1	optional?
25-26					Chem 1	1 more required
						1 more required

Freshman Success Course Description

Freshman Success will be required for all 9th graders to take. This one semester course will rotate with 9th grade PE, which is also one semester. Health class will move to the sophomore year for every student.

The curriculum for Freshman Success will be centered around the School Connect–Boosting Social, Emotional and Academic Skills curriculum. Staff received training by one of the authors, R. Keeth Matheny, M.S., in the Fall of 2021.

<https://school-connect.net/sc3-module-descriptions>

[School Connect Portal Login](#)—email jturner@pcsd.us for login credentials

Course Topics:

Module 1: Creating a Supportive Learning Community

Module 2: Developing Self-Awareness and Self-Management

Module 3: Building Relationships and Resolving Conflicts

Module 4: Preparing for College and the Workforce

BP 5121 GRADES/EVALUATION OF STUDENT ACHIEVEMENT

The School Board believes that students and parents/guardians have the right to receive course grades that represent an accurate evaluation of the student's achievement. Teachers shall evaluate a student's work in relation to standards which apply to all students at his/her grade level, not in relation to the work of other students in one particular class.

Grades should be based on impartial, consistent observation of the quality of the student's work and his/her mastery of course content and objectives as demonstrated through classroom participation, homework and tests. The student's behavior and effort may be reported in separate evaluations, not in his/her academic grade.

(cf. 5113 - Absences and Excuses)

(cf. 5123 - Promotion/Acceleration/Retention)

(cf. 5124 - Communication with Parents/Guardians)

(cf. 5125.3 - Challenging Student Records)

(cf. 6154 - Homework/Make-up Work)

~~In order to promote self-esteem and experiences of success,~~ **By the 2024- 2025 school year**, students in kindergarten through ~~third~~ **fifth** grade shall receive narrative performance or skill-based evaluations rather than letter grades.

The Superintendent or designee shall establish and regularly evaluate a uniform grading system. Principals shall ensure that student grades conform to this system.

Absences

If a student misses class without an excuse and does not subsequently turn in homework, take a test or fulfill another class requirement which he/she missed, the teacher may lower the student's grade for nonperformance. Teachers shall inform students about the class grading system at the beginning of the semester.

Revised 9/98

Revised: September 16, 2011

ADOPTED: June 21, 2005

AR 5121 GRADES/EVALUATION OF STUDENT ACHIEVEMENT

Grades for Achievement

~~Beginning with the Class of 2019,~~ The High School grade point average (GPA) will include plus and minus grading on a student's transcript.

Grades for achievement in 4th 6th- 12th grade and determination of Grade Point Average (GPA) are as follows:

	Grade Points
A Outstanding Achievement	4.0
A-	3.7
B+	3.4
B Above Average Achievement	3.0
B-	2.7
C+	2.4
C Average Achievement	2.0
C-	1.7
D+	1.4
D Below Average Achievement	1.0
D-	0.7
F Little or No Achievement	0
I Incomplete	0
NG No Grade	0

For students enrolled in Advanced Placement (AP) or International Baccalaureate (IB) classes, grade point average for these classes will be determined by the following:

	Grade Points
A Outstanding Achievement	5.0
A-	4.7
B+	4.4
B Above Average Achievement	4.0
B-	3.7
C+	3.4
C Average Achievement	3.0
C-	2.7

In order for students to receive the above grade points, they must be enrolled in an AP or IB course, and complete the course in good standing. The student's GPA that will be placed on their transcript will be based on a 5.00 scale for all AP and IB classes taken. Student transcripts will include both a weighted and non-weighted GPA.

In kindergarten through ~~third~~ **fifth** grade, teachers shall use standards-based report cards to indicate the student's level of achievement and may also furnish examples of student work.

Whenever it becomes evident to a teacher that a student is in danger of failing a course, the teacher shall arrange a conference with the student's parent/guardian or send the parent/guardian a written report.

An incomplete is given only when a student's work is not finished because of illness or other excused absence. If not made up within two weeks after the end of the term, an incomplete will be assigned the grade that indicates the student's earned progress during that time.

Plus and minus signs will be used to indicate performance above or below the assigned letter grade.

Criteria for determining grades for achievement may include but are not limited to:

1. Preparation of assignments, including accuracy, legibility, and promptness.
2. Contribution to classroom discussions.
3. Demonstrated understanding of concepts in tests.
4. Application of skills and principles to new situations.
5. Organization and presentation of written and oral reports.
6. Originality and reasoning ability when working through problems.

Grades for Citizenship and Effort

Grades for citizenship and effort may be reported each marking period as follows:

- O Outstanding
- S Satisfactory
- N Needs Improvement

Criteria for determining grades for citizenship may include but are not limited to:

1. Student obeys rules.
2. Student respects public and personal property.
3. Student maintains courteous, cooperative relations with teachers and fellow students.
4. Student works without disturbing others.

Criteria for determining grades for effort may include but are not limited to:

1. Student takes responsibility for having necessary tools and materials.
2. Student shows interest and initiative.
3. Student goes to work immediately, and completes assignments.
4. Student uses free time resourcefully.

Honor Roll

The high school shall post an Honor Roll. All courses except Pass/Fail shall be counted in computing eligibility for the Honor Roll. To qualify for the Honor Roll, a student must receive no current grade below a C and have a grade point average of 3.3 or better.

Pass/Fail Grading

Students shall be graded Pass/Fail for study skills classes or classes in which they serve as student aides, unless predetermined goals and objectives related to specific subject knowledge are on file and have been approved by the principal or designee.

No Grade (NG)

Students may be given a No Grade for a class that cannot be completed due to extenuating circumstances. No Grade designation results in zero grade points and requires approval from both the counselor and principal.

Repeated Classes

With the approval of the principal or designee, a student may repeat a course in order to raise his/her grade. The student shall receive credit only for taking the course once.

The highest grade received will be the permanent grade on the student's transcript.

Withdrawal from Classes

A student who drops a course during the first two weeks of the semester may do so without any entry on his/her permanent record card. A student who drops a course after the first two weeks of the semester shall receive a W/F grade on his/her permanent record, unless otherwise decided by the principal or designee because of extenuating circumstances.

Selection of the Alaska Scholars

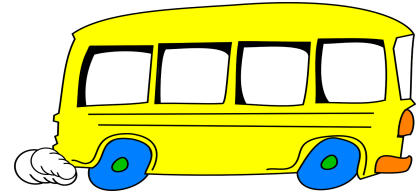
All students in the top 10% of the class, based on GPA, are eligible for the Alaska Scholars Program. This is only eligible for students attending one of the three campuses of the University of Alaska. At the close of their Junior (11th grade) year, the top 10% of students, based on non-weighted GPA, will be submitted to the Alaska Scholars Program. Beginning with the Class of 2019, weighed GPA will be used to determine the top 10%.

Date: June 10, 2015

Petersburg City School District

New K-2 Elementary Report Card!

November 2020



What is it?

The new report card, based on the Alaska (Common Core) Standards, is designed to be a better communication tool with parents.

Why are we switching?

The new report card will give families more accurate information about their child's progress toward the Alaska Standards. We believe this report card will more completely communicate what students are expected to know or be able to do.

What's the same?

- Families will still receive a report card on a student's progress three times each year.
- Teachers will still mark progress on academic standards and behavior expectations.
- Teachers will still share student work as evidence of progress.

What's different?

- **Key standards** will appear for Reading, Writing, and Mathematics, allowing families to see important skills and knowledge for the grade level.
- **Markings will change:** Student progress will be marked on a numerical scale instead of letter grades.
- **Assessment data** will appear on the report card allowing families to see everything on one document.
- **Not every space will be marked.** Blank spaces on the report card indicate the teacher hasn't yet assessed a standard.
- **Attendance impact on learning will be marked.** Students with great attendance will be marked as having "attendance that supports learning". If there is a concern this should trigger a conversation between parent and teacher regarding attendance goals.

What do the test scores on the report card mean?

- MAP Reading/Language/Math RIT: Student score in this section of the assessment - indicates student mastery of skills in the measured RIT range. Some of these skills are also reflected as **Key Standards**.
- MAP Reading/Language/Math NPR: Student national percentile rank in this section of the assessment - indicates student performance as compared to peers across the nation. An NPR score of 50 indicates that the student scored better than 50% of students and lower than 50% of students. A score less than the 40th percentile indicates that school staff should look more closely at the student's achievement to determine whether the student needs additional support. A score less than the 20th percentile indicates that school staff should look closely at whether the student needs more intense support.

Scoring Scale Descriptors (General)

4 Exceeding Standard: Able to teach or explain it to others correctly and consistently. In addition to the scoring scale of 3, student demonstrates in-depth understanding beyond what was taught.

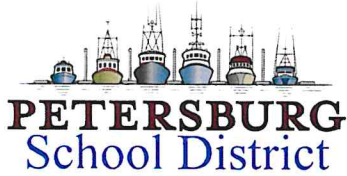
3 Meeting Standard: Able to do what was taught, independently and consistently. Can do all parts independently.

2 Approaching Standard: With some help or support from (peers or adults). Able to perform some parts independently.

1 Far Below Standard: Needs significant support to perform any or most parts.

Marking a student a “3” means that the student has mastered what has been taught so far, even though they may not have achieved the end of year standard yet.

*Please be honest as this is very black and white and will help with retention questioning.



Student:
 Student Number: **483825**
 Grade Level: **K**
 Teacher Name: **Erin Willis**
 School: **Petersburg School District**

Attendance	T1	T2	T3	YR
Days Absent	0.0	3.0	0.0	3.0
Days Tardy	2.0	0.0	0.0	2.0

Reporting Key Levels of Performance

Exceeding Standard	4
Meeting Standard	3
Approaching Standard	2
Far Below Standard	1

Writing	T1	T2	T3
Demonstrates adequate effort.			3
Uses letter sounds to spell simple words and writes simple sentences that make sense.			
Participates in shared research and writing projects with guidance and support from adults.			
Uses a combination of drawing, dictation, and writing to express ideas.			3
Uses grade level conventions (spelling, punctuation, capitalization).			

Reading	T1	T2	T3
Demonstrates adequate effort.			3
Asks and answers questions about stories and text to demonstrate understanding with support.			3
Engages in group reading activities with purpose and understanding.			3
Demonstrates understanding of basic book and print concepts.			3
Demonstrates understanding of spoken words, syllables, and sounds (rhyming, blending, and segmenting).			
Identifies and produces letter sounds.			3
Reads high frequency words by sight.			
Recognizes and names all upper and lowercase letters of the alphabet.			3

Social Studies	T1	T2	T3
Demonstrates adequate effort.			3
Demonstrates understanding of content			3
Me / Myself and Family / Culture			3

Mathematics	T1	T2	T3
Demonstrates adequate effort.			3
Counts objects to tell how many with up to 20 objects in a variety of arrangements.			3
Recognizes and writes numerals to match sets of objects 0-20.			
Counts to 100 by ones and by tens.			
Counts on from any given number.			
Solves addition and subtraction word problems using numbers 0-10.			
Composes and decomposes numbers from 11-19 into tens and ones.			
Compares numbers and quantities of objects.			
Identifies, describes, and compares 2D and 3D shapes.			

Science	T1	T2	T3
Demonstrates adequate effort.			3
Demonstrates understanding of content			3

Listening and Speaking	T1	T2	T3
Expresses ideas clearly.			3
Listens and responds appropriately in collaborative conversations.			3
Uses new vocabulary.			3

Behavior Key Levels of Performance

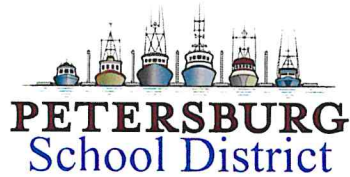
Always	4
Consistently	3
Inconsistently	2
Rarely	1

Behaviors	T1	T2	T3
Listens to and follows directions.	3		
Works appropriately in groups.	3		
Interacts cooperatively with others.	3		
Respects the rights/ property of others.	3		
Actively participates in a variety of learning and cultural environments.	3		
Follows classroom and school rules.	3		
Demonstrates self-control.	3		
Demonstrates organizational skills.	3		
Uses time wisely.	3		

Trimester 1 Comments

is a pleasure to have in class. He is helpful, well-mannered, and enthusiastic. is learning to consistently write and form his numbers 1-10 correctly. He completes table work in the time allotted by managing his time well. participates by expressing his ideas clearly in whole group and small group instruction. He is eager to learn, expresses great pride in his accomplishments, and has shown growth in all areas. is beginning to show signs of independence during work time. He also implements decoding strategies when reading and writing and has strong number sense.

Trimester 2 Comments**Trimester 3 Comments****Teacher Signature:****Date:**



Student:
 Student Number: **477349**
 Grade Level: **1st**
 Teacher Name: **Kerri Curtiss**
 School: **Petersburg School District**

Attendance	T1	T2	T3	YR
Days Absent	3.0	3.5	0.0	6.5
Days Tardy	0.0	0.0	0.0	0.0

Reporting Key Levels of Performance

Exceeding Standard	4
Meeting Standard	3
Approaching Standard	2
Far Below Standard	1

Writing	T1	T2	T3
Demonstrates adequate effort.	3		
Writes real or imagined narrative (beginning, middle, end).	2		
Writes information pieces which include (topic, facts, and closure).	2		
Writes opinion pieces which include (topic, facts and closure).			
Participates in shared research and writing projects.			
Writes legibly and neatly.	3		
Uses grade level conventions (spelling, punctuation, capitalization).	2		

Reading	T1	T2	T3
Demonstrates adequate effort.	2		
Knows and applies grade level phonics.	3		
Reads grade level sight words	2		
Asks and answers questions about key details in a text.	3		
Demonstrates understanding of spoken words, syllables, and sounds (rhyming, blending, and segmenting).	2		
Reads grade level text with accuracy and fluency.	2		
Retells stories using key details.	2		
Identifies the main topic and retell key details of a text.			

Mathematics	T1	T2	T3
Demonstrates adequate effort.	3		
Adds numbers within 20.	3		
Subtracts numbers within 20.	2		
Uses place value understanding to add a 1-digit number to a 2-digit number up to 100.			
Models and identifies place value positions of 2-digit numbers.			
Tells and writes time to half hour.			
Identifies values of coins.	2		
Measures and compares three objects using standard and non-standard units.	3		
Compares two 2-digit numbers with the symbols >, =, <.	3		
Builds, draws, and reasons with shapes and their attributes.			

Social Studies	T1	T2	T3
Demonstrates adequate effort.	3		
Demonstrates understanding of content	3		
Friends, Family and School	3		

Science	T1	T2	T3
Demonstrates adequate effort.	3		
Demonstrates understanding of content	3		

Listening and Speaking	T1	T2	T3
Expresses ideas clearly.	3		
Listens and responds appropriately in collaborative conversations.	3		
Uses new vocabulary.	3		

Behavior Key Levels of Performance

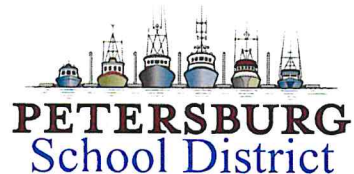
Always	4
Consistently	3
Inconsistently	2
Rarely	1

Behaviors	T1	T2	T3
Listens to and follows directions.	3		
Works appropriately in groups.	3		
Interacts cooperatively with others.	3		
Respects the rights/ property of others.	3		
Actively participates in a variety of learning and cultural environments.	3		
Follows classroom and school rules.	3		
Demonstrates self-control.	3		
Demonstrates organizational skills.	3		
Uses time wisely.	3		
Completes and returns homework	3		

Trimester 1 Comments

is off to a great start in first grade. He is a hard worker and puts in the greatest effort in areas he enjoys most. Motivating him to work hard at tasks that he is not excited about, like reading, has proven to be my biggest challenge, however he usually comes around. is very organized, and follows classroom and school rules well. He is also a great helper when a new skill comes easily to him, he jumps at the opportunity to help others that may be struggling, the trait of a leader. I often challenge to slow down and show me his best work, when he puts his mind to it he really does shine. is just on the cusp of taking off in his reading skills, a very exciting time in first grade. I look forward to seeing his continued progress in the remaining trimesters of first grade. , you are a pleasure to have in class, and I really appreciate all the work you put in at school and at home to be a successful student. Keep up the good work! ~Ms. C

Trimester 2 Comments**Trimester 3 Comments****Teacher Signature:****Date:**



Student
 Student Number: **468099**
 Grade Level: **2nd**
 Teacher Name: **Michelle Brock**
 School: **Petersburg School District**

Attendance	T1	T2	T3	YR
Days Absent	4.5	19.0	0.0	23.5
Days Tardy	0.0	0.0	0.0	0.0

Reporting Key Levels of Performance

Exceeding Standard	4
Meeting Standard	3
Approaching Standard	2
Far Below Standard	1

Writing	T1	T2	T3
Demonstrates adequate effort.	3		
Focuses on a topic and strengthens writing by revising and editing with guidance from adults and peers.	3		
Uses narrative writing to retell real or imaginative events in a logical sequence with added details.	3		
Writes opinion pieces with a topic, reasons, linking words, and a concluding sentence.			
Writes informative text with a topic, facts, and a concluding sentence.	3		
Uses grade level conventions (spelling, punctuation, capitalization).	3		
Uses standard grammar.	3		

Reading	T1	T2	T3
Demonstrates adequate effort.	3		
Analyzes content and structure of text.	3		
Knows and applies grade level phonics and word recognition skills.	4		
Determines the author's purpose or main topic of a text.	3		
Reads with sufficient accuracy and fluency to support comprehension in grade level text.	4		
Asks and answers questions to demonstrate understanding using key details from text.	3		
Compares and contrasts two versions of the same story or two important points of the same topic.	3		
Uses strategies to determine or clarify the meaning of an unknown word.	3		

Social Studies	T1	T2	T3
Demonstrates adequate effort.	3		
Demonstrates understanding of content	3		

Mathematics	T1	T2	T3
Demonstrates adequate effort.	3		
Fluently adds and subtracts numbers within 20	4		
Fluently adds numbers within 100	4		
Fluently subtracts numbers within 100	4		
Uses place value understanding to add and subtract numbers up to 1000			
Represents and solves addition and subtraction word problems up to 100.	4		
Works with equal groups of objects to understand multiplication as repeated addition.	4		
Measures and estimates length using standard units of measure.			
Identifies and draws shapes having specified attributes.	4		
Divides circles and rectangles into equal shares and describes using halves, thirds, fourths, etc.	3		

Science	T1	T2	T3
Demonstrates adequate effort.			
Demonstrates understanding of content			

Listening and Speaking	T1	T2	T3
Expresses ideas clearly.	3		
Listens and responds appropriately in collaborative conversations.	3		
Uses new vocabulary.	3		

Behavior Key Levels of Performance

Always	4
Consistently	3
Inconsistently	2
Rarely	1

Behaviors	T1	T2	T3
Listens to and follows directions.	2		
Interacts cooperatively with others.	3		
Respects the rights/ property of others.	3		
Actively participates in a variety of learning and cultural environments.	3		
Follows classroom and school rules.	3		
Demonstrates self-control.	2		
Accepts responsibility for actions.	2		
Demonstrates organizational skills.	3		
Uses time wisely.	2		
Completes and returns homework.	3		

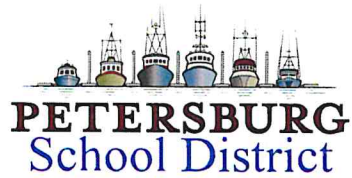
Trimester 1 Comments

is a bright, happy, confident boy who works diligently and excels in all areas of the curriculum. gets along well with his peers and does tend to socialize quite a bit and at times has difficulty with this. We are working on responding respectfully and taking ownership for his actions. is an avid reader. He is able to read beginning 4th grade books at 59 words per minute. For Accelerated Reading his average book level was 3.1 and his comprehension was 94%. earned 28 points for AR where students are only expected to earn 8 points! His comprehension did get lower as the reading level increased. Even though he is capable of reading higher levels, it is beneficial for him to read a bit lower so he is able to understand what he's reading. He has done amazing on spelling tests getting 109% with bonus words! understands math lessons and is able to work with a partner, in a group, or independently utilizing math concepts learned. does well in writing and uses a lot of voice in his writing, which makes it very fun and entertaining to read. We continue to work on writing conventions, such as complete sentences and punctuation. I am so glad to have you in class this year !

Trimester 2 Comments

Trimester 3 Comments

Teacher Signature: _____ **Date:** _____



Student:
 Student Number: **445794**
 Grade Level: **3rd**
 Teacher Name: **Mary Midkiff**
 School: **Petersburg School District**

Attendance	T1	T2	T3	YR
Days Absent	0.0	1.0	0.0	1.0
Days Tardy	0.0	0.0	0.0	0.0

Reporting Key Levels of Performance

Exceeding Standard	4
Meeting Standard	3
Approaching Standard	2
Far Below Standard	1

Mathematics	T1	T2	T3
Demonstrates adequate effort.	4		
Uses strategies or algorithms to fluently add and subtract numbers.	3		
Fluently multiplies numbers up to 100	2		
Fluently divides numbers up to 100			
Solves problems using addition, subtraction, multiplication, and division strategies	2		
Constructs, compares, and expresses fractions as numbers.			
Understands concepts of area measurement.			
Relates area to multiplication and addition.	3		
Categorizes shapes by different attributes.	2		

Reading	T1	T2	T3
Demonstrates adequate effort.	4		
Analyzes content and structure of text.	3		
Knows and applies grade level phonics and word recognition skills.	2		
Reads with sufficient accuracy and fluency to support comprehension in grade level text.	4		
Asks and answers questions to demonstrate understanding using key details from text.	3		
Compares and contrasts the themes of stories or important points of two texts of the same	3		
Determines the author's purpose or main idea with supporting details from the text.	3		
Uses strategies to determine or clarify the meaning of an unknown word.	3		

Listening and Speaking	T1	T2	T3
Expresses ideas clearly.	4		
Listens and responds appropriately in collaborative conversations	3		
Uses new vocabulary.	3		

Writing	T1	T2	T3
Demonstrates adequate effort.	3		
Develops and strengthens writing through planning, revising, and editing with guidance from adults and peers.	3		
Uses narrative writing to develop real or imaginary characters, experiences, or events in a logical sequence with added details.			
Writes opinion pieces supporting a point of view with facts or text evidence.			
Writes informative/explanatory text to examine a topic and convey ideas and information clearly.	3		
Conducts short research projects that build knowledge about a topic.	3		
Uses grade level conventions (spelling, punctuation, capitalization).	3		
Uses standard grammar.	3		

Science	T1	T2	T3
Demonstrates adequate effort.	3		
Demonstrates understanding of content	3		

Social Studies	T1	T2	T3
Demonstrates adequate effort.	3		
Demonstrates understanding of content	2		

Behavior Key Levels of Performance

Always	4
Consistently	3
Inconsistently	2
Rarely	1

Behaviors	T1	T2	T3
Listens to and follows directions.	3		
Interacts cooperatively with others.	3		
Respects the rights/ property of others.	3		
Actively participates in a variety of learning and cultural environments.	4		
Follows classroom and school rules.	4		
Demonstrates self-control.	3		
Accepts responsibility for actions.	3		
Demonstrates organizational skills.	4		
Uses time wisely.	4		
Completes and returns homework.	3		

Trimester 1 Comments

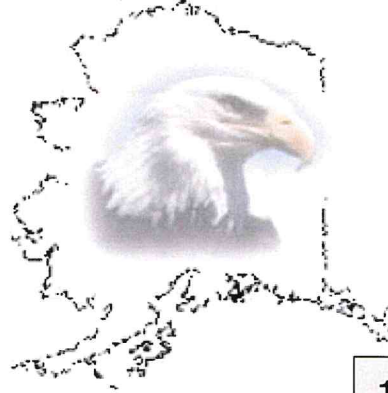
is a conscientious student who comes to school prepared to do her best. She is a solid reader with excellent comprehension. She is starting to challenge herself with longer chapter books. has a good understanding of place value, addition and subtraction. She is learning multiplication and lots of geometry vocabulary! She is a competent writer with good voice. . . works hard and is a pleasure to have in class. Keep up the good work Jaycee!

Trimester 2 Comments**Trimester 3 Comments****Teacher Signature:****Date:**

Name
Teacher Kowalski, Gregg A.
Year 2022-2023
Principal Heather Conn

Fourth Grade Progress Report
Rae C. Stedman Elementary School

P.O. Box 289
 Petersburg, Alaska 99833
 (877) 526-7656 ext. 2



ATTENDANCE	1	2	3	Total
Days Present	48.5	50.5		99
Days Absent	2.5	7.5		10
Times Tardy	0	2		2.0

Student Evaluation Key

Performance

- | | |
|-------------------|-----------------------|
| A - Excellent | E - Excellent |
| B - Above Average | S - Satisfactory |
| C - Average | N - Needs Improvement |
| D - Below Average | N/A - Not Applicable |
| F - Failing | |

Student Behavior/Work Habits

- | | |
|------------------|---------------------|
| X - Satisfactory | - Needs Improvement |
|------------------|---------------------|

Subject Areas	1	2	3
Reading*	C-		
Spelling*	D-		
Language Arts	C		
Penmanship	S+		
Math*	D		
Social Studies	C-		
Science/Health	B		
Music	E		
Art	S		
Technology	S+		

1	2	3	
X			Assignments in on time
X			Assignments completed
X+			Assignments neat
X			Seeks help when needed
X			Organized
X			Listens
X			Follows directions
X			Stays on task
X+			Cooperates
X-			Participates
X+			Respects property
X+			Respects peers
X+			Respects adults
X+			Obeys school/class rules

Our Mission: Provide a safe educational environment where all students are challenged to become lifelong learners

Comments 1st Trimester

_____ needs to read at home. During this trimester, she only read three books independently, earning only 1.5 points toward a goal of 20 points, and achieving only 73% on comprehension according to Accelerated Reading. Reading fluently and competently is such a huge component across the curriculum that no other subject can compare. This is because it provides the foundation to the Language Arts structure in which all other subjects are covered. Reading is the driving force of all academic success as it feeds _____ mind with greater vocabulary, expanded imagery, various styles of voice according to different authors, new subjects of interest, word usage and fluency. Reading is the master link between Writing, Spelling, Speaking and every subject in the curriculum. Additionally, as _____ reaches higher grade levels, most content will be delivered in textual form, placing an additional emphasis on reading fluency, comprehension and ability. Lastly, total memorization of multiplication skills is necessary for the upcoming curriculum, here in elementary school as well as 5th grade. Little by little, bit by bit _____ should start to master these skills.

Comments 2nd Trimester

Comments 3rd Trimester

Cole, Sabrein Elisa

has been assigned to

_____ grade next year.

Date

Teacher

Fifth Grade Progress Report
Rae C. Stedman Elementary School

P.O. Box 289
 Petersburg, Alaska 99833
 (877) 526-7656 ext. 2



ATTENDANCE	1	2	3	Total
Days Present	50.0	58.0		108
Days Absent	1.0	0.0		1
Times Tardy	0	0		0.0

Name	...
Teacher	Miller, Vanessa
Year	2022-2023
Principal	Heather Conn

Student Evaluation Key	
Performance	Effort
A - Excellent B - Above Average C - Average D - Below Average F - Failing	E - Excellent S - Satisfactory N - Needs Improvement N/A - Not Applicable

Student Behavior/Work Habits	
X - Satisfactory	- Needs Improvement

Subject Areas	1	2	3
Reading	B / E	/	/
Spelling/Vocabulary	B / E	/	/
Language Arts	B / E	/	/
Exploratory	E		
Math	B / E	/	/
Social Studies	B / S	/	/
Science/Health	A- / E	/	/
Music	E		
Art	E		
Technology	E		

1	2	3	
X+	X+		Assignments in on time
X	X+		Assignments completed
X+	X+		Assignments neat
X+	X+		Seeks help when needed
X+	X+		Organized
X+	X+		Listens
X+	X+		Follows directions
X	X		Stays on task
X+	X+		Cooperates
X+	X+		Participates
X+	X+		Respects property
X+	X+		Respects peers
X+	X+		Respects adults
X+	X+		Obeys school/class rules

Our Mission: Provide a safe educational environment where all students are challenged to become lifelong learners

Comments 1st Trimester

_____ is a happy, kind student with a funny sense of humor. He works diligently everyday and is proud of both his Spanish skills and artwork. He loves to draw!. _____ is making new friends and feeling more confident in class. At the beginning of the year, he tested below grade level in reading, writing, and math. Despite these tests, he is making tremendous growth this trimester. In math, he is working on mastering his multiplication math facts to 12 _____ enjoys writing stories and is working on spelling, grammar and punctuation. He is working on past and present tense; sometimes he forgets how to express these correctly. He needs to read for 30 minutes at home each night to increase his fluency and comprehension. He plans to reach his reading goal next trimester! Excelente Trabajo _____!

Comments 2nd Trimester

Comments 3rd Trimester

Astorga Sosa, Edahi

has been assigned to

_____ grade next year.

Date

Teacher

LEGEND	
C School Closes	O School Opens
E End of Quarter	S Saturday School
H Legal Holiday	T Testing
I Inservice Day	V Vacation Day
M Meeting	W Teacher Workday
N Not Meeting	X Emergency Closure Day

District: Petersburg Borough School District / School: DISTRICT WIDE
2023-2024 School Calendar

'2023 School year'

Approved By: Title:

[172] Student days [9] Inservice days [181] Total

July 2023							August 2023							September 2023							October 2023									
Sun	Mon	Tue	Wed	Thu	Fri	Sat	Sun	Mon	Tue	Wed	Thu	Fri	Sat	Sun	Mon	Tue	Wed	Thu	Fri	Sat	Sun	Mon	Tue	Wed	Thu	Fri	Sat			
						1			1	2	3	4	5							1	2	1	2	3	4	5	6	7		
2	3	4 H	5	6	7	8	6	7	8	9	10	11	12	3	4 H	5	6	7	8 I	9	8	9	10	11	12	13	14			
9	10	11	12	13	14	15	13	14	15	16	17	18	19	10	11	12	13	14	15	16	15	16	17	18	19	20	21			
16	17	18	19	20	21	22	20	21	22 W	23 I	24 I	25 I	26	17	18	19	20	21	22	23	22	23	24	25	26	27	28			
23	24	25	26	27	28	29	27	28 W	29 O	30	31			24	25	26	27	28	29	30	29	30	31							
30	31																													
Number of Inservice Days: 0 Number of Student Days: 0 Number of Teacher Days: 0							Number of Inservice Days: 3 Number of Student Days: 3 Number of Teacher Days: 8							Number of Inservice Days: 1 Number of Student Days: 19 Number of Teacher Days: 21							Number of Inservice Days: 0 Number of Student Days: 22 Number of Teacher Days: 22									
November 2023							December 2023							January 2024							February 2024									
Sun	Mon	Tue	Wed	Thu	Fri	Sat	Sun	Mon	Tue	Wed	Thu	Fri	Sat	Sun	Mon	Tue	Wed	Thu	Fri	Sat	Sun	Mon	Tue	Wed	Thu	Fri	Sat			
			1 I	2	3	4							1	2		1 H	2 V	3 I	4	5	6						1	2	3	
5	6	7	8	9	10	11	3	4	5	6	7	8	9	7	8	9	10	11	12	13	4	5	6	7	8	9	10			
12	13	14	15	16	17	18	10	11	12	13	14	15	16	14	15 I	16	17	18	19	20	11	12	13	14	15	16	17			
19	20	21	22 V	23 H	24 H	25	17	18	19	20	21 V	22 V	23	21	22	23	24	25	26	27	18	19 I	20	21	22	23	24			
26	27	28	29	30			24	25 H	26 V	27 V	28 V	29 V	30	28	29	30	31				25	26	27	28	29					
							31																							
Number of Inservice Days: 1 Number of Student Days: 18 Number of Teacher Days: 21							Number of Inservice Days: 0 Number of Student Days: 14 Number of Teacher Days: 15							Number of Inservice Days: 2 Number of Student Days: 19 Number of Teacher Days: 22							Number of Inservice Days: 1 Number of Student Days: 20 Number of Teacher Days: 21									
March 2024							April 2024							May 2024							June 2024									
Sun	Mon	Tue	Wed	Thu	Fri	Sat	Sun	Mon	Tue	Wed	Thu	Fri	Sat	Sun	Mon	Tue	Wed	Thu	Fri	Sat	Sun	Mon	Tue	Wed	Thu	Fri	Sat			
						1	2			1	2	3	4	5	6					1	2	3	4							1
3	4	5	6	7	8 V	9	7	8	9	10	11	12	13	5	6	7	8	9	10	11	2	3	4	5	6	7	8			
10	11 V	12 V	13 V	14 V	15 V	16	14	15	16	17	18	19	20	12	13	14	15	16	17	18	9	10	11	12	13	14	15			
17	18	19	20	21	22	23	21	22	23	24	25	26 I	27	19	20	21	22	23	24	25	16	17	18	19	20	21	22			
24	25	26	27	28	29	30	28	29	30					26	27 H	28	29	30 C	31 W		23	24	25	26	27	28	29			
31																					30									
Number of Inservice Days: 0 Number of Student Days: 15 Number of Teacher Days: 15							Number of Inservice Days: 1 Number of Student Days: 21 Number of Teacher Days: 22							Number of Inservice Days: 0 Number of Student Days: 21 Number of Teacher Days: 23							Number of Inservice Days: 0 Number of Student Days: 0 Number of Teacher Days: 0									




System for School Success

2021-2022 School Report

Rae C. Stedman Elementary, Petersburg Borough School District

Title I School: Yes

 **School Designation:** Targeted Support and Improvement -2022

 **Overall School Index Value:** 33.3



An excellent education for every student every day.

System for School Success Overview

Alaska's education accountability system, System for School Success, includes each student group individually, creating a holistic vision of a school through two lenses: the performance of all students and that of their student group populations.


The Compass

A Guide to Alaska's Public Schools


Alaska recently launched **The Compass**, a website designed to help parents access important data about public schools in Alaska. The Compass features a wealth of meaningful information on schools and districts so that parents and guardians can participate in decisions to improve their student's learning.

education.alaska.gov/compass


Academic Achievement

	English Language Arts Percentage of students that were proficient on the state summative assessment.	Mathematics Percentage of students that were proficient on the state summative assessment.
All Students	34.41%	39.78%

Academic Growth


	Not Part of 2021-22 Accountability Because of the introduction of AKSTAR in the spring of 2022, two years of data for comparison are not available to calculate this indicator. For more information to changes to this year's Accountability system please see: https://education.alaska.gov/akessa/stateplan/21-22-Addendum-Template%20final%20accessible.pdf	
---	--	--

School Quality/Success


	Chronic Absenteeism Percentage of students who missed less than 10% of the days enrolled at the school.	Grade 3 ELA Percentage of Grade 3 students that were proficient on the state summative assessment in ELA.
All Students	41.41%	22.22%

n/a - there were less than 10 students represented or the indicator is not relevant to the school.


English Learner Progress

	English Learner Progress Percentage of English Learners that met or exceeded their growth target on the ACCESS for ELLs assessment.
All Students	n/a

Graduation Rates

	Graduation Rate The rate of students that graduated from high school within four or five years of enrolling as ninth graders.
Four-Year	n/a
Five-Year	n/a

Student Group Performance

	Student Group Performance If school is Targeted or Additional Targeted Support, identified student groups are shown below.
Student Groups	AK Native/American Indian

System for School Success Overview



How is my school measured?

	K	1	2	3	4	5	6	7	8	9	10	11	12
ELA and Math Proficiency				✓	✓	✓	✓	✓	✓	✓			
ELA and Math Growth					✗	✗	✗	✗	✗	✗			
Graduation													✓
English Learner Progress	✓	✓	✓	✓	✓	✓	✓	✓	✓	✓	✓	✓	✓
Chronic Absenteeism	✓	✓	✓	✓	✓	✓	✓	✓	✓	✓	✓	✓	✓
Grade 3 ELA Proficiency				✓									

Measures Combine into Index Score

Each indicator noted in the table to the left is given a score for the school. Note: ELA and Math Growth are not part of the 2021-22 Accountability system.

In addition to looking at the whole school, each student group in a school is measured in the areas listed in the table to the left. These scores are combined and the student group is given a score.

How is my school designated for support?

Each year an overall school index value is calculated for each school and a school designation is assigned. There are three school designations for Alaska's schools:

- **Comprehensive Support**
 - **Lowest 5%** - If the overall school index value of a school falls in the lowest 5% of Title I schools, that school receives a designation of Comprehensive Support (Lowest 5%).
 - **Graduation Rate** - If a secondary school has a graduation rate of less than or equal 66.67%, that school receives a designation of Comprehensive Support (Graduation Rate).
- **Targeted Support** - If a school has any student groups with index values under the Comprehensive Support (lowest 5%) threshold, that school receives a designation of Targeted Support.
- **Additional Targeted Support** - Schools that are TSI for the same student group three years in a row.
- **Universal Support** - All other schools are considered Universal Support schools.

Which student groups are measured?

- African American
- Alaska Native/American Indian
- Asian/Pacific Islander
- Caucasian
- Hispanic
- Two or More Races
- Students with Disabilities
- English Learners
- Economically Disadvantaged

What are some questions I could ask my school?

Where can I find more information about how my school is performing?

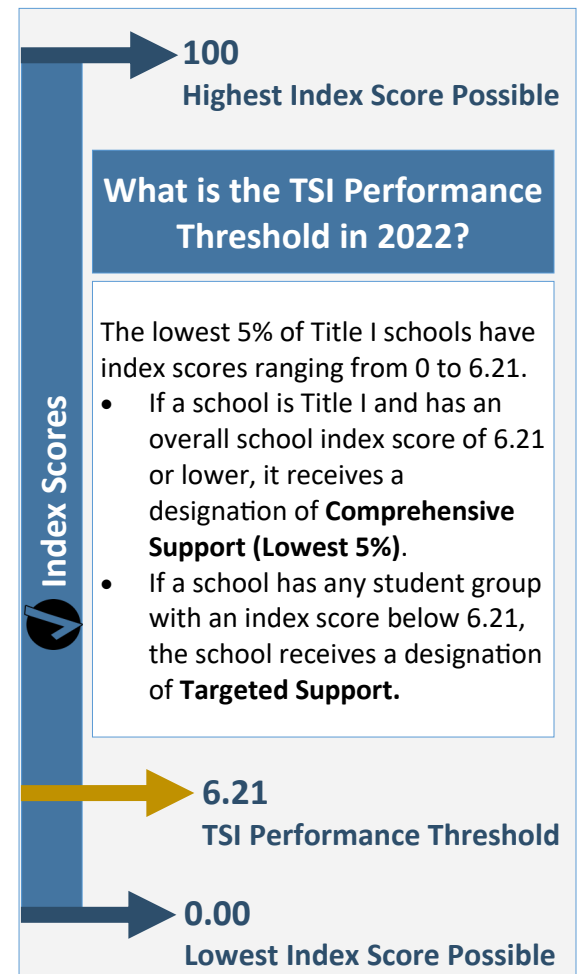
What supports are being provided to my school based on its designation?

What opportunities are available for me to be involved in my student's education?

What is the TSI Performance Threshold in 2022?

The lowest 5% of Title I schools have index scores ranging from 0 to 6.21.

- If a school is Title I and has an overall school index score of 6.21 or lower, it receives a designation of **Comprehensive Support (Lowest 5%)**.
- If a school has any student group with an index score below 6.21, the school receives a designation of **Targeted Support**.





An excellent education for every student every day.

System for School Success

2021-2022 School Report



Mitkof Middle School, Petersburg Borough School District

Title I School: No

School Designation: Universal Support

Overall School Index Value: 52.96

System for School Success Overview

Alaska's education accountability system, System for School Success, includes each student group individually, creating a holistic vision of a school through two lenses: the performance of all students and that of their student group populations.

The Compass

A Guide to Alaska's Public Schools

Alaska recently launched **The Compass**, a website designed to help parents access important data about public schools in Alaska. The Compass features a wealth of meaningful information on schools and districts so that parents and guardians can participate in decisions to improve their student's learning.

education.alaska.gov/compass

Academic Achievement

	English Language Arts Percentage of students that were proficient on the state summative assessment.	Mathematics Percentage of students that were proficient on the state summative assessment.
	All Students	54.35%

Academic Growth

	Not Part of 2021-22 Accountability Because of the introduction of AKSTAR in the spring of 2022, two years of data for comparison are not available to calculate this indicator. For more information to changes to this year's Accountability system please see: https://education.alaska.gov/akessa/stateplan/21-22-Addendum-Template%20final%20accessible.pdf	

School Quality/Success

	Chronic Absenteeism Percentage of students who missed less than 10% of the days enrolled at the school.	Grade 3 ELA Percentage of Grade 3 students that were proficient on the state summative assessment in ELA.
	All Students	70.41%

n/a - there were less than 10 students represented or the indicator is not relevant to the school.

English Learner Progress

	English Learner Progress Percentage of English Learners that met or exceeded their growth target on the ACCESS for ELLs assessment.
	All Students

Graduation Rates

	Graduation Rate The rate of students that graduated from high school within four or five years of enrolling as ninth graders.
	Four-Year Five-Year

Student Group Performance

	Student Group Performance If school is Targeted or Additional Targeted Support, identified student groups are shown below.
	Student Groups

System for School Success Overview



How is my school measured?

	K	1	2	3	4	5	6	7	8	9	10	11	12
ELA and Math Proficiency				✓	✓	✓	✓	✓	✓	✓			
ELA and Math Growth					✗	✗	✗	✗	✗	✗			
Graduation													✓
English Learner Progress	✓	✓	✓	✓	✓	✓	✓	✓	✓	✓	✓	✓	✓
Chronic Absenteeism	✓	✓	✓	✓	✓	✓	✓	✓	✓	✓	✓	✓	✓
Grade 3 ELA Proficiency				✓									

Measures Combine into Index Score

Each indicator noted in the table to the left is given a score for the school. Note: ELA and Math Growth are not part of the 2021-22 Accountability system.

In addition to looking at the whole school, each student group in a school is measured in the areas listed in the table to the left. These scores are combined and the student group is given a score.

How is my school designated for support?

Each year an overall school index value is calculated for each school and a school designation is assigned. There are three school designations for Alaska's schools:

- **Comprehensive Support**
 - **Lowest 5%** - If the overall school index value of a school falls in the lowest 5% of Title I schools, that school receives a designation of Comprehensive Support (Lowest 5%).
 - **Graduation Rate** - If a secondary school has a graduation rate of less than or equal 66.67%, that school receives a designation of Comprehensive Support (Graduation Rate).
- **Targeted Support** - If a school has any student groups with index values under the Comprehensive Support (lowest 5%) threshold, that school receives a designation of Targeted Support.
- **Additional Targeted Support** - Schools that are TSI for the same student group three years in a row.
- **Universal Support** - All other schools are considered Universal Support schools.

Which student groups are measured?

- African American
- Alaska Native/American Indian
- Asian/Pacific Islander
- Caucasian
- Hispanic
- Two or More Races
- Students with Disabilities
- English Learners
- Economically Disadvantaged

What are some questions I could ask my school?

Where can I find more information about how my school is performing?

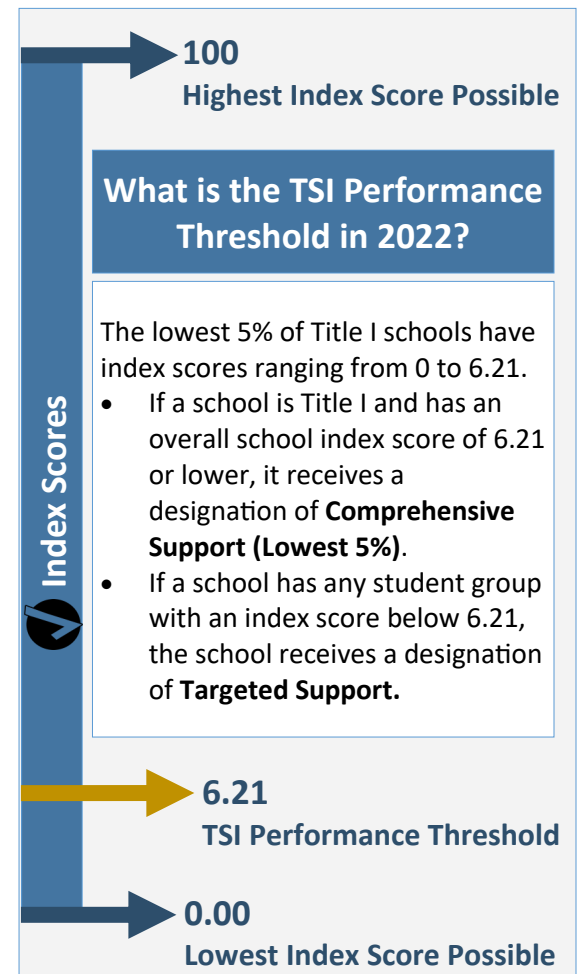
What supports are being provided to my school based on its designation?

What opportunities are available for me to be involved in my student's education?

What is the TSI Performance Threshold in 2022?

The lowest 5% of Title I schools have index scores ranging from 0 to 6.21.

- If a school is Title I and has an overall school index score of 6.21 or lower, it receives a designation of **Comprehensive Support (Lowest 5%)**.
- If a school has any student group with an index score below 6.21, the school receives a designation of **Targeted Support**.





An excellent education for every student every day.

System for School Success

2021-2022 School Report



Petersburg High School, Petersburg Borough School District

Title I School: No

School Designation: Universal Support

Overall School Index Value: 64.98

System for School Success Overview

Alaska's education accountability system, System for School Success, includes each student group individually, creating a holistic vision of a school through two lenses: the performance of all students and that of their student group populations.

The Compass

A Guide to Alaska's Public Schools

Alaska recently launched **The Compass**, a website designed to help parents access important data about public schools in Alaska. The Compass features a wealth of meaningful information on schools and districts so that parents and guardians can participate in decisions to improve their student's learning.

education.alaska.gov/compass

Academic Achievement

	English Language Arts Percentage of students that were proficient on the state summative assessment.	Mathematics Percentage of students that were proficient on the state summative assessment.
All Students	41.03%	38.46%

Academic Growth

	Not Part of 2021-22 Accountability Because of the introduction of AKSTAR in the spring of 2022, two years of data for comparison are not available to calculate this indicator. For more information to changes to this year's Accountability system please see: https://education.alaska.gov/akessa/stateplan/21-22-Addendum-Template%20final%20accessible.pdf

School Quality/Success

	Chronic Absenteeism Percentage of students who missed less than 10% of the days enrolled at the school.	Grade 3 ELA Percentage of Grade 3 students that were proficient on the state summative assessment in ELA.
All Students	88.71%	n/a

n/a - there were less than 10 students represented or the indicator is not relevant to the school.

English Learner Progress

	English Learner Progress Percentage of English Learners that met or exceeded their growth target on the ACCESS for ELLs assessment.
All Students	n/a

Graduation Rates

	Graduation Rate The rate of students that graduated from high school within four or five years of enrolling as ninth graders.
Four-Year	93.1%
Five-Year	100%

Student Group Performance

	Student Group Performance If school is Targeted or Additional Targeted Support, identified student groups are shown below.
Student Groups	n/a

System for School Success Overview



How is my school measured?

	K	1	2	3	4	5	6	7	8	9	10	11	12
ELA and Math Proficiency				✓	✓	✓	✓	✓	✓	✓			
ELA and Math Growth					✗	✗	✗	✗	✗	✗			
Graduation													✓
English Learner Progress	✓	✓	✓	✓	✓	✓	✓	✓	✓	✓	✓	✓	✓
Chronic Absenteeism	✓	✓	✓	✓	✓	✓	✓	✓	✓	✓	✓	✓	✓
Grade 3 ELA Proficiency				✓									

Measures Combine into Index Score

Each indicator noted in the table to the left is given a score for the school. Note: ELA and Math Growth are not part of the 2021-22 Accountability system.

In addition to looking at the whole school, each student group in a school is measured in the areas listed in the table to the left. These scores are combined and the student group is given a score.

How is my school designated for support?

Each year an overall school index value is calculated for each school and a school designation is assigned. There are three school designations for Alaska's schools:

- **Comprehensive Support**
 - **Lowest 5%** - If the overall school index value of a school falls in the lowest 5% of Title I schools, that school receives a designation of Comprehensive Support (Lowest 5%).
 - **Graduation Rate** - If a secondary school has a graduation rate of less than or equal 66.67%, that school receives a designation of Comprehensive Support (Graduation Rate).
- **Targeted Support** - If a school has any student groups with index values under the Comprehensive Support (lowest 5%) threshold, that school receives a designation of Targeted Support.
- **Additional Targeted Support** - Schools that are TSI for the same student group three years in a row.
- **Universal Support** - All other schools are considered Universal Support schools.

Which student groups are measured?

- African American
- Alaska Native/American Indian
- Asian/Pacific Islander
- Caucasian
- Hispanic
- Two or More Races
- Students with Disabilities
- English Learners
- Economically Disadvantaged

What are some questions I could ask my school?

Where can I find more information about how my school is performing?

What supports are being provided to my school based on its designation?

What opportunities are available for me to be involved in my student's education?

What is the TSI Performance Threshold in 2022?

The lowest 5% of Title I schools have index scores ranging from 0 to 6.21.

- If a school is Title I and has an overall school index score of 6.21 or lower, it receives a designation of **Comprehensive Support (Lowest 5%)**.
- If a school has any student group with an index score below 6.21, the school receives a designation of **Targeted Support**.

