

AGENDA & CONFIDENTIAL MEMO
BOARD OF EDUCATION
REGULAR MEETING

MONDAY, JANUARY 8, 2024
6:30 PM

HADLEY JR. HIGH SCHOOL,
240 HAWTHORNE BLVD,
GLEN ELLYN, IL 60137

A reception for Dr. Jeff McHugh will be held starting at 5:30 p.m. in the Library Media Center of Hadley Jr. High School. Members of the District 41 community are invited to attend.

- I. **Call to Order**
- II. **Superintendent Transition Plan**
- III. **Strategic Plan Update : Full Day Kindergarten Center Project**
- IV. **Public Participation**
- V. **Upcoming Meetings**
 - **Monday, January 22, 2024 - Regular Board Meeting, Hadley Jr. High School; 6:30 PM**
 - **Monday, February 12, 2024 - Regular Board Meeting, Hadley Jr. High School; 6:30 PM**
 - **Monday, March 4, 2024 - Committee of the Whole Meeting, Hadley Jr. High School; 6:30 PM**
- VI. **Adjourn to Closed Session**
- VII. **Return to Open Session**
- VIII. **Adjournment**

Superintendent Dr. Melissa Kaczowski



SUPERINTENDENT TRANSITION PLAN

Dr. Melissa Kaczkowski & Dr. Jeff McHugh



MEET

- Board members
- Community leaders
- District partners
- Association leaders
- Administrative team
- Building staff



REVIEW

- Board-related items
- Strategic plan
- Internal teams
- Organizations and consultants
- Projects (Full Day Kindergarten)

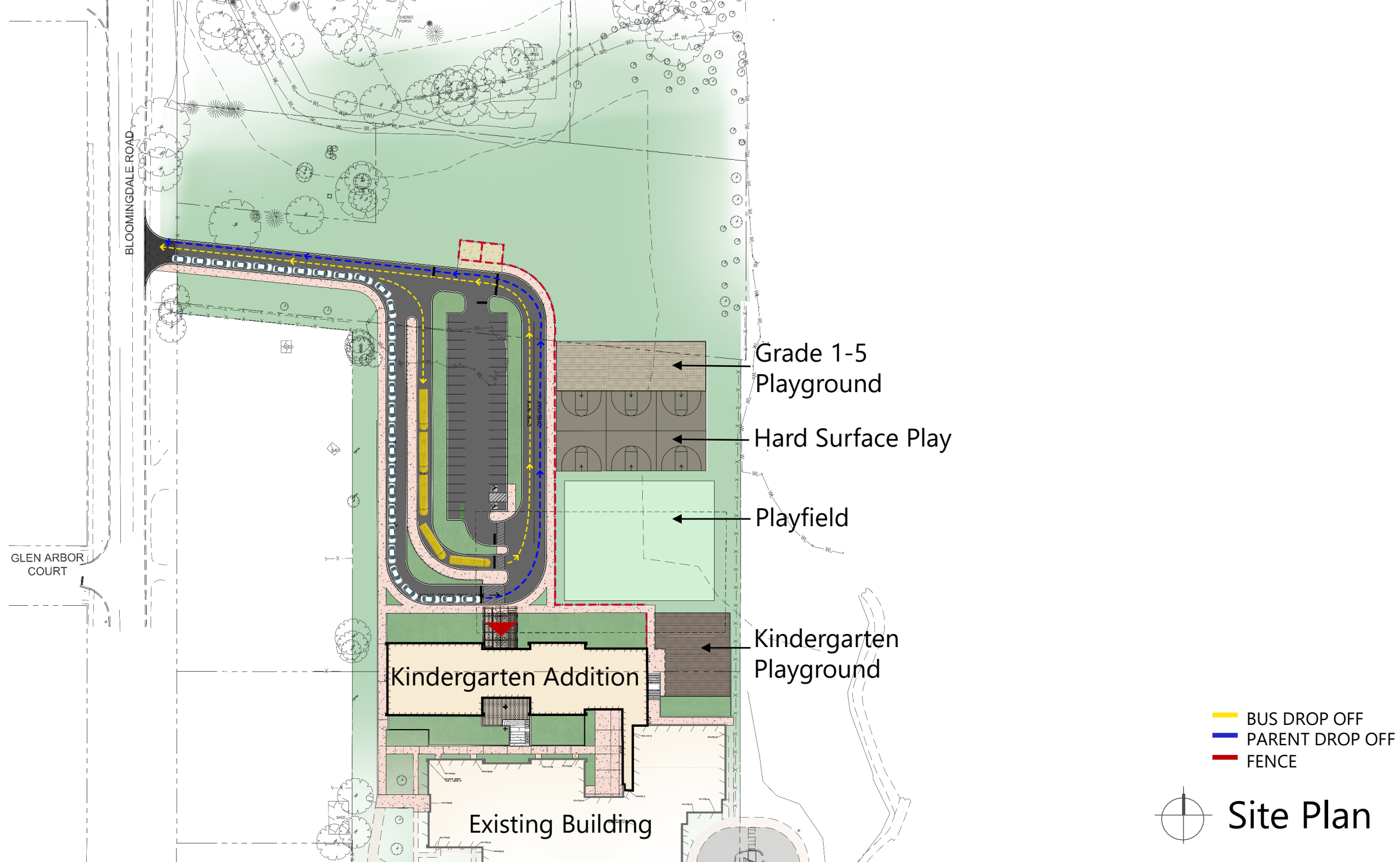


DEVELOP

- Evaluation goals
- Collaborate on strategic plan metrics
- Entry plan

Full-day Kindergarten at Churchill Elementary School

BOARD OF EDUCATION UPDATE PRESENTATION
8 January 2024



Grade 1-5
Playground

Hard Surface Play

Playfield

Kindergarten
Playground

Kindergarten Addition

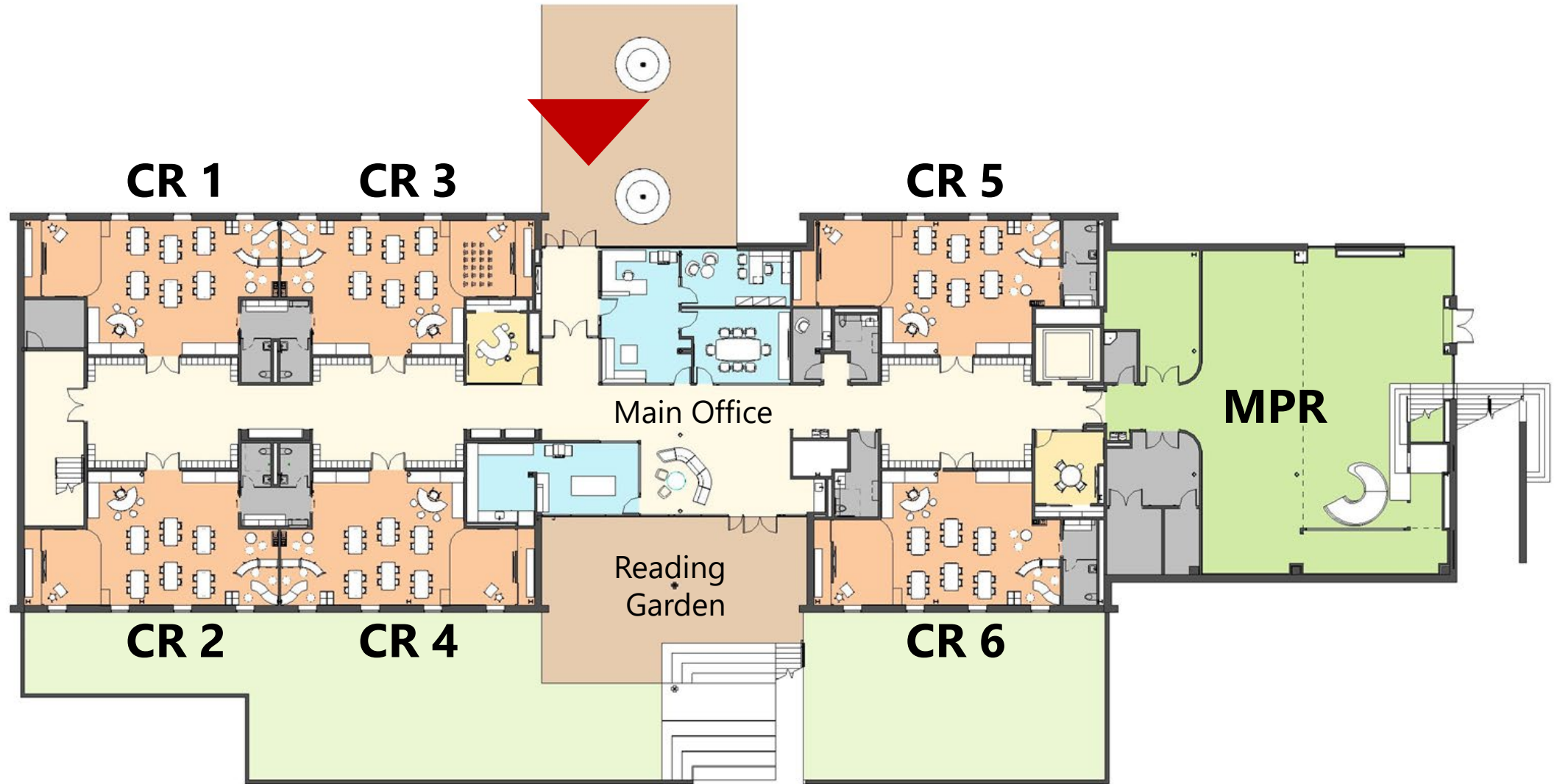
Existing Building

- BUS DROP OFF
- PARENT DROP OFF
- FENCE

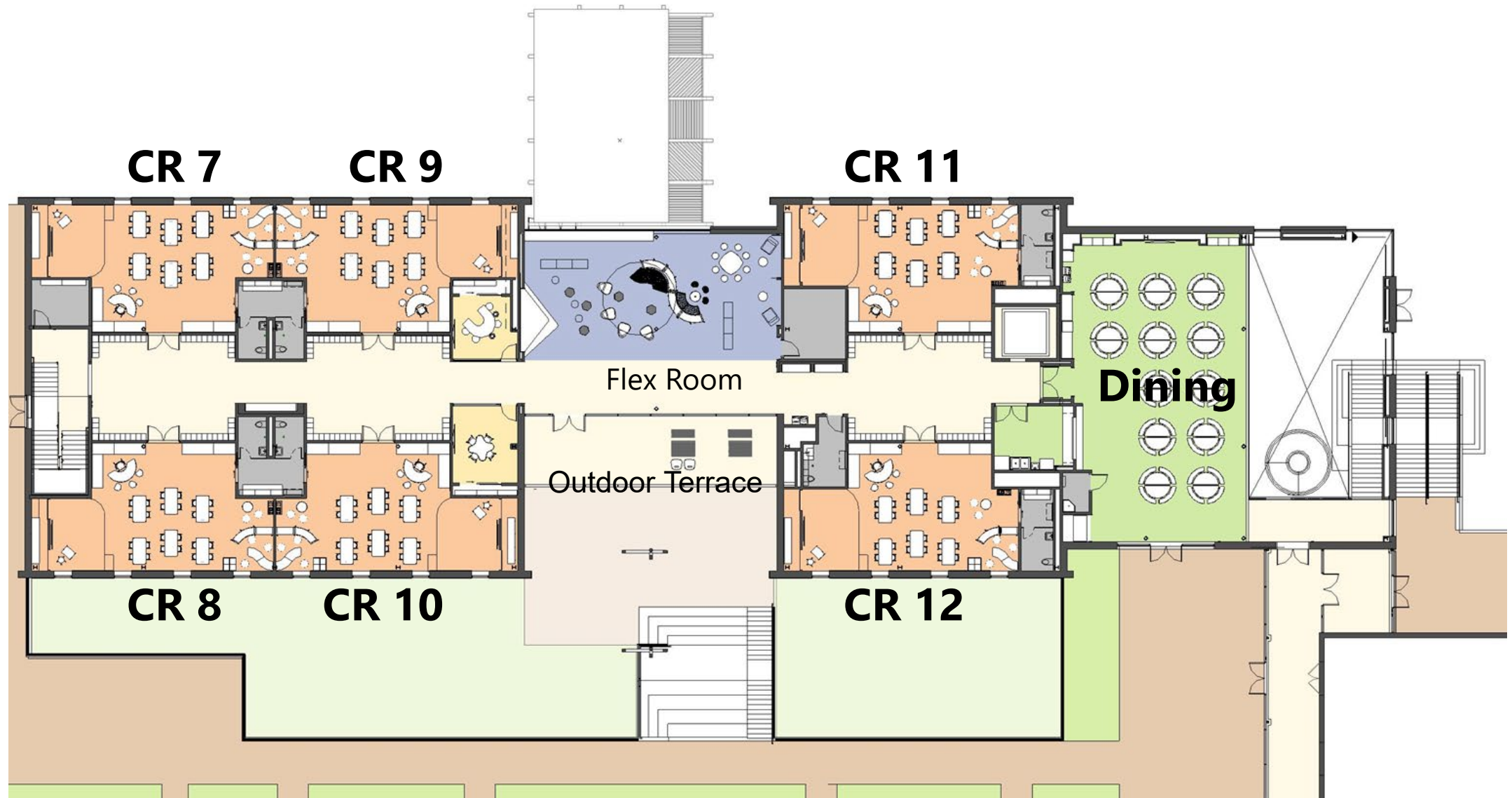
Site Plan



North/South Building Section



Lower Level Plan

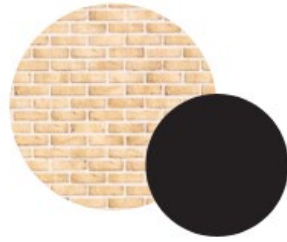


Upper Level Plan



Identity & Character

MAINTAINS EXISTING BUILDING HEIGHT
31'-0"



UPPER LEVEL/EXISTING BUILDING GRADE
13'-0"



LOWER LEVEL
0'-0"



Exterior Inspiration



D41

Main Entrance



Entry Lobby



Northside View



Multi-Purpose Room



Dining Commons



Southside View



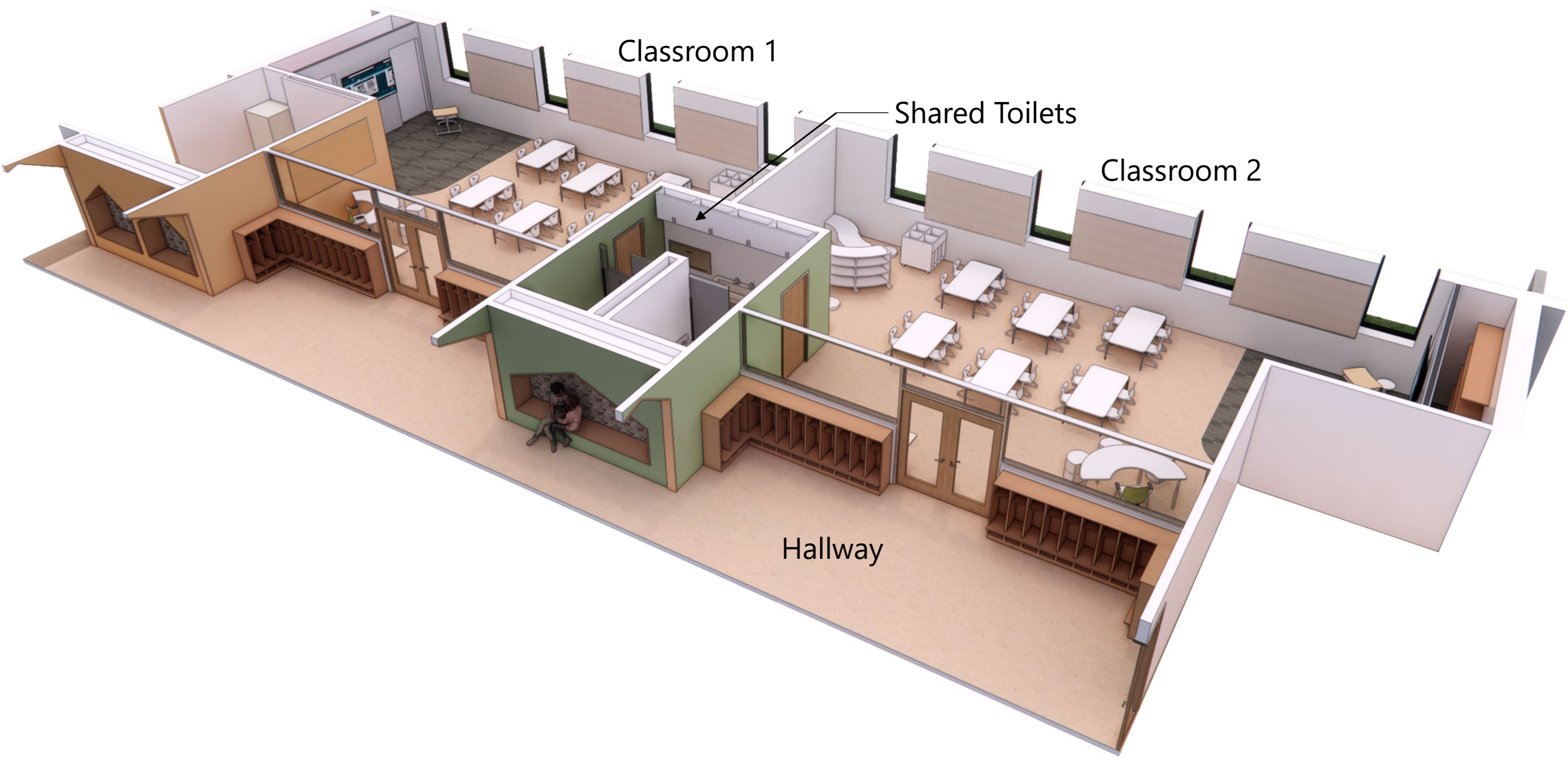
Reading Garden



Second Floor Flex Room



Typical Hallway



Classroom 1

Shared Toilets

Classroom 2

Hallway

Typical Classroom

PROJECT MILESTONE DATES

Design/Documents - In Progress - March 2024

Site Engineering - In Progress - May 2024

Permitting/Zoning - In Progress - May 2024

Bidding/Approvals - April 2024 - May 2024

Construction - June 2024 - June 2025

Move-in - July 2025 - August 2025

School Starts - August 2025

SUSTAINABILITY & WELLNESS



The **WELL Building Standard** centers on occupant health and wellbeing and spans design, construction and operations, with considerations ranging from circadian lighting design, enhanced air quality, nutrition, comfort, and ergonomics.



LEED v4 BD+C is more robust than previous versions and does a good job assessing broad environmental impacts ranging from site, water and energy, through materials and indoor environmental quality considerations.



A photograph of three young children in a greenhouse. They are holding colorful watering cans and tending to various green plants. The scene is bright and cheerful, with sunlight streaming through the glass panes. The text 'LOOKING AHEAD' is overlaid in the center, and a bulleted list of project phases is positioned to the left. The logos for FQC, D41, and Wight are in the bottom right corner.

LOOKING AHEAD

- Design Refinements and Documentation
- Permitting & Governing Body Coordination
- Project Implementation