

THE LAKE AND PENINSULA SCHOOL DISTRICT
Work Session AGENDA
December 10, 2015, 3:00 PM

Agenda

1. 3:00-Sedor Presentation
2. 3:15-CTE Program Update (Bill Hill) 2
3. 3:30-Board Policy: Adding Items to the Agenda 12
4. 3:35-AMP Results (Ty)
5. 3:45-High Deductible HSA Plan (Laura)

BRISTOL BAY REGIONAL Career & Technical Education *program*

OCTOBER 2015



New permit holders!

INSIDE THIS ISSUE:

What is CTE 1

Millenials 1

Business Admin 2

Welding 2

Construction Trades 3

Inside CTE 3

Thanks 4

What Is The CTE Program?

For small school districts, it's virtually impossible to offer a wide range of career and technical education courses to students at their home school sites.



Construction Trades participants—October 2015 session.

But when three school districts combine to offer joint courses, magic happens. The Career & Technical Education (CTE) Pro-

gram has been able to offer these opportunities by bringing the students to one central location (King Salmon/Naknek), multiple times per year, where a wide range of courses and programs can be offered.

This is a dream come true for these school districts. Students can choose courses in Facility Maintenance, Heavy Equipment, Maritime, Welding, Small Engines, Culinary Arts, Business & Computers, and much more. This hands-on exposure provides students a real life picture of life inside the workforce. The training they have received during the CTE program's three yearly sessions is designed to spark an interest that has potential to turn into a career for some of these bright, young people. Attending

classes earns students either high school or college credit (through the University of Alaska Fairbanks Bristol Bay Campus)...or both!

Without the CTE program, these students would miss out on this much needed, and wanted, training.



After all the hard work, students spend some time having fun.

Our Millenials Beat the Stereotypes

Today's generation of high school students are known as Millenials (born between 1987 and 2004). One of the most frequently used words to describe them is "entitled." They expect the workplace to provide them with higher end benefits, a fun work environment, flexible schedules,

and more—all from an entry level position. Many employers simply can't provide this. Both employees and employers become disillusioned. Rather than seeing this as bad news, the CTE Program is using this current trend as an opportunity for our participants.

Instead of "entitled" employees, most employers today, looking to hire entry level employees, will tell you it's often not the hard skills that are difficult to find. It's the soft skills, such as punctuality, a strong work ethic, a good attitude, a willingness to start at the bottom and work up

Our Millenials, cont.



Learning to measure twice and cut once.

the ladder, that they have a hard time finding. This is where the CTE Program comes in. Each day, instructors and staff alike refer to participants as employees, who are there to do a job. Instructors frequently work in lessons, not just on the hard skills, but on the soft skills too, in order to set our participants above the rest of the entry level workforce. And we're already seeing our past participants leap to the front of the line and meet their career and

schooling goals faster than they ever expected.

CTE EXAMPLE OF WORKPLACE PROBLEM COST OF WASTED TIME

DAILY LOST TIME	ANNUAL LOST TIME
Arrive 15 min. late	1 hr/day
Leave 15 min. early	5 days/wk
15 min. on cell phone	52 wks/yr
15 min. on social media	@ \$25/hr
= 1 hour lost	= \$6,500 lost per year

Business Administration



This October, ten students spent the week earning three college credits—one each for Microsoft Excel, Job Readiness Skills, and E-Commerce (website design). Students have been used mostly Apple products (laptops, iPads, iPhones), but for many, this was the first extensive exposure to PC based computers (Dell laptops with Windows

operating systems). Thanks to UAF Bristol Bay Campus, students used a mobile laptop lab designed specifically for use in remote locations or in classrooms not already in use as a computer lab.

Students learned how to use Excel in business settings, built a website to sell hypothetical products and services of their choice,

learned basic expectations in the workplace, how to find jobs, fill out applications, interview, and then how to put their best foot forward in a new job. Participants even went through mock interviews on Wednesday evening. We look forward to hearing about future successful interviews and jobs.

Welding



Safety first for these welders.

The Welding class met in the Bristol Bay High School shop where students spent more than 8 hours each day perfecting their welding skills and learning about shop safety. Course skills and

topics covered the following: SMAW (stick), GMAW (mig/wire), GTAW (tig), OCC (oxy-fuel cutting), and PAC (plasma arc cutting). Students who satisfactorily completed the course received high school and college credit plus a welding jacket, welding helmet, gloves, and safety glasses. In-

structor: Jack Simpson



Construction Trades



During the 2015-16 Bristol Bay Career and Technical Education construction classes, students will be building an 8' by 12' building. During the first week of the four week-long sessions, students com-

Caption describing picture or graphic.

pleted an Occupational Safety and Health Administration 10 hour safety class and framed the building floor and walls. Students also laid out rafters and cut the roof framing members.

At the second training session in November, students will set the walls, sheet them, hang the rafters and apply metal roofing. They will also learn cardiopulmonary resuscitation (CPR), first aid, and how to

use an Automatic External Defibrillator. Session 3 and 4 topics will include concrete, construction math, super energy efficient building science and interior finish. Much fun is had along with a lot of hands-on time with tools and materials used in the trades. Students show exceptional professionalism and are



Preparing Students from Small School Districts for High Demand Careers

LPSD

Lake & Peninsula School District offices are located in King Salmon, AK and serve villages from Port Alsworth to Perryville along the Alaska Peninsula.

www.lpsd.com

Superintendent:
Ty Mase

BBBSD

The Bristol Bay Borough School District is located in Naknek, AK, near the mouth of the Naknek river, where it meets Bristol Bay.

www.bbbsd.net

Superintendent: Bill Hill
Principal: Rick Luthi

SRSD

Located on the Bering Sea coast of southwestern Alaska, bordered by Bristol Bay, the Kuskokwim Mountains, and the Aleutian Range.

www.swrdsd.org

Superintendent:
David Piazza

Inside CTE: Lodging

Situated on the Naknek River, just outside King Salmon, Bear Trail Lodge hosted the CTE students and instructors for their lodging and meals throughout the week. Usually reserved for high end fishing and hunting guests, Bear Trail Lodge was a beautiful location for this CTE session.

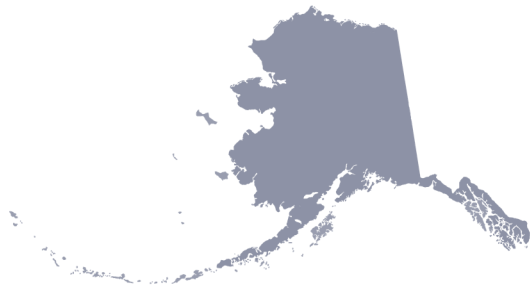
Our thanks to Bear Trail Lodge and

especially Nancy Morris for the wonderful hospitality afforded the students and instructors for this December session. The comments made by the students regarding the warm and caring environment they experienced while at the lodge speak volumes about your establishment. Students and instructors are all looking forward to our next session at the lodge.

For more information, go to...
www.fishasl.com



Bear Trail Lodge on the Naknek River in King Salmon, AK.



**Bristol Bay Regional
Career & Technical Education Program**

Lake & Peninsula School District
PO Box 498
King Salmon, AK 99613
Phone: 907-246-4280
www.lpsd.com

THANK YOU! QUYANA!

Thank you Bristol Bay Borough, Lake & Peninsula Borough, University of Alaska Fairbanks Bristol Bay Campus, and Bristol Bay Native Corporation for your support.

Big thanks also to Naknek Trading, Spenard Builders Supply of Palmer, Bristol Bay Economic Development Corporation, and Everts Air Cargo.

And to Heath & Nanci Lyon at Bear Trail Lodge, thanks for the outstanding hospitality. You spoiled us with your fantastic accommodations and outstanding food.

To all involved, your support helps our youth and Alaska's future! Thanks so much.

For more information on the CTE program, contact Jack Forrester at 907-246-4280.

BRISTOL BAY REGIONAL Career & Technical Education *program*

NOVEMBER 2015



INSIDE THIS ISSUE:

BBDF Visit	1-2
Business Admin.	2
Maritime	2
Welding	3
Construction	3
Small Business Ideas	4
Evening Activities	4
Counselor Notes	4
Drivers	5

November 2015 Session

Another session has come to a close. Four programs were offered in November: Business



Miranda and Makenzie, from LPSD, designing their own logos in MS Publisher class

Administration, Facility Maintenance, Welding, and Maritime. While a lot of fun was had by all, a lot of work was accomplished, too.

Business students focused on College Success Skills, MS Pub-

lisher, and Village Based Entrepreneurship. Construction students continued building their small building (to be completed in Spring 2016). Maritime students held down the fort at Bear Trail Lodge each day to work on their navigational and piloting skills. And the welders worked on their horizontal and flat welds, using a variety of welding methods and materials.

For small school districts, it's virtually impossible to offer a wide range of career and technical education courses to students at their home school sites. But when three school districts combine to offer joint courses, magic happens. The Career & Technical Education (CTE) Program has been able to offer these opportunities by bringing the

students to one central location (King Salmon/Naknek), multiple times per year, where a wide range of courses and programs can be offered.



Ruth, from BBBSD, learning to read navigational charts

Bristol Bay Development Fund Visit



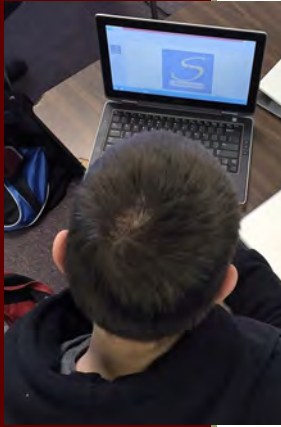
This session, we were fortunate to have a special guest. Camer-

on Poindexter joined us on Friday, for the entire day. Cameron is the manager of the Bristol Bay Development Fund (BBDF), which is a wholly owned subsidiary of Bristol Bay Native Corporation. The mission of the BBDF is "to be a catalyst for in-region business start-up, survival, suc-

cess and growth."

Cameron presented to a group of students, school staff, and community members about how BBDF hopes to invest in the Bristol Bay region. He explained how the fund works, expectations of an applicant, and the

Business Administration



The business students jumped in with both feet on Monday, taking three different courses for UAF credit: College Success Skills, MS Publisher, and Entrepreneurship.

While the College Success class is typically oriented toward a traditional college experience, vocational training, military training/service, apprenticeships, and college were all addressed—from application through the financial aid process, on to choosing cours-

es and majors, understanding the social opportunities, adjusting to living away from home, knowing how to study and succeeding academically, as well as knowing how and where to get help if needed.

Microsoft Publisher is typically used for creating print publications. In this case, students utilized Publisher for creating a small business stationary design sets, which worked hand in glove with the final course, Entrepreneurship.

In the third course, students learned how to evaluate small business ideas—including conducting simple market research, troubleshooting, determining cost of goods, overhead expenses, and even writing a business plan. The week culminated in an exclusive 2 hour visit with Cameron Poindexter from the Bristol Bay Development Fund, who was able to give them even more pointers on starting a business, particularly in Bristol Bay.

Maritime Program



On Day 1—Lectures & discussion of the Community Development Quota (CDQ) program, commercial fishing in Alaska, fisheries management, and how these might effect a young person wishing to enter a fishery.

Day 2—Safety—A full review of basic safety training was provided.

Day 3—Navigation—A full

review of the basics of time, compass corrections, concepts of latitude and longitude, and the basics of using a nautical charter were covered.

Day 4—Piloting—A lecture on determining speed, time and distance, along with compass corrections, rules of the road, plotting position using a three bearing fix, ETA, Course Made Good.

Students completed several USCG captain’s course plotting problems successfully.

Day Five—Assessments—Students were given a 10 question practice exam for a USCG captains test.

I can’t say enough about the excellent students this session: Marisa Olsen (LPSD), Ruth Nashookpuk (BBBSD), and Ethan Johnson (BBBSD).

Bristol Bay Development Fund, cont.

Cameron Poindexter, Manager of the Bristol Bay Development Fund



basic evaluation process for applicants.

Cameron was extremely encouraging to the students, giving them reason to believe they can become Bristol Bay’s next generation of business owners if they work

hard, have a well honed business idea and a willingness to ask for help, which the BBDF generously provides in many cases.

Cameron also set aside about two hours especially for the business students. This time was invaluable for them—giving them a unique peek into

the venture capital world and what it offers to a small business startup.

For more information, visit their website at www.bbdf.net.



Welding Program



Jack Simpson, an instructor with 40 years experience, taught introductory welding, including safety, SMAW (Shield Metal Arc Welding), OAC (Oxygen-Acetylene Cutting), joint design and welding of

Ethan, from BBBSD, using his welding skills

lap and tee joints. Also taught was GMAW (Gas Metal Arc Welding) – wire feed welding process in the flat and horizontal positions using both the lap and tee joint configurations. PAC (Plasma Arc Cutting) is introduced.

And finally, student learned the basics of GTAW (Gas Tungsten Arc Welding) – using the GTAW welding process to weld aluminum in joints of lap and tee in the flat

and horizontal positions.

Note: Students that qualify have the opportunity to attempt a qualification weld for certification in the SMAW process at the end of the course.

Congratulations to both Tia Thompson and Jerome Philips for passing with qualifying welds in the “2F Fillet T-break Macro Etch Test Plate” category for the American Welding Society!



Preparing Students from Small School Districts for High Demand Careers

LPSD

Lake & Peninsula School District offices are located in King Salmon, AK and serve villages from Port Alsworth to Perryville along the Alaska Peninsula.

www.lpsd.com

Superintendent:
Ty Mase

BBBSD

The Bristol Bay Borough School District is located in Naknek, AK, near the mouth of the Naknek river, where it meets Bristol Bay.

www.bbbsd.net

Superintendent: Bill Hill
Principal: Rick Luthi

SWRSD

Located on the Bering Sea coast of southwestern Alaska, bordered by Bristol Bay, the Kuskokwim Mountains, and the Aleutian Range.

www.swrsd.org

Superintendent:
David Piazza

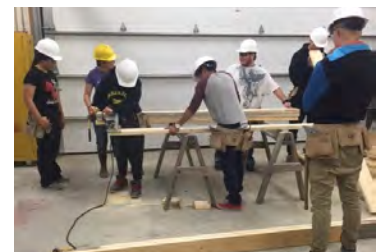
Construction Program

The second session of the CTE Construction Trades & Technology courses in Naknek went by quickly. We finished modules 1 – 5 of the NCCER Core Curriculum: OSHA 10 Hour safety, hand & power tool safety, construction math, & blueprint reading. I am very proud of the students; they framed and sheeted the roof of the cabin with a sense of urgency, without com-

plaint, while getting soaked. They got real hands-on Alaska construction experience, because it rained and snowed on us most of the time.

I have spent 30 years in the construction industry and 20 of those years in Alaska. During the past five years, I have been teaching construction trades technology classes for the UAF Bristol Bay

Campus. It has been very rewarding. I get to work with energetic high school students in rural Alaska. I get to share knowledge that will open the door to jobs in construction trades and serve them as future home owners.



Small Business Designs

The business students learned so much during the November session. It would have to be said that the Publisher content was the most hands-on and immediately useful content. In fact, each student, as a part of their final project, was able to design their own small business stationary set. This is a task necessary for any small business and will set these students apart as they enter the workplace and are able to offer future employers, or their own small businesses,

these skills.

Each student designed their own logo, letterhead, envelopes, thank you notes, business cards, and newsletter. Even under pressure of a short deadline, students were creative and professional in their designs.



“CTE has a long history of delivering education in a variety of models to facilitate student learning and engagement while working with financial, geographic and access challenges.”

—Association of Career & Technical Education

Evening Activities

Each session, several evening activities are offered, ranging from just-for-fun to absolutely required.

Monday through Wednesday evenings, students take either First Aid/CPR (required for all students) or OSHA 10 (required for construction students). If those courses are complete, students can opt to do driver training, learn how

to sew fur (make fur mittens), or just get some much coveted relaxation time.

Thursday’s are known as “Art Appreciation Night.” Students learn the fine art of ice cream sundae building/decorating/ consumption.

And Friday’s find only the traveling students back at the lodge for D&D pizza and a movie night. Or this session,

students had the option of going to BBBSD to watch the regional volleyball tournament.



A Note from the LPSD Counselors

We have been involved with the CTE program since it began over five years ago. Thanks to the vision of our school district, the collaboration with Bristol Bay Borough School District (and this year,

Southwest Regional School District), and especially to the efforts of Jack Forrester, CTE has evolved and grown into a thriving program. All the classes offer hands-on experiences, and they expose students to career opportunities they might not otherwise consider. We have seen students who

are excited about learning, take responsibility, and form new friendships through this unique program. They have been unfailingly polite, helpful and fun. It has been a pleasure to work with such quality students, instructors and directors.

Jada, from Manokotak, learning about MS Publisher





Thoughts on Education

Education is the most powerful weapon which you can use to change the world.

—Nelson Mandela

Education is the key to unlock the golden door of freedom.

—George Washington Carver

Learning is not attained by chance, it must be sought for with ardor and attended to with diligence.

— Abigail Adams

“81 percent of dropouts say relevant, real-world learning opportunities would have kept them in high school.”

—Assoc. of Career & Technical Education

Drivers

Each session, students are invited to bring necessary paperwork and knowledge for the next stage of their driver training, up to and including getting their driver’s licenses.

There are usually a few students at each stage:

1. Taking their written tests to get a permit.
2. Getting driver training while in King Salmon.
3. Taking the written and practical tests for getting their licenses.

Several students are at various stages of their training, currently.





**Bristol Bay Regional
Career & Technical Education Program**

Lake & Peninsula School District
PO Box 498
King Salmon, AK 99613
Phone: 907-246-4280
www.lpsd.com

THANK YOU! QUYANA!

Thank you Bristol Bay Borough School District, Lake & Peninsula School District, Southwest Regional School District, Bristol Bay Borough, Lake & Peninsula Borough, University of Alaska Fairbanks Bristol Bay Campus, and Bristol Bay Native Corporation for your support.

Big thanks also to Naknek Trading, Spenard Builders Supply of Palmer, Bristol Bay Economic Development Corporation, and Everts Air Cargo.

And to Heath & Nanci Lyon at Bear Trail Lodge, thanks for the outstanding hospitality. You spoiled us with your fantastic accommodations. Thanks to Tanya Dube and Becky Hamon for a excellent food!

To all involved, your support helps our youth and Alaska's future! Thanks so much.

For more information on the CTE program, contact Jack Forrester at 907-246-4280.



BB 9322 AGENDA ITEMS

Procedures for placing an item on the agenda, making a presentation, or speaking to an item on the agenda shall be as follows:

Any member of the public or any Board member may request that a matter within the jurisdiction of the Board be placed on the agenda of a regular meeting. The request must be in writing and be submitted to the Superintendent or designee with supporting documents and information, if any, at least seven (7) days before the scheduled meeting date. Items submitted less than a week before the scheduled meeting date may be postponed to a later meeting in order to allow sufficient time for consideration and research of the issue.

The Board President and Superintendent shall decide whether a request is within the subject matter jurisdiction of the Board. Items not within the subject matter jurisdiction of the Board may not be placed on the agenda. In addition, the Board President and Superintendent shall determine if the item is merely a request for information or whether the issue is covered by an existing policy or administrative regulation before placing the item on the agenda.

The Board President and Superintendent shall decide whether an agenda item is appropriate for discussion in open or closed session, and whether the item should be an action item, informational item or consent item.

07/12

Revised 11/15