

## Regular School Board Meeting

Monday, October 23, 2023 7:00 PM

MS/HS Media Center, 1401 7th St SW, Pipestone, MN 56164

### 1. Call to Order and Roll Call

### 2. Pledge of Allegiance

### 3. Approval of Agenda

#### 3.1. Addition

3.1.1. Resolution Requiring the Tally of Write-In Votes only if Write-In Votes are Greater than a Ballot Candidate's Total Votes (11.5)

3.1.2. Set Meeting Date to Canvass Election Results - November 10-17 (11.6)

### 4. Public Forum

### 5. Presentation

### 6. Consent Agenda

6.1. Approve Minutes of the Regular School Board Meeting of September 25, 2023

6.2. Personnel Report: Action Required (new subs, contracts, resignations, volunteers) DaNerica Maples, Student Para; Kristen Brockberg and Samantha Terry, ECFE Parent Educator; Vicki VanEssen, Piano Accompanist; Pam Kruse, Band Lessons; Jason Garza, Night Custodian; Marshawn Robinson, Night Custodian; Jennings Wallace, JH Gymnastics; Gary Hauptert, B - Wrestling; Scott Sterud, JH Wrestling; James Skyberg, B - Girls BB; Morgyn Carson, 8th Girls BB; Ashley Maly, 7th Girls BB; Tim Stotz, B - Boys BB; Cody Heidebrink, C - Boys BB; Robert Petersen, 8th Boys BB; Mitchel Carson, 7th Boys BB; Mariah Swanson, Winter Cheer; (Other personnel items potentially brought forward for approval) Letter of Resignation from Danielle Barnett, Student Services Assitant

### 7. Financials

7.1. Review of Budget Year-to-Date

7.2. Approve Treasurer's Report for September

7.3. Approve Regular Bills for October

7.4. Approve High School Activity Bills for October

7.5. Approve 2023A Bonds Treasurer's Report for September

### 8. Board Forum/Information

8.1. Board Reports and Updates

9. **Administrator's Report**

9.1. Superintendent's Board Report

9.2. Principal's Board Report

10. **Discussion Items**

10.1. First Reading of the 2023-2024  
Paraprofessional Seniority List

10.2. First Reading of the 2023-2024  
Secretaries, Custodians, AP, and Tech Seniority  
List

10.3. First Reading of the 2023-2024 Certified  
Seniority List

10.4. Review Chain of Command Chart

11. **Board Action**

11.1. Resolution Accepting Donations

11.2. Resolution of Governing Board Supporting  
Form A Application to Minnesota State High School  
League Foundation

11.3. Declare Items Obsolete

11.4. Approve Snow Removal Quotes for 2023-2024

11.5. Resolution Requiring the Tally of Write-  
In Votes only if Write-In Votes are Greater than  
a Ballot Candidate's Total Votes

11.6. Set Meeting Date to Canvass Election  
Results - November 10-17

12. **Adjourn**

# Minutes of the Regular School Board Meeting

## Pipestone Area Schools

A Regular School Board Meeting of the Board of Trustees of Pipestone Area Schools was held Monday, September 25, 2023 beginning at 5:30PM in the MS/HS Media Center.

**Members Present:** Chairman Brad Carson; Directors Katie Wiese, Daphne Likness, Chrissy DeBates, Mark Hiniker, and Tyler Fruechte. Absent: Lance Oye. Also present: Ex-Officio Klint Willert, Jacque Kennedy, Jennifer Moravetz, Todd Huisman, and Deb Peschon.

**Visitors Present:** Kyle Kuphal, Natalie Resch, Jen Zupp, Leslie Wajer, Sharon Wolff, and Lucas Lorenzen

**Call to Order and Roll Call:** Chairman Carson called the meeting to order at 5:30PM.

### **Pledge of Allegiance**

### **Approval of Agenda**

#### **Additions:**

Approve 23-24 Updated Crisis Management Plan of Action (11.5):

Motion by Wiese, second by DeBates, to approve the agenda as presented. Passed 6-0.

**Public Forum:** None.

### **Presentation**

**FFA National Convention, Natalie Resch:** Resch asked for permission to go on an overnight trip October 31-November 4 to the 2023 National FFA Convention. She also asked if the district would assist in the payment for the substitute teacher cost and transportation cost with the school suburban.

### **Consent Agenda**

#### **Approve Minutes of the Regular School Board Meeting of August 28, 2023:**

#### **Personnel Report: Action Required (new subs, contracts, resignations, volunteers):**

Sylvia Newell, One Act Play director; Tiffany Fritsch, art teacher; Monica Kennedy, .25FTE art; Bonnie Fritz, paraprofessional; Tamara Kremin, lane change BS + 30; 6th assignments, Michael Slaba, 8th grade math; Ingrid Wielenberg, WIN; Kara Damm, career development; crossing guards pay increase; Cody Heidebrink, additional duties; (Other personnel items potentially brought forward for approval) Christeen Groenhoff, Director of Maintenance.

Motion by Wiese, seconded by DeBates, approved all items in the Consent Agenda. Passed 6-0.

### **Financials**

**Review of Budget Year-to-Date:** The budget year-to-date shows expenditures as of September 20, 2023 at \$2,470,330.38 or 14%. This was non-action.

**Approve Treasurer's Report for August 2023:** The treasurer's report for month ended August 31, 2023 shows a cash balance of \$8,984,631.54. Motion by DeBates, second by Likness, approved the treasurer's report for August. Passed 6-0.

**Approve Regular Bills for September:** The regular bills paid through September 19, 2023 totaled \$544,119.95. Motion by Wiese, second by Likness, approved payment of the regular bills. Passed 6-0.

#### **Approve High School Activity Bills for September**

High school activity bills paid through September 19, 2023 totaled \$7,972.14. Motion by DeBates, second by Hiniker, approved payment of the high school activity bills. Passed 6-0.

#### **Approve 2023A Bonds Additional Bond Money Treasurer's Report for August**

The MN Trust 2023A Bonds treasurer's report for month ended August 31, 2023 has a cash balance of \$53,761.78. Motion by DeBates, second by Likness, approved the 2023A bonds treasurer's report. Passed 6-0.

### **Board Forum/Information**

**Board Reports and Updates:** The negotiations committee met and discussed the changes that came from the legislative session. Wiese thanked staff members for stepping up and taking on extra assignments. Hiniker thanked Klint, Jennifer, and Todd for getting the new school year started, as there have been so many changes.

## **Administrator's Report**

**Superintendent's Board Report (Enrollment, MCA Data Review):** September enrollment is 1093. There is a public comment period open for individuals that would be interested in reviewing the proposed social studies standards. Willert is excited to welcome Christeen Groenhoff as the new Director of Building and Grounds starting October 9. A meet and confer will be occurring with the Education Association about a couple of concerns they have. In October, Willert will share the work he has completed on the entry plan survey for staff and board members. The agreement with TSP has been vetted through the district legal counsel and is on the agenda for approval. He also talked about utilizing charter buses and doing what they can to stay within the budget. If a coach bus is available, it will be used for 2 of the longest trips, possibly at section time, and if a team makes it to state. Otherwise yellow school buses will be used. Administration addressed the staff after the MCA results came out in the paper. Results are important, but not the most important, as other things are taken into account to measure the effectiveness of our schools and classrooms.

**Principal's Board Report:** Moravetz reported an awesome start to the school year with a great team of teachers focused on student success. The elementary kicked off the school year with open house and Moravetz received a lot of positive feedback from parents. Picture day was moved to a school day, so it was one less stop for them. Moravetz is looking at what the writing standards are and how to bring them into the classroom. She is doing published books with the students and teachers. PreK-1<sup>st</sup> have a class book they are going to make and 2<sup>nd</sup> – 5<sup>th</sup> grade students will make their individual books. The books will get sent off to be published and in May they will hold a Young Author's night where students can showcase the books they made. FAST testing finished last week. Moravetz has been working with her Literacy Team to work on the literacy plan and focus on LETRS, they will also be looking at FAST data. There will be a PBIS refresher course for all teachers, and the Leadership Team is working on a strong Tier 1. The Elementary Booster Club had a back to school bash, homecoming is this week with the parade and pep fest happening on Friday. Huisman reported homecoming is this week, between the school and public there are around sixteen floats for the parade. There will be a pep fest after the parade and the public is invited. FAST testing is done with the exception of late enrollments and illnesses. There is a new chess club that was started. Huisman visited Minnesota West CTE class areas and he was very impressed. They have a lot to offer and Huisman feels we are underutilizing it. We have 2 National Merit Scholarship students that were presented a framed certificate. We are extremely short of substitutes. Huisman has also met with his PBIS team, middle school and high school site improvement teams twice. He has seen a great improvement on the dress code. Student ID's should be out on Monday.

**Discussion Items:** None.

## **Board Action**

### **FFA National Convention Request**

Resch is requesting permission to go on an overnight trip with students to the National FFA Convention October 31-November 4. She is also requesting the school to assist in payment for a substitute teacher and transportation costs using the school suburban in the amount of \$1,750.00. Motion by Wiese, second by DeBates, approved the request. Passed 6-0.

### **Resolution Accepting Donations to the District and High School Activities**

#### **RESOLUTION ACCEPTING DONATIONS**

WHEREAS, Minnesota Statutes 123B.02, Subd. 6 provides: "The board may receive, for the benefit of the district, bequests, donations, or gifts for any proper purpose and apply the same to the purpose designated. In that behalf, the board may act as trustee of any trust created for the benefit of the district, or for the benefit of pupils thereof, including trusts created to provide pupils of the district with advanced education after completion of high school, in the advancement of education.", and

WHEREAS, Minnesota Statutes 465.03 provides: "Any city, county, school district or town may accept a grant or devise of real or personal property and maintain such property for the benefit of its citizens in accordance with the terms prescribed by the donor. Nothing herein shall authorize such acceptance or use for religious or sectarian

purposes. Every such acceptance shall be by resolution of the governing body adopted by a two-thirds majority of its members, expressing such terms in full." and

WHEREAS, every such acceptance shall be by resolution of the governing body adopted by a two-thirds majority of its members, expressing such terms in full;

THEREFORE, BE IT RESOLVED, that the School Board of Pipestone Area Schools, ISD 2689, gratefully accepts the following donations as identified below: United Women in Faith, \$235.00 to the Elementary Help Fund; Arrow Athletic Booster Club \$6,652.72 for acceleration program, Dr. Dish (basketball), 2 score flashers for gymnastics, hotel rooms for 9th grade wrestling tournament, and weight room equipment; Pipestone Publishing Company, \$1,345.00 donation to Athletic Help Fund from fall poster.

The motion for adoption of the foregoing resolution made by DeBates, seconded by Likness, and upon vote being taken thereon,

the following voted in favor thereof: Carson, DeBates, Wiese, Likness, Fruechte, and Hiniker.

and the following voted against the same: None

The foregoing resolution was approved this 25th day of September, 2023.

**Approve Agreement with TSP, Inc.:** Motion by Likness, second by Hiniker approved the agreement with TSP, Inc., for architectural services for the bond project. Passed 6-0.

**Certify Proposed Levy Limitation and Certification Report for 2023 Payable 2024 (Set Truth in Taxation Meeting, December 18, 2023, 7:00PM):** Motion by DeBates, second by Wiese, to certify the proposed levy limitation and certification report for 2023 payable 2024 for the maximum, and to set the Truth in Taxation Meeting for December 18, 2023 at 7:00pm. Passed 6-0.

**Approve 23-24 Updated Crisis Management Plan of Action:** Motion by Wiese, second by Hiniker, to approve the updated Crisis Management Plan. Passed 6-0.

**Adjourn:**

Motion by DeBates, second by Wiese, to adjourn the meeting (6:16PM). Passed 6-0.

/s/ Brad Carson  
Brad Carson, Chairman

/s/ Katie Wiese  
Katie Wiese, Clerk

Approved and dated by the board October 23, 2023.  
Submitted, Deb Peschon

## ISD #2689 School Board

September 25, 2023

### SUMMARY OF MINUTES OF THE REGULAR SCHOOL BOARD MEETING OF INDEPENDENT SCHOOL DISTRICT #2689, PIPESTONE COUNTY, PIPESTONE, MINNESOTA

A regular meeting of the School Board, ISD #2689, was held in the MS/HS Media Center on September 25, 2023 at 5:30 p.m. The following members were present: Katie Wiese, Daphne Likness, Mark Hiniker, Tyler Fruechte, Chrissy DeBates, and Brad Carson. Absent: Lance Oye. Also present – Ex-Officio, Klint Willert, Jacque Kennedy, Deb Peschon, Jennifer Moravetz, Todd Huisman, Kyle Kuphal, Natalie Resch, Jen Zupp, Leslie Wajer, Sharon Wolff, and Lucas Lorenzen. Chairman Carson called the meeting to order. Motion by Wiese, second by DeBates, approved the agenda as presented. Motion carried unanimously. Public Forum: None. Presentation: Natalie Resch asked for permission to go on an overnight trip October 31-November 4 to the 2023 National FFA Convention. She also asked if the district would assist in the payment for the substitute teacher cost and transportation cost with the school suburban. Motion by Wiese, second by DeBates, approved all items in the Consent Agenda. Motion carried unanimously. Items approved were minutes of the regular school board meeting of August 28, 2023; contracts/work agreements for Sylvia Newell, One Act Play; Tiffany Fritsch, art teacher; Monica Kennedy, .25FTE art; Bonnie Fritz, paraprofessional; Tamara Kremin, lane change BS + 30; 6th assignments, Michael Slaba, 8th grade math; Ingrid Wielenberg, WIN; Kara Damm, career development; crossing guards pay increase; Cody Heidebrink, additional duties; and Christeen Groenhoff, Director of Maintenance.

Financials: The budget year-to-date shows expenditures as of September 20, 2023 at \$2,470,330.38 or 14%. This was non-action. The treasurer's report for month ended August 31, 2023 shows a cash balance of \$8,984,631.54. Motion by DeBates, second by Likness, approved the treasurer's report for August. Passed 6-0. The regular bills paid through September 19, 2023 totaled \$544,119.95. Motion by Wiese, second by Likness, approved payment of the regular bills. Passed 6-0. High school activity bills paid through September 19, 2023 totaled \$7,972.14. Motion by DeBates, second by Hiniker, approved payment of the high school activity bills. Passed 6-0. The MN Trust 2023A Bonds treasurer's report for month ended August 31, 2023 has a cash balance of \$53,761.78. Motion by DeBates, second by Likness, approved the 2023A bonds treasurer's report. Passed 6-0.

Board and Administrative reports were given. September enrollment is 1093. Discussion Items: None.

Board Action: Resch is requesting permission to go on an overnight trip with students to the National FFA Convention October 31-November 4. She is also requesting the school to assist in payment for a substitute teacher and transportation costs using the school suburban in the amount of \$1,750.00. Motion by Wiese, second by DeBates, approved the request. Passed 6-0. Resolution Approving Gifts to the School: United Women in Faith, \$235.00 to the Elementary Help Fund; Arrow Athletic Booster Club \$6,652.72 for acceleration program, Dr. Dish (basketball), 2 score flashers for gymnastics, hotel rooms for 9th grade wrestling tournament, and weight room equipment; Pipestone Publishing Company, \$1,345.00 donation to Athletic Help Fund from fall poster. Motion by Likness, second by Hiniker approved the agreement with TSP, Inc., for architectural services for the bond project. Passed 6-0. Motion by DeBates, second by Wiese, to certify the proposed levy limitation and certification report for 2023 payable 2024 for the maximum, and to set the Truth in Taxation Meeting for December 18, 2023 at 7:00pm. Passed 6-0. Motion by Wiese, second by Hiniker, to approve the updated Crisis Management Plan. Passed 6-0.

Adjourn: Motion by DeBates, second by Wiese, to adjourn the meeting (6:16PM). Passed 6-0

Approved and dated by the board October 23, 2023. Deb Peschon, Recording Secretary

A full text of the minutes is available for public inspection in the District Office of Pipestone Area Schools or by mail.

A full copy of the Resolution Approving Gifts can be found at <https://meetings.boardbook.org/Public/Agenda/1058?meeting=605604>

Budget Presentation to the Board				
Expenditures as of 10/17/2023		FY2024		
General Fund			10/17/2023	Year to
Classification	Code	FY2024REVISED	Year to Date	Date %
Administrative Salaries	110	\$562,821.00	\$162,110.03	29%
Teacher Salaries	140	\$4,895,282.00	\$748,283.00	15%
Non-Licensed Classroom Personnel	141	\$70,066.00	\$9,112.08	13%
Licensed Instructional Support Personnel	143	\$108,700.00	\$21,597.58	20%
Non-License Instructional Support Personnel	144	\$0.00	\$0.00	#DIV/0!
Substitute Salaries	145	\$100,000.00	\$10,701.52	11%
Substitute Non-Licensed Classroom Salaries	146	\$30,000.00	\$2,566.51	9%
Language Pathologist	152	\$80,583.00	\$4,452.50	6%
School Nurse	154	\$104,650.00	\$16,038.32	15%
School Social Worker	156	\$49,750.00	\$8,777.67	18%
Certified Paraprofessional	161	\$549,838.75	\$64,829.74	12%
Certified One-to-One Paraprofessional	162	\$264,411.00	\$24,373.44	9%
School Counselor	165	\$125,833.00	\$21,520.62	17%
Non-Instructional Support	170	\$848,920.00	\$211,451.58	25%
DAPE Specialist	174	\$0.00	\$0.00	#DIV/0!
Other Salary Payment	185	\$505,359.00	\$111,835.92	22%
Severance	191	\$15,653.00	\$0.00	0%
Third Party Pay Expense Salaries	195	\$0.00	\$0.00	#DIV/0!
FICA	210	\$633,231.00	\$105,197.19	17%
PERA	214	\$137,325.00	\$22,901.68	17%
TRA	218	\$560,735.00	\$91,925.34	16%
Health Insurance	220	\$669,508.00	\$128,328.01	19%
Life Insurance	230	\$5,236.00	\$1,076.39	21%
Dental Insurance	235	\$1,127.00	\$467.72	42%
Long Term Disability	240	\$336.00	\$0.00	0%
TSA Match	250	\$88,688.00	\$16,967.80	19%
Employer Sponsored HSA's	251	\$181,967.00	\$46,765.69	26%
Workmens Comp	270	\$45,210.00	\$8,611.57	19%
Unemployment Compensation	280	\$156,000.00	\$0.00	0%
Other Post-Employment Benefits	291	\$45,480.00	\$0.00	0%
Third Party Pay Benefits	295	\$0.00	\$0.00	#DIV/0!
Total Salaries and Fringe		\$10,836,709.75	\$1,839,891.90	17%
Other Employee Benefits	299	\$0.00	\$0.00	#DIV/0!
Fed Sub Awards Under \$25,000	303	\$21,800.00	\$290.64	1%
Fed Sub Awards Over \$25,000	304	\$0.00	\$0.00	#DIV/0!
Consulting and Servicing Fees	305	\$202,515.00	\$40,332.78	20%
School Resource Officer	310	\$51,504.00	\$0.00	0%
Services Purchased from Coop	316	\$172,151.00	\$33,154.13	19%
Computer and Technology Services	319	\$0.00	\$0.00	#DIV/0!
Communications/Phone	320	\$39,502.00	\$6,365.36	16%
Postage and Express	329	\$10,225.00	\$1,015.62	10%
Utility Services	330	\$283,549.00	\$85,328.46	30%
Short Term Rentals	335	\$20,660.00	\$7,200.00	35%
Property Insurance	340	\$147,285.00	\$148,585.96	101%
Repairs and Maintenance	350	\$132,170.00	\$78,230.42	59%
Transportation	360	\$1,322,688.00	\$147,663.21	11%
Travel	366	\$170,830.00	\$28,961.78	17%
Entry Fees/Student Travel	369	\$41,760.00	\$2,967.81	7%
Rentals and Leases	370	\$0.00	\$0.00	#DIV/0!
Mental Health Professional Services	379	\$5,000.00	\$0.00	0%
Short Term Lease	380	\$86,983.00	\$17,988.17	21%
Third Party Reimbursement Services	385	\$0.00	\$0.00	0%
To Other MN School Districts	390	\$100,918.00	\$0.00	0%
To Out of State Districts	392	\$26,800.00	\$2,360.49	9%
Special Ed Contracted Services	393	\$100,000.00	\$17,049.01	17%
To Non-Ed Agency	394	\$355,890.00	\$43,459.56	12%
Spec Ed Salary Purchased from Co-op	396	\$422,734.00	\$100,916.22	24%
Spec Ed Benefits Purchased from Co-op	397	\$11,912.00	\$8,105.51	68%
Charge Back	398	\$0.00	\$0.00	0%
Purchase Sped Contracted Services	399	\$77,668.00	\$40,875.00	53%
General Supplies	401	\$142,925.00	\$140,092.11	98%
Non instructional Computer Software	405	\$68,248.00	\$53,143.43	78%
Instructional Software License	406	\$103,011.00	\$96,868.36	94%
Instructional Supplies	430	\$189,866.00	\$84,639.03	45%
Individualized Materials	433	\$49,630.00	\$17,818.13	36%
Fuel for Buildings	440	\$85,173.00	\$4,645.24	5%
Noninstructional Tech Supplies	455	\$15,000.00	\$7,283.39	49%
Instructional Tech Supplies	456	\$3,000.00	\$2,981.48	99%
Textbooks/Workbooks	460	\$86,378.00	\$58,830.59	68%
Standardized Tests	461	\$4,000.00	\$0.00	0%
Non-Instructional Tech Devices	465	\$71,452.00	\$71,799.58	100%
Instructional Technology Devices	466	\$65,000.00	\$63,876.36	98%
Library Books	470	\$17,800.00	\$149.02	1%
Audio Visual Aids	480	\$0.00	\$0.00	0%
Electronic Format	485	\$0.00	\$0.00	#DIV/0!
Capital Non-Instruction Tech Software	505	\$9,500.00	\$9,500.00	100%
Site or Grounds Acquisition	510	\$61,650.00	\$61,650.00	100%
Building Acquisition and Construction	520	\$508,015.00	\$88,043.84	17%
Equipment Purchased	530	\$85,320.00	\$75,100.87	88%
Special Education Equipment	533	\$0.00	\$0.00	#DIV/0!
Eligible Pupil Transportation	548	\$0.00	\$0.00	0%
Vehicles Purchased	550	\$0.00	\$0.00	#DIV/0!
Non-Instructional Technology Hardware	555	\$17,000.00	\$13,319.06	78%
Capitalized Instructional Technology Hardware	556	\$0.00	\$0.00	#DIV/0!
Principal on Capital Lease	580	\$80,000.00	\$80,000.00	100%
Interest on Capital Lease	581	\$12,159.00	\$6,709.50	55%
Dues and Memberships	820	\$18,420.00	\$8,904.25	48%
Taxes and Special Assessments	896	\$1,275.00	\$0.00	0%
Affordable Care Act Penalties	897	\$13,000.00	\$0.00	0%
Miscellaneous Other Expenses	899	\$4,000.00	\$270.09	7%
Contingency		\$100,000.00	\$0.00	0%
Total		\$16,453,075.75	\$3,596,366.36	22%

The prior year to date percentage was 23%

INDEPENDENT SCHOOL DISTRICT NO. 2689								
PIPESTONE AREA SCHOOLS								
TREASURER'S REPORT TO SCHOOL BOARD								
FOR THE MONTH ENDED SEPTEMBER 30, 2023								
FUNDS	FUND NUMBER	CASH BALANCE BEGINNING OF MONTH	NET CASH ACTIVITY	CASH BALANCE END OF MONTH	ADJUSTMENTS	CASH BALANCE END OF MONTH FY24	CASH BALANCE END OF MONTH FY23	
GENERAL FUND	01,03,05	\$6,670,440.79	\$318,057.22	\$6,988,498.01		\$6,988,498.01	\$6,949,441.15	
FOOD SERVICE FUND	02	\$635,843.19	(\$11,988.28)	\$623,854.91		\$623,854.91	\$740,518.40	
COMMUNITY SERVICE FUND	04	\$611,572.94	(\$30,660.12)	\$580,912.82		\$580,912.82	\$505,278.23	
TOTAL OPERATING FUNDS		\$7,917,856.92	\$275,408.82	\$8,193,265.74		\$8,193,265.74	\$8,195,237.78	
BUILDING FUND	06	\$0.00	\$0.00	\$0.00		\$0.00	(\$20,098.96)	
DEBT SERVICE FUND	07	\$1,066,429.62	\$148,951.96	\$1,215,381.58		\$1,215,381.58	\$950,129.03	
AGENCY FUND	09	\$345.00	\$0.00	\$345.00		\$345.00	\$345.00	
CERTIFICATES OF DEPOSIT		\$0.00	\$0.00	\$0.00		\$0.00	\$0.00	
TOTAL		\$8,984,631.54	\$424,360.78	\$9,408,992.32	\$0.00	\$9,408,992.32	\$9,125,612.85	
RECONCILEMENT OF TREASURE'S BALANCE WITH BANKS								
DESCRIPTION	ACCOUNT NUMBER	CURRENT RATE OF INTEREST	BALANCE PER BANK STATEMENT	OUTSTANDING CHECKS	OUTSTANDING DEPOSITS	OTHER RECONCILING ITEMS	BALANCE PER TREASURER'S BOOKS	BALANCE PER TREASURER'S BOOKS
FIRST NATIONAL BANK-PAYROLL	200563	0.05%	\$280,769.47	(\$153.85)	\$0.00	\$0.00	\$280,615.62	\$287,210.14
FIRST NATIONAL BANK-MM	808263	0.45%	\$1,224,937.45	\$0.00	\$0.00	\$0.00	\$1,224,937.45	\$3,422,505.18
FIRST F&M	4534150062	0.20%	\$1,208,882.85	(\$140,321.12)	\$0.00	(\$394.00)	\$1,068,167.73	\$356,330.63
MNTrust	6770	5.29%	\$3,873,542.92	\$0.00	\$0.00	\$0.00	\$3,873,542.92	\$3,211,184.90
TOTAL			\$6,588,132.69	(\$140,474.97)	\$0.00	(\$394.00)	\$6,447,263.72	\$7,277,230.85
CERTIFICATES OF DEPOSIT	CD #	Date Purchased	Maturity Date	Maturity Period	Interest Rate		Dollar Amount	Dollar Amount
MNTrust Full Flex					5.35%		\$526,576.19	
Cornerstone Bank	1348781-1	5/9/2023	11/5/2024	18 Months	5.008%		\$232,350.00	
Charles Schwab Bank	59763-1	5/11/2023	11/5/2024	18 Months	4.906%		\$243,497.10	
Western Alliance Bank, CA	1346322-1	2/1/2023	1/31/2024	12 Months	4.745%		\$238,600.00	
ServisFirst Bank, FL	1346321-1	2/1/2023	1/31/2024	12 Months	4.771%		\$238,550.00	
Greenstate Credit Union, IA	1346323-1	2/1/2023	7/31/2024	18 Months	4.495%		\$234,150.00	
Amer Natl BK/FX Cities	58664-1	2/24/2023	8/23/2024	18 Months	4.420%		\$249,647.62	
Fist United Bank and Trust	58665-1	2/8/2023	2/10/2025	24 MOnths	4.360%		\$248,666.44	
Veritx Community Bank NA	58635-1	2/13/2023	2/13/2025	24 Months	4.355%		\$249,691.25	
MN Trust Term Series	296283-1	8/23/2023	1/27/2025	18 Months	5.130%		\$500,000.00	
Total							\$2,961,728.60	\$1,848,382.00
<b>Grand Total</b>							<b>\$9,408,992.32</b>	<b>\$9,125,612.85</b>
						Signed	Jacque Kennedy	

## Pipestone Area Schools ISD #2689 Detail Payment Register By Check

Co	Bank	Check No	Code	Rcd	Vendor	Pmt/Void Date	Pmt Type		
2689	FIN	67472	00975		<b>EWERT RECREATION CENTER</b>		Check		
				E 01	006 203 171 000 430	Instructional Supply		\$105.00	
<b>PO#:</b>	<b>Voucher #:</b>	<b>95510</b>	Invoice		<b>Invoice No:</b> 09/19/2023		<b>9/19/2023</b>	<b>Paid Amt:</b>	<b>\$105.00</b>
								<b>Check Amount:</b>	<b>\$105.00</b>
2689	FIN	67473	10221		<b>GREAT AMERICAN FINANCIAL SERVICES CORPORATION</b>		Check		
				E 01	005 110 000 000 380	Short Term Lease Comp Tech		\$1,338.82	
<b>PO#:</b>	<b>Voucher #:</b>	<b>95507</b>	Invoice		<b>Invoice No:</b> 34895441		<b>9/19/2023</b>	<b>Paid Amt:</b>	<b>\$1,338.82</b>
			E 01	005 110 000 000 380	Short Term Lease Comp Tech		\$5,075.00		
<b>PO#:</b>	<b>Voucher #:</b>	<b>95508</b>	Invoice		<b>Invoice No:</b> 34895440		<b>9/19/2023</b>	<b>Paid Amt:</b>	<b>\$5,075.00</b>
								<b>Check Amount:</b>	<b>\$6,413.82</b>
2689	FIN	67474	10256		<b>INSTRUMENTALIST AWARDS</b>		Check		
				E 01	300 258 234 000 430	Instructional Supply		\$84.00	
<b>PO#:</b>	<b>Voucher #:</b>	<b>95504</b>	Invoice		<b>Invoice No:</b> 56164P 2303		<b>9/19/2023</b>	<b>Paid Amt:</b>	<b>\$84.00</b>
								<b>Check Amount:</b>	<b>\$84.00</b>
2689	FIN	67475	5168		<b>J. W. PEPPER &amp; SON, INC.</b>		Check		
				E 01	300 258 233 000 401	General Supplies		\$682.63	
<b>PO#:</b>	<b>Voucher #:</b>	<b>95509</b>	Invoice		<b>Invoice No:</b> 365612888		<b>9/19/2023</b>	<b>Paid Amt:</b>	<b>\$682.63</b>
								<b>Check Amount:</b>	<b>\$682.63</b>
2689	FIN	67476	00300	00300	<b>PIPESTONE PUBLISHING CO INC</b>		Check		
				E 01	005 010 000 000 305	Consult & Serv.fees, SUMMER COMM. ED		\$1,271.40	
<b>PO#:</b>	<b>Voucher #:</b>	<b>95505</b>	Invoice		<b>Invoice No:</b> COMM. ED		<b>9/19/2023</b>	<b>Paid Amt:</b>	<b>\$1,271.40</b>
								<b>Check Amount:</b>	<b>\$1,271.40</b>
2689	FIN	67477	5261		<b>Redwood Valley High School</b>		Check		
				E 01	300 294 203 000 369	Entry Fees/Student Travel, JR HIGH FB		\$100.00	
<b>PO#:</b>	<b>Voucher #:</b>	<b>95502</b>	Invoice		<b>Invoice No:</b> 09/19/2023		<b>9/19/2023</b>	<b>Paid Amt:</b>	<b>\$100.00</b>
								<b>Check Amount:</b>	<b>\$100.00</b>
2689	FIN	67478	00803		<b>SCOTT RUDIE</b>		Check		
				E 01	300 810 000 000 350	Repair&maint Service, PAINTING		\$1,510.00	
<b>PO#:</b>	<b>Voucher #:</b>	<b>95506</b>	Invoice		<b>Invoice No:</b> 09/19/2023		<b>9/19/2023</b>	<b>Paid Amt:</b>	<b>\$1,510.00</b>
								<b>Check Amount:</b>	<b>\$1,510.00</b>
2689	FIN	67479	9186		<b>TAHER, INC.- BIN# 135092</b>		Check		
				E 02	005 770 000 701 305	Consult & Serv.fees, AUGUST 2023		\$1,093.94	
				E 02	005 770 000 709 305	Consult & Serv.fees, AUGUST 2023		\$1,755.15	
<b>PO#:</b>	<b>Voucher #:</b>	<b>95503</b>	Invoice		<b>Invoice No:</b> 0066118		<b>9/19/2023</b>	<b>Paid Amt:</b>	<b>\$2,849.09</b>
								<b>Check Amount:</b>	<b>\$2,849.09</b>

## Pipestone Area Schools ISD #2689 Detail Payment Register By Check

Co	Bank	Check No	Code	Rcd	Vendor	Pmt/Void Date	Pmt Type		
2689	FIN	67480	10072		<b>INTEK CLEANING AND RESTORATION</b>		Check		
				E 01	005 810 000 000 350	Repair&maint Service		\$10,179.25	
<b>PO#:</b>	<b>Voucher #:</b>	<b>95511</b>	Invoice		<b>Invoice No:</b> SI-76506	<b>9/19/2023</b>	<b>Paid Amt:</b>	<b>\$10,179.25</b>	
							<b>Check Amount:</b>	<b>\$10,179.25</b>	
2689	FIN	67481	5249		<b>VISA</b>		Check		
				E 01	005 296 212 000 369	Entry Fees/Student Travel-Cheerleading		\$101.22	
				E 02	005 770 000 701 366	Travel		\$106.42	
				E 01	300 640 172 316 366	MS/HS Staff Development		\$44.21	
				E 01	300 292 000 000 369	Entry Fees/Student Travel		\$37.92	
				E 01	300 301 501 830 369	Entry Fees/Student Travel		\$75.51	
				E 01	005 605 150 000 366	Entry Fees/Student Travel		\$57.59	
				E 01	300 301 501 000 366	Travel		\$72.67	
				E 01	300 294 203 000 369	Entry Fees/Student Travel		\$51.27	
<b>PO#:</b>	<b>Voucher #:</b>	<b>95512</b>	Invoice		<b>Invoice No:</b> 9871	<b>9/19/2023</b>	<b>Paid Amt:</b>	<b>\$546.81</b>	
							<b>Check Amount:</b>	<b>\$546.81</b>	
2689	FIN	67483	8402		<b>LEGALSHIELD</b>		Check		
				B 01	215 037	LGL-ID		\$428.80	
				B 01	215 039	LGL-IDONLY		\$37.90	
<b>PO#:</b>	<b>Voucher #:</b>	<b>95528</b>	Invoice		<b>Invoice No:</b> M2024030	<b>9/21/2023</b>	<b>Paid Amt:</b>	<b>\$466.70</b>	
							<b>Check Amount:</b>	<b>\$466.70</b>	
2689	FIN	67484	01253		<b>PAEA</b>		Check		
				B 01	215 040	Pipestone Ed. Assoc. Dues		\$9,028.57	
<b>PO#:</b>	<b>Voucher #:</b>	<b>95530</b>	Invoice		<b>Invoice No:</b> M2024030	<b>9/21/2023</b>	<b>Paid Amt:</b>	<b>\$9,028.57</b>	
				B 01	215 040	Pipestone Ed. Assoc. Dues		\$91.64	
<b>PO#:</b>	<b>Voucher #:</b>	<b>95547</b>	Invoice		<b>Invoice No:</b> M202403S10	<b>9/21/2023</b>	<b>Paid Amt:</b>	<b>\$91.64</b>	
							<b>Check Amount:</b>	<b>\$9,120.21</b>	
2689	FIN	67485	10138		<b>HEALTH PARTNERS</b>		Check		
				B 01	215 030	Health Insurance October Coverage Inv# 1655		\$76,053.38	
<b>PO#:</b>	<b>Voucher #:</b>	<b>95552</b>	Invoice		<b>Invoice No:</b> M2024030	<b>9/22/2023</b>	<b>Paid Amt:</b>	<b>\$76,053.38</b>	
							<b>Check Amount:</b>	<b>\$76,053.38</b>	
2689	FIN	67486	01252		<b>NCPERS Group Life Ins</b>		Check		
				B 01	215 034	UNIT NUMBER: 203411		\$48.00	
<b>PO#:</b>	<b>Voucher #:</b>	<b>95553</b>	Invoice		<b>Invoice No:</b> M2024030	<b>9/22/2023</b>	<b>Paid Amt:</b>	<b>\$48.00</b>	
							<b>Check Amount:</b>	<b>\$48.00</b>	
2689	FIN	67487	7348		<b>Madison National Life</b>		Check		
				B 01	215 032	Employer Paid		\$531.29	
				B 01	215 033	Supplemental Life		\$144.41	

## Pipestone Area Schools ISD #2689 Detail Payment Register By Check

Co	Bank	Check No	Code	Rcd	Vendor	Pmt/Void Date	Pmt Type		
2689	FIN	67487	7348		<b>Madison National Life</b>		Check		
				B 01	215 031 LTD			\$634.25	
	<b>PO#:</b>	<b>Voucher #:</b>	<b>95554</b>	Invoice	<b>Invoice No:</b> M2024030	<b>9/22/2023</b>		<b>Paid Amt:</b>	<b>\$1,309.95</b>
								<b>Check Amount:</b>	<b>\$1,309.95</b>
2689	FIN	67488	10212		<b>METROPOLITAN LIFE INSURANCE COMPANY</b>		Check		
				B 01	215 044 Dental Insurance October Coverage			\$3,625.36	
	<b>PO#:</b>	<b>Voucher #:</b>	<b>95555</b>	Invoice	<b>Invoice No:</b> M2024030	<b>9/22/2023</b>		<b>Paid Amt:</b>	<b>\$3,625.36</b>
								<b>Check Amount:</b>	<b>\$3,625.36</b>
2689	FIN	67489	7068		<b>AMERITAS LIFE INSURANCE CORP.</b>		Check		
				B 01	215 045 AMERITAS Vision Insurance September Cove			\$1,001.72	
	<b>PO#:</b>	<b>Voucher #:</b>	<b>95556</b>	Invoice	<b>Invoice No:</b> M2024030	<b>9/22/2023</b>		<b>Paid Amt:</b>	<b>\$1,001.72</b>
								<b>Check Amount:</b>	<b>\$1,001.72</b>
2689	FIN	67490	7386		<b>MREA</b>		Check		
				E 01	005 640 173 316 366 Curriculum Staff Development			\$275.00	
				E 01	300 640 172 316 366 MS/HS Staff Development			\$275.00	
				E 01	100 640 171 316 366 Curriculum Staff Development			\$275.00	
				E 01	005 010 000 000 366 Travel			\$165.00	
	<b>PO#:</b>	<b>Voucher #:</b>	<b>95559</b>	Invoice	<b>Invoice No:</b> REG. #4747	<b>9/26/2023</b>		<b>Paid Amt:</b>	<b>\$990.00</b>
								<b>Check Amount:</b>	<b>\$990.00</b>
2689	FIN	67491	8986		<b>SEACHANGE PRINTING &amp; MARKETING SERVICES LLC</b>		Check		
				E 01	005 010 000 000 401 General Supplies, ELECTION BALLOTS			\$292.30	
	<b>PO#:</b>	<b>Voucher #:</b>	<b>95560</b>	Invoice	<b>Invoice No:</b> 42602-R	<b>9/26/2023</b>		<b>Paid Amt:</b>	<b>\$292.30</b>
								<b>Check Amount:</b>	<b>\$292.30</b>
2689	FIN	67492	10247		<b>DCI CREDIT SERVICES, INC</b>		Check		
				B 01	215 060 Garnishment Erika Pelach			\$600.50	
	<b>PO#:</b>	<b>Voucher #:</b>	<b>95561</b>	Invoice	<b>Invoice No:</b> M2024030	<b>9/26/2023</b>		<b>Paid Amt:</b>	<b>\$600.50</b>
								<b>Check Amount:</b>	<b>\$600.50</b>
2689	FIN	67493	8978		<b>LYLE KRAMER</b>		Check		
				E 01	005 296 209 000 305 Consult & Serv.fees, VB			\$125.00	
	<b>PO#:</b>	<b>Voucher #:</b>	<b>95563</b>	Invoice	<b>Invoice No:</b> 09/26/2023	<b>9/26/2023</b>		<b>Paid Amt:</b>	<b>\$125.00</b>
								<b>Check Amount:</b>	<b>\$125.00</b>
2689	FIN	67494	10317		<b>MADLINE FOSTER</b>		Check		
				E 01	005 296 209 000 305 Consult & Serv.fees, VB			\$125.00	
	<b>PO#:</b>	<b>Voucher #:</b>	<b>95564</b>	Invoice	<b>Invoice No:</b> 09/26/2023	<b>9/26/2023</b>		<b>Paid Amt:</b>	<b>\$125.00</b>
								<b>Check Amount:</b>	<b>\$125.00</b>
2689	FIN	67495	5249		<b>VISA</b>		Check		
				E 01	100 640 171 316 366 Travel			\$197.57	
				E 01	005 810 000 000 401 General Supplies			\$21.36	

## Pipestone Area Schools ISD #2689 Detail Payment Register By Check

Co	Bank	Check No	Code	Rcd	Vendor	Pmt/Void Date	Pmt Type
2689	FIN	67495	5249		VISA		Check
				E 01	005 810 000 000 401	General Supplies	\$130.95
				E 01	005 810 000 000 350	Repair&maint Service	\$181.20
				E 01	005 810 000 000 401	General Supplies	\$23.88
				E 01	005 640 000 316 366	Travel	\$55.00
				E 01	207 203 173 000 406	Instructional Software License	\$120.00
				E 01	103 201 173 000 406	Instructional Software License	\$72.00
				E 01	103 203 173 000 406	Instructional Software License	\$72.00
				E 01	103 203 173 000 406	Instructional Software License	\$72.00
				E 01	300 211 173 000 406	Instructional Software License	\$72.00
				E 01	300 240 173 000 406	Instructional Software License	\$191.31
				E 01	207 260 173 000 406	Instructional Software License	\$12.50
				E 01	207 260 173 000 406	Instructional Software License	\$11.50
				E 01	300 256 173 000 406	Instructional Software License	\$120.00
				E 01	300 292 000 000 401	General Supplies	\$10.68
				E 01	300 292 000 000 401	General Supplies	\$30.00
				E 01	300 292 000 000 401	General Supplies	\$12.84
				E 01	300 292 000 000 366	Travel	\$20.56
				E 01	300 294 210 000 401	General Supplies	\$101.49
				E 01	300 292 000 000 366	Travel	\$12.07
				E 01	300 296 205 000 401	General Supplies	\$200.00
				E 01	005 810 000 000 401	General Supplies	\$170.79
				E 01	005 010 000 000 329	Postage & Express	\$8.95
				E 01	103 203 171 000 430	Instructional Supply	\$35.65
				E 01	103 203 000 000 430	Instructional Supply	\$992.84
				E 01	300 220 173 000 406	Instructional Software License	\$55.30
				E 01	103 203 171 000 401	General Supplies	\$166.38
				E 01	207 256 173 000 430	Instructional Supply	\$254.24
				E 01	103 203 171 000 401	General Supplies	\$38.94
				E 01	103 219 171 317 406	Instructional Software License	\$21.00
				E 01	103 203 171 000 430	Instructional Supply	\$55.07
				E 01	103 203 171 000 406	Instructional Software License	\$42.00
				E 01	103 203 173 000 406	Instructional Software License	\$50.00
				E 01	103 203 173 000 406	Instructional Software License	\$50.00
				E 01	103 203 173 000 406	Instructional Software License	\$50.00
				E 01	103 203 173 000 406	Instructional Software License	\$50.00
				E 01	300 620 591 000 470	Library Books	\$149.02
				E 01	300 258 233 000 430	Instructional Supply	\$1,998.59
				E 01	300 050 000 000 366	Travel	\$185.46

## Pipestone Area Schools ISD #2689 Detail Payment Register By Check

Co	Bank	Check No	Code	Rcd	Vendor	Pmt/Void Date	Pmt Type
2689	FIN	67495	5249		VISA		Check
				E 01	005 810 000 000 401		General Supplies \$44.82
				E 01	300 341 173 830 433		Individualized Mat. \$108.00
				E 01	300 331 172 830 433		Individualized Mat. \$131.23
				E 01	300 258 234 000 430		Instructional Supply \$151.00
				E 01	207 361 849 000 430		Instructional Supply \$561.77
				E 01	207 203 173 000 430		Instructional Supply \$110.00
				E 01	207 361 849 000 430		Instructional Supply \$231.86
				E 01	300 640 172 316 366		MS/HS Staff Development \$15.00
				E 01	005 640 173 316 366		Curriculum Staff Development \$15.00
				E 01	300 050 000 000 366		Travel \$28.42
				E 01	300 050 000 000 366		Travel \$25.24
				E 01	300 050 000 000 366		Travel \$25.00
				E 01	300 050 000 000 366		Travel \$29.53
				E 01	300 050 000 000 366		Travel \$20.00
				E 01	300 050 000 000 366		Travel \$12.32
				E 01	103 203 000 000 430		Instructional Supply (\$992.84)
				E 01	103 203 171 000 430		Instructional Supply \$992.84
<b>PO#:</b>	<b>Voucher #:</b>	<b>95566</b>	<b>Invoice</b>	<b>Invoice No:</b>	<b>9897</b>	<b>9/27/2023</b>	<b>Paid Amt: \$7,624.33</b>
							<b>Check Amount: \$7,624.33</b>
2689	FIN	67496	5249		VISA		Check
				E 01	005 605 150 000 405		Non Instructional Comp Softwar \$7.99
				E 02	005 770 000 701 401		General Supplies \$18.01
				E 01	005 605 150 000 350		Repair&maint Service \$39.00
				E 01	005 810 000 000 401		General Supplies \$558.71
				E 01	005 605 150 000 455		NonInstructional Tech Supplies \$18.96
				E 01	005 605 150 000 455		NonInstructional Tech Supplies \$47.00
				E 01	005 605 150 000 350		Repair&maint Service \$39.00
				E 01	005 605 150 000 350		Repair&maint Service \$39.00
				E 02	005 770 000 701 401		General Supplies \$16.54
				E 01	005 810 000 000 401		General Supplies \$16.48
				E 01	005 810 000 000 401		General Supplies \$103.92
				E 01	005 605 150 000 455		NonInstructional Tech Supplies \$19.96
				E 01	005 605 150 000 350		Repair&maint Service \$217.86
				E 01	005 605 150 000 350		Repair&maint Service \$90.68
				E 01	005 605 150 000 350		Repair&maint Service \$90.68
				E 01	005 605 150 000 455		NonInstructional Tech Supplies \$34.18
				E 01	005 605 150 000 455		NonInstructional Tech Supplies \$10.78
				E 01	005 810 000 000 401		General Supplies \$55.18

## Pipestone Area Schools ISD #2689 Detail Payment Register By Check

Co	Bank	Check No	Code	Rcd	Vendor	Pmt/Void Date	Pmt Type		
2689	FIN	67496	5249		<b>VISA</b>		Check		
				E 01	005 605 150 000 455		NonInstructional Tech Supplies	\$171.00	
				E 01	300 211 172 000 430		Instructional Supply	\$105.07	
				E 01	300 211 172 000 430		Instructional Supply	\$100.45	
				E 02	005 770 000 701 401		General Supplies	\$16.64	
				E 01	005 605 150 000 350		Repair&maint Service	\$39.00	
				E 01	005 605 150 000 455		NonInstructional Tech Supplies	\$7.99	
<b>PO#:</b>		<b>Voucher #:</b>	<b>95565</b>	Invoice	<b>Invoice No:</b> 1739	<b>9/27/2023</b>		<b>Paid Amt:</b>	<b>\$1,864.08</b>
								<b>Check Amount:</b>	<b>\$1,864.08</b>
2689	FIN	67497	5350		<b>MARK ZINNEL</b>		Check		
				E 01	300 292 208 000 305		Consult & Serv.fees	\$115.00	
<b>PO#:</b>		<b>Voucher #:</b>	<b>95567</b>	Invoice	<b>Invoice No:</b> 09/27/2023	<b>9/27/2023</b>		<b>Paid Amt:</b>	<b>\$115.00</b>
								<b>Check Amount:</b>	<b>\$115.00</b>
2689	FIN	67498	10319		<b>DOUGLAS STORBECK</b>		Check		
				E 01	300 294 203 000 305		Consult & Serv.fees, FB 09/29/2023	\$130.00	
<b>PO#:</b>		<b>Voucher #:</b>	<b>95569</b>	Invoice	<b>Invoice No:</b> 09/27/2023	<b>9/27/2023</b>		<b>Paid Amt:</b>	<b>\$130.00</b>
								<b>Check Amount:</b>	<b>\$130.00</b>
2689	FIN	67499	10318		<b>JUSTIN BORCHARDT</b>		Check		
				E 01	300 294 203 000 305		Consult & Serv.fees, FB 09/29/2023	\$130.00	
<b>PO#:</b>		<b>Voucher #:</b>	<b>95568</b>	Invoice	<b>Invoice No:</b> 09/27/2023	<b>9/27/2023</b>		<b>Paid Amt:</b>	<b>\$130.00</b>
								<b>Check Amount:</b>	<b>\$130.00</b>
2689	FIN	67500	10320		<b>TRAVIS SCHUETT</b>		Check		
				E 01	300 294 203 000 305		Consult & Serv.fees	\$130.00	
<b>PO#:</b>		<b>Voucher #:</b>	<b>95570</b>	Invoice	<b>Invoice No:</b> 09/27/2023	<b>9/27/2023</b>		<b>Paid Amt:</b>	<b>\$130.00</b>
								<b>Check Amount:</b>	<b>\$130.00</b>
2689	FIN	67501	10321		<b>TROY PYTLESKI</b>		Check		
				E 01	300 294 203 000 305		Consult & Serv.fees, FB 09/29/2023	\$130.00	
<b>PO#:</b>		<b>Voucher #:</b>	<b>95571</b>	Invoice	<b>Invoice No:</b> 09/27/2023	<b>9/27/2023</b>		<b>Paid Amt:</b>	<b>\$130.00</b>
								<b>Check Amount:</b>	<b>\$130.00</b>
2689	FIN	67502	10322		<b>DOUG STORBECK</b>		Check		
				E 01	300 294 203 000 305		Consult & Serv.fees, FB 09/29/2023	\$130.00	
<b>PO#:</b>		<b>Voucher #:</b>	<b>95572</b>	Invoice	<b>Invoice No:</b> 09/27/2023	<b>9/27/2023</b>		<b>Paid Amt:</b>	<b>\$130.00</b>
								<b>Check Amount:</b>	<b>\$130.00</b>
2689	FIN	67503	10187		<b>CLEAN N CLEAR</b>		Check		
				E 01	005 810 000 000 350		Repair&maint Service	\$1,500.00	
<b>PO#:</b>		<b>Voucher #:</b>	<b>95575</b>	Invoice	<b>Invoice No:</b> 7183	<b>9/27/2023</b>		<b>Paid Amt:</b>	<b>\$1,500.00</b>
								<b>Check Amount:</b>	<b>\$1,500.00</b>

## Pipestone Area Schools ISD #2689 Detail Payment Register By Check

Co	Bank	Check No	Code	Rcd	Vendor	Pmt/Void Date	Pmt Type		
2689	FIN	67504	03254		<b>ISD 0347, WILLMAR</b>		Check		
				E 01	300 292 202 000 369	Entry Fees/Student Travel-Cross Country		\$300.00	
	<b>PO#:</b>	<b>Voucher #:</b>	<b>95574</b>	Invoice	<b>Invoice No:</b> 09/27/2023	<b>9/27/2023</b>	<b>Paid Amt:</b>	<b>\$300.00</b>	
							<b>Check Amount:</b>	<b>\$300.00</b>	
2689	FIN	67505	01009		<b>ISD 2169, SLAYTON</b>		Check		
				E 01	300 292 202 000 369	Entry Fees/Student Travel-Cross Country		\$100.00	
	<b>PO#:</b>	<b>Voucher #:</b>	<b>95573</b>	Invoice	<b>Invoice No:</b> 09/27/2023	<b>9/27/2023</b>	<b>Paid Amt:</b>	<b>\$100.00</b>	
							<b>Check Amount:</b>	<b>\$100.00</b>	
2689	FIN	67506	7403		<b>BOMGAARS SUPPLY INC</b>		Check		
				E 01	005 810 000 000 401	General Supplies		\$725.25	
	<b>PO#:</b>	<b>Voucher #:</b>	<b>95579</b>	Invoice	<b>Invoice No:</b> 046-573-3	<b>9/28/2023</b>	<b>Paid Amt:</b>	<b>\$725.25</b>	
							<b>Check Amount:</b>	<b>\$725.25</b>	
2689	FIN	67507	5782		<b>CENTERPOINT ENERGY</b>		Check		
				E 01	300 810 000 000 440	Fuel For Buildings, AUGUST 2023		\$2,724.37	
	<b>PO#:</b>	<b>Voucher #:</b>	<b>95576</b>	Invoice	<b>Invoice No:</b> 8000015159-9	<b>9/28/2023</b>	<b>Paid Amt:</b>	<b>\$2,724.37</b>	
							<b>Check Amount:</b>	<b>\$2,724.37</b>	
2689	FIN	67508	00063		<b>CITY OF PIPESTONE</b>		Check		
				E 01	005 810 183 000 330	Utilities, SEPT. 2023		\$146.41	
				E 01	005 810 183 000 330	Utilities, SEPT. 2023		\$1,390.91	
				E 01	005 810 183 000 330	Utilities, SEPT. 2023 (PAULSON)		\$2,013.11	
				E 01	005 810 183 000 330	Utilities, SEPT. 2023		\$1,911.51	
				E 01	005 810 182 000 330	Garbage, SETP. 2023		\$1,222.00	
	<b>PO#:</b>	<b>Voucher #:</b>	<b>95578</b>	Invoice	<b>Invoice No:</b> 09/28/2023	<b>9/28/2023</b>	<b>Paid Amt:</b>	<b>\$6,683.94</b>	
							<b>Check Amount:</b>	<b>\$6,683.94</b>	
2689	FIN	67509	10323		<b>FOLLETT SCHOOL SOLUTIONS, LLC</b>		Check		
				E 01	103 620 591 000 405	Reading Program Service Solution-Lexile for c		\$213.93	
	<b>PO#:</b> 18427	<b>Voucher #:</b>	<b>95580</b>	Invoice	<b>Invoice No:</b> 1521007	<b>9/28/2023</b>	<b>Paid Amt:</b>	<b>\$213.93</b>	
							<b>Check Amount:</b>	<b>\$213.93</b>	
2689	FIN	67510	3697		<b>SW/WC SERVICE COOPERATIVE</b>		Check		
				E 01	005 605 000 000 316	Tech Services Purchased Coop. NOV. 2022		\$8,192.00	
				E 01	005 605 150 000 316	Data Processing Svcs		\$1,250.51	
	<b>PO#:</b>	<b>Voucher #:</b>	<b>95577</b>	Invoice	<b>Invoice No:</b> 73463	<b>9/28/2023</b>	<b>Paid Amt:</b>	<b>\$9,442.51</b>	
							<b>Check Amount:</b>	<b>\$9,442.51</b>	
2689	FIN	67511	10285		<b>VENTRIS LEARNING LLC</b>		Check		
				E 01	300 407 000 740 433	UFLI Foundations ISBN 978-1-7320468-2-5		\$140.00	
				E 01	300 407 000 740 433	Shipping		\$20.00	
	<b>PO#:</b> 18438	<b>Voucher #:</b>	<b>95581</b>	Invoice	<b>Invoice No:</b> 20237958	<b>9/28/2023</b>	<b>Paid Amt:</b>	<b>\$160.00</b>	
							<b>Check Amount:</b>	<b>\$160.00</b>	

## Pipestone Area Schools ISD #2689 Detail Payment Register By Check

Co	Bank	Check No	Code	Rcd	Vendor	Pmt/Void Date	Pmt Type		
2689	FIN	67512	00928		<b>POSTMASTER</b>		Check		
				E 01	005 020 000 000 329	Postage & Express		\$5.94	
<b>PO#:</b>	<b>Voucher #:</b>	<b>95582</b>	Invoice	<b>Invoice No:</b>	09/28/2023	<b>9/28/2023</b>	<b>Paid Amt:</b>	<b>\$5.94</b>	
							<b>Check Amount:</b>	<b>\$5.94</b>	
2689	FIN	67513	9704		<b>DAHL MOTORS, LLC</b>		Check		
				E 01	005 810 000 000 350	Repair&maint Service		\$147.25	
<b>PO#:</b>	<b>Voucher #:</b>	<b>95586</b>	Invoice	<b>Invoice No:</b>	255861	<b>9/29/2023</b>	<b>Paid Amt:</b>	<b>\$147.25</b>	
							<b>Check Amount:</b>	<b>\$147.25</b>	
2689	FIN	67514	00574		<b>NASCO</b>		Check		
				E 01	300 331 172 830 433	WA28949 Evenflo Infant Seat		\$319.96	
				E 01	300 331 172 830 433	SHIPPING		\$47.33	
<b>PO#:</b> 18204	<b>Voucher #:</b>	<b>95587</b>	Invoice	<b>Invoice No:</b>	463803	<b>9/29/2023</b>	<b>Paid Amt:</b>	<b>\$367.29</b>	
							<b>Check Amount:</b>	<b>\$367.29</b>	
2689	FIN	67515	9576		<b>PREMIER FURNITURE AND EQUIPMENT</b>		Check		
				E 01	300 850 172 302 530	SC3118CO 18" Large Ovation Contemporary §		\$974.16	
				E 01	300 850 172 302 530	ELS7366-EJA ELO Plymouth II Desk, Lotz AE		\$3,772.32	
				E 01	300 850 172 302 530	Freight		\$858.00	
<b>PO#:</b> 18371	<b>Voucher #:</b>	<b>95584</b>	Invoice	<b>Invoice No:</b>	120096	<b>9/29/2023</b>	<b>Paid Amt:</b>	<b>\$5,604.48</b>	
							<b>Check Amount:</b>	<b>\$5,604.48</b>	
2689	FIN	67516	10216		<b>SECURLY, INC</b>		Check		
				E 01	300 211 172 000 405	Ehass Pass Renewal		\$1,950.00	
				E 01	300 211 172 000 405	Do not bill until after 7/1/23 as that is when ou		\$0.00	
<b>PO#:</b> 18216	<b>Voucher #:</b>	<b>95585</b>	Invoice	<b>Invoice No:</b>	121903	<b>9/29/2023</b>	<b>Paid Amt:</b>	<b>\$1,950.00</b>	
							<b>Check Amount:</b>	<b>\$1,950.00</b>	
2689	FIN	67517	7716		<b>VERIZON WIRELESS</b>		Check		
				E 01	005 810 000 000 320	Communications/Phone 9/9-10/8		\$286.42	
<b>PO#:</b>	<b>Voucher #:</b>	<b>95583</b>	Invoice	<b>Invoice No:</b>	9943949982	<b>9/29/2023</b>	<b>Paid Amt:</b>	<b>\$286.42</b>	
							<b>Check Amount:</b>	<b>\$286.42</b>	
2689	FIN	67518	00975		<b>EWERT RECREATION CENTER</b>		Check		
				E 01	005 420 000 740 433	Individualized Mat.		\$180.00	
<b>PO#:</b>	<b>Voucher #:</b>	<b>95590</b>	Invoice	<b>Invoice No:</b>	10/02/2023	<b>10/2/2023</b>	<b>Paid Amt:</b>	<b>\$180.00</b>	
							<b>Check Amount:</b>	<b>\$180.00</b>	
2689	FIN	67519	01179	1099	<b>RATWIK ROSZAK &amp; MALONEY PA</b>		Check		
				E 01	005 010 113 000 305	Consult & Serv.fees		\$1,139.50	
<b>PO#:</b>	<b>Voucher #:</b>	<b>95589</b>	Invoice	<b>Invoice No:</b>	2689-0001	<b>10/2/2023</b>	<b>Paid Amt:</b>	<b>\$1,139.50</b>	
							<b>Check Amount:</b>	<b>\$1,139.50</b>	

## Pipestone Area Schools ISD #2689 Detail Payment Register By Check

Co	Bank	Check No	Code	Rcd	Vendor	Pmt/Void Date	Pmt Type		
2689	FIN	67520	5949		CDW GOVERNMENT, INC.		Check		
				E 01	300 050 172 000 401	General Supplies		\$41.37	
	<b>PO#:</b>	<b>Voucher #:</b>	<b>95591</b>	Invoice	<b>Invoice No:</b> LP09642	<b>10/2/2023</b>	<b>Paid Amt:</b>	<b>\$41.37</b>	
							<b>Check Amount:</b>	<b>\$41.37</b>	
2689	FIN	67521	8073		INTERSTATE BATTERY CENTER		Check		
				E 01	005 605 150 000 455	NonInstructional Tech Supplies		\$303.60	
	<b>PO#:</b>	<b>Voucher #:</b>	<b>95597</b>	Invoice	<b>Invoice No:</b> 1912999031237	<b>10/2/2023</b>	<b>Paid Amt:</b>	<b>\$303.60</b>	
							<b>Check Amount:</b>	<b>\$303.60</b>	
2689	FIN	67522	9992		IT OUTLET		Check		
				E 01	300 260 172 000 401	General Supplies		\$135.00	
	<b>PO#:</b>	<b>Voucher #:</b>	<b>95593</b>	Invoice	<b>Invoice No:</b> 73967	<b>10/2/2023</b>	<b>Paid Amt:</b>	<b>\$135.00</b>	
							<b>Check Amount:</b>	<b>\$135.00</b>	
2689	FIN	67523	5168		J. W. PEPPER & SON, INC.		Check		
				E 01	300 258 233 000 430	Darklands March P.O.D. Band Set & Score #1		\$70.00	
				E 01	300 258 233 000 430	Freight Ground		\$12.99	
	<b>PO#:</b> 18445	<b>Voucher #:</b>	<b>95599</b>	Invoice	<b>Invoice No:</b> 365638117	<b>10/2/2023</b>	<b>Paid Amt:</b>	<b>\$82.99</b>	
				E 01	300 258 234 000 401	General Supplies		\$5.94	
	<b>PO#:</b>	<b>Voucher #:</b>	<b>95592</b>	Invoice	<b>Invoice No:</b> 365577322	<b>10/2/2023</b>	<b>Paid Amt:</b>	<b>\$5.94</b>	
							<b>Check Amount:</b>	<b>\$88.93</b>	
2689	FIN	67524	7272		MN FFA STATE ASSOCIATION		Check		
				E 01	300 301 501 830 433	Individualized Mat.		\$635.00	
	<b>PO#:</b>	<b>Voucher #:</b>	<b>95595</b>	Invoice	<b>Invoice No:</b> 5284	<b>10/2/2023</b>	<b>Paid Amt:</b>	<b>\$635.00</b>	
							<b>Check Amount:</b>	<b>\$635.00</b>	
2689	FIN	67525	10122		PRIMEX WIRELESS INC		Check		
				E 01	005 605 150 000 455	SEE ATTACHED		\$89.25	
	<b>PO#:</b> 18442	<b>Voucher #:</b>	<b>95598</b>	Invoice	<b>Invoice No:</b> 13124	<b>10/2/2023</b>	<b>Paid Amt:</b>	<b>\$89.25</b>	
							<b>Check Amount:</b>	<b>\$89.25</b>	
2689	FIN	67526	10017		SCHOOL SPECIALTY LLC		Check		
				E 01	103 203 171 000 430	000786 Pink Eraser - Medium, beveled		\$41.56	
				E 01	103 203 171 000 430	084837 Scissors for Kids, Blunt		\$1.40	
				E 01	103 203 171 000 430	038221 Binder clips- mini (1/4")		\$8.00	
				E 01	103 203 171 000 430	032397 Binder clips - Small (3/8")		\$2.72	
				E 01	103 203 171 000 430	015744 File Folder - letter, 1/5 cut (100/bx)		\$28.58	
				E 01	103 203 171 000 430	067506 Sheet protectors		\$15.00	
				E 01	103 203 171 000 430	088706 Index Cards - 3x5, ruled (100/pk)		\$2.35	
				E 01	103 203 171 000 430	027430 Legal pad - 8 1/2x11 3/4"		\$16.44	
				E 01	103 203 171 000 430	2013914 6"x9" Manilla Envelopes		\$38.99	
				E 01	103 203 171 000 430	201183 Prang Medium Weight Construction P:		\$36.00	

## Pipestone Area Schools ISD #2689 Detail Payment Register By Check

Co	Bank	Check No	Code	Rcd	Vendor	Pmt/Void Date	Pmt Type		
2689	FIN	67526	10017		<b>SCHOOL SPECIALTY LLC</b>		Check		
				E 01	103 203 171 000 430	2103359 Tru-Ray Construction Paper, Almond		\$5.58	
				E 01	103 203 171 000 430	053958 Tru-Ray Sulphite Construction Paper,		\$8.37	
				E 01	103 203 171 000 430	036978 School Smart Loose Leaf Rings, 1-1/2		\$19.04	
				E 01	103 203 171 000 430	036987 School Smart Nickel Plated Steel Loo:		\$0.91	
				E 01	103 203 171 000 430	1403528 Smart School Laminating film Rolls, :		\$795.48	
	<b>PO#:</b> 18406	<b>Voucher #:</b>	<b>95596</b>	Invoice	<b>Invoice No:</b> 208133070442	<b>10/2/2023</b>	<b>Paid Amt:</b>	<b>\$1,020.42</b>	
				E 01	103 203 171 000 430	1473683 Grade Book		\$21.24	
	<b>PO#:</b> 18401	<b>Voucher #:</b>	<b>95600</b>	Invoice	<b>Invoice No:</b> 208133082137	<b>10/2/2023</b>	<b>Paid Amt:</b>	<b>\$21.24</b>	
							<b>Check Amount:</b>	<b>\$1,041.66</b>	
2689	FIN	67527	9721		<b>SUMMIT FIRE PROTECTION CO</b>		Check		
				E 01	005 865 000 363 350	Repair&maint Service, FIRE INSPECTION		\$1,138.25	
	<b>PO#:</b>	<b>Voucher #:</b>	<b>95594</b>	Invoice	<b>Invoice No:</b> 143011722	<b>10/2/2023</b>	<b>Paid Amt:</b>	<b>\$1,138.25</b>	
							<b>Check Amount:</b>	<b>\$1,138.25</b>	
2689	FIN	67528	00224		<b>LUDOLPH BUS INCORPORATED</b>		Check		
				E 03	005 760 000 720 360	Transp Cntrt W/Public Reg. OCT. 2023		\$70,200.80	
	<b>PO#:</b>	<b>Voucher #:</b>	<b>95601</b>	Invoice	<b>Invoice No:</b> 1995	<b>10/3/2023</b>	<b>Paid Amt:</b>	<b>\$70,200.80</b>	
							<b>Check Amount:</b>	<b>\$70,200.80</b>	
2689	FIN	67529	00224		<b>LUDOLPH BUS INCORPORATED</b>		Check		
				E 01	300 294 203 733 360	Transp Cntrt W/Public Football		\$1,610.75	
				E 01	300 294 203 733 360	Transp Cntrt W/Public Football		\$910.00	
				E 01	300 296 207 733 360	Transp Cntrt W/Public. GIRLS TENNIS		\$1,278.75	
				E 01	300 296 209 733 360	Transp Cntrt W/Public VB		\$1,015.75	
				E 01	300 258 233 733 360	Transp Cntrt W/Public Band		\$2,094.00	
				E 01	300 258 233 733 360	Transp Cntrt W/Public Band		\$1,760.75	
				E 01	300 258 233 733 360	Transp Cntrt W/Public Band		\$800.00	
	<b>PO#:</b>	<b>Voucher #:</b>	<b>95602</b>	Invoice	<b>Invoice No:</b> 4280	<b>10/3/2023</b>	<b>Paid Amt:</b>	<b>\$9,470.00</b>	
							<b>Check Amount:</b>	<b>\$9,470.00</b>	
2689	FIN	67530	00224		<b>LUDOLPH BUS INCORPORATED</b>		Check		
				E 01	300 294 203 733 360	Transp Cntrt W/Public Football		\$101.36	
				E 01	300 294 203 733 360	Transp Cntrt W/Public Football		\$80.50	
				E 01	300 294 203 733 360	Transp Cntrt W/Public Football		\$228.06	
				E 01	300 294 203 733 360	Transp Cntrt W/Public Football		\$92.00	
				E 01	300 294 203 733 360	Transp Cntrt W/Public Football		\$314.94	
				E 01	300 294 203 733 360	Transp Cntrt W/Public Football		\$80.50	
				E 01	300 294 203 733 360	Transp Cntrt W/Public Football		\$311.32	
				E 01	300 294 203 733 360	Transp Cntrt W/Public Football		\$103.50	
				E 01	300 294 203 733 360	Transp Cntrt W/Public Football		\$115.84	
				E 01	300 294 203 733 360	Transp Cntrt W/Public Football		\$86.25	

**Pipestone Area Schools ISD #2689**  
**Detail Payment Register By Check**

Co	Bank	Check No	Code	Rcd	Vendor	Pmt/Void Date	Pmt Type
2689	FIN	67530	00224		<b>LUDOLPH BUS INCORPORATED</b>		<b>Check</b>
				E 01	300 296 209 733 360	Transp Cntrt W/Public VB	\$166.52
				E 01	300 296 209 733 360	Transp Cntrt W/Public VB	\$126.50
				E 01	300 296 209 733 360	Transp Cntrt W/Public VB	\$244.35
				E 01	300 296 209 733 360	Transp Cntrt W/Public VB	\$92.00
				E 01	300 296 209 733 360	Transp Cntrt W/Public VB	\$273.31
				E 01	300 296 209 733 360	Transp Cntrt W/Public VB	\$161.00
				E 01	300 296 209 733 360	Transp Cntrt W/Public VB	\$103.17
				E 01	300 296 209 733 360	Transp Cntrt W/Public VB	\$109.25
				E 01	300 296 209 733 360	Transp Cntrt W/Public VB	\$282.36
				E 01	300 296 209 733 360	Transp Cntrt W/Public VB	\$161.00
				E 01	300 296 209 733 360	Transp Cntrt W/Public VB	\$159.28
				E 01	300 296 209 733 360	Transp Cntrt W/Public VB	\$74.75
				E 01	300 296 209 733 360	Transp Cntrt W/Public VB	\$179.19
				E 01	300 296 209 733 360	Transp Cntrt W/Public VB	\$212.75
				E 01	300 296 207 733 360	Transp Cntrt W/Public. TN	\$343.90
				E 01	300 296 207 733 360	Transp Cntrt W/Public. TN	\$166.75
				E 01	300 296 207 733 360	Transp Cntrt W/Public. TN	\$179.19
				E 01	300 296 207 733 360	Transp Cntrt W/Public. TN	\$115.00
				E 01	300 296 207 733 360	Transp Cntrt W/Public. TN	\$104.98
				E 01	300 296 207 733 360	Transp Cntrt W/Public. TN	\$92.00
				E 01	300 296 207 733 360	Transp Cntrt W/Public. TN	\$235.30
				E 01	300 296 207 733 360	Transp Cntrt W/Public. TN	\$103.50
				E 01	300 292 202 733 360	Transp Cntrt W/Public CC	\$175.57
				E 01	300 292 202 733 360	Transp Cntrt W/Public CC	\$103.50
				E 01	300 292 202 733 360	Transp Cntrt W/Public CC	\$229.87
				E 01	300 292 202 733 360	Transp Cntrt W/Public CC	\$92.00
				E 01	300 292 202 733 360	Transp Cntrt W/Public CC	\$278.74
				E 01	300 292 202 733 360	Transp Cntrt W/Public CC	\$120.75
				E 01	300 292 202 733 360	Transp Cntrt W/Public CC	\$115.84
				E 01	300 292 202 733 360	Transp Cntrt W/Public CC	\$97.75
				E 01	300 292 202 733 360	Transp Cntrt W/Public CC	\$432.59
				E 01	300 292 202 733 360	Transp Cntrt W/Public CC	\$149.50
				E 01	300 258 233 733 360	Transp Cntrt W/Public Band	\$161.09
				E 01	300 258 233 733 360	Transp Cntrt W/Public Band	\$356.50
				E 01	207 203 000 733 360	Transp Cntrt W/Public. 6TH GRADE	\$170.14
				E 01	207 203 000 733 360	Transp Cntrt W/Public. 6TH GRADE	\$120.75
				E 01	207 203 000 733 360	Transp Cntrt W/Public. 6TH GRADE	\$170.14
				E 01	207 203 000 733 360	Transp Cntrt W/Public. 6TH GRADE	\$120.75

## Pipestone Area Schools ISD #2689

### Detail Payment Register By Check

Co	Bank	Check No	Code	Rcd	Vendor	Pmt/Void Date	Pmt Type
2689	FIN	67530	00224		<b>LUDOLPH BUS INCORPORATED</b>		<b>Check</b>
				E 01	103 203 000 733 360	Transp Cntrt W/Publ. 5TH GRADE	\$170.14
				E 01	103 203 000 733 360	Transp Cntrt W/Publ. 5TH GRADE	\$120.75
				E 01	103 203 000 733 360	Transp Cntrt W/Publ. 5TH GRADE	\$170.14
				E 01	103 203 000 733 360	Transp Cntrt W/Publ. 5TH GRADE	\$120.75
				E 01	300 211 000 733 360	Transp Cntrt W/Publ. CAREER EXPO	\$179.19
				E 01	300 211 000 733 360	Transp Cntrt W/Publ. CAREER EXPO	\$51.75
				E 01	300 211 000 733 360	Transp Cntrt W/Publ. CAREER EXPO	\$179.19
				E 01	300 211 000 733 360	Transp Cntrt W/Publ. CAREER EXPO	\$51.75
				E 01	300 240 000 733 360	Transp Cntrt W/Public Phy Ed	\$91.88
				E 01	103 203 000 000 305	Consult & Serv.fees. BUS SAFTY	\$220.50
				E 01	005 640 173 316 305	Consult & Serv.fees. TYPE III TRAINING	\$42.40
				E 03	005 760 000 713 360	Transp Cntrt W/Publ, OUT OF DISTRICT	\$236.17
				E 03	005 760 000 713 360	Transp Cntrt W/Publ, OUT OF DISTRICT	\$300.58
				E 03	005 760 000 713 360	Transp Cntrt W/Publ, OUT OF DISTRICT	\$579.69
				E 03	005 760 000 723 360	Transp Cntrt W/Public Handicap	\$7,353.90
				E 03	005 760 000 723 360	Transp Cntrt W/Public Handicap	\$3,620.28
				E 03	005 760 000 723 360	Transp Cntrt W/Public Handicap	\$9,509.95
				E 03	005 760 000 723 360	Transp Cntrt W/Public Handicap	\$5,565.86
				E 03	005 760 000 723 360	Transp Cntrt W/Public Handicap	\$5,910.14
				E 03	005 760 000 723 360	Transp Cntrt W/Public Handicap	\$5,288.02
				E 03	005 760 000 723 360	Transp Cntrt W/Public Handicap	\$51.41
<b>PO#:</b>		<b>Voucher #:</b>	<b>95603</b>	Invoice	<b>Invoice No:</b> 1996	<b>10/3/2023</b>	<b>Paid Amt: \$47,910.24</b>
							<b>Check Amount: \$47,910.24</b>
2689	FIN	67531	8707		<b>LARRY ANDERSON</b>		<b>Check</b>
				E 01	005 296 209 000 305	Consult & Serv.fees, VB 10/03/2023	\$125.00
<b>PO#:</b>		<b>Voucher #:</b>	<b>95604</b>	Invoice	<b>Invoice No:</b> 10/03/2023	<b>10/3/2023</b>	<b>Paid Amt: \$125.00</b>
							<b>Check Amount: \$125.00</b>
2689	FIN	67532	7353	1099	<b>LYLE SIEBENAUHLER</b>		<b>Check</b>
				E 01	005 810 000 000 350	Repair&maint Service	\$838.01
<b>PO#:</b>		<b>Voucher #:</b>	<b>95607</b>	Invoice	<b>Invoice No:</b> 2023091701	<b>10/3/2023</b>	<b>Paid Amt: \$838.01</b>
							<b>Check Amount: \$838.01</b>
2689	FIN	67533	00292		<b>MN WEST-PIPESTONE CAMPUS</b>		<b>Check</b>
				E 01	300 361 000 000 335	Short Term Rentals, FALL SEMESTER 2023	\$7,200.00
<b>PO#:</b>		<b>Voucher #:</b>	<b>95606</b>	Invoice	<b>Invoice No:</b> 00270951	<b>10/3/2023</b>	<b>Paid Amt: \$7,200.00</b>
							<b>Check Amount: \$7,200.00</b>

## Pipestone Area Schools ISD #2689 Detail Payment Register By Check

Co	Bank	Check No	Code	Rcd	Vendor	Pmt/Void Date	Pmt Type		
2689	FIN	67534	4570		<b>PIPESTONE MEDICAL GROUP</b>		Check		
				E 01	103 420 000 740 394	to Non-Ed Agency, JULY/AUG. 2023		\$4,117.81	
<b>PO#:</b>	<b>Voucher #:</b>	<b>95608</b>	Invoice	<b>Invoice No:</b>	PCM. SCHOOL	<b>10/3/2023</b>	<b>Paid Amt:</b>	<b>\$4,117.81</b>	
							<b>Check Amount:</b>	<b>\$4,117.81</b>	
2689	FIN	67535	10316		<b>VICKY ROSS</b>		Check		
				E 01	005 296 209 000 305	Consult & Serv.fees, VB 10/03/2023		\$125.00	
<b>PO#:</b>	<b>Voucher #:</b>	<b>95605</b>	Invoice	<b>Invoice No:</b>	10/03/2023	<b>10/3/2023</b>	<b>Paid Amt:</b>	<b>\$125.00</b>	
							<b>Check Amount:</b>	<b>\$125.00</b>	
2689	FIN	67536	10097		<b>AED BRANDS LLC</b>		Check		
				E 01	103 720 000 000 401	11403-000001 LIFEPAK CR Plus / EXPRESS		\$278.00	
<b>PO#:</b> 17895	<b>Voucher #:</b>	<b>95609</b>	Invoice	<b>Invoice No:</b>	139137	<b>10/4/2023</b>	<b>Paid Amt:</b>	<b>\$278.00</b>	
				E 01	005 720 000 000 401	LIFEPAK CR Plus/EXPRESS AED Battery & F		\$695.00	
<b>PO#:</b> 17969	<b>Voucher #:</b>	<b>95610</b>	Invoice	<b>Invoice No:</b>	138283	<b>10/4/2023</b>	<b>Paid Amt:</b>	<b>\$695.00</b>	
							<b>Check Amount:</b>	<b>\$973.00</b>	
2689	FIN	67537	10305		<b>CENTER FOR SAFE AND RESILIENT SCHOOLS AND WORKPLACES</b>		Check		
				E 01	005 205 000 417 303	Fed Sub Awards Under \$25,000		\$290.64	
				E 01	005 640 173 316 305	Consult & Serv.fees		\$8,736.50	
<b>PO#:</b>	<b>Voucher #:</b>	<b>95612</b>	Invoice	<b>Invoice No:</b>	CSR23-95	<b>10/4/2023</b>	<b>Paid Amt:</b>	<b>\$9,027.14</b>	
							<b>Check Amount:</b>	<b>\$9,027.14</b>	
2689	FIN	67538	3512		<b>CHILDRENS CARE HOSP &amp; SCHOOL</b>		Check		
				E 01	103 416 000 740 393	Sp Ed Contr Svcs Pup. AUG. 2023		\$4,593.26	
				E 01	103 416 000 000 392	to Out-of-State Dist. AUG. 2023		\$572.24	
				E 01	100 411 000 000 392	to Out-of-State Dist. AUG. 2023		\$643.77	
				E 01	100 411 000 740 393	Sp Ed Contr Svcs Pup, AUG. 2023		\$6,705.73	
<b>PO#:</b>	<b>Voucher #:</b>	<b>95613</b>	Invoice	<b>Invoice No:</b>	10/04/2023	<b>10/4/2023</b>	<b>Paid Amt:</b>	<b>\$12,515.00</b>	
							<b>Check Amount:</b>	<b>\$12,515.00</b>	
2689	FIN	67539	9354		<b>FRONTLINE TECHNOLOGIES GROUP LLC</b>		Check		
				E 01	300 050 172 000 405	Non Instructional Comp Softwar		\$3,200.41	
<b>PO#:</b>	<b>Voucher #:</b>	<b>95611</b>	Invoice	<b>Invoice No:</b>	1191926	<b>10/4/2023</b>	<b>Paid Amt:</b>	<b>\$3,200.41</b>	
							<b>Check Amount:</b>	<b>\$3,200.41</b>	
2689	FIN	67540	6880		<b>ITC</b>		Check		
				E 01	006 810 000 000 320	Communications/Phone 10/-10/31		\$39.65	
<b>PO#:</b>	<b>Voucher #:</b>	<b>95617</b>	Invoice	<b>Invoice No:</b>	11701942	<b>10/4/2023</b>	<b>Paid Amt:</b>	<b>\$39.65</b>	
							<b>Check Amount:</b>	<b>\$39.65</b>	
2689	FIN	67541	9156		<b>LIBERTY MUTUAL INSURANCE</b>		Check		
				E 01	005 940 000 000 340	BUSINESS AUTO Insurance		\$1,054.00	
<b>PO#:</b>	<b>Voucher #:</b>	<b>95614</b>	Invoice	<b>Invoice No:</b>	14683175	<b>10/4/2023</b>	<b>Paid Amt:</b>	<b>\$1,054.00</b>	
							<b>Check Amount:</b>	<b>\$1,054.00</b>	

## Pipestone Area Schools ISD #2689 Detail Payment Register By Check

Co	Bank	Check No	Code	Rcd	Vendor	Pmt/Void Date	Pmt Type		
2689	FIN	67542	9994		<b>QUADIANT FINANCE USA, INC</b>		Check		
				E 01	005 020 000 000 329 Postage & Express			\$1,000.00	
	<b>PO#:</b>	<b>Voucher #:</b>	<b>95618</b>	Invoice	<b>Invoice No:</b> 7900044080886389	<b>10/4/2023</b>		<b>Paid Amt:</b>	<b>\$1,000.00</b>
								<b>Check Amount:</b>	<b>\$1,000.00</b>
2689	FIN	67543	7599		<b>RAM MUTUAL INSURANCE COMPANY</b>		Check		
				B 01	215 042 Workman's Comp			\$4,794.00	
	<b>PO#:</b>	<b>Voucher #:</b>	<b>95615</b>	Invoice	<b>Invoice No:</b> WC 190140.14	<b>10/4/2023</b>		<b>Paid Amt:</b>	<b>\$4,794.00</b>
								<b>Check Amount:</b>	<b>\$4,794.00</b>
2689	FIN	67544	10199		<b>TROY RYAN HEIDEBRINK</b>		Check		
				E 01	005 810 000 000 350 Repair&maint Service SETP. 2023			\$590.00	
	<b>PO#:</b>	<b>Voucher #:</b>	<b>95619</b>	Invoice	<b>Invoice No:</b> 11	<b>10/4/2023</b>		<b>Paid Amt:</b>	<b>\$590.00</b>
								<b>Check Amount:</b>	<b>\$590.00</b>
2689	FIN	67545	00276		<b>XCEL ENERGY</b>		Check		
				E 01	005 810 184 000 330 Electricity - Paulsen Field AUG. 2023			\$947.10	
	<b>PO#:</b>	<b>Voucher #:</b>	<b>95616</b>	Invoice	<b>Invoice No:</b> 51-6709448-8	<b>10/4/2023</b>		<b>Paid Amt:</b>	<b>\$947.10</b>
								<b>Check Amount:</b>	<b>\$947.10</b>
2689	FIN	67546	00890		<b>STOUT &amp; EVINK</b>		Check		
				E 01	005 810 000 000 350 Repair&maint Service			\$598.27	
	<b>PO#:</b>	<b>Voucher #:</b>	<b>95621</b>	Invoice	<b>Invoice No:</b> 98038	<b>10/4/2023</b>		<b>Paid Amt:</b>	<b>\$598.27</b>
				E 01	005 810 000 000 350 Repair&maint Service			\$341.38	
	<b>PO#:</b>	<b>Voucher #:</b>	<b>95622</b>	Invoice	<b>Invoice No:</b> 98035	<b>10/4/2023</b>		<b>Paid Amt:</b>	<b>\$341.38</b>
				E 01	005 810 000 000 350 Repair&maint Service			\$1,480.35	
	<b>PO#:</b>	<b>Voucher #:</b>	<b>95623</b>	Invoice	<b>Invoice No:</b> 98032	<b>10/4/2023</b>		<b>Paid Amt:</b>	<b>\$1,480.35</b>
				E 01	005 810 000 000 350 Repair&maint Service			\$348.89	
	<b>PO#:</b>	<b>Voucher #:</b>	<b>95624</b>	Invoice	<b>Invoice No:</b> 98033	<b>10/4/2023</b>		<b>Paid Amt:</b>	<b>\$348.89</b>
								<b>Check Amount:</b>	<b>\$2,768.89</b>
2689	FIN	67547	00890	00890	<b>STOUT &amp; EVINK</b>		Check		
				E 01	005 810 000 000 350 Repair&maint Service			\$124.67	
	<b>PO#:</b>	<b>Voucher #:</b>	<b>95620</b>	Invoice	<b>Invoice No:</b> 98037	<b>10/4/2023</b>		<b>Paid Amt:</b>	<b>\$124.67</b>
								<b>Check Amount:</b>	<b>\$124.67</b>
2689	FIN	67548	00256		<b>HILLYARD INC/ SIOUX FALLS</b>		Check		
				E 01	005 810 000 000 401 General Supplies			\$870.12	
	<b>PO#:</b>	<b>Voucher #:</b>	<b>95625</b>	Invoice	<b>Invoice No:</b> 605233036	<b>10/4/2023</b>		<b>Paid Amt:</b>	<b>\$870.12</b>
				E 01	005 810 000 000 401 General Supplies			\$75.99	
	<b>PO#:</b>	<b>Voucher #:</b>	<b>95626</b>	Invoice	<b>Invoice No:</b> 700560872	<b>10/4/2023</b>		<b>Paid Amt:</b>	<b>\$75.99</b>
				E 01	005 810 000 000 401 General Supplies			\$1,125.12	
	<b>PO#:</b>	<b>Voucher #:</b>	<b>95627</b>	Invoice	<b>Invoice No:</b> 700560871	<b>10/4/2023</b>		<b>Paid Amt:</b>	<b>\$1,125.12</b>

## Pipestone Area Schools ISD #2689

### Detail Payment Register By Check

Co	Bank	Check No	Code	Rcd	Vendor	Pmt/Void Date	Pmt Type		
2689	FIN	67548	00256		<b>HILLYARD INC/ SIOUX FALLS</b>		Check		
				E 01	005 810 000 000 401	General Supplies		\$131.46	
<b>PO#:</b>	<b>Voucher #:</b>	<b>95628</b>	Invoice	<b>Invoice No:</b>	605233003	<b>10/4/2023</b>	<b>Paid Amt:</b>	<b>\$131.46</b>	
				E 01	005 810 000 000 401	General Supplies		\$1,438.44	
<b>PO#:</b>	<b>Voucher #:</b>	<b>95629</b>	Invoice	<b>Invoice No:</b>	605233002	<b>10/4/2023</b>	<b>Paid Amt:</b>	<b>\$1,438.44</b>	
				E 01	005 810 000 000 401	General Supplies		\$221.50	
<b>PO#:</b>	<b>Voucher #:</b>	<b>95630</b>	Invoice	<b>Invoice No:</b>	700559147	<b>10/4/2023</b>	<b>Paid Amt:</b>	<b>\$221.50</b>	
				E 01	005 810 000 000 401	General Supplies		\$544.03	
<b>PO#:</b>	<b>Voucher #:</b>	<b>95631</b>	Invoice	<b>Invoice No:</b>	60523301	<b>10/4/2023</b>	<b>Paid Amt:</b>	<b>\$544.03</b>	
				E 01	005 810 000 000 401	General Supplies		\$2,614.05	
<b>PO#:</b>	<b>Voucher #:</b>	<b>95632</b>	Invoice	<b>Invoice No:</b>	605248345	<b>10/4/2023</b>	<b>Paid Amt:</b>	<b>\$2,614.05</b>	
							<b>Check Amount:</b>	<b>\$7,020.71</b>	
2689	FIN	67549	3697		<b>SW/WC SERVICE COOPERATIVE</b>		Check		
				E 01	005 605 000 000 316	Tech Services Purchased Coop, JUNE 2023		\$8,192.00	
				E 01	005 605 150 000 316	CYBERSECURITY, JULY 2023		\$1,250.51	
<b>PO#:</b>	<b>Voucher #:</b>	<b>95633</b>	Invoice	<b>Invoice No:</b>	72752	<b>10/4/2023</b>	<b>Paid Amt:</b>	<b>\$9,442.51</b>	
							<b>Check Amount:</b>	<b>\$9,442.51</b>	
2689	FIN	67550	10324		<b>JOSH SHELDON CONSTRUCTION LLC</b>		Check		
				E 01	005 810 000 000 350	Repair&maint Service		\$2,690.00	
<b>PO#:</b>	<b>Voucher #:</b>	<b>95634</b>	Invoice	<b>Invoice No:</b>	10/04/2023	<b>10/4/2023</b>	<b>Paid Amt:</b>	<b>\$2,690.00</b>	
							<b>Check Amount:</b>	<b>\$2,690.00</b>	
2689	FIN	67551	10325		<b>VOYA FBO PEGGY REYNOLDS</b>		Check		
				B 01	215 005	Peggy Reynolds TSA		\$1,000.04	
<b>PO#:</b>	<b>Voucher #:</b>	<b>95635</b>	Invoice	<b>Invoice No:</b>	10042023	<b>10/4/2023</b>	<b>Paid Amt:</b>	<b>\$1,000.04</b>	
							<b>Check Amount:</b>	<b>\$1,000.04</b>	
2689	FIN	67552	10326		<b>ND CHILD SUPPORT DIVISION</b>		Check		
				B 01	215 029	Child Support - Bradly Stangeland Rem ID#97		\$1,141.20	
<b>PO#:</b>	<b>Voucher #:</b>	<b>95637</b>	Invoice	<b>Invoice No:</b>	M2024040	<b>10/4/2023</b>	<b>Paid Amt:</b>	<b>\$1,141.20</b>	
							<b>Check Amount:</b>	<b>\$1,141.20</b>	
2689	FIN	67553	10327		<b>JOSH STUKEL</b>		Check		
				E 01	300 258 233 000 430	Instructional Supply		\$700.00	
<b>PO#:</b>	<b>Voucher #:</b>	<b>95639</b>	Invoice	<b>Invoice No:</b>	10/04/2023	<b>10/4/2023</b>	<b>Paid Amt:</b>	<b>\$700.00</b>	
							<b>Check Amount:</b>	<b>\$700.00</b>	
2689	FIN	67554	8791		<b>CHRISTENSEN BROADCASTING</b>		Check		
				E 01	005 020 000 000 305	Consult & Serv.fees, YEARLY PACKAGE		\$4,800.00	
<b>PO#:</b>	<b>Voucher #:</b>	<b>95651</b>	Invoice	<b>Invoice No:</b>	account 0449	<b>10/9/2023</b>	<b>Paid Amt:</b>	<b>\$4,800.00</b>	
							<b>Check Amount:</b>	<b>\$4,800.00</b>	

## Pipestone Area Schools ISD #2689 Detail Payment Register By Check

Co	Bank	Check No	Code	Rcd	Vendor	Pmt/Void Date	Pmt Type		
2689	FIN	67555	7651		<b>DOUGLAS D. GOODMUND</b>		Check		
				E 01	005 296 209 000 305	Consult & Serv.fees, VB 10/09/2023		\$125.00	
	<b>PO#:</b>	<b>Voucher #:</b>	<b>95647</b>	Invoice	<b>Invoice No:</b> 10/09/2023	<b>10/9/2023</b>	<b>Paid Amt:</b>	<b>\$125.00</b>	
							<b>Check Amount:</b>	<b>\$125.00</b>	
2689	FIN	67556	6458		<b>HUBERT COMPANY LLC</b>		Check		
				E 02	005 770 000 701 401	SEE ATTACHED		\$439.73	
	<b>PO#:</b> 18420	<b>Voucher #:</b>	<b>95654</b>	Invoice	<b>Invoice No:</b> 292922B5	<b>10/9/2023</b>	<b>Paid Amt:</b>	<b>\$439.73</b>	
				E 02	005 770 000 701 401	General Supplies		\$184.80	
	<b>PO#:</b>	<b>Voucher #:</b>	<b>95655</b>	Invoice	<b>Invoice No:</b> 168135B1	<b>10/9/2023</b>	<b>Paid Amt:</b>	<b>\$184.80</b>	
							<b>Check Amount:</b>	<b>\$624.53</b>	
2689	FIN	67557	9518		<b>INNOVATIVE OFFICE SOLUTIONS LLC</b>		Check		
				E 01	300 407 000 740 433	See attached for Cart4159689		\$806.60	
	<b>PO#:</b> 18436	<b>Voucher #:</b>	<b>95642</b>	Invoice	<b>Invoice No:</b> 4317984	<b>10/9/2023</b>	<b>Paid Amt:</b>	<b>\$806.60</b>	
							<b>Check Amount:</b>	<b>\$806.60</b>	
2689	FIN	67558	5168		<b>J. W. PEPPER &amp; SON, INC.</b>		Check		
				E 01	300 258 234 000 430	Two-Part Any Combination of Voices Go Forth		\$2.40	
	<b>PO#:</b> 18430	<b>Voucher #:</b>	<b>95645</b>	Invoice	<b>Invoice No:</b> 365563556	<b>10/9/2023</b>	<b>Paid Amt:</b>	<b>\$2.40</b>	
							<b>Check Amount:</b>	<b>\$2.40</b>	
2689	FIN	67559	10047		<b>JULIE WIENEKE</b>		Check		
				E 01	005 296 209 000 305	Consult & Serv.fees, VB 10/09/2023		\$125.00	
	<b>PO#:</b>	<b>Voucher #:</b>	<b>95648</b>	Invoice	<b>Invoice No:</b> 10/09/2023	<b>10/9/2023</b>	<b>Paid Amt:</b>	<b>\$125.00</b>	
							<b>Check Amount:</b>	<b>\$125.00</b>	
2689	FIN	67560	5403		<b>LEARNING RESOURCES</b>		Check		
				E 01	103 201 171 000 430	LER6798 Mini Number Treats		\$19.99	
	<b>PO#:</b> 18289	<b>Voucher #:</b>	<b>95643</b>	Invoice	<b>Invoice No:</b> 001063618	<b>10/9/2023</b>	<b>Paid Amt:</b>	<b>\$19.99</b>	
							<b>Check Amount:</b>	<b>\$19.99</b>	
2689	FIN	67561	01622		<b>PEPSI-COLA BOTTLING CO.</b>		Check		
				E 01	300 211 180 000 401	General Supplies		\$32.00	
	<b>PO#:</b>	<b>Voucher #:</b>	<b>95641</b>	Invoice	<b>Invoice No:</b> 1505434	<b>10/9/2023</b>	<b>Paid Amt:</b>	<b>\$32.00</b>	
							<b>Check Amount:</b>	<b>\$32.00</b>	
2689	FIN	67562	8989		<b>ROBERTA L GOODMUND</b>		Check		
				E 01	005 296 209 000 305	Consult & Serv.fees, VB 10/09/2023		\$125.00	
	<b>PO#:</b>	<b>Voucher #:</b>	<b>95650</b>	Invoice	<b>Invoice No:</b> 10/09/2023	<b>10/9/2023</b>	<b>Paid Amt:</b>	<b>\$125.00</b>	
							<b>Check Amount:</b>	<b>\$125.00</b>	
2689	FIN	67563	10017		<b>SCHOOL SPECIALTY LLC</b>		Check		
				E 01	103 203 171 000 430	2100584 Dry Erase Eraser, magnetic		\$11.70	
				E 01	103 203 171 000 430	084887 2-Pocket Folders - Blue		\$0.14	
				E 01	103 203 171 000 430	201234 Prang Medium Weight Construction P.		\$16.56	

## Pipestone Area Schools ISD #2689 Detail Payment Register By Check

Co	Bank	Check No	Code	Rcd	Vendor	Pmt/Void Date	Pmt Type		
2689	FIN	67563	10017		<b>SCHOOL SPECIALTY LLC</b>		Check		
				E 01	103 203 171 000 430	1506456 Prang Medium Weight Construction I		\$36.00	
				E 01	103 203 171 000 430	1506461 Prang Medium Weight Construction I		\$20.72	
				E 01	103 203 171 000 430	1506484 Prang Medium Weight Construction I		\$20.55	
				E 01	103 203 171 000 430	299528 Prang Medium Weight Construction P.		\$9.60	
	<b>PO#:</b> 18406	<b>Voucher #:</b> 95646		Invoice	<b>Invoice No:</b> 308104386225	<b>10/9/2023</b>	<b>Paid Amt:</b>	<b>\$115.27</b>	
							<b>Check Amount:</b>	<b>\$115.27</b>	
2689	FIN	67564	8986		<b>SEACHANGE PRINTING &amp; MARKETING SERVICES LLC</b>		Check		
				E 01	005 010 000 000 401	General Supplies		\$111.39	
	<b>PO#:</b>	<b>Voucher #:</b> 95652		Invoice	<b>Invoice No:</b> 020365	<b>10/9/2023</b>	<b>Paid Amt:</b>	<b>\$111.39</b>	
				E 01	005 010 000 000 401	General Supplies		\$421.75	
	<b>PO#:</b>	<b>Voucher #:</b> 95653		Invoice	<b>Invoice No:</b> 42638	<b>10/9/2023</b>	<b>Paid Amt:</b>	<b>\$421.75</b>	
							<b>Check Amount:</b>	<b>\$533.14</b>	
2689	FIN	67565	10211		<b>SOUTHWEST GLASS CENTER INC</b>		Check		
				E 01	005 810 000 000 350	Repair&maint Service		\$485.50	
	<b>PO#:</b>	<b>Voucher #:</b> 95644		Invoice	<b>Invoice No:</b> 110030	<b>10/9/2023</b>	<b>Paid Amt:</b>	<b>\$485.50</b>	
							<b>Check Amount:</b>	<b>\$485.50</b>	
2689	FIN	67566	00636		<b>STAN HOUSTON EQUIP. CO. INC.</b>		Check		
				E 01	300 361 173 000 430	Briggs Short Brim White Vented Hard Hat		\$131.88	
	<b>PO#:</b> 18435	<b>Voucher #:</b> 95640		Invoice	<b>Invoice No:</b> 2338063	<b>10/9/2023</b>	<b>Paid Amt:</b>	<b>\$131.88</b>	
							<b>Check Amount:</b>	<b>\$131.88</b>	
2689	FIN	67567	9182		<b>THERESA LYNN ENGELKES</b>		Check		
				E 01	005 296 209 000 305	Consult & Serv.fees, VB 10/09/2023		\$125.00	
	<b>PO#:</b>	<b>Voucher #:</b> 95649		Invoice	<b>Invoice No:</b> 10/09/2023	<b>10/9/2023</b>	<b>Paid Amt:</b>	<b>\$125.00</b>	
							<b>Check Amount:</b>	<b>\$125.00</b>	
2689	FIN	67568	8986		<b>SEACHANGE PRINTING &amp; MARKETING SERVICES LLC</b>		Check		
				E 01	005 010 000 000 401	General Supplies		\$64.90	
	<b>PO#:</b>	<b>Voucher #:</b> 95656		Invoice	<b>Invoice No:</b> 020557	<b>10/9/2023</b>	<b>Paid Amt:</b>	<b>\$64.90</b>	
							<b>Check Amount:</b>	<b>\$64.90</b>	
2689	FIN	67569	3720		<b>LOIS WENTZEL</b>		Check		
				E 01	300 211 172 000 350	Repair&maint Service		\$25.00	
	<b>PO#:</b>	<b>Voucher #:</b> 95660		Invoice	<b>Invoice No:</b> 10/09/2023	<b>10/9/2023</b>	<b>Paid Amt:</b>	<b>\$25.00</b>	
							<b>Check Amount:</b>	<b>\$25.00</b>	
2689	FIN	67570	9556		<b>PIPESTONE FLORAL</b>		Check		
				E 01	300 301 501 830 433	Individualized Mat.		\$252.00	
	<b>PO#:</b>	<b>Voucher #:</b> 95659		Invoice	<b>Invoice No:</b> 1000018879	<b>10/9/2023</b>	<b>Paid Amt:</b>	<b>\$252.00</b>	
							<b>Check Amount:</b>	<b>\$252.00</b>	

## Pipestone Area Schools ISD #2689 Detail Payment Register By Check

Co	Bank	Check No	Code	Rcd	Vendor	Pmt/Void Date	Pmt Type		
2689	FIN	67571	00300	00300	PIPESTONE PUBLISHING CO INC		Check		
				E 01	005 010 000 000 305	Consult & Serv.fees SEPT. 2023		\$852.67	
	<b>PO#:</b>	<b>Voucher #:</b>	<b>95661</b>	Invoice	<b>Invoice No:</b> 10/09/2023			<b>Paid Amt:</b>	<b>\$852.67</b>
								<b>Check Amount:</b>	<b>\$852.67</b>
2689	FIN	67572	3697		SW/WC SERVICE COOPERATIVE		Check		
				E 01	300 050 172 000 465	SEE ATTACHED		\$2,806.30	
	<b>PO#:</b> 18409	<b>Voucher #:</b>	<b>95657</b>	Invoice	<b>Invoice No:</b> 73434			<b>Paid Amt:</b>	<b>\$2,806.30</b>
				E 02	005 770 000 701 401	DELL QUOTE # 3000152097046.1		\$1,747.90	
	<b>PO#:</b> 18149	<b>Voucher #:</b>	<b>95658</b>	Invoice	<b>Invoice No:</b> 73743			<b>Paid Amt:</b>	<b>\$1,747.90</b>
								<b>Check Amount:</b>	<b>\$4,554.20</b>
2689	FIN	67573	9721		SUMMIT FIRE PROTECTION CO		Check		
				E 01	103 865 000 363 350	Repair&maint Service		\$171.00	
	<b>PO#:</b>	<b>Voucher #:</b>	<b>95667</b>	Invoice	<b>Invoice No:</b> 143011942			<b>Paid Amt:</b>	<b>\$171.00</b>
				E 01	300 865 000 363 350	Repair&maint Service		\$1,907.50	
	<b>PO#:</b>	<b>Voucher #:</b>	<b>95668</b>	Invoice	<b>Invoice No:</b> 143011970			<b>Paid Amt:</b>	<b>\$1,907.50</b>
								<b>Check Amount:</b>	<b>\$2,078.50</b>
2689	FIN	67574	00469		ISD 0414, MINNEOTA		Check		
				E 01	300 294 210 000 369	Entry Fees/Student Travel		\$125.00	
	<b>PO#:</b>	<b>Voucher #:</b>	<b>95673</b>	Invoice	<b>Invoice No:</b> 10/11/2023			<b>Paid Amt:</b>	<b>\$125.00</b>
								<b>Check Amount:</b>	<b>\$125.00</b>
2689	FIN	67575	9807		BIOAG ENERGY SERVICES		Check		
				E 01	005 810 000 000 401	General Supplies		\$925.34	
	<b>PO#:</b>	<b>Voucher #:</b>	<b>95677</b>	Invoice	<b>Invoice No:</b> 699470886			<b>Paid Amt:</b>	<b>\$925.34</b>
								<b>Check Amount:</b>	<b>\$925.34</b>
2689	FIN	67576	5949		CDW GOVERNMENT, INC.		Check		
				E 01	005 605 150 000 455	NonInstructional Tech Supplies		\$27.98	
	<b>PO#:</b>	<b>Voucher #:</b>	<b>95682</b>	Invoice	<b>Invoice No:</b> MJ09882			<b>Paid Amt:</b>	<b>\$27.98</b>
								<b>Check Amount:</b>	<b>\$27.98</b>
2689	FIN	67577	9704		DAHL MOTORS, LLC		Check		
				E 01	005 810 000 000 350	Repair&maint Service		\$152.71	
	<b>PO#:</b>	<b>Voucher #:</b>	<b>95674</b>	Invoice	<b>Invoice No:</b> 294639			<b>Paid Amt:</b>	<b>\$152.71</b>
								<b>Check Amount:</b>	<b>\$152.71</b>
2689	FIN	67578	00256		HILLYARD INC/ SIOUX FALLS		Check		
				E 01	005 810 000 000 401	General Supplies		\$658.24	
	<b>PO#:</b>	<b>Voucher #:</b>	<b>95678</b>	Invoice	<b>Invoice No:</b> 605183861			<b>Paid Amt:</b>	<b>\$658.24</b>
				E 01	005 810 000 000 401	General Supplies		\$1,987.88	
	<b>PO#:</b>	<b>Voucher #:</b>	<b>95679</b>	Invoice	<b>Invoice No:</b> 905197713			<b>Paid Amt:</b>	<b>\$1,987.88</b>

## Pipestone Area Schools ISD #2689

### Detail Payment Register By Check

Co	Bank	Check No	Code	Rcd	Vendor	Pmt/Void Date	Pmt Type		
2689	FIN	67578	00256		<b>HILLYARD INC/ SIOUX FALLS</b>		Check		
				E 01	005 810 000 000 401	General Supplies		\$280.50	
<b>PO#:</b>	<b>Voucher #:</b>	<b>95680</b>	Invoice	<b>Invoice No:</b>	700558976	<b>10/11/2023</b>	<b>Paid Amt:</b>	<b>\$280.50</b>	
				E 01	005 810 000 000 401	General Supplies		\$421.08	
<b>PO#:</b>	<b>Voucher #:</b>	<b>95681</b>	Invoice	<b>Invoice No:</b>	700558975	<b>10/11/2023</b>	<b>Paid Amt:</b>	<b>\$421.08</b>	
							<b>Check Amount:</b>	<b>\$3,347.70</b>	
2689	FIN	67579	5505		<b>MARK'S GENERAL MACHINE</b>		Check		
				E 01	005 810 000 000 350	Repair&maint Service		\$120.00	
<b>PO#:</b>	<b>Voucher #:</b>	<b>95675</b>	Invoice	<b>Invoice No:</b>	87610	<b>10/11/2023</b>	<b>Paid Amt:</b>	<b>\$120.00</b>	
							<b>Check Amount:</b>	<b>\$120.00</b>	
2689	FIN	67580	00890	00890	<b>STOUT &amp; EVINK</b>		Check		
				E 01	005 810 000 000 401	General Supplies		\$70.79	
<b>PO#:</b>	<b>Voucher #:</b>	<b>95676</b>	Invoice	<b>Invoice No:</b>	98034	<b>10/11/2023</b>	<b>Paid Amt:</b>	<b>\$70.79</b>	
							<b>Check Amount:</b>	<b>\$70.79</b>	
2689	FIN	67581	6885		<b>Pipestone Area School, HS Actv</b>		Check		
				B 04	101 000	Cash (WRONG BANK ACCOUNT)		\$394.00	
<b>PO#:</b>	<b>Voucher #:</b>	<b>95683</b>	Invoice	<b>Invoice No:</b>	10/12/2023	<b>10/12/2023</b>	<b>Paid Amt:</b>	<b>\$394.00</b>	
							<b>Check Amount:</b>	<b>\$394.00</b>	
2689	FIN	67582	10232		<b>AMAZON CAPITAL SERVICES</b>		Check		
				E 01	300 258 234 000 430	Instructional Supply		\$135.89	
				E 01	300 296 207 000 430	Instructional Supply		\$942.52	
				E 01	005 020 000 000 401	General Supplies		\$139.98	
				E 01	300 410 000 740 433	Individualized Mat.		\$155.62	
				E 04	005 580 000 325 430	Instructional Supply		\$9.79	
				E 01	300 240 172 000 430	Instructional Supply		\$47.96	
				E 01	103 203 171 000 430	Instructional Supply		\$9.99	
				E 01	300 296 205 000 430	Instructional Supply		\$53.97	
				E 01	300 640 172 316 401	General Supplies		\$65.06	
				E 01	300 408 000 740 433	Individualized Mat.		\$29.99	
				E 01	103 203 173 000 430	Instructional Supply		\$56.14	
<b>PO#:</b>	<b>Voucher #:</b>	<b>95685</b>	Invoice	<b>Invoice No:</b>	10/12/2023	<b>10/12/2023</b>	<b>Paid Amt:</b>	<b>\$1,646.91</b>	
							<b>Check Amount:</b>	<b>\$1,646.91</b>	
2689	FIN	67583	3697		<b>SW/WC SERVICE COOPERATIVE</b>		Check		
				E 01	103 412 000 740 396	Special Ed Purchased From Dist, SUMMER E		\$1,439.00	
				E 01	103 412 000 740 397	Special Ed Purchased From Dist, SUMMER E		\$489.26	
				E 01	103 412 000 740 366	Travel, ECSE		\$195.80	
				E 01	103 412 000 740 396	Special Ed Purchased From Dist, SUMMER E		\$2,628.26	
				E 01	103 412 000 740 397	Special Ed Purchased From Dist, SUMMER E		\$893.61	

## Pipestone Area Schools ISD #2689 Detail Payment Register By Check

Co	Bank	Check No	Code	Rcd	Vendor	Pmt/Void Date	Pmt Type
2689	FIN	67583	3697		<b>SW/WC SERVICE COOPERATIVE</b>		<b>Check</b>
				E 01	103 412 000 740 366	Travel, SUMMER ECSE	\$357.61
				E 01	005 404 000 740 396	Special Ed Purchased From Dist, SUMMER O	\$973.35
				E 01	005 404 000 740 397	Special Ed Purchased From Dist, SUMMER O	\$330.94
				E 01	005 404 000 740 366	Special Ed Purchased From Dist, SUMMER O	\$175.21
				E 01	005 404 000 740 396	Special Ed Purchased From Dist, SUMMER O	\$1,186.84
				E 01	005 404 000 740 397	Special Ed Purchased From Dist, SUMMER O	\$403.53
				E 01	005 404 000 740 366	Special Ed Purchased From Dist, SUMMER O	\$213.63
				E 01	005 401 000 740 396	Special Ed Purchased From Dist, SUMMER S	\$2,896.83
				E 01	005 401 000 740 397	Special Ed Purchased From Dist, SUMMER S	\$984.82
				E 01	005 401 000 740 366	Travel, SUMMER SPEECH	\$183.66
				E 01	005 405 000 740 396	Special Ed Purchased From Dist, SUMMER T	\$55.11
				E 01	005 405 000 740 397	Special Ed Purchased From Dist, SUMMER T	\$18.74
				E 01	005 405 000 740 366	Special Ed Purchased From Dist, SUMMER T	\$6.96
<b>PO#:</b>	<b>Voucher #:</b>	<b>95687</b>	Invoice	<b>Invoice No:</b>	73706	<b>10/12/2023</b>	<b>Paid Amt: \$13,433.16</b>
							<b>Check Amount: \$13,433.16</b>
2689	FIN	67584	5983		<b>SIOUX VALLEY ENERGY</b>		<b>Check</b>
				E 01	300 810 184 000 330	Utilities - Electricity SEPT. 2023	\$22,083.00
<b>PO#:</b>	<b>Voucher #:</b>	<b>95688</b>	Invoice	<b>Invoice No:</b>	7058684000	<b>10/13/2023</b>	<b>Paid Amt: \$22,083.00</b>
				E 01	300 810 184 000 330	Utilities - Electricity FLASHING LIGHT SEPT. 2	\$78.00
<b>PO#:</b>	<b>Voucher #:</b>	<b>95689</b>	Invoice	<b>Invoice No:</b>	7058684200	<b>10/13/2023</b>	<b>Paid Amt: \$78.00</b>
							<b>Check Amount: \$22,161.00</b>
2689	FIN	67585	3811		<b>MN WEST-CANBY CAMPUS</b>		<b>Check</b>
				E 01	300 211 966 000 394	PSEO, FALL 2023	\$35,379.15
<b>PO#:</b>	<b>Voucher #:</b>	<b>95692</b>	Invoice	<b>Invoice No:</b>	00272030	<b>10/13/2023</b>	<b>Paid Amt: \$35,379.15</b>
							<b>Check Amount: \$35,379.15</b>
2689	FIN	67586	3697		<b>SW/WC SERVICE COOPERATIVE</b>		<b>Check</b>
				E 01	005 605 000 000 316	Tech Services Purchased Coop. AUG 2023	\$8,730.00
				E 01	005 605 150 000 316	CYBERSECURITY, AUG 2023	\$1,263.40
				E 01	005 605 150 000 316	Data Processing Svcs. SMART SERVER INS`	\$483.00
<b>PO#:</b>	<b>Voucher #:</b>	<b>95691</b>	Invoice	<b>Invoice No:</b>	73537	<b>10/13/2023</b>	<b>Paid Amt: \$10,476.40</b>
							<b>Check Amount: \$10,476.40</b>
2689	FIN	67587	7882		<b>C &amp; B OPERATIONS LLC</b>		<b>Check</b>
				E 01	005 810 000 000 401	General Supplies	\$445.42
<b>PO#:</b>	<b>Voucher #:</b>	<b>95696</b>	Invoice	<b>Invoice No:</b>	12319665	<b>10/16/2023</b>	<b>Paid Amt: \$445.42</b>
							<b>Check Amount: \$445.42</b>

## Pipestone Area Schools ISD #2689 Detail Payment Register By Check

Co	Bank	Check No	Code	Rcd	Vendor	Pmt/Void Date	Pmt Type		
2689	FIN	67588	5949		<b>CDW GOVERNMENT, INC.</b>		Check		
				E 01	005 605 150 000 455	NonInstructional Tech Supplies		\$31.87	
<b>PO#:</b>	<b>Voucher #:</b>	<b>95703</b>	Invoice		<b>Invoice No:</b> MB73862	<b>10/16/2023</b>	<b>Paid Amt:</b>	<b>\$31.87</b>	
				E 01	005 605 150 000 455	NonInstructional Tech Supplies		\$5.08	
<b>PO#:</b>	<b>Voucher #:</b>	<b>95705</b>	Invoice		<b>Invoice No:</b> LZ83433	<b>10/16/2023</b>	<b>Paid Amt:</b>	<b>\$5.08</b>	
							<b>Check Amount:</b>	<b>\$36.95</b>	
2689	FIN	67589	6458		<b>HUBERT COMPANY LLC</b>		Check		
				E 02	005 770 000 701 401	SEE ATTACHED		\$119.00	
<b>PO#:</b> 18444	<b>Voucher #:</b>	<b>95695</b>	Invoice		<b>Invoice No:</b> 327454	<b>10/16/2023</b>	<b>Paid Amt:</b>	<b>\$119.00</b>	
							<b>Check Amount:</b>	<b>\$119.00</b>	
2689	FIN	67590	9518		<b>INNOVATIVE OFFICE SOLUTIONS LLC</b>		Check		
				E 01	300 407 000 740 433	See attached for cart 4158866		\$235.91	
<b>PO#:</b> 18439	<b>Voucher #:</b>	<b>95697</b>	Invoice		<b>Invoice No:</b> 4318105	<b>10/16/2023</b>	<b>Paid Amt:</b>	<b>\$235.91</b>	
				E 01	300 407 000 740 433	See attached for Cart 4168953		\$350.92	
<b>PO#:</b> 18441	<b>Voucher #:</b>	<b>95700</b>	Invoice		<b>Invoice No:</b> 4320953	<b>10/16/2023</b>	<b>Paid Amt:</b>	<b>\$350.92</b>	
				E 01	300 407 000 740 433	Individualized Mat.		\$45.89	
<b>PO#:</b>	<b>Voucher #:</b>	<b>95701</b>	Invoice		<b>Invoice No:</b> 4323718	<b>10/16/2023</b>	<b>Paid Amt:</b>	<b>\$45.89</b>	
							<b>Check Amount:</b>	<b>\$632.72</b>	
2689	FIN	67591	8073		<b>INTERSTATE BATTERY CENTER</b>		Check		
				E 01	005 605 150 000 455	NonInstructional Tech Supplies		\$48.20	
<b>PO#:</b>	<b>Voucher #:</b>	<b>95702</b>	Invoice		<b>Invoice No:</b> 1912903029127	<b>10/16/2023</b>	<b>Paid Amt:</b>	<b>\$48.20</b>	
							<b>Check Amount:</b>	<b>\$48.20</b>	
2689	FIN	67592	5976		<b>IS RESTAURANT EQUIPMENT SERVICES LLC</b>		Check		
				E 02	005 770 000 701 350	Repair&maint Service		\$526.60	
<b>PO#:</b>	<b>Voucher #:</b>	<b>95710</b>	Invoice		<b>Invoice No:</b> AR15493	<b>10/16/2023</b>	<b>Paid Amt:</b>	<b>\$526.60</b>	
				E 02	005 770 000 701 350	Repair&maint Service		\$2,520.51	
<b>PO#:</b>	<b>Voucher #:</b>	<b>95693</b>	Invoice		<b>Invoice No:</b> AR15492	<b>10/16/2023</b>	<b>Paid Amt:</b>	<b>\$2,520.51</b>	
				E 02	005 770 000 701 350	Repair&maint Service		\$232.16	
<b>PO#:</b>	<b>Voucher #:</b>	<b>95694</b>	Invoice		<b>Invoice No:</b> AR15494	<b>10/16/2023</b>	<b>Paid Amt:</b>	<b>\$232.16</b>	
							<b>Check Amount:</b>	<b>\$3,279.27</b>	
2689	FIN	67593	9992		<b>IT OUTLET</b>		Check		
				E 01	005 605 150 000 455	NonInstructional Tech Supplies		\$91.29	
<b>PO#:</b>	<b>Voucher #:</b>	<b>95704</b>	Invoice		<b>Invoice No:</b> 74210	<b>10/16/2023</b>	<b>Paid Amt:</b>	<b>\$91.29</b>	
							<b>Check Amount:</b>	<b>\$91.29</b>	
2689	FIN	67594	10302		<b>MACKIN EDUCATIONAL RESOURCES</b>		Check		
				E 01	300 260 173 302 460	Apollo 1: The Tragedy That Put Us On The M		\$29.09	
				E 01	300 260 173 302 460	Apollo 8: The Thrilling Story of the First Missic		\$4.68	
				E 01	300 260 173 302 460	Falling to Earth: An Apollo 15 Astronaut's Jour		\$17.41	

## Pipestone Area Schools ISD #2689

### Detail Payment Register By Check

Co	Bank	Check No	Code	Rcd	Vendor	Pmt/Void Date	Pmt Type	
2689	FIN	67594	10302		<b>MACKIN EDUCATIONAL RESOURCES</b>		Check	
				E 01	300 260 173 302 460	First Man: The Life of Neil A. Armstrong ISBN		\$17.46
				E 01	300 260 173 302 460	Hidden Figures: The American Dream and The		\$25.84
				E 01	300 260 173 302 460	Leap of Faith: An Astronaut's Journey Into the		\$24.25
				E 01	300 260 173 302 460	The Light of Earth: Reflections On a Life In Sp		\$35.24
				E 01	300 260 173 302 460	Light This Candle: The Life and Times of Alan		\$26.19
				E 01	300 260 173 302 460	Moonbound: Apollo II and The Dream of Spacr		\$27.15
				E 01	300 260 173 302 460	Never Panic Early: An Apollo 13 Astronauts Jo		\$29.05
				E 01	300 260 173 302 460	The Ordinary Spaceman: From Boyhood Drea		\$29.35
				E 01	300 260 173 302 460	El Primer Hombre. La Vida De Neil A. Armstro		\$19.35
				E 01	300 260 173 302 460	Reaching For The Moon: The AutoBiography C		\$15.55
				E 01	300 260 173 302 460	Resistencia: Un Ano En El Espacio Spa ISBN		\$16.44
				E 01	300 260 173 302 460	The Sky Below ISBN 9781503936690		\$14.95
	<b>PO#:</b> 18398	<b>Voucher #:</b>	<b>95698</b>	Invoice	<b>Invoice No:</b> CUST. # 827644	<b>10/16/2023</b>	<b>Paid Amt:</b>	<b>\$332.00</b>
							<b>Check Amount:</b>	<b>\$332.00</b>
2689	FIN	67595	5602		<b>Mid States Audio Inc</b>		Check	
				E 01	005 605 150 000 455	NonInstructional Tech Supplies		\$223.44
	<b>PO#:</b>	<b>Voucher #:</b>	<b>95708</b>	Invoice	<b>Invoice No:</b> 33112	<b>10/16/2023</b>	<b>Paid Amt:</b>	<b>\$223.44</b>
							<b>Check Amount:</b>	<b>\$223.44</b>
2689	FIN	67596	00550		<b>MIDLAND TIRE LLC</b>		Check	
				E 01	005 810 000 000 350	Repair&maint Service		\$26.00
	<b>PO#:</b>	<b>Voucher #:</b>	<b>95707</b>	Invoice	<b>Invoice No:</b> 99704	<b>10/16/2023</b>	<b>Paid Amt:</b>	<b>\$26.00</b>
							<b>Check Amount:</b>	<b>\$26.00</b>
2689	FIN	67597	00550	1099	<b>MIDLAND TIRE LLC</b>		Check	
				E 01	005 810 000 000 350	Repair&maint Service		\$26.00
	<b>PO#:</b>	<b>Voucher #:</b>	<b>95706</b>	Invoice	<b>Invoice No:</b> 99735	<b>10/16/2023</b>	<b>Paid Amt:</b>	<b>\$26.00</b>
							<b>Check Amount:</b>	<b>\$26.00</b>
2689	FIN	67598	9186		<b>TAHER, INC.- BIN# 135092</b>		Check	
				E 02	005 770 000 701 305	Consult & Serv.fees, SEPT. 2023		\$88,954.04
	<b>PO#:</b>	<b>Voucher #:</b>	<b>95709</b>	Invoice	<b>Invoice No:</b> 0066539	<b>10/16/2023</b>	<b>Paid Amt:</b>	<b>\$88,954.04</b>
							<b>Check Amount:</b>	<b>\$88,954.04</b>
2689	FIN	67599	6743		<b>TITAN MACHINERY</b>		Check	
				E 01	005 810 000 000 350	Repair&maint Service		\$2,224.19
	<b>PO#:</b>	<b>Voucher #:</b>	<b>95699</b>	Invoice	<b>Invoice No:</b> SO0023905-1	<b>10/16/2023</b>	<b>Paid Amt:</b>	<b>\$2,224.19</b>
							<b>Check Amount:</b>	<b>\$2,224.19</b>
							<b>Report Total:</b>	<b>\$562,349.89</b>

## Pipestone Area Schools ISD #2689

### Detail Payment Register By Check

Co	Bank	Check No	Code	Rcd	Vendor				Pmt/Void Date	Pmt Type
2689	HS	52306	5249		VISA					Check
				E 21	005 298 924 301 401	Football Club				\$544.00
				E 21	005 298 924 301 401	Football Club				\$360.00
				E 21	005 298 932 301 401	Journalism				\$3,672.80
				E 21	005 298 924 301 401	Football Club				\$384.95
<b>PO#:</b>		<b>Voucher #:</b>	<b>95513</b>	Invoice	<b>Invoice No:</b>	0671			<b>9/19/2023</b>	<b>Paid Amt: \$4,961.75</b>
										<b>Check Amount: \$4,961.75</b>
2689	HS	52307	5249		VISA					Check
				E 21	005 298 955 301 401	Fall Concessions				\$26.21
				E 21	005 298 955 301 401	Fall Concessions				\$24.25
<b>PO#:</b>		<b>Voucher #:</b>	<b>95514</b>	Invoice	<b>Invoice No:</b>	9897			<b>9/20/2023</b>	<b>Paid Amt: \$50.46</b>
										<b>Check Amount: \$50.46</b>
2689	HS	52308	5249		VISA					Check
				E 21	005 298 922 301 401	FFA				\$36.00
				E 21	005 298 922 301 401	FFA				\$38.23
<b>PO#:</b>		<b>Voucher #:</b>	<b>95562</b>	Invoice	<b>Invoice No:</b>	9897			<b>9/26/2023</b>	<b>Paid Amt: \$74.23</b>
										<b>Check Amount: \$74.23</b>
2689	HS	52309	9373		J & S LOGOS					Check
				E 21	005 298 924 301 401	Football Club				\$1,940.00
<b>PO#:</b>		<b>Voucher #:</b>	<b>95636</b>	Invoice	<b>Invoice No:</b>	10/04/2023			<b>10/4/2023</b>	<b>Paid Amt: \$1,940.00</b>
										<b>Check Amount: \$1,940.00</b>
2689	HS	52310	3693		HEALY AWARDS, INC					Check
				E 21	005 298 924 301 401	Football Club				\$623.42
<b>PO#:</b>		<b>Voucher #:</b>	<b>95638</b>	Invoice	<b>Invoice No:</b>	082253			<b>10/4/2023</b>	<b>Paid Amt: \$623.42</b>
										<b>Check Amount: \$623.42</b>
2689	HS	52312	01622		PEPSI-COLA BOTTLING CO.					Check
				E 21	005 298 955 301 401	Fall Concessions				\$640.00
				E 21	005 298 955 301 401	Fall Concessions				\$672.00
<b>PO#:</b>		<b>Voucher #:</b>	<b>95662</b>	Invoice	<b>Invoice No:</b>	1505521, 2016664			<b>10/10/2023</b>	<b>Paid Amt: \$1,312.00</b>
										<b>Check Amount: \$1,312.00</b>
2689	HS	52313	00425		SOJOS SPORTSWEAR					Check
				E 21	005 298 927 301 401	Girls Tennis				\$620.00
<b>PO#:</b>		<b>Voucher #:</b>	<b>95664</b>	Invoice	<b>Invoice No:</b>	225966			<b>10/10/2023</b>	<b>Paid Amt: \$620.00</b>
										<b>Check Amount: \$620.00</b>
2689	HS	52314	7415		ANDERSON SCHOOL EVENTS					Check
				E 21	005 298 958 301 401	Homecoming				\$129.12
<b>PO#:</b>		<b>Voucher #:</b>	<b>95663</b>	Invoice	<b>Invoice No:</b>	2298767			<b>10/10/2023</b>	<b>Paid Amt: \$129.12</b>
										<b>Check Amount: \$129.12</b>

## Pipestone Area Schools ISD #2689 Detail Payment Register By Check

Co	Bank	Check No	Code	Rcd	Vendor	Pmt/Void Date	Pmt Type		
2689	HS	52315	9554		<b>PIPESTONE FLORAL LLC</b>		Check		
				E 21	005 298 946 301 401 Volleyball			\$170.00	
	<b>PO#:</b>	<b>Voucher #:</b>	<b>95672</b>	Invoice	<b>Invoice No:</b> 1000019009	<b>10/11/2023</b>		<b>Paid Amt:</b>	<b>\$170.00</b>
								<b>Check Amount:</b>	<b>\$170.00</b>
2689	HS	52316	7980		<b>PRINT EXPRESS</b>		Check		
				E 21	005 298 946 301 401 Volleyball			\$820.00	
	<b>PO#:</b>	<b>Voucher #:</b>	<b>95670</b>	Invoice	<b>Invoice No:</b> QUOTE 1032935	<b>10/11/2023</b>		<b>Paid Amt:</b>	<b>\$820.00</b>
								<b>Check Amount:</b>	<b>\$820.00</b>
2689	HS	52317	6925		<b>PUSH PEDAL PULL</b>		Check		
				E 21	005 298 948 301 401 Wrestling Club			\$696.00	
	<b>PO#:</b>	<b>Voucher #:</b>	<b>95669</b>	Invoice	<b>Invoice No:</b> QUOTE 97489	<b>10/11/2023</b>		<b>Paid Amt:</b>	<b>\$696.00</b>
								<b>Check Amount:</b>	<b>\$696.00</b>
2689	HS	52318	00425		<b>SOJOS SPORTSWEAR</b>		Check		
				E 21	005 298 946 301 401 Volleyball			\$5,329.00	
	<b>PO#:</b>	<b>Voucher #:</b>	<b>95671</b>	Invoice	<b>Invoice No:</b> 10/11/2026	<b>10/11/2023</b>		<b>Paid Amt:</b>	<b>\$5,329.00</b>
								<b>Check Amount:</b>	<b>\$5,329.00</b>
2689	HS	52319	9990		<b>GREGORY ALLAN SPAETHE</b>		Check		
				E 21	005 298 930 301 401 HS Student Council, HS Student Council, DJ F			\$395.00	
	<b>PO#:</b>	<b>Voucher #:</b>	<b>95684</b>	Invoice	<b>Invoice No:</b> 10/12/2023	<b>10/12/2023</b>		<b>Paid Amt:</b>	<b>\$395.00</b>
								<b>Check Amount:</b>	<b>\$395.00</b>
2689	HS	52320	10232		<b>AMAZON CAPITAL SERVICES</b>		Check		
				E 21	005 298 958 301 401 Homecoming SUPPLIES			\$210.86	
	<b>PO#:</b>	<b>Voucher #:</b>	<b>95686</b>	Invoice	<b>Invoice No:</b> 10/12/2023	<b>10/12/2023</b>		<b>Paid Amt:</b>	<b>\$210.86</b>
								<b>Check Amount:</b>	<b>\$210.86</b>
2689	HS	52321	10330		<b>MICHAEL SLABA</b>		Check		
				E 21	005 298 930 301 401 HS Student Council, (HOMECOMING SUPPL			\$28.00	
	<b>PO#:</b>	<b>Voucher #:</b>	<b>95690</b>	Invoice	<b>Invoice No:</b> 10/13/2023	<b>10/13/2023</b>		<b>Paid Amt:</b>	<b>\$28.00</b>
								<b>Check Amount:</b>	<b>\$28.00</b>
								<b>Report Total:</b>	<b>\$17,359.84</b>

INDEPENDENT SCHOOL DISTRICT NO. 2689							
PIPESTONE AREA SCHOOLS							
MNTRUST 2023A BONDS							
FOR THE MONTH ENDED SEPTEMBER 30, 2023							
FUNDS	FUND NUMBER	CASH BALANCE			CASH BALANCE		CASH BALANCE
		BEGINNING OF MONTH	NET CASH ACTIVITY	END OF MONTH	ADJUSTMENTS	END OF MONTH FY2024	
MNTRUST 2023A BONDS	06	\$53,761.78	\$2,834,276.43		\$2,888,038.21		\$2,888,038.21
TOTAL		\$53,761.78	\$2,834,276.43		\$2,888,038.21	\$0.00	\$2,888,038.21
RECONCILEMENT OF TREASURE'S BALANCE WITH BANKS							
DESCRIPTION	ACCOUNT NUMBER	CURRENT RATE OF INTEREST	BALANCE		OUTSTANDING DEPOSITS	OTHER RECONCILING ITEMS	BALANCE PER TREASURER'S BOOKS
			PER BANK STATEMENT	OUTSTANDING CHECKS			
MNTRUST		5.22%	\$2,888,038.21	\$0.00	\$0.00	\$0.00	\$2,888,038.21
MNTRUST TERM SERIES		1.95%	\$0.00	\$0.00	\$0.00	\$0.00	\$0.00
SECURITY(BONDS OR TREASURY NOTES)		Various	\$0.00	\$0.00	\$0.00	\$0.00	\$0.00
CERTIFICATES OF DEPOSIT		Various	\$0.00	\$0.00	\$0.00	\$0.00	\$0.00
TOTAL			\$2,888,038.21	\$0.00	\$0.00	\$0.00	\$2,888,038.21
					Signed	Jacque Kennedy	

Enrollment		ECSE	K	1	2	3	4	5	6	7	8	9	10	11	12	Colony	Total	School Readiness
<b>August</b>	2016-2017	20	97	78	89	82	82	99	82	93	80	81	105	57	83	19	1147	<b>45</b>
	2017-2018	26	101	91	75	86	82	86	103	84	87	91	73	104	56	17	1162	
	2018-2019	30	105	76	90	71	85	79	86	103	81	85	95	69	96	18	1169	<b>90</b>
	2019-2020	22	109	87	74	86	73	80	83	80	105	83	89	78	73	15	1137	<b>73</b>
	2020-2021	25	86	79	79	69	84	73	78	81	79	108	86	80	83	14	1104	<b>67</b>
	2021-2022	23	101	78	81	82	71	86	73	77	79	79	112	74	72	12	1100	<b>68</b>
	2022-2023	21	107	81	80	86	75	68	86	72	74	82	83	103	76	12	1106	<b>80</b>
	2023-2024	24	99	73	80	83	83	81	73	91	73	78	84	83	95	12	1112	<b>96</b>
<b>September</b>	2004-2005	18	80	78	81	85	80	85	100	106	92	93	108	95	95	27	1243	
	2005-2006	16	69	70	71	84	86	80	95	94	105	103	90	112	90	28	1211	33
	2006-2007	19	96	61	77	77	85	83	81	100	93	111	86	91	106	25	1191	32
	2007-2008	37	82	92	59	74	78	93	82	84	97	103	101	88	84	23	1177	32
	2008-2009	28	91	77	93	71	77	85	89	85	82	95	99	94	85	24	1175	34
	2009-2010	29	104	84	75	93	65	81	89	87	79	89	91	96	92	24	1178	35
	2010-2011	35	108	86	85	71	93	70	79	84	90	91	75	81	90	22	1160	33
	2011-2012	33	98	94	82	88	72	90	70	77	83	98	86	79	80	22	1152	34
	2012-2013	36	96	93	87	81	83	76	94	69	75	97	90	80	71	24	1152	34
	2013-2014	41	89	88	96	87	91	80	78	97	64	79	91	77	74	22	1154	34
	2014-2015	31	89	87	85	94	82	92	84	73	108	71	75	77	78	24	1150	46
	2015-2016	28	88	85	85	87	100	82	93	87	68	112	64	79	73	19	1150	37
	2016-2017	24	100	79	90	79	84	100	82	93	79	80	105	57	76	19	1147	42 (plus 16 in ECSE)
	2017-2018	28	96	92	73	85	80	86	103	84	88	91	72	101	56	17	1152	90
	2018-2019	35	102	74	86	72	82	79	82	98	79	88	86	73	97	18	1151	95
	2019-2020	25	105	88	73	83	68	83	80	78	107	87	86	79	67	15	1124	78
	2020-2021	25	83	77	78	69	84	75	78	80	76	108	81	77	83	14	1088	63
	2021-2022	24	105	78	80	82	71	89	73	76	80	78	108	72	75	12	1103	75
	2022-2023	20	110	79	79	86	75	70	87	75	77	80	87	103	74	12	1114	85
	2023-2024	26	102	72	77	82	83	78	74	91	72	79	83	73	89	12	1093	101
<b>October</b>																		
(MARSS)	2005-2006	17	69	70	73	84	86	80	95	93	103	103	91	113	90	28	1217	33

Enrollment		ECSE	K	1	2	3	4	5	6	7	8	9	10	11	12	Colony	Total	School Readiness
	2006-2007	21	95	63	77	77	87	81	82	100	94	111	86	90	104	25	1193	32
	2007-2008	30	85	91	59	74	79	94	84	85	96	102	100	88	85	23	1175	32
	2008-2009	32	92	75	93	69	78	84	90	83	81	95	100	95	82	24	1173	34
	2009-2010	32	104	84	73	93	64	79	86	87	78	89	89	94	91	24	1167	35
	2010-2011	33	107	85	85	71	89	69	79	83	89	89	74	78	89	22	1142	34
	2011-2012	33	98	93	81	87	72	91	69	77	83	99	87	78	79	22	1149	35
	2012-2013	38	95	93	87	81	82	75	93	69	74	97	89	79	72	24	1148	34
	2013-2014	37	89	88	94	87	88	81	79	98	65	86	88	81	73	22	1156	34
	2014-2015	31	89	87	86	94	82	91	85	73	106	72	73	77	78	24	1148	47
	2015-2016	29	88	85	85	85	100	81	91	87	68	111	62	80	72	20	1144	39
	2016-2017	26	99	80	88	79	84	100	81	92	78	80	104	56	75	19	1141	46 (Sped included)
	2017-2018	28	95	92	73	85	80	85	102	86	84	91	72	101	54	17	1145	93
	2018-2019	33	100	74	86	72	80	79	81	97	77	88	84	72	95	18	1136	93
	2019-2020	25	104	89	73	83	68	83	78	78	104	85	84	79	65	15	1113	78
	2020-2021	27	83	79	77	71	84	76	79	80	75	107	81	76	80	14	1089	66
	2021-2022	24	106	78	81	82	70	90	74	76	81	79	107	72	73	12	1105	78
	2022-2023	20	113	79	80	86	75	70	86	73	74	80	88	100	72	12	1108	
	2023-2024	26	103	72	78	81	84	77	73	90	72	80	84	74	88	11	1093	99
November																		
	2005-2006	17	68	72	75	84	87	81	97	93	103	99	86	109	90	28	1211	33
	2006-2007	32	93	64	76	76	88	82	81	99	93	109	83	90	102	25	1193	32
	2007-2008	32	88	92	60	75	79	94	85	85	96	100	99	87	83	26	1181	33
	2008-2009	36	91	76	94	68	78	84	90	84	80	94	101	95	81	24	1176	34
	2009-2010	34	105	86	73	94	65	78	85	88	77	89	86	95	92	24	1171	35
	2010-2011	32	108	86	86	71	90	69	78	83	89	87	75	78	91	22	1145	34
	2011-2012	33	98	92	82	88	72	91	67	77	82	98	85	78	79	22	1144	35
	2012-2013	45	94	94	86	82	82	73	95	69	74	97	87	78	71	24	1151	34
	2013-2014	36	90	87	94	87	88	80	78	98	66	86	88	82	73	22	1155	34
	2014-2015	30	88	88	86	92	80	90	86	73	106	71	74	78	78	24	1144	47
	2015-2016	26	90	86	85	86	100	82	92	86	67	111	62	79	73	20	1145	43
	2016-2017	30	96	80	89	79	82	98	81	92	78	79	103	54	73	19	1133	44 (Sped Inc)
	2017-2018	29	97	93	73	85	80	86	102	86	84	90	71	101	54	17	1148	95
	2018-2019	34	101	74	87	73	80	80	80	100	78	87	84	71	97	18	1144	90
	2019-2020	26	106	92	73	84	69	84	82	81	103	87	86	79	65	15	1132	78

Enrollment		ECSE	K	1	2	3	4	5	6	7	8	9	10	11	12	Colony	Total	School Readiness
	2020-2021	28	82	81	79	71	84	77	77	80	77	108	81	76	82	14	1097	66
	2021-2022	24	109	80	84	79	70	90	74	76	82	80	106	71	72	12	1109	79
	2022-2023	19	107	80	79	83	78	70	85	73	75	82	84	100	71	12	1098	84
December																		
	2005-2006	27	68	72	76	84	87	82	98	92	103	98	86	110	90	28	1223	33
	2006-2007	31	92	65	76	76	88	82	80	97	93	109	84	89	102	25	1189	32
	2007-2008	31	88	93	60	75	79	92	85	84	95	100	99	87	83	26	1177	33
	2008-2009	38	92	74	95	70	78	84	89	86	79	94	100	95	81	24	1179	34
	2009-2010	35	106	86	74	93	64	76	85	87	76	88	86	94	91	24	1165	35
	2010-2011	33	107	86	86	70	90	69	78	83	89	86	75	78	89	22	1141	35
	2011-2012	35	97	92	83	88	71	91	69	77	82	98	85	78	79	22	1147	35
	2012-2013	45	96	96	87	86	83	72	94	69	75	98	87	78	70	24	1160	35
	2013-2014	36	90	87	92	86	87	82	78	99	65	87	84	77	73	22	1145	34
	2014-2015	30	89	88	85	92	79	90	86	71	104	69	73	79	77	25	1137	47
	2015-2016	28	90	86	86	86	100	82	92	86	67	111	61	80	73	19	1147	43
	2016-2017	31	96	80	88	80	83	99	82	93	78	78	103	57	73	19	1140	45
	2017-2018	30	95	92	73	84	79	86	103	86	84	88	71	101	54	17	1143	95
	2018-2019	36	103	74	86	73	79	81	82	101	80	88	85	71	99	18	1156	92
	2019-2020	28	107	91	73	84	69	83	81	81	102	87	86	79	65	15	1131	81
	2020-2021	30	82	80	79	71	82	77	75	80	77	110	81	75	82	14	1095	66
	2021-2022	24	107	79	84	78	70	91	72	76	82	81	104	72	72	12	1104	80
	2022-2023	20	105	81	79	83	78	70	85	73	75	82	83	100	68	12	1094	82
January																		
	2005-2006	28	69	73	76	85	87	83	98	91	103	100	86	106	89	28	1225	33
	2006-2007	32	91	65	75	77	89	82	81	97	95	108	84	88	103	25	1192	32
	2007-2008	35	86	94	60	76	79	90	87	85	95	101	99	87	83	26	1183	33
	2008-2009	38	92	74	96	70	76	84	91	87	79	95	98	93	81	24	1178	34
	2009-2010	35	105	86	72	93	63	77	84	87	77	89	84	94	91	24	1161	36
	2010-2011	40	106	86	85	70	90	70	77	84	88	88	75	79	90	22	1150	36
	2011-2012	38	98	91	83	88	72	93	69	76	83	99	85	78	79	22	1154	35
	2012-2013	44	95	95	86	85	82	74	94	69	73	97	87	77	69	24	1151	35
	2013-2014	37	90	86	93	84	90	81	78	98	63	86	85	80	75	22	1148	34
	2014-2015	32	88	87	85	93	79	89	85	72	104	68	73	80	78	24	1137	48
	2015-2016	30	89	88	86	86	99	83	95	86	68	109	62	80	73	19	1153	43
	2016-2017	31	96	79	86	79	83	99	82	93	77	78	106	57	72	19	1137	66

Enrollment		ECSE	K	1	2	3	4	5	6	7	8	9	10	11	12	Colony	Total	School Readiness
	2017-2018	33	94	92	73	83	79	84	104	86	82	88	71	99	52	17	1137	92
	2018-2019	36	102	74	86	74	79	82	82	103	81	88	85	71	97	18	1158	94
	2019-2020	28	109	90	71	83	70	82	81	82	103	87	85	79	65	15	1130	79
	2020-2021	31	84	80	78	70	83	77	76	80	76	110	78	75	79	14	1091	68
	2021-2022	25	107	81	84	78	70	91	72	76	81	84	104	75	72	12	1112	82
	2022-2023	20	103	79	79	82	77	71	85	74	75	83	84	100	68	12	1092	81
<b>February</b>																		
	2005-2006	29	67	74	74	85	86	83	99	91	103	101	84	105	88	28	1224	33
	2006-2007	38	91	63	76	78	88	81	79	96	95	108	84	89	106	25	1197	32
	2007-2008	36	86	94	60	76	80	89	87	87	95	101	98	88	79	26	1182	33
	2008-2009	42	93	73	95	67	75	83	88	86	80	97	96	95	81	26	1177	34
	2009-2010	38	100	86	71	92	63	77	84	88	76	92	81	96	91	24	1159	37
	2010-2011	40	105	83	85	70	91	71	75	84	88	88	75	79	90	22	1146	36
	2011-2012	41	98	89	81	89	72	93	71	76	83	100	86	78	76	22	1155	36
	2012-2013	45	95	95	86	86	82	75	95	69	73	96	87	76	67	24	1151	35
	2013-2014	37	89	87	91	83	88	80	77	98	63	85	86	73	78	22	1137	34
	2014-2015	32	88	88	85	93	79	89	84	71	103	68	75	77	78	24	1134	48
	2015-2016	30	91	89	86	86	100	83	96	86	68	110	63	80	75	19	1162	43
	2016-2017	32	96	79	85	80	82	97	81	91	79	77	109	53	70	19	1130	66
	2017-2018	33	95	91	73	85	80	86	103	87	82	90	72	97	53	17	1144	93
	2018-2019	37	102	74	86	74	79	81	82	103	80	92	82	68	98	18	1156	94
	2020-2021	30	108	88	71	84	70	82	81	81	103	85	84	79	65	15	1126	79
	2021-2022	30	105	81	82	77	70	88	70	76	79	81	104	76	72	12	1103	87
	2022-2023	22	104	80	79	83	77	71	85	75	75	86	85	99	67	12	1100	81
<b>March</b>																		
	2005-2006	29	69	74	74	85	87	83	101	92	105	101	85	104	88	28	1220	33
	2006-2007	41	92	63	77	78	87	81	79	96	94	109	84	86	106	25	1198	32
	2007-2008	36	84	94	60	77	81	90	88	87	95	100	96	89	79	26	1182	33
	2008-2009	44	92	74	95	66	76	83	88	85	80	98	95	96	80	26	1178	35
	2009-2010	43	99	86	70	92	62	77	84	86	76	89	81	97	92	24	1158	35
	2010-2011	41	106	83	85	69	91	71	75	83	88	90	75	79	90	22	1148	34
	2011-2012	42	100	88	83	89	73	93	71	77	84	99	86	79	76	22	1162	34
	2012-2013	45	95	96	85	86	82	75	95	69	72	96	86	76	66	24	1148	35
	2013-2014	37	91	87	91	83	88	80	76	98	64	85	86	75	78	22	1141	34
	2014-2015	33	88	86	86	94	79	90	84	71	103	67	75	78	77	24	1135	49

Enrollment		ECSE	K	1	2	3	4	5	6	7	8	9	10	11	12	Colony	Total	School Readiness
	2015-2016	28	90	89	84	86	101	83	95	84	68	108	60	80	75	18	1149	42
	2016-2017	34	96	79	86	82	82	97	81	91	79	77	111	53	72	19	1139	71
	2017-2018	33	95	91	72	85	79	86	102	84	82	90	72	97	52	17	1137	93
	2018-2019	38	102	74	86	74	79	81	82	103	79	92	80	68	98	18	1154	93
	2019-2020	31	102	88	71	84	70	82	81	81	103	85	85	79	67	15	1124	79
	2020-2021	34	87	78	79	71	84	73	77	81	79	108	76	74	77	14	1092	74
	2021-2022	29	104	81	82	77	70	88	69	75	79	80	104	73	73	12	1096	84
	2022-2023	26	100	80	79	83	77	71	85	74	74	86	84	100	67	12	1098	87
April																		
	2005-2006	30	69	73	74	84	88	83	101	93	105	101	85	104	88	28	1219	33
	2006-2007	38	92	63	78	79	89	83	80	96	93	108	84	86	107	25	1201	32
	2007-2008	35	85	94	60	78	81	90	87	86	95	101	96	87	79	26	1180	33
	2008-2009	46	92	75	93	65	75	83	87	82	80	99	94	96	80	24	1171	35
	2009-2010	47	99	86	70	92	61	77	82	86	75	88	81	96	92	24	1156	35
	2010-2011	41	105	83	85	69	91	71	76	84	87	91	75	80	90	24	1152	34
	2011-2012	43	100	90	83	90	74	91	70	77	84	98	85	77	76	22	1160	34
	2012-2013	50	95	96	85	85	81	74	95	69	72	96	86	76	65	24	1149	35
	2013-2014	41	91	86	90	83	88	81	75	99	64	85	86	73	75	22	1139	34
	2014-2015	34	87	84	87	95	79	89	84	73	101	67	76	78	77	24	1135	49
	2015-2016	30	89	88	83	85	99	81	94	84	68	108	60	79	75	18	1141	41
	2016-2017	36	96	77	87	80	82	98	81	90	79	76	112	53	72	19	1138	72
	2017-2018	36	95	90	74	86	79	86	102	82	81	92	71	98	53	17	1142	94
	2018-2019	40	103	75	87	75	78	82	80	105	77	91	80	67	96	18	1154	93
	2019-2020	31	102	86	70	84	70	82	81	81	103	85	84	79	67	15	1120	79
	2020-2021	35	86	78	79	71	84	73	78	81	79	109	74	74	77	14	1092	74
	2021-2022	29	106	81	82	76	71	87	69	75	79	80	103	72	73	12	1095	85
	2022-2023	27	100	80	80	85	76	71	86	74	74	85	84	97	66	12	1097	89
May																		
(MARSS)	2005-2006	33	70	73	73	83	87	82	99	92	105	99	85	104	89	28	1215	33
	2006-2007	39	92	63	78	79	90	83	80	97	94	108	83	86	107	25	1204	32
	2007-2008	36	86	94	60	78	81	90	86	85	95	101	96	87	79	26	1180	33
	2008-2009	47	93	74	94	65	76	83	87	81	80	99	94	94	80	24	1171	36
	2009-2010	49	99	84	70	92	61	75	82	86	75	88	82	96	92	24	1155	35
	2010-2011	41	106	83	85	68	92	71	76	84	86	91	75	81	89	23	1151	34
	2011-2012	44	100	90	83	90	73	91	70	77	84	98	84	76	76	22	1158	34



Date: 10/17/2023

**SENIORITY LIST 2023-2024****PIPESTONE AREA SCHOOLS' PARAPROFESSIONALS AS OF 10/17/23**

PARA-PROF. LAST NAME	FIRST NAME	NAME OF SCHOOL	AREA	HIRE DATE	HOURS PER DAY
Hachmann	Kathy	Elementary	Kdgn Para	9/10/1999	7.5
Faber	Laurie	MS/HS	Spec Ed Para	11/15/1999	7.17
Peterson	Sharon	Elementary	Student Para/Lunch	8/28/2000	7.17
Brooke	Corrine	MS/HS	Student Para	8/15/2007	7.17
Kiecksee	Doraine	District	Van Rider	11/30/2007	6
Backer	Carrie	Elementary	Student Para	4/22/2014	7
Steenstra	Jean	Elementary	Pre School Para	10/8/2014	7
Dunn	Kathy	MS/HS	ESL Para	1/12/2015	7.67
Dahms	Jean	MS/HS	Spec Ed Para	2/2/2015	7.17
Steuck	Timothy	Colony	Student Para	5/1/2016	7
Peters	Jeanie	Elementary	Student Para/lunch	8/15/2016	7
Blom	Sharon	Elementary	Student Para	8/30/2016	7
Lemke	Kristina	MS/HS	Spec Ed Para	1/3/2017	7
Grimmett	Jill	District	Speech Para	2/27/2017	7
Loving	Clarinda	MS/HS		8/28/2017	7
Uilk	Laura	MS/HS	Student Para	10/3/2017	7.17
Backer	Stephanie	MS/HS	Student Para	9/11/2018	7
Kracht	Kelly	Elementary	Student Para	11/1/2018	7
Tardaguila	Daisy	Elementary	ESL Para/lunch	8/26/2019	7
Jones	Angie	Elementary	Student Para	10/10/2019	6.25
Johnson	Melanie	Elementary	Student Para	9/28/2020	7.25
Przybys	Amber	Elementary	Preschool Para	11/30/2020	7
Miller	Jennifer	MS/HS	SPED Para/van rider	2/22/2021	7.5
Quilantan	Yvonne	MS/HS	Student Para	3/4/2021	7.5
Smidt	Priscilla	Elementary	Student Para	8/30/2021	7
Crowe	Adayla	Elementary	Student Para	10/12/2021	7
Williams	Heidi	Elementary	Student Para	12/13/2021	7
Pierson	Michaela	MS/HS	Student Para	1/4/2022	7
Baartman	Jennifer	Elementary	Student Para	8/15/2022	7
Noel	Rebekah	Elementary	Student Para	#7999 8/29/20	7
Hailey	Kayla	Elementary	Pre-School Para	#3729 8/29/20	7
Keophilalay	Shauna	Elementary	Student Para	8/31/2022	7
Eggerud	Barbara	Elementary	Student Para	9/19/2022	7
Shane	Riley	MS/HS	Tech Para	12/1/2022	7
Rudebusch	Rachel	MS/HS	Student Para	1/26/2023	7
Hansen	Melissa	Elementary	Student Para	8/9/2023	7
Burnett	Jacey	Elementary	Student Para	#2720 8/28/20	7
Ramsbey	Neil	MS/HS	Student Para	#0252 8/28/20	7
Fritz	Bonnie	MS/HS	Student Para	9/7/2023	7
Maples	DaNerica	MS/HS	Student Para	10/2/2023	7
<b>Pipestone Area School Board</b>			<b>Pipestone Area Educational Support Professionals</b>		
_____	_____			_____	_____
Brad Carson, Chair	Date			Jean Dahms, President	Date
Katie Wiese, Clerk	Date			Dr. Klint W. Willert	Date

10/17/2023					
		<b>SENIORITY LIST 2023-2024</b>			
<b>PIPESTONE AREA SECRETARIES, AP AND CUSTODIANS 10/17/23</b>					
<b>SECRETARIAL EMPLOYEES</b>					
<b>LAST NAME</b>	<b>FIRST NAME</b>	<b>NAME OF SCHOOL</b>	<b>AREA</b>	<b>HIRE DATE</b>	<b>FTE</b>
Weinkauf	Kristie	Elementary	Office	10/1/1999	1.0
Baker	Kathryn	MS/HS	High School	7/1/2020	1.0
Smilloff	Heidi	Elementary	Office	8/29/2022	1.0
Goelz	Lori	MS/HS	Office	7/1/2023	0.83
Barnett	Danielle	MS/HS	Counseling	8/28/2023	1.0
<b>TECH ASSISTANT</b>					
<b>LAST NAME</b>	<b>FIRST NAME</b>	<b>NAME OF SCHOOL</b>	<b>AREA</b>	<b>HIRE DATE</b>	<b>FTE</b>
<b>ACCOUNTS PAYABLE</b>					
<b>LAST NAME</b>	<b>FIRST NAME</b>	<b>NAME OF SCHOOL</b>	<b>AREA</b>	<b>HIRE DATE</b>	<b>FTE</b>
Rudie	Carol	MS/HS	Accounts Pay.	8/1/1999	1.0
<b>CUSTODIAL EMPLOYEES</b>					
<b>LAST NAME</b>	<b>FIRST NAME</b>	<b>NAME OF SCHOOL</b>	<b>AREA</b>	<b>HIRE DATE</b>	<b>FTE</b>
Vinson	Judy	Elem/MS/HS	Custodian (N)	1/3/2022	1.0
Clay	Christopher	Elem/MS/HS	Custodian (N)	8/22/2022	1.0
Schumann	Mark	MS/HS	Custodian (D)	8/23/2022	1.0
Swearingen	Amber	Elem/MS/HS	Custodian (N)	12/5/2022	1.0
Robinson	Marshawn	Elem/MS/HS	Custodian (N)	#8968 10/16/2023	1.0
Garza	Jason	Elem/MS/HS	Custodian (N)	#0911 10/16/2023	1.0
<b>Pipestone Area School Board</b>			<b>Pipestone Area Educational Support Professionals</b>		
Brad Carson, Chairman			Jean Dahms, President		
Date			Date		
<b>Pipestone Area School Board</b>			<b>Superintendent of Schools</b>		
Katie Wiese, Clerk			Dr. Clint W. Willert, Superintendent		
Date			Date		

PIPESTONE AREA SCHOOLS' 2023-2024 SENIORITY LIST						
INDEPENDENT SCHOOL DISTRICT NUMBER 2689						
10/17/23						
NAME	DATE OF	DATE OF	CURRENT	CURRENT	TIER	RECALL FTE
	CONTINUOUS	REASSIGNMENT	FTE	LANE		RIGHTS
	EMPLOYMENT					
<b>AG</b>						
Resch, N	2020		1	BS	T3	
Boomgaarden, M	2023P		1	BS	T4	
<b>BUSINESS ED</b>						
Damm, K	2023P		1	MA	T4	
<b>COUNSELOR</b>						
Dulas, E	2002		1	MA	T4	
Schroyer, T	2014		1	MA	T4	
<b>ELEMENTARY</b>						
Siebenahler	81		1	BA+90	T4	
Slinger	82		1	BA+105	T4	
Wolff	85		1	BA+105	T4	
Zollner	90	2020	1	BA+90	T4	
Tinklenberg	91		1	BA	T4	
Evans, J	92		1	MA+45	T4	
Pease,L	94	2012	1	MA+60	T4	
Bos	96		1	BA	T4	
Nangle, J	96		1	MA+60	T4	
Wajer	96		1	MA+60	T4	
Zupp	98		1	BA+15	T4	
Reinhard, K	2007		1	MA	T4	
Weber, Jen	2008	2013	1	BA+15	T4	
VanDyke, M	2009		1	MS	T4	
Boeddeker, C	2009		1	BA+15	T4	
Boomgaarden, S	2010	2021	1	MA	T4	
Winter,C	2012		1	MA+ 60	T4	
Sterud, S	2013		1	BS	T4	
Tofteland, A	2014		1	BS	T4	
Terry, S	2015		1	MA+30	T4	
Fransman, N	2015		1	BS	T4	
Taubert, A	2016		1	MA+60	T4	
Esselink, K	2016		1	MA	T4	
Wielenberg, R	2017		1	MA	T4	
Schrecengost, C	2018		1	MA	T3	
VanHoecke, E	2018		1	MA	T4	
Beltz, J	2018		1	BS	T4	
Mejia, A	2018		1	BS	T4	
Ludolph-Speer, E	2019		1	BS	T4	
Bauman, Danielle	2020	2023	1	BS	T3	
Claar, A	2020		1	BS	T3	
Taubert, Morgan	2021P		1	BA	T3	
Kremin, T	2021		1	BS+30	T4	
Bettin, D	1-2022P		1	BA	T3	
Maly, A	2022P		1	BA	T3	
Carson, Mitchel	2022P		1	BA	T3	
Schmitke, M	2022P		1	BA	T4	

Gunnink, L	5-2023P			1	MA+45	T4
Quissell, J	2023P			1	BA	T3
<b>ENGLISH</b>						
Lorang	95			0.4	BA+15	T4
Sullivan, M	2008			1	MA	T4
Olson, L	2017			1	MA+60	T3 Rest
Wallace, S	2017	2018		1	BA	T4
Williamson, E	2019			1	BS	T4
Hess, T	2021P			1	BA	T3
Carpenter, W	2022P			1	BA	T3
<b>FACS</b>						
Peters, W	2020			1	BA+45	T3 Rest
<b>HEALTH</b>						
<b>INDUSTRIAL TECH</b>						
Dethlefs	2002			1	MA+15	T4
Stangeland, B	2023P			1	BA+45	T3
<b>INSTRUMENTAL &amp; CLASSROOM</b>						
<b>MUSIC</b>						
<b>MATH</b>						
Stiles	97			1	BA+15	T4
Thompson	98			1	BA	T4
Fenicle, J	98			1	MA + 60	T4
Popma, S	2007	2007		1	MA	T4
Minet, J	2021			1	BA + 30	T4
<b>NURSE</b>						
Loll, J	2021P			1	BS	T3
<b>PHY ED</b>						
Reinhard, S	2004			1	BS	T4
VanDyke, L	2011			1	BA	T4
Tiefenthaler, T	2015			1	BS	T4
Moeller, M	2019			1	BS	T3 Rest
Everson, G	2020			1	BS	T3
Maly, Cole	2021P			1	BA+15	T3
Bloemendaal, S	2023P			1	BS+15	T3
<b>SCIENCE</b>						
Popma	99	2007		1	MA	T4
Dulas, D	2001			1	MA+15	T4
Wielenberg, I	2017			1	BA	T4
Zaske, M	2019			1	MA+30	T4
Slaba, M	2022P			1	BS	T3
<b>SOCIAL</b>						
Johnson, J	98			1	MA	T4
Young, P	2016			1	BA	T4
Olson, L	2017	2020/2021		1	MA+60	T3
Koopman, R	2021P			1	BA	T3
Welsh, N	2023P			1	BS+45	T4
<b>SOCIAL WORKER</b>						
Slaba, K	2022P			1	BS	T3
<b>SPECIAL EDUCATION</b>						
<b>ABS</b>						
Bauman, Danielle	2020			1	BS	T3
Bartholomew, Heather	2020			1	BA	T3
<b>DD</b>						

<b>EBD</b>					
<b>LD/SLD</b>					
Pease, L	94	2004	1	MA+60	T4
Chaulsett, J	2017		1	MA	T4
LaRock, M	2020		1	BA+30	T4
<b>SPEECH</b>					
<b>VISUAL ARTS</b>					
<b>VOCAL &amp; CLASSROOM MUSIC</b>					
Davis, S	2021P		1	BA	T3
Pelach, E	2022P		1	BA	T3
<b>WORLD LANGUAGE</b>					
Lorang	95		0.6	BA+15	T4
Danks	2006		1	MA	T4
<b>TIER 1 STAFF</b>					
Wentzel, B (ABS)	2023P		1	BA+45	T1
Fritsch, T	2023P		1		T1
<b>TIER 2 STAFF</b>					
Bauman, K	2022P		1	BA	T2
Ploeger, Z	2021P		1	MA+60	T2
Lane, Stacy	2021P		1	BA	T2
Carson, Morgyn	2022P		1	BA	T2
Wentzel, B (Counselor)	2023P		1	BA+45	T2
<b>ECFE</b>					
Samuelson, D	2014P		1		
Amundson, J	2018		1	BA	T4
Behr, A	2021P		1	BS	

---

**Ingrid Wielenberg, Co-President of Pipestone Area Education Association**

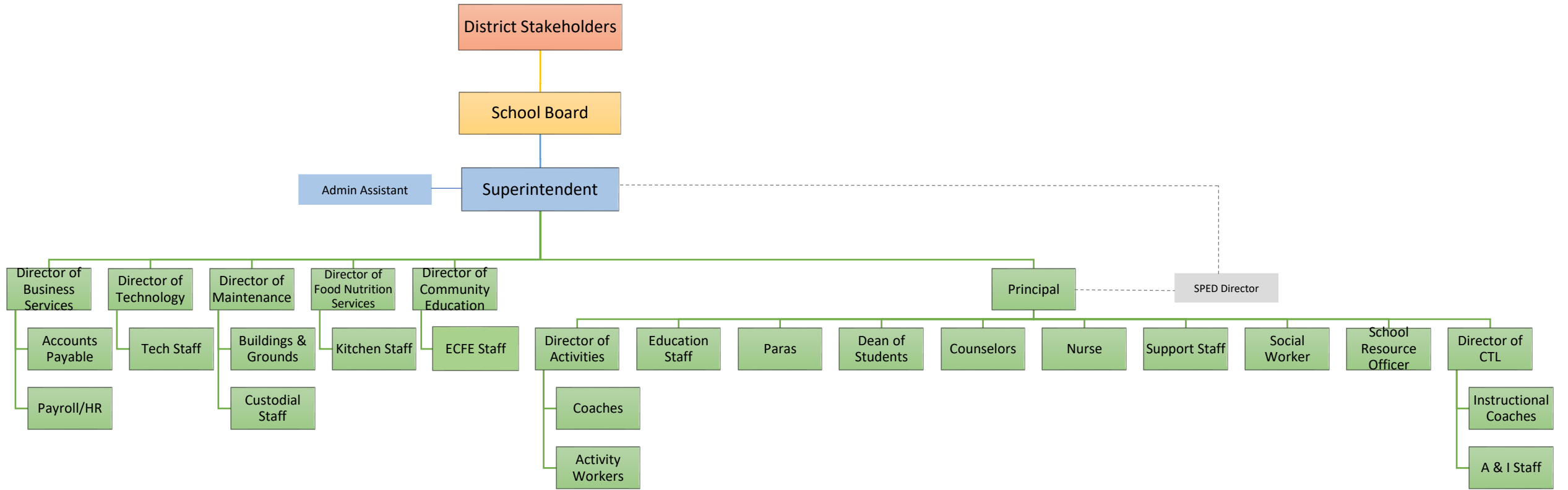
---

**Leslie Wajer, Co-President of Pipestone Area Education Association**

---

**Dr. Klint W. Willert, Superintendent of Schools**

--- indicates shared management



**RESOLUTION ACCEPTING DONATIONS**

WHEREAS, Minnesota Statutes 123B.02, Subd. 6 provides: “The board may receive, for the benefit of the district, bequests, donations, or gifts for any proper purpose and apply the same to the purpose designated. In that behalf, the board may act as trustee of any trust created for the benefit of the district, or for the benefit of pupils thereof, including trusts created to provide pupils of the district with advanced education after completion of high school, in the advancement of education.”, and

WHEREAS, Minnesota Statutes 465.03 provides: “Any city, county, school district or town may accept a grant or devise of real or personal property and maintain such property for the benefit of its citizens in accordance with the terms prescribed by the donor. Nothing herein shall authorize such acceptance or use for religious or sectarian purposes. Every such acceptance shall be by resolution of the governing body adopted by a two-thirds majority of its members, expressing such terms in full.” and

WHEREAS, every such acceptance shall be by resolution of the governing body adopted by a two-thirds majority of its members, expressing such terms in full;

THEREFORE, BE IT RESOLVED, that the School Board of Pipestone Area Schools, ISD 2689, gratefully accepts the following donations as identified below:

<b>Donor</b>	<b>Item</b>	<b>Designated Purpose</b>
Jasper Evangelical Lutheran	\$135.00	Wellness Room
Christ the King Lutheran	\$100.00	Wellness Room

The motion for adoption of the foregoing resolution was made by \_\_\_\_\_ and duly seconded by \_\_\_\_\_

upon vote being taken thereon, the following voted in favor thereof:

and the following voted against the same:

The foregoing resolution was approved this 23<sup>rd</sup> day of October, 2023

Date 10-3-23

Received of Jasper Evangelical Lutheran Amount \$ 135-

For Donation to Wellness Room

Code								Amount	Description
								135-	check

Signed rap

THIS CHECK IS VOID WITHOUT A COLORED BORDER AND BACKGROUND PLUS A KNIGHT & FINGERPRINT WATERMARK ON THE BACK - HOLD AT ANGLE TO VIEW



Cashier's Check

100945

Date: 9/12/23

REMITTER JASPER EVANGELICAL LUTHERAN CHURCH

Branch: 0007

PAY  
TO THE  
ORDER OF

EXACTLY \*\*135 AND 00/100 DOLLARS

\$135.00

PIPESTONE AREA SCHOOLS

*Paula [Signature]*

THE PURCHASE OF AN INDEMNITY BOND WILL BE REQUIRED BEFORE ANY CASHIER'S CHECK OF THIS BANK WILL BE REPLACED OR REFUNDED IN THE EVENT IT IS LOST, MISPLACED, OR STOLEN.

ATTN: WELLNESS ROOM

⑈0000100945⑈ ⑆073922005⑆ 116⑈

Enclosed is a donation to the Pipestone Area Schools Wellness Room.

At Jasper ELC we have a special offering of coins collected for our Sunday School mission project called "Coins for a Cause". The mission purpose is "to help and give to others in our community". We appreciate your support to the children!  
Jasper ELC

Independent School District No. 2689  
Pipestone, Minnesota 56164

3856

Date 10-3-23

Received of Christ the King Lutheran Amount \$ 100-

For Donation to Wellness Room

Code							Amount	Description
							100-	check

Signed DP

THIS CHECK IS VOID WITHOUT THE SAFETY FEATURES LISTED ON THE BACK

Apply to account: **CTK - - CHRIST THE KING LUTHERAN CHURCH**

20092342186

CHRIST THE KING LUTHERAN CHURCH  
PO BOX 682  
PIPESTONE, MN 56164-0682

78-844  
0914

DATE  
09/20/2023

0006602080

First Bank & Trust  
520 6th Street  
Brookings SD 57006-2028

PAY **(ONE HUNDRED DOLLARS AND NO/100)**  
TO THE ORDER OF **PAS WELLNESS ROOM**

AMOUNT  
**\*\*\$100.00**



Signature on File -  
account holder has pre-approved this check  
Void After 90 Days

⑈0006602080⑈ ⑆091408446⑆ 115887⑈

**FORM A**

**RESOLUTION OF GOVERNING BOARD SUPPORTING  
FORM A APPLICATION TO MINNESOTA  
STATE HIGH SCHOOL LEAGUE FOUNDATION**

WHEREAS, the Minnesota State High School League Foundation was formed to provide support for Minnesota’s high school youth to participate in athletics and fine arts;

WHEREAS, the Governing Board of [Name of School/District] Pipestone Area Schools recognizes the value of student participation in extracurricular activities; and

WHEREAS, the MSHSL Foundation is offering grants and funding to assist schools in recognizing, promoting and funding extracurricular participation by high school students in athletic and fine arts programs.

THEREFORE, BE IT RESOLVED, that the Governing Board of [Name of School/District] Pipestone Area Schools supports the school’s application to the Minnesota State High School League Foundation for a **FORM A** grant to offset student activity fees.

10/23/23

Date

\_\_\_\_\_

Board Chair/Head of School

10/23/23

Date

\_\_\_\_\_

Board Clerk – Treasurer/ Finance Director



# PIPESTONE AREA SCHOOLS District No. 2689

Dr. Klint W. Willert, Superintendent  
Todd Huisman, MS/HS Principal  
Jennifer Moravetz, Elementary Principal  
Jacque Kennedy, Business Manager

Rick Zollner, Activities Director  
Christeen Groenhoff, Maintenance Director  
Jean Bailey, Food Service Director

*"District and Community committed to working together to provide educational excellence and support our students for their future."*



Rolling Warmer: In working condition  
*Replaced*



Table Top Warmer: In working condition  
*Replaced*



Rolling Warmer: In working condition  
*Replaced*



Table Top Warmer: In working condition  
*Replaced*



Chairs: 60 damaged and obsolete



Chairs: 15 damaged and obsolete



Pizza Oven: Does not work



Desks: 10 damaged and obsolete

*"Inspire life-long learners. Build Character. Prepare them for their future."*



RECEIVED  
10-16-23

To Pipestone Area School Snow Removal Bid for 2023-2024 from  
Outlaw Customs

SKID LOADER 70.00

PAYLOADER 90.00

PAYLOADER WITH 16ft PUSHER 102.00

SEMI WITH SIDE DUMP TRAILER 95.00

507-825-2985 shop

507-215-5406 brads cell

thank you brad.

---

**RECEIVED**  
10-16-23

Dear Deb Peschon,

My rate would be \$128/hr per loader used to remove the snow.

Contact information:  
Bill Winter/Contractor  
Cell # 605-360-5684

Sincerely,  
Bill Winter

**RESOLUTION REQUIRING THE TALLY OF WRITE-IN VOTES ONLY IF  
WRITE-IN VOTES ARE GREATER THAN A BALLOT CANDIDATE'S TOTAL VOTES**

**WHEREAS**, Minnesota Statutes 204B.09, subdivision 3, provides that a school board may adopt a resolution governing the counting of write-in votes for school board elections. The resolution may require that write-in votes for an individual candidate for the school board only be individually recorded if the total number of write-in votes for that office is equal to or greater than the fewest number of non-write-in votes for a ballot candidate; and

**WHEREAS**, the write-in vote counting process can be overly time consuming and require resources that does not result in a change of election results unless a single write-in candidate receives the most votes for election.

THEREFORE, BE IT RESOLVED, that the School Board of Independent School District No. 2689 requires that write-in votes for an individual candidate for the school board will only be individually recorded if the total number of write-in votes for that office is equal to or greater than the fewest number of non-write-in votes for a ballot candidate.

This resolution shall remain effective for all future elections until and unless the school board rescinds this resolution.

The motion for adoption for the Resolution was made by Member \_\_\_\_\_, duly seconded by Member \_\_\_\_\_,

The vote on adoption of the Resolution was as follows:

Aye:

Nay:

Absent:

Whereupon, said Resolution was declared duly adopted.

By: \_\_\_\_\_  
Chair

By: \_\_\_\_\_  
Clerk