

# WAYZATA PUBLIC SCHOOLS

Independent School District 284  
Wayzata, Minnesota

## **BOARD OF EDUCATION**

Regular Meeting - August 14, 2017 - 7:00 PM  
District Administration Building  
210 County Rd. 101, N, Plymouth, MN

### **AGENDA**

1.	<b>CALL TO ORDER/ROLL CALL</b>	<b>3</b>
2.	<b>APPROVAL OF AGENDA AND CONSENT AGENDA ITEMS</b>	<b>4</b>
	A. Approval of Minutes	5
	B. Finance and Business Recommendations	
	1. Monthly Reports	11
	2. PCard Approval	39
	C. Human Resource Recommendations	
	1. Monthly Recommendations	41
	D. Waive Statutory Requirement for Weekly Pledge of Allegiance	45
3.	<b>REPORTS FROM ORGANIZATIONS</b>	
4.	<b>RECOGNITIONS</b>	
	A. Retiree Recognition	47
5.	<b>STUDENT CURRICULUM PRESENTATION</b>	
6.	<b>SUPERINTENDENT'S REPORTS AND RECOMMENDATIONS</b>	
	A. Superintendent	
	B. Teaching and Learning	
	C. Finance and Business Services	
	1. Monthly Financial Reports	48
	2. Resolution Approving and Authorizing the Execution of a Lease Agreement, a Ground Lease Agreement and Related Documents and Certificates	50
	3. Resolution Relating To The Establishment Of Absentee Voting Hours And Location	53
	4. Easement for MACO on District Property near Greenwood Elementary	55
	D. Human Resource Services	
7.	<b>OTHER BOARD ACTION</b>	
8.	<b>BOARD REPORTS</b>	<b>70</b>
9.	<b>AUDIENCE OPPORTUNITY TO ADDRESS SCHOOL BOARD</b>	<b>71</b>
10.	<b>ADJOURN</b>	<b>72</b>

# WAYZATA PUBLIC SCHOOLS

Independent School District 284  
Wayzata, Minnesota

## MISSION

### **Our Core Purpose:**

The mission of Wayzata Public Schools is to ensure a world-class education that prepares each and every student to thrive today and excel tomorrow in an ever-changing global society.

## VISION

### **What We Intend to Create and Experience:**

The vision of Wayzata Public Schools is to be a model of excellence where all students discover their unique talents, develop a love and tenacity for learning and demonstrate confidence and capacity for success through:

### **Exceptional Student Learning, Experiences and Relationships:**

- High achievement by each and every student—no exceptions, no excuses;
- Content-rich, rigorous and personalized education;
- Meaningful relationships with teachers, staff, mentors and peers in a welcoming, nurturing and safe environment where all are valued for who they are and the contributions they make.

### **Community Trust, Confidence and Partnership:**

- Comprehensive learning opportunities meeting diverse learner needs and community aspirations;
- Committed to being the first choice for students and families;
- Maintaining the highest levels of satisfaction and pride by staff, parents and community.

### **Operational Excellence:**

- Attraction, development and retention of exemplary, creative and engaged employees;
- Accountability by all staff for individual and collective performance;
- Effective and efficient use of time and human, financial and physical resources;
- Culture of continuous improvement and responsive innovation;
- High performing district governance, management and partnerships.

**WAYZATA PUBLIC SCHOOLS**  
Independent School District 284  
Wayzata, Minnesota

**BOARD OF EDUCATION**  
Regular Meeting – August 14, 2017

**AGENDA SECTION:** 1. Call to Order

**ITEM:** Call to Order/Roll Call Attendance

**COMMENTS BY:** Chris McCullough, Board Chair

School Board Chair, Chris McCullough, will call the meeting to order. Clerk Andrea Cuene will call the roll.

	<u>Present</u>	<u>Absent</u>
Linda Cohen	_____	_____
Andrea Cuene	_____	_____
Sarah Johansen	_____	_____
Erik Brown	_____	_____
Chris McCullough	_____	_____
Bonita Lucky	_____	_____
Cheryl Polzin	_____	_____
Dr. Chace B. Anderson, Ex Officio	_____	_____

**WAYZATA PUBLIC SCHOOLS**  
Independent School District 284  
Wayzata, Minnesota

**BOARD OF EDUCATION**  
Regular Meeting – August 14, 2017

**AGENDA SECTION:** 2. Approval of Agenda and Consent Agenda Items

**ITEM:** \_\_\_\_\_

**COMMENTS BY:** Chris McCullough, Board Chair

Consent Agenda items are considered to be routine in nature and will be enacted by one motion. There will be no separate discussion of these items unless a Board member or citizen so requests, in which event, the item will be removed as a Consent Agenda item and addressed. Consent Agenda items are as follows:

- A. Approval of Minutes**
- B. Finance and Business Recommendations**
  - 1. Monthly Reports
  - 2. PCard Approvals
- C. Human Resource Recommendations**
  - 1. Monthly Recommendations
- D. Waive Statutory Requirement for Weekly Pledge of Allegiance**

**RECOMMENDED ACTION:** Approve the agenda as presented and the Consent Agenda items.

Motion by: \_\_\_\_\_ ROLL CALL Passed \_\_\_\_\_

Second by: \_\_\_\_\_ Failed \_\_\_\_\_

Abstentions: \_\_\_\_\_ 4 \_\_\_\_\_

**WAYZATA PUBLIC SCHOOLS**  
Independent School District 284  
Wayzata, Minnesota

**BOARD OF EDUCATION**  
Regular Meeting – August 14, 2017

**AGENDA SECTION:** 2. Approval of Minutes

**ITEM:** A. Approval of Minutes

**COMMENTS BY:** Andrea Cuene, Board Clerk

July 10, 2017 Regular Board Meeting Minutes  
July 24, 2017 Special Board Meeting Minutes  
July 24, 2017 Closed Board Meeting Minutes

**RECOMMENDED ACTION:** Approve the minutes of the Board meetings.

Motion by: \_\_\_\_\_ Yes \_\_\_\_\_ Passed \_\_\_\_\_

Second by: \_\_\_\_\_ No \_\_\_\_\_ Failed \_\_\_\_\_

Abstentions: \_\_\_\_\_

# Minutes of Regular Meeting

## The Board of Education Wayzata Public Schools

---

A Regular of the Board of Education of Wayzata Public Schools was held Monday, July 10, 2017, beginning at 7:00 PM in the Wayzata City Hall, 600 Rice Street, Wayzata.

### 1. CALL TO ORDER/ROLL CALL

*The meeting was called to order by Board Chair Chris McCullough, and the roll call taken by Board Clerk Andrea Cuene. The following School Board members were present: Andrea Cuene, Cheryl Polzin, Sarah Johansen. Chris McCullough, Bonita Lucky, Erik Brown and ex-officio member Superintendent Chace B. Anderson. Absent was Linda Cohen.*

### 2. APPROVAL OF AGENDA AND CONSENT AGENDA ITEMS

*Andrea Cuene motioned to approve the agenda and consent agenda. Erik Brown seconded the motion and it carried unanimously with a roll call vote.*

#### A. Approval of Minutes

1. June 12, 2017 Regular Meeting
2. June 26, 2017 Special Meeting

#### B. Finance and Business Recommendations

##### 1. Monthly Reports

<i>General Checking Account for June 2017</i>	<i>\$3,455,613</i>
<i>Wire Transfer for May 2017</i>	<i>\$11,200,480</i>

#### C. Human Resource Recommendations

##### 1. Monthly Recommendations

#### D. Change October Work Session Time

#### E. Wayzata City Hall Cable Studio & Community Room Use Agreements

### 3. REPORTS FROM ORGANIZATIONS

### 4. RECOGNITIONS

*Superintendent Chace B. Anderson recognized the following groups for their accomplishments:*

#### A. Retirees

#### B. NSCA National High School Strength and Conditioning Coach of the Year - Ryan Johnson

#### C. WHS Boys Golf Team State Championship

### 5. STUDENT CURRICULUM PRESENTATION

### 6. SUPERINTENDENT'S REPORTS AND RECOMMENDATIONS

#### A. Superintendent

B. Teaching and Learning

C. Finance and Business Services

1. Monthly Financial Reports

2. Resolution to Approve Referendum Recommendations

*Sarah Johansen motioned to approve the referendum recommendations and to waive the full reading of said resolutions: to revoke the existing operation referendum revenue authorization of the district, and to approve a new authorization; to authorize the issuance of school building bonds and to renew the expiring capital project levy authorization for technology. These questions will be presented to voters in the November 7<sup>th</sup>, 2017 election. Cheryl Polzin seconded the motion and it carried unanimously with a roll call vote.*

3. Resolution for the Wayzata School Board Election

*Andrea Cuene motioned to approve calling for the election of school board members and calling the school district general election on November 7<sup>th</sup>, 2017. Three school board member positions will be included on the ballot. Erik Brown seconded the motion and it carried unanimously with a roll call vote.*

D. Human Resource Services

**7. OTHER BOARD ACTION**

**8. BOARD REPORTS**

**9. AUDIENCE OPPORTUNITY TO ADDRESS SCHOOL BOARD**

*No citizens wished to address the Board.*

**10. ADJOURN**

*Sarah Johansen moved to adjourn the board meeting, and Erik Brown seconded the motion. There were no objections and the meeting was adjourned at 8:19 pm.*

# Minutes of Special Meeting

## The Board of Education Wayzata Public Schools

---

A Special Meeting of the Board of Education of Wayzata Public Schools was held Monday, July 24, 2017, beginning at 4:00 PM in the District Administration Building, 210 County Road 101 N.

### 1. ROLL CALL

*The meeting was called to order by Board Chair Chris McCullough and the roll call taken by Board Clerk Andrea Cuene.*

*Present at the meeting: Chris McCullough, Sarah Johansen, Linda Cohen, Andrea Cuene, Bonita Lucky, Erik Brown, Cheryl Polzin, and Chace B. Anderson, ex-officio member of the School Board.*

### 2. BUSINESS AND FINANCE

*Executive Director of Business and Finance, Jim Westrum, introduced the review & comment information that will be submitted to the Minnesota Department of Education; and reviewed the land purchase agreement for the Meadow Ridge addition. Any action on these items will be taken in a future Regular Board Meeting.*

#### A. Review & Comment

*No board action required.*

#### B. Land Purchase Agreement

*No board action required.*

#### C. Approval of the Purchase Agreement for Purchase of Land

##### 1. Resolution Authorizing the Superintendent and/or Executive Director of Finance and Business Services to Execute Closing Documents for the Purchase of Land

*At the March 13, 2017 Regular School Board Meeting, the Board passed a resolution authorizing the Superintendent and Executive Director of Business and Finance to enter into a purchase agreement to acquire land for the purposes of building an additional educational facility. The administration has entered into a purchase agreement, and this resolution authorizes the purchase agreement to move forward for completion. Cheryl Polzin moved to waive the reading of the full resolution and to approve the recommended action. Erik Brown seconded the motion and it carried unanimously with a roll call vote.*

#### D. Approval of National Association of Student Councils 2018 Conference Hosting Agreement

*This approval authorizes Wayzata High School to host the national convention for the National Association of Student Councils in 2018. Linda Cohen moved to approve the agreement, and Bonita Lucky seconded the motion. It carried*

*unanimously.*

E. Meadow Ridge Addition Lease Purchase RFP

*Jim Westrum presented the Meadow Ridge Addition Lease Purchase information. The award for this will be determined in the August Regular School Board Meeting.*

3. **ADJOURN**

*Sarah Johansen moved to adjourn the meeting and Erik Brown seconded. There were no objections and the meeting adjourned at 4:27 pm.*

# Minutes of Closed Meeting

## The Board of Education Wayzata Public Schools

---

A Closed Meeting of the Board of Education of Wayzata Public Schools was held Monday, July 24, 2017, beginning at 5:00 PM in the District Administration Building.

### 1. Call to Order/Roll Call

*The meeting was called to order by Board Chair Chris McCullough and the roll call taken by Board Clerk Andrea Cuene.*

*Present at the meeting: Chris McCullough, Sarah Johansen, Linda Cohen, Andrea Cuene, Bonita Lucky, Erik Brown, Cheryl Polzin, and Chace B. Anderson, ex-officio member of the School Board.*

### 2. School Board

#### A. Negotiations and Labor Discussion

*Stacie Vos, Executive Director of Human Resource Services, presented the negotiations and labor discussions with which the district has been involved.*

#### B. Superintendent's Evaluation

*Superintendent Chace B. Anderson exited the room for the remainder of the Closed Session.*

*The Superintendent Evaluation Committee presented their work to the full Board, and opened discussions to evaluate and develop the Superintendent Evaluation, as required yearly in the Superintendent's employment contract. The final evaluation will be presented to the Superintendent at a date scheduled in the future, and the Evaluation Committee will present their general findings to the public in the September Regular School Board Meeting.*

### 3. Adjourn

*Sarah Johansen moved to adjourn the meeting, and Linda Cohen seconded the motion. There were no objections and the meeting adjourned at 7:53 pm.*

**WAYZATA PUBLIC SCHOOLS**

Independent School District 284  
Wayzata, Minnesota

**BOARD OF EDUCATION**

Regular Meeting – August 14, 2017

**AGENDA SECTION: APPROVAL OF AGENDA AND CONSENT AGENDA ITEMS**

**ITEM: Finance & Business Recommendations**

**COMMENTS BY: Jim Westrum, Executive Director of Finance and Business**

**Finance and Business Recommendations**

These routine items are presented for Board of Education review and approval through a single consent motion.

**Monthly Bills**

The attached lists itemize claims for which the Board of Education is requested to authorize payment.

General Checking Account for July 2017	\$5,888,135
Wire Transfer for June 2017	\$24,294,439

**Acknowledgement Of Contributions**

Minn. Stat. 465.03 - GIFTS TO MUNICIPALITIES.

“Any city, county, school district or town may accept a grant or devise of real or personal property and maintain such property for the benefit of its citizens in accordance with the terms prescribed by the donor. Nothing herein shall authorize such acceptance or use for religious or sectarian purposes. Every such acceptance shall be by resolution of the governing body adopted by a two-thirds majority of its members, expressing such terms in full.”

**Monthly Donations**

The Board of Education is requested to accept the attached lists donations received in July 2017.

Cash Donations	\$3,455.28
In-Kind Donations	≈\$3,000.00

Cash Donations:

AMOUNT	DONATED BY	PURPOSE
\$1,800.00	Central Middle School PTA	CMS – 8 <sup>th</sup> grade fieldtrip transportation
\$1,335.28	Plymouth Creek PTO	PC – Special Ed equipment
\$300.00	Jay & Wendy Hesby	WHS – Lucy Mae Hesby Scholarship
\$20.00	Wells Fargo Matching Gifts Program - Mei Ji	CMS – Student Scholarships and support

In-Kind Donations:

≈\$3,000.00	Meadow Ridge Church	MR – 7 sections of staging
-------------	---------------------	----------------------------

**RECOMMENDED ACTION:** That the School Board approves the following checking account and wire transfer payments and accepts with appreciation the above donations, which are in compliance with current District policy and guidelines:

Motion by: \_\_\_\_\_ Yes \_\_\_\_\_ Passed \_\_\_\_\_

Second by: \_\_\_\_\_ No \_\_\_\_\_ Failed \_\_\_\_\_

Abstentions: \_\_\_\_\_

**WAYZATA PUBLIC SCHOOLS  
MONTHLY CHECK DISBURSEMENT SUMMARY  
JULY 2017**

CHECK	VENDOR	DESCRIPTION	DATE	AMOUNT
410713	FIRST STUDENT, INC	TRANSPORTATION	7/20/2017	648,341.05
410718	APPLE FINANCIAL SERVICES	Apple Computer Equipment	7/21/2017	386,464.35
410313	MAIN LINE TRANSPORTATION INC (MTI)	TRANSPORTATION	7/5/2017	362,220.36
410276	FIRST STUDENT, INC	TRANSPORTATION	7/5/2017	350,830.23
410312	MAIN LINE TRANSPORTATION INC (MTI)	TRANSPORTATION	7/5/2017	277,585.71
410620	CDW GOVERNMENT, INC	Firewall Hardware	7/19/2017	277,563.75
410663	MINT ROOFING INC	OW - Partial Roof Rehab TO 6/30/17	7/19/2017	266,129.39
410587	KLEIN BANK	TURF LEASE	7/18/2017	225,119.99
410661	MASTERS PLUMBING HEATING & COOLING LLC	PC - Plumbing TO 6/25/17	7/19/2017	213,412.51
410636	GENERAL SHEET METAL	GW - 23A Mechanical TO 6/21/17	7/19/2017	212,040.00
410622	CM CONSTRUCTION CO, INC	CMS - E-Wing renovation TO 6/30/17	7/19/2017	159,803.30
704346	TIERNEY BROTHERS, INC.	Smartboards GW & KL	7/20/2017	142,263.00
410667	NORTHLAND CONCRETE & MASONRY LLP	HS ADD - 03-A BUILDING CONCRETE	7/19/2017	127,566.77
410523	XCEL ENERGY	MONTHLY ENERGY	7/11/2017	119,111.48
410692	VEIT & COMPANY INC	HS ADD 31-A SITE CLEARING & EARTHWORK	7/19/2017	103,848.39
410641	GRESSER COMPANIES INC	HS ADD 04-B MASONRY PACKAGE #2 FINAL	7/19/2017	102,360.49
410458	MAIN LINE TRANSPORTATION INC (MTI)	TRANSPORTATION	7/11/2017	96,917.23
410627	FEHN COMPANIES INC	NEW ELEM 31-A EARTHWORK & SITE UTILITIES	7/19/2017	86,842.77
410637	GEORGE COOK CONSTRUCTION CO	GW - 06A Demolition and Carpentry TO 6/30/17	7/19/2017	86,061.15
410613	ABSOLUTE COMMERCIAL FLOORING	PC-Flooring replacement TO 6/30/17	7/19/2017	84,044.08
410750	ISD #279-OSSEO SCHOOLS	PERKINS Dec 2016- APR 2017	7/31/2017	79,489.27
410623	CONSTRUCTION SYSTEMS INC	NEW ELEM 05-A STRUCTUAL STEEL - MATERIAL	7/19/2017	75,190.42
410657	KRAUS-ANDERSON CONSTRUCTION CO	GW Construction Management Services	7/19/2017	72,737.61
410255	BENILDE-ST MARGARET SCHOOL	REIMBURSE-NON-PUBLIC TRANSPORT	7/5/2017	57,110.76
410558	NORTHWEST EVALUATION ASSOCIATION	WEB-BASED ACAD PROGRESS (MAP) 7/1/17-6/30/18	7/12/2017	56,375.00
410679	SAFETY FIRST PLAYGROUND SURFACING LLC	IMPACT SAFETY MATS	7/19/2017	53,363.85
410724	INSTRUCTURE INC	CANVAS-ADD'L TICKETING SYSTEM LIC.	7/25/2017	50,900.00
410528	ACT, INC	ACT PLUS WRITING TESTS	7/12/2017	47,268.00
410651	JPMI CONSTRUCTION CO	2017 Window and Door Replace, Exterior Wall Replace	7/19/2017	45,749.62
410218	ISCORP (INTEGRATED OFFICE SYSTEMS CORP)	SERVICE BUREAU SUBSCRIPTION FEE 17-18	7/3/2017	40,000.08
410656	KMH ERECTORS INC	NEW ELEM 05-B STRUCTURAL STEEL - MATERIAL	7/19/2017	39,323.68
410443	K12 TRANSPORTATION MANAGEMENT SVCS INC	TRANSPORTATION	7/11/2017	37,000.00
410640	GRAZZINI BROTHERS & CO	GW - 09D Flooring TO 6/30/17	7/19/2017	33,915.00
410723	EBACKPACK INC	RENEWAL OF SOFTWARE	7/25/2017	33,230.00
410270	CPM EDUCATIONAL PROGRAM	ALGEBRA 2-200 MORE SB, GEOMETRY SB	7/5/2017	33,195.49
410258	BRECK SCHOOL	REIMBURSE-NON-PUBLIC TRANSPORT	7/5/2017	32,201.32
410257	BLAKE SCHOOL	REIMBURSE-NON-PUBLIC TRANSPORT	7/5/2017	31,967.43
410747	CASTREJON INC	Balance of invoice for fiber	7/31/2017	31,250.00
410323	MINNETONKA HIGH SCHOOL	ATH-ADAPTED SPORTS	7/5/2017	27,936.55
410762	TRUST POINT/FBO WAYZATA SCHOOLS(N CEN TRST)	Payroll accrual	7/31/2017	25,795.00
410403	FIRST STUDENT, INC	TRANSPORTATION	7/11/2017	25,528.40
410695	WELLS CONCRETE	NEW ELEM 03-B ARCHITECTUAL PRECASE WALL PANELS	7/19/2017	25,247.60
410654	K12 TRANSPORTATION MANAGEMENT SVCS INC	TRANSPORTATION	7/19/2017	24,500.00
410266	COMMERCIAL DOOR SYSTEMS, INC	PC Misc. Door Replacement	7/5/2017	22,737.57
410749	ISD #276-MINNETONKA SCHOOLS	Final Perkins 16-17	7/31/2017	22,182.03
410696	WELLS CONCRETE	NEW ELEM 03-C PRECAST CONCRETE HOLLOW CORE PLANK	7/19/2017	21,397.52
410498	SEATING & ATHLETIC FACILITY ENTERPRISES	HS-Bleacher Railings	7/11/2017	21,130.00
410311	LONE STAR PERCUSSION	WHS: DRUMLINE EQUIPMENT	7/5/2017	21,026.68
410751	ISD #283-ST LOUIS PARK SCHOOLS	PERKINS 16-17 SCHOOL YEAR	7/31/2017	20,979.09
410364	WEST METRO EDUCATION PROGRAM	TIER BILLING 3 OF 3	7/5/2017	19,866.00
410541	GUIDEK K12	GUIDE K12 SUBSCRIPTION RENEWAL	7/12/2017	19,533.60
410643	HOLLENBACK & NELSON INC	GW - 03-A CONCRETE & MASONRY TO 6/30/17	7/19/2017	19,000.00
410674	CITY OF PLYMOUTH - FINANCE DEPT	BV-WATER	7/19/2017	18,806.33
410522	WOLD ARCHITECTS AND ENGINEERS	CMS E WING SWITCH GEAR REPLACE #162235	7/11/2017	18,639.89
410706	GRAZZINI BROTHERS & CO	NEW ELEM 09-B TILE TO 6/17	7/20/2017	18,561.55
410709	SFM MUTUAL INSURANCE CO	SFM WORK COMP (16-17) 6/1/17-6/30/17	7/20/2017	18,266.10
410569	WEST INTERACTIVE SERVICES CORP	DAB Renewal School Messenger 12 Month	7/12/2017	18,249.00

410735	DEPT OF TRANSPORTAION STATE OF MN	WHS HWY 55	7/25/2017	15,749.15
410368	WOLD ARCHITECTS AND ENGINEERS	BLANKET-HS ADDITIONS-ARCHITECT FEES	7/5/2017	15,197.78
410694	VINCO INC	GW - 26A Electrical TO 6/25/17	7/19/2017	15,048.00
410369	XCEL ENERGY	HS-ELEC METER #17612015 5/17-6/18	7/5/2017	14,950.88
410557	MN SCHOOL BOARDS ASSN	ASSN DUES & POLICY SERV 17-18	7/12/2017	14,819.00
410500	SHI INTERNATIONAL CORP	Hardware to hang Smart Panels	7/11/2017	14,587.83
410682	SHI INTERNATIONAL CORP	Hardware to hang Smart Panels	7/19/2017	13,423.59
410336	REPUBLIC SERVICES #894	SERVICE 5/17	7/5/2017	13,324.27
410438	ISD #281-ROBBINSDALE SCHOOLS	PERKINS GRANT-16-17 FINAL	7/11/2017	13,028.12
410288	HENNEPIN TECHNICAL COLLEGE	FALL & SPRING SALARY REIMBURSEMENT	7/5/2017	13,000.00
410281	FOURTH BAPTIST CHRISTIAN SCHOOL	REIMBURSE-NON-PUBLIC TRANSPORT	7/5/2017	12,951.06
410626	ENVIROBATE	CMS-ASBESTOS ABATEMENT	7/19/2017	12,730.00
410303	KINECT ENERGY INC	MAY ENERGY	7/5/2017	12,438.71
410633	FLYNN MIDWEST LP	HS-ADDITIONS-ROOFING	7/19/2017	12,378.98
410604	SHI INTERNATIONAL CORP	Teacher Windows Laptops	7/18/2017	12,188.00
410530	ASSN OF METRO SCHOOL DISTRICTS	AD-DUES 17-18	7/12/2017	11,492.00
410409	FIRST STUDENT, INC	TRANSPORTATION	7/11/2017	11,447.56
410489	REPUBLIC SERVICES #894	SERVICE 6/17	7/11/2017	11,441.21
410537	COMET INFORMATICS LLC	LCTS-PP 17-18	7/12/2017	11,141.00
410632	FIRST STUDENT, INC	TRANSPORTATION	7/19/2017	10,137.18
410363	WEST LUTHERAN HIGH SCHOOL	REIMBURSE-NON-PUBLIC TRANSPORT	7/5/2017	9,691.79
410665	NATIONAL AUTISM RESOURCES INC	OW/MR/CMS/EMS/WMS SPED SENSORY PURCHASE	7/19/2017	9,522.79
704330	WENGER	HS ADD 11-D THEATRE RIGGING,CURTAINS & TRACK	7/20/2017	9,487.85
410296	INGINA LLC	CED-LEGO,MOVIE MAKING & MINECRAFT	7/5/2017	9,055.00
410599	PCS REVENUE CONTROL SYSTEMS, INC	ANNUAL SOFTWARE 7/1/17-6/30/18	7/18/2017	9,000.00
410621	CENTER FOR ACADEMIC EXCELLENCE	CED-SPEECH & MNSTEM 6/19-6/22	7/19/2017	8,934.75
410748	INTERMEDIATE DIST 287	Final FY17 PERKINS	7/31/2017	8,692.85
410584	HANUS ENTERPRISES,LLP	BUS GARAGE RENT 8/17	7/18/2017	8,559.73
410598	NUTRISLICE INC	DIGITAL SIGNAGE	7/18/2017	8,552.00
410717	VOIGT'S BUS CO	QUIZ BOWL TO ATLANTA 5/25/17	7/20/2017	7,823.24
410237	MUSIC THEATRE INTL	MARY POPPINS ROYALTY-HS 11/17	7/3/2017	7,700.00
410566	THE MATH LEARNING CTR	MLC WORKSHOPS ON AUG. 29	7/12/2017	7,600.00
410618	BRETH-ZENZEN FIRE PROTECTION LLC	GW - 21A Fire Protection TO 6/19/17	7/19/2017	7,600.00
410652	JULEE QUARVE-PETERSON, INC	Updating our DAD Accessibility Transition Plan	7/19/2017	7,500.00
410343	SHAHID, LARIVA	HR-WELLNESS SEMINARS	7/5/2017	7,200.00
410486	RAV TECHNOLOGIES, INC	GW-DE-INSTALL PHASE 1	7/11/2017	6,750.00
410746	UNITED STATES TREASURY	QUARTERLY FEDERAL EXCISE TAX RETURN	7/25/2017	6,659.73
410734	CONSTRUCTION SPECIALTIES INC	BLEACHER INSPECTIONS-CMS	7/25/2017	6,618.00
410705	CENTURY FENCE CO	WHS fencing	7/20/2017	6,545.00
704316	STAPLES BUSINESS ADVANTAGE	MRHB-SUPPLIES	7/14/2017	6,469.01
410231	TELVENT DTN LLC	SEVERE WEATHER NOTICE SERV-7/1/17-6/30/18	7/3/2017	6,432.00
410280	FIRST STUDENT, INC	TRANSPORTATION	7/5/2017	6,392.26
410600	PLYMOUTH ICE CTR	ATH-B & G HOCKEY IMPROVEMENTS	7/18/2017	6,316.34
410678	RUPP, ANDERSON, SQUIRE & WALDSPURGER PA	PROF SERV 5/17	7/19/2017	6,286.20
410698	WOLD ARCHITECTS AND ENGINEERS	GW-17-18 UPGRADES #162128	7/19/2017	6,211.32
410358	TRUGREEN	DIST-WEED CONTROL	7/5/2017	6,201.95
410510	TITANIUM PARTNERS LLC	PLYMOUTH-WATER 4/16-5/15	7/11/2017	5,907.48
410361	UPPER LAKE FOODS	GROCERIES	7/5/2017	5,769.45
410320	MPLS JEWISH DAY SCHOOL	REIMBURSE-NON-PUBLIC TRANSPORT	7/5/2017	5,521.32
410572	SCHOOL SERVICE EMPLOYEES	Payroll accrual	7/14/2017	5,474.16
704325	RELATE COUNSELING CTR	MH ESCE, CMS,WHS 16-17	7/20/2017	5,441.25
410315	MARANATHA CHRISTIAN ACADEMY	REIMBURSE-NON-PUBLIC TRANSPORT	7/5/2017	5,277.81
410699	WRIGHT-HENNEPIN COOPERATIVE ELECTRIC ASSN	MR-ELECTRIC 6/1-7/1	7/19/2017	5,150.56
410761	SCHOOL SERVICE EMPLOYEES	Payroll accrual	7/31/2017	5,124.25
410730	TWIN CITY GARAGE DOOR CO	20'2" X 13'9" CS24 W/STEEL, BROWN	7/25/2017	4,950.00
410688	TEACHING STRATEGIES LLC	SP ED-TRAINING	7/19/2017	4,930.00
410588	LIFETIME FITNESS, INC.	Lifetime fitness locker room rental 8/17	7/18/2017	4,919.30
410285	GOOD SHEPARD	REIMBURSE-NON-PUBLIC TRANSPORT	7/5/2017	4,916.08
410752	KINECT ENERGY INC	JUNE Energy	7/31/2017	4,885.06
410217	GENERATIVE LEARNING	CC SEMINAR 8/17 & 10/17 LG,SB,RB & KM	7/3/2017	4,800.00
410628	FIELD ENVIRONMENTAL CONSULTING INC	EMS-NOISE MONITORING-BAND	7/19/2017	4,693.83
410234	XEROX FINANCIAL SERVICES	WPS PRODUCTION COPIER FLEET	7/3/2017	4,520.00

410731	XEROX FINANCIAL SERVICES	LEASE PAYMENT	7/25/2017	4,520.00
410551	MN LIFE COLLEGE	INTERNSHIP-SP PUPIL 7/2-7/21 AG	7/12/2017	4,500.00
410733	CENTURY LINK BUSINESS SERVICES	MONTHLY INTERNET	7/25/2017	4,500.00
410745	CENTURY LINK BUSINESS SERVICES	MONTHLY INTERNET	7/25/2017	4,500.00
410414	HAHN, R.N.,PHN, MICHELLE	CONSULT SERVICES 1/17,2/17,3/17,4/17,5/17 & 6/17	7/11/2017	4,494.00
704329	WENGER	HS ADD 11-C ACOUSTICAL SHELL SYSTEMS TO 16/17	7/20/2017	4,350.00
410481	CITY OF PLYMOUTH - FINANCE DEPT	FUEL USAGE 5/17	7/11/2017	4,237.23
410593	MILLER 32ND AVE, LLC	RENT 8/17	7/18/2017	4,224.01
410337	RIVER TREE SCHOOL	REIMBURSE-NON-PUBLIC TRANSPORT	7/5/2017	4,134.90
410479	PIONEER MANUFACTURING CO	DIST-FIELD PAINT	7/11/2017	4,032.00
410450	LARSON CO, J. H.	HS-LIGHTS	7/11/2017	3,896.08
704295	ECOLAB PEST ELIMINATION DIV	BV-PEST CONTROL	7/14/2017	3,895.14
704289	PROJECT LEAD THE WAY, INC	PARTICIPATION FEE-PATHWAY TO ENGINEERING 17-18	7/7/2017	3,750.00
410302	KIDCREATE STUDIO	CED-CANVAS & CLAY	7/5/2017	3,614.00
410646	HYDRO KLEAN	GW-CLEAN STORM LINES & DRAINS	7/19/2017	3,580.00
410284	GOLDEN VALLEY SUPPLY CO	HS-HALCYON	7/5/2017	3,565.08
410581	COMPUTER EXPLORERS	CED-STAR WARS & CITY BUILDER START 7/6	7/18/2017	3,564.00
410659	LOVEGREEN SAFETY INC	CSF-MACHINE GUARDS	7/19/2017	3,544.34
410580	COMMITTEE FOR CHILDREN	MIDDLE SCHOOL BULLY PROGRAM	7/18/2017	3,537.00
410251	AVE MARIA ACADEMY	REIMBURSE-NON-PUBLIC TRANSPORT	7/5/2017	3,527.35
410589	LOFFLER COMPANIES, INC.	WPS COPIER FLEET MAINTENANCE	7/18/2017	3,500.18
410390	CHILEDIA INSTITUTE INC	OUT-OF-STATE TUITION 6/1-6/30	7/11/2017	3,406.80
410726	POSTMASTER	FALL YOUTH & ADULT ENRICHMENT CATALOG	7/25/2017	3,393.59
410616	ART SPARK LLC	CED-PROF SERV	7/19/2017	3,366.00
410681	SCIENCE EXPLORERS	CED-STEM 6/26-29 & ENG 6/26-6/29	7/19/2017	3,315.00
410648	INTERSTATE SECURITY SERVICES	HS-SECURITY 5/27-5/31	7/19/2017	3,268.00
410469	NICOL, BARBARA	COMM-REFERENDUM 5/17 & 6/17	7/11/2017	3,250.00
410229	RUSH CREEK GOLF CLUB	SYNCHRO BANQUET 6/4/17	7/3/2017	3,239.44
410398	DIGITAL INSURANCE INC	HR-COBRA & FLEX 6/17	7/11/2017	3,120.16
410375	ANCOM COMMUNICATIONS	HS-NEW RADIO SYSTEM	7/11/2017	3,116.75
704280	INSPEC, INC.	PC-REPLACE SKYLIGHT	7/7/2017	3,100.00
410610	WAYZATA COUNTRY CLUB	ATH-G & B GOLF BANQUET 6/8 & 6/15	7/18/2017	3,010.29
410457	MAIL FINANCE (FORMERLY NEOPOST)	HS NEOPOST MAIL MACHINE	7/11/2017	2,880.60
410525	YOUTH ENRICHMENT LEAGUE	CED-PROF SERV 6/19-6/30	7/11/2017	2,820.00
410267	COMPUTER EXPLORERS	CED-HACKING MINECRAFT & DIGITAL FILM MAKING	7/5/2017	2,808.00
410287	GROVES ACADEMY	REIMBURSE-NON-PUBLIC TRANSPORT	7/5/2017	2,762.02
410708	LOFFLER COMPANIES, INC.	WHS COPY CENTER MAINTENANCE	7/20/2017	2,731.10
410712	EHLERS AND ASSOCIATES INC	BUDGET PROJECTION 17-18	7/20/2017	2,700.00
410317	MINNEHAHA ACADEMY	REIMBURSE-NON-PUBLIC TRANSPORT	7/5/2017	2,660.37
410383	BLB CONSULTING LLC	SCHOOLDUDE PROJECT MGMT	7/11/2017	2,640.00
410350	STRATEGIC EQUIPMENT & SUPPLY	WHS FACS LAB TABLE	7/5/2017	2,625.77
410739	SIGN PRODUCERS, THE	HS BLUE LINE EXPRESS SIGNAGE	7/25/2017	2,625.00
704303	INTERSTATE POWER SYSTEMS	CMS-EMERG GEN INSPEC	7/14/2017	2,611.62
704328	TRUSTED EMPLOYEES	HR-BACKGROUND CHECKS	7/20/2017	2,590.85
410732	CENTURY LINK	MONTHLY PHONES	7/25/2017	2,582.06
410722	CENTURY LINK	MONTHLY PHONE	7/25/2017	2,489.53
704288	EASTBAY TEAM SALES	ATH-SOCCER EQUIP	7/7/2017	2,430.00
410430	HOME DEPOT/GEFCF	TR#15-SUPPLIES	7/11/2017	2,407.11
410226	CITY OF PLYMOUTH - FINANCE DEPT	BUS TICKETS (80)	7/3/2017	2,400.00
410236	MUSIC THEATRE INTL	LITTLE SHOP OF HORRORS ROYALTY-HS 2/18	7/3/2017	2,400.00
410282	FRENCH ACADEMY OF MN INC	REIMBURSE-NON-PUBLIC TRANSPORT	7/5/2017	2,259.87
410729	TERRELL DANIELS INC	WPS REFERENDUM LOGO CONCEPTS	7/25/2017	2,234.00
410561	RENAISSANCE LEARNING INC	SH-READER SUBSCRIPTION & ANNUAL HOSTING FEE	7/12/2017	2,219.00
410741	THE WILD INSTITUTE	KEYNOTE, HB & BS STF TRAINING 6/9/17	7/25/2017	2,200.00
410245	AIRPORT TAXI, INC	TRANSPORTATION	7/5/2017	2,199.00
410293	HOLY FAMILY ACADEMY	REIMBURSE-NON-PUBLIC TRANSPORT	7/5/2017	2,129.72
410348	ST JOHN'S LUTHERAN SCHOOL	REIMBURSE-NON-PUBLIC TRANSPORT	7/5/2017	2,081.52
410250	ART INSTITUTE OF PITTSBURGH LLC	SP PUPIL TUITION 6/15-7/22 SG	7/5/2017	2,030.00
704281	MOTG (MN OFFICE TECHNOLOGY GRP)	WPS PRODUCTION MAINTENANCE BLANKET	7/7/2017	2,028.14
410304	KING OF GRACE LUTHERAN SCHOOL	REIMBURSE-NON-PUBLIC TRANSPORT	7/5/2017	1,999.51
410693	VEIT & COMPANY INC	V BASEBALL WS 31-A: EARTHWORK & SITE UTILITIES	7/19/2017	1,999.08
704335	INNOVATIVE OFFICE SOLUTIONS	KL SMITH CASCADE STORAGE	7/20/2017	1,984.80

410308	LARKIN AUTO REPAIR	REPAIR TR#13	7/5/2017	1,972.95
410518	WAYZATA, CITY OF	WMS-WATER/SEWER	7/11/2017	1,923.19
171800010	KIMBLER, RODNEY PAUL	REIMBURSE	7/5/2017	1,904.99
410550	MN ASSN OF SECONDARY SCHOOL PRINCIPALS	WMS-DUES 17-18 JB	7/12/2017	1,904.00
410252	B & H FOTO & ELECTRONICS	DAVID MOTES CAMERA LENS	7/5/2017	1,895.20
410272	DBW CONSULTING	CONTRACTED SERVICES 6/16-6/30	7/5/2017	1,837.50
410225	MN ELEM SCH PRINCIPAL'S ASSN	GW-ASSN DUES 17-18 BG	7/3/2017	1,820.00
410556	MN ELEM SCH PRINCIPAL'S ASSN	MR-ASSN DUES 17-18 KK	7/12/2017	1,820.00
704332	COMMERCIAL KITCHEN SERVICES	HS-SERV COMBIS	7/20/2017	1,799.11
410634	FORD METRO INC	MR 08-B Curtain wall, Storefront, & Window System	7/19/2017	1,795.50
410349	ST. RAPHAEL CATHOLIC SCHOOL	REIMBURSE-NON-PUBLIC TRANSPORT	7/5/2017	1,761.94
410606	SPIRITWEAR USA	CUL EXP-APPAREL	7/18/2017	1,740.85
410719	ALPHA VIDEO & AUDIO, INC	AMINO BOXES	7/25/2017	1,734.50
410365	WESTMARK PRODUCTIONS	ORCH CONCERT CDs-HS	7/5/2017	1,719.43
410243	ACADEMY OF WHOLE LEARNING	REIMBURSE-NON-PUBLIC TRANSPORT	7/5/2017	1,691.77
410434	IDENTITY PRINTING INC	PIP POSTERS	7/11/2017	1,689.00
704304	JOHNSON CONTROLS	CMS-REPAIR REFRIG LEAK	7/14/2017	1,688.70
410395	CUSTOM EDUCATION SOLUTIONS	INTERVENTION BOOK ORDER - PTA GRANT	7/11/2017	1,684.21
410264	CITY OF LAKES - WALDORF SCHOOL	REIMBURSE-NON-PUBLIC TRANSPORT	7/5/2017	1,676.23
410224	MN ASSN OF SCHOOL BUSINESS OFFICIALS	DUES 17-18 JW	7/3/2017	1,665.00
410473	OSTVIG TREE INC	SH-REMOVE TREE	7/11/2017	1,664.00
704299	HI-TECH REFRIGERATION	HS-REPAIR TRAUHLSON FREEZER	7/14/2017	1,654.94
410482	PRAIRIE RIVER HOME CARE INC	MA NURSE 5/3 & 5/5	7/11/2017	1,622.50
410248	AMERICAN C.P.R. & FIRST AID, INC	CED-HB-TRAINING 6/24/17	7/5/2017	1,620.00
410333	QUARTER GROUP PERFORMERS LLC	CED-SUMMER CAMP 6/19-6/23	7/5/2017	1,600.00
704344	STAPLES BUSINESS ADVANTAGE	OFFICE SUPPLIES MULTIPLE SITES	7/20/2017	1,596.47
410574	APPLE INC	Blanket PO for Apple Repairs	7/18/2017	1,572.95
410374	AK MATERIAL HANDLING SYSTEMS INC	WMS-EQUIP WIRE CAGE (B LOCKER RM)	7/11/2017	1,572.39
410299	JENSEN, SCOTT	HS-REPAIR BASS	7/5/2017	1,554.16
410619	BRIGGS & MORGAN	PROF SERV 3/17,4/17 & 5/17-HAMEL	7/19/2017	1,528.80
410283	FUN ENGINEERZ LLC	CED-JR ENG 6/26-6/30	7/5/2017	1,500.00
410326	NORMANDEALE COMMUNITY COLLEGE	HS CONCURRENT ENROLL PROGRAM-SPRING 2017	7/5/2017	1,500.00
410680	SATHRE-BERGQUIST INC	MR ADDITION - LAND SURVEY	7/19/2017	1,500.00
410467	MINT ROOFING INC	GL-REPAIR ROOF LEAK	7/11/2017	1,487.92
410683	SPIRITWEAR USA	CED-T-SHIRTS	7/19/2017	1,462.50
410351	ST. THERESE SCHOOL	REIMBURSE-NON-PUBLIC TRANSPORT	7/5/2017	1,449.48
410607	THE WORKS	CED-KLHB FIELD TRIP 8/8/17	7/18/2017	1,440.00
704324	JOSTENS, INC	HS-HONOR CORDS 16-17	7/20/2017	1,432.00
410653	JUNIOR ACHIEVEMENT OF UPPER MIDWEST	KL-5TH GR FIELD TRIP 5/23/17	7/19/2017	1,408.00
410262	CHILDREN'S WORKSHOP	REIMBURSE-NON-PUBLIC TRANSPORT	7/5/2017	1,399.63
410508	TEDLUND, BARRY	16-17 TRANSPORTATION	7/11/2017	1,375.66
410456	MAHONEY, SEAN	16-17 TRANSPORTATION	7/11/2017	1,366.71
410297	INTL SCHOOL OF MN	REIMBURSE-NON-PUBLIC TRANSPORT	7/5/2017	1,357.89
410517	WANG, ERIC	16-17 TRANSPORTATION	7/11/2017	1,335.41
410635	FRITZTILE	CMS-TILE	7/19/2017	1,329.50
410756	SKY ZONE INDOOR TRAMPOLINE PARK	JUMP TIME 6/1/17	7/31/2017	1,310.00
410567	THE WORKS	MRHB-FIELD TRIP 7/21/17	7/12/2017	1,300.00
410222	MN ASSN OF SCHOOL ADMINISTRATORS	AD-MEMBERSHIP 17-18 CA	7/3/2017	1,275.00
704337	MEI - MINNESOTA ELEVATOR INC	MONTHLY SERV 7/17	7/20/2017	1,265.00
410345	SPORRE, LAURIE	ATH-SERVICE	7/5/2017	1,260.00
410463	MCCARTNEY, SHARON	SUMMER SPANISH 6/17	7/11/2017	1,249.50
704287	ALLEGRA PRINT & IMAGING	ATH-MSHSL ELIG BOOKLETS	7/7/2017	1,244.15
410472	OFFICE OF MN IT SERVICES	VOICE SERV THRU 5/31/17	7/11/2017	1,231.81
410737	OFFICE OF MN IT SERVICES	SCHOOL ALARMS	7/25/2017	1,231.81
704336	MC GRAW HILL COMPANIES	TE HEALTH & WELLNESS	7/20/2017	1,216.32
704286	STAPLES BUSINESS ADVANTAGE	SHHB-SUPPLIES	7/7/2017	1,208.58
410689	TWIN CITY WATER CLINIC	GL & WMS-DRINKING WATER TEST FOR LEAD	7/19/2017	1,204.00
410305	LAKE CONFERENCE	ATH-B TRACK FEES	7/5/2017	1,184.00
171800069	TOLLISON, KRISTIN	REIMBURSE	7/19/2017	1,164.67
410253	BATTERIES R US	EMS-SCRUBBER BATTERY	7/5/2017	1,157.72
410568	THREE RIVERS PARK DISTRICT	GW-4TH GR FIELD TRIP 11/3/17 HOUSEHOLD #394093	7/12/2017	1,157.00
704320	2ND WIND EXERCISE INC	CMS-REPAIR EQUIPMENT	7/20/2017	1,141.17

410367	WINN, LORI	CED-ETIQUETTE CAMP 6/19-6/22	7/5/2017	1,100.00
171800038	RODEN, KATHY	REIMBURSE	7/12/2017	1,081.83
410327	ORONO COMMUNITY EDUCATION	CED-CLASSES 1/24-5/8	7/5/2017	1,075.90
410292	HOLY TRINITY LUTHERAN SCHOOL	REIMBURSE-NON-PUBLIC TRANSPORT	7/5/2017	1,059.56
410261	CHESTERTON ACADEMY	REIMBURSE-NON-PUBLIC TRANSPORT	7/5/2017	1,052.60
410413	GUGGENBERGER, STEVE	16-17 TRANSPORTATION	7/11/2017	1,051.32
410417	HARTEL, DANIEL	16-17 TRANSPORTATION	7/11/2017	1,051.32
410639	GRAINGER INC., W. W.	WOOD SHOOP EQUIPMENT	7/19/2017	1,042.10
410759	ONEDIGITAL (WAS CORP HEALTH SYSTEMS)	Payroll accrual	7/31/2017	1,040.85
410669	ON SITE SANITATION	SANIT UNITS-LAX TOURN 6/2	7/19/2017	1,038.75
410471	O'CONNELL, STACEY	16-17 TRANSPORTATION	7/11/2017	1,024.48
704302	INSTITUTE FOR ENVIRONMENTAL ASSESSMENT	GW-ASBESTOS ABATEMENT	7/14/2017	1,023.05
410325	NHA HEATING & AIR CONDITIONING INC	HS-SUPPLIES	7/5/2017	1,023.00
410291	HOLY FAMILY CATHOLIC HIGH SCHOOL	REIMBURSE-NON-PUBLIC TRANSPORT	7/5/2017	1,022.01
704345	TEAM SPORTING GOODS, INC	ATH-FB EQUIPMENT	7/20/2017	1,010.67
410370	XCEL ENERGY	HS-ENERGY 5/17-6/18	7/5/2017	1,001.94
410684	ST OLAF COLLEGE	SCHOLARSHIP	7/19/2017	1,000.00
410256	FREDERICK BETHKE VIOLINS LLC	HS-VIOLIN & CELLO REPAIR	7/5/2017	991.00
410289	HILL CO, ROBERT B.	SH-SALT	7/5/2017	990.06
410314	MAIN LINE TRANSPORTATION INC (MTI)	TRANSPORTATION	7/5/2017	988.15
410658	LARSON, DEBORAH	PERKINS-NEW TEACHER INITIATIVE 5/15-6/30	7/19/2017	988.00
410382	BIRCHBARK BOOKS & NATIVE ARTS	AMER INDIAN SUPPLIES	7/11/2017	979.40
410754	PHEASANT ACRES GOLF CLUB	BOYS GOLF PRACTICE 2017	7/31/2017	959.72
410609	WAYZATA COUNTRY CLUB	ATH-G LAX BANQUET 6/4	7/18/2017	950.00
410650	JIMMY'S JOHNNYS INC	HS-SANIT UNITS 5/30-6/26	7/19/2017	938.00
410612	1ST CHOICE PEDIATRIC HOME CARE	MA Contract 5/21-6/3 SGO	7/19/2017	912.00
410410	FOURTH DIMENSION SIGNS	MR-REPAIR SIGN DAMAGE	7/11/2017	900.00
410529	ANCOM COMMUNICATIONS	CED-SUM STAFF EAR PCS	7/12/2017	890.00
704310	SITE ONE LANDSCAPE SUPPLY LLC	HS-IRRIGATION	7/14/2017	868.54
410260	CHELSOM CONSULTANTS LIMITED	SH-BOOKS FOR STAFF DEV	7/5/2017	866.72
410716	REGION V	MARSS SUPPORT SERV -QUARTERLY FEE	7/20/2017	860.00
410549	MN ASSN OF SECONDARY SCHOOL PRINCIPALS	CMS-DUES 17-18 JB	7/12/2017	853.00
410725	MN ASSN OF SECONDARY SCHOOL PRINCIPALS	MEMBERSHIP APPLICATION 17-18	7/25/2017	853.00
704301	HORIZON COMMERCIAL POOL SUPPLY	EMS-POOL SUPPLIES	7/14/2017	850.50
410246	AL-AMAL SCHOOL	REIMBURSE-NON-PUBLIC TRANSPORT	7/5/2017	844.44
410547	LOFFLER COMPANIES INC	COMMUNITY ED COPIER BLANKET	7/12/2017	834.56
410555	MN ASSN OF SCHOOL ADMINISTRATORS	T & L-DUES 17-18 SN	7/12/2017	825.00
410645	HUDSON MAGIC LLC	CED-PROF SERV 6/26-6/29	7/19/2017	825.00
171800003	BERNDT, AARON T	REIMBURSE	7/5/2017	819.36
704322	GENERAL PARTS LLC	HS-STEAMER	7/20/2017	812.50
704305	MACKIN EDUCATIONAL RESOURCES	CMS-MEDIA CTR BKS	7/14/2017	805.28
410274	DELASALLE HIGH SCHOOL	REIMBURSE-NON-PUBLIC TRANSPORT	7/5/2017	803.43
410501	SHRED-N-GO	DAB-SHRED 6/13 & 6/27	7/11/2017	803.02
410295	IDN-H HOFFMAN INC	CSF-SHOP STOCK	7/5/2017	795.70
410697	WESTMARK PRODUCTIONS	WMS-CHOIR VIDEO	7/19/2017	791.59
410677	PUMP & METER SERVICE, INC	KL-UST WATER REMOVAL	7/19/2017	787.50
410328	OTCO INC	CHOIR FOLDERS	7/5/2017	776.52
171800053	GAMMACK, SARA	REIMBURSE	7/19/2017	766.22
410265	COMMERCIAL DOOR SYSTEMS, INC	OW-SECURE ENTRY DRS	7/5/2017	755.73
410511	TOLL GAS & WELDING SUPPLY	CSF-HVAC & WELDING SUPPLIES	7/11/2017	744.44
410546	KINECT ENERGY INC	MGMT FEE 7/17	7/12/2017	743.00
410233	TWIN WEST CHAMBER OF COMMERCE	AD-ANNUAL MEMBERSHIP INVESTMENT 17-18 CA	7/3/2017	741.00
704339	MOTG (MN OFFICE TECHNOLOGY GRP)	PRINTER MONTHLY MAINT 6/18-7/17	7/20/2017	740.34
410591	MAHASTI GRAPHICS	CED-KLHB-PAINTING 7/5/17	7/18/2017	738.52
410494	SAWICKY, KATE	16-17 TRANSPORTATION	7/11/2017	715.80
410346	ST JOHN THE BAPTIST SCHOOL	REIMBURSE-NON-PUBLIC TRANSPORT	7/5/2017	713.89
410480	PITZNER, SARAH	16-17 TRANSPORTATION	7/11/2017	713.55
410687	TANKNOLOGY INC	KL-UST TANK INSPEC/TEST	7/19/2017	713.50
410397	DIEHL, BRENDEN	16-17 TRANSPORTATION	7/11/2017	711.32
704321	COMMERCIAL KITCHEN SERVICES	HS-KITCHEN SERV BOILER	7/20/2017	710.52
410527	ZAYTSEN, VITALIY	16-17 TRANSPORTATION	7/11/2017	709.08
410736	GOPHER STATE ONE-CALL	LOCATES	7/25/2017	704.70

410449	LANDSGARD, CARSON	16-17 TRANSPORTATION	7/11/2017	704.61
410496	SCHULTE, ANN	16-17 TRANSPORTATION	7/11/2017	697.90
410386	BRODERSEN, SHANE	16-17 TRANSPORTATION	7/11/2017	695.66
410387	CARLSON, TYLER	16-17 TRANSPORTATION	7/11/2017	695.66
410460	MALIN, JOSHUA	16-17 TRANSPORTATION	7/11/2017	695.66
410378	ASHWORTH, NICHOLAS	16-17 TRANSPORTATION	7/11/2017	693.43
410497	SCHULTZ, WILLIAM	16-17 TRANSPORTATION	7/11/2017	693.42
410475	PENSHORN, JOHN	16-17 TRANSPORTATION	7/11/2017	688.95
410421	HENDEL, RICHARD	16-17 TRANSPORTATION	7/11/2017	684.47
410502	SMITH, DARREN	16-17 TRANSPORTATION	7/11/2017	677.76
410352	ST. THOMAS ACADEMY	REIMBURSE-NON-PUBLIC TRANSPORT	7/5/2017	676.75
410344	SOUTHWEST CHRISTIAN HIGH SCHOOL	REIMBURSE-NON-PUBLIC TRANSPORT	7/5/2017	673.28
410715	LOFFLER COMPANIES, INC.	WHS COPY CENTER IONS SOFTWARE MAINTENANCE	7/20/2017	670.00
410394	CRYTEEL TRUCK EQUIPMENT	CSF-REPAIR TR#20	7/11/2017	669.85
410441	JOHANSEN, ANNE	16-17 TRANSPORTATION	7/11/2017	668.82
410240	SAUNDERS, KATY	REIMBURSE	7/3/2017	668.21
410509	THIRD PARTY INTEGRITY INC	MILEAGE 7/1/16-5/15/17	7/11/2017	666.08
410686	SUPERIOR PAINTING & DECORATING INC	MR 09-E Painting TO 5/31/17	7/19/2017	665.00
704331	BLICK ART MATERIALS	Art Supplies	7/20/2017	664.02
704334	ECM PUBLISHERS, INC	AD-SCHOOL BRD FILING DATES 7/13/17	7/20/2017	660.64
410393	CPD CENTRAL POWER DISTRIBUTORS	CSF-4000D PARTS	7/11/2017	660.54
410433	HUSEBY, JAMES	16-17 TRANSPORTATION	7/11/2017	653.16
410324	NAPA AUTO PARTS OF CORCORAN	CSF-LOWER SHOP SUPPLIES	7/5/2017	652.32
410340	SCIENCE EXPLORERS	CED-CAMP CONNECT 6/20-6/28	7/5/2017	650.00
410614	AGROPUR INC DIVISION OF NATREL USA	DAIRY PRODUCTS	7/19/2017	643.09
410728	RAV TECHNOLOGIES, INC	PC MEDIA CTR	7/25/2017	641.00
410462	MAXSON, CHRISTOPHER	16-17 TRANSPORTATION	7/11/2017	633.03
410503	SMITH, MICHAEL	16-17 TRANSPORTATION	7/11/2017	633.03
704282	SCHMITT MUSIC CO	EMS-BAND INST REPAIR	7/7/2017	633.00
704308	REINDERS	DIST-YARD SUPPLIES	7/14/2017	630.16
410372	1ST CHOICE PEDIATRIC HOME CARE	MA Contract 6/4-6/17	7/11/2017	624.00
410373	AIRPORT TAXI, INC	TRANSPORTATION	7/11/2017	624.00
410720	ARBOR SCIENTIFIC	ARBOR SCIENTIFIC	7/25/2017	620.58
704327	STAPLES BUSINESS ADVANTAGE	SUPPLIES HS, BVHB, SUMMER CAMP	7/20/2017	618.59
704291	AUTOMATED LOGIC CORP	WMS-SYSTEM SERVICE	7/14/2017	610.00
410332	PROFESSIONAL TURF & RENOVATION	HS-REPAIR BASEBALL FIELDS	7/5/2017	600.00
410380	FREDERICK BETHKE VIOLINS LLC	HS-REPAIR VIOLIN,VIOLA & CELLOS	7/11/2017	600.00
410488	REGENTS OF THE UNIV OF MN	HSK TESTING	7/11/2017	592.50
410423	HILL, ROBERT	OFFICIAL	7/11/2017	592.42
410330	CITY OF PLYMOUTH - FINANCE DEPT	HS-SR DAY & GRADUATION SECURITY	7/5/2017	585.93
410753	LANGUAGE LINE SERVICES	June Interpretation	7/31/2017	577.60
410244	AIM ELECTRONICS, INC	ATH-REPAIR SCOREBOARD	7/5/2017	575.35
410439	JAYTECH INC	HS-SUPPLIES	7/11/2017	575.35
410710	SUGAR MAMAS ICE CREAM TRUCK	GWHB-SOCIAL EVENT 6/5/17	7/20/2017	572.00
410515	VIKING ELECTRIC SUPPLY, INC	CSF-SUPPLIES	7/11/2017	571.56
171800007	FILDES, LORI A	REIMBURSE	7/5/2017	571.10
410586	INNERACTIVE PLAYGROUND	GLHB-FIELD TRIP 7/11/17	7/18/2017	567.00
410334	REGENTS OF THE UNIV OF MN	ATH-RENT B & G TRACK 3/18/17	7/5/2017	562.00
410379	BATTERIES R US	KL-GINI LIFT BATTERY	7/11/2017	558.80
410310	LIFE INSURANCE CO OF NORTH AMERICA	RET/COBRA CASH PAYMENT FOR SUPP LIFE 16-17	7/5/2017	556.00
410453	LINSON, PAUL	16-17 TRANSPORTATION	7/11/2017	554.74
410366	WESTSIDE WHOLESALE TIRE, INC	CSF-REPAIR TIRE	7/5/2017	543.82
410416	HAMEL BUILDING CTR	KL-SUPPLIES	7/11/2017	542.56
171800044	TORDEUR, SCOTT	REIMBURSE	7/12/2017	523.60
410338	S & J GLASS INC	GW - Work Scope 08-A Aluminum Windows&Louvers	7/5/2017	522.40
410740	SUMMIT COMMERCIAL FACILITIES GROUP	KITCHEN BROILER	7/25/2017	516.70
410228	REGENTS OF THE UNIV OF MN	KLHB-RAPTOR PROG 7/20/17	7/3/2017	515.00
410560	REGENTS OF THE UNIV OF MN	MR-RAPTOR ON SITE 8/1/17	7/12/2017	515.00
410700	XEROX CORPORATION	CSF COPIER BLANKET	7/19/2017	513.68
410563	SAMUEL FRENCH INC	PERFORMANCE FEE-HS 10/5-10/7 LICENSE#236047	7/12/2017	500.00
410691	UNIVERSITY OF ST. THOMAS	E ANDERSON id# 101162138	7/19/2017	500.00
410570	XEROX FINANCIAL SERVICES	WHS MEDIA/ATHLETICS COPIER LEASE	7/12/2017	499.45

410493	SAM'S CLUB	LAKER'S BREAKFAST NOOK SUPPLIES 6/17	7/11/2017	497.54
171800063	GAMMACK, SARA	REIMBURSE	7/19/2017	495.70
410542	HAMLIN UNIVERSITY	KL-SUMMER LITERACY TUITION 7/9/17 GR	7/12/2017	495.00
410583	HAMLIN UNIVERSITY	SUMMER LITERACY TUITION	7/18/2017	495.00
410644	HUBERT CO	CUL EXP-SUPPLIES	7/19/2017	490.43
410565	SUGAR MAMAS ICE CREAM TRUCK	KLHB-ICE CREAM SOCIAL	7/12/2017	482.00
410559	ORDWAY CTR FOR THE PERFORMING ARTS	SH-4TH GR FIELD TRIP 2/8/18 CUST#154748	7/12/2017	480.00
410491	R J MECHANICAL INC	HS-WATER SOFTENER STRAINER	7/11/2017	475.00
171800071	WYFFELS, REBECCA	REIMBURSE	7/19/2017	473.35
410545	INTL BOOK IMPORT SERVICE INC	GERMAN TEXT BOOKS A1, B1	7/12/2017	470.40
410298	IRON MOUNTAIN	DIST-STORAGE 6/17	7/5/2017	468.36
410468	NAPA AUTO PARTS OF CORCORAN	CSF-LOWER SHOP SUPPLIES	7/11/2017	466.57
410685	STAR EQUIPMENT	HS ADD WS 11-A LOADING DOCK EQUIPMENT	7/19/2017	460.00
410578	BOND TRUST SERVICES CORP	2015A GO REFUND #36965-PA	7/18/2017	450.00
410241	XEROX FINANCIAL SERVICES	ELS-OFFICE & WHS-SPED COPIER LEASE	7/3/2017	434.51
410703	BERGIN FRUIT AND NUT COMPANY	GROCERIES	7/20/2017	421.86
410564	SMSC - PLAYWORKS	KLHB-FIELD TRIP 7/12/17	7/12/2017	420.00
410359	TWIN CITY GARAGE DOOR CO	CSF-REPAIR GARAGE DOOR	7/5/2017	415.00
410540	EBC (EDUCATORS BENEFIT CONSULTANTS)	admin and compliance service 7/17	7/12/2017	412.90
410357	TOTINO GRACE HIGH SCHOOL	REIMBURSE-NON-PUBLIC TRANSPORT	7/5/2017	410.00
410440	JESEWITZ, TODD	16-17 TRANSPORTATION	7/11/2017	407.10
171800064	GILLESPIE, ALISON	REIMBURSE	7/19/2017	399.70
410603	PUBLIC STORAGE 08316	STORAGE 8/17	7/18/2017	397.00
410461	MAPLE GROVE DEBATE	HS-TOURN FEES	7/11/2017	392.00
410321	MTI DISTRIBUTING INC	CSF-REPAIR TORO	7/5/2017	388.28
410230	SKYWARD INC	CRYSTAL REPORTS-ANNUAL FEE 7/1/17-6/30/18	7/3/2017	388.00
410477	PEPPER & SON INC., J. W.	HS-BAND MUSIC	7/11/2017	385.80
410642	HERC-U-LIFT, INC	KL-REPAIR AERIAL LIFT	7/19/2017	365.68
410271	CRETIN-DERHAM HALL	REIMBURSE-NON-PUBLIC TRANSPORT	7/5/2017	362.37
410419	HEMMER, RACHELLE	16-17 TRANSPORTATION	7/11/2017	360.13
410316	MAYER LUTHERAN HIGH SCHOOL	REIMBURSE-NON-PUBLIC TRANSPORT	7/5/2017	358.20
410451	LARSON, KURT	16-17 TRANSPORTATION	7/11/2017	357.90
410459	MALIN, BENJAMIN	16-17 TRANSPORTATION	7/11/2017	357.90
410487	RAY, COLTON	16-17 TRANSPORTATION	7/11/2017	357.90
410465	MCKEVITT, KATHY	16-17 TRANSPORTATION	7/11/2017	355.66
410521	WILLIAMS, GREGORY	16-17 TRANSPORTATION	7/11/2017	355.66
410495	SCHEMPER, WENDY	16-17 TRANSPORTATION	7/11/2017	353.42
410602	PUBLIC STORAGE	STORAGE 8/17	7/18/2017	353.00
410377	ANDERSON, JAIME	16-17 TRANSPORTATION	7/11/2017	351.19
410411	FREDERICKSON, JOHN	16-17 TRANSPORTATION	7/11/2017	351.19
410448	LAMBERT, JULIE	16-17 TRANSPORTATION	7/11/2017	351.19
410470	NICOSKI, DEBORAH	16-17 TRANSPORTATION	7/11/2017	351.19
410512	TOSTENSON, KEVIN	16-17 TRANSPORTATION	7/11/2017	351.19
410514	VIECELI, MICHAEL	16-17 TRANSPORTATION	7/11/2017	351.19
410524	YOUNGQUIST, ERIK	16-17 TRANSPORTATION	7/11/2017	351.19
410232	TOTAL ENTERTAINMENT/KIDSDANCE	GLHB-IN HOUSE FIELD TRIP 7/7/17	7/3/2017	350.00
410273	DEEPHAVEN ACADEMY	REIMBURSE-NON-PUBLIC TRANSPORT	7/5/2017	349.50
410329	OUR LADY OF GRACE SCHOOL	REIMBURSE-NON-PUBLIC TRANSPORT	7/5/2017	349.43
410322	MINNETONKA CHRISTIAN ACADEMY	REIMBURSE-NON-PUBLIC TRANSPORT	7/5/2017	347.88
410506	SWANSON, ZOARON	16-17 TRANSPORTATION	7/11/2017	346.71
410507	SWIFT, JEREMY	16-17 TRANSPORTATION	7/11/2017	346.71
410516	WAGNER, JULIE	16-17 TRANSPORTATION	7/11/2017	346.71
410594	MN ASSN OF SECONDARY SCHOOL PRINCIPALS	HS-SEMINAR 8/17 TS	7/18/2017	345.00
410611	WAYZATA ROTARY	HS-DUES 7/1/17-9/30/17 SG	7/18/2017	345.00
410478	PIEPER, KIMBERLY	16-17 TRANSPORTATION	7/11/2017	342.24
410504	STENDAL, BRANDON	16-17 TRANSPORTATION	7/11/2017	340.00
410259	CALVIN CHRISTIAN HIGH SCHOOL	REIMBURSE-NON-PUBLIC TRANSPORT	7/5/2017	339.06
410268	CONVENT & ACADEMY OF THE VISITATION	REIMBURSE-NON-PUBLIC TRANSPORT	7/5/2017	333.38
171800018	WINDSOR, CYNTHIA J	REIMBURSE	7/5/2017	332.19
171800028	HANSON, JUDY	REIMBURSE	7/12/2017	330.63
410360	UNLIMITED SUPPLIES	CSF-SUPPLIES	7/5/2017	330.23
171800045	WYFFELS, REBECCA	REIMBURSE	7/12/2017	326.61

410396	DEMORETT, DONALD	16-17 TRANSPORTATION	7/11/2017	326.58
410442	JOHNSON, BRADLEY	16-17 TRANSPORTATION	7/11/2017	326.58
410585	HEARTLAND SCHOOL SOLUTIONS	ANNUAL MAINT FEE & MENU PLANNING	7/18/2017	325.75
410275	FEED MY STARVING CHILDREN	DONATION-WMS	7/5/2017	325.00
410579	BURPEE, MICHAEL	CED HB-ON SITE 7/6/17	7/18/2017	325.00
410505	STEP SAVER INC	HS-SALT	7/11/2017	323.90
410306	LAKE COUNTRY SCHOOL	REIMBURSE-NON-PUBLIC TRANSPORT	7/5/2017	320.23
704293	ECM PUBLISHERS, INC	CED HB-EMPLOY AD 6/29/17	7/14/2017	319.88
410446	KUEHL, BRUCE	16-17 TRANSPORTATION	7/11/2017	319.87
410447	KUTSCHER, ANGELA	16-17 TRANSPORTATION	7/11/2017	319.87
410474	PARKHURST, CYNTHIA	16-17 TRANSPORTATION	7/11/2017	317.63
410520	WETTERSTROM, ROY	16-17 TRANSPORTATION	7/11/2017	317.63
410590	MAD SCIENCE OF MN	CED-GLHB-FIRE & ICE 7/10	7/18/2017	311.00
410420	HENDERSON, DOREEN	16-17 TRANSPORTATION	7/11/2017	310.92
704333	DEMCO, INC.	Media Center Supplies	7/20/2017	310.82
410466	ME & RIZ LLC	SP ED-PROF SERV-PARTNERS IN PREVENTION	7/11/2017	310.00
410432	HOOGENAKKER, JULIE	16-17 TRANSPORTATION	7/11/2017	308.69
410219	LRP PUBLICATIONS	AD-BRD & ADMIN SUBSCRIPTION 17-18	7/3/2017	308.50
410444	KD & COMPANY RECYCLING INC	CSF-PREMIUM MIX & BLACK DIRT	7/11/2017	302.36
410239	SAHLI, CYD	REIMBURSE	7/3/2017	300.00
410381	BINDRA, NIRMALA	REFUND-WOLFRIDGE	7/11/2017	300.00
171800009	JOHNSON, JILL P	REIMBURSE	7/5/2017	297.72
410513	UNLIMITED SUPPLIES	CSF-SUPPLIES	7/11/2017	295.53
704340	REALLY GOOD STUFF	Book Bins for Office	7/20/2017	294.23
704309	SCHMITT MUSIC CO	CMS-REPAIR BAND INST	7/14/2017	292.00
171800056	HENSLIN, ROBIN	REIMBURSE	7/19/2017	289.66
171800067	LAHR, MELISSA	REIMBURSE	7/19/2017	289.40
410339	SALEM LUTHERAN	REIMBURSE-NON-PUBLIC TRANSPORT	7/5/2017	288.20
410490	R J MECHANICAL INC	HS-REPAIR CONCESSION STAND WATER LEAK	7/11/2017	285.00
410412	GRAINGER INC., W. W.	WMS-POOL SUPPLIES	7/11/2017	276.45
410263	CITI-CARGO & STORAGE	STORAGE	7/5/2017	261.00
410707	LEUNG, E	PROF SERV 6/17	7/20/2017	259.07
410484	PROFESSIONAL INTERPRETING	ECSE INTERPRETING	7/11/2017	256.00
410347	STEP SAVER INC	HS-SALT	7/5/2017	253.18
410592	MILLER, FRED	COMM-TV PROD 7/17	7/18/2017	250.00
410757	YANG, YOUQING	REIMBURSEMENT MN STATE MATH LEAGUE	7/31/2017	250.00
171800005	DOUGHTY, ROSANNE E	REIMBURSE	7/5/2017	248.82
704307	MINNESOTA EQUIPMENT	CSF-JOHN DEERE PARTS	7/14/2017	246.30
171800066	KIMBLER, RODNEY	REIMBURSE	7/19/2017	239.33
410533	ASSN FOR SUPERVISION & CURR. DEV.(ASCD)	MR-MEMBERSHIP 17-18 KK A53-NXE3-AAAA	7/12/2017	239.00
410605	SITSPOTS	SitSpots for Meadow Ridge	7/18/2017	236.95
410573	ALLINA HEALTH SYSTEM	PRE-EMPLOY SCREENING 7/6/17 CS	7/18/2017	235.00
410356	TORAH ACADEMY	REIMBURSE-NON-PUBLIC TRANSPORT	7/5/2017	233.86
704317	TRIO SUPPLY CO	CSF-SERVING SUPPLIES	7/14/2017	231.85
704306	MINVALCO	HS-ACTUATORS	7/14/2017	226.46
410227	POSTMASTER	RENEW-FIRST CLASS PRESORT FEE-PERMIT#43	7/3/2017	225.00
410577	ASSN FOR SUPERVISION & CURR. DEV.(ASCD)	ASCD MEMBERSHIPS-JILL AND SHELLY 17-18	7/18/2017	219.00
171800039	SHERWOOD, JAIME	REIMBURSE	7/12/2017	214.53
410335	REGENTS OF THE UNIV OF MN	ATH-SYNCHRO PRACTICE 5/23/17	7/5/2017	208.00
704298	FLINN SCIENTIFIC, INC.	HS-SUPPLIES	7/14/2017	207.18
410342	SEVERSON, LAUREL	CED-CLASS 3/6/17	7/5/2017	200.00
410286	GRAINGER INC., W. W.	HS-MOTOR	7/5/2017	196.52
410435	IDN-H HOFFMAN INC	HS-MULLION SUPPLIES	7/11/2017	195.91
410595	MN ASSN OF SECONDARY SCHOOL PRINCIPALS	HS-REG WKSP 9/27/17 ES	7/18/2017	195.00
410596	MN ASSN OF SECONDARY SCHOOL PRINCIPALS	HS-REG LAW SEMINAR 10/3/17 ES	7/18/2017	195.00
410300	JOHNSTONE SUPPLY	CLUBHOUSE-SUPPLIES	7/5/2017	194.60
410354	TMS JOHNSON INC	EMS-KITCHEN DAMPERS	7/5/2017	190.00
171800049	DAHL, ZACHARY	REIMBURSE	7/19/2017	185.11
410362	USA INFLATABLES	BVHB-RENT TOYS 6/21/17	7/5/2017	180.00
410711	WASTE MANAGEMENT	PC-DEMO WORK	7/20/2017	178.32
171800043	THOMPSON, KARLA	REIMBURSE	7/12/2017	174.95
410763	US DEPT OF EDUCATION	Payroll accrual	7/31/2017	174.73

171800060	TOLLISON, KRISTIN	REIMBURSE	7/19/2017	169.55
410242	A-1 OUTDOOR POWER, INC	CSF-WEED WHIP PARTS	7/5/2017	167.90
410676	PRIBBERNOW, STEPHANIE	CMS-LAST DAY LUNCH	7/19/2017	166.25
171800017	WELK, JENNIFER JOLYN	REIMBURSE	7/5/2017	165.85
410254	BDI	CSF-PARTS	7/5/2017	162.04
171800054	GIBSON, JANE	REIMBURSE	7/19/2017	161.57
171800036	PHILLIPS, WADE	REIMBURSE	7/12/2017	160.39
410714	GM FINANCIAL LEASING	WHS PARKING LOT CAR LEASE 8/17	7/20/2017	159.49
410418	HAUG, ALISSA	16-17 TRANSPORTATION	7/11/2017	158.82
410499	SHERWIN-WILLIAMS	ELS-PAINT	7/11/2017	156.75
410385	BRETZ, NAOMI	16-17 TRANSPORTATION	7/11/2017	156.58
410575	ASSN FOR SUPERVISION & CURR. DEV.(ASCD)	ASCD MEMBERSHIPS-CURR. & INSTR-CLR	7/18/2017	156.00
410617	BREADSMITH	BREAD	7/19/2017	155.00
410389	CENTERPOINT ENERGY	MR-MTR2-5/23-6/23	7/11/2017	152.85
410538	CORNERCOPIA U OF M STUDENT ORGANIC FARM	SCIENCE FT 4/18/17	7/12/2017	150.00
410548	MARKERBOARD PEOPLE, THE	Whiteboards for Meadow Ridge	7/12/2017	150.00
410647	INTELLIGERE INC	SP ED-INTERP 6/29/17	7/19/2017	150.00
410384	BLUE TARP FINANCIAL INC	CSF-SHOP SUPPLIES	7/11/2017	149.94
171800065	IVERSON, SUE	REIMBURSE	7/19/2017	149.53
410519	WESTSIDE WHOLESALE TIRE, INC	CSF-SKID LOADE TRAILER TIRE	7/11/2017	149.18
410301	KALLMAN CREATES PUBLICATIONS	REBECCA WYFFELS	7/5/2017	148.00
171800024	CASEY, COLLEEN	REIMBURSE	7/12/2017	146.99
410392	CONTACT CARTAGE	CSF-BOOKS FOR AFRICA	7/11/2017	145.00
410307	LAMBERT, JONATHAN	OFFICIAL	7/5/2017	142.20
410331	PREMIUM WATERS, INC	CSF-WATER 5/17	7/5/2017	142.12
171800055	GRISMER, SYLVIA	REIMBURSE	7/19/2017	140.86
704323	HOUGHTON MIFFLIN CO LLC	COGAT SCREENER TESTS	7/20/2017	140.00
410534	ASSN FOR SUPERVISION & CURR. DEV.(ASCD)	GW-MEMBERSHIP 17-18 BG	7/12/2017	139.00
410532	ASSN FOR SUPERVISION & CURR. DEV.(ASCD)	CMS-MEMBERSHIP 17-18 JB B38-NXF3-AAAA	7/12/2017	138.00
171800068	SWENSEN, ERIC	REIMBURSE	7/19/2017	136.00
171800032	LACKNER, STACEY	REIMBURSE	7/12/2017	135.52
171800062	CHASE, MICHELLE	REIMBURSE	7/19/2017	135.09
704279	ALLEGRA PRINT & IMAGING	PARTNERS FOR HEALTHY KIDS	7/7/2017	134.85
410399	DRYWALL SUPPLY INC	KL-CONF RM	7/11/2017	133.39
410670	PAINTER, JEREMY	REFUND BALANCE CULINARY EXPRESS ACCT	7/19/2017	132.70
704318	WEST MUSIC CO	MR-Table Stand for Katie Baker	7/14/2017	131.95
410220	MCLAUGHLIN, MEAGHAN	REIMBURSE	7/3/2017	130.96
410704	CDW GOVERNMENT, INC	PC-MEDIA CTR TV MOUNT	7/20/2017	130.94
410625	EMSL ANALYTICAL, INC	CMS-ASBESTOS SAMPLE ANALYSIS	7/19/2017	130.00
171800070	VOS, STACIE	REIMBURSE	7/19/2017	128.32
410371	ZIEGLER INC	CSF-PARTS	7/5/2017	126.54
171800061	WOBSCHELL, ALISON	REIMBURSE	7/19/2017	126.47
704290	ACCO BRANDS CORPORATION	CMS - LAMINATING FILM	7/14/2017	125.00
410319	MPLS GLASS CO	ELS-BR SUPPLIES	7/5/2017	121.77
410221	MN SECRETARY OF STATE-NOTARY	AD-NOTARY APP ML	7/3/2017	120.00
410422	HIGHWAY 55 RENTAL & SALES INC	CSF-RENT STUMP GRINDER	7/11/2017	118.75
410655	KIDCREATE STUDIO	CED-CANVAS & CLAY (BALANCE)	7/19/2017	116.00
171800041	SWENSON, KYLE	REIMBURSE	7/12/2017	115.55
704296	FERGUSON ENTERPRISES, INC #1657	GW-SUPPLIES	7/14/2017	114.49
410582	CULLIGAN - METRO	HS ADMIN-WATER 7/17	7/18/2017	112.95
171800050	DUNHAM, MARY	REIMBURSE	7/19/2017	111.55
410615	ALL SAFE	FIRE EXT INSPECTIONS	7/19/2017	111.35
171800031	KEFFELER, KAREN	REIMBURSE	7/12/2017	111.28
410543	HARVARD BUSINESS REVIEW	AD-SUBSCRIPTION (6 ISSUES) CA	7/12/2017	109.00
410269	CPD CENTRAL POWER DISTRIBUTORS	CSF-4000 D PARTS	7/5/2017	108.46
410238	PALASEK, KATELYN	REIMBURSE	7/3/2017	107.69
171800040	SOLHEID, CAROL	REIMBURSE	7/12/2017	107.11
171800022	BENNETT, KATHRYN	REIMBURSE	7/12/2017	104.85
171800006	FIELDSETH, JOANNE	REIMBURSE	7/5/2017	101.12
410318	MNAEYC(MN ASSN FOR THE ED OF YOUNG	SHHB-2017 ANNUAL REPORT FEE	7/5/2017	100.00
410571	IRS CENTER - UNITED STATES TREASURY	Payroll accrual	7/14/2017	100.00
410742	TWIN WEST CHAMBER OF COMMERCE	LEADERSHIP RETREAT	7/25/2017	100.00

410758	IRS CENTER - UNITED STATES TREASURY	Payroll accrual	7/31/2017	100.00
410531	ASSN FOR MIDDLE LEVEL EDUCATION (AMLE)	CMS-MEMBERSHIP 17-18 CD #3016225	7/12/2017	99.97
410666	NOKOMIS SHOE SHOP INC	PPE SHOES	7/19/2017	99.95
410701	YOUTHLIGHT, INC.	GW-DOWNLOADS SPED	7/19/2017	99.90
410562	RESOURCES FOR READING	READING RECOVERY SENTENCE STRIPS	7/12/2017	99.50
171800037	RASMUSSEN, GWYN	REIMBURSE	7/12/2017	98.72
410539	CULLIGAN - METRO	ELS-WATER COOLER RENTAL SERV 6/17 & 7/17	7/12/2017	95.12
410552	MNAEYC(MN ASSN FOR THE ED OF YOUNG	SUM LDSHP INST HD	7/12/2017	95.00
410437	INTEREUM	BV HOKKI	7/11/2017	94.63
410544	HEIGIS, JOANNA	CASINO NIGHT YRBK AWARD-HS	7/12/2017	91.18
410290	HOLDAHL CO	GW-GYM SUPPLIES	7/5/2017	90.59
410309	LAWSON'S HOMESCHOOL	REIMBURSE-TESTING	7/5/2017	90.00
410401	FASTSIGNS	CSF-VEHICLE DECALS	7/11/2017	87.48
410536	CITI-CARGO & STORAGE	STORAGE	7/12/2017	87.00
410235	ALEXANDER, LORI	REIMBURSE	7/3/2017	84.25
171800026	GALLAGHER, KELLY	REIMBURSE	7/12/2017	83.94
410355	TOLL GAS & WELDING SUPPLY	CSF-NITROGEN	7/5/2017	83.14
704292	CINTAS FIRST AID & SAFETY	EMS-FIRST AID KIT REFILL	7/14/2017	82.77
171800047	ANDERSON, MARY	REIMBURSE	7/19/2017	81.86
171800034	MCKASY, MARY	REIMBURSE	7/12/2017	79.00
410436	IMGRUND, CHRISTINE	REFUND BALANCE CULINARY EXPRESS ACCT	7/11/2017	78.40
171800027	GENGLER, SCOTT	REIMBURSE	7/12/2017	77.06
410554	MN ASSN OF ALTERNATIVE PROGRAMS	MDE WORKSHOP 8/14 & 8/15 A GILLESPIE	7/12/2017	76.00
171800004	BOVEE, NAOMI H	REIMBURSE	7/5/2017	74.96
410391	COMMERCIAL ASPHALT CO	PC-REPAIR PLAYGRD AREA	7/11/2017	73.00
171800021	BECK, MARIE	REIMBURSE	7/12/2017	72.97
410216	AFTSS (AMER FED OF TEACHERS SUBSCRIPTION SVS)	HS-SUBSCRIPTION	7/3/2017	68.92
171800046	ANDERSON, CHACE	REIMBURSE	7/19/2017	68.08
410755	POWER DISTRIBUTORS LLC	CSF GENERATOR REPAIR	7/31/2017	67.84
410455	LUMBER DEALERS SERVICE & SUPPLY CO	CMS-REPAIR COUNTER SUPPLIES	7/11/2017	64.80
171800023	BOWMAN, DEBORAH	REIMBURSE	7/12/2017	62.96
410690	ULMAN, MERRI	REFUND BALANCE CULINARY EXPRESS ACCT	7/19/2017	60.70
171800008	FORRETTE, ABIGAIL L	REIMBURSE	7/5/2017	59.97
171800030	HODENA, MELISSA	REIMBURSE	7/12/2017	59.65
410535	ASSN FOR SUPERVISION & CURR. DEV.(ASCD)	T & L-DUES 17-18 SL	7/12/2017	59.00
410721	ASSN FOR SUPERVISION & CURR. DEV.(ASCD)	BASIC MEMBERSHIP (DUES)	7/25/2017	59.00
410483	PREMIUM WATERS, INC	AD-6/17	7/11/2017	55.40
171800016	THEISEN, JOHN ADAM	REIMBURSE	7/5/2017	54.04
171800013	MAHOWALD, JOSH L	REIMBURSE	7/5/2017	53.45
171800029	HIEBERT, JULIE	REIMBURSE	7/12/2017	52.27
171800011	LAHTI, JILL	REIMBURSE	7/5/2017	52.00
171800014	MERZ, IRENE	REIMBURSE	7/5/2017	50.56
171800025	DISCH, HILARY	REIMBURSE	7/12/2017	50.50
410485	RAMEN, RAGHU	REFUND BALANCE CULINARY EXPRESS ACCT	7/11/2017	50.45
171800048	BOBEK, STACY	REIMBURSE	7/19/2017	50.29
410341	SENIOR COMMUNTIY SERVICES	CED-PROF SERV 5/10/17	7/5/2017	50.00
171800020	BARBKNECHT, ANDREA	REIMBURSE	7/12/2017	48.67
410526	ZARRIELLO, JILL	REFUND BALANCE CULINARY EXPRESS ACCT	7/11/2017	48.30
410675	PREMIUM WATERS, INC	SP ED-WATER COOLER 6/17	7/19/2017	48.19
410249	APPLE INC	Blanket PO for Apple repairs	7/5/2017	46.95
410402	FAULKNER, NOREEN	REFUND BALANCE CULINARY EXPRESS ACCT	7/11/2017	44.75
410638	GERCKENS, JEFFERY	REFUND BALANCE CULINARY EXPRESS ACCT	7/19/2017	41.25
704297	FLAGSHIP RECREATION	PLAYGROUNG EQUIPMENT	7/14/2017	40.75
171800072	ZHANG, SHEEN	REIMBURSE	7/19/2017	40.00
171800042	TERRION, TONY	REIMBURSE	7/12/2017	39.80
410671	PETTY CASH - CMS	REIMBURSE	7/19/2017	39.29
410576	ASSN FOR SUPERVISION & CURR. DEV.(ASCD)	ASCD MEMBERSHIPS-JILL AND SHELLY 17-18	7/18/2017	39.00
410353	SWANSON, TERRI	REFUND BALANCE CULINARY EXPRESS ACCT	7/5/2017	38.75
171800015	PETERSON, LAURI A	REIMBURSE	7/5/2017	38.39
410553	MN ASSN OF ALTERNATIVE PROGRAMS	MDE WORKSHOP 8/14 C LEDMAN	7/12/2017	38.00
171800059	RAINER, LYNNE	REIMBURSE	7/19/2017	36.84
410388	CENTERPOINT ENERGY	12955-16TH AVE-GAS 5/22-6/22	7/11/2017	36.76

410452	LEEPER, THOMAS	REFUND BALANCE CULINARY EXPRESS ACCT	7/11/2017	35.30
410294	HOUSE, MELISSA	REIMBURSE-INSTRUMENT REPAIR	7/5/2017	35.00
171800012	LARSON, KIMBERLY	REIMBURSE	7/5/2017	35.00
171800051	EVANS, MELANIE	REIMBURSE	7/19/2017	33.71
410608	VERIZON WIRELESS	Verizon monthly Data Plan - Welcome Center	7/18/2017	30.08
410662	MELIN, CAREY	REFUND CULINARY EXPRESS ACCT	7/19/2017	29.30
410664	MUENCHOW, NANCY	REFUND BALANCE CULINARY EXPRESS ACCT	7/19/2017	29.30
410376	ANDERSON, GWEN	REFUND BALANCE CULINARY EXPRESS ACCT	7/11/2017	28.00
410727	PREMIUM WATERS, INC	WATER COOLER-PC	7/25/2017	27.00
410601	PREMIUM WATERS, INC	WMS-WATER COOLER 7/17	7/18/2017	25.95
171800057	LYBECK, KRISTINA	REIMBURSE	7/19/2017	25.20
410464	MCGOWN, RANDEE	REFUND BALANCE CULINARY EXPRESS ACCT	7/11/2017	25.10
171800002	ACKERMAN, BRIAN E	REIMBURSE	7/5/2017	21.61
410454	LONG LAKE TRUE VALUE	CSF-SUPPLIES	7/11/2017	20.00
171800033	LOVISOLO, ELIZABETH	REIMBURSE	7/12/2017	20.00
171800058	PARSONS, JEAN	REIMBURSE	7/19/2017	19.80
171800035	NEISS, KAREN	REIMBURSE	7/12/2017	18.73
410400	EULL'S MANUFACTURING CO INC	BV-SUPPLIES	7/11/2017	18.50
171800019	WINTER, ASHLEY M	REIMBURSE	7/5/2017	17.98
704300	HILLYARD INC MINNEAPOLIS	CSF-SUPPLIES	7/14/2017	17.56
171800052	FOLTZ-RINGSTROM, SHARON	REIMBURSE	7/19/2017	16.69
410702	ZAHL-PETROLEUM MAINTENANCE CO	KL-REPLACE UST VENT CAP	7/19/2017	15.70
410660	MARTIN, KAREN	REFUND BALANCE CULINARY EXPRESS ACCT	7/19/2017	14.30
410247	ALEKSUK, NANCY	REFUND BALANCE CULINARY EXPRESS ACCT	7/5/2017	14.10
410492	RUSSELL, NICOLE	REFUND BALANCE CULINARY EXPRESS ACCT	7/11/2017	14.10
704319	STAPLES BUSINESS ADVANTAGE	SUPPLIES	7/14/2017	12.86
410431	HONSTAD, DEB	REFUND BALANCE CULINARY EXPRESS ACCT	7/11/2017	12.80
410445	KOUZOUKAS, DANIELLE	REFUND BALANCE CULINARY EXPRESS ACCT	7/11/2017	12.40
410738	PREMIUM WATERS, INC	JUNE WATER GW	7/25/2017	12.29
410597	NEW YORK TIMES	HS-NEWSPAPER 6/22-7/19	7/18/2017	5.25
410624	DENNY'S 5TH AVENUE BAKERY	GROCERIES	7/19/2017	2.05
410043	S & J GLASS INC	VOID	7/11/2017	(522.40)
408808	K12 TRANSPORTATION MANAGEMENT SVCS INC	VOID	7/18/2017	(24,500.00)
408613	FIRST STUDENT, INC	VOID	7/20/2017	(648,341.05)
				<b>5,888,134.73</b>

**APPROVED BY: JILL SCHWINT  
CONTROLLER - ISD 284  
AUGUST 14, 2017**

**CHERYL POLZIN  
BOARD OF EDUCATION - ISD 284  
AUGUST 14, 2017**

Wayzata Public Schools  
 Student Activity Fund Summary  
 June 2017

**PROGRAM/LOCATION : MISCELLANEOUS**

<i>Fund</i>	<i>Type</i>	<i>Org</i>	<i>Prg</i>	<i>Crs</i>	<i>Fin</i>	<i>Obj/Src</i>	<i>Account Name</i>	<b>Balance as Of 06/30/16</b>	<b>FY'2016/17 Revenue</b>	<b>FY'2016/17 Expend</b>	<b>Balance as Of 06/30/17</b>
21	E/R	018	000	000	000	899/XXX	AD BUILDING	2,014.59	428.18	271.18	2,171.59
<b>TOTAL MISCELLANEOUS</b>								<b>2,014.59</b>	<b>428.18</b>	<b>271.18</b>	<b>2,171.59</b>

**Wayzata Public Schools**  
**Student Activity Fund Summary**  
**June 2017**

**PROGRAM/LOCATION : WAZATA HIGH SCHOOL**

<i>Fund</i>	<i>Type</i>	<i>Org</i>	<i>Prg</i>	<i>Crs</i>	<i>Fin</i>	<i>Obj/Src</i>	<i>Account Name</i>	<b>Balance as Of 06/30/16</b>	<b>FY'2016/17 Revenue</b>	<b>FY'2016/17 Expend</b>	<b>Balance as Of 06/30/17</b>
21	E/R	251	280	001	000	899/099	WAYZATA PLAYERS	29,837.50	42,991.37	40,629.55	32,199.32
21	E/R	251	280	003	000	899/099	YEARBOOK (WAYAKO)	-	44,476.13	9,503.60	34,972.53
21	E/R	251	280	005	000	899/099	CERAMICS	4,514.44	(1,765.33)	(676.08)	3,425.19
21	E/R	251	280	007	000	899/099	CHEERLEADERS	162.00	17,033.00	17,195.00	-
21	E/R	251	280	008	000	899/099	CHOIR	2,852.51	34,334.99	29,798.70	7,388.80
21	E/R	251	280	009	000	899/099	DANCE TEAM	24,060.87	62,512.48	63,146.75	23,426.60
21	E/R	251	280	016	000	899/099	ACTIVITY SUPPORT	101,448.33	47,813.36	25,030.99	124,230.70
21	E/R	251	280	017	000	899/099	DECA	5,664.00	58,013.37	54,343.01	9,334.36
21	E/R	251	280	019	000	899/099	FRENCH	501.23	614.52	886.49	229.26
21	E/R	251	280	020	000	899/099	GERMAN	11,780.00	37,845.06	21,353.14	28,271.92
21	E/R	251	280	021	000	899/099	LETTERMAN	38,954.34	59,107.40	46,278.90	51,782.84
21	E/R	251	280	022	000	899/099	FINE ARTS	5,008.66	1,699.71	2,121.16	4,587.21
21	E/R	251	280	024	000	899/099	BAND	18,050.59	141,087.34	53,791.44	105,346.49
21	E/R	251	280	026	000	899/099	NATIONAL HONOR	4,075.76	20,180.31	19,934.29	4,321.78
21	E/R	251	280	027	000	899/099	STUDENT SERVICES	2,184.14	1,500.00	3,684.14	-
21	E/R	251	280	028	000	899/099	ORCHESTRA	8,263.89	14,663.02	12,172.88	10,754.03
21	E/R	251	280	030	000	899/099	STUDENT COUNCIL	14,386.52	71,731.25	65,001.77	21,116.00
21	E/R	251	280	031	000	899/099	SPANISH	2,111.33	1,346.08	3,457.41	-
21	E/R	251	280	039	000	899/099	THEATRE ARTS	1,110.34	4,894.33	3,412.64	2,592.03
21	E/R	251	280	040	000	899/099	BUSINESS PROFESS(BPA)	7,153.94	68,902.19	67,708.64	8,347.49
21	E/R	251	280	042	000	899/099	SKILLS USA	-	7,013.60	6,971.23	42.37
21	E/R	251	280	044	000	899/099	LINK	11,596.52	9,387.61	9,744.71	11,239.42
21	E/R	251	280	047	000	899/099	SUPER MILEAGE TEAM	481.79	2,103.49	2,585.28	-
21	E/R	251	280	048	000	899/099	Y.E.S.	3,649.01	7,380.47	6,276.60	4,752.88
21	E/R	251	280	049	000	899/099	CREATIVE WRITING	2,131.24	-	-	2,131.24
21	E/R	251	280	050	000	899/099	TROJAN LOCK ROOM (DECA - S	21,461.34	23,866.52	23,294.77	22,033.09
21	E/R	251	280	051	000	899/099	V21 - ACTIVITY SUPPORT	619.81	2,805.82	3,357.92	67.71
21	E/R	251	280	052	000	899/099	ROBOTICS TEAM	113.27	18,975.75	14,095.74	4,993.28
21	E/R	251	280	053	000	899/099	SHOW STOPPERS	9,487.41	16,267.00	13,149.69	12,604.72
21	E/R	251	280	055	000	899/099	CHINESE CLUB	1,256.56	770.35	1,018.26	1,008.65
21	E/R	251	280	056	000	899/099	LAKER'S BKST NOOK	15,048.37	25,325.30	26,292.25	14,081.42
21	E/R	251	280	057	000	899/099	WHS INTERNATIONAL FESTIVAL	1,390.87	-	-	1,390.87
21	E/R	251	280	058	000	899/099	FRESHMAN RETREAT	2,095.15	17,771.56	15,987.69	3,879.02
21	E/R	251	280	059	000	899/099	TRAP & SKEET	5,932.90	31,669.97	28,636.61	8,966.26
21	E/R	251	280	060	000	899/099	JR STATESMAN	741.05	1,436.01	1,910.41	266.65
21	E/R	251	280	061	000	899/099	QUIZ BOWL	-	24,552.71	15,834.89	8,717.82
<b>TOTAL WAZATA HIGH SCHOOL</b>								<b>358,125.68</b>	<b>918,306.74</b>	<b>707,930.47</b>	<b>568,501.95</b>

**Wayzata Public Schools**  
**Student Activity Fund Summary**  
**June 2017**

**PROGRAM/LOCATION : WAZATA HIGH SCHOOL ATHLETICS**

<i>Fund</i>	<i>Type</i>	<i>Org</i>	<i>Prg</i>	<i>Crs</i>	<i>Fin</i>	<i>Obj/Src</i>	<i>Account Name</i>	<b>Balance as Of 06/30/16</b>	<b>FY'2016/17 Revenue</b>	<b>FY'2016/17 Expend</b>	<b>Balance as Of 06/30/17</b>
21	E/R	251	280	070	000	899/099	BASEBALL	1,063.00	12,176.00	13,239.00	-
21	E/R	251	280	071	000	899/099	BASKETBALL - BOYS	1,587.82	10,328.00	11,915.82	-
21	E/R	251	280	072	000	899/099	BASKETBALL - GIRLS	6,952.90	11,988.00	8,152.60	10,788.30
21	E/R	251	280	073	000	899/099	CROSS COUNTRY - BOYS	4,679.48	9,138.00	8,361.65	5,455.83
21	E/R	251	280	074	000	899/099	CROSS COUNTRY - GIRLS	1,209.32	4,573.00	1,481.48	4,300.84
21	E/R	251	280	075	000	899/099	FOOTBALL	59,317.95	20,588.00	53,818.90	26,087.05
21	E/R	251	280	076	000	899/099	GYMNASTICS	3,945.58	3,737.00	2,765.09	4,917.49
21	E/R	251	280	077	000	899/099	GOLF - BOYS	-	9,514.00	9,514.00	-
21	E/R	251	280	078	000	899/099	GOLF - GIRLS	607.21	5,504.00	4,998.17	1,113.04
21	E/R	251	280	079	000	899/099	HOCKEY - BOYS	-	50,219.45	44,105.39	6,114.06
21	E/R	251	280	080	000	899/099	HOCKEY - GIRLS	16,710.40	13,393.00	17,026.18	13,077.22
21	E/R	251	280	081	000	899/099	SKIING - ALPINE	4,952.30	14,759.00	14,799.58	4,911.72
21	E/R	251	280	082	000	899/099	SKIING - NORDIC	11,976.01	9,990.00	15,401.18	6,564.83
21	E/R	251	280	083	000	899/099	SOFTBALL	-	8,378.49	3,167.50	5,210.99
21	E/R	251	280	084	000	899/099	SWIMMING/DIVING - BOYS	4,933.71	5,067.00	3,171.88	6,828.83
21	E/R	251	280	085	000	899/099	SWIMMING/DIVING - GIRLS	10,325.70	10,346.00	10,855.40	9,816.30
21	E/R	251	280	086	000	899/099	SOCCER - BOYS	6,976.85	8,280.00	9,436.32	5,820.53
21	E/R	251	280	087	000	899/099	SOCCER - GIRLS	13,211.88	12,170.00	14,742.29	10,639.59
21	E/R	251	280	088	000	899/099	SYNCHRONIZED SWIMMING	6,982.34	14,569.00	13,596.13	7,955.21
21	E/R	251	280	089	000	899/099	TENNIS - BOYS	21,194.14	7,766.43	16,472.96	12,487.61
21	E/R	251	280	090	000	899/099	TENNIS - GIRLS	2,338.15	12,539.75	13,536.86	1,341.04
21	E/R	251	280	091	000	899/099	TRACK/FIELD - BOYS	253.11	4,309.00	3,644.01	918.10
21	E/R	251	280	092	000	899/099	TRACK/FIELD - GIRLS	723.15	4,223.00	911.38	4,034.77
21	E/R	251	280	093	000	899/099	VOLLEYBALL	10,795.36	11,684.00	11,306.58	11,172.78
21	E/R	251	280	094	000	899/099	WRESTLING	-	7,550.07	5,206.17	2,343.90
21	E/R	251	280	095	000	899/099	ADAPTIVE ATHLETICS	3,900.12	81.00	-	3,981.12
21	E/R	251	280	096	000	899/099	BOYS LACROSSE	4,339.77	11,588.00	9,937.64	5,990.13
21	E/R	251	280	097	000	899/099	GIRLS LACROSSE	2,622.60	4,291.00	2,712.86	4,200.74
<b>TOTAL HIGH SCHOOL ATHLETICS</b>								<b>201,598.85</b>	<b>298,750.19</b>	<b>324,277.02</b>	<b>176,072.02</b>

**Wayzata Public Schools**  
**Student Activity Fund Summary**  
**June 2017**

**PROGRAM/LOCATION : CENTRAL MIDDLE SCHOOL**

<i>Fund</i>	<i>Type</i>	<i>Org</i>	<i>Prg</i>	<i>Crs</i>	<i>Fin</i>	<i>Obj/Src</i>	<i>Account Name</i>	<b>Balance as Of 06/30/16</b>	<b>FY'2016/17 Revenue</b>	<b>FY'2016/17 Expend</b>	<b>Balance as Of 06/30/17</b>
21	E/R	253	280	152	000	899/099	MUSICAL	9,942.65	12,686.00	12,284.42	10,344.23
21	E/R	253	280	156	000	899/099	STUDENT COUNCIL	1,508.47	19,347.59	18,966.16	1,889.90
21	E/R	253	280	157	000	899/099	BAND	257.78	5,512.99	5,770.77	-
21	E/R	253	280	161	000	899/099	YEARBOOKS	4,523.37	11,459.00	14,095.84	1,886.53
21	E/R	253	280	165	000	899/099	STUDENT SERVICES	7,155.27	6,503.80	9,237.72	4,421.35
<b>TOTAL CENTRAL MIDDLE SCHOOL</b>								<b>23,387.54</b>	<b>55,509.38</b>	<b>60,354.91</b>	<b>18,542.01</b>

**Wayzata Public Schools**  
**Student Activity Fund Summary**  
**June 2017**

**PROGRAM/LOCATION : WEST MIDDLE SCHOOL**

<i>Fund</i>	<i>Type</i>	<i>Org</i>	<i>Prg</i>	<i>Crs</i>	<i>Fin</i>	<i>Obj/Src</i>	<i>Account Name</i>	<b>Balance as Of 06/30/16</b>	<b>FY'2016/17 Revenue</b>	<b>FY'2016/17 Expend</b>	<b>Balance as Of 06/30/17</b>
21	E/R	351	280	202	000	899/099	CHOIR	30.89	200.00	-	230.89
21	E/R	351	280	203	000	899/099	STUDENT SERVICES	2,473.94	14,493.24	15,321.58	1,645.60
21	E/R	351	280	209	000	899/099	STUDENT COUNCIL	-	1,654.00	131.77	1,522.23
21	E/R	351	280	212	000	899/099	YEARBOOK	5,905.25	6,147.00	3,203.06	8,849.19
21	E/R	351	280	213	000	899/099	THEATER	4,083.84	19,273.29	9,551.09	13,806.04
21	E/R	351	280	215	000	899/099	DAY ONE	-	400.00	230.00	170.00
<b>TOTAL WEST MIDDLE SCHOOL</b>								<b>12,493.92</b>	<b>42,167.53</b>	<b>28,437.50</b>	<b>26,223.95</b>

**Wayzata Public Schools**  
**Student Activity Fund Summary**  
**June 2017**

**PROGRAM/LOCATION : EAST MIDDLE SCHOOL**

<i>Fund</i>	<i>Type</i>	<i>Org</i>	<i>Prg</i>	<i>Crs</i>	<i>Fin</i>	<i>Obj/Src</i>	<i>Account Name</i>	<b>Balance as Of 06/30/16</b>	<b>FY'2016/17 Revenue</b>	<b>FY'2016/17 Expend</b>	<b>Balance as Of 06/30/17</b>
21	E/R	352	280	100	000	899/099	STUDENT SERVICES	15,272.07	18,179.99	18,412.28	15,039.78
21	E/R	352	280	104	000	899/099	BAND	519.85	2,075.00	1,705.18	889.67
21	E/R	352	280	105	000	899/099	STUDENT COUNCIL	15,906.34	8,015.89	6,686.87	17,235.36
21	E/R	352	280	107	000	899/099	VARIETY FUND	14,513.71	8,205.51	7,027.02	15,692.20
<b>TOTAL EAST MIDDLE SCHOOL</b>								<b>46,211.97</b>	<b>36,476.39</b>	<b>33,831.35</b>	<b>48,857.01</b>

Wayzata Public Schools  
 Student Activity Fund Summary  
 June 2017

**PROGRAM/LOCATION : MEADOW RIDGE**

<i>Fund</i>	<i>Type</i>	<i>Org</i>	<i>Prg</i>	<i>Crs</i>	<i>Fin</i>	<i>Obj/Src</i>	<i>Account Name</i>	<b>Balance as Of 06/30/16</b>	<b>FY'2016/17 Revenue</b>	<b>FY'2016/17 Expend</b>	<b>Balance as Of 06/30/17</b>
21	E/R	403	280	572	000	899/099	STUDENT SERVICES	-	48,083.24	1,680.00	46,403.24
<b>TOTAL MEADOW RIDGE</b>								<b>-</b>	<b>48,083.24</b>	<b>1,680.00</b>	<b>46,403.24</b>

**Wayzata Public Schools**  
**Student Activity Fund Summary**  
**June 2017**

**PROGRAM/LOCATION : BIRCHVIEW**

<i>Fund</i>	<i>Type</i>	<i>Org</i>	<i>Prg</i>	<i>Crs</i>	<i>Fin</i>	<i>Obj/Src</i>	<i>Account Name</i>	<b>Balance as Of 06/30/16</b>	<b>FY'2016/17 Revenue</b>	<b>FY'2016/17 Expend</b>	<b>Balance as Of 06/30/17</b>
21	E/R	404	280	251	000	899/099	STUDENT SERV - K	-	-	-	-
21	E/R	404	280	253	000	899/099	STUDENT SERV - GR 1	-	-	-	-
21	E/R	404	280	254	000	899/099	STUDENT SERV - GR 2	-	-	-	-
21	E/R	404	280	255	000	899/099	STUDENT SERV - GR 3	-	-	-	-
21	E/R	404	280	256	000	899/099	STUDENT SERV - GR 4	-	-	-	-
21	E/R	404	280	257	000	899/099	STUDENT SERV - GR 5	-	-	-	-
21	E/R	404	280	259	000	899/099	STUDENT COUNCIL	731.92	-	-	731.92
21	E/R	404	280	260	000	899/099	STUDENT SERV - GENERAL	3,282.34	1,049.00	2,000.69	2,330.65
21	E/R	404	280	261	000	899/099	MEDIA	251.26	1,362.19	1,613.45	-
<b>TOTAL BIRCHVIEW</b>								<b>4,265.52</b>	<b>2,411.19</b>	<b>3,614.14</b>	<b>3,062.57</b>

**Wayzata Public Schools**  
**Student Activity Fund Summary**  
**June 2017**

**PROGRAM/LOCATION : GREENWOOD**

<i>Fund</i>	<i>Type</i>	<i>Org</i>	<i>Prg</i>	<i>Crs</i>	<i>Fin</i>	<i>Obj/Src</i>	<i>Account Name</i>	<b>Balance as Of 06/30/16</b>	<b>FY'2016/17 Revenue</b>	<b>FY'2016/17 Expend</b>	<b>Balance as Of 06/30/17</b>
21	E/R	406	280	307	000	899/099	KINDERGARTEN	411.77	1,165.00	922.39	654.38
21	E/R	406	280	311	000	899/099	MEDIA	47.11	-	-	47.11
21	E/R	406	280	312	000	899/099	STUDENT SERVICES	1,090.52	9,014.15	8,821.18	1,283.49
<b>TOTAL GREENWOOD</b>								<b>1,549.40</b>	<b>10,179.15</b>	<b>9,743.57</b>	<b>1,984.98</b>

**Wayzata Public Schools**  
**Student Activity Fund Summary**  
**June 2017**

**PROGRAM/LOCATION : OAKWOOD**

<i>Fund</i>	<i>Type</i>	<i>Org</i>	<i>Prg</i>	<i>Crs</i>	<i>Fin</i>	<i>Obj/Src</i>	<i>Account Name</i>	<b>Balance as Of 06/30/16</b>	<b>FY'2016/17 Revenue</b>	<b>FY'2016/17 Expend</b>	<b>Balance as Of 06/30/17</b>
21	E/R	407	280	469	000	899/099	STUDENT COUNCIL	1,754.95	247.84	120.91	1,881.88
21	E/R	407	280	474	000	899/099	STUDENT SERV - GENERAL	7,271.21	-	117.00	7,154.21
21	E/R	407	280	476	000	899/099	CHESS CLUB	328.24	420.00	284.12	464.12
<b>TOTAL OAKWOOD</b>								<b>9,354.40</b>	<b>667.84</b>	<b>522.03</b>	<b>9,500.21</b>

**Wayzata Public Schools**  
**Student Activity Fund Summary**  
**June 2017**

**PROGRAM/LOCATION : SUNSET HILL**

<i>Fund</i>	<i>Type</i>	<i>Org</i>	<i>Prg</i>	<i>Crs</i>	<i>Fin</i>	<i>Obj/Src</i>	<i>Account Name</i>	<b>Balance as Of 06/30/16</b>	<b>FY'2016/17 Revenue</b>	<b>FY'2016/17 Expend</b>	<b>Balance as Of 06/30/17</b>
21	E/R	408	280	572	000	899/099	STUDENT SERVICES	12,573.95	13,778.80	19,057.29	7,295.46
21	E/R	408	280	573	000	899/099	ALL DISTRICT CHOIR	-	4,596.19	4,596.19	-
21	E/R	408	280	574	000	899/099	PENCIL MACHINE/STORE	1,817.03	-	-	1,817.03
<b>TOTAL SUNSET HILL</b>								<b>14,390.98</b>	<b>18,374.99</b>	<b>23,653.48</b>	<b>9,112.49</b>

Wayzata Public Schools  
 Student Activity Fund Summary  
 June 2017

**PROGRAM/LOCATION : PLYMOUTH CREEK**

<i>Fund</i>	<i>Type</i>	<i>Org</i>	<i>Prg</i>	<i>Crs</i>	<i>Fin</i>	<i>Obj/Src</i>	<i>Account Name</i>	<b>Balance as Of 06/30/16</b>	<b>FY'2016/17 Revenue</b>	<b>FY'2016/17 Expend</b>	<b>Balance as Of 06/30/17</b>
21	E/R	410	280	533	000	899/099	STUDENT SERVICES	5,370.72	4,226.28	9,339.72	257.28
<b>TOTAL PLYMOUTH CREEK</b>								<b>5,370.72</b>	<b>4,226.28</b>	<b>9,339.72</b>	<b>257.28</b>

**Wayzata Public Schools**  
**Student Activity Fund Summary**  
**June 2017**

**PROGRAM/LOCATION : GLEASON LAKE**

<i>Fund</i>	<i>Type</i>	<i>Org</i>	<i>Prg</i>	<i>Crs</i>	<i>Fin</i>	<i>Obj/Src</i>	<i>Account Name</i>	<b>Balance as Of 06/30/16</b>	<b>FY'2016/17 Revenue</b>	<b>FY'2016/17 Expend</b>	<b>Balance as Of 06/30/17</b>
21	E/R	411	280	352	000	899/099	STUDENT SERVICES	27,741.20	1,647.00	1,762.24	27,625.96
<b>TOTAL GLEASON LAKE</b>								<b>27,741.20</b>	<b>1,647.00</b>	<b>1,762.24</b>	<b>27,625.96</b>

**Wayzata Public Schools**  
**Student Activity Fund Summary**  
**June 2017**

**PROGRAM/LOCATION : KIMBERLY LANE**

<i>Fund</i>	<i>Type</i>	<i>Org</i>	<i>Prg</i>	<i>Crs</i>	<i>Fin</i>	<i>Obj/Src</i>	<i>Account Name</i>	<b>Balance as Of 06/30/16</b>	<b>FY'2016/17 Revenue</b>	<b>FY'2016/17 Expend</b>	<b>Balance as Of 06/30/17</b>
21	E/R	412	280	401	000	899/099	STUDENT COUNCIL	672.68	-	623.70	48.98
21	E/R	412	280	403	000	899/099	KINDERGARTEN ACTIVITY	3,279.80	-	219.80	3,060.00
21	E/R	412	280	404	000	899/099	CARLSON	-	-	-	-
21	E/R	412	280	405	000	899/099	SPRAQUE	-	-	-	-
21	E/R	412	280	430	000	899/099	MEDIA	225.41	163.96	-	389.37
21	E/R	412	280	431	000	899/099	STUDENT SERVICES	51,883.10	7,745.40	245.55	59,382.95
<b>TOTAL KIMBERLY LANE</b>								<b>56,060.99</b>	<b>7,909.36</b>	<b>1,089.05</b>	<b>62,881.30</b>



**WAYZATA PUBLIC SCHOOLS**

Independent School District 284  
Wayzata, Minnesota

**BOARD OF EDUCATION**

**Regular Meeting – August 14, 2017**

**AGENDA SECTION: APPROVAL OF AGENDA AND CONSENT AGENDA**

**ITEM: Business and Finance Services  
Authorization of Issuance of Individual Procurement Card (P-Card)**

**COMMENTS BY: Jim Westrum, Executive Director of Business & Finance**

**Authorization of Issuance of Individual Procurement Card (P-Card)**

The administration recommends the issuance of a Procurement Card to the following employees:

Sloan Wallgren, ESC

**RECOMMENDED ACTION:** Approve and Authorize of Issuance of Individual Procurement Card (P-Card).

Motion by: \_\_\_\_\_ Yes \_\_\_\_\_ Passed \_\_\_\_\_

Second by: \_\_\_\_\_ No \_\_\_\_\_ Failed \_\_\_\_\_

Abstentions: \_\_\_\_\_ 39 \_\_\_\_\_



**WAYZATA PUBLIC SCHOOLS**  
Independent School District 284  
Wayzata, Minnesota

**BOARD OF EDUCATION**  
Regular Meeting – August 14, 2017

**AGENDA SECTION:** 2. APPROVAL OF AGENDA AND CONSENT AGENDA ITEMS

**ITEM:** C. Human Resource Recommendations

**COMMENTS BY:** Ms. Stacie Vos

Attached is the recommendation regarding personnel actions, including: employment, separations and leaves of absence.

**RECOMMENDED ACTION:** Approve the Human Resource Actions as recommended.

Motion by: \_\_\_\_\_ Yes \_\_\_\_\_ Passed \_\_\_\_\_

Second by: \_\_\_\_\_ No \_\_\_\_\_ Failed \_\_\_\_\_

Abstentions \_\_\_\_\_

## HUMAN RESOURCES RECOMMENDATIONS - Consent Agenda - August 14, 2017

### EMPLOYMENT

Name	Position	Location	Reason	Start Date
McKenzie Anderson	Teacher - Special Services	Birchview	Transfer	8/28/2017
Shauna Mignone	Paraprofessional	Birchview	Transfer	9/5/2017
Julianne Gannon	Culinary Express	Birchview	Transfer	9/5/2017
Annie Roeder	Guidance Counselor	Central Middle	New Position	8/28/2017
Anne Loney	Teacher - Communications	Central Middle	New Position	8/28/2017
Baker, Tara	Teacher - English	Central Middle	New Position	8/28/2017
Janel Kohlmyer	Paraprofessional	Central Middle	Resignation	9/5/2017
Kyle Holder	Teacher - English	Central Middle	Resignation	8/28/2017
Susan Lehr	Culinary Express	Central Middle	Resignation	9/5/2017
Sloan Wallgren	Unaffiliated - CES Facilities Manager	Central Services	Retirement	8/7/2017
JayMar Johnson	Custodian	Central Services	Resignation	7/17/2017
Toni McCall	Nurse	District	Retirement	11/13/2017
Terry Unger	Custodian	East Middle	Transfer	7/31/2017
Carrie Kluender	Custodian	East Middle	Transfer	8/21/2017
Thomas Knudson	Paraprofessional	Gleason Lake	Resignation	9/5/2017
Tamara Gehling	Teacher - Special Services	Greenwood	Transfer	8/28/2017
Kristen Nichole Baker	Teacher - Kindergarten	Greenwood	Resignation	8/28/2017
Todd Larsen	Teacher - Social Studies	High School	New Position	8/28/2017
Rich Iverson	Teacher - Social Studies	High School	Transfer	8/28/2017
Karen Rooney	Teacher - Special Services	High School	Resignation	8/28/2017
Kari Meyer	Paraprofessional	Kimberly Lane	Transfer	9/5/2017
Tiffany Kubly	Teacher - 3rd Grade	Meadow Ridge	Transfer	8/28/2017
Lisa Leland	Teacher - Kindergarten	Meadow Ridge	Long Term Reserve	8/28/2017
Marvin Puspoki	Teacher - 4th Grade	Meadow Ridge	Long Term Reserve	9/19/2017
Amy Sklar	Paraprofessional	Meadow Ridge	New Position	9/5/2017
Colleen Kane-Rood	Paraprofessional	Meadow Ridge	Transfer	9/5/2017
Craig Junkermeier	Custodian	Meadow Ridge	Resignation	8/14/2017
Alicia Oldenhof	Paraprofessional	Meadow Ridge	New Position	9/5/2017
Denise Gerten	Home Base Assistant	Meadow Ridge	New Position	8/21/2017
Rainbow Cramer-Plant	Paraprofessional	Meadow Ridge	New Position	9/5/2017
Carol Meinen	Teacher - Special Services	Oakwood	Transfer	8/28/2017
Julie Redman	Teacher - Special Services	Oakwood	Transfer	8/28/2017
Alison Martin	Teacher - Physical Education	Plymouth Creek	New Position	8/28/2017
Lauren Wilson	Teacher - 3rd Grade	Plymouth Creek	New Position	8/28/2017
Caitlin Fritz	Home Base Instructor	Plymouth Creek	Resignation	8/21/2017

Walsh, Erin	Teacher - 1st Grade	Sunset Hill	Resignation	8/28/2017
Kerry Avery	Teacher - 3rd Grade	Sunset Hill	New Position	8/28/2017
Loyal Serhan	Paraprofessional	Sunset Hill	Resignation	9/5/2017
Lissa Cotton	Paraprofessional	Sunset Hill	Transfer	9/5/2017
Anna Caspar	Teacher - Science	West Middle	Transfer	8/28/2017
Emilie Zbaracki	Teacher - Math	West Middle	Transfer	8/28/2017
Thane Antczak	Teacher - Physical Education	West Middle	Non-renewal	8/28/2017
Jennifer Larson	Teacher - Spanish	Greenwood, Kimberly Lane	Transfer	8/28/2017
Amanda Roff	Teacher - Math	High School	Retirement	8/28/2017

### CONTRACT MODIFICATION

Name	Position	Location	Modification	Date
Geoffrey Ratliff	Custodian	East Middle	Contract Ended	7/7/2017
Steffani Weekly	Teacher - Special Services	Kimberly Lane	From .85 to 1.0	8/28/2017
Alycia Knabenshue	Teacher - Art	West Middle, Central Middle	From .667 to .75	8/28/2017

### LEAVE OF ABSENCE

Name	Position	Location	Leave Date	
Kate Thomas	Teacher - Math	Central Middle	10/16/2017	1/2/2017
Ashley Drill	Teacher - 3rd Grade	Greenwood	11/10/2017	6/11/2018

### RESIGNATION

Name	Position	Location	Resign Date	
Desiree Laitinen	Home Base Instructor	Gleason Lake		8/18/2017
Amy Westman	Teacher - Kindergarten	Greenwood		6/30/2017
Janet Thompson	Culinary Express	High School		7/12/2017
Allison Gillespie	Associate Principal	High School		7/31/2017
Sheila Peterson	Teacher - English	High School		6/30/2017
Sally Platt	Teacher - Literacy Coach	High School		6/30/2017
Alexia Fox	Teacher - English	High School		6/30/2017
Tracy Byrd	Teacher - Achievement Specialist	High School		8/3/2017

Judy Narum	Home Base Assistant	Kimberly Lane	8/18/2017
Susan Olson	Culinary Express	Meadow Ridge	7/24/2017
Chris Hunt	Custodian	Meadow Ridge	9/1/2017
Mary Pernula	Teacher - 1st Grade	Sunset Hill	6/30/2017

**RETIREMENT**

<b>Name</b>	<b>Position</b>	<b>Location</b>	<b>Retirement Date</b>
Susan Snow	Paraprofessional	Birchview	8/1/2017
Gerald Faue	Custodian	High School	7/31/2017

**WAYZATA PUBLIC SCHOOLS**  
Independent School District 284  
Wayzata, Minnesota

**BOARD OF EDUCATION**  
Regular Meeting – August 14, 2017

**AGENDA SECTION:** 2. Approval of Agenda and Consent Agenda Items

**ITEM:** \_\_\_\_\_

**COMMENTS BY:** Chris McCullough, Board Chair

According to Minnesota Statutes Section 121A.11, enacted in 2004, “all public school students shall recite the Pledge of Allegiance to the flag of the United States of America one or more times each week.” As part of this requirement, a school district must instruct students in the proper etiquette toward, correct display of, and respect for the flag, and in patriotic exercises. A school board may waive the recitation and corresponding etiquette requirement by an annual vote.

Wayzata Public Schools also has a district policy that states:

*The School Board recognizes the need to display an appropriate United States flag and to provide instruction to students in the proper etiquette, display, and respect of the flag. The purpose of this policy is to provide for recitation of the Pledge of Allegiance and instruction in school to help further that end. Students shall recite the Pledge of Allegiance one or more times a week. The recitation shall be conducted by each individual classroom teacher or teacher’s surrogate or over a school intercom system by principal or designee. Anyone who does not wish to participate in reciting the Pledge for any personal reasons may elect not to do so. Students and school personnel must respect another person’s right to make that choice. Students will be instructed in the proper etiquette toward, correct display of, and respect for the flag.*

The practice during the 2016-2017 school year was to have elementary students routinely recite the Pledge; generally daily or weekly. Middle school and high school students recited the Pledge weekly; generally on a Monday morning TV broadcast. School principals report that this practice has worked well and the administration is recommending the continuance of this protocol for the 2014-2015 school year. Generally, weekly recitation of the pledge will occur at the middle school and high school levels and daily or weekly recitation of the pledge will occur in the elementary schools

**RECOMMENDED ACTION:** The School Board supports recitation of the Pledge of Allegiance in the district schools and has a district policy calling for the recitation of the Pledge of Allegiance one or more times weekly in each school. Minnesota Statute 121A allows a school district to waive the statutory requirement mandating the recitation of the Pledge of Allegiance by majority vote. The Wayzata School District School Board has chosen to take a vote on waiving the statutory requirement. Waiving the statutory requirement has no impact on the School District's policy.

Motion by: \_\_\_\_\_ YES/NO Passed \_\_\_\_\_

Second by: \_\_\_\_\_ Failed \_\_\_\_\_

Abstentions: \_\_\_\_\_

**WAYZATA PUBLIC SCHOOLS**  
Independent School District 284  
Wayzata, Minnesota

**BOARD OF EDUCATION**  
Regular Meeting – August 14, 2017

**AGENDA SECTION:** 1. HUMAN RESOURCE RECOMMENDATIONS

**ITEM:** B. Wayzata Public Schools 2017-2018 Retirees

**COMMENTS BY:** Superintendent Chace B. Anderson

Tonight we would like to recognize the following employees who announced their retirement in 2017. We would like to thank them for their years of service to Wayzata Public Schools and wish them well in their future endeavors.

<u>Name</u>	<u>Position</u>	<u>Years of Service</u>
Gerald Faue	High School, Custodian	6 Years
Susan Snow	Birchview, Paraprofessional	19 Years

**WAYZATA PUBLIC SCHOOLS**  
Independent School District 284  
Wayzata, Minnesota

**BOARD OF EDUCATION**  
Regular Meeting – August 14, 2017

**AGENDA SECTION: SUPERINTENDENT'S REPORTS AND RECOMMENDATIONS**

**ITEM: Finance and Business Services**

**COMMENTS BY: Jim Westrum, Exec. Director of Finance and Business Services**

**Monthly Financial Reports**

Enclosed for School Board review and information are the following financial reports as of June 2017:

- Student Activity Fund Report
- Investment Summary

No School Board action is required.

**WAYZATA PUBLIC SCHOOLS  
INVESTMENT SUMMARY  
As of June 30, 2017**

**GENERAL FUND**

<u>Investment Held At</u>	<u>Type of Investment</u>	<u>Purchase Date</u>	<u>Maturity Date</u>	<u>Investment Cost</u>	<u>Maturity Amount</u>	<u>Interest Earned</u>	<u>Yield</u>
PMA/MN Trust	Money Market	N/A	NOW	N/A	\$10,981,766	N/A	0.88%
PMA/MN Trust	Term Series	6/14/2017	7/13/2017	10,000,000	\$10,007,548	N/A	0.95%
MSDLAF+	Money Market	N/A	NOW	N/A	\$1,357,600	N/A	0.80%
MSDMAX	Money Market	N/A	NOW	N/A	\$1,058,359	N/A	0.90%
Morgan Stanley	Money Market	N/A	NOW	N/A	\$3,529,304	N/A	0.70%
<b>Total General Fund</b>				<b>\$10,000,000</b>	<b>\$26,934,578</b>		

Note: Term Series investment held with PMA/MN Trust consists of investments in certificates of deposit, obligations of the U.S. Government, it's agencies and instrumentalities, municipal obligations or any other instruments permitted under Minnesota law.

**FUND 06 (ALT FACILITIES BONDS)**

<u>Investment Held At</u>	<u>Type of Investment</u>	<u>Purchase Date</u>	<u>Maturity Date</u>	<u>Investment Cost</u>	<u>Maturity Amount</u>	<u>Interest Earned</u>	<u>Yield</u>
MSDLAF+	Money Market	N/A	NOW	N/A	\$2	N/A	0.80%
<b>Total Alt. Facilities Bonds Fund</b>				<b>\$0</b>	<b>\$2</b>	<b>\$0</b>	

**FUND 82 (2014 BUILDING BONDS)**

<u>Investment Held At</u>	<u>Type of Investment</u>	<u>Purchase Date</u>	<u>Maturity Date</u>	<u>Investment Cost</u>	<u>Maturity Amount</u>	<u>Interest Earned</u>	<u>Yield</u>
MSDLAF+	Money Market	N/A	NOW	N/A	\$12,599,989	N/A	0.80%
<b>Total Building Bonds Fund</b>				<b>\$0</b>	<b>\$12,599,989</b>	<b>\$0</b>	

**WAYZATA PUBLIC SCHOOLS**  
Independent School District 284  
Wayzata, Minnesota

**BOARD OF EDUCATION**  
Regular Meeting – August 14, 2017

**AGENDA SECTION: SUPERINTENDENT’S REPORTS AND RECOMMENDATIONS**

**ITEM: Finance and Business Services**

**COMMENTS BY: Jim Westrum, Exec. Director of Finance and Business Services**

**Lease Purchase Agreement – Addition to Meadow Ridge Elementary**

The Wayzata Public Schools desires to enter into a Lease Purchase Agreement in the amount of \$5,030,000 for the purpose of constructing an addition to Meadow Ridge Elementary School.

The Lease is designated as a qualified tax-exempt obligation for purposes of Section 265(b) (c) of the Internal Revenue Code of 1986, as amended, relating to deductibility of interest by financial institutions. The term will be fourteen (14) years and six (6) months of semi-annual principal and interest payments, beginning on April 1, 2018 and ending on April 1, 2032. The District will receive a separate annual tax levy to finance approximately 100% of the principal and interest payments.

The District solicited proposals and received four (4) responses. The resolution is attached. The request for proposal results and recommendation from our financial advisors, Ehlers, Inc., will be provided at the Board meeting.

**RECOMMENDED ACTION:** Approve the Resolution Awarding and Authorizing the Execution of A Lease Agreement, A Ground Lease Agreement and Related Documents and Certificates For an Addition to Meadow Ridge Elementary School.

Motion by: \_\_\_\_\_ Yes \_\_\_\_\_ Passed \_\_\_\_\_

Second by: \_\_\_\_\_ No \_\_\_\_\_ Failed \_\_\_\_\_

Abstentions: \_\_\_\_\_

EXTRACT OF MINUTES OF MEETING  
OF SCHOOL BOARD OF  
INDEPENDENT SCHOOL DISTRICT NO. 284  
(WAYZATA PUBLIC SCHOOLS)  
WAYZATA, MINNESOTA

HELD: AUGUST 14, 2017

Pursuant to due call and notice thereof, a regular meeting of the School Board of Independent School District No. 284 was held on the 14th day of August, 2017, at 7:00 o'clock p.m.

The following Board members were present:

and the following were absent:

Member \_\_\_\_\_ introduced the following resolution and moved its adoption:

**RESOLUTION APPROVING AND AUTHORIZING THE EXECUTION OF A  
LEASE AGREEMENT, A GROUND LEASE AGREEMENT AND  
RELATED DOCUMENTS AND CERTIFICATES**

BE IT RESOLVED by the School Board of the Independent School District No. 284 (Wayzata Public Schools), State of Minnesota, as follows:

1. The District has received a proposal from \_\_\_\_\_ to provide tax-exempt lease-purchase financing to finance the acquisition, construction, installation and equipping of an addition to Meadow Ridge Elementary School, with necessary equipment, appurtenances and site improvements thereto. That proposal is hereby accepted. Bond counsel is directed to prepare a final Lease Agreement and Ground Lease Agreement (the "Agreements"), and other necessary certificates and documents that reflect the transaction, including an Escrow Agreement if necessary.

2. The District's Executive Director of Finance and Business Services is hereby authorized to execute the Agreements and any related documents thereto on behalf of the District, and to execute such other certificates, documents and agreements as may be necessary and appropriate to effectuate the transactions contemplated by the Agreements and said related documents. The Agreements and the related documents may contain such necessary and appropriate variations, omissions and insertions as the Executive Director of Finance and Business Services shall determine to be necessary, and the execution thereof shall be conclusive evidence of such determination and its approval by the Board.

3. The District reasonably anticipates that it will not issue tax-exempt obligations (not including "private activity bonds" as defined in Section 141 of the Internal Revenue Code of 1986, as amended) in an aggregate amount in excess of \$10 million during the calendar year in which the Lease commences. Thus, the Lease is designated as a qualified tax-exempt obligation for purposes of Section 265(b)(c) of the Internal Revenue Code of 1986, as amended, relating to deductibility of interest by financial institutions.

The motion for the adoption of the foregoing resolution was duly seconded by Member \_\_\_\_\_ and upon roll call vote the following voted in favor thereof:

and the following voted against the same:

whereupon said resolution was declared duly passed and adopted.

STATE OF MINNESOTA    )  
  )SS  
COUNTY OF HENNEPIN    )

I, the undersigned, being the fully qualified and acting Clerk of Independent School District No. 284 (Wayzata Public Schools), State of Minnesota, do hereby certify that I have carefully compared the attached and foregoing extract of minutes of a meeting of the District held on the 14th day of August, 2017, with the original thereof on file in my office, and the same is a full, true and complete transcript insofar as the same relates to the adoption of a resolution approving and authorizing the execution of a Lease Agreement, Ground Lease Agreement and related documents and certificates.

WITNESS MY HAND officially as such Clerk this \_\_\_\_ day of August, 2017.

\_\_\_\_\_  
Clerk

**WAYZATA PUBLIC SCHOOLS**

Independent School District 284  
Wayzata, Minnesota

**BOARD OF EDUCATION**

Regular Meeting – August 14, 2017

**AGENDA SECTION: 6. Superintendent’s Reports and Recommendations**

**ITEM: A. RESOLUTION RELATING TO THE ESTABLISHMENT OF ABSENTEE VOTING HOURS AND LOCATION**

**COMMENTS BY: Jim Westrum, Executive Director of Finance and Business Services**

Independent School District No. 284 will be conducting an election on November 7, 2017. Voters may vote at designated polling places on Election Day November 7, 2017, or may vote early via absentee ballot. Absentee or early voting can be performed by mail or in person. Voters wishing to vote early by mail can do so by contacting the Minnesota Secretary of State Office.

Voters wishing to vote early in person can vote at the District Administration Building, located at 210 County Road 101 N. Wayzata, MN. (Those voters residing within the City of Minnetonka will follow the hours and locations as determined by the City of Minnetonka.) All voters, except for those residing within the City of Minnetonka:

Voting is open during normal business hours 7:30 a.m. - 4:30 p.m.

First day to vote early in person: Friday, September 22, 2017

Last day to vote early in person: Monday, November 6, 2017 (open until 5 p.m. on November 6, 2017)

In addition, voters may vote early in person on Saturday, November 4, 2017 from 10:00 a.m.-2:00 p.m.

**RECOMMENDED ACTION:** Adopt the attached RESOLUTION RELATING TO THE ESTABLISHMENT OF THE ABSENTEE VOTING HOURS AND LOCATION.

Motion by: \_\_\_\_\_ ROLL CALL Passed \_\_\_\_\_

Second by: \_\_\_\_\_ VOTE Failed \_\_\_\_\_

**WAYZATA PUBLIC SCHOOLS**  
Independent School District 284  
Wayzata, Minnesota

**BOARD OF EDUCATION**  
Regular Meeting – August 14, 2017

**RESOLUTION ESTABLISHING ABSENTEE BALLOT POLLING LOCATION AND HOURS  
FOR SCHOOL DISTRICT ELECTIONS  
NOT HELD ON THE DAY OF A STATEWIDE ELECTION  
NOVEMBER 7, 2017**

**BE IT RESOLVED** by the School Board of Independent School District No. 284, State of Minnesota, as follows:

Independent School District No. 284 will be conducting an election on November 7, 2017. Voters may vote at designated polling places on Election Day November 7, 2017, or may vote early via absentee ballot. Absentee or early voting can be performed by mail or in person. Voters wishing to vote early by mail can do so by contacting the Minnesota Secretary of State Office.

Voters wishing to vote early in person can vote at the District Administration Building, located at 210 County Road 101 N. Wayzata, MN. (Those voters residing within the City of Minnetonka will follow the hours and locations as determined by the City of Minnetonka.) All voters, except for those residing within the City of Minnetonka:

Voting is open during normal business hours 7:30 a.m.- 4:30 p.m.

First day to vote early in person: Friday, September 22, 2017

Last day to vote early in person: Monday, November 6, 2017 (open until 5 p.m. on November 6, 2017)

In addition, voters may vote early in person on Saturday, November 4, 2017 from 10:00 a.m.-2:00 p.m.

Dated: August 14, 2017

BY ORDER OF THE SCHOOL BOARD

---

Andrea Cuene  
School Board Clerk

**WAYZATA PUBLIC SCHOOLS**  
Independent School District 284  
Wayzata, Minnesota

**BOARD OF EDUCATION**  
Regular Meeting – August 14, 2017

**AGENDA SECTION: SUPERINTENDENT’S REPORTS AND RECOMMENDATIONS**

**ITEM: Finance and Business Services**

**COMMENTS BY: Jim Westrum, Executive Director of Finance and Business**

**Easement for MACO on District Property near Greenwood Elementary:**

MACO Properties is constructing a facility across Medina Road from Greenwood Elementary School. In order to allow construction and access of sanitary and storm water utilities and sewer line, MACO has requested an easement through district property. The easement requires MACO properties to meet the requirement for tree replacement as described by the city forester and notify neighbors in advance of the work. The project is relatively minor and the existing screen from trees will not be significantly altered.

**RECOMMENDED ACTION:** Approve easement agreement with MACO Properties.

Motion by: \_\_\_\_\_ Yes \_\_\_\_\_ Passed \_\_\_\_\_

Second by: \_\_\_\_\_ No \_\_\_\_\_ Failed \_\_\_\_\_

Abstentions: \_\_\_\_\_

## **EASEMENT AGREEMENT**

THIS EASEMENT AGREEMENT (this "Easement") is made and entered into effective as of \_\_\_\_ day of July, 2017, by and between Independent School District No 284 ("Grantor") and MACO Properties, LLC, a Minnesota limited liability company ("Grantee").

### **RECITALS**

WHEREASE, Grantor is the owner of certain real property located in the City of Plymouth, Hennepin County, Minnesota, which property is described on the attached Exhibit A and referred to on the exhibit and in this Agreement as "Parcel A"; and

WHEREAS, Grantee is the owner of certain real property located at 18040 Medina Road, in the City of Plymouth, Hennepin County, Minnesota, which property is described on the attached Exhibit B and referred to on the exhibit and in this Agreement as "Parcel B"; and

WHEREAS, Grantee desires to construct and use a sewer line within and under the northerly portion of Parcel A in order to provide for sanitary sewer utilities to Parcel B and Grantor desires to grant an easement to Grantee for such use on the terms and conditions provided herein.

### **GRANT OF EASEMENT**

NOW THEREFORE, in consideration of the mutual promises contained and covenants contained herein, and the sum of \$1.00 and other good and valuable consideration paid by each party to the other, the receipt and sufficiency of which are hereby acknowledged, the parties agree as follows:

1. Grantor hereby grants unto Grantee and its heirs, successors and assigns, a perpetual, exclusive and unobstructed easement on, under, over and across such portion of Parcel A as described in Exhibit C for purposes of installing, maintaining and using a sanitary sewer line servicing Parcel B (the “Easement Area”). A map showing the location of the Easement Area is attached hereto as Exhibit D.

2. Grantee shall be solely responsible for all costs relating to the construction, maintenance, and repair of the sewer line. Construction of the sewer line within the Easement Area will be performed in a good and workmanlike manner; consistent with the plans reasonably approved by Grantor and in compliance with all applicable governmental regulations. Prior to any construction activity occurring within the Easement Area, Grantee will provide written notification to the neighbors in close proximity to the terminal manhole of the upcoming project, including the scope and the timing. Grantee will not permit any liens to attach to Parcel A. Grantee will exercise reasonable care to protect Parcel A from damage or injury occasioned in the enjoyment of the easement and rights herein granted, and to promptly repair the property or reimburse Grantor for any property damaged by Grantee or its representatives, including without limitation any damage to the trail located within Parcel A. Except in the case of an emergency, Grantee will provide Grantor with ten (10) days’ prior written notice of its intent to access the Easement Area for any purposes. Grantee acknowledges and understands that Grantor is a public school district and uses Parcel A for programs and activities; Grantee will not unreasonably interfere with Grantor’s use of the Easement Area and shall not, without Grantor’s prior consent (which such consent shall not be unreasonably withheld), access the Easement Area on weekdays (Monday thru Friday) during the school year (approximately September 1 – June 10) between the hours of 8:00am to 6:00pm.

3. Grantor shall have no obligation to maintain or repair Grantee’s sewer line running under the Easement Area. Grantor shall provide Grantee with thirty (30) day written notice of its intent to build or install any structure or obstruction on, over or within the Easement Area, and shall reasonably cooperate with Grantee in any relocation of its sewer line occasioned by Grantor’s obstruction on, over, or within the Easement

Area. Grantee shall not, without Grantor's prior written consent, be permitted to remove any significant trees or any improvements located on Parcel A except with Grantor's prior consent and only after making suitable arrangements to replant or replace any trees or improvements pursuant to the requirements of the City forester. Grantor consents to the removal of the significant trees noted on the attached Exhibit E. Grantee will also be responsible for any cleanup activity or further work within the Easement Area or the surrounding area required by the City forester as a result of the work in the Easement Area or any inspection of the surrounding area due to Grantee's project. Grantor shall not unreasonably withhold consent to access the Easement Access upon request of Grantee in accordance with Paragraph 2 hereof.

4. Grantee shall indemnify and defend Grantor and its officers, directors, agents, employees, and invitees from all liability, suits, actions, claims, costs, damages and expenses of every kind and description, including legal fees, for claims of any character, including liability and expenses in connection with loss of life, personal injury, or damages to property, brought because of any injuries or damages received or sustained by any persons or property that arise or result from any of the following related to this Easement: (i) access and use of the Easement Area by Grantee or its agents, representatives, contractors, subcontractors, tenants, or employees (collectively, the "Grantee Parties"), (ii) any breach or default by Grantee or the Grantee Parties under this Easement, and (iii) any lien for labor or material caused by Grantee or the Grantee Parties.

5. Grantor warrants and represents to Grantee that Grantor owns Parcel A. Grantor reserves title to the land included within the Easement Area, and Grantee's use of said land, however long such use continues, shall not vest in Grantee any rights adverse to those of Grantor other than the rights granted by this Agreement.

6. The grant of easement hereunder shall run with Parcel A and Parcel B, and all terms and conditions hereof shall be binding upon and shall inure to the benefit of Grantor and Grantee and their respective heirs, successors and assigns. The easement granted hereunder is an easement appurtenant to Parcel A and Parcel B and may not be transferred separately from, or severed from, title to Parcel A and/or Parcel B.

7. If a party fails to perform or comply with any term, condition or obligation of this Easement and such nonperformance continues for thirty (30) days after receipt of written notice from the other party specifying the nonperformance (or such longer period as may be reasonable under the circumstances if the nonperformance cannot be cured within thirty (30) days and the party failing to perform commences to cure within such time period and diligently and continuously prosecutes such cure to completion), then the party failing to perform will be in default of this Easement. Upon such default, the party providing written notice hereunder may proceed to use self-help to cure the default by payment or performance. The defaulting party will immediately reimburse the party curing the default for all reasonable third party costs incurred to cure the default. The notice period will not be required in the event of an emergency condition, in which event the party curing the failure to perform will give whatever notice is reasonable under the circumstances and will be immediately reimbursed by the party failing to perform for all reasonable third party costs incurred to cure the failure to perform. Nothing contained in this section will create any obligation on the part of any party to exercise the rights granted herein or perform another party's obligations. All remedies set forth in this Easement are cumulative and will be deemed additional to any and all other remedies to which a party may be entitled to at law or in equity.

8. Any notice required or permitted pursuant to this Easement will be in writing and delivered by (a) personal delivery, (b) reputable overnight delivery service with proof of delivery, (c) United States mail, postage prepaid, either certified or first class mail, or (d) email or facsimile. Any notices by email or facsimile will be followed by delivery by one of the other means, which delivery by such other means will not be subject to timing deadlines. All notices will be sent to a party at the address set forth below, or to such other address as last provided to or known by the party sending such notice. Refusal to accept delivery of a notice or the inability to deliver a notice because of an address that was not properly given will not defeat or delay the giving of notice. Notices will be deemed given upon the earlier of the date of actual receipt or (a) at the time of delivery if by personal delivery, or (b) as of the date of first attempted delivery if by overnight delivery, or (c) upon receipt by email or facsimile as evidenced by a receipt transmission report.

Grantor: Independent School District No 284  
Attn: Jim Westrum  
210 County Road 101 North,  
Plymouth, MN 55447  
Email: [Jim.Westrum@wayzata.k12.mn.us](mailto:Jim.Westrum@wayzata.k12.mn.us)

Grantee: MACO Properties, LLC  
Attn: Kelly Max  
15715-56<sup>th</sup> Avenue N.  
Plymouth, MN 55446  
Email: [macoholdings@outlook.com](mailto:macoholdings@outlook.com)

9. Grantor, its heirs, successors and assigns shall be responsible for reimbursing Grantee, or its heirs, successors and assigns for any and all costs and fees associated with a breach of this Agreement by Grantor or its heirs, successors and assigns. Grantee, its heirs, successors and assigns shall be responsible for reimbursing Grantor, or its heirs, successors and assigns for any and all costs and fees associated with a breach of this Agreement by Grantee or its heirs, successors and assigns.

10. If any provision of this Agreement is adjudicated invalid or unenforceable, it shall be judicially amended in such fashion as to render the provision valid and enforceable and to reflect, to the extent possible, the original intent of the parties. If any provision of this Agreement is amended or stricken as a result of its invalidity or unenforceability, such amendment or deletion shall not affect the remaining provisions of this Agreement.

11. No delay or omission by any party in exercising any right or power arising out of any default hereunder, shall be construed as a waiver of such right or power. A waiver by a party of any obligation of the other party shall not be construed as a waiver of any breach of any other term or condition of the Agreement or any future obligation concerning the same term or condition as previously waived by the party.

12. This Agreement shall be recorded with the Hennepin County Recorder with costs to be paid by Grantee.

13. This Agreement sets forth the entire understanding of the parties and may not be changed except in writing, executed and acknowledged by all parties, and duly recorded in the office of the Hennepin County Recorder.

14. This Agreement shall be governed by the laws of the State of Minnesota.

15. Except as provided herein, no person other than the Grantee will be deemed to have acquired any rights by reason of anything contained in this Easement. This Easement is appurtenant and runs with the land. This Easement constitutes the entire agreement between the parties with respect to its subject matter and fully supersedes all prior written or oral agreements between the parties with respect to such matters. The persons executing this Easement on behalf of a party have been duly authorized to do so, and this Easement will be binding and fully enforceable in accordance with its terms upon the parties hereto.





## **EXHIBIT A**

### **Description of Parcel A**

Parcel A consists of the following two (2) adjacent parcels:

*Parcel ID:* 181182242008  
*Address:* Unassigned Address  
*Legal Description:* See attachment

*Parcel ID:* 1811822430005  
*Address:* 18005 Medina Road, Plymouth, MN 55446  
*Legal Description:* See attachment

*[Attachment to Exhibit A]*  
**Legal Description of Parcel A**

That part of the South Half of the Northwest Quarter of the Southeast Quarter, and of the Southwest Quarter of the Southeast quarter, lying Southwesterly of the following-described line: Commencing at the Southeast corner of said Southwest Quarter of the Southeast Quarter; thence North along the East line thereof 704 feet to the point of intersection of said East line with the centerline of Medina Road, said point being the point of beginning of the line being described; thence deflecting left 55°50' along said centerline a distance of 1400 feet; thence on said centerline along a tangential curve to the left having a radius of 700 feet to its intersection with the West line of said South Half of the Northwest Quarter of the Southeast Quarter, and there ending;

EXCEPT the Northeasterly 33 feet of said property;

ALSO EXCEPT that part of said Southwest Quarter of the Southeast Quarter described as follows:

Commencing at the Southeast corner of said Southwest Quarter of the Southeast Quarter; thence North along the East line thereof 290.67 feet to the point of beginning of the exception being described; thence continuing North 413.33 feet to the point of intersection of said East line with the centerline of Medina Road; thence deflecting left 55°50' along said centerline a distance of 577.6 feet; thence deflecting left 90° a distance of 342 feet; thence deflecting left to the point of beginning;

ALSO EXCEPT that part of said Southwest Quarter of the Southeast Quarter described as follows: Commencing at the Southeast corner of said Southwest Quarter of the Southeast Quarter; thence North along the East line thereof 704 feet to the point of intersection of said East line with the centerline of Medina Road; thence deflecting left 55°50' along said centerline a distance of 637.6 feet to the point of beginning of the exception being described; thence continuing on last-said course along said centerline 330 feet; thence deflecting left 90° a distance of 433 feet; thence deflecting left 90° a distance of 330 feet; thence deflecting left to the point of beginning;

ALSO SUBJECT to an easement for highway purposes over the East 33 feet of said property; All in Section 18, Township 118 North, Range 22 West.

## **EXHIBIT B**

### **Legal Description of Parcel B**

#### PARCEL 1

That part of the Southwest quarter of the Southeast quarter and of the South half of the Northwest quarter of the Southeast quarter of Section 18, Township 118, North Range 22, West of the Fifth Principal Meridian, described as follows: Commencing at a point on the East line of said Southwest quarter of the Southeast quarter distant 704.62 feet North of the Southeast corner of said Southwest quarter of the Southeast quarter, said point being the intersection of the centerlines of State Highway No. 101 and Medina Road, formerly known as County Road No. 48; thence Northwesterly along the centerline of Medina Road a distance of 627.4 feet to the point of beginning of the tract of land to be described; thence North parallel with said State Highway No. 101 a distance of 405.34 feet; thence deflecting left 88°03' a distance of 627.28 feet to the centerline of said County Road No. 48; thence Southeasterly along said centerline a distance of 108.47 feet; thence angle left 32°18' and parallel with the North line of described property a distance of 504.55 feet; thence angle right 88°03' and parallel with State Highway No. 101 a distance of 326.0 feet to centerline of County Road No. 48; thence Southeasterly on said centerline a distance of 39.9 feet to point of beginning.

#### PARCEL 2


That part of the SE 1/4 of Section 18, Township 118, Range 22, described as follows: Beginning at a point in the center line of County Road Number 48 667.3 feet Northwesterly from the intersection of State Highway Number 101 and said County Road 48; thence North and parallel with State Highway No. 101 a distance of 326 feet; thence West a distance of 504.55 feet to the center line of County Road No. 48; thence Southeasterly along the center line of County Road No. 48 a distance of 610 feet to point of beginning.

#### PARCEL 3

That part of the Southwest quarter of the Southeast quarter and of the South half of the Northwest quarter of the Southeast quarter of Section 18, Township 118, North Range 22, West of the Fifth Principal Meridian, described as follows: Commencing at a point on the East line of said Southwest quarter of the Southeast quarter distant 704.62 feet North of the Southeast corner of said Southwest quarter of the Southeast quarter, said point being the intersection of the centerlines of State Highway No. 101 and Medina Road, formerly known as County Road No. 48; thence Northwesterly along the centerline of Medina Road a distance of 627.4 feet to the point of beginning of the tract of land to be described; thence North parallel with said State Highway No. 101 a distance of 405.34 feet; thence deflecting right 91 degrees 57 minutes to the West line of the East 290 feet of said Southwest quarter of the Southeast quarter and of said South half of the Northwest quarter of the Southeast quarter; thence South along said West line to its intersection with the centerline of said Medina Road; thence Northwesterly along last-said centerline to the point of beginning.

# EXHIBIT C

## Legal Description of Easement Area

 **HARRY S. JOHNSON**  
**LAND SURVEYORS**

9063 Lyndale Ave. So. Bloomington, MN. 55420  
phone: 952-884-5341 fax: 952-884-5344

Easement Survey

for

*Maco Holdings*

A 20.00 foot wide Sewer Line Easement over, under and across that part of the following described property in Hennepin County, Minnesota:

That part of the Southeast Quarter of Section 18, Township 118, Range 22, lying South of Medina Road, formerly known as County Road No. 48.  
Except Roads.

The center line of said Sewer Line Easement is described as follows:

Commencing at the Southwest Corner of the Southeast Quarter of Section 18, Township 118, Range 22; thence North 0 degrees 29 minutes 32 seconds West an assumed bearing along the west line of said Southeast Quarter a distance of 1185.50 feet to the Northeast corner of Lot 15, Block 1, Bridlewood Farm, Hennepin County Minnesota; thence continuing North 0 degrees 29 minutes 32 seconds West 16.36 feet to the point of beginning of the centerline to be described; thence North 56 degrees 43 minutes 12 seconds East 11.31 feet; thence North 73 degrees 25 minutes 02 seconds East 378.91 feet; thence South 89 degrees 00 minutes 20 seconds East 4.74 feet, more or less, to the southerly right of way line of Medina Road, formerly known as County Road No. 48 and said Sewer Line Easement there terminating.

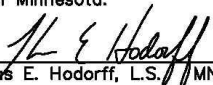
The side lines of said easement are to be prolonged or shortened to terminate at the west line of the Southeast Quarter of Section 18, Township 118, Range 22, also being the easterly line of Bridlewood Farm, Hennepin County, Minnesota and southerly right of way line of Medina Road, formerly known as County Road No. 48.

General Notes:

1. Bearings shown based on the Hennepin County Coordinate System.
2. No current title work was furnished for the preparation of this survey. Legal description, recorded or unrecorded easements and encumbrances are subject to revision upon receipt of current title work.
3. Easement location to be field verified.

I hereby certify that this survey, plan or report was prepared by me or under my direct supervision and that I am a duly Registered Land Surveyor under the laws of the State of Minnesota.

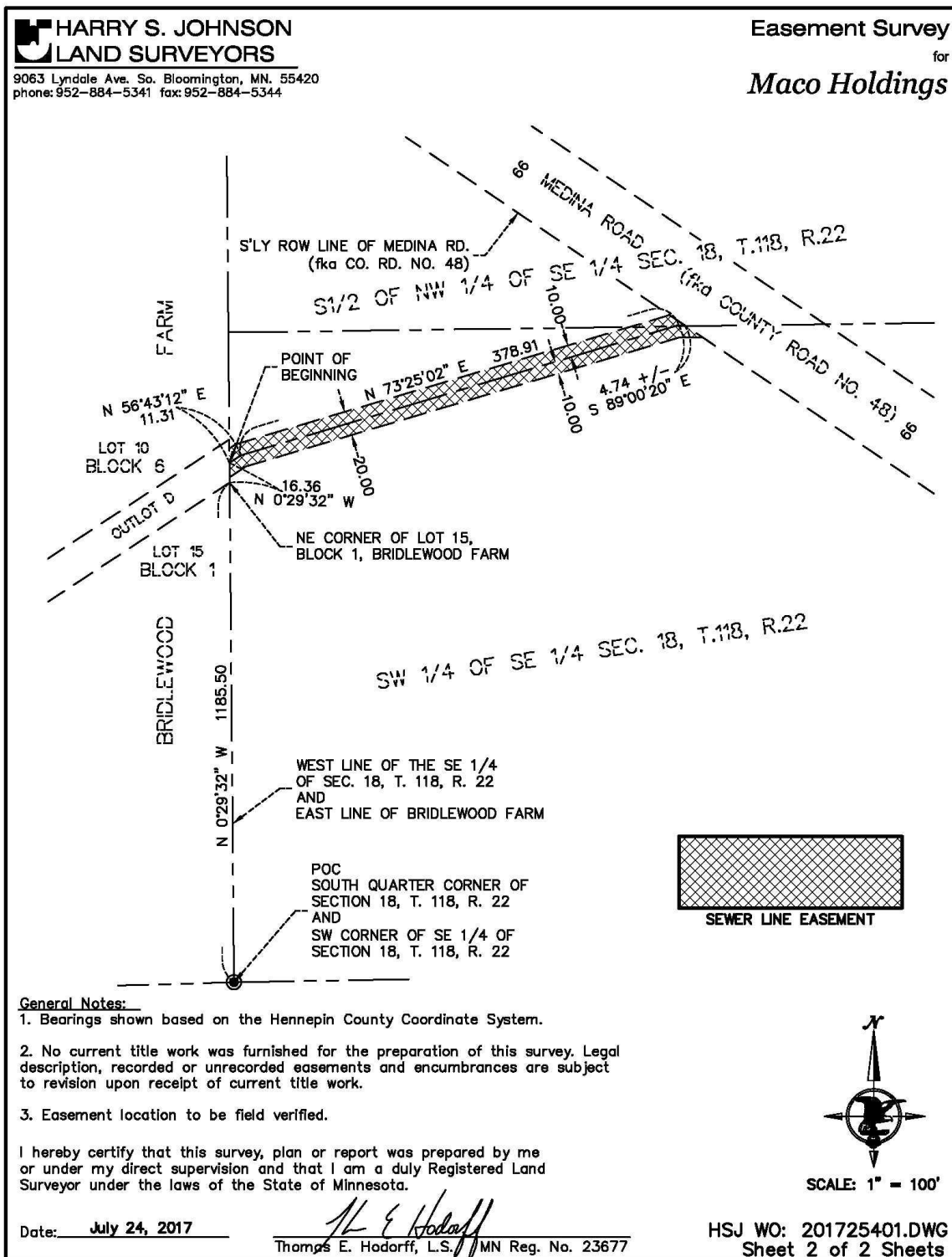
Date: July 24, 2017

  
Thomas E. Hodorff, L.S. MN Reg. No. 23677

HSJ WO: 201725401.DWG  
Sheet 1 of 2 Sheets

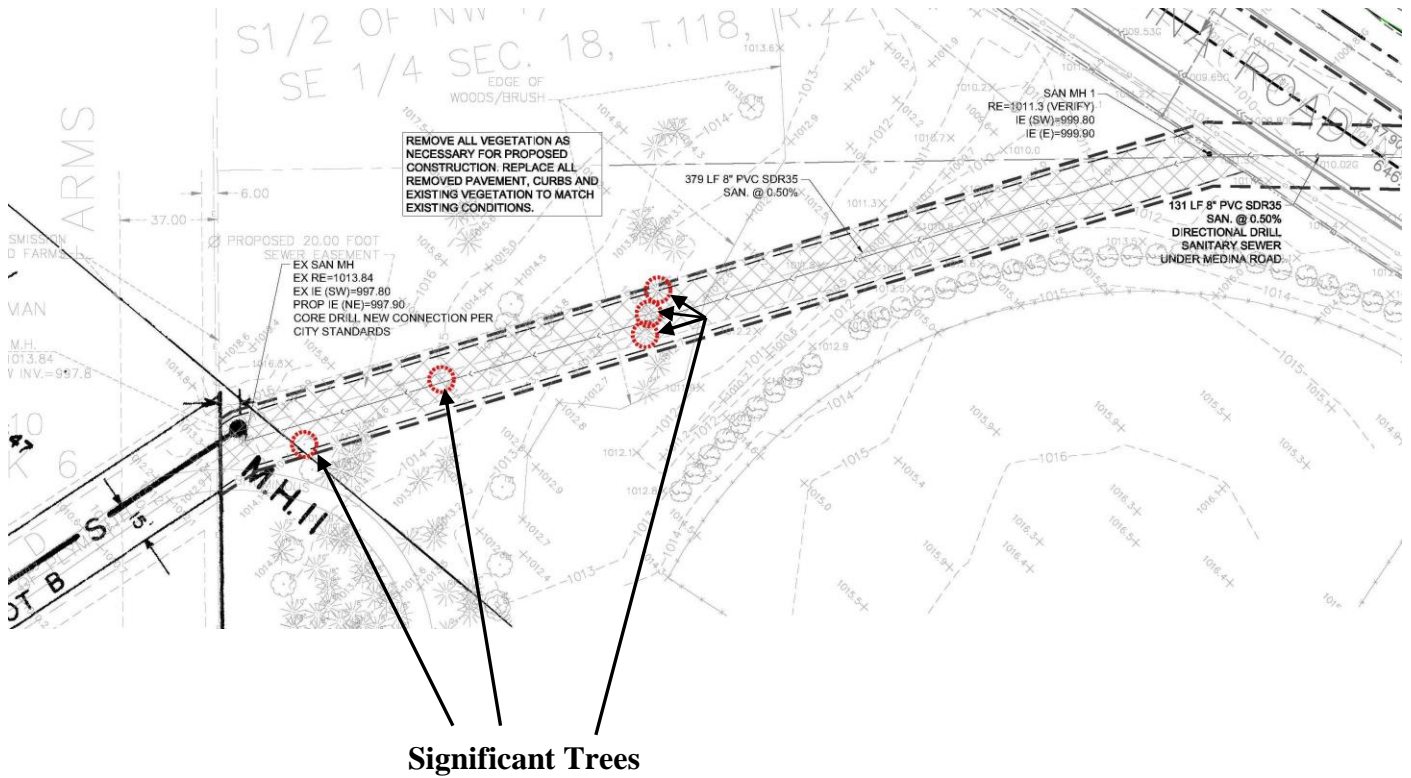
# EXHIBIT D

## Diagram of Easement Area



# EXHIBIT E

## Diagram of Significant Trees Being Removed



**WAYZATA PUBLIC SCHOOLS**  
Independent School District 284  
Wayzata, Minnesota

**BOARD OF EDUCATION**  
Regular Meeting – August 14, 2017

**AGENDA SECTION:** 8. Board Reports

**ITEM:** \_\_\_\_\_

**COMMENTS BY:** Chris McCullough, Board Chair

This section of the agenda provides an opportunity for Board members to update school board members on school board-related work or to make announcements of interest to the public.

**WAYZATA PUBLIC SCHOOLS**  
Independent School District 284  
Wayzata, Minnesota

**BOARD OF EDUCATION**  
Regular Meeting – August 14, 2017

**AGENDA SECTION:** 9. Audience Opportunity to Address the Board

**ITEM:** \_\_\_\_\_

**COMMENTS BY:** Chris McCullough, Board Chair

This section of the agenda provides an opportunity for members of the audience to address the School Board. Speakers will be allotted approximately three minutes.

**WAYZATA PUBLIC SCHOOLS**  
Independent School District 284  
Wayzata, Minnesota

**BOARD OF EDUCATION**  
Regular Meeting – August 14, 2017

**AGENDA SECTION:** 10. Adjourn

**ITEM:** \_\_\_\_\_

**COMMENTS BY:** Chris McCullough, Board Chair

This agenda item brings closure to the school board meeting.

**RECOMMENDED ACTION:** Call the meeting to a close.

Motion by: \_\_\_\_\_ Yes \_\_\_\_\_ Passed \_\_\_\_\_

Second by: \_\_\_\_\_ No \_\_\_\_\_ Failed \_\_\_\_\_

Abstentions: \_\_\_\_\_

Time: \_\_\_\_\_