

WAYZATA PUBLIC SCHOOLS

Independent School District 284
Wayzata, Minnesota

BOARD OF EDUCATION

Regular Meeting - January 23, 2012 - 4:00 PM
District Administration Building
210 County Rd. 101, N, Plymouth, MN

AGENDA

1.	CALL TO ORDER/ROLL CALL	3
2.	ADMINISTRATIVE	
	A. Policies and Regulations - <i>25 minutes</i>	
	1. Board Policy and Regulations 528 & 528-R - "Bullying/Cyberbullying"	4
	2. Board Policy 220 - "Board Member Compensation and Expense" Discussion	11
3.	TEACHING AND LEARNING	
	A. Wayzata High School Site Plan - M. Trewick - <i>25 minutes</i>	14
4.	HUMAN RESOURCES	
5.	FINANCIAL	
	A. Alternative Facilities Plans - J. Westrum, G. Dehler, S. McQueen - <i>30 minutes</i>	25
	B. Budget and Staffing Preparation Calendar - 2012-2013 - J. Westrum, A. Doughty - <i>10 minutes</i>	60
6.	BOARD REPORTS	
	A. LAC Priorities - 2012 - <i>15 minutes</i>	62
7.	SCHOOL BOARD	
	A. Board Protocol Discussion - J. Hesby - <i>30 minutes</i>	
	B. Tentative Board Agenda for February 13, 2012 - <i>5 minutes</i>	63
8.	ADJOURN	64

WAYZATA PUBLIC SCHOOLS

Independent School District 284
Wayzata, Minnesota

MISSION

Our Core Purpose:

The mission of Wayzata Public Schools is to ensure a world-class education that prepares each and every student to thrive today and excel tomorrow in an ever-changing global society.

VISION

What We Intend to Create and Experience:

The vision of Wayzata Public Schools is to be a model of excellence where all students discover their unique talents, develop a love and tenacity for learning and demonstrate confidence and capacity for success through:

Exceptional Student Learning, Experiences and Relationships:

- High achievement by each and every student—no exceptions, no excuses;
- Content-rich, rigorous and personalized education;
- Meaningful relationships with teachers, staff, mentors and peers in a welcoming, nurturing and safe environment where all are valued for who they are and the contributions they make.

Community Trust, Confidence and Partnership:

- Comprehensive learning opportunities meeting diverse learner needs and community aspirations;
- Committed to being the first choice for students and families;
- Maintaining the highest levels of satisfaction and pride by staff, parents and community.

Operational Excellence:

- Attraction, development and retention of exemplary, creative and engaged employees;
- Accountability by all staff for individual and collective performance;
- Effective and efficient use of time and human, financial and physical resources;
- Culture of continuous improvement and responsive innovation;
- High performing district governance, management and partnerships.

WAYZATA PUBLIC SCHOOLS
Independent School District 284
Wayzata, Minnesota

BOARD OF EDUCATION

Work Session – January 23, 2012

AGENDA SECTION: 1. CALL TO ORDER/ROLL CALL

ITEM: _____

COMMENTS BY: Board Chair Hesby

Susan Gaither, Board Clerk, will call the roll:

	<u>PRESENT</u>	<u>ABSENT</u>
Ms. Linda A. Cohen	_____	_____
Ms. Susan H. Droegemueller	_____	_____
Ms. Susan Gaither	_____	_____
Mr. Jay A. Hesby	_____	_____
Mr. John A. Moroz	_____	_____
Ms. Carter G. Peterson	_____	_____
Ms. Cheryl L. Polzin	_____	_____
Dr. Chace B. Anderson, Ex Officio	_____	_____

WAYZATA PUBLIC SCHOOLS
Independent School District 284
Wayzata, Minnesota

BULLYING/CYBERBULLYING

POLICY: 528

The Wayzata School District is committed to a safe and respectful learning environment for all. A safe and civil environment is needed for students to learn and attain high academic standards and to promote healthy human relationships.

The purpose of this policy is to assist the School District in its goal of preventing and responding to acts of bullying, cyberbullying, intimidation, violence, and other similar disruptive behavior. ~~Cyberbullying is defined as misuse of electronic and internet forms of communication, including, but not limited to, cell phones, handheld electronic devices and the internet in all its forms of communication available via the web. From this point forward in this policy, it is understood that bullying includes cyberbullying and encompasses all acts, physical, verbal, emotional and electronic, that risk the safe and respectful learning environment that the Wayzata District is committed to.~~

Bullying, like other violent or disruptive behavior, is conduct that interferes with students' ability to learn and teachers' ability to educate students in a safe environment. It is the School District's intent to prevent bullying and to take action to investigate, respond to, remediate, and discipline those acts of bullying which have not been successfully prevented. However, the School District cannot monitor the activities of students at all times and places and eliminate all incidents of bullying between and among students. However, to the extent such activities or incidents conduct affects the educational environment of the School District and the rights and welfare of its students and is within the control of the School District in its normal operations, it is the School District's intention to respond to those acts of bullying which have not been successfully prevented. This includes bullying conduct which occurs in whole or part outside of the school day or facilities but which affects the educational environment, student learning, or school-based conduct.

An act of bullying, by either an individual student or a group of students, is expressly prohibited on school district property or at school-related functions. This policy applies not only to students who directly engage in an act of bullying but also to students who, by their indirect behavior, condone or support another student's act of bullying. This policy also applies to any student whose conduct at any time or in any place constitutes bullying that interferes with or obstructs the mission or operations of the school district or the safety or welfare of the student, other students, or employees.

POLICY / REGULATION TITLE
BOARD POLICY / REGULATION

NUMBER: 12345
PAGE: 2

ADOPTED: January 9, 2006
AMENDED: November 11, 2008
FIRST READING: January 9, 2012

WAYZATA PUBLIC SCHOOLS
Independent School District 284
Wayzata, Minnesota

BULLYING/CYBERBULLYING

REGULATIONS: 528R

To implement the School Board policy prohibiting bullying, the School District will utilize the following definitions, reporting procedures, School District action and training regulations.

I. GENERAL

- A. No teacher, administrator, volunteer, contractor, or other employee of the school district shall permit, condone, or tolerate bullying.
- B. Apparent permission or consent by a student being bullied does not lessen the prohibitions contained in this policy.
- C. Retaliation against a victim, good faith reporter, or a witness of bullying is prohibited.
- D. False accusations or reports of bullying against another individual are prohibited.
- E. The misuse of technology including, but not limited to, teasing, intimidating, defaming, humiliating, threatening, or terrorizing another student, teacher, administrator, volunteer, contractor, or other employee of the school district by sending or posting e-mail messages, instant messages, text messages, digital pictures or images, or website postings, including blogs, also may constitute an act of bullying regardless of whether such acts are committed on or off School district property and/or with or without the use of School District resources.
- F. A person who engages in an act of bullying, reprisal, or false reporting of bullying or permits, condones, or tolerates bullying of another(s) shall be subject to discipline for that act in accordance with School District's policies and procedures. The School District may take into account the following factors:
 - 1. The developmental and maturity levels of the parties involved;
 - 2. The levels of harm, surrounding circumstances, and nature of the behavior;
 - 3. Past incidences or past or continuing patterns of behavior;
 - 4. The relationship between the parties involved; and
 - 5. The context in which the alleged incidents occurred.

Consequences for students who commit prohibited acts of bullying may range from positive behavioral interventions up to and including suspension and/or expulsion. Consequences for employees who perform, permit, condone, or tolerate bullying or engage in an act of reprisal or intentional false reporting of bullying may result in disciplinary action up to and including termination or discharge.

Consequences for other individuals engaging in prohibited acts of bullying may include, but not be limited to, exclusion from School District property and events and/or termination of services and/or contracts.

- G. The School District will act to investigate all complaints of bullying and will discipline or take appropriate action against any student, teacher, administrator, volunteer, contractor, or other employee of the School District who is found to have violated this policy.

II. DEFINITIONS

- A. ~~Definition of b~~ Bullying means any written or verbal expression, physical act or gesture, ~~intentional~~ electronic communication, or pattern thereof, by a student that is intended to cause or is perceived as causing distress to one or more individuals and which substantially interferes with ~~another student's~~ educational benefits, opportunities, or performance. Bullying includes, but is not limited to, conduct by an individual against a student that a reasonable person under the circumstances knows or should know has the effect of:
1. harming a student or a group of students;
 2. damaging a student's or a group of students' property;
 3. placing a student or a group of students in reasonable fear of harm to person or property;
 4. creating a hostile educational environment for a student or a group of students; or
 5. intimidating a student or group of students.
- B. "Immediately" means as soon as possible but in no event longer than 24 hours.

- C. "On School District property or at school-related functions" means all School District buildings, school grounds, and school property or property immediately adjacent to school grounds, school bus stops, school buses, school vehicles, school contracted vehicles, or any other vehicles approved for School District purposes, the area of entrance or departure from school grounds, premises, or events, and all school-related functions, school-sponsored activities, events, or trips. School District property also may mean a student's walking route to or from school for purposes of attending school or school-related functions, activities, or events. While prohibiting bullying at these locations and events, the School District does not represent that it will provide supervision or assume liability at these locations and events.

III. REPORTING PROCEDURE

- A. Any person who believes he or she has been victim of bullying or any person with knowledge or belief of conduct that may constitute bullying shall report the alleged acts immediately to an appropriate School District official designated by this policy. A student may report bullying anonymously. However, the School District's ability to take action against an alleged perpetrator based solely on an anonymous report may be limited.
- B. The School District encourages the reporting party or complainant to make a written report but oral reports shall be considered complaints as well.
- C. The building principal or the principal's designee or the building supervisor (hereinafter referred to as the building report taker) is the person responsible for receiving reports of bullying at the building level. Any person may report bullying directly to a school district human rights officer or to the superintendent. If the complaint involves the building report taker, the complaint shall be made or filed directly with the superintendent or the school district human rights officer by the reporting party or complainant.
- D. A teacher, school administrator, volunteer, contractor, or other school employee shall be particularly alert to possible situations, circumstances, or events that might include bullying. Any such person who receives a report of, observes, or has other knowledge or belief of conduct that may constitute bullying shall inform the building principal immediately. School district personnel who fail to inform the building report taker in a timely manner of conduct that may constitute bullying in a timely manner may be subject to disciplinary action.
- E. Reports of bullying are classified as private educational and/or personnel data and/or confidential investigative data and will not be disclosed except as permitted by law.
- F. Submission of a good faith complaint or report of bullying will not ~~e~~ affect the complainant's or reporter's future employment, grades, or work assignments, or educational or work environment.

- G. The School District will respect the privacy of the complainant(s), the individual(s) against whom the complaint is filed, and the witnesses as much as possible, consistent with the School District's obligation to investigate, take appropriate action, and comply with any legal disclosure obligations.

IV. SCHOOL DISTRICT ACTION

- A. Upon receipt of a complaint or report of bullying, the School District shall undertake or authorize an investigation by School District officials or a third party designated by the School District.
- B. The School District may take immediate steps, at its discretion, to protect the complainant, reporter, students, or others pending completion of an investigation of bullying, consistent with applicable law.
- C. Upon completion of the investigation, the school district will take appropriate action. Such action may include, but is not limited to, warning, suspension, exclusion, expulsion, transfer, remediation, termination, or discharge. Disciplinary consequences will be sufficiently severe to try to deter violations and to appropriately discipline prohibited behavior. School District action taken for violation of this policy will be consistent with the requirements of applicable collective bargaining agreements; applicable statutory authority, including the Minnesota Pupil Fair Dismissal Act; and School District policies and regulations.
- D. The School District is not authorized to disclose to a victim private educational or personnel data regarding an alleged perpetrator who is a student or employee of the School District. School officials will notify the parent(s) or guardian(s) of students involved in a bullying incident and the remedial action taken, to the extent permitted by law, based on a confirmed report.

V. REPRISAL

The School District will discipline or take appropriate action against any student, teacher, administrator, volunteer, contractor, or other employee of the School District who retaliates against any person who makes a good faith report of alleged bullying, or against any person who testifies, assists, or participates in an investigation, or against any person who testifies, assists, or participates in a proceeding or hearing relating to such bullying. Retaliation includes, but is not limited to, any form of intimidation, harassment, or intentional disparate treatment.

VI. TRAINING AND EDUCATION

- A. The School District annually will provide information and any applicable training to School District staff regarding this policy.
- B. The School District annually will provide education and information to students regarding bullying, including information regarding this School District policy prohibiting bullying, the harmful effects of bullying, and other applicable initiatives to prevent bullying.

- C. The Administration of the School District is directed to implement programs and other initiatives, which may include character development education, to prevent and reduce bullying and bullying policy violations, to respond to bullying in a manner that does not stigmatize the victim, and to make resources or referrals to resources available to victims of bullying.

- D. ~~The School District may implement programs to prevent and reduce bullying violations.~~

VII. NOTICE

The School District will give annual notice of this policy to students, parents or guardians, and staff, and this policy shall appear in the student handbook.

EFFECTIVE: January 9, 2006
MODIFIED: November 11, 2008
MODIFIED:

Discussion Regarding Wayzata Public Schools Policy 220 Regarding School Board Compensation Policy

Wayzata's policy, amended most recently on January 14th, 2008, is as follows:

State law provides that the School Board may fix a compensation rate for its members. The compensation of Board members may be adjusted annually at the first Board meeting of the new calendar year each January. The said adjustment will reflect the average Classic Lake Conference School Board members' compensation. In addition, the School Board may consider compensation rates for Board officers and Special meetings.

The members of the School Board may be reimbursed for expenses incurred in performance of Board functions according to rates established by the Board for school employees.

The related statute is as follows:

123B.09 Subd. 12. **Board to fix compensation.** The clerk, treasurer, and superintendent of any district shall receive such compensation as may be fixed by the board. Unless otherwise provided by law, the other members of the board shall also receive such compensation as may be fixed by the board. All members of the board may receive reimbursement for transportation at the rate provided for in section [471.665](#).

The Policy Committee is seeking board members' input regarding the following policy language:

1. *The compensation of Board members **may** be adjusted annually...*
 - Do we want to retain discretion, leaving "may" as the operative word, or should we change it to "shall"?
 - In other words, is the change in compensation automatic, or do we want to consider it annually?
 - Does a change to "shall" mean we don't need to approve it annually? Would we want to approve it annually anyway?
 - What is the procedure for deviating from policy?

2. *The said adjustment **will** reflect the **average**...*
 - This specifies exactly what the compensation will be, without discretion. Do we still think it's a good idea to compensate by formula?
 - Does this mean arithmetic average or median?
 - Should the average include Wayzata?
 - Should we include recurring stipends in the average?
 - Again, does this mean we don't need to approve changes annually?

3. Classic Lake Conference...

- No longer relevant. What schools should we use?

	District #	ADM Served + Tuitioned Out
OSSEO PUBLIC SCHOOL DISTRICT	0279	21,189
ROBBINSDALE PUBLIC SCHOOL DISTRICT	0281	12,301
WAYZATA PUBLIC SCHOOL DISTRICT	0284	10,455
BLOOMINGTON PUBLIC SCHOOL DISTRICT	0271	10,427
EDEN PRAIRIE PUBLIC SCHOOL DISTRICT	0272	9,934
MINNETONKA PUBLIC SCHOOL DISTRICT	0276	8,426
EDINA PUBLIC SCHOOL DISTRICT	0273	8,088
HOPKINS PUBLIC SCHOOL DISTRICT	0270	7,487
ST. LOUIS PARK PUBLIC SCHOOL DIST.	0283	4,504
RICHFIELD PUBLIC SCHOOL DISTRICT	0280	4,137
ORONO PUBLIC SCHOOL DISTRICT	0278	2,710

4. ... the School Board may consider compensation rates for Board officers and Special meetings

- Should we make those a function of the comparative district average also?

**SCHOOL BOARD COMPENSATION (CLC)
2011 - 2012**

DISTRICT	CHAIR	VICE CHAIR	CLERK	TREASURER
273 Edina	\$2,400.00/annual	\$2,400.00/annual	\$2,400.00/annual	\$2,400.00/annual
<i>Mileage & Conf. Exp*</i>	\$200.00/mo.	\$200.00/mo.	\$200.00/mo.	\$200.00/mo.

270 Hopkins	\$5,298.72/annual	\$4,953.34/annual	\$4,953.34/annual**	\$4,953.34/annual
<i>\$50,000 Term Life Ins*</i>	\$441.56/mo.	\$412.78/mo.	\$412.78/mo.**	\$412.78/mo.
	\$689.00/annual stipend*			

276 Minnetonka	\$4,500.00/annual	\$4,500.00/annual	\$4,500.00/annual	\$4,500.00/annual
<i>\$50.00/Std. Comm. Mtg*</i>	\$375.00/mo.	\$375.00/mo.	\$375.00/mo.	\$375.00/mo.
	\$1,500.00/annual stipend*	\$750.00/annual stipend*		

281 Robbinsdale	\$6,900.00/annual	\$5,700.00/annual	\$6,000.00/annual	\$5,700.00/annual
	\$575.00/mo.	\$475.00/mo.	\$500.00/mo.	\$475.00/mo.

284 Wayzata	\$5,100.00/annual	\$4,320.00/annual	\$4,320.00/annual	\$4,320.00/annual
<i>\$50.00/per extra meeting*</i>	\$425.00/mo.	\$360.00/mo.	\$360.00/mo.	\$360.00/mo.
<i>Mileage & Conf. Exp*</i>				

AVG. (CLC) w/o Wayzata	\$504.14	\$365.70	\$371.95	\$365.70
AVG. (CLC) w/ Wayzata	\$403.31	\$364.56	\$369.56	\$364.56

*Stipends are NOT included in AVI

**This amount is included in the average, otherwise it would throw the average off, but the position of Clerk at Hopkins is filled by their Director of Business Services and does NOT receive this salary over and above his district paid salary.



WAYZATA HIGH SCHOOL
Principal Report
District and Site Improvement Initiatives
2011 - 2012

Name: Mike Trewick

Date: January 19, 2012

District Initiatives

[Site Plan for Implementation of District Initiatives]

PLCS:

- Amy Swenson reported, "We approved 155 requests for Summer PD work, representing 41 WHS PLCs. To date, we've processed 120 timecards. This represents over 1000 hours of summer PLC work on the part of WHS Staff. WOW! We have over 70 unique PLCs in our building with at least 50% of our staff participating on more than one team. "
- PLC Institute - Seven staff members attended- Minneapolis, July 7-9
- Assessment Institute - Twenty six staff members attended - Minnetonka, July 27-29
- High School Administration created a Google Docs Website to track PLC progress.
- Scheduled 31 PLC meetings during late start Wednesdays.
- August 30, 2011 - Keynote Speaker from a Middle School in Chicago presented to staff on how to implement and maintain PLC's and experiences his school went through. Steve spent the day with the High School staff visiting working PLC groups and answering questions.
- September 20, 2011 - Shelly Nelson presented "My Learning Plan" to all the staff to track PLC professional development and how to submit forms.
- October 25, 2011 - Jim Bollum met with Alan Christopherson and Alison Nisbet to talk about practice tests, interventions, and remediation. Alison Nisbet committed to researching on-line test prep and remediation software.
- High School Administration created a Google Docs Website to track High School goals and share information with staff.
- November 10 - Eight different sessions were offered to staff around the PLC concept.
- November 15, 2011 - Administration presented 2011-2012 Alt Comp Goal to staff.
- Alison Nisbet chose study Island for remediation software and trained approximately 15 staff members.

Collaborative Inquiry; Student Response Devices:

- Collaborative Inquiry Training – Twenty two staff attended Session I and eleven attended Session II.
- Wednesday, September 28 – High School Data Team met to discuss aggregate data. Reviewed last year’s MCA scores and went through the collaborative inquiry process to set the alternative compensation goal for 2011-2012. The goal the team decided on is **“The percentage of students in grade 11 who earn achievement levels of Meets the Standards or Exceeds the Standards on the Mathematics MCA-II at Wayzata High School, The Alternative Program, and the IS Alternative Program will increase from 68.48% in 2010-2011 to 70.48% in 2011-2012.”**
- October 18, 2011 - Tina Christopherson presented information about how student response devices fit into the goals of the district with formative/summative assessments, collecting data with student response devices, Collaborative Inquiry, and Performance Matters. She also presented ways we could implement clickers in our classroom. Mike Trewick set the goal of developing one formative assessment by the end of the semester and one summative assessment by the end of the year.
- Tina reports that 151 out of 198 teachers (working directly with students) have been trained in at least one of the Turning Technologies software packages.
- November 10th – One session on “Data Driven Dialogue” was offered to staff.
- December 20, 2011 – High School Data Team met and discussed disaggregated data. Used the collaborative inquiry process to discuss how different cells of students perform on math, reading, and science at the High School. The team used the same process to discuss strand level data. The team plans to meet in February to discuss unit and summative tests for math.

Rounds/Walk-Throughs:

- Each Administrator is assigned approximately 40 staff members. The goal is to visit each classroom weekly.

Domain 4 – Professional Conversations:

- Administrators are scheduling and meeting with teachers to discuss Domain 4 topics. Each Administrator is assigned the same teachers involved in their Rounds/Walk-through list. Administration stresses the use of Collaborative Inquiry and the use of student response devices to gather data and analyze information.

Site Specific Initiatives

Initiative #1 – Equity Goal

Intentionally strive to have 100% of the Black, Hispanic and Free/Reduced lunch students on track for graduation as measured by:

- The # passed on the 9th grade Grad Writing and 15 credits.
 - The # passed on the 10th grade Grad Reading and 30 credits.
 - The # passed on the 11th grade Grad Math and 45 credits.
 - The percent of students in 12th grade meeting all graduation requirements.
-
- Administrators and counselors are meeting with students who are behind in credit to discuss options and get back on track.
 - Intervention Specialist and Equity Specialist administer after school study program.
 - Math 1Y and Math 2y
 - H.S. Reading Class – Read 180 – Designed for ninth and tenth grade students who are more than one grade level behind in reading.
 - Literacy Lab – Designed for tenth graders who are projected to struggle with MCA Reading Test.
 - Test Prep Reading – Designed for eleven and twelve grade students who have not passed MCA Reading Test.

Initiative #2 – Q-Comp Goal

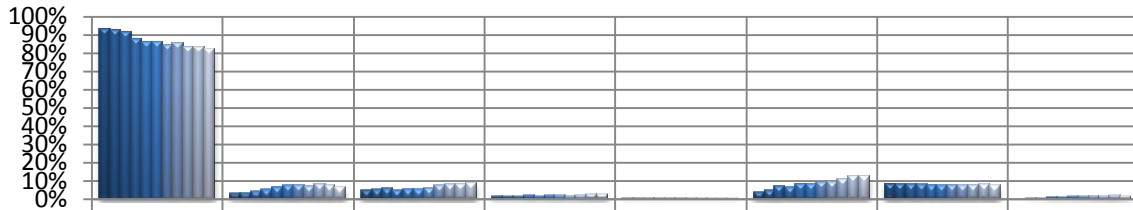
- The percentage of students in grade 11 who earn achievement levels of Meets the Standards or Exceeds the Standards on the Mathematics MCA-II at Wayzata High School, The Alternative Program, and the IS Alternative Program will increase from 68.48% in 2010-2011 to 70.48% in 2011-2012.

Data Summary

Data Summary

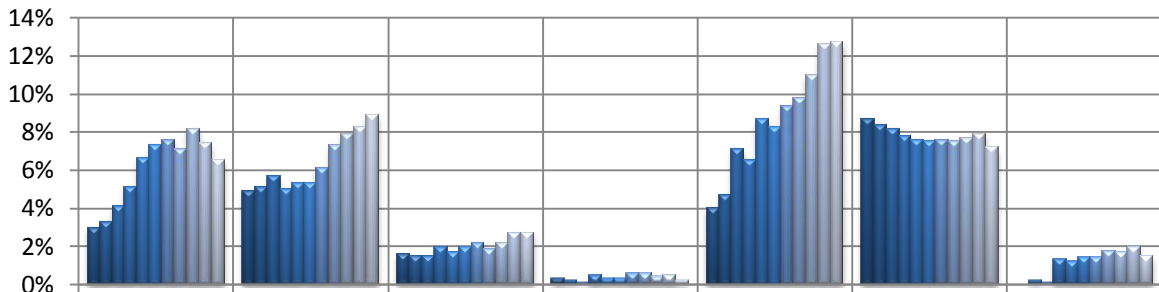
SEE ATTACHED DATA SUMMARY

WAYZATA HIGH SCHOOL Student Demographic Trend



	% White	% Black	% Asian	% Hispanic	% Am Ind	Pct Lunch	Pct Spec	Pct LEP
2000-01	93%	3%	5%	2%	0%	4%	9%	0%
2001-02	93%	3%	5%	2%	0%	5%	8%	0%
2002-03	92%	4%	6%	2%	0%	7%	8%	0%
2003-04	88%	5%	5%	2%	1%	7%	8%	1%
2004-05	86%	7%	5%	2%	0%	9%	8%	1%
2005-06	86%	7%	5%	2%	0%	8%	8%	1%
2006-07	84%	8%	6%	2%	1%	9%	8%	1%
2007-08	85%	7%	7%	2%	1%	10%	8%	2%
2008-09	83%	8%	8%	2%	0%	11%	8%	2%
2009-10	83%	7%	8%	3%	1%	13%	8%	2%
2010-11	82%	7%	9%	3%	0%	13%	7%	2%

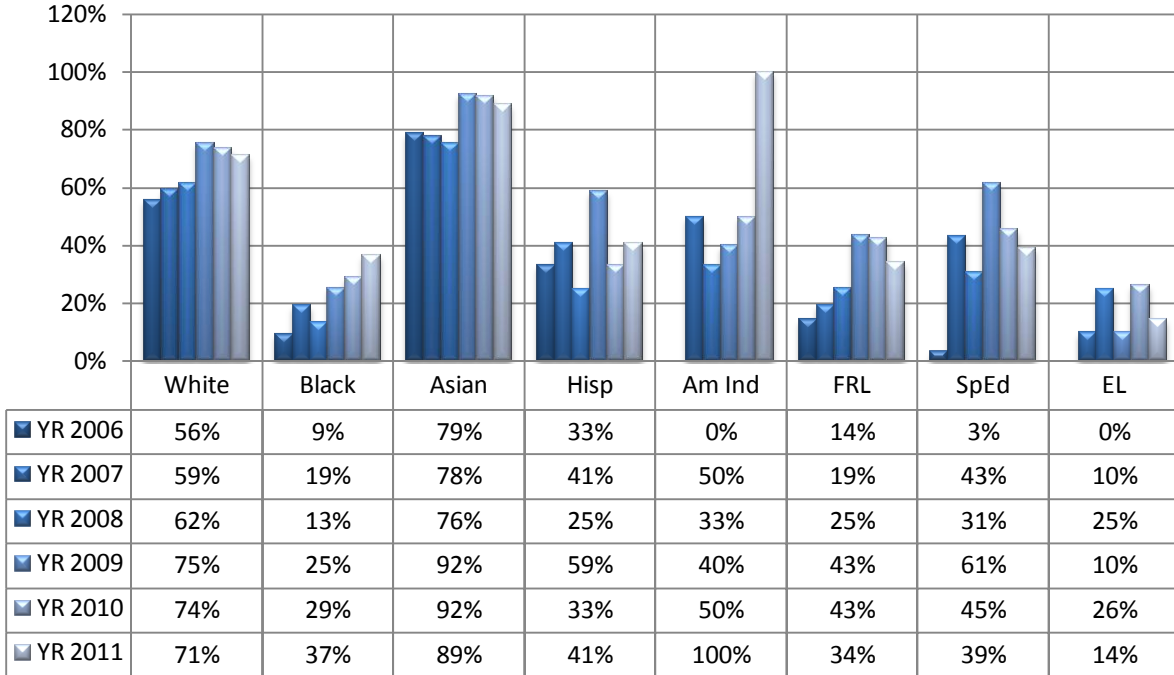
Student Demographic Trend



	Black	Asian	Hispanic	Am Ind	F/RL	Sp. Ed	EL
2000-01	3%	5%	2%	0%	4%	9%	0%
2001-02	3%	5%	2%	0%	5%	8%	0%
2002-03	4%	6%	2%	0%	7%	8%	0%
2003-04	5%	5%	2%	1%	7%	8%	1%
2004-05	7%	5%	2%	0%	9%	8%	1%
2005-06	7%	5%	2%	0%	8%	8%	1%
2006-07	8%	6%	2%	1%	9%	8%	1%
2007-08	7%	7%	2%	1%	10%	8%	2%
2008-09	8%	8%	2%	0%	11%	8%	2%
2009-10	7%	8%	3%	1%	13%	8%	2%
2010-11	7%	9%	3%	0%	13%	7%	2%

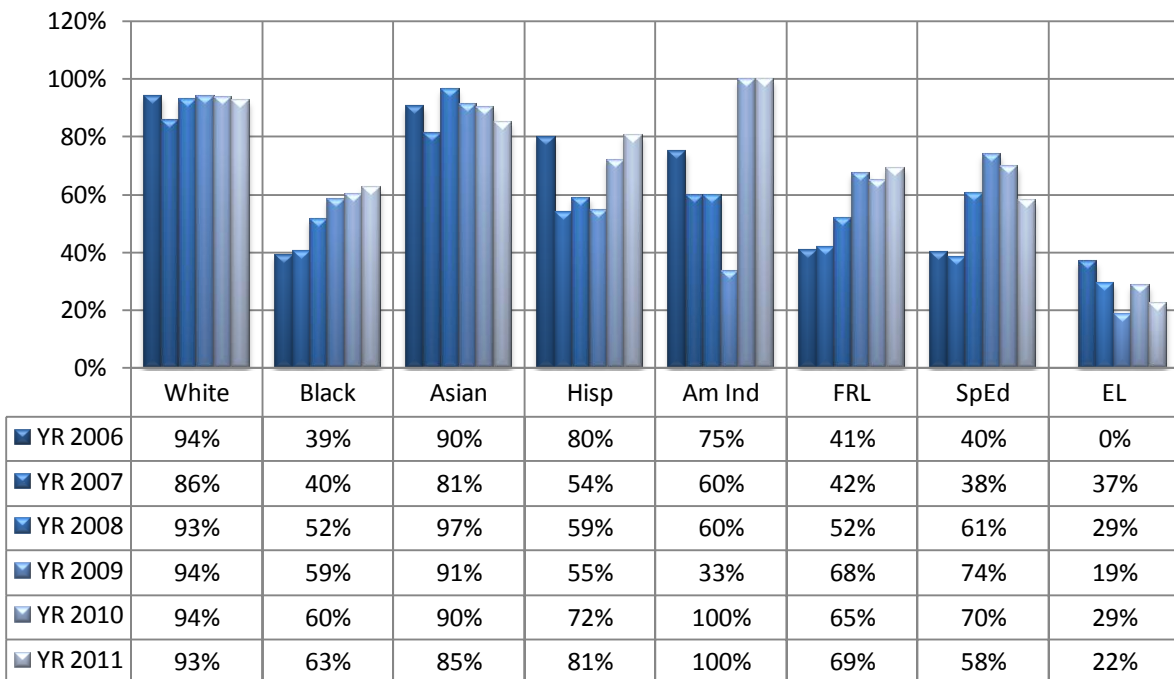
WAYZATA HIGH SCHOOL

Math - MDE Accountability - Percent Proficient - Trend

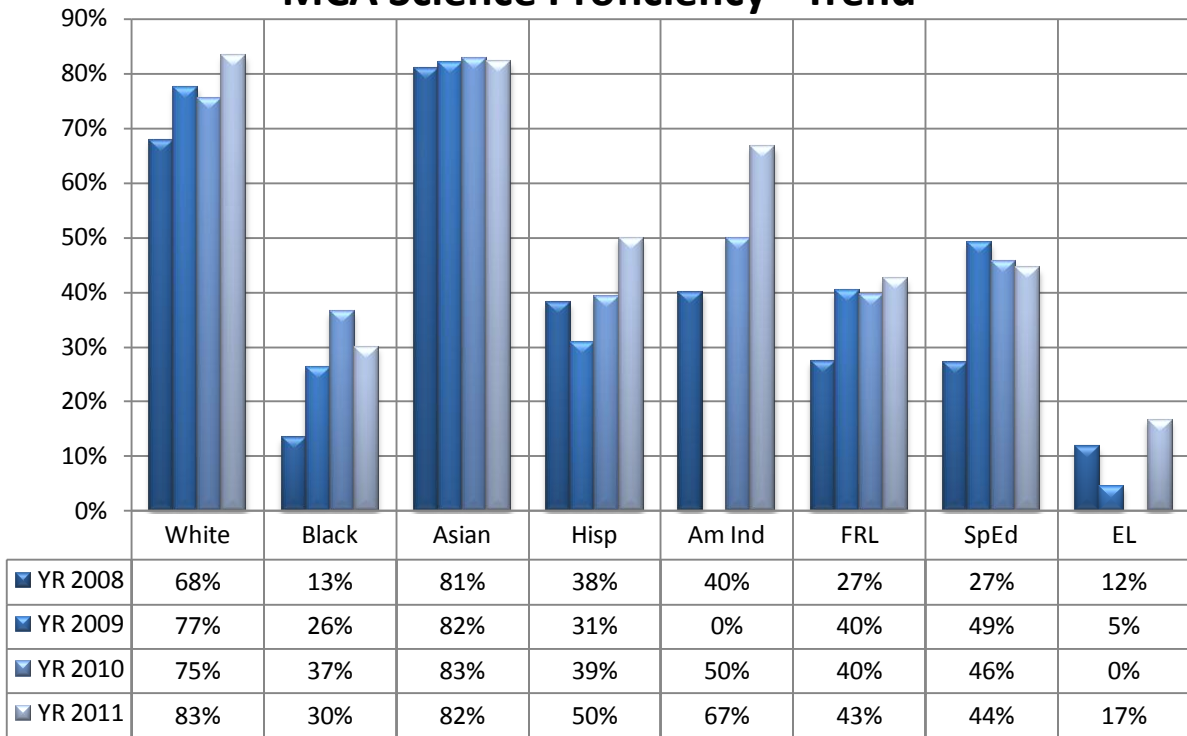


WAYZATA HIGH SCHOOL

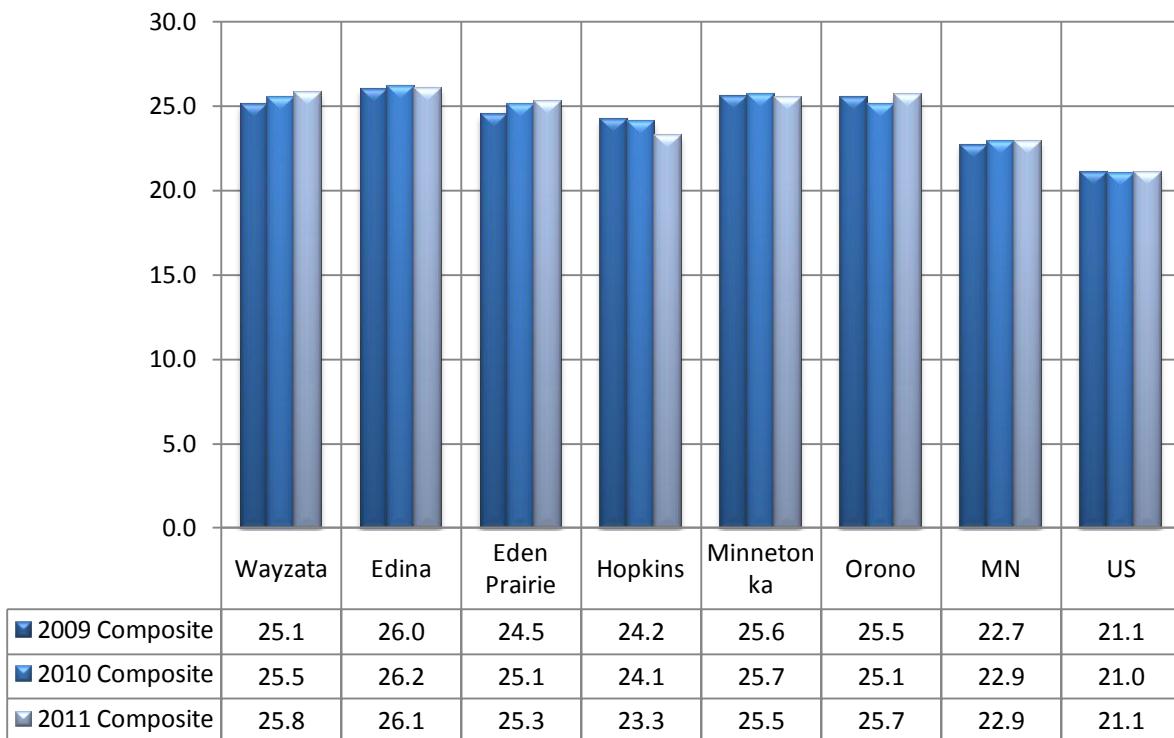
Reading - MDE Accountability - Percent Proficient - Trend



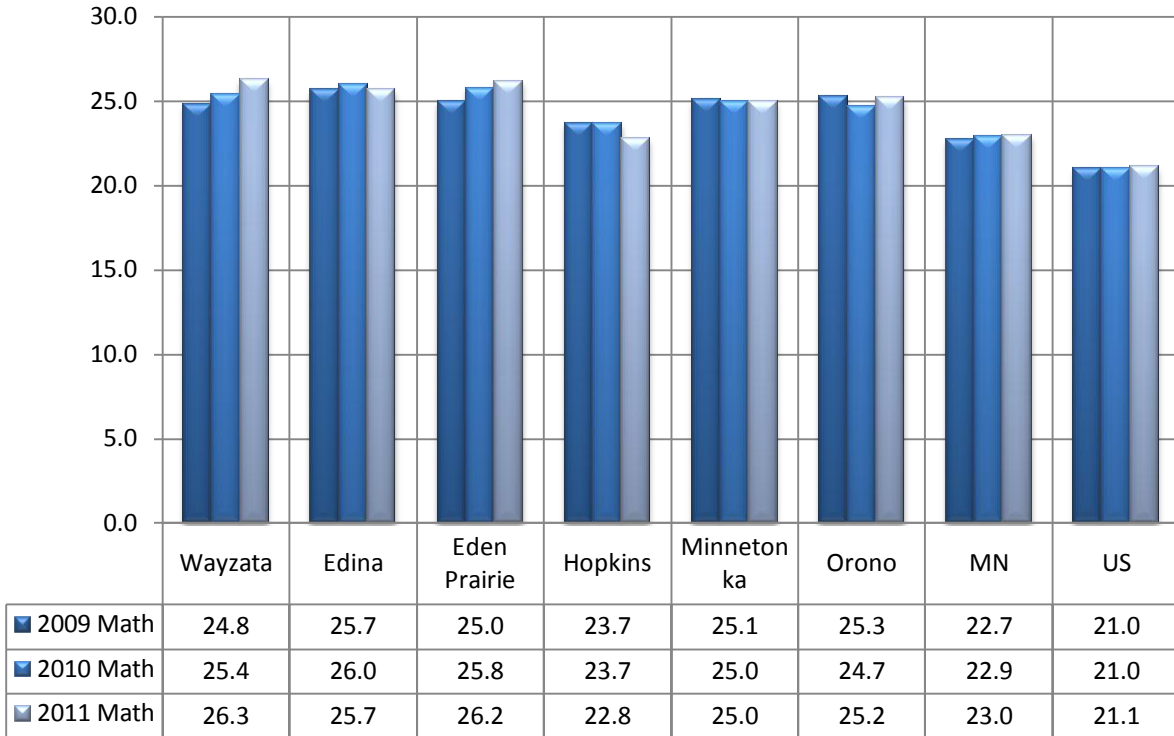
WAYZATA HIGH SCHOOL MCA Science Proficiency - Trend



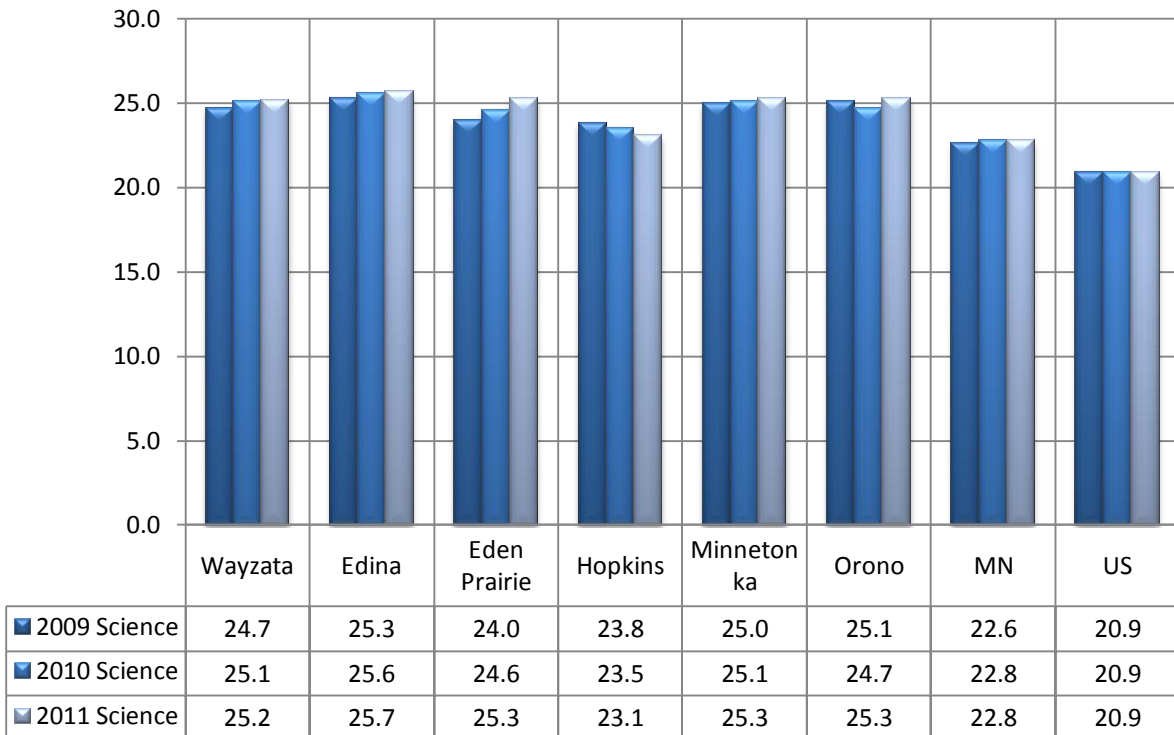
WAYZATA HIGH SCHOOL ACT Composite Score



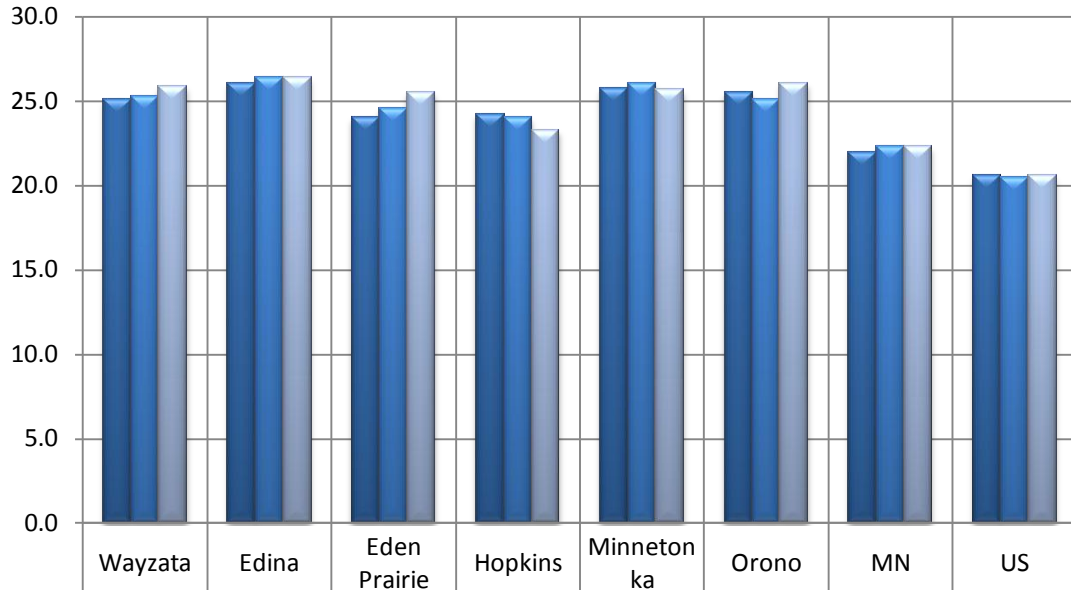
WAYZATA HIGH SCHOOL ACT - Math Score



WAYZATA HIGH SCHOOL ACT - Science Score

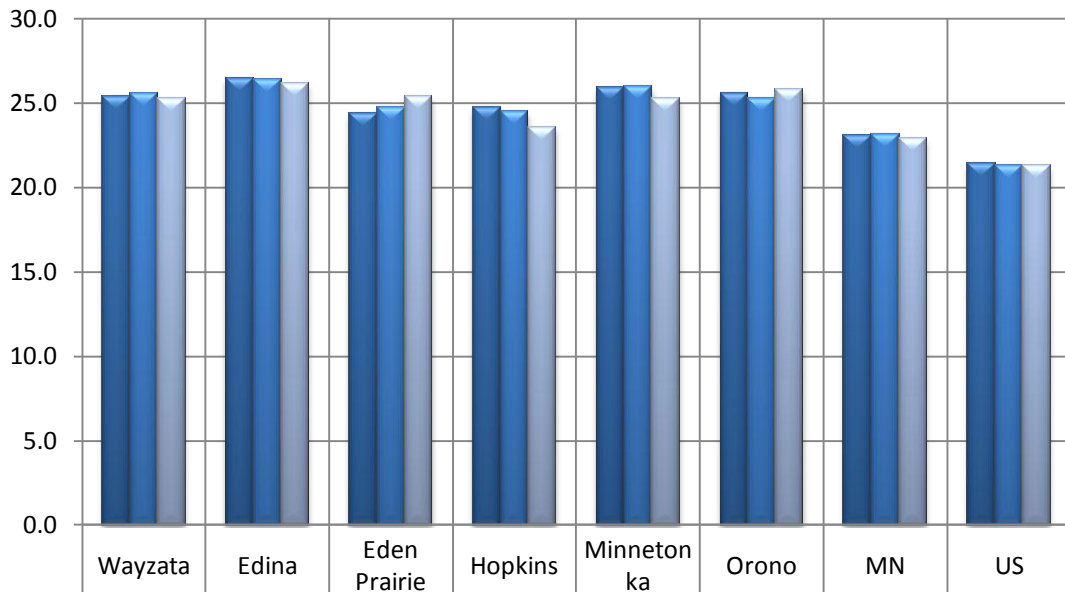


WAYZATA HIGH SCHOOL ACT - English Score



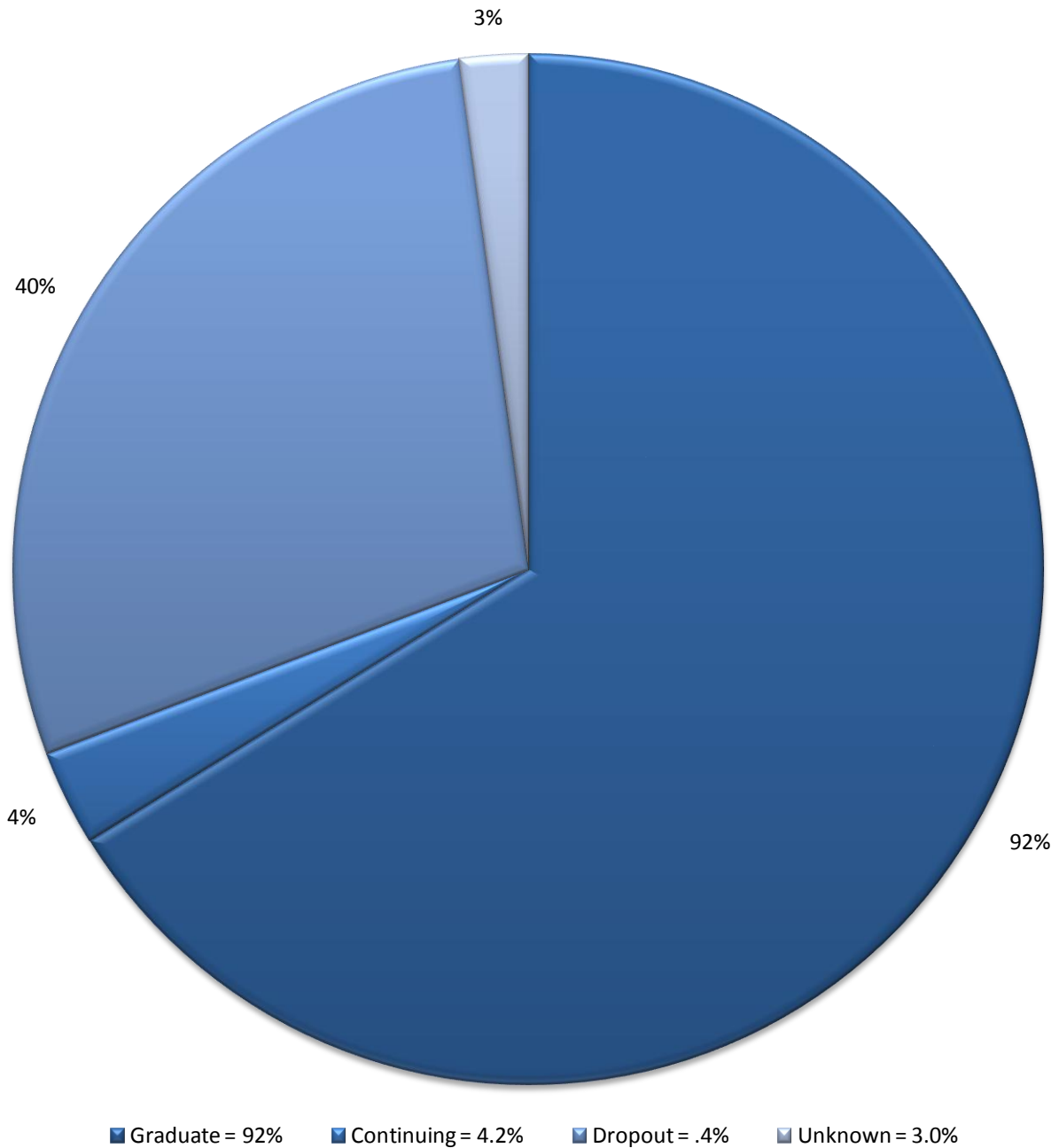
2009 English	25.1	26.1	24.0	24.2	25.8	25.5	22.0	20.6
2010 English	25.3	26.4	24.6	24.0	26.1	25.1	22.3	20.5
2011 English	25.9	26.4	25.5	23.3	25.7	26.1	22.3	20.6

WAYZATA HIGH SCHOOL ACT - Reading Score



2009 Reading	25.4	26.5	24.4	24.8	25.9	25.6	23.1	21.4
2010 Reading	25.6	26.4	24.8	24.5	26.0	25.3	23.2	21.3
2011 Reading	25.3	26.2	25.4	23.6	25.3	25.8	22.9	21.3

WAYZATA HIGH SCHOOL Four Year Graduation Rate



The 4-Year Graduation Rate shows the number of students graduating from high school within four years after entering grade nine. To determine this rate, we identify all students who entered ninth grade four years ago. The next step is to add in any students who moved into the district and subtract out any students who moved away. This adjusted number represents the total number students who are eligible to graduate. The actual Graduation Rate is determined by dividing the total number of students who actually graduated by the number eligible to graduate.

The 5-Year and 6-Year Graduation Rates show the number of students who took additional time to earn sufficient credits or meet other graduation requirements and to receive a high school diploma from their district.



Wayzata High School

Reversing Low Math Performance with an Innovative Approach to Instruction and Measurement

Wayzata Public Schools is a suburban, geographically diverse school district that serves nearly 60,000 residents in all or part of eight communities. The district currently serves 10,400 students from kindergarten to twelfth grade through seven elementary schools, three middle schools, a single high school, and a comprehensive community education program. Strong, long-held supportive relationships with parents, residents, businesses and organizations contribute to a sense of collective pride and ownership in the district.

Unique instructional approach dramatically improves math performance

Wayzata high school offers a rigorous math program in which most students complete a full year of math in a single semester through a block schedule. During the '09-'10 school year, the school introduced an innovative program designed to support its lowest-scoring, ninth grade math students. The program, providing the same ninth grade curriculum, co-taught to smaller groups at a slower pace, remarkably brings most students to grade-level performance or above within a single academic year.

High school mathematics teachers Kristen Addonnizo and Nicole Jockisch, who helped launch the program, along with colleagues Dave Droegemeuller and Mark Ludvigson, have provided instruction that goes beyond academics to address work ethic, accountability, and students working to achieve their personal best. In effect, these teachers have created a culture that allows for calculated risk taking and high levels of student learning.

MAP data drives innovation and validates successes

Having used Measures of Academic Progress® (MAP®) from NWEA in grades three through eight to measure academic growth for nearly a decade, Wayzata administrators knew the value of measurement in evaluating program effectiveness and providing a true picture of how each student is learning.

The high school piloted MAP math 6+ in tandem with the launch of this special program to measure how individual students were being reached and influenced. Students tested at the start and finish of ninth grade averaged an improvement of seven RIT points — an extraordinary growth measure far beyond the norm. When this accomplishment was duplicated the following academic year by another group of students, educators concluded that the program was making a significant difference.

“We were concerned when launching this program that students might resist spending twice as long studying math,” explains Dr. Jeffery Riddlehoover, Associate Principal, “But we have found quite the opposite: that both students and parents are wildly enthusiastic about both the experience and the results. Today, because parents are hearing how this program is helping students achieve, they react like their student got into Harvard when they are accepted. They want their kids involved.”

Professional Learning Communities make data meaningful and actionable

The math teachers in Wayzata high school collaborate in Professional Learning Communities (PLC)s where they have gained extensive training in understanding MAP data. With the actionable insights that MAP provides, teachers are able to adapt instruction to specific learning needs, place incoming ninth grade students in the most appropriate learning environment, and provide meaningful growth targets for each student. “Families can’t help but be excited when a growth target is three points and a student has grown nine points,” says Associate Principal Ridlehoover. “Growth data from MAP is critical in both influencing and validating the work the school district, teachers and students are doing.”

Shared values + actionable data = significant academic growth

Superintendent Dr. Chace Anderson credits the success of this ninth grade math program for its ripple effect: all Wayzata high school students feeling more capable, teachers having solid proof that they can make a difference, and the entire educational community moving forward with greater confidence and enthusiasm. This phenomenon is explained by Dr. Jill Johnson, Executive Director of Teaching and Learning,, “Our academic results reflect a significant paradigm shift from approaching student learning as: What’s wrong with this child? to What can I do to help meet this child’s needs? When people believe in their ability to intervene and truly influence learning, they can create very powerful results. If they don’t have this belief, they won’t have the same success — even if they’re taking the same steps we did.”

*NWEA partners with educators to help all kids learn.
Discover the difference that true partnership makes.
Learn more at www.nwea.org or call 503-624-1951.*



Northwest Evaluation Association
© Northwest Evaluation Association 2012

Review and Comment Submittal

Alternative Facilities

Deferred Maintenance Projects FY 2013 – FY 2014

Wayzata Public Schools Independent School District #284

<http://www.wayzata.k12.mn.us>

Presented to:

Minnesota Department of Education

January xx, 2012

Dr. Brenda Cassellius, Commissioner
Minnesota Department of Education
1500 Highway 36 West
Roseville, Minnesota 55113-4266

Re: Independent School District #28
Alternative Facilities Deferred Maintenance Projects: FY2013 – FY 2014

Dear Commissioner Cassellius:

In accordance with M.S. 123B.71, Wayzata Public Schools, Independent School District 284, is submitting this Review and Comment document for review and approval of the Alternative Facilities Deferred Maintenance Projects: FY 2013. These projects include completing selected deferred maintenance projects at thirteen (13) facilities as prioritized by the Board. These items were identified through facility condition assessment studies and address the most critical current facility maintenance needs of the District.

The cost of the proposed projects for FY 2013, is **\$8,672,950**, and it will be funded through multiple sources including Alternative Facilities Bonds and Levy Authority and District Operating Capital revenue. Additional specific details involving the need for these projects are furnished in the attached report. We appreciate your review and comments on this important proposal and look forward to your reply.

Sincerely,

Superintendent

cc: School Board
Executive Director of Business Services
Facilities Program Director



TABLE OF CONTENTS

	<u>Page</u>
Introduction/Key Information	1, 2
___ 1. Geographic Area and Population to be Served	3
Geographic Area to be Served	
Population to be Served	
Enrollments/Projections	
___ 2. List of Existing Facilities	5
Description of Existing Facilities/Utilization	
Available Alternate Facilities	
___ 3. Specific Deficiencies of the School Facilities	6
Demonstrating Need	
Specific Benefits to Students, Teachers and Community	
___ 4. Relationship of Project to Area Priorities	7
School District	
Educational Cooperatives	
Other Public Bodies	
___ 5. Transit Connectivity between School and Community	7
Project Connection to Walking, Bicycle and Transit Access	
___ 6. Community Use and Collaboration	7
Community Use of Site and Facility	
Collaboration with Other Entities	
___ 7. Description of Proposed Project	8
Square Footage Allocations	
Site and Floor Plans	
Estimated Expenditures	
Schedule	
Detailed Description and Costs for Health Safety/Alternative Facilities	

TABLE OF CONTENTS (continued)

	<u>Page</u>
___ 8. Financing the Project	16
Sources of Funding	
Scheduled Date and Required Notice	
Schedule of Bond Payments	
Sources and Uses of Funds Report	
Property Tax Input	
Total Project Cost	
___ 9. Effects on Operational and Administrative Costs	22
Impact on Operational and Administrative Staffing Costs	
General Fund Impact on Added Square Footage	
HVAC Operating Costs	
___ 10. Consultation with Transportation Officials	22
School Site Access and Safety Issues	
___ 11. Consideration of Indoor Air Quality Issues	23
Air Quality Issues	
Certification of Liability Insurance	
___ 12. Certification of Architects and Engineers	23
HVAC Systems Meet/Exceed Code	
Monitoring of Outdoor Air	
Indoor Air Quality Filtration	
___ 13. Desegregation Requirements	24
___ 14. Use of Environmentally Sustainable Design Concepts	24
___ 15. Acoustical Performance Criteria	25
___ 16. City Infrastructure	25



TABLE OF CONTENTS (continued)

Appendix A

- Deferred Maintenance and Improvements Project Scope and Cost Estimates FY 14

DRAFT



Introduction

In **summer 2010, a District Wide Facilities Analysis Study** was completed for all District Facilities. That study identified significant deferred maintenance needs throughout District facilities and formed the basis of the District's integration into the State's Alternative Facilities Funding process for funding deferred maintenance projects. The proposed projects in this submittal continue that reinvestment.

The **District Wide Facilities Analysis Study** is in the process of being reviewed and will be updated periodically by District Staff. These reviews are for implementing the proposed deferred maintenance projects for the Alternative Facilities funding expenditures (the School District also studied Health and Safety and Capital Improvements projects beyond the proposed projects in this Review and Comment).

This Review and Comment addresses the deferred maintenance projects anticipated for completion during the summers in 2012, and 2013.

DRAFT



KEY INFORMATION

SCHOOL CONSTRUCTION PROJECT SUMMARY

School Facilities Deficiencies/Needs: The District has a number of significant deferred maintenance items that need to be addressed as part of a continued reinvestment in its facilities. The District sees long term educational benefits to the proposed projects.

Description of Project: This proposed project addresses a portion of the facility deferred maintenance items in District Facilities. The facility deferred maintenance items included in this proposed year 2012, 2013 project are identified in the District’s alternative facilities 2 year plan. The scope and schedule for any additional deferred maintenance projects will be submitted for approval in the future.

Project Costs: Financing

- Alternative Facility Levy/Bonding Authority for Deferred Maintenance Project
- Health and Safety Funding for asbestos abatement.
- Operating capital revenue for items deemed ineligible for categorical funding specifically determined by Minnesota Statutes.

School District Superintendent: Dr. Chace B Anderson
Chace.anderson@wayzata.k12.mn.us
 76-745-5000

Executive Director of Business Services: Mr. Jim Westrum
Jim.westrum@wayzata.k12.mn.us
 763-745-5000

Director of Buildings and Grounds: Mr. Joe Matson
Joe.matson@wayzata.k12.mn.us
 763-745-5000

Architects and Engineers: Wold Architects and Engineers - 651-227-7773
 Scott McQueen, Greg Dehler

Financial Consultant: Ehlers and Associates – 651-697-8500

Bond Counsel: Knutson Flynn and Deans – Tom Deans

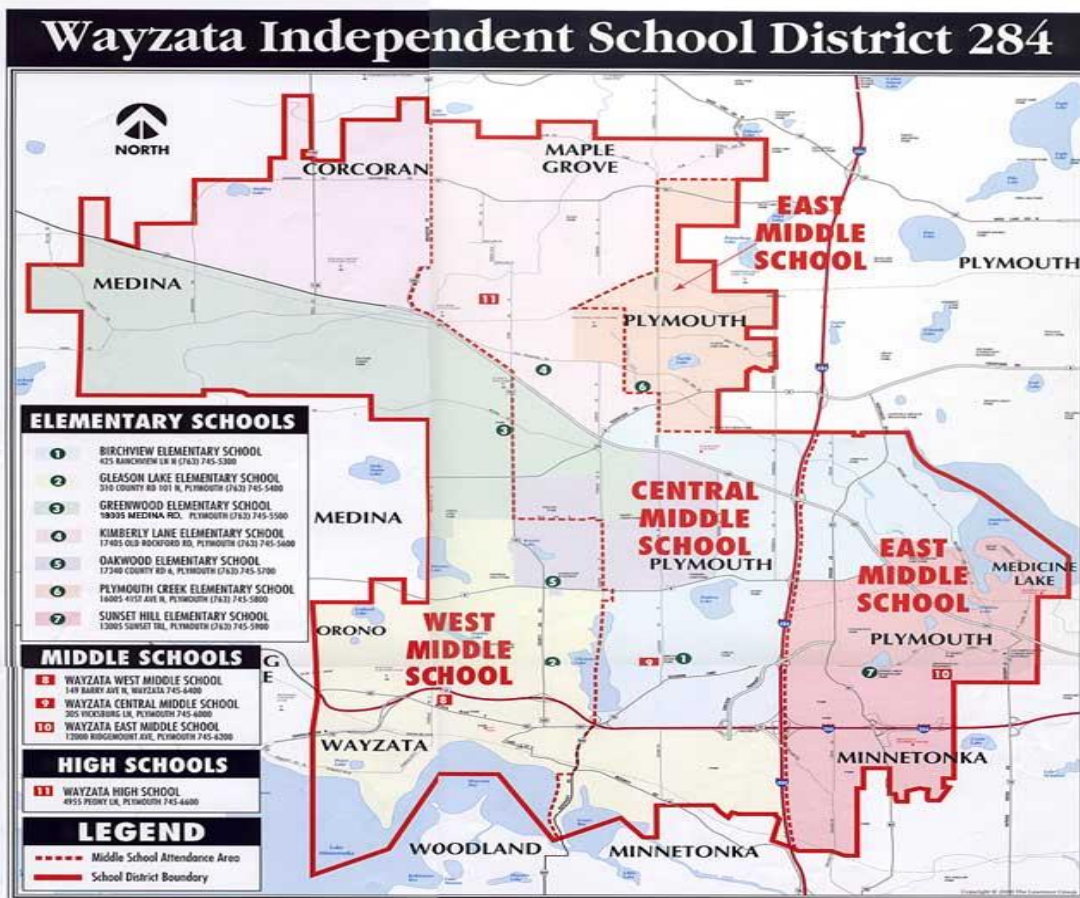
1. The geographic area and population to be served

Part A. Geographic Area to be Served, Population and Enrollment

Wayzata Independent School District No. 284 is located 10 miles west of Minneapolis and spans a geographic area of 38 square miles. The School District serves all or portions of eight west suburban municipalities, including Corcoran, Maple Grove, Medicine Lake, Medina, Minnetonka, Orono, Plymouth and Wayzata. The estimated population of the Wayzata School District continues to grow and currently is approaching 60,000.

Population information provided by the Metropolitan Council affirmed that the City of Plymouth is the largest municipality in the district both for population and landmass. It will continue to be a growing community.

There is significant, confirming evidence based on actual building permits, local projections, regional projections and Metropolitan Council projections that further development will continue in Wayzata School District. District enrollment is expected to remain stable at 10,000 students for the foreseeable future as non-resident students age out and are replaced with actual resident students. Current projections show more than 1000 new single family homes planned within the next three years.





1. *The geographic area and population to be served (Continued)*

Part B. Enrollment Projections

The Wayzata School District projected enrollment for the 2011-2012 school years exceeds 10,300 students and is expected to remain stable. Neighboring districts include Minnetonka, Robbinsdale, Hopkins, Orono, and Osseo. The following chart tracks enrollment and enrollment projections for the district.

Enrollment Projections – Extrapolated to 2016

Year	Actual 2006-2007	Actual 2007-2008	Actual 2008-2009	Actual 2009-2010	Actual 2010-2011	Projected 2011-2012	Projected 2012-2013	Projected 2013-2014	Projected 2013-2014	Projected 2014-2015	Projected 2015-2016
Kdgn	653	582	646	715	740	680	650	650	650	650	650
Grade 1	720	733	672	740	792	810	750	750	750	750	750
Grade 2	701	753	760	708	760	820	815	755	755	755	755
Grade 3	710	740	791	780	739	775	825	820	760	760	760
Grade 4	713	707	758	796	806	760	780	830	825	765	765
Grade 5	726	725	744	781	805	814	765	785	835	830	770
Grade 6	758	753	772	796	811	830	819	770	790	840	835
Grade 7	797	798	796	793	808	811	835	828	780	805	855
Grade 8	839	826	818	797	800	814	816	844	838	795	817
Grade 9	796	843	832	855	812	843	819	825	854	853	810
Grade 10	792	808	846	816	834	819	848	828	835	869	868
Grade 11	769	772	767	841	796	820	824	857	838	850	884
Grade 12	758	732	728	754	812	750	805	813	847	833	845
Student En	9,732	9,772	9,931	10,170	10,316	10,346	10,351	10,355	10,357	10,355	10,364
Student Ch	164	40	159	239	145	30	5	4	2	(2)	9
Percent Ch	1.72%	0.41%	1.63%	2.41%	1.43%	0.29%	0.05%	0.04%	0.02%	-0.02%	0.09%



2. *A list of existing school facilities*
- a. *by year constructed,*
 - b. *their uses, and*
 - c. *an assessment of the extent to which alternate facilities are available within the school district boundaries and in adjacent school districts.*

Description of Existing Facilities/Utilization

<p>Birchview Elementary Year Constructed - 1969 (Add. – 1995) Square Footage – 59,720 S. F. School Site Size – 14 acres Levels – One (1)</p>	<p>Wayzata High School Year Constructed - 1997 Square Footage – 487,000 S. F. School Site Size – 163 acres Levels – Four (4)</p>
<p>Gleason Lake Elementary Year Constructed - 1988 Square Footage – 80,710 S. F. School Site Size – 22 acres *includes Administration Building Levels – Two (2)</p>	<p>Central Middle Year Constructed - 1960 (Additions in 1962, 1964, 1968, 1973, 1989) Square Footage – 308,568 S. F. School Site Size – 65 acres Levels – Two (2)</p>
<p>Greenwood Elementary Year Constructed - 1964 (Additions in 1964, 1986, 1989, 199, and 2000) Square Footage – 72,007 S. F. School Site Size – 29 acres Levels – One (1)</p>	<p>East Middle Year Constructed - 1967 (Additions in 1980) Square Footage – 146,111 S. F. School Site Size – 40 acres Levels – Two (2)</p>
<p>Kimberly Lane Elementary Year Constructed - 1991 Square Footage – 83,000 S. F. School Site Size – 21 acres Levels – One (1)</p>	<p>West Middle Year Constructed - 1949 (Additions in 1968 and 1989) Square Footage – 167,000 S. F. School Site Size – 35.5 acres Levels – Two (2)</p>
<p>Oakwood Elementary Year Constructed - 1957 (Additions in 1992) Square Footage – 66,591 S. F. School Site Size – 40 acres *includes Central Service Facility Levels – One (1)</p>	<p>Administration Building Year Constructed - 1969 Square Footage – 8,600 S. F. School Site Size – *See Gleason Lake Levels – One (1)</p>
<p>Plymouth Creek Elementary Year Constructed - 1988 Square Footage – 80,786 S. F. School Site Size – 19.5 acres Levels – One (1)</p>	<p>Central Services Facility Year Constructed - 1983 Square Footage – 21, 205 S. F. School Site Size- *See Oakwood Levels – One (1)</p>
<p>Sunset Hill Elementary Year Constructed -1963 (Add. - 1989) Square Footage – 64,983 S. F. School Site Size – 20.3 acres Levels – One (1)</p>	

The Wayzata School District is currently operating seven (7) active elementary school facilities, three (3) middle school facilities, and one (1) high school building. There are 11 school-building sites within the Wayzata School District with a variety of construction dates. There is also a Central Services Facility and an Administration Facility

Available Alternate Facilities

None of the proposed projects include expansion or reorganization of any existing educational spaces (the projects are entirely focused on deferred maintenance type of work). As such, no alternate facilities were explored as the quantity of spaces being utilized by the District remains unchanged

3. *A list of the specific deficiencies of the facility*
 - a. *demonstrating the need for a new or renovated facility will provide to*
 - i. *the students,*
 - ii. *the teachers, and*
 - iii. *the community users served by the facility.*

Specific Deficiencies of the Facility

Demonstrated Need for a [New] or [Renovated] Facility to be provided

In the spring of 2010, District 284 retained consultants to perform a facility analysis and assessment in order to understand the needs and the facility conditions at all of the district buildings with significant deferred maintenance.

This facility conditions assessment was used to develop the District's Two Year Alternative Facilities Plan and Ten Year Facilities Maintenance Plan. The detailed spreadsheet included in Section 7f of this submittal was developed from these plans to address the current deferred maintenance deficiencies at the proposed district facilities. Thus, the projects detailed in this Review and Comment address the most urgent deferred maintenance deficiencies throughout the District. These projects are proposed to be completed during the summer of 2012 and 2013.

Specific Benefits that the Project Will Provide

At the completion of these proposed projects, the benefits that will be provided to the District students, community, and staff will include:

- Maintaining acceptable facility conditions in support of the educational mission and needs of the School District in a geographically appropriate location, as related to student demographics now and into the future.

4. *The relationship of the project to any priorities established by*
 - a. *the school district,*
 - b. *educational cooperatives that provide support services, or*
 - c. *other public bodies in the service area.*

School District Priorities

Educational Cooperatives that Provide Support Services

The District has a long history of cooperating with its neighboring districts to expand opportunities to area learners. District 284 is currently a member of the West Metro Education Program, a multi-district educational cooperative organization. In addition, Intermediate School District 287 uses the District's facilities to the extent they are available.

Other Public Bodies in the Service Area

The District has a long history of cooperating with the cities within its boundaries. The District will continue to provide buildings for the community and cities to use to the extent they are available.

5. *Transit Connectivity Between School and Community*

Transit and connectivity between school and community will not be affected as a result of the implementation of the proposed deferred maintenance projects.

6. *A specification of how the project will*
 - a. *increase community use of the facility, and*
 - b. *increase collaboration with other governmental or nonprofit entities.*

6a. How the Project Will Increase Community Use of the Facility

The existing facilities currently used by the surrounding communities will not change as a result of implementing the deferred maintenance projects.

6b. Increase Collaboration with Other Governmental or Non-Profit Entities

The proposed deferred maintenance projects will not change the School District's current collaboration between the cities, community, and non-profit entities through access to their facilities to the extent that they are available.

7. *A narrative description of the project, including*
- a. *the specification of site and outdoor space acreage as provided in the Guide for Planning School Construction Projects in Minnesota. Only usable acreage should be included,*
 - b. *square footage allocations for new and converted classrooms, labs and support spaces,*
 - c. *a floor plan of the project, if applicable,*
 - d. *estimated expenditures in reasonable detail for the project, and*
 - e. *the dates the project will begin and be completed,*
 - f. *projects to be funded under health and safety and/or alternative facility levy and bonding must include a spreadsheet with detail project component descriptions and cost estimates.*

7.a Site and outdoor space acreage:

- The proposed projects do not modify the site acreage of any of the existing sites. As such, the acreage shown as part of Section 2 of this Review and Comment will remain unchanged.

7.b Square footage allocations

- The proposed projects do not change or reconfigure any spaces in the existing buildings. As such, these projects do not have any new or converted classroom, lab or support spaces.

7.c Proposed Scope of Work Diagram

- A diagram is not believed to be applicable for this Review and Comment.

7.d Project Budget Analysis

Alternative Facilities Deferred Maintenance Projects:

	FY 13	FY 14
Construction	\$ 6,038,865	\$ 8,408,400
Fees, Testing, Printing, Bonding , Legal	\$ 2,588,085	\$ 3,603,600
Total Project	\$ 8,626,950	\$ 12,012,000

District Capital Projects:

	FY 13	FY 14
Construction	\$ 32,200	\$ 52,500
Fees, Testing, Printing, Bonding , Legal	\$ 13,800	\$ 22,500
Total Project	\$ 46,000	\$ 75,000

7.e Project Schedule Analysis

- The proposed projects will commence solicitation of bids in the late winter early spring of 2012 after the legal publication of the Review and Comment. Substantial Completion for FY 2013 work is scheduled for August 2012 prior to the start of the 2012/2013 school year.

- **Dates the Project will Begin and Be Completed**

Project Schedule FY 13

Review and Comment Submittal to MDE	January 2012
Review and Comment MDE Review	January 2012 – February 2012
Project Construction Documents Preparation	January 2012 - Feb. 2012
Project Construction Documents Issue	March 2012
Project Construction	June, 2012 – August 20, 2012
Final Project Completion	Fall 2012
Project Construction FY 14	June 2013 – August 2013
Final Completion	Fall 2013



7. A narrative description of the project, including (Continued)

7.f. projects to be funded under health and safety and/or alternative facility levy and bonding must include a spreadsheet with detail project component descriptions and cost estimates.

Course Code	Fiscal Year	Individual Building Name	MDE Category of Work	Description of Work	Funding Source	Amount	District Capital	Totals
						ALT.	OTHER	
				FACILITY / PROJECT		FACILIT.	FUNDING	TOTALS
	2013	District Administration Building	Deferred Maintenance	Replace the deteriorated and worn roof system. The roof system is beyond its useful life.	Alternative Facilities	\$180,000		
	2013	District Administration Building	Deferred Maintenance	Replace the deteriorated flooring material in the lounge, copy room and the safe room.	Alternative Facilities	\$5,000		
	2013	District Administration Building	Deferred Maintenance	Retrofit the deteriorated light fixtures throughout the building.	Alternative Facilities	\$37,000		
				District Administration Building Total				\$222,000
	2013	Birchveiw Elementary School	Deferred Maintenance	In the toilet rooms near the 1st grade pod, replace the deteriorated toilet room partitions provide for accessibility.	Alternative Facilities	\$55,000		
	2013	Birchveiw Elementary School	Deferred Maintenance	Repair and repaint the deteriorated building exterior metal wall panels.	Alternative Facilities	\$20,000		
	2013	Birchveiw Elementary School	Deferred Maintenance	Replace the deteriorated floor material in one Kindergarten room and a locker bay area.	Alternative Facilities	\$10,000		
	2013	Birchveiw Elementary School	Deferred Maintenance	Replace the deteriorated building clock system. The existing system is original to the building and the condition is poor.	Alternative Facilities	\$20,000		
	2013	Birchveiw Elementary School	Deferred Maintenance	Replace the deteriorated building public address system. The existing system is original to the building and the condition is poor.	Alternative Facilities	\$16,650		
	2013	Birchveiw Elementary School	Deferred Maintenance	Retrofit the deteriorated light fixtures through out the building.	Alternative Facilities	\$230,000		
				Birchveiw Elementary School Building Total				\$351,650
	2013	Central Middle School	Deferred Maintenance	The windows in the "C" wing require removal and replacement of the deteriorated window sealant and installing a metal sill over the existing deteriorating brick sill to stop further damage.	Alternative Facilities	\$50,000		
	2013	Central Middle School	Deferred Maintenance	Replace the remaining deteriorated light fixtures located in the "B" and "E" wings of the building. All other areas have been completed.	Alternative Facilities	\$85,000		
	2013	Central Middle School	Deferred Maintenance	Reconstruct the lower tennis courts due to deterioration and pavement failure. On the upper tennis courts, the existing paved surface requires a mill and overlay of the existing pavement.	Alternative Facilities	\$225,000		
	2013	Central Middle School	Deferred Maintenance	The existing building operates with a sanitary sewer ejection/ pumping lift station. The components, i.e., valves pumps and controls are deteriorated and require replacement.	Alternative Facilities	\$50,000		
	2013	Central Middle School	Deferred Maintenance	Replace the existing building security alarm system. The existing system is beyond it's useful life.	Alternative Facilities	\$ 25,000		



Course Code	Fiscal Year	Individual Building Name	MDE Category of Work	Description of Work	Funding Source	Amount	District Capital	Totals
	2013	Central Middle School	Deferred Maintenance	Replace the deteriorated floor material in 10 classrooms in the lower "C" wing.	Alternative Facilities	\$40,000		
	2013	Central Middle School	Deferred Maintenance	Repaint the existing worn wall surfaces in the lower "C" wing classrooms. The wall paint is beyond it's useful life expectancy of 7-10 years and is showing signs of deterioration.	Alternative Facilities	\$15,000		
				Central Middle School Building Total				\$490,000
	2013	Central Sports Complex	Deferred Maintenance	Replace the Ice arena refrigeration mats and piping due to deterioration resulting from the annual removal and reinstallation of the mats. The ice sheet is only in place part of the year.	Alternative Facilities	\$150,000		
	2013	Central Sports Complex	Deferred Maintenance	Repair the existing deteriorated running track surface and eliminate the trench drains to eliminate the potential for further deterioration of the track.	Alternative Facilities	\$275,000		
				Central Sports Complex Building Total				\$425,000
	2013	District Central Services Building	Health and Safety	Correct the IAQ conditions in the four warehouse offices. Currently these offices have no fresh air serving the occupants.	Alternative Facilities	\$100,000		
				District Central Services Building Total				\$100,000
	2013	East Middle School	Deferred Maintenance	Replace the original deteriorated light fixtures in the corridors. The light fixtures are original to the building and are beyond their useful life.	Alternative Facilities	\$170,000		
	2013	East Middle School	Deferred Maintenance	Replace the original deteriorated light fixtures in the building classrooms, lower level east wing and the remaining rooms in the upper level center area. The light fixtures are original to the building and are beyond their useful life.	Alternative Facilities	\$180,000		
	2013	East Middle School	Deferred Maintenance	In the 21 upper level Northwest wing classrooms (Room 207 - 218, 219-224), and in the staff lounge: replace the deteriorated ceiling system, the deteriorated light fixtures, the deteriorated flooring materials, built-in cabinets and classroom doors and hardware.	Alternative Facilities	\$750,000		
	2013	East Middle School	Health and Safety	Miscellaneous asbestos abatement associated with the work in the 21 upper level Northwest wing classrooms (Room 207 - 218, 219-224), and in the staff lounge.	Alternative Facilities	\$65,000		
	2013	East Middle School	Deferred Maintenance	Complete the deteriorated exterior brick tuck pointing and the Concrete building fascia repair.	Alternative Facilities	\$505,000		
	2013	East Middle School	Deferred Maintenance	Replace the deteriorated toilet fixtures, toilet stalls, and provide for handicap accessibility in the eight student toilet room in the Northwest classroom wing.	Alternative Facilities	\$410,000		



Course Code	Fiscal Year	Individual Building Name	MDE Category of Work	Description of Work	Funding Source	Amount	District Capital	Totals
	2013	East Middle School	Deferred Maintenance	Replace the deteriorated exterior concrete in the courtyard east of the pool. Reduce the amount of concrete.	Alternative Facilities	\$70,000		
	2013	East Middle School	Deferred Maintenance	Replace the deteriorated synthetic Gym Floor system in the small gym. The existing Gym floor system is delaminating from the existing substrate.	Alternative Facilities	\$300,000		
	2013	East Middle School	Deferred Maintenance	Replace the existing building security alarm system. The existing system is beyond it's useful life.	Alternative Facilities	\$25,000		
	2013	East Middle School	District Capital	Replace and relocate the flag pole to near the main entrance of the building.	District Capital		\$3,000	
	2013	East Middle School	District Capital	Replace the worn out pool filter media/ material.	District Capital		\$10,000	
	2013	East Middle School	District Capital	Replace the worn out ADA Pool Access Lift	District Capital		\$10,000	
				East Middle School Building Totals				\$2,498,000
	2013	Gleason Lake Elementary School	Deferred Maintenance	Replace deteriorated floor material in rooms 105/106, music, sp ed, and the comp lab. (5 rooms)	Alternative Facilities	\$30,000		
	2013	Gleason Lake Elementary School	Deferred Maintenance	Repair portions of the existing deteriorated parking lot areas.	Alternative Facilities	\$21,000		
	2013	Gleason Lake Elementary School	Deferred Maintenance	Repaint some of the existing worn wall surfaces. The wall paint is beyond its useful life expectancy of 7-10 years and is showing signs of deterioration.	Alternative Facilities	\$15,000		
				Gleason Lake Elementary School Building Totals				\$66,000
	2013	Greenwood Elementary School	Deferred Maintenance	The existing storm sewer system is deteriorated and requires replacement	Alternative Facilities	\$100,000		
	2013	Greenwood Elementary School	Deferred Maintenance	Replace the remaining deteriorated light fixtures located in the building. All other areas have been completed.	Alternative Facilities	\$25,000		
	2013	Greenwood Elementary School	Deferred Maintenance	Replace the deteriorated original building boilers. They are beyond their useful life and require significant ongoing maintenance.	Alternative Facilities	\$310,000		
	2013	Greenwood Elementary School	Deferred Maintenance	Replace deteriorated floor material in rooms 23, 26, 28-30. (5 rooms)	Alternative Facilities	\$45,000		
	2013	Greenwood Elementary School	Deferred Maintenance	Repair portions of the existing deteriorated parking lot areas.	Alternative Facilities	\$49,000		
	2013	Greenwood Elementary School	Deferred Maintenance	Replace the deteriorated building clock system. The existing system is original to the building and the condition is poor.	Alternative Facilities	\$20,000		
	2013	Greenwood Elementary School	Deferred Maintenance	Replace the deteriorated building public address system. The existing system is original to the building and the condition is poor.	Alternative Facilities	\$16,650		



Course Code	Fiscal Year	Individual Building Name	MDE Category of Work	Description of Work	Funding Source	Amount	District Capital	Totals
	2013	Greenwood Elementary School	Deferred Maintenance	Repaint some of the existing worn wall surfaces. The wall paint is beyond its useful life expectancy of 7-10 years and is showing signs of deterioration.	Alternative Facilities	\$2,000		
				Greenwood Elementary School Building Total				\$567,650
	2013	Kimberly Lane Elementary School	Deferred Maintenance	The existing center, east & south lot surfaces as well as the paved fire lane, are failing with significant cracks and deterioration. These parking lots require reconstruction. No additional parking lot area will be included as part of this project scope.	Alternative Facilities	\$883,000		
	2013	Kimberly Lane Elementary School	Deferred Maintenance	The existing concrete loading dock areas, are failing with significant cracks and deterioration. Replace concrete loading areas	Alternative Facilities	\$30,000		
	2013	Kimberly Lane Elementary School	Deferred Maintenance	The existing concrete sidewalks adjacent to the parking lot and at the main entrance to the building are failing with significant cracks and deterioration. Replace the sidewalks along with the parking lot reconstruction work.	Alternative Facilities	\$30,000		
	2013	Kimberly Lane Elementary School	Deferred Maintenance	Replace deteriorated floor material in sp ed, home base, and rooms C12 -Cc16. (7 rooms).	Alternative Facilities	\$30,000		
	2013	Kimberly Lane Elementary School	Deferred Maintenance	Replace the worn carpeted Gym Floor system in the gym. The existing carpet material is beyond it's useful life and is in poor condition.	Alternative Facilities	\$130,000		
	2013	Kimberly Lane Elementary School	District Capital	Replace and relocate the flag pole. The existing pole is tilting due to existing site conditions.	District Capital		\$3,000	
	2013	Kimberly Lane Elementary School	Deferred Maintenance	Repaint some of the existing worn wall surfaces. The wall paint is beyond its useful life expectancy of 7-10 years and is showing signs of deterioration.	Alternative Facilities	\$15,000		
				Kimberly Lane Elementary School Building Total				\$1,121,000
	2013	Oakwood Elementary School	Deferred Maintenance	Replace the deteriorated toilet fixtures, toilet stalls, and provide for handicap accessibility in the West corridor classroom wing.	Alternative Facilities	\$85,000		
	2013	Oakwood Elementary School	Deferred Maintenance	Replace deteriorated floor material in classroom 24, the Art room and Conf. rooms.	Alternative Facilities	\$17,000		
	2013	Oakwood Elementary School	Deferred Maintenance	Repaint some of the existing worn wall surfaces. The wall paint is beyond its useful life expectancy of 7-10 years and is showing signs of deterioration.	Alternative Facilities	\$5,000		
	2013	Oakwood Elementary School	Deferred Maintenance	Replace the deteriorated building public address system. The existing system is original to the building and the condition is poor.	Alternative Facilities	\$16,650		
				Oakwood Elementary School Building Total	Alternative Facilities			\$123,650



Course Code	Fiscal Year	Individual Building Name	MDE Category of Work	Description of Work	Funding Source	Amount	District Capital	Totals
	2013	Plymouth Creek Elementary School	Deferred Maintenance	Replace deteriorated floor material in classrooms 112 - 115 & 118 - 121	Alternative Facilities	\$30,000		
	2013	Plymouth Creek Elementary School	Deferred Maintenance	Replace deteriorated floor material in the southeast corridor and atrium.	Alternative Facilities	\$20,000		
	2013	Plymouth Creek Elementary School	Deferred Maintenance	Repaint some of the existing worn wall surfaces. The wall paint is beyond its useful life expectancy of 7-10 years and is showing signs of deterioration.	Alternative Facilities	\$10,000		
				Plymouth Creek Elementary School Building Total				\$60,000
	2013	Sunset Hill Elementary School	Deferred Maintenance	Replace deteriorated floor material in the three kindergarten rooms and classroom 16, the music room and office.	Alternative Facilities	\$30,000		
	2013	Sunset Hill Elementary School	Deferred Maintenance	Repaint some of the existing worn wall surfaces. The wall paint is beyond its useful life expectancy of 7-10 years and is showing signs of deterioration.	Alternative Facilities	\$5,000		
	2013	Sunset Hill Elementary School	Deferred Maintenance	Replace the deteriorated light fixtures located in the building. The fixtures are original to the building and repair/replacement parts are being phased out.	Alternative Facilities	\$250,000		
				Sunset Hill Elementary School Building Total				\$285,000
	2013	Wayzata High School	Deferred Maintenance	Replace deteriorated floor material in the two rooms in the "A" wing and the office. These areas are original to the building and in poor condition.	Alternative Facilities	\$55,000		
	2013	Wayzata High School	Deferred Maintenance	Repaint some of the existing worn wall surfaces. The wall paint is beyond its useful life expectancy of 7-10 years and is showing signs of deterioration.	Alternative Facilities	\$25,000		
	2013	Wayzata High School	Deferred Maintenance	Replace the remaining portions of the Building Automation System in the "A" tower (3rd and 4th floors). These systems are original to the building and repair and replacement components are unavailable. Portions of the system in this tower have already been replaced.	Alternative Facilities	\$43,000		
	2013	Wayzata High School	Deferred Maintenance	The painted steel toilet room partition stalls are original to the building and are deteriorated and in poor condition.	Alternative Facilities	\$75,000		
	2013	Wayzata High School	Deferred Maintenance	The existing Exterior Insulation Finish System installed originally on the building is showing signs of deteriorated and discoloration. The worst areas appear to be on the North elevations of the building. These areas require repair and/or replacement.	Alternative Facilities	\$100,000		



Course Code	Fiscal Year	Individual Building Name	MDE Category of Work	Description of Work	Funding Source	Amount	District Capital	Totals
	2013	Wayzata High School	Deferred Maintenance	Replace approximately 6300SF of deteriorated roof area. All of the roof areas are original to the building (1996) and are showing signs of deterioration and based on a report completed in 2010, have between 5 - 10 years of estimated remaining service life.	Alternative Facilities	\$75,000		
	2013	Wayzata High School	Deferred Maintenance	The existing water softener equipment system valves are failing and require replacement.	Alternative Facilities	\$10,000		
				Wayzata High School Building Total				\$383,000
	2013	West Middle School	Deferred Maintenance	Replace approximately 15,000 SF of deteriorated 4-ply built-up roofing system over the main gym and the section northwest of the gym over the stage.	Alternative Facilities	\$500,000		
	2013	West Middle School	Deferred Maintenance	Currently there is no handicap access to the existing stage from the main gym/ auditorium floor. Provide access via the installation of an enclosed chair lift from the main floor to the stage. (Approximately 42")	Alternative Facilities	\$75,000		
	2013	West Middle School	Deferred Maintenance	Replace the remaining deteriorated light fixtures located in the band/ music area and in the media center. All other areas have been completed.	Alternative Facilities	\$90,000		
	2013	West Middle School	District Capital	Replace the worn out pool filter media/ material.	District Capital		\$10,000	
	2013	West Middle School	Deferred Maintenance	Replace four deteriorated parking lot light poles/ fixtures.	Alternative Facilities	\$30,000		
	2013	West Middle School	Deferred Maintenance	Replace the deteriorated original building boilers and piping as well as removal of the original brick chimney. The boilers are located in the lower level of the building under the stage. They are beyond their useful life and require significant ongoing maintenance	Alternative Facilities	\$1,050,000		
	2013	West Middle School	Deferred Maintenance	Replace deteriorated floor material in 7 classrooms.	Alternative Facilities	\$45,000		
	2013	West Middle School	Deferred Maintenance	Repaint some of the existing worn wall surfaces. The wall paint is beyond it's useful life expectancy of 7-10 years and is showing signs of deterioration.	Alternative Facilities	\$25,000		
	2013	West Middle School	District Capital	Replace the worn out ADA Pool Access Lift	District Capital		\$10,000	
	2013	West Middle School	Deferred Maintenance	Replace the existing building security alarm system. The existing system is beyond it's useful life.	Alternative Facilities	\$25,000		
				West Middle School Building Total				\$1,860,000



Course Code	Fiscal Year	Individual Building Name	MDE Category of Work	Description of Work	Funding Source	Amount	District Capital	Totals
	2013	District Wide Projects	Deferred Maintenance	District Wide concrete replacement to replace miscellaneous cracked and deteriorated sidewalk sections.	Alternative Facilities	\$40,000		
	2013	District Wide Projects	Deferred Maintenance	District Wide door and hardware replacement due to condition of miscellaneous doors and hardware at various buildings.	Alternative Facilities	\$50,000		
	2013	District Wide Projects	Deferred Maintenance	District Wide Plumbing Fixture replacement due to condition of miscellaneous fixtures in various buildings.	Alternative Facilities	\$30,000		
				District Wide Projects Building Total				\$ 120,000
						Alternative Facilities	District Capital	
				TOTAL:		\$8,626,950	\$46,000	\$8,672,950

DRAFT

8. *The source(s) of financing the project;*
- a. *if multiple sources of funding are to be used, provide all components of the financing plan,*
 - b. *the scheduled date and required notice for a bond issue or school board action,*
 - c. *a schedule of bond payments, including estimated debt service equalization aid,*
 - d. *the sources and uses of funds report*
 - e. *the effect of a bond issue (or lease levy) on local property taxes by the property class and valuation,*
 - f. *total project cost must include:*
 - i. *total construction cost, and*
 - ii. *bond issuance/financing costs (if applicable), and*
 - g. *other financing information as required:*
 - i. *Health and Safety and Alternative Facilities Bonding and Levy funded projects should be described in sufficient detail to allow cross-walking between the review and comment, the health and safety and the alternative facilities databases, and UFARS reporting.*
 - h. *If the review and comment financing includes a lease-levy purchase under M.S. §126C.40, accurate lease payments schedules must be provided. The schedules submitted as part of the review and comment process will be used in setting the initial lease levy amount as part of the annual levy certification process.*

8a. Funding Sources

Deferred Maintenance

The District will use two sources of funding in financing the deferred maintenance. As noted in 7d the estimated expenditures for the project are:

	FY 13	FY 14
• Alternative Facilities	\$8,626,950	\$12,012,000
• District Capital	\$46,000	\$75,000

The District will utilize capital funds from its regular levy process as well as use reserve funds for the project costs.

All of the revenue and expenditures will be accounted for under UFARS with appropriate codes. All projects under alternative facilities funding and health and safety funding will be included in the district's required request and reporting formats to meet Department of Education timelines and data base reporting requirements.

8b. Scheduled Date and Required Notice for a [Bond Issue] [School Board Action]

The District anticipates it will sell alternative facilities bonds in _____ in the amount of \$_____ to cover a portion of the alternative facilities portion of the projects costs.

The chart below shows the impact of planned revenues and expenditures for this purpose as well as the addition of the planned sale of \$_____ in bonds. (Attached is the bond information from the District's financial advisor showing the tax impact and other pertinent data.

8. *The source(s) of financing the project; (Continued)*

We are utilizing our best estimates for the sale of the bonds with the intent of keeping the tax impact on district properties as low as possible. Since we cannot predict with total accuracy the sale price, the capitalized interest, the cost of issuance, and underwriting costs, we believe it is in the best interest of the district to keep the amount of bonds sold to the minimum needed.

DRAFT

8. *The source(s) of financing the project; (Continued)*

8c. A Schedule of Bond Payments, Including Estimated Debt Service Equalization Aid

TABLES / INFO FROM EHLERS

DRAFT

8. *The source(s) of financing the project; (Continued)*

8d. The Sources and Uses of Funds Reports

TABLES / INFO FROM EHLERS

DRAFT

8. *The source(s) of financing the project; (Continued)*

8e. The Effect of a Bond Issue on Local Property Taxes by the Property Class and Valuation

TABLES / INFO FROM EHLERS

DRAFT

8. The source(s) of financing the project; (Continued)

8f. Total project cost must include:

- 8fi. Total construction cost, and
- 8fii. Bond Issuance/Financing Costs

The costs identified in 7d includes building and site construction costs, and general project costs, including architect and engineering fees, legal fees, bond issuance and financing costs, printing costs, topographic surveys, soil borings, city and governmental fees, project and contingencies.

8g. Other Financial Information for Health and Safety and/or Alternative Facilities Bonding and Levy Fund Projects

The District will use Alternative Facilities Funding to pay for the items listed in the amount of **\$ 8,626,950 for FY 13** , and **\$11,947,000 for FY 14**

8h. Lease-Levy Lease Payment Schedule per M.S. §126C.40,

- NA

DRAFT

9. *An analysis of how the proposed new or remodeled facility will affect*
- school district operational or administrative staffing costs, and*
 - Explain how the district's operating budget will cover any increased operational or administrative staffing costs.*

If the district is adding additional square footage, include assumptions and calculations used in calculation of the estimated general fund operation cost.

If the district is updating mechanical systems, provide detail on how the new HVAC system will impact general fund operating costs compared to the current system.

Operational or Staffing Costs -

The District anticipates no increase in the quantity of staff assigned to their facilities as a result of these deferred maintenance projects.

Operating Budget Adjustments -

- **General fund operation cost associated with additional square footage.**
There is no increase in the building square footage as such the proposed projects will have no increase to the general fund operational costs.

10. *A description of the consultation with local or state road and transportation officials on*
- school site access and safety issues, and*
 - the ways that the project will address those issues.*

10 a.b. School Site Access and Safety Issues and Solutions through This Project

- Site access and on-site vehicle traffic management improvements will be reviewed on an ongoing basis. Currently all students within the walking limit, as set by the school board, walk to the building. All others are bussed.

11. A description of how

- a. *indoor air quality issues have been considered, and*
- b. *provide a written certification signed by the project architect that the architects and engineers designing the facility have professional liability insurance.*

11a. Indoor Air Quality Issues Considered

As experienced Minnesota school architects and engineers, Wold has developed a standard for building systems that addresses concerns regarding indoor air quality. As such, this project includes an air system approach for the building area which matches the building’s occupancy to the required outside ventilation rate to help achieve acceptable indoor air quality results. These systems will be easily operated and maintained to provide adequate air changes throughout the facilities to meet or exceed the minimum requirements as established by the Minnesota State Department of Education and outlined in their Guidelines for school construction. These projects will also be designed to meet current code calling for 15 C.F.M./occupant in classroom space as well as the other applicable codes and ASHRAE standards. Monitoring of outdoor air and total airflow will be included in the scope of the building automation system

11b. Certification of Professional Liability Insurance

- Wold Architects and Engineers has professional liability insurance coverage for \$2,000,000 from Evanston Insurance. A Certificate of Insurance is available if requested.

_____ *Registration No.:* _____

12. As required under Minn. Stat. § 123B.72, provide

- a. *a written certification signed by the project architect that the plans and designs for the extensively renovated or new facility’s. The statement must include how the facility*
 - i. *heating, ventilation, and air conditioning systems will meet or exceed code standards,*
 - ii. *will provide for the monitoring of outdoor airflow and total airflow of ventilation systems, and*
 - iii. *will provide an indoor air quality filtration system that meets codes.*

How HVAC Systems Will Be Designed to Meet/Exceed Code Standards

- Any proposed project that includes the replacement of the existing non compliant HVAC system in the building will include new equipment that will provided the required air supply and humidity control. The new system will meet or exceed all required codes and standards. These system improvements will also include mechanical units with air filtration systems that meet or exceed code. In addition, any proposed HVAC system project will provide new building management systems for the building to monitor outdoor air and the total airflow within the HVAC systems.
- **Wold Architects and Engineers** will provide upon completion, a written certification that the HVAC Systems meet code standards, meet monitoring and filtration issues as addressed in Minnesota Statute 123B.71 and 123B.72.

_____ *Registration No.:* _____

13. *A specification, if applicable, of any desegregation requirements that cannot be met by any other reasonable means.*

- This proposal is consistent with the provisions of Wayzata Public Schools desegregation/ integration plan.

14. *A specification, if applicable, of how the facility will utilize environmentally sustainable school facility design concepts.*

- **Sustainable school buildings are achieved by:**

Site design and the design of the site related to site runoff, impact on adjacent property are just a few ways that the site can influence the long-term impacts that these buildings will have on the larger environment. These items and others will be an important consideration to the design team during the design process.

Enhance indoor environmental quality, conserve energy and water resources the architects and the engineers will have the opportunity to enhance the indoor environment, conserve energy and make use of renewable resources through the use of new technology. The investigation of new mechanical air systems and plumbing systems will allow the District to weigh the advantages and disadvantages to determine what is best for each situation.

Use resource-efficient materials - over the last ten years the use of biodegradable and environmentally friendly materials has become more and more common. Materials such as recycled paints, carpet, linoleum, rubber and vinyl composition flooring are just a few examples of materials that will be considered.

Minimize construction waste - Within the Twin Cities region all the major refuse and demolition contractors strive to sort and recycle discarded materials.

Optimize maintenance and operations - Through the use of new technologies and materials the efficiency and operation of the buildings can be enhanced to minimize the use of nonrenewable resources. Operational efficiencies will be considered in the mechanical and electrical systems and weighed against first cost and long term payback.

- Wayzata Public Schools have a desire to investigate all of the above principles for project opportunities. The following are some of the current goals for the proposed projects:

The mechanical system improvements will provide much improved indoor air quality and reduced noise level environments, as well as operate in a manner that will more effectively address those needs in an educational environment.

The building management systems will allow the District to better monitor and control the operations of the building. This will not only make operational costs more efficient, but also create a better indoor environment for the students, staff and community.

15. *A description of how the architects and engineers have considered the American National Standards Institute Acoustical Performance Criteria, Design Requirements and Guidelines for Schools of the maximum background noise level and reverberation times.*

Under this Deferred Maintenance and Improvements project, the following ANSI criteria will be considered. However the implementation of all of the criteria will be limited to the type of work that will be involved in the project.

The ANSI criteria are concerned with addressing (4) key areas related to acoustical design:

- Room acoustics (dB ranges and reverberation times)
- Minimizing background noise from HVAC and Electrical systems
- Classroom sound isolation from interior and exterior sources
- Impact isolation for multi-story classroom facilities

Acoustic design in Schools is achieved by:

Appropriate exterior wall cavity design – In new construction it is typical to provide proper insulation, air space (in a brick and block building), and differing materials to allow for different sound transmissions to be reflected or absorbed by the wall design. Additionally, many of these methods provide protection from exterior environments and perform the added function as sound isolating elements. Under this Deferred Maintenance and Improvements project the only exterior walls that will be fully insulated and provide the functions listed above, will be any new wall construction.

Minimizing sound transmission through interior partitions – provide insulation at the top of deck, with a minimum of one side of gypsum board carried to the top of deck. Continuously caulk along the top edge of the partition wall at the deck. At masonry walls, consider foam or sand filled cores. For operable walls, specify minimum STC rating requirements. Under this Deferred Maintenance and Improvements project only walls that will be added or modified as part of capital improvements will be improved to this extent.

Minimizing reverberation times – provide variation in perimeter walls of rooms over 10,000 sf, and install acoustic isolation panels to accommodate additional absorption. Utilize acoustic ceiling tile and carpet for larger spaces.

Performance based criteria for mechanical specifications – specify minimum standards for acoustic performance of HVAC systems including:

- System Components including low-velocity diffusers and fans
- Limit duct velocity in design and require the test and balance consultant to verify performance
- Provide sound attenuators in duct and air handling unit connections
- Locate VAV terminals above ceilings in common areas as opposed to above classrooms
- Provide vibration isolators at all equipment

Summary:

Wayzata Public Schools has a desire to investigate all of the above principles. Each of the above ideas may be incorporated to some degree into the design for the proposed project. The mechanical system will be designed to take into consideration the noise criteria established by the Minnesota Department of Education for classroom design.

16. **City Infrastructure** – Any existing information from the relevant local unit of government about the cumulative costs to provide infrastructure to serve the school, such as utilities, sewer, roads, and sidewalks.
- No modifications to the Cities' infrastructure will be included as part of this project.



Appendix A – Deferred Maintenance and Improvements Project Scope and Cost Estimates FY 14

Course Code	Fiscal Year	Individual Building Name	MDE Category of Work	Description of Work	Funding Source	Amount	District Capital	Totals
						ALT.	OTHER	
				<u>FACILITY / PROJECT</u>		<u>FACILIT.</u>	<u>FUNDING</u>	<u>TOTALS</u>
				District Administration Building Total				\$ -
	2014	Birchveiv Elementary School	Deferred Maintenance	Roof Replacement gym / café	Alternative Facilities	\$250,000		
	2014	Birchveiv Elementary School	Deferred Maintenance	Replace the deteriorated floor material.	Alternative Facilities	\$20,000		
	2014	Birchveiv Elementary School	Deferred Maintenance	Repaint some of the existing worn wall surfaces. The wall paint is beyond its useful life expectancy of 7-10 years and is showing signs of deterioration.	Alternative Facilities	\$10,000		
	2014	Birchveiv Elementary School	Deferred Maintenance	Replace deteriorated acoustical panels throughout the class room area. These are original to the building and need replacing.	Alternative Facilities	\$100,000		
	2014	Birchveiv Elementary School	Deferred Maintenance	The existing exterior windows and doors are in poor condition and require replacement. These are original to the building and are beyond their useful life. In addition, the building needs tuck pointing/ masonry restoration.	Alternative Facilities	\$350,000		
	2014	Birchveiv Elementary School	Deferred Maintenance	Replace the deteriorated gym floor surface.	Alternative Facilities	\$125,000		
				Birchveiv Elementary School Building Total				\$855,000
	2014	Central Middle School	Deferred Maintenance	Replace the deteriorated small gym floor material.	Alternative Facilities	\$125,000		
	2014	Central Middle School	Deferred Maintenance	The existing boilers/ original to the building and require replacement. Replace the boilers and associated steam piping.	Alternative Facilities	\$1,500,000		
	2014	Central Middle School	Deferred Maintenance	The existing gymnasium operable wall is in poor condition and the operation of the wall is problematic and requires more than routine maintenance, Replace the operable wall.	Alternative Facilities	\$250,000		
	2014	Central Middle School	Deferred Maintenance	Replace deteriorated floor material in (6 rooms).	Alternative Facilities	\$40,000		
	2014	Central Middle School	Deferred Maintenance	Repaint some of the existing worn wall surfaces. The wall paint is beyond its useful life expectancy of 7-10 years and is showing signs of deterioration.	Alternative Facilities	\$30,000		
	2014	Central Middle School	Deferred Maintenance	Repair and Overlay Main lot, CES lot, Bus Corral	Alternative Facilities	\$250,000		
	2014	Central Middle School	Deferred Maintenance	Replace main switch gear transformers and conductors due to deterioration. In addition they are beyond their useful life expectancy of 20 years and locating replacement parts is difficult.	Alternative Facilities	\$ 200,000		
				Central Middle School Building Total				\$2,395,000



Course Code	Fiscal Year	Individual Building Name	MDE Category of Work	Description of Work	Funding Source	Amount	District Capital	Totals
				Central Sports Complex Building Total				\$ -
				District Central Services Building Total				\$ -
	2014	East Middle School	Deferred Maintenance	In the lower level Northwest wing classrooms: replace the deteriorated ceiling system, and light fixtures, the deteriorated flooring materials, built-in cabinets and classroom doors and hardware.	Alternative Facilities	\$1,000,000		
	2014	East Middle School	Health and Safety	Miscellaneous asbestos abatement associated with the work in the lower level Northwest wing classrooms.	Alternative Facilities	\$65,000		
	2014	East Middle School	Deferred Maintenance	Replace the remaining portions of the existing roof system including all of the building except the large gym roof.	Alternative Facilities	\$1,000,000		
	2014	East Middle School	Deferred Maintenance	Replace mains witch gear transformers and conductors due to deterioration. In addition they are beyond their useful life expectancy of 20 years and locating replacement parts is difficult.	Alternative Facilities	\$100,000		
	2014	East Middle School	Deferred Maintenance	Replace the deteriorated toilet fixtures, toilet stalls, and provide for handicap accessibility in the eight student toilet room in the center and west wing	Alternative Facilities	\$410,000		
				East Middle School Building Totals				\$2,575,000
	2014	Gleason Lake Elementary School	Deferred Maintenance	Replace deteriorated floor material in rooms 105/106, music, sp ed, and the comp lab. (5 rooms)	Alternative Facilities	\$30,000		
	2014	Gleason Lake Elementary School	Deferred Maintenance	Replace the deteriorated building public address system. The existing system is original to the building and the condition is poor.	Alternative Facilities	\$21,667		
	2014	Gleason Lake Elementary School	Health and Safety	Restroom upgrades ADA	Alternative Facilities	\$50,000		
	2014	Gleason Lake Elementary School	Deferred Maintenance	Replace the deteriorated / damaged skylights.	Alternative Facilities	\$75,000		
	2014	Gleason Lake Elementary School	Deferred Maintenance	Gym Floor Replacement	Alternative Facilities	\$150,000		
	2014	Gleason Lake Elementary School	Deferred Maintenance	Repaint some of the existing worn wall surfaces. The wall paint is beyond its useful life expectancy of 7-10 years and is showing signs of deterioration.	Alternative Facilities	\$ 25,000		
	2014			Gleason Lake Elementary School Building Totals				\$351,667



Course Code	Fiscal Year	Individual Building Name	MDE Category of Work	Description of Work	Funding Source	Amount	District Capital	Totals
	2014	Greenwood Elementary School	Deferred Maintenance	Repair portions of the existing deteriorated parking lot areas.	Alternative Facilities I	\$49,000		
	2014	Greenwood Elementary School	Deferred Maintenance	Exterior Tuck pointing and masonry repair	Alternative Facilities	\$200,000		
	2014	Greenwood Elementary School	Deferred Maintenance	Replace the deteriorated windows that are original to the building.	Alternative Facilities	\$400,000		
	2014	Greenwood Elementary School	Deferred Maintenance	Replace the deteriorated Gym Floor	Alternative Facilities	\$150,000		
	2014	Greenwood Elementary School	Deferred Maintenance	Replace deteriorated classroom built in casework due to deteriorated condition.	Alternative Facilities	\$50,000		
	2014	Greenwood Elementary School	District Capital	New lockers for students	District Capital		\$75,000	
	2014	Greenwood Elementary School	Deferred Maintenance	Repaint some of the existing worn wall surfaces. The wall paint is beyond its useful life expectancy of 7-10 years and is showing signs of deterioration.	Alternative Facilities	\$15,000		
				Greenwood Elementary School Building Total				\$939,000
	2014	Kimberly Lane Elementary School	Deferred Maintenance	Replace the deteriorated building public address system. The existing system is original to the building and the condition is poor.	Alternative Facilities	\$21,667		
	2014	Kimberly Lane Elementary School	Deferred Maintenance	Replace deteriorated floor material in (7 rooms).	Alternative Facilities	\$30,000		
	2014	Kimberly Lane Elementary School	Deferred Maintenance	Repaint some of the existing worn wall surfaces. The wall paint is beyond its useful life expectancy of 7-10 years and is showing signs of deterioration.	Alternative Facilities	\$15,000		
				Kimberly Lane Elementary School Building Total				\$66,667
	2014	Oakwood Elementary School	Deferred Maintenance	Replace deteriorated floor material in 2 classrooms	Alternative Facilities	\$10,000		
	2014	Oakwood Elementary School	Deferred Maintenance	Repaint some of the existing worn wall surfaces. The wall paint is beyond its useful life expectancy of 7-10 years and is showing signs of deterioration.	Alternative Facilities	\$ 5,000		
	2014	Oakwood Elementary School	Deferred Maintenance	Replace the deteriorated building public address system. The existing system is original to the building and the condition is poor.	Alternative Facilities	\$21,667		
	2014	Oakwood Elementary School	Deferred Maintenance	Repair the existing pavement surface in the north parking lot and drive and install an overlay of pavement.	Alternative Facilities	\$150,000		
	2014	Oakwood Elementary School	Deferred Maintenance	Replace deteriorated existing handling units that currently provide air conditioned air.	Alternative Facilities	\$290,000		
				Oakwood Elementary School Building Total	Alternative Facilities			\$476,667

Course Code	Fiscal Year	Individual Building Name	MDE Category of Work	Description of Work	Funding Source	Amount	District Capital	Totals
	2014	Plymouth Creek Elementary School	Deferred Maintenance	Replace deteriorated floor material in the 8 rooms	Alternative Facilities	\$ 50,000		
	2014	Plymouth Creek Elementary School	Deferred Maintenance	Replace deteriorated carpeted gym floor material.	Alternative Facilities	\$150,000		
	2014	Plymouth Creek Elementary School	Deferred Maintenance	Repaint some of the existing worn wall surfaces. The wall paint is beyond its useful life expectancy of 7-10 years and is showing signs of deterioration.	Alternative Facilities	\$15,000		
				Plymouth Creek Elementary School Building Total				\$215,000
	2014	Sunset Hill Elementary School	Deferred Maintenance	Replace deteriorated floor material in the 5 rooms	Alternative Facilities	\$30,000		
	2014	Sunset Hill Elementary School	Deferred Maintenance	Repaint some of the existing worn wall surfaces. The wall paint is beyond its useful life expectancy of 7-10 years and is showing signs of deterioration.	Alternative Facilities	\$15,000		
	2014	Sunset Hill Elementary School	Deferred Maintenance	Replace deteriorated classroom built in casework due to deteriorated condition.	Alternative Facilities	\$100,000		
	2014	Sunset Hill Elementary School	Deferred Maintenance	Replace deteriorated carpeted gym floor material.	Alternative Facilities	\$125,000		
				Sunset Hill Elementary School Building Total				\$270,000
	2014	Wayzata High School	Deferred Maintenance	Replace Long Jump runway	Alternative Facilities	\$30,000		
	2014	Wayzata High School	Deferred Maintenance	Repaint some of the existing worn wall surfaces. The wall paint is beyond its useful life expectancy of 7-10 years and is showing signs of deterioration.	Alternative Facilities	\$35,000		
	2014	Wayzata High School	Deferred Maintenance	Replace the Building Automation System in the "B" and "C" Towers. These systems are original to the building and repair and replacement components are unavailable. Portions of the system in this tower have already been replaced.	Alternative Facilities	\$328,000		
	2014	Wayzata High School	Deferred Maintenance	Finish Replacement of Athl Parking Lot	Alternative Facilities	\$200,000		
	2014	Wayzata High School	Deferred Maintenance	Repair and overlay bus corral	Alternative Facilities	\$200,000		
	2014	Wayzata High School	Deferred Maintenance	Replace Stadium Field	Alternative Facilities	\$800,000		
	2014	Wayzata High School	Deferred Maintenance	The existing Exterior Insulation Finish System installed originally on the building is showing signs of deteriorated and discoloration. On the North elevations of the building. Complete the work started in FY 13. These areas require repair and/or replacement.	Alternative Facilities	\$1,000,000		
	2014	Wayzata High School	Deferred Maintenance	Replace approximately 8400SF of deteriorated roof area. All of the roof areas are original to the building (1996) and are showing signs of deterioration and based on a report completed in 2010, have between 5 - 10 years of estimated remaining service life.	Alternative Facilities	\$100,000		
	2014			Wayzata High School Building Total				\$2,693,000



Course Code	Fiscal Year	Individual Building Name	MDE Category of Work	Description of Work	Funding Source	Amount	District Capital	Totals
	2014	West Middle School	Deferred Maintenance	In the upper level south west wing classrooms: replace the deteriorated ceiling system, the deteriorated flooring materials, built-in cabinets and classroom doors and hardware.	Alternative Facilities	\$750,000		
	2014	West Middle School	Health and Safety	Miscellaneous asbestos abatement associated with the work in the lower level Northwest wing classrooms.	Alternative Facilities	\$65,000		
	2014	West Middle School	Deferred Maintenance	Replace loading docks	Alternative Facilities	\$50,000		
	2014	West Middle School	Deferred Maintenance	Replace deteriorated floor material in 5 classrooms.	Alternative Facilities	\$30,000		
	2014	West Middle School	Deferred Maintenance	Repaint some of the existing worn wall surfaces. The wall paint is beyond its useful life expectancy of 7-10 years and is showing signs of deterioration.	Alternative Facilities	\$25,000		
	2014			West Middle School Building Total				\$920,000
	2014	District Wide Projects	Deferred Maintenance	District Wide concrete replacement to replace miscellaneous cracked and deteriorated sidewalk sections.	Alternative Facilities	\$50,000		
	2014	District Wide Projects	Deferred Maintenance	District Wide door and hardware replacement due to condition of miscellaneous doors and hardware at various buildings.	Alternative Facilities	\$100,000		
		District Wide Projects	Deferred Maintenance	District wide miscellaneous asphalt paving repair.	Alternative Facilities	\$150,000		
	2014	District Wide Projects	Deferred Maintenance	District Wide Plumbing Fixture replacement due to condition of miscellaneous fixtures in various buildings.	Alternative Facilities	\$30,000		
	2014			District Wide Projects Building Total				\$330,000
	2014					Alternative Facilities	District Capital	
	2014			TOTAL:		\$12,012,000	\$75,000	\$12,087,000

**INDEPENDENT SCHOOL DISTRICT 284
WAYZATA, MINNESOTA**

**BUDGET AND STAFFING PREPARATION CALENDAR
2012-2013**

School Board Approves Payable 2012 Levy	December 28, 2011
Open enrollment application deadline	January 15, 2012
Board work session -- Discuss Revised Budget for 2011-2012	January 23, 2012
Board work session—Discuss Budget and Staffing Preparation Calendar	January 23, 2012
Capital committee recommends allocations	January 24, 2012
Principals and Administrators submit proposed budget changes to Business Office	January 31, 2012
<i>Employee notification due of leave request, retirement, resignation</i>	<i>February 1, 2012</i>
<i>Board action on mid-year budget adjustments</i>	<i>February 13, 2012</i>
<i>Board action on 2012- 13 leave requests and retirements</i>	<i>February 13, 2012</i>
<i>HR sends 2012-13 Employee Status Summary (includes leaves, return-from-leaves and retirees) to sites</i>	<i>February 15, 2012</i>
Administrative Council reviews proposed allocations and budget changes	February 15, 2012
Update CFAC on Budget Status	February 21, 2012
Preliminary enrollment projections by school distributed.	February 27, 2012
Board Work Session—review preliminary revenues/expenditures and proposed changes	February 27, 2012
Cabinet discussions on preliminary staffing ratios and supplies allocations	March 1, 2012
Economic Forecast released (this is used to determine state budget)	March 1, 2012
Budget materials sent to buildings	March 1, 2012
<i>Staffing allocations completed and sent to sites with the Budget materials</i>	<i>March 2, 2012</i>
<i>Principals inform HR of the possibility of any continuing contract staff positions being discontinued.</i>	<i>March 2, 2012</i>
Budget materials submitted to supervisors for review (Elementary, Middle Schools, all other)	March 12, 2012
Board action on resolution discontinuing individual contracts for continuing contract staff	March 12, 2012
<i>Principal/Supervisor to notify in writing any continuing contract staff that their position will be discontinued. Principal/Supervisor delivers resolution to continuing contract staff member. (In order to exercise bumping rights, employee must request within 7 duty days of the notification).</i>	<i>March 13, 2012</i>

Budget materials submitted to supervisors for review (High School)	March 19, 2012
Budget materials submitted to Business Office (Elementary , Middle Schools, all other) (High School)	March 19, 2012 March 26, 2012
All salary and benefit information submitted to Business Office	March 26, 2012
All budget information entered into Finance System	April 1, 2012
Draft of Proposed 2012-2013 Preliminary Budget to Superintendent's Office	April 15, 2012
Board Work Session – Review Proposed 2012-2013 Preliminary Budget	April 23, 2012
<i>Recommendations from principals regarding probationary (including long-term reserve and one-year contracts) teachers due in HR office. Three written evaluations during this school year must be completed and sent to HR.</i>	<i>May 1, 2012</i>
<i>Board action to non-renew a probationary contract.</i>	<i>May 14, 2012</i>
<i>Formal notice of non-renewal of probationary contract to teacher(s) (principal/supervisor hand delivers)</i>	<i>May 15, 2012</i>
Regular Board Meeting – Approve Preliminary Budget for 2012-2013	June 11, 2012
<i>Final Board meeting for action to discontinue probationary teacher's Contracts.</i>	<i>June 11, 2012</i>

January 23, 2012 Board work Session: LAC 2012 Study Activities

The district's LAC would like to devote time this year to some in-depth study topics or similar activities regarding our Legislative Platform and/or topics pending at the Legislature this session. The Committee wants to ensure that their study work is supportive of the board's interests, priorities, and needs. To do that, its members are looking for some feedback and direction from the board. Representatives of our LAC will be at the January work session to hear your suggestions. Ideally, the LAC should be able to leave our work session with:

- A consensus from the board as to at least one or two issues/projects, and
- An expectation as to how the LAC should coordinate with the board regarding that topic(s). For example, do we want a final report of their learning? Do we want a recommendation regarding the issue?

LAC leadership/your board representatives have some suggestions. These fall into three areas:

1. Study Topics (issue-related)

- Early childhood learning
- Special education mandate relief
- General mandate relief
- Integration aid (also a legislative task force)
- Principal evaluation (also a legislative task force)
- Tiered licensure (also a legislative task force)
- Twin West's legislative platform, reasoning, and view of emerging issues
- Funding reform

2. Project creation

"Telling the Wayzata Story"—compiling a did-you-know story/talking points about the district to share with legislators and others

3. General study for background understanding:

- Minnesota School Funding
- Federal and State Special Education Funding and the Wayzata Cross Subsidy

Both Board and LAC members are welcome to introduce additional suggestions during the Work Session discussion.

WAYZATA PUBLIC SCHOOLS

Independent School District 284
Wayzata, Minnesota

BOARD OF EDUCATION

Regular Meeting - February 13, 2012 - 7:00 PM
Wayzata City Hall, 600 Rice Street, Wayzata

AGENDA

1. CALL TO ORDER/ROLL CALL
2. APPROVAL OF AGENDA AND CONSENT AGENDA
 - A. Approval of Minutes
 1. Regular Board Meeting - January 9, 2012
 - B. Finance and Business Recommendations
 - C. Human Resource Recommendations
3. STUDENT CURRICULUM PRESENTATION
 - A. Wayzata High School Student Presentation
4. RECOGNITIONS
 - A. Employee of the Month - February -
 - B. Wayzata Public Schools 2011-2012 Retirees
 - C. Wayzata Public Schools Education Foundation Grants
5. REPORTS FROM ORGANIZATIONS
 - A. Student Council
6. SUPERINTENDENT'S REPORTS AND RECOMMENDATIONS
 - A. Superintendent
 1. Board Policies and Regulations - Second Reading and Approval
 - a. Board Policy and Regulations - 528 and 528-R - "Bullying/Cyberbullying"
 - B. Teaching and Learning
 1. Four Year Desegregation Plans and Budgets
 - C. Finance and Business Services
 1. Monthly Financial Reports
 - D. Human Resource Services
7. OTHER BOARD ACTION
8. AUDIENCE OPPORTUNITY TO ADDRESS SCHOOL BOARD
9. BOARD REPORTS
10. ADJOURN

WAYZATA PUBLIC SCHOOLS
Independent School District 284
Wayzata, Minnesota

BOARD OF EDUCATION

Work Session – January 23, 2012

AGENDA SECTION: 8. ADJOURN

ITEM: _____

COMMENTS BY: Board Chair Hesby

If there is no additional business before the School Board, the Chair will adjourn the meeting.