

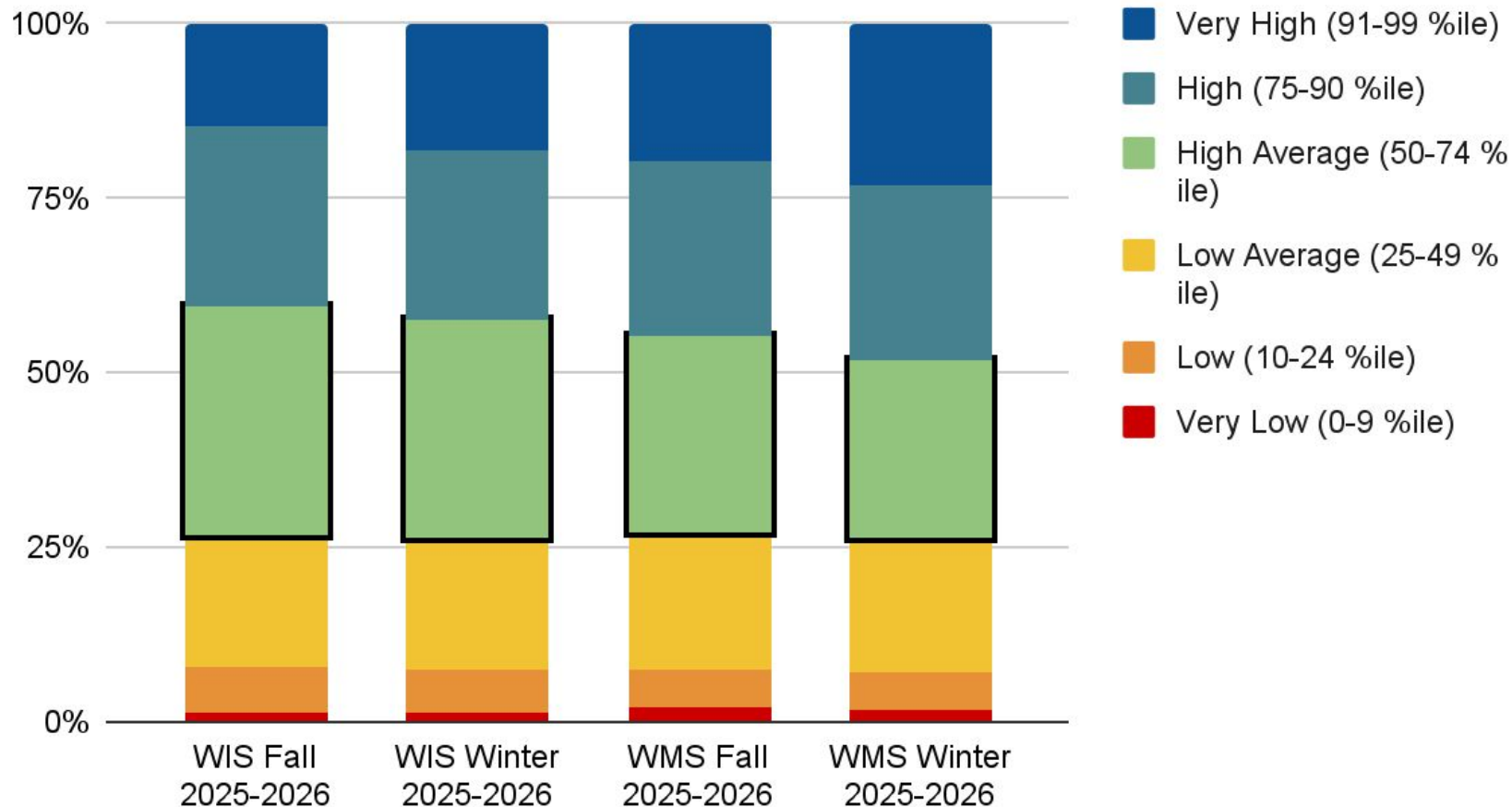
Winter i-Ready Report

Board of Education Curriculum Committee
February 16, 2026

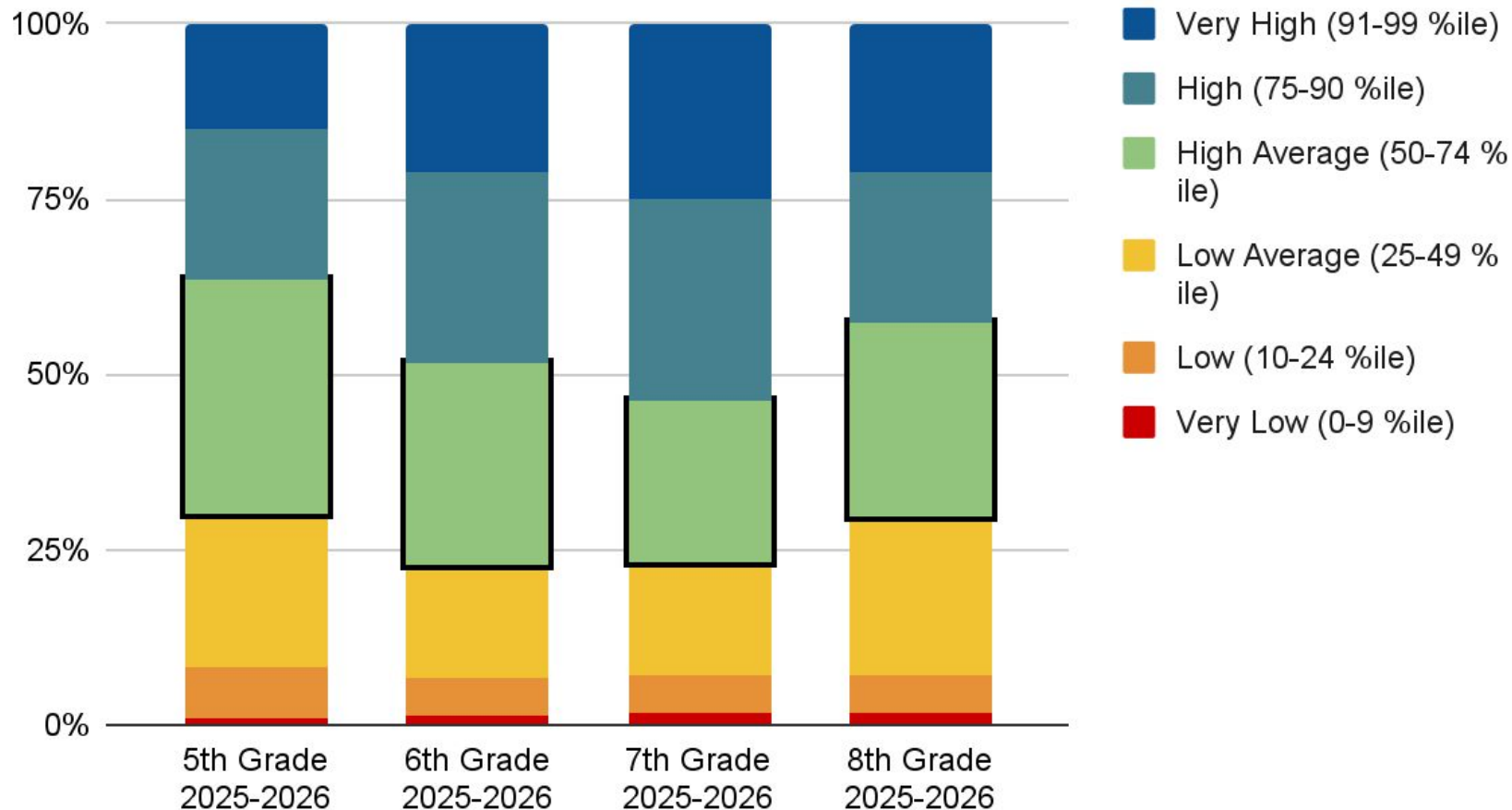
i-Ready Achievement and Growth: What do we look for?

- For achievement, our goal is more than 50% of our students (preferably well more than 50%) at or above the national 50th percentile. We also seek improvement from fall to winter, followed by improvement from winter to spring.
 - 73.6% of students scored at the 50th percentile or higher on i-Ready Reading this winter for grades 5-8 combined.
 - 73.5% of students at the Intermediate School scored at the 50th percentile or higher in Reading.
 - 73.6% of students at the Middle School scored at the 50th percentile or higher in Reading.
 - 77.4% of students have performed at target on i-Ready Mathematics this winter for grades 5-8 combined.
 - 75.8% of students at the Intermediate School scored at the 50th percentile or higher in Mathematics.
 - 79.5 of students at the Middle School scored at the 50th percentile or higher in Mathematics.
- For growth, our goal is for at least 50% of our students to be at or above typical/expected growth.
 - 54.6% of students have met their growth targets on the i-Ready Reading this winter in grades 5-8 combined.
 - 53.1% of students at the Intermediate School met their growth target in Reading. 50.0% of the students in Intermediate target group met their growth target in Reading.
 - 56.3% of students at the Middle School met their growth target in Reading. 49.1% of the students in Intermediate target group met their growth target in Reading.
 - 41.6% of students have met their growth targets on the i-Ready Mathematics this winter in grades 5-8 combined.
 - 42.2% of students at the Intermediate School met their growth target. 37.6% of the students in the target group met their growth target in Mathematics.
 - 40.7% of students at the Middle School met their growth target. 46.5% of the students in target group met their growth target in Mathematics.

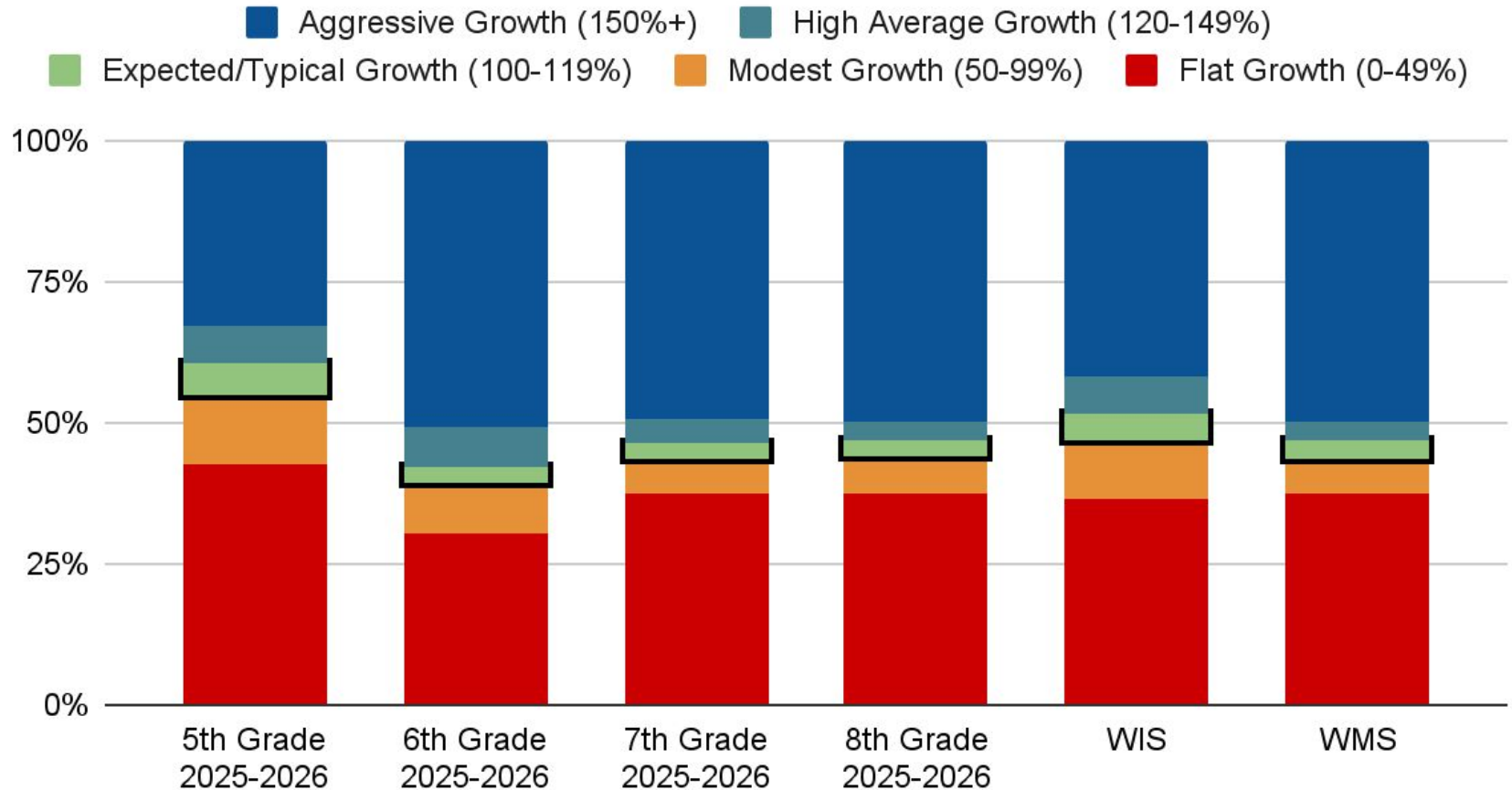
i-Ready Reading Above/Below Median 50th Percentile-Fall-Winter



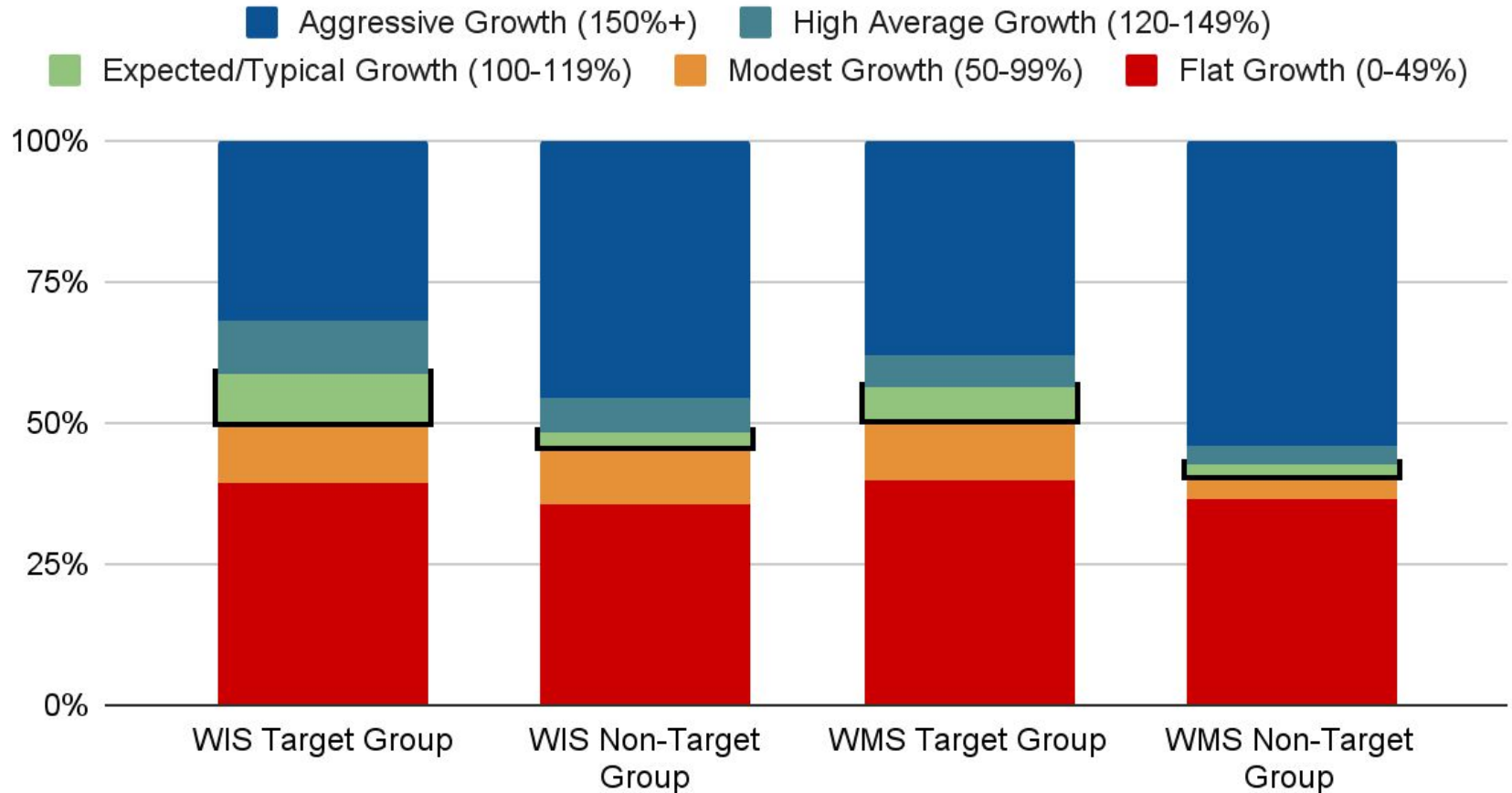
i-Ready Reading Above/Below Median 50th Percentile-Winter by Grade



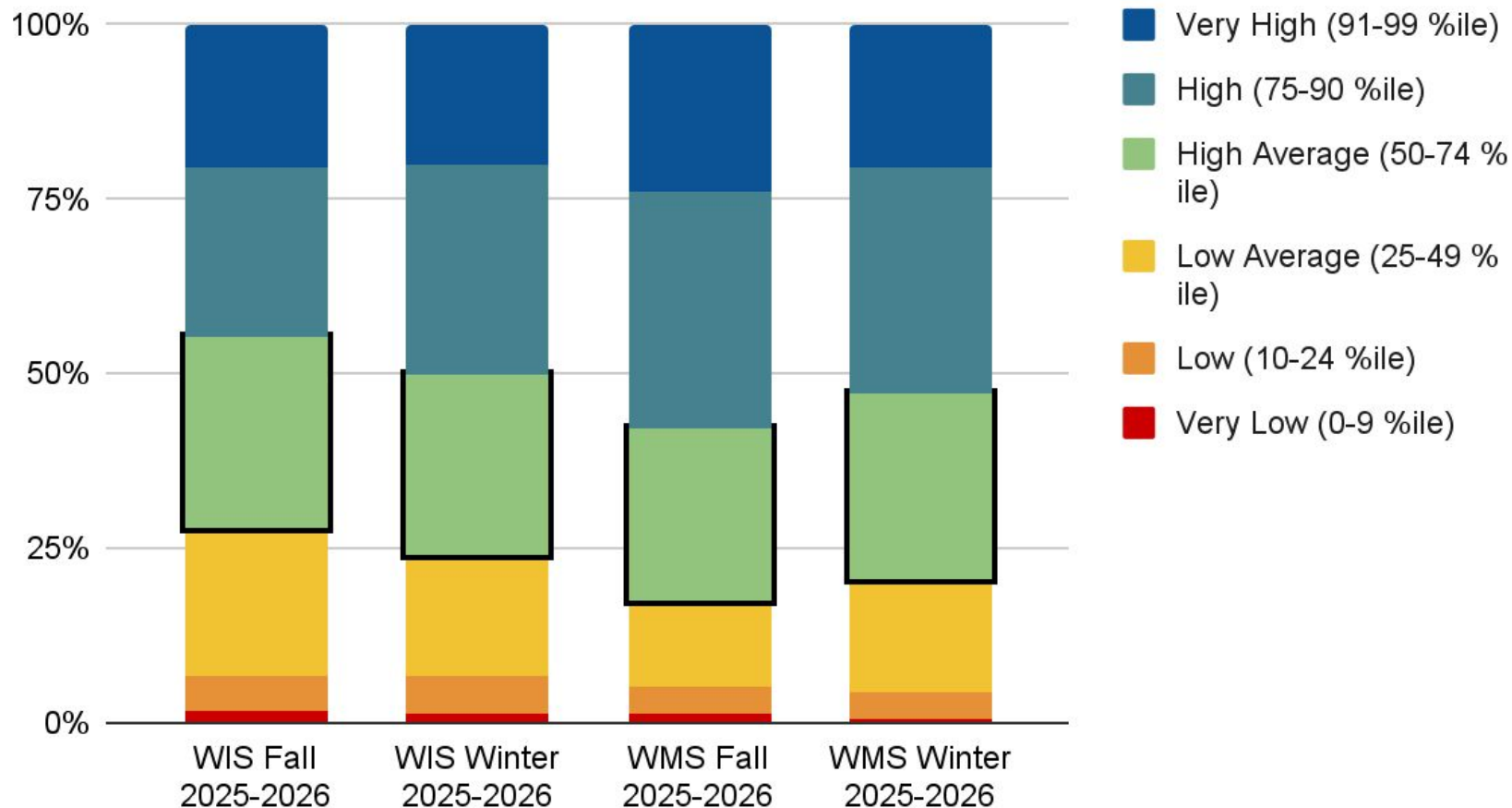
i-Reading Reading Growth Data by Grade and School



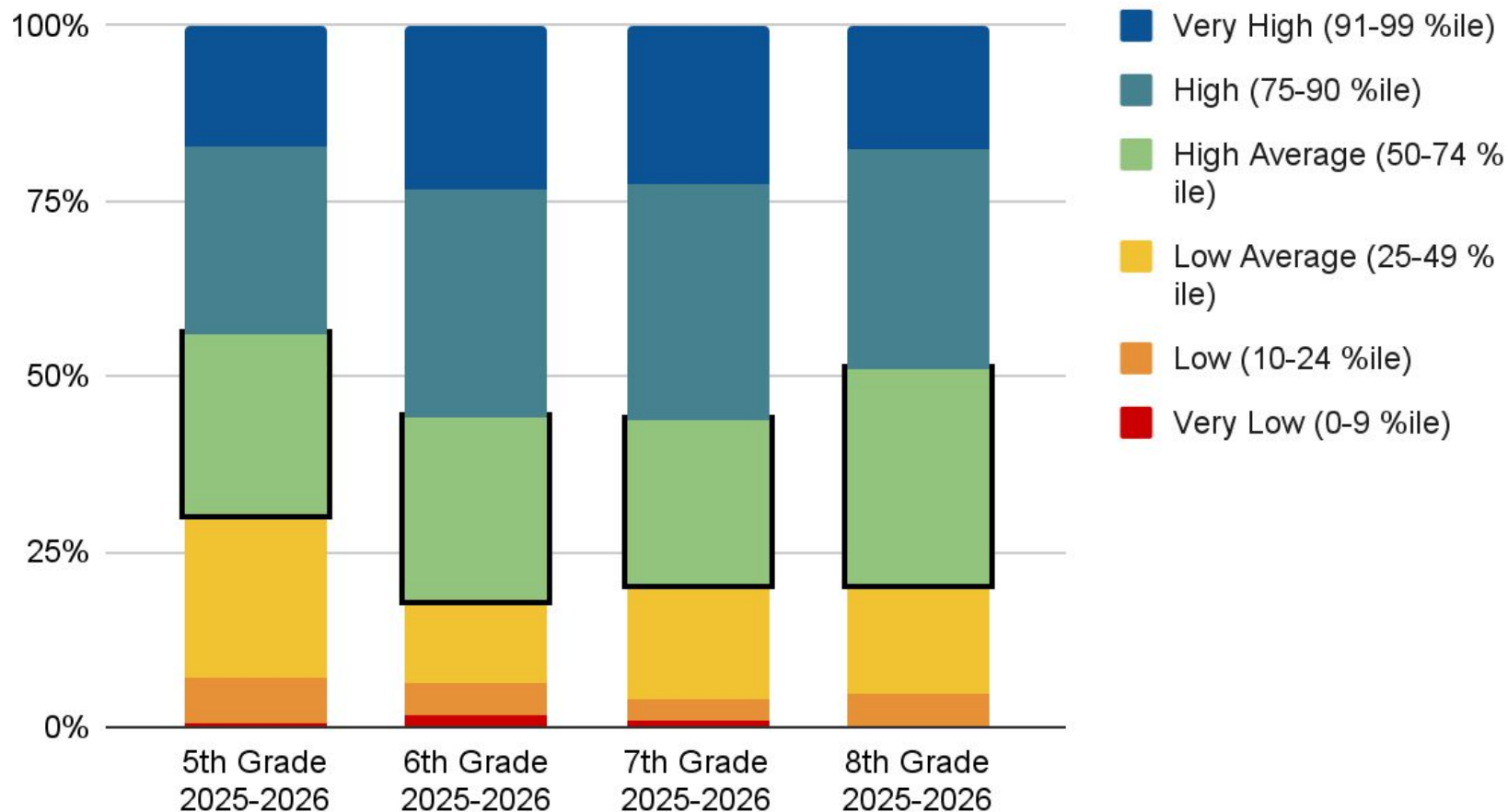
i-Reading Reading Growth Data by Target Group



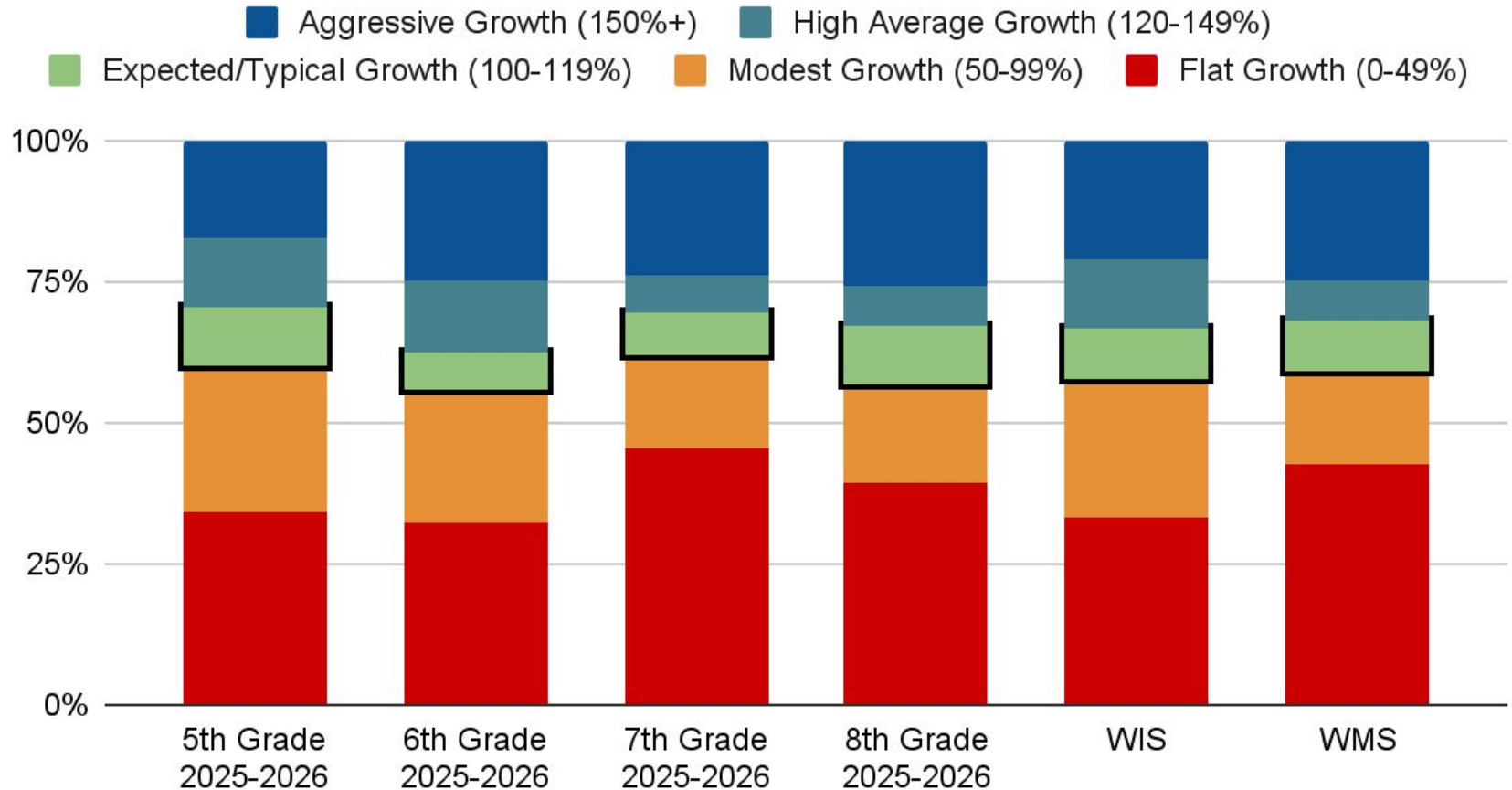
i-Ready Mathematics Above/Below Median 50th Percentile-Fall-Winter



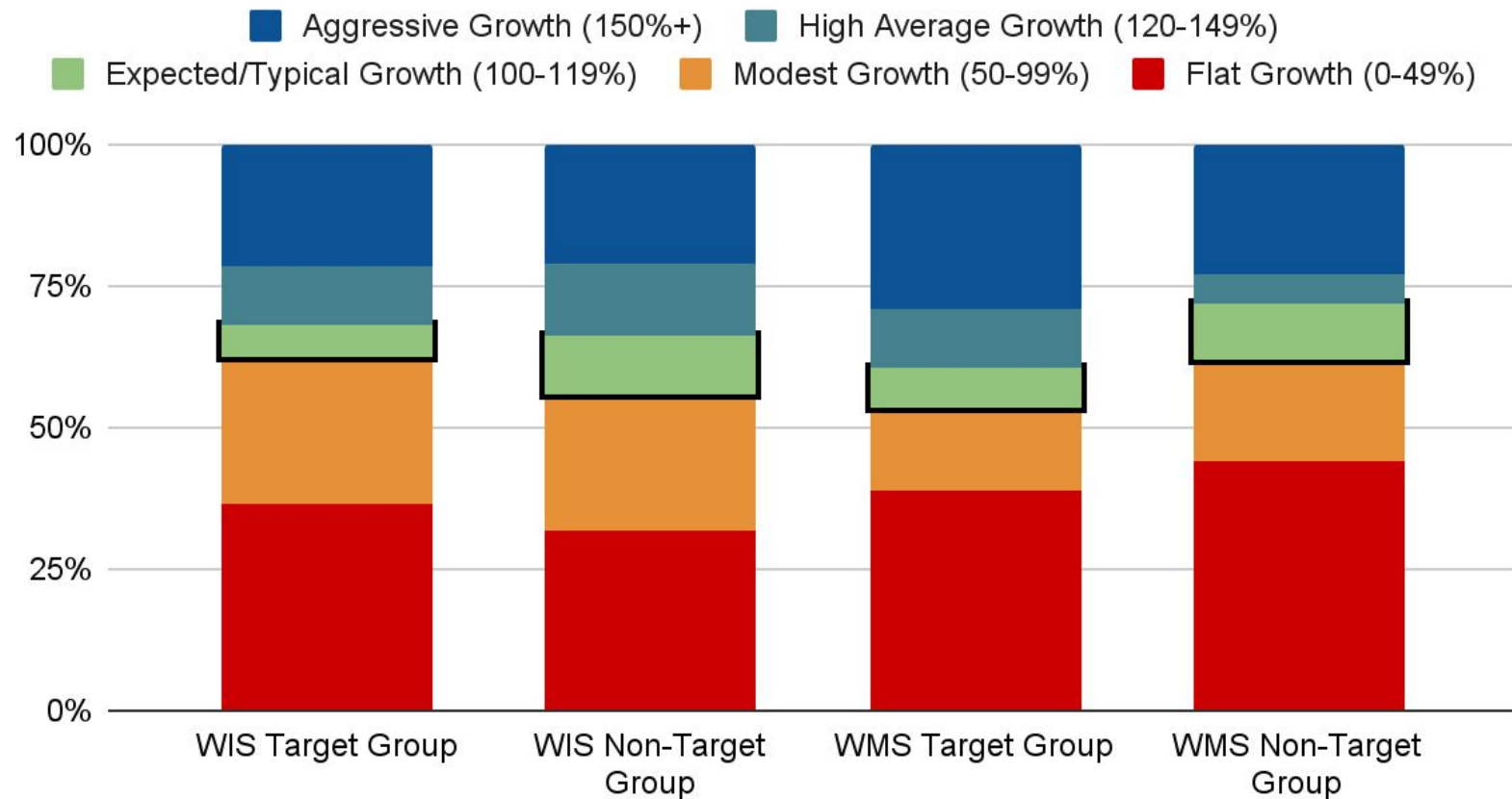
i-Ready Mathematics Above/Below Median 50th Percentile-Winter by Grade



i-Reading Mathematics Growth Data by Grade and School



i-Reading Mathematics Growth Data by Target Group



Your Questions