



**HOWARD
LAKE-WAVERLY-WINSTED
PUBLIC SCHOOLS**
431 4th St N
Winsted, MN 55395

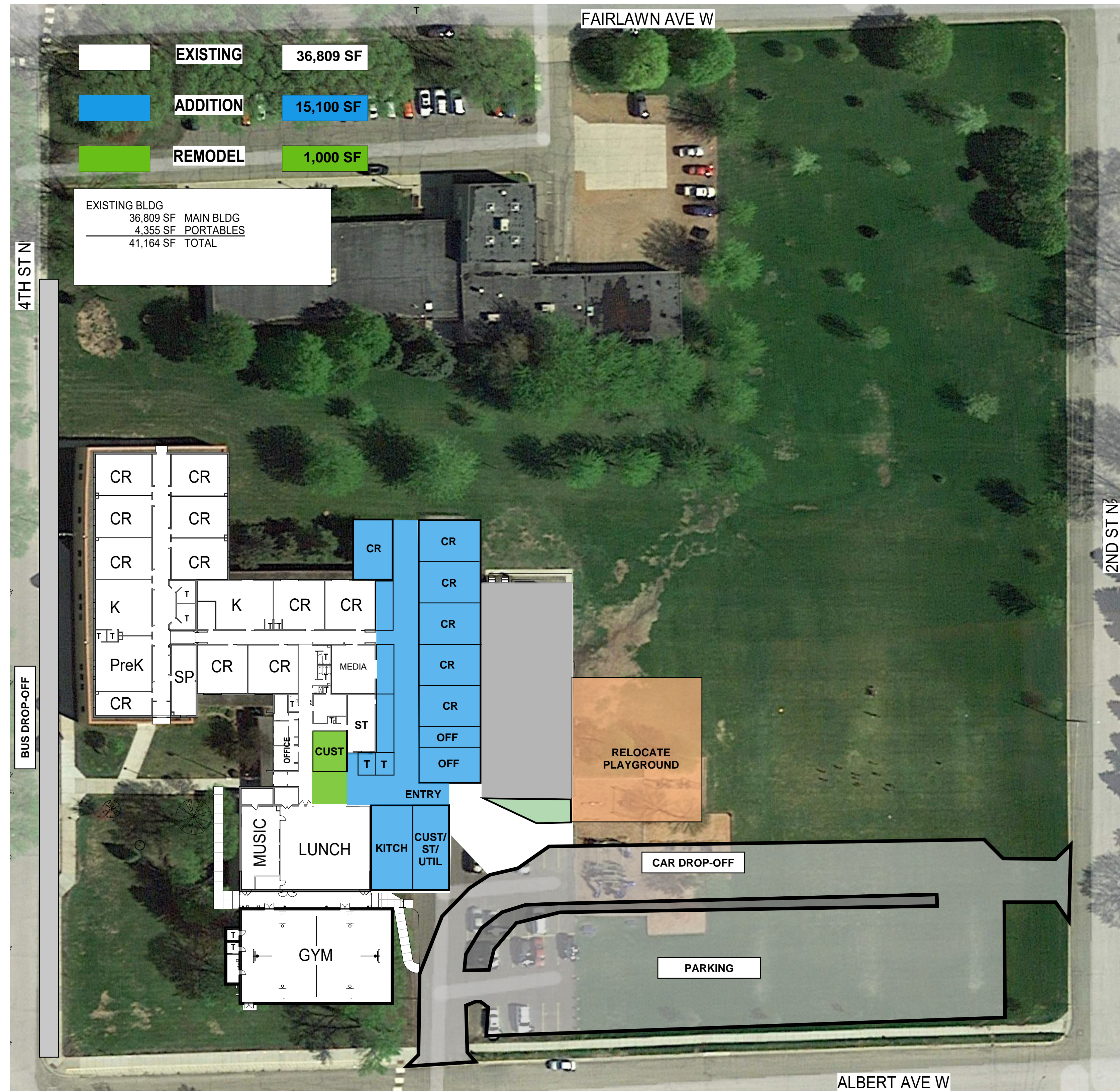
**PRE-REFERENDUM
PLANNING**

NOT FOR CONSTRUCTION



401 North Second Avenue, Suite 206
Minneapolis, MN 55401
612.332.1401

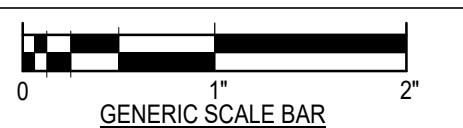
www.wendelcompanies.com
WENDEL ARCHITECTURAL RESOURCES, INC.



NOTE:
THIS DOCUMENT, AND THE IDEAS AND DESIGNS INCORPORATED HEREIN, AS AN INSTRUMENT OF PROFESSIONAL SERVICE, IS THE PROPERTY OF THE ARCHITECT AND ENGINEER AND IS NOT TO BE USED IN WHOLE OR IN PART, FOR ANY OTHER PROJECT WITHOUT THE WRITTEN AUTHORIZATION OF THE ARCHITECT AND ENGINEER. UNAUTHORIZED ALTERATION OR ADDITION TO ANY SURVEY, DRAWING, DESIGN, SPECIFICATION, PLAN OR REPORT IS PROHIBITED IN ACCORDANCE WITH STATE LAW, CODE AND RULES.

NO.	REVISIONS	DATE

DWG. TITLE
WINSTED - EXISTING PLAN



SCALE BAR SHOWN IS TWO INCHES ON THE ORIGINAL DRAWING.
IF NOT TWO INCHES ON THIS SHEET, ADJUST ACCORDINGLY

DATE 01/14/22
SCALE 1" = 40'-0"
DWN. Author CHK. Checker
PROJ. No. 040619
DWG. No.

1 EXISTING PLAN - WINSTED
SCALE: 1" = 40'-0"



HLWW PUBLIC SCHOOLS

803 ELM AVE
WAVERLY, MN 55390

HUMPHREY ELEMENTARY
ADDITION AND REMODEL

PLANNING



401 North Second Avenue, Suite 206
Minneapolis, MN 55401
612.332.1401

www.wendelcompanies.com

WENDEL ARCHITECTURAL RESOURCES, INC.

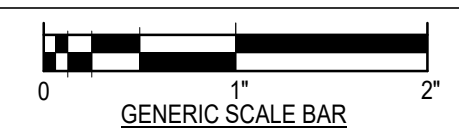


NOTE:
THIS DOCUMENT, AND THE IDEAS AND DESIGNS INCORPORATED HEREIN, AS AN INSTRUMENT OF PROFESSIONAL SERVICE, IS THE PROPERTY OF THE ARCHITECT AND ENGINEER AND IS NOT TO BE USED IN WHOLE OR IN PART, FOR ANY OTHER PROJECT WITHOUT THE WRITTEN AUTHORIZATION OF THE ARCHITECT AND ENGINEER. UNAUTHORIZED ALTERATION OR ADDITION TO ANY SURVEY, DRAWING, DESIGN, SPECIFICATION, PLAN OR REPORT IS PROHIBITED IN ACCORDANCE WITH STATE LAW, CODE AND RULES.

NO.	REVISIONS	DATE

DWG. TITLE

HUMPHREY - EXISTING PLAN



SCALE BAR SHOWN IS TWO INCHES ON THE ORIGINAL DRAWING. IF NOT TWO INCHES ON THIS SHEET, ADJUST ACCORDINGLY.

DATE 01/14/22
 SCALE 1" = 40'-0"
 DWN. Author CHK. Checker
 PROJ. No. 040620
 DWG. No.

1 EXISTING PLAN - HUMPHREY
 SCALE: 1" = 40'-0"