

BELLVILLE INDEPENDENT SCHOOL DISTRICT

BOARD REPORT | Emergent Bilingual Program

March 2026

EMERGING BILINGUAL STUDENT PROGRAMS

ANNUAL EVALUATION | Updated 2.24.2026

BILINGUAL EDUCATION EXCEPTION

BISD filed a Bilingual Education Exception for the 24th consecutive year in 2025-2026.

The 2025-2026 Bilingual Education Exception will cover 116 students in 7 classrooms in grades PK-5 at O'Bryant Primary, O'Bryant Intermediate, and West End Elementary.

BISD would need to hire 6 Bilingual teachers to cover these students in order to not have to file an Exception.

BISD last hired a bilingual teacher in 2023-2024 for Kindergarten (currently have two - PK & Kindergarten).

ESL WAIVER

BISD filed an ESL Waiver for the 7th time in 2025-2026 (1st time in 2018-2019).

TITLE III, PART A

Title III, Part A - English Language Acquisition, Language Enhancement, and Academic Achievement Act is part of the Every Student Succeeds Act (ESSA) and provides for supplementary support to English Learners.

Bellville ISD is a member of the Region 6 Title III, Part A Shared Service Arrangement.

BILINGUAL/ESL BY THE NUMBERS

Spanish Speaking EB Students per Grade

PK	K	1	2	3	4	5	6	7	8	9	10	11	12
11	22	18	21	20	28	25	20	19	29	22	20	22	13

A bilingual program is required in Grades PK-5 beginning with PK if a school district has an enrollment of 20 or more EB students in any language in the same grade district-wide. BISD currently has a teacher at PK and Kindergarten; 11 students in PK and 22 students in Kindergarten.

BILINGUAL PROGRAM OFFERED IN BISD

Transitional/Early Exit

- ❑ Students begin instruction in their home language (usually Spanish) along with English.
- ❑ The goal is to help them learn grade-level content while building English skills.
- ❑ As students gain English proficiency, support in the home language is gradually reduced.
- ❑ Students are expected to transition fully into English-only instruction, usually by the end of elementary school (early exit).

ESL CONTENT-BASED & PULL-OUT

The BISD ESL program serves students who are Emerging Bilingual Students in English Only.

ESL Content-based Instruction - 16 Students

ESL Pull-out Instruction - 132 Students

DISTRICT ENROLLMENT/EB ENROLLMENT/EXIT HISTORY

School Year	EB Enrollment	EB %	# of Exits	Exit %
2021-2022	217	9.29	2	0.92
2022-2023	227	10.18	2	0.88
2023-2024	238	10.42	20	8.4
2024-2025	262	11.32	15	5.7

School Year	Parent Denials	Monitor Year 1	Monitor Year 2
2021-2022	3	1	2
2022-2023	4	3	1
2023-2024	3	2	3
2024-2025	4	15	19

EB ENROLLMENT-CURRENT 2025-2026 BY CAMPUS

Campus	Campus Enrollment	EB Enrollment	EB % (of total campus)	EB % (of total EB)
BHS	771	65	8.43	26
BJH	540	51	9.44	20
Secondary	1311	116	8.85	46.4
OBP	558	85	15.23	34
OBI	309	42	13.59	16.8
WE	147	7	4.76	2.8
Elementary	1014	134	13.21	53.6
District	2325	250	10.75	100

LANGUAGES OTHER THAN ENGLISH SPOKEN IN BISD

2018-2019 -- (4) - Spanish, Cambodian (Khmer), Mandarin (Chinese), Ukrainian

2019-2020 -- (5) - Spanish, Cambodian (Khmer), Mandarin (Chinese), Polish, Ukrainian

2020-2021 -- (5) - Spanish, Cambodian (Khmer), Mandarin (Chinese), Polish, Ukrainian

2021-2022 -- (7) - Spanish, Cambodian (Khmer), Mandarin (Chinese), Polish, Ukrainian,
German, French

2022-2023 -- (5) - Spanish, Cambodian (Khmer), Mandarin (Chinese), Polish, French

2023-2024 -- (5) - Spanish, Cambodian (Khmer), Mandarin (Chinese), Polish, French

2024-2025 -- (5) - Spanish, Cambodian (Khmer), Mandarin (Chinese), Polish, Pilipino
(Tagalog)

2025-2026 -- (4) - Spanish, Cambodian (Khmer), Mandarin (Chinese), Turkish

YEARS IN US SCHOOLS

Years	Number	Percentage
1	21(16 are Grade 1)	9.6
2	20	9.2
3	27	12.4
4	28	12.9
5	24	11.1
6+	97	44.7

ACADEMIC PROGRESS - STAAR READING

Grade	% Approaches EB/All Students	% Meets EB/All Students	%Masters EB/All Students
3	59/74	37/48	11/16
4	60/81	20/48	0/20
5	39/70	22/53	11/27
6	47/71	29/52	6/23
7	57/76	22/53	0/25
8	21/76	5/59	5/30
English I	32/79	8/64	0/24
English II	44/81	11/60	0/4

ACADEMIC PROGRESS - STAAR MATH

Grade	& Approaches EB/All Students	% Meets EB/All Students	% Masters EB/All Students
3	56/68	37/37	7/13
4	55/70	20/46	0/22
5	56/75	22/45	6/20
6	65/75	35/38	0/17
7	39/61	9/41	4/17
8	42/60	5/33	5/10
Algebra I	47/78	3/38	3/18

ENGLISH PROFICIENCY (TELPAS 2025)

Grades 1-2

Years in US Schools	Composite - % Beginning	Composite - % Intermediate	Composite - % Advanced/ Advanced High
1	25	35	40
2	12	70	18
3	0	100	0

Grades 3-12

Years in US Schools	Composite - % Beginning	Composite - % Intermediate	Composite - % Advanced/ Advanced High
1	40	40	20
2	50	13	37
3	4	32	64
4	8	57	35
5+	4	39	57

STAFF

5 Bilingual Paraprofessionals

2 Bilingual Teachers

98 ESL Certified Staff

PROFESSIONAL DEVELOPMENT

BISD is required to develop a Comprehensive Professional Development Plan whenever a Bilingual Education Exception or ESL Waiver is submitted.

The 2024-2025 plan included the following:

- Region 6 Bilingual/ESL Contracted Services provided technical assistance and professional development targeting all levels of district and campus personnel that provide ongoing support for English language learners
- TABE and Title III Symposium Conferences for two elementary Bilingual teachers and two elementary ESL teachers

PARENTAL ENGAGEMENT

- ESL FIESTA - Family Involvement Encourages Students To Achieve - Elementary and Secondary Bilingual and ESL parent meetings to collaborate with parents on ensuring the success of their students and to inform parents of activities going on at the campuses.
- PK/Kindergarten Round-up - ESL staff meets with parents and students to help register, translate, administer formal assessments for students to determine eligibility for Bilingual/ESL program, and bilingual teacher met students and performed an informal assessment with students.
- Provide translation for teachers and administrators as needed for parents
- Literacy and Numeracy activities were purchased and sent home at the end of the school year with elementary EB students along with information on how to use the activities as a family

SUMMER SCHOOL

Bellville ISD provides the state required Summer School for students entering Kindergarten and Grade 1 who are identified as EB students. Mrs. Villasana is expecting close to 15 students again this year.

New ELPS 2026-2027

Navigating the 2026-2027 Texas ELPS Update

A high-level overview for Texas educators and administrators on the timeline and structural changes for the new English Language Proficiency Standards (ELPS).



Current ELPS (until 2026-2027)

LEAs must use current ELPS until the official transition in the 2026-2027 school year.



Implementation Year: 2026-2027



New ELPS (Starting 2026-2027)
The standards are moving from Chapter 74 to a new dedicated chapter.

Relocated to 19 TAC Chapter 120



Chapter 74



Chapter 120



TELPAS Alignment Update

The TELPAS assessment will be updated to align with the new five-level standards.

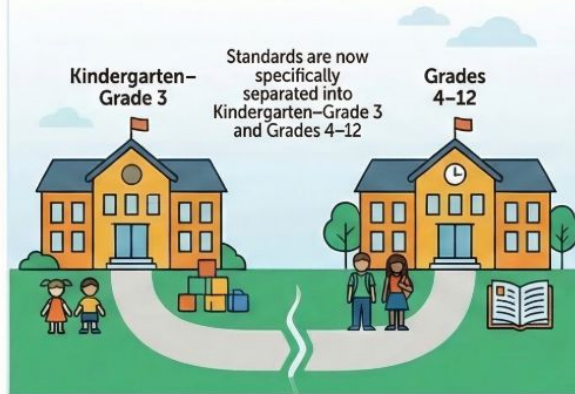
Five Proficiency Levels



Current ELPS Levels (4)	New ELPS Levels (5)
Beginning	1. Pre-Production
Intermediate	2. Beginning
Advanced	3. Intermediate
Advanced High	4. High Intermediate / 5. Advanced

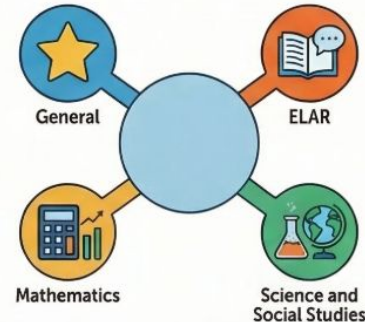
Structural Shifts

Distinct Grade Bands



Content-Specific Descriptors

PLDs now include sections for General, ELAR, Mathematics, Science, and Social Studies.



QUESTIONS

