

New Fairfield Elementary School: Reorganized Leadership Structure & Support

**Board of Education Meeting
April 6, 2026**

NFES: One School, One Identity



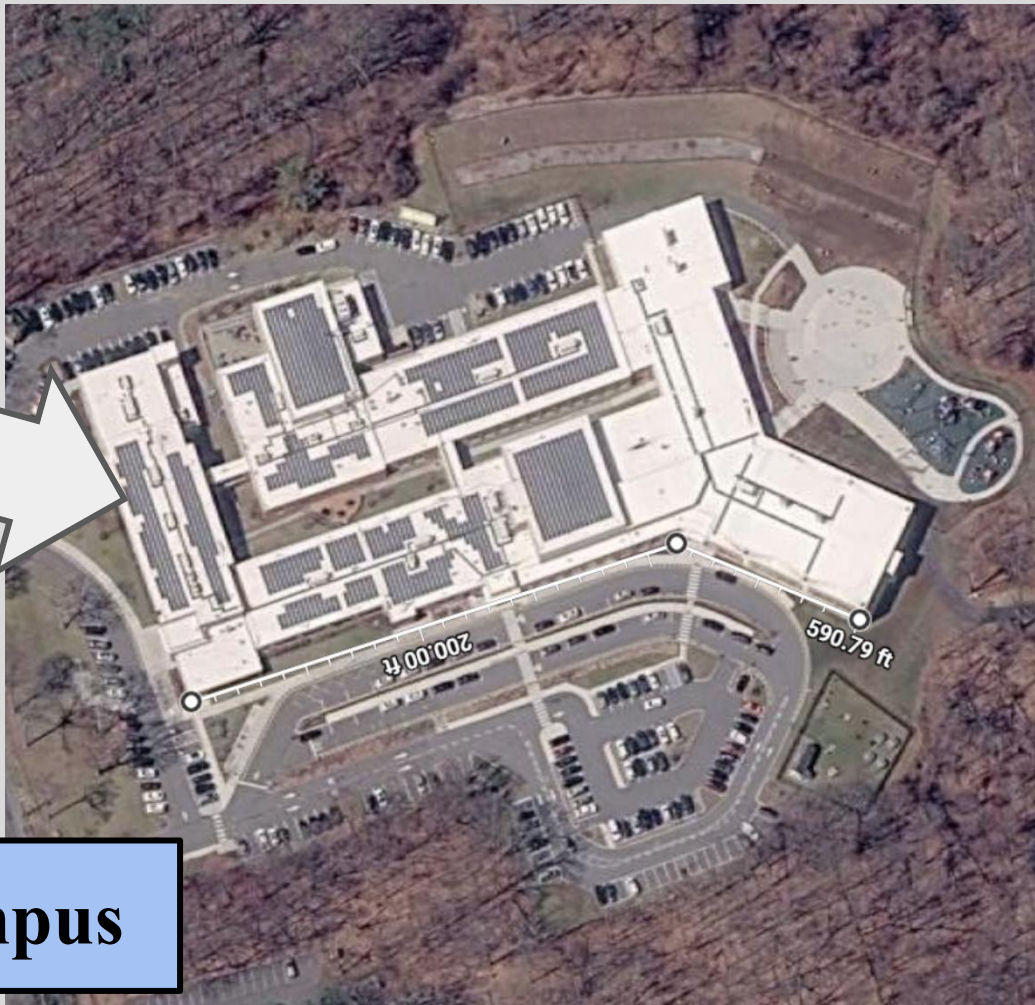
About NFES

By the Numbers

- 956 students (PK-grade 5)
- 646 families
- 92 certified staff (teachers, PPS, & Spec. ed. teachers)
- 79 non-certified staff (paras, custodians, secretaries)
- 45% of all district staff are located at NFES

Campus

- 3 levels in one wing
- 140,000 sq. ft.
(double the regional elementary avg. of 70,000–80,000 sq. ft.)



3 Levels

NFES Campus

How NFES Compares Regionally

- Across 56 elementary schools in southwestern Connecticut (spanning 14 districts), the average number of students in an elementary school is 433.
- Square footage data
 - Average elementary school 70,000-80,000 square feet.
 - NFES is more than double this average → scale requires re-evaluation of leadership

Comparison of Administrative Structures

Grades	Current Configuration	
PreK-5	Campus Principal	Allyson Story
K-1	K-1 Assistant Principal	Rob Spino
2-3	2-3 Assistant Principal	Alyce Misuraca
3-5	4-5 Assistant Principal	Jen Hilderbrand

Comparison of Administrative Structures

Grades	2026-27 Configuration	
PreK-2	Lower House Principal	Allyson Story
3-5	Upper House Principal	Jen Hilderbrand
PreK-2	Lower House Assistant Principal	Rob Spino
3-5	Upper House Assistant Principal	Alyce Misuraca

Positioning NFES for the Future

A School of This Scale Requires a Different Model

- At 956 students, NFES significantly exceeds regional norms in both enrollment and facility size

Developmentally Aligned Structure

- PreK-2 and Grades 3-5 reflect distinct stages of student growth
- Leadership can better respond to academic, social, and behavioral needs at each level

Stronger Instructional Leadership

- Dedicated principals allow for deeper focus on teaching and learning

Positioning NFES for the Future

Clarity and Responsiveness for Families

- Clear points of contact for communication and support
- Streamlined, responsive decision-making at the building level

Sustainable and Future-Focused

- Positions the school to meet increasing student needs
- Builds leadership capacity and long-term organizational stability

In Summary, What's New?

- Dedicated principal for each house
- Dedicated assistant principal for each house
- Focus of instructional leadership at the house level
- Clarity of roles and responsibilities (for staff and families)

This model is a staffing and cost-neutral reorganization that uses existing talent.

What Remains the Same?

Culture

- Shared identity as New Fairfield Elementary School
- Shared Rebel mascot and school spirit
- Continued opportunity for cross-grade connections for students
- Seamless transition from PK-2 to grades 3-5

Operations

- Start / end times, bus schedules
- NFES schedules (master schedule, recess/lunch, specials)
- Shared spaces ... cafeteria, gyms, library, playground
- Continuity of staff and shared staffing (paras, PPS, specials)

Questions?

