



FORT SMITH PUBLIC SCHOOLS LONG RANGE FACILITY COMMITTEE PROPOSAL



ADDRESSING AGING FACILITIES

Facility Consolidation Rationale

- Multiple departments currently housed across three aging facilities, including one over 100 years old
- Buildings no longer support modern safety, technology, and operational needs
- Consolidation improves efficiency, coordination, and service delivery across the district
- Relocation supports long-term sustainability and alignment with district priorities

Departments Impacted:

Technology, Curriculum and Instruction and Assessment, Athletics and Activities, Information Systems, Police Department, Adult Education Center

1922



1919



1908



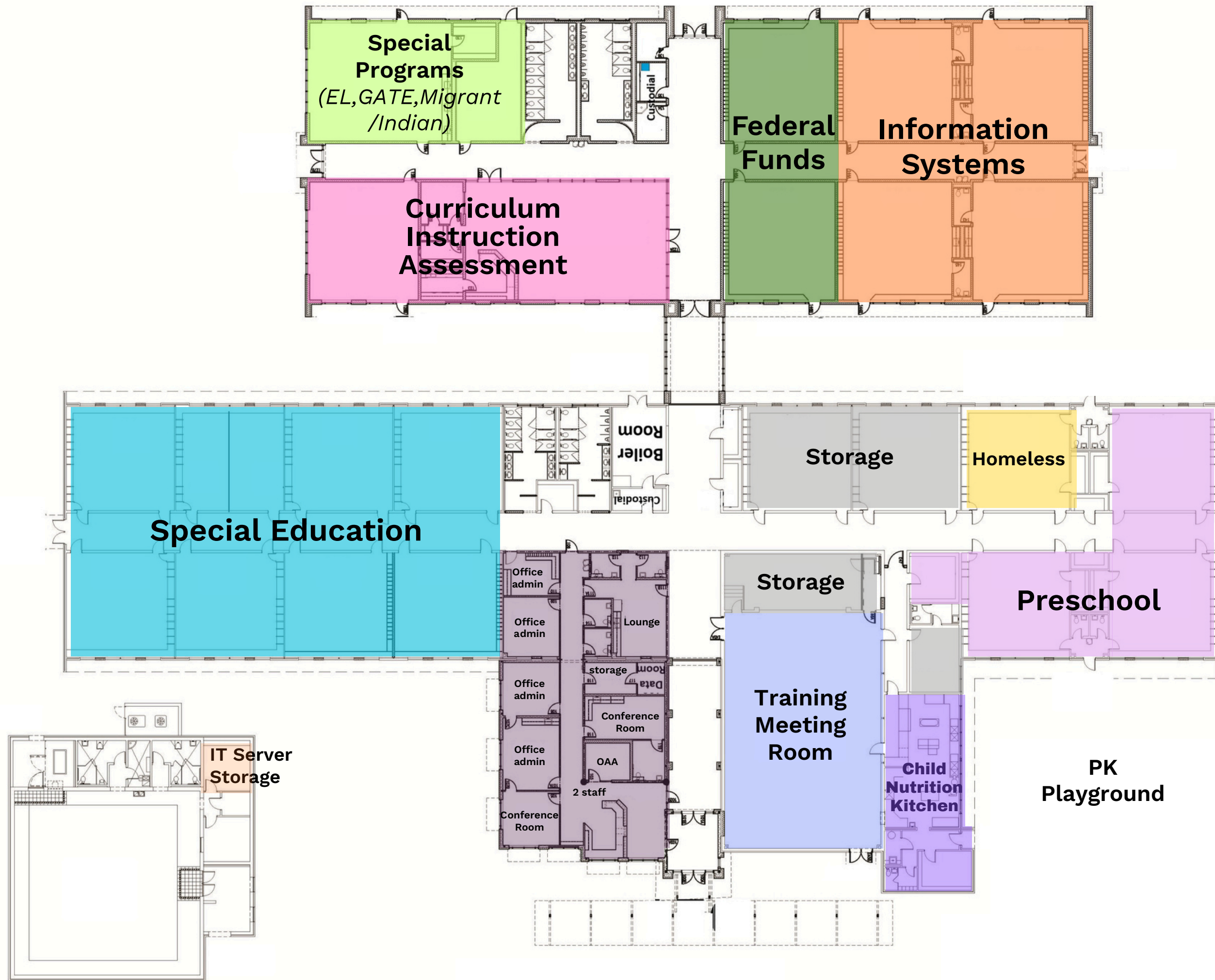
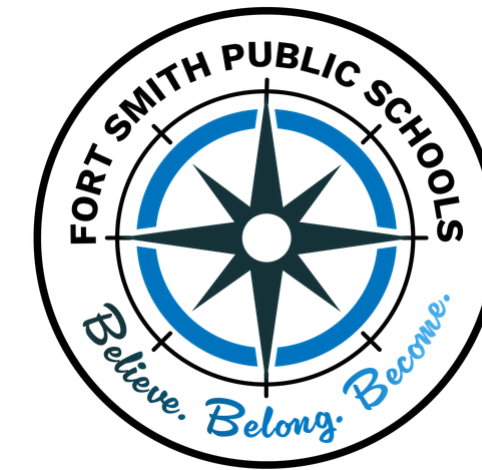
CARNALL ELEMENTARY

Strategic Benefit

- Centralizes Curriculum, Instruction and Assessment, Special Education, Federal Programs, and Information Systems into a single, unified location
- Provides adequate capacity to co-locate all departments within a single facility
- Enables consistent, day-to-day collaboration across teams
- Strategically located near the Service Center to enhance access and coordination
- Improves alignment, collaboration, and overall operational efficiency



Believe. Belong. Become.

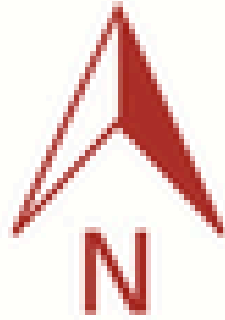


SPRADLING ELEMENTARY

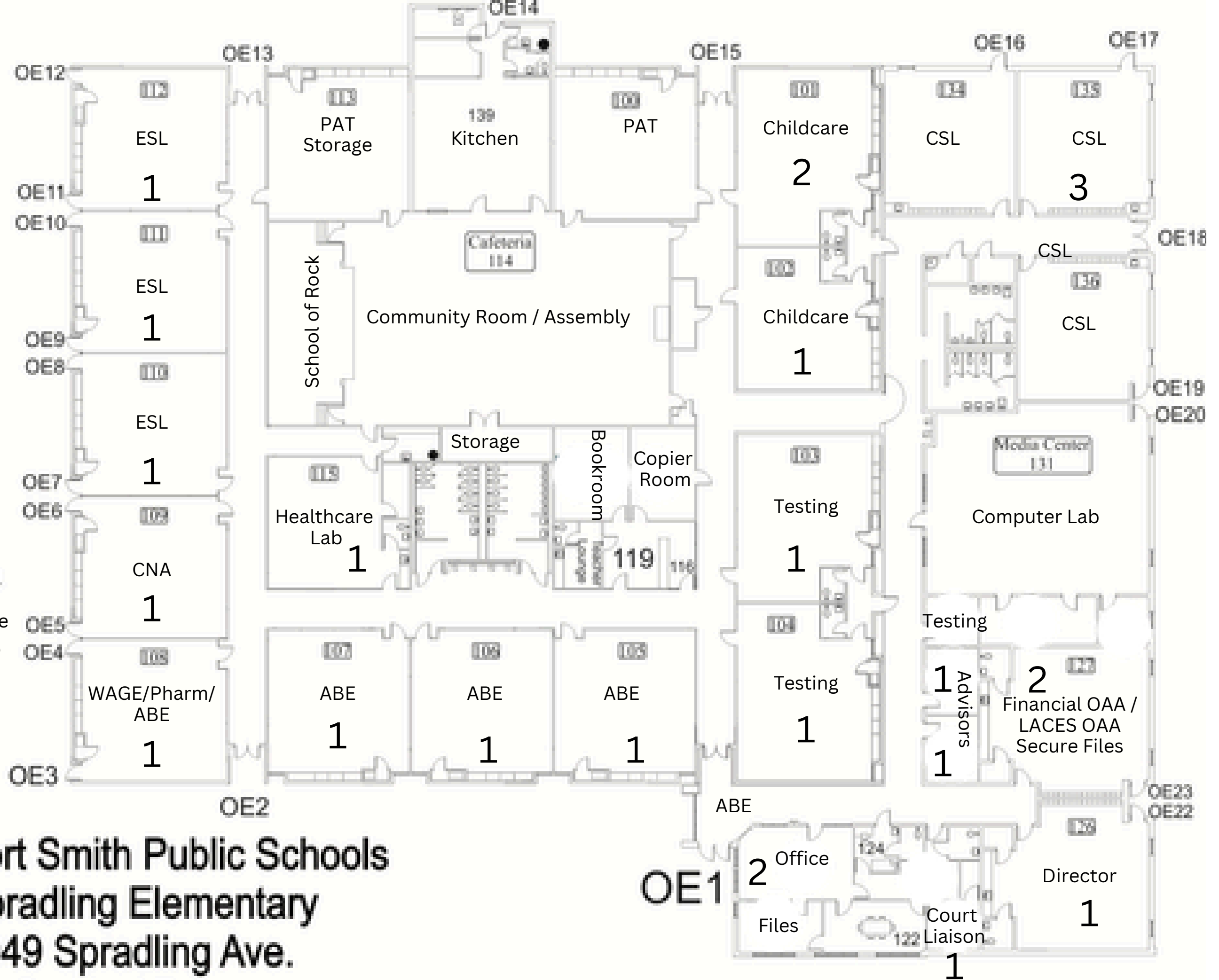
Strategic Benefit

- Maximizes shared use: Pre-K, Children's Service League (CSL) and Parents as Teachers (3 classrooms) with Adult Education utilizing remaining space
- Aligns to instructional needs: ESL and GED clusters, secure testing, daycare, intake, and controlled access offices
- Provides accessible, functional space with ADA access, efficient traffic flow, parking, shelter, and transit
- Establishes a professional, purpose-built environment for adult learners





OE24
Storage
Office



**Fort Smith Public Schools
Spradling Elementary
4949 Spradling Ave.
Ft. Smith, AR**

CENTER BUILDING D

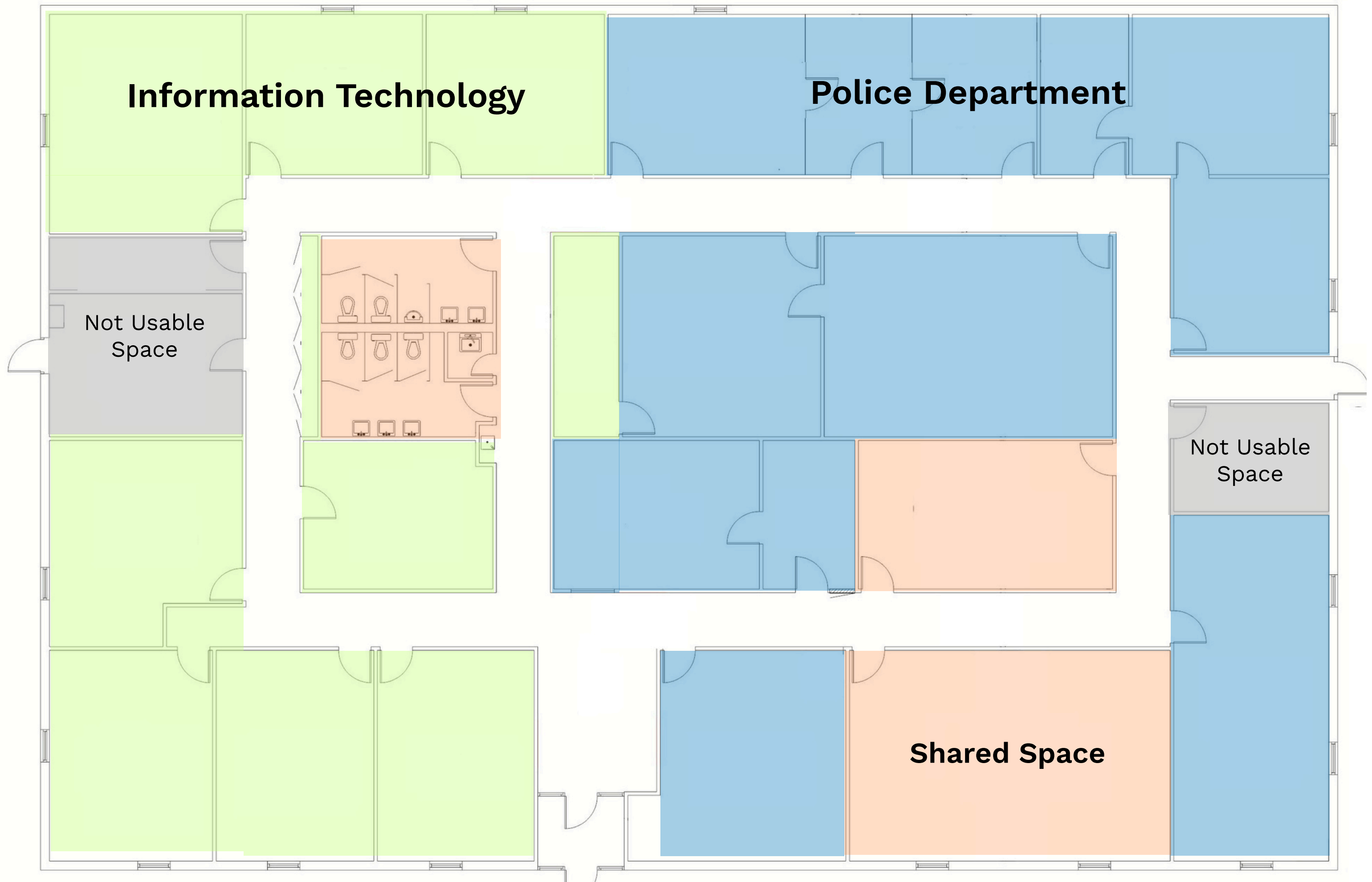
Previously Special Education

Strategic Benefit

- Establishes a dedicated facility for safety, security, and technology operations supporting district continuity and risk management
- Centralizes police and technology functions to strengthen coordination and response
- Ensures compliance with Arkansas law, ACIC, NCIC, and accreditation requirements
- Safeguards sensitive data and investigative processes



Believe. Belong. Become.



CENTER BUILDING B

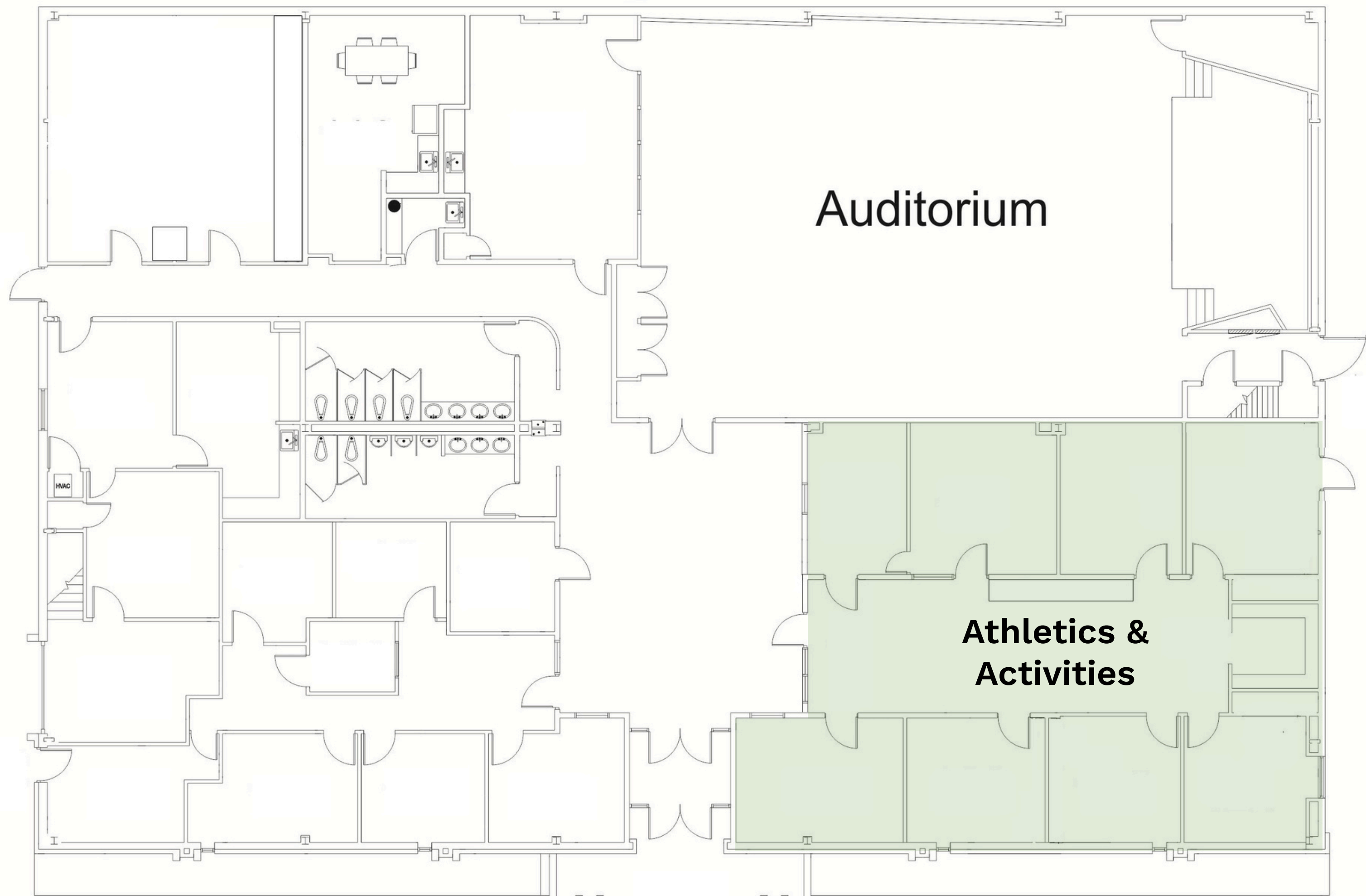
Previously Curriculum and Instruction

Strategic Benefit

- Supports district-wide athletics operations through a centralized, accessible location
- Improves coordination, communication, and community engagement
- Provides sufficient space for daily operations and future program growth
- Enhances workflows, staff collaboration, and responsive service to schools



Believe. Belong. Become.



Auditorium

Athletics & Activities

INSTRUCTION BUILDING "B"

POTENTIAL EXPENSES



01



Parking Space

\$4,500 each
\$195,000 total

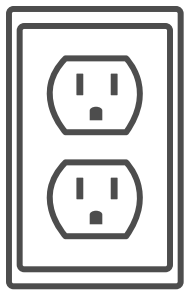
02



Data Drop

\$550 each
\$61,000 total

03



Outlet

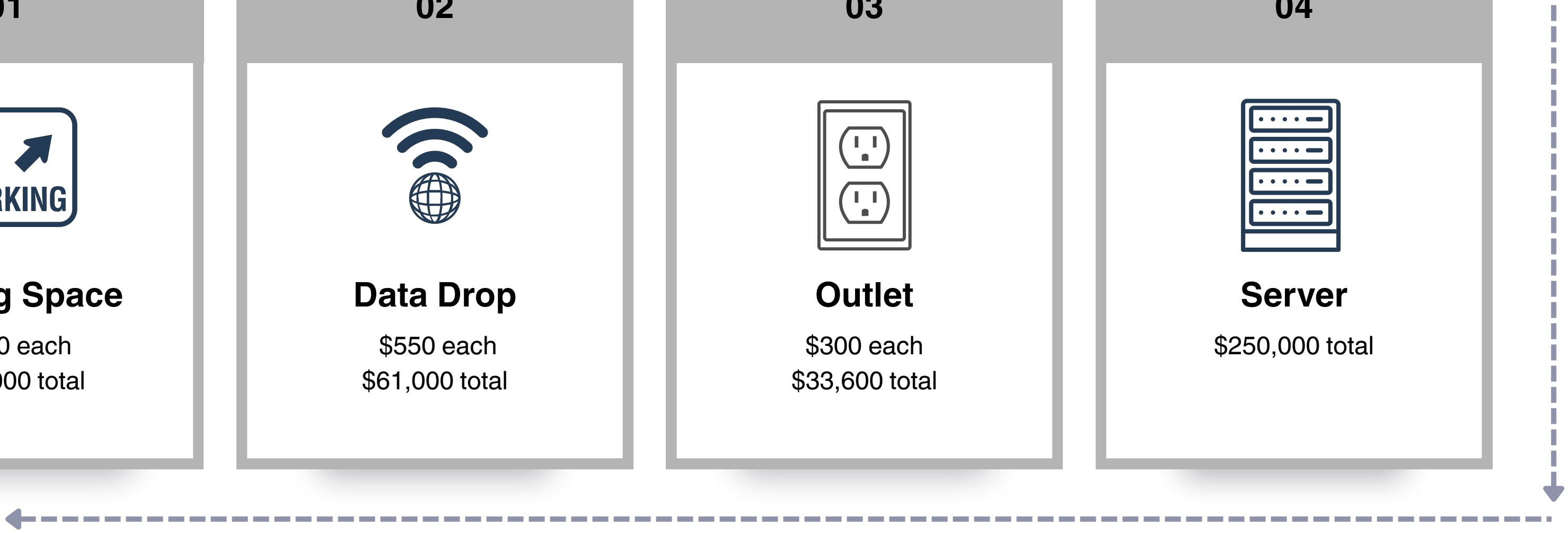
\$300 each
\$33,600 total

04



Server

\$250,000 total



Believe. Belong. Become.



Mr. Darrell Stovall

Chair, Long-Range Facility Planning Committee

Mr. Stovall, is the engineering manager for Riverfront Exploration and a long-time friend of Fort Smith Public Schools. He was instrumental in the concept development and the construction of the Indoor Activity Centers on the Northside and Southside campuses. He served on the 2018 Citizens Committee Project that resulted in the first successful increase in FSPS millage in 30 years. He recently retired from the FSPS Foundation Board.



Believe. Belong. Become.

RECOMMENDATION

1

Move the Parker Center staff to Carnall Elementary

2

Move the Rogers Center staff to both Carnall Elementary and the Service Center

3

Move Adult Education staff to Spradling Elementary