

SOUTHWEST

TEXAS ★ COLLEGE

SWTX CONSTRUCTION REPORT

MAY 21, 2026



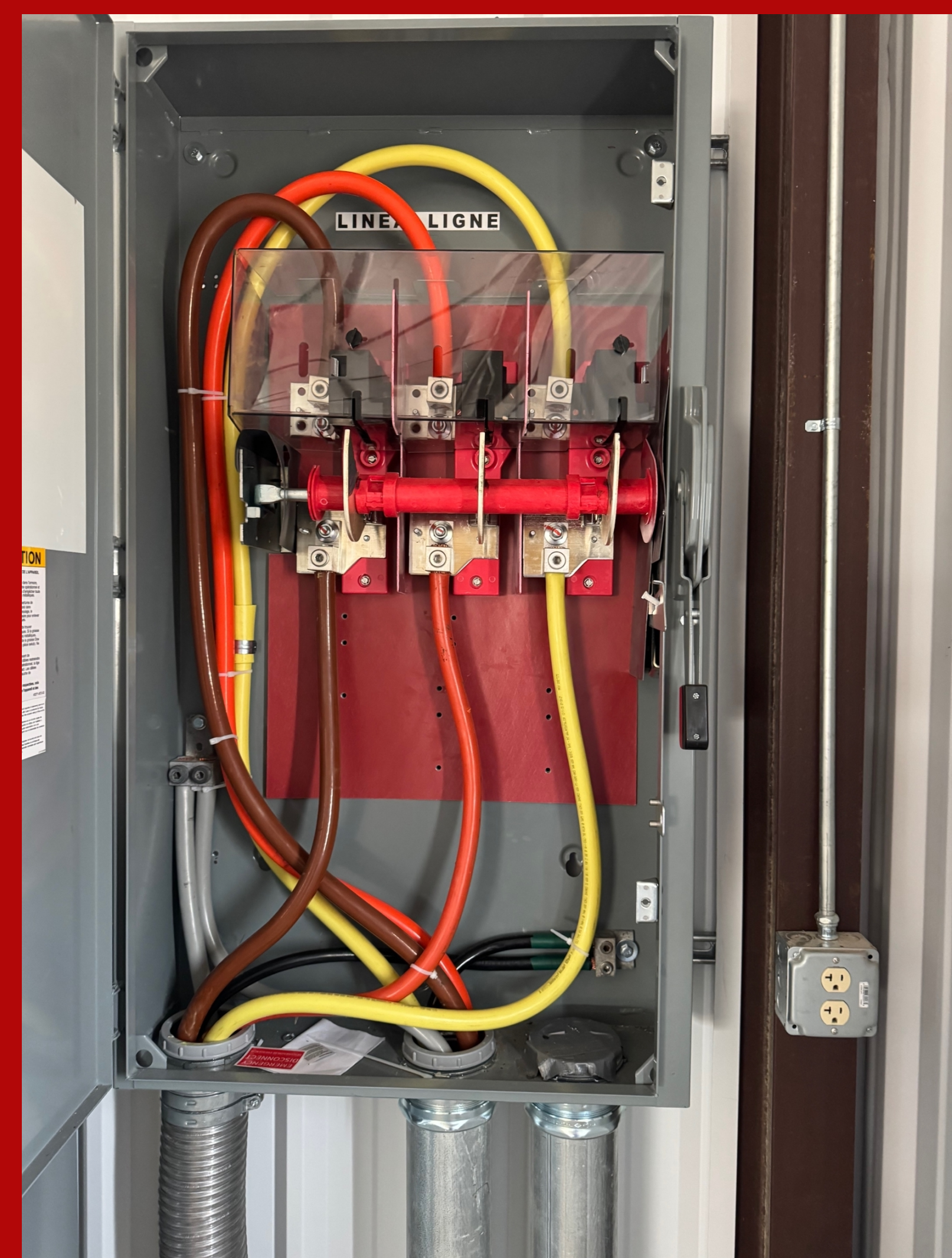
TECH EXPANSION EAGLE PASS HVAC CHITTIM CAMPUS

- **CLASSROOM DRYWALL PAINTED**
- **INTERIOR TIN INSTALLED**
- **ELECTRICAL PANELS COMPLETED**
- **GAS HOT TAP COMPLETED**



EAGLE PASS CAMPUS

EAGLE PASS CAMPUS



EAGLE PASS CAMPUS

EAGLE PASS CAMPUS



EAGLE PASS CAMPUS





TECH EXPANSION DEL RIO WELDING, CONSTRUCTION SCIENCE

- **ROOF TIN IN PROGRESS**
- **INTERIOR TIN IN PROGRESS**
- **DRYWALL IN PROGRESS**
- **ELECTRIC HEATERS INSTALLED**



DEL RIO CAMPUS

The image shows a wall made of white, vertically oriented corrugated metal panels. The panels are connected by small, dark fasteners. At the top, a white fabric or tarp is visible, partially covering the wall. On the right side, a dark horizontal bar is attached to the wall. At the bottom, a red banner with white text is overlaid on the image.

DEL RIO CAMPUS



DEL RIO CAMPUS