



BILINGUAL INSTRUCTIONAL OFFICER

EMPOWERING LEARNERS.
INSPIRING EXCELLENCE.



LEAD



SUPPORT



COLLABORATE



SUCCEED



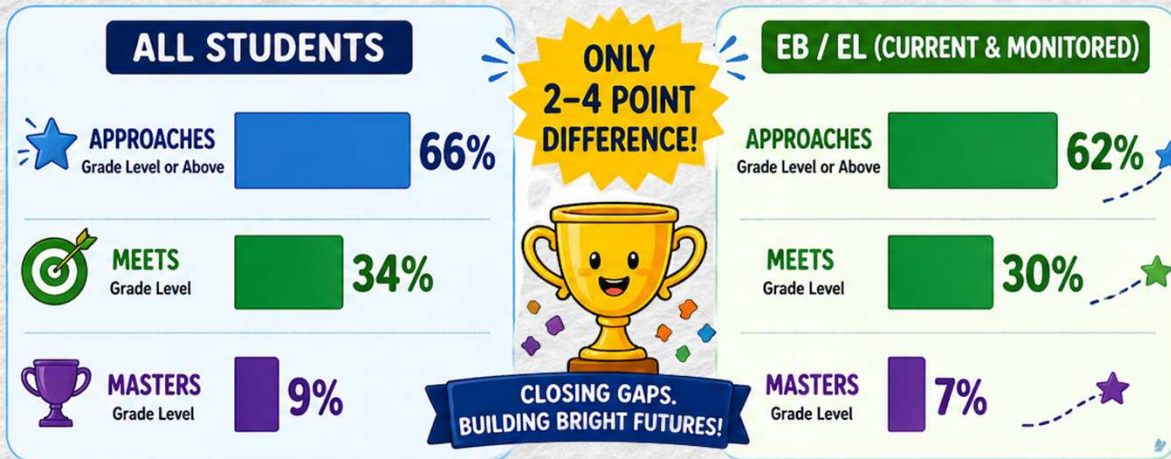
TOGETHER, WE SOAR!



EMERGENT BILINGUALS ARE KEEPING UP!

2024-25 STAAR PERFORMANCE (ALL GRADES, ALL SUBJECTS)

EB / EL (CURRENT & MONITORED) COMPARED TO ALL STUDENTS



OUR EBs. OUR FUTURE. OUR SUCCESS!

KEY TAKEAWAYS

- EB STUDENTS ARE PERFORMING CLOSE TO ALL STUDENTS.** Only a 2-4 point gap across performance levels!
- STRONG SYSTEM.** Our instruction and support are making a difference!
- SUCCESS BEYOND LANGUAGE.** Our EBs are learning, growing, and achieving!
- TOGETHER, WE SOAR!** Every student. Every step. Every success!

Grade	Subject	EB/EL (Current & Monitored)	All Students
Elementary	Math	62%	66%
	Reading	62%	66%
Middle	Math	30%	34%
	Reading	30%	34%
High School	Math	7%	9%
	Reading	7%	9%

2024-2025 (TARP) Texas Academic Performance Report

62% OF EB STUDENTS ARE APPROACHING GRADE LEVEL OR ABOVE!
30% MEET GRADE LEVEL! 7% MASTERS GRADE LEVEL!



DATA TELLS OUR STORY. OUR ACTIONS CREATE LIMITLESS POSSIBILITIES!

WE ARE PROUD OF OUR EMERGENT BILINGUALS! SUPPORTED TODAY. PREPARED FOR TOMORROW. READY FOR THE FUTURE!

DATA-DRIVEN CELEBRATIONS

FOCUSED DUAL LANGUAGE PD PLAN

Together, we designed a **Dual Language Professional Development Calendar** with targeted topics and scheduled sessions to directly address those needs, including:

- ✓ Bridging (El Puente)
- ✓ Preview–View–Review
- ✓ Cross-Linguistic Connections
- ✓ Translanguaging
- ✓ CBLI
- ✓ ELPS



“Our Dual Language PD was intentional—built from data, aligned with campus needs, and focused on strengthening biliteracy instruction.”



SAN ELIZARIO ISD DUAL LANGUAGE DISTRICT
DUAL LANGUAGE PD CALENDAR 2025

 Time 4:15–5:00
Location: Cafeteria
Alarcon
Borrego
Sambrano

August-14, 2025 – Bridging - El Puente @ Sambrano
September-18, 2025 – Preview-View-Review @ Sambrano
October-30, 2025 – Cross-Linguistic Connections @ Sambrano
November-13, 2025 – Translanguaging @ Sambrano
December-10, 2026 – CBLI + ELPS @ Sambrano

August-07, 2025 – Bridging - El Puente @ Borrego
September-04, 2025 – Preview-View-Review @ Alarcon
October 16, 2025 – Cross-Linguistic Connections @ Borrego
November-06, 2025 – Translanguaging @ Alarcon
December-04, 2026 – CBLI + ELPS @ Borrego

★ “You are welcome to repeat the course if you choose to.”



DATA-DRIVEN CELEBRATIONS

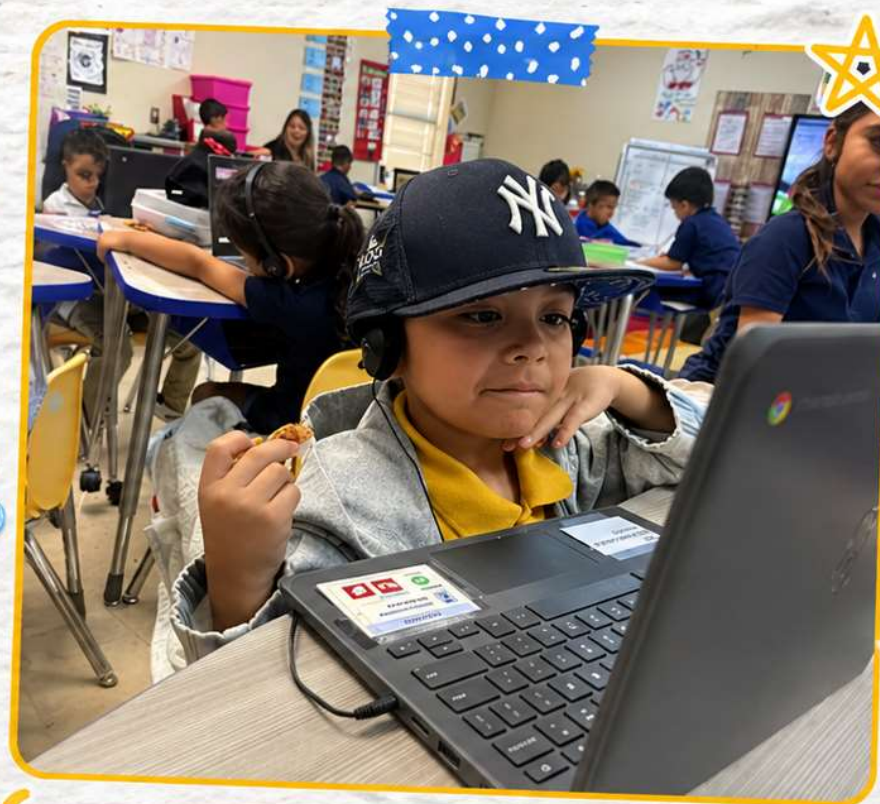
SUMMIT K12 IMPLEMENTATION



STUDENT IMPACT:

Students had consistent opportunities to:

- ✓ Practice **TELPAS-aligned** tasks 
- ✓ Build confidence in **academic language** 
- ✓ Strengthen skills across all **four language domains** 



TEACHER FEEDBACK:

Teachers reported:

- ✓ **Improved student confidence**, especially in Speaking and Writing 
- ✓ Better preparation for **TELPAS expectations** 

SUMMIT K12 GAVE OUR STUDENTS THE OPPORTUNITY TO PRACTICE LANGUAGE IN A WAY THAT **MIRRORS TELPAS**—AND WE ARE SEEING THE IMPACT IN BOTH **CONFIDENCE AND PERFORMANCE.**





DATA-DRIVEN CELEBRATIONS

- LISTENING (L) & SPEAKING (S): BOY TO MOY

School	BOY			MOY		
	#	L (Listening)	S (Speaking)	#	L (Listening)	S (Speaking)
Alfonso Borrego Senior Elementary	75/320	1.84	1.87	298/320	2.81	2.41
Ann M Garcia Enriquez Middle School	350/402	3.04	2.40	354/402	2.91	2.65
Josefa L Sambrano Elementary	134/317	1.05	0.16	291/317	2.07	1.62
L G Alarcon Elementary	13/195	1.57	1.68	176/195	2.94	2.47
San Elizario High School	17/250	1.32	0.77	212/250	2.78	2.17

- READING (R) & WRITING (W): BOY TO MOY

School	BOY			MOY		
	#	R (Reading)	W (Writing)	#	R (Reading)	W (Writing)
Alfonso Borrego Senior Elementary	83/320	1.54	1.16	295/320	1.94	1.59
Ann M Garcia Enriquez Middle School	313/402	2.29	1.60	377/402	2.54	2.18
Josefa L Sambrano Elementary	132/317	0.44	0.11	292/317	1.62	0.69
L G Alarcon Elementary	12/195	1.72	1.14	177/195	2.02	1.61
San Elizario High School	31/250	1.47	1.10	212/250	2.27	2.04



San Elizario ISD Curriculum & Instruction

☆ --- ☆ --- #Here2Serve

DATA-DRIVEN CELEBRATIONS

DISTRICT GROWTH SUMMARY (BOY → MOY)



Together, we analyzed **BOY to MOY ELPS** growth across all assessed campuses, highlighting consistent progress in language development.

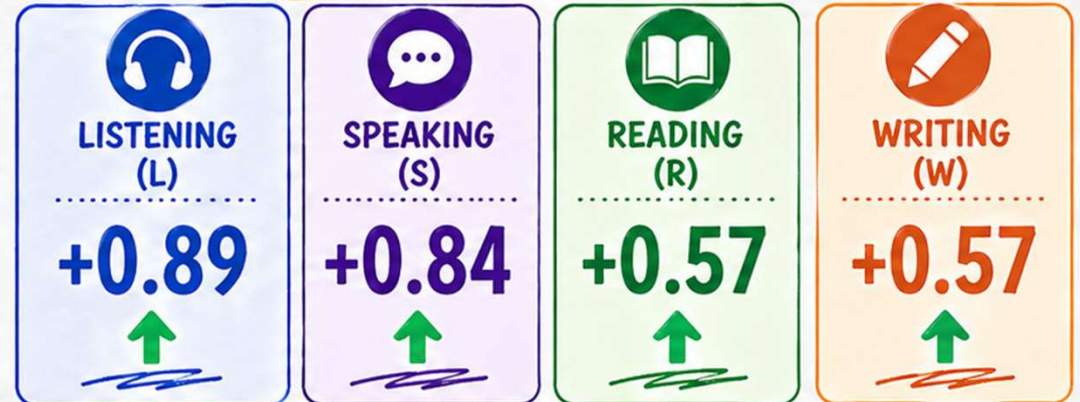
GROWTH BY DOMAIN:

Listening (L):	+0.89 ↑
Speaking (S):	+0.84 ↑
Reading (R):	+0.57 ↑
Writing (W):	+0.57 ↑

WHAT THIS MEANS:

- ✓ Strongest growth in **Listening & Speaking**
- ✓ Continued development in **Reading & Writing**
- ✓ Evidence of intentional language instruction across campuses

OVERALL DISTRICT GROWTH



★ ALL FOUR DOMAINS SHOW POSITIVE GROWTH!



“Our district is seeing measurable growth across all domains—reflecting strong alignment, intentional instruction, and a commitment to language development.”





HIGH QUALITY INSTRUCTIONAL MATERIALS

RESOURCES THAT EMPOWER. INSTRUCTION THAT TRANSFORMS.



CORE PROGRAMS SUPPORTING EB STUDENTS:



• HMH (RLA) – includes Spanish foundational skills (Destrezas Fundamentales / Foundational Skills)



• Bluebonnet / Great Minds (Math) – strong academic vocabulary development



EMBEDDED SUPPORTS FOR EB STUDENTS:



• English & Spanish

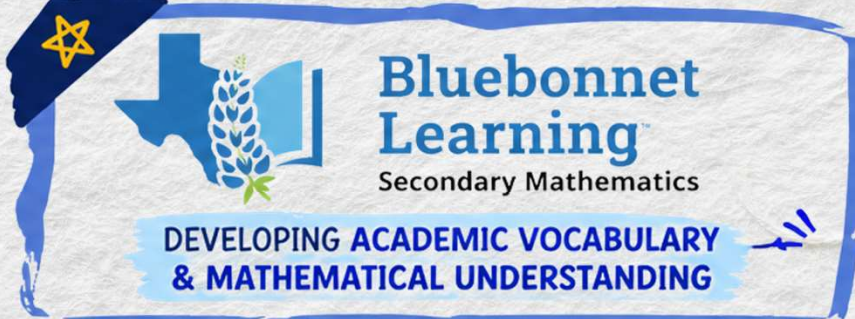


• Academic vocabulary development



HMH

BUILDING STRONG FOUNDATIONS IN
READING & LANGUAGE ARTS



Bluebonnet Learning
Secondary Mathematics

DEVELOPING ACADEMIC VOCABULARY & MATHEMATICAL UNDERSTANDING



San Elizario ISD Curriculum & Instruction

#Here2Serve



STRATEGY IMPLEMENTATION



STRATEGIES THAT DRIVE STUDENT SUCCESS

KEY STRATEGIES IMPLEMENTED:



QSSSA (Structured Student Talk)



Sentence stems across content areas



Language Objectives + Content Objectives



Anchor Charts (co-created with students)



Translanguaging & Bridging (El Puente)



Explicit vocabulary instruction



Summit K12 (4 domains practice)



INTENTIONAL STRATEGIES. STRONGER OUTCOMES.



QSSSA

(Structured Student Talk)



SENTENCE STEMS

across content areas



LANGUAGE OBJECTIVES + CONTENT OBJECTIVES



ANCHOR CHARTS

(co-created with students)



TRANSLANGUAGING & BRIDGING (EL PUENTE)



EXPLICIT VOCABULARY

instruction



SUMMIT K12

(4 domains practice)



San Elizario ISD Curriculum & Instruction



#Here2Serve



DIRECT SUPPORT TO STUDENTS

TARGETED SUPPORT. STRONGER LEARNERS.



- Modeled **Dual Language lessons** to demonstrate effective instruction in real classroom settings.



- Tutored students at **Borrego Elementary** preparing for the **Spanish Reading STAAR**, focusing on:

- ✓ Comprehension skills
- ✓ Vocabulary development
- ✓ Test-taking strategies



San Elizario ISD Curriculum & Instruction

☆ ☆ #Here2Serve

DIRECT SUPPORT TO TEACHERS

STRONG TEACHERS. STRONGER CLASSROOMS.



- Modeled **instructional strategies** during classroom visits and Learning Walks



- Provided **Professional Development** on:
 - Dual Language **strategies**
 - **ELPS** implementation
 - **Language development** techniques



- **PLC** collaboration (Assessments & Data)



- Provided **Dual Language Resources**



BUILDING CAPACITY

GROWING LEADERS. EMPOWERING EDUCATORS.



- Provided **ongoing Professional Development**
 - Leadership
 - Instructional Specialist
 - Parents (Latino Literacy)
 - Teachers



- **IS Mentor**
 - Facilitated **PLCs across campuses** (Loya, Sambrano, Alarcón, Borrego)



- Conducted **Learning Walks with feedback cycles** to support instructional growth



- **Modeled lessons and strategies** in classrooms



San Elizario ISD Curriculum & Instruction

#Here2Serve

DISTRICT ANALYSIS: STRATEGY IMPLEMENTATION
















 STRATEGY	 IMPLEMENTATION GAP(S)	 NEXT STEPS
 El Puente (Bridging)	 Inconsistent implementation across classrooms	 Continue modeling + provide exemplars
 Cross-Linguistic Connections	 Limited depth in student application	 Increase explicit instruction + practice
 Translanguaging	 Misunderstanding of purpose and structure	 Provide targeted PD with examples
 Language Objectives (ELPS)	 Not consistently measurable or visible	 Reinforce through PLCs and monitoring
 Summit K12	 TELPAS/STAAR	 Practice




 Our focus is on strengthening **consistency, clarity,** and **intentional implementation** across all classrooms.
 

#Here2Serve

Strategy Implementation Analysis

 STRATEGY	 IMPLEMENTATION GAP(S)	 NEXT STEPS
 Academic Vocabulary	 Surface-level exposure	 Increase structured vocabulary routines
 Student Discourse	 Limited extended responses	 Implement structured talk strategies (QSSSA)
 Anchor Charts	 Teacher-created vs student-owned	 Promote co-creation with students
 Language of Instruction	 Occasional inconsistencies	 Reinforce through Learning Walk feedback



Our focus is on strengthening **consistency**, **clarity**, and **intentional implementation** across all classrooms.

#Here2Serve

PROFESSIONAL DEVELOPMENT

BUILDING KNOWLEDGE. EMPOWERING EDUCATORS. SUPPORTING OUR STUDENTS.

BUILDING STRONGER BILINGUAL FUTURES TOGETHER!



DATE	TOPIC	AUDIENCE	TIME	LOCATION	FOCUS
8/7/2025	Bridging – El Puente	DL Teacher PD	4:15–5:00	Borrego	District
8/14/2025	Bridging – El Puente	DL Teacher PD	4:15–5:00	Sambrano	District
9/4/2025	Preview–View–Review	DL Teacher PD	4:15–5:00	Alarcon	District
9/18/2025	Preview–View–Review	DL Teacher PD	4:15–5:00	Sambrano	District
9/24/2025	Summit K12's Connect to Literacy (C2L)	Teachers / IS / IO / Admin PD	8:10–11:30	SEHS	Summit K12
10/10/2025	Summit K12 District Plan with Principals	Bilingual IO	3:00–5:00	Central Office	District
10/14/2025	Summit K12 Planning with Alarcon	Bilingual IO	2:00–3:00	Central Office	District
10/16/2025	Summit K12 PD Planning with Borrego & Alarcon	Bilingual IO	3:00–4:00	Borrego	District
10/16/2025	Cross-Linguistic Connections	DL Teacher PD	4:15–5:00	Borrego	District
10/30/2025	Cross-Linguistic Connections	DL Teacher PD	4:15–5:00	Loya	District
10/31/2025	Summit K12 Data & Planning	DL Teacher PD	2:00–4:00	High School PLC	District
11/6/2025	Translanguaging	DL Teacher PD	4:15–5:00	Alarcon	District
11/13/2025	Translanguaging	DL Teacher PD	4:15–5:00	Loya	District
12/10/2025	CBLLI + New ELPS	DL Teacher PD	4:15–5:00	Loya	District
1/16/2026	RLA Assessment Meeting (Sambrano K-2nd)	DL & Mono	8:00–10:00	Sambrano	District
1/29/2026	Summit K12 TELPAS Prep Plan / How Summit Supports with STAAR	DL Teacher PD	4:15–5:00	On-Line	District
2/3/2026	Summit K12 TELPAS Support	Training	3:00–4:15	SEHS	District
2/4/2026	Summit K12 Data Meeting & AI Assessment Teacher Resource (Mr. Corona)	Training	8:00–9:00	GEMS	District



MORE THAN **40** PD SESSIONS DELIVERED!



AUGUST 2025 – APRIL 2026



TEACHERS, ADMIN, IOs & SUPPORT STAFF



FOCUSED ON BILITERACY & STUDENT SUCCESS



“High-quality PD leads to high-impact instruction and student success!”



San Elizario ISD Curriculum & Instruction



#Here2Serve



TELPAS 2025

OUR STUDENTS ARE GROWING!



BUILDING STRONGER BILINGUAL LEARNERS EVERY YEAR!



KEY TAKEAWAYS

- ADVANCED + ADVANCED HIGH INCREASES AS STUDENTS MOVE FROM 3RD TO 6TH GRADE!**
- BEGINNING LEVEL DECREASES FROM 9.45% IN 3RD GRADE TO 5.15% IN 6TH GRADE!**
- OUR 6TH GRADERS HAVE THE HIGHEST PERCENTAGE IN ADVANCED (41.24%)!**
- WE ARE BUILDING STRONG FOUNDATIONS FOR CONTINUED LANGUAGE SUCCESS!**

LOOK AT OUR
PROFICIENCY
GROWTH!

PROFICIENCY = ADVANCED + ADVANCED HIGH

39.37%

3RD GRADE

35.11%

4TH GRADE

38.65%

5TH GRADE

49.49%

6TH GRADE

PROFICIENCY GREW

10.12 POINTS!

FROM 3RD TO 6TH GRADE

TOGETHER, WE ARE **EMPOWERING BILINGUAL SUCCESS!**



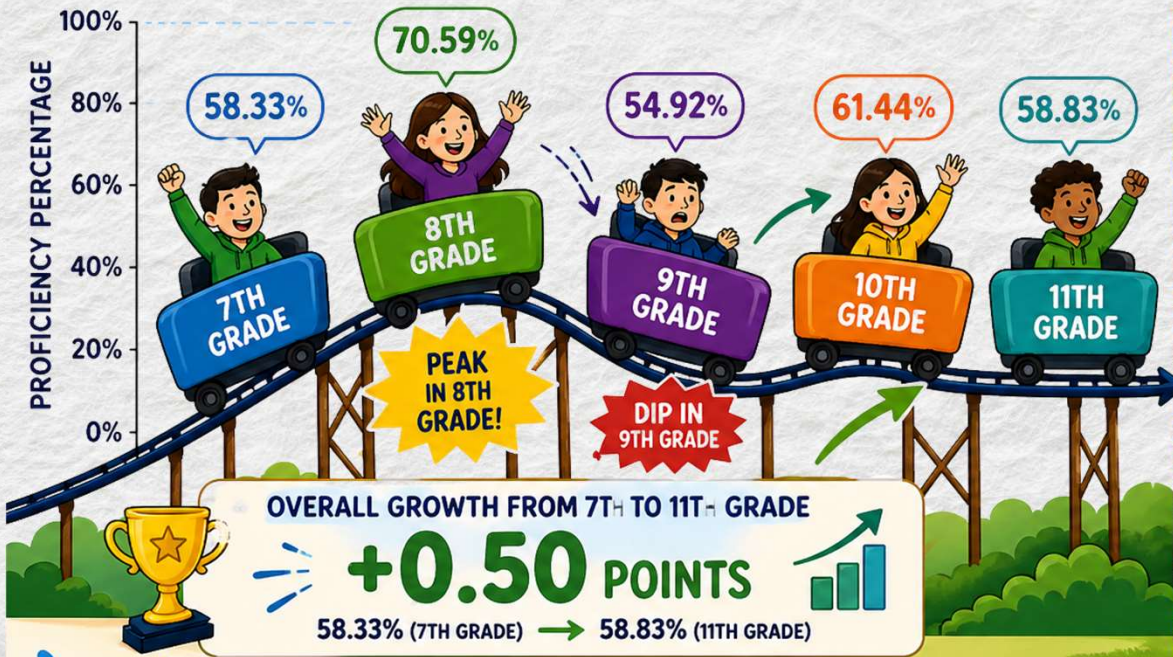


TELPAS 2025 OUR STUDENTS KEEP CLIMBING!

MIDDLE SCHOOL
TO HIGH SCHOOL
JOURNEY

BUILDING CONFIDENT, CAPABLE BILINGUAL LEARNERS EVERY YEAR!

PROFICIENCY = ADVANCED + ADVANCED HIGH



KEY TAKEAWAYS

- STRONG MIDDLE SCHOOL PERFORMANCE**
Our 8th graders have the highest proficiency at 70.59%!
- 9TH GRADE DIP**
We see a drop in proficiency during the transition to high school.
- RECOVERY IN 10TH GRADE**
Proficiency increases again in 10th grade.
- STABILIZING IN 11TH GRADE**
Our 11th graders maintain strong proficiency.
- FOCUS FOR CONTINUED GROWTH**
Targeted support during the high school transition will help us keep the momentum going!



EVERY STUDENT. EVERY YEAR. EVERY SUCCESS. TOGETHER, WE SOAR! ★



Cognados	
español	inglés
• Exponentes	• Exponents
• Sustitución	• Substitution
• variable	• variable
• Evaluar	• Evaluate
• Expresión	• Expression
• Orden de Operación	• Order of Operations
• Comparar cantidades	• Compare



Bilingual Instructional Officer



QUESTIONS?

