



TODD HALL CONCEPTS

June 1st, 2026

Proposed Overall Plan



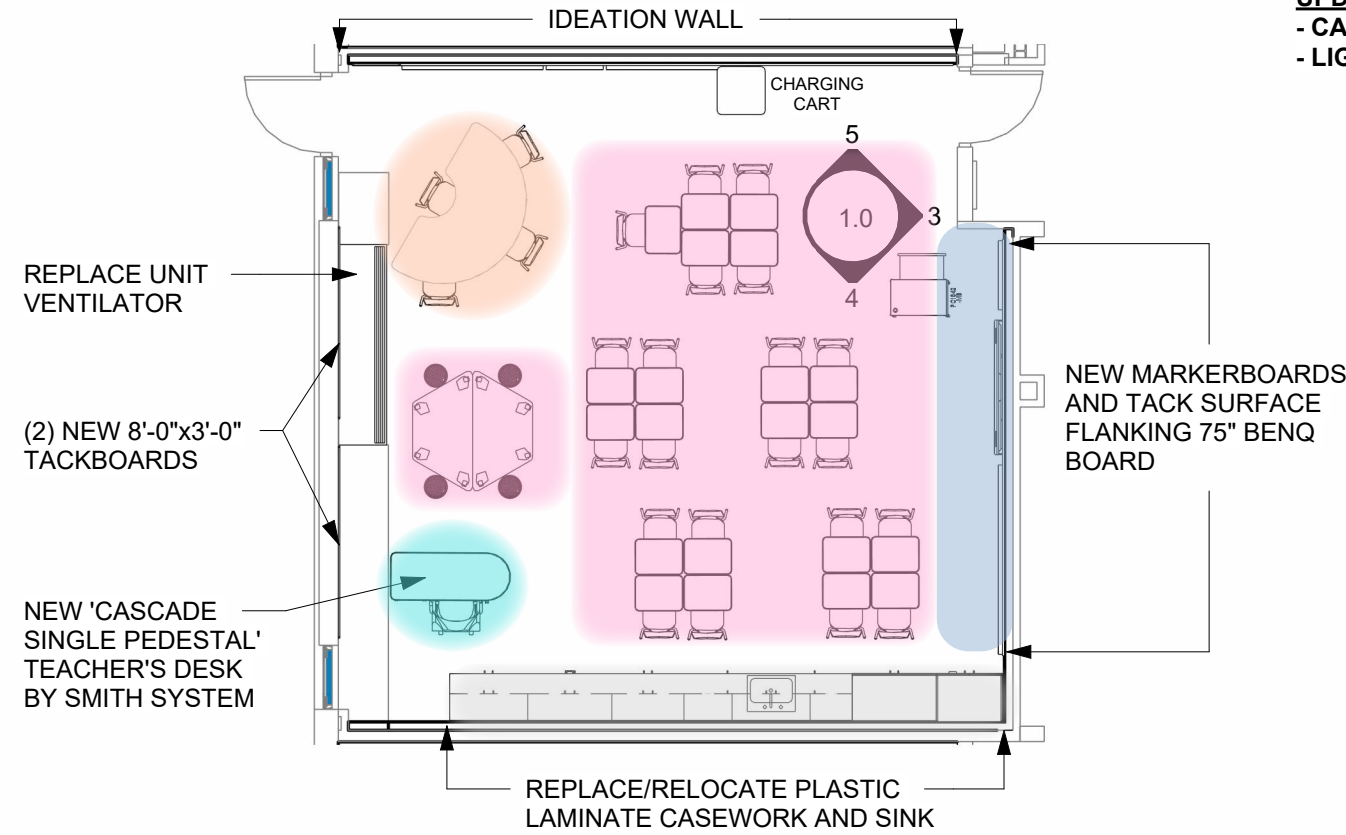
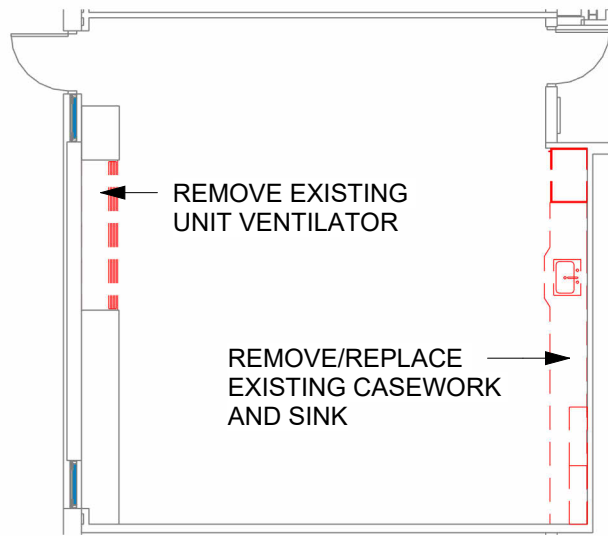
- GRADE CLASSROOM
 - SMALL GROUP/INTERVENTIONIST ROOMS
 - BUILDING SUPPORT
 - SHARED CURRICULUM ROOMS
 - NTDSE ROOMS
 - STAFF SUPPORT
- ROOMS WITH NO USAGE CHANGE HALFTONED*



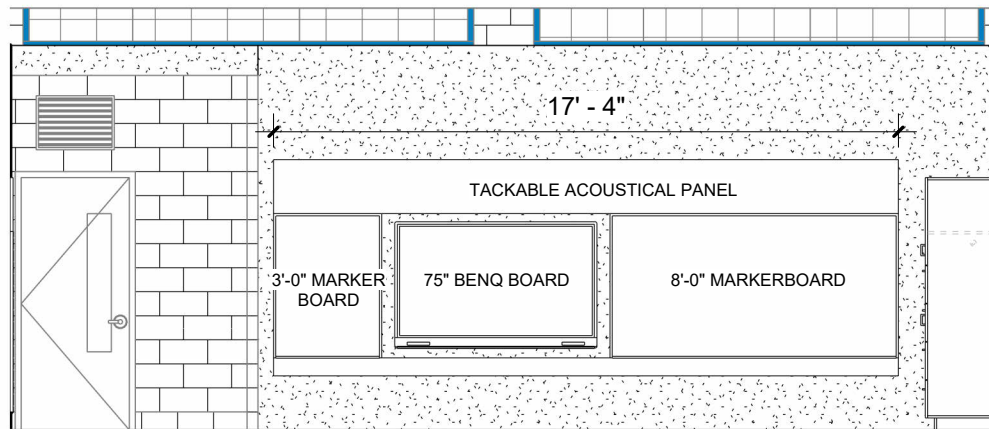
UPDATES PER FEEDBACK:
- CABINET ABOVE THE SINK
- LIGHTS ON DIMMERS - CODE REQUIREMENT



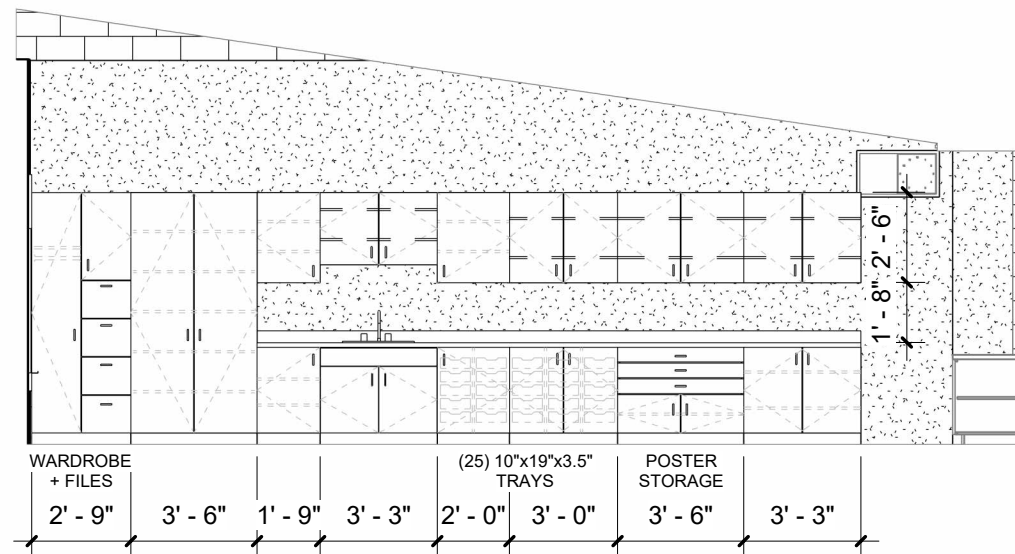
[Click to View](#)



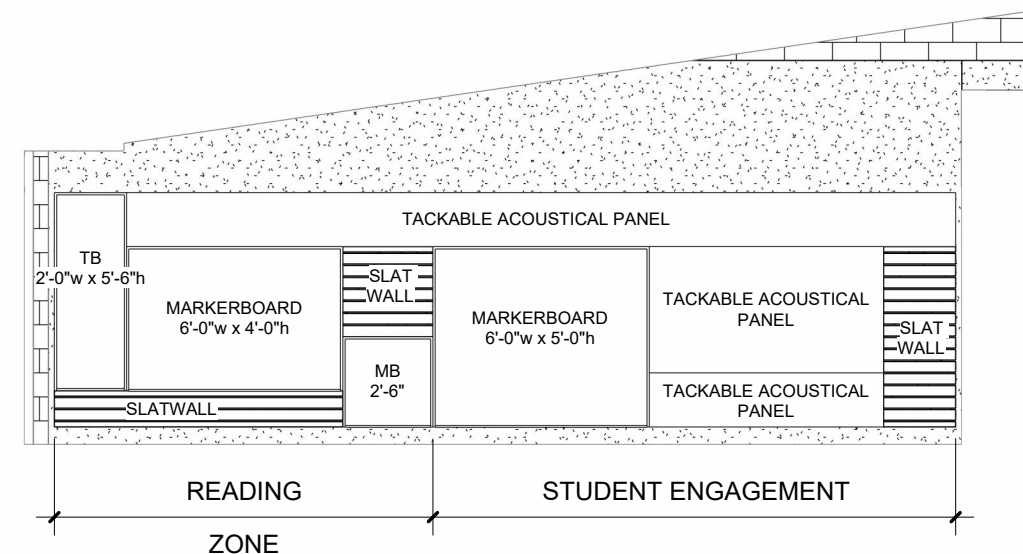
CLASSROOM ZONES	
	STUDENT SEATING
	INSTRUCTIONAL
	TEACHER
	SMALL GROUP
	STORAGE/RESOURCE



3 Proposed Instructional Elevation - Corridor Wall
3/16" = 1'-0"



4 Proposed Casework Elevation
3/16" = 1'-0"



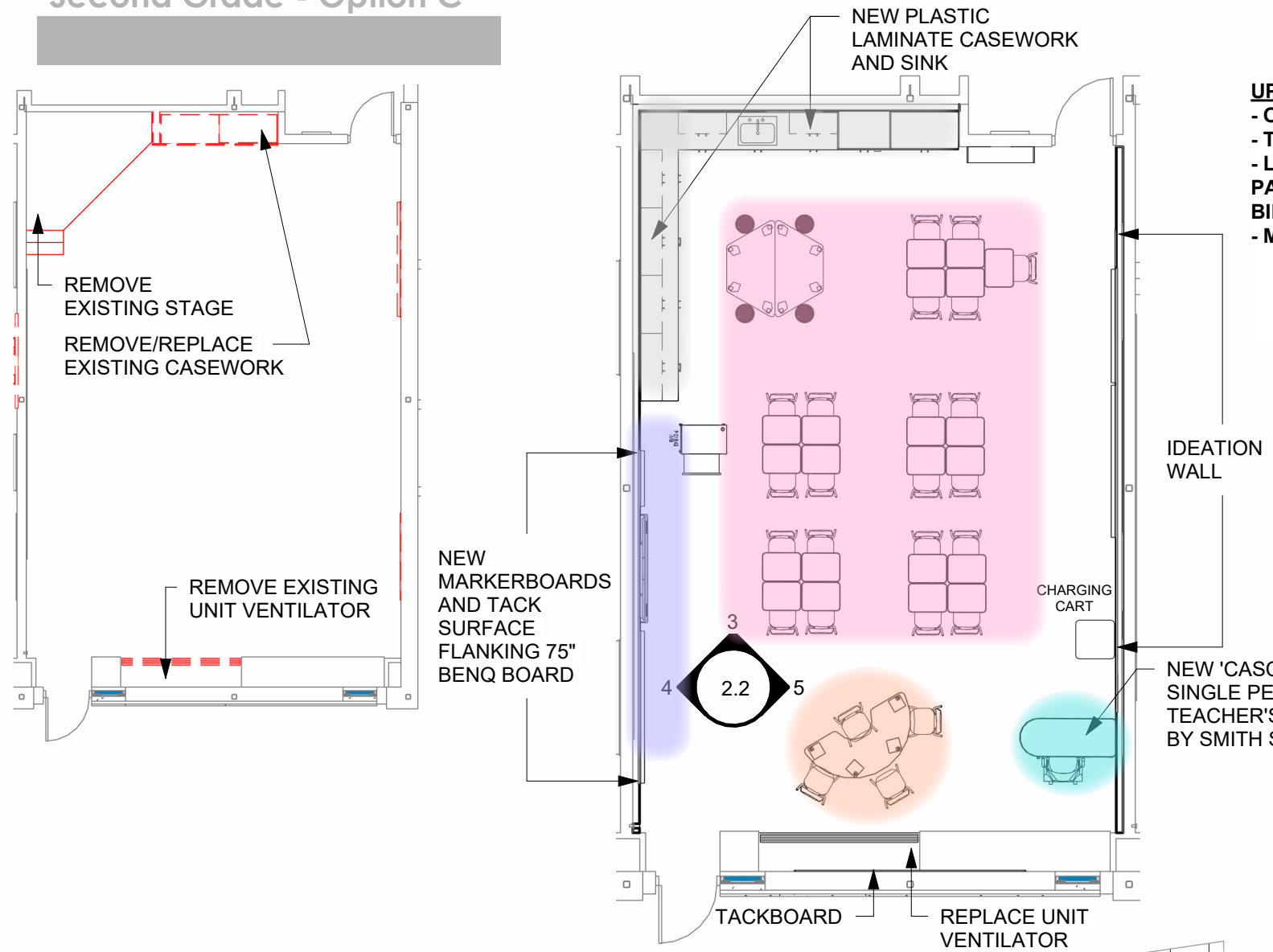
5 Proposed Ideation Wall Elevation
3/16" = 1'-0"





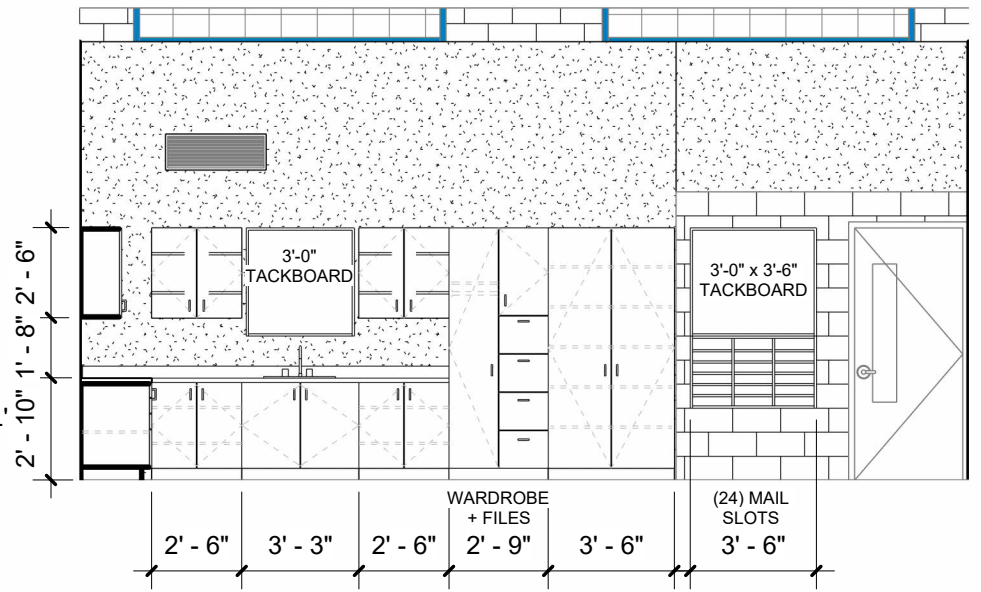
Second Grade - Option C

EXISTING BUILT-IN STORAGE: 172 CUBIC FEET
 PROPOSED STORAGE: 310 CUBIC FEET



- UPDATES PER FEEDBACK:**
- OPTION C
 - TACKBOARD ABOVE SINK
 - LECTERN AND DESK ON CASTERS PROVIDED (ONE PART OF SUMMER FURNITURE AND ONE PART OF BID)
 - MODIFIED STUDENT IDEATION WALL
 - SLAT WALL BELOW TACKABLE ACOUSTIC
 - ELIMINATED SLAT AND SMALLER MARKERBOARD TO MAKE LARGER MARKERBOARD

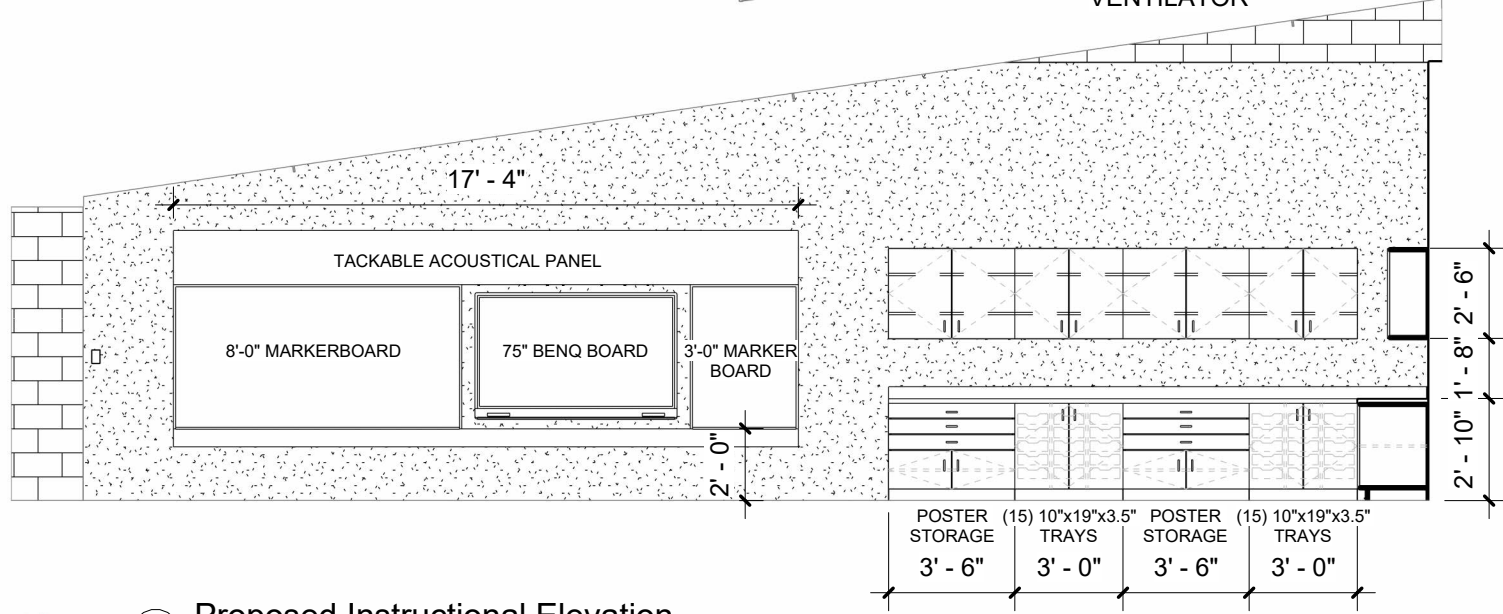
- TACKBOARD ABOVE UNIVENT
- ADDED TACKBOARD NEAR CLASSROOM DOOR
- ADDED STUDENT MAILBOXES AFFIXED TO WALL NEAR DOOR



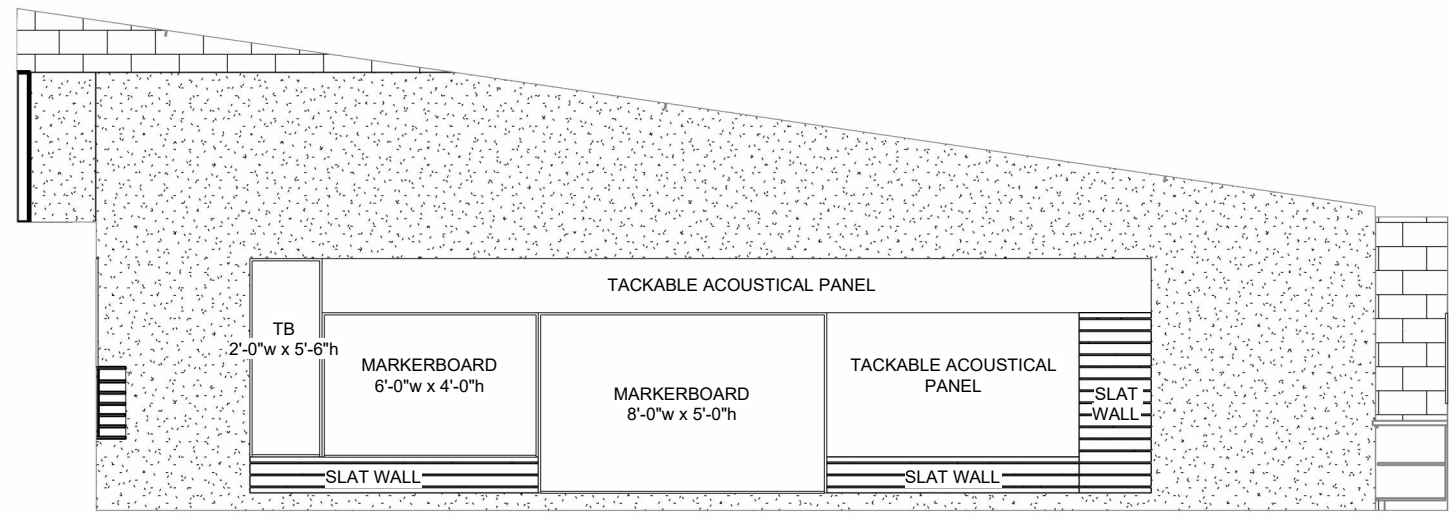
3 Proposed Casework Elevation (option C)
 3/16" = 1'-0"

CLASSROOM ZONES

- STUDENT SEATING
- INSTRUCTIONAL
- TEACHER
- SMALL GROUP
- STORAGE/RESOURCE



4 Proposed Instructional Elevation
 3/16" = 1'-0"

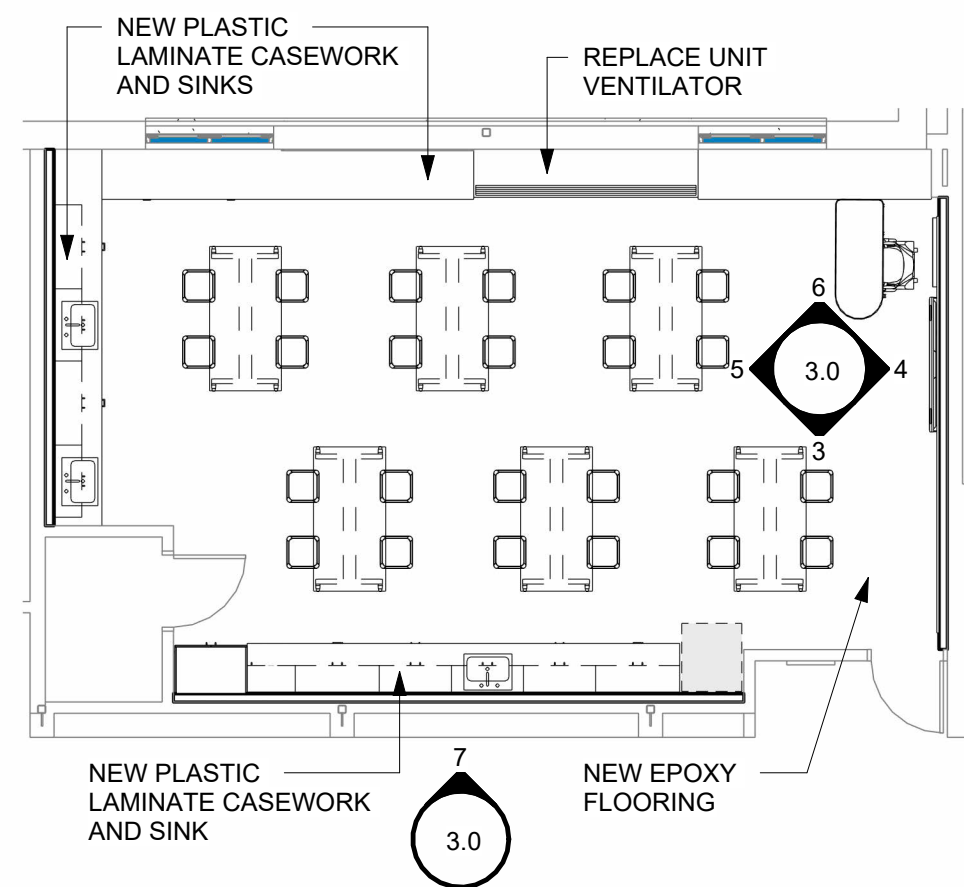
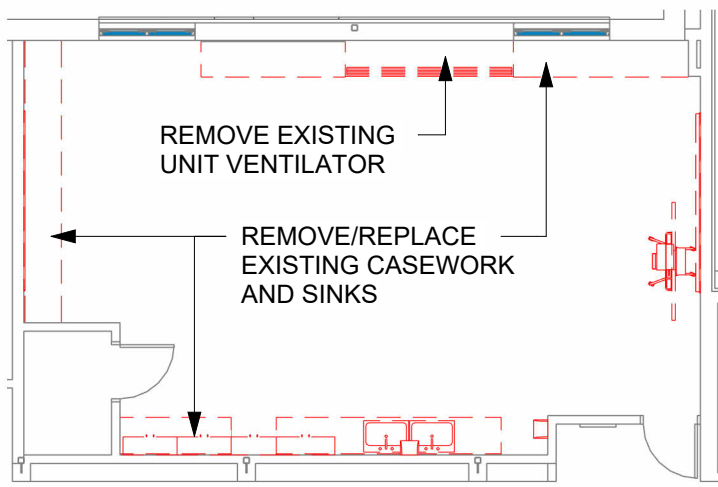


5 Proposed Ideation Wall Elevation (option C)
 3/16" = 1'-0"



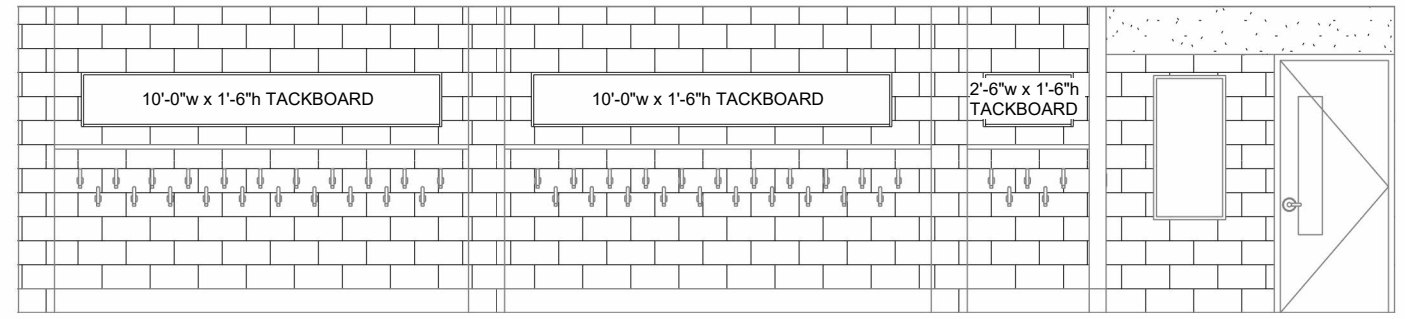


Art Room - Option A

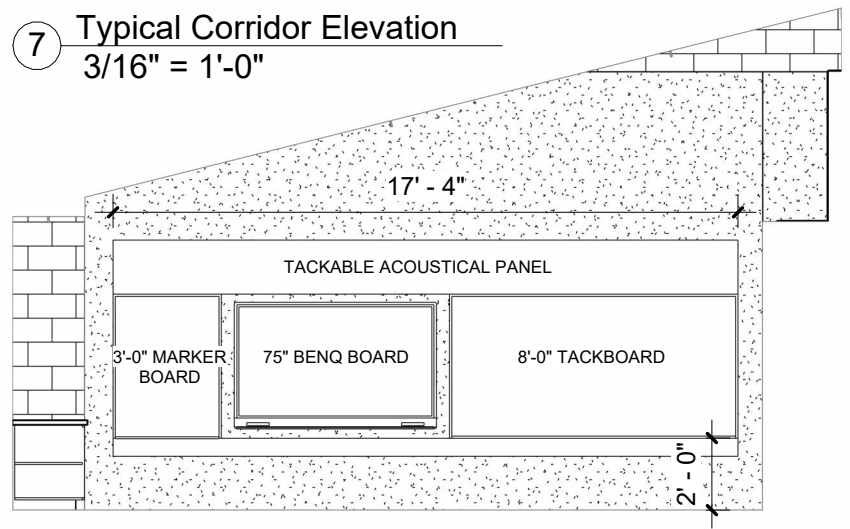


EXISTING BUILT-IN STORAGE: 264 CUBIC FEET
 PROPOSED STORAGE: 440 CUBIC FEET

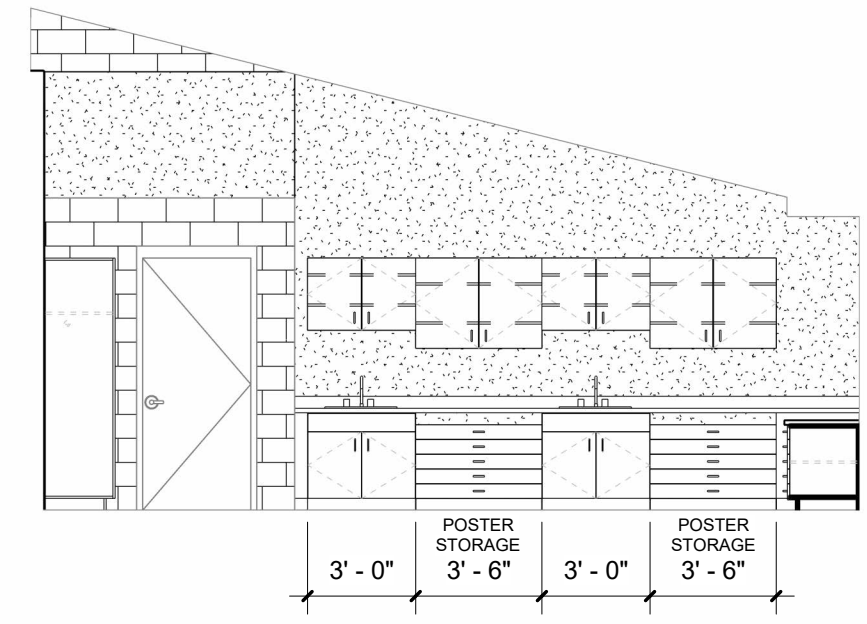
- UPDATES PER FEEDBACK:**
- OPTION A
 - MODIFIED TEACHING WALL TO SHOW TACKBOARD AS LARGER BOARD
 - MODIFIED CASEWORK TO SHOW SPOT FOR DRYING RACK (SGC TO MEASURE)
 - EPOXY FLOORING
 - NEW SHELVING FLANKING UNIVENT
 - ADDED TACKBOARDS IN THE CORRIDORS



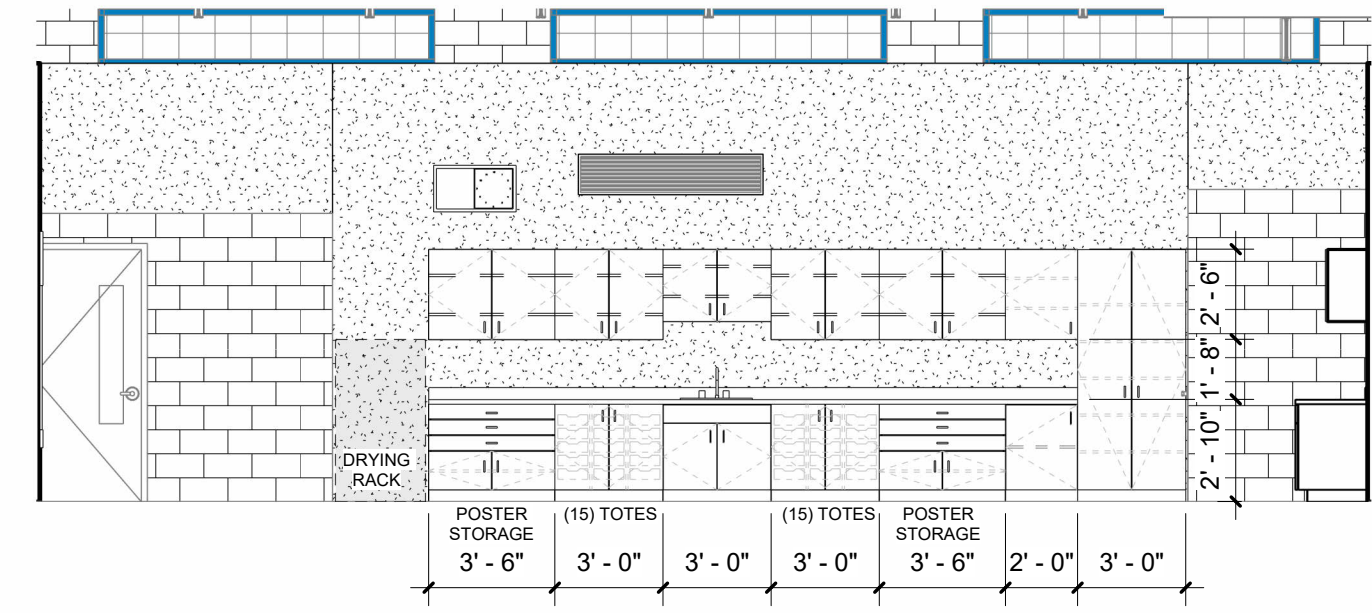
7 Typical Corridor Elevation
 3/16" = 1'-0"



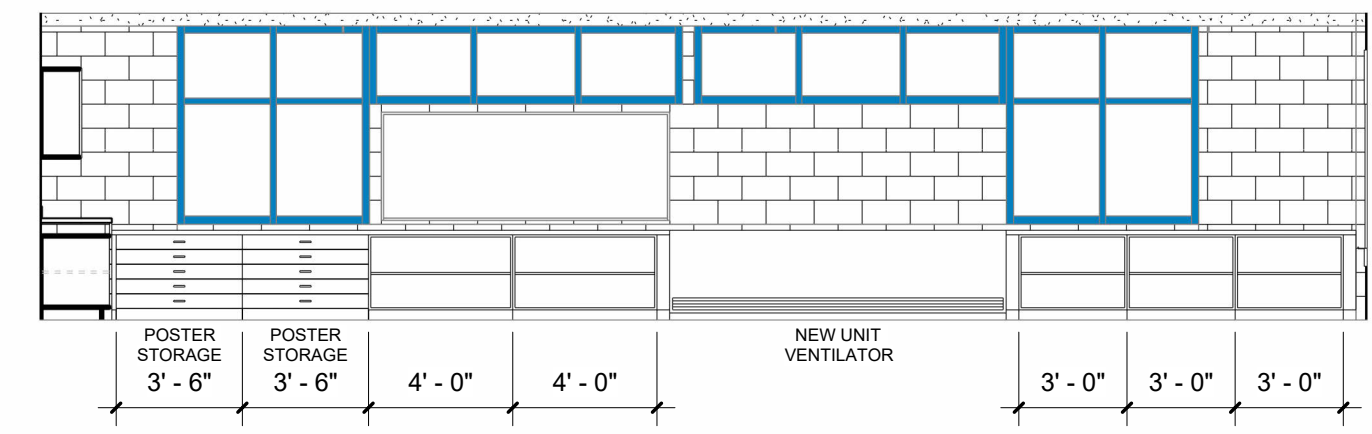
4 Proposed Instructional Elevation
 3/16" = 1'-0"



5 Proposed Casework Elevation
 3/16" = 1'-0"



3 Proposed Casework Elevation (option A)
 3/16" = 1'-0"

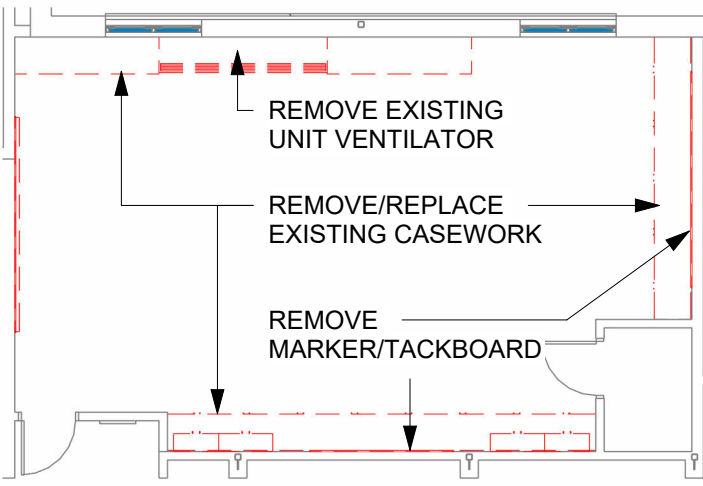


6 Proposed Casework Elevation (option A)
 3/16" = 1'-0"

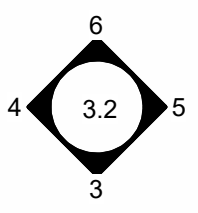
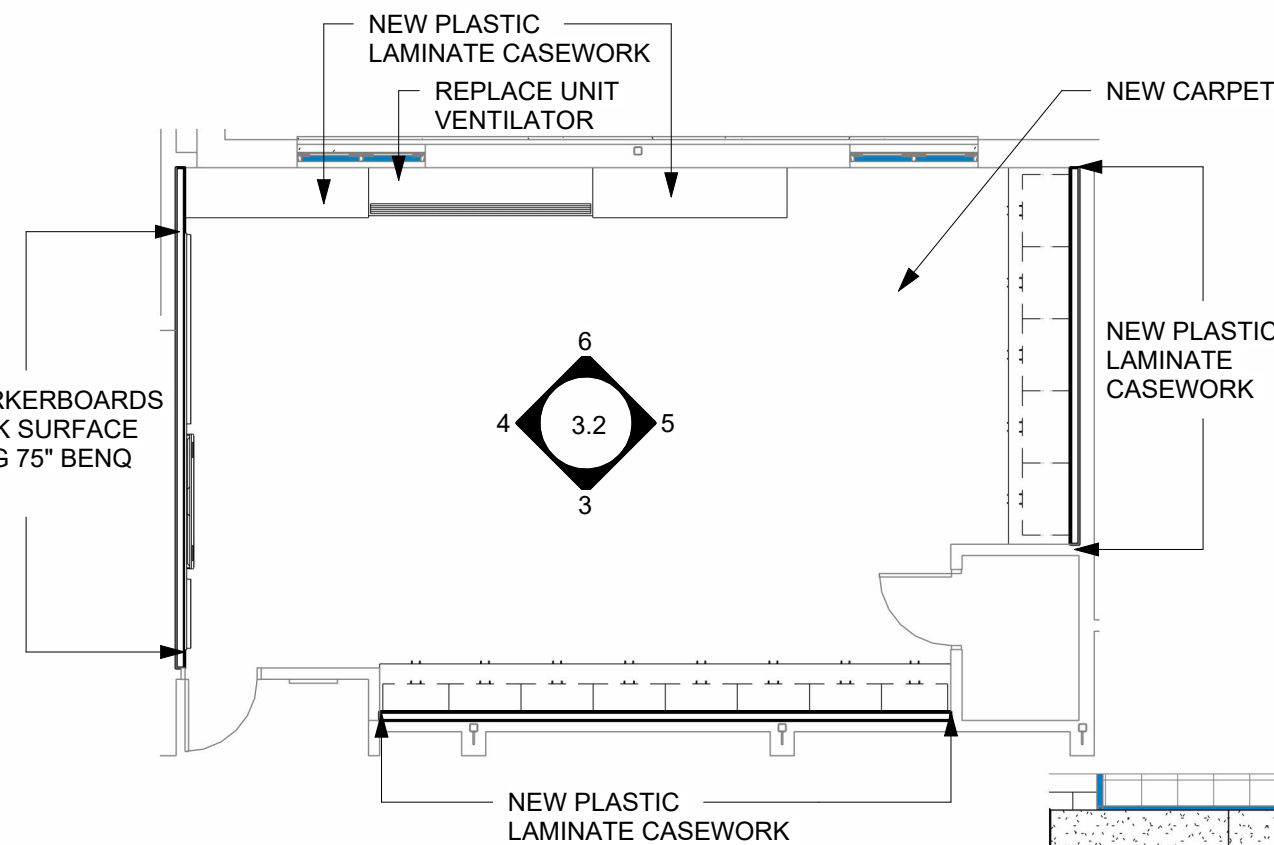




Music Room

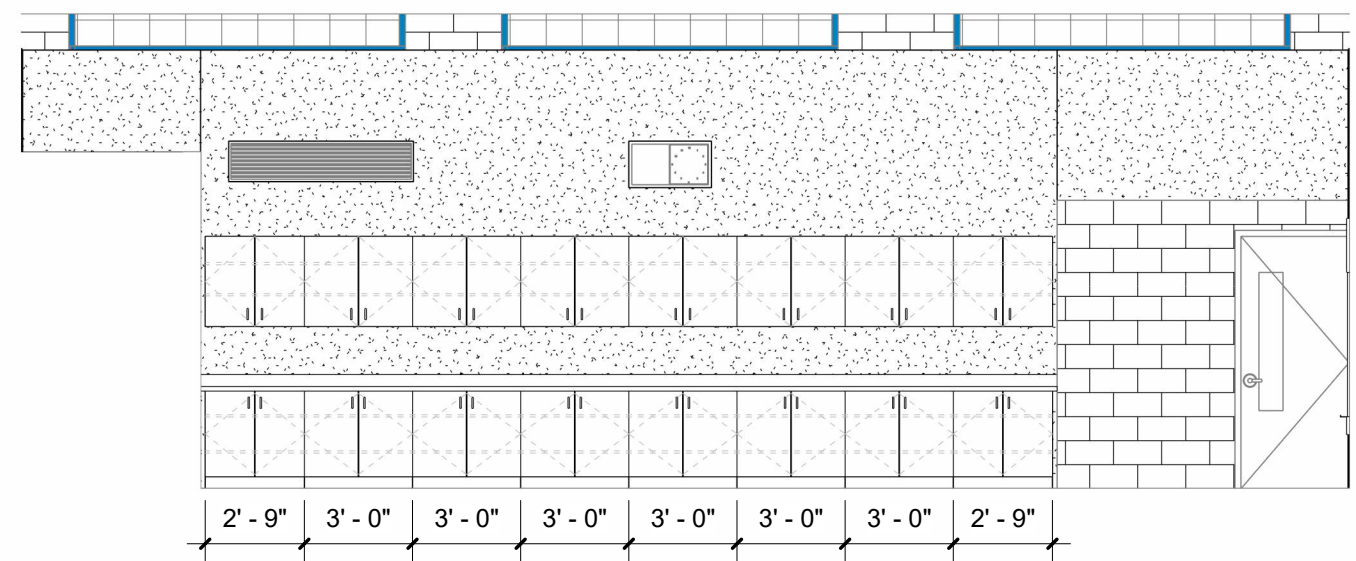


NEW MARKERBOARDS AND TACK SURFACE FLANKING 75" BENQ BOARD

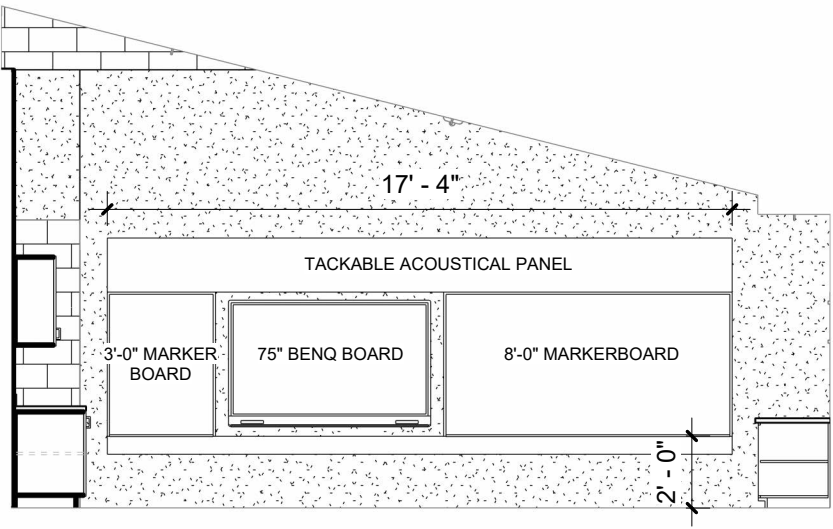


EXISTING BUILT-IN STORAGE: 295 CUBIC FEET
 PROPOSED STORAGE: 460 CUBIC FEET

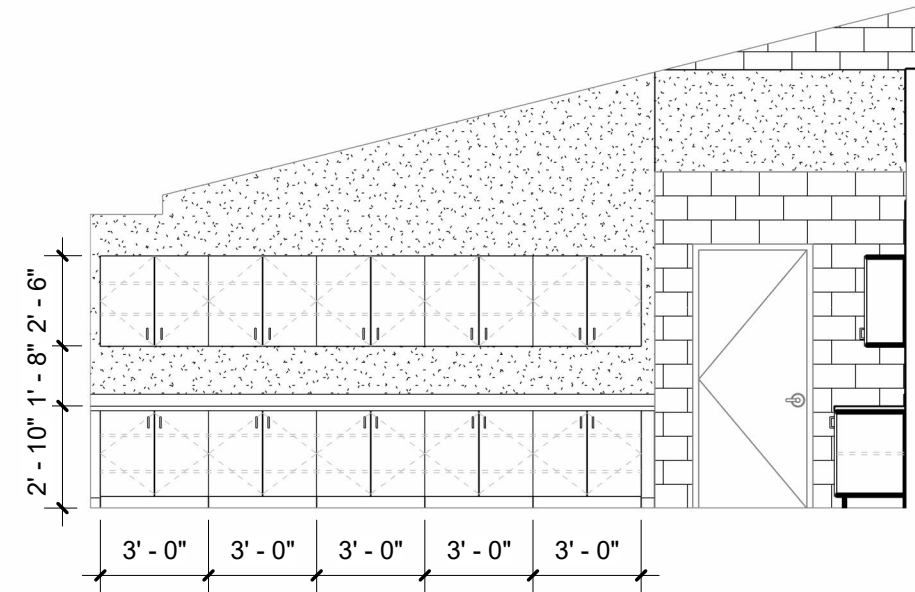
- UPDATES PER FEEDBACK:**
- ELIMINATED HOOKS
 - TEACHING WALL ADJACENT TO CLASSROOM DOOR
 - CORRIDOR WALL ENTIRELY UPPER AND LOWER CABINETS
 - NEW CARPETING



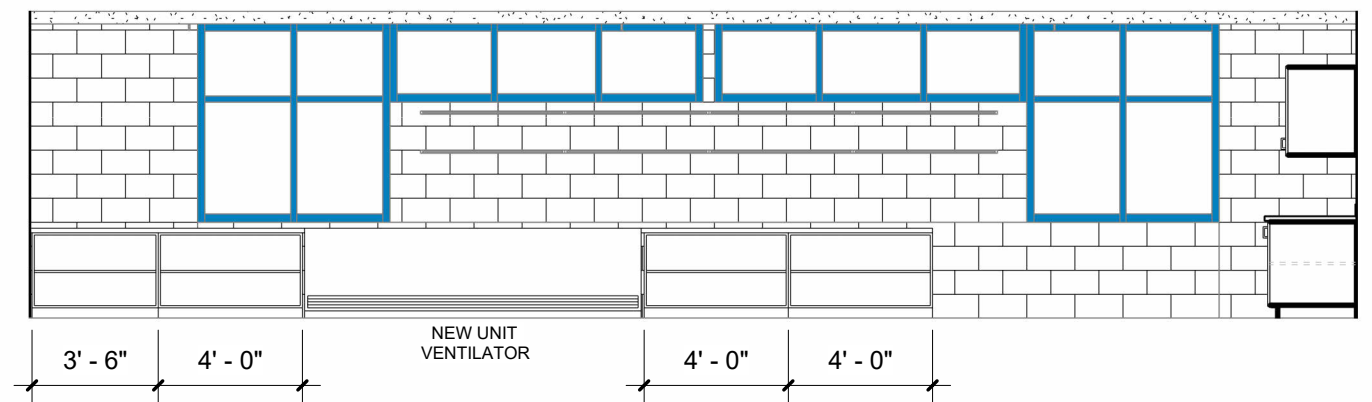
3 Proposed Instructional Elevation
 3/16" = 1'-0"



4 Proposed Classroom Elevation
 3/16" = 1'-0"

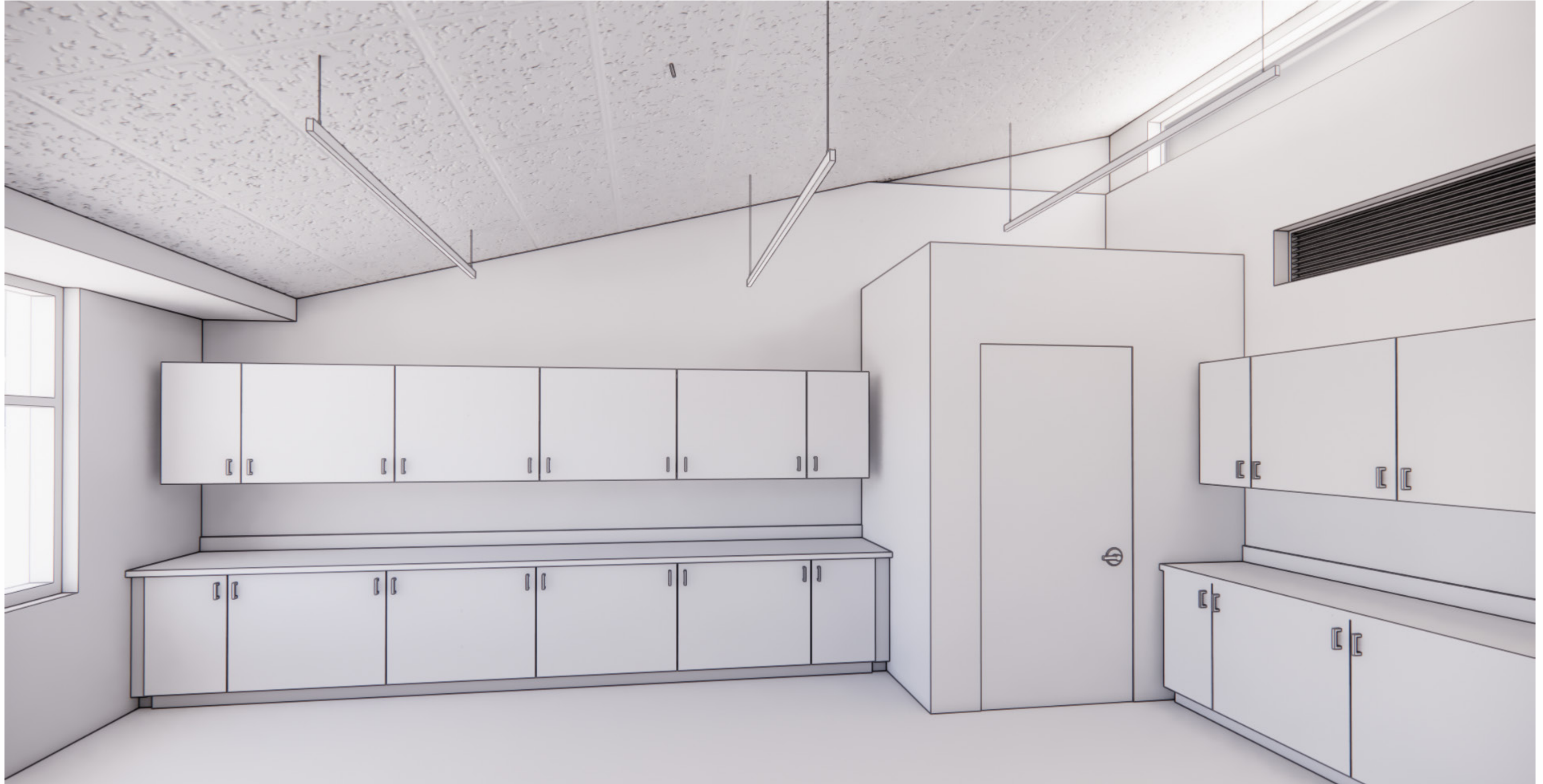


5 Proposed Casework Elevation
 3/16" = 1'-0"

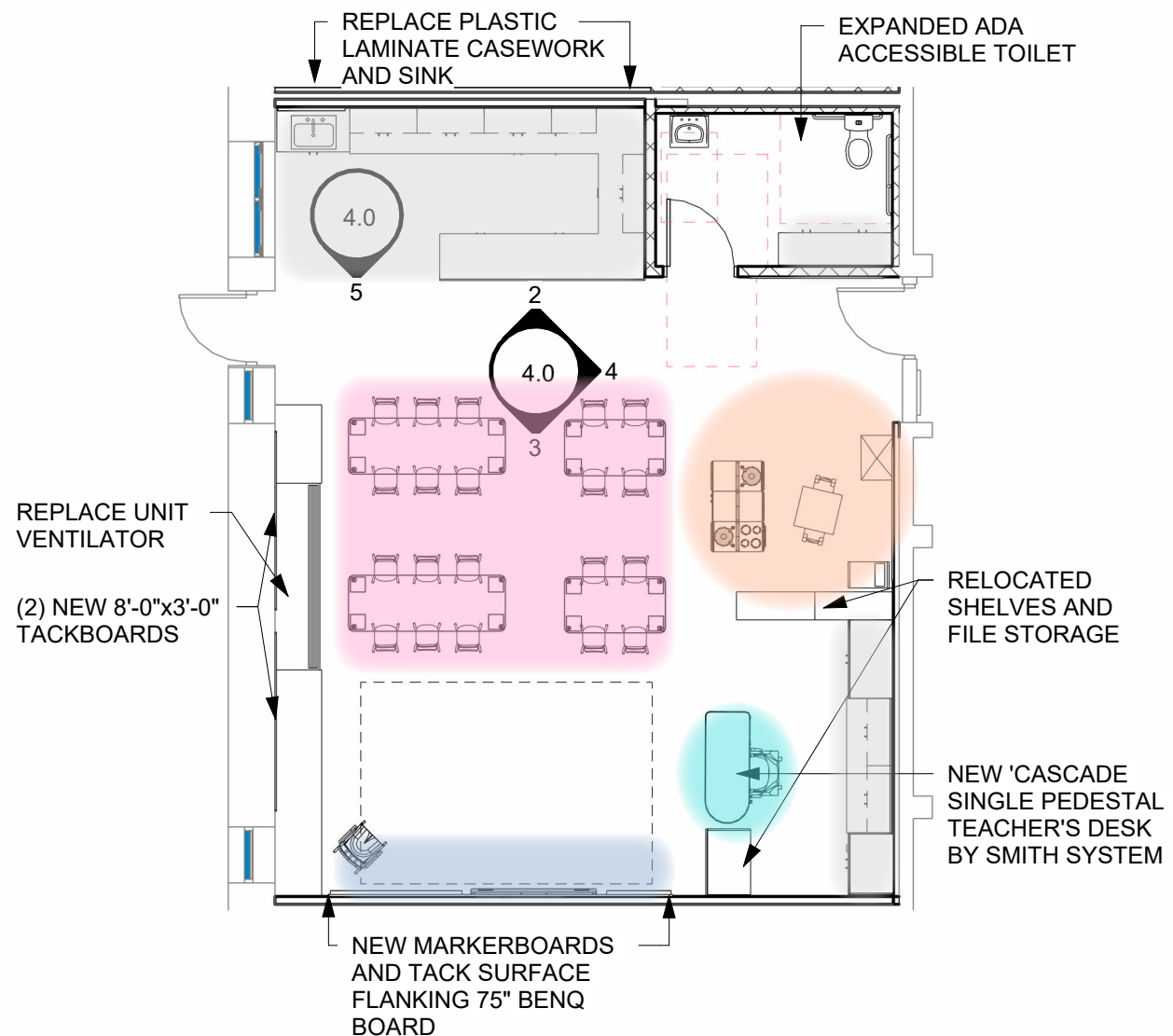
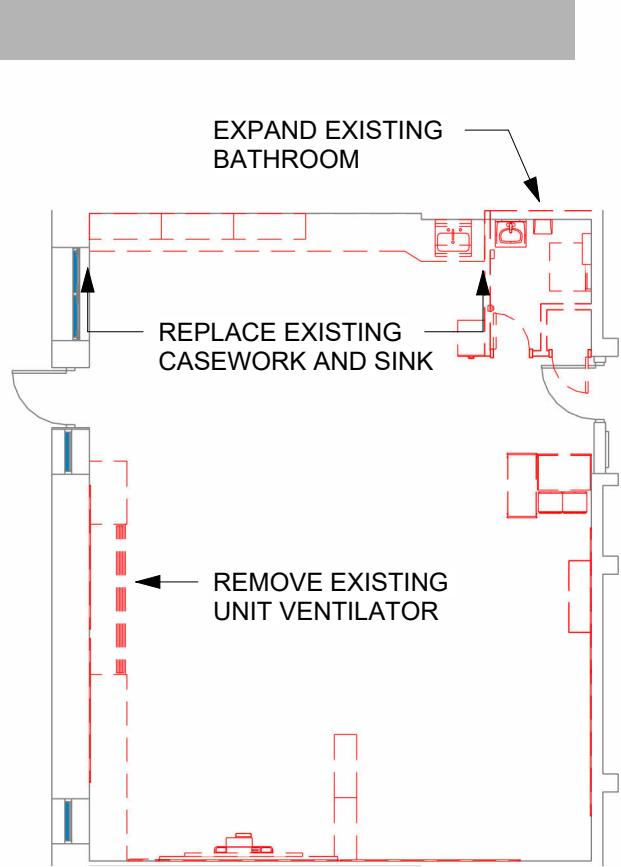


6 Proposed Casework Elevation
 3/16" = 1'-0"





Kindergarten



CLASSROOM ZONES

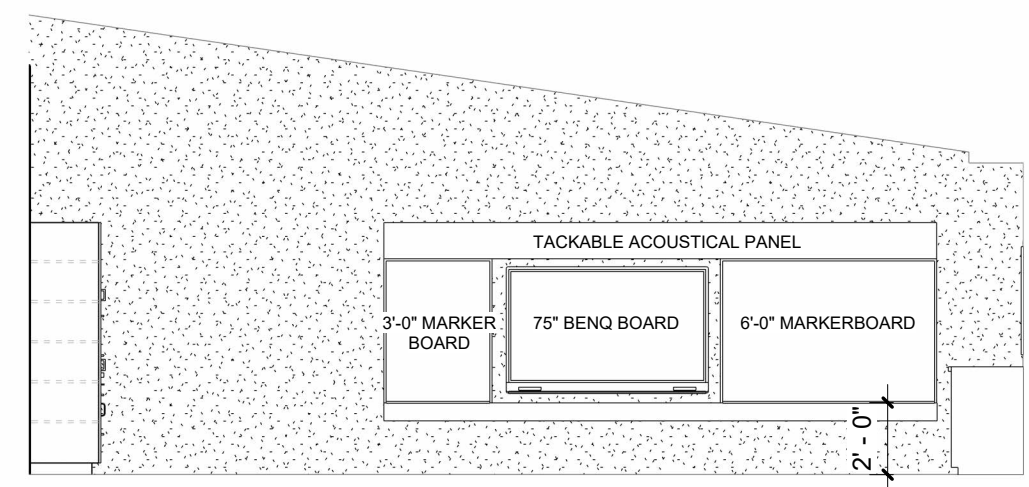
- STUDENT SEATING
- INSTRUCTIONAL
- TEACHER
- SMALL GROUP
- STORAGE/RESOURCE

EXISTING BUILT-IN STORAGE: 187 CUBIC FEET
PROPOSED STORAGE: 375 CUBIC FEET + Relocated Shelves

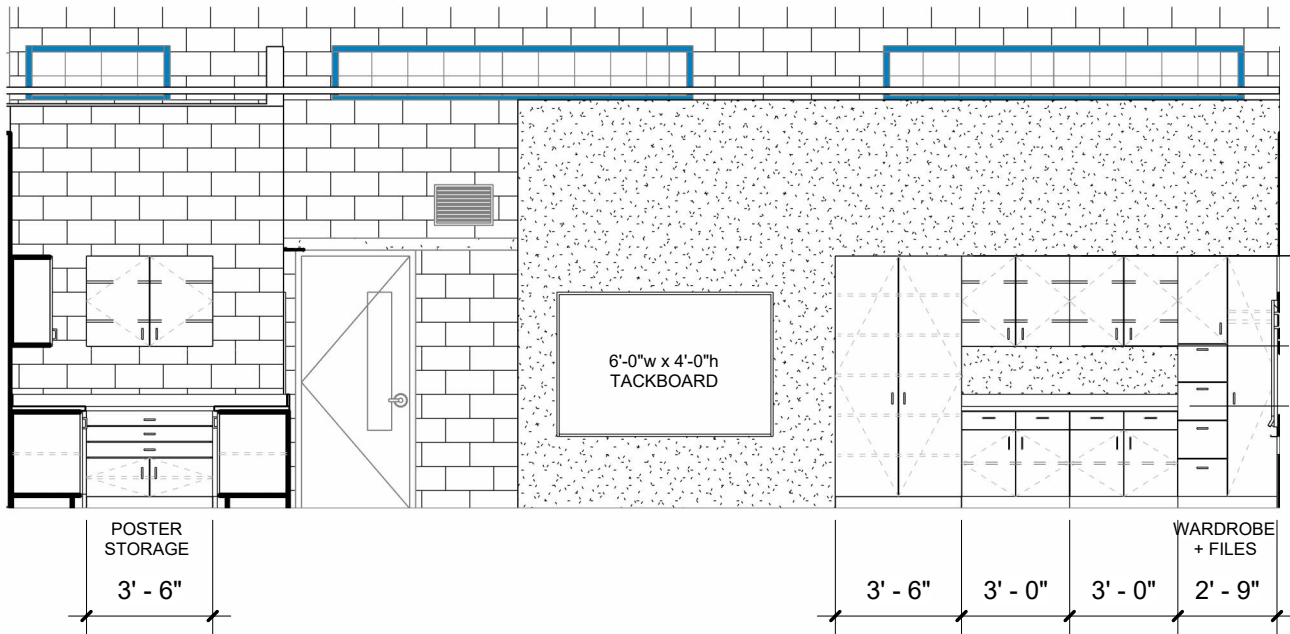
[Click to View](#)

UPDATES PER FEEDBACK:

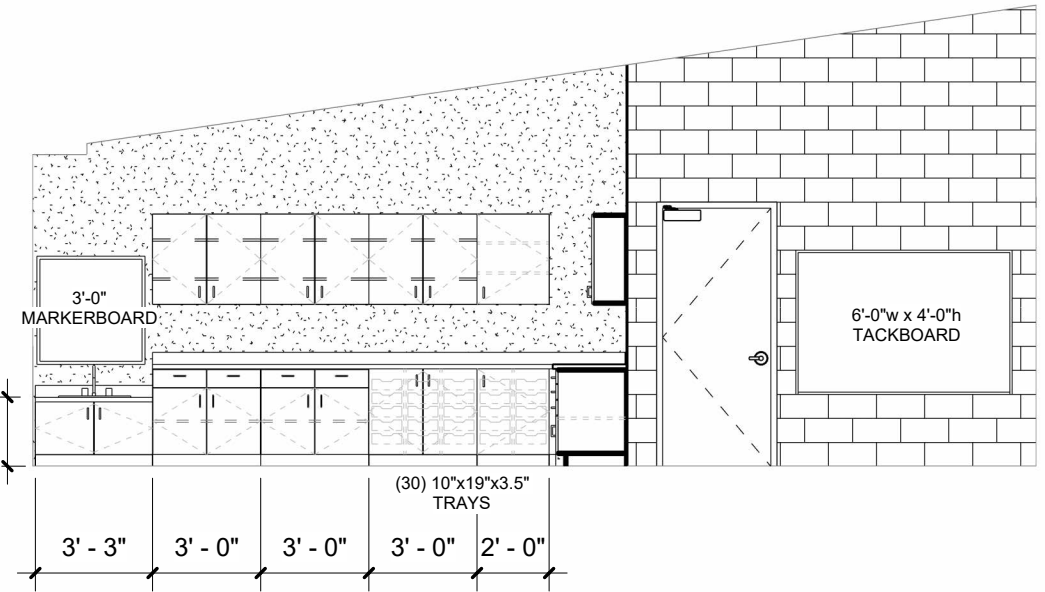
- ADDED CABINETS BEHIND TEACHER'S DESK
- ADDITIONAL DRAWER SPACE
- RUG (BY DISTRICT) SITTING AREA



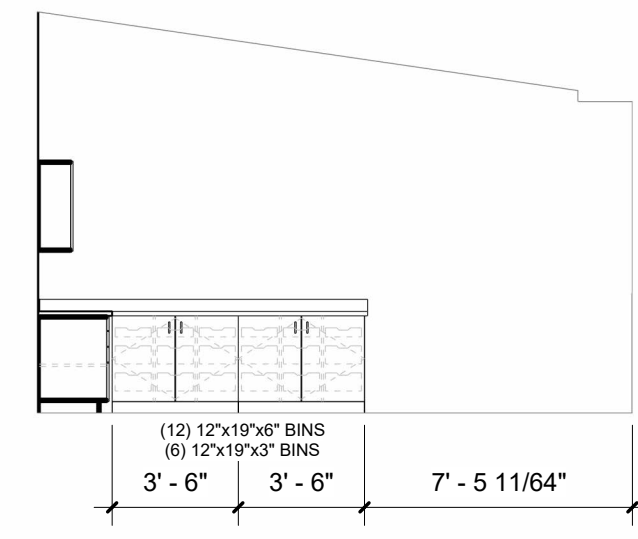
3 Proposed Instructional Elevation
 3/16" = 1'-0"



4 Proposed Casework Elevation
 3/16" = 1'-0"



2 Proposed Casework Elevation
 3/16" = 1'-0"

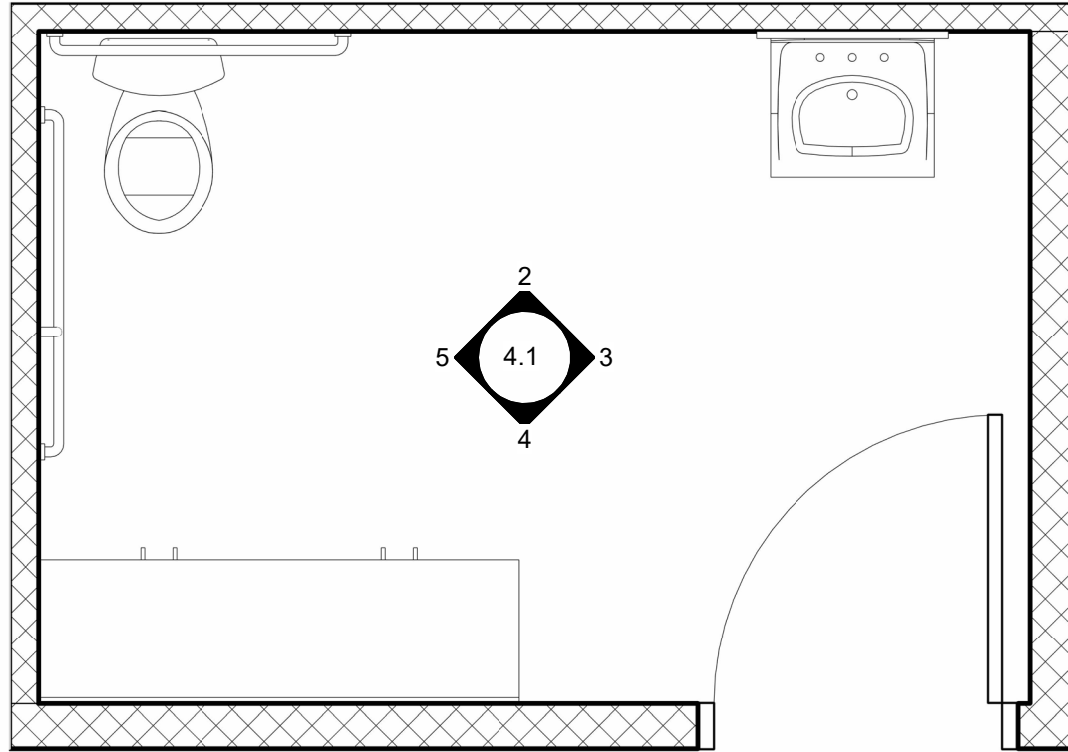


5 Proposed Casework Elevation
 3/16" = 1'-0"

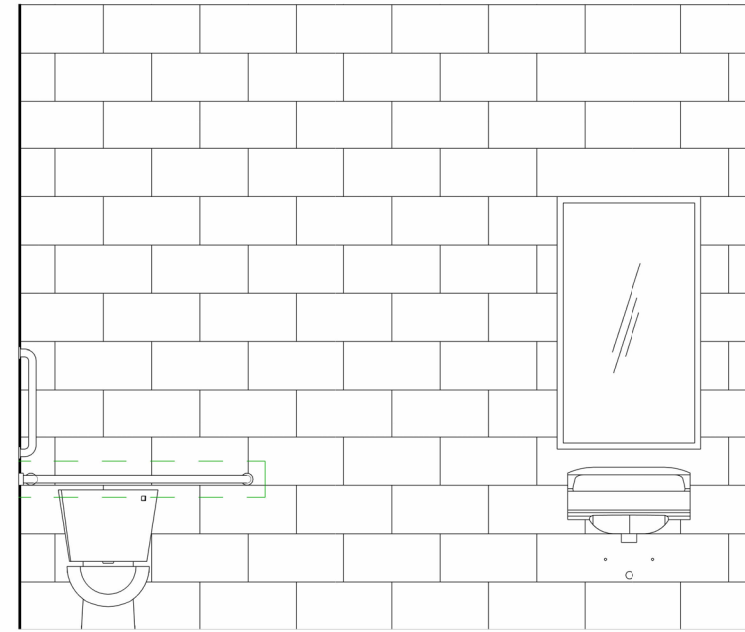




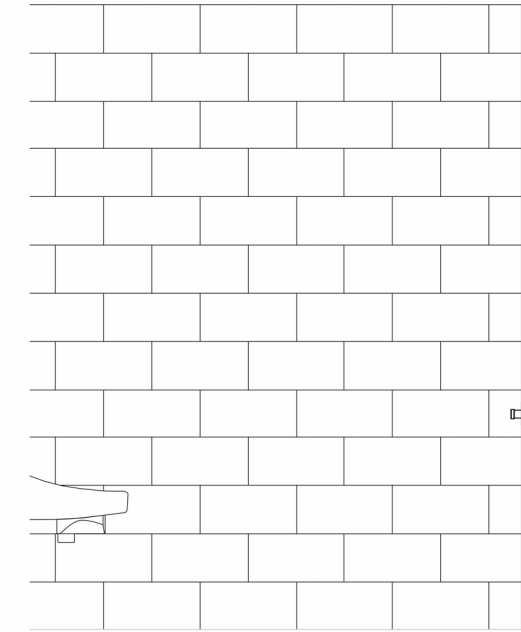
Typ. ADA Single Bathroom



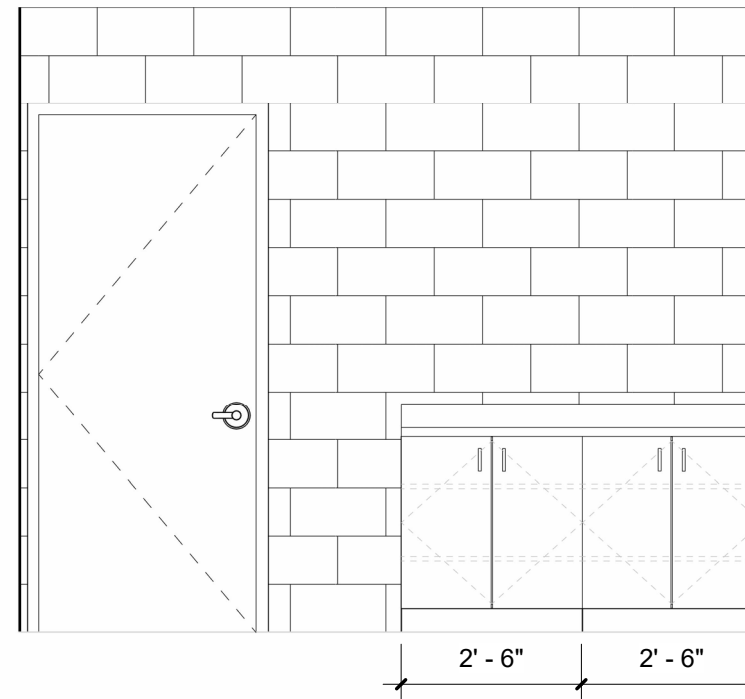
1 Floor Plan - Proposed Bathroom (Kindergarten)
1/2" = 1'-0"



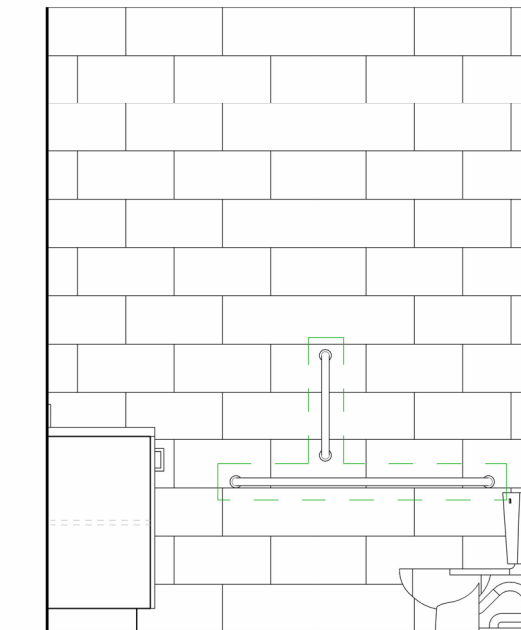
2 Proposed Bathroom Elevation
3/8" = 1'-0"



3 Proposed Bathroom Elevation
3/8" = 1'-0"



4 Proposed Bathroom Elevation
3/8" = 1'-0"



5 Proposed Bathroom Elevation
3/8" = 1'-0"

REPLACE UNIT VENTILATOR

NEW 'CASCADE SINGLE PEDESTAL' TEACHER'S DESK BY SMITH SYSTEM

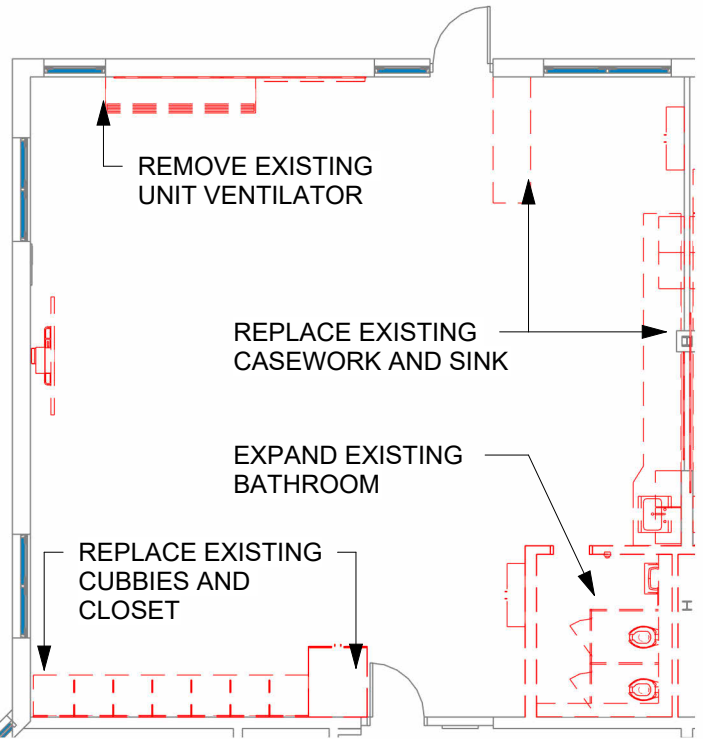
EXISTING BUILT-IN STORAGE: 248 CUBIC FEET
 PROPOSED STORAGE: 263 CUBIC FEET

- UPDATES PER FEEDBACK:**
- STANDARDIZATION OF CUBBIES
 - PARTITION BETWEEN SINK AND TOILET
 - MARKERBOARD AND TACKBOARD FLANKING BENQ BOARD
 - TACKBOARDS ON TOILET ROOM WALLS
 - TACKBOARD ABOVE SINK
 - COMBINATION TOTE SIZES
 - STANDARDIZATION OF UPPERS ABOVE UNIVENT
 - STANDARDIZATION OF TACKBOARD NEAR CLASSROOM DOOR
 - RUG (BY DISTRICT) SITTING AREA

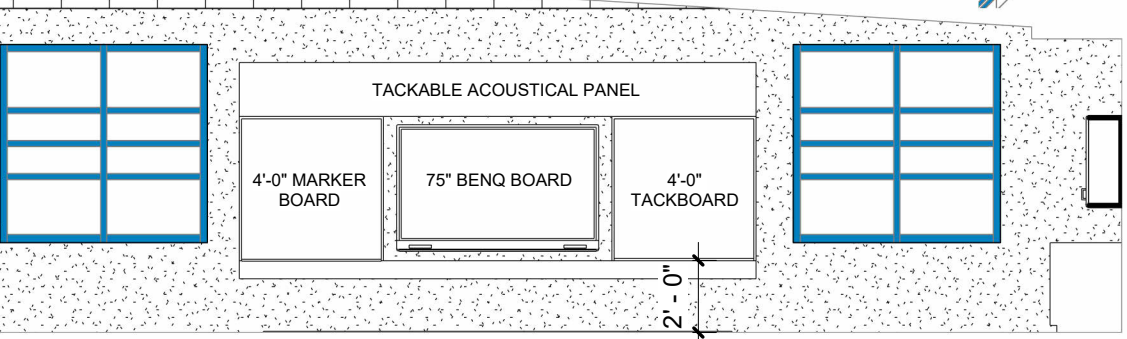
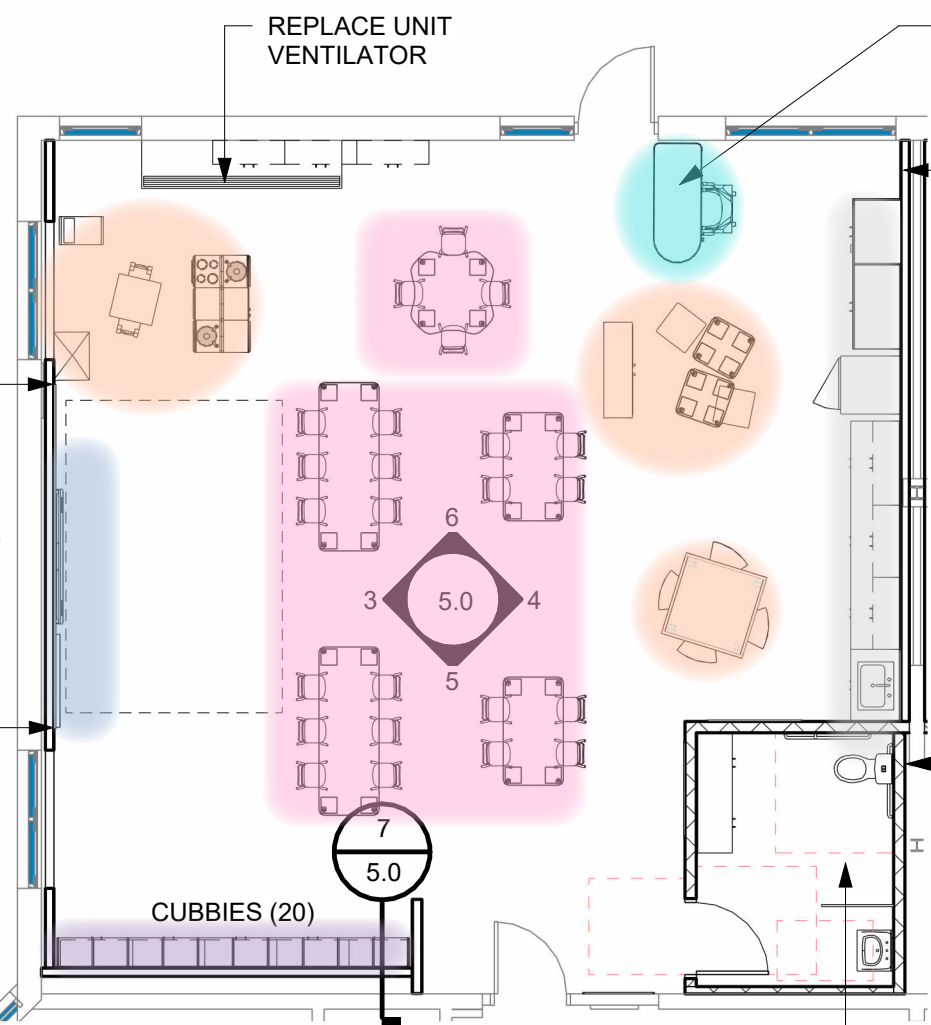


CLASSROOM ZONES

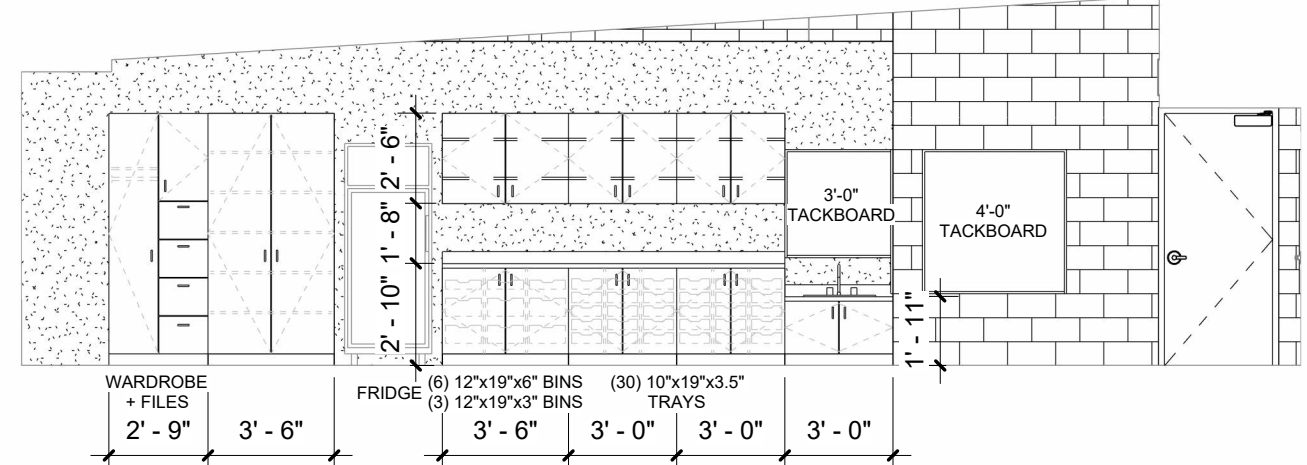
- STUDENT SEATING
- INSTRUCTIONAL
- TEACHER
- DRAMATIC PLAY
- STORAGE/RESOURCE
- CUBBIES



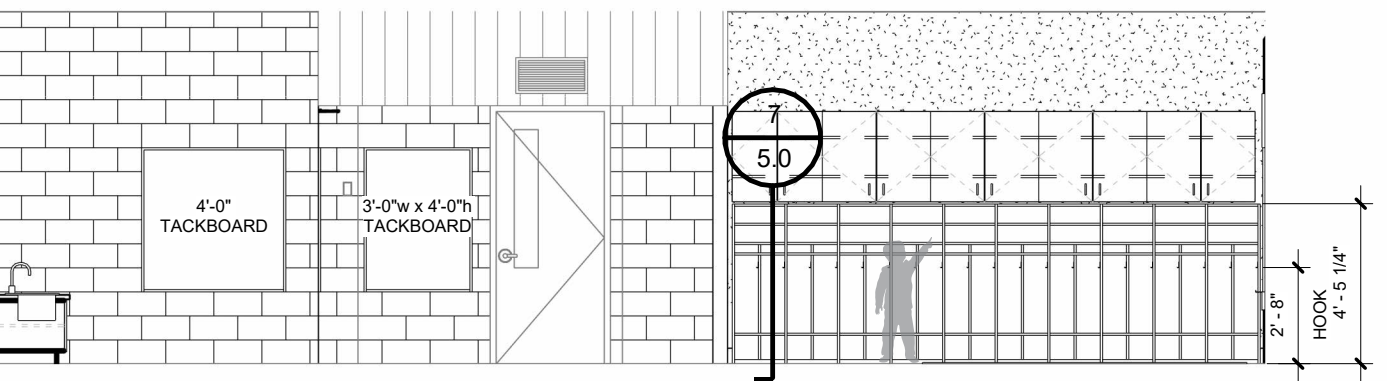
MARKERBOARDS AND TACK SURFACE FLANKING 75" BENQ BOARD



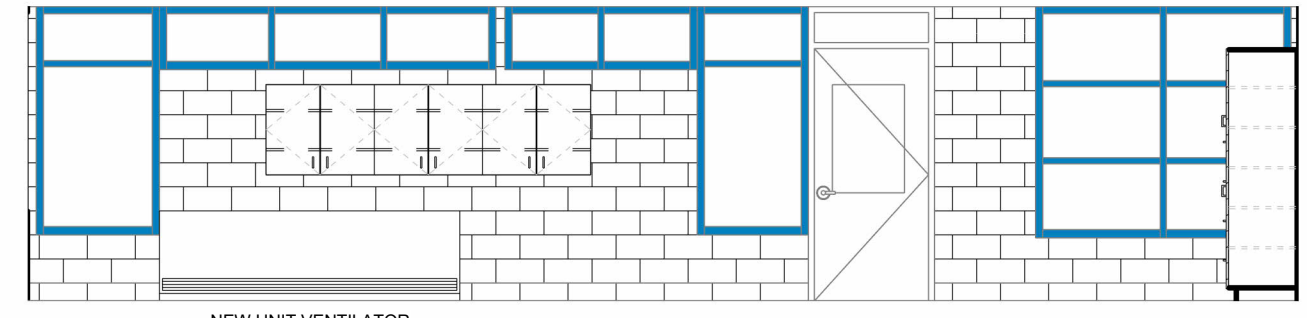
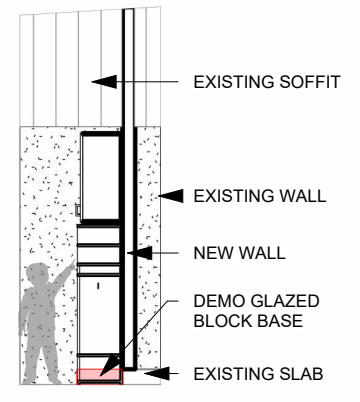
3 Proposed Instructional Elevation
 3/16" = 1'-0"



4 Proposed Casework Elevation
 3/16" = 1'-0"



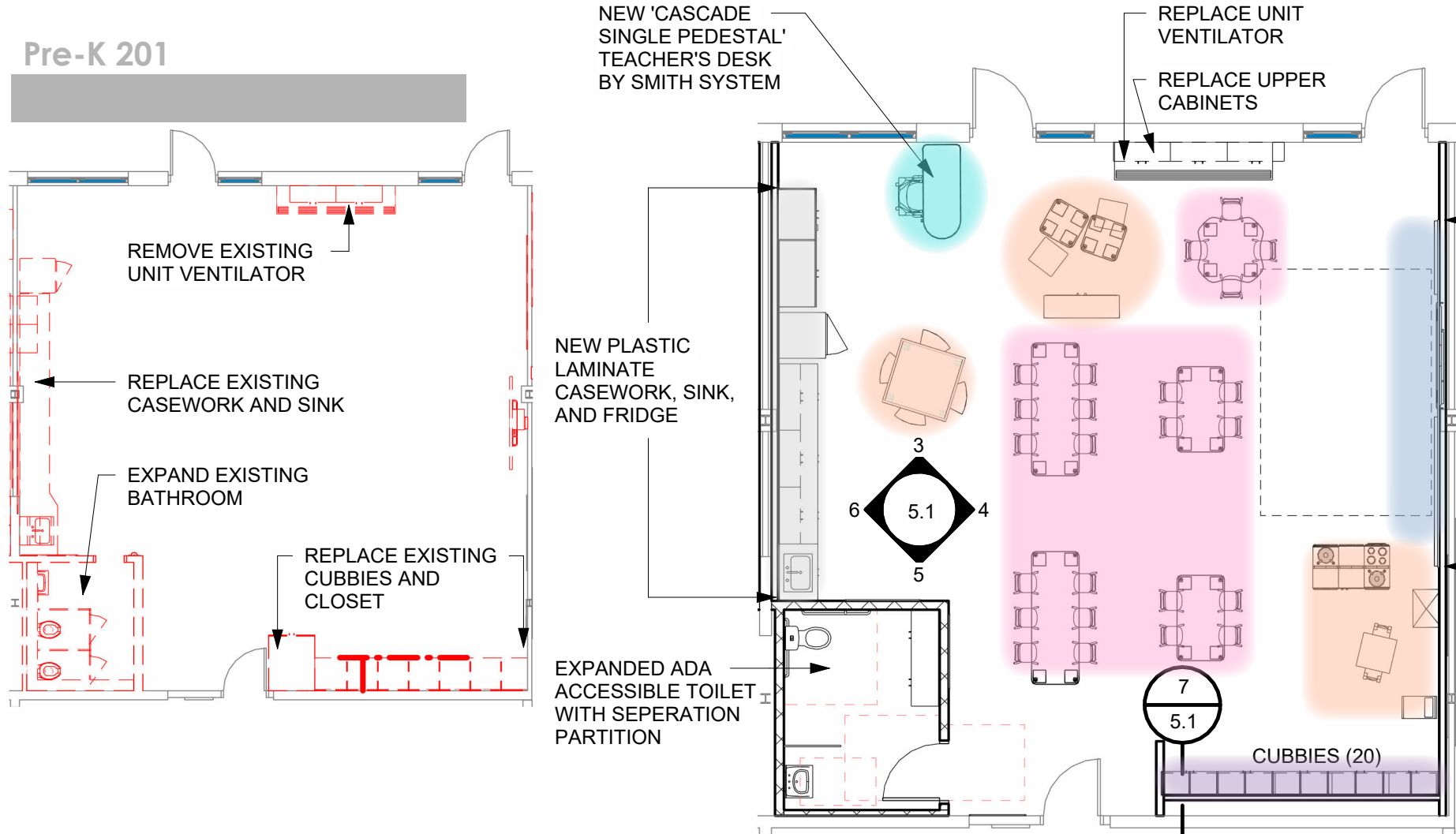
5 Proposed Cubby Elevation
 3/16" = 1'-0"



6 Proposed Window Elevation
 3/16" = 1'-0"





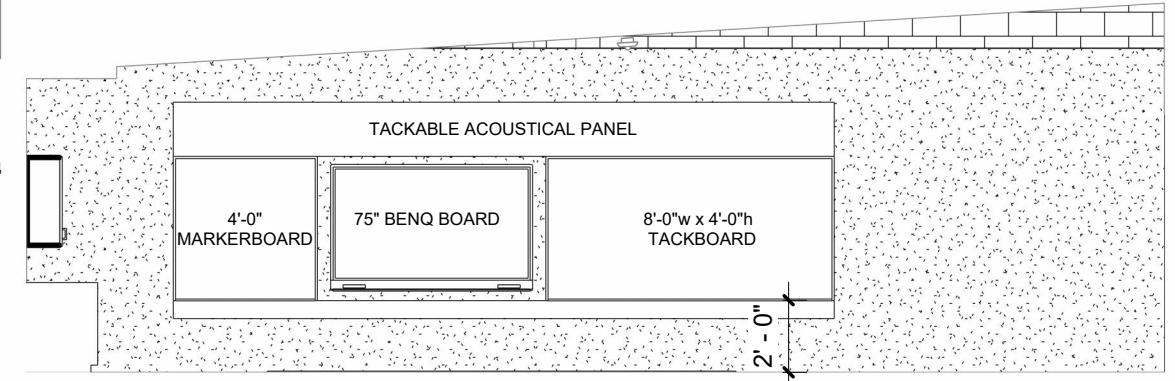


EXISTING BUILT-IN STORAGE: 121 CUBIC FEET
 PROPOSED STORAGE: 221 CUBIC FEET

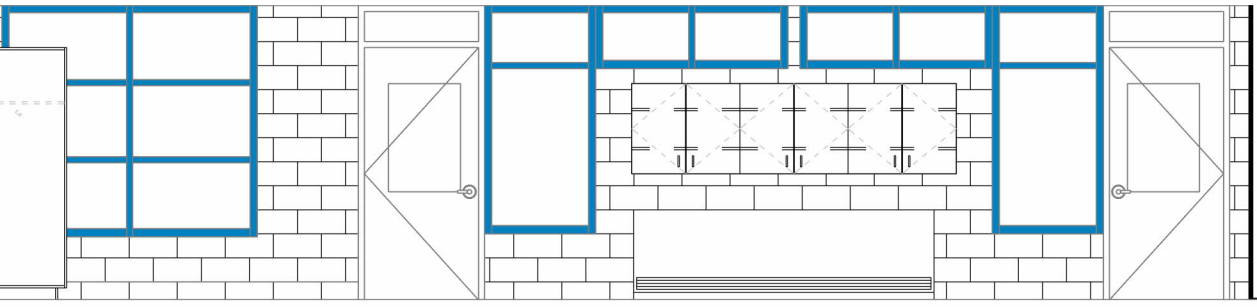
- UPDATES PER FEEDBACK:**
- STANDARDIZATION OF CUBBIES
 - PARTITION BETWEEN SINK AND TOILET
 - MARKERBOARD AND TACKBOARD FLANKING BENQ BOARD (LARGER IS TACKBOARD)
 - TACKBOARDS ON TOILET ROOM WALLS
 - TACKBOARD ABOVE SINK
 - COMBINATION TOTE SIZES
 - STANDARDIZATION OF UPPERS ABOVE UNIVENT
 - STANDARDIZATION OF TACKBOARD NEAR CLASSROOM DOOR
 - RUG (BY DISTRICT) SITTING AREA



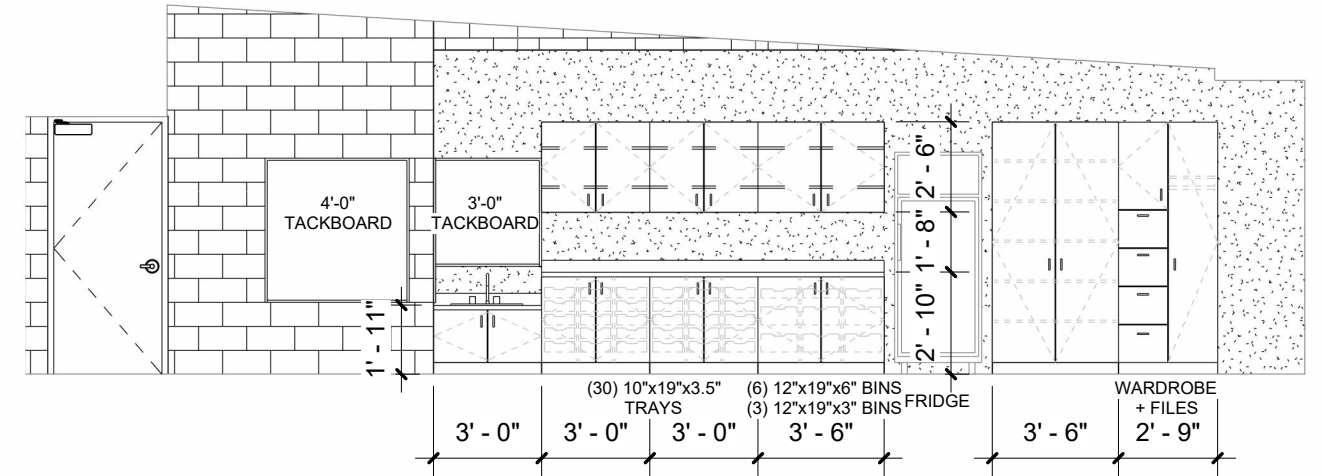
CLASSROOM ZONES	
	STUDENT SEATING
	INSTRUCTIONAL
	TEACHER
	DRAMATIC PLAY
	STORAGE/RESOURCE
	CUBBIES



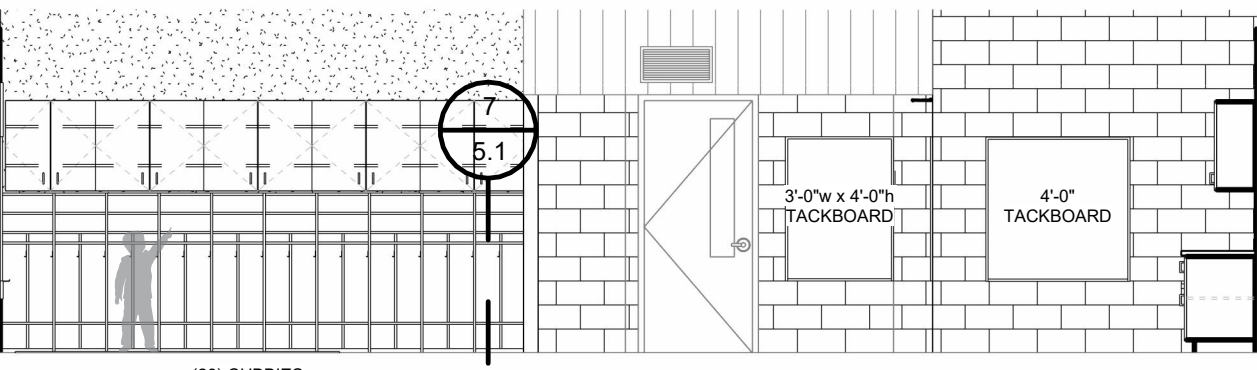
4 Proposed Instructional Elevation
 3/16" = 1'-0"



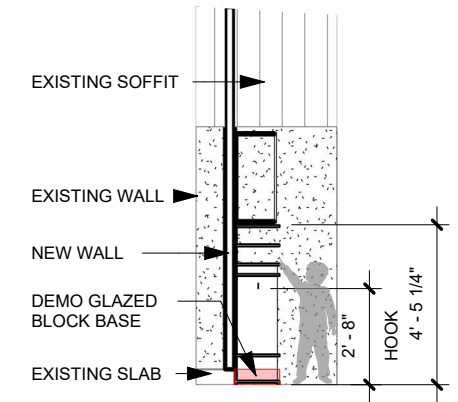
3 Proposed Window Elevation
 3/16" = 1'-0"



6 Proposed Casework Elevation
 3/16" = 1'-0"

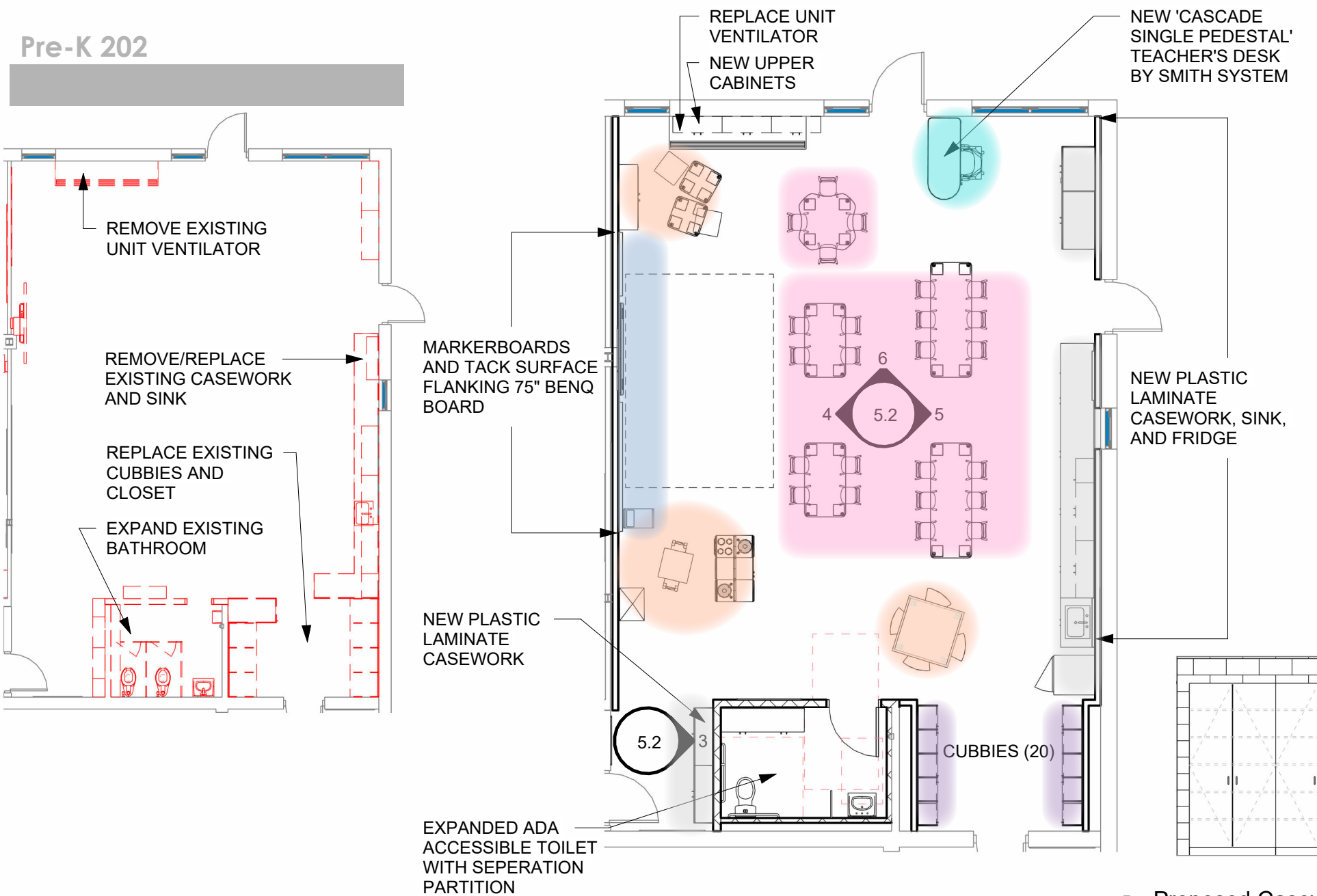


5 Proposed Cubby Elevation
 3/16" = 1'-0"





EXISTING BUILT-IN STORAGE: 215 CUBIC FEET
 PROPOSED STORAGE: 282 CUBIC FEET



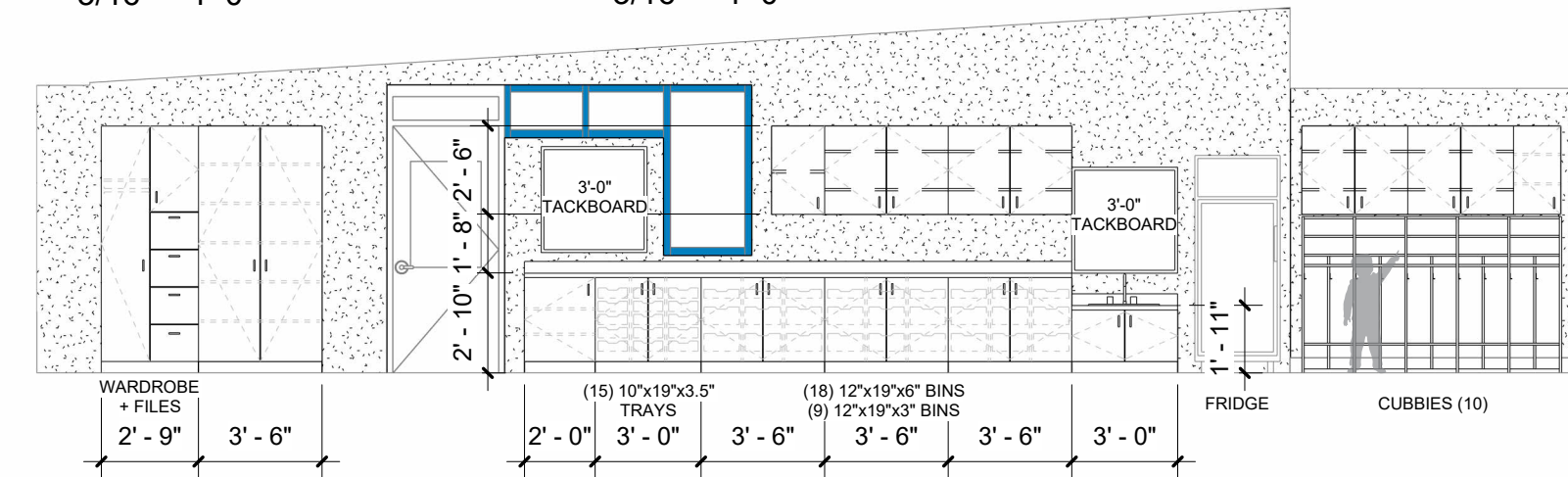
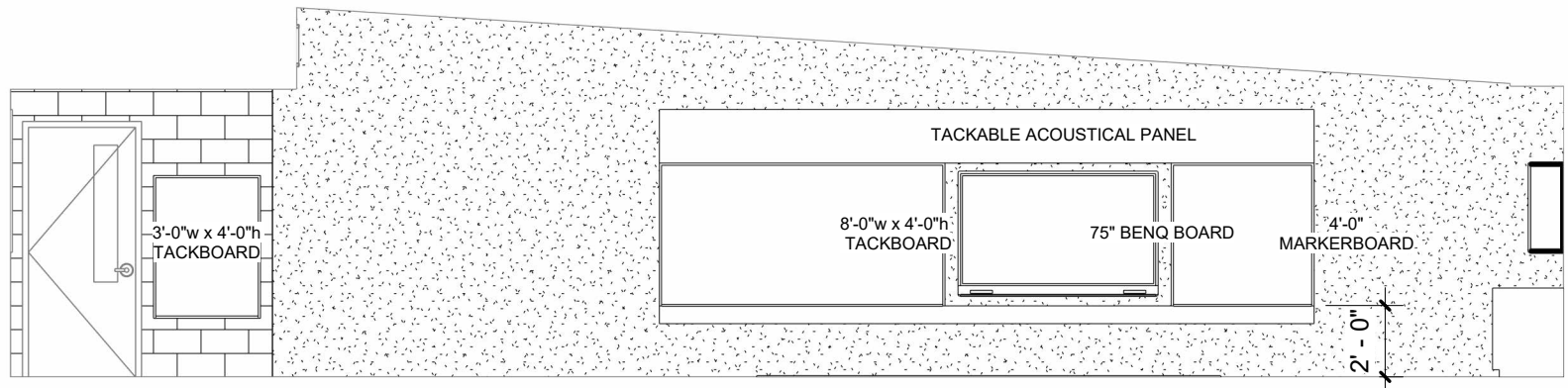
- UPDATES PER FEEDBACK:**
- STANDARDIZATION OF CUBBIES
 - PARTITION BETWEEN SINK AND TOILET
 - MARKERBOARD AND TACKBOARD FLANKING BENQ BOARD (LARGER IS TACKBOARD)
 - TACKBOARDS ON TOILET ROOM WALLS
 - TACKBOARD ABOVE SINK
 - COMBINATION TOTE SIZES
 - STANDARDIZATION OF UPPERS ABOVE UNIVENT
 - STANDARDIZATION OF TACKBOARD NEAR CLASSROOM DOOR
 - RUG (BY DISTRICT) SITTING AREA



CLASSROOM ZONES	
	STUDENT SEATING
	INSTRUCTIONAL
	TEACHER
	DRAMATIC PLAY
	STORAGE/RESOURCE
	CUBBIES

3 Proposed Casework Elevation
 3/16" = 1'-0"

6 Proposed Window Elevation
 3/16" = 1'-0"

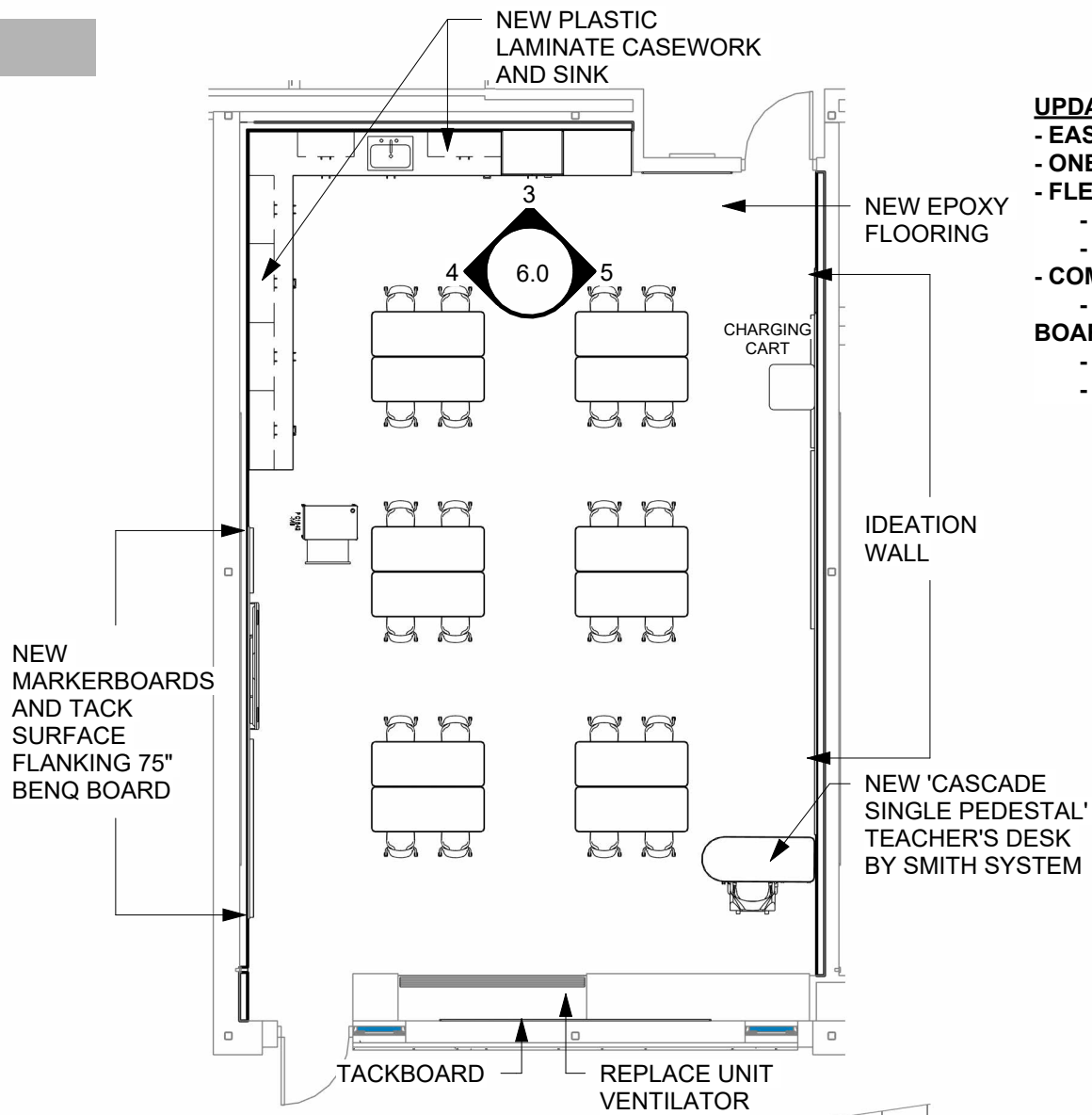
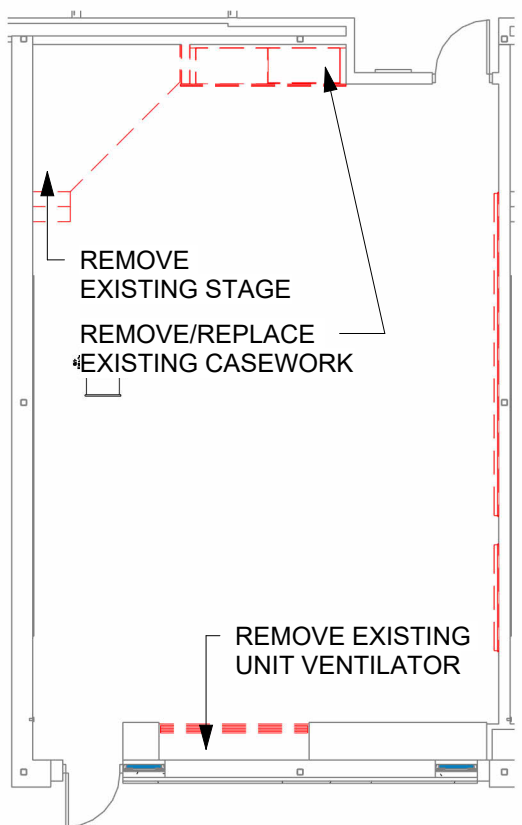


5 Proposed Casework Elevation
 3/16" = 1'-0"

4 Proposed Casework Elevation
 3/16" = 1'-0"



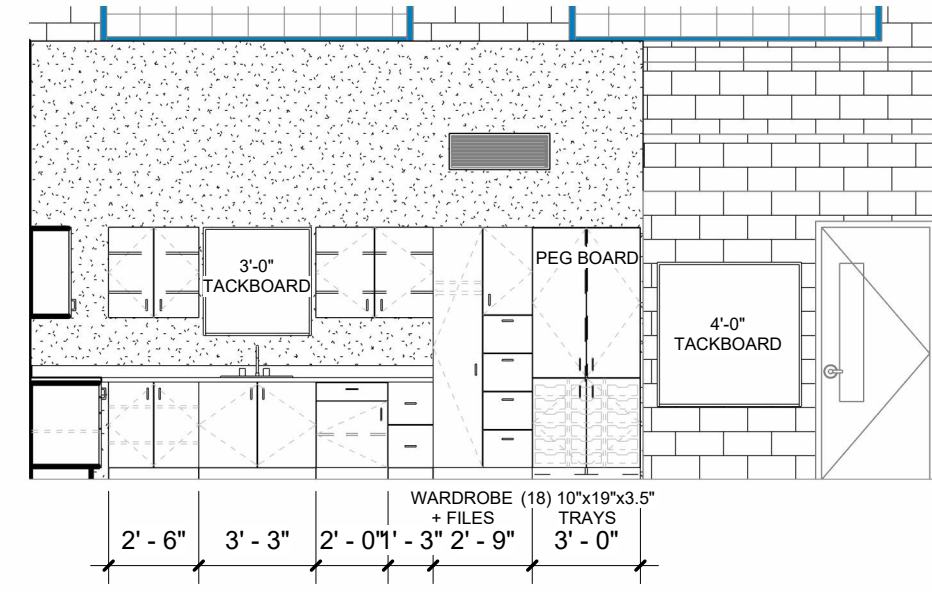




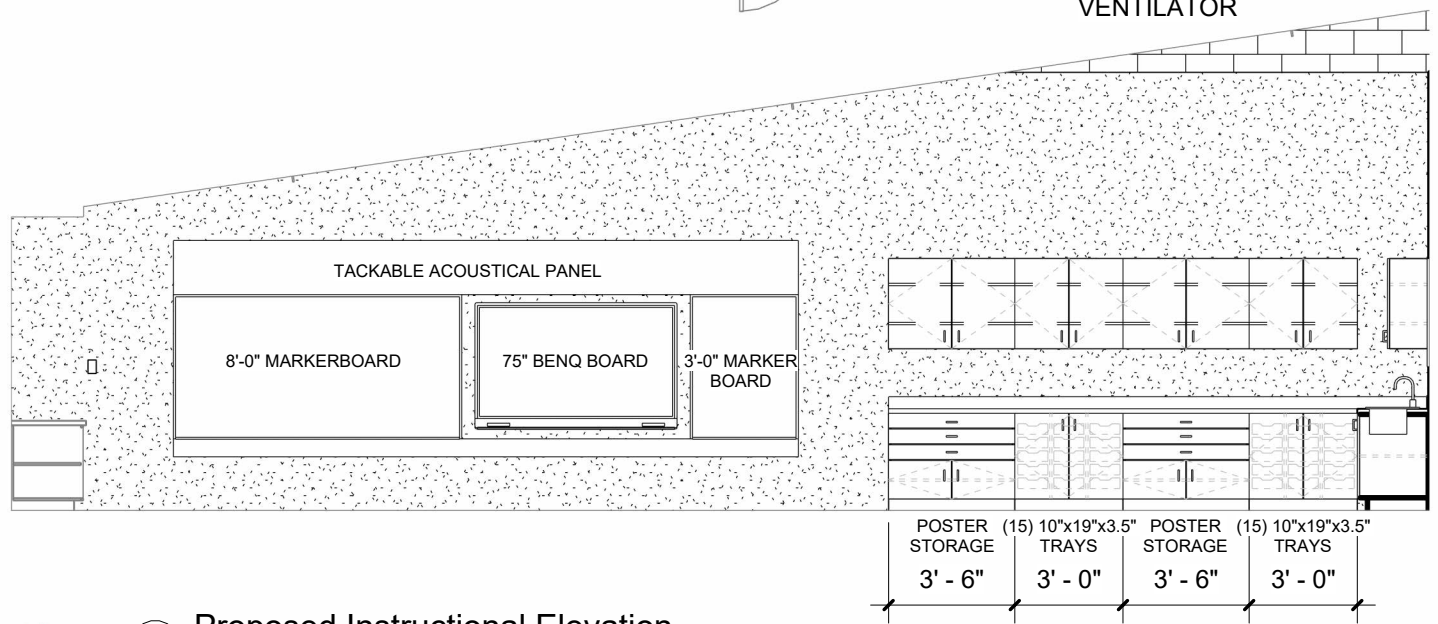
UPDATES PER FEEDBACK:

- EASY ACCESS TO TOILET ROOMS
- ONE SINK
- FLEXIBLE FURNITURE
 - CHAIRS ON CASTERS
 - TABLES FOR TWO TO GROUP
- COMBINATION OF STORAGE
 - LARGE CRAFT STORAGE FOR TRAYS AND PEG BOARD
- BOARD
 - FILE FOLDERS
 - DRAWERS/CABINET FOR SAFETY GOGGLES

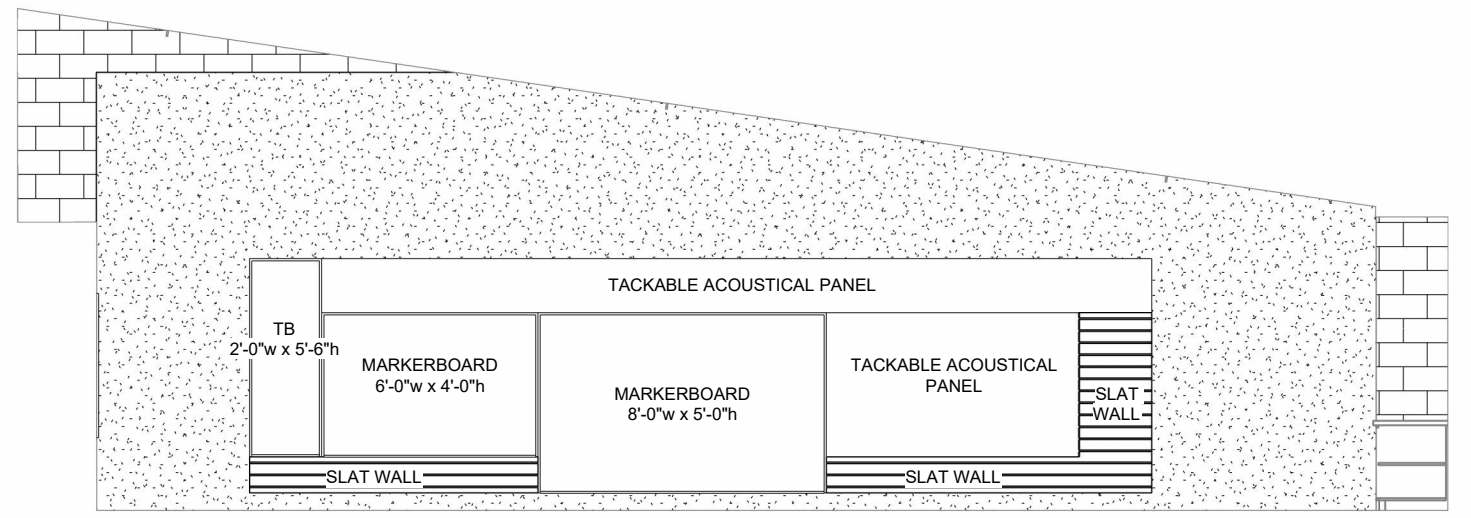
- EPOXY FLOORING
- DEDICATED MARKERBOARDS FOR GRADE LEVELS (4 PROVIDED)
- TACKBOARDS PROVIDED FOR STUDENT DISPLAY



3 Proposed Casework Elevation
3/16" = 1'-0"



4 Proposed Instructional Elevation
3/16" = 1'-0"



5 Proposed Ideation Wall Elevation
3/16" = 1'-0"





Gymnasium

UPDATES PER FEEDBACK:

- PAINT
- REMOVED WALL ART
- NEW ADJUSTABLE HOOPS CENTERED ON EAST AND WEST WALL
- NEW ADJUSTABLE HOOPS CENTERES ON NORTH AND SOUTH WALL (EAST SIDE)
- WALL PADS AROUND ENTIRE GYM
- NEW FLOORING WITH SPORT STRIPING AND CENTER LOGO

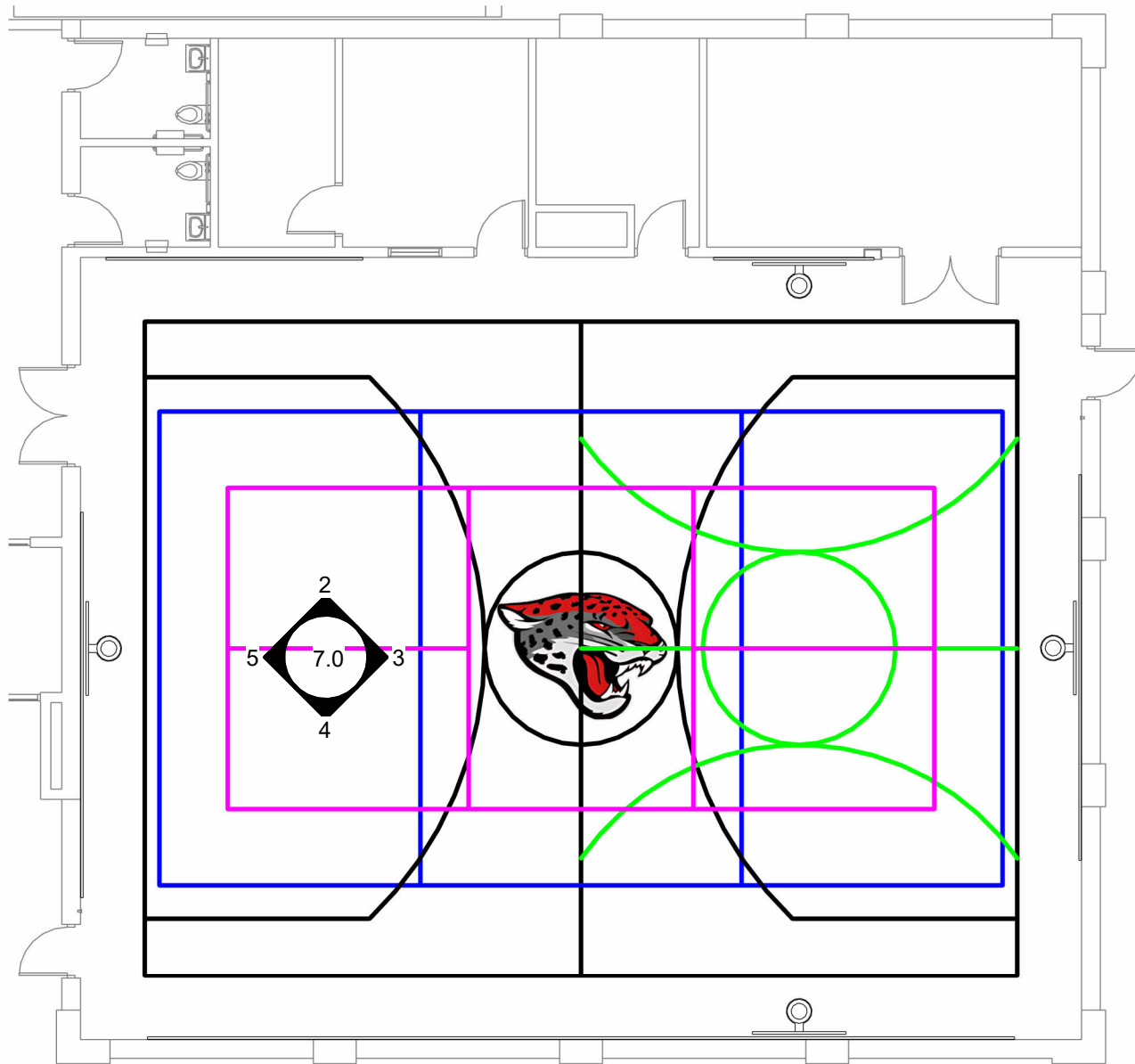
COURT STRIPING

BASKETBALL COURT (EAST TO WEST)
54'-4" x 40'-8"

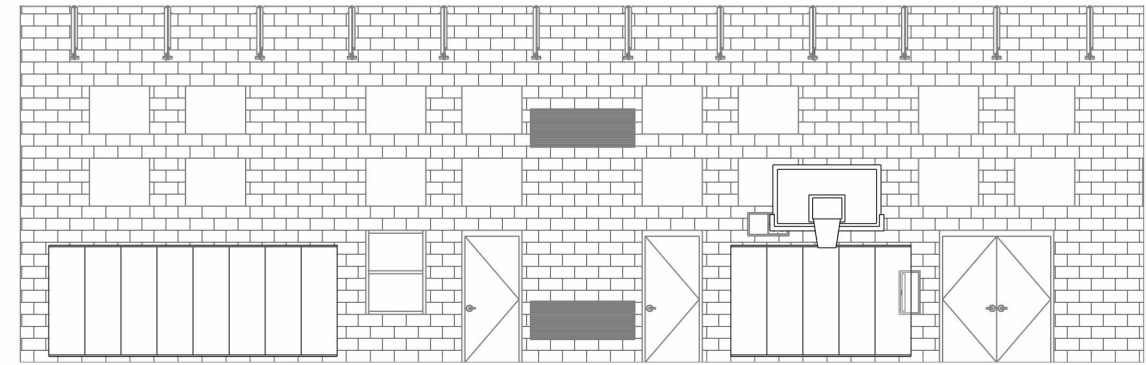
BASKETBALL COURT (NORTH TO SOUTH)
40'-8" x 27'-2"

VOLLEYBALL COURT (EAST TO WEST)
52'-6" x 29'-6"

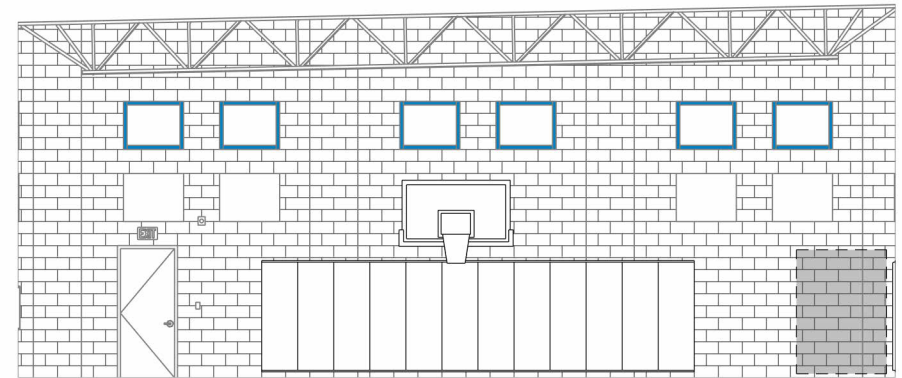
PICKLEBALL COURT (EAST TO WEST)
44'-0" x 20'-0"



[Click to View](#)



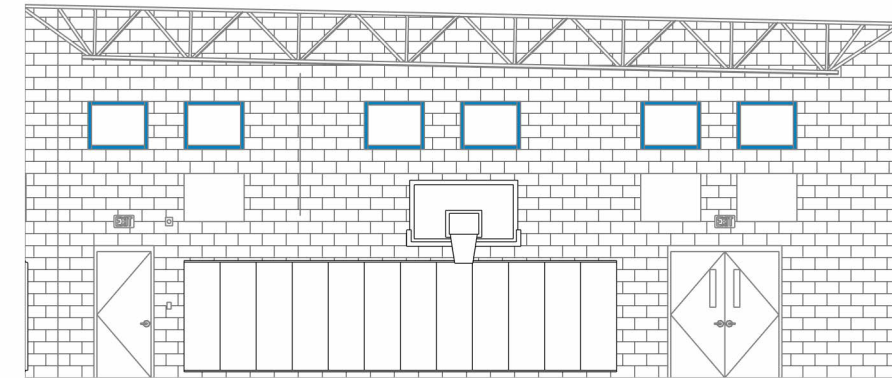
2 NORTH ELEVATION
3/32" = 1'-0"



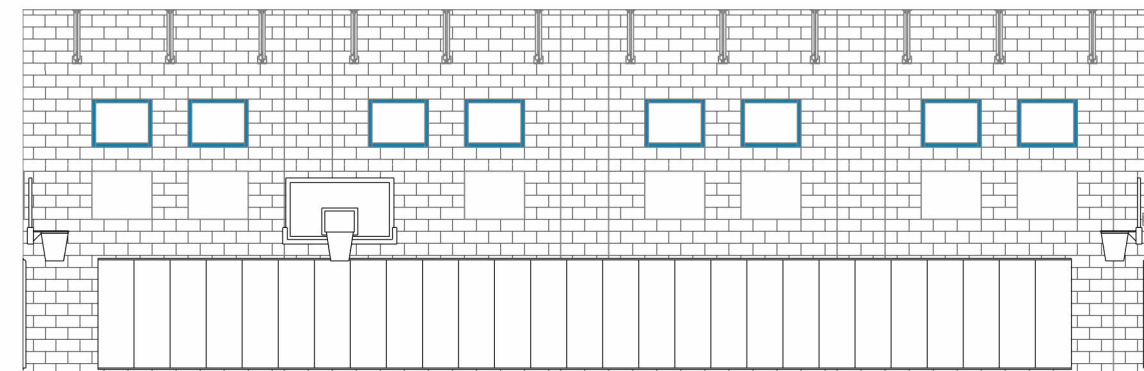
CHIN UP BAR TO REMAIN

ROCK CLIMBING WALL TO REMAIN

3 EAST ELEVATION
3/32" = 1'-0"



5 WEST ELEVATION
3/32" = 1'-0"



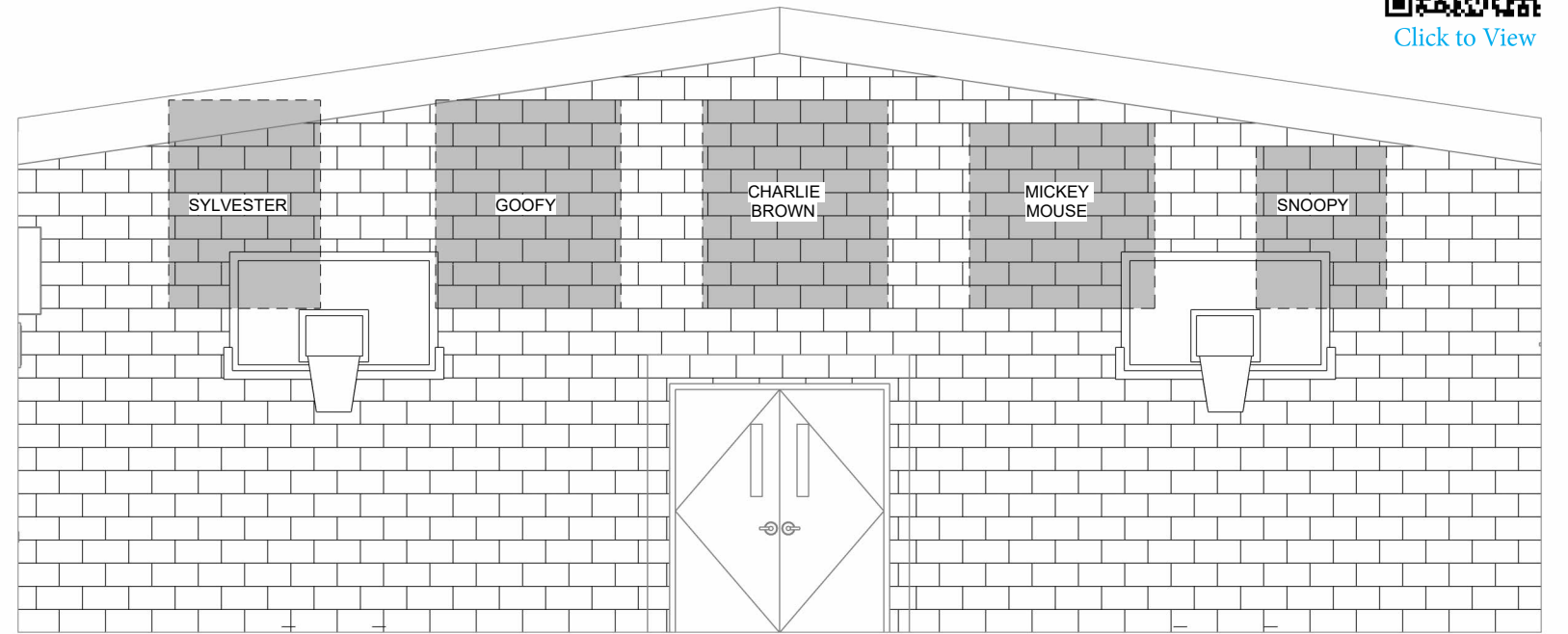
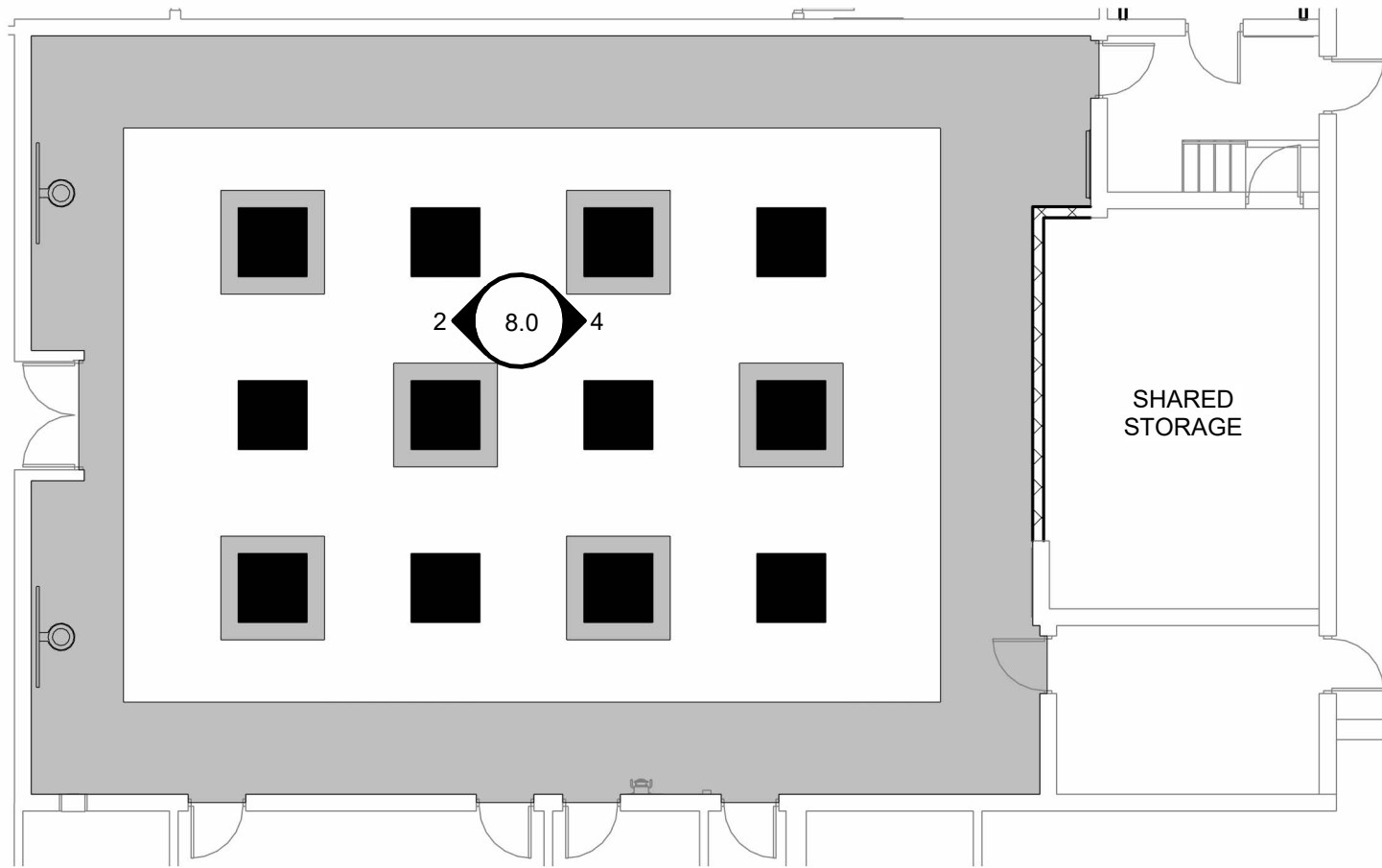
4 SOUTH ELEVATION
3/32" = 1'-0"

UPDATES PER FEEDBACK:

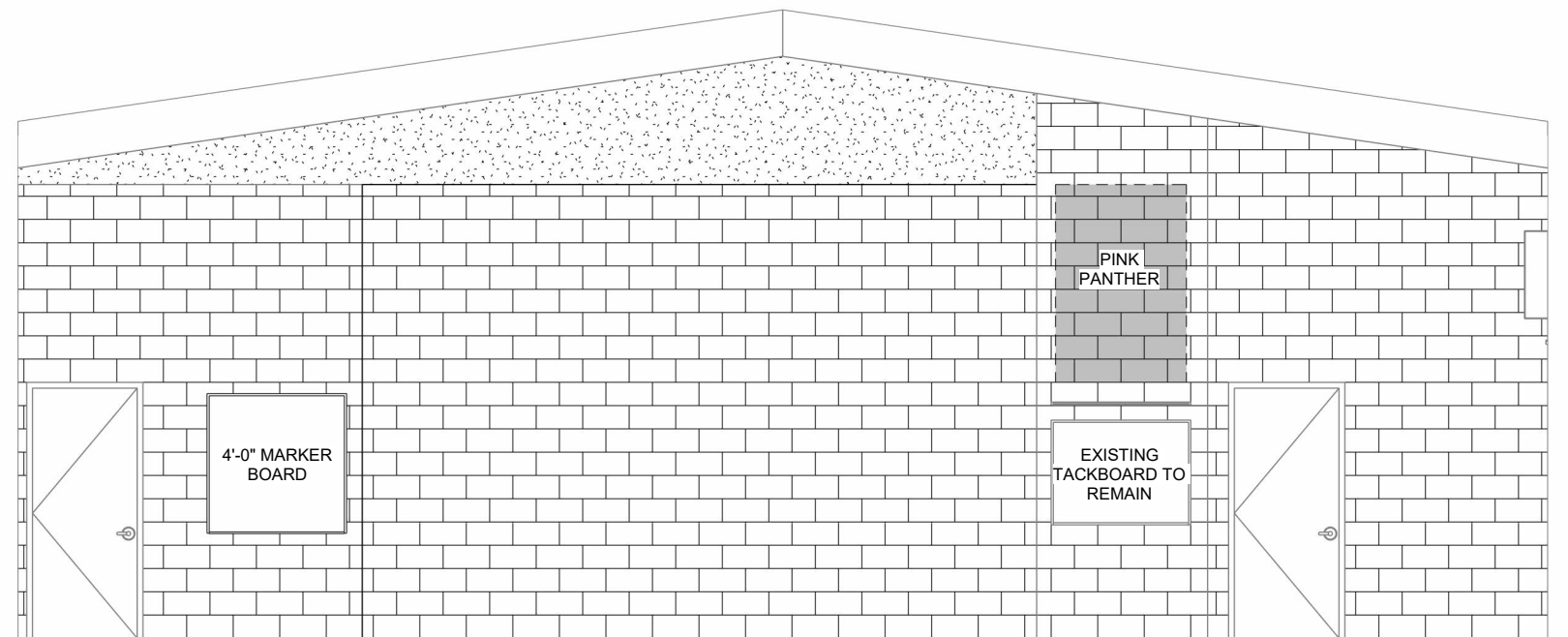
- PAINT
- NEW ADJUSTABLE HOOPS WITH BACKBOARDS
- NEW FLOORING
- NEW MARKERBOARD (LEFT OF OLD STAGE)
- NEW LIGHTING
- NEW CEILING



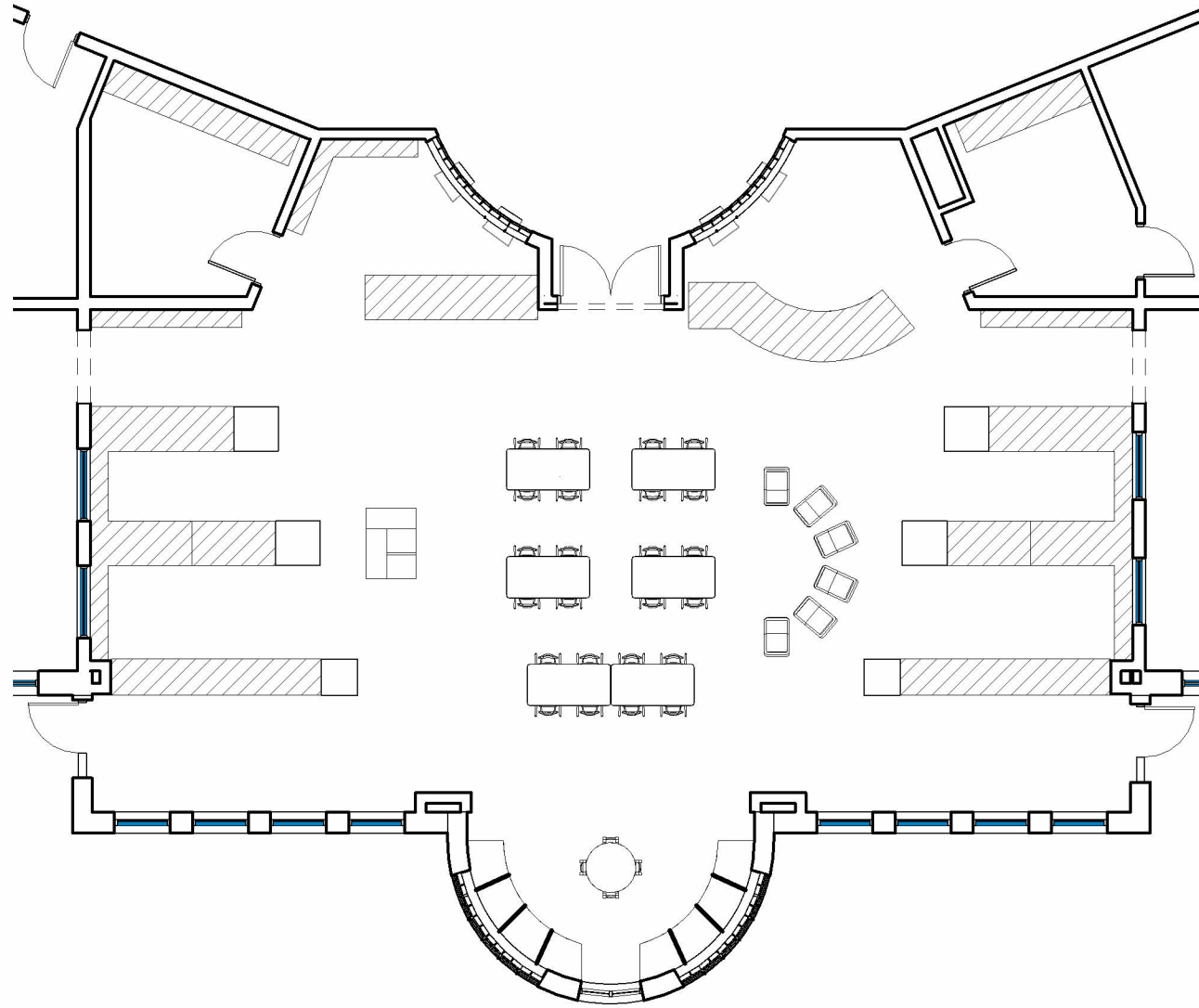
[Click to View](#)



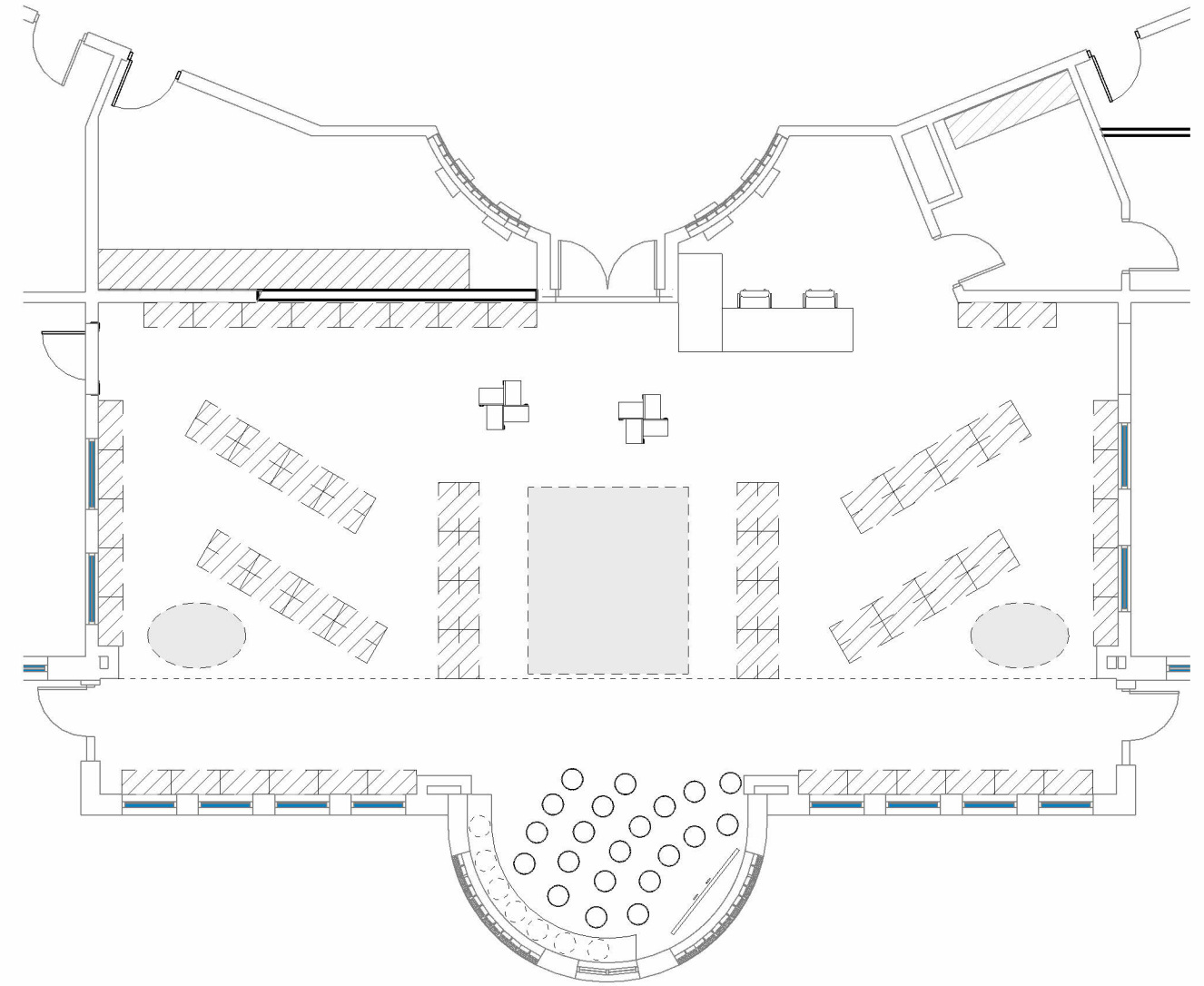
② WEST ELEVATION
3/16" = 1'-0"



④ EAST ELEVATION
3/16" = 1'-0"



1 Library Furniture - Exist
3/32" = 1'-0"



2 Library Furniture - New
3/32" = 1'-0"