

# DISTRICT 45

**Updated Financial Projection Scenarios**

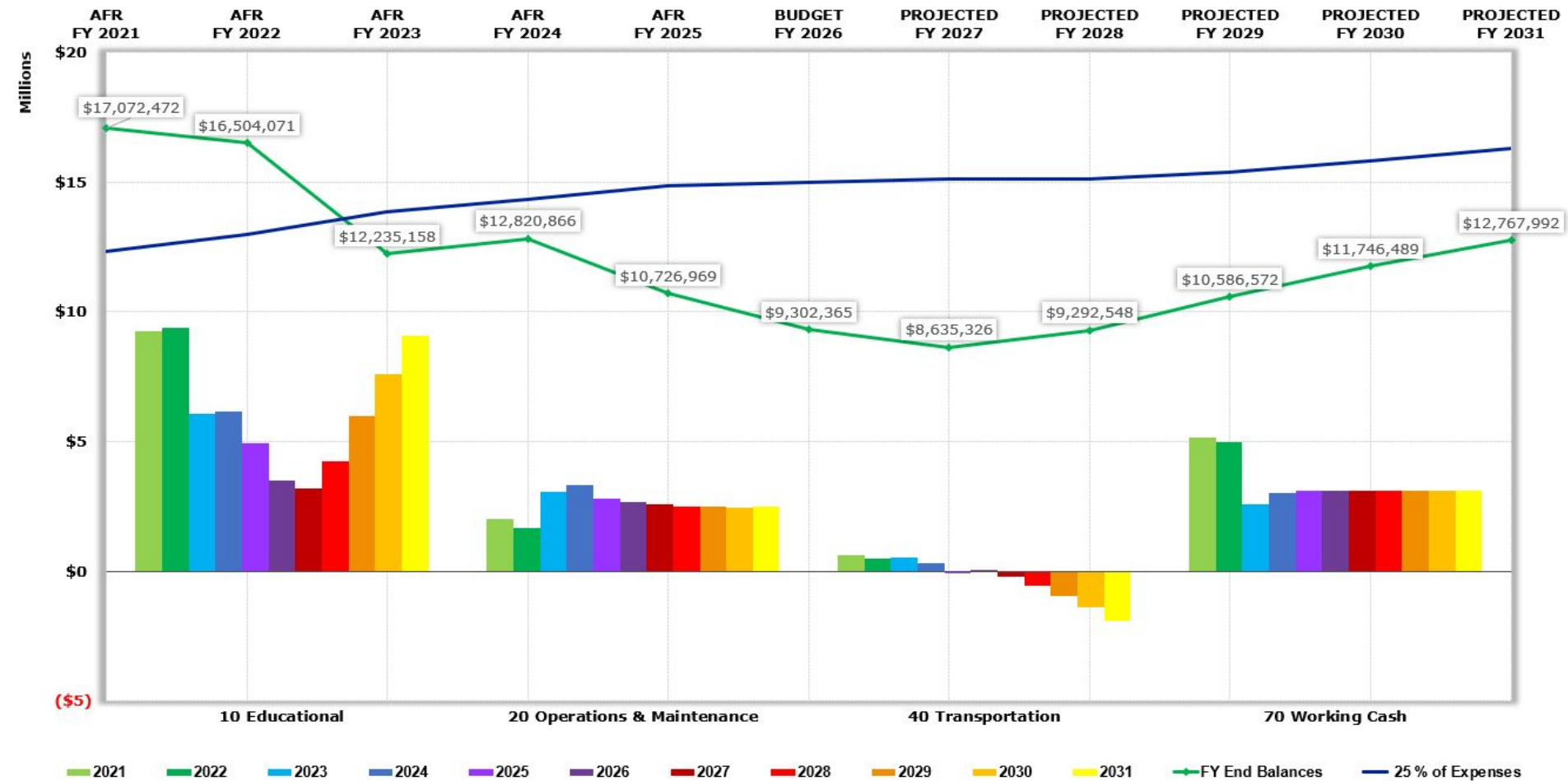
**Board of Education**

**June 16, 2026**

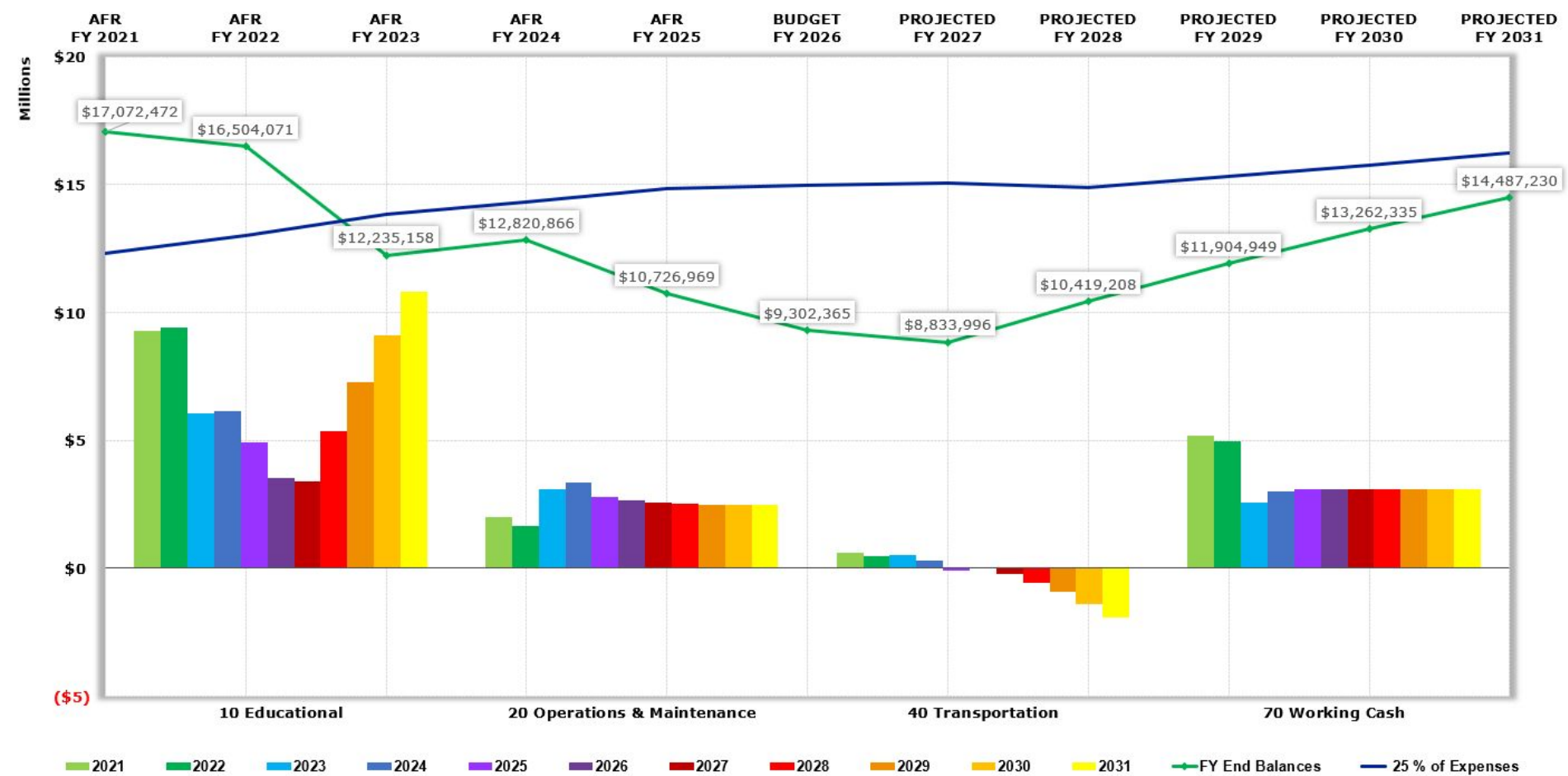
## May 19th Projections

- Starting Fund Balances are reset using Audited Actuals
- Actual Insurance Rates of 15-16% are applied instead of the 8% that was projected
- Federal and State Revenue projections are decreased (10%) to reflect what has been discussed at LEND, IASA, and IASBO Meetings
  - State Special Education, State Transportation, Federal Title funds

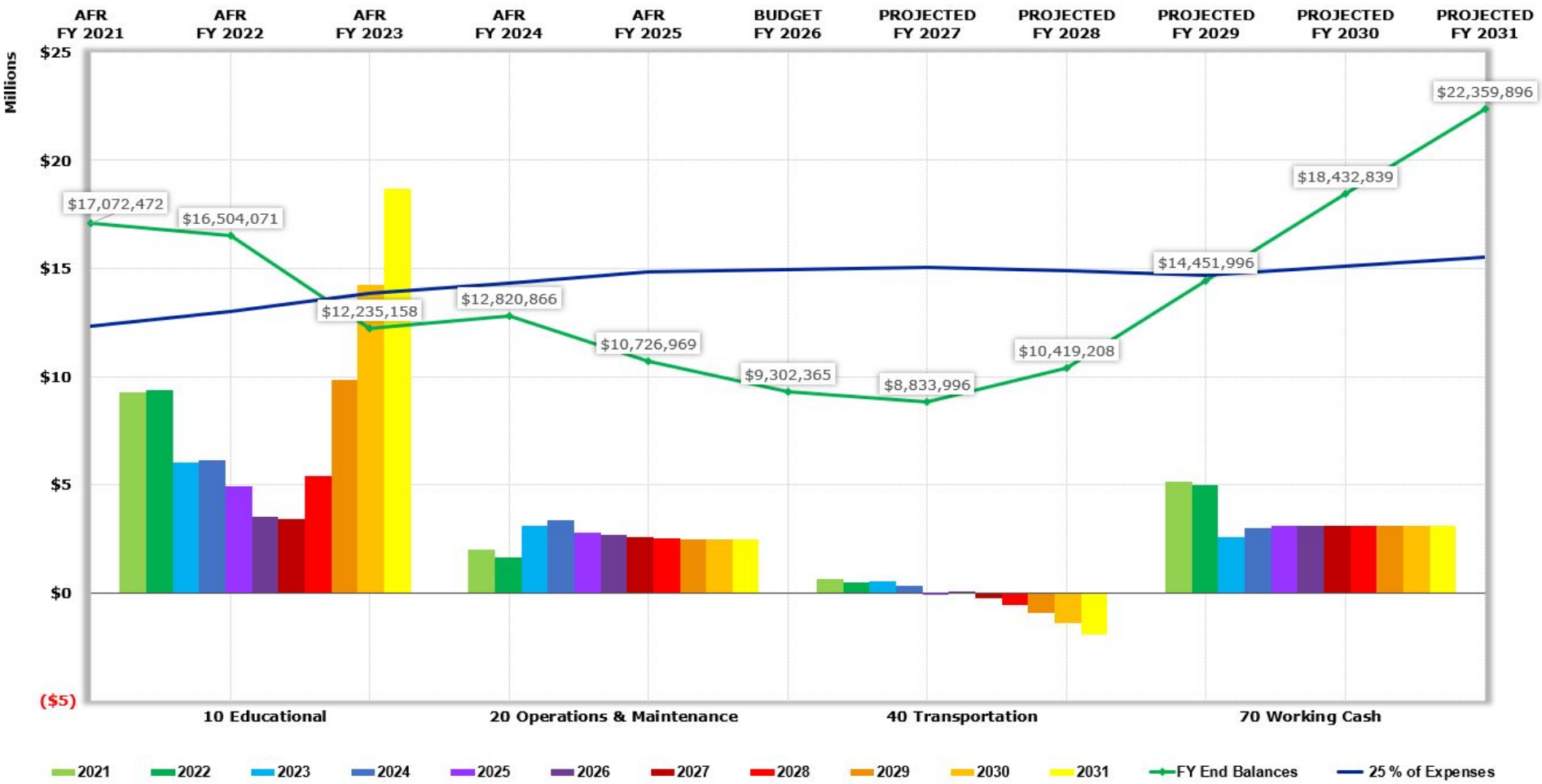
# Reducing Expenses to Obtain 25% Fund Balance In 3 Years by FY29 - 1st Year (\$1.5 million); 2nd Year (\$1 million); 3rd Year (\$750,000)



# Reducing Expenses to Obtain 25% Fund Balance In 3 Years by FY29 - 1st Year (\$1.695 million); 2nd Year (\$1.71 million); 3rd Year (\$0)



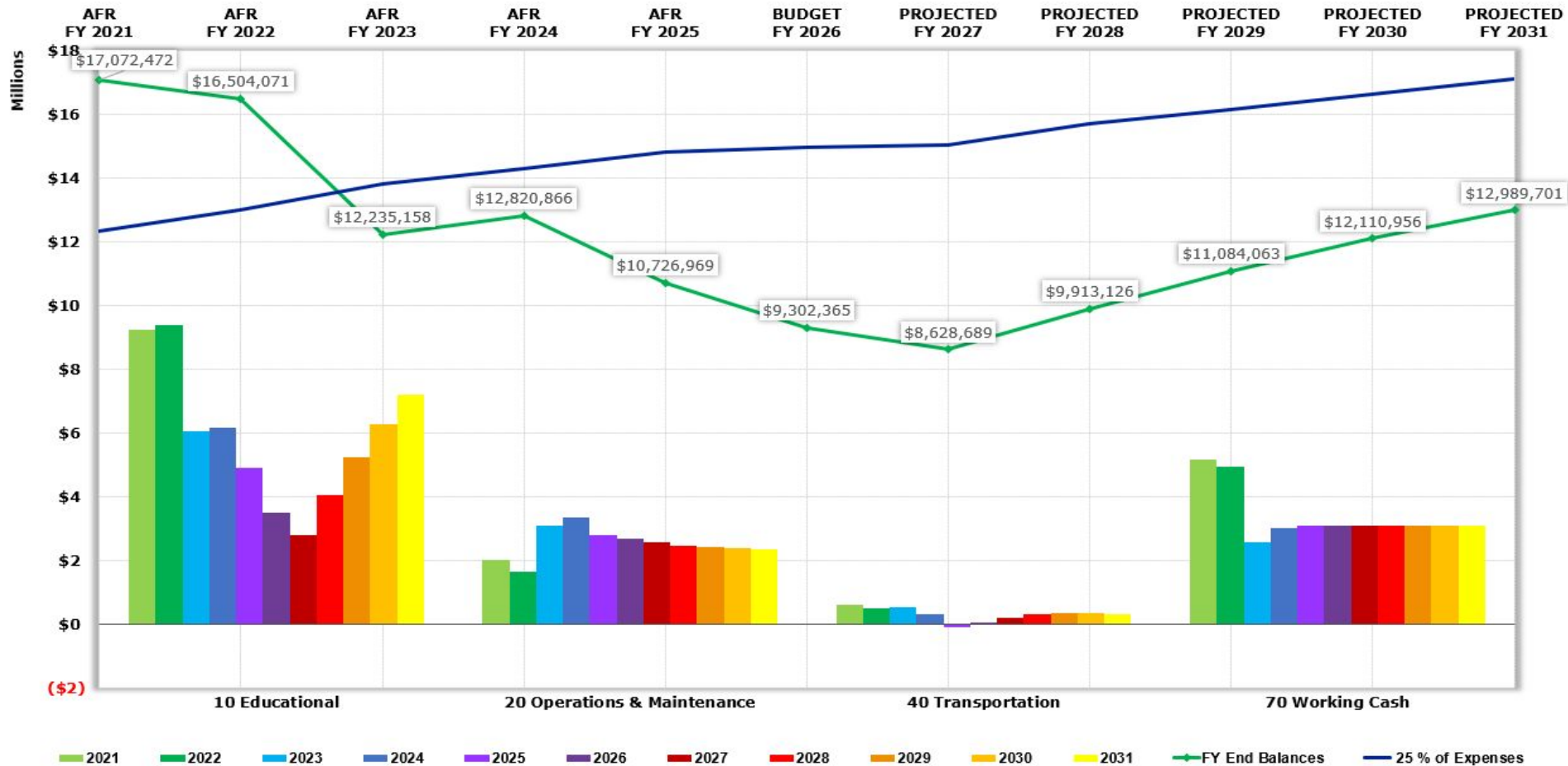
# Reducing Expenses to Obtain 25% Fund Balance In 3 Years by FY29 - 1st Year (\$1.695 million); 2nd Year (\$1.71 million); 3rd Year (\$2.5 Million)



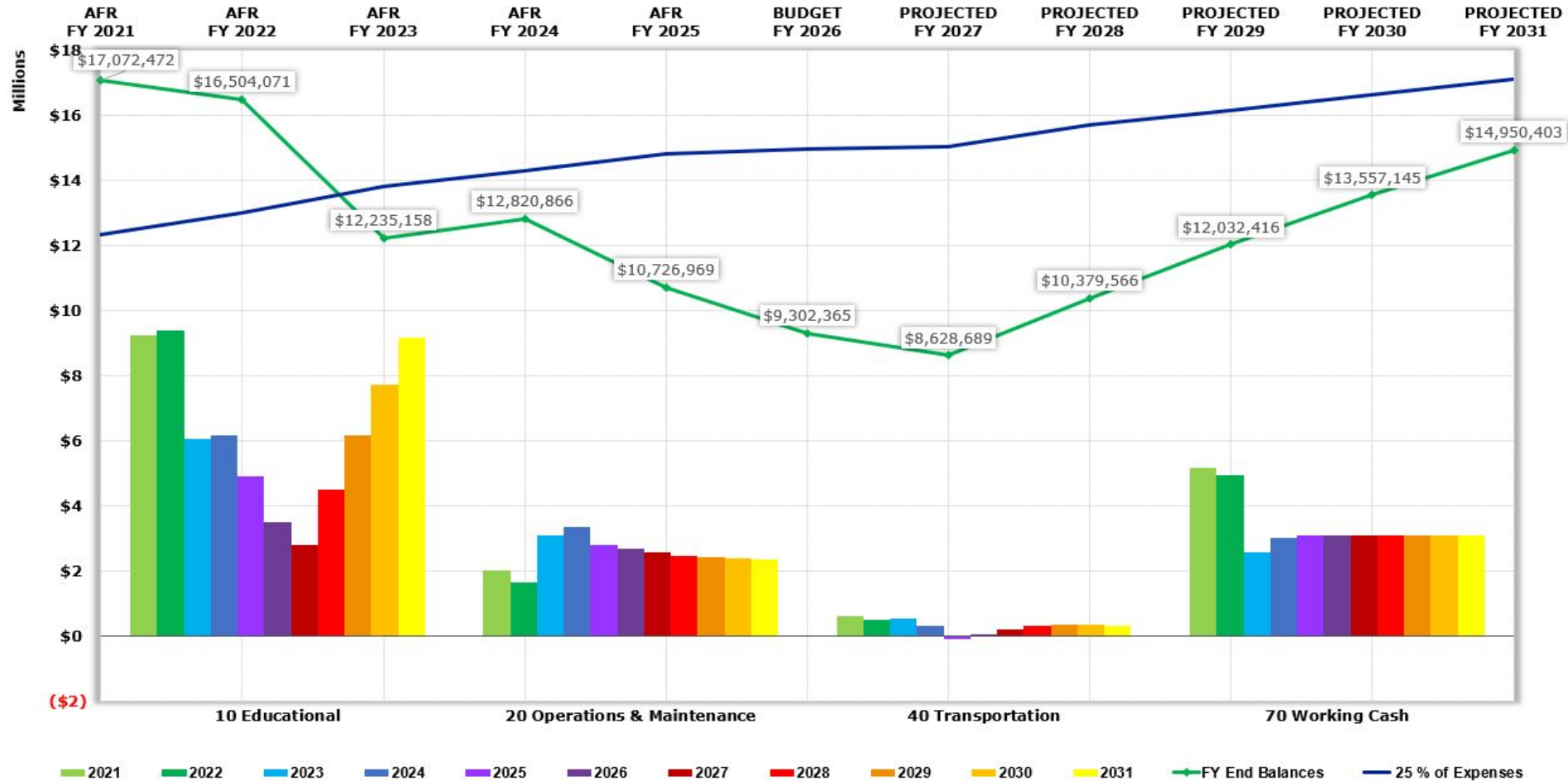
# Potential Tax Rate Options

Tax Rate Increase	Additional Revenue	Impact on \$350,000 Home
.20 (20 cents)	\$3.296 Million	\$226 (\$19 per month)
.23 (23 cents)	\$3.770 Million	\$259 (\$22 per month)
.267 (26.7 cents)	\$4.355 Million	\$299 (\$25 per month)
.276 (27.6 cents)	\$4.497 Million	\$309 (\$26 per month)
.29 (29 cents)	\$4.718 Million	\$324 (\$27 per month)

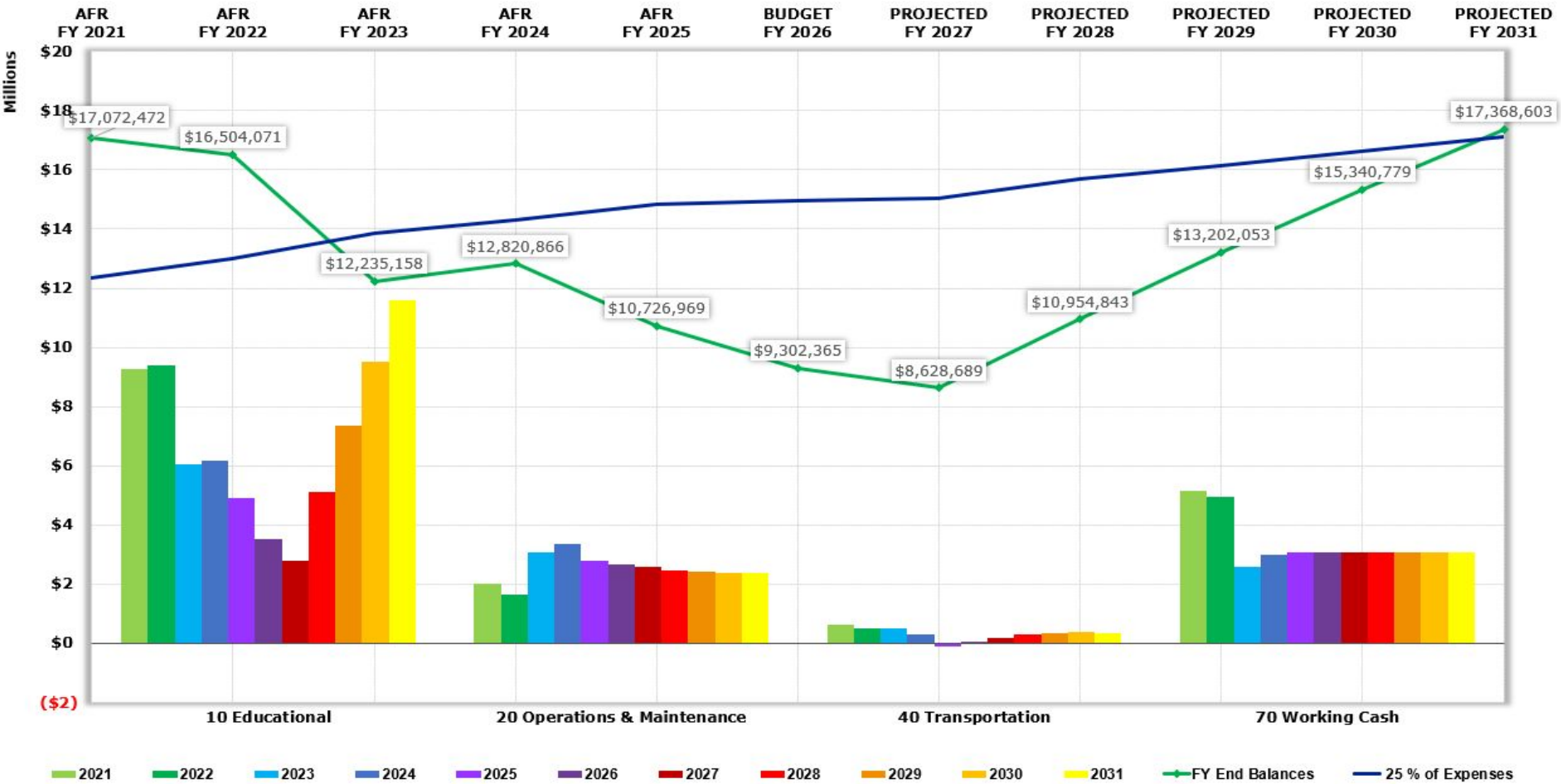
# Increasing Limiting Rate by 20 Cents - (Bringing back \$1.2 Million of Cuts in FY28)



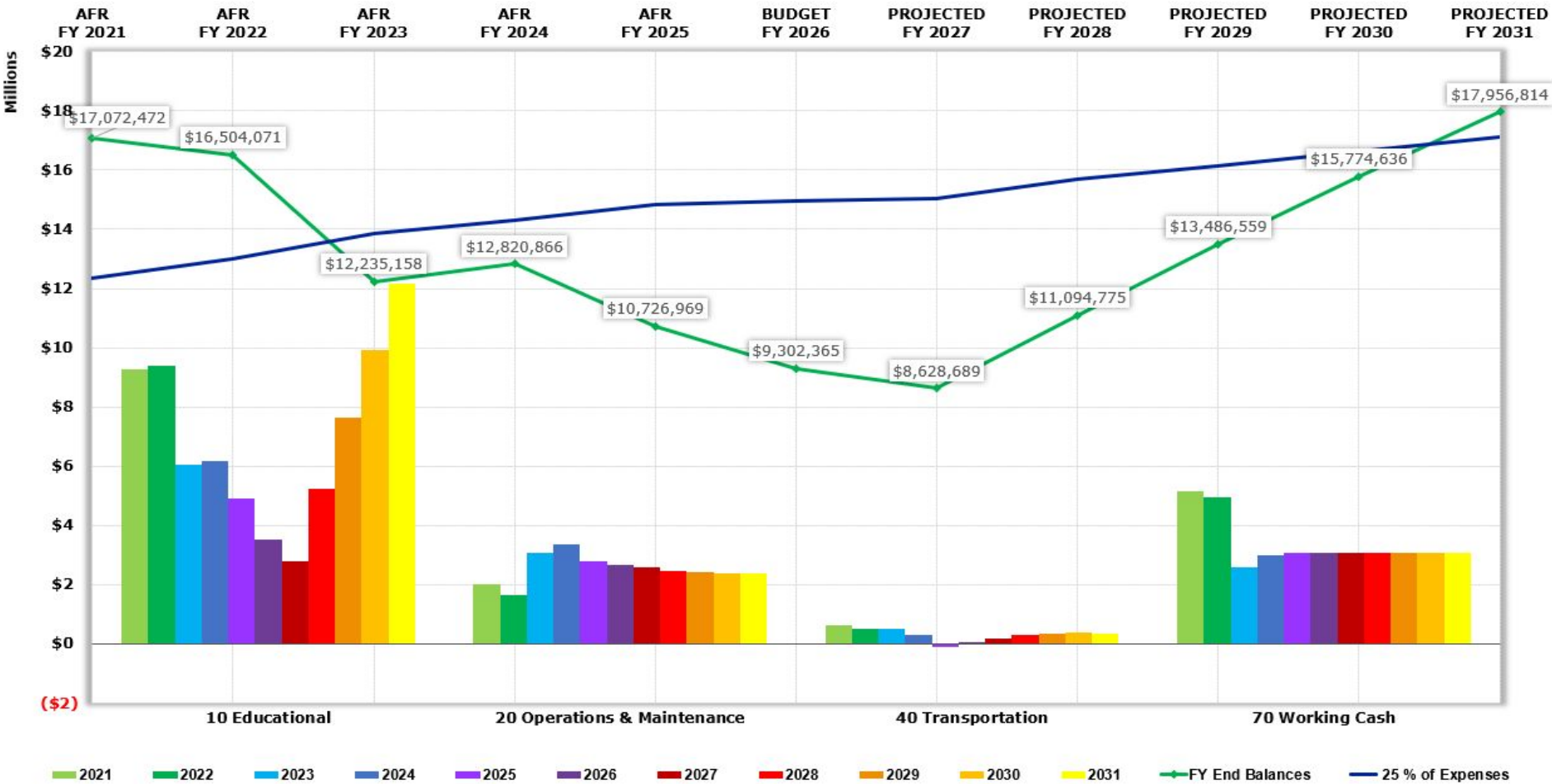
# Increasing Limiting Rate by 23 Cents - (Bringing back \$1.2 Million of Cuts in FY28)



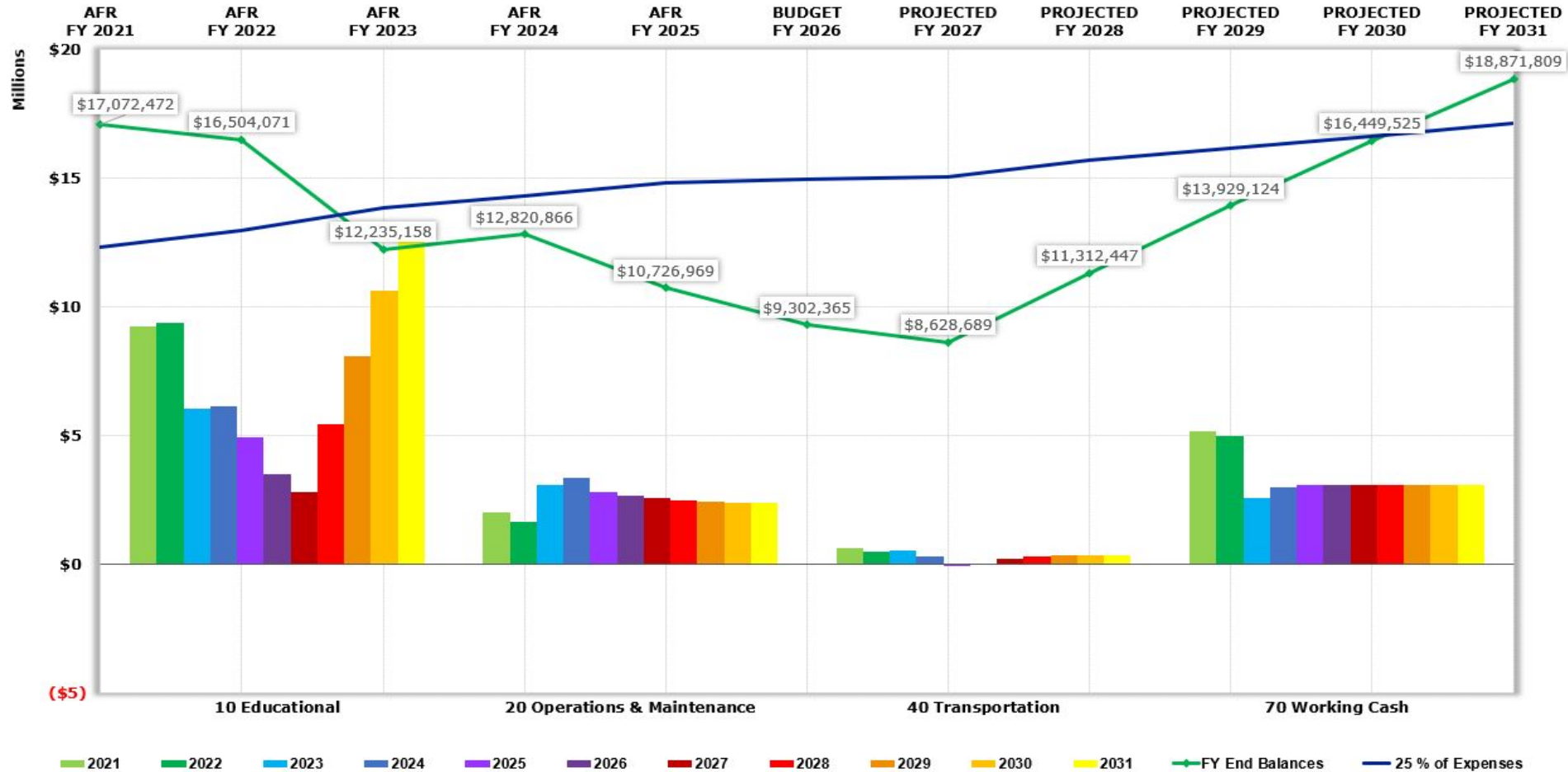
# Increasing Limiting Rate by 26.7 Cents - (Bringing back \$1.2 Million of Cuts in FY28)



# Increasing Limiting Rate by 27.6 Cents - (Bringing back \$1.2 Million of Cuts in FY28)



# Increasing Limiting Rate by 29 Cents - (Bringing back \$1.2 Million of Cuts in FY28)



**DISTRICT  
FORTY  
FIVE**

**Questions?**