



1



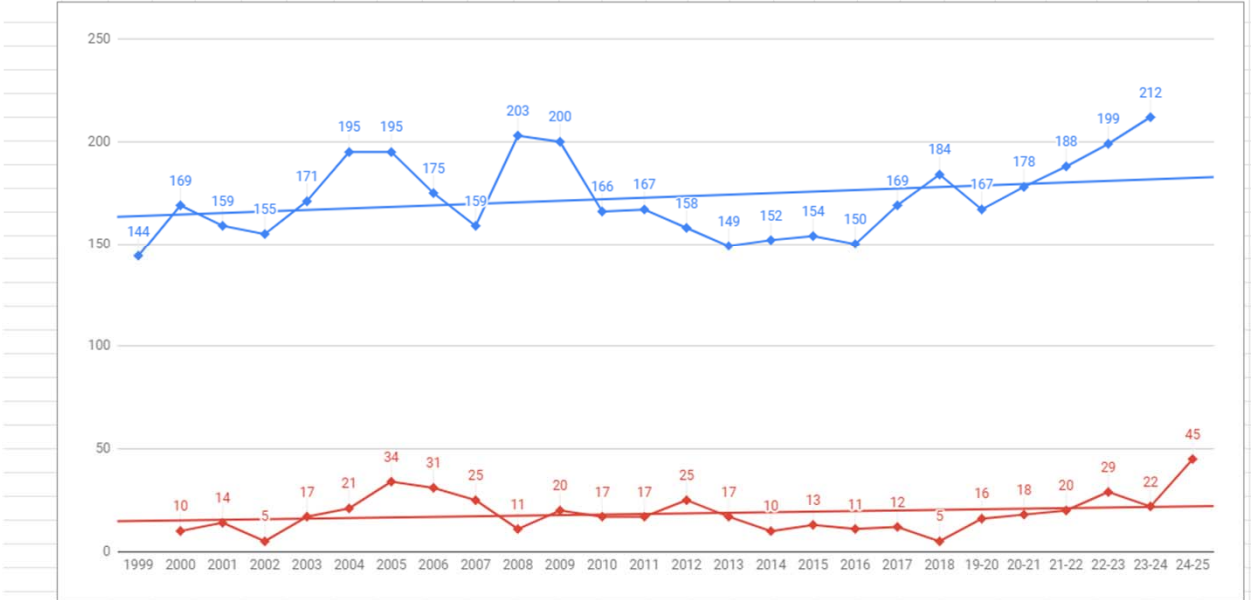
2

# Enrollment

3

HL-W-W Access/Usage Trend Report

Year	1999	2000	2001	2002	2003	2004	2005	2006	2007	2008	2009	2010	2011	2012	2013	2014	2015	2016	2017	2018	19-20	20-21	21-22	22-23	23-24	24-25
Access	144	169	159	155	171	195	195	175	159	203	200	166	167	158	149	152	154	150	169	184	167	178	188	199	212	212
Usage	10	14	5	17	21	34	31	25	11	20	17	17	25	17	10	13	11	12	5	16	18	20	29	22	45	



4

### ALL Members Access/Usage Trend Report

	1999	2000	2001	2002	2003	2004	2005	2006	2007	2008	2009	2010	2011	2012	2013	2014	2015	2016	2017	2018	2019	2020	2021	2022	2023	2024
ACCESS - TOTALS	2784	3031	3112	3162	3196	3347	3501	3564	3613	3693	3731	3666	3687	3708	3714	3826	3851	3887	3940	3999	4140	4082	4130	4221	4312	
WTC - TOTALS		574	550	625	629	664	643	815	650	731	602	550	497	538	503	519	570	599	573	537	627	644	651	646	725	731



5



### 2023-2024 School Year

All Blocks	Enrollment 2023-2024													
	Program	Target	Ann	Big Lake	Buff	Del	HLWW	MP LK	Monti	STMA	WA	Corner	Other	Total
Auto Career Sk	20	1	2	5					2	1				11
Auto Tech	120	5	5	30	25	1		7	9	19				101
Auto - 2nd year	1	1		2	4			1	1	1				10
CEO	20		3	11	6					4				24
Constr. Trds.	60	6	2	15	11			9	5					48
Const - 2nd Yr	0													0
Cosmetology	60	4	3	14	6	2		2	11	13				55
Cosmo - 2nd Yr	2		2						1	1				4
ECEC	72	2	4	8	4	2		1	14	2				37
Graphics	18	2		1	2	3			6		1			15
Health Science	66	3	8	11	9			3	13	9				56
Heavy Equipment	22	1		5	6	2			2	6				22
Law Enfor/EMR	75	3	4	20	3	2		1	6	12	2			53
Law - 2nd Yr	1					2				3				5
OJT	150					6		17	42	119				184
PAES	30		3	10					3	4				20
Welding Tech.	54	4	5	13	5	3		2	9	13	1			55
Welding - 2nd Yr	3							2		2				4
Youth Apprent	50	1		13		1				10				25
<b>Grand Totals</b>	<b>824</b>	<b>33</b>	<b>41</b>	<b>158</b>	<b>83</b>	<b>22</b>		<b>45</b>	<b>124</b>	<b>219</b>	<b>4</b>	<b>0</b>	<b>0</b>	<b>729</b>

6



Pre-registered for 2024-2025

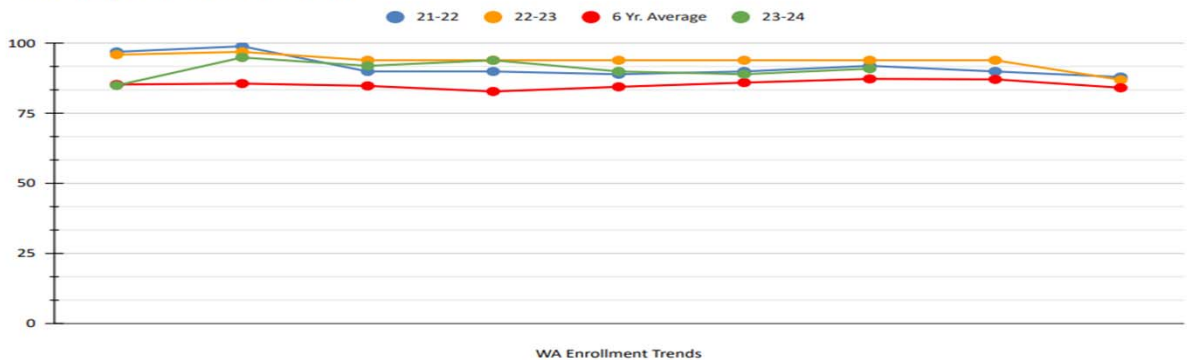
Enrollment 2024-2025													
Program	Target	Ann	Big Lake	Buff	Del	HLWW	MP LK	Monti	STMA	WA	Corner	Other	Total
Auto Career Sk	30	2	1	1		2		4	1				11
Auto Tech	120	6	3	34	16	5	5	8	20				97
Auto - 2nd year	16	1	1	3	3				1				9
CEO	24		3	7	7			2	5				24
Constr. Trds.	60	4	5	15	13	3	3	10	7				60
Const - 2nd Yr	1												0
Cosmetology	60	4	6	14	5	2	3	11	15				60
Cosmo - 2nd Yr	2				2								2
ECEC	72	5	7	17	7	2	3	5	7				53
Graphics	18	3			1		3	4					11
Graphics - 2nd Yr	2			2									2
Health Science	66	6	6	16	6	1	4	11	16				66
Heavy Equipment	60	5		12	9	5	5	5	11				52
Law Enfor/EMR	75	4	4	20	9	7	2	5	8				59
Law - 2nd Yr	1				1								1
OJT	100					14	9		100				123
PAES	30			1				8	4				13
Welding Tech.	54	3	1	17	9	2	3	10	9				54
Welding - 2nd Yr	9	1	4		2	2		1	5				15
Youth Apprent	50	1		4			2	3	9				19
<b>Grand Totals</b>	<b>850</b>	<b>45</b>	<b>41</b>	<b>163</b>	<b>90</b>	<b>45</b>	<b>42</b>	<b>87</b>	<b>218</b>	<b>0</b>	<b>0</b>	<b>0</b>	<b>731</b>

7



WA Enrollment Trends		Sept	Oct	Nov	Dec	Jan	Feb	March	April	May/June
2017-2018	Day	85	87	83	80	90	90	93	99	99
2018-2019	School	84	83	88	80	86	89	84	85	80
2019-2020	Only	83	75	78	75	73	74	78	77	77
2020-2021	No IS or NS	67	73	76	78	75	79	83	78	74
2021-2022		97	99	90	90	89	90	92	90	88
2022-2023		96	97	94	94	94	94	94	94	87
6 Yr. Average		85	86	85	83	84.5	86	87	87	84
2023-2024		85	95	92	94	90	89	91		

Academy Enrollment Trends



8

# Program Development

9



**Heavy  
Equipment  
Operations &  
Maintenance**

10

# HEOM - Heavy Equipment Operations & Maintenance "Sandbox" & Outdoor Classroom



11



12



13

**This industry-driven program offers:**

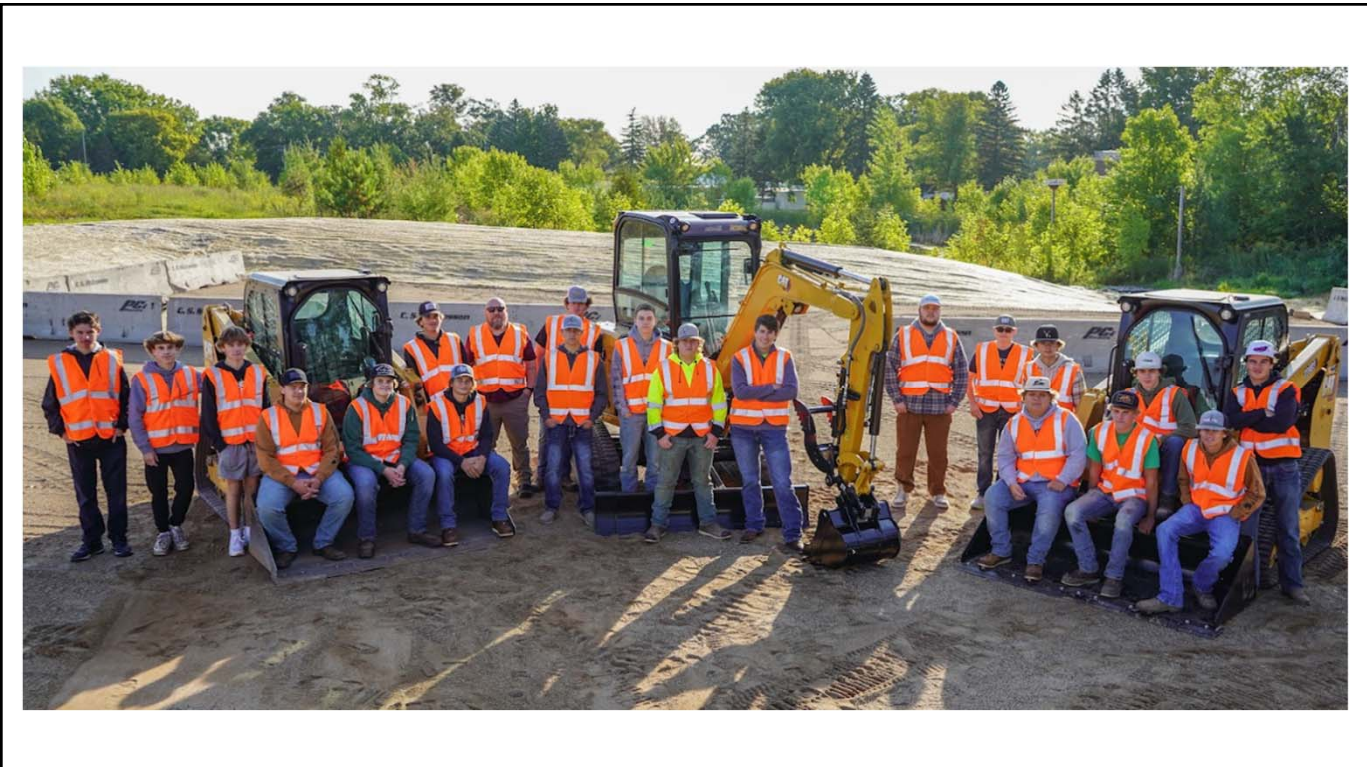
- High school and apprenticeship credit
- Hands-on experience with heavy equipment
- Industry networking opportunities

A photograph of a banner for the "OPERATING ENGINEERS PATHWAY" program. The banner features the logo of the International Union of Operating Engineers (IUEO) on the left, which includes the number "49". To the right of the IUEO logo are logos for several partner organizations: C. S. McCracken, SOFEHN, Stride Career Prep, VET, and WRIGHT TECHNICAL CENTER. The banner is set up outdoors on a gravel path. In the background, there is a water tower with "Buffalo" written on it, a tall antenna tower, and a group of people standing nearby. The sky is bright and clear.

14



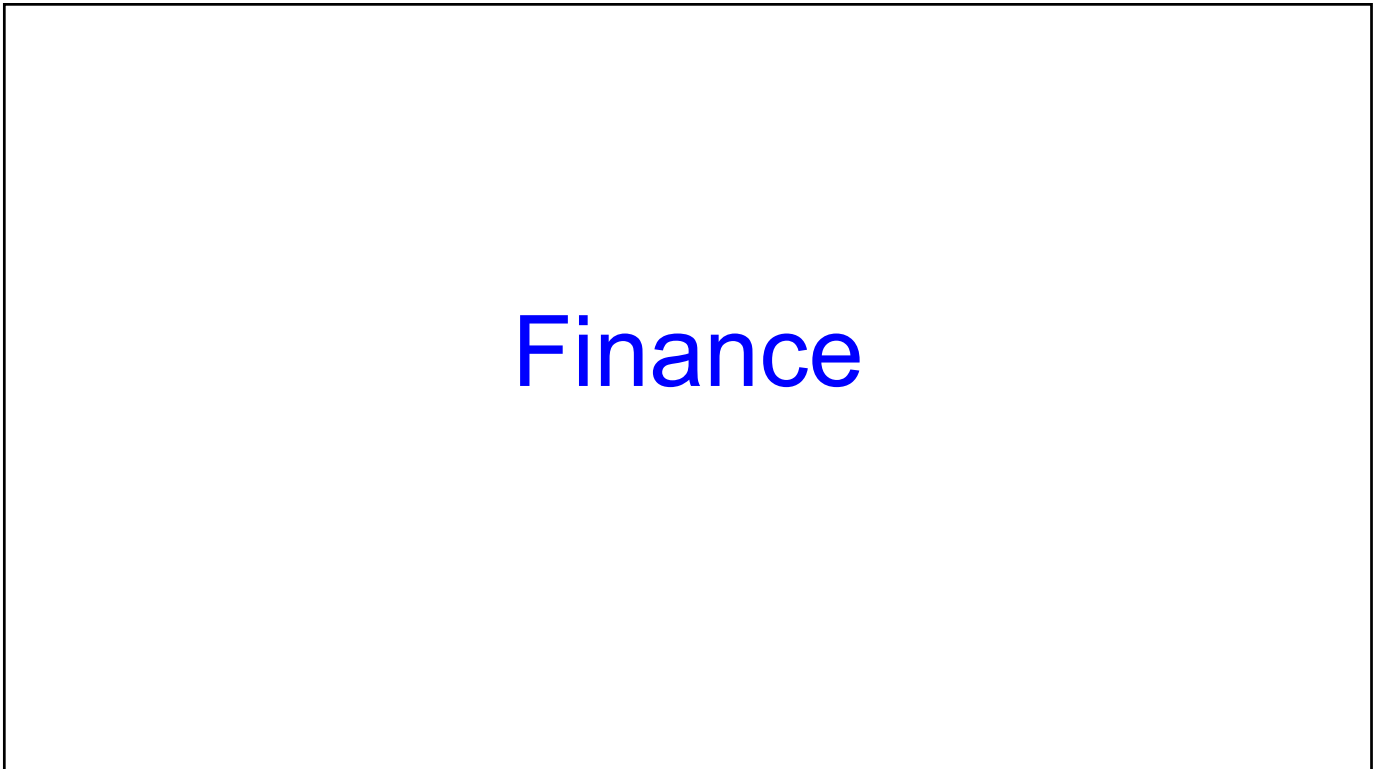
15



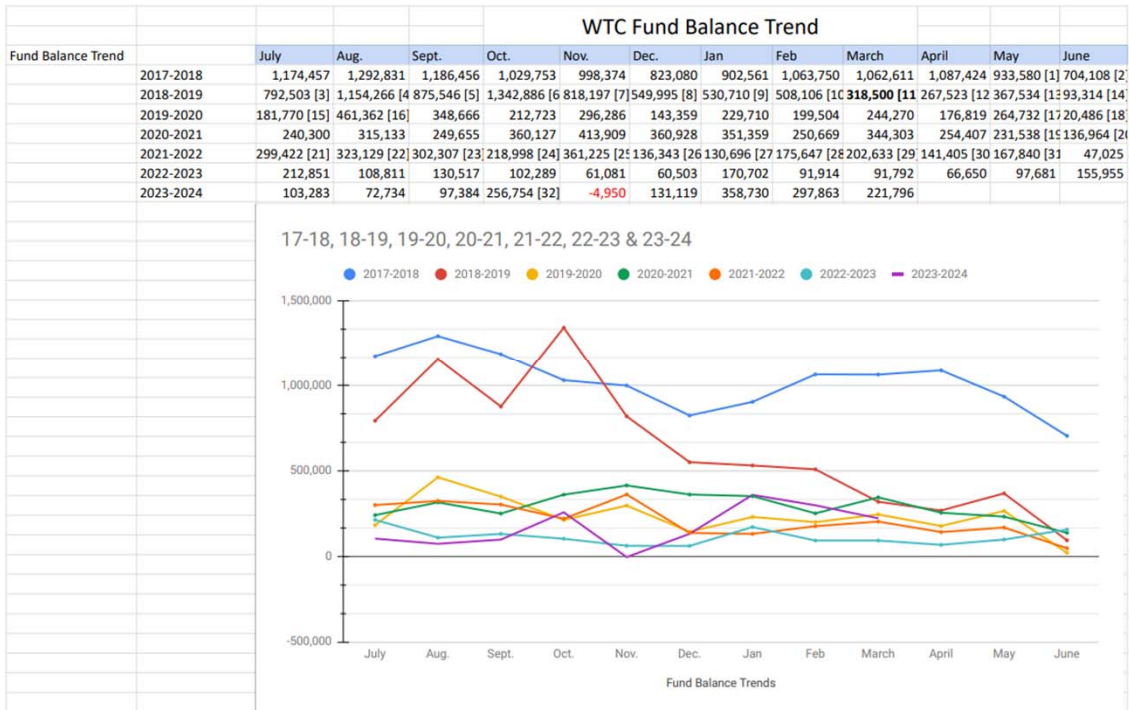
16



17



18



19

District	2023-2024 Invoice Amounts							
	23-24 WTCA [WTCA [2]	23-24 BA09 [BA09 [4]	23-24 LTFM [LTFM [6]	23-24 CTE L [7]	CTE L [8]			
Annandale	\$111,877	\$9,323	\$21,599	\$1,800	\$11,879.26	\$989.94	\$20,684	\$1,724
Big Lake	\$136,535	\$11,378	\$29,920	\$2,493	\$17,245.53	\$1,437.13	\$32,559	\$2,713
BHM	\$366,322	\$30,527	\$55,630	\$4,636	\$43,837.51	\$3,653.13	\$72,170	\$6,014
Delano	\$153,539	\$12,795	\$22,230	\$1,853	\$14,734.97	\$1,227.91	\$30,862	\$2,572
HLWW	\$66,378	\$5,531	\$13,540	\$1,128	\$6,101.07	\$508.42	\$11,577	\$965
Maple Lake	\$52,524	\$4,377	\$8,289	\$691	\$8,338.87	\$694.91	\$13,779	\$1,148
Monticello	\$230,313	\$19,193	\$45,708	\$3,809	\$25,756.96	\$2,146.41	\$46,159	\$3,847
STMA	\$388,959	\$32,413	\$42,675	\$3,556	\$39,105.83	\$3,258.82	\$69,819	\$5,818
<b>Totals</b>	<b>\$1,506,447</b>	<b>\$125,537</b>	<b>\$239,591</b>	<b>\$19,966</b>	<b>\$167,000.00</b>	<b>\$13,916.67</b>	<b>\$297,610</b>	<b>\$24,801</b>

Fund Balance Stabilization			
		FY23 Audit	
District	FY24 Allocation %	\$133,775.00	Quarterly
Annandale	7.43	\$9,935.47	\$2,483.87
Big Lake	9.06	\$12,124.03	\$3,031.01
BHM	24.32	\$32,530.07	\$8,132.52
Delano	10.19	\$13,634.35	\$3,408.59
HLWW	4.41	\$5,894.13	\$1,473.53
Maple Lake	3.49	\$4,664.73	\$1,166.18
Monticello	15.29	\$20,451.52	\$5,112.88
STMA	25.82	\$34,540.71	\$8,635.18
<b>Totals</b>		<b>\$133,775.00</b>	<b>\$33,443.75</b>

20

23-24 AUA									
21-22 ACCESS (10th & 11th Grade Students Enrolled at Member Districts)									
Annandale	Big Lake	BHM	Delano	HLWW	Maple Lake	Monticello	STMA	Totals	
308	493	913	397	188	122	642	1067	4130	
%	%	%	%	%	%	%	%	%	
7.46%	11.94%	22.11%	9.61%	4.55%	2.95%	15.54%	25.84%	100.00%	
22-23 USAGE (11th & 12th Grade Students Enrolled at WTC)									
Annandale	Big Lake	BHM	Delano	HLWW	Maple Lake	Monticello	STMA	Totals	
Oct 1	Feb 1	Oct 1	Feb 1	Oct 1	Feb 1	Oct 1	Feb 1	Oct 1	Feb 1
49	43	40	37	171	159	67	67	29	24
Average	Average	Average	Average	Average	Average	Average	Average	Average	Average
46	38.5	165	67	26.5	25	93.5	160.5	622	
%	%	%	%	%	%	%	%	%	
7.40%	6.19%	26.53%	10.77%	4.26%	4.02%	15.03%	25.80%	100.00%	
22-23 ASSESSMENTS for the FY24 School Year									
Annandale	Big Lake	BHM	Delano	HLWW	Maple Lake	Monticello	STMA	Totals	
7.43%	9.06%	24.32%	10.19%	4.41%	3.49%	15.29%	25.82%	100.00%	

21

WRIGHT TECHNICAL CENTER		LTFM				
Independent School District #966						
District Assessments for SY 2024-25 for FY26						
						FY26 Billing
School District	2021-22 Assessment [1]	2022-23 Assessment [2]	2023-24 Assessment [3]	3 Year Average [4]	Pro-rated Share	
Annandale	6.95%	7.43% [5]	5.79% [6]	6.72%	\$27,336.47	
Big Lake	10.94%	9.06%	9.00%	9.67%	\$39,303.80	
B/H/M	24.25%	24.32%	21.57%	23.38%	\$95,060.98	
Delano	10.37%	10.19%	10.27%	10.28%	\$41,784.00	
HL/W/W	3.89%	4.41%	3.92%	4.07%	\$16,561.81	
Maple Lake	4.63%	3.49%	4.48%	4.20%	\$17,076.82	
Monticello	15.51%	15.29%	16.59%	15.80%	\$64,227.83	
STMA	23.46%	25.82%	28.37%	25.88%	\$105,239.31	
TOTAL	100.00%	100.0%	100.0%	100.0%	\$406,591.00	
Revised 2.1.2024				Current LTFM \$	\$167,000	
				Current 09 Bond	\$239,591	
				New LTFM \$	\$406,591	
				LTFM Bond	\$80,121.00	
				LTFM \$ Available	\$326,470	

22

# HF2069 & SF1856

A bill for an act

relating to capital investment; appropriating money for capital improvements at Wright Technical Center; authorizing the sale and issuance of state bonds.

BE IT ENACTED BY THE LEGISLATURE OF THE STATE OF MINNESOTA:

Section 1. **WRIGHT TECHNICAL CENTER; CAPITAL IMPROVEMENTS.**

Subdivision 1. **Appropriation.** \$9,500,000 is appropriated from the bond proceeds fund to the commissioner of education for a grant to Wright Technical Center to predesign, design, construct, renovate, furnish, and equip improvements and betterments of a capital nature at Wright Technical Center and its affiliated facilities in the city of Buffalo, including major projects to preserve or replace mechanical, electrical, and security systems; utility infrastructure; and site renovations to support ongoing operations.

Subd. 2. **Bond sale.** To provide the money appropriated in this section from the bond proceeds fund, the commissioner of management and budget shall sell and issue bonds of the state in an amount up to \$9,500,000 in the manner, upon the terms, and with the effect prescribed by Minnesota Statutes, sections 16A.631 to 16A.675, and by the Minnesota Constitution, article XI, sections 4 to 7.

23

# Questions?



24