



**WELCH**

Public Schools

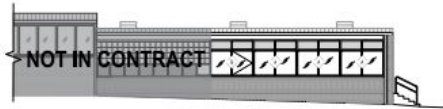


# WELCH

Public Schools

Regular Meeting  
Welch Board of Education  
Superintendent's Report  
May 9, 2021

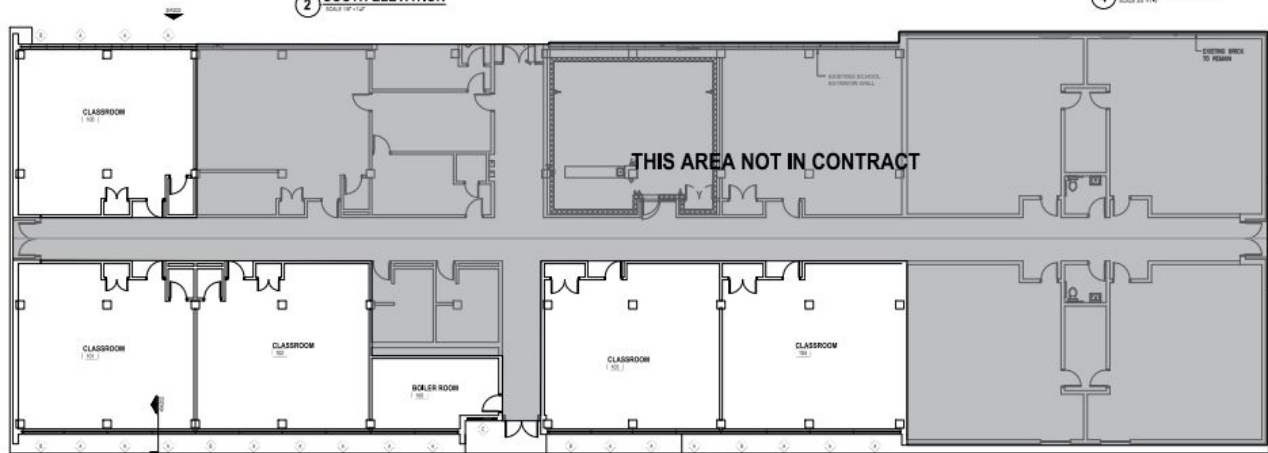
# Construction Update



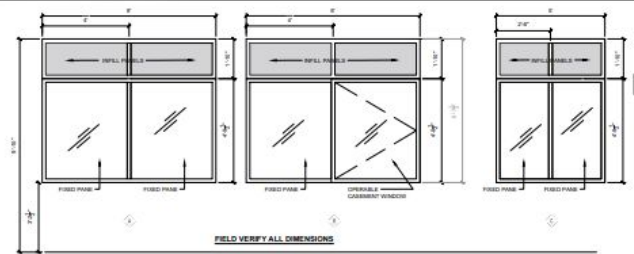
3 PARTIAL NORTH ELEVATION  
SCALE 1/4" = 1'-0"



2 SOUTH ELEVATION  
SCALE 1/4" = 1'-0"

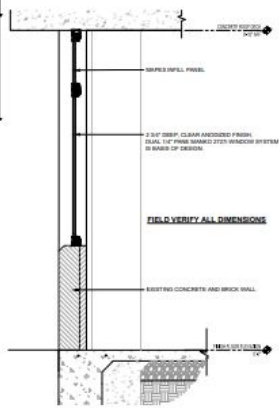


1 NEW SOUTH ELEVATION  
SCALE 1/4" = 1'-0"



5 WINDOW TYPES  
SCALE 1/2" = 1'-0"

**WINDOW SPECIFICATIONS:**  
 2 3/4" DEEP, CLEAR ANODIZED FRAME,  
 EQUAL 1/4" FRAME SPACING 270° WINDOW SYSTEM  
 OR ASSESS BY OTHERS.  
**INFILL PANELS:**  
 MATCH TO INFILL FRAME,  
 COLOR TO BE SELECTED FROM  
 SPEC. SCHEDULED SYSTEM PROVIDER.



4 WALL SECTION  
SCALE 3/4" = 1'-0"

# Legislative Update

# Legislative Update

- SB 229 - Redbud School Funding Act
  - Authorizes OSDE to annually distribute grants to public schools and charter schools (not virtual) from the State Common School Building Equalization Fund.
  - Funded through marijuana sales taxes.
  - Est. Allocation to WPS Building Fund: **\$2,102.87**
  - House amendments must be approved by Senate

# Legislative Update

- House Bill 2030
  - Requires students to correctly answer 60 out of 100 questions found on the United States naturalization test in order to graduate high school.
  - Begins with 9th grade class in 2022-23 school year.

# Key Legislative Dates

- May 28: Last day of session "Sine Die"

# Financial Update

# ESSER II Allocation

- \$177,651.74
- The legislation required the CARES ESSER I and CRSSA ESSER II funds to be allocated to states based on the Title I formula allocations. States (SEAs) were then required to allocate to districts on the Title I formula. CARES ESSER I was based on the October 1, 2018 Low-Income Report, and CRSSA ESSER II was based on the October 1, 2019 Low-Income Report.
- The CARES ESSER I funds must be spent by September 2022.
- The CARES ESSER II funds must be spent by September 2023.

# ESSER III (ARP) Allocation

- \$398,972.15 is the final allocation.
- The allocation must be spent by September 2023.