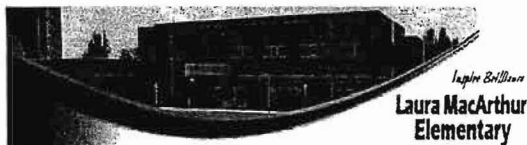


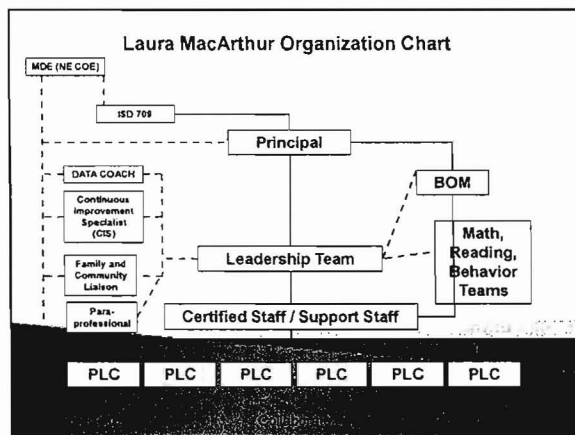
## School overview



We will be a reward school in 2015 and say we did it together!

## Intentionality

- Expectations, expectations, expectations
- Teaming and collaboration
- Developing people (Take fear out of the system)
- Laser focus on results
- Professional development
- Listening (people side of change)
- Can do spirit and empowering students, families and staff
- We will not settle for the status quo.



## Approaches to closing the achievement gap.

- Increased learning time
- High expectations for all
- Quickly meeting student need to resource
- Alignment of the adults in the building in language and behaviors (standards and norms)
- There are 7 days in a week, and SOMEDAY isn't one of them.

## Challenges

- Time
- Turning around a school is difficult work
- Scheduling to be within contract language
- Communicating information to all staff to ensure fidelity of implementation
- Keeping employee engagement high while managing so much change

- Our staff has taken on this "Priority" label as a blessing. With support from MDE, ISD 709, NSOE, and our community, nothing will stop us from reaching our goals and vision of being a reward school in 2 years and saying we did it together.

Laura Mae Arthur Elementary School  
Data Highlights of School Turnaround Efforts

**Parent and Family Involvement**

Event	SY 11-12	SY 12-13	SY 13-14	Change (+/-)
<b>Parent-Teacher Conferences</b>				
Goal setting conferences in September	NA	96%		
Spring conferences in January	NA	89%		
<b>Monthly Family Nights (# of people)</b>	NA			
September Open House	NA	NA	400	
Fall (Oct. – Nov.) Based on Peacemaker Assemblies	NA	46		
Winter (Dec.-Jan.) Based on Peacemaker Assemblies	NA	47		
Spring (Feb.-March) Based on Peacemaker Assemblies	NA	51		
Spring (April-May Based on Peacemaker Assemblies	NA	75		
<b>Cultural Night (Feb.26, 2013)</b>	NA	250		
MCA Pump up the Volume, grades 3-5 (March 28 <sup>th</sup> , 2013)	NA	100		
Student Enrollment on <i>October 1<sup>st</sup></i> (K to 5)	462	473		

**Student Achievement**

Measure of Achievement	SY 11-12	SY 12-13	SY 13-14	Change (+/-)
<b>MCA testing (percent proficient)</b>				
<b>Reading</b>				
Grade 3	n/a	49.32*		
Grade 4	n/a	40.54*		
Grade 5	n/a	41.0		
*Different baseline due to new MCA reading test				
<b>Math</b>				
Grade 3	47.0	62.5		+15.5
Grade 4	45.1	67.8		+22.7
Grade 5	15.7	42.3		+26.6

**Closing the Achievement Gap**

Different Subgroups	SY 11-12	SY 12-13	SY 13-14	Change (+/-)
Special Education Grade 4- math	28.6%	69.23%		+40.63
American Indian –Grade 4- math	30%	50%		+20
African American- Grade 4- math	20%	50%		+30
*Based on fall student enrollment (K to 5 <sup>th</sup> )	466	487	453- as of 9/17/2013	