

Winfield 34 Spring Data Presentation

June 18, 2026



Looking into Data

Multiple Standardized Measures for Reading and Math

- FastBridge - Reading (3x per year) - grades k-3
- NWEA MAP - Math & Reading (3x per year) - grades k-8
- IAR - Math & Reading (1x per year) - grades 3-8

One Standardized Measure for Science

- Illinois Science Assessment (1x per year) - grades 5 & 8

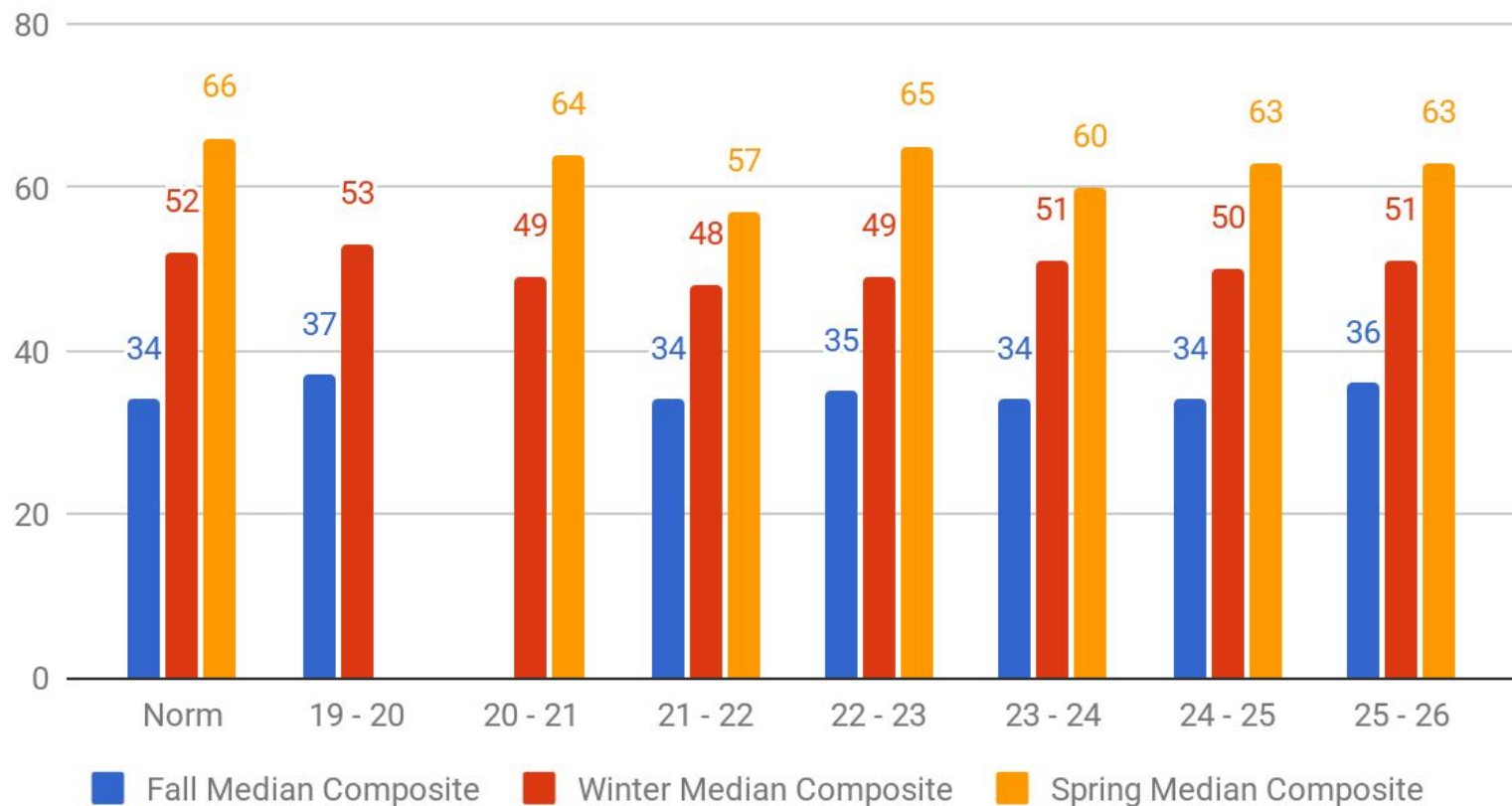
IAR Update

Illinois Assessment of Readiness

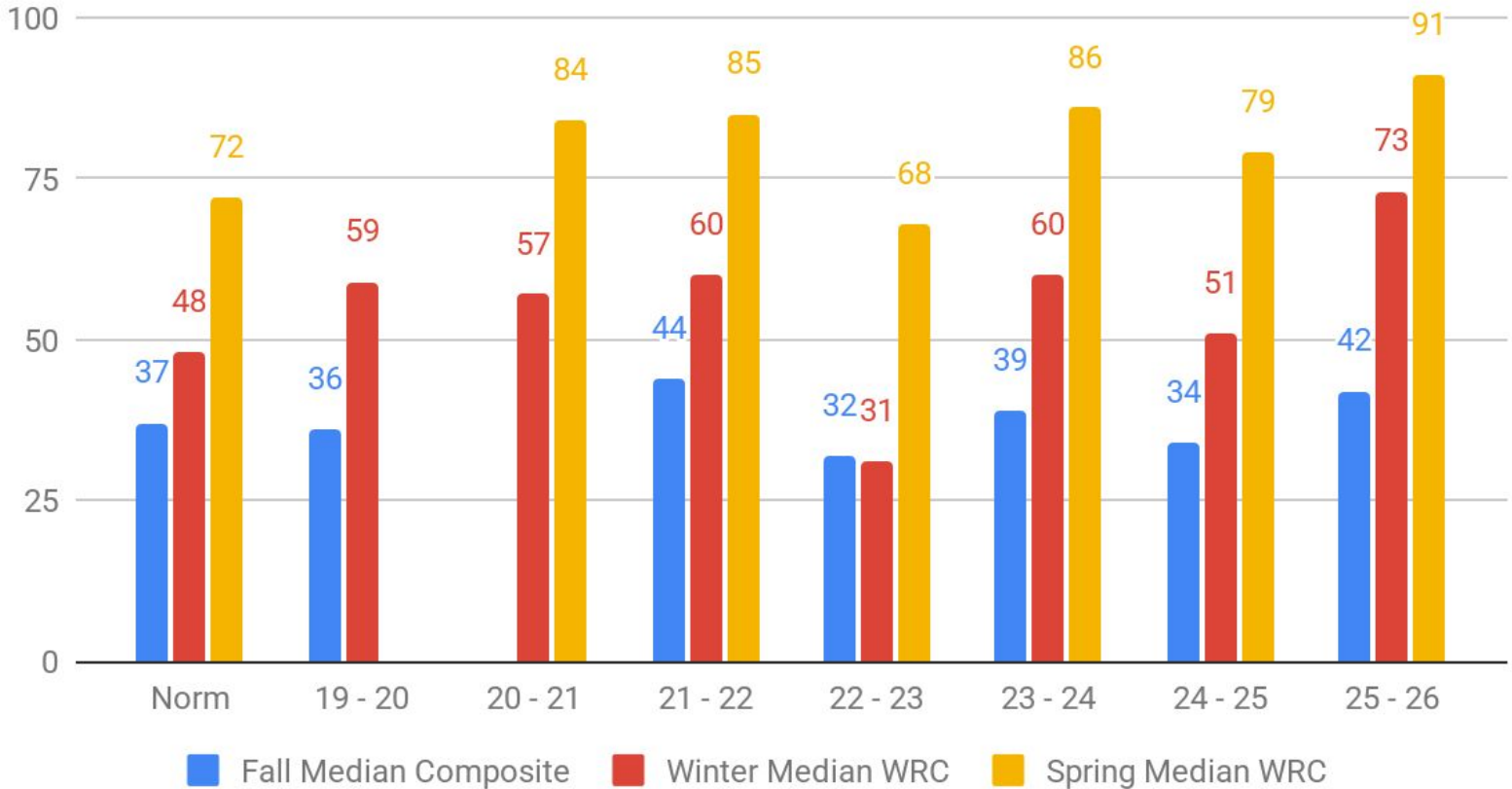
- Received information from the State on Wednesday, June 18th
 - Preliminary Raw Scores became available today
 - State committee is reanalyzing the cut scores in mid-July and will have new parameters for groupings.
 - The Illinois State Board will review and potentially approve new groupings in August
 - We will have new grouping parameters for the data in August/September
 - What does this mean - test didn't change but the achievement bars will.

FastBridge Reading Achievement by Grade Level

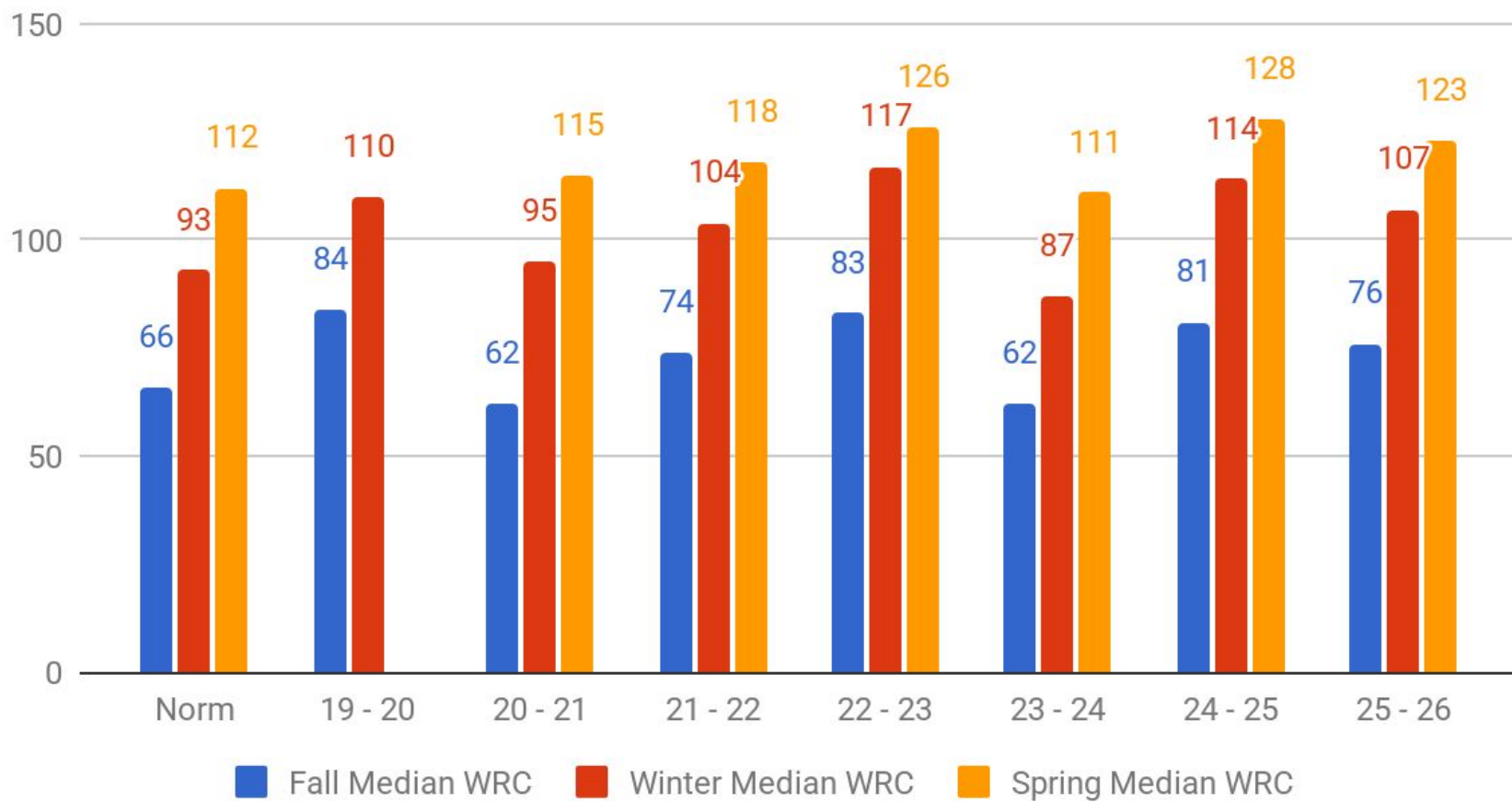
Kindergarten Early Reading Median Composite



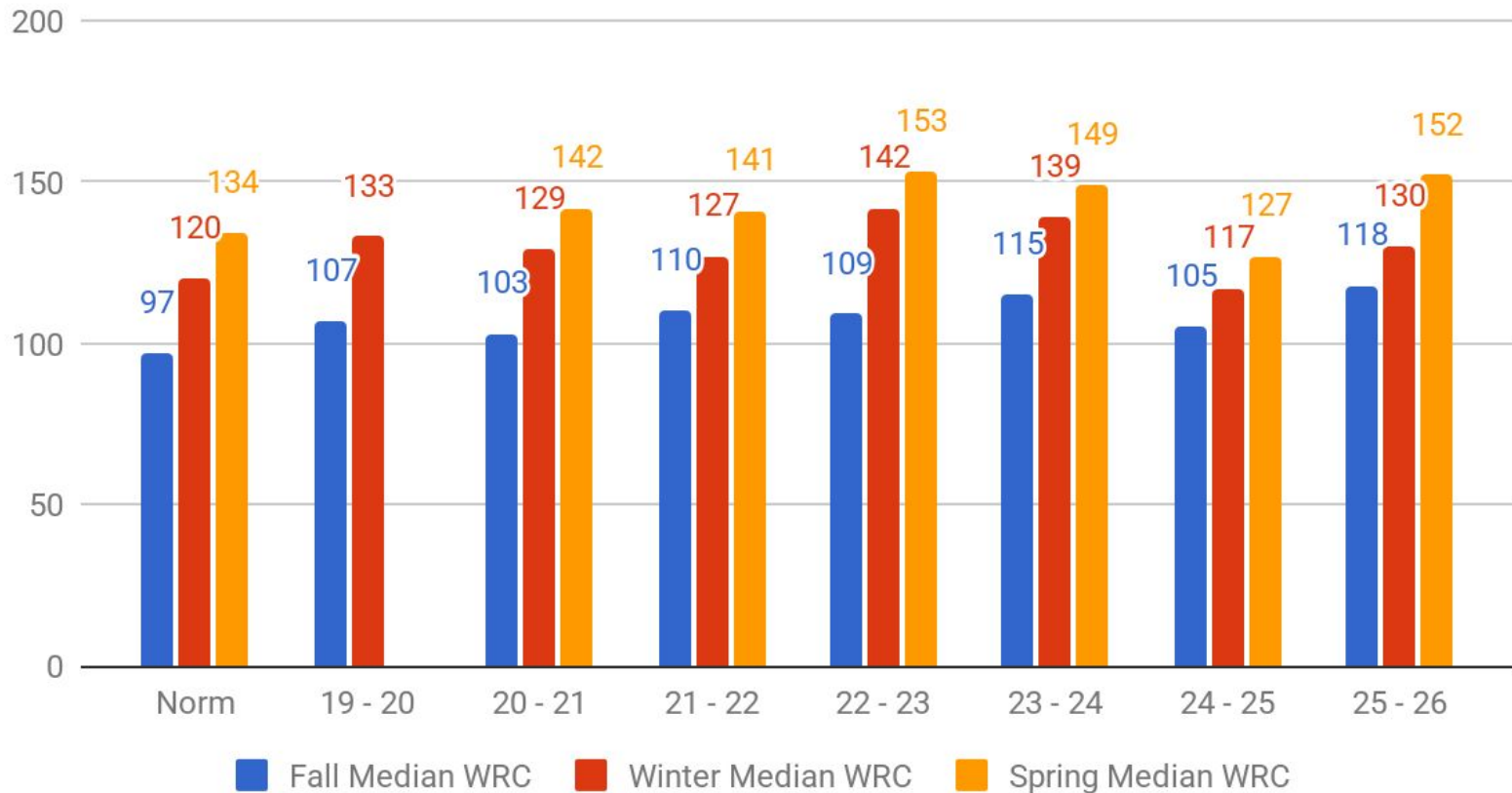
1st Grade Median Words Read Correct



2nd Grade Median Words Read Correct

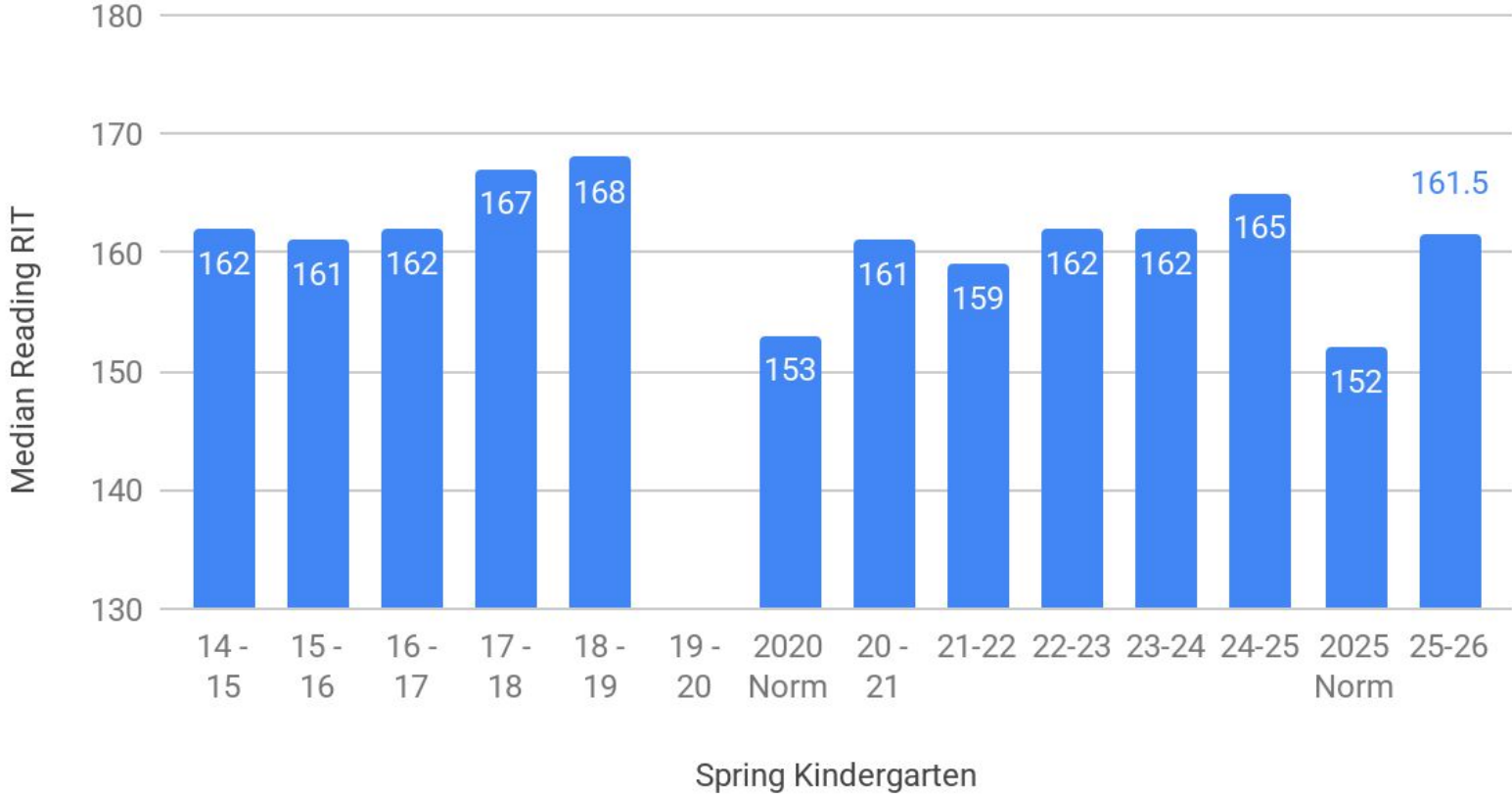


3rd Grade Median Words Read Correct

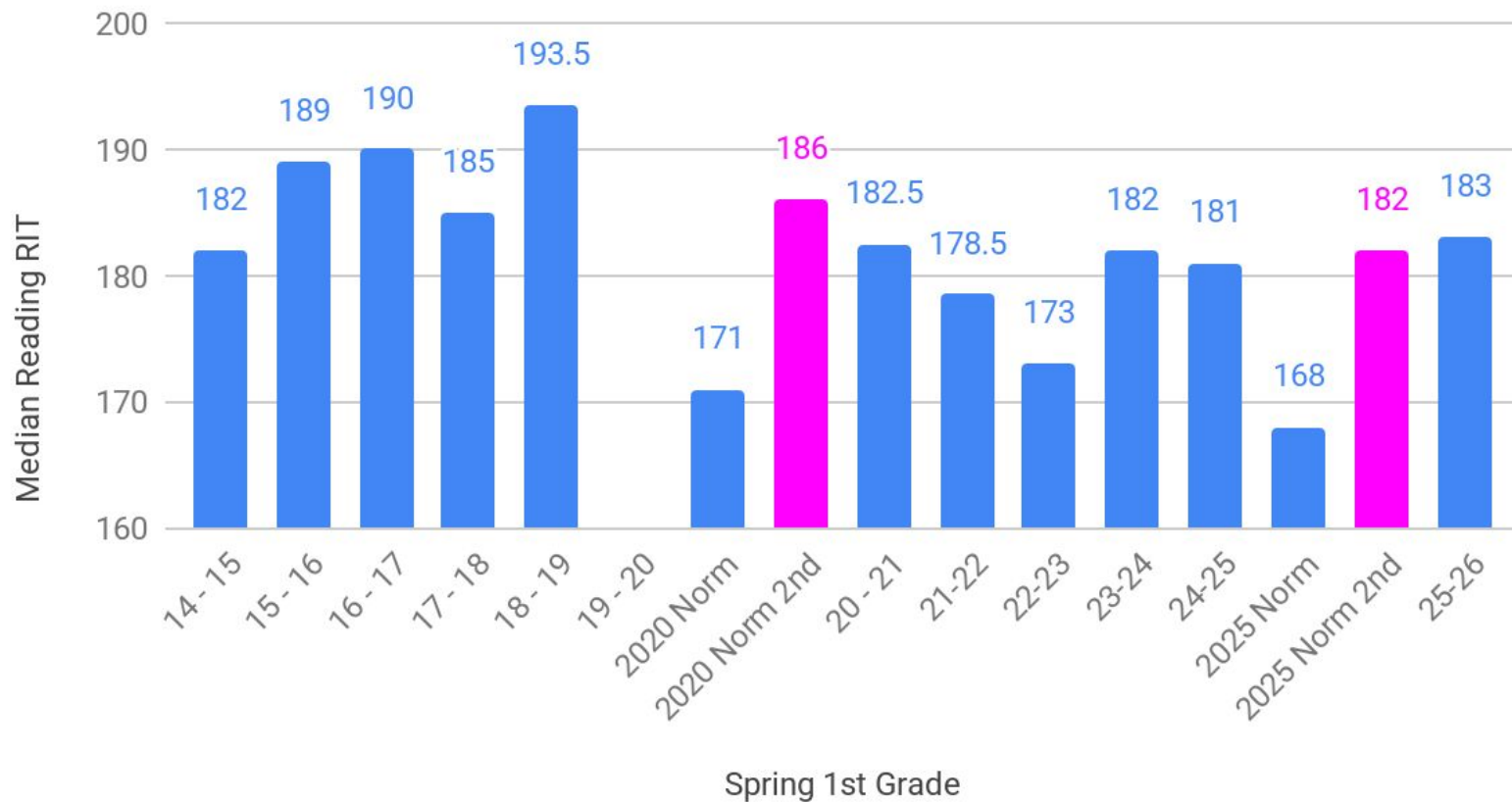


MAP Reading Achievement By Grade Level

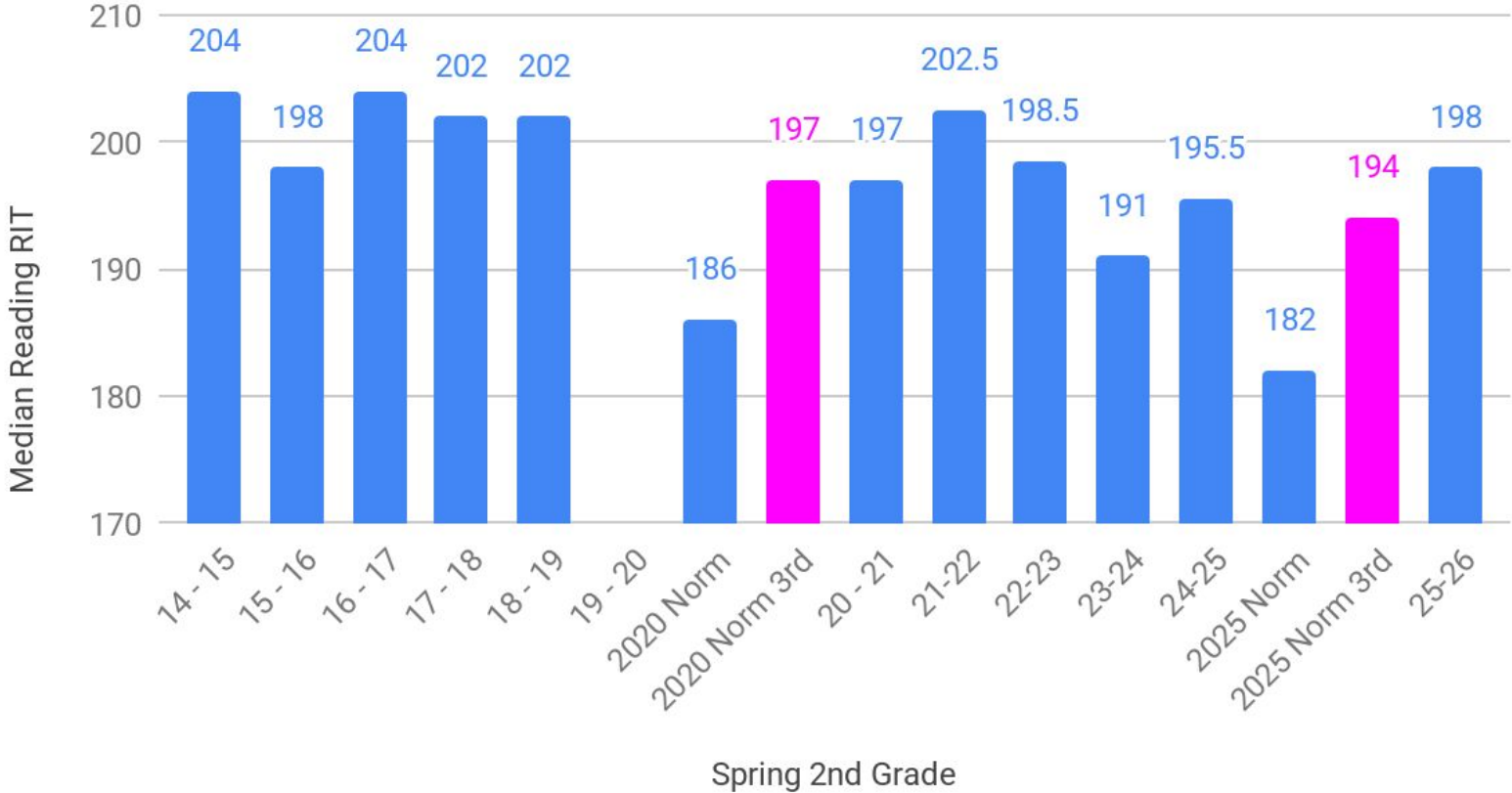
Median Reading RIT vs. Spring Kindergarten



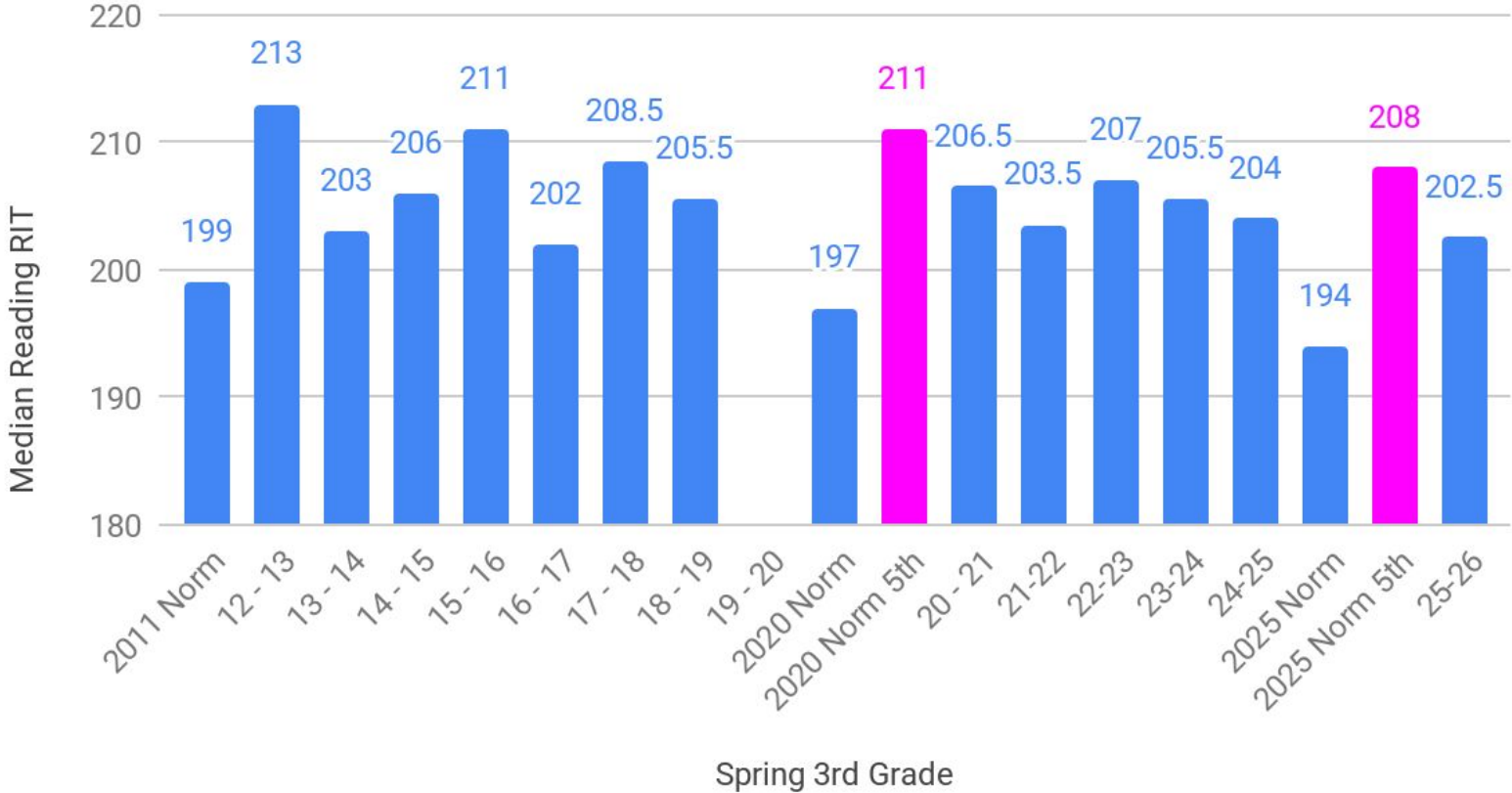
Median Reading RIT vs. Spring 1st Grade



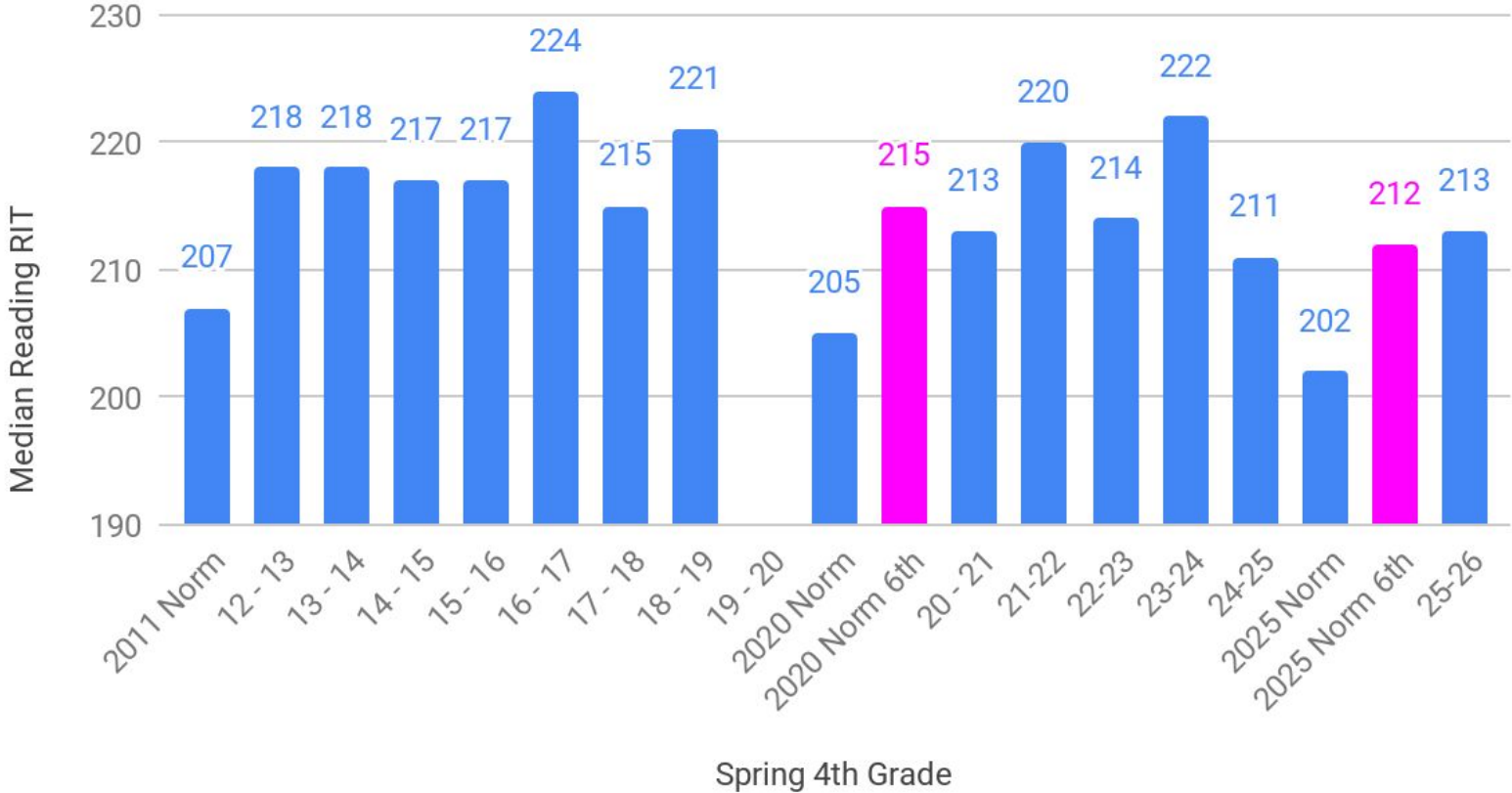
Median Reading RIT vs. Spring 2nd Grade



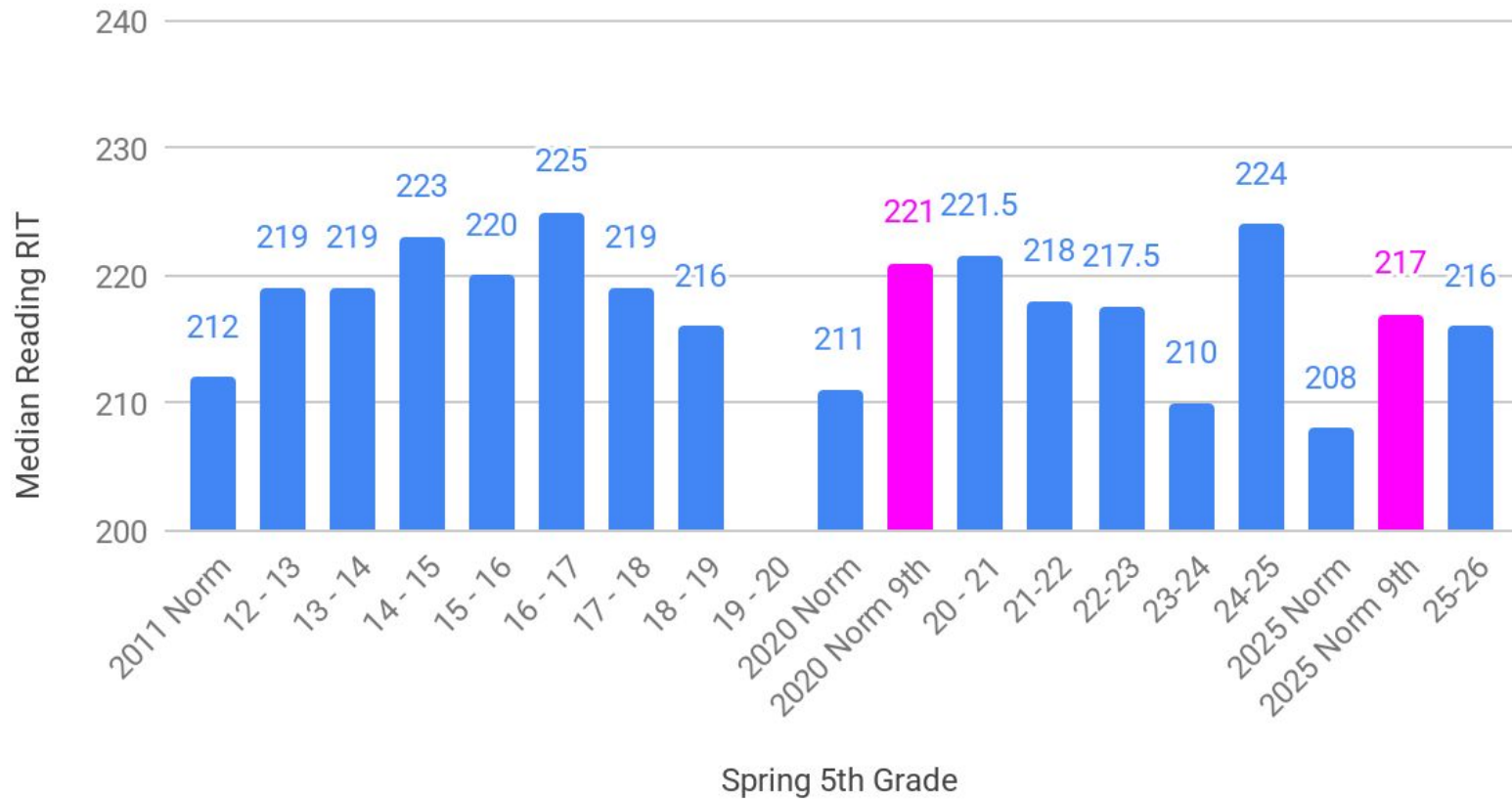
Median Reading RIT vs. Spring 3rd Grade



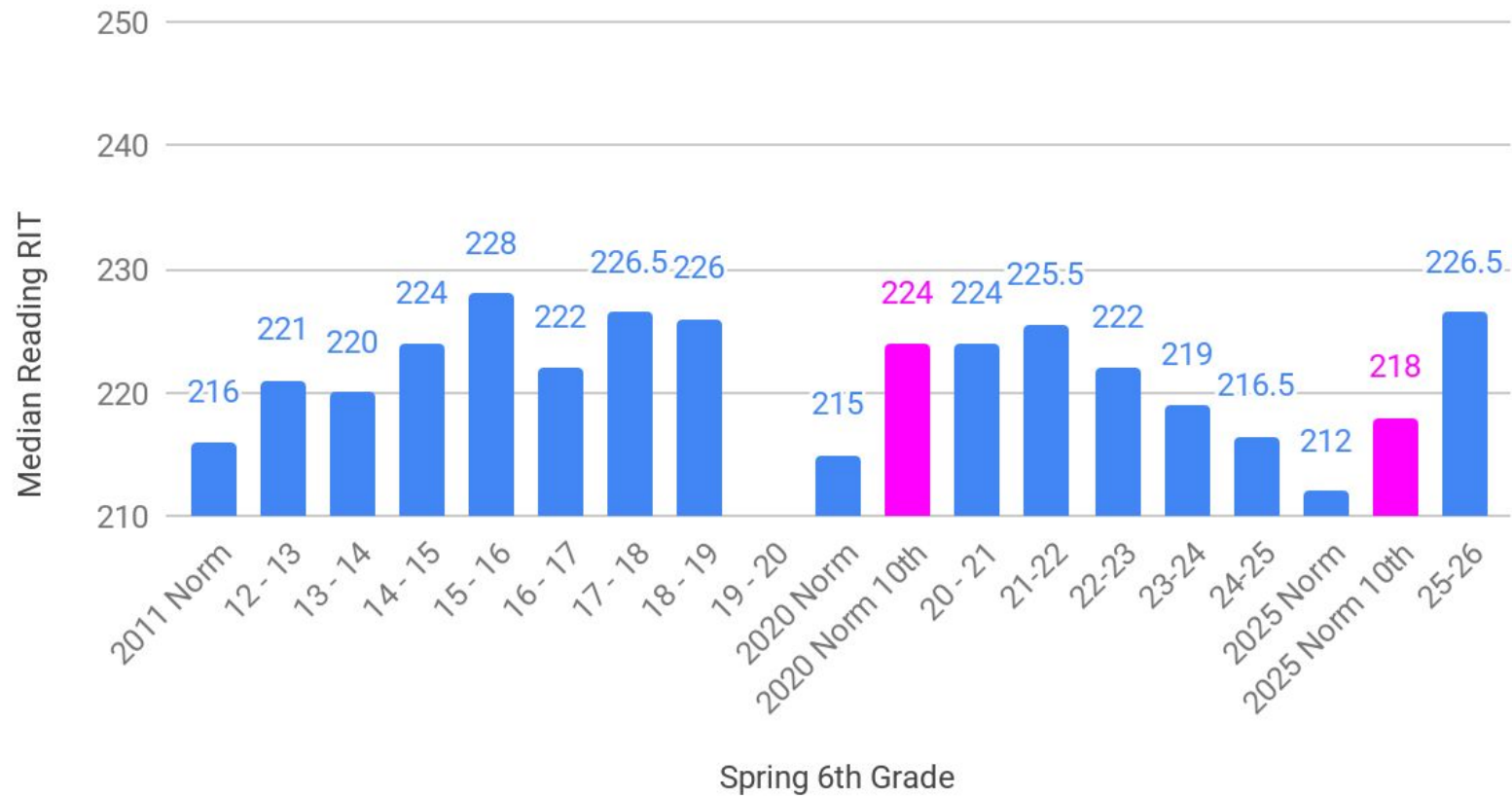
Median Reading RIT vs. Spring 4th Grade



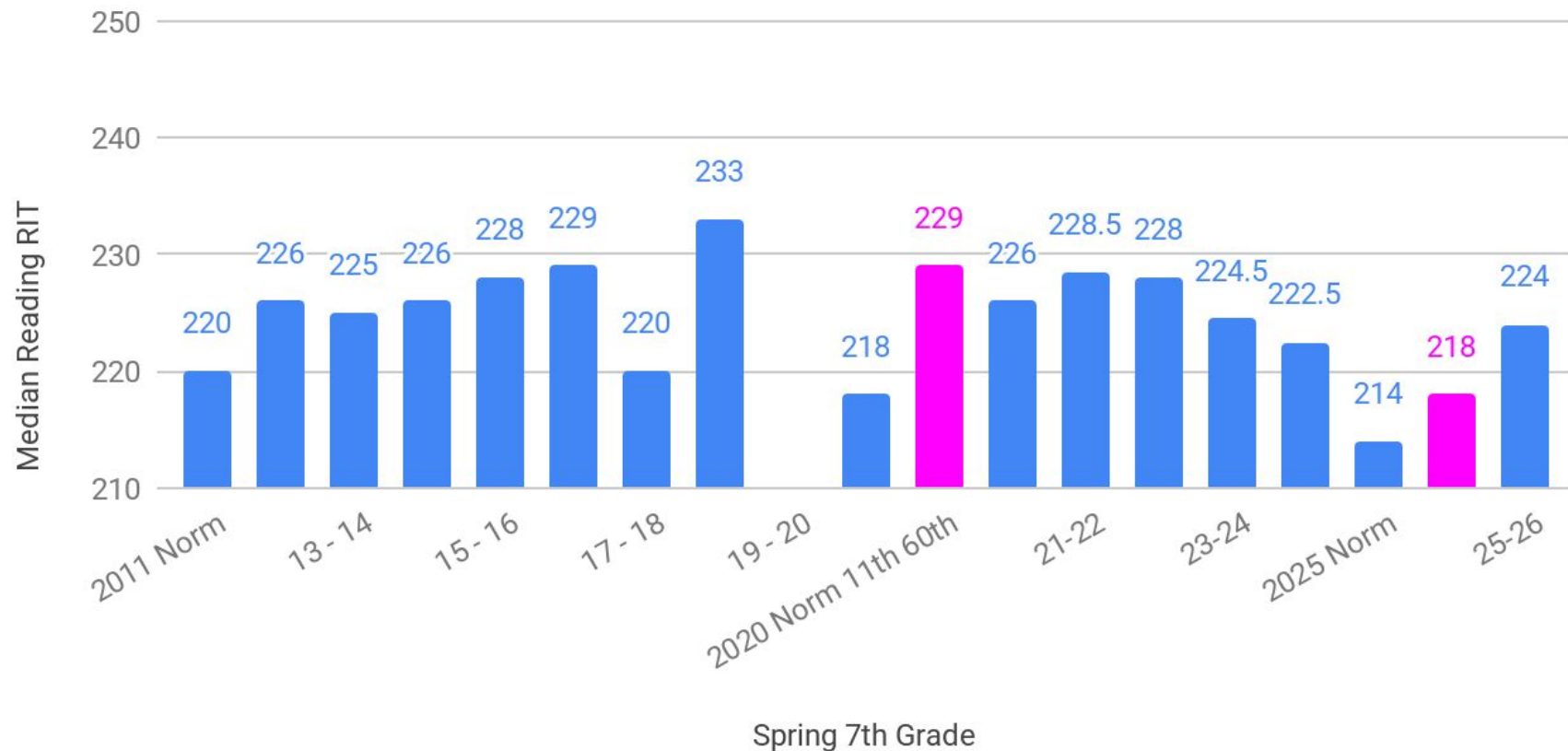
Median Reading RIT vs. Spring 5th Grade



Median Reading RIT vs. Spring 6th Grade



Median Reading RIT vs. Spring 7th Grade

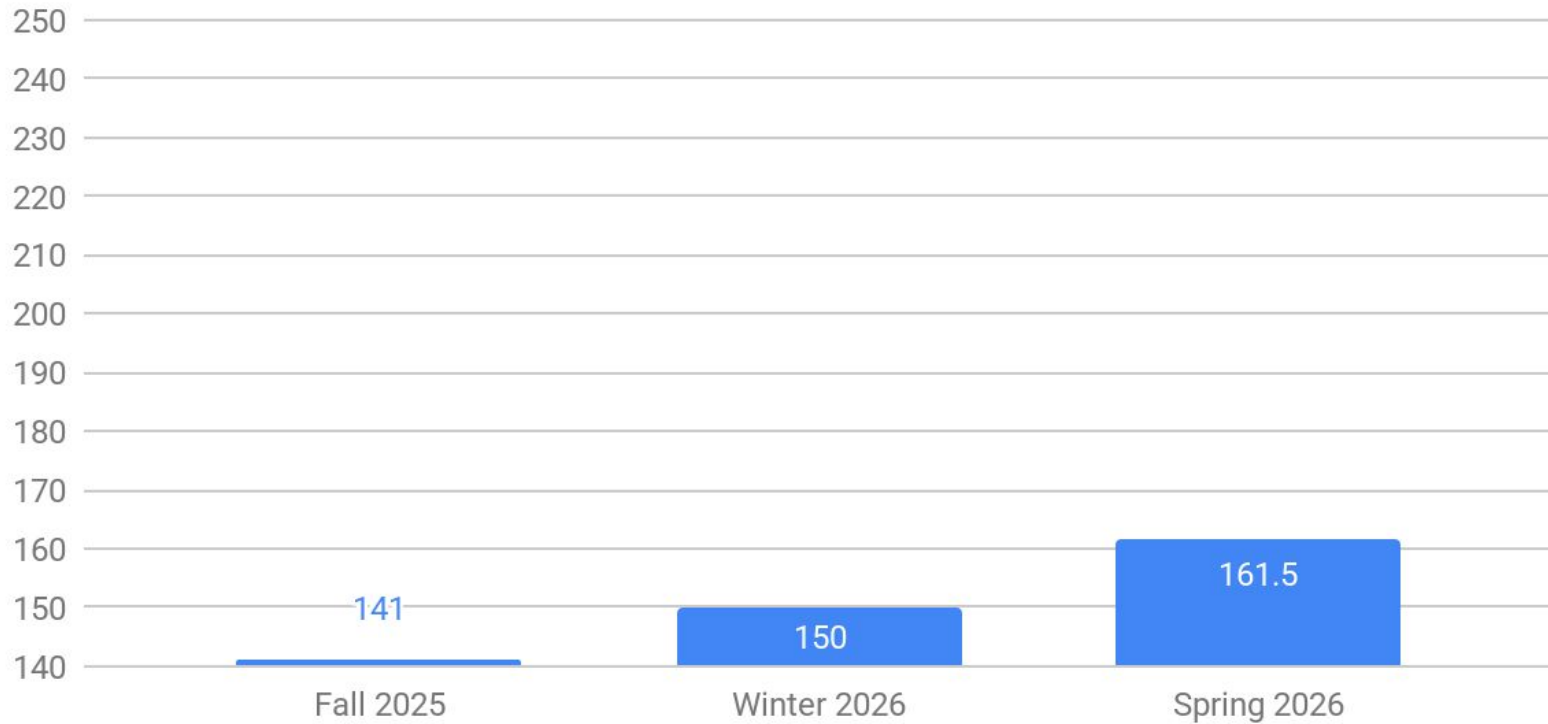


Median Reading RIT vs. Spring 8th Grade



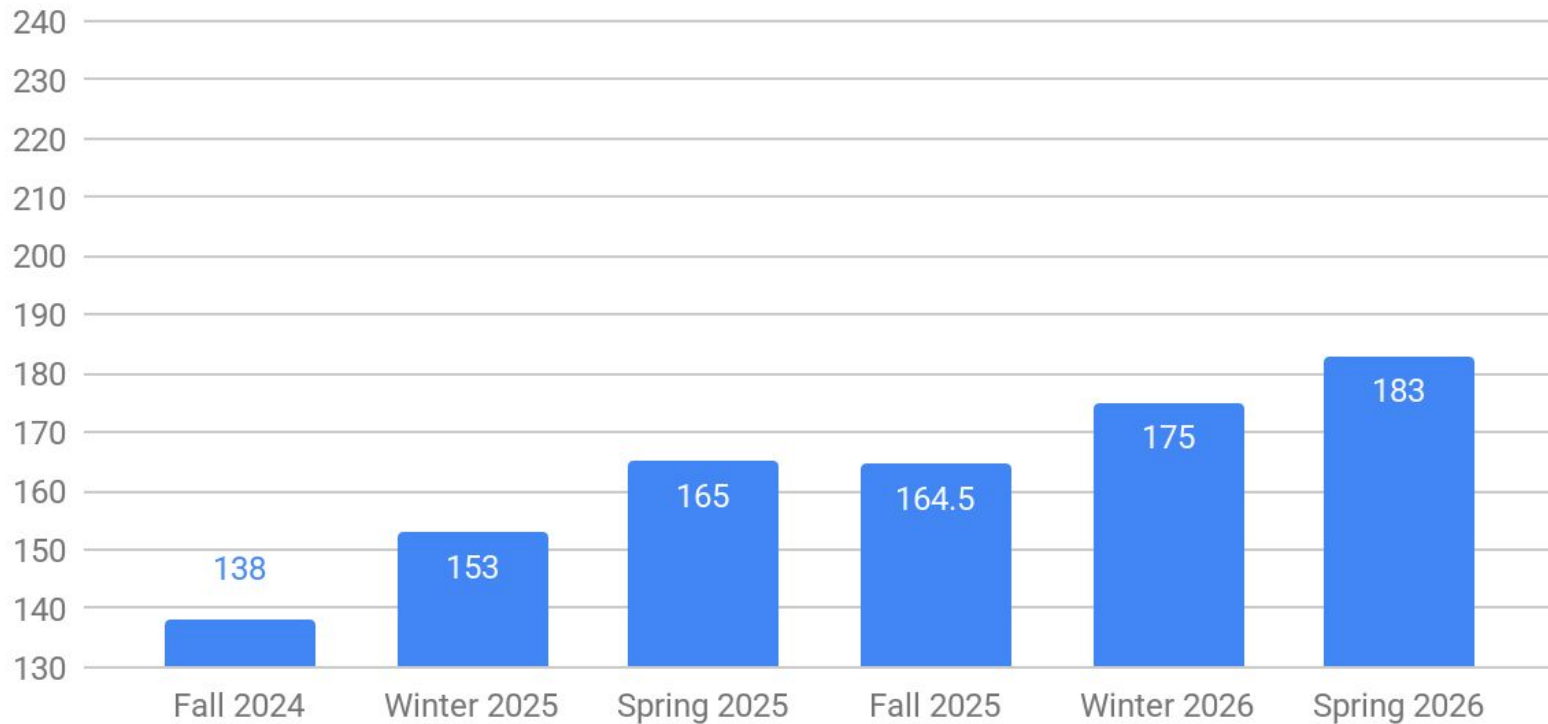
MAP Reading Achievement By Cohort

Median Reading RIT



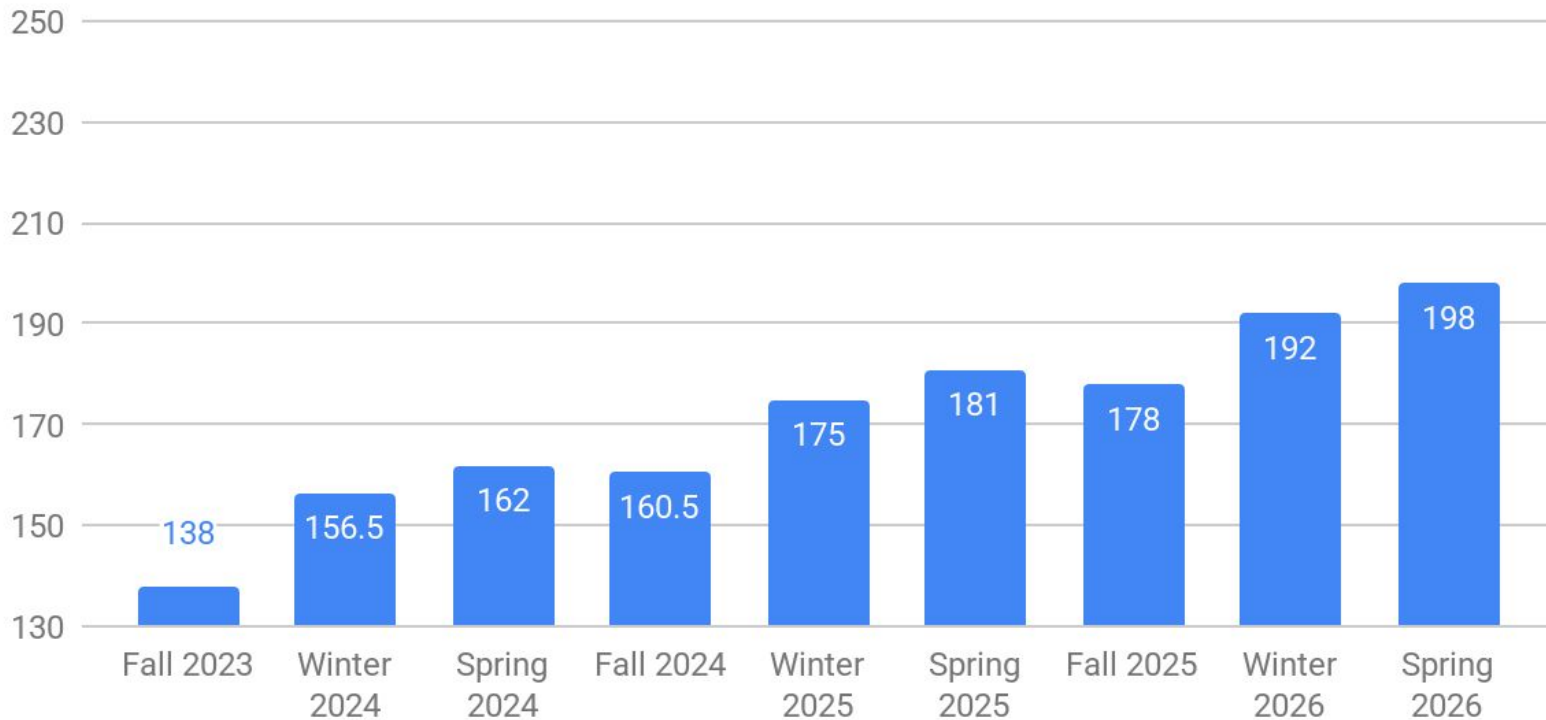
8th Grade Class of 2034 (Current Kindergarten)

Median Reading RIT



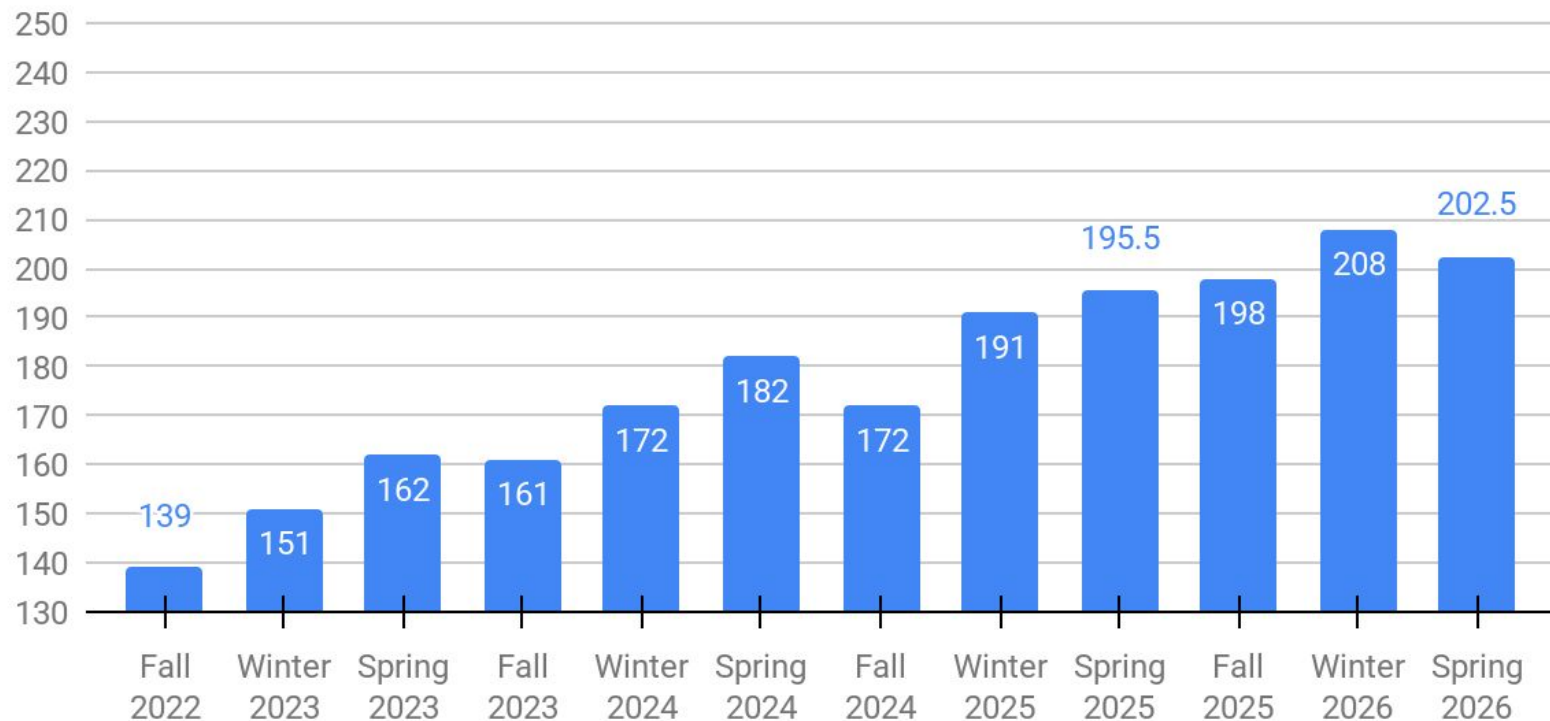
8th Grade Class of 2033 (1st Grade)

Median Reading



8th Grade Class of 2032 (Current 2nd Grade)

Median Reading RIT

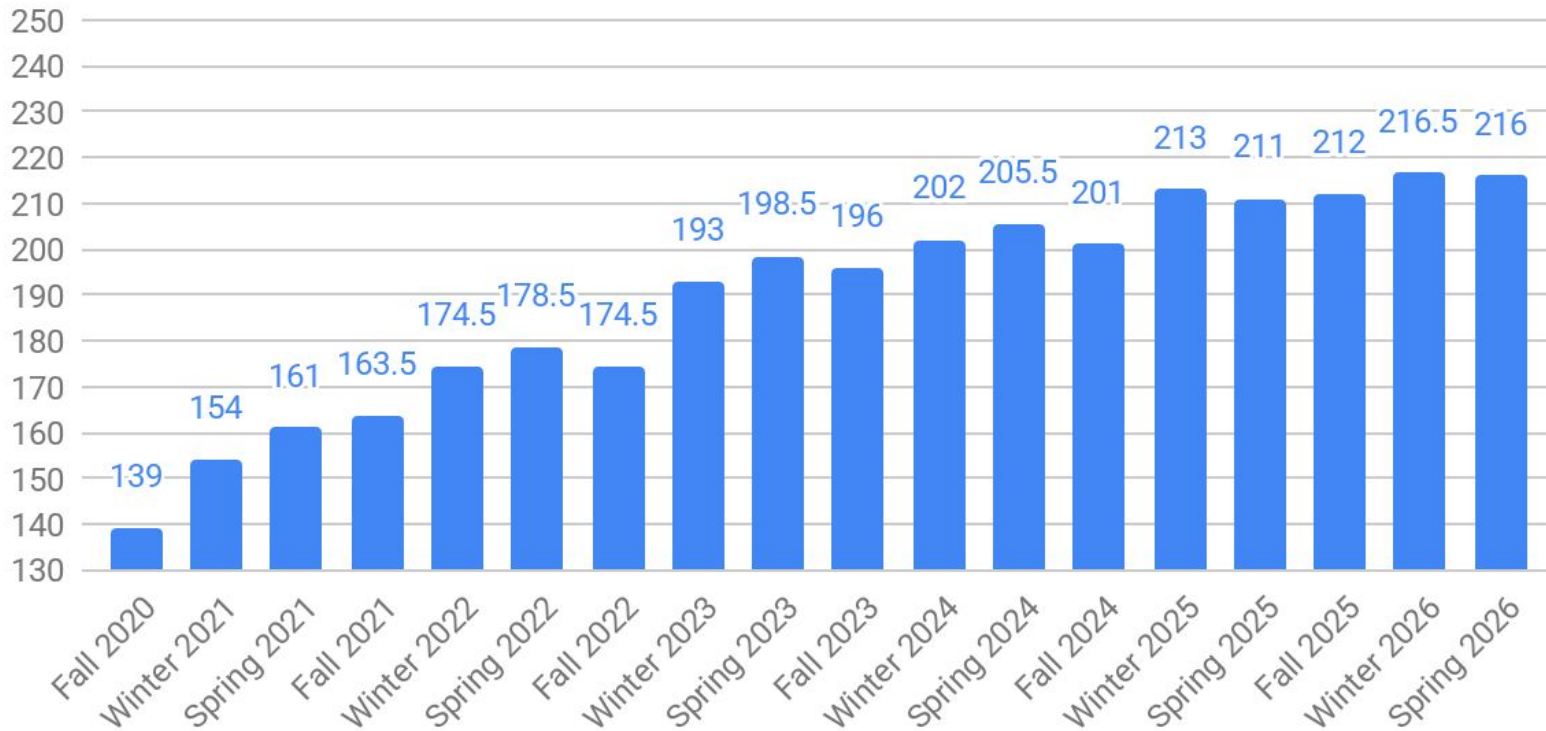


8th Grade Class of 2031 (Current 3rd Grade)

Median Reading RIT

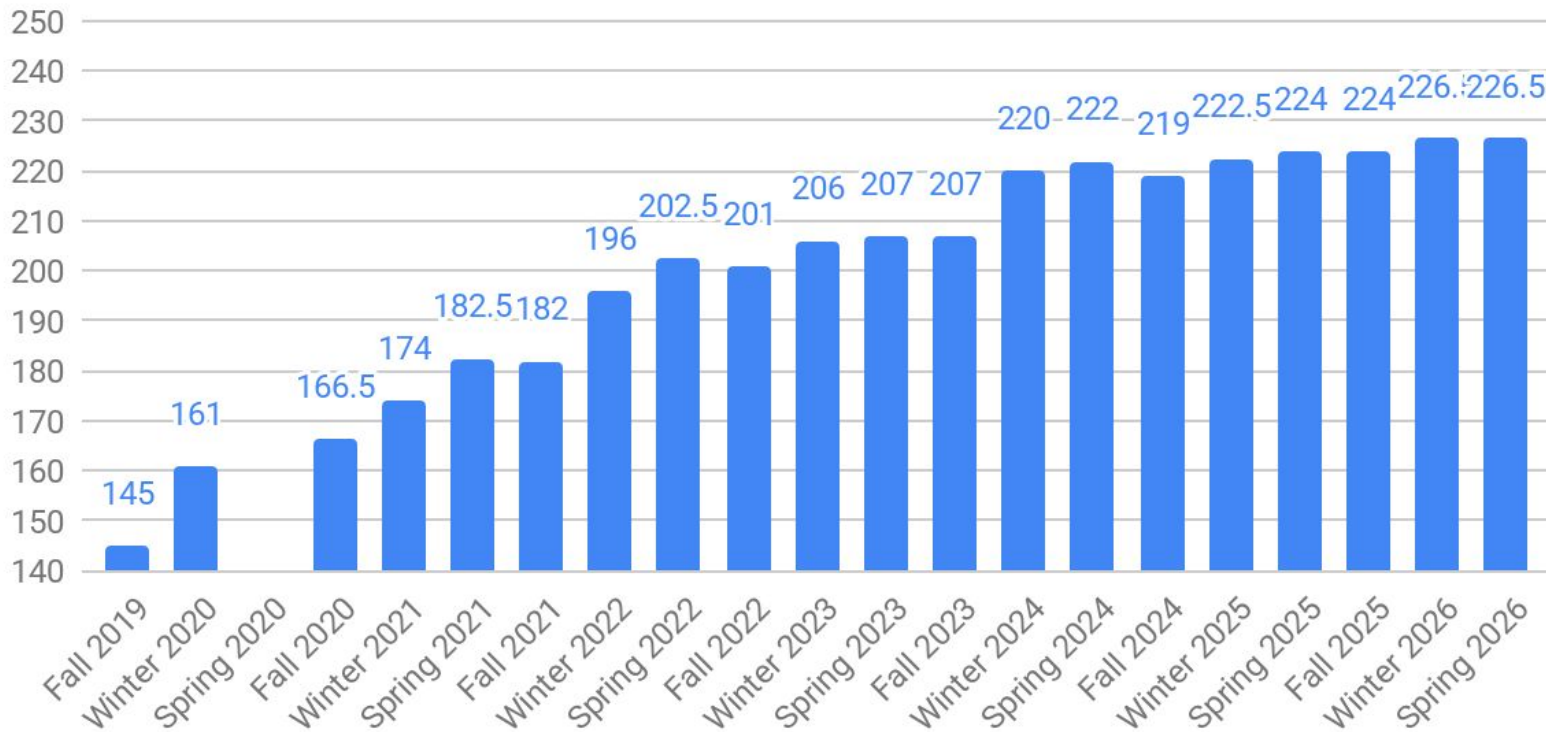


Median Reading RIT



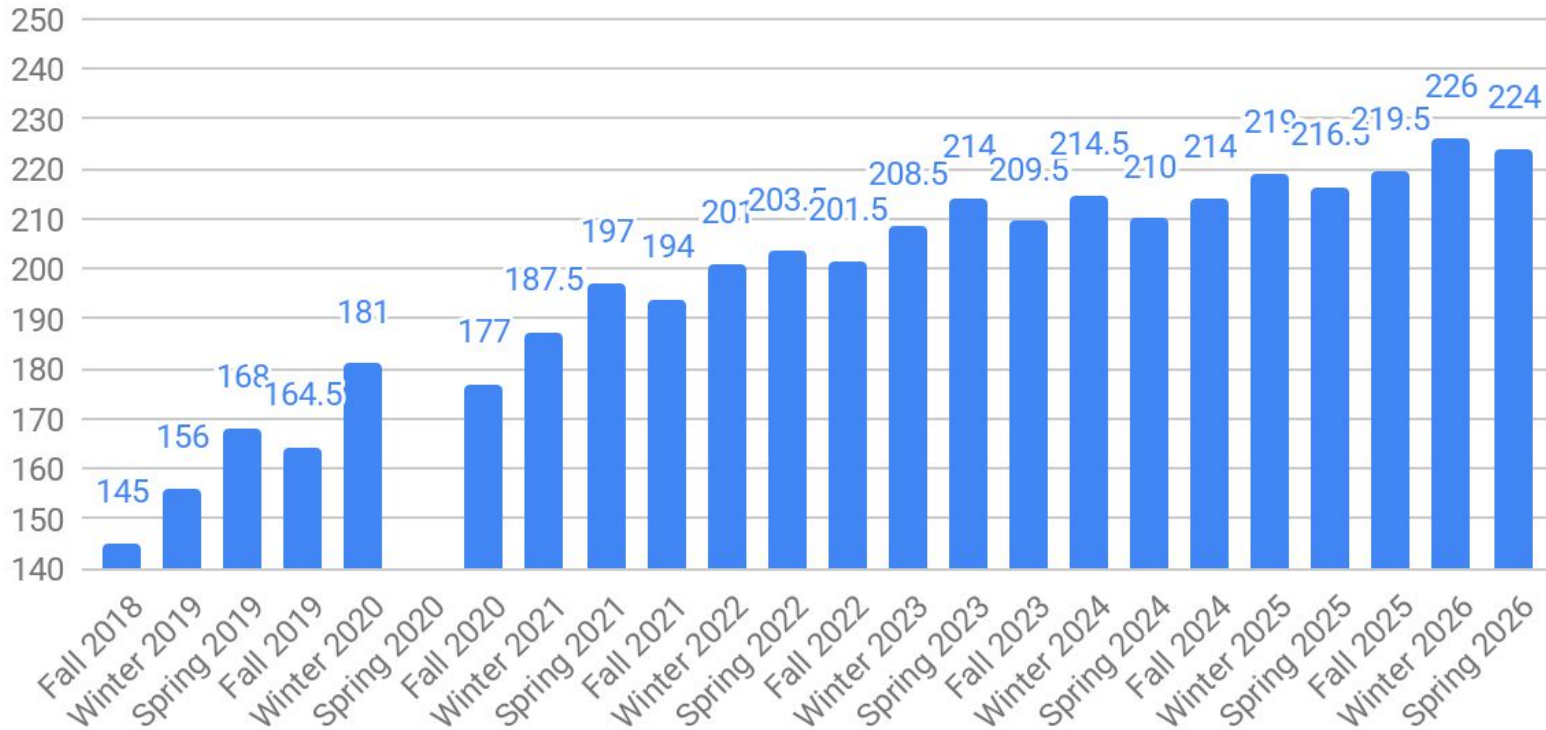
8th Grade Class of 2029 (Current 5th grade)

Median Reading RIT



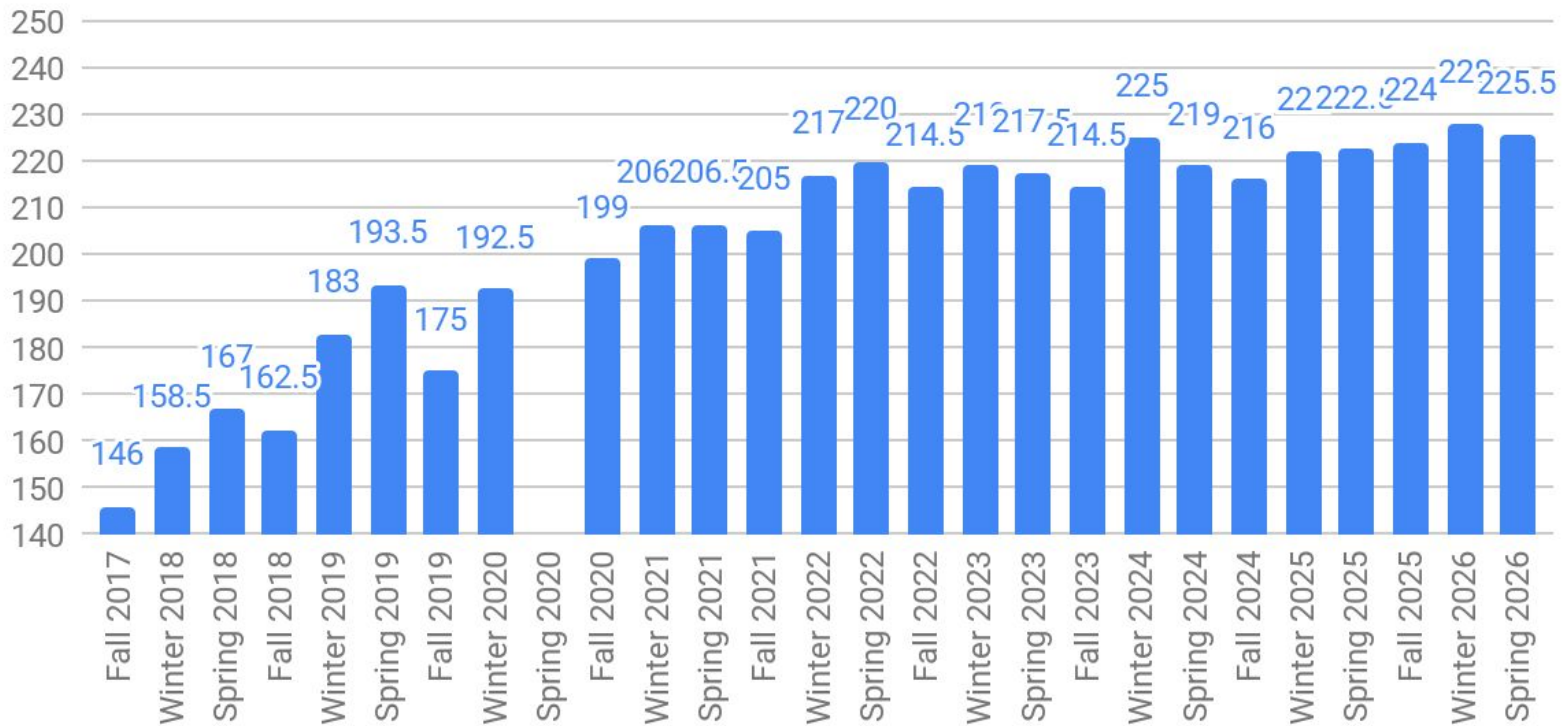
8th Grade Class of 2028 (Current 6th Grade)

Median Reading RIT



8th Grade Class of 2027 (Current 7th Grade)

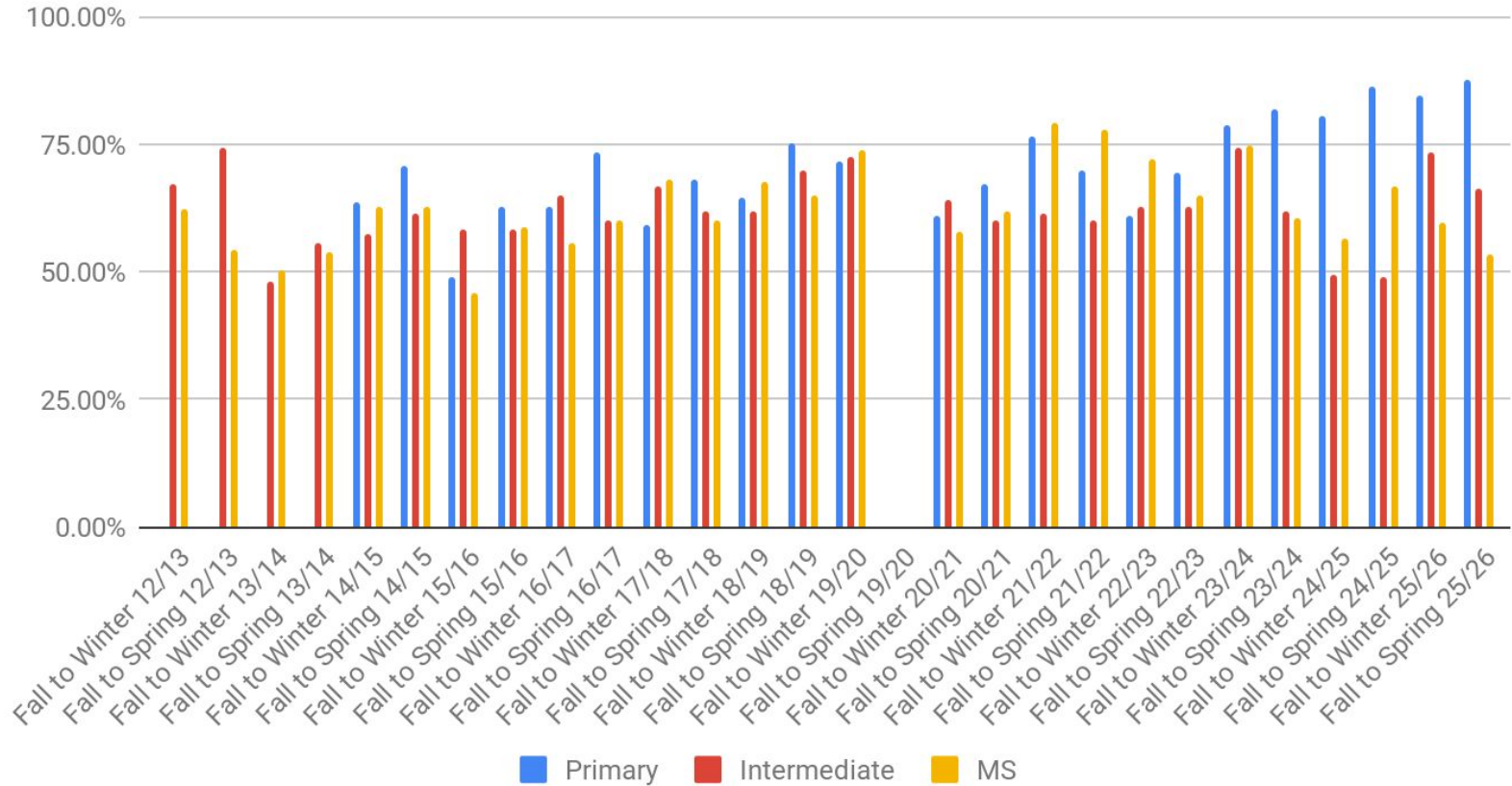
Median Reading RIT



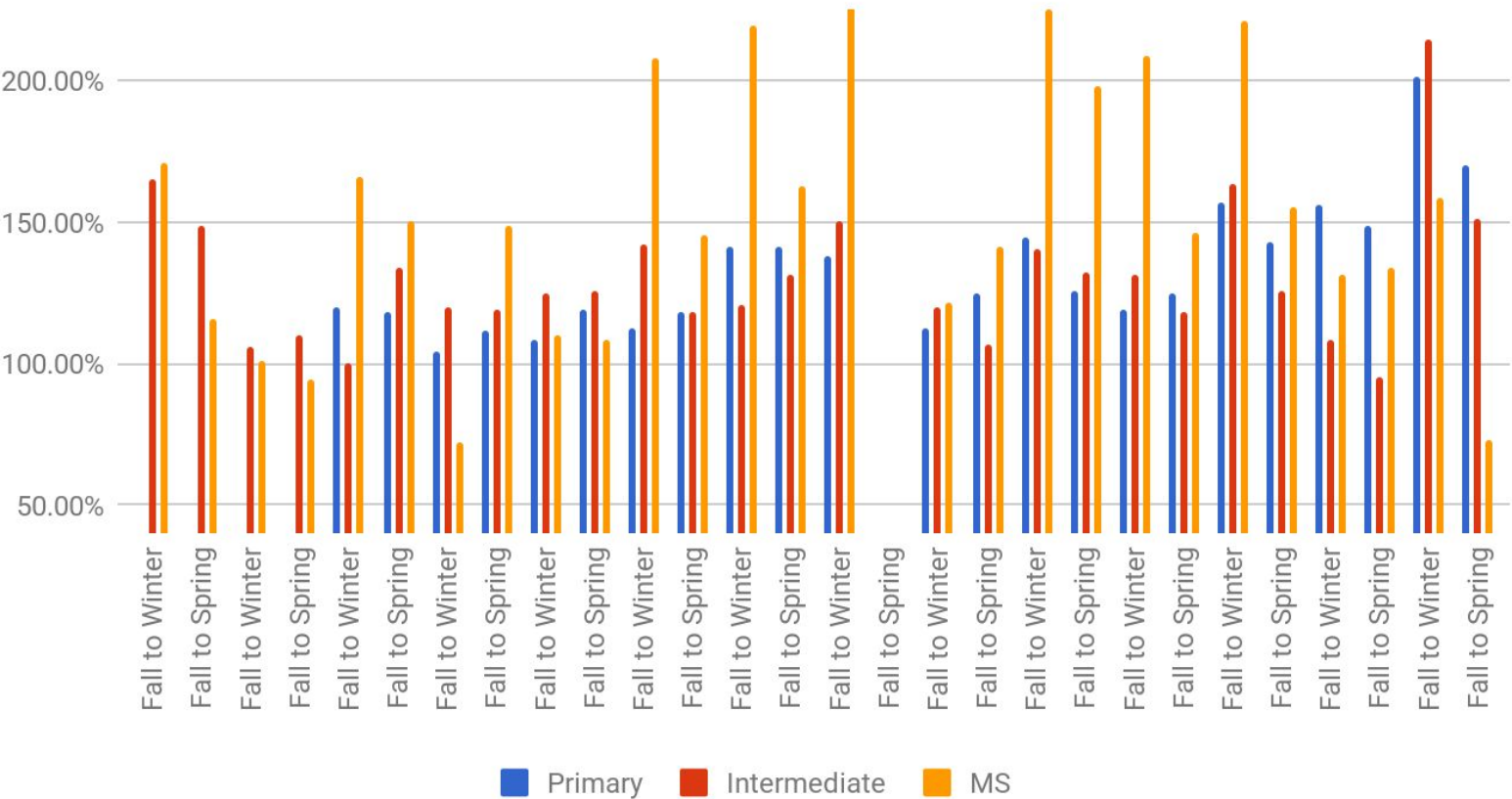
8th Grade Class of 2026 (Current 8th Grade)

MAP Reading Growth - By Level

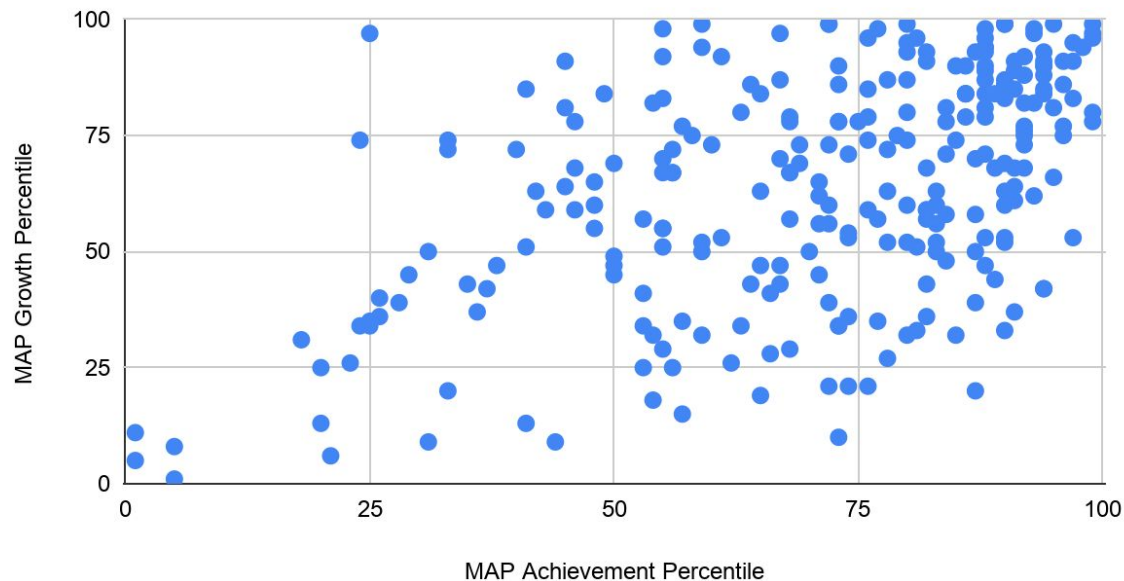
Reading - % of Students Meeting & Exceeding MAP Growth Targets



Reading - % of Growth Compared to Projected MAP Growth Targets



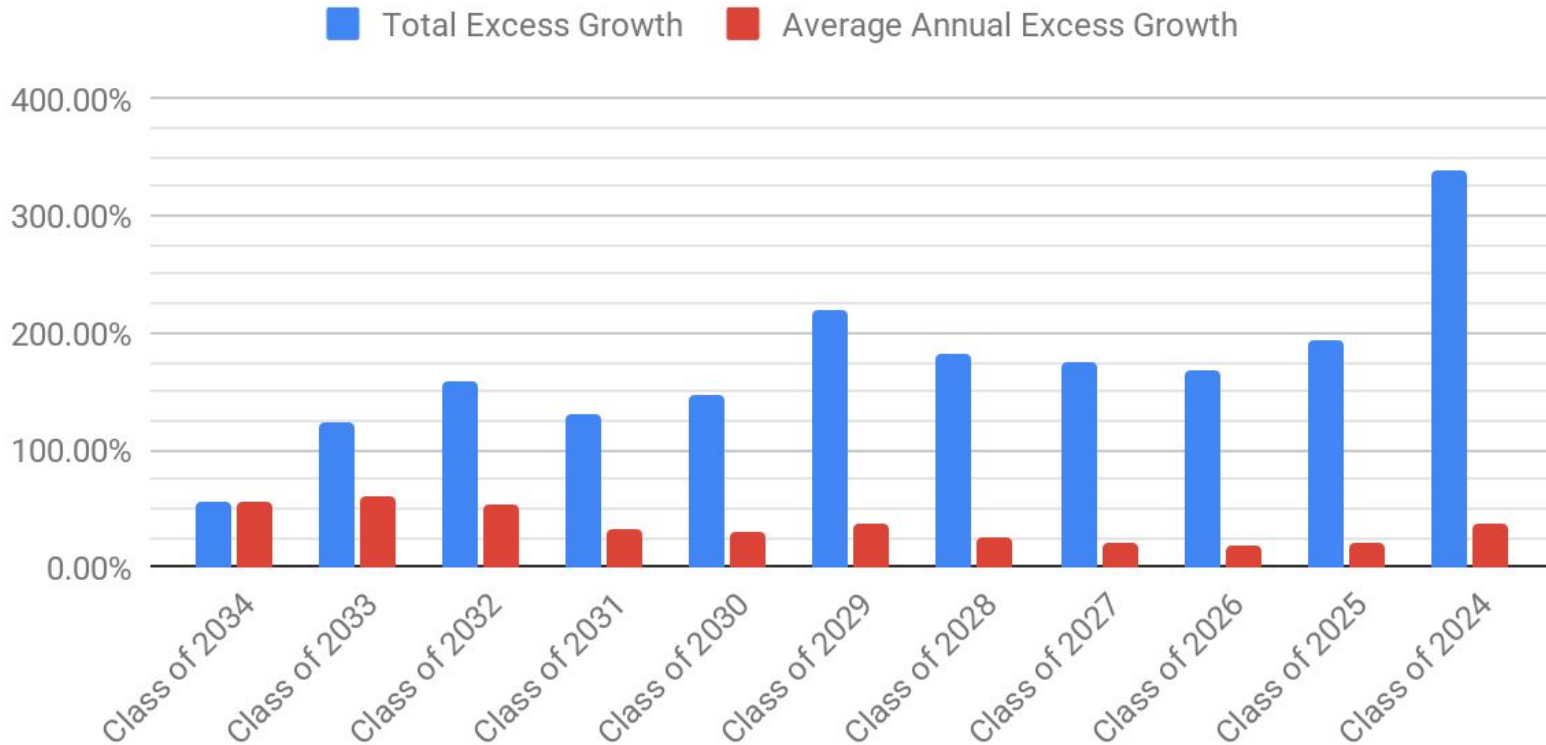
Fall 25 to Spring 26 Reading All Students Quadrant Chart



	Below 50% Growth and 50% Below Achievement	Below 50% Growth & 50%+ Achievement	50%+ Growth & Below 50% Achievement	50%+ Growth & 50%+ Achievement
Number of Kids	24	48	20	170
% of Kids	9.16%	18.32%	7.63%	64.89%

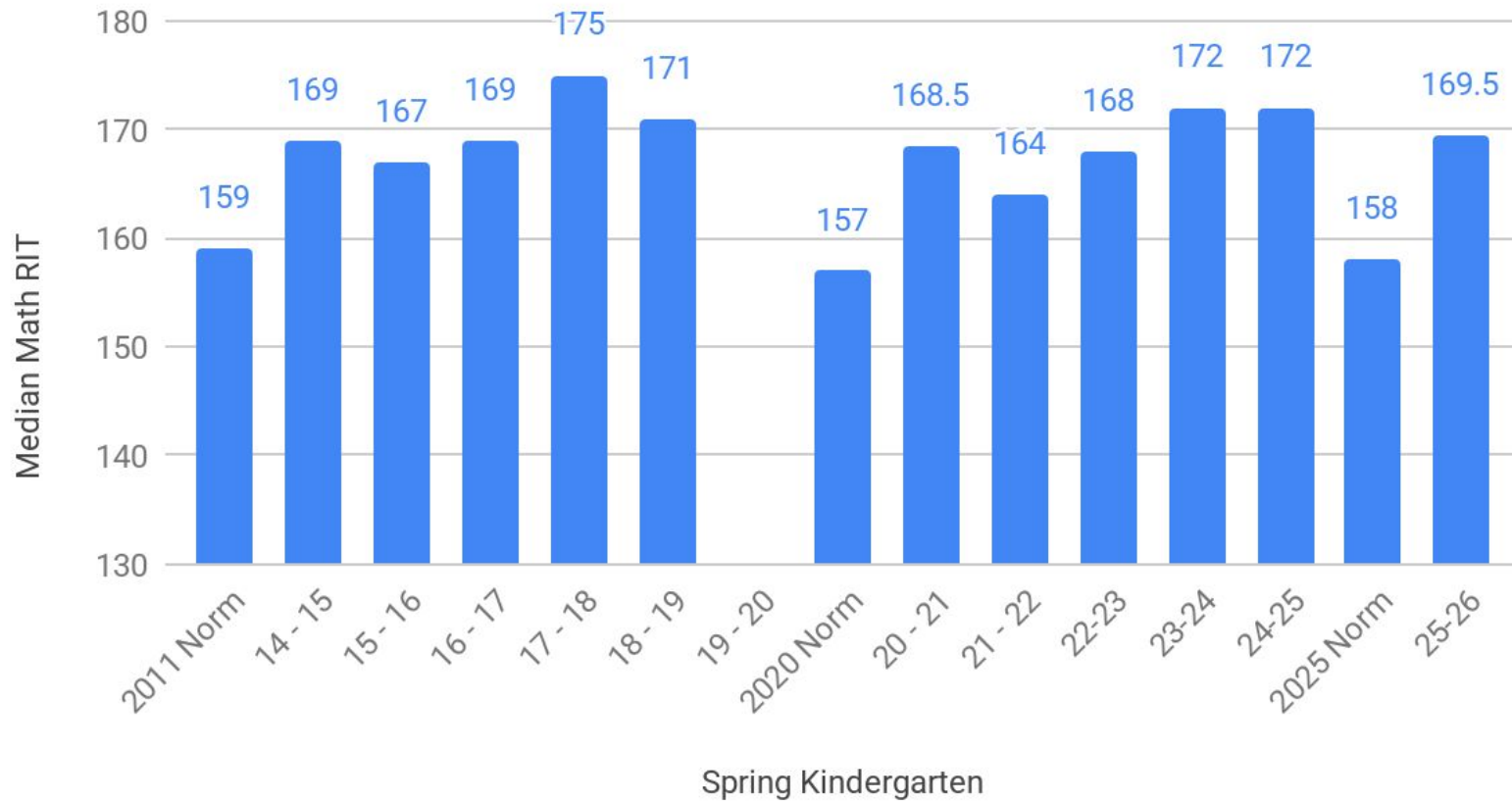
Reading	N	% of Students	% Growth	% OPP
Hi (90th Percentile+)	57	21%	89.47%	225.44%
Hi (75th Percentile+)	136	51.13%	83.58%	200.88%
Low (25th Percentile-)	15	5.64%	14%	5.56%
Low (10th Percentile-)	5	1.88%		
Absent 10%+	29	10.90%	55.56%	110.55%
Low Income	70	26.32%	60.87%	126.11%
IEP excluding Speech only	30	11.28%	53.33%	120.50%
Limited English Proficient	35	13.16%	68.57%	133.23%
Females	127	47.74%	77.78%	165.94%
Males	138	51.88%	64.71%	147.05%
Asian	13	4.89%	69.23%	131.11%
Black or African American	19	7.14%	33.33%	96.69%
Hispanic or Latino	50	18.80%	80%	165.32%
Multi-ethnic	17	6.39%	76.47%	182.08%
Native Hawaiian or Other Pacific Islander	0	0.00%		
White	166	62.41%	72.12%	158.96%
Total Tests	266			

Reading Total Excess Growth and Average Annual Excess Growth

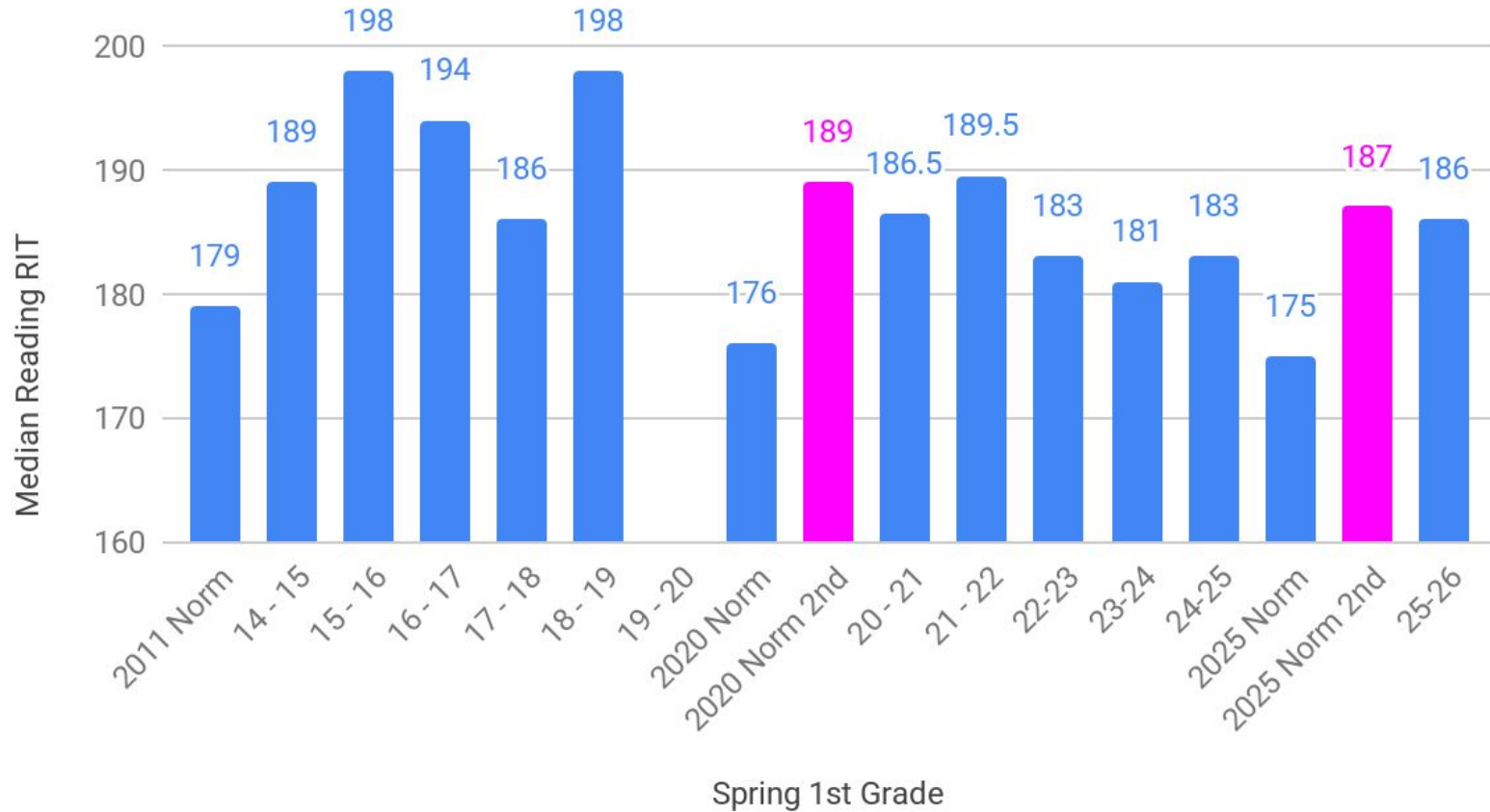


MAP Math Achievement By Grade Level

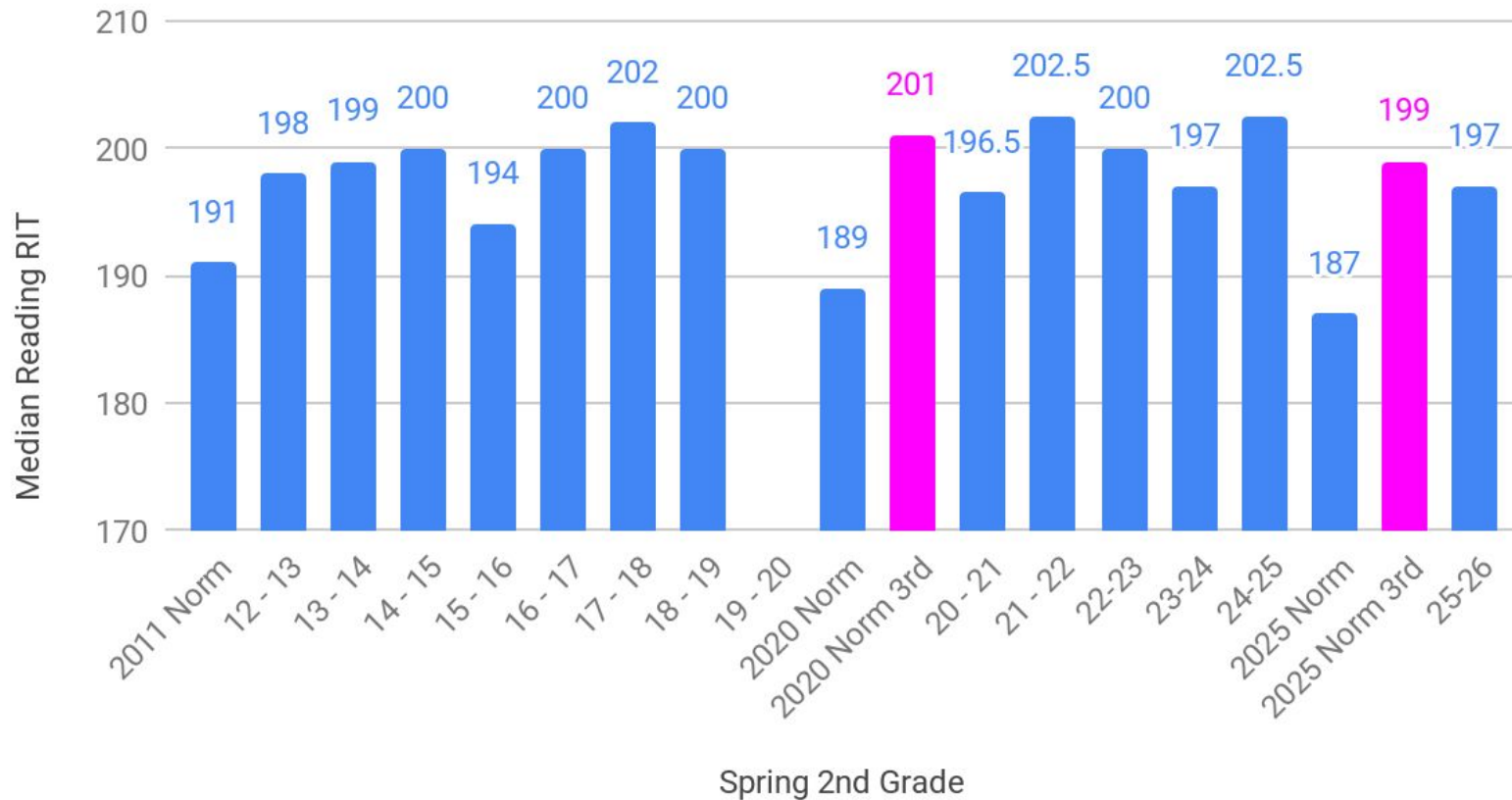
Median Math RIT vs. Spring Kindergarten



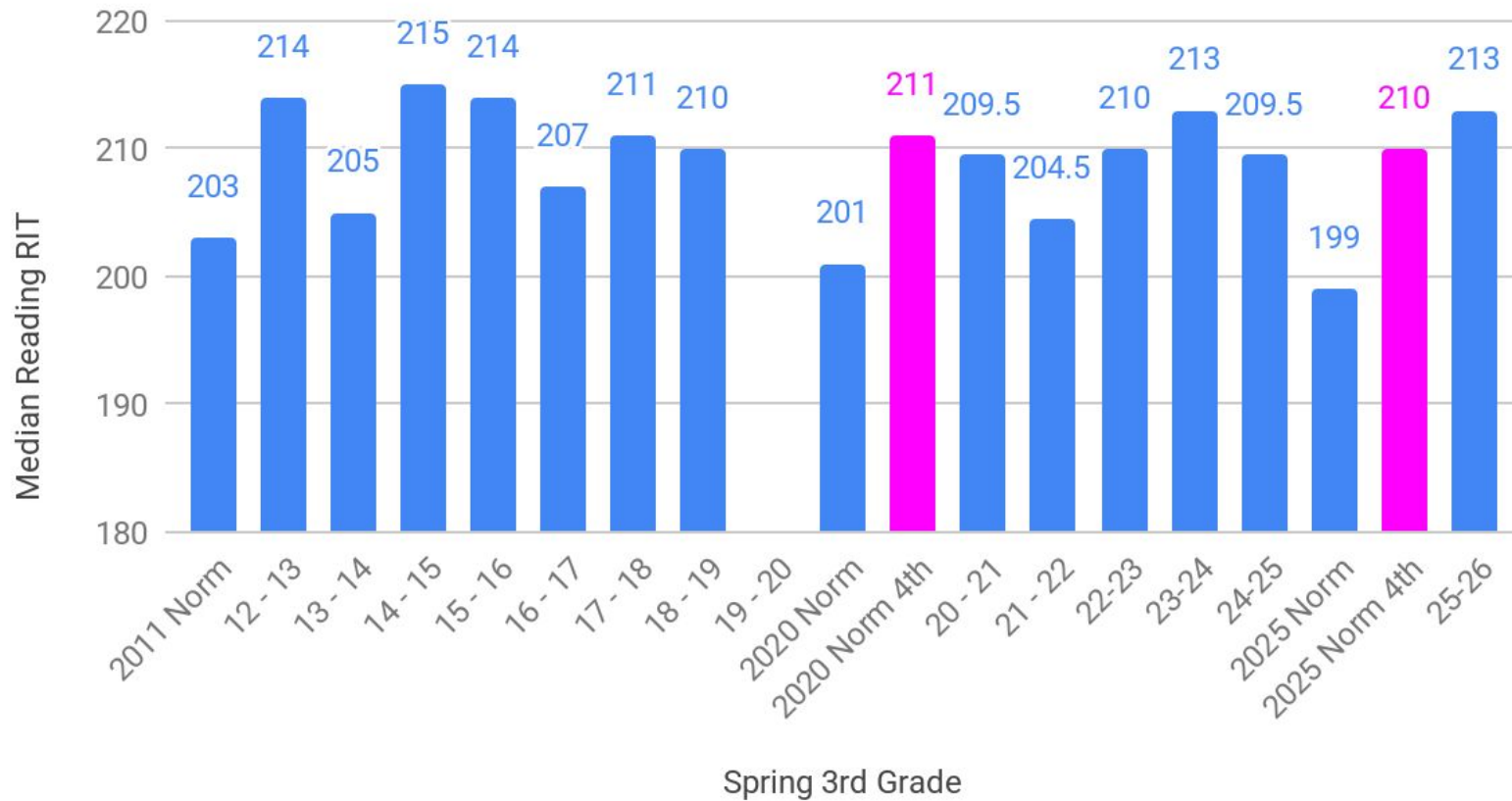
Median Math RIT vs. Spring 1st Grade



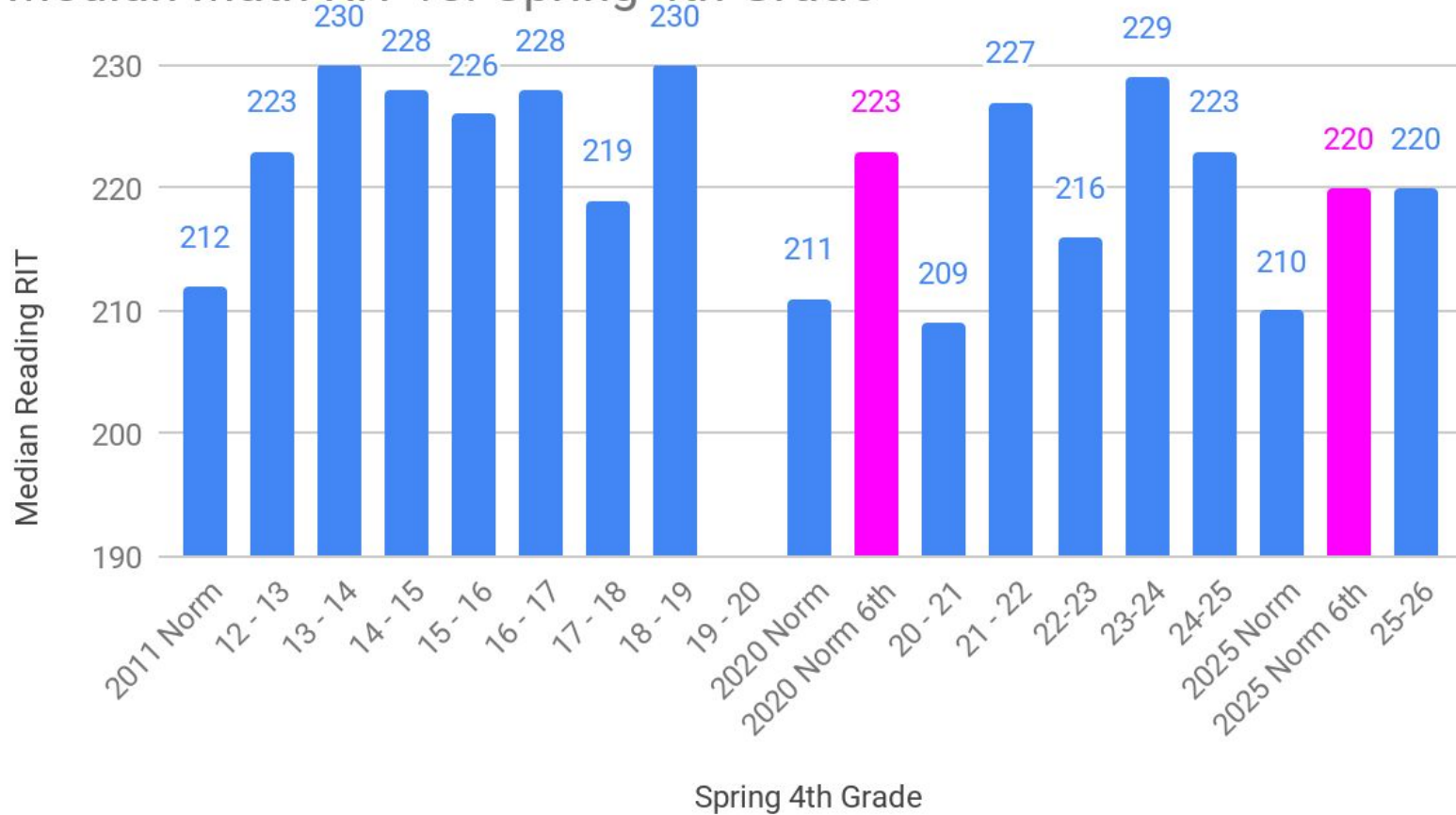
Median Math RIT vs. Spring 2nd Grade



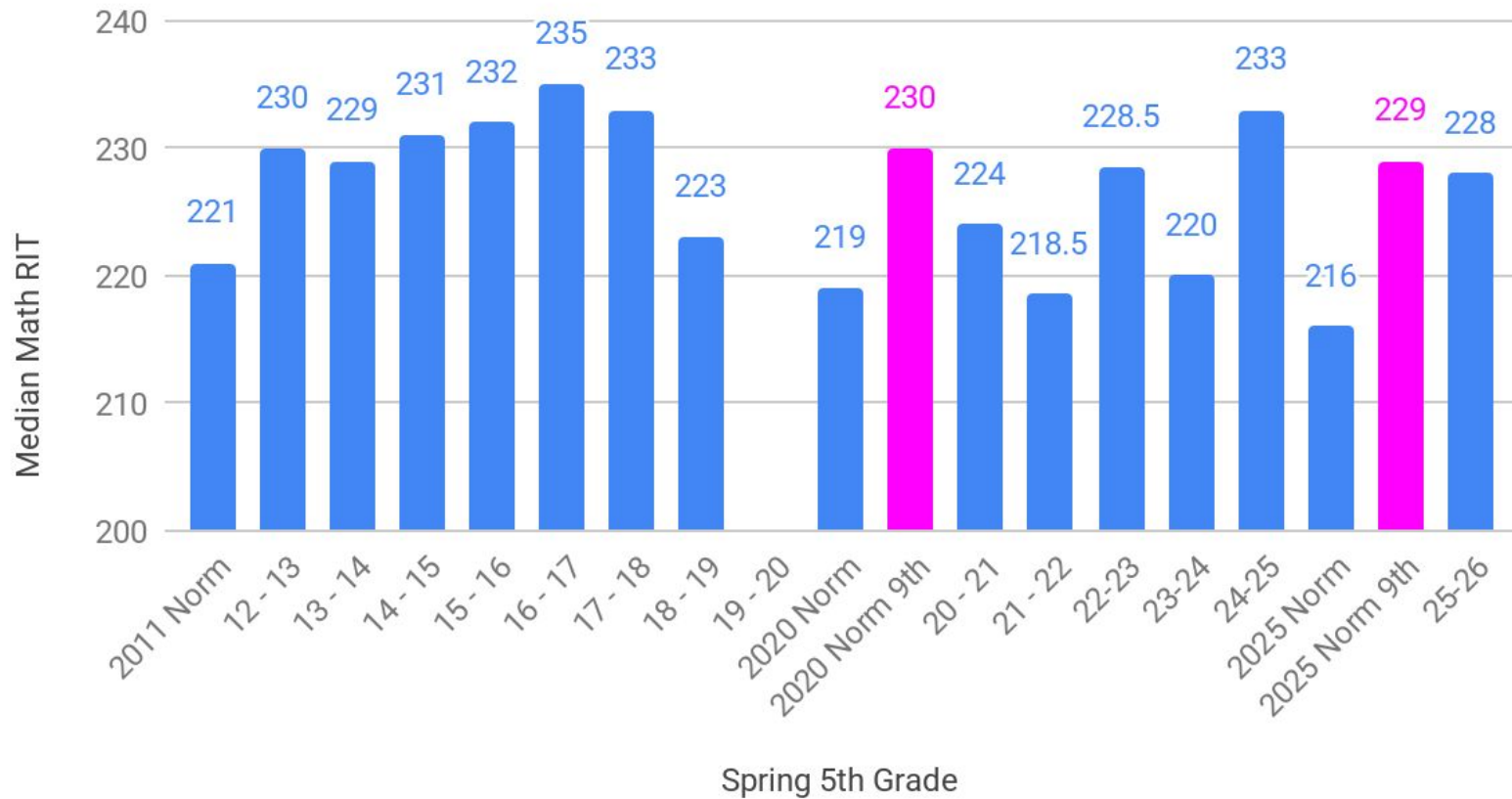
Median Math RIT vs. Spring 3rd Grade



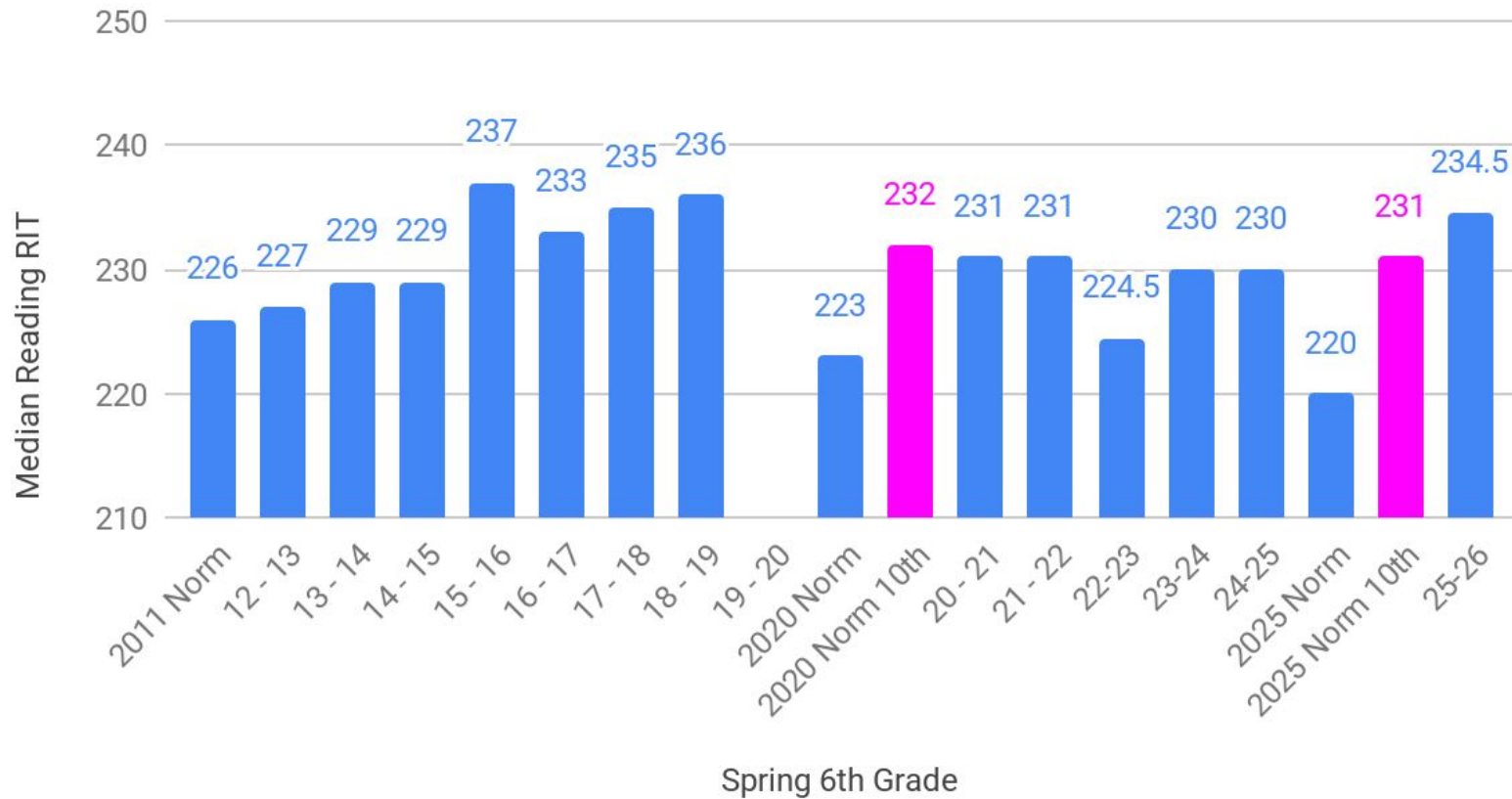
Median Math RIT vs. Spring 4th Grade



Median Math RIT vs. Spring 5th Grade



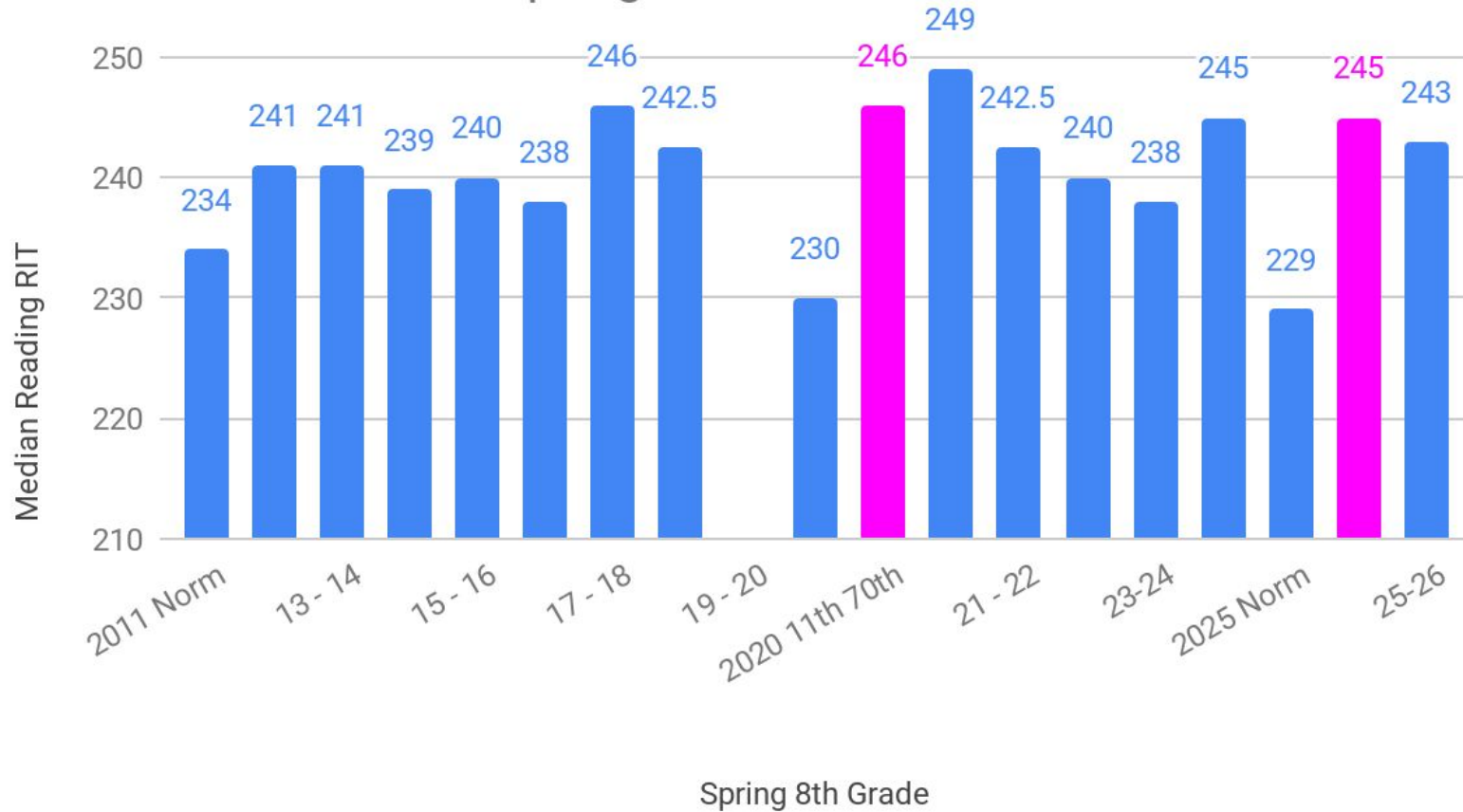
Median Math RIT vs. Spring 6th Grade



Median Math RIT vs. Spring 7th Grade

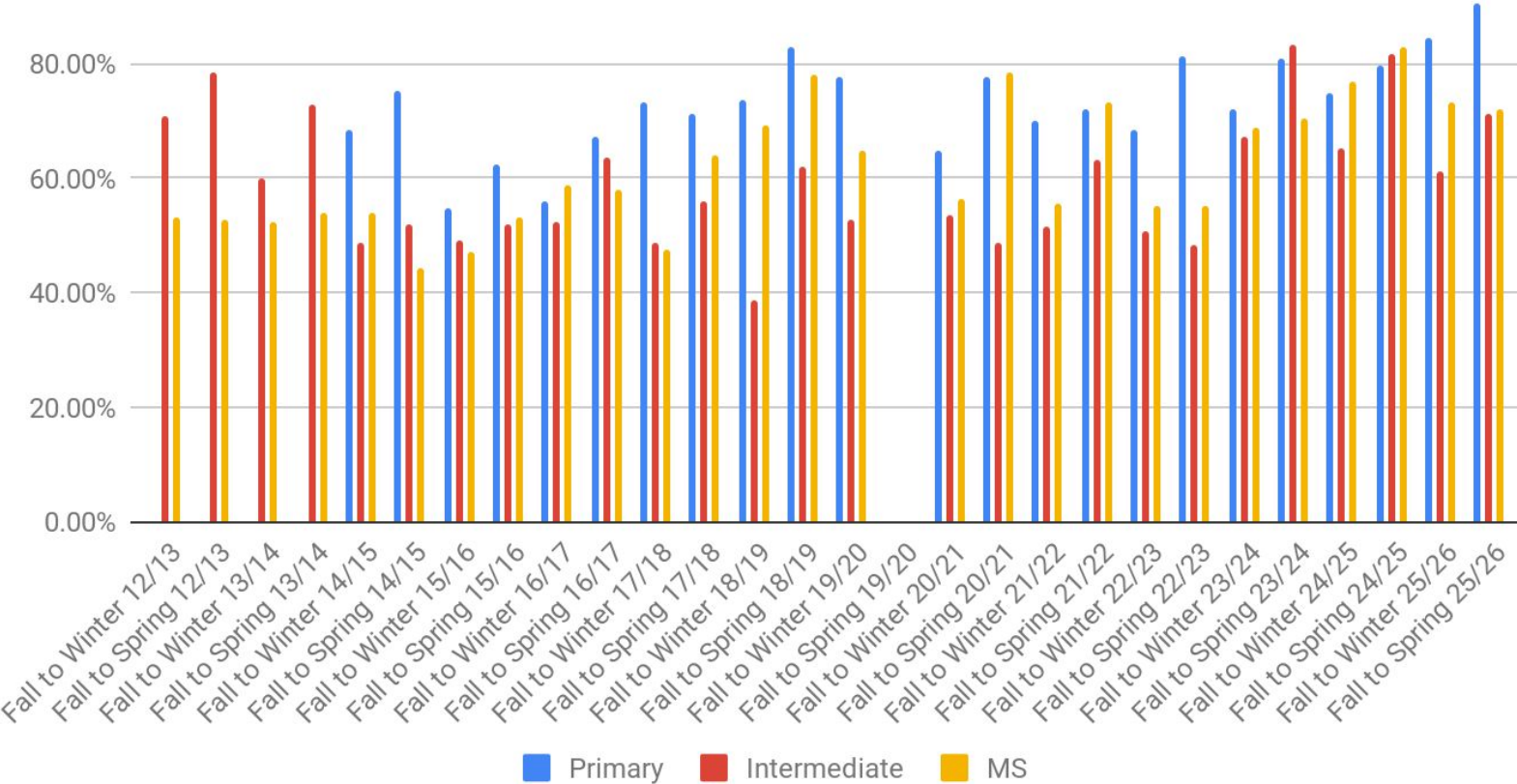


Median Math RIT vs. Spring 8th Grade

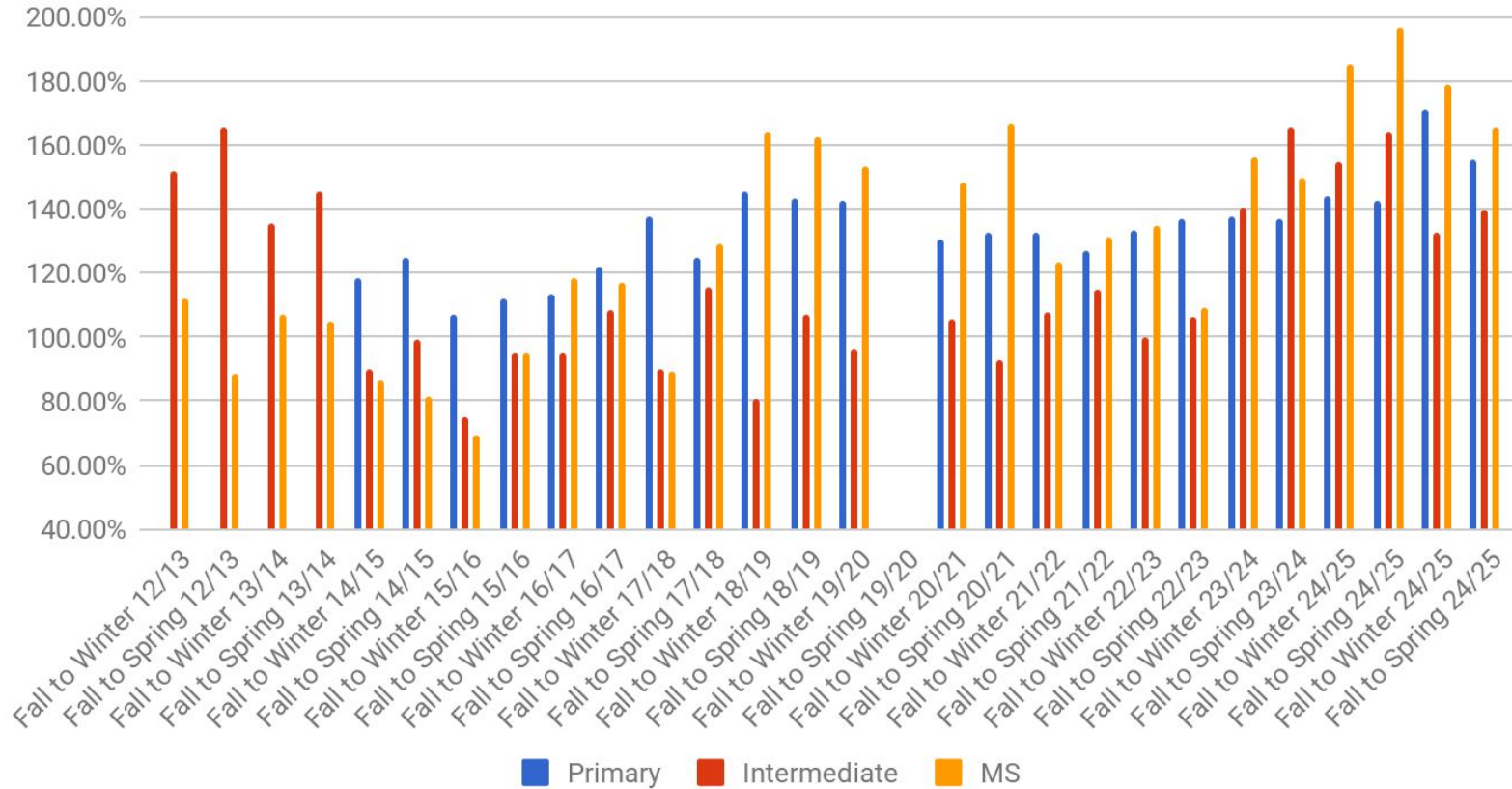


MAP Math Growth - By Level

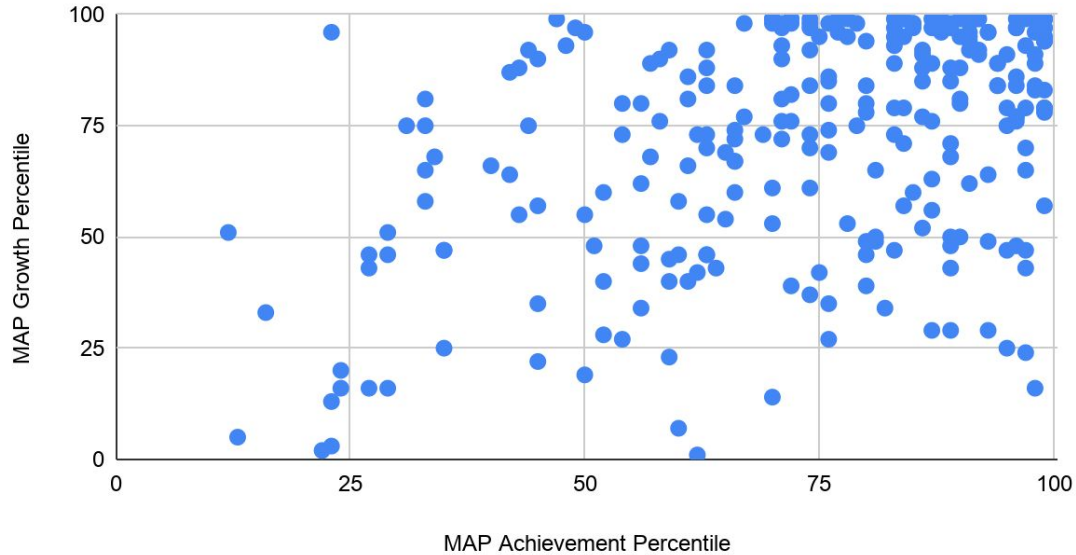
Math - % of Students Meeting & Exceeding MAP Growth Targets



Math - % of Growth Compared to Projected MAP Growth Targets



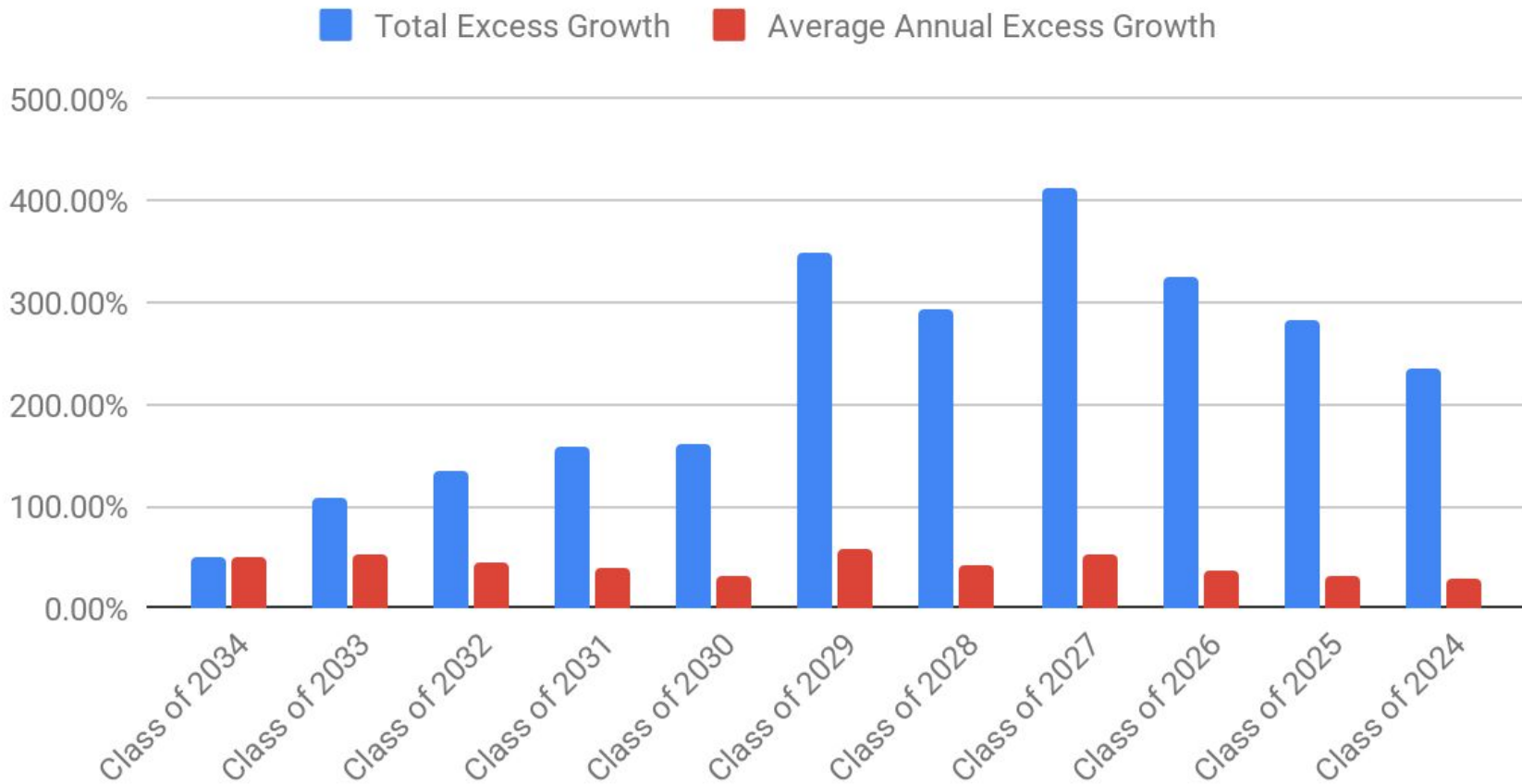
Fall 25 to Spring 26 Math All Students Quadrant Chart



	Below 50% Growth and 50% Below Achievement	Below 50% Growth & 50%+ Achievement	50%+ Growth & Below 50% Achievement	50%+ Growth & 50%+ Achievement
Number of Kids	17	44	21	180
% of Kids	6.49%	16.79%	8.02%	68.70%

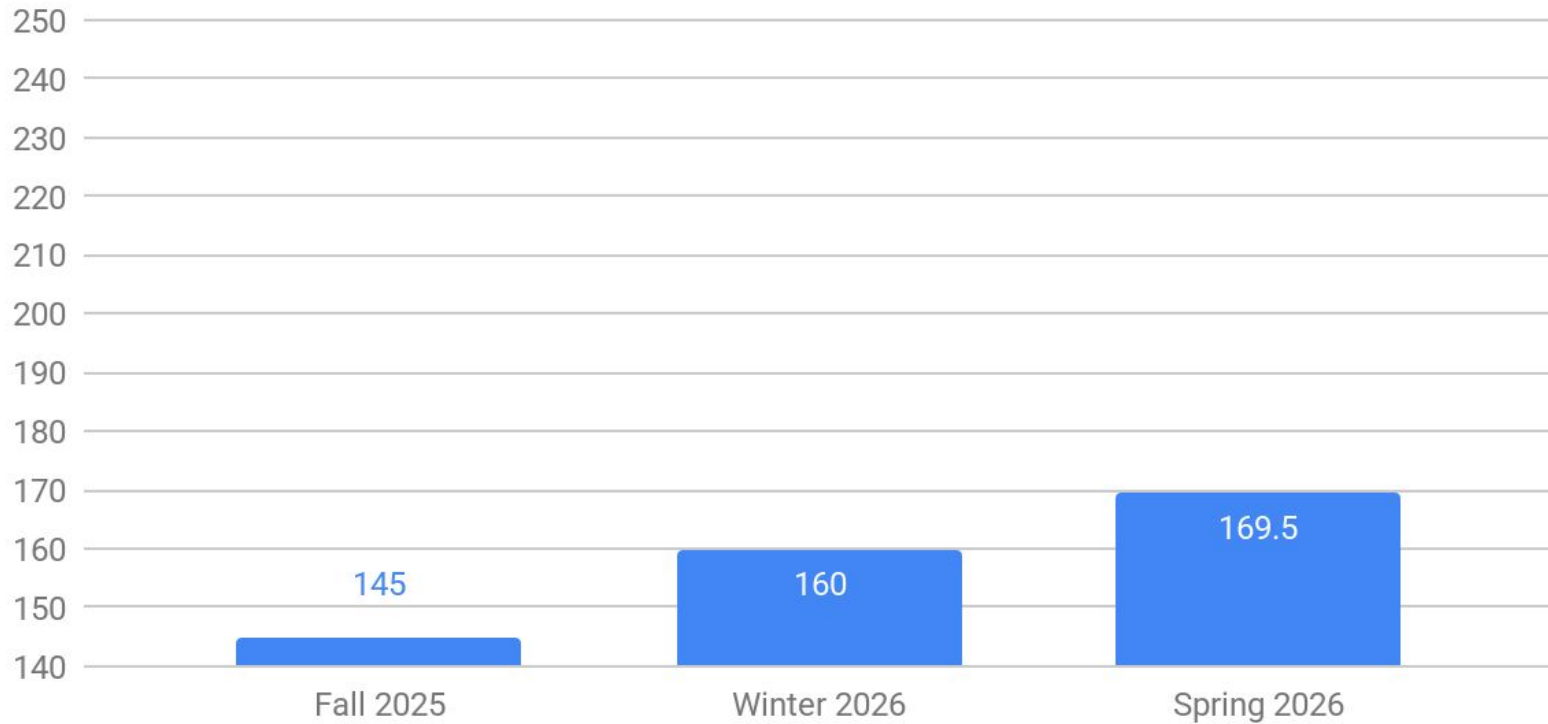
Mathematics	N	% of Students	% Growth	% OPP
Hi (90th Percentile+)	72	27%	88.73%	181.76%
Hi (75th Percentile+)	144	54.14%	87.41%	172.92%
Low (25th Percentile-)	10	3.76%	22.22%	42.86%
Low (10th Percentile-)	0	0.00%		
Absent 10%+	28	10.53%	80.77%	146.59%
Low Income	68	25.56%	73.13%	139.37%
IEP excluding Speech only	30	11.28%	65.62%	140.17%
Limited English Proficient	36	13.53%	83.33%	154.11%
Females	127	47.74%	80.16%	151.86%
Males	138	51.88%	77.94%	152.25%
Asian	13	4.89%	92.31%	142.11%
Black or African American	19	7.14%	66.67%	121.84%
Hispanic or Latino	50	18.80%	79.59%	154.25%
Multi-ethnic	17	6.39%	64.71%	148.99%
Native Hawaiian or Other Pacific Islander	0	0.00%		
White	166	62.41%	80.61%	155.52%
Total Tests	266			

Math Total Excess Growth and Average Annual Excess Growth



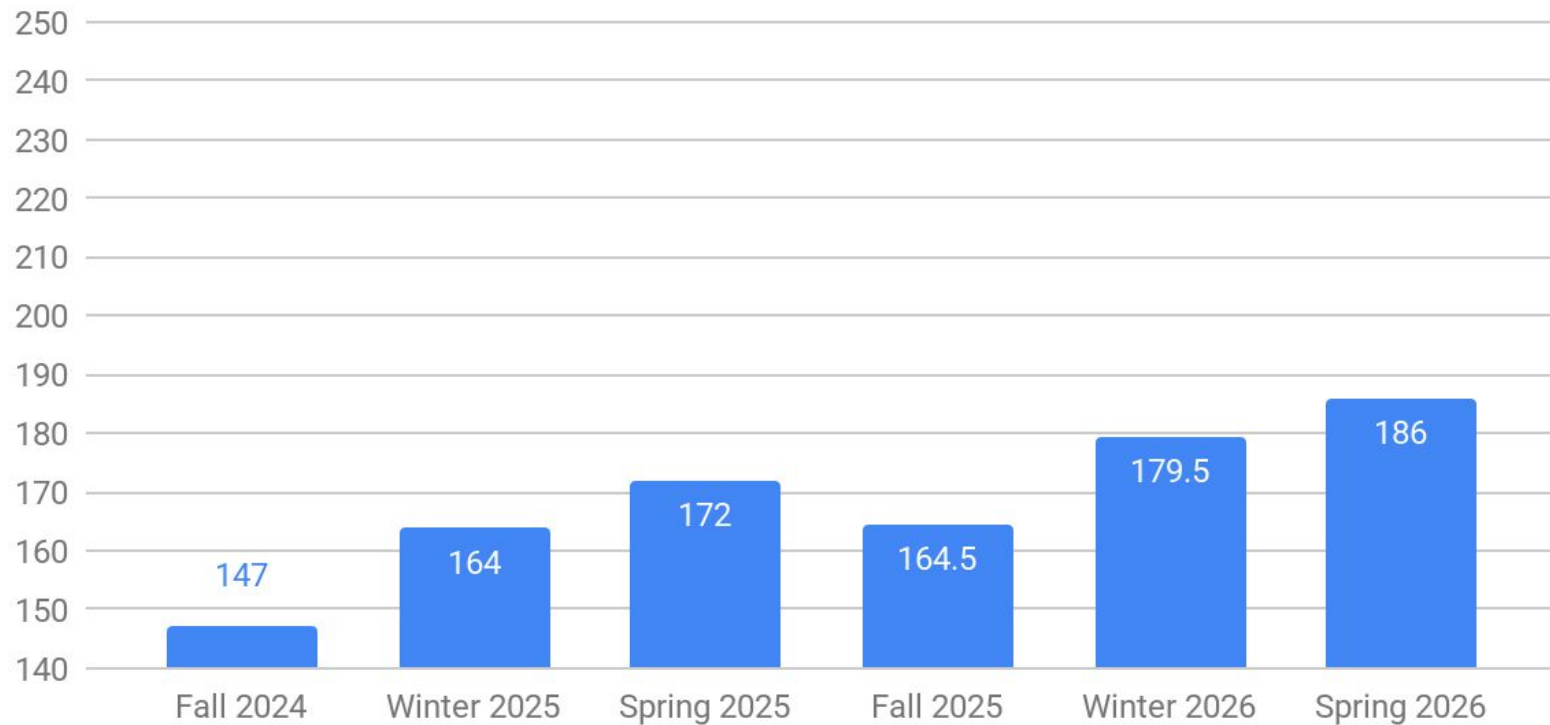
MAP Math Achievement By Cohort

Median Math RIT



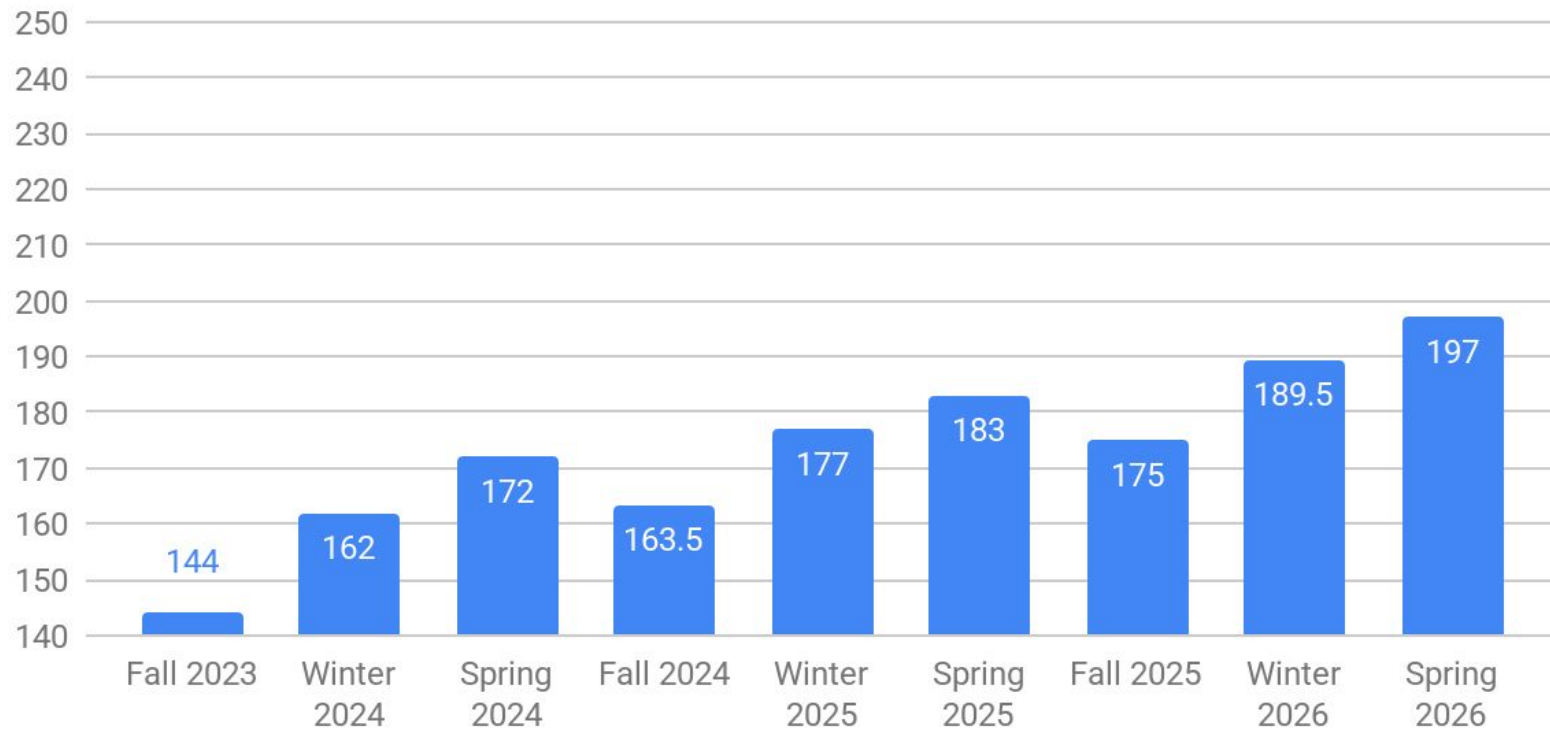
8th Grade Class of 2034 (Current Kindergarten)

Median Math RIT



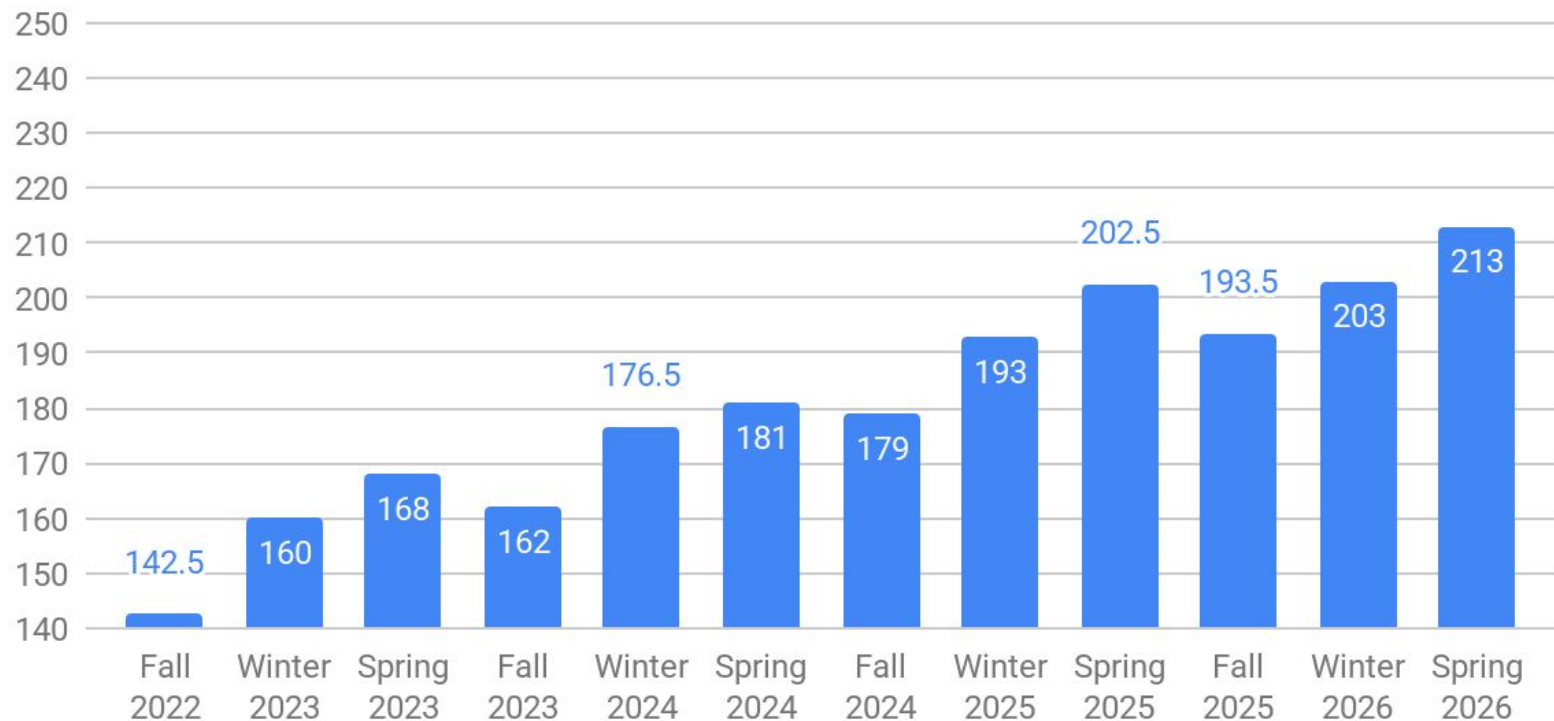
8th Grade Class of 2033 (Current 1st Grade)

Median Math RIT



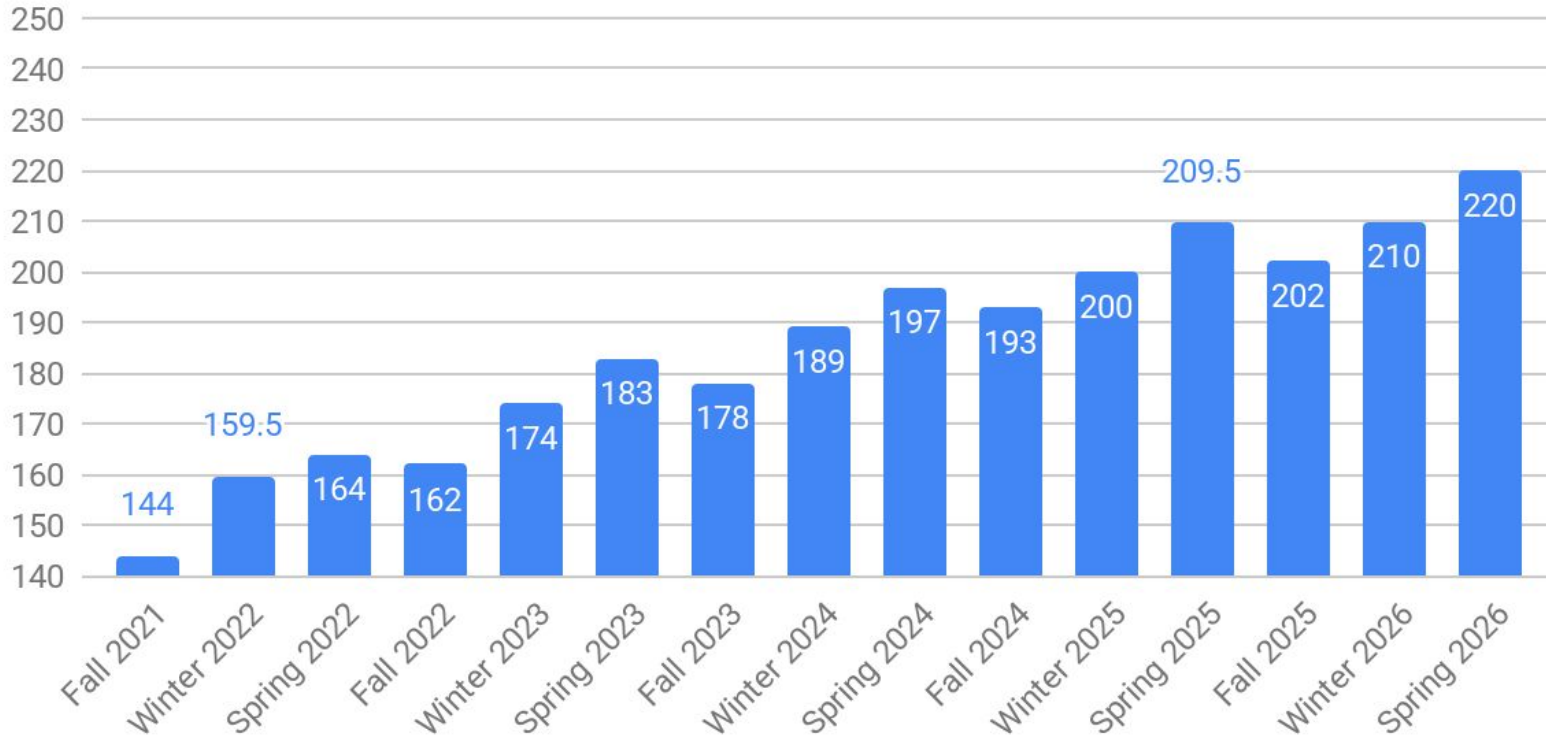
8th Grade Class of 2032 (Current 2nd Grade)

Median Math RIT



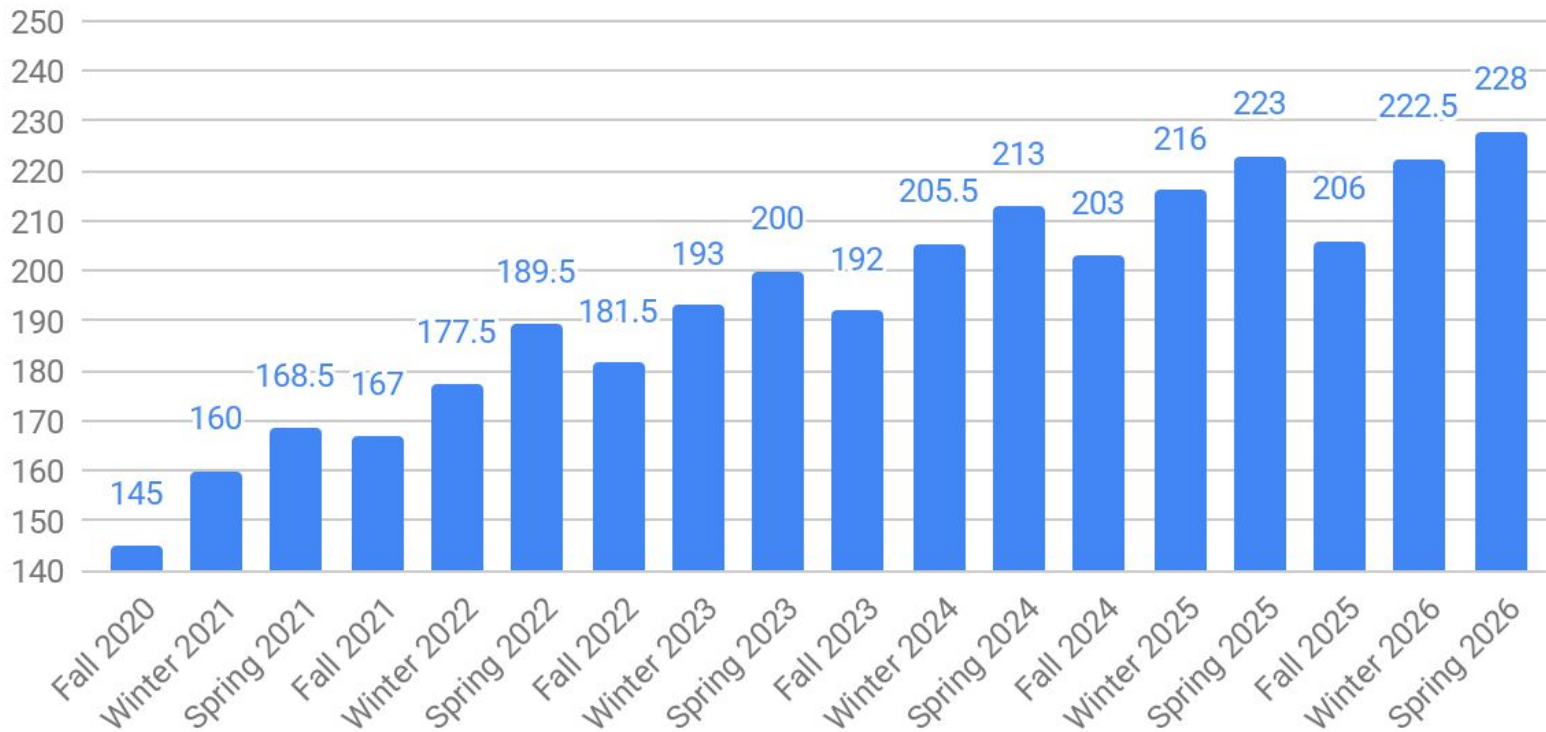
8th Grade Class of 2031 (Current 3rd Grade)

Median Math RIT



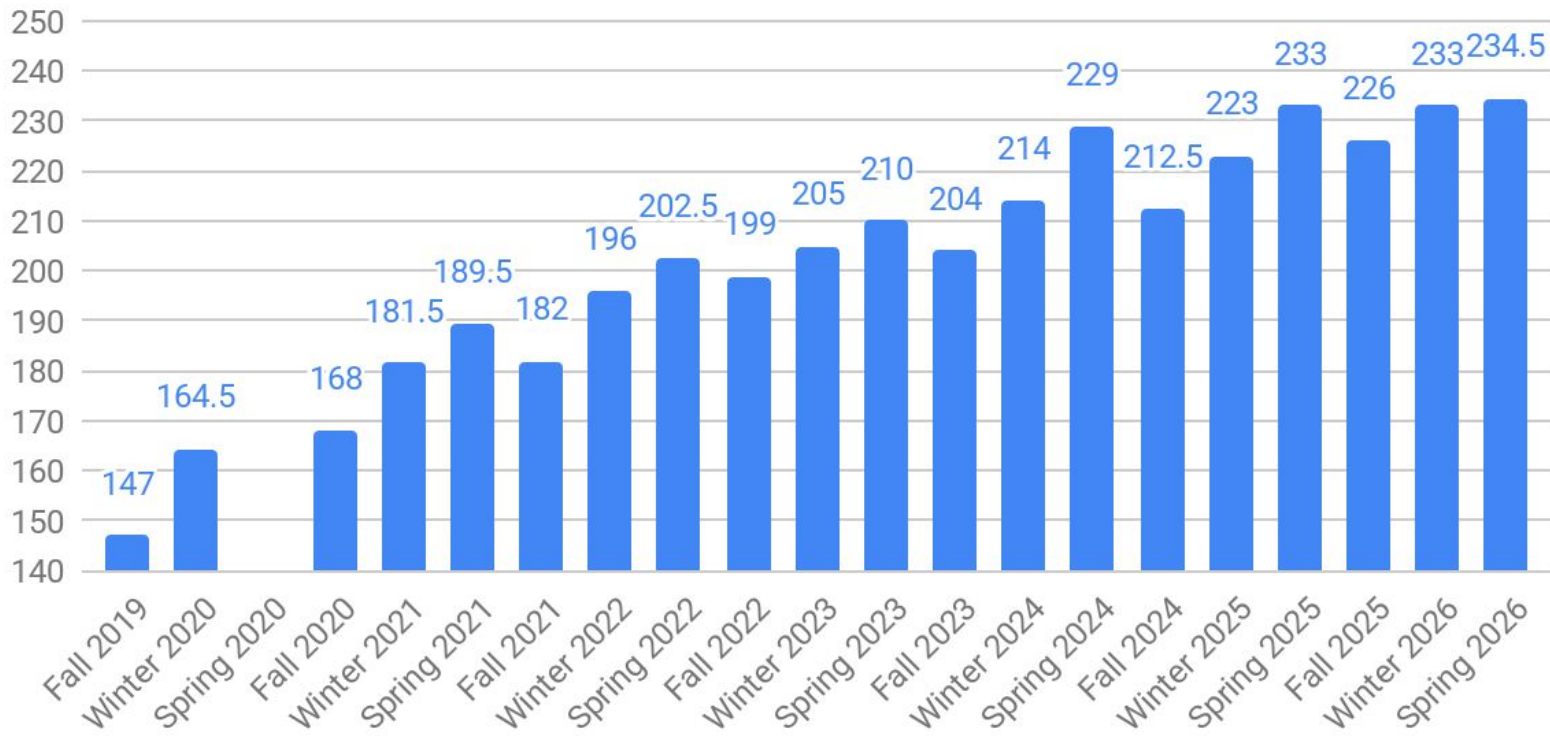
8th Grade Class of 2030 (Current 4th Grade)

Median Math RIT



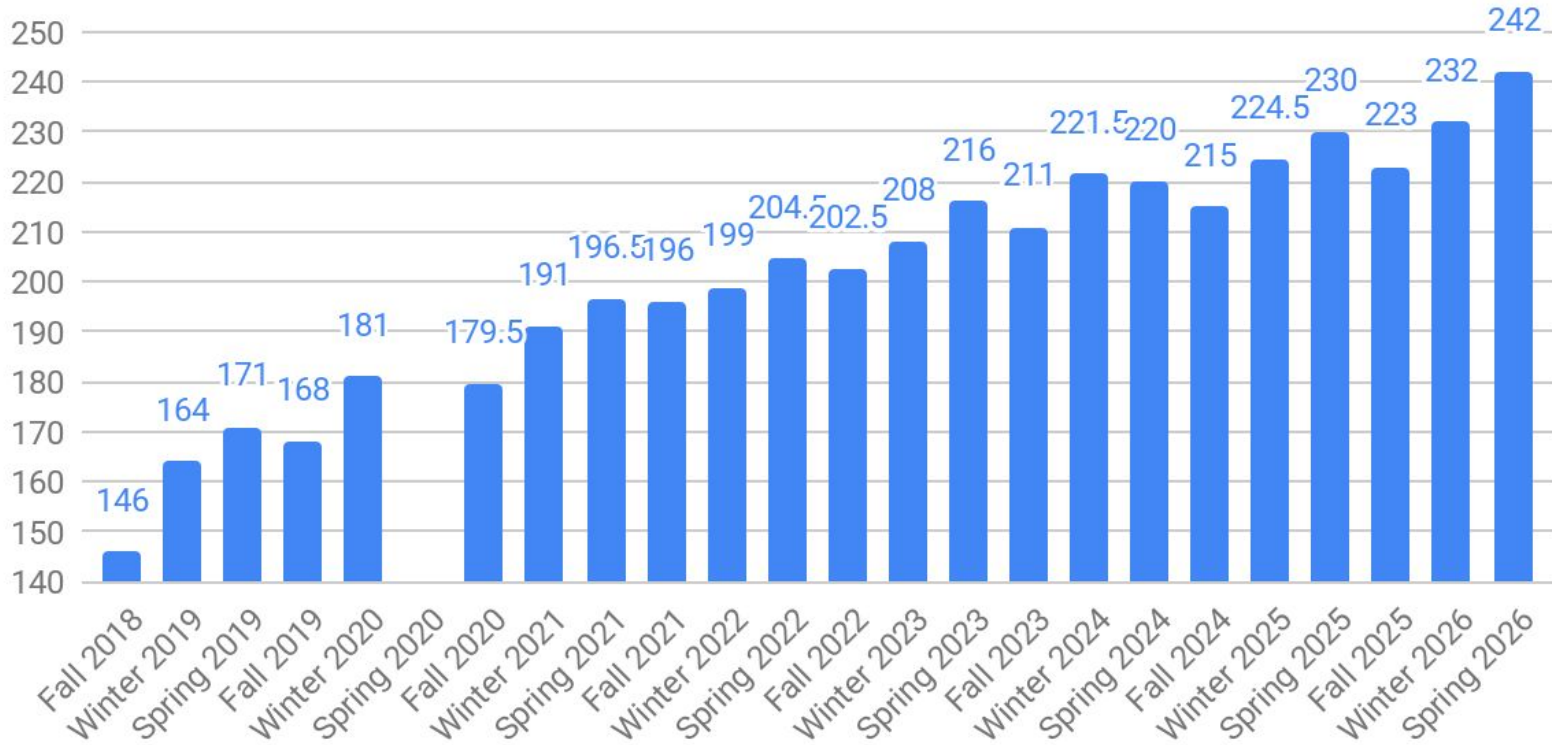
8th Grade Class of 2029 (Current 5th Grade)

Median Math Rit



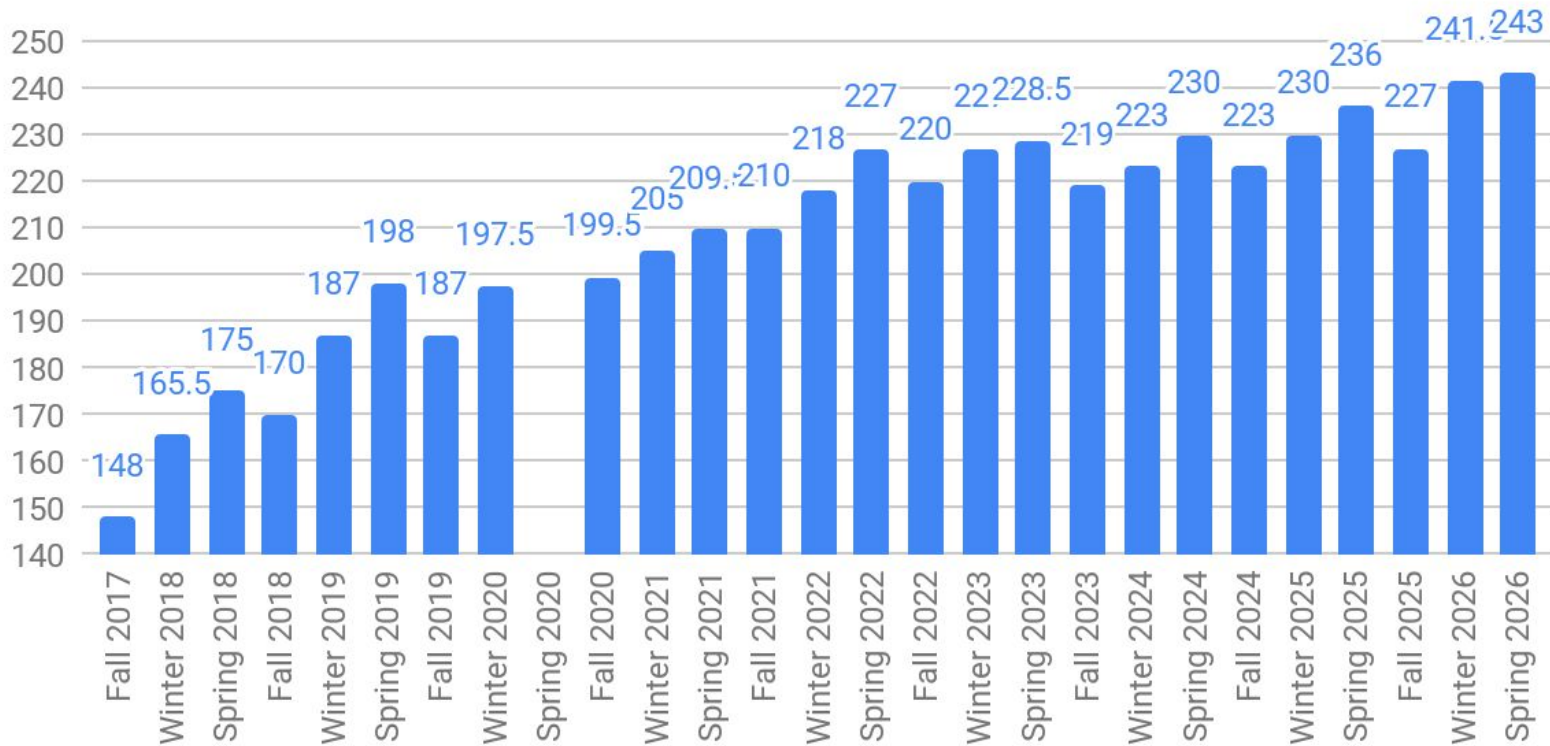
8th Grade Class of 2028 (Current 6th Grade)

Median Math RIT



8th Grade Class of 2027 (Current 7th Grade)

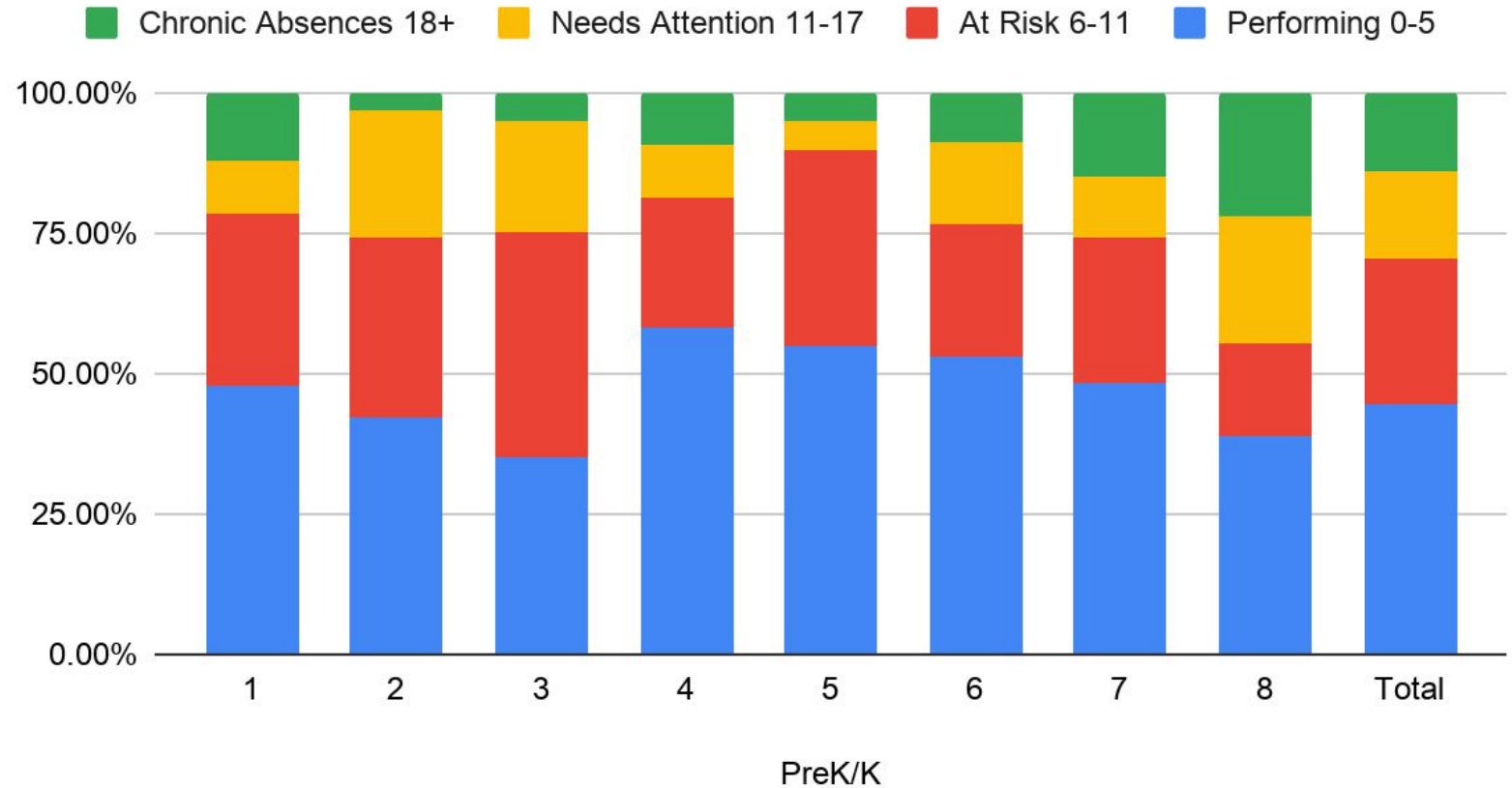
Median Math RIT



8th Grade Class of 2026 (Current 8th Grade)

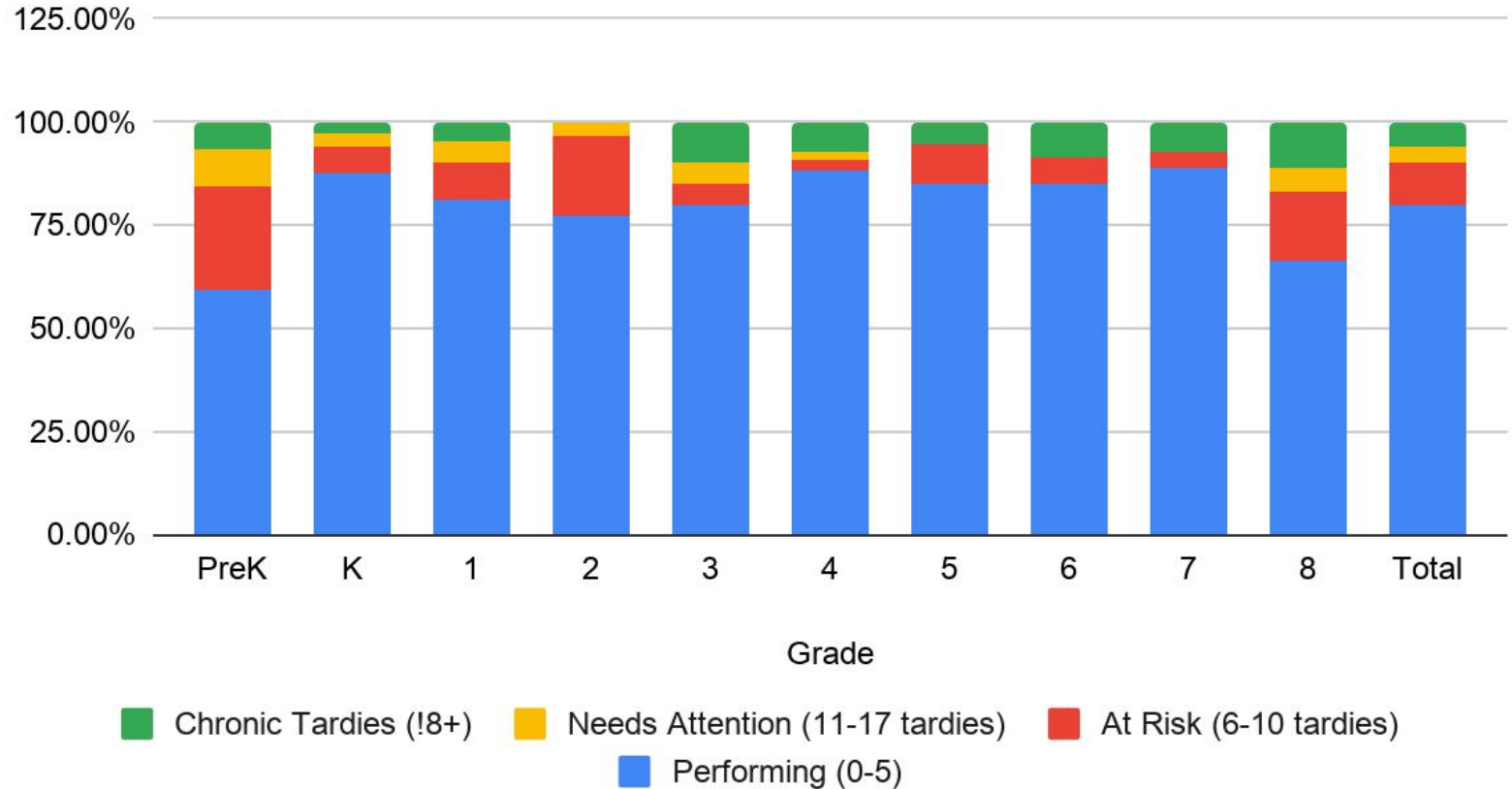
District Attendance Data

2025-26 Attendance



Grade	Performing (0-5)	At Risk (6-10 absences)	Needs Attention (11-17 absences)	Chronic Absence (18+)
PreK	40.91%	2.27%	22.73%	34.09%
K	21.21%	42.42%	18.18%	18.18%
1	47.62%	30.95%	9.52%	11.90%
2	41.94%	32.26%	22.58%	3.23%
3	35.00%	40.00%	20.00%	5.00%
4	58.14%	23.26%	9.30%	9.30%
5	55.00%	35.00%	5.00%	5.00%
6	52.94%	23.53%	14.71%	8.82%
7	48.15%	25.93%	11.11%	14.81%
8	38.89%	16.67%	22.22%	22.22%
Total	44.55%	25.96%	15.38%	14.10%

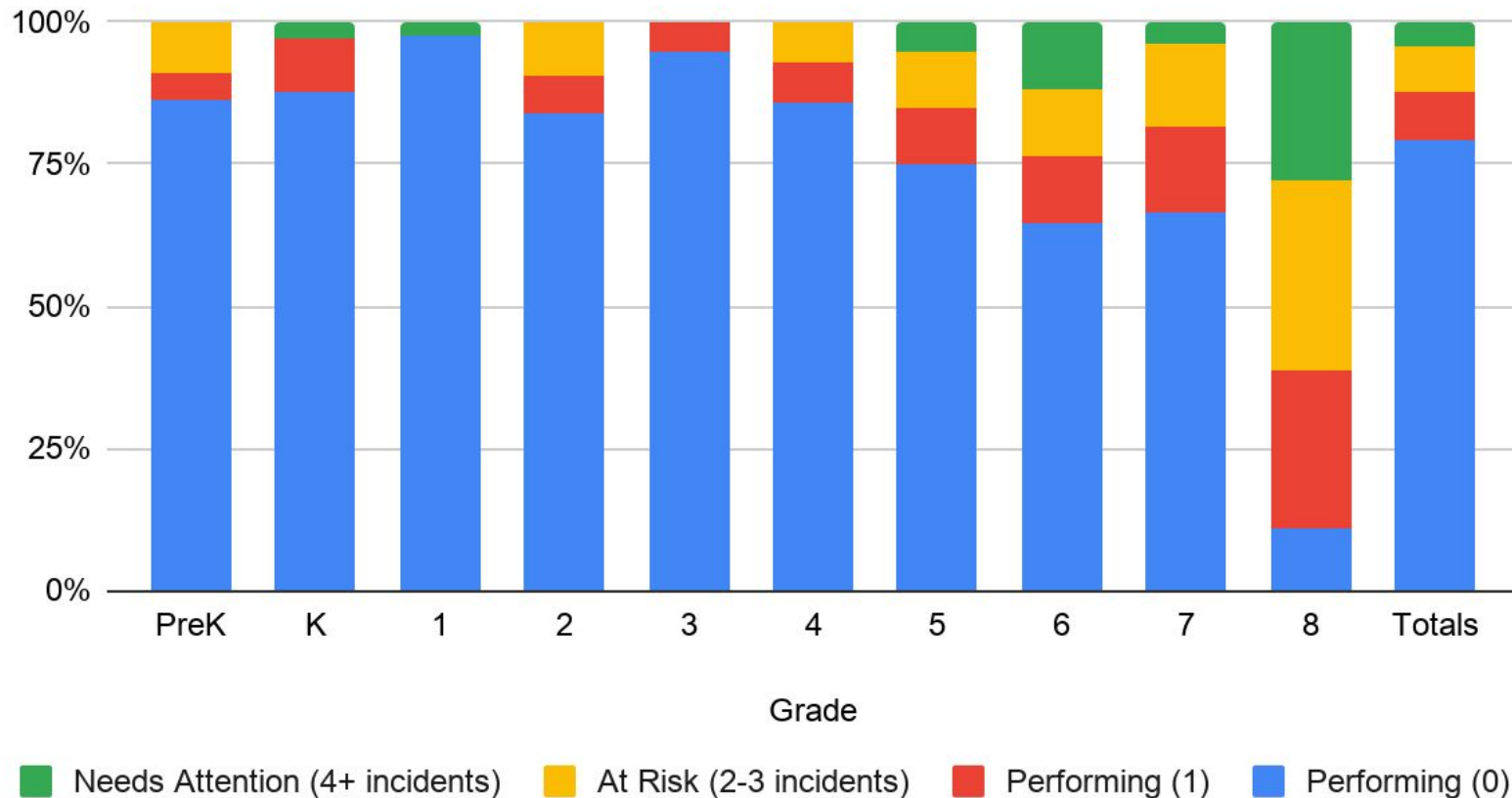
Tardies 2025-26



Grade	Performing (0-5)	At Risk (6-10 tardies)	Needs Attention (11-17 tardies)	Chronic Tardies (!8+)
PreK	59.09%	25.00%	9.09%	6.82%
K	87.88%	6.06%	3.03%	3.03%
1	80.95%	9.52%	4.76%	4.76%
2	77.42%	19.35%	3.23%	0.00%
3	80.00%	5.00%	5.00%	10.00%
4	88.37%	2.33%	2.33%	6.98%
5	85.00%	10.00%	0.00%	5.00%
6	85.29%	5.88%	0.00%	8.82%
7	88.89%	3.70%	0.00%	7.41%
8	66.67%	16.67%	5.56%	11.11%
Total	79.81%	10.58%	3.53%	6.09%

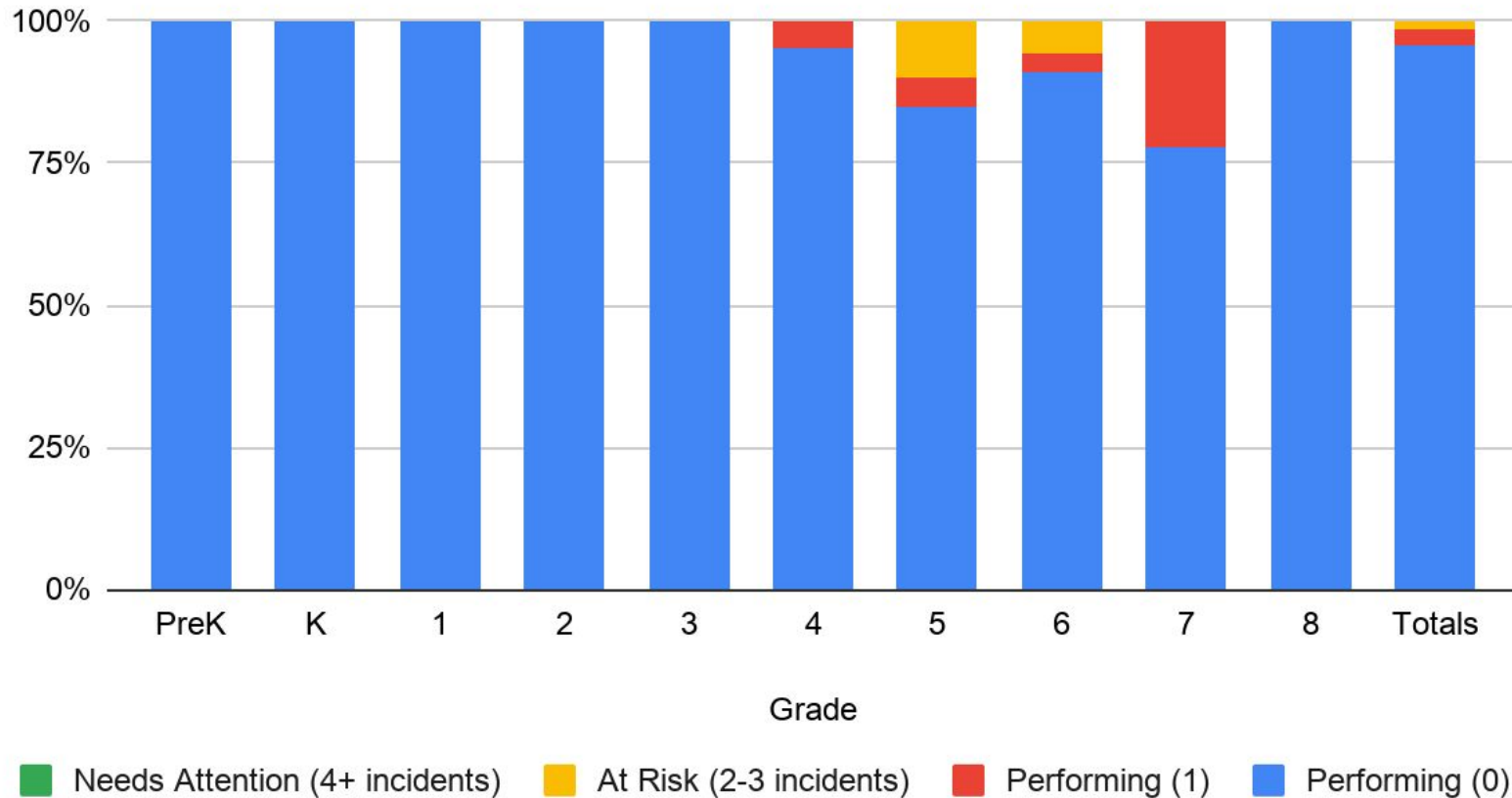
District Behavior Data

Behavior Log Incidents - 2025-26 Data



Behavior Log Percents					
Grade	Performing (0)	Performing (1)	At Risk (2-3 incidents)	Needs Attention (4+ incidents)	
PreK	86.36%	4.55%	9.09%	0.00%	
K	87.88%	9.09%	0.00%	3.03%	
1	97.62%	0.00%	0.00%	2.38%	
2	83.87%	6.45%	9.68%	0.00%	
3	95.00%	5.00%	0.00%	0.00%	
4	86.05%	6.98%	6.98%	0.00%	
5	75.00%	10.00%	10.00%	5.00%	
6	64.71%	11.76%	11.76%	11.76%	
7	66.67%	14.81%	14.81%	3.70%	
8	11.11%	27.78%	33.33%	27.78%	
Totals	79.17%	8.33%	8.33%	4.17%	

Discipline Incidents 25-26



Discipline Percents				
Grade	Performing (0)	Performing (1)	At Risk (2-3 incidents)	Needs Attention (4+ incidents)
PreK	100.00%	0.00%	0.00%	0.00%
K	100.00%	0.00%	0.00%	0.00%
1	100.00%	0.00%	0.00%	0.00%
2	100.00%	0.00%	0.00%	0.00%
3	100.00%	0.00%	0.00%	0.00%
4	95.35%	4.65%	0.00%	0.00%
5	85.00%	5.00%	10.00%	0.00%
6	91.18%	2.94%	5.88%	0.00%
7	77.78%	22.22%	0.00%	0.00%
8	100.00%	0.00%	0.00%	0.00%
Totals	95.51%	3.21%	1.28%	0.00%

Discipline types		
	Students At Risk (2-3 incidents)	Students Needing Attention (4+ incidents)
Refusal To Follow Directions/Non Compliance	1	0
Physical and Verbal Agression	2	0
Purposeful and Willful Destruction of Property	0	0
Violence with physical Injury	0	0
Violence without physical injury	0	0
Behavior - Other Reason	0	0