



SOUTH SAN ANTONIO INDEPENDENT SCHOOL DISTRICT

Agenda Item Summary

Meeting Date: January 20, 2021

Purpose: Presentation/Report Recognition Discussion/ Possible Action

Closed/Executive Session Work Session Discussion Only Consent

From: Theresa Servellon, Chief Academic Officer

Item Title: Academic Health Report

Description:

This report is a follow up to our August budget workshop discussion, in which we committed to providing “essential reports” to assist trustees with academic progress monitoring.

Recommendation:

N/A

District Goal/Strategy:

Strategy 1 We will engage all school community members through transparency and effective communication to promote a positive perception and create a strong brand.

Funding Budget Code and Amount:

CFO Approval

--	--

APPROVED BY:

SIGNATURE

DATE

Chief Officer:

Superintendent:

Executive Summary: Academic Health Report



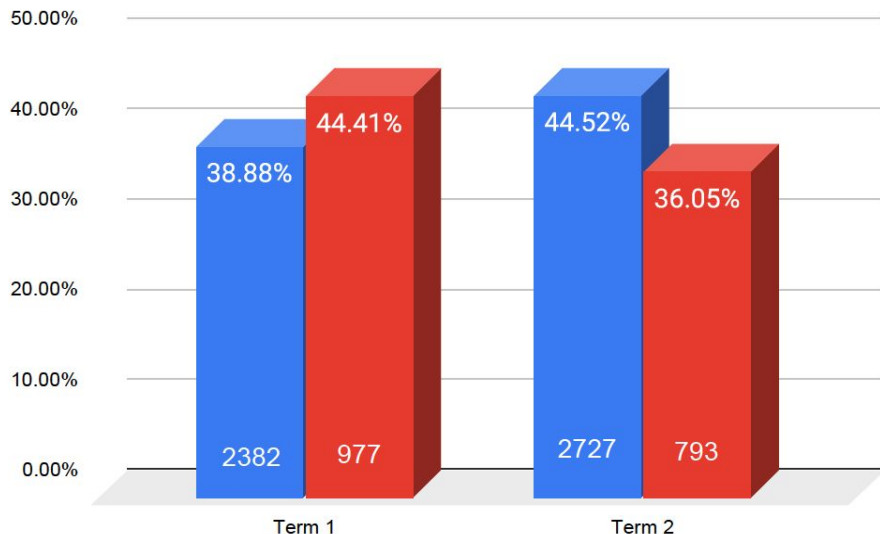
2020-2021 SY Term 1 vs. Term 2 Special Programs



Remote Learning/In-Person Learning

■ % Remote Learning Students Not Passing 1 Class or more
 ■ % In-Person Learning Students Not Passing 1 Class or More

Term 1 vs. Term 2 Grade Analysis



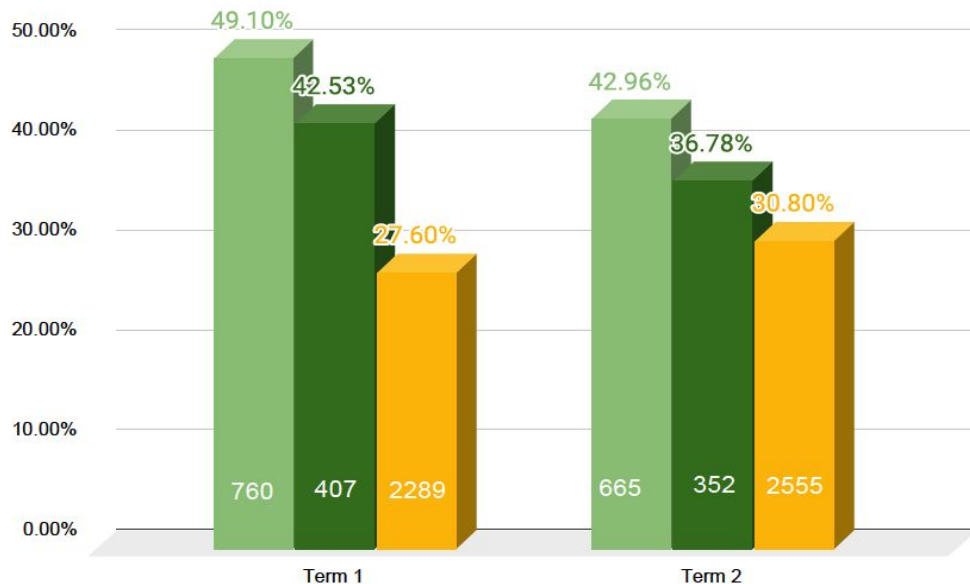
Executive Summary: Academic Report

School	Final Term 2	
	Remote Learning	In Person Learning
Athens ES	10.2% <small>18/175</small>	20.5% <small>8/39</small>
Hutchins ES	8.6% <small>21/244</small>	4.7% <small>8/167</small>
Kindred ES	19.1% <small>38/198</small>	19.6% <small>23/117</small>
Palo Alto ES	25.8% <small>90/348</small>	13.5% <small>20/148</small>
Price ES	23.6% <small>59/250</small>	16.7% <small>23/137</small>
Madla ES	35.4% <small>119/336</small>	32.8% <small>21/64</small>
Five Palms ES	34.3% <small>105/306</small>	32.1% <small>28/121</small>
Armstrong ES	38.2% <small>81/212</small>	23.6% <small>18/76</small>
Carrillo ES	29.6% <small>68/229</small>	10.1% <small>18/177</small>
Benavidez ES	29.7% <small>125/420</small>	16.1% <small>22/136</small>
Dwight MS	53.1% <small>242/455</small>	33.9% <small>39/115</small>
Kazen MS	62.0% <small>85/137</small>	49.3% <small>39/79</small>
Shepard MS	31.6% <small>144/455</small>	31.6% <small>37/117</small>
Zamora MS	63.9% <small>255/399</small>	58.7% <small>77/131</small>
South San HS	65.9% <small>1193/1810</small>	72.5% <small>388/535</small>
West Campus HS	55.2% <small>84/152</small>	58.5% <small>24/41</small>

English Learners and Special Education Students

■ % of failing of Spec. Ed. students 1 course or more
 ■ % of failing of EL students 1 course or more
 ■ % of failing of Non-EL, Non-Sp.Ed. students 1 course or more

Term 1 vs. Term 2 Grade Analysis



Executive Summary: Academic Report

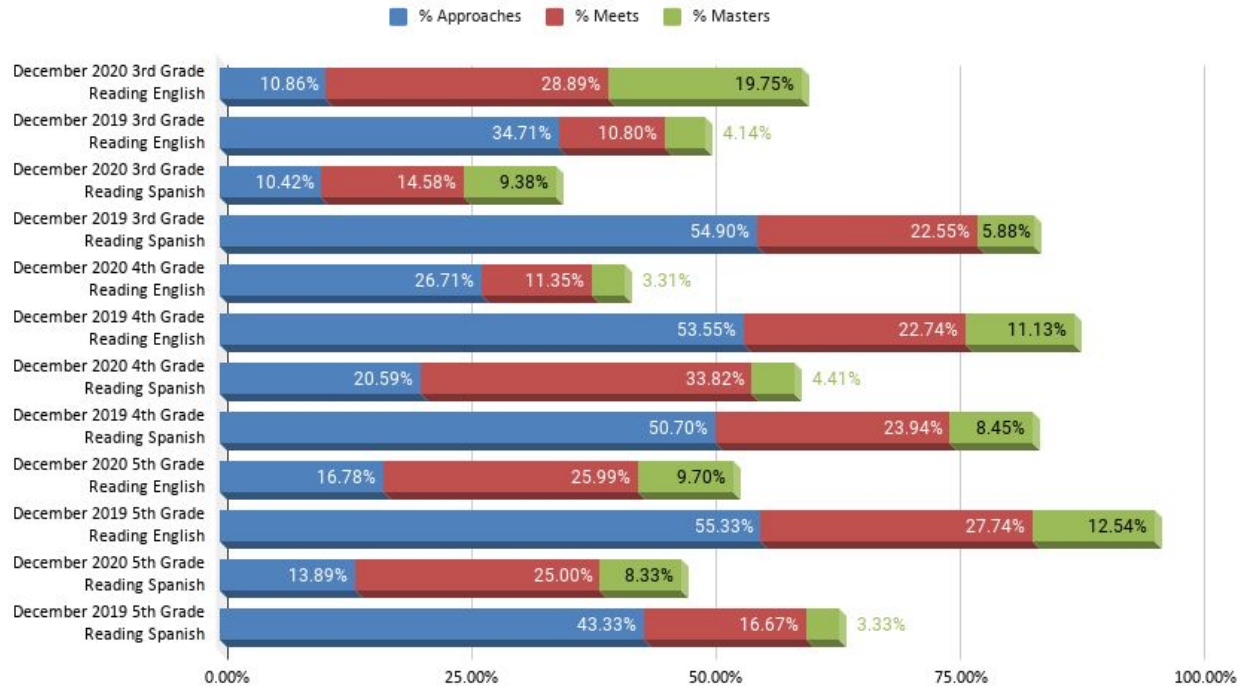
School	Final Term 2	
	English Learners	Special Education
Athens ES	10.29% <small>7/68</small>	17.39% <small>4/23</small>
Hutchins ES	8.82% <small>9/102</small>	0% <small>0/48</small>
Kindred ES	33.00% <small>1/3</small>	26.19% <small>11/42</small>
Palo Alto ES	66.67% <small>4/6</small>	22.41% <small>13/58</small>
Price ES	23.03% <small>35/152</small>	20.83% <small>10/48</small>
Madla ES	25.00% <small>2/8</small>	47.62% <small>20/42</small>
Five Palms ES	32.38% <small>68/210</small>	22.22% <small>8/36</small>
Armstrong ES	50.00% <small>6/12</small>	32.65% <small>16/49</small>
Carrillo ES	40.00% <small>4/10</small>	45.24% <small>19/42</small>
Benavidez ES	25.54% <small>47/184</small>	30.51% <small>18/59</small>
Dwight MS	57.24% <small>83/145</small>	41.89% <small>31/74</small>
Kazen MS	46.67% <small>21/45</small>	74.29% <small>26/35</small>
Shepard MS	31.97% <small>39/122</small>	25.00% <small>17/68</small>
Zamora MS	68.55% <small>85/124</small>	64.41% <small>38/59</small>
South San HS	72.84% <small>228/313</small>	61.08% <small>113/185</small>
West Campus HS	70.27% <small>26/37</small>	61.54% <small>8/13</small>

December 2020 Common Assessment Results



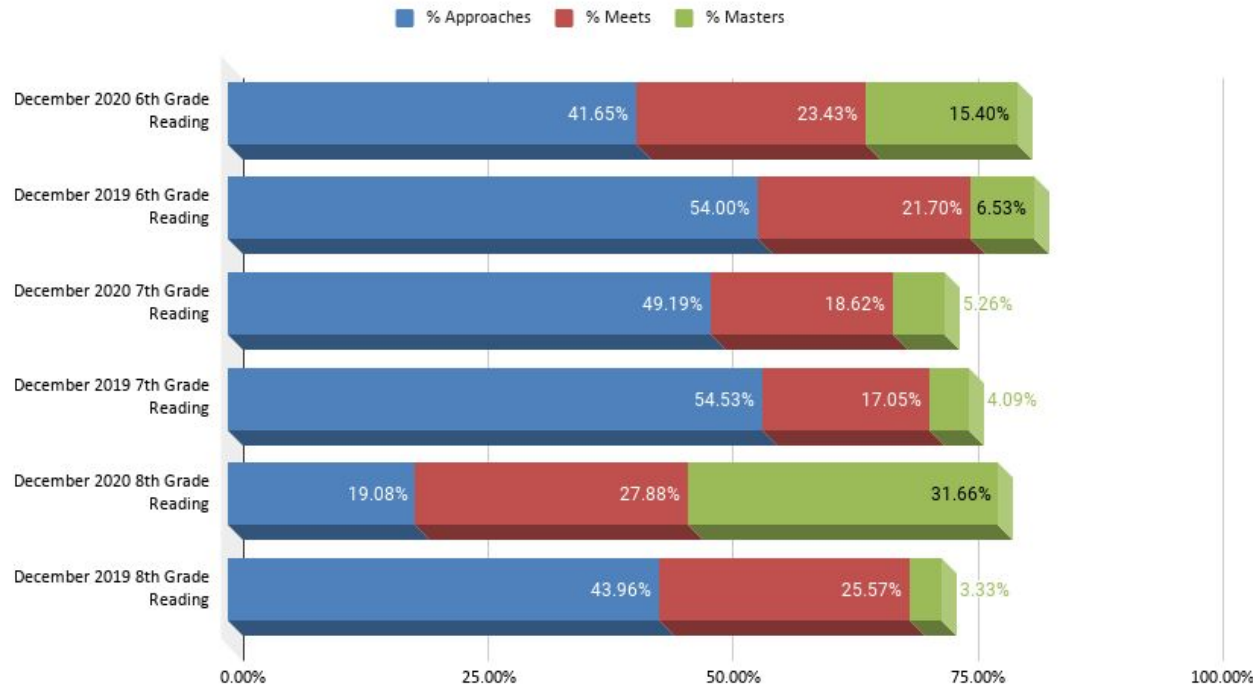
Reading Common Assessment 3-5

December Common Assessment 2019 vs. 2020



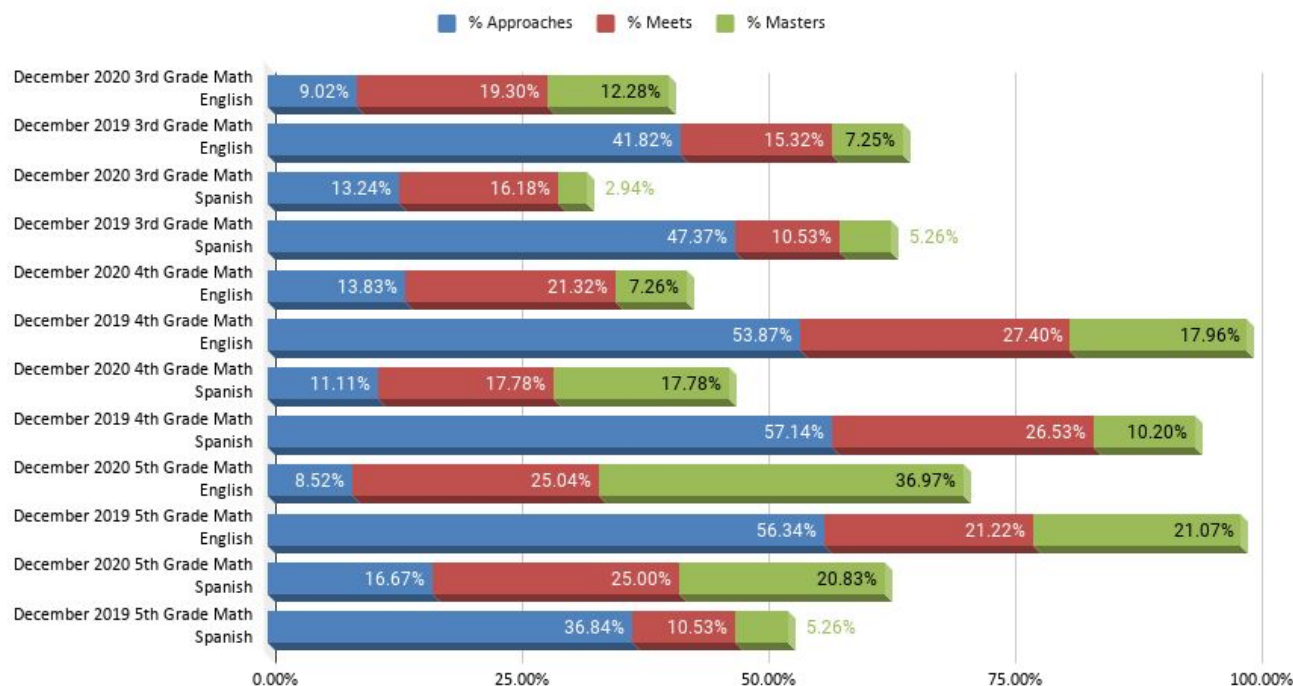
Reading Common Assessment 6-8

December Common Assessment 2019 vs. 2020 Reading 6-8



Math Common Assessment 3-5

December Common Assessment 2019 vs. 2020 Math 3-5



Math Common Assessment 6-8

December Common Assessment 2019 vs. 2020 Math 6-8

